

352.0742B

N 427

0.2



1962 ANNUAL  
TOWN REPORT

NEW HAMPSHIRE  
STATE LIBRARY



# Town of New London

## New Hampshire

### Annual Reports

Of The Town Officers,

Boards and

Other Agencies

FOR YEAR ENDING

DECEMBER 31, 1962

: ————— :

*Printed by*

THE COUNTRY PRESS

PLEASANT STREET

NEW LONDON, NEW HAMPSHIRE



## THE COVER DESIGN

The design on the cover is the work of Vincent S. Wickham, B.F.A., a New London resident. It was chosen by four judges in a competition conducted by the New London Historical Committee and the Selectmen, seeking a Town Seal that would meet the following criteria:

1. Significance of design to New London; how well it tells the story of our Town.
2. Adaptability for reproduction.
3. Artistic merit.

You will recognize the towers of Colgate Hall and the Baptist Church, along with the Town Hall and one simple line indicative of the hills surrounding New London.

The judges in our "Town Seal" contest were:

Mr. William Kidder, Sr.  
Dr. J. Duane Squires  
Mr. Percy Thurston  
Mrs. Elizabeth Ripley

We express our sincere appreciation to the competing local artists and to the judges. We hope you approve and vote to make this the

OFFICIAL TOWN SEAL  
OF  
NEW LONDON

The Seal will then be incorporated in metal markers to be erected at suitable historic sites throughout our Town. This action was authorized by vote at Town Meeting in 1962 to continue over a period of years anticipating the 200th Anniversary of the incorporation of New London in 1779.



# New Hampshire Annual Report Contest

*This is to certify that*

## *New London*

has been awarded *first place*  
in Class **III** for the year **1962** in recognition of  
the excellence of its **1961** Annual Report

Judges:



PUBLIC ADMINISTRATION SERVICE,  
DEPARTMENT OF GOVERNMENT:

*David L. Mann*  
*Henry Louise H. Hancock*  
*Walter J. Ford*

*Edith A. Smith*  
COLLEGE OF LIBERAL ARTS,  
UNIVERSITY OF NEW HAMPSHIRE:

*E. B. Sackett*, Dean

\* \* \* \* \*

A similar Certificate was awarded The Country Press for the quality of the product in the printing of the 1961 Report. The Town Officers and Departments express their appreciation to Laurence F. Petersen, owner of The Country Press, for his contribution to the excellence of our 1961 Annual Report.

## INDEX

Appropriations, Credits .....	28-29
Auditor's Report .....	21
Balance Sheet .....	30
Bonded Debt .....	31
Budget Committee Report .....	21
Budget, Town .....	22-26
Cemetery Commissioners Report .....	68
Civil Defense Report .....	74-75
Comparative Statement of Appropriations and Expenditures .....	32-33
How Your Property Tax Dollar Is Spent .....	56-57
Detailed Statement of Payments .....	42-55
Fire Department .....	82
Fire Warden's Report .....	81
Forestry and Shade Trees .....	78-79
Health Officers Report .....	84
Hospital Reports .....	85-90
Information Booth Report .....	77-78
Memorial Day Report .....	80
Municipal Court .....	82-83
Outing Club Report .....	95-97
Perambulation of Town Lines .....	13-16
Planning Board .....	76
Police Department .....	83
Selectmen's Report .....	9-13
Summary of Inventory and Schedule of Town Property .....	27
Sewer Budget Statement .....	69-70
Summary of Receipts and Payments .....	34-39
Summary of Warrant, Tax Collector's Report .....	34-39
Town Clerk's Report .....	31
Town Officers .....	6-8
Town Treasurer' Report .....	29
Tracy Memorial Library .....	90-95
Trust Funds .....	58-67
Vital Statistics .....	98-112
Warrant .....	17-20
Water System Precinct .....	70-74
Zoning Board of Adjustment .....	77
<b>SCHOOLS .....</b>	<b>113-142</b>
Auditor's Reports .....	129
Bonded Indebtedness .....	130
Budget .....	120-122
Executive Organization .....	114
Financial Report .....	130-132
Enrollment .....	139
Graduates .....	140
Principal's Report .....	136-138
Personnel of New London Central School .....	140-141
Report of District Treasurer .....	128
Report of Teacher Consultant .....	135-136
Report of School Nurse .....	142
School Board's Budget .....	123-128
School Building Account .....	132
School Building Fund .....	129
Superintendent's Report .....	133-135
Treasurer's Report .....	128
Tuition Pupils .....	139
Warrant .....	118-119

# TOWN OF NEW LONDON

---

Incorporated Anno Domini 1779

Population (1950 Census) 1470

Population (1960 Census) 1718

Second Congressional District

Fifth Councilor District

Seventh State Senatorial District

## *United States Senators*

Styles Bridges of Concord — Deceased

Maurice J. Murphy Jr. of Portsmouth appointed through 1962

Norris Cotton of Lebanon through 1962

## *Representative in Congress*

Perkins Bass of Peterborough through 1962

## *State Senator*

James C. Cleveland of New London through 1962

## *Representative to General Court*

M. Roy London of New London through 1962



## TOWN OFFICERS

### *Selectmen*

RICHARD W. CHATELLIER '63  
M. ROY LONDON '63 (appointed)  
MERLE C. GAY '64 (deceased)  
GERALD C. PRESCOTT '65

### *Treasurer*

FRED H. TIBBETTS

### *Town Clerk*

WILLIAM F. KIDDER

### *Tax Collector*

DORRIS M. SMITH

### *Moderator*

M. ROY LONDON, to November 6, 1962  
LLOYD S. LITTLEFIELD

### *Auditor*

ALF E. JACOBSON  
WILLIAM H. CORSNER & CO.

### *Road Agent*

HENRY M. STANLEY

### *State Road Foreman*

KENNETH M. RICH

### *Judge of Municipal Court*

J. DUANE SQUIRES



*Town Health Officer*

JOHN M. OHLER, M.D.

*Trustees of Trust Funds*

HERBERT D. SWIFT '63      CHARLES M. HEMENWAY '64  
ROBERT C. WHITMAN '65

*Sewer Commission*

WILLIAM O. BROWN '63      KENNETH A. BUTLER '64  
WESLEY B. WOODWARD '65

*Cemetery Commission*

HAROLD E. MESSER '63      ALBERT J. SHOLES '64  
TYLER D. GRACE '65

*Public Library Trustees*

ALF E. JACOBSON '63      LUCY M. WOODWARD '64  
MARGARET M. HUBBARD '65

*Supervisors of Check List*

HELEN S. RAY      FRED H. TIBBETTS  
DWIGHT BRALEY

*Ballot Clerks*

DORIS E. SHEPARD      OSCAR A. COLBURN  
ARTHUR S. LITTLE      RUSSELL H. DIMMICK

*Civil Defense Director*

WATSON B. JOHNSTON

*Tree Warden*

BERKLEY E. HUNTER

*Surveyor of Wood and Lumber*

ROY E. EMERY

*Budget Committee*

ROBERT G. SAWYER, Chairman '63

JOHN G. HOLTEEN '63            GENEVIEVE MILLAR '64  
BENJAMIN H. YERXA '63        WILLIS V. AMES '65  
EDWIN B. HUBBARD '64        DORIS H. PHILLIPS '65  
RALPH E. MARSHALL '64        LAURENCE R. SPAULDING '65

*Planning Board*

ELLIS K. HEATH '65, Chairman

WAYNE K. WHEELER '63        A. IRVING DODGE '65, Secy.  
RICHARD W. CHATELLIER '63    MARY C. BARRETT '67  
OSCAR A. COLBURN '64        JAMES E. SHEPARD 2d '67

*Zoning Board of Adjustment*

FRANK H. BUTLER '65, Chairman

CLARENCE B. GRANGER '63     MAURICE E. SHEPARD '66  
MARY C. BARRETT '64         WILLIAM G. NEUMANN '67  
Secretary

*Water Commission*

BENJAMIN H. YERXA '63        PAUL B. GAY '64  
EDWARD A. TODD '65

*Town History Committee*

MILDRED TUNIS                J. DUANE SQUIRES  
WILLIAM M. KIDDER            PERCY M. THURSTON

*Fire Chief*

EDWARD A. TODD

*Board of Fire Engineers*

CLEMENT W. LOVERING '63     ROBERT M. LOVELY '64  
ROBERT G. MacMICHAEL '65

*Constables*

TYLER D. GRACE, Chief

ALWIN J. HAWKINS             KENNETH M. RICH  
WATSON B. JOHNSTON         CHARLES G. BAILEY

## MESSAGES FROM THE SELECTMEN

Our Board was shocked, along with the entire Town, by the loss of one of its members, Merle C. Gay, whose very active life in New London ended suddenly on May 7, 1962, from natural causes. Born in New London in 1899, Merle was known and loved by a host of friends for miles around. He was an eager participant in a great many civic activities throughout his life and will be long remembered. "Uncle Merle's" place on our Board was filled by the appointment of M. Roy London by the remaining two members.

\* \* \* \* \*

We shall attempt to review a few highlights of Town affairs, some of which are of general interest completely aside from our office, and some are matters directly in line with our duties. You are urged to read the reports of the various departments for more specific information.

\* \* \* \* \*

The observance of the 125th Anniversary of the founding of Colby Junior College was an event of special interest to our Town in 1962. Under various names, this educational institution has been active in the life of New London for a century and a quarter. From the very beginning it has been closely linked with the people of the Town, and the relationships between campus and community have been pleasant and mutually stimulating.

As Mrs. Lord's history of New London indicates, eleven leading citizens of New London began the school. On July 4, 1837, these men secured the charter from the State Legislature which inaugurated what we today know as Colby Junior College. These eleven were Joseph Colby, Anthony Colby, Perley Burpee, Jonathan Greeley, John Brown, Jonathan Herrick, David Everett, Samuel Carr, Walter P. Flanders, Jonathan Addison and Marshall Trayne. All these names were on the New London check-list in 1837, and each of these men held town offices at various times, some for many terms. Their



initiative and energy made evident in founding the school in 1837 have always characterized the community.

A study of Colby catalogues since the first one issued in 1838 reveals that at all times since the beginning, one or more citizens of New London have served on the governing board of the school. Such is still the case. Many of the principal buildings of the College bear the names of old New London families whose descendants still live here, e.g. Colgate, Burpee, Shepard. At all times local youth has enjoyed opportunities for getting an education which the school has made possible. They still do. Since the institution first opened its doors, it has brought leaders of thought and culture to New London, freely making these privileges available to our citizens.

A sometimes overlooked but very important aspect of the contribution of the modern Colby Junior College, to the community, is the economic. Just how much this kind of assistance to the prosperity of our Town amounts to is indicated by some figures recently compiled by the Treasurer of the College. These facts relate to the academic year, 1961-1962:

Cash handled through the Student Bank and probably spent in Town	\$ 82,910.00
College payroll during regular school year	710,216.00
Payroll during Summer Months of Conferences	39,253.00
Paid to New London Business Firms and Individuals (56 in number)	143,633.00
Taxes, Sewer, and Water	32,426.00
	<hr/>
TOTAL	\$1,008,438.00

In addition to the above figure, Colby students and faculty paid more than \$11,000 for season tickets at King Ridge during 1961-1962. The College makes a practice of paying its town tax bill, based on the previous year, in June. This enables New London to operate without resorting to borrowing in anticipation of taxes, as most towns and cities are forced to do. Proper adjustment is made when current tax bills are issued in the Fall. This practice results in a direct saving of importance to the Town.



The Gordon Research Conferences of the American Association for the Advancement of Science, held on the Colby campus each summer from June through August, bring 1400-1600 people to New London. These men and women come from all over the United States and from every continent in the world. No figures are available as to the local expenditures of these visitors, but the Conference headquarters has a staff of ten people, six of whom live in New London. The public relations value of these meetings, which results in the name and location of New London becoming known throughout the entire world, cannot be calculated.

In all we have said there has been no estimate made concerning the expenditures of parents and friends of Colby students when they come to New London to visit, but it is obviously considerable at such times as Registration, Parents Weekend, and Commencement. Nor do we have any figures on how many local bills contracted for by students are sent home to parents and paid by them through the mail. This, again, is no doubt extensive.

For these several reasons, therefore — historical, cultural, and economic — we are pleased to congratulate Colby on passing its 125th birthday in 1962. We mourned the untimely death of President Austin during the year, but we join with all our citizens in wishing his successor, President Everett M. Woodman, every success as he continues the administration of Colby.

\* \* \* \* \*

Town insurance has been discussed by the various members of the Board of Selectmen off and on for many years, and with local insurance agents since 1959. In November, 1961, finding that we had fifteen different policies placed in eleven different companies by five local agents, action was finally taken. The Library Trustees, Sewer Commissions and Cemetery Commissioners were consulted and agreement was unanimous that all strictly Town insurance be consolidated under a master policy. The premiums would be paid from an "Insurance Appropriation" and departmental appropriations reduced accordingly. Com-

missions on this insurance would be shared equally by the five local agents.

The Selectmen invited the agents, Carlton F. Barton, Colby Agency, Country Houses, A. T. Kirk and New London Agency to review the properties and town liability exposure and submit proposals for writing a consolidated policy. From the three proposals submitted, that of the New London Agency was accepted and the plan became effective July 1, 1962.

The result of the cooperation of the Town Departments and the local agents has provided us with proper coverage based on today's values and a clear, convenient insurance program. It also resulted in an overdraft in many departments for 1962 only. Property values were increased, liability coverage was increased, policies were written on a 5-year budget basis, giving us an annual figure for all Town insurance.

\* \* \* \* \*

The groundwork of a very much-needed addition to our Town facilities was laid in 1962. We refer to the acquisition of a beach suitable, and available, for a "Town Beach". The Planning Board, assisted by a few private citizens of New London, successfully negotiated with Mr. Walter S. Bucklin for land bordering Little Lake Sunapee, part of his property. This is the shore that has been used for years for the Outing Club swimming classes. The Planning Board report, in this issue, gives further details of Mr. Bucklin's generous offer. Having sought a beach site for several years without success, the Selectmen express their sincere thanks to the Planning Board for accepting this task and following through to a happy solution. Property offered a municipality must be accepted or rejected at Town Meeting. Upon acceptance, we are sure proper expressions of appreciation will be extended to Mr. Bucklin.

\* \* \* \* \*

In 1962 we purchased an electric calculator, a "Comptograph", which we find very helpful in our weekly work and of inestimable value in figuring tax bills. Perhaps you did not realize that the Selectmen's duties include figuring your tax bills

and supplying the "Tax Warrant" to the Town Collector. Heretofore the figuring was done by hand, with one man checking another's figures. Our Selectmen's Office was further improved by the addition of a tile floor and new chairs, as the room is used more and more for meetings.

\* \* \* \* \*

Building Permits for 1962 showed an increase over the previous year, with three more year-round dwellings and three more summer cottages. Permits issued:

- 13 — year-round dwellings
- 5 — summer cottages
- 4 — commercial buildings
- 1 — boathouse
- 1 — garage
- 19 — additions and alterations
- 8 — signs
- 
- 51 — issued
- 4 — denied

Estimated value of new construction — \$300,000.

: ————— :

## PERAMBULATION OF NEW LONDON-WILMOT TOWN LINE

The Town Line of New London-Wilmot extends for a distance of  $7\frac{1}{2}$  miles, more or less, along the upper slopes of Morgan Hill, Bunker Hill and Jones Hill, at the East boundary of New London — those hills at the far side of Pleasant Lake, as viewed from Main Street. It crosses rough, wooded land, with beautiful views in all directions; the starting point is difficult to reach (about a twenty minute walk after leaving your car and another twenty minutes to find the marker).

The line runs along the ridge, drops down to the Elkins-Wilmot Road, on down to cross Route #11 and to the common bound of New London, Wilmot and Sutton.

There are nineteen stone markers along the line at various points, with the initials T.L.N.L.-W. carved in them, along with perambulation dates. While the New Hampshire Statutes require the perambulation and marking every seven years, the earliest date indicated is 1862, and while all markers have numerous dates, many lack consecutive seven year visits until 1912. From 1912 to 1962, most boundaries have been regularly marked at the seven year anniversary. If you walked the line, you would well understand why. Seven year's growth of underbrush, logging operations, moss and the normal work of nature make the markers hard to find.

With the members of your Board of Selectmen approaching, in, or slightly beyond middle-age, it was decided to engage the services of better-qualified men to perambulate this Town Line in 1962, in accordance with R.S.A. 51:3. We felt fortunate in finding two men willing to "walk the line", mark the stone markers "1962" and report the findings to us. These men, Richard H. Webb of Sunapee, and William Richer, a trained surveyor employed by the New England Forestry Foundation, report as follows:

December 15, 1962

To the Selectmen of New London —

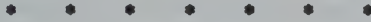
Dear Sirs:

We took the description of the New London-Wilmot Town Line as described in the perambulation of 1955, supplied by your Board, and followed its course from North to South on December 10, 1962. We checked the directions carefully and found them to be accurate. All markers were located and engraved, excepting numbers 8 and 14, which we could not locate. Number 8 lies near the new Camp Tabor road and may have been destroyed during its construction. Number 14 should lie next to the State Road from Elkins to Wilmot Flat. There is new gravel at this location and the old stone marker may have been covered. However, there is a cement post and Town Line sign erected



by the State, according to their survey of 1913.”

Detailed description of the course of this Town Line has been duly recorded with the Town Clerk.



## NEW LONDON-NEWBURY TOWN LINE

Upon notification by the Newbury Board of Selectmen, the New London Selectmen met with them at 8:00 A.M. on October 17, 1962, to perambulate the New London-Newbury town line. The Statutes provide that the “older” incorporated town choose the date every seven years and so notify the “younger” town.

Meeting at 103A at the former Frye property, now owned by George Williams, the group composed of Merle S. Rich, Frederick S. Cook and Jack Sweeney, Newbury Selectmen, and M. Roy London, Gerald C. Prescott and R. W. Chatellier, New London Selectmen, proceeded to the shore of Lake Sunapee to a large boulder about 100 feet south of the Williams boathouse. This stone has been engraved every seven years since 1913 and we added the “1962”. The actual common bound of the towns of New London, Newbury and Sunapee is at a point in Lake Sunapee, several hundred feet off shore from this boulder. Our 19th century legislators may have had some method in mind for “renewing the marks and bounds once in every seven years forever” that we are not aware of on this particular bound!

We then renewed the mark with 1962 at the stone marker on the west side of Route 103A, a stone in the wall which you can see readily.

The next marker is a large rock on the east side of an abandoned road, now overgrown and impassable except on foot, running at an angle from #103A south of the Vance Allyn property.

Another marker is a large stone on the west side of Stony Brook Road, about 200 feet south of a culvert and stream crossing the road several hundred feet south of the King Hill Road intersection.

The last marker, which is the common bound of New London, Newbury and Sutton, is in the woods across from Fred Simpson's residence. This southerly line of New London, incidentally, is plainly marked by an old stone wall that runs in quite a straight line from 103A all the way down to the Sutton Road at Hominy Pot. In places the wall is overgrown and tumbled down, in places as sound as when it was built by manpower, aided by teams of horses and oxen. When we realize that the walls served a dual purpose of clearing the fields for tillage, and to confine cattle before the days of modern fencing, we have great respect for the courage and determination of the hardy men and women who established our boundaries in virgin woodlands.

Here again, all New London-Newbury town lines were renewed and marked "1962" and a detailed description of locations duly recorded with the Town Clerk. We give you our little story thinking it may have nostalgic appeal to some, and general interest to our growing number of residents who came from urban areas where "walking the town line" was unheard of by the average citizen.

# THE STATE OF NEW HAMPSHIRE

## TOWN WARRANT

To the Inhabitants of the Town of New London in the County of Merrimack in said State, qualified to vote in Town Affairs:

[L. S.]

You are hereby notified to meet at Whipple Memorial Hall in said New London on Tuesday, the twelfth day of March, next at ten of the clock in the forenoon, to act upon the following subjects:

1. To choose all necessary Town Officers for the year ensuing.

2. To raise such sums of money as may be necessary to defray town charges for the ensuing year and make appropriations of the same.

This sum to include:

**Note: Amounts shown in the right hand column of figures are the 1962 appropriations which are given here for your convenience for purposes of comparison only.**

	1963	1962
Town Officers Salaries	\$5,250.00	\$5,000.00
Town Officers Expenses	2,800.00	2,600.00
Election and Registration	250.00	450.00
Municipal Court	550.00	500.00
Town Hall Expenses	3,000.00	3,000.00
Social Security, Town share	1,100.00	1,100.00
Health Officer, Expenses and Salary (\$100.00)	350.00	350.00
Vital Statistics	150.00	150.00
Legal Expenses	150.00	150.00
Town Welfare	1,000.00	1,200.00
Old Age Assistance (25% of total)	1,500.00	1,500.00
Highway Department, general expenses	1,000.00	2,000.00

Town Dump maintenance	1,800.00	1,600.00
Parks and Public Property	100.00	150.00
Interest	600.00	1,000.00
Planning and Zoning Board Expenses	150.00	250.00
Town Insurance	3,500.00	

FOR A TOTAL OF \$23,250.00      \$21,000.00

Note: This sum would be \$21,200 for comparison to 1962, excluding the new "Insurance Appropriation".

To see if the Town will vote to raise and appropriate the following sums of money for the purposes specified, for the ensuing year:

Article	1963	1962
3 New London Hospital, including \$300 for Town Welfare cases	\$5,000.00	\$5,000.00
4 Shade Tree Care, including \$100 State Blister Rust control	\$1,000.00	1,100.00
5 Cemetery Commission (Plus \$50.00 share of Insurance Appropriation)	900.00	925.00
6 Sewer Dept. (25% of total) (Plus \$85.00 share of Insurance Appropriation)	1,560.10	1,772.84
7 Memorial Day Observance, paid to American Legion Post #40	150.00	150.00
8 Information Booth	400.00	400.00
9 Town Historical Committee	200.00	200.00
10 Street Lights	4,200.00	4,200.00
11 Fire Department (Plus \$500.00 share of Insurance Appropriation)	4,250.00	7,300.00
12 Police Department (Plus \$75.00 share of Insurance Appropriation)	5,200.00	4,800.00



13	Civil Defense	925.00	1,588.00
	(Plus \$75.00 share of Insurance Appropriation)		
14	Tracy Memorial Library, maintenance	4,000.00	5,000.00
	(Plus \$650.00 share of Insurance Appropriation)		
15	Tracy Memorial Library, repairs and improvements	1,500.00	5,500.00
16	Lake Sunapee Board of Trade	600.00	600.00
17	Dartmouth-Lake Sunapee Reg. Assoc.	200.00	200.00
18	Complete Reappraisal of Real Es- tate in New London by N. H. State Tax Commission	3,000.00	
	Total cost estimate: \$6,000.00		
	1963 Appropriation: 3,000.00		
	1964 Appropriation: 3,000.00		
19	Highway Dept., maintenance of Town roads	27,600.00	27,600.00
20	Highway Dept., Improvement and resurfacing of Town roads	7,000.00	7,000.00
21	Highway Dept., Equipment Re- serve Fund	3,500.00	5,000.00
22	Highway Dept., Sidewalk and Curb Improvement and Con- struction	1,500.00	1,000.00
23	Highway Dept., Town Road Aid, Town's share	677.77	679.03
	(State to contribute \$4,518.46)		
24	State Highway Aid Reconstruction	2,500.00	
	(State to allot \$5,000.00)		

25 Fire Hydrant Rental, New Lon-  
don Water Precinct 1,800.00 1,550.00

26. To see if the Town will vote to discontinue the elected office of Chief of Police and to authorize the Selectmen to employ a qualified person for this office.

(This article presented by petition)

27. To see if the Town will authorize the Selectmen to borrow money in anticipation of taxes, if deemed necessary by the Selectmen.

28. To see if the Town will vote to accept the design which appears on the front cover of the 1962 Town Report and declare this to be the official Town Seal of the Town of New London.

29. To see if the Town will vote to accept a gift of 360 feet of lake frontage on the eastern shore of Little Lake Sunapee, said property being a gift from Walter S. Bucklin with the stipulation that the property is to be used solely for a Town Bathing Beach after the State Highway Department relocates that portion of Little Sunapee Road which abuts said property.

POLLS OPEN FROM 10:00 A.M. to 6:00 P.M.

Given under our hands and seal, this 15th day of February, in the year of our Lord nineteen hundred and sixty-three.

RICHARD W. CHATELLIER,  
M. ROY LONDON,  
GERALD C. PRESCOTT,  
Selectmen of New London, N. H.

A true copy of Warrant — Attest:

RICHARD W. CHATELLIER,  
M. ROY LONDON,  
GERALD C. PRESCOTT,  
Selectmen of New London, N. H.

## AUDITOR'S REPORT

To the Citizens of the Town of New London, N. H.:

We have examined the financial statements of the Selectmen, Town Treasurer, Tax Collector, Town Clerk, Road Agent, Cemetery Commission, Sewer Commission, Library Treasurer and Trustee of the Trust Funds. Our examination was made in accordance with generally accepted auditing standards, and accordingly included such tests of the accounting records and such other auditing procedures as we considered necessary in the circumstances.

In our opinion the financial statements present fairly the financial position of the aforementioned accounts as at December 31, 1962, and the results of their operation for the year then ended, in conformity with generally accepted municipal accounting principles applied on a basis consistent with that of the preceding year.

William H. Corsner & Co.

: ————— :

## REPORT OF THE BUDGET COMMITTEE

To the Voters of New London:

In accordance with the Municipal Budget Laws of New Hampshire, the New London Budget Committee has prepared the town and school budgets for the current year, which are herewith submitted to you in this report.

The committee held two public meetings and one closed meeting to discuss the proposed items in the budgets.

Respectfully submitted,

ROBERT G. SAWYER,  
1963 Budget Committee Chairman

# BUDGET OF THE TOWN OF NEW LONDON, N. H.

Estimates of Revenue and Expenditures for the Ensuing Year January 1, 1963, to December 31, 1963, Compared with Estimated and Actual Revenue, Appropriations and Expenditures of the Previous Year January 1, 1962, to December 31, 1962

## SOURCES OF REVENUE

	Estimated Revenue Year—1962	Actual Revenue Year—1962	Est. Revenue Ensnuing Year—1963
<b>From State:</b>			
Interest and Dividends Tax	\$18,000.00	\$27,486.18	\$22,000.00
Railroad Tax		18.04	
Building and Loan Association Tax	400.00		500.00
Reimbursement acc. Gas Tax	500.00	562.10	30.00
For fighting forest fires, 1/2 Warden's Sal. and Exp.		35.52	
<b>From Local Sources Except Taxes:</b>			
Dog Licenses	400.00	426.45	350.00
Business Licenses, Permits and Filing Fees	100.00	124.00	100.00
Fines and Forfeits, Municipal Court	500.00	1,072.25	500.00
Rent of Town Hall	50.00	406.00	50.00
Interest Received on Taxes and Deposits	300.00	488.28	350.00
Income of Departments:			
(a) Highway, including rental of equipment		3,252.94	1,000.00
(b) T.R.A. use of equipment		798.20	500.00
(c) Fire Equipment out-of-town use		47.25	



	Estimated Revenue Previous Year—1962	Actual Revenue Previous Year—1962	Estimated Revenue Ensnung Year—1963
Motor Vehicle Permit Fees	13,000.00	14,102.75	13,000.00
Sale of Town Property (20 Histories) Brochure Advertising	100.00	150.00	100.00
		95.00	

**From Local Taxes Other Than Property Taxes:**

(a) Poll Taxes — Regular @ \$2	1,000.00	1,230.00	1,000.00
(b) National Bank Stock Taxes	62.00	70.00	70.00
(c) Yield Taxes	25.00	219.56	25.00

**TOTAL REVENUES FROM ALL SOURCES  
EXCEPT PROPERTY TAXES**

\$34,437.00      \$50,584.52      \$39,575.00

\*Cash Surplus equals Excess of actual Cash on Hand at close of fiscal year over Current Liabilities, i.e., Balance of Appropriation due School District, Unexpended Balances of Special Appropriations, Outstanding Temporary Loans in Anticipation of Taxes and Accounts Payable.

## PURPOSES OF EXPENDITURES

### CURRENT MAINTENANCE EXPENSES —

#### General Government:

	Appropriations Previous Year—1962	Actual Expenditures Previous Year—1962	Estimated Expenditures Ensuing Year—1963	Budget Committee's Recommendation
Town Officers' Salaries	\$ 5,000.00	\$ 5,012.60	\$ 5,250.00	
Town Officers' Expenses	2,600.00	3,002.33	2,800.00	
Election and Registration Expenses	450.00	493.50	250.00	
Municipal Court Expenses	500.00	422.25	550.00	
Expenses Town Hall and Other Town Buildings	3,000.00	3,151.90	3,000.00	
Employees' Retirement and Social Security	1,100.00	977.31	1,100.00	

#### Protection of Persons and Property:

Police Department	4,800.00	5,169.00	5,200.00	
Fire Department	7,300.00	7,744.34	4,250.00	
Moth Exterm.—Blister Rust and Care of Trees	1,500.00	1,253.81	1,400.00	
Insurance			3,500.00	
Planning and Zoning	250.00	439.31	150.00	
Damages and Legal Expenses	150.00	176.63	150.00	
Civil Defense	1,588.00	1,515.06	925.00	

#### Health:

Health Departments, including Hospitals	5,350.00	5,206.87	5,350.00	
Vital Statistics	150.00	153.75	150.00	
Sewer Maintenance (25% of actual)	1,772.84	1,761.39	1,560.10	
Town Dump	1,600.00	1,863.56	1,800.00	

#### Highways and Bridges:

Town Maintenance — Summer and Winter	27,600.00	30,275.58	27,600.00	
Street Lighting	4,200.00	4,180.40	4,200.00	

	Appropriations Previous Year—1962	Actual Expenditures Previous Year—1962	Estimated Expenditures Ensuing Year—1963	Budget Committee's Recommen- dation
<b>General Expenses of Highway Department</b>				
Town Road Aid	2,000.00	2,425.29	1,000.00	
	679.03	679.03	677.77	
<b>Libraries, Maintenance</b>				
Library Improvement and Repair	5,000.00	4,985.98	4,000.00	
	5,500.00	5,500.00	1,500.00	
<b>Public Welfare:</b>				
Town Poor	1,200.00	803.15	1,000.00	
Old Age Assistance	1,500.00	1,361.91	1,500.00	
<b>Patriotic Purposes:</b>				
Town History Committee	200.00	90.00	200.00	
Memorial Day and Veterans' Associations	150.00	150.00	150.00	
<b>Recreation:</b>				
Parks and Playgrounds	150.00	68.20	100.00	
<b>Public Service Enterprises:</b>				
One-half cost of Revaluation Fund			3,000.00	
Cemeteries, Town Share of Maintenance	925.00	943.70	900.00	
Information Booth	400.00	400.00	400.00	
<b>Advertising and Regional Associations:</b>				
Lake Sunapee Board of Trade	600.00	600.00	600.00	
Dartmouth-Lake Sunapee Regional Assoc.	200.00	200.00	200.00	
<b>Interest:</b>				
On Long Term Notes	1,000.00	330.00	600.00	

	Appropriations Previous Year—1962	Actual Expenditures Previous Year—1962	Estimated Expenditures Ensnung Year—1963	Budget Committee's Recommen- dation
7,000.00	6,194.74	7,000.00		
1,550.00	1,500.00	2,500.00		
1,000.00	1,018.17	1,800.00		
5,000.00	5,711.82	1,500.00		
		3,500.00		
5,000.00	5,000.00	5,000.00		
18,841.41	18,841.41	19,000.00		
180,692.75	180,692.25	194,451.45		
\$307,499.03	\$310,296.34	\$319,764.32		

**Highways and Bridges:**

Town Construction Special Impr. Account  
 State Aid Construction — Town's Share  
 Hydrant Service  
 Sidewalk and Curb Const. and Repair  
 Highway Equipment Fund

**Payment on Principal of Debt:**

Long Term Notes  
 County Taxes  
 School Taxes

**TOTAL EXPENDITURES**

DORIS H. PHILLIPS  
 LAURENCE R. SPAULDING  
 ANNA E. RICH

RALPH E. MARSHALL  
 ROBERT G. SAWYER  
 GERALD C. PRESCOTT

JOHN G. HOLTEEN  
 GENEVIEVE MILLAR  
 WILLIS V. AMES

BENJAMIN H. YERXA  
 EDWIN B. HUBBARD

Budget Committee



# SELECTMEN'S REPORT

## SUMMARY OF INVENTORY

Improved and unimproved Land and Buildings	\$3,764,910
Mills and Machinery	8,700
Electric Plants	170,000
Stock in Trade	78,980
Boats and Launches (252)	18,225
Cows (149)	9,780
Neatstock (36)	1,580
Goats (7)	25
Fowls (18,932)	3,650
Gasoline Pumps	3,025
Road Machinery	8,100
Total Valuation	<hr/> \$4,065,325
Less: Soldiers' Exemptions	99,000
Net Taxable Valuation	<hr/> \$3,966,325

## SCHEDULE OF TOWN PROPERTY

Town Hall and Land	\$60,000.00
Furniture and Equipment	2,500.00
Library, Land and Building	60,000.00
Furniture and Equipment	15,000.00
Police Department, Equipment	500.00
Fire Department, Land and Building	15,000.00
Equipment	25,000.00
Highway Department, Land and Buildings	10,000.00
Equipment	35,000.00
Parks and Common	10,000.00
Sewer Dept.	50,000.00
Schools, Land and Buildings	680,000.00
Equipment	50,000.00
Town History Books, 1,111 @ \$5.00	5,555.00
Davis Lot	100.00
Sargent Lot	25.00
	<hr/> \$1,018,680.00

1962

## APPROPRIATIONS, CREDITS, TAX RATE

Town Charges		\$21,000.00
Police Department		4,800.00
Fire Department		7,300.00
New London Hospital Association		5,000.00
Sewer Commission (25% of total)		1,772.84
Cemetery Commission		925.00
Information Booth		400.00
Lake Sunapee Board of Trade		600.00
Dartmouth-Lake Sunapee Region Assoc.		200.00
Historical Committee		200.00
Memorial Day Observance		150.00
Tracy Memorial Library, maintenance		5,000.00
Tracy Memorial Library, building improvement		5,500.00
Hydrant Rental		1,550.00
Street Lights		4,200.00
Highway Department :		
Road Maintenance	\$27,600.00	
Equipment Fund	5,000.00	
T.R.A. Contribution	679.03	
Sidewalks and Curbs	1,000.00	
Special Road Improvement	7,000.00	
		<hr/> 41,279.03
Civil Defense		1,588.00
Shade Tree Care		1,500.00
Debt Retirement		5,000.00
		<hr/>
Total Town Appropriation		\$107,964.87
Less: Estimated Revenues and Credits —		
Interest and Dividends Tax	\$27,486.18	
Yield Tax (Timber)	25.00	
Interest on Taxes	300.00	
Business Licenses, Permits, Fees	100.00	
Dog Licenses	400.00	
Motor Vehicle Permit Fees	13,000.00	

Rent of Town Property	50.00
Sale of History Books	100.00
Fines, Municipal Court	500.00
National Bank Stock Taxes	62.00
Poll Taxes	1,000.00
Gas Tax Refund	500.00
Cash Surplus	2,781.35
	<hr/>
	46,304.53
	<hr/>
Net Town Appropriations	\$ 61,660.34
Net School Appropriations	180,692.75
County Tax Assessment	18,841.41
	<hr/>
	\$261,194.50
Add: Overlay	582.95
	<hr/>
Amount to be raised by Property Taxes	\$261,777.45
Tax Rate approved by Tax Commission:	
Town	\$1.56
School	4.56
County	.48
	<hr/>
Total Tax Rate	\$6.60 per \$100.00 Assessed Value

## TOWN TREASURER'S REPORT

Cash on hand January 1, 1962	\$ 48,426.91
Amount received from Jan. 1, 1962 to Dec. 31, 1962	322,866.79
	<hr/>
	\$371,293.70
Amount paid out from January 1, 1962 to December 31, 1962 on order of Selectmen	\$256,028.30
Cash on hand December 31, 1962	115,265.40
	<hr/>
	\$371,293.70

FRED H. TIBBETTS, Treasurer

# BALANCE SHEET

## ASSETS

Cash on hand, December 31, 1962		\$115,265.40
<b>Accounts due the Town:</b>		
Property Tax, 1962	\$20,178.10	
Poll Tax, 1962	172.00	
Yield Tax, 1962	398.80	
Head Tax, 1962	560.00	
Yield Tax, 1956	130.14	
State of N. H. — Bounties	75.50	
Highway Dept., private work	1,135.54	
		<hr/>
		\$22,650.08
		<hr/>
<b>TOTAL ASSETS</b>		<b>\$137,915.48</b>

## LIABILITIES

<b>Unexpended Balance of Long Term Appropriations:</b>		
School District	\$105,692.75	
Special Improvement Fund	805.26	
Highway Dept. Equipment Fund	339.23	
Main Street Improvement	1,500.00	
New London Historical Committee	110.00	
<b>Other Liabilities:</b>		
Sewer Dept. Bonds	11,000.00	
Highway Dept. Notes	3,000.00	
Fire Dept. Notes	2,000.00	
State of N. H. Head Tax	560.00	
State of N. H. Yield Tax	10.58	
		<hr/>
<b>TOTAL LIABILITIES</b>		<b>\$125,017.82</b>
<b>Excess of Assets over Liabilities</b>		<b>12,897.66</b>
		<hr/>
		<b>\$137,915.48</b>
Net Surplus December 31, 1961	\$ 2,781.35	
Net Surplus December 31, 1962	12,897.66	
		<hr/>
Net Increase in Surplus	\$10,116.31	



# STATEMENT OF BONDED DEBT

## TOWN OF NEW LONDON

Showing Annual Maturities of Outstanding  
Bonds and Long Term Notes

	Sewer Construction Bonds 1950 1 3/4%	Highway Dept. (serial notes) Loader Notes 1959 3%	Fire Dept. (serial notes) Truck Notes 1959 3%
Original Amount	\$59,000.00	\$12,000.00	\$8,000.00
Maturities			
1963	4,000.00	3,000.00	2,000.00
1964	4,000.00		
1965	3,000.00		
	\$11,000.00	\$3,000.00	\$2,000.00
Total	\$11,000.00	\$3,000.00	\$2,000.00

## REPORT OF THE TOWN CLERK FOR 1962

### Issue of Dog Licenses:

2 —	1961 Licenses	\$	1.35
136	Males and Spayed Females @	\$2.00	272.00
18	Females @	5.00	90.00
3	Kennel Licenses		44.00
13	Penalties @	.50	6.50
8	Pro Rata Licenses		12.60
			\$ 426.45
Issue of Auto Permits:	1,102		14,102.75
Filing Fees: Town Meeting			16.00
Primary			8.00
			\$14,553.20
TOTAL CASH RECEIPTS			\$14,553.20
PAID TOWN TREASURER			\$14,553.20

Respectfully submitted,

WILLIAM F. KIDDER, Town Clerk

**COMPARATIVE STATEMENT OF APPROPRIATIONS AND EXPENDITURES**

Appropriation	Total		Amount		Balance Overdraft
	Appropriation Credits	Available Expenditures	Appropriation Credits	Available Expenditures	
Town Charges	\$21,000.00	\$1,849.08	\$22,849.08	\$21,321.91	\$1,527.17
Police Department	4,800.00	19.31	4,819.31	5,188.91	\$369.60
Fire Department	7,300.00	513.80	7,813.80	7,775.37	38.43
New London Hospital Association	5,000.00		5,000.00	5,000.00	
Sewer Department	1,772.84	149.72	1,922.56	1,911.11	11.45
Cemeteries	925.00		925.00	943.70	18.70
Historical Committee	200.00		200.00	90.00	110.00
Information Booth	400.00		400.00	400.00	
Lake Sunapee Board of Trade	600.00		600.00	600.00	
Dartmouth-Lake Sunapee Association	200.00		200.00	200.00	
Memorial Day	150.00		150.00	150.00	
Library, Maintenance	5,000.00	1,755.81	6,755.81	6,741.79	14.02
Library, building improvement	5,500.00		5,500.00	5,500.00	
Hydrant Service	1,550.00		1,550.00	1,500.00	50.00
Street Lights	4,200.00		4,200.00	4,180.40	19.60
Highway, maintenance	27,600.00	4,051.14	31,651.14	30,275.58	1,375.56
Highway, Town Road Aid	679.03	4,526.87	5,205.90	5,205.90	
Highway, Sidewalks and Curbs	1,000.00		1,000.00	1,018.17	18.17
Highway, special improvement	7,000.00		7,000.00	6,194.74	805.26
Highway Equipment Fund	5,000.00	1,051.05	6,051.05	5,711.82	339.23

# COMPARATIVE STATEMENT OF APPROPRIATIONS AND EXPENDITURES (Continued)

Appropriation	Total		Amount		Balance Overdraft
	Appropriation Credits	Available Expenditures	Available Expenditures	Balance Overdraft	
Civil Defense	1,588.00	1,588.00	1,515.06	72.94	
Shade Trees	1,500.00	1,500.00	1,253.81	246.19	
Debt Retirement	5,000.00	5,000.00	5,000.00		
School District	180,692.75	40,000.00	220,692.75	115,000.00	105,692.75
County Tax	18,841.41	18,841.41	18,841.41		
<b>TOTALS</b>	<b>\$307,499.03</b>	<b>\$53,916.78</b>	<b>\$361,415.81</b>	<b>\$251,519.68</b>	<b>\$110,302.60</b>
			Overdraft		— \$406.47
			Balance		\$109,896.13

**SUMMARY OF WARRANT  
PROPERTY, POLL AND YIELD TAXES**

LEVY OF 1962

— DR —

**Taxes Committed to Collector:**

Property Taxes	\$261,777.45
Poll Taxes	1,274.00
National Bank Stock Taxes	62.00

Total Warrant	\$263,113.45
---------------	--------------

**Added Taxes:**

Property Taxes	231.00
Poll Taxes	30.00
National Bank Stock Taxes	8.00

269.00

Interest Collected

24.64

TOTAL DEBITS

\$263,407.09

— CR —

**Remittances to Treasurer:**

Property Taxes	\$241,299.05
Poll Taxes	1,070.00
National Bank Stock Taxes	70.00
Interest Collected	24.64

\$242,463.69

**Abatements:**

Property Taxes	531.30
Poll Taxes	62.00

593.30

**Uncollected Taxes — As Per Collector's List:**

Property Taxes	20,178.10
Poll Taxes	172.00

20,350.10

TOTAL CREDITS

\$263,407.09



PROPERTY, POLL AND YIELD TAXES

LEVY OF 1961

— DR —

Uncollected Taxes — As of January 1, 1962:

Property Taxes	\$20,078.55	
Poll Taxes	138.00	
Yield Taxes	618.36	
	<hr/>	\$20,834.91

Added Taxes:

Poll Taxes		24.00
------------	--	-------

Interest Collected During Fiscal Year

Ended December 31, 1962		432.14
	<hr/>	

TOTAL DEBITS \$ 21,291.05

— CR —

Remittances to Treasurer During Fiscal  
Year Ended December 31, 1962:

Property Taxes	\$19,882.55	
Poll Taxes	160.00	
Yield Taxes	219.56	
Interest Collected During Year	432.14	
	<hr/>	\$20,694.25

Abatements Made During Year:

Property Taxes	196.00	
Poll Taxes	2.00	
	<hr/>	198.00

Uncollected Taxes — As Per Collector's List:

Yield Taxes	398.80	
	<hr/>	

TOTAL CREDITS \$ 21,291.05

— 35 —

STATE HEAD TAX

LEVY OF 1962

— DR —

State Head Taxes Committed to Collector:

Original Warrant	\$4,065.00
Added Taxes	80.00

Total Commitment	\$4,145.00
Penalties Collected	8.00

TOTAL DEBIT	\$4,153.00
-------------	------------

— CR —

Remittances to Treasurer:

Head Taxes	\$3,425.00
Penalties	8.00
	<u>\$3,433.00</u>

Abatements	160.00
------------	--------

Uncollected Head Taxes — As per Collector's List	560.00
--	--------

TOTAL CREDITS	\$ 4,153.00
---------------	-------------

STATE HEAD TAX

LEVY OF 1961

— DR —

Uncollected Taxes — As of January 1, 1962	\$ 485.00
Added Taxes During 1962	75.00
Penalties Collected During 1962	55.50

TOTAL DEBITS	\$ 615.50
--------------	-----------

— 36 —

— CR —

Remittances to Treasurer During 1962:

Head Taxes	\$555.00	
Penalties	55.50	
	<u>          </u>	610.50

Abatements During Year 5.00

TOTAL CREDITS \$ 615.50

PROPERTY, POLL AND YIELD TAXES

Levy of 1956

— DR —

Uncollected Taxes — As of January 1, 1962:

Yield Taxes	\$130.14	
	<u>          </u>	

TOTAL DEBITS \$130.14

— CR —

Uncollected Taxes — As of December 31, 1962:

Yield Taxes	\$ 130.14	
	<u>          </u>	

TOTAL CREDITS \$ 130.14

SEWER CHARGES

LEVY OF 1962

— DR —

Taxes Committed to Collector:

Sewer Charges	\$8,912.85	
Added Taxes	95.25	
	<u>          </u>	

Total Commitment	\$9,008.10	
Interest Collected	.29	
	<hr/>	
TOTAL DEBITS		\$ 9,008.39

— CR —

Remittances to Commissioner:

Sewer Charges	\$8,708.55	
Interest Collected	.29	
	<hr/>	
		\$8,708.84
Abatements		5.00
Uncollected Charges		294.55
		<hr/>
TOTAL CREDITS		\$ 9,008.39

SEWER CHARGES

Levy of 1961

— DR —

Uncollected Sewer Charges — As of January 1, 1962:

Charges	\$ 257.15
Interested Collected During Year	5.64

TOTAL DEBITS		\$ 262.79
--------------	--	-----------

— CR —

Remittances to Commissioner:

Charges	\$ 257.15
Interest Collected	5.64

TOTAL CREDITS		\$ 262.79
---------------	--	-----------

SUMMARY OF TAX SALES ACCOUNTS

As of December 31, 1962

— DR —

	1962	1961	1960	1959
Taxes Sold to Town during Current Fiscal Year	<hr/>	<hr/>	<hr/>	<hr/>

— 38 —



<b>Balance of Unredeemed Taxes</b>			
January 1, 1962	\$1.40	\$5.50	\$5.01
	<u>          </u>	<u>          </u>	<u>          </u>
<b>TOTAL DEBITS</b>	\$1.40	\$5.50	\$5.01

— CR —

Deeded to Town — During Year	1.40	5.50	5.01
	<u>          </u>	<u>          </u>	<u>          </u>
<b>TOTAL CREDITS</b>	\$1.40	\$5.50	\$5.01

Respectfully submitted,

DORRIS M. SMITH,  
Tax Collector.

## SUMMARY OF RECEIPTS

### By Taxation:

1961 Property Taxes	\$19,882.55	
Interest	432.14	
Poll Taxes	160.00	
Yield Taxes	219.56	
Head Taxes	555.00	
Head Tax Penalties	55.50	
	<u>                  </u>	\$21,304.75
1962 Property Taxes	241,299.05	
Interest	24.64	
Poll Taxes	1,070.00	
Head Taxes	3,425.00	
Head Tax Penalties	8.00	
National Bank Stock Taxes	70.00	
	<u>                  </u>	245,896.69

### From State of New Hampshire:

Interest and Dividends Tax	27,486.18
T.R.A. Loan Repaid	4,526.87
Gas Tax Refund	562.100
Town Equipment used for T.R.A. work	788.40

Blister Rust Refund	.25	
Fire Warden's expenses, 1/2 refund	35.52	
Head Tax expense adjustment	20.15	
Railroad Tax, town share	18.04	
		<hr/> 33,437.51

**From Local Sources :**

Printing of Sewer Precinct Billheads	5.45	
Highway Dept.	3,252.94	
Dog Licenses	426.45	
Business Permits, Fees	124.00	
Fines, Municipal Court	1,072.25	
Rent of Town Hall	406.00	
Motor Vehicle Registration	14,102.75	
Sale of Fire Truck	200.00	
Out-of-Town Use of Fire Equipment	47.25	
Sale of Town Property	150.00	
Brochure Advertisements	95.00	
Insurance Adjustments	2,345.75	
		<hr/> 22,227.84

TOTAL RECEIPTS	<hr/> \$322,866.79
----------------	--------------------

Cash on hand January 1, 1962	48,426.91
------------------------------	-----------

	<hr/> \$371,293.70
--	--------------------

## SUMMARY OF PAYMENTS

### CURRENT MAINTENANCE EXPENSES

**General Government:**

Town Officers' Salaries	\$5,012.60	
Town Officers' Expenses	3,127.33	
Election and Registration	493.50	
Municipal Court	422.25	
Town Hall	3,151.90	
Town share of Social Security	977.31	
		<hr/> 13,184.89

Protection of Persons and Property :

Police Department	5,169.60	
Fire Department including Forest Fires	7,744.34	
Civil Defense	1,515.06	
Care of Shade Trees and Blister Rust	1,254.06	
	<hr/>	15,683.06

Health :

Health Dept. and Hospital Support	5,206.87	
Vital Statistics	153.75	
Sewer maintenance, Town share	1,761.39	
Town Dump	1,863.56	
	<hr/>	8,985.57

Highway Department :

Maintenance of Roads	30,275.58	
General Expenses	2,525.29	
Total amount of "Town Road Aid"	5,205.90	
Annual Impr. and resurfacing	6,194.74	
Street Lights	4,180.40	
Sidewalks and Curb construction	1,018.17	
Equipment Fund purchases	5,711.82	
	<hr/>	55,111.90

General Services :

Tracy Memorial Library maintenance	4,985.98	
Tracy Memorial Library repairs	5,500.00	
Cemeteries	943.70	
Information Booth	400.00	
Lake Sunapee Board of Trade	600.00	
Dartmouth-Lake Sunapee Region Assoc.	200.00	
Planning and Zoning Boards	439.91	
Parks and Playgrounds	68.20	
Legal Expenses	176.63	
New London Historical Committee	90.00	
Memorial Day Services	150.00	
	<hr/>	13,553.82

Public Welfare :

Town share, Old Age Assistance	1,361.91	
--------------------------------	----------	--

Town Welfare, direct aid	803.15	
	<u>          </u>	2,165.06
Indebtedness Payments:		
Reduction of principal	5,000.00	
Interest	<u>          </u>	5,330.00
Payments to Other Governmental Divisions:		
New London School District	115,000.00	
New London Water Precinct	1,500.00	
County Taxes	18,841.41	
State of New Hampshire Head Tax	3,664.50	
State of New Hampshire Yield Tax	35.84	
	<u>          </u>	139,041.75
Other Payments:		
Issue of Auto Permits	551.00	
Bounties	75.50	
	<u>          </u>	626.50
		<u>          </u>
TOTAL PAYMENTS		\$256,028.30
Cash on hand December 31, 1962		115,265.40
		<u>          </u>
		\$371,293.70

: ————— :

## DEPARTMENTAL EXPENSES

### TOWN OFFICERS' SALARIES

Appropriation		\$5,000.00
Paid: R. W. Chatellier, Chairman	\$	900.00
Gerald C. Prescott, Selectman		750.00
M. Roy London, Selectman (7 months)		437.50
Merle C. Gay, Selectman (5 months)		312.50
Fred H. Tibbetts, Treasurer		250.00
Dorris M. Smith, Collector		2,112.60
William F. Kidder, Town Clerk		100.00



Herbert D. Swift, Trust Officer	150.00	
	<hr/>	5,012.60

Overdraft		\$ 12.60
-----------	--	----------

### TOWN OFFICERS' EXPENSES

Appropriation		\$2,600.00
---------------	--	------------

Paid: Postage, printing, stationery supplies	\$ 206.86	
--	-----------	--

Newspaper notices, Assoc. dues, misc.	183.38	
---------------------------------------	--------	--

The Country Press, town reports	1,053.50	
---------------------------------	----------	--

Newport Bus. Equip., "Comptograph"	445.50	
------------------------------------	--------	--

Emma L. Colby, officers' bonds	399.54	
--------------------------------	--------	--

Dorris M. Smith, Collector	181.49	
----------------------------	--------	--

William F. Kidder, Town Clerk	70.58	
-------------------------------	-------	--

Gerald C. Prescott, Selectman, travel	5.00	
---------------------------------------	------	--

Merle C. Gay, Selectman, travel	10.00	
---------------------------------	-------	--

M. Roy London, Selectman, travel	11.06	
----------------------------------	-------	--

R. W. Chatellier, Selectman:		
------------------------------	--	--

Postage, phone	\$ 10.32	
----------------	----------	--

N. H. Assessors Conference	16.00	
----------------------------	-------	--

N. H. Planning Conference	6.40	
---------------------------	------	--

Office and clerical	300.00	
---------------------	--------	--

	<hr/>	332.72
--	-------	--------

Perambulate Town Lines:		
-------------------------	--	--

N. L.-Wilmot, Richard H. Webb	30.00	
-------------------------------	-------	--

N. L.-Newbury, M. Roy London	10.00	
------------------------------	-------	--

Gerald C. Prescott	10.00	
--------------------	-------	--

R. W. Chatellier	10.00	
------------------	-------	--

State Tax Commission, boat inventories	42.70	
--	-------	--

	<hr/>	3,002.33
--	-------	----------

Overdraft		\$ 402.33
-----------	--	-----------

### ELECTION AND REGISTRATION

Appropriation		\$ 450.00
---------------	--	-----------

Filing Fees		24.00
-------------	--	-------

Amount available		\$ 474.00
------------------	--	-----------

Paid: M. Roy London, moderator	\$ 30.00	
Helen S. Ray, supervisor	94.50	
Fred H. Tibbetts, supervisor	94.50	
Dwight L. Braley, supervisor	87.50	
Ballot Clerks	98.00	
New London Inn, dinner	46.00	
Edgewood Inn, dinner	30.00	
Elkins Printing Co.	11.50	
Helen S. Ray, expenses	1.50	
		493.50

Overdraft \$ 19.50

### TOWN HALL

Appropriation		\$3,000.00
Rent received: St. Andrew's Church	55.00	
New London Grange	5.00	
Shirley Tripp, dancing class	12.00	
Jenkins Dance Studio	124.00	
Station WHDH	10.00	
		206.00
Insurance return premiums		164.43
Amount available		\$3,370.43

Paid: Willie S. Ray, custodian (\$720 less 1961 adj.)	\$ 660.00
Kearsarge Telephone Co.	182.05
Public Service of N. H.	141.15
New London Fuel Co.	234.55
The Colby Agency, insurance	152.64
New London Agency, insurance (new estimated annual premium \$450.)	1,200.08
Berkley E. Hunter, repair flagpole	10.00
Bernard L. Cushing, balcony repair	96.75
Ernest E. Welch & Son, elec. repair	19.28
Clayton A. Miller, furnace repair	16.15
Leslie W. Shaw, partition	110.20

Thompson & Hoague, U. S. flag	22.50	
Earl G. Burns, mower repair	10.00	
N. L. Water Precinct, service	20.00	
N. L. Sewer Commission, service	22.20	
Seth A. Lamson, table, Selectmen's office	25.00	
Lull & Prescott, floor, Selectmen's office	165.78	
Pinecraft Co., Inc., chairs, " office	228.00	
		<u>3,316.33</u>

Balance \$ 54.10

### MUNICIPAL COURT

Appropriation		\$ 500.00
Court Fines, Town share		1,072.25
Amount available		<u>\$1,572.25</u>
Paid: J. Duane Squires, Judge	\$ 400.00	
Elkins Printing Co., stationery	17.25	
Witness fee	5.00	
		<u>422.25</u>

Balance \$1,150.00

### POLICE DEPARTMENT

Appropriation		\$4,800.00
Insurance return premium		19.31
Amount available		<u>\$4,819.31</u>
Paid: Tyler D. Grace, Chief, wages	\$3,611.54	
Alwin J. Hawkins, Constable, wages	692.25	
Watson B. Johnston, Constable, wages	234.00	
Charles G. Bailey, Constable, wages	85.50	
Jordan Grace, Special Officer, wages	67.50	
Total wages		<u>\$4,690.79</u>

Tyler D. Grace, travel and expenses	\$ 116.96	
Uniforms	209.25	
Insurance	117.83	
Printing, paint and miscellaneous	54.08	
		<hr/>
		498.12
		<hr/>
		\$5,188.91
Overdraft	\$ 369.60	

### FIRE DEPARTMENT

Appropriation		\$7,300.00
Sale of truck to Town of Springfield		200.00
Rent of basement space to Water Precinet (2 years)		200.00
State of N. H., share of Warden costs		35.52
Out of town use of equipment		47.25
Insurance return premium		31.03
		<hr/>
Amount available		\$7,813.80

Paid: Edward A. Todd, Chief	\$ 350.00	
Carlton F. Barton, Warden	70.03	
Volunteer firemen's wages (26)	1,054.40	
Kearsarge Telephone Co.	327.08	
Supplies and equipment	798.31	
Willys 4-wheel-drive truck	2,861.00	
Portable pump	372.75	
Maintenance and repairs	599.00	
Kidder Garage Co., fuel oil	267.80	
New London Fuel Co., fuel oil	231.91	
Colby Agency, insurance	102.86	
New London Agency, insurance	740.23	
		<hr/>
		7,775.37
		<hr/>
Balance	\$ 38.43	

### CIVIL DEFENSE

Appropriation	\$1,588.00
---------------	------------



Paid: Equipment	\$1,015.98	
Supplies and repairs	293.08	
Travel, clerical, stationery, etc.	153.61	
Insurance	52.39	
		<u>1,515.06</u>
Balance		\$ 72.94

### HEALTH

Appropriation		\$5,350.00
Paid: New London Hospital	\$5,000.00	
Dr. John H. Ohler, health officer	96.87	
Dr. Donald Bent	110.00	
		<u>5,206.87</u>
Balance		\$ 143.13

### SHADE TREES

Appropriation, Town work		\$1,500.00
(includes \$100.00 State Blister Rust control)		
Paid: Berkley E. Hunter, Tree Warden	\$ 114.81	
Sawyer Tree Service, spray and feeding	811.25	
New London Florists, supply and plant trees (26 maples, 2 red oak)	228.00	
State of N. H., Blister Rust control	99.75	
		<u>1,253.81</u>
Balance		\$ 246.19

### PLANNING AND ZONING BOARDS

Appropriation		\$ 250.00
Balance from previous years		156.95
		<u>\$ 406.95</u>
Paid: Florence C. Mitchell, typing	\$ 24.62	
The Argus-Champion, notices	24.00	

Elkins Printing Co.	44.00	
Evans Printing Co.	1.40	
Frank Butler, supplies	3.00	
State of New Hampshire, maps	6.95	
John Carter Co., paper	163.19	
New Hampshire Bindery	94.78	
Dorris M. Smith, clerical	15.00	
Postage	62.37	
		439.31
Overdraft		\$ 32.36

#### VITAL STATISTICS

Appropriation		\$150.00
Paid: William F. Kidder, Town Clerk		\$153.75
Overdraft		\$ 3.75

#### HYDRANT RENTAL

Appropriation		\$1,550.00
Paid: New London Water Precinct		\$1,500.00
Balance		\$ 50.00

#### HIGHWAY DEPARTMENT, GENERAL EXPENSES

Appropriation		\$2,000.00
Insurance return premium		225.45
Amount available		\$2,225.45
Paid: Materials and supplies	\$ 26.57	
Recording fees	2.24	
Kearsarge Telephone Co.	56.20	
Public Service Co. of N. H.	84.79	
Building repair and maintenance	292.90	
Insurance	2,288.04	
		2,750.74
Overdraft		\$ 525.29

## HIGHWAY DEPARTMENT

Appropriation: Maintenance, summer and winter	\$27,600.00
Private work and materials	3,252.94
State of N. H. for use of equipment T.R.A.	798.20
	<hr/>
Amount available	\$31,651.14
Paid: Wages	\$15,989.49
Maintenance of roads and equipment	10,527.17
Materials and supplies	2,578.58
Trucks and equipment hired	1,180.34
	<hr/>
	30,275.58
Balance	\$ 1,375.56

## HIGHWAY DEPT. EQUIPMENT FUND

Appropriation	\$5,000.00
Balance on hand Jan. 1, 1962	1,051.05
	<hr/>
Amount available	\$6,051.05
Paid: Merrimack Farmers Exch., chain saw	\$ 178.50
Brodhead Ford Village, truck	4,124.32
N. H. Explosives & Machinery, Inc., snowplow	1,259.00
Reed Bros., spreader	150.00
	<hr/>
	5,711.82
Balance (to be carried)	\$ 339.23

## SPECIAL ROAD IMPROVEMENT

Appropriation	\$7,000.00
Paid: Wages	\$2,568.19
Trucks and equipment hired	2,336.20
Material and supplies	1,042.10
Blasting	237.00
Surveys	11.25
	<hr/>
	6,194.74
Balance (to be carried)	\$ 805.26

## TOWN ROAD AID

Appropriation	\$ 679.03
Received, State of New Hampshire	4,526.87
	<u>4,526.87</u>
Amount available	\$5,205.90
Paid: State of New Hampshire, advance	\$4,526.87
State of New Hampshire, Town share	679.03

Note: The Town advanced the entire amount required in order to complete the work before the summer traffic. The State share was repaid at the start of its fiscal year.

## SIDEWALKS AND CURBS

Appropriation	\$1,000.00
Paid: Wages	\$ 468.22
John Swenson Granite Co., granite	445.60
L. M. Pike & Son, Inc., asphalt	104.35
	<u>1,018.17</u>
Overdraft	\$ 18.17

## SEWER DEPARTMENT

Appropriation	\$1,772.84
Insurance return premium	149.72
	<u>1,922.56</u>
Amount available	\$1,922.56
Paid: New London Sewer Commission	\$1,772.84
(25% of Maintenance Budget)	..
New London Agency, insurance	138.27
	<u>1,911.11</u>
Balance	\$ 11.45

## TOWN DUMP

Appropriation	\$1,600.00
Paid: Esther C. Whittemore, rent	\$ 50.00

Ray E. Emery, attendant	391.50	
Lawrence Miner, attendant	1,145.00	
Occasional labor and bulldozing	277.06	
	<hr/>	1,863.56
Overdraft		\$ 263.56

#### STREET LIGHTS

Appropriation		\$4,200.00
Paid: Public Service Co. of N. H.		\$4,180.40
Balance		\$ 19.60

#### DAMAGES AND LEGAL FEES

Appropriation		\$150.00
Paid: Upton, Sanders & Upton	\$101.10	
Dog damages	19.00	
	<hr/>	120.10
Balance		\$ 29.90

#### PUBLICITY

Appropriation		\$800.00
Paid: Lake Sunapee Board of Trade	\$600.00	
Dartmouth-Lake Sunapee Association	200.00	
	<hr/>	\$800.00

#### INFORMATION BOOTH

Appropriation		\$400.00
Paid: Evelyn D. Messer	\$200.00	
Vinita L. Gay	200.00	
	<hr/>	\$400.00

#### HISTORICAL COMMITTEE

Appropriation		\$200.00
Paid: Vincent S. Wickham, contest award	\$25.00	



Vincent S. Wickham, casting	65.00	
	<hr/>	90.00
Balance (to be carried)		\$110.00

#### PARKS

Appropriation		\$150.00
Paid: Laurids K. Lauridsen, sign	\$46.00	
Lull & Prescott, trucking and grading	22.20	
	<hr/>	68.20
Balance (to be carried)		\$ 81.80

#### CEMETERIES

Appropriation		\$925.00
Paid: Cemetery Commissioners	\$925.00	
New London Agency, insurance	18.70	
	<hr/>	943.70
Overdraft		\$ 18.70

#### TRACY MEMORIAL LIBRARY

Appropriation: Maintenance		\$ 5,000.00
Special repair and improvement		5,500.00
Insurance return premium		1,755.81
		<hr/>
Amount available		\$12,255.81
Paid: Library Trustees	\$10,500.00	
New London Agency, insurance	1,741.79	
	<hr/>	12,241.79
Balance		\$ 14.02

#### OLD AGE ASSISTANCE

Appropriation		\$1,500.00
Paid: State of N. H. (Town share of 25%)		1,361.91
Balance		\$ 138.09

## TOWN WELFARE

Appropriation		\$1,200.00
Paid: Merrimack County Commissioners	\$415.00	
Direct local assistance	339.71	
R. W. Chatellier, welfare officer	48.44	
	<hr/>	803.15
Balance		\$ 396.85

## MEMORIAL DAY SERVICES

Appropriation		\$150.00
Paid: American Legion Post #40		\$150.00

## OTHER PAYMENTS

### Dog Licenses

Received: William F. Kidder, Clerk, license fees		\$ 426.45
Paid: William F. Kidder, Clerk, issue licenses		56.53
	<hr/>	\$ 369.92

### Motor Vehicle Registration

Received: William F. Kidder, Clerk, auto permits		\$14,102.75
Paid: William F. Kidder, Clerk, issue permits		551.00
	<hr/>	\$13,551.75

### Bounties

Paid: William F. Kidder, porcupine bounties	\$69.50	
Gerald C. Prescott, poreupine bounties	1.50	

R. W. Chatellier

4.50

75.50

### **Social Security**

Appropriation	\$1,100.00
Paid: State Treasurer, Town share $3\frac{1}{8}\%$ of wages	977.31
Balance	<u>\$122.69</u>

### **Interest**

Appropriation	\$1,000.00
Paid: The New London Trust Co.	330.00
Balance	<u>\$ 670.00</u>

### **Debt Retirement**

Appropriation	\$5,000.00
Paid: The New London Trust Co.	\$5,000.00

### **County Tax**

Appropriation	\$18,841.41
Paid: Donald G. Rainie, Treas. Merrimack County	18,841.41

### **Yield Tax**

Paid: State Treasurer, 2% of assessed value of timber cut \$35.84

### **Head Tax**

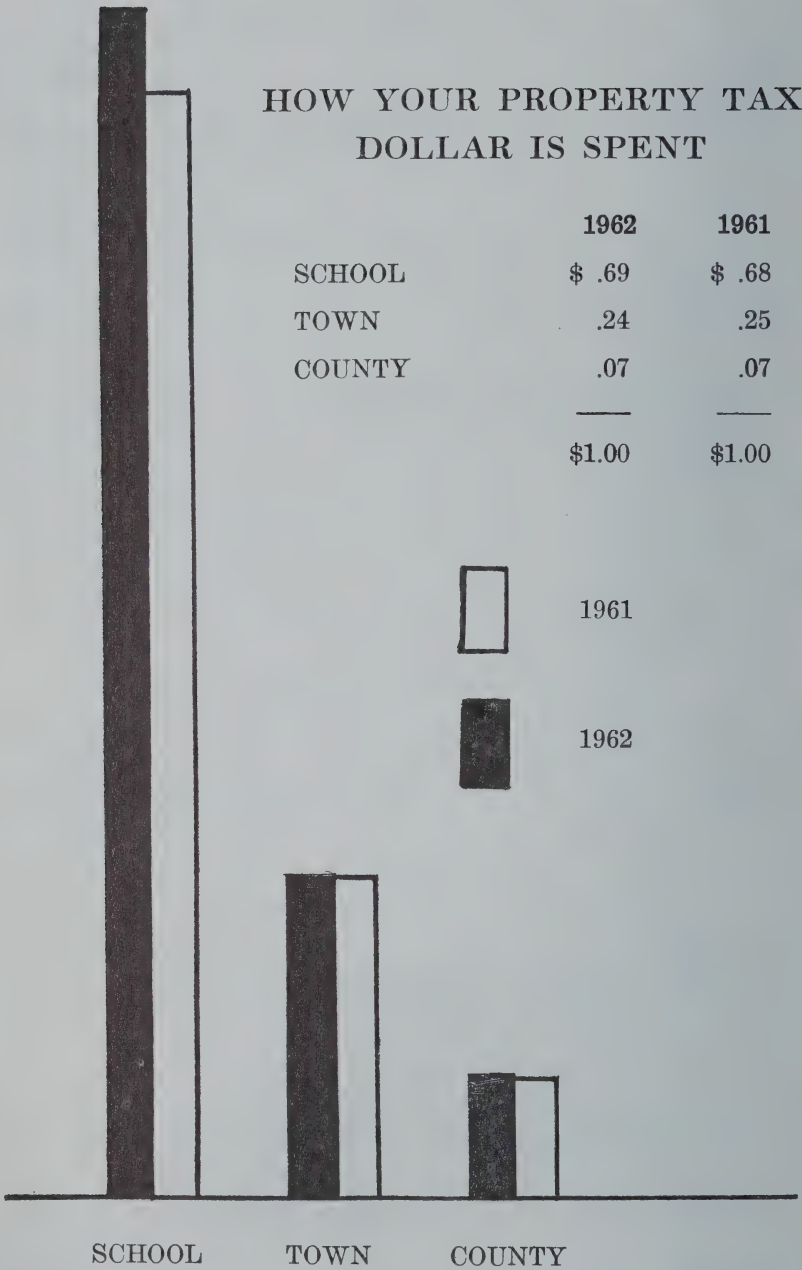
Paid: State Treasurer (@ \$5.00 less \$.15 Town share) \$3,664.50

**New London School District**

Appropriation: 1962-1963 School year	\$180,692.75
Balance due Jan. 1, 1962 of 1961-1962 appropriation	40,000.00
	<hr/>
	\$220,692.75
Paid: Evelyn O. Kiernan, Treasurer	\$115,000.00
Balance due School District for 1962-1963 Fiscal year ending June 30, 1963	\$105,692.15

## HOW YOUR PROPERTY TAX DOLLAR IS SPENT

	1962	1961
SCHOOL	\$ .69	\$ .68
TOWN	.24	.25
COUNTY	.07	.07
	———	———
	\$1.00	\$1.00





# THE 24¢ TOWN SHARE OF YOUR PROPERTY TAX DOLLAR

## **HIGHWAY DEPARTMENT — 10 cents**

Maintenance of Roads  
Improvement of Roads  
Town Road Aid  
General Expenses  
Equipment Fund  
Sidewalks and Curbs  
Payment on Loader

## **PROTECTION — 5 cents**

Fire Department maintenance  
Fire Truck, 1962 payment  
Police Department  
Care of Trees  
Civil Defense  
Street Lights  
Hydrant service

## **GENERAL GOVERNMENT — 4 cents**

Officers' Salaries  
Officers' Expenses  
Election, Registration  
Municipal Court  
Town Hall maintenance  
Old Age Assistance  
Public Welfare  
Vital Statistics  
Interest  
Social Security  
Planning, Zoning, Legal Exp.

## **SERVICES — 3 cents**

Library  
Cemeteries  
Information Booth  
Memorial Day  
Advertising  
Historical

## **HEALTH & SANITATION — 2 cents**

N. L. Hospital Association  
Board of Health  
Town Dump  
Sewer maintenance (25%)

---

24 cents

**REPORT OF THE TRUST FUNDS  
OF THE TOWN OF NEW LONDON, N. H.  
ON DEC. 31, 1962**

There are 231 Cemetery Trust accounts for the care of individual cemetery lots, each in a separate Savings Bank Book and earning 4%. The principal in these savings accounts totals \$21,040.32 and the unspent earnings \$4,747.76 making a total of \$25,788.08 in the Cemetery Trust Funds. This indicates an average value of \$111.63 for each of the 231 accounts.

The Tracy Memorial Library has the support of four Trust Funds, i.e. the Jane A. Tracy Fund, the Sarah and Elizabeth Brown Fund, the Ann Mary Jelly Fund and the Kathleen L. Whitcomb Fund, which together contributed a total of \$5,781.23 in earnings during the past year. Incidentally, every year, this income from earnings has increased since the Trust Funds were first established. There are 8 different investment trusts that we hold for the benefit of the Library. All Cash Capital Gains from them are deposited in the Uninvested Savings of that particular Trust Fund, for Capital Gains are a return of principal and NOT income. These Uninvested Funds are all earning 4% and this interest is turned over to the Library, as earned income.

It is interesting to note that the original Tracy Trust Fund principal of \$100,000.00 has increased to \$101,942.16 in the past 12 years due to accumulations of Cash Capital Gains and the original principal has a market value of \$168,519.00 today. The total value, at cost, of all Trust Funds, both invested and uninvested, within our care, is \$129,328.09. These investments produced a cash income of \$7,064.58 at an average return of 5.4%.

TRUST FUNDS FOR CARE OF CEMETERY LOTS

Date of Creation	Name of Trust Fund	Balance of Principal at End Year	Balance of Income Begin-ning Yr.	Income During Year	Expended During Year	Balance Income End Yr.
1892	Eliphant Gay	\$100.00	\$119.22	\$ 8.86	\$ 2.00	\$126.08
1900	Clement & Lovering	114.00	57.88	6.95	3.00	61.83
1902	Alexander Whitney	100.00	82.53	7.33	2.00	87.96
1909	Sanford Fisher	100.00	28.23	5.18	2.00	31.46
1911	Fales & Burpee	50.00	6.02	2.23	2.00	6.30
1911	John Currier	100.00	33.53	5.40	2.00	36.93
1911	William S. Carter	50.00	6.12	2.27	1.00	7.39
1911	Sargent & Woodward	100.00	27.10	5.14	2.00	30.24
1911	George W. Craft	50.00	10.09	2.43	1.00	11.52
1911	Frank S. & Sarah E. Seamans	200.00	71.80	10.99	3.00	79.79
1911	Ephraim Knight	50.00	10.64	2.43	1.00	12.07
1911	Timothy Crowley	50.00	8.84	2.37	1.00	10.21
1912	Joseph Messer	50.00	11.57	2.47	1.00	13.04
1912	Herrick & Colby	420.00	176.03	24.14	6.00	194.17
1913	Carr & Greeley	50.00	10.95	2.45	1.00	12.40
1913	Enoch Adams	50.00	12.96	2.53	1.00	14.46
1913	Osborn French	50.00	14.29	2.59	1.00	15.88
1915	Cora & Effie Bunker	75.00	40.19	4.65	2.00	42.84
1915	David Towle	50.00	21.05	2.87	1.00	22.92
1915	Whipple	100.00	20.55	4.86	2.00	23.41
1915	A. J. Messer	50.00	5.13	2.24	2.00	5.37
1915	Daniel Seamans	50.00	22.95	2.93	1.00	24.88
1915	Nelson (1sh. Northern R.R. at 6%) Nelson, R.R. Dividends	100.00				
			176.40	13.15	3.00	186.55
1916	Richard Morgan	50.00	8.66	2.35	1.00	10.01
1916	C. C. & G. W. Gardner	100.00	21.43	4.90	2.00	24.33
1917	Ebenezer & Samuel Shepard	50.00	8.50	2.35	1.00	9.85
1917	B. E. Burpee	50.00	13.74	2.57	2.00	14.31
1917	Frank P. Sargent	50.00	14.51	2.59	1.00	16.10
1917	James D. Prescott	100.00	20.36	4.83	4.00	21.24
1918	Asa B. Pillsbury	50.00	8.24	2.35	1.00	9.59
1918	Augusta Davis	75.00	41.31	4.69	1.00	45.00
1919	Greene & French	50.00	11.30	2.47	1.00	12.77
1919	Micajah Morgan	50.00	9.57	2.40	2.00	9.97
1919	Frank P. Messer	50.00	7.29	2.32	2.00	7.61
1920	Ira Smith	50.00	11.46	2.43	2.00	11.94
1920	James Morgan	50.00	19.66	2.32	2.00	20.48
1921	Harrison & John Williams	100.00	18.59	4.80	4.00	19.39
1921	Jonathan Everett	200.00	149.15	14.15	5.00	158.30
1922	Sale of Lots in New Yard		433.13	17.48		450.61
1922	S. Messer & Levi Nichols	75.00	24.81	4.02	2.00	26.83
1922	David Baldwin	50.00	5.99	2.26	2.00	6.25
1922	Roger Williams	50.00	9.55	2.39	1.00	10.94
1923	Anthony C. Philbrick	50.00	6.01	2.23	2.00	6.29
1923	Sarah E. Boynton & Thomas Farwell	102.64	20.26	4.93	4.00	21.24
1923	Samuel Burpee	100.00	15.09	4.68	4.00	15.77
1923	Jacob H. Todd	50.00	10.70	2.44	2.00	11.14
1923	Israel & Albert Hunting	100.00	18.72	4.31	3.00	20.53
1923	Harriet Brower	50.00	12.23	2.52	2.00	12.80
1923	Thomas Burpee	50.00	11.39	2.43	2.00	11.37
1923	George A. Messer	50.00	8.87	2.33	2.00	9.25

## CEMETERY TRUST FUNDS (Continued)

Date of Creation	Name of Trust Fund	Balance of Principal at End Year	Balance of Income Beginning Yr.	Income During Year	Expended During Year	Balance Income End Yr.
1923	Benjamin Everett	50.00	9.63	2.40	2.00	10.03
1924	Frank W. Knowlton	50.00	7.77	2.33	2.00	8.10
1924	O. L. Jennings	25.00	20.22	1.83	1.00	21.05
1924	A. B. Stimson	100.00	23.04	5.00	4.00	24.04
1924	Sarah M. Severance	50.00	10.94	2.46	2.00	11.40
1925	Dr. John P. Elkins & Cemetery	500.00	9.47	20.76	30.00	.23
1925	Henry Patten	100.00	29.03	5.23	3.00	81.26
1925	Adelbert Messer	100.00	24.92	5.06	4.00	25.98
1925	Adnah Fowler	50.00	5.34	2.25	2.00	5.59
1925	Benton M. Stanley	100.00	4.52	4.25	4.00	4.77
1925	George R. MacFarland	100.00	23.60	5.00	4.00	24.60
1925	Sadie Lowe	100.00	22.32	4.95	3.00	24.27
1925	William H. Manahan	100.00	23.68	5.22	4.00	29.90
1925	Stephen & Alvin Messer	100.00	14.18	4.64	4.00	14.82
1925	John French	50.00	4.29	2.19	2.00	4.48
1925	Messer Rifles Old Soldiers Graves	346.27	86.21	17.58	16.00	87.79
1926	Sales of Elkins Cemetery Lots		356.04	14.38		370.42
1927	Charles Putney	100.00	15.88	4.69	4.00	16.57
1927	Myra B. Lord	50.00	9.03	2.40	2.00	9.43
1927	John B Koehne	75.00	26.56	4.11	3.00	27.67
1927	C. C. & J. S. Phillips & Ursula Peaslee	125.00	14.33	5.66	4.00	15.99
1928	George Williams	50.00	10.94	2.46	2.00	11.40
1929	Leonard P. Gould	100.00	29.04	5.23	4.00	30.27
1929	Moses Adams	50.00	7.94	2.34	2.00	8.28
1929	Fred & Sidney Pedrick	50.00	5.04	2.24	2.00	5.28
1929	John Sullivan	50.00	5.49	2.24	2.00	5.73
1929	Evarts Messer	100.00	17.46	4.76	4.00	18.22
1930	Frank Jewett	50.00	5.46	2.23	2.00	5.69
1930	John D. Pingree	50.00	9.21	2.40	2.00	9.61
1931	Walter E. Pingree	50.00	13.06	2.56	2.00	13.62
1931	Dr. Charles A. Lamson	50.00	8.36	2.36	2.00	8.72
1931	Zaccheus Messer	100.00	15.53	4.68	4.00	16.21
1932	Edwin R. Phillips	200.00	30.74	9.38	8.00	32.12
1932	Sanborn & Hillborn	50.00	8.18	2.36	2.00	8.54
1933	John W. Morse	50.00	10.90	2.46	2.00	11.36
1933	A. I. Merigold	50.00	8.29	2.36	2.00	8.65
1933	Charles Folsom	50.00	8.60	2.36	2.00	8.96
1933	Mrs. Charles Wells	50.00	10.30	2.44	2.00	10.74
1935	Reverdy F. Smith	100.00	24.65	5.05	3.00	26.70
1935	George Dockham	25.00	8.34	1.55	1.00	8.69
1935	Frank Shepard	50.00	10.42	2.44	2.00	10.86
1935	James Jewett & Robert Davis	100.00	9.56	4.44	4.00	10.00
1935	Angus Farnum	100.00	14.67	4.64	4.00	15.31
1935	Adelaide M. Fellows	50.00	9.37	2.40	2.00	9.77
1936	Thomas & Charles Grainey	70.00	18.35	3.58	2.00	19.93
1936	Abbie McConnell	100.00	16.18	4.71	3.00	17.89
1937	Eugene O'Niel & Patrick Welch	100.00	10.78	4.49	4.00	11.27
1937	Samuel Greenwood	100.00	19.55	4.83	3.00	21.38
1937	Alice Brown	50.00	8.45	2.36	2.00	8.81
1938	May C. Plympton	100.00	18.29	4.79	3.00	20.08
1938	Moses Trussell	50.00	6.23	2.23	2.00	6.56
1939	Augustus S. Messer	484.41	225.93	28.78	10.00	254.71

**CEMETERY TRUST FUNDS (Continued)**

Date of Creation	Name of Trust Fund	Balance of Principal at End Year	Balance of Income Beginning Yr.	Income During Year	Expended During Year	Balance Income End Yr.
1939	Arthur L. Rayno	100.00	23.19	4.99	3.00	25.18
1939	Horace Hurd	50.00	6.90	2.30	2.00	7.20
1940	Fred Farwell	100.00	20.01	4.87	3.00	21.88
1941	Calvin Sargent	100.00	13.82	4.62	4.00	14.44
1941	Fred A. Pressey	100.00	14.02	4.64	4.00	14.66
1941	Charles Goings	50.00	5.62	2.23	2.00	5.85
1941	Amos Page	125.00	45.25	6.88	2.00	50.13
1941	Willie M. Knowlton	100.00	15.68	4.70	4.00	16.38
1941	Frank Mastin	50.00	7.68	2.32	2.00	8.00
1941	Silvester M. Allen	50.00	7.08	2.32	2.00	7.40
1941	Barton & Lindsey	100.00	16.91	4.73	4.00	17.64
1942	Percy C. Bond	100.00	13.90	4.62	4.00	14.52
1943	John & Fred Morgan	100.00	14.82	4.66	4.00	15.48
1943	Archie Fitzpatrick	300.00	37.90	13.66	6.00	45.56
1943	J. B. Roby & G. E. Fifield	100.00	11.71	4.52	4.00	12.23
1944	E. W. Converse	100.00	12.24	4.56	4.00	12.90
1945	Wendell N. Hobbs	150.00	28.00	7.22	5.00	30.22
1945	Mrs. Marie Barrett	100.00	16.74	4.73	4.00	17.47
1945	William H. Phillips	100.00	13.35	4.60	4.00	13.95
1945	Swift-Fellows-Bunker, Etc.	500.00	25.61	21.40	20.00	27.01
1946	Keil	100.00	12.72	4.58	4.00	13.30
1946	Phillip T. Cate	100.00	12.09	4.56	4.00	12.65
1946	Edgar F. Sargent	150.00	31.47	7.36	4.00	34.83
1946	Nathaniel W. Colby	100.00	12.09	4.56	4.00	12.65
1946	Ralph W. Preston	100.00	11.66	4.52	4.00	12.18
1946	William C. Sanborn	100.00	12.55	4.56	4.00	13.11
1946	Charles E. Gay	100.00	10.62	4.47	4.00	11.09
1946	Clifton J. Lull	50.00	10.32	2.43	2.00	10.75
1946	George D. Graves, Jr.	100.00	9.61	4.44	4.00	10.05
1946	George Cory	100.00	17.70	4.76	3.00	19.46
1947	Mrs. Arthur Whitcomb	100.00	8.86	4.39	4.00	8.75
1947	Harry W. Hodges	100.00	8.19	4.39	4.00	8.58
1948	Rufus Lamson	100.00	20.99	4.89	3.00	22.88
1948	James F. Hayes	100.00	13.06	4.59	4.00	13.65
1948	Irene Black Gott	50.00	9.86	2.41	2.00	10.27
1949	Russell L. Parshley	100.00	17.13	4.75	4.00	17.88
1949	Timothy Sanborn	50.00	7.03	2.32	2.00	7.35
1949	William Lorden	100.00	9.07	4.44	4.00	9.51
1949	Edwin P. Burpee	200.00	32.01	9.42	6.00	35.43
1949	Hiram A. Eastman	75.00	8.79	3.38	2.00	10.17
1949	William Courtney Donn	75.00	6.38	3.30	2.00	7.68
1949	Frank Call	50.00	6.47	2.28	2.00	6.75
1949	A. W. Holms	150.00	17.38	6.78	5.00	19.16
1949	Walter E. Gay	100.00	14.99	4.66	4.00	15.65
1950	Ausbon Sargent	100.00	10.76	4.50	4.00	11.26
1950	Austin Morgan	150.00	16.44	6.75	6.00	17.19
1950	Percival Wood	43.00	7.70	2.03	2.00	7.73
1951	Joseph Dietche	100.00	11.88	4.52	4.00	11.90
1951	Fred W. Knowlton	100.00	11.09	4.51	4.00	11.60
1951	Curtis B. Smith	75.00	9.38	3.42	2.00	10.80
1951	Fred A. Todd	100.00	8.69	4.39	4.00	9.08
1951	Andrew Sherburne	100.00	15.19	4.67	4.00	15.86



CEMETERY TRUST FUNDS (Continued)

Date of Creation	Name of Trust Fund	Balance of Principal at End Year	Balance of Income Beginning Yr.	Income During Year	Expended During Year	Balance Income End Yr.
1951	Homer Lockwood	50.00	6.85	2.28	2.00	7.13
1951	Charles Gordon	100.00	8.83	4.42	4.00	9.25
1951	Charles P. Pratt	100.00	11.94	4.53	3.00	13.47
1952	Penn E. Moore	50.00	6.87	2.29	2.00	7.16
1952	Willis A. Prescott & Frank E. Babcock	100.00	7.97	4.37	4.00	8.34
1952	Ernest Quimby	100.00	8.62	4.39	4.00	9.01
1952	Charles H. Hadlock	100.00	13.96	4.60	3.00	15.56
1952	Harry H. Tuttle	50.00	6.40	2.27	2.00	6.67
1952	Mildred C. Tunis	75.00	14.30	3.61	1.00	16.91
1953	Roger Butler	75.00	7.84	3.34	2.00	9.18
1953	Dr. Albert Mackintosh	75.00	7.56	3.34	2.00	8.90
1953	Archibald Granger	50.00	5.42	2.24	2.00	5.66
1953	Charles Nye	100.00	11.67	4.51	4.00	12.18
1953	Samuel Best	100.00	11.67	4.51	3.00	13.18
1953	John E. Stellwagon	100.00	8.02	4.39	4.00	8.41
1953	Morton Page Messer	100.00	7.46	4.35	4.00	7.81
1954	Blood & McCutchins	100.00	4.18	4.23	4.00	4.41
1954	Howard E. Todd	50.00	4.55	2.20	2.00	4.75
1954	Wilbur Knowlton	50.00	5.55	2.23	2.00	5.78
1954	Charles S. Horton	75.00	4.01	3.20	2.00	5.21
1954	George O. Draper	75.00	7.30	3.32	2.00	8.62
1954	Daniel & Sarah Cross Loverin	100.00	7.04	4.35	4.00	7.39
1954	Stephen Dean	75.00	4.91	3.23	2.00	6.14
1954	Joseph Cutting	100.00	7.57	4.35	3.00	8.92
1955	Gilman, Leca & Vaundry	100.00	5.17	4.27	4.00	5.44
1955	William Kitchen	50.00	4.25	2.20	2.00	4.45
1955	John D. Quackenbos	100.00	8.12	4.39	4.00	8.51
1955	H. E. & J. H. Hall	200.00	10.78	8.56	7.00	12.34
1955	Freeman T. Putney	200.00	16.03	8.77	5.00	19.80
1955	Herman P. Messer	100.00	7.92	4.37	4.00	8.29
1956	Clarence Prescott	50.00	4.57	2.19	2.00	4.76
1956	John C. Witt	50.00	3.96	2.17	2.00	4.13
1956	Charles Prew	100.00	6.99	4.33	4.00	7.32
1956	Charles A. Everett	100.00	7.99	4.36	4.00	8.35
1956	Edwin Messer	100.00	4.99	4.27	4.00	5.26
1956	James Eli Shepard	100.00	7.04	4.34	4.00	7.38
1956	Ernest E. Welch, Sr.	50.00	3.50	2.15	2.00	3.65
1956	Charles W. Gay	100.00	8.68	4.38	4.00	9.06
1957	Herbert Leslie Sawyer	50.00	4.19	2.19	2.00	4.38
1957	Walter T. Moreland	75.00	5.42	3.26	2.00	6.68
1957	Andrew Craig	50.00	3.53	2.15	2.00	3.68
1957	Micajah Emery	50.00	3.53	2.15	2.00	3.68
1957	Charles Messer	100.00	8.69	4.38	3.00	10.07
1957	Earl Rowe	75.00	3.66	3.18	2.00	4.34
1957	Thomas Wistar	75.00	5.83	3.25	2.00	7.08
1958	Waldo Campbell	100.00	6.03	4.30	3.00	7.33
1958	Frederic E. Everett	100.00	5.72	4.26	4.00	5.98
1958	C. J. Trayner	100.00	5.16	4.26	3.00	6.42
1958	Dr. William P. Clough, Sr.	100.00	6.19	4.30	3.00	7.49
1958	Dr. A. Seymour Thomas	100.00	5.19	4.27	3.00	6.46
1958	Harry Pond	75.00	3.08	3.16	2.00	4.24

## CEMETERY TRUST FUNDS (Continued)

Date of Creation	Name of Trust Fund	Balance of Principal at End Year	Balance of Income Begin- ning Yr.	Income During Year	Expended During Year	Balance Income End Yr.
1958	Guy F. Williams .....	75.00	3.08	3.16	2.00	4.24
1958	E. E. & Myron P. Adams .....	100.00	5.50	4.26	3.00	6.76
1958	Nellie Griggs .....	50.00	1.88	2.07	2.00	1.95
1958	Jack I. Grow .....	100.00	3.56	4.19	4.00	3.75
1959	John E. Macy .....	75.00	1.58	3.10	2.00	2.68
1959	M. Roy London .....	100.00	3.16	4.18	3.00	4.34
1959	Clinton F. Bliss .....	100.00	3.16	4.18	3.00	4.34
1959	H. G. Davis .....	100.00	3.16	4.18	3.00	4.34
1959	Archie MacInnis .....	75.00	2.35	3.12	2.00	3.47
1960	Charles E. Shepard .....	100.00	2.55	4.14	3.00	3.69
1960	Walter Morgan .....	100.00	2.55	4.14	4.00	2.69
1960	William A. MacFarland .....	100.00	2.92	4.14	4.00	3.06
1960	Stanley A. Spiller .....	50.00	1.15	2.07	1.00	2.22
1960	Charles Woodward .....	100.00	3.29	4.17	3.00	4.46
1961	Chester Melendy .....	100.00	.33	4.05	3.00	1.38
1961	Ervin P. Edmunds .....	50.00	.50	2.02	1.00	1.52
1961	Fred O. Williams .....	50.00		2.35	1.00	1.35
1961	Victor J. Dean .....	50.00		2.35	1.00	1.35
1962	Davis S. Thompson .....	100.00				
1962	Charles Morgan .....	150.00				
1962	Dr. James B. Brown .....	60.00				
1962	Eugene Austin .....	100.00				
1962	Sally Waite .....	50.00				
1962	Kempfield Bros. ....	200.00				
1962	Oscar A. Colburn .....	100.00				
		\$21,040.32	\$4,425.12	\$1,012.64	\$ 690.00	\$4,747.76

NOTE: All Cemetery Trust Funds listed above are for care of Cemetery Lots except where noted otherwise. All are invested in Concord Savings Bank except 1915 Lucy J. Nelson Fund, which is invested in one share of Northern R. R. Stock (6%); Interest in all other cases is 4%. Total balance income cemetery funds at end of year: \$4,747.76.

## TRUST FUNDS

### 1951 JANE A. TRACY FUND for TRACY MEMORIAL LIBRARY

How Invested	Balance Principal Beginning Year	New Funds Created	Loss on Sale of Securities	Capital Gain Divi- dends	Balance Principal End of Year	Amount Income During Year	Expended Balance During Year	End of Year
Newport Savings Bank Concord Savings Bank TOTAL Uninvested Cash	\$ 2,392.66	\$2,269.45		\$81.69	\$4,743.80	\$113.16	\$113.16	
	8,230.75				8,230.75	329.20	329.20	
	<u>10,623.41</u>	<u>2,269.45</u>		<u>81.69</u>	<u>12,974.55</u>	<u>442.36</u>	<u>442.36</u>	
117 Shares A.T.&T.	6,430.90				6,430.90	421.20	421.20	
10M—A.T.&T.—5% Deb.	10,895.77				10,895.77	500.00	500.00	
10 Shares Am. Tob. Pref.	1,336.35				1,336.35	60.00	60.00	
71 Shares Bank of Amer.	2,183.50				2,183.50	142.00	142.00	
1,145 Sh. Broad St. Inv. Corp.	7,098.00			(stock)	7,098.00	503.80	503.80	
24 Sh. Capital Gains	7,098.00			3.63	7,098.00	503.80	503.80	
Cash Capital Gains				3.63				
1,169 Sh. Broad St. I. C.	1,019.45		1,019.45	6.05		31.50	31.50	
10 Sh. Caterpillar Tractor Pref.	6,889.92				6,889.92	496.00	496.00	
400 Sh. Duquesne Light Co.	3,320.00			(stock)	3,320.00	178.50	178.50	
476 Sh. Eaton & Howard	3,320.00			6.04				
8 Sh. Capital Gains	3,320.00			6.04	3,320.00	178.50	178.50	
Cash Capital Gains				6.04				
484 Sh. Eaton & Howard	1,564.55			(stock)	1,564.55	93.24	93.24	
209 Sh. Fidelity Fund	1,564.55			14.64				
13 Sh. Capital Gains	1,564.55			14.64				
Cash Capital Gains				14.64				
222 Sh. — TOTALS	1,564.55			14.64	1,564.55	93.24	93.24	

## Tracy Memorial Library Funds (Cont.)

How Invested	Balance Principal Beginning Year	New Funds Created	Loss on Sale of Securities	Capital Gain Divi- dends	Balance Principal End of Year	Amount Income During Year	Expended During Year	Balance End of Year
144 Sh. 1st National Bank of Boston	6,425.66				6,425.66	432.00	432.00	
} 27 Sh. 1st Nat. Bank of St. Louis	1,280.40			(stock)	1,280.40	86.40	86.40	
} 27 Sh. Stock Dividend								
} 54 Sh. — TOTALS	1,280.40			(stock)	1,280.40	86.40	86.40	
100 Sh. International Harvester Co.	3,658.28				3,658.28	240.00	240.00	
} 1,037 Sh. Keystone Custodian K-1	8,813.90			(stock)	8,813.90	490.27	490.27	
} 24 Sh. Capital Gains				7.48				
} Cash Capital Gains				7.48	8,813.90	490.27	490.27	
} 1,061 Sh. — TOTALS	8,813.90				8,813.90	490.27	490.27	
136 Sh. Manufacturers Hanover Trust	3,925.76				3,925.76	272.00	272.00	
} 1,509 Sh. M.I.T.	9,192.00			(stock)	9,192.00	627.20	627.20	
} 59 Sh. Capital Gains				10.96				
} Cash Capital Gains				10.96	9,192.00	627.20	627.20	
} 1,568 Sh. — TOTALS	9,192.00				9,192.00	627.20	627.20	
655 Sh. Nation Wide Securities Co.	8,199			(stock)	8,199.00	501.37	501.37	
} 21 Sh. Capital Gains				16.65				
} Cash Capital Gains				16.65	8,199.00	501.37	501.37	
} 676 Sh. — TOTALS	8,199.00				8,199.00	501.37	501.37	
383 Sh. George Putnam Fund	3,226.11			(stock)	3,226.11	165.68	165.68	
} 3 Sh. Capital Gains				16.24				
} Cash Capital Gains				16.24	3,226.11	165.68	165.68	
} 386 Sh. — TOTALS	3,226.11				3,226.11	165.68	165.68	
10 Sh. Rumford Printing Co.	934.20		1,250.00		3,226.11	165.68	165.68	

Sold out and cash deposited in  
Tracy Uninvested Funds.

### Tracy Memorial Library Funds (Cont.)

How Invested	Balance Principal Beginning Year	New Funds Created	Loss on Sale of Securities	Capital Gain Divi- dends	Balance Principal End of Year	Amount Income During Year	Expended Balance During Year	End of Year
44 Sh. Texaco Co.	677.50				677.50	81.40	81.40	
100 Shares Texas Gulf Sulphur	3,850.01				3,850.01	55.00	55.00	
<b>TOTALS OF ALL JANE A. TRACY TRUST FUNDS</b>					101,942.16	5,819.92	5,819.92	
1913 SARAH & ELIZABETH BROWN TRUST FUND								
73 Sh. Scudder, Stevens & Clark	1,029.82			(stock)	1,029.82	40.88	40.88	
3 Sh. Capital Gains				11.09				
Cash Capital Gains								
76 Sh. — TOTALS	1,029.82			11.09	1,029.82	40.88	40.88	
Uninvested Brown Trust (Newport Savings Bank)	126.73	11.09			137.82	4.85	4.85	
<b>TOTALS SARAH &amp; ELIZ. BROWN TRUST FUNDS</b>					1,167.64	45.73	45.73	
1945 ANN MARY JELLY TRUST FUND								
Uninvested Jelly Trust (Sugar River Savings Bank)	124.64				124.64	5.58*	5.58	
<b>TOTALS ANN MARY JELLY TRUST FUND</b>					124.64	5.58*	5.58	
1962 KATHLEEN L. WHITCOMB TRUST FUND		1,000.00			1,000.00			
<b>TOTALS KATHLEEN L. WHITCOMB TRUST FUND</b>					1,000.00			
<b>GRAND TOTALS OF ALL TRACY MEMORIAL LIBRARY TRUST FUNDS</b>					104,234.44	5,871.23	5,871.23	



## Miscellaneous Trust Funds

How Invested	Balance	New Funds Created	Loss on	Capital	Balance	Amount	Expended	Balance
	Principal Beginning Year		Sale of Securities	Gain Dividends	Principal End of Year	Income During Year		
1897 Ministerial Trust Fund	1,353.33				1,353.33	60.89*	60.89	
Support of New London Churches								
1941 Heidelberg Prize Speaking Fund	500.00				500.00†	23.72	18.00	37.55
By Herbert D. Swift (High School Prize Speaking)					2,200.00†	96.10		275.48
1959 New London School District	2,200.00				4,053.33	180.71	78.89	313.03
<b>TOTALS OF MISCELLANEOUS TRUST FUNDS</b>								
<b>TOTALS OF ALL TRUST FUNDS (Cemetery, Library &amp; Miscellaneous)</b>					\$129,328.09	\$7,064.58	\$6,640.12	\$5,060.79

\*The Ann Mary Jelly Trust Fund Uninvested Funds in the Sugar River Savings Bank earned 4 1/4 % interest. Also the Ministerial Trust Fund.

†The Heidelberg Prize Speaking Fund had a balance at the beginning of the year of \$31,833. The New London School District, \$179.38.

This is to certify that the information contained in this report is complete and correct to the best of our knowledge and belief.

CHARLES M. HEMENWAY  
HERBERT D. SWIFT  
ROBERT C. WHITMAN

January 15, 1963

# REPORT OF CEMETERY COMMISSIONERS

Cash on hand January 1, 1962	\$ 883.83	
<b>Received:</b>		
Town Treasurer	925.00	
Care of Lots	123.25	
Opening Graves	137.00	
Sale of Lots	135.00	
Trustees Trust Funds	690.00	
Grading	23.00	
Foundations	62.00	
For Trust Funds	760.00	
Miscellaneous	83.53	
	\$3,822.61	
<b>Paid:</b>		
Tyler D. Grace, labor and supplies	\$ 140.77	
Albert J. Sholes, labor	542.05	
Harold E. Messer, labor and truck	1,114.92	
Tracy Memorial Library, rent	1.00	
Emma L. Colby, bond	10.00	
Trustees Trust Funds	760.00	
Postage	4.00	
Merrimack Farmers Exchange, supplies	79.61	
Elkins Printing Co., supplies	7.25	
Greenlands Corp., repairs	1.42	
R. P. Johnson & Son, supplies	26.90	
Heath & Lull, supplies	2.85	
New London Water System Precinct	12.00	
Kidder Garage Co., repairs and supplies	7.99	
Lawrence W. Rowe, loam	15.00	
Citizens National Bank, service charge	8.05	
New London Hardware, supplies	18.57	
Social Security	54.36	
	\$2,806.74	
Balance January 1, 1963		1,015.87
		\$3,822.61

HAROLD E. MESSER, ALBERT J. SHOLES,  
TYLER D. GRACE, Cemetery Commissioners.

**NEW LONDON  
SANITARY SEWER COMMISSION**

**ANNUAL SEWER STATEMENT FOR 1962**

Cash on hand January 1, 1962	\$3,304.64	
1962 Town Appropriation	1,772.84	
1962 Sewer Taxes	8,708.84	
1961 Sewer Taxes	258.19	
Interest on 1961 taxes	4.60	
State Refund	221.05	
Transfer of Funds from Newport Bank	4,233.76	
	\$18,503.92	
Maintenance and Labor	\$4,531.89	
Tools and Supplies	1,895.03	
Electricity	57.30	
Fuel	676.00	
Bond and Debt Retirement	4,000.00	
Bond and Debt Interest	280.00	
Chlorinator	817.70	
Supervisor and Tax Collection	414.89	
Insurance and Miscellaneous	212.54	
Repairs	50.00	
	\$12,935.35	
Cash on hand January 1, 1963		5,568.57
		\$18,503.92

**SEWER BUDGET FOR 1963**

Maintenance and Labor	\$5,100.00
Tools and Supplies	200.00
Electricity	70.00
Fuel	700.00
Bond and Debt Retirement	4,000.00
Bond and Debt Interest	300.00
Chlorinator	500.00
Supervisor and Tax Collector	425.00
Miscellaneous	250.00

Repairs	300.00	
Contingency	300.00	
		\$12,145.00
Cash on hand January 1, 1963		5,568.57
		\$6,576.43
Appropriation request, 1963, 1/4 of budget requirements, less insurance		\$1,560.10

: ————— :

## NEW LONDON WATER SYSTEM PRECINCT

### TREASURER'S REPORT

January 1 — December 31, 1962

#### Receipts

Cash on hand January 1, 1962 (check book)	\$22,548.48	
Louise Todd — Taxes	15,455.18	
Water Rent	6,113.89	
Line Extensions	393.03	
Paul B. Gay —		
Use of equipment and materials sold	260.81	
From Savings Banks —		
Withdrawn principal	25,000.00	
Withdrawn interest	1,413.63	
Colby Insurance Agency — refund	12.54	
		\$71,197.56
Total Receipts		

#### Disbursements

##### Maintenance:

Paul B. Gay — Payroll	\$ 3,005.80
-----------------------	-------------

Joy Mfg. Co.	111.17	
George A. Caldwell Co.	224.79	
Kidder Garage Co.	16.36	
Public Works Supply Co.	486.91	
New London Hardware	22.19	
L. M. Pike & Sons, Inc.	7.48	
M. E. Walker	58.04	
Kenneth A. Butler	15.00	
H. R. Prescott & Sons, Inc.	145.65	
Municipal Services, Inc.	17.28	
Twin Lake Village	50.00	
N. H. Explosives & Machinery Co.	4.08	
Heath & Lull	2.50	
	<hr/>	\$ 4,167.25

House Service:

Paul B. Gay — Payroll	1,718.47	
Duncan Hunter	274.16	
George A. Caldwell Co.	328.80	
Municipal Services, Inc.	186.76	
H. R. Prescott & Sons, Inc.	155.18	
Hileo Supply Co.	21.48	
L. M. Pike & Sons, Inc.	22.62	
	<hr/>	2,707.47

Supply:

Paul B. Gay — Payroll	870.35	
George Roberts	6.20	
Lawrence Rowe	24.00	
H. R. Prescott & Sons, Inc.	125.49	
John Danais Co., Inc.	106.20	
Wallace Tiernan, Inc.	39.40	
Public Works Supply	107.90	
Public Service Co. of N. H.	27.75	
	<hr/>	1,307.29

Miscellaneous:

Paul B. Gay — Payroll	423.27
Benjamin H. Yerxa	300.00
Town of Springfield	7.78
Merrimack Farmers Exchange	8.63
N. H. Water Works Assn.	10.00



George A. Roberts	4.50
Oscar A. Colburn	75.00
B. O. Gay	50.00
Edward A. Todd	100.00
Paul B. Gay	100.00
New London Trust Co.	5.37
Louise Todd	201.00
Sanel Auto Parts Co.	235.37
New London Hardware	16.81
Edson C. Eastman	10.00
Town of New London	200.00
Colby Insurance Agency	289.40
Emma L. Colby	32.50
George A. Caldwell Co.	54.50
The Country Press	56.25
Tracy Memorial Library	1.00
	<hr/>
	2,181.38

Construction :

H. R. Prescott Co.	231.88
Willey's Express	8.31
Central Foundry Co.	13,273.32
N. L. Fuel Co.	4.00
Town of New London	160.00
George A. Caldwell Co.	1,181.39
Bucklin Farm	179.00
John Holteen	86.00
Lawrence Rowe	245.50
Duncan Hunter	94.00
Johns Manville	2,473.80
Hileo Supply Co.	169.67
Kidder Garage Co.	44.00
Sanel Auto Parts Co.	35.56
Darling Valve Mfg. Co.	378.00
George E. Smith	2,750.90
Keith-White Motors	120.73
N. H. Explosives & Mach. Co.	792.21
Paul B. Gay — Payroll	13,353.80
Page Belting Co.	80.57
	<hr/>
	35,662.64

Construction Meters:

Newport Welding Co.	9.14	
Hersey Darling Meter Co.	1,494.42	
	<hr/>	1,503.56

Maintenance Meters:

M. E. Walker	19.17	
Badger Meter Mfg. Co.	1,679.62	
New London Hardware	8.52	
Newport Welding Co.	5.00	
Laskey's	980.27	
City of Concord	7.80	
Claremont Water & Sewer Dept.	12.87	
N. E. Meter Repair Co., Inc.	9.97	
	<hr/>	2,723.22

Interest:

First National Bank, Boston	4,500.00	
N. E. Merchants National Bank	1,210.00	
Mechanics National Bank	315.00	
	<hr/>	6,025.00

Debt:

N. E. Merchants National Bank	6,000.00	
First National Bank, Boston	5,000.00	
Mechanics National Bank	3,000.00	
	<hr/>	14,000.00

TOTAL DISBURSEMENTS \$70,277.81

Check Book Balance 919.75

Grand Total 

---

\$71,197.56

**BALANCE SHEET FOR 1962**

**Receipts**

From Taxes:	\$15,455.18
Water Rents	6,113.89
Labor and Materials	260.81
Extension Payments	393.03
Refund	12.54

Interest on Savings Account	1,413.63
Interest earned left in Savings Bank	1,879.19
	<hr/>
Total Receipts	\$25,528.27
Cash on hand, January 1, 1962 (check book)	22,548.48
In Savings Account January 1, 1962	90,000.00
	<hr/>
	\$138,076.75

### Payments

Maintenance	\$ 6,890.47
House Service	2,707.47
Supply	1,307.29
Miscellaneous	2,181.38
	<hr/>
Current Expenses	\$ 13,086.61
New Construction	37,166.20
Payment on Bonds	14,000.00
Interest	6,025.00
	<hr/>
Total Payments	\$ 70,277.81
Cash on hand January 1, 1963 (check book)	919.75
In Savings Accounts January 1, 1963	66,879.19
	<hr/>
GRAND TOTAL	\$138,076.75

OSCAR A. COLBURN,  
Treasurer.

: ————— :

## NEW LONDON CIVIL DEFENSE 1962 REPORT

Your Civil Defense Control Center is manned and in operation every Tuesday night to participate in our State R.A.C.E.S. radio drills. During this time the Control Center is open for

public inspection and we would be happy to have you stop in, as many of our townspeople have done, to see our equipment and men taking part in the drill. For the benefit of those who do not know what takes place during these drills, I will give you a brief resume.

Radio Amateur Civil Emergency Service (R.A.C.E.S.) is a nationwide radio communications network that is used in event of disaster, such as a hurricane, flood or national crisis. If disaster should ever strike, New London would always be in communication with outside assistance. The purpose of the R.A.C.E.S. drills is to give our operators the experience necessary to send and receive messages rapidly and accurately. There is no room for error if the safety of our community is concerned.

We maintain direct radio communications with Area Control in Newport which is in direct contact with our State C. D. in Concord. In addition, we have found that because of our high location our radios will reach Concord C. D. direct and can assist our neighboring towns with their C. D. activities. Therefore, our organization plays a major part in our State Civil Defense.

We New Londoners should express our thanks to Percy M. Thurston, Ralph Marshall, Philip Dow, Oscar Clark, Charles Bailey and Emerson Bailey for the time and energy which they give in carrying out this important phase of our local unit.

### **Public Services Rendered**

At the request of our American Red Cross Director, Mrs. Charles Woodworth, New London Civil Defense assisted at the New London Horse Show by furnishing radio communications to the Hospital and a standby auxiliary ambulance. On New London Hospital Day and again on Halloween, our radio equipment was used to maintain communications for our local Police. On other occasions they were used to reach our Doctors.

Throughout the Cuban crisis, our Control Center was on an alert status to insure that it would be ready for any eventuality. During the next year, I feel it prudent to go ahead with our Public Shelter plans and programs. Please feel free to call upon me any time with Civil Defense problems and questions.

WATSON B. JOHNSTON, Director

## REPORT OF THE PLANNING BOARD

To the Citizens of New London :

Acting under a mandate contained in Chapter 36, New Hampshire Revised Statutes Annotated 1955, your Planning Board formulated Land Subdivision Control Regulations. These regulations were presented to the citizens of the Town at a properly advertised Hearing on June 6, 1962. Minor modifications were incorporated into the Regulations as a result of suggestions made at the Hearing and the Regulations were unanimously adopted and declared in force by the Board on June 7, 1962.

Under the new regulations one plat was approved by the Board. Name, Glengae; Developer, Edwin H. Keith.

Acceding to the requests of many citizens that the Planning Board investigate the possibility of a town beach, the Board appointed James E. Shepard II and A. Irving Dodge as a subcommittee to conduct this investigation. Through their capable efforts, a gift of 360 feet of lake frontage on the eastern shore of Little Lake Sunapee has been generously offered to the Town by Mr. Walter S. Bucklin. It is hoped that the voters of the Town will see fit to accept this gift at the forthcoming Town Meeting.

At the time of the writing of this report, the Board is awaiting a decision by the State Highway Department relative to the relocation of Little Lake Sunapee Road, a step which will make the Town Beach possible. In the meantime the Board is making progress in drawing plans for this facility with the very capable assistance of Dr. Donald Bent, Chairman of the Outing Club Swimming Program.

The Chairman of the Board wishes to thank Mr. Shepard, Mr. Dodge, Wayne Wheeler, Oscar Colburn, Richard Chatellier and Mary Barrett, Board members, for the many, many hours of conscientious and unselfish effort which they have devoted to furthering the best interests of the Town.

Respectfully submitted,

ELLIS K. HEATH,  
Chairman.



## ZONING BOARD OF ADJUSTMENT

During 1962, the Zoning Board of Adjustment conducted two open Hearings on appeals referred to the Board by the Selectmen. The first was held on May 14th. This concerned the request by Colonel and Mrs. Percy H. Lash Jr. for determination under Article IX, Section H, to allow them to sell antiques in their home on Route 11, Low Plains. The request was approved and they were notified accordingly.

The second hearing was held on December 4th. This was a request by Wallace and Merle Gray for interpretation regarding the use of the Wayside Chapel on Otterville Road as a craft shop. Article IX, Section H, Sub-Section 4, states "such uses permitted shall be incidental to the use of the property as a residence by the owner or tenant." Since they did not qualify on these grounds their appeal was denied and they were duly notified.

There are no further appeals before the Board.

Respectfully submitted,

WILLIAM G. NEUMANN,  
Secretary

: ————— :

## INFORMATION BOOTH

### Summer of 1962

The New London Information Booth had a very busy summer. We opened the booth on July 2 and closed September 1, and were open from 9 A.M. to 5 P.M., Monday through Saturday.

During these hours 4,392 people stopped for help and we received many phone calls. There were 1,346 cars, 801 on foot, 7 bicycles, 1 bus, 2 motorcycles and 2 on horseback. Twenty-five states were represented, as well as the District of Columbia and 3 Canadian provinces.

The questions asked us at the booth were varied. They

included places to stay, things to do, distances to places, where to eat, nearest golf course, antiques, museums, dry cleaners, auctions, mines, camping areas, the "Jelly Girls" or Waes, nearest railroad, bus station, churches, shows, nearest Rotary meeting, hours of boat trips on Lake Sunapee and Lake Winnepesaukee, and many others.

We were in daily contact with local hotels and motels in town which aided greatly the many people desirous of lodging. Also, a file of each family in town was completed and proved most beneficial in locating people for inquiries.

We both feel that the New London booth has much to offer **in the hundreds of books, pamphlets, and maps** available to the public. We received many gracious thanks from the traveling public, who, if going through our town a second time, stopped to thank us.

We wish to thank the Selectmen of New London for the opportunity of serving in the Information Booth this summer.

Respectfully submitted,

EVELYN D. MESSER

VINITA L. GAY

: ————— :

## FORESTRY AND SHADE TREES

While the Town itself owns no woodland areas, as many cities and some towns in New Hampshire do, there are extensive privately-owned woodlands in New London. Our 1961 report describes the progress of the work carried on by the New Hampshire State Division of Resources Development in the eradication of the White Pine Blister Rust in the 14,000 acres in New London with sufficient growth of White Pine to be included. This acreage has now reached the "control" status with annual inspection, and occasional eradication of currant and gooseberry bushes, the disease carrier plants, at a lower cost to the town.

The largest single tract of 1,100 acres east of Pleasant Lake, along with many smaller tracts, are privately owned and under guided forestry improvement plans. You will notice "Tree Farm" signs alongside the roadsides and all owners of wooded areas are encouraged to avail themselves of the services of the Department of Agriculture in planning the care and improvement, on a cooperative basis, of this valuable asset to the owner and to the Town.

The slow death of many of our fine old maples was hastened by the accelerated removal of many trees beyond hope of recovery. Both our State Road Agent, Kenneth Rich, and our Tree Warden, Berkley Hunter, have had their crews at work actively in 1962.

Our roadside trees received two spray treatments, in early spring and again in July. These sprays contain both a fertilizer and an insecticide. To naturally fill the vacancies where old trees were removed, New London Florists were engaged to supply and plant 26 maples and 2 red oaks. The red oak, due to its deep-growing tap root, is thought by some to be more resistant to the surface infiltration of highway salts.

We feel that our shade tree program is worth while, that we are fortunate in having a resident Tree Warden interested in this work, and that the program should be continued . . . perhaps expanded.

:— ————— :

## WHITE PINE BLISTER RUST CONTROL

### Town of New London

#### FINANCIAL STATEMENT — 1962

Town Appropriation	\$100.00
N. H. State cooperative aid funds	\$311.66
Area worked — 1042 acres	

## MEMORIAL DAY

New London Post #40, American Legion, has been foremost in assuming the duties of organizing and taking active participation in the programs for Memorial Day ever since the Sons of Union Veterans disbanded in 1949. It is with a great deal of pride and indeed a privilege that the Legion has been called upon to perpetuate the significance of this day so ably constituted by the Grand Army of the Republic.

Membership in New London Post #40 is drawn from the Towns of Springfield, Sutton, Wilmot and New London, and, as has been the custom in the past, the Legion body conducts appropriate Memorial exercises in each Town, at the church and at the cemeteries. Post #40 provides the band, flags and wreaths for decorating, grave markers, firing squad and supplies and speakers when requested.

To assist the Legion in keeping alive the dignity and devotion of Memorial Day, each Town appropriates a sum of money at its annual Town Meeting. The following report indicates how much money was voted in 1962 and how it was spent. Expenditures will vary from year to year.

### Appropriated

Town of New London	\$150.00	
Town of Springfield	50.00	
Town of Sutton	100.00	
Town of Wilmot	50.00	
		————— \$350.00

### Expenditures

New London band	\$175.00	
Flags and wreaths	29.09	
Firing Squad supplies	10.31	
Entertainment	10.80	
		————— \$225.20

A. IRVING DODGE, Commander  
ALFORD B. TUNIS, Adjutant  
Post #40, American Legion

## PREVENTING FOREST FIRES IS OUR RESPONSIBILITY

Costs of suppressing carelessly set outdoor fires in New Hampshire in 1962 cost the persons responsible \$5,545. In the same period, the cost to the cities and towns for control of such fires for which no responsibility could be placed, cost another \$24,634. What utter waste of tax money and what shameful and needless loss of timber and aesthetic values in the 2,200 acres burned. Residences, farms, and other business places were threatened with possible total destruction.

Carelessly set man-caused fires can be prevented if every citizen remembers his responsibility in regard to any source of fires in the open. We can help to keep our fire loss low by remembering these simple rules.

1. Dispose of burnable waste at the town dump.
2. If waste or brush is to be burned on the premises, obtain permit from the forest fire warden. Seasonal permits may be issued for approved incinerators and sites.
3. Burn safely by picking a clean site, avoiding dry windy weather and preferably burning late in the day.
4. Have something to keep the fire under control — pails of water, garden hose, sprinkling can, broom for grass fires or shovel will help.
5. Be sure your fire is dead out before you leave it.
6. If the fire gets out of control or if you see a fire out of control, report promptly to your warden or fire department. Continue to fight it until help arrives.

There is potential danger when matches fall into the hands of children. It is never too early for parents to instill in the child's mind a respect for fire.

New London enjoyed another year with an excellent record of cooperation resulting in no forest fires. Let us continue to keep our town safe from fire.

In 1962 we had 0 fires. We burned 0 acres. Permits issued: 168.

CARLTON F. BARTON, Forest Fire Warden  
GERALD S. GROSS, District Fire Chief



# REPORT OF THE FIRE DEPARTMENT

## Officers

Captain	Lloyd Heath
1st Lieutenant	Robert Lull
2nd Lieutenant	Harry Barrett
3rd Lieutenant	Kenneth Butler
Clerk	Jesse Welch

The Company responded to the following calls:

10 House fires, and probable causes—	
3 chimney	1 lightning
1 fireplace	1 undetermined
2 faulty flue	1 oil stove
1 brush fire — 1 flooded cellar — 3 Out-of-town fires	

The 1937 Chevrolet truck was sold to the Town of Springfield Fire Department.

New equipment purchased includes a Willys four-wheel-drive truck and a Homelite 300 g.p.m. portable pump. The new truck is equipped with a short-wave radio, furnished by Civil Defense, which will allow communication with C. D., the Police Department, and the Sunapee Fire Department.

The Department appreciates the cooperation and support extended by the people of the town during 1962.

EDWARD A. TODD, Chief

— — — — — :

## MUNICIPAL COURT

In 1962 the New London Municipal Court considered 202 cases, by far the largest number in any one year since the Court was established. The previous high total for any calendar year was 105. This does not mean that New London is developing a higher rate of illegal action. In 1962 there were 33 "Small Claims" cases in the Court, an all-time high for this category. In 1962 State officers — State Police, Conservation Officers, Public Utility Commission Officers, and Forestry Department officials — brought in more than 70 cases, again an all-time high. In addition, local officials from nearby towns often bring cases

to this Court. The State of New Hampshire is making additional rules and regulations every year, and many actions are brought into Court today which might not have been years ago.

The regular sessions of the Court are held each week in the Town Hall on Thursday morning at 10 o'clock. In accordance with law, these sessions are open to the public, except in juvenile cases. At the request of enforcement officers, special sessions of the Court may be held from time to time. Appreciation is expressed to Mr. Will Ray, Custodian of the Town Hall, for his excellent work in keeping the Court Room well arranged and in a dignified condition.

J. DUANE SQUIRES, Municipal Judge

:— ————— :

## POLICE DEPARTMENT

### Court Cases

Nature of offense:	Number of cases
Speeding	23
Improper license plates	2
Unregistered vehicles	7
Stop and Yield sign violations	16
Reckless operating	7
Careless operating	2
Driving while intoxicated	5
Hit-and-run drivers	2
Faulty equipment	7
Operating in a manner to endanger	1
Unlicensed drivers	3
Miscellaneous traffic violations	22
Uninspected vehicles	17
Larceny (jewelry)	1

### Non-court Cases

Minor accidents — with less than \$50 damage	70
Breaking and entering	8
Transportation of offenders to Boscawen	2
Transportation of offenders to State Hospital	3
Transportation of offenders to Newport	2

Mileage 1962 Police work: 16,535

## REPORT OF THE TOWN HEALTH OFFICER

The Board of Health in New Hampshire municipalities generally consists of the Health Officer, who is approved by the State Health Department and the Selectmen. In recent years the Health Officer has been called upon more and more for assistance and investigation of problems pertaining to contamination of water supply, faulty sanitary disposal systems, improper disposal of refuse matter and unsanitary or offensive accommodations for livestock.

These duties are rather far afield from the normal routine of our medical doctors whose time can be better applied in their profession. After consultation with Dr. John H. Ohler, Health Officer, with the State Department of Health, and with Dr. Donald F. Bent, Bacteriologist, it was agreed that Dr. Bent be recommended by the Selectmen for the office of Health Officer. Dr. Ohler will remain as Medical Consultant for cases requiring his attention. From 1956-1959, Dr. Bent was Senior Bacteriologist of the Massachusetts Department of Public Health.

Dr. Bent has been an instructor in Medical Microbiology at Harvard Medical School and occupies the same post in Colby Junior College at the present time. His laboratory is equipped for water and soil testing for contamination; he is a year-round resident of New London, and we feel fortunate in having his services available as Health Officer.

Dr. Bent is prepared to assist you in problems of possible contamination, and we urge you to avail yourself of these services, should the occasion arise. It is particularly important that new construction be done in a manner that will prevent seepage from disposal systems finding its way to adjoining properties, roads, streams or bodies of water. As New London continues to grow, this becomes more important and only through cooperation of property owners, builders and our Board of Health can we continue to enjoy our unusually fine natural surroundings.

JOHN H. OHLER, M.D.

Board of Selectmen

# NEW LONDON HOSPITAL ASSOCIATION

## REPORT FOR 1962 FISCAL YEAR

September 30, 1962, ended the 44th fiscal year of New London Hospital and the fourth year in its new building. At the Annual Meeting held in January, 1963, Rachel Sargent, Administrator, compared statistics for the first four years in the new Hospital with those for the last four years in the old Hospital.

	Last four years in Old Hospital	First four years in New Hospital
Total In-Patients	2,667	3,612
Total Out-Patients	14,593	34,714

Mrs. Sargent and Dr. William P. Clough, Jr., Chief of Staff, stressed the great need for more Out-Patient and In-Patient space to carry out procedures.

The Board of Directors of the New London Hospital Association, Inc., meets the third Tuesday of each month at the Hospital. The following Officers and Directors served on the Board for the 1962 fiscal year:

President	Joseph O. Fleming (Georges Mills)
Vice President	Guy F. Williams, Jr. (New London)
Treasurer	James H. Cave (Wilmot)
Secretary	Mrs. Carl D. Hill (New London)

Directors — Term Expiring at Annual Meeting Jan. 1963

George Morse (Bradford)\*      Henry Kidder, II (Springfield)  
Bernard Streeter (New London)†      Merle Rich (Newbury)

Directors — Term Expiring at Annual Meeting Jan. 1964

Mrs. Mildred Ames (New London)      Edwin H. Keith (Sutton)  
Frank Cricenti (New London)      Mrs. R. Seldon Rose (Wilmot)

Directors — Term Expiring at Annual Meeting Jan. 1965

Eliot B. Foot (Sutton)      J. Duane Squires (New London)  
Amos Johnson (Andover)      Robert Whitman (New London)

Mrs. Henry M. Lyons (Sunapee) (represents Summer Residents)  
Mrs. William P. Clough (New London) (represents Hospital  
Aid Association)

---

\*Replaced Charles Hemenway, who resigned from the Board. Mr. Hemenway had served on the Board for many years and as President of the Board during some of the most difficult times in the construction of the present new building.

†Replaced Roy Messer, from Bradford, another faithful Board member for many years, who resigned during the year.

Since 1961 brought a Net Loss of \$10,954.53 to the Hospital, the Board voted an increase in rates during 1962. The fiscal year ended September 30, 1962, showing a Net Profit of \$371. Contributions in **services and money** from New London and surrounding towns actively served by the Hospital are too numerous to mention individually, but every one was gratefully accepted and put to use to better our Hospital. Appropriations from the towns of Andover, Bradford, New London, Newbury, Springfield, Sunapee, Sutton and Wilmot added \$6,447.00 to Hospital Income.

Hospital Day receipts amounted to \$23,222.10; after expenses were deducted the Hospital realized a net profit of \$15,395.48. The great efforts of MANY AREA PEOPLE were guided by two capable Co-Chairmen, namely **Charles Marston** and **John Howes**, both of New London. Five percent of the net profit from Hospital Day was placed in the Hospital Day Endowment Fund.

The New London Hospital Aid Association continued its active support and established The Hospital Aid Endowment Fund with a gift of \$10,000. The Summer Residents Committee, through its fund drive, donated \$5,000 worth of new equipment to the Hospital during the year. The Third Year Class at Colby Junior College continued its practice of providing new laboratory equipment for the Hospital.

New Endowment Funds established during the year totaled \$14,551.08. Endowment Funds serve as living memorials of the people in whose name they are established.

Dr. Donald W. Clark, M.D., was appointed to the Active Medical Staff during the 1962 fiscal year, and in September,



1962, Dr. William Talbot Pike, D.M.D., was approved by the Board as a member of the Medical Staff.

In April, the Building and Grounds Committee began a study of plans for an addition to the Hospital and by September, 1962, preliminary plans had been received from the architect.

**Special Professional Services for the year included:** 708 Surgical Operations, 106 Obstetrical Deliveries, 2,997 X-Rays, 21,635 Laboratory Tests, 4,173 Accident Cases treated.

**In-Patient Statistics during the year were:** 1,053 admissions, 106 births, 30 deaths, 7,492 adult and children in-patient days of care, 778 newborn in-patient days of care, 20.5 average number of patients (children and adults) per day, 2.1 average number of newborn patients per day, 76 percent occupancy (adults and children), 35.6 percent occupancy (newborn).

Of the 1,053 In-patient admission, the following breakdown is given to show where these patients came from: Out of State, 130; New London, 178; Sunapee, 96; Andover, 95; Newport, 78; Sutton, 70; Bradford, 62; Wilmot, 54; Danbury, 43; Georges Mills, 26; Henniker, 24; Newbury, 22; Claremont, 17; Grantham, 15; Warner, 14; Goshen, 11; Other towns, 118. **Total 1,053.**

The Hospital Dollar in 1962 was spent as follows: Employee salaries, 60c; Medical and Surgical supplies and drugs, 13c; Professional Service fees, .09c; Fuel, .05c; Laundry, .04c; Utilities, .04; Instruments, minor equipment, miscellaneous, .03½c; Insurance and taxes, .01½c.

New London Hospital's fine Medical Staff consists of the following Officers and Members, all approved by the Board of Directors:

### Officers

President	Anne A. Wasson, M.D.
Vice President	John Ohler, M.D.
Secretary	Warren L. Franz, M.D.
Treasurer	Alfred E. Sears, D.M.D.
Chief of Staff	William P. Clough, Jr., M.D.

## Members

Lynn S. Beals, M.D.	Francis H. Nolin, M.D.
James B. Brown, D.M.D.	William T. Pike, D.M.D.
Donald W. Clark, M.D.	John A. Walker, M.D.
Mather Cleveland, M.D.	Arthur F. Wright, M.D.

Thirty-six members attended the Annual Meeting of the New London Hospital Association, Inc., in January, 1963, most of whom were Directors and their husbands and wives. Perhaps area people may not be aware that one becomes a member of this Association when he contributes to the value of one dollar to the Hospital during the year; this membership means he is a voting member. The Annual Meeting is the time when he can take an active part in electing Officers and Directors of the Corporation and take part in the discussion of any subject that may properly come before any meeting of the Corporation.

The Board appreciates the efforts of all friends of the Hospital who have contributed services or money, individually or as a group, during this 44th year of New London Hospital.

Respectfully submitted,

REBECCA H. HILL, Secretary

: ————— :

## HOSPITAL AID ASSOCIATION

### ANNUAL REPORT 1961-1962

President — Miss Doris Phillips  
Vice-President — Mrs. George Gibson  
Secretary — Mrs. Russell Dimmick  
Treasurer — Mrs. Jack Cable

The New London Hospital Aid Association held nine monthly meetings from October 4th, 1961, to June 6, 1962, with

an average attendance of 44 members. The association this year turned over to the Hospital the first Endowment Fund of \$10,000 and has now started the second Endowment Fund.

The organization is kept busy at the meetings with various projects such as: knitting, sewing, cancer dressings and art crafts. Funds are raised by the membership drive, rummage sale, donation day, renting pillows at the New London Barn Playhouse and new this year, a Bridal Tea and three food sales during the summer.

The volunteer workers very generously give their time to the hospital in the morning and the evening — much appreciated by the hospital.

Respectfully submitted,

MARGARET DIMMICK,  
Secretary

## NEW LONDON HOSPITAL AID ASSOCIATION

### Annual Report for the Year Ending October 1, 1962

Balance on hand October 1, 1961		\$1,725.97
Receipts:		
Dues	\$ 241.20	
Additional to Rummage Sale, 1961	1.00	
Engagement Calendars	357.00	
Rental of Equipment	7.00	
Gifts	20.00	
Luncheon Fund	52.54	
Fashion Show	70.00	
Food Sales	162.99	
Barn Playhouse Cushions	451.15	
Rummage Sale, 1962	1,352.52	
		<hr/>
		\$2,715.40
		<hr/>
		\$4,441.37

Expenditures:

Work Committees	\$ 359.14	
Hospital Day Expense	42.98	
Donation Day Expense	24.00	
Fashion Show Expense	13.50	
Food Sale Expense	8.54	
Rummage Sale Expense	97.12	
Bank Service Charges	1.95	
Miscellaneous Expense	2.85	
Special Gifts	20.00	
Newspaper Subscriptions for Hospital	49.80	
Hospital Linen	572.61	
Addition to Hospital Aid Endowment Fund	1,000.00	
		<hr/>
		\$2,192.49
		<hr/>
Balance on hand October 1, 1962		\$2,248.88

Respectfully submitted,

IRENE S. CABLE,  
Treasurer

: \_\_\_\_\_ :

## TRACY MEMORIAL LIBRARY ANNUAL REPORT

The statistics of the past year show an interesting increase in the circulation of children's books, and in the summer visitors using our library facilities.

Adult fiction	6,290
Adult non-fiction	2,781
Juvenile fiction	8,351
Juvenile non-fiction	1,715
Adult magazines	809
Juvenile magazines	107
	total 20,053

There have been 12,842 visitors to our library.

Inter-library loans have received prompt response, and we have borrowed 729 books and 14 films from the State Library at Concord. The books have been used for supplementary reading in the Children's Room, and the films in connection with National Book Week and the National Library Week.

Special loans were made to the following: New London Central School, 112 books; Wilmot Schools, 454; N. L. Kindergarten, 81; Sunapee School, 78; Nursery School, 18; Camp Kearsarge, 40, and Mission Circle, 10.

We have added 130 adults and 49 children to our borrower's list.

The auditorium is used by the Woman's Club for several meetings each year, for the annual Hospital Board meeting, for displays during Book and National Library Week, and for special events. The club room is open on an average of twice a week for committees to meet.

Book purchases have been: 270 adult and 147 juvenile books. We have been able to add to our adult collection by buying many paper bound books. The magazine table has a variety of 56 magazines in the adult reading room, and three in the Children's Room.

The New London Service Organization has continued to add to the military book shelf with the following books: "But Not in Shame" by Toland; "Guns of August" by Tuchman, and "Night Drop" by Marshall.

A new heating system is being installed by Mr. Clayton Miller, Elkins. One large furnace now serves the entire building, and the auditorium is heated constantly. It is now available for community use at any time the library is open. An incinerator, for paper disposal, is now in use in the old boiler room. A "press and print" mimeograph was bought for use in preparing hand work for Story Hours on Saturdays in the Children's Room and has proved a most useful tool for the librarians.



Mr. John Stohrer, English teacher at the New London Central School, brought his class to the library for instruction by the librarian in library facilities and for familiarization with reference tools.

In February a regional meeting for librarians was held by the State Library at our building. Mrs. Ray took part in a panel discussion on library services in rural areas.

In observance of National 4-H Week a delightful display of articles made by the members, was arranged by Mrs. Philip Parker, leader of the local group. Mrs. Ray was invited to speak at their April meeting on the subject, "Your library, and what it has to offer you."

Over 200 persons came to view the exhibit arranged on National Library Week by the committee headed by Mrs. Mary R. Smith, under the theme, "Read and Watch Your World Grow". All the grades of the elementary school gathered at the high school auditorium to watch the film, "Pueblo Boy", sponsored by the committee. At the library a railroad display, a language laboratory, and a new mathematics book were on exhibit. Door prizes were won by Susan Bent and Janet Rogers.

The librarians attended the New Hampshire Library Association meeting held at Hotel Carpenter in Manchester on May 11th.

The subject chosen for the Vacation Reading Club was "Friendship Seven", with much emphasis placed on space travel, astronauts, and rockets. Thirty-one children registered on the opening day. At the annual party the awards and ribbons were presented, the winners being Lois Nelson and Paul Blaber, summer residents. Diplomas for completion of the course were given to forty-one members. The club was entertained by Charles Edwards, from the Barn Players, with a magic show, and refreshments were served in the library garden.

An exhibit, "Old New London Homes", arranged by the New London Historical Society, was displayed in the auditorium from May 5th to July 13th. It was opened with an evening

meeting at which the prizes for the New Hampshire booklets, made by the fourth grade at the Central School, were awarded to the children. First prize was won by Susan Bent, the second prize by Cotton Cleveland and the third prize went to Claudia Chadwick.

Mrs. Hubbard, chairman of the Board of Trustees, and Mrs. Ray attended the annual meeting of the N. H. Trustees Association held at the Highway Hotel in October. The exchange of pertinent ideas for libraries and service to their communities proved most interesting to us.

National Book Week was observed in November with an attendance of 350 persons. Two films were shown daily to the classes from the Central School, Wilmot Schools, and Springfield Memorial School. Displays of new adult and juvenile books were exhibited by the librarians.

At the Neighborhood Meeting, held at the Fiske Library in Claremont, Mrs. Ray was one of the speakers. She spoke on "Adult Services in a Public Library" as part of a panel discussing library problems.

The Children's Hour on Saturday afternoons has been well attended by the pre-school group. The librarians have instructed in handicraft, and entertained 475 children with stories and games during the year. A Christmas party was held on the fourth Saturday in December for all the children, with boxes of candy, and gifts for the Children's Room.

Mrs. George Enman and Miss Kendra Lovell have given most valuable assistance with the Children's Room and the Vacation Reading Club.

Our Christmas candles and lights again shine out across the snow, biding a hearty welcome to everyone to their library.

Respectfully submitted,

HELEN S. RAY,  
Librarian

Periodicals	373.95
Insurance	51.48
Sewer tax	5.00
Water rent	20.00
New chairs	168.70
Heating system (not complete)	3,428.90
Petty cash fund	6.71
Miscellaneous expenses	39.00
	<hr/>
Total Expenses	13,853.64
	<hr/>
Balance on hand December 31, 1962	\$ 4,858.42

\*To be deposited in savings account.

†To be returned to town treasurer.

Respectfully submitted,

ERNEST E. WELCH,  
Treasurer.

: \_\_\_\_\_ :

## NEW LONDON OUTING CLUB

### The Civic and Recreational Organization of New London

President: John H. Ohler  
 Vice President: Edwin H. Keith  
 Secretary: Mrs. Henry Kidder, III  
 Treasurer: Chandler Perkins

#### Directors for Three Years

James D. Brown    Mrs. William Neumann    Mrs. William Roos

#### Directors for Two Years

Mrs. John Ballin    Donald Bent    Mrs. Henry Pogue

## 1962 FINANCIAL REPORT

### Tracy Memorial Library and Tracy Memorial Building

Balance on hand January 1, 1962 \$ 549.32

#### Income:

Town appropriation (regular)	\$ 5,000.00	—
Town appropriation (special for heating system)	5,500.00	—
Auditorium rent	35.00	
Safe deposit box rentals	289.50	
Vault floor space rentals	24.00	
Guest dues	65.00	
Fines	146.63	
Brown Trust Fund	23.83	—
Jelly Trust Fund	5.58	—
Tracy Trust Fund	5,211.67	—
Friends of the library*	68.18	—
Return premiums and dividends on insurance†	1,730.33	
Miscellaneous income	63.02	
		<hr/>
Total income		18,162.74

Total income plus balance on hand \$18,712.06

#### Expenses:

Salaries	\$ 7,576.42
Electricity	220.47
Telephone	66.46
Fuel	383.89
Supplies	262.55
Children's projects	85.07
Repairs and maintenance	148.73
Bank service charges	17.32
Postage and box rent	52.55
New books	861.21
Grounds	85.23

## Directors for One Year

Richard Brady

Russell Dimmick

Mrs. Donald Muller

**Lifetime:** William Clough, Jr.

During 1962 the Outing Club has sponsored:

4-H Club

Free swimming lessons and maintenance of beach and equipment  
at Little Lake Sunapee in conjunction with the Red Cross

Tennis Clinic

Little League baseball team

Free dancing lessons for 5th to 8th graders

Free square dancing lessons

John Jay ski movie

Hilltoppers football team

Maintenance of information booth, with help of town

New London Pony Club

Child at Spruce Pond Conservation Camp

Winter sports equipment sale

Once again the Outing Club has leased the food concession at King Ridge and has hired Mrs. Ruth Noonan as manager. Last winter it proved to be a gastronomic and a financial success, and we have hopes of even more improvement for the 1962-1963 season.

At the annual meeting in November the Outing Club voted to appropriate up to \$2,000 toward the ski jump at King Ridge. In the meantime, it was discovered that the cost of the jump would be considerably more and plans for completion are being worked out.

A membership drive in June produced about \$1,000.00 and showed a great deal of interest from townspeople as well as summer residents. The Outing Club would like to have more active participation on the part of its members and it should be kept in mind that one does not have to serve on the board of directors to do this. By-law amendments in November opened the Outing Club activities to residents of the entire area and several meetings each year will now be open to all concerned.

POLLY H. KIDDER, Secretary



**NEW LONDON OUTING CLUB**  
**1962 STATEMENT OF EARNINGS**

Income :

Dues and Assessments		\$ 1,009.50
Contributions		200.00
Service Charges	\$ 334.50	
Concessions	12,477.47	
Entertainment	1,505.91	
		14,317.88
Other Income		1,080.00

TOTAL INCOME		\$16,607.38
--------------	--	-------------

Expenses :

Wages and Commissions		\$ 2,640.40
Interest		135.94
Taxes (S.S.)		82.51
Rent		1,237.37
Depreciation		104.14
Miscellaneous Expenses —		
Information Booth	\$ 59.45	
Insurance	57.17	
Advertising	97.00	
		213.62
Other Expenses —		
Ski Concession	\$6,456.76	
Entertainment	958.25	
Recreational	1,812.82	
		9,227.83

Addition to Surplus		2,965.57
---------------------	--	----------

		\$16,607.38
--	--	-------------

# VITAL STATISTICS

## Births Registered in the Town of New London, N. H. for the Year Ending December 31, 1962

Date of Birth	Name of Child (if any)	Sex	No.	Name and Birthplace of Father	Maiden Name and Birthplace of Mother	Residence of Parents	Occupation of Father
Jan. 8	Deborah Lee	F	4	Clinton G. Cornell, Jr. Brooklyn, N. Y.	Joyce E. Richards Temple	Washington	Machinist
Jan. 9	Lori Ann	F	4	Earle W. Carpenter, Jr. Hanover	Hazel C. Lewis Whitefield	W. Springfield	Drill Oper.
Jan. 17	Alan Neill	M	2	Richard N. Brady Orange, N. J.	Beverly Nichols Newton, Mass.	Springfield	Telephone Installer
Jan. 19	Heidi Jay	F	2	Verne E. Barrett New London	Judith A. Dickinson Lowell, Mass.	Concord	Accountant
Jan. 19	Bernard Fred	M	3	Fred L. Davis New London	Terry J. Rudner Lebanon	W. Springfield	Laundry Owner
Jan. 22	Darlene	F	3	Wayne B. Atwood Wilnot	Phyllis J. Carter Salisbury	Wilnot	Builder & Contractor
Jan. 23	Brian Scot	M	5	Phillip A. Thompson Sutton	Elizabeth H. Willard Amherst	N. Sutton	Road Agent
Jan. 28	John Arthur	M	3	Richard L. Plummer Milton, Mass.	Dorothy C. McMorran Calais, Me.	Henniker	Mechanical Engr.
Jan. 29	Patricia Kathleen	F	5	Elton J. Davis Candia	Joan L. Dube Biddeford, Me.	Windsor, Vt.	Goodyear
Jan. 30	Brian Scott	M	5	Paul H. Gross, Sr. Concord	Barbara A. Rousseau Plymouth	Wilnot Flat	Bus Driver
Jan. 30	Dwayne Alan	M	1	James Minard, Jr. Franklin	Sylvia Reed New London	Andover	Head of Sorting Dept.
Jan. 31	Kerry	F	2	Dale G. Prew New London	Janet Preble Boston, Mass.	New London	Radio-TV Repairman
Feb. 3	Edwina Mae	F	2	Darrel Palmer New London	Lois M. Whitcher New London	Sutton	Garage Attendant
Feb. 8	Sharon Lee	F	2	David L. Trombley, Jr. Keene	Patricia M. Fadden Woodsville	Sunapee	Tool Grinder

**Births Registered in the Town of New London, N. H. for the Year Ending December 31, 1962 (Cont.)**

Date of Birth	Name of Child (if any)	Sex	No.	Name and Birthplace of Father	Maiden Name and Birthplace of Mother	Residence of Parents	Occupation of Father
Feb. 10	Lisa Marie	F	2	Ray B. Moran Danbury	Patricia M. Peterson Franklin	Danbury	Mate Aboard Dredge
Feb. 11	Stephanie Lamson	F	3	Chandler M. Perkins Newport	Debra D. Lamson New London	New London	Real Estate-Ins.
Feb. 13	Marlene Louise	F	2	Danville A. Huff Sebec, Me.	Lee V. Phillips Lynn, Mass.	Sunapee	Machinist
Feb. 14	Tamey Lynn	F	4	Laurence R. Sharp Alexandria	Jessie K. Wolfenden W. Warwick, R. I.	Alexandria	Self-employed
Feb. 23	Keith Todd	M	2	Bruce A. Barrett New London	Nancy J. Patten New London	Andover	Carpenter
Mar. 2	Derek Michael	M	2	Robt. G. Kozikowski Bristol, Conn.	Kathleen Rowell Newport	New London	Med. Technologist
Mar. 6	Christopher Daniel	M	3	Jules H. Pellerin Concord	Janet L. Staley Flint, Mich.	Croydon	Microbiologist
Mar. 7	Robt. Earle	M	3	John W. Wentworth Danbury	Della Chadwick New London	Danbury	State Highway Dept.
Mar. 10	Regina Marie	F	1	Chas. F. Davis Lebanon	Edith E. George Hanover	North Newport	Laborer
Mar. 14	Jas. Robt.	M	3	Robt. W. Goodwin Peabody, Mass.	Joyce C. Blakney Boston, Mass.	East Washington	Student
Mar. 16	Lisa Ellen	F	4	Richard E. Crockford Miami, Fla.	Claire I. Coddair Haverhill, Mass.	New London	Teacher
Mar. 20	Baby Boy Rich	M*	2	Kenneth M. Rich, Jr. New London	Betty McElroy Montclair, N. J.	Claremont	Mgr.-Farmer's Exch.
Mar. 23	Brian Joseph	M	4	Walter R. O'Loan Brooklyn, N. Y.	Ruth R. Desrosiers Methuen, Mass.	Henniker	Mfg. Supt.
Apr. 2	Michael Joseph	M	4	Edward H. Quimby Concord	Eleanor M. Tucker Grantham	Newport	Postal Clerk
Apr. 3	Carol Lynn	F	1	Clayton H. Dow, Jr. Concord	Marilyn J. Colburn Newbury	New London	Teacher

**Births Registered in the Town of New London, N. H. for the Year Ending December 31, 1962 (Cont.)**

Date of Birth	Name of Child (if any)	Sex	No.	Name and Birthplace of Father	Maiden Name and Birthplace of Mother	Residence of Parents	Occupation of Father
Apr. 10	Timothy Allen	M	1	Darrell O. Bentley New London	Nancy B. Lane Ayer, Mass.	Salisbury	Apprentice Pressman
Apr. 10	Michael Louis	M	1	Louis L. Ansart, Jr. Concord	Mary A. Currier Hanover	Newbury	Machinist
Apr. 19	Ian L.	M	1	Donald L. Campbell Fort Wayne, Ind.	Adrienne G. Werany Brooklyn, N. Y.	New London	Teacher
Apr. 26	Greggory Alan	M	1	Wm. H. Cartier Boston, Mass.	Mary L. Rannista Newport	Guild	Co-owner, Restaurant
May 8	Baby Boy	M*	6	Wm. M. Lyons, Jr. Concord	Joan E. Crane New London	New London	Engineer
May 16	Kimberly Stark	F	1	Gordon M. Keeler New York, N. Y.	Karin Moller Hamburg, Germany	New London	Designer
May 17	Eileen Renee	F	4	James F. Fletcher Colfax, La.	Beatrice C. Brown Bradford	Bradford	USAF
May 21	Roberto Amarando	M	1	Roberto A. Pugliese Cambridge, Mass.	Ellen E. Wagner Belmont, Mass.	Sutton	Machinist
May 22	Edwin Bushrod	M	1	John H. Ford S. Danbury	Victoria Trotter Franklin	Danbury	Laborer
May 23	Brent Edward	M	1	Floyd A. Drew Newport	Alona M. Rollins Sunapee	Sunapee	Inspector
June 6	Terry Lynn	F	1	David O. Addison Franklin	Mary E. Downes Derry	Franklin	Mechanic
June 6	Nathan Mitchell	M	4	Walter W. Walker New London	Judith R. Schucker Greenfield, Mass.	Wilmot	Carpenter
June 8	Christopher John	M	4	Robt. D. Olson Livermore, Iowa	Emma M. Olson Ottawa, Kansas	Claremont	Veterinarian
June 15	Sandra Louise	F	2	Ellsworth F. Ruggles, Sr. New London	Alyce F. Wirkkala Unity	Georges Mills	Mechanic
June 18	Timothy	M	1	Dan H. Allen Newton, Mass.	Sara Scudder Brooklyn, N. Y.	New London	Teacher

**Births Registered in the Town of New London, N. H. for the Year Ending December 31, 1962 (Cont.)**

Date of Birth	Name of Child (if any)	Sex	No.	Name and Birthplace of Father	Maiden Name and Birthplace of Mother	Residence of Parents	Occupation of Father
June 19	Pamela Jean	F	1	Robt. M. Gauthier Greenfield, Mass.	Barbara A. Armstrong Greenfield, Mass.	Bradford	U.S. Air Force
June 22	Todd Douglas	M	4	Bryant H. Adams Franklin	Adrienne L. Rousseau Franklin	Andover	Plumbing Contractor
June 25	Randall Eric	M	1	Merrill F. Tilley Derry	Linda J. Butcher New London	W. Springfield	Painter
July 2	Roy Fillmore IV	M	2	Roy F. Leach, III Penobscot, Me.	Claire F. Peterson Worcester, Mass.	Hartford, Conn.	Engineer
July 5	Ross Arthur	M	1	Arthur E. Starkweather Jr. Boston, Mass.	Gail S. Hilton Concord	Contoocook	Cost Accountant
July 7	James Donald	M	4	Donald E. Garrison Ulster Park, N. Y.	Catharine D. Schwartz Poughkeepsie, N. Y.	New London	Commodities Dealer
July 7	Jamie Edwin	M	1	Robt. E. Moulton New London	Janet M. Murphy New London	Warner	Electronic Tech.
July 7	Diane Lee	F	4	Harold L. Whittemore New London	Jane Pellerin New London	Warner	Stock Rm. Supervisor
July 8	Debra Dee	F	9	Joseph Tarrien, Jr. Newport	Cathaline H. Pickens W. Oneonta, N. Y.	Newport	Construction Laborer
July 14	Wendy M. L. Louise	F	1	Wm. P. Clough, III Boston, Mass.	Marta V. L. K. Melin Stockholm, Sweden	New London	Teacher
July 14	Kathleen Daryl	F	2	John W. Murray Bayonne, N. J.	Sylvia J. Kidder New London	Jersey City, N. J.	Bus Operator
July 18	Wallace Reginald Jr.	M	2	Wallace R. Brown Concord	Nola G. Britton Wolfeboro	Bradford	Laborer
July 23	James Frederick Jr.	M	6	Jas. F. Hansen Jersey City, N. J.	Dolores Ann Clark Oradell, N. J.	Bradford	Claims Adjuster
July 29	Danny Michael	M	2	Joseph W. Patten Tunbridge, Vt.	Inez M. Habets Claremont	Claremont	Trk. Driver
July 30	Stewart Douglas Jr.	M	1	Stewart D. McLeod Franklin	Carolyn E. James New London	Franklin	Trk. Driver



**Births Registered in the Town of New London, N. H. for the Year Ending December 31, 1962 (Cont.)**

Date of Birth	Name of Child (if any)	Sex	No.	Name and Birthplace of Father	Maiden Name and Birthplace of Mother	Residence of Parents	Occupation of Father
Aug. 7	Walter Lorraine Jr.	M	3	Walter L. Leach, Sr. E. Andover	Carol A. Pariseau Newport	Newport	Mill Worker
Aug. 8	John Robt.	M	4	Jackson G. Merrill New London	Louise F. Stoodley Walpole	N. Sutton	Poultryman
Aug. 9	Edward John	M	6	Edward J. J. Abair Duxbury, Vt.	Eunice E. Mason Lebanon	W. Springfield	Laborer
Aug. 9	Brian David	M	3	Richard D. Mathiesen Bloomington, Ill.	Lorraine N. Rollins Concord	Sunapee	Shipping Clerk
Aug. 10	Peter Wm.	M	2	Donald J. Mitchell New London	Sheila F. McCabe Boston, Mass.	N. Sutton	Student
Aug. 13	Michael Robt.	M	1	Robt. A. McLaughlin Bristol	Dorothy E. McLaughlin Canaan	Danbury	Foreman
Aug. 14	Ricky Glen	M	4	John T. Dukette Sutton	Madeline F. Clarke Taunton, Mass.	Andover	Mason & Roofer
Aug. 15	Richard Keith	M	2	Richard G. Putney Malden, Mass.	Judith A. Jepson Franklin	Milford	Receiver-Packer
Aug. 20	Jos. Earl	M	2	Donald E. Russell, Sr. Hartford, Conn.	Margaret E. Simpson New London	Bradford	Machine Oper.
Aug. 23	Michael James	M	3	Ray E. Witham Deerfield	Lorraine M. Mahoney Manchester	Newport	Const. Worker
Aug. 25	Ralph Howard	M	1	Conrad O. West Newport	Ruth A. Hamel Newport	Newport	Mechanic
Aug. 26	Robt. Donald Jr.	M	2	Robt. D. Spooner Claremont	Judith M. Dezan Tunbridge, Vt.	Wendell	Shoe Shop Worker
Aug. 28	Beverly Diane	F	4	Richard F. Stetson Newport	Eunice E. Breckenridge E. Orange, N. J.	New London	Dry Cleaner
Aug. 29	Cheryl Anne	F	4	Arthur L. Fontaine Boscawen	Katherine B. Fortune Concord	Andover	Tel. Lineman
Aug. 29	Robt. John	M	5	Allen D. Fortune Franklin	Mavis O. Griffis Starke, Fla.	Andover	Mechanic

**Births Registered in the Town of New London, N. H. for the Year Ending December 31, 1962 (Cont.)**

Date of Birth	Name of Child (if any)	Sex	No.	Name and Birthplace of Father	Maiden Name and Birthplace of Mother	Residence of Parents	Occupation of Father
Sept. 6	Cynthia Louise	F	2	Richard W. Digilio New London	Josephine Nocito Italy	Newbury	Laborer
Sept. 8	Laurence Earl II	M	1	Oscar E. Clark, II Littleton	Ann B. Whittlesey Pittsfield, Mass.	New London	Mechanic
Sept. 9	Wanda Jean	F	4	Forrest M. Craigie Bradford	Joan A. Toppin E. Sutton	S. Newbury	Tel. Lineman
Sept. 12	Roberta Lee	F	4	Alden W. Davis Newport	Joyce M. Hamel Newport	Sunapee	Mason Tender
Sept. 15	Judy Anne	F	3	Evars C. Hall Malden, Mass.	Helenmarie Peterson Auburn, Mass.	Sutton	High School Principal
Sept. 15	Tommy Carlton	M	3	Willis C. Hall Newbury	Chris H. S. Hoppel Germany	Newbury	Army
Sept. 15	Wm. John	M	2	Wm. F. Short Cambridge, Mass.	Janet A. Moses W. Rumney	Concord	Real Est. Broker
Sept. 25	Robt. Bruce	M	2	Bruce D. Armstrong New London	Marion E. Hillsgrove Franklin	Danbury	Foreman
Sept. 26	Robt. Walter	M	7	Jack G. McGhee Springfield, Mass.	Janet M. Schmelzinger Springfield, Mass.	Goshen	Methods Engineer
Sept. 30	Baby Boy	M*	1	Lewis E. Bennett Lebanon	Ruth E. Hadley Springfield	Newport	Inspector
Oct. 1	Loretta May	F	1	Peter J. Berube Manchester	Eleanor M. Hazen New London	Wilnot Flat	Army
Oct. 5	Diane Marie	F	4	Franklin DeRose West Edmeston, N. Y.	Marie E. Pickets Morris, N. Y.	Newport	Carpenter
Oct. 7	Wayne Victor	M	1	Ramon V. Laro New London	Judith A. Jenkins Lynn, Mass.	Sunapee	Tel. Co.
Oct. 8	Daniel Vincent	M	1	Chas. R. Gustafson Rockford, Ill.	Patricia A. Reardon Olean, N. Y.	Bradford	U.S. Air Force
Oct. 12	Allen Wayne	M	1	John J. Fellows Claremont	Maryann Reed Newport	Newport	Logger

**Births Registered in the Town of New London, N. H. for the Year Ending December 31, 1962 (Cont.)**

Date of Birth	Name of Child (if any)	Sex	No.	Name and Birthplace of Father	Maiden Name and Birthplace of Mother	Residence of Parents	Occupation of Father
Oct. 26	Matthew Samuel	M	6	David C. Chamberlin E. Concord	Joy A. Sanborn New London	Salisbury	Carpenter
Oct. 27	Naomi Lynn	F	1	John P. Carey Claremont	Gail E. Eastman Sunapee	Sunapee	U.S.A.F.
Oct. 28	Rita May	F	6	Lester A. Witham Cabot, Vt.	Sunapee N. Woodward Plainfield	Bradford	Milk Dealer
Nov. 20	Mary Bates	F	1	Edward L. Colby, Jr. Lawrence, Mass.	Linda B. Petersen Concord, Mass.	New London	Student
Nov. 20	Brian Lee	M	5	Jordan L. Grace New London	Annette E. Laughy Wilnot	Wilnot	Painter
Nov. 30	Melanie Irene	F	3	Robt. A. Page Tunbridge, Vt.	Irene H. Koivisto Guild	Newport	Electrician
Nov. 30	Kristen Paige	F	3	Howard W. Curtis Boston, Mass.	Virginia R. Nelson Boston, Mass.	Andover	Teacher
Dec. 7	Susan Jan	F	2	Clifford J. Gillespie Revere, Mass.	Alina Bielecki Uzanie, Poland	Andover	Teacher
Dec. 8	Audrey P.	F	1	Peter C. Laganas Lowell, Mass.	Evangeline P. Midouhas Scranton, Penna.	New London	Shoe Mfg.
Dec. 10	Kristina Lindsay	F	2	Jack W. Jensen Des Moines, Iowa	Joan M. McFadden Chanute, Kans.	New London	Minister & Teacher
Dec. 13	Sandra Mae	F	2	Leslie E. Morgan Mexico, Missouri	Judith E. Champion New London	New London	Custodian
Dec. 13	Sonya Marie	F	3	Leslie E. Morgan Mexico, Missouri	Judith E. Champion New London	New London	Custodian
Dec. 13	Wayne Mason	M	2	Stuart M. Spaulding Kingston, N. Y.	Linda L. Kinsman Concord, Mass.	New London	Elect. Engineer
Dec. 14	Crystal Ann	F	3	James T. Minard, Jr. Franklin	Sylvia J. Reed New London	Andover	Milkman
Dec. 18	Taffy Lynn	F	5	Arnold O. Campbell Warner	Pearl I. Cote Keene	Newport	A & P Tea Co.

**Births Registered in the Town of New London, N. H. for the Year Ending December 31, 1962 (Cont.)**

Date of Birth	Name of Child (if any)	Sex	No.	Name and Birthplace of Father	Maiden Name and Birthplace of Mother	Residence of Parents	Occupation of Father
Dec. 18	Donna Jeanne	F	1	Donald K. Heath New London	Gertrude E. Anderson Sunapee	New London	Well Driller
Dec. 22	Linda Kathleen	F	3	Nicholas E. Hill St. Louis, Missouri	Gertrude E. Margin Winthrop, Me.	Newbury	Mechanic
Dec. 26	Mark Wayne	M	2	Allen W. Wirta Newport	Evelyn G. Miller	Sunapee	Laborer
Dec. 29	Barry Alan	M	4	Ralph A. Gay, Jr. New London	Ernestine C. Upbam Boston, Mass.	New London	Self-employed
Dec. 31	Randy Arthur	M	4	Harold A. Pratt Claremont	Rita B. St. Pierre Brownington, Vt.	Croydon	Self-employed

NOTE: All births in this table were live except three marked with an asterisk (\*) after the M or F in the column under sex. Place of birth in all cases, New London, except Wayne Mason Spaulding, which was Hanover. Color in all cases, white. Except where otherwise noted, towns and cities are in New Hampshire.

I hereby certify that the above return is correct according to the best of my belief and knowledge.

**WILLIAM F. KIDDER, Town Clerk.**

Deaths Registered in the Town of New London, N. H. for the Year Ending December 31, 1962

Date of Death	Place of Death	Name and Surname of Deceased	Age	Birth	Sex	Wid. Mar. Sing.	Occupation	Name of Father and Maiden Name of Mother	
								M	S
Jan. 1	New London	Charles Austin Morgan	82	New London	M	S	Farmer	Austin Morgan	Mary Fellows
Jan. 5	New London	Raymond Halliday	65	E. Providence, R. I.	M	S	Instructor	Fred B. Halliday	Ella Wilson
Jan. 13	Boscawen	Stephen Patroleski	76	Russia	M	W	Laborer	_____	_____
Jan. 23	New London	John G. W. Bartlett	70	Franklin	M	M	Organ Pipe Maker	Chas. Bartlett	Georgiana Short
Feb. 13	New London	Bertha H. Clough	77	Boston, Mass.	F	W	Housewife	Walter Ross	Harriet Rice
Feb. 15	New London	Reginald W. Crosby	67	Newbury	M	M	Retired	Wm. G. Crosby	Luna Nichols
Feb. 19	Boscawen	Mae M. Matthews	70	Goffstown	F	W	_____	Wm. F. Miller	Katherine Sybel
Feb. 20	New London	Margaret E. Terry	97	Methuen, Mass.	F	W	Housewife	T. J. B. House	Louise C. Osgood
Feb. 23	New London	Jas. H. Treloar	88	Wallingford, Conn.	M	W	Tool & Die Maker	Wm. Treloar	Ellen Curtis
Mar. 1	New London	Albert S. Reddy	79	Taunton, Mass.	M	M	Store Owner	Samuel Reddy	Lydia Caldwell
Mar. 14	New London	Edward Christiansen	74	Norway	M	W	_____	Christian Christiansen	Marie Englebretsen
Mar. 16	New London	Davis S. Thomson	37	Boston, Mass.	M	M	Co-owner Bowling Ctr	Malcolm Thomson	Helen Breed
Mar. 19	New London	Joshua H. Dunbar	76	Grantham	M	M	Sawyer	Geo. W. Dunbar	Aurora Hemphill
Mar. 20	New London	Chloe C. Baker	84	Bethlehem, Conn.	F	M	Housewife	Fer S. Curtis	Ida Whiting



Deaths Registered in the Town of New London, N. H. for the Year Ending December 31, 1962 (Cont.)

Date of Death	Place of Death	Name and Surname of Deceased	Age	Birth	Wid.		Sex	Sing.	Occupation	Name of Father and Maiden Name of Mother
					Mar.	Mar.				
Apr. 8	New London	Florence M. Prescott	73	New London	F	W			Housewife	Mason Emery Helen Haskins
Apr. 9	New London	John Davis	75	England	M	M			Engineer	
Apr. 16	New London	Leone Whitcomb	56	Woodsville	F	M			Housewife	Wm. Greenwood Odile Boisvert
Apr. 23	New London	Harry J. Mason	69	Goshen	M	M			Farmer	Addison Mason Nellie Richards
May 7	New London	Merle C. Gay	62	New London	M	M			Mail Carrier	Baxter Gay Anna Brown
June 13	New London	Harold W. Chadwick	71	Sutton	M	M			Retired	Wm. P. Chadwick Lizzie Prescott
June 15	Manchester	Laurana H. Wilson	65	Kingston, Mass.	F	M			Housewife	Waldo S. Cole Marrilla Harlow
June 16	Hanover	Eugene M. Austin	52	Chester, Penna.	M	M			Pres. Colby Jr. Coll.	John C. Austin Mildred Biggs
June 19	New London	Alexander J. Bowlsan	79	Charlottown, P.E.I.	M	M			—————	Thomas Bowlsan Mary McGinnis
July 16	New London	Fred R. Verret	54	Pottsville, Penna.	M	M			Salesman	Frederick Verret Julia Hartlein
July 20	New London	Raymond D. Fiske	69	Vernon, Conn.	M	W			Engineer	Edward D. Fiske Luella Doane
July 23	New London	Sarah L. Still	76	Boston, Mass.	F	W			Nurse	Thomas S. Little Christine McLean
July 25	New London	John F. Kelley	85	Boston, Mass.	M	W			Electrician	John F. Kelley Mary A. Dunn
July 31	New London	Harriet B. Stocker	77	Hastings, Minn.	F	W			Housewife	Elwin H. Bartlett Laura Mayes

Deaths Registered in the Town of New London, N. H. for the Year Ending December 31, 1962 (Cont.)

Date of Death	Place of Death	Name and Surname of Deceased	Age	Birth	Wid.		Occupation	Name of Father and Maiden Name of Mother	
					Mar.	Sex Sing.		Mother	Mother
Aug. 3	Concord	Charles Tenney	84	Wilmot	M		Farmer	Melvin Tenney	
Aug. 6	Hanover	Perley E. Boardman	44	Lebanon	M	M	Machinist	Sarah Prescott	
Aug. 7	New London	John H. Davey	87	Vergennes, Vt.	M	M	Sales Eng.	John Davey	
Aug. 12	New London	Otto J. A. Grassi, Jr.	48	New York, N. Y.	M	M	Ins. Broker	Eliza Hacking	Otto J. A. Grassi
Aug. 20	New London	Samuel Newman	89	New York, N. Y.	M	M	Knit Goods	Lucretia Cousen	Loeb Newman
Aug. 30	New London	Wenona B. Simons	66	W. Fairlee, Vt.	F	M	Housewife	Rosa Straus	Arthur Moore
Aug. 30	New London	Myrtle F. Simpson	74	New London	F	W	Housewife	Margie Lufkin	Fred W. Goings
Sept. 3	New London	Paul H. Bishop	76	Bethlehem, Penna.	M	W	Engineer	Mary A. Murray	Edwin P. Bishop
Sept. 13	New London	Nelse Hervan	69	Brooklyn, N. Y.	M	M	Sales Eng.	Helen Boehler	John Hervan
Sept. 24	New London	Beatrice M. Brown	71	Bridgewater, N. S.	F	W	Housewife	Ann Ringfirst	— Rodenhizer
Oct. 26	New London	Marion F. Crowninshield	69	Holyoke, Mass.	F	M	Housewife	Gusander Young	Wm. B. Stacy
Nov. 7	New London	Millicent Ennis	67	Brighton, Mass.	F	W	Housewife	Lillian Cathcart	Frank Perkins
Nov. 7	New London	Rosa Webster	92	Danbury	F	W	Practical Nurse	Alice	George N. Ford
Nov. 12	New London	John H. Davies	51	Boston, Mass.	M	M		Amanda Davis	Robert Davies
									Sadie Shipley

Deaths Registered in the Town of New London, N. H. for the Year Ending December 31, 1962 (Cont.)

Date of Death	Place of Death	Name and Surname of Deceased	Age	Birth	Sex	Wid.		Occupation	Name of Father and Maiden Name of Mother
						Mar.	Sing.		
Nov. 17	New London	Mary F. Hunt	61	Brookline, Mass.	F	M		Nurse	Martin J. McDonough Delia Daley
Nov. 19	New London	Harold W. Scott	68	St. Stephens, Canada	M	M		Carpenter	Joseph Scott Annie Enbeltendee
Nov. 20	New London	Isabelle L. Davis	78	Sutton	F	M		Housewife	Frank Palmer Jenny Barber
Nov. 22	New London	Belle O. Davis	80	Andover	F	M		Housewife	Julius Davis Angeline A. Bestor
Nov. 23	New London	Anna A. Chandler	80	Lynn, Mass.	F	W		Housewife	James Farwell Emma Heckman
Nov. 29	New London	Mary Berry	74	Rochester	F	M		Housewife	John Meserve Carrie Hanson
Dec. 25	New London	Donna J. Heath	7 days	New London	F	S		—	Donald K. Heath Gertrude E. Anderson

Color in all instances, white. Unless otherwise indicated, towns and cities in this table are in New Hampshire.

I hereby certify that the above return is correct according to the best of my belief and knowledge.

WILLIAM F. KIDDER, Town Clerk.

**Marriages Registered in the Town of New London, N. H. for the Year Ending December 31, 1962**

Date and Place of Marriage	Name and Surname of Groom and Bride, and residence at time of marriage	Age	Occupation of Groom and Bride	Place of Birth of Each	Names of Parents	Birthplace of Parents	1st, 2nd, etc. marriages	Name, residence and official station of persons by whom married
Jan. 28, 1962 New London	Berton C. Murray New London	28	Self-Employed	W. Stockholm, N. Y.	Marvin J. Murray Gladys E. Hill	N. Y. N. Y.	1st	John R. Schroeder New London
	Charlotte A. Wagner Stewart Manor, N. Y.	31	Teacher	New York, N. Y.	Charles L. Wagner Martha F. Herbert	N. Y. N. H.	2nd	Clergyman
Mar. 25, 1962 New London	Curtis A. Petersen New London	23	U. S. Army	Concord, Mass.	Laurence F. Petersen Mary E. Seale	Mass. Mass.	1st	John R. Schroeder New London
	Constance Kyburg No. Sutton	21	Office Clerk	Evanston, Ill.	Paul E. Kyburg Harriet E. Greene	Mass. Mass.	1st	Clergyman
Apr. 19, 1962 Keene	Ronald P. Wyman New London	24	Teacher	Manchester	Paul J. Wyman Ruth M. Worrill	N. H. N. H.	1st	Fay L. Gemmell Keene
	Jane A. Loring Wayne, N. J.	20	Student	New Jersey	Wm. L. Loring Edith A. Smith	Conn. N. J.	1st	Minister
June 3, 1962 New London	Robert M. Lovely, Jr. New London	23	U. S. Army	New London	Robt. M. Lovely Eleanor M. Jaquith	N. H. Mass.	1st	Alf E. Jacobson New London
	Carolyn Howe Leominster, Mass.	19	Student	Leominster, Mass.	Robt. F. Howe Deborah T. Rawson	Mass. Mass.	1st	Clergyman
June 6, 1962 Danbury	Harold E. Welch, Jr. New London	21	Student	Boston, Mass.	Harold Welch Barbara Howard	N. H. Mass.	1st	E. H. Jones Danbury
	Catherine MacKenzie Concord	20	Lab. Tech.	Concord	Robt. MacKenzie Ida J. White	Canada Canada	1st	Minister
June 9, 1962 Potter Place	Edgar R. Condict New London	22	Elect. Eng.	Boston, Mass.	Clinton A. Condict Elizabeth M. Lane	Burma Mass.	1st	Roland O. Blais New London
	Judith A. Pond New London	20	Student	New London	Harry J. Pond Evelyn M. Berube	N. Y. Me.	1st	Roman Catholic Priest

## Marriages Registered in the Town of New London, N. H. for the Year Ending December 31, 1962 (Cont.)

Date and Place of Marriage	Name and Surname of Groom and Bride, and residence at time of marriage	Age	Occupation of Groom and Bride	Place of Birth of Each	Names of Parents	Birthplace of Parents	1st, 2nd, etc. marriages	Name, residence and official station of persons by whom married
June 16, 1962 Andover	Russell E. Jewell New London	29	Const.	Groton	Frank Jewell Edith Gage	N. H. N. H.	1st	John R. Schroeder New London
June 16, 1962 New London	Margaret Ann Blake Andover	19	File Clerk	Lebanon	Ernest Blake Helen V. Doyle	Canada N. H.	1st	Clergyman
Sept. 21, 1962 New London	Russell J. Rochette Newburyport, Mass.	23	Dent. Lab. Tech.	Hooksett	Sylvio J. Rochette Murial Arrington	Canada N. H.	1st	John R. Schroeder New London
Oct. 3, 1962 New London	Donna M. Colby New London	19	Accountant	New London	Phillip R. Colby Eleanor G. Sanborn	N. H. N. H.	1st	Clergyman
Nov. 17, 1962 New London	Richard MacNeill Orleans, Mass.	20	Elect. Tech.	Manchester, Conn.	Ulysses G. MacNeill Helene M. Thingstrom	Conn. Conn.	1st	John W. Jensen New London
Nov. 17, 1962 New London	Jean I. Macaulay Brookline, Mass.	19	Student	Brockton, Mass.	Willis W. Macaulay Theo E. Brown	Mass. N. H.	1st	Clergyman
Nov. 17, 1962 New London	John Popovics Proctor, Vt.	39	U.S. Army	Proctor, Vt.	Frank Popovics Bertha Havrilec	Czech. N. J.	2nd	Wm. F. Kidder New London
Nov. 17, 1962 New London	Mildred A. Havens El Paso, Texas	40	Office Mgr.	Imlaystown, N. J.	Harly Havens Mable Applegate	N. J. N. J.	2nd	Justice of the Peace
Nov. 23, 1962 New London	Samuel J. Orr, Jr. Suffield, Conn.	43	Attorney	Suffield, Conn.	Samuel J. Orr Hattie Dibble	Conn. Conn.	2nd	John W. Jensen New London
Nov. 23, 1962 New London	Nancy H. Grace Suffield, Conn.	36	Housewife	Natick, Mass.	Chas. M. Hemenway Ann Boynton	Mass. N. Y.	2nd	Clergyman
Nov. 23, 1962 New London	Graham Gordon New London	33	Bookkeeper	New York, N. Y.	Chas. A. Gordon Edith P. Graham	N. H. Calif.	1st	Richard A. Bowser New London
Nov. 23, 1962 New London	Joyce Barton New London	27	Teacher	Montreal, Canada	Donald G. Barton Dorothy T. Smith	N. H. N. H.	1st	Clergyman



**Marriages Registered in the Town of New London, N. H. for the Year Ending December 31, 1962 (Cont.)**

Date and Place of Marriage	Name and Surname of Groom and Bride, and residence at time of marriage	Age	Occupation of Groom and Bride	Place of Birth of Each	Names of Parents	Birthplace of Parents	1st, 2nd, etc. marriages	Name, residence and official station of persons by whom married
Nov. 24, 1962 New London	Jon D. Holstine Kingman, Ind.	25	Govt. Employ	Danville, Ill.	Russel T. Holstine Ruth N. Jordan	Ill. Ill.	1st	John R. Schroeder New London
	Dorothy E. Colburn New London	27	Secretary	Concord	Oscar A. Colburn Helen F. Carter	N. H. Canada	1st	Clergyman
Dec. 22, 1962 Elkins	Chas. Sullivan New London	21	Phot. Asst.	Flushing, N. Y.	Wm. D. Sullivan Maude Griffin	— N. Y.	1st	John R. Schroeder New London
Dec. 22, 1962 New London	Patricia M. Charles N. Sutton	19	Secretary	White River Jct., Vt.	Byron W. Charles Hazel M. McDonald	Me. Me.	1st	Clergyman
	Francis R. Wallis Santa Barbara, Calif.	34	Welder	S. Bend, Ind.	Clarence E. Wallis Bernice A. Eby	Ill. Ind.	2nd	Richard A. Bowser New London
	Sandra L. Sherburne Santa Barbara, Calif.	22	Med. Tech.	Brookline, Mass.	Andrew B. Sherburne Alice L. Gay	— —	1st	Clergyman

Color in all instances, white. All towns and cities are in New Hampshire unless otherwise indicated.

I hereby certify that the above return is correct according to the best of my belief and knowledge.

**WILLIAM F. KIDDER, Town Clerk.**

# **ANNUAL REPORT**

of the

**NEW LONDON SCHOOL DISTRICT**

**For The Fiscal Year**

**JULY 1, 1961**

to

**JUNE 30, 1962**

## EXECUTIVE ORGANIZATION

### New London School Board

ANNA E. RICH, Chairman	Term Expires 1963
CLARENCE W. GAY	Term Expires 1964
JUNE E. SPAULDING	Term Expires 1965

### Supervisory Union \*43 Officers

GUY E. ALEXANDER, Chairman	Sunapee
SALLY M. ELDREDGE, Vice-Chairman	Newport
RICHARD H. WEBB, Secretary	Sunapee
NATALIE MOORE, Treasurer	Newport

### Officers of School District

Moderator	PAUL B. GAY
Clerk	JOHN HOWES
Treasurer	EVELYN O. KIERNAN
Auditor	M. ROY LONDON
Truant Officer	TYLER GRACE

### Administration

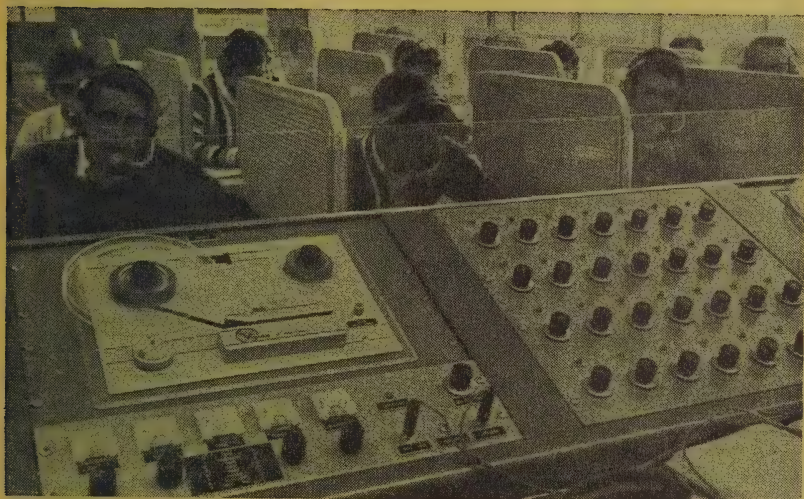
Superintendent of Schools	GORDON B. FLINT
Teacher Consultant	ALPHONSE J. SOUCY
Secretary to Superintendent	INES FERRITER
Bookkeeper	MARGARET MAHONEY
School Nurse	DELLA C. SPILLER

DEDICATION PROGRAM, NEW LONDON HIGH SCHOOL AUDITORIUM

September 27, 1962 — 8:00 P.M.

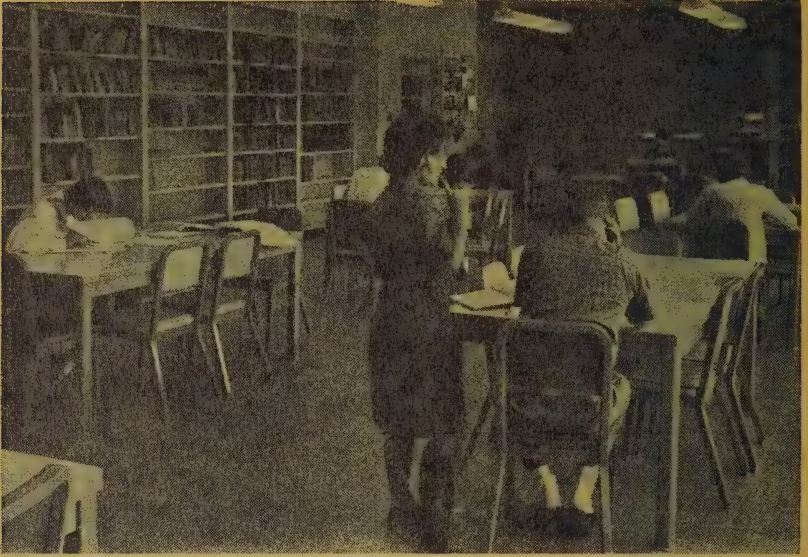
Our National Anthem	New London School Band
Invocation	Rev. Richard A. Bowser
Welcome	
Introduction of Guests	Anna E. Rich, Chairman of School Board
Presentation of Building	Richard E. Bean, Pres. Bean Construction Co. Alfred T. Granger, Architect
Acceptance	Clarence E. Gay, School Board Member
Presentation of Gifts	
Acceptance	June E. Spaulding, School Board Member
Music	New London School Band
Dedicatory Address	Dr. Charles F. Ritch, Jr. New Hampshire Commissioner of Education
Music	New London School Band
Benediction	Rev. Theodore Yardley

Inspection of the Building



*The 28-station Language Laboratory showing the console and some of the booths in use. (This permits the study of foreign language by the aural-oral method.)*



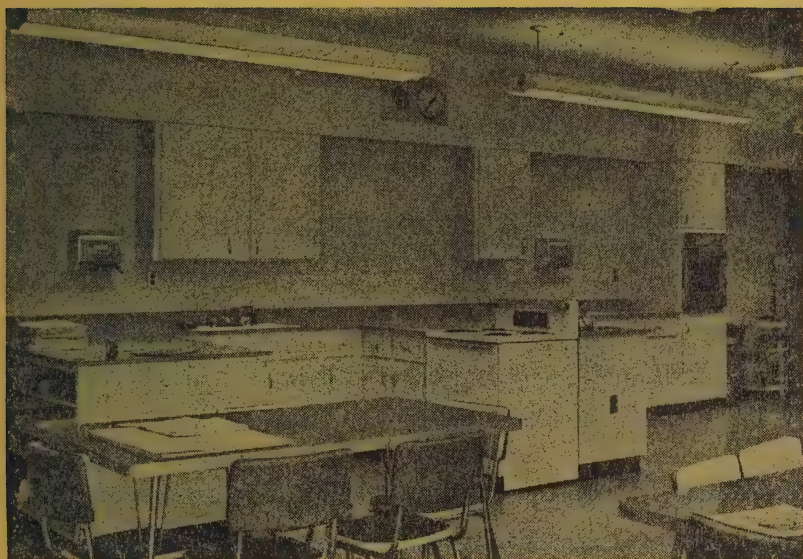


*The new School Library.*

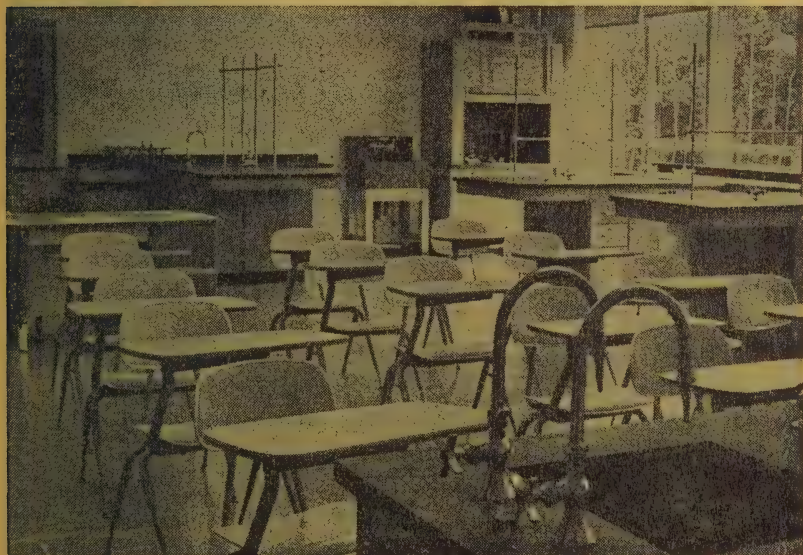


*A part of the Industrial Arts Department. The area of the Shop was more than doubled by the renovations.*





*The Home Economics Department showing several of the unit kitchens.*



*The Chemistry and Physics Laboratory showing some of the student stations and the fume hood. (There is another Science Laboratory for instructing in Biology and General Science.)*

# SCHOOL WARRANT

## THE STATE OF NEW HAMPSHIRE

To the Inhabitants of the School District in the Town of New London qualified to vote in District affairs:

You are hereby notified to meet at the Central School in said District on the eleventh day of March, 1963, at 8 o'clock p.m. to act upon the following subjects:

Article 1. To choose a Moderator for the ensuing year.

Article 2. To choose a Clerk for the ensuing year.

Article 3. To choose a Member of the School Board for the ensuing three years.

Article 4. To choose a Treasurer for the ensuing year.

Article 5. To choose one or more Auditors and such other Officers and Agents as the voters may judge necessary.

Article 6. To hear the reports of Agents, Auditors, Committees or Officers chosen and pass any vote relating thereto.

Article 7. To see what sum of money the District will raise and appropriate for the support of schools, for the salaries of School District Officials and Agents, and for the payment of statutory obligations of the District, and to authorize the application against said appropriation of said sums as are estimated to be received from the state equalization fund, and other state sources, together with other income; the School Board to certify to the Selectmen the balance between the estimated revenue and the appropriation, which balance is to be raised by taxes by the Town.

Article 8. To see if the District will vote to raise and appropriate the sum of \$550.00 to erect a chain link fence not less than four feet in height to extend in a southerly direction three hundred and fifty feet from approximately the District's flagpole and along the westerly boundary of the District's property.

Article 9. To transact any other business that may legally come before this meeting.

Given under our hands at said New London this 14th day of February, 1963.

ANNA E. RICH  
CLARENCE GAY  
JUNE E. SPAULDING

New London School Board

A True Copy — Attest:

ANNA E. RICH  
CLARENCE GAY  
JUNE E. SPAULDING

New London School Board



# BUDGET OF THE SCHOOL DISTRICT OF NEW LONDON, N. H.

## EXPENDITURES

ITEM	Actual Expenditures 1961-62	Adopted Budget 1962-63	Actual Expenditures July 1 to Dec. 31, 1962	School Board's and Budget Com.'s Budget 1963-64
<b>Administration</b>				
Salaries	\$ 425.00	\$ 425.00	\$ 425.00	\$ 425.00
Contracted Services	40.00	40.00	40.00	40.00
Other Expenses	174.73	183.40	149.87	150.00
<b>Instruction</b>				
Salaries	86,600.00	88,768.64	102,460.00	120,176.00
Textbooks	1,650.00	2,402.03	1,800.00	2,400.00
Library and Audio-visual Materials	825.00	1,263.09	1,275.00	1,250.00
Teaching Supplies	3,860.00	4,061.91	3,650.00	4,400.00
Contracted Services	425.00	507.50	485.00	700.00
Other Expenses	268.00	467.51	587.00	1,550.00
<b>Health Services</b>				
	2,495.00	1,363.71	2,495.00	2,695.00
<b>Pupil Transportation</b>				
	8,200.00	8,168.31	9,700.00	10,560.00
<b>Operation of School Plant</b>				
Salaries	5,108.00	5,980.00	7,696.00	10,076.00
Supplies	1,000.00	960.20	1,800.00	1,685.00
Heat	3,700.00	3,267.97	6,700.00	6,700.00
Utilities	2,050.00	1,933.76	3,560.00	4,060.00
<b>Maintenance of School Plant</b>				
	4,830.00	1,394.09	4,580.00	4,400.00

**SCHOOL BUDGET (Continued)**

**ITEM**

**Fixed Charges**

Employee Retirement and F.I.C.A.  
Insurance

**School Lunch and Special Milk Program**

**Student-Body Activities**

**Capital Outlay**

Buildings  
Equipment

**Debt Service**

Principal of Debt  
Interest on Debt

**Outgoing Transfer Accounts in State**

Tuition  
Supervisory Union Expenses  
Tax for State-Wide Supervision

**Contingency Fund**

**CURRENT YEAR EXPENDITURES  
OR SCHOOL APPROPRIATION**

**TOTAL EXPENDITURES OR SCHOOL APPROP.**

	Actual Expenditures 1961-62	Adopted Budget 1962-63	Actual Expenditures July 1 to Dec. 31, 1962	School Board's and Budget Com.'s Budget 1963-64
	6,921.43	6,496.60	8,991.38	10,006.08
	2,049.00	2,152.03	6,088.00	4,046.00
	1,000.00	2,690.52	1,000.00	1,000.00
	600.00	1,604.64	600.00	650.00
		56.20		
	2,388.00	6,354.69	1,358.00	2,220.00
	30,000.00	30,000.00	30,000.00	30,000.00
	18,491.00	17,998.00	16,998.00	16,058.00
	436.00			
	4,736.61	4,736.61	4,900.50	5,456.37
	494.00	406.00	552.00	568.00
	1,000.00		2,000.00	2,000.00
	\$189,766.82	\$193,772.41	\$219,890.75	\$243,271.45
	\$189,766.82	\$193,772.41	\$219,890.75	\$243,271.45



**SCHOOL BUDGET (Continued)**

**RECEIPTS**

ITEM	Actual Receipts 1961-62	Adopted Budget 1962-63	Actual Receipts July 1 to Dec. 31, 1962	School Board's and Budget Com.'s Budget 1963-64
*Balance (actual or estimated)	\$ 5,700.00	\$ 2,206.79	\$ 1,200.00	\$ 3,450.00
Tuition	23,980.00	27,410.96	28,334.00	32,885.00
Revenue from State Sources	9,000.00	9,260.00	10,900.00	11,750.00
Revenue from Federal Sources	544.00	2,036.35	629.00	560.00
Other Receipts	175.00		175.00	175.00
Balance 1960-1961 Appropriation		6,116.96		
Total Receipts Other Than Property Taxes	\$ 39,399.00	\$ 47,031.06	\$ 41,238.00	\$ 48,820.00
District Assessment raised or to be raised by property taxes	\$150,367.82	\$147,744.07	\$178,652.75	\$194,451.45
<b>TOTAL APPROP. VOTED BY SCHOOL DISTRICT</b>	<b>\$189,766.82</b>	<b>\$194,775.13</b>	<b>\$219,890.75</b>	<b>\$243,271.45</b>

\*Actual Cash Balance as of June 30, 1961 for Column 1; Current assets minus current liabilities as of June 30, 1962 for Column 2; June 30, 1963 for Column 4.

ANNA E. RICH  
 GERALD PRESCOTT  
 ROBERT G. SAWYER

WILLIS V. AMES  
 EDWIN B. HUBBARD  
 GENEVIEVE MILLAR

JOHN HOLTEEN  
 BENJAMIN H. YERXA

Budget Committee

# NEW LONDON SCHOOL BUDGET

1963-1964

(As recommended by the School Board)

ADMINISTRATION \$ 615.00

Salaries for Administration \$ 425.00

Salaries of District Officers:

School Board (3 @ \$100.) \$300.00

Treasurer 100.00

Clerk 10.00

Moderator 5.00

Auditor 10.00

Contracted Services for Administration 40.00

Census 40.00

Other Expenses for Administration 150.00

Printing 25.00

Supplies 25.00

School Boards' Association 30.00

Postage 35.00

Miscellaneous 35.00

INSTRUCTION 130,476.00

Salaries for Instruction 120,176.00

Instructional Staff:

Present Staff 108,200.00

2 Additional Teachers 9,400.00

Secretarial Assistants 2,576.00

Textbooks (\$6.00 x 400 students) 2,400.00

School Libraries and Audiovisual Materials 1,250.00

Library Books 600.00

Maps, Charts, Globes 50.00

Magazines 200.00

Film Rentals 125.00

N.D.E.A. Books 200.00

Supplies 75.00

Teaching Supplies 4,400.00

General 1,100.00

Workbooks 500.00

Tests	100.00	
Laboratory	300.00	
Shop	600.00	
Domestic Arts	350.00	
Auto Driving	100.00	
Remedial Reading	75.00	
Music	400.00	
Student Magazines	250.00	
Art	400.00	
Guidance Materials	125.00	
Miscellaneous	100.00	
Contracted Services for Instruction		700.00
Testing Service (U.N.H. and 8th Gr.)	150.00	
Rinehart Handwriting Service	350.00	
Educational TV (@ \$.50)	200.00	
Other Expenses for Instruction		1,550.00
Educational Conferences	250.00	
N.E.A.S.S.C. Evaluation	400.00	
Commencement Expenses	50.00	
Diplomas	100.00	
Summer School Allowance	700.00	
Miscellaneous	50.00	
HEALTH SERVICES		2,495.00
Salaries for Health Services		2,000.00
Other Expenses for Health Services		495.00
Supplies and Expenses	50.00	
Medical Inspection	320.00	
Nurse's Travel and Expenses	100.00	
Miscellaneous	25.00	
PUPIL TRANSPORTATION		10,560.00
Contracted Services for Pupil Transportation		8,760.00
Special Transportation		1,800.00
Regular Athletic Trips	1,000.00	
Ski Team	200.00	
Educational Trips	250.00	

Band Trips	350.00	
OPERATION OF PLANT		22,221.00
Salaries for Operation of Plant	10,076.00	
2 Full-time	8,216.00	
1 Part-time (42 weeks)	1,260.00	
Summer Help	600.00	
Supplies for Operation of Plant	1,685.00	
Flags	50.00	
Electric Bulbs and Tubes	175.00	
Toilet Paper	35.00	
Towels	250.00	
Soap	50.00	
Floor Wax	500.00	
Sweeping Compound	75.00	
Brushes and Mops	125.00	
Disinfectant	75.00	
Liquid Cleaner	100.00	
Miscellaneous	250.00	
Heat for Buildings	6,400.00	
Utilities, except Heat for Buildings	4,060.00	
Electricity	3,600.00	
Telephone	310.00	
Gas — Boilers, Home Ec., Lab, and Shop	150.00	
MAINTENANCE OF PLANT		4,400.00
Replacement of Equipment	1,200.00	
Furniture Replacement	600.00	
Exchange Typewriters	600.00	
Repairs to Equipment	600.00	
Repairs to Buildings	2,600.00	
General	1,700.00	
Painting (Old Building)	650.00	
Gym Floors (refinish)	250.00	
FIXED CHARGES		14,052.08
School District Contributions to Employee Retirement	10,006.08	

State Employees' Retirement:		
Janitors (4.9%)	402.58	
Teachers' Retirement (5.1%)	5,967.00	
F. I. C. A.:		
Teachers	2,940.00	
Nurse	72.50	
Janitors	366.00	
Lunch Workers	165.00	
School Secretary	93.00	
Insurance		4,046.00
Fire Insurance—Bldgs. and Equip.	2,990.00	
1. Original Bldg.	\$155,000	
2. New Bldg.	415,000	
3. Contents	45,000	
	<hr/>	
	\$615,000	
Liability	146.00	
Workmen's Compensation	328.00	
Sewer Tax	260.00	
Driver Training Car	117.00	
Treasurer's Bond	25.00	
Water Rent	100.00	
Theft	10.00	
Truck	49.00	
Non-Ownership Liability	21.00	
SCHOOL LUNCH & SPECIAL MILK PROGRAM		1,000.00
District Monies	1,000.00	
STUDENT-BODY ACTIVITIES		650.00
Athletics: General	400.00	
Skiing	250.00	
CAPITAL OUTLAY		2,200.00
Equipment	2,200.00	
N.D.E.A.—Science, Math, Lang.	920.00	
Band Instruments	300.00	
12 Reading Chairs—Room 2	100.00	
Ceramic Kiln—Art	300.00	



Shop	400.00	
Miscellaneous	200.00	
<b>DEBT SERVICE FROM CURRENT MONIES</b>		<b>46,058.00</b>
Principal of Debt		30,000.00
Elementary Building	5,000.00	
New Addition	25,000.00	
Interest on Debt		16,058.00
Elementary Building (2.4%)	996.00	
New Addition (3.4%)	15,062.00	
<b>OUTGOING TRANSFER ACCOUNTS</b>		<b>6,024.37</b>
District share of Supervisory Union		
Expenses		5,456.37
Tax for Statewide Supervision		568.00
(Per Capita Tax—\$2 x 284)		
<b>MISCELLANEOUS</b>		<b>2,000.00</b>
Contingency Fund	2,000.00	
		<hr/>
		<b>\$243,271.45</b>

### **ESTIMATED INCOME**

Balance on hand July 1, 1963		\$ 3,450.00
Additional Building Aid—1962-63	\$2,250.00	
Part of 1962-63 Contingency Fund — not needed on Fire Insurance	1,200.00	
<b>REVENUE FROM STATE SOURCES</b>		<b>11,750.00</b>
School Building Aid (30%)	9,000.00	
Elementary Bldg. (\$5,000.00)		
New Addition (25,000.00)		
Additional Building Aid (7.5%)	2,250.00	
Driver Training	500.00	
<b>REVENUE FROM FEDERAL SOURCES</b>		<b>560.00</b>
National Defense Education Act	560.00	
Title III (Science, Math, Language)		

REFUNDS	175.00
Sale of Supplies	175.00

AMOUNTS RECEIVED FROM OTHER SCHOOL

DISTRICTS IN STATE: Tuition	32,885.00
-----------------------------	-----------

---

\$48,820.00

## ANNUAL REPORT OF DISTRICT TREASURER

**Fiscal Year Ending June 30, 1962**

Cash on hand July 1, 1961	\$ 2,206.79
---------------------------	-------------

Received from Selectmen, Current Approp- riation	\$147,744.07
---	--------------

Received from Selectmen, balance due from 1960-1961 appropriation	6,116.96
--	----------

Received from State Treas., Lunch Program	1,690.52
---	----------

Received from State Treas., Building Aid	9,000.00
--	----------

Received from State Treas., Driver Training	260.00
---	--------

Received from State Treas., N.D.E.A. Funds	345.83
--	--------

Received from Secondary Tuitions	25,614.70
----------------------------------	-----------

Received from Elementary Tuitions	1,796.26
-----------------------------------	----------

---

TOTAL RECEIPTS	192,568.34
----------------	------------

---

Total Amount available for Fiscal Year	\$194,775.13
--	--------------

Less: School Board orders paid	193,772.41
--------------------------------	------------

Balance on hand June 30, 1962	\$ 1,002.72
-------------------------------	-------------

EVELYN O. KIERNAN,

District Treasurer

July 3, 1962

## AUDITOR'S REPORT

This is to certify that we have examined the books, vouchers, bank statements and other financial records of the treasurer of the school district of New London of which the above is a true summary for the fiscal year ending June 30, 1962, and find them correct in all respects.

July 5, 1962 M. ROY LONDON, Auditor

### REPORT OF THE NEW LONDON SCHOOL BUILDING FUND

(For the Year Ending June 30, 1962)

Cash on hand July 1, 1961	\$124,250.88
Received from Sale of Notes and Bonds	\$560,000.00
Less purchase 185M U.S. Treasury Bonds	183,297.46
	<hr/>
	\$376,702.54
Received from All Other Sources	121.06
	<hr/>
	376,823.60
Total Amount available for Fiscal Year	\$501,074.48
Less: School orders paid	391,054.15
	<hr/>
Balance on hand June 30, 1962	\$110,020.33

July 3, 1962 EVELYN O. KIERNAN,  
District Treasurer

### AUDITOR'S CERTIFICATE

This is to certify that we have examined the books, vouchers, bank statements and other financial records of the treasurer of the School District of New London of which the above is a true summary for the fiscal year ending June 30, 1962, and find them correct in all respects.

July 5, 1962 M. ROY LONDON, Auditor

**STATEMENT OF BONDED INDEBTEDNESS**  
(As of January, 1963)

Date of Issue	July 15, 1954	June 1, 1961
Original Amount	\$84,000.00	\$493,000.00
Rate of Interest	2.40%	3.40%
Annual Maturity Date	January 15	June 1
Period of Issue	16 years	20 years
Interest Payable	July 15 and Jan. 15	June 1 and Dec. 1
Annual Principal	\$5,000 (1956-67)	\$25,000 (1961-1980)
	\$6,000 (1968-71)	\$18,000 (1981)
Payable at	First National Bank of Newport	First National Bank of Boston
Amount Outstanding	\$49,000.00	\$468,000.00

**FINANCIAL REPORT OF THE  
NEW LONDON SCHOOL DISTRICT**

For the Year Ending June 30, 1962

RECEIPTS

FEDERAL AID:

National School Lunch	\$1,690.52	
Other	345.83	
	—————	\$ 2,036.35

STATE AID: Building Aid 9,000.00

LOCAL TAXATION:

Current Appropriation	147,744.07
Balance due from 1960-1961 Appropriation	6,116.96

FROM OTHER SOURCES THAN TAXATION:

Elementary School Tuition	1,796.26	
Secondary School Tuition	25,614.70	
Other (Driver Training)	260.00	
	—————	27,670.96

**TOTAL RECEIPTS** **\$192,568.34**

Cash on hand beginning of year, July 1, 1961 2,206.79

**GRAND TOTAL** **\$194,775.13**

## PAYMENTS

### ADMINISTRATION:

Salaries of District Officers	\$ 425.00
Superintendent's Salary (local share)	*1,702.52
Tax for Statewide Supervision	496.00
Salaries of Other Administrative Personnel	1,979.50
Supplies and Expenses	1,131.62

### INSTRUCTION:

Principal's and Teachers' Salaries	86,768.64
Books and Other Instructional Aids	2,402.03
Scholars' Supplies	3,673.96
Salaries of Clerical Assistants	2,000.00
Supplies and Other Expenses	2,991.64

### OPERATION OF PLANT:

Salaries of Custodians	5,980.00
Fuel	3,267.97
Water, Light, Supplies and Expenses	2,622.99

### MAINTENANCE OF SCHOOL PLANT:

Repairs and Replacements	1,299.47
--------------------------	----------

### AUXILIARY ACTIVITIES

Health Supervision	1,363.71
Transportation	8,168.31
Special Activities	1,604.64
School Lunch (Fed. and District Funds Only)	†2,690.52

### FIXED CHARGES:

Retirement	6,643.17
Insurance, Treas. Bonds and Expenses	2,152.03

### CAPITAL OUTLAY:

Land and New Buildings	56.20
New Equipment	6,354.69

### DEBT AND INTEREST:

Principal of Debt	30,000.00
Interest on Debt	17,998.00

---

TOTAL PAYMENTS FOR ALL PURPOSES \$193,772.41



Cash on hand end of year, June 30, 1962 1,002.72

---

GRAND TOTAL \$194,775.13

---

\*Newport \$4,167.60, Sunapee \$1,302.38, Springfield \$218.95,  
Croydon \$158.55, State of New Hampshire \$2,500.00.

†\$1,690.52 of this amount was the Federal reimbursement.

**NEW LONDON  
SCHOOL BUILDING ACCOUNT**

July 1, 1961 — June 30, 1962

RECEIPTS

Balance on hand July 1, 1961	\$124,250.88
Received from Deposits on Bids	\$ 100.00
Received from Savings Account	21.06
Repayment of Treasury Bonds inc. Interest	376,702.54
	<hr/> 376,823.60
GRAND TOTAL	\$501,074.48

EXPENDITURES

R. E. Bean Construction Co.	\$348,484.50
First National Bank of Boston — Preparation of Bonds	1,600.00
A. T. Kirk Agency--Transfer Property	12,045.20
Alfred T. Granger Associates — 7.5% Com- mission on Contract	18,698.58
Refund of Bid Deposit	50.00
New London Agency — Insurance	1,072.50
Upton, Sanders, Upton — Legal Services	103.37
Duff Mfg. Corp. — Part-payment Science Equipment	9,000.00
	<hr/> 391,054.15
TOTAL EXPENDITURES	391,054.15
Balance on hand June 30, 1962	\$110,020.33

# REPORT OF THE SUPERINTENDENT OF SCHOOLS

To the School Board and Citizens of New London:

I submit herewith my fifteenth annual report as Superintendent of Schools.

## SCHOOL PLANT

The opening of the 1962-1963 school year in September was highlighted by the occupancy of the new plant. With a minimum of difficulties and confusion, both students and staff settled in to make use of the new facilities that a most generous and educationally-minded community had made available to them.

Appropriate dedicatory exercises were held on September 27, 1962. (A copy of the Program is included elsewhere in this Report.)

So many people contributed so much in such a variety of ways to the building project that no list could possibly be complete. One source of satisfaction to a community that took steps to meet its school problem might come from the report of C. Paul Quimby, Director of Secondary School Services with the New Hampshire Department of Education. Mr. Quimby visited New London on January 11, 1963, to check on what action, if any, would need to be taken in order that New London High School might be an approved comprehensive high school in September, 1963, under the new Minimum Standards for New Hampshire Secondary Schools. His report of January 14, 1963, says in part:

“It is a pleasure to make a matter of record in this letter that all standards will be met by September or will be in the process of being met. It is also refreshing to note that not only has the school district anticipated the minimum standards well in advance, it has gone considerably beyond the minimums in many respects.”

## SCHOOL ORGANIZATION

The new facilities have made it possible to establish a 6-6 type of school organization within the same 12 grade plant.

The grades are now operated as follows:

Grades 1-6	159 Elementary Students
Grades 7 and 8	61
Grades 9-12	167
<hr/>	
	228 Secondary Students
<hr/>	
	387 Total

Double grades in the same room have been eliminated at the elementary level. Grades 7 and 8 are now operated on a departmental setup — on a similar basis as Grades 9-12.

### **TEACHERS' SALARY SCHEDULE**

Another significant accomplishment has been the development of a Salary Schedule and its unanimous adoption by the School Board on January 10, 1963 — to be effective for the 1963-1964 school year.

The range for teachers with the Bachelor's Degree (4 Years of training) is \$4,500 to \$6,500 over a period of nine years. Starting salary for those holding the Master's Degree is \$200 more than for the Bachelor's, with a top of \$500 more.

Other provisions of the Schedule, aimed to attract and hold capable teachers, include a pay allowance of \$15 per graduate credit beyond the Master's Degree in an individual's major teaching field to a maximum of 30 credits. Another provides that the "School Board may, at its discretion, add to the accumulated step credits of any teacher as a reward for outstanding service."

There were seven changes on the New London teaching staff this year. It is hoped that the adoption of a Salary Schedule will serve as an important factor in reducing the teacher turnover and make for a more permanent faculty where there is real incentive for doing advanced study and providing exceptional teaching.

## WESTON L. RAY

Weston L. Ray retired in June after completing 15 years of faithful service as School Custodian. "Skeet" did not see or carry out his job in the "narrow sense" but saw fit to take a real responsibility and interest which caused him to earn the respect of staff, students and townspeople. Both the school and community are indebted to him for a job well done — and I am sure join me in wishing him many years of good health and contentment in a well-earned retirement.

Respectfully submitted,

GORDON B. FLINT, Superintendent of Schools

## REPORT OF TEACHER CONSULTANT

Following is a brief summary of some of the services and responsibilities I have been happy to share. In rendering this report, I gratefully acknowledge the continued support, encouragement and guidance of many people within the school system and throughout the community.

CLASSROOM VISITS and conferences with teachers have made it possible to share the educational atmosphere of the classroom. Through such conferences teachers can become aware of strengths and weaknesses with continuous improvement as a main objective.

RESOURCES AND MATERIALS are made available where needed and where specifically requested. This would include such items as references, special texts, workbooks, film strips, and other instructional aids.

CURRICULUM IMPROVEMENTS are gradually realized as continued emphasis is given to:

1. The newer techniques and approaches to the teaching of arithmetic. It is anticipated that further experimentation will prevail before a major curriculum revision is undertaken.



2. The use of Reading Laboratories — individual reading selections of graded difficulty — as a means of individualizing the teaching and strengthening of reading skills throughout most elementary and junior high grades.
3. Educational T.V. as a teaching aid in science (grades 3, 4, 5, 6), New Hampshire History (grade 4), and art (as deemed effective by the art supervisor).
4. The organization of a system-wide curriculum committee (now in process) for the purpose of reviewing existing outlines and up-dating scope and sequence, grades 1-6, particularly in science, mathematics, and social studies.

EDUCATIONAL CONFERENCES in reading, testing, mathematics, and supervision, whether informally with teachers or teacher groups or on a regional basis, have all aimed at keeping abreast of current educational trends. All such conferences have been most rewarding.

Respectfully submitted,

ALPHONSE J. SOUCY, Teacher Consultant

## REPORT OF THE PRINCIPAL TO SUPERINTENDENT GORDON B. FLINT

Dear Mr. Flint:

I submit herewith my annual report as Principal of New London Central School.

The overall makeup of the school had undergone several important changes when school opened in September. The new high school addition not only made it possible to improve the high school program, but the elementary program also. Single elementary grades were possible for the first time now that there were enough classrooms available.



The revisions in the high school program that were started a few years ago were brought nearer to completion this year in anticipation of the new Minimum Standards and Recommended Practices for New Hampshire High Schools which will become effective in September, 1963. Even though the present program meets the new minimum standards, there are areas that need strengthening and improving. This should be done as rapidly as possible if we are to give our young people the best education possible.

On January 11, 1963, New London High School was visited by Mr. C. Paul Quimby, Director of Secondary School Services of the New Hampshire State Department of Education, to review the present program and to discuss any proposed changes to see if the school could be an approved comprehensive high school in September, 1963. Mr. Quimby reported: "It is a pleasure to make a matter of record in this letter that all standards will be met by September or will be in the process of being met." He pointed out, however, that the program needs some revisions in certain areas.

The minimum program of studies for approval as a "comprehensive high school" are:

1. College Preparatory Academic Subjects .....20 Units  
(New London has 22 units)
2. General Subjects .....10 Units  
(New London has 11 units)
3. Practical Arts Subjects .....14 Units  
(New London has 15 units)
4. Fine Arts ..... 3 Units  
(New London has 4 units)

In addition to the course requirements, adequate classrooms, laboratories, a library, and equipment to meet the requirements of the various courses are necessary. The staff must meet the required qualifications and be adequate in number to permit each teacher to have not more than five preparations per day.

The library and guidance services must meet certain requirements also. There must be a qualified librarian or a teacher-librarian who is able to provide a minimum of one period daily of library services for each 100 pupils. There must also be a qualified guidance counselor or teacher-counselor available for one period daily for guidance for each 60 pupils. These two services were initiated in the program in September, 1962.

The new high school building has provided the necessary facilities, but two more teachers are needed to meet the course requirements of the minimum standards.

One of the basic needs in the future will be to develop enrichment courses for those students capable of benefiting from such courses. Another need will be to eliminate the few alternations of courses that are in the program at the present time.

In reviewing the program for next year, it is obvious that if New London had not gone ahead and built the new addition, the high school could not have been approved as a comprehensive high school.

At the present time plans are being made for the evaluation of the high school by the New England Association of Colleges and Secondary Schools. This evaluation was scheduled for this year, but the school was given permission to wait one year to allow the new program to be put into effect in the new building. This evaluation is required to maintain the accreditation of the school.

Respectfully submitted,

ROBERT J. LIVINGSTON, Principal

## ENROLLMENT AS OF JANUARY 1, 1963

Grade 1	29
” 2	33
” 3	19
” 4	20
” 5	26
” 6	32
” 7	36
” 8	25
” 9	46
” 10	50
” 11	40
” 12	31
	<hr/>
	387

: ————— :

## TUITION PUPILS — JANUARY 1, 1963

### High School

Sutton School District	21
Salisbury School District	2
Springfield School District	22
Wilmot School District	6
Newbury School District	14
Bradford School District	4

### Elementary

Springfield School District	9
-----------------------------	---

# GRADUATES

## Class of 1962

Brown, William	Kimball, Mary
Campbell, Maxwell	Lewis, Sally
Charles, Byron	Messer, Paul
Clough, Nancy	Mitchell, Peter
Dayton, John	Peterson, Frances
Gay, Judith	Roberts, Malinda
Heath, James	Rogers, Jean
Hill, James	Waddell, Amelia
Kidder, William, Jr.	

: ————— :

## PERSONNEL OF NEW LONDON CENTRAL SCHOOL

NAME	Training Inst. and Degree or Certificate	Total Yrs. Teaching	Years in N. L. thru June, 1962
Livingston, Robert J. Principal	Univ. of Vt., M.S.	31	18
Bailey, Floyd P. Ind. Arts and Auto Dr.	Keene Teach. Coll., B.Ed.	10	10
Barter, Linda H. (Mrs.) Homemaking	Univ. of Ariz., M.S.	1	1
Charpentier, Norman Soc. Studies and English	Plym. Teach. Coll., B.Ed.	1	1
Curtiss, Herwood Mathematics and Band	Univ. of Me., M.Ed.	15	15
Fisher, Alberta C. Music	Univ. of Vt., B.S.	27½	23

Greenan, John C., Jr.	St. Anselm's Coll., A.B.	1	1
Biology and Gen. Science			
Harris, Alice (Mrs.)	Middlebury Coll., A.B.	14	9
French and Latin			
Hill, Carl D.	Boston Univ., M.Ed.	13	9
Physical Education			
Marston, Charles	Univ. of N. H., B.S.	6	6
Social Studies			
Rayno, Jacqueline (Mrs.)	Keene Teach. Coll., B.Ed.	8	1
English, Librarian			
Stohrer, John F.	Plym. Teach. Coll., B.Ed.	8	4
English, Guidance			
Taylor, Maurice H.	Springfield Coll., B.S.	23	1
Science, Mathematics			
Welch, Ernest E.	Babson Inst., B.S.	4	3
Business Education			
Wyman, Ronald P.	Keene Teach. Coll., B.Ed.	2	2
Art			
Pomeroy, Richard	Keene Teach. Coll., B.Ed.	1	1
Grade 6			
Woodward, Lucy (Mrs.)	Keene Teach. Coll., 2 Yr. Cert.	11	7
Grade 5			
Colburn, Helen (Mrs.)	Plym. Teach. Coll., 2 Yr. Cert.	37	20
Grade 4			
Knox, Beverly (Mrs.)	Univ. of Ariz., A.B.	2	2
Grade 3			
Lull, Jennie B. (Mrs.)	Plym. Teach. Coll., 2 Yr. Cert.	25	23
Grade 2			
McAllister, Grace	Plym. Teach. Coll., B.Ed.	1	1
Grade 1			

#### Custodians

Leslie Morgan  
George Enman  
Albert Sholes — part-time

#### Secretary to Principal

Pauline Dayton

#### Lunch Workers

Mrs. Alfred Gay  
Mrs. Mary Gay  
Mrs. Albert Sholes  
Miss Florence Champion

#### Transportation

Edmunds Bus Line — 4 buses — 4 routes



# REPORT OF SCHOOL NURSE

January 1962 — January 1963

- 366 School room contacts
- 148 Home contacts by calls and telephone
- 308 Conferences, includes 28 with students
- 383 Weighed and measured, and inspected heads, skin, teeth,  
and for vaccination
- 117 Physical examinations by Dr. Ohler and Dr. Clark
- 81 Intradermal Tuberculin tests by Dr. Ohler
- 4 Positive reactors
- 5 Chest X-rays arranged
- 28 Physical defects recorded and reported
- 24 First Aid treatments
- 124 Other treatments
- 424 Vision and hearing tests
- 12 Vision re-tests
- 27 Hearing re-tests
- 51 Vision defects recorded and reported
- 27 Hearing loss recorded and reported
- 90 Exclusions for communicable diseases and other illnesses
- 20 Referred to family physician and for further health care
- 9 Transported to homes from school and to dentists and for  
eye examination
- 6 Health talks given in Grades 1 through 6
- Open House attended and many conferences held with  
parents
- School Nurse section of Teachers' Convention attended  
October 20
- School Nurse conference attended in Lebanon, March 1

A new policy requesting parents of Grade 1 children entering in the fall to be physically examined by family doctor before being admitted seems to be well worth the endeavor and proved successful.

Respectfully submitted,

DELLA C. SPILLER, R.N.

School Nurse









New Hampshire State Library



3 4677 00343262 7

\* \* \* \* \*

**SCHOOL MEETING**

MONDAY, MARCH 11, 1963

8:00 P.M.

SCHOOL AUDITORIUM

Voting for Elected Officers

: ————— :

**TOWN MEETING**

TUESDAY, MARCH 12, 1963

10:00 A.M.

WHIPPLE MEMORIAL HALL

Polls open 10:00 A.M. to 6:00 P.M.

\* \* \* \* \*