



University of
New Hampshire

THE WMUR GRANITE STATE POLL



May 6, 2015

MORE CANDIDATES MEAN LESS CLARITY FOR NH GOP PRIMARY

By: Andrew E. Smith, Ph.D.
Zachary S. Azem, M.A.
UNH Survey Center
603-862-2226
www.unh.edu/survey-center

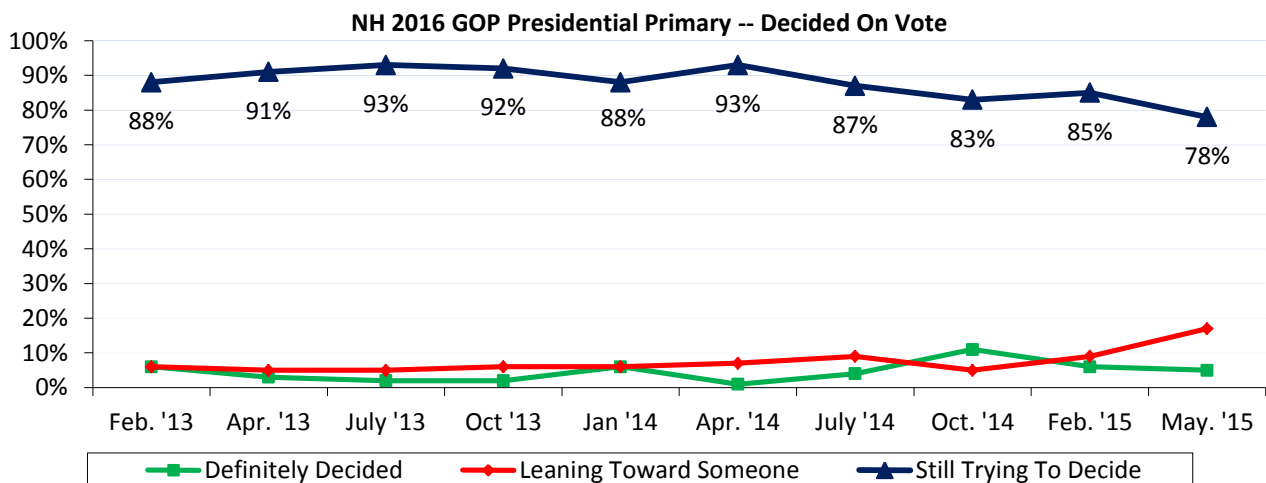
DURHAM, NH – The Republican field of candidates vying for the nomination continues to grow but there remains no frontrunner. The New Hampshire race will remain very unclear for some time as very few voters are deciding on who they will support.

These findings are based on the latest **WMUR Granite State Poll**,* conducted by the University of New Hampshire Survey Center. Seven hundred and six (706) randomly selected New Hampshire adults were interviewed by landline and cellular telephone between April 24 and May 3, 2015. The margin of sampling error is +/- 3.7 percent. Included were two hundred ninety-three (293) likely 2016 Republican Primary voters (MSE = +/-5.7), two hundred twenty-nine (229) likely 2016 Democratic Primary voters (MSE = +/-6.5), and six hundred and twenty-seven (627) likely 2016 presidential election voters (MSE = +/- 3.9).

NH Republicans Not Engaged

2016 is the 100th anniversary of the New Hampshire Primary and while an ever growing field of candidates is contending for the Republican nomination, New Hampshire voters don't share their enthusiasm. While many of the candidates discussed in this poll will decide not to run, and others may enter who were not discussed, candidates who are the early identified frontrunners have typically won past New Hampshire primaries.

New Hampshire primary voters usually decide who they will vote for in the last weeks, or days of the campaign and it is no surprise that very few likely Republican primary voters have made up their minds about who they will support in 2016. Currently, only 5% of likely Republican Primary voters say they have definitely decided who they will support, 17% are leaning toward a candidate, and 78% are still trying to decide.



* We ask that this copyrighted information be referred to as *the Granite State Poll*, sponsored by WMUR-TV, and conducted by the University of New Hampshire Survey Center.

The Republican electorate is somewhat more interested in the 2016 primary than it was at a similar point in 2007, the last time both parties had contested primaries. Currently, 42% of likely Republican primary voters say they are extremely interested in the election, 43% are very interested, and 15% are only somewhat interested or not very interested. By comparison, in 2007, 27% of likely Republican primary voters said they were extremely interested in the 2008 primary, 48% were very interested, and 25% were only somewhat interested or not very interested.

Another indication of increased interest in the 2016 primary among Republicans is that undeclared voters, often erroneously referred to as “independents”, are much more likely to say they plan to vote in the Republican primary than they were in 2008. Currently, 40% of undeclared voters say they plan to vote in the Republican primary, only 23% plan to vote in the Democratic primary, and 37% say they will not vote in either primary or are unsure. At this time in 2007, only 20% of undeclared voters said they would vote in the Republican primary, 54% said they planned to vote in the Democratic primary, and 26% said they would not vote in either primary or were unsure which primary they would vote in.

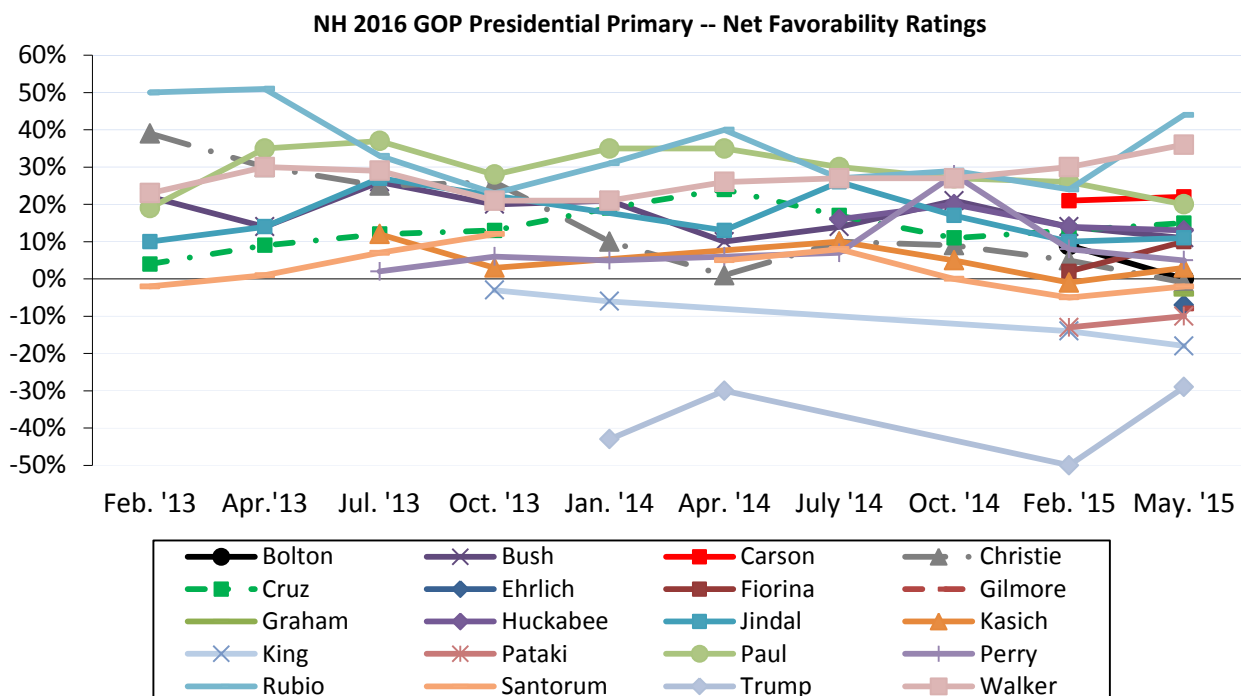
GOP Favorability Ratings

Florida senator Marco Rubio, Kentucky senator Rand Paul, and Wisconsin governor Scott Walker currently are the most popular candidates among New Hampshire Republican primary voters – 60% have a favorable opinion of Rubio, 51% have a favorable opinion of Paul and 50% have a favorable opinion of Walker. No other candidate breaks 50% in favorability ratings. The candidates with the highest unfavorable ratings are businessman Donald Trump (56% unfavorable), New Jersey governor Chris Christie (40%), former Pennsylvania senator Rick Santorum (37%), and former Florida governor Jeb Bush (34%).

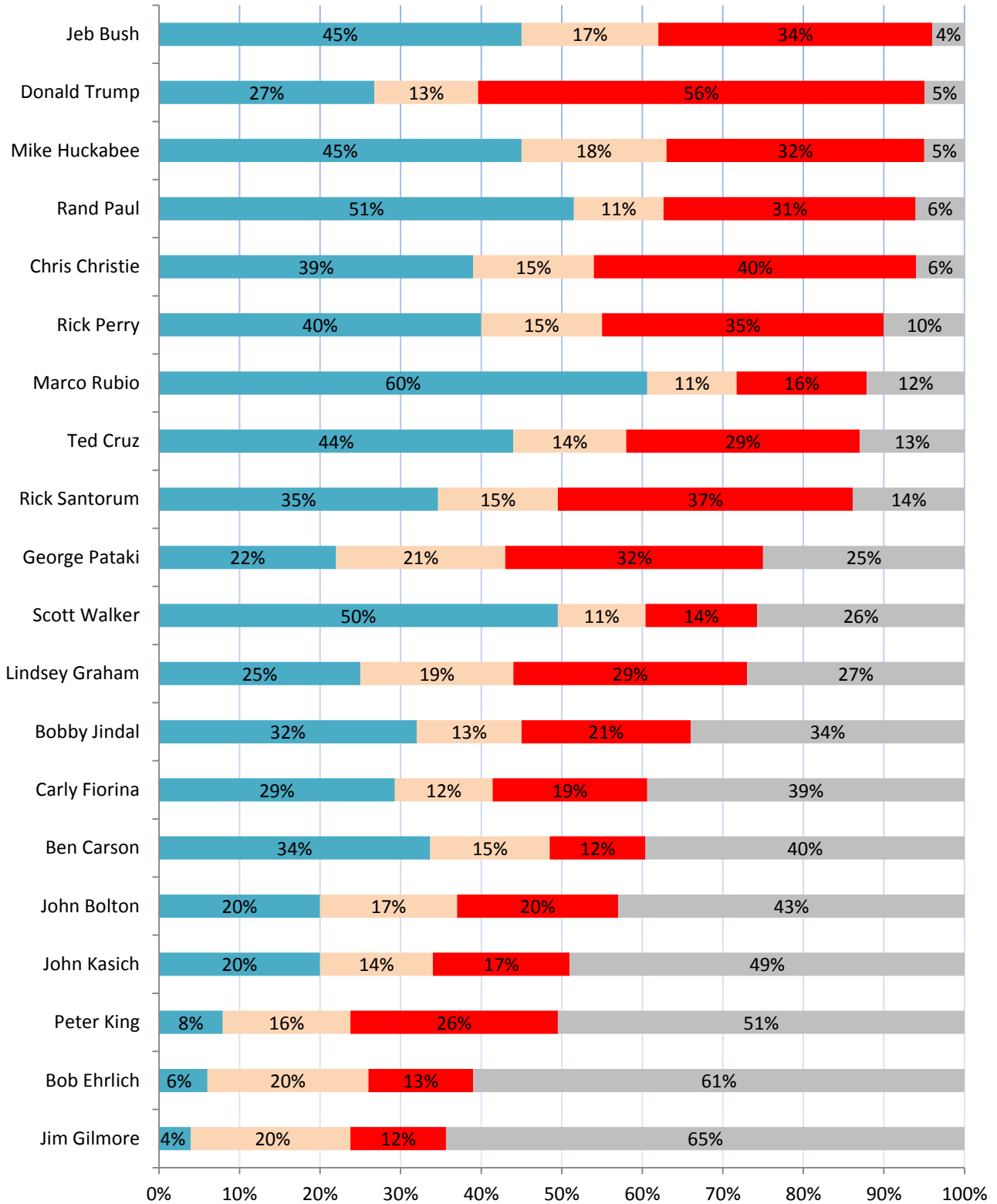
Rubio and Walker lead the GOP field in net favorability (the percentage who have a favorable opinion of him or her minus the percentage who have an unfavorable opinion) among Republican primary voters. Rubio’s net favorability rating is +44%, up from +24% in February while Walker’s net favorability rating is +36%, up from +30% in February. GOP candidates with moderate net favorability ratings include neurosurgeon Ben Carson (+22%) and Paul (+20%).

Texas senator Ted Cruz (+15%), former Arkansas governor Mike Huckabee (+13%), Bush (+11%), former Texas Governor Rick Perry (+5%), Christie (-1%), Santorum (-2%), former New York governor George Pataki (-10%) and Trump (-29%) have low net favorability ratings, despite most Republican Primary voters knowing them.

Louisiana governor Bobby Jindal (+11%), businesswoman Carly Fiorina (+10%), Ohio governor John Kasich (+3%), former ambassador John Bolton (+0%), South Carolina senator Lindsey Graham (-4%), former Maryland governor Bob Ehrlich (-7%), former Virginia governor Jim Gilmore (-8%), and New York congressman Peter King (-18%) have low net favorability ratings, and are also are not well known.



Favorability Ratings - Potential NH GOP Presidential Candidates - May 2015



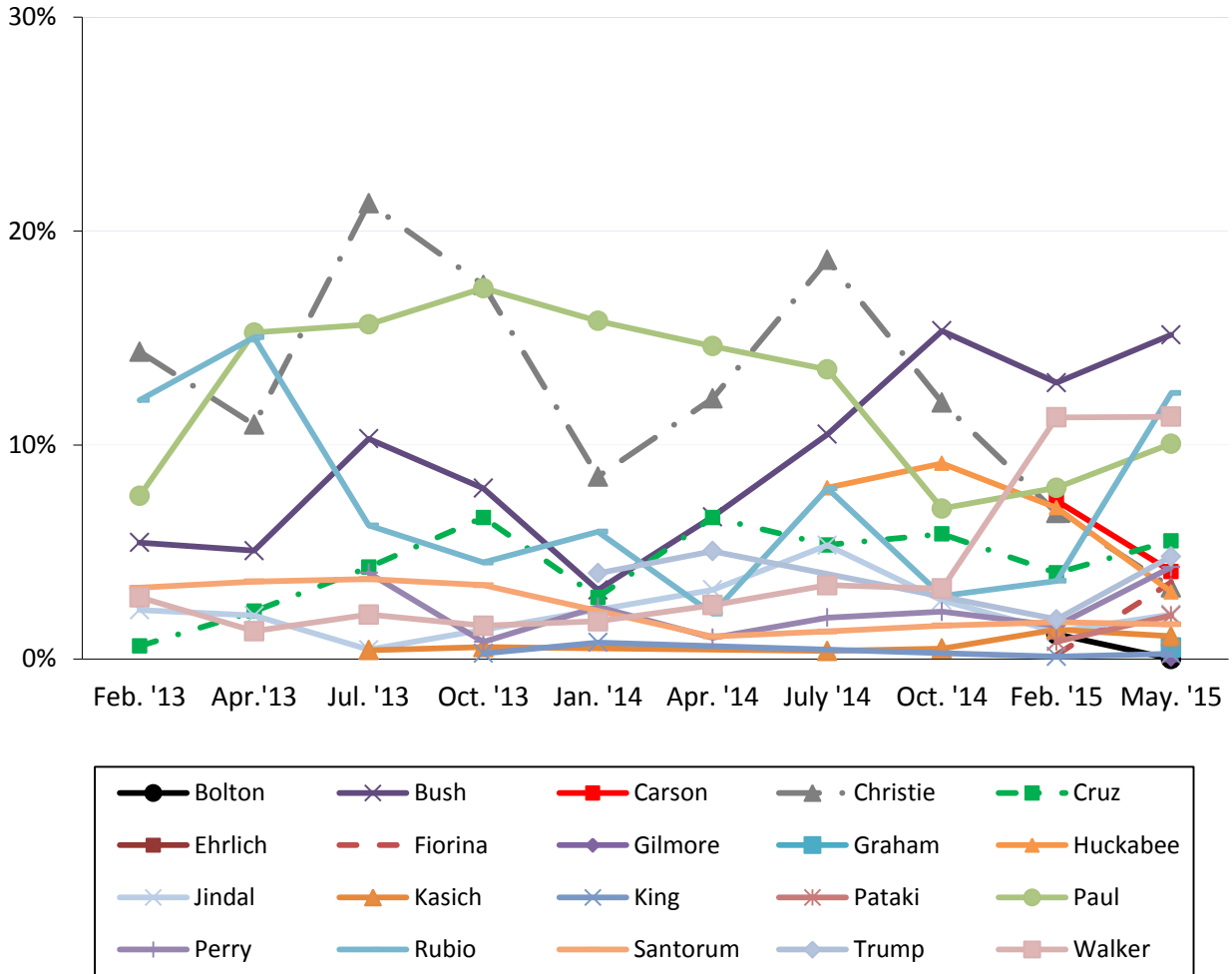
■ Favorable
 ■ Neutral
 ■ Unfavorable
 ■ DK

2016 NH Republican Primary

There continues to be no frontrunner in the Republican race. Currently, 15% of likely Republican primary voters support Bush, followed closely by Rubio (12%), Walker (11%), Paul (10%), Cruz (6%), Trump (5%), Perry (4%), Carson (4%), Fiorina (4%), Christie (3%), Huckabee (3%), Jindal (2%), Pataki (2%), Santorum (2%), Kasich (1%), and Graham (1%). All other potential candidates receive less than 1% support, and 14% say they are undecided.

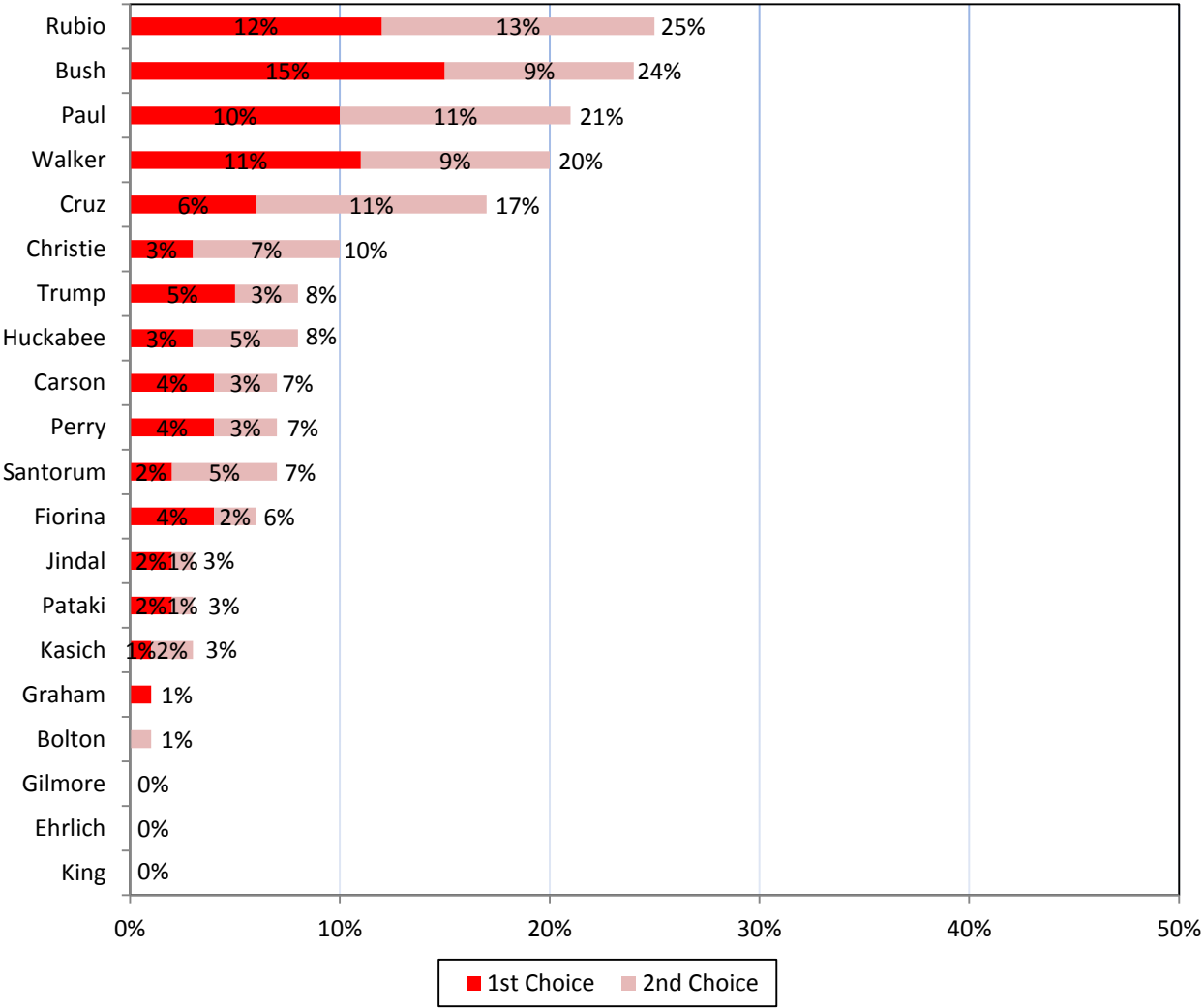
“Bush, Rubio, Walker, and Paul seem to be separating themselves slightly from the rest of the field but this is likely due to press attention rather than any real campaign work,” said Andrew Smith, Director of the UNH Survey Center.

NH 2016 GOP Presidential Primary -- Support If Vote Held Today



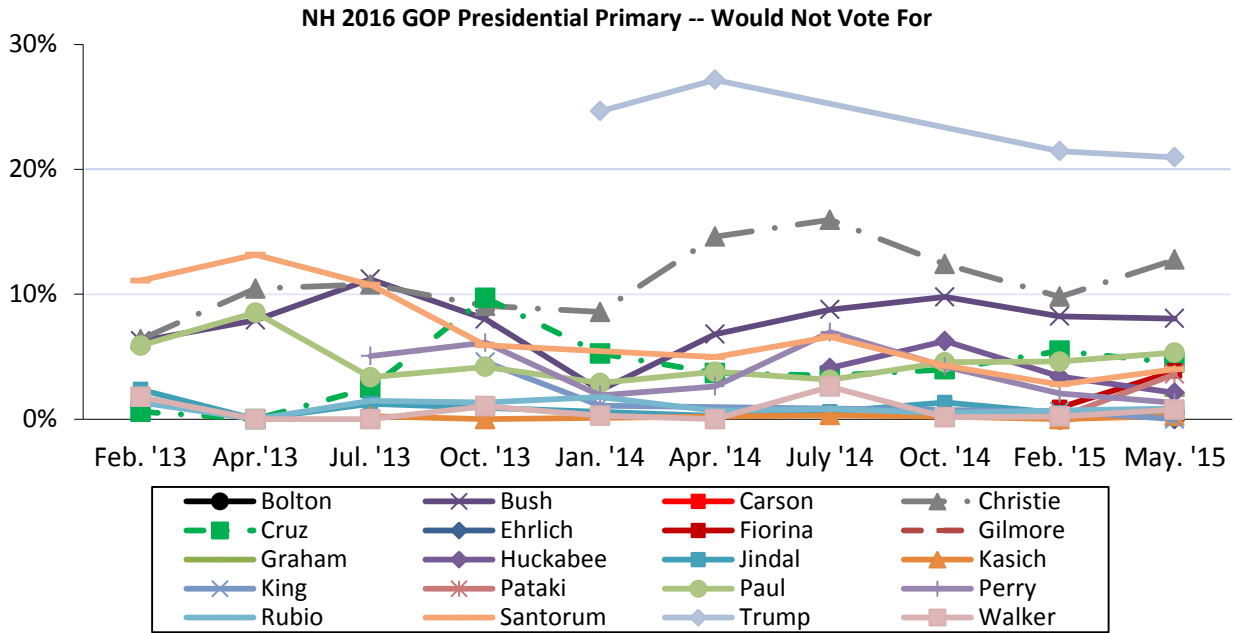
2016 NH Republican Primary with Second Choice

Asking likely Republican Primary voters who their second choice is does not clarify the primary picture. When the top two choices are combined, 25% of likely primary voters favor Rubio, 24% favor Bush, 21% favor Paul, 20% favor Walker and 17% favor Cruz.



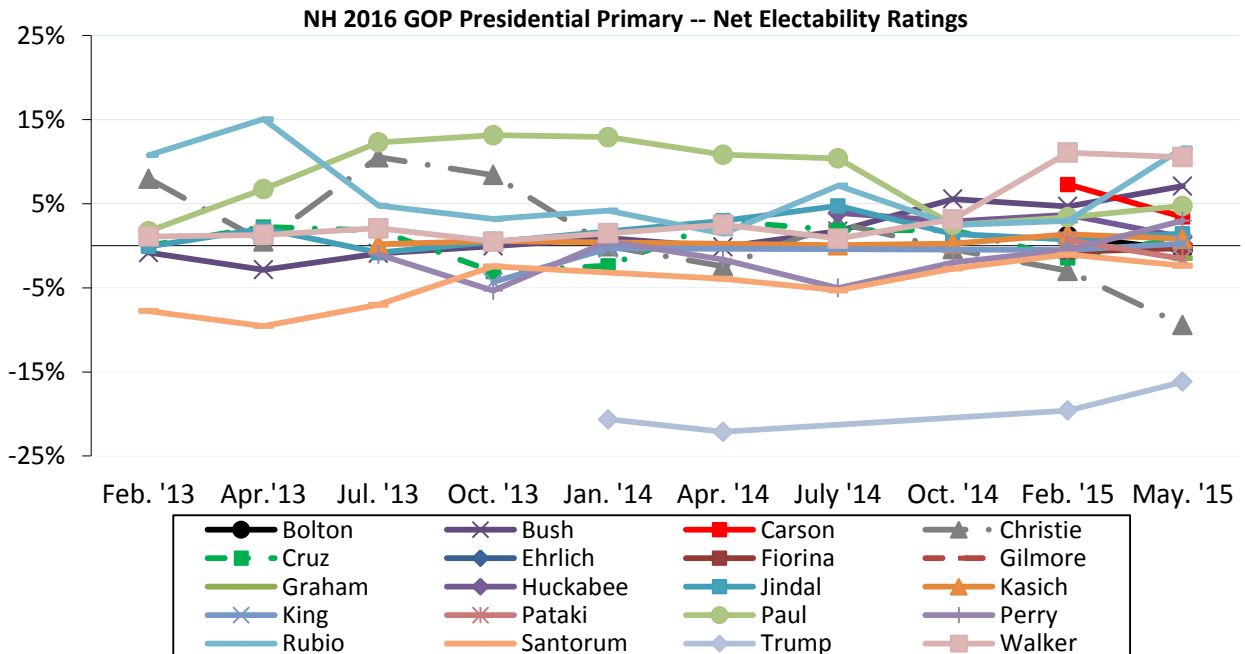
Most Unpopular Republican Candidate

When asked which candidate they would NOT vote for under any circumstance, 21% of likely Republican Primary voters say they would not vote for Trump, 13% would not vote for Christie, 8% would not vote for Bush, 5% would not vote for Paul, 5% would not vote for Cruz, 4% would not vote for Fiorina, 4% would not vote for Santorum, 4% would not vote for Pataki, 2% would not vote for Huckabee, 2% would not vote for Graham, 1% would not vote for Perry, 1% would not vote for Jindal, 1% would not vote for Walker, 1% would not vote for Rubio, 1% would not vote for Carson, 1% would not vote for Bolton, 10% think all the prospective candidates are acceptable, and 18% are unsure.



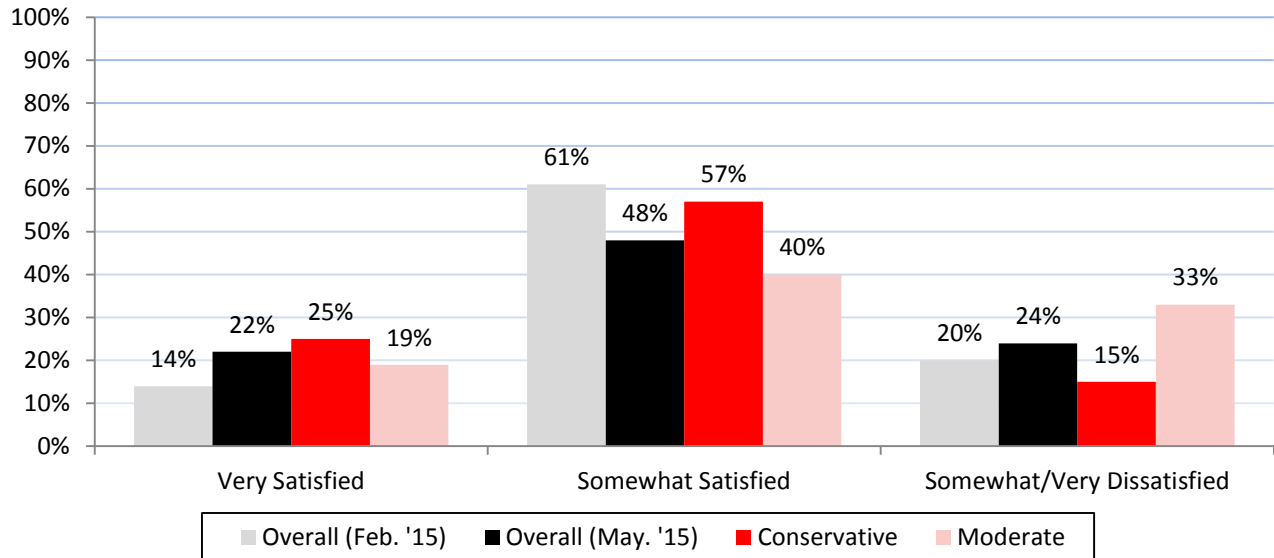
Republican Net Electability

When looking at electability scores (the percentage who support a candidate minus the percent who would not vote for that candidate), there is also no clear leader – Rubio (+11%), Walker (+10%), Bush (+7%), Paul (+5%), Carson (+3%), Perry (+3%), Cruz (+1%), Huckabee (+1%), Jindal (+1%), and Kasich (+1%) all have positive net electability scores. King (+0%), Ehrlich (+0%), Fiorina (+0%), Gilmore (+0%), Bolton (-1%), Graham (-1%), Pataki (-2%), Santorum (-2%), Christie (-10%), and Trump (-16%) have neutral negative net electability scores.



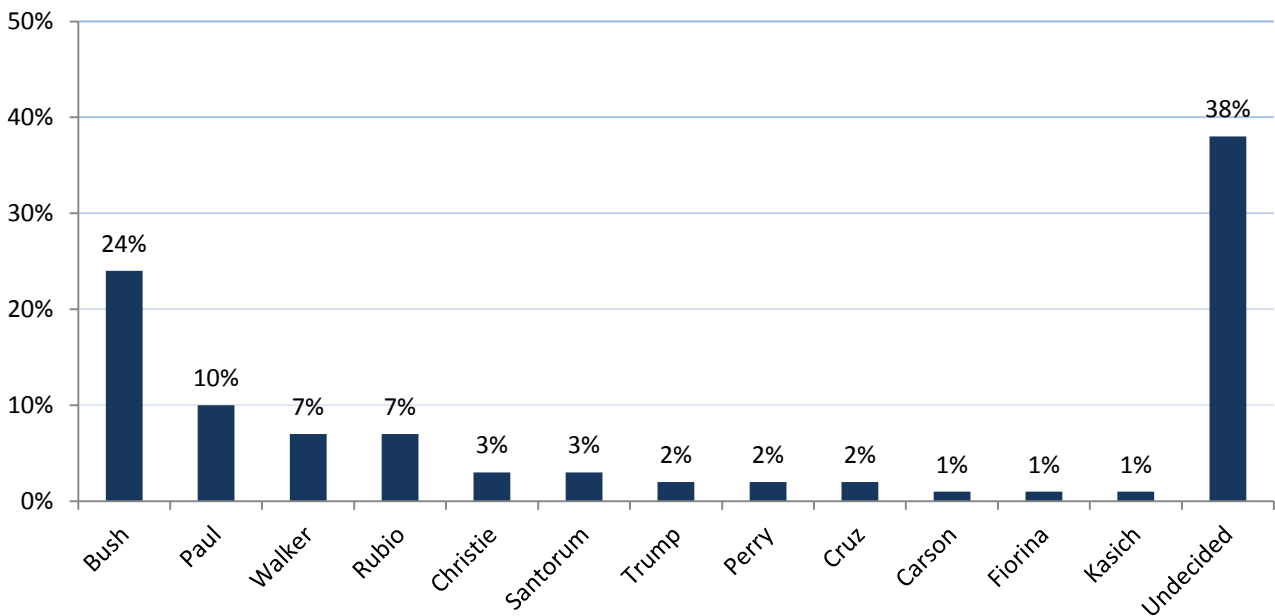
Satisfaction with the Current Primary Field?

Despite the many candidates who are running, only 22% of Republican primary voters say they are very satisfied with the current field of candidates, 48% are somewhat satisfied, and 24% are unsatisfied. Moderate to liberal Republicans, who make up just under half of the Republican primary electorate, are more likely to be dissatisfied with the current field than conservatives.



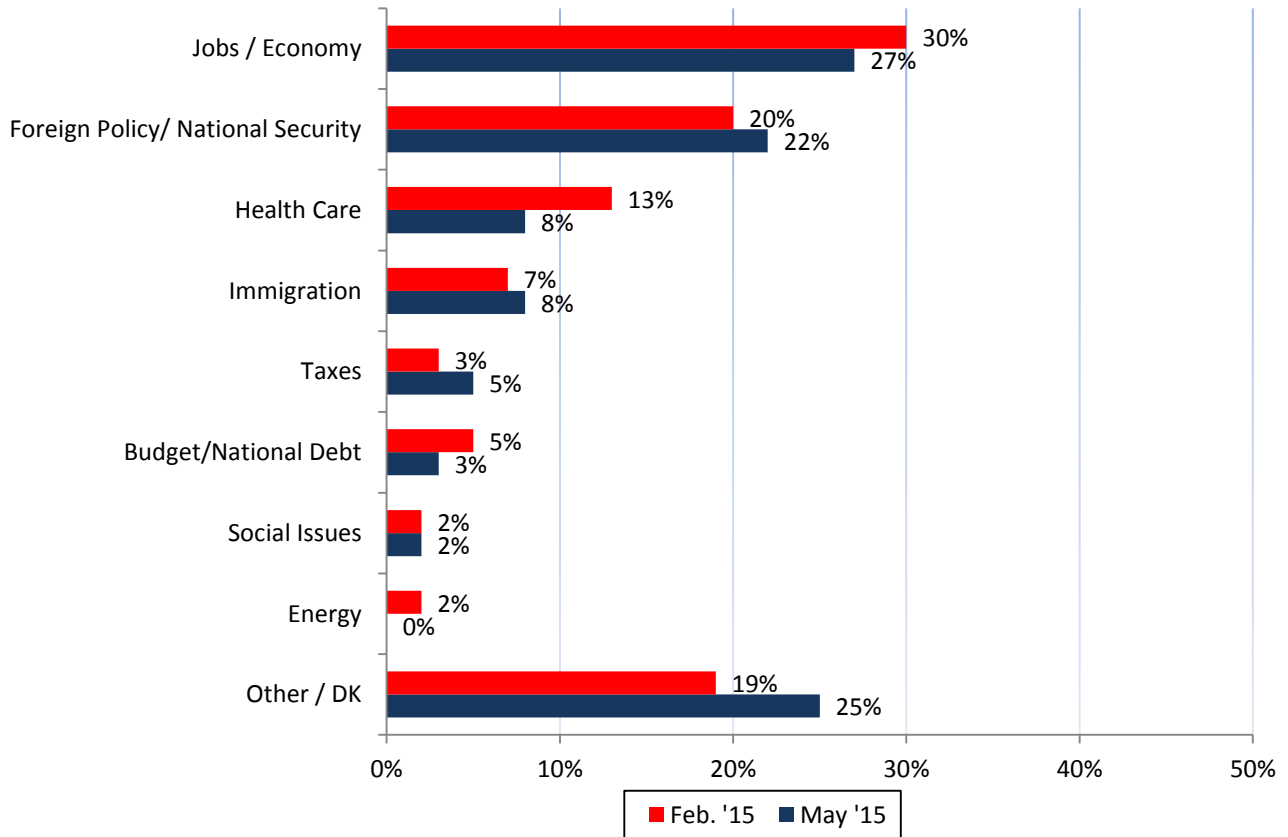
Who Will Win NH Republican Primary?

Republican primary voters are also unsure about who they think will win the New Hampshire Republican Primary next year. Thirty-eight percent are unsure who will win while 24% think Bush will win followed by Paul (10%), Walker (7%), and Rubio (7%).



Most Important Issue To Primary Vote

What asked what issue is the most important in deciding to vote in the presidential primary, 27% of Likely Republican Primary voters cite jobs or the economy, 22% cite foreign policy or national security, 8% cite health care, 8% cite immigration, 5% cite taxes, 3% cite the budget or national debt, and 2% cite social issues.



Granite State Poll Methodology

These findings are based on the latest WMUR Granite State Poll, conducted by the University of New Hampshire Survey Center. Seven hundred and six (706) randomly selected New Hampshire adults were interviewed by landline and cellular telephone between April 24 and May 3, 2015. The margin of sampling error is +/- 3.7 percent. Included were two hundred ninety-three (293) likely 2016 Republican Primary voters (MSE = +/-5.7), two hundred twenty-nine (229) likely 2016 Democratic Primary voters (MSE = +/-6.5), and six hundred and twenty-seven (627) likely 2016 presidential election voters (MSE = +/- 3.9).

The data have been weighted to adjust for numbers of adults and telephone lines within households, respondent sex, age, and region of the state. In addition to potential sampling error, all surveys have other potential sources of non-sampling error including question order effects, question wording effects, and non-response.

Granite State Poll, Spring 2015 GOP Primary Voter Demographics

Sex	N	%	Region	N	%
Male	173	59%	North Country	20	7%
Female	120	41%	Central/Lakes	59	20%
			Connecticut Valley	27	9%
Age	N	%	Mass Border	87	30%
18 to 34	45	16%	Seacoast	56	19%
35 to 49	92	33%	Manchester Area	44	15%
50 to 64	81	29%			
65 and Over	58	21%	Party Registration	N	%
			Democrat	0	0%
Highest Level of Education	N	%	Undeclared	114	41%
High School or Less	54	19%	Republican	166	59%
Some College	58	20%			
College Graduate	138	48%	Party Identification	N	%
Post-Graduate	39	14%	Democrat	20	7%
			Independent	31	11%
			Republican	237	82%

Decided Who to Vote for in 2016 GOP Primary?
(Likely NH GOP Primary Voters)

“Have you definitely decided who you will vote for in the New Hampshire primary ... are you leaning toward someone ... or have you considered some candidates but are still trying to decide?”

	<u>Feb. '13</u>	<u>Apr. '13</u>	<u>July '13</u>	<u>Oct. '13</u>	<u>Jan. '14</u>	<u>Apr. '14</u>	<u>July '14</u>	<u>Oct. '14</u>	<u>Feb. '15</u>	<u>May '15</u>
Definitely Decided	6%	3%	2%	2%	6%	1%	4%	11%	6%	5%
Leaning Toward Someone	6%	5%	5%	6%	6%	7%	9%	5%	9%	17%
Still Trying to Decide	88%	91%	93%	92%	88%	83%	87%	83%	85%	78%
(N)	(205)	(164)	(197)	(220)	(245)	(182)	(247)	(271)	(346)	(291)

Republican Nomination in 2016 NH Primary
(Likely NH GOP Primary Voters)

"I'm going to read you the names of the candidates who are either running or considering running for the Republican nomination. If the Republican primary for president were held today, which of the following would you support for the Republican nomination John Bolton ... Jeb Bush ... Ben Carson ... Chris Christie ... Ted Cruz ... Bob Ehrlich ... Carly Fiorina ... Jim Gilmore ... Lindsey Graham ... Mike Huckabee ... Bobby Jindal ... John Kasich ... Peter King ... George Pataki ... Rand Paul ... Rick Perry Marco Rubio ... Rick Santorum ... Donald Trump ... Scott Walker ... or someone else?" ROTATE CANDIDATES

	<u>Feb. '13</u>	<u>Apr. '13</u>	<u>July '13</u>	<u>Oct. '13</u>	<u>Jan. '14</u>	<u>Apr. '14</u>	<u>July '14</u>	<u>Oct. '14</u>	<u>Feb. '15</u>	<u>May '15</u>
Jeb Bush	5%	5%	10%	8%	3%	7%	11%	15%	17%	15%
Marco Rubio	12%	15%	6%	4%	6%	2%	8%	3%	5%	12%
Scott Walker	3%	1%	2%	2%	2%	3%	3%	3%	12%	11%
Rand Paul	8%	15%	16%	17%	16%	15%	14%	7%	9%	10%
Ted Cruz	1%	2%	4%	6%	3%	7%	5%	6%	4%	6%
Donald Trump	---	---	---	---	4%	5%	---	---	2%	5%
Ben Carson	---	---	---	---	---	---	---	---	8%	4%
Rick Perry	---	---	4%	1%	2%	1%	2%	2%	2%	4%
Carly Fiorina	---	---	---	---	---	---	---	---	*	4%
Chris Christie	14%	11%	21%	16%	9%	12%	19%	12%	9%	3%
Mike Huckabee	---	---	---	---	---	---	8%	9%	9%	3%
Bobby Jindal	2%	2%	*	---	---	3%	5%	3%	1%	2%
George Pataki	---	---	---	---	---	---	---	---	1%	2%
Rick Santorum	3%	4%	4%	4%	---	1%	1%	2%	2%	2%
John Kasich	---	---	*	*	---	---	*	*	1%	1%
Lindsey Graham	---	---	---	---	---	---	---	---	---	1%
Peter King	---	---	---	*	*	---	---	---	*	*
Bob Ehrlich	---	---	---	---	---	---	---	---	---	*
Jim Gilmore	---	---	---	---	---	---	---	---	---	0%
John Bolton	---	---	---	---	---	---	---	---	1%	0%
Paul Ryan	11%	11%	8%	9%	6%	13%	5%	6%	---	---
Kelly Ayotte	10%	5%	---	---	13%	13%	---	---	---	---
Scott Brown	---	---	---	7%	11%	---	---	---	---	---
Rob Portman	0%	1%	*	*	*	*	1%	*	---	---
John Huntsman	8%	5%	---	---	---	---	---	---	---	---
John Thune	1%	*	---	---	---	---	---	---	---	---
Someone Else	2%	0%	3%	3%	6%	3%	3%	3%	1%	1%
Don't Know Yet	20%	23%	20%	21%	18%	15%	15%	28%	15%	14%
(N)	(209)	(167)	(199)	(233)	(244)	(186)	(245)	(274)	(348)	(293)

* = Less than 1% --- = Not Included

Second Choice in 2016 NH Primary
(Likely NH GOP Primary Voters)

“If _____ was not running, who would be your second choice?”

	<u>Apr. '14</u>	<u>July '14</u>	<u>Oct. '14</u>	<u>Feb. '15</u>	<u>May '15</u>
Marco Rubio	11%	8%	5%	3%	13%
Ted Cruz	5%	5%	3%	5%	11%
Rand Paul	12%	9%	8%	10%	11%
Jeb Bush	8%	8%	10%	11%	9%
Scott Walker	4%	4%	5%	5%	9%
Chris Christie	4%	10%	7%	8%	7%
Mike Huckabee	---	7%	7%	6%	5%
Rick Santorum	3%	2%	3%	1%	5%
Donald Trump	4%	---	---	6%	3%
Ben Carson	---	---	---	6%	3%
Rick Perry	1%	3%	5%	3%	3%
Carly Fiorina	---	---	---	1%	2%
John Kasich	---	1%	*	2%	2%
Bobby Jindal	3%	4%	2%	2%	1%
George Pataki	---	---	---	2%	1%
John Bolton	---	---	---	1%	1%
Bob Ehrlich	---	---	---	---	*
Lindsey Graham	---	---	---	---	*
Peter King	---	---	---	1%	0%
Jim Gilmore	---	---	---	---	0%
<i>Mitt Romney</i>	---	---	---	12%	---
Paul Ryan	8%	7%	5%	---	---
Kelly Ayotte	11%	---	---	---	---
Rob Portman	1%	1%	*	---	---
Someone Else	*	1%	*	1%	2%
No Second Choice	9%	14%	34%	6%	5%
Don't Know	17%	16%	5%	8%	7%
(N)	(187)	(246)	(274)	(301)	(250)

* = Less than 1% --- = Not Included

Candidate You Wouldn't Vote For In 2016 NH Republican Primary
(Likely NH GOP Primary Voters)

“Which of the candidates who are either running or considering running for the Republican nomination would you NOT vote for under any circumstance?”

	<u>Feb. '13</u>	<u>Apr. '13</u>	<u>July '13</u>	<u>Oct. '13</u>	<u>Jan. '14</u>	<u>Apr. '14</u>	<u>July '14</u>	<u>Oct. '14</u>	<u>Feb. '15</u>	<u>May '15</u>
Donald Trump	---	---	---	---	25%	27%	---	---	21%	21%
Chris Christie	6%	11%	11%	7%	9%	15%	16%	12%	10%	13%
Jeb Bush	6%	8%	11%	8%	2%	7%	9%	10%	8%	8%
Rand Paul	6%	9%	3%	5%	3%	4%	3%	5%	5%	5%
Ted Cruz	1%	*	3%	8%	5%	4%	3%	4%	5%	5%
Carly Fiorina	---	---	---	---	---	---	---	---	1%	4%
Rick Santorum	11%	13%	11%	6%	---	5%	7%	4%	3%	4%
George Pataki	---	---	---	---	---	---	---	---	*	4%
Mike Huckabee	---	---	---	---	---	---	4%	6%	3%	2%
Lindsey Graham	---	---	---	---	---	---	---	---	---	2%
Rick Perry	---	---	5%	6%	2%	3%	7%	4%	2%	1%
Bobby Jindal	2%	*	1%	---	---	*	1%	1%	1%	1%
Scott Walker	2%	*	0%	*	*	0%	3%	*	*	1%
Marco Rubio	1%	*	2%	2%	2%	1%	1%	*	1%	1%
Ben Carson	---	---	---	---	---	---	---	---	*	1%
John Bolton	---	---	---	---	---	---	---	---	0%	1%
John Kasich	---	---	*	0%	---	---	*	*	0%	*
Bob Ehrlich	---	---	---	---	---	---	---	---	---	0%
Jim Gilmore	---	---	---	---	---	---	---	---	---	0%
Peter King	---	---	---	5%	1%	---	---	---	1%	0%
<i>Mitt Romney</i>	---	---	---	---	---	---	---	---	5%	---
Paul Ryan	2%	*	*	1%	*	0%	1%	0%	---	---
Rob Portman	3%	1%	1%	*	*	0%	*	1%	---	---
Kelly Ayotte	6%	6%	---	---	5%	4%	---	---	---	---
Scott Brown	---	---	---	2%	5%	---	---	---	---	---
John Huntsman	4%	6%	---	---	---	---	---	---	---	---
John Thune	1%	*	---	---	---	---	---	---	---	---
Someone Else	2%	*	*	1%	*	2%	*	*	1%	*
All OK	15%	24%	25%	20%	21%	16%	23%	17%	11%	10%
Don't Know	32%	21%	25%	28%	19%	14%	21%	34%	22%	18%
(N)	(208)	(168)	(197)	(232)	(243)	(185)	(243)	(271)	(347)	(285)

* = Less than 1% --- = Not Included

Satisfaction with 2016 NH Republican Primary Field
(Likely NH GOP Primary Voters)

“Overall, how satisfied or dissatisfied are you with the choice of candidates for the Republican nomination for President next year? Are you very satisfied, somewhat satisfied, somewhat dissatisfied, or very dissatisfied?”

	<u>Feb. '15</u>	<u>May '15</u>
Very Satisfied	14%	22%
Somewhat Satisfied	61%	48%
Somewhat Dissatisfied	14%	16%
Very Dissatisfied	6%	8%
Don't Know	6%	6%
(N)	(347)	(293)

Who Will Win 2016 NH Republican Primary?

(Likely NH GOP Primary Voters)

“Regardless of who you are voting for, which candidate do you think is most likely to win the New Hampshire Republican primary?”

	<u>Feb. '15</u>	<u>May '15</u>
Jeb Bush	15%	24%
Rand Paul	7%	10%
Scott Walker	3%	7%
Marco Rubio	*	7%
Chris Christie	4%	3%
Rick Santorum	1%	3%
Donald Trump	3%	2%
Rick Perry	2%	2%
Ted Cruz	*	2%
Ben Carson	1%	1%
Carly Fiorina	0%	1%
John Kasich	0%	1%
John Bolton	*	*
Mike Huckabee	1%	*
George Pataki	0%	*
Peter King	0%	*
Bobby Jindal	1%	0%
Lindsey Graham	---	0%
Bob Ehrlich	---	0%
Jim Gilmore	---	0%
Someone Else	*	0%
<i>Mitt Romney</i>	22%	---
Don't Know	40%	38%
(N)	(347)	(289)

* = Less than 1% --- = Not Included

Most Important Issue To Primary Vote

(Likely NH GOP Primary Voters)

“There are many issues facing the candidates in the election for president. In your opinion, which one issue is MOST IMPORTANT to YOUR VOTE in the presidential primary?”

	<u>Feb. '15</u>	<u>May '15</u>
Jobs/Economy	29%	27%
Foreign Policy/National Security	20%	22%
Health Care	13%	8%
Immigration	7%	8%
Budget/National Debt	5%	3%
Taxes	3%	5%
Energy	2%	0%
Social Issues	2%	2%
Other/Don't Know	19%	25%
(N)	(285)	(283)

Candidate Characteristics
(Likely NH GOP Primary Voters)

“Which Republican candidate do you think is the strongest leader?”

	<u>Feb. '15</u>	<u>May '15</u>
Jeb Bush	10%	12%
Scott Walker	9%	11%
Donald Trump	3%	9%
Rand Paul	5%	8%
Marco Rubio	2%	7%
Chris Christie	11%	7%
Rick Perry	4%	5%
Ted Cruz	4%	4%
Carly Fiorina	0%	2%
John Kasich	1%	2%
Mike Huckabee	2%	2%
Lindsey Graham	---	1%
Bobby Jindal	1%	1%
George Pataki	1%	1%
Ben Carson	2%	1%
John Bolton	*	*
Rick Santorum	0%	*
Peter King	0%	0%
Bob Ehrlich	---	0%
Jim Gilmore	---	0%
Someone Else	*	2%
Mitt Romney	17%	---
Don't Know	26%	27%
(N)	(346)	(291)

* = Less than 1% --- = Not Included

“Which Republican candidate do you think is most believable?”

	<u>Feb. '15</u>	<u>May '15</u>
Rand Paul	10%	10%
Scott Walker	7%	9%
Mike Huckabee	8%	9%
Jeb Bush	8%	8%
Marco Rubio	5%	7%
Chris Christie	5%	7%
Donald Trump	2%	4%
Rick Perry	1%	4%
Ted Cruz	1%	4%
Ben Carson	7%	3%
Carly Fiorina	0%	3%
Rick Santorum	1%	2%
John Kasich	2%	2%
Bobby Jindal	1%	2%
John Bolton	2%	1%
George Pataki	1%	1%
Bob Ehrlich	---	*
Peter King	0%	0%
Lindsey Graham	---	0%
Jim Gilmore	---	0%
Someone Else	1%	1%
<i>Mitt Romney</i>	8%	---
Don't Know	30%	25%
(N)	(340)	(291)

* = Less than 1% --- = Not Included

“Which Republican candidate do you think is least honest?”

	<u>May '15</u>
Chris Christie	18%
Donald Trump	16%
Jeb Bush	8%
Rick Perry	3%
George Pataki	2%
Ted Cruz	2%
Rick Santorum	2%
Lindsey Graham	2%
Rand Paul	1%
Marco Rubio	1%
John Bolton	1%
Scott Walker	*
Carly Fiorina	*
John Kasich	*
Mike Huckabee	*
Bob Ehrlich	*
Peter King	*
Bobby Jindal	*
Ben Carson	0%
Jim Gilmore	0%
Someone Else	*
<i>Mitt Romney</i>	---
Don't Know	42%
(N)	(287)

* = Less than 1% --- = Not Included

“Which Republican candidate do you think is most likeable?”

	<u>Feb. '15</u>	<u>May '15</u>
Marco Rubio	5%	17%
Jeb Bush	9%	11%
Mike Huckabee	11%	9%
Chris Christie	10%	7%
Rand Paul	5%	6%
Scott Walker	3%	6%
Donald Trump	3%	4%
Ben Carson	7%	4%
Rick Santorum	1%	2%
Ted Cruz	*	2%
Rick Perry	2%	1%
Lindsey Graham	---	1%
Carly Fiorina	0%	1%
John Kasich	*	1%
John Bolton	0%	1%
Bob Ehrlich	---	*
George Pataki	2%	0%
Peter King	0%	0%
Bobby Jindal	0%	0%
Jim Gilmore	---	0%
Someone Else	*	1%
<i>Mitt Romney</i>	15%	---
Don't Know	26%	28%
(N)	(343)	(292)

* = Less than 1% --- = Not Included

“Which Republican candidate do you think is most conservative?”

	<u>May '15</u>
Ted Cruz	17%
Mike Huckabee	10%
Rand Paul	9%
Scott Walker	8%
Rick Santorum	7%
Jeb Bush	5%
Rick Perry	4%
Marco Rubio	3%
Donald Trump	3%
Ben Carson	2%
Lindsey Graham	2%
Jim Gilmore	1%
Chris Christie	*
Carly Fiorina	*
John Kasich	*
John Bolton	*
Peter King	*
George Pataki	0%
Bobby Jindal	0%
Bob Ehrlich	0%
Someone Else	*
<i>Mitt Romney</i>	---
Don't Know	31%
(N)	(291)

* = Less than 1% --- = Not Included

“Which Republican candidate do you think has the best chance of winning in the general election next November?”

	<u>Feb. '15</u>	<u>May '15</u>
Jeb Bush	16%	27%
Marco Rubio	2%	11%
Scott Walker	4%	10%
Rand Paul	5%	9%
Ted Cruz	2%	4%
Chris Christie	8%	2%
Rick Perry	2%	2%
Mike Huckabee	1%	2%
Donald Trump	4%	1%
Carly Fiorina	0%	1%
John Kasich	1%	1%
Jim Gilmore	---	1%
Ben Carson	1%	*
John Bolton	*	*
Rick Santorum	*	*
George Pataki	*	*
Lindsey Graham	---	*
Peter King	0%	0%
Bob Ehrlich	---	0%
Bobby Jindal	*	0%
Someone Else	1%	1%
<i>Mitt Romney</i>	17%	---
Don't Know	36%	29%
(N)	(346)	(291)

* = Less than 1% --- = Not Included

“Which Republican candidate do you think best represents the values of Republicans like yourself?”

	<u>Feb. '15</u>	<u>May '15</u>
Jeb Bush	8%	13%
Scott Walker	10%	10%
Rand Paul	10%	9%
Ted Cruz	6%	7%
Marco Rubio	3%	7%
Mike Huckabee	7%	7%
Donald Trump	*	5%
Ben Carson	6%	4%
Chris Christie	6%	3%
Rick Perry	1%	3%
Rick Santorum	1%	3%
Carly Fiorina	0%	3%
Bobby Jindal	1%	2%
John Kasich	1%	1%
Lindsey Graham	---	1%
George Pataki	1%	1%
Jim Gilmore	---	1%
Bob Ehrlich	---	*
Peter King	0%	0%
John Bolton	*	0%
Someone Else	1%	2%
<i>Mitt Romney</i>	15%	---
Don't Know	23%	19%
(N)	(343)	(290)

* = Less than 1% --- = Not Included

“Which Republican candidate do you think has the right experience to be President?”

	<u>Feb. '15</u>	<u>May '15</u>
Jeb Bush	11%	19%
Scott Walker	10%	10%
Rand Paul	6%	9%
Donald Trump	3%	5%
Rick Perry	1%	5%
Marco Rubio	1%	4%
Chris Christie	7%	4%
Mike Huckabee	2%	3%
Carly Fiorina	0%	3%
Ted Cruz	2%	3%
John Kasich	1%	2%
John Bolton	3%	1%
Ben Carson	2%	1%
George Pataki	2%	1%
Rick Santorum	0%	*
Bobby Jindal	1%	*
Lindsey Graham	---	*
Peter King	0%	0%
Bob Ehrlich	---	0%
Jim Gilmore	---	0%
Someone Else	1%	1%
<i>Mitt Romney</i>	19%	---
Don't Know	29%	27%
(N)	(346)	(290)

* = Less than 1% --- = Not Included

GOP Favorability Ratings
(Likely GOP Primary Voters)

"Next, I'd like to get your overall opinion of some REPUBLICANS who are running or may run for President in 2016. As I read each name, please say if you have a favorable or unfavorable opinion of this person - or if you have never heard of him or her."

"Former Ambassador to the UN John Bolton?"

	<u>Favorable</u>	<u>Neutral</u>	<u>Unfavorable</u>	<u>Don't Know</u>	<u>Net</u>	<u>(N)</u>
May '15	20%	17%	20%	43%	0%	(293)
Feb. '15	24%	10%	15%	51%	+9%	(348)

"Former Florida Governor Jeb Bush?"

	<u>Favorable</u>	<u>Neutral</u>	<u>Unfavorable</u>	<u>Don't Know</u>	<u>Net</u>	<u>(N)</u>
May '15	45%	17%	34%	4%	+11%	(293)
Feb. '15	47%	9%	33%	11%	+14%	(349)
Oct. '14	49%	3%	28%	20%	+21%	(274)
July '14	45%	7%	31%	18%	+14%	(251)
Apr. '14	45%	9%	35%	11%	+10%	(187)
Jan. '14	46%	8%	25%	21%	+21%	(246)
Oct. '13	47%	8%	27%	18%	+20%	(236)
July '13	53%	5%	27%	15%	+26%	(200)
Apr. '13	48%	10%	34%	8%	+14%	(171)
Feb. '13	53%	5%	31%	11%	+22%	(212)

"Neurosurgeon Ben Carson?"

	<u>Favorable</u>	<u>Neutral</u>	<u>Unfavorable</u>	<u>Don't Know</u>	<u>Net</u>	<u>(N)</u>
May '15	34%	15%	12%	40%	+22%	(292)
Feb. '15	30%	8%	9%	54%	+21%	(348)

"New Jersey Governor Chris Christie?"

	<u>Favorable</u>	<u>Neutral</u>	<u>Unfavorable</u>	<u>Don't Know</u>	<u>Net</u>	<u>(N)</u>
May '15	39%	15%	40%	6%	-1%	(292)
Feb. '15	41%	10%	36%	13%	+5%	(349)
Oct. '14	44%	4%	35%	17%	+9%	(274)
July '14	46%	6%	36%	13%	+10%	(251)
Apr. '14	43%	10%	42%	5%	+1%	(187)
Jan. '14	43%	9%	33%	15%	+10%	(246)
Oct. '13	49%	6%	23%	23%	+26%	(236)
July '13	59%	5%	24%	12%	+25%	(200)
Apr. '13	56%	8%	26%	9%	+30%	(171)
Feb. '13	60%	7%	21%	12%	+39%	(212)

"Texas Senator Ted Cruz?"

	<u>Favorable</u>	<u>Neutral</u>	<u>Unfavorable</u>	<u>Don't Know</u>	<u>Net</u>	<u>(N)</u>
May '15	44%	14%	29%	13%	+15%	(293)
Feb. '15	37%	8%	24%	31%	+13%	(349)
Oct. '14	33%	6%	22%	39%	+11%	(275)
July '14	39%	4%	22%	35%	+17%	(250)
Apr. '14	42%	9%	18%	31%	+24%	(187)
Jan. '14	37%	8%	18%	37%	+19%	(246)
Oct. '13	32%	5%	19%	43%	+13%	(236)
July '13	29%	6%	17%	48%	+12%	(200)
Apr. '13	21%	8%	12%	59%	+9%	(171)
Feb. '13	18%	6%	14%	62%	+4%	(212)

"Former Maryland Governor Bob Ehrlich?"

	<u>Favorable</u>	<u>Neutral</u>	<u>Unfavorable</u>	<u>Don't Know</u>	<u>Net</u>	<u>(N)</u>
May '15	6%	20%	13%	61%	-7%	(292)

"Businesswoman Carly Fiorina?"

	<u>Favorable</u>	<u>Neutral</u>	<u>Unfavorable</u>	<u>Don't Know</u>	<u>Net</u>	<u>(N)</u>
May '15	29%	12%	19%	39%	+10%	(292)
Feb. '15	15%	9%	13%	62%	+2%	(349)

"Former Virginia Governor Jim Gilmore?"

	<u>Favorable</u>	<u>Neutral</u>	<u>Unfavorable</u>	<u>Don't Know</u>	<u>Net</u>	<u>(N)</u>
May '15	4%	20%	12%	65%	-8%	(292)

"South Carolina Senator Lindsey Graham?"

	<u>Favorable</u>	<u>Neutral</u>	<u>Unfavorable</u>	<u>Don't Know</u>	<u>Net</u>	<u>(N)</u>
May '15	25%	19%	29%	27%	-4%	(291)

"Former Arkansas Governor Mike Huckabee?"

	<u>Favorable</u>	<u>Neutral</u>	<u>Unfavorable</u>	<u>Don't Know</u>	<u>Net</u>	<u>(N)</u>
May '15	45%	18%	32%	5%	+13%	(292)
Feb. '15	45%	11%	31%	14%	+14%	(349)
Oct. '14	48%	6%	28%	17%	+20%	(275)
July '14	46%	7%	30%	16%	+16%	(251)

"Louisiana Governor Bobby Jindal?"

	<u>Favorable</u>	<u>Neutral</u>	<u>Unfavorable</u>	<u>Don't Know</u>	<u>Net</u>	<u>(N)</u>
May '15	32%	13%	21%	34%	+11%	(293)
Feb. '15	29%	8%	19%	44%	+10%	(348)
Oct. '14	31%	7%	14%	49%	+17%	(274)
July '14	39%	3%	13%	45%	+26%	(250)
Apr. '14	30%	9%	17%	44%	+13%	(187)
July '13	39%	4%	12%	45%	+27%	(200)
Apr. '13	30%	9%	16%	45%	+14%	(171)
Feb. '13	31%	8%	21%	41%	+10%	(212)

“Ohio Governor John Kasich?”

	<u>Favorable</u>	<u>Neutral</u>	<u>Unfavorable</u>	<u>Don't Know</u>	<u>Net</u>	<u>(N)</u>
May '15	20%	14%	17%	49%	+3%	(292)
Feb. '15	15%	12%	16%	57%	-1%	(349)
Oct. '14	17%	5%	12%	66%	+5%	(274)
July '14	22%	5%	12%	61%	+10%	(250)
Oct. '13	12%	5%	16%	74%	+3%	(236)
July '13	28%	5%	16%	52%	+12%	(200)

"New York Congressman Peter King?"

	<u>Favorable</u>	<u>Neutral</u>	<u>Unfavorable</u>	<u>Don't Know</u>	<u>Net</u>	<u>(N)</u>
May '15	8%	16%	26%	51%	-18%	(292)
Feb. '15	9%	9%	23%	59%	-14%	(349)
Jan. '14	14%	8%	20%	59%	-6%	(246)
Oct. '13	15%	7%	18%	60%	-3%	(236)

“Former New York Governor George Pataki?”

	<u>Favorable</u>	<u>Neutral</u>	<u>Unfavorable</u>	<u>Don't Know</u>	<u>Net</u>	<u>(N)</u>
May '15	22%	21%	32%	25%	-10%	(291)
Feb. '15	17%	15%	30%	38%	-13%	(349)

"Kentucky Senator Rand Paul?"

	<u>Favorable</u>	<u>Neutral</u>	<u>Unfavorable</u>	<u>Don't Know</u>	<u>Net</u>	<u>(N)</u>
May '15	51%	11%	31%	6%	+20%	(292)
Feb. '15	53%	8%	27%	12%	+26%	(349)
Oct. '14	50%	6%	23%	21%	+27%	(274)
July '14	53%	8%	23%	16%	+30%	(251)
Apr. '14	56%	8%	21%	15%	+35%	(187)
Jan. '14	49%	8%	14%	28%	+35%	(246)
Oct. '13	52%	4%	24%	20%	+28%	(236)
July '13	57%	3%	20%	20%	+37%	(200)
Apr. '13	54%	7%	19%	20%	+35%	(171)
Feb. '13	45%	6%	26%	23%	+19%	(212)

“Former Texas Governor Rick Perry?”

	<u>Favorable</u>	<u>Neutral</u>	<u>Unfavorable</u>	<u>Don't Know</u>	<u>Net</u>	<u>(N)</u>
May '15	40%	15%	35%	10%	+5%	(292)
Feb. '15	42%	9%	34%	14%	+8%	(349)
Oct. '14	49%	6%	21%	24%	+28%	(274)
July '14	39%	7%	32%	23%	+7%	(251)
Apr. '14	36%	11%	30%	23%	+6%	(187)
Jan. '14	32%	11%	27%	30%	+5%	(245)
Oct. '13	36%	9%	30%	24%	+6%	(236)
July '13	39%	9%	37%	15%	+2%	(200)

"Florida Senator Marco Rubio?"

	<u>Favorable</u>	<u>Neutral</u>	<u>Unfavorable</u>	<u>Don't Know</u>	<u>Net</u>	<u>(N)</u>
May '15	60%	11%	16%	12%	+44%	(292)
Feb. '15	41%	10%	17%	33%	+24%	(348)
Oct. '14	43%	6%	14%	37%	+29%	(274)
July '14	46%	4%	19%	31%	+27%	(250)
Apr. '14	52%	9%	12%	27%	+40%	(187)
Jan. '14	42%	7%	11%	40%	+31%	(246)
Oct. '13	41%	7%	18%	34%	+23%	(236)
July '13	47%	6%	14%	33%	+33%	(200)
Apr. '13	59%	8%	8%	25%	+51%	(171)
Feb. '13	56%	6%	6%	31%	+50%	(212)

"Former Pennsylvania Senator Rick Santorum?"

	<u>Favorable</u>	<u>Neutral</u>	<u>Unfavorable</u>	<u>Don't Know</u>	<u>Net</u>	<u>(N)</u>
May '15	35%	15%	37%	14%	-2%	(292)
Feb. '15	29%	14%	34%	23%	-5%	(349)
Oct. '14	31%	10%	31%	29%	0%	(274)
July '14	38%	7%	30%	25%	+8%	(250)
Apr. '14	36%	9%	31%	25%	+5%	(187)
Oct. '13	39%	9%	27%	25%	+12%	(236)
July '13	44%	6%	37%	13%	+7%	(200)
Apr. '13	39%	11%	38%	12%	+1%	(171)
Feb. '13	40%	8%	42%	10%	-2%	(212)

"Businessman Donald Trump?"

	<u>Favorable</u>	<u>Neutral</u>	<u>Unfavorable</u>	<u>Don't Know</u>	<u>Net</u>	<u>(N)</u>
May '15	27%	13%	56%	5%	-29%	(292)
Feb. '15	19%	9%	69%	3%	-50%	(349)
Apr. '14	23%	6%	66%	5%	-43%	(187)
Jan. '14	29%	8%	59%	5%	-30%	(246)

"Wisconsin Governor Scott Walker?"

	<u>Favorable</u>	<u>Neutral</u>	<u>Unfavorable</u>	<u>Don't Know</u>	<u>Net</u>	<u>(N)</u>
May '15	50%	11%	14%	26%	+36%	(293)
Feb. '15	39%	6%	9%	46%	+30%	(349)
Oct. '14	33%	9%	6%	52%	+27%	(274)
July '14	37%	4%	10%	49%	+27%	(250)
Apr. '14	38%	7%	12%	43%	+26%	(187)
Jan. '14	30%	5%	9%	56%	+21%	(246)
Oct. '13	29%	5%	8%	57%	+21%	(236)
July '13	42%	6%	13%	39%	+29%	(200)
Apr. '13	38%	9%	8%	45%	+30%	(171)
Feb. '13	37%	7%	14%	42%	+23%	(212)

**Favorability Rating – John Bolton
(Likely 2016 GOP Primary Voters)**

LIKELY NH GOP PRIMARY VOTERS	<u>Favorable</u> 20%	<u>Neutral</u> 17%	<u>Unfavorable</u> 20%	<u>Don't Know</u> 43%	<u>(N)</u> 293
Registered Undeclared	22%	23%	17%	39%	114
Registered Republican	19%	14%	23%	44%	166
Democrat	13%	36%	31%	20%	20
Independent	13%	13%	24%	50%	31
Republican	20%	16%	19%	45%	237
Liberal	12%	24%	23%	41%	13
Moderate	20%	14%	17%	49%	114
Conservative	21%	20%	25%	35%	149
Support Tea Party	27%	11%	21%	42%	126
Neutral	16%	23%	18%	44%	84
Oppose Tea Party	11%	24%	25%	41%	73
Voted in 2008 GOP Primary	22%	18%	19%	41%	223
Voted in 2008 DEM Primary	13%	11%	31%	45%	21
Voted in 2012 GOP Primary	22%	18%	21%	39%	243
Voted in 2012 DEM Primary	4%	25%	17%	54%	20
Union household	7%	5%	31%	57%	33
Non-union	21%	18%	19%	42%	253
Read Union Leader	17%	17%	21%	45%	78
Read Boston Globe	25%	17%	21%	37%	31
Read Local Newspapers	20%	19%	20%	41%	107
Watch WMUR	17%	16%	23%	44%	179
Listen to NHPR	19%	13%	22%	47%	68
18 to 34	7%	15%	27%	51%	45
35 to 49	18%	24%	11%	47%	92
50 to 64	21%	15%	18%	46%	81
65 and over	29%	12%	31%	28%	58
Male	25%	17%	26%	32%	173
Female	11%	18%	11%	59%	120
High school or less	16%	17%	32%	36%	54
Some college	17%	21%	16%	45%	58
College graduate	21%	16%	19%	43%	138
Post-graduate	18%	17%	16%	49%	39
Attend services 1 or more/week	22%	22%	20%	36%	78
1-2 times a month	19%	24%	9%	47%	34
Less often	16%	16%	25%	44%	106
Never	22%	12%	20%	46%	67
North Country	33%	12%	19%	36%	20
Central / Lakes	19%	19%	14%	48%	59
Connecticut Valley	10%	20%	29%	41%	27
Mass Border	17%	16%	19%	49%	87
Seacoast	18%	27%	21%	34%	56
Manchester Area	27%	8%	26%	39%	44
First Cong. Dist	18%	20%	20%	43%	150
Second Cong. Dist	20%	15%	21%	44%	139

**Favorability Rating – Jeb Bush
(Likely 2016 GOP Primary Voters)**

LIKELY NH GOP PRIMARY VOTERS	<u>Favorable</u>	<u>Neutral</u>	<u>Unfavorable</u>	<u>Don't Know</u>	<u>(N)</u>
	45%	17%	34%	4%	293
Registered Undeclared	44%	15%	38%	3%	114
Registered Republican	47%	20%	30%	4%	166
Democrat	39%	14%	47%	0%	20
Independent	38%	13%	43%	6%	31
Republican	47%	18%	31%	4%	237
Liberal	38%	5%	57%	0%	13
Moderate	55%	10%	31%	4%	114
Conservative	42%	22%	32%	4%	149
Support Tea Party	36%	16%	46%	2%	126
Neutral	54%	17%	23%	7%	84
Oppose Tea Party	48%	19%	29%	4%	73
Voted in 2008 GOP Primary	47%	20%	29%	4%	223
Voted in 2008 DEM Primary	44%	11%	45%	0%	21
Voted in 2012 GOP Primary	47%	17%	32%	3%	243
Voted in 2012 DEM Primary	38%	14%	48%	0%	20
Union household	72%	9%	19%	0%	33
Non-union	41%	18%	36%	5%	253
Read Union Leader	41%	15%	41%	3%	78
Read Boston Globe	47%	27%	24%	2%	31
Read Local Newspapers	57%	13%	29%	1%	107
Watch WMUR	52%	14%	31%	3%	179
Listen to NHPR	42%	12%	45%	1%	68
18 to 34	38%	28%	31%	3%	45
35 to 49	48%	16%	29%	7%	92
50 to 64	41%	13%	42%	3%	81
65 and over	53%	14%	31%	2%	58
Male	48%	15%	34%	3%	173
Female	42%	20%	33%	5%	120
High school or less	42%	19%	38%	1%	54
Some college	48%	19%	30%	3%	58
College graduate	43%	15%	37%	5%	138
Post-graduate	56%	18%	21%	5%	39
Attend services 1 or more/week	41%	32%	27%	1%	78
1-2 times a month	49%	11%	40%	0%	34
Less often	45%	11%	36%	8%	106
Never	49%	11%	37%	3%	67
North Country	49%	7%	34%	10%	20
Central / Lakes	52%	16%	27%	6%	59
Connecticut Valley	34%	14%	53%	0%	27
Mass Border	50%	10%	35%	4%	87
Seacoast	46%	34%	16%	3%	56
Manchester Area	31%	18%	50%	1%	44
First Cong. Dist	47%	20%	28%	5%	150
Second Cong. Dist	43%	14%	40%	3%	139

**Favorability Rating – Ben Carson
(Likely 2016 GOP Primary Voters)**

LIKELY NH GOP PRIMARY VOTERS	<u>Favorable</u>	<u>Neutral</u>	<u>Unfavorable</u>	<u>Don't Know</u>	<u>(N)</u>
	34%	15%	12%	40%	292
Registered Undeclared	30%	17%	11%	42%	114
Registered Republican	39%	13%	13%	35%	166
Democrat	17%	13%	33%	37%	20
Independent	28%	8%	11%	52%	31
Republican	35%	15%	11%	39%	236
Liberal	12%	15%	11%	62%	13
Moderate	29%	9%	16%	47%	114
Conservative	38%	20%	10%	32%	149
Support Tea Party	44%	14%	8%	34%	126
Neutral	29%	21%	10%	39%	84
Oppose Tea Party	22%	8%	23%	47%	73
Voted in 2008 GOP Primary	38%	15%	12%	36%	222
Voted in 2008 DEM Primary	22%	2%	33%	43%	21
Voted in 2012 GOP Primary	38%	16%	12%	34%	242
Voted in 2012 DEM Primary	4%	3%	27%	66%	20
Union household	13%	3%	13%	71%	33
Non-union	36%	15%	12%	37%	253
Read Union Leader	46%	6%	14%	34%	78
Read Boston Globe	39%	5%	13%	43%	31
Read Local Newspapers	29%	14%	11%	46%	107
Watch WMUR	31%	13%	16%	41%	179
Listen to NHPR	26%	9%	18%	48%	68
18 to 34	29%	21%	5%	45%	45
35 to 49	32%	17%	3%	48%	92
50 to 64	32%	9%	17%	42%	81
65 and over	41%	14%	21%	24%	58
Male	32%	19%	15%	34%	172
Female	36%	8%	8%	48%	120
High school or less	26%	22%	15%	37%	54
Some college	29%	19%	11%	40%	58
College graduate	41%	9%	12%	38%	138
Post-graduate	24%	14%	11%	51%	38
Attend services 1 or more/week	51%	11%	6%	31%	78
1-2 times a month	31%	13%	12%	44%	34
Less often	29%	19%	11%	40%	106
Never	22%	12%	19%	48%	67
North Country	35%	1%	13%	51%	20
Central / Lakes	21%	16%	10%	53%	59
Connecticut Valley	33%	15%	27%	25%	27
Mass Border	38%	8%	10%	45%	87
Seacoast	35%	23%	6%	36%	55
Manchester Area	43%	22%	16%	19%	44
First Cong. Dist	36%	19%	9%	36%	149
Second Cong. Dist	32%	10%	15%	43%	139

**Favorability Rating – Chris Christie
(Likely 2016 GOP Primary Voters)**

LIKELY NH GOP PRIMARY VOTERS	<u>Favorable</u> 39%	<u>Neutral</u> 15%	<u>Unfavorable</u> 40%	<u>Don't Know</u> 6%	<u>(N)</u> 292
Registered Undeclared	36%	17%	41%	6%	114
Registered Republican	41%	14%	40%	5%	166
Democrat	36%	2%	60%	1%	20
Independent	10%	25%	57%	8%	31
Republican	43%	15%	37%	6%	236
Liberal	11%	45%	44%	0%	13
Moderate	43%	10%	43%	5%	114
Conservative	39%	16%	41%	5%	149
Support Tea Party	36%	11%	50%	4%	126
Neutral	48%	18%	23%	10%	84
Oppose Tea Party	32%	21%	43%	3%	73
Voted in 2008 GOP Primary	42%	16%	37%	6%	222
Voted in 2008 DEM Primary	22%	5%	73%	0%	21
Voted in 2012 GOP Primary	41%	16%	38%	4%	242
Voted in 2012 DEM Primary	17%	19%	52%	12%	20
Union household	34%	6%	50%	10%	33
Non-union	39%	17%	38%	6%	253
Read Union Leader	36%	14%	42%	8%	78
Read Boston Globe	41%	14%	42%	3%	31
Read Local Newspapers	40%	14%	39%	7%	107
Watch WMUR	38%	13%	44%	5%	179
Listen to NHPR	50%	10%	36%	4%	68
18 to 34	43%	19%	35%	3%	45
35 to 49	35%	15%	42%	8%	92
50 to 64	40%	16%	38%	5%	81
65 and over	39%	12%	42%	7%	58
Male	45%	9%	44%	3%	172
Female	30%	24%	35%	11%	120
High school or less	35%	15%	49%	1%	54
Some college	43%	6%	42%	9%	58
College graduate	36%	21%	37%	6%	138
Post-graduate	45%	11%	37%	8%	38
Attend services 1 or more/week	39%	20%	35%	6%	78
1-2 times a month	47%	11%	41%	1%	34
Less often	35%	13%	45%	6%	106
Never	37%	16%	40%	7%	67
North Country	18%	26%	43%	13%	20
Central / Lakes	36%	17%	30%	18%	59
Connecticut Valley	27%	21%	52%	0%	27
Mass Border	41%	17%	40%	2%	87
Seacoast	39%	13%	45%	3%	55
Manchester Area	54%	4%	40%	2%	44
First Cong. Dist	41%	10%	41%	8%	149
Second Cong. Dist	36%	21%	39%	4%	139

**Favorability Rating – Ted Cruz
(Likely 2016 GOP Primary Voters)**

LIKELY NH GOP PRIMARY VOTERS	<u>Favorable</u>	<u>Neutral</u>	<u>Unfavorable</u>	<u>Don't Know</u>	<u>(N)</u>
	44%	14%	29%	13%	293
Registered Undeclared	36%	16%	33%	15%	114
Registered Republican	51%	12%	27%	10%	166
Democrat	16%	0%	79%	5%	20
Independent	33%	13%	23%	31%	31
Republican	47%	15%	26%	12%	237
Liberal	16%	28%	26%	29%	13
Moderate	33%	13%	38%	15%	114
Conservative	55%	11%	24%	10%	149
Support Tea Party	62%	13%	19%	6%	126
Neutral	36%	23%	21%	20%	84
Oppose Tea Party	21%	6%	54%	19%	73
Voted in 2008 GOP Primary	49%	15%	26%	10%	223
Voted in 2008 DEM Primary	12%	0%	62%	26%	21
Voted in 2012 GOP Primary	48%	14%	29%	8%	243
Voted in 2012 DEM Primary	1%	3%	47%	48%	20
Union household	39%	7%	32%	22%	33
Non-union	43%	15%	29%	13%	253
Read Union Leader	36%	16%	31%	17%	78
Read Boston Globe	44%	15%	37%	3%	31
Read Local Newspapers	40%	11%	36%	13%	107
Watch WMUR	36%	16%	34%	14%	179
Listen to NHPR	30%	10%	41%	18%	68
18 to 34	37%	17%	35%	11%	45
35 to 49	42%	18%	21%	20%	92
50 to 64	48%	9%	31%	12%	81
65 and over	45%	11%	35%	9%	58
Male	45%	12%	36%	7%	173
Female	42%	17%	19%	22%	120
High school or less	30%	20%	37%	13%	54
Some college	59%	12%	20%	9%	58
College graduate	43%	15%	28%	13%	138
Post-graduate	37%	5%	36%	23%	39
Attend services 1 or more/week	55%	10%	21%	13%	78
1-2 times a month	45%	21%	20%	14%	34
Less often	35%	15%	37%	13%	106
Never	42%	13%	30%	15%	67
North Country	38%	12%	33%	16%	20
Central / Lakes	38%	26%	19%	17%	59
Connecticut Valley	30%	14%	40%	16%	27
Mass Border	47%	6%	29%	18%	87
Seacoast	60%	9%	26%	6%	56
Manchester Area	35%	20%	37%	7%	44
First Cong. Dist	45%	16%	27%	12%	150
Second Cong. Dist	43%	12%	31%	14%	139

**Favorability Rating – Bob Ehrlich
(Likely 2016 GOP Primary Voters)**

LIKELY NH GOP PRIMARY VOTERS	Favorable	Neutral	Unfavorable	Don't Know	(N)
	6%	20%	13%	61%	292
Registered Undeclared	5%	21%	11%	63%	114
Registered Republican	7%	21%	15%	58%	166
Democrat	7%	40%	16%	37%	20
Independent	0%	15%	10%	74%	31
Republican	7%	19%	13%	61%	236
Liberal	18%	18%	6%	58%	13
Moderate	10%	17%	14%	59%	114
Conservative	3%	24%	14%	60%	149
Support Tea Party	5%	23%	11%	61%	126
Neutral	9%	21%	8%	62%	84
Oppose Tea Party	3%	15%	26%	55%	72
Voted in 2008 GOP Primary	6%	19%	15%	60%	222
Voted in 2008 DEM Primary	8%	11%	23%	57%	21
Voted in 2012 GOP Primary	7%	20%	14%	59%	242
Voted in 2012 DEM Primary	0%	29%	11%	60%	20
Union household	0%	12%	17%	71%	33
Non-union	7%	20%	13%	60%	253
Read Union Leader	13%	14%	12%	60%	78
Read Boston Globe	20%	12%	13%	55%	31
Read Local Newspapers	8%	17%	10%	65%	107
Watch WMUR	9%	17%	13%	61%	179
Listen to NHPR	7%	15%	16%	61%	68
18 to 34	10%	28%	5%	57%	45
35 to 49	10%	20%	9%	62%	92
50 to 64	2%	17%	17%	65%	81
65 and over	3%	20%	23%	54%	58
Male	4%	26%	16%	54%	173
Female	9%	12%	9%	70%	119
High school or less	1%	29%	20%	50%	54
Some college	2%	28%	14%	56%	58
College graduate	10%	15%	12%	63%	138
Post-graduate	4%	15%	9%	72%	39
Attend services 1 or more/week	6%	15%	18%	61%	78
1-2 times a month	11%	23%	6%	59%	34
Less often	7%	26%	14%	53%	105
Never	1%	15%	12%	72%	67
North Country	0%	12%	12%	75%	20
Central / Lakes	4%	15%	11%	70%	59
Connecticut Valley	0%	15%	18%	67%	27
Mass Border	7%	15%	12%	66%	87
Seacoast	5%	30%	18%	47%	56
Manchester Area	13%	32%	11%	44%	44
First Cong. Dist	8%	27%	11%	54%	149
Second Cong. Dist	2%	13%	15%	70%	139

**Favorability Rating – Carly Fiorina
(Likely 2016 GOP Primary Voters)**

LIKELY NH GOP PRIMARY VOTERS	<u>Favorable</u> 29%	<u>Neutral</u> 12%	<u>Unfavorable</u> 19%	<u>Don't Know</u> 39%	<u>(N)</u> 292
Registered Undeclared	24%	19%	14%	42%	114
Registered Republican	34%	8%	23%	35%	166
Democrat	11%	30%	45%	13%	20
Independent	20%	7%	13%	60%	31
Republican	32%	11%	18%	39%	236
Liberal	18%	26%	24%	33%	13
Moderate	26%	10%	24%	40%	114
Conservative	35%	13%	17%	35%	149
Support Tea Party	41%	8%	16%	35%	126
Neutral	24%	21%	18%	38%	84
Oppose Tea Party	16%	11%	30%	43%	72
Voted in 2008 GOP Primary	34%	14%	16%	36%	222
Voted in 2008 DEM Primary	0%	6%	46%	49%	21
Voted in 2012 GOP Primary	34%	13%	18%	35%	242
Voted in 2012 DEM Primary	0%	21%	29%	50%	20
Union household	21%	2%	15%	61%	33
Non-union	29%	14%	20%	37%	253
Read Union Leader	42%	13%	18%	27%	78
Read Boston Globe	28%	20%	25%	28%	31
Read Local Newspapers	36%	11%	19%	34%	107
Watch WMUR	31%	14%	18%	37%	179
Listen to NHPR	18%	18%	26%	37%	68
18 to 34	11%	17%	16%	56%	45
35 to 49	34%	14%	17%	34%	92
50 to 64	26%	8%	21%	45%	81
65 and over	38%	12%	26%	24%	58
Male	37%	13%	23%	28%	173
Female	18%	12%	15%	55%	119
High school or less	22%	11%	28%	39%	54
Some college	28%	17%	15%	40%	58
College graduate	35%	11%	18%	35%	138
Post-graduate	17%	10%	22%	51%	39
Attend services 1 or more/week	31%	11%	20%	38%	78
1-2 times a month	24%	18%	18%	40%	34
Less often	27%	13%	23%	38%	105
Never	32%	11%	15%	42%	67
North Country	41%	0%	12%	48%	20
Central / Lakes	19%	16%	21%	44%	59
Connecticut Valley	14%	15%	25%	47%	27
Mass Border	45%	8%	11%	36%	87
Seacoast	16%	18%	19%	47%	56
Manchester Area	32%	14%	34%	20%	44
First Cong. Dist	25%	16%	19%	41%	149
Second Cong. Dist	34%	9%	20%	38%	139

**Favorability Rating – Jim Gilmore
(Likely 2016 GOP Primary Voters)**

LIKELY NH GOP PRIMARY VOTERS	<u>Favorable</u> 4%	<u>Neutral</u> 20%	<u>Unfavorable</u> 12%	<u>Don't Know</u> 65%	<u>(N)</u> 292
Registered Undeclared	1%	21%	10%	69%	114
Registered Republican	6%	20%	13%	61%	166
Democrat	7%	36%	19%	39%	20
Independent	2%	13%	8%	76%	31
Republican	4%	19%	11%	66%	236
Liberal	6%	15%	6%	73%	13
Moderate	4%	15%	10%	71%	114
Conservative	4%	25%	13%	58%	149
Support Tea Party	2%	22%	13%	62%	126
Neutral	5%	22%	9%	64%	84
Oppose Tea Party	5%	15%	13%	67%	73
Voted in 2008 GOP Primary	3%	20%	12%	64%	222
Voted in 2008 DEM Primary	6%	13%	21%	59%	21
Voted in 2012 GOP Primary	3%	22%	12%	63%	242
Voted in 2012 DEM Primary	0%	18%	15%	67%	20
Union household	7%	3%	15%	75%	33
Non-union	3%	21%	12%	65%	253
Read Union Leader	4%	15%	12%	68%	78
Read Boston Globe	8%	9%	22%	62%	31
Read Local Newspapers	5%	19%	11%	66%	107
Watch WMUR	5%	17%	12%	66%	179
Listen to NHPR	1%	14%	14%	71%	68
18 to 34	8%	23%	11%	58%	45
35 to 49	3%	24%	3%	71%	92
50 to 64	2%	17%	12%	69%	81
65 and over	3%	16%	28%	53%	58
Male	6%	24%	14%	57%	172
Female	1%	14%	8%	77%	120
High school or less	9%	25%	16%	50%	54
Some college	3%	27%	13%	57%	58
College graduate	3%	16%	10%	71%	138
Post-graduate	1%	16%	9%	75%	38
Attend services 1 or more/week	4%	16%	11%	68%	78
1-2 times a month	2%	22%	8%	68%	34
Less often	6%	25%	11%	58%	106
Never	0%	14%	16%	70%	67
North Country	9%	11%	12%	69%	20
Central / Lakes	0%	15%	6%	78%	59
Connecticut Valley	0%	15%	15%	70%	27
Mass Border	3%	15%	13%	70%	87
Seacoast	10%	30%	20%	41%	55
Manchester Area	4%	29%	4%	62%	44
First Cong. Dist	5%	26%	12%	57%	149
Second Cong. Dist	2%	13%	12%	73%	139

**Favorability Rating – Lindsey Graham
(Likely 2016 GOP Primary Voters)**

LIKELY NH GOP PRIMARY VOTERS	<u>Favorable</u> 25%	<u>Neutral</u> 19%	<u>Unfavorable</u> 29%	<u>Don't Know</u> 27%	<u>(N)</u> 291
Registered Undeclared	18%	21%	35%	27%	114
Registered Republican	30%	18%	24%	27%	166
Democrat	16%	22%	57%	5%	20
Independent	26%	9%	31%	34%	31
Republican	26%	20%	25%	29%	235
Liberal	15%	16%	29%	39%	13
Moderate	20%	16%	38%	27%	114
Conservative	31%	24%	22%	23%	148
Support Tea Party	26%	21%	25%	28%	125
Neutral	25%	27%	21%	27%	84
Oppose Tea Party	26%	9%	43%	22%	73
Voted in 2008 GOP Primary	27%	21%	25%	27%	221
Voted in 2008 DEM Primary	27%	8%	57%	8%	21
Voted in 2012 GOP Primary	27%	21%	27%	25%	241
Voted in 2012 DEM Primary	19%	4%	48%	29%	20
Union household	35%	6%	27%	33%	33
Non-union	24%	20%	29%	27%	252
Read Union Leader	29%	18%	31%	22%	77
Read Boston Globe	22%	18%	30%	31%	31
Read Local Newspapers	23%	20%	31%	26%	106
Watch WMUR	24%	17%	33%	26%	178
Listen to NHPR	16%	11%	43%	29%	68
18 to 34	22%	27%	15%	36%	45
35 to 49	27%	21%	21%	31%	91
50 to 64	20%	16%	42%	22%	81
65 and over	34%	18%	31%	17%	58
Male	27%	24%	33%	16%	171
Female	22%	13%	22%	43%	120
High school or less	30%	22%	23%	25%	54
Some college	10%	23%	39%	28%	58
College graduate	28%	15%	27%	30%	137
Post-graduate	31%	23%	24%	22%	39
Attend services 1 or more/week	31%	18%	25%	26%	78
1-2 times a month	19%	17%	26%	38%	34
Less often	25%	26%	29%	20%	106
Never	23%	10%	33%	34%	65
North Country	27%	4%	28%	41%	20
Central / Lakes	15%	23%	23%	39%	59
Connecticut Valley	24%	21%	34%	21%	27
Mass Border	35%	16%	32%	18%	87
Seacoast	24%	21%	28%	27%	56
Manchester Area	20%	26%	27%	27%	43
First Cong. Dist	20%	23%	25%	32%	148
Second Cong. Dist	29%	16%	32%	23%	139

**Favorability Rating – Mike Huckabee
(Likely 2016 GOP Primary Voters)**

LIKELY NH GOP PRIMARY VOTERS	<u>Favorable</u> 45%	<u>Neutral</u> 18%	<u>Unfavorable</u> 32%	<u>Don't Know</u> 5%	<u>(N)</u> 292
Registered Undeclared	41%	22%	32%	4%	114
Registered Republican	48%	14%	32%	6%	166
Democrat	13%	20%	66%	1%	20
Independent	45%	19%	36%	0%	31
Republican	48%	18%	28%	7%	236
Liberal	49%	18%	31%	2%	13
Moderate	44%	12%	38%	6%	114
Conservative	48%	22%	27%	4%	149
Support Tea Party	41%	20%	32%	7%	125
Neutral	54%	22%	18%	7%	84
Oppose Tea Party	38%	12%	50%	1%	73
Voted in 2008 GOP Primary	46%	20%	28%	5%	222
Voted in 2008 DEM Primary	30%	7%	63%	0%	21
Voted in 2012 GOP Primary	44%	20%	31%	5%	242
Voted in 2012 DEM Primary	50%	5%	45%	0%	20
Union household	56%	14%	23%	8%	33
Non-union	43%	18%	34%	5%	253
Read Union Leader	51%	20%	27%	2%	78
Read Boston Globe	29%	13%	56%	2%	31
Read Local Newspapers	38%	25%	26%	10%	106
Watch WMUR	42%	19%	35%	4%	179
Listen to NHPR	33%	15%	47%	4%	68
18 to 34	27%	27%	40%	6%	45
35 to 49	52%	17%	24%	8%	92
50 to 64	45%	17%	33%	4%	81
65 and over	47%	14%	34%	5%	58
Male	42%	19%	38%	1%	172
Female	49%	16%	23%	11%	120
High school or less	40%	21%	37%	2%	54
Some college	38%	22%	30%	11%	58
College graduate	48%	16%	30%	6%	138
Post-graduate	47%	16%	34%	3%	39
Attend services 1 or more/week	63%	18%	13%	6%	78
1-2 times a month	34%	14%	37%	15%	34
Less often	38%	20%	40%	3%	106
Never	40%	17%	39%	4%	66
North Country	45%	16%	29%	11%	20
Central / Lakes	36%	25%	23%	15%	59
Connecticut Valley	43%	16%	40%	0%	27
Mass Border	48%	20%	30%	2%	87
Seacoast	50%	18%	27%	5%	56
Manchester Area	43%	6%	50%	0%	44
First Cong. Dist	42%	15%	36%	7%	149
Second Cong. Dist	46%	22%	29%	3%	139

**Favorability Rating – Bobby Jindal
(Likely 2016 GOP Primary Voters)**

LIKELY NH GOP PRIMARY VOTERS	Favorable	Neutral	Unfavorable	Don't Know	(N)
	32%	13%	21%	34%	293
Registered Undeclared	30%	13%	22%	35%	114
Registered Republican	33%	14%	20%	33%	166
Democrat	18%	16%	51%	14%	20
Independent	29%	8%	15%	48%	31
Republican	32%	13%	20%	35%	237
Liberal	22%	22%	16%	39%	13
Moderate	26%	9%	27%	38%	114
Conservative	39%	16%	17%	28%	149
Support Tea Party	48%	8%	14%	30%	126
Neutral	22%	21%	20%	37%	84
Oppose Tea Party	13%	14%	37%	36%	73
Voted in 2008 GOP Primary	35%	15%	17%	33%	223
Voted in 2008 DEM Primary	16%	4%	48%	32%	21
Voted in 2012 GOP Primary	35%	14%	21%	30%	243
Voted in 2012 DEM Primary	5%	18%	21%	56%	20
Union household	27%	3%	29%	41%	33
Non-union	32%	13%	21%	34%	253
Read Union Leader	45%	12%	14%	29%	78
Read Boston Globe	46%	5%	22%	27%	31
Read Local Newspapers	34%	11%	22%	32%	107
Watch WMUR	32%	10%	25%	33%	179
Listen to NHPR	26%	8%	31%	35%	68
18 to 34	21%	3%	32%	44%	45
35 to 49	31%	20%	9%	40%	92
50 to 64	42%	8%	21%	29%	81
65 and over	32%	13%	33%	22%	58
Male	37%	14%	26%	23%	173
Female	25%	11%	14%	51%	120
High school or less	22%	12%	35%	31%	54
Some college	28%	18%	22%	32%	58
College graduate	37%	11%	17%	35%	138
Post-graduate	28%	14%	18%	40%	39
Attend services 1 or more/week	35%	15%	15%	35%	78
1-2 times a month	41%	11%	17%	30%	34
Less often	27%	13%	27%	33%	106
Never	31%	11%	22%	37%	67
North Country	32%	8%	29%	31%	20
Central / Lakes	28%	14%	15%	43%	59
Connecticut Valley	43%	5%	28%	24%	27
Mass Border	36%	9%	21%	34%	87
Seacoast	16%	28%	23%	33%	56
Manchester Area	42%	8%	19%	32%	44
First Cong. Dist	24%	17%	22%	37%	150
Second Cong. Dist	41%	9%	20%	30%	139

**Favorability Rating – John Kasich
(Likely 2016 GOP Primary Voters)**

LIKELY NH GOP PRIMARY VOTERS	<u>Favorable</u> 20%	<u>Neutral</u> 14%	<u>Unfavorable</u> 17%	<u>Don't Know</u> 49%	<u>(N)</u> 292
Registered Undeclared	17%	15%	16%	52%	114
Registered Republican	23%	15%	18%	44%	166
Democrat	13%	22%	48%	17%	20
Independent	11%	10%	24%	56%	31
Republican	21%	14%	13%	51%	236
Liberal	21%	18%	11%	50%	13
Moderate	20%	11%	16%	53%	113
Conservative	21%	18%	18%	43%	149
Support Tea Party	24%	10%	20%	46%	125
Neutral	15%	21%	11%	52%	84
Oppose Tea Party	18%	16%	20%	46%	72
Voted in 2008 GOP Primary	21%	16%	15%	48%	222
Voted in 2008 DEM Primary	15%	12%	30%	43%	21
Voted in 2012 GOP Primary	22%	15%	18%	45%	242
Voted in 2012 DEM Primary	4%	21%	16%	60%	20
Union household	10%	3%	18%	68%	33
Non-union	21%	15%	17%	47%	252
Read Union Leader	22%	10%	15%	53%	78
Read Boston Globe	16%	4%	17%	63%	31
Read Local Newspapers	22%	11%	15%	52%	106
Watch WMUR	23%	11%	15%	51%	179
Listen to NHPR	19%	11%	17%	53%	68
18 to 34	14%	5%	26%	55%	45
35 to 49	14%	21%	9%	56%	92
50 to 64	19%	11%	19%	52%	81
65 and over	35%	16%	20%	29%	57
Male	24%	16%	22%	38%	172
Female	14%	12%	10%	64%	119
High school or less	21%	12%	24%	43%	54
Some college	16%	23%	17%	44%	58
College graduate	22%	13%	14%	51%	138
Post-graduate	14%	10%	20%	55%	39
Attend services 1 or more/week	16%	17%	21%	47%	78
1-2 times a month	11%	22%	11%	57%	34
Less often	25%	13%	17%	45%	105
Never	19%	13%	16%	52%	66
North Country	19%	9%	18%	55%	20
Central / Lakes	22%	16%	10%	52%	59
Connecticut Valley	31%	17%	12%	40%	27
Mass Border	18%	6%	17%	59%	87
Seacoast	22%	29%	16%	33%	56
Manchester Area	13%	12%	29%	46%	44
First Cong. Dist	19%	17%	18%	46%	149
Second Cong. Dist	22%	12%	15%	51%	139

**Favorability Rating – Peter King
(Likely 2016 GOP Primary Voters)**

LIKELY NH GOP PRIMARY VOTERS	<u>Favorable</u> 8%	<u>Neutral</u> 16%	<u>Unfavorable</u> 26%	<u>Don't Know</u> 51%	<u>(N)</u> 292
Registered Undeclared	11%	19%	19%	52%	114
Registered Republican	6%	15%	32%	48%	166
Democrat	16%	18%	33%	34%	20
Independent	0%	10%	31%	58%	31
Republican	8%	17%	24%	51%	237
Liberal	33%	12%	22%	33%	13
Moderate	6%	9%	28%	57%	114
Conservative	8%	23%	26%	44%	149
Support Tea Party	9%	13%	29%	49%	126
Neutral	5%	24%	19%	52%	84
Oppose Tea Party	10%	12%	30%	48%	73
Voted in 2008 GOP Primary	8%	19%	24%	49%	223
Voted in 2008 DEM Primary	2%	8%	45%	46%	21
Voted in 2012 GOP Primary	8%	18%	28%	47%	243
Voted in 2012 DEM Primary	16%	17%	14%	53%	20
Union household	0%	7%	26%	67%	33
Non-union	9%	16%	26%	49%	253
Read Union Leader	9%	15%	27%	49%	78
Read Boston Globe	9%	7%	25%	59%	31
Read Local Newspapers	8%	16%	22%	55%	107
Watch WMUR	9%	15%	24%	52%	179
Listen to NHPR	12%	11%	24%	53%	68
18 to 34	5%	8%	26%	61%	45
35 to 49	8%	22%	16%	55%	92
50 to 64	9%	10%	28%	53%	81
65 and over	11%	19%	39%	31%	58
Male	10%	18%	34%	39%	173
Female	4%	14%	14%	68%	120
High school or less	5%	12%	39%	45%	54
Some college	8%	24%	21%	48%	58
College graduate	9%	18%	21%	52%	138
Post-graduate	7%	6%	31%	56%	39
Attend services 1 or more/week	7%	21%	26%	46%	78
1-2 times a month	4%	14%	20%	62%	34
Less often	6%	17%	28%	48%	106
Never	13%	9%	26%	51%	67
North Country	11%	9%	29%	52%	20
Central / Lakes	4%	16%	22%	58%	59
Connecticut Valley	13%	25%	27%	35%	27
Mass Border	11%	9%	23%	57%	87
Seacoast	4%	32%	22%	42%	56
Manchester Area	6%	8%	40%	46%	44
First Cong. Dist	8%	20%	24%	49%	150
Second Cong. Dist	7%	13%	28%	52%	139

**Favorability Rating – George Pataki
(Likely 2016 GOP Primary Voters)**

LIKELY NH GOP PRIMARY VOTERS	<u>Favorable</u> 22%	<u>Neutral</u> 21%	<u>Unfavorable</u> 32%	<u>Don't Know</u> 25%	<u>(N)</u> 291
Registered Undeclared	25%	20%	35%	20%	114
Registered Republican	19%	23%	31%	27%	166
Democrat	15%	40%	34%	11%	20
Independent	18%	15%	30%	37%	31
Republican	23%	20%	32%	25%	236
Liberal	20%	18%	22%	39%	13
Moderate	25%	20%	28%	27%	114
Conservative	20%	24%	35%	21%	149
Support Tea Party	19%	16%	37%	28%	125
Neutral	20%	26%	29%	25%	84
Oppose Tea Party	28%	25%	27%	20%	73
Voted in 2008 GOP Primary	24%	20%	36%	21%	222
Voted in 2008 DEM Primary	17%	22%	28%	33%	21
Voted in 2012 GOP Primary	24%	22%	33%	21%	242
Voted in 2012 DEM Primary	6%	25%	34%	35%	20
Union household	22%	3%	33%	42%	33
Non-union	22%	22%	33%	23%	253
Read Union Leader	26%	20%	36%	18%	78
Read Boston Globe	28%	15%	32%	25%	31
Read Local Newspapers	25%	21%	36%	18%	106
Watch WMUR	25%	19%	31%	25%	178
Listen to NHPR	22%	21%	36%	21%	68
18 to 34	9%	23%	14%	53%	45
35 to 49	24%	25%	32%	20%	92
50 to 64	23%	19%	43%	16%	81
65 and over	26%	18%	34%	22%	58
Male	28%	22%	33%	17%	172
Female	12%	21%	31%	36%	120
High school or less	29%	25%	15%	30%	54
Some college	17%	24%	38%	22%	58
College graduate	22%	19%	34%	24%	138
Post-graduate	17%	18%	40%	26%	38
Attend services 1 or more/week	16%	17%	40%	27%	78
1-2 times a month	18%	18%	30%	34%	34
Less often	23%	27%	29%	21%	106
Never	25%	20%	29%	26%	66
North Country	24%	24%	28%	24%	20
Central / Lakes	29%	14%	35%	22%	59
Connecticut Valley	9%	21%	33%	37%	27
Mass Border	19%	17%	41%	24%	87
Seacoast	14%	33%	22%	30%	55
Manchester Area	33%	24%	27%	16%	44
First Cong. Dist	21%	26%	28%	24%	149
Second Cong. Dist	22%	16%	38%	24%	139

**Favorability Rating – Rand Paul
(Likely 2016 GOP Primary Voters)**

LIKELY NH GOP PRIMARY VOTERS	<u>Favorable</u>	<u>Neutral</u>	<u>Unfavorable</u>	<u>Don't Know</u>	<u>(N)</u>
	51%	11%	31%	6%	292
Registered Undeclared	54%	14%	28%	4%	114
Registered Republican	49%	9%	34%	7%	166
Democrat	22%	3%	74%	1%	20
Independent	43%	8%	45%	5%	31
Republican	55%	12%	26%	7%	236
Liberal	21%	16%	37%	26%	13
Moderate	50%	11%	33%	6%	114
Conservative	58%	6%	30%	6%	149
Support Tea Party	64%	8%	23%	6%	125
Neutral	45%	20%	25%	9%	84
Oppose Tea Party	36%	6%	53%	5%	73
Voted in 2008 GOP Primary	53%	13%	29%	5%	222
Voted in 2008 DEM Primary	15%	1%	81%	2%	21
Voted in 2012 GOP Primary	52%	12%	30%	5%	242
Voted in 2012 DEM Primary	15%	5%	65%	16%	20
Union household	42%	6%	40%	11%	33
Non-union	52%	12%	30%	6%	253
Read Union Leader	52%	9%	33%	6%	78
Read Boston Globe	52%	5%	40%	3%	31
Read Local Newspapers	51%	11%	31%	7%	106
Watch WMUR	46%	11%	35%	8%	179
Listen to NHPR	49%	9%	29%	12%	68
18 to 34	59%	15%	26%	0%	45
35 to 49	63%	12%	16%	9%	92
50 to 64	47%	9%	35%	9%	81
65 and over	35%	8%	51%	6%	58
Male	58%	10%	31%	2%	172
Female	42%	13%	31%	13%	120
High school or less	44%	14%	34%	7%	54
Some college	60%	11%	24%	6%	58
College graduate	50%	11%	31%	8%	138
Post-graduate	57%	6%	36%	1%	39
Attend services 1 or more/week	49%	16%	30%	5%	78
1-2 times a month	62%	8%	19%	12%	34
Less often	54%	12%	31%	4%	106
Never	47%	4%	39%	10%	66
North Country	31%	2%	53%	13%	20
Central / Lakes	43%	25%	22%	10%	59
Connecticut Valley	37%	8%	40%	15%	27
Mass Border	61%	9%	28%	2%	87
Seacoast	56%	7%	35%	2%	56
Manchester Area	56%	9%	28%	7%	44
First Cong. Dist	55%	8%	30%	7%	149
Second Cong. Dist	47%	14%	32%	6%	139

**Favorability Rating – Rick Perry
(Likely 2016 GOP Primary Voters)**

LIKELY NH GOP PRIMARY VOTERS	<u>Favorable</u> 40%	<u>Neutral</u> 15%	<u>Unfavorable</u> 35%	<u>Don't Know</u> 10%	<u>(N)</u> 292
Registered Undeclared	39%	14%	36%	11%	114
Registered Republican	42%	15%	33%	10%	166
Democrat	12%	17%	71%	0%	20
Independent	25%	16%	33%	26%	31
Republican	44%	15%	32%	9%	236
Liberal	21%	24%	29%	26%	13
Moderate	31%	11%	48%	10%	113
Conservative	50%	15%	28%	7%	149
Support Tea Party	48%	16%	29%	8%	125
Neutral	48%	19%	24%	9%	84
Oppose Tea Party	18%	9%	57%	16%	72
Voted in 2008 GOP Primary	44%	14%	31%	10%	222
Voted in 2008 DEM Primary	13%	7%	58%	21%	21
Voted in 2012 GOP Primary	43%	15%	34%	8%	242
Voted in 2012 DEM Primary	3%	16%	36%	45%	20
Union household	38%	8%	30%	24%	33
Non-union	41%	14%	36%	9%	252
Read Union Leader	32%	14%	38%	17%	78
Read Boston Globe	13%	13%	67%	6%	31
Read Local Newspapers	36%	17%	33%	13%	106
Watch WMUR	41%	10%	38%	10%	179
Listen to NHPR	25%	11%	48%	15%	68
18 to 34	18%	24%	47%	11%	45
35 to 49	42%	18%	30%	10%	92
50 to 64	42%	10%	35%	13%	81
65 and over	53%	12%	28%	7%	57
Male	39%	14%	44%	3%	172
Female	41%	16%	22%	21%	119
High school or less	45%	11%	36%	7%	54
Some college	49%	20%	26%	5%	58
College graduate	38%	15%	36%	11%	138
Post-graduate	25%	11%	44%	20%	39
Attend services 1 or more/week	43%	25%	23%	8%	78
1-2 times a month	34%	15%	43%	8%	34
Less often	39%	11%	38%	11%	105
Never	42%	9%	37%	12%	66
North Country	59%	3%	29%	9%	20
Central / Lakes	32%	19%	31%	17%	59
Connecticut Valley	51%	14%	22%	13%	27
Mass Border	46%	12%	32%	10%	87
Seacoast	36%	24%	39%	2%	56
Manchester Area	27%	10%	54%	9%	44
First Cong. Dist	41%	12%	39%	7%	149
Second Cong. Dist	37%	18%	32%	14%	139

**Favorability Rating – Marco Rubio
(Likely 2016 GOP Primary Voters)**

LIKELY NH GOP PRIMARY VOTERS	<u>Favorable</u> 60%	<u>Neutral</u> 11%	<u>Unfavorable</u> 16%	<u>Don't Know</u> 12%	<u>(N)</u> 292
Registered Undeclared	64%	14%	14%	8%	114
Registered Republican	60%	8%	19%	14%	166
Democrat	30%	24%	45%	1%	20
Independent	33%	13%	34%	20%	31
Republican	66%	10%	12%	13%	236
Liberal	65%	16%	16%	3%	13
Moderate	54%	9%	21%	16%	114
Conservative	65%	13%	14%	8%	149
Support Tea Party	68%	4%	15%	13%	125
Neutral	57%	21%	7%	15%	84
Oppose Tea Party	49%	12%	31%	8%	73
Voted in 2008 GOP Primary	65%	11%	12%	12%	222
Voted in 2008 DEM Primary	37%	6%	53%	4%	21
Voted in 2012 GOP Primary	64%	11%	15%	10%	242
Voted in 2012 DEM Primary	24%	15%	48%	12%	20
Union household	57%	6%	16%	22%	33
Non-union	60%	12%	17%	12%	253
Read Union Leader	59%	6%	20%	16%	78
Read Boston Globe	65%	10%	22%	3%	31
Read Local Newspapers	56%	10%	18%	16%	106
Watch WMUR	55%	12%	21%	12%	179
Listen to NHPR	49%	10%	26%	15%	68
18 to 34	50%	8%	26%	16%	45
35 to 49	69%	16%	6%	9%	92
50 to 64	57%	5%	21%	17%	81
65 and over	61%	11%	19%	10%	58
Male	65%	12%	19%	4%	172
Female	54%	9%	13%	24%	120
High school or less	48%	15%	24%	13%	54
Some college	53%	13%	13%	21%	58
College graduate	71%	8%	12%	9%	138
Post-graduate	46%	11%	29%	14%	39
Attend services 1 or more/week	74%	10%	6%	10%	78
1-2 times a month	52%	11%	19%	19%	34
Less often	57%	9%	22%	12%	106
Never	54%	15%	19%	12%	66
North Country	62%	16%	6%	16%	20
Central / Lakes	50%	15%	7%	28%	59
Connecticut Valley	51%	8%	35%	6%	27
Mass Border	62%	8%	22%	8%	87
Seacoast	69%	17%	5%	9%	56
Manchester Area	64%	2%	26%	8%	44
First Cong. Dist	63%	12%	13%	11%	149
Second Cong. Dist	56%	10%	20%	14%	139

**Favorability Rating – Rick Santorum
(Likely 2016 GOP Primary Voters)**

LIKELY NH GOP PRIMARY VOTERS	<u>Favorable</u>	<u>Neutral</u>	<u>Unfavorable</u>	<u>Don't Know</u>	<u>(N)</u>
	35%	15%	37%	14%	292
Registered Undeclared	28%	15%	47%	10%	114
Registered Republican	40%	14%	29%	16%	166
Democrat	13%	5%	81%	1%	20
Independent	24%	18%	33%	25%	31
Republican	38%	15%	33%	14%	236
Liberal	12%	40%	31%	17%	13
Moderate	29%	12%	49%	10%	114
Conservative	42%	16%	27%	15%	149
Support Tea Party	45%	14%	30%	11%	125
Neutral	32%	22%	24%	22%	84
Oppose Tea Party	21%	9%	59%	10%	73
Voted in 2008 GOP Primary	37%	14%	36%	13%	222
Voted in 2008 DEM Primary	10%	9%	59%	22%	21
Voted in 2012 GOP Primary	38%	15%	34%	13%	242
Voted in 2012 DEM Primary	10%	20%	52%	19%	20
Union household	36%	10%	34%	19%	33
Non-union	35%	14%	37%	14%	253
Read Union Leader	27%	18%	39%	16%	78
Read Boston Globe	20%	10%	59%	11%	31
Read Local Newspapers	33%	12%	41%	14%	106
Watch WMUR	29%	14%	41%	16%	179
Listen to NHPR	30%	10%	54%	6%	68
18 to 34	42%	3%	37%	18%	45
35 to 49	25%	26%	39%	9%	92
50 to 64	43%	9%	32%	17%	81
65 and over	33%	12%	40%	15%	58
Male	32%	18%	42%	8%	172
Female	38%	10%	29%	23%	120
High school or less	33%	16%	34%	16%	54
Some college	33%	19%	32%	16%	58
College graduate	39%	13%	35%	12%	138
Post-graduate	24%	12%	49%	16%	39
Attend services 1 or more/week	58%	8%	24%	10%	78
1-2 times a month	21%	24%	43%	12%	34
Less often	30%	17%	38%	15%	106
Never	22%	15%	46%	17%	66
North Country	41%	12%	32%	15%	20
Central / Lakes	27%	20%	37%	17%	59
Connecticut Valley	17%	19%	54%	9%	27
Mass Border	41%	7%	35%	17%	87
Seacoast	31%	20%	41%	7%	56
Manchester Area	45%	13%	26%	16%	44
First Cong. Dist	32%	16%	38%	14%	149
Second Cong. Dist	37%	13%	36%	14%	139

**Favorability Rating – Donald Trump
(Likely 2016 GOP Primary Voters)**

LIKELY NH GOP PRIMARY VOTERS	<u>Favorable</u> 27%	<u>Neutral</u> 13%	<u>Unfavorable</u> 56%	<u>Don't Know</u> 5%	<u>(N)</u> 292
Registered Undeclared	31%	9%	54%	5%	114
Registered Republican	22%	15%	59%	4%	166
Democrat	16%	4%	74%	6%	20
Independent	22%	7%	59%	11%	31
Republican	28%	14%	54%	4%	236
Liberal	39%	6%	55%	0%	13
Moderate	19%	9%	67%	5%	114
Conservative	31%	15%	50%	3%	149
Support Tea Party	28%	15%	55%	2%	125
Neutral	30%	17%	46%	6%	84
Oppose Tea Party	15%	3%	75%	8%	73
Voted in 2008 GOP Primary	27%	15%	55%	4%	222
Voted in 2008 DEM Primary	13%	2%	62%	24%	21
Voted in 2012 GOP Primary	26%	14%	56%	4%	242
Voted in 2012 DEM Primary	23%	3%	55%	19%	20
Union household	22%	6%	58%	13%	33
Non-union	27%	14%	55%	4%	253
Read Union Leader	20%	17%	55%	7%	78
Read Boston Globe	26%	22%	50%	2%	31
Read Local Newspapers	29%	8%	56%	7%	106
Watch WMUR	25%	12%	57%	5%	179
Listen to NHPR	21%	10%	68%	2%	68
18 to 34	12%	37%	43%	8%	45
35 to 49	31%	5%	57%	6%	92
50 to 64	23%	12%	63%	2%	81
65 and over	31%	7%	56%	6%	58
Male	30%	8%	60%	2%	172
Female	22%	19%	51%	8%	120
High school or less	40%	15%	45%	1%	54
Some college	18%	9%	69%	4%	58
College graduate	28%	14%	52%	5%	138
Post-graduate	13%	8%	68%	11%	38
Attend services 1 or more/week	25%	17%	52%	6%	78
1-2 times a month	29%	20%	47%	4%	34
Less often	22%	10%	62%	5%	106
Never	34%	8%	55%	3%	66
North Country	32%	4%	54%	11%	20
Central / Lakes	20%	17%	56%	7%	59
Connecticut Valley	27%	2%	67%	3%	27
Mass Border	29%	12%	54%	6%	87
Seacoast	29%	13%	56%	2%	56
Manchester Area	26%	19%	54%	1%	44
First Cong. Dist	26%	15%	54%	5%	149
Second Cong. Dist	26%	11%	58%	4%	139

**Favorability Rating – Scott Walker
(Likely 2016 GOP Primary Voters)**

LIKELY NH GOP PRIMARY VOTERS	Favorable	Neutral	Unfavorable	Don't Know	(N)
	50%	11%	14%	26%	293
Registered Undeclared	48%	10%	14%	27%	114
Registered Republican	52%	11%	13%	24%	166
Democrat	25%	12%	53%	10%	20
Independent	36%	2%	14%	48%	31
Republican	53%	11%	11%	25%	237
Liberal	28%	16%	16%	39%	13
Moderate	42%	7%	23%	28%	114
Conservative	60%	13%	6%	21%	149
Support Tea Party	68%	8%	6%	17%	126
Neutral	45%	16%	4%	35%	84
Oppose Tea Party	26%	9%	39%	26%	73
Voted in 2008 GOP Primary	55%	13%	11%	21%	223
Voted in 2008 DEM Primary	34%	7%	30%	29%	21
Voted in 2012 GOP Primary	55%	12%	13%	21%	243
Voted in 2012 DEM Primary	5%	12%	31%	52%	20
Union household	44%	5%	14%	37%	33
Non-union	51%	10%	14%	25%	253
Read Union Leader	57%	6%	12%	26%	78
Read Boston Globe	61%	6%	20%	13%	31
Read Local Newspapers	50%	9%	15%	26%	107
Watch WMUR	50%	10%	16%	24%	179
Listen to NHPR	43%	5%	29%	23%	68
18 to 34	36%	3%	27%	34%	45
35 to 49	42%	19%	9%	30%	92
50 to 64	57%	7%	13%	23%	81
65 and over	61%	8%	12%	18%	58
Male	55%	12%	20%	13%	173
Female	41%	9%	5%	45%	120
High school or less	44%	13%	22%	21%	54
Some college	46%	14%	11%	29%	58
College graduate	56%	8%	10%	25%	138
Post-graduate	38%	12%	19%	31%	39
Attend services 1 or more/week	53%	11%	8%	28%	78
1-2 times a month	52%	19%	9%	21%	34
Less often	46%	10%	18%	25%	106
Never	52%	6%	17%	26%	67
North Country	56%	2%	9%	34%	20
Central / Lakes	35%	14%	13%	38%	59
Connecticut Valley	55%	12%	7%	25%	27
Mass Border	60%	4%	13%	22%	87
Seacoast	41%	25%	10%	24%	56
Manchester Area	54%	4%	26%	15%	44
First Cong. Dist	43%	15%	17%	25%	150
Second Cong. Dist	58%	6%	11%	25%	139

**Decided 2016 GOP Primary Vote
(Likely 2016 GOP Primary Voters)**

	Def. <u>Decided</u>	Leaning <u>Towards Someone</u>	Still Trying <u>To Decide</u>	(N)
LIKELY NH GOP PRIMARY VOTERS	5%	17%	78%	291
Registered Undeclared	3%	13%	85%	114
Registered Republican	6%	19%	75%	166
Democrat	5%	24%	71%	20
Independent	6%	15%	78%	31
Republican	5%	17%	79%	235
Liberal	12%	0%	88%	13
Moderate	5%	16%	79%	113
Conservative	4%	20%	75%	149
Support Tea Party	5%	21%	74%	126
Neutral	2%	9%	89%	83
Oppose Tea Party	8%	18%	74%	73
Voted in 2008 GOP Primary	5%	19%	76%	223
Voted in 2008 DEM Primary	1%	16%	83%	21
Voted in 2012 GOP Primary	5%	17%	78%	243
Voted in 2012 DEM Primary	1%	14%	84%	20
Union household	5%	40%	56%	33
Non-union	5%	14%	81%	252
Read Union Leader	7%	16%	77%	78
Read Boston Globe	12%	10%	78%	31
Read Local Newspapers	5%	15%	80%	105
Watch WMUR	5%	22%	72%	178
Listen to NHPR	8%	10%	82%	68
18 to 34	8%	12%	80%	45
35 to 49	2%	16%	82%	92
50 to 64	3%	19%	78%	79
65 and over	8%	17%	75%	58
Male	3%	21%	75%	173
Female	6%	11%	82%	118
High school or less	8%	23%	69%	54
Some college	4%	16%	80%	58
College graduate	4%	18%	78%	137
Post-graduate	4%	7%	89%	39
Attend services 1 or more/week	5%	15%	80%	78
1-2 times a month	13%	8%	78%	34
Less often	2%	15%	84%	104
Never	5%	27%	68%	67
North Country	15%	16%	69%	20
Central / Lakes	1%	18%	81%	58
Connecticut Valley	6%	22%	72%	27
Mass Border	4%	17%	79%	87
Seacoast	1%	15%	84%	56
Manchester Area	10%	17%	73%	44
First Cong. Dist	5%	17%	78%	150
Second Cong. Dist	4%	17%	79%	138

**GOP 2016 Primary Support
(Likely 2016 GOP Primary Voters)**

	Jeb <u>Bush</u>	Marco <u>Rubio</u>	Scott <u>Walker</u>	Rand <u>Paul</u>	Ted <u>Cruz</u>	Donald <u>Trump</u>	Someone <u>Else</u>	<u>Undecided</u>	<u>(N=)</u>
LIKELY NH GOP PRIMARY VOTERS	15%	12%	11%	10%	6%	5%	27%	14%	293
Registered Undeclared	15%	12%	7%	7%	1%	8%	34%	16%	114
Registered Republican	16%	12%	15%	11%	9%	2%	23%	12%	166
Democrat	37%	5%	6%	5%	0%	6%	37%	4%	20
Independent	28%	6%	7%	16%	9%	8%	17%	9%	31
Republican	12%	13%	12%	10%	6%	4%	28%	15%	237
Liberal	8%	0%	6%	0%	0%	3%	44%	39%	13
Moderate	25%	8%	7%	13%	0%	2%	34%	11%	114
Conservative	8%	17%	15%	10%	11%	8%	19%	12%	149
Support Tea Party	7%	13%	19%	16%	9%	1%	22%	13%	126
Neutral	19%	10%	6%	9%	6%	10%	25%	15%	84
Oppose Tea Party	26%	13%	3%	3%	0%	5%	35%	15%	73
Voted in 2008 GOP Primary	15%	14%	13%	8%	7%	4%	26%	13%	223
Voted in 2008 DEM Primary	39%	7%	3%	4%	0%	8%	34%	5%	21
Voted in 2012 GOP Primary	14%	13%	12%	10%	6%	4%	26%	13%	243
Voted in 2012 DEM Primary	43%	2%	0%	0%	0%	5%	32%	17%	20
Union household	31%	12%	10%	5%	0%	0%	31%	11%	33
Non-union	13%	12%	11%	11%	6%	6%	27%	13%	253
Read Union Leader	19%	12%	14%	13%	6%	0%	23%	13%	78
Read Boston Globe	27%	14%	12%	14%	0%	1%	17%	15%	31
Read Local Newspapers	23%	10%	11%	2%	3%	4%	33%	14%	107
Watch WMUR	20%	11%	10%	9%	1%	6%	29%	14%	179
Listen to NHPR	26%	6%	3%	10%	1%	1%	36%	16%	68
18 to 34	16%	13%	9%	24%	6%	0%	18%	15%	45
35 to 49	13%	9%	6%	7%	8%	8%	39%	9%	92
50 to 64	18%	12%	16%	12%	3%	3%	25%	12%	81
65 and over	12%	22%	13%	2%	4%	7%	19%	22%	58
Male	11%	13%	13%	11%	6%	6%	29%	10%	173
Female	21%	12%	9%	9%	4%	3%	23%	19%	120
High school or less	4%	17%	7%	15%	2%	15%	19%	19%	54
Some college	15%	6%	11%	9%	8%	2%	27%	21%	58
College graduate	14%	16%	13%	10%	5%	2%	29%	11%	138
Post-graduate	37%	3%	6%	6%	9%	3%	30%	6%	39
Attend services 1 or more/week	13%	17%	15%	1%	14%	2%	29%	9%	78
1-2 times a month	14%	11%	12%	15%	0%	6%	32%	10%	34
Less often	17%	10%	7%	15%	4%	6%	25%	17%	106
Never	14%	12%	11%	12%	2%	6%	25%	17%	67
North Country	17%	9%	16%	5%	6%	8%	27%	11%	20
Central / Lakes	22%	8%	4%	8%	2%	11%	27%	18%	59
Connecticut Valley	11%	11%	25%	0%	0%	6%	27%	20%	27
Mass Border	21%	10%	16%	9%	5%	2%	27%	11%	87
Seacoast	5%	26%	8%	3%	11%	4%	29%	14%	56
Manchester Area	10%	9%	5%	33%	7%	1%	23%	12%	44
First Cong. Dist	13%	15%	7%	13%	5%	6%	28%	12%	150
Second Cong. Dist	16%	10%	15%	7%	6%	4%	26%	16%	139

**GOP 2016 Primary – Second Choice
(Likely 2016 GOP Primary Voters)**

	<u>Marco Rubio</u>	<u>Ted Cruz</u>	<u>Rand Paul</u>	<u>Jeb Bush</u>	<u>Scott Walker</u>	<u>Someone Else</u>	<u>No Second Choice</u>	<u>Don't Know</u>	<u>(N=)</u>
LIKELY NH GOP PRIMARY VOTERS	13%	11%	11%	9%	9%	35%	5%	7%	250
Registered Undeclared	13%	12%	10%	7%	9%	32%	11%	6%	94
Registered Republican	14%	11%	12%	10%	9%	35%	1%	8%	147
Democrat	11%	0%	12%	7%	9%	29%	24%	9%	19
Independent	0%	2%	16%	3%	21%	24%	10%	23%	28
Republican	15%	13%	11%	10%	7%	37%	3%	5%	198
Liberal	5%	0%	0%	14%	9%	33%	8%	30%	8
Moderate	10%	9%	13%	12%	7%	32%	5%	11%	100
Conservative	15%	12%	11%	7%	11%	39%	4%	3%	131
Support Tea Party	12%	20%	4%	5%	14%	42%	0%	3%	109
Neutral	18%	3%	10%	12%	5%	37%	10%	6%	72
Oppose Tea Party	9%	5%	27%	9%	5%	19%	11%	15%	59
Voted in 2008 GOP Primary	16%	12%	10%	8%	9%	35%	4%	5%	192
Voted in 2008 DEM Primary	10%	0%	6%	11%	11%	27%	15%	19%	20
Voted in 2012 GOP Primary	15%	11%	10%	8%	10%	37%	4%	4%	209
Voted in 2012 DEM Primary	0%	0%	5%	8%	0%	21%	20%	47%	16
Union household	15%	20%	2%	9%	2%	30%	1%	22%	30
Non-union	13%	10%	12%	9%	10%	35%	6%	5%	218
Read Union Leader	9%	11%	10%	7%	13%	35%	2%	13%	68
Read Boston Globe	2%	13%	9%	5%	5%	51%	11%	4%	26
Read Local Newspapers	15%	14%	12%	7%	7%	30%	7%	8%	92
Watch WMUR	16%	10%	11%	8%	9%	34%	4%	8%	153
Listen to NHPR	11%	5%	17%	5%	11%	35%	7%	10%	55
18 to 34	12%	13%	12%	6%	0%	45%	4%	9%	38
35 to 49	3%	13%	18%	11%	9%	32%	6%	7%	82
50 to 64	25%	9%	6%	5%	10%	35%	5%	4%	71
65 and over	11%	7%	8%	15%	13%	32%	6%	8%	45
Male	14%	12%	11%	9%	11%	34%	4%	4%	153
Female	13%	9%	10%	8%	5%	35%	7%	12%	97
High school or less	10%	20%	8%	8%	6%	42%	1%	4%	41
Some college	14%	15%	16%	8%	8%	24%	10%	6%	46
College graduate	12%	9%	9%	11%	10%	39%	6%	5%	123
Post-graduate	17%	1%	16%	4%	9%	29%	3%	21%	37
Attend services 1 or more/week	20%	9%	15%	8%	9%	29%	6%	3%	71
1-2 times a month	9%	19%	8%	14%	5%	41%	2%	2%	31
Less often	8%	8%	7%	10%	10%	41%	6%	10%	86
Never	11%	13%	16%	5%	10%	31%	5%	10%	55
North Country	12%	0%	15%	20%	11%	29%	0%	12%	18
Central / Lakes	16%	6%	2%	4%	8%	40%	10%	13%	48
Connecticut Valley	15%	7%	9%	10%	16%	36%	6%	0%	22
Mass Border	14%	19%	14%	8%	5%	27%	5%	8%	78
Seacoast	14%	11%	20%	12%	5%	30%	4%	4%	48
Manchester Area	8%	7%	4%	6%	17%	50%	4%	4%	36
First Cong. Dist	15%	8%	14%	11%	6%	33%	7%	6%	132
Second Cong. Dist	12%	14%	8%	6%	12%	36%	4%	8%	114

**GOP 2016 Primary – Would NOT Support
(Likely 2016 GOP Primary Voters)**

	Donald <u>Trump</u>	Chris <u>Christie</u>	Jeb <u>Bush</u>	Rand <u>Paul</u>	Ted <u>Cruz</u>	Someone <u>Else</u>	All <u>Acceptable</u>	Don't <u>Know</u>	(N=)
LIKELY NH GOP PRIMARY VOTERS	21%	13%	8%	5%	5%	21%	10%	18%	285
Registered Undeclared	21%	14%	11%	5%	3%	17%	6%	21%	111
Registered Republican	22%	12%	5%	6%	6%	23%	13%	14%	162
Democrat	25%	7%	2%	24%	12%	13%	0%	18%	20
Independent	12%	20%	22%	2%	5%	20%	15%	4%	30
Republican	22%	13%	7%	4%	4%	22%	10%	20%	230
Liberal	15%	9%	24%	0%	8%	14%	6%	24%	13
Moderate	32%	11%	5%	7%	6%	18%	11%	11%	109
Conservative	14%	16%	9%	5%	2%	22%	10%	22%	148
Support Tea Party	19%	18%	9%	2%	2%	19%	12%	19%	124
Neutral	24%	8%	4%	7%	3%	19%	9%	25%	82
Oppose Tea Party	22%	11%	11%	9%	11%	27%	5%	5%	70
Voted in 2008 GOP Primary	22%	13%	5%	5%	5%	21%	9%	19%	215
Voted in 2008 DEM Primary	14%	26%	8%	13%	11%	10%	3%	15%	21
Voted in 2012 GOP Primary	21%	13%	6%	5%	5%	21%	9%	19%	235
Voted in 2012 DEM Primary	13%	20%	21%	12%	10%	20%	0%	3%	20
Union household	29%	28%	8%	0%	0%	27%	7%	1%	33
Non-union	20%	11%	8%	6%	5%	19%	10%	21%	247
Read Union Leader	20%	17%	9%	7%	9%	20%	8%	10%	78
Read Boston Globe	14%	14%	5%	9%	13%	17%	20%	8%	31
Read Local Newspapers	18%	15%	6%	4%	6%	24%	10%	16%	106
Watch WMUR	21%	18%	6%	6%	6%	15%	8%	20%	173
Listen to NHPR	25%	11%	13%	10%	12%	19%	5%	5%	65
18 to 34	17%	15%	2%	0%	5%	18%	21%	22%	45
35 to 49	26%	14%	10%	1%	2%	27%	10%	11%	90
50 to 64	19%	12%	13%	8%	8%	18%	6%	15%	78
65 and over	19%	12%	4%	11%	3%	18%	7%	25%	57
Male	24%	14%	6%	6%	5%	23%	9%	12%	166
Female	16%	11%	11%	5%	4%	18%	11%	26%	119
High school or less	6%	23%	6%	4%	5%	24%	4%	28%	51
Some college	36%	7%	6%	6%	3%	22%	7%	13%	58
College graduate	21%	12%	10%	4%	6%	18%	13%	16%	135
Post-graduate	16%	14%	4%	10%	3%	24%	10%	19%	38
Attend services 1 or more/week	21%	7%	8%	6%	3%	21%	10%	25%	78
1-2 times a month	23%	10%	8%	6%	2%	17%	20%	14%	34
Less often	19%	17%	5%	5%	4%	26%	7%	15%	101
Never	20%	16%	13%	4%	7%	16%	8%	16%	65
North Country	13%	19%	9%	15%	1%	17%	9%	17%	18
Central / Lakes	29%	7%	6%	2%	1%	21%	10%	24%	58
Connecticut Valley	15%	30%	12%	5%	2%	17%	0%	19%	26
Mass Border	17%	17%	9%	4%	8%	20%	11%	14%	87
Seacoast	25%	4%	3%	5%	5%	21%	12%	25%	55
Manchester Area	18%	11%	12%	8%	6%	26%	10%	9%	41
First Cong. Dist	22%	9%	6%	6%	5%	23%	12%	16%	146
Second Cong. Dist	21%	16%	11%	5%	4%	18%	7%	19%	136

**GOP 2016 Primary Who Will Win
(Likely 2016 GOP Primary Voters)**

	Jeb <u>Bush</u>	Rand <u>Paul</u>	Marco <u>Rubio</u>	Scott <u>Walker</u>	Rick <u>Santorum</u>	Chris <u>Christie</u>	Someone <u>Else</u>	Don't <u>Know</u>	(N=)
LIKELY NH GOP PRIMARY VOTERS	24%	10%	7%	7%	3%	3%	8%	38%	289
Registered Undeclared	26%	10%	6%	8%	0%	5%	13%	33%	114
Registered Republican	25%	8%	7%	7%	5%	1%	6%	41%	165
Democrat	46%	16%	6%	4%	0%	6%	9%	13%	20
Independent	31%	11%	2%	2%	0%	0%	8%	45%	31
Republican	22%	9%	7%	8%	4%	3%	9%	39%	233
Liberal	34%	5%	3%	0%	0%	0%	0%	57%	13
Moderate	35%	14%	6%	7%	2%	2%	6%	28%	113
Conservative	17%	5%	9%	9%	4%	3%	12%	41%	147
Support Tea Party	18%	9%	7%	11%	7%	4%	8%	36%	125
Neutral	21%	8%	8%	2%	0%	1%	12%	48%	82
Oppose Tea Party	41%	12%	5%	6%	0%	3%	6%	26%	72
Voted in 2008 GOP Primary	23%	11%	7%	7%	0%	3%	9%	40%	221
Voted in 2008 DEM Primary	49%	4%	4%	2%	0%	0%	11%	30%	21
Voted in 2012 GOP Primary	23%	10%	7%	7%	2%	2%	10%	38%	241
Voted in 2012 DEM Primary	40%	4%	0%	0%	0%	6%	6%	45%	20
Union household	42%	2%	12%	2%	0%	0%	14%	27%	33
Non-union	23%	10%	6%	8%	3%	3%	8%	39%	250
Read Union Leader	29%	10%	5%	12%	0%	2%	5%	37%	77
Read Boston Globe	34%	15%	9%	3%	0%	13%	4%	23%	31
Read Local Newspapers	29%	12%	4%	5%	2%	5%	12%	31%	104
Watch WMUR	28%	12%	7%	7%	0%	2%	11%	33%	178
Listen to NHPR	37%	17%	2%	7%	0%	0%	8%	28%	67
18 to 34	12%	12%	7%	5%	19%	7%	0%	39%	45
35 to 49	26%	11%	7%	3%	0%	1%	14%	39%	90
50 to 64	29%	9%	8%	11%	0%	3%	7%	32%	80
65 and over	28%	6%	8%	10%	0%	1%	10%	38%	58
Male	26%	8%	9%	9%	3%	4%	11%	30%	170
Female	22%	12%	5%	4%	2%	1%	5%	49%	119
High school or less	20%	3%	5%	3%	11%	0%	22%	37%	52
Some college	19%	8%	10%	11%	4%	2%	8%	37%	57
College graduate	25%	13%	9%	8%	0%	3%	6%	36%	138
Post-graduate	38%	6%	0%	5%	0%	5%	0%	46%	39
Attend services 1 or more/week	27%	4%	6%	6%	0%	2%	4%	52%	78
1-2 times a month	31%	10%	5%	9%	7%	0%	7%	31%	34
Less often	23%	11%	12%	6%	6%	2%	8%	32%	103
Never	21%	13%	3%	9%	0%	5%	17%	32%	67
North Country	23%	6%	11%	9%	0%	0%	10%	41%	20
Central / Lakes	24%	18%	6%	3%	0%	0%	9%	40%	59
Connecticut Valley	28%	12%	13%	13%	0%	3%	4%	27%	26
Mass Border	22%	10%	5%	12%	0%	2%	10%	38%	86
Seacoast	16%	2%	7%	2%	5%	5%	10%	53%	56
Manchester Area	38%	8%	9%	3%	14%	4%	4%	20%	43
First Cong. Dist	19%	13%	8%	4%	6%	4%	9%	38%	148
Second Cong. Dist	29%	6%	7%	10%	0%	1%	8%	39%	137

**Satisfaction with 2016 GOP Field
(Likely 2016 GOP Primary Voters)**

	<u>Very Satisfied</u>	<u>Somewhat Satisfied</u>	<u>Somewhat Dissatisfied</u>	<u>Very Dissatisfied</u>	<u>Don't Know</u>	<u>(N)</u>
LIKELY NH GOP PRIMARY VOTERS	22%	48%	16%	8%	6%	293
Registered Undeclared	24%	46%	13%	10%	6%	114
Registered Republican	22%	49%	15%	7%	6%	166
Democrat	24%	19%	27%	31%	0%	20
Independent	17%	39%	24%	12%	8%	31
Republican	23%	52%	13%	6%	6%	237
Liberal	37%	18%	15%	18%	12%	13
Moderate	19%	40%	17%	16%	8%	114
Conservative	25%	57%	14%	1%	3%	149
Support Tea Party	30%	48%	11%	4%	7%	126
Neutral	13%	62%	14%	5%	5%	84
Oppose Tea Party	18%	31%	25%	20%	6%	73
Voted in 2008 GOP Primary	24%	47%	15%	8%	7%	223
Voted in 2008 DEM Primary	9%	34%	31%	25%	0%	21
Voted in 2012 GOP Primary	23%	51%	13%	7%	6%	243
Voted in 2012 DEM Primary	16%	9%	38%	25%	12%	20
Union household	15%	52%	14%	6%	13%	33
Non-union	24%	46%	16%	8%	5%	253
Read Union Leader	30%	31%	19%	9%	11%	78
Read Boston Globe	30%	19%	19%	18%	14%	31
Read Local Newspapers	19%	50%	16%	9%	7%	107
Watch WMUR	20%	47%	16%	9%	7%	179
Listen to NHPR	19%	26%	21%	19%	14%	68
18 to 34	21%	45%	19%	0%	14%	45
35 to 49	16%	56%	16%	7%	4%	92
50 to 64	24%	41%	16%	14%	5%	81
65 and over	28%	46%	12%	8%	5%	58
Male	23%	47%	16%	11%	3%	173
Female	21%	49%	15%	4%	10%	120
High school or less	13%	64%	4%	9%	11%	54
Some college	20%	50%	19%	10%	1%	58
College graduate	26%	46%	18%	4%	6%	138
Post-graduate	28%	27%	19%	17%	9%	39
Attend services 1 or more/week	29%	52%	7%	6%	6%	78
1-2 times a month	13%	50%	8%	13%	16%	34
Less often	20%	47%	20%	8%	5%	106
Never	24%	43%	21%	8%	4%	67
North Country	22%	62%	11%	2%	3%	20
Central / Lakes	17%	44%	20%	8%	11%	59
Connecticut Valley	31%	49%	12%	6%	2%	27
Mass Border	25%	50%	18%	4%	3%	87
Seacoast	20%	53%	15%	11%	1%	56
Manchester Area	23%	36%	9%	15%	16%	44
First Cong. Dist	20%	48%	18%	8%	6%	150
Second Cong. Dist	24%	48%	13%	8%	7%	139

**Most Important To Your Vote In Presidential Primary?
(Likely 2016 GOP Primary Voters)**

	<u>Jobs/ Economy</u>	<u>Health Care</u>	<u>Foreign Policy</u>	<u>Immi- gration</u>	<u>Budget/ Debt</u>	<u>Taxes</u>	<u>Social Issues</u>	<u>Other/ DK</u>	<u>(N=)</u>
LIKELY NH GOP PRIMARY VOTERS	27%	8%	22%	8%	3%	5%	2%	25%	283
Registered Undeclared	30%	13%	17%	8%	0%	6%	1%	24%	113
Registered Republican	25%	5%	26%	7%	5%	4%	2%	27%	159
Democrat	47%	9%	5%	2%	0%	0%	14%	23%	20
Independent	24%	20%	40%	0%	2%	5%	0%	9%	30
Republican	26%	7%	21%	9%	3%	5%	2%	27%	228
Liberal	46%	17%	4%	0%	0%	12%	12%	9%	13
Moderate	32%	11%	25%	2%	2%	1%	2%	25%	110
Conservative	24%	7%	22%	11%	4%	5%	2%	25%	144
Support Tea Party	30%	4%	24%	8%	1%	5%	1%	26%	121
Neutral	15%	13%	18%	14%	3%	7%	2%	28%	81
Oppose Tea Party	37%	7%	26%	0%	6%	1%	5%	19%	72
Voted in 2008 GOP Primary	23%	7%	24%	9%	3%	5%	1%	28%	215
Voted in 2008 DEM Primary	31%	11%	32%	0%	0%	0%	6%	20%	21
Voted in 2012 GOP Primary	24%	8%	22%	9%	3%	5%	1%	28%	235
Voted in 2012 DEM Primary	37%	12%	26%	0%	0%	0%	14%	11%	20
Union household	13%	12%	40%	11%	0%	3%	2%	20%	33
Non-union	30%	8%	20%	7%	3%	5%	2%	25%	244
Read Union Leader	31%	11%	26%	7%	2%	5%	2%	16%	78
Read Boston Globe	37%	0%	24%	0%	0%	16%	4%	18%	31
Read Local Newspapers	26%	13%	20%	8%	1%	6%	3%	23%	100
Watch WMUR	27%	11%	22%	9%	2%	3%	2%	24%	175
Listen to NHPR	35%	10%	19%	0%	1%	6%	5%	25%	65
18 to 34	26%	6%	27%	0%	0%	7%	3%	31%	45
35 to 49	24%	13%	18%	7%	7%	4%	2%	25%	89
50 to 64	29%	9%	19%	11%	1%	6%	4%	21%	77
65 and over	30%	4%	30%	8%	1%	3%	1%	23%	56
Male	33%	3%	21%	8%	2%	6%	1%	26%	168
Female	19%	16%	24%	7%	4%	2%	4%	23%	115
High school or less	27%	7%	17%	12%	1%	0%	0%	36%	53
Some college	27%	6%	20%	7%	1%	8%	3%	30%	56
College graduate	27%	10%	26%	8%	5%	6%	2%	18%	135
Post-graduate	32%	12%	20%	0%	0%	2%	7%	27%	37
Attend services 1 or more/week	15%	10%	26%	10%	5%	4%	2%	28%	77
1-2 times a month	35%	4%	25%	5%	0%	0%	0%	31%	32
Less often	29%	11%	24%	7%	2%	5%	2%	21%	103
Never	35%	5%	13%	6%	2%	8%	5%	25%	62
North Country	30%	11%	20%	7%	4%	0%	0%	29%	19
Central / Lakes	10%	16%	23%	20%	5%	3%	3%	21%	53
Connecticut Valley	47%	4%	17%	13%	0%	2%	4%	15%	27
Mass Border	33%	6%	22%	6%	0%	4%	3%	26%	84
Seacoast	15%	10%	24%	0%	7%	6%	3%	35%	56
Manchester Area	39%	4%	23%	2%	0%	10%	0%	22%	44
First Cong. Dist	26%	7%	22%	7%	4%	7%	1%	27%	145
Second Cong. Dist	28%	10%	22%	9%	2%	2%	4%	24%	134

**Who is the Strongest Leader?
(Likely 2016 GOP Primary Voters)**

	Jeb <u>Bush</u>	Scott <u>Walker</u>	Donald <u>Trump</u>	Rand <u>Paul</u>	Marco <u>Rubio</u>	Chris <u>Christie</u>	Someone <u>Else</u>	Don't <u>Know</u>	(N=)
LIKELY NH GOP PRIMARY VOTERS	12%	10%	9%	8%	7%	6%	20%	27%	291
Registered Undeclared	13%	9%	14%	5%	5%	6%	21%	25%	114
Registered Republican	12%	12%	5%	10%	9%	6%	19%	27%	166
Democrat	26%	6%	9%	4%	2%	18%	26%	9%	20
Independent	27%	7%	17%	7%	2%	4%	17%	19%	31
Republican	10%	11%	8%	8%	8%	6%	20%	29%	235
Liberal	11%	6%	0%	11%	0%	4%	28%	39%	13
Moderate	21%	7%	7%	8%	6%	10%	16%	25%	114
Conservative	5%	14%	11%	6%	10%	4%	23%	27%	148
Support Tea Party	5%	15%	7%	10%	7%	4%	26%	27%	126
Neutral	12%	9%	11%	5%	7%	6%	19%	32%	83
Oppose Tea Party	27%	3%	4%	7%	10%	11%	14%	23%	73
Voted in 2008 GOP Primary	10%	13%	9%	6%	8%	8%	21%	25%	222
Voted in 2008 DEM Primary	41%	6%	4%	4%	5%	4%	22%	15%	21
Voted in 2012 GOP Primary	10%	12%	9%	9%	7%	7%	20%	25%	242
Voted in 2012 DEM Primary	46%	0%	4%	0%	0%	8%	25%	17%	20
Union household	34%	6%	6%	5%	11%	0%	20%	19%	33
Non-union	10%	11%	9%	8%	7%	7%	21%	27%	252
Read Union Leader	16%	12%	3%	8%	6%	11%	20%	25%	78
Read Boston Globe	20%	6%	2%	11%	11%	1%	18%	31%	31
Read Local Newspapers	17%	12%	4%	6%	4%	8%	25%	23%	106
Watch WMUR	15%	9%	10%	6%	6%	8%	22%	24%	179
Listen to NHPR	27%	7%	0%	9%	0%	11%	19%	25%	68
18 to 34	15%	2%	0%	21%	11%	10%	9%	33%	45
35 to 49	9%	6%	17%	5%	6%	6%	26%	25%	91
50 to 64	13%	13%	5%	7%	5%	5%	23%	30%	81
65 and over	14%	17%	8%	4%	12%	4%	17%	24%	58
Male	10%	13%	9%	8%	8%	10%	22%	22%	171
Female	15%	7%	9%	8%	7%	2%	18%	34%	120
High school or less	4%	8%	14%	15%	11%	1%	21%	25%	53
Some college	17%	8%	4%	2%	2%	5%	27%	35%	58
College graduate	9%	12%	8%	8%	11%	7%	21%	24%	138
Post-graduate	29%	7%	9%	5%	0%	16%	7%	27%	39
Attend services 1 or more/week	10%	12%	14%	6%	8%	4%	18%	29%	78
1-2 times a month	19%	5%	10%	10%	3%	6%	23%	24%	34
Less often	16%	11%	7%	7%	9%	3%	21%	27%	105
Never	6%	8%	5%	10%	9%	12%	21%	28%	67
North Country	9%	20%	10%	0%	11%	3%	22%	25%	20
Central / Lakes	16%	5%	14%	8%	3%	7%	21%	26%	59
Connecticut Valley	4%	26%	6%	8%	5%	0%	12%	38%	27
Mass Border	17%	10%	6%	7%	6%	8%	25%	21%	86
Seacoast	11%	9%	11%	1%	16%	2%	20%	29%	56
Manchester Area	6%	6%	5%	21%	5%	13%	14%	31%	44
First Cong. Dist	12%	9%	10%	11%	10%	6%	17%	24%	150
Second Cong. Dist	13%	11%	6%	4%	5%	7%	24%	30%	138

**Who is the Most Believable?
(Likely 2016 GOP Primary Voters)**

	Rand <u>Paul</u>	Scott <u>Walker</u>	Mike <u>Huckabee</u>	Jeb <u>Bush</u>	Chris <u>Christie</u>	Marco <u>Rubio</u>	Someone <u>Else</u>	Don't <u>Know</u>	(N=)
LIKELY NH GOP PRIMARY VOTERS	10%	9%	9%	8%	7%	7%	26%	25%	291
Registered Undeclared	9%	6%	12%	7%	7%	5%	30%	24%	114
Registered Republican	9%	12%	5%	10%	7%	8%	24%	25%	165
Democrat	17%	7%	8%	12%	12%	9%	28%	7%	19
Independent	7%	14%	1%	19%	7%	2%	28%	23%	31
Republican	10%	9%	10%	7%	7%	6%	25%	26%	236
Liberal	0%	7%	38%	13%	9%	0%	5%	29%	12
Moderate	10%	4%	5%	12%	13%	4%	30%	21%	114
Conservative	10%	14%	9%	4%	2%	9%	25%	25%	149
Support Tea Party	13%	15%	5%	1%	6%	7%	27%	26%	125
Neutral	7%	7%	13%	10%	3%	8%	25%	28%	84
Oppose Tea Party	9%	3%	7%	19%	11%	4%	27%	19%	72
Voted in 2008 GOP Primary	8%	11%	8%	8%	8%	6%	26%	25%	221
Voted in 2008 DEM Primary	4%	4%	0%	29%	6%	11%	36%	9%	21
Voted in 2012 GOP Primary	10%	11%	8%	8%	7%	6%	26%	24%	241
Voted in 2012 DEM Primary	0%	1%	23%	23%	14%	0%	21%	17%	20
Union household	3%	6%	3%	18%	7%	15%	24%	23%	33
Non-union	11%	10%	9%	7%	7%	5%	26%	24%	252
Read Union Leader	11%	10%	2%	11%	6%	7%	28%	25%	78
Read Boston Globe	14%	6%	3%	14%	0%	3%	26%	35%	31
Read Local Newspapers	8%	7%	3%	9%	7%	5%	30%	31%	105
Watch WMUR	8%	8%	7%	10%	11%	7%	27%	22%	178
Listen to NHPR	12%	4%	10%	13%	18%	1%	29%	13%	68
18 to 34	31%	0%	3%	8%	0%	8%	12%	38%	45
35 to 49	5%	5%	12%	1%	12%	2%	41%	21%	92
50 to 64	10%	14%	10%	13%	5%	6%	23%	18%	81
65 and over	3%	14%	6%	10%	6%	14%	20%	28%	56
Male	10%	9%	7%	7%	8%	8%	33%	19%	171
Female	10%	9%	11%	10%	6%	5%	16%	33%	120
High school or less	16%	7%	10%	2%	5%	10%	25%	24%	54
Some college	5%	8%	6%	10%	12%	5%	25%	29%	58
College graduate	10%	12%	9%	7%	7%	7%	25%	23%	138
Post-graduate	9%	4%	7%	20%	4%	0%	30%	26%	38
Attend services 1 or more/week	8%	13%	14%	8%	2%	7%	26%	21%	78
1-2 times a month	10%	5%	0%	7%	14%	5%	31%	29%	34
Less often	11%	7%	8%	9%	7%	9%	24%	25%	106
Never	12%	11%	8%	6%	9%	2%	26%	25%	65
North Country	6%	19%	12%	10%	3%	4%	26%	20%	20
Central / Lakes	7%	4%	13%	8%	9%	8%	17%	35%	59
Connecticut Valley	5%	19%	17%	3%	3%	9%	33%	11%	26
Mass Border	9%	8%	5%	15%	4%	7%	35%	17%	87
Seacoast	6%	8%	9%	4%	6%	8%	23%	38%	56
Manchester Area	27%	10%	3%	5%	16%	2%	17%	19%	44
First Cong. Dist	15%	7%	9%	7%	7%	6%	22%	27%	149
Second Cong. Dist	5%	10%	8%	10%	8%	7%	29%	23%	138

**Who is the Least Honest?
(Likely 2016 GOP Primary Voters)**

	<u>Chris Christie</u>	<u>Donald Trump</u>	<u>Jeb Bush</u>	<u>Rick Perry</u>	<u>Lindsey Graham</u>	<u>Rick Santorum</u>	<u>Someone Else</u>	<u>Don't Know</u>	<u>(N=)</u>
LIKELY NH GOP PRIMARY VOTERS	18%	16%	8%	3%	2%	2%	8%	42%	287
Registered Undeclared	17%	14%	10%	3%	3%	3%	10%	39%	114
Registered Republican	19%	18%	7%	3%	2%	2%	7%	43%	162
Democrat	21%	32%	11%	0%	0%	0%	24%	13%	20
Independent	21%	4%	19%	0%	0%	0%	12%	44%	31
Republican	17%	17%	6%	4%	3%	3%	6%	45%	232
Liberal	0%	15%	30%	0%	0%	0%	19%	36%	13
Moderate	18%	15%	8%	3%	3%	3%	9%	41%	111
Conservative	22%	17%	4%	3%	2%	2%	6%	44%	147
Support Tea Party	19%	18%	6%	4%	5%	1%	8%	39%	124
Neutral	16%	14%	5%	4%	0%	0%	5%	56%	82
Oppose Tea Party	22%	18%	15%	1%	0%	4%	11%	30%	72
Voted in 2008 GOP Primary	20%	16%	4%	3%	2%	3%	7%	45%	218
Voted in 2008 DEM Primary	35%	4%	33%	0%	0%	0%	21%	6%	21
Voted in 2012 GOP Primary	20%	16%	5%	4%	2%	3%	8%	42%	238
Voted in 2012 DEM Primary	10%	17%	46%	0%	0%	0%	11%	16%	20
Union household	7%	20%	12%	0%	4%	0%	4%	52%	33
Non-union	20%	15%	7%	3%	2%	2%	8%	42%	248
Read Union Leader	23%	5%	10%	0%	5%	4%	7%	46%	76
Read Boston Globe	25%	8%	4%	10%	0%	0%	8%	45%	31
Read Local Newspapers	16%	23%	7%	5%	1%	1%	7%	40%	105
Watch WMUR	22%	15%	5%	0%	3%	2%	10%	43%	177
Listen to NHPR	18%	15%	11%	3%	0%	4%	11%	37%	67
18 to 34	17%	28%	10%	7%	0%	5%	0%	34%	45
35 to 49	15%	20%	11%	5%	3%	3%	5%	38%	92
50 to 64	27%	13%	9%	0%	3%	2%	9%	36%	80
65 and over	16%	7%	2%	1%	3%	0%	13%	58%	56
Male	18%	20%	5%	5%	3%	2%	8%	38%	170
Female	18%	11%	12%	0%	1%	2%	8%	48%	118
High school or less	18%	24%	8%	0%	2%	0%	0%	48%	54
Some college	15%	27%	1%	1%	8%	0%	6%	43%	56
College graduate	19%	12%	10%	4%	0%	5%	11%	39%	137
Post-graduate	21%	8%	13%	6%	2%	0%	7%	45%	38
Attend services 1 or more/week	20%	9%	9%	0%	3%	3%	7%	48%	76
1-2 times a month	16%	17%	1%	10%	7%	0%	0%	49%	34
Less often	22%	19%	9%	2%	2%	0%	4%	42%	104
Never	13%	19%	9%	5%	0%	5%	16%	32%	66
North Country	28%	8%	11%	0%	4%	0%	3%	47%	20
Central / Lakes	9%	13%	9%	5%	2%	1%	7%	54%	57
Connecticut Valley	30%	5%	12%	0%	3%	0%	15%	34%	27
Mass Border	20%	19%	8%	3%	3%	3%	9%	35%	86
Seacoast	13%	19%	5%	6%	0%	5%	9%	43%	55
Manchester Area	21%	23%	6%	0%	2%	2%	5%	42%	43
First Cong. Dist	20%	23%	8%	2%	1%	2%	8%	35%	146
Second Cong. Dist	16%	10%	8%	4%	4%	2%	7%	49%	138

**Who is the Most Likeable?
(Likely 2016 GOP Primary Voters)**

	Marco <u>Rubio</u>	Jeb <u>Bush</u>	Mike <u>Huckabee</u>	Chris <u>Christie</u>	Rand <u>Paul</u>	Scott <u>Walker</u>	Someone <u>Else</u>	Don't <u>Know</u>	(N=)
LIKELY NH GOP PRIMARY VOTERS	17%	11%	8%	7%	6%	6%	18%	27%	292
Registered Undeclared	16%	9%	16%	6%	6%	5%	20%	22%	114
Registered Republican	18%	13%	3%	7%	4%	6%	17%	32%	166
Democrat	26%	38%	9%	8%	0%	5%	11%	3%	20
Independent	6%	14%	13%	5%	12%	2%	22%	26%	31
Republican	17%	9%	8%	7%	5%	6%	18%	30%	236
Liberal	12%	13%	0%	0%	0%	6%	49%	20%	13
Moderate	13%	18%	7%	11%	7%	2%	18%	23%	114
Conservative	21%	6%	11%	4%	5%	7%	16%	29%	149
Support Tea Party	18%	4%	6%	7%	8%	8%	17%	32%	126
Neutral	12%	9%	11%	6%	2%	5%	20%	35%	84
Oppose Tea Party	20%	25%	8%	6%	6%	3%	20%	12%	73
Voted in 2008 GOP Primary	18%	10%	10%	6%	5%	7%	19%	26%	222
Voted in 2008 DEM Primary	16%	40%	8%	9%	0%	1%	20%	6%	21
Voted in 2012 GOP Primary	16%	10%	8%	7%	6%	7%	19%	28%	242
Voted in 2012 DEM Primary	17%	31%	21%	4%	0%	1%	25%	2%	20
Union household	23%	19%	24%	9%	0%	0%	6%	18%	33
Non-union	16%	10%	7%	6%	6%	6%	20%	28%	253
Read Union Leader	19%	14%	6%	3%	10%	4%	22%	22%	78
Read Boston Globe	9%	23%	3%	13%	18%	2%	8%	24%	31
Read Local Newspapers	15%	15%	9%	12%	4%	5%	17%	23%	107
Watch WMUR	19%	15%	10%	5%	7%	5%	20%	20%	179
Listen to NHPR	10%	16%	6%	14%	12%	4%	21%	17%	68
18 to 34	14%	13%	0%	9%	11%	0%	5%	48%	45
35 to 49	15%	4%	15%	10%	3%	0%	31%	22%	92
50 to 64	19%	12%	10%	4%	8%	10%	16%	21%	81
65 and over	18%	18%	5%	4%	2%	10%	13%	28%	58
Male	19%	11%	9%	8%	5%	5%	17%	26%	172
Female	15%	10%	7%	5%	7%	6%	20%	30%	120
High school or less	15%	3%	16%	3%	5%	5%	13%	40%	54
Some college	16%	5%	9%	6%	6%	8%	11%	38%	58
College graduate	20%	12%	6%	7%	6%	5%	27%	18%	138
Post-graduate	11%	29%	6%	10%	3%	5%	8%	28%	39
Attend services 1 or more/week	21%	8%	7%	4%	0%	5%	28%	27%	78
1-2 times a month	14%	12%	3%	24%	10%	0%	3%	33%	34
Less often	16%	10%	11%	3%	6%	4%	17%	33%	106
Never	13%	14%	10%	7%	10%	12%	19%	16%	67
North Country	19%	9%	10%	3%	8%	8%	12%	31%	20
Central / Lakes	16%	14%	12%	11%	4%	0%	18%	24%	59
Connecticut Valley	12%	14%	0%	0%	2%	19%	31%	22%	27
Mass Border	18%	14%	12%	7%	6%	7%	19%	18%	87
Seacoast	21%	3%	8%	9%	3%	3%	14%	38%	56
Manchester Area	15%	11%	3%	2%	11%	3%	17%	39%	44
First Cong. Dist	17%	10%	9%	5%	7%	5%	16%	30%	150
Second Cong. Dist	18%	12%	8%	8%	3%	6%	19%	25%	139

**Who is the Most Conservative?
(Likely 2016 GOP Primary Voters)**

	<u>Ted</u> <u>Cruz</u>	<u>Mike</u> <u>Huckabee</u>	<u>Rand</u> <u>Paul</u>	<u>Scott</u> <u>Walker</u>	<u>Rick</u> <u>Santorum</u>	<u>Jeb</u> <u>Bush</u>	<u>Someone</u> <u>Else</u>	<u>Don't</u> <u>Know</u>	<u>(N=)</u>
LIKELY NH GOP PRIMARY VOTERS	16%	10%	9%	8%	7%	5%	15%	31%	291
Registered Undeclared	15%	13%	12%	4%	8%	2%	19%	28%	114
Registered Republican	19%	7%	6%	10%	6%	7%	12%	34%	165
Democrat	19%	3%	5%	15%	10%	5%	30%	14%	20
Independent	10%	8%	2%	22%	8%	0%	8%	42%	31
Republican	17%	10%	11%	5%	6%	5%	14%	31%	235
Liberal	19%	0%	4%	0%	0%	6%	24%	47%	13
Moderate	22%	9%	7%	6%	8%	5%	14%	28%	113
Conservative	14%	12%	13%	10%	4%	4%	15%	29%	149
Support Tea Party	19%	6%	11%	10%	6%	5%	12%	31%	124
Neutral	13%	10%	12%	4%	7%	3%	15%	37%	84
Oppose Tea Party	18%	13%	6%	6%	9%	3%	20%	25%	73
Voted in 2008 GOP Primary	16%	12%	10%	9%	7%	5%	12%	28%	221
Voted in 2008 DEM Primary	12%	5%	9%	0%	9%	5%	26%	33%	21
Voted in 2012 GOP Primary	17%	11%	9%	9%	8%	4%	12%	31%	241
Voted in 2012 DEM Primary	4%	13%	3%	6%	4%	5%	29%	37%	20
Union household	0%	7%	23%	5%	3%	2%	23%	36%	33
Non-union	19%	10%	8%	8%	7%	5%	13%	29%	251
Read Union Leader	17%	7%	13%	10%	7%	4%	16%	27%	77
Read Boston Globe	13%	5%	20%	1%	7%	5%	20%	30%	31
Read Local Newspapers	20%	6%	16%	1%	11%	5%	17%	25%	105
Watch WMUR	15%	9%	10%	7%	6%	6%	16%	30%	179
Listen to NHPR	19%	7%	7%	2%	10%	3%	21%	30%	67
18 to 34	15%	0%	14%	3%	3%	0%	11%	53%	45
35 to 49	14%	14%	12%	12%	8%	3%	11%	26%	92
50 to 64	17%	11%	5%	8%	9%	8%	18%	23%	81
65 and over	21%	10%	7%	5%	4%	4%	20%	30%	57
Male	22%	7%	14%	10%	6%	4%	16%	21%	172
Female	8%	13%	3%	5%	8%	5%	13%	44%	119
High school or less	9%	16%	16%	1%	1%	2%	13%	42%	54
Some college	25%	2%	5%	8%	7%	3%	17%	32%	57
College graduate	13%	9%	11%	11%	9%	7%	15%	25%	138
Post-graduate	28%	16%	1%	4%	4%	2%	11%	33%	39
Attend services 1 or more/week	13%	16%	6%	12%	12%	3%	7%	31%	78
1-2 times a month	25%	0%	3%	11%	4%	3%	21%	34%	34
Less often	15%	9%	9%	5%	5%	4%	19%	35%	105
Never	20%	8%	18%	5%	6%	7%	14%	22%	66
North Country	12%	7%	1%	5%	14%	8%	18%	34%	20
Central / Lakes	13%	11%	8%	10%	8%	9%	12%	29%	59
Connecticut Valley	15%	16%	1%	0%	5%	3%	25%	35%	27
Mass Border	23%	4%	11%	7%	9%	2%	15%	29%	87
Seacoast	22%	20%	15%	1%	3%	2%	14%	24%	56
Manchester Area	4%	3%	10%	20%	4%	6%	12%	41%	43
First Cong. Dist	16%	12%	9%	8%	6%	6%	13%	30%	148
Second Cong. Dist	18%	7%	10%	7%	7%	3%	16%	32%	139

**Who has the Best Chance of Winning the General Election?
(Likely 2016 GOP Primary Voters)**

	Jeb <u>Bush</u>	Marco <u>Rubio</u>	Scott <u>Walker</u>	Rand <u>Paul</u>	Ted <u>Cruz</u>	Rick <u>Perry</u>	Someone <u>Else</u>	Don't <u>Know</u>	(N=)
LIKELY NH GOP PRIMARY VOTERS	27%	11%	10%	9%	4%	2%	9%	29%	291
Registered Undeclared	30%	13%	12%	7%	1%	4%	13%	21%	114
Registered Republican	26%	10%	9%	10%	6%	1%	6%	32%	165
Democrat	68%	10%	0%	0%	2%	0%	16%	5%	20
Independent	26%	6%	9%	8%	9%	1%	12%	29%	31
Republican	24%	12%	10%	10%	3%	3%	8%	30%	235
Liberal	29%	3%	6%	12%	0%	0%	18%	32%	13
Moderate	41%	11%	10%	7%	1%	0%	11%	18%	113
Conservative	17%	13%	10%	9%	7%	4%	7%	33%	149
Support Tea Party	15%	12%	14%	11%	9%	5%	3%	30%	125
Neutral	27%	8%	6%	6%	0%	2%	16%	36%	84
Oppose Tea Party	45%	12%	6%	8%	0%	0%	11%	18%	72
Voted in 2008 GOP Primary	24%	11%	11%	7%	5%	3%	10%	29%	221
Voted in 2008 DEM Primary	68%	8%	7%	4%	0%	0%	9%	4%	21
Voted in 2012 GOP Primary	25%	11%	10%	10%	4%	3%	8%	27%	241
Voted in 2012 DEM Primary	55%	1%	0%	4%	0%	0%	22%	18%	20
Union household	28%	20%	5%	2%	1%	17%	7%	19%	33
Non-union	27%	10%	10%	10%	4%	1%	9%	29%	252
Read Union Leader	30%	8%	16%	7%	9%	0%	9%	21%	77
Read Boston Globe	34%	21%	0%	14%	10%	0%	5%	15%	30
Read Local Newspapers	32%	10%	8%	4%	4%	4%	11%	27%	106
Watch WMUR	30%	10%	9%	6%	2%	4%	13%	26%	179
Listen to NHPR	43%	5%	11%	8%	1%	0%	12%	21%	68
18 to 34	16%	22%	8%	21%	6%	0%	0%	28%	45
35 to 49	34%	6%	9%	11%	3%	5%	11%	21%	92
50 to 64	25%	10%	11%	6%	6%	2%	8%	33%	81
65 and over	28%	17%	8%	1%	2%	2%	11%	31%	57
Male	28%	16%	12%	7%	1%	3%	10%	22%	172
Female	24%	5%	6%	11%	7%	2%	7%	38%	119
High school or less	14%	10%	3%	12%	0%	11%	15%	36%	54
Some college	18%	10%	12%	3%	3%	2%	11%	41%	57
College graduate	27%	15%	11%	11%	7%	0%	6%	22%	138
Post-graduate	58%	1%	9%	3%	0%	0%	7%	23%	39
Attend services 1 or more/week	23%	11%	9%	10%	8%	1%	6%	31%	78
1-2 times a month	34%	7%	10%	11%	0%	0%	5%	34%	34
Less often	27%	14%	12%	7%	2%	0%	13%	25%	105
Never	25%	10%	7%	9%	4%	9%	7%	28%	66
North Country	18%	13%	19%	0%	0%	0%	5%	45%	20
Central / Lakes	32%	8%	4%	7%	2%	2%	17%	28%	59
Connecticut Valley	29%	10%	13%	3%	9%	0%	6%	29%	27
Mass Border	33%	8%	14%	4%	4%	7%	5%	26%	87
Seacoast	14%	23%	8%	10%	1%	0%	9%	35%	55
Manchester Area	26%	7%	5%	28%	8%	0%	8%	19%	43
First Cong. Dist	22%	13%	8%	15%	1%	1%	9%	30%	149
Second Cong. Dist	31%	9%	11%	1%	7%	4%	9%	28%	139

**Who Best Represents Republicans Like Yourself?
(Likely 2016 GOP Primary Voters)**

	<u>Jeb Bush</u>	<u>Scott Walker</u>	<u>Rand Paul</u>	<u>Ted Cruz</u>	<u>Mike Huckabee</u>	<u>Marco Rubio</u>	<u>Someone Else</u>	<u>Don't Know</u>	<u>(N=)</u>
LIKELY NH GOP PRIMARY VOTERS	13%	10%	8%	7%	7%	7%	28%	19%	290
Registered Undeclared	8%	7%	5%	6%	8%	8%	35%	23%	114
Registered Republican	16%	13%	9%	9%	7%	7%	23%	16%	165
Democrat	24%	2%	17%	0%	0%	5%	37%	14%	18
Independent	18%	19%	5%	5%	1%	0%	19%	32%	30
Republican	12%	9%	8%	8%	9%	8%	28%	18%	236
Liberal	10%	7%	0%	0%	27%	0%	20%	36%	12
Moderate	18%	5%	12%	3%	2%	7%	36%	19%	113
Conservative	10%	14%	8%	11%	10%	8%	22%	17%	149
Support Tea Party	7%	16%	14%	13%	5%	7%	23%	15%	126
Neutral	18%	4%	3%	4%	5%	6%	35%	25%	84
Oppose Tea Party	18%	4%	6%	2%	10%	10%	29%	22%	71
Voted in 2008 GOP Primary	11%	12%	7%	8%	7%	6%	30%	18%	222
Voted in 2008 DEM Primary	39%	6%	4%	0%	0%	6%	38%	6%	20
Voted in 2012 GOP Primary	12%	12%	8%	8%	7%	6%	29%	18%	241
Voted in 2012 DEM Primary	29%	0%	0%	0%	16%	2%	27%	27%	20
Union household	22%	10%	3%	0%	3%	16%	29%	17%	33
Non-union	12%	10%	9%	7%	8%	6%	28%	20%	252
Read Union Leader	13%	10%	10%	6%	2%	4%	33%	22%	78
Read Boston Globe	19%	6%	11%	7%	3%	20%	27%	7%	30
Read Local Newspapers	19%	5%	5%	10%	2%	6%	32%	21%	106
Watch WMUR	17%	8%	8%	3%	4%	5%	32%	22%	177
Listen to NHPR	15%	3%	14%	4%	5%	2%	37%	20%	68
18 to 34	11%	3%	29%	0%	3%	16%	14%	23%	45
35 to 49	12%	6%	4%	12%	11%	0%	42%	13%	92
50 to 64	12%	12%	7%	10%	6%	6%	28%	20%	80
65 and over	13%	14%	2%	2%	8%	15%	23%	24%	56
Male	12%	11%	10%	11%	5%	9%	30%	12%	170
Female	14%	8%	6%	2%	11%	4%	25%	30%	120
High school or less	6%	6%	16%	3%	3%	11%	30%	26%	54
Some college	14%	8%	5%	13%	6%	8%	25%	21%	58
College graduate	13%	12%	7%	5%	11%	6%	31%	14%	138
Post-graduate	19%	6%	8%	15%	1%	4%	21%	27%	37
Attend services 1 or more/week	9%	16%	1%	9%	17%	4%	25%	18%	78
1-2 times a month	16%	5%	10%	8%	0%	6%	26%	28%	34
Less often	14%	3%	10%	10%	4%	9%	32%	17%	106
Never	10%	14%	14%	1%	5%	9%	27%	21%	65
North Country	14%	16%	6%	1%	14%	6%	21%	22%	20
Central / Lakes	17%	5%	3%	4%	3%	4%	35%	30%	59
Connecticut Valley	4%	25%	0%	0%	15%	8%	39%	8%	26
Mass Border	17%	9%	11%	7%	5%	5%	29%	16%	87
Seacoast	7%	7%	3%	15%	14%	17%	16%	22%	55
Manchester Area	10%	10%	25%	9%	0%	2%	29%	15%	44
First Cong. Dist	12%	6%	11%	11%	8%	9%	24%	18%	149
Second Cong. Dist	12%	13%	5%	3%	6%	5%	33%	21%	138

**Who has the Right Experience to be President?
(Likely 2016 GOP Primary Voters)**

	Jeb <u>Bush</u>	Scott <u>Walker</u>	Rand <u>Paul</u>	Rick <u>Perry</u>	Donald <u>Trump</u>	Chris <u>Christie</u>	Someone <u>Else</u>	Don't <u>Know</u>	(N=)
LIKELY NH GOP PRIMARY VOTERS	19%	10%	9%	5%	5%	4%	20%	27%	290
Registered Undeclared	17%	9%	6%	6%	8%	4%	20%	29%	114
Registered Republican	21%	12%	11%	5%	2%	4%	19%	26%	164
Democrat	35%	7%	5%	0%	4%	13%	27%	9%	19
Independent	22%	9%	5%	1%	7%	0%	18%	38%	30
Republican	18%	10%	10%	6%	5%	4%	19%	27%	236
Liberal	23%	7%	0%	0%	0%	0%	40%	30%	12
Moderate	31%	8%	7%	3%	2%	10%	17%	22%	113
Conservative	12%	13%	11%	8%	7%	0%	20%	30%	149
Support Tea Party	9%	16%	10%	11%	5%	3%	19%	27%	126
Neutral	18%	8%	8%	1%	7%	2%	17%	37%	84
Oppose Tea Party	36%	3%	8%	0%	1%	9%	25%	18%	71
Voted in 2008 GOP Primary	19%	11%	8%	6%	5%	5%	17%	28%	221
Voted in 2008 DEM Primary	38%	6%	0%	0%	4%	8%	34%	11%	20
Voted in 2012 GOP Primary	20%	11%	10%	5%	5%	4%	18%	26%	240
Voted in 2012 DEM Primary	30%	1%	0%	0%	4%	14%	38%	13%	20
Union household	34%	6%	3%	17%	4%	0%	4%	32%	33
Non-union	18%	11%	10%	4%	5%	5%	21%	26%	252
Read Union Leader	20%	12%	7%	3%	2%	6%	19%	30%	78
Read Boston Globe	23%	4%	14%	0%	2%	0%	21%	36%	31
Read Local Newspapers	20%	10%	4%	9%	3%	4%	18%	32%	106
Watch WMUR	25%	9%	6%	7%	6%	5%	18%	25%	177
Listen to NHPR	29%	5%	7%	3%	2%	13%	22%	19%	68
18 to 34	24%	0%	24%	6%	0%	5%	11%	30%	45
35 to 49	15%	8%	9%	9%	7%	6%	20%	27%	92
50 to 64	18%	12%	7%	5%	7%	3%	25%	22%	80
65 and over	23%	17%	3%	0%	3%	3%	21%	31%	57
Male	20%	14%	8%	5%	6%	6%	16%	25%	170
Female	18%	5%	11%	5%	3%	2%	24%	31%	120
High school or less	10%	9%	15%	9%	11%	5%	10%	31%	54
Some college	15%	11%	5%	8%	4%	3%	18%	35%	58
College graduate	22%	10%	11%	4%	2%	3%	23%	23%	138
Post-graduate	30%	8%	3%	0%	5%	7%	21%	25%	37
Attend services 1 or more/week	19%	8%	11%	1%	7%	1%	25%	28%	78
1-2 times a month	16%	15%	10%	7%	6%	9%	14%	23%	34
Less often	19%	10%	10%	4%	5%	4%	19%	28%	106
Never	19%	10%	7%	12%	2%	6%	18%	26%	65
North Country	28%	16%	0%	0%	7%	5%	5%	40%	20
Central / Lakes	20%	6%	10%	3%	10%	4%	19%	28%	59
Connecticut Valley	8%	17%	5%	23%	4%	3%	22%	17%	26
Mass Border	22%	14%	4%	5%	0%	3%	24%	27%	87
Seacoast	21%	7%	11%	5%	6%	0%	21%	30%	55
Manchester Area	13%	7%	24%	0%	4%	12%	16%	24%	43
First Cong. Dist	21%	9%	14%	3%	6%	3%	19%	25%	149
Second Cong. Dist	17%	12%	5%	8%	3%	6%	21%	30%	137