

NHamp
352.07
G47
1971



Annual Reports


GILFORD

New Hampshire

Year Ending December 31, 1971



University of New Hampshire
Library



Digitized by the Internet Archive
in 2010 with funding from
Boston Library Consortium Member Libraries

Annual Reports
of the town of
GILFORD
New Hampshire



for the year ending
December 31, 1971

BRIDGE & BYRON, INC.
CONCORD, N. H.

NHamp
352.07
G47
1971

Pictures on the cover were taken by Mrs. Sally Pilliod and are of some of the entries in the 1971 Old Home Day parade.

TABLE OF CONTENTS

Town Officers	7
Town Warrant	12
Budget of the Town of Gilford	27

REPORTS

Board of Selectmen	30
Trustees of the Library	34
Treasurer of the Library	36
Librarian	38
Recreation Commission	42
Planning Board	44
Department of Public Works	46
Overseer of Public Welfare	53
Police Department	54
Fire Department	56
Forest Fire Warden and District Chief	59
Conservation Commission	61
Winnepesaukee River Basin Study	62

FINANCIAL REPORTS

Certificate	64
Tax Collector	65
Town Clerk	85
Auditors' Report	87
Trustees of Trust Funds	88
Inventory	97
Appropriations	98
Estimated Revenue and Taxes Assessed	100
Statement of Bonded Debt	102
Comparative Statement of Appropriations and Expenditures	103
Assets	105
Liabilities	106
Receipts	107
Payments	109
Detailed Statement of Payments	113
Schedule of Town Property	133

SCHOOL REPORT

School District Officers	136
School Warrant	137
Proposed Budget	138
Report of Superintendent of Schools	140
Financial Report	142
Auditors' Report	145
School Lunch Program	146
Statistics	147

VITAL STATISTICS

Births	152
Marriages	154
Deaths	160

PETITION

*To the Gentlemen selectmen of the Town of Gilmanton
The petition of us Subscribers Inhabitants of the northerly
part of Gilmanton humbly sheweth that our situation is so
remote from the place of holding our annual and others
meetings we have to travel from five to twenty miles to said
place which renders it expensive and so inconvenient that a
large portion of us (at many times) cannot attend said
meetings. Therefore we humbly request your Honorable
body to call or warn a town Meeting of the Inhabitants of
said Gilmanton at some convenient time between this and
the First of May next ensuing to see if the Town will pass
a vote granting leave for an incorporation of that part of the
upper parish (so called) of said Gilmanton that lyeth on
the northerly part of the eleventh range of hundred acre
lots from thence eastwardly in such direction as to follow
the ridge of mountains to the Alton line covering all the
Land between the above named lines Alton line Winne-
piseogee Pond and Winnepiseogee River to said eleventh
range including the Islands in said Pond belonging to said
Gilmanton and your Petitioners as in duty bound shall ever
pray.*

*Gilmanton 14th March 1811
Ebenezer Smith and others*

*The above requested meeting, which resulted in the creation of Gilford,
was held May 27, 1811. Town records quoted on pages 5 and 6 tell of
action taken at the meeting and the report of the Committee.*

State of New Hampshire *At a Town Meeting Legally notified*
Strafford ss *and holden at Gilman-*
ton on Monday the 27th day of May 1811 Proceeded to
business firstly Choose John Shepard Esquire Moderator
2ly Voted on the petition of Ebeneaser Smith Esquire and
others Voted that the above named petition be submitted
to a committee of three uninterested men out of Town to
determine whether the divisional line shall be on the
eleventh range or on the twelfth range or on a strait line
on the northeast side of the twelfth range by a northwest
line to the River and that the committee make their report
to the Selectmen and their report to be final and conclu-
sive as it respects the Divisional line—

3ly Voted to choofe a committee of five men to nominate
three uninterested men out of Town to establish the bound-
ary lines for a new Town in Gilmanton (so called) choose
Stephen Moody Esq. Nehemiah Sleeper Esq., Col. Wm.
Badger Capt. John Smith and Samuel Shepard Esquire for
the committee above named

4ly Voted to received the report of the committee of five
men for the above named purpose of a dividing line in
Town as it respects a new Town in Gunstock (so called)
The committee named are Nathan Taylor Esq. Jame Mc-
Duffee Esquire Enoch Wood Esquire to establish the line
where the line of the new Town shall be agreeable to the
above named purpose—

5ly Voted that the lot Layers be a committee to say when
and establish the line from the northwesterly corner of the
twelfth range to Alton line acrofs the mountains or Ma-
sonan land so called.

This may certify that the above is a true Copy from the
Records of the Town of Gilmanton.

Wm. Badger Town Clerk

Recorded August 11th 1812 by Wm. Blaisdell Town Clerk

The Report of the Above Committee

Gilmanton May 31st 1811

We the Subscribers being appointed a committee by the Town of Gilmanton to determine where the division line shall be between said Gilmanton and a new Town contemplated to be set off on the northerly part of Gilmanton agreeable to a vote of said Town of the 27th of this instant Maay have attended to that duty and after a full investigation of the subject agree to report and do report that the division line between Gilmanton and their new contemplated Town be on the line between range No. eleven and range No. twelve of hundred acre lots in said Gilmanton thence on a northwesterly point to the Winnepiseogee Waters.

*Nathan Taylor
James McDuffee
Enoch Wood*

Gilmanton May 31st 1811

This day we received the above Report

*John Shepard Selectmen
Ezekiel Hort of
Daniel Gates Gilmanton*

A true Copy of Record

Attest Isaac Bean Town Clerk

Recorded August 11th 1812

by Wm. Blaisdell Town Clerk

TOWN OFFICERS

1971

OFFICERS ELECTED BY BALLOT AT BIENNIAL ELECTION

Term commencing on day of Biennial Election

Two Year Terms

MODERATOR

Harry W. Prescott, Resigned

Peter V. Millham, Appointed 2-19-71

Term expires 1972

REPRESENTATIVES TO GENERAL COURT

Esther R. Nighswander

Term expires 1972

Six Year Terms

SUPERVISORS OF CHECK LIST

Susan M. Harris

Term expires 1972

Marie L. Jordan

Term expires 1974

Horatio B. Tower, Jr.

Term expires 1976

OFFICERS ELECTED BY BALLOT AT TOWN MEETING

Term commencing on day of Town Meeting

One Year Terms

Town Clerk

Lorraine T. Royce

Town Treasurer

Lewis A. Aldrich

Tax Collector

William H. Taylor, Resigned

Lorraine T. Royce, Appointed 7-15-71

Overseer of Public Welfare

William M. Connelly

Three Year Terms

SELECTMEN

Robert D. White	Term expires 1972
Edward H. Needham	Term expires 1973
Stephen C. Harper	Term expires 1974

TRUSTEES OF TRUST FUNDS

Lorraine T. Royce, Resigned	
Wayne E. Snow, Appointed 12-9-71	Term expires 1972
Milo F. Bacon	Term expires 1973
Ray C. Watson	Term expires 1974

TRUSTEES OF PUBLIC LIBRARY

Dorothy K. Simonds	Term expires 1972
Eleanor H. Lindsay	Term expires 1973
Robert A. Edwards	Term expires 1974

AUDITORS

Kenneth W. Spaulding	Term expires 1972
Jack C. Sawyer	Term expires 1973
Robert Scales	Term expires 1974

BOARD OF FIRE ENGINEERS

Fred M. Shurbert	Term expires 1972
Robert L. Clifford	Term expires 1973
Ronald G. Hook	Term expires 1974

FIRE CHIEF

Sherman O. Thompson, Appointed by Fire Engineers

BUDGET COMMITTEE

William J. Baker	Term expires 1972
------------------	-------------------

Lawrence W. Guild, II	Term expires 1972
Robert G. Watson	Term expires 1972
Richard M. Campbell, Jr., Chairman	
	Term expires 1973
Martin P. Johnson	Term expires 1973
Thomas B. Manter	Term expires 1973
Arthur C. Harris, Jr.	Term expires 1974
Robert L. Clifford	Term expires 1974
Douglas L. Hounsell	Term expires 1974
Edward H. Needham, Selectman	
Leo B. Sanfacon, School Board	
Paul A. Vincent, Ridgewood Sewer District	
Arthur L. Drouin, Gilford Sewer District	

OFFICERS APPOINTED BY THE SELECTMEN

Chief of Police	Bruce G. Cheney
Deputy Tax Collector	Horatio B. Tower, Jr.
Highway Agent	Philip R. Bryant
Supt. of Public Works	H. Richard Howarth, P.E.
Town Appraiser	Wilfred H. St. Laurent
Civil Defense Director	Charles O. Pratt
Health Officer	H. Richard Howarth, P.E.

INSPECTORS OF ELECTIONS

Two Year Terms

H. Neil Noyes	Term expires 1972
Paul A. Vincent	Term expires 1972
Mildred H. Weeks	Term expires 1972
Justine D. White	Term expires 1972

PLANNING BOARD

Five Year Terms

Arthur H. Nighswander, Chairman	
	Term expires 1976
Robert B. MacHaffie	Term expires 1972

Robert R. Lemire	Term expires 1973
Janice E. Sanfacon	Term expires 1974
Richard H. Ray	Term expires 1975
Edward H. Needham	Selectman

ZONING BOARD OF ADJUSTMENT

Five Year Terms

Douglas L. Hounsell, Chairman	Term expires 1972
Ray C. Watson	Term expires 1973
Ernest F. Perkins	Term expires 1974
Frank Quimby	Term expires 1975
Lawrence Inglis	Term expires 1976

CONSERVATION COMMISSION

Three Year Terms

William L. Turner	Term expires 1972
William S. Lord, Chairman	Term expires 1972
Virginia H. Tripp	Term expires 1973
Marcelia V. Muehlke	Term expires 1973
Robert Robertson	Term expires 1974
Ivan Phelps	Term expires 1974
Clement A. Lyon, Jr.	Term expires 1974
Stephen C. Harper	Selectman

RECREATION COMMISSION

Three Year Terms

Pauline Richardson, Chairman	Term expires 1974
Arthur A. Tilton	Term expires 1974
Robert R. Blandford	Term expires 1972
David M. Copithorne	Term expires 1973
Janet S. Tyrrel, Clerk	Term expires 1974

SEWER DISTRICT OFFICERS ELECTED AT
SEWER DISTRICT MEETINGS

GILFORD SEWER DISTRICT

Moderator	Samuel L. Sargent
Clerk and Treasurer	Madeline E. Drouin
Commissioners	Arthur L. Drouin Helen M. Sargent Leon E. Hayes

RIDGEWOOD SEWER DISTRICT

Moderator	Dr. Edward C. Wolston
Clerk	Paul A. Vincent
Commissioners	Clifford O. Hodges Gerard R. Morin Armand W. Bedard

Town Meeting March 1829

Choose Sealer of Weights and Measures. Bernard Morrill was chosen.

Voted that Sealer of Weights and Measures take a legal coarse in relation to sealing weights and measures.

Struck off the cleaning of the Meeting House at 90 cents to Levi Gilman, Jr.

Voted to have a work house the present year.

Voted that Nathaniel Davis House be a work house the present year and himself Superintendent.

TOWN WARRANT
The State of New Hampshire

To the Inhabitants of the Town of Gilford in the County of Belknap in said State, qualified to vote in Town Affairs:

You are hereby notified to meet at Gilford Elementary School in said Gilford on Tuesday, the 7th day of March, 1972 at 8 of the clock in the forenoon (Polls to be open from 8 a. m. to 6 p. m. at least) to act upon the following subjects:

Article 1. To choose all necessary Town Officers for the ensuing year.

Article 2. To take the sense of the qualified voters whether the amendments of the Constitution proposed by the 1971 session of the General Court shall be approved.

Article 3. To see what action the Town will take on the following questions:

1. Are you in favor of the adoption of Amendment No. 1 as proposed by the Planning Board for the town zoning ordinance by amending Article III, Section E, to require that on-premises signs in the Commercial District conform to requirements presently in effect in the Industrial District as set forth in Article VIII of the zoning ordinance?

2. Are you in favor of the adoption of Amendment No. 2 as proposed by the Planning Board for the town zoning ordinance by amending Article V,

Section B, Article IV District Regulations and Boundaries of District to redefine the boundaries of the Residential District as shown on the revised zoning map, and as particularly described in the official copy of the proposed amendments, and to provide for one acre lots with frontage of 150 feet (except lots bordering on Lake Winnepesaukee to be 30,000 square feet and with 100 feet frontage) with provision for reduction to 30,000 square feet in subdivisions of 10 acres where the developer provides either water supply or common sewer system, with certain provisions excepting from this amendment certain lots of record and where approval of final plans is pending before the Planning Board?

3. Are you in favor of the adoption of Amendment No. 3 as proposed by the Planning Board for the town zoning ordinance by amending Article VI, Section B, Article IV District Regulations and Boundaries of Districts by redefining the boundaries of the Residential Agricultural District as shown on the revised zoning map, and as particularly described in the official copy of the proposed amendments, and to provide for 2 acre lots with frontage of 150 feet with provision for deduction to one acre in subdivisions of 20 acres where the developer provides both water supply and common sewer system, with certain provisions excepting from this amendment certain lots of record and subdivisions where approval of final plans is pending before the Planning Board?

4. Are you in favor of the adoption of Amendment No. 4 as proposed by the Planning Board for the town zoning ordinance by amending Article VII, Section B to provide side and rear yard requirements of 20 feet in the Commercial District?

5. Are you in favor of the adoption of Amendment No. 5 as proposed by the Planning Board for

the town zoning ordinance by inserting a new article after Article VII to be known as Article VIIA of the zoning ordinance which will establish and define the boundaries of and the uses allowed in a Limited Commercial District easterly of the Laconia By-Pass in the vicinity of the intersection with Route 11A as shown on the revised zoning map and as particularly described in the official copy of the proposed amendments?

6. Are you in favor of the adoption of Amendment No. 6 as proposed by the Planning Board for the town zoning ordinance by amending Article X, Section C of the zoning ordinance to require reissue of building permits where construction is postponed or suspended for six months?

7. Are you in favor of the adoption of Amendment No. 7 as proposed by the Planning Board for the town zoning ordinance by amending Article XI, Section D, which allows so-called cluster zoning as an exception under certain conditions, to increase the size of minimum lots from 15,000 square feet to 22,500 square feet, to increase required frontage from 100 feet to 150 feet and to strike out the words "or other type system" in subsection 5?

8. Are you in favor of the adoption of Amendment No. 8 as proposed by the Planning Board for the town zoning ordinance by amending Article XVI of the zoning ordinance to provide new definitions for mobile homes, modular homes and trailers?

9. Are you in favor of the adoption of Amendment No. 9 as proposed by the Planning Board for the town zoning ordinance by adding a new article, known as Article XVII, to the zoning ordinance which will provide for regulation of use of wet land

conservation areas where soil is poorly drained, very poorly drained or Alluvial flood plain?

(The above questions will appear on the official Town Ballot.)

Article 4. To see what sum the Town will raise and appropriate to defray the general expenses of the Town for the ensuing year, including: Town Officers' Salaries, Administrative Expenses, Election and Registration Expenses, Property Mapping, Repairs and Maintenance of Town Buildings, Land Purchase Costs and Surveys, Employees' Retirement and Social Security, White Pine Blister Rust Control, Planning Board Expenses, Dog Damage, Legal Expenses, Civil Defense, Conservation Commission Expenses, Ambulance Service, Welfare, Memorial Day, Interest on Temporary Loans, Interest on Long-Term Loans and Principal Payment on Long-Term Notes and Insurance.

Article 5. To see what sum the Town will vote to raise and appropriate for the installation of a Fire Detection System at the Town Hall, Highway Department, School, Library and Glendale Fire Station.

Article 6. To see if the Town will raise and appropriate the sum of \$500.00 to be added to the Conservation Fund.

Article 7. To see what action the Town will take on an Old Home Day observance and to raise and appropriate funds for the same.

Article 8. To see what sum the Town will raise and appropriate for the support of Public Works in the Town, including: Town Engineer's salary and

expenses, Town Dump, Water Works, Glendale Wharves and Parking Lots, Care of Cemeteries, and Street Lighting.

Article 9. To see what sum the Town will raise and appropriate for Highway Department Expenses and to authorize the use of Highway Subsidy Funds. (See Laws of 1971, Chapter 504, Section 5)

Article 10. To see what sum the Town will raise and appropriate to construct a new, wider bridge on Hoyt Road. (By Petition)

Article 11. To see what sum the Town will raise and appropriate for the purchase of new Highway Department Equipment.

Article 12. To see if the Town will vote to raise and appropriate the sum of \$1,103.60 for the maintenance, construction or reconstruction of Class V Highways.

Article 13. To see what sum the Town will vote to raise and appropriate for the Laconia Water Works in payment of hydrant rental and inch-foot charge in the Ridgewood Ave., Bedford Ave., Collins Heights area. (Previously included in the Fire Department budget.)

Article 14. To see what sum the Town will vote to raise and appropriate for Water Works Construction in Gilford Village.

Article 15. To see what sum the Town will vote to raise and appropriate for the support of the Police Department.

Article 16. To see what sum the Town will vote to raise and appropriate for the support of the Fire Department, and purchase of Fire Department Equipment.

Article 17. To see if the Town will vote to raise and appropriate the sum of \$6,680.00 for participation in the Winnepesaukee River Basin Sewage Study.

Article 18. To see what sum the Town will vote to raise and appropriate toward the support of the Lakes Region Planning Commission.

Article 19. To see if the Town will vote to raise and appropriate the sum of \$7,000.00 for the purpose of Town Hall Remodelling.

Article 20. To see what sum the Town will raise and appropriate to be contributed toward the support of the following non-profit organizations: Lakes Region General Hospital and Lakes Region Association.

Article 21. To see what sum the Town will raise and appropriate for the support of the Public Library.

Article 22. To see what sum the Town will raise and appropriate for the operation, maintenance and improvement of Parks, Playgrounds and Beaches.

Article 23. To see what sum the Town will vote to raise and appropriate for Village Field Improvement. (Submitted without recommendation.)

Article 24. To see if the Town will vote to have the State Tax Commission audit the books of the Town annually until the vote is rescinded.

Article 25. To see if the Town will vote to authorize the Selectmen to sell and transfer title to all real estate taken by the Town in default of redemption from any tax sale, to such persons and upon such conditions as they shall see fit.

Article 26. To see if the Town will vote to authorize the Selectmen to hire money on the credit of the Town in anticipation of taxes.

Article 27. To see if the Town will vote to establish a three-member Refuse Disposal Planning Committee with duties as set forth in Sections 1-5, Chapter 53-B, New Hampshire Revised Statutes Annotated, 1955, to study the advisability of establishing a regional refuse disposal district, and in addition, to participate with the Lakes Region Planning Commission in the development of a Regional Disposal Plan. The Committee shall report its findings and recommendations to the Selectmen for action by the Town Meeting.

Article 28. To see what action the Town will take on the following Ordinance:

AN ORDINANCE PROHIBITING DOGS FROM RUNNING AT LARGE WITHIN THE LIMITS OF THE TOWN OF GILFORD; AUTHORIZING THE IMPOUNDING OF DOGS RUNNING AT LARGE, WHETHER LICENSED OR UNLICENSED; REDEMPTION OF IMPOUNDED DOGS; AND PROVIDING A PENALTY.

Section 1. **DEFINITION OF TERMS.**

(a) "DOG" shall be intended to mean both male and female.

(b) "OWNER" shall be intended to mean any person or persons, firms, associations or corporations owning, keeping, or harboring a dog.

(c) "AT LARGE" shall be intended to mean off the premises of the owner and not under the control of the owner or a member of his immediate family or a person of sufficient age and strength to effectively restrain the dog either by leash or chain, not longer than 6 (six) feet.

Section 2. **RUNNING AT LARGE PROHIBITED.**

No owner or keeper of any such dog, whether licensed or unlicensed, shall allow such dog to run at large within the limits of the Town of Gilford, at any time.

Nothing in this article shall be construed as to require a person to leash a dog while it is securely confined in an automobile.

Section 3. **IMPOUNDING.** It shall be the duty of every police officer of the Town of Gilford, and such other persons as the Selectmen may designate, to apprehend any dog found running at large contrary to the provisions of Section 2 and to impound such dog in a suitable place.

Section 4. **NOTICE TO OWNER AND REDEMPTION.** If such dog has upon it a license or tag giving the name and address of the owner or the name or address of the owner is otherwise known to the police department then the police department shall notify the owner or keeper of the dog within twenty four (24) hours after such seizure. Notice of impounding shall be in writing, either by registered

mail or delivered in hand by a police officer. If the owner is not known or the name and address of the owner is not given by license or other tag with the dog no notice is necessary. The owner of any dog so impounded may reclaim said dog upon payment of the sum of \$2.00 and the cost of impounding the dog, provided, however, that before release to any person if the dog is not licensed, a license as required by the Town of Gilford shall be secured.

Section 5. **FEES.** All sums collected pursuant to the provisions of this section shall be accounted for and paid to the Town Treasury.

Section 6. **DISPOSITION OF UNCLAIMED DOGS.** Any dog which has been impounded and is not redeemed by the owner shall be turned over to an incorporated society for the prevention of cruelty to animals, provided that any such dog be held for at least four (4) days after impounding, and in those cases requiring notice to the owner, the dog shall be held for four (4) days after the required notice has been given.

Section 7. **PENALTY.** Any owner found to be in violation of any of the provisions of this Ordinance shall be guilty of a misdemeanor and upon conviction thereof shall be fined an amount not in excess of twenty dollars.

Section 8. This ordinance shall become effective upon passage.

Article 29. To see what action the Town will take on the following Ordinance:

AN ORDINANCE ESTABLISHING A TOWN DUMP AND PROVIDING FOR THE USE THEREOF

Section 1. **ESTABLISHMENT.** The Selectmen of the Town of Gilford are hereby authorized to establish a town dump (the "Town Dump") at such place or places as may be deemed appropriate by them.

Section 2. **USE OF THE TOWN DUMP.** The Town Dump may be used by the following persons upon the following conditions:

2.1 **Dump Users.** The following are the classes of persons who may use the Town Dump.

(a) Taxpayers of the Town of Gilford ("Taxpayers");

(b) Persons who abide in rental units situated within the Town of Gilford ("Renters");

(c) Persons supplying rubbish collection services within the Town of Gilford ("Rubbish Collectors");

2.2 **Dump Permits.** The Town Dump users will be permitted to use the Town Dump for the disposal of garbage and waste material upon obtaining and displaying, when using the Town Dump, a permit in the following manner:

(a) Taxpayers shall apply for a permit at the Town Hall and upon filling out the appropriate application form shall be issued a Taxpayer's Sticker which sticker will be evidence of their right to use the Town Dump;

(b) Renters shall apply for a permit at the Town Hall and upon filling out the appropriate application form shall be issued a Renter's Sticker which sticker will state thereon "Disposal Privileges Only Until", the blank space being filled in with the date to which the Renter will be allowed to use the Town Dump.

(c) Rubbish Collectors shall apply for a permit at the Town Hall and upon filling out the

appropriate application form, in which they must agree to use the Town Dump for the deposit of garbage and waste materials collected from Gilford Taxpayers or Renters only, shall be issued a sticker upon which will be noted the words "Business Dumping Only."

(d) Other classes of Town Dump Users and Stickers. The Selectmen are hereby authorized and empowered to establish such other classes of users of the Town Dump and the stickers allowing the use by such users as they shall deem necessary and appropriate.

(e) Such stickers shall be displayed by affixing the same to the side window of the applicant's motor vehicle on the driver's side.

Section 3. OPERATION OF DUMP. The Selectmen are hereby authorized and empowered to determine during what days, during what hours, and upon what conditions the Town Dump shall be open to receive garbage and other waste material.

Section 4. OPERATION AND MAINTENANCE OF THE TOWN DUMP. The Selectmen are hereby authorized and empowered to make provision for the proper maintenance and operation of the Town Dump and to expend for such purposes such sums of money as the Town may vote therefor at any annual or special meeting thereof. The power to operate and maintain the Town Dump shall include, without limitation, the following powers and duties; to provide what type and kinds of garbage and waste materials may or may not be deposited in the Town Dump, to provide for such personnel to oversee the operation of the Town Dump as may be necessary and appropriate within the funds available to the Selectmen for Town Dump purposes and to make

such contracts as they may deem necessary and appropriate for the operation and maintenance of the Town Dump.

Section 5. **ENFORCEMENT.** Any person using the Town Dump without having first obtained a permit from the Town authorizing such use shall be fined up to \$100.00 for each separate use of the Dump in violation of this Ordinance. If a person using the Dump without a permit from the Town can show to the satisfaction of the Selectmen that he falls in one of the classes of persons permitted to use the Town Dump, then the above fine will be reduced to an amount of \$10.00 upon the guilty party obtaining the required permit and displaying it to the Selectmen. Violators are subject to loss of dump usage at the discretion of the Selectmen.

Section 6. This Ordinance shall become effective upon passage.

Article 30. To see what action the Town will take on the following Ordinance:

AN ORDINANCE PROVIDING FOR RUBBISH CONTAINERS AT THE GLENDALE DOCKS, GILFORD AND FOR THE USES THEREOF

Section 1. **ESTABLISHMENT.** The Selectmen of the Town of Gilford are hereby authorized and empowered to provide rubbish containers on and about the Glendale Docks subject to the provisions of this ordinance.

Section 2. **SIGNS INDICATING USE.** The Selectmen are to provide appropriate signs in and about the Glendale Docks area, (some of which signs may be attached to the rubbish containers or printed thereon) stating that the containers are provided

solely for the use of persons owning property on, or renting property on, islands in Lake Winnepesaukee in the Town of Gilford and for people who are using the launching facilities at the Glendale Docks. These signs shall further indicate that any use of the rubbish containers other than the aforementioned permitted use will subject the guilty party to a fine up to \$100.00 for each separate offense. Dumping of large furniture, appliances, etc. is prohibited.

Section 3. PERMITTED USERS OF GLENDALE DOCKS RUBBISH CONTAINERS. The only persons who shall be permitted to use the rubbish containers provided for in this Ordinance shall be persons who are either owners or renters of property on islands in Lake Winnepesaukee in the Town of Gilford or persons who are using the launching facilities at the Glendale Docks, Gilford. Rubbish from commercial establishments is prohibited.

Section 4. DISPOSAL OF RUBBISH FROM CONTAINERS. The Selectmen shall make appropriate provision for the removal of the rubbish collected in the rubbish containers provided for in this Ordinance.

Section 5. ENFORCEMENT. Any person violating the provisions of this Ordinance shall be fined an amount up to \$100.00 for each separate violation thereof.

Section 6. This Ordinance shall become effective upon passage.

Article 31. To see what action the Town will take on the following Ordinance :

AN ORDINANCE PROVIDING FOR SWIMMING
POOL SAFETY DEVICES

Section 1. Every person owning land on which there is situated a swimming pool, which contains twenty-four (24) inches of water in depth at any point, shall erect and maintain thereon an adequate enclosure either surrounding the property or pool area, sufficient to make such body of water inaccessible to small children. Such enclosure, including gates therein, must not be less than four (4) feet in height above the underlying ground; all gates must be self-latching with latches placed four (4) feet above the underlying ground or otherwise made inaccessible from the outside to small children.

Section 2. A natural barrier, hedge, pool cover or other protective device approved by the governing body may be used as long as the degree of protection afforded by the substituted devices or structures is not less than the protection afforded by the enclosure, gate and latch described herein.

Section 3. All gates or doors opening through such enclosures shall be equipped with a self-closing as well as a self-latching device designated to keep and capable of keeping such door or gate securely closed at all times when not in actual use and prevent a small child opening same.

Section 4. Any owner found to be in violation of any of the provisions of this Ordinance shall be fined an amount up to \$50.00.

Section 5. This Ordinance shall become effective upon passage.

Article 32. To see if the Town will vote to authorize the Board of Selectmen to set the amount of, and to provide for collection of reasonable fees for filing applications for building permits, appeals, or applications to the Board of Adjustment, and applications

to the Planning Board for subdivision or site approval in order to provide in whole or in part for reimbursement to the Town for the time of Town employees involved in processing such applications or appeals, and for incidental expenses.

Article 33. To transact any other business which may legally come before said meeting.

In accordance with a resolution adopted at the 1957 Town Meeting a motion will be presented to adjourn to the Gilford Elementary School in said Gilford on Wednesday, the 8th day of March, 1972 at 7:30 o'clock in the evening to take up Articles 4 through 33.

Given under our hands and seal, this 21st day of February, in the year of our Lord nineteen hundred and seventy-two.

R. D. WHITE
EDWARD H. NEEDHAM
S. C. HARPER
Selectmen of Gilford

A true copy of Warrant. Attest:

R. D. WHITE
EDWARD H. NEEDHAM
S. C. HARPER
Selectmen of Gilford

BUDGET OF THE TOWN OF GILFORD

Estimates of Revenue and Expenditures for the Ensuing Year, 1972 Compared with Estimates and Actual Revenue, Appropriations and Expenditures of 1971

Sources of Revenue	Estimated Revenue 1971	Actual Revenue 1971	Estimated Revenue 1972
Interest and Dividends Tax	\$ 25,000.00	\$ 33,997.72	\$ 33,000.00
Savings Bank Tax	2,000.00	2,483.59	2,500.00
Highway Subsidy	10,777.99	21,556.00
Meals and Rooms Tax	14,000.00	16,864.01	17,000.00
Reimbursement a/c State Forest Lands	750.00	766.82	385.00
State Payment in Lieu of Taxes ..	1,500.00	1,402.93	753.85
Village Field Matching Funds	4,500.00	3,500.00
Summer Police	960.00	937.50
Dog Licenses	1,100.00	1,188.16	1,100.00
Filing Fees	7.00	7.00
Parking Fines	50.00	203.00	200.00
Rent of Town Buildings	125.00	150.00
Interest Received on Taxes	8,000.00	9,213.35	8,000.00
Beach Admissions	1,000.00	1,177.25	1,000.00
Building Permits	1,500.00	1,545.00	1,500.00
Sewer Plans	700.00
Sewer Permit Fees	600.00	650.00	600.00
Percolation Fees	2,300.00	1,820.00	1,800.00
Water Department	1,350.00	1,868.34	1,350.00
Alarm System	240.00	240.00	240.00
Dumping Fees	200.00	592.00	500.00
Interest Received on Investments ..	900.00	1,082.00	900.00
Motor Vehicle Permit Fees	50,000.00	57,752.12	58,000.00
Town Clerk Fees	1,500.00	1,727.50	1,700.00
Sale of Town Property	1,550.00
County Payment in Lieu of Taxes ..	6,586.65	13,173.30	6,586.65
Sale of Town Maps	37.50	35.00
Sale of Ordinance Books	114.00	100.00
Sale of Gilford Stories	78.00	75.00
Telephone Commissions	51.57	50.00
Purchase of Weeks Land	4,000.00	4,000.00
Fire Truck	38,000.00
Reimbursements a/c Business Pro- fits Tax	47,584.19	45,591.65	47,693.00
Poll Taxes	3,000.00	646.00
Income from Head Taxes	900.00	190.00
Resident Taxes Retained	8,886.90	9,000.00
National Bank Stock Taxes	100.00	382.57	200.00
Yield Taxes	26.60
Total Revenues from all Sources	\$218,320.84	\$221,149.37	\$219,481.50
Except Property Taxes
Amount to be Raised by Property Taxes	347,350.46	374,275.72
Total Revenues	\$593,757.22

BUDGET OF THE TOWN OF GILFORD

Estimates of Revenue and Expenditures for the Ensuing Year, 1972 Compared with Estimates and Actual Revenue, Appropriations and Expenditures of 1971

Purposes of Expenditures	Appropriations Previous Year 1971	Actual Expenditures Previous Year 1971	Appropriations Recommended by Budget Committee 1972
State Audit	\$ 1,355.52	\$ 1,355.52	\$
Town Officers' Salaries	12,390.00	10,799.95	9,128.00
Administrative Expenses	46,331.00	46,982.12	54,291.78
Election and Registration Expense	2,000.00	710.78	1,640.00
Property Mapping	3,600.00	3,472.65	3,600.00
Town Buildings Expense	12,260.00	11,571.95	16,000.00
Land Purchase Costs & Surveys ..	500.00	3,288.00	1,250.00
Retirement & Social Security	12,300.00	14,650.58	16,000.00
Town Engineer's Dept.	18,975.00	18,849.65	24,537.00
Police Dept. & Summer Police	84,540.00	96,164.33	90,709.00
Fire Dept. & Equipment	59,950.00	60,109.41	61,600.00
White Pine Blister Rust Control ..	150.00	100.00	100.00
Regional Planning	3,581.00	3,581.00	3,694.00
Insurance	20,500.00	29,078.04	22,632.00
Planning Board	3,070.00	3,035.83	3,000.00
Damage by Dogs	575.00	500.00	575.00
Legal Expenses	2,000.00	909.67	2,000.00
Civil Defense	100.00	25.00	100.00
Capital Outlay Plan	1,130.00	1,130.00
Conservation Comm. Expenses ...	300.00	287.57	200.00
Conservation Fund	500.00	500.00	500.00
Winnepesaukee River Basin Survey ..	5,000.00	6,680.00
Town Dump	5,845.00	6,169.70	7,548.00
Ambulance Service	4,800.00	4,970.84	6,979.24
Lakes Region General Hospital ...	4,000.00	4,000.00	4,000.00
Street Lighting	5,750.00	5,513.57	6,400.00
Highway Department	95,218.00	109,581.04	105,679.00
Town Road Aid	1,258.43	1,101.12	1,103.60
Library	10,200.00	10,200.00	16,400.00
Welfare	7,000.00	8,755.37	7,000.00
Glendale Wharves & Parking Lots ..	3,579.00	2,292.65	3,875.00
Town Building Plans	1,800.00
Town Hall Remodelling	7,000.00
Memorial Day	125.00	100.00	125.00
Old Home Day	1,200.00	1,812.67	1,200.00
Parks, Playgrounds & Beaches ...	17,830.00	17,375.00	19,145.00
Water Works	1,500.00	1,506.94	1,735.00
Cemeteries	400.00	100.00
Lakes Region Association	950.00	950.00	1,000.00
Laconia Water Works	2,515.00
Interest on Temporary Loans	7,500.00	5,453.65	7,500.00
Interest on Long-Term Notes	5,788.35	5,788.35	4,915.60
Payment Long Term Notes	29,000.00	29,000.00	19,500.00

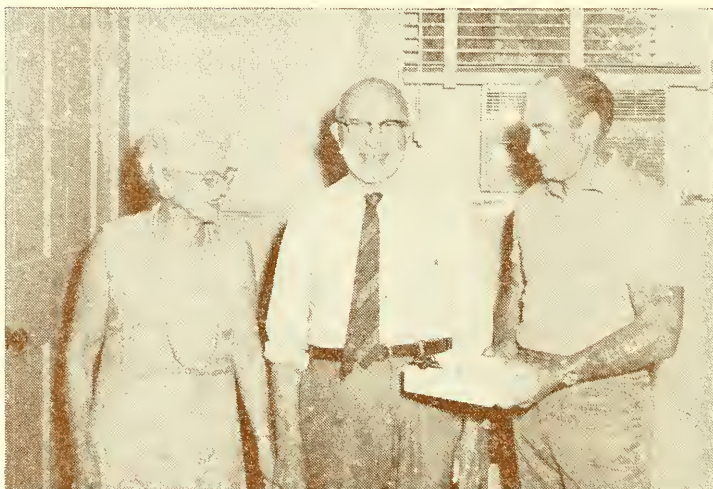
Bridge Construction	500.00	305.11	3,850.00
Water Works Construction	22,700.00
Highway Dept. Equipment	18,000.00
Fire Truck	38,000.00
Fire Detection System	7,250.00
* Village Field Improvement	15,000.00
Bookkeeping Machine	10,000.00	10,069.62
Weeks Land Purchase	5,000.00	5,000.00
Total Appropriations	\$548,351.30	\$537,047.68	\$593,757.22

* Not included in total appropriations. Submitted without Recommendation.

Town Meeting June 8 1813

- 2nd "Moved to see if Town would choose a committee out of Town consisting of three to district of the Town into School Districts."
- 31y "Voted not to have a committee out of Town for the above mentioned purpose—"
- 41y "Moved to see if the Town would choose a committee-man from each School District to district the town a new and define the limits thereof—"
- 51y "Voted not to have the above named committee—"
- 61y "Moved and voted that the selectmen be a committee to district the town in to school districts and define the limits thereof—"
- 71y "Moved and voted to have a committee from each school districts and draw the limits and represent the same to the selectmen—"
- 81y "Moved to reconsider the above voted and voted not to reconsider the vote—"

REPORT OF THE BOARD OF SELECTMEN



"Bill" Taylor accompanied by Mrs. Taylor, receives onyx desk set from fellow workers on occasion of surprise party at Town Hall. Selectman Ed Needham made the presentation.

Mr. William Taylor after twenty-one years of service to the Town of Gilford as our Tax Collector retired on July 15, 1971 due to failing health. A beautiful framed scroll was unveiled on Old Home Day 1971 to honor Mr. Taylor, and later was presented to him in the Lakes Region General Hospital on behalf of the people of Gilford by the Selectmen. Bill was very grateful and pleased by this expression of appreciation. After a lengthy stay at the hospital Bill is now at home on Schoolhouse Hill Road.

Mrs. Lorraine Royce, Town Clerk, was appointed by the Selectmen to fill the unexpired term of Mr. Taylor. The Selectmen found that the citizens of Gilford are pleased to have the convenience of the Tax Collector's office being available on a 45 hour

week basis and this year on your warrant you will find an opportunity to express your views on the question of whether you would like to combine the position of Town Clerk and Tax Collector and whether you wish to extend the term of the Town Clerk/Tax Collector to a three-year term instead of the present one-year term.

Your Auditors, Jack Sawyer, Ken Spalding and Bob Scales had to do double duty this year. A special audit was required when Bill Taylor resigned plus the usual town audit in January and February. Your Auditors feel that the town business has grown to such an extent in the past few years that the Town of Gilford should request the State Tax Commission to do a yearly audit of the town affairs. Your Selectmen concur in this matter and again you will be given the opportunity to express your desires at the town meeting.

Mr. Frank Smith, who passed away in June of 1971, served the town many years as a police officer and as the dump attendant and will be missed by his many friends.

Memorial Day was celebrated this year with the usual appropriate ceremonies, but differently, in that we had probably the youngest main speaker in the history of Gilford in the person of Mr. Kenneth Colburn a Laconia High School Junior. Mr. Colburn made an excellent, thought provoking talk presenting the "younger" generation point of view. The Selectmen were very pleased with their choice of Ken as this year's Memorial Day speaker.

Old Home Day gets better every year. Shelia and Bob Weeks did an outstanding job — especially when one remembers that the event had to be postponed one week due to rain and high wind. That's like putting on two Old Home Days in one weeks time. Sheila and Bob were very grateful to the many

people who helped in the success of Old Home Day '71.

Mr. Stanley MacGaregill, a good friend of Gilford, and "Mr. Fireworks" of Old Home Day died in September shortly after Old Home Day. He will be missed by many of us, old and young.

Cecily and Frank Quimby of October Lane have consented to be co-chairmen of Old Home Day 1972 and, of course, will need the help and cooperation of many of us to top the 1971 affair.

Our Burroughs Electronic Bookkeeping Machine arrived in June and although we did experience several "shakedown problems" our payrolls and employee earnings records for the rest of the year were done by machine as well as other check writing. The 1971 Tax Warrants and Tax Bills were also produced on the machine in cooperation with our address-ograph machine. A total of 4,322 tax bills were prepared and processed for a total of \$1,213,726.57.

Property mapping continued in 1971 with the help of Harold Dinsmore and Phil Hodgkins. The Selectmen expect in the near future to have property maps of the town in binders at the town hall for the convenience of all.

Bill St. Laurent, and his girl Friday, Sue Whitney, received and re-appraised some 1500 parcels of property and with \$2,800,000.00 of new construction increased his appraisal of our tax base by approximately \$5,600,000.00. Bill expects a similar increase for 1972.

The ambulance service agreement due to expire in 1971, has been extended one year. This service seems to be working out very well.

As explained at last years town meeting the town insurance program was put out to bid in 1971. After much deliberation, interviews and meetings, on July 1, 1971 the insurance program for the Town of Gil-

ford and the Gilford School District was awarded to the Melcher & Prescott Agency with Mr. Norman Liberty of that company the agent for the Town and School District. The bidding process itself brought out the best in all the bidders and we, the Selectmen, are sure the town benefited from the competition.

Another Summer Town Meeting was held in August. A very good turn-out indicates the interest of our summer friends in the development of Gilford. The purity of the big lake is of primary concern.

The Selectmen wish to congratulate Mrs. Lorraine T. Royce on her 25th anniversary as Town Clerk of Gilford. Her devotion to her position over these twenty-five years has been unswerving and with her additional responsibilities has aided many boards of Selectmen including the present Board of Selectmen. We find her pleasant, efficient manner an asset to her position and to the Town of Gilford. Congratulations to you, Lorraine, with the hope that you have many more happy and healthful years in your association with the Town. (It is an ill-founded rumor that Lorraine has been Town Clerk since 1813.)

ROBERT D. WHITE
EDWARD H. NEEDHAM
STEPHEN C. HARPER
Board of Selectmen

Town Meeting March 13, 1832

Voted to purchase a Blank Book for the Towns Farm to keep accounts in.

REPORT OF GILFORD
PUBLIC LIBRARY TRUSTEES
1971



*William S. Lord
Laura Taylor, Circulation Clerk
Ruth S. Pratt, Librarian
Eleanor Lindsay, Trustee*

William Lord, trustee of the Gilford Public Library, resigned in January after 15 years of faithful service. The trustees presented him with the book, **Nature of Life** by Louis and Margery Milne as a small token of appreciation.

Robert Edwards was appointed to fill out Mr. Lord's term and then was elected as a trustee in March.

The new reference room is a popular place and the new copier has proved to be very useful to our young people and other Gilfordites.

Job qualifications for the library staff have been determined by the trustees. We now have: Librarian-Ruth Pratt; Assistant Librarian-Gaynelle Richardson; and Circulation Clerks-Dorothy Emilio and Kathryn Woolston.

A new vacuum cleaner was purchased this year to help in the maintenance.

As we have lost our State funds for reference books the successful Book Sale on Old Home Day was a help in purchasing new titles.

Respectfully submitted,

ELEANOR LINDSAY
ROBERT EDWARDS
DOROTHY K. SIMONDS

Conveyance of land to B. Weeks Esq. near the burying ground at Jona Elkins 1827.

In consideration of two Dollars and fifty cents paid by Benjamin Weeks Esq. before the signing hereof — we the Subscribing Selectmen of the Town of Gilford order as follows "to wit" that the said Benjamin Weeks shall have a certain piece of land containing about one fourth of an acre in and adjoining the burying yard near Jonathan Elkins it being all the land the town owns there that we know of—

In witness whereof we have hereunto set our hands this seventeenth day of May A.D. 1827.

*Samuel Leavitt
F. W. Boynton Selectmen
Levi R. Weeks*

REPORT OF THE TREASURER
OF THE
GILFORD PUBLIC LIBRARY

Bank Balance as of Dec. 31, 1970 \$ 2,316.15

Receipts

Appropriations	\$10,200.00	
Gifts	31.12	
From Librarian :		
Fines	187.26	
Book Sales	188.67	
Non-Resident Fees	12.00	
Copy Machine	119.20	
Misc.	1.65	
From Trust Funds :		
Remick Trust	258.10	
Total Receipts — 1971		\$10,998.00
Bank Balance		2,316.15
Total Charges		\$13,314.15

Payments

Salaries	\$6,037.92
Books and Periodicals	2,463.14
Library Administration	331.24
Bldgs. and Grounds	1,145.11

Capital Outlay :		
Furnishings	843.68	
Buildings	88.41	
Inventory taking	158.06	
		<hr/>
Payment Sub-Total		\$11,067.56
Aganist State Fund		62.15
Against Remick Trust		248.37
Bank Service Charges		6.19
		<hr/>
Total Payments		\$11,384.27
Bank Balance 12-31-71		\$ 1,929.88
		<hr/>
Total Credits		\$13,314.15

Respectfully submitted by,

ROBERT EDWARDS

Town Meeting March 12, 1833

Voted to excuse Moses Plummer from paying his poll tax the last year as he was Superintendent.

Voted that the Superintendent of the Town Farm be hence forth taxable as any other towns man.

Voted to allow 55 cents per day on the road.

REPORT OF THE LIBRARIAN OF THE GILFORD PUBLIC LIBRARY

In 1971, the new reference room was used by students as well as adult borrowers. The copy machine has been a great help to our patrons, also. This is an A. B. Dick Copier. It will copy just about any printed material and ball point pen, too. For a very reasonable fee, our staff will copy what you need.

From June until Labor Day weekend, Mrs. Lindsay and the librarian were busy getting ready for the annual book sale. The library collection was carefully weeded. Many of the older volumes were put on a special 'Americana' table at the Gilford Old Home Day Fair. This year's sale was the most successful one, yet.

In June, Miss Gaynelle Richardson joined the staff as Assistant Librarian. Mrs. Dorothy Emilio is still our Circulation Clerk on Thursday afternoons. Mrs. Laura Taylor resigned in October and Mrs. Kathryn Woolston has replaced her on Tuesday afternoon as our Circulation Clerk. There are now two members of the staff on duty during the hours that the library is open to the public. These hours are 2-6 PM, Mondays and Fridays; 2-8 PM on Tuesday, Wednesday and Thursday; and on Wednesday morning from 9:30 until 11:30 AM. Please note that we are now open 3 evenings a week. A copy of this schedule may be obtained at the library.

During the spring and summer months, flowers were donated by Mrs. Emilio, Mrs. Lindsay, and Mrs. Bette Persons. Just before Christmas, Mrs. Helen Weeks presented a 'pine cone lady' to the

library. This brightened up the main entry during the holidays.

Finally, the Gilford Public Library had its busiest year ever, in 1971. With both the lower level and main floor in operation, we were able to serve our patrons more efficiently. We have increased the number of borrowers, adult and junior. Our summer visitors kept us very busy, also.

The staff of the library extends a cordial invitation to all residents of Gilford to use your library this coming year. You may wish to study, have something copied, order a rare book or just browse. Whatever it may be, we are here to serve you.

Respectfully submitted,

RUTH S. PRATT,

Librarian

Circulation Records

Number of books loaned from library :

	Adult	Juvenile	Total
Non-fiction	2854	949	3803
Fiction	4814	3506	8320
Magazines	751	-----	751
Recordings	842	-----	842
			<hr/>
			13,716

No. of Bookmobile books loaned to library

(3 trips)

2572

Books borrowed by mail from State Library

137

Books borrowed on Interlibrary Loan from
Laconia

57

2766

Registration Records

	1970	1971
Adult borrowers	628	710
Juvenile Borrowers	605	661

Cash Records

Balance brought forward Jan. 1, 1971	\$	2.80
Cash received from copier		119.20
Cash received from fines		186.83
Cash received from books sales		183.80
Cash received from lost books		4.87
Cash received from Non-resident fees		12.00
Cash received from Gifts		31.12
Miscellaneous		1.65
		<hr/>
	\$	542.27
Cash turned over to Mr. Edwards		—539.90
		<hr/>
Balance on hand, December 31 ,1971	\$	2.37

Received from Mr. Edwards for postage and supplies in 1971		\$ 99.89
Spent for supplies in 1971	\$ 57.48	
Spent for postage in 1971	35.63	
		<hr/>
		—93.11
		<hr/>
Balance on Hand December 31, 1971	\$	6.78

Accession Records

Number of Volumes (estimated Jan. 1, 1971)	9004
Volumes purchased by the town	470
Volumes purchased with State Aid	7

Volumes purchased with Remick-Burpee Trust Fund		47	
Volumes donated by friends		36	
American Museum of Natural History	2		
Anonymous	18		
Arabian American Oil Co.	1		
Author	1		
Mr. and Mrs. John Chandler in memory of Flora Lavalee	2		
Mrs. Louise Elsner	1		
Mrs. Gardner Greene, Jr.	1		
Laconia Library	1		
Atwood Levensaler	1		
Mrs. Doris Lord	1		
Mary Butler Chapter DAR in memory of Mrs. Winnifred Varney	1		
Publisher	2		
Donald J. Selby	1		
Horatio Tower, Jr.	2		
Robert B. Weeks	1		
Total volumes purchased, donated			+560
			<hr/>
			9564
Volumes discarded in 1971	565		
Volumes reported lost	1		
			<hr/>
			—566
			<hr/>
Number of volumes December 31, 1971 (estimated)			8998

REPORT OF THE RECREATION COMMISSION

The Village Field

During 1971, the installation of lighting facilities on the tennis courts and multi-purpose court were completed, thus affording townspeople maximum usage of these areas. Spring saw the usual large influx of young boys onto the field for baseball, soccer and other activities. John McGonagle headed up the summer recreation program and did an outstanding job, especially in the area of tennis instruction, earning the respect of the more than 100 children whom he taught over the course of the summer. In addition to the children, John instructed an eager group of women. College soccer, and football took over in the fall, followed by skating in the winter. A special note of thanks is in order to Mr. Maurice Gouin for donating his time and equipment to make this skating available.

“In the works” for this spring is the installation of a slide, swing set and climber at the field and additional landscaping along the road to the tennis courts.

Gilford Beach

Gilford beach continues to be the hub of activities in the summer time. The record number of children enrolled in swimming classes necessitated the hiring of a part-time instructor in addition to the six full-time life guards. For the second year, a water carnival proved to be a popular event. The new building provided necessary facilities in an attractive setting.

In September, the Recreation Commission held a public hearing in an effort to ascertain the desires of the community on a recreational level. The general consensus of those in attendance was that recreation facilities should be spread throughout the town, and not merely centered in the village. To this end, it is the plan of the Commission to expand recreational facilities at the Gilford Beach, in order to make it more than a waterfront facility. Moreover, we are continuing to look for suitable pieces of land in other areas of Gilford.

The Recreation Commission plans to hold these hearings annually and we seek your help in planning future projects.

POLLY RICHARDSON, Chairman
BOB BLANDFORD
ARTHUR TILTON
JANET TYRREL
DAVID COPITHORNE

Voted to raise 400 and 50 dollars for necessary charges. — March 1813

Voted to raise \$700 for necessary charges for present year. — March 1829

REPORT OF THE PLANNING BOARD

In April of 1971 the Planning Board moved into a new office on the second floor of the Community Church Parish Hall. Since that time the office has been open, and the clerk available to assist the public mornings Monday through Thursday. Even with the additional help, the Planning Board members have put in approximately 153 volunteer hours during 49 regular and 9 special meetings. During this time they approved 7 non-residential site plans and 35 subdivision plans consisting of 148 lots. These figures do not include plans which are still under consideration. The Board is indebted to the Town Engineer for his help in reviewing plans and preparing road estimates.

The Board has met periodically with the Planning Consultant to finalize the Capital Improvement Budget and work on other aspects of the Comprehensive Plan, such as improvements to the Town Center. The Conservation Commission and the Recreation Commission have also been consulted, especially concerning land acquisition for future parks throughout the Town, and the protection of sensitive land areas along streams and ponds.

In September, at the request of the Selectmen, the Planning Board presented to the residents of Gilford a proposed amendment to the Zoning Ordinance which would permit a dog track in the Town. The referendum was voted down, so the Planning Board stopped hearings on the amendment.

The State Planning Office offered a course on the administration of land subdivision regulations this past winter which the Planning Board clerk attended. The course was designed to help local plan-

ning boards with the interpretation and enforcement of subdivision regulations. As other courses of this nature are made available, the Board intends to utilize the information to better serve the Town.

During the winter months, in keeping with the Comprehensive Plan and State pollution control requirements, the Board prepared for the Town's consideration changes to the Zoning Ordinance which would change the boundaries between the Residential District and the Residential-Agricultural District, and include one and two acre lots. Other amendments the Board felt should be presented to the residents for their consideration included a Limited Commercial District around the Route 11A-by-pass interchange, and a clearer definition of mobile homes. After careful study of the newly acquired Wet Lands Map, the Planning Board felt that a whole new Article should be inserted into the Zoning Ordinance to prevent the mis-use of wet lands in Gilford.

The Planning Board intends to spend the next year finishing the Town Center Design, and working with the Conservation Commission to protect the ecology of our Town. The Planning Board thanks you for your support during the past year, and urges you to attend their meetings any Monday night.

ARTHUR NIGHSWANDER, Chairman
ROBERT LEMIRE, Vice-Chairman
JANICE SANFACON, Secretary
DORIS MacHAFFIE, Clerk
ROBERT MacHAFFIE
ALIDA MILLHAM
RICHARD RAY
EDWARD NEEDHAM, Selectman



A typical operation this winter, the loading of salt into spreaders for ice removal.

REPORT OF DEPARTMENT OF PUBLIC WORKS

1971

The Department of Public Works was established by the Board of Selectmen in November 1970 and is comprised of the following pre-existing departments or areas of work: Town Engineer, Highway Department, Town Dump, Town Buildings, Water Works, Glendale Wharves & Parking, Cemeteries and Street Lighting. The organization, personnel administration, planning, fiscal administration and

general operation procedures being managed through the Town Engineer's Office.

Among the administrative accomplishments last year have been the instituting of a vehicle preventative maintenance program, equipment cost records, dump usage records, and vehicle fuel usage records. Additional procedures and programs will continue to be established in the future so all phases of the Department will produce maximum service for the least amount of tax money.

Also, this office has performed many operational duties some of which are shown below with the totals for the year:

	1971
Building Permits Issued	166
Sign Permits Issued	21
Sewer Permits Issued (new construction)	86
Sewer Permits Issued (replacement of existing septic tank systems)	42
Septic Tank System Inspection	94
Percolation Tests Performed	45
Dye Tests of Septic Tank Systems	92
	—

It is interesting, and very encouraging, to note the number of sewer permits issued for replacement of existing septic tank systems. Most of these were issued on request of the individuals and shows a willingness for people to correct possible health and/or pollution problems on their own.

As Health Officer, approximately 25 health and/or nuisance complaints were received and investigated; 4 orders to correct conditions in violation of Town and State regulations were issued, 3 foster home inspections, 1 head start center inspection and 1 meat processing building inspection were made. Also, water samples from Gilford Beach were taken

and tested weekly from July 6 to August 16 for coliform bacteria. The results ranged from a low of 3 to a high of 78 (New Hampshire requirement is 240 or below) showing the high quality of water at the beach.

Other areas of work included the layout of roads prior to reconstruction: review of subdivision plans for the Planning Board, preparation of road construction estimates for proposed roads in new subdivisions and ; to represent the Town as a member of the Winnepesaukee River Basin Study Commission.

Revenue produced in 1971 through services by this Office is as follows :

Percolation Tests	\$1,820.00
Sewer Permits	650.00
Building and Sign Permits	1,545.00
	<hr/>
	\$4,015.00

Also, \$592.00 was received as revenue for septic tank pumping disposal. Although not a service of this Office, the set-up and operation of the facilities came from it.

Last year saw two new employees in this Office. Mrs. Lillian Maynard was hired as a full-time secretary to do the recording of data for the Public Works Department records, prepare permits for issuance filing, typing and act as receptionist for the Department. Mike Robinette was hired for the summer to perform the dye testing, collect and analyse water samples, surveying, map work, etc. Both should be commended for jobs well done.

This year, a request is being made to hire a full-time engineering-aide. The duties will be deed research, surveying, drafting, maintain map files, perform percolation tests, make blueprints, make traffic signs, water testing and analysis, dye testing, investi-

gate complaints, inspection of set-backs for new buildings, inspection of septic tank systems and to consult with Town Engineer on problems and decisions. This will not only relieve the Town Engineer of some routine tasks but also provide a more effective organization structure within the Department.

The Highway Department, with a work force of eight men, is responsible for maintaining and improving approximately 50 miles of roads and for the maintenance of its vehicles and other equipment. Road maintenance in 1971 included snow and ice removal of the more than 100 inches of snow which fell in the area; pavement sealing of 22 roads (6 miles); moving brush in roadways; pavement sweeping and patching; raking, grading and dust oiling gravel roads; tree cutting and removal; culvert installation and flushing; erecting traffic signs; ditch cleaning.

Reconstruction of the following roads, amounting to over 2 miles, was also accomplished last year: Varney Point Road (Old Route 11 to Beach); Wildwood Road; Casey Road; Dow Road; Davis Road; Heights Road; Ox Bow Lane; Farmer Drive and; Jameson Avenue. Varney Point Road was paved to allow two-way traffic plus a walkway, thus making it much safer for pedestrian traffic, especially during the summer months.

Work done for other Departments included (1) Gilford Beach; grading, paving and sealing of drives; grading parking areas; hauling and placing sand on beach; (2) Village Field: excavating trench for power line to tennis courts; (3) Lincoln Park: hauling gravel for parking area, (4) Town Dump: hauling and spreading cover material; (5) Water Works; excavating for water main repair.

Jim Richard was hired as the first full-time mechanic for the Department and has done a good

job of keeping the equipment on the road. For example, the total average annual mileage of our three dump trucks prior to 1971 was 17,000 miles, while last year it was in excess of 31,000 miles. This is attributable to both an increased work schedule and less equipment down-time.

The highway garage has been approved as an Official Inspection Station and will do the semi-annual inspecting of all Town owned vehicles. This will result in savings to the Town for inspection fees, parts and labor. Also the garage will handle the routine maintenance and mechanical work for all Town Departments (i.e. Highway, Police and Fire) resulting in further savings to the Town.

A Capital Expenditure Program has been prepared for the purchase of replacement and new equipment. In this way, annual costs will be equalized as much as possible, while providing for the necessary updating and additional equipment needs. Cost records started last year, will provide valuable information on operating costs for the implementation of the program. This year, a request is being made for the purchase of a front-end loader to replace our present one and some new vehicle maintenance equipment to better handle the expanded service operations of the highway garage.

In late December 1971 a fire occurred at the dump destroying the building and dozer. However, both were replaced and it is now back in normal operation.

As a reminder, use of the dump is restricted to vehicles bearing the most recent taxpayers sticker or by special permission. Both may be obtained at the Town Hall. This also applies to the Glendale Docks Parking area.

The New Hampshire Air Pollution Control Agency has set forth a schedule, based on population, re-

quiring the discontinuance of all open burning dumps in the State. Gilford's date is July 1, 1974. As a result of this regulation, we have started discussions with neighboring communities, notably Belmont and Laconia, to determine possible regional solutions. Also, we will be exploring methods and costs of handling this alone. Either way, the costs for solid waste disposal will increase around three to four times within the next few years. Present costs are approximately \$1.00 per ton.

In 1971, Ron Dockham was hired as the first full-time maintenance man for the Town. His primary duty was the general maintenance of the Town Hall, Town Engineer's Office, Glendale Fire Station and Glendale Comfort Station. Along with these duties, and because of his carpentry skills, he also built a parts stock room in the highway garage, an enclosure for the exterior door to the Police Department, helped in the renovation of the Police and Town Clerks Department, built steps on the building at the Village Field, repaired picnic tables and life guard stands at the beach.

A request is being made this year to replace the water works main line. The present 6 inch main was installed in the early 1940's and is reported to be the main cause of the water quality problems experienced by the users. Also, it will be extended and tied into the school to act as an auxiliary supply at times of peak demand. This, in turn, will lessen the amount of work needed to correct inadequate water storage at the school.

It is difficult to summarize a years work into just a few pages, so if anyone has questions about subjects not mentioned herein, or would like more information on any phase of this Department's activities, please contact the Town Engineer's Office.

Again this year, I wish to thank the Board of Selectmen, the other Municipal Officers and Departments, and you the Public, for your continued support.

Respectfully submitted,

H. RICHARD HOWARTH, P.E., L.S.
Superintendent of Public Works

Voted to raise \$000 for necessary charges the ensuing year. — March 1831

Voted to raise \$1000 for necessary charges the ensuing year. — March 1832

REPORT OF OVERSEER OF PUBLIC WELFARE

Increased unemployment, a strike, sickness, and unexpected emergencies have caused greater need for neighborly help this year. And this is all that "Public Welfare" really is. Traditionally, since the earliest colonial days in New England, neighbors have helped each other in need. Once, nearby neighbors helped with chores, baking, and "minding things" on an individual basis. Nowadays, the whole community shares in helping a family to help themselves. Forty-four (44) families, one hundred and fourteen (114) persons, have been helped in such fashion.

We have continued to consult closely with the Donated Foods and Hot Lunch Programs to assure that all possible eligible families have been served. Ongoing support of the Lakes Region Day Care Center has provided direct developmental care for a number of our low-income, preschool youngsters. Other resources utilized have included the Julia Ladd Fund, the Laura Buttrick Fund (Hospital), and various church and fraternal societies.

State Welfare Aid to the Permanently and Totally Disabled has been broadened to now include those physically or mentally disabled over age eighteen (18) and unable to work. The state, county, and local welfare offices are very cooperative and helpful. Please keep in mind to refer any individual or family who might benefit from some "neighborly help," this next year. Thank you very much.

WILLIAM M. CONNELLY
Overseer of Public Welfare

REPORT OF THE POLICE DEPARTMENT

In 1971, the Gilford Police Department again experienced a busy year. Calls for police service increased with the number of reported offenses rising 8%. At the same time the department increased its clearance rate by 11%.

With the advantage of a stabilized roster of personnel the department was able to place a heavy emphasis on the deterrence of criminal activity or, failing to deter, to put forth an all out effort to apprehend violators. As a result, in 1971, the department showed a small decrease in criminal offenses while enjoying an increase in clearance of criminal offenses.

Criminal cases require more time to solve than motor vehicle cases and because of the added time the department spent on these cases it was necessary to curtail, somewhat, our enforcement of motor vehicle laws. This action, to our disappointment, caused an increase in the number of traffic accidents in 1971. Interestingly enough, when we analyzed the expense of traffic accident vs. criminal loss, we found that all forms of criminal activity cost the residents of Gilford \$33,816.55 (of which \$22,528.69 was recovered). This figure contrasted with \$61,690.00 in damage to property not to mention the cost and suffering of injuries involved. (This figure includes the repair in approximately 70% of the accidents, as not all parties reported the extent of damage).

While we do not intend to imply that either is more important than the other, we realize that in 1972 a more balanced enforcement effort must be employed to reduce loss in both areas. Towards this end we intend to increase our traffic enforcement while hopefully maintaining our present high level of clearance in criminal violations.

The following is a comparative list of 1970 to 1971 activities:

	1971	1970
Cruiser miles driven	128,459	131,518
Calls for police service	3,923	3,905
Criminal offenses known	384	386
Arrests/Summones — Criminal	162	165
Property reported stolen	\$33,816.55	\$35,875.00
Stolen/Lost prop. recovered	\$22,528.69	\$15,989.89
Motor Vehicle offenses known	336	307
Arrests/Summonses —		
Motor Vehicle	295	288
Accidents — Fatal	1	1
Accidents — Property Damage	176	140
Accidents — Personal Injury	43	30
Court Appearances	582	617
Fines paid	\$18,105.00	\$18,720.00
Days Sentenced	4,337	1,974
Radar checks made	14,221	20,742
Warnings issued	619	539
Defective Equip. Tags issued	125	234
Parking Tags issued	349	245
Checkups made	261	449
Motorist's assists rendered	203	152
House Checks made	2,620	1,201
Doors secured	503	327
Street lights out	28	16
Lights reported on/off	121	104

In 1971, we attempted to give you the professional law enforcement you expect and deserve. In the coming year we will endeavor to improve and upgrade our work while striving to meet the everchanging requirements of the courts and society.

Respectfully submitted,

BRUCE G. CHENEY,

Chief



REPORT OF THE GILFORD FIRE DEPARTMENT

The year 1971 has been a busy one for your fire department. Again through the generosity of the towns people we were able to install three more dry hydrants, making a total of fifteen. The three new locations are as follows: Mt. Rowe, Silver Sands and Ames Farm, which makes for better fire protection for you, the taxpayers.

Once again time was spent with soil conservation personnel going around and finding new locations to install dry hydrants, just to name a few: Gilford Country Club Pond, Dinsmoor Point Road, one at the end of the Airport Runway near Meadow Brook Lane, one at Steam Village Pond and others near

the Glendale Docks and Gilford Marina. We would like to point out that these hydrants were installed by fireman, at no extra cost to the town, as the men came in on their time off.

In July we established new rules and regulations for the volunteers. We hope that this year we may be able to compensate the men for the time they donate each year to the department, such as attending training schools and regular monthly meetings. These meetings and schools will be compulsory, if the town votes to pay the volunteers. We feel that this is long over due, as other towns have been paying their volunteers for quite some time.

This past year we doubled our training sessions, and have been fortunate to be able to use training aids from other departments, including the Laconia Vocational School on Prescott Hill. As we mentioned in last years report, the fire service is growing faster than we can keep up with, so we do have to spend considerable time training and make good use of our two state training schools, namely, the Lily Pond Training Center and the one located at Fitzwilliams in Keene, N. H.

As stated in the 1970 report we would again like to put the replacement schedule before you as follows:

Replace Engine (2) in 1971. This has already been sold, and until our new truck arrives, we have put two older trucks back into service so that the town would be covered, however, these two trucks are not recognized by the underwriters as they are over twenty years old. Hopefully by the time this report is out we will take delivery of our new truck. The two older trucks have been kept in the Glendale station.

Ladder truck in 1975 — an added piece of apparatus

Replace engine 1 in 1979 — 20 years old
Replace engine 3 in 1983 — 20 years old
Replace engine 5 in 1987 — 20 years old

We had the following emergency calls this past year: House fires 17 — Woods and Grass fires 29 — Car and Truck fires 6 — Miscellaneous 32 — Responded to Mutual Aid 21 times, and received none for which we are thankful — Rescue calls 4 — Resuscitator calls 3 — Making a total of 112 emergency calls.

For the town consideration we would like to bring to your attention the possibility of setting aside a fund each year to help defray the expense of buying fire apparatus when it comes due, so we would not have to borrow large sums of money to pay for this expensive equipment. We think we should all give this considerable thought in the coming year.

Last, but certainly not least, all fire and emergency calls are going into our new Lakes Region Central Dispatch Office now in operation at the Belknap County courthouse. WHEN REPORTING A FIRE OR EMERGENCY BE SURE TO CALL 524-1545 AND GIVE YOUR NAME, THE NAME OF THE STREET OR ROAD YOU LIVE ON, THE TYPE OF FIRE OR EMERGENCY THAT YOU HAVE, AND MAKE SURE YOU TELL THEM "GILFORD."

If you have any questions on the above information, please feel free to call us at 524-7500, which is our new business telephone number.

Respectfully submitted,

SHERMAN O. THOMPSON, Chief
ROBERT CLIFFORD
RONALD HOOK
FRED SHURBERT

Board of Fire Engineers

REPORT OF THE
FOREST FIRE WARDEN
AND DISTRICT CHIEF

LEST WE FORGET — IT CAN HAPPEN HERE

Disastrous forest and brush fires that destroy hundreds of homes are more prevalent on the west coast with their dry seasons and strong dry hot winds but 25 years ago this fall is the anniversary of a disaster that devastated large areas of northern New England leaving villages in ashes with rows of cellar-holes and chimneys in a number of summer vacation home locations. Many lives were lost on that destructive day of October 23, 1947 nothing could stop the wind driven flames.

It is true that such conditions are unusual for New Hampshire but they happened once, they can happen again. The fuel for fires is all around us. All it takes is a firebrand. Only by cultivating a habit of carefulness with fire at all times can we meet the challenge of protection when dry conditions prevail.

Please let these reminders be your guide:

1. Never, either when walking, riding or driving, discard a firebrand — a lighted match or a glowing cigarette.
2. Always obtain a permit for any outside burning. The burning of household rubbish is not permitted if your town has rubbish collection. Burning of grass or garden litter can be dangerous. See your warden first.
3. If you camp or picnic, be sure open fires are allowed and if they are, put them **dead out** when leaving.

4. **Most Important** — instruct your children in the danger of the lighted match. A lighted match and dry grass or forest litter is a dangerous combination which leads to destructive loss and can lead to tragedy.

The past year — 1971 was a favorable year for the control of fires. There were too many fire starts in some towns. We thank those who remembered and ask others to heed Smokey's message.

Number of fires reported and acres burned —
1971 season:

State	463 fires	160 acres
District	42 fires	16 acres
Town	1 fire	spot

SHERMAN O. THOMPSON
Forest Fire Warden

HUBERT C. HARTWELL, JR.
District Chief

At a meeting legally notified and holden at Gilford on Monday, the 2nd day of November 1812

"A pool was taken to see whether the Moderator and Selectmen should receive votes outdoors or in the house the pool was as follows 115 to 119 in favour of the votes being received in the house."

REPORT OF THE CONSERVATION COMMISSION

In 1971 we purchased water testing equipment and, in cooperation with the Town Engineer, commenced testing streams and other bodies of water. It is expected that records of these and future tests will show to what extent the quality of the water is changing from year to year.

We also assisted in the negotiations leading to the acquisition of a portion of the Weeks property adjacent to the Wilson property behind the elementary school that was previously purchased by the town, and we are continuing to investigate and evaluate the possibility of acquiring other open space areas or rights therein, and the further protection of wetland areas.

We are also taking steps to bring the commission into closer contact with the New Hampshire Association of Conservation Commissions, of which we are a member, and other organizations, and some of our members have attended meetings of some of them, such as that of the Land Use Foundation in Bedford in December.

WILLIAM S. LORD
Chairman

REPORT ON THE WINNIPESAUKEE RIVER BASIN STUDY

In December 1970, as a result of an Environmental Protection Agency ruling, which required basin consideration prior to obtaining eligibility for federal grants, and in an effort to protect our waters from contamination, the Winnepesaukee River Basin Study Commission was formed. It consists of representatives from the following communities: Meredith, Laconia, Gilford, Belmont, Sanbornton, Northfield, Tilton and Franklin.

The Commission contracted the engineering firm of Charles A. Maguire Associates of Providence, R. I., to perform a study which would determine the method of sewage disposal to best protect the water quality of the basin, and also, be the most economical for the communities involved. This report is substantially complete, but is still under review by the River Basin Study Commission, the New Hampshire Water Supply & Pollution Control Commission and the Environmental Protection Agency.

The study has evaluated several alternatives, and the recommended system at the time of this writing, is for a series of interceptor pipes to transport wastes from all eight communities to a single treatment plant in Franklin. Discharge from the plant, after secondary treatment, would be into the Merrimack River.

This system produces minimal effects on the environment by removing the wastes from the basin,

treating it at one location and discharging it into water capable of accepting it. Also, it is the most economical of all the alternatives considered.

The results of this study will provide a means for disposing of the wastes from Gilford by having points where the Town could tie into the regional system. For example, on Route 11 and Route 11A. However, the internal layout of the pipes to collect and transport the wastes from homes, etc., to these points is not included and must be determined by another study performed solely by the Town. A proposal of this type appeared on last years Warrant, but was withdrawn pending the completion of the River Basin Report.

Respectfully submitted,

H. RICHARD HOWARTH, P.E.
Member, Winnepesaukee River Basin
Study Commission

Town Meeting March 1829

Voted to raise \$600 for schooling the present year.

FINANCIAL REPORT

**Of the Town of Gilford, N. H. in Belknap County
For the Fiscal Year Ended December 31 ,1971**

CERTIFICATE

This is to certify that the information contained in this report was taken from official records and is correct to the best of our knowledge and belief.

ROBERT W. WHITE
EDWARD H. NEEDHAM
STEPHEN C. HARPER
Selectmen

LEWIS A. ALDRICH
Treasurer

REPORT OF THE TAX COLLECTOR

SUMMARY OF WARRANT

Property, Poll and Yield Taxes

Levy of 1970

Debits

Uncollected Taxes as of July 15, 1971 :

Property Taxes	\$5,071.86
Poll Taxes	98.00
Yield Taxes	217.82

\$5,387.68

Added Taxes :

Property Taxes	\$ 58.50
Poll Taxes	8.00

\$ 66.50

Interest Collected July 15 —

Dec. 31, 1971	6.33
---------------	------

Total Debits \$5,460.51

Credits

Remittances to Treasurer, July 15 —

Dec. 31, 1971 :

Property Taxes	\$ 293.62
Poll Taxes	20.00
Yield Taxes	none
Interest Collected	6.33

\$ 319.95

Abatements:

Property Taxes	\$ 757.16	
Poll Taxes	26.00	
Yield Taxes	none	
	<hr/>	\$ 783.16

Uncollected Taxes—Dec. 31, 1971:

Property Taxes	\$4,079.58	
Poll Taxes	60.00	
Yield Taxes	217.82	
	<hr/>	\$4,357.40

Total Credits		<hr/>	\$5,460.51
---------------	--	-------	------------

**Property, Poll and Yield Taxes
Levy of 1969**

Debits

Uncollected Taxes as of July 15, 1971:

Property Taxes	\$3,461.32	
Poll Taxes	106.00	
Yield Taxes	none	
	<hr/>	\$3,567.32

Added Taxes: none

Interest Collected July 15 —	
Dec. 31, 1971	1.04
	<hr/>

Total Debits		<hr/>	\$3,568.36
--------------	--	-------	------------

Credits

Remittances to Treasurer,
July 15-Dec. 31, 1971:

Property Taxes	\$	8.65
Poll Taxes		none
Yield Taxes		none
Interest Collected		1.04

\$ 9.69

Abatements:

Property Taxes	\$	56.50
Poll Taxes		54.00
Yield Taxes		none

\$ 110.50

Uncollected Taxes—Dec. 31, 1971:

Property Taxes	\$3,396.17
Poll Taxes	52.00
Yield Taxes	none

\$3,448.17

Total Credits

\$3,568.36

**Property, Poll and Yield Taxes
Levy of 1968**

Debits

Uncollected Taxes as of July 15, 1971:

Property Taxes	\$1,317.81
Poll Taxes	58.00
Yield Taxes	none

\$1,375.81

Added Taxes:	none	
Interest Collected July 15 — Dec. 31, 1971		none
	<hr/>	
Total Debits		<hr/> \$1,375.81

Credits

Remittances to Treasurer, July 15-Dec. 31, 1971:		
Property Taxes	none	
Poll Taxes	none	
Yield Taxes	none	
Interest Collected	none	
	<hr/>	
Abatements:		
Property Taxes	none	
Poll Taxes	32.00	
Yield Taxes	none	
	<hr/>	
		\$ 32.00
Uncollected Taxes—December 31, 1971:		
Property Taxes	\$1,317.81	
Poll Taxes	26.00	
Yield Taxes	none	
	<hr/>	
		\$1,343.81
		<hr/>
Total Credits		\$1,375.81

Property, Poll and Yield Taxes
Levy of 1967

Debits

Uncollected Taxes as of July 15, 1971 :		
Property Taxes	\$1,194.30	
Poll Taxes	46.00	
Yield Taxes	none	
		\$1,240.30
Added Taxes:		none
Interest Collected July 15 — Dec. 31, 1971		none
Total Debits		\$1,240.30

Credits

Remittances to Treasurer, July 15-Dec. 31, 1971 :		
Property Taxes	none	
Poll Taxes	none	
Yield Taxes	none	
Interest Collected	none	
Abatements:		
Property Taxes	none	
Poll Taxes	22.00	
Yield Taxes	none	
		\$ 22.00
Uncollected Taxes—December 31, 1971 :		
Property Taxes	\$1,194.30	
Poll Taxes	24.00	

Yield Taxes	none	
		<u>\$1,218.30</u>
Total Credits		<u>\$1,240.30</u>

**Property, Poll and Yield Taxes
Levy of 1966**

Debits

Uncollected Taxes as of July 15, 1971 :		
Property Taxes	\$ 536.06	
Poll Taxes	16.00	
Yield Taxes	none	
		<u>\$ 552.06</u>
Added Taxes :	none	
Interest Collected July 15 — Dec. 31, 1971		<u>none</u>
Total Debits		<u>\$ 552.06</u>

Credits

Remittances to Treasurer, July 15-Dec. 31, 1971 :		
Property Taxes	\$ 5.88	
Poll Taxes	none	
Yield Taxes	none	
Interest Collected	none	
		<u>\$ 5.88</u>

Abatements:

Property Taxes	none	
Poll Taxes	8.00	
Yield Taxes	none	
	<hr/>	\$ 8.00

Uncollected Taxes—December 31, 1971:

Property Taxes	\$ 530.18	
Poll Taxes	8.00	
Yield Taxes	none	
	<hr/>	\$ 538.18

Total Credits \$ 552.06

**Property, Poll and Yield Taxes
Levy of 1965**

Debits

Uncollected Taxes as of July 15, 1971:

Property Taxes	\$ 189.12	
Poll Taxes	8.00	
Yield Taxes	none	
	<hr/>	\$ 197.12

Added Taxes: none

Interest Collected July 15 —

Dec. 31, 1971	none
	<hr/>
Total Debits	\$ 197.12

Credits

Remittances to Treasurer,
July 15-Dec. 31, 1971:

Property Taxes	none
Poll Taxes	none
Yield Taxes	none
Interest Collected	none

Abatements:

Property Taxes	none
Poll Taxes	none
Yield Taxes	none

Uncollected Taxes—December 31, 1971:

Property Taxes	\$ 189.12
Poll Taxes	8.00
Yield Taxes	none

\$ 197.12

Total Credits

\$ 197.12

**Property, Poll and Yield Taxes
Levy of 1964**

Debits

Uncollected Taxes as of July 15, 1971:

Property Taxes	none
Poll Taxes	4.00
Yield Taxes	none

\$ 4.00

Added Taxes

none

Interest Collected July 15 —
Dec. 31, 1971

none

Total Debits

\$ 4.00

Credits

Remittances to Treasurer,
July 15 — Dec. 31, 1971 :

Property Taxes	none
Poll Taxes	none
Yield Taxes	none
Interest Collected	none

Abatements:

Property Taxes	none
Poll Taxes	none
Yield Taxes	none

Uncollected Taxes—December 31, 1971 :

Property Taxes	none
Poll Taxes	4.00
Yield Taxes	none

\$ 4.00

Total Credits

\$ 4.00

**Property, Poll and Yield Taxes
Levy of 1963**

Debits

Uncollected Taxes as of July 15, 1971 :

Property Taxes	\$ 153.07
----------------	-----------

Poll Taxes	14.00	
Yield Taxes	none	
		<hr/>
		\$ 167.07
Added Taxes:	none	
Interest Collected July 15 — Dec. 31, 1971		.20
		<hr/>
Total Debits		\$ 167.27

Credits

Remittances to Treasurer, July 15-Dec. 31, 1971:		
Property Taxes	none	
Poll Taxes	2.00	
Yield Taxes	none	
Interest Collected	.20	
		<hr/>
		\$ 2.20
Abatements:		
Property Taxes	108.91	
Poll Taxes	4.00	
Yield Taxes	none	
		<hr/>
		\$ 112.91
Uncollected Taxes—December 31, 1971:		
Property Taxes	44.16	
Poll Taxes	8.00	
Yield Taxes	none	
		<hr/>
		\$ 52.16
		<hr/>
Total Credits		\$ 167.27

Property, Poll and Yield Taxes
Levy of 1962

Debits

Uncollected Taxes as of July 15, 1971 :		
Property Taxes	\$	31.96
Poll Taxes		none
Yield Taxes		none
		\$ 31.96
Added Taxes :		
		none
Interest Collected July 15 —		
Dec. 31, 1971		none
		\$ 31.96
Total Debits		

Credits

Remittances to Treasurer,		
July 15 — Dec. 31, 1971 :		
Property Taxes		none
Poll Taxes		none
Yield Taxes		none
Interest Collected		none

Abatements :		
Property Taxes		none
Poll Taxes		none
Yield Taxes		none

Uncollected Taxes—December 31, 1971 :		
Property Taxes	\$	31.96
Poll Taxes		none

Yield Taxes	none	
	<hr/>	\$ 31.96
Total Credits		<hr/> \$ 31.96

SUMMARY OF WARRANT

State Head Tax

Levy of 1970

Debits

Uncollected Taxes as of July 15, 1971	\$ 300.00	
Added Taxes July 15 — Dec. 31, 1971	25.00	
Penalties Collected July 15 — Dec. 31, 1971	5.50	
	<hr/>	
Total Debits		\$ 330.50

Credits

Remittances to Treasurer July 15-Dec. 31, 1971:		
Head Taxes	\$ 60.00	
Penalties	5.50	
	<hr/>	
		\$ 65.50
Abatements July 15-Dec. 31, 1971		80.00
Uncollected Head Taxes Dec. 31, 1971		185.00
		<hr/>
Total Credits		\$ 330.50

State Head Tax

Levy of 1969

Debits

Uncollected Taxes as of July 15, 1971	\$ 295.00	
Added Taxes	none	
Penalties Collected	none	
	<hr/>	
Total Debits		\$ 295.00

Credits

Remittances to Treasurer July 15-Dec. 31, 1971	none	
Abatements July 15 — Dec. 31, 1971	155.00	
Uncollected Head Taxes Dec. 31, 1971	140.00	
	<hr/>	
Total Credits		\$ 295.00

State Head Tax

Levy of 1968

Debits

Uncollected Taxes as of July 15, 1971	\$ 140.00	
Added Taxes	none	
Penalties Collected	none	
	<hr/>	
Total Debits		\$ 140.00

Credits

Remittances to Treasurer		
July 15-Dec. 31, 1971	none	
Abatements July 15 —		
Dec. 31, 1971	75.00	
Uncollected Head Taxes		
Dec. 31, 1971	65.00	
	<hr/>	
Total Credits		\$ 140.00

State Head Tax

Levy of 1967

Debits

Uncollected Taxes as of		
July 15, 1971	\$ 130.00	
Added Taxes	none	
Penalties Collected	none	
	<hr/>	
Total Debits		\$ 130.00

Credits

Remittances to Treasurer		
July 15-Dec. 31, 1971	none	
Abatements July 15 —		
Dec. 31, 1971	65.00	
Uncollected Head Taxes		
Dec. 31, 1971	65.00	
	<hr/>	
Total Credits		\$ 130.00

**State Head Tax
Levy of 1966**

Debits

Uncollected Taxes as of		
July 15, 1971	\$	40.00
Added Taxes		none
Penalties Collected		none
		<hr/>
Total Debits	\$	40.00

Credits

Remittances to Treasurer		
July 14 — Dec. 31, 1971		none
Abatements July 15 —		
Dec. 31, 1971		20.00
Uncollected Head Taxes		
Dec. 31, 1971		20.00
		<hr/>
Total Credits	\$	40.00

**State Head Tax
Levy of 1965**

Debits

Uncollected Taxes as of		
July 15, 1971	\$	25.00
Added Taxes		none
Penalties Collected		none
		<hr/>
Total Debits	\$	25.00

Credits

Remittances to Treasurer		
July 15-Dec. 31, 1971	none	
Abatements July 15 —		
Dec. 31, 1971	none	
Uncollected Head Taxes		
Dec. 31, 1971	25.00	
Total Credits		\$ 25.00

**State Head Tax
Levy of 1964**

Debits

Uncollected Taxes as of		
July 15, 1971	\$ 15.00	
Added Taxes	none	
Penalties Collected	none	
Total Debits		\$ 15.00

Credits

Remittances to Treasurer		
July 15-Dec. 31, 1971	none	
Abatements July 15 —		
Dec. 31, 1971	10.00	
Uncollected Head Taxes		
Dec. 31, 1971	5.00	
Total Credits		\$ 15.00

**State Head Tax
Levy of 1963**

Debits

Uncollected Taxes as of July 15, 1971	\$	45.00	
Added Taxes		none	
Penalties Collected		.50	
Total Debits			\$ 45.50

Credits

Remittances to Treasurer July 15-Dec. 31, 1971:			
Head Taxes	\$	5.00	
Penalties Collected		.50	
			\$ 5.50
Abatements July 15-Dec. 31, 1971			10.00
Uncollected Head Taxes, Dec. 31, 1971			30.00
Total Credits			\$ 45.50

SUMMARY OF WARRANT

**Property, Resident and Yield Taxes
Levy of 1971**

Debits

Taxes Committed to Collector:	
Property Taxes	\$1,192,991.40
Resident Taxes	21,630.00

Nat'l Bank Stock Taxes	270.50	
	<hr/>	
Total Warrant		\$1,214,891.90
Yield Taxes		79.20
Added Taxes:		
Property Taxes	\$ 20,872.40	
Resident Taxes	890.00	
	<hr/>	
		\$ 21,762.40
Overpayments During Year:		
a/c Property Taxes	\$ 618.78	
a/c Nat'l Bank Stock Taxes	106.95	
	<hr/>	
		\$ 725.73
Interest Collected on Delinquent Property Taxes		none
Penalties Collected on Resident Taxes		118.00
		<hr/>
Total Debits		\$1,237,577.23

Credits

Remittances to Treasurer:		
Property Taxes	\$ 881,611.99	
Resident Taxes	16,040.00	
Nat'l Bank Stock Taxes	265.62	
Yield Taxes	31.92	
Interest Collected	none	
Penalties on Resident Taxes	118.00	
	<hr/>	
		\$ 898,067.53
Abatements Made During Year:		
Property Taxes	\$ 3,141.62	
Resident Taxes	1,540.00	

Yield Taxes	47.28	
	<hr/>	\$ 4,728.90
Advance 1971 payments to former Collector previously remitted to Treasurer:		
Property Taxes	\$ 1,667.35	
Nat'l Bank Stock Taxes	111.95	
	<hr/>	\$ 1,779.30
Uncollected Taxes—December 31, 1971:		
Property Taxes	\$ 328,061.50	
Resident Taxes	4,940.00	
Yield Taxes	none	
	<hr/>	\$ 333,001.50
Total Credits		<hr/> <hr/> \$1,237,577.23

**Summary of Taxes Collected Town of Gilford, N. H.
January 1, 1971 — July 15, 1971**

Remittances to Treasurer \$253,085.16

Levy of 1970

Property Taxes	\$223,723.85
Poll Taxes	618.00
Interest	3,585.02
Head Taxes	1,853.00
Penalties	220.60
Levy of Prior Year —1966	36.46
Prepayments Levy of 1972	1,667.35
Redemptions from Tax Sales	18,965.49
Interest After Tax Sales	2,298.44
Taxes Bank Stock	116.95
	<hr/>
	\$253,085.16

HORATIO B. TOWER JR.
Deputy Tax Collector

SUMMARY OF TAX SALES ACCOUNTS

July 15, 1971 — December 31, 1971

DEBITS

	1970	1969	1968
Balance of Unredeemed			
Taxes—July 15, 1971	\$33,742.63	\$18,683.78	\$ 2,436.67
Interest Collected after sale	401.24	1,347.26	452.67
Redemption Costs	1,406.47	495.97	98.78
Total Debits	\$35,550.34	\$20,527.01	\$ 2,988.12

CREDITS

Remittances to Treasurer—			
July 15 — Dec. 31, 1971			
Redemptions	\$15,366.73	\$10,442.12	\$ 1,929.08
Interest & Cost after sale	401.24	1,347.26	452.67
Abatements During Year ..	34.87	33.90
Unredeemed Taxes—			
December 31, 1971	19,747.50	8,703.73	606.37
Total Credits	\$35,550.34	\$20,527.01	\$ 2,988.12

Respectfully submitted,

LORRAINE T. ROYCE
Tax Collector

REPORT OF TOWN CLERK

Year Ending December 31, 1971

Motor Vehicle Permits Issued :

1970 — 96	\$ 1,078.19	
1971 — 3,405	54,791.06	
1972 — 97	1,882.87	
	<hr/>	\$ 57,752.12

Dog Licenses Issued :

451 Licenses	\$ 1,092.16	
6 Kennel Licenses	96.00	
	<hr/>	\$ 1,188.16

Filing Fees from Candidates

for Office \$ 7.00

Fees:

1,017 Titles Processed	\$ 1,017.00	
226 Financing Statements		
Recorded	452.00	
87 Termination Notices		
Recorded	87.00	
28 Marriage Licenses		
Issued	84.00	
10 Marriage Certificates		
Issued	16.00	
10 Birth Certificates		
Issued	7.25	
23 Death Certificates		
Issued	23.00	
6 Writs Recorded	3.00	
2 Letters of Residence	.50	
8 U. S. Treasury Liens	16.00	
Misc. Recording	11.00	
Copies of records	10.75	
	<hr/>	\$ 1,727.50

Total Received from above sources: \$60,674.78

Other Receipts:

Percolation Fees	\$ 1,820.00
Sewer Permits	650.00
Building Permits	1,545.00
Water Bills	1,868.34
Beach Admissions	1,177.25
Administrative Expense	1,753.53
Sale of Gilford Stories	78.00
Dumping Fees	592.00
Alarm System	240.00
Payments in Lieu of Taxes—	
Belknap County	13,173.30
Payment in Lieu of Taxes—	
State of N. H.	103.85
State Forest Lands	
Reimbursement	766.82
State Recreational Land—	
Reimbursement	1,299.08
a/c Interest and Dividends	
Tax	1,648.56
Sale of Town Property	1,550.00
Parking Fines	203.00
Reimbursement—Ambulance	
Service	49.42
Telephone Commissions	51.57
Sale of Ordinance Books	114.00
Sale of Town Maps	37.50
Rent of Glendale Hall	125.00
Refunds—OASI (Library)	350.28
Credit to Old Home Day	
Account	857.50
Credit to Election and	
Registration Account	44.45
Credit to Beach Account	167.00
Credit to Town Buildings	
Account	78.46

Credit to Town Engineer Account	33.50	
Credit to Glendale Wharves and Parking Account	40.65	
Credit to Insurance Account	730.73	
Credit to Village Field Account	16.20	
Credit to Police Accounts	8,857.23	
Credit to Highway Acct.	7,444.10	
Credit to Fire Account	167.27	
	<hr/>	\$ 47,633.59
		<hr/>
Total Receipts and Reimbursements paid to Town		\$108,308.37

Respectfully submitted,

LORRAINE T. ROYCE
Town Clerk

AUDITORS' REPORT

We, the undersigned, Auditors of the Town of Gilford, have finished the Audit of the books of William H. Taylor, Tax Collector, resigned, thru July 15, 1971 to the satisfaction of the Board of Selectmen, and approve the warrants given the present Tax Collector, Lorraine T. Royce, in the total amount of \$13,592.52.

JACK C. SAWYER
ROBERT B. SCALES
K. W. SPAULDING

January 19, 1972

REPORT OF TRUSTEES OF TRUST FUNDS

Year of Creation	NAME OF TRUST FUND	HOW INVESTED	Amt. of Principal		Bal of Income on hand beginning of Year	Income During Year	Expended During Year	Balance end of Year
			\$					
1944	Ida Alderson	Laconia Savings Bank	\$ 55.00		\$ 16.79	\$ 3.68	\$ 4.00	\$ 16.47
1957	Mr. & Mrs. A. P. Aldrich, Jr.	Laconia Savings Bank	100.00		10.65	5.67	5.00	11.32
1962	Mr. & Mrs. James Ames	Laconia Savings Bank	150.00		12.02	8.30	8.00	12.32
1925	James N. Ames	Laconia Savings Bank	200.00		12.18	10.87	12.00	11.05
1927	A. H. Bacon	Laconia Savings Bank	200.00		18.26	11.14	5.00	24.40
1943	H. Frank Bacon	Laconia Savings Bank	100.00		48.93	7.62	6.00	50.55
1948	Milo Bacon & Ray Page	Laconia Savings Bank	400.00		33.01	22.11	10.00	45.12
1924	Edwin T. Batchelder	Laconia Savings Bank	100.00		12.47	5.75	6.00	12.22
1953	Elwin Batchelder	Laconia Savings Bank	300.00		98.01	20.36	4.00	114.37
1965	Harry A. & Thelma L. Bean	Laconia Savings Bank	200.00		29.18	11.70	6.00	34.88
1952	Ansel H. Bernier	Laconia Savings Bank	100.00		11.14	5.68	5.00	11.82
1969	Edna Smith Berquest	Laconia Savings Bank	200.00		11.06	10.75	6.00	15.81
1968	Eloise C. Bidwell	Laconia Savings Bank	100.00		7.06	5.48	4.00	8.54
1956	Clara L. Blaisdell	Laconia Savings Bank	200.00		48.34	12.69	10.00	51.03
1901	Eliza Blaisdell	Laconia Savings Bank	53.76		8.95	3.20	4.00	8.15
1902	Samuel H. Blaisdell	Laconia Savings Bank	100.00		11.96	5.73	4.00	13.69
1922	Susan E. Blaisdell	Laconia Savings Bank	75.00		17.80	4.74	4.00	18.54
1965	William P. Blaisdell	Laconia Savings Bank	100.00		27.95	6.52	34.47
1956	Eugene & Esther Blake	Laconia Savings Bank	100.00		30.36	1.65	6.00	26.01
1969	John G. Blake	Laconia Savings Bank	100.00		6.85	5.45	4.00	8.30
1959	Robert & Jeanne Brice	Laconia Savings Bank	200.00		53.46	12.96	10.00	56.42

1951	B. Briggs & B. Kingsbury	Laconia Savings Bank	100.00	7.81	5.51	6.00	7.32
1954	Dr. Ernest F. Bright	Laconia Savings Bank	200.00	47.55	12.65	10.00	50.20
1919	Thomas Britton	Laconia Savings Bank	100.00	10.88	5.67	5.00	11.55
1919	John R. Brown	Laconia Savings Bank	100.00	10.21	5.64	5.00	10.85
1964	Charles & Ruth Burditt	Laconia Savings Bank	100.00	16.00	5.94	4.00	17.94
1954	Claribel Clark	Laconia Savings Bank	300.00	88.73	19.88	16.00	92.61
1928	Samuel C. Clark, Jr.	Laconia Savings Bank	100.00	14.77	5.86	4.00	16.63
1956	Mr. & Mrs. Sidney E. Clarke	Laconia Savings Bank	100.00	11.16	5.68	5.00	11.84
1953	Alice M. Clifford	Laconia Savings Bank	150.00	12.99	8.35	9.00	12.34
1918	Moses Clough	Laconia Savings Bank	25.00	8.07	1.68	9.75
1961	Harry L. & Eleanor B. Cochran	Laconia Savings Bank	175.00	26.29	10.28	6.00	30.57
1949	Mabel & John Colby	Laconia Savings Bank	200.00	15.81	11.04	10.00	16.85
1961	Alfred D. Cooper	Laconia Savings Bank	100.00	15.59	5.90	4.00	17.49
1970	Haven E. & Esther P. Corliss	Laconia Savings Bank	100.00	.22	5.10	5.32
1969	John B. & Hilda G. Crawford	Laconia Savings Bank	400.00	19.80	21.39	10.00	31.19
1924	George Crosby	Laconia Savings Bank	125.00	9.04	6.88	8.00	7.92
1965	Archie & Priscilla Cruickshank	Laconia Savings Bank	100.00	9.41	5.60	4.00	11.01
1970	H. Leslie & Ruth S. Curtis	Laconia Savings Bank	100.00	4.71	4.71
1962	Mr. & Mrs. Robert Cushman	Laconia Savings Bank	150.00	24.62	8.93	6.00	27.55
1964	LeRoy & David Dale	Laconia Savings Bank	150.00	18.41	8.61	6.00	21.02
1928	Reuben S. Dame	Laconia Savings Bank	100.00	11.37	5.70	5.00	12.07
1933	John P. Davis	Laconia Savings Bank	100.00	9.11	5.59	6.00	8.70
1947	Louise Davis	Laconia Savings Bank	100.00	22.07	6.24	6.00	22.31
1966	Louise DeHart	Laconia Savings Bank	100.00	6.21	5.43	5.00	6.64
1925	Helen F. Dennen	Laconia Savings Bank	100.00	6.52	5.46	6.00	5.98
1940	Warren S. Dostendorff	City Savings Bank	100.00	9.13	5.51	5.00	9.64
1958	Elizabeth Dockham	Laconia Savings Bank	100.00	10.19	5.63	5.00	10.82
1955	Carl & Ethel Dolloff	Laconia Savings Bank	100.00	88.49	9.62	98.11
1971	*John C. Dow	Laconia Savings Bank	100.005757
1970	Thomas & Alice Drever	Laconia Savings Bank	200.00	5.09	10.45	5.00	10.54

Year of Creation	NAME OF TRUST FUND	HOW INVESTED	Amt. of Principal	Bal of Income on hand beginning of Year	Income During Year	Expended During Year	Balance end of Year
1930	Arthur H. Drury	Laconia Savings Bank	100.00	9.92	5.63	6.00	9.55
1953	Harold W. Eaton	Laconia Savings Bank	100.00	7.57	5.52	6.00	7.09
1953	Harry & Lucy Edgcomb	Laconia Savings Bank	200.00	14.71	11.00	10.00	15.71
1952	George & Marion Elliott	Laconia Savings Bank	100.00	105.16	10.45	115.61
1951	Chester B. Emerson	Laconia Savings Bank	150.00	17.43	8.57	8.00	18.00
1970	Bert T. & Blanche E. Ewing	Laconia Savings Bank	100.00	1.14	5.15	6.29
1957	Frank Flanders	Laconia Savings Bank	25.00	5.99	1.58	7.57
1957	Samuel Flanders	Laconia Savings Bank	100.00	10.91	5.67	5.00	11.58
1962	Clifton & Bessie Fogg	Laconia Savings Bank	150.00	22.92	8.85	6.00	25.77
1945	Carol & Belle Follett	Laconia Savings Bank	100.00	7.21	5.48	5.00	7.69
1923	Hannah G. Follett	Laconia Savings Bank	100.00	7.62	5.51	5.00	8.13
1957	Annie S. Ford	Laconia Savings Bank	100.00	16.63	5.96	4.00	18.59
1971	*Kenneth H. & Charlotte ForRey	Laconia Savings Bank	100.009292
1939	Lawrence A. Foss	City Savings Bank	150.00	25.02	8.86	6.00	27.88
1969	Frank A. & Beverly G. Fountain	Laconia Savings Bank	200.00	10.18	10.71	5.00	15.89
1969	Edward E. Fowler	Laconia Savings Bank	400.00	19.05	21.35	10.00	30.40
1955	Augustine S. & Margaret J. Francis	Laconia Savings Bank	200.00	16.12	11.07	12.00	15.19
1949	Asa B. Frohock	Laconia Savings Bank	100.00	7.37	5.51	6.00	6.88
1943	Benjamin H. Frohock	Laconia Savings Bank	351.15	220.15	29.16	12.00	237.31
1944	George Frohock	Laconia Savings Bank	150.00	51.00	10.28	6.00	55.28

* New Funds Created.

1937	Mary E. Frohock	Laconia Savings Bank	150.00	19.67	8.68	6.00	22.35
1970	Myrtle Frohock	Laconia Savings Bank	200.00	.14	10.19	10.33
1970	Myrtle Frohock	Laconia Savings Bank	200.00	2.64	10.32	12.96
1965	Richard Frohock	Laconia Savings Bank	300.00	77.35	19.24	96.59
1924	General Fund	Laconia Savings Bank	1,350.00	141.02	75.97	216.99
1917	Francis M. Gilman	Laconia Savings Bank	200.00	21.74	11.36	10.00	23.10
1920	Martha Gilman	Laconia Savings Bank	200.00	27.92	11.67	10.00	29.59
1944	Ida Glidden	Laconia Savings Bank	200.00	32.36	11.88	6.00	38.24
1968	Charles A. Gove	Laconia Savings Bank	400.00	29.95	21.96	10.00	41.91
1930	Eleanor J. Gove	Laconia Savings Bank	100.00	10.17	5.64	6.00	9.81
1916	Mary J. Gove	Laconia Savings Bank	150.00	16.82	8.55	8.00	17.37
1939	Frank B. Grant	Laconia Savings Bank	125.00	14.77	7.12	21.89
1922	Frank E. Grant	Laconia Savings Bank	100.00	10.51	5.65	5.00	11.16
1913	Levi Grant	Laconia Savings Bank	50.00	8.71	3.00	3.00	8.71
1923	Seth E. Grant	Laconia Savings Bank	100.00	9.08	5.59	5.00	9.67
1966	Lawrence & Rhea Guild	Laconia Savings Bank	400.00	51.42	23.06	12.00	62.48
1965	Martin C. & Katherine S. Hall	Laconia Savings Bank	150.00	16.48	8.52	6.00	19.00
1954	Grace V. Hanson	Laconia Savings Bank	100.00	66.63	8.49	75.12
1946	William I. Harris	Laconia Savings Bank	200.00	29.21	11.72	31.93
1962	Paul E., Jr. & Signe O. Haskell	Laconia Savings Bank	100.00	42.57	7.26	49.83
1927	A. Lincoln Hatch	Laconia Savings Bank	100.00	9.52	5.61	6.00	9.13
1965	Benjamin Hatch	Laconia Savings Bank	200.00	28.87	11.70	6.00	34.57
1927	Caleb M. Hatch	Laconia Savings Bank	100.00	10.19	5.63	5.00	10.82
1957	Mr. & Mrs. Herbert Heath	Laconia Savings Bank	100.00	10.54	5.67	6.00	10.21
1903	Simeon P. Heath	Laconia Savings Bank	60.00	10.15	3.58	13.73
1970	Clyde & Florida Hickey	Laconia Savings Bank	100.00	4.87	4.87
1962	Charles A. & Lillian Horn	Laconia Savings Bank	100.00	46.63	7.47	54.10
1920	William S. Hoyt	Laconia Savings Bank	75.00	12.84	4.48	17.32
1969	Hunt & Wadsworth	Laconia Savings Bank	286.00	14.16	15.29	10.00	19.45
1900	Sarah P. Hunt	Laconia Savings Bank	100.00	13.77	5.82	5.00	14.59

Year of Creation	NAME OF TRUST FUND	HOW INVESTED	Amt. of Principal	Bal of Income on hand beginning of Year	Income During Year	Expended During Year	Balance end of Year
1962	Alfred R. Hunter	Laconia Savings Bank	200.00	22.82	11.41	10.00	24.23
1939	Herman & Alvah Hunter	City Savings Bank	200.00	15.26	10.88	10.00	16.14
1964	Benjamin & Vallie Hurd	Laconia Savings Bank	150.00	20.63	8.73	6.00	23.36
1947	W. A. & F. M. Jackson & Ray C. Watson		400.00 [†]	91.43	19.81	110.00	1.24
1919	Annis James	Laconia Savings Bank	150.00	86.88	12.07	98.95
1936	Mabel James	Laconia Savings Bank	100.00	17.22	6.00	6.00	17.22
1941	Nellie D. James	Laconia Savings Bank	50.00	18.24	3.47	21.71
1947	Dora Keasor	Laconia Savings Bank	200.00	19.04	11.22	12.00	18.26
1968	Thelma S. Kreitzer	Laconia Savings Bank	100.00	9.15	5.58	4.00	10.73
1956	Fred A. Kuss	Laconia Savings Bank	100.00	9.50	5.60	5.00	10.10
1896	Julia A. Ladd	Laconia Savings Bank	2,215.68	1,579.46	177.36	620.00	1,136.82
1923	Ann C. Lamprey	Laconia Savings Bank	100.00	16.90	5.96	5.00	17.86
1917	Charles W. Leavitt	Laconia Savings Bank	100.00	9.25	5.59	5.00	9.84
1915	Wealthy C. Leavitt	Laconia Savings Bank	100.00	9.20	5.60	6.00	8.80
1969	Yvonne & Harry Levoy	Laconia Savings Bank	100.00	5.41	5.37	5.00	5.78
1924	Liberty Hill Cemetery	Laconia Savings Bank	100.00	42.69	7.27	49.96
1926	A. V. Lincoln	Laconia Savings Bank	1,250.00	1,742.34	140.16	1,005.55	876.95
1954	Alice M. McGraw	Laconia Savings Bank	100.00	9.49	5.61	6.00	9.10
1965	John J. & Lucy B. McGuiness	Laconia Savings Bank	150.00	15.71	8.48	6.00	18.19
1966	Arthur & Thelma Manning	Laconia Savings Bank	100.00	9.09	5.58	4.00	10.67

[†] \$100.00 Added to Principal

1958	Ralph Matthews	Laconia Savings Bank	125.00	57.86	9.34	6.00	61.20
1965	Mr. & Mrs. Ralph Milliken	Laconia Savings Bank	100.00	11.39	5.70	4.00	13.09
1960	Mr. & Mrs. Ernest Morin	Laconia Savings Bank	150.00	25.76	8.98	6.00	28.74
1929	Clara Morrill	Laconia Savings Bank	100.00	9.87	5.63	5.00	10.50
1934	Clara Ellen Morrill	Laconia Savings Bank	100.00	10.85	5.67	5.00	11.52
1942	Harry W. Moss	Laconia Savings Bank	100.00	8.77	5.56	5.00	9.33
1927	Dr. George W. Munsey	Laconia Savings Bank	500.00	119.85	31.68	20.00	131.53
1970	Howard B. Jessie S. Naylor	Laconia Savings Bank	200.00	1.64	10.27	11.91
1962	Oscar D. Nichols	Laconia Savings Bank	100.00	13.18	5.78	4.00	14.96
1946	Elmer Olsen	Laconia Savings Bank	150.00	8.59	8.12	8.00	8.71
1956	Frank & Etta Page	Laconia Savings Bank	100.00	61.74	8.24	69.98
1960	Kenneth & Helen Park	Laconia Savings Bank	100.00	55.58	7.92	63.50
1948	J. Patten A. Moulton	Laconia Savings Bank	100.00	14.44	5.86	5.00	15.30
1929	Edward A. Perkins	Laconia Savings Bank	50.00	11.07	3.12	4.00	10.19
1969	Harold F. & Evelyn E. Perkins	Laconia Savings Bank	100.00	4.95	5.34	4.00	6.29
1963	Mr. & Mrs. Wesley Phelps	Laconia Savings Bank	150.00	18.97	8.65	6.00	21.62
1965	Augustus Pitou, 2nd & Euladie Pitou	Laconia Savings Bank	100.00	10.10	5.63	4.00	11.73
1936	Lillian B. Plowman	Laconia Savings Bank	200.00	31.80	11.86	10.00	33.66
1924	John M. Potter	Laconia Savings Bank	200.00	61.08	13.37	12.00	62.45
1944	Joseph Potter, Jr.	Lakeport National Bank	100.00	42.87	6.49	10.00	39.36
1924	Joseph Potter	Charlestown Five Cents S. B.	103.78	17.94	6.68	3.33	21.29
1925	William Potter	Charlestown Five Cents S. B.	207.55	47.85	13.38	6.67	54.56
1944	William & Fred Potter	Laconia Savings Bank	200.00	30.53	11.80	12.00	30.33
1941	Samuel J. Prescott	Laconia Savings Bank	200.00	13.27	10.91	8.00	16.18
1902	Lucy M. Rand	City Savings Bank	151.00	22.03	8.76	6.00	24.79
1948	Oscar V. Rand	Laconia Savings Bank	150.00	32.84	9.34	6.00	36.18
1969	Theodate Burnee Remick & Elliot Remick Library Trust	Laconia Savings Bank	5,000.00	258.10	261.75	258.10	261.75

Year of Creation	NAME OF TRUST FUND	HOW INVESTED	Amt. of Principal	Bal. of Income on hand beginning of Year	Income During Year	Expended During Year	Balance end of Year
1935	Cora E. Roberts	City Savings Bank	125.00	20.25	7.33	5.00	22.58
1966	Paul Robie	Laconia Savings Bank	200.00	24.54	11.47	6.00	30.01
1969	Ruth E. & Willard D. Rollins	Laconia Savings Bank	100.00	5.41	5.37	4.00	6.78
1971	*Ruth E. Rollins	Laconia Savings Bank	200.00	1.14	1.14
1929	Emily S. Rowe	Laconia Savings Bank	100.00	7.63	5.51	5.00	8.14
1915	Sarah F. Rowe	Laconia Savings Bank	75.00	15.20	4.60	19.80
1913	Simon Rowe	Laconia Savings Bank	100.00	8.66	5.57	8.23
1957	Elizabeth H. Sanborn	Laconia Savings Bank	1,000.00	308.39	66.77	20.00	355.16
1898	Emily B. Sanborn	Laconia Savings Bank	350.00	83.35	22.19	21.00	84.54
1921	Enoch Sanborn	Laconia Savings Bank	100.00	9.77	5.61	5.00	10.38
1959	Everett & Viola Sanborn	Laconia Savings Bank	100.00	30.84	6.70	5.00	32.54
1954	Jacob Sanborn	Laconia Savings Bank	1,000.00	93.24	55.78	149.02
1921	Jacob Sanborn	Lakeport National Bank	200.00	129.38	14.96	31.00	113.34
1936	John Earl Sanborn	Laconia Savings Bank	100.00	5.87	5.43	6.00	5.30
1947	Orman M. Sanborn	Laconia Savings Bank	200.00	23.70	11.46	12.00	23.16
1903	Philena M. Sanborn	Laconia Savings Bank	100.00	11.42	5.71	5.00	12.13
1935	Belle Sanders	City Savings Bank	100.00	68.43	8.50	5.00	71.93
1945	C. E. & M. W. Sawyer	Laconia Savings Bank	250.00	20.42	13.84	12.00	22.26
1962	James A. Sawyer	Laconia Savings Bank	150.00	25.11	8.95	6.00	28.06
1924	Levi Sawyer	Laconia Savings Bank	300.00	101.43	20.50	10.00	111.93
1911	Nancy Sawyer	Laconia Savings Bank	100.00	12.37	5.74	4.00	14.11

1952	Mabel M. Schreiner & J. F. Goddard*	Laconia Savings Bank	500.00	200.97	23.73	200.00	24.70
1967	Franklin C. Seeley	Laconia Savings Bank	200.00	20.83	11.30	6.00	26.13
1954	Fred & Florence Shurbert	Laconia Savings Bank	100.00	62.13	8.29	6.00	64.42
1964	Mr. & Mrs. Charles H. Sleeper & Mr. & Mrs. William H. Nadon	Laconia Savings Bank	150.00	18.41	8.62	5.00	21.03
1944	Charles Smith	Laconia Savings Bank	100.00	11.32	5.69	5.00	12.01
1948	Claude R. Smith	Laconia Savings Bank	100.00	8.14	5.43	5.00	8.67
1930	Daniel Smith	Laconia Savings Bank	55.00	13.91	3.50	17.41
1917	David Y. Smith	Laconia Savings Bank	100.00	9.38	5.59	9.97
1954	David & Celia Smith	Laconia Savings Bank	100.00	49.79	7.67	6.00	51.46
1961	Frederick & Linnie Smith	Laconia Savings Bank	100.00	13.82	5.82	4.00	15.64
1914	John P. Smith	Laconia Savings Bank	400.00	43.59	22.73	23.00	43.32
1924	Joseph E. Smith	Laconia Savings Bank	100.00	11.54	5.68	5.00	12.22
1913	Lydia F. Smith	Laconia Savings Bank	100.00	8.59	5.55	4.00	10.14
1968	Mr. & Mrs. Otis S. Smith	Laconia Savings Bank	100.00	7.32	5.49	4.00	8.81
1928	Sarah P. Smith	Laconia Savings Bank	2,500.00	1,663.60	212.12	1,875.72
1963	William W. & Ann L. Smith	Laconia Savings Bank	300.00	74.26	19.11	6.00	87.37
1954	Walter Sproule	Laconia Savings Bank	100.00	66.63	8.49	75.12
1970	Ernest A. Stone	Laconia Savings Bank	100.00	1.46	5.17	6.63
1969	Richard & Frances Talbot	Laconia Savings Bank	100.00	11.06	5.68	5.00	11.74
1957	Walter & Lillian Tate	Laconia Savings Bank	150.00	40.96	9.77	6.00	44.73
1926	Charles S. Thompson	Laconia Savings Bank	100.00	11.11	5.68	5.00	11.79
1944	Thurston & Capp	Laconia Savings Bank	35.00	6.97	2.13	9.10
1969	Ernest C. & Grace Tobey	Laconia Savings Bank	200.00	13.16	10.89	5.00	19.05
1969	Edmund C. Varney	Laconia Savings Bank	2,000.00	109.41	107.52	10.00	206.93
1956	A. Rena Vincent	Laconia Savings Bank	100.00	10.71	5.67	5.00	11.38
1901	Ellen E. S. Wadleigh	Laconia Savings Bank	200.00	9.90	10.75	12.00	8.65
1917	John G. Wadleigh	City Savings Bank	50.00	9.99	3.01	13.00

* \$250.00 New Fund Created.

1943	Benjamin Wadley	Laconia Savings Bank	100.00	39.43	7.17	10.00	36.60
1959	Todd & Jean Wallace	Laconia Savings Bank	100.00	9.89	5.63	5.00	10.52
1922	William W. Watson	Laconia Savings Bank	100.00	10.55	5.65	5.00	11.20
1954	Dorothy K. Watts	Laconia Savings Bank	100.00	10.93	5.67	5.00	11.60
1922	Harry B. & Helen A. Webster	Laconia Savings Bank	100.00	12.40	5.75	5.00	13.15
1905	Benjamin Weeks	City Savings Bank	100.00	6.27	5.35	5.00	6.62
1938	Fred R. Weeks	City Savings Bank	300.00 [†]	161.24	18.28	106.00	73.52
1953	Grace L. Weeks	Laconia Savings Bank	100.00	9.26	5.60	6.00	8.86
1911	John H. Weeks	Laconia Savings Bank	150.00	16.42	8.54	10.00	14.96
1969	John J. & Esther M. Weeks	Laconia Savings Bank	200.00	11.06	10.75	6.00	15.81
1936	Laura A. Weeks	Laconia Savings Bank	3,000.00	1,172.90	212.76	33.00	1,352.66
1969	Orrin H. Weeks	Laconia Savings Bank	300.00	23.20	16.46	39.66
1917	William H. Weeks	Laconia Savings Bank	100.00	12.18	5.74	5.00	12.92
1970	William H. & Helen F. Weeks	Laconia Savings Bank	100.00	4.66	4.66
1965	Otis E. & Mary I. White	Laconia Savings Bank	200.00	28.87	11.70	6.00	34.57
1962	Elverton W. & Madelene Whitney	Laconia Savings Bank	200.00	16.93	11.05	10.00	17.98
1956	Louisa & Stewart Whitney	Laconia Savings Bank	100.00	11.10	5.68	5.00	11.78
1931	Mary A. Whittier	Laconia Savings Bank	200.00	15.95	11.05	10.00	17.00
1953	Harold & Margaret Wilkinson	Laconia Savings Bank	200.00	12.76	10.64	5.00	18.40
1970	Carl & Maria Willberg	Laconia Savings Bank	100.00	5.10	5.10
1971	*Robert W. & Adele M. King	Laconia Savings Bank	100.00	2.45	2.45
1970	W. A. & Elva M. Woodward	Laconia Savings Bank	100.00	.13	5.10	5.23
GRAND TOTALS			\$50,023.92	\$12,272.37	\$ 3,093.44	\$ 3,511.65	\$11,854.16

[†] \$100.00 Added to Principal
^{*} \$100.00 New Fund Created.

This is to certify that the information contained in this report is complete and correct, to the best of our knowledge and belief.

WAYNE E. SNOW
RAY C. WATSON
Trustees

INVENTORY

Land	\$20,589,543.00
Buildings	27,914,927.00
Factory Buildings	86,860.00
Public Water Utility	8,400.00
Public Utilities — Gas	23,690.00
Electric	963,500.00
Mature Wood and Timber	6,870.00
House Trailer, Mobile Homes & Travel Trailers Assessed as Personal Property (403)	1,205,490.00
Boats and Launches (821)	1,755,300.00
	<hr/>
Total Valuation Before Exemptions Allowed	\$52,554,580.00
Less: Elderly Exemptions (37)	136,750.00
	<hr/>
Net Valuation on which Tax Rate is Computed	\$52,417,830.00

Town Meeting March 9, 1813

Voted to raise as much school money as the law directs and no more.

APPROPRIATIONS

Town Officers' Salaries	\$ 12,390.00
Administrative Expense	46,331.00
Bookkeeping Machine	10,000.00
Election and Registration	2,000.00
Property Mapping	3,600.00
Ambulance Service	4,800.00
Retirement and Social Security	12,300.00
Insurance	20,500.00
Conservation Commission Expenses	300.00
White Pine Blister Rust Control	100.00
Dutch Elm Disease Control	50.00
Dog Damage	575.00
Legal Expenses	2,000.00
Welfare	7,000.00
Memorial Day	125.00
Land Purchase Costs	500.00
Interest — Temporary Loans	7,500.00
Interest — Long Term Notes	5,788.35
Payment of Notes	29,000.00
Balance of State Audit	1,355.52
Civil Defense	100.00
Old Home Day	1,200.00
Town Engineer	18,975.00
Town Buildings	12,260.00
Highway Department	95,218.00
Town Dump	5,845.00
Water Works	1,500.00
Glendale Wharves and Parking Lots	3,579.00
Care of Cemeteries	400.00
Street Lighting	5,750.00
Bridge Construction	500.00
Town Road Aid	1,258.43
Police Department	82,620.00

Summer Police	1,920.00
Fire Department	53,750.00
Fire Department Equipment including car	6,200.00
Fire Truck	38,000.00
Planning Board	3,070.00
Winnepesaukee River Basin Sewage Study	5,000.00
Lakes Region Planning Commission	3,581.00
Town Capital Outlay Plan	1,130.00
Town Building Plans	1,800.00
Purchase of Weeks Property	5,000.00
Conservation Fund	500.00
Lakes Region General Hospital	4,000.00
Lakes Region Association	950.00
Public Library	10,200.00
Parks, Playgrounds and Beaches	17,830.00
	<hr/>
Total Town Appropriations	\$548,351.30

1870 Report

SCHOOL HOUSES. There are several districts that have not a respectable or comfortable school house; but continue to disregard the convenience, the comfort of their children, and send them to the old dilapidated, worn-out, torn-to-pieces, uncomfortably-seated house rather than spend a few dollars for a good one. We fear that it is the mighty love of the mightier dollar that forms the mightiest barrier to having suitable school houses in these districts. If people expect good schools they must provide suitable school rooms. We hope the day is not far distant when some of our districts may follow the example of districts No. 1 and 5.

ESTIMATED REVENUE AND TAXES ASSESSED

Total Town Appropriations	\$ 548,351.30
Less:	
Int. & Dividends Tax	\$33,997.72
Village Field Matching	
Funds	4,500.00
Savings Bank Tax	2,483.59
Meals & Rooms Tax	16,864.00
Beach Admissions	1,100.00
Reim. a/c State Lands	750.00
County payment in lieu of taxes	6,586.65
Revenue from Yield	
Tax Sources	66.00
Int. Received on Taxes	8,900.00
Clerks fees	1,500.00
Highway Subsidy	11,278.00
Dog Licenses	1,200.00
Motor Vehicle Permit	
Fees	52,000.00
Notes—Weeks Land &	
Fire Truck	42,000.00
Summer Police	960.00
Sale of Tax Deeded	
Property	1,550.00
Parking Fines	130.00
Alarm System	240.00
Water Department	1,500.00
Nat'l Bank Stock Taxes	270.50
Resident Taxes Retained	11,896.50
Surplus	15,000.00
Building Permits	1,100.00

State payment in lieu of taxes	1,500.00	
Sewer permit fees	400.00	
Dumping fees	500.00	
Percolation tests	1,200.00	
		<hr/>
Total Revenues and Credits		\$ 219,472.96
Net Town Appropriations		328,878.34
Net School Appropriations		786,279.60
County Tax Assessment		108,891.20
		<hr/>
Total of Town, School and County		\$ 1,224,049.14
Deduct: Reimbursement a/c Property Exempted 1970 Special Session		45,591.65
Add: War Service Tax Credits Overlay		22,500.00 30,861.51
		<hr/>
Amount to be Raised by Prop. Taxes		\$ 1,231,819.00
Inventory Less Exemptions		\$52,417,830.00
Tax Rate per \$100.00		\$2.35

STATEMENT OF BONDED DEBT

December 31, 1971

Showing Annual Maturities of Outstanding Bonds and Long Term Notes.

Maturities	Water Works Improv. Note 1963 — 2.7% Orig. Amt.	Hunt Land Notes 1964 — 3.5% Orig. Amt.	Farmer Field Notes 1965 — 3% Orig. Amt.	Beachwood Serial Notes 1962 — 3.1% Orig. Amt.	Wilson Land Notes 1970 — 5% Orig. Amt.	Weeks Property Notes 1971 — 6% Orig. Amt.
1972	\$9,000.00	\$15,750.00	\$15,750.00	\$140,000.00	\$60,000.00	\$4,000.00
1973	1,000.00	1,750.00	1,750.00	10,000.00	4,000.00	1,000.00
1974		1,750.00	1,750.00	10,000.00	4,000.00	1,000.00
1975			1,750.00	10,000.00	4,000.00	1,000.00
1976				10,000.00	4,000.00	1,000.00
1977				10,000.00	4,000.00	
1978				4,000.00	4,000.00	
1979				4,000.00	4,000.00	
1980				4,000.00	4,000.00	
1981				4,000.00	4,000.00	
1982				4,000.00	4,000.00	
1983				4,000.00	4,000.00	
1984				4,000.00	4,000.00	
1985				4,000.00	4,000.00	
Total	\$1,000.00	\$3,500.00	\$5,250.00	\$50,000.00	\$56,000.00	\$4,000.00

COMPARATIVE STATEMENT OF APPROPRIATIONS AND EXPENDITURES

For the Year Ending December 31, 1971

Account	Appropriations	Receipts and Reimbursements	Total Available	Expenditures	Unexpended Balance	Overdrafts
Town Officers' Salaries	\$ 12,390.00	\$	\$ 12,390.00	\$ 10,799.95	\$ 1,590.05	\$
Administrative Expenses	46,331.00	1,776.49	48,107.49	46,982.12	1,125.37
Election & Registration	2,000.00	44.45	2,044.45	710.78	1,333.67
Property Mapping	3,600.00	3,600.00	3,472.65	127.35
Town Buildings	12,260.00	78.46	12,338.46	11,571.95	766.51
Town Engineer	18,975.00	33.50	19,008.50	18,849.65	158.85
Retirement & Social Security	12,300.00	350.28	12,650.28	14,650.58	2,000.30
Ambulance Service	4,800.00	49.42	4,849.42	4,970.84	121.42
Police Department	82,620.00	10,897.73	93,517.73	94,284.83	767.10
Summer Police	1,920.00	1,920.00	1,879.50	40.50
Fire Department	53,750.00	170.37	53,920.37	53,943.87	23.50
Fire Department Equipment	6,200.00	6,200.00	6,165.54	34.46
Fire Truck	38,000.00	38,000.00	38,000.00
White Pine Blister Rust	100.00	100.00	100.00
Dutch Elm Disease Control	50.00	50.00	50.00
Insurance	20,500.00	730.73	21,230.73	29,078.04	7,847.31
Planning Board — Operation	3,070.00	3,070.00	3,035.83	34.17
Town Capital Outlay Plan	1,130.00	1,130.00	1,130.00
Regional Planning Board	3,581.00	3,581.00	3,581.00
Conservation Commission	300.00	300.00	287.57	12.43
Conservation Fund	500.00	500.00	500.00
Dog Damage	575.00	575.00	500.00	75.00
Legal Expenses	2,000.00	2,000.00	909.67	1,090.33
Civil Defense	100.00	100.00	25.00	75.00
State Audit	1,355.52	1,355.52	1,355.52
Lakes Region General Hospital	4,000.00	4,000.00	4,000.00
Town Dump	5,845.00	5,845.00	6,169.70	324.70
Street Lighting	5,750.00	5,750.00	5,513.57	236.43
Highway Department	95,218.00	11,503.50	106,721.50	109,581.04	2,859.54
New Highway Construction	500.00	500.00	305.11	194.89

Town Road Aid	1,258.43	1,258.43	1,101.12	157.31
Public Library	10,200.00	10,200.00	10,200.00
Welfare	7,000.00	589.29	7,589.29	8,755.37	1,166.08
Memorial Day	125.00	125.00	100.00	25.00
Old Home Day	1,200.00	857.50	2,057.50	1,812.67	244.83
Village Field — Operation	3,780.00	16.20	3,796.20	3,690.31	105.89
Gilford Beach — Operation	13,000.00	167.00	13,167.00	12,450.02	716.98
Gilford Beach Improvement	1,050.00	1,050.00	1,234.67	184.67
Water Works	1,500.00	1,500.00	1,506.94	6.94
Cemeteries	400.00	400.00	400.00
Glendale Wharves	3,579.00	40.65	3,619.65	2,292.65	1,327.00
Lakes Region Association	950.00	950.00	950.00
Interest — Temporary Loans	7,500.00	7,500.00	5,453.65	2,046.35
Interest — Long-Term Notes	5,788.35	5,788.35	5,788.35
Land Purchase Costs	500.00	500.00	3,288.00	2,788.00
Payment of Notes	29,000.00	29,000.00	29,000.00
Weeks Land Purchase	5,000.00	5,000.00	5,000.00
Bookkeeping Machine	10,000.00	10,000.00	10,069.62	69.62
Winnepesaukee River Basin Study	5,000.00	5,000.00	5,000.00
Town Building Plans	1,800.00	1,800.00	1,800.00
	<u>\$548,351.30</u>	\$ 27,305.57	<u>\$575,656.87</u>	<u>\$537,047.68</u>	<u>\$ 56,768.37</u>
					\$ 18,159.18
					Less Overdraft
					Net Balance
					\$ 38,609.19

701 Comprehensive Plan	\$ 2,070.00	\$ 470.00	\$ 1,600.00
New Highway Construction	5,494.89	5,494.89
Village Field Matching Funds	8,335.00	6,842.13	1,492.87
Beach Capital Improvements	21,975.24	21,878.16	97.08
	<u>\$ 37,875.13</u>	<u>\$ 34,685.38</u>	<u>\$ 3,189.95</u>

UNEXPENDED BALANCES FROM PREVIOUS APPROPRIATIONS

ASSETS

Cash in hands of Treasurer	\$298,045.18
Change Cash Funds	225.00
Accounts Due to the Town :	
From State—Road Toll Refund	1,502.41
School District (Insurance)	4,285.00
Old Home Day	50.00
Administrative Expense	55.48
Police Services	943.00
Highway Services	84.23
Water Bills	169.02
Unredeemed Taxes :	
Levy of 1970	20,128.72
Levy of 1969	8,703.73
Previous Years	606.37
Uncollected Taxes :	
Levy of 1971, Including Resident Taxes	333,343.48
Levy of 1970	4,357.40
Levy of 1969	3,448.17
Previous Years	3,385.53
State Head Taxes—Previous Years	350.00
Total Assets	\$679,682.72
Excess of liabilities over assets	73,062.77
Grand Total	\$752,745.49

LIABILITIES

Bills outstanding :

Legal Expense	\$ 853.30
Salaries	90.00

Unexpended Balances of Special Appropriations :

701 Comprehensive Plan	1,600.00
Village Field Matching Funds	1,492.87
Fire Truck	38,000.00
Winnepesaukee River Basin Study	5,000.00
Town Building Plans	1,800.00

Due to State :

Resident Taxes: (State's Share)	
Uncollected	2,223.00
Collected—not remitted	5,615.10
2% Bond & Debt Retirement Taxes	
Uncollected	36.30
Collected—not remitted	5.32

Due to School District: 576,279.60

Long Term Notes Outstanding :

Beachwood Notes	50,000.00
Farmer Field Notes	5,250.00
Hunt Land Notes	3,500.00
Water Works Improvement Note	1,000.00
Wilson Land Notes	56,000.00
Weeks Land Notes	4,000.00

Total Accounts Owed by the Town	\$752,745.49
Current Deficit, December 31, 1970	\$ 79,863.78
Current Deficit, December 31, 1971	\$ 73,062.77
Decrease of Deficit	\$ 6,801.01

RECEIPTS

Current Revenue :

From Local Taxes :

1971 Property Taxes	\$883,015.40
1971 Resident Taxes	16,040.00
Nat'l Bank Stock Taxes	382.57
Yield Taxes	31.92
Property & Yield Taxes—	
Previous Years	262,484.21
Poll Taxes—	
Previous Years	646.00
State Head Taxes—	
Previous Years	1,928.00
Interest received on	
Delinquent Taxes	9,213.35
Penalties:	
Head Taxes	\$228.70
Res. Taxes	\$118.00

346.70

Tax sales redeemed 42,767.30

From State :

For Town Road Aid	4,057.40
Highway Subsidy	10,777.99
Interest and dividends tax	33,997.72
Reim. a/c Timber Tax	36.30
Savings Bank Tax	2,483.59
Reim. a/c State Forest	
Lands	766.82
Police Teletype	468.00
Summer Police Program	2,250.00
Community Relations	
Program (Police)	260.00
Reim. a/c Motor Vehicle	
Road Toll	952.49

Reim. a/c Old Age	
Assistance	589.29
Meals and Rooms Tax	16,864.01
Payment in Lieu of Taxes	1,402.93
Reim. a/c Business	
Profits Tax	45,591.65

From County :

Payment in Lieu of Taxes	13,173.30
--------------------------	-----------

From Local Sources, except Taxes :

Dog Licenses	1,188.16
Town Clerk Fees	1,727.50
Parking Fines	203.00
Rent of Town Property	125.00
Interest received on deposits	
and Treasury notes	1,082.00
Income from Depts.	17,421.38
Income from water works	1,868.34
Motor Vehicle Permits	57,752.12
Building Permits and	
Sign Permits	1,545.00
Sewer Permits	650.00
Dumping Fees	592.00
Percolation Tests	1,820.00
Telephone Commissions	51.57
Old Home Day	857.50
Alarm System	240.00
Sale of Gilford Stories	78.00
Sale of Ordinance Books	114.00
Sale of Town Maps	37.50
Beach Admissions	1,177.25
Filing Fees	7.00
Miscellaneous items	267.32

From Receipts other than Current Revenue :

Proceeds of Tax	
Anticipation Notes	700,000.00

Proceeds of Long		
Term Notes	4,000.00	
Treasury Bills	98,526.33	
Insurance adjustments	771.38	
Sale of Town Property	1,550.00	
Refunds	350.28	
	<hr/>	
Total Receipts from All Sources		\$2,244,529.57
Cash on hand January 1, 1971		187,708.45
		<hr/>
Grand Total		\$2,432,238.02

PAYMENTS

Current Maintenance Expenses:

General Government:

Town Officers' Salaries	\$10,799.95
Administrative Expenses	46,982.12
Election & Registration	710.78
Land Purchase Costs	3,288.00
Town Buildings	11,571.95
Town Engineer	18,849.65

Protection of Persons & Property:

Police Department &

Summer Police	96,164.33
Property Mapping	3,472.65
Fire Dept. & Equipment	60,109.41
White Pine Blister	
Rust Control	100.00
Planning Board	3,035.83
Damage by dogs	500.00
Insurance	29,078.04

Civil Defense	25.00
Bounties	.50
Health:	
Lakes Region General	
Hospital	4,000.00
Ambulance Service	4,970.84
701 Comprehensive Plan	470.00
Town Dump	6,169.70
Highways and Bridges:	
Town Road Aid	1,101.12
Street Lighting	5,513.57
Highway Department	109,581.04
Libraries:	
Gilford Public Library	10,200.00
Public Welfare:	
Old Age Assistance	2,355.37
Town Poor	6,400.00
Patriotic Purposes:	
Memorial Day	100.00
Old Home Day	1,812.67
Recreation:	
Glendale Wharves &	
Parking Lots	2,292.65
Parks, Playgrounds &	
Beaches	17,375.00
Village Field Matching	
Fund Program	6,842.13
Public Service Enterprises:	
Water Works	1,506.94
Conservation Commission—	
Operation	287.57
Regional Planning	3,581.00
Conservation Fund	500.00

Unclassified :

Petty Cash to Police Dept.	25.00
Damages & legal expenses	909.67
Lakes Region Assoc.	950.00
Taxes Bought by Town	35,466.82
Abatements & Refunds	2,569.28
Employees' Retirement & Social Security	14,650.58
Investments (Treasury Bills)	98,526.33

Total Current Maintenance Expenses \$ 622,845.49

Debt Service :

Interest on Debt :

Paid on tax anticipation notes	5,453.65
Paid on long term notes	5,788.35

Total Interest Payments \$ 11,242.00

Principal of Debt :

Pymts. on Tax Anticipation Notes	700,000.00
Pymts. on long term notes	29,000.00

Total Principal Payments \$ 729,000.00

Capital Outlay :

Capital Outlay Plan	1,130.00
Bridge Construction	5,800.00
Beach Building	21,878.16
Purchase of Weeks Property	5,000.00
Bookkeeping Machine	10,069.62

Total Outlay Payments \$ 43,877.78

Payments to Other Governmental Divisions:

Resident Taxes Paid	
State Treasurer	1,656.00
State Head Taxes paid	
State Treasurer	6,169.05
Payments to State a/c 2%	
Bond & Debt Retire.	
Taxes	36.30
Taxes paid to County	108,891.20
State Audit	1,355.52
Pymts. to School Dist.	609,119.50
	<hr/>
Total Payments to Other Governmental Divisions	\$ 727,227.57
	<hr/>
Total Payments for all Purposes	\$2,134,192.84
Cash on hand December 31, 1971	298,045.18
	<hr/>
Grand Total	\$2,432,238.02

DETAILED STATEMENT OF PAYMENTS

DETAIL NO. 1

Town Officers' Salaries

Appropriation	\$12,390.00
---------------	-------------

Expenditures

Lewis A. Aldrich, Treasurer	\$ 700.00
Stephen C. Harper, Selectman	950.00
Rowland D. H. Keith, Selectman	250.00
Edward H. Needham, Selectman	1,200.00
Lorraine T. Royce, Town Clerk	2,500.00
Lorraine T. Royce, Tax Collector	550.00
William H. Taylor, Tax Collector	2,446.17
Horatio B. Tower, Jr., Deputy Tax Collector	1,009.18
Robert D. White, Selectman	1,200.00
Adjustment	— 5.40
	<hr/>
	\$10,799.95

DETAIL NO. 2

Administrative Expenses

Appropriation	\$46,331.00
Reimbursements	1,776.49
	<hr/>
Total Available	\$48,107.49

Expenditures

Wages	\$36,240.04
New Equipment	1,207.07
Supplies	1,975.65

Machine Maintenance	615.45
Books and Magazines	100.04
Printing	2,700.94
Postage	1,816.50
Notices	210.00
Dues, Meetings, etc.	346.06
Appraisal Expense	534.50
Recording Fees	387.58
Boat Hire	90.00
Miscellaneous expenses	758.29
	<hr/>
	\$46,982.12

DETAIL NO. 3

Election and Registration

Appropriation	\$ 2,000.00
Reimbursements	44.45
	<hr/>
Total Available	\$ 2,044.45

Expenditures

Supplies	\$ 11.95
Printing and Notices	254.90
Meals for Election Officials	96.60
Police Services	48.38
Salaries of Election Officials	298.95
	<hr/>
	\$ 710.78

DETAIL NO. 4

Property Mapping

Appropriation	\$ 3,600.00
---------------	-------------

Expenditures

Wages	\$ 3,255.00
Deeds and Supplies	175.95
Mileage	41.70
	<hr/>
	\$ 3,472.65

DETAIL NO. 5

Town Buildings

Appropriation	\$12,260.00
Reimbursements	78.46
	<hr/>
Total Available	\$12,338.46

Expenditures

Wages	\$ 3,613.80
Fuel	2,073.49
Glendale Water System	50.00
Supplies	297.53
Materials	431.54
Miscellaneous	208.07
Rubbish Collection	42.00
Gilford Water Works	75.00
Electricity	1,886.88
Telephones	1,256.59
Skilled Labor	254.87
Heater Maintenance	311.04
Travel — Maintenance man	100.00
Rent of Parish Hall	971.14
	<hr/>
	\$11,571.95

DETAIL NO. 6

Town Engineer

Appropriation	\$18,975.00
---------------	-------------

Reimbursements	33.50
Total Available	<u>\$19,008.50</u>

Expenditures

Salaries	\$15,886.10
Mileage	97.34
Dye Testing Personnel	928.00
Radio	247.54
Office Equipment	863.12
Supplies	178.94
Publications	60.35
Camera	53.98
Gasoline	67.37
Miscellaneous	215.47
Telephone	207.53
Truck Maintenance	40.76
Meetings	3.15
	<u>\$18,849.65</u>

DETAIL NO. 7

Employees' Retirement and Social Security

Appropriation	\$12,300.00
Reimbursements	350.28
Total Available	<u>\$12,650.28</u>

Expenditures

State of New Hampshire (OASI)	\$ 8,990.38
Police Retirement	2,975.10
Firemen's Retirement	2,685.10
	<u>\$14,650.58</u>

DETAIL NO. 8
Summer Police

Appropriation \$ 1,920.00

Expenditures

Wages \$ 1,879.50

DETAIL NO. 9
Police Department

Appropriation \$82,620.00

Reimbursements 10,897.73

Total Available \$93,517.73

Expenditures

Wages \$71,477.17

Administration 1,935.38

Communications 3,153.64

Transportation 11,503.29

Equipment and Supplies 2,968.88

Reimbursement to Cadet Program 4.50

Plant Expense 115.26

Mileage 1,053.42

Blood Alcohol Tests 544.00

Special—Community Relations Program 240.90

Special—Headquarters Improvement 1,128.64

Miscellaneous 159.75

\$94,284.83

DETAIL NO. 10
Fire Department

Appropriation \$53,750.00

Reimbursements	170.37
Total Available	<u>\$53,920.37</u>

Expenditures

Chief's Car	\$ 113.34
Clothing Allowance	476.33
Fire Education	299.37
Gasoline	728.46
Mutual Aid	50.00
Miscellaneous Fires	395.68
Laconia Water Company	2,515.00
Maintenance Repairs and Supplies	6,172.01
Protective Clothing	391.77
Radio Repair	597.77
Telephones	578.58
Wages	41,449.14
Miscellaneous	176.42
	<u>\$53,943.87</u>

DETAIL NO. 11

**Blister Rust and Care of Trees
White Pine Blister Rust Control**

Appropriation	\$ 100.00
---------------	-----------

Expenditures

State of New Hampshire	\$ 100.00
------------------------	-----------

Dutch Elm Disease Control

Appropriation	\$ 50.00
---------------	----------

Expenditures

None
------	-------

DETAIL NO. 12

Insurance

Appropriation	\$20,500.00
Reimbursements	730.73
	<hr/>
Total Available	\$21,230.73

Expenditures

Belknap Agency	\$ 4,364.39
Gilford School District (Earned dividends)	61.00
Davis and Towle Agency	5,096.83
Melcher and Prescott Agency	13,692.00
N.H.-Vt. Hospitalization Service	5,863.82
	<hr/>
	\$29,078.04

DETAIL NO. 13

Planning Board — Operational

Appropriation	\$ 3,070.00
---------------	-------------

Expenditures

Wages	\$ 1,501.00
Mileage	60.00
New Equipment	319.93
Supplies	58.54
Postage	146.38
Mimeographing & Photo-copies	42.68
Publications	7.65
Printing and Notices	831.27
Janitor Services	27.23
Toll Calls	16.15
Miscellaneous	25.00
	<hr/>
	\$ 3,035.83

DETAIL NO. 14

Dog Damage

Appropriation \$ 575.00

Expenditures

N. H. Humane Society \$ 500.00

DETAIL NO. 15

Legal Expense

Appropriation \$ 2,000.00

Expenditures

Nighswander, Lord, Martin & Killkelley \$ 909.67

DETAIL NO. 16

Civil Defense

Appropriation \$ 100.00

Expenditures

Rental of Gas Tank \$ 25.00

DETAIL NO. 17

Ambulance Service

Appropriation \$ 4,800.00

Reimbursements 49.42

Total Available \$ 4,849.42

Expenditures

City of Laconia \$ 4,970.84

DETAIL NO. 18

Hospital

Appropriation \$ 4,000.00

Expenditures

Lakes Region General Hospital \$ 4,000.00

DETAIL NO. 19

Town Dump

Appropriation \$ 5,845.00

Expenditures

Wages	\$ 4,968.00
Fuel	179.44
Equipment Rental	60.00
Equipment Maintenance	301.05
Equipment and Supplies	27.04
Publishing Notices	36.00
Printing	42.00
Pest Control	107.89
Materials	9.23
Telephone	237.92
Electricity	87.80
Signs	8.70
Gasoline	104.63
	<hr/>
	\$ 6,169.70

DETAIL NO. 20

Conservation Fund

Appropriation \$ 500.00

Expenditures

Gilford Conservation Commission \$ 500.00

DETAIL NO. 21
Land Purchase Costs

Appropriation \$ 500.00

Expenditures

Albert Jr. and Dorothy A. Devitt	\$ 850.00
J. B. Jr. and Helen F. Felton	840.00
Olive C. Gillis and F. W. Page	1.00
W. Robert Nolte & Associates	290.00
Justine I. and John Ruel	607.00
Arthur Weeks	25.00
Carol Weeks	675.00

\$ 3,288.00

DETAIL NO. 22

State Audit

Appropriation \$ 1,355.52

Expenditures

State of N. H. \$ 1,355.52

DETAIL NO. 23

Street Lighting

Appropriation \$ 5,750.00

Expenditures

Electricity	\$ 5,509.57
Christmas Lights	4.00

\$ 5,513.57

DETAIL NO. 24

Highway Department

Appropriation	\$ 95,218.00
Reimbursements	11,503.50
	<hr/>
Total Available	\$106,721.50

Expenditures

Wages	\$ 60,628.10
Maintenance Tools and Supplies	4,561.77
Culverts	578.33
Gas and Oil	10,113.71
Road Oil	517.50
Asphalt	11,486.06
Gravel	406.73
Tires	1,688.57
Salt	4,389.92
Cold Patch	2,264.30
Mechanical Supplies	5,679.40
Bridge Maintenance	14.99
Traffic Signs	527.92
Mechanic Equipment	1,017.15
Equipment Rental	1,383.81
Tree Service	40.00
Telephone	108.00
Miscellaneous	4,174.78
	<hr/>
	\$109,581.04

DETAIL NO. 25

Town Road Aid

Appropriation	\$ 1,258.43
---------------	-------------

Expenditures

State of N. H.	\$ 1,101.12
----------------	-------------

DETAIL NO. 26

Library

Appropriation \$ 10,200.00

Expenditures

Gilford Public Library \$ 10,200.00

DETAIL NO. 27

Welfare

Appropriation \$ 7,000.00

Reimbursements 589.29

Total Available \$ 7,589.29

Expenditures

Old Age Assistance \$ 2,355.37

Direct Relief—food, household, child care 6,000.00

Travel Expense 300.00

Administration — wages 100.00

\$ 8,755.37

DETAIL NO. 28

Town Capital Outlay Plan

Appropriation \$ 1,130.00

Expenditures

Community Planning Services \$ 1,130.00

DETAIL NO. 29

Winnepesaukee River Basin Survey

Appropriation \$ 5,000.00

Expenditures

None

**DETAIL NO. 30
Regional Planning**

Appropriation \$ 3,581.00

Expenditures

Lakes Region Planning Commission \$ 3,581.00

**DETAIL NO. 31
Old Home Day**

Appropriation \$ 1,200.00

Reimbursements 857.50

Total Available \$ 2,057.50

Expenditures

Fireworks 350.00

Bands 200.00

Corsages 5.75

Cooklet and Poster Expense 884.10

Janitor Services **61.71**

Trophies and Ribbons 275.66

Supplies and Misc. 35.45

\$ 1,812.67

**DETAIL NO. 32
Memorial Day**

Appropriation \$ 125.00

Expenditures

Belknap County Drum & Bugle Corps	\$	40.00
Prescott's Flower Shop		60.00
		<hr/>
	\$	100.00

DETAIL NO. 33

Conservation Commission — Operational

Appropriation	\$	300.00
---------------	----	--------

Expenditures

Supplies	\$	182.77
Office Equipment		43.80
Meeting Expense		11.00
Dues		50.00
		<hr/>
	\$	287.57

DETAIL NO. 34

Village Field — Operation

Appropriation	\$	3,780.00
Reimbursements		16.20
		<hr/>
Total Available	\$	3,796.20

Expenditures

Wages	\$	1,000.00
Equipment		515.34
Instruction		51.00
Supplies		124.89
Pump		499.00
Plumber's Services		33.65
Picnic Tables		90.00

Telephone	83.95
Care of Field	662.00
Electricity	573.22
Electrician's Services	13.00
Miscellaneous	44.26
	<hr/>
	\$ 3,690.31

DETAIL NO. 35

Gilford Beach — Operation

Appropriation	\$ 13,000.00
Reimbursements	167.00
	<hr/>
Total Available	\$ 13,167.00

Expenditures

Wages	\$ 9,632.00
Clothing	87.17
Supplies and Materials	388.64
Equipment	969.26
Printing, Notices, etc.	312.31
Raft Repairs, moving, etc.	280.00
Plumber's Services	62.30
Rubbish Collection	131.04
Telephones	104.11
Electricity	119.01
Asphalt	160.78
Miscellaneous	203.40
	<hr/>
	\$ 12,450.02

DETAIL NO. 36

Bookkeeping Machine

Appropriation	\$ 10,000.00
---------------	--------------

Expenditures

Burroughs Corp. — Electronic	
Bookkeeping machine	\$ 8,719.90
Burroughs Corp. — Form and supplies	1,349.72
	<hr/>
	\$ 10,069.62

DETAIL NO. 37

Water Works

Appropriation	\$ 1,500.00
---------------	-------------

Expenditures

Supplies	\$ 9.00
Electricity	338.18
Plumbers services	454.76
Salt	705.00
	<hr/>
	\$ 1,506.94

DETAIL NO. 38

Cemeteries

Appropriation	\$ 400.00
---------------	-----------

Expenditures

None
------	-------

DETAIL NO. 39

Glendale Wharves and Parking Lots

Appropriation	\$ 3,579.00
Reimbursements	40.65
	<hr/>
Total Available	\$ 3,619.65

Expenditures

Supplies	\$	55.92
Plumber		60.65
Rubbish Collection		1,260.00
Materials		9.23
Keys		1.05
Dock Maintenance		112.20
Signs		26.10
Police Services		36.00
Electrician		47.50
Wages		684.00
		<hr/>
	\$	2,292.65

DETAIL NO. 40

Lakes Region Association

Appropriation	\$	950.00
---------------	----	--------

Expenditures

Lakes Region Association	\$	950.00
--------------------------	----	--------

DETAIL NO. 41

Interest — Temporary Loans

Appropriation	\$	7,500.00
---------------	----	----------

Expenditures

Interest on Tax Anticipation Notes	\$	5,453.65
------------------------------------	----	----------

DETAIL NO. 42

Interest — Long-Term Notes

Appropriation	\$	5,788.35
---------------	----	----------

Expenditures

Hunt Land Notes	\$	183.75
Water Works Improvement Notes		40.50
Highway Equipment Notes (1968)		312.00
Highway Equipment Notes (1969)		150.00
Farmer Field Notes		183.75
Beachwood Notes		1,860.00
Wilson Land Notes		3,058.35
		<hr/>
	\$	5,788.35

DETAIL NO. 43

Purchase of Weeks' Land

Appropriation	\$	5,000.00
---------------	----	----------

Expenditures

Arthur H. and Mildred H. Weeks (Cash — \$1,000.00 and Notes \$4,000.00	\$	5,000.00
--	----	----------

DETAIL NO. 44

Bridge Construction

Appropriation	\$	500.00
---------------	----	--------

Expenditures

Persons Concrete	\$	305.11
------------------	----	--------

DETAIL NO. 45

Purchase of Fire Truck

Appropriation	\$	38,000.00
---------------	----	-----------

Expenditures

None

DETAIL NO. 46

Beach Capital Improvements

Appropriation \$ 1,050.00

Expenditures

Painting \$ 1,198.00

Electrical 28.10

Plumber's Services 8.57

\$ 1,234.67

DETAIL NO. 47

Fire Department Equipment

Appropriation \$ 6,200.00

Expenditures

Hose, and couplings \$ 1,460.25

Light and small equipment 20.26

Hydrant Kits 478.50

Plymouth Station Wagon (Chief's car) 3,221.53

Radios 985.00

\$ 6,165.54

DETAIL NO. 48

Town Building Plans

Appropriation \$ 1,800.00

Expenditures

None

DETAIL NO. 49

Payment of Notes

Appropriation \$ 29,000.00

Expenditures

Beachwood Note	\$ 10,000.00
Farmer Field Note	1,750.00
Highway Equipment Note (1968)	8,000.00
Highway Equipment Note (1969)	2,500.00
Hunt Land Note	1,750.00
Water Works Improvement Note	1,000.00
Wilson Note	4,000.00
	<hr/>
	\$ 29,000.00

SCHEDULE OF TOWN PROPERTY

Town Hall, Land and Buildings	\$ 51,600.00
Furniture and Equipment	13,400.00
Library, Land and Buildings	27,750.00
Furniture and Equipment	9,250.00
Police Department Equipment	25,000.00
Fire and Highway Department, Land and Buildings	142,800.00
Furniture	1,480.00
Fire Equipment	96,500.00
Highway Equipment	78,600.00
Materials and Supplies	6,000.00
Glendale Fire Station	41,700.00
Beach, Wharves and Parking lot	400,250.00
State School land	11,700.00
Lincoln Park	31,800.00
Water Works	17,600.00
School, Lands and Buildings	620,500.00
Equipment	35,600.00
Civil Defense Equipment	6,150.00
Farmer Field	90,000.00
Hunt Land Gravel Bank	23,670.00
Dump Buildings	850.00
Old Town Shed and Land	14,780.00
Wilson Land	31,100.00
Wilson Land and Buildings	41,740.00
Weeks Land	7,000.00
Land acquired through Tax Collector's Deeds:	
Normand Morin Land	10,000.00
George Allen land	2,000.00
Robert Tilton land	500.00
Total	\$1,839,320.00

1880 Report

It is a mistake to speak in too high a key. Children soon cease to attend to a teacher with a loud voice pitched on a high key. It induces a corresponding loudness and harshness of tone on the part of the pupils, and leads them to speak and read in a hard unvarying manner. It produces an irritating effect on the nervous systems of children which prevents their being quiet and attentive. The teacher should speak in pleasant and conversational tones in the school-room. It is more effective in securing attention and order, and the teacher will be more successful in imparting instruction. But weakness of voice must not be confounded with good modulation. Weakness of voice indicates some corresponding weakness in body or character. Proper modulation, on the contrary, conveys the impression that the speaker thoroughly understands himself.

Annual Report

of the

School District

of the town of

Gilford

New Hampshire

For the year ending June 30, 1971

OFFICERS OF THE
GILFORD SCHOOL DISTRICT

MODERATOR

Peter V. Millham

CLERK

Doris MacHaffie

TREASURER

Lewis A. Aldrich

AUDITORS

Robert Scales

Pauline Richardson

SCHOOL BOARD

John O. Richards, Chairman Term expires 1973

Dr. Leo Sanfacon Term expires 1974

Esther Nighswander Term expires 1972

SUPERINTENDENT OF SCHOOL

John P. Ball

Tel. 524-5710

ASSISTANT SUPERINTENDENT

Alexander J. Blastos

Tel. 524-5710

TEACHER CONSULTANT

Esma C. Ford

SCHOOL NURSE

Theresa Peters

Regular meeting of the School Board
Third Monday of each month at 7:30 P. M.

SCHOOL WARRANT
The State of New Hampshire

To the Inhabitants of the School district in the town of GILFORD qualified to vote in district affairs:

You are hereby notified to meet at the Gilford Elementary School in said district on the seventh day of March 1972, at eight o'clock in the forenoon, to act upon the following subjects:

1. To choose a Moderator for the coming year.
2. To choose a Clerk for the ensuing year.
3. To choose a Member of the School Board for the ensuing three years.
4. To choose a Treasurer for the ensuing year.
5. To choose two (2) auditors for the ensuing year.

POLLS WILL OPEN AT 8:00 A. M. AND WILL NOT
CLOSE BEFORE 6:00 P. M.

Given under our hands at said Gilford this sixteenth day of February 1972.

JOHN O. RICHARDS, Chairman
ESTHER NIGHSWANDER
LEO B. SANFACON
School Board

A true copy of Warrant—Attest:

JOHN O. RICHARDS, Chairman
ESTHER NIGHSWANDER
LEO B. SANFACON
School Board

School District meeting on appropriation items is scheduled for April 18, 1972 at the Gilford Elementary School at 7:30 P. M.

PROPOSED BUDGET

Gilford School District

1972 — 1973

Purpose of Appropriation		Expenditures		
		Approved Budget 1971-72	School Board's Budget 1972-73	Budget Committee Recommended 1972-73
Administratiton:				
110	Salaries	\$ 720.00	\$ 720.00	\$ 720.00
135	Contracted Services	270.00	320.00	320.00
190	Other Expenses	215.00	330.00	330.00
Instruction:				
210	Salaries	238,051.00	257,766.00	245,368.00
215	Textbooks	3,570.00	750.00	750.00
220	Library & Audiovisual Materials	6,300.00	5,000.00	5,000.00
230	Teaching Supplies	7,140.00	10,000.00	10,000.00
235	Contracted Services	1,860.00	1,500.00	1,500.00
290	Other Expenses	1,300.00	2,036.00	2,036.00
Health Services		10,659.00	9,012.00	9,012.00
Pupil Transportation		52,612.00	58,000.00	58,000.00
Operation of Plant:				
610	Salaries	18,186.00	18,836.00	18,836.00
630	Supplies	4,300.00	4,300.00	4,300.00
640	Heat for Building	6,000.00	7,000.00	7,000.00
645	Utilities	4,200.00	4,500.00	4,500.00
Maintenance of Plant		11,600.00	5,750.00	5,750.00
Fixed Charges:				
850	Employee Retire & FICA	16,078.00	21,005.00	21,005.00
855	Insurance	8,746.00	12,174.00	12,174.00
School Lunch & Spec. Milk Pro- gram		8,000.00	8,000.00	8,000.00
Capital Outlay:				
1265	Sites	300.00	300.00
1266	Buildings	58,000.00	6,650.00	6,650.00
1267	Equipment	8,500.00	4,530.00	4,530.00
Debt Service:				
1370	Principal of Debt	10,000.00	10,000.00	10,000.00
1371	Interest on Debt	480.00	160.00	160.00
Outgoing Transfer Accts. in State:				
1477.1	Tuition	312,914.00	395,861.00	395,861.00
1477.3	Supervisory Union Exp.	20,003.00	22,664.00	22,664.00

Expenditures to Other than Public Schools:			
1479 Tuition	1,000.00	1,000.00	1,000.00
Summer School	2,250.00	2,250.00	2,250.00
Contingency Fund	6,899.00	7,360.00	7,360.00
Deficit Appropriation	37,800.00	37,800.00
Total Appropriations	<u>\$819,853.00</u>	<u>\$915,574.00</u>	<u>\$903,176.00</u>

Receipts

Revenues & Credits Available To Reduce School Taxes	Approved Revenues 1971-72	Estimated Revenues	
		School Board's Budget 1972-73	Budget Committee 1972-73
UNENCUMBERED BALANCE	\$ 11,329.40	\$ 10,000.00	\$ 10,000.00
Revenue from State Sources:			
Sweepstakes	5,424.00	10,000.00	10,000.00
School Building Aid	1,652.00	1,652.00	1,652.00
Revenue from Federal Sources:			
School Lunch & Spec. Milk Program	3,500.00	3,500.00	3,500.00
PL 874 (Impacted Area — Cur. Operation)	4,500.00	3,375.00	3,357.00
Emergency Manpower Program	8,030.00
Local Revenue Except Taxes:			
Tuition	1,000.00	1,600.00	1,600.00
Rent	500.00	600.00	600.00
Other Revenue from Local Sources	5,668.00	7,155.00	7,155.00
Total Revenues and Credits	<u>\$ 33,573.40</u>	<u>\$ 45,912.00</u>	<u>\$ 37,882.00</u>
District Assessment to be Raised by Property Taxes	786,279.80	869,662.00	865,294.00
Total Appropriation	<u>\$819,853.00</u>	<u>\$915,574.00</u>	<u>\$903,176.00</u>

REPORT OF SUPERINTENDENT OF SCHOOLS

To the People of Gilford :

The time for decision is now. The people of the town have to make a choice of the alternatives that are open to them. With the information that is at hand, the town must decide whether or not to remain with Laconia or to make other arrangements. If the choice is to remain with Laconia, this fact must be accepted by the City. I am sure that this design will take longer to solve than by Gilford's going alone or with some other community. The ones who will feel the results the greatest, will be the students. Whatever the answer, the result should be what is best for the pupil.

As you know, the school population of the town is growing rapidly. The increase of 21 students during the year is easily seen at the elementary level, by the counting of heads. The increase at the secondary level is also noted, probably more dramatically by the increased costs of tuition. From the time that the present school year's budget was prepared to December of 1971, about one year, there had been an increase of thirty students at the secondary level. These pupil increases, along with increases in costs will, without a doubt, make next year's school costs go over the million dollar mark for the first time.

The elementary school is busy with a fine group of teachers, aides and administration working together. Each day that passes, the trend is towards greater individualization of the teaching program. The best plan would be to have a one teacher-one pupil ratio.

This, of course, is impossible but programs can be designed to nearly reach this goal. You will be hearing more on this as the years go by.

With the overcrowding in the Laconia schools, the situation is less than ideal. The facilities at both the Junior High and Senior High are over capacity. The result at the Senior High with its extended day is obvious. The Junior High situation is not as bad but class sizes are over what is recommended. As you can see, this works against the individualization of pupil programs at those levels.

The School Board has pursued every possible idea. They cannot make all the decisions, but they need your opinion. Negativism does no one any good. Ideas and possible solutions are encouraged. It is only with the town's support that they can provide the best possible education for all the children of the community. It has been my privilege to have worked with them and I wish to thank them for their support.

Respectfully submitted,

JOHN P. BALL
Superintendent of Schools

1857 Report

One of the greatest hindrances to progress in our schools is tardiness and absence on the part of scholars, an evil that no teacher or committee have the power to abviate; it lies entirely with scholars and parents, and to them only can we look for a remedy.

FINANCIAL REPORT

Gilford School District

For Fiscal Year Ending June 30, 1971

Receipts

Cash on Hand, July 1, 1970	\$ 6,014.08
Current Appropriation	689,119.50
Tuitions, Regular School Year	1,092.00
Tuitions, Summer School	50.00
Rentals	875.00
Filing Fees	7.00
School Building Aid	3,000.00
Intellectually Retarded	561.03
Sweepstakes	4,442.03
Title III, NDEA	325.73
School Lunch and Special Milk Program	3,747.77
PL 874, Impacted Area Aid	6,887.00
Reimbursements	511.20
Total Receipts	<hr/> \$722,188.64

Expenditures

110	Salaries, District Officers	\$ 720.00
135	Contracted Services for Admin.	270.00
190	Other Expenses for Admin.	313.73
210.1	Principal and Asst. Principal	
	Salaries	12,700.00
210.3	Classroom Teachers. Salaries	199,683.59
210.5	Salary of Secretary	5,200.00
215	Textbooks	3,193.38
220	Library & Audiovisual Mate.	6,500.10
230	Teaching Supplies	9,885.65

235	Contracted Services for Instr.	4,729.00
290	Other Expenses for Instruction	1,044.39
310	Truant Officer	40.00
410	Salary of Nurse & Speech Therapist	9,673.00
490	Other Expenses for Health Services	621.07
535	Contracted Services for Trans.	48,229.50
610	Salaries of Custodians	16,331.73
630	Supplies for Operation of Plant	4,236.10
640	Heat for Building	6,862.35
645	Utilities:	
	Electricity	\$3,014.60
	Gas	236.84
	Telephone	827.02
		<hr/>
		4,078.46
725	Replacement of Equipment	1,116.54
726	Repairs to Equipment	959.76
735	Contracted Services for Maintenance	3,465.10
766	Repairs to Buildings	820.13
850.2	Teachers' Retirement	4,847.45
850.3	Social Security	7,444.70
855	Insurance	4,302.53
975.1	School Lunch Program— Federal Funds	3,747.77
975.2	School Lunch Program— District Funds	3,750.00
1266	Capital Outlay—Buildings	15,353.00
1267	Capital Outlay— New Equipment	5,768.15
1370	Principal of Debt	10,000.00
1371	Interest on Debt	800.00

1477.1	Tuitions to Laconia Sch. Dist.	295,047.66
1477.3	Share of Supervisory Union Exp.	16,474.22
1710	Summer School Salaries	2,000.00
1735	Summer School Transportation	650.00
	Total Payments	<hr/> \$710,859.24
	Cash on Hand, 6-30-71	11,329.40
	Grand Total	<hr/> \$722,188.64

Respectfully submitted,

JOHN O. RICHARDS,
Chairman

ESTHER NIGHSWANDER
LEO B. SANFACON
School Board

LEWIS A. ALDRICH,
School District Treasurer

1865 Report

Could we have a column containing a correct list of boys in town ungoverned at home, and attending school for little but mischief and disturbing others, it would present a few lamentable cases, cases highly ominous of evil to the delinquents themselves.

AUDITORS' REPORT

This is to certify that we have examined the books, vouchers, bank statements and other financial records of the treasurer of the school district of Gilford of which the above is a true summary for the fiscal year ending June 30, 1971, and find them correct in all respects.

PAULINE RICHARDSON
ROBERT B. SCALES
Auditors

August 30, 1971

1860 Report

The system of our common schools we regard as among the most important of our civil institutions. Our common schools lay the foundation for the perpetuity of our form of government. Educate the masses and our government is safe. To do this our common schools are admirably adopted, children of the rich and the poor have equal rights in the school room; and from the humble district school house, rather than from our seminaries, colleges and other higher institutions of learning go forth the great mass of men and women who are to bear the responsibilities of manufacturing the liberties of our country and of giving character to future generations.

SCHOOL LUNCH PROGRAM

1970 - 1971

Receipts

Cash on Hand, July 1, 1970	\$ 54.65
Lunch Sales, Children	14,290.55
Lunch Sales, Adults	1,130.00
Federal Reimbursements	3,747.77
District Appropriation	4,750.00
	<hr/>
Total	\$23,972.97

Expenditures

Food	\$12,893.45
Labor	9,942.14
All Other Expenditures	1,092.17
Cash on Hand, June 30, 1971	45.21
	<hr/>
Total	\$23,972.97

1875 Report

In a country and under a government like ours, where every man is a sovereign, and laws are made for the general good and by men of our own election, it would seem both wise and prudent for public officers to regard such laws, especially where the disbursements of funds are concerned.

STATISTICS

Tuition Rates and Costs

The following tables show the tuition rates and total paid since the pupils of Grades 7 and 8 assigned to Laconia in September 1947 because of lack of classrooms in Gilford.

Year	Total Payments	Senior High Tuition Rate	Junior High Tuition Rate
1972-73 (Budget)	\$395,861.00	\$939.00	\$805.00
1971-72 (Budget)	312,914.00	861.00	755.00
1970-71	295,047.66	846.00	680.00
1969-70	253,264.18	726.00	640.00
1968-69	223,017.29	674.00	586.00
1967-68	194,207.55	619.00	549.00
1966-67	166,761.00	552.00	467.00
1965-66	164,890.36	596.00	471.00
1964-65	129,404.28	434.00	471.00
1963-64	104,679.49	426.00	395.50
1962-63	91,745.00	438.00	254.00
1961-62	73,644.62	378.00	314.00
1960-61	67,126.36	357.00	341.00
1959-60	67,678.89	404.00	339.00
1958-59	58,301.00	376.00	300.00
1957-58	50,908.76	350.00	315.00
1956-57	52,417.45	346.00	319.00
1955-56	38,775.23	321.00	292.00
1954-55	31,102.83	320.00	280.00
1953-54	27,633.47	305.00	265.00
1952-53	25,837.75	285.00	238.00
1951-52	21,781.14	262.00	233.00
1950-51	17,872.48	245.00	205.00
1949-50	15,176.65	295.00	125.00
1948-49	11,367.00	150.00	110.00
1947-48	9,133.43	125.00	100.00

**Gilford Elementary School Enrollment
As of January 14, 1972**

Joan Kenney	Kindergarten	38
Pamela Kyle	Kindergarten	19
Marjorie Edwards	1	23
Dorothy Thompson	1	26
Ann Walden	1	13
Debora Webster	2	21
Joan Buckman	2	11
Jean Mitchell	2	30
Sara Adams	3	25
Lynda Conboy	3	25
Arlene Phelps	3	26
Maxine Johnson	4	26
Kathryn LaCroix	4	25
Shirley Oliver	4	26
Gary Allen	5	30
Ethel Dolloff	5	28
Nancy Johnson	5	29
Jean Landroche	6	27
Joy Nelson	6	27
William Powers	6	27
Total		502

SCHEDULE OF BONDED INDEBTEDNESS

Year	3rd Addition — 1962	
	Principal	Interest
1971-72	\$10,000.00	\$480
1972-73	10,000.00	160

SCHOOL CENSUS REPORT 1971-72

Ages as of Sept. 1, 1971	Number of Children Total Boys Girls			Public School		Parochial School* Outside District	Other Private Schools		Not Attending Any School		
				Within the District	Outside the District		Within the District	Outside the District			
Less Than											
1 Year	52	32	20								
1	47	20	27								
2	49	31	18								
3	41	20	21								
4	42	20	22	8			1	2			
5	67	39	28	64		1	1	1			
Total											
Births-5	298	162	136	72		1	2	3			
6	63	40	23	58		5					
7	65	38	27	64				1			
8	72	31	41	67		5					
9	83	45	38	81		2					
10	97	47	50	96		1					
11	74	46	28	58	15	1					
12	80	46	34	9	67	4					
13	69	41	28		67	1			1		
14	72	30	42	1	70			1			
15	84	38	46		82			2			
16	73	42	31		72			1			
17	49	30	19		48					1	
Through											
18	15	7	8	8					2	5	
Total											
6-18	896	481	415	434	429	19	5	1	3	5	
Total											
Birth-18	1,194	643	551	506	429	20	2	8	1	3	5

* No parochial school within the district.

Why Gilford Does Not Receive State Foundation Aid

Elementary Average Daily Membership	580.9
Elementary Membership x 319 Dollars and 40 Cents per pupil	185,540.11
Secondary Average Daily Membership	241.4
Secondary Membership x 429 Dollars and 61 Cents per pupil	103,708.64
Total Cost of Foundation Program ...	298,248.75
1968 Equalized Valuation	44,248,489.00
Less 14 Dollars Tax on Equalized Valuation	619,478.85
Amount of 1971 Payment00

SALARIES OF ADMINISTRATIVE PERSONNEL 1970 - 1971

Total Salary of Superintendent of Schools was \$17,000. Divided as follows:

Laconia — \$10,828.60	Gilford — \$2,839.10
Gilmanton — \$832.30	State of N. H. — \$2,500.00

Total Salary of Teacher Consultant was \$10,776.00. Divided as follows:

Laconia — \$6,031.16	Gilford — \$1,581.28
Gilmanton — \$463.56	State of N. H. — \$2,700.00

Vital Statistics
for the year
1971

Births Registered in the Town of Gilford for the Year Ending December 31, 1971

Date of Birth	Place of Birth	Name of Child (If Any)	Name of Father	Maiden Name of Mother	Residence of Parents	Birthplace of Mother	Birthplace of Father
1971							
Jan. 2	Laconia	Robert L. Landry	Raymond A. Landry, Sr.	Darlene A. Maynard	Gilford	Ohio	N. H.
5	Laconia	William M. Fay	Merrill P. Fay	Nan Tracy	Gilford	Maine	N. H.
Feb. 3	Laconia	David A. Robinson	Roger A. Robinson	Jean D. Rondeau	Gilford	Rhode Island	N. H.
11	Laconia	Ann N. Morse	Robert W. Morse	Dorothy A. Fennell	Gilford	Mass.	Maine
14	Laconia	Christopher M. Smith	Newton S. Smith, Jr.	Marie A. Dumais	Gilford	N. H.	N. H.
15	Laconia	Kristi A. Forbes	William H. Forbes, Jr.	Margaret D. Fay	Gilford	N. H.	Mass.
19	Laconia	Amy D. White	Seely F. White, Jr.	Marie E. Macozek	Gilford	N. H.	N. H.
21	Laconia	Carleton E. Ladd	Keith A. Ladd	Etta L. Evans	Gilford	Conn.	N. H.
22	Laconia	Veronica E. Soule	Philip P. Soule	Jane J. Longley	Gilford	N. H.	Mass.
27	Laconia	Faith N. Stevens	Wayne E. Stevens	Barbara A. Michaud	Gilford	Mass.	N. H.
Mar. 1	Laconia	Angela S. Jordan	Robert W. Jordan	Doris L. Norris	Gilford	Calif.	N. H.
3	Laconia	Douglas M. Hayes	Bennett M. Hayes	Judith A. Ryerson	Gilford	N. H.	N. H.
15	Laconia	Eric R. Wilson	Ray D. Wilson	Geri W.	Gilford	Michigan	England
26	Laconia	John H. McDonald, Jr.	John H. McDonald	Brenda J. Elliott	Gilford	N. H.	N. H.
Apr. 15	Franklin	Paul A. Pantaleo	Eugene J. Pantaleo, Jr.	Marion E. Pratt	Gilford	N. H.	N. H.
17	Laconia	Terri A. Gibson	Charles L. Gibson	Bonita A. Nevers	Gilford	Maine	N. H.
30	Laconia	Christian J. Ness	William E. Ness	Geraldine C. Paradise	Gilford	Vermont	N. H.
May 6	Laconia	Douglas J. Chapman	James M. Chapman	Cynthia C. Pechat	Gilford	N. H.	Maryland
June 1	Laconia	Angela M. Kelley	Robert W. Kelley, Jr.	Joanne N. Blake	Gilford	N. H.	N. H.
2	Laconia	Trisha R. Cyr	James P. R. Cyr	Patricia J. Kimball	Gilford	N. H.	N. H.
2	Laconia	Tiffany J. Cyr	James P. R. Cyr	Patricia J. Kimball	Gilford	Maine	Maine
5	Laconia	Jacinda L. Luneau	Peter B. Luneau	Elaine N. Drouin	Gilford	N. H.	Mass.
16	Laconia	Anna T. Zimmermann	Gerhard J. Zimmermann	Miriam D. Macozek	Gilford	N. H.	N. H.
22	Haver	Michael A. Posnack	Alan J. Posnack	Gale L. Turner	Gilford	New York	New York
24	Laconia	Ruth A. Morris	Charles E. Morris	Ruth E. Nelson	Gilford	Illinois	Calif.
29	Laconia	Charles R. Grauger	John L. Grauger	Pauline N. George	Gilford	N. H.	N. H.
July 6	Laconia	Douglas A. DuBois	Bert W. DuBois	Jean N. Smith	Gilford	Vermont	N. H.

7	Laconia	Christopher B. Gagnon	M	Bibe H. Gagnon	Catherine L. Clermont	Gilford	N. H.
15	Laconia	Jennifer L. Fournier	F	Lincoln C. Fournier	Lou E. Robert	Gilford	N. H.
12	Laconia	Kerry L. Hosmer	F	Peter Hosmer	Barbara A. Damien	Gilford	Mass.
17	Laconia	Steven W. Ainsworth	M	William M. Ainsworth	Linda R. Burditt	Gilford	N. H.
18	Laconia	Scott W. LaPierre	M	Wayne M. LaPierre	Jane M. Marcoux	Gilford	N. H.
22	Laconia	Lisa A. Laurent	F	Roger P. Laurent	Linda A. Reichert	Gilford	N. H.
28	Laconia	Scott J. Herbert	M	Wayne H. Herbert	Grace L. Guilfrida	Gilford	Mass.
30	Laconia	Andrew J. Luneau	M	Gary L. Luneau	Jeanette A. Twombly	Gilford	N. H.
Sept. 9	Laconia	Vickie J. Stinson	F	Lawrence J. Stinson	Sally A. James	Gilford	N. H.
Oct. 1	Laconia	John L. Paradise	M	Lionel J. Paradise	Margaret A. Hough	Gilford	N. H.
10	Laconia	David A. Hawkins	M	Frederick J. Hawkins	Nancy L. Dehart	Gilford	N. H.
26	Laconia	Stacy L. Simoneau	F	Lawrence W. Simoneau	Nancy L. Dehart	Gilford	N. H.
26	Laconia	Tracy L. Simoneau	F	Lawrence W. Simoneau	Judith A. Riley	Gilford	N. H.
Nov. 3	Laconia	Stephen W. Coff	M	William N. Coff, III	Nancy Robinson	Gilford	Meane
3	Laconia	Philip T. Horne	M	Tracy L. Horne	Gail L. Smith	Gilford	Mass.
18	Laconia	Laura K. Burnett	F	William T. Burnett	Sandra F. Thompson	Glendale	New York
28	Dover	Darby C. Grigg	F	James W. Grigg		Gilford	West Virginia

I hereby certify that the above return is correct, according to the best of my knowledge and belief.

LORRAINE T. ROYCE, Town Clerk

Marriages Registered in the Town of Gilford for the Year Ending December 31, 1971

Date of Marriage	Place of Marriage	Name and Surname	Residence of Each at time of marriage	Date of Birth of each	Place of Birth of each	Name of Parents	Birthplace of Parents	Name, resident and official station of persons by whom married
1970 Jan. 9	Lakeport	Thomas W. Talcott, Jr. Regina Gallivan	Dedham, Dorchester	12-27-46 7-12-50	Mass. Mass.	Thomas W. Talcott Virginia Connolly Charles N. Gallivan Marian Hart	Mass. Mass. Mass. Mass.	William P. Neiman Catholic Priest Lakeport
Jan. 10	Gilford	Horatio B. Tower, Jr. Pamela L. Stearns	Gilford Gilford	8-12-05 11-5-07	Mass. Mass.	Horatio B. Tower Gertrude W. Hall Gilbert H. Noyes Lena N. Dupart	Mass. Mass. N. H. Mass.	Floyd G. Kinsley Clergyman Gilford
Jan. 23	Lakeport	Dennis J. Decato Elizabeth A. Twombly	Gilford Belmont	1-31-47 9-26-53	N. H. N. H.	Emile E. Decato Madalen L. Dyer Roscoe E. Twombly Barbara Taylor	N. H. Maine Mass. Mass.	William P. Neiman Catholic Priest Lakeport
Feb. 13	Concord	Kim R. Cedarstrom Susan E. Speirs	Glendale Concord	5-22-58 3-6-51	Mass. Ill.	Robert Cedarstrom Pauline Woodman Robert Speirs Grace Colechester	Mass. Mass. England Mass.	David L. Ebert Minister Henniker
Feb. 28	Tilton	Jerry A. Heath Sherry F. Draper	Gilford Northfield	7-19-50 2-3-49	N. H. N. H.	Herbert A. Heath Mary Jarvis Lawrence L. Draper Earline Alexander	Mass. N. H. N. H. N. H.	Donald B. Corringham Episcopal Priest Northfield
Feb. 28	Gilford	William T. Burnett Gail L. Smith	West Orange Gilford	1-3-48 5-28-51	N. Y. Vermont	Dr. James G. Burnett Crystal Williams Dale C. Smith Theresa D. Judd	N. Y. Okla. Vt. Vt.	Floyd G. Kinsley Clergyman Gilford
Mar. 5	Gilford	Norman L. Huekins Winnifred N. Girard	Lexonia Gilford	8-2-27 12-19-27	N. H. England	Edgar Huekins Victoria Latroux Samuel Tilley Florence Harwood	N. H. Canada England England	George W. Stafford Justice of the Peace Lexonia

Mar.	6	Gilford	Andreas B. Wischlbarger	Holliston	12-20-40	N. Y.	Bernard Wischlbarger	Germany	John C. Adams
			Judith G. Adams	Gilford	1-25-49	Conn.	Grace E. Bloodgood	N. Y.	Justice of the Peace
Mar.	27	Laconia	Barry W. Poirrier	Laconia	8-30-51	N. H.	Virginia G. Goodwin	Vt.	Gilford
			Wendy J. Jones	Gilford	4-26-51	N. H.	Roger Poirrier	Mass.	Richard F. Beyer
Apr.	3	Tilton	Wayne M. LaPierre	Gilford	8- 8-50	N. H.	Virginia Rollins	N. H.	Clergyman
			Jane M. Marcoux	Tilton	2-16-50	N. H.	Robert Jones	Mass.	Concord
Apr.	10	Gilford	Harlan C. Clark	Dorchester	1- 8-49	Okla.	Jean Stourrock	Scotland	Rev. Warren J. Regan
			Claire E. Gullivan	Gilford	1-14-48	Mass	Martin N. LaPierre	N. H.	Priest
Apr.	24	Gilford	Frank W. Bedard	Gilford	10- 9-23	N. H.	Alice R. Skinner	N. H.	Tilton
			Anna R. Fenoff	Gilford	2-28-21	Mass.	Arthur N. Marcoux	N. H.	
May	15	Gilford	Clement W. Orr	Sanbornton	10-25-09	Maine	William H. Clark	Okla.	Francis L. Murdoch, Jr.
			Ailene N. Paterno	Gilford	4-15-13	Maine	Dorothy G. Milligan	Okla.	Justice of the Peace
May	20	No. Conway	Douglas J. Armstrong	Gilford	9-27-48	N. H.	Charles N. Gullivan	Mass.	Ashland
			Candace N. Peters	No. Conway	1- 1-49	N. H.	Marian T. Hart	Mass.	Floyd G. Kinsley
May	21	Gilford	Neil A. Eastman	Gilford	6-13-52	N. H.	Fernand J. Bedard	N. H.	Clergyman
			Gloria E. Gallant	Laconia	12-26-52	N. H.	Ernest R. Schaafl	Germany	Gilford
June	6	Lekeport	Bernard J. Fountain	Gilford	12-31-24	Mass.	Mabel E. Ramier	Mass.	Floyd G. Kinsley
			Frances M. Smith	Laconia	10-16-33	N. H.	Washington J. Orr	Maine	Clergyman
June	11	Gilford	Marc A. Corriveau	Gilford	3-22-49	N. H.	Ella Deering	Maine	Gilford
			Calleen F. McGrath	Laconia	8-27-49	N. H.	Fred R. Cook	N. H.	
							Ella F. Moulton	Maine	Rev. Alfred Daniszewski
							James H. Armstrong	N. H.	Catholic Priest
							Marguerite Eastman	N. H.	No. Conway
							Bernard L. Peters	N. H.	
							Lillian Bleam	Mass.	Floyd G. Kinsley
							Clifford C. Eastman	N. H.	Clergyman
							Antoinette Thompson	N. H.	Gilford
							Ernest F. Gallant	Mass.	
							Pauline D. Morin	N. H.	Robert F. Jones
							Raymond Fountain	N. H.	Justice of the Peace
							Elizabeth McDonald	N. H.	Lakeport
							Irving G. Morse	N. H.	
							Helen Gibbs	Mass.	Rev. Denis Downey
							Roland Corriveau	N. H.	Catholic Priest
							Helen Bennett	N. H.	Merrimack
							Roger McGrath	N. H.	
							Laura McKinley	Mass.	

Marriages Registered in the Town of Gilford — Continued

Date of Marriage	Place of Marriage	Name and Surname	Residence of Each at time of marriage	Date of Birth of each	Place of Birth of each	Name of Parents	Birthplace of Parents	Name, resident and official station of persons by whom married
June 12	Pelham	Calvin C. Kolb, Jr.	Gilford	12- 6-49	Conn.	Calvin C. Kolb, Sr. Jeanette Bowman	Conn.	Rev. William L. Quirk Catholic Priest Pelham
June 23	Laconia	Kathleen J. Stadtmiller	Gilford	10- 7-51	Panama	Ann R. Shanley James P. Stadtmiller	Conn. Mass.	Richard J. Spead Justice of the Peace Lakeport
June 25	Portsmouth	Richard C. Heimis	Laconia	10- 4-47	N. H.	John Heimis Agnes Grant	N. H. N. H.	W. C. Hodgins Rector Portsmouth
June 29	Laconia	Linda L. Pelkey	Gilford	6-10-41	N. H.	Lee Clow Blaisdelle	N. H.	Kenneth R. Dunlap Justice of the Peace Laconia
June 29	Laconia	Harold F. Secord	Gilford	11-14-02	Mass.	Freeland Secord Frances Brinard	Canada N. Y.	J. Desmond O'Connor Catholic Priest Laconia
July 3	Laconia	Della M. Flood	Gilford	4- 4-15	Maine	Guy McCreedy Bertha McLaughlin	Canada Mass.	Floyd G. Kinsley Clergyman Gilford
July 3	Gilford	Joseph P. Kennedy, Jr.	Laconia	10-14-48	Mass.	Elizabeth McMillen Paul E. Jordan	Mass. N. H.	Wallace Wandetson Minister Center Sandwich
July 3	Laconia	Brenda J. Donnell	Gilford	11-16-50	N. H.	Elizabeth McMillen Paul E. Jordan	Mass. N. H.	Rev. Stephen W. Soruton Catholic Priest Laconia
July 3	Laconia	Michael P. Girard	Laconia	4- 8-52	N. H.	Louise Smith Lionel J. Girard	N. H. England Wash., D.C.	
July 3	Gilford	Sally Greene	Gilford	2- 3-51	N. H.	Winston L. Greene Kirk	Vt.	
July 9	Laconia	Albert L. Soule	Hingham	5-20-49	Mass.	Charles E. Soule Marion Beausang	Mass. Mass.	
July 9	Laconia	Nancy K. Rollins	Quincy	2- 6-49	Mass.	Robert H. Rollins Kathryn E. Gratten	Mass. Canada	
July 10	Laconia	William A. Crook	Gilford	5-13-13	Mass.	Albert Crook Blanche Pettit	Canada Iowa	
July 10	Laconia	Richard E. Eastman	Nashua	6-24-43	Mass.	George Truelson Nellie Dunham	Calif. Mass.	
July 10	Laconia	Myrtle T. Dabben	Gilford	8-19-49	N. H.	Clifford Eastman Antoinette Thompson	N. H. N. H.	
July 10	Laconia	Richard E. Eastman	Gilford	8-19-49	N. H.	Harold Turte Marguerite Rollins	Mass. N. H.	
July 10	Laconia	Donna M. Turte	Laconia		N. H.			

July	19	Laconia	Howard R. Hovey	Santa Ana	6-9-13	Rt. 1.	Howard W. Hovey	W. Va.	Bernard I. Smeirson
			Muriel J. Chafer	Gilford	10-16-04	Michigan	Mary Blake	N. Y.	Justice of the Peace
Aug.	7	Lakeport	Ernest W. Decato	Gilford	11-12-49	N. H.	Harriet Stone	Mich.	Laconia
			Shelia A. Tibbetts	Gilford	6-23-51	Vt.	Emile E. Decato	N. H.	William P. Neiman
Aug.	14	Laconia	Stephen W. Guyer	Gilford	6-1-50	N. H.	Madeline Dyer	Maine	Catholic Priest
			Deborah Bates	Gilford	2- 20 51	N. H.	John R. Tibbetts	Mass.	Lakeport
Aug.	21	Gilford	Paul W. Witkowski	Brooklyn	1-29-49	N. Y.	Viola M. Williams	N. Y.	J. Desmond O'Connor
			Diana E. Hunt	Knoxville	3-16-49	N. Y.	Leon W. Guyer	N. H.	Catholic Priest
Aug.	28	Laconia	Roland H. Debeeca, Jr.	Laconia	3-13-48	N. H.	Annette Letourneau	N. H.	Laconia
			Stephene S. Pelchat	Gilford	1-31-49	N. H.	Wesley Bates	Mass.	J. Bradbury Mitchell
Aug.	28	Gilford	Robert S. Gove	Gilford	12-3-47	N. H.	Virginia Wilkenson	N. H.	Minister
			Patricia A. Landry	Gilford	2-12-51	N. H.	Earl Witkowski	N. Y.	Laconia
Aug.	28	Gilford	Michael J. Southworth	Laconia	5-6-49	N. H.	Aubrey Feinberg	N. Y.	Rev. Justin Vojtek, OSB
			Deborah J. Cott	Gilford	1-17-51	Maine	Gordon E. Hunt	N. Y.	Catholic Priest
Sept.	4	Laconia	William K. Dietrich, Jr.	Gilford	12-23-49	N. J.	Patricia Rudd	N. H.	Manchester
			Shirley M. Hickey	Manchester	9-29-49	Va.	Roland DeLuca, Sr.	N. H.	Floyd G. Kinsley
Sept.	11	Laconia	Robert N. Robbins	Gilford	1-22-44	N. H.	Christine Pearson	N. H.	Clergyman
			Susan L. Bolduc	Laconia	3-23-51	N. H.	Ernest Pelchat	N. H.	Gilford
Sept.	11	Gilford	Jack Locke	Gilford	1-29-95	N. H.	Perris Forrest	R. I.	Rev. Frank Gulino, Jr.
			Lottie A. Tomlinson	Holderness	1-8-94	N. H.	Robert E. Gove	N. H.	Minister
							Muriel Moody	N. H.	Minister
							Joseph A. Landry	Canada	Laconia
							Mariam Chamberlin	N. H.	Laconia
							William Southworth	N. Y.	Laconia
							Ann Taylor	N. H.	Laconia
							William Cott	Maine	Laconia
							June Peterson	Maine	Laconia
							William K. Dietrich, Sr.	Maine	Laconia
							Sadie DeBlaker	N. J.	Laconia
							Joseph Hickey	N. J.	Laconia
							Uora Alonzo	Vt.	Laconia
							Norman Robbins	N. H.	Laconia
							Muriel Debroisbriand	N. H.	Laconia
							Roland Bolduc	N. H.	Laconia
							Theresa Campbell	N. H.	Laconia
							Fred Locke	N. H.	Laconia
							Loretta Foote	N. H.	Laconia
							George Brown	N. H.	Laconia
							Lacy Colunline	N. H.	Laconia

Marriages Registered in the Town of Gilford — Continued

Date of Marriage	Place of Marriage	Name and Surname	Residence of Each at time of marriage	Date of Birth of each	Place of Birth	Name of Parents	Birthplace of Parents	Name, resident and official station of persons by whom married
Sept. 11	Gilford	John V. Finnigan	Gilford	2-26-27	Maine	John V. Finnigan Rilla Morrison	Maine	George W. Stafford Justice of the Peace Laconia
Sept. 18	Lakeport	Marguerite M. Cadrette	Laconia	3-1-37	N. H.	Adelard Arsenault Delia Moreau	N. H. Canada	Martin J. Mager, OSB Catholic Priest Manchester
Oct. 9	Gilford	Paul C. Provost	Manchester	6-15-47	N. H.	Camille D. Provost Juliette A. Trahan	N. H. N. H.	Floyd G. Kinsley Clergyman Gilford
		Lorraine R. Noury	Gilford	11-7-50	N. H.	Francis A. Noury Margaret A. Davies	N. H. Wales	J. Desmond O'Connor Catholic Priest Laconia
		Albert J. Dolloff	Gilford	4-1-47	N. H.	Carl Dolloff Ethel Crofteau	N. H. N. H.	Rev. Miller C. Lovett Minister Laconia
		Darlene A. Spaulding	Laconia	9-14-47	N. H.	Maurice Ladd Beatrice Martel	N. H. N. H.	George W. Stafford Justice of Peace Laconia
Oct. 23	Laconia	Thomas F. Sleeper	Gilford	11-20-52	N. H.	Frank Sleeper Blanche Dreever	N. H. Mass.	Rev. Frank Gulibello, Jr. Minister Laconia
		Sherry A. Corno	Laconia	7-1-53	N. H.	Lionel Corno Shirley Farrell	N. H. Mass.	
Oct. 30	Laconia	Harold E. Wescott, Jr.	Meredith	3-24-31	N. H.	Harold E. Wescott Helen Wigglesworth	Vt. Mass.	
		Claire A. Brooks	Gilford	1-15-30	N. H.	Hector Morin Yvonne Goyette	Mass. N. H.	
Nov. 12	Gilford	Wayne T. Goddiard	Laconia	9-1-47	N. H.	Lyonel T. Goddiard Eleanor Bean	N. H. N. H.	
		Kathleen M. Mingo	Gilford	2-3-52	Maine	Leandro Mingo Lillian Pond	N. H. Maine	
Nov. 19	Gilford	Kenneth H. Wakefield	Laconia	12-16-20	N. H.	Walter E. Wakefield Annis Sanborn	N. H. N. H.	
		Dorothea E. Richardson	Gilford	6-12-26	N. H.	Henry A. Chamberlain Grace Little	N. H. N. H.	

Nov.	20	Gilford	Nelson T. Currin	Meredith	1-14-47	N. H.	Nelson T. Currin, Sr. Marilyn Reid	No. Carolina N. H.	Charlotte H. Straw Justice of the Peace Meredith
Nov.	20	Laconia	Jocelyn A. Cooper	N. H.	12-2-43	N. H.	Frank R. Binette Suzanne Guimont	Canada	George Chicoine Catholic Priest Laconia
Nov.	20	Gilford	John W. Predmore	Gilford	3-3-38	Florida	Samuel B. Predmore	N. J.	
			Loretta N. Bedard	Laconia	10-21-49	N. H.	Alice Wilson Marie Bedard	Mass. Canada	
Nov.	20	Gilford	Ronald E. Dockham	Gilford	8-11-35	N. H.	Edward P. Dockam Bernadette Giguere	Mass. N. H.	Rev. Frank Gulipello, Jr. Minister Laconia
Nov.	25	Gilford	Shirley M. Chase	Laconia	12-27-48	Mass.	James A. Chase Dorothy M. Kiley	Mass. N. Y.	
Nov.	25	Gilford	Kevin B. McKaig	Gilford	2-16-52	Maine	Barbara Wilson	Mass.	George Chicoine Catholic Priest Laconia
Nov.	27	Laconia	Camille L. Doucet	Laconia	1-25-52	N. H.	Benoit Doucet	N. H.	
Nov.	27	Laconia	Richard A. Shortway	New York	2-17-24	N. J.	Florence Perreault Anthony Shortway	N. H. N. J.	Floyd G. Kinsley Clergyman Gilford
			Gretheen Swartzwelder	Gilford	6-20-47	Mass.	Blanche Wiley William Swartzwelder	N. J. Mass.	
Dec.	11	Gilmanton I. Works	Claude B. Patten	Gilford	7-14-99	N. H.	Priscilla Elder Joseph W. Patten	Mass. N. H.	William H. Maisell Minister
			Florence W. Sanville	Gilmanton I. Wks.	8-25-20	N. H.	George Powers James Russell Grace Wiggin	N. H. N. H. N. H.	Gilmanton Iron Works

I hereby certify that the above return is correct, according to the best of my knowledge and belief.

LORRAINE T. ROYCE, Town Clerk

Deaths Registered in the Town of Gilford for the Year Ending December 31, 1971

Date of Death	Place of Death	Name and Surname of the Deceased	Age	Place of Birth	Sex	Color	Sing., mar., or wid.	Occupation	Name of Father	Maiden Name of Mother
1971										
Jan. 22	Laconia	Elizabeth C. Barnard	73	Thornton	F	W	M	Bookkeeper	Fred W. Connor	Jessie Merrill
Feb. 3	Laconia	Bernice E. Johnson	92	N. H.	F	W	W	Housewife	E. N. Whitney	Alma Steele
Feb. 10	Laconia	Kenneth G. Cotton	69	N. H.	M	W	M	Machinist	Walter Cotton	Charlotte Davison
Feb. 25	Laconia	Audrie R. Lemire	61	Canada	F	W	W	Housewife	G. Michaud	Unknown
Mar. 14	Laconia	Norman R. Wild	50	Conn.	M	W	W	Sandlers, V. P.	Otto Wild	Amalie Kiler
Mar. 21	Gilford	Margaret J. Francis	70	Washington	F	W	W	Housewife	J. Wilson, Johnston	Florence Corbett
Mar. 28	Gilford	Archie C. Herbert	68	N. H.	M	W	M	Lumberjack	Ehmer C. Herbert	Lizzie Clark
May 29	New York	Carol Clark	55		M	W	M			
June 9	Laconia	Frank W. Smith	77	Mass.	M	W	M	Police Officer	Robert S. Smith	Martha A. Spencer
June 19	Gilford	Evelyn A. Crochetiere	68	Canada	F	W	M	Housewife	Thomas Stone	Miranda Wood
June 25	Laconia	Henry L. Wilson	66	N. H.	M	W	M	Machine Oper.	William Wilson	Eta
July 7	Gilford	Mary Murphy	77	Mass.	F	W	W	Ret. Housewife	John J. Quinnlan	Margaret Murphy
July 9	Laconia	Brian J. Pelletier, 1 mo. 17 days	82	N. H.	M	W	W		Raymond Pelletier	Sylvia Gagnon
July 16	Laconia	Florence Parker	83	N. H.	F	W	W	Boat Mechanic	Nathaniel Hurd	Sarah Foote
Aug. 11	Laconia	Earl W. Stone	64	Conn.	M	W	W	Housewife	John Carrowe	Arnold
Aug. 19	Gilford	Laurence W. Simoneau	21	N. H.	M	W	M	Machine Oper.	William Stone	May Clark
Sept. 5	Laconia	Addie T. Olsen	84	N. H.	F	W	W	Housewife	James B. Tate	Viola L. Dustin
Sept. 14	Gilford	Charles F. Long	67	Mass.	M	W	W	Ret. Assembler	Samuel Long	Mary E. Bryant
Sept. 17	Gilford	Delia G. Hart	82	Ireland	F	W	W	Housewife	Michael Gleason	Mary Fitzgerald
Oct. 5	Laconia	Erling Klafstad	73	Norway	M	W	M	President, Mfg.	Christian Klafstad	Helen
Oct. 9	Laconia	Theresa W. Sheehan	7 days	N. H.	F	W	M	Mgr. Cab. Col.	Fredrick Hawkins	Julia M. Loo-Olsen
Oct. 17	Hanover	Robert D. Lewis	55	N. H.	M	W	M	Accountant	Fred B. Hunt	Margaret Hough
Oct. 18	Meredith	John L. Carroll	56	Vermont	M	W	M	Salesman	Amos C. Lewis	Sarah J. Ward
Oct. 20	Laconia	Norman W. Gumbo	56	N. J.	M	W	M	Fireman	Walter H. Gumbo	Lillian Burke
Nov. 4	Laconia	Hollis G. Perkins	91	N. H.	M	W	W	Ret. S. & W.	Mildram Perkins	Unknown
Dec. 2	Laconia	Alice N. Ulfo	65	Canada	F	W	M	Housewife	Arturme Hebert	Sarah J. MacLaurin
Dec. 25	Laconia									Arthense Vigneault

I hereby certify that the above return is correct, according to the best of my knowledge and belief.

LORRAINE T. ROYCE, Town Clerk

