



September 24, 2015

TRUMP STILL ATOP GOP FIELD IN NH, FIORINA RISES TO SECOND

By: Andrew E. Smith, Ph.D.
Zachary S. Azem, M.A.
UNH Survey Center

andrew.smith@unh.edu
603-862-2226
www.unh.edu/survey-center

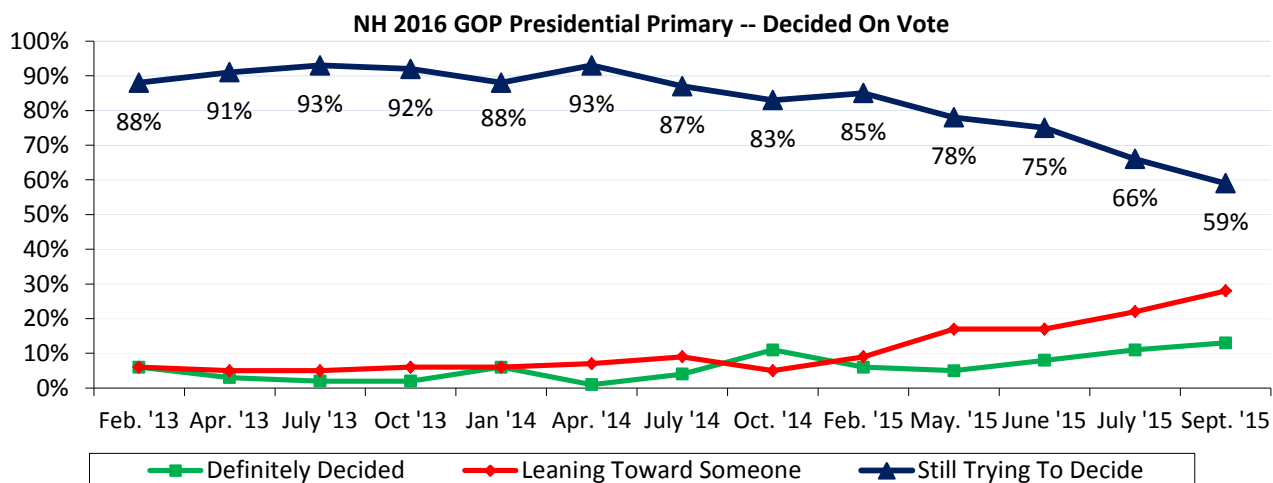
DURHAM, NH – Donald Trump has maintained the lead in the New Hampshire Primary race but Carly Fiorina has jumped into second place. Trump remains an extremely divisive candidate within the party and is the candidate that New Hampshire Republicans say they are least likely to vote for. However, only one in 10 New Hampshire Republican Primary voters say they have firmly decided who they will vote for in the Primary.

These findings are based on the latest **CNN/WMUR New Hampshire Primary Poll**,* conducted by the University of New Hampshire Survey Center. Eight hundred and twenty (820) randomly selected New Hampshire adults were interviewed by landline and cellular telephone between September 17 and September 23, 2015. The margin of sampling error is +/- 3.4 percent. Included were three hundred forty-four (344) likely 2016 Republican Primary voters (MSE = +/-5.3), three hundred fourteen (314) likely 2016 Democratic Primary voters (MSE = +/-5.5), and seven hundred and forty-three (743) likely 2016 presidential election voters (MSE = +/- 3.6).

NH Republicans Not Engaged

2016 marks the 100th anniversary of the New Hampshire Primary and has attracted a record number of major Republican candidates. New Hampshire Republicans are, as usual, taking their time deciding who to support. Candidates who have been identified as early frontrunners have typically won past New Hampshire primaries, yet no frontrunner truly exists in the current Republican field.

New Hampshire primary voters usually decide who they will vote for in the last weeks, or days of the campaign and it is no surprise that few likely Republican primary voters have made up their minds about who they will support in 2016. Currently, only 13% of likely Republican Primary voters say they have definitely decided who they will support, 28% are leaning toward a candidate, and 59% are still trying to decide.



* We ask that this copyrighted information be referred to as *the CNN/WMUR New Hampshire Primary Poll*, sponsored by WMUR-TV and CNN, and conducted by the University of New Hampshire Survey Center.

The Republican electorate is more interested in the 2016 primary than it was at a similar point in 2007, the last time both parties had contested primaries. Currently, 54% of likely Republican primary voters say they are extremely interested in the election, 31% are very interested, and 15% are only somewhat interested or not very interested. By comparison, in September 2007, 32% of likely Republican primary voters said they were extremely interested in the 2008 primary, 47% were very interested, and 22% were only somewhat interested or not very interested. Another sign of higher interest in Republicans is that 41% of undeclared voters who can vote in either primary, say they will vote in the Republican primary while only 32% say they will vote in the Democratic primary. In September 2007, 46% of undeclared voters said they would vote in the Democratic primary and only 29% said they would vote in the Republican primary.

GOP Favorability Ratings

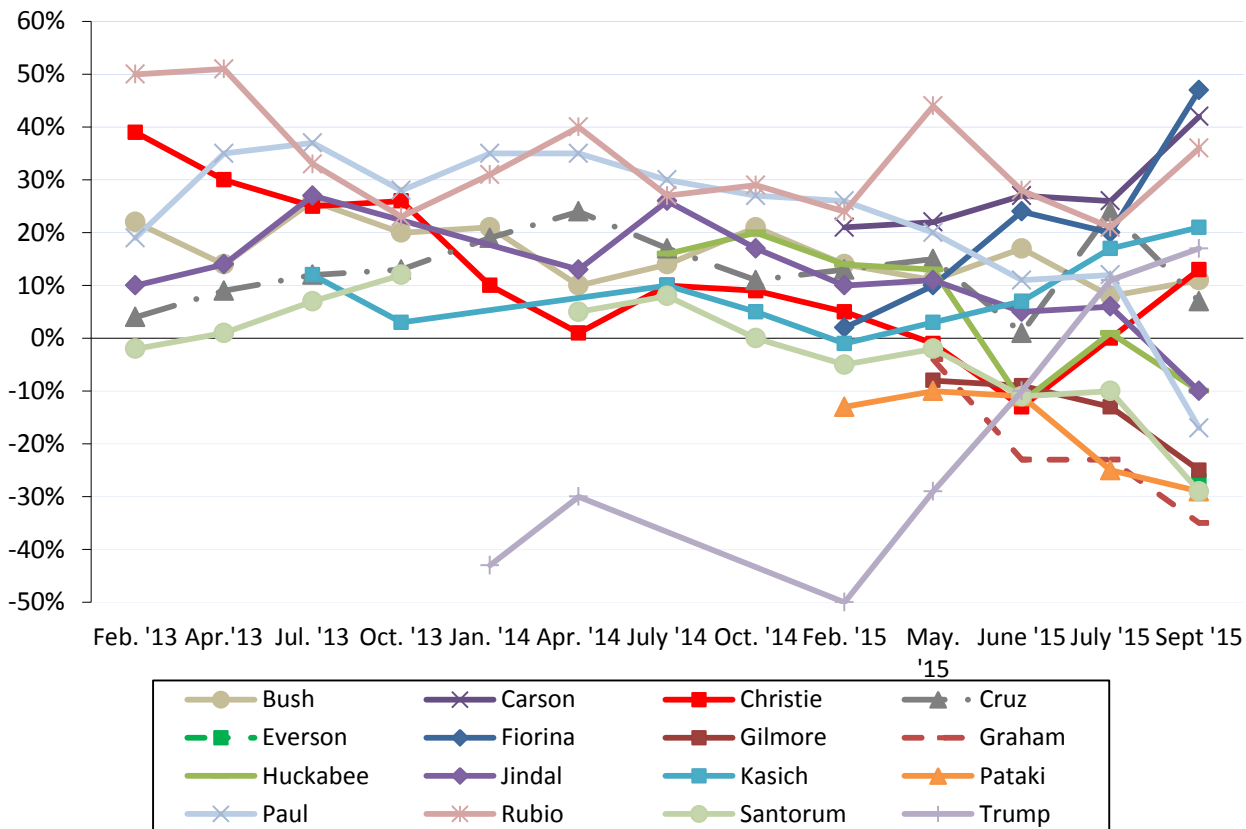
Businesswoman Carly Fiorina leads the GOP field in net favorability (the percentage who have a favorable opinion of him or her minus the percentage who have an unfavorable opinion) among Republican primary voters. Currently 62% have a favorable opinion of Fiorina, 15% have an unfavorable opinion and 23% are neutral or don't know enough about her to say. Fiorina's net favorability rating is +47%, which is up from +20% in July. Other GOP candidates with moderate net favorability ratings include neurosurgeon Ben Carson (+42%), Florida senator Marco Rubio (+36%), Ohio governor John Kasich (+21%), and businessman Donald Trump (+17%).

New Jersey governor Chris Christie (+13%), former Florida governor Jeb Bush (+11%), and Texas senator Ted Cruz (+7%) have low net favorability ratings, despite most Republican Primary voters knowing them. Former Arkansas governor Mike Huckabee (-10%), Louisiana governor Bobby Jindal (-10%), Kentucky senator Rand Paul (-17%), former New York governor George Pataki (-29%), former Pennsylvania senator Rick Santorum (-29%), and South Carolina senator Lindsey Graham (-35%), have negative net favorability ratings, despite most Republican Primary voters knowing them.

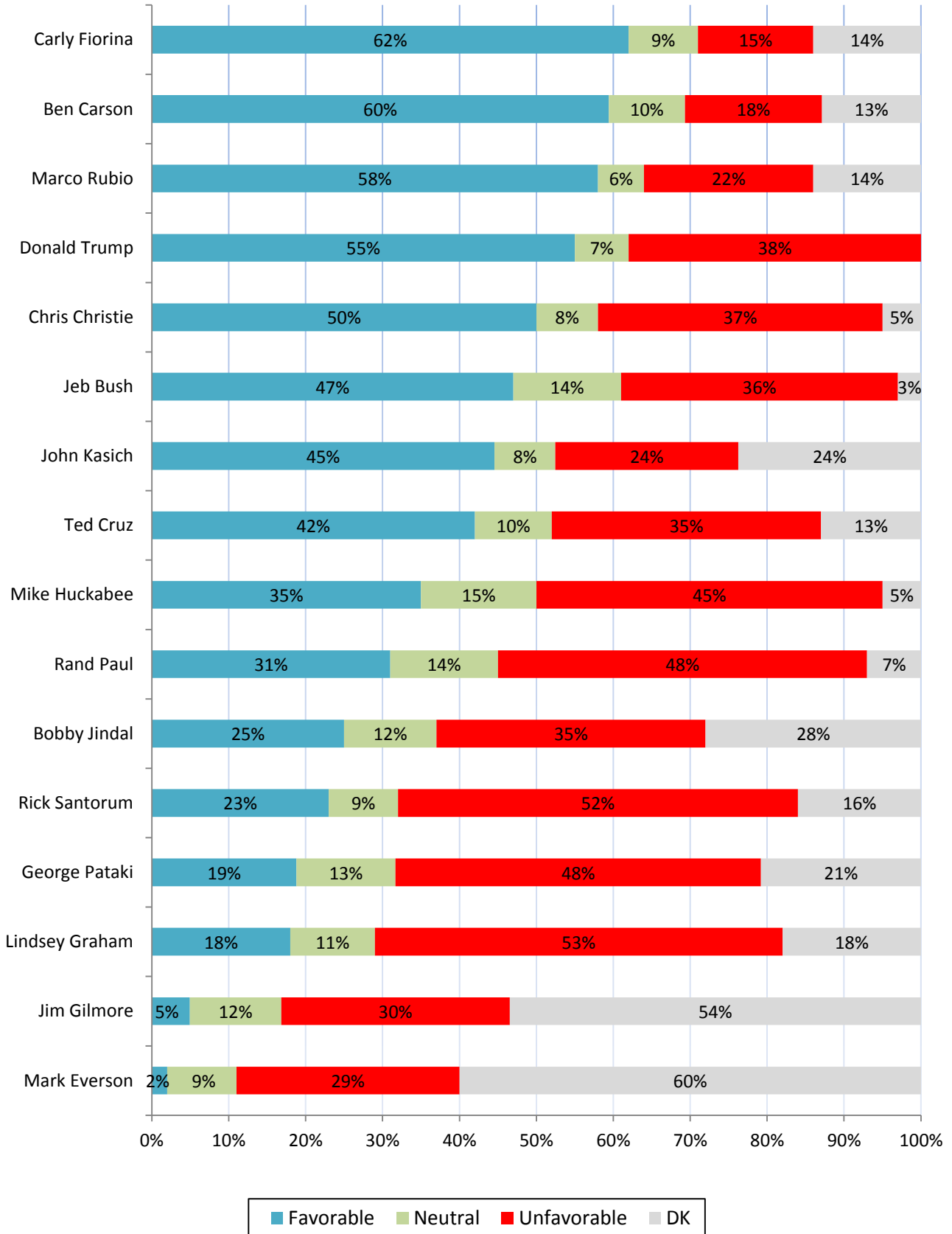
Former Virginia governor Jim Gilmore (-25%) and former IRS commissioner Mark Everson (-27%), have low net favorability ratings, and are also not well known to voters.

Trump, who has been the subject of extensive media coverage, has seen his approval ratings steadily increase among Republican Primary voters as he has moved from -50% in February to +17% in September.

NH 2016 GOP Presidential Primary -- Net Favorability Ratings



Favorability Ratings - Potential NH GOP Presidential Candidates - September 2015

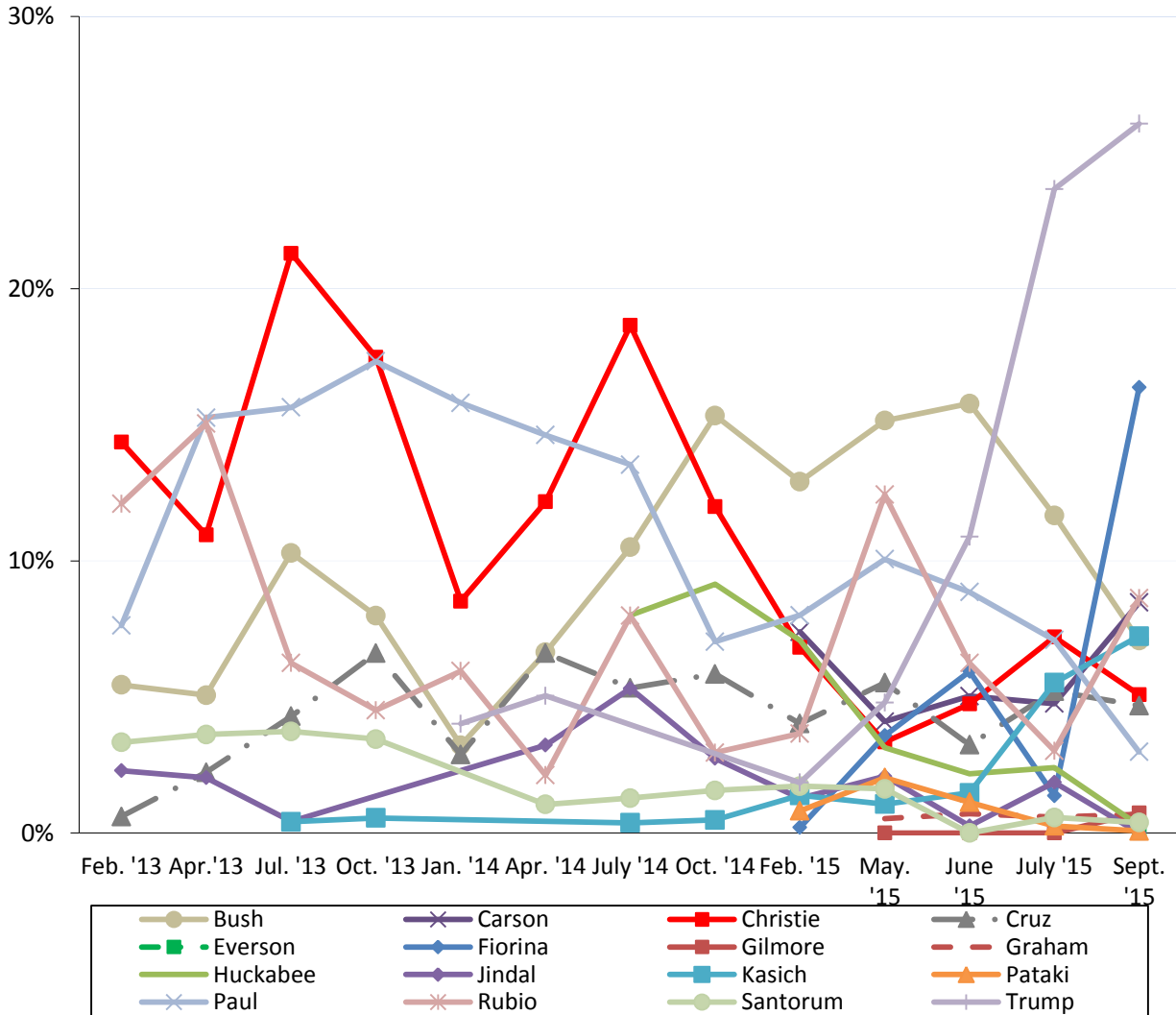


2016 NH Republican Primary

Donald Trump continues to top the field in New Hampshire with 26% of likely Republican primary voters supporting him. Trump is followed by Fiorina (16%), Rubio (9%), Carson (8%), Kasich (7%), Bush (7%), Christie (5%), Cruz (5%), Paul (3%), Gilmore (1%) and Graham (1%). All other potential candidates receive less than 1% support, and 11% say they are undecided.

Fiorina, who has recently received much more media attention after her performances in the first two debates, has risen from 1% to 16% since July, which is an indication of how volatile the electorate is.

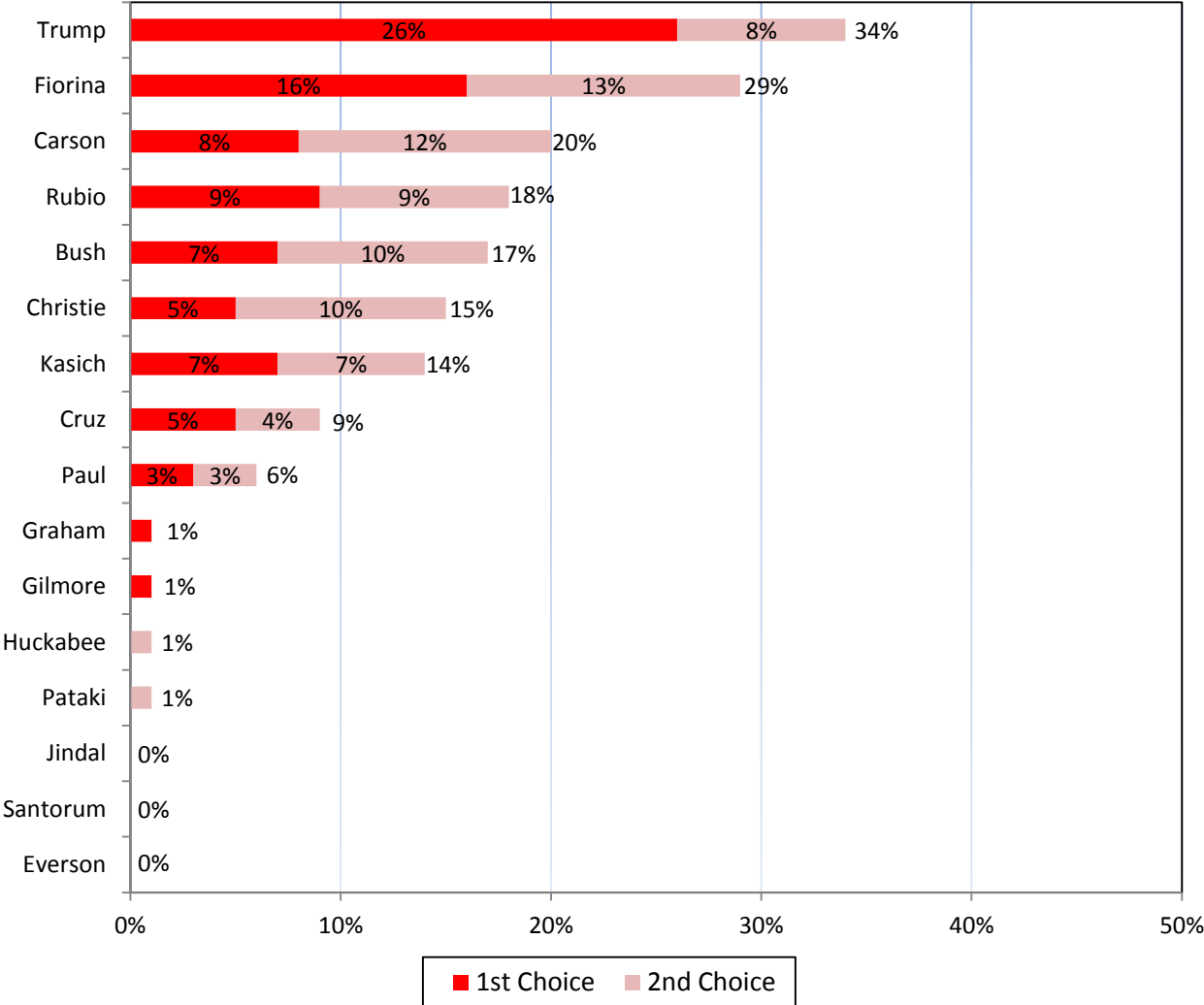
NH 2016 GOP Presidential Primary -- Who Support If Vote Held Today?



Likely Republican Primary voters were asked the primary reason they are supporting a candidate. The major reasons Republicans are supporting Trump are that he is straight-talking (21%), that he is not a politician (17%), his experience (9%), and his views on the economy (9%). The major reasons voters say they are supporting Fiorina are that she is smart and knowledgeable (25%), a strong leader (14%), and her views on the economy (11%).

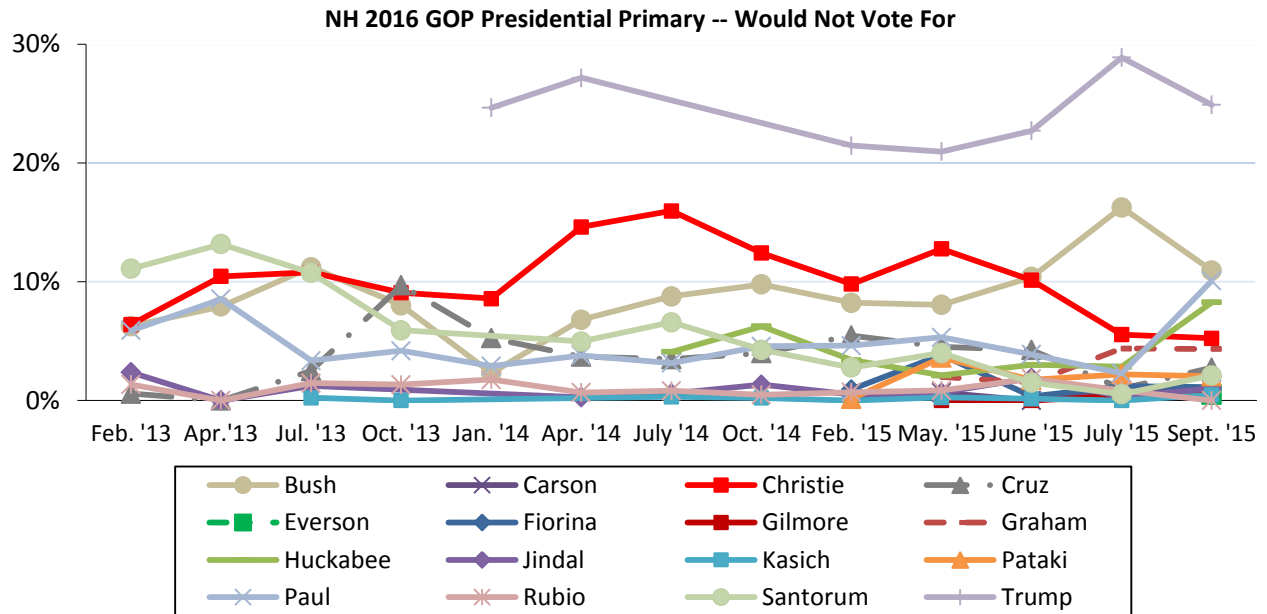
2016 NH Republican Primary with Second Choice

Asking likely Republican Primary voters who their second choice is more clearly defines the field with Trump and Fiorina leading their rivals. When the top two choices are combined, 34% of likely primary voters favor Trump, 29% favor Fiorina, 20% favor Carson, 18% favor Rubio, 17% favor Bush, 15% favor Christie, and 14% favor Kasich.



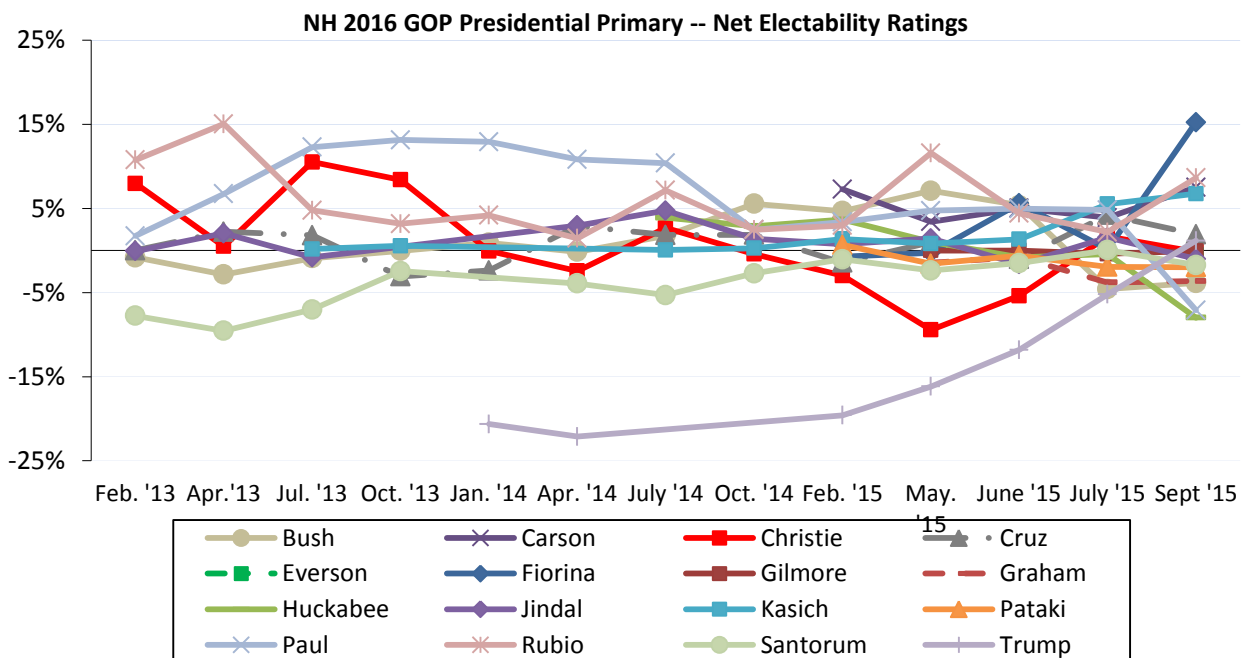
Most Unpopular Republican Candidate

Despite leading the Republican field, Trump remains the candidate New Hampshire Republicans are least likely to vote for. When asked which candidate they would NOT vote for under any circumstance, 25% of likely Republican Primary voters say they would not vote for Trump, 11% would not vote for Bush, 10% would not vote for Paul, 8% would not vote for Huckabee, 5% would not vote for Christie, 4% would not vote for Graham, 3% would not vote for Cruz, 2% would not vote for Santorum, 2% would not vote for Pataki, 1% would not vote for Fiorina, 1% would not vote for Jindal, 1% would not vote for Carson, 1% would not vote for Gilmore, 1% would not vote for Everson, 10% think all the prospective candidates are acceptable, and 15% are unsure.



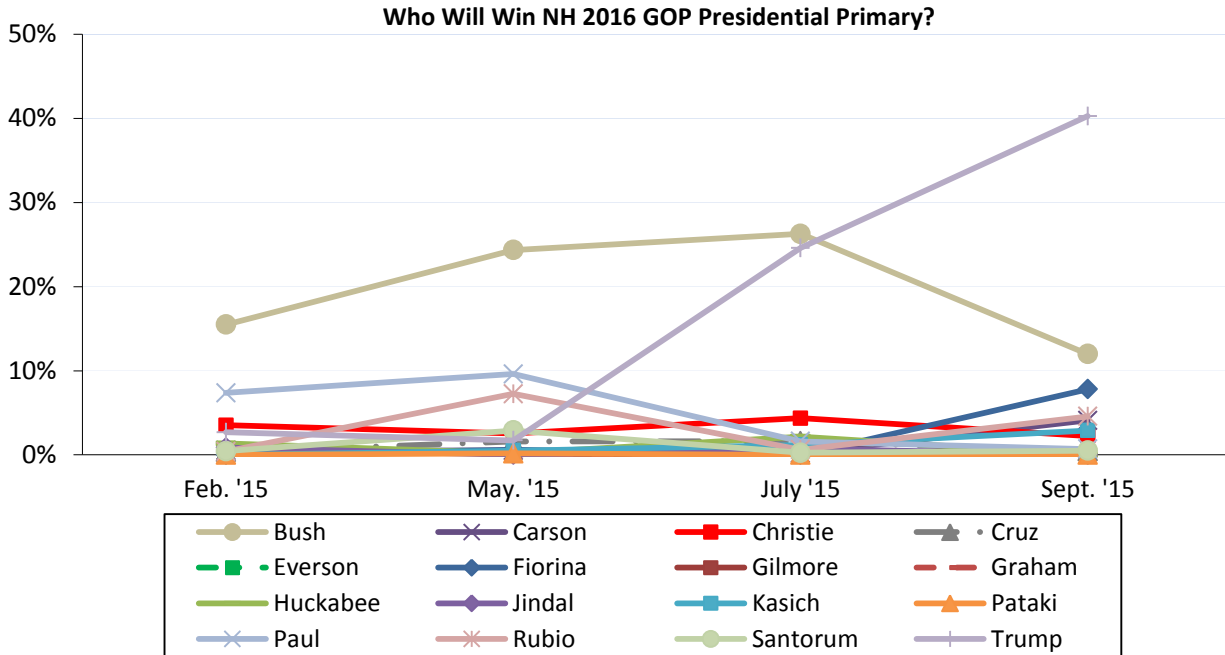
Republican Net Electability

Fiorina tops the field in net electability (the percentage who support a candidate minus the percent who would not vote for that candidate), with +15%. Rubio (+9%), Carson (+8%), Kasich (+7%), Cruz (+2%) and Trump (+1%) all have positive net electability scores. Gilmore (+0%), Christie (+0%), Everson (-1%), Jindal (-1%), Santorum (-2%), Pataki (-2%), Graham (-4%), Bush (-4%), Paul (-7%), and Huckabee (-8%) have neutral or negative net electability scores.



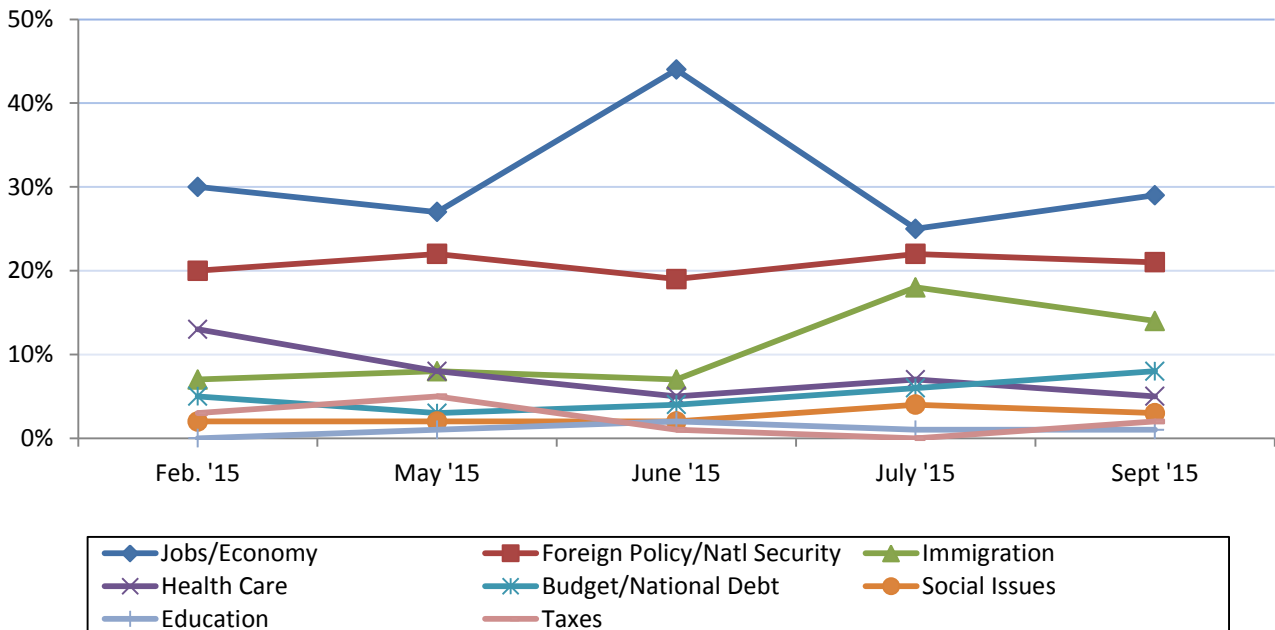
Who Will Win NH Primary?

When asked who they think will win the 2016 New Hampshire Republican Primary, 40% think Trump will win, 12% think Bush will win, 8% think Fiorina will win, 5% think Rubio will win, and 5% think Santorum will win. The percentage believing Trump will win the primary has increased 15 percentage points since July. This poll marks the first time that New Hampshire Republicans did not name Bush as the candidate who would win the Primary.



Most Important Issue To Primary Vote

When asked what issue is the most important in deciding to vote in the presidential primary, 29% of likely Republican Primary voters cite jobs or the economy, 21% cite foreign policy or national security, 14% cite immigration, 8% cite the budget or national debt, 5% cite health care, 3% cite social issues, 2% cite taxes and 1% cite education.



Candidate Qualities

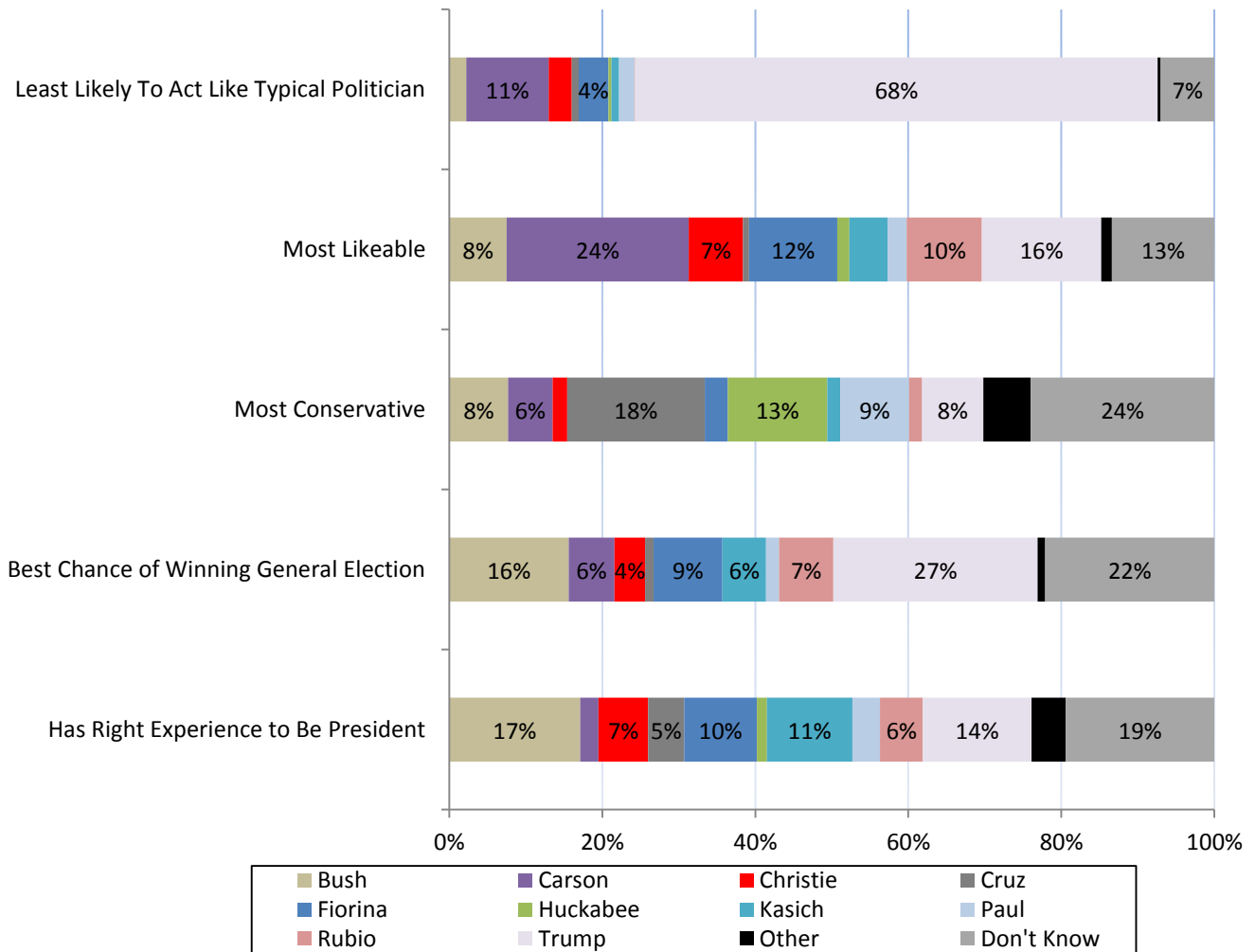
Voters were asked to identify which candidate best exemplified a number of candidate qualities. A majority (68%) of likely Republican Primary voters name Trump as the candidate least likely to act like a typical politician, 11% chose Carson, 4% chose Fiorina and 7% were unsure.

Twenty-four percent (24%) chose Carson as the most likeable, 16% chose Trump, 12% chose Fiorina and 13% were unsure.

Eighteen percent (18%) chose Cruz as the most conservative, 13% chose Huckabee, 9% chose Paul and 24% were unsure.

Twenty-seven percent (27%) chose Trump as having the best chance to win the general election in November, 16% chose Bush, 9% chose Fiorina and 22% unsure.

Seventeen percent (17%) chose Bush as having the right experience to be President, 14% chose Trump, 11% chose Kasich and 19% were unsure.



CNN/WMUR New Hampshire Primary Poll Methodology

These findings are based on the latest CNN/WMUR New Hampshire Primary Poll, conducted by the University of New Hampshire Survey Center and funded by CNN and WMUR-TV, Manchester, NH. Eight hundred and twenty (820) randomly selected New Hampshire adults were interviewed by landline and cellular telephone between September 17 and September 23, 2015. If a household included more than one adult, the adult who had the most recent birthday was selected to be interviewed.

The margin of sampling error is +/- 3.4 percent for the entire sample. Included were three hundred forty-three (343) likely 2016 Republican Primary voters (MSE = +/-5.3), three hundred fourteen (314) likely 2016 Democratic Primary voters (MSE = +/-5.5), and seven hundred and forty-seven (747) likely 2016 presidential election voters (MSE = +/- 3.6). These MSE's have not been adjusted for design effect. The design effect for the survey is 1.1% and 1.1% for the sample of likely 2016 general election voters.

The random sample used in the CNN/WMUR New Hampshire Primary Poll was purchased from Marketing Systems Group (MSG), Horsham, PA. STS screens each selected telephone number to eliminate non-working numbers, disconnected numbers, and business numbers to improve the efficiency of the sample, reducing the amount of time interviewers spend calling non-usable numbers.

The data have been weighted to adjust for numbers of adults and telephone lines within households. Additionally, data were weighted by respondent sex, age, and region of the state to targets from the most recent American Community Survey (ACS) conducted by the U.S. Census Bureau. In addition to potential sampling error, all surveys have other potential sources of non-sampling error including question order effects, question wording effects, and non-response. Due to rounding, percentages may not sum to 100%. The number of respondents in each demographic below may not equal the number reported in cross-tabulation tables as some respondents choose not to answer some questions.

For more information about the methodology used in the CNN/WMUR New Hampshire Primary Poll, contact Dr. Andrew Smith at (603) 862-2226 or by email at andrew.smith@unh.edu.

New Hampshire Primary Poll, Fall 2015 Demographics

Sex	N	%	Region	N	%
Male	401	49%	North Country	81	10%
Female	419	51%	Central/Lakes	144	18%
			Connecticut Valley	120	15%
			Mass Border	201	25%
Age	N	%	Seacoast	134	16%
18 to 34	208	26%	Manchester Area	139	17%
35 to 49	196	25%			
50 to 64	242	31%	Party Registration	N	%
65 and Over	141	18%	Democrat	190	28%
			Undeclared	310	45%
			Republican	185	27%
Highest Level of Education	N	%	Party Identification	N	%
High School or Less	160	20%	Democrat	354	45%
Some College	178	22%	Independent	146	19%
College Graduate	302	37%	Republican	288	37%
Post-Graduate	168	21%			

New Hampshire Primary Poll, Fall 2015 Likely Republican Primary Voter Demographics

Sex	N	%	Region	N	%
Male	202	59%	North Country	38	11%
Female	141	41%	Central/Lakes	52	15%
			Connecticut Valley	44	13%
Age	N	%	Mass Border	96	28%
18 to 34	67	21%	Seacoast	46	14%
35 to 49	80	24%	Manchester Area	65	19%
50 to 64	118	36%			
65 and Over	60	19%	Party Registration	N	%
			Democrat	0	0%
Highest Level of Education	N	%	Undeclared	128	42%
High School or Less	65	19%	Republican	178	58%
Some College	75	22%			
College Graduate	134	40%	Party Identification	N	%
Post-Graduate	62	18%	Democrat	25	7%
			Independent	55	17%
			Republican	250	76%

Decided Who to Vote for in 2016 GOP Primary?

(Likely NH GOP Primary Voters)

“Have you definitely decided who you will vote for in the New Hampshire primary ... are you leaning toward someone ... or have you considered some candidates but are still trying to decide?”

	<u>Definitely Decided</u>	<u>Leaning Toward Someone</u>	<u>Still Trying to Decide</u>	<u>(N)</u>
Sept '15	13%	28%	59%	(343)
July '15	11%	22%	66%	(309)
June '15	8%	17%	75%	(401)
May '15	5%	17%	78%	(291)
Feb. '15	6%	9%	85%	(346)
Oct. '14	11%	5%	83%	(271)
July '14	4%	9%	87%	(247)
Apr. '14	1%	7%	83%	(182)
Jan. '14	6%	6%	88%	(245)
Oct. '13	2%	6%	92%	(220)
July '13	2%	5%	93%	(197)
Apr. '13	3%	5%	91%	(164)
Feb. '13	6%	6%	88%	(205)

Republican Nomination in 2016 NH Primary

(Likely NH GOP Primary Voters)

"I'm going to read you the names of the candidates who are either running or considering running for the Republican nomination. If the Republican primary for president were held today, which of the following would you support for the Republican nomination Jeb Bush ... Ben Carson ... Chris Christie ... Ted Cruz ... Mark Everson ... Bob Ehrlich ... Carly Fiorina ... Jim Gilmore ... Lindsey Graham ... Mike Huckabee ... Bobby Jindal ... John Kasich ... George Pataki ... Rand Paul ... Rick Perry ... Marco Rubio ... Rick Santorum ... Donald Trump ... Scott Walker ... or someone else?" ROTATE CANDIDATES

	<u>2013</u>				<u>2014</u>				<u>2015</u>				
	<u>Feb.</u>	<u>Apr.</u>	<u>July</u>	<u>Oct</u>	<u>Jan.</u>	<u>Apr.</u>	<u>July</u>	<u>Oct.</u>	<u>Feb.</u>	<u>May</u>	<u>June</u>	<u>July</u>	<u>Sept</u>
Donald Trump	---	---	---	---	4%	5%	---	---	2%	5%	11%	24%	26%
Carly Fiorina	---	---	---	---	---	---	---	---	*	4%	6%	1%	16%
Marco Rubio	12%	15%	6%	4%	6%	2%	8%	3%	5%	12%	6%	3%	9%
Ben Carson	---	---	---	---	---	---	---	---	8%	4%	5%	5%	8%
John Kasich	---	---	*	*	---	---	*	*	1%	1%	1%	6%	7%
Jeb Bush	5%	5%	10%	8%	3%	7%	11%	15%	17%	15%	16%	12%	7%
Chris Christie	14%	11%	21%	16%	9%	12%	19%	12%	9%	3%	5%	7%	5%
Ted Cruz	1%	2%	4%	6%	3%	7%	5%	6%	4%	6%	3%	5%	5%
Rand Paul	8%	15%	16%	17%	16%	15%	14%	7%	9%	10%	9%	7%	3%
Jim Gilmore	---	---	---	---	---	---	---	---	---	0%	0%	0%	1%
Lindsey Graham	---	---	---	---	---	---	---	---	---	1%	1%	1%	1%
Rick Santorum	3%	4%	4%	4%	---	1%	1%	2%	2%	2%	0%	1%	*
Scott Walker [^]	3%	1%	2%	2%	2%	3%	3%	3%	12%	11%	8%	11%	*
Mike Huckabee	---	---	---	---	---	---	8%	9%	9%	3%	2%	2%	*
George Pataki	---	---	---	---	---	---	---	---	1%	2%	1%	*	*
Mark Everson	---	---	---	---	---	---	---	---	---	---	---	---	0%
Bobby Jindal	2%	2%	*	---	---	3%	5%	3%	1%	2%	*	2%	0%
Rick Perry	---	---	4%	1%	2%	1%	2%	2%	2%	4%	4%	2%	---
Bob Ehrlich	---	---	---	---	---	---	---	---	---	*	*	0%	---
Peter King	---	---	---	*	*	---	---	---	*	*	0%	---	---
John Bolton	---	---	---	---	---	---	---	---	1%	0%	---	---	---
Paul Ryan	11%	11%	8%	9%	6%	13%	5%	6%	---	---	---	---	---
Kelly Ayotte	10%	5%	---	---	13%	13%	---	---	---	---	---	---	---
Scott Brown	---	---	---	7%	11%	---	---	---	---	---	---	---	---
Rob Portman	0%	1%	*	*	*	*	1%	*	---	---	---	---	---
John Huntsman	8%	5%	---	---	---	---	---	---	---	---	---	---	---
John Thune	1%	*	---	---	---	---	---	---	---	---	---	---	---
Someone Else	2%	0%	3%	3%	6%	3%	3%	3%	1%	1%	1%	0%	*
Don't Know Yet	20%	23%	20%	21%	18%	15%	15%	28%	15%	14%	21%	12%	11%
(N)	(209)	(167)	(199)	(233)	(244)	(186)	(245)	(274)	(348)	(293)	(400)	(305)	(344)

* = Less than 1% --- = Not Included

[^]Scott Walker dropped out of the presidential race on September 21st while this poll was in the field. After his announcement his name was dropped from the poll.

Why Vote For That Candidate?
(Likely NH GOP Primary Voters)

"What is the most important reason you are currently supporting _____?"

	<u>Trump</u>	<u>Fiorina</u>	<u>Rubio</u>	<u>Carson</u>	<u>Kasich</u>	<u>Bush</u>	<u>Cruz</u>	<u>Christie</u>
Straight-Talking	21%	--	--	---	---	---	---	38%
Not Politician/Outsider	17%	4%	---	23%	---	---	---	---
Strong/Leader	3%	14%	---	---	---	---	---	10%
Smart/Knowledgeable	1%	25%	9%	24%	5%	8%	5%	---
Experience/Record	9%	9%	6%	---	34%	22%	8%	13%
Views on Foreign Affairs	1%	4%	19%	---	---	---	7%	3%
Views on Economy	9%	11%	---	2%	---	3%	---	---
Eloquent/Good Speaker	---	6%	11%	---	---	---	---	6%
Likes Views & Ideas	5%	9%	21%	6%	8%	11%	13%	14%
Conservative	---	---	---	---	17%	4%	37%	---
Other	34%	18%	34%	45%	36%	48%	30%	16%
(N=)	(90)	(56)	(30)	(29)	(25)	(24)	(16)	(17)

Second Choice in 2016 NH Primary
(Likely NH GOP Primary Voters)

“If _____ was not running, who would be your second choice?”

	<u>Apr. '14</u>	<u>July '14</u>	<u>Oct. '14</u>	<u>Feb. '15</u>	<u>May '15</u>	<u>June '15</u>	<u>July '15</u>	<u>Sept '15</u>
Carly Fiorina	---	---	---	1%	2%	8%	5%	13%
Ben Carson	---	---	---	6%	3%	5%	5%	12%
Chris Christie	4%	10%	7%	8%	7%	8%	9%	10%
Jeb Bush	8%	8%	10%	11%	9%	14%	14%	10%
Marco Rubio	11%	8%	5%	3%	13%	7%	10%	9%
Donald Trump	4%	---	---	6%	3%	10%	7%	8%
John Kasich	---	1%	*	2%	2%	1%	5%	7%
Ted Cruz	5%	5%	3%	5%	11%	4%	8%	4%
Rand Paul	12%	9%	8%	10%	11%	5%	7%	3%
Scott Walker^	4%	4%	5%	5%	9%	7%	6%	2%
Mike Huckabee	---	7%	7%	6%	5%	3%	4%	1%
George Pataki	---	---	---	2%	1%	4%	1%	1%
Jim Gilmore	---	---	---	---	0%	0%	0%	*
Bobby Jindal	3%	4%	2%	2%	1%	3%	1%	*
Lindsey Graham	---	---	---	---	*	*	*	*
Rick Santorum	3%	2%	3%	1%	5%	3%	1%	0%
Mark Everson	---	---	---	---	---	---	---	0%
Rick Perry	1%	3%	5%	3%	3%	5%	2%	---
Bob Ehrlich	---	---	---	---	*	0%	0%	---
Peter King	---	---	---	1%	0%	0%	---	---
John Bolton	---	---	---	1%	1%	---	---	---
Mitt Romney	---	---	---	12%	---	---	---	---
Paul Ryan	8%	7%	5%	---	---	---	---	---
Kelly Ayotte	11%	---	---	---	---	---	---	---
Rob Portman	1%	1%	*	---	---	---	---	---
Someone Else	*	1%	*	1%	2%	1%	0%	1%
No Second Choice	9%	14%	34%	6%	5%	3%	5%	8%
Don't Know	17%	16%	5%	8%	7%	8%	11%	9%
(N)	(187)	(246)	(274)	(301)	(250)	(317)	(269)	(307)

Candidate You Wouldn't Vote For In 2016 NH Republican Primary
(Likely NH GOP Primary Voters)

“Which of the candidates who are either running or considering running for the Republican nomination would you NOT vote for under any circumstance?”

	<u>2013</u>				<u>2014</u>				<u>2015</u>				
	<u>Feb.</u>	<u>Apr.</u>	<u>July</u>	<u>Oct.</u>	<u>Jan.</u>	<u>Apr.</u>	<u>July</u>	<u>Oct.</u>	<u>Feb.</u>	<u>May</u>	<u>June</u>	<u>July</u>	<u>Sept</u>
Donald Trump	---	---	---	---	25%	27%	---	---	21%	21%	23%	29%	25%
Jeb Bush	6%	8%	11%	8%	2%	7%	9%	10%	8%	8%	10%	16%	11%
Rand Paul	6%	9%	3%	5%	3%	4%	3%	5%	5%	5%	4%	2%	10%
Mike Huckabee	---	---	---	---	---	---	4%	6%	3%	2%	3%	3%	8%
Chris Christie	6%	11%	11%	7%	9%	15%	16%	12%	10%	13%	10%	6%	5%
Lindsey Graham	---	---	---	---	---	---	---	---	---	2%	1%	4%	4%
Ted Cruz	1%	*	3%	8%	5%	4%	3%	4%	5%	5%	4%	1%	3%
Rick Santorum	11%	13%	11%	6%	---	5%	7%	4%	3%	4%	2%	1%	2%
George Pataki	---	---	---	---	---	---	---	---	*	4%	2%	2%	2%
Carly Fiorina	---	---	---	---	---	---	---	---	1%	4%	*	1%	1%
Bobby Jindal	2%	*	1%	---	---	*	1%	1%	1%	1%	2%	*	1%
Ben Carson	---	---	---	---	---	---	---	---	*	1%	0%	1%	1%
Jim Gilmore	---	---	---	---	---	---	---	---	---	0%	0%	*	1%
Mark Everson	---	---	---	---	---	---	---	---	---	---	---	---	1%
John Kasich	---	---	*	0%	---	---	*	*	0%	*	*	0%	*
Scott Walker^	2%	*	0%	*	*	0%	3%	*	*	1%	2%	*	*
Marco Rubio	1%	*	2%	2%	2%	1%	1%	*	1%	1%	2%	1%	0%
Rick Perry	---	---	5%	6%	2%	3%	7%	4%	2%	1%	1%	2%	---
Bob Ehrlich	---	---	---	---	---	---	---	---	---	0%	*	0%	---
Peter King	---	---	---	5%	1%	---	---	---	1%	0%	1%	---	---
John Bolton	---	---	---	---	---	---	---	---	0%	1%	---	---	---
Mitt Romney	---	---	---	---	---	---	---	---	5%	---	---	---	---
Paul Ryan	2%	*	*	1%	*	0%	1%	0%	---	---	---	---	---
Rob Portman	3%	1%	1%	*	*	0%	*	1%	---	---	---	---	---
Kelly Ayotte	6%	6%	---	---	5%	4%	---	---	---	---	---	---	---
Scott Brown	---	---	---	2%	5%	---	---	---	---	---	---	---	---
John Huntsman	4%	6%	---	---	---	---	---	---	---	---	---	---	---
John Thune	1%	*	---	---	---	---	---	---	---	---	---	---	---
Someone Else	2%	*	*	1%	*	2%	*	*	1%	*	1%	1%	0%
All OK	15%	24%	25%	20%	21%	16%	23%	17%	11%	10%	13%	12%	10%
Don't Know	32%	21%	25%	28%	19%	14%	21%	34%	22%	18%	19%	17%	15%
(N)	(208)	(168)	(197)	(232)	(243)	(185)	(243)	(271)	(347)	(285)	(397)	(307)	(343)

Who Will Win 2016 NH Republican Primary?
(Likely NH GOP Primary Voters)

“Regardless of who you are voting for, which candidate do you think is most likely to win the New Hampshire Republican primary?”

	<u>Feb. '15</u>	<u>May '15</u>	<u>July '15</u>	<u>Sept '15</u>
Donald Trump	3%	2%	25%	40%
Jeb Bush	15%	24%	26%	12%
Carly Fiorina	0%	1%	0%	8%
Marco Rubio	*	7%	1%	5%
Ben Carson	1%	1%	*	4%
John Kasich	0%	1%	1%	3%
Chris Christie	4%	3%	4%	2%
Rand Paul	7%	10%	2%	1%
Rick Santorum	1%	3%	*	1%
Ted Cruz	*	2%	2%	*
Scott Walker^	3%	7%	8%	*
Mike Huckabee	1%	*	2%	0%
Bobby Jindal	1%	0%	1%	0%
George Pataki	0%	*	0%	0%
Lindsey Graham	---	0%	0%	0%
Jim Gilmore	---	0%	0%	0%
Mark Everson	---	---	---	0%
Rick Perry	2%	2%	*	---
Bob Ehrlich	---	0%	0%	---
John Bolton	*	*	---	---
Peter King	0%	*	---	---
Mitt Romney	22%	---	---	---
Someone Else	*	0%	0%	0%
Don't Know	40%	38%	28%	24%
(N)	(347)	(289)	(309)	(344)

Most Important Issue To Primary Vote
(Likely NH GOP Primary Voters)

“There are many issues facing the candidates in the election for president. In your opinion, which one issue is MOST IMPORTANT to YOUR VOTE in the presidential primary?”

	<u>Feb. '15</u>	<u>May '15</u>	<u>June '15</u>	<u>July '15</u>	<u>Sept '15</u>
Jobs/Economy	29%	27%	44%	25%	29%
Foreign Policy/National Security	20%	22%	19%	22%	21%
Immigration	7%	8%	7%	18%	14%
Budget/National Debt	5%	3%	4%	6%	8%
Health Care	13%	8%	5%	7%	5%
Social Issues	2%	2%	2%	4%	3%
Taxes	3%	5%	1%	0%	2%
Education	0%	1%	2%	1%	1%
Other/Don't Know	21%	24%	17%	18%	16%
(N)	(285)	(283)	(390)	(288)	(333)

Candidate Characteristics
(Likely NH GOP Primary Voters)

“Which Republican candidate do you think is most likeable?”

	<u>Feb. '15</u>	<u>May '15</u>	<u>July '15</u>	<u>Sept '15</u>
Ben Carson	7%	4%	5%	24%
Donald Trump	3%	4%	12%	16%
Carly Fiorina	0%	1%	2%	12%
Marco Rubio	5%	17%	6%	10%
Jeb Bush	9%	11%	13%	8%
Chris Christie	10%	7%	7%	7%
John Kasich	*	1%	5%	5%
Rand Paul	5%	6%	6%	3%
Mike Huckabee	11%	9%	8%	2%
Ted Cruz	*	2%	3%	1%
Lindsey Graham	---	1%	1%	1%
Scott Walker[^]	3%	6%	7%	*
Bobby Jindal	0%	0%	3%	*
Rick Santorum	1%	2%	1%	0%
George Pataki	2%	0%	*	0%
Jim Gilmore	---	0%	0%	0%
Mark Everson	---	---	---	0%
Rick Perry	2%	1%	1%	---
Bob Ehrlich	---	*	0%	---
Peter King	0%	0%	---	---
John Bolton	0%	1%	---	---
Mitt Romney	15%	---	---	---
Someone Else	*	1%	0%	*
Don't Know	26%	28%	20%	13%
(N)	(343)	(292)	(308)	(344)

“Which Republican candidate do you think is most conservative?”

	<u>May '15</u>	<u>July '15</u>	<u>Sept '15</u>
Ted Cruz	17%	16%	18%
Mike Huckabee	10%	12%	13%
Rand Paul	9%	9%	9%
Donald Trump	3%	9%	8%
Jeb Bush	5%	8%	8%
Ben Carson	2%	2%	6%
Rick Santorum	7%	4%	4%
Carly Fiorina	*	*	3%
Chris Christie	*	3%	2%
John Kasich	*	3%	2%
Marco Rubio	3%	2%	2%
Lindsey Graham	2%	2%	1%
Scott Walker^	8%	5%	1%
George Pataki	0%	*	*
Bobby Jindal	0%	1%	*
Jim Gilmore	1%	0%	0%
Mark Everson	---	---	0%
Rick Perry	4%	1%	---
Bob Ehrlich	0%	0%	---
John Bolton	*	---	---
Peter King	*	---	---
Someone Else	*	0%	0%
Don't Know	31%	24%	24%
(N)	(291)	(309)	(344)

“Which Republican candidate do you think has the best chance of winning in the general election next November?”

	<u>Feb. '15</u>	<u>May '15</u>	<u>June '15</u>	<u>July '15</u>	<u>Sept '15</u>
Donald Trump	4%	1%	7%	21%	27%
Jeb Bush	16%	27%	37%	22%	16%
Carly Fiorina	0%	1%	2%	1%	9%
Marco Rubio	2%	11%	7%	3%	7%
Ben Carson	1%	*	*	1%	6%
John Kasich	1%	1%	1%	1%	6%
Chris Christie	8%	2%	3%	4%	4%
Rand Paul	5%	9%	2%	2%	2%
Ted Cruz	2%	4%	3%	4%	1%
Lindsey Graham	---	*	0%	0%	*
Rick Santorum	*	*	1%	0%	*
Scott Walker^	4%	10%	4%	10%	0%
Mike Huckabee	1%	2%	*	1%	0%
Bobby Jindal	*	0%	*	1%	0%
Jim Gilmore	---	1%	1%	0%	0%
George Pataki	*	*	*	0%	0%
Mark Everson	---	---	---	---	0%
Rick Perry	2%	2%	3%	*	---
Bob Ehrlich	---	0%	0%	0%	---
Peter King	0%	0%	0%	---	---
John Bolton	*	*	---	---	---
Mitt Romney	17%	---	---	---	---
Someone Else	1%	1%	1%	1%	*
Don't Know	36%	29%	29%	29%	22%
(N)	(346)	(291)	(402)	(308)	(344)

“Which Republican candidate do you think has the right experience to be President?”

	<u>Feb. '15</u>	<u>May '15</u>	<u>July '15</u>	<u>Sept '15</u>
Jeb Bush	11%	19%	17%	17%
Donald Trump	3%	5%	15%	14%
John Kasich	1%	2%	6%	11%
Carly Fiorina	0%	3%	*	10%
Chris Christie	7%	4%	6%	7%
Marco Rubio	1%	4%	2%	6%
Ted Cruz	2%	3%	5%	5%
Rand Paul	6%	9%	6%	4%
Ben Carson	2%	1%	2%	2%
Scott Walker^	10%	10%	11%	2%
Mike Huckabee	2%	3%	3%	1%
Lindsey Graham	---	*	*	1%
Rick Santorum	0%	*	1%	1%
Bobby Jindal	1%	*	2%	*
Jim Gilmore	---	0%	0%	*
George Pataki	2%	1%	*	0%
Mark Everson	---	---	---	0%
Rick Perry	1%	5%	3%	---
Bob Ehrlich	---	0%	0%	---
Peter King	0%	0%	---	---
John Bolton	3%	1%	---	---
Mitt Romney	19%	---	---	---
Someone Else	1%	1%	0%	*
Don't Know	29%	27%	21%	19%
(N)	(346)	(290)	(308)	(342)

“Which Republican candidate do you think is least likely to act like a typical politician if elected President?”

	<u>June '15</u>	<u>Sept '15</u>
Donald Trump	46%	68%
Ben Carson	9%	11%
Carly Fiorina	4%	4%
Chris Christie	5%	3%
Jeb Bush	5%	2%
Rand Paul	4%	2%
John Kasich	*	1%
Ted Cruz	1%	1%
Mike Huckabee	1%	*
Lindsey Graham	*	*
Marco Rubio	2%	*
Scott Walker^	2%	0%
Rick Santorum	*	0%
Bobby Jindal	*	0%
George Pataki	*	0%
Jim Gilmore	0%	0%
Peter King	0%	0%
Mark Everson	---	0%
Rick Perry	1%	---
Bob Ehrlich	0%	---
Someone Else	2%	0%
Don't Know	17%	7%
(N)	(401)	(344)

GOP Favorability Ratings
(Likely GOP Primary Voters)

"Next, I'd like to get your overall opinion of some REPUBLICANS who are running or may run for President in 2016. As I read each name, please say if you have a favorable or unfavorable opinion of this person - or if you have never heard of him or her."

"Former Florida Governor Jeb Bush?"

	<u>Favorable</u>	<u>Neutral</u>	<u>Unfavorable</u>	<u>Don't Know</u>	<u>Net</u>	<u>(N)</u>
Sept '15	47%	14%	36%	3%	+11%	(343)
July '15	46%	12%	38%	4%	+8%	(308)
June '15	50%	12%	33%	5%	+17%	(400)
May '15	45%	17%	34%	4%	+11%	(293)
Feb. '15	47%	9%	33%	11%	+14%	(349)
Oct. '14	49%	3%	28%	20%	+21%	(274)
July '14	45%	7%	31%	18%	+14%	(251)
Apr. '14	45%	9%	35%	11%	+10%	(187)
Jan. '14	46%	8%	25%	21%	+21%	(246)
Oct. '13	47%	8%	27%	18%	+20%	(236)
July '13	53%	5%	27%	15%	+26%	(200)
Apr. '13	48%	10%	34%	8%	+14%	(171)
Feb. '13	53%	5%	31%	11%	+22%	(212)

"Neurosurgeon Ben Carson?"

	<u>Favorable</u>	<u>Neutral</u>	<u>Unfavorable</u>	<u>Don't Know</u>	<u>Net</u>	<u>(N)</u>
Sept '15	60%	10%	18%	13%	+42%	(344)
July '15	40%	5%	14%	41%	+26%	(309)
June '15	40%	7%	13%	40%	+27%	(400)
May '15	34%	15%	12%	40%	+22%	(292)
Feb. '15	30%	8%	9%	54%	+21%	(348)

"New Jersey Governor Chris Christie?"

	<u>Favorable</u>	<u>Neutral</u>	<u>Unfavorable</u>	<u>Don't Know</u>	<u>Net</u>	<u>(N)</u>
Sept '15	50%	8%	37%	5%	+13%	(342)
July '15	41%	10%	41%	7%	0%	(309)
June '15	31%	14%	44%	12%	-13%	(400)
May '15	39%	15%	40%	6%	-1%	(292)
Feb. '15	41%	10%	36%	13%	+5%	(349)
Oct. '14	44%	4%	35%	17%	+9%	(274)
July '14	46%	6%	36%	13%	+10%	(251)
Apr. '14	43%	10%	42%	5%	+1%	(187)
Jan. '14	43%	9%	33%	15%	+10%	(246)
Oct. '13	49%	6%	23%	23%	+26%	(236)
July '13	59%	5%	24%	12%	+25%	(200)
Apr. '13	56%	8%	26%	9%	+30%	(171)
Feb. '13	60%	7%	21%	12%	+39%	(212)

"Texas Senator Ted Cruz?"

	<u>Favorable</u>	<u>Neutral</u>	<u>Unfavorable</u>	<u>Don't Know</u>	<u>Net</u>	<u>(N)</u>
Sept '15	42%	10%	35%	13%	+7%	(344)
July '15	46%	10%	22%	21%	+24%	(309)
June '15	32%	11%	31%	26%	+1%	(400)
May '15	44%	14%	29%	13%	+15%	(293)
Feb. '15	37%	8%	24%	31%	+13%	(349)
Oct. '14	33%	6%	22%	39%	+11%	(275)
July '14	39%	4%	22%	35%	+17%	(250)
Apr. '14	42%	9%	18%	31%	+24%	(187)
Jan. '14	37%	8%	18%	37%	+19%	(246)
Oct. '13	32%	5%	19%	43%	+13%	(236)
July '13	29%	6%	17%	48%	+12%	(200)
Apr. '13	21%	8%	12%	59%	+9%	(171)
Feb. '13	18%	6%	14%	62%	+4%	(212)

"Former IRS Commissioner Mark Everson?"

	<u>Favorable</u>	<u>Neutral</u>	<u>Unfavorable</u>	<u>Don't Know</u>	<u>Net</u>	<u>(N)</u>
Sept '15	2%	9%	29%	60%	-27%	(342)

"Businesswoman Carly Fiorina?"

	<u>Favorable</u>	<u>Neutral</u>	<u>Unfavorable</u>	<u>Don't Know</u>	<u>Net</u>	<u>(N)</u>
Sept '15	62%	9%	15%	14%	+47%	(344)
July '15	37%	7%	17%	39%	+20%	(309)
June '15	39%	6%	15%	41%	+24%	(401)
May '15	29%	12%	19%	39%	+10%	(292)
Feb. '15	15%	9%	13%	62%	+2%	(349)

"Former Virginia Governor Jim Gilmore?"

	<u>Favorable</u>	<u>Neutral</u>	<u>Unfavorable</u>	<u>Don't Know</u>	<u>Net</u>	<u>(N)</u>
Sept '15	5%	12%	30%	54%	-25%	(341)
July '15	5%	8%	18%	69%	-13%	(309)
June '15	6%	6%	15%	73%	-9%	(400)
May '15	4%	20%	12%	65%	-8%	(292)

"South Carolina Senator Lindsey Graham?"

	<u>Favorable</u>	<u>Neutral</u>	<u>Unfavorable</u>	<u>Don't Know</u>	<u>Net</u>	<u>(N)</u>
Sept '15	18%	11%	53%	18%	-35%	(342)
July '15	19%	11%	42%	28%	-23%	(309)
June '15	17%	13%	40%	29%	-23%	(400)
May '15	25%	19%	29%	27%	-4%	(291)

“Former Arkansas Governor Mike Huckabee?”

	<u>Favorable</u>	<u>Neutral</u>	<u>Unfavorable</u>	<u>Don't Know</u>	<u>Net</u>	<u>(N)</u>
Sept '15	35%	15%	45%	5%	-10%	(344)
July '15	40%	11%	39%	10%	+1%	(309)
June '15	31%	13%	43%	13%	-12%	(400)
May '15	45%	18%	32%	5%	+13%	(292)
Feb. '15	45%	11%	31%	14%	+14%	(349)
Oct. '14	48%	6%	28%	17%	+20%	(275)
July '14	46%	7%	30%	16%	+16%	(251)

“Louisiana Governor Bobby Jindal?”

	<u>Favorable</u>	<u>Neutral</u>	<u>Unfavorable</u>	<u>Don't Know</u>	<u>Net</u>	<u>(N)</u>
Sept '15	25%	12%	35%	28%	-10%	(342)
July '15	28%	7%	22%	43%	+6%	(309)
June '15	26%	7%	21%	46%	+5%	(400)
May '15	32%	13%	21%	34%	+11%	(293)
Feb. '15	29%	8%	19%	44%	+10%	(348)
Oct. '14	31%	7%	14%	49%	+17%	(274)
July '14	39%	3%	13%	45%	+26%	(250)
Apr. '14	30%	9%	17%	44%	+13%	(187)
July '13	39%	4%	12%	45%	+27%	(200)
Apr. '13	30%	9%	16%	45%	+14%	(171)
Feb. '13	31%	8%	21%	41%	+10%	(212)

“Ohio Governor John Kasich?”

	<u>Favorable</u>	<u>Neutral</u>	<u>Unfavorable</u>	<u>Don't Know</u>	<u>Net</u>	<u>(N)</u>
Sept '15	45%	8%	24%	24%	+21%	(342)
July '15	34%	12%	17%	37%	+17%	(309)
June '15	20%	13%	13%	54%	+7%	(400)
May '15	20%	14%	17%	49%	+3%	(292)
Feb. '15	15%	12%	16%	57%	-1%	(349)
Oct. '14	17%	5%	12%	66%	+5%	(274)
July '14	22%	5%	12%	61%	+10%	(250)
Oct. '13	12%	5%	16%	74%	+3%	(236)
July '13	28%	5%	16%	52%	+12%	(200)

“Former New York Governor George Pataki?”

	<u>Favorable</u>	<u>Neutral</u>	<u>Unfavorable</u>	<u>Don't Know</u>	<u>Net</u>	<u>(N)</u>
Sept '15	19%	13%	48%	21%	-29%	(344)
July '15	18%	11%	43%	28%	-25%	(309)
June '15	23%	14%	34%	29%	-11%	(400)
May '15	22%	21%	32%	25%	-10%	(291)
Feb. '15	17%	15%	30%	38%	-13%	(349)

"Kentucky Senator Rand Paul?"

	<u>Favorable</u>	<u>Neutral</u>	<u>Unfavorable</u>	<u>Don't Know</u>	<u>Net</u>	<u>(N)</u>
Sept '15	31%	14%	48%	7%	-17%	(344)
July '15	44%	13%	32%	12%	+12%	(309)
June '15	43%	15%	32%	10%	+11%	(400)
May '15	51%	11%	31%	6%	+20%	(292)
Feb. '15	53%	8%	27%	12%	+26%	(349)
Oct. '14	50%	6%	23%	21%	+27%	(274)
July '14	53%	8%	23%	16%	+30%	(251)
Apr. '14	56%	8%	21%	15%	+35%	(187)
Jan. '14	49%	8%	14%	28%	+35%	(246)
Oct. '13	52%	4%	24%	20%	+28%	(236)
July '13	57%	3%	20%	20%	+37%	(200)
Apr. '13	54%	7%	19%	20%	+35%	(171)
Feb. '13	45%	6%	26%	23%	+19%	(212)

"Florida Senator Marco Rubio?"

	<u>Favorable</u>	<u>Neutral</u>	<u>Unfavorable</u>	<u>Don't Know</u>	<u>Net</u>	<u>(N)</u>
Sept '15	58%	6%	22%	14%	+36%	(344)
July '15	46%	11%	25%	19%	+21%	(309)
June '15	49%	10%	21%	19%	+28%	(400)
May '15	60%	11%	16%	12%	+44%	(292)
Feb. '15	41%	10%	17%	33%	+24%	(348)
Oct. '14	43%	6%	14%	37%	+29%	(274)
July '14	46%	4%	19%	31%	+27%	(250)
Apr. '14	52%	9%	12%	27%	+40%	(187)
Jan. '14	42%	7%	11%	40%	+31%	(246)
Oct. '13	41%	7%	18%	34%	+23%	(236)
July '13	47%	6%	14%	33%	+33%	(200)
Apr. '13	59%	8%	8%	25%	+51%	(171)
Feb. '13	56%	6%	6%	31%	+50%	(212)

"Former Pennsylvania Senator Rick Santorum?"

	<u>Favorable</u>	<u>Neutral</u>	<u>Unfavorable</u>	<u>Don't Know</u>	<u>Net</u>	<u>(N)</u>
Sept '15	23%	9%	52%	16%	-29%	(344)
July '15	29%	12%	39%	20%	-10%	(309)
June '15	27%	14%	38%	21%	-11%	(400)
May '15	35%	15%	37%	14%	-2%	(292)
Feb. '15	29%	14%	34%	23%	-5%	(349)
Oct. '14	31%	10%	31%	29%	0%	(274)
July '14	38%	7%	30%	25%	+8%	(250)
Apr. '14	36%	9%	31%	25%	+5%	(187)
Oct. '13	39%	9%	27%	25%	+12%	(236)
July '13	44%	6%	37%	13%	+7%	(200)
Apr. '13	39%	11%	38%	12%	+1%	(171)
Feb. '13	40%	8%	42%	10%	-2%	(212)

“Businessman Donald Trump?”

	<u>Favorable</u>	<u>Neutral</u>	<u>Unfavorable</u>	<u>Don't Know</u>	<u>Net</u>	<u>(N)</u>
Sept '15	55%	7%	38%	0%	+17%	(344)
July '15	51%	7%	40%	2%	+11%	(309)
June '15	38%	11%	48%	4%	-10%	(400)
May '15	27%	13%	56%	5%	-29%	(292)
Feb. '15	19%	9%	69%	3%	-50%	(349)
Apr. '14	23%	6%	66%	5%	-43%	(187)
Jan. '14	29%	8%	59%	5%	-30%	(246)

**Favorability Rating – Jeb Bush
(Likely 2016 GOP Primary Voters)**

LIKELY NH GOP PRIMARY VOTERS	<u>Favorable</u> 47%	<u>Neutral</u> 14%	<u>Unfavorable</u> 36%	<u>Don't Know</u> 3%	<u>(N)</u> 343
Registered Undeclared	47%	18%	32%	4%	128
Registered Republican	51%	11%	35%	3%	178
Democrat	54%	14%	31%	0%	25
Independent	31%	32%	34%	3%	55
Republican	50%	10%	35%	4%	250
Liberal	50%	20%	30%	0%	22
Moderate	47%	13%	35%	6%	124
Conservative	46%	14%	37%	2%	181
Support Tea Party	40%	12%	44%	4%	118
Neutral	50%	18%	32%	1%	141
Oppose Tea Party	59%	2%	33%	6%	63
Voted in 2008,2012 NH Primaries	54%	9%	34%	3%	248
Voted in 2008 or 2012 NH Primary	34%	23%	39%	4%	44
Did Not Vote in Either NH Primary	27%	28%	38%	7%	51
Veteran household	44%	16%	37%	2%	107
Non-veteran	48%	13%	35%	4%	230
Union household	50%	12%	38%	0%	37
Non-union	46%	14%	35%	4%	299
Read Union Leader	51%	10%	36%	4%	113
Read Boston Globe	58%	12%	26%	5%	36
Read Local Newspapers	54%	14%	29%	3%	109
Watch WMUR	53%	12%	31%	4%	190
Listen to NHPR	48%	10%	39%	3%	67
18 to 34	35%	17%	38%	9%	67
35 to 49	43%	16%	36%	4%	80
50 to 64	51%	14%	33%	1%	118
65 and over	55%	10%	33%	2%	60
Male	45%	12%	41%	2%	202
Female	50%	16%	28%	6%	141
High school or less	40%	14%	42%	4%	65
Some college	42%	20%	35%	3%	75
College graduate	49%	13%	35%	3%	134
Post-graduate	55%	9%	32%	4%	62
Attend services 1 or more/week	50%	14%	32%	3%	79
1-2 times a month	53%	2%	45%	0%	32
Less often	45%	20%	31%	4%	123
Never	46%	10%	40%	5%	94
North Country	51%	16%	32%	1%	38
Central / Lakes	61%	9%	27%	3%	52
Connecticut Valley	41%	19%	33%	6%	44
Mass Border	38%	13%	49%	0%	96
Seacoast	63%	15%	19%	3%	46
Manchester Area	41%	12%	38%	9%	65
First Cong. Dist	51%	12%	33%	3%	190
Second Cong. Dist	42%	16%	38%	4%	150

**Favorability Rating – Ben Carson
(Likely 2016 GOP Primary Voters)**

LIKELY NH GOP PRIMARY VOTERS	<u>Favorable</u> 60%	<u>Neutral</u> 10%	<u>Unfavorable</u> 18%	<u>Don't Know</u> 13%	<u>(N)</u> 344
Registered Undeclared	58%	9%	18%	14%	128
Registered Republican	63%	10%	16%	10%	180
Democrat	44%	1%	34%	21%	25
Independent	42%	12%	26%	20%	55
Republican	65%	10%	14%	11%	252
Liberal	40%	13%	12%	35%	23
Moderate	57%	10%	19%	14%	124
Conservative	64%	10%	17%	9%	181
Support Tea Party	68%	6%	14%	12%	119
Neutral	63%	12%	13%	12%	141
Oppose Tea Party	45%	11%	33%	10%	63
Voted in 2008,2012 NH Primaries	65%	9%	17%	9%	248
Voted in 2008 or 2012 NH Primary	59%	9%	18%	13%	44
Did Not Vote in Either NH Primary	33%	14%	19%	34%	52
Veteran household	59%	10%	18%	12%	107
Non-veteran	60%	10%	18%	13%	231
Union household	62%	10%	14%	14%	37
Non-union	59%	10%	18%	13%	300
Read Union Leader	62%	13%	18%	7%	113
Read Boston Globe	47%	17%	32%	4%	36
Read Local Newspapers	59%	10%	19%	12%	109
Watch WMUR	58%	9%	19%	14%	191
Listen to NHPR	51%	12%	26%	11%	67
18 to 34	55%	10%	16%	19%	67
35 to 49	50%	10%	16%	24%	81
50 to 64	63%	11%	19%	7%	118
65 and over	68%	6%	19%	7%	60
Male	60%	10%	18%	12%	203
Female	59%	9%	17%	15%	141
High school or less	52%	8%	25%	16%	65
Some college	52%	15%	14%	18%	75
College graduate	66%	9%	13%	12%	135
Post-graduate	64%	7%	22%	7%	62
Attend services 1 or more/week	65%	5%	23%	7%	79
1-2 times a month	64%	10%	18%	8%	32
Less often	62%	9%	16%	13%	124
Never	50%	14%	16%	21%	94
North Country	55%	14%	22%	9%	38
Central / Lakes	66%	13%	15%	6%	52
Connecticut Valley	52%	7%	17%	24%	44
Mass Border	64%	10%	13%	12%	97
Seacoast	60%	10%	24%	6%	46
Manchester Area	55%	5%	19%	20%	65
First Cong. Dist	62%	7%	20%	11%	191
Second Cong. Dist	57%	13%	14%	17%	150

**Favorability Rating – Chris Christie
(Likely 2016 GOP Primary Voters)**

LIKELY NH GOP PRIMARY VOTERS	<u>Favorable</u>	<u>Neutral</u>	<u>Unfavorable</u>	<u>Don't Know</u>	<u>(N)</u>
	50%	8%	37%	5%	342
Registered Undeclared	47%	7%	39%	7%	128
Registered Republican	52%	8%	37%	3%	178
Democrat	50%	0%	33%	17%	25
Independent	46%	7%	41%	6%	55
Republican	52%	10%	36%	3%	250
Liberal	49%	13%	26%	12%	23
Moderate	50%	11%	37%	2%	122
Conservative	50%	6%	39%	6%	181
Support Tea Party	51%	7%	41%	1%	119
Neutral	58%	9%	29%	3%	139
Oppose Tea Party	39%	9%	44%	8%	63
Voted in 2008,2012 NH Primaries	54%	7%	37%	1%	246
Voted in 2008 or 2012 NH Primary	29%	17%	45%	8%	44
Did Not Vote in Either NH Primary	45%	6%	26%	23%	52
Veteran household	54%	8%	35%	3%	107
Non-veteran	48%	9%	38%	6%	229
Union household	51%	12%	35%	2%	37
Non-union	50%	8%	37%	5%	298
Read Union Leader	54%	8%	33%	5%	112
Read Boston Globe	59%	5%	35%	0%	36
Read Local Newspapers	49%	8%	38%	5%	109
Watch WMUR	58%	10%	28%	4%	191
Listen to NHPR	55%	5%	28%	12%	67
18 to 34	20%	9%	52%	19%	67
35 to 49	51%	9%	37%	2%	79
50 to 64	59%	7%	33%	1%	118
65 and over	64%	8%	27%	1%	60
Male	43%	10%	43%	4%	203
Female	59%	6%	28%	7%	139
High school or less	40%	12%	41%	8%	65
Some college	47%	7%	31%	15%	75
College graduate	52%	9%	39%	0%	135
Post-graduate	61%	5%	33%	1%	60
Attend services 1 or more/week	51%	10%	37%	3%	79
1-2 times a month	40%	18%	35%	6%	31
Less often	51%	9%	33%	8%	124
Never	52%	3%	42%	3%	94
North Country	48%	11%	26%	14%	38
Central / Lakes	48%	10%	36%	6%	52
Connecticut Valley	58%	4%	32%	5%	44
Mass Border	46%	9%	41%	4%	97
Seacoast	46%	10%	40%	5%	46
Manchester Area	54%	7%	37%	2%	64
First Cong. Dist	53%	9%	33%	5%	189
Second Cong. Dist	46%	9%	40%	5%	150

**Favorability Rating – Ted Cruz
(Likely 2016 GOP Primary Voters)**

LIKELY NH GOP PRIMARY VOTERS	<u>Favorable</u>	<u>Neutral</u>	<u>Unfavorable</u>	<u>Don't Know</u>	<u>(N)</u>
	42%	10%	35%	13%	344
Registered Undeclared	40%	8%	42%	10%	128
Registered Republican	46%	12%	30%	12%	180
Democrat	24%	4%	56%	16%	25
Independent	22%	8%	49%	21%	55
Republican	48%	11%	31%	10%	252
Liberal	28%	16%	29%	27%	23
Moderate	25%	10%	55%	10%	124
Conservative	56%	9%	22%	13%	181
Support Tea Party	69%	9%	15%	7%	119
Neutral	33%	14%	41%	13%	141
Oppose Tea Party	17%	8%	70%	5%	63
Voted in 2008,2012 NH Primaries	44%	10%	38%	8%	248
Voted in 2008 or 2012 NH Primary	42%	12%	35%	11%	44
Did Not Vote in Either NH Primary	28%	13%	20%	39%	52
Veteran household	41%	11%	42%	6%	107
Non-veteran	42%	10%	32%	15%	231
Union household	47%	12%	30%	10%	37
Non-union	41%	10%	36%	13%	300
Read Union Leader	43%	11%	38%	7%	113
Read Boston Globe	34%	9%	52%	6%	36
Read Local Newspapers	40%	13%	38%	9%	109
Watch WMUR	37%	12%	38%	13%	191
Listen to NHPR	28%	1%	59%	12%	67
18 to 34	38%	11%	31%	20%	67
35 to 49	33%	18%	32%	18%	81
50 to 64	45%	6%	41%	8%	118
65 and over	47%	10%	36%	7%	60
Male	44%	9%	37%	11%	203
Female	39%	12%	33%	16%	141
High school or less	33%	11%	45%	12%	65
Some college	45%	11%	20%	24%	75
College graduate	42%	12%	37%	9%	135
Post-graduate	47%	7%	41%	6%	62
Attend services 1 or more/week	51%	9%	29%	10%	79
1-2 times a month	43%	8%	39%	10%	32
Less often	45%	11%	32%	13%	124
Never	30%	10%	44%	16%	94
North Country	21%	14%	42%	23%	38
Central / Lakes	48%	15%	34%	4%	52
Connecticut Valley	45%	2%	32%	21%	44
Mass Border	46%	12%	31%	11%	97
Seacoast	55%	9%	27%	10%	46
Manchester Area	30%	9%	47%	14%	65
First Cong. Dist	41%	10%	38%	11%	191
Second Cong. Dist	42%	11%	31%	16%	150

**Favorability Rating – Mark Everson
(Likely 2016 GOP Primary Voters)**

LIKELY NH GOP PRIMARY VOTERS	<u>Favorable</u> 2%	<u>Neutral</u> 9%	<u>Unfavorable</u> 29%	<u>Don't Know</u> 60%	<u>(N)</u> 342
Registered Undeclared	5%	11%	29%	55%	128
Registered Republican	0%	9%	26%	64%	178
Democrat	0%	18%	24%	58%	25
Independent	1%	4%	30%	65%	55
Republican	2%	10%	30%	59%	250
Liberal	0%	18%	16%	66%	23
Moderate	2%	8%	29%	61%	122
Conservative	2%	9%	30%	59%	181
Support Tea Party	1%	12%	29%	58%	119
Neutral	3%	6%	26%	65%	139
Oppose Tea Party	0%	9%	37%	54%	63
Voted in 2008,2012 NH Primaries	2%	9%	26%	63%	246
Voted in 2008 or 2012 NH Primary	2%	15%	36%	46%	44
Did Not Vote in Either NH Primary	0%	4%	35%	61%	52
Veteran household	1%	8%	29%	63%	107
Non-veteran	2%	9%	29%	59%	229
Union household	0%	8%	36%	56%	37
Non-union	2%	9%	28%	61%	298
Read Union Leader	0%	7%	32%	61%	112
Read Boston Globe	3%	13%	37%	47%	36
Read Local Newspapers	3%	9%	28%	60%	109
Watch WMUR	2%	8%	31%	60%	191
Listen to NHPR	1%	6%	38%	54%	67
18 to 34	0%	6%	45%	50%	67
35 to 49	0%	16%	18%	66%	79
50 to 64	4%	9%	27%	60%	118
65 and over	1%	4%	30%	65%	60
Male	1%	10%	35%	54%	203
Female	3%	7%	21%	69%	139
High school or less	0%	7%	44%	49%	65
Some college	3%	8%	27%	62%	75
College graduate	3%	10%	23%	65%	135
Post-graduate	0%	9%	28%	64%	60
Attend services 1 or more/week	3%	7%	32%	57%	79
1-2 times a month	4%	10%	26%	61%	31
Less often	1%	8%	27%	64%	124
Never	2%	12%	29%	57%	94
North Country	0%	4%	42%	54%	38
Central / Lakes	0%	11%	38%	52%	52
Connecticut Valley	0%	12%	20%	69%	44
Mass Border	3%	12%	29%	56%	97
Seacoast	7%	7%	25%	61%	46
Manchester Area	1%	4%	24%	70%	64
First Cong. Dist	2%	8%	32%	57%	189
Second Cong. Dist	1%	9%	25%	65%	150

**Favorability Rating – Carly Fiorina
(Likely 2016 GOP Primary Voters)**

LIKELY NH GOP PRIMARY VOTERS	<u>Favorable</u>	<u>Neutral</u>	<u>Unfavorable</u>	<u>Don't Know</u>	<u>(N)</u>
	62%	9%	15%	14%	344
Registered Undeclared	63%	7%	15%	16%	128
Registered Republican	68%	9%	14%	9%	180
Democrat	51%	1%	20%	28%	25
Independent	44%	8%	27%	20%	55
Republican	68%	10%	12%	10%	252
Liberal	36%	4%	24%	36%	23
Moderate	58%	16%	16%	10%	124
Conservative	69%	6%	13%	13%	181
Support Tea Party	74%	5%	12%	9%	119
Neutral	61%	15%	13%	12%	141
Oppose Tea Party	55%	7%	27%	11%	63
Voted in 2008,2012 NH Primaries	69%	9%	15%	8%	248
Voted in 2008 or 2012 NH Primary	65%	7%	13%	14%	44
Did Not Vote in Either NH Primary	27%	13%	20%	39%	52
Veteran household	66%	12%	12%	9%	107
Non-veteran	61%	8%	16%	15%	231
Union household	59%	10%	20%	12%	37
Non-union	63%	9%	14%	14%	300
Read Union Leader	71%	10%	12%	8%	113
Read Boston Globe	53%	10%	31%	6%	36
Read Local Newspapers	67%	8%	13%	12%	109
Watch WMUR	64%	11%	10%	15%	191
Listen to NHPR	60%	11%	13%	16%	67
18 to 34	41%	8%	24%	27%	67
35 to 49	54%	12%	17%	18%	81
50 to 64	74%	9%	10%	7%	118
65 and over	72%	8%	14%	6%	60
Male	60%	10%	19%	11%	203
Female	66%	8%	10%	17%	141
High school or less	40%	11%	33%	16%	65
Some college	57%	7%	8%	28%	75
College graduate	70%	11%	10%	9%	135
Post-graduate	77%	6%	15%	3%	62
Attend services 1 or more/week	66%	8%	14%	12%	79
1-2 times a month	65%	13%	16%	6%	32
Less often	62%	8%	16%	14%	124
Never	57%	11%	14%	18%	94
North Country	47%	6%	22%	25%	38
Central / Lakes	65%	11%	13%	10%	52
Connecticut Valley	51%	11%	14%	25%	44
Mass Border	64%	11%	18%	8%	97
Seacoast	77%	7%	2%	14%	46
Manchester Area	63%	8%	19%	10%	65
First Cong. Dist	64%	10%	15%	12%	191
Second Cong. Dist	60%	8%	15%	16%	150

**Favorability Rating – Jim Gilmore
(Likely 2016 GOP Primary Voters)**

LIKELY NH GOP PRIMARY VOTERS	<u>Favorable</u>	<u>Neutral</u>	<u>Unfavorable</u>	<u>Don't Know</u>	<u>(N)</u>
	5%	12%	30%	54%	341
Registered Undeclared	5%	14%	27%	54%	128
Registered Republican	5%	12%	30%	53%	177
Democrat	10%	16%	22%	52%	25
Independent	1%	6%	37%	56%	55
Republican	5%	13%	29%	54%	249
Liberal	5%	14%	29%	52%	23
Moderate	4%	14%	31%	52%	122
Conservative	5%	11%	29%	55%	180
Support Tea Party	7%	11%	33%	50%	118
Neutral	3%	12%	27%	58%	139
Oppose Tea Party	4%	16%	33%	48%	63
Voted in 2008,2012 NH Primaries	5%	13%	30%	52%	246
Voted in 2008 or 2012 NH Primary	0%	16%	35%	49%	43
Did Not Vote in Either NH Primary	7%	4%	23%	66%	52
Veteran household	4%	8%	36%	53%	107
Non-veteran	5%	14%	27%	55%	229
Union household	0%	17%	27%	56%	37
Non-union	5%	11%	30%	54%	298
Read Union Leader	8%	13%	36%	43%	111
Read Boston Globe	5%	20%	42%	33%	36
Read Local Newspapers	9%	15%	24%	52%	109
Watch WMUR	5%	11%	26%	58%	190
Listen to NHPR	5%	11%	29%	55%	67
18 to 34	7%	6%	30%	57%	67
35 to 49	3%	21%	20%	56%	79
50 to 64	4%	12%	29%	55%	117
65 and over	5%	8%	41%	47%	60
Male	6%	14%	31%	49%	202
Female	2%	8%	28%	62%	139
High school or less	1%	8%	34%	57%	64
Some college	5%	6%	20%	69%	75
College graduate	6%	16%	28%	50%	135
Post-graduate	5%	14%	40%	41%	60
Attend services 1 or more/week	7%	8%	28%	57%	79
1-2 times a month	0%	21%	26%	53%	30
Less often	2%	13%	34%	51%	124
Never	7%	11%	26%	56%	94
North Country	3%	12%	22%	63%	38
Central / Lakes	8%	16%	26%	50%	52
Connecticut Valley	3%	7%	35%	55%	44
Mass Border	6%	13%	28%	53%	97
Seacoast	4%	12%	32%	52%	46
Manchester Area	3%	8%	34%	55%	64
First Cong. Dist	3%	12%	33%	52%	189
Second Cong. Dist	6%	11%	25%	58%	149

**Favorability Rating – Lindsey Graham
(Likely 2016 GOP Primary Voters)**

LIKELY NH GOP PRIMARY VOTERS	<u>Favorable</u> 18%	<u>Neutral</u> 11%	<u>Unfavorable</u> 53%	<u>Don't Know</u> 18%	<u>(N)</u> 342
Registered Undeclared	19%	13%	54%	15%	128
Registered Republican	19%	11%	51%	19%	178
Democrat	21%	0%	61%	19%	25
Independent	14%	10%	51%	24%	55
Republican	18%	13%	52%	17%	250
Liberal	24%	14%	18%	44%	23
Moderate	17%	12%	54%	18%	122
Conservative	18%	10%	57%	15%	181
Support Tea Party	18%	11%	59%	13%	119
Neutral	18%	15%	48%	19%	139
Oppose Tea Party	19%	6%	64%	11%	63
Voted in 2008,2012 NH Primaries	21%	12%	55%	12%	246
Voted in 2008 or 2012 NH Primary	12%	11%	53%	24%	44
Did Not Vote in Either NH Primary	11%	7%	41%	41%	52
Veteran household	22%	5%	55%	18%	107
Non-veteran	16%	14%	52%	18%	229
Union household	16%	9%	59%	16%	37
Non-union	18%	12%	52%	18%	298
Read Union Leader	18%	12%	57%	13%	112
Read Boston Globe	17%	9%	67%	8%	36
Read Local Newspapers	22%	9%	55%	14%	109
Watch WMUR	22%	10%	51%	17%	191
Listen to NHPR	14%	12%	55%	19%	67
18 to 34	12%	4%	52%	32%	67
35 to 49	17%	16%	50%	17%	79
50 to 64	19%	14%	55%	12%	118
65 and over	24%	9%	51%	16%	60
Male	21%	13%	54%	12%	203
Female	13%	9%	51%	27%	139
High school or less	18%	10%	55%	18%	65
Some college	24%	9%	43%	24%	75
College graduate	16%	14%	54%	16%	135
Post-graduate	16%	11%	61%	12%	60
Attend services 1 or more/week	16%	13%	53%	18%	79
1-2 times a month	19%	11%	57%	13%	31
Less often	20%	16%	45%	19%	124
Never	18%	5%	60%	18%	94
North Country	15%	18%	44%	23%	38
Central / Lakes	22%	10%	53%	14%	52
Connecticut Valley	25%	14%	38%	23%	44
Mass Border	18%	7%	59%	16%	97
Seacoast	10%	12%	64%	14%	46
Manchester Area	17%	11%	51%	22%	64
First Cong. Dist	18%	11%	56%	16%	189
Second Cong. Dist	18%	12%	49%	21%	150

**Favorability Rating – Mike Huckabee
(Likely 2016 GOP Primary Voters)**

LIKELY NH GOP PRIMARY VOTERS	<u>Favorable</u> 35%	<u>Neutral</u> 15%	<u>Unfavorable</u> 45%	<u>Don't Know</u> 5%	<u>(N)</u> 344
Registered Undeclared	28%	20%	47%	4%	128
Registered Republican	40%	12%	45%	3%	180
Democrat	12%	7%	69%	12%	25
Independent	17%	29%	50%	4%	55
Republican	40%	14%	42%	4%	252
Liberal	26%	18%	36%	20%	23
Moderate	26%	12%	57%	5%	124
Conservative	42%	17%	39%	2%	181
Support Tea Party	39%	17%	40%	4%	119
Neutral	41%	19%	38%	2%	141
Oppose Tea Party	13%	4%	78%	5%	63
Voted in 2008,2012 NH Primaries	38%	14%	46%	2%	248
Voted in 2008 or 2012 NH Primary	29%	7%	56%	8%	44
Did Not Vote in Either NH Primary	24%	30%	33%	13%	52
Veteran household	27%	19%	49%	5%	107
Non-veteran	38%	14%	44%	4%	231
Union household	44%	10%	45%	2%	37
Non-union	33%	16%	46%	5%	300
Read Union Leader	37%	12%	48%	4%	113
Read Boston Globe	20%	11%	67%	2%	36
Read Local Newspapers	35%	14%	48%	3%	109
Watch WMUR	32%	16%	47%	5%	191
Listen to NHPR	20%	14%	63%	4%	67
18 to 34	22%	16%	49%	13%	67
35 to 49	39%	20%	39%	2%	81
50 to 64	36%	14%	48%	2%	118
65 and over	35%	13%	48%	4%	60
Male	35%	14%	46%	4%	203
Female	35%	17%	43%	5%	141
High school or less	29%	23%	41%	7%	65
Some college	37%	24%	32%	8%	75
College graduate	40%	10%	47%	3%	135
Post-graduate	24%	9%	65%	2%	62
Attend services 1 or more/week	49%	11%	38%	2%	79
1-2 times a month	23%	16%	51%	10%	32
Less often	30%	17%	48%	5%	124
Never	32%	17%	46%	5%	94
North Country	27%	20%	45%	7%	38
Central / Lakes	32%	12%	50%	6%	52
Connecticut Valley	36%	15%	45%	4%	44
Mass Border	43%	12%	41%	4%	97
Seacoast	32%	17%	47%	5%	46
Manchester Area	30%	20%	46%	4%	65
First Cong. Dist	34%	17%	45%	5%	191
Second Cong. Dist	36%	14%	45%	5%	150

**Favorability Rating – Bobby Jindal
(Likely 2016 GOP Primary Voters)**

LIKELY NH GOP PRIMARY VOTERS	<u>Favorable</u> 25%	<u>Neutral</u> 12%	<u>Unfavorable</u> 35%	<u>Don't Know</u> 28%	<u>(N)</u> 342
Registered Undeclared	19%	12%	41%	28%	128
Registered Republican	31%	12%	31%	26%	178
Democrat	18%	8%	50%	25%	25
Independent	15%	12%	39%	33%	55
Republican	28%	13%	34%	26%	250
Liberal	11%	8%	30%	52%	23
Moderate	16%	12%	45%	27%	122
Conservative	33%	13%	30%	25%	181
Support Tea Party	43%	12%	26%	19%	119
Neutral	21%	14%	36%	29%	139
Oppose Tea Party	5%	9%	61%	25%	63
Voted in 2008,2012 NH Primaries	29%	12%	37%	22%	246
Voted in 2008 or 2012 NH Primary	14%	11%	40%	35%	44
Did Not Vote in Either NH Primary	15%	12%	22%	51%	52
Veteran household	29%	14%	32%	25%	107
Non-veteran	23%	11%	37%	29%	229
Union household	31%	10%	40%	19%	37
Non-union	24%	12%	35%	29%	298
Read Union Leader	35%	16%	29%	20%	112
Read Boston Globe	17%	13%	51%	19%	36
Read Local Newspapers	31%	10%	35%	24%	109
Watch WMUR	26%	13%	31%	30%	191
Listen to NHPR	19%	8%	48%	24%	67
18 to 34	21%	4%	35%	41%	67
35 to 49	22%	15%	29%	34%	79
50 to 64	25%	15%	38%	22%	118
65 and over	29%	14%	41%	16%	60
Male	28%	12%	35%	26%	203
Female	21%	12%	36%	32%	139
High school or less	21%	13%	42%	24%	65
Some college	26%	9%	23%	42%	75
College graduate	25%	12%	35%	27%	135
Post-graduate	29%	14%	45%	13%	60
Attend services 1 or more/week	27%	8%	37%	28%	79
1-2 times a month	23%	19%	38%	19%	31
Less often	31%	9%	30%	30%	124
Never	18%	15%	40%	27%	94
North Country	26%	11%	23%	39%	38
Central / Lakes	25%	15%	37%	23%	52
Connecticut Valley	25%	6%	40%	29%	44
Mass Border	23%	11%	39%	28%	97
Seacoast	31%	13%	33%	23%	46
Manchester Area	22%	14%	35%	29%	64
First Cong. Dist	28%	13%	33%	26%	189
Second Cong. Dist	20%	10%	38%	32%	150

**Favorability Rating – John Kasich
(Likely 2016 GOP Primary Voters)**

LIKELY NH GOP PRIMARY VOTERS	<u>Favorable</u> 45%	<u>Neutral</u> 8%	<u>Unfavorable</u> 24%	<u>Don't Know</u> 24%	<u>(N)</u> 342
Registered Undeclared	46%	6%	25%	24%	128
Registered Republican	46%	8%	24%	21%	178
Democrat	62%	0%	12%	26%	25
Independent	44%	5%	20%	31%	55
Republican	45%	9%	25%	21%	250
Liberal	35%	3%	11%	51%	23
Moderate	49%	9%	18%	25%	122
Conservative	44%	8%	30%	19%	181
Support Tea Party	45%	6%	33%	16%	119
Neutral	48%	11%	19%	22%	139
Oppose Tea Party	52%	5%	19%	24%	63
Voted in 2008,2012 NH Primaries	53%	9%	21%	17%	246
Voted in 2008 or 2012 NH Primary	24%	6%	42%	28%	44
Did Not Vote in Either NH Primary	26%	6%	17%	51%	52
Veteran household	51%	7%	21%	21%	107
Non-veteran	43%	8%	25%	24%	229
Union household	42%	9%	37%	12%	37
Non-union	46%	8%	22%	25%	298
Read Union Leader	50%	8%	31%	12%	112
Read Boston Globe	55%	6%	23%	16%	36
Read Local Newspapers	44%	9%	28%	19%	109
Watch WMUR	49%	9%	20%	22%	191
Listen to NHPR	45%	7%	22%	25%	67
18 to 34	23%	2%	39%	36%	67
35 to 49	40%	14%	16%	30%	79
50 to 64	52%	8%	24%	16%	118
65 and over	58%	8%	18%	17%	60
Male	48%	8%	23%	20%	203
Female	40%	7%	24%	29%	139
High school or less	41%	8%	24%	28%	65
Some college	38%	7%	24%	31%	75
College graduate	42%	9%	27%	22%	135
Post-graduate	69%	6%	16%	9%	60
Attend services 1 or more/week	41%	10%	25%	24%	79
1-2 times a month	57%	9%	21%	13%	31
Less often	49%	4%	23%	24%	124
Never	39%	10%	26%	26%	94
North Country	35%	9%	17%	39%	38
Central / Lakes	42%	8%	33%	16%	52
Connecticut Valley	45%	11%	17%	28%	44
Mass Border	37%	8%	31%	24%	97
Seacoast	48%	8%	30%	14%	46
Manchester Area	63%	4%	8%	24%	64
First Cong. Dist	50%	8%	23%	19%	189
Second Cong. Dist	39%	7%	24%	29%	150

**Favorability Rating – George Pataki
(Likely 2016 GOP Primary Voters)**

LIKELY NH GOP PRIMARY VOTERS	<u>Favorable</u> 19%	<u>Neutral</u> 13%	<u>Unfavorable</u> 48%	<u>Don't Know</u> 21%	<u>(N)</u> 344
Registered Undeclared	21%	17%	44%	18%	128
Registered Republican	18%	11%	50%	21%	180
Democrat	28%	14%	30%	28%	25
Independent	16%	16%	47%	21%	55
Republican	18%	12%	50%	19%	252
Liberal	34%	24%	16%	26%	23
Moderate	18%	13%	46%	23%	124
Conservative	17%	11%	53%	19%	181
Support Tea Party	16%	12%	56%	17%	119
Neutral	21%	15%	42%	23%	141
Oppose Tea Party	21%	10%	52%	17%	63
Voted in 2008,2012 NH Primaries	21%	14%	49%	16%	248
Voted in 2008 or 2012 NH Primary	20%	10%	47%	23%	44
Did Not Vote in Either NH Primary	7%	11%	41%	41%	52
Veteran household	16%	13%	53%	18%	107
Non-veteran	20%	13%	45%	22%	231
Union household	14%	8%	59%	18%	37
Non-union	19%	14%	46%	21%	300
Read Union Leader	17%	13%	54%	16%	113
Read Boston Globe	38%	7%	48%	8%	36
Read Local Newspapers	25%	17%	45%	12%	109
Watch WMUR	19%	12%	48%	20%	191
Listen to NHPR	23%	11%	49%	17%	67
18 to 34	12%	7%	46%	35%	67
35 to 49	26%	18%	31%	25%	81
50 to 64	19%	14%	54%	13%	118
65 and over	16%	11%	58%	15%	60
Male	19%	14%	51%	17%	203
Female	19%	11%	43%	27%	141
High school or less	16%	12%	54%	18%	65
Some college	18%	8%	44%	29%	75
College graduate	16%	14%	47%	23%	135
Post-graduate	27%	17%	48%	9%	62
Attend services 1 or more/week	18%	13%	47%	22%	79
1-2 times a month	12%	16%	58%	14%	32
Less often	15%	14%	49%	22%	124
Never	25%	11%	43%	21%	94
North Country	22%	12%	43%	24%	38
Central / Lakes	22%	18%	47%	14%	52
Connecticut Valley	7%	20%	52%	21%	44
Mass Border	21%	11%	45%	23%	97
Seacoast	18%	10%	52%	20%	46
Manchester Area	19%	10%	48%	22%	65
First Cong. Dist	20%	10%	48%	22%	191
Second Cong. Dist	16%	16%	48%	20%	150

**Favorability Rating – Rand Paul
(Likely 2016 GOP Primary Voters)**

LIKELY NH GOP PRIMARY VOTERS	<u>Favorable</u> 31%	<u>Neutral</u> 14%	<u>Unfavorable</u> 48%	<u>Don't Know</u> 7%	<u>(N)</u> 344
Registered Undeclared	36%	9%	47%	9%	128
Registered Republican	31%	18%	48%	4%	180
Democrat	29%	5%	48%	18%	25
Independent	44%	10%	39%	7%	55
Republican	29%	16%	50%	5%	252
Liberal	35%	23%	28%	14%	23
Moderate	28%	11%	51%	10%	124
Conservative	32%	15%	49%	4%	181
Support Tea Party	39%	15%	44%	2%	119
Neutral	24%	17%	51%	8%	141
Oppose Tea Party	35%	5%	53%	7%	63
Voted in 2008,2012 NH Primaries	34%	15%	48%	3%	248
Voted in 2008 or 2012 NH Primary	36%	9%	47%	7%	44
Did Not Vote in Either NH Primary	11%	14%	47%	27%	52
Veteran household	25%	14%	53%	8%	107
Non-veteran	34%	14%	46%	6%	231
Union household	31%	20%	45%	5%	37
Non-union	31%	13%	48%	7%	300
Read Union Leader	36%	18%	42%	4%	113
Read Boston Globe	38%	9%	49%	4%	36
Read Local Newspapers	30%	16%	47%	7%	109
Watch WMUR	23%	15%	53%	9%	191
Listen to NHPR	35%	8%	53%	4%	67
18 to 34	36%	8%	42%	14%	67
35 to 49	38%	19%	35%	8%	81
50 to 64	32%	17%	47%	4%	118
65 and over	16%	9%	71%	4%	60
Male	33%	14%	46%	6%	203
Female	28%	13%	50%	9%	141
High school or less	29%	17%	47%	7%	65
Some college	27%	16%	43%	14%	75
College graduate	32%	11%	52%	5%	135
Post-graduate	37%	13%	46%	3%	62
Attend services 1 or more/week	29%	14%	54%	2%	79
1-2 times a month	29%	15%	50%	6%	32
Less often	30%	13%	48%	9%	124
Never	35%	15%	42%	9%	94
North Country	14%	16%	60%	10%	38
Central / Lakes	32%	18%	46%	3%	52
Connecticut Valley	30%	5%	53%	12%	44
Mass Border	25%	14%	53%	8%	97
Seacoast	46%	13%	37%	4%	46
Manchester Area	38%	15%	40%	7%	65
First Cong. Dist	32%	14%	46%	8%	191
Second Cong. Dist	29%	14%	51%	7%	150

**Favorability Rating – Marco Rubio
(Likely 2016 GOP Primary Voters)**

LIKELY NH GOP PRIMARY VOTERS	<u>Favorable</u>	<u>Neutral</u>	<u>Unfavorable</u>	<u>Don't Know</u>	<u>(N)</u>
	58%	6%	22%	14%	344
Registered Undeclared	53%	8%	27%	12%	128
Registered Republican	66%	4%	14%	15%	180
Democrat	43%	0%	31%	26%	25
Independent	45%	8%	27%	20%	55
Republican	63%	6%	20%	11%	252
Liberal	35%	8%	21%	36%	23
Moderate	55%	6%	26%	13%	124
Conservative	63%	6%	19%	12%	181
Support Tea Party	66%	6%	18%	10%	119
Neutral	59%	9%	21%	11%	141
Oppose Tea Party	51%	1%	35%	13%	63
Voted in 2008,2012 NH Primaries	63%	5%	23%	9%	248
Voted in 2008 or 2012 NH Primary	57%	4%	24%	15%	44
Did Not Vote in Either NH Primary	34%	10%	18%	37%	52
Veteran household	57%	6%	27%	10%	107
Non-veteran	58%	6%	20%	16%	231
Union household	67%	6%	15%	11%	37
Non-union	57%	6%	23%	14%	300
Read Union Leader	62%	8%	23%	7%	113
Read Boston Globe	52%	3%	38%	7%	36
Read Local Newspapers	58%	6%	23%	13%	109
Watch WMUR	57%	8%	22%	13%	191
Listen to NHPR	53%	2%	32%	14%	67
18 to 34	41%	6%	30%	23%	67
35 to 49	55%	3%	19%	23%	81
50 to 64	62%	9%	24%	6%	118
65 and over	72%	3%	16%	8%	60
Male	58%	8%	23%	12%	203
Female	58%	4%	21%	18%	141
High school or less	43%	7%	33%	17%	65
Some college	50%	7%	21%	22%	75
College graduate	62%	6%	20%	13%	135
Post-graduate	76%	5%	16%	3%	62
Attend services 1 or more/week	58%	3%	25%	13%	79
1-2 times a month	70%	4%	17%	8%	32
Less often	56%	7%	21%	16%	124
Never	55%	8%	22%	14%	94
North Country	45%	9%	17%	28%	38
Central / Lakes	51%	10%	34%	6%	52
Connecticut Valley	54%	7%	18%	21%	44
Mass Border	63%	5%	20%	12%	97
Seacoast	63%	4%	25%	8%	46
Manchester Area	62%	3%	20%	15%	65
First Cong. Dist	60%	4%	25%	11%	191
Second Cong. Dist	55%	8%	18%	19%	150

**Favorability Rating – Rick Santorum
(Likely 2016 GOP Primary Voters)**

LIKELY NH GOP PRIMARY VOTERS	<u>Favorable</u> 23%	<u>Neutral</u> 9%	<u>Unfavorable</u> 52%	<u>Don't Know</u> 16%	<u>(N)</u> 344
Registered Undeclared	31%	11%	46%	12%	128
Registered Republican	20%	9%	55%	16%	180
Democrat	18%	2%	62%	17%	25
Independent	15%	7%	54%	24%	55
Republican	25%	10%	52%	13%	252
Liberal	16%	3%	42%	39%	23
Moderate	16%	11%	58%	15%	124
Conservative	30%	9%	48%	13%	181
Support Tea Party	30%	10%	50%	11%	119
Neutral	23%	13%	50%	15%	141
Oppose Tea Party	17%	1%	71%	12%	63
Voted in 2008,2012 NH Primaries	24%	10%	55%	11%	248
Voted in 2008 or 2012 NH Primary	27%	4%	56%	13%	44
Did Not Vote in Either NH Primary	15%	10%	34%	41%	52
Veteran household	24%	8%	54%	14%	107
Non-veteran	23%	9%	51%	16%	231
Union household	23%	11%	58%	8%	37
Non-union	23%	9%	51%	17%	300
Read Union Leader	22%	12%	56%	9%	113
Read Boston Globe	29%	5%	62%	4%	36
Read Local Newspapers	24%	11%	52%	13%	109
Watch WMUR	23%	10%	50%	17%	191
Listen to NHPR	21%	3%	58%	18%	67
18 to 34	25%	2%	50%	24%	67
35 to 49	24%	9%	51%	16%	81
50 to 64	21%	13%	55%	12%	118
65 and over	22%	10%	54%	14%	60
Male	22%	11%	55%	12%	203
Female	26%	5%	48%	21%	141
High school or less	28%	11%	43%	18%	65
Some college	19%	9%	47%	25%	75
College graduate	25%	8%	56%	11%	135
Post-graduate	19%	8%	62%	11%	62
Attend services 1 or more/week	38%	8%	41%	14%	79
1-2 times a month	10%	5%	72%	12%	32
Less often	23%	11%	49%	18%	124
Never	15%	8%	61%	16%	94
North Country	9%	13%	57%	21%	38
Central / Lakes	35%	18%	37%	10%	52
Connecticut Valley	20%	5%	48%	27%	44
Mass Border	23%	6%	60%	11%	97
Seacoast	26%	6%	55%	12%	46
Manchester Area	22%	8%	50%	20%	65
First Cong. Dist	26%	8%	54%	12%	191
Second Cong. Dist	20%	9%	50%	21%	150

**Favorability Rating – Donald Trump
(Likely 2016 GOP Primary Voters)**

LIKELY NH GOP PRIMARY VOTERS	<u>Favorable</u>	<u>Neutral</u>	<u>Unfavorable</u>	<u>Don't Know</u>	<u>(N)</u>
	55%	7%	38%	0%	344
Registered Undeclared	50%	5%	45%	0%	128
Registered Republican	57%	8%	35%	0%	180
Democrat	43%	2%	53%	2%	25
Independent	47%	3%	50%	0%	55
Republican	57%	8%	35%	0%	252
Liberal	42%	18%	39%	0%	23
Moderate	53%	2%	45%	0%	124
Conservative	57%	9%	34%	0%	181
Support Tea Party	63%	6%	31%	1%	119
Neutral	51%	10%	39%	0%	141
Oppose Tea Party	42%	2%	55%	1%	63
Voted in 2008,2012 NH Primaries	50%	7%	43%	0%	248
Voted in 2008 or 2012 NH Primary	62%	6%	32%	0%	44
Did Not Vote in Either NH Primary	76%	4%	20%	0%	52
Veteran household	47%	9%	42%	1%	107
Non-veteran	59%	5%	36%	0%	231
Union household	62%	12%	26%	0%	37
Non-union	54%	6%	40%	0%	300
Read Union Leader	55%	6%	38%	1%	113
Read Boston Globe	54%	0%	46%	0%	36
Read Local Newspapers	49%	8%	43%	0%	109
Watch WMUR	54%	7%	38%	0%	191
Listen to NHPR	49%	2%	48%	1%	67
18 to 34	71%	0%	29%	0%	67
35 to 49	59%	10%	31%	1%	81
50 to 64	51%	8%	41%	0%	118
65 and over	40%	9%	50%	1%	60
Male	54%	7%	39%	1%	203
Female	58%	6%	36%	0%	141
High school or less	52%	7%	42%	0%	65
Some college	72%	6%	22%	0%	75
College graduate	52%	7%	41%	0%	135
Post-graduate	44%	5%	49%	2%	62
Attend services 1 or more/week	44%	9%	47%	0%	79
1-2 times a month	54%	8%	38%	0%	32
Less often	57%	5%	37%	1%	124
Never	60%	6%	34%	0%	94
North Country	57%	4%	38%	0%	38
Central / Lakes	47%	8%	43%	2%	52
Connecticut Valley	48%	6%	47%	0%	44
Mass Border	63%	10%	27%	0%	97
Seacoast	52%	0%	48%	0%	46
Manchester Area	57%	7%	36%	0%	65
First Cong. Dist	59%	5%	37%	0%	191
Second Cong. Dist	51%	9%	39%	1%	150

**Decided 2016 GOP Primary Vote
(Likely 2016 GOP Primary Voters)**

	Def. <u>Decided</u>	Leaning <u>Towards Someone</u>	Still Trying <u>To Decide</u>	(N)
LIKELY NH GOP PRIMARY VOTERS	13%	28%	59%	343
Registered Undeclared	11%	31%	58%	128
Registered Republican	12%	26%	61%	180
Democrat	0%	15%	85%	25
Independent	15%	17%	68%	55
Republican	14%	31%	54%	251
Liberal	8%	19%	73%	23
Moderate	13%	29%	58%	123
Conservative	14%	29%	57%	181
Support Tea Party	13%	25%	61%	119
Neutral	12%	31%	57%	141
Oppose Tea Party	15%	21%	64%	63
Voted in 2008,2012 NH Primaries	12%	27%	61%	248
Voted in 2008 or 2012 NH Primary	15%	23%	62%	44
Did Not Vote in Either NH Primary	17%	39%	44%	51
Veteran household	16%	23%	61%	107
Non-veteran	12%	30%	58%	230
Union household	16%	28%	55%	37
Non-union	13%	28%	60%	299
Read Union Leader	18%	28%	54%	113
Read Boston Globe	11%	24%	65%	36
Read Local Newspapers	9%	28%	62%	109
Watch WMUR	12%	28%	60%	190
Listen to NHPR	17%	29%	54%	67
18 to 34	15%	29%	56%	67
35 to 49	11%	28%	61%	81
50 to 64	10%	31%	59%	118
65 and over	18%	18%	65%	59
Male	18%	31%	51%	203
Female	7%	23%	69%	140
High school or less	26%	27%	47%	65
Some college	14%	29%	57%	75
College graduate	7%	29%	64%	134
Post-graduate	11%	26%	63%	62
Attend services 1 or more/week	16%	25%	59%	79
1-2 times a month	11%	26%	63%	32
Less often	12%	32%	56%	124
Never	13%	24%	63%	93
North Country	32%	24%	44%	38
Central / Lakes	11%	27%	62%	52
Connecticut Valley	15%	27%	59%	43
Mass Border	10%	38%	52%	97
Seacoast	5%	20%	75%	46
Manchester Area	15%	24%	62%	65
First Cong. Dist	15%	30%	55%	191
Second Cong. Dist	11%	26%	63%	149

**GOP 2016 Primary Support
(Likely 2016 GOP Primary Voters)**

	<u>Donald Trump</u>	<u>Carly Fiorina</u>	<u>Marco Rubio</u>	<u>Ben Carson</u>	<u>John Kasich</u>	<u>Jeb Bush</u>	<u>Someone Else</u>	<u>Undecided</u>	<u>(N=)</u>
LIKELY NH GOP PRIMARY VOTERS	26%	16%	9%	8%	7%	7%	16%	11%	344
Registered Undeclared	25%	20%	6%	12%	6%	10%	13%	8%	128
Registered Republican	22%	16%	12%	6%	8%	6%	18%	13%	180
Democrat	19%	8%	14%	3%	11%	12%	27%	5%	25
Independent	29%	15%	3%	11%	9%	6%	17%	10%	55
Republican	25%	18%	9%	9%	7%	7%	14%	11%	252
Liberal	34%	12%	9%	13%	9%	5%	10%	9%	23
Moderate	26%	16%	6%	11%	6%	9%	13%	13%	124
Conservative	24%	17%	10%	6%	7%	7%	19%	10%	181
Support Tea Party	26%	23%	7%	9%	2%	4%	20%	9%	119
Neutral	24%	14%	8%	8%	9%	11%	12%	13%	141
Oppose Tea Party	18%	12%	13%	7%	16%	7%	17%	11%	63
Voted in 2008,2012 NH Primaries	18%	18%	11%	9%	9%	8%	16%	11%	248
Voted in 2008 or 2012 NH Primary	32%	23%	2%	9%	0%	3%	20%	9%	44
Did Not Vote in Either NH Primary	59%	4%	1%	4%	6%	8%	7%	10%	52
Veteran household	22%	16%	9%	6%	8%	7%	19%	13%	107
Non-veteran	28%	17%	8%	9%	7%	7%	14%	10%	231
Union household	29%	6%	17%	18%	14%	5%	8%	3%	37
Non-union	25%	18%	7%	7%	7%	8%	16%	12%	300
Read Union Leader	23%	18%	9%	9%	8%	8%	15%	11%	113
Read Boston Globe	18%	12%	11%	7%	10%	6%	29%	6%	36
Read Local Newspapers	23%	17%	10%	9%	6%	8%	19%	7%	109
Watch WMUR	28%	17%	8%	7%	8%	10%	13%	10%	191
Listen to NHPR	24%	20%	8%	12%	6%	5%	17%	7%	67
18 to 34	43%	12%	2%	6%	2%	2%	20%	12%	67
35 to 49	28%	23%	8%	10%	1%	6%	15%	9%	81
50 to 64	17%	17%	10%	9%	12%	9%	16%	9%	118
65 and over	20%	12%	12%	9%	11%	11%	9%	15%	60
Male	27%	16%	7%	9%	10%	7%	16%	8%	203
Female	25%	17%	11%	8%	3%	7%	15%	14%	141
High school or less	35%	7%	6%	9%	9%	10%	15%	9%	65
Some college	36%	13%	3%	8%	5%	8%	15%	11%	75
College graduate	20%	19%	12%	9%	6%	7%	16%	12%	135
Post-graduate	17%	25%	9%	7%	11%	4%	16%	10%	62
Attend services 1 or more/week	20%	21%	10%	13%	6%	7%	15%	9%	79
1-2 times a month	16%	9%	18%	9%	15%	9%	13%	12%	32
Less often	27%	20%	5%	5%	8%	9%	13%	14%	124
Never	33%	12%	9%	10%	5%	5%	18%	7%	94
North Country	28%	11%	9%	4%	11%	10%	12%	15%	38
Central / Lakes	24%	15%	9%	7%	6%	9%	23%	8%	52
Connecticut Valley	27%	15%	3%	19%	8%	6%	15%	8%	44
Mass Border	30%	15%	11%	11%	7%	8%	13%	5%	97
Seacoast	23%	24%	9%	6%	4%	7%	14%	14%	46
Manchester Area	22%	19%	8%	4%	8%	4%	16%	18%	65
First Cong. Dist	27%	18%	8%	6%	6%	8%	16%	11%	191
Second Cong. Dist	24%	15%	8%	12%	9%	6%	16%	10%	150

**GOP 2016 Primary – Second Choice
(Likely 2016 GOP Primary Voters)**

	<u>Carly Fiorina</u>	<u>Ben Carson</u>	<u>Chris Christie</u>	<u>Jeb Bush</u>	<u>Marco Rubio</u>	<u>Someone Else</u>	<u>No Second Choice</u>	<u>Don't Know</u>	<u>(N=)</u>
LIKELY NH GOP PRIMARY VOTERS	13%	12%	10%	10%	9%	28%	8%	9%	307
Registered Undeclared	14%	14%	4%	4%	10%	33%	14%	8%	118
Registered Republican	13%	12%	13%	13%	11%	25%	3%	9%	157
Democrat	17%	9%	6%	20%	6%	25%	17%	0%	24
Independent	5%	4%	11%	3%	15%	29%	21%	11%	50
Republican	15%	13%	11%	10%	8%	28%	4%	10%	224
Liberal	14%	11%	18%	15%	0%	23%	5%	14%	21
Moderate	10%	13%	10%	10%	9%	24%	12%	12%	108
Conservative	16%	12%	10%	8%	11%	32%	6%	6%	163
Support Tea Party	19%	14%	10%	7%	12%	29%	2%	6%	108
Neutral	10%	11%	13%	11%	10%	26%	8%	11%	123
Oppose Tea Party	13%	10%	8%	9%	6%	32%	16%	7%	56
Voted in 2008,2012 NH Primaries	16%	14%	10%	10%	11%	27%	4%	9%	220
Voted in 2008 or 2012 NH Primary	12%	3%	2%	4%	9%	49%	14%	8%	40
Did Not Vote in Either NH Primary	4%	11%	21%	12%	2%	19%	22%	9%	47
Veteran household	16%	12%	12%	7%	12%	25%	7%	9%	93
Non-veteran	12%	12%	10%	10%	9%	30%	9%	9%	208
Union household	13%	8%	22%	11%	18%	18%	3%	8%	36
Non-union	14%	13%	9%	9%	9%	30%	9%	9%	264
Read Union Leader	16%	13%	12%	9%	11%	32%	2%	6%	101
Read Boston Globe	17%	12%	8%	10%	6%	32%	6%	9%	34
Read Local Newspapers	15%	11%	9%	8%	7%	31%	5%	13%	101
Watch WMUR	16%	11%	15%	9%	8%	25%	6%	9%	171
Listen to NHPR	9%	11%	8%	8%	9%	33%	14%	8%	62
18 to 34	8%	14%	9%	8%	2%	29%	18%	12%	59
35 to 49	14%	8%	9%	14%	10%	23%	7%	14%	74
50 to 64	15%	14%	13%	7%	11%	28%	6%	5%	108
65 and over	19%	12%	10%	8%	13%	28%	3%	7%	51
Male	13%	12%	10%	10%	10%	31%	8%	6%	186
Female	14%	12%	11%	8%	8%	24%	9%	12%	121
High school or less	5%	8%	19%	13%	13%	28%	6%	8%	59
Some college	14%	13%	9%	9%	5%	26%	12%	12%	67
College graduate	19%	12%	9%	6%	7%	32%	7%	9%	119
Post-graduate	10%	15%	6%	13%	18%	23%	8%	6%	56
Attend services 1 or more/week	11%	16%	7%	13%	11%	28%	4%	9%	72
1-2 times a month	13%	7%	16%	8%	18%	33%	5%	0%	28
Less often	13%	13%	9%	11%	13%	25%	9%	7%	107
Never	17%	6%	14%	5%	2%	29%	12%	15%	87
North Country	8%	8%	14%	12%	4%	22%	33%	0%	33
Central / Lakes	15%	9%	12%	9%	8%	36%	2%	7%	48
Connecticut Valley	13%	7%	4%	4%	11%	36%	18%	6%	41
Mass Border	12%	18%	10%	11%	8%	31%	1%	8%	92
Seacoast	25%	8%	9%	11%	12%	15%	3%	16%	40
Manchester Area	10%	11%	12%	9%	12%	25%	7%	14%	54
First Cong. Dist	15%	11%	13%	11%	9%	26%	6%	8%	169
Second Cong. Dist	10%	13%	8%	8%	10%	31%	11%	10%	135

**GOP 2016 Primary – Would NOT Support
(Likely 2016 GOP Primary Voters)**

	Donald <u>Trump</u>	Jeb <u>Bush</u>	Rand <u>Paul</u>	Mike <u>Huckabee</u>	Chris <u>Christie</u>	Someone <u>Else</u>	All <u>Acceptable</u>	Don't <u>Know</u>	(N=)
LIKELY NH GOP PRIMARY VOTERS	25%	11%	10%	8%	5%	16%	10%	15%	343
Registered Undeclared	25%	11%	9%	9%	5%	16%	12%	12%	128
Registered Republican	27%	10%	9%	9%	6%	18%	9%	12%	179
Democrat	39%	9%	3%	12%	0%	9%	12%	16%	25
Independent	33%	12%	3%	6%	3%	14%	9%	21%	55
Republican	23%	10%	12%	8%	7%	18%	9%	13%	251
Liberal	31%	0%	0%	10%	7%	14%	16%	22%	23
Moderate	30%	10%	7%	13%	4%	16%	4%	16%	124
Conservative	21%	13%	13%	4%	6%	17%	13%	12%	180
Support Tea Party	17%	12%	11%	7%	5%	26%	14%	8%	119
Neutral	29%	10%	10%	6%	5%	13%	9%	17%	141
Oppose Tea Party	36%	10%	10%	16%	4%	9%	4%	11%	63
Voted in 2008,2012 NH Primaries	29%	10%	9%	8%	5%	17%	10%	12%	247
Voted in 2008 or 2012 NH Primary	18%	12%	26%	17%	9%	7%	8%	4%	44
Did Not Vote in Either NH Primary	12%	13%	4%	3%	3%	20%	7%	38%	52
Veteran household	23%	10%	9%	7%	7%	19%	11%	14%	107
Non-veteran	26%	11%	10%	9%	4%	15%	9%	15%	231
Union household	27%	14%	14%	10%	3%	16%	7%	10%	37
Non-union	25%	11%	9%	8%	5%	17%	10%	15%	299
Read Union Leader	25%	11%	12%	6%	8%	18%	9%	10%	113
Read Boston Globe	32%	17%	9%	5%	6%	16%	3%	13%	36
Read Local Newspapers	27%	10%	10%	5%	6%	18%	9%	15%	109
Watch WMUR	24%	11%	10%	9%	3%	16%	10%	17%	190
Listen to NHPR	33%	11%	8%	9%	7%	8%	12%	11%	67
18 to 34	16%	8%	16%	11%	2%	16%	10%	21%	67
35 to 49	22%	13%	3%	11%	6%	17%	11%	16%	81
50 to 64	30%	12%	10%	7%	5%	18%	8%	10%	118
65 and over	32%	9%	13%	5%	4%	15%	8%	14%	59
Male	27%	13%	11%	7%	6%	15%	8%	13%	202
Female	22%	9%	8%	10%	4%	19%	12%	17%	141
High school or less	25%	11%	9%	4%	4%	16%	12%	18%	64
Some college	12%	17%	7%	7%	6%	14%	15%	23%	75
College graduate	27%	7%	12%	11%	5%	19%	8%	11%	135
Post-graduate	38%	11%	10%	9%	5%	16%	5%	6%	62
Attend services 1 or more/week	39%	11%	12%	3%	5%	15%	10%	6%	79
1-2 times a month	15%	10%	14%	17%	6%	19%	3%	15%	32
Less often	21%	12%	10%	8%	2%	17%	13%	16%	123
Never	23%	11%	6%	10%	7%	15%	8%	20%	94
North Country	27%	17%	17%	4%	2%	7%	4%	22%	38
Central / Lakes	27%	12%	6%	8%	4%	16%	14%	12%	52
Connecticut Valley	24%	11%	7%	4%	8%	21%	9%	15%	44
Mass Border	17%	14%	12%	6%	6%	17%	13%	14%	96
Seacoast	32%	6%	7%	9%	5%	13%	7%	21%	46
Manchester Area	28%	5%	10%	17%	4%	20%	7%	9%	65
First Cong. Dist	24%	11%	12%	10%	4%	18%	8%	13%	190
Second Cong. Dist	26%	12%	8%	5%	6%	15%	11%	16%	150

**GOP 2016 Primary Who Will Win
(Likely 2016 GOP Primary Voters)**

	<u>Donald Trump</u>	<u>Jeb Bush</u>	<u>Carly Fiorina</u>	<u>Marco Rubio</u>	<u>Ben Carson</u>	<u>John Kasich</u>	<u>Someone Else</u>	<u>Don't Know</u>	<u>(N=)</u>
LIKELY NH GOP PRIMARY VOTERS	40%	12%	8%	5%	4%	3%	4%	24%	344
Registered Undeclared	40%	9%	6%	2%	5%	5%	4%	29%	128
Registered Republican	37%	13%	9%	7%	4%	2%	3%	24%	180
Democrat	37%	22%	0%	13%	0%	3%	4%	22%	25
Independent	34%	13%	3%	0%	2%	3%	8%	37%	55
Republican	42%	11%	10%	5%	5%	3%	3%	21%	252
Liberal	53%	10%	8%	9%	0%	8%	0%	12%	23
Moderate	44%	15%	4%	2%	5%	2%	3%	25%	124
Conservative	36%	10%	11%	5%	4%	3%	5%	25%	181
Support Tea Party	40%	12%	8%	4%	6%	3%	4%	25%	119
Neutral	39%	10%	11%	4%	3%	3%	5%	25%	141
Oppose Tea Party	35%	18%	3%	8%	4%	4%	3%	25%	63
Voted in 2008,2012 NH Primaries	35%	13%	8%	4%	4%	4%	5%	26%	248
Voted in 2008 or 2012 NH Primary	50%	13%	14%	5%	5%	0%	1%	11%	44
Did Not Vote in Either NH Primary	56%	7%	3%	6%	2%	0%	2%	25%	52
Veteran household	31%	13%	9%	5%	4%	5%	4%	28%	107
Non-veteran	45%	11%	7%	4%	4%	2%	4%	23%	231
Union household	42%	16%	6%	6%	12%	0%	2%	14%	37
Non-union	40%	11%	8%	4%	3%	3%	4%	26%	300
Read Union Leader	39%	13%	5%	6%	5%	3%	5%	24%	113
Read Boston Globe	32%	14%	8%	3%	3%	2%	11%	27%	36
Read Local Newspapers	40%	18%	9%	3%	8%	3%	4%	15%	109
Watch WMUR	43%	12%	10%	5%	2%	2%	3%	24%	191
Listen to NHPR	40%	11%	6%	6%	6%	5%	1%	25%	67
18 to 34	56%	14%	5%	5%	5%	0%	2%	13%	67
35 to 49	40%	14%	8%	4%	3%	2%	4%	24%	81
50 to 64	38%	11%	9%	4%	4%	4%	7%	24%	118
65 and over	30%	10%	10%	2%	5%	5%	1%	37%	60
Male	47%	12%	7%	3%	6%	4%	4%	17%	203
Female	30%	12%	9%	7%	1%	2%	5%	34%	141
High school or less	50%	13%	5%	5%	2%	2%	5%	19%	65
Some college	46%	7%	5%	4%	6%	3%	5%	24%	75
College graduate	36%	16%	10%	4%	5%	4%	1%	23%	135
Post-graduate	33%	9%	8%	5%	1%	2%	9%	34%	62
Attend services 1 or more/week	38%	7%	15%	2%	8%	2%	3%	26%	79
1-2 times a month	29%	16%	3%	15%	5%	10%	0%	23%	32
Less often	42%	11%	8%	2%	3%	4%	4%	26%	124
Never	44%	17%	4%	5%	2%	1%	7%	21%	94
North Country	40%	13%	3%	10%	0%	3%	4%	27%	38
Central / Lakes	42%	10%	8%	5%	3%	3%	7%	22%	52
Connecticut Valley	38%	10%	4%	0%	8%	2%	3%	35%	44
Mass Border	48%	8%	11%	4%	7%	3%	2%	17%	97
Seacoast	23%	26%	13%	5%	4%	0%	2%	28%	46
Manchester Area	42%	11%	5%	4%	0%	5%	7%	26%	65
First Cong. Dist	38%	16%	10%	3%	2%	4%	5%	23%	191
Second Cong. Dist	43%	7%	5%	7%	7%	2%	4%	26%	150

**Who is the Least Likely To Act Like A Typical Politician?
(Likely 2016 GOP Primary Voters)**

	<u>Donald Trump</u>	<u>Ben Carson</u>	<u>Carly Fiorina</u>	<u>Chris Christie</u>	<u>Jeb Bush</u>	<u>Rand Paul</u>	<u>Someone Else</u>	<u>Don't Know</u>	<u>(N=)</u>
LIKELY NH GOP PRIMARY VOTERS	68%	11%	4%	3%	2%	2%	3%	7%	344
Registered Undeclared	66%	11%	4%	2%	4%	3%	1%	8%	128
Registered Republican	70%	12%	4%	3%	1%	2%	4%	5%	180
Democrat	75%	8%	0%	5%	2%	0%	0%	11%	25
Independent	62%	9%	3%	3%	4%	9%	2%	8%	55
Republican	68%	12%	5%	3%	2%	1%	3%	6%	252
Liberal	61%	11%	0%	2%	9%	8%	5%	6%	23
Moderate	73%	7%	2%	2%	3%	2%	4%	7%	124
Conservative	65%	13%	6%	4%	1%	2%	2%	7%	181
Support Tea Party	66%	17%	6%	2%	1%	1%	2%	4%	119
Neutral	67%	10%	1%	5%	3%	2%	3%	10%	141
Oppose Tea Party	75%	3%	7%	1%	3%	3%	4%	4%	63
Voted in 2008,2012 NH Primaries	70%	11%	3%	3%	2%	1%	2%	7%	248
Voted in 2008 or 2012 NH Primary	64%	11%	11%	4%	0%	9%	2%	0%	44
Did Not Vote in Either NH Primary	65%	8%	2%	3%	4%	0%	5%	14%	52
Veteran household	67%	10%	5%	3%	4%	1%	4%	6%	107
Non-veteran	69%	11%	4%	3%	1%	2%	2%	7%	231
Union household	61%	21%	2%	4%	0%	0%	7%	6%	37
Non-union	69%	10%	4%	3%	3%	2%	2%	7%	300
Read Union Leader	64%	11%	5%	4%	1%	0%	4%	10%	113
Read Boston Globe	78%	4%	2%	6%	0%	3%	3%	5%	36
Read Local Newspapers	65%	13%	6%	2%	1%	2%	4%	7%	109
Watch WMUR	70%	8%	5%	4%	3%	1%	3%	7%	191
Listen to NHPR	62%	13%	7%	3%	4%	4%	4%	4%	67
18 to 34	68%	13%	4%	0%	3%	4%	2%	6%	67
35 to 49	70%	10%	3%	3%	1%	2%	4%	7%	81
50 to 64	74%	9%	5%	3%	2%	2%	1%	3%	118
65 and over	60%	13%	5%	5%	1%	0%	4%	12%	60
Male	72%	11%	3%	3%	2%	2%	3%	5%	203
Female	64%	10%	6%	3%	3%	2%	3%	10%	141
High school or less	60%	13%	6%	2%	3%	4%	4%	8%	65
Some college	58%	12%	3%	3%	5%	3%	3%	13%	75
College graduate	78%	9%	3%	2%	1%	2%	2%	4%	135
Post-graduate	70%	12%	3%	7%	1%	0%	3%	6%	62
Attend services 1 or more/week	60%	11%	7%	6%	4%	1%	3%	7%	79
1-2 times a month	63%	10%	2%	2%	6%	5%	6%	5%	32
Less often	74%	12%	2%	2%	2%	1%	2%	6%	124
Never	71%	9%	5%	2%	0%	3%	1%	9%	94
North Country	66%	7%	3%	4%	8%	3%	0%	8%	38
Central / Lakes	58%	11%	9%	2%	3%	4%	9%	3%	52
Connecticut Valley	57%	16%	3%	5%	0%	4%	4%	11%	44
Mass Border	74%	11%	3%	4%	3%	0%	1%	4%	97
Seacoast	72%	11%	3%	4%	0%	2%	2%	6%	46
Manchester Area	74%	9%	3%	0%	0%	1%	1%	11%	65
First Cong. Dist	70%	8%	4%	4%	1%	2%	3%	9%	191
Second Cong. Dist	67%	13%	4%	2%	4%	3%	2%	5%	150

**Who is Most Likeable?
(Likely 2016 GOP Primary Voters)**

	<u>Ben Carson</u>	<u>Donald Trump</u>	<u>Carly Fiorina</u>	<u>Marco Rubio</u>	<u>Jeb Bush</u>	<u>Chris Christie</u>	<u>Someone Else</u>	<u>Don't Know</u>	<u>(N=)</u>
LIKELY NH GOP PRIMARY VOTERS	24%	16%	12%	10%	8%	7%	11%	13%	344
Registered Undeclared	26%	14%	13%	6%	8%	5%	10%	18%	128
Registered Republican	25%	12%	11%	12%	9%	9%	12%	9%	180
Democrat	17%	11%	10%	11%	14%	11%	9%	17%	25
Independent	23%	13%	2%	1%	10%	8%	18%	24%	55
Republican	24%	16%	14%	12%	7%	6%	10%	11%	252
Liberal	24%	8%	6%	6%	12%	29%	0%	15%	23
Moderate	21%	16%	11%	8%	12%	7%	12%	12%	124
Conservative	25%	16%	13%	12%	4%	5%	13%	12%	181
Support Tea Party	30%	16%	10%	9%	7%	6%	13%	9%	119
Neutral	22%	15%	13%	12%	8%	9%	10%	12%	141
Oppose Tea Party	21%	12%	13%	9%	10%	7%	14%	14%	63
Voted in 2008,2012 NH Primaries	27%	12%	9%	12%	8%	9%	13%	10%	248
Voted in 2008 or 2012 NH Primary	21%	19%	29%	7%	6%	0%	5%	13%	44
Did Not Vote in Either NH Primary	9%	29%	8%	2%	6%	5%	11%	30%	52
Veteran household	24%	11%	10%	11%	8%	11%	13%	11%	107
Non-veteran	24%	17%	12%	9%	7%	5%	11%	14%	231
Union household	21%	18%	10%	20%	5%	14%	9%	4%	37
Non-union	24%	15%	12%	8%	8%	6%	12%	14%	300
Read Union Leader	21%	16%	12%	13%	8%	8%	12%	10%	113
Read Boston Globe	23%	14%	7%	21%	4%	12%	17%	2%	36
Read Local Newspapers	24%	14%	12%	13%	8%	10%	10%	10%	109
Watch WMUR	21%	18%	10%	12%	9%	8%	10%	13%	191
Listen to NHPR	25%	18%	9%	8%	13%	3%	10%	13%	67
18 to 34	5%	20%	21%	7%	7%	4%	14%	22%	67
35 to 49	27%	21%	15%	8%	9%	11%	2%	7%	81
50 to 64	32%	12%	9%	11%	7%	8%	12%	10%	118
65 and over	26%	10%	6%	13%	8%	5%	18%	15%	60
Male	20%	18%	14%	10%	7%	7%	15%	10%	203
Female	29%	12%	8%	9%	9%	8%	6%	19%	141
High school or less	17%	26%	7%	7%	5%	6%	14%	19%	65
Some college	18%	17%	8%	4%	11%	8%	12%	22%	75
College graduate	28%	13%	15%	10%	7%	8%	9%	8%	135
Post-graduate	29%	8%	11%	18%	8%	6%	12%	8%	62
Attend services 1 or more/week	23%	13%	17%	9%	12%	4%	12%	11%	79
1-2 times a month	27%	9%	10%	17%	12%	4%	9%	12%	32
Less often	21%	18%	12%	7%	6%	8%	14%	15%	124
Never	25%	17%	8%	10%	6%	10%	9%	15%	94
North Country	16%	21%	8%	12%	8%	5%	11%	19%	38
Central / Lakes	28%	21%	4%	11%	6%	4%	21%	5%	52
Connecticut Valley	27%	12%	10%	4%	7%	8%	10%	22%	44
Mass Border	20%	19%	15%	10%	6%	12%	9%	8%	97
Seacoast	24%	4%	16%	12%	12%	7%	6%	19%	46
Manchester Area	27%	13%	12%	9%	8%	3%	12%	16%	65
First Cong. Dist	24%	17%	12%	10%	7%	7%	10%	13%	191
Second Cong. Dist	23%	14%	11%	9%	9%	7%	13%	14%	150

**Who is the Most Conservative?
(Likely 2016 GOP Primary Voters)**

	Ted <u>Cruz</u>	Mike <u>Huckabee</u>	Rand <u>Paul</u>	Donald <u>Trump</u>	Jeb <u>Bush</u>	Ben <u>Carson</u>	Someone <u>Else</u>	Don't <u>Know</u>	(N=)
LIKELY NH GOP PRIMARY VOTERS	18%	13%	9%	8%	8%	6%	15%	24%	344
Registered Undeclared	19%	18%	11%	8%	4%	2%	10%	27%	128
Registered Republican	21%	11%	8%	4%	8%	8%	19%	20%	180
Democrat	18%	30%	12%	9%	5%	3%	2%	21%	25
Independent	15%	7%	14%	8%	0%	1%	16%	40%	55
Republican	18%	13%	7%	8%	10%	7%	16%	20%	252
Liberal	5%	16%	3%	5%	16%	11%	5%	40%	23
Moderate	16%	22%	8%	7%	6%	3%	14%	25%	124
Conservative	22%	7%	10%	9%	8%	7%	18%	19%	181
Support Tea Party	25%	10%	8%	7%	7%	8%	15%	19%	119
Neutral	14%	13%	8%	8%	11%	6%	17%	24%	141
Oppose Tea Party	18%	22%	14%	7%	4%	3%	11%	21%	63
Voted in 2008,2012 NH Primaries	22%	14%	8%	3%	8%	7%	17%	21%	248
Voted in 2008 or 2012 NH Primary	16%	15%	20%	15%	6%	5%	10%	12%	44
Did Not Vote in Either NH Primary	1%	4%	3%	24%	9%	2%	8%	49%	52
Veteran household	23%	9%	11%	8%	6%	4%	16%	22%	107
Non-veteran	16%	15%	8%	8%	8%	6%	14%	25%	231
Union household	23%	24%	11%	8%	12%	3%	10%	9%	37
Non-union	17%	12%	8%	8%	7%	6%	16%	26%	300
Read Union Leader	20%	7%	11%	5%	10%	9%	18%	20%	113
Read Boston Globe	9%	24%	13%	12%	7%	4%	14%	15%	36
Read Local Newspapers	21%	17%	11%	7%	6%	4%	15%	19%	109
Watch WMUR	15%	13%	11%	9%	9%	6%	17%	21%	191
Listen to NHPR	18%	16%	11%	11%	5%	5%	15%	19%	67
18 to 34	12%	14%	8%	13%	9%	4%	4%	36%	67
35 to 49	11%	19%	8%	6%	7%	3%	18%	27%	81
50 to 64	29%	12%	11%	5%	6%	7%	16%	13%	118
65 and over	14%	9%	2%	8%	12%	9%	20%	27%	60
Male	22%	15%	11%	8%	6%	6%	15%	18%	203
Female	11%	10%	7%	7%	11%	6%	15%	33%	141
High school or less	11%	5%	9%	10%	14%	7%	13%	31%	65
Some college	17%	5%	12%	6%	12%	3%	11%	34%	75
College graduate	19%	16%	9%	9%	6%	6%	17%	19%	135
Post-graduate	26%	25%	5%	5%	0%	7%	17%	16%	62
Attend services 1 or more/week	12%	12%	7%	8%	7%	12%	20%	23%	79
1-2 times a month	17%	15%	14%	8%	2%	5%	23%	17%	32
Less often	25%	15%	7%	8%	9%	3%	11%	23%	124
Never	16%	13%	8%	8%	9%	5%	13%	29%	94
North Country	10%	6%	9%	10%	6%	3%	17%	38%	38
Central / Lakes	16%	13%	10%	9%	9%	10%	19%	14%	52
Connecticut Valley	15%	9%	11%	22%	1%	14%	6%	22%	44
Mass Border	22%	17%	6%	5%	6%	5%	19%	19%	97
Seacoast	19%	17%	13%	3%	14%	3%	7%	25%	46
Manchester Area	19%	10%	10%	4%	9%	2%	14%	32%	65
First Cong. Dist	15%	13%	11%	6%	11%	4%	17%	23%	191
Second Cong. Dist	21%	14%	7%	10%	3%	8%	11%	26%	150

**Who has the Best Chance of Winning the General Election?
(Likely 2016 GOP Primary Voters)**

	Donald <u>Trump</u>	Jeb <u>Bush</u>	Carly <u>Fiorina</u>	Marco <u>Rubio</u>	Ben <u>Carson</u>	John <u>Kasich</u>	Someone <u>Else</u>	Don't <u>Know</u>	(N=)
LIKELY NH GOP PRIMARY VOTERS	27%	16%	9%	7%	6%	6%	8%	22%	344
Registered Undeclared	24%	14%	10%	6%	7%	7%	9%	23%	128
Registered Republican	23%	17%	9%	9%	5%	6%	8%	23%	180
Democrat	13%	30%	5%	18%	3%	5%	10%	16%	25
Independent	18%	18%	10%	2%	7%	4%	9%	33%	55
Republican	29%	15%	10%	7%	6%	6%	8%	19%	252
Liberal	24%	23%	0%	9%	18%	5%	10%	11%	23
Moderate	28%	20%	5%	6%	7%	7%	4%	23%	124
Conservative	25%	12%	12%	9%	4%	6%	11%	22%	181
Support Tea Party	31%	8%	13%	9%	6%	3%	10%	20%	119
Neutral	23%	19%	8%	6%	6%	7%	7%	24%	141
Oppose Tea Party	21%	26%	6%	8%	4%	10%	8%	18%	63
Voted in 2008,2012 NH Primaries	21%	17%	10%	8%	6%	7%	8%	23%	248
Voted in 2008 or 2012 NH Primary	34%	10%	9%	5%	9%	3%	11%	18%	44
Did Not Vote in Either NH Primary	47%	14%	3%	4%	5%	2%	5%	20%	52
Veteran household	18%	19%	8%	9%	5%	6%	8%	28%	107
Non-veteran	31%	15%	10%	7%	6%	6%	8%	19%	231
Union household	34%	15%	4%	19%	14%	7%	0%	7%	37
Non-union	26%	16%	10%	6%	5%	6%	9%	24%	300
Read Union Leader	24%	15%	8%	12%	7%	8%	9%	17%	113
Read Boston Globe	31%	25%	5%	5%	3%	8%	13%	10%	36
Read Local Newspapers	28%	15%	8%	11%	7%	4%	10%	16%	109
Watch WMUR	28%	16%	10%	8%	5%	6%	8%	19%	191
Listen to NHPR	23%	15%	9%	7%	5%	7%	11%	23%	67
18 to 34	34%	17%	8%	6%	10%	2%	9%	15%	67
35 to 49	29%	20%	13%	7%	8%	0%	6%	17%	81
50 to 64	24%	14%	8%	8%	4%	10%	11%	22%	118
65 and over	19%	17%	7%	10%	3%	7%	4%	34%	60
Male	33%	16%	10%	6%	7%	7%	7%	14%	203
Female	18%	15%	7%	8%	4%	3%	10%	34%	141
High school or less	40%	15%	7%	8%	7%	1%	10%	13%	65
Some college	34%	13%	7%	6%	8%	3%	12%	18%	75
College graduate	22%	17%	11%	8%	7%	6%	4%	25%	135
Post-graduate	13%	17%	11%	7%	1%	14%	9%	27%	62
Attend services 1 or more/week	26%	13%	12%	4%	10%	4%	6%	25%	79
1-2 times a month	17%	16%	8%	11%	6%	14%	1%	25%	32
Less often	27%	15%	11%	7%	5%	7%	7%	21%	124
Never	30%	20%	5%	8%	4%	2%	12%	17%	94
North Country	32%	14%	2%	6%	4%	6%	4%	32%	38
Central / Lakes	23%	15%	9%	8%	2%	7%	14%	22%	52
Connecticut Valley	19%	12%	10%	1%	12%	6%	14%	27%	44
Mass Border	35%	14%	10%	9%	7%	5%	5%	14%	97
Seacoast	25%	20%	13%	10%	7%	0%	6%	19%	46
Manchester Area	20%	18%	8%	5%	3%	10%	9%	27%	65
First Cong. Dist	29%	17%	10%	7%	5%	5%	7%	20%	191
Second Cong. Dist	23%	14%	8%	7%	8%	7%	10%	24%	150

**Who has the Right Experience to be President?
(Likely 2016 GOP Primary Voters)**

	<u>Jeb Bush</u>	<u>Donald Trump</u>	<u>Carly Fiorina</u>	<u>Marco Rubio</u>	<u>Ben Carson</u>	<u>John Kasich</u>	<u>Someone Else</u>	<u>Don't Know</u>	<u>(N=)</u>
LIKELY NH GOP PRIMARY VOTERS	17%	14%	11%	10%	7%	6%	16%	19%	342
Registered Undeclared	16%	12%	12%	15%	6%	2%	19%	18%	128
Registered Republican	18%	12%	11%	7%	6%	10%	18%	17%	179
Democrat	13%	14%	12%	5%	11%	0%	20%	26%	25
Independent	13%	11%	13%	10%	5%	1%	19%	28%	54
Republican	19%	14%	11%	10%	6%	7%	16%	17%	251
Liberal	19%	13%	11%	5%	14%	3%	5%	29%	23
Moderate	21%	14%	13%	10%	8%	5%	9%	19%	124
Conservative	15%	14%	10%	9%	5%	6%	23%	18%	179
Support Tea Party	10%	14%	9%	15%	7%	5%	26%	15%	119
Neutral	25%	16%	11%	9%	5%	7%	9%	17%	140
Oppose Tea Party	17%	6%	18%	5%	10%	4%	18%	22%	63
Voted in 2008,2012 NH Primaries	17%	11%	13%	10%	8%	7%	16%	16%	246
Voted in 2008 or 2012 NH Primary	13%	13%	4%	13%	0%	3%	26%	28%	44
Did Not Vote in Either NH Primary	20%	29%	8%	3%	3%	0%	9%	28%	52
Veteran household	16%	9%	15%	7%	8%	7%	16%	22%	106
Non-veteran	18%	16%	10%	11%	6%	5%	17%	18%	231
Union household	9%	20%	16%	6%	12%	9%	23%	5%	37
Non-union	18%	13%	11%	10%	6%	5%	16%	21%	299
Read Union Leader	18%	14%	12%	8%	7%	7%	16%	18%	112
Read Boston Globe	14%	5%	18%	7%	19%	4%	11%	22%	36
Read Local Newspapers	17%	11%	13%	7%	9%	7%	21%	14%	109
Watch WMUR	19%	14%	13%	9%	8%	6%	10%	20%	190
Listen to NHPR	12%	11%	7%	11%	9%	6%	22%	22%	67
18 to 34	20%	11%	5%	3%	2%	2%	32%	25%	67
35 to 49	15%	19%	3%	18%	9%	4%	16%	16%	80
50 to 64	18%	11%	16%	10%	8%	7%	13%	16%	118
65 and over	18%	16%	17%	6%	6%	9%	8%	20%	60
Male	16%	15%	14%	10%	6%	4%	21%	15%	201
Female	18%	13%	8%	9%	8%	8%	10%	26%	141
High school or less	16%	12%	13%	3%	6%	7%	23%	20%	65
Some college	17%	20%	8%	11%	4%	2%	15%	23%	74
College graduate	18%	13%	12%	10%	8%	6%	16%	18%	134
Post-graduate	17%	11%	13%	14%	9%	7%	12%	16%	62
Attend services 1 or more/week	24%	10%	6%	14%	6%	3%	19%	18%	79
1-2 times a month	21%	12%	21%	3%	3%	6%	24%	9%	31
Less often	18%	12%	13%	12%	5%	5%	17%	18%	124
Never	10%	20%	10%	6%	11%	8%	11%	23%	94
North Country	22%	21%	8%	6%	5%	6%	7%	24%	38
Central / Lakes	17%	12%	11%	7%	8%	1%	21%	22%	52
Connecticut Valley	13%	22%	8%	9%	6%	2%	25%	15%	44
Mass Border	18%	17%	13%	11%	6%	9%	14%	13%	95
Seacoast	18%	6%	5%	16%	7%	5%	19%	24%	46
Manchester Area	16%	9%	16%	6%	8%	7%	14%	24%	65
First Cong. Dist	18%	13%	9%	10%	6%	6%	16%	21%	190
Second Cong. Dist	16%	15%	14%	9%	7%	4%	17%	18%	149

**Most Important To Your Vote In Presidential Primary?
(Likely 2016 GOP Primary Voters)**

LIKELY NH GOP PRIMARY VOTERS	<u>Jobs/ Economy</u> 29%	<u>Health Care</u> 5%	<u>Foreign Policy</u> 21%	<u>Immi- gration</u> 14%	<u>Taxes</u> 2%	<u>Budget/ Debt</u> 8%	<u>Social Issues</u> 3%	<u>Educ- ation</u> 1%	<u>Other/ DK</u> 16%	<u>(N=)</u> 333
Registered Undeclared	35%	5%	16%	15%	2%	6%	5%	0%	16%	124
Registered Republican	27%	4%	26%	14%	2%	10%	1%	1%	13%	176
Democrat	32%	4%	15%	17%	9%	5%	0%	5%	14%	25
Independent	37%	2%	16%	15%	0%	9%	3%	0%	18%	51
Republican	29%	5%	24%	14%	2%	8%	3%	1%	14%	245
Liberal	22%	5%	16%	11%	18%	9%	0%	0%	19%	21
Moderate	33%	5%	18%	14%	3%	8%	0%	1%	17%	123
Conservative	29%	5%	26%	14%	0%	6%	4%	1%	14%	173
Voted in 2008,2012 NH Primaries	31%	5%	23%	14%	3%	8%	2%	1%	12%	240
Voted in 2008 or 2012 NH Primary	28%	7%	30%	12%	0%	5%	6%	0%	13%	42
Did Not Vote in Either NH Primary	22%	5%	8%	19%	0%	8%	2%	3%	35%	51
Veteran household	20%	5%	27%	18%	2%	11%	1%	1%	15%	104
Non-veteran	34%	5%	19%	13%	3%	6%	3%	1%	15%	224
Union household	28%	5%	23%	23%	0%	11%	0%	0%	11%	37
Non-union	30%	5%	21%	14%	3%	7%	3%	1%	15%	290
Read Union Leader	31%	5%	22%	15%	3%	7%	4%	1%	12%	110
Read Boston Globe	22%	7%	25%	18%	10%	8%	0%	0%	11%	35
Read Local Newspapers	33%	7%	22%	12%	4%	6%	2%	0%	15%	107
Watch WMUR	29%	8%	22%	14%	2%	6%	2%	1%	15%	183
Listen to NHPR	35%	4%	20%	12%	4%	8%	6%	2%	9%	65
18 to 34	25%	2%	18%	11%	2%	7%	6%	2%	26%	64
35 to 49	38%	12%	10%	16%	6%	5%	2%	0%	12%	78
50 to 64	31%	3%	28%	14%	2%	9%	1%	2%	10%	116
65 and over	21%	4%	31%	14%	1%	11%	1%	0%	17%	57
Male	30%	4%	20%	15%	2%	8%	2%	1%	19%	195
Female	29%	7%	24%	14%	4%	7%	3%	1%	12%	138
High school or less	17%	5%	17%	12%	4%	10%	9%	2%	24%	62
Some college	14%	6%	27%	19%	2%	8%	1%	0%	23%	74
College graduate	40%	7%	22%	12%	2%	3%	2%	1%	11%	130
Post-graduate	41%	0%	17%	18%	2%	15%	0%	2%	5%	60
Attend services 1 or more/week	21%	6%	28%	10%	1%	4%	5%	2%	24%	75
1-2 times a month	24%	0%	33%	18%	2%	10%	2%	0%	10%	32
Less often	31%	7%	20%	13%	3%	8%	3%	2%	12%	118
Never	39%	4%	16%	16%	4%	10%	0%	0%	13%	93
North Country	23%	5%	19%	4%	0%	11%	0%	0%	38%	35
Central / Lakes	27%	5%	27%	11%	0%	9%	7%	0%	14%	51
Connecticut Valley	36%	9%	15%	15%	4%	3%	3%	0%	15%	43
Mass Border	30%	7%	20%	19%	5%	5%	1%	3%	11%	94
Seacoast	31%	6%	24%	15%	5%	2%	2%	0%	16%	46
Manchester Area	29%	1%	22%	16%	0%	14%	3%	2%	12%	65
First Cong. Dist	28%	6%	22%	14%	2%	10%	4%	1%	13%	184
Second Cong. Dist	32%	5%	20%	14%	3%	5%	1%	1%	19%	146