

2.67
39
996

ANNUAL REPORT

Town of Center Harbor

New Hampshire



For Year Ending December 31

1996

SELECTMEN'S HOURS

Wednesday Evenings
7:30 P.M. to 9:00 P.M.

TOWN CLERK'S HOURS

Monday— 9:00 A.M. to 3:00 P.M.

Tuesday— 9:00 A.M. to 3:00 P.M.

Wednesday— 9:00 A.M. to 12 Noon
— 6:30 P.M. to 8:30 P.M.

Thursday— 9:00 A.M. to 3:00 P.M.

Friday— 9:00 A.M. to 3:00 P.M.

PLANNING BOARD

1st and 3rd Tuesday of the Month
7:30 P.M.

BLOOD PRESSURE CLINIC

2nd Wednesday of Month
12:00 Noon - 3:00 P.M.

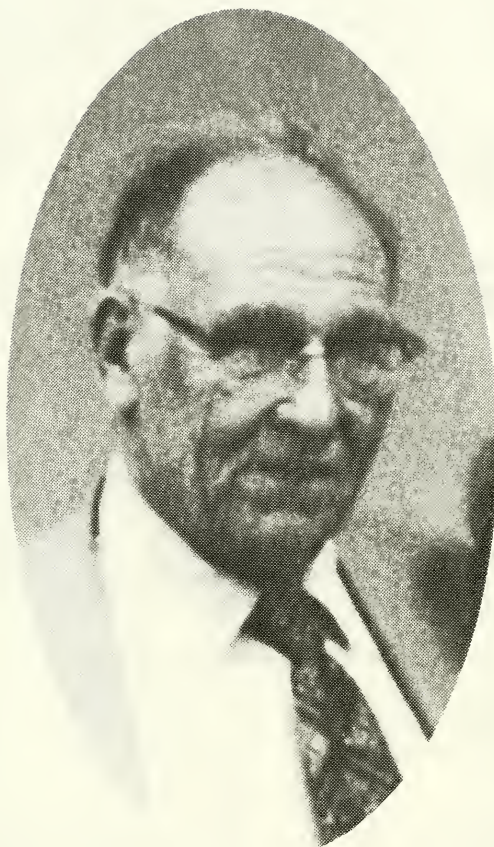
ANNUAL REPORT
of the
OFFICERS
of the
TOWN OF CENTER HARBOR

For the Fiscal Year Ending December 31,


1996

TABLE OF CONTENTS

Town Officers, List of..... 5
 Minutes, Town Meeting 1996..... 7
 Warrant for 1997..... 13
 Amount Budgeted for 1997..... 17
 Summary Inventory of Valuation..... 18
 Budget..... 19
 Statement of Appropriations and Taxes Assessed..... 23
 Comparative Statement of Appropriations and Expenditures..... 25
 Statement of Assets and Liabilities..... 26
 Schedule of Long Term Indebtedness..... 27
 Schedule of Town Property..... 28
 Report of Town Clerk..... 29
 Report of Tax Collector..... 30
 Report of Town Treasurer..... 32
 Expenditures of all Funds..... 33
 Detailed Statement of Payments..... 35
 Town Highway/Cemetery Maintenance Payroll..... 39
 Memorial Park Cemetery..... 40
 Trust Funds..... 41
 Nichols Memorial Library - Treasurer..... 42
 Report on Audit..... 43
 Planning Board Report..... 44
 Report of Librarian..... 45
 Center Harbor Volunteer Firemen's Association..... 46
 Report of Forest Fire Warden..... 47
 Lakes Region Community Services..... 48
 Report of Center Harbor Historical Society..... 49
 Report of Bicentennial Committee..... 50
 Report of Police Chief..... 53
 New Beginnings..... 54
 Lakes Region Planning Commission..... 55
 Lakes Region Family Service..... 57
 Community Action Program..... 64
 Meredith Public Health Nursing Association..... 67
 Inter-Lakes Day Care Center..... 68
 Parks and Recreation..... 69
 New Hampshire Humane Society..... 71
 Report of District one Councilor..... 72
 Vital Statistics..... 75
 Real Estate Assessments..... 79



EX-POLICE CHIEF IRA WEEKS, JR.
1919-1996



Digitized by the Internet Archive
in 2009 with funding from
Boston Library Consortium Member Libraries

TOWN OFFICERS

1996

Moderator..... Edward N. Libby
Town Clerk..... Sheila Mohan
Town Treasurer..... Robert Heath
Collector of Taxes..... Jessie L. Foley

Selectmen

Lewis C. Hanson, Chairman.....Term Expires in 1997
Aaron C. Smith.....Term Expires in 1998
George C. Burns.....Term Expires in 1999

Trustees of Trust Funds

Martha Ann LeRoy.....Term Expires in 1997
John P. Merrill.....Term Expires in 1998
Barbara Benoit.....Term Expires in 1999

Library Trustees

Elected by Town

Chip Sorlien.....Term Expires in 1998
Helen Heiner.....Term Expires in 1999

Elected by Library Association

Bess G. Hanson.....Term Expires end of 1997
Barbara Benoit.....Term Expires end of 1998
Joan Mayerson.....Term Expires end of 1998
Kate Vachon.....Term Expires end of 1999

Supervisors of the Check List

Ingrid Smith.....Term Expires in 1998
Nancy Kelley.....Term Expires in 2000
Joan Taylor.....Term Expires in 2002

Road Agent.....Jeffrey Haines
Town Historian.....Gladys Bickford
Health Officer.....Kenneth Ballance
Chief of Police.....Andrew Faller
Chief of Fire Department.....Leon Manville
Emergency Management Director.....Kevin Campbell
Deputy Treasurer.....George Hooper
Animal Control Officer.....Andrew Faller
Deputy Collector of Taxes-Boats.....Robert Heath
Deputy Collector of Taxes-Boats.....Rita Donaldson Pernaw
Compliance Officer.....Kenneth Ballance

Planning Board

Kirk Meloney, Co-Chairman.....	Term Expires	in 1998
Edward Libby, Co-Chairman.....	Term Expires	in 1998
Harold Tate.....	Term Expires	in 1997
Darlene Fritz.....	Term Expires	in 1998
Seth Ira Stearns, Alternate.....	Term Expires	in 1998
Barbara Lauterbach.....	Term Expires	in 1997
Diane Kline, Alternate.....	Term Expires	in 1998
Sheila Mohan, Clerk/Alternate.....	Term Expires	in 1997

Zoning Board of Adjustment

Roger Kelley, Chairman.....	Term Expires	in 1997
John Starrett, Vice Chairman.....	Term Expires	in 1998
Christopher Williams.....	Term Expires	in 1998
John Foley.....	Term Expires	in 1999
George Lamprey.....	Term Expires	in 1997
Karen Peranelli, Alternate.....	Term Expires	in 1999
Richard Hanson, Alternate.....	Term Expires	in 1999
Jean Meloney, Alternate.....	Term Expires	in 1998
Elwood Shaw, Alternate.....	Term Expires	in 1997

Center Harbor Memorial Park Board

John P. Merrill, Treasurer.....	Term Expires	in 1997
Barbara Benoit.....	Term Expires	in 1998
Bess Hanson, Clerk.....	Term Expires	in 1999
Jeffrey Haines.....	Term Expires	in 1998

Conservation Commission

Ingrid Smith.....	Term Expires	in 1998
Eloise Coudert.....	Term Expires	in 1998
Edwin (Duke) Kline.....	Term Expires	in 1999
Harold Bernt.....	Term Expires	in 1999
Janet Youtz.....	Term Expires	in 1999

Lakes Region Planning Commission

Edward Libby.....	Term Expires	in 1999
Harold Bernt.....	Term Expires	in 1998

Parks and Recreation Commission

.....Eloise Coudert.....

Historic District Commission

Gladys Bickford	Ingrid Smith
Barbara Lauterbach	George C. Burns

Lakes Region Transportation Committee

Jeffrey Haines.....	Term Expires	in 1998
---------------------	--------------	---------

TOWN OF CENTER HARBOR
TOWN MEETING
March 12, 1996

The Moderator, Edward Libby, swore in the ballot clerks, Priscilla Manville and Shirley Smith, and posted the time for accepting absentee ballots at 1:00 P.M.

The March 12, nineteen hundred and ninety-six Town Meeting was called to order at ten o'clock in the morning by the Moderator who announced the polls were open to act upon Articles 1-A and 1-B, and at 1:00 P.M. the absentee ballots were accepted. The polls were closed at 6:00 P.M. and the ballots were tallied.

Article 1-A. All town officers and school board members for the year ensuing were voted on, with the following results.

Selectman for 3 years		
George C. Burns	had	83 votes
B. Earl Canfield	had	19 votes
Lester Heath	had	18 votes
Robert Beem	had	2 votes

Town Clerk for 1 year		
Sheila Mohan	had	120 votes

Collector of Taxes for 1 year		
Jessie Foley	had	117 votes

Town Treasurer for 1 year		
Robert Heath	had	110 votes
Lewis Woodaman	had	2 votes

Trustee of Trust Funds for 3 years		
Barbara Benoit	had	118 votes

Library Trustee for 3 years		
Helen Heiner	had	113 votes

Supervisor of the Checklist for 6 years		
Joan Taylor	had	117 votes

School Board Moderator		
Robert Rowan	had	6 votes
Edward Libby	had	4 votes
John Kimball	had	4 votes
Robert Beem	had	3 votes

Mary Woodaman, Ken Jolimore, Francis Strayer, Ken Ballance, George Burns, Gary Toczko, Lee Webb, Gary Burton, Diane Cantwell, James Bascom, Edwin Kline, Sheila Mohan each had 1 vote.

Meredith Member for 3 years		
Peter Brothers	had	105 votes

Wendall Witcher, Richard Hanson, and Merrill Ambrose had one 1 each.

Member from Sandwich for 3 years

Lee Webb	had	97 votes
James Moore	had	1 vote

Article 1-B. To see if the Town will vote to Adopt Amendment No. 1-B as proposed by Petition, for the Town Zoning Ordinance as follows: To delete Section 5:2:2, which allows an Inn or Hotel in the Commercial District Village Area to be constructed to a height of fifty (50) feet by Special Exception providing certain conditions could be met, and to delete #7, Appendix-A Special Exceptions, under the Commercial District-Village Area column, a cross reference to Section 5:2:2? (The Planning Board, by a vote of four to one, opposes this amendment).

Yes	45	No	66
-----	----	----	----

Article 2. It was moved by Chuck Burns and seconded by John Kimball to raise and appropriate the sum of \$256,669 to defray town charges for the ensuing year. Vote was unanimous in the affirmative.

Article 3. It was moved by Aaron Smith and seconded by Chris Williams to raise and appropriate the sum of \$168,254 for the maintenance of Town Highways and Bridges, including sidewalks, and dead tree removal, \$21,622.21 to be paid from State Highway Block Aid, the balance of \$146,631.79 to be raised by taxes. Vote was unanimously in the affirmative.

Article 4. It was moved by Lewis Hanson and seconded by Kenneth Ballance to authorize the Selectmen to enter into a long-term lease/purchase agreement in the amount of \$31,166.76 payable over a term of forty-eight months, to purchase a new Ford pickup truck for the Highway Department and to raise and appropriate the sum of \$7,791.69 for the first year's payment for that purpose. The Selectmen recommend this lease. This Article required a 2/3 ballot vote. The vote was Yes 62 No 5. The motion was past.

Article 5. It was moved by Chuck Burns and seconded by Lewis Hanson to raise and appropriate the sum of \$159,495 for the disposition of Solid Waste. This Article was recommended by the Selectmen. Seth Stearns asked if this was for Center Harbor residents? Chuck Burns spoke to Mr. Stearns' concern. Center Harbor pays 17.4% of the cost for the recycling center in Meredith. Mr. Stearns asked if this was a decrease from last year. Mr. Burns answered, "Yes". The vote was unanimous in the affirmative.

Article 6. It was moved by Aaron Smith and seconded by Bess Hanson to raise and appropriate the sum of \$30,000 for the maintenance of the Center Harbor Fire Department, and to authorize the Center Harbor Volunteer Firemen's Association to expend said sum for the operation and maintenance of the Center Harbor Fire Department. The vote was unanimous in the affirmative.

Article 7. It was moved by Lew Hanson and seconded by Karen Peranelli to raise and appropriate the sum of \$15,425 for the Center Harbor Fire Department to be paid to members who qualify with the required number of points at year's end. Strongly recommended by the Selectmen. Lew Hanson explained that the State has mandated the Selectmen to recommend or not recommend each Article. In the case of this Article Lew Hanson explained that the Selectmen feel strongly about this Article. Bart Couderd asked if this is the first year and if someone could explain this request. Don Bosse spoke for the Fire Department. There are 110 hours of training a year, and the training sessions are on Thursday nights. The firemen are given two points for each training session. Each fireman must earn 35 points a year to be paid. They are trying to get the members better trained. David Johnson asked if there were twenty-two members in the department? Don Bosse answered yes, each member would receive \$599.00. If members do not qualify the money will be turned back to the Town. The vote was unanimous in the affirmative.

Article 8. It was moved by Chuck Burns and seconded by David Johnson to raise and appropriate the sum of \$77,930 for the operation of the Police Department. Stephen Caney asked if the cost of the video camera was included in this amount. Edward Libby answered yes, approximately \$7000. Mr. Caney asked for justification of the video camera. Chief Andrew Fallor was given permission to speak to this question. The cost of the camera is under \$5000, and it reasons were for liability purposes, domestic violence calls, and court preparation. Basically it serves a number of purposes. The vote was unanimous in the affirmative.

Article 9. It was moved by Aaron Smith and seconded by Diane Kline to raise and appropriate the sum of \$21,024 for Parks and Recreation, to include Band Concerts, Holiday Celebrations and Lifeguards. The vote was unanimous in the affirmative.

Article 10. It was moved by Lewis Hanson and seconded by Chuck Burns to raise and appropriate the sum of \$17,000 to complete the job of replacing the docks at the Town beach. The vote was unanimous in the affirmative.

Article 11. It was moved by Chuck Burns and seconded by Orion Bickford to raise and appropriate the sum of \$33,804 for the purpose of providing ambulance service to the Town. The vote was unanimous in the affirmative.

Article 12. It was moved by Helen Heiner and seconded by Diane Kline to raise and appropriate the sum of \$35,550 for the operation of the Nichols Memorial Library, \$8,800 to be paid from the Trust and other funds, the balance of \$26,750 to be raised in taxes. The vote was unanimous in the affirmative.

Article 13. It was moved by Bess Hanson and seconded by Constance Martin to raise and appropriate the sum of \$11,000 for the purpose of cleaning, repairing and sealing the exterior surfaces of the Nichols Memorial Library. The vote was unanimous

in the affirmative.

Article 14. It was moved by Aaron Smith and seconded by Bess Hanson to raise and appropriate the sum of \$5000 for Direct Welfare. The vote was unanimous in the affirmative.

Article 15. It was moved by Helen Heiner and seconded by Bess Hanson to raise and appropriate the sum of \$500 for the Center Harbor Historical Society. (Funds to be used for the repair of the old Center Harbor School). The vote was unanimous in the affirmative.

Article 16. It was moved by Lew Hanson and seconded by Gregory Garrick to raise and appropriate the sum of \$1000 for Center Harbor's share of the Red Hill Fire Tower. Duke Kline asked what the total cost of the Tower was and what percentage Center Harbor paid. John Schlemmer, Forest Fire Warden, spoke on this matter. Center Harbor, Moultonboro, Sandwich and Meredith share the cost equally. The vote was unanimous in the affirmative.

Article 17. It was moved by Jim Bascom and seconded by Eloise Coudert to raise and appropriate the sum of \$4,187 for the support of the Inter-Lakes Day Care Center. The vote was unanimous in the affirmative.

Article 18. It was moved by Ann Williams and seconded by Bess Hanson to raise and appropriate the sum of \$3,500 for the support of the Lakes Region Family Service. The vote was unanimous in the affirmative.

Article 19. It was moved by Bess Hanson and seconded by Gregory Garrick to raise and appropriate the sum of \$14,468 for the support of the Meredith Public Health Nursing Association. The vote was unanimous in the affirmative.

Article 20. It was moved by Bess Hanson and seconded by Constance Martin to raise and appropriate the sum of \$400 for the support of the Greater White Mountain Chapter of the American Red Cross. The vote was unanimous in the affirmative.

Article 21. It was moved by Jim Bascom and seconded by Eloise Coudert to raise and appropriate the sum \$6,582 for the Community Action Program. The vote was unanimous in the affirmative.

Article 22. It was moved by Chuck Burns and seconded by Gregory Garrick to raise and appropriate the sum of \$600 for the support of the Lakes Region General Hospital. David Johnson asked if anyone knew what the \$600 was for. Chuck Burns responded for welfare cases. The vote was unanimous in the affirmative.

Article 23. It was moved by Eloise Coudert and seconded by John Kimball to raise and appropriate the sum of \$300 for the support of the Lakes Region Community Services Council. The vote

was unanimous in the affirmative.

Article 24. It was moved by Helen Heiner and seconded by Ann Williams to raise and appropriate the sum of \$500 for the support of New Beginnings. The vote was unanimous in the affirmative.

Article 25. It was moved by Lew Hanson and seconded by Chuck Burns to raise \$30,000 for the purpose of reducing the general fund deficit pursuant to RSA 41:9-V. Lew Hanson explained that the Town has changed the accounting system as mandated by the State. Using the old system each year we have shown a surplus. At the end of 1994 Helen Laverdure discovered a deficit. Department of Revenue Administration went back to 1988 and the deficit occurred due to the 2% discount that is allowed each year. The Overlay was shaved to keep the tax rate down and as a result we have this deficit. The \$151,192 figure on page 24 of the Town Report is subject to audit and the summation of the audit will be in next year's Town Report. RSA 41:9V mandates that something be raised to defray the deficit. Gregory Garrick asked what overlay means. Lew Hanson explained that the overlay is money set aside to cover expenses that cannot be anticipated, such as abatements, and overspending. Also, you cannot appropriate money for the 2% discount. Ann Williams asked if the re-valuation would have any effect on the deficit. Chuck Burns answered that the re-valuation was contracted by the DRA and would have no effect. The vote was unanimous in the affirmative.

Article 26. It was moved by David Schimke and seconded by Orion Bickford to allow a discount of two percent on taxes paid in full within fifteen (15) days of issue of the tax bill by the Tax Collector. Set Stearns remarked that it would appear that a percentage of the people take the discount as the cost of the other people in town. Jessie Foley answered that fifty to seventy-five percent do take the discount. Eloise Coudert asked if the Selectmen felt that it would be advantageous to discontinue the two percent. Chuck Burns, yes. Gregory Garrick asked what the mathematics would be. Bob Beem, it would depend on how many take the discount. There was a show of hands on the vote. There were 39 yes and 23 no. The motion past.

Article 27. It was moved by Chuck Burns and seconded by Chris Williams to authorize the Selectmen to hire money in anticipation of taxes. The vote was unanimous in the affirmative.

Article 28. It was moved by Aaron Smith and seconded by Constance Martin to authorize the Selectmen to apply for, receive and expend federal and state grants, which may become available during the year, and also to accept and expend money from any other governmental unit or private source to be used for the purposes for which the Town may legally appropriate money, provided (1) that such grants and other monies do not require the expenditure of other Town funds, (2) that a public hearing shall be held by the Selectmen prior to the receipt and expenditure of such grants and monies, and (3) that such items shall be exempt

from all provisions of RSA 32 relative to limitation and expenditure of Town monies, all as provided by RSA 31,05-b. The vote was unanimous in the affirmative.

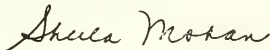
Article 29. It was moved by Helen Heiner and seconded by Bess Hanson to accept the provisions of RSA 202-A:4-c providing that any town at an annual meeting may adopt an article authorizing indefinitely, until specific rescission of such authority, the public library trustees to apply for, accept and expend, without further action by the Town Meeting, unanticipated money from a state, federal or other governmental unit or a private source which becomes available during the fiscal year. (Majority vote required). The vote was unanimous in the affirmative.

Article 30. it was moved by Chuck Burns and seconded by Bart Coudert to authorize the Selectmen to sell property acquired by Tax Collector's Deed, by public auction (or advertised sealed bid) or in such other manner as determined by the Selectmen as justice may require, until rescinded. The vote was unanimous in the affirmative.

Article 31. No agent or committee reports.

Seth Stearns asked when we would be getting our house numbers. Chuck Burns responded that street naming and numbering has been going on for the last year and a half. The more the Selectmen get into this the more complicated it becomes. Co-ordination with other towns has to be considered, Moultonboro, Sandwich, Holderness, New Hampton and Meredith. Mr. Stearns asked what happens when you dial 911, and can we move up the priority. Mr. Stearns offered to help.

Moved by John Desmond and seconded by Richard Harlow to adjourned the meeting. The vote was unanimous in the affirmative. The meeting was adjourned at 9:15 P.M.



Submitted by Sheila Mohan
Town Clerk

STATE OF NEW HAMPSHIRE
TOWN OF CENTER HARBOR

TOWN WARRANT

To the inhabitants of the Town of Center Harbor in the County of Belknap in Said State, Qualified to vote in Town Affairs:

You are hereby notified to meet at the Cary H. Mead Meeting Room in Said Center Harbor on Tuesday, the Eleventh day of March, next at ten of the clock in the morning to act upon the following subjects:

Article 1-A. To choose all necessary Town and School Officers for the year ensuing.

Article 1-B. Are you in favor of the adoption of Amendment No. 1-B as proposed by Petition, to delete Zoning Ordinance Section 5:2:2, which Section now allows an Inn or Hotel with a pitched roof more than 35' but not more than 50' in height by Special Exception if certain conditions are met in the Commercial District (CV)-Village Area, and to also delete from Zoning Ordinance Appendix A - Special Exceptions, the reference to such Exception now allowed under Zoning Ordinance Section 5:2:2. The Planning Board voted unanimously to disapprove this petitioned amendment.

Article 1-C. Are you in favor of the adoption of Amendment No. 1-C as proposed by Petition, to amend the Town of Center Harbor Zoning Map, and to amend Zoning Ordinance Section 9:1:3 to expand the boundary of the Commercial District (CV) - Village Area, to include Tax Map Lot 9-31, now part of the Residential District, so that the description of the district boundary shall read as follows: Beginning at a point where the northwesterly corner of Tax Map Lot Number 9-27, also known as the Nichols Memorial Library property, and the northeasterly corner of Tax Map Lot Number 9-11, also known as the Morrill Memorial Park Association property, meet; following a straight line southwesterly to the northwesterly corner of Tax Map Lot Number 9-30 (Belknap County Registry of Deeds, Book 649, Page 258), also known as the Dyer Property; then following the boundary of Tax Map Lot Number 9-30 in a southwesterly direction to the northwesterly corner of Tax Map Lot Number 9-31, then following the boundary of Tax Map Lot Number 9-31 to the southwesterly corner of Tax map Lot Number 9-32; then following the common boundary of Tax Map Lots Number 9-31 and 9-32 to a point where the boundary intersects with Main Street; then following Main Street in a northeasterly direction to the corner of Main Street and Route 25B; then following Route 25B in a northwesterly direction to the point of beginning? (The Planning Board voted 6-0 with one abstention, to disapprove this petition.)

Article 2. To see if the Town will vote to raise and appropriate such sums of money as may be necessary to defray the Town charges, for the ensuing year and make appropriations of the same. The sum being \$269,060.

Article 3. To see if the Town will vote to raise and appropriate \$184,371 for the maintenance of Town Highways and Bridges, including sidewalks, and dead tree removal, \$23,683 to be paid from State Highway Block Aid, the balance of \$160,688 to be raised by taxes. Recommended by Selectmen.

Article 4. To see if the Town will vote to raise and appropriate \$250,000 to upgrade Kelsea Avenue and Kelley Court, to include proper drainage, paved sidewalks with granite curbs, proper base, construction and paving of street from Route 25B to Bean Road, and proper finish work to grade new street into all properties that front Kelsea Avenue. To authorize the Selectmen to borrow such funds in the name of the Town. (By petition) (Two-thirds ballot vote required for passage.) Not recommended by Selectmen.

Article 5. To see if the Town will vote to raise and appropriate the sum of \$20,000 to develop a final engineering design for the reconstruction of Kelsea Avenue and Kelley Court, construction of said project to be completed in 1998, to be non-lapsing through 1998. Recommended by Selectmen.

Article 6. To see if the Town will vote to raise and appropriate the sum of \$147,056 for the disposition of Solid Waste. Recommended by Selectmen.

Article 7. To see if the Town will vote to raise and appropriate the sum of \$47,000 for the maintenance of the Center Harbor Fire Department. Recommended by Selectmen.

Article 8. To see if the Town will vote to raise and appropriate the sum of \$81,335 for the operation of the Police Department. Recommended by Selectmen.

Article 9. To see if the Town will vote to authorize the Selectmen to enter into a long-term lease/purchase agreement in the amount of \$20,776, payable over a term of thirty-six months, to purchase a new Ford police cruiser for the Police Department and to raise and appropriate the sum of \$6,925 for the first year's payment for that purpose. The Selectmen recommend this lease. (Two-thirds ballot vote required.)

Article 10. To see if the Town will vote to raise and appropriate the sum of \$30,600 for Parks and Recreation, to include Band Concerts, Holiday Celebrations and Lifeguards. Recommended by Selectmen.

Article 11. To see if the Town will vote to raise and appropriate the sum of \$4000 for the construction of a sand volleyball court at the Town Beach. This will be a non-lapsing account per RSA 32:3 VI and will not lapse until the volleyball court is completed or in two years, whichever is less. Recommended by Selectmen.

Article 12. To see if the Town will vote to raise and appropriate the sum of \$33,804 for the purpose of providing ambulance service to the Town. Recommended by Selectmen.

Article 13. To see if the Town will vote to raise and appropriate the sum of \$38,900 for the operation of the Nichols Memorial Library, \$7320 to be paid from trust and other funds, the balance of \$31,580 to be raised by taxes. Recommended by Selectmen.

Article 14. To see if the Town will vote to adopt the provisions of RSA 202-A:4-d authorizing the library trustees to accept gifts of personal property, other than money, which may be offered to the library for any public purpose, provided, however, that no acceptance of personal property by the library trustees shall be deemed to bind the town or the library trustees to raise, appropriate or expend any public funds for the operation, maintenance, repair or replacement of such personal property.

Article 15. To see if the Town will vote to raise and appropriate the sum of \$6000 for direct Welfare. Recommended by Selectmen.

Article 16. To see if the Town will vote to raise and appropriate the sum of \$500 for the Center Harbor Historical Society. (Funds to be used for the repair of the old Center Harbor School.) Recommended by Selectmen.

Article 17. To see if the Town will vote to raise and appropriate the sum of \$1000 for Center Harbor's share of the operation of the Red Hill Fire Tower. Recommended by Selectmen.

Article 18. To see if the Town will vote to raise and appropriate \$4,275 for the support of the Inter-Lakes Day Care Center. (\$4,275 appropriated in 1996.) Recommended by Selectmen.

Article 19. To see if the Town will vote to raise and appropriate \$3500 for the support of the Lakes Region Family Service. (\$3500 appropriated in 1996.) Recommended by Selectmen.

Article 20. To see if the Town will vote to raise and appropriate \$14,468 for the Meredith Public Health Nursing Association. (\$14,468 appropriated in 1996.) Recommended by Selectmen.

Article 21. To see if the Town will vote to raise and appropriate \$400 for the support of the Greater White Mountain Chapter of the American Red Cross. (\$400 appropriated in 1996.) Recommended by Selectmen.

Article 22. To see if the Town will vote to raise and appropriate \$6,582 for the Community Action Program. (\$6,582 appropriated in 1996.) Recommended by Selectmen.

Article 23. To see if the Town will vote to raise and appropriate \$600 for Lakes Region General Hospital. (\$600 appropriated in 1996.) Recommended by Selectmen.

Article 24. To see if the Town will vote to raise and appropriate \$300 for the support of the Lakes Region Community Services Council. (\$300 appropriated in 1996.) Recommended by Selectmen.

Article 25. To see if the Town will vote to raise and appropriate \$750 for the support of New Beginnings, (\$500 appropriated in 1996.) Recommended by Selectmen.

Article 26. To see if the Town will vote to permit the use of Tax Property #9-76 to be developed as a Town Park and site for a community bandstand, property being the land across from the Municipal Building between Main Street and Route 25.

Article 27. To see if the Town will vote to raise and appropriate the sum of \$25,000 to fund and conduct the activities of the Center Harbor Bicentennial, This sum to be offset by donations to the extent possible with a maximum of \$5,000 to be raised by taxes, Recommended by Selectmen,

Article 28. To see if the Town will vote to raise and appropriate the sum of \$60,000 for funding of a Center Harbor community bandstand and park area. This sum to be offset by donations to the extent possible with a maximum of \$20,000 to be raised by taxes, Recommended by Selectmen.

Article 29. To see if the Town will vote to raise \$30,000 for the purpose of reducing the general fund deficit pursuant to RSA 41:0.V.

Article 30. To see if the Town will appropriate the sum of \$1.00 to expend from Tax Anticipation Notes.

Article 31. To enter into discussion regarding a non-binding vote to guide and direct the Selectmen as to the wishes of the voters regarding a semi-annual tax billing,

Article 32. To see if the Town will vote to allow a discount of two percent on taxes paid in full within fifteen (15) days of issue of the tax bills by the Tax Collector.

Article 33. To see if the Town will vote to authorize the Selectmen to hire money in anticipation of taxes.

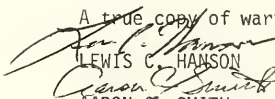
Article 34. To see if the Town will authorize the Selectmen to lease the property adjacent to Senter's Market, and owned by the Town, for the erection of signage for the businesses located in Senter's Market. Signage must comply with Town Ordinances and be approved by the Planning Board.

Article 35. To see if the Town will vote to authorize the Selectmen to apply for, receive and expend federal and state grants, which may become available during the course of the year, and also to accept and expend money from any other governmental unit or private source to be used for the purposes for which the Town may legally appropriate money, provided: (1) that such grants and other monies do not require expenditure of other Town funds, (2) that a public hearing shall be held by the Selectmen prior to the receipt and expenditure of such grants and monies, and (3) that such items shall be exempt from all provisions of RSA 32 relative to limitation and expenditure of Town monies, all as provided by RSA 31:05-b.

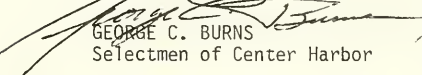
Article 36. To see if the Town will vote to authorize the Selectmen to sell property acquired by Tax Collector's deed, by public auction (or advertised sealed bid) or in such other manner as determined by the Selectmen as justice may require, until rescinded.

Article 37. To choose agents or committees in relation to any article of the Warrant and hear reports of any heretofore chosen.

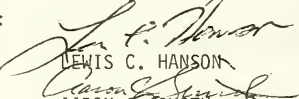
A true copy of warrant--Attest:


LEWIS C. HANSON

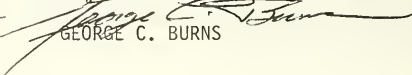

AARON C. SMITH


GEORGE C. BURNS

Selectmen of Center Harbor


LEWIS C. HANSON


AARON C. SMITH


GEORGE C. BURNS

AMOUNTS BUDGETED FOR 1997

GENERAL GOVERNMENT

EXECUTIVE OFFICERS	\$ 55,260	
ELECTIONS & REGISTRATIONS	1,325	
FINANCIAL ADMINISTRATION	23,955	
REVALUATION OF PROPERTY	5,900	
LEGAL EXPENSES	6,000	
BENEFITS	48,909	
PLANNING & ZONING	12,100	
MUNICIPAL BUILDING	22,350	
CEMETERIES	1,950	
INSURANCE TOWN PACKAGE	26,729	
		<u>\$204,478</u>

PUBLIC SAFETY

POLICE DEPARTMENT	81,335	
AMBULANCE	33,804	
FIRE DEPARTMENT	47,000	
BUILDING INSPECTION	3,730	
EMERGENCY MANAGEMENT	0	
OTHER (RED HILL TOWER)	1,000	
		<u>\$166,869</u>

HIGHWAY STREETS & BRIDGES

PUBLIC WORKS DEPARTMENT	184,371	
STREET LIGHTING	10,000	
SANITATION	147,056	
		<u>\$341,427</u>

HEALTH

HEALTH OFFICER	800	
HEALTH AGENCIES	15,068	
		<u>\$ 15,868</u>

WELFARE

DIRECT RELIEF	6,000	
INTERGOVERNMENTAL WELFARE	15,807	
		<u>\$ 21,807</u>

RECREATION & CULTURE

PARKS & RECREATION	26,650	
HOLIDAYS	3,950	
LIBRARY	38,900	
HISTORICAL SOCIETY	500	
		<u>\$ 70,000</u>

CONSERVATION

CONSERVATION COMMISSION	1,860	
		<u>\$ 1,860</u>

DEBT SERVICE

PRINCIPAL ON LOANS	45,840	
INTEREST ON LOANS	2,352	
		<u>\$ 48,192</u>

SUMMARY INVENTORY OF VALUATION

Value of Land Only:

Current Use (At Current Use Values)	3857 acres	\$ 765,050
Conservation Restriction Assessment	42 acres	
Residential		90,401,449
Commercial/Industrial		2,892,700
Total Taxable Land		\$94,059,199

Value of Buildings Only:

Residential		\$51,006,950
Manufactured Housing		563,400
Commercial/Industrial		6,681,600
Total Taxable Buildings		\$58,251,950
Public Utilities		\$ 1,502,000
Elderly Exemptions		30,000
Blind Exemptions		15,000
Net Valuation on Which the Tax Rate is Computed		\$153,768,149

Number of Individuals Granted an Exemption in 1996		4 @	5,000	
		1 @	10,000	

Current Use Report for 1996 - Number of Acres Exempted

	<u>No. of Acres</u>
Farm Land	440
Forest Land	3316
Wet Land	100
Total Number of Acres Exempted under CU	3857
Total Number of Acres Taken Out of CU	2.5
Total Number of Acres Exempted Under Conservation Restriction	41.5
Total Numbers of Acres Receiving the 20% Recreational Adjustment	150
Total Number of Owners Granted Current Use Assessment	101
Total Number of Owners Granted Conservation Restriction Assessment	2

BUDGET OF THE TOWN OF CENTER HARBOR, NH.

	APPRO. 1996	ACTUAL 1996	REQUESTED 1997
PURPOSES OF APPROPRIATION			
GENERAL GOVERNMENT			
EXECUTIVE OFFICERS	49,304	58,908	55,260
ELECTION & REGISTRATION	2,425	3,180	1,325
FINANCIAL ADMINISTRATION	24,705	37,269	23,955
REVALUATION OF PROPERTY	5,025	33,820	5,900
LEGAL EXPENSES	8,000	4,346	6,000
PERSONNEL ADMINISTRATION	42,380	40,278	48,909
PLANNING AND ZONING	12,100	12,556	12,100
MUNICIPAL BUILDING	24,300	19,543	22,350
CEMETERIES	1,950	1,020	1,950
INSURANCE	28,025	28,840	26,729
PUBLIC SAFETY			
POLICE DEPARTMENT	77,930	83,310	81,335
AMBULANCE SERVICE	33,804	33,804	33,804
FIRE DEPARTMENT	30,000	29,898	30,000
FIRE DEPT. PAY	15,425	13,909	17,000
BUILDING INSPECTION	2,800	2,443	3,730
EMERGENCY MANAGEMENT	250	0	0
RED HILL FIRE TOWER	1,000	1,000	1,000
HIGHWAY STREETS AND BRIDGES			
PUBLIC WORKS	168,254	179,536	176,579
PICKUP TRUCK LEASE	7,792	7,792	7,792
STREET LIGHTS	7,600	8,819	10,000
SANITATION	159,495	157,387	147,056
HEALTH			
HEALTH OFFICER	500	740	800
MEREDITH PUBLIC HEALTH	14,468	14,468	14,468
LR GENERAL HOSPITAL	600	600	600
WELFARE			
DIRECT ASSISTANCE	5,000	4,553	6,000
IL DAY CARE CENTER	4,187	4,187	4,275
LR FAMILY SERVICE	3,500	3,500	3,500
RED CROSS	400	400	400
COMMUNITY ACTION PROGRAM	6,582	6,582	6,582
LR COMMUNITY SERVICE	300	300	300
NEW BEGINNINGS	500	500	750
CULTURAL AND RECREATION			
PARKS & RECREATION	21,024	23,991	26,650
DOCK REPAIR	17,000	0	0
LIBRARY	26,750	26,750	38,900
LIBRARY BUILDING MAINT.	11,000	11,001	0
HOLIDAYS	3,420	3,766	3,950
OTHER	500	500	500
CONSERVATION			
CONSERVATION COMMISSION	750	1,464	1,860
DEFICIT REDUCTION	30,000	30,000	30,000
DEBT SERVICE			
PRINCIPAL	41,080	47,775	45,840
INTEREST	5,475	63,896	2,352
TOTAL APPROPRIATIONS	865,599	970,633	868,726
<u>LESS AMOUNT ESTIMATED REVENUES</u>			<u>250,000</u>
<u>AMOUNT TO BE RAISED BY TAXES</u>			<u>618,726</u>
<u>(EXCLUSIVE OF SCHOOL AND COUNTY)</u>			

BUDGET OF THE TOWN OF CENTER HARBOR, NH

	EST REV 1996	ACTUAL REV 1996	EST REV 1997
SOURCES OF REVENUE			
TAXES			
LAND USE CHANGE	5,000	2,500	5,000
YIELD TAXES	5,000	5,629	5,000
BOAT	15,000	7,466	10,000
INTEREST	10,000	21	1,000
LICENSES PERMITS & FEES			
MOTOR VEHICLE	100,000	118,903	105,000
BUILDING PERMITS	1,000	1,247	1,000
OTHER PERMITS & FEES	5,000	6,352	5,000
STATE			
REVENUE SHARING	57,000	67,526	60,000
HIGHWAY BLOCK GRANT	21,622	21,600	22,000
OTHER	0	850	0
CHARGES FOR SERVICES			
INCOME FROM DEPARTMENTS	2,000	2,961	2,000
SALES	2,000	4,143	2,000
MISCELLANEOUS			
SALE OF MUNICIPAL PROPERTY	0	0	0
INTEREST ON INVESTMENTS	50,000	52,152	50,000
REIMBURSEMENTS	8,000	19,007	10,000
OTHER	0	6,519	0
	<hr/>	<hr/>	<hr/>
TOTAL REVENUES & CREDITS	281,622	316,876	278,000

- NOTES -

- NOTES -

STATEMENT OF APPROPRIATIONS
AND
TAXES ASSESSED FOR 1996

APPROPRIATIONS

GENERAL GOVERNMENT

EXECUTIVE OFFICERS	49,304
ELECTIONS & REGISTRATION	2,425
FINANCIAL ADMINISTRATION	24,705
REVALUATION OF PROPERTY	5,025
LEGAL EXPENSES	8,000
PERSONNEL ADMINISTRATION	42,380
PLANNING & ZONING	12,100
MUNICIPAL BUILDING	24,300
CEMETERIES	1,950
INSURANCE	28,025
POLICE DEPARTMENT	77,930
AMBULANCE	33,804
FIRE DEPARTMENT	45,425
BUILDING INSPECTION	2,800
RED HILL TOWER	1,000
HAZ MAT	250
PUBLIC WORKS	176,045
STREET LIGHTING	7,600
SANITATION	159,495
HEALTH DEPT	500
OTHER	15,068
WELFARE	5,000
OTHER	15,469
CULTURAL & RECREATION	79,694
CONSERVATION	750
DEBT SERVICE	41,080
INTEREST	1,900
TOTAL APPROPRIATIONS	865,599

SOURCES OF REVENUE

LAND USE CHANGE TAX	\$	2,500
YIELD TAX		5,629
BOAT TAX		7,466
INTEREST		21
LICENSES, PERMITS, FEES		7,599
MOTOR VEHICLE		118,903
SHARED REVENUE		67,526
HIGHWAY BLOCK		21,622
OTHER		850
INCOME FROM DEPTS.		2,961
MISCELLANEOUS		4,143
SALE OF MUNICIPAL PROP.		0
INTEREST ON INVEST		52,152
REIMBURSEMENTS		19,007

TOTAL REVENUES & CREDIT \$316,876

TOTAL TOWN APPROPRIATIONS \$895,599
TOTAL REVENUES & CREDIT 316,876

NET TOWN APPROPRIATIONS \$ 578,723
SCHOOL ASSESSMENT 1,238,779
COUNTY TAX ASSESSMENT 235,219
\$ 2,052,721

TAX RATE:

TOWN	5.17
SCHOOL	7.87
COUNTY	1.50
	<u>14.54</u>

COMPARATIVE STATEMENT OF APPROPRIATIONS AND EXPENDITURES

TITLE OF	APPROPRIATION	RECEIPTS	TOTAL	EXPENDITURES	UNEXPENDED	OVERDRAFTS
APPROPRIATION	49,304		49,304	53,908		4,604
EXECUTIVE OFFICERS	2,425	37	2,462	3,181		719
ELECTIONS & REGISTRATION	24,705	81,518	106,223	37,269	68,954	
FINANCIAL ADMIN.	5,025		5,025	37,820		32,795
REVALUATION OF PROPERTY	8,000		8,000	4,346	3,654	
LEGAL EXPENSES	42,380		42,380	40,278	2,102	
BENEFITS	12,100	1,561	13,661	12,555	1,106	
PLANNING & ZONING	24,300	2,748	27,048	17,170	9,878	
MUNICIPAL BUILDING	1,950	2,179	4,129	2,700	1,429	
CEMETERIES	28,025		28,025	28,840		815
INSURANCE	77,930	5,901	83,831	83,309	522	
POLICE	33,804		33,804	33,804		
AMBULANCE	45,425	156	45,587	43,807	1,774	
FIRE	2,800		2,800	2,443	357	
BUILDING INSPECTION	250		250	0	250	
HAZ MAT	1,000		1,000	1,000		
FIRE TOWER	176,045	21,622	197,667	189,824	7,843	
PUBLIC WORKS	7,600		7,600	8,819		1,219
STREET LIGHTS	159,495		159,495	157,387	2,108	
SANITATION	15,568		15,568	15,208	360	
HEALTH	20,469	95	20,564	19,622	942	
WELFARE	38,024	2,832	40,856	22,310	18,546	
PARKS & REC	0	750	750	3,766		3,766
HOLIDAYS	37,750		37,750	37,751		1
LIBRARY	750		750	1,464		292
CONSERVATION	500	422	1,172	1,464		
HISTORICAL SOCIETY	235,219		235,219	235,219		
COUNTY TAX	1,238,779		1,238,779	1,238,779		
SCHOOL	41,080		41,080	47,374		6,294
DEBT SERVICE	5,475		5,475	6,161		686
INTEREST DEBT	2,000,000		2,000,000	2,000,000		
TAN	58,137		58,137	58,137		
INTEREST						
TOTALS	2,336,177	2,177,958	4,514,135	4,444,751	119,825	51,191

STATEMENT OF ASSETS AND LIABILITIES

ASSETS:		
CASH ON HAND FROM ALL SOURCES		307,724
UNREDEEMED TAXES:		
LEVY - 1995	49,169	
LEVY - 1994	24,430	
LEVY - 1993	15	
TOTAL UNREDEEMED		73,614
UNCOLLECTED TAXES:		
LEVY - 1996 PROPERTY	180,334	
LEVY - 1996 YIELD	170	
LEVY - 1996 LAND USE CHANGE	2,000	
TOTAL UNCOLLECTED		182,504
ACCOUNTS RECEIVABLE		10,600
PREPAID EXPENSE		4,191
TOTAL ASSETS	\$	578,633
LIABILITIES:		
ACCOUNTS PAYABLE	109	
ACCRUED PAYROLL EXPENSE	2,576	
DUE TO THE STATE	266	
DUE TO CHRISTMAS LIGHT FUND	509	
RESERVE FOR ENCUMBRANCES	35,116	
DUE TO SCHOOL DISTRICT	618,028	
TOTAL LIABILITIES		<u>\$656,604</u>
DEFICIT		\$ 77,971

SCHEDULE OF LONG TERM INDEBTEDNESS
AS OF DECEMBER 31, 1996

LONG TERM NOTES OUTSTANDING:

NEW GARAGE	\$25,000
LAND PURCHASE	8,840
REFURBISHING OF FIRE TRUCK	12,000

TOTAL NOTES OUTSTANDING	\$45,840

SCHEDULE OF TOWN PROPERTY

As of December 31, 1996

Municipal Building and Land	\$427,900.00
Furniture and Equipment	20,000.00
Library, Land and Building	235,200.00
Furniture and Equipment	15,500.00
Police Department	
Equipment	40,000.00
Fire Department	
Equipment	500,000.00
Town Garage, Tennis and Soft Ball Fields	100,700.00
Highway Department	
Equipment	200,000.00
Parks and Recreation	2,000.00
All Other Property	
Town Dump (Closed)	28,500.00
Cox Land	5,100.00
Old Town House, Land and Building	66,000.00
Furniture	150.00
Old Center Harbor School House	26,700.00
Coe Land	450.00
Berry Swamp Land	800.00
Hawkins Land	16,200.00
Hanks Land (between Main Street and Route 25)	83,900.00
Baxter Land	24,400.00
Fencer Land (On SBRT)	800.00
Lot on Route 25 & 25B	32,200.00
Lot on Cross Road	10,500.00
Morrill Memorial Park	70,700.00
Town Pound	500.00
Contrada Land	39,800.00
Cersosimo Lumber Co.	27,400.00
Town Beaches	
Winnipесаaukee	416,600.00
Squam	116,200.00
Winona	29,500.00
TOTAL	\$2,528,300.00

TOWN CLERK'S REPORT
FOR THE YEAR ENDING DECEMBER 31, 1996

RECEIPTS:

1996 VEHICLE PERMITS	1486	\$118,911.00
1996 DOG LICENSES	154	1,171.00
1996 MARRIAGE LICENSES	12	540.00
1996 DECALS	1313	2,958.00
UCC's		1,386.60

TOTAL RECEIPTS		\$124,966.60
REFUND		= 8.00

REMITTED TO TREASURER		\$124,958.60
-----------------------	--	--------------

SUBMITTED BY SHEILA MOHAN
TOWN CLERK

TAX COLLECTOR'S REPORT

FOR THE MUNICIPALITY OF CENTER HARBOR, NH YEAR ENDING December 31, 1996

DR.	<u>PRIOR LEVIES</u>			
	<u>1996</u>	<u>1995</u>	<u>1994</u>	<u>1994</u>
UNCOLLECTED TAXES				
-Beg. of Year:	\$	\$		
Property Taxes		202,466.66		
Yield Taxes		1,698.35		
TAXES COMMITTED				
-THIS YEAR:				
Property Taxes	2,218,850.93			
Land Use Change	4,500.00			
Yield Taxes	5,798.61			
Interest Collected	11.84	10,620.72		
on Delinquent Tax	9.28	338.29		
	<hr/>	<hr/>		
TOTAL DEBITS	\$2,229,170.66	215,124.02		
REMITTED TO TREAS.				
DURING FISCAL YR.				
Property Taxes	\$1,983,325.09	\$201,419.26		
Land Use Change	2,500.00			
Yield Taxes	5,628.65	1,698.35		
Interest	11.84	10,620.72		
	9.28	338.29		
Discounts Allowed:	31,654.20	234.47		
Abatements Made:				
Property Taxes	23,537.35	812.93		
UNCOLLECTED TAXES				
-END OF YEAR:				
Property Taxes	180,334.29	0		
Land Use Change	2,000.00			
Yield Taxes	169.96			
	<hr/>	<hr/>		
TOTAL CREDITS	\$2,229,170.66	\$215,124.02		

TAX COLLECTOR'S REPORT

FOR THE MUNICIPALITY OF CENTER HARBOR, NH YEAR ENDING December 31, 1996

	<u>PRIOR LEVIES</u>			
DR.	<u>1995</u>	<u>1994</u>	<u>1993</u>	<u>1992</u>
Unredeemed Liens Balance at Beg. of Fiscal Yr.		\$40,070.18	\$22,920.76	
Liens Executed During Fiscal Yr.	\$66,048.61	1,936.21	8,622.94	
Interest & Costs Coll. After Lien Execution	636.33			
	<hr/>	<hr/>	<hr/>	
TOTAL DEBITS	\$66,684.94	\$42,006.39	\$31,543.70	
CR.				
REMITTANCE TO TREASURER:				
Redemptions	\$16,879.44	\$15,640.53	\$21,004.05	
Int./Costs (After Lien Execution)	636.33	1,936.21	8,622.94	
Abatements of Unredeemed Taxes			1,901.42	
Unredeemed Liens Bal. End of Year	49,169.17	24,429.65	15.29	
	<hr/>	<hr/>	<hr/>	
TOTAL CREDITS	\$66,684.94	\$42,006.39	\$31,543.70	

TREASURER'S REPORT AND SUMMARY 1996

BALANCE ON HAND 01-01-96		\$ 203,258.86
RECEIPTS		
TAX COLL. REG. ACCOUNT	\$2,270,312.84	
BOAT TAX	7,466.06	
TOWN OFFICE INCOME	128,000.27	
TOWN CLERK	124,958.60	
T. A. N. NOTE PROCEEDS	2,000,000.00	
INTEREST EARNED (TREAS)	52,152.00	
TOTAL RECEIPTS	<u>\$4,582,890.76</u>	\$4,582,890.76
DISBURSEMENTS:		
CHECKS (PER SELECTMEN)	\$4,480,866.02	
BANK CHARGES	22.80	
TOTAL	<u>\$4,480,888.82</u>	\$4,480,888.82
BALANCE ON HAND 12-31-96		\$ 305,260.80

EXPENDITURES OF ALL FUNDS

GENERAL GOVERNMENT		
SELECTMEN SALARIES	3,500	
EXECUTIVE EXPENSES	50,408	
ELECTIONS & REGISTRATION	3,181	
FINANCIAL ADMINISTRATION	37,269	
REVALUATION OF PROPERTY	37,820	
LEGAL EXPENSES	4,346	
BENEFITS	40,278	
PLANNING & ZONING	12,555	
MUNICIPAL BUILDING	17,170	
CEMETERIES	2,700	
INSURANCE	28,840	
	TOTAL GENERAL GOVERNMENT	\$238,067
PUBLIC SAFETY		
POLICE DEPARTMENT	83,309	
AMBULANCE SERVICE	33,804	
FIRE DEPARTMENT	43,807	
BUILDING INSPECTION	2,443	
EMERGENCY MANAGEMENT	0	
MOULTONBORO FIRE TOWER	1,000	
	TOTAL PUBLIC SAFETY	\$164,363
HIGHWAYS STREETS & BRIDGES		
PUBLIC WORKS	189,825	
STREET LIGHTING	8,819	
SANITATION	157,387	
	TOTAL HIGHWAYS STREETS & BRIDGES	\$356,031
HEALTH		
HEALTH OFFICER	740	
MEREDITH PUBLIC HEALTH	14,468	
LAKES REGION HOSPITAL	0	
	TOTAL HEALTH	\$15,208
WELFARE		
DIRECT RELIEF	4,553	
CAP	6,582	
LR FAMILY SERVICES	3,500	
LR DAY CARE CENTER	4,187	
LR COMMUNITY SERVICES	300	
NEW BEGINNINGS	500	
AMERICAN RED CROSS	0	
	TOTAL WELFARE	\$19,622
CULTURAL & RECREATION		
PARKS & RECREATION	22,310	
HOLIDAYS	3,766	
HISTORICAL SOCIETY	500	
LIBRARY	37,751	
	TOTAL CULTURAL & RECREATION	\$64,327
CONSERVATION		
CONSERVATION COMMISSION	1,464	
TRUSTEE OF TRUST FUNDS	0	
	TOTAL CONSERVATION	\$ 1,464
DEBT SERVICE		
PRINCIPAL ON LONG TERM NOTES	47,374	
INTEREST ON LONG TERM NOTES	6,161	

PRINCIPAL ON TAN	2,000,000	
INTEREST ON TAN	58,137	
	TOTAL DEBT SERVICE	\$2,111,672
COUNTY		
COUNTY TAX	235,219	
	TOTAL COUNTY	\$ 235,219
SCHOOL		
INTERLAKES SCHOOL DISTRICT	1,238,779	
	TOTAL SCHOOL	\$1,238,779
	TOTAL EXPENDITURES	\$4,444,751

DETAILED STATEMENT OF PAYMENTS		
GENERAL GOVERNMENT		
EXECUTIVE OFFICERS		
SELECTMEN SALARIES	\$ 3,500	
SECRETARY	18,450	
EXPENSES	7,500	
SUPPLIES & POSTAGE	2,995	
DUES & MEMBERSHIPS	2,133	
PRINTING & ADVERTISING	1,796	
MISC SUPPLIES	240	
CONVENTIONS & MEETINGS	0	
TELEPHONE	2,606	
EQUIPMENT MAINTENANCE	1,302	
COMPUTER	3,939	
OFFICE PERSONNEL	9,447	53,908
ELECTIONS & REGISTRATION		
TOWN CLERK	420	
MODERATOR	0	
WAGES	1,864	
SUPPLIES	393	
ADVERTISING	356	
MEALS	148	3,181
FINANCIAL ADMINISTRATION		
TAX COLLECTOR	10,125	
TREASURER	525	
DEPUTY TREASURER	55	
AUDITORS	4,826	
BOOKKEEPER	4,830	
TAX COLLECTOR EXPENSES	448	
TREASURER EXPENSES	2,106	
TAX SALES & COSTS	0	
REFUNDS & ABATEMENTS	14,354	37,269
REVALUATION OF PROPERTY		
APPRAISAL & MAP WORK	2,395	
REVALUATION COSTS	33,590	
MAPS	1,085	
911	750	37,820
LEGAL EXPENSES		
LEGAL EXPENSES	4,346	4,346
BENEFITS		
BLUE CROSS BLUE SHIELD	26,143	
UNEMPLOYMENT	589	
WORKMAN'S COMP	1,009	
FICA	8,836	
RETIREMENT	1,627	
GROUP LIFE INS.	2,074	40,278
PLANNING & ZONING		
PLANNING BOARD & POLICE CLK.	11,500	
PLANNING BOARD EXPENSES	926	
ZONING BOARD EXPENSES	129	12,555
MUNICIPAL BUILDING		
SUPPLIES	292	
CLEANING	2,400	
MAINTENANCE	7,576	

SEWER SERVICE	353	
FUEL	2,523	
ELECTRICITY	4,026	17,170
CEMETERIES		
CHMP	2,116	
RESTORATION	584	2,700
INSURANCE		
TOWN PACKAGE	28,840	28,840
TOTAL GENERAL GOVERNMENT		\$238,067
PUBLIC SAFETY		
POLICE DEPARTMENT		
WAGES	58,032	
SPECIALS	5,100	
SPECIAL DETAIL	1,531	
COMPUTER EXPENSES	0	
TELEPHONE	1,511	
DOG POUND	300	
INVESTIGATIONS	46	
MISC	40	
TRAINING	135	
RADIO MAINTENANCE	1,376	
DUES & MEMBERSHIPS	795	
GASOLINE	1,870	
OIL, TIRES, LUBE	236	
EQUIPMENT	7,150	
UNIFORMS	208	
CRUISER MAINTENANCE	4,859	
WITNESS FEES	120	83,309
AMBULANCE		
AMBULANCE SERVICE	33,804	33,804
FIRE DEPARTMENT		
FIRE DEPARTMENT OPERATING	29,898	
SALARIES	13,909	43,807
BUILDING INSPECTION		
COMPLIANCE OFFICER	2,230	
TELEPHONE	33	
MILEAGE	180	
FIRE INSPECTION	0	2,443
EMERGENCY MANAGEMENT		
HAZ MAT	0	
RED HILL FIRE TOWER	1,000	1,000
TOTAL PUBLIC SAFETY		164,363
HIGHWAYS STREETS & BRIDGES		
PUBLIC WORKS		
WAGES	67,132	
SUB-CONTRACT	10,703	
EQUIPMENT MAINTENANCE	15,677	
GASOLINE, OIL & GREASE	5,669	
SAND & GRAVEL	7,123	
SALT	10,999	
CULVERTS	1,830	
COLD PATCH & BITUMINOUS	17,339	
TREES	2,210	
SIDEWALKS	375	
TELEPHONE	766	

	ROAD REPAIRS	7,855	
	HEAT	3,748	
	UNIFORMS	629	
	ELECTRICITY	2,286	
	LEASE FOR DUMP TRUCK	16,804	
	PICKUP TRUCK LEASE	7,792	
	NEW EQUIPMENT	10,300	
	SIGN MAINTENANCE	291	
	BUILDING MAINTENANCE	296	189,824
	STREET LIGHTING		
	STREET LIGHTS	8,819	8,819
	TOTAL HIGHWAYS, STREET & BRIDGES		198,643
	SANITATION		
	TRASH PICK UP	1,485	
	SUB-CONTRACT	3,607	
	TRANSFER STATION	151,699	
	MISC	596	
	TOTAL SANITATION		157,387
HEALTH			
	HEALTH OFFICER	740	
	MEREDITH PUBLIC HEALTH	14,468	
	LAKES REGION HOSPITAL	0	
	TOTAL HEALTH		15,208
WELFARE			
	DIRECT RELIEF	4,553	
	CAP	6,582	
	LR FAMILY SERVICES	3,500	
	IL DAY CARE CENTER	4,187	
	LR COMMUNITY SERVICES	300	
	NEW BEGINNINGS	500	
	AMERICAN RED CROSS	0	
	TOTAL WELFARE		19,622
CULTURAL & RECREATION			
	PARKS & RECREATION		
	WAGES	4,491	
	LIFEGUARDS	8,087	
	BOAT LAUNCH ATTENDANT	1,552	
	BEACH SUPPLIES	1,071	
	BAND CONCERTS	985	
	ADVERTISING	44	
	TELEPHONE	160	
	BATH HOUSE MAINTENANCE	355	
	NEW PARK MAINTENANCE	928	
	PORTABLES	1,040	
	REPAIR & MAINTAIN DOCKS	2,491	
	NEW DOCK	0	
	MISC	215	
	ELECTRICITY	891	22,310
HOLIDAYS			
	BANDS	450	
	SUPPLIES	316	
	FIREWORKS	3,000	3,766
CULTURAL			
	HISTORICAL SOCIETY	500	
	LIBRARY	26,750	

	LIBRARY REPAIRS	11,001	38,251
	TOTAL CULTURAL & RECREATION		64,327
CONSERVATION			
	CONSERVATION COMMISSION	1,464	
	TOTAL CONSERVATION		1,464
DEBT SERVICE			
PRINCIPAL			
	NEW GARAGE	25,000	
	REFURBISHING FIRE TRUCK	6,294	
	LAND PURCHASE	16,080	47,374
INTEREST			
	NEW GARAGE	3,575	
	REFURBISHING FIRE TRUCK	686	
	LAND PURCHASE	1,900	6,161
TAN			
	PRINCIPAL	2,000,000	
	INTEREST ON TAN	58,137	2,058,137
	TOTAL DEBT SERVICE		2,111,672
COUNTY			
	COUNTY TAX	235,219	235,219
SCHOOL			
	INTER LAKES SCHOOL DISTRICT	1,238,779	1,238,779
	TOTAL EXPENDITURES .		4,444,751

HIGHWAY/PUBLIC WORKS SALARIES

1996

HIGHWAYS	\$53,593.22
WHARF AND FOUNTAIN	3,359.33
PARKS	8,362.89
CENTER HARBOR MEMORIAL PARK	1,019.50
LIBRARY	136.25
OTHER CEMETERIES	533.25
POLICE MAINTENANCE	11.75
FIRE DEPARTMENT MAINTENANCE	116.00
	<hr/>
TOTAL	\$67,132.19

CENTER HARBOR MEMORIAL PARK

Treasurer's Report

1996

Sales and Interments

RECEIPTS:

Sale of Lots	\$150.00
Interments	575.00
	<hr/>

TOTALS	\$725.00
--------	----------

EXPENSES:

Town of Center Harbor	\$625.00
Trustees of Trust Funds	100.00
	<hr/>

TOTALS	\$725.00
--------	----------

JOHN P. MERRILL
Treasurer

Report of the Trust Funds of Center Harbor, NH on December 31, 1996

◆ How Invested ◆		Principal ◆		Interest Income & Expense ◆			
Date	Name	Jan 1996 Balance	Cash Gains	Dec 1996 Balance	Jan 1996 Balance	Dec 1996 Expense	Grand Totals
<i>Regular Trust Funds</i>							
	Various						
1963	Dr. LB Merrill	2750.00		2750.00	1099.89	179.45	3867.80
	Care of Cemetery						
	Care of Park	250.00		250.00	12.23	12.23	250.00
1949	Benita A. State	1000.00		1000.00	101.78	150.20	1007.98
	Town Improvement						
1913	Benjamin C. Smith	6400.00		6400.00	329.34	329.34	6400.00
	Care of Cemetery, Balance to School						
1961	Hosea Canney	2025.00		2025.00	835.86	141.97	2602.83
	Care of Grave, Town Poor, Education						
1952	Caroline P. Hill	1690.00		1690.00	120.41	93.30	1853.71
	Medical Care of Needy						
<i>Total Regular Trust Funds</i>		14115.00		14115.00	2157.94	830.40	15982.32
<i>Capital Reserve Funds</i>							
1978	Town of Ctr. Harbor	8235.49		8235.49	4909.88	674.38	13819.75
	Meredith Incinerator						
<i>Total Capital Reserve Funds</i>		8235.49		8235.49	4909.88	674.38	13819.75
<i>General Trust Funds</i>							
1971	CH Memorial Park	5200.00	275.00	5475.00	1050.38	319.06	6444.44
	Care of Cemetery						
1989	Conservation Comm.	9469.52		9469.52	1208.07	547.85	11225.44
	Land and/or easement purchase						
<i>Total General Trust Funds</i>		14669.52	275.00	14944.52	2258.45	866.91	17669.88
Grand Totals		37020.01	275.00	37295.01	9326.27	2371.69	47471.95

We certify that the information in this report is correct to the best of our knowledge and belief.

John P. Merrill
Martha Ann LeRoy

JAMES E. NICHOLS MEMORIAL LIBRARY ASSOCIATION
Annual Treasurer's Report

Balance on Hand January 1, 1996 \$15,622.97

RECEIPTS:

Nichols Trust Funds	\$3,503.04	
Interest - NOW Account	45.69	
Interest - Endowment Funds	417.64	
Interest - MBIA	527.01	
Interest - Bergstrom	104.54	
Membership Dues	82.00	
Fines and Book Sales	528.00	
Gifts	4,785.25	
Town of Center Harbor	26,750.00	
Copier	123.50	
Miscellaneous	232.21	
Total Receipts		\$37,098.88

Total Available

EXPENSES:

Salaries	17,650.59	
FICA & ITW & IRS	5,218.40	
Fuel	1,122.22	
Furnishings & Equipment	331.92	
Repairs & Maintenance	1,139.92	
Supplies	1,070.18	
Telephone	702.59	
Travel	179.97	
Collection Dev. (From F&B Sales)	528.00	
Books & Periodicals	4,877.48	
Landscaping	136.00	
Special Projects from Gifts	4,200.96	
Prof. Dev. & Training	620.00	
Program Projects	420.96	
Miscellaneous	75.00	
Bergstrom Collection	1,128.25	
Total Expenses		39,402.44

Balance on Hand December 31, 1996 13,319.41

Permanent Endowment Funds (Principal) in Certificate of Deposit

Stanley Fund	\$3,000.00	Mason Fund	\$200.00
Morse Fund	2,000.00	Morse	300.00
Fox Fund	1,000.00	Piper Fund	300.00
Garnet Hill		Perkins Fund	200.00
Grange Fund	1,000.00		
	<u>\$7,000.00</u>		<u>\$1,000.00</u>

Respectfully submitted, Sarah S. Heath
Treasurer

The Town of Center Harbor is under contract with Grzelak & Co. to be audited in 1996. The initial auditing took place in January and will be made public when the final compilation is complete. It will then be available in the Town Office.

1996 PLANNING BOARD REPORT

The Planning Board of Center Harbor enjoyed a calm and steady year in 1996. There was not a lot of land subdivision activity; however, the Board kept busy with regular meetings working to improve our current zoning laws to be more conforming with the 90's. One improvement adopted this year was a two-tier Non-Residential Site Plan Review. With this revision townspeople wishing to start a home occupation or small business will find it easier to comply with site plan regulations working together with the Planning Board. The Board also worked hard to clarify and improve the Home Occupation section of the zoning ordinance with hopes it will meet voter approval in March 1998.

Several new propositions have come before the Board this year. The New Hampshire Antique Boat Society has suggested the possible location of their new and permanent museum to be in Center Harbor with eventual lake access. The possibility of the Sheafe house (formerly Dybros) being moved across town to a new location, renovated and utilized, raises some eyebrows (and a scratch on the head?). The Bicentennial Committee suggestion of a bandstand on our town green overlooking the lake is reminiscent of the town's past and small town atmosphere.

The Board continued with the ongoing site plan for the Legion of Christ in constructing their school expansion on Route 25B. As the phases unfold and progress it is clear that this will be a premier facility when completed. Another area the Board is continually working on is our sign regulations; an area which requires continual updates to keep with current trends and tastes.

The entire Board is grateful for the support of the residents and selectmen in its quests for good planning; and without the dedicated work of clerk Sheila Mohan much would be left undone - a big thanks to her for keeping us together. The Planning Board meets on the first and third Tuesday of every month at 7:30 pm in the Cary Mead Room. We encourage our residents to attend and be involved in the planning process.

Respectfully submitted,

KIRK MELONEY
Co-Chair, CHPB

JAMES E. NICHOLS MEMORIAL LIBRARY
Librarian's Report for 1996

For the first time, circulation of library materials passed the ten thousand mark, during the past year. Total circulation for 1996 was 10,133, showing a thirty percent rise from 1995. More than 5,000 people came into the Library during the year. Other statistics are as follows:

New registrations:	181
Library material added:	725
Library material withdrawn	312
Interlibrary loans:	
Materials borrowed:	217
Materials loaned:	167

During February and March, New Beginnings provided a facilitator for four story hours, dealing with conflict resolution for youngsters. Library volunteers organized a book sale in July, during the Center Harbor Congregational Church Flea Market. In August a Scrabble tournament was held at the Library, sponsored by the Nichols Memorial Library Association, under the direction of Nancy Chapman. In cooperation with the Center Harbor Parks and Recreation Department, a storyteller was sponsored for an evening of outdoor entertainment at the beach in July. Eloise Coudert directed two Saturday craft sessions in the spring and two in the fall at the Library, which were well attended by area youngsters. The Library was the site for the community Christmas party in early December. The festivities were organized by Eloise with the participation of the Library Trustees and Library volunteers.

The employees of Sabanek Associates donated their time to make a quilt depicting scenes from New Hampshire and particularly the Lakes Region. They organized a raffle and sold tickets and after the drawing in September, gave the proceeds to the Library. We are very grateful for their hard work and generosity and the money shall go towards revamping the children's area.

My heartfelt thanks to the Trustees, to the Treasurer, to Library assistants, Jackie Kelley and Judy Hodges, and to all our volunteers, who gave so generously of their time.

Sandra S. Pickel
Librarian

CENTER HARBOR FIRE DEPARTMENT
1996 Report

In 1996 the Center Harbor Fire Department responded to 177 calls. Of these 62 calls were fire related; 71 were medical emergencies; 26 were reported motor vehicle accidents, and there were 16 calls for service.

We now have a total of 20 members in the department, 12 of whom are state certified to Firefighter Level 1 and five who are state certified to Career Level. This year we held a First Responder class, bringing the number of members trained in EMS to 11.

In 1996 we continued our involvement with the Daniel Webster Explorer group. The Explorers are designed for those from 14 to 18 years of age, in our town and surrounding communities, who have an interest in the fire service. Anyone interested in information about the Explorers can contact a department member.

Anyone interested in becoming a member of the Fire Department, as a Firefighter or EMS provider, is urged to contact a member for information.

Residents and businesses alike are again to be commended for their practice of fire prevention. The department would like to remind everyone to clean and check the batteries in your smoke detectors regularly as they may well save your life.

Thank you for your continued support. We sincerely appreciate it.

Respectfully submitted,

LEON E. MANVILLE, Chief

Deputy David A. French
Deputy John Schlemmer
Captain -Don Bosse
Captain Ingrid Baker
Lieutenant Bob Baker
Lieutenant Wayne Baker
Engineer Scott Davis

Firefighters Ken Ballance	Howard Bates	Mike Bertholet
Kevin Campbell	Norma Cannon	Jeff Duren
Dave Enright	Roger Hibbard	Kent Libby
Pat Mohan	Cindy Schlemmer	Doug Thibeau

REPORT OF TOWN FOREST FIRE WARDEN AND STATE FOREST RANGER

To aid your Forest Fire Warden, Fire Department and State Forest Ranger, contact your local Warden or Fire Department to find out if a permit is required before doing any open burning. Violations of RSA 227-L:17, the fire permit law and the other burning laws of the State of New Hampshire are misdemeanors punishable by fines of up to \$2,000 and/or a year in jail. Violators are also liable for all fire suppression costs.

There are ten Forest Rangers who work for the N.H. Division of Forests and Lands, Forest Protection Bureau. State Forest Rangers are available to assist communities with forest fire suppression, prevention and training programs as well as the enforcement of forest fire and timber harvest laws. If you have any questions regarding forest fire or timber harvest laws please call our office at 271-2217.

The State of New Hampshire operates 15 fire towers, 2 mobile patrols and 3 contract aircraft patrols. This early detection and reports from citizens aid in quick response from local fire departments.

1996 FIRE STATISTICS
(Cost Shared)

<u>FIRES REPORTED BY COUNTY</u>		<u>CAUSES OF FIRES REPORTED</u>	
Belknap	06	Smoking	05
Carroll	07	Debris Burning	34
Cheshire	13	Campfire	16
Coos	10	Power Line	04
Grafton	12	Railroad	02
Hillsborough	19	Equipment Use	01
Merrimack	14	Lightning	02
Rockingham	15	Children	22
Strafford	05	CHRV	01
Sullivan	06	Miscellaneous	20
TOTAL FIRES	107		

"REMEMBER, ONLY YOU CAN PREVENT FOREST FIRES!"

Lee A. Gardner
Forest Ranger

John Schlemmer
Forest Fire Warden

LAKES REGION COMMUNITY SERVICES COUNCIL

During the past year, Lakes Region Community Services Council has continued to provide comprehensive services to the residents of Center Harbor who are developmentally disabled. Such services as residential, vocational and transportation have long become an integral part of their lives.

Our transportation network is called "Greater Laconia Transit Agency" (GLTA). It is a sub corporation of the Council, and provides transportation to LRCSO clients, as well as the general public. During the past year it has expanded its services to a steadily increasing ridership.

Center Harbor's support for our Agency has been very meaningful in helping us to operate a comprehensive community-based system of care. Without it our mentally retarded citizens, who are our primary responsibility, would be completely isolated in their homes. These transportation services are therefore indispensable for a variety of day programs, whether they be rehabilitative activities or gainful employment.

We greatly appreciate the assistance that the Town of Center Harbor has given us and earnestly hope that you will continue to support us in our efforts to help your developmentally disabled citizens to lead meaningful lives.

STEPHEN C. MAGUIRE
Assistant Executive Director

CENTRE HARBOR HISTORICAL SOCIETY

1996

You are invited to visit the collection of memorabilia of your town at the Village Schoolhouse on Saturday afternoons in July and August. The little school that serves as our Museum is located on Route 25B. You can also attend an evening meeting of the Historical Society at 7:30 on the fourth Thursday of the month from April through November. Many who have attended meetings in the past will be surprised by the renovations that have been made. Thanks to the special efforts and hard work of some of the Society members the Schoolhouse now has a kitchen and a bathroom.

Loyal patrons made the annual plant sale, held at the Center Harbor Fire Station, very successful with all members doing their share to help. Look for the plant sale on May 24th in 1997.

As usual, the Historical Society participated in the Independence Day Parade. On Memorial Day American flags were placed on the graves of veterans buried in Center Harbor. If you want to know where these are located, come with us. The Society also participated in the Lakes Region Roundtable project sponsored by Inherit New Hampshire.

During the months of April through November the Society will have programs on various topics. In July, from the third through the sixth the Society will have a Bicentennial Open House. There will be slide shows, tool, spinning and blacksmith demonstrations, even historical foods.

Consider this an invitation to attend, participate, and have a very enjoyable time with the Centre Harbor Historical Society as we celebrate Center Harbor's Bicentennial year.

CENTER HARBOR BICENTENNIAL COMMITTEE

The first meeting of the Center Harbor Bicentennial Committee was held on May 21, 1996 in the Cary Mead Room of the Town Hall. Twelve people were present. It was agreed that Eloise Coudert and Seth Ira Stearns would serve as Co-Chairs with Barbara Lauterbach, Secretary and Warren Perkins, Treasurer. At that point there was a general discussion as to what events were to be planned and when they would most likely occur. The blackboard was filled with suggestions from the open discussion. It was suggested that there were others who were interested in the committee and they would be advised that the next meeting would be June 12th. Currently there is a group of from 25 to 30 people that are now involved in planning the celebration of the Town's birthday during the entire year of 1997. The actual day of the incorporation of the Town was December 7, 1797. The major celebration will be held over the long Fourth of July weekend running from the 3rd to the 6th. "the year to be here!"

No money was appropriated in the 1996 Town Budget for planning or funding the bicentennial, so one of the first projects was to raise money by selling caps, T-shirts and water bottles for expenses. Another project was to print a large banner for advertising. The layout of the banner was done by "Annie" Paquette with the printing donated by VUTEK. Cooperation in this project finally placed the banner on the end of the old Children's Museum at the traffic lights.

Fall planting was also necessary to have Spring gardens ready for our celebration. Several gardens were planted with perennials and bushes. Also hundreds of bulbs were placed around the Town Hall as well as by the cemetery and the park by the traffic lights. The iron fence around the cemetery was painted with the help of the inmates from the shock incarceration group in Laco-nia. They also helped with the Fall cleanup by raking leaves around the Town Hall and Library, as well as around the Historical Society building.

Early on it was determined that a historical pictorial quilt would be a unique gift to remember the bicentennial year. Several of the ladies from the committee, as well as others interested in the quilt project, have been meeting weekly to sew a historical masterpiece. It will hang in the Cary Mead Room in a glass frame when completed. The materials for the project were supplied by the Sabaneks.

The major project of this Bicentennial Committee will be the building of a new bandstand. This project is a grand undertaking that will coincide with our 200th birthday and will live on, forming a park area that will change the looks of downtown Center Harbor. The Architectural plan is being developed and donated by Chris Williams. There are also many others who are donating time and talents to see that the new park will be a credit to the whole Town. Fund raising efforts are underway to see that we

have a first class bandstand that will make us all proud to say, "we come from Center Harbor, no matter how you spell it".

There has been a lot accomplished by the loyal and faithful members of the Bicentennial Committee but more needs to be done. If there is anyone that wants to lend a helping hand in the continuing celebration, talk to a committee member. If you wish to donate some money to the overall project, talk with Warren Perkins.

CENTER HARBOR BICENTENNIAL CALENDAR

subject to minor changes

- Jan 1 > 31 Historical Exhibit Centre Harbor Historical Society at library
1 > 5 Clean Start for Beard Growing Contest
5 Bicentennial Proclamation all churches of the area
25 Winter Outing at Red Hill Inn
- Feb 1 > 28 Historical Exhibit town hall
8 Winter Carnival
- Mar 1 > 31 Historical Exhibit town hall
29 Easter Festival & Wooden Egg Rewards
- Apr 1 > 30 Historical Exhibit town hall
5 Beard Judging - Barber Shop Quartet
24 Historical Society Meeting old school house
26 Tree Planting in connection with conservation committee
- May 1 > 31 Historical Exhibit town hall
22 Historical Society Meeting old school house
24/31 Planting Bicentennial Gardens by the Library
26 Civil War Living History Display
- Jun 1 - 30 Historical Exhibit town hall
26 Historical Society Meeting old school house
28 Canoe Races. 1797 Settlement Re-enactment
29 Mount Washington Cruise boarding at the bay
- July 1 > 31 Historical Exhibit old school house
3 **Children's Day, Clowns, Games, Concessions**
4 **Independence Day Activities, Foot Races, Parade,**
Presentation and Hanging of Quilt, Band Concert, Fireworks
5 **Pancake Breakfast, Art Festival, Street Dance**
6 **Dedication of Bandstand, Band Concert, Bar-B-Q**
The Centre Harbor Historical Society open house all four days
11 Town Band Concert 7:30 PM at the bandstand
18 Town Band Concert 7:30 PM at the bandstand
25 Town Band Concert 7:30 PM at the bandstand
24 Historical Society Meeting old school house
- Aug 1 > 31 Historical Exhibit old school house
1 Town Band Concert 7:30 PM at the bandstand
8 Town Band Concert 7:30 PM at the bandstand
16 Horseshoe Tournament & Harbor Picnic/Bar-B-Q
28 Historical Society Meeting old school house
- Sep 1 > 30 Historical Exhibit town hall
21 Harvest Concert Home Grown Talent
25 Historical Society Meeting old school house
- Oct 1 > 31 Historical Exhibit town hall
23 Historical Society Meeting old school house
31 Hay Rides, Halloween Party, Special Entertainment
- Nov 1 > 30 Historical Exhibit town hall
15/22 Children Heritage Program
20 Historical Society Meeting old school house
- Dec 1 > 31 Historical Exhibit town hall
6 Christmas Party at the Library
7 Proclamation Service 2:00 PM CHCC
Recognition Dinner 6:00 PM Chequers

CENTER HARBOR POLICE DEPARTMENT
1996

1996 started off as a very busy year and kept right on going at a steady rate. Our arrest record is up from last year, and we found ourselves in court much more than in the past. We also noted that our domestic assault cases were up from last year as well. This is a discouraging fact and something that we in the Center Harbor Police Department do not like to see and hope it will decrease in 1997. I would like to take this time to thank all of the personnel in the police department for their time and dedication to the job. I would also like to wish everyone a safe and healthy year in 1997.

Respectfully submitted,

ANDREW FALLER, Chief

Arrests	38
Bad check cases	4
Felony forgery cases	1
Theft cases	25
Accidents covered	52
Alarms covered	29
Departmental assistance	24
Shoplifting cases	4
Hit and run cases	1
Criminal mischief cases	15
Domestic disputes/assaults	21
Secured doors for business owners	15
Medical calls	13
Burglary cases	4
911 hangup calls	21
Missing juvenile cases	9
Suicide attempts	2
Felonious sexual assault cases	6
Unattended death cases	2
Assaults	5
Parking tickets issued	89
Motor vehicle summons issued	81
Other M/V related cases and warnings	572
Miscellaneous cases*	59
Total calls for service for 1996	1094

*Miscellaneous cases includes cases such as loose dog calls, welfare checks of residents, trees down, serving subpoenas for other jurisdictions, M/V lockouts, motorist assistance, etc.

NEW BEGINNINGS

On behalf of New Beginnings, I would like to thank the Town of Center Harbor for its continued support. Your \$500 allocation for 1995-96 assisted us in providing emergency services, advocacy and support to victims of domestic and sexual violence.

Publicity surrounding the issue of domestic and sexual violence and its devastating effects on families and children has resulted in a significant increase in requests for our services. Our records indicate that we had 7 contacts with Center Harbor residents in 1993, 5 contacts in 1994, and 16 contacts in 1995. In addition, 372 other contacts for services were not identified by town. Our agency documented over 1,721 requests for service for 1995. The first six months of 1996 shows that we had 7 contacts from Center Harbor residents.

As you know, New Beginnings staffs a 24-hour crisis line solely with volunteers; operates a full-time shelter for women and children and safe homes for male victims; provides support and advocacy at court, the hospital, police stations, and social service agencies; offers peer support groups for victims of domestic violence and sexual assault; assists with needs assessment, case management and housing options; and does community outreach and education programs for teens and adults. All our services are provided free of charge.

We are members of the state-wide NH Coalition Against Domestic and Sexual Violence, promoting statewide networking and resource sharing among domestic violence and sexual assault programs. The Coalition is the evaluating body and administrator of state and federal contracts that provide subsidiary funding for member programs and advocates for legislative change that affects victims of domestic and sexual assault.

We greatly appreciate the solid support of the Center Harbor community. We are dedicated to human service, social responsibility and fiscal accountability. We were pleased to start a community outreach in Center Harbor, "We Can Work It Out", a conflict resolution program for grades K-2. This interactive story hour was conducted at the Nichols Memorial Library. We were encouraged by the response and turnout. New Beginnings represents a very finite portion of the Center Harbor budget but the returns are immeasurable. We welcome your participation in our efforts to insure a world of safety for ourselves and our children. Volunteers are always needed and the opportunity to serve is fulfilling and satisfying.

Sincerely,

KATHY KELLER, Director
New Beginnings-A Women's Crisis Center

LAKES REGION PLANNING COMMISSION

1995-1996

The Lakes Region Planning Commission is a voluntary, non-profit association of local governments formed for the purpose of bringing area municipalities together. By associating and pooling resources, local governments have access to a highly trained professional staff for a wide variety of services. Over the past year the LRPC:

Provided consultation and technical assistance to 31 member communities.

Co-hosted three public Municipal Law Lectures where practicing attorneys provide a legal perspective on local planning, zoning and other municipal issues.

Presented a public workshop for local land use and select boards on home occupations where attorneys and planners participated in a panel discussion on this rapidly growing economic and land use activity.

Convened a public workshop on the basics of planning for planning board members and others who needed an introduction or refresher seminar on the dynamics and responsibilities of the local planning process.

Convened four public meetings to receive public comment as part of the update to the Lakes Region Transportation Plan. The Transportation Plan is the policy document which supports additions to the regional and state transportation improvement programs.

Completed Phase 2 of the Route 16 Corridor Study and initiated work on the analysis and recommendations aspects of Phase 3.

Represented the Region on the NH Heritage Trail Advisory Comm.

Continued to update the regional land use map using geographic information system technology. Land use for Franklin, Laconia, Gilford, Tilton, Meredith and Hill was completed last year; more communities will be added in the next year.

Continued to support area economic development policy as a board member of the Belknap County Economic Development Council and Newfound Economic Development Corporation Mitigation Fund Advisory Comm. Applied for regional funding to support economic development from the NH Comm. Development Finance Authority.

Produced and distributed newsletters focusing on planning topics and issues relevant to the Lakes Region.

Represented the region in discussions leading to the construction of an access road to Governor's State Park along Lake Winnisquam as a member of the Governor's State Park Advisory Comm.

Served as the Lakes Region's data clearinghouse for US Census, demographics and statistical data. These data are available to community officials and the public.

Retained regional interest in locating a state sponsored conference facility in the Lakes Region.

Developed public information materials, e.g., brochure, display, draft map guide and slide show, as part of a major effort to educate the public about nonpoint source pollution in the Lake Winnepesaukee watershed.

Provided support to the US Americorps staff who focused on working with local land owners on issues related to water quality and land management.

As part of the NH Rivers Management and Protection Program, the LRPC contacted study area towns to establish the Pemigewasset River Advisory Comm,

Performed substantial work on a report that compares single-day household hazardous waste (HHW) collections with permanent HHW collection facilities.

Established subareas of the Lakes Region as forums to discuss regional planning issues.

Coordinated the 12th annual Household Hazardous Waste Collection, the largest single day, multi-site collection in New Hampshire.

We look forward to serving Center Harbor in the future. Feel free to contact us at 279-8171 whenever we can be of assistance.

LAKES REGION FAMILY SERVICE ASSOCIATION, INC.

I. AGENCY PROGRAMS AND SERVICES

Lakes Region Family Service Association is a private, non-profit social service agency dedicated to strengthening individuals and families by establishing a broad range of programs that promote healthy relationships. We offer services in counseling, mediation, child advocacy, parent aide, parenting classes and a variety of workshops to residents of the Lakes Region. Our organization has been in existence as a separate agency for over 20 years, and has been located in the Lakes Region for over 26 years.

The range of services we offer are directed by both the needs of communities and families and our belief that the family is the basis for a healthy, responsible and well-functioning society.

The following are brief descriptions of our programs. We seek and utilize town funding from Center Harbor in our Counseling, Mediation and Family Life Institute Programs. Marital Mediation, Child Advocacy and Parent Aide services are funded through other sources.

A. Counseling Program

This Program provides counseling for children, adults, families and groups dealing with issues such as child/adolescent adjustment, marital difficulties, depression, anxiety, alcohol and drug abuse, parenting difficulties, family communication difficulties, grief and stress. The counseling staff has expertise in dealing with issues of child sexual, physical, and emotional abuse as well as neglect. Services are offered to children, adolescents, and adults impacted by such trauma. A variety of groups are also offered throughout the year including Co-dependency, Adult Children of Alcoholics, Mindful Eating Groups for those who struggle with eating problems, Groups for men who are abusive and various children's groups (such as Social Skills).

Our staff is composed of Master level professionals from a variety of backgrounds including psychology, counseling psychology, and social work. We have a Ph.D. level psychologist who is able to provide more intensive testing and evaluation and family therapy. Our staff are very committed to working closely with families, schools, local physicians and other human service organizations to address children's and adults' needs as fully as possible.

We offer counseling in conjunction with other services, such as Mediation and Children in Transition Workshops (such as coping with divorce, remarriage, moving). Our services are often particularly helpful to people and families who are more reluctant to approach more traditional mental health services; i.e. we offer supports for a wide range of family issues that are not identified as "pathological."

A new program entitled "Teen Anger Management" is being offered through a Belknap County Incentive Fund Grant for this year. This grant seeks to provide services to families with teens who have trouble controlling their anger. They are referred by schools, police or themselves. This program will be offered in various communities in Belknap County. We have made contact with various school districts in Belknap County to offer these programs to students in the 1996-97 school year. We have received very positive feedback on this program to date. We will be conducting at least one of these programs in Center Harbor at a community-based site.

Counseling services are provided on a sliding scale fee. We accept some insurances, and we work closely with people to arrange affordable fees if they lack such insurance.

Contributions from towns are of great assistance in making services accessible and affordable. Residents of Center Harbor are most frequently seen at our 95 Water Street, Laconia Office. Over the last year, we have collaborated with school personnel in the Meredith School District area to provide services at both the elementary and high School level. We are now beginning our seventh year of conducting our social skills program at Interlakes Elementary School.

B. Mediation Program

In March, 1992, the Belknap Mediation Program was integrated into Lakes Region Family Service. Over the last four years, this Program has become an integral part of our Agency. This Program offers free family mediation services to residents of Belknap County. Mediation is short-term conflict resolution designed to assist families to learn new ways of solving problems. Most of the services in Family Mediation activities are provided by very skilled and committed volunteers. Typical problems addressed in Family Mediation include:

- Rebelliousness
- Discipline problems
- Issues over household rules
- Communication problems

- Re-integration of children who are leaving foster care

Other Family Mediations take place when parents are unable to agree on child visitation, or when extended family members look for help in negotiating agreements.

Another component of the mediation program is working with area schools to teach peer mediation and conflict resolution skills to students from elementary and secondary grades. Peer mediation has developed within our organization over the last 2 1/2 years. The coordinator works collaboratively with schools and communities (including parents, teachers, and students) to implement a program of students helping students through utilization of conflict resolution skills. This is one component of our efforts to reduce violence among youth. Schools throughout the Lakes Region have participated in the Program and we plan on expanding this further each year. We worked with students at Interlakes Elementary School in 1995-96. This year we are training additional students.

We are hoping that Center Harbor will help provide some funding to assist the Family mediation costs and in the future to be involved in the development of peer mediation services.

C. *Divorce Mediation*

This is an affordable option for separating or divorcing couples who are seeking a positive alternative to the typical legal process (separate lawyers and high court expenses). With Mediation a couple works with neutral mediators to negotiate agreements on child custody, visitation and property settlements which best fit the needs of the family. We do not receive any supplemental or town funds for this service.

D. *The Parent Aide Program*

This program provides a wide variety of services to families who need intensive assistance in learning skills called for in parenting today. Families served by the Program are referred by the Division of Children, Youth and Families and have histories of problems with parenting. Services may include in-home parent education, advocacy, supervising visitation between parents and their children, assisting with learning skills for meal planning, providing transportation as necessary and assisting the families in learning the skills necessary for seeking out and applying for additional services if needed. Funding for this program is received through the Division of Children, Youth and Families.

E. *The Child Advocacy Program*

This program offers assistance to parents and children who are coping with child sexual abuse. Services are available to those families in which the child who has been sexually abused is under the age of 18. Types of services offered within this program include court advocacy, support for non-offending parents (such as a support group, and providing counseling/consultation regarding behavior management with children who are affected as well as their siblings). Individual and family counseling is also available for those impacted. If the family has no insurance or other means of payment services in counseling are offered free of charge. All of the advocacy services are offered at no charge. Funds for this program are received through the Victim of Crime Assistance Program and administered through the Department of Justice of the State of New Hampshire.

F. *The Family Life Institute*

This is the newest program of Lakes Region Family Service. The Institute has two components:

1. An expansion of educational offerings to community residents. This includes programs such as conflict resolution skills, communication skills, assertiveness training, parenting, and stress management. Family-focused seminars and workshops on topics such as child development, alternative family structures (such as blended families or single-parent families), and family dynamics and communication will be offered;

In 1996 the following are examples of programming offered through the Family Life Institute:

- Strengthening the Voice - A workshop for women
- Parenting Workshops
 - How to Discipline Your Child
 - Active Parenting
 - STEP Parenting
 - Positive Discipline
 - No More Tears
 - Disciplining Difficult Children
 - Parenting in the 90's
 - Living with Young Adults
 - Taking Charge of ADHD
- Social Skills Groups

- Working It Out
- Upstream Presentations - These are presentations offered through our collaboration with Upstream, a community organization offering free classes. Last March, 1996, a staff counselor conducted training with peer counselors in conducting groups for younger students.

We have also begun offering a four-part “Working It Out” Workshop designed for parents and teen to actively participate in learning new and more effective ways of managing conflict. We are hoping to offer this workshop throughout the region over the coming year. This workshop as well as our Social Skills Program have received funding through Belknap County Incentive Funds and are offered free of charge.

The remaining workshops are offered at very nominal fees with some scholarships available. The workshops are offered in communities, including Center Harbor, to increase accessibility. We plan on increasing community offerings in Center Harbor in the coming year.

2. The Family Life Institute has also established a more formal training program for individuals who undergraduate and graduate students in human service fields. This includes expanded internships as well as post-graduate training in the areas of services to individuals, children and families



The agency has not only been developing internally, it has also become increasingly committed to strengthening our community involvement in a number of ways. Every staff person is involved in community groups that increase collaboration and will ultimately provide a more unified, coherent service delivery system. Examples of this participation include membership in the following groups: The Alliance of Not For Profit Executive Directors, The Task Force For Family Violence Prevention, The Belknap County Services Team, Upstream, Lakes Region General Hospital’s Mental Health Coalition, the Statewide Committee for Parent Aides, New Hampshire Mediation Association, Youthworks of Laconia, and The Homeless Coalition. All of these groups are composed of providers of a wide range of services. As an agency, we also work closely with schools in providing in-service training and school-based programs (often with a prevention focus, such as classes on sexual harassment, alternatives to violence, group-leadership skills for peer counselors).

Overall, Lakes Region Family Service has committed itself to participate actively in addressing issues and concerns faced by families and individuals in the

90's. Our strategic planning process builds in annual review of services offered and identifies areas needing expansion and growth.

Our staff is composed of a variety of professionals with a broad range of training and experience who can be utilized in developing and implementing new programs. The Executive Director, Kathleen Dotter, CCSW has over 20 years of experience in clinical practice with a broad range of clients. She also has over ten years experience in undergraduate and graduate education, both as full and part-time faculty. Over the last 12 years, she has held both clinical and administrative positions. Philip Mead, Ph.D. is a Certified Psychologist as well as a Certified Marriage and Family Therapist. Our clinical staff is composed of people with Master's degrees in Counseling Psychology (some are Certified Mental Health Counselors), Social Work and one person with a Doctorate of Ministry (she is a Certified Pastoral Counselor). The Coordinator of the Parent Aide/Child Advocacy Program has a Bachelor's degree in Human Services. The parent aides have Associate and Bachelor degrees in a variety of fields. All of the staff are experienced in providing services to families. The agency has an ongoing commitment to providing opportunities for continuing education to staff to ensure that they are familiar with current trends and developments in provision of human services. The Parent Aide/Child Advocacy coordinator has been accepted into a training program for trainers of in-home service providers (particularly those who teach parenting skills).

II. Center Harbor: Numbers served

<u>Year</u>	<u>Total families served</u>	<u>Center Harbor families served</u>
1992	1,192	19
1993	1,100	20
1994	1,067	16
1995	1,034	15
1996 (thru July)	1,552 *	32*

*This includes Family Life Institute Programs.

III. FINANCIAL REQUEST

We finished 1995 with a loss of \$4,465.00. This loss actually reflects a recovery of outstanding and bad debts of approximately \$5,000.00. Difficulties from our projected budget centered on less than expected income from special events and the fund drive.

The Parent Aide Program brought in more money than anticipated in 1995, so we saw some assistance in overall expenses there. In July, 1996 we received a one-time grant award of \$15,000.00 from the Lakes Region Charitable Trust Fund for a Parent Aide Pilot Project in Tilton and Northfield

We received a bequest of \$27,650.00 in 1995. This money was placed in our reserves to help replenish it due to past years in which we had to utilize reserve funds for operating expenses. This was a one-time donation which we do not anticipate receiving again in the foreseeable future. We may find it necessary to draw on these reserves in 1996 to assist in meeting our budget.

Overall, this agency continues operating on a barebones budget. We provide a phenomenal amount of services of very high quality considering the number of staff and money we have to spend. We do not have health insurance and staff salaries are low in some cases. The staff is very motivated, committed and creative. They also are highly qualified professionals who provide the best services possible. We continue seeking stable funding to help secure our staff salaries and maintain them as employees.

We are in the midst of some dramatically changing times. Funding sources are shrinking, and clients are confronted with economic stressors they have not confronted for a long time.

We are requesting \$3,500.00 from the town of Center Harbor for the 1996 fiscal year. This is the same amount requested last year. \$3,000.00 of the request will be utilized by the Counseling Program and Family Life Institute workshops. This helps make counseling services (including Parenting Groups) affordable and accessible for more people. \$500.00 is being requested to help support Family and Parent/Child Mediation services, which are offered free of charge. This will also assist us in progressing towards offering school based peer Mediation training in the Center Harbor area.

A copy of our overall budget is attached.

SUMMARY OF SERVICES 1996
 PROVIDED TO CENTER HARBOR RESIDENTS
 BY THE MEREDITH AREA CENTER
 BELKNAP-MERRIMACK COMMUNITY ACTION PROGRAM

SERVICE DESCRIPTION	UNITS OF SERVICE	HOUSEHOLDS PERSONS	VALUE
<p>COMMODITY SUPPLEMENTAL FOOD PROGRAM is a nutrition program that offers participants free nutritious foods to supplement their daily diet. The program serves children under six years of age, women during pregnancy and up to 12 months after the birth of their baby and low income elderly. Food is distributed from our Concord warehouse. Value \$22.21 per unit.*(An individual may not be enrolled in both the WIC Program and CSFP but a family may have members on both programs.)</p>	Packages-52	Persons-5	\$1,154.92
<p>CONGREGATE MEALS-All senior citizens are welcome to our congregate meal sites for nutritious hot meals, social/recreational activities and special events. Value \$5.33 per meal.</p>	Meals-244	Persons-11	\$1,300.52
<p>EMERGENCY FOOD PANTRIES provide up to three days of food for people facing temporary food crisis. Value \$3.00 per meal.</p>	Meals-702	Persons-78	\$2,106.00
<p>FAMILY PLANNING provides confidential, comprehensive gynecological care, including complete medical examinations breast exams, Pap smears, pregnancy testing, birth control and counseling. Value \$60.00 per unit.</p>	Visits-29	Persons-16	\$1,756.80

FUEL ASSISTANCE is available to income eligible households to help with energy costs during the prime heating season. Priority is given to the elderly and disabled. The average benefit for the 95-96 program was \$334.00

18-Applications Persons-34 \$6,122.52

SENIOR COMPANION PROGRAM provides friendly visiting and respite services for homebound elderly. Income eligible seniors (60+) serve as companions. Value to visitees is comparable to similar private sector services. (\$4.56 per unit/hour). Value to companions includes mileage, weekly stipend (\$4.56 per unit).

Vistee-1 Hours-4 \$18.24

MEALS-ON-WHEELS provides the delivery of nutritionally balanced hot meals to homebound elderly or adult residents five days per week. Value \$5.91 per meal.

Meals-1634 Persons-8 \$9,656.94

CAP TRANSPORTATION provides regularly scheduled transportation to and from towns in Belknap and Merrimack Counties to medical and professional facilities, shopping centers, and congregate meal sites. Value \$4.76 per ride.

Rides-128 Persons-5 \$609.15

WOMEN, INFANTS AND CHILDREN provides specific food to supplement daily diet of pregnant or nursing women as well as children under five. Participants receive medical/nutritional screening, counseling and education. Value includes cost of vouchers and clinical services at \$38.50 per unit.

Vouchers-104 Persons-8 \$4,004

HOMELESS EMERGENCY ASSISTANCE
provides emergency funds to
individuals facing eviction,
in need of security deposit
or first month's rent to avoid
homelessness.

Grants-1

Persons-4

\$732.00

CARING FUND provides emer-
gency assistance grants on
a discretionary basis.

Grants-2

\$669.27

GRAND TOTAL

\$28,130.36

INFORMATION AND REFERRAL-CAP provides utility, land-
lord/tenant, legal and health counseling as well as
referrals for housing, transportation and other life
concerns. These support/advocacy services are not
tracked.

MEREDITH PUBLIC HEALTH NURSING ASSOCIATION

Once again I would like to take this opportunity to express my sincere thanks to the town of Center Harbor for their continued strong financial support to our agency. The support of all of you is greatly appreciated.

Our staff includes: June A. Plummer, RN, Exec. Dir/Supr; Jane H. Kiah, B.S.,RN; Steve Arvin, M.Ed, MSN, CS; Craig S. Walton, RPT; Judy Stoecklin, CCC-SLP; Susan J. French, OTR; Marylin L. Kimball, CNA; Sheila A. Grad, CNA; Dale M. Connolly, Office Manager; Aglaia Rouvalis, Office Clerk.

Board of Directors include: Helen Laverdure, President; Avis Sell, Vice-President; Max Jenness, Secretary; Carlos Barry, Treasurer; Richard Harlow, Asst. Treas.; Yvonne Hale, Raymond Hutchins, Regina Nadeau, Janet Noland, and Janice Phillips.

Meredith Public Health Nursing Association is a Medicare, Medicaid, BC/BS approved and State Licensed non-profit agency that provides Skilled Nursing, Psychiatric Nursing, Physical Therapy, Speech Therapy, Occupational Therapy, and Homemaker Service to the residents of Meredith and Center Harbor.

Memorial gifts were received in memory of Deborah Bailey, Florence Barrett, Richard Beede, Edith A. Berryman, Clarence Bickford, Freeman Brooks, Irving Buell, Rev. Clarence Buker, Sr., Sherman Carter, Marcia Currier, Patricia Dunn, Arthur C. Fletcher, Virginia Foshay, Helene Gleason, RN, Alpheus Hutchins, Jr., Alvan Hyde, Marjorie E. Jones, Doris Knott, Carmelle Levesque, Matilda Mardell, Hazel McAndrew, Elizabeth J. McDermott, Delmar Miller, Gladys Moscardini, George Newton, Virginia Nichols, Beatrice Palm, John R. Pearson, Jr., Catherina A. Perkins, Virginia Shannon-Winter, Kenneth E. Sorlien, James D. Sutherland, Catherine Taber, Emily Walker, and Harry Wallace.

Services to Center Harbor during 1996

274 RN Home Visits
16 Physical Therapy
539 CNA Visits
135 Blood Pressure Readings at monthly
clinics
6 Weekend/Evenings Visits

Uncollectible accounts for 1996 - \$10,779.50

A free Blood Pressure Clinic is held on the second Wednesday of each month at the Cary Mead Room. Everyone is welcome to come between 12 noon and 3 pm. Monthly Blood Pressure and Foot Clinics are provided by our nursing staff at the CAP Senior Center in Meredith.

The Flu Clinic was held on October 23rd. Total number of immunizations administered were 287.

June A. Plummer, RN
Exec Dir/Supr

INTER-LAKES DAY CARE CENTER

On behalf of the Board of Directors I would like to thank the Town of Center Harbor for their continued financial support to our agency for residents of Center Harbor. This support is greatly appreciated.

Inter-Lakes Day Care Center, Inc. is a private, non-profit fully licensed, non-denominational, tax exempt community child care agency incorporated in October 1971, and governed by a volunteer Board of Directors. In the exercise of its charter powers, the Agency aims to promote child development and family support for working parents through comprehensive infant, toddler, preschool, and school age curriculum developmentally appropriate for the children through twelve years old.

Our Center is open on a year round basis from 6:30 AM to 5:30 pm in one site and 6:00 PM in the other, making it possible for parents to maintain employment. Services include full and part time child care, morning preschool programs, summer day camp programs, and U.S.D.A. approved hot meals and snacks. Through the State of New Hampshire under Title XX sliding fee scale tuition, based on income level and family size, is available for purposes of employment, training and pursuit of degree or certificate programs, job search, and temporary disability.

Additional services include sponsorship of the Inter-Lakes Family Daycare Nutrition Program, a group of 43 licensed home day care providers who receive federal reimbursements from U.S.D.A. by serving approved meals and snacks while providing care for children of working parents.

CONSTANCE C. PELLETIER
Executive Director

PARKS AND RECREATION DEPARTMENT
ANNUAL REPORT - 1996

The year's events began with the annual skating party, held Feb. 3rd at the town ice rink. 25 to 30 children and parents braved the frigid weather on that afternoon. We appreciate the efforts of the firemen and Jeff Haines in maintaining the ice rink.

The "Spike Into Spring" volleyball tournament held on Mar. 16 drew 40 players from around the state and was sponsored in conjunction with the Moultonboro Recreation Department. Bart Coudert volunteers his time to conduct volleyball programs every Sunday and Tuesday nights at the Inter Lakes High School Gym. Randy Mattson ran a girl's volleyball program this past July and August.

About 70 children participated in an egg hunt and egg decorating at the annual Easter Party on April 6. The monthly senior citizen programs had to be cancelled in June due to the lack of participation by Center Harbor seniors. The Memorial Day Parade took place on May 27 with music provided by the Inter Lakes Jr/Sr High School Band. Chip Sorlien donated wreaths for the ceremonies.

The Fourth of July celebration began with the 18th Annual Center Harbor Footrace which drew a record 392 runners. The footrace, initiated and sponsored for 17 years by the Center Harbor Sport Shop, welcomed its new sponsor - Chequers Harbour Restaurant. The theme of the Independence Day Parade was "Heroes and Heroines". Due to rain, the fireworks were postponed to July 5. Sabanek Associates donated a barge for a beautiful fireworks display on the bay.

Lifeguards were on duty every day at the town beach from June 22 through Aug. 25. Two sessions of Red Cross Swim lessons were offered by our WSI certified instructors and 80 children signed up. A water carnival celebrated the completion of swim lessons.

20 children registered for the summer recreation program which included arts and crafts, field trips, tennis lessons, a guest artist program and beach party. Art instructor Jean Meloney donated her time to help the children with many of the crafts. Steve McMaster took the trophy and prize at the 6th Annual Center Harbor Horseshoe Tournament.

Band concerts resumed this year under the able direction of conductor Paul Mayerson. Five Friday evening concerts were held, and the band grew in size to approximately 35 members. Large audiences attended the performances.

The Recreation Department continued to sponsor activities in conjunction with Nichols Memorial Library. A series of two craft programs in May and two programs in November drew 12 to 15 children for each session. "Campfire Capers" storytelling and sing-alongs were offered during the summer. Events were topped off by a Christmas Party and tree lighting on Dec. 7. 30 to 40 children and adults celebrated.

A Halloween Party on October 31 for the children of the town was highlighted by an appearance by Mo the Clown, made possible by a donation from the Woman's Club. 70 to 80 children and parents enjoyed the party.

The Recreation Department is currently working closely with the Bicentennial Committee in planning activities for the town's 200th birthday in 1997. A complete inventory of outdoor recreational facilities was also compiled this year for the Office of State Planning. I wish to thank town businesses, organizations and individuals who supported recreation programs this year,

Respectfully submitted,

ELOISE COUDERT
Recreation Director

REPORT OF THE NEW HAMPSHIRE HUMANE SOCIETY

Costs for stray animals brought to the Humane Society are as follows: Stray dogs, if not picked up, are held for a week at \$8 per day. The fee for stray cats will be \$20.00. The charge for any strays which must be euthanized remains at \$35.00. Any animal claimed by the owner is charged to the owner and not the town.

Whenever the Society receives a stray, it becomes our full responsibility. We must see to its veterinary needs, try to locate the owner, hold it for court action, if necessary, and eventually either place or euthanize the animal. We feel that this service to your community has been provided at modest cost in the past, and we look forward to doing the same job in 1997.

As an additional benefit to the towns that contract our services we now have a full time humane educator on our staff. This educator will be available for presentations to schools, clubs and organizations.

MARK J. ACKERMAN
Executive Director

REPORT TO THE CITIZENS OF DISTRICT ONE

By

Raymond S. Burton
Councilor - District One

It is an honor to report to you as a member of the New Hampshire Executive Council. The Executive Council is five in number and serves much like a Board of Directors at the top of your Executive Branch of State Government in Concord. We vote on most contracts over \$2,500 to outside agencies, individuals and municipalities, also major permits to use state waters. 267 unclassified positions as Commissioners and Directors within the Executive Branch of State Government, and the entire Judicial Branch of NH State Government is voted in by the Governor with the advice and consent of the Executive Council. We also vote on gubernatorial nominations of hundreds of citizens to various boards and commissions as prescribed by NH law.

Anyone desiring further information should write or call our State House Office (listed below).

Citizens in this region should be attentive to several projects:

- 1) The statewide Health Care Council's 18 month planning project will be coming to conclusion in December of 1997. There are three very active Councils in this District. Information can be obtained by calling Commissioner Terry Morton, Department of Health and Human Services at 1-800-852-3345.
- 2) The ten year highway planning process will be underway this coming summer and fall. I will be conducting at least three hearings in this district to ascertain regional needs. Information on this project can be obtained by calling Commissioner Leon Kenison, Department of Transportation at 271-3735.
- 3) The NH Joint Tourist Promotional Program will, I expect, be funded at least with \$500,000 to be matched by local Chamber of Commerce and tourists groups to promote your region. Information on this program is available from Commissioner Robb Thomson, Department of Resources and Economic Development at 271-2411.
- 4) There is approximately \$172,000 waiting to be matched by local economic development promotion dollars from local groups. Information can be obtained on this program from Director Norman STorrs, Economic Development at 271-2341.
- 5) There is about \$10,000,000 waiting for applications from local governments for Community Development Block Grants to improve your local town and area. Information on how to apply can be obtained by calling Director Jeff Taylor, OSP at 271-2155.
- 6) Local towns, cities, counties and eligible organizations should be aware of the large Federal and State Surplus Distribution Programs (the state surplus distribution center is open to the public at White Farm on Clinton Street in Concord, NH on Mondays, Wednesdays and Fridays. Further information may be obtained by calling Supervisor Art Haeussler, Surplus Distribution at 271-2602.
- 7) Citizens and groups concerned with disabilities should be aware of the large number of services available from the Developmental Disabilities Council by calling Director Alan Robichaud at 271-3236.
- 8) The Department of Environmental Services covering water, sewers, air, lakes and rivers has available information and financial resources by calling Commissioner Robert Varney or Asst. Commissioner Dana Bisbee at 271-3503.

9) The Department of Health and Human Services including elderly, mental health, human services, public health, drug and alcohol abuse are all under Commissioner Terry Morton at 1-800-852-3345.

Our State Government is small, effective and efficient. It is amazing how many services, both technical information and financial assistance, is available to eligible applicants and for proposals.

Please call my office at any time, I am at your service!

RAYMOND S. BURTON
State House - Room 207
Concord, NH 03301
Tel. (603) 271-3632

Vital Statistics

BIRTHS
REGISTERED IN THE TOWN OF CENTER HARBOR, NEW HAMPSHIRE
FOR THE YEAR ENDING DECEMBER 31, 1996

DATE OF BIRTH	NAME OF CHILD	NAME OF FATHER	NAME OF MOTHER
JAN 10	FINNIAN MAIRTAN O'CONNELL	DECLAN ANTHONY	KATHLEEN MARIE
JAN 16	RACHEL MARIE GOYETTE	STEVEN ROBERT	HEIDI WELLS
FEB 18	TRAVIS EUGENE MANVILLE	LEON EUGENE	MELISSA
JUNE 15	ALICIA MARIE VACHON	ROBERT	ANGELA JEAN

MARRIAGES
 REGISTERED IN THE TOWN OF CENTER HARBOR, NEW HAMPSHIRE
 FOR THE YEAR ENDING DECEMBER 31, 1996

DATE	NAME & SURNAME OF GROOM & BRIDE	RESIDENCE AT TIME OF MARRIAGE	NAME & RESIDENCE OF OFFICIANT
JAN 27	JOHN JOSEPH ASHEY SUE CAROL THIBEAU	CENTER HARBOR, NH CENTER HARBOR, NH	PATRICK H. WOOD LACONIA, NH
FEB 14	LESTER QUADE HEATH CINDY MARIE BOCCELLO	CENTER HARBOR, NH CENTER HARBOR, NH	MICHAEL LOVE MOULTONBORO, NH
FEB 22	WILLIAM JAMES STANKOS JOANNE BARBARA GOFEY	KITTERY, ME KITTERY, ME	NANCY H. DEPUY MOULTONBORO, NH
MAY 25	JOHN EUGENE THOMPSON MELISSA ANN STOTT	ROSENDALE, NY ROSENDALE, NY	ANGELLA D. BASCOM CENTER HARBOR, NH
JUNE 8	MICHAEL DAVID ALDRICH CHERYL LYNNE BURBANK	NEEDHAM, MA NEEDHAM, MA	CHRISTINE L. DIBONA MOULTONBORO, NH
JUNE 14	BRIAN LEE BARNES JENNIFER LEIGH GEBHARD	COMMERCE, GA LAWRENCEVILLE, GA	JOHN P. CURRAN MEREDITH, NH
JULY 13	JAMES CHRISTOPHER PAUGH NANCY ELLEN FUNKHOUSER	NORTH ANDOVER, MA NORTH ANDOVER, MA	JOHN W. EATON CENTER HARBOR, NH
AUG 10	BRENDAN PAUL REESE FRANCINE MARIE BOUCHER	NATICK, MA MATERTOWN, MA	HENRY BOUDREAU TROIS RIVIERES, CANADA
AUG 17	PAUL EDWARD ARSENAULT LINDA JEAN BARBER	CENTER HARBOR, NH CENTER HARBOR, NH	DOUGLAS A. TRUELL MEREDITH, NH
AUG 24	THOMAS WM. SPFRANKLIN III DIANA DESMOND	NEW YORK CITY, NY NEW YORK CITY, NY	JOHN W. EATON CENTER HARBOR, NH
SEPT 8	IPA M. WEEKS, JR. JUNE E. BRIDGES	CENTER HARBOR, NH TILTON, NH	MARY ANN FOSTER CONCORD, NH

DEATHS
 REGISTERED IN THE TOWN OF CENTER HARBOR, NEW HAMPSHIRE
 FOR THE YEAR ENDING DECEMBER 31, 1996

DATE OF DEATH	NAME	AGE	PLACE OF BIRTH	OCCUPATION
JAN 1	LUCY ANN MAZZOCCA	91	DUDLEY, MA	HOMEMAKER
FEB 28	GEORGE LEROY WALLACE	71	YORK, SC	PURCHASING AGT.
APR 5	BEVERLY MARILYN CASWELL	68	LACONIA, NH	OFFICE MGR.
APR 26	WALTER JONES	73	NEW HAMPSTON, NH	STEEPLEJACK
JUNE 15	AVERIL LYDIA TAYLOR	87	EASTON, ME	HOMEMAKER
AUG 9	ROBERT FRANKLIN CRONIN	80	CENTER HARBOR, NH	WELDER
AUG 30	EDITH A. BERRYMAN	87	NEW YORK CITY, NY	DIETICIAN
OCT 23	ALICE R. O'MALLEY	78	NO. ADAMS, MA	MOTEL MGR.
DEC 13	IRA MERRILL WEEKS JR.	77	WARREN, NH	RET. POLICE CHIEF

**REPORT
OF THE
1996 PROPERTY ASSESSMENTS
FOR THE
TOWN OF CENTER HARBOR
NEW HAMPSHIRE**

OWNER	LOT #	DESCRIPTION	VALUATION
ACKLEY, ETHEL	7-19	L/B	395800
ADAMS, BURDETTE & CYNTHIA	2-11	L/B	120600
AINSWORTH KIMBLE, JANET	1-28	L/B	141700
ALLARD, MAURICE & JANE	9-14	L/B	92300
ALLEN, WILLIAM & DIANE	9-06	L/B	144500
AMBROSE, BROS, INC	2-41	L/O	4992
AMBROSE LAND CO	4-56	L/O	3800
AMIRALIAN, DONALD & ROBIN	2-68	L/B	176300
ANDERSEN, RONALD & SUSAN	4-12	L/B	107400
ANDERSON, MELODY	7-46	L/B	1261100
ANDREWS, WILLIAM & VERA	3-76	L/B	163500
APRILLE, JUNE R	8-14-9	L/B	93500
ARCHAMBAULT, GEROG E	3-38	L/B	36400
ARCIDY, LESLIE J.	9-15	L/B	73300
ARMSTRONG, PATRICIA & MARSHALL	3-10	L/O	63600
ARNOLD, FRANK L. & VIRLENE	2-90	L/B	198300
ASHEY, & SUE THIBEAU, JOHN	4-4.12	L/B	113400
ASHTON, WILLIAM & M. DISBROW	3-53	L/B	83800
AUDUBON SOCIETY OF NH	6-23	L/O	88100
AUFHAUSER, CLAUDIA & SCHULATTA	9-74	L/B	128600
BAGGLEY, DANIEL	3-25	L/B	106900
BAILEY TRUST, REV.	7-53	L/B	664500
BAIRD, GORDON	6-11	L/B	488500
BAIRD, GORDON	6-12	L/O	41100
BAKER, DEBORAH WRIGHT, MARK	5-07	L/B	75000
BAKER, ROBERT	2-39	L/O	12400
BALLAM, TERRY & LORI SOUTHWICK	3-107	L/B	81200
BALLANCE, KENNETH & GEORGANNE	8-11.1	L/O	30800
BAMBERGER, NANCY	2-04	L/B	138400
BANKOSH, JOHN & KATHERINE	9-99	L/B	30400
BARKER III DEVEREUX B.	8-46.1	L/B	566060
BARRETT, RAYMOND JR.	4-4.16	L/B	76800
BASCOM, JAMES & ANGELA	2-18	L/B	133385
BEAL, MARGARET	7-47	L/B	972400
BEAL, THOMAS & BARBARA	7-42	L/B	976700
BEAN, FRANKLIN & BEULAH	5-39	L/B	328000
BEAUMONT, STEPHEN D. & BARBARA	9-69	L/B	42600
BECKETT, LYNN MALEY, GAIL	7-21	L/B	450400
BEEB, ROBERT & CYNTHIA	5-56	L/B	90695
BEIJ, PIERCE	1-44	L/O	3840
BEIJ, PIERCE	3-66	L/O	1800
BELL, RUTH	3-70	L/B	164900
BEINISH, ROGER & NOELLE	4-07	L/B	80800
BENNETT, ELLEN F.D	4-43	L/O	850
BENNETT, ELLEN F.D	4-44	L/B	105599
BENNETT, ELLEN F.D.	4-3	L/O	150
BENNETT, ELLEN F.D	4-09	L/B	192124
BENNETT, EVERETT & LAURA	4-37.3	L/B	142900
BENOIT, GREGORY & CAROLE	8-3.1	L/B	102500
BENOIT, PETER & KAREN	8-02	L/B	109900
BENOIT, ROBERT & BARBARA	8-03	L/B	111200
BERKLEY, FOREST	2-44	L/B	89500
BERNT, HAROLD & GERLI, MARIE	8-13	L/B	115300
BERRYMAN, & H. WOBBER, GORDON & ED	1-3.2	L/B	100700
BERTHOLET JR., RAYMOND	1-40.3	L/O	22100
BERTHOLET JR., RAYMOND	1-40.4	L/B	78500
BICKFORD, GLADYS	9-81	L/B	118600
BIGELOW INC, R.C.	4-48	L/B	147336

BILLIN, REV. TRUST CAROLE	2-59	L/B	369400
BIRCH LANE REALTY TRUST	8-09	L/O	29900
BISHOP, PAUL & PHYLISS	7-72	L/B	109200
BISSONNETTE, JAMES & ELIZABETH	9-87	L/B	53400
BLAIR, KENNETH & DOROTHY	2-82	L/B	119700
BLOOD, STEPHEN & COLLEEN	3-102	L/B	61700
BOGART, KATHRYN	2-07	L/B	65700
BOHIGIAN, GEORGE & SHARON	2-60.3	L/B	167600
BOND, BRUCE	2-77	L/B	174300
BOSSE, DONALD	4-4.9	L/B	85600
BOYNTON, GENE & WINIFRED	1-31	L/B	62300
BRADLEY, JOHN & BARBARA	2-36	L/O	89400
BRANDHORST ET EL, ERIC	5-36	L/B	370400
BRASHARES, LEWIS O & EDITH	5-65	L/B	111943
BRASHARES, LEWIS O & EDITH	8-01	L/O	9775
BRASHARES, LEWIS O & EDITH	6-09	L/O	408100
BRATSOS, JOHN & BETTY	7-63	L/B	260200
BRATT, ALBERT & BETTY	2-76	L/B	166400
BREED, WILLIAM & SUSAN	8-46.2	L/B	476500
BREWER, ANDREA	1-38	L/B	36800
BRICKLEY, SAMUEL & COLLEEN	1-21	L/B	190700
BROOKS, ETHEL	9-10	L/B	66900
BROWN, BEVERLY	9-08	L/B	100100
BROWN, DONALD & JANE	6-15	L/B	172300
BURGESS, EUGENE & BONNIE	9-57	L/B	48600
BURNS, ELLEN	3-91	L/B	163100
BURROWS, BRUCE & DOWNS JILL	7-80	L/B	86900
CABELL, CYANE & RICHARD ET AL	7-29	L/B	531600
CABELL, BRUCE	7-28	L/B	440300
CABELL, HILDRETH ET AL	7-27	L/B	454600
CALDWELL, DOROTHY	9-43	L/B	192200
CALLAHAN DANIEL ET AL	2-62	L/O	29200
CALLAHAN, CALLAHAN & SHIMKE	2-57	L/O	52700
CALLAHAN, ET AL, DANIEL & THEL	2-61	L/B	90200
CAMPBELL, CRAWFORD	7-50	L/O	4100
CAMPBELL, KEVIN & DIANE	9-77	L/B	225300
CAMPBELL, LEONARD & NAN	9-45	L/B	95000
CANEY, STEVEN & ROCHELLE	4-45	L/B	144200
CANNON, ROBERT & MARGUERITA	3-36	L/B	90800
CANTWELL, WILLIAM & NOEL	9-B2	O/B	8100
CARR, ADRIAN & LOIS	3-19	L/B	68700
CARR, DONARD & HAZEL	9-80	L/B	98700
CASWELL, ALLEN & BRENDA	1-57.1	L/B	156710
CASWELL, HERMAN J. ET AL	1-57	L/B	137332
CASWELL, HERMAN J. ET AL	1-58	L/O	3176
CASWELL, HERMAN J. ET AL	3-116	L/O	150
CENTER HARBOR REALTY TRUST	4-24	L/O	128200
CENTER HARBOR TRUST	4-40	L/O	30100
CENTER HARBOR, TOWN OF	1-45		0
CENTER HARBOR, TOWN OF	2-31		0
CENTER HARBOR, TOWN OF	3-32		0
CENTER HARBOR, TOWN OF	3-33		0
CENTER HARBOR, TOWN OF	3-68		0
CENTER HARBOR, TOWN OF	3-113		0
CENTER HARBOR, TOWN OF	4-49		0
CENTER HARBOR, TOWN OF	4-51		0
CENTER HARBOR, TOWN OF	4-58		0
CENTER HARBOR, TOWN OF	5-5		0
CENTER HARBOR, TOWN OF	5-15		0

CENTER HARBOR, TOWN OF	6-70		0
CENTER HARBOR, TOWN OF	6-79		0
CENTER HARBOR, TOWN OF	7-49		0
CENTER HARBOR, TOWN OF	9-11		0
CENTER HARBOR, TOWN OF	9-79		0
CENTER HARBOR, TOWN OF	9-89		0
CENTER HARBOR, TOWN OF	9-27		0
CENTER HARBOR, TOWN OF	9-76		0
CENTER HARBOR, TOWN OF	9-26		0
CENTER HARBOR, TOWN OF	9-79		0
CENTER HARBOR, TOWN OF	4-19		0
CENTER HARBOR, TOWN OF	6-32		0
CENTER HARBOR, TOWN OF	2-45.7		0
CHASE, CHRISTINE	5-51	L/B	155250
CHEEVER, DANIEL & MARY	7-08	L/O	55900
CHEEVER, DANIEL & MARY	7-07	L/O	202900
CHUTE, JEANNE	1-07	L/B	287100
CHVIRUK, EDWARD & IMELDA	3-84	L/B	57000
CLARKE, NADINE	3-15	L/O	66100
CLARKE, NADINE & JOE	3-05	L/B	145900
CLARKE, ROBERTA	7-14.1.1	L/B	645700
COCHRAN, GUY & JANE	5-06	L/B	49100
COGGSWELL, NORMAN	7-87	L/O	26100
COLEMAN, RANDALL & EDNA	7-25	L/B	429300
COLLINS, KATHLEEN	2-24	L/B	156700
CONCANNON, WILLIAM	6-36	L/O	32500
CONGREGATIONAL CHURCH	9-30		0
CONGREGATIONAL CHURCH	9-29		0
CONNOR FAMILY TRUST	7-61	L/B	264500
CONRAD REALTY TRUST	2-90.2	L/O	29200
CONRAD REALTY TRUST	4-4.1	L/O	57700
CONRAD REALTY TRUST	4-21	L/O	60400
CONRAD REALTY TRUST	3-64	L/O	9600
CONRAD REALTY TRUST	4-37.2	L/O	1154
CONVERSE D HAIRE RUDOLPH&BET	1-01	L/B	115800
CONWAY, JAMES	2-81	L/B	141700
COOASHAUKEE CLUB INC	7-30	L/B	598800
COOK, JOHN & ELIZABETH	1-48	L/B	143683
COOK, JOHN	2-19	L/O	273
COOLIDGE NICOLE FINAMOR&PETER	7-04	L/O	210400
COOLIDGE, ROBERT	7-05	L/O	4000
COOLIDGE, NICHOLAS	7-03	L/B	606600
COOLIDGE-MEYERS GST TRUST	7-06	L/B	722200
COREY, SHERYL	2-35	L/O	25800
CORSO, RICHARD & KATHRYN	4-32	L/B	118700
COST, RHONDA	5-11	L/B	73300
COUDERT, EARL & ELOISE	4-11	L/B	86900
CRANE, CAROL	6-58	L/B	169700
CRANE, CAROL	6-28	L/O	16500
CROCKER, RICHARD&BARBARA	8-14.4	L/B	149600
CRONIN, ROBERT & FRED A	9-48	L/B	80300
CROWE, GLORIANN	7-55	L/O	1100
CROWE, GLORIANN	7-54	L/B	344000
CROWE, GLORIANN	7-74	L/O	52100
CURCIO, VINCENTIA	6-51	L/O	1000
CURRAN, JR. JOHN & JENNIFER	1-01.1	L/O	32100
CUTTER, DAVID&SHONE, JACQUEL	9-02	L/B	97100
D'ANGELO, JAMES & LINDA	3-12	L/B	238900
D'ARCY, JEROME & MESCON, ROBIN	1-10	L/B	177296

DAIGNEAULT, SALLY M	3-81	L/O	216700
DAIGNEAULT, TR. CKH TR, THOMAS	3-96	L/O	36600
DAMON, G. H. & HARRIET	5-23	L/B	1274800
DANE %KELLOGG G&G, ERNEST	8-29	L/O	6534
DANE %KELLOGG G&G, ERNEST	8-47	L/O	6510
DANE R. E. T., EDWARD N.	6-24.3	L/B	385600
DANE R. E. T., EDWARD N	8-06	L/B	38828
DANE R. E. T., HERBERT	8-18	L/O	29248
DANE TRUST, EDWARD	6-60	L/B	519800
DANE TRUST, EDWARD	8-43	L/B	852400
DANE TRUST, EDWARD	8-48&9B3	L/B	300900
DANE TRUST, EDWARD	4-55	L/B	183000
DANE TRUST, EDWARD	8-41	L/O	700
DANE TRUST, EDWARD	8-36	L/B	315288
DANE TRUST, EDWARD	6-24	L/B	1310600
DANE TRUST, EDWARD	6-24.4	L/B	152000
DANE, BENJAMIN & ALEXANDRA	8-14	L/O	65885
DANE, CHARLES	8-28.1	L/O	34000
DANE, EDWARD & ARABELLA	8-45	L/B	519618
DANE, EDWARD & ARABELLA	8-49	L/O	17900
DANE, EDWARD N	4-54	L/O	4600
DANE, EDWARD N. & HERBERT	5-28	L/O	320100
DANE, HERBERT & SALLY	8-44	L/B	555900
DAVIS, D. SCOTT & DONALD	3-83	L/B	99700
DAVY, GEORGE & BETSY	9-54	L/B	122300
DEBIASE, LOUIS	7-83	L/O	26100
DECARO, ANDREW	6-46	L/O	400
DEGRACE, JEANNE & DAVID	1-49	L/B	131325
DELLENBAUGH, ET AL, JOANNA	7-52	L/B	408962
DENTON, STUART P & SYLVIA K	6-56	L/O	17400
DESMOND, JOHN	5-32	L/B	368500
DESOSA, CAROL	6-17	L/B	122100
DESROSIERS, NORMAND	4-20	L/B	67700
DICECCA, CHARLES & COSMOS	4-39	L/B	94000
DIOCESE OF MANCHESTER	9-53	L/B	0
DOG COVE CORP.	5-43	L/O	0
DOLAC, THERESA	3-72	L/B	129400
DOLAN & MARY FRENCH, JERILYN	9-31	L/B	140600
DOLE, JOAN	9-97.1	L/O	30000
DOLE, JOAN & KERI	9-97	L/B	462000
DONAHUE-CLARIDGE, JEANNE	4-05	L/B	67000
DONALDSON-PERNAW RITA	9-78	L/B	165700
DORS, THOMAS & CLAIRE	2-56	L/B	169800
DORSEY, HELEN BACA	9-41	L/B	135500
DOW, JULIA & JAMES	6-20	L/B	106500
DOWD, ALBERTA	2-09	L/O	26000
DOYLE, TIMOTHY	5-13	L/B	70500
DRENKHAN RICHARD & DIANE	9-05	L/B	128500
DREW, LUCILLE	2-32	L/B	36000
DUFFIELD, MICHAEL & SCHIELE, KATE	8-8.2	L/B	108717
DUNNELL & ELLEN BENNET, J&W	7-01	L/O	12503
DUREN, JAMES	3-109	L/B	67800
DUREN, JEFFREY	3-99	L/B	39000
DWIGHT, THORA	7-82	L/B	50200
DWYER, BEVERLY	3-51	L/B	39900
DWYER, EDWARD	2-02	L/B	184830
DWYER, EDWARD	2-20	L/O	12631
EARL, GEORGE	3-82	L/O	5200
EARL, GEORGE	2-69	L/B	262950

EARL, GEORGE	2-73	L/B	206800
EDMANDS, RICHARD & ANITA	3-94	L/B	175200
EHL, REV. TRUST, ELEANOR	2-52	L/O	121200
EHL, REV. TRUST, ELEANOR	2-55	L/B	88900
EHL, REV. TRUST, ELEANOR	2-51	L/B	253300
EISAMAN, CLARENCE & NANCY	1-37	L/B	35100
ELBAUM, MARC & CHRISTINE	4-28	L/B	69100
ELCOCK, %J.SULLIVAN, JOSEPH	7-40	L/B	1894500
ELLIOTT VILAS, JOCELYN	6-42	L/O	37200
ELLIOTT, LAURENCE	6-40	L/O	41400
ELLIOTT, PEGGY	6-29.1	L/O	45900
ELMORE, JOHN	6-26	L/B	602454
EMERSON, DENLEY	5-3.1	L/B	58200
ERICKSON, RICHARD & BARBARA	3-13	L/B	216200
FAIRBANKS & P.WILLARD, WILLIAM	2-13.1	L/B	91000
FANCHER, FRANKLIN & MARY	9-22	L/B	171000
FARNUM, PETER E	6-10	L/B	676000
FARRINGTON, ROBERT & SYLVIA	2-25	L/B	243600
FEELY, FRANK & MURIEL	8-32	L/B	156700
FERGUSON, BARBARA	2-08	L/B	59700
FERLAZZO, PHILIP & VIRGINIA	3-60.3	L/B	155900
FERRANTE, JAMES & HELEN	9-75	L/B	226600
FIELDS JR, RICHARD	3-96.1	L/B	91500
FINN, FRANK	9-91	L/B	624800
FISHER, VIRGINIA	9-66	L/B	86300
FISKE REALTY TRUST	8-42	L/B	640700
FLANDERS, IRENE	3-88	L/B	46400
FLYNN, SHAUN & JULIE	1-52	L/B	88600
FOLEY, JOHN & JESSIE	5-24	L/B	157800
FORTGANG, ROBERT & ELLEN	6-69.2	L/O	7900
FOSTER TRUST 1989, ESTHER P	3-06	L/B	185600
FOSTER, BRADFORD & ELAINE	9-93	L/B	98400
FOSTER, BRADFORD & ELAINE	2-17	L/B	126900
FOWLER REALTY TRUST	7-62	L/B	261300
FRAZIER, MALCOLM CONSTANCE	7-67	L/B	236800
FREETO, J. GAIL	6-76	L/O	40200
FRITZ, CHARLES & DARLENE	6-62	L/B	173400
FUREY, ROBERT & JESSIE	3-67.1.5	L/B	134200
FURLONG, LISA	2-23	L/B	146600
GAMBSY, RICHARD	5-04	L/B	37900
GARDEN, STUART & SALLY	4-13	L/B	132400
GARLAND, WILMA & ROLAND	1-14	L/B	171400
GARRICK, GREGORY	7-75	L/B	475400
GAVARNY, BRUCE	1-14.2	L/O	62500
GAVARNY, BRUCE	1-18	L/B	175770
GAYNOR, JOSEPH & CONCETTA	6-73	L/O	36400
GAYNOR, JOSEPH & CONCETTA	9-98	L/B	510200
GEDDES, ELLA	9-49	L/B	100300
GEISSLER & SANDMANN, E. & H	9-88	L/B	65200
GEORGE % P. GEORGE, HELEN	8-31	L/O	5270
GEORGE % P. GEORGE, HELEN	8-30	L/B	268040
GEORGE, PAUL & HELEN	8-26	L/O	24200
GEPHART, JOHN	7-41	L/B	882300
GEPHART, JOHN	7-41.3	L/O	60300
GERTZ & WELLS	6-33	L/O	1100
GIBBENS, J.ROBERT & CONSTANCE	3-02	L/B	233800
GIBB, BARBARA	6-02	L/B	435300
GILL MARION & JAMES	1-12	L/B	107300
GINGASS & S. DRAKE, DANIEL	5-57	L/B	85900

GINTER & J. FELDMAN, JOHN	9-55	L/B	82200
GINTER, JOHN & CANDACE	9-24	L/B	83500
GLOGOWSKI, STANLEY & ANGELA	6-71	L/B	131100
GOLDBERGER, WILLIAM & MARCIA	5-29	L/B	401100
GOODNOW, ROBERT W	2-67	L/B	136000
GORDON, ELLEN	6-07	L/B	418800
GORDON, ELLEN REALTY TRUST	6-1.22	L/O	416200
GORDON, ELLEN REALTY TRUST	6-13	L/O	35700
GORDON, MELVIN REALTY TRUST	6-1.5	L/O	411800
GORDON, MELVIN REALTY TRUST	6-1.3	L/O	404000
GORDON, MELVIN & ELLEN	6-06	L/B	1857100
GORDON, MYRA & ROY	7-14.3	L/B	66900
GORDON, ROY & MYRNA	7-14.1.2	L/B	569423
GOYETTE, STEVEN & HEIDI	9-64	L/B	76500
GRAHAM, THELMA	2-79	L/B	159600
GRANBERG ET AL, CARL	6-52	L/B	68700
GRANGER, JAMES & PATRICIA	3-93	L/B	121900
GRANT, JOHN	5-44U1	L/B	104900
GRAY, STELLA	6-63	L/O	44100
GREEN, JAMES & ELLEN	5-01	L/O	20200
GRIFFIN, HAMILTON	7-23	L/B	473600
GRIFFIN, WILLIAM & VIRGINIA	2-13.5	L/B	119000
GRIFFIN, WILLIAM & VIRGINIA	2-13.4	L/O	27000
GROSS & DIANE GARFIELD, PETER	6-29	L/B	634600
GROSS & DIANE GARFIELD, PETER	6-29.2	L/O	2350
GUARINO, JAY & KAREN	3-42	L/B	50700
GURNEY, PETER & GEORGE	7-36	L/B	851900
HAAS THOMAS W. & MELINDA A.	5-58.2	L/B	595200
HAIGH, WILLIAM & MADELINE	5-09	L/B	135600
HAIGH, WILLIAM & MADELINE	5-17.3	L/O	35400
HAINES, JEFFREY & SHEILA	1-51	L/B	92500
HAINES, MILDRED	2-43	L/B	95033
HAINES, Y. ANN	4-17	L/B	119800
HAINES, Y. ANN	2-22	L/B	77700
HALE PARTNERSHIP	3-67	L/B	1082800
HALE, ALLAN & SALLY	3-71	L/B	47700
HALE, ALLAN & SALLY	3-20	L/B	128950
HALE, MELVIN & RUTH ET AL	3-17	L/O	185700
HALE, MELVIN & RUTH	3-3	L/B	223000
HALE, YVONNE	3-92	L/B	143800
HALEY, SANDRA	8-10	L/B	117000
HALLORAN, ROBERT & BARBARA	5-49	L/B	122100
HALSEY, CATHERINE	4-52	L/B	399975
HALSEY, JEFF	4-37	L/B	227385
HALSEY, JEFFREY D 1990 TRUST	3-23	L/B	96900
HALSEY, JONATHAN	4-56.7	L/O	33300
HAMMOND, BEVERLY	2-38	L/B	4500
HANSON & J. KIRWAN, VICTORIA	8-23	L/B	118900
HANSON FAMILY TRUST	6-72	L/O	2615
HANSON FAMILY TRUST	8-20	L/B	167836
HANSON, RICHARD	9-25	L/B	101800
HARLAN, ESTHER	3-01	L/B	181800
HARLOW, RICHARD & CAROLYN	9-07	L/B	124300
HARRIS REALTY TRUST	7-37	L/O	6500
HASKELL, ANN B. REV TRUST	3-16	L/B	270000
HAVERSAT, MADELINE	9-09	L/B	100500
HAVRE, PIERRE & JAN	3-07	L/B	251000
HAWKINS SAFETY EQUIP.CO	2-12	L/O	16900
HEATH EVERETT & MADELINE	9-72U3	L/B	809900

HEATH TRST, EVERETT & MADELINE	9-82	L/B	500700
HEATH, ROBERT	9-51	L/B	131700
HEATH, ROBERT	8-07	L/O	26000
HEATH, ROBERT	9-63	L/B	76000
HEINER, JAY & HELEN	5-64.5	L/B	220300
HEINER, JAY & HELEN	5-64.6	L/O	22300
HENNESSEY, JOHN & LOUISE	2-01	L/B	193900
HENNESSEY, JOHN & LOUISE	1-25	L/B	140700
HERBERT ET AL, JEANNETTE	7-51	L/O	3409
HERRINGTON, STUART & THUAN	3-60	L/O	30600
HIBBERD, ROGER & LAURA	4-53.1	L/B	109600
HICKEY, DAVID	4-35	L/B	78500
HIGLEY, GEORGE & JOAN	9-64	L/B	44950
HILDEBRAND, ADAM MARK	7-88	L/B	90000
HILL ESTATE, ROBERT	3-108	L/B	31300
HILSKY, CHARLES & NANCY	4-4.13	L/B	94300
HIRSHIK, LARRY & BETH	6-45.9	L/B	140400
HODGE, DEAN	5-03	L/O	50900
HOLLAND FAMILY TRUST	2-45.2	L/O	27600
HOOD, ROBERT & MARILYN	4-10	L/B	212000
HOOPER, GEORGE & JANET	9-46	L/B	83100
HOPKINS, STEVEN V. ET AL	2-13	L/O	81400
HORNE, ARNOLD	7-22	L/B	449000
HOWARD, PHYLLIS	2-26	L/B	229100
HOWARD, ROBERT	6-47	L/O	500
HOWELL FAMILY TRUST	7-33	L/B	449100
HOWES, BARBARA & ANTHONY MELLO	2-13.7.2	L/O	20700
HUEY ALFRED M. & BARBARA P.	8-28	L/B	436200
HUGHES, JOHN & MAE	3-106	L/B	39100
HULKOW, JOSEPH J. & PAMELA S.	2-45.4	L/O	16700
HULSLANDER, BRUCE & ELIZABETH	6-45.12	L/B	137800
HUNTER, CONVERSE & DOROTHEA	7-89	L/B	487844
HURD, DAVID & LYNN	3-110	L/B	34400
HURLEY, DAVID R. JR. & JULIA	5-45	L/B	87500
HURLEY, MICHAEL & MARION	9-71	L/B	44800
HURLEY, ROBERT & DEBORAH	5-44U-2	L/B	75400
HURLEY, JOHN & BEATRICE	9-38	L/B	137500
HYDE, HAROLD J. & PATRICIA G.	2-33	L/B	30200
HYNE, VIRGINIA	9-58	L/B	112500
ILLSLEY, RITA & RUSSELL	4-22	L/B	43300
IRELAND EST % ETHEL HARDING	2-84	L/B	146700
IRREGARDLESS INC	8-37	L/B	429100
J & C MANAGEMENT	9-28	L/B	308900
JAMES, MARY	7-10	L/O	1001400
JAMES, MARY	7-14.2	L/B	145500
JEANLOZ, CLAUDE & DONNA	8-40	L/B	414947
JEPSEN, ALVIN & JANE	3-97.11	L/B	135000
JIRKOVSKY, JOHN	3-117	L/B	43700
JOHNSON, BRUCE	1-40.5	L/B	62800
JOHNSON, CHRIS & MARY	1-40	L/B	107700
JOHNSON, CONSTANCE	6-69.3	L/B	134400
JOHNSON, DAVID C & BONNIE	4-4.15	L/B	136100
JOHNSON, GEORGE & MARGARET	7-32	L/B	467500
JOHNSON, MARGARET	1-40.2	L/O	22300
JONES, CLARENCE	3-58	L/B	26300
JORDAN, JOHN	3-40	L/B	75600
JORDAN, JOHN	3-41	L/B	21500
JORDAN, KENNETH	3-44	L/B	37400
JORDAN, PATRICIA & JOHN	3-44.4	L/B	99900

JORDAN, ROLAND & LOIS	2-71	L/B	87400
JORDAN, THOMAS	3-43	L/B	45700
JORDAN, THOMAS & MATTHEW	3-44.3	L/O	16100
JOYCE, FREDERICK & MARGARET	3-54	L/B	28900
KARAGOZIAN, HAROLD & KARIN	5-44U6	L/B	118700
KAYROS, PETER & KATHLEEN	9-85	L/B	35600
KEAY, DONALD & MARY ANN	9-59	L/B	169900
KELLEY REV. TRUST, GARALD	9-68	L/B	68600
KELLEY REV. TRUST, GARALD	9-60	L/O	30000
KELLEY, JOHN & DIANE	3-34.1	L/B	84000
KELLEY, MARTIN F. & BETTY	6-53	L/O	600
KELLEY, REGINALD & JACQUELINE	6-77	L/B	160225
KELLEY, ROGER & NANCY	8-24	L/B	125500
KELLEY, WAYNE G. & BARBARA	3-71	L/B	148000
KELLY, JOHN & MARY	3-04	L/B	173600
KELSEY TRUST, THOMAS & ELIZ.	6-08	L/B	487000
KEVORKIAN, CHARLES	4-56.8	L/O	33000
KIMBALL ISLAND TRUST	7-09	L/B	1284600
KIMBALL ISLAND TRUST	7-70	L/O	50300
KIMBALL ISLAND TRUST	7-60	L/O	112100
KIMBALL, DAVID	2-47	L/B	89300
KIMBLE, THOMAS & BARBARA	7-65	L/B	228700
KING, WILLIAM & ELIZABETH	3-67.1	L/B	122600
KLAFT, GEORGE & ETHEL E.	9-13	L/B	102100
KLINE, EDWIN & DIANE	5-64	L/B	80394
KNEELAND, WALTER & DOROTHY	9-04	L/B	104300
KOERBER, WILLIAM & MARGUERITE	3-18	L/B	140944
KOSINSKI, RICHARD & LINDA	2-83.2	L/O	97800
KOZAK, MARK & KATHLEEN	6-21	L/B	90600
KUHN ET AL, C.	5-59	L/B	394800
KRAMPTZ, JAMES	2-13.7.1	L/B	39000
LABRANEY, CHESTER & PRISCILLA	3-65	L/B	53400
LAFFER, SUSAN	6-55	L/B	79000
LAGOR, DON & CHERYL	2-13.7.2	L/O	20700
LAMAREAUX, JUSTIN	5-52	L/B	128300
LAMPREY, GEORGE	3-24	L/B	72900
LAMPREY, ROBERT & MARGARET	9-40	L/B	302800
LAMPREY, ROBERT & MARGARET	9-95	L/O	73000
LANGDON, ROBERT & JOAN	3-77	L/O	57300
LAPLANTE, LOUISE & RICHARD	6-64	L/B	52200
LAPOINTE, RALPH & DOROTHY	9-18	L/B	84400
LARMIE, WAYNE C. & BEVERLY A.	6-44	L/O	50900
LARSON, ALVIN & ELIZABETH	3-52	L/B	34800
LARSSON, B.J.	9-61	L/B	108900
LASKEY, JOHN & PATRICIA	5-54	L/O	100100
LATULIPPE, DON & CYNTHIA	1-53	L/B	72200
LATULIPPE TRUST, DONNA L	7-64	L/O	286200
LATULIPPE, MICHAEL	7-71	L/B	120900
LATULIPPE, RENE & DOROTHY	7-73	L/B	84100
LATULIPPE, RENE & MICHAEL	7-69	L/O	26845
LAUTERBACH, BARBARA	9-32	L/B	151700
LAUTERBACH, BARBARA	9-35	L/O	41700
LAVACHE & ROBT.CARR, RICHARD	3-111	L/B	87800
LAVALLEE, PRISCILLA	9-73	L/B	160900
LAVERDURE, HELEN	4-4.17	L/B	71000
LEACH, DAVID	6-75	L/B	22800
LEBARON FAMILY LAND TRUST	7-31	L/B	442400
LEGION OF CHRIST	9-92	L/O	0
LEGION OF CHRIST	8-21	L/B	0

LELAND, RICHARD	2-63	L/B	125300
LELAND, RICHARD	2-64	L/B	156900
LEROY, MARTHA ANN	9-36	L/B	74000
LEROY, MARTHA ANN 1989 REV TRT	8-25	L/B	131300
LEVY, ROBERT & GLADYS	5-44-U5	L/B	246000
LIBBY, KR-A	8-05	L/B	77900
LIBBY, EDWARD	1-15	L/B	234700
LITTLE, DAVID & HEIDI	1-41.1	L/B	88300
LITTLETON, ARTHUR & MARY	5-58	L/B	561800
LOCUS LTD PARTNERSHIP I	6-25	L/B	559216
LOCUS LTD PARTNERSHIP I	7-16	L/B	2037003
LOCUS LTD PARTNERSHIP I	7-14.4	L/O	5078
LOVETT, MILLER	6-66	L/O	3300
LOWELL, JOHN & CARRIE	1-8	L/B	288626
LUCIER, RUSSELL & HELENA	3-67.1U3	L/B	129400
LUDWICK, DAVID & MARIE	3-103.2	L/B	68200
LUDWICK, ELEANOR	3-103	L/B	81400
LUDWICK, JOHN & SALLY	3-104	L/B	96800
LUDWICK, STEPHEN & CYNTHIA	3-105.3	L/B	54500
LUDWICK, TIMOTHY & KAREN	3-103.1	L/B	49200
LUDWIG, DAVID R & PAMELA	2-27	L/B	148100
LYDEN, JEAN	5-12	L/B	69800
MACARTHUR, ROBERT & JOAN	7-59	L/B	287300
MACCRELLISH, DAVID	1-41.2	L/O	26300
MACDONALD, ERNEST & PAMELA	2-45.6	L/O	75600
MACDONALD, WARREN & JOYCE	3-112	L/B	64900
MAHER, RONALD & BRENDA	6-67	L/B	60700
MANVILLE, EUGENE	6-69	L/O	13400
MANVILLE, EUGENE & PRISCILLA	9-50	L/B	106500
MANVILLE, LEON & MELISSA	6-69.1	L/B	96400
MARCUS, WILLIAM & CYNTHIA	7-13.4	L/B	1191200
MARDEN & H. WOBBER, PHILIP	1-02	L/B	105800
MARDEN & H. WOBBER, PHILIP	1-04	L/O	113900
MARSHALL, CARL & NORMA	6-02	L/B	157600
MARTIN, DENNIS & JACKLYN	3-46	L/B	63500
MARTIN, HERBERT & GERTRUDE	9-62	L/B	88600
MARTIN, ROGER & CONSTANCE	3-90	L/B	122900
MARTINES, PHYLLIS	9-17	L/B	78600
MATTE, STEVEN & SHERRI	4-14	L/B	99800
MATTSON, LEE	4-50	L/O	13872
MATTSON, LEE & RANDY	4-47&46	L/B	171530
MAYERSON, PAUL S. & JOAN A	1-36	L/B	98100
MCCABE, EDWARD & BARBARA	3-97	L/O	129200
MCCAHAN, ANN & RICHARD	8-34	L/B	108600
MCCARTHY, JOSEPH & KATHLEEN	7-13	L/O	889900
MCDONALD TRUST ET AL	7-57	L/B	352500
MCHUGH, JOHN E. ET AL	2-48	L/O	30200
MCHUGH, JOHN E. ET AL	2-91	L/O	25800
MCLEAN FAMILY TRUST, A.R.	7-68	L/B	291100
MCLEARY, BARBARA	5-21	L/B	507588
MEAD FARM INC.	7-14	L/B	1151982
MEAD FARM ASSOCIATION	7-15	L/O	0
MEAD, CHARLES & CAROL	7-11	L/B	435967
MEAD, GEORGE & CAROLE	7-12	L/O	1088
MEAD, HANSY	7-14.1	L/B	424723
MEAD, WILLIAM & HANSY	7-18	L/B	717212
MEAD, WILLIAM & HANSY	7-17	L/O	1280
MEADOWS MOTEL	9-90	L/B	1104400
MELONEY, KIRK & JEAN	5-7.1	L/B	131100

MERKWAN, SANDRA & DAVID	1-59	L/B	83900
MERRILL, JOHN	8-12	L/B	62300
MICHAUD, PETER & ROBIN	1-35	L/B	129100
MICICH, JOHN & JOYCE	4-4.18	L/O	27900
MILLER, ARVIN & NANCY	2-65.1	L/B	245500
MILLER, CAROL & RICHARD	6-39	L/B	153100
MILLER, SUTHERLAND	2-42	L/O	82100
MILLER, W. ALLEN	7-39	L/B	895300
MILLS, DAVID	3-65.2	L/B	75200
MITCHELL, OLIVER & DOROTHY	9-19	L/B	141400
MOENCH, THEODORE & LAURA	2-72	L/B	152100
MOHAN, PATRICK & SHEILA	6-78	L/B	115700
MOLLOY, THOMAS & DOROTHY	4-16	L/B	97100
MONELL, RICHARD & KAREN	2-28	L/B	189300
MOODY, JEFFREY	2-49	L/B	243100
MOODY, WINSHIP	3-34	L/B	107300
MOODY, WINSHIP	3-11	L/B	275300
MORRILL, BARBARA	3-71.2	L/B	208100
MORRIS, CHARLES K	3-63	L/B	143700
MORRIS, JAMES	1-24	L/B	78900
MORRISON, ALFRED & EVELYN	3-35	L/B	53800
MORRISON, RALPH & JOYCE	6-45.10	L/O	43500
MORSE, CHARLES & JOSEPHINE	7-58	L/B	354600
MORTEN, DOROTHY D TRUST	3-67.1.6	L/B	143400
MOTENKO ET AL, NEIL & ALUMA	6-38	L/B	170300
MOTENKO, NEIL	6-29.2	L/O	800
MOTENKO, NEIL	6-37	L/O	500
MOTTA, MARIO & JOYCE	1-22	L/B	214400
MOUSE PROPS. LLC	6-05	L/O	312600
MOUSE PROPS. LLC	7-02	L/B	235900
MUDGETT, THELMA	2-50	L/B	158300
MUNROE, TIMOTHY & M	1-46	L/B	119600
MUNROE, TIMOTHY & M	1-47	L/O	13440
MURDOUGH, GAIL & SAMUEL	7-45	L/B	936600
MURDOUGH, THOM, G. TRUST	7-44	L/B	1002900
MURDOUGH, THOMAS & JOY P.	7-41.2	L/O	934100
MURPHY, DANIEL & JEAN	6-50	L/O	60900
MURPHY, DOUGLAS W.	6-74	L/O	500
MURPHY, HUGH & BARBARA	3-78	L/B	84500
MURPHY, ROBERT	7-85	L/B	67400
MYERS, DEBORAH M	8-33	L/B	79900
NE FORESTRY FOUNDATION	5-22	L/O	11768
NH ELECTRIC COOP	0-0B	L/O	1417900
NEIDHART, RUTH	3-79	L/B	295100
NELSON, NANCY J & TAM, LOREY	5-2	L/O	60000
NEWCOMB, WALTER & MARJORIE	2-70	L/B	87400
NEWMAN TRUST	6-01	L/B	1399400
NEWMAN TRUST	6-16	L/O	35100
NORMANDIN, LOUIS & GLADYS	1-19	L/B	47100
NORMANDIN, PAUL	1-09	L/B	98600
NORMANDIN, RICHARD & TANYA	1-19.2	L/O	26400
NORTON, ELWIN C.	5-48	L/O	53200
NOTIS-MCCONARTY, EDWARD&JEAN	1-20	L/B	137253
NOURSE, PETER & MAMYE	2-29	L/B	145200
NYNEX	9-21	L/B	169600
O'HAIRE, RUTH	8-38	L/B	0
O'MALLEY, RICHARD & ALICE	5-14	L/B	160900
O'NEIL, NORMANDIN ET AT	1-39	L/O	220400
O'NEIL, GERALD T & JOAN	2.13.2	L/B	149300

OHNEMUS, WALTER III & PATRICIA	5-62.2	L/B	105000
OHNEMUS, WALTER & JEAN	5-62	L/B	513000
OLSEN, GAIL	9-44	L/B	78900
ORTOLANI, PATRICIA	3-114.1	L/B	66600
PANGARO REV. TRUST, LAWERENCE	3-75	L/B	156200
PAQUETTE, ANATOLE	4-27	L/B	267000
PAQUETTE, ANATOLE	3-100	L/O	43200
PAQUETTE, ANATOLE & DONNA	3-101	L/B	119600
PAQUETTE, THOMAS & PENELOPE	4-26	L/B	74400
PARENT ET AL, ROBERT	2-89	L/B	114600
PARKER, PATSY	3-86	L/B	48500
PARSONS, DONALD & NATALIE	2-05	L/B	179700
PARTRIDGE, MALCOLM & GLORIA	3-08	L/O	41400
PASTAN, ELSIE	6-54	L/O	26400
PEACOCK, DONALD	9-37	L/B	61900
PELCHAT, ERNEST & ELAINE	3-50	L/B	50000
PERANELLI, KAREN	4-06	L/B	83100
PERKINS TRUSTEE, BLANCHE P	2-46	L/O	6976
PERKINS TRUSTEE, BLANCHE P	1-43	L/O	2040
PERKINS TRUSTEE, BLANCHE P	1-42	L/O	150
PERKINS TRUSTEE, BLANCHE P	2-87	L/B	102072
PERKINS, CLYDE & RUBY	3-57	L/B	69700
PERKINS, WARREN	2-88	L/B	303452
PERNOLD, ANDRE & SUELLLEN	3-28	L/B	234073
PIERCE, LINDA	6-35	L/B	115200
PIERCE, R WENDELL	6-29.19	L/O	75600
PIERCE, R. WENDELL	6-80	L/O	28900
PLUMMER, DAVID & JOANNE	3-105.2	L/B	153900
PLUMMER, JANET	1-29	L/O	11900
POLICIANO, MARY	3-67.18	L/B	144500
POLLOCK & D. LEARY, SANDRA	9-84	L/B	63800
POLO, MARGARET	3-48	L/B	34200
PONTON, MARK & KAREN	6-30	L/B	561500
POOLE, ROGER & JANE	5-58.3	L/B	157200
PORTER, LAWRENCE W. JR	9-23	L/B	72200
POUNDS, JON & JACQUELINE	3-60.4	L/O	192400
POWER, THOMAS & SUSAN	5-64.5	L/O	32400
PRESTON, ROBERT & MARION	7-26	L/B	484900
PROCTOR, ARDYS & HAROLD	3-74	L/B	124300
PROULX, ROBERT & SHARON	1-14.1	L/O	30600
PUBLIC SERVICE CO	P/S1	O/B	84100
PULSIFER, BERTRAM	1-23	L/O	51600
PUTNAM, ELLIOTT & NAN	6-61	L/B	226100
QUIGLEY, CHARLES & BARBARA	2-34	L/B	49900
RACINE, EVELYN	9-42	L/B	178600
RAND & S. VITUM, MARTHA	9-67	L/B	35300
RANKIN, JOHN & LOUISE	5-40	L/B	344500
RED HILL INN LTD	4-38	L/B	1139748
REES & E. BROWN, MALCOLM	7-34	L/O	904400
REILEY, DAVID	1-16	L/B	244500
REILEY, DAVID W.	2-10	L/O	27100
REILEY, DAVID & LUCY	2-06	L/B	13100
REMILLARD, RUSSELL & SHEILA	3-49	L/B	29700
REPASY, WILLIAM	4-15	L/B	140500
RGB II, P. ROSANELLI	4-56.4	L/O	26500
RGB III, P. ROSANELLI	4-56.3	L/O	26500
RICHARDSON, DAVID	1-05	L/B	145600
RICHARDSON, HARE & PLATT	1-56	L/B	81450
RICHARDSON, HARE & PLATT	1-54	L/B	98875

RIGIONE, PAULINA	9-70	L/B	77800
RINES, KEVIN & VICKI	3-85	L/B	69500
ROBINSON, PATRICK & ELIZABETH	5-60	L/B	407100
ROCK, ALBIN & DOROTHY	6-65	L/O	5700
ROGERS TRUST	3-62.1	L/B	270800
ROLLER, PAUL & REBECCA	6-04	L/B	488800
ROSANELLI, PETER	4-56.1	L/B	100500
ROSEN & P. JACOBSON, MICHAEL	1-03	L/B	174800
ROSENBERGER ET AL	2-53	L/B	84100
ROSENBERGER ET AL	2-54	L/O	62400
ROUBO, LYNN	4-36	L/O	6163
ROWLEY, VIRGINIA	5-47	L/O	52100
ROWLEY, VIRGINIA	5-35	L/B	462900
ROYEA, DAVID & JOAN	4-53	L/B	86600
RUEL, ANN MARIE	4-23	L/O	61700
RUEL, PETER & JAYNE	3-26	L/B	119200
RUGG, PAUL	6-29.3	L/O	41100
RUITER JR, CHARLES	3-61	L/B	32000
RUNDEL & JENNIFER CONWAY, PAME	2-86	L/B	94000
RUSSELL & SPRAGUE	9-72U14	L/B	65100
RUSSELL & SPRAGUE	9-72	L/B	77400
RUSSELL, BETTY K	7-39.2	L/B	827000
RYAN, DANIEL & DONNA	7-78	L/B	57200
SANDERSON, PRISCILLA	9-12	L/B	119200
SANFORD, CONSTANCE R.	1-06	L/B	208500
SARGENT, HAROLD & DIANE	1-50	L/B	44200
SASSER, PAUL & SARAN	3-22	L/B	148800
SCALZO, JOSEPH & CAROL	9-63.2	L/B	67400
SCHIMKE, DAVID	2-60	L/B	125200
SCHLEMMER, CYNTHIA	4-56.5	L/O	26400
SCHLEMMER, JOHN & CYNTHIA	4-56.6	L/B	167700
SCHOENBAUER, JOHN & CAROLYN	5-16	L/B	138200
SCHOFIELD, LYNN & DENNIS	9-20	L/B	127400
SCHREIBER, PHYLLIS	5-46	L/O	52100
SCHREIBER, PHYLLIS	5-34	L/B	381400
SCHWANN, WILLIAM	7-79	L/B	535100
SCHWARTZ, LOWELL & KARLENE	7-24	L/B	445500
SCOTT & D. MAY, LOIS	4-56.9	L/O	32100
SCOTTO, ANTHONYJR. LAPORTE ANN	7-48	L/O	359400
SECORD, RICHARD & FRANCES	8-04	L/B	160400
SEELEY, JAMES & KENDAL	9-01	L/B	97500
SEERY Q.P.R.T., WILLIAM	7-38	L/B	1087100
SENA, DEAN	2-30	L/B	102600
SHADOFF, MICHAEL & EDWARD	2-85	L/B	100100
SHANNON TR OF REV.TR., SHIRLEY	3-67.1.7	L/B	144500
SHAW, EDWIN & ALICE	3-45	L/B	40900
SHAW, ELWOOD & GRETA	9-03	L/B	116900
SHAW, & TAYLOR LINDA, RONALD	3-87	L/B	60300
SHELDON, LISA	5-61	L/B	443600
SHELLITO, PAUL & BARBARA	5-38	L/B	378500
SHIBLES, KENNEDY	2-37	L/B	33300
SHLAGER, JULIAN	4-42	L/O	43200
SHLAGER, JULIAN & JEAN	4-41	L/B	155300
SHUFFLETON, TIMOTHY&ARIANE	4-56.2	L/B	165100
SHUTE, CHARLES & ELISE	3-59	L/B	74200
SILBER, KATHRYN	7-56	L/B	343600
SINNOTT, KLARA LOUISE	1-13	L/B	101200
SKAWINSKI, W. BRUCE & MARYANNE	3-97.1	L/B	163400
SKERRY REALTY TRUST	7-81	L/B	26200

SKIP TO MY LOO	9-72	L/B	297700
SKIP TO MY LOO	9-72	L/B	8200
SKIP TO MY LOO	9-72	L/B	45500
SKIP TO MY LOO	9-72	L/B	39400
SKIP TO MY LOO	9-72	L/B	40500
SKIP TO MY LOO	9-72	L/B	55500
SKIP TO MY LOO	9-72	L/B	58400
SKIP TO MY LOO	9-72	L/B	89600
SKIP TO MY LOO	9-72	L/B	12400
SKIP TO MY LOO	9-72	L/B	70900
SKIP TO MY LOO	9-72	L/B	70800
SKIP TO MY LOO	9-72	L/B	98200
SMALL, RACHEL & ALMON	8-35	L/B	114100
SMITH, AARON	8-08	L/O	1130
SMITH, AARON	8-15.2	L/O	2126
SMITH, AARON	8-11	L/B	19200
SMITH, AARON & INGRID	8-15	L/B	136370
SMITH, PETER & DEBORAH	5-53	L/B	122025
SMITH, RICHARD & MARION	3-39	L/B	66900
SMITH, SHIRLEY	8-17	L/B	95100
SMITH, STEVEN & DAWNA	3-59.1	L/B	62100
SODERBERG, JOHN	1-11	L/B	146800
SORLIEN, KENNETH & PRISCILLA	6-31	L/B	510600
SPAULDING, WALTER & IRENE	2-74	L/B	156800
SPLAINE, EDWARD & SHIRLEY	1-26	L/B	117500
SQUAM LAKE ASSOC	5-31	L/O	935
SQUAM LAKE ASSOC	4-38	L/O	37400
STARBUCK, RICHARD	6-27	L/B	375400
STARBUCK, RICHARD	6-34	L/O	20200
STARRETT, JOHN & NANCY	3-95	L/B	147300
STATE OF NEW HAMPSHIRE	1-30		0
STEARNS, SETH	3-14	L/O	259400
STENQUIST ET AL, MACUMBER	2-03	L/B	114700
STEPHENS, RICHARD & APRIL	6-57	L/B	97625
STONE, CATHLEEN & JAMES	5-42	L/B	549000
STREETER, RONALD	3-47	L/B	27400
STREHLE, GLENN & KATHERINE	5-64.2	L/O	32500
STREHLE, GLENN & KATHERINE	7-20	L/B	539000
STURTEVANT COVE ASSOC	6-29.17	L/O	600000
SULLIVAN, BRIAN M & NINA	2-45.1	L/O	27900
SULLIVAN, KENNETH & PATRICIA	2-66	L/B	143300
SULLIVAN, ELOIS	6-18	L/B	117900
SULLIVAN, THOMAS & AMY	5-44U3	L/B	89700
SUTCLIFFE TRUSTEE, GEORGE D	2-78	L/B	153000
SUTTCN RESTORATION TRUST	9-39	L/B	119600
SWAIN ESTATE, TED	4-08	O/B	49600
SWAN, JAMES & ELIZ.PERESS	5-30	L/B	355700
SWIFT, JOHN & THERESA	8-22	L/B	95300
SYLVIA, DAVID & DEBORAH	3-60.1	L/B	115000
TAFT ET AL, DENNIS	4-25	L/O	96100
TALBOT, LAURENCE	6-68	L/O	800
TATE, HAROLD	3-67.1.4	L/B	129400
TAYLOR III, GERALD & KIMBERLY	5-08	L/B	62400
TAYLOR TRUST, WILLIAM	7-84	L/B	78600
TAYLOR, AVRIL	5-10	L/B	81500
TEMPLE TRUST, JOHN	5-33	L/B	320800
THAYER, PAUL & ALICIA	2-13.7.3	L/O	20800
THIBBAULT, DONALD & BEATRICE	1-17	L/B	179800
THOMPSON, ANNA	1-32	L/B	23300

THOMPSON REALTY TRUST	5-18	L/O	5844
THOMPSON REALTY TRUST	5-23.1	L/B	748200
TICE, ROBERT & BIRD, JENNIFER	5-17	L/B	62923
TINSLEY, JAMES F.	3-65.3	L/B	48900
TOCZKO, GARY & PAMELA	6-19	L/B	143600
TOROW, GARY & DENISE	6-45.1	L/B	109000
TOWNSLEY, EDWIN & JANET	7-76	L/B	496500
TREVOR JR, FREDERICK A	4-1.1	L/O	33900
TREVOR, KEITH & JACKIE	8-19	L/B	85900
TURK, GILBERT & ELEANOR	3-09	L/O	64900
TWOMBLEY, ROBERT G	5-19	L/B	575411
TWOMBLEY ET AL, ALEXANDER	5-20	L/B	609530
UHLENDORFF, JAMES & MARTHA	1-33	L/B	71300
ULM, R. LEIGH	8-28.2	L/O	138400
ULM, R. LEIGH	9-78.2	L/B	124700
URSILLO, PAUL & ELFLINE AMY	4-30	L/B	149300
VALPEY, EDWARD G.	4-33	L/B	92900
VALPEY, ROBERT & ALICE	5-26	L/B	743700
VALPEY, ROBERT & ALICE	5-25	L/B	84800
VALPEY, ROBERT	9-B1	O/B	14100
VAUGHN, JEFFREY & PAMELA	2-45.5	L/O	24400
VICKERS, W.HARRY & BARBARA	5-44U4	L/B	77700
VOGLER, ROBERT & JEAN	2-83.1	L/O	83700
VORISEK, FAMILY TRUST	3-27	L/B	116100
WALDRON, JAMES	2-40	L/O	12000
WALDRON, JAMES & JANET	4-27.2	L/O	51800
WALKER, DAVID	9-56	L/B	81500
WALLACE, GEORGE & MADELYN	3-73	L/B	156300
WARNER, MARY ALICE	6-03	L/B	473600
WARNER, MARY ALICE	6-14	L/B	158500
WATKINS, FRANK & DEBORA	4-4.1	L/B	106200
WATTERS, DAVID	6-45	L/O	27500
WATTERS, KAREN & DAVID	6-49	L/O	600
WAUKEWAN GOLF CLUB INC	3-69	L/O	50200
WAUKEWAN GOLF CLUB INC	3-56 & 55	L/O	44894
WEATHERBIE, MATTHEW & SUSAN	5-27	L/B	853200
WEAVER, GRACE	6-22	L/O	26900
WEAVER, GRACE	6-59	L/B	108300
WEEKS III, IRA & KATHERINE	3-21	L/B	164300
WEEKS III, IRA & KATHERINE	4-01	L/O	37900
WEEKS JR, IRA	3-89	L/B	67400
WEEKS, ROBERT, JR, ET AL	3-114	L/B	36900
WEEKS, THOMAS	4-34	L/B	69100
WEERAKODDY, UPALI & SAVITRI	5-55	L/B	140100
WEIN, DAVID & MARTHA	2-75	L/B	142700
WEISS, PAULINE	7-86	L/B	89800
WELCH, DONALD & HELEN	9-34	L/B	207800
WELLS, DONALD & RUTH	3-67.1.2	L/B	121700
WELSH FAMILY TRUST, FRANK	9-33	L/B	164700
WERNTZ, HAROLD	5-64.1	L/B	243700
WESTHEIMER, FRANK	7-43	L/B	875200
WHALEN, SALLY & THOMAS	8-16	L/B	123200
WHATLEY REV. TRUST, JEAN	5-37	L/B	339900
WHITE, JOHN & MELANCEY	3-62	L/B	192621
WHITE, RICHARD & SYLVIA	3-105.1	L/B	153600
WHITE 1995 TRUST, SHIRLEY	2-21	L/B	72548
WHITEHEAD TRUST, FRANCES C.P.	5-21.1	L/B	643800
WHITING, JOHN & MARIE	8-27	L/B	73900
WHITING, LELAND & STEPHANIE	4-29	L/B	74400

WHITNEY, SUSAN J	9-86	L/B	46000
WHITTLESLEY&C.MAGUIRE,CHARLES	2-65	L/B	194500
WILDES FAMILY TRUST	2-80	L/B	132700
WILKINSON, ALLAN & SUSAN	2-13.7.4	L/O	20700
WILLIAMS, CHRISTOPHER & ANN	3-29	L/B	434000
WILLWERTH, BRUCE B. & ANN E.	4-31	L/B	60900
WILSON, ALAN W. & KAREN A.	6-78.2	L/B	57200
WINN FLAGSHIP CO	9-83	L/B	636600
WINSOR, DONALD & DONNA	2-14	L/B	85000
WISE, KELLY & SYBIL	5-41	L/B	390600
WOOD, PETER M. & JOANN C.	7-13.2	L/B	974700
WOOD, RAWSON & ELIZABETH	7-35	L/B	1312600
WOODAMAN, GREGORY & ROBIN	6-60.1	L/B	120900
WOODAMAN, LEWIS & MARY	9-65	L/B	119200
WOODS, JEFFREY & PATRICIA	2-45.3	L/O	23700
WOODS, THOMAS & PATRICIA	7-41.1	L/O	607200
WOODWORTH, GAYLORD & AVIS	9-16	L/B	111800
WRIGHT, JUDITH	7-66	L/B	241500
YERED, LOUIS & EVELYN	3-98	L/O	28000
YOUNG, RICHARD H & PATRICIA	6-48	L/O	400
YOUTZ, PHILIP & JANET	2-16	L/B	106500
YOUTZ, PHILIP & JANET	1-34	L/O	400
YUILL, DANIEL & HELEN	5-50	L/B	114800
ZAGARELLA, SALVATORE & BARBARA	9-47	L/B	104200
ZARROW, GERALD & MYRA	6-43	L/B	68000
ZEVITAS, DEMOS & MARY	4-18	L/B	45000

- NOTES -

- NOTES -

TOWN OF CENTER HARBOR
TO REPORT FIRES
Or Call Emergency Equipment
ONLY !!!
DIAL 911

AMBULANCES — HOSPITALS

AMBULANCE FOR EMERGENCIES ONLY — 911

Stewart's Ambulance — 524-1545
Lakes Region Hospital - Laconia — 524-3211
Huggins Hospital - Wolfeboro — 1-569-2150

POISON INFORMATION CENTER

Hanover 1-643-4000
Boston 1-617-232-2120

POLICE — FIRE OFFICIALS

State Police — Tamworth 1-323-8112
State Police — Concord 1-271-3636
Center Harbor Police — 253-9756 or 524-3830 or 911
Fire Chief — 253-8558
Forest Fire Warden, (Burning Permits issued) 253-4561
during regular office hours. All other times 253-8544
To Call Fire Station on all other business 253-4451
Emergency Management Director — 279-6930

SIGNALS

Test Signal — 1 Blast every Mon. at 7:15 p.m.

Civil Defense Alerts:

Yellow (Warning) — Steady Blast, 2 minutes
Red (Take Cover) — Wailing Tone, 3 minutes
White (All Clear) — 5 Blasts of 30 seconds
each with 2 minutes of silence
between each blast.