



December 8, 2015

**TRUMP WIDENS NH LEAD BUT MOST VOTERS NOT YET CONVINCED**

By: Andrew E. Smith, Ph.D.  
Zachary S. Azem, M.A.  
UNH Survey Center

andrew.smith@unh.edu  
603-862-2226  
www.unh.edu/survey-center

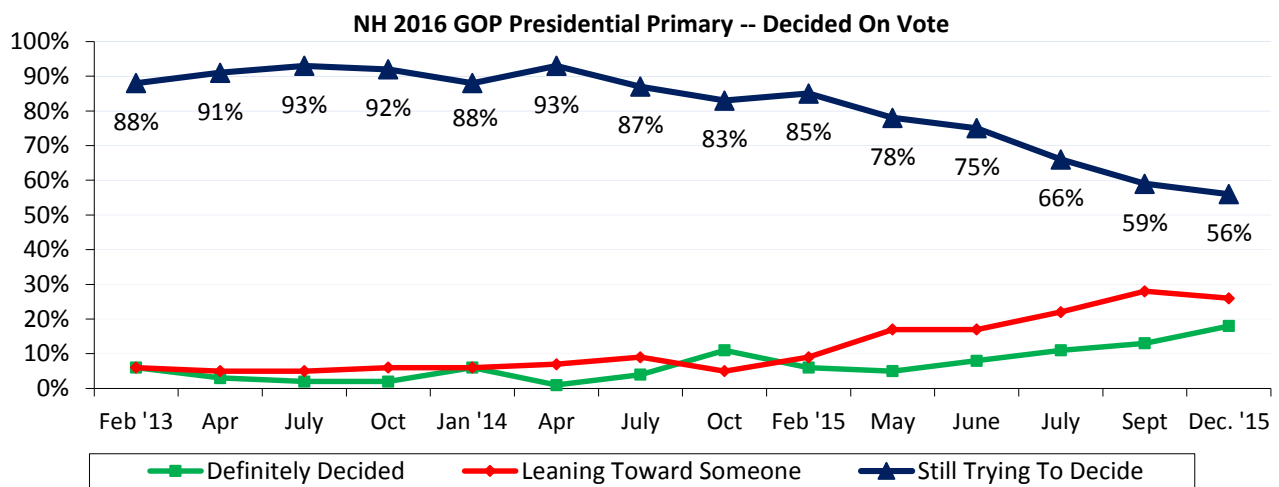
DURHAM, NH – Donald Trump has expanded his lead in the New Hampshire Primary race while Marco Rubio has moved into second place. Trump also continues to be the candidate that New Hampshire Republicans say they are least likely to vote for. Only eighteen percent of New Hampshire Republican Primary voters say they have firmly decided who they will vote for in the Primary.

These findings are based on the latest **CNN/WMUR New Hampshire Primary Poll**,\* conducted by the University of New Hampshire Survey Center. Nine hundred and fifty-four (954) randomly selected New Hampshire adults were interviewed by landline and cellular telephone between November 30 and December 7, 2015. The margin of sampling error is +/- 3.2 percent. Included were four hundred and two (402) likely 2016 Republican Primary voters (MSE = +/-4.9) and three hundred and seventy (370) likely 2016 Democratic Primary voters (MSE = +/-5.1).

**NH Republicans Not Engaged Yet**

2016 marks the 100<sup>th</sup> anniversary of the New Hampshire Primary and has attracted a record number of major Republican candidates. New Hampshire Republicans are, as usual, taking their time deciding who to support.

New Hampshire primary voters usually decide who they will vote for in the last weeks, or days of the campaign and it is no surprise that few likely Republican primary voters have made up their minds about who they will support in 2016. Currently, only 18% of likely Republican Primary voters say they have definitely decided who they will support, 26% are leaning toward a candidate, and 56% are still trying to decide.



\* We ask that this copyrighted information be referred to as *the CNN/WMUR New Hampshire Primary Poll*, sponsored by WMUR-TV and CNN, and conducted by the University of New Hampshire Survey Center.

The Republican electorate is more interested in the 2016 primary than it was at a similar point in 2007, the last time both parties had contested primaries. Currently, 58% of likely Republican primary voters say they are extremely interested in the election, 28% are very interested, and 13% are only somewhat interested or not very interested. By comparison, in December 2007, 35% of likely Republican primary voters said they were extremely interested in the 2008 primary, 48% were very interested, and 18% were only somewhat interested or not very interested. Another sign of higher interest in Republicans is that 48% of undeclared voters who can vote in either primary, say they will vote in the Republican primary while only 38% say they will vote in the Democratic primary.

### GOP Favorability Ratings

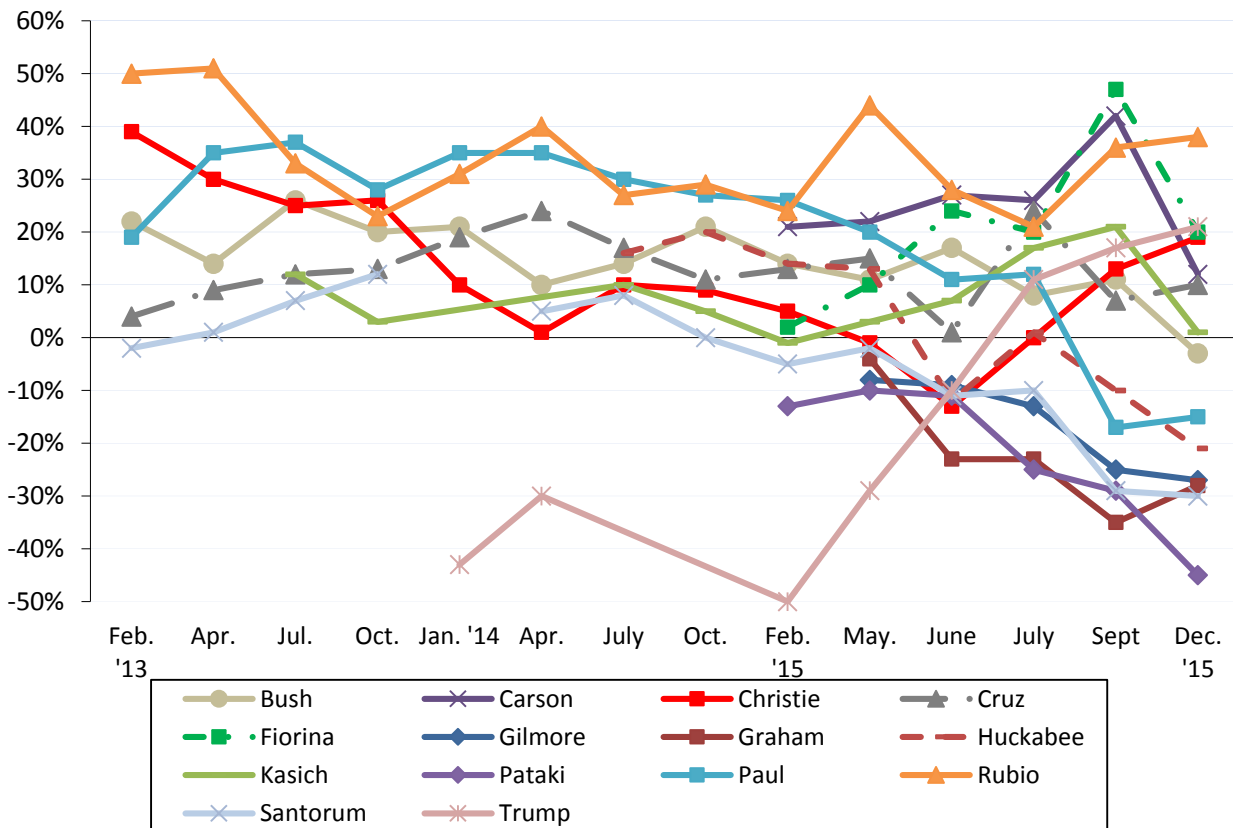
Florida senator Marco Rubio leads the GOP field in net favorability (the percentage who have a favorable opinion of him or her minus the percentage who have an unfavorable opinion) among Republican primary voters. Currently 61% have a favorable opinion of Rubio, 23% have an unfavorable opinion and 16% are neutral or don't know enough about him to say. Rubio's net favorability rating is +38%, up slightly from +36% in September. Other GOP candidates with moderate net favorability ratings include businessman Donald Trump (+21%), businesswoman Carly Fiorina (+20%), and New Jersey governor Chris Christie (+19%).

Neurosurgeon Ben Carson (+12%), Texas senator Ted Cruz (+10%), and Ohio governor John Kasich (+1%) have low net favorability ratings while former Florida governor Jeb Bush (-3%), Kentucky senator Rand Paul (-15%), former Arkansas governor Mike Huckabee (-21%), former Virginia governor Jim Gilmore (-27%), South Carolina senator Lindsey Graham (-28%), former Pennsylvania senator Rick Santorum (-30%), and former New York governor George Pataki (-45%) have negative net favorability ratings.

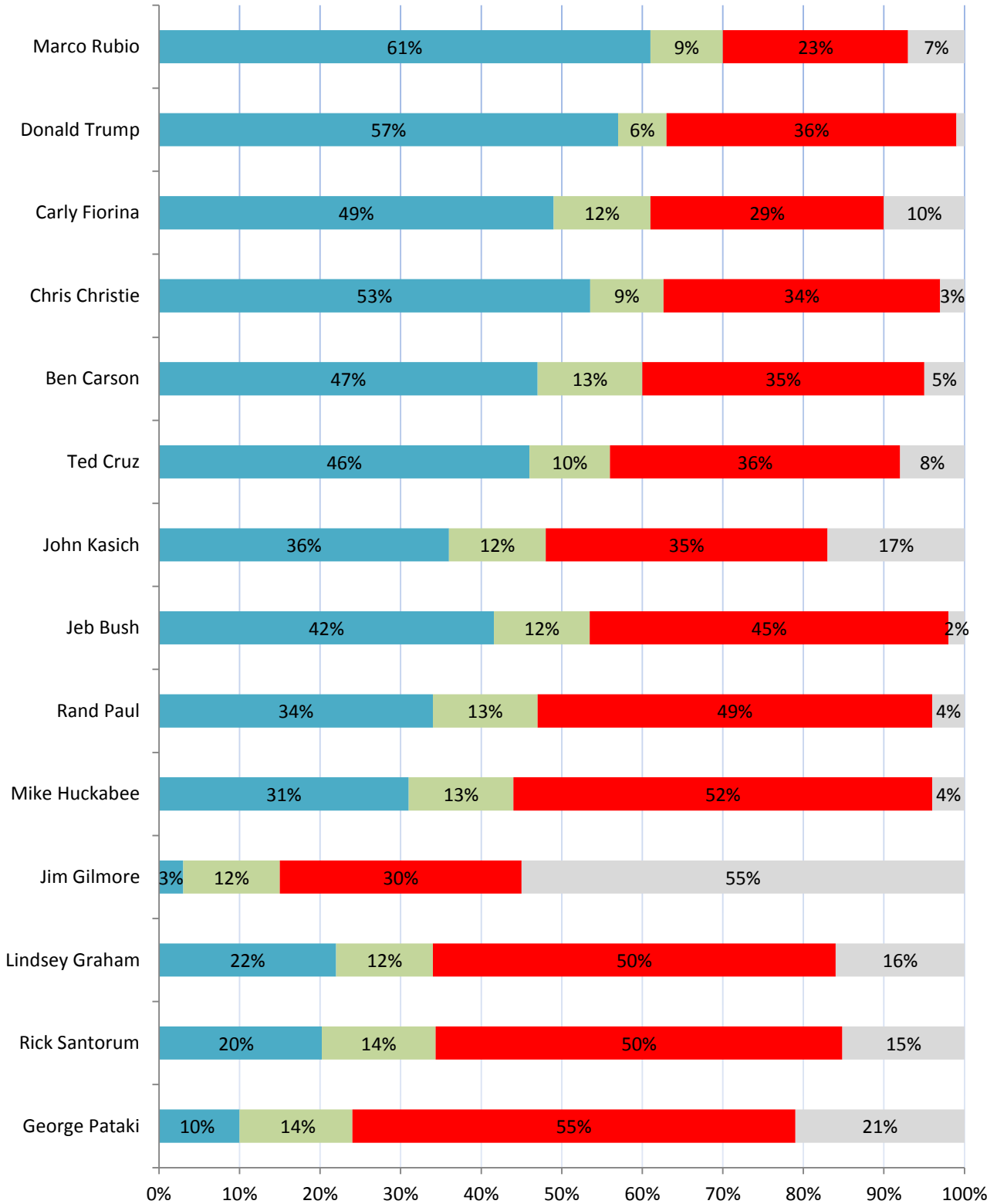
Carson (from +42% to +12%), Fiorina (from +47% to +20%), Kasich (from +21% to +1%), and Bush (from +11% to -3%) have all seen their net favorability rating drop significantly since September.

Cruz (+66%), Trump (+56%), Fiorina (+43%), Carson (+41%) and Rubio (+38%) are very popular among voters who regularly listen to conservative talk radio, while Bush (-32%) and Kasich (-32%) are very unpopular among talk radio listeners.

NH 2016 GOP Presidential Primary -- Net Favorability Ratings



Favorability Ratings - Potential NH GOP Presidential Candidates - December 2015



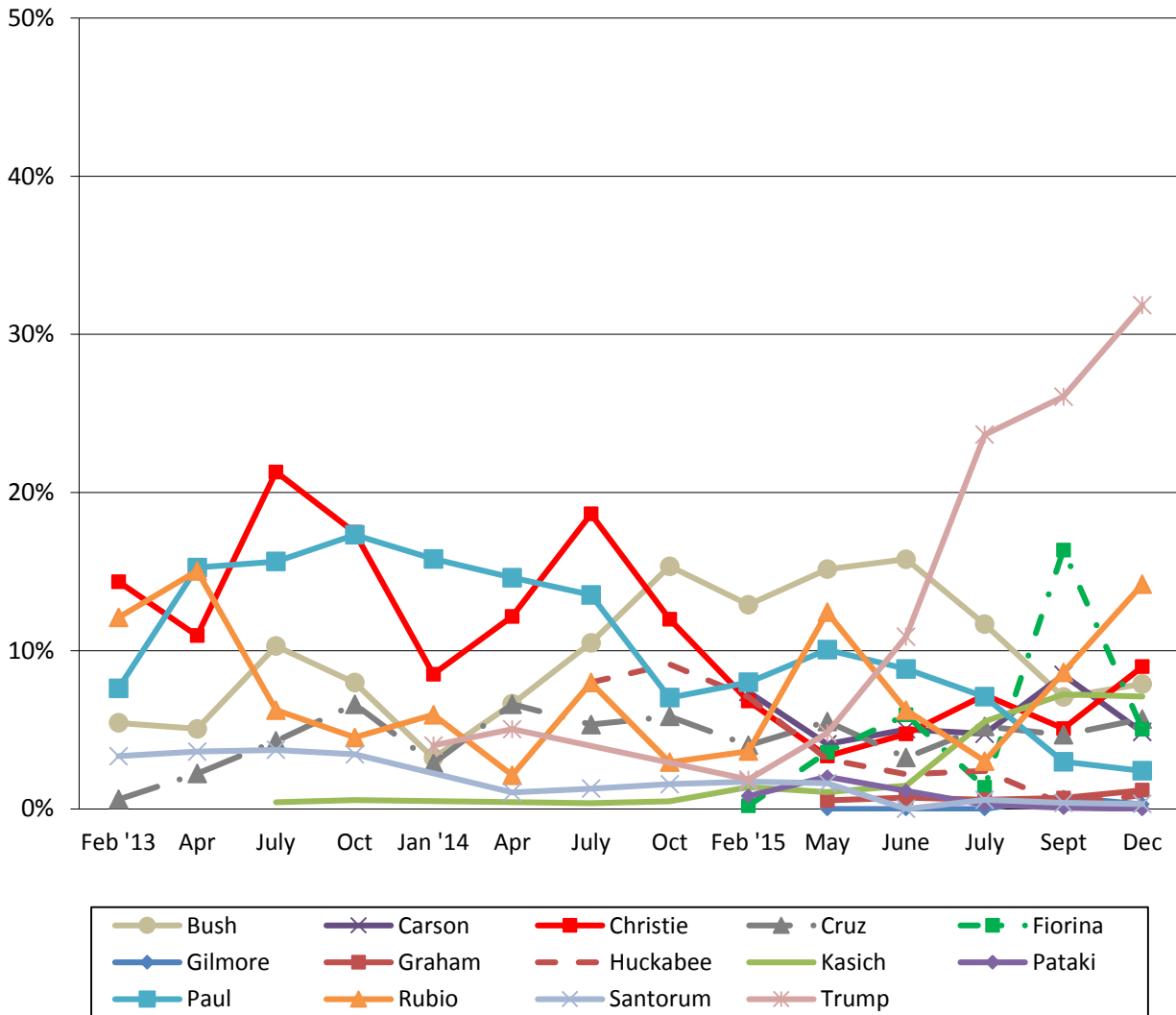
■ Favorable
 ■ Neutral
 ■ Unfavorable
 ■ DK

## 2016 NH Republican Primary

Donald Trump continues to top the field in New Hampshire with 32% of likely Republican primary voters supporting him. Trump is followed by Rubio (14%), Christie (9%), Bush (8%), Kasich (7%), Cruz (6%), Fiorina (5%), Carson (5%), Paul (2%), Graham (1%) and Huckabee (1%). All other potential candidates receive less than 1% support, and 9% say they are undecided.

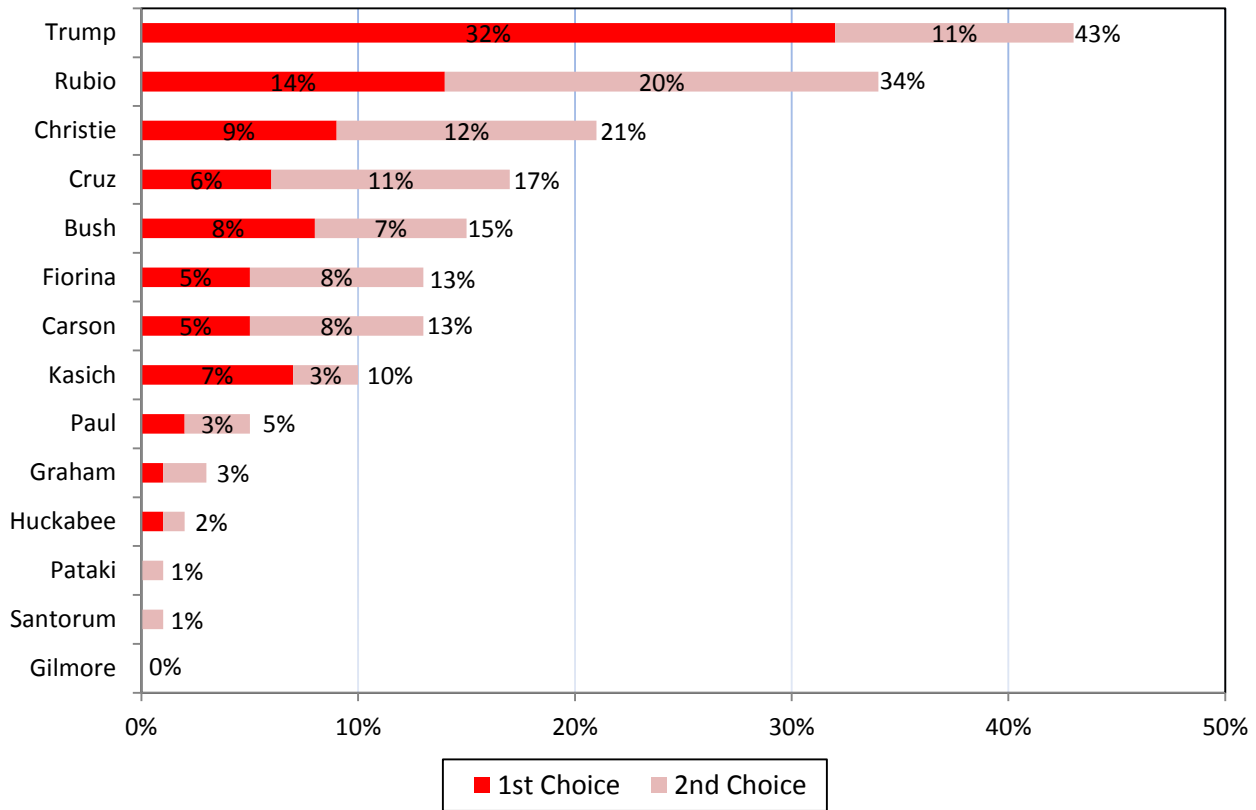
Trump (44%), Cruz (15%), and Rubio (12%) are the top choices among primary voters who regularly listen to conservative talk radio. Trump (39%), Rubio (18%) and Christie (14%) are the top choices among primary voters who regularly read the Union Leader.

NH 2016 GOP Presidential Primary -- Who Support If Vote Held Today?

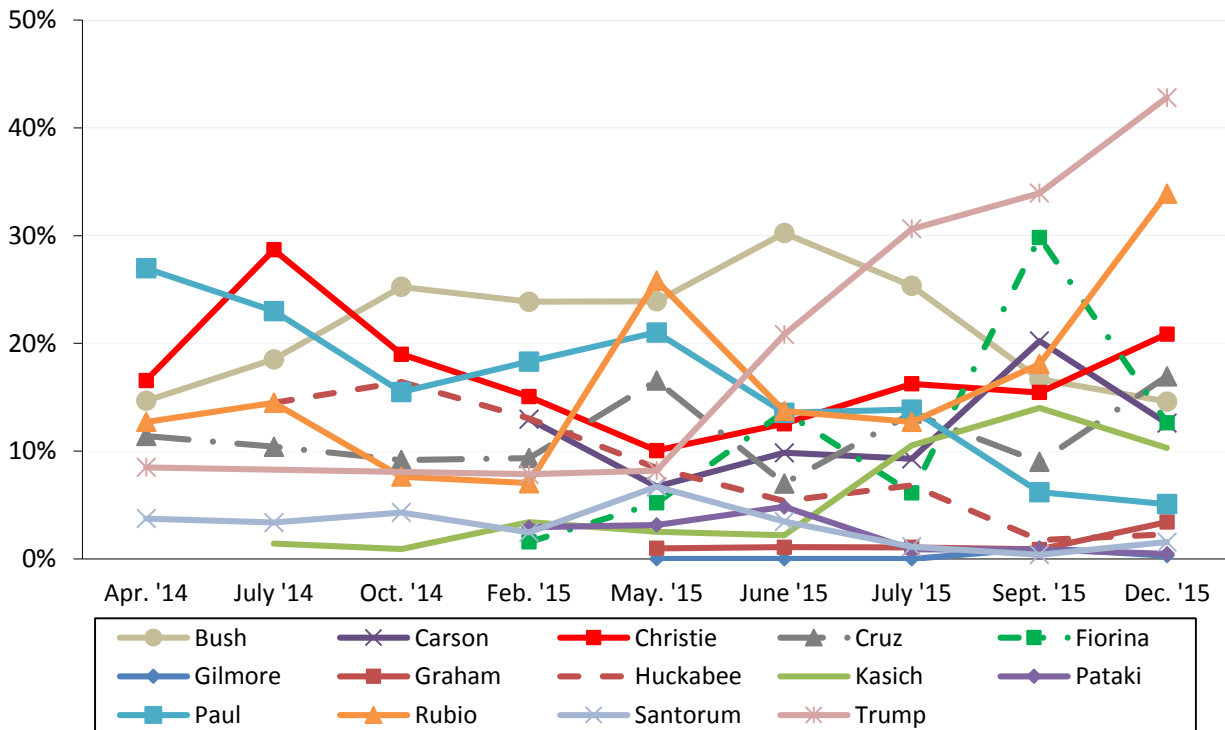


### 2016 NH Republican Primary with Second Choice

Asking likely Republican Primary voters who their second choice is more clearly defines the field with Trump and Rubio leading their rivals. When the top two choices are combined, 43% of likely primary voters favor Trump, 34% favor Rubio, 21% favor Christie, 17% favor Cruz, 15% favor Bush, 13% favor Fiorina, 13% favor Carson and 10% favor Kasich.



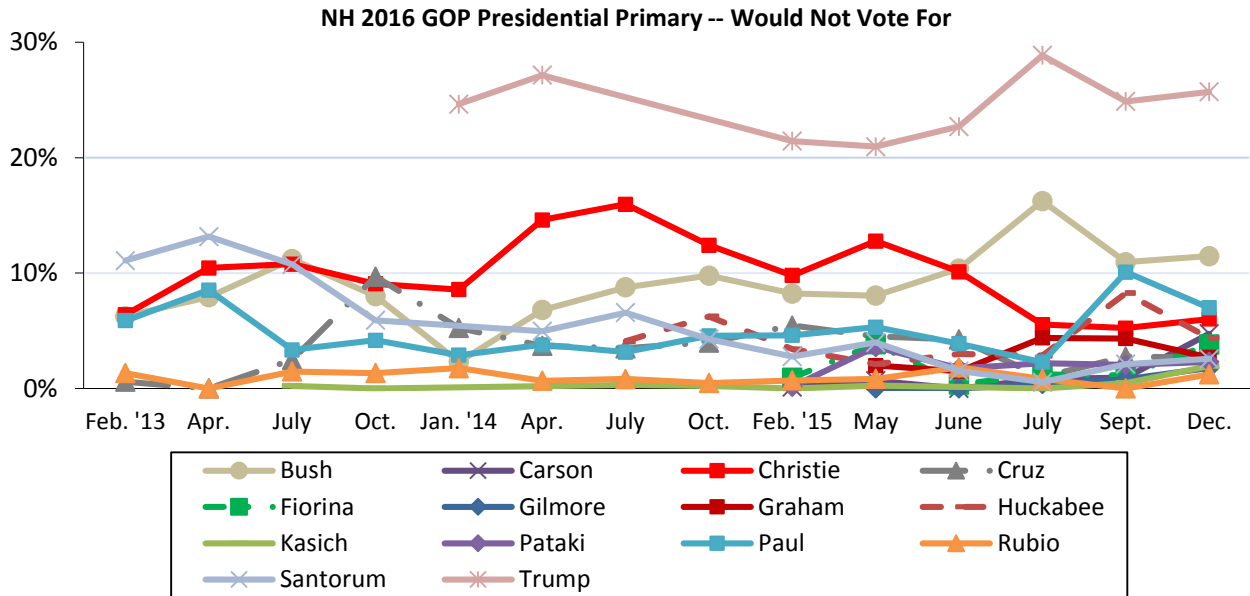
### NH 2016 GOP Presidential Primary -- First and Second Choice Combined



### Most Unpopular Republican Candidate

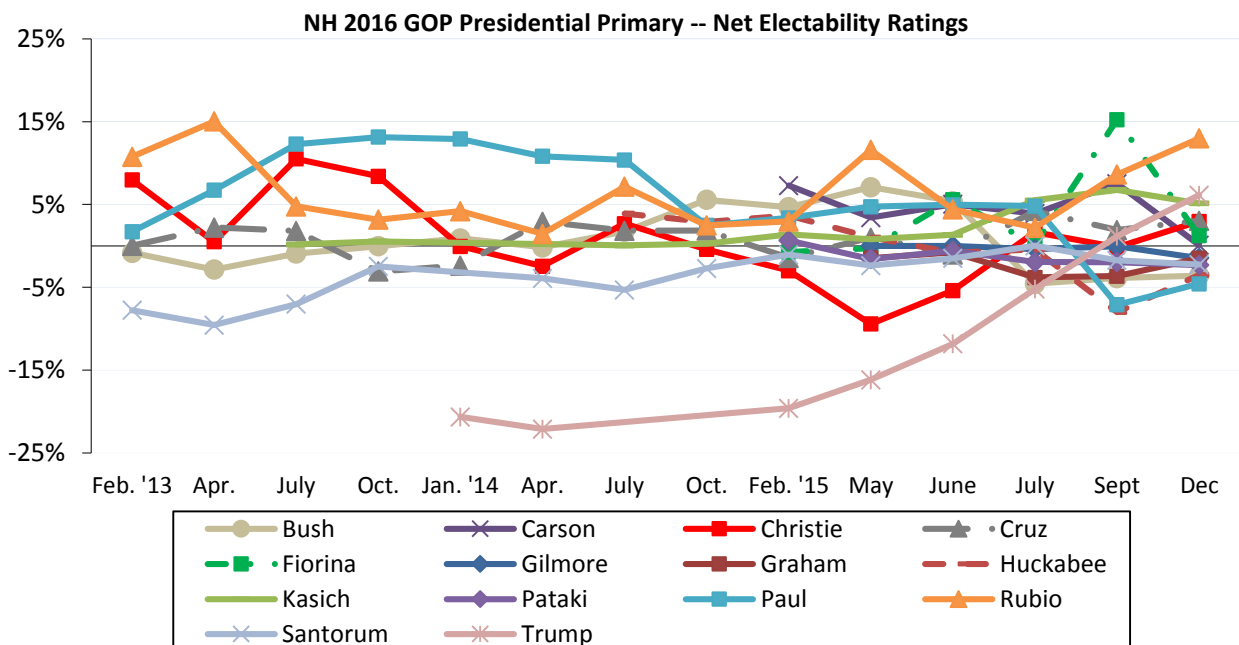
Despite leading the Republican field, Trump remains the candidate New Hampshire Republicans are least likely to vote for. When asked which candidate they would NOT vote for under any circumstance, 26% of likely Republican Primary voters say they would not vote for Trump, 11% would not vote for Bush, 7% would not vote for Paul, 6% would not vote for Christie, 5% would not vote for Carson, 4% would not vote for Huckabee, 4% would not vote for Fiorina, 3% would not vote for Cruz, 3% would not vote for Graham, 3% would not vote for Santorum, 2% would not vote for Pataki, 2% would not vote for Rubio, 1% would not vote for Gilmore, 11% think all the prospective candidates are acceptable, and 9% are unsure.

Voters who oppose the tea party (48%), voters with a postgraduate education (40%) and voters who are 65 and older (37%) are more likely to say they wouldn't vote for Trump under any circumstances.



### Republican Net Electability

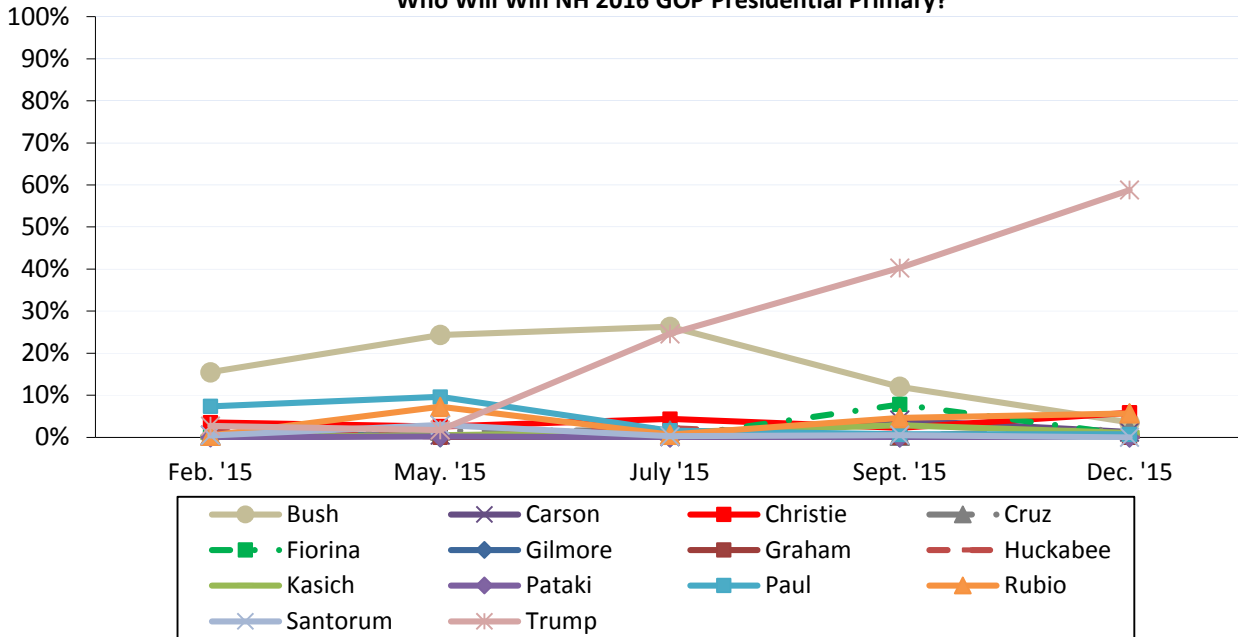
Rubio tops the field in net electability (the percentage who support a candidate minus the percent who would not vote for that candidate), with +13%. Trump (+6%), Kasich (+5%), Cruz (+3%), Christie (+3%) and Fiorina (+1%) all have positive net electability scores. Carson (+0%), Gilmore (-2%), Graham (-2%), Pataki (-2%), Santorum (-3%), Huckabee (-3%), Bush (-4%), and Paul (-5%) have neutral or negative net electability scores.



### Who Will Win NH Primary?

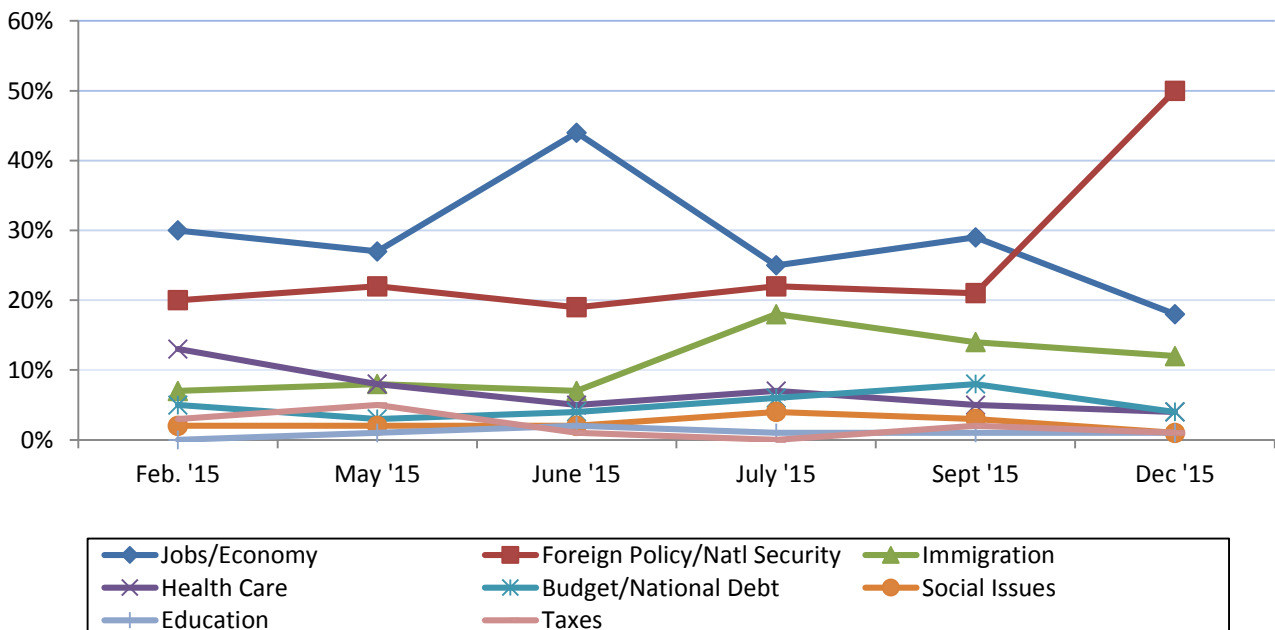
Trump is now seen as the clear favorite by New Hampshire Republicans. When asked who they think will win the 2016 New Hampshire Republican Primary, 59% think Trump will win, 6% think Christie will win, 6% think Rubio will win, and 4% think Bush will win. The percentage believing Trump will win the primary has increased 19 percentage points since September.

Who Will Win NH 2016 GOP Presidential Primary?



### Most Important Issue To Primary Vote

The recent terrorist attacks in Paris and San Bernardino have redefined this race as one about foreign policy. Half (50%) of Republican Primary voters cite foreign policy or national security, including terrorism, as the most important in deciding to vote in the presidential primary. This represents a 29 percentage point increase since September. Eighteen percent (18%) of likely Republican Primary voters cite jobs or the economy, 12% cite immigration, 4% cite the budget or national debt, 4% cite health care, 1% cite social issues, 1% cite taxes and 1% cite education.



### Candidate Qualities

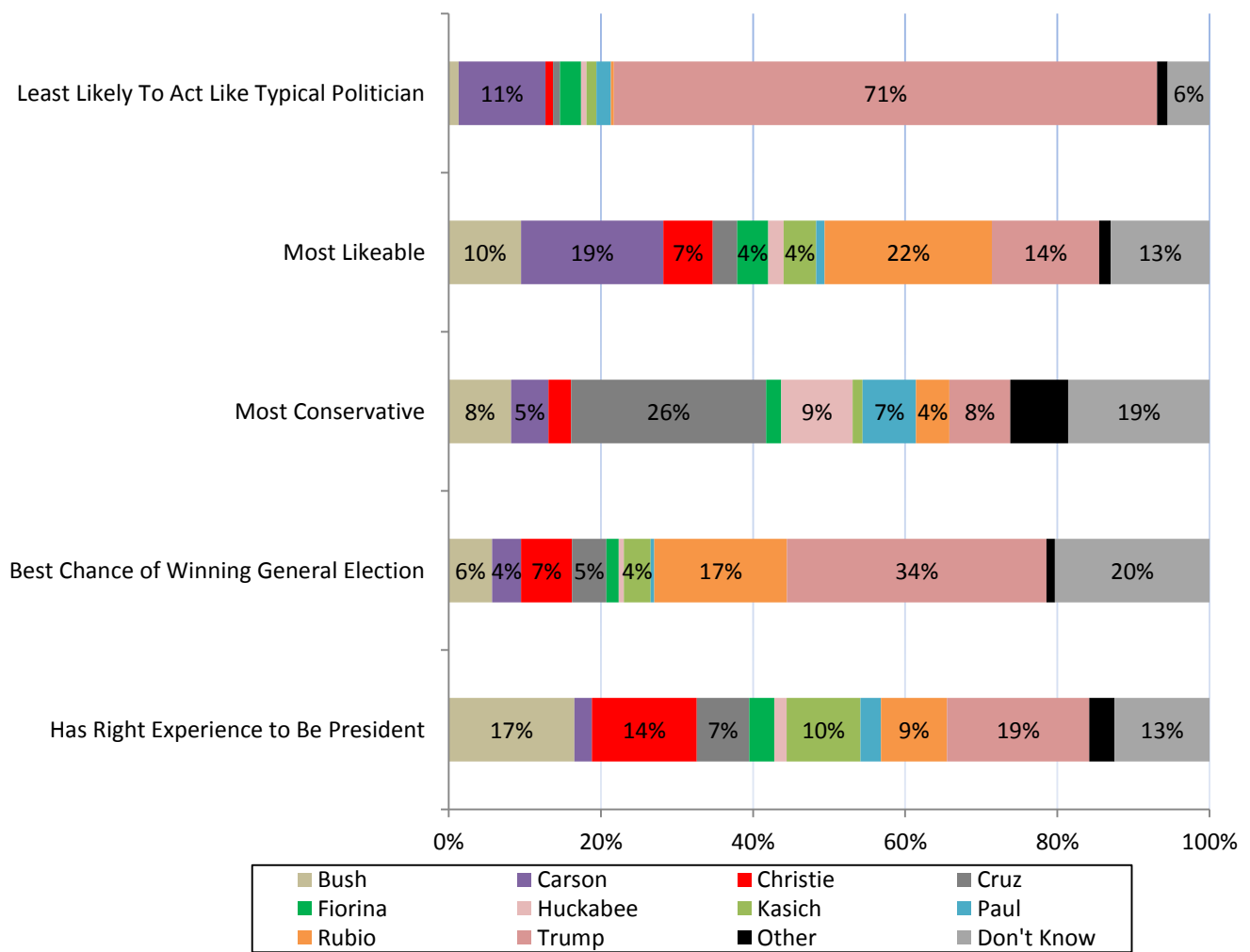
Voters were asked to identify which candidate best exemplified a number of candidate qualities. Seven in ten (71%) likely Republican Primary voters name Trump as the candidate least likely to act like a typical politician, 11% chose Carson, and 6% were unsure.

Twenty-two percent (22%) chose Rubio as the most likeable, 19% chose Carson, 14% chose Trump and 13% were unsure.

Twenty-six percent (26%) chose Cruz as the most conservative, 9% chose Huckabee, 8% chose Trump, 8% chose Bush and 19% were unsure.

Thirty-four percent (34%) chose Trump as having the best chance to win the general election in November, 17% chose Rubio, 7% chose Christie and 20% unsure.

Nineteen percent (19%) chose Trump as having the right experience to be President, 17% chose Bush, 14% chose Christie and 13% were unsure.



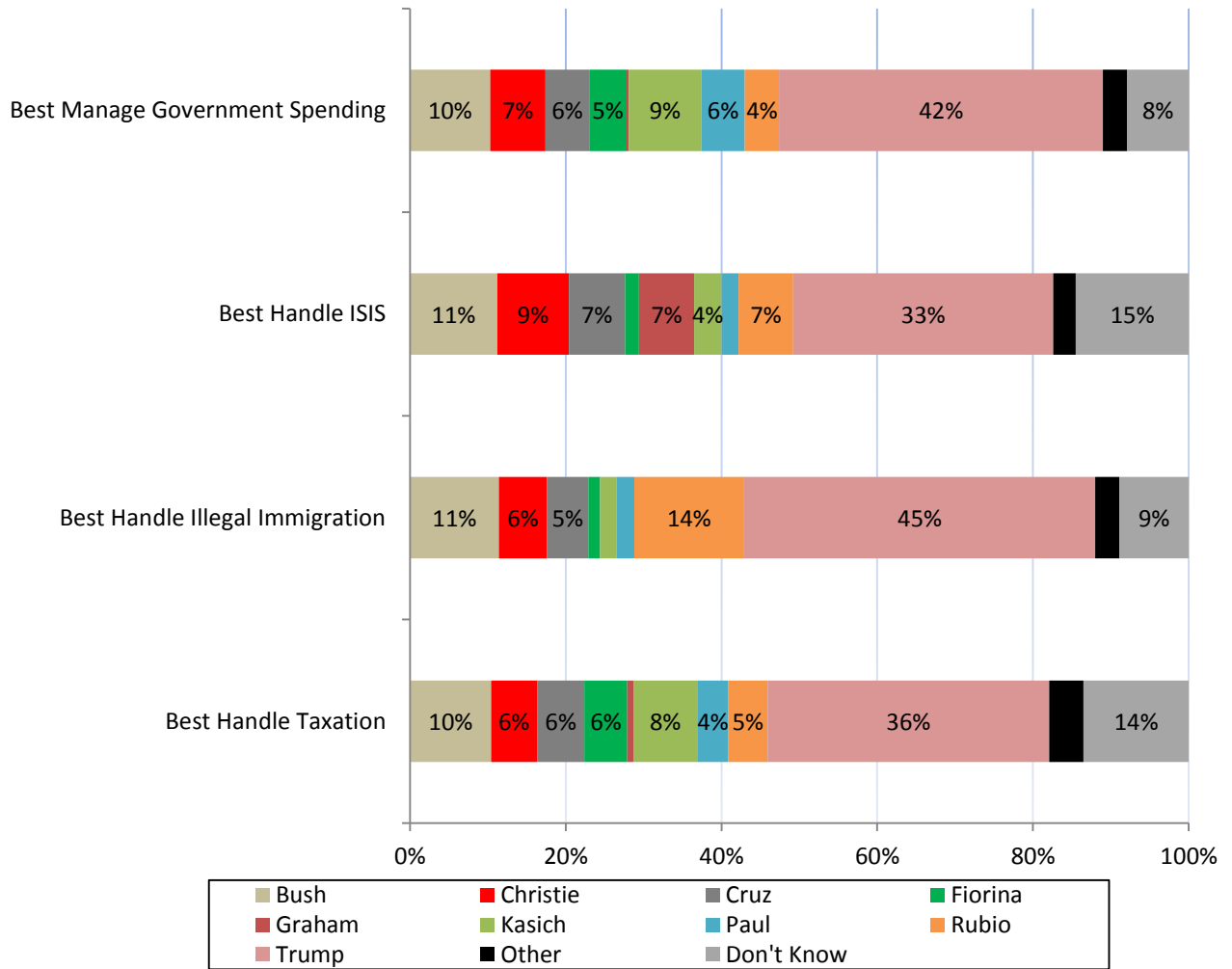


When asked who could best manage government spending 42% chose Trump, 10% chose Bush, 9% chose Kasich and 8% were unsure.

A third of likely voters (33%) chose Trump as the best to handle ISIS, 11% chose Bush, 9% chose Christie and 15% were unsure.

Forty-five percent (45%) chose Trump as the best to handle illegal immigration, 14% chose Rubio, 11% chose Bush and 9% were unsure.

Thirty-six percent (36%) chose Trump as the best to handle taxation, 10% chose Bush, 8% chose Kasich and 14% were unsure.



### CNN/WMUR New Hampshire Primary Poll Methodology

These findings are based on the latest CNN/WMUR New Hampshire Primary Poll, conducted by the University of New Hampshire Survey Center and funded by CNN and WMUR-TV, Manchester, NH. Nine hundred and fifty-four randomly selected New Hampshire adults were interviewed by landline and cellular telephone between November 30 and December 7, 2015. If a household included more than one adult, the adult who had the most recent birthday was selected to be interviewed.

The margin of sampling error is +/- 3.2 percent for the entire sample. Included were four hundred and two (402) likely 2016 Republican Primary voters (MSE = +/-4.9), three hundred seventy (370) likely 2016 Democratic Primary voters (MSE = +/- 5.1). These MSE's have not been adjusted for design effect. The design effect for the survey is 1.1%.

The random sample used in the CNN/WMUR New Hampshire Primary Poll was purchased from Marketing Systems Group (MSG), Horsham, PA. STS screens each selected telephone number to eliminate non-working numbers, disconnected numbers, and business numbers to improve the efficiency of the sample, reducing the amount of time interviewers spend calling non-usable numbers.

The data have been weighted to adjust for numbers of adults and telephone lines within households. Additionally, data were weighted by respondent sex, age, and region of the state to targets from the most recent American Community Survey (ACS) conducted by the U.S. Census Bureau. In addition to potential sampling error, all surveys have other potential sources of non-sampling error including question order effects, question wording effects, and non-response. Due to rounding, percentages may not sum to 100%. The number of respondents in each demographic below may not equal the number reported in cross-tabulation tables as some respondents choose not to answer some questions.

For more information about the methodology used in the CNN/WMUR New Hampshire Primary Poll, contact Dr. Andrew Smith at (603) 862-2226 or by email at [andrew.smith@unh.edu](mailto:andrew.smith@unh.edu).

### New Hampshire Primary Poll, December 2015 Demographics

<b>Sex</b>	<b>N</b>	<b>%</b>	<b>Region</b>	<b>N</b>	<b>%</b>
Male	<b>466</b>	<b>49%</b>	North Country	<b>85</b>	<b>9%</b>
Female	<b>486</b>	<b>51%</b>	Central/Lakes	<b>159</b>	<b>17%</b>
			Connecticut Valley	<b>137</b>	<b>14%</b>
			Mass Border	<b>270</b>	<b>28%</b>
<b>Age</b>	<b>N</b>	<b>%</b>	Seacoast	<b>153</b>	<b>16%</b>
18 to 34	<b>243</b>	<b>26%</b>	Manchester Area	<b>148</b>	<b>16%</b>
35 to 49	<b>243</b>	<b>26%</b>			
50 to 64	<b>269</b>	<b>29%</b>	<b>Party Registration</b>	<b>N</b>	<b>%</b>
65 and Over	<b>165</b>	<b>18%</b>	Democrat	<b>221</b>	<b>23%</b>
			Undeclared	<b>509</b>	<b>54%</b>
<b>Highest Level of Education</b>	<b>N</b>	<b>%</b>	Republican	<b>213</b>	<b>23%</b>
High School or Less	<b>186</b>	<b>20%</b>			
Some College	<b>223</b>	<b>23%</b>	<b>Party Identification</b>	<b>N</b>	<b>%</b>
College Graduate	<b>341</b>	<b>36%</b>	Democrat	<b>397</b>	<b>43%</b>
Post-Graduate	<b>198</b>	<b>21%</b>	Independent	<b>161</b>	<b>18%</b>
			Republican	<b>363</b>	<b>39%</b>

## New Hampshire Primary Poll, December 2015 Likely Republican Primary Voter Demographics

<b>Sex</b>	<b>N</b>	<b>%</b>	<b>Region</b>	<b>N</b>	<b>%</b>
Male	<b>232</b>	<b>58%</b>	North Country	<b>38</b>	<b>9%</b>
Female	<b>170</b>	<b>42%</b>	Central/Lakes	<b>80</b>	<b>20%</b>
			Connecticut Valley	<b>44</b>	<b>11%</b>
<b>Age</b>	<b>N</b>	<b>%</b>	Mass Border	<b>109</b>	<b>27%</b>
18 to 34	<b>67</b>	<b>17%</b>	Seacoast	<b>60</b>	<b>15%</b>
35 to 49	<b>110</b>	<b>28%</b>	Manchester Area	<b>72</b>	<b>18%</b>
50 to 64	<b>137</b>	<b>35%</b>			
65 and Over	<b>74</b>	<b>19%</b>	<b>Party Registration</b>	<b>N</b>	<b>%</b>
			Democrat	<b>0</b>	<b>0%</b>
<b>Highest Level of Education</b>	<b>N</b>	<b>%</b>	Undeclared	<b>199</b>	<b>50%</b>
High School or Less	<b>72</b>	<b>18%</b>	Republican	<b>201</b>	<b>50%</b>
Some College	<b>102</b>	<b>25%</b>			
College Graduate	<b>160</b>	<b>40%</b>	<b>Party Identification</b>	<b>N</b>	<b>%</b>
Post-Graduate	<b>68</b>	<b>17%</b>	Democrat	<b>24</b>	<b>6%</b>
			Independent	<b>50</b>	<b>13%</b>
			Republican	<b>325</b>	<b>81%</b>

### Decided Who to Vote for in 2016 GOP Primary?

(Likely NH GOP Primary Voters)

“Have you definitely decided who you will vote for in the New Hampshire primary ... are you leaning toward someone ... or have you considered some candidates but are still trying to decide?”

	<u>Definitely Decided</u>	<u>Leaning Toward Someone</u>	<u>Still Trying to Decide</u>	<u>(N)</u>
<b>Dec '15</b>	<b>18%</b>	<b>26%</b>	<b>56%</b>	<b>(403)</b>
Sept '15	13%	28%	59%	(343)
July '15	11%	22%	66%	(309)
June '15	8%	17%	75%	(401)
May '15	5%	17%	78%	(291)
Feb. '15	6%	9%	85%	(346)
Oct. '14	11%	5%	83%	(271)
July '14	4%	9%	87%	(247)
Apr. '14	1%	7%	83%	(182)
Jan. '14	6%	6%	88%	(245)
Oct. '13	2%	6%	92%	(220)
July '13	2%	5%	93%	(197)
Apr. '13	3%	5%	91%	(164)
Feb. '13	6%	6%	88%	(205)

## Republican Nomination in 2016 NH Primary

(Likely NH GOP Primary Voters)

"I'm going to read you the names of the candidates who are either running or considering running for the Republican nomination. If the Republican primary for president were held today, which of the following would you support for the Republican nomination Jeb Bush ... Ben Carson ... Chris Christie ... Ted Cruz ... Carly Fiorina ... Jim Gilmore ... Lindsey Graham ... Mike Huckabee ... John Kasich ... George Pataki ... Rand Paul ... Marco Rubio ... Rick Santorum ... Donald Trump ... or someone else?" ROTATE CANDIDATES

	<u>2013</u>				<u>2014</u>				<u>2015</u>					
	<u>Feb</u>	<u>Apr</u>	<u>July</u>	<u>Oct</u>	<u>Jan</u>	<u>Apr</u>	<u>July</u>	<u>Oct</u>	<u>Feb</u>	<u>May</u>	<u>June</u>	<u>July</u>	<u>Sept</u>	<u>Dec</u>
Donald Trump	---	---	---	---	4%	5%	---	---	2%	5%	11%	24%	26%	<b>32%</b>
Marco Rubio	12%	15%	6%	4%	6%	2%	8%	3%	5%	12%	6%	3%	9%	<b>14%</b>
Chris Christie	14%	11%	21%	16%	9%	12%	19%	12%	9%	3%	5%	7%	5%	<b>9%</b>
Jeb Bush	5%	5%	10%	8%	3%	7%	11%	15%	17%	15%	16%	12%	7%	<b>8%</b>
John Kasich	---	---	*	*	---	---	*	*	1%	1%	1%	6%	7%	<b>7%</b>
Ted Cruz	1%	2%	4%	6%	3%	7%	5%	6%	4%	6%	3%	5%	5%	<b>6%</b>
Carly Fiorina	---	---	---	---	---	---	---	---	*	4%	6%	1%	16%	<b>5%</b>
Ben Carson	---	---	---	---	---	---	---	---	8%	4%	5%	5%	8%	<b>5%</b>
Rand Paul	8%	15%	16%	17%	16%	15%	14%	7%	9%	10%	9%	7%	3%	<b>2%</b>
Lindsey Graham	---	---	---	---	---	---	---	---	---	1%	1%	1%	1%	<b>1%</b>
Mike Huckabee	---	---	---	---	---	---	8%	9%	9%	3%	2%	2%	*	<b>1%</b>
Jim Gilmore	---	---	---	---	---	---	---	---	---	0%	0%	0%	1%	<b>*</b>
Rick Santorum	3%	4%	4%	4%	---	1%	1%	2%	2%	2%	0%	1%	*	<b>*</b>
George Pataki	---	---	---	---	---	---	---	---	1%	2%	1%	*	*	<b>0%</b>
Scott Walker	3%	1%	2%	2%	2%	3%	3%	3%	12%	11%	8%	11%	*	---
Mark Everson	---	---	---	---	---	---	---	---	---	---	---	---	0%	---
Bobby Jindal	2%	2%	*	---	---	3%	5%	3%	1%	2%	*	2%	0%	---
Rick Perry	---	---	4%	1%	2%	1%	2%	2%	2%	4%	4%	2%	---	---
Bob Ehrlich	---	---	---	---	---	---	---	---	---	*	*	0%	---	---
Peter King	---	---	---	*	*	---	---	---	*	*	0%	---	---	---
John Bolton	---	---	---	---	---	---	---	---	1%	0%	---	---	---	---
Paul Ryan	11%	11%	8%	9%	6%	13%	5%	6%	---	---	---	---	---	---
Kelly Ayotte	10%	5%	---	---	13%	13%	---	---	---	---	---	---	---	---
Scott Brown	---	---	---	7%	11%	---	---	---	---	---	---	---	---	---
Rob Portman	0%	1%	*	*	*	*	1%	*	---	---	---	---	---	---
John Huntsman	8%	5%	---	---	---	---	---	---	---	---	---	---	---	---
John Thune	1%	*	---	---	---	---	---	---	---	---	---	---	---	---
Someone Else	2%	0%	3%	3%	6%	3%	3%	3%	1%	1%	1%	0%	*	<b>0%</b>
Don't Know Yet	20%	23%	20%	21%	18%	15%	15%	28%	15%	14%	21%	12%	11%	<b>9%</b>
<b>(N)</b>	<b>(209)</b>	<b>(167)</b>	<b>(199)</b>	<b>(233)</b>	<b>(244)</b>	<b>(186)</b>	<b>(245)</b>	<b>(274)</b>	<b>(348)</b>	<b>(293)</b>	<b>(400)</b>	<b>(305)</b>	<b>(344)</b>	<b>(399)</b>

\* = Less than 1% --- = Not Included

**Second Choice in 2016 NH Primary**  
(Likely NH GOP Primary Voters)

“If \_\_\_\_\_ was not running, who would be your second choice?”

	<u>Apr. '14</u>	<u>July '14</u>	<u>Oct. '14</u>	<u>Feb. '15</u>	<u>May '15</u>	<u>June '15</u>	<u>July '15</u>	<u>Sept '15</u>	<u>Dec '15</u>
<b>Marco Rubio</b>	11%	8%	5%	3%	13%	7%	10%	9%	<b>20%</b>
<b>Chris Christie</b>	4%	10%	7%	8%	7%	8%	9%	10%	<b>12%</b>
<b>Ted Cruz</b>	5%	5%	3%	5%	11%	4%	8%	4%	<b>11%</b>
<b>Donald Trump</b>	4%	---	---	6%	3%	10%	7%	8%	<b>11%</b>
<b>Ben Carson</b>	---	---	---	6%	3%	5%	5%	12%	<b>8%</b>
<b>Carly Fiorina</b>	---	---	---	1%	2%	8%	5%	13%	<b>8%</b>
<b>Jeb Bush</b>	8%	8%	10%	11%	9%	14%	14%	10%	<b>7%</b>
<b>John Kasich</b>	---	1%	*	2%	2%	1%	5%	7%	<b>3%</b>
<b>Rand Paul</b>	12%	9%	8%	10%	11%	5%	7%	3%	<b>3%</b>
<b>Lindsey Graham</b>	---	---	---	---	*	*	*	*	<b>2%</b>
<b>Mike Huckabee</b>	---	7%	7%	6%	5%	3%	4%	1%	<b>1%</b>
<b>George Pataki</b>	---	---	---	2%	1%	4%	1%	1%	<b>1%</b>
<b>Rick Santorum</b>	3%	2%	3%	1%	5%	3%	1%	0%	<b>1%</b>
<b>Jim Gilmore</b>	---	---	---	---	0%	0%	0%	*	<b>0%</b>
<b>Scott Walker</b>	4%	4%	5%	5%	9%	7%	6%	2%	---
<b>Bobby Jindal</b>	3%	4%	2%	2%	1%	3%	1%	*	---
<b>Mark Everson</b>	---	---	---	---	---	---	---	0%	---
<b>Rick Perry</b>	1%	3%	5%	3%	3%	5%	2%	---	---
<b>Bob Ehrlich</b>	---	---	---	---	*	0%	0%	---	---
<b>Peter King</b>	---	---	---	1%	0%	0%	---	---	---
<b>John Bolton</b>	---	---	---	1%	1%	---	---	---	---
<b>Mitt Romney</b>	---	---	---	12%	---	---	---	---	---
<b>Paul Ryan</b>	8%	7%	5%	---	---	---	---	---	---
<b>Kelly Ayotte</b>	11%	---	---	---	---	---	---	---	---
<b>Rob Portman</b>	1%	1%	*	---	---	---	---	---	---
<b>Someone Else</b>	*	1%	*	1%	2%	1%	0%	1%	*
<b>No Second Choice</b>	9%	14%	34%	6%	5%	3%	5%	8%	<b>5%</b>
<b>Don't Know</b>	17%	16%	5%	8%	7%	8%	11%	9%	<b>8%</b>
<b>(N)</b>	<b>(187)</b>	<b>(246)</b>	<b>(274)</b>	<b>(301)</b>	<b>(250)</b>	<b>(317)</b>	<b>(269)</b>	<b>(307)</b>	<b>(360)</b>

**Candidate You Wouldn't Vote For In 2016 NH Republican Primary**  
(Likely NH GOP Primary Voters)

“Which of the candidates who are either running or considering running for the Republican nomination would you NOT vote for under any circumstance?”

	<u>2013</u>				<u>2014</u>				<u>2015</u>					
	<u>Feb</u>	<u>Apr</u>	<u>July</u>	<u>Oct</u>	<u>Jan</u>	<u>Apr</u>	<u>July</u>	<u>Oct</u>	<u>Feb</u>	<u>May</u>	<u>June</u>	<u>July</u>	<u>Sept</u>	<u>Dec</u>
Donald Trump	---	---	---	---	25%	27%	---	---	21%	21%	23%	29%	25%	<b>26%</b>
Jeb Bush	6%	8%	11%	8%	2%	7%	9%	10%	8%	8%	10%	16%	11%	<b>11%</b>
Rand Paul	6%	9%	3%	5%	3%	4%	3%	5%	5%	5%	4%	2%	10%	<b>7%</b>
Chris Christie	6%	11%	11%	7%	9%	15%	16%	12%	10%	13%	10%	6%	5%	<b>6%</b>
Ben Carson	---	---	---	---	---	---	---	---	*	1%	0%	1%	1%	<b>5%</b>
Mike Huckabee	---	---	---	---	---	---	4%	6%	3%	2%	3%	3%	8%	<b>4%</b>
Carly Fiorina	---	---	---	---	---	---	---	---	1%	4%	*	1%	1%	<b>4%</b>
Lindsey Graham	---	---	---	---	---	---	---	---	---	2%	1%	4%	4%	<b>3%</b>
Ted Cruz	1%	*	3%	8%	5%	4%	3%	4%	5%	5%	4%	1%	3%	<b>3%</b>
Rick Santorum	11%	13%	11%	6%	---	5%	7%	4%	3%	4%	2%	1%	2%	<b>3%</b>
George Pataki	---	---	---	---	---	---	---	---	*	4%	2%	2%	2%	<b>2%</b>
John Kasich	---	---	*	0%	---	---	*	*	0%	*	*	0%	*	<b>2%</b>
Jim Gilmore	---	---	---	---	---	---	---	---	---	0%	0%	*	1%	<b>2%</b>
Marco Rubio	1%	*	2%	2%	2%	1%	1%	*	1%	1%	2%	1%	0%	<b>1%</b>
Mark Everson	---	---	---	---	---	---	---	---	---	---	---	---	1%	---
Bobby Jindal	2%	*	1%	---	---	*	1%	1%	1%	1%	2%	*	1%	---
Scott Walker	2%	*	0%	*	*	0%	3%	*	*	1%	2%	*	*	---
Rick Perry	---	---	5%	6%	2%	3%	7%	4%	2%	1%	1%	2%	---	---
Bob Ehrlich	---	---	---	---	---	---	---	---	---	0%	*	0%	---	---
Peter King	---	---	---	5%	1%	---	---	---	1%	0%	1%	---	---	---
John Bolton	---	---	---	---	---	---	---	---	0%	1%	---	---	---	---
Mitt Romney	---	---	---	---	---	---	---	---	5%	---	---	---	---	---
Paul Ryan	2%	*	*	1%	*	0%	1%	0%	---	---	---	---	---	---
Rob Portman	3%	1%	1%	*	*	0%	*	1%	---	---	---	---	---	---
Kelly Ayotte	6%	6%	---	---	5%	4%	---	---	---	---	---	---	---	---
Scott Brown	---	---	---	2%	5%	---	---	---	---	---	---	---	---	---
John Huntsman	4%	6%	---	---	---	---	---	---	---	---	---	---	---	---
John Thune	1%	*	---	---	---	---	---	---	---	---	---	---	---	---
Someone Else	2%	*	*	1%	*	2%	*	*	1%	*	1%	1%	0%	<b>1%</b>
All OK	15%	24%	25%	20%	21%	16%	23%	17%	11%	10%	13%	12%	10%	<b>12%</b>
Don't Know	32%	21%	25%	28%	19%	14%	21%	34%	22%	18%	19%	17%	15%	<b>9%</b>
(N)	(208)	(168)	(197)	(232)	(243)	(185)	(243)	(271)	(347)	(285)	(397)	(307)	(343)	<b>(399)</b>

**Who Will Win 2016 NH Republican Primary?**  
(Likely NH GOP Primary Voters)

“Regardless of who you are voting for, which candidate do you think is most likely to win the New Hampshire Republican primary?”

	<u>Feb. '15</u>	<u>May '15</u>	<u>July '15</u>	<u>Sept '15</u>	<u>Dec '15</u>
Donald Trump	3%	2%	25%	40%	<b>59%</b>
Chris Christie	4%	3%	4%	2%	<b>6%</b>
Marco Rubio	*	7%	1%	5%	<b>6%</b>
Jeb Bush	15%	24%	26%	12%	<b>4%</b>
Ted Cruz	*	2%	2%	*	<b>2%</b>
Ben Carson	1%	1%	*	4%	<b>1%</b>
John Kasich	0%	1%	1%	3%	<b>1%</b>
Rand Paul	7%	10%	2%	1%	<b>1%</b>
Carly Fiorina	0%	1%	0%	8%	<b>1%</b>
Mike Huckabee	1%	*	2%	0%	*
Rick Santorum	1%	3%	*	1%	<b>0%</b>
George Pataki	0%	*	0%	0%	<b>0%</b>
Lindsey Graham	---	0%	0%	0%	<b>0%</b>
Jim Gilmore	---	0%	0%	0%	<b>0%</b>
Scott Walker	3%	7%	8%	*	---
Bobby Jindal	1%	0%	1%	0%	---
Mark Everson	---	---	---	0%	---
Rick Perry	2%	2%	*	---	--
Bob Ehrlich	---	0%	0%	---	---
John Bolton	*	*	---	---	---
Peter King	0%	*	---	---	---
Mitt Romney	22%	---	---	---	---
Someone Else	*	0%	0%	0%	<b>0%</b>
Don't Know	40%	38%	28%	24%	<b>20%</b>
(N)	(347)	(289)	(309)	(344)	<b>(403)</b>

**Most Important Issue To Primary Vote**  
(Likely NH GOP Primary Voters)

“There are many issues facing the candidates in the election for president. In your opinion, which one issue is MOST IMPORTANT to YOUR VOTE in the presidential primary?”

	<u>Feb. '15</u>	<u>May '15</u>	<u>June '15</u>	<u>July '15</u>	<u>Sept '15</u>	<u>Dec '15</u>
Foreign Policy/National Security	20%	22%	19%	22%	21%	<b>50%</b>
Jobs/Economy	29%	27%	44%	25%	29%	<b>18%</b>
Immigration	7%	8%	7%	18%	14%	<b>12%</b>
Budget/National Debt	5%	3%	4%	6%	8%	<b>4%</b>
Health Care	13%	8%	5%	7%	5%	<b>4%</b>
Social Issues	2%	2%	2%	4%	3%	<b>1%</b>
Taxes	3%	5%	1%	0%	2%	<b>1%</b>
Education	0%	1%	2%	1%	1%	<b>1%</b>
Other/Don't Know	21%	24%	17%	18%	16%	<b>10%</b>
(N)	(285)	(283)	(390)	(288)	(333)	<b>(394)</b>



**Candidate Characteristics**  
(Likely NH GOP Primary Voters)

“Which Republican candidate do you think is most likeable?”

	<u>Feb '15</u>	<u>May '15</u>	<u>July '15</u>	<u>Sept '15</u>	<u>Dec '15</u>
<b>Marco Rubio</b>	5%	17%	6%	10%	<b>22%</b>
<b>Ben Carson</b>	7%	4%	5%	24%	<b>19%</b>
<b>Donald Trump</b>	3%	4%	12%	16%	<b>14%</b>
<b>Jeb Bush</b>	9%	11%	13%	8%	<b>10%</b>
<b>Chris Christie</b>	10%	7%	7%	7%	<b>7%</b>
<b>John Kasich</b>	*	1%	5%	5%	<b>4%</b>
<b>Carly Fiorina</b>	0%	1%	2%	12%	<b>4%</b>
<b>Ted Cruz</b>	*	2%	3%	1%	<b>3%</b>
<b>Mike Huckabee</b>	11%	9%	8%	2%	<b>2%</b>
<b>Lindsey Graham</b>	---	1%	1%	1%	<b>1%</b>
<b>Rand Paul</b>	5%	6%	6%	3%	<b>1%</b>
<b>Rick Santorum</b>	1%	2%	1%	0%	*
<b>George Pataki</b>	2%	0%	*	0%	<b>0%</b>
<b>Jim Gilmore</b>	---	0%	0%	0%	<b>0%</b>
<b>Bobby Jindal</b>	0%	0%	3%	*	---
<b>Scott Walker</b>	3%	6%	7%	*	---
<b>Mark Everson</b>	---	---	---	0%	---
<b>Rick Perry</b>	2%	1%	1%	---	---
<b>Bob Ehrlich</b>	---	*	0%	---	---
<b>Peter King</b>	0%	0%	---	---	---
<b>John Bolton</b>	0%	1%	---	---	---
<b>Mitt Romney</b>	15%	---	---	---	---
<b>Someone Else</b>	*	1%	0%	*	<b>0%</b>
<b>Don't Know</b>	26%	28%	20%	13%	<b>13%</b>
<b>(N)</b>	<b>(343)</b>	<b>(292)</b>	<b>(308)</b>	<b>(344)</b>	<b>(398)</b>

“Which Republican candidate do you think is most conservative?”

	<u>May '15</u>	<u>July '15</u>	<u>Sept '15</u>	<u>Dec '15</u>
Ted Cruz	17%	16%	18%	<b>26%</b>
Mike Huckabee	10%	12%	13%	<b>9%</b>
Jeb Bush	5%	8%	8%	<b>8%</b>
Donald Trump	3%	9%	8%	<b>8%</b>
Rand Paul	9%	9%	9%	<b>7%</b>
Ben Carson	2%	2%	6%	<b>5%</b>
Marco Rubio	3%	2%	2%	<b>4%</b>
Rick Santorum	7%	4%	4%	<b>4%</b>
Lindsey Graham	2%	2%	1%	<b>3%</b>
Chris Christie	*	3%	2%	<b>3%</b>
Carly Fiorina	*	*	3%	<b>2%</b>
John Kasich	*	3%	2%	<b>1%</b>
Jim Gilmore	1%	0%	0%	<b>1%</b>
George Pataki	0%	*	*	<b>0%</b>
Bobby Jindal	0%	1%	*	---
Scott Walker	8%	5%	1%	---
Mark Everson	---	---	0%	---
Rick Perry	4%	1%	---	---
Bob Ehrlich	0%	0%	---	---
John Bolton	*	---	---	---
Peter King	*	---	---	---
Someone Else	*	0%	0%	<b>0%</b>
Don't Know	31%	24%	24%	<b>19%</b>
(N)	(291)	(309)	(344)	<b>(402)</b>

“Which Republican candidate do you think has the best chance of winning in the general election next November?”

	<u>Feb. '15</u>	<u>May '15</u>	<u>June '15</u>	<u>July '15</u>	<u>Sept '15</u>	<u>Dec '15</u>
Donald Trump	4%	1%	7%	21%	27%	<b>34%</b>
Marco Rubio	2%	11%	7%	3%	7%	<b>17%</b>
Chris Christie	8%	2%	3%	4%	4%	<b>7%</b>
Jeb Bush	16%	27%	37%	22%	16%	<b>6%</b>
Ted Cruz	2%	4%	3%	4%	1%	<b>5%</b>
Ben Carson	1%	*	*	1%	6%	<b>4%</b>
John Kasich	1%	1%	1%	1%	6%	<b>4%</b>
Carly Fiorina	0%	1%	2%	1%	9%	<b>2%</b>
Mike Huckabee	1%	2%	*	1%	0%	<b>1%</b>
Rand Paul	5%	9%	2%	2%	2%	<b>1%</b>
Lindsey Graham	---	*	0%	0%	*	*
Rick Santorum	*	*	1%	0%	*	*
Jim Gilmore	---	1%	1%	0%	0%	<b>0%</b>
George Pataki	*	*	*	0%	0%	<b>0%</b>
Bobby Jindal	*	0%	*	1%	0%	---
Scott Walker	4%	10%	4%	10%	0%	---
Mark Everson	---	---	---	---	0%	---
Rick Perry	2%	2%	3%	*	---	---
Bob Ehrlich	---	0%	0%	0%	---	---
Peter King	0%	0%	0%	---	---	---
John Bolton	*	*	---	---	---	---
Mitt Romney	17%	---	---	---	---	---
Someone Else	1%	1%	1%	1%	*	*
Don't Know	36%	29%	29%	29%	22%	<b>20%</b>
(N)	(346)	(291)	(402)	(308)	(344)	<b>(403)</b>

“Which Republican candidate do you think has the right experience to be President?”

	<u>Feb. '15</u>	<u>May '15</u>	<u>July '15</u>	<u>Sept '15</u>	<u>Dec '15</u>
Donald Trump	3%	5%	15%	14%	<b>19%</b>
Jeb Bush	11%	19%	17%	17%	<b>17%</b>
Chris Christie	7%	4%	6%	7%	<b>14%</b>
John Kasich	1%	2%	6%	11%	<b>10%</b>
Marco Rubio	1%	4%	2%	6%	<b>9%</b>
Ted Cruz	2%	3%	5%	5%	<b>7%</b>
Carly Fiorina	0%	3%	*	10%	<b>3%</b>
Rand Paul	6%	9%	6%	4%	<b>3%</b>
Ben Carson	2%	1%	2%	2%	<b>2%</b>
Lindsey Graham	---	*	*	1%	<b>2%</b>
Mike Huckabee	2%	3%	3%	1%	<b>2%</b>
Rick Santorum	0%	*	1%	1%	<b>1%</b>
Jim Gilmore	---	0%	0%	*	<b>0%</b>
George Pataki	2%	1%	*	0%	<b>0%</b>
Bobby Jindal	1%	*	2%	*	---
Scott Walker	10%	10%	11%	2%	---
Mark Everson	---	---	---	0%	---
Rick Perry	1%	5%	3%	---	---
Bob Ehrlich	---	0%	0%	---	---
Peter King	0%	0%	---	---	---
John Bolton	3%	1%	---	---	---
Mitt Romney	19%	---	---	---	---
Someone Else	1%	1%	0%	*	*
Don't Know	29%	27%	21%	19%	<b>13%</b>
(N)	(346)	(290)	(308)	(342)	<b>(400)</b>

“Which Republican candidate do you think is least likely to act like a typical politician if elected President?”

	<u>June '15</u>	<u>Sept '15</u>	<u>Dec '15</u>
Donald Trump	46%	68%	<b>71%</b>
Ben Carson	9%	11%	<b>11%</b>
Carly Fiorina	4%	4%	<b>3%</b>
Rand Paul	4%	2%	<b>2%</b>
John Kasich	*	1%	<b>1%</b>
Jeb Bush	5%	2%	<b>1%</b>
Chris Christie	5%	3%	<b>1%</b>
Ted Cruz	1%	1%	<b>1%</b>
Mike Huckabee	1%	*	<b>1%</b>
Lindsey Graham	*	*	<b>1%</b>
Jim Gilmore	0%	0%	<b>1%</b>
Marco Rubio	2%	*	*
George Pataki	*	0%	*
Rick Santorum	*	0%	<b>0%</b>
Bobby Jindal	*	0%	---
Scott Walker	2%	0%	---
Peter King	0%	0%	---
Mark Everson	---	0%	---
Rick Perry	1%	---	---
Bob Ehrlich	0%	---	---
Someone Else	2%	0%	<b>0%</b>
Don't Know	17%	7%	<b>6%</b>
(N)	(401)	(344)	<b>(401)</b>

“Which Republican candidate do you think can best handle illegal immigration?”

	<u>June '15</u>	<u>Dec '15</u>
Donald Trump	13%	45%
Marco Rubio	11%	14%
Jeb Bush	13%	11%
Chris Christie	3%	6%
Ted Cruz	6%	5%
Rand Paul	5%	2%
John Kasich	1%	2%
Ben Carson	1%	2%
Carly Fiorina	*	2%
Rick Santorum	*	1%
Mike Huckabee	1%	*
George Pataki	*	0%
Lindsey Graham	*	0%
Jim Gilmore	0%	0%
Rick Perry	16%	---
Scott Walker	4%	---
Bobby Jindal	0%	---
Bob Ehrlich	0%	---
Peter King	0%	---
Someone Else	1%	0%
Don't Know	22%	9%
(N)	(402)	(399)

“Which Republican candidate do you think can best handle ISIS?”

	<u>Dec '15</u>
Donald Trump	33%
Jeb Bush	11%
Chris Christie	9%
Ted Cruz	7%
Lindsey Graham	7%
Marco Rubio	7%
John Kasich	4%
Rand Paul	2%
Carly Fiorina	2%
Ben Carson	2%
Mike Huckabee	1%
George Pataki	0%
Jim Gilmore	0%
Rick Santorum	0%
Someone Else	1%
Don't Know	15%
(N)	(398)

“Which Republican candidate do you think can best manage government spending?”

	<u>Dec '15</u>
Donald Trump	42%
Jeb Bush	10%
John Kasich	9%
Chris Christie	7%
Ted Cruz	6%
Rand Paul	6%
Carly Fiorina	5%
Marco Rubio	4%
Ben Carson	3%
Lindsey Graham	*
Mike Huckabee	0%
George Pataki	0%
Jim Gilmore	0%
Rick Santorum	0%
Someone Else	*
Don't Know	0%
(N)	(399)

“Which Republican candidate do you think can best handle taxation?”

	<u>Dec '15</u>
Donald Trump	36%
Jeb Bush	10%
John Kasich	8%
Ted Cruz	6%
Chris Christie	6%
Carly Fiorina	6%
Marco Rubio	5%
Rand Paul	4%
Ben Carson	3%
Mike Huckabee	2%
Lindsey Graham	1%
George Pataki	0%
Jim Gilmore	0%
Rick Santorum	0%
Someone Else	0%
Don't Know	14%
(N)	(401)

**GOP Favorability Ratings**  
(Likely GOP Primary Voters)

"Next, I'd like to get your overall opinion of some REPUBLICANS who are running or may run for President in 2016. As I read each name, please say if you have a favorable or unfavorable opinion of this person - or if you have never heard of him or her."

"Former Florida Governor Jeb Bush?"

	<u>Favorable</u>	<u>Neutral</u>	<u>Unfavorable</u>	<u>Don't Know</u>	<u>Net</u>	<u>(N)</u>
<b>Dec '15</b>	<b>42%</b>	<b>12%</b>	<b>45%</b>	<b>2%</b>	<b>-3%</b>	<b>(402)</b>
Sept '15	47%	14%	36%	3%	+11%	(343)
July '15	46%	12%	38%	4%	+8%	(308)
June '15	50%	12%	33%	5%	+17%	(400)
May '15	45%	17%	34%	4%	+11%	(293)
Feb. '15	47%	9%	33%	11%	+14%	(349)
Oct. '14	49%	3%	28%	20%	+21%	(274)
July '14	45%	7%	31%	18%	+14%	(251)
Apr. '14	45%	9%	35%	11%	+10%	(187)
Jan. '14	46%	8%	25%	21%	+21%	(246)
Oct. '13	47%	8%	27%	18%	+20%	(236)
July '13	53%	5%	27%	15%	+26%	(200)
Apr. '13	48%	10%	34%	8%	+14%	(171)
Feb. '13	53%	5%	31%	11%	+22%	(212)

"Neurosurgeon Ben Carson?"

	<u>Favorable</u>	<u>Neutral</u>	<u>Unfavorable</u>	<u>Don't Know</u>	<u>Net</u>	<u>(N)</u>
<b>Dec '15</b>	<b>47%</b>	<b>13%</b>	<b>35%</b>	<b>5%</b>	<b>+12%</b>	<b>(402)</b>
Sept '15	60%	10%	18%	13%	+42%	(344)
July '15	40%	5%	14%	41%	+26%	(309)
June '15	40%	7%	13%	40%	+27%	(400)
May '15	34%	15%	12%	40%	+22%	(292)
Feb. '15	30%	8%	9%	54%	+21%	(348)

"New Jersey Governor Chris Christie?"

	<u>Favorable</u>	<u>Neutral</u>	<u>Unfavorable</u>	<u>Don't Know</u>	<u>Net</u>	<u>(N)</u>
<b>Dec '15</b>	<b>53%</b>	<b>9%</b>	<b>34%</b>	<b>3%</b>	<b>+19%</b>	<b>(401)</b>
Sept '15	50%	8%	37%	5%	+13%	(342)
July '15	41%	10%	41%	7%	0%	(309)
June '15	31%	14%	44%	12%	-13%	(400)
May '15	39%	15%	40%	6%	-1%	(292)
Feb. '15	41%	10%	36%	13%	+5%	(349)
Oct. '14	44%	4%	35%	17%	+9%	(274)
July '14	46%	6%	36%	13%	+10%	(251)
Apr. '14	43%	10%	42%	5%	+1%	(187)
Jan. '14	43%	9%	33%	15%	+10%	(246)
Oct. '13	49%	6%	23%	23%	+26%	(236)
July '13	59%	5%	24%	12%	+25%	(200)
Apr. '13	56%	8%	26%	9%	+30%	(171)
Feb. '13	60%	7%	21%	12%	+39%	(212)

"Texas Senator Ted Cruz?"

	<u>Favorable</u>	<u>Neutral</u>	<u>Unfavorable</u>	<u>Don't Know</u>	<u>Net</u>	<u>(N)</u>
<b>Dec '15</b>	<b>46%</b>	<b>10%</b>	<b>36%</b>	<b>8%</b>	<b>+10%</b>	<b>(402)</b>
Sept '15	42%	10%	35%	13%	+7%	(344)
July '15	46%	10%	22%	21%	+24%	(309)
June '15	32%	11%	31%	26%	+1%	(400)
May '15	44%	14%	29%	13%	+15%	(293)
Feb. '15	37%	8%	24%	31%	+13%	(349)
Oct. '14	33%	6%	22%	39%	+11%	(275)
July '14	39%	4%	22%	35%	+17%	(250)
Apr. '14	42%	9%	18%	31%	+24%	(187)
Jan. '14	37%	8%	18%	37%	+19%	(246)
Oct. '13	32%	5%	19%	43%	+13%	(236)
July '13	29%	6%	17%	48%	+12%	(200)
Apr. '13	21%	8%	12%	59%	+9%	(171)
Feb. '13	18%	6%	14%	62%	+4%	(212)

"Businesswoman Carly Fiorina?"

	<u>Favorable</u>	<u>Neutral</u>	<u>Unfavorable</u>	<u>Don't Know</u>	<u>Net</u>	<u>(N)</u>
<b>Dec '15</b>	<b>49%</b>	<b>12%</b>	<b>29%</b>	<b>10%</b>	<b>+20%</b>	<b>(400)</b>
Sept '15	62%	9%	15%	14%	+47%	(344)
July '15	37%	7%	17%	39%	+20%	(309)
June '15	39%	6%	15%	41%	+24%	(401)
May '15	29%	12%	19%	39%	+10%	(292)
Feb. '15	15%	9%	13%	62%	+2%	(349)

"Former Virginia Governor Jim Gilmore?"

	<u>Favorable</u>	<u>Neutral</u>	<u>Unfavorable</u>	<u>Don't Know</u>	<u>Net</u>	<u>(N)</u>
<b>Dec '15</b>	<b>3%</b>	<b>12%</b>	<b>30%</b>	<b>55%</b>	<b>-27%</b>	<b>(402)</b>
Sept '15	5%	12%	30%	54%	-25%	(341)
July '15	5%	8%	18%	69%	-13%	(309)
June '15	6%	6%	15%	73%	-9%	(400)
May '15	4%	20%	12%	65%	-8%	(292)

"South Carolina Senator Lindsey Graham?"

	<u>Favorable</u>	<u>Neutral</u>	<u>Unfavorable</u>	<u>Don't Know</u>	<u>Net</u>	<u>(N)</u>
<b>Dec '15</b>	<b>22%</b>	<b>12%</b>	<b>50%</b>	<b>16%</b>	<b>-28%</b>	<b>(400)</b>
Sept '15	18%	11%	53%	18%	-35%	(342)
July '15	19%	11%	42%	28%	-23%	(309)
June '15	17%	13%	40%	29%	-23%	(400)
May '15	25%	19%	29%	27%	-4%	(291)

“Former Arkansas Governor Mike Huckabee?”

	<u>Favorable</u>	<u>Neutral</u>	<u>Unfavorable</u>	<u>Don't Know</u>	<u>Net</u>	<u>(N)</u>
<b>Dec '15</b>	<b>31%</b>	<b>13%</b>	<b>52%</b>	<b>4%</b>	<b>-21%</b>	<b>(402)</b>
Sept '15	35%	15%	45%	5%	-10%	(344)
July '15	40%	11%	39%	10%	+1%	(309)
June '15	31%	13%	43%	13%	-12%	(400)
May '15	45%	18%	32%	5%	+13%	(292)
Feb. '15	45%	11%	31%	14%	+14%	(349)
Oct. '14	48%	6%	28%	17%	+20%	(275)
July '14	46%	7%	30%	16%	+16%	(251)

“Ohio Governor John Kasich?”

	<u>Favorable</u>	<u>Neutral</u>	<u>Unfavorable</u>	<u>Don't Know</u>	<u>Net</u>	<u>(N)</u>
<b>Dec '15</b>	<b>36%</b>	<b>12%</b>	<b>35%</b>	<b>17%</b>	<b>+1%</b>	<b>(400)</b>
Sept '15	45%	8%	24%	24%	+21%	(342)
July '15	34%	12%	17%	37%	+17%	(309)
June '15	20%	13%	13%	54%	+7%	(400)
May '15	20%	14%	17%	49%	+3%	(292)
Feb. '15	15%	12%	16%	57%	-1%	(349)
Oct. '14	17%	5%	12%	66%	+5%	(274)
July '14	22%	5%	12%	61%	+10%	(250)
Oct. '13	12%	5%	16%	74%	+3%	(236)
July '13	28%	5%	16%	52%	+12%	(200)

“Former New York Governor George Pataki?”

	<u>Favorable</u>	<u>Neutral</u>	<u>Unfavorable</u>	<u>Don't Know</u>	<u>Net</u>	<u>(N)</u>
<b>Dec '15</b>	<b>10%</b>	<b>14%</b>	<b>55%</b>	<b>21%</b>	<b>-45%</b>	<b>(400)</b>
Sept '15	19%	13%	48%	21%	-29%	(344)
July '15	18%	11%	43%	28%	-25%	(309)
June '15	23%	14%	34%	29%	-11%	(400)
May '15	22%	21%	32%	25%	-10%	(291)
Feb. '15	17%	15%	30%	38%	-13%	(349)

“Kentucky Senator Rand Paul?”

	<u>Favorable</u>	<u>Neutral</u>	<u>Unfavorable</u>	<u>Don't Know</u>	<u>Net</u>	<u>(N)</u>
<b>Dec '15</b>	<b>34%</b>	<b>13%</b>	<b>49%</b>	<b>4%</b>	<b>-15%</b>	<b>(402)</b>
Sept '15	31%	14%	48%	7%	-17%	(344)
July '15	44%	13%	32%	12%	+12%	(309)
June '15	43%	15%	32%	10%	+11%	(400)
May '15	51%	11%	31%	6%	+20%	(292)
Feb. '15	53%	8%	27%	12%	+26%	(349)
Oct. '14	50%	6%	23%	21%	+27%	(274)
July '14	53%	8%	23%	16%	+30%	(251)
Apr. '14	56%	8%	21%	15%	+35%	(187)
Jan. '14	49%	8%	14%	28%	+35%	(246)
Oct. '13	52%	4%	24%	20%	+28%	(236)
July '13	57%	3%	20%	20%	+37%	(200)
Apr. '13	54%	7%	19%	20%	+35%	(171)
Feb. '13	45%	6%	26%	23%	+19%	(212)



"Florida Senator Marco Rubio?"

	<u>Favorable</u>	<u>Neutral</u>	<u>Unfavorable</u>	<u>Don't Know</u>	<u>Net</u>	<u>(N)</u>
<b>Dec '15</b>	<b>61%</b>	<b>9%</b>	<b>23%</b>	<b>7%</b>	<b>+38%</b>	<b>(402)</b>
Sept '15	58%	6%	22%	14%	+36%	(344)
July '15	46%	11%	25%	19%	+21%	(309)
June '15	49%	10%	21%	19%	+28%	(400)
May '15	60%	11%	16%	12%	+44%	(292)
Feb. '15	41%	10%	17%	33%	+24%	(348)
Oct. '14	43%	6%	14%	37%	+29%	(274)
July '14	46%	4%	19%	31%	+27%	(250)
Apr. '14	52%	9%	12%	27%	+40%	(187)
Jan. '14	42%	7%	11%	40%	+31%	(246)
Oct. '13	41%	7%	18%	34%	+23%	(236)
July '13	47%	6%	14%	33%	+33%	(200)
Apr. '13	59%	8%	8%	25%	+51%	(171)
Feb. '13	56%	6%	6%	31%	+50%	(212)

"Former Pennsylvania Senator Rick Santorum?"

	<u>Favorable</u>	<u>Neutral</u>	<u>Unfavorable</u>	<u>Don't Know</u>	<u>Net</u>	<u>(N)</u>
<b>Dec '15</b>	<b>20%</b>	<b>14%</b>	<b>50%</b>	<b>15%</b>	<b>-30%</b>	<b>(402)</b>
Sept '15	23%	9%	52%	16%	-29%	(344)
July '15	29%	12%	39%	20%	-10%	(309)
June '15	27%	14%	38%	21%	-11%	(400)
May '15	35%	15%	37%	14%	-2%	(292)
Feb. '15	29%	14%	34%	23%	-5%	(349)
Oct. '14	31%	10%	31%	29%	0%	(274)
July '14	38%	7%	30%	25%	+8%	(250)
Apr. '14	36%	9%	31%	25%	+5%	(187)
Oct. '13	39%	9%	27%	25%	+12%	(236)
July '13	44%	6%	37%	13%	+7%	(200)
Apr. '13	39%	11%	38%	12%	+1%	(171)
Feb. '13	40%	8%	42%	10%	-2%	(212)

"Businessman Donald Trump?"

	<u>Favorable</u>	<u>Neutral</u>	<u>Unfavorable</u>	<u>Don't Know</u>	<u>Net</u>	<u>(N)</u>
<b>Dec '15</b>	<b>57%</b>	<b>6%</b>	<b>36%</b>	<b>1%</b>	<b>+19%</b>	<b>(402)</b>
Sept '15	55%	7%	38%	0%	+17%	(344)
July '15	51%	7%	40%	2%	+11%	(309)
June '15	38%	11%	48%	4%	-10%	(400)
May '15	27%	13%	56%	5%	-29%	(292)
Feb. '15	19%	9%	69%	3%	-50%	(349)
Apr. '14	23%	6%	66%	5%	-43%	(187)
Jan. '14	29%	8%	59%	5%	-30%	(246)

**Favorability Rating – Jeb Bush  
(Likely 2016 GOP Primary Voters)**

<b>LIKELY NH GOP PRIMARY VOTERS</b>	<b><u>Favorable</u></b> 42%	<b><u>Neutral</u></b> 12%	<b><u>Unfavorable</u></b> 45%	<b><u>Don't Know</u></b> 2%	<b><u>(N)</u></b> 402
Registered Undeclared	35%	12%	52%	1%	199
Registered Republican	48%	11%	38%	3%	201
Democrat	35%	21%	41%	2%	24
Independent	35%	6%	59%	0%	50
Republican	43%	11%	43%	2%	325
Liberal	32%	10%	58%	0%	16
Moderate	48%	14%	37%	1%	152
Conservative	38%	9%	50%	3%	218
Support Tea Party	28%	12%	58%	2%	132
Neutral	47%	10%	42%	2%	178
Oppose Tea Party	52%	15%	33%	0%	74
Voted in 2008,2012 NH Primaries	43%	11%	45%	1%	295
Voted in 2008 or 2012 NH Primary	40%	8%	47%	5%	61
Did Not Vote in Either NH Primary	38%	18%	41%	3%	46
Union household	35%	8%	54%	3%	43
Non-union	42%	12%	44%	2%	355
Read Union Leader	47%	10%	41%	2%	119
Read Boston Globe	46%	20%	29%	5%	35
Read Local Newspapers	42%	11%	46%	2%	136
Watch WMUR	48%	9%	42%	1%	249
Listen to NHPR	42%	14%	40%	4%	106
Listen to Conserv. Talk Radio	30%	7%	62%	1%	89
18 to 34	34%	18%	42%	6%	67
35 to 49	36%	10%	52%	1%	110
50 to 64	47%	10%	42%	1%	137
65 and over	48%	10%	40%	1%	74
Male	37%	9%	52%	2%	232
Female	48%	15%	35%	2%	170
High school or less	35%	7%	55%	3%	72
Some college	44%	14%	41%	1%	102
College graduate	39%	12%	47%	3%	160
Post-graduate	51%	13%	36%	0%	68
Attend services 1 or more/week	32%	19%	45%	3%	100
1-2 times a month	52%	9%	38%	1%	49
Less often	46%	12%	40%	2%	125
Never	41%	6%	52%	1%	123
North Country	45%	26%	28%	1%	38
Central / Lakes	40%	6%	52%	2%	80
Connecticut Valley	22%	12%	60%	6%	44
Mass Border	39%	11%	49%	2%	109
Seacoast	55%	8%	37%	0%	60
Manchester Area	47%	15%	36%	2%	72
First Cong. Dist	49%	11%	39%	1%	207
Second Cong. Dist	34%	12%	51%	3%	195

**Favorability Rating – Ben Carson  
(Likely 2016 GOP Primary Voters)**

<b>LIKELY NH GOP PRIMARY VOTERS</b>	<b><u>Favorable</u></b> <b>47%</b>	<b><u>Neutral</u></b> <b>13%</b>	<b><u>Unfavorable</u></b> <b>35%</b>	<b><u>Don't Know</u></b> <b>5%</b>	<b><u>(N)</u></b> <b>402</b>
Registered Undeclared	43%	13%	39%	5%	199
Registered Republican	51%	14%	31%	4%	201
Democrat	18%	20%	62%	0%	24
Independent	42%	13%	38%	7%	50
Republican	50%	13%	32%	5%	325
Liberal	16%	13%	53%	18%	16
Moderate	35%	17%	44%	4%	152
Conservative	59%	10%	27%	3%	218
Support Tea Party	67%	8%	22%	3%	132
Neutral	47%	16%	34%	4%	178
Oppose Tea Party	21%	16%	57%	6%	74
Voted in 2008,2012 NH Primaries	52%	11%	34%	3%	295
Voted in 2008 or 2012 NH Primary	32%	22%	35%	10%	61
Did Not Vote in Either NH Primary	39%	18%	36%	7%	46
Union household	46%	24%	30%	0%	43
Non-union	48%	12%	35%	5%	355
Read Union Leader	48%	14%	36%	1%	119
Read Boston Globe	43%	5%	48%	5%	35
Read Local Newspapers	42%	14%	38%	5%	136
Watch WMUR	46%	13%	37%	4%	249
Listen to NHPR	36%	20%	40%	4%	106
Listen to Conserv. Talk Radio	64%	13%	23%	0%	89
18 to 34	44%	8%	30%	19%	67
35 to 49	40%	21%	36%	2%	110
50 to 64	54%	11%	33%	2%	137
65 and over	46%	11%	42%	1%	74
Male	50%	12%	34%	4%	232
Female	44%	15%	36%	6%	170
High school or less	49%	7%	30%	14%	72
Some college	47%	14%	36%	3%	102
College graduate	48%	16%	33%	3%	160
Post-graduate	46%	12%	43%	0%	68
Attend services 1 or more/week	59%	13%	26%	2%	100
1-2 times a month	46%	11%	37%	6%	49
Less often	50%	13%	31%	6%	125
Never	37%	15%	44%	4%	123
North Country	50%	21%	26%	3%	38
Central / Lakes	51%	12%	29%	7%	80
Connecticut Valley	55%	6%	32%	7%	44
Mass Border	47%	12%	37%	4%	109
Seacoast	43%	17%	37%	3%	60
Manchester Area	42%	13%	42%	2%	72
First Cong. Dist	46%	15%	35%	4%	207
Second Cong. Dist	49%	11%	35%	5%	195

**Favorability Rating – Chris Christie  
(Likely 2016 GOP Primary Voters)**

<b>LIKELY NH GOP PRIMARY VOTERS</b>	<b><u>Favorable</u></b> <b>53%</b>	<b><u>Neutral</u></b> <b>9%</b>	<b><u>Unfavorable</u></b> <b>34%</b>	<b><u>Don't Know</u></b> <b>3%</b>	<b><u>(N)</u></b> <b>401</b>
Registered Undeclared	48%	11%	38%	3%	199
Registered Republican	59%	8%	30%	3%	200
Democrat	31%	20%	49%	0%	24
Independent	39%	6%	53%	2%	50
Republican	57%	9%	30%	4%	324
Liberal	34%	5%	62%	0%	16
Moderate	55%	12%	33%	1%	151
Conservative	54%	8%	33%	5%	218
Support Tea Party	49%	8%	40%	4%	131
Neutral	58%	9%	30%	3%	178
Oppose Tea Party	50%	13%	37%	1%	74
Voted in 2008,2012 NH Primaries	58%	7%	32%	3%	294
Voted in 2008 or 2012 NH Primary	45%	13%	40%	3%	61
Did Not Vote in Either NH Primary	35%	17%	41%	7%	46
Union household	32%	18%	50%	0%	43
Non-union	56%	8%	33%	3%	354
Read Union Leader	60%	9%	29%	2%	118
Read Boston Globe	55%	10%	35%	0%	35
Read Local Newspapers	57%	9%	30%	3%	135
Watch WMUR	62%	8%	28%	2%	249
Listen to NHPR	53%	8%	35%	4%	106
Listen to Conserv. Talk Radio	53%	11%	35%	1%	88
18 to 34	34%	13%	45%	8%	67
35 to 49	49%	11%	38%	2%	110
50 to 64	57%	8%	34%	1%	137
65 and over	69%	6%	22%	3%	73
Male	53%	8%	36%	3%	232
Female	54%	11%	32%	3%	169
High school or less	51%	7%	36%	6%	71
Some college	54%	13%	30%	3%	102
College graduate	52%	10%	34%	3%	160
Post-graduate	57%	5%	38%	0%	68
Attend services 1 or more/week	52%	10%	34%	4%	100
1-2 times a month	50%	10%	37%	3%	48
Less often	58%	9%	29%	4%	125
Never	51%	9%	38%	2%	123
North Country	50%	27%	21%	3%	38
Central / Lakes	53%	6%	38%	3%	80
Connecticut Valley	57%	5%	32%	6%	43
Mass Border	52%	9%	35%	3%	109
Seacoast	47%	9%	43%	2%	60
Manchester Area	61%	6%	30%	3%	72
First Cong. Dist	56%	10%	32%	2%	207
Second Cong. Dist	51%	9%	36%	4%	194

**Favorability Rating – Ted Cruz  
(Likely 2016 GOP Primary Voters)**

<b>LIKELY NH GOP PRIMARY VOTERS</b>	<b><u>Favorable</u></b> <b>46%</b>	<b><u>Neutral</u></b> <b>10%</b>	<b><u>Unfavorable</u></b> <b>36%</b>	<b><u>Don't Know</u></b> <b>8%</b>	<b><u>(N)</u></b> <b>402</b>
Registered Undeclared	41%	10%	41%	7%	199
Registered Republican	51%	9%	31%	9%	201
Democrat	13%	12%	65%	10%	24
Independent	40%	13%	46%	1%	50
Republican	50%	9%	32%	9%	325
Liberal	7%	24%	57%	12%	16
Moderate	31%	12%	48%	8%	152
Conservative	60%	5%	27%	8%	218
Support Tea Party	68%	4%	22%	5%	132
Neutral	40%	15%	35%	10%	178
Oppose Tea Party	20%	8%	68%	4%	74
Voted in 2008,2012 NH Primaries	51%	8%	35%	6%	295
Voted in 2008 or 2012 NH Primary	29%	13%	43%	15%	61
Did Not Vote in Either NH Primary	36%	17%	34%	12%	46
Union household	43%	22%	29%	6%	43
Non-union	46%	9%	37%	8%	355
Read Union Leader	52%	8%	37%	2%	119
Read Boston Globe	39%	13%	45%	4%	35
Read Local Newspapers	40%	5%	46%	10%	136
Watch WMUR	44%	9%	39%	8%	249
Listen to NHPR	42%	7%	43%	9%	106
Listen to Conserv. Talk Radio	79%	6%	13%	1%	89
18 to 34	26%	15%	49%	10%	67
35 to 49	50%	8%	33%	8%	110
50 to 64	51%	10%	33%	7%	137
65 and over	46%	8%	37%	9%	74
Male	51%	7%	35%	7%	232
Female	40%	14%	37%	9%	170
High school or less	48%	12%	23%	17%	72
Some college	45%	9%	36%	10%	102
College graduate	46%	7%	41%	6%	160
Post-graduate	47%	14%	38%	1%	68
Attend services 1 or more/week	61%	14%	20%	5%	100
1-2 times a month	47%	10%	40%	4%	49
Less often	42%	7%	36%	14%	125
Never	37%	10%	47%	6%	123
North Country	40%	18%	32%	10%	38
Central / Lakes	47%	7%	36%	11%	80
Connecticut Valley	36%	12%	41%	11%	44
Mass Border	51%	8%	34%	7%	109
Seacoast	49%	12%	32%	7%	60
Manchester Area	45%	10%	41%	4%	72
First Cong. Dist	45%	12%	38%	6%	207
Second Cong. Dist	47%	8%	34%	11%	195

**Favorability Rating – Carly Fiorina  
(Likely 2016 GOP Primary Voters)**

<b>LIKELY NH GOP PRIMARY VOTERS</b>	<b><u>Favorable</u></b> <b>49%</b>	<b><u>Neutral</u></b> <b>12%</b>	<b><u>Unfavorable</u></b> <b>29%</b>	<b><u>Don't Know</u></b> <b>10%</b>	<b><u>(N)</u></b> <b>400</b>
Registered Undeclared	49%	12%	31%	9%	199
Registered Republican	50%	12%	27%	11%	199
Democrat	33%	14%	45%	8%	24
Independent	39%	23%	27%	11%	50
Republican	52%	10%	27%	10%	323
Liberal	25%	10%	42%	23%	16
Moderate	44%	13%	32%	11%	152
Conservative	56%	11%	24%	8%	216
Support Tea Party	62%	12%	20%	6%	130
Neutral	46%	12%	30%	12%	178
Oppose Tea Party	34%	17%	44%	6%	74
Voted in 2008,2012 NH Primaries	53%	12%	28%	7%	293
Voted in 2008 or 2012 NH Primary	39%	11%	28%	22%	61
Did Not Vote in Either NH Primary	41%	15%	33%	11%	46
Union household	48%	19%	32%	2%	43
Non-union	50%	11%	28%	10%	353
Read Union Leader	52%	10%	29%	9%	119
Read Boston Globe	57%	7%	31%	5%	35
Read Local Newspapers	46%	14%	32%	8%	136
Watch WMUR	50%	11%	29%	10%	249
Listen to NHPR	49%	12%	29%	10%	106
Listen to Conserv. Talk Radio	64%	11%	21%	4%	89
18 to 34	35%	16%	27%	22%	67
35 to 49	41%	10%	40%	8%	109
50 to 64	56%	14%	23%	7%	137
65 and over	57%	8%	27%	8%	74
Male	48%	12%	30%	10%	232
Female	51%	12%	26%	11%	168
High school or less	51%	6%	28%	15%	72
Some college	44%	14%	27%	15%	102
College graduate	47%	14%	32%	8%	160
Post-graduate	63%	12%	23%	2%	66
Attend services 1 or more/week	59%	15%	18%	7%	98
1-2 times a month	51%	10%	31%	8%	49
Less often	51%	10%	25%	14%	125
Never	38%	14%	39%	10%	123
North Country	44%	14%	33%	9%	38
Central / Lakes	47%	11%	30%	11%	80
Connecticut Valley	52%	12%	26%	10%	44
Mass Border	46%	11%	33%	11%	107
Seacoast	47%	20%	26%	7%	60
Manchester Area	61%	8%	22%	9%	72
First Cong. Dist	49%	13%	28%	10%	207
Second Cong. Dist	50%	11%	29%	10%	193

**Favorability Rating – Jim Gilmore  
(Likely 2016 GOP Primary Voters)**

<b>LIKELY NH GOP PRIMARY VOTERS</b>	<b><u>Favorable</u></b> <b>3%</b>	<b><u>Neutral</u></b> <b>12%</b>	<b><u>Unfavorable</u></b> <b>30%</b>	<b><u>Don't Know</u></b> <b>55%</b>	<b><u>(N)</u></b> <b>402</b>
Registered Undeclared	2%	13%	30%	55%	199
Registered Republican	4%	11%	31%	54%	201
Democrat	0%	15%	8%	78%	24
Independent	5%	10%	33%	53%	50
Republican	3%	12%	32%	53%	325
Liberal	0%	10%	17%	73%	16
Moderate	2%	13%	27%	58%	152
Conservative	4%	10%	35%	50%	218
Support Tea Party	6%	11%	34%	49%	132
Neutral	1%	10%	31%	58%	178
Oppose Tea Party	2%	22%	20%	55%	74
Voted in 2008,2012 NH Primaries	2%	11%	31%	55%	295
Voted in 2008 or 2012 NH Primary	5%	10%	29%	56%	61
Did Not Vote in Either NH Primary	5%	19%	26%	50%	46
Union household	4%	20%	32%	44%	43
Non-union	3%	11%	31%	56%	355
Read Union Leader	5%	13%	27%	55%	119
Read Boston Globe	0%	21%	31%	48%	35
Read Local Newspapers	5%	12%	33%	50%	136
Watch WMUR	2%	10%	36%	51%	249
Listen to NHPR	3%	14%	27%	55%	106
Listen to Conserv. Talk Radio	5%	7%	38%	50%	89
18 to 34	7%	20%	17%	57%	67
35 to 49	4%	14%	25%	57%	110
50 to 64	3%	10%	33%	54%	137
65 and over	0%	6%	43%	50%	74
Male	4%	13%	35%	49%	232
Female	2%	11%	25%	62%	170
High school or less	5%	12%	27%	56%	72
Some college	4%	12%	24%	60%	102
College graduate	2%	11%	32%	55%	160
Post-graduate	2%	14%	39%	45%	68
Attend services 1 or more/week	0%	16%	30%	54%	100
1-2 times a month	6%	6%	49%	38%	49
Less often	2%	11%	24%	63%	125
Never	5%	12%	29%	53%	123
North Country	3%	24%	26%	47%	38
Central / Lakes	2%	10%	32%	55%	80
Connecticut Valley	0%	15%	49%	37%	44
Mass Border	6%	8%	28%	57%	109
Seacoast	0%	12%	25%	63%	60
Manchester Area	3%	12%	27%	58%	72
First Cong. Dist	3%	12%	26%	59%	207
Second Cong. Dist	3%	12%	35%	50%	195

**Favorability Rating – Lindsey Graham  
(Likely 2016 GOP Primary Voters)**

<b>LIKELY NH GOP PRIMARY VOTERS</b>	<b><u>Favorable</u></b> <b>22%</b>	<b><u>Neutral</u></b> <b>12%</b>	<b><u>Unfavorable</u></b> <b>50%</b>	<b><u>Don't Know</u></b> <b>16%</b>	<b><u>(N)</u></b> <b>400</b>
Registered Undeclared	22%	9%	53%	16%	199
Registered Republican	22%	13%	48%	17%	199
Democrat	14%	26%	48%	13%	24
Independent	14%	15%	50%	21%	50
Republican	24%	10%	50%	16%	323
Liberal	13%	15%	42%	29%	16
Moderate	25%	13%	47%	14%	152
Conservative	20%	9%	54%	16%	216
Support Tea Party	20%	7%	60%	14%	130
Neutral	25%	14%	44%	17%	178
Oppose Tea Party	21%	17%	51%	11%	74
Voted in 2008,2012 NH Primaries	23%	10%	53%	14%	293
Voted in 2008 or 2012 NH Primary	19%	13%	41%	27%	61
Did Not Vote in Either NH Primary	22%	18%	44%	16%	46
Union household	14%	23%	43%	20%	43
Non-union	23%	10%	51%	15%	353
Read Union Leader	28%	9%	46%	17%	119
Read Boston Globe	29%	8%	46%	17%	35
Read Local Newspapers	24%	12%	50%	14%	136
Watch WMUR	22%	10%	53%	15%	249
Listen to NHPR	25%	12%	48%	15%	106
Listen to Conserv. Talk Radio	24%	8%	59%	10%	89
18 to 34	25%	11%	33%	32%	67
35 to 49	15%	12%	56%	16%	109
50 to 64	24%	11%	53%	12%	137
65 and over	26%	14%	48%	12%	74
Male	20%	11%	56%	13%	232
Female	24%	13%	42%	21%	168
High school or less	24%	4%	47%	25%	72
Some college	21%	14%	46%	19%	102
College graduate	21%	11%	54%	14%	160
Post-graduate	24%	18%	50%	8%	66
Attend services 1 or more/week	14%	15%	53%	19%	98
1-2 times a month	32%	3%	55%	10%	49
Less often	25%	9%	43%	23%	125
Never	22%	15%	52%	11%	123
North Country	25%	13%	51%	11%	38
Central / Lakes	16%	11%	54%	19%	80
Connecticut Valley	29%	12%	48%	11%	44
Mass Border	25%	10%	47%	18%	107
Seacoast	17%	14%	52%	17%	60
Manchester Area	22%	12%	50%	17%	72
First Cong. Dist	22%	8%	53%	17%	207
Second Cong. Dist	22%	15%	47%	16%	193



**Favorability Rating – Mike Huckabee  
(Likely 2016 GOP Primary Voters)**

<b>LIKELY NH GOP PRIMARY VOTERS</b>	<b><u>Favorable</u></b> <b>31%</b>	<b><u>Neutral</u></b> <b>13%</b>	<b><u>Unfavorable</u></b> <b>52%</b>	<b><u>Don't Know</u></b> <b>4%</b>	<b><u>(N)</u></b> <b>402</b>
Registered Undeclared	24%	12%	59%	5%	199
Registered Republican	37%	15%	45%	3%	201
Democrat	14%	19%	62%	5%	24
Independent	23%	17%	54%	6%	50
Republican	33%	12%	51%	4%	325
Liberal	0%	34%	66%	0%	16
Moderate	23%	15%	58%	4%	152
Conservative	39%	11%	47%	3%	218
Support Tea Party	43%	11%	43%	3%	132
Neutral	31%	14%	51%	4%	178
Oppose Tea Party	10%	15%	73%	2%	74
Voted in 2008,2012 NH Primaries	33%	14%	50%	2%	295
Voted in 2008 or 2012 NH Primary	29%	8%	54%	9%	61
Did Not Vote in Either NH Primary	17%	18%	60%	6%	46
Union household	20%	19%	57%	5%	43
Non-union	32%	13%	51%	4%	355
Read Union Leader	33%	11%	55%	1%	119
Read Boston Globe	29%	17%	54%	0%	35
Read Local Newspapers	28%	14%	54%	4%	136
Watch WMUR	35%	11%	51%	4%	249
Listen to NHPR	23%	14%	59%	3%	106
Listen to Conserv. Talk Radio	40%	10%	50%	1%	89
18 to 34	18%	14%	57%	11%	67
35 to 49	26%	13%	60%	1%	110
50 to 64	35%	14%	48%	3%	137
65 and over	37%	11%	47%	5%	74
Male	29%	11%	54%	5%	232
Female	32%	16%	49%	2%	170
High school or less	34%	12%	46%	7%	72
Some college	38%	12%	46%	4%	102
College graduate	24%	13%	59%	3%	160
Post-graduate	32%	18%	49%	1%	68
Attend services 1 or more/week	41%	19%	40%	1%	100
1-2 times a month	46%	3%	46%	5%	49
Less often	28%	16%	48%	7%	125
Never	19%	11%	68%	3%	123
North Country	42%	21%	36%	0%	38
Central / Lakes	21%	15%	59%	5%	80
Connecticut Valley	39%	11%	48%	3%	44
Mass Border	32%	8%	54%	6%	109
Seacoast	36%	16%	44%	4%	60
Manchester Area	24%	16%	58%	2%	72
First Cong. Dist	32%	14%	51%	3%	207
Second Cong. Dist	30%	13%	53%	5%	195

**Favorability Rating – John Kasich  
(Likely 2016 GOP Primary Voters)**

<b>LIKELY NH GOP PRIMARY VOTERS</b>	<b><u>Favorable</u></b> <b>36%</b>	<b><u>Neutral</u></b> <b>12%</b>	<b><u>Unfavorable</u></b> <b>35%</b>	<b><u>Don't Know</u></b> <b>17%</b>	<b><u>(N)</u></b> <b>400</b>
Registered Undeclared	33%	9%	41%	18%	199
Registered Republican	40%	15%	29%	16%	199
Democrat	54%	11%	25%	10%	24
Independent	26%	17%	42%	16%	50
Republican	36%	12%	35%	17%	323
Liberal	29%	25%	26%	19%	16
Moderate	42%	12%	28%	19%	152
Conservative	34%	11%	40%	15%	216
Support Tea Party	27%	12%	47%	13%	130
Neutral	38%	11%	31%	20%	178
Oppose Tea Party	52%	15%	23%	9%	74
Voted in 2008,2012 NH Primaries	40%	10%	36%	14%	293
Voted in 2008 or 2012 NH Primary	29%	15%	27%	29%	61
Did Not Vote in Either NH Primary	21%	22%	38%	19%	46
Union household	31%	17%	38%	14%	43
Non-union	37%	12%	35%	16%	353
Read Union Leader	48%	12%	27%	13%	119
Read Boston Globe	56%	10%	26%	8%	35
Read Local Newspapers	44%	9%	34%	13%	136
Watch WMUR	42%	10%	34%	15%	249
Listen to NHPR	44%	12%	31%	14%	106
Listen to Conserv. Talk Radio	25%	5%	57%	12%	89
18 to 34	24%	23%	24%	29%	67
35 to 49	33%	9%	39%	19%	109
50 to 64	39%	14%	35%	12%	137
65 and over	47%	5%	35%	13%	74
Male	36%	11%	39%	14%	232
Female	37%	14%	29%	20%	168
High school or less	24%	14%	35%	26%	72
Some college	38%	14%	27%	21%	102
College graduate	37%	10%	40%	14%	160
Post-graduate	45%	15%	33%	7%	66
Attend services 1 or more/week	26%	19%	40%	15%	98
1-2 times a month	21%	13%	48%	18%	49
Less often	46%	7%	26%	22%	125
Never	41%	13%	33%	14%	123
North Country	31%	20%	38%	12%	38
Central / Lakes	38%	8%	33%	20%	80
Connecticut Valley	28%	19%	41%	12%	44
Mass Border	36%	8%	37%	18%	107
Seacoast	38%	10%	30%	21%	60
Manchester Area	41%	17%	30%	12%	72
First Cong. Dist	37%	13%	33%	18%	207
Second Cong. Dist	36%	12%	37%	16%	193

**Favorability Rating – George Pataki  
(Likely 2016 GOP Primary Voters)**

<b>LIKELY NH GOP PRIMARY VOTERS</b>	<b><u>Favorable</u></b> <b>10%</b>	<b><u>Neutral</u></b> <b>14%</b>	<b><u>Unfavorable</u></b> <b>55%</b>	<b><u>Don't Know</u></b> <b>21%</b>	<b><u>(N)</u></b> <b>400</b>
Registered Undeclared	7%	12%	58%	22%	199
Registered Republican	12%	15%	52%	21%	199
Democrat	15%	28%	39%	17%	24
Independent	11%	10%	55%	24%	50
Republican	9%	13%	56%	21%	323
Liberal	21%	6%	54%	19%	16
Moderate	8%	18%	55%	19%	152
Conservative	10%	11%	56%	23%	216
Support Tea Party	6%	9%	69%	15%	130
Neutral	13%	15%	49%	22%	178
Oppose Tea Party	7%	22%	48%	22%	74
Voted in 2008,2012 NH Primaries	10%	12%	57%	21%	293
Voted in 2008 or 2012 NH Primary	14%	18%	41%	28%	61
Did Not Vote in Either NH Primary	3%	19%	61%	17%	46
Union household	13%	14%	56%	18%	43
Non-union	9%	14%	55%	22%	353
Read Union Leader	9%	14%	59%	19%	119
Read Boston Globe	14%	16%	47%	23%	35
Read Local Newspapers	10%	16%	54%	20%	136
Watch WMUR	12%	11%	56%	21%	249
Listen to NHPR	12%	12%	57%	19%	106
Listen to Conserv. Talk Radio	8%	8%	71%	13%	89
18 to 34	5%	24%	40%	31%	67
35 to 49	12%	10%	58%	20%	109
50 to 64	11%	14%	52%	22%	137
65 and over	10%	12%	63%	16%	74
Male	10%	13%	58%	19%	232
Female	10%	16%	50%	24%	168
High school or less	6%	9%	58%	26%	72
Some college	12%	17%	44%	27%	102
College graduate	10%	14%	55%	21%	160
Post-graduate	8%	15%	67%	10%	66
Attend services 1 or more/week	7%	14%	58%	21%	98
1-2 times a month	6%	10%	66%	18%	49
Less often	13%	17%	47%	23%	125
Never	11%	12%	56%	22%	123
North Country	11%	30%	47%	12%	38
Central / Lakes	10%	10%	59%	21%	80
Connecticut Valley	7%	13%	59%	21%	44
Mass Border	10%	10%	53%	27%	107
Seacoast	8%	13%	55%	25%	60
Manchester Area	12%	17%	54%	17%	72
First Cong. Dist	10%	16%	54%	20%	207
Second Cong. Dist	9%	12%	56%	23%	193

**Favorability Rating – Rand Paul  
(Likely 2016 GOP Primary Voters)**

<b>LIKELY NH GOP PRIMARY VOTERS</b>	<b><u>Favorable</u></b> <b>34%</b>	<b><u>Neutral</u></b> <b>13%</b>	<b><u>Unfavorable</u></b> <b>49%</b>	<b><u>Don't Know</u></b> <b>4%</b>	<b><u>(N)</u></b> <b>402</b>
Registered Undeclared	29%	16%	51%	4%	199
Registered Republican	39%	9%	48%	4%	201
Democrat	37%	17%	28%	18%	24
Independent	39%	25%	33%	3%	50
Republican	34%	10%	53%	3%	325
Liberal	17%	36%	36%	11%	16
Moderate	26%	14%	55%	4%	152
Conservative	41%	8%	47%	3%	218
Support Tea Party	44%	7%	46%	2%	132
Neutral	35%	16%	46%	4%	178
Oppose Tea Party	20%	18%	59%	4%	74
Voted in 2008,2012 NH Primaries	33%	11%	51%	4%	295
Voted in 2008 or 2012 NH Primary	38%	13%	45%	5%	61
Did Not Vote in Either NH Primary	35%	21%	44%	0%	46
Union household	42%	20%	37%	2%	43
Non-union	33%	12%	51%	4%	355
Read Union Leader	33%	11%	52%	4%	119
Read Boston Globe	28%	7%	64%	2%	35
Read Local Newspapers	34%	13%	51%	3%	136
Watch WMUR	34%	12%	51%	3%	249
Listen to NHPR	39%	5%	53%	3%	106
Listen to Conserv. Talk Radio	35%	8%	56%	1%	89
18 to 34	44%	17%	32%	7%	67
35 to 49	36%	12%	50%	2%	110
50 to 64	36%	12%	49%	2%	137
65 and over	21%	13%	60%	7%	74
Male	36%	9%	52%	3%	232
Female	32%	18%	46%	5%	170
High school or less	32%	11%	48%	9%	72
Some college	42%	16%	40%	3%	102
College graduate	33%	11%	53%	4%	160
Post-graduate	29%	14%	56%	1%	68
Attend services 1 or more/week	37%	12%	51%	0%	100
1-2 times a month	44%	8%	45%	3%	49
Less often	27%	12%	52%	9%	125
Never	34%	16%	48%	2%	123
North Country	15%	21%	60%	4%	38
Central / Lakes	32%	14%	46%	8%	80
Connecticut Valley	31%	6%	57%	6%	44
Mass Border	36%	8%	55%	2%	109
Seacoast	38%	25%	34%	3%	60
Manchester Area	44%	8%	46%	3%	72
First Cong. Dist	33%	17%	48%	3%	207
Second Cong. Dist	35%	9%	51%	5%	195

**Favorability Rating – Marco Rubio  
(Likely 2016 GOP Primary Voters)**

<b>LIKELY NH GOP PRIMARY VOTERS</b>	<b><u>Favorable</u></b> <b>61%</b>	<b><u>Neutral</u></b> <b>9%</b>	<b><u>Unfavorable</u></b> <b>23%</b>	<b><u>Don't Know</u></b> <b>7%</b>	<b><u>(N)</u></b> <b>402</b>
Registered Undeclared	57%	9%	26%	8%	199
Registered Republican	64%	8%	21%	7%	201
Democrat	63%	11%	18%	8%	24
Independent	56%	6%	27%	11%	50
Republican	62%	9%	23%	7%	325
Liberal	62%	21%	6%	11%	16
Moderate	62%	9%	23%	7%	152
Conservative	62%	5%	25%	7%	218
Support Tea Party	62%	6%	26%	6%	132
Neutral	60%	8%	23%	8%	178
Oppose Tea Party	58%	12%	23%	7%	74
Voted in 2008,2012 NH Primaries	64%	8%	23%	5%	295
Voted in 2008 or 2012 NH Primary	53%	15%	19%	14%	61
Did Not Vote in Either NH Primary	50%	6%	32%	12%	46
Union household	66%	11%	20%	3%	43
Non-union	60%	8%	24%	7%	355
Read Union Leader	64%	9%	22%	5%	119
Read Boston Globe	61%	11%	24%	4%	35
Read Local Newspapers	59%	7%	25%	9%	136
Watch WMUR	63%	8%	21%	7%	249
Listen to NHPR	55%	13%	24%	7%	106
Listen to Conserv. Talk Radio	64%	8%	26%	2%	89
18 to 34	52%	10%	19%	18%	67
35 to 49	54%	8%	32%	7%	110
50 to 64	67%	7%	24%	3%	137
65 and over	61%	13%	18%	7%	74
Male	61%	6%	27%	6%	232
Female	61%	12%	18%	9%	170
High school or less	41%	10%	34%	16%	72
Some college	61%	12%	20%	7%	102
College graduate	62%	8%	24%	6%	160
Post-graduate	80%	3%	16%	1%	68
Attend services 1 or more/week	68%	9%	17%	5%	100
1-2 times a month	63%	9%	26%	3%	49
Less often	62%	9%	18%	12%	125
Never	54%	7%	32%	7%	123
North Country	58%	16%	22%	4%	38
Central / Lakes	47%	7%	35%	11%	80
Connecticut Valley	65%	9%	19%	7%	44
Mass Border	62%	10%	21%	8%	109
Seacoast	70%	6%	14%	10%	60
Manchester Area	66%	7%	25%	2%	72
First Cong. Dist	62%	10%	22%	6%	207
Second Cong. Dist	60%	7%	25%	8%	195

**Favorability Rating – Rick Santorum  
(Likely 2016 GOP Primary Voters)**

<b>LIKELY NH GOP PRIMARY VOTERS</b>	<b><u>Favorable</u></b> <b>20%</b>	<b><u>Neutral</u></b> <b>14%</b>	<b><u>Unfavorable</u></b> <b>50%</b>	<b><u>Don't Know</u></b> <b>15%</b>	<b><u>(N)</u></b> <b>402</b>
Registered Undeclared	16%	15%	53%	16%	199
Registered Republican	25%	12%	48%	15%	201
Democrat	21%	19%	41%	20%	24
Independent	15%	21%	52%	11%	50
Republican	21%	12%	51%	16%	325
Liberal	4%	22%	34%	40%	16
Moderate	15%	13%	58%	14%	152
Conservative	27%	13%	47%	13%	218
Support Tea Party	24%	13%	53%	10%	132
Neutral	22%	15%	46%	18%	178
Oppose Tea Party	12%	15%	62%	10%	74
Voted in 2008,2012 NH Primaries	24%	12%	50%	14%	295
Voted in 2008 or 2012 NH Primary	9%	13%	53%	25%	61
Did Not Vote in Either NH Primary	15%	25%	47%	12%	46
Union household	26%	23%	47%	4%	43
Non-union	19%	12%	51%	17%	355
Read Union Leader	26%	10%	48%	16%	119
Read Boston Globe	12%	14%	57%	16%	35
Read Local Newspapers	20%	10%	56%	14%	136
Watch WMUR	21%	11%	50%	18%	249
Listen to NHPR	22%	12%	50%	16%	106
Listen to Conserv. Talk Radio	29%	10%	50%	11%	89
18 to 34	11%	21%	47%	20%	67
35 to 49	19%	15%	51%	15%	110
50 to 64	26%	11%	49%	13%	137
65 and over	20%	12%	52%	17%	74
Male	22%	14%	52%	12%	232
Female	18%	13%	48%	20%	170
High school or less	26%	15%	44%	15%	72
Some college	18%	10%	51%	22%	102
College graduate	17%	17%	51%	16%	160
Post-graduate	25%	12%	56%	7%	68
Attend services 1 or more/week	33%	17%	40%	10%	100
1-2 times a month	14%	13%	58%	15%	49
Less often	22%	13%	45%	21%	125
Never	11%	13%	62%	14%	123
North Country	16%	27%	43%	13%	38
Central / Lakes	23%	10%	55%	12%	80
Connecticut Valley	32%	6%	47%	15%	44
Mass Border	19%	11%	49%	22%	109
Seacoast	18%	21%	43%	17%	60
Manchester Area	17%	13%	59%	10%	72
First Cong. Dist	17%	16%	50%	16%	207
Second Cong. Dist	24%	11%	50%	15%	195

**Favorability Rating – Donald Trump  
(Likely 2016 GOP Primary Voters)**

<b>LIKELY NH GOP PRIMARY VOTERS</b>	<b><u>Favorable</u></b>	<b><u>Neutral</u></b>	<b><u>Unfavorable</u></b>	<b><u>Don't Know</u></b>	<b><u>(N)</u></b>
	<b>57%</b>	<b>6%</b>	<b>36%</b>	<b>1%</b>	<b>402</b>
Registered Undeclared	57%	6%	35%	1%	199
Registered Republican	56%	6%	36%	2%	201
Democrat	34%	0%	66%	0%	24
Independent	51%	13%	36%	0%	50
Republican	60%	6%	33%	2%	325
Liberal	55%	0%	45%	0%	16
Moderate	47%	9%	43%	0%	152
Conservative	63%	5%	30%	2%	218
Support Tea Party	75%	7%	16%	2%	132
Neutral	54%	5%	40%	2%	178
Oppose Tea Party	29%	10%	61%	0%	74
Voted in 2008,2012 NH Primaries	57%	6%	35%	1%	295
Voted in 2008 or 2012 NH Primary	58%	6%	34%	2%	61
Did Not Vote in Either NH Primary	52%	7%	42%	0%	46
Union household	56%	0%	44%	0%	43
Non-union	56%	7%	35%	2%	355
Read Union Leader	56%	5%	39%	0%	119
Read Boston Globe	46%	6%	49%	0%	35
Read Local Newspapers	58%	6%	35%	1%	136
Watch WMUR	59%	5%	35%	1%	249
Listen to NHPR	51%	4%	44%	1%	106
Listen to Conserv. Talk Radio	77%	3%	21%	0%	89
18 to 34	60%	7%	33%	0%	67
35 to 49	59%	8%	33%	1%	110
50 to 64	57%	7%	34%	2%	137
65 and over	49%	4%	45%	2%	74
Male	62%	6%	31%	1%	232
Female	49%	6%	43%	2%	170
High school or less	63%	11%	21%	5%	72
Some college	55%	6%	39%	1%	102
College graduate	58%	6%	35%	1%	160
Post-graduate	48%	3%	49%	0%	68
Attend services 1 or more/week	57%	6%	36%	2%	100
1-2 times a month	60%	6%	31%	3%	49
Less often	59%	5%	34%	2%	125
Never	51%	8%	41%	0%	123
North Country	46%	1%	50%	3%	38
Central / Lakes	66%	3%	28%	2%	80
Connecticut Valley	52%	8%	37%	3%	44
Mass Border	63%	10%	27%	0%	109
Seacoast	52%	6%	41%	0%	60
Manchester Area	49%	5%	44%	2%	72
First Cong. Dist	56%	6%	38%	1%	207
Second Cong. Dist	57%	7%	34%	2%	195

**Decided 2016 GOP Primary Vote  
(Likely 2016 GOP Primary Voters)**

	<u>Def. Decided</u>	<u>Leaning Towards Someone</u>	<u>Still Trying To Decide</u>	<u>(N)</u>
<b>LIKELY NH GOP PRIMARY VOTERS</b>	<b>18%</b>	<b>26%</b>	<b>56%</b>	<b>403</b>
Registered Undeclared	17%	23%	60%	200
Registered Republican	20%	28%	52%	201
Democrat	9%	21%	69%	24
Independent	17%	33%	50%	50
Republican	19%	25%	56%	325
Liberal	25%	21%	54%	16
Moderate	13%	24%	63%	152
Conservative	21%	27%	52%	218
Support Tea Party	29%	24%	47%	132
Neutral	11%	26%	63%	178
Oppose Tea Party	17%	22%	61%	74
Voted in 2008,2012 NH Primaries	17%	28%	55%	295
Voted in 2008 or 2012 NH Primary	20%	22%	58%	61
Did Not Vote in Either NH Primary	25%	17%	58%	46
Union household	14%	22%	63%	43
Non-union	19%	26%	55%	355
Read Union Leader	23%	29%	47%	119
Read Boston Globe	26%	20%	55%	35
Read Local Newspapers	22%	25%	53%	137
Watch WMUR	18%	25%	57%	250
Listen to NHPR	17%	23%	59%	106
Listen to Conserv. Talk Radio	24%	28%	48%	90
18 to 34	24%	28%	48%	67
35 to 49	18%	19%	64%	110
50 to 64	17%	27%	56%	137
65 and over	18%	24%	58%	75
Male	22%	26%	52%	232
Female	13%	25%	62%	171
High school or less	22%	19%	59%	72
Some college	17%	23%	59%	102
College graduate	21%	26%	53%	160
Post-graduate	10%	34%	55%	68
Attend services 1 or more/week	15%	33%	52%	100
1-2 times a month	29%	24%	47%	49
Less often	15%	27%	58%	125
Never	19%	19%	62%	123
North Country	21%	23%	56%	38
Central / Lakes	18%	32%	51%	80
Connecticut Valley	15%	25%	60%	44
Mass Border	18%	31%	51%	109
Seacoast	16%	13%	71%	60
Manchester Area	23%	23%	54%	72
First Cong. Dist	23%	19%	58%	207
Second Cong. Dist	14%	33%	53%	195



**GOP 2016 Primary Support  
(Likely 2016 GOP Primary Voters)**

	<u>Donald Trump</u>	<u>Marco Rubio</u>	<u>Chris Christie</u>	<u>Jeb Bush</u>	<u>John Kasich</u>	<u>Ted Cruz</u>	<u>Someone Else</u>	<u>Undecided</u>	<u>(N=)</u>
<b>LIKELY NH GOP PRIMARY VOTERS</b>	<b>32%</b>	<b>14%</b>	<b>9%</b>	<b>8%</b>	<b>7%</b>	<b>6%</b>	<b>15%</b>	<b>9%</b>	<b>399</b>
Registered Undeclared	34%	16%	7%	7%	7%	5%	13%	11%	198
Registered Republican	29%	13%	11%	9%	8%	6%	17%	8%	199
Democrat	24%	10%	9%	28%	18%	2%	4%	5%	24
Independent	28%	18%	5%	6%	4%	7%	21%	11%	50
Republican	33%	14%	10%	7%	6%	6%	15%	10%	322
Liberal	43%	0%	11%	19%	4%	4%	9%	10%	16
Moderate	27%	15%	11%	12%	12%	2%	11%	10%	152
Conservative	34%	15%	7%	4%	4%	9%	18%	9%	217
Support Tea Party	37%	13%	5%	3%	2%	12%	22%	6%	132
Neutral	32%	15%	9%	8%	8%	4%	14%	10%	175
Oppose Tea Party	20%	17%	15%	15%	15%	0%	5%	13%	73
Voted in 2008,2012 NH Primaries	31%	15%	10%	7%	9%	7%	14%	8%	293
Voted in 2008 or 2012 NH Primary	36%	6%	10%	13%	2%	4%	21%	9%	61
Did Not Vote in Either NH Primary	32%	21%	2%	10%	5%	1%	13%	17%	44
Union household	35%	6%	7%	2%	10%	8%	17%	14%	43
Non-union	31%	15%	9%	9%	7%	5%	15%	9%	351
Read Union Leader	39%	18%	14%	3%	7%	3%	11%	5%	118
Read Boston Globe	30%	18%	14%	2%	15%	3%	15%	3%	35
Read Local Newspapers	36%	13%	10%	8%	11%	2%	15%	6%	136
Watch WMUR	35%	15%	11%	9%	7%	5%	12%	7%	246
Listen to NHPR	32%	13%	11%	6%	12%	3%	12%	11%	105
Listen to Conserv. Talk Radio	44%	12%	8%	2%	0%	15%	10%	9%	90
18 to 34	37%	4%	6%	11%	5%	2%	26%	10%	67
35 to 49	31%	13%	5%	8%	6%	7%	19%	11%	109
50 to 64	34%	17%	12%	5%	8%	7%	11%	6%	137
65 and over	26%	14%	13%	12%	11%	4%	7%	14%	73
Male	35%	14%	6%	7%	8%	7%	16%	7%	229
Female	27%	15%	12%	9%	6%	4%	14%	12%	170
High school or less	43%	5%	6%	7%	4%	6%	23%	7%	71
Some college	34%	13%	11%	13%	3%	2%	14%	10%	101
College graduate	30%	17%	6%	5%	10%	8%	13%	11%	158
Post-graduate	21%	20%	16%	7%	10%	5%	12%	9%	68
Attend services 1 or more/week	22%	18%	11%	4%	5%	9%	20%	12%	100
1-2 times a month	41%	10%	9%	5%	5%	2%	21%	6%	49
Less often	33%	14%	11%	11%	10%	5%	7%	8%	122
Never	34%	13%	6%	10%	6%	6%	16%	10%	122
North Country	34%	14%	1%	13%	3%	0%	30%	5%	38
Central / Lakes	39%	9%	9%	8%	13%	6%	11%	6%	80
Connecticut Valley	32%	12%	5%	7%	4%	4%	27%	10%	44
Mass Border	32%	17%	3%	5%	6%	11%	12%	13%	108
Seacoast	21%	16%	10%	10%	7%	3%	17%	15%	60
Manchester Area	31%	16%	23%	8%	6%	4%	7%	5%	69
First Cong. Dist	31%	13%	12%	10%	7%	4%	14%	9%	205
Second Cong. Dist	33%	15%	6%	6%	7%	7%	16%	10%	193

**GOP 2016 Primary – Second Choice  
(Likely 2016 GOP Primary Voters)**

<b>LIKELY NH GOP PRIMARY VOTERS</b>	<b>Marco <u>Rubio</u> 20%</b>	<b>Chris <u>Christie</u> 12%</b>	<b>Ted <u>Cruz</u> 11%</b>	<b>Donald <u>Trump</u> 11%</b>	<b>Ben <u>Carson</u> 8%</b>	<b>Someone <u>Else</u> 26%</b>	<b>No Second <u>Choice</u> 5%</b>	<b>Don't <u>Know</u> 8%</b>	<b>(N=) 360</b>
Registered Undeclared	16%	13%	9%	12%	9%	25%	7%	10%	177
Registered Republican	23%	11%	13%	10%	7%	27%	3%	6%	181
Democrat	21%	10%	3%	5%	2%	35%	20%	4%	23
Independent	9%	11%	4%	16%	12%	29%	5%	13%	45
Republican	21%	12%	13%	11%	7%	24%	4%	7%	290
Liberal	33%	20%	0%	9%	0%	31%	7%	0%	15
Moderate	19%	12%	5%	6%	6%	33%	4%	15%	137
Conservative	20%	11%	17%	15%	10%	21%	4%	3%	195
Support Tea Party	18%	7%	18%	20%	11%	16%	5%	5%	122
Neutral	18%	14%	10%	6%	8%	31%	4%	8%	157
Oppose Tea Party	22%	13%	1%	7%	2%	34%	7%	14%	64
Voted in 2008,2012 NH Primaries	19%	14%	11%	10%	8%	26%	4%	8%	267
Voted in 2008 or 2012 NH Primary	27%	8%	12%	10%	4%	23%	6%	9%	56
Did Not Vote in Either NH Primary	14%	5%	12%	15%	8%	24%	13%	8%	37
Union household	22%	0%	15%	7%	7%	31%	9%	10%	37
Non-union	20%	13%	11%	12%	8%	25%	4%	8%	319
Read Union Leader	22%	12%	12%	8%	8%	22%	6%	10%	112
Read Boston Globe	18%	16%	5%	5%	12%	33%	6%	5%	34
Read Local Newspapers	20%	15%	7%	10%	11%	27%	5%	5%	128
Watch WMUR	21%	14%	9%	11%	10%	24%	5%	7%	229
Listen to NHPR	22%	13%	9%	10%	5%	29%	4%	9%	94
Listen to Conserv. Talk Radio	22%	10%	20%	15%	10%	11%	5%	8%	82
18 to 34	23%	10%	7%	19%	10%	20%	8%	3%	60
35 to 49	16%	11%	11%	13%	7%	27%	4%	12%	95
50 to 64	20%	10%	12%	8%	7%	29%	5%	7%	129
65 and over	21%	19%	13%	5%	9%	24%	4%	7%	63
Male	16%	12%	14%	11%	9%	26%	6%	6%	212
Female	25%	11%	8%	11%	5%	25%	4%	11%	147
High school or less	14%	16%	12%	18%	6%	15%	9%	10%	67
Some college	27%	10%	15%	7%	7%	20%	7%	6%	91
College graduate	16%	13%	11%	10%	9%	31%	3%	8%	141
Post-graduate	25%	7%	4%	11%	8%	33%	2%	9%	61
Attend services 1 or more/week	21%	9%	13%	18%	7%	26%	2%	4%	87
1-2 times a month	16%	16%	18%	11%	3%	24%	9%	3%	46
Less often	23%	11%	7%	8%	9%	26%	5%	12%	112
Never	17%	12%	11%	10%	9%	27%	6%	9%	110
North Country	17%	18%	11%	5%	9%	22%	12%	7%	36
Central / Lakes	17%	14%	7%	15%	6%	32%	4%	6%	75
Connecticut Valley	25%	11%	6%	16%	9%	27%	3%	3%	39
Mass Border	20%	13%	15%	9%	9%	20%	6%	8%	93
Seacoast	26%	6%	8%	9%	7%	28%	2%	15%	51
Manchester Area	17%	11%	16%	11%	7%	25%	4%	8%	65
First Cong. Dist	20%	13%	11%	8%	9%	24%	4%	9%	188
Second Cong. Dist	19%	10%	11%	14%	6%	27%	6%	7%	172

**GOP 2016 Primary – Would NOT Support  
(Likely 2016 GOP Primary Voters)**

	<b>Donald <u>Trump</u></b>	<b>Jeb <u>Bush</u></b>	<b>Rand <u>Paul</u></b>	<b>Chris <u>Christie</u></b>	<b>Ben <u>Carson</u></b>	<b>Someone <u>Else</u></b>	<b>All <u>Acceptable</u></b>	<b>Don't <u>Know</u></b>	<b>(N=)</b>
<b>LIKELY NH GOP PRIMARY VOTERS</b>	<b>26%</b>	<b>11%</b>	<b>7%</b>	<b>6%</b>	<b>5%</b>	<b>24%</b>	<b>11%</b>	<b>9%</b>	<b>399</b>
Registered Undeclared	26%	15%	4%	6%	5%	27%	9%	9%	198
Registered Republican	26%	8%	10%	6%	5%	22%	14%	9%	199
Democrat	52%	8%	0%	19%	0%	11%	10%	0%	24
Independent	24%	14%	2%	9%	5%	22%	17%	6%	49
Republican	24%	11%	8%	5%	5%	26%	11%	11%	323
Liberal	33%	9%	13%	22%	0%	15%	0%	8%	16
Moderate	32%	9%	6%	4%	5%	22%	10%	12%	150
Conservative	20%	14%	8%	6%	5%	26%	14%	7%	217
Support Tea Party	10%	21%	8%	6%	3%	32%	15%	6%	129
Neutral	28%	8%	6%	8%	5%	21%	11%	13%	178
Oppose Tea Party	48%	5%	3%	4%	5%	22%	6%	6%	74
Voted in 2008,2012 NH Primaries	26%	13%	7%	6%	5%	23%	11%	9%	293
Voted in 2008 or 2012 NH Primary	20%	7%	8%	5%	0%	30%	14%	15%	60
Did Not Vote in Either NH Primary	29%	10%	3%	6%	12%	24%	11%	5%	46
Union household	25%	12%	4%	12%	0%	28%	5%	13%	43
Non-union	26%	12%	7%	5%	5%	24%	12%	9%	352
Read Union Leader	23%	11%	8%	4%	2%	30%	14%	6%	119
Read Boston Globe	40%	8%	8%	4%	0%	23%	12%	5%	35
Read Local Newspapers	28%	14%	5%	6%	4%	27%	11%	4%	135
Watch WMUR	23%	11%	9%	5%	4%	27%	12%	9%	246
Listen to NHPR	32%	8%	3%	5%	2%	27%	15%	9%	106
Listen to Conserv. Talk Radio	10%	25%	6%	4%	2%	26%	20%	9%	89
18 to 34	23%	7%	7%	16%	8%	27%	7%	6%	66
35 to 49	19%	14%	7%	6%	6%	22%	13%	13%	110
50 to 64	26%	13%	5%	5%	4%	30%	9%	10%	137
65 and over	37%	9%	7%	1%	3%	19%	18%	6%	74
Male	20%	13%	6%	6%	5%	26%	13%	10%	230
Female	34%	9%	9%	5%	4%	22%	10%	8%	169
High school or less	19%	13%	8%	10%	5%	22%	11%	14%	72
Some college	28%	13%	5%	4%	4%	26%	10%	11%	102
College graduate	21%	12%	8%	5%	4%	26%	15%	8%	158
Post-graduate	40%	7%	8%	8%	6%	20%	6%	5%	67
Attend services 1 or more/week	21%	10%	12%	7%	3%	23%	16%	8%	99
1-2 times a month	19%	11%	14%	7%	5%	30%	9%	5%	48
Less often	29%	14%	4%	4%	6%	23%	11%	10%	125
Never	30%	10%	4%	7%	4%	25%	9%	11%	122
North Country	32%	10%	14%	4%	0%	13%	16%	10%	38
Central / Lakes	24%	17%	5%	7%	5%	21%	9%	11%	79
Connecticut Valley	30%	9%	7%	3%	3%	36%	8%	4%	44
Mass Border	23%	12%	7%	6%	6%	25%	11%	10%	108
Seacoast	27%	8%	3%	10%	6%	23%	13%	10%	59
Manchester Area	24%	9%	8%	6%	4%	27%	13%	8%	72
First Cong. Dist	25%	11%	6%	7%	4%	26%	11%	8%	205
Second Cong. Dist	26%	12%	8%	5%	5%	22%	11%	10%	194

**GOP 2016 Primary Who Will Win  
(Likely 2016 GOP Primary Voters)**

	<u>Donald Trump</u>	<u>Chris Christie</u>	<u>Marco Rubio</u>	<u>Jeb Bush</u>	<u>Ted Cruz</u>	<u>Ben Carson</u>	<u>Someone Else</u>	<u>Don't Know</u>	<u>(N=)</u>
<b>LIKELY NH GOP PRIMARY VOTERS</b>	<b>59%</b>	<b>6%</b>	<b>6%</b>	<b>4%</b>	<b>2%</b>	<b>1%</b>	<b>3%</b>	<b>20%</b>	<b>403</b>
Registered Undeclared	56%	7%	8%	3%	2%	2%	2%	21%	200
Registered Republican	62%	5%	4%	4%	2%	1%	4%	19%	201
Democrat	47%	9%	0%	8%	0%	0%	5%	31%	24
Independent	54%	11%	4%	1%	3%	1%	5%	20%	50
Republican	61%	5%	6%	4%	2%	1%	2%	19%	325
Liberal	43%	28%	0%	20%	0%	0%	7%	2%	16
Moderate	55%	9%	5%	3%	1%	1%	2%	25%	152
Conservative	63%	2%	7%	3%	3%	2%	3%	17%	218
Support Tea Party	68%	2%	6%	1%	2%	1%	3%	16%	132
Neutral	59%	5%	4%	5%	2%	1%	2%	21%	178
Oppose Tea Party	42%	13%	11%	2%	1%	1%	3%	26%	74
Voted in 2008,2012 NH Primaries	57%	7%	5%	3%	2%	1%	3%	21%	295
Voted in 2008 or 2012 NH Primary	67%	0%	3%	4%	3%	0%	3%	21%	61
Did Not Vote in Either NH Primary	60%	4%	11%	5%	0%	1%	3%	15%	46
Union household	55%	7%	2%	4%	3%	2%	5%	21%	43
Non-union	59%	6%	6%	3%	2%	1%	2%	20%	355
Read Union Leader	59%	7%	3%	4%	3%	1%	5%	19%	119
Read Boston Globe	67%	0%	5%	0%	0%	0%	9%	20%	35
Read Local Newspapers	59%	3%	6%	3%	1%	1%	5%	22%	137
Watch WMUR	59%	7%	5%	3%	3%	2%	3%	19%	250
Listen to NHPR	56%	5%	8%	1%	3%	1%	3%	23%	106
Listen to Conserv. Talk Radio	66%	3%	7%	1%	5%	1%	3%	15%	90
18 to 34	68%	2%	6%	5%	0%	0%	4%	14%	67
35 to 49	60%	7%	5%	3%	3%	2%	3%	16%	110
50 to 64	61%	4%	7%	2%	1%	1%	3%	22%	137
65 and over	46%	9%	4%	6%	5%	2%	0%	27%	75
Male	64%	5%	8%	2%	2%	1%	3%	16%	232
Female	52%	7%	3%	6%	2%	2%	2%	27%	171
High school or less	62%	2%	2%	2%	1%	1%	4%	26%	72
Some college	51%	7%	8%	4%	2%	1%	3%	25%	102
College graduate	64%	5%	6%	4%	2%	1%	2%	15%	160
Post-graduate	53%	11%	5%	5%	2%	1%	3%	20%	68
Attend services 1 or more/week	59%	7%	7%	2%	3%	3%	2%	18%	100
1-2 times a month	58%	6%	3%	4%	7%	1%	5%	17%	49
Less often	58%	6%	7%	6%	0%	0%	4%	19%	125
Never	59%	5%	5%	2%	1%	2%	1%	26%	123
North Country	46%	11%	2%	1%	4%	3%	7%	25%	38
Central / Lakes	58%	6%	7%	5%	3%	2%	1%	19%	80
Connecticut Valley	65%	4%	3%	4%	1%	0%	2%	20%	44
Mass Border	62%	2%	5%	4%	1%	1%	2%	23%	109
Seacoast	59%	5%	6%	5%	0%	1%	0%	24%	60
Manchester Area	58%	10%	9%	1%	3%	0%	5%	13%	72
First Cong. Dist	57%	7%	5%	3%	2%	1%	4%	21%	207
Second Cong. Dist	60%	4%	6%	4%	2%	2%	1%	20%	195

**Who is the Least Likely To Act Like A Typical Politician?  
(Likely 2016 GOP Primary Voters)**

	<b>Donald <u>Trump</u></b>	<b>Ben <u>Carson</u></b>	<b>Carly <u>Fiorina</u></b>	<b>Rand <u>Paul</u></b>	<b>John <u>Kasich</u></b>	<b>Jeb <u>Bush</u></b>	<b>Someone <u>Else</u></b>	<b>Don't <u>Know</u></b>	<b>(N=)</b>
<b>LIKELY NH GOP PRIMARY VOTERS</b>	<b>71%</b>	<b>11%</b>	<b>3%</b>	<b>2%</b>	<b>1%</b>	<b>1%</b>	<b>5%</b>	<b>5%</b>	<b>401</b>
Registered Undeclared	72%	12%	3%	0%	2%	1%	3%	6%	199
Registered Republican	71%	11%	2%	4%	0%	1%	6%	5%	200
Democrat	68%	11%	11%	0%	0%	0%	0%	11%	23
Independent	77%	6%	4%	3%	3%	1%	6%	0%	50
Republican	71%	12%	2%	2%	1%	1%	5%	6%	325
Liberal	79%	12%	4%	2%	0%	0%	3%	0%	16
Moderate	74%	11%	3%	0%	1%	3%	3%	5%	151
Conservative	68%	12%	3%	3%	2%	0%	6%	6%	218
Support Tea Party	71%	11%	2%	3%	1%	0%	6%	6%	132
Neutral	72%	11%	4%	2%	2%	2%	4%	4%	177
Oppose Tea Party	69%	15%	2%	0%	2%	3%	2%	8%	73
Voted in 2008,2012 NH Primaries	72%	12%	3%	2%	2%	0%	5%	5%	294
Voted in 2008 or 2012 NH Primary	76%	3%	4%	4%	0%	6%	5%	3%	61
Did Not Vote in Either NH Primary	62%	20%	1%	0%	0%	1%	1%	14%	46
Union household	72%	9%	9%	0%	0%	0%	9%	2%	43
Non-union	71%	12%	2%	2%	1%	1%	4%	6%	354
Read Union Leader	71%	9%	3%	1%	3%	1%	8%	4%	119
Read Boston Globe	58%	15%	5%	2%	9%	2%	5%	3%	35
Read Local Newspapers	65%	14%	4%	2%	2%	1%	5%	7%	136
Watch WMUR	72%	9%	3%	2%	2%	1%	6%	6%	248
Listen to NHPR	65%	13%	4%	0%	2%	3%	4%	8%	105
Listen to Conserv. Talk Radio	81%	8%	2%	0%	0%	0%	5%	5%	89
18 to 34	67%	8%	3%	4%	3%	2%	4%	9%	67
35 to 49	71%	13%	4%	3%	1%	2%	3%	5%	110
50 to 64	75%	10%	3%	0%	1%	1%	6%	4%	137
65 and over	68%	15%	2%	1%	1%	1%	5%	6%	73
Male	67%	14%	1%	2%	1%	2%	6%	6%	231
Female	77%	7%	5%	2%	2%	1%	2%	5%	170
High school or less	56%	17%	3%	0%	1%	2%	9%	12%	72
Some college	78%	8%	5%	3%	1%	2%	2%	2%	102
College graduate	75%	11%	0%	1%	2%	0%	5%	5%	158
Post-graduate	69%	12%	6%	4%	1%	2%	3%	4%	68
Attend services 1 or more/week	72%	12%	2%	4%	1%	0%	5%	5%	99
1-2 times a month	60%	9%	4%	3%	2%	0%	5%	17%	49
Less often	72%	11%	2%	1%	2%	3%	5%	4%	125
Never	74%	13%	4%	1%	1%	1%	4%	3%	123
North Country	76%	11%	0%	4%	0%	0%	4%	6%	38
Central / Lakes	70%	12%	4%	0%	2%	1%	5%	6%	80
Connecticut Valley	58%	13%	3%	6%	0%	2%	8%	11%	44
Mass Border	71%	14%	3%	2%	1%	1%	3%	6%	109
Seacoast	71%	13%	5%	2%	0%	2%	2%	5%	59
Manchester Area	79%	5%	0%	1%	4%	2%	7%	1%	72
First Cong. Dist	74%	9%	3%	2%	2%	2%	5%	3%	207
Second Cong. Dist	68%	14%	3%	2%	0%	1%	4%	8%	194

**Who is Most Likeable?  
(Likely 2016 GOP Primary Voters)**

	<b>Marco <u>Rubio</u></b>	<b>Ben <u>Carson</u></b>	<b>Donald <u>Trump</u></b>	<b>Jeb <u>Bush</u></b>	<b>Chris <u>Christie</u></b>	<b>John <u>Kasich</u></b>	<b>Someone <u>Else</u></b>	<b>Don't <u>Know</u></b>	<b>(N=)</b>
<b>LIKELY NH GOP PRIMARY VOTERS</b>	<b>22%</b>	<b>19%</b>	<b>14%</b>	<b>9%</b>	<b>7%</b>	<b>4%</b>	<b>12%</b>	<b>13%</b>	<b>398</b>
Registered Undeclared	21%	17%	16%	9%	6%	5%	13%	14%	200
Registered Republican	24%	21%	12%	10%	7%	4%	11%	12%	197
Democrat	32%	0%	6%	17%	13%	15%	10%	7%	24
Independent	20%	20%	18%	13%	2%	5%	13%	9%	50
Republican	22%	20%	14%	8%	7%	3%	12%	14%	321
Liberal	9%	0%	10%	19%	18%	0%	32%	11%	16
Moderate	28%	9%	14%	13%	6%	6%	10%	13%	151
Conservative	20%	28%	14%	6%	6%	3%	12%	12%	216
Support Tea Party	23%	28%	14%	5%	4%	1%	12%	13%	129
Neutral	18%	16%	16%	11%	7%	7%	14%	12%	177
Oppose Tea Party	29%	10%	14%	16%	8%	5%	6%	13%	73
Voted in 2008,2012 NH Primaries	24%	18%	14%	9%	6%	4%	11%	13%	291
Voted in 2008 or 2012 NH Primary	12%	22%	12%	14%	12%	5%	10%	14%	61
Did Not Vote in Either NH Primary	20%	17%	17%	9%	1%	3%	21%	12%	46
Union household	10%	24%	5%	11%	7%	6%	28%	9%	43
Non-union	23%	18%	15%	9%	6%	4%	10%	13%	352
Read Union Leader	26%	17%	14%	11%	12%	2%	11%	8%	117
Read Boston Globe	19%	12%	9%	7%	16%	13%	13%	11%	35
Read Local Newspapers	21%	13%	14%	14%	9%	7%	11%	12%	136
Watch WMUR	24%	16%	16%	10%	7%	5%	11%	11%	248
Listen to NHPR	23%	19%	13%	8%	7%	10%	10%	9%	105
Listen to Conserv. Talk Radio	26%	23%	16%	4%	8%	1%	14%	8%	89
18 to 34	19%	15%	20%	11%	5%	3%	18%	10%	67
35 to 49	15%	25%	15%	11%	7%	4%	11%	13%	109
50 to 64	26%	17%	14%	7%	5%	5%	11%	15%	134
65 and over	24%	17%	9%	11%	12%	6%	7%	13%	75
Male	19%	22%	16%	9%	5%	4%	12%	13%	230
Female	26%	14%	12%	10%	8%	5%	11%	13%	168
High school or less	8%	24%	18%	10%	9%	3%	11%	17%	70
Some college	27%	10%	19%	12%	7%	4%	11%	10%	102
College graduate	24%	19%	11%	9%	4%	4%	14%	15%	159
Post-graduate	26%	27%	8%	6%	8%	8%	9%	8%	66
Attend services 1 or more/week	25%	35%	7%	6%	5%	1%	12%	8%	98
1-2 times a month	20%	17%	10%	8%	10%	3%	19%	14%	49
Less often	26%	10%	17%	9%	5%	7%	13%	14%	124
Never	16%	15%	19%	14%	7%	5%	8%	15%	122
North Country	27%	17%	15%	6%	1%	1%	19%	15%	38
Central / Lakes	14%	18%	18%	12%	7%	7%	15%	10%	79
Connecticut Valley	22%	22%	13%	8%	0%	7%	8%	21%	44
Mass Border	28%	21%	13%	5%	8%	3%	8%	14%	107
Seacoast	23%	19%	10%	19%	4%	2%	10%	12%	60
Manchester Area	19%	15%	15%	10%	12%	5%	15%	10%	70
First Cong. Dist	21%	18%	13%	11%	9%	4%	13%	11%	206
Second Cong. Dist	23%	20%	15%	8%	4%	5%	11%	15%	192

**Who is the Most Conservative?  
(Likely 2016 GOP Primary Voters)**

	<b>Ted <u>Cruz</u></b>	<b>Mike <u>Huckabee</u></b>	<b>Jeb <u>Bush</u></b>	<b>Donald <u>Trump</u></b>	<b>Rand <u>Paul</u></b>	<b>Ben <u>Carson</u></b>	<b>Someone <u>Else</u></b>	<b>Don't <u>Know</u></b>	<b>(N=)</b>
<b>LIKELY NH GOP PRIMARY VOTERS</b>	<b>26%</b>	<b>9%</b>	<b>8%</b>	<b>8%</b>	<b>7%</b>	<b>5%</b>	<b>18%</b>	<b>19%</b>	<b>402</b>
Registered Undeclared	25%	9%	6%	6%	7%	5%	19%	20%	200
Registered Republican	26%	9%	10%	10%	7%	4%	17%	16%	200
Democrat	16%	7%	7%	0%	9%	9%	26%	26%	24
Independent	27%	6%	6%	10%	10%	3%	14%	23%	50
Republican	26%	10%	9%	8%	6%	5%	18%	17%	325
Liberal	4%	0%	20%	0%	2%	10%	31%	33%	16
Moderate	24%	11%	8%	5%	7%	6%	20%	19%	152
Conservative	29%	9%	7%	11%	8%	4%	17%	15%	218
Support Tea Party	35%	6%	6%	15%	9%	7%	15%	9%	132
Neutral	19%	11%	10%	5%	5%	4%	20%	26%	177
Oppose Tea Party	28%	10%	10%	6%	9%	3%	22%	11%	74
Voted in 2008,2012 NH Primaries	26%	11%	9%	7%	8%	5%	17%	16%	295
Voted in 2008 or 2012 NH Primary	28%	4%	8%	8%	4%	3%	18%	27%	61
Did Not Vote in Either NH Primary	18%	4%	3%	16%	6%	6%	25%	22%	46
Union household	27%	10%	4%	5%	9%	2%	22%	20%	43
Non-union	26%	9%	9%	8%	7%	5%	18%	18%	355
Read Union Leader	29%	11%	10%	10%	4%	4%	15%	16%	119
Read Boston Globe	20%	19%	5%	7%	9%	3%	22%	15%	35
Read Local Newspapers	25%	11%	10%	9%	9%	3%	17%	15%	137
Watch WMUR	21%	9%	9%	10%	7%	6%	21%	17%	250
Listen to NHPR	29%	10%	6%	9%	5%	6%	19%	16%	106
Listen to Conserv. Talk Radio	41%	7%	2%	15%	3%	6%	16%	11%	90
18 to 34	16%	0%	7%	11%	10%	0%	29%	28%	67
35 to 49	31%	12%	6%	4%	7%	6%	18%	15%	110
50 to 64	26%	14%	7%	11%	5%	5%	17%	15%	137
65 and over	23%	6%	17%	7%	7%	7%	12%	21%	75
Male	32%	7%	5%	11%	8%	5%	18%	15%	232
Female	17%	12%	12%	5%	5%	5%	19%	24%	171
High school or less	23%	6%	10%	13%	1%	7%	16%	24%	72
Some college	25%	10%	9%	7%	7%	5%	19%	18%	102
College graduate	29%	10%	8%	8%	6%	3%	17%	18%	160
Post-graduate	22%	12%	4%	4%	15%	6%	23%	14%	68
Attend services 1 or more/week	29%	13%	8%	5%	8%	5%	17%	14%	100
1-2 times a month	25%	7%	9%	9%	10%	3%	20%	17%	49
Less often	23%	8%	7%	7%	6%	6%	17%	25%	125
Never	24%	8%	9%	12%	6%	4%	20%	17%	123
North Country	19%	19%	4%	4%	8%	3%	23%	20%	38
Central / Lakes	28%	5%	10%	7%	4%	3%	19%	24%	80
Connecticut Valley	32%	8%	4%	8%	11%	4%	20%	14%	44
Mass Border	30%	9%	8%	10%	8%	7%	12%	16%	109
Seacoast	21%	11%	11%	5%	5%	4%	24%	20%	60
Manchester Area	20%	9%	9%	11%	8%	7%	18%	18%	72
First Cong. Dist	23%	10%	8%	11%	7%	4%	21%	16%	207
Second Cong. Dist	29%	9%	9%	5%	7%	6%	15%	21%	195

**Who has the Best Chance of Winning the General Election?  
(Likely 2016 GOP Primary Voters)**

	<b>Donald <u>Trump</u></b>	<b>Marco <u>Rubio</u></b>	<b>Chris <u>Christie</u></b>	<b>Jeb <u>Bush</u></b>	<b>Ted <u>Cruz</u></b>	<b>Ben <u>Carson</u></b>	<b>Someone <u>Else</u></b>	<b>Don't <u>Know</u></b>	<b>(N=)</b>
<b>LIKELY NH GOP PRIMARY VOTERS</b>	<b>34%</b>	<b>17%</b>	<b>7%</b>	<b>6%</b>	<b>5%</b>	<b>4%</b>	<b>7%</b>	<b>20%</b>	<b>403</b>
Registered Undeclared	35%	18%	5%	6%	6%	3%	8%	20%	200
Registered Republican	33%	17%	9%	6%	3%	5%	7%	20%	201
Democrat	25%	18%	15%	6%	0%	4%	3%	28%	24
Independent	31%	20%	4%	5%	4%	8%	7%	20%	50
Republican	36%	17%	6%	6%	5%	3%	8%	19%	325
Liberal	55%	4%	7%	0%	0%	6%	15%	12%	16
Moderate	29%	19%	10%	6%	2%	2%	9%	23%	152
Conservative	36%	19%	4%	5%	7%	5%	5%	18%	218
Support Tea Party	41%	18%	3%	3%	10%	6%	4%	15%	132
Neutral	34%	16%	7%	5%	2%	3%	9%	23%	178
Oppose Tea Party	21%	22%	12%	7%	0%	3%	12%	23%	74
Voted in 2008,2012 NH Primaries	32%	18%	7%	6%	5%	4%	7%	21%	295
Voted in 2008 or 2012 NH Primary	39%	13%	6%	5%	3%	5%	6%	22%	61
Did Not Vote in Either NH Primary	40%	19%	5%	7%	3%	0%	14%	12%	46
Union household	36%	9%	5%	0%	3%	2%	15%	29%	43
Non-union	33%	19%	7%	6%	5%	4%	7%	19%	355
Read Union Leader	35%	22%	6%	2%	5%	3%	10%	17%	119
Read Boston Globe	39%	11%	6%	0%	3%	3%	14%	24%	35
Read Local Newspapers	36%	16%	8%	9%	3%	2%	9%	17%	137
Watch WMUR	38%	17%	7%	5%	4%	5%	6%	18%	250
Listen to NHPR	32%	20%	8%	4%	4%	2%	6%	24%	106
Listen to Conserv. Talk Radio	43%	20%	3%	2%	9%	1%	2%	19%	90
18 to 34	54%	8%	4%	7%	2%	7%	8%	11%	67
35 to 49	35%	15%	3%	5%	6%	5%	11%	20%	110
50 to 64	30%	23%	9%	3%	5%	2%	5%	22%	137
65 and over	22%	15%	11%	12%	3%	2%	7%	27%	75
Male	37%	19%	5%	6%	4%	5%	6%	17%	232
Female	30%	16%	9%	5%	5%	2%	9%	24%	171
High school or less	39%	10%	5%	8%	6%	5%	3%	24%	72
Some college	37%	19%	7%	3%	3%	5%	5%	20%	102
College graduate	34%	16%	7%	7%	5%	4%	11%	16%	160
Post-graduate	24%	26%	8%	4%	3%	1%	7%	27%	68
Attend services 1 or more/week	33%	21%	6%	5%	5%	6%	8%	16%	100
1-2 times a month	47%	10%	6%	4%	5%	6%	8%	14%	49
Less often	32%	18%	8%	9%	3%	3%	6%	21%	125
Never	31%	18%	6%	4%	4%	3%	8%	25%	123
North Country	27%	14%	1%	4%	7%	11%	9%	26%	38
Central / Lakes	34%	10%	7%	8%	3%	6%	9%	22%	80
Connecticut Valley	45%	20%	4%	5%	1%	0%	6%	18%	44
Mass Border	35%	21%	3%	7%	8%	2%	6%	17%	109
Seacoast	33%	13%	10%	7%	0%	2%	8%	26%	60
Manchester Area	32%	23%	13%	1%	6%	3%	7%	16%	72
First Cong. Dist	32%	15%	8%	4%	6%	4%	10%	21%	207
Second Cong. Dist	36%	20%	5%	8%	3%	3%	5%	20%	195



**Who Has the Right Experience to be President?  
(Likely 2016 GOP Primary Voters)**

	<b>Donald <u>Trump</u></b>	<b>Jeb <u>Bush</u></b>	<b>Chris <u>Christie</u></b>	<b>John <u>Kasich</u></b>	<b>Marco <u>Rubio</u></b>	<b>Ted <u>Cruz</u></b>	<b>Someone <u>Else</u></b>	<b>Don't <u>Know</u></b>	<b>(N=)</b>
<b>LIKELY NH GOP PRIMARY VOTERS</b>	<b>19%</b>	<b>17%</b>	<b>14%</b>	<b>10%</b>	<b>9%</b>	<b>7%</b>	<b>13%</b>	<b>12%</b>	<b>400</b>
Registered Undeclared	20%	15%	12%	9%	11%	7%	13%	14%	199
Registered Republican	18%	18%	16%	10%	6%	7%	14%	11%	200
Democrat	16%	28%	13%	15%	7%	0%	18%	3%	24
Independent	15%	19%	9%	9%	5%	8%	19%	17%	50
Republican	20%	15%	15%	9%	9%	7%	12%	12%	323
Liberal	36%	30%	10%	4%	0%	0%	10%	10%	16
Moderate	13%	26%	15%	12%	8%	1%	11%	13%	152
Conservative	22%	9%	13%	9%	10%	11%	15%	12%	217
Support Tea Party	23%	7%	10%	7%	12%	13%	16%	12%	131
Neutral	17%	15%	15%	10%	8%	5%	14%	15%	177
Oppose Tea Party	14%	32%	16%	17%	5%	0%	9%	7%	74
Voted in 2008,2012 NH Primaries	17%	15%	15%	12%	10%	8%	12%	11%	293
Voted in 2008 or 2012 NH Primary	27%	17%	12%	2%	3%	5%	17%	17%	61
Did Not Vote in Either NH Primary	21%	26%	5%	8%	5%	3%	14%	18%	46
Union household	25%	16%	3%	11%	3%	14%	18%	10%	43
Non-union	18%	16%	15%	10%	9%	6%	13%	13%	354
Read Union Leader	25%	14%	15%	13%	9%	7%	8%	9%	117
Read Boston Globe	23%	6%	16%	17%	13%	4%	12%	8%	35
Read Local Newspapers	23%	15%	14%	14%	9%	2%	14%	9%	136
Watch WMUR	20%	18%	15%	10%	9%	5%	12%	11%	248
Listen to NHPR	22%	18%	14%	12%	5%	7%	13%	10%	106
Listen to Conserv. Talk Radio	27%	6%	17%	4%	8%	14%	9%	16%	89
18 to 34	34%	22%	4%	8%	2%	2%	20%	8%	67
35 to 49	20%	20%	9%	7%	8%	9%	19%	9%	110
50 to 64	15%	11%	20%	10%	10%	8%	10%	16%	135
65 and over	12%	20%	18%	14%	8%	6%	7%	15%	75
Male	21%	13%	15%	12%	9%	8%	11%	12%	230
Female	16%	21%	13%	7%	9%	5%	17%	13%	171
High school or less	21%	17%	12%	7%	6%	6%	18%	13%	70
Some college	18%	20%	13%	9%	11%	5%	12%	12%	102
College graduate	20%	14%	11%	11%	10%	9%	10%	14%	159
Post-graduate	14%	18%	23%	10%	5%	4%	17%	10%	68
Attend services 1 or more/week	17%	11%	14%	7%	11%	13%	15%	12%	100
1-2 times a month	31%	11%	14%	7%	9%	3%	16%	10%	49
Less often	18%	23%	14%	15%	6%	3%	11%	10%	124
Never	17%	17%	14%	8%	9%	5%	13%	16%	123
North Country	22%	15%	6%	6%	11%	0%	26%	14%	38
Central / Lakes	24%	17%	15%	14%	4%	4%	8%	14%	79
Connecticut Valley	14%	9%	14%	7%	15%	5%	21%	15%	44
Mass Border	15%	15%	12%	10%	12%	13%	11%	12%	109
Seacoast	18%	24%	12%	5%	4%	6%	16%	15%	60
Manchester Area	20%	17%	21%	12%	8%	7%	8%	7%	71
First Cong. Dist	21%	19%	15%	9%	6%	6%	11%	12%	207
Second Cong. Dist	16%	13%	12%	10%	12%	8%	15%	13%	194

**Who Can Best Handle Government Spending?  
(Likely 2016 GOP Primary Voters)**

	<b>Donald <u>Trump</u></b>	<b>Jeb <u>Bush</u></b>	<b>John <u>Kasich</u></b>	<b>Chris <u>Christie</u></b>	<b>Ted <u>Cruz</u></b>	<b>Rand <u>Paul</u></b>	<b>Someone <u>Else</u></b>	<b>Don't <u>Know</u></b>	<b>(N=)</b>
<b>LIKELY NH GOP PRIMARY VOTERS</b>	<b>42%</b>	<b>10%</b>	<b>9%</b>	<b>7%</b>	<b>6%</b>	<b>6%</b>	<b>13%</b>	<b>8%</b>	<b>399</b>
Registered Undeclared	44%	10%	10%	5%	6%	4%	13%	8%	199
Registered Republican	39%	11%	9%	10%	5%	7%	12%	8%	199
Democrat	35%	20%	6%	12%	0%	3%	13%	11%	24
Independent	45%	14%	4%	3%	4%	8%	18%	3%	49
Republican	42%	9%	10%	7%	6%	5%	12%	9%	324
Liberal	51%	19%	0%	3%	0%	2%	20%	5%	16
Moderate	40%	13%	12%	9%	1%	4%	11%	10%	152
Conservative	42%	8%	8%	6%	10%	8%	13%	7%	216
Support Tea Party	48%	2%	7%	4%	12%	8%	14%	5%	131
Neutral	40%	13%	9%	9%	2%	5%	14%	8%	175
Oppose Tea Party	34%	20%	15%	7%	0%	4%	10%	10%	74
Voted in 2008,2012 NH Primaries	41%	10%	10%	9%	6%	6%	11%	8%	293
Voted in 2008 or 2012 NH Primary	44%	10%	6%	3%	7%	5%	14%	12%	61
Did Not Vote in Either NH Primary	42%	14%	7%	3%	2%	5%	24%	4%	45
Union household	35%	6%	7%	11%	11%	6%	17%	7%	43
Non-union	43%	10%	10%	7%	5%	6%	12%	8%	353
Read Union Leader	49%	10%	10%	11%	3%	3%	7%	6%	118
Read Boston Globe	42%	7%	24%	7%	0%	5%	5%	10%	35
Read Local Newspapers	42%	12%	16%	10%	2%	4%	7%	9%	137
Watch WMUR	46%	13%	11%	7%	4%	4%	10%	5%	247
Listen to NHPR	40%	11%	8%	8%	4%	4%	13%	11%	105
Listen to Conserv. Talk Radio	48%	2%	1%	7%	13%	6%	15%	7%	89
18 to 34	46%	11%	7%	4%	2%	7%	14%	9%	67
35 to 49	46%	10%	8%	7%	6%	9%	9%	4%	110
50 to 64	44%	9%	8%	9%	6%	4%	12%	8%	136
65 and over	28%	14%	17%	6%	6%	2%	15%	13%	74
Male	43%	9%	11%	6%	7%	7%	12%	5%	230
Female	39%	12%	7%	8%	4%	4%	14%	12%	170
High school or less	49%	8%	7%	6%	8%	2%	14%	7%	72
Some college	41%	17%	4%	8%	5%	4%	10%	12%	101
College graduate	42%	6%	14%	5%	6%	7%	13%	7%	157
Post-graduate	33%	11%	9%	13%	4%	9%	15%	5%	68
Attend services 1 or more/week	36%	5%	7%	8%	7%	5%	22%	8%	100
1-2 times a month	47%	6%	4%	8%	10%	7%	16%	3%	49
Less often	45%	11%	13%	6%	3%	4%	8%	10%	122
Never	42%	15%	9%	7%	3%	8%	9%	7%	123
North Country	37%	6%	8%	0%	4%	4%	25%	15%	36
Central / Lakes	43%	9%	13%	6%	8%	3%	10%	8%	79
Connecticut Valley	45%	8%	10%	0%	5%	8%	13%	12%	44
Mass Border	48%	8%	9%	8%	6%	6%	8%	8%	109
Seacoast	35%	17%	9%	11%	2%	6%	14%	6%	60
Manchester Area	36%	13%	7%	12%	7%	6%	15%	3%	71
First Cong. Dist	39%	11%	10%	8%	6%	5%	13%	8%	206
Second Cong. Dist	45%	9%	8%	6%	6%	6%	12%	8%	193

**Who Can Best Handle ISIS?  
(Likely 2016 GOP Primary Voters)**

	<b>Donald <u>Trump</u></b>	<b>Jeb <u>Bush</u></b>	<b>Chris <u>Christie</u></b>	<b>Ted <u>Cruz</u></b>	<b>Lindsey <u>Graham</u></b>	<b>Marco <u>Rubio</u></b>	<b>Someone <u>Else</u></b>	<b>Don't <u>Know</u></b>	<b>(N=)</b>
<b>LIKELY NH GOP PRIMARY VOTERS</b>	<b>33%</b>	<b>11%</b>	<b>9%</b>	<b>7%</b>	<b>7%</b>	<b>7%</b>	<b>10%</b>	<b>14%</b>	<b>398</b>
Registered Undeclared	36%	10%	10%	8%	5%	8%	9%	14%	200
Registered Republican	31%	12%	8%	7%	9%	6%	12%	15%	197
Democrat	29%	43%	7%	0%	2%	7%	3%	8%	24
Independent	25%	9%	6%	13%	7%	6%	13%	20%	49
Republican	35%	9%	10%	7%	7%	7%	10%	14%	322
Liberal	33%	26%	9%	0%	0%	0%	2%	30%	16
Moderate	29%	15%	9%	3%	10%	9%	8%	18%	152
Conservative	37%	7%	9%	10%	6%	7%	13%	11%	214
Support Tea Party	43%	7%	8%	13%	5%	8%	10%	5%	131
Neutral	29%	12%	10%	5%	8%	7%	12%	18%	174
Oppose Tea Party	22%	20%	11%	2%	8%	6%	10%	20%	74
Voted in 2008,2012 NH Primaries	32%	12%	9%	7%	9%	7%	10%	14%	291
Voted in 2008 or 2012 NH Primary	37%	8%	8%	12%	3%	4%	9%	20%	61
Did Not Vote in Either NH Primary	36%	11%	14%	2%	1%	10%	14%	12%	45
Union household	31%	20%	4%	15%	4%	0%	11%	16%	43
Non-union	33%	10%	10%	6%	7%	8%	10%	14%	350
Read Union Leader	35%	15%	8%	5%	8%	8%	9%	13%	117
Read Boston Globe	29%	9%	2%	3%	15%	3%	23%	16%	34
Read Local Newspapers	38%	14%	8%	4%	8%	5%	11%	12%	134
Watch WMUR	37%	12%	10%	5%	8%	9%	9%	10%	247
Listen to NHPR	34%	12%	7%	7%	10%	7%	9%	14%	106
Listen to Conserv. Talk Radio	48%	3%	6%	16%	6%	8%	5%	7%	89
18 to 34	34%	20%	3%	4%	2%	3%	18%	16%	67
35 to 49	31%	15%	11%	9%	5%	8%	10%	12%	110
50 to 64	38%	5%	8%	9%	7%	9%	10%	15%	133
65 and over	29%	10%	15%	5%	12%	3%	7%	18%	75
Male	38%	9%	11%	9%	7%	6%	10%	10%	229
Female	28%	14%	7%	5%	7%	8%	11%	20%	168
High school or less	36%	8%	8%	9%	4%	3%	13%	19%	71
Some college	36%	16%	11%	4%	7%	5%	7%	13%	102
College graduate	33%	10%	8%	9%	4%	11%	10%	15%	155
Post-graduate	28%	9%	10%	6%	16%	6%	14%	12%	68
Attend services 1 or more/week	31%	6%	6%	8%	4%	13%	12%	20%	100
1-2 times a month	30%	8%	9%	10%	6%	6%	22%	8%	48
Less often	35%	15%	9%	7%	7%	6%	9%	11%	121
Never	35%	13%	11%	5%	9%	3%	6%	17%	123
North Country	35%	9%	0%	7%	9%	8%	14%	18%	37
Central / Lakes	33%	9%	11%	9%	4%	2%	16%	16%	78
Connecticut Valley	32%	7%	10%	10%	9%	2%	15%	15%	44
Mass Border	36%	8%	5%	11%	11%	7%	7%	14%	108
Seacoast	36%	17%	8%	1%	4%	15%	5%	14%	60
Manchester Area	28%	17%	18%	3%	4%	8%	9%	13%	71
First Cong. Dist	34%	12%	10%	4%	5%	8%	11%	16%	205
Second Cong. Dist	33%	10%	9%	11%	9%	6%	10%	13%	192

**Who Can Best Handle Illegal Immigration?  
(Likely 2016 GOP Primary Voters)**

	<b>Donald <u>Trump</u></b>	<b>Marco <u>Rubio</u></b>	<b>Jeb <u>Bush</u></b>	<b>Chris <u>Christie</u></b>	<b>Ted <u>Cruz</u></b>	<b>Rand <u>Paul</u></b>	<b>Someone <u>Else</u></b>	<b>Don't <u>Know</u></b>	<b>(N=)</b>
<b>LIKELY NH GOP PRIMARY VOTERS</b>	<b>45%</b>	<b>14%</b>	<b>11%</b>	<b>6%</b>	<b>5%</b>	<b>2%</b>	<b>7%</b>	<b>9%</b>	<b>399</b>
Registered Undeclared	45%	16%	11%	5%	5%	1%	7%	11%	197
Registered Republican	45%	12%	12%	8%	6%	3%	7%	7%	201
Democrat	34%	16%	25%	4%	0%	0%	6%	15%	24
Independent	51%	12%	10%	2%	4%	3%	10%	8%	50
Republican	45%	14%	11%	7%	6%	2%	6%	9%	324
Liberal	43%	22%	15%	3%	0%	2%	4%	11%	16
Moderate	39%	16%	21%	8%	2%	0%	4%	9%	151
Conservative	49%	13%	4%	5%	8%	4%	8%	9%	217
Support Tea Party	60%	13%	5%	3%	9%	3%	6%	3%	132
Neutral	38%	14%	13%	6%	5%	3%	8%	13%	175
Oppose Tea Party	31%	21%	21%	13%	0%	0%	6%	8%	73
Voted in 2008,2012 NH Primaries	47%	13%	12%	7%	5%	3%	6%	7%	294
Voted in 2008 or 2012 NH Primary	39%	9%	12%	6%	10%	3%	6%	15%	61
Did Not Vote in Either NH Primary	42%	27%	5%	0%	2%	0%	13%	11%	44
Union household	42%	13%	11%	4%	7%	5%	8%	11%	43
Non-union	45%	14%	11%	7%	5%	2%	7%	9%	352
Read Union Leader	50%	15%	9%	8%	6%	1%	5%	7%	118
Read Boston Globe	40%	19%	3%	2%	13%	2%	12%	9%	33
Read Local Newspapers	46%	14%	13%	6%	3%	2%	9%	7%	135
Watch WMUR	49%	14%	13%	7%	3%	2%	5%	7%	248
Listen to NHPR	44%	14%	13%	4%	6%	0%	9%	10%	106
Listen to Conserv. Talk Radio	72%	11%	3%	1%	8%	0%	1%	4%	90
18 to 34	40%	14%	11%	2%	2%	6%	14%	11%	66
35 to 49	44%	16%	14%	3%	9%	3%	4%	7%	110
50 to 64	49%	12%	10%	9%	6%	0%	7%	8%	137
65 and over	44%	11%	12%	11%	2%	0%	5%	14%	73
Male	49%	14%	9%	6%	7%	3%	6%	7%	229
Female	40%	15%	15%	6%	4%	2%	8%	11%	170
High school or less	46%	4%	7%	5%	9%	1%	14%	15%	72
Some college	46%	14%	17%	5%	3%	3%	4%	9%	102
College graduate	45%	16%	10%	8%	6%	2%	6%	8%	156
Post-graduate	42%	20%	12%	6%	4%	4%	6%	6%	68
Attend services 1 or more/week	43%	15%	8%	5%	7%	4%	9%	10%	100
1-2 times a month	44%	6%	10%	11%	7%	3%	12%	6%	49
Less often	49%	12%	11%	6%	4%	1%	6%	11%	123
Never	42%	18%	16%	5%	5%	3%	4%	7%	122
North Country	33%	16%	20%	3%	4%	4%	13%	7%	37
Central / Lakes	52%	8%	13%	5%	2%	2%	7%	11%	80
Connecticut Valley	36%	15%	10%	11%	3%	6%	7%	12%	44
Mass Border	49%	13%	9%	5%	9%	2%	6%	8%	108
Seacoast	40%	25%	12%	2%	5%	2%	2%	12%	60
Manchester Area	48%	11%	9%	12%	6%	0%	9%	5%	70
First Cong. Dist	43%	14%	12%	7%	6%	1%	6%	9%	206
Second Cong. Dist	47%	14%	11%	5%	4%	3%	7%	9%	193

**Who Can Best Handle Taxation?  
(Likely 2016 GOP Primary Voters)**

	<u>Donald Trump</u>	<u>Jeb Bush</u>	<u>John Kasich</u>	<u>Ted Cruz</u>	<u>Chris Christie</u>	<u>Carly Fiorina</u>	<u>Someone Else</u>	<u>Don't Know</u>	<u>(N=)</u>
<b>LIKELY NH GOP PRIMARY VOTERS</b>	<b>36%</b>	<b>10%</b>	<b>8%</b>	<b>6%</b>	<b>6%</b>	<b>6%</b>	<b>14%</b>	<b>14%</b>	<b>401</b>
Registered Undeclared	35%	9%	10%	7%	3%	5%	14%	17%	199
Registered Republican	37%	12%	7%	5%	9%	6%	15%	10%	201
Democrat	36%	13%	13%	0%	14%	0%	3%	21%	24
Independent	32%	15%	7%	4%	0%	3%	23%	15%	50
Republican	37%	9%	8%	7%	6%	6%	13%	13%	325
Liberal	58%	18%	4%	0%	0%	0%	5%	15%	16
Moderate	30%	15%	11%	2%	9%	6%	13%	14%	152
Conservative	38%	7%	6%	10%	5%	5%	16%	14%	218
Support Tea Party	42%	3%	7%	13%	4%	4%	17%	10%	132
Neutral	35%	13%	8%	3%	5%	7%	16%	12%	176
Oppose Tea Party	27%	18%	14%	0%	10%	4%	7%	20%	74
Voted in 2008,2012 NH Primaries	36%	11%	9%	7%	6%	4%	14%	12%	295
Voted in 2008 or 2012 NH Primary	37%	10%	4%	6%	5%	9%	13%	17%	61
Did Not Vote in Either NH Primary	37%	9%	7%	0%	4%	9%	15%	19%	45
Union household	27%	10%	3%	15%	2%	14%	13%	17%	43
Non-union	37%	10%	9%	5%	7%	5%	14%	13%	354
Read Union Leader	40%	11%	8%	7%	11%	4%	11%	10%	119
Read Boston Globe	30%	9%	23%	0%	14%	5%	14%	5%	35
Read Local Newspapers	40%	12%	12%	2%	7%	5%	9%	11%	137
Watch WMUR	40%	11%	10%	5%	8%	4%	11%	11%	249
Listen to NHPR	37%	9%	8%	3%	7%	5%	13%	17%	106
Listen to Conserv. Talk Radio	36%	4%	1%	13%	7%	5%	18%	16%	90
18 to 34	45%	6%	7%	2%	0%	13%	16%	11%	67
35 to 49	37%	11%	7%	11%	4%	4%	13%	12%	110
50 to 64	35%	12%	8%	5%	7%	5%	15%	13%	137
65 and over	30%	10%	14%	3%	13%	3%	8%	18%	74
Male	37%	9%	9%	7%	4%	5%	17%	11%	232
Female	35%	12%	7%	4%	8%	6%	10%	17%	170
High school or less	43%	9%	8%	8%	5%	7%	14%	6%	72
Some college	38%	15%	4%	4%	5%	2%	12%	19%	102
College graduate	37%	7%	11%	7%	5%	5%	16%	14%	159
Post-graduate	25%	13%	9%	4%	11%	11%	14%	14%	68
Attend services 1 or more/week	35%	7%	7%	9%	6%	5%	17%	16%	100
1-2 times a month	44%	1%	4%	4%	6%	16%	17%	7%	49
Less often	34%	13%	10%	4%	8%	3%	11%	17%	124
Never	35%	14%	9%	7%	5%	4%	15%	10%	123
North Country	30%	5%	7%	1%	1%	17%	20%	19%	37
Central / Lakes	39%	9%	13%	6%	3%	3%	12%	16%	80
Connecticut Valley	31%	8%	8%	4%	7%	6%	22%	14%	44
Mass Border	40%	10%	7%	9%	2%	3%	15%	14%	109
Seacoast	37%	7%	8%	6%	11%	9%	5%	17%	60
Manchester Area	34%	20%	6%	6%	12%	3%	15%	6%	71
First Cong. Dist	39%	12%	10%	5%	7%	7%	10%	11%	207
Second Cong. Dist	33%	9%	7%	7%	5%	4%	19%	16%	194

**Most Important To Your Vote In Presidential Primary?  
(Likely 2016 GOP Primary Voters)**

<b>LIKELY NH GOP PRIMARY VOTERS</b>	<b><u>Jobs/ Economy</u> 18%</b>	<b><u>Health Care</u> 4%</b>	<b><u>Foreign Policy</u> 50%</b>	<b><u>Immi- gration</u> 12%</b>	<b><u>Taxes</u> 1%</b>	<b><u>Budget/ Debt</u> 4%</b>	<b><u>Social Issues</u> 1%</b>	<b><u>Educ- ation</u> 1%</b>	<b><u>Other/ DK</u> 10%</b>	<b><u>(N=)</u> 394</b>
Registered Undeclared	17%	2%	53%	13%	1%	5%	1%	1%	7%	197
Registered Republican	20%	5%	47%	10%	1%	3%	1%	0%	12%	195
Democrat	21%	16%	42%	5%	5%	0%	0%	0%	10%	22
Independent	17%	0%	46%	17%	3%	9%	2%	0%	6%	49
Republican	18%	3%	51%	11%	0%	4%	1%	1%	10%	320
Liberal	8%	15%	39%	25%	6%	0%	2%	0%	5%	16
Moderate	21%	4%	52%	10%	0%	4%	1%	0%	9%	148
Conservative	17%	2%	51%	12%	1%	5%	2%	1%	10%	214
Voted in 2008,2012 NH Primaries	18%	2%	53%	11%	1%	4%	2%	0%	9%	290
Voted in 2008 or 2012 NH Primary	21%	9%	37%	13%	3%	3%	0%	0%	14%	59
Did Not Vote in Either NH Primary	17%	6%	45%	10%	1%	4%	0%	3%	15%	45
Union household	17%	14%	52%	5%	0%	0%	3%	3%	7%	43
Non-union	18%	2%	50%	12%	1%	4%	1%	0%	10%	348
Read Union Leader	17%	2%	57%	13%	0%	3%	1%	1%	6%	118
Read Boston Globe	25%	2%	52%	18%	0%	3%	0%	0%	0%	35
Read Local Newspapers	16%	3%	50%	15%	2%	3%	1%	1%	10%	134
Watch WMUR	15%	3%	55%	13%	2%	2%	1%	1%	8%	246
Listen to NHPR	22%	7%	42%	12%	1%	4%	1%	0%	10%	104
Listen to Conserv. Talk Radio	11%	2%	51%	20%	0%	5%	0%	0%	10%	89
18 to 34	18%	4%	43%	9%	2%	3%	0%	0%	20%	64
35 to 49	20%	9%	50%	8%	2%	7%	1%	1%	2%	108
50 to 64	20%	1%	49%	17%	0%	3%	1%	1%	8%	136
65 and over	16%	1%	55%	7%	0%	3%	3%	0%	16%	73
Male	21%	3%	46%	12%	1%	4%	1%	0%	11%	230
Female	15%	4%	55%	10%	1%	4%	2%	1%	9%	164
High school or less	19%	1%	46%	15%	0%	8%	0%	0%	10%	71
Some college	13%	5%	56%	11%	2%	2%	1%	2%	9%	100
College graduate	23%	4%	44%	12%	1%	3%	2%	0%	12%	155
Post-graduate	14%	3%	58%	9%	0%	6%	3%	0%	8%	68
Attend services 1 or more/week	15%	1%	53%	8%	1%	6%	5%	0%	10%	98
1-2 times a month	12%	4%	62%	8%	3%	0%	0%	0%	10%	49
Less often	15%	3%	51%	16%	0%	4%	0%	1%	10%	122
Never	27%	5%	40%	11%	1%	4%	1%	1%	10%	120
North Country	22%	0%	49%	12%	4%	3%	0%	0%	10%	38
Central / Lakes	17%	6%	40%	16%	0%	6%	1%	1%	12%	78
Connecticut Valley	19%	0%	57%	2%	0%	0%	2%	3%	16%	42
Mass Border	20%	4%	51%	12%	0%	4%	2%	0%	8%	107
Seacoast	17%	6%	53%	8%	1%	5%	1%	0%	9%	60
Manchester Area	16%	2%	52%	15%	2%	3%	2%	0%	9%	69
First Cong. Dist	17%	3%	52%	11%	2%	4%	1%	0%	10%	205
Second Cong. Dist	19%	4%	47%	12%	0%	4%	2%	1%	10%	190