



1956 Annual Report

SUTTON

NEW HAMPSHIRE

ANNUAL REPORT OF PROGRESS

OF THE

TOWN OF SUTTON

NEW HAMPSHIRE

RECEIPTS and EXPENDITURES

Together with the Reports of the

TOWN OFFICERS

for the

Year Ending December 31, 1956

SCHOOL DISTRICT OFFICERS

for the

Year Ending June 30, 1956

Cover picture

South Sutton Church

by Lawrence R. Whitney

N
352.07
5964
1956

TABLE OF CONTENTS

Section A - Reports of Town Officers

List of Town Officers 3

Insert - Sutton World War II Memorial

Town Warrant 5

Budget 8

Summary of Inventory 10

Graph - Your 1956 Tax Dollar 11

Selectmen's Narrative 12

Plan of the Township of Sutton 18

Notes on the Original Plan of the Town 19

Inventory of Gross Valuation and Comparison 23

Comparative Statement 24

1956 Appropriations, Taxes Assessed and Tax Rate 26

Taxes Assessed in 1956 with Comparison 28

Balance Sheet 30

Schedule of Town Property 31

Report of Town Clerk 32

Report of Tax Collector 33

Report of Town Treasurer 35

Summary of Payments 38

Detailed Statement of Payments 40

Report of Trust Funds 53

Summary of Timber Tax 58

Comparative Statement of Timber Tax 59

Sutton Volunteer Fire Department 60

Financial Statement - Blister Rust Control 62

Sutton Free Library, Report of Trustees 63

Report of Librarian 66

Auditors' Report 68

Insert - Sutton Scenes

Section B - School District Reports

List of School Officers 69

School Warrant 70

School Budget 72

Report of School Board 74

Report of School District Treasurer 75

Summary of Payments 75

Detailed Statement of Payments 77

Report of Building Fund Committee 83

Annual School Health Service Report 84

Report of Superintendent of Schools 85

Section C - Vital Statistics 88

TOWN OFFICERS

Town Clerk

Evangeline A. Chadwick

Selectmen

Harold W. Chadwick
Clifford W. Ayer
Robert S. Bristol

Term expires 1957
Term expires 1958
Term expires 1959

Town Treasurer

Grace L. Mitchener

Tax Collector

Evangeline A. Chadwick

Highway Agent

Nelson M. Adams

Trustees of Trust Funds

Ethel M. West
Alice M. Davis
Helena M. Wells

Term expires 1957
Term expires 1958
Term expires 1959

Auditors

William B. Connor

Arthur E. Davis

Trustees of the Library

Maija Salo
Helena M. Wells
Irene C. Davis
Robert S. Bristol
Martha S. Wells
Rena M. Robinson

Term expires 1957
Term expires 1957
Term expires 1958
Term expires 1958
Term expires 1959
Term expires 1959

Town of Sullon

Police Officer
Charles L. Allen

Health Officer
Ralph J. Whipple

Overseer of the Poor
George H. Hosmer

	Librarians	
Fannie I. Greene		Jessie C. Quinley

Moderator
William B. Connor

	Supervisors of Checklist	
Eva V. Felch	Dorothy B. Patten	Verna C. Powell

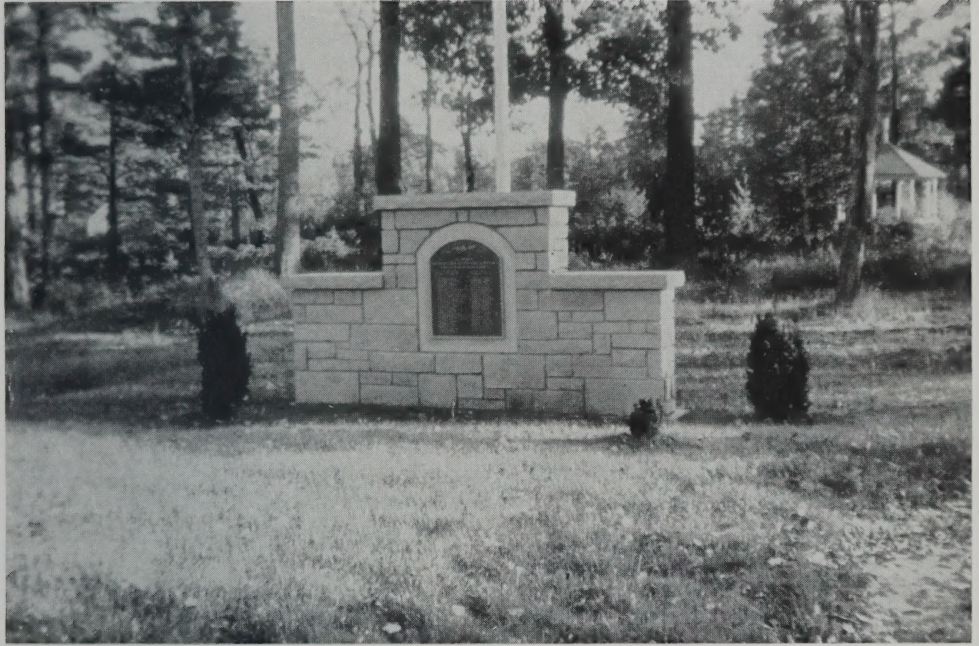
Janitor of Town Hall
Warren E. Hosmer

Fire Warden
Ervin C. Patten

	Fire Captains	
John Csutor		Term expires 1957
Judson Downie		Term expires 1958
Robert Bentley		Term expires 1959

	Budget Committee	
Harris E. Wheeler		Term expires 1957
John R. Powell		Term expires 1957
Dudley Coonley		Term expires 1958
Harold D. Hurd		Term expires 1958
Arthur E. Davis		Term expires 1959
William L. Bradford		Term expires 1959

	Planning Board	
William B. Connor		Eliot B. Foot
Harold D. Hurd		George H. Hosmer
Elizabeth Coonley		John R. Powell



SUTTON WORLD WAR II MEMORIAL

The Sutton World War II Memorial has been completed. This Memorial will be dedicated on May 26th, 1957. We hope you will plan to be present at that time. We wish to thank all individuals and organizations who contributed time, money and labor, or who assisted us in any manner to complete this project.

Sutton Veterans' Service Committee

TOWN WARRANT

THE STATE OF NEW HAMPSHIRE

To the Inhabitants of the Town of Sutton in the County of Merrimack in said State, qualified to vote in Town Affairs:

You are hereby notified to meet at Pillsbury Memorial Hall in said Sutton, the twelfth day of March next, at ten of the clock in the forenoon, to act upon the following subjects:

1. To choose all necessary town officers for the year ensuing. The polls to be open for this purpose from ten of the clock in the forenoon and to be closed no earlier than six-thirty of the clock in the afternoon.
2. To raise such sums of money as may be necessary to defray town charges for the ensuing year and make appropriation for the same.
3. To see how much money the town will vote to raise and appropriate for the payment of aid to persons on public welfare.
4. To see how much money the town will vote to raise and appropriate for the repair of highways and bridges.
5. To see if the town will vote to raise and appropriate a sum not to exceed \$1,038.40 for Town Road Aid; and the State to contribute \$6,922.67.

6. To see if the town will vote to raise and appropriate the sum of \$1,675.00 for street lighting.
7. To see if the town will vote to raise and appropriate the sum of \$75.00 for the Dartmouth-Lake Sunapee Region.
8. To see if the town will vote to raise and appropriate the sum of \$500.00 for the maintenance of the Sutton Free Library.
9. To see if the town will vote to raise and appropriate the sum of \$100.00 for the observance of Memorial Day.
10. To see if the town will vote to raise and appropriate the sum of \$400.00 for the New London Hospital.
11. To see if the town will vote to raise and appropriate the sum of \$400.00 for the control of White Pine Blister Rust.
12. To see if the town will vote to raise and appropriate the sum of \$785.00 for the purchase of equipment for the Highway Department.
13. To see how much money the town will vote to raise and appropriate for the expenses of the fire department, for insurance for the same, for new equipment, and to pass any vote relating thereto.
14. To see if the town will vote to raise and appropriate the sum of \$1,500.00 for the purchase of the Fire House at North Sutton, and to pass any vote relating thereto.
15. To see if the town will vote to raise and appropriate the sum of \$100.00 for forest fire fighting.

16. To see if the town will vote to transfer a portion of the unencumbered surplus funds to a Capital Reserve Fund to be used for capital improvements in Pillsbury Memorial Hall, and to pass any vote relating thereto.
17. To see if the town will vote to accept a trust fund of \$200.00 for the maintenance and care of the Edna M. Whitcher Lot in the North Sutton Cemetery.
18. To see if the town will vote to accept a trust fund of \$150.00 for the maintenance and care of the Fred E. Merrill Lot in the North Sutton Cemetery.
19. To see if the town will vote to accept a trust fund of \$100.00 for the maintenance and care of the Fernando P. Ayer Lot in the East Sutton Cemetery.
20. To see if the town will vote to authorize the Selectmen to borrow money in anticipation of taxes.
21. To transact any other business that may legally come before said meeting.

Given under our hands and seal this twenty-first day of February in the year of our Lord, nineteen hundred and fifty-seven.

HAROLD W. CHADWICK
CLIFFORD W. AYER
ROBERT S. BRISTOL
Selectmen of Sutton

A true copy of Warrant — Attest:

HAROLD W. CHADWICK
CLIFFORD W. AYER
ROBERT S. BRISTOL
Selectmen of Sutton

BUDGET COMMITTEE RECOMMENDATIONS FOR 1957
(with comparison of 1956 appropriations)

For your convenience in using this Annual Report at Town Meeting, the budget items below are arranged in the same order as the corresponding Article in the Warrant.

	1956 <i>Appropriations</i>	1957 <i>Recommendations</i>
Town Charges:		
Salaries	\$2,000.00	\$4,000.00
Expenses	1,000.00	1,000.00
Election and Registration	250.00	150.00
Town Hall	500.00	500.00
Police Department	100.00	100.00
Vital Statistics	15.00	15.00
Health Department	20.00	20.00
Care of Dump	200.00	200.00
Care of Common	20.00	20.00
Cemeteries	700.00	875.00
Interest	200.00	200.00
Social Security	150.00	150.00
Interest, Church & School	<u>150.00</u>	<u>150.00</u>
	\$5,305.00	\$7,380.00
Public Welfare:		
Town Poor	\$500.00	\$300.00
Soldiers' Aid	500.00	500.00
Old Age Assistance	<u>2,500.00</u>	<u>2,500.00</u>
	\$3,500.00	\$3,300.00
Highways and Bridges:		
Town Maintenance		
(Summer)	\$6,750.00	\$6,750.00
(Winter)	3,250.00	3,250.00
General Expenses of Highway Department	<u>750.00</u>	<u>750.00</u>
	\$10,750.00	\$10,750.00

Town Road Aid	1,040.43		1,038.40
Street Lighting	1,675.00		1,675.00
Dartmouth-Lake Sunapee Region	75.00		75.00
Library	500.00		500.00
Memorial Day	100.00		100.00
New London Hospital	400.00		400.00
White Pine Blister Rust	400.00		400.00
New Equipment, Highway	---		785.00
Fire Department:			
Expenses	600.00	870.00	
Insurance	---	625.00	
New Equipment	1,300.00	3,000.00	
S. S. Fire House	300.00	---	
"Red" Network	300.00	---	
	<u>\$2,500.00</u>	<u>---</u>	\$4,495.00
No. Sutton Fire House	---		1,500.00
Forest Fire	100.00		100.00
Capital Reserve Fund	---		2,500.00
Note on conventional truck	---		2,250.00
Note on 4 wheel drive	2,090.00		---
Wadleigh Park Road	150.00		---
Balance on Shovel	200.00		---
Repairs, or new equipment	1,000.00		---
Total	<u>\$29,785.43</u>		<u>\$37,248.40</u>

SUMMARY OF INVENTORY

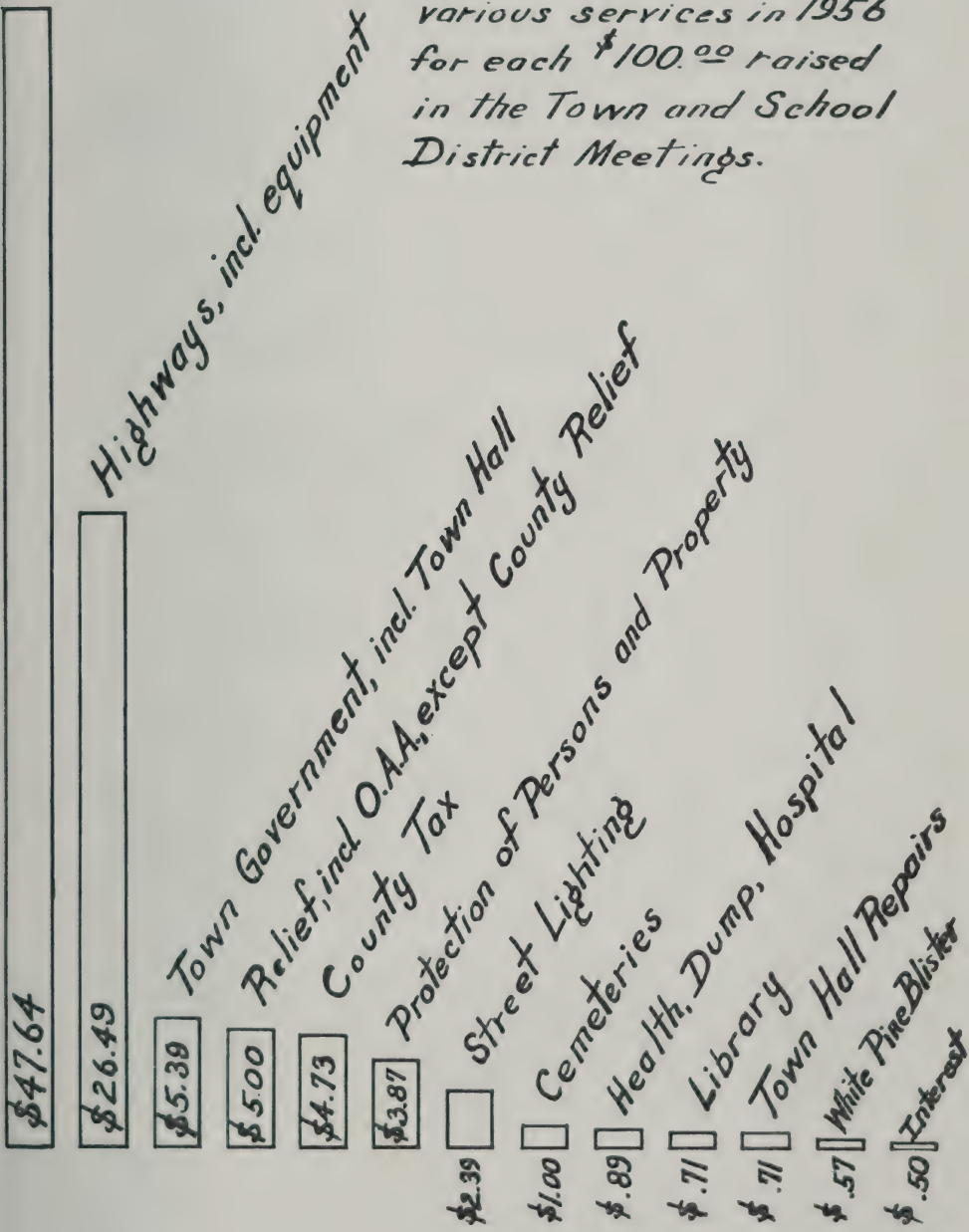
Land and Buildings <i>(exclusive of growing wood and timber)</i>	\$1,061,395.00
Electric Plants	96,120.00
Mature Wood and Timber	1,200.00
Stock in Trade	8,500.00
Boats and Launches	2,650.00
Horses (44)	2,175.00
Cows (54)	3,260.00
Neat Stock (13)	635.00
Sheep and Goats (29)	290.00
Fowls (920)	450.00
Gasoline Pumps and Tanks	825.00
Portable Mills	1,000.00
Wood and Lumber	<u>8,750.00</u>
TOTAL	\$1,187,250.00
<i>Less Soldiers' Exemptions</i>	<u>23,700.00</u>
Net valuation on which tax rate is computed	\$1,163,550.00
Number of Inventories distributed	426
Number of Inventories returned	354
Number of veterans who received property exemption	25
Number of veterans exempted from poll tax	51

School

Your 1956 Tax Dollar

This graph shows the proportionate distribution of expenditures among the various services in 1956 for each \$100.00 raised in the Town and School District Meetings.

Highways, incl. equipment



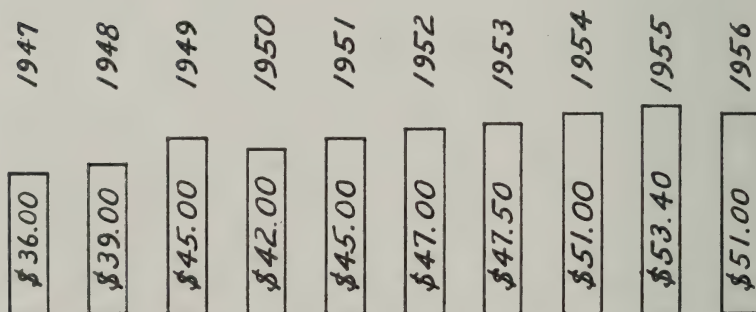
REPORT FROM THE ROUND ROOM

We are proud to have had the opportunity to conduct the affairs of Sutton in this its one hundred and seventy-second year of incorporation as a town. We believe that it has been a year of progress and prosperity for Sutton, and we are pleased to present this summary of Town Officers' activities for 1956.

Lower Tax Rate

Doubtless the biggest news of the year for tax payers was the decrease in the tax rate and the slightly lower tax bills resulting in nearly every case. The amount of decrease was \$2.40 per one-thousand dollars of valuation; the 1955 rate was \$53.40, the 1956 rate was \$51.00. The accompanying bar graph shows the changes in the tax rate since 1947.

Tax Rate per \$1000.⁰⁰ of Valuation 1947 - 1956



A number of factors enter into making a tax rate, and on the pages immediately following this report is a comparative summary of the main components of the tax rates for 1955 and 1956. On reading these tables you will see that the total amount of appropriations this year was only \$710.18 less than in 1955, and that the property taxes committed to the Collector, only \$539.35 less

in 1956 than in 1955. The most important factor that accounts for the decrease in the rate was the increase in the net valuation on which the property tax was assessed.

The increased net valuation was due to two things; first, there was an increase in the total valuation of \$25,665.00; coupled with that, was a decrease in the amount of valuation exempted to Veterans. A change in the Veterans' Exemption Law was made by the 1955 session of the General Court which resulted in \$16,530.00 less valuation being exempted to Veterans in Sutton. Therefore, the amount of value on which to base the tax in 1956 was greater by \$42,195.00 than in 1955.

This brief analysis of the "why" of the lower tax rate in 1956 shows that only a small difference in appropriations, and a modest increase in valuation made it possible. Should the voters at Town and School meeting favor new and/or increased services, a higher rate (*and taxes*) would follow. While it is the duty of the Selectmen to find all possible taxable valuation, it is not an easy task in a town which is adding assessable property at a slow pace. Unless a complete re-evaluation is undertaken, the possibility of an increase in total valuation can only be made by small increments. It would not be wise, for these reasons, to expect an increase in valuation to be a factor in keeping our rate down another year. Therefore, we say plainly that we do not attempt to predict the rate for 1957, and we flatly warn that is *could increase*.

Town Report

The second bit of good news was the recognition of our 1955 Town Report in the New Hampshire Town Report Contest. We received a certificate showing that our efforts placed third in the class of towns of 500 to 1,000 population in the entire state. The judging is, we understand, based mainly on attractive appearance, and an effort being made to make the workings of town business more understandable to the voters.

Highways

The net overdraft of both Town Maintenance appropriations is only \$135.53. This is a much brighter financial picture than the Selectmen or the Road Agent believed they could expect in view of two facts; first, the unusually heavy snows of March, April and December of 1956; secondly, because \$1,400.00 of the maintenance appropriation was budgeted to pay part of the bal-

ance due on the tractor shovel and this is a sizeable amount to take away from current road uses.

The T.R.A. money was expended on the Nelson Hill road extending the work that was started in 1954 at King Bridge in Sutton Village. A three inch treated gravel surface was applied to a road eighteen feet wide and 1.2 miles in length, from the residence of Mr. George Arland to a point beyond the junction with the Brown Road, thus completing the gravel surface of the 1955 project.

Starting from the end of this new surface to the Newbury Town Line, the road was widened to twenty-two feet, graded and drained. These are the preliminary steps, and funds did not permit application of the gravel base to the new section. Gravel to a depth of about twelve inches will be applied in 1957 to prepare the road for eventual surface treatment.

The "Duncan Fund" was used in two projects of a permanent nature, and in the purchase and installation of nine culverts. A section of the hill from the Huntoon House to the summer residence of the Misses Dodge was graded, drained, gravelled and surface treated with asphalt. This should lessen the cost of maintaining this hill which tended to wash seriously in heavy rain storms. The second project was the replacement of one of the "twin bridges" near the Maple Leaf Golf Course, with a thirty-six inch culvert, thus eliminating an old wooden bridge.

The usefulness of the new tractor shovel was increased, at very little expense, by installing a used truck "wing" as a blade attached to the shovel "arms". With this attachment the tractor can be used for light pushing jobs, such as cleaning up the dump, and moving snow back at corners.

Complying with the vote taken at our last Town Meeting in regard to purchasing a new highway truck, your Selectmen and Road Agent spent much time and study in checking different makes and models. A decision was made to buy a Ford, and a final decision to buy a conventional two speed axle hydraulic dump, with complete hydraulic snow removal equipment. Bids were submitted and returned from several dealers, and the lowest bid accepted. We think this truck will fulfill every need of the town and at a cost of \$2,500 less than a four wheel drive.

Original Town Plan

The town has in its possession a very rare and old parchment showing the original grants in the town of Sutton. Due to its age and condition this document was entrusted to Mrs. Alfred G. Wilmot who kindly delivered it to the Harcourt Bindery in Boston, for reconditioning. The Bindery mounted the map in its original size under glass, in a simple, black wooden frame. Aside from its great age (*over two hundred years old*) and its historic interest, this map serves a useful purpose today as an aid in reading and interpreting deeds where reference is made to the lot numbers. An accurate drawing of this Town Plan appears on page 18 of this Town Report, and also a few notes on its historical background and significance.

Town Dump

We are reluctant to suggest specific days for disposal, or to employ a costly supervisor. To avoid such measures, it is important for every individual using this public rubbish disposal to take personal pride and responsibility. If the above conditions are not met, this dump may be closed, and open to the public only on specified days.

New Dam and Water Hole

Much credit should be given Fire Ward, John Csutor, for the construction of a new concrete dam on King Brook in Sutton Village. Mr. Csutor, with the help of many local men, did a fine job; the Town paying only for cement, tile, back-hoe, etc. All labor for building forms, grading and pouring cement, was supplied by local men, free. The Sutton Fire Departement deserves much credit for the many improvements made this past year.

Town Hall

The Town Hall wood trim was painted this past year, and also the flag pole on the front lawn. A new assist rail has been installed on the front steps, which we hope will meet with your approval.

On the petition of members of the Sutton Women's Club, we are including an article in the Town Warrant relative to making improvements in Pillsbury Town Hall. Sutton is very fortunate to have had the gift of this beautiful structure. It is a fine building but in the course of progress, little has been done to modernize it and increase its usefulness. The many demands made on the

new school suggest that a properly equipped Town Hall would better serve some of these functions now being held at the school. We would like to see an over-all plan developed for renovating this building, a plan which could be accomplished step by step, a year at a time, over an extended period. Therefore, we suggest that a committee be appointed at the 1957 Town Meeting to study the problem and to report their recommendations at the Annual Meeting in March 1958.

Yield Right of Way Signs

At the request of the town, new highway "Yield right of way" signs have been placed at several intersections of State Highway 114. These were supplied and erected by the State Highway Department at no cost to the town.

Cemetery Grading

Using an appropriation, a small grading job was completed at the Millwoods Cemetery. The fence was also painted, which adds much to its appearance.

Carry-Over Appropriations

There is a carry-over appropriation of \$300.00 to be used for the beautification of the South Sutton Common and the Library lawn. We hope to complete this work sometime this spring.

Balance of Appropriations

There is a balance of \$1,989.04 of appropriations and receipts over payments, which is a reflection of the good financial standing of the Town.

Timber Tax Summary

Your attention is directed to the tables containing information from revenues, and amounts of timber cut in Sutton since the enactment of the Yield Tax Law. These figures are not part of the required material for Town Reports, but they are interesting and informative. We believe that this feature of our report is unique in the State.

For many years statements have been made that our standing timber was practically exhausted. It is therefore interesting to note the amounts of wood and lumber reported cut since 1950. The volume reported cut for the Yield Tax year ending September 30, 1956, is the largest to date, but we believe that this is a peak and cutting will taper off.

Surplus

We are pleased to inform the voters of Sutton that there is an accumulated surplus of several thousand dollars. The surplus results in a sizable bank balance on hand December 31, 1956. Such a large balance is of no help except to decrease the amount of money that has to be borrowed in anticipation of taxes. Since the Town can borrow money for this purpose at a low rate of interest, we believe that the surplus should be put to "work" for us. We recommend the following ways to use this money to advantage:

1. To set aside part of the surplus in a Capital Reserve Fund for capital improvements in the Town Hall.
2. To apply a part of the surplus to reduce the money to be raised by taxes in 1957.

Adieu -

From inventory time when we donned snow shoes to walk to the Gore to take the count of lumber, to the present when we are assembling facts, figures, pictures, etc., for this Town Report, we have endeavored to 'discharge and perform our duty faithfully and impartially according to the best of our ability'. On the mantel shelf in the Round Room we have placed a card bearing these words which express our attitude in accepting our particular office:

"Don't strut. The fact that you have a certain title or position doesn't prove anything except that maybe in selecting you somebody made a mistake that will be rectified later."

-- John Temple

BEECH TREE

← FIVE MILES NEW LONDON

← WEST - FIVE DEGREES SOUTH

HEMLOCK TREE

↑ WILMOT

↑ for SEVEN MILES AND EIGHTY POLES

↑ NORTH - SIXTEEN DEGREES WEST WARNER

↑

BEECH TREE

↓ SOUTH - SIXTEEN DEGREES EAST

NEWBURY (FISHERSFIELD)

↓ SEVEN MILES AND EIGHTY POLES

WHITE OAK

40	39	38	37	36	35	34	33					18
25	26	27	28	29	30	31	32					17
24	23	22	21	20	19	18	17					16
9	10	11	12	13	14	15	16					15
8	7	6	5	4	3	2	1					14
	63	64	65	66	67	68	69	70	71	72	73	13
44	41	42	43		45	46	47	48	49	50	51	12
30	40	38	36	34	32	30	28	25	23	22	20	11
83	39	37	35	33	31	29	27	26	24	0	0	10
82	62	61	60	59	58	57	56	55	54	53	52	9
	81	80	79	78	77	76	75	74	66	21	19	8
48	47	46	45	44	43	42	41					7
49	50	51	52	53	54	55	56					6
63		62	61	60	59	58	57					5
UNDIVIDED LAND												4
BRADFORD												3
												2
												1
												1

BRADFORD

LAND

WARNER

Notes on the Original Plan of the Town

The diagram on the opposite page is a faithful and accurate copy of the **Plan of the Township of Sutton**. The original, framed and under glass, as described in the Selectmen's Report, is kept in the safe at the Town Hall. This Plan shows the lots into which the Proprietors divided the thirty-six square miles of land "within the Province of New Hampshire" described as "lying West of Kyahsarge Hill so called; and beginning at a Beach Tree; -- from thence running north sixteen degrees west seven miles and eighty poles, to a Hemlock standing on the top of a hill: etc.". The Beach tree referred to is the south-east corner of the town adjoining Warner, now a tall stone post in Clifford Sawyer's field south of his barn, and is the lower right corner of the diagram. The compass directions and the distance between the corners are marked along the sides of the diagram.

This tract known as "Perrystown" was granted to Obadiah Perry and 59 Grantees on November 30, 1749 and was to be divided into sixty equal shares; and also one share for the first-settled minister, one share for the support of the Gospel, and one share for the support of schools; making in all sixty-three shares, each consisting of two lots. On the Plan they laid out the First Division to contain seventy-two lots of one hundred acres each. This is the section of small squares in the middle part of the diagram. The large squares at either end represent the sixty-four lots which comprised the Second Division, each containing one hundred sixty acres.

The Charter directed "that, in laying out the lots, care be taken to sort them in such manner as to make the shares as equal as possible". To accomplish this each share was made to consist of two distinct and separate lots, one in the First Division, and one in the Second Division. The numbers of the two lots of each share were then written on a ticket, discretion being used to make the tickets as nearly equal in value as possible. The tickets were drawn by the Grantees, in person, at a meeting held "at the dwelling House of Ann Slaten at Portsmouth," Wednesday, July 11, 1750.

The Grantors reserved for themselves eighteen shares of three hundred acres each. This is the strip on the extreme right of the

diagram and represents a "strip of land one mile wide and seven and one quarter miles long, the whole length of the town on the east side of the same". These lots are sometimes called the "Lord Proprietors' Lots". The Grantors showed good judgement in keeping this part of the town for themselves because it contains large areas of level land, the best that Sutton offers for agricultural purposes.

The date of the Plan is not certain as the figure on the parchment is illegible. But from the record of the Grantors' meetings it appears that it must have been completed in time for the drawing of the tickets in July 1750. Furthermore it is recorded in the minutes of the meeting of June 21, 1750 that they had some difficulty in obtaining the Plan from the surveyor. We are making an assumption that the "Plan" referred to is this same parchment that we are describing and that is copied on the preceding page. From the Grantees' records: "Voted that the Comitey that Laid ought the Land shall goe and Demand the Plan of the Surveyer forthwith soe that they may Cuppel the Lotes. Capt. Obadiah Perry, Daniel Roberts, Benjamin Eatton, John Currer Demanded the Plan of the Survaiuer who was then present at the meeting before the Society and he refused to Let them have the Plan that he had drawn of the tract of Land". Later they "voted and allowed to Timothy Clement 44 pounds Old Tenor, to satisfy him for surveying our township".

The following information is submitted about a few of the lots and is intended to locate some of them in the familiar Sutton of today; and also to point out some historical facts. You may be interested to try to approximate the location of your property, and perhaps from the notes about these widely separated lots you can guess at it.

"That one of said sixty-three shares be for the first minister of the Gospel who shall be settled there,". *Lot No. 32 in the First Division, and Lot No. 63 in the Second Division were set aside for the minister.

"And one other of the said sixty-three shares be for and towards the support of the Gospel ministry there forever, and that the hundred acres lots belonging to these two shares be laid out as near the place where the meeting-house shall be built as conveniently may, and not drawn for as the other lots are".*

Lot No. 31 in the First Division and Lot No. 5 in the Second Division were saved for this purpose.

“That one other of said sixty-three shares be for the use and support of a school forever”. * Lot No. 60 in the First Division and Lot No. 4 in the Second Division were reserved for the support of the school.

The “Lull” lot, now owned by Clarence Holmgren is No. 29 in the First Division, and it is interesting to note that this has the same area and boundaries as when it was laid out. It is a 100 acre tract that stretches over Meeting House Hill encompassing parts of the north, west and south slopes. A description of the lot in a deed using the names of adjoining present day owners might read as follows:

On the North by the Fred Wells lot owned by Mrs. Doris Deprey, On the East by the George Tilton place owned by Dura Crockett, and land of Mrs. Grace Lowe, on the South by land of Mrs. Grace Lowe and Buster West, on the West by lands of Fred Courser, James Nelson and Arthur Merrill.

A part of Lot No. 14 in the Second Division is now the property of Mrs. Anna Kutzner at North Sutton, and thus it can be assumed that this village is located in this lot.

Lots Nos. 4 and 5, school and church lots, in the Second Division are just south of Keyser Lake; we learn this from the original parchment where the lake has been sketched in.

The lot known as the Butternut Orchard, owned by Carl Heyser, is the easterly part of Lot No. 6 in the Second Division.

The farm of Mr. William B. Connor is in the westerly part of Lot No. 8 in the Second Division.

The Mary Ellen Bailey Lot owned by the town is the north half of Lot No. 23 in the First Division.

The Sargent Lot, now owned by Mr. Gordon Davis, is the south half of No. 49 in the First Division. These last two lots are located south and west of Shadow Hill.

By vote of the Grantees on August 31, 1769: "to give one Hundred Dollars and one hundred acre Lott in the first Division No. 75 in said town to any man that shall Engage and build a good Sawmill on said Lott by the Last of October Next". By conjecture this places lot No. 75 in the First Division south of the residence of Mrs. Grace Lowe, and it was the probable site of the mill at the falls on Lane River over and through some narrow ledges. This may be the place described in the minutes of the meeting of November 30, 1761: "our opinion that it is the Best place for A Sawmill to be built to serve the town is to set said mill on the falls in Keyasargy River which falls Bares Southwardly or South westerly (easterly^d) from our meeting house Lot". (Meeting house lot No. 31, First Division)

From the minutes of the meeting of January 7, 1771: "Voted to give Joseph Bean the 2nd Son of Cornelius Bean who was born in said Town October 31 or Nov. 1, 1770 the first born there some consideration". And at the meeting of April 1, 1771: "Voted to give Joseph Bean 2nd Son of Cornelius Bean one hundred acre Lott in said Town he being the first born in said Town. Said Lott adjoining on the North to No. 20 on the South to No. 52 in the first Division of Lotts on the East to No. 8 chiefly of the Lord Proprietors Land on the west to a Lott not Drawn".

Additional information that anyone may have in regard to the identity and history of these lots would be welcomed by the Selectmen.

*From the Charter

**INVENTORY OF GROSS VALUATION, April 1, 1956
and COMPARISON with April 1, 1955**

	1956		1955
Land and Buildings	\$1,061,395.00		\$1,032,215.00
Electric Plants	96,120.00		98,125.00
Mature Wood & Timber	1,200.00		1,400.00
Stock in Trade	8,500.00		8,400.00
Boats and Launches	2,650.00		2,350.00
Horses	(44) 2,175.00	(43)	2,115.00
Cows	(54) 3,260.00	(60)	3,560.00
Neat Stock	(13) 635.00	(18)	925.00
Sheep and Goats	(29) 290.00	(30)	245.00
Fowls	(920) 450.00	(1150)	700.00
Gasoline Pumps & Tanks	825.00		1,125.00
Portable Mills	1,000.00		1,525.00
Wood and Lumber	8,750.00		8,900.00
Total Valuation	<u>\$1,187,250.00</u>		<u>\$1,161,585.00</u>
Exempt to Soldiers	23,700.00		40,230.00
Net Taxable Valuation	<u>\$1,163,550.00</u>		<u>\$1,121,355.00</u>
 Tax Rate per \$1,000.00	 \$51.00		 \$53.40

Number of Veterans receiving Property Exemption	25	43
Number of Veterans exempted from Poll Tax	51	58

Taxes Committed to Collector Evangeline A. Chadwick

	1956	1955
Property Taxes	\$59,341.37	\$59,880.72
Poll Taxes	494.00	500.00
Yield Taxes	4,379.00	1,335.84
	<u>\$64,214.37</u>	<u>\$61,716.56</u>

COMPARATIVE STATEMENT OF APPROPRIATIONS AND EXPENDITURES FOR 1956
TOWN OF SUTTON, NEW HAMPSHIRE

<i>Title of Appropriation</i>	<i>Appropriation</i>	<i>Receipt</i>	<i>Expended</i>	<i>Balance</i>	<i>Overdraft</i>
Town Officers' Salaries	\$2,000.00		\$2,014.05		\$14.05
Town Officers' Expenses	1,000.00		1,256.13		256.13
Election and Registration	250.00	8.00	263.42		5.42
Town Hall	500.00		776.86		276.86
Town Hall Repairs	405.00		348.60	56.40	
Police Department	100.00	5.55	47.50	58.05	
Fire Department, <i>including Forest Fires</i>	700.00	33.67	760.71		
Fire Department Equipment	1,300.00	8.07	1,088.18	219.89	
Red Network	300.00		255.50	44.50	
White Pine Blister Rust	400.00		400.00	10.80	
New London Hospital	400.00	10.80	400.00		
Care of Dump	200.00		197.05	2.95	
Health Department	20.00		298.58	20.00	
South Sutton Fire House	300.00		1.42	1.42	
Vital Statistics	15.00		11.00	4.00	
Town Maintenance (<i>Summer</i>)	6,750.00	1,032.40	5,578.89	2,203.51	
Town Maintenance (<i>Winter</i>)	3,250.00	286.56	5,875.60		
Duncan Fund	3,296.68		3,283.43	13.25	
Town Road Aid (T.R.A.)	1,040.43		1,040.43		
Wadleigh Park Road	150.00		92.11	57.89	
General Expenses of Highway Department	750.00	21.66	826.01		54.35

Tractor Shovel	200.00			200.00	
4 Wheel Drive Truck (<i>Note and Interest</i>)	2,090.00			2,030.00	
New Truck conventional	1,000.00			5,500.00	60.00
Street Lighting	1,675.00	4,500.00		1,510.30	164.70
Library	500.00	39.22		703.59	114.37
Soldiers' Aid	500.00	15.00		572.61	57.61
Old Age Assistance (O.A.A.)	2,500.00	211.26		1,901.00	310.26
Town Poor	500.00			500.00	500.00
Dartmouth-Lake Sunapee Region	75.00			75.00	
Common, South Sutton	20.00			20.00	
Cemeteries	700.00			757.63	
Interest, <i>including School and Church Funds</i>	350.00	196.89		146.67	400.22
Memorial Day	100.00			100.00	
Library and South Sutton Common, Spec.	300.00			300.00	300.00
Civil Defense	200.00			200.00	200.00
Cemetery Landscaping	27.00			27.00	27.00
Water Holes	67.36	97.15*		127.81	36.70
TOTALS	\$33,931.47	\$6,516.23		\$38,458.66	\$5,191.54
					3,202.50
					\$1,989.04

NET BALANCE OF APPROPRIATIONS

*Town Line Signs	\$67.50
Signs and Railings	29.65
	<u>\$97.15</u>

**1956 APPROPRIATIONS
AND TAXES ASSESSED AND TAX RATE**

Town Officers' Salaries	\$2,000.00
Town Officers' Expenses	1,000.00
Social Security	150.00
Election and Registration	250.00
Town Hall and Buildings Maintenance	500.00
Police Department	100.00
Fire Department	600.00
Forest Fire	100.00
Fire Department Equipment	1,300.00
Blister Rust	400.00
Health Department	20.00
New London Hospital	400.00
Care of Dump	200.00
Vital Statistics	15.00
Town Road Aid (T.R.A.)	1,040.43
Town Maintenance: <i>Summer</i>	6,750.00
<i>Winter</i>	3,250.00
Wadleigh Park Road	150.00
General Expenses of Highway Department	750.00
"Red Network"	300.00
South Sutton Fire House	300.00
Street Lighting	1,675.00
Balance on shovel	200.00
New truck	5,500.00
Library	500.00
Old Age Assistance	2,500.00
Town Poor	500.00
Soldiers' Aid	500.00
Memorial Day	100.00
South Sutton Common	20.00
Cemeteries	700.00
Church Fund	60.00
School Fund	90.00
Dartmouth-Lake Sunapee Region	75.00
Payment of Truck Note and Interest	2,090.00
Interest on Temporary Loans	200.00
County Tax	3,308.88
School Tax	32,156.45

Total Town, School and County Appropriations \$69,750.76

Less: Estimated Revenues and Credits:

Interest and Dividends Tax	\$ 1,406.59	
Railroad Tax	.80	
Savings Bank Tax	144.70	
Reimbursement a/c State and Federal Lands	50.00	
Revenue from Yield Tax Sources	2,186.32	
Motor Vehicle Permit Fees	2,000.00	
Dog Licenses	125.00	
Truck Notes	4,500.00	\$10,413.41
Total Revenues and Credits		<u>\$59,337.35</u>
Plus Overlay		497.70
Net Amount to be raised by Taxation		<u>\$59,835.05</u>
Less: 247 Poll Taxes @ \$2.00		<u>494.00</u>
Amount to be raised by property taxes on which Tax Rate is figured:		<u>\$59,341.05</u>

Taxes Committed to Tax Collector

Property Taxes committed 8/7/56	\$59,341.37
Poll Taxes committed 4/25/56	494.00
Total Committed	<u>\$59,835.37</u>

Tax Rate \$5.10 per hundred dollars of valuation

TAXES ASSESSED IN 1956
With Comparative Figures for 1955

	1956	1955
Town Officers' Salaries	\$2,000.00	\$2,000.00
Town Officers' Expenses	1,000.00	1,000.00
Social Security	150.00	150.00
Election & Registration	250.00	125.00
Town Hall Repairs		500.00
Town Hall Maintenance	500.00	500.00
Police Department	100.00	100.00
Fire Department	600.00	600.00
Forest Fire	100.00	100.00
Fire Department Equipment	1,300.00	1,000.00
Blister Rust	400.00	400.00
Health Department	20.00	20.00
New London Hospital	400.00	400.00
Care of Dump	200.00	200.00
Vital Statistics	15.00	15.00
Town Road Aid	1,040.43	1,040.63
Town Maintenance, Summer	6,750.00	6,500.00
Town Maintenance, Winter	3,250.00	3,250.00
Town Line Signs	---	150.00
Wadleigh Park Road	150.00	---
Duncan Fund	---	3,141.29
General Exp. of Highway Dept.	750.00	750.00
"Red Network"	300.00	---
South Sutton Fire House	300.00	---
Street Lighting	1,675.00	1,600.00
Balance on Shovel	200.00	---
New Truck (conventional)	5,500.00	---
Library	500.00	400.00
Old Age Assistance	2,500.00	2,500.00
Town Poor	500.00	300.00
Soldiers' Aid	500.00	700.00
Memorial Day	100.00	100.00
South Sutton Common	20.00	20.00
Cemeteries	700.00	700.00
Church and School Funds	150.00	150.00
Dartmouth-Lake Sunapee Region	75.00	75.00

Truck Note and Interest - (Four-Wheel Drive)	2,090.00	2,090.00
Interest on Temporary Loans	200.00	200.00
County Tax	3,308.88	3,744.84
School Tax	32,156.45	35,898.10
Total Appropriations	\$69,750.76	\$70,419.86
Overlay (Abatements & Adjustments)	497.70	538.78
Total Amount Needed to carry on Town and School services	\$70,248.46	\$70,958.64

SOURCES OF REVENUE, 1956
With comparative figures for 1955

1956

1955

The funds needed to provide the above listed appropriations made by the Town, School District and County, came from the following sources:

Property Tax	\$59,341.05	\$59,880.36
Poll Tax	494.00	500.00
Interest and Dividends Tax	1,406.59	1,082.02
Railroad Tax	.80	.84
Savings Bank Tax	144.70	63.40
Reimbursement a/c State Land	50.00	69.23
Reimbursement a/c Exemption Growing Wood and Timber	2,186.32	4,021.50
Motor Vehicle Permit Fees (estimate)	2,000.00	2,000.00
Dog Licenses (estimate)	125.00	200.00
Truck Notes	4,500.00	---
Duncan Fund	---	3,141.29
Total Revenues	\$70,248.46	\$70,958.64

BALANCE SHEET
AS AT DECEMBER 31, 1956

ASSETS

Current Assets

Cash on hand 12/31/56		\$20,711.61
Accounts due Town:		
Merrimack County	\$180.61	
Library	114.37	
Trustees of Trust Funds	305.00	599.98
Unredeemed Taxes:		
Levy of 1955	\$865.31	
Levy of 1954	770.65	
Previous Years	136.87	1,772.83
Uncollected Taxes:		
Levy of 1956	\$9,635.97	
Yield Tax, 1956	395.83	
Poll Tax, 1956	118.00	
Poll Tax, previous years	22.00	
Head Tax, 1956	380.00	
Head Tax, previous years	80.00	10,631.80
TOTAL ASSETS		\$33,716.22

LIABILITIES

Current Liabilities

Accounts owed by Town, Schedule A*		\$1,143.80
Church Fund Interest		60.00
Due Sutton School District:		
Balance 1956-1957 Appropriation		19,300.41
Due State of New Hampshire:		
2% Debt Retirement, Yield Tax	\$729.83	
Head Tax	470.00	1,199.83
Due for F. I. C. A.		800.00
Deposits, Timber Tax		550.00
Notes Payable, Citizens National Bank		4,500.00
TOTAL LIABILITIES		\$27,554.04
EXCESS OF ASSETS OVER LIABILITIES		6,162.18
TOTAL		\$33,716.22

**Schedule A (Accounts Owed by Town)*

Town Hall Repairs, balance	\$56.40	
Fire Department Equipment, balance	219.89	
Red Network	44.50	
South Sutton Fire House	1.42	
Wadleigh Park Road	57.89	
Spec. Appro. Library, So. Sutton Com.	300.00	
Civil Defense	200.00	
Balance Cemetery Landscaping	27.00	
Bal. Town Line Signs, Signs & railings	36.70	
Whitcher Trust Fund	200.00	\$ 1,143.80

SCHEDULE OF TOWN PROPERTY

Town Hall, land and building	\$15,000.00
Furniture and Equipment	1,700.00
Library, land and building	11,000.00
Furniture and Equipment	3,000.00
Police Department, equipment	25.00
Fire Department, land and building	2,000.00
Equipment, and trucks	15,256.24
Highway Department, land and buildings	4,000.00
Equipment	17,792.25
Materials and Supplies	470.90
School, land and buildings	55,000.00
Equipment	3,000.00
Common and Monument	5,000.00
Outdoor Stage	25.00
*Property Acquired by Collector's Deeds	770.00
Total	\$134,039.39

*Tax Deeded Property:

Pillsbury land 10A	\$150.00
N. G. Ordway lot 56A	270.00
M. E. Bailey lot 60A	200.00
Gile land 7A	50.00
Arthur Andrews land 8A	50.00
George Marena land 4A	50.00
	\$770.00

REPORT OF TOWN CLERK

January 1, 1956 to December 31, 1956

Town Tax for Motor Vehicle Registration:

Received for 1955 Permits	(18)	\$20.92
Received for 1956 Permits	(330)	<u>2,123.97</u>
Total number Permits	348	

Paid to Treasurer \$2,144.89

Dog Licenses Issued:

60 Males @ \$2.00	\$120.00
11 Females @ \$5.00	55.00
3 Kennels @ \$12.00	36.00
1 Replacement	<u>.25</u>

Total Receipts \$211.25
Less Commission 14.80

Paid to Treasurer \$196.45

Town Clerks' Salary

Evangeline A. Chadwick, Town Clerk:

Elections, etc.	\$26.00
Auto Permits	174.00
Copying Records	14.00
Copying Invoice	25.00
Copying Vital Statistics	13.00

Expenses:

Telephone, postage and supplies	6.25
---------------------------------	------

REPORT OF TAX COLLECTOR

Summary of Property Taxes

	1956	1955
Warrant, Property Taxes	\$59,341.48	\$ 9,337.38
Interest Collected	7.53	184.53
Property Taxes Abated	306.00	
<i>Total</i>	<u>\$59,043.01</u>	<u>\$9,521.91</u>
Paid to Treasurer	\$49,399.51	\$9,337.38
Interest Paid to Treasurer	7.53	184.53
Unpaid Taxes, December 31, 1956	9,635.97	
<i>Total</i>	<u>\$59,043.01</u>	<u>\$9,521.91</u>

Summary of Timber Tax

	1956	1955	1953	1952
Warrant, Timber Tax	\$4,379.00	\$10.65	\$48.12	\$1.10
Interest Collected		.12		.28
<i>Total</i>	<u>\$4,379.00</u>	<u>\$10.77</u>	<u>\$48.12</u>	<u>\$1.38</u>
Paid to Treasurer	\$3,983.17	\$10.65	\$48.12	\$1.10
Interest Paid		.12		.28
Unpaid Timber Tax	395.83			
<i>Total</i>	<u>\$4,379.00</u>	<u>\$10.77</u>	<u>\$48.12</u>	<u>\$1.38</u>

Summary of Poll Taxes

	1956	1955	1954	1953
Warrant, Poll Tax	\$494.00	\$124.00	\$50.00	\$6.00
Additional	22.00			
Interest Collected	.17	1.80	1.90	.56
Less Abatements	(20.00)	(28.00)	(16.00)	
<i>Total</i>	<u>\$496.17</u>	<u>\$97.80</u>	<u>\$35.90</u>	<u>\$6.56</u>
Paid to Treasurer	\$378.00	\$90.00	\$20.00	\$4.00
Interest Paid	.17	1.80	1.90	.56
Unpaid Poll Tax	118.00	6.00	14.00	2.00
<i>Total</i>	<u>\$496.17</u>	<u>\$97.80</u>	<u>\$35.90</u>	<u>\$6.56</u>

Town of Sutton

Summary of Head Taxes

	1956	1955	1954	1953
Warrant, Head Tax	\$1,520.00	\$410.00	\$95.00	\$20.00
Additional	65.00			
Penalties Collected	9.00	30.50	4.50	.50
Less Abatements	(35.00)	(90.00)		
<i>Total</i>	\$1,559.00	\$350.50	\$99.50	\$20.50
Paid to Treasurer	\$1,170.00	\$305.00	\$45.00	\$5.00
Penalties Paid	9.00	30.50	4.50	.50
Unpaid Head Tax	380.00	15.00	50.00	15.00
<i>Total</i>	\$1,559.00	\$350.50	\$99.50	\$20.50

Summary of Tax Sales

Tax Sales on Account of Levies of:

	1955	1954	Previous Years
Taxes Sold During Current Fiscal Year	\$2,979.58		
Balance of Unredeemed Taxes 1/1/56		\$1,470.36	\$425.04
Interest Collected After Tax Sale	24.21	66.90	50.43
<i>Total</i>	\$3,003.79	\$1,537.26	\$475.47
Remittance to Treasurer	\$2,138.48	766.61	338.60
Unredeemed Taxes, 12/31/56	865.31	770.65	136.87
<i>Total</i>	\$3,003.79	\$1,537.26	\$475.47

REPORT OF TOWN TREASURER
(Detail Statement of Receipts)

From Local Taxes:Evangeline A. Chadwick, *Tax Collector:*

Property tax 1956	\$49,399.51	
Property tax 1955	9,337.38	
Yield tax 1956	3,983.17	
Yield tax, previous years	59.87	
Poll tax 1956	378.00	
Poll tax, previous years	114.00	
Head tax, 1956	1,170.00	
Head tax, previous years	355.00	
Head tax penalties	44.50	
Interest	196.89	
Tax Sales Redeemed	3,243.69	
Dog taxes	211.25	
Auto permits 1955	20.92	
Auto permits 1956	2,123.97	\$70,638.15

From State of New Hampshire:

Forest Fire Bill	\$17.02	
Duncan Fund	3,296.68	
Interest & Dividends Tax	1,409.37	
Savings Bank Tax	127.65	
Railroad Tax	.85	
Reimbursement a/c State Lands	4.33	
White Pine Blister Refund	10.80	
O. A. A. Refund	211.26	
Head Tax Refund	2.00	\$5,079.96

From Merrimack County:

County Commissioners, aid repaid	\$976.54	\$976.54
----------------------------------	----------	----------

Revenue from Departments:*Highway Department:* (Schedule "A" below)

Use of trucks, gravel	\$1,004.25	
Gas refund	58.71	
Driveways	235.00	
Sale of junk	21.00	\$1,318.96

<i>Pistol Permits</i>	\$5.55	\$ 5.55
-----------------------	--------	---------

<i>Filing Fees</i>	\$8.00	\$8.00
<i>Library:</i>		
F. E. Nelson, Trust Fund	\$62.50	
Sale of Books	5.88	\$68.38
From Sources Other Than Taxes:		
Temporary Loans	\$16,500.00	
Insurance Refunds	38.31	
Sale of Tax Deeded Property	50.00	
Deposits on Yield Tax	1,792.00	
Trustees of Trust Funds	150.00	
Sale of Wood	41.50	
Truck Notes	4,500.00	
New Trust Fund (Whitcher)	200.00	
Repayment S. A. Case No. 1	15.00	
Sale of Lumber	3.50	\$23,290.31
Total Receipts		\$101,385.85
Cash balance adjustment		5,987.75
Cash on hand January 1, 1956		11,931.81
		<u>\$119,305.41</u>
Paid on Selectmen's Orders		<u>98,593.80</u>
Cash on hand December 31, 1956		\$20,711.61

Schedule "A" Highway Department:

<i>Use of trucks, gravel,</i>	
Dudley Coonley	\$3.50
Herman Keller	15.00
Pat Rooney, Jr.	96.25
Roy B. Mattern Jr.	49.50
Hans Rahr	560.35
Follansbee Inn	12.00
Camp Penacook	20.00
Richard Smiley	8.50
Donald Lowe	10.50
George Woollett	20.00
John A. Wolfe	12.00

George Wells	3.50	
John M. Lovett	139.20	
Donald Chadwick	5.00	
George Salo	48.95	\$1,004.25
<i>Gas Refunds:</i>		
State of New Hampshire	\$58.71	\$58.71
<i>Plowing Driveways:</i>		
John Dorr	\$10.00	
James Nelson Estate	5.00	
Carlton Bradford	5.00	
William Bradford	5.00	
Elsie Ring	5.00	
Carl Heyser	5.00	
Ella Mulligan	5.00	
Frank Barraclough	10.00	
Buster West	5.00	
A. S. Little Jr.	5.00	
William Stevens	10.00	
Herbert Brewster	5.00	
Bernard Howe	5.00	
Elinor Wheeler	5.00	
Maude T. Clarke	5.00	
John R. Powell	5.00	
Henry Mercer	5.00	
Ronald Palmer	5.00	
Frank Tucker	5.00	
F. Clifton Haynes	5.00	
Arthur Davis	5.00	
William King	5.00	
Weston Chadwick	5.00	
Thomas Mains	5.00	
Evelyn Boynton	5.00	
Carl Blanchard	5.00	
Wesley Kendall	5.00	
Henry Palmer	5.00	
Harry Chadwick	10.00	
William Jaynes	5.00	
Arthur Dorley Jr.	5.00	
Earl Rowe	5.00	
Edward Cassidy	5.00	
Eliot Foot	5.00	

Beatrice Gregory	5.00	
Gerald Roby	5.00	
Mildred Dorley	5.00	
Addie Nelson	5.00	
Luke Cheney	5.00	
Anthony Sikel	5.00	
Ella French	5.00	
Preston Quinley	5.00	
Grace Lowe	5.00	\$235.00
<i>Miscellaneous:</i>		
Sale of Junk	\$21.00	\$21.00
		<hr/>
TOTAL		\$1,318.96

SUMMARY OF PAYMENTS

Town Officers' Salaries	\$ 2,014.05
Town Officers' Expenses	1,256.13
Election and Registration	263.42
Town Hall Repairs	348.60
Town Hall	776.86
Police Department	47.50
Fire Department, including Forest Fire	760.71
Fire Department Equipment	1,088.18
White Pine Blister Rust	400.00
New London Hospital	400.00
Care of Dump	197.05
Fire House, South Sutton	298.58
Vital Statistics	11.00
Town Maintenance: Summer	5,578.89
Winter	5,875.60
Duncan Fund	3,283.43
Town Road Aid (T.R.A.)	1,040.43
Street Lighting	1,510.30
General Expenses of Highway Department	826.01
Wadleigh Park Road	92.11
Library	703.59
Old Age Assistance	1,901.00

County Poor	180.61
Memorial Day	100.00
Soldiers' Aid	572.61
Dartmouth-Lake Sunapee Region	75.00
South Sutton Common	20.00
Cemeteries	757.63
Advance, Trustees of Trust Funds	305.00
Trust Funds, Paid to Trustees	250.00
Timber Tax payment to Collector	1,529.36
Timber Tax refunds to Depositors	38.29
Taxes bought by Town	3,181.84
Property Tax refunds	38.25
Red Net Work	255.50
Driveway refund	5.00
Wood	35.00
Interest	146.67
Truck Note and Interest	2,030.00
Temporary Loans	16,500.00
State and County	4,681.88
School District	33,324.91
Damages and Legal Expenses	65.00
Signs and Water Holes	127.81
Shovel Appropriation	200.00
New Equipment	5,500.00
Total Payments	\$98,593.80

DETAILED STATEMENT OF PAYMENTS

Town Officers' Salaries

Appropriation \$2,000.00

Payments

Clifford W. Ayer, Selectman	\$350.00	
Robert S. Bristol, Selectman	400.00	
Harold W. Chadwick, Selectman	250.00	
Robert S. Bristol, Tax Comm. meeting	8.00	
Evangeline A. Chadwick, Town Clerk:		
Auto Permits	161.00	
Copying Records	4.00	
Evangeline A. Chadwick, Tax Collector:		
Commission 1954 Head Tax	7.95	
Commission 1955 Head Tax	16.60	
Commission 1955 Property Tax	104.00	
Commission 1956 Property Tax	460.00	
Amelia A. Chapman, Auditor	40.00	
Sherman J. Felch, Treasurer	37.50	
Grace Mitchener, Treasurer	150.00	
George G. Wells, Auditor	25.00	<u>2,014.05</u>

Overdraft \$14.05

Town Officers' Expenses

Appropriation \$1,000.00

Payments

Association of N. H. Assessors, dues	3.00
Clifford W. Ayer, Reg. mail, mileage, etc.	75.00
Robert S. Bristol, postage, mileage, copying inventory, Tax warrants, etc.	142.55
Delos J. Bristol, express	3.35
Brown & Saltmarsh, supplies	35.20
Evangeline A. Chadwick, postage, telephone, supplies	28.75
Harold W. Chadwick, postage, mileage, etc.	175.00

Margaret F. Chadwick, stamped envelopes, certified mail	38.40	
Edson C. Eastman, supplies	28.75	
Sherman J. Felch, postage	4.54	
The Harcourt Bindery, map	30.00	
Everett W. Howe, service court proceedings	4.00	
Kearsarge Insurance Agency, insurance	109.47	
Mayflower Press, Town Reports	516.00	
N. H. Tax Collectors' Association, dues	3.00	
Registry of Deeds, records	23.86	
Registry of Probate, records	.40	
State Tax Commission, Tax Laws	3.75	
Sutton General Store, supplies	.35	
Vernondale Store, supplies	.60	
Helena Wells, postage, Trust Funds bks.	1.91	
Wheeler & Clark, stamps, stencils	16.35	
Whitney Studio, photos report	11.90	
		<u>1,256.13</u>
<i>Overdraft</i>		\$256.13

Election and Registration

<i>Appropriation</i>	\$250.00	
Receipts: Filing Fees	8.00	258.00
Bernice Ayer, ballot clerk	\$12.00	
Evangeline Chadwick, clerk, postage absentee ballots	12.32	
Brown & Saltmarsh, check lists	5.90	
William B. Connor, Moderator	26.00	
Arthur E. Davis, ballot clerk	4.00	
Eva Felch, Supervisor	46.00	
Sherman J. Felch, ballot clerk	13.00	
Mayflower Press, ballots	24.20	
Fred Merrill, ballot clerk	12.00	
Dorothy Patten, Supervisor	50.00	
Vernal Powell, Supervisor	42.00	
Mark Stearns, ballot clerk	12.00	
Martha Wells, ballot clerk	4.00	
		<u>263.42</u>
<i>Overdraft</i>		\$5.42

Town Hall

<i>Appropriation</i>		\$500.00
<i>Payments</i>		
Robert S. Bristol, sawing wood	\$9.00	
Harry Chadwick, labor on wood	2.00	
Margaret F. Chadwick, insurance	35.36	
Emma L. Colby, insurance	332.40	
Warren E. Hosmer, custodian	205.00	
Warren E. Hosmer, labor on wood	29.00	
Kearsarge Insurance Agency, insurance	2.22	
Keller's General Store, supplies	1.10	
Merrimack County Telephone Co., phone	93.76	
Public Service Co., lights	20.76	
Elmer Roby, labor	5.00	
Sutton General Store, supplies	41.26	<u>776.86</u>
<i>Overdraft</i>		\$276.86

Town Hall Repairs

<i>Balance of 1955 Appropriation</i>		\$405.00
<i>Payments</i>		
Sargent and Hunter, painting	\$300.00	
Morton E. Walker, railing	48.60	<u>348.60</u>
Balance 1955 appropriation		\$56.40

Police Department

<i>Appropriation</i>	\$100.00	
Pistol Permits	5.55	\$105.55
<i>Payments</i>		
Charles L. Allen, police duty	\$45.00	
Kearsarge Insurance Agency, insurance	2.50	<u>\$47.50</u>
Balance		\$58.05

Fire Department, including Forest Fires

<i>Appropriation</i>	Fire Department	\$600.00	
	Forest Fire	100.00	
	Reimbursement	17.02	
	Insurance Adjustment	16.65	\$733.67

Payments

Bradford Garage, labor and material	\$42.97	
C. A. Danforth & Co., oil - So. Sutton	125.64	
Warren E. Hosmer	8.00	
Jones Express, express - portable pump	7.68	
Kearsarge Insurance Agency	249.90	
Keller's General Store, supplies	18.86	
Merrimack Farmers' Exchange, brush	1.13	
New London Agency, insurance	33.90	
New London Fuel Co., oil - No. Sutton	90.12	
New London Hardware, battery charger, anti-freeze	32.30	
Patten's Garage, repairs	10.45	
Public Service Co., lights	44.03	
Vernondale Store, supplies	9.03	\$674.01

Stearns Fire:

John Csutor	\$8.50	
Judson Downie	8.50	
David Hosmer	3.50	
Pat Rooney	5.00	25.50

Forest Fire Training Meeting:

Clifford Ayer	\$6.20	
Robert Bristol	7.00	
Ervin C. Patten	7.70	20.90

Dump Fire:

Nelson M. Adams	\$4.00	
Clifford Allen	1.10	
Judson Downie	9.90	
David Hosmer	7.70	
Richard Mitchener	1.10	
Pat Rooney	7.70	
Edgar Russell	4.40	
John Seymour	2.20	
George Wells	2.20	40.30
		<u>\$760.71</u>

Overdraft

\$27.04

Fire Department Equipment

<i>Appropriation</i>	\$1,300.00	
Balance 1955 Appropriation	8.07	\$1,308.07
<i>Payments</i>		
W. S. Darley Co., portable pump	\$169.75	
Judson Downie, fire extinguisher	33.09	
Justin A. McCarthy Co., hose, supplies	825.11	
Sears, Roebuck & Co., hose and connections, portable pump	60.23	<u>\$1,088.18</u>
Balance		\$219.89

Blister Rust

<i>Appropriation</i>	\$400.00	
Refund, State of New Hampshire	10.80	\$410.80
<i>Payment</i>		
William E. Messeck, appropriation	\$400.00	<u>\$400.00</u>
Balance		\$10.80

Health Department

<i>Appropriation</i>		\$20.00
No Expenditures		
Balance		\$20.00

New London Hospital

<i>Appropriation</i>		\$400.00
<i>Payments</i>		
New London Hospital, Inc.	\$200.00	
Part appropriation applied as follows:		
S. A. Case No. 1	146.35	
S. A. Case No. 2	53.65	<u>\$400.00</u>
Balance		None

Town of Sutton

45

Care of Dump

<i>Appropriation</i>		\$200.00
<i>Payments</i>		
Nelson M. Adams	\$112.05	
Philip A. Thompson	85.00	<u>\$197.05</u>
Balance		\$2.95

South Sutton Fire House

<i>Appropriation</i>		\$300.00
<i>Payments</i>		
Allen Auto Wrecking, material	\$15.00	
Bradford Lumber Co., material	30.30	
Ralph L. Dodge Co., hardware	21.05	
Merrimack Farmers' Exchange, material	173.60	
Charles Sanborn, labor, paint	58.63	<u>\$298.58</u>
Balance		\$ 1.42

Vital Statistics

<i>Appropriation</i>		\$15.00
<i>Payments</i>		
Evangeline A. Chadwick,	\$11.00	<u>\$11.00</u>
Balance		\$1.00

Town Maintenance
(Summer)

<i>Appropriation</i>	\$6,750.00	
Receipts	1,032.40	<u>\$7,782.40</u>
<i>Payments</i>		
Labor		
Nelson M. Adams	\$940.03	

Clifford W. Ayer	15.00	
Walter Couch	60.03	
Director of Internal Revenue	229.40	
Earl A. Rowe	174.45	
Phillip Thompson	747.61	
Carroll Thompson	5.00	\$2,171.52
<i>Gas, oil, repairs, supplies:</i>		
Allen's Auto Wrecking, repairs	\$54.40	
Bucklin Tractor Co., parts	21.19	
Construction Equipment Co., parts	251.50	
Cressy & Williams, parts	5.90	
Dalphond Bros., planks	52.00	
Elkins Printing Co., bridge signs	5.00	
Fiske, Alden Co., payment shovel	1,225.00	
Grappone, Inc., parts	36.86	
C. A. Harrington, sharpen tools	11.60	
R. C. Hazelton, parts	23.31	
W. A. Hezelton & Son, plank	96.90	
International Harvester Co., parts	238.60	
Jones Express, express	2.15	
Keller's General Store	170.98	
New London Hardware, bolts	5.78	
N.H. Bituminous Products Co., tar	289.15	
Frank Pobuda, plank	3.00	
Ervin C. Patten, labor, parts	161.39	
W. Lee Pomeroy, rental power saw	50.00	
Ray Road Equipment, parts	40.86	
Robertson Motor Co., parts	28.57	
Sanel Auto Parts Inc., parts	102.88	
Scott Machinery, parts	9.47	
Stanley Ford Sales, repairs	12.90	
Sutton General Store, gas, oil	216.01	
Town of New London, gravel	4.50	
Vernondale Store,	207.82	
Leonard F. Wheeler, blasting	76.00	
Willey's Express	2.15	
O. H. Woodward, machine work	1.50	<u>\$3,407.37</u>
Total		\$5,578.89
Balance		\$2,203.51

Town Maintenance
(Winter)

<i>Appropriation</i>	\$3,250.00	
Receipts	286.56	\$3,536.56

*Payments**Labor*

Nelson M. Adams,	\$1,277.78	
Dir. of Internal Revenue	298.60	
Warren E. Hosmer	18.60	
Donald Rowe	17.62	
Earl A. Rowe	590.33	
Nelson Stearns	5.39	
Carroll Thompson	167.55	
Phillip Thompson	933.37	
Orison H. Woodward	8.00	3,317.24

Gas, Oil, Repairs, Supplies, etc.

Allen Auto Wrecking, parts	121.41	
H. F. Davis Tractor Co.	141.30	
R. C. Hazelton, parts	92.00	
Keller's Store, gas, oil	144.17	
Merrimack Farmers' Exchange:		
salt	47.60	
Mosleys' Express	2.50	
N. H. Explosives Co.	110.38	
Ervin Patten, repairs	870.65	
Ray Road Equipment, parts	151.33	
Sanel Auto Parts, parts	39.00	
Sawyer & Howlett, parts	8.25	
Sutton General Store, gas	461.04	
Vernondale Store, gas, oil	368.73	2,558.36
		5,875.60

Overdraft

\$2,339.04

Town Road Aid

<i>Appropriation</i>		\$1,040.43
----------------------	--	------------

Paid Treasurer, State of N. H.	1,040.43	1,040.43
--------------------------------	----------	----------

Balance		None
---------	--	------

Duncan Fund

Receipts			\$3,296.68
<i>Payments</i>			
<i>Labor</i>			
Nelson M. Adams	\$487.54		
Director of Internal Revenue	90.30		
Warren E. Hosmer	9.80		
John R. Powell	19.60		
Earl A. Rowe	56.32		
Carroll Thompson	49.81		
Phillip Thompson	457.15	1,170.52	
<i>Supplies</i>			
Keller's General Store, gas, oil	\$66.60		
Merrimack Farmers' Exchange, cement	19.22		
N. H. Bituminous Products Co., oil	1,268.53		
Ray Road Equipment, culverts	713.25		
Sutton General Store, gas, oil	45.31	2,112.91	
Total			\$3,283.43
Balance			\$13.25

Street Lighting

<i>Appropriation</i>			\$1,675.00
<i>Paid</i> Public Service Co. of N. H.	\$1,510.30	\$1,510.30	
Balance			\$164.70

General Expenses of Highway Department

<i>Appropriation</i>	\$750.00		
Refund, Insurance Adjustment	21.66	\$771.66	
<i>Payments</i>			
Robert Bristol	\$4.50		
Margaret F. Chadwick, insurance	51.36		

Town of Sutton

49

Jones Express, express	2.23	
Kearsarge Insurance Agency, insurance	658.37	
Merrimack County Telephone Co.	78.47	
Public Service Co. of N. H., lights	31.08	<u>\$826.01</u>

Overdraft \$51.35

Library

<i>Appropriation</i>	\$500.00	
Balance of 1955 Appropriation	20.81	
Receipts	68.38	\$589.22

Payments on Trustees' orders (see Report) 703.59 \$703.59

Overdraft \$114.37

Old Age Assistance

<i>Appropriation</i>	\$2,500.00	
Refund, O. A. A.	211.26	\$2,711.26

Paid Treasurer, State of N. H. \$1,901.00 \$1,901.00

Balance \$810.26

Town Poor

Appropriation \$500.00

No Expense

Balance \$500.00

County Poor

Clinton Perkins \$180.61 \$180.61

Patriotic Purposes

<i>Appropriation</i> , Memorial Day	\$100.00	
<i>Appropriation</i> , Soldiers' Aid	500.00	
Refund S. A. Case No. 1	15.00	\$615.00
<i>Payments</i>		
American Legion Post No. 40	\$100.00	
Case No. 1	474.31	
Case No. 2	98.30	\$672.61
<i>Overdraft</i>		\$57.61

Recreation

<i>Appropriation</i> , South Sutton Common	\$20.00	
<i>Appropriation</i> , Dartmouth-Lake Region	75.00	\$95.00
<i>Payments</i>		
W. E. Hosmner, care of Common	\$20.00	
Dartmouth-Lake Sunapee Region	75.00	\$95.00
Balance		None

Cemeteries

<i>Appropriation</i>		\$700.00
<i>Payments</i>		
S. J. Felch, labor	\$81.50	
Warren E. Hosmer, labor	456.00	
E. W. Howe, labor	113.00	
Kearsarge Insurance Agency, ins.	5.32	
Merrimack Farmers' Exchange, fertilizer	9.49	
Sutton General Store, paint & supplies	44.32	
Leonard F. Wheeler, loam	48.00	\$757.63
<i>Overdraft</i>		\$57.63

Unclassified

Payments

Advance, Trustees of Trust Funds	\$305.00	
Dog Damages and Legal Expense	65.00	
Taxes bought by Town	2,866.14	
Costs and interest on same	315.70	
Timber Tax paid to Collector from Deposits	1,529.36	
Timber Tax Refunds to Depositors	38.29	
Trust Funds paid to Trustees (Wells, Nolan)	250.00	
Property Tax Refunds	38.25	
Driveway Refund	5.00	
Wood	35.00	\$5,447.74

Interest

<i>Appropriation</i> , Temporary Loans	\$200.00	
<i>Appropriation</i> , Church Fund	60.00	
<i>Appropriation</i> , School Fund	90.00	
Receipts, Interest on Taxes	196.89	\$546.89

Payments

Citizens' National Bank	\$146.67	<u>\$146.67</u>
Balance		\$400.22

Tractor Shovel

<i>Appropriation</i>		\$200.00
----------------------	--	----------

Payments

Fiske Alden Co.	\$200.00	<u>\$200.00</u>
Balance		None

Water Holes

<i>Balance Appropriation Water Holes</i>	\$67.36	
<i>Balance Appropriation Town Line Signs</i>	67.50	
<i>Balance Appropriation Signs and Railings</i>	29.65	\$164.51
<i>Payments</i>		
Merrimack Farmers' Exchange, cement	\$67.50	
R. P. Johnson & Son, supplies	2.10	
Curtis Rowe, machine hire	40.00	
Sutton General Store, supplies	1.31	
Orison H. Woodward, cement	16.90	<u>\$127.81</u>
Balance		\$36.70

Temporary Loans

<i>Paid Citizens' National Bank</i>	\$16,500.00
-------------------------------------	-------------

Other Governmental Divisions

<i>Payments</i>		
Donald G. Rainie, County Tax	\$3,308.88	
Treasurer, State of N. H.:		
Head Tax 1955	400.00	
Head Tax 1956	973.00	
School District	33,324.91	\$38,006.79

REPORT OF TRUST FUNDS

of the

TOWN OF SUTTON

for the

Year Ending December 31, 1956

C E R T I F I C A T E

This is to certify that the information contained in this report is complete and correct, to the best of our knowledge and belief.

January 15, 1957

Helena M. Wells
Ethel M. West
Alice M. Davis
Trustees of Trust Funds

William B. Connor
Arthur E. Davis
Auditors

REPORT OF THE TRUST FUNDS OF THE TOWN OF SUTTON, N. H., ON DECEMBER 31, 1956

Date of Creation	TRUST FUNDS Purpose of Creation Name of Fund	How Funds are Invested	Amount of Principal	Balance of Income		Rate of Interest	Income During Year	Expended During Year	Balance of Income on Hand at End of Year	
				on hand at beginning of Year	During Year					
1909	Mary Eaton School Fund	Concord Savings Bank	\$150.00	\$	72.20	3	\$	6.71	\$	78.91
1909	Mary Wadleigh Lot Fund	Concord Savings Bank	49.00		1.66	3		1.54		2.20
1909	Betsy Eaton Lot Fund	Concord Savings Bank	100.00		8.06	3		3.29		9.35
1909	Ruth Stinson Lot Fund	Concord Savings Bank	100.00		4.76	3		3.18		5.94
1910	Ruth Stinson Yard Fund	Concord Savings Bank	200.00		6.57	3		6.32		6.89
1910	Emma Abbott Lot Fund	Concord Savings Bank	50.00		4.18	3		1.62		5.80
1912	David Johnson Lot Fund	Concord Savings Bank	50.00		2.42	3		1.60		2.02
1914	Charles Kohlrusch Lot Fund	Concord Savings Bank	200.00		9.47	3		6.41		9.88
1918	John M. Pressey Library Fund	Concord Savings Bank	1,000.00		7.97	3		31.31		39.28
1918	John M. Pressey Lot Fund	New Hampshire Savings Bank	70.00		7.58	3 1/4		2.46		8.04
1914	P. S. H. Wadleigh Lot Fund	New Hampshire Savings Bank	947.92		250.94	3 1/4		37.73		288.67
1916	Orin Nelson Worthy Poor Fund	U. S. Savings Bond	1,000.00		Matured-to-be re-invested in a savings acc't.					
1916	Orin Nelson Library Fund	New Hampshire Savings Bank	300.00		10.12	3 1/4		9.92		8.04
1918	John M. Pressey Lot Fund	New Hampshire Savings Bank	100.00		4.95	3 1/4		3.31		6.26
1922	Frank J. Pillsbury Lot Fund	New Hampshire Savings Bank	100.00		4.30	3 1/4		3.33		5.63
1923	Sarah Russell Lot Fund	New Hampshire Savings Bank	50.00		2.51	3 1/4		1.66		4.17
1923	Henry Peaslee Lot Fund	New Hampshire Savings Bank	200.00		8.25	3 1/4		6.63		7.88
1924	Mary Pressey Lot Fund	New Hampshire Savings Bank						7.00		

1924 Sarah Johnson Lot Fund	New Hampshire Savings Bank	95.00	3.64 3/4	3.15	2.00	4.79
1925 Mrs. Francis Ferry	New Hampshire Savings Bank	100.00	5.08 3/4	3.33	3.00	5.41
1925 Bertha Elkins Lot Fund	New Hampshire Savings Bank	100.00	3.66 3/4	3.30	2.00	4.96
1926 Arthur K. Rix Lot Fund	New Hampshire Savings Bank	250.00	29.32 3/4	8.86	5.00	33.18
1929 John Pressey Lot Fund	New Hampshire Savings Bank	50.00	1.91 3/4	1.62		3.53
1928 Little & Bean Lot Fund	New Hampshire Savings Bank	300.00	9.40 3/4	9.93	11.00	8.33
1928 Stephen Woodward Lot Fund	New Hampshire Savings Bank	50.00	1.96 3/4	1.63	1.00	2.59
1928 George C. Pillsbury Lot Fund	New Hampshire Savings Bank	100.00	5.20 3/4	3.34		8.54
1930 Arthur & Arlettie Merrill Lot Fund	New Hampshire Savings Bank	100.00	8.18 3/4	3.44	3.00	8.62
1930 John Eaton School Fund	New Hampshire Savings Bank	500.00	193.68 3/4	21.84		215.52
1930 John & Jeanette Eaton Lot Fund	New Hampshire Savings Bank	75.00	3.75 3/4	2.43	2.00	4.23
1930 Ellen A. W. Hoyt Lot Fund	New Hampshire Savings Bank	100.00	10.59 3/4	3.50	3.00	11.09
1930 Matthew H. Kohlrausch Lot Fund	New Hampshire Savings Bank	150.00	6.49 3/4	4.99	5.00	6.48
1931 Leonard F. E. Dresser Lot Fund	New Hampshire Savings Bank	150.00	14.69 3/4	5.25	5.00	14.94
1932 Abbie M. Dillingham Lot Fund	New Hampshire Savings Bank	75.00	2.66 3/4	2.47	2.00	3.13
1932 S.E. Richard & Betsy Colby L. Fund	New Hampshire Savings Bank	150.00	5.83 3/4	4.99	3.00	7.82
1933 Fred Pratt Lot Fund	New Hampshire Savings Bank	100.00	3.33 3/4	3.27	3.00	3.60
1934 Fred Felch Lot Fund	New Hampshire Savings Bank	200.00	11.34 3/4	6.77	8.00	10.11
1934 Eva Nelson Lot Fund	New Hampshire Savings Bank	200.00	26.57 3/4	7.21	10.00	23.73

REPORT OF THE TRUST FUNDS OF THE TOWN OF SUTTON, N. H., ON DECEMBER 31, 1956

Date of Creation	Purpose of Creation Name of Fund	How Funds are Invested	Amount of Principal	Balance of Income on hand at beginning of Year	Rate of Interest	Income During Year	Expended During Year	Balance of Income on hand at end of Year
1935	Horace Chadwick Lot Fund	New Hampshire Savings Bank	200.00	12.85	3/4	6.81	8.00	11.66
1935	Moses Blaisdell Lot Fund	New Hampshire Savings Bank	100.00	3.85	3/4	3.30	3.00	4.15
1935	Sarah Davis Lot Fund	New Hampshire Savings Bank	100.00	3.76	3/4	3.30	3.00	4.06
1937	Frances Chadwick Lot Fund	Sugar River Savings Bank	200.00	14.71	3 1/4	7.01	8.00	13.72
1937	Mabel Howlett Lot Fund	Sugar River Savings Bank	100.00	5.30	3 1/4	3.44	3.00	5.74
1938	Emma Loud Lot Fund	Sugar River Savings Bank	50.00	2.90	3 1/4	1.71	2.00	2.61
1939	Fred Fisher Lot Fund	Sugar River Savings Bank	500.00	127.69	3 1/4	20.56	10.00	138.25
1941	Stephen & Helen Huse Lot Fund	Sugar River Savings Bank	300.00	61.92	3 1/4	11.84	3.00	73.76
1942	James & Mary Knowlton Lot Fund	Sugar River Savings Bank	100.00	4.51	3 1/4	3.42	3.00	4.93
1942	L. C. Richards Lot Fund	Sugar River Savings Bank	300.00	9.40	3 1/4	10.14	9.00	10.54
1943	L. C. Richards Yard Fund	Sugar River Savings Bank	300.00	10.83	3 1/4	10.16	10.00	10.99
1943	L. C. Richards Library Fund	Sugar River Savings Bank	300.00	16.07	3 1/4	10.34		26.41
1944	F.E.Nelson Town of Sutton Fund	Sugar River Savings Bank	5,000.00	49.39	3 1/4	165.43	100.00	114.82
1944	F.E.Nelson Town of Sutton Fund	U. S. Savings Bond	2,500.00		2 1/2	62.50	62.50	
1944	F.E.Nelson Cemetery Fund	Concord Savings Bank	2,000.00	71.31	3	63.05	80.00	54.36
1944	F.E.Nelson Town of Sutton Fund	Concord Savings Bank	2,500.00	33.19	3	78.83	100.00	62.02
1942	Frank S. Jordan Lot Fund	Sugar River Savings Bank	100.00	9.23	3 1/4	3.57	3.00	9.80
1944	Edwin Wright Lot Fund	Sugar River Savings Bank	200.00	7.43	3 1/4	6.79	7.00	7.22
1945	J. L. Andrews Lot Fund	Sugar River Savings Bank	100.00	4.64	3 1/4	3.42	5.00	3.06
1946	Asa Nelson Todd Lot Fund	Sugar River Savings Bank	100.00	4.94	3 1/4	3.42	5.00	3.36

1946 Benjamin K. Coburn Lot Fund	Sugar River Savings Bank	300.00	21.45	3 1/4	10.53	10.00	21.98
1947 Herbert L. Pillsbury Lot Fund	Sugar River Savings Bank	200.00	7.71	3 1/4	6.79	7.00	7.50
1948 John Mackintosh Lot Fund	Concord Savings Bank	150.00	6.64	3	4.78	3.00	8.42
1948 Georgianna Nelson Lot Fund	Concord Savings Bank	50.00	2.10	3	1.58		3.68
1949 Fred Roby Lot Fund	Sugar River Savings Bank	100.00	9.19	3 1/4	3.57	2.00	10.76
1949 Albert Chadwick Lot Fund	Sugar River Savings Bank	100.00	4.50	3 1/4	3.42	3.00	4.92
1950 John Sargent Lot Fund	Sugar River Savings Bank	100.00	12.14	3 1/4	3.66		15.80
1950 Charlotte & George Wheeler Lot F.	Sugar River Savings Bank	100.00	6.71	3 1/4	3.48	6.00	4.19
1951 Frank Fisher Yard Fund	Sugar River Savings Bank	2,822.81	393.21	3 1/4	105.36		498.57
1952 Richard Hall Lot Fund	Sugar River Savings Bank	100.00	4.12	3 1/4	3.40	3.00	4.52
1953 H. R. Bullard Lot Fund	Sugar River Savings Bank	100.00	8.77	3 1/4	3.55		12.32
1954 Minnie W. Cressey Yard Fund	Sugar River Savings Bank	5,000.00	185.43	3 1/4	169.88		355.31
1956 Carlington G. Wells Lot Fund	Sugar River Savings Bank	150.00		3 1/4	2.63		2.63
1956 Lucia Nolan Lot Fund	Sugar River Savings Bank	100.00		3 1/4	1.75		1.75
1956 Elder Frank Nelson Lot Fund	New Hampshire Savings Bank	100.00					
1956 Truman Putney Lot Fund	New Hampshire Savings Bank	100.00					
1956 James M. Nelson Lot Fund	New Hampshire Savings Bank	100.00					

Totals \$32,234.73 \$1,919.11 \$1,031.81 \$567.50 \$2,383.42

SUMMARY OF TIMBER TAX OCTOBER 1, 1955 TO SEPTEMBER 30, 1956

WARRANT

	<i>Volume Reported Cut</i>	<i>Total Value Assessed</i>	<i>Tax at 10% (Town share)</i>	<i>Tax at 2% (State share)</i>	<i>Total Tax</i>
Lumber stumpage	3,059,182	\$36,391.18	\$3,639.11	\$727.81	\$4,366.92
Pulp stumpage	20.17 cords	36.80	3.68	.74	4.42
Cordwood stumpage	28 cords	28.75	2.88	.58	3.46
Christmas trees	350 trees	35.00	3.50	.70	4.20
		\$36,491.73	\$3,649.17	\$729.83	\$4,379.00

Average Unit Value all Species Lumber	\$14.47
Average Unit Value of Pulp Wood	1.88
Average Unit Value of Cord Wood	1.13
Average Unit Value of Christmas trees	.10

COMPARATIVE STATEMENT OF TIMBER TAX

	1951-52	1952-53	1953-54	1954-55	1955-56
Total Volume of Lumber Reported Cut	1,927.365	2,074,416	2,248,932	1,514,371	3,059,182
Total Volume of Pulp Reported Cut	135.5 cords	440 cords	768.26 cords	107.84 cords	20.17 cords
Total Volume of Wood Reported Cut	114.5 cords	131 cords	23 cords	76 cords	28 cords
Total Volume of Christmas Trees Reported Cut					350 trees
TOTAL ASSESSED VALUATION	\$22,428.81	\$25,656.79	\$24,418.32	\$15,754.97	\$36,491.73

COMPARATIVE SUMMARY OF RECEIPTS

Amount reimbursed by State					none
a/c exemption of growing wood and timber	\$1,795.52	\$1,506.27	\$1,547.25	\$2,685.66	
from taxation:	\$2,085.37	2,417.48	2,293.49	1,335.83	3,649.17
Total Tax					
TOTAL RECEIPTS	\$3,880.89	\$3,923.75	\$3,840.74	\$4,021.49	*\$3,649.17

(Reimbursement plus tax)

* 10% Tax, Town's Share

SUTTON VOLUNTEER FIRE DEPARTMENT

Annual Report

The Fire Wards are pleased to be able to report a very successful year. Immediately after Town Meeting orders were placed for 250 feet of 2½" hose, 200 feet of 1½" hose and 200 feet of booster hose to provide more adequate service by the various trucks. Since Sutton Mills has no firehouse or truck, a portable pump and a supply of booster hose were purchased to be located in the Mills to provide an immediate means of fighting fire until the regular trucks can get there.

With the same thought in mind of providing better protection for residents of the Mills, the stream at the western end of the street was dammed, providing a good source of water for all three trucks in case of fire.

The firehouse in South Sutton was finished and is in use. The firehouse at Blaisdell Lake is well under way and will be finished in the spring. Funds for this firehouse were provided by the Blaisdell Lake Property Owners' Association at no cost to the town. The old Model B Ford firetruck has been loaned to the Association to be stationed in this firehouse. The Association has agreed to equip it and a great deal of very valuable equipment, not only for this truck, but for the whole department has been donated by Mr. John Cragin.

The trucks were called out for fifteen fires during the year of which only one was a house fire. There were four chimney fires, one flooded furnace, four brush fires and five fires at the dump.

The Red Network Alarm System was fully installed before summer and has been in use ever since. We point out that the number 555 is to be dialed *only to report a fire*. Dialing this number to find out where a fire is, or for any other reason except to report a fire, constitutes a false alarm and is punishable with a fine.

The Department, by means of Beano games held every Wednesday night, monthly donations and honorary memberships, managed to raise \$1,227.70 up to January 1st, 1957. Of this, \$946.42 was spent to install a heater in the South Sutton firehouse, dig two new waterholes for better protection of the residents in the South and Fox Chase areas and to provide heat for all installations. Some new equipment was also purchased from this sum. By raising this money the Fire Department was able to stay within its budget and enter the new fiscal year with a clean slate. In addition, thanks to this money, it was possible to rebuild the bodies of both the Model B and the Power Wagon with no expense to the taxpayers. This remodelling has resulted in safer, more usable equipment for both the South Sutton and the Blaisdell Lake districts.

Naturally the Department plans to continue to attempt to raise what money we can, and in submitting the budget for this year, we have attempted to plan so that eventually the appropriation for the Department can be drastically reduced and held at a stable figure without impairing the efficiency of the Department.

Since our physical plant is in such good condition after last year's efforts, we intend to concentrate during the coming year on the improvement of the use of that plant. It was disastrously proved at our one house fire of the year that equipment alone, no matter how good, can save a house unless the crew is thoroughly trained in its use. Willing assistance and unstinting effort is useless if misdirected.

Therefore we are planning monthly training periods for the coming year to acquaint as many men as possible with the equipment and its most effective use. Since these training periods will be rigidly limited to one hour, we feel that every man in town will find it possible to attend. And in a town of this size it is important that every man be trained to fight a fire effectively. We will devote our time and energy to providing that training.

The great disappointment of the past year was the lack of interest by the residents of the town. After all, this is your fire department, established to protect your property. It cannot do

its job without your help. We all have our own interests. We all begrudge the time and effort required by attendance at drills. But we feel, and hope you will too, that an hour a month is cheap insurance if it will enable us to save the home of even one resident. We are doing our best to cut down our financial demands on the town but we cannot further cut our demands on your time. Please give us one hour a month for the welfare of your Fire Department and the protection of your homes.

Respectfully submitted,

Robert W. Bentley
John Csutor
Judson Downie
Fire Wards

White Pine Blister Rust Control

Financial Statement, Town of Sullon
1956

Town Funds expended	\$389.20	
Cooperative funds expended	318.10	
Total expenditures		\$707.30
1956 Town Appropriation	\$400.00	
Town Funds expended	389.20	
Balance returned to Town		\$10.80
Area worked	1,406 acres	
Currant and Gooseberry bushes destroyed	2,388	

SUTTON FREE LIBRARY**Report of the Trustees**

Once more the Board of Trustees of the Sutton Free Library would like to tell the citizens of Sutton what has been accomplished during the past year.

We have tried through the selection of the books to suit varied tastes. Also many good books have been given to the Library. The generosity of those contributing to the paper-covered book shelf is appreciated, especially by those who enjoy that type of reading matter. A good collection of magazines is always found on the reading tables.

It was necessary this year to have the doors repaired and painted. On reading our Treasurer's report the citizens will probably conclude that we have run over our appropriation. But let us analyse the problem. Our repairs (\$108.18) and the renewed insurance with the valuation being increased, do look rather forbidding. However, the John M. Pressey and L. C. Richards Library Funds have not been used this year. The Library also has a savings account which is receivable. Therefore we really have reserve to balance our apparent overdraft. Repairs are usually unexpected but need immediate attention.

May we quote from a Library report written by the Trustees under date of December 1, 1897: "We are proud to say that there is none better in the State, taking into account the number of Vols., their age and character, together with its furnishings, consisting in part of a large Black Walnut Book Case and Desk presented to your library by the late Dr. Welch and his Estimable Wife.--Your Trustees have not fixed upon the age of persons entitled to its privileges. We do not want to deny any one of the advantages of acquiring information by any act of ours.--The duties of the public in dealing with the library must not be passed over.--It is a waste of funds and effort to go on purchasing books, if they are not taken from your library and read by the public." The Trustees of the Library who made the report for the year 1897 were: Fred B. Adams, Thomas Burpee and John F. Emery. Was 1897 so different from 1956! Sutton has an attractive library well stocked with books of all types. But is it not wasted if it is not used by everyone?

An interesting incident with an international flavor occurred at our Library this summer when Dr. R.V.K.R. Rao visited there with his host, Mr. Arthur Goodfriend. Dr. Rao of India is from the New Delhi School of Economics. He was amazed to find a book on our shelves that he had not found in big libraries in his travel in the U.S. The book, "Life of Rhada Krishnan", is about one of his favorite personalities.

The Trustees of the Library know that many miss Mrs. Greene behind the desk, making suggestions for interesting reading and giving generously of her time. Everyone wishes her happiness in her new home.

Helena M. Wells, *Secretary*

Books Purchased in 1956 (Adult)

Boon Island	Kenneth Roberts
My Several Worlds	Pearl Buck
The Woman in Black	Helen Holdridge
The Last Hurrah	Edwin O'Conner
A Night to Remember	Walter Lord
John Goffe's Legacy	George Woodbury
Border Legion	Zane Grey
Arizona Ames	Zane Grey
Spice Box	Grace Livingston Hill
The Old Shoe	Grace Livingston Hill
War and Peace	Leo Tolstoy
The Imperial Woman	Pearl Buck
Surprise Evidence	Agatha Christy
Harry of Monmouth	A. M. Maugham
Auntie Mame	Patrick Dennis
Guestward Ho	Barber C. Hooton
The Coast of Maine	Louise Dickenson
A Certain Smile	Francoise Sagan
A Thing of Beauty	Dr. A. J. Cronin
The Rosemary Tree	Elizabeth Goudge
Spirit of St. Louis	Charles A. Lindbergh
More Yankee Yarns	Alton H. Blackington
Tolbecken	Samuel Shellabarger
The Nun's Story	Katherine Hulme
Much Ado About Me	Fred Allen

(Juvenile)

Barbara Owen. Girl Reporter	Jane Scott
First Book of Nurses	Mary Elling
Robinson Crusoe	Daniel DeFoe
Swiss Family Robinson	Johann Wyso
Golden Books:	
Our World	
Mother Goose	
The Happy Family	
The Bug's Family at the Easter Party	
The Little Engine that Could	
Reptiles Amphibians	
Jungle Animals	
Tale of Peter Rabbit	
Flowers	
The Giant with the Three Golden Hairs	
Won Kim's Ox	Philip Eisenberg

Books Donated during 1956

Woman's Modern Home Almanac	Kipling's Best
MacArthur, His Rendezvous with History	The Risks We Take
How to Believe	After Worlds Collide
Oklahoma Kin	A Portrait
Sonnets from Portuguese	The Romance of a Christmas Card
Winterbound	Walt Disney Mother Goose
Wee Wisdom	Missions

Books have been donated by the following:

Mrs. Eliot Foot	Mrs. Delos Bristol
Mrs. Bessie Friel	Raymond Frederick
National Board of Underwriters	Remington Rand Co.
Alfred P. Sloane, Jr.	Mrs. Fannie Greene
Miss Marcia Hersey	Mrs. Charles Blamy
Sutton Women's Club	Mrs. Nellie L. Roby
The Baptist Church of Sutton	

LIBRARIAN'S REPORT FOR 1956

Books Purchased:		
Adult Books		23
Juvenile books		15
Magazines donated		5
Weekly Newspaper		1
Books in circulation		4,544
Adult books loaned	1,019	
Juvenile books loaned	373	
Magazines loaned	276	(total 1,659)
Balance on hand January 1, 1956		\$ 37.53
<i>Less Expenditures for Supplies</i>		<u>36.00</u>
Balance on hand January 1, 1957		\$ 1.53

Mrs. Jessie C. Quinley
Librarian

FINANCIAL STATEMENT
Sutton Free Library

Receipts

Balance Town Treasury (Jan. 1, 1956)	\$20.84	
Appropriation 1956	500.00	
F. E. Nelson Trust Fund	62.50	
Sale of Books	5.88	\$589.22

Payments*Librarian:*

Mrs. Fannie Greene	\$93.75	
Mrs. Jessie Quinley	31.25	125.00

Books:

Campbell and Hall, Inc.	80.35	
Mrs. Martha S. Wells	5.00	85.35

Magazines:

N. H. Profiles	6.50	
National Geographic Society	6.00	
Sports Illustrated	6.00	
Argus Press	4.00	22.50

Maintenance:

Warren E. Hosmer	55.00	
New London Fuel Co.	84.92	
Public Service Co. of N. H.	59.20	
Lorna S. Couch	15.00	214.12

Insurance:

Grange Mutual Fire Insurance Co.	148.44	148.44
----------------------------------	--------	--------

Repairs:

Dana W. Aldrich	76.90	
Robert G. Powell	31.28	<u>108.18</u>

Total Payments		\$703.59
----------------	--	----------

<i>Overdraft</i>		<u>114.37</u>
		589.22

Funds Receivable

Orin Nelson Trust Fund	\$25.00	
From Building Fund, Savings	108.18	<u>133.18</u>

Balance, Receipts and Funds Receivable, <i>less payments</i>		\$18.81
--	--	---------

Building Fund, Sugar River Savings Bank

Jan. 1, 1956	\$383.38
Deposit Jan. 13, 1956	31.25
Interest	13.33
Jan. 1, 1957	<u>\$427.96</u>

Robert S. Bristol
Treasurer, Library Trustees

AUDITORS' REPORT

We hereby certify that we have examined the books and accounts of the Selectmen, Town Clerk, Tax Collector, Treasurer, Road Agent, Library Trustees, and Trustees of the Trust Funds of the Town of Sutton, for the year ending December 31, 1956 and find them correctly cast and vouchers for all payments.

William B. Connor

Arthur E. Davis

Auditors, Town of Sutton, N. H.

Sutton Scenes (*Opposite Page*)



- No. 1 Main Street, Sutton Mills
- No. 2 Old Home Day, South Sutton
- No. 5 Old Home Day, South Sutton
(*Photos by Robert Russell*)
- No. 3 Fire Trucks
(*Photo by Donald Mitchell*)
- No. 4 Town Truck plowing snow
- No. 6 Pillsbury Memorial Hall
(*Photos by Richard Mitchener Jr.*)



1



2



3



4



5



6

**SUTTON SCHOOL DISTRICT
ANNUAL REPORT
July 1, 1955 to June 30, 1956**

School Moderator
Robert S. Bristol

School Board

George G. Wells	Term Expires 1957
Clifford W. Ayer	Term Expires 1958
Surrissa Lewis	Term Expires 1959

School Treasurer
Marguerite B. Rowe

School Auditor
George H. Hosmer

Superintendent of Schools
William C. Sterling

SCHOOL WARRANT

THE STATE OF NEW HAMPSHIRE

To the Inhabitants of the School District in the town of Sutton qualified to vote in district affairs:

You are hereby notified to meet at the Town Hall in said district on the ninth day of March 1957, at 8:00 o'clock in the evening to act upon the following subjects:

1. To choose a Moderator for the coming year.
2. To choose a Clerk for the ensuing year.
3. To choose a Member of the School Board for the ensuing three years.
4. To choose a Treasurer for the ensuing year.
5. To determine and appoint the salaries of the School Board and Truant Officer, and fix the compensation of any other officers or agent of the district.
6. To hear the reports of Agents, Auditors, Committees, or Officers chosen, and pass any vote relating thereto.
7. To choose Agents, Auditors, and Committees in relation to any subject embraced in this warrant.

8. To see what sum of money the district will raise and appropriate for the support of schools, for the salaries of school district officials and agents, and for the payment of statutory obligations of the district, and to authorize the application against said appropriations of such sums as are estimated to be received from the state foundation aid fund together with other income; the school board to certify to the selectmen the balance between the estimated revenue and the appropriations, which balance is to be raised by taxes by the town.

9. To see if the district will authorize the School Board to make application for and to receive, in the name of the District, such advances, grants in aid, or other funds for educational purposes as may now or hereafter be forthcoming from the United States Government and/or State Agencies.

10. To see what action the district will take in regard to high school transportation.

11. To transact any other business that may legally come before said meeting.

Given under our hands this 20th day of February 1957.

GEORGE G. WELLS
CLIFFORD W. AYER
SURISSA Y. LEWIS
School Board

A true copy of Warrant—Attest:

GEORGE G. WELLS
CLIFFORD W. AYER
SURISSA Y. LEWIS
School Board

SUTTON SCHOOL DISTRICT
Proposed Budget 1957-58 and Financial Report 1955-56

<i>Expenditures</i>	<i>Actual Expenditures 1955-56</i>	<i>Adopted Budget 1956-57</i>	<i>Adopted Budget 1957-58</i>
Administration:			
Salaries of district officers	\$358.00	\$360.00	\$360.00
Superintendent's salary (local share)	318.12	322.41	326.40
Tax for state wide supervision	218.00	224.00	190.00
Salaries of other adm. personnel	197.98	170.04	178.78
Supplies and expenses	195.97	190.00	190.00
Instruction:			
Elementary teachers' and principal's salaries	9,175.13	9,000.00	9,800.00
Books and other instructional aids, E.	215.33	100.00	150.00
Scholars' supplies, E.	563.68	250.00	300.00
Supplies and other expenses, E.	95.03	50.00	130.00
Operation of School Plant:			
Salaries of custodians, E.	562.00	550.00	600.00
Fuel or heat, E.	1,189.38	900.00	1,200.00
Water, light, supplies and expenses, E.	573.14	400.00	400.00
Maintenance of School Plant:			
Repairs and replacements, E.	278.11	100.00	100.00
Auxiliary Activities:			
Health supervision, E.	457.00	450.00	450.00
Transportation, High	1,600.00	1,800.00	1,800.00
Transportation, E.	4,436.25	4,420.00	5,000.00
Tuition, H.	7,250.57	7,500.00	9,500.00
Tuition, E.	300.00	1,150.00	675.00
Special activities and special funds, E.	32.44	50.00	50.00
School lunch and special milk, E. (fed. and dist. funds)	300.00	550.00	550.00
Fixed Charges:			
Retirement, E.	466.80	660.00	720.86
Insurance, treas. bond and expenses, E.	250.58	300.00	300.00
Contingency Fund		300.00	300.00
Total Current Expenses	\$29,033.51	\$29,796.45	\$33,271.04

Town of Sullon

73

	<i>Actual Expenditures 1955-56</i>	<i>Adopted Budget 1956-57</i>	<i>Adopted Budget 1957-58</i>
Total Current Expenses (fwd)	\$29,033.51	\$29,796.45	\$33,271.04
Capital Outlay:			
Lands and new building, E.	\$1,363.56		
Additions and improvements, E.	475.00		
New equipment, E.			250.00
Debt and Interest:			
Principal of debt	\$4,000.00	\$4,000.00	\$4,000.00
Interest on debt	1,100.00	1,000.00	900.00
Total 1955-56 Expenditures	<u>\$35,972.07</u>		
Total 1956-57 School Appropriation		\$34,796.45	
Total 1957-58 School Appropriation			\$38,421.04
Balance (Actual or estimated)	<u>2,085.07</u>		
Total	\$38,057.14	\$34,796.45	\$38,421.04
	<i>Actual Receipts 1955-56</i>	<i>Adopted Budget 1956-57</i>	<i>Adopted Budget 1957-58</i>
<i>Receipts</i>			
Balance (Actual or estimated)	\$625.74		
Federal Aid	33.30	250.00	250.00
State Aid			800.00
Trust Funds	90.00	90.00	90.00
Other	1,510.00		
Total Receipts other than Taxes	<u>\$2,259.04</u>	\$340.00	\$1,140.00
District Assessment	35,798.10	34,456.45	37,281.04
Total 1955-56 Receipts	<u>\$38,057.14</u>		
Total 1956-57 Appropriation voted by Dist.		\$34,796.45	
Total 1957-58 Appropriation voted by Dist.			\$38,421.04

REPORT OF SUTTON SCHOOL BOARD

In the school year 1955-56 we were able to put some final touches on the Central School Building and grounds. Under the able supervision of Mr. Eliot B. Foot, the following projects were completed:

Lightning Rods were installed on the school building. The planting of evergreens at the two front corners of the building and barberry hedge along the driveway together with two young maples given by the graduating class of 1956, complete for the present the front lawn development.

The grading work on the play area at the rear of the building was made possible through the generosity of Mr. Foot who contributed \$100.00 plus the use of equipment toward this work.

The School Board wishes to express thanks to the teachers, students and janitor for their continued cooperation in keeping our school building one in which we can take a great deal of pride.

George G. Wells
Clifford W. Ayer
Surrissa Y. Lewis
Sutton School Board

REPORT OF SCHOOL DISTRICT TREASURER

Fiscal Year July 1, 1955 to June 30, 1956

Cash on Hand - July 1, 1955		\$112.71
Current Appropriation	\$35,798.10	
Received from State Treasurer: (Federal Funds)	33.30	
Received from Trust Funds as Income	90.00	
Received from All Other Sources	635.51	
Total Receipts		<u>\$36,556.91</u>
Total Amount Available for Fiscal Year (Balance and Receipts)		\$36,669.62
Less School Board Orders Paid		<u>34,959.02</u>
Balance on hand June 30, 1956		\$1,710.60

Respectfully submitted,

MARGUERITE B. ROWE

*School District Treasurer***SUMMARY OF PAYMENTS**

1. Administration:		
1. Salaries of District Officers		\$358.00
2. Superintendent's Salary (<i>local share</i>)		318.12
3. Tax for State Wide Supervision		218.00
4. Salaries of other Administrative Personnel		197.98
5. Supplies and Expenses		195.97
11. Instruction:		
6. Teachers' Salaries		9,175.13
7. Books		215.33
8. Scholars' Supplies		563.68
10. Supplies		95.03

III. Operation of School Plant:		
11. Salaries of Custodians		562.00
12. Fuel and/or Heat		1,189.38
13. Water, Lights, etc.		573.14
IV. Maintenance of School Plant:		
14. Repairs and Replacements		278.11
V. Auxiliary Activities:		
15. Health Supervision		457.00
16. Transportation:		
(a)High School		1,600.00
(b)Elementary School		4,436.25
17. Tuition:		
(a)High School		7,250.57
(b)Elementary School		300.00
18. School Lunch		332.44
VI. Fixed Charges:		
19. Retirement		466.80
20. Insurance, Treasurer's Bond, etc.		250.58
TOTAL NET CURRENT EXPENSES:		<u>\$29,033.51</u>
(a) High School	\$8,912.57	
(b) Elementary School	20,120.94	
VII. Capital Outlay:		
21. Land and New Buildings		
<i>(from Capital Outlay Summary)</i>		1,363.56
22. Additional Improvements to Buildings		475.00
VIII. Debt and Interest:		
(General Expenses)		
25. Principal of Debt		4,000.00
26. Interest on Debt		<u>1,100.00</u>
Total Net Payments for All Purposes		\$35,972.07

DETAILED STATEMENT OF PAYMENTS**DETAIL NO. 1
Salaries of District Officers**

Bernice H. Ayer, Truant Officer	\$15.00	
Clifford W. Ayer, Board Member	100.00	
Rena M. Robinson, Board Member and Clerk	103.00	
George G. Wells, Board Member	100.00	
Marguerite B. Rowe, Treasurer	50.00	\$358.00

**DETAIL NO. 2
Superintendent's Excess Salary**

Superintendent's Excess Salary (local share)		318.12
--	--	--------

**DETAIL NO. 3
Tax for State Wide Supervision**

(a) High School	62.00	
(b) Elementary School	156.00	218.00

**DETAIL NO. 4
Salaries of Other Administrative Personnel**

Bernice Ayer, School Census	10.00	
Robert S. Bristol, -Moderator	3.00	
George H. Hosmer, Auditor	3.00	
Supervisory Union No. 26	181.98	197.98

**DETAIL NO. 5
Supplies and Expenses**

Edson C. Eastman Co., Inc.	18.45	
J. L. Hammett Co.	33.43	
W. H. Mandrey, Treas.:		
N. H. School Board Association	10.00	
William C. Sterling	35.26	
Supervisory Union No. 26	98.83	\$195.97

INSTRUCTION**DETAIL NO. 6
Teachers' Salaries**

Lorraine Cadoo	2,035.80	
Gladys Murray	2,368.00	
Blanche Robinson	2,031.63	
N. H. - Vt. Hospitalization Service	52.80	
Collector of Internal Revenue	1,692.80	
Supervisory Union No. 26	462.50	
Teachers' Retirement Board	451.60	
Washington National Insurance Co.	70.00	
Lucy Woodward	10.00	9,175.13

**DETAIL NO. 7
Books and other Instructional Aids**

Belwin, Inc.	2.00	
C. S. Birchard Co.	14.38	
Cacl Fisher, Inc.	5.35	
Ginn & Co.	29.75	
C. S. Hammond & Co.	20.34	
Iroquois Publishing Co.	62.40	
The MacMillan Co.	6.11	
Scott Foresman & Co.	60.06	
L. W. Singer Co.	9.30	
Warner School District	5.64	215.33

**DETAIL NO. 8
Scholars' Supplies**

American Book Co.	63.38	
Milton Bradley	24.17	
California Test Bureau	5.94	
Cascade Paper Co.	15.20	
Edson C. Eastman Co., Inc.	1.41	
Ginn & Co.	101.21	
Gledhill Bros., Inc.	18.81	
E. M. Hale Co.	5.85	
J. L. Hammett Co.	81.35	
Iroquois Pub. Co.	19.63	
Junior Scholarship Inc.	17.00	

Kearsarge Independent	13.27	
The MacMillan Co.	25.88	
Mainco Trading Co.	9.98	
McCormick -Mathers Co.	14.94	
National Geographic Society	6.00	
News Map of the Week, Inc.	19.75	
The L. W. Singer Co.	31.20	
Science Research Assoc.	6.36	
Scott, Foresman & Co.	47.38	
Treasurer, State of New Hampshire	1.39	
Tri-State Office Equipment Co.	13.59	
Warner-Dowling Co.	1.92	
Henry S. Wolkins Co.	9.12	
World Book Co.	8.95	563.68

DETAIL NO. 10
Supplies and other Expenses

Concord Hardware Co., Inc.	5.39	
The MacMillan Co.	3.91	
Merrimack County Telephone Co.	82.86	
W. C. Sterling	1.54	
O. H. Toothaker	1.33	95.03

OPERATION OF SCHOOL PLANT

DETAIL NO. 11
Salaries of Custodians

Lorna Couch		562.00
-------------	--	--------

DETAIL NO. 12

New London Fuel Co.		1,189.38
---------------------	--	----------

DETAIL NO. 13
Water, Light, Supplies and Expenses

Gledhill Bros. Inc.	15.00	
J. L. Holcomb Mfg. Co.	123.00	
Merr. Farmers' Exchange, Inc.	1.41	
Public Servcie Co. of N. H.	270.65	
Sutton General Store	17.51	
Warner School District	32.65	
West Disinfecting Co.	112.92	573.14

MAINTENANCE OF SCHOOL PLANT**DETAIL NO. 14
Repairs and Replacements**

Lorna Couch	107.00	
R. L. Galloway	32.80	
Elmer Goodrich	9.00	
J. L. Hammett Co.	4.83	
New London Cleaners	3.00	
George H. Quimby	7.43	
Arthur Rowe	4.00	
Charles Sanborn	100.00	
Sanborn & Miller	10.05	278.11

AUXILIARY ACTIVITIES**DETAIL NO. 15
Health Supervision**

Supervisory Union No. 26	345.00	
Anne A. Wasson, M. D.	112.00	457.00

**DETAIL NO. 16
Transportation**

(a) Elementary School:		
Carlton R. Bradford	3,200.00	
William B. Connor	500.00	
Sawyer & Howlett	500.00	
James Schofield	232.25	4,436.25
(b) High School:		
Carlton R. Bradford	1,400.00	
E. Curtis Hall, Jr.	200.00	1,600.00

**DETAIL NO. 17
Tuition**

(a) Elementary School:		
Warner School District	300.00	
(b) High School:		
New London School District	6,358.25	

Town of Sutton

81

Warner School District	892.32	7,250.57
------------------------	--------	----------

DETAIL NO. 18a

School Lunch (*Federal and District Funds only*)

Bessie Barker	60.00	
Cardigan Sports Store	11.45	
Leslie E. Frost	4.50	
New London Fuel Co.	11.00	
C. M. Rice Paper Co.	11.10	
Sutton Central School Hot Lunch Fund:		
George G. Wells, Treasurer	234.39	332.44

FIXED CHARGES

DETAIL NO. 19

Retirement

N. H. Retirement System	383.62	
Supervisory Union No. 26	83.18	466.80

DETAIL NO. 20

Insurance, Treasurer's Bond and Expenses

Margaret F. Chadwick	239.78	
Kearsarge Insurance Agency	5.00	
New England School Development Council	5.80	250.58

CAPITAL OUTLAY

DETAIL NO. 21

Lands and New Buildings

Payments by:

Sutton Central School Building Fund		1,363.56
-------------------------------------	--	----------

8

DETAIL NO. 22

Additions and Improvements to Buildings

Sutton Central School Building Fund		475.00
-------------------------------------	--	--------

DEBT AND INTEREST**DETAIL NO. 25
Principal of Debt**

First National Bank of Boston	4,000.00
-------------------------------	----------

**DETAIL NO. 26
Interest on Debt**

First National Bank of Boston	<u>1,100.00</u>
-------------------------------	-----------------

TOTAL NET PAYMENTS FOR ALL PURPOSES	\$35,972.07
--	--------------------

Cash on hand at end of year June 30, 1956 (General Fund)	1,710.60
---	----------

Cash on hand at end of year, June 30, 1956 Capital Outlay Fund (from Cap. Outlay Summary)	<u>374.47</u>
--	---------------

GRAND TOTAL NET PAYMENTS	\$38,057.14
---------------------------------	--------------------

George G. Wells
Clifford W. Ayer
Surrissa Lewis
Members of School Board

**REPORT OF SUTTON SCHOOL DISTRICT
BUILDING FUND**

July 1, 1955 to June 30, 1956

Cash on hand July 1, 1955	513.03	
Receipts during Fiscal Year	1,225.00	
Grand Total Net Receipts		<u>\$1,738.03</u>
Payments:		
Site Development	518.32	
Other Payments	845.24	
Total Net Payments		1,363.56
Cash on Hand June 30, 1956		<u>374.47</u>
		<u><u>\$1,738.03</u></u>

Eliot B. Foot
Chairman Building Committee

George G. Wells
Chairman School Board

Clifford W. Ayer
Treasurer

**SCHOOL HEALTH
ANNUAL SERVICE REPORT
1955-1956**

The School Health Service gives the following report:

Number of pupils examined 56

	Defects	Corrections
Teeth	20	15
Tonsils	1	13
Glands	1	1
Wax in ears	1	1
Vision	1	3

Special Work

Dr. Mansfield examined eyes	57
Polio Clinic	41
Pre-entrance examinations	7
Special cases	2
Welfare cases	2
Home visits	22

We would like to thank all who have helped with the School Health Program, Polio clinic, School Lunch Program, and the Lions Club for their interest.

Dr. Anne A. Wasson, *School Physician*
Ruth B. Whitcomb, R. N., *School Nurse*

HEALTH REPORT

Polio Clinics

Number Held	1
Total Attendance	59

Gertrude J. Snow
Public Health Nursing
Bureau of Public Health Nursing
N. H. State Department of Health

REPORT OF THE SUPERINTENDENT OF SCHOOLS

To the Members of the School Board of Sullon District:

During the school year 1955-1956, the following teachers were employed:

TEACHER & GRADES	TRAINING	YR. GRAD.
Mrs. Gladys E. Murray, Grades 6-7-8	P.S.	1918
Mrs. Lorraine M. Cadoo, <i>Principal</i> , Grades 4-5	T.A.	1918
Mrs. Blanche E. Robinson, Grades 1-2-3	P.T.C.	1936
Miss Blanche C. Bailey, Music	K.T.C.	1932

GENERAL STATISTICS

	Grades 6-7-8	Grades 4-5	Grades 1-2-3	Total 1955-56	Total 1955-54
Half days in session	354	354	354	354	348
Half days not in session	6	6	6	6	12
Number pupils registered	19	20	25	64	66
Average membership	16.9	18.0	21.0	57.0	58.4
Percent attendance	92.8	93.0	95.2	94.2	89.7
Average tardiness per pupil	.6	0	.09	.2	.18
Number visits Superintendent	20	30	15	65	61

31 pupils attended schools in other districts.

GRADUATES

June 1956

Judith Allen
Rena Keyser

Charlotte Partridge
Eleanor Almstrom

Judith Schofie ld

PERFECT ATTENDANCE

For One Year

Allan Partridge

Donald Bowne

Emily Partridge

**Superintendent's Salary
1955-1956**

Bradford School District	\$389.20
Henniker School District	838.73
Hopkinton School District	1,197.64
Newbury School District	354.81
Sutton School District	318.12
Warner School District	731.66
Webster School District	244.84
	\$4,075.00
State Share	2,500.00
Total	\$6,575.00

There has been one change in the teaching staff this year. Mrs. Della Miller has replaced Mrs. Blanche Robinson as the teacher of the Primary Grades. Mrs. Murray is back with us as the Upper Grade teacher and Mrs. Cadoo is again the Middle Grade teacher and Principal.

Mrs. Cadoo is now in her thirteenth year as a teacher in the Sutton schools, and the town has been very fortunate to have her for these many years. She has been an outstanding teacher and had developed into an excellent Principal. The excellent progress that has been made in the Sutton Schools over the last few years, has been due to several factors. One of these factors has been the untiring work and the sympathetic interest that she has shown in the Sutton children.

One of the other important factors has been the interest of the Sutton School Board and Sutton residents who have recognized the importance of providing good schools for the children. I feel, very strongly, that these factors are most important for setting the tone for fine morale of the children in Sutton Central School.

School costs continue to rise. Suppliers have informed me that we may expect increases of from ten to twenty percent in materials. The supply of teachers remains critical, with the nation again breaking a record for the total number of children born during this calendar year. This is the problem facing the nation's school districts. Schools are now overcrowded and the school population is sure to increase each year. for the next six years School districts are now bidding for teachers so that beginning teachers are being hired for higher salaries than experienced teachers are getting. Districts must pay their teachers more money or suffer loss of teachers or a break down in teacher morale.

The State still has not accepted its rightful share of the burden, although we are being helped, this year, by the state building aid program in the amount of eight hundred dollars. The state and federal government help us build roads, but our most important natural resource - children - receive little help.

It is always a pleasure to visit the Central School in Sutton. I appreciate the courtesy and cooperation I receive from Sutton.

William C. Sterling
Superintendent of Schools

MARRIAGES REGISTERED IN THE TOWN OF SUTTON, N. H. FOR THE YEAR ENDING DECEMBER 31, 1956

Date and Place of Marriage	Name and Surname of Groom and Bride and Residence of Each at Time of Marriage	Age	Place of Birth and Occupation of Each	Names of Parents	Name, Residence and Official Station of Persons by whom Married
Oct. 1, 1955 Reading, Mass.	Carroll Leslie Thompson Sutton, N. H. Nancy Woodbury Buck Woburn, Mass.	22 20	Sutton, N. H. Bulldozer Operator Manchester, N. H. Nurse	Andrew L. Thompson Viola J. Ayer Ralph L. Buck Phyllis A. Persal	Rev. Paul E. Sheldon Clergyman Reading, Mass.
Aug. 31, 1956 Rochester, N. H.	Lawrence Arthur Olin Sutton, N. H. Dorothy Arlene Russell Rochester, N. H.	26 23	Brockton, Mass. Construction Foreman Farmington, N. H. Nurse	John Olin Mura Fifield L. Richard Russell Etta Wentworth	Rev. George J. Schilling Baptist Clergyman Rochester, N. H.
Sept. 29, 1956 Boscawen, N. H.	Armon David Deno Sutton, N. H. Marlene June Presby Boscawen, N. H.	18 18	New London, N. H. U. S. Navy Concord, N. H. Student	Daniel F. Deno Shirley Graves George H. Presby Freda M. Sweeney	Rev. J. Lincoln Thomas Clergyman Boscawen, N. H.
Sept. 30, 1956 Springfield, N. H.	Ernest Robert Arthur Carpenter Springfield, N. H. Helen Katherine Partridge Sutton, N. H.	18 16	New Hampshire Laborer New Hampshire Waitress	Farle W. Carpenter, Sr. Ruby L. Collins Lawrence W. Partridge Emily M. Mignault	Rev. C. M. Prestwood, Jr. Clergyman Sunapee, N. H.
October 11, 1956 S. Newbury, N. H.	Clark Morse Davis Sutton, N. H. Evelyn Arlene Croteau Newbury, N. H.	25 20	New Hampshire Div. Manager New Hampshire Office Work	Robert R. Davis Vernal L. Morse George E. Croteau Fleurette Y. LaBarre	Rev. Norman Armstrong Clergyman Bradford, N. H.
Nov. 11, 1956 Sutton, N. H.	Charles Emil Hosmer Sutton, N. H. Veda May Whipple Sutton, N. H.	19 20	New London, N. H. Truck Driver Newport, N. H. Clerk-Typist	George H. Hosmer Hazel M. Nye Ralph J. Whipple Emma C. Eastman	Rev. Millard D. Webster Clergyman Sutton, N. H.

BIRTHS REGISTERED IN THE TOWN OF SUTTON, N. H., FOR THE YEAR ENDING DECEMBER 31, 1956

Date and Place of Birth	Name of Child (if any)	Sex	No. of Child	Name of Father and Maiden Name of Mother	Residence of Parents and Occupation of Father	Birthplace of Father and of Mother
Feb. 1, 1956 New London, N. H.	Francis Bryson	M	2	Carlton Leroy Jacobs Mary Elizabeth Rudolph	Sutton, N. H. U. S. Army	Maine New London, N. H.
Feb. 18, 1956 New London, N. H.	Alexander David, Jr.	M	1	Alexander David McKinnon Gloria Elizabeth Crosett	Sutton, N. H. Truck Driver	Whitefield, N. H. New London, N. H.
Feb. 22, 1956 New London, N. H.	Dawnah Ellen	F	3	Elmer Barrett Grover Ellen May Dyer	Sutton, N. H. Laborer	New Hampshire New Hampshire
March 15, 1956 New London, N. H.	Vickie Mae	F	2	Nelson William Stearns Shirley Beatrice Pease	Sutton, N. H. Mechanic	New Hampshire New Hampshire
March 26, 1956 New London, N. H.	Neil Arthur	M	4	Weston Albert Chadwick Patricia Alice Shepard	Sutton, N. H. Carpenter	New Hampshire New Hampshire
June 7, 1956 New London, N. H.	Susan	F	2	Arthur Joseph Dorley, Jr. Dianne Neal Birch	Sutton, N. H. Store Owner	Lowell, Mass. Massachusetts
June 12, 1956 New London, N. H.	Sandra Rose	F	6	Allen Chadwick Sylvia June Willey	Sutton, N. H. Nurseryman-Florist	Osterville, Mass. Vermont
June 26, 1956 New London, N. H.	Beverly Marie	F	1	George Robert Gagnon Annie Jean Rayno	Sutton, N. H. Nurseryman	New Hampshire New Hampshire
August 10, 1956 New London, N. H.	Diane Jean	F	1	Carroll Leslie Thompson Nancy Woodbury Buck	Sutton, H. N. Carpenter	New Hampshire New Hampshire
August 23, 1956 New London, N. H.	Kathleen Marie	F	3	John Csutor Mary Ellen Mourison	Sutton, N. H. Truck Driver	Connecticut Connecticut
December 11, 1956 New London, N. H.	Kim Anne	F	3	Donald Harry Lowe Florence Bernice Balchunas	Sutton, N. H. Insurance Salesman	New York, N. Y. Duquesne, Pa.

Note: All white. All living. I hereby certify that the above return is correct, according to the best of my knowledge and belief.
 EVANGELINE A. CHADWICK, *Town Clerk*

DEATHS REGISTERED IN THE TOWN OF SUTTON, N. H. FOR THE YEAR ENDING DECEMBER 31, 1956

Date and Place of Death	Surname of Deceased	Age	Sex	Place of and Occupation	Single Marr. Wid.	Name of Father and Maiden Name of Mother
Feb. 6, 1956 Gilmanton, N. H.	Lionel Rollins	34	M	Nottingham, N. H.		Walter Rollins
Feb. 27, 1956 Sunapee, N. H.	Gertrude Davis Clay	83	F	Landscape Nurseryman Sutton, N. H.	D	Lucy Merrill Enoch Davis
June 23, 1956 New London, N. H.	Herbert Hazen	83	M	Housewife-Retired Sutton, N. H.	W	Amanda Campbell John Hazen
July 2, 1956 Concord, N. H.	Perley Woodward	69	M	Teamster - Retired Sutton, N. H.	D	Augusta Adams George Woodward
July 11, 1956 New London, N. H.	Charles W. Whippen	64	M	Railroad Repairman Lynn, Mass.	M	Annie Ayer Charles A. Whippen
July 12, 1956 New London, N. H.	Lillie Esther Merrill	77	F	Science Teacher - Ret. Wilnot, N. H.	M	Susan Mears Matthew Emery
Aug. 23, 1956 Sutton, N. H.	Mary E. Cronin Folsom	69	F	Housewife - Retired Manchester, N. H.	W	Elnora Messer John Cronin
Sept. 8, 1956 Andover, N. H.	Emma M. Woodward Davis	89	F	Nurse - Retired Canaan, N. H.	W	Anne Foley Moses G. Woodward
Sept. 30, 1956 Sutton, N. H.	Maude Eaton Sawyer	82	F	Clerical Work - Retired Newbury, N. H.	W	Sarah J. Kenniston Albert S. Eaton
Nov. 19, 1956 Newport, N. H.	Ida Seace Liberty	68	F	Housewife - Retired Concord, Vt.	W	Emaline Brown Curtis Kidder
Nov. 26, 1956 Sutton, N. H.	Jane Emiline Clark	94	F	Housewife Keokuk, Iowa	M	unknown Samuel E. Carey
				Housewife - Retired	W	Lucy Garfield

Note: All White.

I hereby certify that the above return is correct, according to the best of my knowledge and belief.
EVANGELINE A. CHADWICK, Town Clerk

University Library
Durham
New Hampshire

