



February 5, 2016

TRUMP STILL LEADS IN NH, RUBIO ON THE RISE, MOST VOTERS STILL UNDECIDED

By: Andrew E. Smith, Ph.D.
Zachary S. Azem, M.A.
UNH Survey Center

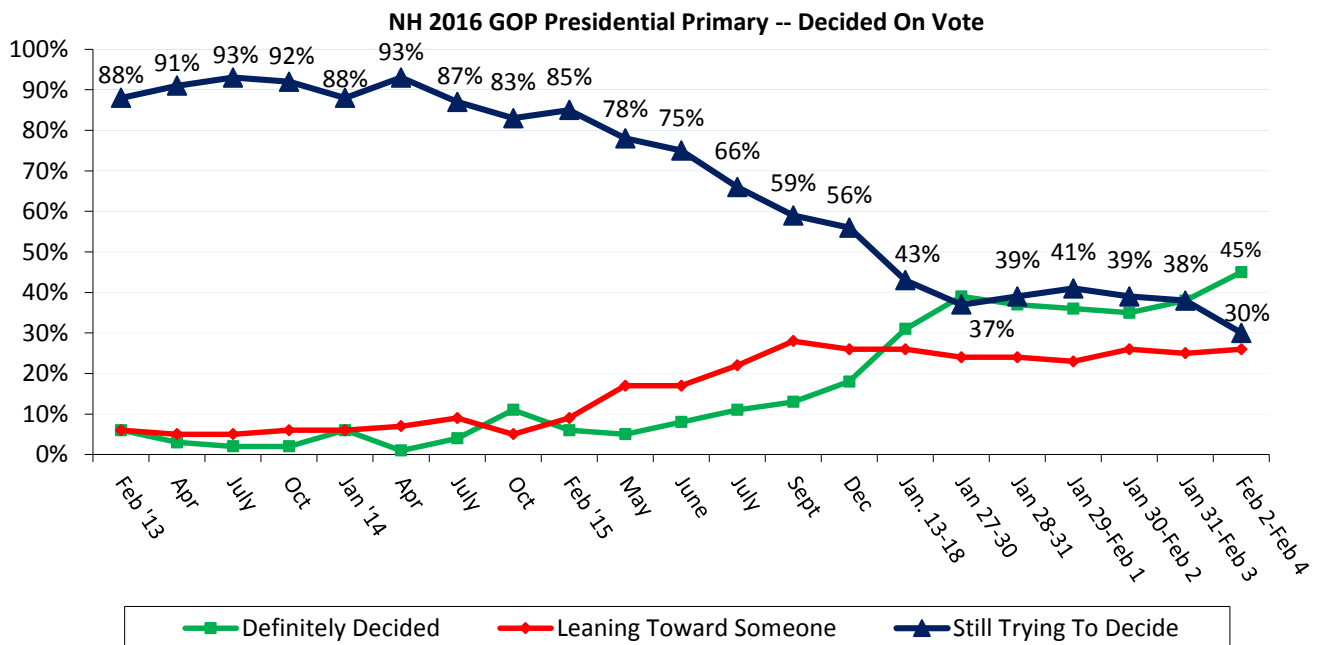
andrew.smith@unh.edu
603-862-2226
www.unh.edu/survey-center

DURHAM, NH – Donald Trump has maintained the lead in the New Hampshire Primary race and most Republican primary voters think he will win the primary. But Trump remains a divisive candidate within the party as he is also the candidate that New Hampshire Republicans say they are least likely to vote for. After a third-place finish in the Iowa Caucuses, Marco Rubio is currently in second place. Only forty-five percent of New Hampshire Republican Primary voters say they have firmly decided who they will vote for in the Primary.

These findings are based on the latest **CNN/WMUR New Hampshire Primary Poll**,* conducted by the University of New Hampshire Survey Center. Seven hundred and fifty-one (751) randomly selected New Hampshire adults were interviewed by landline and cellular telephone between February 2 and February 4, 2016. The margin of sampling error is +/- 3.6 percent for the entire sample. Included were two hundred and eighty-seven (287) likely 2016 Republican Primary voters (MSE = +/-5.8 percentage points), and three hundred and twelve (312) likely 2016 Democratic Primary voters (MSE = +/-5.5 percentage points).

NH Republicans Still Undecided

New Hampshire primary voters usually decide who they will vote for in the last weeks, or days of the campaign and a majority of likely Republican primary voters have not yet made up their minds about who they will vote for. Currently, only 45% of likely Republican Primary voters say they have definitely decided who they will support, 26% are leaning toward a candidate, and 30% are still trying to decide.



* We ask that this copyrighted information be referred to as *the CNN/WMUR New Hampshire Primary Poll*, sponsored by WMUR-TV and CNN, and conducted by the University of New Hampshire Survey Center.

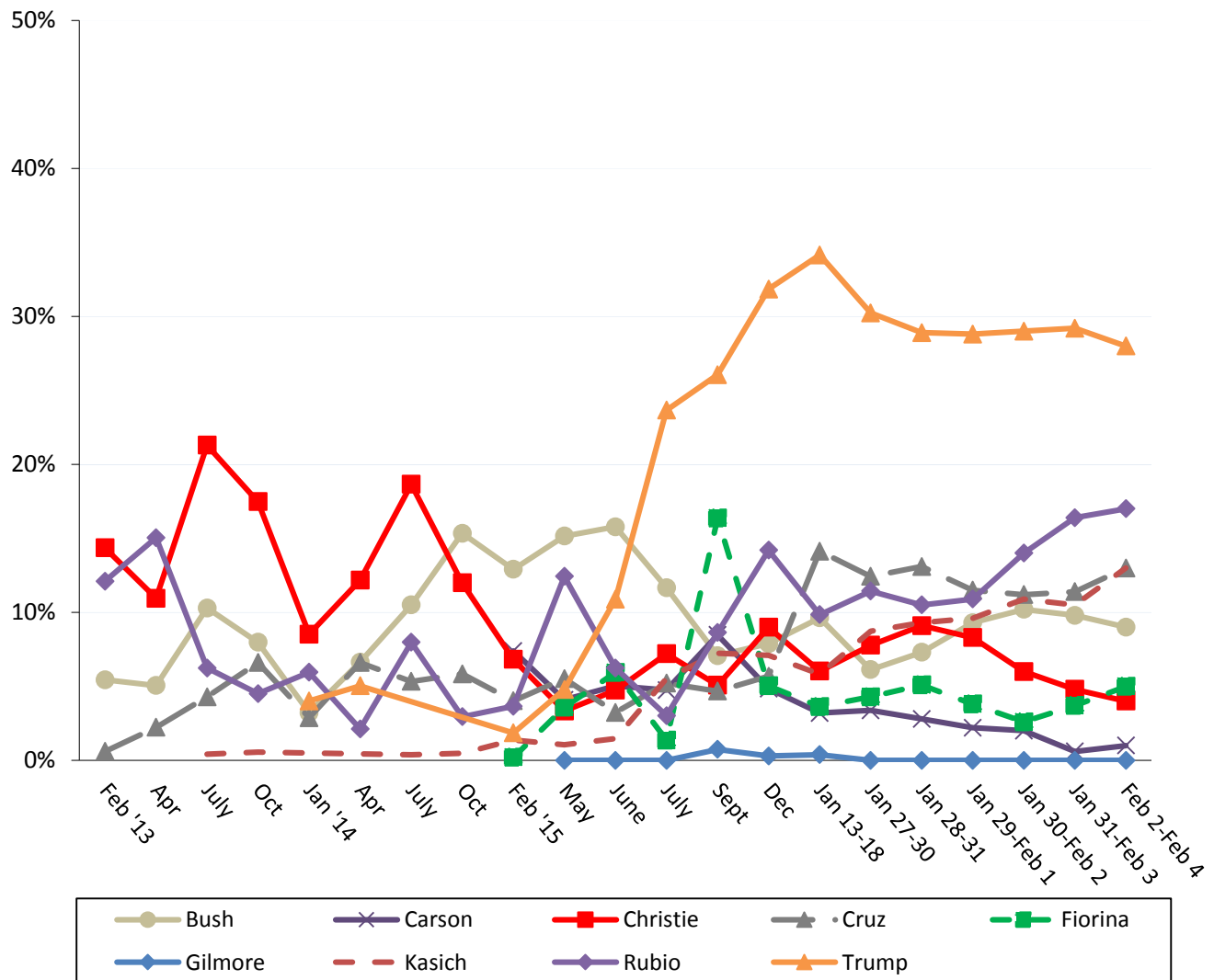
The Republican electorate is more interested in the 2016 primary than it was at a similar point in the 2008 cycle, the last time both parties had contested primaries. Currently, 57% of likely Republican primary voters say they are extremely interested in the election, 34% are very interested, and 10% are only somewhat interested or not very interested. By comparison, at this point in the election cycle, only 43% of likely Republican primary voters said they were extremely interested in the 2008 primary, 49% were very interested, and 9% were only somewhat interested or not very interested. Currently, 46% of undeclared voters who can vote in either primary, say they will vote in the Republican primary while 46% say they will vote in the Democratic primary.

2016 NH Republican Primary

Donald Trump continues to top the field in New Hampshire with 28% of likely Republican primary voters supporting him. Trump is followed by Marco Rubio (17%), John Kasich (13%), Ted Cruz (13%), Jeb Bush (9%), Carly Fiorina (5%), Chris Christie (4%), and Ben Carson (1%). All other potential candidates receive less than 1% support, and 8% say they are undecided.

Trump (33%), Rubio (21%), and Cruz (20%) are the leading candidates among primary voters who regularly listen to conservative talk radio. Rubio (36%) and Trump (24%) are the top choices among primary voters who regularly read the Union Leader. Trump also has the support of 40% of likely primary voters who say they have definitely decided who they are voting for on primary day.

NH 2016 GOP Presidential Primary -- Who Support If Vote Held Today?

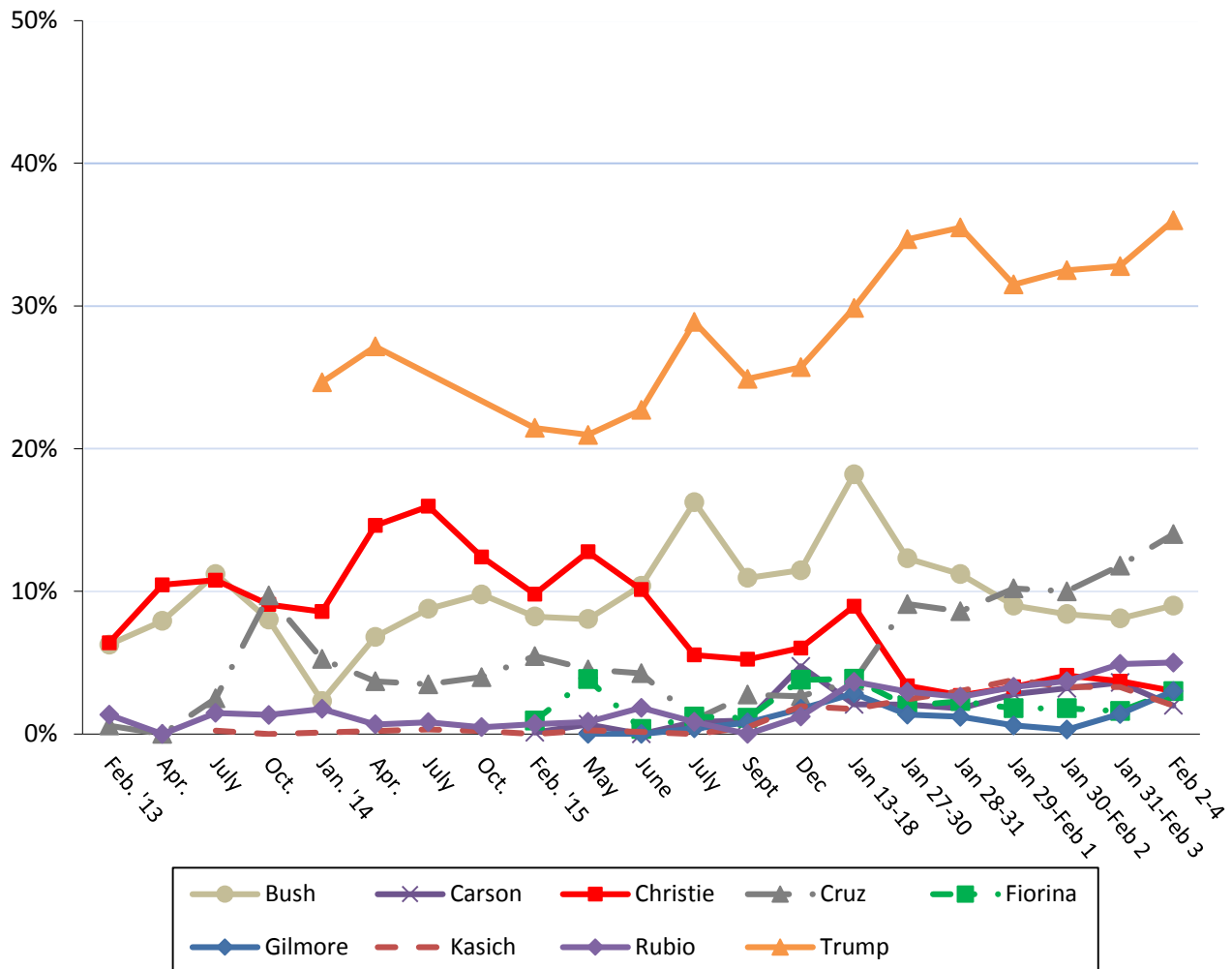


Most Unpopular Republican Candidate

Despite leading the New Hampshire field, Trump is also the candidate New Hampshire Republicans are least likely to vote for. When asked which candidate they would NOT vote for under any circumstance, 36% of likely Republican Primary voters say they would not vote for Trump, 14% would not vote for Cruz, 9% would not vote for Bush, 5% would not vote for Rubio, 3% would not vote for Christie, 3% would not vote for Fiorina, 3% would not vote for Gilmore, 2% would not vote for Kasich, 2% would not vote for Carson, 13% think all the prospective candidates are acceptable, and 10% are unsure.

Female voters (50%) and Union Leader readers (45%) are most likely to say they wouldn't vote for Trump under any circumstances and conservative talk radio listeners (26%) are most likely to say they wouldn't vote for Bush under any circumstances.

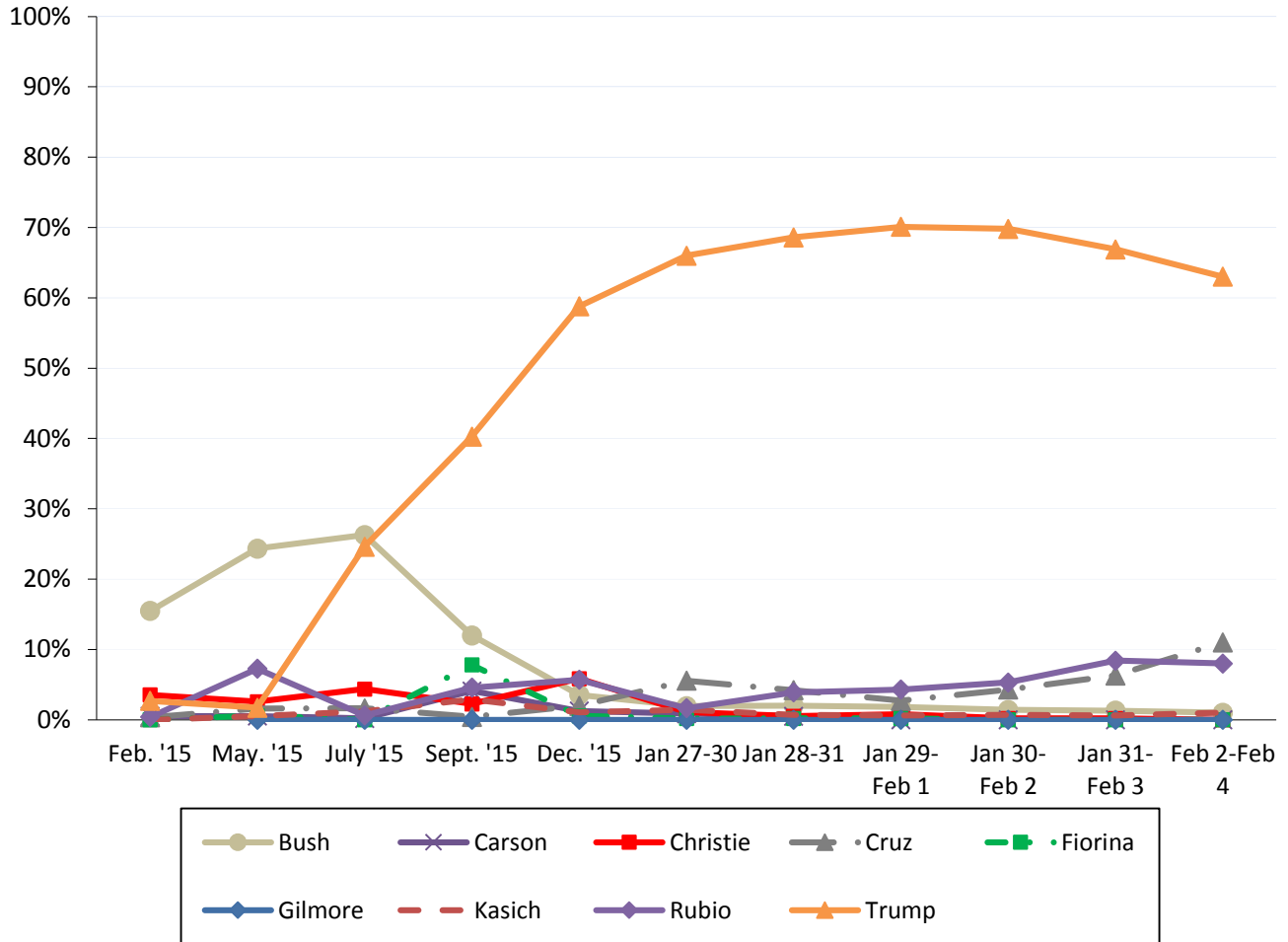
NH 2016 GOP Presidential Primary -- Would Not Vote For



Who Will Win NH Primary?

Trump remains the candidate that most New Hampshire Republicans think will win in the Granite State. When asked who they think will win the 2016 New Hampshire Republican Primary, 63% think Trump will win, 11% think Cruz will win, and 8% think Rubio will win.

Who Will Win NH 2016 GOP Presidential Primary?



CNN/WMUR New Hampshire Primary Poll Methodology

These findings are based on the latest CNN/WMUR New Hampshire Primary Poll, conducted by the University of New Hampshire Survey Center and funded by CNN and WMUR-TV, Manchester, NH. Interviews were conducted by the UNH Survey Center with assistance from the Center for Public Interest Polling in Eagleton Institute at Rutgers. Seven hundred and fifty-one (751) randomly selected New Hampshire adults were interviewed by landline and cellular telephone between February 2 and February 4, 2016. If a household included more than one adult, the adult who had the most recent birthday was selected to be interviewed.

The margin of sampling error is +/- 3.6 percent for the entire sample. Included were two hundred and eighty-seven (287) likely 2016 Republican Primary voters (MSE = +/-5.8 percentage points), and three hundred and twelve (312) likely 2016 Democratic Primary voters (MSE = +/-5.5 percentage points). These MSE's have not been adjusted for design effect. The design effect for the survey is 1.1%.

The random sample used in the CNN/WMUR New Hampshire Primary Poll was purchased from Marketing Systems Group (MSG), Horsham, PA. MSG screens each selected telephone number to eliminate non-working numbers, disconnected numbers, and business numbers to improve the efficiency of the sample, reducing the amount of time interviewers spend calling non-usable numbers.

The data have been weighted to adjust for numbers of adults and telephone lines within households. Additionally, data were weighted by respondent sex, age, and region of the state to targets from the most recent American Community Survey (ACS) conducted by the U.S. Census Bureau. In addition to potential sampling error, all surveys have other potential sources of non-sampling error including question order effects, question wording effects, and non-response. Due to rounding, percentages may not sum to 100%. The number of respondents in each demographic below may not equal the number reported in cross-tabulation tables as some respondents choose not to answer some questions.

For more information about the methodology used in the CNN/WMUR New Hampshire Primary Poll, contact Dr. Andrew Smith at (603) 862-2226 or by email at andrew.smith@unh.edu.

New Hampshire Primary Poll, February 2-4, 2016 Demographics

Sex	N	%	Region	N	%
Male	367	49%	North Country	60	8%
Female	384	51%	Central/Lakes	119	16%
			Connecticut Valley	111	15%
			Mass Border	212	28%
Age	N	%	Seacoast	119	16%
18 to 34	190	27%	Manchester Area	131	17%
35 to 49	182	25%			
50 to 64	217	30%	Party Registration	N	%
65 and Over	129	18%	Democrat	197	25%
			Undeclared & Not Reg.	383	51%
Highest Level of Education	N	%	Republican	168	24%
High School or Less	109	18%			
Some College	159	26%	Party Identification	N	%
College Graduate	207	33%	Democrat	304	49%
Post-Graduate	145	23%	Independent	79	13%
			Republican	232	38%

New Hampshire Primary Poll, February 2-4, 2016 Likely Republican Primary Voter Demographics

Sex	N	%	Region	N	%
Male	163	57%	North Country	19	7%
Female	124	43%	Central/Lakes	50	18%
			Connecticut Valley	34	12%
Age	N	%	Mass Border	88	31%
18 to 34	55	20%	Seacoast	36	13%
35 to 49	75	27%	Manchester Area	58	20%
50 to 64	96	35%			
65 and Over	51	18%	Party Registration	N	%
			Democrat	0	0%
Highest Level of Education	N	%	Undeclared & Not Reg.	129	45%
High School or Less	53	19%	Republican	158	55%
Some College	70	25%			
College Graduate	108	38%	Party Identification	N	%
Post-Graduate	55	19%	Democrat	34	12%
			Independent	34	12%
			Republican	216	76%

Decided Who to Vote for in 2016 GOP Primary?

(Likely NH GOP Primary Voters)

“Have you definitely decided who you will vote for in the New Hampshire primary ... are you leaning toward someone ... or have you considered some candidates but are still trying to decide?”

	<u>Definitely Decided</u>	<u>Leaning Toward Someone</u>	<u>Still Trying to Decide</u>	<u>(N)</u>
Feb 2-4 '16	45%	26%	30%	(287)
Jan 31-Feb 3 '16	38%	25%	38%	(390)
Jan 30-Feb 2 '16	35%	26%	39%	(378)
Jan 29-Feb 1 '16	36%	23%	41%	(362)
Jan 28-31 '16	37%	24%	39%	(359)
Jan 27-30 '16	39%	24%	37%	(409)
Jan 13-18 '16	31%	26%	43%	(412)
Dec '15	18%	26%	56%	(403)
Sept '15	13%	28%	59%	(343)
July '15	11%	22%	66%	(309)
June '15	8%	17%	75%	(401)
May '15	5%	17%	78%	(291)
Feb. '15	6%	9%	85%	(346)
Oct. '14	11%	5%	83%	(271)
July '14	4%	9%	87%	(247)
Apr. '14	1%	7%	83%	(182)
Jan. '14	6%	6%	88%	(245)
Oct. '13	2%	6%	92%	(220)
July '13	2%	5%	93%	(197)
Apr. '13	3%	5%	91%	(164)
Feb. '13	6%	6%	88%	(205)

Republican Nomination in 2016 NH Primary

(Likely NH GOP Primary Voters)

"I'm going to read you the names of the candidates who are running for the Republican nomination. If the Republican primary for president were held today, which of the following would you support for the Republican nomination Jeb Bush ... Ben Carson ... Chris Christie ... Ted Cruz ... Carly Fiorina ... Jim Gilmore ... John Kasich ... Marco Rubio ... Donald Trump ... or someone else?" ROTATE CANDIDATES

	<u>2015</u>						<u>2016</u>						
	<u>Feb</u>	<u>May</u>	<u>June</u>	<u>July</u>	<u>Sept</u>	<u>Dec</u>	<u>Jan 13-18</u>	<u>Jan 27-30</u>	<u>Jan 28-31</u>	<u>Jan 29-Feb 1</u>	<u>Jan 30-Feb 2</u>	<u>Jan 31-Feb 3</u>	<u>Feb 2-4</u>
Donald Trump	2%	5%	11%	24%	26%	32%	34%	30%	29%	29%	29%	29%	28%
Marco Rubio	5%	12%	6%	3%	9%	14%	10%	11%	11%	11%	14%	16%	17%
John Kasich	1%	1%	1%	6%	7%	7%	6%	9%	9%	10%	11%	11%	13%
Ted Cruz	4%	6%	3%	5%	5%	6%	14%	12%	13%	12%	11%	11%	13%
Jeb Bush	17%	15%	16%	12%	7%	8%	10%	6%	7%	9%	10%	10%	9%
Carly Fiorina	*	4%	6%	1%	16%	5%	4%	4%	5%	4%	3%	4%	5%
Chris Christie	9%	3%	5%	7%	5%	9%	6%	8%	9%	9%	6%	5%	4%
Ben Carson	8%	4%	5%	5%	8%	5%	3%	3%	3%	2%	2%	1%	1%
Jim Gilmore	---	0%	0%	0%	1%	*	*	0%	0%	0%	0%	0%	0%
Rand Paul	9%	10%	9%	7%	3%	2%	6%	3%	4%	4%	4%	---	---
Mike Huckabee	9%	3%	2%	2%	*	1%	1%	1%	1%	1%	---	---	---
Rick Santorum	2%	2%	0%	1%	*	*	0%	0%	0%	0%	0%	---	---
Lindsey Graham	---	1%	1%	1%	1%	1%	---	---	---	---	---	---	---
George Pataki	1%	2%	1%	*	*	0%	---	---	---	---	---	---	---
Scott Walker	12%	11%	8%	11%	*	---	---	---	---	---	---	---	---
Mark Everson	---	---	---	---	0%	---	---	---	---	---	---	---	---
Bobby Jindal	1%	2%	*	2%	0%	---	---	---	---	---	---	---	---
Rick Perry	2%	4%	4%	2%	---	---	---	---	---	---	---	---	---
Bob Ehrlich	---	*	*	0%	---	---	---	---	---	---	---	---	---
Peter King	*	*	0%	---	---	---	---	---	---	---	---	---	---
John Bolton	1%	0%	---	---	---	---	---	---	---	---	---	---	---
Paul Ryan	---	---	---	---	---	---	---	---	---	---	---	---	---
Kelly Ayotte	---	---	---	---	---	---	---	---	---	---	---	---	---
Scott Brown	---	---	---	---	---	---	---	---	---	---	---	---	---
Rob Portman	---	---	---	---	---	---	---	---	---	---	---	---	---
John Huntsman	---	---	---	---	---	---	---	---	---	---	---	---	---
John Thune	---	---	---	---	---	---	---	---	---	---	---	---	---
Someone Else	1%	1%	1%	0%	*	0%	*	3%	2%	2%	*	4%	2%
Don't Know Yet	15%	14%	21%	12%	11%	9%	6%	10%	7%	9%	10%	9%	8%
(N)	(348)	(293)	(400)	(305)	(344)	(399)	(408)	(400)	(352)	(354)	(372)	(386)	(285)

* = Less than 1% --- = Not Included

	<u>2013</u>				<u>2014</u>			
	<u>Feb</u>	<u>Apr</u>	<u>July</u>	<u>Oct</u>	<u>Jan</u>	<u>Apr</u>	<u>July</u>	<u>Oct</u>
Donald Trump	---	---	---	---	4%	5%	---	---
Ted Cruz	1%	2%	4%	6%	3%	7%	5%	6%
Marco Rubio	12%	15%	6%	4%	6%	2%	8%	3%
John Kasich	---	---	*	*	---	---	*	*
Chris Christie	14%	11%	21%	16%	9%	12%	19%	12%
Jeb Bush	5%	5%	10%	8%	3%	7%	11%	15%
Carly Fiorina	---	---	---	---	---	---	---	---
Ben Carson	---	---	---	---	---	---	---	---
Rand Paul	8%	15%	16%	17%	16%	15%	14%	7%
Mike Huckabee	---	---	---	---	---	---	8%	9%
Jim Gilmore	---	---	---	---	---	---	---	---
Rick Santorum	3%	4%	4%	4%	---	1%	1%	2%
Lindsey Graham	---	---	---	---	---	---	---	---
George Pataki	---	---	---	---	---	---	---	---
Scott Walker	3%	1%	2%	2%	2%	3%	3%	3%
Mark Everson	---	---	---	---	---	---	---	---
Bobby Jindal	2%	2%	*	---	---	3%	5%	3%
Rick Perry	---	---	4%	1%	2%	1%	2%	2%
Bob Ehrlich	---	---	---	---	---	---	---	---
Peter King	---	---	---	*	*	---	---	---
John Bolton	---	---	---	---	---	---	---	---
Paul Ryan	11%	11%	8%	9%	6%	13%	5%	6%
Kelly Ayotte	10%	5%	---	---	13%	13%	---	---
Scott Brown	---	---	---	7%	11%	---	---	---
Rob Portman	0%	1%	*	*	*	*	1%	*
John Huntsman	8%	5%	---	---	---	---	---	---
John Thune	1%	*	---	---	---	---	---	---
Someone Else	2%	0%	3%	3%	6%	3%	3%	3%
Don't Know Yet	20%	23%	20%	21%	18%	15%	15%	28%
(N)	(209)	(167)	(199)	(233)	(244)	(186)	(245)	(274)

Candidate You Wouldn't Vote For In 2016 NH Republican Primary
(Likely NH GOP Primary Voters)

“Which of the candidates who are running for the Republican nomination would you NOT vote for under any circumstance?”

	<u>2015</u>						<u>2016</u>						
	<u>Feb</u>	<u>May</u>	<u>June</u>	<u>July</u>	<u>Sept</u>	<u>Dec</u>	<u>Jan 13-18</u>	<u>Jan 27-30</u>	<u>Jan 28-31</u>	<u>Jan 29-Feb 1</u>	<u>Jan 30-Feb 2</u>	<u>Jan 31-Feb 3</u>	<u>Feb 2-4</u>
Donald Trump	21%	21%	23%	29%	25%	26%	30%	35%	36%	31%	33%	33%	36%
Ted Cruz	5%	5%	4%	1%	3%	3%	4%	9%	9%	10%	10%	12%	14%
Jeb Bush	8%	8%	10%	16%	11%	11%	18%	12%	11%	9%	8%	8%	9%
Marco Rubio	1%	1%	2%	1%	0%	1%	4%	3%	3%	3%	4%	5%	5%
Chris Christie	10%	13%	10%	6%	5%	6%	9%	3%	3%	3%	4%	4%	3%
Carly Fiorina	1%	4%	*	1%	1%	4%	4%	2%	2%	2%	2%	2%	3%
Jim Gilmore	---	0%	0%	*	1%	2%	3%	1%	1%	1%	*	1%	3%
Ben Carson	*	1%	0%	1%	1%	5%	2%	2%	2%	3%	3%	4%	2%
John Kasich	0%	*	*	0%	*	2%	2%	2%	3%	4%	3%	3%	2%
Rand Paul	5%	5%	4%	2%	10%	7%	5%	4%	5%	6%	5%	---	---
Rick Santorum	3%	4%	2%	1%	2%	3%	1%	1%	2%	2%	2%	---	---
Mike Huckabee	3%	2%	3%	3%	8%	4%	2%	1%	1%	1%	---	---	---
Lindsey Graham	---	2%	1%	4%	4%	3%	---	---	---	---	---	---	---
George Pataki	*	4%	2%	2%	2%	2%	---	---	---	---	---	---	---
Mark Everson	---	---	---	---	1%	---	---	---	---	---	---	---	---
Bobby Jindal	1%	1%	2%	*	1%	---	---	---	---	---	---	---	---
Scott Walker	*	1%	2%	*	*	---	---	---	---	---	---	---	---
Rick Perry	2%	1%	1%	2%	---	---	---	---	---	---	---	---	---
Bob Ehrlich	---	0%	*	0%	---	---	---	---	---	---	---	---	---
Peter King	1%	0%	1%	---	---	---	---	---	---	---	---	---	---
John Bolton	0%	1%	---	---	---	---	---	---	---	---	---	---	---
Mitt Romney	5%	---	---	---	---	---	---	---	---	---	---	---	---
Paul Ryan	---	---	---	---	---	---	---	---	---	---	---	---	---
Rob Portman	---	---	---	---	---	---	---	---	---	---	---	---	---
Kelly Ayotte	---	---	---	---	---	---	---	---	---	---	---	---	---
Scott Brown	---	---	---	---	---	---	---	---	---	---	---	---	---
John Huntsman	---	---	---	---	---	---	---	---	---	---	---	---	---
John Thune	---	---	---	---	---	---	---	---	---	---	---	---	---
Someone Else	1%	*	1%	1%	0%	1%	*	1%	1%	1%	1%	6%	2%
All OK	11%	10%	13%	12%	10%	12%	10%	14%	14%	15%	15%	13%	13%
Don't Know	22%	18%	19%	17%	15%	9%	6%	9%	9%	10%	9%	10%	10%
(N)	(347)	(285)	(397)	(307)	(343)	(399)	(406)	(400)	(353)	(358)	(374)	(387)	(284)

	<u>2013</u>				<u>2014</u>			
	<u>Feb</u>	<u>Apr</u>	<u>July</u>	<u>Oct</u>	<u>Jan</u>	<u>Apr</u>	<u>July</u>	<u>Oct</u>
Donald Trump	---	---	---	---	25%	27%	---	---
Jeb Bush	6%	8%	11%	8%	2%	7%	9%	10%
Ted Cruz	1%	*	3%	8%	5%	4%	3%	4%
Rand Paul	6%	9%	3%	5%	3%	4%	3%	5%
Chris Christie	6%	11%	11%	7%	9%	15%	16%	12%
Marco Rubio	1%	*	2%	2%	2%	1%	1%	*
John Kasich	---	---	*	0%	---	---	*	*
Ben Carson	---	---	---	---	---	---	---	---
Carly Fiorina	---	---	---	---	---	---	---	---
Rick Santorum	11%	13%	11%	6%	---	5%	7%	4%
Jim Gilmore	---	---	---	---	---	---	---	---
Mike Huckabee	---	---	---	---	---	---	4%	6%
Lindsey Graham	---	---	---	---	---	---	---	---
George Pataki	---	---	---	---	---	---	---	---
Mark Everson	---	---	---	---	---	---	---	---
Bobby Jindal	2%	*	1%	---	---	*	1%	1%
Scott Walker	2%	*	0%	*	*	0%	3%	*
Rick Perry	---	---	5%	6%	2%	3%	7%	4%
Bob Ehrlich	---	---	---	---	---	---	---	---
Peter King	---	---	---	5%	1%	---	---	---
John Bolton	---	---	---	---	---	---	---	---
Mitt Romney	---	---	---	---	---	---	---	---
Paul Ryan	2%	*	*	1%	*	0%	1%	0%
Rob Portman	3%	1%	1%	*	*	0%	*	1%
Kelly Ayotte	6%	6%	---	---	5%	4%	---	---
Scott Brown	---	---	---	2%	5%	---	---	---
John Huntsman	4%	6%	---	---	---	---	---	---
John Thune	1%	*	---	---	---	---	---	---
Someone Else	2%	*	*	1%	*	2%	*	*
All OK	15%	24%	25%	20%	21%	16%	23%	17%
Don't Know	32%	21%	25%	28%	19%	14%	21%	34%
(N)	(208)	(168)	(197)	(232)	(243)	(185)	(243)	(271)

Who Will Win 2016 NH Republican Primary?
(Likely NH GOP Primary Voters)

“Regardless of who you are voting for, which candidate do you think is most likely to win the New Hampshire Republican primary?”

	<u>Feb. '15</u>	<u>May '15</u>	<u>July '15</u>	<u>Sept '15</u>	<u>Dec '15</u>	<u>Jan 27-30</u>	<u>Jan 28-31</u>	<u>Jan 29-Feb 1</u>	<u>Jan 30-Feb 2</u>	<u>Jan 31-Feb 3</u>	<u>Feb 2-4</u>
Donald Trump	3%	2%	25%	40%	59%	66%	69%	70%	70%	67%	63%
Ted Cruz	*	2%	2%	*	2%	6%	4%	3%	4%	6%	11%
Marco Rubio	*	7%	1%	5%	6%	2%	4%	4%	5%	8%	8%
Jeb Bush	15%	24%	26%	12%	4%	2%	2%	2%	1%	1%	1%
John Kasich	0%	1%	1%	3%	1%	1%	1%	1%	1%	1%	1%
Chris Christie	4%	3%	4%	2%	6%	1%	1%	1%	*	*	*
Carly Fiorina	0%	1%	0%	8%	1%	*	*	*	0%	0%	*
Ben Carson	1%	1%	*	4%	1%	1%	1%	0%	0%	0%	0%
Jim Gilmore	---	0%	0%	0%	0%	0%	0%	0%	0%	0%	0%
Rand Paul	7%	10%	2%	1%	1%	1%	1%	1%	1%	---	---
Mike Huckabee	1%	*	2%	0%	*	0%	0%	0%	---	---	---
Rick Santorum	1%	3%	*	1%	0%	0%	0%	0%	0%	---	---
George Pataki	0%	*	0%	0%	0%	---	---	---	---	---	---
Lindsey Graham	---	0%	0%	0%	0%	---	---	---	---	---	---
Scott Walker	3%	7%	8%	*	---	---	---	---	---	---	---
Bobby Jindal	1%	0%	1%	0%	---	---	---	---	---	---	---
Mark Everson	---	---	---	0%	---	---	---	---	---	---	---
Rick Perry	2%	2%	*	---	--	---	---	---	---	---	---
Bob Ehrlich	---	0%	0%	---	---	---	---	---	---	---	---
John Bolton	*	*	---	---	---	---	---	---	---	---	---
Peter King	0%	*	---	---	---	---	---	---	---	---	---
Mitt Romney	22%	---	---	---	---	---	---	---	---	---	---
Someone Else	*	0%	0%	0%	0%	1%	2%	2%	1%	0%	*
Don't Know	40%	38%	28%	24%	20%	19%	17%	17%	16%	16%	16%
(N)	(347)	(289)	(309)	(344)	(403)	(405)	(357)	(360)	(378)	(389)	(287)

**Decided 2016 GOP Primary Vote
(Likely 2016 GOP Primary Voters)**

	Def. <u>Decided</u>	Leaning <u>Towards Someone</u>	Still Trying <u>To Decide</u>	(N)
LIKELY NH GOP PRIMARY VOTERS	45%	26%	30%	287
Registered Undeclared	35%	27%	38%	124
Registered Republican	51%	25%	25%	158
Democrat/Independent	53%	22%	25%	67
Republican	42%	27%	31%	216
Liberal/Moderate	38%	34%	28%	125
Conservative	49%	19%	31%	143
Extremely Interested	49%	25%	26%	163
Very Interested	40%	31%	29%	98
Somewhat/Not Very Interested	35%	7%	59%	26
Voted in 2008,2012 NH Primaries	43%	29%	28%	202
Voted in 2008 or 2012 NH Primary	41%	26%	33%	34
Did Not Vote in Either NH Primary	53%	13%	34%	52
Will Definitely Vote	48%	24%	28%	248
Will Vote Unless Emergency	24%	33%	43%	39
Read Union Leader	35%	34%	31%	65
Read Boston Globe	53%	29%	18%	22
Read Local Newspapers	43%	20%	37%	77
Watch WMUR	37%	31%	31%	169
Listen to NHPR	34%	33%	33%	62
Listen to Conserv. Talk Radio	40%	28%	32%	49
18 to 34	52%	30%	18%	55
35 to 49	45%	20%	35%	75
50 to 64	39%	29%	33%	96
65 and over	51%	22%	28%	51
Male	48%	22%	30%	163
Female	40%	30%	30%	124
High school or less	51%	23%	26%	53
Some college	43%	24%	33%	70
College graduate	42%	29%	29%	108
Post-graduate	43%	24%	33%	55
Attend services 1 or more/week	40%	21%	39%	84
1-2 times a month	50%	24%	27%	29
Less often	42%	31%	27%	108
Never	52%	22%	25%	59
North Country	56%	17%	26%	19
Central / Lakes	45%	25%	30%	50
Connecticut Valley	40%	36%	24%	34
Mass Border	41%	31%	27%	88
Seacoast	65%	11%	24%	36
Manchester Area	36%	22%	42%	58
First Cong. Dist	45%	21%	34%	146
Second Cong. Dist	45%	30%	25%	141

**GOP 2016 Primary Support
(Likely 2016 GOP Primary Voters)**

	Donald <u>Trump</u>	Marco <u>Rubio</u>	John <u>Kasich</u>	Ted <u>Cruz</u>	Jeb <u>Bush</u>	Carly <u>Fiorina</u>	Chris <u>Christie</u>	Someone <u>Else</u>	<u>Undecided</u>	<u>(N=)</u>
LIKELY NH GOP PRIMARY VOTERS	28%	17%	13%	13%	9%	5%	4%	3%	8%	285
Registered Undeclared	25%	15%	20%	12%	10%	6%	3%	1%	8%	125
Registered Republican	29%	20%	8%	14%	9%	4%	5%	4%	9%	154
Democrat/Independent	19%	9%	36%	10%	8%	3%	4%	2%	8%	66
Republican	30%	20%	6%	14%	10%	5%	3%	3%	8%	216
Liberal/Moderate	21%	20%	23%	5%	14%	2%	5%	2%	7%	123
Conservative	31%	16%	5%	19%	6%	7%	2%	3%	10%	144
Extremely Interested	31%	20%	10%	14%	8%	3%	2%	3%	9%	164
Very Interested	24%	16%	20%	11%	9%	4%	7%	2%	8%	96
Somewhat/Not Very Interested	21%	7%	5%	8%	20%	17%	7%	8%	5%	26
Voted in 2008,2012 NH Primaries	24%	21%	14%	14%	10%	4%	2%	3%	8%	200
Voted in 2008 or 2012 NH Primary	19%	3%	13%	15%	12%	8%	16%	4%	9%	34
Did Not Vote in Either NH Primary	49%	12%	10%	7%	5%	5%	2%	2%	8%	52
Definitely Decided	40%	14%	13%	16%	7%	1%	3%	5%	0%	126
Leaning Towards Someone	22%	21%	15%	16%	10%	5%	6%	2%	3%	72
Still Trying to Decide	12%	19%	12%	5%	12%	10%	3%	1%	25%	85
Will Definitely Vote	29%	19%	14%	12%	9%	4%	3%	3%	7%	246
Will Vote Unless Emergency	22%	8%	9%	15%	9%	9%	10%	3%	16%	39
Read Union Leader	24%	36%	9%	7%	7%	4%	2%	0%	11%	63
Read Boston Globe	31%	18%	32%	0%	7%	0%	9%	0%	3%	20
Read Local Newspapers	26%	17%	16%	5%	16%	9%	4%	2%	5%	76
Watch WMUR	31%	16%	11%	12%	12%	3%	6%	2%	9%	166
Listen to NHPR	19%	23%	20%	5%	10%	6%	4%	3%	9%	62
Listen to Conserv. Talk Radio	33%	21%	2%	20%	1%	11%	1%	6%	6%	48
18 to 34	28%	13%	11%	15%	8%	5%	6%	9%	5%	57
35 to 49	32%	22%	10%	13%	5%	6%	3%	1%	9%	75
50 to 64	25%	15%	17%	13%	13%	3%	3%	2%	9%	93
65 and over	30%	21%	12%	8%	11%	6%	1%	2%	9%	50
Male	33%	9%	14%	13%	10%	5%	4%	3%	8%	161
Female	21%	27%	12%	12%	9%	4%	3%	3%	8%	124
High school or less	41%	18%	7%	9%	4%	3%	0%	5%	12%	51
Some college	29%	14%	6%	17%	12%	4%	2%	5%	10%	70
College graduate	24%	20%	13%	16%	12%	6%	4%	2%	4%	105
Post-graduate	22%	16%	28%	5%	6%	5%	7%	1%	11%	57
Attend services 1 or more/week	14%	22%	8%	18%	10%	8%	3%	5%	13%	84
1-2 times a month	35%	13%	19%	4%	19%	0%	0%	0%	10%	29
Less often	35%	15%	13%	13%	6%	4%	4%	2%	9%	108
Never	31%	19%	16%	8%	10%	5%	7%	4%	0%	56
North Country	34%	14%	18%	18%	0%	9%	0%	0%	6%	18
Central / Lakes	14%	16%	10%	10%	24%	3%	6%	8%	9%	50
Connecticut Valley	21%	18%	19%	7%	8%	5%	9%	8%	4%	34
Mass Border	27%	21%	17%	14%	4%	5%	3%	3%	7%	91
Seacoast	46%	6%	17%	10%	7%	9%	0%	0%	4%	36
Manchester Area	33%	20%	2%	15%	8%	3%	3%	0%	16%	57
First Cong. Dist	30%	15%	11%	12%	10%	7%	1%	2%	10%	142
Second Cong. Dist	25%	19%	16%	13%	8%	2%	7%	4%	6%	143

**GOP 2016 Primary – Would NOT Support
(Likely 2016 GOP Primary Voters)**

	Donald <u>Trump</u>	Ted <u>Cruz</u>	Jeb <u>Bush</u>	Marco <u>Rubio</u>	Chris <u>Christie</u>	Someone <u>Else</u>	All <u>Acceptable</u>	Don't <u>Know</u>	(N=)
LIKELY NH GOP PRIMARY VOTERS	36%	14%	9%	5%	3%	11%	13%	10%	284
Registered Undeclared	31%	21%	8%	5%	4%	10%	10%	10%	124
Registered Republican	40%	8%	9%	5%	2%	12%	15%	10%	156
Democrat/Independent	28%	24%	4%	5%	4%	7%	11%	16%	67
Republican	39%	11%	10%	5%	3%	12%	14%	6%	214
Liberal/Moderate	41%	21%	5%	6%	2%	10%	8%	6%	124
Conservative	33%	8%	10%	3%	4%	14%	18%	11%	143
Extremely Interested	37%	11%	9%	7%	3%	11%	16%	5%	160
Very Interested	34%	20%	10%	1%	4%	10%	7%	15%	98
Somewhat/Not Very Interested	30%	8%	0%	7%	4%	15%	15%	20%	26
Voted in 2008,2012 NH Primaries	38%	12%	10%	5%	3%	11%	11%	9%	201
Voted in 2008 or 2012 NH Primary	34%	31%	3%	2%	0%	8%	13%	8%	34
Did Not Vote in Either NH Primary	28%	7%	7%	4%	5%	12%	20%	16%	50
Definitely Decided	28%	17%	11%	4%	3%	12%	17%	7%	126
Leaning Towards Someone	51%	2%	11%	3%	4%	11%	11%	8%	73
Still Trying to Decide	33%	18%	4%	8%	3%	10%	9%	16%	86
Will Definitely Vote	35%	14%	10%	4%	3%	10%	14%	10%	246
Will Vote Unless Emergency	40%	9%	3%	11%	3%	19%	8%	7%	39
Read Union Leader	45%	10%	5%	7%	7%	10%	7%	9%	65
Read Boston Globe	33%	20%	14%	12%	0%	0%	2%	19%	22
Read Local Newspapers	34%	19%	7%	8%	1%	8%	12%	10%	75
Watch WMUR	35%	15%	8%	4%	5%	14%	10%	9%	167
Listen to NHPR	39%	14%	9%	3%	3%	11%	9%	13%	61
Listen to Conserv. Talk Radio	21%	5%	26%	6%	0%	19%	13%	9%	49
18 to 34	42%	15%	4%	2%	0%	10%	14%	12%	53
35 to 49	36%	17%	7%	6%	6%	11%	11%	6%	75
50 to 64	32%	12%	13%	6%	3%	9%	15%	9%	96
65 and over	35%	13%	7%	4%	2%	15%	12%	12%	50
Male	25%	18%	11%	5%	5%	12%	16%	9%	160
Female	50%	8%	6%	4%	2%	10%	9%	11%	124
High school or less	32%	5%	9%	6%	4%	10%	11%	22%	52
Some college	22%	15%	14%	2%	4%	16%	20%	8%	70
College graduate	47%	9%	8%	4%	4%	9%	11%	8%	106
Post-graduate	34%	29%	3%	9%	0%	10%	9%	6%	55
Attend services 1 or more/week	54%	8%	4%	5%	2%	10%	10%	7%	84
1-2 times a month	18%	16%	13%	4%	7%	10%	15%	16%	28
Less often	25%	15%	10%	6%	3%	12%	19%	9%	107
Never	38%	17%	11%	3%	5%	10%	5%	12%	59
North Country	18%	27%	4%	0%	0%	15%	24%	12%	17
Central / Lakes	42%	22%	6%	1%	3%	9%	4%	12%	50
Connecticut Valley	40%	6%	9%	8%	5%	17%	13%	3%	34
Mass Border	39%	10%	8%	7%	3%	10%	16%	7%	88
Seacoast	20%	17%	15%	0%	7%	14%	9%	18%	36
Manchester Area	37%	10%	8%	7%	3%	7%	17%	11%	58
First Cong. Dist	31%	16%	7%	5%	3%	9%	14%	14%	144
Second Cong. Dist	40%	11%	10%	5%	3%	13%	12%	5%	140

**Who will win NH Republican Primary?
(Likely 2016 GOP Primary Voters)**

	Donald <u>Trump</u>	Ted <u>Cruz</u>	Marco <u>Rubio</u>	John <u>Kasich</u>	Jeb <u>Bush</u>	Chris <u>Christie</u>	Someone <u>Else</u>	Don't <u>Know</u>	(N=)
LIKELY NH GOP PRIMARY VOTERS	63%	11%	8%	1%	1%	0%	0%	16%	287
Registered Undeclared	64%	12%	5%	1%	0%	0%	0%	17%	126
Registered Republican	61%	10%	10%	1%	1%	1%	1%	16%	156
Democrat/Independent	51%	15%	8%	4%	1%	0%	1%	20%	67
Republican	66%	10%	8%	0%	1%	0%	0%	15%	216
Liberal/Moderate	63%	8%	4%	2%	0%	1%	1%	20%	124
Conservative	62%	15%	10%	0%	1%	0%	0%	12%	143
Extremely Interested	62%	13%	10%	1%	1%	1%	1%	12%	164
Very Interested	65%	6%	5%	2%	0%	0%	0%	21%	97
Somewhat/Not Very Interested	59%	16%	3%	0%	0%	0%	0%	23%	26
Voted in 2008,2012 NH Primaries	61%	12%	9%	1%	1%	0%	1%	17%	201
Voted in 2008 or 2012 NH Primary	67%	3%	6%	0%	1%	3%	0%	19%	34
Did Not Vote in Either NH Primary	67%	14%	5%	1%	0%	0%	0%	13%	53
Definitely Decided	71%	10%	9%	2%	1%	1%	0%	6%	127
Leaning Towards Someone	54%	11%	7%	0%	1%	0%	1%	26%	73
Still Trying to Decide	58%	13%	6%	1%	0%	0%	0%	23%	84
Will Definitely Vote	62%	12%	8%	1%	1%	0%	1%	15%	248
Will Vote Unless Emergency	67%	4%	5%	1%	1%	0%	0%	22%	39
Read Union Leader	61%	11%	14%	0%	1%	0%	1%	13%	65
Read Boston Globe	51%	4%	4%	7%	0%	0%	3%	31%	22
Read Local Newspapers	60%	10%	7%	3%	1%	0%	2%	17%	77
Watch WMUR	62%	10%	8%	1%	0%	1%	1%	17%	169
Listen to NHPR	61%	7%	5%	4%	1%	0%	1%	21%	64
Listen to Conserv. Talk Radio	69%	9%	9%	0%	1%	0%	0%	12%	49
18 to 34	72%	7%	5%	0%	0%	0%	0%	15%	57
35 to 49	68%	12%	8%	2%	0%	0%	0%	9%	74
50 to 64	62%	11%	5%	0%	0%	0%	1%	20%	95
65 and over	51%	13%	14%	2%	2%	0%	0%	17%	50
Male	68%	11%	5%	1%	1%	1%	0%	13%	164
Female	56%	12%	11%	0%	0%	0%	1%	20%	122
High school or less	59%	14%	11%	0%	0%	0%	0%	16%	53
Some college	59%	19%	7%	0%	1%	0%	1%	13%	68
College graduate	66%	9%	8%	1%	0%	0%	1%	15%	108
Post-graduate	65%	4%	4%	4%	1%	0%	0%	22%	57
Attend services 1 or more/week	52%	13%	13%	1%	1%	0%	1%	19%	82
1-2 times a month	74%	3%	4%	0%	0%	0%	0%	19%	29
Less often	65%	13%	5%	2%	0%	1%	1%	14%	108
Never	67%	11%	7%	0%	1%	0%	0%	14%	60
North Country	60%	14%	16%	0%	0%	0%	0%	10%	19
Central / Lakes	64%	14%	9%	1%	1%	0%	1%	10%	50
Connecticut Valley	54%	12%	10%	0%	2%	3%	0%	19%	34
Mass Border	65%	11%	4%	2%	0%	0%	0%	17%	90
Seacoast	75%	3%	0%	0%	0%	0%	2%	21%	36
Manchester Area	57%	12%	12%	0%	1%	0%	0%	18%	56
First Cong. Dist	61%	13%	8%	1%	1%	0%	0%	16%	145
Second Cong. Dist	65%	9%	7%	1%	1%	1%	0%	16%	141