

NHamp
F
44
-SS
2009

Shelburne, New Hampshire



Annual Report

For The Year Ending December 31, 2009

TOWN OFFICERS 2009 - 2010

SELECTPERSONS

Lucy Evans	Term expires 2010
Heidi Behling	Term expires 2011
Stanley Judge	Term expires 2012

TREASURER

Robert Pinkham	Term expires 2012
----------------	-------------------

DEPUTY TREASURER

John Cosgriff	Term expires 2010
---------------	-------------------

TAX COLLECTOR

Susan Waddington	Term expires 2012
------------------	-------------------

DEPUTY TAX COLLECTOR

Kimberly Landry	Term expires 2010
-----------------	-------------------

TOWN CLERK

Susan Waddington	Term expires 2012
------------------	-------------------

DEPUTY TOWN CLERK

Jo Anne Carpenter	Term expires 2010
-------------------	-------------------

AUDITORS

Rodney Hayes	Term expires 2010
Debbie Hayes	Term expires 2011

MODERATOR

John Henne	Term expires 2010
------------	-------------------

SUPERVISORS OF THE CHECKLIST

Robin Henne	Term expires 2010
Hildreth Danforth	Term expires 2012
Joyce Carlisle	Term expires 2014

BALLOT CLERKS

Beverly Pinkham	Robert Pinkham
-----------------	----------------

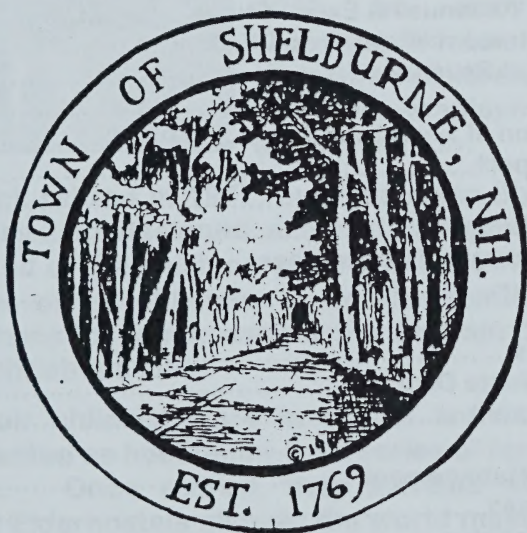
PUBLIC WORKS FOREMAN & ROAD AGENT

Ken Simonoko

BUILDING AND CODE ENFORCEMENT

Rav Bennett

**ANNUAL REPORT
OF THE TOWN OF
SHELBURNE, NEW HAMPSHIRE**



**FOR THE YEAR ENDING
DECEMBER 31, 2009**

TABLE OF CONTENTS

Dedication	1
Town Officers	3
State & Federal Officials	6
Special Thank you	7
2009 Town Meeting Minutes	8
Financial Reports	
Summary Inventory of Valuation.....	14
Statement of Appropriations & Taxes Assessed.....	15
Comparative Statement of Appropriations.....	19
Town Clerk' Report.....	20
Schedule of Town Property.....	20
Town Officers' Salaries.....	21
Tax Collector's Report.....	22
Treasurer Report.....	24
Balance Sheet.....	26
Summary of Revenues & Expenditures.....	28
Detailed Statement - Revenues & Expenditures.....	29
Departmental Revenues.....	44
Trust Funds.....	46
Reconciliation of Long-term Debt.....	49
Auditors Report.....	49
Charts	50
Warrant and Budget	55
Report of Officers and Committees	
Selectpersons.....	72
Town Clerk	75
Public Works.....	76
Shelburne Waste District.....	77
Fire Department.....	78
Fast Squad.....	81
Emergency Management.....	82
Planning Board.....	83
Building Inspector.....	84
Park Commission.....	85
Town Forest.....	86
Conservation Commission.....	87
Heritage Commission.....	87
Shelburne Union Church.....	88
Cemetery.....	90
Library.....	91
Family Resource Center.....	92
North Country Council.....	93
Executive Councilor Ray Burton.....	94
Rules, Regulations & Informational Material	96

DEDICATION

This town report is dedicated to the memory of four Shelburne Citizens who passed away in 2009 & January of 2010.

John P. (Jack) Danforth



Jack Danforth passed away in Lewiston, Me on Oct. 20, 2009. He was born May 31, 1915 in Cleveland, OH. He received a BA and an MBA from Harvard. In 1941 he married Eleanor (Tommie) Weston. They raised their three children in Ohio where Jack was employed by Babcock and Wilcox, Co.

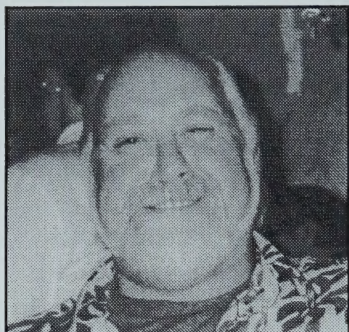
When Jack retired in 1977, they moved to Shelburne to the house they had designed and had built on the North Rd. Jack did all of the finish carpentry on his own house as well as houses of his children. He also made furniture and smaller items for family and for the Gorham Congregational Church Christmas fair.

While their children were in school and later, Jack and Tommie acted as host family for a series of foreign exchange students. Once retired, they traveled extensively and attended Elderhostels all over the world making friends and taking photographs. In addition to travel and woodworking, Jack was an avid sailor in a series of small boats.

He was School Treasurer in Shelburne for 25 years, held several offices at the Gorham Congregational Church and in United Way, Habitat for Humanity and other local committees.

He is survived by his widow, Tommie, three children, 7 grandchildren and one great grandchild.

Gordon "Jim" Evans



Jim Evans passed away on Saturday January 9, 2010 at the age of 57. He was born in Berlin, the son of Gordon and Dorothy Evans and was a lifelong resident of Shelburne.

He worked as a truck driver most recently for Coleman Construction and prior to that was employed by Currier Trucking for 30 years.

Jim was an avid outdoorsman. He loved hunting, fishing, and snowmobiling. He was a hotrod enthusiast and loved his red street rod. He and his wife, Lucy loved to attend rallies with their friends in the White Mountain and Coos County Cruisers and won many prizes with their red street rod.

He was a member of the Shelburne Heritage Commission and had a lot of knowledge about the history of Shelburne.

He will be sadly missed by his wife and best friend Lucy, his daughters, Becky and Fallone, his twin sister, Vera-Ellen and his many friends.

Frederic "Fred" Sprague

Fred Sprague passed away January 26, 2010 at the age of 72. He was born in Cambridge, Mass. And lived in Rockport, Mass. For most of his life. He served in the US Navy and was employed by Brown's Yacht Yard.

He loved to come to the campground in Shelburne with his friends and retired to Shelburne about 10 years ago. He liked boats and enjoyed golfing and snowmobiling. His mobility and activities had been restricted over the last few years due to health concerns.

He will be missed sadly missed by family and friends.

TOWN OFFICERS 2009 - 2010

SELECT PERSONS

Lucy Evans Term expires 2010
Heidi Behling Term expires 2011
Stanley Judge Term expires 2012

TREASURER

Robert Pinkham Term expires 2012

DEPUTY TREASURER

John Cosgriff Term expires 2010

TAX COLLECTOR

Susan Waddington Term expires 2012

DEPUTY TAX COLLECTOR

Kimberly Landry Term expires 2010

TOWN CLERK

Susan Waddington Term expires 2012

DEPUTY TOWN CLERK

Jo Anne Carpenter Term expires 2010

AUDITORS

Rodney Hayes Term expires 2010
Debbie Hayes Term expires 2011

MODERATOR

John Henne Term expires 2010

SUPERVISORS OF THE CHECKLIST

Robin Henne Term expires 2010
Hildreth Danforth Term expires 2012
Joyce Carlisle Term expires 2014

BALLOT CLERKS

Beverly Pinkham Robert Pinkham

PUBLIC WORKS FOREMAN & ROAD AGENT

Ken Simonoko

BUILDING AND CODE ENFORCEMENT

Rav Bennett

HEALTH OFFICER

Lucy Evans

FAST SQUAD

George Corriveau

Luc Corriveau

EMERGENCY MANAGEMENT

Stanley Judge

FIRE CHIEF

Warren "Tom" Hayes

CONSTABLE

Jerry Baker

BUDGET COMMITTEE

Stanley Judge

Term expires 2010

John Henne

Term expires 2010

Robert Corrigan

Term expires 2011

Jacqueline Corrigan

Term expires 2011

Michael Brosnan

Term expires 2012

PLANNING BOARD

Heidi Behling

Term expires 2010

Jennifer Corrigan

Term expires 2010

David Landry

Term expires 2010

Steve Tasse

Term expires 2011

John Carpenter

Term expires 2011

Roger Gagnon

Term expires 2012

Ann Leger

Term expires 2012

BOARD OF ADJUSTMENT

John Gralenski

Term expires 2010

Terry Davenport

Term expires 2010

Raymond Danforth

Term expires 2011

Benjamin Mayerson

Term expires 2012

Joyce Carlisle

Term expires 2012

Jennifer Corrigan (alternate)

Term expires 2011

Raymond Halle (alternate)

Term expires 2012

MEMORIAL FOREST

Michael Ryan

Term expires 2010

John Gralenski

Term expires 2011

Robert Waddington

Term expires 2012

CEMETERY TRUSTEES

Robert Waddington	Term expires 2010
William Healy	Term expires 2011
Cynthia Gralenski	Term expires 2012

TRUSTEES OF TRUST FUNDS

Benjamin Mayerson	Term expires 2010
Robin Henne	Term expires 2011
Raymond Danforth	Term expires 2012

LIBRARY TRUSTEES

Wendy Mayerson	Term expires 2010
Reny Demers	Term expires 2011
Robert Pinkham	Term expires 2012

CONSERVATION COMMISSION

Thomas Moore	Term expires 2010
John Cosgriff	Term expires 2010
Stanley Judge	Term expires 2011
John Gralenski	Term expires 2011
David Carlisle	Term expires 2012
Mary Jo Landry	Term expires 2012

PARK COMMISSION

Kenneth Simonoko	Term expires 2010
Beverly Pinkham	Term expires 2010
Andrew Johnston	Term expires 2011
Robert Corrigan	Term expires 2012
Marc Van Sant	Term expires 2012

LANDFILL COMMITTEE

Heidi Behling	Term expires 2010
Ken Simonoko	Term expires 2010
Vacant	Term expires 2011
Raymond Danforth	Term expires 2012
John Gralenski	Term expires 2012

HERITAGE COMMISSION

Roger Morrisette	Term expires 2009
Betty Werner	Term expires 2010
Vacant	Term expires 2010
Hildreth Danforth	Term expires 2011
Cynthia Gralenski	Term expires 2011
Ken Simonoko	Term expires 2012
Gordon Evans	Term expires 2012

NORTH COUNTRY COUNCIL

Stanley Judge

John Carpenter



Surveyors of Wood, Bark and Lumber
Fence Viewers
Sealers of Weights and Measures
THE SELECTPERSONS



STATE AND FEDERAL OFFICIALS

PRESIDENT OF THE UNITED STATES

Barack H. Obama

VICE PRESIDENT OF THE UNITED STATES

Joe Biden

U.S. SENATORS

Judd Gregg

Jeanne Shaheen

U.S. CONGRESSMEN

Carol Shea-Porter

Paul Hodes

GOVERNOR OF NEW HAMPSHIRE

John Lynch

EXECUTIVE COUNCIL

Raymond S. Burton

STATE SENATOR (District 1)

John T. Gallus

STATE REPRESENTATIVE (District 3)

William Hatch

SPECIAL THANK YOU

Some special thank you's are in order for 2009.

To Patti Stolte & Tri-County CAP and volunteers: Thank you for continuing to serve a delicious Community Breakfast on the first and third Tuesday of each month at the Shelburne Town Hall.

To Roma and Junior Hayes, Reny Demers, Bob and Bev Pinkham and Lala Dinsmore: Thank you for your help with the Community Breakfasts

To Ben Mayerson: Thank you for creating and maintaining the town website. It is a great site and always improving.

To the Shelburne Neighbors Club: Thank you for your help with making funeral luncheons very special.

To Ray Danforth: Thank you for help with our energy and landfill issues.

To John Gralenski: Thank you for donating your time to help out at the Transfer Station on Saturday mornings.

To Paula Simonoko and everyone else who takes a turn: Thank you for the many delicious snacks you have prepared for Saturday mornings at the Transfer Station.

To Ann Leger: Thank you for your help with the town report layout.

To Jen Corrigan: Thank you for your excellent work on tabulation and data presentation of the Planning Board questionnaire.

To Bob Pinkham: Thank you for your help on projects at the town hall

To everyone who donates books the Library: Thank you for helping our collection grow.

To everyone that takes the time to volunteer to serve on committees or to hold town office: Thank you!!! It is all of you that make Shelburne a very special place to live.

4324 Solid Waste Disposal	\$32,600
4414 Animal Control	\$200
4415 Health	\$400
4444 Welfare	\$2,000
4520 Parks & Recreation	\$5,000
4550 Library	\$1,800
4590 Memorial Forest	\$400
4611 Conservation Commission	\$1,000
4711 Principal Long Term Note	\$28,625
4721 Int. Long Term Note	\$2,000
4723 Int. TAN Note	\$900

Article 4 It was voted to raise and appropriate \$20,000 to be added to the Heavy Highway Equipment Capital Reserve Fund previously established.

Motion: Bob Corrigan

Second: John Gralenski

Article 5 It was voted to raise and appropriate the sum of \$175,000 to purchase a new plow truck and equip it for the Highway Department and to authorize the issuance of not more than \$60,000 of bonds or notes in accordance with the provisions of the Municipal Finance Act (RSA33) and to authorize the municipal officials to issue and negotiate such bonds or notes and to determine the rate of interest thereon; further mote to authorize the withdrawal of balance (\$115,000) of the Heavy Highway Capital Reserve Fund created for this purpose. Voting by paper ballot began at 7:15 p.m. and ended at 8:15 p.m. The vote was 58 for, 3 against.

Motion: John Gralenski

Second: John Cosgriff

Article 6 It was voted to raise and appropriate the sum of \$8,000 to be added to the existing Fire Truck Capital Reserve Fund previously established.

Motion: Tom Hayes

Second: Peter Nickerson

Article 7 It was voted to raise and appropriate the sum of \$5,400 to be added to the Fire Department Equipment Capital Reserve Fund previously established.

Motion: Tom Hayes

Second: David Landry

- Article 8** It was voted to raise and appropriate the sum of \$9,000 to be added to the Paving Capital Reserve Fund previously established.
Motion: Bob Corrigan Second: John Gralenski
- Article 9** It was voted to raise and appropriate the sum of \$500 to be added to the existing Peabody Farm Museum Capital Reserve Fund previously established.
Motion: John Gralenski Second: Robin Henne
- Article 10** It was voted to raise and appropriate the sum of \$600 to be added to the existing Cemetery Equipment Capital Reserve Fund previously established.
Motion: John Gralenski Second: Bob Corrigan
- Article 11** It was voted to raise and appropriate the sum of \$1,000 to be added to the existing Town Building Capital Reserve Fund previously established.
Motion: Bob Corrigan Second: John Gralenski
- Article 12** It was voted to raise and appropriate the sum of \$4,000 to be added to the existing Revaluation Capital Reserve Fund previously established.
Motion: Jo Carpenter Second: Cynthia Gralenski
- Article 13** It was voted to raise and appropriate the sum of \$600 to be added to the Cemetery Maintenance Capital Reserve Fund previously established. This represents the sum of money received from the sale of cemetery lots in 2008. This sum to come from fund balance (surplus) and no amount to be raised from taxation.
Motion: Jackie Corrigan Second: David Landry
- Article 14** It was voted to raise and appropriate the sum of \$3,000 to be added to the existing Town Vehicle Maintenance Expendable Trust Fund previously established.
Motion: Cynthia Gralenski Second: John Gralenski
- Article 15** It was voted to raise and appropriate the sum of \$500 to be added to the existing Fire Department Mutual Aid Expendable Trust Fund previously established.
Motion: Bob Corrigan Second: Jackie Corrigan

Article 16 It was voted to raise and appropriate the sum of \$500 to be added to the existing Sand/Gravel Expendable Trust previously established.

Motion: John Gralenski

Second: Cynthia Gralenski

Article 17 It was voted to raise and appropriate the sum of the sum of \$2,500 to purchase a copier for the town office and vote to withdraw \$1,150 from the Land Use Change Fund toward this purchase; the balance (\$1,350) to be raised by taxation.

Motion: Ray Danforth

Second: John Gralenski

Article 18 It was voted to raise and appropriate the sum of the sum of \$1,000 for the purpose of supporting the Family Resource Center at Gorham (by petition)

Motion: Robin Henne

Second: David Landry

Article 19 It was voted to authorize the Selectmen to dispose of Municipal assets (recyclables, etc.) under the authority of RSA 31:3.

Motion: Tom Hayes

Second: Robin Henne

The meeting returned to Article 1 and the following report was given:

Selectman for 3 Years

Stanley Judge 55 votes

Jocelyne Corriveau 17 votes

Town Clerk for 3 Years

Sue Waddington 72 votes

Treasurer for 3 Years

Robert Pinkham 72 votes

Constable for 1 Year

Jerry Baker 56 votes

Brian Lamarre 2 votes

Rav Bennett 1 vote

George Corriveau 1 vote

Tim Hayes 1 vote

Auditor for Two Years

Debbie Hayes 71 votes

Trustee of Trst Fds for 3 Years

Tax Collector for 3 Years

Sue Waddington 72 votes

Raymond Danforth 72 votes

Bdgt Committee for 3 Years

Mike Brosnan	4 votes
Leon Favreau	2 votes
David Carlisle	1 vote
Jackie Corrigan	1 vote
Jocelyne Corriveau	1 vote
John Henne	1 vote
Stan Judge	1 vote
Teddy Peabody	1 vote
Randy Stiles	1 vote
Steve Tassej	1 vote

Cem Committee for 1 Year

Robert Waddington	71 votes
Mike Brosnan	1 vote

Cem Committee for 2 Years

William Healy	70 votes
Mike Brosnan	1 vote

Cem Committee for 3 Years

Cynthia Gralenski	66 votes
Mike Brosnan	1 vote
Daryl Bennett	1 vote

Library Trustee for 3 Years

Robert Pinkham	71 votes
----------------	----------

On a motion by Joyce Carlisle, seconded by Robin Henne, the meeting was adjourned at 9:10 PM.

A True Copy: attest

Sue Waddington
Town Clerk



FINANCIAL REPORTS



SUMMARY INVENTORY OF VALUATION MS-1 FORM - SEPTEMBER 2009

VALUE OF LAND

Current use - 13,411.00 acres	624,772
Discretionary Preservation Easement – 0.4 acres	75
Residential - 1,361.51 acres	16,219,800
Commercial/Industrial Land -276.240acres	1,726,800
Total	\$ 18,571,447

VALUE OF BUILDINGS

Residential	26,249,421
Manufactured Housing	566,800
Commercial/Industrial	9,501,100
Discretionary Preservation Easements	10,779
Total	\$36,328,100

ELECTRIC/GENERATING COMPANIES (Utilities)

Great Lakes Hydro America, LLC	3,833,800
PSNH	854,900
Total	\$ 4,688,700

GAS, OIL & PIPELINE COMPANIES (Utilities)

Portland Pipeline	6,898,500
Portland Natural Gas	16,148,700
Total	\$ 23,047,200

TOTAL VALUATION \$ 82,635,447

Disabled Exemption(1)	-15,000
Elderly Exemptions(5)	-80,000
Solar Energy Exemptions(6)	-38,000
NET VALUATION	\$ 2,502,447

NET VALUATION WITHOUT UTILITIES \$ 54,766,547

Exempt/non-taxable land – 15,280.42 acres	\$ 8,079,200
Exempt/nontaxable buildings	\$ 674,600

We certify that the information contained in this report was taken from official records and is correct to the best of our knowledge.
Selectpersons - Stanley Judge, Lucy Evans, Heidi Behling

STATEMENT OF APPROPRIATION AND TAXES ASSESSED

APPROPRIATIONS

GENERAL GOVERNMENT

Executive	26,350
Election, Reg. & Vital Statistics	7,935
Financial Administration	18,508
Revaluation of Property	12,000
Legal Expense	9,000
Personnel Admin.	42,937
Planning & Zoning	3,000
General Government Buildings	48,400
Cemeteries	3,600
Insurance	13,383
Regional Association	465

PUBLIC SAFETY

Police Dept.	2,100
Ambulance	13,483
Fire Dept.	16,760
Building Inspection	2,500
Emergency Management	4,100
Dispatch Service	3,509

HIGHWAY & STREETS

Highways	52,000
----------	--------

SANITATION

Solid Waste Disposal	32,600
----------------------	--------

HEALTH

Pest Control	200
Health Agencies	400

WELFARE

Direct Assistance	2,000
-------------------	-------

CULTURE & RECREATION

Parks & Recreation	5,000
--------------------	-------

Library	1,800
Memorial Forest	400
CONSERVATION	
Conservation Commission	1,000
DEBT SERVICE	
Principal - L.T. Bonds & Notes	28,625
Interest - Long term Bonds & Notes	2,000
Interest on Tax Anticipation Note	900
CAPITAL OUTLAY	
Family Resource Center	1,000
Copier	2,500
New Plow Truck	175,000
OPERATING TRANSFERS OUT	
Cemetery Maintenance CR	600
Cemetery Equipment CR	600
Heavy Highway Equipment CR	20,000
Fire Truck CR	8,000
Fire Equipment CR	5,400
Paving CR	9,000
Revaluation CR	4,000
Town Building CR	1,000
Peabody Farm CR	500
Expendable Trust	
Fire Dept. Mutual Aid Expendable Trust	500
Town Vehicle Maintenance Expendable Trust	3,000
Sand/Gravel Expendable Trust	500
TOTAL	\$ 586,555
SOURCES OF REVENUE	
TAXES	
Land Use Change Tax	1,150
Yield Taxes	35,146
Payment in Lieu of Taxes	37,496
Interest and Penalties on Taxes	3,000

Excavation Tax	40
LICENSES, PERMITS AND FEES	
Business Licenses and Permits	75
Motor Vehicle Permit Fees	65,000
Building Permits	1,100
Other Permits, Licenses & Fees	800
FROM STATE	
Shared Revenue & Room	0
Room & Meals	17,169
Highway Block Grant	13,206
Other - RR Tax & FEMA Grant	9,800
CHARGES FOR SERVICES	
Landfill - Sale recyclables & PAYT	6,500
Other Charges - Plowing, Burial Fees	300
MISCELLANEOUS REVENUES	
Sale of Municipal Property	0
Interest on Investments	4,000
Other - Dividends, Insurance Reimb, grant, etc.	5,000
INTERFUND OPERATING TRANSFERS IN	
Capital Reserve Funds	115,000
Cemetery Trust Funds	600
OTHER FINANCING SOURCES	
Proceeds from Long-term note	60,000
Taken from surplus to reduce taxes	10,000
Voted from surplus to Cemetery Maintenance CR	600
TOTAL	\$ 385,982
TAX RATE COMPUTATION	
Total Town Appropriations	
Less: Revenues	586,555
Less: Shared Revenue	0
Add: Overlay	10,608
War Services Credits	2,800
Net Town Appropriation	213,981

Net Local Regional School Tax Assessment	511,502
State Education Tax Assessment	118,909
Net County Tax Assessment	271,905
Total of Town, School & County	\$1,116,297
Less: War Service Credit	-2,800

Property Taxes to be raised \$1,113,497

Net Assessed Valuation \$82,502,447
 Assessed Valuation- no utilities \$54,766,547

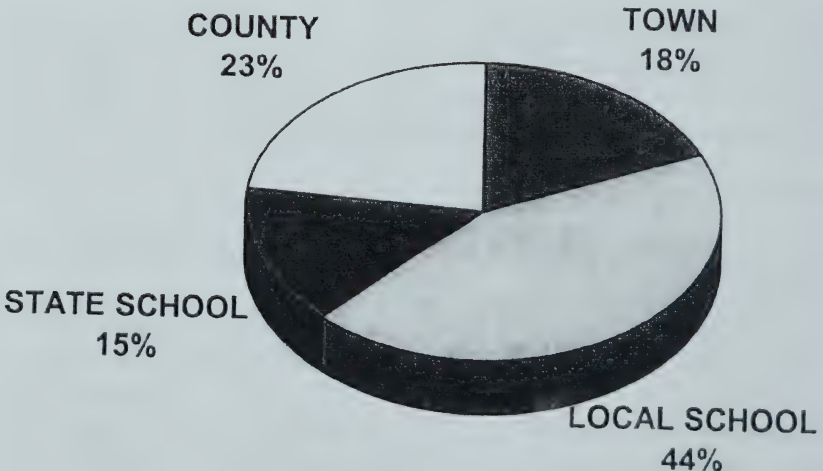
The tax rate breaks down as follows:

Town:	\$ 2.59 per \$ 1,000
Local School:	\$ 6.20 per \$ 1,000
State School:	\$ 2.17 per \$ 1,000
County:	\$ 3.30 per \$ 1,000

Total **\$ 14.26 per \$ 1,000**

Note: Shelburne's equalized valuation ratio for 2008 was 100.7%.

2009 TAXES



COMPARATIVE STATEMENT OF APPROPRIATIONS AND EXPENDITURES

Title of Appropriation	Amount of Appropriation	Expenditures	Unexpended Balances	Overdrafts
Executive	\$ 26,350.00	\$ 27,065.32	\$ 0.00	\$ 715.32
Elec., Reg. & V. Stat.	7,935.00	6,316.04	1,618.96	0.00
Financial Admin.	18,500.00	18,976.37	0.00	468.37
Legal Expense	9,000.00	4,896.25	4,103.75	0.00
Revaluation of Property	12,000.00	7,207.65	4,792.35	0.00
Employee Benefits	42,937.00	40,991.66	1,945.34	0.00
Planning & Zoning	3,000.00	1,576.93	1,423.07	0.00
General Government Buildings	48,400.00	39,997.18	8,402.82	0.00
Cemeteries	3,600.00	3,780.82	0.00	180.82
Insurance	13,383.00	12,811.65	571.35	0.00
Regional Association	465.00	464.10	0.90	0.00
Police	2,100.00	109.90	1,990.10	0.00
Ambulance	13,483.00	13,482.22	0.78	0.00
Fire	16,760.00	12,069.54	4,690.46	0.00
Building Inspection	2,500.00	1,262.50	1,237.50	0.00
Emergency Management	4,100.00	5,422.80	0.00	1,322.80
Dispatch	3,509.00	3,508.98	0.02	0.00
Highway	52,000.00	49,807.66	2,192.34	0.00
Solid Waste Disposal	32,600.00	29,611.91	2,988.09	0.00
Health Agencies	400.00	379.00	21.00	0.00
Animal Control	200.00	0.00	200.00	0.00
Welfare	2,000.00	300.00	1,700.00	0.00
Parks & Recreation	5,000.00	3,769.01	1,230.99	0.00
Library	1,800.00	1,800.00	0.00	0.00
Memorial Forest	400.00	791.70	0.00	391.70
Conservation Commission	1,000.00	1,000.00	0.00	0.00
Principal - Long Term Note	28,625.00	37,925.90	0.00	9,300.90
Interest - Long Term Note	2,000.00	795.65	1,204.35	0.00
Interest - Tax Anticipation Note	900.00	692.55	207.45	0.00
Family Resource Center	1,000.00	1,000.00	0.00	0.00
Plow Truck	175,000.00	172,504.36	2,495.64	0.00
Copier	2,500.00	2,500.00	0.00	0.00
To Capital Reserve Funds	49,100.00	49,100.00	0.00	0.00
To Expendable Trust Fund	4,000.00	4,000.00	0.00	0.00
TOTAL	586,555.00	555,917.65	43,017.26	12,379.91

TOWN CLERKS REPORT

Motor Vehicle Fees *	66,091.00
Auto Titles	122.00
Auto Transfers	105.00
Dog Licenses	512.50
Dog Fines	2.00
Vital Statistics	60.00
Checklist copies	225.00
Copy fees	3.00
UCCs	<u>90.00</u>
Total	\$ 62,210.50

**Includes \$263 due from 2008 and there is \$265.00 due from 2009 that is not included in this total*

Susan Waddington, Town Clerk

SCHEDULE OF TOWN PROPERTY

Town Hall, Land & Buildings	308,700.00
Contents	65,000.00
Library	25,000.00
Police Department	7,500.00
Fire Dept. Land, Building	93,350.00
Equipment	99,250.00
Highway Dept. Land, Buildings	93,350.00
Equipment	353,248.00
Materials & Supplies	7,000.00
Chester C. Hayes Memorial Park	78,100.00
Park Pavilion, etc.	10,600.00
Town Memorial Forest & Evans Cemetery	86,200.00
Property - 2 lots	108,200.00
Wheeler & Leadmine Cemeteries	112,000.00
Peabody House & Land	148,800.00
Contents	10,000.00
Landfill Buildings	46,600.00
Equipment	29,300.00
Town Landfill Site	<u>115,200.00</u>
Total	\$1,797,398.00

TOWN OFFICERS SALARIES

<u>OFFICE</u>	<u>2009</u>	<u>2010</u>
Selectpersons(3)	1,500	1,500
Town Clerk	4,450 + training + 80/election	\$11.75/hr
Deputy Town Clerk	80	80
Moderator	80/election	80/election
Supervisors of Checklist(3)	10/sitting + 60/election	10/sitting + 60/election
Ballot Clerks(2)	40/election	40/election
Treasurer	1,000	1,000
Deputy Treasurer	80	80
Tax Collector	3,200 + training	3,200 + training
Deputy Tax Coll.	80	80
Auditors(2)	400	400
Trustees of Trust Funds(3)	1@ 100, 2@ 40	1@ 100, 2 @ 40
Building Inspector	200 +fees	200+ fees
Librarian	200	200
Children's Librarian	100	100

TAX COLLECTOR'S REPORT
Summary of Tax Accounts
Fiscal Year Ended December 31, 2008

DEBITS

UNCOLLECTED AT THE BEGINNING OF THE YEAR

	2009	2008	2007
Property Taxes:		27,345.37	0.00
Excavation Tax:		0.00	0.00
Yield		0.00	0.00
Prior Years' Credit	(169.90)		
This Year New Credits	(139.33)		

TAXES COMMITTED DURING THIS FISCAL YEAR

Property Taxes:	1,113,403.00	0.00
L U Change Tax:	13,710.00	0.00
Yield Taxes:	35,145.84	0.00
Excavation Tax:	40.04	0.00

OVERPAYMENT REFUNDS

Interest -Late Tax	738.98	1,790.68	
TOTAL DEBITS: \$1,162,728.63		29,136.05	0.00

CREDITS

REMITTED TO TREASURER DURING THIS FISCAL YEAR

	2009	2008	2007
Property Taxes	1,094,817.36	15,874.14	0.00
LU Change	13,710.00	0.00	0.00
Yield Taxes:	35,145.84	0.00	0.00
Interest/Penalties:	738.98	1,790.68	0.00
Excavation Tax:	40.04	0.00	0.00
Conversion to Lien:	0.00	11,471.23	0.00
Pri yr Overpay Assign	(169.90)	0.00	0.00

ABATEMENTS MADE DURING THIS FISCAL YEAR

Property Taxes:	49.00	0.00	0.00
Yield Tax	0.00	0.00	0.00

UNCOLLECTED AT THE END OF THE FISCAL YEAR

Property Taxes:	18,536.64	0.00	0.00
Yield Taxes	0.00	0.00	0.00
P. Tax Credit Bal	(139.33)	0.00	0.00

TOTAL CREDITS: \$1,162,728.63 29,136.05 0.00

DEBITS

UNREDEEMED & EXECUTED LIENS

	2009	2008	2007	2006+
Unredeemed:	0.00	0.00	2,688.24	1,236.68
Liens Executed:	0.00	12,622.36	0.00	0.00
Unredeemed Elderly	0.00	0.00	0.00	0.00
Elderly Liens Execut	0.00	0.00	0.00	0.00
Interests & Costs Collected	0.00	185.59	277.93	278.85

TOTAL

LIEN DEBITS: 0.00 12,807.95 2,966.17 1,515.53

CREDITS

REMITTED TO TREASURER DURING THIS FISCAL YEAR

	2009	2008	2007	2006+
Redemptions:	0.00	6,581.10	724.06	1,236.68
Interest./Costs:	0.00	185.59	277.93	278.85
Abatements:	0.00	0.00	0.00	0.00
Liens Deeded:	0.00	0.00	0.00	0.00

Bal - Year End: 0.00 6,041.26 1,964.18 0.00

TOTAL

LIEN CREDITS: 0.00 12,807.95 2,966.17 1,505.53



If anyone is having problems paying their taxes. Please call for more information on exemptions and credits that are available.

It should be noted that the date to apply for any exemption has been changed to April 15th.

Susan Waddington, Tax Collector

TREASURER'S REPORT

Checking Account

Opening Balance 1/1/09	188,299.31
Revenues	1,502,757.04
Transfers from other accounts	235,496.00
Expenditures	(1,557,143.40)
Transfers to other accounts	(317,717.50)
Balance 12/31/09	\$51,691.45

Conservation Commission Savings Account

Opening Balance 1/1/09	800.24
Interest earned	8.61
Transfer from other accounts	2,135.00
Balance 12/31/09	\$ 2,943.85

CD – Northway Bank

Opening Balance 1/1/09	74,155.12
Interest earned	1,739.76
Transfer to Money Market Account	(75,894.88)
Balance 12/31/09	\$ 0.00

Money Market – Northway Bank

Opening Balance 1/1/09	0.00
Transfer from CD	75,894.88
Transfer from other accounts	230,000.00
Interest earned	1,141.51
Transfer to other accounts	(70,000.00)
Balance 12/31/09	\$237,036.39

NH Public Deposit Investment Pool

Opening Balance 1/1/09	127,141.03
Revenues	114,224.09
Transfer from other accounts	85,000.00
Interest earned	329.28
Expenditures	(53,100.00)

Transfer to other accounts	(165,000.00)
Balance 12/31/09	\$ 108,594.40

Money Market Account – Laconia Bank

Opening Balance 1/1/09	6,197.15
Interest earned	28.72
Balance 12/31/09	\$ 6,225.87

Land Use Change Account

Opening Balance 1/1/09	1,226.26
Revenues	13,739.24
Interest Earned	20.25
Debit	(1,150.00)
Balance 12/31/09	\$ 13,835.75

Landfill Fees Account

Opening Balance 1/1/09	15,451.44
Revenues	3,308.20
Transfer from other accounts	582.50
Interest Earned	80.82
Balance 12/31/08	\$ 19,422.96

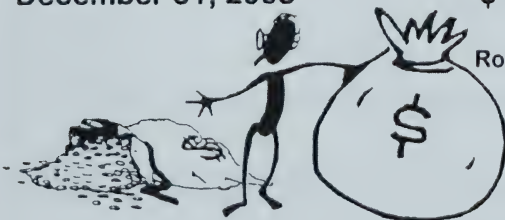
Town Forest Account

Opening Balance 1/1/08	5,044.56
Interest earned	21.96
Expenditures	(496.00)
Balance 12/31/08	\$ 4,570.52

Total all funds on hand

December 31, 2008 \$ 444,321.19

Robert F. Pinkham, Treasurer



BALANCE SHEET - DECEMBER 31, 2008

ASSETS

CASH			
General Fund			51,691.45
CD'S			0.00
Money Market Funds			243,262.26
Invest. Pool			108,576.26
Cap. Res. Funds			
H Highway	2,225.95		
Paving	11,985.39		
Revaluation	12,736.87		
Cem. Maint	13,118.64		
Peabody Museum	9,692.63		
Cem. Equip	644.06		
Town Building	70,601.43		
Fire Equip	7,740.88		
Fire Truck	<u>19,395.87</u>		
			148,141.72
Cem. Trust Fd			20,168.24
Wheeler Cem Trust Fd			34,660.78
Fire Mutual Aid Expend Trst			1,645.97
HH Haz Waste Expend Trst			1,401.48
Vehic Maint Expend Trst			8,192.69
Sand Gravel Exp Trst			2,631.31
Fds with Dept.			
Library			
Cking	2,971.80		
CD	<u>2,583.17</u>		
		5,554.97	
Cons. Comm.	2,943.85		
Land Use Change	13,835.75		
Town Forest	4,570.52		
Ldfill Fees	19,422.96		
			46,328.05
ACCOUNTS RECEIVABLE			
Motor Vehicle fees	265.00		
Burial Fees	50.00		
State of NH - RR Tax	4,799.60		
Tax - Uncollected			
Property - 09	18,536.64		
Tax Liens	8,005.44		
			31,656.68
TOWN PROPERTY			
Land & Buildings	1,201,100.00		
Equipment	589,798.00		
Inv. & Supplies	<u>7,000.00</u>		
			<u>1,797,398.00</u>
TOTAL ASSETS			<u>\$2,495,754.89</u>

BALANCE SHEET - DECEMBER 31, 2008

LIABILITIES & NET WORTH

ACCOUNTS PAYABLE

School Distr.	285,411.00	
NH Retire System	1,803.38	
IRS	4,932.48	
Town of Gorham - Dispatch	877.26	
AVRRDD Mt Carberry	483.07	
Bond Auto Parts	186.80	
Waystack Frizzell	276.50	
Treas. State of NH	46.27	
Sanel Auto Parts	58.64	
GDS Associates	3,429.26	
Munce's Superior	1,406.76	
Portland North	99.67	
Peppy's Electric	480.75	
The Daily Sun	<u>84.00</u>	
		299,575.84

OVERLAY

9,657.54

MONIES ENCUMBERED FOR DEPARTMENTS

Master Plan		2,000.00
Meadows Bridge		0.00
Tax overpayments		139.33
Environmental Projects		2,003.45
Emergency Mngmt Grant		2,500.00
Cem Lot		2,600.00

CR FUNDS

H Highway	2,225.95	
Paving	11,985.39	
Revaluation	12,736.87	
Cem. Maint.	13,118.64	
Peabody Farm	9,692.63	
Cem. Equip.	644.06	
Town Bldg	70,601.43	
Fire Equip	7,740.88	
Fire Truck	<u>19,395.87</u>	
		148,141.72

CEMETERY TRUST FUNDS

20,168.24

WHEELER TRUST FUND

34,660.78

EXPENDABLE TRUST FUNDS

Fire Mutual Aid		1,645.97
HH Waste		1,401.48
Vehicle Maint		8,192.69
Sand/Gravel		2,631.31

REVOLVING FUNDS

Library	5,554.97	
Cons. Comm.	2,943.85	
Land Use Change	13,835.75	
Town Forest	4,570.52	
Ldfill Fees	<u>19,422.96</u>	
		46,328.05

NET WORTH

1,797,398.00

SURPLUS

116,710.49

TOTAL LIABILITIES & NET WORTH

2,495,754.89

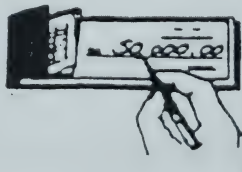
SUMMARY OF REVENUES

Revenue from Tax Collector	1,182,841.91
Revenue from Town Clerk	62,210.50
From State and Federal Government	73,758.36
From Local Sources	15,275.70
Tax Anticipation Loan	115,000.00
Long-term Note	60,000.00
Miscellaneous	12,938.92
From CR & Trusts	114,224.09
TOTAL REVENUES	\$ 1,636,249.48



SUMMARY OF EXPENDITURES

General Government	155,592.57
Public Safety	34,791.88
Highway Department	49,603.08
Sanitation	29,129.84
Health/Welfare	679.00
Culture & Recreation	6,360.71
Conservation Commission	215.00
Debt Service	39,414.10
Payment to Capital Reserve	49,100.00
Payment to Expendable Trust	4,000.00
County Budget	271,905.00
School District	617,621.00
Tax Anticipation Loan	115,000.00
Tax Lien	12,622.36
Encumbered Money	6,208.46
Family Resource Center	1,000.00
New Plow Truck	172,504.36
Copier	2,500.00
Miscellaneous	41,996.04
TOTAL	\$ 1,610,243.40



DETAILED STATEMENT OF REVENUES

TAX COLLECTOR

Property Taxes	1,110,521.60
Property taxes – overpayments	117.33
Property Tax – pre-payment	22.00
Interest-property taxes	2,285.83
Excavation Tax	40.04
Yield Taxes	35,145.84
Land Use Change Tax	13,710.00
Interest – Land Use Change	29.24
Interest – Yield Tax	214.59
Tax Sale Redemption	8,541.84
Conversion to lien	11,471.23
Interest-tax lien	<u>742.37</u>
	1,182,841.91

TOWN CLERK

Motor Vehicle Registration *(\$263.00 from 08)	61,091.00
Motor Vehicle Titles	122.00
Motor Vehicle Transfers	105.00
Checklist copies	225.00
Dog Licenses	512.50
Dog fines	2.00
Vital Statistics	60.00
Copy Fees	3.00
UCC'S	<u>90.00</u>
<i>* 09 Accts Receivable - \$265.00</i>	62,210.50

STATE OF NH & FEDERAL GOVERNMENT

NH Highway Block Grant	13,206.20
NH Rev. Sharing	0.00
Meals & Room Tax	17,169.16
Emergency Management Grant	5,000.00
Fed Forest	<u>38,383.00</u>
<i>09 Acct's Receivable – RR Tax - \$4,799.60</i>	73,758.36

FEES AND PERMITS

Building Permits	962.50
Pistol Permits	80.00
Planning Board *(\$202.20 from 08)	<u>438.20</u>
	1,480.70

CHARGE FOR SERVICES

Snow Plowing & Sanding ((\$360.00 from 08)*	975.00
Burial Fees*	<u>700.00</u>
<i>*09 Accts Receivable- \$50.00</i>	1,675.00

INCOME FROM DEPARTMENTS

Garbage Bags	5,915.50
Transfer Station Fees (Transf to Ldfill Fees Acct)	582.50
Recycling Income (Trsf to Ldfill Fee Acct – from 09)	<u>3,308.20</u>
	9,806.20

INTEREST

All Accounts	3,456.16
--------------	-----------------

TAX ANTICIPATION LOAN

Northway Bank	115,000.00
---------------	-------------------

LONG-TERM NOTE

Northway Bank – New Plow	60,000.00
--------------------------	------------------

MISCELLANEOUS

Copy Fees	123.50
Refunds & Reimbursements	9,023.06
Sale of Cemetery Lot	2,600.00
Donations for Town Hall use	<u>50.00</u>
	11,796.56

OTHER FINANCING SOURCES

Withdraw Trust funds*	402.26
Withdraw from Capital Reserve Funds*	<u>113,821.83</u>
	114,224.09

**This was done as a transfer between accounts in the investment pool and does not show in the checkbook income.*

TOTAL RECEIPTS ALL SOURCES \$1,636,249.48

DETAILED SCHEDULE OF EXPENDITURES

EXECUTIVE – 4130

<u>Ads</u>	
The Daily Sun	28.00
<u>Dues & Publications</u>	
NE Resource Recovery Association	50.00
NH Municipal Association	594.59
NH Association of Assessing Officials	20.00
NH Municipal Manager Association	35.00
Treasurer, State of NH – Justice of Peace fee	75.00
Lexis Nexus Matthew Bender Co., Inc.	366.13
	<u>1,140.72</u>
<u>Mileage</u>	
Stanley Judge	108.00
<u>Postage</u>	266.65
<u>Repairs</u>	
Dynatics – new router	126.00
<u>Salaries</u>	
Selectmen, Moderator, Adm. Assistant.	21,007.98
<u>Supplies</u>	
Staples, various supplies	314.96
Lyndonville Office Supply – toner & printer cartridge	242.30
ANCO Signs & Stationary – Justice stamp	13.50
Sun World – letterhead & envelopes	125.00
Greetings Jewelers – plaques for pictures	36.00
McAfee	69.99
Jo Carpenter, reimburse	16.98
	<u>818.73</u>
<u>Miscellaneous</u>	
Cartographic Associates, tax map	850.00
Seventh Street Graphics, town report	699.25
Northern Forest Heritage Park, donation	300.00
Tri-County Community Action – Senior Meals	360.00
Quest Technologies, calibrate meter	353.19
Scott Lawson Group, sound consultation	660.00
City of Berlin, reimb. Road survey	292.00
Berlin City Bank, safe deposit box	55.00
	<u>3,569.44</u>
TOTAL	27,065.52

ELECTION, REGISTRATION & VITAL STATISTICS - 4140Ads

The Daily Sun 210.00

Conferences & Meetings

NH City & Town Clerks' Ass'n 107.00

Dues & Publications

NE Assn of City & Town Clerks 40.00

NH City & Town Clerks Ass'n 40.00

80.00

Mileage

Susan Waddington 94.50

Postage

Postmaster, Gorham, NH 72.17

Sue Waddington, reimb. expense 5.40

77.57

Salaries

Wages, tn clerk, dep. tn clerk, election officials 5,430.20

Supplies

Primedia Price Digests, motor vehicle books 129.00

Staples 18.98

McAfee, renewal 69.99

IDS, dog tags 54.80

272.77

Vital Record Fees

Treasurer, State of NH 44.00

TOTAL**\$ 6,316.04****FINANCIAL ADMINISTRATION - 4150**Ads

The Daily Sun 28.00

Conferences & Meetings

NH Tax Collectors Conferences, workshops 160.00

NHGFOA Conference, Jo & Bob 100.00

The Balsams, meals Tax Collectors Conference 64.00

324.00

Deeds

Registry of Deeds 16.88

Dues & Publications

NH Tax Collector's Association. 40.00

NH GFOA 70.00

110.00

Forester

Haven Neal Forestry Services 240.00

Mileage

Sue Waddington 199.80

Jo Carpenter 34.20

234.00

Postage

Postmaster, Gorham, NH 525.40

Sue Waddington 5.32

Jo Carpenter 16.09

546.81

Salaries

Wages - Tax Collector, & Deputy, Adm Asst, 14,723.49

Treasurer & Deputy, Auditors, Trustees of Trust Funds

Software Support

Avitar Associates 1,968.00

Supplies

Intuit, payroll service 239.00

Staples 129.93

G. Neil, labor posters 57.99

Avitar Associates, tax bills 78.07

NH Poster Compliance 69.00

Northway Bank, deposit slips 33.75

785.19

TOTAL 18,976.37**REVALUATION OF PROPERTY - 4152**

Avitar 7,207.65

LEGAL EXPENSES - 4153

Waystack Frizzell 4,619.75

*Accts Payable of \$276.50***PERSONNEL ADMINISTRATION - 4155**

Social Security & Medicare - town's share 7,115.97

NH Unemployment Comp. 69.00

LGC HealthTrust - Dental 1,327.56

Primex Health 22,098.72

LGC HealthTrust - S.T. Disability 659.96

LGC HealthTrust - L.T. Disability 741.33

NH Retirement System 6,108.79

LRG Healthcare	56.00
TOTAL	38,177.33

Accounts Payable of \$ 2,814.33

PLANNING & ZONING - 4191

Ads

The Daily Sun	112.00
---------------	--------

Dues & Publications

North Country Council, land use book	15.00
--------------------------------------	-------

Postage

Postmaster, Gorham, NH	241.18
------------------------	--------

Salaries

Wages - Secretary	1,002.45
-------------------	----------

Recording Fees

Coos County Registry of Deeds	16.44
-------------------------------	-------

Supplies

Staples	46.87
---------	-------

Jo Carpenter, reimb. Expense	<u>8.99</u>
	55.86

Miscellaneous

Korey LaPointe, tabulation of questionnaire	50.00
---	-------

TOTAL	1,492.93
--------------	-----------------

Accts Payables of \$84.00

GENERAL GOVERNMENT BUILDINGS - 4194

Salaries

Wages, janitor, Public Works Foreman & Helper	1,496.88
---	----------

Supplies

Jo Carpenter, reimburse	74.42
-------------------------	-------

NES Fire & Safety	272.00
-------------------	--------

Rockingham Electric	33.65
---------------------	-------

WalMart	89.52
---------	-------

ColorWorks, paint for library	87.77
-------------------------------	-------

White Mountain Lumber, library project	88.58
--	-------

Hannaford	15.24
-----------	-------

Mountain Greenery, flowers	21.98
----------------------------	-------

Staples	11.99
---------	-------

Priscilla Meyers, reimb. expense	36.86
----------------------------------	-------

Gorham Hardware	6.00
-----------------	------

Lyndonville Office Supply	945.20
---------------------------	--------

Bob Pinkham Fine Carpentry	1,785.64
F.b. Spaulding, grass seed	125.50
Darryl Bennett Plumbing	331.75
B. Pinkham, reimb, supplies	<u>25.12</u>
	3,951.22

Repairs

Munce's Burner Service	205.29
Peppy's Electric	905.00
Darryl Bennett, new furnace & installation	<u>125.00</u>
	1,235.29

Utilities & Fuel

PSNH, electric bills	4,010.19
Munce's Superior, diesel, kerosene, heating oil	16,430.83
Gorham Oil, heating oil & propane	3,640.85
Our Town Energy, membership	65.00
FairPoint Communications	3,550.15
NCIA	<u>300.00</u>
	27,997.02

TOTAL **34,680.41**

Acct payable of \$5,316.77

CEMETERIES - 4195

<u>Fuel</u>	
NH DOT	166.82
<u>Salaries</u>	
Wages	3,314.98
<u>Supplies</u>	
F.B. Spaulding	263.12
Jo Carpenter, copy of plat	2.50
William Healy, reimb, paint	<u>33.40</u>
	299.302

TOTAL **3,780.82**

INSURANCE - 4196

Workers Compensation	3,883.00
NHMA Property Liability Ins.	8,928.65

TOTAL **12,811.65**

REGIONAL ASSOCIATION - 4197

North Country Council, dues	464.10
-----------------------------	--------

POLICE - 4210Supplies

Treasuere, State of New Hampshire, law books	14.50
NC Paging Limited, pager contract..	95.40

TOTAL

	109.90
--	--------

AMBULANCE - 4215

Town of Gorham	13,482.22
----------------	-----------

FIRE DEPARTMENT - 4220Dues & Publications

NH Assn of Fire Chiefs	75.00
NH Retirement System	90.00
1 st Responder Newspaper	60.00
NH State Firemen's Assoc.	<u>300.00</u>
	525.00

Equipment

Sears, air compressor & drill	359.98
Bergeron Protective Clothing, safety vests	265.00
Andy Sheehan, tool chest	<u>30.00</u>
	654.98

Gasoline

NH DOT	62.70
--------	-------

Mileage

Warren Hayes	81.05
Andy Sheehan	33.80
Pete Nickerson	51.35
Kevin Daniels	17.60
Robert Langlands	<u>17.60</u>
	201.40

Mutual Aid

Northern NH Mutual Aid	100.00
------------------------	--------

Salaries

Fires	355.61
Training - Local Payroll	2,302.85
Forest Fire Training	252.60
Forest Fires	0.00
Certified Training	359.48

Accidents	968.84
Ambulance Calls	40.90
Inspections	153.85
Rescues	0.00
Repair	37.50
Clerical	21.88
Meetings	146.30
Mutual Aid	1,979.69
Flood	0.00
Traffic Control	0.00
Grant	0.00
Fuel spills	0.00
Other	<u>373.70</u>
	6,993.20

Repair

Ossipee Mountain Electronics	525.00
T&B Sheet Metal	100.00
Bond Auto Parts	<u>416.77</u>
	1,041.77

State Inspections

A & A Auto Repair	280.00
<u>Supplies</u>	
Bergeron Protective Clothing	136.20
Mr. Pizza	58.80
Fire Programs, software support	435.00
Ossipee Mountain Electronics	688.39
Treasurer, State of NH, signs	<u>295.30</u>
	1,613.69

Training Costs

Franford	150.00
Cumberland County Fire/Rescue School	<u>260.00</u>
	410.00

TOTAL

11,882.74

Accts Payable of \$186.80

BUILDING INSPECTION – 4240

Dues & Publications

International Code Council	100.00
----------------------------	--------

Salaries

Building Inspector, salary	200.00
Building Inspector, salary from fees	<u>962.50</u>

	1,162.50
TOTAL	1,262.50
DISPATCH SERVICE - 4250	
Town of Gorham	2,631.72
<i>Accts Payable of \$877.26</i>	
EMERGENCY MANAGEMENT – 4290	
<u>Ads</u>	
The Daily Sun	112.00
<u>Fast Squad</u>	
Wages for calls	791.34
GALL'S	791.88
Airgas East, lease & oxygen	288.06
ZOLL Medical Corp	303.35
Luc Corriveau, reimb. Mileage & supplies	69.23
Ossipee Mtn Electronics	30.00
Lifesavers, Inc.	92.67
GEMS Association, training	6.00
George Corriveau, reimb. supplies	146.27
	<u>2,518.80</u>
<u>Other</u>	
American Red Cross	172.00
Hubbard Consulting, update Hazard Mitigation Plan	2,500.00
Public NH Television	120.00
	<u>2,792.00</u>
TOTAL	5,422.80
HIGHWAY DEPARTMENT - 4312	
<u>Cell phone</u>	
U.S. Cellular	590.10
<u>Dues and Publications</u>	
NH Road Agent Association	20.00
<u>Gas</u>	
NHDOT	185.79
<u>Repairs</u>	
McDevitt Truck	443.73
Leon Costello Co.	1,070.00
Howard Fairfield, Inc.	534.82
T&B Sheet Metal	455.00
Berlin City Ford	<u>988.12</u>

	3,491.67
<u>Salaries</u>	
Wages - Highway Dept.	36,924.33
<u>State Inspection</u>	
A&A Auto Repair	245.00
<u>Supplies</u>	
Barrett Trucking Co., salt	4,275.23
Gorham Hardware	29.54
Sanel Auto Parts	1,476.43
Labonville, Inc.	459.00
Treasurer, State of NH, signs	36.21
Bergeron Protective Clothing	51.00
Airgas East	196.61
Ken Simonoko, reimburse expense	81.15
St. Pierre Manufacturing	16.34
White Mountain Lumber	126.81
Landscape Impressions	580.00
Howard P. Fairfield, Inc.	170.94
Darryl Bennett Plumbing	48.50
Ossipee Mountain Electronics, install radio	88.91
Lawson Products	421.58
Pike Industries	87.94
	<u>8,146.19</u>

TOTAL 49,603.08

Accts Payable of \$ 204.58

SOLID WASTE DISPOSAL – 4324

<u>Ads</u>	
The Daily Sun	21.00
<u>Mt. Carberry Fees</u>	
AVRRDD Mount Carberry Landfill	4,507.09
<u>Conferences & Meetings</u>	
Ken Simonoko, reimburse lunches	38.26
<u>Gasoline</u>	
NHDOT	101.30
<u>Salaries</u>	
Wages - Transfer Station	18,618.91
<u>Septage Fee</u>	
Town of Gorham	500.00
<u>Supplies</u>	
Munce's Propane	57.00

Brown Packaging, baling wire	<u>197.97</u>
	254.97
<u>Water Testing, Permits & Operating Plan</u>	
Sevee & Maher Engineers	4,988.31
<u>Other</u>	
Treasurer, State of NH, licenses	100.00
TOTAL	29,129.84
<i>Accts Payable of \$483.07</i>	
PEST CONTROL - 4414	0.00
HEALTH AGENCIES - 4415	
Northern Human Services	379.00
WELFARE - 4442	
Tri-County CAP	300.00
TOTAL	300.00
PARKS & RECREATION - 4520	
<u>Gasoline</u>	
NHDOT	261.50
<u>Salaries</u>	
Wages, Park Department	2,085.47
<u>Supplies</u>	
F.B. Spaulding	263.13
Bev Pinkham, flowers & soil	32.31
Treasurer, State of NH, signs	<u>66.60</u>
	362.04
<u>Other</u>	
Town of Gorham - recreation fee	1,000.00
Riendeau Industrial Services, pump portable toilet	<u>60.00</u>
	1,060.00
TOTAL	3,769.01
LIBRARY - 4550	
<u>Salaries</u>	
Wages - Librarians	300.00
<u>Other</u>	
Library Appropriation	1,500.00
TOTAL	1,800.00

MEMORIAL FOREST - 4590Salaries

Wages 706.00

Repairs

John Gralenski, reimb, expense 29.99

Supplies

Gorham Hardware 42.39

John Gralenski 13.32

55.71

TOTAL 791.70**CONSERVATION COMMISSION - 4611**Dues & Publications

NH Assoc. of Cons. Comm. - dues 175.00

Conferences

NH Assoc. of Cons. Comm, - reg. fee 40.00

TOTAL 215.00*Balance of appropriation transferred to CC Savings Acct***PRINCIPAL LONG TERM NOTE - 4711 37,925.90****INTEREST LONG TERM NOTE - 4721 795.65****INTEREST - TAN NOTE - 4723 692.55****CAP OUTLAY - MACHINERY, VEHICLES & EQUIP. - 4902**New Plow Truck

Portland North 107,120.00

Howard Fairfield, Inc. 63,246.00

McDevitt Truck 1,873.36

Jackson Signsmith 265.00

172,504.36

Copier

Lyndonville Office Supply 2,500.00

TOTAL 175,004.36**CAPITAL OUTLAY - BUILDINGS - 4903****TOTAL 0.00**

CAPITAL OUTLAY - OTHER IMPROVEMENTS - 4909

Family Resource Center	1,000.00
------------------------	----------

TRANSFER TO CAPITAL RESERVE FUND - 4915

Cemetery Equipment CR	600.00
Fire Equipment Cr	5,400.00
Heavy Highway CR	20,000.00
Town Bldg	1,000.00
Paving	9,000.00
Peabody Farm	500.00
Revaluation	4,000.00
Fire Truck CR	8,000.00
Cemetery Maintenance Cr	600.00

TOTAL	49,100.00
--------------	------------------

This was done as a transfer between accounts in the Investment Pool and does not show in the checkbook expenditures.

TRANSFER TO EXPENDABLE TRUST

Fire Mutual Aid Expendable Trust	500.00
Town Vehicle Maintenance Exp Trust	3,000.00
Sand/Gravel Expendable Trust	500.00

TOTAL	4,000.00
--------------	-----------------

This was done as a transfer between accounts in the Investment Pool and does not show in the checkbook expenditures.

TAX ANTICIPATION LOAN - 4711

Berlin City Bank	115,000.00
------------------	------------

TAX LIEN

Susan Waddington, Tax Collector	12,622.36
---------------------------------	-----------

COUNTY TAX - 4931

Treasurer Coos County	271,905.00
-----------------------	------------

SCHOOL DISTRICT - 4933

GRS Co-op School District	617,621.00
---------------------------	------------

ENCUMBERED MONEY

NH Retirement System	1,121.34
IRS	1,711.37

Gorham Oil	77.74
AVRRDD Mt. Carberry Landfill	452.92
St. Pierre Manufacturing	667.35
Bond Auto Parts	98.88
Munce;s Superior	1,195.43
Town of Gorham, 4 th qtr Dispatch	<u>883.43</u>
TOTAL	6,208.46
MISCELLANEOUS - 4960	
ST Dis, LT Dis, Dental & Health Acct	(12.30)
Retirement Account	4.70
FICA, Medicare & Fed Withholding	689.63
Bergeron Protective Clothing, fire equipment	1,317.47
AVRRDD, HH waste payment (refund Exp Tr)	208.83
Dennis Desmond, refund auto reg	93.00
Glen Peabody, refund moped reg	6.00
Gary Riff, refund auto reg	5.00
Portland Pipeline, abatement – prop tax	21,165.92
Roger & Debbie Gagnon, abatement – prop tax	180.63
Androscoggin Vally Country Club, abatement	14,586.89
Portland Pipeline, abatement in error	3750.27
TOTAL	41,996.04
TOTAL ALL EXPENSES	<u>\$1,610,243.40</u>



DEPARTMENTAL REVENUES

Under the Municipal Budgeting System, each municipality must budget using gross expenses by department. The associated revenues are not permitted to be deducted to reflect the net operating expenses. In order to clarify the interrelationship of the departments' revenues and expenses, the following information is being offered.

1. **Executive** - This budget includes all of the Town's copier expenses. When used for non Town business, the Town receives compensation. The Town also receives reimbursements for certain other expenses such as public hearing expenses. For 2009, this totaled \$86.50. Some rebates and Staples rewards were also received. Miscellaneous reimbursements totaled \$127.91.
2. **Elections, etc.** - The associated revenues include fees from motor vehicle registrations, dog registrations, and UCC's. For 2009, these fees totaled \$1,432.50. Fees for checklists totaled \$225.00. Fees for dog fines totaled \$2.00.
3. **Financial** - Costs of registering liens are recovered in the liening process. For 2009 fees for purchasing the assessing data base totaled \$50.00.
4. **Revaluation of Property** - There were no associated revenues year.
5. **Legal** - There were no associated revenues year.
6. **Personnel Adm.** - There were no associated revenues this year.
7. **Planning** - The associated revenues include fees from the applications for site plan review, subdivision, and any associated expenses. For 2009, these items totaled \$236.00
8. **Buildings**- Several donations were received for use of the Town Hall. In 2009, this totaled \$50.00.
9. **Cemeteries** - This budget is partially offset by the interest received on Cemetery Perpetual care trust funds and burial fees. In 2009, this amount was \$193.43. \$ 750.00 was received from burial fees and 4 cemetery lot was sold for \$2,600.00.
10. **Insurance** - This budget is partially offset by the credit received due to past history. In 2009 received a credit from workers comp of \$444.00.
11. **Regional Assoc.** - There were no associated revenues.
12. **Police** - This budget is offset by revenues received for fines or services. In 2009, \$80.00 was received from gun permits.
13. **Ambulance** - Gorham does receive revenues against their gross expenses. Our fee is calculated based upon actual usage, and their net operating expenses.
14. **Fire** - The Fire Department receives 50% reimbursement for fire warden training, forest fire fighting. Reimbursements for rescue expenses and insurance money from accidents are also received. In 2009, this amount was \$ 4,697.05

15. **Building Insp.** - The building inspector's salary is partially reimbursed by the associated fees. In 2009, this totaled **\$962.50**.
16. **Dispatch** - Our fee is calculated based upon actual historical usage. (running 3 year average). There were no associated revenues.
17. **Emergency Management** - In 2009 a grant of **\$5,000** was received to update our Hazard Mitigation Plan. Miscellaneous revenues of **\$53.06** were also received.
18. **Highway** -This department does receive occasionally income from plowing and sanding and from the highway block grant from the state based upon the number of miles of town roads maintained; and some other smaller misc. items. In 2009, the Block Grant totaled **\$13,206.20** Revenues for sanding were received that totaled **\$615.00**. There were miscellaneous revenues of **\$250.00**.
19. **Solid Waste** - This department receives income from recycling, and fees for disposal of various items, from the sale of PAYT bags and from the sale of recyclables In 2009, **\$582.50** was received from fees; **\$5,915.50** was received from the sale of bags; and **\$3,308.20** (actually sold in 08 but paid for in 2009) from the sale of recyclables.
20. **Health, Welfare** - There were no associated revenues.
21. **Parks** - The development and some of the park maintenance is supported by the FOSR. In 2009 FSOR continued fund raising but no new equipment was added to the Park
22. **Library** - The library received many gifts of books. The Library is authorized to receive monetary gifts. In 2009 they received several donations of books
23. **Memorial Forest** - In 2009 **\$496.00** was withdrawn from the Town Forest Account to pay for trimming in Town Forest and the purchase of a brush cutter.
24. **Conservation** - There were no associated revenues
25. **Welfare** - In 2009 **\$152.67** was received from the GRS Coop to help a needy family.
26. **Principal** - Long-term note - There were no associated revenues.
27. **Interest** - Long-term note - There were no associated revenues.
28. **TAN interest**. - There were no associated revenues.
29. **Land use change fees** - This money can be used by vote of the Town, to offset a special warrant article. In 2009, **\$1,150.00** was used.
30. **Special Revenue Fund** - Funds from fees and sale of recyclables are deposited in this fund. The use of this money must be authorized by town meeting. **No money was authorized in 2009.**

SHELBURNE TRUST FUNDS

Cemetery Perpetual Care - There are 47 individual funds managed as one common trust fund.

Library Trust Fund - The Trustee of Trust Funds now hold the trust fund for the Library.

Capital Reserve Funds - There are nine active capital reserve funds. These are Cemetery Maintenance, Cemetery Equipment, Heavy Highway Equipment, Fire Truck, Town Road Paving, New Storage Building, Revaluation, Peabody Farm Museum and Fire Department Equipment

Expendable Trust Funds - There are four expendable trust funds . They are the Fire Mutual Aid Expendable Trust, Household Hazardous Waste Expendable Trust, Town Vehicle Maintenance Expendable Trust and the Sand/Gravel Expendable Trust Fund.

Special Trust Fund - There is one special Trust Fund - the Wheeler Cemetery Fund established by a gift of \$30,214.38 to the Town from the estate of Joanne B. Harriman.

GRS Cooperative School District Funds - The Shelburne Trustees of Trust Funds were chosen at the 2005 School District Meeting to manage the 5 capital reserve funds, 2 expendable trust funds and 4 scholarship funds for the GRS Cooperative School District.

Detailed accounts have been delivered to the Selectmen, Auditors, Attorney General and The Department of Revenue Administration. A summary of all accounts is listed below

SHELBURNE TRUST FUNDS - DETAILS

	PRINCIPAL	INCOME	TOTAL
Library Trust Fund			
Balance 12/31/08	1,368.76	1,204.50	2,572.91
Income 2009	0.00	10.26	10.26
Balance 12/31/09	1,368.76	1,214.41	2,583.17

Town Cemeteries Perpetual Care Trust Funds

Balance 12/31/08	10,055.00	10,223.87	20,278.87
Income – 2009	0.00	82.60	82.60
Withdrawn -2009	<u>(0.00)</u>	<u>(193.43)</u>	<u>(193.43)</u>
Balance 12/31/09	10,055.00	10,113.24	20,168.24

Wheeler Cemetery Trust Fund

Balance 12/31/08	30,214.38	4,305.42	34,519.80
Income - 2009	<u>0.00</u>	<u>140.98</u>	<u>140.98</u>
Balance 12/31/09	30,214.38	4,446.40	34,660.78

Cemetery Maintenance CR

Balance 12/31/08	12,466.43	0.00	12,466.43
Income – 2009	<u>600.00</u>	<u>52.21</u>	<u>652.21</u>
Balance 12/31/09	12,466.43	52.21	13,118.64

Cemetery Equipment CR

Balance 12/31/08	42.00	0.00	42.00
Income - 2009	<u>600.00</u>	<u>2.06</u>	<u>602.06</u>
Balance 12/31/08	642.00	2.06	644.06

Heavy Highway CR

Balance 12/31/08	90,111.88	4,195.29	94,307.17
Income - 2009	20,000.00	423.14	20,423.14
Withdrawn – 2009	<u>(107,885.93)</u>	<u>(4,618.43)</u>	<u>(112,504.36)</u>
Balance 12/31/09	2,225.95	0.00	2,225.95

Fire Truck CR

Balance 12/31/08	11,179.00	171.72	11,350.72
Income - 2009	<u>8,000.00</u>	<u>45.15</u>	<u>8,045.15</u>
Balance 12/31/09	19,179.00	216.87	19,395.87

Peabody Farm Museum CR

Balance 12/31/08	8,205.03	950.06	9,155.09
Income 2009	<u>500.00</u>	<u>37.54</u>	<u>736.35</u>
Balance 12/31/09	8,705.03	987.60	9,692.63

New Storage Building CR

Balance 12/31/08	62,500.00	6,820.43	69,320.43
Income 2009	<u>1,000.00</u>	<u>281.00</u>	<u>1,281.00</u>
Balance 12/31/09	63,500.00	67,101.43	70,601.43

Town Road Paving CR

Balance 12/31/08	2,956.02	0.00	2,956.02
Income 2009	<u>9,000.00</u>	<u>29.37</u>	<u>9,027.37</u>
Balance 12/31/09	11,956.02	29.37	11,985.39

Revaluation CR

Balance 12/31/08	8,600.00	102.25	8,702.25
Income 2009	<u>4,000.00</u>	<u>34.62</u>	<u>4,034.62</u>
Balance 12/31/09	12,600.00	136.87	12,736.87

Fire Equipment CR

Balance 12/31/08	3,641.77	0.00	3,641.77
Income 2009	5,400.00	16.58	5,416.58
Withdrawal 2009	<u>(1,300.89)</u>	<u>(16.58)</u>	<u>(1,317.47)</u>
Balance 12/31/09	7,740.88	0.00	7,740.88

Fire Dept. Mutual Aid Expendable Trust

Balance 12/31/08	1,140.84	0.00	1,140.84
Income 2009	<u>500.00</u>	<u>5.13</u>	<u>505.13</u>
Balance 12/31/09	1,640.84	5.13	1,645.97

Household Hazardous Waste Expendable Trust Fund

Balance 12/31/08	1,604.58	0.00	1,604.58
Income 2009	0.00	5.75	5.75
Withdrawal - 2009	<u>(203.08)</u>	<u>(5.75)</u>	<u>(208.83)</u>
Balance 12/31/09	1,401.48	0.00	1,401.48

Vehicle Maintenance Expendable Trust

Balance 12/31/08	5,168.12	4.58	5,172.70
Income 2009	<u>3,000.00</u>	<u>19.99</u>	<u>3,019.99</u>
Balance 12/31/09	8,168.12	24.57	8,192.69

Sand/Gravel Expendable Trust

Balance 12/31/08	2,065.06	57.17	2,122.23
Income 2009	<u>500.00</u>	<u>9.08</u>	<u>509.08</u>
Balance 12/31/09	2,565.00	66.25	2,631.31

SHELBURNE FUNDS

GRAND TOTAL	\$ 195,028.95	\$ 24,396.41	\$ 219,425.36
--------------------	----------------------	---------------------	----------------------

GRS Cooperative Funds (Breakdown in Coop Report)

Balance 12/31/08	1,523,053.33	66,053.44	1,589,106.77
Income 2009	171,211.00	6,618.29	177,829.29
Withdrawal 2009	<u>(55,592.34)</u>	<u>(26,819.70)</u>	<u>(82,412.04)</u>
Balance 12/31/09	1,638,671.99	45,852.03	1,684,524.02

ALL FUNDS HELD BY SHELBURNE TRUSTEES

GRAND TOTAL \$1,833,700.94 \$70,248.44 \$1,903,949.38

Trustees of Trust Funds - Raymond Danforth, Robin Henne, Ben Mayerson

RECONCILIATION OF OUTSTANDING LONG-TERM INDEBTEDNESS

Outstanding Long-Term Debt January 1, 2009	\$ 27,937.50
Debt Incurred During Fiscal Year Loan Proceeds during 2009	60,000.00
Debt Retirement During Fiscal Year Payments made during 2009	37,925.90
Debt Retired - Early Payments	11.60
Outstanding Long-Term Debt December 31, 2009	\$ 50,000.00



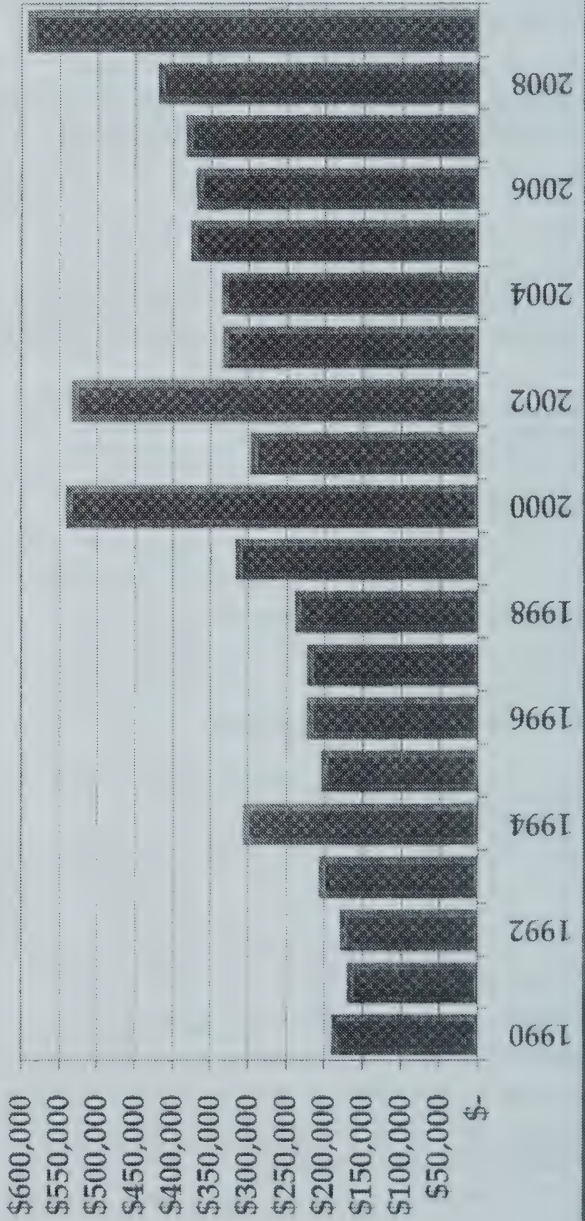
AUDITORS REPORT



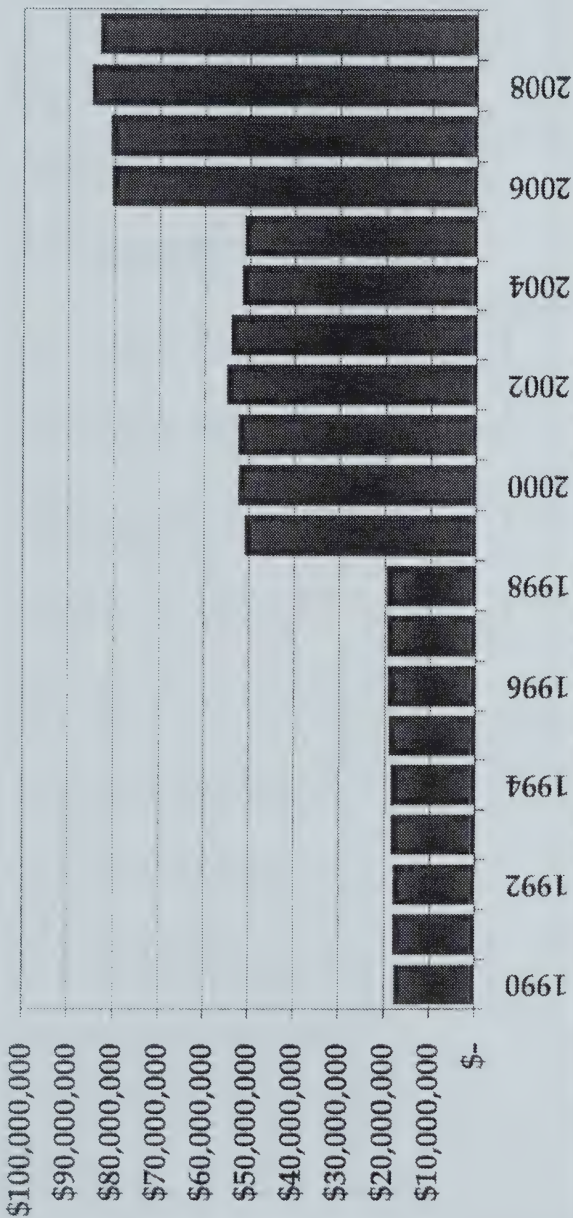
We have audited the books and records of the Town of Shelburne for the year ending Dec 31, 2009, by means, at times, and to the extent deemed appropriate by the State of NH Department of Revenue Administration and find them complete and accurate.

Town Auditors: Rodney Hayes and Debbie Hayes

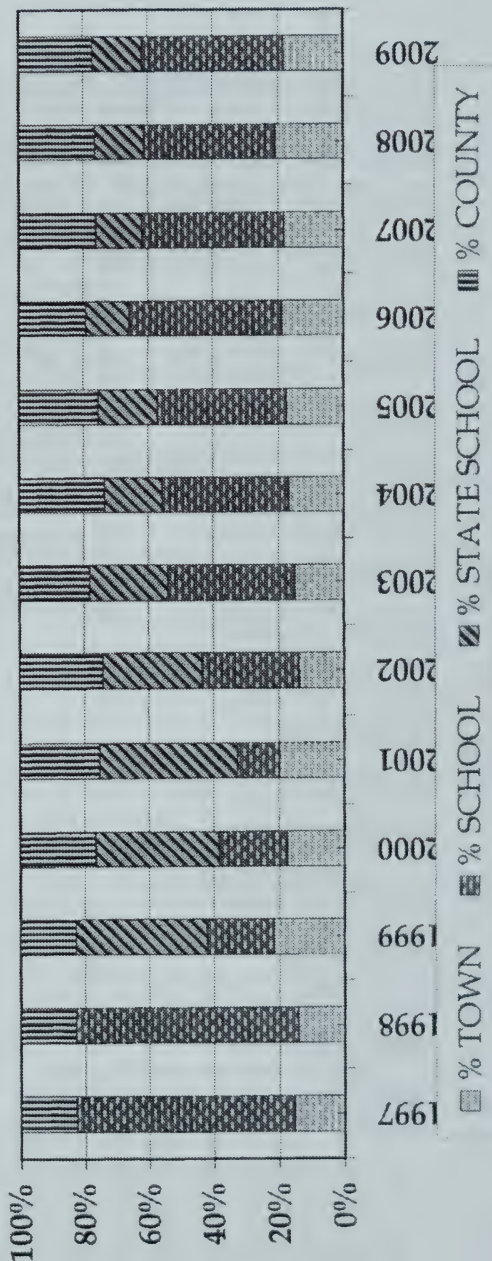
SHELBURNE
TOWN BUDGET



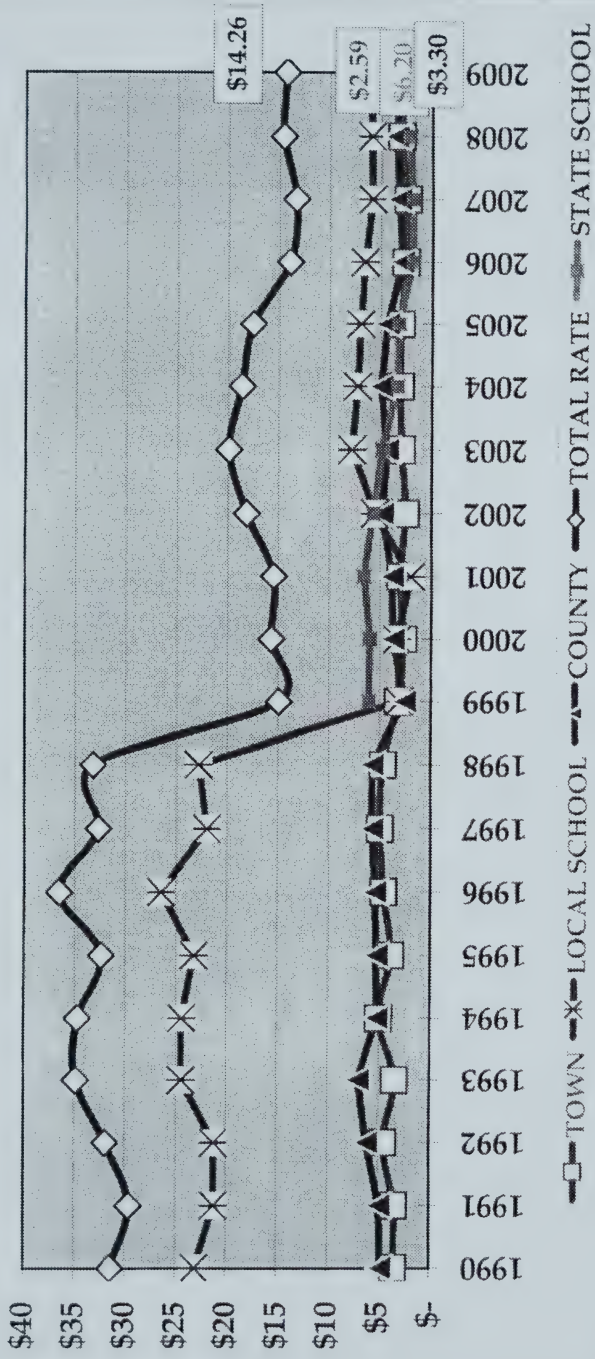
TOWN OF SHELBURNE
ASSESSED VALUATION



TOWN OF SHELburnE
TAX RATE % DISTRIBUTION



TOWN OF SHELBURNE
TAX RATE COMPARISON



WARRANT AND BUDGET



TOWN OF SHELBURNE TOWN MEETING WARRANT

To the inhabitants of the Town of Shelburne, in the County of Coos, and the State of New Hampshire, qualified to vote in Town affairs; you are hereby notified that:

The polls will be open at 5 PM and close not before 9 PM;

The Annual Town Meeting of the Town of Shelburne, New Hampshire, will be held at the Shelburne Town Hall, on Tuesday, March 9, 2010, at 7 PM, to act upon the following subjects:

1. To **CHOOSE** all necessary Town officers for the year ensuing (printed ballot).
2. To see if the Town will **VOTE TO APPROVE** the proposed amendment to the Zoning Ordinance (printed ballot)
3. To **HEAR** such reports of Town Officers heretofore chosen and pass any vote relating thereto.
4. To see if the Town will **VOTE TO RAISE AND APPROPRIATE** the sum of \$347,286 for **General Operation**.

[The Board of Selectmen and the Budget Committee recommend this appropriation.] (Majority vote required.)

4130 Executive	\$27,025
4140 Election, Registration, & Vital Statistics	\$12,970
4150 Financial Administration	\$19,128
4152 Revaluation of Property	\$7,500
4153 Legal Expense	\$5,500
4155 Employee Benefits	\$46,086
4191 Planning and Zoning	\$3,000
4194 General Government Buildings	\$44,200
4195 Cemetery (\$300 to be received from Cem Fds)	\$3,700

4196 Insurance	\$13,000
4197 Regional Association	\$547
4210 Police	\$2,100
4215 Ambulance	\$14,181
4220 Fire Department	\$17,810
4240 Building Inspection	\$2,500
4250 Dispatch Agreement	\$3,014
4290 Emergency Management	\$4,500
4312 Highway	\$52,000
4324 Solid Waste Disposal	\$32,750
4414 Animal Control	\$200
4415 Health	\$400
4444 Welfare	\$2,500
4520 Parks & Recreation	\$6,200
4550 Library	\$2,075
4590 Memorial Forest	\$400
4611 Conservation Commission	\$1,000
4711 Principal Long Term Note	\$20,000
4721 Int. Long Term Note	\$2,100
4723 Int. TAN Note	\$900

5. To see if the Town will VOTE TO ABOLISH THE POSITION OF Constable as a ballot position and to AUTHORIZE the Board of Selectpersons to appoint police officer(s) under RSA 105:1 or to execute contract(s) of not more than one year with other agencies or municipalities for police coverage for the Town of Shelburne, whatever they deem to be in the best interest of the town.

6. To see if the Town will **VOTE TO RAISE AND APPROPRIATE** the sum of \$2,500 to purchase a new computer for the town office. This will be a non-lapsing article per RSA 32:7, VI and will not lapse until the purchase is complete or December 31, 2011, whichever is sooner.
The Board of Selectmen and the Budget Committee recommend this appropriation. (Majority vote required)
7. To see if the Town will **VOTE TO RAISE AND APPROPRIATE** \$300 to be cover the Town's costs of planning for the restoration of the old Meadow's Bridge and immediate area. This will be a non-lapsing article per RSA 32:7, VI and will not lapse until the purchase is complete or December 31, 2013, whichever is sooner.
[The Board of Selectmen and the Budget Committee recommend this appropriation.] (Majority vote required).
8. To see if the Town will **VOTE TO RAISE AND APPROPRIATE** \$15,000 to be added to the Heavy Highway Equipment Capital Reserve Fund previously established.
[The Board of Selectmen and the Budget Committee recommend this appropriation.] (Majority vote required).
9. To see if the Town will **VOTE TO RAISE AND APPROPRIATE** \$15,000 to be added to the existing Fire Truck Capital Reserve Fund previously established.
[The Board of Selectmen and the Budget Committee recommend this appropriation.] (Majority vote required).
10. To see if the Town will **VOTE TO RAISE AND APPROPRIATE** the sum of \$1,000 to be added to the Fire Department Equipment Capital Reserve Fund previously established.
[The Board of Selectmen and the Budget Committee recommend this appropriation.] (Majority vote required).

11. To see if the Town will **VOTE TO RAISE AND APPROPRIATE** \$10,000 to be added to the **Paving Capital Reserve Fund** previously established.
[The Board of Selectmen and the Budget Committee recommend this appropriation.] (Majority vote required).
12. To see if the Town will **VOTE TO RAISE AND APPROPRIATE** \$500 to be added to the existing **Peabody Farm Museum Capital Reserve Fund** previously established.
[The Board of Selectmen and the Budget Committee recommend this appropriation.] (Majority vote required).
13. To see if the Town will **VOTE TO RAISE AND APPROPRIATE** \$500 to be added to the existing **Cemetery Equipment Capital Reserve Fund** previously established.
[The Board of Selectmen and the Budget Committee recommend this appropriation.] (Majority vote required).
14. To see if the Town will **RAISE AND APPROPRIATE** \$1,000 to be added to the existing **Town Building Capital Reserve Fund** previously established.
[The Board of Selectmen and the Budget Committee recommend this appropriation.] (Majority vote required).
15. To see if the Town will **RAISE AND APPROPRIATE** \$5,000 to be added to the existing **Revaluation Capital Reserve Fund** previously established.
[The Board of Selectmen and the Budget Committee recommend this appropriation.] (Majority vote required).
16. To see if the Town will **VOTE TO RAISE AND APPROPRIATE** \$2,600 to be added to the **Cemetery Maintenance Capital Reserve Fund** previously established. This represents the sum of money received from the sale of cemetery lots in 2009. This sum to come from fund balance (surplus) and no amount to be raised from taxation
[The Board of Selectmen and the Budget Committee recommend this appropriation.] (Majority vote required)

17. To see if the Town will **RAISE AND APPROPRIATE** \$2,000 to be added to the existing **Town Vehicle Maintenance Expendable Trust Fund** previously established.
[The Board of Selectmen and the Budget Committee recommend this appropriation.] (Majority vote required)
18. To see if the Town will **RAISE AND APPROPRIATE** \$500 to be added to the existing **Fire Department Mutual Aid Expendable Trust Fund** previously established.
[The Board of Selectmen and the Budget Committee recommend this appropriation.] (Majority vote required)
19. To see if the Town will **RAISE AND APPROPRIATE** \$500 to be added to the existing **Sand/Gravel Expendable Trust** previously established.
The Board of Selectmen and the Budget Committee recommend this appropriation.] (Majority vote required)
20. To see if the Town will **RAISE AND APPROPRIATE** \$20,000 to be added to the existing **General Building Maintenance Expendable Trust Fund** previously established and **VOTE** to withdraw \$13,700 from the **Land Use Change Fund** toward this amount; the balance (\$6,700) to be raised by taxation.
[The Board of Selectmen and the Budget Committee recommend this appropriation.] (Majority vote required)
21. To see if the Town will **VOTE TO RAISE AND APPROPRIATE** the sum of \$1,000 for the purpose of **supporting the Family Resource Center at Gorham** (by petition)
[The Board of Selectmen and the Budget Committee recommend this appropriation.] (Majority vote required)
22. To see if the Town will **VOTE TO AUTHORIZE** the Selectmen to dispose of **Municipal assets** (recyclables, etc.) under the authority of **RSA 31:3**.

23. To see if the Town will VOTE TO APPROVE the following resolution to be forwarded to our State Representative(s), our State Senator, the Speaker of the House, and the Senate President. (by petition)

Resolved: The citizens of New Hampshire should be allowed to vote on an amendment to the New Hampshire Constitution that defines "marriage".

24. To TRANSACT ANY OTHER BUSINESS that may legally come before said meeting.

BUDGET OF THE TOWN WITH A MUNICIPAL BUDGET COMMITTEE

OF: SHELBURNE

BUDGET FORM FOR TOWNS WHICH HAVE ADOPTED
THE PROVISIONS OF RSA 32:14 THROUGH 32:24

Appropriations and Estimates of Revenue for the Ensuing Year January 1, 2010 to December 31, 2010

or Fiscal Year From _____ to _____

IMPORTANT:

Please read RSA 32:5 applicable to all municipalities.

1. Use this form to list the operating budget and all special and individual warrant articles in the appropriate recommended and not recommended area. All proposed appropriations must be on this form.
2. Hold at least one public hearing on this budget.
3. When completed, a copy of the budget must be posted with the warrant. Another copy must be placed on file with the town clerk, and a copy sent to the Department of Revenue Administration at the address below within 20 days after the meeting.

This form was posted with the warrant on (Date): _____

BUDGET COMMITTEE

Please sign in ink.

Under penalties of perjury, I declare that I have examined the information contained in this form and to the best of my belief it is true, correct and complete

[Signature]

[Signature]

[Signature]

[Signature]

THIS BUDGET SHALL BE POSTED WITH THE TOWN WARRANT

FOR DRA USE ONLY

NH DEPARTMENT OF REVENUE ADMINISTRATION
 MUNICIPAL SERVICES DIVISION
 P.O. BOX 487, CONCORD, NH 03302-0487
 (603)271-3397

1 2 3 4 5 6 7 8 9

ACCT #	PURPOSE OF APPROPRIATIONS (RSA 32:3.V)	OP Bud. Warr. Art.#	Appropriations		Actual Expenditures Prior Year	SELECTMEN'S APPROPRIATIONS		BUDGET COMMITTEE'S APPROPRIATIONS	
			Prior Year As Approved by DRA	Prior Year As Approved		(RECOMMENDED)	(NOT RECOMMENDED)	(RECOMMENDED)	(NOT RECOMMENDED)
			XXXXXXXXXX	XXXXXXXXXX	XXXXXXXXXX	XXXXXXXXXX	XXXXXXXXXX	XXXXXXXXXX	XXXXXXXXXX
GENERAL GOVERNMENT									
4130-4139	Executive	4	26350		27066	27025		27025	
4140-4149	Election, Reg. & Vital Statistics	4	7935		6316	12970		12970	
4150-4151	Financial Administration	4	18508		19058	19128		19128	
4152	Revaluation of Property	4	12000		7208	7500		7500	
4153	Legal Expense	4	9000		4897	5500		5500	
4155-4159	Personnel Administration	4	42937		40992	46086		46086	
4191-4193	Planning & Zoning	4	3000		1577	3000		3000	
4194	General Government Buildings	4	49400		39937	44200		44200	
4195	Cemeteries	4	3600		3781	3700		3700	
4196	Insurance	4	13383		12812	13000		13000	
4197	Advertising & Regional Assoc.	4	465		464	547		547	
4199	Other General Government	4							
PUBLIC SAFETY									
4210-4214	Police	4	2100		110	2100		2100	
4215-4219	Ambulance	4	13483		13482	14181		14181	
4220-4229	Fire	4	16760		11978	17810		17810	
4240-4249	Building Inspection	4	2500		1263	2500		2500	
4290-4298	Emergency Management	4	4100		5423	4500		4500	
4299	Other (Including Communication)	4	3509		3509	3014		3014	
AIRPORT/AVIATION CENTER									
4301-4309	Airport Operations								
HIGHWAYS & STREETS									
4311	Administration								
4312	Highways & Streets	4	52000		49808	52000		52000	
4313	Bridges								

1	2	3	4	5	6	7	8	9
ACCT.#	PURPOSE OF APPROPRIATIONS (RSA 32:3.V)	OP Bud. Warr. Art.#	Appropriations Prior Year As Approved by DRA	Actual Expenditures Prior Year	SELECTMEN'S APPROPRIATIONS Ensuing Fiscal Year (RECOMMENDED)	(NOT RECOMMENDED)	BUDGET COMMITTEES APPROPRIATIONS Ensuing Fiscal Year RECOMMENDED	NOT RECOMMENDED
	HIGHWAYS & STREETS cont.		XXXXXXXXXX	XXXXXXXXXX	XXXXXXXXXX	XXXXXXXXXX	XXXXXXXXXX	XXXXXXXXXX
4316	Street Lighting							
4319	Other							
	SANITATION		XXXXXXXXXX	XXXXXXXXXX	XXXXXXXXXX	XXXXXXXXXX	XXXXXXXXXX	XXXXXXXXXX
4321	Administration							
4323	Solid Waste Collection							
4324	Solid Waste Disposal	4	32600	28612	32750		32750	
4325	Solid Waste Clean-up							
4326-4329	Sewage Coll. & Disposal & Other							
	WATER DISTRIBUTION & TREATMENT		XXXXXXXXXX	XXXXXXXXXX	XXXXXXXXXX	XXXXXXXXXX	XXXXXXXXXX	XXXXXXXXXX
4331	Administration							
4332	Water Services							
4335-4339	Water Treatment, Conserv. & Other							
	ELECTRIC		XXXXXXXXXX	XXXXXXXXXX	XXXXXXXXXX	XXXXXXXXXX	XXXXXXXXXX	XXXXXXXXXX
4351-4352	Admin. and Generation							
4353	Purchase Costs							
4354	Electric Equipment Maintenance							
4359	Other Electric Costs							
	HEALTHWELFARE		XXXXXXXXXX	XXXXXXXXXX	XXXXXXXXXX	XXXXXXXXXX	XXXXXXXXXX	XXXXXXXXXX
4411	Administration							
4414	Pest Control	4	200	0	200		200	
4415-4419	Health Agencies & Hosp. & Other	4	400	379	400		400	
4441-4442	Administration & Direct Assist.	4	2000	300	2500		2500	
4444	Intergovernmental Welfare Payments							
4445-4449	Vendor Payments & Other							

1	2	3	4	5	6	7	8	9
ACCT #	PURPOSE OF APPROPRIATIONS (RSA 32:3 V)	OP Bud. Warr. Art.#	Appropriations Prior Year As Approved by DRA	Actual Expenditures Prior Year	SELECTMEN'S APPROPRIATIONS Ensuing Fiscal Year (RECOMMENDED)	(NOT RECOMMENDED)	BUDGET COMMITTEES APPROPRIATIONS Ensuing Fiscal Year RECOMMENDED	NOT RECOMMENDED
	CULTURE & RECREATION		XXXXXX	XXXXXX	XXXXXX	XXXXXX	XXXXXX	XXXXXX
4520-4529	Parks & Recreation	4	5000	3769	6200		6200	
4550-4559	Library	4	1800	1800	2075		2075	
4583	Patriotic Purposes							
4589	Other Culture & Recreation	4	400	792	400		400	
	CONSERVATION		XXXXXX	XXXXXX	XXXXXX	XXXXXX	XXXXXX	XXXXXX
4611-4612	Admin. & Purch. of Nat. Resource	4	1000	1000	1000		1000	
4619	Other Conservation							
4631-4632	REDEVELOPMENT & HOUSING							
4651-4659	ECONOMIC DEVELOPMENT							
	DEBT SERVICE		XXXXXX	XXXXXX	XXXXXX	XXXXXX	XXXXXX	XXXXXX
4711	Princ.- Long Term Bonds & Note	4	28625	37926	20000		20000	
4721	Interest-Long Term Bonds & Not	4	2000	796	2100		2100	
4723	Int. on Tax Anticipation Notes	4	900	693	900		900	
4790-4799	Other Debt Service							
	CAPITAL OUTLAY		XXXXXX	XXXXXX	XXXXXX	XXXXXX	XXXXXX	XXXXXX
4901	Land							
4902	Machinery, Vehicles & Equipment		177500	175004	see page 6		see page 6	
4903	Buildings							
4909	Improvements Other Than Bldgs.		1000	1000	see page 6		see page 6	
	OPERATING TRANSFERS OUT		XXXXXX	XXXXXX	XXXXXX	XXXXXX	XXXXXX	XXXXXX
4912	To Special Revenue Fund							
4913	To Capital Projects Fund							
4914	To Enterprise Fund							
	Sewer-							
	Water-							

--SPECIAL WARRANT ARTICLES--

Special warrant articles are defined in RSA 323.6, as appropriations: 1) in petitioned warrant articles; 2) appropriations raised by bonds or notes; 3) appropriations to a separate fund created pursuant to law, such as capital reserve funds or trusts funds; or 4) an appropriation designated on the warrant as a special article or as a nonlapsing or nontransferable article.

ACCT #	PURPOSE OF APPROPRIATIONS (RSA 323.6)	Warr. Art.#	Appropriations Prior Year As Approved by DRA		Actual Expenditures Prior Year	SELECTMEN'S APPROPRIATIONS Enacting Fiscal Year		BUDGET COMMITTEE'S APPROPRIATIONS Enacting Fiscal Year	
			Warr. Art.#	Amount		(RECOMMENDED)	(NOT RECOMMENDED)	(RECOMMENDED)	(NOT RECOMMENDED)
1	4902 New Computer	6	0	0	0	2500			9
2	4909 Family Resource Center	21	1000	1000	1000	1000			8
3	4909 Meadows Bridge	7	0	0	0	300			7
4	4915 Paving CR	11	9000	9000	9000	10000			6
5	4915 Town Building CR	14	1000	1000	1000	1000			5
6	4915 Heavy Highway CR	8	20000	20000	20000	15000			4
7	4915 Camery Equipment CR	13	600	600	600	500			3
8	4915 Fire Truck	9	8000	8000	8000	15000			2
9	4915 Revaluation CR	15	4000	4000	4000	5000			1
10	4915 Fire Equipment CR	10	5400	5400	5400	1000			
11	4915 Paabody Farm CR	12	500	500	500	500			
12	4915 Cemetery Maintenance CR	16	600	600	600	2600			
13	4916 Fire Dept. Mutual Aid Exp. Trust	18	500	500	500	500			
14	4916 Town Vehicle Maint. Exp. Trust	17	3000	3000	3000	2000			
15	4916 Sand/Gravel Exp. Trust	19	500	500	500	500			
16	4916 Gen Bldg. Maint. Exp. Trust	20	0	0	0	20000			
SPECIAL ARTICLES RECOMMENDED			XXXXXXX	XXXXXXX	XXXXXXX	XXXXXXX	XXXXXXX	XXXXXXX	XXXXXXX
						77400			77400

---INDIVIDUAL WARRANT ARTICLES---

"Individual" warrant articles are not necessarily the same as "special warrant articles". An example of an individual warrant article might be negotiated cost items for labor agreements, leases or loans of a one time nature you wish to address individually.

ACCT #	PURPOSE OF APPROPRIATIONS (RSA 323.6)	Warr. Art.#	Appropriations Prior Year As Approved by DRA		Actual Expenditures Prior Year	SELECTMEN'S APPROPRIATIONS Enacting Fiscal Year		BUDGET COMMITTEE'S APPROPRIATIONS Enacting Fiscal Year	
			Warr. Art.#	Amount		(RECOMMENDED)	(NOT RECOMMENDED)	(RECOMMENDED)	(NOT RECOMMENDED)
1	INDIVIDUAL ARTICLES RECOMMENDED		XXXXXXXXXX	XXXXXXXXXX	XXXXXXXXXX	XXXXXXXXXX	XXXXXXXXXX	XXXXXXXXXX	XXXXXXXXXX
2									
3									
4									
5									
6									
7									
8									
9									

1	2	3	4	5	6
ACCT.#	SOURCE OF REVENUE	Warr. Art.#	Actual Revenues Prior Year	Selectmen's Estimated Revenues	Budget Committee's Est. Revenues
TAXES			XXXXXXXXXX	XXXXXXXXXX	XXXXXXXXXX
3120	Land Use Change Taxes - General Fund		1150	13700	13700
3180	Resident Taxes				
3185	Timber Taxes		35146	5000	5000
3186	Payment in Lieu of Taxes		37496	38383	38383
3189	Other Taxes				
3190	Interest & Penalties on Delinquent Taxes		3272	2000	2000
	Inventory Penalties				
3187	Excavation Tax (\$.02 cents per cu yd)		40	40	40
LICENSES, PERMITS & FEES			XXXXXXXXXX	XXXXXXXXXX	XXXXXXXXXX
3210	Business Licenses & Permits		90	100	100
3220	Motor Vehicle Permit Fees		61320	60000	60000
3230	Building Permits		963	2000	2000
3290	Other Licenses, Permits & Fees		807	1000	1000
3311-3319	FROM FEDERAL GOVERNMENT				
FROM STATE			XXXXXXXXXX	XXXXXXXXXX	XXXXXXXXXX
3351	Shared Revenues		0	0	0
3352	Meals & Rooms Tax Distribution		17169	17000	17000
3353	Highway Block Grant		13206	14064	14064
3354	Water Pollution Grant				
3355	Housing & Community Development				
3356	State & Federal Forest Land Reimbursement				
3357	Flood Control Reimbursement				
3359	Other (Including Railroad Tax)		9800	4000	4000
3379	FROM OTHER GOVERNMENTS				
CHARGES FOR SERVICES			XXXXXXXXXX	XXXXXXXXXX	XXXXXXXXXX
3401-3406	Income from Departments		5915	6000	6000
3409	Other Charges		1365	800	800
MISCELLANEOUS REVENUES			XXXXXXXXXX	XXXXXXXXXX	XXXXXXXXXX
3501	Sale of Municipal Property		2600	900	900
3502	Interest on Investments		3306	3500	3500
3503-3509	Other		5758	3000	3000
INTERFUND OPERATING TRANSFERS IN			XXXXXXXXXX	XXXXXXXXXX	XXXXXXXXXX
3912	From Special Revenue Funds				
3913	From Capital Projects Funds				

1	2	3	4	5	6
ACCT.#	SOURCE OF REVENUE	Warr. Art.#	Actual Revenues Prior Year	Selectmen's Estimated Revenues	Budget Committee's Est. Revenues
INTERFUND OPERATING TRANSFERS IN cont.			XXXXXXXXXX	XXXXXXXXXX	XXXXXXXXXX
3914	From Enterprise Funds				
	Sewer - (Offset)				
	Water - (Offset)				
	Electric - (Offset)				
	Airport - (Offset)				
3915	From Capital Reserve Funds		112504	0	0
3916	From Trust & Fiduciary Funds		402	300	300
3917	Transfers from Conservation Funds				
OTHER FINANCING SOURCES			XXXXXXXXXX	XXXXXXXXXX	XXXXXXXXXX
3934	Proc. from Long Term Bonds & Notes		60000	0	0
	Amounts VOTED From F/B ("Surplus")		600	2600	2600
	Fund Balance ("Surplus") to Reduce Taxes		10000	10000	10000
TOTAL ESTIMATED REVENUE & CREDITS			382909	184387	184387

****BUDGET SUMMARY****

	PRIOR YEAR ADOPTED BUDGET	SELECTMEN'S RECOMMENDED BUDGET	BUDGET COMMITTEE'S RECOMMENDED BUDGET
Operating Budget Appropriations Recommended (from pg. 5)	3544955	347286	347286
Special Warrant Articles Recommended (from pg. 6)	231600	77400	77400
Individual Warrant Articles Recommended (from pg. 6)			
TOTAL Appropriations Recommended	586555	424686	424686
Less: Amount of Estimated Revenues & Credits (from above)	382909	184387	184387
Estimated Amount of Taxes to be Raised	203646	240299	240299

Maximum Allowable Increase to Budget Committee's Recommended Budget per RSA 32:18: 40,258
(See Supplemental Schedule With 10% Calculation)

BUDGET COMMITTEE SUPPLEMENTAL SCHEDULE
 (For Calculating 10% Maximum Increase)
 (RSA 32:18, 19, & 32:21)

VERSION #1: Use if you have no Collective Bargaining Cost Items or RSA 32:21 Water Costs

LOCAL GOVERNMENTAL UNIT: Shelburne FISCAL YEAR END 2010

	RECOMMENDED AMOUNT
1. Total RECOMMENDED by Budget Comm. (See Posted Budget MS7, 27, or 37)	\$ 424,686
LESS EXCLUSIONS:	\$20,000
2. Principal: Long-Term Bonds & Notes	
3. Interest: Long-Term Bonds & Notes	\$2,100
4. Capital Outlays Funded From Long-Term Bonds & Notes per RSA 33:8 & 33:7-b.	0
5. Mandatory Assessments	0
6. Total exclusions (Sum of rows 2 - 5)	< 22,100 >
7. Amount recommended less recommended exclusion amounts (line 1 less line 6)	\$ 402,586
8. Line 7 times 10%	\$ 40,258
9. Maximum Allowable Appropriations (lines 1 + 8)	\$ 464,944

Line 8 is the maximum allowable increase to budget committee's recommended budget. Please enter this amount on the bottom of the posted budget form, MS7, 27, or 37.

Please attach a copy of this completed supplemental schedule to the back of the budget form.

REPORTS OF OFFICERS
AND
COMMITTEES



SELECTPERSONS REPORT

The Board of Selectpersons has had a busy year trying to address various issues. The Selectmen attended 29 posted meetings, as well as a number of other Board meetings.

The Board of Selectpersons has encouraged the town clerk to continue to pursue the possibility of becoming a municipal agent. The town clerk did learn that the office will need to have high speed internet for this to work well. Also the state's grant money for this project is gone. The town would have to purchase all the necessary equipment. The cost could be as high as \$5,000. In light of this information money has been included in the budget. This means for now she will continue to manually type each registration. So everyone needs to bring their old registrations and their patience when they register their vehicles.

The appeal of Androscoggin Valley Country Club's was heard before the Board of Land and Tax Appeal in April 2009. The decision was to settle in the middle of the values put forth by each side. The town processed abatement for them in the fall.

The Board met several times with Fire Chief Tom Hayes and the Fire Department Officers to keep the lines of communication open and to keep abreast of the needs of the Fire Department. These meetings have been quite successful and the Board plans to continue these in 2010. It is the hope of the Board that a schedule for the replacement of vehicles and equipment be developed.

The Board also met periodically with Ken Simonoko to address the needs of the Public Works Department. Each year the Board reviews and updates the Heavy Equipment replacement schedule and the paving schedule. The new plow truck was purchased in June and was immediately delivered to Howard Fairfield, Inc. to have the plow, wing and sander installed. The

complete truck was picked up in September. Ken is very pleased with this new 4-wheel drive vehicle.

The Board met with Constable Jerry Baker to discuss the future of police services in Shelburne since the untimely loss of Officer Bill Weichert. Jerry has not found anyone interested in filling this position. They also held discussions with the NH State Police and Police Chief P.J. Cyr. They decided that their first step would be to ask voters to abolish the elected position of Constable. They feel that this position is out-dated since there are now only 2 elected Constables in the state.

The Board was concerned when they learned of Fairpoint's bankruptcy. This development stopped the plan fiber optic cable installation in Shelburne and has also impacted Time Warner's timeline for offering services in Shelburne.

Once again Shelburne's town report won first prize for towns with population under 750 in New Hampshire Municipal Association Town Report Contest.

In May the Board and the Memorial Forest Committee held a ceremony to dedicate the forested lot near the Maine state line as the William "Bill Hastings" Memorial Forest.

In June Ray Danforth encouraged the Board to enter a program sponsored by EPA and UNH to benchmark the energy use of the town buildings. In July the Board met with Judy Darveau, EPA contact, Professor Ihab Faraq, ScD, P.E. and Intern Jim Potter to view a Power Point presentation on the energy use of town buildings. The goal of this program is to reduce the energy use in each building by 10%.

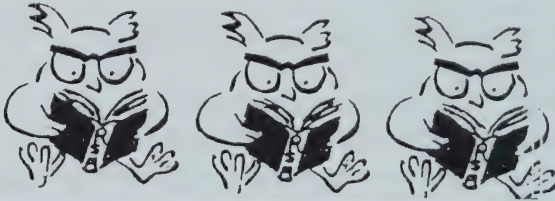
In November the Board hired GDS Associates to perform an energy audit on the various town buildings. Recommendations for improvements were received and problems with the town hall's wet basement area were highlighted. This report has led to the Board's funding the General Buildings Maintenance Expendable Trust Fund in

the \$20,000. It also pointed out that the town needs to develop a plan for town buildings.

The Board has found budget development for 2010 a challenge due to rising costs, problems that need to be addressed and the state of the economy in the North Country, the United States and the world. Health insurance rose by about 15% and the basement area of the town hall must be addressed. The Board is committed to trying to keep expenditures down while at the same time addressing needs of the town so that we will not have to spend years trying to catch up on things that should have been done but were not. The town portion is projected to be up slightly in 2010.

Lastly, the Board would like to thank all the town departments for working to keep their budgets and expenditures down.

Selectpersons – Stanley Judge, Lucy Evans, Heidi Behling



Lt. Doug Gralenski, NH Fish and Game, speaking at the dedication of the William "Bill" Hastings Memorial Forest

Town Clerk Report for 2009

Town Clerk office hours: Tuesdays 11am – 3pm
Thursdays 3pm – 6pm

Registrations: Renewals during the month of your birth.

Dog Licenses: Due May 1st, if dog is over 3 months old.
Neutered/Spayed- \$6.50
Un-neutered/Un-spayed- \$9.00
Rabies certificate is required to register dog.
\$25.00 forfeiture if no licensed by June 1st. - RSA 466:13

Voter Registration: New voters can register with the Supervisors of the Checklist or the Town Clerk or Deputy.
Proof of age and Citizenship are required.

Vital Statistics for 2009

Resident Births	0
Resident Marriage	1
Resident Death	1
Resident Civil Union	0

Note: Civil Union is now called Marriage as of January 2010.

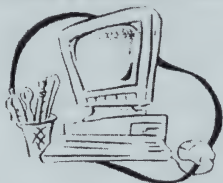
US Census

For the past couple of years, Jo and I have been doing our part for the US Census. This year it's your turn to do your

part. You may have already been contacted. This information is especially important for when we write grants to the Federal Government for equipment, programs and help.

Municipal Agent

Once again we were denied the ability to be state agents in regards to registrations and license plates. It is a matter of money for the State and for Shelburne. I put the extra money in my budget just in case it happens to work out. So, for the time being, we must all complete our registrations at the DMV or another town whose clerk is a municipal agent.



PUBLIC WORKS

The new four-wheel drive truck arrived in late summer. The time spent reviewing the specs on the new vehicle was well worth it. The four-wheel drive is great on the hills. The four-way plow is especially nice on North Road where there are places that there is not a lot of room for snow banks.

Now that I am well prepared for winter we haven't had a lot of snow but we all know we have a ways to go before it is over and we could be buried tomorrow.

I would like to remind everyone that when we do have a storm it is important to not park on the road and it is against the law to plow snow into the road and leave it there. Snow left in the road could cause a serious accident for one of your neighbors.

Keep in mind that the plow truck on the North Road has the right of way under state statute for being over width, over height and over weight during the maintenance of the roads. Please be cautious. Let's all be safe.

Ken Simonoko, Road Agent

Shelburne Waste District

The operation of the "Dump" continues smoothly, with Shelburne's citizens working with the operating crew to reduce waste and enjoy the donuts. Pay-as-you-Throw bags are still available at both the Town office and the transfer station, and the cost is still \$7.50 for a roll of 5 bags.

Please remember that we are collecting all mercury items such as switches, thermometers, regular fluorescents, compact fluorescent lights (CFLs) and small "button" batteries. Therefore, keep these items out of the regular trash and place them in the special containers.

On the revenue side, we are holding all of the collected cardboard, tires and scrap metal hoping that the price for scrap increases. The town received \$582.50 for landfill fees, and \$5,915.50 from the sale of green bags. The income from sale of bags offset over 18 percent of the solid waste budget for the year. In addition we have put o \$19,427.91 into the landfill equipment account against future purchases.

Since the town plow has been replace, the old plow has replaced the trash truck. This should keep the town going for a few years while we review alternatives.

The Household Hazardous Waste collection day is scheduled for June 5. Please look for information at the transfer station in May. Note that it does not cost Shelburne residents anything to take their hazardous waste to the collection day.

Again, we wish to thank everyone who helped to make the transfer station operation go smoothly, and to reduce the waste. Please join us for coffee and donuts.

The Transfer Station Crew



FIRE DEPARTMENT REPORT

The Shelburne Fire Department is pleased once again to report that no serious residential fires occurred in 2009. I want to thank everyone for their diligence in safety concerns, maintaining heating systems and getting chimneys cleaned.

We have had another busy year with the following:

Calls

Assisting other departments:

Berlin	1
Gorham	3
Randolph	1
Gilead, ME	3
Jackson	0

Other types of calls we responded to were:

Train derailment (Gilead, ME)	1	(3
days)		
Vehicle accidents	7	
Ambulance assists	2	
Inspections	4	
Escort	1	
Fire	3	
Station Coverage (Gilead)	1	

Training

The department logged 239 hours of training this year.

Subjects of training included:

- Pumping
- Draft from pond
- Hydrant
- In ground water tank pumping
- Flagger certification
- Rope inspection and handling
- Pipeline
- Scott air packs
- Bog Brook with Gilead and Bethel



Hazmat
Radio

The department has 186 hours of donated time to report this year.

Reminders:

Remember, if you are in need, the department has a collection of items which you may borrow free of charge:

Canes

Walkers

Wheelchair

Hospital bed

Potty chair

Call a local Fire Warden for a burn permit

Tom Hayes

466-3989

Peter Nickerson

466-3834

Bill Davenport

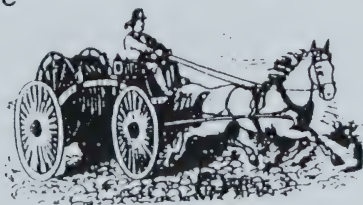
466-2971

The Fire Triangle

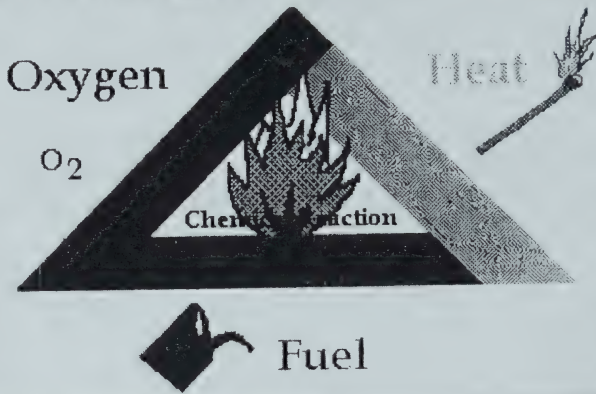
Four things must be present at the same time in order to produce fire:

- Enough oxygen to sustain combustion,
- Enough heat to raise the material to its ignition temperature,
- Some sort of fuel or combustible material, and
- The chemical, exothermic reaction that is fire.

Take a look at the following diagram, called the "Fire Triangle"



Fire Triangle



Oxygen, heat, and fuel are frequently referred to as the "fire triangle." Add in the fourth element, the chemical reaction, and you actually have a fire "tetrahedron." The important thing to remember is: take any of these four things away, and you will not have a fire or the fire will be extinguished.

Essentially, fire extinguishers (and Firefighters) put out fire by taking away one or more elements of the fire triangle/tetrahedron.

Fire safety, at its most basic, is based upon the principle of keeping fuel sources and ignition sources separate.

I would like to take this opportunity to thank the firefighters, officers and their families of Shelburne, Gorham & Gilead.

Thank you to Jerry Baker, the Gorham Police, NH State Police, and Gorham Ambulance, which of course includes our local EMTs, George & Luc Corriveau, and the Shelburne Ladies Auxiliary.

Tom Hayes, Fire Chief

FAST SQUAD REPORT

Dear Shelburnites,

This report is more on a personal note. It's not about numbers, but rather about people. These people, of whom there are many, that make this town the community that it is.

During the last two years, many "Shelburnites" have passed on. These people were family members to some of you, friends to others, or perhaps just an acquaintance. In the line of work that I do, you will sooner or later treat one of these above mentioned people. Those times touch close to home. Though troubling and sad at the moment, it is very comforting to later reflect on the fact that you were able to have that interaction with these folks. At a time when they were in need you were able to bring them comfort. "That folks is what drives us to do what we do". That mindset seems to fit more than one profession in this town. If everyone were to take a moment to look around from our busy schedules, we might catch a fleeting glimpse of these people making a difference, the people that are the core of this community. A good friend of mine in the medical community once stated to me "We are entrusted to care for those that cannot care for themselves" That statement carries a lot of meaning and responsibility. I don't know about the rest of you, but I see that happening everyday in this community. I see people working unselfishly to help others, not expecting anything in return. To these people, and you know who you are, I say "Thank You" Thank You for thinking less of yourselves and more of others. These unselfish acts will someday come back to you in a good way.

Keep up the good work. You people are the spokes that keep this community together.

I would like to welcome Bill Davenport Jr. to the Shelburne Fast Squad. Bill is now an EMT-B. He like the rest of us also rides with Gorham EMS. When you see Bill, please take a moment to welcome him.

We are always looking for new members so if you are interested please give me a call.

Luc continues to work with us on the weekends when he is home from his regular job working in the OR at Spere Hospital as a Registered Nurse. He is also continuing to further his medical education. People talk of raising children and how challenging that is. Let me tell you that the rewards are great. Nothing can surpass working next to your son on an ambulance call, where you are there as equals. Invest time in your kids, it pays off. They might come to inspire you, mine have.

Thank You.

Respectfully, George Corriveau - Director

EMERGENCY MANAGEMENT

This was a quiet year in Shelburne with no major emergencies. Many parts of the state were not so lucky. Some places had flooding, high winds and major power outages.

We received a grant to update our Hazards Mitigation Plan. Jane Hubbard, Hubbard Consulting, was contracted to help with the update. Hubbard Consulting wrote our initial plan. We were able to finish our update during the summer with a minimal number of meetings. To date no word has been received from FEMA about the plan's approval status.

Remaining grant money will be used to hold a tabletop exercise on opening our Emergency Operations Center and to purchase a laptop computer.

It is very important for each household to be prepared for an emergency. The Red Cross recommends that at least 3 days worth of water and food be kept on hand. We still have some weeks of winter to go and then there is always the possibility of spring floods, when parts or all of Shelburne could be cut off from either Gorham or Maine. So plan ahead and stock up.

Stanley Judge, Emergency Management Director

PLANNING BOARD

The past year had minimal development activity which has allowed the Board to focus on updating the Towns Master Plan. This has included the circulation of a questionnaire last spring and then the tabulation of the results through the summer and fall. In December we held the first of what will be a series of meetings, this one to review the responses to the questionnaire, to present a vision statement for the plan and to solicit help in developing various segments of the plan.

At present we have several volunteer groups working on various sections of the plan these include the following areas:

- Natural Resources
- Housing
- History – Historical Resources
- Town Roads
- Town infrastructure and Finances
- Land Use Regulation

We still have several sections of the plan that are not being addressed at this time –they are:

- Economic Development
- Regional Concerns

If you are interested in working on these subjects please contact Jo or any member of the Planning Board.

We will hold several more public meetings to discuss the plan as the work on the various sections near completion. There will also be public hearings on the entire plan once it is completed.

John Carpenter, Chairperson

BUILDING INSPECTOR REPORT

In 2009 1 sign permit, 2 demolition permit and 13 building permits were issued:

Garage	2
Shed	2
Alterations/Renovations	6
Deck	1
Fence	1
Vegetable Stand	2
Mini-storage unit	1

If anyone is planning any kind of building project, including purchasing a pre-built structure, they should contact the building inspector to obtain a permit. There are quite a few state laws around both building and demolishing structures that must be complied with and the building inspector has the necessary paper work to comply with these laws.

If anyone has questions about whether or not a project requires a building or demolition permit, please call the building inspector before the project is started.

Rav Bennett, Building Inspector



Shelburne Park Annual Report

The Shelburne Park Commission now has its full complement of commissioners as Marc Van Sant and Andrew Johnston have volunteered to serve their town, giving us currently five members, all of whom are listed below.

During the 2009 activity year, the Park Commission stayed true to its stated mission regarding meetings: we meet on an as needed basis. We held no meetings last year, but with a full slate of commissioners, we plan to meet at least once before the annual town meeting takes place in March 2010, and thereafter, as needed. We must elect a new commission chairperson as a first order of business.

Other projects for the coming year include straightening up the pavilion, which is about to fall on hard times, so to speak – or at least on hard ground. Special projects manager, Ken Simonoko will manage this project, which is funded in the 2010 Park budget.

Additionally, we need to roll and flatten the areas of the Park that have become miniature loam tsunamis as a result of frost heaves and aquifer activity. Val Dube has graciously volunteered to put a piece of his heavy equipment to work on this project this summer. Val also helped improve the Park last summer by using his tractor to lay down a garlic-based mosquito barrier at the Park periphery.

Bev Pinkham will continue with her Park beautification projects, mainly tending to the flower garden in the stonework base of the Park entrance sign. Other projects will be addressed as the need arises and if funding becomes available.

Bob Corrigan, Commission Chairperson, Ken Simonoko, Special Projects Manager, Bev Pinkham, Beautification Projects Specialist, Andrew Johnston, Marc Van Sant

TOWN FOREST

The Town Forrest Committee made some good strides in opening up the young birch trees growing where the clear-cuts were made a few years ago. This is a big job. Some thought was given to using prisoners from the New Hampshire Correctional Institution in Berlin to do the work, but after discussions with Gorham on their experience using that labor source, it turns out that such a project is considerably more complicated than we felt we could handle. For the time being, at least, we are doing what we can by ourselves. We expect to continue with brush removal this year.

A new nature trail has been constructed in the "Bill Hastings Memorial Forest" by the Maine border. The work was taken on as a Senior Project by Nick Gralenski. Each senior class member must submit a proposal for a community service project and complete the job as a requirement to graduate. The trail is completed and a sign to be installed facing the river has been made but is not yet put up. This will be done in the spring. One bench, offering a view of the river, has been put in place. Another small sign/map at the start of the path will also be put up in the spring. The trail is about a quarter mile long on basically flat terrain. It is easy walking, scenic, and the moose have already taken to it. We encourage everyone to give it a try.

Another concern of the Committee involves the dead birches along the roadside. The engineer in charge of Route 2 indicated that he would give us a hand in removing them but he has since left and we do not know where this project stands at this point.

We again wish to thank Mike Ryan for getting the lawn mowed between rain storms this soggy summer. Also I wish to personally thank Bob Waddington for his vigorous application of the brush cutter and chain saw.

Town Forest Committee – John Gralenski, Mike Ryan, Bob Waddington

Shelburne Conservation Commission

The Shelburne Conservation has had a busy year. . In April we held a successful Open House with over 45 people in attendance. The river, roads, forests, conservation easements and other topics were presented to residents to get a feel for what the preservation priorities are in the Town. Excellent feedback was received and this is the first of many times we will be going to the residents for direction in future decisions.

Education was key this year with members attending the NH Association for Conservation Commission workshops in November and the Androscoggin Valley Watershed Council's Conference on the river in January. John Cosgriff was a presenter.

The Commission is working with other conservation minded citizens to support and add input and resources to the Town's Master Plan.

Conservation Commission - John Gralenski - Chair, Stan Judge, John Cosgriff, David Carlisle, Thomas Moore, Jody Landry



HERITAGE COMMISSION 2009

There was good attendance at our monthly open days at the Peabody Farmhouse. In addition we opened by appointment several times when visitors were researching ancestry in the area. We hear from neighbors that they have missed the open days and would like to remind everyone that a phone call to any member of the commission is all it takes to arrange a visit. This is your town's history and your town owns and runs the museum, so please come.

Visitors in the past who have commented on the ceiling plaster in the hallway which was badly damaged by soot from a now non-existent chimney and from squirrel damage, should see it now. Rob Bolash took down the old ceiling and re-plastered it and it looks great.

In the winter of 2008/9 we experimented with winterizing the house and turning off the heat except when someone was working there. But several books, especially the leather bound ones, developed mildew. Therefore this year we are going back to keeping the furnace on at its lowest setting.

We were fortunate in gaining two enthusiastic new members of the commission last spring. But again we lost a valuable member when Jim Evans died in Jan. We enjoyed his perspective as a Shelburne native, and the descendant of one of the original settlers of the town. We will miss him. Again we could use new members and would like to hear from any interested people.

Heritage Commission -Hildy Danforth, Cynthia Gralenski, Roger Morrisette, Ken Simonoko, Betty Werner

Shelburne Union Church

The historic Shelburne Union Church is a non-denominational church open for services through the months of July and August, with the services beginning at 7pm on Sunday evenings. A schedule of the services is published in the Berlin Daily Sun.

In April a meeting was held to elect officials. The church committee welcomed Richard and Diane Wood as our new Chairman and Secretary of the church. Also Kimberly and Katherine Landry took over the positions as Treasurer and Assistant Treasurer respectively. Tom Hayes was elected as the at large member of the committee. The transition to new members went smoothly even in spite of the absence and unfortunate resignation

of Richard and Diane Wood in December due to health reasons. We are looking for anyone who might be interested in taking over the position of Chairman and Secretary. If you have the time and dedication to be available Sunday evenings for the months of July and August and periodically throughout the year for discussion on church matters and fundraising, please contact Kimberly Landry at 466-5353.

This year two fundraisers were put on to raise money for the insurance on the church building. A Ham Dinner was put on in September raising \$924. This total amount raised was from ticket sales as well as donations at the door. We also had a firewood raffle which raised \$226. Congratulations to Red Hutchins who won a cord of firewood! Many thanks to those who attended the dinner and purchased tickets to help support the church and keep our doors open for another year.

Thanks to those who volunteered their time and services to help make our fundraisers a success. A special thanks to Burton and Tillie Meyers for filling in and bridging the gaps as we made the transition to a new committee this past year. To all of you folks who attended our services, we say thank you very much, as this is what keeps our church running. The Shelburne Union Church Committee



CEMETERY COMMITTEE

We filled the two vacancies that were created by the deaths of long-time members Ben Werner and Doris Gorham. The newly elected members are Bob Waddington and Bill Healy. You may have seen them fixing and painting the fence at the Hazelton Cemetery. They plan to finish the job in the spring.

We would like to focus on the Wheeler Cemetery in 2010 since we received an endowment that can only be used on that cemetery. Ken has started by putting loam, fertilizer and seed on some graves in that cemetery.

During 2009 one four cemetery lots were sold.

The prices for cemetery lots are as follows:

Four grave lot - \$800.00

Two grave lot - \$600.00

One grave lot - \$400.00

The cost for the burial of a coffin is \$600.00 and the cost of the burial of a cremation is \$50.00.

There were three burials during 2009. Two were in the Wheeler Cemetery and one was in the Leadmine Cemetery.

The trustees would once again like to thank Ken Simonoko and Ted Peabody for their excellent care of all cemeteries during the past year. Many thanks for a hard job well done. Cemetery Trustees - Cynthia Gralenski, Bob Waddington, Bill Healy



Shelburne Public Library

It has been a busy year at the Shelburne Public Library. On Valentine's Day the Library held a romantic spaghetti dinner. It was held to raise money towards the purchase of our new computer. It was fun evening with great food and friends. We have decided to do make it an annual event. We want to extend a special thank you to all the Shelburne Neighbors for those homemade desserts.

If you have stopped by the library you have seen the renovations in progress. Please pardon our dust. We have installed our new computer counter and have the new computer up and running. The new printer is picture quality and prints beautifully. Come on in and check it out.

In December the Library and the Shelburne Neighbors worked together on their annual auction. It was a little different this year. The auction was held on a Saturday in December. We were lucky to have three Santas arrive at the auction. Their jokes and good humor helped raise money for the Shelburne Neighbors' scholarship fund.

We are working on continuing the renovations. We want the library to be a part of the community. The library is a place to meet, read, talk and use the computers.

This year the library has loaned 6 Adult Non Fiction, 33 Adult Fiction, 8 Children Books, 31 other Media and 7 Inter-Library Loans.

Marlene Marchand, Librarian

Library Financial Report

Beginning Balance		\$994.05
Deposits		\$3,976.00
Expenditures		
Books		\$70.45
Equipment		1,552.91
Subscriptions		112.95
Misc.		261.94
Total		<u>\$1,998.25</u>
Balance as of 12/31/09		<u>\$ 2,971.80</u>



Family Resource Center @ Gorham Annual Report



In 2009, the Resource Center provided direct services to over 1,000 low income children, youth and families in Shelburne and the surrounding communities. Hundreds of others received referrals to other services, attended a class or workshop.

The direct services the FRC staff provided included home visiting for families at risk of abuse and neglect, after school programs, substance abuse prevention activities, workforce development training, computer classes and parenting workshops. The Center again sponsored "Coats for Community" which provided free donated winter clothing to over 200 individuals and "Operation School Supplies" which provided 257 needy students with backpacks and school supplies to start the school year. Last year the Center provided over 360 low income families and seniors with free on-line tax filing and returned over \$400,000 in refunds and tax credits and we have already started this program up again for this year. Last year we also helped families access fuel assistance and winter weatherization programs.

Residents from Shelburne have participated in the Center's after school program, computer classes, parenting workshops, workforce development program and free income tax preparation program in 2009. We have also had several Shelburne residents participate on the Center's board of directors and volunteer in many of the programs.

We are grateful to the Town for its support as we continue to offer skills and build capacity for the children, youth and families of the Androscoggin Valley.

Tom Austin Executive Director

North Country Council

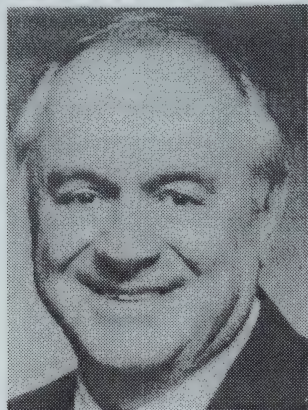
This year has been an exceptional tough year, not only for our region, but the entire country. We realize that all of our communities have struggled with budgets and the economic hardships of its citizens and we hope that North Country Council has been able to help. We would like to thank all of you for your support of the North Country Council this past year.

We continued to deliver planning services throughout the region. We have and we will continue to adjust our capacities to respond to the needs of the communities and you will see this in the programs that we will be introducing in the coming years. We are continuing our Community Outreach program targeted at helping our planning boards in the difficult tasks of managing the planning activities in their communities. These programs, as well as all the traditional programs in master planning, solid waste management, natural resource planning, Brownfields Assessments and transportation planning, will continue to be a focus of North Country Council. Our primary focus this year has been on economic development as we try to respond to the economic downturn in the region. We continued our strong relationship with the Department of Commerce and the Economic Development Administration (EDA) in bringing funding and project development to the region. We applied for and received a number of very significant grants from EDA for the region as well as a significant Brownfields Grant from EPA.

Again, thank you for all of your support for the Council. I hope that my staff and I can continue to be of service to your community. The Council is here to serve you. It is your organization. Our staff and Board are committed to responding to community need. If there is a project or a need in your town, please call us. We are dedicated to both supporting our individual towns and promoting regional unity in the North Country.

Michael King Executive Director

REPORT TO THE PEOPLE OF DISTRICT ONE



2009 was indeed the year of American Recovery and Reinvestment Act (ARRA)/Stimulus Funds in New Hampshire!

As of November 4, 2009 \$579,305,870.00 had been allocated in New Hampshire in nine areas: business/

community; education; employment; energy; health; housing; safety; technology; and transportation. Of that \$181,463,876.00 went to Council District One towns and cities and the counties of Belknap, Carroll, Coos, Grafton and Sullivan.

The ARRA money has enabled local, state and county government to work on projects that have been in the process and planning for years. For a complete listing of these projects go to :

www.ed.state.nh.us/education/recovery/index.htm or write to my office.

Governor Lynch has now submitted the New Hampshire Transportation Plan to the New Hampshire House and Senate. Highways/bridges, rail, aviation and public projects are among the proposed recommendations. Contact your local State Senator and Legislator for details about what projects you believe to be key ones for your region.

As Councilor, I do not see new revenues being raised in New Hampshire State Government. With the decline in existing revenues leading to cut backs in services, only time will determine what the law making branch has in mind for new dollars. Keep in close touch with your local State Senator and Legislator to make sure cost are NOT passed on to county and local government.

The Governor and Council are required by law to fill dozens of boards and commissions with volunteers. If you

are interested in serving, please send a letter of interest and your resume to Governor John Lynch, Attention Jennifer Kuzma, Appointment Liaison, State House, and 107 North Main Street, Concord, NH 03301. For the current list of what possible appointments might be coming up go to:

<http://www.sos.nh.gov/redbook/index.htm>.

There is a constant flow of informational items available at my office: tourist maps, consumer handbooks, and the New Hampshire Constitution. Each Monday I send, via e-mail, the schedule of my weekly meetings and other information. Send me your e-mail to be added to the list at rburton@nh.gov or find the schedule on my State House web page at: <http://www.nh.gov/council/district1/schedules>.

Contact my office anytime I can be of help.



RULES, REGULATIONS
AND
INFORMATIONAL MATERIAL



DOG LICENSES

It's the Law

1. **EVERY DOG**, three months old or older, **MUST HAVE A LICENSE**. These are obtained from the Town Clerk. This must be done **EVERY YEAR BEFORE APRIL 30TH**. Penalties will be imposed on any dog that is not registered as of June 1st.

2. **EVERY DOG*** must have a certificate showing that it has been **VACCINATED FOR RABIES**. This certificate must be presented at the time of registration.

3. **EVERY DOG** must wear its license tag. (RSA 466:1)

4. License Fees: (RSA 466:4)

\$ 6.50 - all neutered dogs

\$ 6.50 - puppies (3 - 7 months)

\$ 9.00 - all unneutered male dogs

\$ 9.00 - all unspayed female dogs

\$ 2.00 - owners over 65 (one dog only)

Failure to comply will make you liable for a penalty of \$25.00 per dog. (RSA 466:13)

5. **SHELBURNE HAS A LEASH LAW**

No dog may be allowed to run at large unless it is accompanied by the owner or custodian. (RSA 466:30a)
(Voted November 4, 1980)

6. * It is now State law to have all cats 3 months of age and over vaccinated against rabies.





LANDFILL REGULATIONS

Hours: Saturday - 6 AM to 12 PM all year
Wednesday - 3 - 4:30 PM June 9 - Sept 8.

Shelburne has adopted Pay-As-You-Throw. This means that garbage must be disposed of in special bags which may be purchased at the Transfer Station or the Town Office. The cost of a package of 5 bags is \$7.50.

Recycling is mandated by the Town of Shelburne. A list of recyclable materials is available at the Transfer Station.

Any items containing mercury are collected separately. See Ken or John for more information.

There are now charges to dispose of many different items. These fees reflect the cost to the Town for disposal and are subject to change. People wanting to dispose of items that have a fee associated with their disposal should see the landfill attendant and pay him before disposing of the item. People disposing of items, not paid for, will be billed. A list of fees is available at the Transfer Station.

The Transfer Station **does not accept** any hazardous waste including hazardous household waste. A Hazardous Household Waste Collection Day will be held again this year with the Androscoggin Valley Regional Refuse Disposal District. Details will be posted at the Transfer Station.

Reminder – outdoor burning of garbage is illegal RSA 125-N

ORDINANCE REGULATING USE OF ALCOHOL ON TOWN PROPERTY

Section 1: Consumption of Alcohol Restricted

Except as otherwise provided by this Ordinance, it shall be unlawful to drink or otherwise consume any alcoholic beverage or alcoholic liquor as defined in RSA:175, in the Chester C. Hayes Memorial Park, any Town buildings or associated parking lots in the Town of Shelburne.

Section 2: Possession of Open Containers

Possession of open containers which contain alcoholic beverages or alcoholic liquor as defined in RSA:175 in any public place shall be considered prima facie evidence of consumption.

Section 3: Penalty

Whoever shall fail to comply with the provisions of this ordinance shall be guilty of a violation and subject to a fine as specified in Criminal Code 651:2, not less than \$ 50.00 per violation.



SNOW REMOVAL ORDINANCE passed 8/14/94

No person shall remove snow from his/her premises and deposit it on any street or highway.

Any person who violates this ordinance shall be fined not more than \$1,000 and not less than \$50 for each separate and distinct violation.



PARKING BAN

It was voted at the 1990 Town Meeting to mandate a parking ban within the boundaries of town roads' right of way during and 24 hours after a snow storm.

Vehicles in violation will be towed at owner's expense.

SPEED LIMITS IN SHELBURNE

The selectmen have set speed limits for the following town roads:

East end of North Road - from intersection with Meadow Road to the Maine Line - 35 miles per hour.

Village Road and all other town roads - 25 miles per hour.

Truck Travel Restricted Ordinance Adopted 9/15/2008

When signs are erected giving notice thereof, including any applicable vehicle weight limitations and/or restrictions upon any classification of vehicles recognized by the State and/or Federal Department of Transportation or Interstate Commerce Commission, streets or parts of streets shall be restricted to vehicles complying with such vehicular weight limitations and/or restrictions, provided, however, that if signs are erected restricting a street, or part thereof, with a sign stating merely "No Through Truck Traffic" or similar designation, without further elaboration, then such street or part of such street shall be restricted to vehicles that meet all of the following requirements: (1) a gross vehicle weight of 12,000 pounds or under; (2) no more than two (2) axles; (3) no more than six (6) tires; and (4) operates as a single unit. All trucks failing to comply with such limitations are expressly prohibited unless they have applied for and received a permit for an exemption from this ordinance. These restrictions shall not apply to vehicles making deliveries or pick ups to residences, businesses or properties on said streets, to Town owned vehicles or drivers traveling to their own residences on said street. Drivers traveling to their own residences shall not park said vehicle on any portion of the Town street or right of way.

This ordinance was applied to North Road from the intersection of Meadow Road by voted of the Board of Selectpersons on September 30, 2008.



WEIGHT LIMITS ON ALL TOWN ROADS

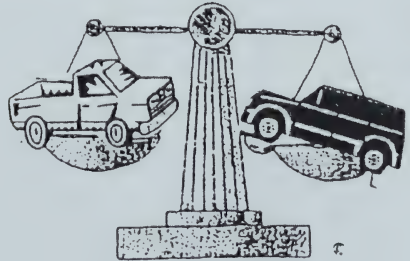
After holding a Public Hearing during the August 27, 1996 Selectmen's Meeting, the Board of Selectmen voted to set the following weight limits under the authority granted them by RSA 231:191 at their Selectmen's Meeting on September 5, 1996.

The weight limit on any town road within the Town of Shelburne shall be set at 60,000 lbs.

Per RSA 231:191 applications may be made to the Board of Selectmen to exceed this weight limit. The Board may grant permission in writing may impose reasonable conditions and may establish reasonable regulations for bonding and restoring the highway.

The roads to which this shall apply are as follows:

- North Road (intersection of Meadow Road to Maine)
- Conner Road
- Hayes Road
- Hubbard Grove
- Landfill Drive
- Losier Road
- Mt. Moriah Drive
- Power House Acres
- R-F Drive
- Seyah Road
- Sunrise Drive
- Village Road
- Winthrop Drive



Burning and Permits



Contact your local forest fire warden or fire department for information on obtaining a written fire permit.

It's The Law - RSA 227-L:17(II)

Anyone who wishes to burn clean, ordinary combustibles such as leaves, brush or untreated lumber, or have a camp or cooking fire must have written permission from the landowner and a fire permit (requires the free Adobe Acrobat Reader at 100% actual size) from the local forest fire warden or local fire department in the town or city where the fire will be kindled. You must be at least 18 years of age to obtain a written fire permit.



Gas grills or charcoal fires in a container up and off the ground on your own property do not require a fire permit.

Public or privately owned camp or picnic grounds must obtain an annual written fire permit from the town forest fire warden for use of outside fireplaces, camp or cooking fires used in the operation of the camp or picnic grounds. Such camp or cooking fires should:

1. be in an area cleaned to mineral soil at least 8 feet across;
2. have at least 6 inches of sand or gravel under the fire for any fire built on the ground;
3. have no limbs or other burnable material to a height of 10 feet above the fireplace area; and
4. be constructed so they cannot be moved from their mineral soil area.

What You Can Burn and When

Only leaves, woody debris or brush less than 5 inches in diameter, or untreated wood and dimension lumber can be burned. For any open burning a written fire permit is required. Even with the permit, no open burning between the hours of 9:00 am and 5:00 pm unless it is raining.

When the ground where you are burning is completely covered with snow no fire permit is required. However, be sure to check local ordinances that might restrict winter-time burning.

Air quality regulations restrict the type of material burned in the open. Stumps, painted or treated lumber, tires, tubes, plastics, foam rubber and shingles are some of the prohibited materials (see Department of Environmental Services, Air Resources Division Open Burning Rules) requires the free Adobe Acrobat Reader.

A buried fire is NOT an extinguished fire!

What You Need To Know

When you request a written fire permit you will need to know the following:

What are you going to burn? Material must be clean ordinary combustibles. Brush cannot exceed 5 inches in diameter.	How much help will you have during the burn? Your fire must be attended at all times, or completely extinguished.
Where are you going to burn? How far from the nearest	Do you own the land where you plan to burn? If not, do you have written

<p>structure, trees and dead vegetation or overhead phone or power lines?</p> <p>Fires must be no closer than 50 feet from a structure, or 25 feet if in an approved incinerator.</p>	<p>permission from the landowner?</p>
<p>When do you want to burn?</p> <p>Date, time of day, no burning 9:00 am to 5:00 pm unless it's raining (permit needed even when raining).</p>	<p>Will you be able to extinguish your fire if someone complains?</p> <p>Air pollution officials could require a fire be put out if there are smoke complaints.</p>
<p>What do you have for fire protection?</p> <p>A hose, shovel or rake, and a bucket of water should be available at the fire. You are liable for the costs of extinguishing escaped fires.</p>	<p>Are there any tires or tubes in the material to be burned?</p> <p>Tires, tubes, plastics, shingles, and foam rubber are just some of the prohibited materials.</p>

Commercial Permits

The Forest Ranger for your town/city and local Warden are needed to issue a commercial permit to burn when no other means of disposal of material is available, such as chipping, hauling to a landfill or other methods of legal disposal.

The commercial permit is for contractors who use hired help for the burning of material between the hours of 9:00 am and 5:00 pm and only needed when the ground is not covered with snow.

The permit will be required to have suppression equipment on site while the burning is being done and the fires will have to be totally extinguished or be constantly attended.

State Law Prohibits Residential Trash Burning

RSA 125-N

A Public Health Risk



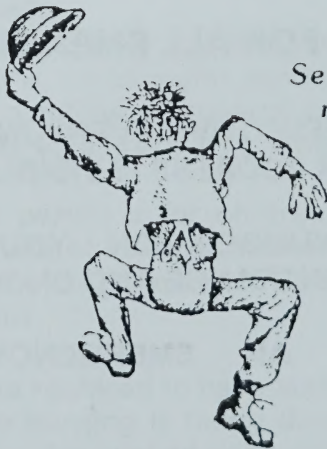
DIAL 911 FOR ALL EMERGENCIES

**FOR 911 TO BE EFFECTIVE EVERYONE NEEDS TO
MAKE SURE THEIR ADDRESS IS VISIBLE.**

**PLACE YOUR NUMBER ON YOUR MAILBOX
OR DRIVEWAY ENTRANCE AND ON YOUR HOUSE.**

**REMEMBER, IN AN EMERGENCY MINUTES
COUNT!!!!**

Notes



*See ya
next year!*

EXTRA !
EXTRA!
YOUR VOTE COUNTS!



SHELBURNE TOWN MEETING

TUESDAY MARCH 9TH -- 7:00 PM
SHELBURNE TOWN HALL

GRS **COOPERATIVE SCHOOL DISTRICT** **MEETING**

WEDNESDAY MARCH 3RD - 7:00 PM
GORHAM MIDDLE HIGH SCHOOL GYM

