

NHamp
F
44
.049
2006

ANNUAL REPORT

Of the Officers of the Town of

CHATHAM

NEW HAMPSHIRE



FOR THE FISCAL YEAR ENDING
December 31, 2006

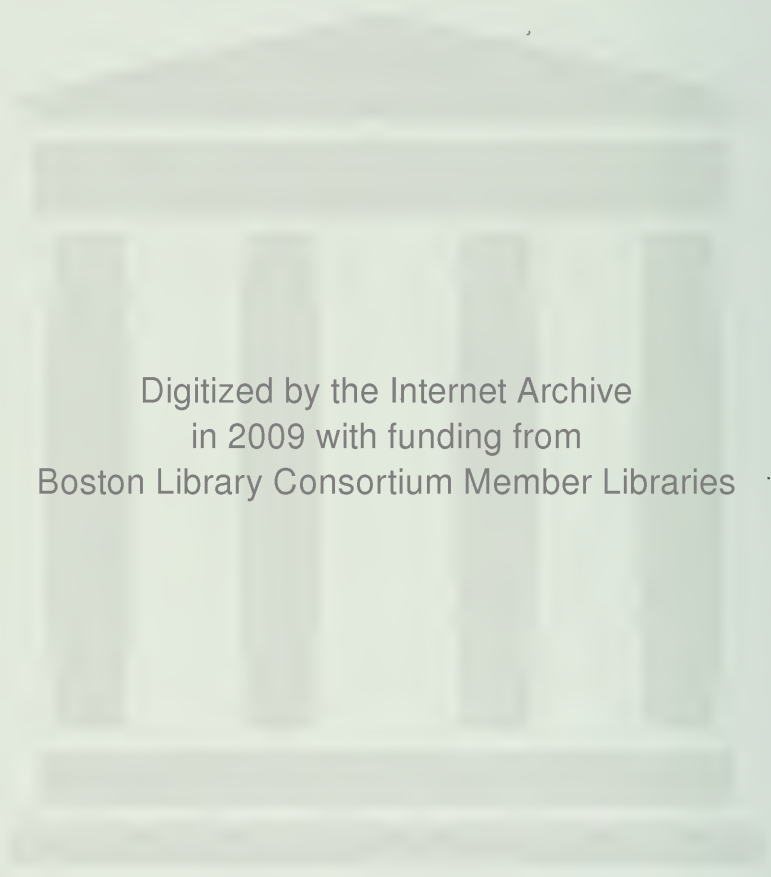
ANNUAL REPORT

Of the Municipal Officers
of the Town of

CHATHAM

NEW HAMPSHIRE

FOR THE FISCAL YEAR ENDING
December 31, 2006



Digitized by the Internet Archive
in 2009 with funding from
Boston Library Consortium Member Libraries

In appreciation of his many years of dedicated service, the residents of the Town of Chatham would like to extend their sincere thanks and gratitude to E. Herbert Eastman.



He served as a Chatham Selectman from March 1989 until March 2007.

SCHOOL DISTRICT OF CHATHAM

SCHOOL BOARD

Susan Perry, Chair	Term Expires 2008
James Diegoli	Term Expires 2007
Susan Crowley	Term Expires 2009

SCHOOL DISTRICT OFFICERS

Frank Eastman, Moderator	(2 year term)	Term Expires 2008
Jeanne Eastman, Treasurer		Term Expires 2007
Catherine Lee Kyle, Clerk		Term Expires 2007
Maryanne Eastman, Auditor		Term Expires 2007

SCHOOLS

K-5	New Suncook School, Lovell Rhonda Poliquin, Principal	207-925-6711
K-5	Charles A. Snow School Jeanette Almy, Principal	207-935-2536
6-8	Molly Ockett Middle School, Fryeburg Sharon Burnell, Principal	207-935-2401
9-12	Fryeburg Academy, Fryeburg Daniel Lee, Headmaster	207-935-2001

SCHOOL ADMINISTRATIVE UNIT NO. 9

603-356-5533

Dr. Carl J. Nelson, Superintendent of Schools
Dr. Martha Cray, Assistant Superintendent
Maureen Soraghan, Director of Special Services
James Hill, Director of Administrative Services
Becky Jefferson, Director of Budget & Finance
Marie Brown, Payroll Manager
Pamela Stimpson, Preschool Coordinator
Carol Bennett, Transportation Coordinator

SCHOOL ADMINISTRATIVE DISTRICT NO. 72

207-935-2600

Gary L. MacDonald, Superintendent of Schools

**CHATHAM SCHOOL DISTRICT WARRANT
STATE OF NEW HAMPSHIRE**

To the Inhabitants of the School District of Chatham, in the County of Carroll, State of New Hampshire, qualified to vote on District affairs:

You are hereby notified to meet in the Town Hall in said District on Tuesday, the 13th day of March, 2007 to act upon the following subjects. The meeting will take place at 6:00 p.m.

ARTICLE 1. To elect a Clerk for the ensuing year.

ARTICLE 2. To elect a member of the School Board for the ensuing three years.

ARTICLE 3. To elect a Treasurer for the ensuing year.

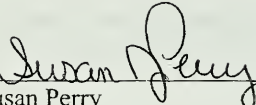
ARTICLE 4. To elect an Auditor for the ensuing year.

ARTICLE 5. To see what sum the School District will vote to raise and appropriate for the support of schools, for the payment of salaries for school district officials and agents, and for the payment of the statutory obligations of the District. The Budget Committee recommends \$660,191 (5-0-0). The School Board recommends \$660,191 (3-0-0). This article does not include appropriations voted in other warrant articles. (Majority vote required)

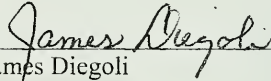
ARTICLE 6. To see if the School District will vote to raise and appropriate the sum of \$5,000 to be added to the Capital Reserve Fund (Special Education) previously established for this purpose. (Recommended by the School Board 3-0-0) (Recommended by the Budget Committee 4-1-0)

ARTICLE 7. To transact any other business that may legally come before this meeting.

Given under our hands, this 5th day of February 2007.



Susan Perry

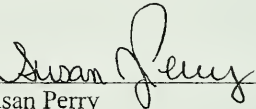


James Diegoli

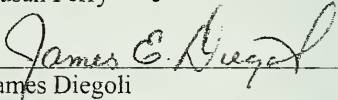


Susan Crowley

A TRUE COPY OF WARRANT - ATTEST



Susan Perry



James Diegoli



Susan Crowley

RECEIVED
MAR 20 2006
SAU # 18 Office

MINUTES OF THE CHATHAM SCHOOL DISTRICT MEETING MARCH 14, 2006

- Article 1 Catherine Lee Kyle was elected Clerk for the ensuing year.
- Article 2 Susan Crowley was elected to the school board for three years.
- Article 3 Jean Eastman was elected Treasurer for the ensuing year.
- Article 4 Maryanne Eastman was elected Auditor for the ensuing year.
- Article 5 Frank Eastman was elected Moderator for two years.
- Article 6 The school district voted to raise and appropriate the sum of \$678,872.00 which was recommended by both the school board and the budget committee.
- Article 7 \$5000 was authorized to be added to the Capital Reserve Fund. The article was accepted as read.

Meeting was adjourned at 6:30.

Catherine Lee Kyle
Recording Clerk

CHATHAM SCHOOL DISTRICT
Balance Sheet
June 30, 2006

	<u>General Account</u>
<u>ASSETS:</u>	
Cash	\$105,135.52
TOTAL ASSETS	\$105,135.52
 <u>LIABILITIES AND FUND EQUITY:</u>	
Deferred Revenues	\$ 25,811.41
Unreserved Fund Balance	<u>79,324.11</u>
TOTAL LIABILITIES AND FUND EQUITY	\$105,135.52

STATEMENT OF REVENUES
For the Fiscal Year Ended June 30, 2006

	<u>General Account</u>	
<u>REVENUE FROM LOCAL SOURCES:</u>		
Current Appropriation	\$427,356.00	
Earnings on Investments	<u>2,898.10</u>	
TOTAL LOCAL REVENUE		\$430,254.10
 <u>REVENUE FROM STATE SOURCES:</u>		
Equitable Education Aid	\$ 71,129.00	
Statewide Enhanced Education Tax	<u>113,254.00</u>	
TOTAL REVENUE FROM STATE SOURCES		\$184,383.00
 <u>REVENUE FROM FEDERAL SOURCES</u>		
Federal Forest Reserve	<u>18,559.49</u>	
TOTAL REVENUE FROM FEDERAL SOURCES		\$ 18,559.49
 <u>REVENUE FROM OTHER SOURCES</u>		
Transfer from Capital Reserve Fund	\$ 38,996.57	
TOTAL REVENUE FROM OTHER SOURCES		\$ 38,996.57
 TOTAL REVENUE		 \$672,193.16

CHATHAM SCHOOL DISTRICT
2007-2008 BUDGET

FUNCTION/OBJECT/DESCRIPTION	ADOPTED BUDGET 2005-2006	ACTUALS 2005-2006	ADOPTED BUDGET 2006-2007	PROPOSED BUDGET 2007-2008
1100				
REGULAR EDUCATION				
560-101 Tuition, Elementary	284,130	251,096.04	315,420	277,870
560-103 Tuition, Sr. High	249,561	209,640.86	235,584	248,750
TOTAL 1100 REGULAR EDUCATION	533,691	460,736.90	551,004	526,620
1200				
SPECIAL EDUCATION				
560-109 Tuition, Special Education	53,460	42,177.58	62,604	62,240
TOTAL 1200 SPECIAL EDUCATION	53,460	42,177.58	62,604	62,240
2140				
PSYCHOLOGICAL SERVICES				
330-120 Testing/Counseling	100	0.00	100	100
TOTAL 2140 PSYCHOLOGICAL SERVICES	100	0.00	100	100
2150				
SPEECH SERVICES				
330-120 Speech Testing	100	0.00	100	100
TOTAL 2150 SPEECH SERVICES	100	0.00	100	100
2160				
OCCUPATIONAL/PHYSICAL THERAPY SERVICES				
330-120 Occupational/Physical Therapy	100	0.00	100	100

CHATHAM SCHOOL DISTRICT
2007-2008 BUDGET

FUNCTION/OBJECT/DESCRIPTION	ADOPTED BUDGET 2005-2006	ACTUALS 2005-2006	ADOPTED BUDGET 2006-2007	PROPOSED BUDGET 2007-2008
TOTAL 2160 OCCUP/PHYSICAL THERAPY	100	0.00	100	100
2310 SCHOOL BOARD SERVICES				
523-37 Insurance, Treas. Bond	65	0.00	65	0
110-74 School Board Salaries	855	855.00	855	855
260-44 Workers Compensation	310	301.00	310	310
390-47 Census	0	0.00	0	0
390-74 Treasurer's Salary	90	90.00	90	90
330-47 Legal Services	500	0.00	500	500
390-47 Audit	30	30.00	30	30
390-74 Salary, Clerk/Moderator/Checklist	70	70.00	70	70
390-117 School Board Expenses	200	0.00	170	150
540-70 Advertising	70	24.00	100	100
TOTAL 2310 SCHOOL BOARD SERVICES	2,190	1,370.00	2,190	2,105
2320 OFFICE OF SUPERINTENDENT				
311-104 SAU #9 Share	8,432	8,432.00	9,124	10,088
TOTAL 2320 OFFICE OF SUPERINTENDENT	8,432	8,432.00	9,124	10,088
2720 PUPIL TRANSPORTATION				
513-120 Cont. Services-Reg. Trans.	48,300	48,233.30	49,350	51,660
626-86 Fuel, Bus	3,000	4,762.89	4,200	7,078
519-120 Transp-Spec Ed	100	0.00	100	100
TOTAL 2720 PUPIL TRANSPORTATION	51,400	52,996.19	53,650	58,838

CHATHAM SCHOOL DISTRICT
2007-2008 BUDGET

FUNCTION/OBJECT/DESCRIPTION	ADOPTED BUDGET 2005-2006	ACTUALS 2005-2006	ADOPTED BUDGET 2006-2007	PROPOSED BUDGET 2007-2008
5251 CAPITAL RESERVE				
930-105 Transfer ExpTrust-Tuition	33,500	33,500.00	0	0
930-105 Transfer Reserve - Sp. Ed.	5,000	5,000.00	5,000	0
TOTAL 5251 CAPITAL RESERVE	38,500	38,500.00	5,000	0
SUPPLEMENTAL APPROPRIATION-SPEC EDUC	24,270	0.00	0	0
DEFICIT APPROPRIATION (PRIOR YR 6/30/04)	19,120	0.00	0	0
GRAND TOTAL APPROPRIATION	\$731,363	\$604,212.67	\$683,872	\$660,191

CHATHAM SCHOOL DISTRICT
ESTIMATED REVENUE

	ACTUAL RECEIPTS 2005-2006	ESTIMATED REVENUE 2006-2007	ESTIMATED REVENUE 2007-2008	
	-----	-----	-----	
Unencumbered Balance	11,344	79,324	50,000	
REVENUE FROM STATE/FEDERAL SOURCES:				
National Forest Reserve	18,559	25,811	25,000	Estimate
Catastrophic Aid	0	0	0	
Medicaid Reimbursement	0	0	0	
REVENUE FROM LOCAL SOURCES:				
Earnings on Investments	2,898	2,000	2,000	
Other Local	0	0	0	
School Bus Reserve	38,997	0	0	
Special Education Reserve	0	0	0	
Supplemental Appropriation	0	0	0	
	-----	-----	-----	
Total Revenue	71,798	107,135	77,000	
STATE OF NH ADEQUACY GRANT	71,129	71,129	60,460	** Estimate
STATE OF NH EDUCATION TAX	113,254	116,255	126,695	** Estimate
DISTRICT ASSESSMENT	427,356	389,353	396,036	
DEFICIT APPROPRIATION	0	0	0	
	-----	-----	-----	
GRAND TOTAL REVENUE	\$683,537	\$683,872	\$660,191	*

* Does Not Include Separate/Special Articles

** Per NH DOE 11/15/06 Report

CHATHAM SCHOOL DISTRICT
SPECIAL EDUCATION EXPENSES/REVENUE 2004-2005, 2005-2006

EXPENSES: SPECIAL EDUCATION	ACTUAL EXPENSES 2004-2005	ACTUAL EXPENSES 2005-2006
1200.330.135 Extended School Year	\$0	\$0
1200.560.109 Tuition, Special Education	\$39,016	\$42,178
2140.330.120 Psychological Testing/Counseling	\$217	\$0
2150.330.120 Speech Testing	\$0	\$0
2160.330.120 Occupational/Physical Therapy	\$0	\$0
2720.519.120 Transportation, Special Education	\$0	\$0
	<hr/>	<hr/>
TOTAL SPECIAL EDUCATION EXPENSES	\$39,233	\$42,178

REVENUE: SPECIAL EDUCATION	ACTUAL REVENUE 2004-2005	ACTUAL REVENUE 2005-2006
Catastrophic Aid	\$0	\$0
NH State Adequacy Allocation	\$0	\$49,746
Medicaid Reimbursement	\$920	\$0
	<hr/>	<hr/>
TOTAL SPECIAL EDUCATION REVENUE	\$920	\$49,746

SCHOOL ADMINISTRATIVE UNIT NO. 9

2007-08 Budget

	<u>Func-</u>	<u>Adopted</u>	<u>Adopted</u>	<u>Chatham's</u>
	<u>tion</u>	<u>Budget</u>	<u>Budget</u>	<u>Share</u>
		<u>2006-07</u>	<u>2007-08</u>	<u>0.90%</u>
				<u>2007-08</u>
Special Education	2190	\$200,698	\$ 215,166	\$ 1,929.63
Improvement of Inst.	2210	14,515	15,000	134.52
School Board Services	2310	15,365	15,765	141.38
Superintendent	2320	201,012	219,230	1,966.08
Asst. Superintendent	2321	142,673	150,846	1,352.80
Business/Finance	2521	396,580	436,197	3,911.86
Operations/Maintenance	2620	85,030	73,827	662.09
Transportation	2720	39,276	41,345	370.78
Gross Budget Total		\$1,095,149	\$1,167,376	\$10,469.14
Plus Federal Projects		+ 10,000	+ 10,000	+ 89.68
Minus Estimated Revenue		- 41,200	- 52,500	- 470.82
Net Total Expenses		\$1,063,949	\$1,124,876	\$10,088.00
(District Apportionment)				

ENROLLMENT (October 2006)

Total K-8 ... 41 Total 9-12 ... 21

Kindergarten

Coburn, Kaitlyn
Drew, Shania
Garland, Jacob
King, Yukon
Novia, Abigail
Papineau, Aaron

Grade 1

Aubuchont, Courtney
Boucher, Zachary

Grade 2

Butters, Evan
Hennessy, Christopher

Grade 3

Bell, Dustin
Coburn, Hunter
Drew, Jacob
Fournier, Renae
Hennessy, Aaron
McCabe, Eamonn
Woolf, Saige

Grade 4

Bloodworth, Miles
Briggs, Sullivan
Johnson, Tyler

Grade 5

Bloodworth, Dakota
Drouin, Christian
McCabe, Joseph

Grade 6

Cooper, Emily
Eastman, Kayla
Fournier, Michael
Lewis, Laura
Perry, Jennifer

Grade 7

Brooks, Sylvia
Drouin, Casadi
Gerrish, David
Hennessy, Sage
McGrath, Autumn

Grade 8

Bellen, Rebecka
Brooks, Alexander
Cooper, Abraham
Eastman, Seth
Hurst, Kimberley
Lewis, Charlotte
Marquis, Alisha
Pitman, Riley

Grade 9

Perry, Christopher

Grade 10

Cassily, Meaghan
Cline, Logan
Cloutier, Nolan
Cooper, Cheyainne
Farnham, Leia
Head, Ellen
Wadleigh, Timothy
Whitney, Melissa

Grade 11

Cherry, Amy Lynn
Diegoli, James
Farnham, Kathrina
Hennessy, Corecn
Logan, Jonathan
Novia, Nicholas

Grade 12

Anderson, Britney
Head, Lauren
Marquis, Jacob
Richards, Heidi
Straw, Katie
Wagner, Ryann

Office	Selectmen	Year Term Ends
Selectmen:	E. Herbert Eastman	2007
	<small>Herb does not wish to be elected for another term.</small>	
	William Perry	2008
	Wayne McAllister	2009
Treasurer:	Jeanne Eastman	2007
Moderator:	Frank Eastman	2008
Town Clerk:	Patricia Pitman	2007
Tax Collector:	Patricia Pitman	2007
Road Agent:	Melvin Cherry	2008
Supervisors of the Checklist:	Jack Rice	2008
	Stephen Eastman	2010
	Barbara Eastman	2012
Auditor:	Marianne Eastman	2006
Constable:	Mark Pitman	2007
Civil Defense:	Jim Layne	2007
(appointed by the Selectmen)		
Surveyors of Wood, Bark, & Lumber	Perley Head	2007
	Melvin Cherry	2007
Trustees of the Trust Fund:	Robert Kyle	2007
	Robert Crowley	2008
	Susan Perry	2009

Fence Viewers:	James Diegoli	2007
	Perley Head	2007
	William Pitman	2007

Budget Committee:	William Pitman	2007
	Eleanor Eastman	2007
	Melvin Cherry	2008
	George Perry	2008
	Lincoln Garland	2009
	Gail Calomb	2009

Planning Board:	Jayne Britton	2007
(appointed by Selectmen)	Robert Farnham	2007
	Scott Leach	2008
	Susan Logan	2008
	Mike McAllister	2009
	Jason Eastman	2009
	Wayne McAllister- Selectmen Member	
	Linda Cooper-Alternate	
	Leon Shackley-Alternate	

Fire Wardens:	Jim Layne	Warden
	Wayne McAllister	1st Deputy
	Perley Head	2nd Deputy
	Gary Banhart	3rd Deputy
	Jeff Stone	4th Deputy
	William Briggs	5th Deputy
	Wayne McAllister Jr	6th Deputy
	Mike McAllister	7th Deputy
	Jayne Britton	8th Deputy
	Edward Layne	9th Deputy
	Mark Pitman	10th Deputy

Town Warrant
The State of New Hampshire

To the Inhabitants of the Town of Chatham, in the County of Carroll in said State, qualified to vote in Town Affairs:

You are hereby notified to meet at the Town House in said Chatham on Tuesday, the 13th day of March, next at 6:30 in the evening, to act upon the following subjects:

1. To choose all necessary Town Officers for the year ensuing.
2. To see if the Town will vote to raise and appropriate the sum of which represents the operating budget. Said sum does not include special or individual articles addressed.

Recommended by Selectmen 3-0

Recommended by Budget Comm. 5-0

3. To see if the Town will vote to raise and appropriate the sum of **\$274.00** for the Mt. Washington Valley Chapter of the American Red Cross.

Recommended by Selectmen 3-0

Recommended by Budget Comm. 5-0

4. To see if the Town will vote to raise and appropriate the sum of **\$750.00** for the Early Supports & Services Program of Children Unlimited.

Recommended by Selectmen 3-0

Recommended by Budget Comm. 5-0

5. To see if the Town will vote to raise and appropriate the sum of **\$803.83** for the White Mountain Community Health Center.

Recommended by Selectmen 3-0

Recommended by Budget Comm. 5-0

6. To see if the Town will vote to raise and appropriate the sum of

\$358.00 for Northern Human Services, the Mental Health Center. (Formerly Carroll County Mental Health)

Recommended by Selectmen 3-0

Recommended by Budget Comm. 5-0

7A. To see if the Town will vote to raise and appropriate the sum of **\$3,850.00** to Saco Valley Fire Association for the ensuing year.

Recommended by Selectmen 3-0

Recommended by Budget Comm. 5-0

7B. To see if the Town will vote to raise and appropriate the sum of **\$2,000.00** for Saco Valley Fire Association's truck fund.

Recommended by Selectmen 3-0

Recommended by Budget Comm. 5-0

8A. To see if the Town will vote to raise and appropriate the sum of **\$1,952.00** for its share of the Fryeburg Rescue Expenses.

Recommended by Selectmen 3-0

Recommended by Budget Comm. 5-0

8B. To see if the Town will vote to raise and appropriate the sum of **\$825.00** for Fryeburg Rescue's truck fund.

Recommended by Selectmen 3-0

Recommended by Budget Comm. 5-0

9. To see if the Town will vote to raise and appropriate the sum of **\$750.00** for the Town of Lovell's Recreation Department.

Recommended by Selectmen 3-0

Recommended by Budget Comm. 5-0

10. To see if the Town will vote to raise and appropriate the sum of **\$1,000.00** for Tri-County Community Action.

Recommended by Selectmen 3-0

Recommended by Budget Comm. 5-0

11. To see if the Town will vote to raise and appropriate the sum of

\$500.00 for the support of Eastern Slope Airport Authority.

Recommended by Selectmen 2-1

Recommended by Budget Comm. 5-0

12. To see if the Town will vote to raise and appropriate the sum of **\$500.00** for the support of CASA.

Recommended by Selectmen 3-0

Recommended by Budget Comm. 5-0

13. To see if the Town will vote to change the purpose of the existing Town Hall Renovations Capital Reserve fund to a capital reserve fund for the purpose of municipal building construction/repairs.
2/3 majority vote needed

Recommended by Selectmen 3-0

Recommended by Budget Comm. 4-1

14. To see if the Town will vote to raise and appropriate \$5,000 to be placed in the capital reserve fund for municipal building construction/repairs and to allow the Board of Selectmen to act as agents to expend monies from said fund.

Recommended by Selectmen 3-0

Recommended by Budget Comm. 5-0

15. To see if the Town will vote to create a capital reserve fund for the purpose of municipal vehicles and equipment and to raise and appropriate the sum of 5,000 to be placed in said fund. To allow the Board of Selectmen to act as agents to expend monies from said capital reserve fund.

Recommended by Selectmen 3-0

Recommended by Budget Comm. 4-1

16. To see if the Town will vote to raise and appropriate the sum of \$30,000 for the disposal of trash/solid waste. To see if the town will choose one of the following options:

Option A. : To vote to use the Town of Lovell's Transfer Station with a \$10,000 initial fee and \$15,000 annual fee.

Recommended by Selectmen 3-0

Recommended by Budget Comm. 5-0

Option B: To vote to use the Town of Fryeburg's Transfer Station with a \$15,000 initial fee and \$15,000 annual fee, plus pay per throw system.

Recommended by Selectmen 0-3

Recommended by Budget Comm. 0-5

17. To see if the Town will vote to accept the following petitioned article: Water held in Aquifers beneath land within the boundaries of the town Chatham, New Hampshire, shall never be sold.

Recommended by Selectmen 0-3-0

18. To see if the town will go on record in support of effective actions by the President and the Congress to address the issue of climate change which is increasingly harmful to the environment and economy of New Hampshire and to the future well being of the people of Chatham.

These actions include:

1. Establishment of a national program requiring reductions of U.S. greenhouse gas emissions while protecting the U.S. economy.
2. Creation of a major national research initiative to foster rapid development of sustainable energy technologies thereby stimulating new jobs and investments.

In addition, the Town of Chatham encourages New Hampshire citizens to work for emission reductions within their communities, and we ask our Selectmen to consider the appointment of a voluntary energy committee to recommend local steps to save energy and reduce emissions.

Recommended by the Selectmen 0-3-0

To transact any other business that may legally come before this meeting.

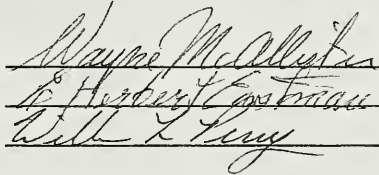
Given under our hands and seal, this 6th day of February in that year of our Lord Two thousand and seven.

Selectmen of Chatham

Wayne McAllister

E. Herbert Eastman

William Perry


Wayne McAllister
E. Herbert Eastman
William Perry

Important Warrant Article Information

American Red Cross- Article 3- This agency responds in times of emergency and supports families as they seek to restore peacefulness to their lives in cases of fire, flood, and winter storm. The Red Cross also trains area residents in CPR and First Aid.

Children Unlimited, Inc. –Article 4- This agency provides services for developmental evaluations, speech/language therapy, physical therapy, family support, and counseling. This year Children Unlimited spent \$7,096.00 to provide services for families in Chatham.

White Mountain Community Health Center- Article 5- This agency provides medical care for underinsured and uninsured Chatham residents. This year they provided services for 31 Chatham residents.

Northern Human Services- Article 6- Formerly known as Carroll County Mental Health, this agency provides mental health coverage for Carroll County residents. The funds they receive from us help them cover the costs incurred by residents that can not afford to pay for services themselves.

Saco Valley Fire Association- Articles 7A & 7B- This agency provides fire protection services for the Town of Chatham.

Fryeburg Rescue- Articles 8A & 8B- This agency provides emergency coverage for the Town of Chatham. Their request is based on the amount of runs made to Chatham.

Lovell Recreation Department-Article 9- This program provides children living in Chatham with the opportunity to participate in sport activities.

Tri- County Community Action – Article 10- This agency worked with 113 residents of Chatham. They provide fuel, food, and emergency housing. They spent \$ 13,083 on Chatham residents.

Eastern Slope Airport Authority – Article 11- The airport is located in Fryeburg Maine. The funds are used for operation and maintenance costs.

CASA- Article 12. Court Appointed Special Advocates for children would like our support. They provide services for abused and neglected children in our area.

Comparative Statement of Appropriations & Expenditures

Type of Appropriation	Appropriation	Receipts	Expenditures	Unexpended Amt.
Town Salaries/ Expenses	\$17,000.00		\$14,616.67	\$2,383.33
Election, Reg & Vital Statistics	\$1,200.00		\$1,406.29	-\$206.29
Revaluation of Property	\$6,600.00		\$6,600.00	\$0.00
Legal Expenses	\$10,000.00		\$1,091.25	\$8,908.75
Planning & Zoning	\$500.00		\$296.48	\$203.52
Government Buildings	\$3,000.00		\$2,540.78	\$459.22
Cemeteries	\$1,300.00	\$300.00	\$1,300.00	\$0.00
Insurance	\$5,000.00		\$4,284.64	\$715.36
Advertising & Regional Assoc.	\$800.00		\$1,046.17	-\$246.17
Licenses & Fees	\$450.00		\$150.00	\$300.00
Police	\$300.00		\$0.00	\$300.00
Ambulance	\$2,340.00		\$2,340.00	\$0.00
Fire	\$5,850.00		\$5,850.00	\$0.00
Civil Defense	\$100.00		\$0.00	\$100.00
Highway & Bridges	\$27,191.54		\$27,191.54	\$0.00
Highway Block Grant	\$14,808.46		\$14,042.53	\$765.93
Solid Waste	\$25,630.00		\$26,092.00	-\$462.00
Health Agencies	\$3,037.00		\$3,037.00	\$0.00
General Assistance	\$2,000.00		\$0.00	\$2,000.00
Parks & Playgrounds	\$750.00		\$750.00	\$0.00
Patriotic Purposes	\$150.00		\$82.03	\$67.97
Airport	\$500.00		\$500.00	\$0.00
Building Fund	\$3,000.00		\$3,000.00	\$0.00
Land Swap	\$5,000.00		\$0.00	\$5,000.00
Fire on Robbin's Hill		2280.27	\$2,307.86	~\$27.59
Total	\$136,507.00	\$300.00	\$118,525.24	\$17,981.76

	Appropriation 2006	Expenses 2006	Recommended by Selectmen-2007	Recommended by Budget Comm.-2007
General Government				
Executive (Town Salaries/Expenses)	\$17,000.00	\$14,616.67	\$18,000.00	\$18,000.00
Election, Reg. & Vital Statistics	\$1,200.00	\$1,406.29	\$1,200.00	\$1,200.00
Revaluation of Property	\$6,600.00	\$6,600.00	\$6,600.00	\$6,600.00
Legal Expenses	\$10,000.00	\$1,091.25	\$10,000.00	\$10,000.00
Planning & Zoning	\$500.00	\$296.48	\$500.00	\$500.00
Government Buildings	\$3,000.00	\$2,540.78	\$4,000.00	\$4,000.00
Cemeteries	\$1,300.00	\$1,300.00	\$1,300.00	\$1,300.00
Insurance	\$5,000.00	\$4,284.64	\$5,000.00	\$5,000.00
Advertising & Regional Association Dues	\$800.00	\$1,046.17	\$1,100.00	\$1,100.00
Licenses & Fees	\$450.00	\$150.00	\$200.00	\$200.00
Public Safety				
Police	\$300.00	\$0.00	\$300.00	\$300.00
Ambulance	\$2,340.00	\$2,340.00	WA	WA
Fire	\$5,850.00	\$5,850.00	WA	WA
Civil Defense	\$100.00	\$0.00	\$100.00	\$100.00
Highway & Bridges	\$42,000.00	\$41,234.07	\$44,000.00	\$44,000.00
Sanitation				
Solid Waste	\$25,630.00	\$26,092.00	WA	WA
Health & Welfare				
Health Agencies	\$3,037.00	\$3,037.00	WA	WA
General Assistance	\$2,000.00	\$0.00	\$2,000.00	\$2,000.00
Culture & Recreation				
Parks & Playgrounds	\$750.00	\$750.00	WA	WA
Patriotic Purposes	\$150.00	\$82.03	\$150.00	\$150.00
Economic Development				
Airport	\$500.00	\$500.00	WA	WA
Capital Projects				
Building Fund	\$3,000.00	\$3,000.00	WA	WA
Land Swap	\$5,000.00	\$0.00	held over	held over
Fire on Robbins Hill		\$2,307.86		
	\$136,507.00	\$118,525.24	\$94,450.00	\$94,450.00

Sources of Revenue 2006-2007

	Est. Revenue 2006	Actual Revenue 2006	Est. Revenue 2007
Taxes			
Yield Tax	\$8,000.00	\$46,926.86	\$10,000.00
Payment in Lieu of Taxes	\$18,000.00	\$25,569.00	\$18,000.00
Interest & Pen. Of Del. Taxes	\$1,500.00	\$2,661.28	\$1,500.00
Land Use Change Tax	\$2,000.00	\$3,000.00	\$0.00
Inventory Penalties	\$150.00	\$599.50	\$150.00
Licenses, Permits, & Fees			
Motor Vehicle Permits/titles	\$40,000.00	\$49,077.00	\$40,000.00
Planning Board	\$100.00	\$165.00	\$100.00
Other Lic. & Permit Fees (dogs, ucc, gun, vital statistics)	\$300.00	\$754.28	\$300.00
From State			
Shared Revenue	\$1,200.00	\$628.00	\$500.00
Meals & Rooms Tax	\$7,000.00	\$11,077.87	\$10,000.00
Highway Block Grant	\$14,808.46	\$14,808.46	\$16,325.28
Misc. State Revenue	\$0.00		
Other (remaining block grant)	\$0.00		
Miscellaneous Revenue			
Interest of Deposits	\$100.00	\$240.73	\$100.00
Trust & Agency Funds	\$300.00	\$300.00	\$300.00
Return of Town Aid	\$0.00		
From Capital Reserves Fund	\$0.00		
Robbin's Hill Fire Reimbursement	\$0.00	\$2,280.27	
	\$93,458.46	\$158,088.25	\$97,275.28

Town Clerk's Report - 2006

Money Collected by the Town Clerk

Registrations	\$48,905.00
Titles	\$172.00
Dog Licenses	\$354.50
UCC's	\$120.00
Fee's (marriage, vitals, filing)	\$249.78
Returned Check	-\$57.00
	\$49,744.28

Money Collected by Selectmen's Office

Highway Block Grant	\$14,808.46
Mulford Trust Fund	\$300.00
Revenue Sharing	\$628.00
Rooms and Meals Tax	\$11,077.87
Payment in Lieu of Taxes	\$25,569.00
Gun Permits	\$30.00
Planning Board Fees	\$165.00
Land Use Change Tax	\$3,000.00
Robbins Hill Fire Reimbursement	\$2,280.27
Interest from Checking	240.73
	\$58,099.33
Total	\$107,843.61

Vital Statistics Report

The following information was provided by the State of New Hampshire's Division of Vital Records Administration.

Births:

Victoria Lynn Butters was born on 07/18/2006.

Deaths:

Natalie Howard passed away on 09/02/2006.

Marriages:

Willard F. Lebroke and Laura L. Rogers were married on 03/11/2006.

Stanley E. Burgess and Marie L. Emery were married on 05/27/2006.

Stephen J. Young and Kim M. Nickerson were married on 09/03/2006.

Richard J. Bertrand and Erica M. Nordgren were married on 09/16/2006.

Tax Collector's Report

Summary of Warrant 2006

Taxes Committed to the Tax Collector:

Property Taxes	\$499,969.41
Yield Taxes	\$37,004.00
Inventory Penalties	\$577.00
Land Use Change Tax	\$3,000.00
Total Debits:	\$540,550.41

Remittance to Treasurer:

Property Taxes	\$386,570.70
Yield Taxes	\$46,385.00
Inventory Penalties	\$434.00
Land Use Changes	\$3,000.00
Abatements	\$36.00

Uncollected Taxes

Property Taxes	\$113,525.66
Yield Taxes	\$0.00
Inventory Penalties	\$107.00
Overpayment of Tax	(\$9,507.43)
Total Credits	\$540,550.93

Summary of Warrants (as of December 31, 2005)

1993 Property Taxes	\$641
2005 Liened Property Taxes	\$11,323.74
2004 Liened Property Taxes	\$735.49
2003 Inventory Penalties	\$10.00
2004 Inventory Penalties	\$10.00
2005 Inventory Penalties	\$38.00
2005 Yield Tax	\$398.83

Report of the Treasurer

Balance on 1/1/06		\$294,905.11
From Town Clerk		
MV Regs	\$48,905.00	
Mv Titles	172.00	
Dog Lic.	354.50	
Filing Fees	40.00	
Vital Stats	147.00	
UCC	120.00	
Planning Board	165.00	
Mulford Fund	300.00	
Recording Fees	32.78	
Copies	30.00	
Saco Valley Fire	1,126.34	
Room and Meals Tax	11,077.87	
Highway Block Grants	14,808.46	
Revenue Sharing	628.00	
Robbins Hill Fire	1,153.93	
Lieu of Taxes	25,569.00	
Redeposited check	57.00	
Deposit adjustment	<u>.08</u>	104,686.96
From Tax Collector		
06 Prop Tax	\$386,570.70	
05 Prop Tax	129,169.66	
05 Prop Tax Int	3,675.92	
05Redemption	3,713.22	
05 Redemption Int	75.00	
04 Redemption	1,982.42	
04 Redemption Int	297.54	
06 Yield Tax	46,365.00	
06 Tield Tax Int	20.00	
05 Yield Tax	541.86	
06 Inventory	434.00	
05 Inventory	39.00	
04 Inventory	86.00	
04 Interest Penalty	13.50	
04 Overpayment	27.00	
Landuse Change	3000.00	576,010.82
Laconia Savings Bank Int		<u>240.73</u>
Total Cash		680,938.51
Less Payments		
Selectmens Orders Paid	658142.04	
Cost of New Checks	<u>91.35</u>	<u>658,233.39</u>
Balance 12/31/06		317,610.23
Historical Society Paint Fund		
Balance 1/1/06		3623.49
Interest		<u>14.96</u>
Balance 12/31/06		3638.45
Escrow Account		
Balance 1/1/06		582.91
Interest		<u>24.33</u>
Balance 12/31/06		607.24

2006 Road Agent Report

Revenue	NH Block Grant	\$14,808.46
	Town Budget	\$27,191.54
	Unexpended Funds 2004	\$0.00
	FEMA	\$0.00
	Total Funds Available	\$42,000.00

Expenses

January	M.Cherry	plowing	\$3,330.00
		labor	\$554.09
	K. Limmer	plowing	\$350.00
	P.Head	plowing	\$90.00
	B.Robbins	trucking	\$430.00
	Coleman's	sand	\$81.86
February	M. Cherry	plowing	\$1,795.00
	M. Cherry	labor	\$346.31
	Coleman's	sand	\$415.91
	P.Head	plowing	\$125.00
	K.Limmer	plowing	\$475.00
	Monson Co.	road salt	\$538.00
March	M.Cherry	plowing	\$1,475.00
	P. Head	plowing	\$100.00
	M. Cherry	labor	\$300.14
	K.Limmer	plowing	\$150.00
	B.Robbins	trucking	\$927.00
April	M. Cherry	plowing	\$385.00
	M. Cherry	labor	\$64.65
May	M. Cherry	equipment	\$1,035.00
	M. Cherry	labor	\$175.46
	Frost Mtn.	gravel	\$720.02
	Kennet co.	gravel	\$203.00
	Coleman's		\$1,222.50
June	M.Cherry	equipment	\$3,827.50
	M.Cherry	labor	\$466.37
	Frost Mtn.	gravel	\$1,862.42
	B.Robbins	backhoe	\$775.00
	M.Turner	road work	\$410.00
	B.Robbins	trucking	\$1,040.00
	S.Eastman	road work	\$120.00
July	M. Cherry	equipment	\$4,480.00
	M. Cherry	labor	\$600.27
	Frost Mtn.	gravel	\$1,066.17
	B.Robbins	trucking	\$1,385.00
	R.Thuot	road work	\$720.00
August	M. Chery	equipment	\$270.00
	M. Chery	labor	\$36.94
	B.Robbins	trucking	\$1,755.00
September	M. Cherry	equipment	\$825.00
	M.Cherry	labor	\$138.53

	R. Eastman	brush trim	\$475.00
November	M. Cherry	equipment	\$1,485.00
	M. Cherry	labor	\$249.34
	Frost Mtn.	gravel	\$1,041.72
December	M. Cherry	equipment	\$1,340.00
	M. Cherry	labor	\$230.87
	Frost Mtn.	gravel	\$45.00
	B. Robbins		\$1,300.00
	Total Expenses		\$41,234.07
	Remainder		\$765.93

To The People of Chatham,

We had lots of rain and ice in the winter of 2005/2006, and not much snow. March came and went with no plowing. Evergreen Valley Road mudded up in the spring. When summer came trees were trimmed, gravel hauled, and roads ditched. Little Chatham Road and Butter Hill Road had some ditch work done. A series of heavy rains in Oct./Nov. caused some roads to wash out.

(Butter Hill Road, Barnes Road, and Province Brook Road) Repairs were made before things froze up. Here we are back to another normal/abnormal winter.

Plans in 2007 are to ditch and gravel Dewin Road, Weeks Road, Barnes Road, and Province Brook Road.

Respectfully,

Mel Cherry

Auditor's Certificate

It is to certify that I have examined the books of the Treasurer, Tax Collector, and Town Clerk and find them to be correct to the best of my knowledge.

*Maryann Eastman
2.7.2007*

Year Ending 2006

Date of Creation	Name of Trust fund	Purpose	How Invested	Principal Balance Beg. Year	New Funds Created	Withdrawals End of Year	Income Balance Beg. Year	Income % Amount	Expended during Year	Balance End of Year	Grand Total
10/22/40	Mason Clay	Cem.Care	Bank-CD # 1(475)	108.00			108.00				
6/22/38	Olive Eastman	Cem.Care	Bank-CD # 1(475)	217.00			217.00				
11/25/60	A. McIntyre	Cem.Care	Bank-CD # 1(475)	217.00			217.00				
8/14/57	North Chatham	Cem.Care	Bank-CD # 1(475)	349.00			349.00				
8/22/69	Lillian Charles	Cem.Care	Bank-CD # 1(475)	108.00			108.00				
11/25/57	H. Andrews	Cem.Care	Bank-CD # 1(475)	108.00			108.00				
3/30/56	Alice Charles	Cem.Care	Bank-CD # 1(475)	190.00			190.00				
1/12/54	Chester Eastman	Cem.Care	Bank-CD # 1(475)	108.00			108.00				
3/2/51	Dana Charles	Cem.Care	Bank-CD # 1(475)	54.00			54.00				
4/12/88	F&H Lusk	Cem.Care	Bank-CD # 1(475)	210.00			210.00				
4/17/58	Lottie Heath	Cem.Care	Bank-CD # 1(475)	108.00			108.00				
9/10/90	H.E. Perry	Cem.Care	Bank-CD # 1(475)	225.00			225.00				
5/26/66	Francis Thompson	Cem.Care	Bank-CD # 1(475)	135.00			135.00				
The above trust funds were placed into a CD. The total interest gained is...											
1/31/66	Hanscom	Cem.Care	Bank-CD 2 (438)	1,574.97			1,574.97	3.93	94.00	2,856.15	2,852.39
8/14/40	Fred Eaton	Cem.Care	Bank-CD 3(523)	2,876.96			2,876.96			1,574.97	1,574.97
	Cemetery Trust	Cem.Care	Bank-Savings(761)	2664.57			2664.57			2,876.96	2,876.96
5/1/98	Capital Reserve	Renovations	Bank- Savings(085)	21,980.98	3,000.00	666.00	24,465.81	0.5	11.09	2695.66	2695.66
3/1/90	Capital Reserve	Special Ed	Bank- Savings(598)	48,826.75	5,000.00		54,220.71	0.75	150.83	24,465.81	24,465.81
12/26/70	Eagle Grange(2)	Fire Dept	Bank- Savings(622/086)	2,175.46			2,175.46	0.85	393.96	54,220.71	54,220.71
10/5/05	Expendable Tuition Trust	Tuition	Bank-Savings(301)	33,500.00			33,717.33	0.50	9.00	33,717.33	2,184.26
	Town Checking Account			590.72							88175.1
	Sales of Cemetary Plots	2 plots sold			300.00						

**DEPARTMENT OF REVENUE ADMINISTRATION
Municipal Services Division
2006 Tax Rate Calculation**

TOWN/CITY: CHATHAM

Barbara J. Robertson
10/25/06

Gross Appropriations	131,507
Less: Revenues	191,237
Less: Shared Revenues	171
Add: Overlay	9,909
War Service Credits	19,000

Net Town Appropriation	(30,992)
Special Adjustment	0

Approved Town/City Tax Effort	(30,992)	TOWN RATE
		-0.66

SCHOOL PORTION

Net Local School Budget (Gross Approp. - Revenue)	576,737
Regional School Apportionment	0
Less: Equitable Education Grant	(71,129)

State Education Taxes	(116,255)	LOCAL
Approved School(s) Tax Effort	389,353	SCHOOL RATE
		8.28

STATE EDUCATION TAXES

Equalized Valuation(no utilities) x	\$2.52		STATE
46,224,770		116,255	SCHOOL RATE
Divide by Local Assessed Valuation (no utilities)			2.49
46,643,787			
Excess State Education Taxes to be Remitted to State			
Pay to State →	0		

COUNTY PORTION

Due to County	43,319
Less: Shared Revenues	(204)

Approved County Tax Effort	43,115	COUNTY RATE
		0.92

TOTAL RATE	11.03
-------------------	--------------

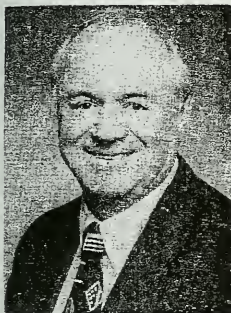
Total Property Taxes Assessed	517,731
Less: War Service Credits	(19,000)
Add: Village District Commitment(s)	0
Total Property Tax Commitment	498,731

PROOF OF RATE

Net Assessed Valuation		Tax Rate	Assessment
State Education Tax (no utilities)	46,643,787	2.49	116,255
All Other Taxes	47,024,338	8.54	401,476
			517,731

TRC#
98

TRC#
98



Raymond S. Burton

December 2006

338 River Road
Bath, NH 03740
Tel. (603) 747-3662
Car Phone (603) 481-0863
E-mail: ray.burton4@gte.net

107 North Main Street
State House Room 207
Concord, NH 03301

*Executive Councilor
District One*

Report to the People of District One By Raymond S. Burton, Executive Councilor

It is an honor to report to the people of this large Northern District in my capacity as Executive Councilor, one of several elected public servants. The five member Council was founded in the NH Constitution and much of NH law provides an additional avenue at the top of your Executive Branch of State Government.

2007 will be a year when members of the Council are charged with conducting public hearings on the State of New Hampshire 10-year transportation plan. With inflation affecting basic transportation costs, and presently no plan for an increase in the State gasoline tax, I don't look for any new projects becoming a reality. We'll be lucky to complete what is currently in the plan.

I continue to seek volunteers to serve on the 300 or so Boards and Commissions as prescribed by New Hampshire law. There are some great opportunities to serve your state government! Send your letter of interest and resume to my office, or to Kathy Goode, Director of Appointments/Liaison to the Council, Governor's Office, State House, 107 North Main Street, Concord, NH 03301. Tel. (603) 271-2121. To find out what openings are available and to see a list of boards, visit the NH Secretary of State website at: www.sos.nh.gov/redbook/index.htm.

The NH web site is a very valuable for citizens. If internet is not available to you, use your local public or school library to go to www.nh.gov and find all state agencies, general court (representatives) and senate members, mailing addresses, and where legislative bills and proposals are. I send my weekly schedule to some 500 e-mail addresses that include town offices, county officials, district media, NH House and Senate members, and others. If you would like to be on that e-mail list please send your e-mail address to rburton@nh.gov. I often include other public notices and information.

It is an honor to continue to serve you now in my 29th and 30th years as a public servant. Contact my office anytime about your ideas, concerns and problems with state government. I respond to all inquiries and challenges.

Sincerely,

COOS COUNTY:

Berlin, Carroll, Clarksville,
Colebrook, Columbia, Dalton,
Dixville, Dummer, Errol,
Gorham, Jefferson, Lancaster,
Milan, Millsfield, Northumberland,
Pittsburg, Randolph, Shelburne,
Stewartstown, Stark, Stratford,
Whitefield

SULLIVAN COUNTY:

Charlestown, Claremont, Cornish,
Croydon, Grentham, Newport
Plainfield, Springfield, Sunapee



Towns in Council District #1

CARROLL COUNTY:

Albany, Bartlett,
Chatham, Conway, Eaton,
Ellingham, Freedom, Hart's Loc.,
Jackson, Madison, Moultonborough,
Osipes, Sandwich, Tamworth,
Tullonboro, Wakefield, Wolfboro.

GRAFTON COUNTY:

Alexandria, Ashland, Bath,
Benton, Bethlehem, Bridgewater,
Bristol, Campton, Canaan,
Dorchester, Easton, Ellsworth,
Enfield, Franconia, Grafton,
Groton, Hanover, Haverhill,
Hebron, Holderness, Landaff,
Lebanon, Lincoln, Lisbon,
Livermore, Littleton, Lyman,
Lyme, Monroe, Orange, Orford,
Piermont, Plymouth, Rumney,
Sugar Hill, Thornton, Warren,
Watersville Valley, Wentworth,
Woodstock

BELKNAP COUNTY:

Alton, Belmont, Center Harbor,
Giffard, Laconia, Meredith,
New Hampton, Sanbornston, Titton

Dear Residents,

All dogs must be licensed on or before April 30th. If you wish you may fill out the form below and mail it to me. My address is:

1681 Main Road, Chatham, NH 03813

Please include payment, copy of your dog's rabies vaccination and a self addressed stamped envelope. I will mail you the license and tag.

If you have any questions, please call 694-2043.

Sincerely,
Patricia Pitman
Town Clerk

Owner _____

Address _____

Breed _____

Name _____

Color _____

Rabies, Innoc. Exp. _____

\$9.00 _____ Male

\$9.00 _____ Female

\$6.50 _____ Neutered Male

\$6.50 _____ Spayed Female

\$2.00 _____ Owner over 65

UNH
MILNE SPECIAL COLLECTION
18 LIBRARY WAY
DURHAM NH 03824-3592

