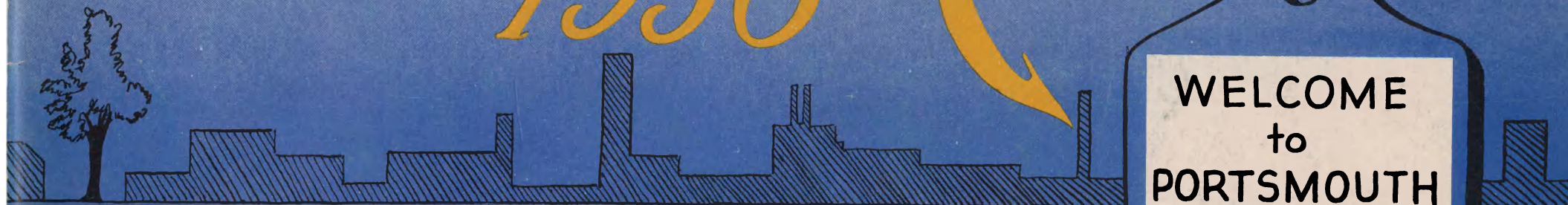


Annual Report 1956



WELCOME
to
PORTSMOUTH
N. H.

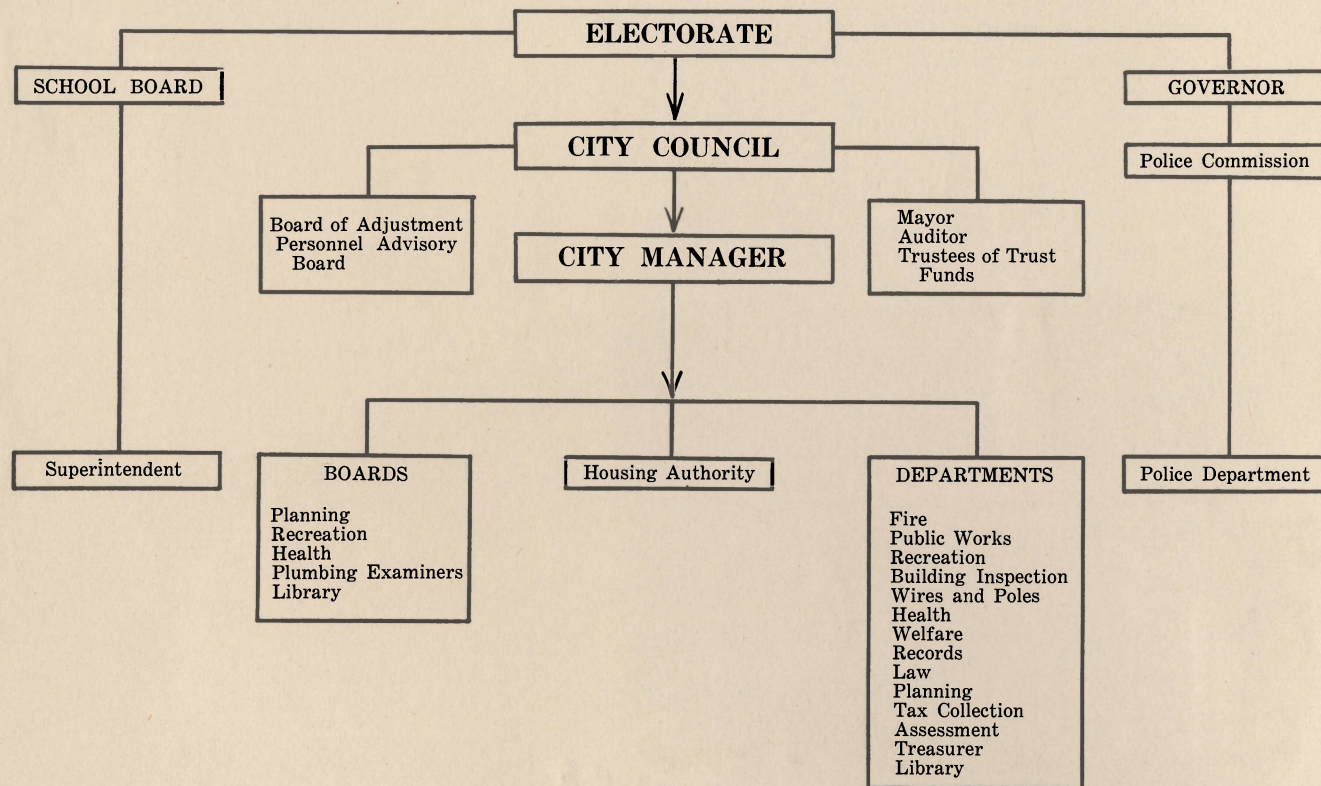
PORTSMOUTH, N.H.

GERALD A. STONE
CLASS OF '58
P. H. S.



CITY OF PORTSMOUTH

ORGANIZATION CHART



N
352.07
P85
1956



TABLE OF CONTENTS

Council Activities	2	Fire Department	17
Administrative Officers	4	Welfare Department	18
Boards and Commissions	5	Civil Defense	18
Progress Report	6	Public Library	19
Future Plans for Portsmouth	7	Recreation	20, 21
Departments	8	Education	22, 23
Department of Records	9	Inspecting Agencies	24, 25
Legal Department	10	Financial Section	26—36
Planning Department	11	Taxation Trends	37
Finance Department	12, 13	Portsmouth Budget Dollar	38
Public Works	14, 15	City Map	39
Police Department	16	Facts About Your City	40
		Directory of City Offices	41



City of Portsmouth, New Hampshire

OFFICE OF THE CITY MANAGER

August 7, 1957

ROBERT C. VIOLETTE
CITY MANAGER

Honorable Mayor, City Council and Citizens
City of Portsmouth
Portsmouth, New Hampshire

Gentlemen:

It is my pleasure to submit to you the Annual Report of the City of Portsmouth, for the Year 1956 - the seventh under the Council-Manager form of Government.

This report contains a record of some of the improvements and services rendered by your City Government. Complete records of all activities are available at City Hall for inspection by the public.

I wish to take this opportunity to renew my expression of deep appreciation to all those who, over the course of the year, have helped us to overcome and eliminate some of the more perplexing problems. Of those that remain outstanding, we are determined to meet and dispose of - to the best of our abilities.

Our new High School is nearing completion and will be available by the fall of 1957. This will relieve our over-crowded schools at a time when we need it the most.

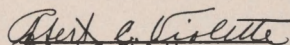
To the many individuals who served on committees and boards, and gave so willingly of their time and efforts, please rest assured that your services were highly regarded. The work which you have done has proven a great help to our City.

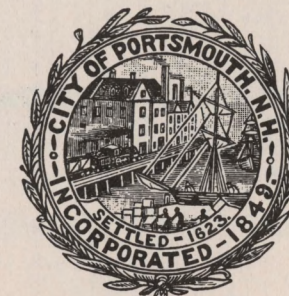
May I also extend my sincere appreciation to our local newspaper and radio stations for their splendid cooperation and services rendered to keep our citizenry well-informed.

The credit for the high degree of success attained during the past year, is due the Mayor, Members of the City Council and all City Employees. I am greatly appreciative for all your efforts and cooperation.

It is a pleasure to serve you as your City Manager.

Respectfully submitted,


Robert C. Violette
City Manager



SUMMARY OF ACTIVITIES — 1956

- Held 12 Regular Meetings
- Held 13 Special Meetings
- Conducted 21 Public Hearings
- Adopted 15 Resolutions
- Adopted 5 City Ordinances
- Amended 15 Ordinances
- Approved Annual Budget of: \$2,374,775.11

CITY COUNCIL

MEMBERS: 9

Expenditure: \$1,790.00

EXECUTIVE DEPARTMENT:

Expenditures: \$27,032.84

Employees: 3

7

PORTSMOUTH CITY COUNCIL

COUNCIL MEMBERS: Mayor John J. Leary; Assistant Mayor Andrew Jarvis; Mary C. Dondero; Donald H. Margeson; Sherman Newton*; Lawrence Guptil, Jr.; John J. Hassett, Jr.; Samuel McMaster; Paul V. Brown; Robert C. Violette, City Manager; Thomas J. McDonough, City Clerk.
**Absent when picture was taken.*





ADMINISTRATIVE OFFICERS

CITY CLERK

AMERICO J. BELLUCCI
(Resigned July 27, 1956)

THOMAS J. McDONOUGH
(Appointed July 28, 1956)

DIRECTOR OF PUBLIC WORKS

NAT S. STEVENS

CITY AUDITOR

WILFRED E. YOUNG

CITY TREASURER

TERESA B. DEMARAIS

(Appointed July 23, 1956)

BUILDING INSPECTOR

LUCIEN O. GEOFFRION

CITY ASSESSOR

J. WARREN SOMERBY

TAX COLLECTOR

MARTIN O. BETZ

CITY MARSHAL

FREDERICK R. CROMPTON

FIRE CHIEF

RAYMOND I. BEAL

SUPERINTENDENT OF SCHOOLS

MRS. MILDRED RIESE

DIRECTOR OF WELFARE

ALBERT C. WENNBERG

DIRECTOR OF PLANNING

LEWIS M. McNEIL, SR.

SANITARY INSPECTOR

(Appointed April 9, 1956)

THOMAS E. FLYNN, JR.

CITY SOLICITOR

OSCAR NEUKOM

JUSTICE, MUNICIPAL COURT

SAMUEL LEVY

ASSOCIATE JUSTICE

JACK FENWICK

CLERK OF COURT

ALVIN A. MASON

DIRECTOR OF RECREATION

MISS DOROTHY M. VAUGHAN

LIBRARIAN, PUBLIC LIBRARY

LIONEL TRUDEL, V. M. D.

MEAT INSPECTOR

WILLIAM A. THOMPSON

SEALER OF WEIGHTS AND MEASURES

EDWARD J. FLAHIVE

DOG OFFICER

ARTHUR M. PATTERSON

FIRE ALARM SUPERINTENDENT

EDGAR F. WOOD

PLUMBING INSPECTOR

• BOARD OF HEALTH

S. GERARD GRIFFIN, M. D.
ARTHUR HEALEY
WILLIAM M. FARRINGTON, D. M. D.

• PLANNING BOARD

JOHN W. DURGIN, Sr., *Chairman*
JOSEPH J. SHANLEY, *Vice-Chairman*
KEIVEN GILLIS
CHARLES GOUSE
EDWARD T. BURNHAM
A. NEIL SCHIOT
ROBERT CROWLEY
ROBERT C. VIOLETTE, *Ex-Officio*
NAT S. STEVENS, *Ex-Officio*

• ZONING BOARD OF ADJUSTMENT

ERNEST E. STAFFORD, *Chairman*
MRS. BARBARA B. GRIFFIN GEORGE L. GRAY
MRS. SAMUEL COHEN PETER COLLINS
MORRIS D. LEVY ROBERT WHALEN
ALBERT C. WENNBERG, *Advisor and Secretary*

• PERSONNEL ADVISORY BOARD

REV. PHILIP KENNEY
FRANCIS P. TUCKER

• TRUSTEES OF THE TRUST FUND

ARTHUR F. BROWN, *Chairman*
ARTHUR GORMAN
MISS DOROTHY F. LEAR, *Clerk*

• LIBRARY TRUSTEES

E. CURTIS MATTHEWS KATHERINE P. FLANAGAN
WYMAN P. BOYNTON ELLEN T. MOSES
MRS. IRVING E. STOWE MRS. EDWARD T. WENDEL, *Clerk*

• RECREATION COMMITTEE

MRS. ROBERT H. DUNN RALPH ATWELL
MRS. MARY E. WARNER JOHN E. KANE
JOHN R. WIGGIN ARTHUR C. CLOUGH

• BOARD OF EDUCATION

STOWE WILDER, *Chairman* JOHN J. WHOLEY
MARGARET E. BATCHELDER JOHN W. DURGIN, JR.
ALICE M. LEE CALEB L. HODSDON
KENNARD E. GOLDSMITH CHESTER P. HARTFORD
WYMAN P. BOYNTON JOHN J. HASSETT, SR.
WILLIAM M. FARRINGTON CHARLES J. GRIFFIN

• JOINT BUILDING COMMITTEE

KENNARD E. GOLDSMITH, *Chairman* PAUL V. BROWN
MAYOR JOHN J. LEARY ALICE M. LEE
HARRY WINEBAUM JOHN DURGIN, JR.
JOHN J. WHOLEY JAMES C. PIPER

• HOUSING AUTHORITY

LAWRENCE E. MULLONEY, *Chairman*
FRANK E. PATERSON, *Vice-Chairman*
ORMAN R. PAUL, *Treasurer*
ALONZO W. PARKS (Appointed May 15, 1956)
FRANK J. MASSEY (Term Expired April 15, 1956)
HARRY I. CASWELL (Resigned May 26, 1956)
FRANK BUTTERWORTH, JR. (Appointed July 16, 1956)
EDWARD J. ABBOTT, *Executive Director*
ROBERT H. McCANN, *Assistant Director*

• POLICE COMMISSION

J. PAUL GRIFFIN, *Chairman*
REGINALD E. GOLDSMITH MORRIS SILVERMAN

• CIVIL DEFENSE

WILLIAM T. EVANS, *Director* (Resigned March 1, 1956)
EDWARD L. BUTLER, *Director* (Appointed February 16, 1956)

BOARDS AND COMMISSIONS

**PROGRESS
REPORT
1956**

ADMINISTRATIVE APPOINTMENTS

- Sanitary Inspector
- Planning Director
- City Treasurer
- Building Inspector
- Health Officer
- Board of Adjustment Members
- Personnel Board Members
- City Clerk

PROGRESS MADE

- Adopted Modern Inter-Department Posting and Billing Methods.
- Revised Administrative Code—Placed in Operation.
- All City Ordinances in Process of Legal Examination and Proposed Revision.
- Complete Revitalization of Head and Poll Tax.
- City-Wide Population Check Census.
- Adopted On-Street Parking Ordinances and Changed Meter Devices.
- First Reading of 1956 Mobile Home Ordinances.
- Developed Municipal Building Code.
- Adopted Thoroughfare Plan in Part.
- Extended Health-Recreation Program.
- Initiated Complete Sanitary Fill Program.
- Reorganized Public Works Department.
- Approved First Public Housing Project.

NEW CONSTRUCTION

- Little League Ball Park.
- Parking Lot Construction.
- New Senior High School 60% Completed.
- Public Library Improvement.
- Installation of New Street Lighting System.
- Sub-Surface and Surface Drainage Within Existing Dwelling Areas.
- Re-Examined Portsmouth-Madbury Water System Prior to Acceptance.
- Construction of 12 Inch Water Main on Gosling Road.
- Major Repairs to Memorial Bridge Approach.
- Construction of 4 Inch Water Main on Ceres Street.

FUTURE PLANS FOR PORTSMOUTH

PROJECTS

- Reconstruction of Pierce Island Bridge.
- Renovation of Sherbourne Pumping Station.
- Gunite Municipal Swimming Pool.
- New Filtration Plant for Municipal Swimming Pool.
- Sewage Treatment System for Public Housing Project.

NEW DEVELOPMENTS

- Elwyn Park Sub-Division.
- Meadowbrook Park Sub-Division.
- Woodlawn Circle and Hillcrest Drive Sub-Division.



RESURFACING PROGRAM

- Section of Sagamore Avenue.
- Section of Lafayette Highway.
- Section of Middle Road.
- Sheafe Street.
- Section of Woodbury Avenue.

SURFACE TREATMENT

- Walker-Bungalow Road.
- Cliff Road.
- Major Part of South-End.
- Aldrich Road.
- Parrott Avenue.
- Section of Junkins Avenue.
- Farm Lane.
- Livermore Street.
- Edwards Street
- Fells Road.
- Sheffield Road.

DEPARTMENTS

RECORDS		EMPLOYEES	
Expenditures:	\$11,428.87	Full time:	3
ELECTION			
Expenditures:	10,591.38		
CIVIL DEFENSE			
Expenditures:	6,043.25		
EDUCATION			
Expenditures:	920,672.14	Full time:	211
		Part time:	86
LAW			
CITY SOLICITOR			
Expenditures:	3,582.05	Part time:	1
MUNICIPAL COURT			
Expenditures:	4,300.00	Part time:	4
FINANCE			
CITY AUDITOR			
Expenditures:	14,093.40	Full time:	4
CITY TREASURER			
Expenditures:	5,215.94	Full time:	1
TAX COLLECTOR			
Expenditures:	8,776.37	Full time:	2
		Part time:	1
CITY ASSESSOR			
Expenditures:	11,409.77	Full time:	2
		Part time:	1
FIRE			
Expenditures:	123,187.82	Full time:	20
Revenues:	3,659.78	Part time:	34
(Ambulance Rental)		(Call men)	
PLANNING			
Expenditures:	5,287.79	Full time:	1

POLICE		EMPLOYEES	
Expenditures:	\$175,123.84	Full time:	36
INSPECTION			
Building Inspector			
Expenditures:	645.79	Part time:	1
DOG OFFICER			
Expenditures:	1,095.50	Part time:	1
HEALTH			
Expenditures:	25,338.74	Full time:	10
(Includes Comfort Station)		(Including Comfort Station)	
		Part time:	2
PLUMBING INSPECTOR			
Expenditures:	1,075.00	Part time:	1
SEALER OF WEIGHTS AND MEASURES			
Expenditures:	897.15	Part time:	1
PUBLIC LIBRARY			
Expenditures:	20,076.06	Full time:	5
		Part time:	3
PUBLIC WORKS			
Expenditures:	393,134.47	Full time:	54
Revenues:	7,665.46	Part time:	51
WATER DIVISION			
Expenditures:	271,421.88	Full time:	31
Revenues:	268,238.75	Part time:	29
RECREATION			
Expenditures:	46,431.06	Full time:	4
Revenue:	1,014.04	Part time:	30
(Community Center)			
WELFARE			
Expenditures:	81,451.20	Full time:	1
(Including Old Age Assistance)			

VITAL STATISTICS

	1953	1954	1955	1956
Births	561	617	600	595
Marriages	338	332	338	372
Deaths	245	266	252	213
Stillbirths	6	16	6	2

LICENSES AND PERMITS

	1953	1954	1955	1956
Taxi Operator License	201	169	137	176
Taxicab Permits	37	35	35	38
Dog Licenses	1327	1309	1253	1294
Bicycle Licenses	629	736	658	534

RECORDING OF PERSONAL PROPERTY LIENS

	1953	1954	1955	1956
Conditional Sales	1451	1333	1347	1376
Personal Mortgages	653	947	1557	1706
Miscellaneous Record	29	32	24	43

SELECTIVE SERVICE REGISTRATION

	1953	1954	1955	1956
Comparative Registration	148	144	135	134

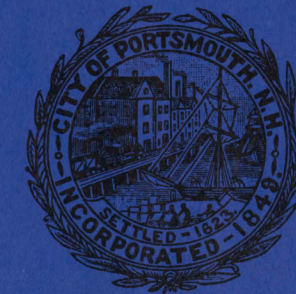
MUNICIPAL ELECTIONS — 1956

	Eligible Voters	Votes Cast	% Voting
Presidential Primary	12,203	1,428	11.7%
Primary Election	2,725		
General Election	13,185	8,407	63.7%

JURY DRAWINGS

	1953	1954	1955	1956
Grand Jurors Drawn	17	18	19	18
Petit Jurors Drawn	37	33	45	37

DEPARTMENT OF RECORDS





LEGAL DEPARTMENT

LAW DEPARTMENT

- Legal Counsel to the City
- Contracts
- Leases
- Legal Instruments
- Opinions to Departments
- Municipal Prosecutor

MUNICIPAL COURT

CASES BEFORE THE COURT

	<i>1954</i>	<i>1955</i>	<i>1956</i>
Criminal			
Misdemeanors	718	807	1052
Felonies	14	28	41
Civil	43	97	62
Juvenile	48	47	46
Small Claims	213	308	254

Planning is a Continuing Function of Municipal Government

CODES AND ORDINANCES

*Housing Code	Completed
*Building and Electrical	Adopted
*Fire Prevention	Adopted
Parking and Truck unloading Ordinance	Adopted
Mobilehome Ordinance	Adopted
Zoning and Map	Being Revised

** developed through Citizen Committees.*

PROGRESS ON THE MASTER PLAN

Thoroughfare	Partial Adoption
Existing Land Use (1954)	Being Revised for 1957
Future Land Use	In Preparation for 1957
Community Facilities	In Preparation for 1957
Capital Budget	In Preparation for 1957
Street Ordinance and Specs.	In Preparation for 1957

URBAN PLANNING ASSISTANCE PROGRAM

Section 701 of the National Housing Act

Federal Share	\$3,450	In Cash
State Share	1,950	In Services and Supplies
City Share	1,500	In Services
Portsmouth's "in Services" Contributions		\$817.21

PLANNING BOARD

Review and Study of Street Ordinance
Approved Mobilehome Ordinance
Approved Building, Electrical and Fire Prevention Code
Reviewed Low Rent Housing Project — "Gosling Road"
Reviewed eleven (11) re-zoning referrals from City Council, approved six (6)
Reviewed seven (7) Subdivisions, Final approval of five (5), total house lots 145

ZONING BOARD OF ADJUSTMENT

Number of Meetings	14
Petitions of Appeal	26
Petitions Granted	19
Petitions Denied	3
No Jurisdiction	2
Withdrawn	2
Legal non-co	1

PLANNING DEPARTMENT

CITY AUDITOR

POST AUDIT

PRE AUDIT

ACCOUNTING

BUDGET

CHECKS

FINANCIAL ADVISOR TO
THE CITY GOVERNMENT

PREPARATION AND PROCESSING OF:

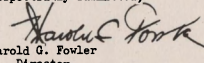
Payrolls of approximately 538 employees.

Processing several thousand purchase orders and
vouchers, and thousands of separate invoices.

Certificate of Audit

This is to certify that we have examined and audited the accounts and records of the City of Portsmouth for the fiscal year ended December 31, 1956. In our opinion, the Exhibits included herewith reflect the true financial condition of the City on December 31, 1956, together with the results of operations for the fiscal year ended on that date.

Respectfully submitted,


Harold G. Fowler
Director
DIVISION OF MUNICIPAL ACCOUNTING
STATE TAX COMMISSION

CITY ASSESSOR

Addressed and Mailed 6,058 Inventory Forms; 3,290 of which were returned and processed, and in addition 1,062 Veteran's Exemptions Forms, 894 Veteran's Exemptions granted.

Property Transfer — 1,291.

New Property placed on the Assessment Rolls — 63.

Property increase in value because of alterations and remodeling — 91.

Prepared Poll Tax Warrant and bills for 8,661 names — 2,470 Veterans exempted.

Prepared Head Tax Warrants and bills for 11,131 names.
Prepared Property Tax Warrant and bills for 6,178 units of property.

97 Abatements granted. Less than .3 of 1% of total collected.

New Hampshire Railroad Stock List prepared and forwarded to State Tax Commission.

Prepared list of Bank Stocks and included in Real Estate Warrant.

Census conducted by Auxiliary Police coordinated with Head and Poll Tax Files.

Assessment of 3 operations of timber cutting.

EQUALITY PROPORTIONALITY

F
I
N
A
N
C
E

CITY TREASURER

Balance (All Accounts)	
January 1, 1956	\$2,810,191.66
Receipts, 1956, Total	3,980,052.66
Disbursements, 1956, Total	5,384,588.73
Balance (All Accounts)	
December 31, 1956	1,405,655.59
Total Wages and Salaries	1,114,576.35
Total Withholding Tax	
withheld and paid to the District	
Director of Internal Revenue	
(593 Employees)	159,788.50

BORROWINGS 1956

Tax Anticipation Loan	\$1,000,000.00
Rates of Discount:	
\$500,000	1.99%
500,000	1.819%
Actual Cost of Loan	13,754.26
Supplementary High School Bond	
Issue (1955)	203,000.00
Rate of Interest	3.0%
Actual Cost of Loan	730.00

INVESTED EARNINGS FROM BONDS

High School Bond Issue of 1955	48,352.36
Amount of Disbursements from	
High School Bond, 1955	1,395,283.72

POLICE DEPARTMENT RECEIPTS

Parking Meter Fines	6,700.00
Beano	720.00
Junk Dealer Licenses	275.00
Parking Meter Receipts	48,695.75

TAX COLLECTOR

Amount of Real Estate	
Warrant	\$1,799,289.97
Amount Collected by	
December 31, 1956	1,688,570.08
1956 Real Estate Tax	
Discount	5,744.55
1955 Real Estate Tax	
Collected in 1956	98,261.45
Misc. Property Collected	
up to 1956, December 31	204.04
Amount of Head Tax	
Warrant	55,655.00
Total State Head Tax	
Collected for 1956	
plus penalty	32,893.00
Collected for 1955	
in 1956 plus penalty	15,661.21
Misc. Head Tax plus penalty	1,204.50
Amount of Poll Tax Warrant	14,000.00
Poll Taxes Collected up to	
December 31, 1956	9,868.00
1955 Poll Taxes	3,968.00
Misc. Poll Taxes	338.00

AUTOMOBILE REGISTRATIONS

	1954	1955	1956
Number	7726	8601	9082
Income	\$77,518.25	\$92,375.20	\$101,984.35

WATER DIVISION

WATER CONSUMPTION

	<i>Total Gallons</i>	<i>Average Daily Consumption</i>
1954	806,123,285	2,208,557
1955	921,052,290	2,523,400
1956	1,127,915,500	3,090,179

WATER REVENUES

1954	\$196,645.02
1955	\$226,034.45
1956	\$259,210.60

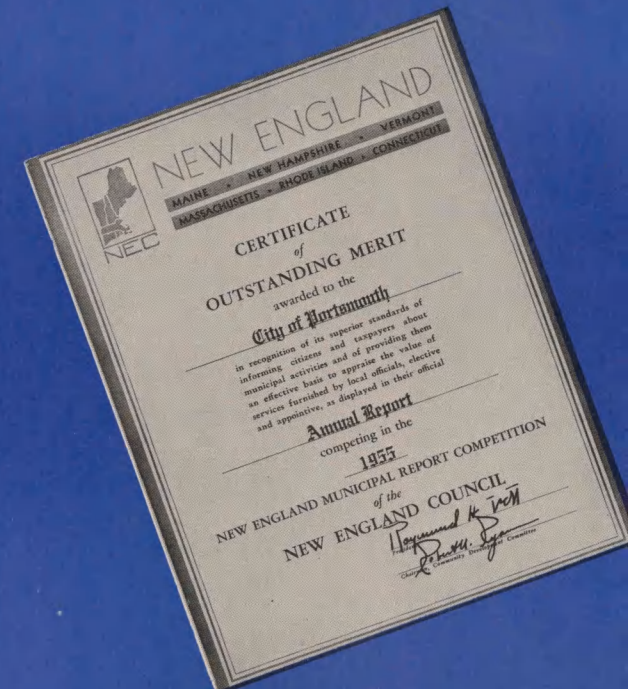
ACCOMPLISHMENTS

- 152 New Meters Installed.
- 477 Meters Renewed or Replaced.
- 77 Hydrants Renewed or Replaced.
- 8,290 feet of New Mains Laid.
- 1,118 feet extended on Existing Mains.

P U B L I C W O R K S

ANNUAL REPORT - City of Portsmouth

- 1953 Awarded First Place in New Hampshire Municipal Reports Contest. Contest sponsored by Public Administrative Service — University of New Hampshire for cities over 10,000 population.
- 1954 Awarded First Place in New Hampshire Municipal Reports Contest.
- 1955 Awarded First Place in New Hampshire Municipal Reports Contest.
- Awarded First Place in New England Municipal Reports Contest. Contest sponsored by the New England Council for all cities over 10,000 population.



DIVISION OF STREETS

**STREET RESURFACING
AND REBUILDING**

Used: 68,246 gallons of asphalt
3,711 tons of stone
7,488 tons of gravel and sand
420 yards of loam

PATCHING

Used: 2,444 tons of Hot Top or
Bituminous Concrete
942 tons of Blue Rock Mix
or Cold Patch

DIVISION OF SEWERS

SEWER EXTENSIONS
798 feet

DRAINAGE EXTENSIONS
1,800 feet



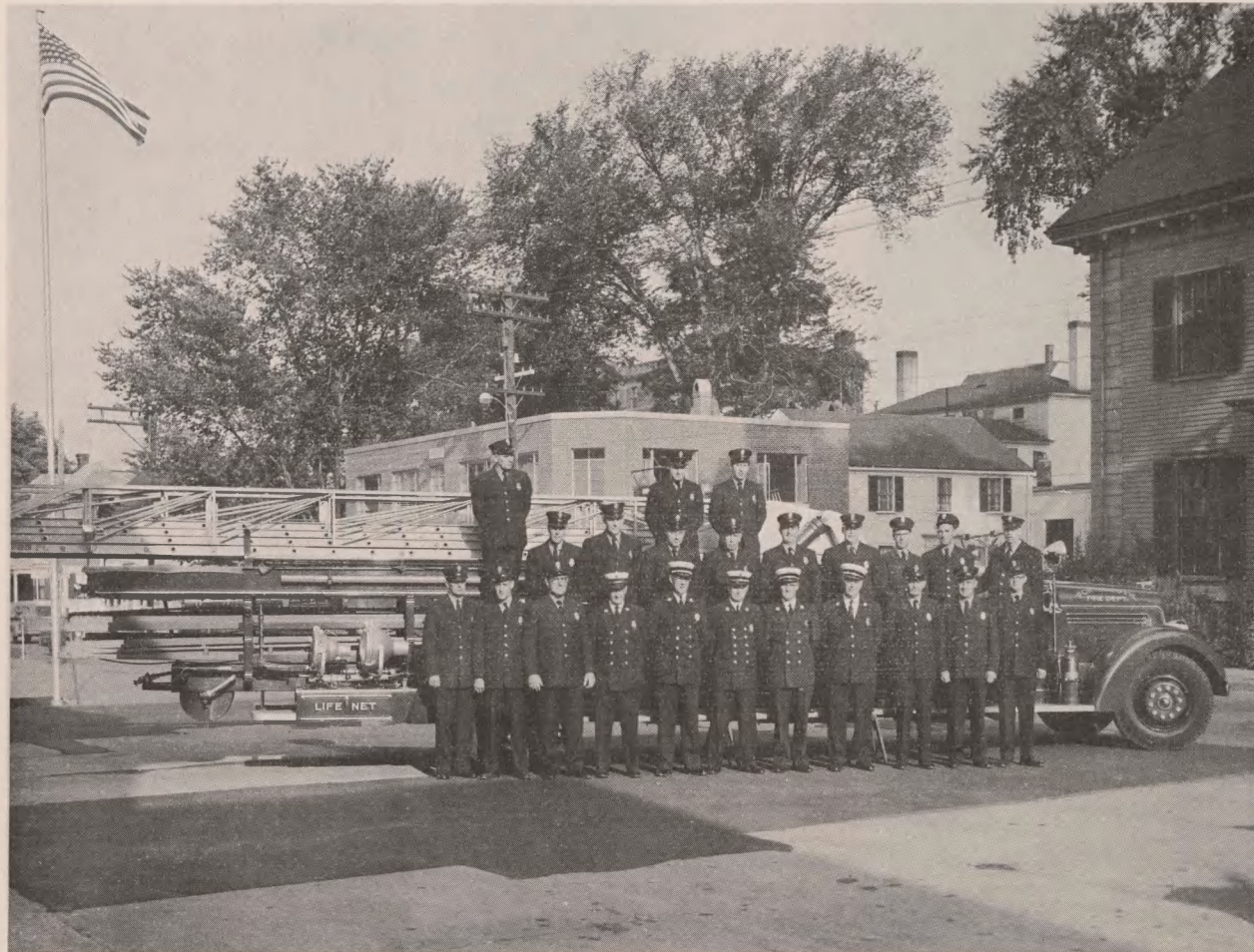
ACTIVITIES - 1956

Assault	15
Assault, Aggravated	1
Assault with intent to rob	1
Automobile Offenses	301
A. W. O. L.	1
Arrested for out of City	2
Breaking, Entering and Larceny	8
City Ordinance Violations	115
Contempt of Court	2
Contributing to delinquency of minor	1
Disorderly Conduct	27
Drunks	219
Embezzlement	3
Forgery	5
Fish and Game Violations	3
Fugitive from Justice	4
Gambling	4
Investigation	1
Larceny	26
Liquor Violations	16
Lodgers	405
Safekeeping	9
Suspicion	1
Sex Violations Offenses	3
Suicide	1
Suicide, attempted	4
Street lights reported out	121
Patrol and Escort trips made	12,376
Value of Lost and Stolen property recovered and returned to owners	\$17,767.07



Portsmouth Police Department Station

- 19 Members of School Patrol Attended the National Jamboree of School Patrols in Washington, D. C.
- 142 Members of School Patrol enjoyed Field Day and Picnic.
- Two week Program of Specialized training Given to All Police Members by F. B. I.
- 4 Officers attended police school in Nashua, N. H., for two weeks training, sponsored by N. H. Chiefs of Police.
- 1 Officer had one week of Firearms Training at Wakefield, Massachusetts, sponsored by F. B. I.
- Firearms training for all officers throughout the year.
- Auxiliary Police spent 3,425 hours in police training.
- 15 new members participated in 3 months of classroom training — 900 hours.



Members of your permanent Fire Department

SUPERINTENDENT OF FIRE ALARMS

- Extended Lines and installed two new three-fold Fire Alarm Boxes, McKinley and Grant Avenues; Farm and Meadow Lanes.
- Replaced 4 obsolete Boxes with 4 three-fold type.
- Rebuilt Sections of #5 and of #2.
- Installed new 12 inch Clark-Cooper Horn — City Yard.
- Repaired lines, cleared grounds, etc., for all circuits.
- Purchased new 3500 Watt Motor Generator Emergency Power Supply.

To the average individual, the fireman symbolizes fire protection. In essence, however, this represents but one type of service. Steps must also be taken to prevent conflagrations in order to make the community a more wholesome place in which to live. Consequently the department avails itself of every opportunity to promote its Fire Prevention Program.

ACTIVITIES - 1956

Total Calls Answered	1104
Still Alarms	311
Bell Alarms	48
False Alarms	17
Miscellaneous Calls	29
Ambulance Calls	716

CALLS MADE UNDER MUTUAL AID SYSTEM	21
Rye	5
Newington	3
Newcastle	2
Dover	2
Greenland	2
Stratham	1
Eliot	1

TOTAL VALUE OF BUILDINGS AND CONTENTS ENDANGERED BY FIRE	\$1,119,660.00
Insurance on Buildings and Contents	702,310.00
Damage by Fire	300,677.38
Amount Covered by Insurance	252,597.38
Net Loss	48,080.00

NEW EQUIPMENT

- 1 500 Gallon Triple Combination Pump with 500 gallon tank.
- 1 1955 Ford Sedan.
- 26 Combination Windows.

WELFARE

AVERAGE NUMBER OF CASES AND EXPENDITURES

DIRECT RELIEF

Average Number of Cases (Monthly)	35.2
Average Number of Persons (Monthly)	84.2
Average Monthly Expenditures	\$1,676.82

BOARD AND CARE

	<i>Children</i>	<i>Adults</i>
Average Number of Cases (Monthly)	10.	3.6
Average Number of Persons (Monthly)	28.6	3.6
Average Monthly Expenditures	\$1,063.91	\$273.71

DIRECT RELIEF

FOOD

SHELTER

CLOTHING

FUEL

MEDICAL

HOSPITAL

OLD AGE ASSISTANCE

CIVIL DEFENSE - 1956

Number of Meetings Held	206
NUMBER OF VOLUNTEERS	701
Hours Donated	11,758

Auxiliary Police

Fire Wardens

Rescue, Health and Special Weapons Defense

Communications and Warning

Emergency Welfare

Transportation

Ground Observer Corps

Staff and Administration

PROGRESS REPORT FOR 1956

City Census — Auxiliary Police

First Volunteer Radiological Detection Class in State

G. O. C. Participated in Dedication of PAFB

RACES — Radio monitoring receivers set-up in Police and Fire Stations

3 day test in OPERATION ALERT 1956

3rd Annual Class CD Auxiliary Police formed

New Sirens and Poles Set



FCDA 50/50 Contribution Program:

Part payment for installation of new Siren system and radio gear.

Mobile transmitter-receiver radio for Rockingham County Sheriff's group.

Two Radio transmitter-receivers for Police Jeep, and Fire Department.

TOTAL EXPENDITURES:

Services, City Census and Siren System	\$5,991.25
Less F. C. D. A. Contribution	3,320.35
New Expenditures	2,670.90

BROWSING

STUDY

REFERENCE

BOOK FAIR

PAINTINGS

GREAT BOOKS SESSIONS

INTER LIBRARY LOAN

Number of Volumes January 1, 1956	70,167
Total Volumes Added in 1956	1,359
Worn Out, Obsolete Volumes Discarded	533
Number of Volumes January 1, 1957	71,029
Magazines Subscribed to in 1956	81
Magazines Presented in 1956	50
Newspapers Received Daily	6



General View of Portsmouth Public Library

PUBLIC LIBRARY

INTER LIBRARY LOAN

Books borrowed from other libraries	43
Books loaned to other libraries	100

BOOKS ISSUED FOR HOME USE

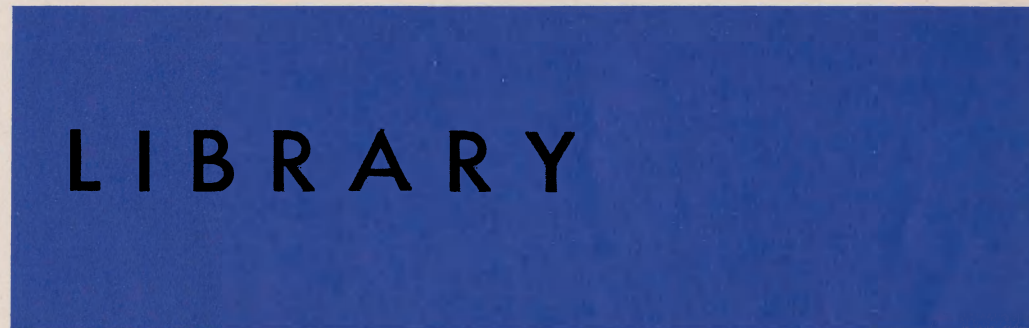
	1955	1956
Fiction	41,149	40,518
Non-Fiction	26,207	25,560
Juvenile	29,171	28,314

REFERENCE SERVICE

Number of questions answered — Less than 10 minutes	1,344
Number of questions answered — Over 10 minutes	480

SPECIAL ACTIVITIES

- Discussion Groups
- Exhibits
- Story Hours
- Displays
- Library Tours



Reading for Relaxation — Children's Reading Room



RECREATION

Served 147,547 in 1956



Top: Municipal Skating Rink:
Greenland Road.

Bottom: Field Day Events:
South Playgrounds.

PORTSMOUTH COMMUNITY CENTER

Judo — 104 meetings
Children's Boxing — 32 meetings
Adult Ping Pong League — 42 meetings
Industrial Basketball — 67 games
Grammar School Basketball — 46 games
Girls Basketball League — 30 games
Badminton — 32 meetings
Teenage Dances — 20 dances
Community Chorus — 38 meetings

UNION WHARF BUILDING

Archery — 120 meetings
Art Association — 40 meetings





SUMMER PROGRAM

Total Attendance Including
Municipal Pool 66,516

Swimming Pool
Red Cross Swimming Program
755 in classes
Free Swim
36,015 attendance

Sports
Arts and Crafts
Outing Activities
Quiet Activities
City Softball League
6 Playground Areas
Special Events
Red Sox Excursion to Boston
200 children

Top: Municipal Swimming Pool.

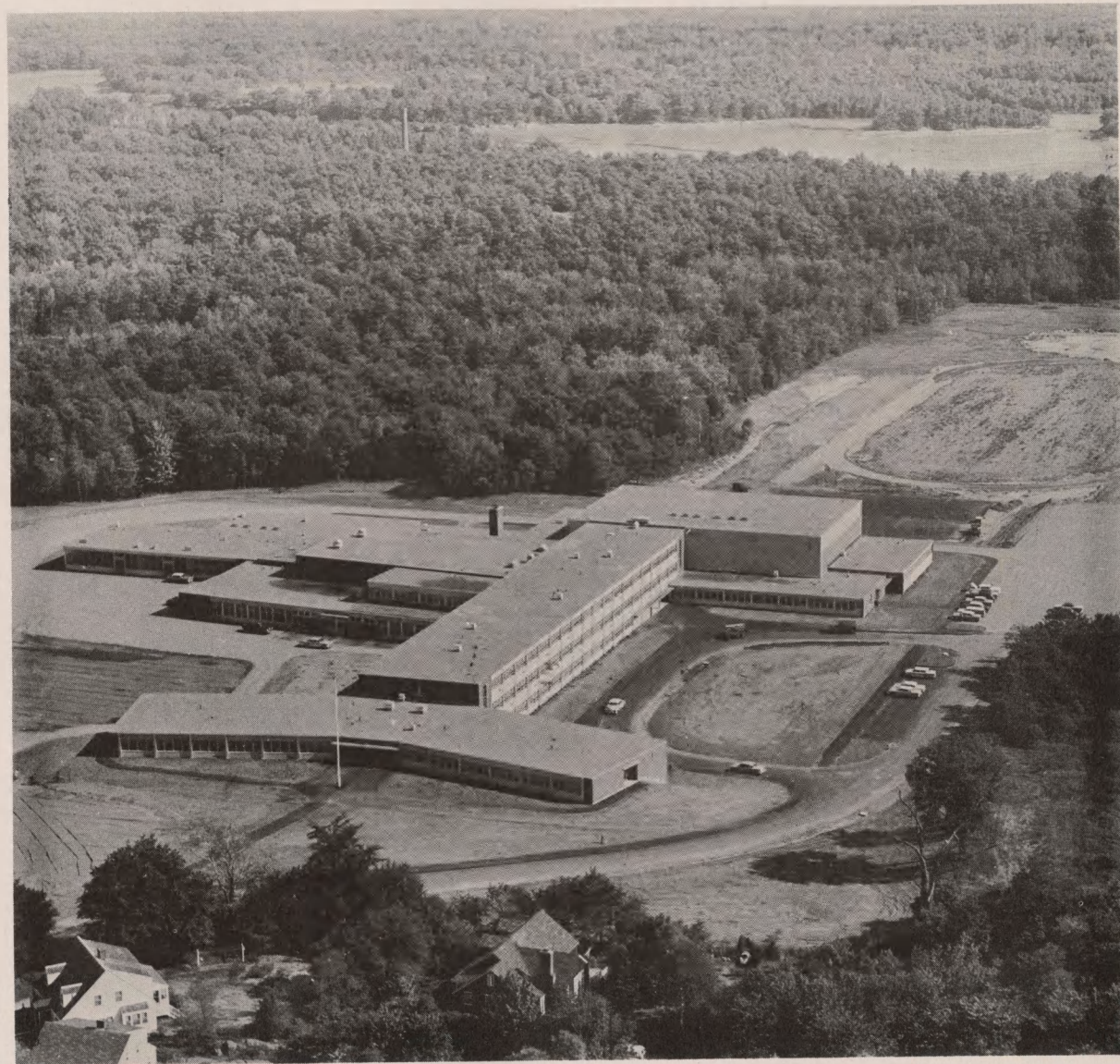
Top Right: Quiet Please! Some High-Level Thinking: Lafayette Playground.

Right: Ah! The price of victory. Jack-O-Lantern Carving Contest: Community Center.



FUTURE PLANS

- \$56,000 Municipal Swimming Pool;
New filtration system;
Gunitite bottom of Pool.
- \$25,000 South Playground: Complete
Renovation.
- \$68,000 \$100,000 Pierce Island Bridge.



E D U C A T I O N

Average School Membership	3736.8
Average Daily Attendance	3494.1
Average Daily Absence	242.7
Percentage of Daily Attendance	93.7

Non-Resident Pupils Attending
Portsmouth Schools

Air Base	2	Senior High	159
Greenland	51	Junior High	93
Kittary	2	Elementary	1
Navy Yard	5	Kindergarten	3
New Castle	53		
Newington	29		
Rye	136		
Stratham	1		
Eliot	1		

NUMBER OF CHILDREN

Under 5 Years of Age	2031
5 — 8	1183
8 — 14	2165
14 — 19	1180

SCHOOL NURSE — 1956

Examinations given in Public Schools	1028
Examinations given in St. Patrieks School	144
Pre-School Examinations	274
Vision Tests Given	4624
Found to have Uncorrected Visual Defects	229
Hearing Tests	2443
Found to have Hearing Loss	76
Home Visits	135
Telephone Contacts	756

POLIO VACCINE CLINICS

Number Receiving Inoculations	2285
-------------------------------	------

ACCELERATED RATE OF GROWTH IN ENROLLMENT

Year	Enrollment	Teaching Staff	Expenditures
1915	2124	63	\$ 61,587.12
1925	2479	83	168,101.61
1935	2955	112	222,777.81
1945	3049	136	356,512.24
1955	3781	164	871,407.65
1956	4019	162*	920,672.14

* As of December, 1956

AVERAGE MEMBERSHIP

June 30, 1956

		Cost per Pupil
Senior High	781	\$296.50
Junior High	853	258.76
Elementary	1788	236.64
Kindergarten	316	143.24
Total	3728	Average \$246.30

COST PER PUPIL OF AVERAGE ENROLLMENT

1953	1954	1955	1956
\$213.49	\$228.66	\$233.73	\$246.30

NEW SENIOR HIGH SCHOOL

General Construction 60% completed. Budgetary Cost \$3,223,000. Expected opening Date — Fall, 1957.

HEALTH

Control by Education		
Mosquito Control, Housing Inspection		
Business Establishment Inspection		
Rodent and Predator Control		
Swimming Pool Inspection, Milk Sanitation		
Disease Prevention		
Small Pox Vaccinations		
Polio Vaccinations	1821 First Shot	
	2851 Second Shot	

LEADING CAUSES OF DEATH IN PORTSMOUTH

	1954	1955	1956
Diseases of Circulatory System	149	146	123
Cancer and other Malignant Tumors	39	52	29
Nephritis	2	4	1
Pneumonia	13	12	19
Accidental	7	11	6
Diabetes Mellitus	0	3	2
Tuberculosis	0	0	2
Uremia	7	2	7
Ulcers	2	5	3
Prematurity	10	6	3
Meningitis	0	0	2
Death Rate — Per 1,000	13.3	12.6	10.7
Average Age — At Death	63.03	64.18	65.07

BUILDING INSPECTOR

Total Permits Issued		
1954	1955	1956
400	292	373

Total Estimated Construction Cost		
1954	1955	1956
\$1,046,010	\$5,835,005	\$3,171,140

New Homes Constructed

1954	1955	1956
71	86	186
New Businesses	20	Residential and Commercial
New Garages	32	Alterations
Farm Building	1	Buildings relocated
		Buildings demolished
		124
		1
		9

SANITARY INSPECTOR

Food Permits Issued	151
Number of Establishments Inspected	403
Complaints Investigated	57

PLUMBING INSPECTOR

Number of Plumbing Permits Issued	331
Number of Licenses Granted	83

WIRES AND POLES INSPECTIONS

January	23
February	13
March	27
April	27
May	39
June	27
July	35
August	36
September	41
October	25
November	29
December	16

DOG OFFICER

Complaints Investigated	237
Dogs Picked Up	82
Dogs Killed by Autos	27
Dogs Quarantined	37
Dogs Returned to Owners	88
Dogs Placed in Good Homes	33
Number of Dogs Registered	1,294

INSPECTING AGENCIES

SEALER OF WEIGHTS AND MEASURES

Tested and Sealed:

Computing and Counter Balance Scales	206
Gasoline, Grease, and Kerosene Pumps	176
Platform Scales	30
Measuring Cans	35
Oil Bottles	23
Tank Truck Meters	14

MEAT INSPECTOR

Inspected all smaller meat markets.
Investigated all complaints.



CITY OF PORTSMOUTH, NEW HAMPSHIRE
Balance Sheet — General Funds
As of December 31, 1956

Statement 1

ASSETS	December 31, 1956	LIABILITIES	December 31, 1956
<i>Cash:</i>			
General Fund	\$ 77,772.09	<i>Unexpended Balances of Appropriations:</i>	
Petty Cash	220.00	Maplewood Avenue Sewer	\$ 1,000.00
Fiscal Agent — Bonds and Coupons	5,313.00	Sherburne Avenue Project	1,408.41
<i>Unexpended Bond Funds:</i>			
Permanent Improvements — 1941	1,689.65	Atlantic Heights Baseball Diamond	10.13
Improvements and Equipment — 1950	18,439.50	New Equipment Highway	260.92
Permanent Improvements — 1954	8,797.29	Vaughan Street Parking Lot	1,037.75
Parking Area — 1954	2,430.13	Pierce Island Bridge	8,520.02
High School Bonds — 1955	1,237,477.76	Revision of Ordinances	2,500.00
	\$1,352,139.42	Acquisition of Land	5,000.00
			\$ 19,737.23
<i>Accounts Receivable:</i>			
General Fund	\$ 6,288.54	Overpayments to be Refunded	1,488.00
Due from Trustees of Trust Funds	213.15	Unexpended Balances of Bond Fund	1,268,834.33
Due from State of New Hampshire	45,132.35	Fiscal Agents — Bonds and Coupons	5,313.00
	51,634.04	Accounts Payable — General Accounts	75,681.19
Due from State a/c Peverly		<i>Due State of New Hampshire:</i>	
Hill Construction	7,279.11	Uncollected Head Taxes	23,165.00
Deeded Property	1,217.48	Collected Not Remitted	8,035.00
		Special Yield Taxes	38.54
			31,238.54
<i>Unredeemed Taxes:</i>			
Levy of 1955	1,273.61	Long Term Note a/c Peverly	
Levy of 1954	332.16	Hill Construction	7,500.00
Levy of 1953	216.54		
Levy of 1952	121.74	<i>Reserves:</i>	
	1,944.05	Uncollected Taxes	2,215.54
<i>Uncollected Taxes:</i>			
Levy of 1956	117,688.74	Overlay — Current Year	8,759.99
Levy of 1955	1,629.55		10,975.53
Levy of 1954	897.61	Municipal Escrow Account	6,970.00
	120,215.90		
<i>Uncollected State Head Taxes:</i>			
Levy of 1956	23,165.00	Total Liabilities	1,427,737.82
		Current Surplus	129,857.18
Total Assets	\$1,557,595.00		
Grand Total	1,557,595.00	Grand Total	\$1,557,595.00

Statement 2

CITY OF PORTSMOUTH, NEW HAMPSHIRE
Analysis of Surplus Revenue
Fiscal Year Ended December 31, 1956

Current Surplus—December 31, 1956	\$129,857.18	
Current Surplus—December 31, 1955	100,896.78	
	<hr/>	
Increase in Current Surplus		\$ 28,960.40

ANALYSIS OF CHANGE

Increases:

Budget Surplus	\$110,811.12	
Cash Refund	15.40	
Balance of 1955 Overlay Closed to Surplus	1,534.36	
Retroactive Social Security Not Credited to Appropriation	2,646.85	
Adjustment of General Ledger to Tax Warrants	22.36	
	<hr/>	
		\$115,030.09

Decreases:

Surplus Used to Reduce Tax Rate	\$ 33,939.23	
Supplemental Appropriations from Surplus	51,992.00	
Prior Year Bills Paid from Surplus	105.01	
Accounts Payable Adjustment	14.05	
Tax Sale Abatement	19.40	
	<hr/>	
		86,069.69
		<hr/>
		\$28,960.40

Statement 3

CITY OF PORTSMOUTH, NEW HAMPSHIRE
Statement of Estimated and Actual Revenues and Budget Summary
Fiscal Year Ended December 31, 1956

<i>Source</i>	— Revenues —		<i>Excess</i>	<i>Deficit</i>
	<i>Estimated</i>	<i>Actual</i>		
Interest & Dividends Tax	\$ 28,895.62	\$ 28,895.62	\$	\$
Railroad Tax	8,000.00	8,072.07	72.07	
Savings Bank Tax	10,585.19	15,060.28	4,475.09	
Payment in Lieu of Taxes (NHA)	19,000.00	21,651.30	2,651.30	
Motor Vehicle Permit Fees	90,000.00	101,482.01	11,482.01	
Dog Licenses	2,500.00	2,738.08	238.08	
Business Licenses & Permits & Fees	9,500.00	13,073.23	3,573.23	
Rent of City Ambulance	2,500.00	3,659.78	1,159.78	
Fines & Forfeits—Municipal Court & Parking	6,000.00	12,199.50	6,199.50	
Interest on Taxes	2,500.00	2,480.16		19.84
Revenue Surplus	33,939.23	33,939.23		
Yield Tax Revenue		192.66	192.66	
<i>Schools:</i>				
Federal Grants	224,159.31	247,955.17	23,795.86	
Tuition	63,200.00	70,702.52	7,502.52	
Rent of Buildings	1,000.00	964.48		35.52
Physical Education	10,000.00	8,328.96		1,671.04
State Aid	22,000.00	22,000.00		
Community Center	600.00	473.06		126.94
Highway Department Revenue ..	4,000.00	7,665.46	3,665.46	
Head Tax Revenue	3,000.00	2,895.79		104.21
<i>Other Revenue:</i>				
Gain on Sale of Deeded Property		3,896.91		
Sale of Maps		21.50		
Investment of School Bond Funds		48,352.36		
Welfare Department	40,105.79	614.55	20,340.43	
Comfort Station		1,140.80		
Recreation Department		540.98		
Prior Year Tax Collections		1,274.50		
Miscellaneous Revenue		4,604.62		
Taxes Committed in Excess of Budgetary Requirements		3,382.01	3,382.01	
Added Taxes		4,112.06	4,112.06	
		<hr/>		
	\$581,485.14	\$672,369.65	\$92,842.06	\$1,957.55

BUDGET SUMMARY

Actual Revenues	\$672,369.65	
Estimated Revenues	581,485.14	
	<hr/>	
Revenue Surplus		\$90,884.51
Unexpended Balances of Appropriations		19,926.61
		<hr/>
Net Budget Surplus		\$110,811.12

CITY OF PORTSMOUTH, NEW HAMPSHIRE
Comparative Statement of Appropriations and Expenditures
Fiscal Year Ended December 31, 1956

Statement 4

	<i>Forwarded From 1955</i>	<i>Appropriations</i>	<i>Transfers</i>	<i>Receipts and Reimbursements</i>	<i>Total Amount Available</i>	<i>Total Expenditures & Encumbrances</i>	<i>Transfers To Surplus</i>	<i>Balances Forwarded To 1957</i>
<i>General Government:</i>								
Assessor's Department	\$	\$ 10,897.50	+	\$ 246.49	\$ 265.78	\$ 11,409.77		\$
Auditor's Department		14,409.70		.38	14,410.08	14,093.40	+	316.68
City Clerk's Department		12,017.60	-	594.65	102.19	11,428.87	+	96.27
City Manager's Department		14,675.00		11.24	14,686.24	14,105.66	+	580.58
Election & Registration		10,000.00	+	591.38	10,591.38	10,591.38		
Jury Drawing		100.00	+	3.27	103.27	103.27		
Collector's Department		8,872.60		.66	8,873.26	8,776.37	+	96.89
City Treasurer's Department		5,450.00		48.45	5,498.45	5,215.94	+	282.51
Public Buildings & Places		12,704.55	+	220.46	2.17	12,927.18		
City Council Salaries		1,800.00			1,800.00	1,790.00	+	10.00
<i>Protection of Persons & Property:</i>								
Fire Department		121,143.68		443.43	121,587.11	121,098.52	+	488.59
Fire Alarm		2,850.00		70.37	2,920.37	2,089.30	+	831.07
Police Department		183,927.59	-	13,082.75	6,632.97	175,123.84	+	2,353.97
Civil Defense		3,275.00		3,370.36	6,645.36	6,043.25	+	602.11
Dog Officer's Department		1,076.50	+	19.00	1,095.50	1,095.50		
<i>Health:</i>								
Health Department		9,878.50		.32	9,878.82	9,158.37	+	720.45
Comfort Station		19,454.25			19,454.25	17,255.37	+	2,198.88
<i>Highways & Bridges:</i>								
Town Road Aid				23,448.69	401,654.49	393,134.47		8,520.02
General Maintenance Expense ..		362,923.05	+	15,282.75		42,500.00	+	1,238.40
Dump & Refuse Removal								
Sewer Maintenance								
Cemeteries								
Street Lights		42,500.00						
<i>Recreation:</i>								
Parks		8,438.40	-	1,981.47	6,456.93	6,456.93		
Recreation		22,605.65	-	703.44	453.58	22,355.79	+	62.25
Community Center		16,901.00	+	703.44	76.15	17,680.59		
<i>Libraries</i>								
Libraries		19,755.85	+	307.40	12.81	20,076.06		
<i>Patriotic Purposes:</i>								
Memorial Day		550.00			550.00	416.89	+	133.11
<i>Public Welfare:</i>								
Old Age Assistance		37,500.00			37,500.00	34,761.64	+	2,738.36
City Welfare		50,842.00	-	6,894.34	3.54	43,951.20	+	416.07
<i>Public Service Enterprise:</i>								
Planning Board		6,010.00			6,010.00	5,287.79	+	722.21
Building Inspection Department ..		680.00			680.00	645.79	+	34.21
Inspection of Wires & Poles		716.50			.61	717.11	+	1.24
Weights & Measures		901.50			901.50	895.15	+	6.35

CITY OF PORTSMOUTH, NEW HAMPSHIRE
Comparative Statement of Appropriations and Expenditures
Fiscal Year Ended December 31, 1956

Statement 4

	Forwarded From 1955	Appropriations	Transfers	Receipts and Reimbursements	Total Amount Available	Total Expenditures & Encumbrances	Transfers To Surplus	Balances Forwarded To 1957	
<i>Unclassified:</i>									
Damages & Legal	\$	\$ 10,442.50	\$	\$.06	\$ 10,442.56	\$ 7,882.05	+	\$ 60.51	
Contingency Fund		8,500.00			8,500.00	7,199.09	+	1,300.91	
City Pension Fund		625.00			625.00	625.00			
Employees' Retirement		25,000.00		4,597.22	29,597.22	27,612.45	+	1,984.77	
Expenses — Trustees of Trust Funds		5,500.00		16.15	5,516.15	4,833.20	+	682.95	
Advertising & Regional Associations		1,000.00			1,000.00	1,000.00			
New Hampshire Profiles		375.00			375.00	375.00			
City Report		1,000.00			1,000.00	1,250.00	—	250.00	
Band Concerts		500.00			500.00	500.00			
Harbor Master		200.00			200.00		+	200.00	
Coats & Hats — School Patrol ...		500.00			500.00		+	500.00	
<i>Interest:</i>									
Temporary Loans		7,950.00	+	5,882.46	13,832.46	13,754.26	+	78.20	
Bonded Debt		67,728.50			67,728.50	67,728.50			
<i>Indebtedness:</i>									
Temporary Loans				1,000,000.00	1,000,000.00	1,000,000.00			
Bonded Debt		198,000.00			198,000.00	198,000.00			
<i>Overlay — Abatements — Current Year</i>		20,000.00			20,000.00	11,240.01		8,759.99	
<i>Payments to Other Governmental Divisions:</i>									
County Tax		134,203.37			134,203.37	134,203.37			
School Department		910,394.32	+	10,992.00*	922,111.21	920,672.14	+	1,439.07	
<i>New Construction & Permanent Improvements:</i>									
New Senior High School Land	\$	3,700.00	\$	\$	\$ 3,700.00	\$ 3,700.00	\$	\$	
Maplewood Acres Sewer		1,000.00			1,000.00			1,000.00	
New Equipment — Highway ..		21,215.00			21,215.00	20,954.08		260.92	
Land for Sanitary Fill		150.00			150.00	150.00			
Repairs to Highway Equipment		2,500.00			2,500.00	2,500.00			
Municipal Parking Lot		8,598.90			8,598.90	8,598.90			
Vaughn Street Parking Lot....		5,880.29			5,880.29	4,842.54		1,037.75	
Sherburne Avenue Project		2,449.05			2,449.05	1,040.64		1,408.41	
Public Library Annex		1,027.12			1,027.12	1,027.12			
Atlantic Heights Baseball Diamond		1,152.50			1,152.50	1,142.37		10.13	
Acquisition of Land			+	15,000.00*	15,000.00	10,000.00		5,000.00	
Purchasing of Fleet Street Parking Lot			+	26,000.00*	26,000.00	26,000.00			
	\$	47,672.86	\$2,394,775.11	\$51,992.00	\$1,040,282.02	\$3,534,721.99	\$3,486,298.16	\$19,926.61	\$28,497.22

* Supplemental Appropriations from Revenue Surplus.

Statement 5

CITY OF PORTSMOUTH, NEW HAMPSHIRE
Balance Sheet — Bonded Indebtedness
Fiscal Year Ended December 31, 1956

ASSETS		
Bonded Indebtedness — Municipal & School	\$3,464,000.00	
Bonded Indebtedness — Water Department	168,000.00	
		\$3,632,000.00
LIABILITIES		
<i>Municipal & School Bonds Outstanding:</i>		
Permanent Improvements — 1946	\$ 200,000.00	
Improvements & Equipment — 1947	8,000.00	
Permanent Improvements & Equipment — 1951 ..	128,000.00	
Parking Area — 1953	105,000.00	
Parking Area — 1954	100,000.00	
Permanent Improvements — 1954	80,000.00	
Senior High School — 1955	2,640,000.00	
Supplemental School Issue — 1956	203,000.00	
		\$3,464,000.00
<i>Water Bonds Outstanding:</i>		
Water Bonds — 1951	\$ 150,000.00	
Water Bonds — 1954	18,000.00	
		168,000.00
		\$3,632,000.00

Statement 7

CITY OF PORTSMOUTH, NEW HAMPSHIRE
Summary of Bond and Coupon Account
Fiscal Year Ended December 31, 1956

Balance — December 31, 1955	\$ 5,365.00	
<i>Receipts:</i>		
Transfers from General Fund	\$265,728.50	
Transfers from Water Department	13,892.50	
		279,621.00
		\$284,986.00
<i>Expenditures:</i>		
Bonds Retired	\$209,000.00	
Coupons Retired	70,673.00	
		279,673.00
Balance — December 31, 1956*		\$5,313.00
PROOF OF BALANCE		
Balance in the Merchants National Bank of Boston — Per Statement Dated December 11, 1956		\$5,313.00
* Atlantic Heights Bridge Bonds Outstanding	\$ 5,000.00	
Atlantic Heights Bridge Coupons Outstanding	250.00	
High School Building Coupons Outstanding	63.00	
		\$5,313.00

Statement 6

CITY OF PORTSMOUTH, NEW HAMPSHIRE
Municipal Bond Funds
Summary of Receipts, Expenditures and Proof of Balance
Fiscal Year Ended December 31, 1956

	<i>Balance December 31, 1955</i>	<i>Receipts</i>	<i>Expenditures</i>	<i>Balance December 31, 1956</i>
<i>Permanent Improvements:</i>				
1941	\$ 1,689.65	\$	\$	\$ 1,689.65
<i>Improvements & Equipment:</i>				
1950	18,439.50			18,439.50
Parking Area — 1954	2,725.15		295.02	2,430.13
<i>Permanent Improvements:</i>				
1954	8,797.29			8,797.29
<i>High School Bonds:</i>				
1955	2,632,761.48	*122,172.02	1,517,455.74	1,237,477.76
	\$2,664,413.07	\$122,172.02	\$1,517,750.76	\$1,268,834.33

PROOF OF BALANCE

Balance in the New Hampshire National Bank of Portsmouth — Per Statement Dated December 1, 1956	\$ 1,689.65
Balance in the Merchants National Bank of Boston — Per Statement Dated December 1, 1956	18,439.50
Balance in the Merchants National Bank of Boston — Per Statement Dated December 1, 1956	2,430.13
Balance in the Merchants National Bank of Boston — Per Statement Dated December 1, 1956	8,797.29
Balance in the Merchants National Bank Bank of Boston — Per Statement Dated December 31, 1956	\$440,752.03
Less: Outstanding Checks	196,221.77
	\$244,530.26
Add: Treasury Notes Purchased	992,947.50
	1,237,477.76
Reconciled Balance — December 31, 1956	\$1,268,834.33

* Proceeds of Supplementary Bonds Dated December 15, 1956 Received in 1957. Receipts Shown Represent Refunds and Federal Aid.

CITY OF PORTSMOUTH, NEW HAMPSHIRE
 Parking Meter Account
 Balance Sheet
 As of December 31, 1956

ASSETS	
Cash in Bank	\$17,413.26
Total Assets	<u>\$17,413.26</u>

LIABILITIES & UNAPPROPRIATED SURPLUS	
Accounts Payable	\$ 532.77
Unappropriated Surplus (Exhibit H-2)	16,880.49
Total Liabilities & Unappropriated Surplus	<u>\$17,413.26</u>

Statement 8

CITY OF PORTSMOUTH, NEW HAMPSHIRE
 Summary of General Fund Receipts, Expenditures
 and Proof of Balance
 Fiscal Year Ended December 31, 1956

Balance — December 31, 1955	\$ 98,787.79	
Receipts During Year	3,540,946.14	
	<u>\$3,639,733.93</u>	
Expenditures During Year	3,561,741.84	
Balance — December 31, 1956		<u>\$77,992.09</u>

PROOF OF BALANCE

Balance in the New Hampshire National Bank of Portsmouth—Per Statement Dated December 31, 1956.....	\$ 43,583.77	
Less: Outstanding Checks	13,050.66	
	<u>\$30,533.11</u>	
Balance in the Merchants National Bank of Boston — Per Statement Dated December 31, 1956	\$30,159.27	
Less: Outstanding Checks	385.03	
	<u>29,774.24</u>	
Balance in the First National Bank of Portsmouth — Per Statement Dated December 21, 1956.....	7,464.74	
Balance in the National Shawmut Bank of Boston — Per Statement Dated December 1, 1956	5,000.00	
Balance in the Second Bank — State Street Trust Company — Per Statement Dated December 3, 1956 ..	5,000.00	
	<u>\$ 77,772.09</u>	
Petty Cash	220.00	
Reconciled Balance — December 31, 1956		<u>\$77,992.09</u>

Statement 10

CITY OF PORTSMOUTH, NEW HAMPSHIRE
 Parking Meter Account
 Statement of Account
 Fiscal Year Ended December 31, 1956

Unappropriated Surplus — December 31, 1955.....	\$ 927.50
Receipts	48,695.75
	<u>49,623.25</u>

<i>Expenditures:</i>	
Salaries of Officers & Clerk	\$11,682.47
Retirement	500.84
Uniform Allowance	90.68
Meter Repairs	3,478.72
Parking Area Expense	3,619.96
Public Safety Signs	8,981.10
Insurance	133.55
Radio Equipped Jeep	1,527.77
Traffic Light — Islington & Bartlett Streets	2,477.00
Payments to Parkit-Lockett Company for Meters	916.64
	<u>33,408.73</u>

Unappropriated Surplus Prior to Adjustment	\$16,214.52
Add: Adjustment in Accounts Payable for Prior Years	665.97
Unappropriated Surplus — December 31, 1956	<u>\$16,880.49</u>

CITY OF PORTSMOUTH, NEW HAMPSHIRE
 Summary of Parking Meter Receipts, Expenditures
 and Proof of Balance
 For Period March 27 to December 31, 1956

Balance — March 27, 1956	\$ 3,452.44
Receipts During Period	41,795.69
	\$45,248.13
Expenditures During Period	27,834.87
	\$17,413.26
Balance — December 31, 1956	\$17,413.26

PROOF OF BALANCE

Balance in the New Hampshire National Bank —	
Per Statement of December 28, 1956	17,491.87
Less: Outstanding Checks	78.61
	\$17,413.26
Reconciled Balance — December 31, 1956	\$17,413.26

CITY OF PORTSMOUTH, NEW HAMPSHIRE
 Summary of Trust Fund Principal and Income
 Fiscal Year Ended December 31, 1956

<i>Funds</i>	<i>PRINCIPAL</i>		<i>INCOME</i>			<i>Balance December 31, 1956</i>	<i>Balance of Principal & Income December 31, 1956</i>
	<i>Balance December 31, 1955</i>	<i>Balance December 31, 1956</i>	<i>Balance December 31, 1955</i>	<i>Earned During Year</i>	<i>Expended During Year</i>		
Schools	\$ 15,800.00	\$ 15,800.00	\$ 3,780.68	\$ 551.94	\$	\$ 4,332.62	\$ 20,132.62
Worthy Poor	14,403.23	14,403.23	453.43	468.36	500.00	421.79	14,825.02
Colored Population	500.00	500.00	1.36	13.96	15.00	.32	500.32
Haven Park	6,523.56	6,523.56	1,764.74	240.47		2,005.21	8,528.77
South Playground	15.00	15.00	42.74	1.73		44.47	59.47
Scholarship	5,000.00	5,000.00	499.54	163.58	200.00	463.12	5,463.12
Memorial Fountain	500.00	500.00	224.05	19.36		243.41	743.41
Public Library	38,508.88	38,508.88	499.27	1,044.24	1,000.21	543.30	39,052.18
Prescott Park	1,121,818.32	* 1,121,818.32	35,988.46	41,628.43	11,236.60	66,380.29	1,188,198.61
Gray Scholarship	42,896.96	42,896.96	1,116.22	2,364.85	2,089.50	1,391.57	44,288.53
William J. Cater Playground	5,000.00	5,000.00	50.00	152.63		202.63	5,202.63
	\$1,250,965.95	\$1,250,965.95	\$44,420.49	\$46,649.55	\$15,041.31	\$76,028.73	\$1,326,994.68

* Includes Reserve for Amortization of \$769.81.

CITY OF PORTSMOUTH, NEW HAMPSHIRE
Summary of Trust Fund Investments
Fiscal Year Ended December 31, 1956

Statement 13

			<i>Number of Shares</i>	
<i>Checking Accounts:</i>				
New Hampshire National Bank	\$ 4,432.29			
First National Bank	46,078.04			
	\$ 50,510.33			
<i>Savings Banks:</i>				
Charlestown Five Cent Savings Bank	\$ 10,000.00			
Exeter Banking Company	10,000.00			
Franklin Savings Bank	10,000.00			
Lynn Institution for Savings	10,000.00			
Mechanics Savings Bank	10,000.00			
Merchants Savings Bank	10,000.00			
Newburyport Five Cent Savings Bank	10,000.00			
New Hampshire Savings Bank	10,000.00			
Peterborough Savings Bank	10,000.00			
Piscataqua Savings Bank	25,000.00			
Portsmouth Co-Operative Bank	20,000.00			
Portsmouth Savings Bank	78,858.04			
Portsmouth Trust Company	25,893.32			
Provident Institution for Savings	10,000.00			
	249,751.36			
<i>Bonds — Government:</i>				
U. S. Treasury Bonds — 2½%	\$200,981.68			
U. S. Savings Bonds — Series G	27,000.00			
U. S. Savings Bonds — Series K	218,000.00			
	445,981.68			
<i>Bonds — Other:</i>				
American Telephone & Telegraph — 2⅞%	\$ 19,860.00			
American Telephone & Telegraph — 3⅞%	20,891.36			
Boston & Maine Railroad — 4%	1,000.00			
Boston & Maine Railroad — 4½%	1,000.00			
Canadian National Railroad — 4½%	1,000.00			
Consolidated Edison — 3⅞%	21,070.00			
Detroit Edison Company — 3%	2,401.64			
Great Northern Railroad — 4½%	11,462.60			
Ohio Power — 3%	20,298.95			
Pacific Gas & Electric — 3⅞%	20,176.16			
Potomac Electric Power — 3%	10,045.80			
Southern California Gas — 3½%	20,979.40			
West Texas Utilities — 3⅞%	20,321.30			
	170,507.21			
<i>Stocks — Bank:</i>				
Chase Manhattan Bank	542	\$ 20,092.32		
First National Bank of Boston ...	500	26,076.21		
Guarantee Trust Company	600	32,157.00		
Manufacturers Trust Company ...	600	20,132.55		
The First National City Bank	550	27,462.00		
United States Trust Company	1,000	57,429.76		
		\$183,349.84		
<i>Stocks — Insurance:</i>				
New Hampshire Fire Insurance Company	100	\$ 4,404.00		
Peerless Casualty Company	110	2,352.00		
		6,756.00		
<i>Stock — Other:</i>				
American Steel Foundry	210	\$ 6,141.38		
American Telephone & Telegraph	375	61,316.22		
Beech-nut Life Savers, Inc.	240	6,469.35		
Boston Edison Company	200	10,340.26		
Commonwealth Edison Company .	320	11,332.95		
Corporation of New York	500	500.00		
Detroit Edison Company	500	16,328.50		
Hershey Chocolate Company	200	7,876.07		
Libbey-Owens — Ford	100	4,742.50		
Massachusetts Life Insurance Company	1,414.35	42,896.96		
Niagara Mohawk Power Company	400	12,062.00		
Northern Illinois Gas Company ..	90	1,496.37		
Otis Elevator	200	4,930.94		
Pennsylvania Railroad	59	2,950.00		
Texas Gulf Sulphur	300	9,001.95		
United Shoe Machinery	200	8,370.29		
Wisconsin Electric Power	440	13,382.52		
		220,138.26		
Total Investments		\$1,326,994.68		

CITY OF PORTSMOUTH, NEW HAMPSHIRE
Water Department
Statement of Profit and Loss
Fiscal Year Ended December 31, 1956

Statement 15

Revenues:

Commercial Sales	\$145,693.94	
Industrial Sales	90,976.80	
Other Municipal Sales	5,273.84	
		\$241,944.58

Less: Expenses:

Operating Expenses:

Operation:

Superintendence	\$ 7,025.18	
Pumping Station Labor	44,948.30	
Pumping Station — Supplies & Expenses	4,522.61	
Purification System — Supplies & Expenses	658.59	
Fuel	2,789.35	
Power Purchased	26,030.15	
		\$ 85,974.18

Maintenance:

Repairs to Water Supply Structures & Equipment	\$ 1,961.87	
Repairs to Pumping Station Structures & Equipment	386.13	
		2,348.00

Distribution Expenses:

Operation:

Superintendence	\$ 10,026.68	
Meter Department — Labor	1.80	
Meter Department — Supplies & Expenses	1.71	
Other Distribution — Supplies & Expenses	248.26	
		10,278.45

Maintenance:

Repairs to Mains	\$ 2,904.83	
Repairs to Services	30,140.82	
Repairs to Hydrants	706.51	
Repairs to Meters	7,186.05	
		40,938.21

Commercial:

Commercial Office Salaries	\$ 12,735.09	
Meter Reading Salaries	6,725.83	
		\$ 19,460.92

General:

General Office Rent & Expenses	\$ 2,146.15	
General Expense	175.54	
		2,321.69

Miscellaneous Undistributed:

Insurance	\$ 2,015.67	
Stationery & Printing	652.17	
Stores Department & Shop Expense .	5,774.54	
Garage Expense	617.92	
		9,060.30

Depreciation	30,004.32	
--------------------	-----------	--

Total Operating & Distribution Expenses	\$200,386.07
---	--------------

Net Operating Income	\$ 41,558.51
----------------------------	--------------

Add: Other Income:

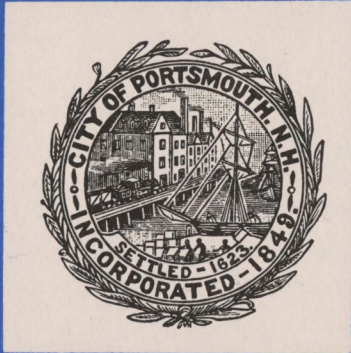
Merchandise Sales & Job Work	\$ 17,266.02	
Other Non-Operating Revenue	2,293.18	
		19,559.20

Gross Income	\$ 61,117.71
--------------------	--------------

Less: Deductions from Income:

Interest	\$ 2,892.50	
Employees' Retirement System	8,952.92	
		11,845.42

Net Profit	\$ 49,272.29
------------------	--------------



Statement 16

CITY OF PORTSMOUTH, NEW HAMPSHIRE
 Water Department
 Summary of Receipts, Expenditures and Proof of Balance
 Fiscal Year Ended December 31, 1956

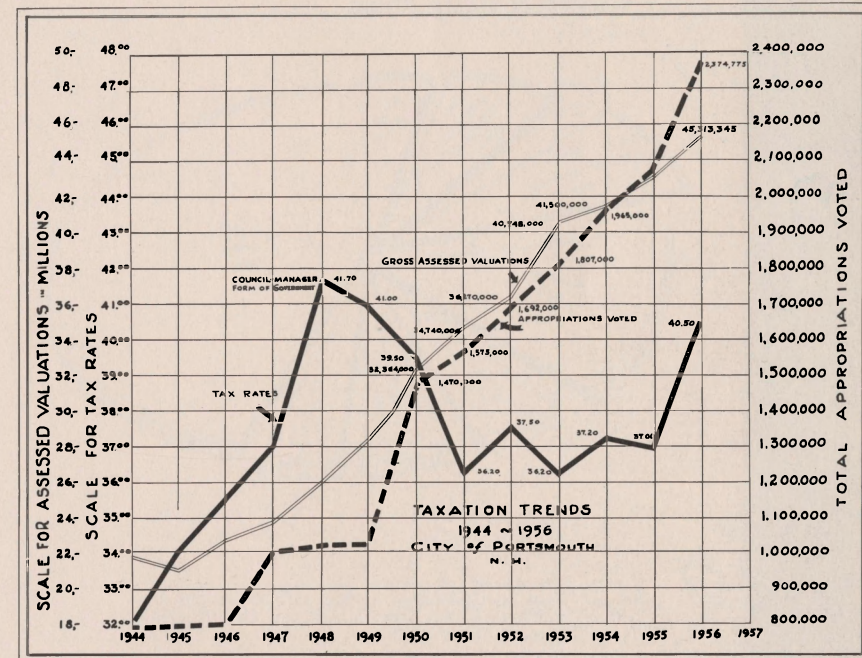
Balance — January 1, 1956	\$ 39,286.04	
Receipts During Year	268,238.75	
		<u>\$307,524.79</u>
Expenditures During Year	271,421.88	
		<u>271,421.88</u>
Balance — December 31, 1956		<u>\$ 36,102.91</u>

PROOF OF BALANCE

Balance in the First National Bank — Per		
Statement Dated December 31, 1956	\$ 37,691.85	
Less: Outstanding Checks	2,059.03	
		<u>\$ 35,632.82</u>
Add: Deposit of January 2, 1957	470.08	
		<u>\$ 36,102.90</u>
Cash on Hand — December 31, 195601	
		<u>\$ 36,102.91</u>
Reconciled Balance — December 31, 1956		<u>\$ 36,102.91</u>

ASSESSED VALUATION OF VARIOUS
TYPES OF PROPERTY

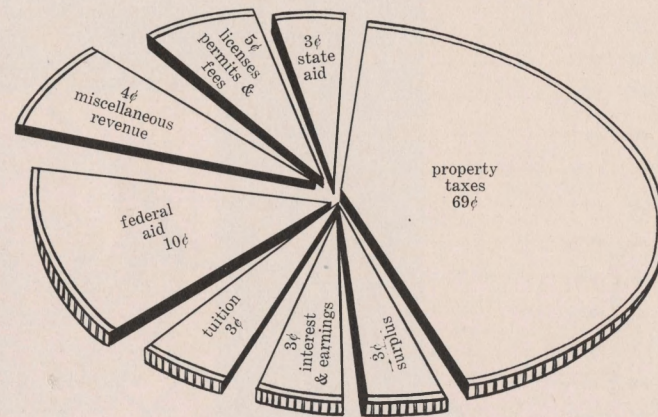
LAND AND BUILDINGS	\$25,407,255.00
Electric Plants	16,745,000.00
Horses	400.00
Cows	9,050.00
Other Neat Stock	100.00
Hogs	600.00
House Trailers Used as Dwellings	46,750.00
Boats and Launches	31,900.00
Compressors and Lifts	10,500.00
Gasoline Pumps and Tanks	13,255.00
Pheasants	500.00
Machinery	455,400.00
Road Building Equipment	219,300.00
Stock in Trade	2,373,235.00
<hr/>	
Gross Valuation	\$45,313,345.00
Less Veteran's Exemptions	962,600.00
<hr/>	
Net Valuation	\$44,350,745.00



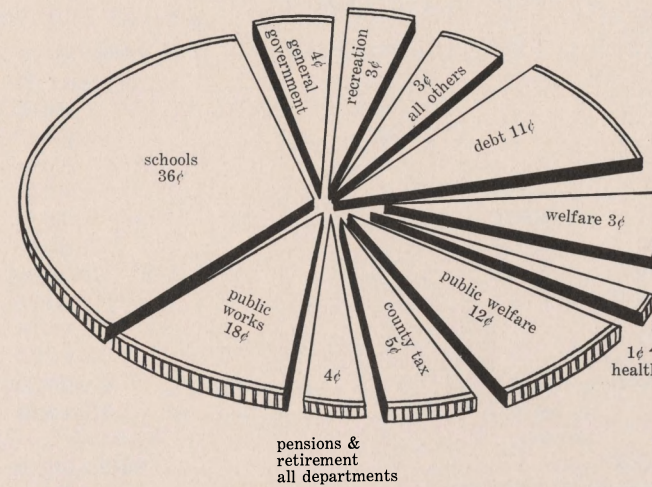
PORTSMOUTH BUDGET DOLLAR

1956

WHERE IT CAME FROM . . .

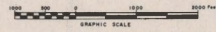


WHERE IT WENT . . .

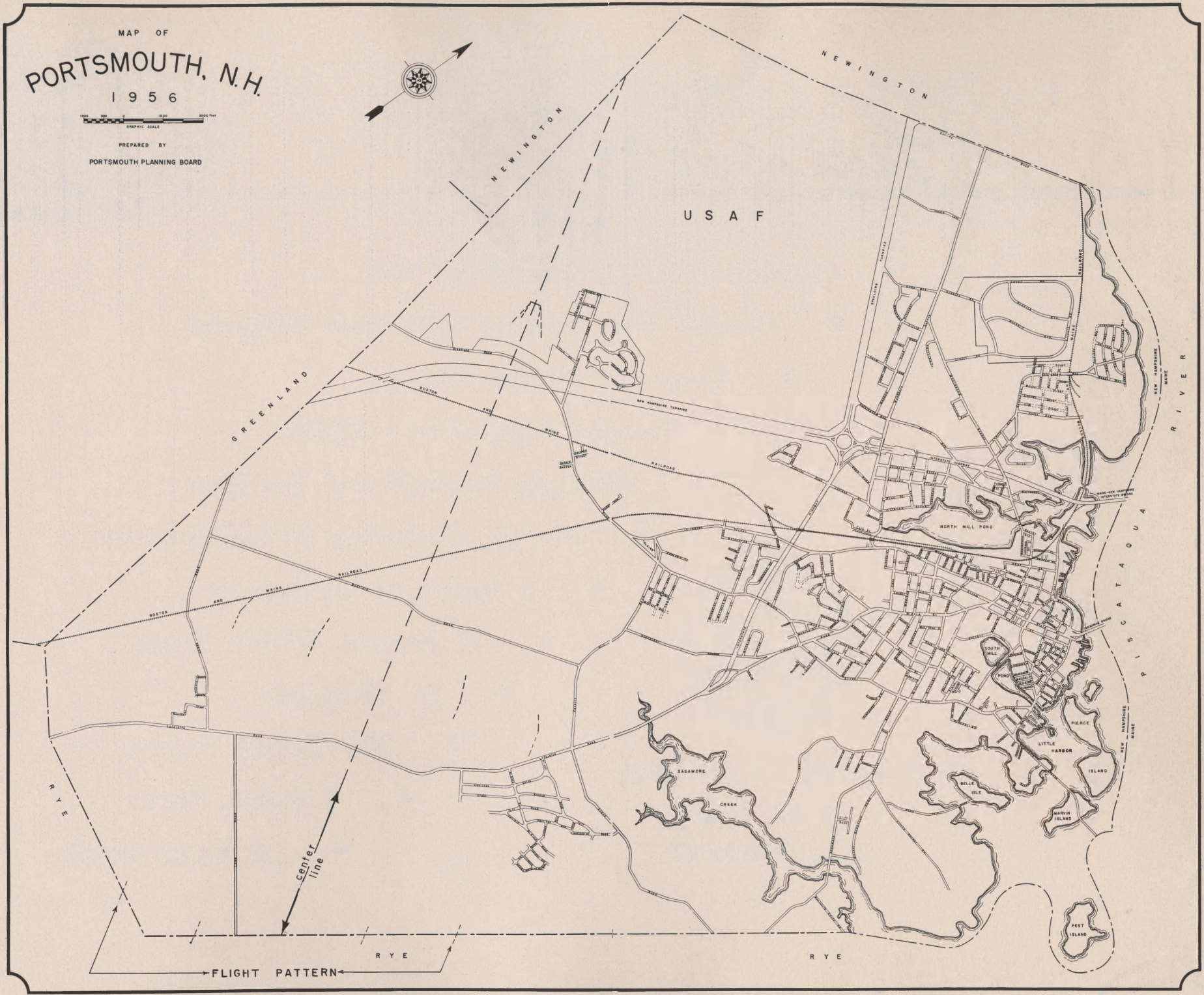
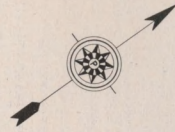


¹Includes general fund and school.
 Source: State Tax Commission, Annual Audit Report, City of
 Portsmouth, 1956, Concord, N. H., and City of Portsmouth,
 Receipts Ledger, 1956.

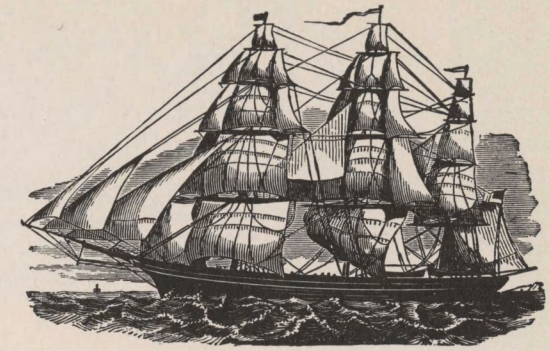
MAP OF
PORTSMOUTH, N.H.
1956



PREPARED BY
PORTSMOUTH PLANNING BOARD



Facts about Your City



- **Settled 1623 — Incorporated 1849**
- **Unique and Existing Historical Patterns**
- **Home of Clipper Ships**
- **Present Population — 20,500**
- **Multiple Recreational Facilities**
- **20 Manufacturing Establishments**
- **6 Financial Institutions**
- **13 Islands Within Areas**
- **21 Churches**
- **300 Retail Stores**
- **4 Public Parks**
- **8 Playgrounds**



**COUNCIL – MANAGER
MUNICIPAL
GOVERNMENT**



DIRECTORY OF CITY OFFICES

FIRE — GE 6 - 1127

Administration, General	GE 6-4125
Ambulance	6-1127
Assessments	6-1117
Auto Permits	6-1124
Beano Licenses	6-2145
Bicycle Licenses	6-0013
Bills and Accounts	6-9222
Birth Certificates	6-0013
Building Permits	6-5867
Cemetery	6-0176
City Council	6-4125
Civil Defense	6-6666
Dance Licenses	6-0013
Death Certificates	6-0013
Dog Licenses	6-0013
Elections	6-0013
Engineering, City	6-0176
Garbage Collection	6-0176
Health, Public	6-6015
Housing, Low-rent, Public	6-3217
Library	6-5724
Marriage Certificates	6-0013
Milk Licenses and Inspections	6-6015
Mortgages and Conditional Sales	6-0013
Nursing, Public Health	6-0815
Oil Burner, Inspection	6-1127

POLICE — GE 6 - 2145

Ordinances and Resolutions	GE 6-0013
Parks	6-0176
Payments by the City	6-9222
Personnel, City	6-4125
Planning, City	6-5867
Plumbing Permits and Licenses	6-0200
Purchasing	6-4125
Recreation	6-4256
Refuse Collection	6-0176
Red Cross	6-2600
Sanitation	6-6015
Schools	6-2434
School Nurse	6-2601
Selective Service Registration	6-0013
Sewers	6-0176
Snow Plowing and Sanding	6-0176
Street Lights Burned Out	6-4125
Street Maintenance	6-0176
Tax Collection	6-1124
Taxicab Permits	6-0013
Treasury Information	6-9221
Urban Renewal and Redevelopment	6-3217
Water	6-0176
Water Bills	6-2436
Welfare	6-1925
Weights and Measures	6-3902
Zoning	6-5867

