

University of New Hampshire

## University of New Hampshire Scholars' Repository

---

Manchester Research Group

UNH Community Projects

---

1-1-2012

### West Granite neighborhood comparisons #1

Neighborworks Greater Manchester

Follow this and additional works at: <https://scholars.unh.edu/mrg>

---

#### Recommended Citation

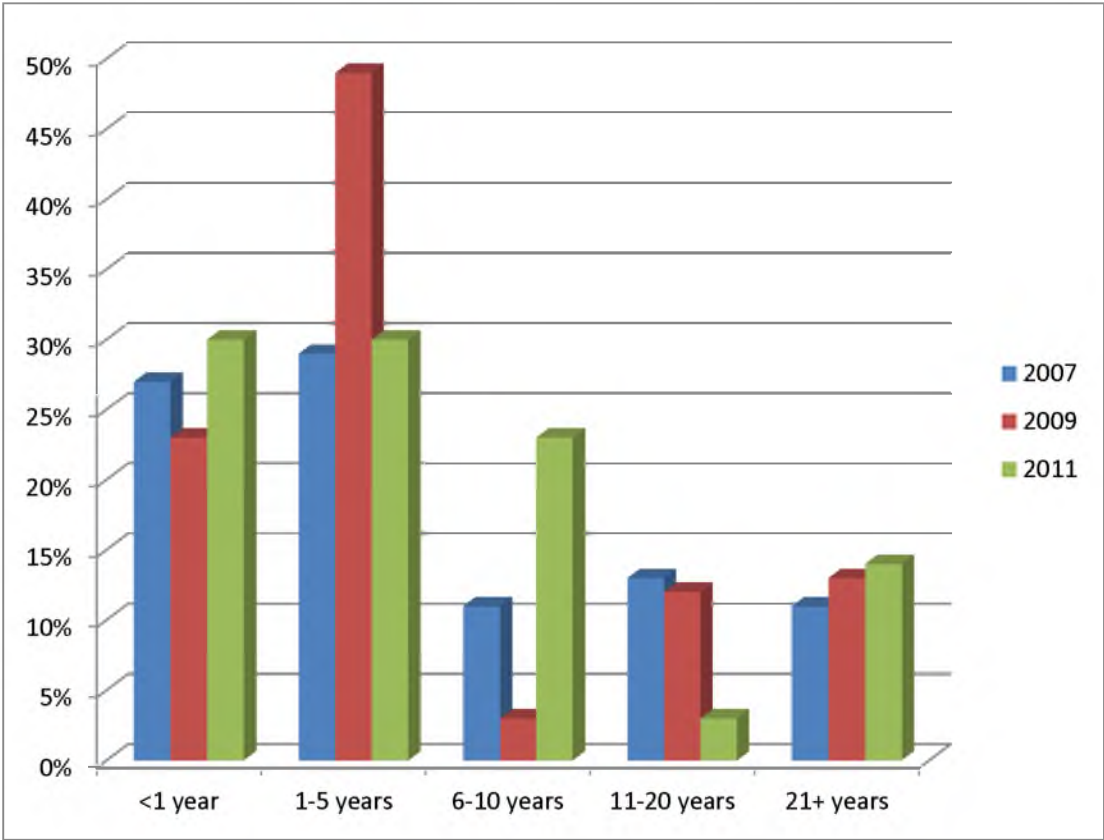
Neighborworks Greater Manchester, "West Granite neighborhood comparisons #1" (2012). *Manchester Research Group*. 75.

<https://scholars.unh.edu/mrg/75>

This Text is brought to you for free and open access by the UNH Community Projects at University of New Hampshire Scholars' Repository. It has been accepted for inclusion in Manchester Research Group by an authorized administrator of University of New Hampshire Scholars' Repository. For more information, please contact [Scholarly.Communication@unh.edu](mailto:Scholarly.Communication@unh.edu).

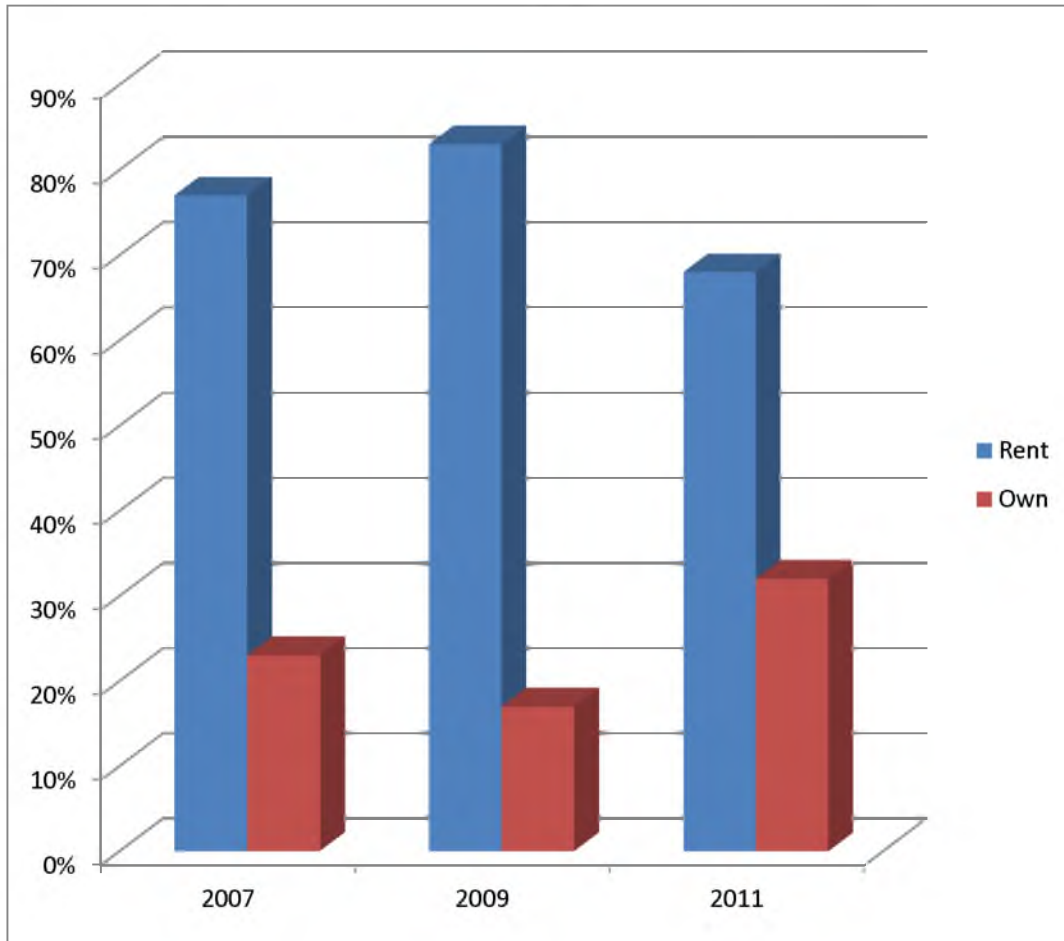
	2007	2009	2011
<1 year	27%	23%	30%
1-5 years	29%	49%	30%
6-10 years	11%	3%	23%
11-20 years	13%	12%	3%
21+ years	11%	13%	14%

## How long have you lived in this neighborhood?



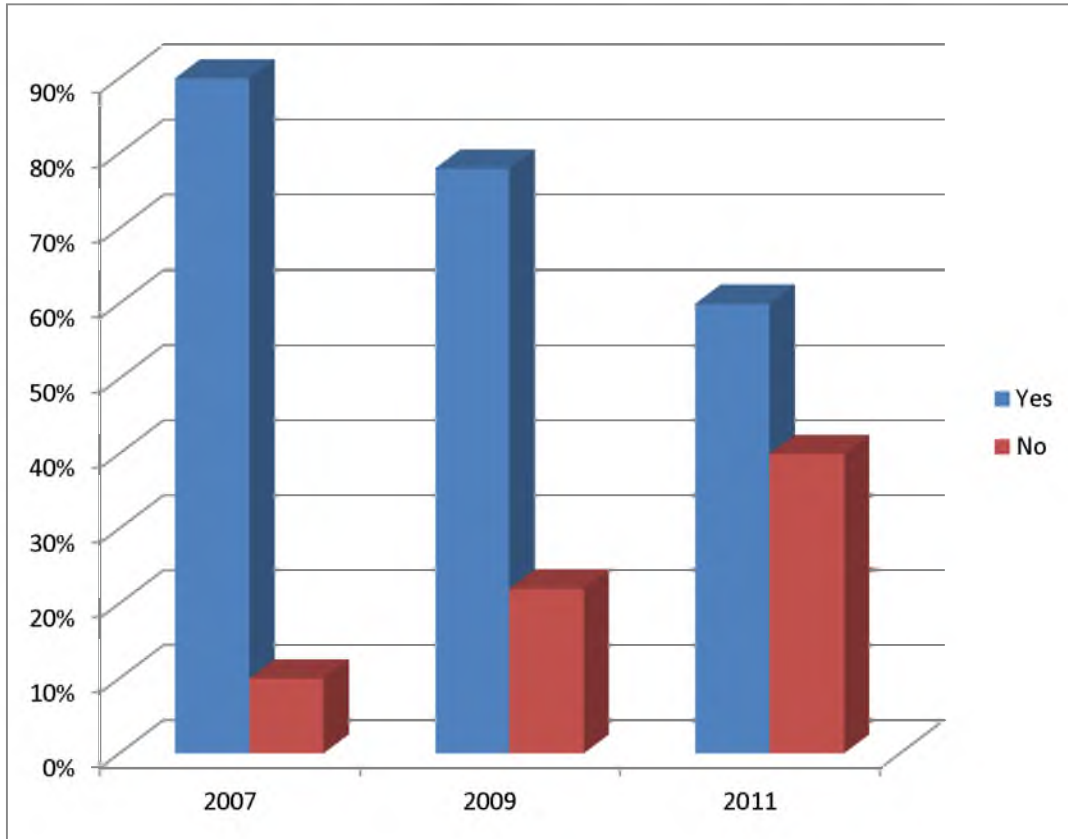
	2007	2009	2011
Rent	77%	83%	68%
Own	23%	17%	32%

## Do you rent or own your home?



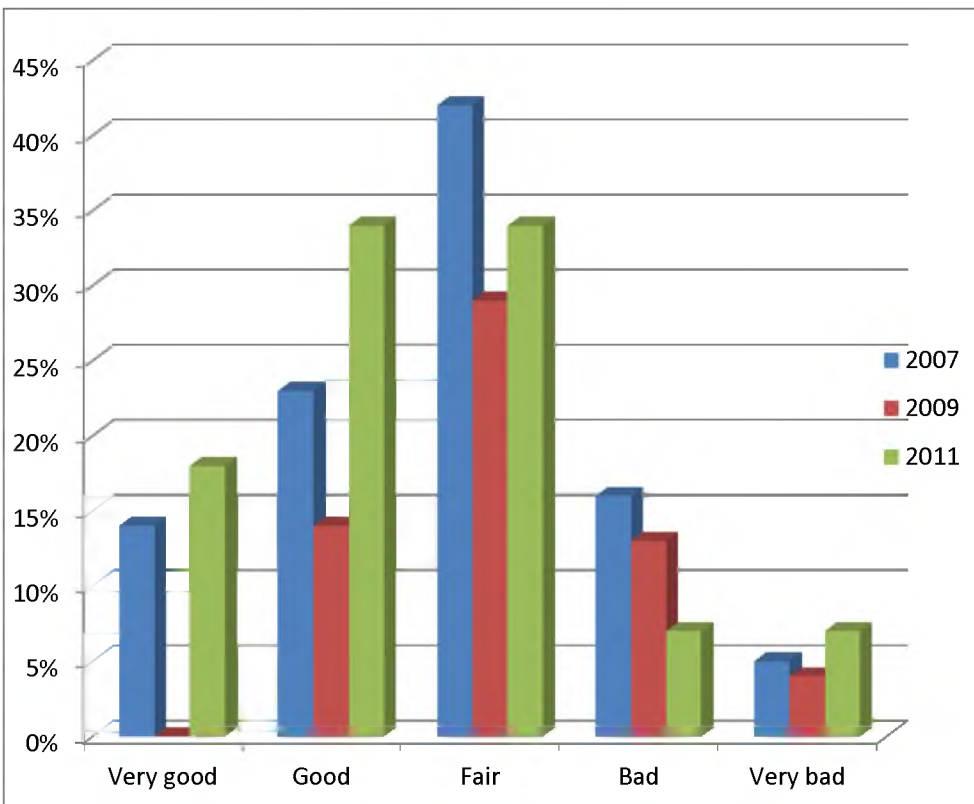
	2007	2009	2011
Yes	90%	78%	60%
No	10%	22%	40%

If you rent, would you like to own your home?



	2007	2009	2011
Very good	14%	0%	18%
Good	23%	14%	34%
Fair	42%	29%	34%
Bad	16%	13%	7%
Very bad	5%	4%	7%

# How would you rate your neighborhood?



# What do you like about your neighborhood? (most common responses)

2007

- People/neighbors/friends
- Quiet
- Convenient to downtown, highway, etc.
- "Nothing"

2011

- Convenient to downtown, highway, etc.)
- Quiet
- "Nothing"
- Neighbors
- Piscataquog Trail

2009

- Convenient to downtown, highway, etc.
- "Nothing"
- People/neighbors/friends
- Quiet
- Grace Haven Baptist Church/community center
- Cheap rent

What are your neighborhood's challenges?  
(most common responses)

2007

- Kids/teens/no parental supervision
- Traffic/speeders/parking
- Drugs
- Trash
- No place for kids to play
- Convenient to downtown, highway, etc.
- Landlord/building related

2009

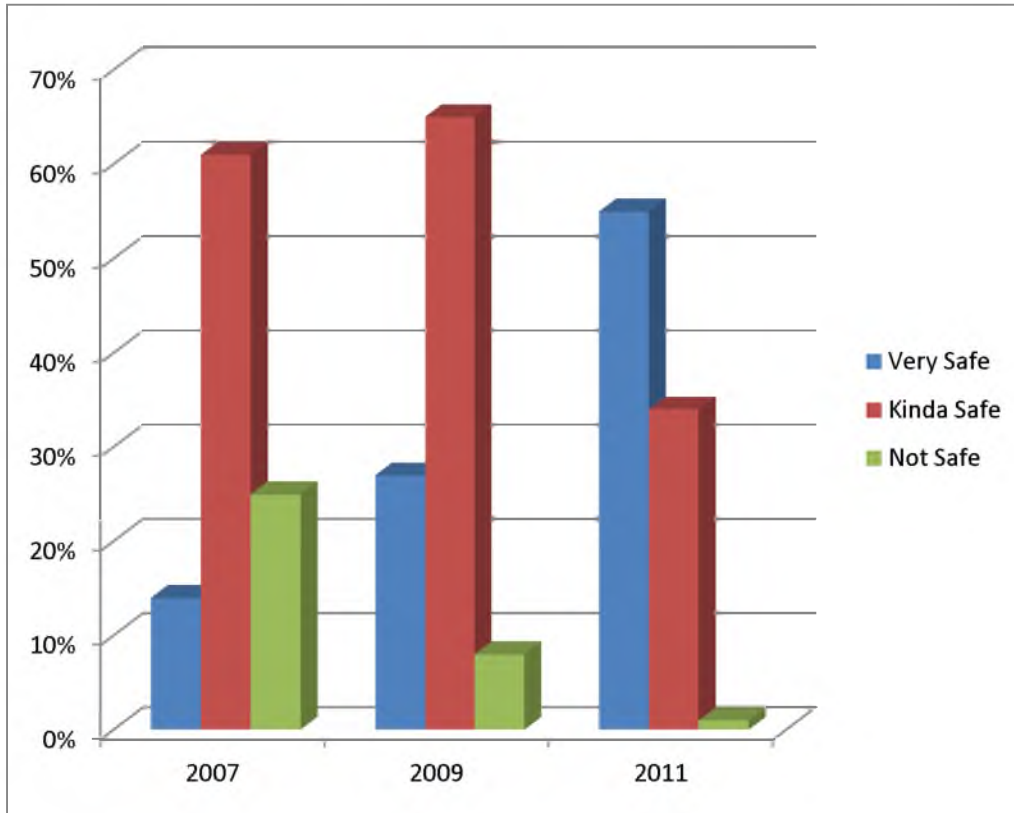
- Kids/teens/no parental supervision
- Drugs
- Traffic/speeders
- Noise
- Landlord/building related
- Trash
- Vandalism
- Gangs
- Transient tenants

2011

- Nothing for kids to do
- Noise
- Unruly children
- Drugs
- Sidewalks
- Unsightly

	2007	2009	2011
Very Safe	14%	27%	55%
Kinda Safe	61%	65%	34%
Not Safe	25%	8%	1%

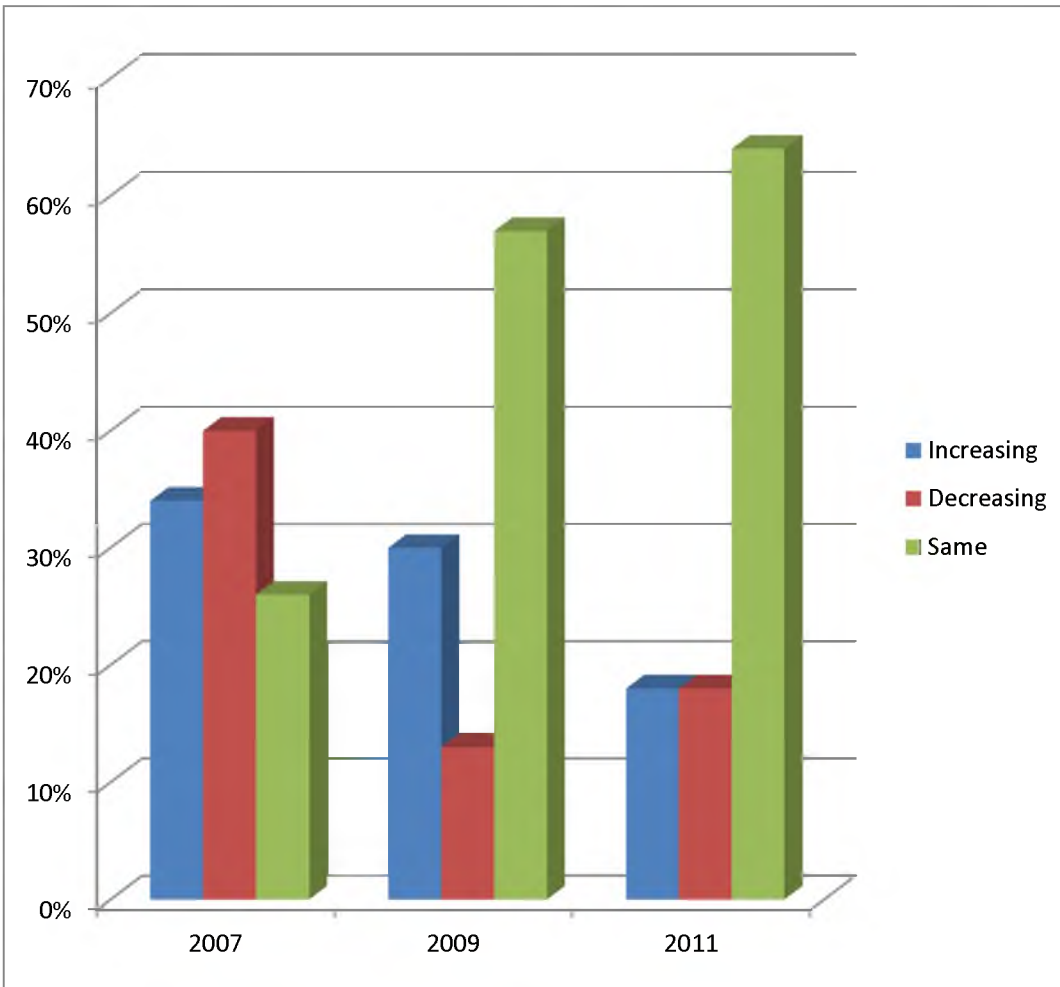
## How safe do you feel in your neighborhood?





	2007	2009	2011
Increasing	34%	30%	18%
Decreasing	40%	13%	18%
Same	26%	57%	64%

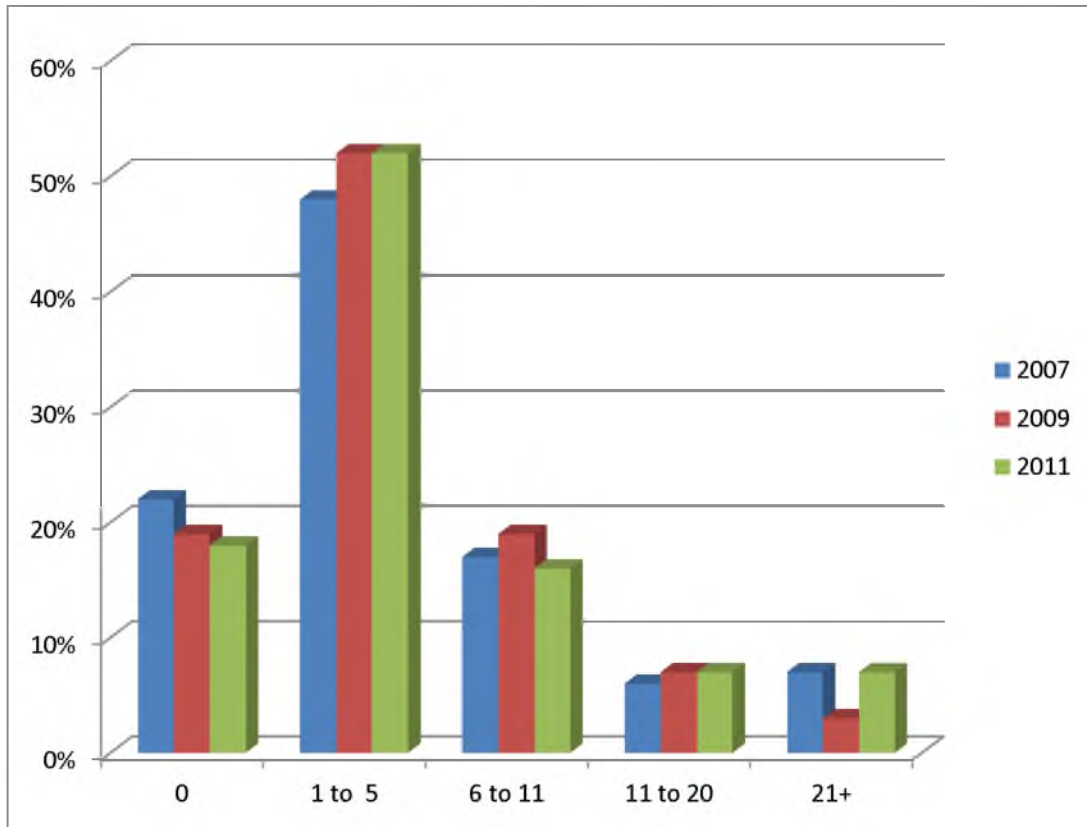
Do you see crime increasing, decreasing or staying the same?





	2007	2009	2011
0	22%	19%	18%
1 to 5	48%	52%	52%
6 to 11	17%	19%	16%
11 to 20	6%	7%	7%
21+	7%	3%	7%

How many neighborhood families do you know by name?



	2007	2009	2011
Yes	54%	60%	55%
No	46%	40%	45%

Are you a registered voter?

