



The County of
GRAFTON

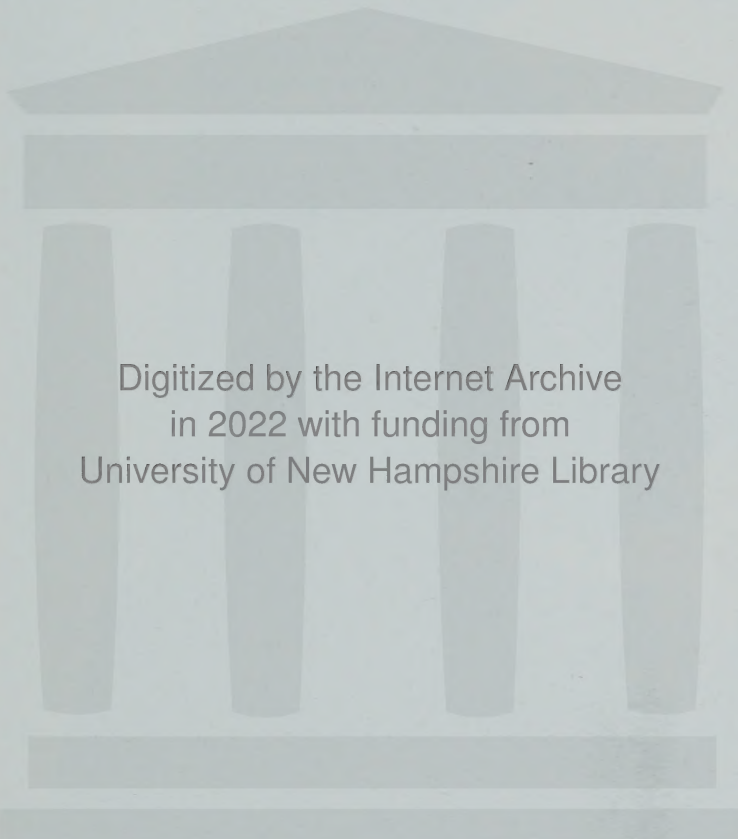
NEW HAMPSHIRE

YEAR ENDED DECEMBER 31

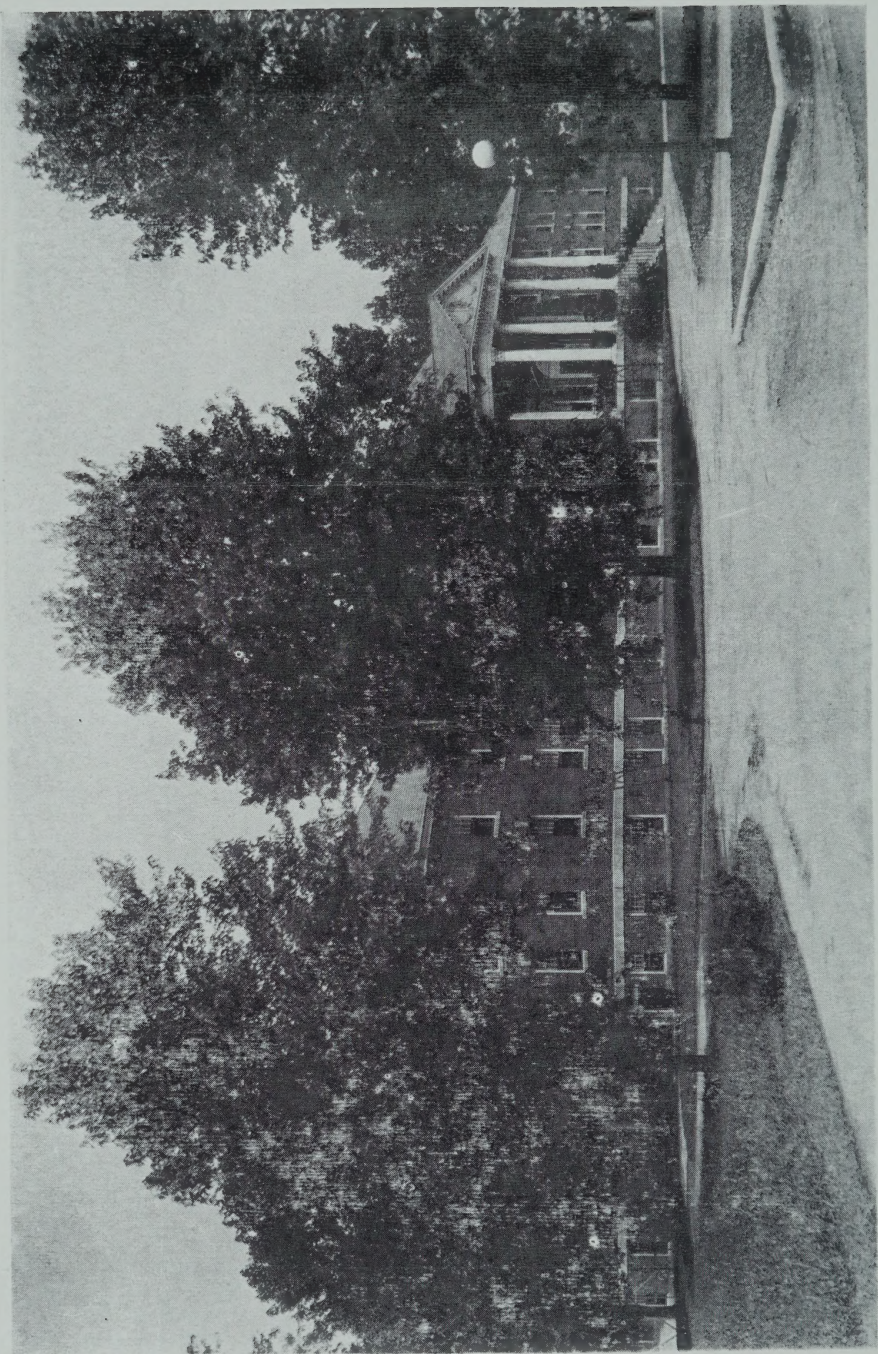
1952

Annual

R E P O R T



Digitized by the Internet Archive
in 2022 with funding from
University of New Hampshire Library



Grafton County Farm Home

Annual Report of the Commissioners

OF THE

COUNTY OF GRAFTON

Together with the Reports of the
Treasurer, Auditors, Superintendent, Jailer,
Clerk of Court, Solicitor, Sheriff,
Chaplain, Physician and
Extension Service

FOR THE YEAR ENDED DECEMBER 31, 1952

The Ammonoosuc Press
Lisbon, N. H.
1953

I N D E X

Grafton County Officers	4
Grafton County Delegation	5
Budget for 1952	6
Report of Commissioners	9
Text of Audit Report of Municipal Accounting Division, State Tax Commission	11
Financial Report	
Balance Sheet	16
Schedule of County Property	17
Receipts and Payments	18
Detail of Receipts	22
Detail of Payments	24
Comparative Statement of Appropriations and Expenditures	35
Treasurer's Report	37
Comparative Debt Statement	38
Detailed Account of Welfare In- vestigators' Expense	39
Detailed Account of County Of- ficers' Expense	40
Auditors' Report	41
Superintendent's Report	43
Clerk of Court's Report	58
County Solicitor's Report	62
Sheriff's Report	65
Chaplain's Report	73
Physician's Report	74
Statistical Reports	75
Summary of Farm Accounts	77
Grafton County Extension Service	79

GRAFTON COUNTY OFFICERS

Commissioners

Kenneth G. Bell	Plymouth
Joseph L. Graham	Canaan
George F. Clement	Landaff

Treasurer

Bertram W. Pulsifer, Commissioner	Campton
-----------------------------------	---------

Sheriff

William E. Green	Orford
------------------	--------

Jailer

Erville H. Aldrich	North Haverhill
--------------------	-----------------

Clerk of Court

Unwar J. Samaha	Woodsville
-----------------	------------

Judge of Probate

Henry A. Dodge	Littleton
----------------	-----------

Register of Probate

Anna D. Proctor	Woodsville
-----------------	------------

Register of Deeds

Fred J. Shores	Woodsville
----------------	------------

County Almshouse and House of Correction

Erville H. Aldrich	North Haverhill
--------------------	-----------------

Chaplain

H. Benjamin Simms	North Haverhill
-------------------	-----------------

Physicians

E. C. Campbell, M.D., Medical Director	Woodsville
L. E. McKinlay, M.D., Asst. Physician	No. Haverhill
C. D. Eastman, M.D., Asst. Physician	Woodsville

Auditors

Horace B. Knight	Woodsville
George H. Richardson	Littleton

GRAFTON COUNTY DELEGATION — 1951 - 1952

Ashland	Hiram F. Gingras
Bath	Edwin P. Chamberlin
Bethlehem	James Elmer Harrington
Bristol	Bowdoin Plumer
Campton	Philip S. Willey
Canaan	Frank B. Clarke
Ellsworth	Chester A. Avery
Enfield	Thomas J. Lorden
Franconia	J. Everett Grass
Grafton	Elsie F. Williams
Hanover	Edith P. Atkins, Robert J. Fuller Charles A. Holden
Haverhill	Theodore Chamberlin Norman A. McMeekin, Finlay P. Sleeper
Holderness	John M. Crafts
Lebanon	Arthur F. Adams, Jerold M. Ashley, Forrest B. Cole, Lane Dwinell, Fred A. Jones, Harold G. Randall Charles Griffin
Lincoln	
Lisbon	*James E. Collins, Arthur L. Hamilton
Littleton	Van H. Gardner, Fred Kelley Eda C. Martin
Lyme	Henry S. Pushee
Monroe	Howard W. Burrill
Orford	Harlan Skinner
Piermont	Earl V. Howard
Plymouth	Kenneth G. Bell, Elmer E. Huckins
Rumney	Jesse A. Barney
Thornton	Ida M. Horner
Warren	Fayne E. Anderson
Waterville	Sarah J. Woodward
Woodstock	Charles A. Gilbert
Wentworth	Ida T. Sawyer
	*Deceased

1952 BUDGET OF

Sources of Revenue	Est. Rev. Year 1952
Current Revenue:	
Income from Institutions:	
(a) County Farm	\$35,000.00
(b) Court Houses	20.00
Superior Court	-----
Reimbursement of expenditures for support of poor, etc.	3,000.00
	<hr/>
Total Revenue from All Sources Except Taxation	\$38,020.00

GRAFTON COUNTY

Purposes of Expenditures	Estimated Year 1952
Current Maintenance Expenses:	
General Government:	
Salaries of	
(a) Commissioners	\$3,000.00
(b) Treasurer	300.00
(c) Auditors	200.00
(d) Solicitor	1,800.00
(e) Medical Referee	1,250.00
(f) Sheriff	1,250.00
Expenses of	
(a) Commissioners and Treas.	2,500.00
(b) Register of Deeds	2,000.00
(c) Register of Probate	2,300.00
(d) Solicitor (Clerk Hire)	750.00
Care and Supplies for	
Court Houses	5,000.00
Permanent Improvements	
Court Houses	5,000.00
Superior Court:	
Jury Payrolls	7,000.00
"State vs.—" Payrolls	2,500.00
Counsel Fees	1,000.00
Stenographer, etc.	4,000.00
Clerk of Superior Court	10,500.00
Sheriff and Deputies	7,500.00
Office Equipment (Sheriff's)	-----
Public Welfare	
County Farm	115,000.00
Support of Poor off Farm	18,000.00
Old Age Assistance	11,000.00
Board and Care of Children	25,000.00

(Continued on next page)

1952 Budget, Expenditures (continued)

Soldiers' Aid	5,000.00
Welfare Administration	8,500.00
Interest:	
On Temporary Loans	2,000.00
Outlay, New Construction and Equipment:	
County Farm Freezer Locker	-----
Indebtedness:	
Deficit of Previous Year	-----
All Other Payments:	
Miscellaneous	1,500.00
County Extension Service	15,245.00
Employees' Retirement	1,200.00

Total Expenditures	\$260,295.00

REPORT OF COUNTY COMMISSIONERS

To the Citizens of Grafton County:

In accordance with the Public Laws of the State of New Hampshire, the Commissioners of Grafton County herewith present the annual report of the Commissioners, Treasurer, Auditors, Superintendent of the County Farm, Jailer, Clerk of Court, Solicitor, Sheriff, Chaplain, Physician and County Extension Service.

At the end of the year 1952 the County is in excellent financial condition, having a cash balance of \$50,281.49 with no liabilities. This is due largely to the increased revenue from the Farm, which this year reached an all time high.

Necessary repairs have been made at the Court Houses and the County Farm and the equipment and supplies have been kept at a good standard.

The County has a splendid dairy herd that has brought in a substantial part of the County Farm income. Cattle were shown at several fairs and took numerous prizes.

The overdraft under salaries of County Officers is due to an increase in the salaries of the Commissioners and increased expenses of the Medical Referees. Under Board and Care of Children, an overdraft of \$2,706.55 is due to the increase in the number of children, higher cost of clothing and some large medical bills. This appropriation should be increased. An overdraft under Miscellaneous was caused by the purchase of equipment for the office of the Judge of Probate, the biennial audit by the State Tax Commission and the premium on the Liability Insurance policy.

The Commissioners feel that the County is fortunate in having Mr. and Mrs. Aldrich as Superintendent and

Matron at the County Farm and that we have such a loyal and efficient staff.

The citizens of Grafton County are cordially invited to visit the County Farm at any time.

Respectfully submitted,

KENNETH G. BELL
JOSEPH L. GRAHAM
GEORGE F. CLEMENT
Commissioners

DIVISION OF MUNICIPAL ACCOUNTING**STATE TAX COMMISSION****Concord, New Hampshire**

August 14, 1952

Board of County Commissioners

Grafton County

Woodsville, New Hampshire

Gentlemen:

In accordance with the provisions of Chapter 82, Section 27, of the Revised Laws, the biennial audit and examination of the accounts of Grafton County has been made by the Division of Municipal Accounting of the State Tax Commission. The audit covered the fiscal years ended December 31, 1950 and December 31, 1951. Submitted herewith is the report which includes Exhibits as hereafter listed. The report is made up in two sections as follows:

Section I - Fiscal Year Ended December 31, 1950

Section II - Fiscal Year Ended December 31, 1951

Scope of Audit

Included in the audit and examination were the accounts and records of the Board of County Commissioners, County Treasurer, Clerk of the Superior Court and Superintendent of the County Farm.

Financial Statements**Comparative Balance Sheets:**

December 31, 1949 - December 31, 1950 (Exhibit A)

December 31, 1950 - December 31, 1951 (Exhibit I)

Comparative Balance Sheets for the fiscal years ended December 31, 1949-1950 and December 31, 1950-1951, are presented in Exhibits A and I respectively. As indicated therein the Net Debt increased by \$707.22 in 1950. In 1951, the financial condition of the County

changed from a Net Debt of \$6,935.92 to a Surplus of \$19,084.82, a gain of \$26,020.74.

Analysis of Change in Financial Condition

Fiscal Year Ended December 31, 1950 (Exhibit B)

Fiscal Year Ended December 31, 1951 (Exhibit J)

Statements presenting an analysis of the contributing factors which caused the change in financial condition of the county during the fiscal years ended December 31, 1950 and December 31, 1951, are included in Exhibits B and J, respectively.

The increase in Net Debt in 1950 amounted to \$707.22. The factors which caused this were as follows:

Increases in Net Debt	
Net Budget Deficit	\$830.10
Deficiency in Amount of County Tax Payment	.02
	\$830.12
Decreases in Net Debt	
Increase in Accounts Receivable	\$ 94.90
Increase in Superintendent's Cash on Hand	28.00
	122.90
Net Increase	\$707.22

In 1951, the financial condition changed from a Net Debt of \$6,935.92, to a Surplus of \$19,084.82. This resulted from:

Decreases in Net Debt and Increases in Surplus	
Net Budget Surplus	\$15,352.22
Increase in Accounts Receivable	1,635.45
1950 Deficit Raised in 1951 Budget	9,033.07
Change in Financial Condition	\$26,020.74

Comparative Statements of Appropriations and Expenditures - Estimated and Actual Revenues

Fiscal Year Ended December 31, 1950 (Exhibits C & D)
 Fiscal Year Ended December 31, 1951 (Exhibits K & L)

In the fiscal year ended December 31, 1950, a net overdraft of appropriations of \$11,815.67, less a net revenue surplus of \$10,985.57, resulted in a net budget deficit of \$830.10.

In 1951, a net revenue surplus of \$21,689.71, less a net overdraft of appropriations of \$6,337.49, resulted in a net budget surplus of \$15,352.22.

Summaries of Receipts and Expenditures

Fiscal Year Ended December 31, 1950 (Exhibit E)

Fiscal Year Ended December 31, 1951 (Exhibit M)

Summaries of the receipts and expenditures of the County, made up in accordance with the uniform classification of accounts, for the fiscal years 1950 and 1951, are presented in Exhibits E and M, respectively.

Accounts of Commissioners and Treasurer

All orders issued by the Commissioners and Clerk of the Superior Court during the periods under review were examined and compared with corresponding entries in the Treasurers records. Supporting invoices and payrolls were also examined and the classification of expenditures noted. Proof of the Treasurer's balance as of December 31, 1951, is shown in Exhibit N.

Clerk of the Superior Court

The financial accounts and records of the Clerk of Court of Grafton County were examined. Court receipts were checked by source, insofar as possible, and found to be properly recorded. Court orders issued by the Clerk were supported by invoices, vouchers and payrolls bearing the approval of a Superior Court Justice.

County Farm

The accounts and records of the Superintendent of the County Farm were examined. Receipts of the Farm were checked by source through the triplicate receipt forms. All receipts, as recorded in the cash book, were properly accounted for by the Superintendent through deposits to the credit of the County Treasurer's account in the Woodsville National Bank.

Classified Summaries of receipts and expenditures of the County Institutions for the years 1950 and 1951 are presented in Exhibits G and O respectively.

Conclusion:

The accounts and records of all county officials were found in good condition and the accounting procedure conformed to the uniform system prescribed by this Division.

In compliance with Section 31, Chapter 211, of the Laws of 1939, a copy of this report or a summary of its essential features should be published in the next annual report of the County. This letter of transmittal should be included in its entirety but the publication of Exhibits is optional.

The appreciation and thanks of the members of this Division is hereby expressed to the officials of Grafion County and the office staff for the assistance rendered during the course of the audit.

Yours very truly,

Harold G. Fowler
Director

DIVISION OF MUNICIPAL
ACCOUNTING
STATE TAX COMMISSION

Alan R. Matthews, Auditor
John T. Flanders, Accountant

**DIVISION OF MUNICIPAL ACCOUNTING
STATE TAX COMMISSION**

Concord, New Hampshire

August 14, 1952

Certificate of Audit

This is to certify that we have examined and audited the accounts and records of the Grafton County Commissioners, County Treasurer, Clerk of the Superior Court and Superintendent of the County Farm, for the fiscal years ended December 31, 1950 and December 31, 1951. In our opinion the Exhibits presented herewith reflect the true financial condition of the County and the results of operations for the periods under review.

Respectfully submitted,

Harold G. Fowler

Director

DIVISION OF MUNICIPAL
ACCOUNTING
STATE TAX COMMISSION

Alan R. Matthews, Auditor

John T. Flanders, Accountant

Exhibits and Schedules on file in County Commissioners' Office.

FINANCIAL REPORT**BALANCE SHEET**

Fiscal Year Ended December 31, 1952

Assets**Cash on hand:**

Treasurer	\$49,981.49	
Supt. of County Farm	300.00	
		\$50,281.49

Accounts Due County:

(a) Taxes due from towns	None	
(b) Accounts due farm	\$2,941.64	
		2,941.64

Total Assets		\$53,223.13
---------------------	--	-------------

Liabilities

None

Total Liabilities		None
--------------------------	--	------

Surplus		\$53,223.13
----------------	--	-------------

Surplus- - December 31, 1951	\$19,084.82	
------------------------------	-------------	--

Surplus - December 31, 1952	53,223.13	
-----------------------------	-----------	--

Increase of surplus	34,138.31	
---------------------	-----------	--

FINANCIAL REPORT

SCHEDULE OF COUNTY PROPERTY**Description:**

Land and Buildings:

(a) Court Houses	\$150,000.00
(b) Jail	82,500.00
(c) County Farm	375,000.00
(d) Water System	30,000.00

Furniture and Equipment

(a) Court Houses	30,000.00
(b) Jail	1,800.00
(c) County Farm	42,000.00

\$711,300.00

FINANCIAL REPORT**RECEIPTS AND****Current Revenue:**

Taxes from towns and cities		\$222,275.00
Income of Institutions		
(a) County Farm	76,671.65	
(b) Court Houses	386.00	
		<hr/>
		77,057.65
Reimbursement of Expenditures for support of poor, etc.		
(a) From State of N. H.	180.39	
(b) From Coos County	118.81	
		<hr/>
		299.20
(c) From other sources		5,294.57
		<hr/>
		\$304,926.42

(Receipts carried to page 20)

PAYMENTS**FINANCIAL REPORT'****Current Maintenance Expenses****General Government**

1. Salaries of

(a) Commissioners	\$3,600.00
(b) Treasurer	300.00
(c) Auditors	200.00
(d) Solicitor	1,800.00
(e) Medical Referees	1,723.90
(f) Sheriff	1,250.00

 \$8,873.90

2. Expenses of

(a) Commissioners	2,194.04
(b) Treasurer	140.17
(c) Register of Deeds	2,065.10
(d) Register of Deeds (Indexing)	173.00
(e) Register of Probate	2,164.85

 \$6,737.16
3. Care and Supplies of
Court Houses

5,316.65

Superior Court

4. Jury Payrolls	\$4,315.58
5. "State vs.—" Payrolls	598.36
6. Counsel Fees	555.13
7. Stenographer, Solicitor, etc.	4,361.70
8. Clerk of Superior Court	11,864.26
9. Sheriff and Deputies	6,356.16

 \$28,051.19

(Payments carried to page 21)

FINANCIAL REPORT**RECEIPTS AND**

Total Receipts brought forward	\$304,926.42
Receipts Other than Current Revenue:	
Temporary loans during year	\$200,000.00
Total Receipts Other than Current Revenue	\$200,000.00
Total Receipts from all sources	\$504,926.42
Cash on hand at beginning of year	19,248.98
Grand Total	\$524,175.40

PAYMENTS**FINANCIAL REPORT**

Public Welfare	
10. County Farm expenditures	\$133,096.22
11. Support of poor not on County Farm	10,643.70
12. Old Age Assistance	11,416.56
13. Aid to Disabled	266.00
14. Board and care of children	28,026.63
15. Aid to Soldiers	4,735.48
16. Welfare Administration	8,501.75
	<hr/>
	\$196,686.34
	<hr/>
Total Current Maintenance Expenses	\$245,665.24
Interest:	
17. Paid on temporary loans	\$2,288.24
Indebtedness:	
18. Payments on temporary loans	\$200,000.00
Outlay, New Construction	
19. County Court Houses	\$6,275.52
All Other Payments	
20. County Extension Service	\$15,245.00
21. Retirement System	1,869.94
22. Miscellaneous	2,549.97
	<hr/>
Total payments for all purposes	\$473,893.91
Cash on hand at end of year	50,281.49
	<hr/>
Grand Total	\$524,175.40

DETAIL OF RECEIPTS

Taxes from Towns

Alexandria	\$1,640.39
Ashland	7,953.00
Bath	2,814.00
Benton	331.19
Bethlehem	10,633.64
Bridgewater	2,413.91
Bristol	8,270.85
Campton	5,423.51
Canaan	4,232.12
Dorchester	593.47
Easton	631.26
Ellsworth	124.47
Enfield	5,394.61
Franconia	4,014.29
Grafton	1,649.28
Groton	1,080.26
Hanover	24,541.38
Haverhill	13,376.51
Hebron	1,689.29
Holderness	7,457.33
Landaff	853.54
Lebanon	28,397.86
Lincoln	5,903.62
Lisbon	8,299.75
Littleton	18,817.80
Lyman	931.33
Lyme	3,000.71
Monroe	20,153.67
Orange	408.99
Orford	2,676.19
Piermont	3,169.64
Plymouth	12,576.32
Rumney	3,600.86
Thornton	1,795.98
Warren	1,700.40
Waterville	213.38
Wentworth	1,487.02
Woodstock	4,023.18
	<hr/>
	\$222,275.00
No uncollected taxes	

DETAIL OF RECEIPTS (Continued)**Income of Institutions**

Grafton County Farm	\$76,671.65	
(See report of Supt. of County Farm, page 45)		
Use of Court Houses		
State Tax Commission	20.00	
Town of Plymouth	366.00	
		<hr/>
		\$77,057.65

Reimbursements

State of New Hampshire		
Old Age Assistance	180.39	
Coos County		
Old Age Assistance	118.81	
		<hr/>
		\$ 299.20

Other Sources

Boarded children	3,320.08	
Direct relief	896.01	
Soldiers' Aid	269.00	
Interest on Gov't certificate	689.42	
Cancelled checks	62.84	
Refund on sheriff's bond	22.00	
Refund —Clerk of Court	.22	
Sale of Typewriter	35.00	
		<hr/>
		\$5,294.57

Temporary Loans During Year

National State Capital Bank, Concord, N. H.		
Note No. 156, dated 1-18-52,		
due 12-15-52	for 100,000.00	
Note No. 157, dated 1-18-52,		
due 12-29-52	for \$100,000.00	
Above notes discounted at 1.25		
per annum		\$200,000.00

DETAIL OF PAYMENTS

Current Maintenance Expenses

Commissioners:

Bell, Kenneth G.	\$1,200.00
Graham, Joseph L.	1,200.00
Clement, George F.	1,200.00

\$3,600.00

Treasurer:

Pulsifer, Bertram W.	\$300.00
----------------------	----------

Auditors:

Knight, Horace B.	100.00
Richardson, George H.	100.00

\$200.00

Solicitor:

Jones, Robert A.	\$1,800.00
------------------	------------

Medical Referees:

Bogle, Dr. J. G.	10.00
Campbell, Dr. E. C.	5.00
DeWitt, Dr. R. F.	158.30
Dinerman, Dr. I. A.	62.10
Dudley, Dr. Frank G.	94.95
Handy, Dr. A. W.	162.30
House, Dr. R. K.	25.00
LaTourette, Dr. Kenneth	126.00
Middleton, Dr. L. A.	8.60
Miller, Dr. R. E.	574.50
Nice, Dr. Philip O.	67.00
Orton, Dr. L. M.	208.80
Putnam, Dr. W. F.	216.35
Rihl, Dr. W. A.	5.00

\$1,723.90

Sheriff:

Green, William E.	\$1,250.00
-------------------	------------

Expenses of County Officers

Bell, Kenneth G., Commissioner	
July 1, 1951 to June 30, 1952	\$368.60
Graham, Joseph L., Commissioner	
July 1, 1951 to June 30, 1952	623.24
Clement, George F., Commissioner	
July 1, 1951 to June 30, 1952	122.20
Kirk, Madeline W., clerical service	1,080.00
	<hr/>
	\$2,194.04

Treasurer

Pulsifer, Bertram W.	\$140.17
----------------------	----------

Register of Deeds

Shores, F. J., telephone	\$ 56.57
Shores, F. J., express, misc.	40.03
Bates Mfg. Co., supplies	2.45
Courier Printing Co., printing	54.04
Eastern Standard Supply Co., s'plies	23.90
Hall & McChesney, supplies	186.91
Larson, Carl, supplies	56.26
Keystone Envelope Co., supplies	32.64
Mann & Co., E. B., supplies	5.44
Martell Co., A. E., supplies	316.14
McAllister, S. F., supplies	1.50
Record Print, The, printing	76.95
Remington Rand, Inc., supplies	670.24
Sherwin & Son, supplies	5.50
Smith, Ellis, supplies	4.76
Tower Companies, F. L., register	12.80
Tuttle Stationery Co., supplies	518.97
	<hr/>
	\$2,065.10

Register of Deeds - Indexing

Payments made to Fred J. Shores as follows:

Chiaradia, Stella	125.00
Shores, Charlotte	48.00

 \$173.00
Register of Probate

Proctor, Anna D., clerk hire	\$1,000.00
Proctor, Anna D., express, postage, misc.	263.30
Bartlett Ins. Agency, deputy's bond	23.13
Larson, Carl, supplies	24.63
N. E. Tel. & Tel. Co., telephone	155.95
Remington Rand, Inc., supplies	49.60
Remington Rand Inc., typewriters	456.00
Tower Companies, F. L., register	12.80
Tuttle Stationery Co., supplies	118.00
White River Paper Co., supplies	20.16
Dodge, Henry A., Judge telephone, express, postage	41.28

 \$2,164.85
Care and Supplies of Court Houses

Adams, Melvin, cartage	\$70.00
Atlas Products Co., supplies	49.54
Boston & Maine Railroad, freight	382.26
Brill, William, labor	5.00
Cass, Ralph W., labor	6.25
Deming Oil Co., oil	338.01
Fracher's, supplies	12.81
Grafton County Farm, coal	121.65
Greenwood, Clarence, Janitor	300.00
Greenwood, Clarence, supplies, extra labor	11.80

Hill's Store, supplies	1.29
Holbrook Grocery Co., supplies	5.20
Insurance	556.44
Langway, Cecil, Janitor	1,980.00
Littleton Ice Co., ice	25.75
Logan, Melvin, labor	37.05
Mann & Co., E. B., supplies	5.07
Nelson, Carl E., cartage	24.00
Newell Co., D. H., coal	432.25
Page, Roy, labor	10.00
Rand's, supplies	13.95
Scruggs Hardware, labor and s'plies	227.39
Water Dept., Plymouth Village, rent	30.00
White Mt. Power Co., electricity	98.91
White River Paper Co., supplies	65.78
Woodsville Fuel Co., unloading coal	83.10
Woodsville Water & Light Dept, water electric service	423.15

\$5,316.65

Superior Court - Counsel Fees

Bowker, Robert E., attorney fees	\$110.00
Castello, Luigi, attorney fees	25.00
Maynard, William, attorney fees	30.00
Samaha, Unwar J., attorney fees	120.13
Stebbins, S. J., attorney fees	70.00
T'esreau, Charles, attorney fees	200.00

\$555.13

Stenographer - County Solicitor, etc.

Ruf, Dorothy M., stenog'pher's fees	\$121.82
Sheehan, Paul A., stenog'pher's fees	350.40
Trask, H. L., stenographer's fees	420.75
White, Grace J., stenographer's fees	9.20
Woodward, Arlene R., steno- grapher's fees	7.00

State Treasurer, Allowance, stenographers	1,364.16
Jones, Robert A., Solicitor, expenses, supplies	1,066.00
Jones, Robert A, clerical hire	750.00
Corey Hewitt Co., supplies	12.40
State Tax Commission, Lincoln audit	259.97

\$4,361.70

Clerk of Superior Court

American Law Book Co., supplies	\$15.00
Art Metal Construction Co., supplies	6.62
Boston Law Book Co., supplies	50.00
Bridgman's Furniture Inc., supplies	3.27
Caledonia Typewriter Co., repairs	5.55
Davis, Burnham, supplies	10.50
De Filippi, Raymond, supplies	17.57
Hall & McChesney, supplies	340.18
Keystone Envelope Co., supplies	31.75
Large, Robert H., bonds	50.00
Larson, Carl, supplies	140.08
Lawyers Cooperative Pub. Co., supplies	134.00
Llewellyn Inc., R. H., supplies	49.80
N. E. Tel. & Tel. Co., telephone	958.70
Remington Rand Inc., supplies	146.07
Samaha, Unwar J., salary, receipts	8,452.32
Sanborn Woodcraft Co., supplies	1.50
Secretary of State, supplies	2.00
Shepard's Citations, supplies	45.00
Shovan, George, Supreme Court Opinions	25.00
Smith, Ellis, supplies	6.56
Stockheimer, Kellett, postage	119.24
Tower Companies, Fred L., register	12.80
Tuttle Stationery Co., supplies	232.31

Twin State Pub. Co., docket and printing	1,008.44
---	----------

\$11,864.26

Sheriff and Deputies

Green, William E. fees, expenses, attendance	\$3,016.76
Alling, Koland, fees, expenses, attendance	69.98
Bort, Loren, fees, expenses, attendance	377.00
Bruce, Rufus, fees, expenses, attendance	135.94
Farnham, John L., fees, expenses, attendance	1,329.92
Gardner, Theodore, fees, expenses, attendance	612.34
Hubbard, Stanley, fees, expenses, attendance	271.16
Johnson, Fred, fees, expenses, attendance	162.70
Leavitt, George U. L.,	367.68
Ayer Insurance Agency deputy sheriff's bond	7.68
Bartlett Ins. Agency, insurance on machine gun	5.00

\$6,356.16

	Disabled	DETAIL OF PAYMENTS		PUBLIC WELFARE		Total
		Poor not on county farm	Old age assistance	Board and care of children	Aid to Soldiers	
Alexandria	\$289.82	\$507.07	\$36.00	\$110.00
Ashland	\$74.00	182.52	1,377.32	30.00	1,171.35
Bath	344.46	1,559.84
Bethlehem	227.43	227.43
Bristol	89.25	337.28	2,434.63	149.66	3,010.82
Campton	470.46	27.67	545.18	1,043.31
Canaan	436.92	284.50	1,328.91	45.00	2,095.33
Easton	150.00	150.00
Enfield	1,033.41	881.92	1,038.62	1,016.78	3,970.73
Franconia	1,201.71	650.00	1,851.71
Grafton	403.34	403.34
Haverhill	87.10	336.19	433.84	857.13
Haverhill	1,291.13	1,467.78	1,463.05	4,221.96
Holderness	786.40	786.40
Landaff	15.00	15.00
Lebanon	99.05	4,019.51	1,264.05	7,525.68	2,024.73	14,933.02
Lincoln	88.73	88.73
Lisbon	311.67	226.51	6,493.24	109.26	7,140.68
Littleton	400.72	2,432.92	971.25	681.64	4,486.53
Lyman	364.00	364.00
Lyme	231.75	231.75
Monroe	169.70	169.70
Orange	304.24	304.24
Orford	407.50	726.93	1,134.43
Plymouth	166.95	211.21	697.30	1,075.46
Rumney	671.59	27.35	698.94
Thornton	912.32	912.32
Warren	406.01	1,322.35	1,728.36
Woodstock	216.48	120.88	8.50	345.86
	\$266.00	\$10,643.70	\$11,416.56	\$28,026.63	\$4,735.48	\$55,088.37

DETAIL OF PAYMENTS

Statement of Old Age Assistance, Boarded Children and Aid to Disabled

1952	Old Age Asst.		Boarded Children		Disabled	
	Cases	Amount	Cases	Amount	Cases	Amt.
January	72	\$891.94	58	\$2,235.28	---	-----
February	68	916.44	58	2,260.72	---	-----
March	69	915.37	56	2,061.17	---	-----
April	69	969.40	58	2,099.76	---	-----
May	70	947.19	60	2,560.50	1	\$12.25
June	70	982.22	60	2,363.58	1	21.70
July	67	924.31	61	2,138.01	1	21.70
August	70	1,044.96	55	1,883.06	2	40.95
September	68	968.39	61	2,452.32	2	40.95
October	67	905.66	68	2,800.41	2	40.95
November	65	991.90	64	2,722.58	2	43.75
December	64	958.78	60	2,449.24	2	43.75
		*\$11,416.56		\$28,026.63		†\$266.00

*Old Age Assistance 25% of grant and amount paid by County

*Alien Old Age Assistance 50% of grant per case under \$50
100% of grant per case over \$50

†This amount represents 35% of grant and amount paid by County.

County Farm Expenditures

(See Superintendent's Report, page 44)

DETAIL OF PAYMENTS**Welfare Administration Expense**

Brown & Saltmarsh, supplies	\$6.12
Caledonia Typewriter Co., typ'riter	240.00
Clark, Doris, mdse	15.00
Densmore & Eastman, rent—Lebanon Office	300.00
Eastern Standard Supply Co., supplies	11.51
Granite State Electric Co., lights—Lebanon Office	12.00
Mann & Co., E. B., supplies	13.10
Martell & Co., A. E., supplies	97.83
N. E. Tel. & Tel. Co., service	842.08
Railway Express Co., express	2.67
Twin State Pub. Co., supplies	3.50
Wander In Gift Shop, supplies	1.00
White River Paper Co., supplies	10.51
Woodsville Post Office, postage	87.46
Salaries of Investigators (2)	3,480.00
Expenses of Investigators (2)	1,722.37
Clerical Expense—Welfare Office	1,656.60

\$8,501.75

DETAIL OF PAYMENTS

Interest

National State Capital Bank, Concord, N. H.	
Interest on temporary loans	
No. 156 and 157	\$2,288.24

Indebtedness

National State Capital Bank, Concord, N. H.	
Payment of temporary loans	
No. 156 and 157	\$200,000.00

Outlay, New Construction, Court Houses

Cass, Ralph W., labor	\$349.45
Martin, Clayton, labor	10.00
Foote, Clyde L., painting	2,717.02
Hathorne Co., A. C., labor	73.33
Nevers, Allison, labor	2,060.42
Rowden, Thomas, labor	.75
Scruggs Hardware, labor	467.28
Woodsville Furniture Co., labor and equipment	597.27
	\$6,275.52

All Other Payments

County Extension Service	\$15,245.00
Retirement System	1,869.94
Miscellaneous:	
Ayer Ins. Agency, Work- men's Compensation	\$567.20
Ayer Ins. Agency, Liability In- surance (3 yrs.)	797.56
Canaan Reporter ,county reports	354.54
Edes, Francis, legal work	35.00
Littleton Nat'l Bank, rent office Judge Dodge	100.00

Northern Office Supply Co., equipment, Judge Dodge office	388.20	
Pemigewasset Nat'l Bank, checks	44.81	
Proctor, Anna D., clerical work	2.00	
State Tax Commission, audit	233.38	
White River Paper Co., supplies	11.28	
Woodsville Nat'l Bank, charge	1.00	
Woodsville Post Office, postage on county reports	15.00	
		<hr/>
		\$2,549.97

**COMPARATIVE STATEMENT OF APPRO-
PRIATIONS AND EXPENDITURES**

	Appropriations	Expenditures	Unexp. Bal.	Overdraft
County Officers' salaries	\$7,800.00	*\$8,867.70	\$1,067.70
County Officers' expenses	2,500.00	2,334.21	\$165.79
Register of Deeds expenses	2,000.00	2,238.10	238.10
Register of Probate expenses	2,300.00	*2,129.85	170.15
Care and supplies for Court Houses	*4,980.00	*4,930.65	49.35
Jury payrolls	7,000.00	*4,300.94	2,699.06
State vs p'rolls	2,500.00	*581.36	1,918.64
Counsel fees	1,000.00	*530.13	469.87
Stenog'r-Solicitor	4,750.00	4,361.70	388.30
Clerk of Superior Court	10,500.00	*11,864.04	1,364.04
Sheriff and deputies	7,500.00	*6,334.16	1,165.84
County farm	*80,000.00	*56,424.57	23,575.43
Support of poor not on county farm	18,000.00	*9,747.69	8,252.31
Old age assist.	11,000.00	*11,117.36	117.36
Aid to disabled	266.00	266.00
Board and care of children	*22,000.00	*24,706.55	2,706.55
Aid to soldiers	5,000.00	*4,466.48	533.52
Welfare admin. expense	8,500.00	8,501.75	1.75
Interest	2,000.00	*1,598.82	401.18
County extension service	15,245.00	15,245.00
Retirem'nt s'tem	1,200.00	1,869.94	669.94
Miscellaneous	1,500.00	2,549.97	1,049.97

COMPARATIVE STATEMENT OF APPROPRIATIONS AND EXPENDITURES

	Appropriations	Expenditures	Unexp. Bal.	Overdraft
Perm't improvements, Court Houses	†8,896.76	6,275.52	2,621.24
	\$226,171.76	\$191,242.49	\$42,410.68	\$7,481.41

*Represents Net Figure—ie. Total expenditures less reimbursements.

†Includes \$3,896.76, amount carried over from 1951 appropriation.

TREASURER'S REPORT

Receipts

Cash Balance from year 1951	\$ 18,948.98
Taxes collected from towns	222,275.00
Temporary loans	200,000.00
Grafton County Farm	76,671.65
Court Houses	386.00
Reimbursement for Board of Children	3,320.08
Reimbursement for Direct Relief	896.01
Reimbursement for Soldiers' Aid	269.00
Reimbursement for Old Age Assistance	299.20
Interest on Government Certificate	689.42
Refund on Sheriff's Bond	22.00
Refund from Clerk of Court	.22
Sale of Typewriter	35.00
Cancelled checks	62.84
	\$523,875.40

Disbursements

Commissioners' Orders	\$245,940.29
Court Orders	25,664.38
Payment on Temporary Loans	200,000.00
Interest on Temporary Loans	2,288.24
Miscellaneous	1.00
Cash in Treasurer's hands Dec. 31, 1952	49,981.49
	\$523,875.40

Comparative Debt Statement

	Dec. 31, 1951	Dec. 31, 1952
Temporary loans outstanding	None	None
Cash on hand	\$19,248.98	\$50,281.49
Bills receivable	3,732.60	2,941.64
	<u>\$22,981.58</u>	<u>\$53,223.13</u>
Bills payable	None	None
Surplus	\$22,981.58	Sur. \$53,223.13

**DETAILED ACCOUNT OF WELFARE
INVESTIGATORS' EXPENSE**

	Mileage	Hotel and Subsistence	Other Expense	Total
*Warren, Beatrice M.				
16,752 mi. at 7c	\$1,172.64	\$53.55	\$74.02	\$1,300.21
No. home visits 892				
No. contacts made 721				
Collections made \$3,159.39				
Clark, Thelma G.				
4,501 mi. at 7c	315.07	51.65	55.44	422.16
No home visits 165				
No. contacts made 1,254				
Collections made \$1,325.70				
	\$1,487.71	\$105.20	\$129.46	\$1,722.37

*Covers Littleton and Plymouth Districts

**DETAILED ACCOUNT OF COUNTY OFFICERS'
EXPENSES**

	Mileage	Hotel and Subsistence	Other Expense	Total
Bell, Kenneth G. Commissioner 5,080 mi. at 7c	\$355.60	\$13.00	\$368.60
Graham, Joseph L. Commissioner 8,615 mi. at 7c	603.05	7.35	\$12.84	623.24
Clement, George F. Commissioner 1,596 mi. at 7c	111.72	10.48	122.20
Pulsifer, Bertram W. Treasurer 1,666 mi. at 7c	116.62	20.00	3.55	140.17
Jones, Robert A. Solicitor 5,900 mi. at 8c	472.00	82.15	511.85	1,066.00
Green, William E. Sheriff Court Attendance \$1,199.00	121.20	30.00	1,350.20
Criminal Service \$365.00	302.70	17.30	981.56	1,666.56

COUNTY AUDITORS' REPORT

Fiscal Year Ended December 31, 1952

Grafton County

County Treasurer's Account

Balance on hand January 1, 1952	\$18,948.98	
Receipts - Year Ended		
December 31, 1952	504,926.42	
		\$523,875.40
Payments - Year Ended		
December 31, 1952	473,893.91	
		\$49,981.49
Balance - December 31, 1952, as per Cash Book		\$49,981.49
Balance in		
Pemigewasset National Bank	\$43,169.09	
Woodsville National Bank	9,510.66	
National Bank of Lebanon	5,000.00	
		\$57,679.75
As per statements of December 31, 1952	57,679.75	
Less Outstanding Orders	7,698.26	
		\$49,981.49
Reconciled Bank Balance as of December 31, 1952		\$49,981.49

County Farm Superintendent's Account

Total Amount of Receipts from Institution - Year Ended Dec. 31, 1952	\$76,671.65
Total Remittance to County Treasurer - Year Ended December 31, 1952	\$76,671.65
Superintendent's Balance on hand January 1, 1952	300.00
Superintendent's Balance on hand December 31, 1952	300.00

Indebtedness - December 31, 1952

Outstanding Temporary Loans in anticipation of taxes	None
Outstanding Long Term Notes	None
Outstanding Bonds	None
Bills owed by County	None

County Taxes Uncollected - December 31, 1952

County Taxes Due from Towns and Cities	None
--	------

Signed:

G. H. RICHARDSON

H. B. KNIGHT

Date January 9, 1953

County Auditors

 Woodsville, N. H.

December 31, 1952

We hereby certify that there were no outstanding bills against the County December 31, 1952, which were presented for payment and no orders issued by us which have not been paid by the Treasurer.

KENNETH G. BELL

JOSEPH L. GRAHAM

GEORGE F. CLEMENT

Grafton County Commissioners

 State of New Hampshire, Grafton, ss

December 31, 1952

Personally appeared the above named Kenneth G. Bell, Joseph L. Graham and George F. Clement and made oath to the truth of the above statement by them signed.

FRED J. SHORES

Justice of the Peace

SUPERINTENDENT'S REPORT

Grafton County Farm Haverhill, N. H.

Gentlemen:

I hereby submit my report of the Grafton County Farm Almshouse, House of Correction and jail for the year ended December 31, 1952.

Almshouse

Number of Inmates January 1, 1952	60
Number admitted during year	112
Number discharged during year	85
Number of deaths during year	17
Number of Inmates January 1, 1953	70

House of Correction

Number of Inmates January 1, 1952	11
Number admitted during year	37
Number discharged during year	38
Number of Inmates on January 1, 1953	10

Jail

Number of Inmates on January 1, 1952	3
Number admitted during year	25
Number discharged during year	21
Number of Inmates January 1, 1953	7

Number of weeks' board furnished inmates, House of Correction and Jail not paid by towns, individuals, or others, 2,904 weeks and 1 day.

Number of weeks board furnished other than above mentioned, 973 weeks and 3 days.

COUNTY FARM EXPENDITURES

Institution

Labor	\$17,726.97
Provisions	12,009.54
Clothing	2,893.29
Supplies and equipment	6,872.08
Fuel, including freight	6,057.33
Additions and repairs	1,846.91
Water and lights	2,569.67
Freight, express, telephone	657.75
Insurance	1,029.53
Roach extermination	216.00
Services of Clergy	110.00
Expense Superintendent's car	300.62
Superintendent's bond	40.00
Elevator inspection	23.00
Fixed charges and other expenses	284.26
	\$52,636.95

Farm

Truck and tractor expense	\$2,282.56
International truck	2,263.20
Taxes	2,744.94
Insurance	1,988.46
Light and power	905.25
Labor	9,296.68
Feed and supplies	27,589.90
Repairs	1,751.68
Equipment	839.97
Fertilizer	619.10
Veterinary	420.50
Expense of team	388.00
Milk testing	184.15
Registering cattle	190.60
Seeds	627.00

Bedding	994.04
Bulldozer (pasture improvement)	301.25
Livestock and poultry	546.30
New silo	2,147.00
Miscellaneous	1,283.29

\$57,363.87

Hospital

Doctors	\$3,400.50
Labor - Nurses and Aides	10,937.35
Laboratory work	278.50
Supplies and equipment	2,243.03
Repairs	910.39
Cancer Commission	809.53
Miscellaneous	427.71

\$19,007.01

Jail

Labor	\$3,432.34
Repairs	98.80
Supplies	6.42
Insurance	200.00
Other expense	350.83

\$4,088.39

Total expense \$133,096.22

Receipts

Boarders	\$12,224.64
Hospital	12,768.55
Farm:	
Produce	\$505.03
Cattle and swine	12,250.04

Milk and cream	35,411.10	
Other income	2,964.20	
	<hr/>	\$51,130.37
Miscellaneous		548.09
		<hr/>
Total Receipts		\$76,671.65
Cash advanced by the Commissioners		300.00
		<hr/>
		\$76,971.65
 Expenditures		
Paid County Treasurer		\$76,671.65
Cash on hand December 31, 1952		300.00
		<hr/>
		\$76,971.65

INVENTORY

Personal Property of Grafton County Farm December 31, 1951

Live stock	\$52,280.00
Products and supplies	10,237.08
Farm implements	18,433.80
Household furniture	5,411.50
Supplies and equip't - institution	27,880.82
Jail and House of Correction	1,791.00
Chapel	393.00
Hospital	11,110.23
	\$127,537.43

Personal Property of Grafton County Farm December 31, 1952

Livestock	\$54,470.20
Products and supplies	10,359.29
Farm implements	19,923.86
Household furniture	5,384.00
Supplies and equip't - Institution	29,377.52
Jail and House of Correction	1,719.89
Chapel	393.00
Hospital	11,474.80
	\$133,102.56

Per Capita Cost of Inmates at County Farm, including Almshouse, Soldiers' Aid, House of Correction and Jail

	Weeks	Days
Almshouse	2,131	2
House of Correction	549	6
Jail	223	---
	2,903	8
County charges at Farm		

County charges (net total)	2904	1
Town boarders	740	—
Private boarders and others	89	4
Old Age Assistance, ADC, etc.	143	6
	<hr/>	<hr/>
Total	3,876	11
Net Total	3,877	4
County Farm expenditures	\$133,096.22	
Inventory of personal property at beginning of year	127,537.43	
Accounts due Farm at beginning of year	3,566.47	
	<hr/>	
	\$264,200.12	
County Farm receipts	\$76,671.65	
Inventory at end of year	133,102.56	
Accounts due Farm	2,941.64	
	<hr/>	
	\$212,715.85	
	<hr/>	
Balance against Farm	\$51,484.27	
Number of weeks served		
County cases	2,904 weeks	1 day
Per capita cost per week of all inmates, but excluding boarders, employees and guests	\$17.72	plus
Per capita cost per week including boarders and public welfare cases, but excluding employees and guests	\$13.27	plus

The year just past has been a busy one. Some new siding has been put on the main barn and a new silo has been erected. The Chevrolet truck has been exchanged for an International and the hay loader for a side delivery rake. We are pleased with the increase in the farm income and size of the herd.

The pasture improvement program was continued; about fifteen acres were cleared. The work done last year was a great help as to pasturage.

The Holsteins were shown as in previous years and carried away their share of ribbons.

A gas stove has been installed in our downstairs kitchen which is an improvement over the wood stove.

In January the doctors of the New Hampshire Academy of General Practice met here with about 25 present. We were pleased to have them use the chapel.

Several members of the Plymouth Republican League of Women Voters were here in July. They were shown over the institution and some went on the meadow to see the corn, potatoes and hay. We were glad to extend our hospitality to them and wish more would avail themselves of the opportunity.

In August a family field day was held at the Farm and as last year there were about five hundred here. The day was filled with programs for all the family. Everyone seemed to have a good time as well as a profitable one.

Feature events on the program for different members of the family were as follows: For the men there were demonstrations of forage harvesting equipment, featuring field choppers. There was also a wood chipper demonstrated; then Professor K. S. Morrow from U.N.H. talked about what a good proven sire can do for a dairy herd and used "Tyler Farm Rag Apple Leader" as an example. At that time this bull had over 60 daughters in the herd.

Programs of special interest to the women were a demonstration of "The Basic Dress and Accessories" conducted by Miss Carolyn Lyon, Clothing Specialist at U.N.H.; then a class on Controlling Household Insects, taught by Prof. G. J. Conklin. There was also a pottery making demonstration.

Programs arranged for the boys and girls featured Poultry Dressing Contest, Tractor Driving Contest; Demonstration of Fitting a Dairy Heifer for the Show Ring, and instruction and practice in judging foods, canning and clothing.

A ladies' milking contest was the climax of the day's events. Prizes were awarded on the basis of the lady getting the most milk in three minutes. Miss Adele Boudreault of Woodsville was the winner.

There has been very little change in the personnel. Ida Foote R.N. has replaced Marion Hodge as night nurse. Evelyn Bigelow R.N. is working from three to eleven in place of Dorothy Moulton R.N. who helps us as a supply nurse. We are very sorry to hear of Robert Gibson's illness which necessitates Sadie's leaving us as a regular supply nurse. Henry Paige is turnkey, replacing Henry Stearns who went back with the telephone Company.

The annual Christmas Party was successful as usual. Roland Clough brought movies which everyone enjoyed, after which Santa appeared. The gifts from the well laden trees were distributed by him and his helpers. After looking for a Santa Claus we discovered that there was a natural on the Farm in the person of Stanley Fadden. We were very glad to have Mr. and Mrs. Bell and Mr. and Mrs. Clement present.

We are grateful to all those outside who helped us make this Christmas a merry one for the people here. To Blanche Chase of Woodsville for the jars of jelly, the Woodsville Home Demonstration Group, Mrs. A. C. Hampson and her 4-H group, The WCTU of Lebanon, Mr. Vigent of Wells River for his very generous donation of candy and the courtesy of his clerks during the "girls" shopping, we say thank you—also to Mr. Andrews for the fruit he brought. The Lions Club came with its group of carol singers which was greatly enjoyed.

Mr. Simms held services every other Sunday. The people here thought a great deal of him and will miss him. We hope there will be a replacement very soon. Rev. Hanssmann from Lisbon comes once a month for services, bringing a group of singers. They are well attended and appreciated, as we realize it must be an effort for him to come that distance. Father Boulay comes once a month for confession and communion and his people look forward to his coming. We are very glad to welcome him here.

We wish to thank the many who have given magazines and flowers.

There have been movies several times through the kindness of the North Haverhill fire department.

We wish to express our appreciation to our staff and Dr. Campbell for their help and cooperation during the past year.

We are very grateful to our County Commissioners, Mrs. Madeline Kirk and all others who have helped us in our work here.

Respectfully submitted,

ERVILLE ALDRICH, Superintendent
CHRISTELE ALDRICH, Matron

We hereby certify that we have examined the foregoing accounts of the Superintendent of the County Farm for the year ended December 31, 1952 and find them correctly cast and properly vouched.

KENNETH G. BELL
JOSEPH L. GRAHAM
GEORGE F. CLEMENT

Commissioners of Grafton County

INMATES OF GRAFTON COUNTY ALMSHOUSE

Name	Town	Time supported		
		Age	Weeks	Days
Ethel Hall*	Alexandria	52	2	2
Lily Watson*	Ashland	71	52	2
Mabel Randall*	Ashland	61	52	2
William St. Arnold*	Ashland	81	52	2
Albert Fitch*	Ashland	74	3	5
William Ferrill*	Bath	81	52	2
Bertha Herlihy	Bath	28	4
Marie Jervah*	Bethlehem	45	2
Gustave Anderson*	Bridgewater	78	52	2
Sarah Ferrin*	Bristol	42	52	2
Edward Simonds	Bristol	70	30	2
Amy Overton	Bristol	59	5
James Ansley*	Canaan	86	28	2
John Lassila*	Campton	66	52	2
James Kennedy*	Easton	63	52	2
John Johnson	Enfield	82	30	1
Gusti Latvali*	Enfield	71	52	2
Laurent Laroche	Enfield	27	8
Israel Peasley	Enfield	64	5
Alice Jones*	Franconia	15	6
Joseph Moran*	Grafton	59	33	5
Alice Jewell*	Groton	72	52	2
Edward Hoyt*	Haverhill	46	52	2
Ned Ware*	Haverhill	73	52	2
Joseph Page	Haverhill	44	1	1
Dixie L. Boardman*	Haverhill	14	2	1
David Carlisle*	Haverhill	81	33	5
Corlis Pascal*	Haverhill	79	21	1
Hugh Shute	Haverhill	43	4
Michael Hurley*	Haverhill	72	21	6
Frank Mossey*	Haverhill	72	11
Herbert Dow*	Hebron	83	52	2
Virginia Emery*	Holderness	34	52	2
Mildred Johnson*	Lebanon	61	52	2
Maude Quimby*	Lebanon	55	52	2
George Brooks	Lebanon	67	39	5
Vincent Hopper*	Lebanon	72	52	2
George Harper*	Lebanon	83	52	2
Charles Fay	Lebanon	63	2	4

INMATES OF GRAFTON COUNTY ALMSHOUSE

Name	Town	Time supported		
		Age	Weeks	Days
Bertha Tattersall	Lebanon	25	3	5
Arlene Tattersall	Lebanon	6	3	5
Bety Ann Tattersall	Lebanon	4	2
Rosie Tattersall	Lebanon	3	1	6
Linda Tattersall	Lebanon	2	2	2
Marion Tattersall	Lebanon	1	1	6
Joseph Fenton*	Lincoln	79	52	2
Martin Cahill	Lincoln	83	23	4
Michael Mullahy*	Lincoln	86	52	2
Ernest Bourassa	Lincoln	67	39	1
Alexis Casey	Lincoln	55	41	6
John Powers*	Lincoln	72	1
William Goodwin*	Lisbon	76	52	2
Leon Ferrin*	Lisbon	32	4
Patricia Heath	Lisbon	15	3
Dale Heath	Lisbon	14	3
Sandra Heath	Lisbon	12	3
Ora Powers	Lisbon	?	2	2
Carl Miner*	Littleton	73	52	2
Edward Lyons*	Littleton	75	52	2
Patrick Joyce	Littleton	94	52	2
Edwin Chandler*	Lyme	62	52	2
Annie Monroe*	Monroe	62	52	2
Helen Judd*	Monroe	17	35	1
Frank St. Clair*	Orford	73	52	2
Bert Baker	Orford	83	5
Pearl Kennerson	Orford	23	5
Sandra Kennerson	Orford	1-d	5
Flora Miles*	Piermont	50	52	2
Andrew Sinkowich*	Plymouth	82	52	2
Walter Greenleaf	Plymouth	?	6	2
Rose Conway	Plymouth	42	4
Dorothy Comeau	Rumney	27	3
Richard Comeau	Rumney	1-d	3
Lemuel Sleep*	Warren	83	2
Nellie Howland	Wentworth	64	37	3
George Clough*	Wentworth	78	26	1

*Indicates inmates now at farm.

41 names not listed (private boarders and public welfare.)

TOWN BOARDERS AT GRAFTON COUNTY FARM

Name	Town	Time supported		
		Age	Weeks	Days
Harold Heath	Ashland	50	9	3
Eldbridge Huntoon	Bethlehem	63	4
Raymond Adams*	Bristol	25	7	5
Anna Schmidt	Canaan	48	5	4
Florence Quimby	Enfield	65	24	6
Frances Abbott	Enfield	28	24	6
Eva Sturtevant	Enfield	39	9	2
Lyman Sturtevant	Enfield	15	4	3
Roberta Sturtevant	Enfield	12	2	2
George McDonald	Grafton	83	4
William Buskey	Groton	77	5
Patrick O'Carroll	Hanover	61	28	2
John Gagnon*	Hanover	72	9	2
Bernice Rinehart*	Haverhill	57	43	6
Telepor Clement*	Lebanon	84	52	2
Fred Clement*	Lebanon	60	52	2
Ernest Franklin	Lebanon	58	6
John Prowelenty*	Lincoln	66	52	2
George Polichuke*	Lincoln	74	52	2
Alex Fountain*	Lincoln	70	17	1
William Lyndes	Lisbon	59	10
Joseph Houle*	Littleton	82	52	2
Shelia Corliss	Littleton	6	1	1
Orange Wells	Littleton	66	9	1
Maude Wells*	Littleton	17	6	4
Emmerette Pushee	Lyme	54	6	6
Jerry Tolman*	Orford	40	52	2
Jay LaMontague*	Piermont	55	52	2
John McNeil	Piermont	81	14	5
Dora McGoff	Plymouth	29	2	1
Louise Derrick	Warren	25	5
Gerald Derrick	Warren	1d	5
Mary Tathem	Wentworth	59	16	2
Calvin Sargent*	Woodstock	59	52	2
James Ward*	Woodstock	73	52	2
Ruth Benzie	Newbury Vt	64	7	1

6 private boarder cases not listed.

*Indicates inmates now at farm.

**INMATES OF GRAFTON COUNTY
HOUSE OF CORRECTION**

Name	Court	Crime	Time Served		
			Age	Wks	Days
Ray, Luther E., Jr., Hanover, Drunk			22	3	6
Gould, Perley, Haverhill, Bigamy			47	23	1
King, Leon H., Littleton, Vagrancy			52	23	1
Spaulding, Carlos, Lebanon, Non-support			38	11	4
Miller, James, Lebanon, Vagrancy			55	11	4
Vainey, George, Lisbon, Non-support			33	15	3
Gould, Robert, Lebanon, Drunk			58	7	6
Page, Maurice, Haverhill, Assault on minor			23	37	5
Smith, Carl T., Plymouth, Leave car to endanger			19	1	2
Armstrong, Jack, Canaan, Misuse of car plates			52	4	3
Brown, Carroll, Haverhill, Drunk			32	3	6
Martin, Albin, Bristol, Drunk			34	15	3
Bergeron, Eugene L., Bristol, Operating car with no license			26	15	3
Welch, Roland, Orford, Forgery			45	23	6
Burt, Richard H., Lisbon, Stealing car			18	26	3
Higgings, Albert, Littleton, Drunk			28	10	2
Gagnon, Edward J., Bethlehem, Drunk			47	9
Hurley, James P., Bethlehem, Drunk			48	9
LaBrum, Paul A., Lebanon, Non-pay't of taxes			37	1	3
Brown, Percy, Haverhill, Vagrancy			57	3	6
Clark, James H., Haverhill, Vagrancy			63	3	6
Henry, Paul, Lebanon, Drunk			39	7	5
Fields, Daniel, Lebanon, Drunk			35	11	4
White, Earl V., Canaan, Drunk			56	3	6
LeMay, Atlo, Bethlehem, Drunk			31	11	4
Tattersall, George Jr., Lebanon, Drunk			28	3	6
Pollock, Hamilton, Littleton, Non-support			42	11	4
Wells, Earl, Dalton, Forgery			22	18	4
Wooten, Leroy, Bethlehem, Assault			42	11	5
Kousios, Joseph A., Manchester, Stealing			33	17	6
Fields, Daniel, Lebanon, Drunk			35	11	4
Thorne, Francis, Littleton, Drunk			28	11	3
Locke, Neal E., Haverhill, Operating no lic.			20	3	4
Duffy, DeLoyd, Littleton, Vagrancy			62	7
Daley, Thomas, Haverhill, Drunk			54	8
Sheppard, Richard S., Lincoln, Stealing			18	8	6
Shane, Donald R., No. Woodstock, Stealing			24	8	6

**INMATES OF GRAFTON COUNTY
HOUSE OF CORRECTION**

Name	Court	Crime	Time Served		
			Age	Wks	Days
King, Leon, Littleton, Drunk and Vagrancy			58	4	3
Noyes, Milton, Lisbon, Vagrancy			45	4
Joslin, Wendell, Haverhill, Drunk			57	2
Greene, Francis, Enfield, Drunk			22	1
Pelers, Walter, Haverhill, Vagrancy			50	19	1
Sanville, Albert, Lebanon, Hit and run driver			21	34	2
Smith, Arthur B., Woodsville, Drunk			38	4
LaBarre, Leo, Lebanon, Drunk			50	20	3
Pecore, Howard, Lebanon, Rape			25	30	5
Carbonneau, Leo J., Lincoln, Indec't exposure			50	15	2
Therrien, Maurice, Hanover, Driving to endanger			18	4

INMATES OF GRAFTON COUNTY JAIL

Name	Court	Crime	Time Served		
			Age	Wks	Days
Dion, John, Haverhill,		Counterfeit check	23	1	1
Wright, Paul E., Haverhill,		Counterfeit check	33	3	3
Huntoon, Leonard, Littleton,		Selling beer to minor, Driving without lic.	24	7	3
Cook, Roy E. Lebanon,		Violating probation	45	9
Farley, Harold, Lebanon,		Break'g and enter'g	18	4	2
Fontaine, Donald, Lebanon,		Break'g - enter'g	18	4	2
Shallow, Earl, Haverhill,		Bastardy charge	54	4	1
Coffran, Reginald, Littleton,		Sex crime	31	4	4
Burt, Richard, Haverhill,		Stealing truck	18	12	2
McKay, Daniel, Lebanon,		Breaking - entering	31	1	5
Stack, Edward, Michigan,		Forgery	32	3	2
Shares, John E., Lebanon,		Breaking - entering	21	3	3
McEwans, Donald, Haverhill,		Break'g - enter'g	21	3	3
Gould, Perley, Ashland,		Bastardy	47	4
Smith, Charles W., Haverhill,		Insuffic't funds	36	1
Pennele, Virgil L., Army,		AWOL	33	1
Brayton, Eugene K., Army,		AWOL	21	1
Welch, Ronald, Haverhill,		Counterfeit check	45	3	6
Laraway, Marvin, Lebanon,		Non-support	29	7	5
Cote, Charles, Littleton,		Drunk driving	32	2
Laughlin, Francis, Bristol,		Non-support	32	5
LaMontague, Guilbert E.,		Lisbon, Count. check	33	3	4
Jenkins, Forest L., Haverhill,		Count. check	34	17
Cussons, Francis J., Plymouth,		Non-support	52	2
King, Earnest, Littleton,		Non-support	25	23	5
Head, Andrew C., Haverhill,		Break'g - enter'g	32	6
Archambault, Joseph, Lebanon,		Break - enter	20	6
Wells, Earl, Dalton,		Counterfeit check	22	1	2
McLeod, Alfred, Bethlehem,		Drunk, Assault	32	20	2
Charette, Vernon, Waterbury,		Conn., Bur- glary, Assault intent to kill	20	19	2
Boutin, Harold, Haverhill,		Break'g - enter'g	24	1	6
Stamford, Robert, Littleton,		Stealing	26	23	2
Frost, Roland, Lebanon,		Non-support	35	1
Shene, Donald R., N. Woodstock,		Break - enter	24	1	4
Shepard, Richard L., Lincoln,		Break'g - enter'g	18	1	4
Martin, David, White River Jct.,		Breaking and entering	21	8	6
Greenwood, Pearl, White River, Vt.,		Breaking and entering	20	8	6

CLERK OF COURT'S REPORT

To the Commissioners of Grafton County:

I submit herewith report of the Receipts and Disbursements of this office for the year ended December 31, 1952, as examined and allowed by the Court.

January Term 1952 Account

Charges against County:

1.	Fees chargeable to County	
	Mittimus, Capias, etc. (5)	\$10.00
	State Entries (2)	.90
	Divorce Cards (21)	2.10
	Total fees	\$13.00
2.	Permanent Records	
	Criminal recording	151.85
3.	Miscellaneous Cash Disbursements	12.42
4.	Allowance for Clerk and Clerical Hire	2,330.64
	Total charges	\$2,507.91

Credits to County:

1.	Entries (167 @ 90c)	\$150.30
2.	Fines and Costs	49.40
3.	Sale of Dockets	None
4.	Sale of Rules of Court	None
5.	Misc. Credits to County	None
6.	Fees chargeable to County	13.00
7.	Allowance for Permanent Records	151.85
8.	Allowance for Clerk and Clerical Hire	2,143.36
	Total Credits	\$2,507.91

Examined and allowed the foregoing account.

JOHN H. LEAHY

April 30, 1952

Presiding Justice

May Term 1952 Account

Charges against County:

1.	Fees chargeable to County		
	Mittimus, Capias, etc. (3)	\$6.00	
	State entries (15)	4.50	
	Divorce Cards	8.10	
	Total fees		\$18.60
2.	Permanent Records		
	Civil Vol. 29, pgs. 39-249	84.80	
	Certificates 527	79.05	
	Criminal Vol. 2, pgs. 599-600	.80	
	Criminal, Vol. 3, pgs. 1-128	51.20	
	Criminal Vol. 3, pgs. 129-546	167.20	
	Certifications 394	59.10	
			\$442.15
3.	Miscellaneous Cash Disbursements		13.42
4.	Allowance for Clerk and Clerical Hire		2,379.88
	Total Charges		\$2,854.05

Credits to County:

1.	Entries (164 @ 90c)	153.00
2.	Fines and costs	240.00
3.	Sale of Dockets	5.00
4.	Sale of Rules of Court	None
5.	Misc. credits to County	3.70
6.	Fees chargeable to County	18.60
7.	Allowance for Permanent Records	442.15
8.	Allowance for Clerk and Clerical Hire	1,991.60

	Total credits	\$2,854.05
--	---------------	------------

Examined and allowed the foregoing account.

JOHN H. LEAHY

August 31, 1952

Presiding Justice

September Term 1952 Account

Charges against County:

1.	Fees chargeable to County		
	Mittimus, Capias, etc.	\$29.20	
	State entries	14.80	
	Divorce Cards	5.25	
	Total fees		\$49.25
2.	Permanent Records		
	Criminal Vol. 3 pgs. 547-600	21.60	
	Criminal Vol. 4 pgs. 1-600	240.00	
	Criminal Vol. 5 pgs. 1-376	150.40	
	Criminal Certifications 892	133.80	
	Civil Vol. 29 pgs. 250-294	18.00	
	Civil Certifications 90	13.50	
			\$577.30
3.	Miscellaneous Cash Disbursements	12.60	
4.	Allowance for Clerk and Clerical Hire	2,424.69	
	Total charges		\$3,063.84

Credits to County:

1.	Entries (144 @ 90c)	\$129.60	
2.	Fines and costs	None	
3.	Sale of Dockets	None	
4.	Sale of Rules of Court	None	
5.	Misc. credits to County	None	
6.	Fees chargeable to County	49.25	
7.	Allowance for Permanent Records	577.30	
8.	Allowance for Clerk and Clerical Hire	2,307.69	
	Total credits		\$3,063.84

REPORT OF COUNTY SOLICITOR

To the Commissioners for the County of Grafton:

I respectfully present the following report of cases presented before the Superior Court for the year 1952:

JANUARY TERM - 1952

Indictments

No criminal cases were presented to the Grand Jury at the January term of Court.

Waivers of Indictment

State vs. Perley Gould - Bigamy. Plea, Guilty. Sentenced to the House of Correction for 6 months.

State vs. John Raymond Dion - Forgery. Plea, Guilty. Case continued for sentence and ordered held for parole authorities.

MAY TERM - 1952

Indictments

State vs. Roland Welch - Forgery. Plea, Guilty. Sentenced to 6 months in the House of Correction.

State vs. Earl R. Wells - Forgery. Plea, Guilty. Sentenced to 6 months in the House of Correction.

State vs. Timothy W. Hurley - Embezzlement - 2 counts. Cases continued for sentence.

Waivers of Indictment

State vs. Joseph Archambeault - Breaking, entering and larceny in the night-time. Plea, Guilty. Sentenced to State's Prison for not more than 3 years nor less than one year and one day.

State vs. Andrew Carlton Head - Breaking, entering and larceny in the night-time. Plea, Guilty. Sentenced to State's Prison for not more than 5 years nor less than 2 years.

Appeals

- Clarence G. Hibbard - Driving While Intoxicated. Plea, Guilty. Ordered to pay a fine of \$50.00.
- Albert Higgins, Jr. - Disturbing the Peace. Plea, Guilty. Sentenced to 3 months in the House of Correction.

SEPTEMBER TERM - 1952

Indictments

- State vs. Leslie Forrest Jenkins - Forgery. Plea, Guilty. Sentenced to not more than 4 years nor less than 18 months in State's Prison.
- State vs. Gilbert Lamontagne - Forgery (principal, 2nd degree). Plea, Not Guilty. Trial by Jury and found Guilty. Sentenced to not more than 5 years nor less than 3 years in State's Prison.
- State vs. John Shares - Breaking, Entering and Larceny in night-time. Plea, Guilty. Sentenced to serve not more than 3 years nor less than 1 year and one day in State's Prison.
- State vs. Donald McEwan - Breaking, Entering and Larceny in night-time. Plea, Guilty. Sentenced to serve not more than 3 years nor less than 1 year and one day in State's Prison.

Waivers of Indictment

- State vs. Richard Burt - Escape from House of Correction. Plea, Guilty. Sentenced to 90 days in County Jail.
- Earl R. Wells - Escape from House of Correction. Plea, Guilty. Sentenced to State's Prison for not more than 2 years nor less than one year and one day. Sentence to commence upon completion of present sentence.
- Joseph A. Kousios - Escape from House of Correction. Plea, Guilty. Sentenced to State's Prison for not more than 2 years nor less than one year and one

day. Sentence to commence upon completion of present sentence.

Harold L. Boutin - Breaking, Entering and Larceny in night-time. Case continued for sentence. Placed on probation for a period of 3 years and ordered to make restitution in the sum of \$36.50.

Richard L. Shepard - Assault with Intent to Rob. Plea, Guilty. Sentenced to 9 months in the House of Correction.

Donald Richard Shene - Assault with Intent to Rob. Plea, Guilty. Sentenced to 9 months in the House of Correction.

Daniel Clifford McKay - Breaking, Entering and Larceny in night-time. Plea, Guilty. Sentenced to not more than 10 years nor less than 5 years in New Hampshire State's Prison.

Harold Farley - Breaking, Entering and Larceny in night-time. Plea, Guilty. Sentenced to not more than 4 years nor less than 18 months in State's Prison.

Donald Fontaine - Breaking, Entering and Larceny in night-time. Plea, Guilty. Sentenced to not more than 4 years nor less than 18 months in State's Prison, said sentence to begin at the expiration of his present sentence for violation of parole.

Sexual Psychopath

Reginald T. Coffran - Examined by Commission and found not to be a sexual psychopath.

Respectfully submitted:

ROBERT A. JONES
County Solicitor

SHERIFF'S REPORT

To the Honorable Board of County Commissioners and voters of Grafton County:

As Sheriff of Grafton County, I respectfully submit herewith my annual report from January 1, 1952 to December 31, 1952.

During the week of April 28, with the cooperation of the F.B.I., a Police training school was held for all law enforcement officers. Twenty-seven communities of Grafton County were represented as well as many officers from Sullivan County and Vermont State Police whose stations are located on the Vermont-New Hampshire border. This was the second Police training school conducted in Grafton County and all officers agreed it was a valuable course of instruction.

JANUARY TERM AT LEBANON

William E. Green, Sheriff

Court Attendance

4 days (Dec. 17-21, 1951) @ \$10.00	\$40.00
45 days @ \$10.00	450.00
3 days Municipal Court	9.00
Travel	79.20
Paid Minister	10.00

\$588.20

Criminal Investigation

10 days @ \$10.00	\$100.00
Travel	90.30
Telephone	168.05
Postage and box rent	17.75
Office supplies	33.70
Photographing	17.90
Annotations - 1951	3.50

\$431.20

Koland G. Alling

Court Attendance			
2 days @ \$10.00		\$20.00	
Travel		36.20	
Meals		.45	
Telephone		1.13	
		<hr/>	\$57.78
Criminal Investigation			
1 day @ \$10.00		\$10.00	
Travel		2.20	
		<hr/>	\$12.20

Loren F. Bort

Court Attendance			
1½ days @ \$10.00		\$15.00	
Travel		49.40	
Meals		3.05	
		<hr/>	\$67.45
Criminal Investigation			
½ day		\$5.00	
Travel		1.80	
Telephone		.40	
		<hr/>	\$7.20

Rufus J. Bruce

Criminal Investigation			
Travel		\$34.30	
Telephone		1.70	
Hearing		3.00	
Postage		.99	
		<hr/>	\$39.99

John L. Farnham

Court Attendance		
3½ days @ \$10.00	\$35.00	
Travel	129.50	
Meals	3.00	
Fee for bail	1.00	
	<hr/>	\$168.50
Criminal Investigation		
8 days @ \$10.00	\$80.00	
Travel	24.60	
Telephone	19.81	
	<hr/>	\$124.41

Theodore R. Gardner

Criminal Investigation		
5 days @ \$10.00	\$50.00	
Travel	3.00	
Telephone	31.08	
	<hr/>	\$84.08

Fred Johnson

Court Attendance		
4 days @ \$10.00	\$40.00	
Travel	3.30	
	<hr/>	43.30

Stanley Hubbard

Criminal Investigation		
1½ days @ \$10.00	\$15.00	
Travel	13.60	
Making arrest	2.00	
	<hr/>	\$30.60

George U. L. Leavitt

Court Attendance		
25 days @ \$10.00	\$250.00	
Travel	5.00	
Court supplies	1.88	
	<hr/>	\$256.88

MAY TERM AT PLYMOUTH**William E. Green, Sheriff**

Court Attendance		
39 days @ \$10.00	\$390.00	
Travel	42.00	
Paid Minister	10.00	
	<hr/>	\$442.00

Criminal Investigation		
7 days @ \$10.00	\$70.00	
Travel	80.00	
Meals	1.50	
Telephone	252.84	
Office supplies	27.55	
Photographing	1.95	
	<hr/>	\$433.84

Loren F. Bort

Court Attendance		
2 days @ \$10.00	20.00	
Meals	2.09	
	<hr/>	\$22.00

Criminal Investigation		
4½ days @ \$10.00	\$45.00	
Travel	108.90	
Meals	8.96	
Telephone	2.05	
	<hr/>	\$164.91

Rufus Bruce

Criminal Investigation		
3 days @ \$10.00	\$30.00	
Travel	54.90	
Meals	1.00	
Telephone	3.05	
Mittimus & copy	2.00	
Assistance	5.00	
		\$95.95

John L. Farnham

Court Attendance		
7 days @ \$10.00	\$70.00	
Travel	45.00	
Meals	3.15	
		\$118.15

Criminal Investigation		
8 days @ \$10.00	\$80.00	
Municipal Court	3.00	
Travel	152.80	
Meals	5.25	
Telephone	19.44	
		\$260.49

Theodore R. Gardner

Court Attendance		
4 days @ \$10.00	\$40.00	
Travel	35.00	
Meals	3.45	
		\$78.45

Criminal Investigation		
Travel	\$10.80	
Meals	1.75	
Mittimus & copy	2.00	
		\$14.55

Stanley Hubbard

Court Attendance

11 days @ \$10.00	\$110.00
Travel	44.00
Meals	\$12.50

 \$166.50

Criminal Investigation

1 day @ \$10.00	\$10.00
Travel	15.50
Meals	1.50

 \$27.00
George U. L. Leavitt

Court Attendance

5 days @ \$10.00	\$50.00
Travel	1.00

 \$51.00
SEPTEMBER TERM AT WOODSVILLE**William E. Green, Sheriff**

Court Attendance

31 days @ \$10.00	\$310.00
Paid Minister	10.00

 \$320.00

Criminal Investigation

19½ days @ \$10.00	\$195.00
Travel	132.40
Meals	15.80
Mittimus	2.00
Assistance	23.00
Telephone	417.82
Supplies	2.30
Printing	12.70
Photographing	.50

 \$801.52

Loren F. Bort

Court Attendance	
4 days @ \$10.00	\$40.00
Travel	3.60
Meals	1.25
	<hr/>
	\$44.85

Criminal Investigation	
2 days @ \$10.00	\$20.00
Travel	49.50
Meals	1.00
	<hr/>
	\$70.50

John L. Farnham

Court Attendance	
20½ days @ \$10.00	\$205.00
Travel	28.50
Meals	18.90
Assistance	5.00
	<hr/>
	\$257.40

Criminal Investigation	
18½ days @ \$11.00	\$185.00
Travel	181.60
Meals	13.20
Mittimus & copy	2.00
Telephone	14.17
Assistance	5.00
	<hr/>
	\$400.97

Theodore R. Gardner

Court Attendance	
16 days @ \$10.00	\$160.00
Travel	58.40
Meals	8.75
	<hr/>
	\$227.15

Criminal Investigation

9½ days @ \$10.00	\$95.00
Travel	67.20
Meals	4.50
2 Mittimus & copy	4.00
Telephone	37.41
	<hr/>

\$208.11

Stanley Hubbard**Court Attendance**

3 days @ \$10.00	\$30.00
Travel	12.00
Meals	3.75
Telephone	1.31
	<hr/>

\$47.06

Fred Johnson**Criminal Investigation**

9 days @ \$10.00	\$90.00
Travel	22.60
Meals	6.80
	<hr/>

\$119.40

George U. L. Leavitt**Court Attendance**

5 days @ \$10.00	\$50.00
Travel	9.80
	<hr/>

\$59.80

Respectfully submitted,
WILLIAM E. GREEN
Sheriff

CHAPLAIN'S REPORT

To the Commissioners of Grafton County:

As Chaplain of Grafton County Farm, I submit my report for the year ended December 31, 1952.

The regular worship services have been well attended and the spirit and participation of the members of the Home have been excellent. There seems to have been a great deal of joy and personal help gained from worship experiences together. Special seasons have been observed in a way to make them as spiritually meaningful as possible to each member of the Home. In these services and by personal visits to those in the hospital, I have sought to give counsel and guidance in a sympathetic and understanding manner, that all our people might find comfort and retain joy in living.

I wish to express my deep appreciation for the helpful co-operation of the superintendent and matron, Mr. and Mrs. Erville Aldrich, also, Dr. E. Campbell, the members of the hospital staff, Mrs. Ethel Little and their assistants. The County is to be complimented not only on the excellence of its institution, but also on the high quality of its staff and personnel.

Respectfully submitted,

H. BENJAMIN SIMMS
Chaplain

REPORT OF THE COUNTY PHYSICIAN

To the Commissioners of Grafton County:

I herewith submit my report for the year ended December 31, 1952.

During this year the personnel has remained almost unchanged, in which we feel very fortunate.

In January, the County Hospital was host for a meeting of the New Hampshire Academy of General Practice. The attending members expressed their thanks for the courtesy shown them by the employees of the County.

The exchange of the drug and dark rooms has been accomplished and has proved to be very efficient. A new bed-pan sterilizer has been installed.

The Board of Health has made inspection and has had no criticisms to make.

Anticipated hospital expenditures would be for a few new hospital beds, replacement of some mattresses and possibly replacement of the auto-clave. The higher beds would be easier moved with less damage to floors if equipped with 5-in. or 6-in. casters. All beds possible should be equipped with rubber bumpers on the legs to prevent damage to walls and mop-boards.

The associate physicians have made periodic rounds with me and their counsel has been of great help.

Statistics are appended to this report. Average age of death in the institution is 69.5 years. Four died of cancer, ten died of vascular changes associated with age.

There were 5,256 in-patient days and 1,814 out-patient visits for a total of 7,070 calls. Medical cost per patient averaged 48 cents per day, including operations, X-rays and deliveries!

I wish to compliment the Commissioners and all employees on the operation of facilities and the excellent cooperation of all concerned.

E. C. CAMPBELL, M.D.

Statistics for 1952 for Grafton County Hospital

Patients in hospital January 1, 1952	16
Admissions	95
Discharges	74
Daily average	14.4
Total patient days	5,256
Number births	6
Number operations	7
Number deaths	17
Number discharged, cured or improved	65
Number discharged, unimproved	9
Number out-patients	1,814
Number autopsies	2
Patients in hospital January 1, 1953	20

DEATHS IN 1952

Date	Name	Age			Cause of Death
		Yr	Mo	Da	
Jan 9	Lindley Masure	79	2	25	Arteriosclerosis 20 yrs. Eczema 5 yrs.
Jan 12	Rose Conway	42			Glioblastoma multi- forma
Jan 13	Jack Dumont	66	6	7	Cancer of floor of mouth
Mar 29	Howard Cole	39	7	15	Choreiform asyn- ergy progressive, ter- minal pneumonia
Apr 9	William Buskey	77(?)			Bleeding peptic ulcer, severe spinal arthritis, ectropla, arterioscl'sis
May 24	Hugh James Chute	43	8	10	Carcinoma of head of pancreas, pneumonia rt. lower lobe
June 14	Martin Cahill	83	7	3	Coronary embolus, arter- iosclerosis, rheumatoid arthritis
June 30	Charlie Faye	63	9	24	Bleeding peptic ulcer
July 9	Elbridge Huntoon	62	2	6	Gas pois'n-World War I, cereb'l atrophy, urinary retention, term. pneum.
July 30	John Johnson	81	10	21	Coronary emb., asthma, arteriosclerosis
Sept 7	Ruth Benzle	64	6	29	Art'sclerosis 10 yrs., diabetic 5 yrs., peri- pheral gangrene, am- putation left leg, un- healed 5 mo.
Sept 17	Mary Stone	91	2	7	Art'scl., myocarditis
Sept 19	Russell Cochrane	82	10	25	Hemiplegia, cerebral emb., art'scl.
Sept 22	Clarissa Little	71			Cerebral hemorrhage, art'scl., hypertension
Oct 5	George D Brooks	66	9	6	Cerebral hemorrhage, art'scl., syphilis
Oct 14	John McPherson	83	7	3	Chronic myelogenous leukemia, cer. hemorr- hage due to art'scl.
Nov 10	Sarah Gonyer	70	7	3	Arteriosclerosis

**SUMMARY OF FARM ACCOUNTS FOR
GRAFTON COUNTY FOR 1952**

Capital Investment	1951	1952
Value of land & buildings	\$42,715.00	\$45,000.00
Livestock inventory	52,280.00	54,470.20
Machinery & equip't inventory	18,433.80	19,923.86
Feed & supplies inventory	10,237.08	10,359.29
	<hr/>	<hr/>
Total	\$123,665.88	\$129,753.35
		<hr/>
		123,665.88
		<hr/>
Capital Gain in Inventory		\$6,087.47

Summary of Receipts

	Cash	Institution	Total
Milk & milk products	\$35,411.10	\$3,881.34	\$39,292.44
Produce	505.03	1,040.72	1,545.75
Eggs	-----	53.25	53.25
Dressed poultry	-----	292.80	292.80
Dressed beef	-----	1,163.60	1,163.60
Dressed pork	-----	3,108.80	3,108.80
Livestock	12,250.04	-----	12,250.04
Other income	2,964.20	-----	2,964.20
	<hr/>	<hr/>	<hr/>
Total Receipts	\$51,130.37	\$9,540.51	\$60,670.88
Increase in livestock inventory			2,190.20
Increase in value land & buildings			2,285.00
Increase in feed & supplies inventory			122.21
Increase in machinery & equip't inventory			1,490.06
			<hr/>
Grand Total			\$66,758.35

Summary of Expenses

Supervision	\$ 300.00
Labor—regular	9,296.68
Labor—House of Correction	1,622.00
Feed	26,617.78
Supplies	1,453.84
Truck and tractor expense	2,282.56
International truck	2,263.20
Taxes	2,744.94
Insurance	1,988.46
Light and power	905.25
Repairs	1,751.68
Equipment	839.97
Seeds and fertilizer	1,246.10
Livestock expense	817.75
Expense of team	388.00
Bedding	994.04
Bulldozer—pasture improvement	301.25
Livestock and poultry purchased	546.30
New silo	2,147.00
Coal	707.62
Miscellaneous	71.45
	<hr/>
Total	\$59,285.87
Total Receipts plus Inventory Increase	66,758.35
Total Expenses	59,285.87
	<hr/>
Operating profit	\$7,472.48

ERVILLE H. ALDRICH
Superintendent

RICHARD RUTHERFORD
County Agricultural
Agent

FINANCIAL REPORT
GRAFTON COUNTY EXTENSION SERVICE

County Extension Work in Agriculture, Home Economics and 4-H Club Work for Year Ended December 31, 1952.

Herein is submitted a statement of expenditures of the legislative appropriation of \$15,245.00 for Grafton County Extension Work in cooperation with the University of New Hampshire and the United States Department of Agriculture.

Legislative Appropriation for Year 1952	\$15,245.00
Balance on Hand, January 1, 1952	4,677.19
Sale of Addressing Machine	50.00
	<hr/>
	\$19,972.19

Expenses

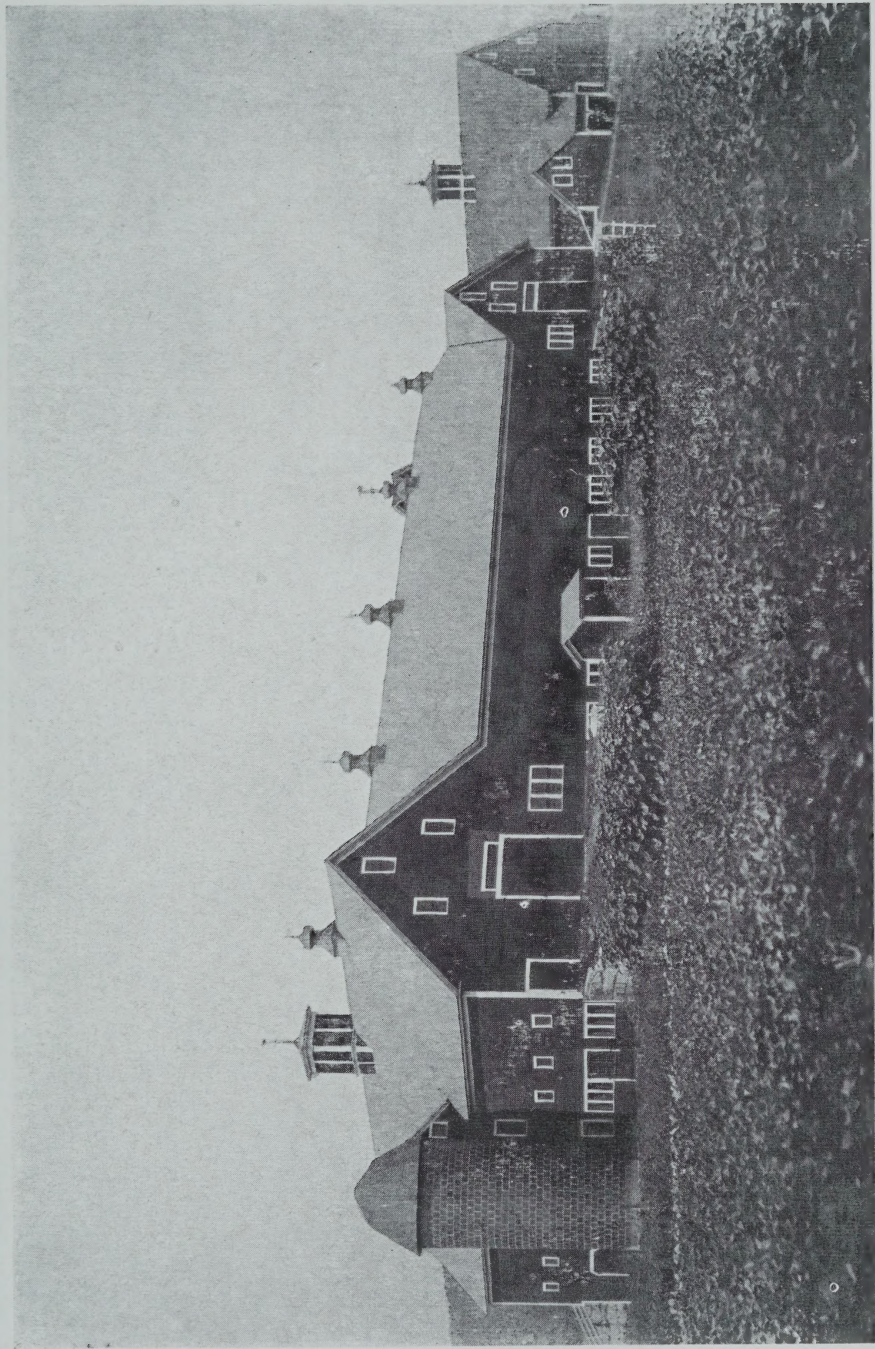
Salary, Agricultural Agent	\$1,150.00
Travel, Agricultural Agent	1,044.37
Salary, Home Demonstration Agent	400.00
Travel, Home Demonstration Agent	897.54
Salary, Club Agent	666.63
Travel, Club Agent	1,125.83
Salary, Forester	462.50
Travel, Forester	841.60
Travel, Assistant Club Agent	803.44
Salary, Assistant Home Demonstration Agent	425.00
Travel, Assistant Home Demonstration Agent	197.14
Salary —3 clerks	4,603.88
Janitor Services	28.16
Freight and Express	7.74
Telephone and Postage	487.13

Rent	624.00	
Printing	81.05	
Repairs to Equipment	83.87	
Supplies and Materials	704.97	
Equipment	541.76	
Insurance on Office Furniture and Equipment	44.10	
4-H Club Awards	186.90	
Miscellaneous	55.19	
		\$15,462.80
		<hr/>
Balance on Hand, December 31, 1952		\$4,509.39

Respectfully submitted,

MARGARET WHITCOMB
Treasurer

RICHARD RUTHERFORD
County Agricultural Agent



Grafton County Farm Barns

