

NH
352.07
P85
1966



ANNUAL REPORT

1

9

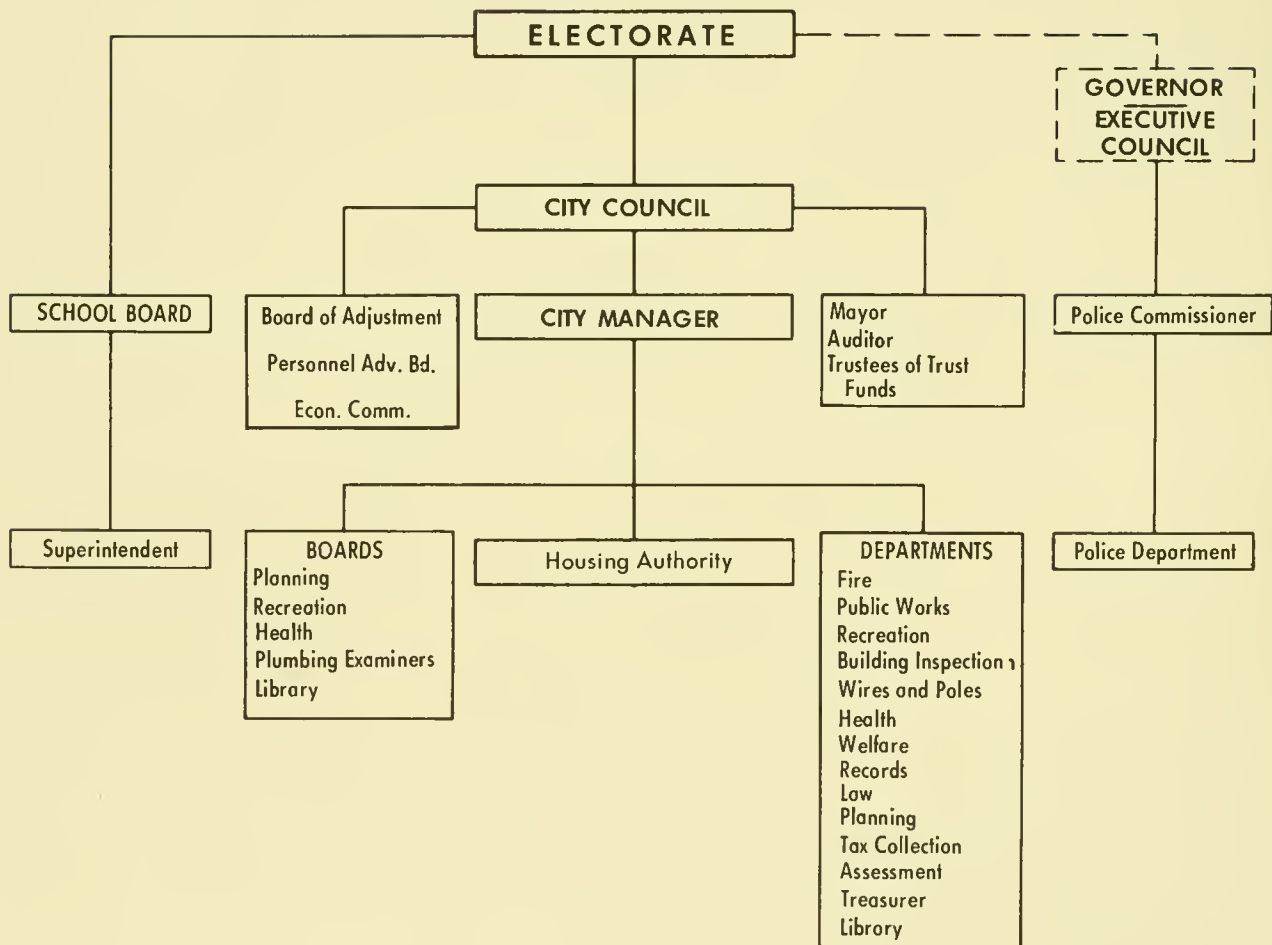
6

6



PORTSMOUTH NEW HAMPSHIRE

Municipal Organization Chart



City Manager's Report



City of Portsmouth, New Hampshire

CITY HALL 126 DANIEL STREET

April 11, 1967

Honorable Mayor, Members of the
City Council and Citizens of
Portsmouth, New Hampshire

Gentlemen:

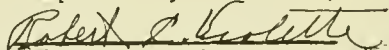
As City Manager, this is the fifteenth year that I have supervised the development of the annual report. Ten of those fifteen years, Portsmouth has received the First Place Award in recognition of the excellence of its' annual report. The past seven years, our report has received honorable mention in the New England Municipal Report Competition.

On account of the limited space, we have printed just a few of the many activities during the year 1966. Full and complete records are available at City Hall. The past year, or 1966, has been a very successful year, financially and otherwise. The closing of the Municipal Books, at the end of the year, showed an unexpended balance of \$160,000.00. Included in this report is a list of the many accomplishments.

Credit is due to the Honorable Mayor, and to the Members of the City Council, for their guidance and advice; to the members of the many Boards and Committees, for their time, efforts and valuable contributions and also to the City employees, for their outstanding achievements.

A special tribute of appreciation and gratitude, to the Portsmouth Herald, our local newspaper and to the two radio stations, WHEB and WBBX, for keeping the citizenry informed.

Respectfully submitted,


Robert C. Violette
City Manager

RCV:lzs



"City of the Open Door"

Table of Contents

City Manager's Report	1
Portsmouth City Council	3
Administrative Officers	4
Boards and Commissions	5
Council Activities — 1966	6-10
Major Accomplishments	11
ADMINISTRATIVE DEPARTMENTS	
Records	12
Assessments	13
Tax Collection	15
Treasurer	16
Education	18-20
Public Works	21-22
Water Department	22
Planning Department	23
Recreation	24-25
Library	26
Fire Department	27
Police Department	28-29
Law	30
Health and Welfare	31
INSPECTION DEPARTMENTS	
Building Inspector	32
Plumbing Inspector	32
Dog Officer	33
Sealer of Weights and Measures	33
ECONOMICS	
Economic Commission	34-35
FINANCE	
Division of Accounting	36-37
Summary of State Tax Commission	38-39
Exhibits and Statements	40-49
CIVIL DEFENSE	50
GENERAL INFORMATION	51
DIRECTORY OF CITY OFFICES AND SERVICES	52

- Front cover drawing by Alice Casgrove
- Back cover block prints by Dorothy H. Lord
- Cover and report lay out by Portsmouth Planning Department staff

Portsmouth City Council



Left to Right: Councilmen: William Keefe; Edmund T. Scarponi; Frank Butterworth, Jr; Robert E. Whalen; City Manager, Robert C. Violette; Mayor Timothy J. Connors; City Clerk, Peter E. O'Connell; C. Richard Williams; Robert Shaines, Assistant Mayor; Samuel A. McMaster and Raymond C. Dunphy.

CITY COUNCIL ACTIVITIES: 1966

Held 12 regular meetings
Held 11 special meetings
Held 18 public hearings
Passed 16 resolutions
Adopted 13 Ordinances, Tabled 2.

COUNCIL MEMBERS: 9

EXECUTIVE DEPARTMENT:

Robert C. Violette, City Manager
Mrs. Leda Z. Sombric, Clerk/Stenographer

Administrative Officers

CITY CLERK	Peter E. O'Donnell
CITY AUDITOR	Wilfred E. Young
CITY ASSESSOR	Lucien O. Geoffrion
TAX COLLECTOR	James P. Healy
CITY TREASURER	Mrs. Tereso B. Demarais
CITY ATTORNEY	John C. Driscoll
BUILDING INSPECTOR	Lewis M. McNeil, Sr.
SANITARY/CITY PHYSICIAN	S. Gerard Griffin, M.D.
CITY MARSHAL	Stanton G. Remick
FIRE CHIEF	Frederick R. Crompton
DIRECTOR OF WELFARE	Mrs. Hildo Hundley
DIRECTOR OF PLANNING	Albert C. Wennberg
SUPERINTENDENT PUBLIC WORKS	Gordon Hanchett
CITY ENGINEER	Richard Nelson
SUPERINTENDENT WATER DEPARTMENT	Frank Emery
SUPERINTENDENT OF SCHOOLS	Herbert R. Hogstrom
ASSISTANT SUPERINTENDENT OF SCHOOLS	Walter Brown
CLERK OF COURT	Lois S. Van Bubar
MUNICIPAL JUDGE	Thomas E. Flynn, Jr. Attorney-at-Law
ASSOCIATE JUDGE	Samuel Levy Attorney-at-Law
LIBRARIAN, PUBLIC LIBRARY	Dorothy M. Vaughan
SEALER WEIGHTS/MEASURES	William Thomson
FIRE ALARM SUPERINTENDENT/WIRES & POLE INSPECTOR	Arthur M. Potterson
PLUMBING INSPECTOR	James Varotsis
PORTSMOUTH ECONOMIC COMMISSION DIRECTOR	Anthony R. Jarrett
DIRECTOR OF RECREATION	Joseph Fate
DIRECTOR OF CIVIL DEFENSE	William T. Evans



Portsmouth Senior High School Band

Boards and Commissions

BOARD OF HEALTH

S. Gerord Griffin, M. D.
Arthur J. Heoley, Secretary
William A. Ruel, D. M. D.

PLANNING BOARD

Robert Simpson, Chairman
Joseph J. Shanley, Vice Chairman
C. Richard Williams, Councilman
Stanley C. Wyman
Henry Beraunsky
Charles George
Robert Renfra
Robert C. Violette, City Manager
(ex-officio)
Gordon Hanchett, Super. of Highways
(ex-officio)
Albert C. Wennberg, Secretary-Director

ZONING BOARD OF ADJUSTMENT

Robert E. O'Leary, Chairman
Alfansa Cabrera, Vice Chairman
John W. Cullen
Walter Beevers
Arthur MacDonald
Bruce Graves
Lavis Cord
Albert C. Wennberg, Secretary

BUILDING COMMISSION

Dr. S. Gerard Griffin, Chairman
Frederick Crompton, Fire Chief
Lewis McNeil, Building Inspector
Albert C. Wennberg, Planning Director

LIBRARY TRUSTEES

Richard H. Jerauld
Mrs. Natalie Fenwick
Mrs. Nancy R. Beck
Colonel Henry B. Morgeson
Philip Hodgdon
Richard H. Hoy

ADULT EDUCATION STUDY COMMITTEE

Frank Butterworth, Jr.
Miss Margaret M. Ballard
Herbert R. Hagstrom, Supt. of Schools

RECREATION COMMITTEE

Miss Keith Bickford
John T. McDanaugh
Harry F. Hallsey
Samuel Kline
Arthur Clough
John Vinciguerra
Teddy E. Lilokos
Robert P. Hopley
Forrest E. Hadgdon

HOUSING AUTHORITY

Lawrence E. Mulloney, Chairman
Ormon R. Paul
Saverio M. Giambalva
Frank Fate
G. Worren Wilder
Edward J. Abbott, Executive Director
Robert H. McCann, Assistant Director
(to August, 1966)
Walter Murphy, Executive Director
(from August, 1966)

TRUSTEES OF THE TRUST FUND

Miss Dorothy F. Leor
Robert McLoughlin
James R. Kelly

CIVIL DEFENSE

William T. Evons, Director

BOARD OF EDUCATION

John W. Durgin, Jr.
Roimond Bowles
Wyman P. Boynton
Mrs. Eileen D. Foley
Philip F. Gray
Charles J. Griffin
Dr. Poul E. Harvey
Philip W. Hodgdon
William H. P. Hopley
Dr. Rubin I. Joffe
Mrs. Alice M. Lee
Warren Nickerson

POLICE COMMISSION

John Loughlin, Chairman
J. Paul Griffin
Henry Gerber

CITIZENS ADVISORY COMMITTEE

Edward B. Furber, Chairman
James R. Kelly
Edward T. Burnham
Cicero A. Lewis
Peter Collins
Frank Butterworth, Jr.
Wyman P. Boynton
Miss Margaret Ballard
Melvin R. Alexander
Marris C. Foye
Mrs. Richard Wallace
Robert C. Violette, City Manager
(ex-officio)
Albert C. Wennberg, Planning Director
(ex-officio)

TRAFFIC AND PARKING COMMITTEE

Councilman Samuel A. McMaster, Chairman
Councilman Frank Butterworth, Jr.
Raymond I. Beal
Marris C. Foye
Henry W. Beraunsky
William Thomson
Albert C. Wennberg (ex-officio)
City Manager Robert C. Violette
(ex-officio)
Fire Chief Frederick Crompton
(ex-officio)
Police Marshal Stanton Remick
(ex-officio)
Gordon Hanchett

PORTSMOUTH DEVELOPMENT COMMISSION

Anthony R. Jarrett, Director
Phillip P. Finn, Chairman
Robert Iofolla
Lars Sondberg
Harry Winebaum
Timothy J. Cannors (ex-officio)
Robert C. Violette, City Manager (ex-officio)
John J. Wholey



Council Activities 1966

JANUARY

3 Meetings

Robert Iafolla appointed to Economic Development Commission to replace Thomas M. Prentiss.

C. Richard Williams appointed to the Planning Board.

Parking & Traffic Committee, Samuel McMaster, Chairman and Councilman Dunphy and Butterworth.

Port Authority - Councilman Butterworth.

Adopted the Rules of the Council which have been in force for the last two years.

Voted to purchase a deep-well pump for Well No. 2 at Madbury.

Adopted Resolution No. 1 in honor of Thomas M. Prentiss.

Voted to honor request for office space for the Rockingham County Community Action Group.

City Manager authorized to advertise for bids for a cone-type incinerator for dump.

FEBRUARY

3 Meetings

3 Public Hearings

Adopted Resolution No. 2 recognizing Title VI of the Civil Rights Act of 1964 as it relates to the Marcy-Washington Streets Project No. NH R-1.

Held Public Hearing on Ordinance to rezone land to Limited Industrial on Ocean Rd. Petitioner: Pace Industries, Inc. Adopted.

Held Public Hearing on Ordinance to rezone land on westerly sideline of U.S. Rt. No. 1 Bypass. Petitioners: Kenneth & Pauline Langley and Vol Halla Corp. Adopted.

Held Public Hearing on 1966 Appropriation Bill. Adopted.

MARCH

3 Meetings

1 Public Hearing

Voted to appropriate \$7,666 for the Sims Avenue Sewer line.

Voted to send a letter to Governor King protesting a tuition increase at UNH.

Held Public Hearing 1966 Zoning Ordinance. Adopted.

Awarded bid to lowest bidder (Taccetta Chevrolet) for two 1/2 ton pickup trucks.

Allocated \$240 for the Portsmouth Senior High Band for signs for the trip to Washington.

APRIL

2 Meetings

2 Public Hearings

Recommended City Attorney John C. Driscoll to be a member of Governor John W. King's Transportation Commission.

Authorized Trustees of Trust Funds to purchase the Adams Collection of Wood Carvings and Folk Art and installing them in the Sheafe Warehouse in Prescott Park.

Mr. Edward Jackson appointed to the Personnel Advisory Board.

APRIL
(CONT.)

City Manager authorized to buy a Pitney-Bowes mailing machine and scale.
Councilman Scarponi appointed to Armed Services Committee.
Voted to accept the offer of Stowe Wilder of 3 Dawn Cypress trees to be planted near the South Mill Pond.
Council offered \$10,000, which was accepted by the University of New Hampshire, for land on Lafayette Road to be used for the new Sub-Fire Station.
Held Public Hearing on Ordinance to have "No Parking on State Street". Tabled.
Held Public Hearing on Back Channel Dredging Project.

MAY

2 Meetings
1 Public Hearing

Provided two buses for transportation of Golden Agers to the Weirs for their annual picnic.
Voted to accept nomination of Ralph Robertson to the Personnel Advisory Board.
Public Hearing held on Resolutions No. 3, 4, 5.
Adopted Resolution No. 3 authorizing the borrowing of \$500,000 for Permanent Municipal Improvements.
Adopted Resolution No. 4 authorizing the borrowing of \$268,500 for Public Municipal Improvements.
Adopted Resolution No. 5 authorizing the borrowing of \$85,000 for water line extensions.
Adopted Resolution No. 6 authorizing the City Manager to apply to Governor and Council through the Water Pollution Commission for approval of constructing sewage disposal facilities; the purpose of approval being to exclude cost of said facilities from net indebtedness of City and for State Guarantee.

JUNE

2 Meetings
2 Public Hearings

Voted to accept the letter from Vice President Hubert H. Humphrey thanking the Mayor and the City Council for the reception he received during his visit to the City.
Held Public Hearing on Resolution No. 7 — a Resolution to consider the Redevelopment Plan and the method of relocation of present occupants for the Vaughan Street Project No. NH R-10.
Accepted the gift of \$1,000 from the Isle of Shoals Trust Fund to establish and maintain a room at the library to be known as "Shoalsiana".
Held Public Hearing on Salary Ordinance. Adopted.

JUNE
(CONT.)

Accepted resignation of Rae S. Laraba from the North Mill Pond Committee with regret.
Adopted "Junk Car" Ordinance.

JULY

1 Meeting
2 Public Hearings

Voted to change the name of the South Playground to the John J. Leary Athletic Field in honor of the late John J. Leary.

Voted to go on record favoring the "Planning of the Future Development of Great Bay".

Voted to start the Gosling Meadows Sewer Project.

Adopted Resolution No. 8 a Resolution approving an Urban Renewal Plan as the Redevelopment Plan for the Vaughan St. Project N.H. R-10 and the feasibility of relocation for the project.

Adopted Resolution No. 9 approving and authorizing the execution of a Cooperation Agreement between the City and the Housing Authority for the Vaughan St. Project N.H. R-10.

Adopted Resolution No. 10 amending Resolution No. 2 entitled "Resolution of the City Council approving the undertaking of surveys and plans for an Urban Renewal Project and filing of an application."

Held Public Hearing on Ordinance to rezone land on Marcy St. (LaCava). Tabled.

Held Public Hearing on Ordinance to rezone land on Spur Road. (Coastline Realty) Adopted.

Held Public Hearing on Ordinance to Amend Dog Ordinance. Adopted.

AUGUST

2 Meetings
1 Public Hearing

Council voted to go on record and have City Manager send a letter to the Congressional Delegation in favor of House Bill S:3471.

City Manager authorized to hire an additional engineer for the City of Portsmouth.

City Manager authorized to attend Manager's Institute at Orono, Maine.

Adopted Resolution No. 11 - Recertification of Workable Program.

Accepted the deed to the land on Lafayette Rd. for the new fire sub-station from the Treasurer of UNH.

Held Public Hearing on Amendment to the Zoning Ordinance Chapter 19, Sect. 19-104J. Adopted.

Councilman Whalen appointed to Portsmouth Housing Authority to replace Alanzo Parks.

Adopted Resolution No. 12 providing for a discount of 1% on real estate taxes paid on or before October 7, 1966 and interest charge of 6% on all taxes remaining unpaid after December 1, 1966.

SEPTEMBER

1 Meeting

Adopted Resolution No. 13 making an additional appropriation of \$8,014.80 for additional necessary expenditures of the city for the fiscal year ending December 31, 1966.

City Manager authorized to proceed with advertising for bids for the construction of the sub-fire station and that the Witmer Associates be hired as Architects.

Voted to hire a full-time Housing Inspector for the balance of the year.

City Manager and City Attorney empowered to negotiate leases for the Northeast Cutting and Die Co. and Neslab Instruments, Inc.

Passed the Ordinance relating to "Signs".

OCTOBER

1 Meeting
2 Public Hearings

City Manager authorized to purchase an Addressograph and Burroughs Accounting Machine.

Voted to send 3 members of the Planning Board and two members of the Board of Adjustment to the Community Planning Seminar in Concord.

Public Hearing on Ordinance to extend the Central Business District on Bow Street. Adopted.

Public Hearing on Ordinance to rezone from Limited Industrial to General Business, land on the northwesterly side of Lafayette Road. Adopted.

NOVEMBER

2 Meetings
1 Public Hearing

City Manager and City Attorney authorized to sign a 90-day option on the Brackett property.

Councilman Butterworth appointed to the Regional Airport Committee.

Voted to allow the City Manager to attend the Municipal Officials Meeting in Portland on November 16 and 17.

Adopted the Ordinance to rezone land on Marcy St. (LaCava).

Adopted the Ordinance to restrict truck and bus travel.

Voted to appoint Ralph May, Robert McLaughlin, Dorothy Vaughan, Paul Keefe, John De-Courcy and Mrs. Paul Slawson as alternates to be on a Commission to study houses to be saved in the Urban Renewal Project.

Accepted a letter from the President of the International Travel and Vacation Ship stating that Portsmouth was one of the 25 selected cities that the ship would visit.

Mr. Anthony Jarrett, Director of Economic Development, gave a progress report.

Voted to cover the meters on the upper deck parking lot for the holiday season.

DECEMBER

1 Meeting
3 Public Hearings

Mayor Connors appointed Councilmen Whalen, Dunphy, Scarponi and Shaines to a Joint Building Committee to work with members of the Board of Education on new construction.

Councilmen Keefe, McMaster and Butterworth appointed to a Joint Site Selection Committee for 40 additional units for elderly.

Resolution No. 14 was adopted favoring location of a Regional Airport in the area.

Resolution No. 15 was adopted authorizing a temporary loan in anticipation of taxes.

Resolution No. 16 honoring the retirement of Fire Chief Crompton was adopted.

Voted to send congratulatory letters to Policemen Scarponi, Condon and Roth on their recent promotions.

Held Public Hearing on Ordinance to rezone land on Woodbury Avenue (St. Pierre). Adopted.

Held Public Hearing on Ordinance to rezone land on Lafayette Road (Petrillo-Hortnett). Adopted.

Held Public Hearing on No Parking on Joffre Terrace, both sides. Adopted.

THE CHASE HOUSE (1762) STRAWBERRY BANKE

Shown, upon completion of its restoration in 1965. The house was retained on its original site at Strawberry Banke.



Major Accomplishments

Portsmouth has an aggressive and continuous program for community improvement and items which we feel deserve the title of major accomplishments are as follows:

- Incinerator Purchase and Installation.
- Borrowed \$853,000 for Sewer Main Extensions.
- New Addressograph, Mailing Machine and Scales.
- New Accounting Machine.
- Purchased Land on Brockett Road for New Elementary School Site.
- New Sub-Fire Station — Lafayette Highway.
- Dredging of Back Channel Approved.
- Portsmouth Housing Authority Authorized to File Application For A Vaughan Street Urban Renewal Project.
- South Playground (so-called) Changed to John J. Leory Athletic Field; Monument Erected on Parrot Avenue.
- City Council Authorized Purchase Of The Adams Collection of Wood Carvings and Folk Art Which Were Placed in Sheafe Warehouse, Prescott Park.
- Sims Avenue Sewer Completed.
- New Loud Speaker System in Council Chambers.
- Adopted "Junk Car" Ordinance.
- Old Vocational School Building Rented to Two New Industries.
- Improvements to Public Buildings And Places.



New Pease Primary School on Northwood Road. Opened September, 1966.

The office of the Portsmouth City Clerk is essentially a service department to the general public and most branches of municipal government. More and more it is becoming the information center to which all types of inquiries are routed.

VITAL STATISTICS RECORDED

Births	663
Deaths	248
Marriages	401
Stillbirths	8

COUNCIL MEETINGS ATTENDED — 28

ELECTIONS SUPERVISED - 2

Eligible Voters	9020
Votes Cast-General	6712-74.3%
Absentee Ballots processed	655
Votes Cast-Primary	2541-28.6%

JURY DRAWINGS - 3

Grand Jurors Drawn	18
Petit Jurors Drawn	43

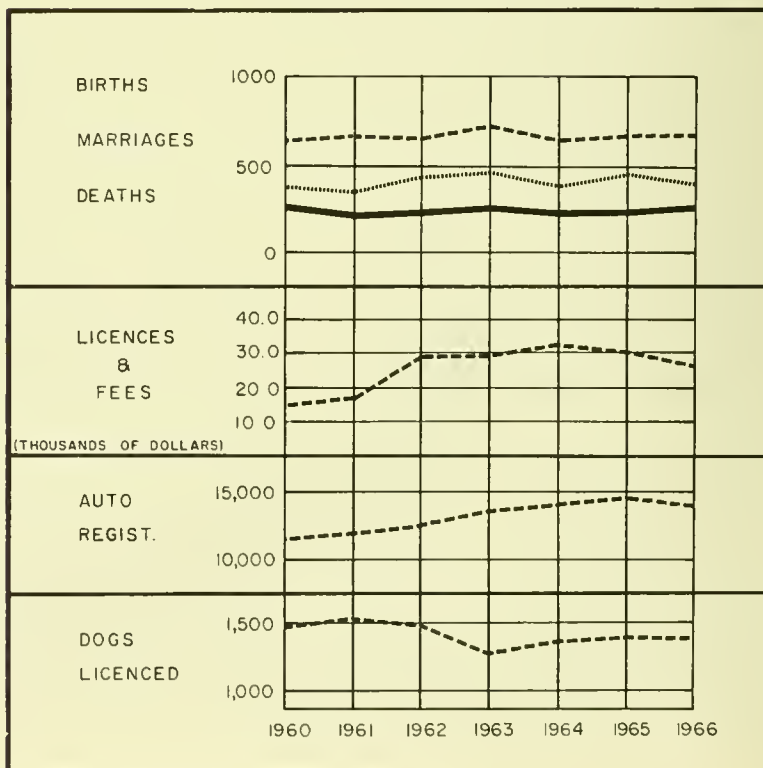
CAUSES OF DEATH

Disease of Circulatory	131
Cancer	49
Accidents	11
Uremia	9
Pneumonia	9
Immaturity	9
Leukemia	5
Toxemia	3
Diabetes Mellitus	3
Bleeding Duodenal Ulcer	2
Parkinsons Disease	2
Emphysema	2
Suicide	2
Hodgkins Disease	1
Ruptured Aneurysm	1
Peritonitis	1
Bronchial Asthma	1
Subdural Hematoma	1
Cirrhosis	1
Pancreatitis	1
Senility	1
Gastrointestinal Hemorrhage	1
Cholangitis	1
Cholinergic Crisis	1

LICENSES AND PERMITS ISSUED

Vital Statistics (1943)	\$ 1,943.50
2267 UCC Filings	4,534.00
48 Miscellaneous Filings	71.25
425 Marriage Filings	1,275.00
27 Sewer Entrance Permits	2,311.61
102 Miscellaneous Items	242.69
1374 Dog Licenses	3,338.25
1252 Bike Licenses	313.00
84 Gasoline Storage Permits	84.00
21 Pole Licenses	21.00
69 Taxi Operator Permits	138.00
26 Taxicab Permits	260.00
2 Theatre Licenses	200.00
33 Pinball Licenses	1,650.00
65 Misc. Licenses	1,222.00
121 Political Filings	131.00
4,312 Parking Meter Tokens	8,624.00
Total Receipts for 1966	\$26,359.30

"STATISTICS"



	1965	1966	Difference
Gross Valuation (all taxable property)	\$56,569,025.00	\$66,007,615.00	+9,438,590.00
Assessment Ratio	42%	50%	
Total Veterans Exemption	1,335,550.00	1,352,220.00	+ 16,670.00
Net Taxable Total	55,233,475.00	64,655,395.00	+9,421,920.00
Tax Rate	59.50	55.50	- 4.00
Warrant to Tax Collector	3,303,691.11	3,588,374.43	+ 284,683.32
Real Estate and Stock in Trade Inventories Distributed and Processed		5,352	
Veterans Exemptions Distributed		1,417	
Veterans Exemptions Processed		1,388	
Property Transfers Processed		411	

ITEMIZED SUMMARY OF VALUATIONS

	1965	— 1966
Land & Buildings	\$34,619,075.00	\$40,034,395.00
Factory Buildings & Land	733,650.00	947,550.00
Factory Machinery	492,500.00	543,500.00
Public Utilities	16,795,500.00	19,915,000.00
Trailers	96,400.00	87,850.00
Stock in Trade - Merchants	2,876,150.00	3,392,000.00
Stock in Trade - Manufacturers	445,500.00	494,000.00
Vehicles	250.00	250.00
Boats & Launches	116,375.00	175,675.00
Livestock & Poultry	9,000.00	8,420.00
Pumps & Tanks	34,175.00	33,375.00
Road Building Machinery	350,450.00	375,600.00
	<u>\$56,569,025.00</u>	<u>\$66,007,615.00</u>

FIRST STEP TOWARDS FULL VALUE ASSESSMENTS

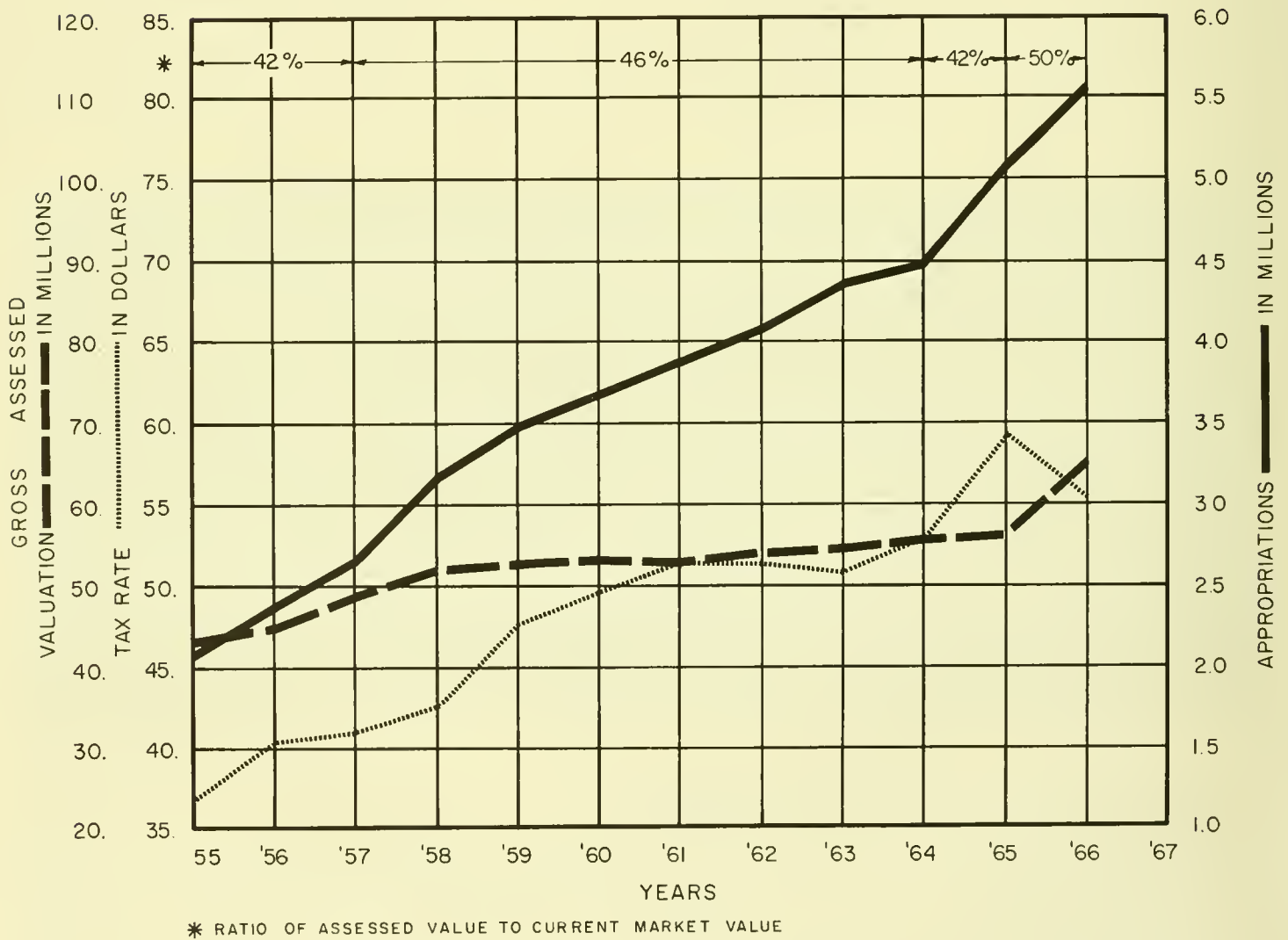
The Assessment Department's most important activity in 1966 was the beginning of a revaluation program that will result eventually in bringing all property assessments to the level required by New Hampshire law — to 100% of value.

In the past, assessments in Portsmouth were based on an average 40% to 42% of the market value of the property. In 1966, the assessment of every property was carefully reviewed and a judgment made of the market value of each property and an assessment of 50% of the market value was placed on each property.

Assessments

As a direct result, the city's tax base in 1966 was raised by 18% over the previous year - from \$56,569,025. to \$66,007,615. an increase of \$9,438,590. This increase in our tax base was more than sufficient to offset the \$284,000 increase in the City Budget and as a result the 1966 tax rate decreased \$4.00 from the previous year.

If this revaluation had not been done, there is every indication that the tax rate would have climbed from \$59.50 in 1965 to \$64.50 in 1966. Instead, the tax rate dropped to \$55.50, a difference of \$9.00.



Amount of 1966 Real Estate Warrant	\$3,588,374.43
Amount of Real Estate Collected by 12/31/66	3,321,091.81
1966 Real Estate Discount	24,654.43
1965 Real Estate Collected in 1966	252,650.49
Misc. Property Collected up to 12/31/66	728.00
Amount of Head Tax Warrant	47,755.00
Head Tax Collected for 1966, Plus Penalty	32,294.50
Head Tax Collected for 1965 in 1966, Plus Penalty	13,072.00
Miscellaneous Head Tax, Plus Penalty	286.00
Amount of Poll Tax Warrant	14,924.00
Poll Taxes Collected up to 12/31/66	9,884.00
1965 Poll Tax Collected up to 12/31/66	3,670.00
Misc. Poll Tax Collected up to 12/31/66	50.00

AUTO REGISTRATIONS			
	<u>1964</u>	<u>1965</u>	<u>1966</u>
NUMBER	13,927	14,544	13,477
INCOME	\$176,372.14	\$191,673.36	\$182,606.00



New Hampshire Vocational Institute

Balance (all accounts) December 31, 1965		\$ 502,675.09
Total Receipts for 1966		8,993,080.94
Total Disbursements for 1966		8,605,900.38
Balance (all accounts) December 31, 1966		889,855.65
Total Salaries and Wages for 1966		3,504,395.10
Total Withholding Tax Paid to District Director of Internal Revenue (1105 Employees)		440,553.16
Total Withholding for Social Security		117,693.91
Other Deductions		
N. H. Teachers Retirement Board	\$ 93,551.46	
Employees Retirement System	23,424.36	
N. H. Police Retirement	17,601.47	
Health & Accident Insurance	10,641.41	
N. H. Firemen Retirement	9,610.64	
N. H. -Vt. Hospitalization	43,038.50	
Union Dues	7,106.50	
P.N.H.M.E.F. Credit Union	41,978.29	
Other Deductions	50.00	
		247,002.63
Total Deductions	\$ 805,249.70	
Net Payrolls	2,699,145.49	

The City's contribution toward the retirement and hospital benefits of its employees are as follows:

N. H. Teachers Retirement System	\$ 62,450.20
N. H. Police Retirement System	16,033.94
N. H. Fireman's Retirement System	11,302.96
N. H. Employee's Retirement System	21,541.75
F. I. C. A. Teachers-Unit 001	45,342.48
F. I. C. A. General Employees 002	40,402.45
N. H. -Vt. Hospital Service	14,699.67
	\$211,773.45

BORROWINGS

Tax Anticipation Loan for 1966 (January 5, 1966)		\$2,000,000.00
Discount on Loan	\$ 58,740.01	
Expense on Loan	980.00	
Rate \$1,000,000.00 @ 2.95		
500,000.00 @ 2.98		
500,000.00 @ 3.00		
\$500,000 Sewer Bond Issue of 1966	\$500,000.00 Rate 4.10 plus 100.2059	
1966 Public Improvement Bonds	353,500.00 Rate 4.10 plus 100.0159	

INVESTED TREASURY BILLS AND BANK CERTIFICATE OF DEPOSITS

Sewer Bond Issue		
Accrued Interest Ending December 31, 1966	\$ 7,933.26	
1966 Municipal Funds	30,212.36	
1966 Public Improvement Bonds	2,030.64	

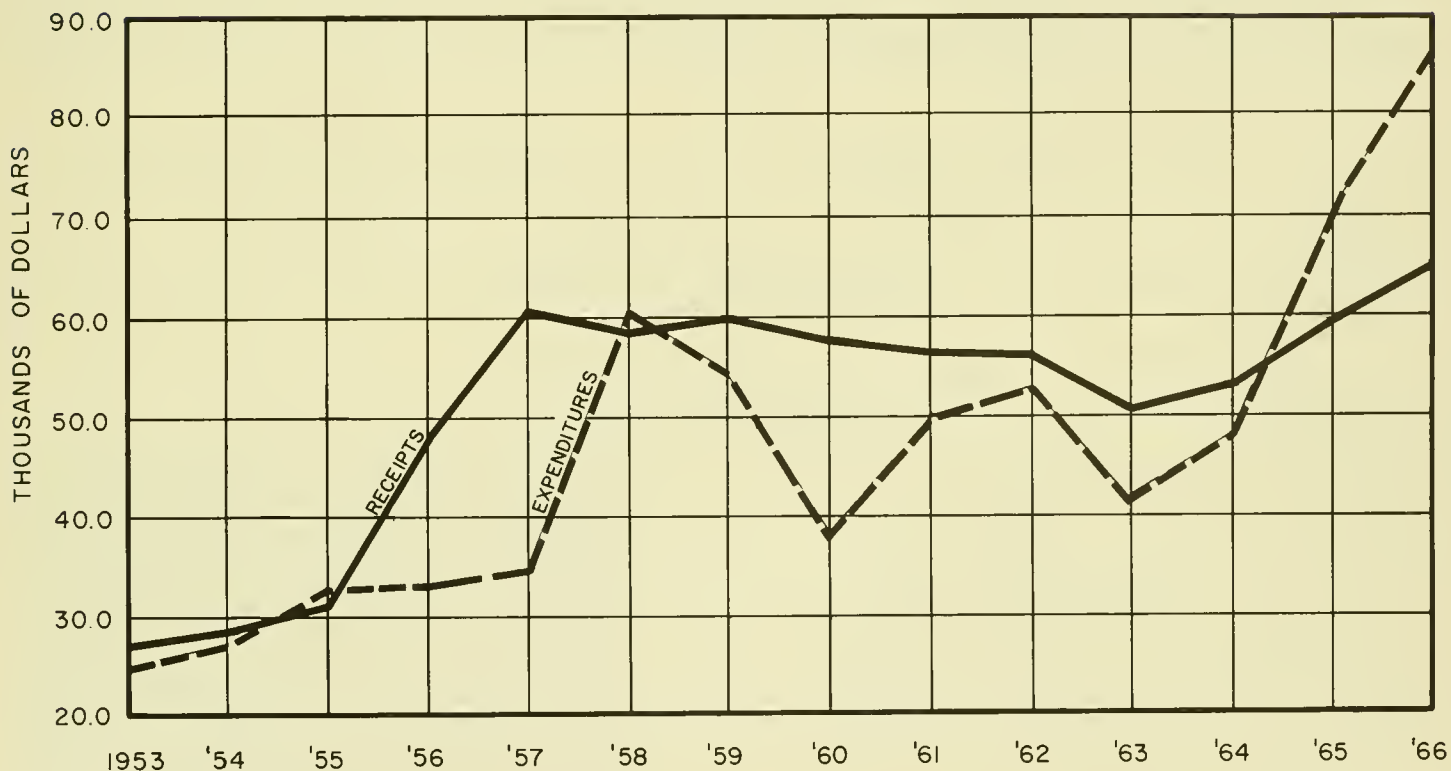
POLICE DEPARTMENT RECEIPTS

Parking Meter Fines 1966.	\$10,650.00
District Court Fines.	12,248.68

RECEIPTS FROM STATE OF NEW HAMPSHIRE

Interest and Dividend Tax	\$37,315.34
Savings Bank Tax	11,705.16
Railroad Tax	3,591.89
School - Banded Debt.	37,787.38
Sweepstakes	83,198.67
Sewerage Program.	70,106.00

PARKING METER ACCOUNT



NOTE: DOES NOT REFLECT: a) NEW LOTS / LOT SALE: \$265.4 THOUSANDS
 b) BOND RETIREMENT COSTS

PORTSMOUTH LOOKS AHEAD IN EDUCATION

The people of Portsmouth have high educational goals for their children. Many of the high school graduates go on to college. Scores on achievement tests, college board exams and National Merit Exams, prove that the student body is made up of highly motivated children who reflect their parents' desire for good education.

While continuing to provide an up-to-date educational program which fits the needs for modern pupils, long range plans are being made for the future.

The following are some of the features of Portsmouth's educational program:

- Eleven elementary schools, each with a supervising principal.
- A comprehensive senior high school including grades 9-12.
- A junior high program for grades 7 and 8.
- Psychological, psychiatric and guidance services for all schools.
- Supervisors in all special areas: music, art and physical education.
- An up-to-date reading program.
- Kindergarten classes in all elementary schools.
- An instrumental music program for all schools.
- Elementary classes for the intellectually able pupils in grades 4, 5 and 6. An honors program for grades 7-12.
- Special classes for slow learners at all levels.
- Summer School remedial and enrichment program for both elementary and secondary levels.
- Evening adult education program.

Cost Per Pupil for 1966

Senior High	\$537.71
Junior High	541.48
Elementary	381.30
Kindergarten	235.98
Average	\$432.93

School	Grades	Enrollment
Senior High	9-12	1,725
Junior High	7-8	800
Atlantic Heights	K-6	165
Dondero	K-6	460
Farragut	K-6	170
Haven	K-6	200
Lafayette	K-6	275
New Franklin	K-6	300
Pease (Rye St.)	K3-6	825
Pease (Northwood Rd.)	1-3	460
Sherburne	K-6	250
Whipple	K-6	230
Wentworth	K-6	370
Total		6,230

SURVEY OF THE HIGH SCHOOL GRADUATION CLASS OF 1966

Attending Four-Year Colleges	39%
Attending other institutions of higher learning	23%
Employed	25%
Married.	5%
Armed Services.	8%
	100%

LONG RANGE BUILDING PLANS

PART I

NEW FRANKLIN ELEMENTARY

1. Addition of five classrooms.
2. Activity-Cafeteria room with adequate kitchen area and facilities.
3. A library room.
4. A multi-purpose room.
5. An administrative area.
6. New heating plant.
7. New toilet facilities.
8. Site development.

PART I

DONDERO ELEMENTARY

1. Addition of six classrooms
2. A library room.
3. A multi-purpose room.
4. Enlarge kitchen area and install kitchen facilities.
5. Site development.

AUTOMOTIVE SHOP-SENIOR HIGH

The addition of an automotive shop is planned to meet the needs of many pupils who wish to study in this area. There is also the need to eliminate over-crowding in the shop area.

LOCKER-SHOWER FACILITY-SENIOR HIGH

A separate building is planned to house the locker rooms, showers and storage space for the athletic program.

PART II

A new 20-22 class room elementary school is to be built on the Brackett site.

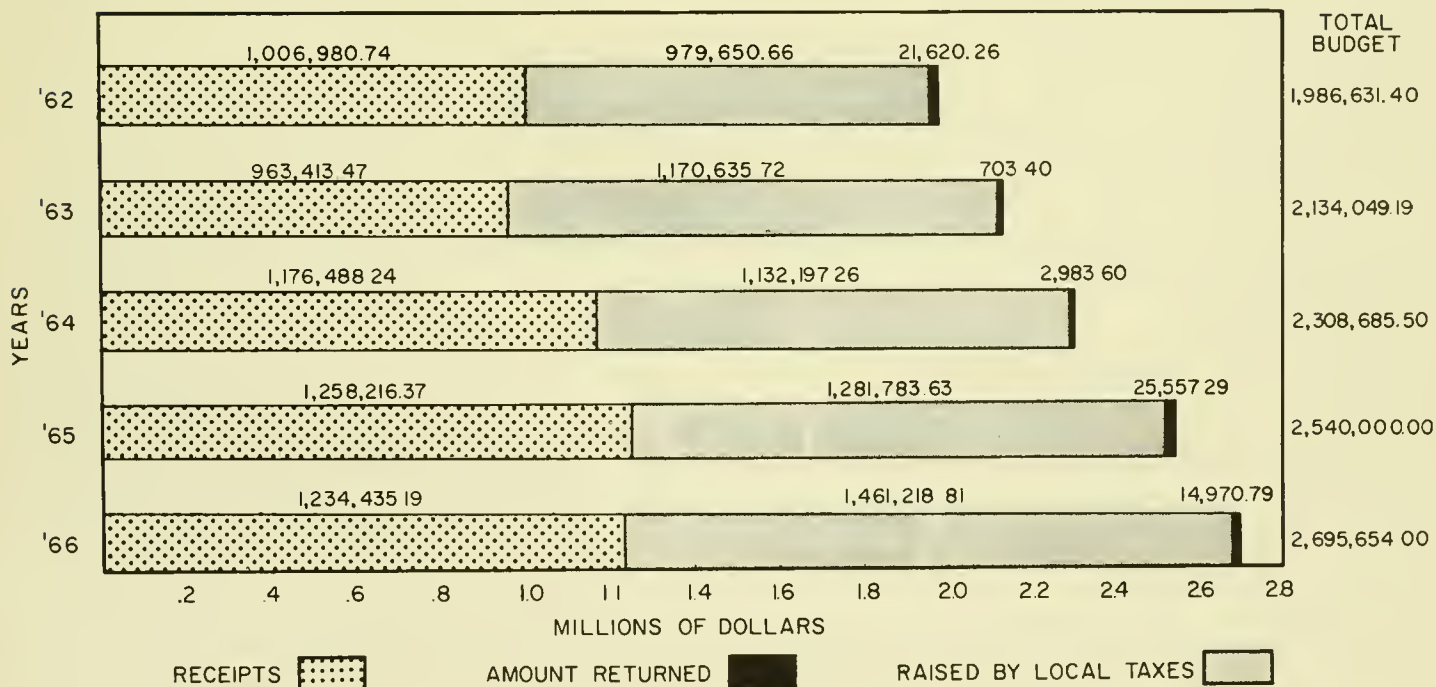
Parts I and II have been voted by the Joint Building Committee. The firm of Gilbert Associates has been hired to prepare plans.

It is expected that construction will begin on Part I during the Fall of 1967.

PART III

A study will be made of the Lafayette and Sherburne building problems. This study will include site possibilities as well as enrollment and building facilities. A target date of 1971 has been established for construction in this area.

FINANCING OUR SCHOOLS



FEDERAL PROGRAMS OPERATED IN PORTSMOUTH SCHOOLS

Headstart

This program runs for six weeks in the summer for pre-school children. It is designed to assist children to be better prepared to start school in September.

Adult Basic Education

This program is for people over 21 years of age who have not completed the eighth grade. Classes meet twice per week in the evening.

Library Services

Provision is made for extending the hours for the high school library so that it will be open until 9:00 P.M. each weekday evening during the school year. It is staffed with a librarian and aides to supervise the facility and to assist students.

Teacher Aides

Teacher aides have been employed in some of the elementary schools. These aides permit the teacher to give more individual attention to pupils by doing many of the routine tasks.

Social Worker and Counselor

The Social Worker works with the schools and guidance counselor, but primarily with the parents. She also works with welfare agencies in creating a home atmosphere and relationship that will provide elementary school children a better opportunity to be successful in school.

The Guidance Counselor works closely with the school psychologist, teachers, principals and pupils to help remove difficulties and problems of elementary pupils.

Library Books and Instructional Materials

The sum of \$14,000 was received in 1966 and \$13,000 in 1967 to purchase library books and materials. These books are distributed to the schools of the city, including St. Patrick's and Lady Isle, to develop school libraries.

National Education Act

Funds are received on a matching basis to purchase equipment and materials for certain specified areas of the curriculum such as science, math, foreign languages, social studies, and reading. The goal is to improve the instruction of the schools.

STREET IMPROVEMENTS

Paved Under Contract

South Street from Miller Avenue to Marcy Street
 Borthwick Park (Base Course Only)
 Summer Street from Austin Street to Middle Street
 Islington Street to State Street
 State Street from Cass Street to Middle Street

Resurfaced by City Forces:

Bartlett Street 1,400 linear feet

State Aid (TRA)

Spinney Road widened and resurfaced. Elwyn Road; two curves widened and areas paved.

Sidewalks Built Under Contract

Boss Avenue
 Dennett Street
 Bartlett Street 3,600 linear feet
 Maplewood Avenue

Sidewalks Resurfaced By City Forces

Bartlett Street 1,400 linear feet

Materials Used in 1966

Bituminous Concrete (Hot Top)	12,376.11 tons
Cold Patch	335.4 tons
Gravel	9,015 cubic yards
Sand	546 cubic yards
Loam	91 cubic yards
Fill	8,540 cubic yards
Stone Dust	9.4 tons
Stone (Crushed)	105.35 tons
Salt	1,041.27 tons
Gasoline:	
Regular	47,621 gallons
High Test	18,261 gallons
Diesel Fuel	14,450 gallons

Future Plans

Over 90 streets were grader-patched in 1966 and it is intended that most of these streets will be machine surfaced in 1967. It is intended that grader-patching will continue in equal amount during the year of 1967. Other plans include the following:

- A) Widening of Daniel Street from Chapel to Penhallow Street as per agreement with the General Services Administration. The City will lay curb and sidewalks on Daniel Street, Penhallow and Bow Streets. The General Services Administration will deed sufficient land for widening both streets and will complete the sidewalks. That this work may be matched, the City will widen street in front of City Hall and also construct a new sidewalk:
- B) Surface Borthwick Road and Booth Avenue.
- C) Resurface Maplewood Avenue from B & M Railroad tracks to Woodbury Avenue.
- D) Town Road Aid to be used in the reconstruction of Jones Avenue.

INCINERATOR

A new Teepee-type incinerator was placed in operation during the month of December. It is intended that all City refuse will be burned in this incinerator and a small usage fee for out-of-town users was deemed necessary to defray some of the operating expenses.

SEWERS

During the year of 1966 the two treatment plants and the five pumping stations processed over one million gallons of sewage.

Extensions of new mains added on additional 3,500 linear feet of sewer lines to the City's system, and were made on Ridges Court, Sims Avenue, Wibird Street, Willard Avenue and Islington Street. There were 26 new manholes and 11 new catch basins constructed. Approximately 2,200 linear feet of existing sewer main were cleaned during the year.

Water Department

Mr. Frank Emery, Supervisor

New Main Construction

Portsmouth	Size	Linear Ft.
Ridges Court	6" C.I.	320'
Orchard Street	6" C.I.	620'
Ash Street	4" C.I.	300'
Jones Avenue	6" C.I.	440'
Walker Bungalow Road	6" C.I.	2,117'
Greenleaf Avenue	6" C.I.	360'
Greenleaf Avenue	8" C.I.	2,200'
Greenleaf Ave. to Lafayette Rd.	8" (Trans.)	1,500'
Pevery Hill Rd.	8" C.I.	2,430'
Banfield Rd.	10" C.I.	9,700'
Borthwick Park	10" C.I.	705'

Newington

	Size	Linear Ft.
Newington Plaza	10" C.I.	1,300'
Newington Plaza	6" C.I.	130'
Fox Point Road	12" C.I.	5,146'
Patterson Lane	8" C.I.	2,560'

Greenland

	Size	Linear Ft.
Greenland	6" C.I.	206'
Vanita Drive	6" C.I.	300'
Fairway Estates	6" C.I.	520'
Riverside Lane	6" C.I.	300'
Route 101	12" C.I.	1,062'

TOTAL 32,216 ft.

Daily Average Pumpings

Location	Gallons
Madbury Wells	992,900
Madbury Plant	1,135,000
Greenland Well	548,000
Sherburne Station	413,000
No. 1 Well - Portsmouth	357,000
Total Daily Average	3,445,900

• Services Renewed	80
• New Services	70
• Meters Changed	780
• New Hydrants	35

The Planning Department participated in all meetings and routine duties of the following Boards and Commissions:

- Planning Board 20 meetings
- Board of Adjustment 18 meetings
- Building Commission 3 meetings

Assistance was also rendered to all other municipal agencies upon request. Activities of major significance were as follows:

- A) Regional Plan Base Maps and Overlays
- B) Community Programs and Reports:
 - Shore Line Analysis
 - Workable Program
 - Industrial Lands
 - Old Industrial Areas
 - Air Base Approach Plan

- Zoning Ordinance Map and Text
- Community Land-Use Plans
- Capital Improvement Program
- South Mill Pond Improvement
- Four Tree Island Fill
- Annual Report-1965
- Development Commission Review

Traffic and Parking "701" Program



Portsmouth Public Library – Isles of Shoals Room

Recreation Department

Joseph A. Fate, Recreation Director
 Paul Desotelle, Assistant Director
 Mrs. Constance D. Bean, Administrative Assistant

"Recreation" is a constructive force for good in most of the major problems of this explosive age. The increasing amount of time available through shorter working hours and automation; the faster tempo and complexity of daily living; the lengthened life span and earlier retirement; the ever increasing free time for youth — these forces create a challenging scene wherein recreation programs and facilities are becoming essential to the creation of satisfying, full lives.

The Recreation Department feels sure that every effort will be made to meet the need for new and added recreation facilities.

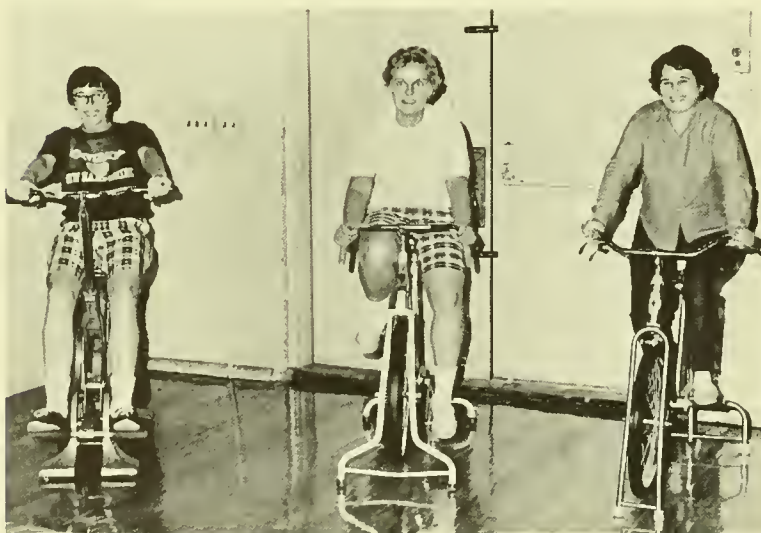
We would like to take this opportunity to thank the many volunteers that have helped make our recreation program a success.

ACTIVITIES — JOHN F. KENNEDY ADULT CENTER

	1965 Weekly Average	1966 Weekly Average
Volleyball	65	100
Ladies Night	25	65
Shuffleboard	15	25
Basketball	85	114
Duplicate Bridge	48	40
Weights & Exercise Equipment	30	138
Handball	120	160
Golden Age Club	15	25
Steam Room	150	210
Pool	50	60
Ping Pong	60	72
Reading Room	15	25
Open Daily	10:00 A.M. - 10:00 P.M.	
Saturday's	10:00 A.M. - 4:00 P.M.	

SPECIAL EVENTS - 1966

Easter Egg Hunt	625
Big League Tournament	1,000
4th of July Fireworks	14,000
4th of July Free Ice Cream	1,600
Baseball Clinic	160
Municipal Pool	85,000
Municipal Pool - VFW Swim Meet	325
Talent Night and Concert	450
Arts and Crafts	925
Excursions	1,010
Jr. Olympics	700
Softball Banquet	200
Golden Eagles Bazaar	850
Basketball Dance	250
Football Dance	350
Halloween Dance	360
Out-door dances	700
Country Fair	400



Womens Physical Fitness Program

PLAYGROUND ATTENDANCE

1966

Maple Haven	3,231
South	2,871
Atlantic Heights	4,435
Lafayette	1,996
Gosling Meadows	4,530
Sherburne	2,091
New Franklin	1,376
Elwyn Park	2,091
Baseball Program	6,250
Arts and Crafts	894

TOTAL 29,715

Although shortages in staff occurred during the year of 1966 it was an extremely busy year. Gifts were received from local banking institutions, Miss Brenda Kuhn, Mrs. Edith Pike Norton, and the Rev. Lyman Rutledge of Dublin, N. H. who contributed the remarkable Isles of Shoals Collection consisting of books and storage and display equipment for the same.

A survey of the Portsmouth Library, its plant and services, made by the State Library during the spring and summer resulted in a full report to the Trustees and City Manager with respect to existing library facilities and future needs.

Number of books 1 - 1 - 1966	78,737
Added by purchase	1,676
Added by gift	67
Shoals Room Collection	212
	<hr/>
Total	80,692
Obsolete books withdrawn	-,604
	<hr/>
Number of books on hand 1 - 1 - 1967	80,088

INTER LIBRARY LOANS

	1965	1966
Borrowed from other libraries	38	36
Loaned to other libraries	69	60

Magazines: 85 subscriptions - 44 presented
 Newspapers (daily): New York Times; Wall Street Journal; Christian Science Monitor;
 Boston Herald; Manchester Union; Portsmouth Herald.
 Newspaper (foreign): Manchester Guardian (English) presented weekly.

<u>Circulation</u>	<u>1965</u>	<u>1966</u>	
Juvenile	23,897	21,459	-2438
Adult fiction	33,274	32,474	- 800
Adult non-fiction	28,557	29,214	+ 657
	<hr/>	<hr/>	
Totals	85,728	83,147	-2581

NON-FICTION CIRCULATION ANALYSES

	<u>1965</u>	<u>1966</u>
General literature and magazines	4,740	5,413 +673
Philosophy, psychology, etc.	869	868 - 1
Religion and allied subjects	453	523 + 70
Sociology and social studies	2,341	2,608 +267
Foreign languages, dictionaries, etc.	349	168 -181
Mathematics, astronomy, physics, etc.	1,170	1,284 +114
Science, medicine, etc.	2,822	2,818 - 4
Fine arts, music, antiques, etc.	3,779	3,784 + 5
Literature, drama, poetry	2,502	2,333 -169
Biography	3,444	3,436 - 8
Travel	2,668	2,617 - 51
History	3,620	3,362 -258
	<hr/>	<hr/>
	28,757	29,214 +457

NEW BORROWERS

REGISTRATION

	1965	1966
Adult	858	825 -33
Juvenile	436	349 -87
	<hr/>	<hr/>
	1294	1174 -120

ACTIVITIES. . . .1966

Bell Alarms.	68 (30 False)
Still Alarms.	254 (10 out of
Miscellaneous calls.	104 town)
Ambulance Calls	763
Total.	1189

WIRES AND POLES

- Rebuilt lines on Lincoln Avenue, South Street and Dennett Street.
- Purchased and installed new batteries in control panel.
- Added 3 master street boxes in system.
- Trimmed trees and repaired lines where required.
- Issued 364 Electrical Permits.
- Investigated 8 defective wiring complaints.
- Inspected wiring in 4 fire damaged buildings.

SUMMARY OF OUT-OF-TOWN CALLS

Pease Air Force Base	5
Kittery	3
Newington	1
Stratham	1

TOTAL VALUE OF BUILDINGS AND CONTENTS ENDANGERED BY FIRE \$2,355,553.46

Insurance on Buildings and Contents.	\$1,761,700.00
Damage by Fire.	157,962.00
Insurance Paid.	131,492.31
Uninsured Loss	26,469.69

Chief Frederick R. Crompton, a permanent member for 39 years (the last 14 years as Chief) resigned as of 31 December, 1966. 1st Deputy Ernest Weeks was promoted to Chief, 2nd Deputy Joseph Hudson was promoted to 1st Deputy, Captain Donald Lane was promoted to 2nd Deputy, and Glenn Smith was promoted from Private to Captain. All appointments effective 1, January 1967.

A new Dodge Station Wagon was purchased to replace the 1960 Plymouth.

700 Ft. of 2 1/2" DJ Hose, and 300 Ft. of 1 1/2" DJ Hose was purchased during the year.



Central Fire Station New Howe Pumper -750 gallons

(Photo by Glenn E. Smith)

Police Department

Stanton G. Remick, City Marshal
E. Edward Scarponi, Deputy Marshal

- April 18, 1966: Officer Kerry Plaisted attended a 2-week Police Training Course at Concord, N. H. under the auspices of the New Hampshire State Police.
- May 12, 1966: Officer Richard Maddock and 22 members of the School Safety Patrol made a 3-day trip to Washington, D. C.
- May 16, 1966: City Marshal Stanton G. Remick attended a 4-day Command Staff School at Boston, Mass. which was sponsored by the New England Chiefs of Police Association and the Federal Bureau of Investigation
- October 17, 1966: Officer Ronald P. Grivois attended a 2-week Police Training Course sponsored by the New Hampshire State Police.

<u>OFFENSES</u>	<u>Number Reported</u>	<u>Arrests</u>	<u>Offenses Cleared</u>	<u>Juveniles</u>
Aggravated Assault	3	3	3	
Assaults (other)	33	31	31	7
Arrested for Other Depts		16		
Arson	4	4	4	4
Auto Theft	53	24	22	15
Automobile Offenses		452		
Bastardy		8		
Burglary (B.E.&L.)	113	32	33	21
Disorderly Conduct		45		21
Drunkenness		157		9
D.W.I.		19		
Forgery	6	5		
Fraud-False Pretenses	1	3		
Larceny by Check		5		
Interviews		692		
Larceny (Grand)	70	3	12	2
(Petty)	200	77	54	63
Liquor Laws		1		
(Minors in Poss.)		10		
Lodgers . . (166)				
Malicious Damage	177	54	28	48
Mental Patients		5		
Non-Support		6		
Rape-Forcible	1	1	1	1
Attempted to Commit	1	1	1	
Receiving Stolen Property	1	4		1
Robbery-Armed	6	6	6	
From Person	2	3	2	
Safe Keeping		1		
Other Offenses-AWOL		4		
Runaways		52		52
Uncont. Child		10		10
False Alarm	3	2		2
Refuse to Stop		6		
Weapons Off	2	6		
Misc.		9		

<u>OFFENSES</u>	<u>Number Reported</u>	<u>Arrests</u>	<u>Offenses Cleared</u>	<u>Juveniles</u>
Other Offenses (Cont.)				
Vio. Probation.	1			1
Failing to ans. summons		1		
False report of Crime		1		
Sex Offenses - Exposing person.	2	2	2	
Lascivious Acts.	1	1	1	
Suspicion		252		107
Violoting City Ordinance		108		26
*(Does not include interviews)				
TOTAL	669	*1394	192	417
Accidents reported to Police Department				874
Police patrol trips.				10,268
Store doors and windows found open				599
Street lights reported out				155
Suicide				2
Suicide, attempted				12
Deaths due to auto accidents.				8
Received of Beano Licenses.				\$ 600.00
Received of Junk Licenses.				175.00
Amount Paid Parking Fines.				10,650.00
Amount Paid City Treasurer, Parking Receipts				54,940.54
Cash				
Tokens				9,881.00

**FOR THE PERIOD OF: JANUARY 1, 1966 TO DECEMBER 31, 1966
STOLEN PROPERTY**

AMOUNT STOLEN
\$124,015.68

AMOUNT RECOVERED
\$62,245.21



L to R— City Marshal Stanton G. Remick congratulating Captain E. Edward Scarponi on being promoted to Deputy Marshal, Sergeant John J. Condon on being promoted to Captain and Officer Robert Roth being promoted to Sergeant.

OFFICE OF CITY ATTORNEY

John C. Driscoll, City Attorney

As in previous years the City Attorney served all Departments and Boards of the City government. The Attorney gave rulings and interpretations of city and State law as is required by the City's Administrative Code. Additionally there was the prosecution of all contested criminal cases on behalf of the City in the District Court.

The Public Service Company has appealed to the Superior Court the assessment placed on its properties by the City. At issue is the judgment of the City Assessor in evaluating this and all other properties within the City. This action is one of the greatest importance and could mean the potential loss of approximately \$300,000 in tax revenue to the City annually. This case has meant considerable work in preparation for trial, which is expected sometime during the year of 1967 or even possibly 1968. In this case it is the contention and position of the City that the City Assessor applied the proper yardstick in appraising the Public Service Company properties. We do look to the litigation with guarded optimism.

The City Attorney was on call at all times for the service

of the Police Department to make out criminal complaints on behalf of the Department and when the justice of the peace within the Department is off duty. During the year this has meant that the City Attorney is called out at night and in the early morning hours seven days a week, 52 weeks a year to fulfill this function.

During the year there was a major case in the Rockingham County Superior Court which affected the rezoning of land on Ocean Road. This office presented the position of the City in that court case, *Bosse et al. v. City of Portsmouth*. This case involved land owned by Pace Industries, Inc. The Court ruled that the City had acted contrary to the statutory provisions and held the purported rezoning to be of no effect. The case was appealed to the State Supreme Court and that Court upheld the decision of the Superior Court, in ruling that the City Council had not validly changed the zoning from a residential character to that of a light industrial classification.

PORTSMOUTH DISTRICT COURT

Thomas E. Flynn, Jr.
Justice

Samuel Levy
Special Justice

Lois S. VanBubar
Clerk

John P. McGee
Probation Officer

CRIMINAL CASES

Complaints entered during the year	1337
Cases disposed of during the year	
Felonies	51
Misdemeanors	1286
	1337

JUVENILE CASES

Cases of neglected children	17
Cases of delinquent children	38

SMALL CLAIMS CASES

Cases pending at beginning of year	7
Cases entered during year	177
Cases disposed of during year	172

CIVIL CASES

Cases entered during the year	63
Cases disposed of during the year	63

Departments of Health and Welfare

WELFARE DEPARTMENT

Hilda Hundley, Welfare Director

DIRECT RELIEF

Average Number of Cases (Monthly)	15.
Average Number of Persons (Monthly)	41.9
Average Monthly Expenditures	\$ 607.57

BOARD AND CARE-CHILDREN

Average Number of Cases (Monthly)	10.
Average Number of Children (Monthly)	15.5
Average Monthly Expenditures	\$1175.18

BOARD AND CARE-ADULT

Average Number of Cases (Monthly)	4.3
Average Number of Persons (Monthly)	4.3
Average Monthly Expenditures	\$ 420.47

DEPARTMENT OF HEALTH

S. Gerard Griffin, M. D.
Health Office / City Physician

The Department of Health is under the direction of S. Gerard Griffin, M.D., who is City Physician, Health Officer, Chairman of the Board of Health and Chairman of the Building Commission.

During the year routine inspections were made of eating establishments, grocery stores, barber shops, etc., and a total of 115 permits issued.

As Chairman of the Building Commission, all complaints and motions received regarding infractions of the Housing Code were investigated and processed as required by ordinance.

Complaints and nuisances and violations were investigated. Potential foster homes for children were inspected at the request of the State of New Hampshire. City Welfare cases were treated in homes, office, nursing homes and hospital. Physical examinations were given to prospective Firemen, and Police Officers as well as summer recreation workers. School health examinations were given in cooperation with other local physicians and the school nurses. A program of immunizations is contemplated for 1966-67. International Certificates of Vaccination for foreign travel were validated.

The health of the City in the past year was quite satisfactory with no significant rise in communicable diseases and no epidemics. The tuberculosis and venereal disease rates are low and there were no cases of poliomyelitis and few cases of infectious hepatitis.

Inspection Departments

Building Inspection

Lewis M. McNeil, Sr., Inspector

During the 1966, one hundred and ninety-four (194) permits were issued for a total of \$2,129,905.00.

New Homes	20	\$	293,000.00
New Garages	17		25,800.00
New Business & Industry	6		1,257,000.00
New Apartments	1		500.00
General Repairs	90		123,465.00
Buildings Remodeled	14		76,900.00
New Additions	30		250,790.00
Buildings Razed	8		5,750.00
Historic Renovation	1		50,000.00
Miscellaneous	7		46,700.00
	TOTAL		\$2,129,905.00

Fees collected and turned over to the City
Treasurer \$ 4,253.00

A total of 786 building inspections were made of work being done for which building permits were issued.

42 Building Permits or use of buildings were denied.
35 Appeals were granted by the Board of Adjustment.
4 Appeals were denied by the Board of Adjustment.
2 Appeals were tabled by the Board of Adjustment.
1 Appeal to Board of Adjustment was withdrawn.

Attended 12 meetings of the Board of Adjustment.

37 Public Buildings were inspected.
5 Violations were found.
4 Violations were corrected.
1 Violation to be corrected.

194 Building Permits were issued.
3 Violations were found.
3 Violations were corrected.
No stop orders issued.

- Inspected structures with the assistance of Mr. Mancel L. Thompson in accordance with the terms of the Housing Code.
- Receival and distribution of surplus food for the Welfare Department.
- As requested by City Manager acted as overseer of Comfort Station and its custodians and matrons.

Plumbing Inspector

James Varatsis (Part Time)

LICENSES & PERMITS ISSUED - 1966

Masters Licenses	19
Journeyman Licenses	40
Application Test Fees	5
Permits Issued	174

Monies Received for Licenses	\$ 29.50
Monies Received for Tests	5.00
Monies Received for Permits	397.40

Income Received for 1966 \$431.90

Dog Officer

Robert E. Reynolds, Dog Officer

The following is an outline of the activities of the Dog Officer which covers the period from January 1, 1966 through December 31, 1966.

Calls received	1,593
Dog bites reported to Dog Officer	77
Loose dogs impounded	273
Loose dogs (licensed) picked up, returned to owner	241
Loose dogs (unlicensed) picked up, returned to owner	143
Total dogs handled	657
Lost dogs reported	126
Lost dogs found by Dog Officer	109
Number of tags issued	1,375
Number of replacement tags issued	36

One hundred and thirty other types of animals were handled which included:

16 Rats, 4 Bats, 9 Skunks, 3 Raccoons, 9 Woodchucks, 6 Seagulls, 14 Squirrels, 52 Cats, 4 Chipmunks, 3 Foxes, 6 Rabbits and 1 Guinea Pig.

Sealer of Weights & Measures

William A. Thomson, Inspector (Part Time)

The State and City Inspectors attended a Technical Training School held on March 1-3, 1966 at Concord, N.H.

	Tested and Sealed
Computing & Counter Balance Scales	100
Gasoline Pumps	254
Tank Truck Meters	35
Line Meters	7
Grease Pumps	3
Heavy-Duty Platform Scales	5
Overhead Track Scales	8
Suspension Scales (under 100 lbs.)	14
Suspension Scales (over 100 lbs.)	1
Small Platform Scales	30

Commissioners: Philip P. Finn, Chairman
Robert Iafolla
Lars J. Sandberg
John J. Wholey
Harry Winebaum
Mayor Timothy J. Connors (ex-officio)
City Manager Robert C. Violette (Secretary and ex-officio)

Objectives: The commission was created by a City Ordinance of January 7, 1965, to encourage the expansion and welfare of existing industries and businesses, the establishment of new industry, and to recommend and initiate programs to improve the economic base of Portsmouth and the area.

MAJOR ACCOMPLISHMENTS

A) New Industry Committed to and/or located in Portsmouth, N. H.

<u>Name of Company</u>	<u>Product Manufactured</u>	<u>Number of Employees *</u>
• Welpro, Inc.	Shoes by electronic fabrication	65
• Booth Fisheries (A Division of Consolidated Foods)	Prepared Seafoods	170 to be hired following completion of new \$3.8 million (150,000 sq. ft.) plant scheduled for opening September 1, 1967
• North East Cutting Die Corp.	Shoe Cutting Dies	25
• Diaphragm Industries Inc.	Elastomer diaphragms for aircraft and automobile applications	130 (locating and hiring April 1967)

* Level as of 12/31/66 unless otherwise noted.

Summary: By September 1967 new industries (including Booth Fisheries payroll) as listed above will contribute an additional \$1.56 million in payroll and additional tax revenue of approximately \$80,000.

B) Support of Existing Industry and Businesses

1. Arranged financing for one company contributing to a 25% increase in its employment level.
2. Initiated four marketing and/or engineering support programs by the University of New Hampshire to existing businesses.
3. Conducted "Workshop Programs" to analyze, then initiate programs for labor recruiting, and product diversification with executives of local industry.
4. Coordinated City services and assistance with other City Departments on behalf of existing businesses, and those committed to commence new operations in the City.
5. Relocated one industry to more spacious plant to permit continuing expansion.

C) Other Activities

1. Processed over 70 out of State concerns interested in Portsmouth as a potential location.
2. Represented the State of New Hampshire (at the request of Governor John King) in preparing and presenting a site to officials of the Environmental Science Services Administration (ESSA) in conjunction with other local organizations.
3. Devoted extensive time to the planning of new industrial sites to replace Borthwick Park to which Booth Fisheries took title and option July 1966.

Acknowledgements

The Commission expresses its appreciation to the many State and City Departments, also other local organizations whose whole-hearted cooperation have contributed so significantly to the Commission's activities.



New Hampshire State Port Authority Wharf

Starting with .5 million of short tons in 1949 cargo commerce for the Port of Portsmouth, N. H. has risen to an estimated figure of 1.7 million tons for 1966.

A program for the continued enlargement of this marine terminal and its facilities is contemplated so that it may become a major point of commerce and industry within the seacoast area.

The total cost of operating the Finance department for the year amounted to \$24,820.98 including the cost of the annual audit by the State Tax Commission which amounted to \$1,764.35.

Payrolls were processed for 1,105 employees of whom 646 were employed by the School department for a total expenditure of \$3,504,395.19 with deductions for income tax, social security, retirement, blue cross, insurance, union dues and credit union amounting to \$805,249.70 leaving a balance of \$2,699,145.49 as net "take home pay" representing our municipal contribution to the local economy.

The cost of municipal services continued to expand and its upward trend is reflected in the annual budget of \$5,272,535.56 an increase of \$351,708.28 or 7.2% over the preceding year.

Municipal revenue other than taxes amounted to \$1,770,619.02 for an increase of \$85,849.58 over the preceding year. Some of the larger items of revenue were \$905,963.00 for Federal Grant re School Maintenance, \$214,722.65 for tuition to the School department, \$181,925.49 from Motor Vehicle registration and \$173,598.44 from the State of New Hampshire which included \$83,198.67 from the Sweepstakes.

The total credit to Revenue Surplus for the year amounted to the sum of \$160,519.48 representing an excess of actual over estimated revenue of \$73,788.29 and \$86,731.19 from unexpended appropriation balances.

The loan in anticipation of taxes amounted to \$2,000,000 at a total cost to the City of \$58,740.01 reflecting not only the very high market rates at that time but also a new trend in bidding by the banks on temporary loans so that for the first time our loan was bid on and split into three sections for the following amounts and rates.

Bidder	Amount	Rate
New England Merchants Natl. Bank, Boston	\$1,000,000	2.95%
State St. Bank & Trust, Boston	500,000	2.98%
National Shawmut Bank, Boston	500,000	3.00%

Two bond issues were authorized and issued under the date of October 1, 1966 one for \$500,000. Sewer bonds at 4.1% and one for \$353,500. Public Improvement bands at 4.1% reflecting the extremely high market rates which prevailed at that time and giving the City the highest bond rates it has carried in many years.

The entire municipal operation for 1966 covering all funds showed receipts of \$8,993,080.94 and disbursements of \$8,605,900.38.

The municipal Water Department again had a substantial operating loss of \$63,802.38 and its operating funds were extremely low; however, as of this writing, a revision of rates has been authorized by the City Council to become effective as of September 1, 1967 which should tend to alleviate this situation during the coming year.



Water Department
Banfield Road - 10 in. main extension



Water Department
Bean Hill Control Station

Construction of Cone-Type Incinerator
Jones Avenue Dump Area



Herald Photo

**DIVISION OF MUNICIPAL ACCOUNTING
STATE TAX COMMISSION**
Concord, New Hampshire

June 5, 1967

Robert C. Violette, City Manager
Portsmouth, New Hampshire

Dear Sir:

Submitted herewith is the report of an examination and audit of the accounts of the City of Portsmouth for the fiscal year ended December 31, 1966, which was made by this Division in accordance with your request. Exhibits as hereafter listed are included as part of the report.

SCOPE OF AUDIT

The accounts and records of all city officials charged with the custody, receipt and disbursement of city funds were examined and audited. An examination was made of a sufficient number of vouchers, payrolls and cancelled checks to

satisfy the requirements of accepted standards of audit procedure. Receipts were checked by source insofar as possible. Book balances were verified by comparison with reconciled bank balances made from statements obtained from depository banks.

**Comparative Balance Sheets (General Fund Account)
December 31, 1965 – December 31, 1966:**
(Exhibit A-1)

Comparative Balance Sheets (General Fund Account) for the fiscal years ended December 31, 1965 and December 31, 1966, are presented in Exhibit A-1. As indicated therein the Surplus decreased by \$4,715.61 in 1966.

Analysis of Change in Current Financial Condition:
(Exhibit A-3)

An analysis of the change in the current financial condition of the City during the year is made in Exhibit A-3, with the factors which caused the change indicated therein. These were as follows:

DECREASE IN SURPLUS

Surplus Used to Reduce Tax Rate	\$152,681.82	
Additional Appropriations Authorized by City Council (Exhibit A-4)	8,864.80	
Adjustment a/c Reserve for Uncollected Taxes	544.56	
Prior Year's Insurance Charge	150.00	
	<hr/>	\$162,241.18

INCREASE IN SURPLUS

Net Budget Surplus	\$155,722.27	
Prior Year's Insurance Refund	1,641.00	
Prior Year's Accounts Payable Adjustment	162.00	
Tax Collector's Excess Credits (Net)	.30	
	<hr/>	157,525.57
Net Decrease		<u>\$ 4,715.61</u>

Increase in Bonded Indebtedness:

The bonded indebtedness of the City (including Municipal, School and Water Debt) increased by \$41,250.00 in 1966, as shown herewith:

	Bonded Debt December 31, 1965	Bonds Issued in 1966	Bonds Retired in 1966	Bonded Debt December 31, 1966
Municipal	\$2,573,000.00	\$853,500.00	\$260,000.00	\$3,166,500.00
School	2,213,000.00	-0-	170,000.00	2,043,000.00
Water	69,000.00	-0-	11,000.00	58,000.00
	<hr/>	<hr/>	<hr/>	<hr/>
	\$4,855,000.00	\$853,500.00	\$441,000.00	\$5,267,500.00
	<hr/>	<hr/>	<hr/>	<hr/>

Statement of Bonded Indebtedness:
(Exhibit J)

A statement of outstanding bonded indebtedness as of December 31, 1966, showing annual debt service requirements, is contained in Exhibit J.

Comparative Statements of Appropriations and Expenditures — Estimated and Actual Revenues:
(Exhibits A-4 & A-5)

Comparative statements of appropriations and expenditures, estimated and actual revenues for the fiscal year ended December 31, 1966, are presented in Exhibits A-4 and A-5. As indicated by the budget summary (Exhibit A-5), a revenue surplus of \$75,747.24, plus unexpended balances of appropriations of \$79,975.03, resulted in a net budget surplus of \$155,722.27.

District Court:
(Exhibit E)

A statement of the accounts of the District Court for the fiscal year is included in Exhibit E.

Parking Meter Accounts:
(Exhibits H-1, H-2, H-3 & H-4)

Statements of the Parking Meter accounts are presented in Exhibits H-1, H-2, H-3 and H-4.

Water Department:
(Exhibits I-1, I-2 & I-3)

Financial statements of the Water Department for the fiscal year are contained in Exhibits I-1, I-2 and I-3.

Tax Collections:

Tax collections (exclusive of State Head Taxes) of the current year's levy compared to taxes assessed, for the years 1965 and 1966, were as follows:

	Levy of 1965	Percent	Levy of 1966	Percent
Taxes Assessed - Current Year's Levy	\$3,329,131.44		\$3,608,764.79	
Taxes Collected - Current Year's Levy	\$3,020,247.11	90.7%	\$3,306,562.15	91.6%
Discounts Allowed - Current Year's Levy	22,665.11	.7%	24,654.76	.7%
Taxes Abated - Current Year's Levy	6,398.60	.2%	8,956.36	.3%
Uncollected Taxes - Current Year's Levy	279,820.62	8.4%	268,591.52	7.4%
	<u>\$3,329,131.44</u>	<u>100.0%</u>	<u>\$3,608,764.79</u>	<u>100.0%</u>

Conclusion:

The provisions of Chapter 184 of the Laws of 1955, require that this report or the summary of findings and recommendations (letter of transmittal) shall be published in the next annual report of the City.

We extend our thanks to the officials of the City of Portsmouth and their office staffs for the assistance rendered during the course of the audit.

Yours very truly,
HAROLD G. FOWLER
Director

Division of Municipal Accounting
State Tax Commission

EXHIBIT A-2

CITY OF PORTSMOUTH

BALANCE SHEET — BONDED INDEBTEDNESS

As of December 31, 1966

ASSETS

Bonded Indebtedness — Municipal	\$3,166,500.00
Bonded Indebtedness — School	2,043,000.00
Bonded Indebtedness — Water Department	58,000.00
Total Assets	\$5,267,500.00

LIABILITIES

Municipal Bonds Outstanding:	
Permanent Improvements & Equipment — 1951	\$ 28,000.00
Permanent Improvements — 1957	20,000.00
Voting Machines — 1958	24,000.00
Sewer — 1960	700,000.00
Urban Renewal — 1961	1,50,000.00
Street Issue — 1963	25,000.00
Recreational Building Issue — 1963	10,000.00
Urban Renewal Issue — 1963	6,000.00
Parking Area — 1964	45,000.00
Sewer — 1964	800,000.00
Capital Improvements — 1964	55,000.00
Sewer — 1965	450,000.00
Sewer — 1966	500,000.00
Public Improvements — 1966	353,500.00
	\$3,166,500.00

School Bonds Outstanding:

Senior High School — 1955	\$1,540,000.00
Supplemental School Issue — 1959	103,000.00
Elementary School Issue — 1959	295,000.00
Junior High School Addition Issue — 1963	105,000.00
	2,043,000.00

Water Bonds Outstanding:

Water Bonds — 1951	\$ 50,000.00
Water Bonds — 1954	8,000.00
	58,000.00
Total Liabilities	\$5,267,500.00

EXHIBIT A-3

CITY OF PORTSMOUTH

ANALYSIS OF REVENUE SURPLUS

Fiscal Year Ended December 31, 1966

Current Surplus — December 31, 1965	\$205,717.37
Current Surplus — December 31, 1966	201,001.76
Decrease in Current Surplus	\$4,715.61

ANALYSIS OF CHANGE

Decreases:	
Surplus Used to Reduce Tax Rate	\$152,681.82
Additional Appropriations Authorized by City Council (Exhibit A-4)	8,864.80
Reserve for Uncollected Taxes	544.56
Adjustment	150.00
Prior Year's Insurance Charge	\$162,241.18

Increases:

Net Budget Surplus	\$155,722.27
Tax Collector's Excess Credits (Net)	.30
Prior Year's Insurance Refund	1,641.00
Prior Year's Accounts Payable Adjustment	162.00
	157,525.57
Net Decrease	\$4,715.61

EXHIBIT A-4

CITY OF PORTSMOUTH

COMPARATIVE STATEMENT OF APPROPRIATIONS AND EXPENDITURES

Fiscal Year Ended December 31, 1966

	Forwarded From 1965	Appropriations 1966	Transfers	Receipts and Reimbursements	Total Amount Available	Total Expenditures & Encumbrances	Unexpended Balance To Surplus	Forwarded To 1967
General Government:	\$	\$	+\$	\$	\$	\$	\$	\$
Assessors' Department		25,540.00	115.00	15.00	25,670.00	22,730.39	2,939.61	
Auditors' Department		24,890.10		90.60	24,980.70	24,620.98	359.72	
City Clerk's Department		18,283.00		13.00	18,296.00	17,394.14	901.86	
Election & Registration		15,000.00			15,000.00	11,540.35	3,459.65	
City Manager's Department		22,315.00		34.03	22,349.03	21,711.40	637.63	
Collector's Department		16,683.00		285.12	16,968.12	16,359.25	608.87	
City Treasurer's Department		9,738.00		2.00	9,740.00	9,450.65	289.35	
Public Buildings & Places		14,408.00		60.00	14,468.00	13,779.41	688.59	
City Council Salaries		4,500.00			4,500.00	4,475.00	25.00	
Protection of Persons & Property:								
Fire Department		220,322.96	10,379.80	1,796.52	232,499.28	228,007.31	4,491.97	
Fire Alarm		8,479.72	260.00	100.00	8,839.72	8,765.65	74.07	
Police Department		327,492.78		27,310.86	354,803.64	346,777.52	8,026.12	
Civil Defense		5,000.00			5,000.00	4,907.87	92.13	
Dog Officer's Department		4,166.00	11.00		4,177.00	4,177.00		
Health:								
Health Department		15,766.00	208.00	24.00	15,998.00	14,650.58	1,347.42	
Comfort Station		28,800.58	1,548.00	147.00	30,495.58	28,804.02	1,691.56	
Highways & Bridges:								
Town Road Aid		10,094.58	8,590.00		1,504.58	1,504.58		
General Maintenance Expense		332,160.38	11,631.56	(B) 16,771.28	360,563.22	360,563.22		
Dump & Refuse Removal		58,606.48	9,042.08		67,648.56	67,648.56		
Sewer Maintenance		30,000.00	172.29		29,827.71	29,827.71		
Treatment Plant & Pumping Station		48,000.00	4,000.10	1,107.50	45,107.40	45,107.40		
Cemeteries		800.00	366.28		433.72	433.72		
Street Lights		60,000.00			60,000.00	59,856.78	143.22	
Christmas Lighting		1,000.00			1,000.00	1,000.00		
Fire Loss — Highway Tools & Equipment				1,560.70	1,560.70	1,484.53		76.17
Libraries		37,679.70		15.00	37,694.70	32,871.18	4,823.52	
Recreation:								
— Parks — Maintenance		8,000.00	1,200.00	134.65	9,334.65	9,329.96	4.69	
— Recreation		50,700.00		670.60	51,370.60	48,137.12	3,233.48	
Community Center		25,173.75		24.00	25,197.75	22,464.06	2,733.69	
— Playground Maintenance & Construction		10,000.00	635.36	375.00	9,739.64	9,739.64		
Basketball Officials' Fund	367.50			716.00	1,083.50	914.95		168.55
Patriotic Purposes:								
Memorial Day		1,000.00			1,000.00	828.21	171.79	
Public Service Enterprises:								
Building Inspection Department		8,540.00			8,540.00	7,681.29	858.71	

Division of Weights & Measures	1,240.00			2.00	1,242.00	1,150.10	91.90
Planning Board	17,805.00			40.20	17,845.20	17,802.16	43.04
Unclassified:			(A)				
Damages & Legal Department	22,462.72	+ 2,724.55		891.00	26,078.27	26,078.27	
Contingency Fund	18,500.00	- 8,488.76			10,011.24	4,577.17	5,434.07
City Pension Funds — Including Police	3,342.60				3,342.60	2,848.97	493.63
Portsmouth Development Commission	22,960.00			297.62	23,257.62	22,737.04	520.58
Advertising & Regional Associations	4,500.00				4,500.00	4,500.00	
City Report	2,000.00				2,000.00	2,174.74	(174.74)
Employees' Retirement	39,000.00				39,000.00	33,895.84	5,104.16
Expenses — Trustees of Trust Funds	5,400.00			3.00	5,403.00	4,417.00	986.00
Building Commission	500.00				500.00	120.25	379.75
New Hampshire Municipal Association	753.99				753.99	753.99	
Advertising	1,500.00	+ 416.45			1,916.45	1,916.45	
Health Insurance (Blue Cross - Blue Shield)	9,893.20			54.59	9,947.79	9,323.85	623.94
Mental Health Clinic	10,000.00				10,000.00	10,000.00	
Man in Washington	4,500.00				4,500.00	4,500.00	
Theatre-by-the-Sea	1,000.00				1,000.00	1,000.00	
Salary Adjustment	15,000.00	- 15,000.00					
Music Club	1,000.00				1,000.00	240.00	760.00
Technical Institute Building Rental				1,090.00	1,090.00	704.82	385.18
Public Welfare:							
Old Age Assistance	55,000.00	+ 1,166.32			56,166.32	56,166.32	
City Relief	50,520.00	- 1,166.32			49,353.68	35,194.25	14,159.43
Interest:							
Temporary Loans	61,300.00				61,300.00	59,720.01	1,579.99
Bonded Debt	130,693.00				130,693.00	126,693.00	4,000.00
Indebtedness:							
Bonded Debt	430,000.00				430,000.00	430,000.00	
Overlay — Abatements (Current Year)	30,000.00			.50	30,000.50	33,611.12	(3,610.62)
Overlay — Abatements (Prior Year)					4,708.16	3,600.41	(3,145.54)
Payments to Other Governmental Divisions:							
County Tax	196,371.02				196,371.02	196,371.02	
School Tax	2,695,654.00			49,005.29	2,744,659.29	2,729,538.50	15,120.79
New Construction & Permanent Improvements:							
South Mill Pond Gates	6,000.00				15,196.20	4,844.93	10,351.27
City Landing					533.14	533.14	533.14
Harry K. Torrey Bequest for Street Signs					705.75	705.75	705.75
School Projects (Site Development, Bleachers, Etc.)							
New Equipment	20,000.00	- 283.65			18,119.04	9,362.01	8,757.03
Chain Link Fence	2,500.00				19,716.35	19,716.35	
					2,500.00	2,494.00	6.00
	\$33,629.79	\$5,302,535.56		\$102,637.06	\$5,438,802.41	\$5,333,597.00	\$79,975.03
							\$25,230.38

(A) Includes \$850.00 Voted From Surplus by City Council on April 4, 1966.
(B) Includes \$8,014.80 Voted From Surplus by City Council on August 1, 1966.

EXHIBIT A-5

CITY OF PORTSMOUTH

STATEMENT OF ESTIMATED AND ACTUAL REVENUES AND BUDGET SUMMARY

Fiscal Year Ended December 31, 1966

Source	Estimated	Actual	Excess	Deficit
	\$	\$	\$	\$
REVENUES				
Interest & Dividends Tax	37,315.34	37,315.34		
Motor Vehicle Permit Fees	180,000.00	181,925.49	1,925.49	
Dog Licenses	2,000.00	2,349.50	349.50	
Business Licenses, Permits & Fees	13,500.00	15,859.75	2,359.75	
Fines & Forfeits — District Court & Parking	16,500.00	22,898.68	6,398.68	
Rent of City Ambulance	2,000.00	2,572.88	572.88	
Interest on Taxes	6,500.00	6,967.94	467.94	
Head Tax Revenue — 1965 Levy	3,000.00	3,552.30	552.30	
Railroad Tax	3,590.61	3,591.89	1.28	
Savings Bank Tax	11,705.16	11,705.16		
Added Taxes		1,958.95	1,958.95	
SCHOOLS:				
Federal Grant	893,425.00	905,963.00	12,538.00	
Rental of Buildings, Etc.	2,500.00	2,281.73		218.27
Athletics	12,000.00	11,797.87		202.13
Tuitions	214,000.00	214,722.65	722.65	
State Aid — Sweepstakes	76,842.58	83,198.67	6,356.09	
State Building Aid	38,270.22	37,787.38		482.84
MISCELLANEOUS:				
Welfare Department		2,338.98		
Community Center		1,230.99		
Comfort Station		890.36		
Interest on Invested Funds	20,000.00	37,115.34	37,846.65	
Payment in Lieu of Taxes		6,467.44		
Head Taxes & Penalties After Settlement		286.00		
Miscellaneous		3,957.72		
Sale of Tax Deeded Property		5,559.82		
Highway Department Revenue	8,500.00	11,348.32	2,848.32	
Building Inspector	2,500.00	4,252.00	1,752.00	
Surplus Used to Reduce Tax Rate	152,681.82	152,681.82		
	<u>\$1,696,830.73</u>	<u>\$1,772,577.97</u>	<u>\$76,650.48</u>	<u>\$ 903.24</u>
Budget Summary				
Actual Revenues		\$1,772,577.97		
Estimated Revenues		1,696,830.73		
Revenue Surplus			\$75,747.24	
Unexpended Balances of Appropriations			79,975.03	
Net Budget Surplus				\$155,722.27

EXHIBIT D
CITY OF PORTSMOUTH
STATEMENT OF CITY CLERK'S ACCOUNTS
Fiscal Year Ended December 31, 1966

— DR. —

Licenses issued:

Dog Licenses	\$3,338.50
Bicycle Licenses	313.00
Taxi Licenses	376.00
Theatre Licenses	200.00
Pinball Licenses	1,650.00
Other Licenses	1,246.00
	<u>\$ 7,123.50</u>

Other Fees:

Recording Vital Statistics	\$1,943.50
Marriage Intentions	1,309.00
Sewer Connections	2,311.61
Filing Fees	131.00
Miscellaneous	313.19
Uniform Commercial Code	4,603.50
Parking Meter Tokens	8,624.00
	<u>19,235.80</u>

— CR. —

Remittances to Treasurer:

Dog Licenses	\$ 3,338.50
Bicycle Licenses	313.00
Taxi Licenses	376.00
Miscellaneous Licenses	3,096.00
Fees	10,611.80
Parking Meter Tokens	8,624.00
	<u>\$26,359.30</u>

EXHIBIT E
CITY OF PORTSMOUTH
STATEMENT OF DISTRICT COURT ACCOUNTS
AND PROOF OF BALANCE
Fiscal Year Ended December 31, 1966

Balance — January 1, 1966 \$ 1,593.02

Receipts:

Fines	\$22,629.00
Small Claims	349.80
Writs, Executions, Etc.	139.43
Unrecorded Receipts	54.00
Miscellaneous	296.72
	<u>23,468.95</u>

Expenditures:

Department of Safety	\$ 8,504.14
Fish & Game Department	140.00
City of Portsmouth	12,065.00
Witness Fees	928.23
Office Supplies & Expenses	476.03
Small Claims	303.85
Association Dues	72.50
City of Portsmouth — a/c Small Claims	45.95
Juvenile Court Refunds	65.00
Refunds & Miscellaneous	666.15
Bail Returned	213.75
Surety Bond	12.00
Department of Employment Security	104.00
Postage	45.75
	<u>23,642.35</u>

Balance — December 31, 1966

PROOF OF BALANCE

Balance in the First National Bank of

Portsmouth — Per Statement

December 30, 1966

Less: Outstanding Checks

\$ 1,936.45
<u>1,836.10</u>

\$ 100.35

Add: Cash on Hand —

December 31, 1966

40.00

Balance in The New Hampshire National

Bank of Portsmouth — Per Statement

December 30, 1966

Less: Outstanding Checks

\$ 3,910.19
<u>2,630.92</u>

1,279.27

Reconciled Balance — December 31, 1966

\$26,359.30

\$1,419.62

EXHIBIT F-1
CITY OF PORTSMOUTH

SUMMARY OF TRUST FUND PRINCIPAL AND INCOME

Fiscal Year Ended December 31, 1966

FUNDS	PRINCIPAL					INCOME			Balance of Principal & Income December 31, 1966
	Balance January 1, 1966	Gains on Sales	Balance December 31, 1966	Balance January 1, 1966	Earned During Year	Expended During Year	Balance December 31, 1966		
Schools	\$ 15,800.00		\$ 15,800.00	\$ 3,149.85	\$ 647.21	\$ 50.01	\$ 3,747.05	\$ 19,547.05	
Worthy Poor	14,435.16		14,435.16	1,230.30	618.56	400.00	1,448.86	15,884.02	
Colored Population	500.00		500.00	7.82	19.81	12.91	14.72	514.72	
Haven Park	6,523.56		6,523.56	3,534.92	425.31	136.45	3,823.78	10,347.34	
Annie Fields Scholarship Fund	5,000.00		5,000.00	102.09	214.67	210.00	106.76	5,106.76	
Memorial Fountain	500.00		500.00	410.21	39.08		449.29	949.29	
Public Library	40,508.88		41,508.88	774.86	1,650.57	1,602.10	823.33	42,332.21	
Prescott Park	1,360,781.92	1,000.00	1,360,781.92	115,975.86	66,188.01	68,929.45	113,234.42	1,474,016.34	
Gray Scholarship	42,896.96		42,896.96	1,280.25	2,512.10	2,671.00	1,121.35	44,018.31	
William J. Carter Playground	5,000.00		5,000.00	2,152.25	302.32	229.00	2,225.57	7,225.57	
	\$1,491,946.48		\$1,492,946.48	\$128,618.41	\$72,617.64	\$74,240.92	\$126,995.13	\$1,619,941.61	

EXHIBIT I-1

CITY OF PORTSMOUTH

WATER DEPARTMENT BALANCE SHEET

As of December 31, 1966

ASSETS

Current Assets:

Cash in Bank \$ 4,634.21
 Petty Cash 100.00
 Materials & Supplies 28,321.39
 Accounts Receivable \$ 50,503.62
 Less: Reserve for Bad Debts 3,000.00
47,503.62

Total Current Assets

\$ 80,559.22

Fixed Assets:

Land:
 Water Supply \$ 155,223.00
 Pumping Station 1,835.00
 Water Storage 1,400.00
 Distribution System 750.00
 Other Land 2,172.00
\$ 161,380.00

Buildings:

Water Supply \$ 925,902.58
 Pumping Station 78,347.31
 Water Storage 85,000.00
 Purification System 854,776.00
 Stores Department 3,834.44
 Stable & Garage 2,500.00
 Other Structures 2,500.00
\$1,952,860.33

Equipment:

Water Supply \$ 105,877.78
 Pumping Station 138,150.24
 Purification 5,700.00
 Transmission Mains 1,563,102.36
 Water Storage 74,405.04
 Distribution Mains 1,522,822.69
 Services 8,335.34
 Hydrants 54,202.48
 Meters 123,016.76
 Stables & Garage 5,807.00
 Other Equipment 31,505.76
3,632,925.45

Total Buildings & Equipment \$5,585,785.78
 Less: Reserve for Depreciation 682,797.33
4,902,988.45

Depreciated Value

5,064,368.45

Total Assets

\$5,144,927.67

LIABILITIES, INVESTMENT & SURPLUS

Current Liabilities:

Accounts Payable \$ 23,675.48
 Customers' Deposits 890.00
 Accrued Taxes 3,300.43
\$ 27,865.91

Total Current Liabilities

\$ 27,865.91

Fixed Liabilities:

Funded Debt \$ 58,000.00

Total Fixed Liabilities

58,000.00

Total Liabilities

\$ 85,865.91

Investment & Surplus:

Municipal Investment \$ 668,282.85
 Federal Contribution for Plant Expansion 4,096,027.10
\$4,764,309.95

Surplus:

Balance — January 1, 1966 \$ 316,119.17
 Increase in Surplus:
 Merchandise Sales & Job Work a/c of Port Authority 43,589.33
\$ 359,708.50

Decreases in Surplus:

1965 Salaries Paid by General Fund \$ 965.47
 Customers' Deposit Adjustment 10.00
 1965 Taxes 178.84
 Net Loss for 1966 63,802.38
64,956.69

Balance — December 31, 1966 294,751.81

Total Investment & Surplus

5,059,061.76

Total Liabilities, Investment & Surplus

\$5,144,927.67

EXHIBIT I-2
CITY OF PORTSMOUTH
WATER DEPARTMENT STATEMENT OF PROFIT AND LOSS

Fiscal Year Ended December 31, 1966

Revenues:			
Commercial Sales	\$224,338.32	Commercial: Office Salaries	\$13,118.29
Industrial Sales	46,887.12	Meter Reading Salaries	10,532.40
Other Municipal Sales	4,564.07		\$23,650.69
Merchandise Sales & Job Work	31,981.31		
Total Revenues	\$307,770.82	Total Operating & Distribution Expenses	\$255,142.42
Less:		Net Operating Profit	\$ 52,628.40
Operating Expenses:			
Operation:		Less: Non-Operating Expenses:	
Superintendence	\$ 8,876.16	General Expenses:	
Pumping Station — Labor	79,316.83	Office Rent & Expense	\$ 1,232.17
Pumping Station — Supplies & Expenses	3,662.40	Other General Expense	143.10
Purification System	9,895.26		\$ 1,375.27
Fuel	2,648.61	Miscellaneous Undistributed Expenses:	
Power Purchased	33,403.56	Insurance	\$ 5,117.06
	\$137,802.82	Stationery & Printing	450.00
Maintenance:		Stores Department & Shop Expense	5,532.80
Repairs to Water Supply — Structures & Equipment	\$12,571.76	Garage Expense	3,538.24
Repairs to Pumping Station — Structures & Equipment	1,927.60		14,638.10
Repairs to Purification System — Structures & Equipment	1,565.40	Other Expenses:	
	\$16,064.76	Depreciation Expense	85,347.35
Distribution Expenses:		Total Non-Operating Expenses	101,360.72
Operation:		Net Loss After Non-Operating Expenses	(\$ 48,732.32)
Superintendence	\$15,874.41		
Customers' Premises Expense	1,489.13	Other Revenue:	
Other Distribution Supplies & Expenses	1,205.59	Penalties	\$ 1,376.00
Meter Department Supplies & Expenses	95.00	Other Expenses:	
	18,664.13	Interest	\$ 1,117.50
Maintenance:		Employees' Retirement & Social Security	13,521.79
Repairs to Mains	\$ 9,430.04	Taxes	1,806.77
Repairs to Services	31,046.53		16,446.06
Repairs to Hydrants	2,548.83	Net Other Expenses	15,070.06
Repairs to Meters	15,934.62	Net Loss	(\$ 63,802.38)
	\$58,960.02		

EXHIBIT I-3
 CITY OF PORTSMOUTH
 WATER DEPARTMENT
SUMMARY OF RECEIPTS, EXPENDITURES AND PROOF OF BALANCE
 Fiscal Year Ended December 31, 1966

Balance — January 1, 1966	\$ 14,033.08	
Receipts During Year	364,897.01	
	\$378,930.09	
Expenditures During Year	374,295.88	
Balance — December 31, 1966		\$4,634.21

PROOF OF BALANCE

Balance in the First National Bank, Portsmouth N. H. — Per Statement December 30, 1966	\$ 4,982.42	
Add: Deposit of January 3, 1966	633.65	
	\$ 5,616.07	
Less: Outstanding Checks	981.86	
Reconciled Balance — December 31, 1966		\$4,634.21

The Portsmouth Civil Defense Auxiliary Police Unit working under the authority of the Portsmouth Civil Defense Agency, was extremely active during the year of 1966. Three major items of vital importance to the area's safety in the event of national or local disaster were given close attention by members of the Civil Defense Unit and may be noted as follows:

- 1) **FALLOUT SHELTER QUALIFICATIONS AND STOCKING.** Continued progress is being made within this work element which includes the qualification of new shelter areas and their stocking with medical supplies, water, food, sanitary units and monitoring equipment.
- 2) **RADIOLOGICAL DEFENSE MONITORING.** During the past year, 28 members of the Civil Defense group took an extensive three-months course so as to become qualified in radiation monitoring. Detailed training was also provided in shelter management and the managing of groups of persons seeking shelter.
- 3) **EMERGENCY OCCUPATION COMMUNICATION CENTER (EOC).** Considerable work remains to be done to the Civil Defense Center located at Police Headquarters. Upon its completion, this self-contained unit will be the most complete operations and communication center within the local area. A significant area of Civil Defense preparation includes the initiation of programs of Medical Self-Help, a course designed to acquaint the average citizen with medical techniques that will enable the administration of emergency medical aid to persons in the absence of a doctor or other qualified medical personnel.

The local Civil Defense unit amassed a total of over 5,500 voluntary work and training hours on the afore mentioned projects. Many more hours were spent in planning and administration duties. These hours represent the efforts of a small group of devoted people whose principal aim is to give the 28,000 residents of Portsmouth a greater chance for survival in the event of a national emergency period. We would appreciate your assistance and request that you contact Mr. William T. Evans or any Civil Defense official for additional information.



C. D. Auxiliary Police Service at Stratham, N. H.

General Information

AREA — TOPOGRAPHY

Elevations	0 to 85 feet
Terrain	Flat/Rolling
Market Square	Approximately 28.0 ft. above mean sea level
Land Area	15.2 square miles
Water Area	0.4 square miles

CLIMATE

Average annual temperature	46° F
Average January temperature	23° F
Average July temperature	70° F
Prevailing wind	Westerly

POPULATION		% Change	Density (Persons Per Sq. Mile)
1930	14,495	+ 6.7	954
1940	14,821	+ 2.3	988
1950	18,320	+ 23.6	1221
1960	26,900	+ 46.8	1793

(1960 Count includes all military residents)

VOTING PLACES

WARD

- I — New Franklin School, Stark Street-Myrtle Ave.
- II — Junior High School, Parrott Avenue
- III — Sherburne School, Sherburne Road
- IV — Senior High School, Summit Ave., -Alumni Drive
- V — Community Center, Daniel Street
- VI — Wentworth School, Granite Street

STATE REPRESENTATIVES (General Court)

House of Representatives

- WARD I — William F. Keefe
Duncan McEachern Ralph Maynard
- II — Christopher M. Conlon
Jeremiah Quirk
Ann Sadler
- III — C. Cecil Dame
Clayton E. Osborn Joseph McEachern
- IV — Walter Jameson
Julia H. White
- V — Fannie Gerber
Edward J. Ingraham
- VI — Eileen G. Rossley
Wayne Bohler

STATE SENATORS

- Arthur Tufts (R) 23rd District
- Eileen Foley (D) 24th District

REPRESENTATIVES

- James C. Cleveland (R) 2nd District
- Louis Wyman (D) 1st District

SENATORS

- Thomas J. McIntyre (D)
- Norris Cotton (R)

ADMINISTRATIVE BUILDINGS

- City Hall Doniel Street
- Fire Station Court Street
- Police Station Penhallow Street
- Library Congress/Islington
- Highway Department Islington Street
- School Department Islington Street
- Health Center Porter/Church Streets

PARKS AND PLAYGROUNDS

- Pierce Island Picnic-municipal pool-small boat ramps
- Prescott Park Recreational-walk-through-playground
- Elwyn Park Walk-through
- Haven Park Walk-through
- Goodwin Park Walk-through
- South Playground Lighted tennis courts, basketball,
baseball, football-public events
- Alumni Field Recreation, baseball, public events
- Clough Field Playground and Little League
- Lafayette Playground Playground and Skating
- Maple Haven Playground
- Dondero School Playground and Skating
- Sherburne Playground
- Pine Street Playground
- New Franklin Playground
- Wentworth Playground
- Atlantic Heights Playground and Skating
- Atlantic Heights Little League Baseball
- Plains Little League Baseball
- Greenland Road Skating Rink
- Mariette Drive Skating Rink
- Elwyn Road Skating Rink

RECREATIONAL BUILDINGS

- Community Center Daniel Street
- Kennedy Adult Recreation Center Parrott Avenue
- Union Wharf Building Prescott Park
- Bath House Pierce Island

Directory of City Offices and Services

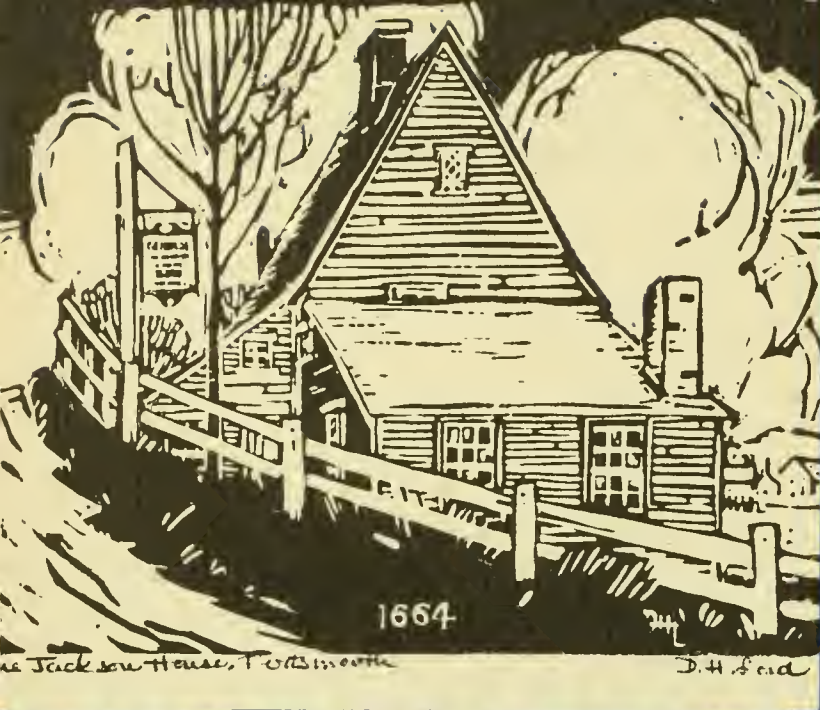
FIRE 436-1127

Administration, General	436-4125
Ambulance	436-1127
Assessments	436-1117
Auto Permits	436-1124
Beano Licenses	436-2145
Bicycle Licenses	436-0013
Bills and Accounts	436-8222
Birth Certificates	436-0013
Building Permits	436-5867
Cemetery	436-0176
City Council	436-4125
Dance Licenses	436-0013
Death Certificates	436-0013
Sewers	436-0176
Dog Licenses	436-0013
Dog Officer	436-9067
Elections	436-0013
Engineering, City	436-0176
Garbage Collection	436-0176
Health, Public	436-3224
House, Low-Rent, Public	436-4310
Industrial Commission	436-9411
Library	436-5724
Marriage Certificates	436-0013
Milk, Licenses and Inspections	436-4125
Mortgages and Conditional Sales	436-0013
Nursing, Public Health	436-0815

POLICE 436-2145

Oil Burner Inspection	436-1127
Ordinances and Resolutions	436-0013
Parks	436-0176
Payments by the City	436-8222
Personnel, City	436-4125
Planning, City	436-5869
Plumbing Permits – Licenses	436-6128
Purchasing	436-4125
Recreation	436-4256
Refuse Collection	436-0176
Red Cross	436-2600
Sanitation	436-0176
Schools	436-2434
School Nurse	436-2601
Selective Service Registration	436-0013
Snow Plowing and Sanding	436-0176
Street Lights Burned Out	436-4125
Street Maintenance	426-0176
Tax Collection	436-1124
Toxicob Permits	436-0013
Treasury Information	436-5800
Urban Renewal & Redevelopment	436-3217
Water	436-0176
Water Bills	436-2346
Welfare	436-1925
Weights and Measures	436-3902
Zoning	436-5867





1664

The Jackson House, Portsmouth

D.H. Ford



1758

The John Paul Jones House, Portsmouth

D.H. Ford



1807

St. John's Church, Portsmouth

Dorothy H. Ford



1755

The Nathaniel Ladd House, Portsmouth

D.H. Ford



1895

The Emma Whitehead Garrison

D.H. Ford