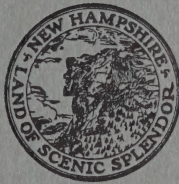


# GRAFTON COUNTY

## Annual Report

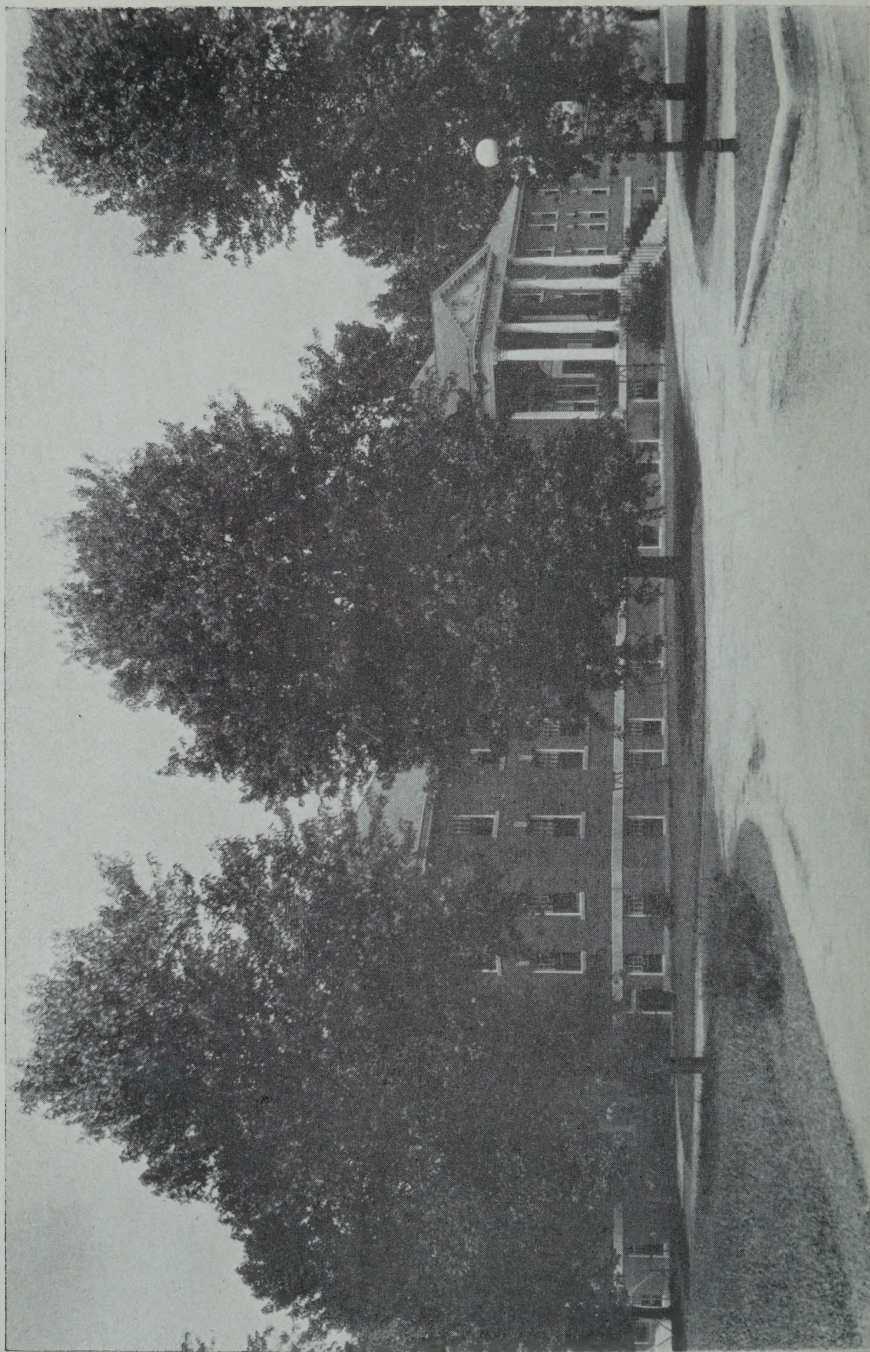


FOR THE YEAR ENDING  
DECEMBER 31, 1948









GRAFTON COUNTY FARM HOME



**Annual Report**  
**OF THE**  
**Commissioners**  
**OF THE**  
**County of Grafton**

**Together with the Reports of the  
Treasurer, Auditors, Superintendent, Jailer,  
Clerk of Court, Solicitor, Sheriff,  
Chaplain, Physician and  
Extension Service**

---

**FOR THE YEAR ENDING  
DECEMBER 31, 1948**

---

**THE RECORD PRINT  
PLYMOUTH, N. H.**

N

352.0742

G73

1948

## INDEX

---

County Officers .....	5
Grafton County Delegation .....	6
Commissioners' Report .....	7
Text of Audit Report of Municipal Accounting Division, State Tax Commission .....	9
Financial Report —	
Balance Sheet .....	15
Receipts and Payments .....	16
Schedule of County Property .....	20
Detail of Bonded Debt .....	21
Detail of Receipts .....	22
Detail of Payments .....	24
Comparative Statement of Appropriations and Expenditures .....	35
County Treasurer's Report .....	36
Comparative Debt Statement .....	37
Detailed Account of Welfare Investigators' Expense .....	38
Detailed Account of County Officers' Expense..	39
County Auditors' Report .....	40
Superintendent's Report .....	42
Clerk of Court's Report .....	57
County Solicitor's Report .....	60
Sheriff's Report .....	66
Chaplain's Report .....	80
Physician's Report .....	81
Summary of Farm Accounts .....	84
Grafton County Extension Service .....	86





## GRAFTON COUNTY OFFICERS

---

### COMMISSIONERS

George T. Noyes	Bethlehem
Kenneth G. Bell	Plymouth
Joseph L. Graham	Canaan

### TREASURER

Harry S. Huckins	Plymouth
------------------	----------

### SOLICITOR

Robert A. Jones	Lebanon
-----------------	---------

### SHERIFF

Robert P. Peckett, Jr.	Franconia
------------------------	-----------

### JAILER

Maurice R. Young	Jan. 1 to Jan. 31, 1948	
		North Haverhill
Archie A. Birch	Feb. 1 to Dec. 31, 1948	
		North Haverhill

### CLERK OF COURT

Unwar J. Samaha	Plymouth
-----------------	----------

### JUDGE OF PROBATE

Henry A. Dodge	Littleton
----------------	-----------

### REGISTER OF PROBATE

Anna D. Proctor	Woodsville
-----------------	------------

### REGISTER OF DEEDS

Fred J. Shores	Woodsville
----------------	------------

### COUNTY ALMSHOUSE AND HOUSE OF CORRECTION

Maurice R. Young, Supt.	Jan. 1 to Jan. 31, 1948	
		North Haverhill
Archie A. Birch, Supt.	Feb. 1 to Dec. 31, 1948	
		North Haverhill

### CHAPLAIN

Rev. Rufus Ansley	Haverhill
-------------------	-----------

### PHYSICIAN

E. M. Miller, M.D.	Woodsville
--------------------	------------

### AUDITORS

Horace B. Knight	Woodsville
Harry D. Sawyer	Woodstock

**GRAFTON COUNTY DELEGATION  
1947-1948**

Ashland	William A. Brown
Bath	Amos N. Blandin
Benton	John Boutin
Bethlehem	Charles H. Whittier
Bridgewater	Edward G. Mellus
Bristol	Glenn L. Wheeler
Campton	Philip S. Willey
Canaan	Frank B. Clarke
Dorchester	Herbert H. Ashley
Easton	Lyle E. Brown
Enfield	Emmett Stewart
Grafton	Fred R. Young
Groton	Thomas Newton
Hanover	Robert J. Fuller
	Charles A. Holden
	Howard N. Kingsford
Haverhill	Theodore Chamberlin
	William J. Clough
	Norman A. McMeekin
Hebron	Norman W. Sanborn
Holderness	Norman P. Smith
Lebanon	Arthur F. Adams
	Jerold M. Ashley
	George H. Edson
	Frank F. Hough
	Fred A. Jones
	Harold G. Randall
Lincoln	William J. Canton
Lisbon	James E. Collins
	Arthur L. Hamilton
Littleton	Charles F. Armstrong
	Mabel M. Downing
	Fred Kelley
Lyme	Henry S. Pushee
Monroe	George L. Frazer
Orford	Arthur J. Lewis
Piermont	Ernest D. Day
Plymouth	William Maynard
	Ernest L. Silver
Rumney	Jesse A. Barney
Thornton	Ida M. Horner
Warren	Fayne E. Anderson
Wentworth	Charles A. Gilbert
Woodstock	Harry D. Sawyer

## REPORT OF COUNTY COMMISSIONERS

---

To the Citizens of Grafton County:

In accordance with the Public Laws of the State of New Hampshire, the Commissioners of Grafton County herewith present the annual report of the Commissioners, Treasurer, Auditors, Superintendent of County Farm, Jailer, Clerk of Court, Solicitor, Sheriff, Chaplain, Physician and County Extension Service.

In line with the times, the cost of operating the Almshouse still shows an increase. A general increase in salaries was granted early in the year and of course the cost of supplies continued to rise. The income from the farm, however, shows a marked increase, a total increase of nearly \$15,000.00; of this amount, \$3,000.00 was from the sale of lumber and milk receipts were higher by approximately \$7,000.00.

Much of the equipment at the farm and almshouse has had to be replaced. These expenditures are really in the nature of capital investments. A new truck was bought for the farm, also, a new tractor with plough and mowing machine attachments.

In the almshouse a new refrigerator was purchased. To meet with sanitary requirements, it was found necessary to buy over \$500.00 worth of plastic dishes. This did away with the agate ware formerly in use.

The Register of Deeds office shows a cost to the County of \$6,363.74 against an appropriation of \$800.00. This is explained as follows: The County Delegation voted to install photostatic equipment and authorized the Commissioners to pay for it with unexpended balances from other appropriations. The equipment installed cost approximately \$2,500.00 and new supplies costing about \$1,000.00 had to be bought to be used with this equipment. In addition to this, the Register's office was able to complete their indexing work for the County. This work which normally would have been done a year earlier had to be paid for from this year's appropriation.



The cost of direct relief and boarded children remains about the same as last year. We have 55 children at the present time in foster homes and institutions and the cost to the County for the year 1948 amounted to \$22,473.63. Of this amount, through collections made by our two investigators, we were reimbursed \$4,450.67.

The financial condition of the County is in excellent shape. We have an inventory value of \$507,337.89, with a bonded debt of only \$10,000.00, which will be paid this year.

As in the past, the Commissioners wish again to thank the various county and town officers for their friendly assistance in carrying on the work of the county.

The Commissioners' invitation to the people of Grafton County to visit and inspect the County Home still stands. The personnel of the Grafton County Home looks forward to receiving all visitors and will be very glad to show them every attention.

Respectfully submitted,

GEORGE T. NOYES,  
KENNETH G. BELL,  
JOSEPH L. GRAHAM,

Commissioners

The following towns may send their affidavits and direct their correspondence to:

JOSEPH L. GRAHAM, Canaan, N. H.—Canaan, Dorchester, Enfield, Grafton, Hanover, Lebanon, Lyme, Orford, Orange and Piermont.

GEORGE T. NOYES, Bethlehem, N. H. — Bath, Benton, Bethlehem, Easton, Franconia, Haverhill, Landaff, Lisbon, Littleton, Lyman and Monroe.

KENNETH G. BELL, Plymouth, N. H.—Alexandria, Ashland, Bridgewater, Bristol, Campton, Ellsworth, Groton, Hebron, Holderness, Lincoln, Plymouth, Rumney, Thornton, Warren, Wentworth and Woodstock.

## DIVISION OF MUNICIPAL ACCOUNTING

### STATE TAX COMMISSION

Concord, New Hampshire

May 4, 1948

Board of County Commissioners

Grafton County

Woodsville, New Hampshire

Gentlemen:

In accordance with the provisions of Chapter 82, Section 27, of the Revised Laws, the biennial audit and examination of the accounts of Grafton County has been made by the Division of Municipal Accounting of the State Tax Commission. The audit covered the fiscal years ended December 31, 1946 and December 31, 1947. Submitted herewith is the report of this audit, including Exhibits as hereafter listed. The report is made up in three sections as follows:

Section I—Fiscal Year Ended December 31, 1946

Section II—Fiscal Year Ended December 31, 1947

Section III—Statistical Tables Covering Ten Year Period.

### SCOPE OF AUDIT

Included in the audit and examination were the accounts and records of the Board of County Commissioners, County Treasurer, Clerk of the Superior Court and Superintendent of the County Farm.

### FINANCIAL STATEMENTS

#### Comparative Balance Sheets:

December 31, 1945—December 31, 1946

(Exhibit A)

December 31, 1946—December 31, 1947

(Exhibit H)

Comparative Balance Sheets for the fiscal years ended December 31, 1945-1946, and December 31, 1946-1947, are presented in Exhibits A and H, respectively. As indicated therein the Net Debt increased by \$11,194.33 in 1946, while in 1947 a decrease of \$14,685.31 took place.

**Reconciliation of Change in Financial Condition:**

Fiscal Year Ended December 31, 1946 (Exhibit B)

Fiscal Year Ended December 31, 1947 (Exhibit I)

Statements presenting an analysis of the factors which affected the change in financial condition of the county during the fiscal years ended December 31, 1946 and December 31, 1947, are included in Exhibits B and I, respectively.

The increase in Net Debt during the year 1946 amounted to \$11,194.33. The factors which caused this were as follows:

<b>Increases</b>	
Net Budget Deficit	\$ 5,993.57
Cash Surplus Used to Reduce Amount of 1946 County Tax	15,000.00
Decrease in Accounts Receivable	200.76
	<u>\$21,194.33</u>
<b>Decreases</b>	
Bonds Retired	10,000.00
Net Increase	<u>\$11,194.33</u>

The Net Debt decreased by \$14,685.31 in 1947. This was brought about as follows:

<b>Decreases</b>	
Net Budget Surplus	\$ 4,736.06
Bonds Retired	10,000.00
	<u>\$14,736.06</u>
<b>Increases</b>	
Decrease in Accounts Receivable	50.75
Net Decrease	<u>\$14,685.31</u>



## Comparative Statements of Appropriations and Expenditures—Estimated and Actual Revenues:

Fiscal Year Ended December 31, 1946  
(Exhibits C & D)  
Fiscal Year Ended December 31, 1947  
(Exhibits J & K)

In the fiscal year ended December 31, 1946, a net overdraft of appropriations of \$21,015.68 less a net revenue surplus of \$15,022.11, resulted in a net budget deficit of \$5,993.57.

In 1947, a net revenue surplus of \$6,465.52, less a net overdraft of appropriations of \$1,729.46, produced a net budget surplus of \$4,736.06.

## Summaries of Receipts and Expenditures:

Fiscal Year Ended December 31, 1946 (Exhibit E)  
Fiscal Year Ended December 31, 1947 (Exhibit L)  
Summaries of the receipts and expenditures of the County, made up in accordance with the uniform classification of accounts, for the fiscal years ended December 31, 1946 and December 31, 1947, are presented in Exhibits E and L, respectively.

## Statement of Bonded Indebtedness: (Exhibit P)

A statement of bonded indebtedness, as of December 31, 1947, showing annual maturities of principal and interest, is contained in Exhibit P.

## Tax Anticipation Notes Issued: (Exhibit Q)

Tax anticipation notes issued during 1946 and 1947, are shown in Exhibit Q, with the amounts, dates of issue and maturity, and rate of discount indicated.

## Statistical Tables:

The third section of the report is comprised of statistical tables covering a ten year period from 1938 to 1947. These are as follows:

- Table I—Balance Sheet
- Table II—Tax Apportionment
- Table III—Receipts and Expenditures

## ACCOUNTS OF COMMISSIONERS AND TREASURER

All orders issued by the Commissioners and Clerk of the Superior Court during the periods under review were examined and compared with corresponding entries in the Treasurer's records. Supporting invoices and payrolls were also examined and the classification of expenditures noted. Proof of the Treasurer's balance as of December 31, 1947, is shown in Exhibit M.

### CLERK OF THE SUPERIOR COURT

The financial accounts and records of the Clerk of Court of Grafton County were examined. Court receipts were checked by source, insofar as possible, and found to be properly recorded. Court orders issued by the Clerk were supported by invoices, vouchers and payrolls bearing the approval of a Superior Court Justice.

### COUNTY FARM

The accounts and records of the Superintendent of the County Farm were examined. Receipts of the Farm were checked by source through the triplicate receipt forms. All receipts, as recorded in the cash book, were properly accounted for by the Superintendent through deposits to the credit of the County Treasurer's account in the Woodsville National Bank.

Classified Summaries of receipts and expenditures of the County Institutions for the years 1946 and 1947 are presented in Exhibits F and N, respectively.

### GENERAL COMMENTS

#### **Competitive Bidding:**

Our examination revealed that bids were not usually obtained on larger quantities of Fuel, Feed and Grain and certain other commodities purchased, but that the waiver provision of the law had been generally complied with in connection with such purchases. Upon inquiry we were informed by the Commissioners that market conditions at the time of purchase were such that in order not to impair or reduce certain County services it was necessary to make the purchases in the open market.

**Conclusion:**

The accounts and records of all county officials were found in good condition and the accounting procedure conformed to the uniform procedure prescribed by this Division.

In conformance with Section 31, Chapter 211, of the Laws of 1939, a copy of this report or a summary of its essential features should be published in the next annual report of the County. This letter of transmittal should be included in its entirety. The publication of Exhibits is optional.

The appreciation and thanks of the members of this Division is hereby expressed to the officials of Grafton County and the office staff for the assistance rendered during the course of the audit.

Yours very truly,

HAROLD G. FOWLER

Director

Division of Municipal Accounting

State Tax Commission

Norman P. Schauer, Auditor

Roger G. Guilmette, Accountant



**DIVISION OF MUNICIPAL ACCOUNTING  
STATE TAX COMMISSION**

Concord, New Hampshire

May 4, 1948

**Certificate of Audit**

This is to certify that we have audited the accounts and records of the Grafton County Commissioners, County Treasurer, Clerk of the Superior Court, and Superintendent of the County Farm, for the fiscal years ended December 31, 1946, and December 31, 1947. It is our opinion that the Exhibits presented herewith fairly present the financial condition of the County as to its assets, liabilities, net debt and the results of operations for the periods under review.

Respectfully submitted,

HAROLD G. FOWLER,

Director

Division of Municipal Accounting

State Tax Commission

Norman P. Schauer, Auditor

Roger G. Guilmette, Accountant

Exhibits and Schedules on file in County Commissioners' Office.

**FINANCIAL REPORT**  
**BALANCE SHEET**

**Fiscal Year Ending December 31, 1948**

Assets	
Cash on Hand	
Treasurer	\$19,885.83
Supt. of County Farm	300.00
	\$20,185.83
Accounts Due County	
(a) Taxes due from towns	none
(b) Accounts due farm	1,159.00
	1,159.00
Total Assets	\$21,344.83
* Excess of liabilities over assets net (debt)	13,655.17
Grand Total	\$35,000.00
Net debt—December 31, 1947	15,326.42
Net debt—December 31, 1948	13,655.17
	\$ 1,671.25
Decrease of debt	
* This is offset by Schedule of County Property amount- ing to	\$507,337.89
See Schedule of County Property on page 20.	
Purpose for which debt was created— New Almshouse	
Liabilities	
*Bonds Outstanding	
Grafton County Farm Bonds (Alms House)	\$10,000.00
Temporary Loans Outstanding:	
Tax Note No. 135 due Jan. 18, 1949	25,000.00
	\$35,000.00
Total Liabilities	\$35,000.00
Grand Total	\$35,000.00

\* See Page 21, Schedule for Bonds Outstanding.

## Financial Report

## RECEIPTS AND

**Current Revenue:**

Taxes from towns and cities	\$179,730.00	\$179,730.00
Fines and Forfeits		
Superior Court	294.64	294.64
Income of Institutions		
(a) County Farm	39,298.80	
(b) Court Houses	20.00	
		<u>39,318.80</u>
Reimbursement of Expenditures		
for support of poor, etc.		
(a) From State of		
New Hampshire	16.80	16.80
(b) From other sources	4,692.89	4,692.89
		<u>4,709.69</u>
Total current revenue receipts		<u>\$224,053.13</u>

Receipts carried forward to Page 18.



## PAYMENTS

## Financial Report

## Current Maintenance Expenses:

## General Government:

## 1. Salaries of

(a) Commissioners	\$ 3,000.00	
(b) Treasurer	300.00	
(c) Auditors	100.00	
(d) Solicitor	1,800.00	
(e) Medical Referees	1,554.78	
(f) Sheriff	1,250.00	
	<u>          </u>	\$ 8,004.78

## 2. Expenses of

(a) Above Officers	\$ 2,431.84	
(b) Register of Deeds	4,523.35	
(c) Register of Deeds (Indexing)	1,271.08	
(d) Register of Deeds (Dark Room)	569.31	
(e) Register of Probate	1,788.39	
	<u>          </u>	\$10,583.97

3. Care and Supplies  
for Court House

\$ 4,327.22	
<u>          </u>	4,327.22

## Superior Court

4. Jury payrolls	\$ 7,554.74	
5. "State vs. -" Payrolls	2,765.44	
6. Counsel fees	1,565.47	
7. Stenographer, etc.	3,972.80	
8. Clerk of Superior Court	7,768.94	
9. Sheriff and Deputies	14,551.58	
	<u>          </u>	\$38,178.97

## Public Welfare

10. County Farm Expenditures	\$92,566.35
---------------------------------	-------------

Payments carried forward to Page 19

**Financial Report****RECEIPTS AND**


---

Total Receipts Brought forward from Page 16		\$224,053.13
<b>Receipts Other Than Current Revenue</b>		
Temporary loans during year	\$175,000.00	
Total receipts other than Current Revenue		175,000.00
		<hr/>
Total receipts from all sources		\$399,053.13
Cash on hand at beginning of year		3,206.33
		<hr/>

**Grand Total****\$402,259.46**

**PAYMENTS****Financial Report**


---

11. Support of poor not on County Farm	\$12,483.68	
12. Old Age Assistance	7,213.18	
13. Board and care of children	22,473.63	
14. Aid to soldiers	947.41	
15. Welfare administration	8,024.77	
		<u>\$143,709.02</u>
Total Current Maintenance Expenses		\$204,803.96
<b>Interest</b>		
16. Paid on temporary loans	1,416.13	
17. Paid on bonded debt	1,000.00	
		<u>\$ 2,416.13</u>
<b>Total Outlay Payments</b>		
<b>Indebtedness:</b>		
18. Payments on tem- porary loans	\$150,000.00	
19. Payment on Principal of bonds	10,000.00	
Total indebtedness payments		<u>\$160,000.00</u>
<b>All Other Payments:</b>		
20. County Extension service	\$13,000.00	13,000.00
21. Retirement System	858.34	858.34
22. Miscellaneous	995.20	995.20
Total payments for all purposes		<u>\$382,073.63</u>
Cash on hand at end of year		<u>20,185.83</u>
 Grand Total		 \$402,259.46



**Financial Report**

---

**SCHEDULE OF COUNTY PROPERTY**

---

## Description:

## Land and Buildings:

(a) Court Houses	\$100,000.00
(b) Jail	55,000.00
(c) County Farm	250,000.00
(d) Water System	20,000.00

## Furniture and Equipment

(a) Court Houses	30,000.00
(b) Jail	1,379.70
(c) County Farm	50,958.19
	<hr/>
	\$507,337.89

STATEMENT OF BONDED DEBT  
OF GRAFTON COUNTY

---

December 31, 1948

Showing annual Maturities of Outstanding Obligations

County Farm

1929

1949

\$10,000.00

These Bonds issued to build new Almshouse.

## DETAIL OF RECEIPTS

## Taxes from Towns

Alexandria	\$ 1,504.96
Ashland	5,224.11
Bath	2,439.07
Benton	328.66
Bethlehem	8,112.95
Bridgewater	1,695.24
Bristol	7,697.78
Campton	3,822.94
Canaan	3,407.78
Dorchester	501.65
Easton	449.75
Ellsworth	103.79
Enfield	4,151.61
Franconia	2,923.42
Grafton	1,193.58
Groton	1,107.09
Hanover	16,952.40
Haverhill	11,797.50
Hebron	1,556.85
Holderness	5,621.98
Landaff	830.32
Lebanon	23,491.15
Lincoln	3,355.88
Lisbon	8,268.63
Littleton	13,959.80
Lyman	778.42
Lyme	2,387.17
Monroe	22,505.13
Orange	397.86
Orford	2,248.79
Piermont	1,902.82
Plymouth	9,410.32
Rumney	2,577.46
Thornton	1,262.73
Warren	1,591.45
Waterville	190.28
Wentworth	1,280.08
Woodstock	2,698.55
	<hr/>
	\$179,730.00

No uncollected taxes



**DETAIL OF RECEIPTS (Continued)**

Fines and Forfeits, Superior Court

Plymouth Municipal Court, fine \$	50.00	
Robert A. Jones, Pinball money	164.00	
Refund of Juror	46.08	
Court order No. 7881, cancelled	34.56	
		\$ 294.64

Income of Institutions

Grafton County Farm	\$39,298.80	
(See report of Supt. of County Farm, Page 42)		
Use of Court Houses		
State Tax Commission	20.00	
		39,318.80

Reimbursements

State of New Hampshire		
Old Age Assistance	\$ 16.80	16.80

Other Sources:

Boarded Children	\$ 3,897.14	
Boarded Adults	75.00	
Direct Relief	478.53	
Refund on bond premiums	18.31	
Sale of merchandise	77.00	
Ret'd. Retirement Contribution	100.00	
Tax rebate	46.91	
		4,692.89

Temporary Loans During Year

Kenneth B. Hill Co., Boston, Mass.  
 Notes No. 129-130-131-132-133-134  
 for \$25,000.00 each dated Jan. 8, 1948  
 Payable \$50,000 Nov. 30, 1948 &  
 \$100,000 December 28, 1948  
 Above notes discounted at .93 of 1%  
 per annum \$150,000.00

National Bank of Lebanon, N. H.

Note No. 135, dated Nov. 18, 1948  
 Payable Jan. 18, 1949  
 Above note discounted  
 at 2% per annum 25,000.00  
 -----\$175,000.00

**DETAIL OF PAYMENTS**  
**CURRENT MAINTENANCE EXPENSES**

**Commissioners:**

Noyes, George T.	\$ 1,000.00	
Bell, Kenneth G.	1,000.00	
Graham, Joseph L.	1,000.00	
	<u>          </u>	\$ 3,000.00

**Treasurer:**

Huckins, Harry S.	300.00	
	<u>          </u>	300.00

**Auditors:**

Knight, Horace B.	50.00	
Sawyer, Harry D.	50.00	
	<u>          </u>	100.00

**Solicitor:**

Jones, Robert A.	1,800.00	
	<u>          </u>	1,800.00

**Medical Referees:**

Bogle, Dr. J. G.	10.00	
Churchill, Dr. Kenneth	30.40	
DeWitt, Dr. Reginald F.	95.20	
Dinerman, Dr. I. A.	88.60	
Holyoke, Dr. J. B.	70.00	
House, Dr. R. K.	50.00	
Miller, Dr. R. E.	612.00	
Orton, Dr. Leon M.	224.00	
Page, Dr. John M.	10.00	
Pickwick, Dr. H. C.	82.23	
Putnam, Dr. William	282.35	
	<u>          </u>	\$ 1,554.78

**Sheriff:**

Peckett, Robert P., Jr.	1,250.00	
	<u>          </u>	1,250.00

## DETAIL OF PAYMENTS

### EXPENSES OF COUNTY OFFICERS

Noyes, George T., Commissioner		
July 1, 1947 to June 30, 1948	\$	367.47
Bell, Kenneth G., Commissioner		
July 1, 1947 to June 30, 1948		353.41
Graham, Joseph L., Commissioner		
July 1, 1947 to June 30, 1948		671.60
Huckins, Harry S., Treasurer		104.36
Kirk, Madeline W., Services		
as clerk 50%		935.00
	_____	\$ 2,431.84

### Register of Deeds

Shores, F. J., telephone	\$	59.34
Shores, F. J., express, misc.		28.15
Courier Printing Co., supplies		37.82
Cragg Bindery, The, supplies		8.00
Keystone Envelope Co., supplies		17.50
Larson, Carl, supplies		33.93
Mann & Co., E. B., supplies		10.70
Martell & Co., A. E., supplies		226.64
McAllister, S. F., repairs		7.60
Northern Office Supply Co. supplies		6.50
Record Print, The, supplies		52.75
Remington Rand, Inc., Dexigraph		
Camera		1,975.00
Remington Rand, Inc., supplies		2,037.88
Rogers Co., Chas., supplies		6.93
Tower Companies, F. L. register		8.00
Tuttle Stationery Co., supplies		6.61
	_____	\$ 4,523.35

### Register of Deeds—Dark Room for Dexigraph

Caldbeck-Cosgrove Co., supplies	\$	67.81
Hutchins, A. V., labor		64.50
Scruggs Hardware, labor		177.53
Thayer, Eugene, labor		4.50
United Camera Exchange, supplies		6.55
Wilmot, Herman R., labor		159.22



Woodsville Furniture Co.,		
Equipment	89.20	
	<hr/>	\$ 569.31

### Register of Deeds—Indexing

Payments made to Fred Shores as follows:

Clough, Mrs. Elmer, services	\$ 354.00	
Hosford, Harriet, services	344.00	
McLellan, Mary, services	144.00	
Shores, Charlotte, services	308.00	
Remington Rand Inc., supplies	121.08	
	<hr/>	\$ 1,271.08

### Register of Probate

Proctor, Anna D., clerk hire	\$ 500.00	
Proctor, Anna D., express, postage	224.82	
Hall & McChesney, supplies	167.40	
Larson, Carl, supplies	119.59	
N. E. Tel. & Tel. Co., telephone	144.81	
Remington Rand Inc., supplies	292.80	
Rogers Co., Chas., supplies	6.93	
Tower Companies, F. L., register	8.00	
Tuttle Stationery Co., supplies	247.76	
White River Paper Co., supplies	1.79	
Dodge, Henry A., Judge,		
telephone, express, postage	74.49	
	<hr/>	\$ 1,788.39

### Care and Supplies of Court Houses

Atlas Products Co., supplies	\$ 50.52
Boston & Maine Railroad, freight	237.74
Bragdon Paint Co., supplies	25.00
Cass, Ralph W., labor & supplies	4.12
Field, M. W., supplies	1.25
Fox, Perry, labor	16.25
Holcomb Mfg. Co., supplies	22.75
Insurance	426.95
Lamarre, A. A., labor & ice	137.75
Langway, Cecil, services as janitor	1,680.00
Mann & Co., E. B., supplies	7.67
Newell, D. H., Inc., coal	303.13
Northern Coal Co., labor	46.00
Peoples Market, The, supplies	3.52

Rand's, supplies	.98	
Scruggs Hardware, labor & supplies	306.07	
Water Dept., Plymouth Village		
Water rent	14.00	
Wheeler, Phineas, services as janitor	300.00	
Wheeler, Phineas, Misc. expense,		
labor	56.70	
White Mt. Power Co., electricity	94.95	
White River Paper Co., supplies	70.61	
Woodsville Fuel Co., unloading coal	60.63	
Woodsville Hardware Co., supplies	39.67	
Woodsville Water & Light Dept.,		
water, electric service	420.96	
	<hr/>	\$ 4,327.22

#### Superior Court—Counsel Fees

Bowker, Robert E., attorney fees	\$ 35.00	
Castello, Luigi, attorney fees	85.00	
Cotton, Tesreau & Stebbins,		
attorney fees	120.00	
Maynard, William, attorney fees	35.00	
Marble, Thomas L., attorney fees	207.80	
Moulton, Francis G., attorney fees	25.00	
Mussman, Mack M., attorney fees	400.00	
Page, Elwin L., attorney fees	153.33	
Samaha, Unwar J., attorney fees	97.60	
Sawyer, C. Murray, attorney fees	161.74	
Stanley, John W., attorney fees	150.00	
Stebbins, Stewart J., attorney fees	35.00	
Tesreau, Charles, attorney fees	60.00	
	<hr/>	\$ 1,565.47

#### Stenographer—County Solicitor

Forsberg, Martha A., steno-		
grapher's fees	\$ 513.51	
Kimball, F. Gordon, Treas., allow-		
ance—State	1,647.66	
McBride, Marguerite, steno-		
grapher's fees	10.00	
Ruf, Dorothy M., steno-		
grapher's fees	157.16	
Strom, Georgia, steno-		
grapher's fees	46.35	

St. Amour, Grace J., stenographer's fees	105.55	
Trask, H. L., stenographer's fees	221.12	
White, Grace J., stenographer's fees	41.75	
Jones, Robert A., Solicitor, expenses, supplies	1229.70	
		<u>          </u> \$ 3,972.80

### Clerk of Superior Court

American Law Book Co., supplies	\$ 15.00	
Andrews, Philip J., supplies	25.00	
Boston Law Book Co., supplies	55.00	
Chase Grain Mill, supplies	5.44	
Clarke Press, The, printing	68.29	
Cole Printing Co., printing	11.00	
Cragg Bindery, The, supplies	193.40	
Keystone Envelope Co., supplies	88.90	
Large, Robert H., bonds	64.86	
Larson, Carl, supplies	127.34	
Lawyers Cooperative Pub. Co., supplies	26.00	
LeMay, Omar J., equipment	35.00	
McAllister, S. F., repairs	1.70	
N. E. Tel. & Tel. Co., telephone	649.84	
Northern Office Supply Co., supplies	16.14	
Peisch, Angell & Co., accounting system	157.00	
Phaneuf Press, printing	22.17	
Remington Rand, Inc., supplies	113.00	
Rogers, Chas. C., equipment	217.25	
Royal Typewriter Co., supplies	14.00	
Sargent, Fred L., postage	147.60	
Samaha, Unwar J., salary, receipts	4,863.45	
Secretary of State supplies	.85	
Sentinel Printing Co., supplies	28.72	
Shepard, Frank D., supplies	36.00	
Shoven, George, Supreme Court Opinions	20.50	
Twin State Pub. Co., Docket and printing	756.80	
Willey's Express, express	8.69	
		<u>          </u> \$ 7,768.94

### Sheriff and Deputies

Peckett, Robert P. Jr., fees, expenses, attendance	\$ 6,970.99
Adams, Carson, fees, expenses, attendance	539.92
Akerstrom, Sidney, fees, expenses, attendance	8.00
Clarke, George E., fees, expenses, attendance	9.40
Durgin, George, fees, expenses, attendance	297.64
Farnham, John L., fees, expenses, attendance	1,861.61
Gardner, Van H., fees, expenses, attendance	1,163.00
Gardner, Theodore, fees, expenses, attendance	1,305.05
Green, Kenneth, fees, expenses, attendance	21.50
Hobbs, E. G., fees, expenses, attendance	28.00
Hunt, Frederick S., fees, expenses, attendance	641.40
Kimball, William A., fees, expenses, attendance	77.53
Larty, Wilfred J., fees, expenses, attendance	44.00
Leavitt, George U. L., fees, expenses, attendance	244.60
Patten, Eugene, fees, expenses, attendance	57.60
Peckett, Mary Ann, fees, expenses, attendance	630.53
Ricard, James Q., fees, expenses, attendance	418.25
Swan, Harold W., fees, expenses, attendance	57.11
Bartlett Ins. Agency, Ins. Machine Gun & Recorder	18.00
Bosworth, E. J., Ventilator	34.94



30

Blake's New Plymouth Restaurant, feeding jury	38.05	
Hunkins & Eaton Agency, Sheriff's Bonds	36.96	
Newfound Print Shop, supplies	30.00	
Potter's Restaurant, feeding jury	17.50	
	<hr/>	\$14,551.53

**County Farm Expenditures**

See Superintendent's Report, Page 42

**DETAIL OF PAYMENTS  
PUBLIC WELFARE**

	Poor not on County Farm	Old Age Assistance	Board & care of Children	Aid to Soldiers	Total
Alexandria		\$ 61.88		\$	61.88
Ashland	\$ 172.41	245.87	\$ 377.68	\$ 41.71	837.67
Bath	63.81	326.27	767.81		1,157.89
Bethlehem	5.14				5.14
Bristol		214.29			214.29
Campton	311.82		1,053.40		1,365.22
Canaan	.90	214.81	2,003.87		2,219.58
Dorchester		11.18			11.18
Ellsworth		98.14			98.14
Enfield	545.59	357.25	1,100.84	167.95	2,171.63
Franconia			888.25		888.25
Groton		69.17			69.17
Hanover	350.85	198.34	78.04		627.23
Haverhill	2,203.14	1,440.16	387.28	24.50	4,055.08
Holderness		143.46	548.09		691.55
Landaff		206.01			206.01
Lebanon	5,498.61	610.44	7,807.79	385.93	14,302.77
Lincoln	710.34	86.50	815.17		1,612.10
Lisbon	342.75	262.47	1,615.85		2,221.07
Littleton	823.46	908.84	757.84	327.32	2,817.46
Lyman		196.09	173.15		369.24
Orange		61.50			61.50
Orford	73.45	41.67			115.12
Piermont	496.17	243.94			740.11
Plymouth	707.88	583.40	424.66		1,715.94
Rumney	67.98	114.87	1,091.04		1,273.89
Thornton	8.00	165.86	1,251.26		1,425.12
Warren		350.68	1,331.61		1,682.29
Woodstock	101.38				101.38
	\$12,483.68*	\$ 7,213.18	\$22,473.63	\$947.41	\$43,117.90

\* This amount represents 25% of grant and amount paid by County.

**DETAIL OF PAYMENTS**  
**Statement of Old Age Assistance**  
**And Boarded Children**

1948	Old Age Assistance		Boarded Children	
	Cases	Amount	Cases	Amount
January	58	\$ 712.56	74	\$ 2,252.38
February	55	629.40	71	2,035.39
March	55	636.38	66	1,976.67
April	55	570.15	70	2,054.13
May	54	649.35	65	2,089.28
June	53	588.43	63	1,926.27
July	53	581.40	65	1,772.04
August	55	554.40	55	1,616.63
September	54	543.46	52	1,588.12
October	52	521.43	54	1,503.33
November	52	635.75	57	1,886.36
December	45	590.47	55	1,772.98
		\$ 7,213.18		\$22,473.63

## DETAIL OF PAYMENTS

### WELFARE ADMINISTRATION EXPENSES

Currier, Albina H.	
Services as investigator	\$ 1,560.00
Expenses	932.74
Warren, Beatrice M.	
Services as investigator	1,560.00
Expenses	931.48
Astle, William A., Relief	
Administration, Littleton office	525.00
Kirk, Madeline W.,	
Services as bookkeeper	935.00
Commissioners' office 50%	
Hobbs, Doris D., services as clerk	
Commissioners' office	375.25
Cain, Fred. supplies	
	4.50
Densmore & Eastman, rent of	
Lebanon Relief Office	240.00
Employees Retirement System	
Contribution	100.46
Granite State Electric Co., Lights,	
Lebanon Relief Office	12.00
Kimball's Inc., supplies	
	1.00
Llewellyn, R. H., supplies	
	7.25
Mann & Co., E. B., supplies	
	1.35
New England Tel. & Tel. Co.,	
Service	622.95
Plymouth Post Office, envelopes	
	15.00
Record Print, supplies	
	31.50
Richardson, Lester, labor	
	3.00
Rogers Co., Charles C., supplies	
	22.95
Twin State Publishing Co., supplies	
	28.35
Woodsville Post Office, postage	
	105.72
White River Paper Co., supplies	
	9.27
	\$ 8,024.77



## DETAIL OF PAYMENTS

## Interest

First National Bank, Boston		
Coupons on County Bonds	\$ 1,000.00	
Interest on temporary loans		
No. 129 to 135 inclusive	1,416.13	
	<u>          </u>	\$ 2,416.13

## Indebtedness

First National Bank, Boston		
Payment on principal of bonds	10,000.00	
National Shawmut Bank, Boston		
Payment on temporary loans		
No. 129 to 134 inclusive	150,000.00	
	<u>          </u>	\$160,000.00

## All Other Payments

County Extension Service	\$13,000.00	\$13,000.00
Retirement System	858.34	858.34

## Miscellaneous:

Ayer Insurance Agency,		
Workmen's Compensation	\$ 298.67	
Record Print, County Reports	290.00	
Kirk, Madeline W.,		
Postage on reports	10.00	
Shawmut National Bank,		
service charge	150.00	
Woodsville National Bank,		
service charge	3.50	
State Tax Commission, Audit	196.12	
Grafton County Farm, tax refund	46.91	
	<u>          </u>	\$ 995.20

COMPARATIVE STATEMENT OF  
APPROPRIATIONS AND EXPENDITURES  
YEAR 1948

	Appro- priations	Expen- ditures	Unexpended Balance	Over- draft
County Officers' Salaries	\$ 7,150.00	\$ 8,004.78	\$	\$ 854.78
County Officers' Expenses	2,500.00	2,431.84	68.16	
Register of Deeds Expenses	800.00	6,363.74		5,563.74
Register of Probate Expenses	1,500.00	1,788.39		288.39
Care & Supplies for Court Houses	*5,280.00	*4,230.22	1,049.78	
Jury Payrolls	8,000.00	*7,474.10	525.90	
State vs. Payrolls	2,000.00	2,765.44		765.44
Counsel Fees	500.00	1,565.47		1,065.47
Stenographer, etc. Clerk of Superior Court	4,500.00	3,972.80	527.20	
Sheriff & Deputies	10,000.00	7,768.94	2,231.06	
County Farm	14,000.00	*14,319.27		319.27
Support of Poor not on County Farm	*40,000.00	*53,267.55		13,267.55
Old Age Assistance	*12,000.00	*11,930.15	69.85	
Board and Care of Children	9,000.00	*7,196.38	1,803.62	
Aid to Soldiers	24,000.00	*18,576.49	5,423.51	
Welfare Administration Expense	1,500.00	947.41	552.59	
Interest	7,500.00	*7,924.77		424.77
Principal on Bonds	1,500.00	2,416.13		916.13
County Extension Service	10,000.00	10,000.00		
Retirement System	13,000.00	13,000.00		
Miscellaneous	2,500.00	858.34	1,641.66	
	2,500.00	*948.29	1,551.71	
	179,730.00	187,750.50	15,445.04	23,465.54
Amount of County Tax	179,730.00		23,465.54	
Net Overdraft			\$ 8,020.50	
Net Expenditures		\$187,750.50		
Net Overdraft		8,020.50		
		\$179,730.00		

\* Represents Net Figure—i. e. Total Expenditures less Reimbursements.

## TREASURER'S REPORT

### Receipts

Cash Balance from year 1947	\$ 2,906.33
Taxes collected from towns	179,730.00
Temporary Loans	175,000.00
Grafton County Farm	39,298.80
Court Houses	20.00
Reimbursement for Board of Children	3,897.14
Reimbursement for Board of Adults	75.00
Reimbursement for Direct Relief	478.53
Sale of Merchandise	77.00
Rebate on Bonds	18.31
Reimbursement—Superior Court	294.64
Miscellaneous	163.71
	\$401,959.46

### Disbursements

Commissioners' Orders	\$183,062.69
Court Orders	36,441.31
Payment on Temporary Loans	150,000.00
Payment on principal of bonds	10,000.00
Interest on Temporary Loans	1,416.13
Interest on Bonds	1,000.00
Bank Service Charges	153.50
Cash in Treasurer's hands	
December 31, 1948	19,885.83
	\$401,959.46

## COMPARATIVE DEBT STATEMENT

	Dec. 31, 1947	Dec. 31, 1948
Bonds Outstanding	\$20,000.00	\$10,000.00
Total bonded debt	\$20,000.00	\$10,000.00
Temporary Loans Outstanding		25,000.00
Cash on hand	\$ 3,206.33	\$20,185.83
Bills receivable	1,467.25	1,159.00
	\$ 4,673.58	\$21,344.83
Bills payable	None	None
	\$ 4,673.58	\$21,344.83
		21,344.83
Surplus \$4,673.58	Deficit	\$3,655.17

**DETAILED ACCOUNT OF  
WELFARE INVESTIGATORS' EXPENSE**

		Hotel and Mileage Subsistence	Other Expense	Total
Currier, Albina H., 10,382 mi. at 7c	\$	726.74	58.10	147.90
No. Home Visits 874				932.74
No. Contacts made 1,696				
Collections made \$1,855.48				
Warren, Beairice M., 12,070 mi. at 7c		844.90	42.75	43.83
No. Home Visits 804				931.48
No. Contacts Made 894				
Collections made \$2,595.19				



**DETAILED ACCOUNT OF  
COUNTY OFFICERS' EXPENSES**

		Mileage	Hotel and Subsistence	Other Expense	Total
Noyes, George T., Commissioner, (4433 mi. at 7c)	\$	310.31	\$ 8.75	\$ 48.41	\$ 367.47
Bell, Kenneth G., Commissioner, (4725 mi. at 7c)		330.75	11.00	11.66	353.41
Graham, Joseph L., Commissioner, (8890 mi. at 7c)		622.30	39.30	10.00	671.60
Huckins, Harry S., Treasurer (1170 mi. at 7c)		81.90	8.35	14.11	104.36
Jones, Robert A., Solicitor (6905 mi. at 8c)		552.40	196.90	480.40	1,229.70
Peckett, Robert P., Jr., Sheriff Court Attendance \$ 920.00		399.55	453.35	1,116.47	2,889.37
Criminal Service 1,336.00		1,294.65	773.65	677.32	4,081.62

**COUNTY AUDITORS' REPORT**  
**Fiscal Year Ending December 31, 1948**  
**Grafton County**

---

**County Treasurer's Account**

Balance on Hand, January 1, 1948	\$	2,906.33
Receipts—Year Ending December 31, 1948		399,053.13
		\$401,959.46
Payments—Year Ending December 31, 1948		\$382,073.63
		\$19,885.83
Balance—December 31, 1948, As per Cash Book		\$19,885.83
Balance in Pemigewasset Nat'l. Bank	\$19,119.78	
Woods Nat'l. Bank	5,549.83	
As per statement of December 31, 1948	24,669.61	
Less Outstanding Orders	4,783.78	
		\$19,885.83
Reconciled Bank Balance— As of December 31, 1948		\$19,885.83

---

**County Farm Superintendent's Account**

Total Amount of Receipts from Institution—Year Ending December 31, 1948	\$39,298.80	
Total Remittance to County Treasurer—Year Ending December 31, 1948	\$39,298.80	
		\$300.00
Superintendent's Balance on Hand, January 1, 1948	\$	300.00
Superintendent's Balance on Hand, December 31, 1948	\$	300.00

**Indebtedness—December 31, 1948**

Outstanding Temporary Loans in	
Anticipation of Taxes	\$ 25,000.00
Outstanding Long Term Notes	None
Outstanding Bonds	\$ 10,000.00
Bills Owed by County	None

**County Taxes Uncollected—December 31, 1948**

County Taxes Due from Towns and Cities	None
	Signed H. D. SAWYER, H. B. KNIGHT, County Auditors

Date January 3, 1949

Woodsville, N. H.  
December 31, 1948

We hereby certify that there were no outstanding bills against the County December 31, 1948, which were presented for payment and no orders issued by us which have not been paid by the Treasurer.

**Indebtedness**

Outstanding Temporary Loans in anticipation of taxes	\$25,000.00
Outstanding Bonds	10,000.00
	\$35,000.00

GEORGE T. NOYES,  
JOSEPH L. GRAHAM,  
KENNETH G. BELL,  
Grafton County Commissioners

State of New Hampshire, Grafton, ss.

December 31, 1948

Personally appeared the above named George T. Noyes, Joseph L. Graham and Kenneth G. Bell and made oath to the truth of the above statement by them signed.

MARGUERITE E. McBRIDE,  
Justice of the Peace

## SUPERINTENDENT'S REPORT

P. O. WOODSVILLE, N. H.

---

Grafton County Home  
Haverhill, N. H.

Gentlemen:

I herewith submit my report of the Grafton County Almshouse, House of Correction and Jail for the year ending December 31, 1948.

### Almshouse

Number of Inmates January 1, 1948	81
Number admitted during year	101
Number discharged during year	88
Number of deaths during year	16
Number of Inmates January 1, 1949	78

### House of Correction

Number of Inmates January 1, 1948	21
Number admitted during year	59
Number discharged during year	60
Number absconded and not returned	2
Number of Inmates January 1, 1949	18

### Jail

Number of Inmates January 1, 1948	13
Number admitted during year	27
Number discharged during year	33
Number of Inmates January 1, 1949	7

Average number in Almshouse, House of Correction and Jail whose board was not paid by towns or individuals, 82 plus.

Number of weeks board furnished inmates, House of Correction and Jail not paid by towns or individuals, 3,726 weeks, 6 days.

## COUNTY FARM EXPENDITURES

### Institution

Labor	\$10,739.74	
Provisions	10,206.49	
Clothing	2,474.16	
Supplies and Equipment	4,583.75	
Fuel including Freight	8,284.00	
Additions and Repairs	2,882.74	
Water and Lights	2,309.24	
Freight, Express and Telephone	672.35	
Insurance	2,019.69	
Fixed Charges and Other Expenses	2,601.95	
	\$46,774.11	

### Farm

Truck and Tractor Expense	\$ 4,437.61	
Taxes	1,851.84	
Light and Power	279.55	
Labor	2,990.00	
Feed and Supplies	16,233.04	
Repairs	447.53	
Equipment	362.49	
Other Expenses	2,588.01	
	\$29,190.07	

### Hospital

Doctors	\$ 1,468.46	
Labor	9,497.16	
Supplies and Equipment	1,974.97	
Other Expenses	43.25	
	\$12,983.84	

### Jail

Labor	\$ 3,445.00	
Repairs	135.48	
Other Expenses	37.85	
	\$ 3,618.33	
	\$92,566.35	



## INMATES OF GRAFTON COUNTY ALMSHOUSE

Name	Where From	Time Supported		
		Age	Weeks	Days
Lily Watson*	Ashland	66	52	2
Mabel Randall*	Ashland	56	52	2
William Ferrell*	Bath	77	52	2
Joseph Costello	Bethlehem	49		9
Gustave Anderson*	Bridgewater	73	52	2
Sally Ferrin*	Bristol	37	52	2
Edward Simonds*	Bristol	65	52	2
Samuel Tuttle	Canaan	36	10	
Frederick Marsden	Campton	13		3
Joseph Boris*	Campton	66	52	2
Charles Sargent	Campton	62	32	
Ruth MacDonald	Campton	43	18	2
Peter Brown*	Enfield	78	52	2
John Johnson*	Enfield	77	52	2
Gustie Latvala*	Enfield	66	46	6
Jeanette Butler*	Enfield	17	4	2
Shirley Butler*	Enfield	5	4	2
John Sawler	Franconia	82	36	5
Michael Long*	Franconia	68	52	2
Frank Locke*	Franconia	56	52	2
James Kelly*	Franconia	70	52	2
Alice Jewell*	Groton	67	52	2
George Watling*	Hanover	67	52	2
John Garrity	Hanover	51	4	
Fred Boosi	Haverhill	65	5	5
Edward Hoyt*	Haverhill	41	52	2
Ned Ware*	Haverhill	74	52	2
Ellen Barney*	Haverhill	88	52	2
Edward Williams*	Haverhill	72	17	3
Frank Provenchia*	Haverhill	62	17	3
Frank Sadousky	Haverhill	63	1	5
Bernard Edmands	Haverhill	46	2	
Lester Langford	Haverhill	40	3	
Bernice Minor*	Haverhill	34	3	1
Herbert Dow*	Hebron	78	52	2
Robert Stanley	Hebron	80	42	1
Virginia Emery*	Holderness	29	52	2
Leander Fitzgerald*	Landaff	82	52	2
Abbie Smith*	Lebanon	71	52	2
Annie Johnson*	Lebanon	50	52	2
Mildred Johnson*	Lebanon	56	52	2
Maud Quimby*	Lebanon	50	52	2
Frank LaPorte	Lebanon	81	31	1
George Brooks*	Lebanon	62	52	2
Vincent Hopper*	Lebanon	67	52	2
George Harper*	Lebanon	78	52	2
Joseph Pariseau*	Lebanon	86	13	1
David Carlisle	Lebanon	67	5	6
Alice Drambourg	Lebanon	85	9	5
Laura Adams	Lebanon	62	1	1

## INMATES OF GRAFTON COUNTY ALMSHOUSE

Name	Where From	Age	Time Supported	
			Weeks	Days
John Race	Lebanon	4	1	
Peter Aroldi*	Lebanon	77	51	5
Vina Walsh*	Lebanon	84	50	1
Phyllis Shontell	Lebanon	11	3	1
Alvin Shepard	Lebanon	11	2	2
Zepherine King	Lebanon	40	1	1
Christabella Winters	Lebanon	57	2	2
Charles Tibbetts	Lebanon	44	7	4
Betty Ann Currier	Lebanon	8	1	
Clinton Powell*	Lebanon	55	11	
Joseph Fenton*	Lincoln	74	52	2
Martin Cahill*	Lincoln	79	52	2
Mike Mullahy*	Lincoln	81	52	2
Dan Smith*	Lincoln	74	52	2
Henry Baron*	Lincoln	69	52	2
John Mikkila*	Lincoln	62	18	2
Minnie Mansfield	Lisbon	62	14	5
Jerry O'Neil*	Lisbon	47	42	1
William John Goodwin*	Lisbon	71	32	5
Thelma Knox	Lisbon	17	27	6
Patrick Devoe*	Lisbon	17	10	
John Hassey	Littleton	70	11	5
Carl Minor*	Littleton	69	52	2
Patrick Joyce*	Littleton	89	52	2
Patrick Quinn	Littleton	75	34	5
Edward Lyons*	Littleton	70	52	2
Donald Halvorson	Littleton	16	3	1
Edmon Bourgyne	Littleton	68	1	3
Roscoe Lincoln	Littleton	21		4
Charles King	Littleton	77	1	5
Roy Howland	Littleton	17	1	
Josephine Stevens*	Littleton	17	4	3
Robert Coyer	Lyman	2	2	3
Annie Monroe*	Monroe	57	30	4
Flora Miles*	Piermont	45	52	2
Flora Simpson*	Piermont	75	52	2
Frank Dawson*	Plymouth	69	52	2
Warren Leavitt*	Plymouth	72	52	2
Thomas Meehan*	Plymouth	58	52	2
Francis Marsden	Plymouth	21	10	5
Andrew Sinkowitch*	Plymouth	77	28	1
Eva Clark*	Rumney	60	52	2
Howard Cole	Rumney	36	1	3
George Avery	Thornton	86	25	4
Michaela Gray	Thornton	3	2	2
Ellen Gray	Thornton	4	5	5
Oscar Hendrickson*	Warren	74	52	2
Irene Marsden	Warren	16	1	2
William Polk*	Warren	77	42	
Nellie Howland*	Wentworth	59	52	1
Mary Salls*	Wentworth	61	6	6

\* Indicates inmates now on Farm

## TOWN BOARDERS AT GRAFTON COUNTY HOME

Name	Where From	Time Supported		
		Age	Weeks	Days
William St. Arnold*	Ashland	76	52	2
George Sanborn	Bristol	86	2	2
Fred Dodge	Bristol	82	16	3
Learned Greenwood	Bristol	57	4	
James Ansley*	Canaan	78	16	4
Berton Benedict	Canaan	75	3	1
Ruth Black	Canaan	40	2	4
Carl Black	Canaan	13	4	1
Carolyn Black	Canaan	11	4	1
James Black	Canaan	7	4	1
Richard Black	Canaan	2	4	1
Betty Black	Canaan	3	4	1
Erta Ford	Groton	73	2	2
William Cook	Hanover	77	4	5
John Gnyea	Hanover	67	40	2
Josephine Johnson	Hanover	25	11	4
Berton James Johnson	Hanover	Baby	3	6
Flora French	Haverhill	64		2
Edith Woods	Haverhill	71	20	
Hiram Davis	Haverhill	86	35	5
Ellen Woodward	Haverhill	93	2	2
Lemuel Sargent	Haverhill	65	32	
William Sanders	Haverhill	71	1	3
Maud Chase	Haverhill	29	6	1
Antonio Miller*	Haverhill	58	47	
Ned Carr	Haverhill	69	2	5
Otto Johnson	Haverhill	77	3	
Joyce Horne	Haverhill	19		4
Leslie Horne	Haverhill	9 mos		4
Charles Gilbert	Haverhill	66	5	6
John Keough	Landaff	78	4	1
Alexander Carr	Lebanon	57	34	6
Joseph Pariseau*	Lebanon	86	39	
Telephor Clement*	Lebanon	80	52	1
Fred Clement*	Lebanon	55	52	1
Oscar Vaughan	Lebanon	65	4	1
Fred Kataw	Lebanon	82		3
Fred St. John	Lebanon	67	4	1
James Friend	Lebanon	76	11	5
Susan Jarvis*	Lebanon	91	10	1
Julia Watson*	Lebanon	74	7	5
William Stevens	Lebanon	82	1	3
John Meade	Lincoln	63	5	4
Adam Bagdonis	Lincoln	64	23	
Henry Bean	Lincoln	77	19	6
Madeline Tattersall	Lisbon	27	2	1
Russell Tattersall	Lisbon	8	5	3
Dorothy Tattersall	Lisbon	6	2	1
Sheila Tattersall	Lisbon	4	2	1

## TOWN BOARDERS OF GRAFTON COUNTY HOME

Name	Where From	Time Supported		
		Age	Weeks	Days
Raymond Tattersall	Lisbon	2	2	1
Romona Tattersall	Lisbon	1	2	1
Mary Brunelle	Littleton	56	40	4
Hilda Daneau*	Lyman	24	4	6
Larry Daneau*	Lyman	0	1	6
Albert Wilkinson	Lyme	77	2	5
Charlotte Wilkinson	Lyme	86	2	5
Harry Gassett	Orford	65	7	2
Frank St. Clair	Orford	69	1	3
J. Earle LaMontague*	Piermont	50	52	2
George Day	Piermont	77	5	3
Ollie Dennis*	Piermont	48	30	2
Russell Cochrane*	Thornton	78	10	
Burly Avery*	Thornton	66	7	2
Kate Willoughby	Warren	80		5
John Kelly	Warren	85		3
Melvin H. Jones	Wentworth	51	8	1
George Clough	Wentworth	74	9	6
Henry Rein*	Wentworth	70	12	4
Edward Este*	Woodstock	64	4	2

\* Indicates inmate now on Farm.

**INMATES OF GRAFTON COUNTY  
HOUSE OF CORRECTION**

Name	Court	Crime	Age	Time Served	
				Wks.	Days
Fitzhugh, Charles,	Bristol,	Drunk	53	16	1
Wells, Fred G.,	Lebanon,	Drunk	52	4	3
Stone, Louis,	Superior,	Aiding & Abetting G. L.	22	26	6
Bourroughs, Clifford,	Haverhill,	Drunk	33	12	5
Valley, Joseph,	Haverhill,	Drunk			2
McKinley, John,	Canaan,	selling adulterated milk	25	3	
Hurley, Michael J.,	Haverhill,	Drunk	68	6	5
Watson, William,	Haverhill,	Drunk	24	6	4
Martin, James,	Lebanon,	Petty Larceny	47	4	
Dumont, Jack,	Haverhill,	Drunk	68	6	3
Bragg, Lendell N.,	Bristol,	Operating under the influence	19	12	6
Gately, Thomas F.,	Haverhill,	drunk	60	6	4
Robinson, Clarence E.,	Ashland,	Drunk & disorderly	49	4	1
Gauthier, Francis,	Haverhill,	Drving under the influence	22	4	5
Lordan, Jeremiah T.,	Haverhill,	Drunk	70	6	4
Tallman, Jerry,	Haverhill,	Drunk	36	7	2
Kennedy, George,	Bethlehem,	Rec'd. stolen property	55	13	5
Paradie, Napoleon,	Haverhill,	Drunk	59	4	2
Johnson, Otto,	Haverhill,	Drunk	70	8	4
Stone, Louis,	Haverhill,	Absconding	22	4	2
King, Winston,	Lebanon,	Drunk	40	8	4
Keegan, James,	Lebanon,	Drunk	43	5	4
Greenleaf, Walter,	Plymouth,	Drunk	65	6	3
Keto, Henry W.,	Littleton,	Drunk & disorderly	36	1	2
Keto, Henry W.,	Littleton,	Rude & disorderly	36	4	2
Greenleaf, Walter,	Plymouth,	Drunk	65	11	
Tibbetts, George,	Haverhill,	Drunk	62	1	3
Connor, John,	Plymouth,	Drunk	34	4	2
Bob, John,	Littleton,	Drunk & disorderly	60	6	4
Gregorie, Archie,	Bethlehem,	Drunk & disorderly	62	17	
Hammell, Leon,	Haverhill,	Drunk	34		3
Auger, Anthony,	Lebanon		46	23	4
Wright, Emille,	Lincoln,	Drunk & disorderly	47	12	6
Wright, Emille,	Lincoln,	Assault	47	10	2
Kerrigan, James J.,	Ashland,	drunk	58	6	2
Champatrick, Cedar,	Haverhill,	Drunk	69		1
LaBare, Leo,	Lebanon,	Drunk	46	12	6
Tallman, Jerry,	Hanover,	Drunk	36	19	3
Bagdonis, Adam,	Haverhill,	drunk	64	6	2
Guilmette, Paul E.,	Lisbon,	Operating motor vehicle after license revoked	25	8	2



**INMATES OF GRAFTON COUNTY  
HOUSE OF CORRECTION**

---

Name	Court	Crime	Time Served		
			Age	Wks.	Days
Bradford, Joseph J., Plymouth,	Lewd and lascivious conduct		26	10	6
Bob, John, Haverhill,	Drunk		60	11	1
Coutermarsh, Walter S., Sr., Canaan,	Carrying pistol without permit		50	17	4
Carrier, Victor, Haverhill,	Drunk		60	17	2
LaFrance, Alfred, Haverhill,	Drunk		28	17	2
Terrien, William, Lebanon,	Drunk		30	1	
Hamilton, James Leo, Haverhill,	Non-support		41	2	1
Clifton, Robert, Bethlehem,	Drunk & disorderly		36	5	
Rebb, Theodore, Bethlehem,	Drunk & disorderly		38	13	4
Greenleaf, Walter, Plymouth,	Drunk		65	10	4
Bennett, George, Haverhill,	Drunk		38	9	5
Millette, Roland F., Haverhill,	Petty larceny		25	9	3
Douglas, Richard L., Haverhill,	Petty larceny		21	9	3
St. Sauveur, Homer, Plymouth,	Drunk		61	8	5
LeBare, Leo, Lebanon,	Drunk		46	7	3
Hill, Rupert, Lisbon,	Assault		19	5	5
Hall, Duncan, Littleton,	Unlawful use of No. plates on motor vehicle		22	4	5
Petrascsek, Nick, Haverhill,	Drunk		58	3	5
Dumont, Jack, Haverhill,	Drunk		69	3	4
Downing, Frank, Haverhill,	Drunk		44	2	1
MacNevin, Archie, Lebanon,	Operating under the influence		41		6

## INMATES OF GRAFTON COUNTY JAIL

Name	Court	Crime	Age	Time Served	
				Wks.	Days
Emery, Robert, Littleton, Intent to cheat & fraud			24	8	4
Preison, Charles H., Hanover, Aid & counsel to defraud			19	17	
Darling Perley, Superior, Contempt			39	43	4
Garrety, John S., Hanover, Bad check			51	11	5
Bernier, Albert J., Canaan, B. E. & larceny			26		4
Hamm, Albert W., Canaan, B. E., & larceny			24		4
Gauthier, Wilfred, Haverhill, Counterfeit check			19	4	1
Gray, Douglas A., Superior, Violation of probation			23	3	1
Jacobs, Raymond, Superior, Violation of probation			36	2	1
Hart, Bernard, Lisbon, Counterfeit check			33	4	
Bolduc, Francis W., Littleton, B. E. & larceny			20	4	6
Duffy, Deloyd, Littleton, Unnatural and lascivious act			58	1	3
Annis, Raymond, Haverhill, Grand larceny			19	5	
VanSiclen, S. Burt, Bristol, Bad check			53	11	1
Maxfield, Norman, Superior, non-support			?		3
Langtange, Robert, Littleton, Grand Larceny			18	7	6
Ryan, Harry J., Lebanon, B. E. & larceny			20	4	
Martin, Rosario E., Plymouth, Adultery			40	5	4
Dion, John R., Haverhill, Counterfeit check			21	2	1
Burgess, Sherman N., Lisbon, Bastardy			20	3	5
Bolduc, Francis W., Littleton, Grand larceny			20	6	4
Gauthier, Wilfred, Haverhill, Misuse of funds			19	6	4
Kallum, Charles J., Superior, violation of probation			35	8	3
LeBrun, Paul A., Superior, Violation of probation			35	7	5
Shepard, Alfred P., Held over night					1
Cook, Roy, Canaan, Assault			42	4	5
Cook, Roy, Canaan, Intent to cheat & defraud			42		
Boutin, Adrian J., Superior, violation of probation			28		2

## RECEIPTS

---

Boarders		\$ 3,865.29
Hospital		9,866.64
Farm		
Produce	\$ 577.40	
Cattle and swine	2,905.36	
Milk and cream	17,420.63	
Other income	3,770.55	
		\$24,673.94
Miscellaneous		892.93
		\$39,298.80
Cash advanced by the Commissioners		300.00
		\$39,598.80

## EXPENDITURES

---

Paid County Treasurer		\$39,298.80
Cash on Hand December 31, 1948		300.00
		\$39,598.80

## INVENTORY

---

### Personal Property at Grafton County Farm:

December 31, 1947

Live Stock	\$25,750.00
Produce and supplies	17,617.28
Farm implements	7,485.80
Household furniture	6,492.77
Almshouse furniture	10,719.20
Jail and House of Correction	1,203.60
Chapel	454.00
Hospital	8,461.81
	<hr style="width: 20%; margin-left: auto; margin-right: 0;"/>
<b>Total</b>	<b>\$78,184.46</b>

### Personal Property at Grafton County Farm:

December 31, 1948

Live Stock	\$30,683.00
Produce and supplies	10,882.85
Farm implements	10,823.94
Household Furniture	5,261.30
Supplies & Equipment—	
Institution	20,335.99
Jail and House of Correction	1,085.95
Chapel	376.00
Hospital	8,379.50
	<hr style="width: 20%; margin-left: auto; margin-right: 0;"/>
<b>Total</b>	<b>\$87,828.53</b>

## PRODUCTS OF THE FARM

---

Hay	160 tons
Ensilage	180 tons
Beets	4,225 lbs.
Beet Greens	1,550 lbs.
Beans, dry	450 lbs.
Beans, shell	1,007 lbs.
Beans, string	1,175 lbs.
Cabbage	1,730 lbs.
Carrots	5,899 lbs.
Cauliflower	88 lbs.
Corn	5,240 ears
Cucumbers	2,310 lbs.
Endive	752 lbs.
Lettuce	68 lbs.
Onions	1,081 lbs.
Parsnips	1,710 lbs.
Peas	1,020 lbs.
Potatoes	2,013 bu.
Radishes	32 lbs.
Rhubarb	25 lbs.
Spinach	100 lbs.
Squash	3,480 lbs.
Tomatoes	3,000 lbs.
Turnips	2,635 lbs.
Dressed Pork, used on Farm	5,738 lbs.
Dressed Beef, used on Farm	7,118 lbs.
Milk used on Farm (and at cottages)	38,993 qts.
	(Includes skim milk)
Cream used on Farm (and cottages)	805 qts.
Milk sold to White Brothers	319,498 lbs.
Fruit, vegetables, pickles and mince meat canned:	
For Employees, guests, etc.	929 qts.
For inmates	1,911 qts.



Per capita cost of Inmates at County Farm,  
including Almshouse, House of Correction  
and Jail:

	Weeks	Days
Almshouse	3052	4
House of Correction	498	6
Jail	175	3
County charges at Farm	<u>3725</u>	<u>13</u>
	or	
County charges (net total)	3726	6
Town Boarders	727	4
Private Boarders	52	2
Total	<u>4505</u>	<u>12</u>
	or	
Net Total	4506	5
County Farm Expenditures	\$92,566.35	
Inventory of Personal Property at beginning of year	78,184.46	
Accounts due Farm at beginning of year	1,467.25	
	<u>          </u>	\$172,218.06
County Farm Receipts	\$39,298.80	
Inventory at end of year	87,828.53	
Accounts due Farm	1,159.00	
	<u>          </u>	128,286.33
Balance against Farm		<u>\$43,931.73</u>
Number of weeks served		
County cases	3,726 wks.	6 days
Per Capita cost per week of all inmates, but excluding boarders, employees and guests	\$11.79 plus.	

Due to illness, Miss Sally Horne, R.N., resigned as head nurse in January. Mrs. Muriel LaMott, R.N., was engaged to fill the position and Mrs. Gertrude Kimball was employed as an assistant in the hospital. Mrs. Della Fitzgerald of Ryegate, Vt., is the cook in the front part. Mrs. Bertha Hatch replaced Mrs. Maud Young and Mrs. Mae Carle was engaged for general work. Howard Hatch became House of Correction boss, relieving Harry Hatch who became boss farmer.

The usual necessary repairs have been made on the cottages. The jail has been painted and new cell locks installed. The new X-ray machine which was purchased last year, came in April and has been of great service. A new refrigerator has been installed in the front part kitchen.

Our chapel services have been under the direction of Rev. Rufus Ansley of Haverhill and were well attended. We are very grateful to him for his interest and friendly words to the entire Farm family. Father Donelly of Woodsville has frequently responded to calls from the Catholics at the Farm.

During the year many parties and movies were held in the Chapel. Thanks are due the Ammonoosuc Valley 4-H Club of Lisbon, The Community Council of Orford, Dr. Elmer Miller and Mr. Charles Christopher of Woodsville, for bringing entertainment to the residents. The Christmas Party was made a memorable one through the kindness of the North Haverhill Junior Choir, The Ladies Club and the Happy-Go-Lucky 4-H Club of Campton, the Lebanon W. C. T. U., and the Ross-Wood Post of the American Legion. Many thanks to them and to Mr. Fullerton, the genial Santa Claus.

The gifts of fruit, vegetables and bread from The First National Warehouse at No. Haverhill, the gifts

of flowers, books and magazines from friends and neighbors are gratefully acknowledged.

I wish to add my personal thanks to the Board of Commissioners for their forbearance, to Mrs. Madeline Kirk for her untiring aid and to Dr. Miller and the entire staff for their co-operation.

Respectfully submitted,

ARCHIE BIRCH, Supt.

---

We hereby certify that we have examined the foregoing accounts of the Superintendent of the County Farm for the year ending December 31, 1948 and find them correctly cast and properly vouched.

GEORGE T. NOYES,

JOSEPH L. GRAHAM,

KENNETH G. BELL,

Commissioners of

Grafton County

## CLERK OF COURT'S REPORT

---

To the Commissioners of Grafton County:

I submit herewith report of the receipts and disbursements of this office for the year ending December 31, 1948, as examined and allowed by the Court.

### JANUARY TERM, 1948

#### Disbursements

Office Supplies	\$ 27.17
48 Divorce Cards	4.80
Mittimus, Capias, etc	12.00
16 Probation Certificates	16.00
50 State Entries 1524-1573	15.00
1 Petition for Discharge	1.00
Court Attendance	400.00
Allowance	1,265.00
Extra Allowance (Stenographer)	60.00
	\$1,800.97

#### Receipts

24 Dockets Sold	\$ 36.00
74 Civil Entries 8121-8194	66.60
62 Equity Entries 4904-4966	55.30
Credit by Refund, Tel. etc.	.83
Refund State v. Carroll Finley	25.00
Refund State v. Flanders	5.00
Order on County Treasurer	1,611.74
	\$1,800.97

### MAY TERM, 1948

#### Disbursements

Office Supplies	\$ 20.72
40 Divorce Cards	4.00
Mittimus, capias, etc	16.00
22 Probation Certificates	22.00
20 State Entries No. 1574-1593	6.00
2 Petitions for Discharge	2.00
Judgment Records Vo. 24, pgs. 482-503	8.80

132 Certifications	19.80
Court Attendance	400.00
Allowance	1,265.00
Extra Allowance (Stenographer)	146.80
	<hr/>
	\$1,911.12

### Receipts

22 Dockets Sold	\$ 33.00
71 Civil Entries 8195-8266	63.90
79 Equity Entries 4967-5046	71.10
Refund State v. Deslandes	13.70
Refund State v. Parent	13.70
Costs State v. Hamm	50.00
Costs State v. Bernier	50.00
Cost State v. Smith	25.00
Order on County Treasurer	1,590.72
	<hr/>
	\$1,911.12

### SEPTEMBER TERM 1948

#### Disbursements

Office Supplies	\$ 24.29
40 Divorce Cards	4.00
Mittimus, Capias, etc	16.00
13 Probation Certificates	13.00
23 State Entries 1594-1616	6.90
2 Petitions for Discharge	2.00
Court Attendance	400.00
Allowance	1,265.00
Extra Allowance (Stenographer)	146.80
	<hr/>
	\$1,877.99

#### Receipts

24 Dockets Sold	\$ 36.00
91 Civil Entries No. 8267-8357	31.00
81 Equity Entries No. 5047-5127	72.90
Costs State v. Monroe	25.00
Costs State v. Latulippe	15.00
Costs State v. Boardman	10.00



59

Costs State v. Bean	15.00
Order on County Treasurer	1,622.19
	<hr/>
	\$1,877.99

Respectfully submitted,

UNWAR J. SAMAHA,

Clerk of the Superior Court

**REPORT OF COUNTY SOLICITOR**

---

To the Commissioners for the County of Grafton:

I respectfully present the following report of cases presented before the Superior Court for the year 1948.

**JANUARY TERM 1948****Indictments**

State vs. Armand Bertrand—Accessory to robbery. Plea guilty. Continued for sentence and placed on probation for 3 years.

State vs. Harry Liberty—Larceny. Plea not guilty. Changed plea to guilty. Sentenced to not more than 5 years nor less than 3 years in State Prison, sentence suspended. Turned over to Manchester, N. H. police department January 22, 1948.

State vs. Stanley Krauz—Two indictments for breaking, entering and larceny. Plea guilty. Sentenced to not more than 3 years nor less than 2 years in State Prison. Committed.

State vs. Francis Rheaume—Breaking, entering and larceny. Plea guilty. Sentenced to not more than 3 years nor less than 2 years in State Prison, sentence suspended and placed on probation for three years.

State vs. Elroy Pollard—Breaking, entering, and larceny. Sentenced to not more than 2 years nor less than 1 year and 1 day in State Prison. Committed.

State vs. Louis Stone—Accessory to breaking, entering, and larceny. Plea guilty. Sentenced to 1 year in the House of Correction, 6 months of the sentence suspended. Committed.

State vs. Howard Dearborn—Murder. No plea. Declared insane and committed to N. H. State Hospital.

State vs. Guy Powers—Shooting a person in mistake for game. Plea guilty. Sentenced to 1 year in the House of Correction, sentence suspended upon restitution in the sum of \$540.

State vs. Maurice S. Plante—Manslaughter. Plea not guilty. Indictment quashed.

State vs. Francis A. Monfette—Larceny. Plea guilty. Sentenced to not more than 5 years nor less than 1 year and 1 day in State Prison. Committed.

State vs. Carl Corey—Robbery. Plea not guilty. Changed plea to guilty. Sentenced to not more than 5 years nor less than 3 years in State Prison. Committed.

State vs. Joseph Colbath—Fraudulent conversion. Plea guilty. Continued for sentence. Placed on probation for 3 years.

State vs. Roger Brooks—Manslaughter—Plea not guilty. Trial by jury and found guilty. Sentenced to not more than 7 years nor less than 4 years in State Prison. Committed.

State vs. Nelson Guyotte—Unnatural act. Plea not guilty. Trial by jury and found guilty. Sentenced to not more than 5 years nor less than 2 years in State Prison. Committed.

State vs. Fredus Shepard—Attempted robbery and 2 counts aggravated assault. Plea not guilty. Trial by jury and found guilty of simple assault 2 counts. Continued for sentence.

State vs. Sherm Thompson—Attempted robbery and 2 counts aggravated assault. Plea not guilty. Trial by jury and found guilty of simple assault 2 counts. Continued for sentence.

State vs. Kenneth Faucheux—Robbery. Plea not guilty. Trial by jury and found guilty. Sentenced to not more than 12 years nor less than 8 years in State Prison. Committed.

State vs. Louis Faucheux—Accessory to Robbery. Plea not guilty. Trial by jury and found guilty. Sentenced to not more than five years nor less than 3 years in State Prison. Committed.

### Appealed Cases

State vs. Lawrence J. Deslandes—Driving under the influence. Plea nolo.

State vs. John P. Caldwell—Appeal dismissed. Fined \$15 and costs.

State vs. George Tilton—Public nuisance. Motion to Quash indictment. Motion granted.

### MAY TERM 1948

State vs. Maurice S. Plante—2nd degree manslaughter. Plea not guilty. Trial by jury and found guilty. Sentenced to not more than five years nor less than three years in State Prison. Committed.

State vs. John Garrity—Fraud. Plea guilty. Sentenced to not more than five years nor less than three years in State Prison. Committed.

State vs. Bernard Hart. Counterfeiting. Plea guilty. Sentenced to not more than 3 years nor less than one year and one day in State Prison. Committed.

State vs. Wilfred Gauthier. Counterfeiting. Waived indictment and plead guilty. Continued for sentence. Ordered to make restitution in the sum of \$150.00. Placed on probation for three years.

State vs. Alfred Downing. Breaking, entering and larceny in night-time. Plea guilty. Continued for sentence and placed on probation for three years. Placed in the custody of Superintendent of the Golden Rule Farm for remainder of minority.

State vs. Charles A. Howe. Breaking, entering and larceny in night-time. Continued for sentence and placed on probation for three years.

State vs. Albert J. Bernier. Breaking, entering and larceny. Plea guilty. Continued for sentence and placed on probation for three years. Paid costs of \$50.00.

State vs. Albert W. Hamm. Breaking, entering and larceny. Plea guilty. Continued for sentence and placed on probation for three years. Paid costs of \$50.00.

State vs. Francis Bolduc. Breaking, entering and larceny. Plea guilty. Continued for sentence.

State vs. Charles Pierson. Counterfeiting. Plea guilty. Continued for sentence and placed on probation for three years.

State vs. Christos Kasaras. Counterfeiting. Plea guilty. Continued for sentence. Placed on probation for three years.

### Appealed Cases

State vs. Terrance Monroe. Driving under the influence. Plea not guilty. Trial by jury and found guilty. Paid fine of \$100 and costs of \$25.00.

State vs. Richard Oulton. Attempting to operate while under the influence. Plea not guilty. Trial by Court. Motion to dismiss granted.

State vs. Gilbert Smith. Larceny. Plea guilty of petit larceny. Sentenced to House of Correction for six months, sentence suspended upon payment of costs of \$50.00.

### July 29, 1948 Waiver of Indictment

State vs. Raymond Annis. Waived indictment and entered plea of guilty. Continued for sentence, placed on probation for three years ordered to make restitution of \$61.99 and pay cost of \$31.01.

State vs. Bernard Corliss. Larceny. Waived indictment and entered plea of guilty. Continued for sentence. Placed on probation for 3 years and ordered to pay costs of \$50.00.



State vs. George O. Keeler. Larceny. Waived indictment and entered plea of guilty. Continued for sentence. Placed on probation for 3 years and ordered to pay costs of \$50.00.

State vs. Albin J. Werner. Desertion of minor children. Plea guilty. Continued for sentence.

#### SEPTEMBER TERM 1948

State vs. Harry Ryan, Jr. Breaking, entering and larceny. Plea guilty. Continued for sentence. Placed on probation for three years. Ordered to pay costs of \$50.00 and to make restitution in the sum of \$36.75 through the Probation Department.

State vs. Paul Richardson. Breaking, entering and larceny. Plea guilty. Continued for sentence. Placed on probation for three years. Ordered to pay costs of \$50.00 and to make restitution in the sum of \$66.75 through the Probation Department.

State vs. Clyde Boardman. Adultery. Waived indictment and entered plea of guilty. Continued for sentence upon payment of costs of \$10.00.

State vs. Burt Van Sieten. Larceny by check. Plea guilty. Sentenced to not more than five years nor less than one year and one day in State Prison. Committed.

State vs. Robert Langtange. Breaking, entering and larceny in night-time. Plea guilty. Sentenced to not more than five years nor less than 2 years in State Prison. Committed.

State vs. Albert J. Burns. Breaking, entering and larceny in night-time. Plea guilty. Continued for sentence. Placed on probation for 3 years.

State vs. Rene Latulippe. Larceny. Plea nolo. Continued for sentence. Paid costs of \$15.00.

State vs. John Dion. Forgery. Plea guilty. Sentenced to not more than five years nor less than 2 years in State Prison. Committed.

### Appealed Cases

State vs. Raymond C. DeMasse. Failure to return to scene of an accident. Nol Prossed.

State vs. Albert Bean. Drunk and Disorderly. Plea guilty. Sentenced to 30 days in the House of Correction. Sentence suspended upon payment of \$15.00 costs.

Respectfully submitted

ROBERT A. JONES,

County Solicitor.

## SHERIFF'S REPORT

---

To the Commissioners of Grafton County:

I respectfully submit the following report as Sheriff of the County from January 1, 1948 to December 31, 1948:

### JANUARY TERM AT LEBANON

Robert P. Peckett, Jr., Sheriff

#### **Criminal Investigation**

60 days at \$8.00	\$ 480.00	
Travel	394.50	
Meals & Hotel	181.85	
Attending Sheriff's Meeting	8.00	
Police Radio installed in Car	8.00	
Conference with T. Gardner	8.00	
Paid National Needle Co. for grapple hooks	17.50	
Revising & preparing Instructions to new Deputies	16.00	
Siren installed in Car	8.00	
Telephone	140.79	
Service & Copy	29.00	
Assistance	44.00	
Working on County Bills	8.00	
	\$1,343.64	\$ 1,343.64

#### Trip to Raleigh, N. C., Assistance & Prisoner

23 days at \$8.00	\$ 184.00	
Travel	268.25	
Hotel and Meals	256.05	
Telephone	33.05	
Paid Deputy A. A. Buner	15.00	
Assistance	88.00	
	844.35	844.35

#### **Court Attendance**

38 days at \$8.00	\$ 304.00
Travel	84.50

Meals and Hotel	230.00	
Assistance	179.25	
Bus (Arraignment day)	10.00	
Feeding Grand Jury	34.50	
Paid Rev. Learey opening day of court	10.00	
Telephone	222.75	
Feeding Prisoners	17.25	
Feeding Petit Jury	79.30	
Postage for term	7.25	
Secretarial Services	60.00	
Repairs to Courtroom buzzer	26.09	
Witnesses (4) and travel	19.02	
Preparing January Term Bills	16.00	
	<hr/>	
	\$1,299.91	\$ 1,299.91
		<hr/>
		\$3,487.90

John Farnham ,Deputy Sheriff

**Criminal Investigation**

16 days at \$8.00	\$ 128.00	
3 days at \$4.00	12.00	
Travel	140.00	
Meals	13.00	
	<hr/>	
	\$ 293.00	293.00

**Court Attendance**

18 days at \$8.00	\$ 144.00	
Attending Sheriff's Meeting	8.00	
Taking Prisoners to Concord	24.00	
Assistance	8.00	
Travel	250.00	
Meals	24.00	
	<hr/>	
	\$ 458.20	458.20
		<hr/>
		\$ 751.20

William A. Kimball, Deputy Sheriff

**Court Attendance**

2 days at \$8.00	\$ 16.00
Naturalization Court	8.00

Preparing January Term Bill	8.00		
Prisoner to State Hospital	8.00		
Telephone	10.08		
Service and copies	3.00		
Assistance	7.00		
Travel	15.80		
Meals	1.65		
		<hr/>	
	\$ 77.53	\$	77.53

## James Q. Ricard, Deputy Sheriff

**Criminal Investigation**

14 days at \$8.00	\$ 112.00		
Travel	78.00		
Meals	6.75		
Telephone	.85		
		<hr/>	
	\$ 197.60	\$	197.60

**Court Attendance**

1 day	\$ 8.00		
Travel	2.80		
		<hr/>	
	\$ 10.80	\$	10.80
		<hr/>	
		\$	208.40

## Frederick S. Hunt, Jr., Deputy Sheriff

**Court Attendance**

2 days at \$8.00	\$ 16.00		
Sheriff's Assoc. Meeting	16.00		
Transporting Juror	8.00		
Travel	40.00		
Meals	6.00		
Telephone	3.30		
		<hr/>	
	\$ 89.30	\$	89.30

## Harold W. Swan, Deputy Sheriff

**Criminal Investigation**

4 days at \$8.00	\$ 32.00		
Travel	9.40		

Telephone	3.31		
	<hr/>	\$ 44.71	\$ 44.71

**Court Attendance**

1 day	\$ 8.00		
Travel	4.40		
	<hr/>	\$ 12.40	\$ 12.40
			<hr/>
			\$ 57.11

**Mary Ann Peckett, Deputy Sheriff**

6 hrs. at 80c letters, etc.	\$ 4.80		
Sheriff's Meeting	8.00		
9 days at \$8.00	72.00		
9 days at \$4.00 letters, etc.	36.00		
	<hr/>	\$ 120.80	\$ 120.80

**Court Attendance**

12 days at \$8.00	\$ 96.00		
Travel	182.70		
Meals and Hotel	33.60		
Preparing January Term Bills	24.00		
Edson C. Eastman, Mun. Ct. warrants	1.61		
	<hr/>	\$ 337.91	\$ 337.91
			<hr/>
			\$ 458.71

**George U. L. Leavitt, Deputy Sheriff****Court Attendance**

26 days at \$8.00	\$ 208.00		
Travel	5.20		
Supplies	3.90		
7 summonses	7.00		
	<hr/>	\$ 224.10	\$ 224.10

**Van Gardner, Deputy Sheriff****Criminal Investigation**

10 days at \$8.00	\$ 80.00		
-------------------	----------	--	--



70

Travel	53.30		
Meals	2.50		
Assistance	8.00		
		<hr/>	
	\$ 143.80	\$	143.80

**Court Attendance**

14 days at \$8.00	\$ 112.00		
Assistance	8.00		
Travel	228.85		
Meals	32.75		
Service & copies	8.00		
Feeding Prisoners	1.00		
		<hr/>	
	\$ 390.60	\$	390.60
			<hr/>
		\$	534.40

Theodore R. Gardner, Deputy Sheriff

**Criminal Investigation**

5 days at \$8.00	\$ 40.00		
Travel	7.40		
		<hr/>	
	\$ 47.40	\$	47.40

**Court Attendance**

22 days at \$8.00	\$ 176.00		
Travel	258.55		
Meals	34.90		
Assistance	8.00		
Service & Copy	2.00		
Telephone	13.25		
		<hr/>	
	\$ 492.70	\$	492.70
			<hr/>
		\$	540.10

Total expenditures for

January Term 1948 \$ 6,428.75

## MAY TERM 1948, AT PLYMOUTH

Robert P. Peckett, Jr., Sheriff

**Criminal Investigation**

27 days at \$8.00	\$	216.00	
Travel		118.30	
Meals & Hotel		53.35	
Telephone		143.08	
Paid Dusik for care of cattle		10.00	
Courier Printing Co.		32.00	
Stationery & Postage		11.15	
Secretarial Services		55.00	
Mildred Farnham, Professional Services		20.00	
	\$	658.88	\$ 658.88
Trip to Roanoke, Va., 2 Prisoners 19 days at \$8.00	\$	152.00	
Travel		335.10	
Meals & Hotel for three persons		217.95	
Telephone		27.55	
	\$	732.60	\$ 732.60
			\$ 1,391.48

**Court Attendance**

38 days at \$8.00	\$	304.00	
2 days at \$8.00		16.00	
Travel		186.45	
Meals & Hotel		198.55	
Paid Father Verrette		10.00	
Telephone		2.25	
	\$	717.25	\$ 717.25
			\$ 2,108.73

Carson Adams, Deputy Sheriff

**Criminal Investigation**

4 days at \$8.00	\$	32.00
1 day Assistance at \$4.00		4.00
16 days P. M. at \$8.00		128.00

Travel	10.00		
Meals	2.25		
		<hr/>	
	\$ 176.25	\$	176.25

**Court Attendance**

14 days at \$8.00	\$ 112.00		
Travel	34.07		
Meals & Hotel	27.35		
		<hr/>	
	\$ 173.42	\$	173.42
			<hr/>
		\$	349.67

## Van Gardner, Deputy Sheriff

**Criminal Investigation**

22 days at \$8.00	\$ 176.00		
Travel	201.45		
Meals & Hotel	48.55		
Feeding Prisoners	2.00		
Assistance	8.00		
		<hr/>	
	\$ 436.00	\$	436.00

**Court Attendance**

3 days at \$8.00	\$ 24.00		
Travel	77.80		
Meals	5.80		
		<hr/>	
	\$ 107.60	\$	107.60
			<hr/>
		\$	543.60

## Theodore Gardner, Deputy Sheriff

**Criminal Investigation**

9 days at \$8.00	\$ 72.00		
Travel	1.00		
		<hr/>	
	\$ 73.00	\$	73.00

**Court Attendance**

17 days at \$8.00	\$ 136.00		
Travel	243.60		

Meals	24.50		
3 subpoenas	3.00		
Lunch for prisoner	.80		
Feeding Jury	6.70		
Telephone	9.95		
		<hr/>	
	\$ 424.55	\$	424.55
		<hr/>	
		\$	497.55

Sidney M. Akerstrom, Deputy Sheriff

**Criminal Investigation**

1 day	\$ 8.00	\$	8.00
James Q. Ricard			

**Criminal Investigation**

8 days at \$8.00	\$ 64.00		
Travel	29.70		
Meals	3.00		
Telephone	1.40		
		<hr/>	
	\$ 98.10	\$	98.10

John Farnham, Deputy Sheriff

**Criminal Investigation**

10 days at \$8.00	\$ 80.00		
4 days at \$4.00	16.00		
Travel	53.50		
Meals	4.50		
Telephone	40.56		
		<hr/>	
	\$ 194.56	\$	194.56

**Court Attendance**

16 days at \$8.00	\$ 128.00		
Travel	217.35		
Meals	24.25		
		<hr/>	
	\$ 369.60	\$	369.60
		<hr/>	
		\$	564.16

## George V. Durgin

**Court Attendance**

19 days at \$8.00	\$ 152.00	
Travel	30.25	
	<hr/>	
	\$ 182.25	\$ 182.25

## Frederick S. Hunt, Jr., Deputy Sheriff

**Criminal Investigation**

6 days at \$8.00	\$ 48.00	
Travel	14.60	
Meals	4.50	
Telephone	4.85	
	<hr/>	
	\$ 71.95	\$ 71.95

**Court Attendance**

17 days at \$8.00	\$ 136.00	
Travel	57.60	
Meals	18.00	
	<hr/>	
	\$ 211.60	\$ 211.60
		<hr/>
		\$ 283.55

## Mary Ann Peckett, Deputy Sheriff

## Conference &amp; Letters

5 days at \$4.00, 1 day at \$8.00	\$ 28.00	
Taking Deposition 3 copies, Postage	48.62	
Court Attendance 6 days at \$8.00	48.00	
Travel	47.20	
	<hr/>	
	\$ 171.82	\$ 171.82

Total expenditures for May Term      \$ 4,807.43

SEPTEMBER TERM 1948

AT HAVERHILL

Robert P. Peckett, Jr., Sheriff

**Criminal Investigation**

32 days at \$8.00	\$ 256.00
-------------------	-----------

6 days at \$8.00 P. M.	48.00	
Travel	178.50	
Meals & Hotel	64.45	
Assistance	26.00	
Service	.50	
Telephone	4.70	
	<hr/>	
	\$ 578.15	\$ 578.15

**Court Attendance**

5 days at \$8.00	\$ 40.00	
32 days at \$8.00	256.00	
Travel	128.60	
Meals	24.80	
Service & Copies	8.00	
Feeding Prisoners	2.25	
Assistance	24.00	
Postage	9.85	
Secretarial Services	65.00	
Courier Printing Co., forms	32.00	
Stationery	18.25	
Telephone	263.46	
	<hr/>	
	\$ 872.21	\$ 872.21

---

\$ 1,450.36

Theodore R. Gardner, Deputy Sheriff

**Criminal Investigation**

3 days at \$8.00	\$ 24.00	
Travel	8.50	
Meals	1.50	
	<hr/>	
	\$ 34.00	\$ 34.00

**Court Attendance**

9 days at \$8.00	\$ 72.00	
Travel	82.40	
Meals	13.70	
Service, copies, travel	19.30	
Telephone	38.00	
Assistance	8.00	
	<hr/>	
	\$ 233.40	\$ 233.10

---

\$ 267.40



## Van Gardner, Deputy Sheriff

**Criminal Investigation**

6 days at \$8.00	\$	48.00		
1 day at \$4.00		4.00		
Travel		27.00		
Assistance		5.00		
Feeding Prisoner		1.00		
		<hr/>		
	\$	85.00	\$	85.00

## Kenneth Green, Deputy Sheriff

**Court Attendance**

2 days at \$8.00	\$	16.00		
Travel		5.50		
		<hr/>		
	\$	21.50	\$	21.50

## George E. Clark, Deputy Sheriff

**Criminal Investigation**

1 day	\$	8.00		
Travel		1.40		
		<hr/>		
	\$	9.40	\$	9.40

## John L. Farnham, Deputy Sheriff

**Criminal Investigation**

7 days at \$8.00	\$	56.00		
6 days at \$4.00		24.00		
Travel		153.00		
Meals & Hotel		14.25		
Telephone		21.10		
		<hr/>		
	\$	268.35	\$	268.35

**Court Attendance**

18 days at \$8.00	\$	144.00		
1 day P. M.		8.00		
Travel		90.40		

Meals	25.50		
Minister Opening Day	10.00		
		<u>\$ 277.90</u>	\$ 277.90
			<u>\$ 546.25</u>

Eugene P. Patten, Deputy Sheriff

**Criminal Investigation**

5 days at \$8.00	\$40.00		
Travel	17.60		
		<u>\$ 57.60</u>	\$ 57.60

James Q. Ricard, Deputy Sheriff

**Criminal Investigation**

7 days at \$8.00	\$ 56.00		
2 days at \$4.00	8.00		
Travel	41.40		
Meals	3.35		
Telephone	3.00		
		<u>\$ 111.75</u>	\$ 111.75

W. J. Larty, Deputy Sheriff

**Court Attendance**

4 days at \$8.00	\$ 32.00		
1 day at \$4.00	4.00		
Travel	4.00		
Meals	4.00		
		<u>\$ 44.00</u>	\$ 44.00

George V. Durgin, Deputy Sheriff

**Criminal Investigation**

7 days at \$8.00	\$ 56.00		
Travel	50.20		
Service, copy, arrest	6.00		
Telephone	3.19		
		<u>\$ 115.39</u>	\$ 115.39

## Frederick S. Hunt, Jr., Deputy Sheriff

**Criminal Investigation**

8 days at \$8.00	\$	64.00	
Travel		66.00	
Meals & Hotel		12.60	
Assistance		33.50	
Service		1.50	
		<hr/>	
	\$	177.60	\$ 177.60

**Court Attendance**

6 days at \$8.00	\$	48.00	
Travel		36.40	
Meals		5.00	
Telephone		1.55	
		<hr/>	
	\$	90.95	\$ 90.95
			<hr/>
	\$		268.55

## Carson Adams, Deputy Sheriff

**Criminal Investigation**

7 days at \$8.00	\$	56.00	
15 days Assisted Sheriff to Roanoke, Va.		120.00	
Taxi fare		13.00	
Meals		1.25	
		<hr/>	
	\$	190.25	\$ 190.25

## E. G. Hobbs, Chief of Police

**Court Attendance**

1 day	\$	8.00	
App. of John Dion 4 men 4 hrs. each		20.00	
		<hr/>	
	\$	28.00	\$ 28.00

## George U. L. Leavitt, Deputy Sheriff

**Criminal Investigation**

2 days at \$8.00	\$	16.00	
------------------	----	-------	--

Travel	3.00	
3 copies	1.50	
	<hr/>	
	\$ 20.50	\$ 20.50
Total expenditures for September Term		<hr/>
		\$ 3,215.95
		<hr/>
		\$14,452.13
Total expenditures for the year 1948		
less allowance for error on May Term bill		
which was paid in 1949.		76.00
		<hr/>
		\$14,376.13

Respectfully submitted,

ROBERT P. PECKETT, JR.,  
Sheriff

## CHAPLAIN'S REPORT

---

To the Commissioners of Grafton County:

I herewith submit my report for the year ending December 31, 1948. For a portion of the year 1948, it was my privilege to serve as Chaplain for the Grafton County Farm. In that period, at irregular intervals, I visited the prisoners, the hospital patients and conducted worship for the residents of the Farm. They were very appreciative of any small service rendered them, making it a pleasure to serve them.

The older people stand greatly in need of the comforting and reassurance which the Christian religion brings. They have more than the normal need for faith, since in their situation, little is left to them except faith. No matter how well organized, and the Farm is splendidly managed, any institutional life is abnormal for the individual. It requires special effort to maintain mental health, and, if you will permit me, may I urge that there be continued and increased religious activities, worship, pastoral counseling, friendly visitation, and in so far as possible, occupational therapy. Short trips to visit relatives and old friends at frequent intervals, are highly desirable.

Please allow me to commend most heartily your Staff. They maintain personal relations and create a very desirable atmosphere that is distinctly superior to any other similar institution I know and my experience includes first-hand knowledge of more than sixty such institutions. Grafton County certainly is justified in taking great pride in its County Farm.

Respectfully submitted,

RUFUS ANSLEY,

Chaplain

## REPORT OF COUNTY PHYSICIAN

---

To the Commissioners of Grafton County:

I herewith submit my report for the year ending December 31, 1948.

Many of the patients admitted to the hospital have been far advanced in chronic disease and many of those with acute illness were also struggling with the infirmities of old age.

During the past year a new and modern X-ray unit has been installed, the acquisition of which is of signal benefit to the institution. With its present equipment the hospital now serves both medical and surgical cases as well as can be found in any other like institution.

We should remember that patients who are sent in for terminal care, whether from convalescent homes or from other hospitals, usually need a great deal of nursing attention. A sick patient in his right mind, or an infant, will remain in bed at least, but one whose mind is largely gone has to be under constant supervision to prevent accident such as climbing or falling out of bed. Therefore more nurses are required in order that these poor unfortunate people may receive the kind care that is necessary.

Besides those in the hospital, it has also been my duty and privilege to care for the inmates of the almshouse and for those confined in the jail and house of correction. The hospital stands ready to receive emergency patients at all times day or night, but before such are brought in, one of the Commissioners should be consulted.

I desire to express my appreciation for the wise counsel of the Commissioners and for the cooperation of all who have worked in the hospital.

Respectfully submitted,

E. M. MILLER, M.D.



**Statistics for 1948 for Grafton County Hospital**

Patients in hospital January 1, 1948	21
Patients admitted during year	91
Patients in hospital January 1, 1949	20
Patients discharged cured or improved	76
Daily average	20.8
Total nursing days in year	7600
Number of births during year	2
Number of operations during year	6
Number of deaths during year	16

## DEATHS 1948

Date 1948	Name	Yrs.	Mo.	Dys.	Cause of death
Jan. 16	Ellen Woodward	93	10	20	Senility
Feb. 18	William Cook, Sr.	77	11	28	Carcinoma of Prostate
Mar. 8	Alice Dramburg	85	6	4	Senility and Fractured femur
Apr. 12	Minnie Mansfield	62	3	11	Syringomyelia
Apr. 22	Melvin H. Jones	51	7	28	Cirrhosis of Liver
May 1	Erta Ford	73	8	27	Carcinoma of Pelvic Organs
May 19	Edith Woods	71	5	7	Lateral Sclerosis of Spine, Organic heart disease
June 27	George Avery	86	9	23	Carcinoma of Sigmoid, Arteriosclerosis
July 18	Charles Tibbetts	44		17	Acute Pancreatitis
Aug. 5	Frank LaPorte	82	4	19	Organic Heart disease Senility
Aug. 30	Patrick Quinn	75	8	4	Senility
Aug. 31	Alexander Carr	56	9	19	Cerebral Hemorrhage, Carcinoma of Stomach
Sept. 6	Hiram Davis	86	2	2	Carcinoma of Prostate, Senility
Oct. 21	Robert Stanley	81	5	12	Lobar Pneumonia
Nov. 22	Mary Brunelle	57	9		Carcinoma of Uterus
Dec. 31	John Kelly	85		21	Senility

**SUMMARY OF FARM ACCOUNTS  
OF GRAFTON COUNTY FOR 1948**

**CAPITAL INVESTMENT**

	1947	1948
Value of Land and Buildings	\$42,715.00	\$42,715.00
Livestock Inventory	25,750.00	30,683.00
Machinery and Equipment Inventory	7,485.80	10,823.94
Feed & Supplies Inventory	7,450.00	10,882.85
Totals	\$83,400.80	\$95,104.79
Capital Gain in Inventory		11,703.99

**Summary of Receipts**

	Cash	Institution	Total
Milk and Milk Products	\$17,420.63	\$ 4,598.68	\$22,019.31
Produce	577.40	2,906.16	3,483.56
Dressed Beef & Pork		3,189.00	3,189.00
Livestock	2,905.36		2,905.36
Poultry and Eggs		24.80	24.80
Forest Products	3,000.00		3,000.00
Other Income	770.55		770.55
Total Receipts	\$24,673.94	\$10,718.64	\$35,392.58
Increase in Livestock Inventory			4,933.00
Increase in Machinery & Equipment Inventory			3,338.14
Increase in Feed & Supplies Inventory			3,432.85
Grand Total			\$47,096.57

### Summary of Expenses

Supervision	\$ 250.00
Labor—subsistence—regular	3,990.00
Labor—House of Correction	1,585.00
Feed and Supplies	16,491.04
Truck and Tractor Expense	905.62
Repairs	447.53
Equipment	3,894.48
Taxes	1,851.84
Insurance	882.34
Light and Power	279.55
Livestock Expenses	530.05
Seeds and Fertilizer	1,462.34
Other Expenses	337.62
	\$32,907.41
Total	\$32,907.41
Total Receipts plus Inventory Increase	\$47,096.57
Total Expenses	32,907.41
	\$14,189.16
Operating Profit	\$14,189.16

ARCHIE BIRCH,

Superintendent

RICHARD R. RUTHERFORD

County Agricultural Agent

**FINANCIAL REPORT**  
**GRAFTON COUNTY EXTENSION SERVICE**

---

County Extension Work in Agriculture, Home Economics, and 4-H Club Work for year ending December 31, 1948.

Herein is submitted a statement of expenditures of the legislative appropriation of \$13,000.00 for Grafton County Extension Work in cooperation with the University of New Hampshire and the United States Department of Agriculture.

Legislative Appropriation for year 1948	\$13,000.00
Balance on Hand, January 1, 1948	2,058.85
	\$15,058.85

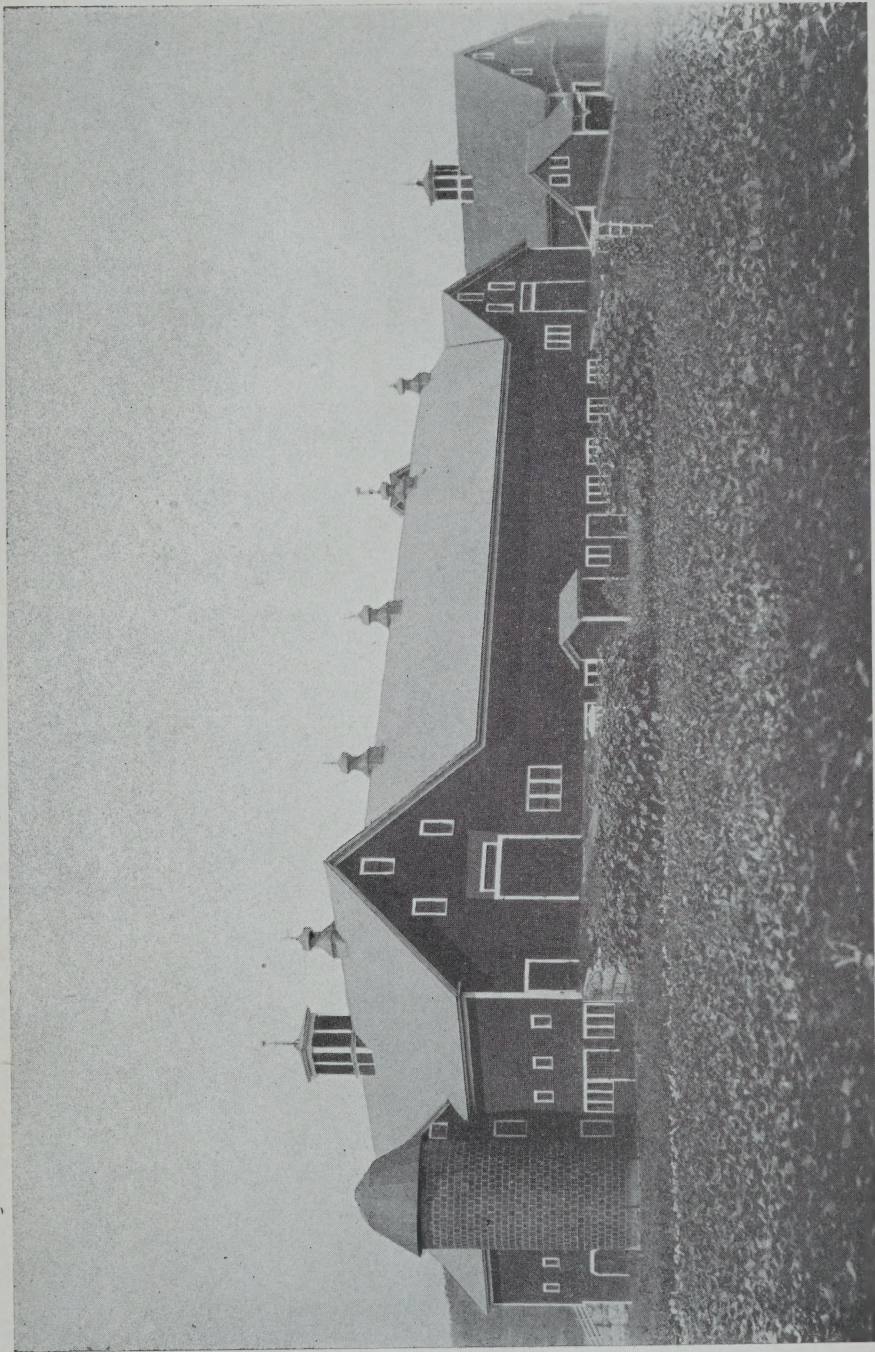
Salary & Expenses, Agricultural Agent	\$ 2,052.44
Salary & Expenses, Home Demonstration Agent	841.44
Salary & Expenses, Club Agent	925.75
Salary & Expenses, Forester	1,278.17
Salary & Expenses, Asst. Home Demonstration Agent	988.16
Expenses, Asst. Club Agent	135.24
Salary 3 clerks	3,935.79
Express and Freight	44.40
Telephone and Postage	508.66
Printing	128.95
Equipment	335.52
Rent	608.00
Supplies and Materials	543.80

Repairs to Equipment	85.83	
Labor	140.39	
Miscellaneous Expenses	377.78	
	<hr/>	\$12,930.32
Balance on Hand December 31, 1948		<hr/> \$ 2,128.53

Respectfully submitted,  
CLARA K. BIRCH, Treasurer  
Grafton County Farm Bureau  
& Extension Service  
RICHARD R. RUTHERFORD,  
County Agricultural Agent







GRAFTON COUNTY FARM BARN







