

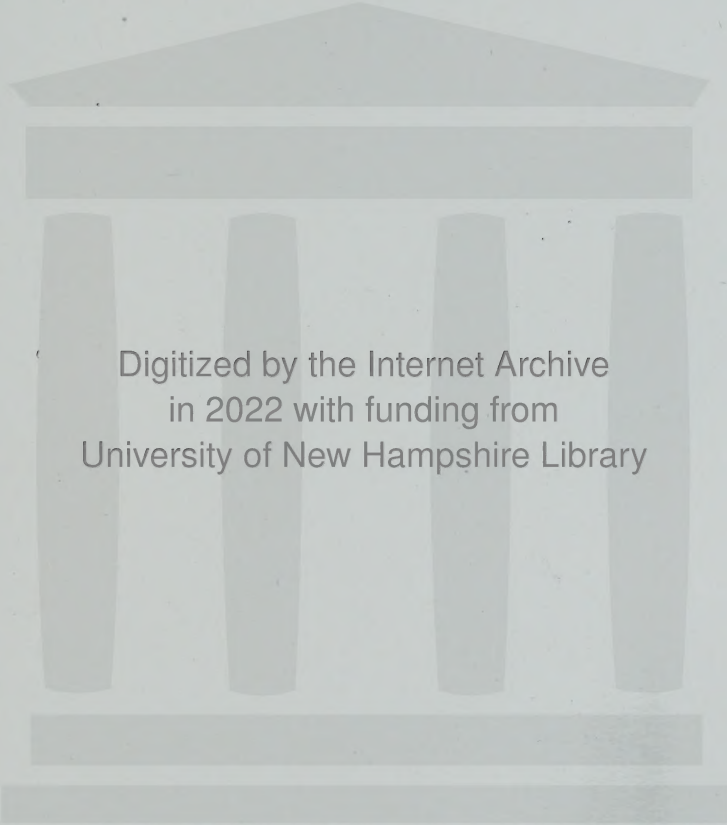
GRAFTON COUNTY

Annual Report

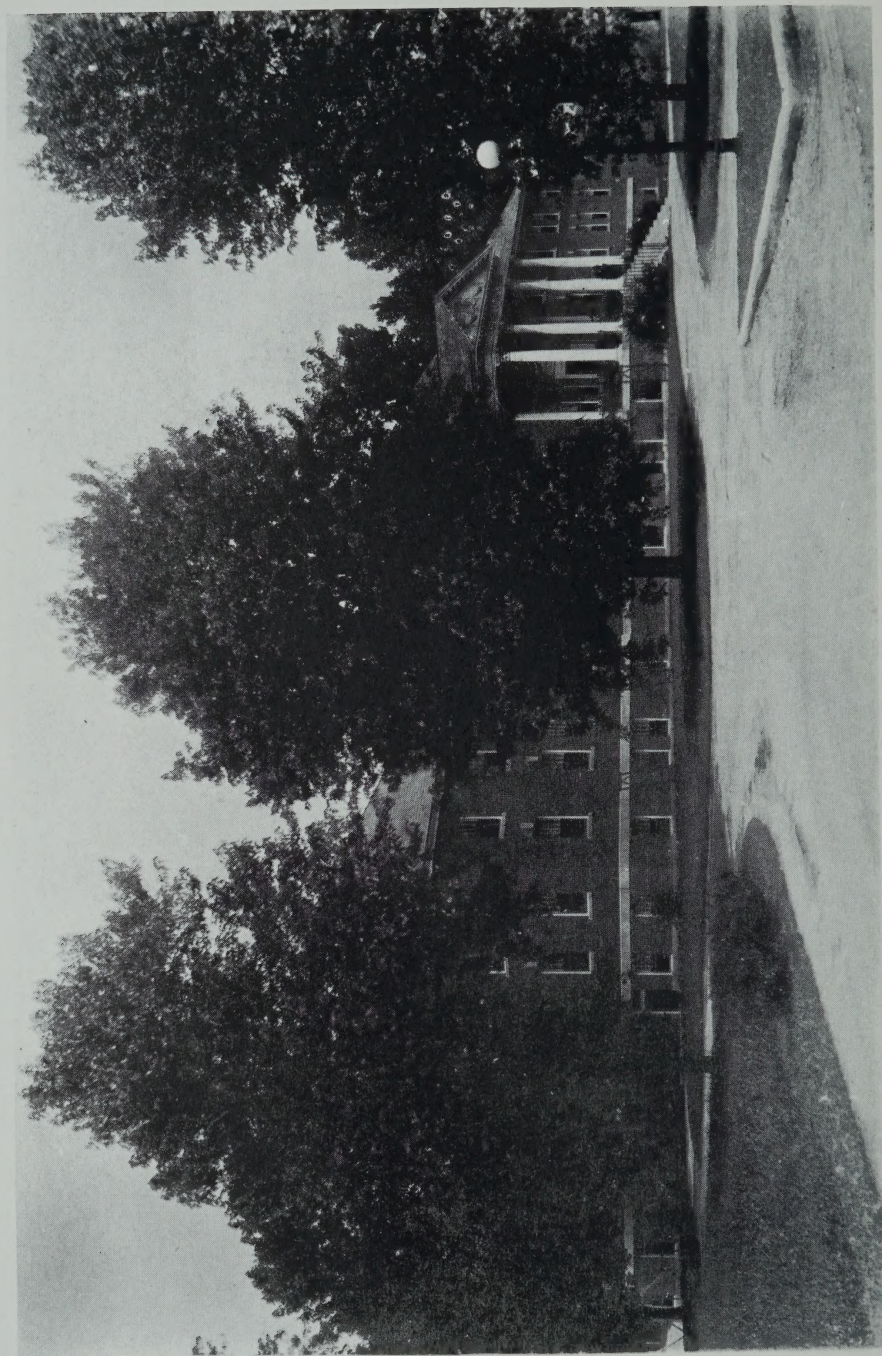


FOR THE YEAR ENDING

December 31, 1946



Digitized by the Internet Archive
in 2022 with funding from
University of New Hampshire Library



GRAFTON COUNTY FARM HOME

Annual Report
OF THE
Commissioners
OF THE
COUNTY OF GRAFTON

Together with the Reports of the
Treasurer, Auditors, Superintendent, Jailer,
Clerk of Court, Solicitor, Sheriff,
Chaplain, Physician and
Farm Bureau

FOR THE YEAR ENDING
DECEMBER 31, 1946

TWIN STATE PUBLISHING COMPANY
Woodsville, N. H.

N
352.0742
673
1946

IN MEMORIAM

**ANN M. ANDREWS
MOSES A. BATCHELDER**

On September 29, deep sorrow darkened the Institution and the community in the loss of Mrs. J. E. Andrews, who had served us so long and faithfully as Matron at the County Home. She devoted nearly a score of years working for the welfare and happiness of the inmates and patients and her cherished memory will live long in their hearts. There is a feeling of great loss among her many friends as well as to Mr. Andrews, our superintendent, to whom she was deeply devoted.

Death claimed another of our faithful servants December 19, in the passing of Moses A. Batchelder, who had served as County Auditor for twenty four years. Always keenly interested in county affairs, his absence will be deeply felt.

**GEORGE A. PUSHEE,
FRED PARKER,
KENNETH G. BELL,**

Commissioners of Graf-
ton County

INDEX

In Memoriam	2
County Officers	5
Grafton County Delegation	6
Report of County Delegation Proceedings	7
Commissioner's Report	8
Tax Commission Audit Reports	10
Selectmen of Town and Overseers of Poor	15
Financial Report —	
Balance Sheet	17
Receipts and Payments	18
Schedule of County Property	22
Detail of Bonded Debt	23
Detail of Receipts	24
Detail of Payments	27
Comparative Statement of Appropriations and Expenditures	37
Treasurer's Report	38
Comparative Debt Statement	39
Detailed Account of Welfare Investigators Expense	40
Detailed Account of County Officers Expense	41
Auditor's Report	42
Superintendent's Report	43
Clerk of Court's Report	58
County Solicitor's Report	61
Sheriff's Report	68
Chaplains' Reports	71
Physician's Report	72
Summary of Farm Accounts	76
Grafton County Farm Bureau	78

GRAFTON COUNTY OFFICERS

COMMISSIONERS

George A. Pushee	Lyme
Fred Parker	Lisbon
Kenneth G. Bell	Plymouth

TREASURER

Harry S. Huckins	Plymouth
------------------	----------

SOLICITOR

Hazen K. Sturtevant	Plymouth
---------------------	----------

SHERIFF

Robert P. Peckett, Jr.	Franconia
------------------------	-----------

JAILER

J. Earle Andrews	Woodsville
------------------	------------

CLERK OF COURT

C. Murray Sawyer	Woodsville
------------------	------------

JUDGE OF PROBATE

Henry A. Dodge	Littleton
----------------	-----------

REGISTER OF PROBATE

Anna D. Proctor	Woodsville
-----------------	------------

REGISTER OF DEEDS

Fred J. Shores	Woodsville
----------------	------------

COUNTY ALMSHOUSE AND HOUSE OF CORRECTION

J. Earle Andrews, Superintendent	Woodsville
----------------------------------	------------

CHAPLAINS

Rev. E. A. Ramige	North Haverhill
Rev. R. B. Nichols	Woodsville

PHYSICIAN

E. M. Miller, M. D.	Woodsville
---------------------	------------

AUDITORS

Moses A. Batchelder	Plymouth
Horace B. Knight	Woodsville

GRAFTON COUNTY DELEGATION
1945 - 1946

Alexandria	Orlo Erland Wadhams
Ashland	William A. Brown
Bath	Amos N. Blandin
Bethlehem	William H. Aiken
Bristol	Glenn L. Wheeler
Campton	Bertram W. Pulsifer
Canaan	Joseph L. Graham
Enfield	Emmett Stewart
Franconia	Richard A. Bowles
Grafton	George L. Aldrich
Hanover	Grace F. Batchelder
	Charles A. Holden
Haverhill	Howard N. Kingsford
	William J. Clough
	Norman A. McMeekin
	Wesley G. White
Holderness	Edmund W. Ogden
Landaff	Roscoe J. Oakes
Lebanon	Daniel E. Butler
	Norris Cotton
	Ernest R. Coutermarsh
	George H. Edson
	Matthew S. Gile
	Frank X. Guay
Lincoln	Harry A. Merrill
Lisbon	James E. Collins
	Arthur L. Hamilton
Littleton	Mabel M. Downing
	Frederick E. Green
	Fred Kelley
Lyman	Clara K. Birch
Lyme	Martha M. Lamphere
Orford	Charles L. Cushman
Plymouth	Kenneth G. Bell
	Harry A. Merrill
Rumney	Jesse A. Barney
Warren	Charles F. Little
Woodstock	Harry D. Sawyer

GRAFTON COUNTY DELEGATION

Woodsville, N. H.

June 21, 1946

A meeting of the Grafton County Delegation was held in the Court House at Woodsville, Friday afternoon, June 21, 1946.

The meeting was called to order at 2 o'clock, by Arthur Hamilton, Chairman of the Delegation.

Donald Matson, Chairman of the board of trustees of the State Retirement System, was introduced. He explained the Retirement System, in relation to County employees.

Questions were asked by Mr. Blandin, Dr. Kingsford and Mr. Parker. Mr. Hamilton asked the amount of the County payroll. This was estimated at \$3000. per month, for 35 employees. It was further estimated that if the system were adopted, an appropriation of \$2500. would have to be made by the County.

A resolution was read by Dr. Kingsford, who moved its adoption. This was seconded by Mrs. Wheeler, and the motion was carried. After discussion the vote was rescinded. Mr. Blandin moved, and Mr. Little seconded, that the matter be tabled until a meeting of the Delegation at the next session of th Legislature. This was agreed upon.

Roll call showed as present: Brown of Ashland, Blandin of Bath, Wheeler of Bristol, Kingsford of Hanover, Clough and White of Haverhill, Collins and Hamilton of Lisbon, Downing and Green of Littleton, Birch of Lyman, Cushman of Orford, Bell of Plymouth, and Little of Warren.

The meeting adjourned to the call of the chair.

A true record,

CLARA BIRCH,

Clerk.

A true copy of record: Attest:

CLARA BIRCH,

Clerk.

REPORT OF COUNTY COMMISSIONERS

To the Citizens of Grafton County :

In accordance with the Public Laws of the State of New Hampshire the Commissioners of Grafton County herewith present the annual report of the Commissioners, Treasurer, Auditors, Superintendent of County Farm, Jailer, Clerk of Court, Solicitor, Sheriff, Chaplain, Physician and Farm Bureau.

County Farm

Expenditures at the County Farm showed a definite increase over the year 1945. This was due, of course, to the continued increase in the costs of all commodities, equipment and general repairs, also to salary raises, which were necessary to meet the higher cost of living.

There was a slight increase in the number of inmates cared for, and the per capita cost per week amounted to \$8.86.

The hospital as usual has been filled to capacity. It enables us to provide proper care for those needing hospitalization and is a real financial asset to the county.

The new elevator, for which the 1945 Delegation authorized an expenditure of \$22,000.00, has now been installed at a cost of \$21,176.19. This elevator has been urgently needed for several years and assists greatly in caring for the unfortunate people in this institution.

The buildings connected with the farm are in first class condition due to the fact that repairs are made as needed.

We are indebted to Superintendent and Mrs. J. E. Andrews and their staff of assistants for the excellent condition of affairs at the farm. They have rendered valuable service to the county.

For details covering administration of the Institution we would refer you to the Superintendent's report on other pages.

Welfare and Relief

Boarded children are still our major relief expense. At the present time we have 71 children boarded in foster homes and institutions at a cost of \$21,732.97 for the year 1946. This year our two investigators collected \$4,799.22 from the parents of these children, who are required to finance the welfare of their children as far as possible. Direct relief remained about the same as in 1945.

Finances

With a bonded debt of only \$30,000.00, which is for bonds issued to build the new almshouse in the year 1929, we believe the finances of the County to be in the best of condition.

The Commissioners wish to extend their thanks to the various County and Town officers and all others for their assistance in carrying on the work of the County.

The Commissioners extend to the people of the County of Grafton and the public in general a hearty and sincere invitation to visit the Grafton County Farm and inspect the new elevator, which has recently been installed, and also, the other buildings connected with the farm.

Respectfully submitted,

GEORGE A. PUSHEE,

FRED PARKER,

KENNETH G. BELL,

Commissioners.

DIVISION OF MUNICIPAL ACCOUNTING**STATE TAX COMMISSION**

Concord, New Hampshire

May 17, 1946

Board of County Commissioners,
Grafton County,
Woodsville, New Hampshire

Gentlemen:

In accordance with the provisions of Chapter 82, Section 27, of the Revised Laws, the biennial audit and examination of the accounts of Grafton County has been made by the Division of Municipal Accounting of the State Tax Commission. The audit covered the fiscal years ended December 31, 1944 and December 31, 1945. Submitted herewith is the report of this audit, including Exhibits and Schedules as hereafter listed. The report is made up in three sections as follows:

- Section I - Fiscal Year Ended December 31, 1944
- Section II - Fiscal Year Ended December 31, 1945
- Section III - Statistical Tables Covering Ten Year Period

SCOPE OF AUDIT

Included in the audit and examination were the accounts and records of the Board of County Commissioners, County Treasurer, Clerk of the Superior Court and Superintendent of the County Farm.

FINANCIAL REPORTS**Comparative Balance Sheets: (Exhibits I & V)**

Comparative Balance Sheets for the fiscal years ended December 31, 1943-December 31, 1944, and December 31, 1944-December 31, 1945, are presented in Exhibits I and V, respectively. As indicated therein the Net Debt was decreased by \$15,826.49 during the year 1944, while in 1945 a decrease of \$1,408.39 took place.

Comparative Statements of Appropriations and Expenditures - Estimated and Actual Revenues:

Fiscal Year Ended December 31, 1944 (Exhibits III & IV)

Fiscal Year Ended December 31, 1945 (Exhibits VII & VIII)

In the fiscal year ended December 31, 1944, a net unexpended balance of appropriations of \$24,368.74, plus a net revenue surplus of \$4,152.47, resulted in a net budget surplus of \$28,521.21.

A net unexpended balance of appropriations of \$10,550.98, plus a net revenue surplus of \$8,612.86, produced a net budget surplus of \$19,163.84, in 1945.

Reconciliation of Change in Financial Condition:

Fiscal Year Ended December 31, 1944 (Schedule A)

Fiscal Year Ended December 31, 1945 (Schedule E)

Statements presenting an analysis of the factors which affected the change in financial condition of the county during the fiscal years ended December 31, 1944 and December 31, 1945, are included in Schedules A and E respectively.

The decrease in Net Debt during the year 1944 amounted to \$15,826.49. The factors influencing this were as follows:

DECREASES

Net Budget Surplus	\$28,521.21	
Bonds Matured	10,000.00	
Decrease in Amounts Payable	302.74	
		\$38,823.95

INCREASES

Cash Surplus Used To Reduce Amount of 1944 County Tax	\$22,494.27	
Decrease in Accounts Receivable	503.19	
		22,997.46
Decrease in Net Debt		\$15,826.49

In 1945 the decrease in Net Debt amounting to \$1,408.39, was brought about as follows:

DECREASES

Net Budget Surplus	\$19,163.84	
Bonds Matured	10,000.00	
Increase in Accounts Receivable	765.76	
		\$29,929.60

INCREASES

Cash Surplus Used To Reduce Amount of 1945 County Tax	\$28,521.21
Decrease in Net Debt	\$ 1,408.39

Summaries of Receipts and Expenditures:

Fiscal Year Ended December 31, 1944 (Exhibit II)

Fiscal Year Ended December 31, 1945 (Exhibit VI)

Summaries of the receipts and expenditures of the County, made up in accordance with uniform classification of accounts, for the fiscal years ended December 31, 1944, and December 31, 1945, are presented in Exhibits II and VI, respectively.

Statistical Tables:

The third section of the report is comprised of statistical tables covering a ten year period from 1936 to 1945, a statement of bonded indebtedness (showing annual maturities) as of December 31, 1945, and a list of County Officers' surety bonds. The ten year comparative tables are as follows:

Table I - Balance Sheets

Table II - Tax Apportionment

Table III - Receipts and Expenditures

ACCOUNTS OF COMMISSIONERS AND TREASURER

All orders issued by the Commissioners and Clerk of the Superior Court during the periods under review were examined and compared with corresponding entries in the Treasurer's records. Supporting invoices

and payrolls were also examined and the classification of expenditures noted. Proof of the Treasurer's balance as of December 31, 1945, is shown in Schedule D.

CLERK OF THE SUPERIOR COURT

The financial accounts and records of the Clerk of Court of Grafton County were examined. Court receipts were checked by source, insofar as possible, and found to be properly recorded. Court orders issued by the Clerk were supported by invoices, vouchers and payrolls bearing the approval of a Superior Court Justice.

COUNTY FARM

The accounts and records of the Superintendent of the County Farm were examined. Receipts of the Farm were checked by source through triplicate receipt forms. All receipts were properly accounted for by the Superintendent through deposits to the credit of the County Treasurer's account in the Woodsville National Bank.

GENERAL COMMENTS

The accounts and records of all county officials which were examined were found in good condition and the accounting procedure conformed to the standard procedure prescribed by this Division.

In conformance with Section 31, Chapter 211, of the Laws of 1939, a copy of this report or a summary of its essential features should be published in the next annual report of the County. This letter of transmittal should be included in its entirety. The publication of Exhibits and Schedules is optional.

The appreciation and thanks of the members of this Division is hereby expressed to the officials of Grafton County and the office staff for the assistance rendered during the course of the audit.

Yours very truly,
HAROLD G. FOWLER
 Director
 DIVISION OF MUNICIPAL ACCOUNTING
 STATE TAX COMMISSION

DIVISION OF MUNICIPAL ACCOUNTING

STATE TAX COMMISSION

Concord, New Hampshire

May 17, 1946

CERTIFICATE OF AUDIT

This is to certify that we have audited the accounts and records of the Grafton County Commissioners, County Treasurer, Clerk of the Superior Court and Superintendent of the County Farm, for the fiscal years ended December 31, 1944 and December 31, 1945. It is our opinion that the Exhibits and Schedules presented herewith fairly present the financial condition of the County as to its assets, liabilities, net debt and the results of operations for the periods under review.

Respectfully submitted,
HAROLD G. FOWLER
Director
DIVISION OF MUNICIPAL ACCOUNTING
STATE TAX COMMISSION

Alan R. Matthews, Auditor
Harry G. Hager,
Alfred S. Cloues, Jr.,
Accountants

Exhibits and Schedules on file in County Commissioners office.

**SELECTMEN OF TOWN AND OVERSEERS
OF THE POOR**

Your attention is called to the following extracts from
the laws of 1903:

CHAPTER 42, SECTION 1

SECTION 1. Any town or county furnishing any assistance to any person within six years preceding his death shall be entitled to recover from the estate of such persons the sum or sums paid out for such assistance the said claim to be preferred claim against his said estate after payment of funeral charges, expense of last sickness and expenses of administration, provided he leaves no widow or minor children at his decease.

CHAPTER 106, SECTION 1, as amended

SECTION 1. No town shall be liable for the support of any person unless, he or the person under whom he derives his settlement, shall have wholly gained a settlement therein during the ten years preceding the last date of application for support providing that no person having a settlement in any town in this state upon arriving at the age of seventy years shall lose that settlement on account of being exempt by law from paying a poll tax, if he resides in said town.

ASSISTANCE TO PERSONS IN QUARANTINE:

PUBLIC STATUTES, CHAPTER 110

Following Section 6

SECTION 1. Whenever any person or family is placed in quarantine by a board of health, to protect the public against small pox, scarlet fever, diphtheria or any other dangerous, infectious or contagious disease, it shall be the duty of said board to assist such person or family while in quarantine in such manner as in the judgment of the board may be deemed wise and necessary.

SECTION 2. All expenses thus incurred, or such part thereof as the board may determine, shall be deem-

ed as legitimate expenditure for the protection of public health and shall be charged to the account of incidental expenses, but not to any indigent pauper account, nor shall such expenditure be construed to mean a public aid to the person or persons so quarantined and assisted unless such person or persons are already paupers as defined by the Public Statutes.

The following towns may send their affidavits and direct there correspondence to:

GEORGE A. PUSHEE, Lyme, N. H.—Cannan, Dorchester, Enfield, Grafton, Hanover, Lebanon, Lyme, Orford, Orange and Piermont.

GEORGE T. NOYES, Bethlehem, N. H.—Bath, Benton, Bethlehem, Easton, Franconia, Haverhill, Laddaff, Lisbon, Littleton, Lyman and Monroe.

KENNETH G. BELL, Plymouth, N. H.—Alexandria, Ashland, Bridgewater, Bristol, Campton, Ellsworth, Groton, Hebron, Holderness, Lincoln, Plymouth, Rumney, Thornton, Warren, Wentworth, and Woodstock.

GEORGE A. PUSHEE,
 FRED PARKER,
 KENNETH G. BELL,
 Commissioners.

FINANCIAL REPORT
BALANCE SHEET
Fiscal Year Ending December 31, 1946

ASSETS

Cash on Hand	
Treasurer	\$3,170.27
Supt. of County Farm	300.00
	\$3,470.27
Accounts Due County:	
(a) Taxes due from towns	None
(b) Accounts due farm	1,518.00
	\$1,518.00
Total Assets	\$4,988.27
*Excess of liabilities over assets (net debt)	\$30,011.73
Grand total	\$35,000.00
Net Debt--December 31, 1945	\$18,817.10
Net Debt--December 31, 1946	\$30,011.73
	\$11,194.63

*This is offset by Schedule of County Property amounting to \$499,537.89. See Schedule of County Property on Page 22.

Purpose for which debt was created - New Almshouse

LIABILITIES

*BONDS OUTSTANDING	
Grafton County Farm Bonds (Almshouse)	\$30,000.00
TEMPORARY LOANS OUTSTANDING:	
Tax Note No. 120 due Jan. 16, 1947	\$ 5,000.00
Total Liabilities	\$35,000.00
Grand total	\$35,000.00

*See Page 23, Schedule for Bonds Outstanding

Financial Report**RECEIPTS AND****Current Revenue:**

Taxes from towns and cities	\$133,880.00	\$133,880.00
Fines and Forfeits		
Superior Court	228.56	228.56
Income of Institutions		
(a) County Farm	30,451.33	
(b) Court Houses	20.00	
		<u>\$30,471.33</u>
Reimbursement of Expenditures for support of poor, etc.		
(a) From State of New Hampshire	17.97	17.97
(b) From other sources	4,963.95	4,963.95
Total current revenue receipts		<u>\$169,561.81</u>

Receipts carried forward to Page 20.

PAYMENTS**Financial Report****Current Maintenance Expenses:****General Government:**

1. Salaries of

(a) Commissioners	\$3,000.00
(b) Treasurer	300.00
(c) Auditors	100.00
(d) Solicitor	1,200.00
(e) Medical Referees	656.30
(f) Sheriff	1,000.00

 \$ 6,256.30

2. Expenses of

(a) Above officers	2,154.04
(b) Register of Deeds	485.11
(c) Register of Deeds (Indexing)	226.56
(d) Register of Probate	1,286.29

 4,152.00

3. Care and Supplies

 for Court House 4,866.99

4,866.99

Superior Court

4. Jury payrolls	6,276.13
5. "State vs.," payrolls	706.80
6. Counsel fees	692.50
7. Stenographer, etc.	3562.09
8. Clerk of Superior Court	7,653.26
9. Sheriff and Deputies	7,316.06

 26,206.84

Public Welfare:

10. County Farm expenditures	66,596.07
11. Support of poor not on County Farm	10,161.10
12. Old Age Assistance	6,852.50

Payments carried forward to Page 21.

Financial Report**RECEIPTS AND**

Total Receipts Brought forward
from Page 18

Receipts other than Current Revenue:

Temporary loans during year \$80,000.00

Total Receipts other than
Current Revenue 80,000.00

Total receipts from all sources \$249,561.81

Cash on Hand at beginning of year 19,463.84

Grand Total

\$269,025.65

PAYMENTS**Financial Report**

Total Payments Brought Forward
from Page 19

13. Board and care of children	21,732.97
14. Aid to soldiers	789.06
15. Welfare administration expenses	7,312.10

113,443.80

Total Current Maintenance Expenses \$154,925.93

Interest:

16. Paid on temporary loans	\$ 332.70
17. Paid on bonded debt	2,000.00

Total interest payments 2,332.70

Total Outlay Payments**Indebtedness:**

18. Payments on temporary loans	75,000.00
19. Payments on principal of bonds	10,000.00

Total indebtedness payments 85,000.00

**Outlay, New Construction
and Equipment**

20. County Farm 13,786.52

All Other Payments:

21. Farm Bureau	9,000.00	9,000.00
22. Miscellaneous	510.23	510.23

Total payments for all purposes \$265,555.38

Cash on Hand at end of year 3,470.27

Grand Total \$269,025.65

Financial Report

SCHEDULE OF COUNTY PROPERTY

Description:

Land and buildings:

(a) Court House	\$100,000.00
(b) Jail	55,000.00
(c) County Farm	250,000.00
(d) Water System	20,000.00

Furniture and Equipment

(a) Court House	25,700.00
(b) Jail	1,379.70
(c) County Farm	47,458.19

\$499,537.89

**STATEMENT OF BONDED DEBT OF GRAFTON
COUNTY**

December 31, 1946

Showing Annual Maturities of Outstanding Obligations

County Farm

1929

1947	\$10,000.00
1948	10,000.00
1949	10,000.00
	<hr/>
	\$30,000.00

These Bonds issued to build new Almshouse.

DETAIL OF RECEIPTS

Taxes From Towns

Alexandria	\$ 1,100.94
Ashland	3,878.91
Bath	1,920.25
Benton	256.03
Bethlehem	5,837.57
Bridgewater	1,292.97
Bristol	5,709.55
Campton	2,713.96
Canaan	2,573.14
Dorchester	358.44
Easton	294.43
Ellsworth	76.80
Enfield	2,893.18
Franconia	2,099.47
Grafton	934.52
Groton	832.11
Hanover	12,904.11
Haverhill	8,602.74
Hebron	1,152.15
Holderness	4,070.94
Landaff	550.47
Lebanon	17,167.05
Lincoln	2,393.91
Lisbon	6,068.00
Littleton	10,318.15
Lyman	588.88
Lyme	1,869.05
Monroe	18,011.98
Orange	281.63
Orford	1,561.81
Piermont	1,382.58
Plymouth	7,002.53
Rumney	1,971.46
Thornton	908.92
Warren	1,228.96
Waterville	153.62
Wentworth	998.53
Woodstock	1,920.26

\$133,880.00

No uncollected taxes.

DETAIL OF RECEIPTS (Continued)**Fines and Forfeits, Superior Court**

Robert P. Peckett, Jr., Sheriff

Slot Machine Money	\$93.50	\$93.50
--------------------	---------	---------

Cancellation of the following
Court Orders

No. 5919 Issued July 10, 1945	3.12
No. 5921 Issued July 10, 1945	3.12
No. 6125 Issued Oct. 30, 1945	3.12
No. 6738 Issued Oct. 31, 1946 and returned	125.70

 \$228.56
Income from Institutions

Grafton County Farm	\$30,451.33
Use of Court Houses	20.00

 \$30,471.33
Reimbursements

State of New Hampshire	
Old Age Assistance	17.97
Other Sources	
Boarded Children	4,855.84
Direct Relief	103.47
Rebate on bond premiums	4.64

 \$4,981.92
Temporary Loans During Year

Ballou, Adams & Co., Boston, Mass.

Note No. 117, dated January 3, 1946	25,000.00
Note No. 118, dated January 3, 1946	25,000.00
Note No. 119, dated January 3, 1946	25,000.00

Above notes payable December 20, 1946

Above notes discounted @ .45 of 1%
per annum

Pemigewasset Nat'l Bank Plymouth, N. H.
Note No. 120, dated
December 16, 1946

5,000.00

Payable January 16, 1947

80,000.00

Above noted discounted @ rate of 2 %
per annum.

DETAIL OF PAYMENTS

CURRENT MAINTENANCE EXPENSES

Commissioners:

Pushee, George A.	\$1,000.00	
Parker, Fred	1,000.00	
Bell, Kenneth G.	1,000.00	
		\$ 3,000.00

Treasurer:

Huckins, Harry S.	300.00	
		\$ 300.00

Auditors:

Batchelder, M. A.	50.00	
Knight, H. B.	50.00	
		\$ 100.00

Solicitor:

Sturtevant, Hazen K.	1,200.00	
		\$ 1,200.00

Medical Referees:

Church, Dr. Kenneth	54.00	
DeWitt, Dr. Reginald F.	60.60	
House, Dr. Reginald K.	108.00	
Orton, Dr. Leon M	209.80	
Page, Dr. John M.	29.00	
Pickwick, Dr. H. C.	48.45	
Putnam, Dr. William	146.45	
		656.30

Sheriff:

Peckett, Robert P. Jr.	1,000.00	
		1,000.00

DETAIL OF PAYMENTS*** EXPENSES OF COUNTY OFFICERS**

Pushee, George A., Commissioner		
July 1, 1945 to June 30, 1946	\$	577.92
Parker, Fred, Commissioner		
July 1, 1945 to June 30, 1946		216.43
Bell, Kenneth G. Commissioner		
July 1, 1945 to June 30, 1946		352.65
Huckins, Harry S., Treasurer		106.24
Kirk, Madeline W., services as clerk, 50%		870.00
Twin State Publishing Co.		
Commissioners Expense Vouchers		30.80
		<hr/>
	\$	2,154.04

Register of Deeds

Shores, F. J., telephone		44.00
Shores, F. J., express, cartage, supplies		6.86
Keystone Envelope Co., The, supplies		13.75
Larson, Carl, supplies		8.11
Lewis, C. G., express		1.05
Mann, E. B. & Co., supplies		8.35
Martell, A. E. & Co., supplies		227.08
McAllister, S. F. supplies		1.25
Record Print, The supplies		25.75
Remington Rand, Inc., supplies		98.53
Twin State Pub. Co. supplies		48.95
White River Paper Co., supplies		1.43
		<hr/>
	\$	485.11

Register of Deeds—Indexing

Payments made to Fred J. Shores as follows:

Casely, Charlotte, services		160.00
Weden, Betty		66.56
		<hr/>

\$ 226.56

*See Page 48 for Detailed Account

Register of Probate

Proctor, Anna D., clerk hire	\$500.00
Casely, Charlotte, services	160.00
Proctor, Anna D., Express and <i>Postage</i>	<i>64.72</i>
Keystone Envelope Co., supplies	13.75
Larson, Carl, supplies	406.25
N. E. Tel & Tel. Co., telephone	78.60
Remington Rand Inc., supplies	55.67
Twin State Publishing Co.,	22.85
Woodsville Post Office, supplies	60.00
Dodge, Henry A., Judge telephone express and postage	71.65
White River Paper Co., supplies	12.60
	<hr/>
	\$ 1,286.29

Care and Supplies of Court Houses

Barnes Co. Henry K., supplies	10.25
Boston & Maine Railroad, freight	468.55
Burt, A. A., labor and supplies	79.70
Calbeck-Cosgrove Co., supplies	1.45
Cass, Ralph W., labor and supplies	21.30
Clough, M. P., labor and supplies	50.40
Field, M. W., supplies	3.43
Gallant Freeman, services as janitor	36.08
Gleason, William, services as janitor	222.29
Goudies' Hardware, supplies	3.30
Insurance	423.51
Lamarre, A. A., labor and ice	11.40
Langway, Cecil, supplies	.80
Langway, Cecil, services as janitor	1,163.65
Mann, E. B. & Co., supplies	10.29
MacFarland, Victor, labor	8.00
Newell, D. H., Inc., fuel	434.51
Northern Coal Co, services	63.25
Parker's, supplies	6.50
Rands, supplies	3.80
Sanville & Co. labor	161.50
Scruggs Hardward, labor and supplies	130.28
Tullar, H. G., repairs	30.41
Wander In Gift Shop, supplies	4.00

Water Dept. Plymouth Village	
water rent	14.00
Waterman & Co., supplies	54.26
Wheeler, Phineas, services as	
janitor	350.50
Wheeler, Phineas, misc. expense	8.12
White Mt. Power Co., electricity	92.09
White River Paper Co., supplies	39.67
Wilmot, Herman R., labor	5.60
Woodsville Fuel Co., unloading coal	109.10
Woodsville Furniture Co.,	
Co., equipment	297.26
Woodsville Hardware Co., supplies	7.37
Woodsville Water & Light Dept.	
water and electric service	440.37
	<hr/>
	\$ 4,866.99

Superior Court, Counsel Fees

Clark, Frank B., attorney's fees	25.00
Castello, Luigi, attorney's fees	170.00
Davison, Harold K., attorney's fees	7.50
Jones, Fred A., attorney's fees	150.00
Sawyer, C. Murray, attorney's fees	20.00
Stanley, John W., attorney's fees	100.00
Stark, John M., attorney's fees	100.00
Tesreau, Charles, attorney's fees	120.00
	<hr/>
	\$ 692.50

Stenographers, Etc.

Forsberg, Martha A.,	
stenographer's fees	1,532.12
Johnson, Gertrude,	
stenographer's fees	8.15
Ladd, Ethel, stenographers's fees	229.46
Maher, P. F. stenographer's fees	15.00
Trask, H. L. stenographer's fees	501.53
White, Grace J., stenographer's fees	100.35
*Sturtevant, Hazen K., Solicitor	
expenses and supplies	1,175.48
	<hr/>
	\$ 3,562.09

Clerk of Superior Court

American Law Book Co., supplies	12.00
Bartlett Ins. Co., R. T., bond	25.00
Boston Law Book Co., supplies	14.00
Cragg Bindery, The supplies	169.32
Kenison, Arthur E., supplies	12.00
Keystone Envelope Co., supplies	73.50
Larson, Carl, supplies	254.18
Lawyer's Co-operative Pub Co., supplies	44.00
N. E. Tel & Tel Co., telephone	644.11
Northern Office Supply Co., supplies	8.50
Perkins, Maurice, supplies	20.00
Phaneuf Press, supplies	25.18
Remington Rand Inc., supplies	297.83
Sargent, Fred L., postage	81.28
Sawyer, C. Murray, salary and receipts	4,973.86
Secretary of State, supplies	3.65
Shepard, Frank D., supplies	36.00
Shoven, George O., Supreme Court Opinions	20.00
Star Paper Fastener Co., supplies	11.60
Tower Co., Fred L., N. H. Register	6.00
Twin State Publishing Co., Docket and printing	921.25

\$ 7,653.26

*See Page 48 for Detailed Account.

Sheriff and Deputies

*Peckett, Robert P., sheriff fees	3,222.90
Farnham, John L., Deputy sheriff fees	1,278.36
Gardner, Theodore R., Deputy sheriff fees	1,046.75
Gardner, Van H., Deputy sheriff fees	170.50
Harrington, J. Stanley, Deputy sheriff fees	162.00
Kimball, William A., Deputy Deputy sheriff fees	867.72

Leavitt, George U. L., Deputy sheriff fees	246.77
Ricard, James O., Deputy sheriff fees	27.40
Wright, Clarence W., Deputy sheriff fees	274.20
Hunkins & Eaton Agency, Sheriffs' bonds	19.46
	<hr/>
	\$ 7,316.06

*See Page 48 for Detailed Account.

County Farm Expenditures

(See Superintendent's Report, Page 50)

**DETAIL OF PAYMENTS
PUBLIC WELFARE**

County	Poor not on Farm	Old Age Assistance	Board and Care of Children	Aid to Soldiers	Total
Alexandria	\$	\$ 205.00	\$	\$	\$ 205.00
Ashland	161.30	189.34	1,452.61		1,803.25
Bath	206.24	410.62	150.00		766.86
Bethlehem	42.12				42.12
Bristol		404.40			404.40
Campton	214.10	40.30	1,055.70		1,337.10
Canaan	153.04	223.67	2,009.11		2,385.82
Dorchester		104.94			104.94
Ellsworth	52.20	80.11			132.31
Enfield	521.84	280.00	863.72	29.70	1,695.26
Franconia		69.88		76.22	146.10
Grafton	5.00	76			5.76
Groton		49.31			49.31
Hanover	432.40	367.65	459.27		1,259.32
Haverhill	2,393.36	1,369.71	431.81		4,194.88
Holderness	63.00	200.93	611.30		875.23
Landaff	262.20	71.75	16.70		350.65
Lebanon	3,449.04	556.44	6,330.96	211.15	10,547.59
Lincoln	43.46	10.46	680.57		734.49
Lisbon		430.93	3,011.05		3,441.98
Littleton	814.38	575.66	2,379.09		3,769.13
Lyman		103.77			103.77
Lyme	97.15	234.25			331.40
Orange		15.63			15.63
Orford			10.41		10.41
Piermont	167.50				167.50
Plymouh	775.58	412.33	340.66		1,528.57
Rumney		97.11	10.80		107.91
Thornton	149.57	177.92	920.41		1,247.90
Warren	130.62	169.63	963.13	471.99	1,735.37
Woodstock			35.67		35.67

\$10,161.10 *\$6,852.50 \$21,732.97 \$ 789.06 \$39,535.63

* This amount represents 25% of grant and amount paid by county.

**DETAIL OF PAYMENTS
STATEMENT OF OLD AGE ASSISTANCE AND
BOARDED CHILDREN**

1946	Old Age Assistance Cases	Assistance Amount	Boarded Cases	Children Amount
January	63	\$ 520.86	66	\$ 1,736.96
February	57	551.36	68	1,598.05
March	57	507.79	67	1,604.13
April	57	505.40	73	1,757.25
May	59	534.50	75	1,880.49
June	61	576.65	77	1,975.51
July	62	560.87	76	1,950.34
August	61	588.59	77	1,874.64
September	62	666.47	73	1,810.10
October	58	594.04	72	1,877.62
November	58	632.28	71	1,906.02
December	57	613.69	71	1,761.86
		\$ 6,852.50		\$ 21,732.97

DETAIL OF PAYMENTS
WELFARE ADMINISTRATION EXPENSES

Currier, Albina H.,	
Services as investigator	\$1,490.00
*Expenses	748.22
Warren, Beatrice M.,	
Services as investigator	1,520.00
*Expenses	907.64
Kirk, Madeline W.	
Services as bookkeeper	
Commissioners' office 50%	870.00
Hobbs, Doris D., Services as clerk	
Commissioners' office	42.75
Astle, William A., Relief	
Administration, Littleton office	600.00
Olsson, Ernestine N., Services as clerk	
Commissioners' office	209.00
Densmore & Eastman, Rent of	
Lebanon Relief office	240.00
Granite State Electric Co.,	
Electricity, Lebanon relief office	11.00
Ayer Insurance Agency,	
Employer's insurance	29.99
Brown & Saltmarsh, supplies	6.12
College Supplies Inc., supplies	1.35
Kirk, Madeline W., postage	6.50
Mann & Co., E. B., supplies	2.15
New England Tel. & Tel. Co., services	393.38
Remington Rand Inc., service	39.95
Star Paper Fastener Co., supplies	15.00
Twin State Publishing Co., supplies	8.70
United States Post Office, postage	121.80
White River Paper Co., supplies	16.08
	\$ 7,312.10

*See Page 47, Detailed Account, Welfare Investigators.

DETAIL OF PAYMENTS

Interest

First National Bank, Boston		
Coupons on County Bonds	\$ 2,000.00	
Interest on temporary notes		
No. 117 to 120 inclusive	332.70	
		\$ 2,332.70

Indebtedness

First National Bank, Boston		
Payment on principal of bonds	10,000.00	
National Shawmut Bank, Boston		
Payment on temporary notes		
No. 117 to 119 inclusive	75,000.00	
		\$ 85,000.00

Outlay, New Construction and Equipment

Hudson & Ingram	594.27	
Cummings Const'n. Co., H. P.	13,192.25	
		13,786.52

All Other Payments

Farm Bureau	9,000.00	\$ 9,000.00
Miscellaneous		
Record Print, County Reports	\$ 214.00	
Railway Express, exp. on reports	1.77	
State Tax Commission,, Audit	245.25	
Chamberlin's Greenhouse, supplies	10.00	
Twin State Pub. Co.,		
Notice Del. meeting	2.40	
Courier Printing Co.,		
Notice Del. meeting	4.00	
Hanover Gazette,		
Notice Del. meeting	1.35	
Birch, Clara, Expense		
Delegation meeting	6.20	
Brown, William, Expense		
Delegation meeting	25.26	
		\$ 510.23

**COMPARATIVE STATEMENT OF
APPROPRIATIONS AND EXPENDITURES
YEAR 1946**

	Appro- priations	Expend- itures	Unexpended Balance	Over- draft
County Officers' Salaries	\$6,200.00	\$6,256.30		\$56.30
County Officers' Expenses	2,500.00	2,154.04	\$345.96	
Register of Deeds Expenses	800.00	711.67	88.33	
Register of Probate Expenses	1,400.00	1,286.29	113.71	
Care and Supplies for Court Houses	*4,480.00	*4,846.99		366.99
Jury Payrolls	4,100.00	6,276.13		2,176.13
State vs. Payrolls	1,000.00	706.80	293.20	
Counsel Fees	400.00	692.50		292.50
Stenographer, etc.	4,300.00	*3,560.00	740.00	
Clerk of Superior Court	4,500.00	*7,518.20		3,018.20
Sheriff and Deputies	4,700.00	*7,220.01		2,520.01
County Farm	*39,000.00	*36,144.74	2,855.26	
Support of Poor not on County Farm	*13,500.00	*10,057.63	3,442.37	
Old Age Assistance	10,000.00	*6,834.53	3,165.47	
Board and Care of Children	19,500.00	*16,877.13	2,622.87	
Aid to Soldiers	1,500.00	789.06	710.94	
Welfare Administration Expense	7,000.00	7,312.10		312.10
Interest	2,500.00	2,332.70	167.30	
Principal on Bonds	10,000.00	10,000.00		
Farm Bureau	9,000.00	9,000.00		
Miscellaneous	2,500.00	510.23	1,989.77	
	\$148,880.00	\$141,087.05	\$16,535.18	\$8,742.23
Less amount transferred from 1945	15,000.00			
Amount of County Tax Elevator, County Farm	\$133,880.00	13,786.52		13,786.52
		\$154,873.57		\$22,528.75
			22,528.75	
Net Overdraft			\$5,993.57	
Net Expenditures		\$154,873.57		
Net Overdraft		5,993.57		
		\$148,880.00		

TREASURER'S REPORT

Receipts

Cash balance from year 1945	\$ 19,163.84
Taxes collected from towns	133,880.00
Temporary loans	80,000.00
J. E. Andrews, Supt. Grafton County Farm	30,451.33
Court Houses	20.00
Reimbursement for Old Age Assistance	17.97
Reimbursement for Board of Children	4,855.84
Reimbursement for Direct Relief	103.47
Reimbursement, Court Expense	228.56
Refund on bonds	4.64
	\$ 268,725.65

Disbursements

Commissioners' Orders	\$ 152,050.42
Court Orders	26,172.26
Payment on temporary loans	75,000.00
Payment on principal of bonds	10,000.00
Interest on temporary loans	332.70
Interest on bonds	2,000.00
Cash in Treasurer's hands December 31, 1946	3,170.27
	\$ 268,725.65

COMPARATIVE DEBT STATEMENT

	Dec. 31, 1945		Dec. 31, 1946
Bonds Outstanding	\$40,000.00		\$30,000.00
Total bonded debt	\$40,000.00		\$30,000.00
Temporary Loans			
Outstanding			\$5,000.00
Cash on hand	\$19,464.14		\$3,470.27
Bills Receivable	1,718.76		1,518.00
	\$21,182.90		\$4,988.27
Bills Payable	None		None
	\$21,182.90		\$4,988.27
	21,182.90		4,988.27
Surplus	\$21,182.90	Deficit	\$11.73

**DETAILED ACCOUNT OF WELFARE
INVESTIGATORS' EXPENSE**

	Mileage	Hotel and Subsistence	Other Expense	Total
Currier, Albina H. (11,074 mi. at 5c)	\$ 553.70	\$ 63.10	\$ 131.42	\$ 748.22
No. Home Visits	1,006			
No. Contacts Made	1,975			
Collections Made	\$1,963.43			
Collections Made	*1,001.75			
(*This money collected from clients and paid to vendors did not go through County Treasury.)				
Warren, Beatrice M. (16,125 mi. at 5c)	806.25	84.15	17.24	907.64
No. Home Visits	1,068			
No. Contacts Made	1,378			
Collections Made	\$2,824.79			

**DETAILED ACCOUNT OF COUNTY OFFICERS'
EXPENSE**

		Mileage	Hotel and Subsistence	Other Expense	Total
Pushee, George A. Commissioner (5,864 mi. at 8c)	\$	469.12	\$ 61.55	\$ 47.25	\$ 577.92
Parker, Fred Commissioner (2,323 mi. at 8c)		185.84	12.80	17.79	216.43
Bell, Kenneth G. Commissioner (4,230 mi. at 8c)		338.40	7.30	6.95	352.65
Huckins, Harry S. Treasurer (1,080 mi. at 8c)		86.40	7.45	12.39	106.24
Sturtevant, H. K. Solicitor (10,637 mi. at 8c)		850.96	148.30	176.22	1,175.48
Peckett, Robert P. Sheriff Services		1,074.34	411.20	560.36 1,177.00	3,222.90

AUDITORS' REPORT

We, the undersigned, auditors of Grafton County, certify that we have carefully examined the accounts of the County Commissioners and Treasurer and the Superintendent of the County Farm for the year 1946 and we find them correctly cast and properly vouched, and there is a balance of \$3,170.27 in the hands of the Treasurer and \$300.00 in the hands of the Superintendent of the County Farm.

H. B. KNIGHT,
H. D. SAWYER,

Auditors.

January 10, 1947

Woodsville, N. H.
December 31, 1946

We hereby certify that there were no outstanding bills against the County December 31, 1946, which were presented for payment and no orders issued by us which have not been paid by the Treasurer.

GEORGE A. PUSHEE,
FRED PARKER,
KENNETH G. BELL,
Grafton County Commissioners.

State of New Hampshire, Grafton, ss.

December 31, 1946

Personally appeared the above named George A. Pushee, Fred Parker and Kenneth G. Bell and made oath to the truth of the above statement by them signed.

FRED J. SHORES,
Justice of the Peace.

SUPERINTENDENT'S REPORT

P. O. Woodsville, N. H.

Grafton County Home

Haverhill, N. H.

Gentlemen:

I herewith submit my report of the Grafton County Almshouse, House of Correction and Jail from January 1, 1946 to December 31, 1946.

Almshouse

Number of Inmates January 1, 1946	76
Number admitted during year	101
Number discharged during year	76
Number of deaths during year	24
Number of Inmates January 1, 1947	77

House of Correction

Number of Inmates January 1, 1946	22
Number admitted during year	41
Number discharged during year	44
Number of Inmates January 1, 1947	19

Jail

Number of Inmates January 1, 1946	8
Number admitted during year	41
Number discharged during year	42
Number of Inmates January 1, 1947	7

Average number in Almshouse, House of Correction and Jail whose board was not paid by towns or individuals 79 plus.

Number of weeks board furnished Inmates, House of Correction and Jail not paid by towns or individuals, 4144 weeks, 3 days.

COUNTY FARM EXPENDITURES

Institution

Labor	\$ 7,578.75
Provisions	7,352.85
Clothing	1,240.11
Supplies	2,780.57
Fuel, including freight	5,688.28
Additions and repairs	3,394.23
Water and lights	2,443.45
Freight, express and telephone	434.12
Insurance	994.86
Equipment	506.00
Fixed charges and other expenses	1,185.17

\$ 33,598.39

Farm

Insurance	684.95
Truck and tractor expense	1,203.10
Taxes	1,982.96
Lights and power	243.72
Labor	4,762.02
Stock	520.00
Feed and supplies	8,489.78
Repairs	342.45
Equipment	217.40
Other expenses	1,797.79

\$ 20,244.17

Hospital

Doctors	1,601.20
Labor	6,654.08
Supplies and equipment	1,603.98
Other expenses	191.34

\$ 10,050.60

Jail

Labor	2,485.17
Supplies	2.40
Insurance	100.00
Other expenses	115.34

\$ 2,702.91

\$ 66,596.07

INMATES GRAFTON COUNTY ALMSHOUSE

Name	Where From	Time Supported		
		Age	Weeks	Days
Lily Watson*	Ashland	64	52	1
Mabel Randall*	"	54	52	1
Thelma Knox*	"	16	1	4
William Ferrell*	Bath	75	52	1
Russell Enderson	Bethlehem	63	9	5
Gustav Anderson*	Bridgewater	71	23	2
Sally Ferrin*	Bristol	35	52	1
Edward Simonds*	"	63	52	1
Kenneth Sanborn	"	11		3
Thankful Bowen	Canaan	88	2	4
Charles Hackett	"	70	15	2
Florence Tashro	"	17	5	3
Phylis Shepard	"	6	1	2
Joan Currier*	"	4	18	6
Larry Currier	"	3		2
Lucy Brown	"	13	3	2
Joe Boris*	Campton	64	52	1
Frederick Marsden	"	10	1	1
Charles Sargent	"	60	2	3
Rose Sargent	"	73		2
Harry Marsden	"	12		4
Peter Brown*	Enfield	77	52	1
John Johnson*	"	77	24	1
Patricia Petro	"	4	1	5
Asenath Oakey	"	75		2
Gusti Latvala*	"	65	5	
John Sawler*	Franconia	80	52	1
Michel Long*	"	66	52	1
Frank Lock*	"	54	52	1
Lynn Bowles	"	60	1	
James Kelley*	"	68	52	1
Lucille McKay	"	16		4
Alice Jewell*	Groton	65	52	1
William Brosky	"	70	5	
Frank Mellon	Hanover	71	16	3
Edward Hoyt*	Haverhill	39	52	1
Ned Ware*	"	66	52	1
Edward Kingsley*	"	79	52	1
Ellen Barney*	"	86	52	1
Imogene Fisher	"	34	2	
Frank Provenchia*	"	61	13	2
Fred Palmer	"	45	1	
Herbert Dow*	Hebron	76	52	1
Robert Stanley*	"	78	52	1
James Nickerson	"	51		1
Virginia Emery*	Holderness	27	52	1
Leander Fitzgerald*	Landaff	80	52	1
Golden Wallace	"	68	20	2

* Indicates Inmates now on Farm.

INMATES GRAFTON COUNTY ALMSHOUSE

Name	Where From	Time Supported		
		Age	Weeks	Days
Abbie Smith*	Lebanon	69	52	1
Annie Johnson*	"	48	52	1
Mildred Johnson*	"	54	52	1
Maude Quimby*	"	48	52	1
Frank LaPort*	"	79	52	1
William Scott*	"	65	52	1
Alice Dramburg*	"	83	52	1
George Brooks*	"	60	52	1
Cornelius McCaffery*	"	71	52	1
George Harper*	"	76	19	6
Vincent Hopper*	"	65	49	
Sandra Roy	"	9 mo.	13	1
B. L. Birch	"	74		4
Theresa Jewellvn	"	13	1	
Jeremiah Buckley	"	75	2	2
Paul Arquette	"	16		5
Helen Smith	"	15		6
Betty Melendy*	"	15	1	6
Joseph Fenton*	Lincoln	72	52	1
Edward Condon*	"	67	52	1
Martin Cahill*	"	77	52	1
Mike Mullahy*	"	79	52	1
George Watling	"	65	38	6
Edward Williams	"	70	14	4
Thomas Goodwin	"	48	36	4
Dan Smith*	"	72	52	1
Howard Grey	"	46	44	4
David Stone	"	unknown	1	1
Thomas Crouch	"	46	3	
Joseph King*	"	82	9	6
Cornelius Sullivan*	"	57		2
Edna Parent	Lisbon	21		2
Gertrude Hussy	"	11		2
Minnie Mansfield*	"	60	2	2
John Hassy*	Littleton	68	52	1
Joseph Druin	"	88	17	2
Carl Miner*	"	67	52	1
Patrick Quinn*	"	70	52	1
Mary Crowell	"	2	1	5
Diane Crowell	"	6 mo.	11	3
Corliss Pascal	"	72		6
Oscar Howland	"	11	9	5
Rachel Strayer	"	16		5
Jame Lowe	"	26	2	
Mary Peacock	Lyman	24	8	2
Frank Peacock	"	baby	7	6
Freeman Downs*	Monroe	69	52	1
Annie Munroe*	"	55	52	1

* Indicates Inmates now on Farm.

INMATES GRAFTON COUNTY ALMSHOUSE

Name	Where From	Time Supported		
		Age	Weeks	Days
George Roy	Orford	11	15	6
Flora Miles*	Piermont	43	52	1
Flora Simpson*	"	73	52	1
James White	"	79	10	1
Clarence Colby	"	13	5	4
Frank Dawson*	Plymouth	67	52	1
Warren Leavitt*	"	70	52	1
Thomas Mehan*	"	56	52	1
Andrew Senkiveivitch*	"	76	1	1
Willie Page	Rumney	83	19	2
George Avery*	Thornton	84	52	1
John Nastasia	Warren	7	8	5
Joan Nastasia	"	7	8	5
Betty Carr	"	14	2	2
James Knowles	"	8		6
Oscar Hendrickson	"	73		2
Nellie Howland*	Wentworth	57	52	1
Mary Salls	"	59	5	5
Donald Avery	Woodstock	11		6
Joyce Carpenter	"	18	1	

*Indicates Inmates now on Farm.

TOWN BOARDERS AT GRAFTON COUNTY HOME

Name	Where From	Time Supported		
		Age	Weeks	Days
William St. Arnoult*	Ashland	75	43	
Albert Nelson	Bath	79	36	6
Nellie Weeks	"	78	2	6
Josephine Livingston	Bristol	89	5	3
Betty Currier	Canaan	6	1	3
Joan Currier	"	4	8	
Larry Currier	"	3	8	
Jerimiah McCarty	Enfield	77	1	3
Willie Wiggins	Grafton	66	21	5
Samuel Tuttle	"	34	3	5
Wendall Sargent	Hanover	34	22	2
Nettie LeMere	"	70	23	5
William Cook*	"	75	47	6
Edith Woods*	Haverhill	69	52	1
Harrison Sisco	"	66	12	4
Thomas Sturgeon	"	96	9	
Fred Church	"	69	29	1
Grace Blandin	"	65	9	
Peabody Day	"	80		1
Benjamin White	"	67	23	
Bertha Sawyer	"	68	2	1
Helen Reeves*	"	86	15	3
Josephine Bedor*	"	87	6	1
Pauline Boemig*	"	76	2	5
Philis Judd*	"	16	2	5
John Keough*	Landaff	76	52	1
Alfred Carpenter	"	76	2	2
Oscar Goodrich	Lebanon	66	13	1
Frank Canfield	"	80	6	3
Alexander Carr*	"	55	19	4
Maude Harris*	"	52		5
Samuel Oleuk	Lincoln	70		2
Martin Kelley	"	unknown	15	3
Adam Bagdonis	"	63	5	
Elizabeth Stanley	Lisbon	unknown	23	3
Grover Hanno	"	60		6
Charles Stone	"	83		3
Joseph Malenfant*	"	76	17	1
Patrick Joyce*	Littleton	87	52	1
Ethel Herbert	"	36	3	2
Sue Gullen	"	73	9	4
William Carlin	Lyman	76	36	5
Charlotte Wilkerson	Lyme	85	11	2
Alder Leard	Piermont	77	23	6
Fred Dickey	Plymouth	61	2	
Eva Clark*	Rumney	58	52	1
Henry Rien*	Wentworth	69	16	5
George Clough*	"	71	47	1
Annie Moulton*	Woodstock	79	31	1

* Indicates Inmates now on Farm.

INMATES AT GRAFTON COUNTY HOUSE OF CORRECTION

Name	Court	Crime	Age	Time Served	
				Weeks	Days
Powers, Ora	Littleton	drunk	35	13	5
Wood, Gordon M.	Lisbon	operating under the influence	23	8	4
Mason, Lloyd A.	Lisbon	operating under the influence	18	8	4
Eaton, Harry F.	Littleton	drunk	34	4	2
Carter, Clifton	Superior	Assault Carnal	18	25	6
Dion, John R.	Superior	Counterfeit Checks	18	50	2
Ahern, Edward	Hanover	disorderly conduct	56	12	6
Crocker, Richard	Ashland	stealing	47	14	1
Piper, Everett	Campton	drunk	37	4	
Handy, Eudell	Superior	G. L. Auto.	41	50	1
Battis, John	Superior	false pretense	40	47	
Dupree, Luzene	Lebanon	drunk	68	8	5
Miller, Frank	Haverhill	drunk	43	1	
Mattison, William J.	Haverhill	drunk	53	10	5
Miles, Harold	Littleton	neglect of children	48	8	2
Miles, Harold	Littleton	obstructing officer	48	8	2
Austin, Irving	Lisbon	drunk	47	9	
Casey, Alex	Lincoln	drunk	52	4	3
Ingalls, Howard	Littleton	drunk	52	4	2
Watson, Milo	Haverhill	drunk	?		1
Gaff, William	Lincoln	drunk	61	8	5
Manchettutus, John	Haverhill	drunk	63	7	
Buffon, Vernon	Hanover	vagabondage	20	13	3
Dufraime, Wilfred	Lebanon	drunk	46	8	4
Gigie, Howard	Haverhill	drunk	66		5
Stevenson, Frederick	Lebanon	drunk	55	13	1
Grey, Douglas	Lincoln	non-support	?		4
Joslyn, Floyd	Haverhill	driving under the influence	20	2	5
Couture, Norman	Superior	G. L. auto	19	33	5
Hall, Duncan	Superior	G. L.	20	15	6
VanByron, Albert	Superior	G. L.	31	15	2
Coyer, Adelor	Superior	attempted assault	43	36	3
Eastman, Edward	Ashland	operating without license	20		1
Stewart, Howard C.	Ashland	driving under the influence	31	4	1
Hamel, Marion	Ashland	deserting minor child	31	26	1
Smith, James J.	Haverhill	Absconding	61	9	5
Patten, Andrew	Lisbon	stealing	20	29	3
Wedge, Charles	Bethlehem	drunk and disorderly	67	8	4
Munson, Godfrey	Bethlehem	drunk and disorderly	57	9	3
Couin, Dennis	Bethlehem	drunk and disorderly	36	9	1
Randall, Tom	Bethlehem	drunk and disorderly	54	9	4

INMATES AT GRAFTON COUNTY HOUSE OF CORRECTION

Name	Court	Crime	Age	Time Served	
				Weeks	Days
Davis Stanley,	Lisbon,	drunk	47	12	6
McCarthy, Lawrence,	Littleton,	drunk and disorderly	52	12	6
Kelsea, Arnold,	Canaan,	aid & abat abandonment	27	4	4
Emerson, Pauline,	Canaan,	desertion & neglect of minor children	28	12	5
Tallman, Jerry,	Haverhill,	drunk	34	6	3
Reed, Etienne,	Haverhill,	drunk	70	8	4
Pearson, Frederick,	Bethlehem,	drunk and disorderly	44	8	3
Fowler, Walter,	Ashland,	drunk	31	4	2
Bickford, Elwin S.,	Ashland,	drunk	63	23	1
Dufraine, Wilfred,	Lebanon,	drunk	46	22	5
Ryan, John,	Hanover,	drunk	36	9	1
Tallman, Sidney,	Lebanon,	drunk	39	12	5
Little, Frank,	Lebanon,	drunk	56	9	3
McGee, John,	Littleton,	drunk and disorderly	57	5	5
Fowler, Walter F.,	Ashland,	derisive language and public annoyance	31	3	2
Wells, Orange,	Littleton,	drunk and disorderly	61	8	3
Passero, Anthony,	Haverhill,	drunk	39	1	
MacDonald, William,	Bethlehem,	drunk and disorderly	44	5	1
Lambert, Raymond,	Bethlehem,	drunk and disorderly	48	16	3
Gelridge, Richard,	Bethlehem,	drunk and disorderly	58	1	2
Grey, Douglas,	Lincoln,	non-support	?		2
Sargent, Percy G.,	Lisbon,	operating after license revoked	37	4	4
Farnham, Forest,	Superior,	stealing	23	15	6
Crocker, Bernard A.,	Ashland,	damaging property,	56	17	4
LaFrance, Alfred,	Haverhill,	drunk	26	8	4
Smith, Donald F.,	Superior, G. L.		28	14	1
Fontaine, Leo,	Superior,	aggravated assault	33	10	3
Bellerose, Albert C.,	Lincoln,	breaking and entering	20	10	3
Bellerose, Albert C.,	Lincoln,	drunk and disorderly	20	2	
Girard, William J.,	Haverhill,	drunk	?	2	2
Tallman, Jerry,	Hanover,	drunk and disturbing peace	34	9	4
Matterson, William,	Haverhill,	drunk	54	1	5
Crawford, Enock,	Littleton,	vagrant	36	6	6
King, Leon,	Littleton,	P. L.	52	6	1
Daniels, Donald,	Lebanon,	assault	37	5	4

INMATES AT GRAFTON COUNTY JAIL

Name	Court	Crime	Age	Time Served,	
				Weeks	Days
Pushee, Clarence L.,	Grafton Co. Supr.,	contempt	47	25	6
Handy, Endell,	Lincoln, G. L.	Auto	41	2	1
George, Bert,	Grafton Co. Supr.,	assault carnal	25	2	
Downer, William,	Graf. Co. Supr.	contempt	42	52	1
Carter, Clifton,	Haverhill,	assault carnal	18	2	
Dion, John R.,	Haverhill,	forged checks	18	2	
Nihan, Dennis John,	Graf. Co. Supr.,	contempt	35	3	6
Johnson, Ralph W.,	Littleton, G. L.	Auto	27	1	
Battis, John,	Haverhill,	cheat and fraud	40		2
Wooster, Wallace,	Graf. Co. Supr.,	contempt	23	1	
Morvan, Lorenzo,	Littleton,	assault	28	13	3
Morvan, Lorenzo,	Littleton,	operating under influence			
Marsh, Ernest,	Graf. Co. Supr.,	assault carnal	18	1	4
Champagne, Louis,	Littleton,	operating under influence	23	25	6
Racini, Emil,	Canaan,	stealing,		15	1
Coyer, Adelor,	Littleton,	attempted assault	43	15	1
Lewandowski, Frank,	Littleton,	aggravated assault	24	1	6
Enderson, Roger,	Bethlehem,	desertion and neglect	41	14	1
Liberty, Harry H.,	Plymouth,	stealing	55	11	5
Hoffs, Elias,	Lebanon,	stealing	32	11	
Hill, Richard C.,	Lebanon,	stealing	22	11	
Corbett, Leonard,	Littleton,	stealing	49	9	2
Stevens, Tom,	Lebanon,	stealing	32		1
Stevens, Florence,	Lebanon,	stealing	28		3
Marks, Josephine,	Lebanon,	stealing	21		3
Hall, Duncan,	Littleton,	breaking, entering and larceny	20	5	3
Williams, Lealand,	Littleton,	contempt	46	3	2
Pidgen, Adrian,	Littleton,	stealing	25	4	1
VanByron, Albert,	Littleton,	stealing	31	3	3
Kimball, Burt,	Canaan,	bastardry	66	7	5
Menard, Wilfred,	Plymouth,	stealing	20	4	3
Lewandowski, Frank,	Supr. Court,	Held	24	1	1
Elliott, John G.,	Haverhill,	stealing	50		3
White, Raymond A.,	Haverhill,	stealing	34		3
Wheeler, Clair,	Haverhill,	stealing	32		3
Ingalls, Howard,	Littleton,	breaking, entering and stealing	52	15	1
Lussier, Leonard W.,	Plymouth,	breaking & entering stealing	42	1	1
Cook, Roy E.,	Supr. Court,	violation of probation	40	21	6
Jones, Frank M.,	Plymouth,	hit and run	27	4	1
Farnham, Forrest,	Lisbon,	stealing	23	2	5
Shultka, Carolyn J.,	Plymouth,	stealing	25	2	3
Bence, John F.,	Plymouth,	stealing	42	2	3

INMATES AT GRAFTON COUNTY JAIL

Name	Court	Crime	Age	Time Served	
				Weeks	Days
Fontainé, Leo,	Littleton,	agg. assault	33	1	2
LeBrun, Paul Arthur,	Supr. Court,	contempt	31	12	
Bailey, Lloyd,	Plymouth,	G. L.	28	1	
Goupe, Armand,	Plymouth,	G. L.	22	1	
Couture, Charles,	Plymouth,	false pretense	41	9	1
Charbono, Harold,	Lebanon,	G. L. Auto	28	7	
Frost, Roland B.,	Lebanon,	assault carnal	29		4
LaCourse, Alton,	Littleton,	bad check	24		2

RECEIPTS

Boarders		\$ 1,839.68
Hospital		8,810.32
Farm		
Produce	\$ 636.50	
Cattle and swine	2,633.00	
Milk and cream	15,120.42	
Other income	748.07	19,137.99
Miscellaneous income	663.34	663.34
		<hr/>
		\$ 30,451.33
Cash advanced by Commissioners		300.00
		<hr/>
		\$ 30,751.33

EXPENDITURES

Paid County Treasurer	\$ 30,451.33
Cash on hand December 31, 1946	300.00
	<hr/>
	\$ 30,751.33

INVENTORY

Personal Property at Grafton County Farm:

December 31, 1945

Live Stock	\$ 21,140.00
Produce and Supplies	16,693.32
Farm Implements	7,729.80
Household Furniture	6,507.95
Almshouse Furniture	10,194.30
Jail and House of Correction	1,513.10
Chapel	432.00
Hospital	8,564.77
	\$ 72,775.24
Total	

Personal Property at Grafton County Farm:

December 31, 1946

Live Stock	\$23,185.00
Produce and Supplies	15,269.12
Farm Implements	7,351.80
Household Furniture	6,597.04
Almshouse Furniture	9,912.40
Jail and House of Correction	1,162.40
Chapel	432.00
Hospital	8,467.47
	\$ 72,377.23
Total	

Per capita cost of inmates at County Farm,
including Almshouse, Soldiers' Dependents,
House of Correction and Jail:

	Weeks	Days
Almshouse	2948	1
House of Correction	864	
Jail	332	2
<hr/>		
County Charges at Farm	4144	3
Town Boarders	831	2
Private Boarders	57	5
<hr/>		
Total	5032	10
County Farm Expenditures	\$ 66,596.07	
Inventory of Personal Property		
at beginning of year	72,775.24	
Accounts due Farm at		
beginning of year	1,718.76	
<hr/>		
	\$ 141,090.07	
County Farm Receipts	\$30,451.33	
Inventory at end of year	72,377.23	
Accounts due Farm	1,518.00	
<hr/>		
	\$ 104,346.56	
<hr/>		
Balance against Farm	\$ 36,743.51	
Number of weeks served		
County Cases	4144 wks.	3 days

Per Capita cost per week of all inmates,
but excluding boarders, employees and
guests \$8.86 plus

The crops of 1946 were of average quantity.
There wasn't as much hay cut as in the previous year
because about 20 additional acres of land were plowed.

The Ladino clover has proven it's worth and the
stock has benefited much from it.

There has been no great expenditure in the way
of repairs. The elevator was completed and certainly
has been a great time and labor saver, as anyone that
has ever carried a stretcher patient up two flights of
winding stairs can testify.

Rev. E. A. Ramige has been our pastor this year and we wish to thank him for his many kindnesses. Church services are held every other Sunday. Rev. R. B. Nichols substituted several times during the year.

Several parties have been held and were greatly enjoyed both by the staff and inmates. The Christmas party was especially good this year and we wish to thank all who helped to make it a success.

The Bookmobile still brings us the latest in reading material and it's visits are much looked forward to.

There have been several changes in the working staff. Evangeline Maccini, R. N., Carolyn Sawyer, R. N., Mrs. Ruth Knapp and Mrs. Bertha Knapp have completed their duties in the Hospital. Sarah M. Horne, R. N., is Hospital Supervisor, assisted by Josephine Dion, R. N., Muriel LaMott, R. N., Emma Sayers and Alonzo Morris. William Little and Harry Hatch have completed their services as House of Correction Boss and assistant herdsman, respectively. The rest of the staff remains the same.

The entire institution was saddened by the long illness and death of it's Matron, Anne M. Andrews. Had she lived until April 1947 she would have completed twenty years of service.

Thanks are due everyone that contributed books, magazines, etc. These articles have brought many hours of enjoyment and relaxation.

Mr. Fred Parker's term of office as Commissioner expired this year. We were sorry to see him leave as he has served the County faithfully for many years.

Mr. George Noyes is to be the new Commissioner and we hope that he will enjoy his work with us.

To the County Commissioners, County Physician, Chaplain, and other officers with whom we have worked during the year we extend thanks. Their helpfulness and co-operation has been appreciated.

I wish to thank the employees for their consideration and helpfulness during the year, especially

during the summer and fall while Mrs. Andrews was ill. The strain was great and it has been very difficult to carry on the work alone.

Respectfully submitted,

J. EARLE ANDREWS,
Superintendent.

We hereby certify that we have examined the foregoing accounts of the Superintendent of the County Farm for the year ending December 31, 1946, and find them correctly cast and properly vouched.

GEORGE A. PUSHEE,
FRED PARKER,
KENNETH G. BELL,
Commissioners of Grafton County.

CLERK OF COURT'S REPORT

To the Commissioners of Grafton County:

I submit herewith report of the receipts and disbursements of this office for the year ending December 31, 1946, as examined and allowed by the Court.

JANUARY TERM, 1946

Disbursements

Office supplies	\$ 14.31
66 Divorce cards	6.60
Mittimus, Capias, etc.	39.00
Pet. to Marry Edith Laro	2.20
16 Probation Certificates	16.00
15 State Entries 1387-1401	4.50
2 Petitions for Discharge	2.00
53 Days Attendance	530.00
Allowance	1,265.00
	\$ 1,879.61

Receipts

By 23 Dockets Sold	34.50
20 Rules of Court Sold	20.00
35 Civil Entries 7806-7840	31.50
117 Equity Entries 4241-4357	105.30
Credit by Refund, Tel, etc.	44.59
Costs State v Lavoie	4.70
Fine State v Reneau	50.00
Order on County Treasurer	1,589.02
	\$1,879.61

MAY TERM, 1946

Disbursements

Office supplies	\$ 21.15
88 Divorce Cards	8.80
Mittimus, Capias, etc.	20.00
11 Probation Certificates	11.00
17 State Entries 1402-1418	5.10

3 Petitions for Discharge	3.00
50 Days attendance	500.00
Allowance	1,265.00
	<hr/>
	\$1,834.05

Receipts

By 24 Dockets sold	36.00
51 Civil Entries 7841-7891	45.90
133 Equity Entries 4357-4489	119.70
Credit by Refund, Tel., etc.	2.35
Refund Lewellyn v Follansbee	23.77
Fine State v Stevens	127.00
Fine State v Stevens	127.00
Fine State v Marks	127.00
Fine State v Kinne	100.00
Fine & costs State v Gould	75.00
Order on County Treasurer	1,050.33
	<hr/>
	\$1,834.05

SEPTEMBER TERM, 1946

Disbursements

To Office supplies	\$ 35.68
78 Divorce Cards	7.80
Mittimus, Capias, etc.	37.00
27 Probation Certificates	27.00
25 State Entries 1419-1443	7.50
3 Petitions for Discharge	3.00
36 Days Attendance	180.00
3 Days Interim Attendance	15.00
Allowance	1,265.00
	<hr/>
	\$1,577.98

Receipts

By 21 Dockets sold	31.50
31 Civil Entries 7892-7922	27.90
127 Equity Entries 4490-4616	114.30
Credit by Refund, Tel., etc.	5.94
Costs State v Snell	100.00
Costs State v Ahnert	50.00

60

Costs State v Maki	13.80
Order on County Treasurer	1,234.54
	<hr/>
	\$1,577.98

Respectively submitted,

C. MURRAY SAWYER,

Clerk.

REPORT OF COUNTY SOLICITOR

To the Commissioners for the County of Grafton:

I respectively present the following report of cases presented before the Superior Court for the January May and September terms for the year 1946.

JANUARY TERM

Indictments

State vs. Livingston T. Moore, Jr. Larceny by check. Arraigned April 9, 1946 at Concord, New Hampshire, plea guilty, case continued for sentence. In this case restitution of Grafton County Offense was made. Respondent was sentenced under Merrimack County Complaint.

State vs. Wendell Dennis. Statutory Offense. Arraigned January 15, 1946, Plea not guilty. Trial February 12, 1946, found not guilty. Discharged.

State vs. John H. Battis. Larceny. Arraigned January 28, 1946. Plea nolo. February 6, 1946 sentenced to one year in the Grafton County House of Correction. Committed.

State vs. John R. Dion. Larceny by check. Arraigned January 14, 1946, plea guilty, sentenced to serve one year in the Grafton County House of Correction. Committed.

State vs Clifton Carter, Statutory Offense. Arraigned January 14, 1946. Plea guilty, sentenced to serve six months in the Grafton County House of Correction. Committed.

State vs. Ralph N. Johnson. Larceny. Arraigned January 14, 1946. Plea guilty. Sentenced to State Prison for a term of not more than three years nor less than one year and one day. Committed.

State vs. Bert H. George. Statutory Offense. Arraigned January 14, 1946. Plea not guilty, not guilty plea withdrawn; plea guilty. Sentenced to State Prison for a term of not more than three years nor less than one year and one day. Committed.

State vs. Eudell Timonthy Handy, alias Timothy Handy. Larceny. Arraigned January 14, 1946, plea not guilty. January 15, 1946 not guilty plea withdrawn

plea guilty. Sentenced to serve one year in the Grafton County House of Correction. Committed.

Appeal Cases

State vs. Roger E. LaVoie. Operating Motor vehicle under influence of intoxicating liquor. January 16, 1946 arraigned. Plea guilty. Sentenced to pay fine of fifty dollars and costs taxed at four dollars and seventy cents or to serve sixty days in the Grafton County House of Correction. Fine and costs paid.

State vs. Dean K. Richardson. Operating motor vehicle under influence of intoxicating liquor. Arraigned January 17, 1946. Plea not guilty. Trial-found not guilty. Discharged.

MAY TERM

Indictments

State vs. Duncan O. Hall. Breaking and entering in the night time and larceny. Arraigned May 20, 1946. Plea guilty. Sentenced to serve one year in the Grafton County House of Correction. Committed.

State vs. Robert Frederick Enderson. Neglect to maintain minor children. Arraigned May 20, 1946, plea not guilty. June 6, 1946 not guilty plea withdrawn, plea guilty. Sentenced to serve six months in the Grafton County House of Correction and ordered to pay twenty dollars per week through the Probation Department; sentence suspended; placed on Probation during compliance with court order.

State vs. Adrian L. Pigeon. Larceny. Arraigned May 20, 1946. Plea guilty. Sentenced to State Prison for a term of not more than two years, not less than one year and one day. Committed.

State vs. Frank Lewendowski. Aggravated assault. Arraigned June 6, 1946. Plea guilty. Sentenced to State Prison for a term of not more than three years nor less than one year and one day; ordered to pay a fine in the amount of one hundred dollars and costs taxed at one hundred dollars; State's Prison sentence suspended on payment of fine and costs. Committed.

State vs. Albert VanByron. Larceny. Arraigned May 20, 1946. Plea guilty. Sentenced to serve nine

months in the Grafton County House of Correction. Committed.

State vs. Norman Couture. Larceny. Arraigned May 20, 1946. Plea guilty. Sentenced to serve one year in the Grafton County House of Correction. Committed.

State vs. Reginald McLean. Forgery. Arraigned May 20, 1946. Plea guilty. Case continued for sentence; restitution in the amount of twenty dollars to be made on or before June 1, 1946; placed on Probation for a term of one year.

State vs. Emile J. Racine. Larceny. Arraigned May 20, 1946. Plea guilty. Sentenced to State Prison for a term of not more than two years nor less than one year and one day. Committed.

State vs. Elias Hopps. Larceny of livestock. Arraigned May 21, 1946. Plea guilty. Sentenced to State Prison for a term of not more than two years nor less than one year and one day. Committed.

State vs. Richard H. Hill. Larceny of livestock. Arraigned May 21, 1946. Plea guilty. Sentenced to State Prison for a term of not more than two years nor less than one year and one day; sentence suspended placed on Probation for a term of two years.

Appeal Cases

State vs. Harry H. Liberty. Petit Larceny. Arraigned May 20, 1946. Plea not guilty; plea of not guilty withdrawn; plea nolo; case continued for sentence.

Indictment Waived

State vs. Everett B. Kinne. Hit and run. Arraigned May 11, 1946. Plea guilty. Sentenced to Grafton County House of Correction for a term of one year; to pay fine in the amount of one hundred dollars and pay costs taxed at one hundred dollars. House of Correction sentence suspended on payment of fine and costs. Placed on Probation for a term of three years; mittimus to issue on call of the County Solicitor.

State vs. Tom Stevens. Larceny. Arraigned April 8, 1946. Plea guilty. Sentenced to State Prison for a term of not more than four years nor less than

two years and to pay costs taxed at one hundred twenty-seven dollars. State Prison sentence suspended on payment of costs. Costs paid; mittimus to issue on call of the County Solicitor.

State vs. Florence Stevens. Larceny. Arraigned April 8, 1946. Plea guilty. Sentenced to State Prison for a term of not more than four years nor less than two years and to pay costs taxed at one hundred twenty-seven dollars. State Prison sentence suspended on payment of costs, costs paid; mittimus to issue on call of the County Solicitor.

State vs. Josephine Marks. Larceny. Arraigned April 8, 1946. Plea guilty. Sentenced to State Prison for a term of not more than four years nor less than two years; to pay costs taxed at one hundred twenty-seven dollars; and to pay restitution in the amount of two hundred thirteen dollars; State Prison sentence suspended on payment of costs and restitution, paid; mittimus to issue on call of the County Solicitor.

SEPTEMBER TERM

Indictments

State vs. John F. Bence. Larceny. Arraigned September 11, 1946. Plea guilty. Sentenced to State Prison for a term of not more than three years nor less than two years and six months. Committed.

State vs. Carolyn J. Shutka. Receiving and concealing stolen property. Arraigned September 11, 1946. Plea guilty. Sentenced to State Prison for a term of not more than two years nor less than one year and one day; State Prison sentence suspended. Placed on Probation for a term of three years.

State vs. Frank Maurice Jones. Hit and run. Arraigned September 11, 1946. Plea not guilty, not guilty plea withdrawn; plea guilty. Sentenced to State Prison for a term of not more than eighteen months nor less than one year and one day. Committed.

State vs. Howard W. Ingalls. Breaking and entering in the night time and larceny. Arraigned September 11, 1946. Plea not guilty. September 23, 1946 not guilty plea withdrawn, plea guilty. Sentenced to serve six months in the Grafton County House of Correction and pay costs taxed at fifty dollars; House

of Correction sentence suspended on payment of costs. Placed on Probation for a term of one year.

State vs. Leo Fontaine. Aggravated assault. Arraigned September 11, 1946. Plea not guilty by reason of insanity. October 5, 1946 on being found sane not guilty plea withdrawn. Plea guilty. Sentenced to serve one year in the Grafton County House of Correction; the last six months of the sentence suspended; placed on Probation for a term of four years to begin at the expiration of the served sentence on condition that Leo Fontaine support his minor child, be of good behavior, and refrain from exercising any custody or control over the said child and refrain from abusing or molesting the child in any way.

State vs. Forrest Farnham. Larceny. Arraigned September 11, 1946. Plea guilty. Sentenced to serve six months in the Grafton County House of Correction. Committed.

State vs. Duncan Hall. Larceny. Arraigned September 11, 1946. Plea guilty. Sentenced to State Prison for a term of not more than three years nor less than two years. Committed.

State vs. Leonard W. Lussier. Breaking and entering in the night time and larceny. Arraigned September 11, 1946. Plea not guilty. September 24, 1946 not guilty plea withdrawn; plea guilty to grand larceny. Sentenced to State Prison for a term of not more than three years nor less than one year and one day. Committed.

State vs. Donald H. Smith. Breaking, entering in the night time and larceny. Arraigned September 11, 1946. Plea not guilty. September 24, 1946 plea not guilty withdrawn, plea guilty. Sentenced to serve six months in the Grafton County House of Correction. Committed.

State vs. Carmelia C. Smith. Breaking and entering in the night time and larceny. Arraigned September 11, 1946. Plea guilty. September 24, 1946 continued for sentence. Placed on Probation for a term of two years.

State vs. Rose Robie. Breaking and entering in the night time and larceny. Arraigned September 11, 1946. Plea not guilty, plea of not guilty withdrawn; plea guilty. September 24, 1946 continued for sen-

tence. Placed on Probation for a term of two years.

State vs. Wilfred R. Menard. Breaking and entering in the night time and larceny. Arraigned September 11, 1946. Plea guilty. Sentenced to State Prison for a term of not more than three years nor less than one year and one day. Committed.

Indictments Waived

State vs. John G. Elliott. Larceny of livestock. Arraigned September 7, 1946. Plea guilty. Sentenced to State Prison for a term of not more than three years nor less than two years. Committed.

State vs. Raymond A. White. Larceny of livestock. Arraigned September 7, 1946. Plea guilty. Sentenced to State Prison for a term of not more than three years nor less than two years. Committed.

State vs. Claire Wheeler. Larceny of livestock. Arraigned September 7, 1946. Plea guilty. Sentenced to State Prison for a term of not more than three years nor less than two years. Committed.

State vs. Walter Martin Ahnert. Larceny. Arraigned September 4, 1946. Continued for examination to September 25, 1946. September 25, 1946 arraigned. Plea guilty. Sentenced to serve six months in the Grafton County House of Correction and pay costs taxed at fifty dollars; House of Correction sentence suspended on payment of costs. Placed on Probation for a term of three years.

State vs. Richard Snell. Aggravated assault. Arraigned September 4, 1946. Plea guilty. Sentenced to serve one year in the Grafton County House of Correction and pay costs taxed at one hundred dollars; House of Correction sentence suspended on payment of costs; placed on Probation for a term of one year.

State vs. Donald L. Rogers. Aggravated assault. Arraigned September 4, 1946. Plea guilty. Sentenced to serve one year in the Grafton County House of Correction and pay costs taxed at one hundred dollars; House of Correction sentence suspended on payment of costs; placed on Probation for a term of one year.

State vs. Cary Rothenburger. Aggravated assault. Arraigned September 4, 1946. Plea guilty. Sentenced to serve one year in the Grafton County

House of Correction and pay costs taxed at one hundred dollars; House of Correction sentence suspended on payment of costs; placed on Probation for a term of one year.

State vs. Armond Goupil. Larceny. Arraigned September 23, 1946. Plea guilty. Case continued for sentence on payment of costs taxed at one hundred dollars; placed on probation for a term of two years.

State vs. Lloyd Bailey. Larceny. Arraigned September 23, 1946. Plea guilty. Case continued for sentence on payment of costs taxed at one hundred dollars. Placed on Probation for a term of three years.

Appeal Cases

State vs. Alice Maki. Operating motor vehicle under the influence of intoxicating liquor. Arraigned September 24, 1946. Plea guilty. Sentenced to pay a fine of fifty dollars and costs taxed at thirteen dollars and eighty cents. Sentence suspended to September 28, 1946. Fine and costs paid.

I wish to take this opportunity to express my appreciation for the cooperation shown the Solicitor's Office by the various State, County and Local Police Departments.

I particularly wish to call to the attention of the taxpayers of Grafton County the excellence of the police work performed by Stuart H. Currier, Sergeant of the New Hampshire State Police and to the high quality of the work done by Van H. Gardner, Chief of Police of Littleton. The efforts of these two men have been outstanding in their respective fields.

I have enjoyed the work as prosecuting attorney for the County of Grafton and sincerely hope that all police agencies in the State will give the incoming County Solicitor the same perserverance and cooperation that I have been shown.

I thank the voters of Grafton County for the confidence they have shown in me over the past few years.

Respectively submitted,

HAZEN K. STURTEVANT.

SHERIFF'S REPORT

To the Commissioners of Grafton County :

I respectfully submit the following report as Sheriff of the County from January 1, 1946, to December 31, 1946:

JANUARY TERM AT LEBANON

To Attendance

Robert P. Peckett, Jr., Sheriff	
1 day at \$6.50	\$ 6.50
53 days at \$5.00	265.00
Travel	175.10
Expenses	196.30
Clergyman	10.00
Supplies	4.45
Feeding Jury	12.05
William A. Kimball, Deputy Sheriff	
5 days	35.00
Travel	1.00
James Q. Ricard, Deputy Sheriff	
4 days	28.00
Travel	12.00
J. Stanley Harrington, Deputy Sheriff	
11 days	77.00
Travel	67.50
Expenses	16.50
George U. L. Leavitt, Deputy Sheriff	
23 days	161.00
Travel	4.60
Expenses	5.37
John Farnham, Deputy Sheriff	
8 days	56.00
Travel	33.70
Expenses	6.00
Theodore R. Gardner, Deputy Sheriff	
5 days at \$6.50	32.50

12 days at \$7.00	84.00
Travel	185.05
Expenses	35.30
	<hr/>
	\$ 1,509.92

MAY TERM AT PLYMOUTH

To Attendance

Robert P. Peckett, Jr., Sheriff	
3 days at \$500	15.00
50 days	250.00
Travel	182.90
Expenses	252.79
Clergyman	10.00
Assistance	19.00
William A. Kimball, Deputy Sheriff	
26 days	182.00
Travel	19.40
Theodore R. Gardner, Deputy Sheriff	
19 days	133.00
Travel	117.20
Expenses	21.50
John L. Farnham, Deputy Sheriff	
25 days	175.00
Travel	217.60
Expenses	54.00
Assistance	16.00
James Q. Ricard, Deputy Sheriff	
1 day	7.00
1 day	8.00
Travel	40.00
Expenses	2.10
Assistance	5.00
George U. L. Leavitt, Deputy Sheriff	
4 days	28.00
Travel	.80
	<hr/>
	\$ 1,756.29

SEPTEMBER TERM AT WOODSVILLE

To attendance

Robert P. Peckett, Jr., Sheriff	
1 day	8.00
3 days	15.00
34 days	175.00
Travel	62.80
Expenses	85.04
Clergyman	10.00
Assistance	35.00
George U. L. Leavitt, Deputy Sheriff	
4 days	28.00
Travel	12.90
Expenses	6.10
Van H. Gardner, Deputy Sheriff	
1 day	7.00
John L. Farnham, Deputy Sheriff	
21 days	147.00
Travel	270.70
Expenses	29.50
Assistance	7.00
William A. Kimball, Deputy Sheriff	
2 days	15.00
Travel	13.40
Expenses	2.25
Theodore R. Gardner, Deputy Sheriff	
14 days	99.00
Travel	105.16
Expenses	22.49
Assistance	7.00
	<hr/>
	\$1,163.34

Respectfully submitted,

Robert P. Peckett, Jr.

Sheriff

CHAPLAIN'S REPORT

To the Commissioners of Grafton County :

I herewith submit my report in the work of chaplain for the year ending December 31, 1946.

Since coming to this community last March, Sunday afternoon services have been conducted every other week in the chapel. During an absence from the state, Rev. R. Nichols of Woodsville officiated for me at two of the meetings. Several funeral services were conducted, including the one for Mrs. Andrews, the wife of our esteemed Superintendent. It was fitting that this service for Mrs. Andrews was held at the Institution where she had served so long and faithfully and where she was greatly loved.

A few programs were arranged for with a violinist and other talent. It was a special pleasure to provide for the program at the annual Christmas party. This delightful gathering was enjoyed by all in the setting of two large Christmas trees.

My connections with Grafton County Farm have brought many satisfactions. The kindly courtesy of Supt. Andrews has been greatly appreciated. Mrs. Lang and the choir were ready to help at every Sunday service. We were grateful for the fine gift given to Mrs. Ramige and me at the Christmas party. Mrs. Little and her cooperative spirit was appreciated. Not the least satisfaction came from the response and appreciation manifested by the inmates whether to a sick call, a little chat or to the Sunday service.

Respectfully submitted,

E. A. Ramige,

Chaplain

REPORT OF THE COUNTY PHYSICIAN

To the Commissioners of Grafton County:

I herewith submit my report for the year ending December 31, 1946.

Under the management of Superintendent and Mrs. Andrews the hospital has completed another successful year. With the prevailing shortage of nurses the superintendent has somehow managed to keep the regular staff of nurses complete so that at all times the patients have had their usual good care.

The usefulness of the hospital in caring for the indigent sick of the County is increasingly apparent year by year. The administration of the hospital is economical and the nursing care given the patients will compare favorably with any like institution.

During the past year most of the patients have been advanced in years, some of whom were in the last stages of chronic disease and some were sent in from other hospitals for terminal care.

Besides those in the hospital, it has been my privilege and duty to care for the health of the inmates in the Almshouse and those confined in the House of Correction and the Jail, and it has been my purpose to administer to all of them with the consciousness of being a public servant, and to give to all the best possible care and consideration. In cases of critical illness when it appeared beneficial to the patient, the Commissioners have always approved of calling in consulting Doctors.

Since many of our patients are of advanced age and without close friends, it would be difficult to overestimate the importance of a kindly and sympathetic staff of nurses. Elderly people removed from their homes for the first time, need a great deal of kindness and sympathy, and that is where good nursing begins.

This institution has been fortunate in that it has been entirely free of contagious disease during the year which is a condition much desired but seldom evaluated, particularly where so many individuals are living in one building.

Patients are admitted to the hospital only upon the advice and consent of the Commissioners.

I gratefully acknowledge the valuable counsel of the Commissioners, the cooperation of the management, and the assistance of all connected with the work of the hospital.

Respectfully submitted,

E. M. Miller,

County Physician.

Statistics for 1946

Patients in hospital January 1, 1946	21
Patients admitted during year	99
	<hr style="width: 10%; margin-left: auto; margin-right: 0;"/>
Patients in hospital January 1, 1947	120
Patients discharged, cured or improved	27
Daily average	72
Total nursing days in year	22.5
Number of births during year	8211
Number of operations during year	1
Number of deaths during year	7
	24

DEATHS 1946

Date	Date	Yrs.	Mos.	Dys.	Cause of Death
Jan. 7	Lynn Bowles	60	3	26	Cerebral Hemorrhage
Jan. 18	Thankful Bowen	88	4	12	General Debility
Jan. 19	David Stone				Organic Heart Disease
Jan. 20	Nellie Weeks				Varicose Ulcers
Feb. 17	Charles Stone	83	11	15	Organic Heart Disease
Mar. 5	Victor Revoir				Cerebral Hemorrhage
Mar. 9	Peabody Day	80	1	19	Broncho pneumonia
Mar. 12	James White	79	10	29	Cerebral Hemorrhage
Mar. 13	William Page	84		28	Arteriosclerosis- Senility
May 22	Golden Wallace	68	10	25	Cerebral Hemorrhage
May 23	Samuel Oleuk	69	9	19	Organic Heart Disease
June 1	Will Wiggin	67		6	Carcinoma of Prostate
June 5	Wendell H. Sargent	34	7	4	Epileptic Convulsions- Epilepsy
June 13	Elizabeth Stanley				Senility
June 16	Alder C. Leard	78	3	23	Cerebral Hemorrhage
Aug. 9	Asenath S. Oakley	76	2	1	Organic Heart Disease
Aug. 27	Bertha Sawyer	68	3	29	Organic Heart Disease
Sept. 2	Larry Currier	3	5	17	Meningitis
Sept. 9	Fred M. Dickey	61	2		Organic Heart Disease
Sept. 30	Frank Mullen	71	4	13	Carcinoma of Pharynx
Oct. 16	Arthur Levesque				Cerebral Hemorrhage
Oct. 30	Mertie Gilman	69	3	20	Carcinoma of Pelvic Organs
Nov. 21	Victor Plante	77	1	12	Organic Heart Disease
Nov. 22	Sue Gullen	73	3	22	Carcinoma of Ear

**SUMMARY OF FARM ACCOUNTS OF GRAFTON
COUNTY FARM FOR 1946**

CAPITAL INVESTMENT

	1945	1946
Value of Land and Buildings	\$42,715.00	\$42,715.00
Inventory of Livestock	21,140.00	23,185.00
Inventory of machinery and Equipment	7,250.00	7,274.60
Inventory of Feed & Supplies	7,596.28	5,539.50
	<hr/>	
	\$78,701.28	\$78,714.10
Capital gain in Inventory		\$12.82

Summary of Receipts

	Cash	Institution	Total
Milk and			
Milk Products	\$14,841.44	\$3,131.61	\$17,973.05
Potatoes & Vegetables	686.85	3,389.77	4,076.62
Poultry & Eggs		612.61	612.61
Dressed Pork & Beef		2,910.20	2,910.20
Sale of Livestock	2,533.50		2,533.50
Miscellaneous Receipts	761.74		761.74
	<hr/>		
	\$18,823.53	\$10,044.19	\$28,867.72
Increase in Livestock Inventory			2,045.00
Increase in Machinery Inventory			24.60
			<hr/>
			\$30,937.32

Summary of Expenses

Supervision	\$ 250.00
Labor-Regular	4,762.02
Labor-House of Correction	1,247.00
Purchased Feed	9,135.91
Livestock & Veterinarian	332.14
Seeds, Fertilizer & Spray Materials	912.86
Machinery Repairs	86.70
Taxes	1,982.26
Insurance	684.95

Light & Power	243.72
Tractor, Truck Repairs, Gas & Oil	1,203.10
Miscellaneous Expenses	139.42
	<hr/>
	\$20,980.08
Decrease in Crops & Feed Inventory	2,056.78
	<hr/>
	\$23,036.86
Total Receipts plus Inventory Increase	\$30,937.32
Total Expenses plus Inventory Decrease	23,036.86
	<hr/>
Operating Profit	\$ 7,900.46

J. EARLE ANDREWS,
Superintendent.

W. ROSS WILSON,
County Agricultural Agent.

FINANCIAL REPORT
GRAFTON COUNTY FARM BUREAU

County Extension Work in Agriculture, Home Economics, and Boys and Girls Club Work for the Year ending December 31, 1946.

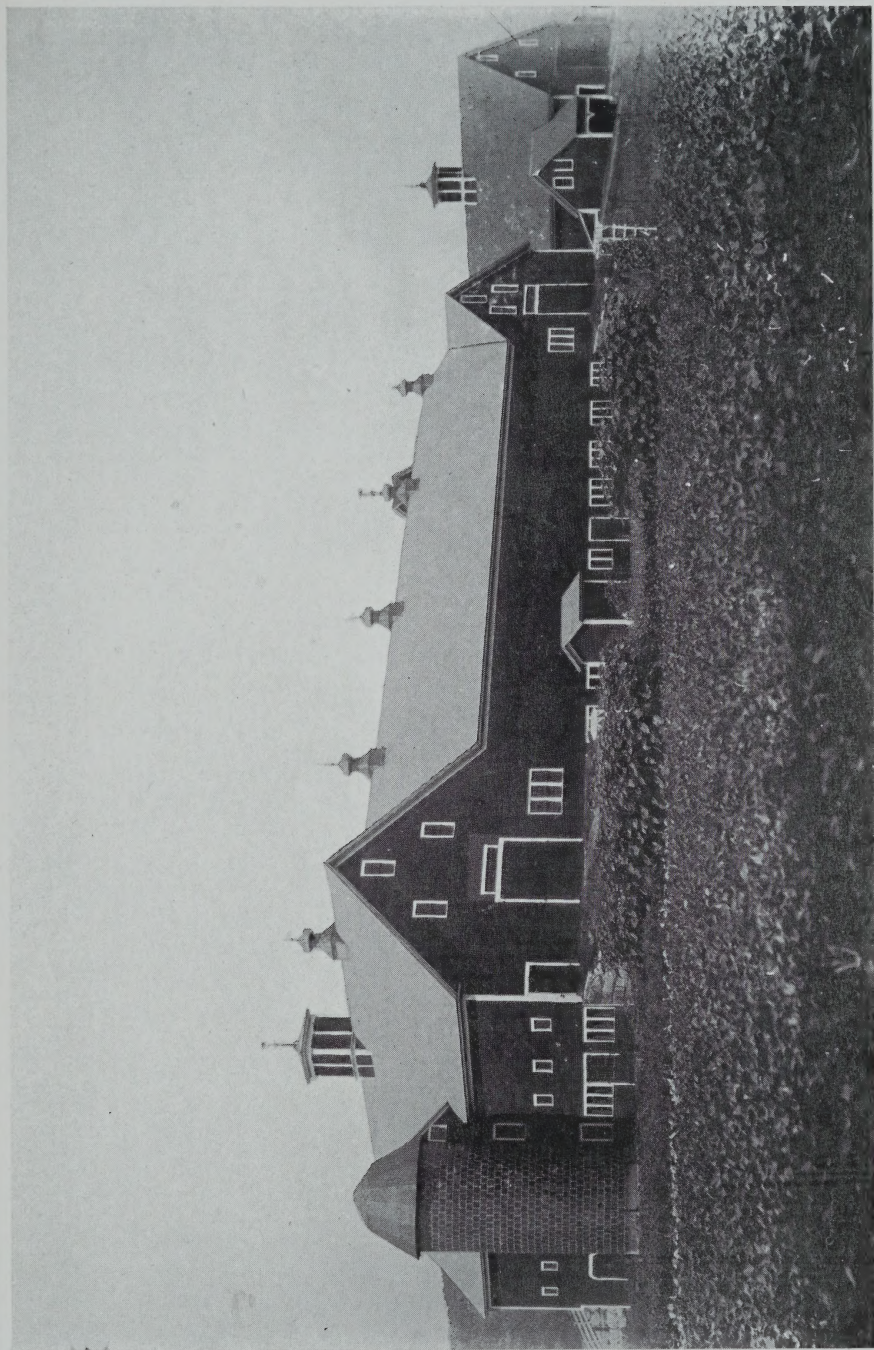
To the Commissioners of Grafton County:

Herein is submitted a statement of expenditures of the legislative appropriation of \$9000.00 for Grafton County Extension Work in cooperation with the University of New Hampshire and the United States Department of Agriculture.

Legislative appropriation for the year 1946	\$9,000.00
Balance on Hand January 1, 1946	1,492.56
Sale of typewriters	27.50
	\$10,520.06

Salary & Expenses of Agricultural Agent	\$2338.11	
Salary & Expenses of Home Demonstration Agent	1159.71	
Salary & Expenses of Club Agent	1518.91	
Salary & Expenses of Assistant Club Agent	166.51	
Expenses of County Forester	320.75	
Expenses of Asst. Home Demonstration Agent	20.87	
Stenographic Services (3 clerks)	2521.96	
Freight & Express	27.52	
Telephone & Postage	416.44	
Rent	372.50	
Printing	13.40	
Equipment	509.72	
Supplies	341.02	
Equipment	509.72	
Labor	4.50	
Miscellaneous Expenses	45.13	
		9,832.76
Balance on Hand December 31, 1946		\$ 687.30

Respectfully submitted,
MILDRED HIGGINS, Treasurer.
W. ROSS WILSON,
County Agricultural Agent.



GRAFTON COUNTY FARM BARN

