



17  
B. 1.00

E. P. Thompson

Dec. 4-1920









**ANNUAL REPORT**  
OF THE  
**COMMISSIONERS**  
OF THE  
**COUNTY OF BELKNAP**

TOGETHER WITH THE  
**REPORTS OF THE SUPERINTENDENT OF THE  
COUNTY FARM, SHERIFF, COUNTY TREAS-  
URER, JAILER, PHYSICIAN, CHAPLAIN,  
CLERK OF THE COURT, COUNTY  
SOLICITOR AND AUDITORS,**

FOR THE  
**YEAR ENDING DECEMBER 31, 1914.**



LACONIA, N. H.  
PRESS OF THE NEWS AND CRITIC.

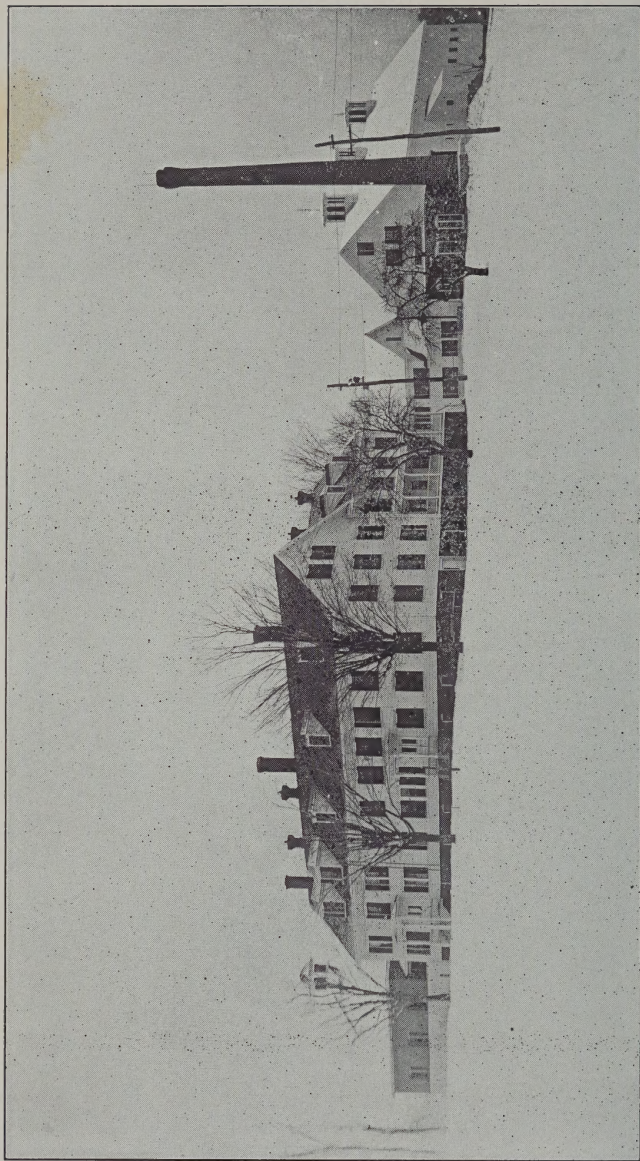
1915







## COUNTY FARM BUILDINGS



The brick building comprising the house of correction and men's hospital, also the women's apartments are not shown in this picture

435

# ANNUAL REPORT

OF THE

## COMMISSIONERS

OF THE

# COUNTY OF BELKNAP

TOGETHER WITH THE

REPORTS OF THE SUPERINTENDENT OF THE  
COUNTY FARM, SHERIFF, COUNTY TREAS-  
URER, JAILER, PHYSICIAN, CHAPLAIN,  
CLERK OF THE COURT, COUNTY  
SOLICITOR AND AUDITORS,

FOR THE

YEAR ENDING DECEMBER 31, 1914.



LACONIA, N. H.,

PRESS OF THE NEWS AND CRITIC.

1915



## COUNTY OFFICERS.

---

### COMMISSIONERS,

ARTHUR C. S. RANDLETT, Laconia ;  
STEPHEN L. WEEKS, Gilmanton ;  
JONATHAN C. SHANNON, Laconia.

### TREASURER,

STEPHEN B. COLE, Laconia

### SOLICITOR,

JOHN M. MESERVE, Tilton.

### SHERIFF,

LESTER PHILBROOK, Laconia.

### CLERK OF SUPERIOR COURT,

EDWIN P. THOMPSON, Laconia,

### JUDGE OF PROBATE,

FRANK P. TILTON, Laconia.

### REGISTER OF PROBATE,

\*TRUE W. THOMPSON, Laconia.

### COMMISSIONER OF PROBATE,

\*\*THOMAS C. HILL, Laconia.

### REGISTER OF DEEDS,

MARTIN B. PLUMMER, Laconia.

### DEPUTY REGISTER OF DEEDS,

MRS. MABEL CONNOR, Meredith.

### AUDITORS,

†HARRIS A. MORSE, Tilton ;

OSCAR L. YOUNG, Laconia ;

††HERBERT J. JONES, Alton.

\* Deceased.

\*\* Appointed Feb. 24.

† Resigned.

†† Appointed March 31.

SUPERINTENDENT OF COUNTY FARM AND DEPUTY JAILOR,  
ALFRED P. BATCHELDER, Laconia.

PHYSICIAN AT COUNTY FARM,  
HENRY C. WELLS, M. D., Laconia.

CHAPLAIN,  
REV. GEORGE L. THOMPSON, Laconia.

DEPUTY SHERIFFS,  
CALVIN JENKINS, Barnstead ;  
DEARBORN F. CAVERLY, Meredith ;  
JOHN H. LYFORD, Belmont ;  
ORVIS A. PLUMMER, Tilton ;  
WILLIAM H. PHILBROOK, Laconia.

MEDICAL REFEREE,  
EDWIN P. HODGDON, M. D., Laconia.

### Belknap County Delegation, 1915 and 1916.

Alton . . . . .	Charles H. McDuffee
Barnstead . . . . .	Charles A. Holmes
Belmont . . . . .	Edwin C. Bean
Center Harbor . . . . .	John Coe
Gilford . . . . .	John A. Hammond
Gilmanton . . . . .	Albert W. Hill
Laconia, Ward 1 . . . . .	John T. Dodge
“ “ 2 . . . . .	William B. Johnson
“ “ 2 . . . . .	Charles R. Pease
“ “ 3 . . . . .	Harry S. Chase
“ “ 4 . . . . .	Burt S. Dearborn
“ “ 4 . . . . .	William F. Seaverns
“ “ 5 . . . . .	Frank Pearson
“ “ 5 . . . . .	Archie B. Sanborn
“ “ 6 . . . . .	George W. Hoyt
“ “ 6 . . . . .	George D. Merrill
Meredith . . . . .	Bertram Blaisdell
New Hampton . . . . .	Frank W. Preston
Sanbornton . . . . .	Robert M. Wright
Tilton . . . . .	Herman Page
Tilton . . . . .	Charles E. Tilton

## Commissioners' Report.

---

### *To the Citizens of Belknap County:*

In compliance with the requirements of the laws of New Hampshire, your Commissioners herewith submit the report of their financial transactions for the year ending December 31, 1914, and a statement of the financial condition of the county at the end of the year, together with the reports of the other county officers required by law. Attention is called to these reports for detailed information regarding the work done in different departments of the county's business.

The almshouse and house of correction have continued under the management of Mr. and Mrs. Alfred P. Batchelder, who assumed the positions of superintendent and matron, January 1, 1913. They have spared no pains in making the lives of those in the almshouse comfortable while those committed to the house of correction have been kept at work.

Their services have been secured for the coming year, in which the county is very fortunate.

The crops have been larger than those of last year; the large corn yield being nearly double, necessitating the building of another silo, which will supply the farm with the required amount of ensilage.

The demonstration grass plots, fertilized under the direction of Prof. F. W. Taylor of New Hampshire State College, gave good results; there were six equal sized plots. The one top dressed with nitrate of soda gave the largest yield; as the same material is to be used on the same plots for three years, there is not much information to publish at this time, with the exception that one of the plots, receiving

no fertilizer, yielded at the rate of 1700 pounds less of hay per acre, than the one receiving the nitrate of soda.

There are nine refunding bonds outstanding, due Jan. 1st, 1915; the money is in the hands of the treasurer to meet them, with the exception of \$3,043.70 on deposit in Meredith Village Savings Bank. The municipal bonds, formerly in the sinking fund, have been turned over to the treasurer and sold, the proceeds to be used in redeeming the outstanding bonds at date of maturity.

All the improvements authorized by the last delegation, have been completed with the exception of the water tank, the appropriation for that purpose having been used for building the new silo, which was a necessity.

The upper floor of the court house, including the court room and stairway, has been thoroughly renovated. The arrangement of the jury seats has never given satisfaction, and they have been moved nearer to the witness stand; brass foot rods have been erected, a panel back built and a new radiator placed in the rear of the seats, also a new cork floor matting has been laid.

On account of the general business depression and the consequent inability of many to obtain work, the calls for aid have been more numerous than for several years.

The assistance rendered the transient poor, meaning those who, ordinarily are able to care for their families comfortably, has been 60 per cent more than that of last year, while the number of week's board furnished at the county farm has increased 16 per cent. Notwithstanding the increased amount of aid rendered, the county being out of debt, your commissioners believe that a reduced appropriation would meet the running expenses for the coming two years.

Since a recent attack by a desperate prisoner with confessed murderous intent on the life of the jailer, there has been a strong feeling that such a thing should be made impossible by building tool-proof cell work, which will remove



any need of the jailer coming in close contact with the prisoners, and making escape from jail practically impossible. If the present delegation should vote to make the jail improvements, the appropriation will probably have to remain as formerly.

We wish to express our sincere thanks to Mr. and Mrs. Batchelder, who have been untiring in their efforts to make the lives of the inmates comfortable; and in performing all other duties incumbent on them as superintendent and matron respectively. Also to the chaplain, Rev. George L. Thompson, for his kindly helpfulness, both at the farm and outside, and to Mr. and Mrs. J. F. Weeks, who so cheerfully gave their assistance in making Christmas day of 1914, a merry Christmas for the inmates. We also wish to express our thanks to the different county, city and town officials for their co-operation, and to all other citizens who have aided us in our work of the past year.

Following is the amount of the appropriations for each of the past twenty years.

COUNTY TAX.

1895.....\$37 800	1905.....\$30 000
1896..... 36 500	1906..... 30 000
1897..... 28 500	1907..... 31 000
1898..... 30 000	1908..... 31 000
1899..... 30 500	1909..... 32 000
1900..... 30 000	1910..... 32 000
1901..... 35 500	1911..... 32 000
1902..... 35 500	1912..... 32 000
1903..... 31 000	1913..... 32 000
1904..... 30 000	1914..... 32 000

Respectfully submitted,

ARTHUR C. S. RANDLETT,  
STEPHEN L. WEEKS,  
JONATHAN C. SHANNON,  
*Commissioners of Belknap County.*

## External Poor Account

Amount Paid for Support of Paupers and Soldiers and  
Their Families Off the Farm for the  
Year Ending December 31, 1914.

### ALTON.

Transient . . . . .	\$211.85	
Soldiers and their families . . .	123.61	
	_____	\$335.46

### BARNSTEAD.

Transient . . . . .	\$ 12.50	
	_____	\$12.50

### BELMONT.

Transient . . . . .	\$162.50	
Soldiers and their families . . .	25.00	
	_____	\$187.50

### CENTER HARBOR.

Transient . . . . .	\$ 56.82	
	_____	\$56.81

### GILMANTON.

Transient . . . . .	\$458.95	
Laura Page . . . . .	65.00	
	_____	\$523.95

### LACONIA.

Transient . . . . .	\$4,078.70	
Mrs. Harry Parker . . . . .	407.81	
Nellie Tasker . . . . .	21.00	
Sarah Guilford . . . . .	66.00	
Mrs. Chas. Huckins . . . . .	103.75	
Mrs. Phillias Coutroue . . . . .	393.45	
Soldiers and their families . . .	273.96	
	_____	\$5,344.76

REPORTS

443

MEREDITH.

Transient . . . . .	\$236.70	
Soldiers and their families . . . . .	325.41	
Mrs. Cummings . . . . .	45.59	
		————— \$607.70

NEW HAMPTON.

Soldiers and their families . . . . .	\$107.17	
		————— \$107.17

SANBORNTON.

Transient . . . . .	\$436.59	
Soldiers and their families . . . . .	244.75	
		————— \$681.34

TILTON.

Transient . . . . .	\$450.78	
		————— \$450.78

EXTERNAL POOR

TOTAL AMOUNT PAID OUT IN THE SEVERAL TOWNS  
AND THE CITY OF LACONIA FOR SUPPORT OF  
POOR FOR THE YEAR:

Alton . . . . .	\$335.46	
Barnstead . . . . .	12.50	
Belmont . . . . .	187.50	
Center Harbor . . . . .	56.82	
Gilmanton . . . . .	523.95	
Laconia . . . . .	5344.76	
Meredith . . . . .	607.70	
New Hampton . . . . .	107.17	
Sanbornton . . . . .	681.34	
Tilton . . . . .	450.78	
		————— \$8,307.98
Deduct collection on above account . . . . .		\$239.81
		—————
Net cost to Belknap County . . . . .		\$8,068.17

## County Farm.

Itemized Accounts of Bills for County Farm, House of  
Correction and Jail for the Year Ending  
December Thirty-first, 1914.

### JANUARY

Laconia Gas & Electric Co., service . . . . .	\$32.12
A. P. Batchelder, Supt., payroll . . . . .	155.00
"            cash paid sundries . . . . .	13.05
Wright Studio, photo farm buildings . . . . .	2.00
D. M. Rowe, groceries . . . . .	270.15
Swift & Co., provisions . . . . .	65.72
Frederick C. Small & Co., groceries . . . . .	49.52
People's Market, meat . . . . .	2.75
F. S. Roberts, provisions . . . . .	19.97
Geo. H. Mitchell & Co., tinware . . . . .	3.80
J. S. Morrill, grain . . . . .	150.23
O. A. Lougee, dry goods . . . . .	35.27
Arthur H. Ingalls, 1 boar . . . . .	18.00
J. Henry Story, medicine . . . . .	11.50
Lawrence Baldi, tobacco . . . . .	9.25
Cook's Lumber Co., sawdust . . . . .	2.00
A. T. Quinby & Son, hardware . . . . .	2.00
Dennis O'Shea, dry goods . . . . .	8.78
H. S. Chase, footwear . . . . .	13.55
C. J. Burke, smith work . . . . .	27.21
J. P. Smith, lime . . . . .	1.25
J. P. Pitman & Co., hardware . . . . .	6.25
Citizens' Telephone Co., service . . . . .	2.00
Winnepesaukee Telephone Co., service . . . . .	2.12
H. C. Wells, ½ medical contract . . . . .	50.00

*REPORTS*

445

Laconia Water Co., service . . . . .	280.18
" repairs . . . . .	49.62
Fred A. Young, insurance . . . . .	327.90
H. C. Wells, M. D., returning births and deaths . . . . .	2.75
L. H. Wilkinson, burial John Clark .	16.50
	\$1,630.44

**FEBRUARY**

Laconia Gas & Electric Co., service .	\$25.96
" " lamps .	9.72
Wallace Building Co., coal . . . . .	236.04
A. P. Batchelder, Supt., payroll . . .	155.00
" " cash pd. sun- dries . . . . .	13.85
Swift & Co., meat . . . . .	21.88
J. Henry Story, medicine . . . . .	7.25
C. J. Burke, smith work . . . . .	2.40
J. S. Morrill, grain . . . . .	97.53
Cook's Lumber Co., sawdust . . . . .	2.50
O. A. Lougee, dry goods . . . . .	6.25
A. T. Quinby & Son, hardware . . . .	14.18
Lawrence Baldi, tobacco . . . . .	12.75
Smith & Son, crackers . . . . .	7.95
O. T. Lougee, clothing . . . . .	6.84
W. D. Huse & Sons, repairs . . . . .	13.65
Smith's Variety Store, tinware . . . .	5.05
The Cudahy Packing Co., supplies .	12.00
D. M. Rowe, groceries . . . . .	10.65
Frederick C. Small & Co., coffee . . .	32.30
F. S. Roberts, meat . . . . .	15.26
N. Y. Clothing Co., clothing . . . . .	14.88
John Parker Smith, supplies . . . . .	6.53
S. D. McGloughlin & Co., coal . . . .	394.32
Union Publishing Co., 1 directory . .	2.50

Citizens Telephone Co., service . . .	2.00
Winnepesaukee Telephone Co., service	2.82
Mallard's Pharmacy, medicine . . . .	75
Ed. Shepherd, labor . . . . .	18.00
	<hr/> \$1,150.81

## MARCH

Laconia Gas & Electric Co., service .	\$24.97
A. P. Batchelder, Supt., payroll . . .	165.33
"                    "    sundries . .	11.33
J. Henry Story, medicine . . . . .	12.35
A. T. Quinby & Son, hardware . . . .	5.03
The Worrell Mfg. Co., disinfectant . .	8.00
W. D. Huse & Sons, repairs . . . . .	3.00
W. E. Foster, medicine . . . . .	2.00
F. A. Barlow, labor . . . . .	10.00
Lougee-Robinson Co., heaters . . . .	7.00
F. S. Roberts, meat . . . . .	14.14
J. P. Pitman & Co., hardware . . . .	1.50
C. J. Burke, smith work . . . . .	7.82
Wilcox Bros., ice . . . . .	25.92
O. A. Lougee, dry goods . . . . .	12.45
Fred L. Tenney, root cutter . . . .	10.00
Swift & Co., provisions . . . . .	37.84
Cook's Lumber Co., sawing and saw- dust . . . . .	27.60
Citizens Tel. Co., service . . . . .	2.00
B. & M. R. R., freight . . . . .	5.60
Wallace Building Co., coal . . . . .	131.49
Kidder Machine Co., repairs . . . . .	8.90
J. L. Roberts, coal . . . . .	220.01
Winnepesaukee Tel. Co., service . . .	2.36
W. D. Veasey, horses . . . . .	650.00
	<hr/> \$1,406.64

REPORTS

447

APRIL

M. G. Wiley, M. D., medical aid to E. Hull . . . . .	\$2.50
Laconia Gas & Electric Co., service . . . . .	19.68
D. M. Rowe, groceries . . . . .	55.66
S. L. Weeks, maple syrup . . . . .	2.50
Citizens Tel. Co., service . . . . .	2.00
Emile St. Jacques, shoes . . . . .	11.90
A. P. Batchelder, Supt., payroll . . . . .	180.00
"          "          sundries . . . . .	17.54
"          " $\frac{1}{4}$ salary . . . . .	200.00
Cook's Lumber Co., stickings and saw-dust . . . . .	9.00
A. T. Quinby & Son, hardware . . . . .	2.93
J. S. Morrill, grain . . . . .	214.29
E. H. Burleigh, bull . . . . .	50.00
Jos. Breck & Sons, seeds . . . . .	7.65
Lawrence Baldi, tobacco . . . . .	12.00
Frederick C. Small & Co., syrup . . . . .	14.08
Smith's Variety Store, tinware . . . . .	7.30
O. A. Lougee, dry goods . . . . .	19.80
J. Henry Story, medicine . . . . .	7.20
W. A. Moore, shoes . . . . .	13.45
F. S. Roberts, provisions . . . . .	16.53
J. P. Pitman & Co., hardware . . . . .	6.33
O. T. Lougee, clothing . . . . .	7.30
U. S. Envelope Co., toilet paper . . . . .	10.50
C. J. Burke, smith work . . . . .	4.70
Swift & Co., meat . . . . .	28.05
Winnepesaukee Tel. Co., service . . . . .	2.47
J. L. Roberts, fertilizer . . . . .	144.00
S. D. McGloughlin & Co., coal . . . . .	132.63
	<hr/> \$1,201.99

## MAY

Laconia Gas & Electric Co., service . . . . .	\$13.08
A. P. Batchelder Supt., payroll . . . . .	180.00
"                    "      sundries . . . . .	16.49
J. S. Morrill, grain . . . . .	107.12
Swift & Co., meat . . . . .	60.78
Lawrence Baldi, tobacco . . . . .	6.00
Emile St. Jacques, shoes . . . . .	3.32
O. A. Lougee, dry goods . . . . .	7.55
C. J. Burke, smithwork . . . . .	12.84
F. S. Roberts, provisions . . . . .	12.61
Cook's Lumber Co., lumber . . . . .	1.26
A. T. Quinby & Son, hardware . . . . .	9.03
J. Henry Story, medicine . . . . .	2.90
Knight & Huntress, dry goods . . . . .	1.70
John Parker Smith, supplies . . . . .	3.00
Winnepesaukee Tel. Co., service . . . . .	2.12
Citizen's Tel. Co., service . . . . .	2.00
Cash Market, meat . . . . .	7.98

---

 \$449.78

## JUNE

Laconia Gas & Electric Co., service . . . . .	\$ 6.76
C. A. French, use of boar . . . . .	2.00
Swift & Co., meat . . . . .	30.85
A. P. Batchelder Supt., payroll . . . . .	180.00
"                    "      sundries . . . . .	10.91
O. A. Lougee, dry goods . . . . .	1.02
A. T. Quinby & Son, hardware . . . . .	15.89
Bowker Fertilizer Co., fertilizer . . . . .	68.61
O. T. Lougee, clothing . . . . .	9.88
F. H. Moore, seed corn . . . . .	5.25
J. S. Morrill, grain . . . . .	126.48
Lougee-Robinson Co., furniture . . . . .	49.34
Knight & Huntress, dry goods . . . . .	6.00



REPORTS

449

J. Henry Story, medicine . . . . .	13.15	
F. S. Roberts, provisions . . . . .	14.31	
C. J. Burke, smith work . . . . .	1.90	
Frederick C. Small & Co., provisions .	11.01	
W. D. Huse & Sons, repairs . . . . .	.70	
Cook's Lumber Co., lumber . . . . .	2.40	
Winnepesaukee Telephone Co., service	2.42	
Citizen's Telephone Co., service . . .	2.00	
Earl Flanders, recording births and deaths . . . . .	1.20	
		<hr/> \$562.08

JULY

Laconia Gas & Electric Co., service . .	\$4.68
Winnepesaukee Tel. Co., service . . .	2.62
A. P. Batchelder, Supt., payroll . . .	173.33
"    "    sundries . . . . .	14.85
Lawrence Baldi, tobacco . . . . .	14.65
J. L. Roberts, hay rake . . . . .	21.00
J. Henry Story, medicine . . . . .	8.90
O. A. Lougee, dry goods . . . . .	5.79
O. T. Lougee, clothing . . . . .	28.41
E. J. Dinsmoor, harness supplies . . .	7.25
Lougee, Robinson Co., furniture . . .	3.25
C. J. Burke, smith work . . . . .	22.75
W. A. Moore, shoes . . . . .	2.50
F. S. Roberts, meat . . . . .	21.12
Emile St. Jacques, footwear . . . . .	4.42
A. T. Quinby & Son, hardware . . . .	28.98
Cash Market, meat . . . . .	6.45
R. F. Moore, vet. services . . . . .	10.00
Dennis O'Shea, clothing . . . . .	13.50
W. D. Huse & Sons, labor . . . . .	3.94
L. H. Wilkinson, burial of J. Cook .	17.00
Cook's Lumber Co., lumber . . . . .	3.35

A. P. Batchelder, Supt., $\frac{1}{4}$ salary . . .	200.00
Swift & Co., provisions . . . . .	86.67
D. M. Rowe, provisions . . . . .	257.36
H. C. Sanborn, cultivator and supplies	37.63
J. S. Morrill, grain . . . . .	65.24
Laconia Water Co., service . . . . .	175.00
Citizens Telephone Co., service . . .	2.00
E. G. Cobleigh, footwear . . . . .	2.75
	<hr/> \$1,245.39

## AUGUST

Laconia Gas & Electric Co., service .	\$4.94
H. C. Wells, $\frac{1}{2}$ med. contract . . . . .	75.00
A. P. Batchelder, Supt., payroll . . .	198.50
"    "    sundries . . . . .	9.82
H. C. Sanborn, lantern . . . . .	2.50
Frederick C. Small & Co., tea and cof- fee . . . . .	93.19
O. A. Lougee, dry goods . . . . .	5.66
J. S. Morrill, grain . . . . .	54.13
J. Henry Story, medicine . . . . .	10.20
N. Y. Clothing Co., clothing . . . . .	10.75
Laconia Market Co., provisions . . .	1.12
McCarthy's Clothing Store, clothing .	9.00
A. T. Quinby & Son, hardware . . . .	4.58
Lawrence Baldi, tobacco . . . . .	12.00
D. M. Rowe, groceries . . . . .	3.20
W. A. Moore, shoes . . . . .	5.75
Smith's Variety Store, glassware . . .	4.00
F. S. Roberts, meat . . . . .	23.77
C. J. Burke, smith work . . . . .	7.00
O'Shea Furniture Co., furniture . . .	26.42
Emile St. Jacques, footwear . . . . .	20.86
People's Market, provisions . . . . .	8.31
O. T. Lougee, clothing . . . . .	13.59

## REPORTS

451

Swift & Co., meat . . . . .	40.70	
The Worrell Mfg. Co., disinfectants . . . . .	10.00	
Dennis O'Shea, clothing . . . . .	12.60	
Citizens' Telephone Co., service . . . . .	2.00	
Cash Market, meat . . . . .	17.47	
Winnepesaukee Tel. Co., service . . . . .	2.12	
		\$689.18

## SEPTEMBER

Laconia Gas & Electric Co., service . . . . .	\$5.46	
A. P. Batchelder, Supt., payroll . . . . .	181.50	
" " sundries . . . . .	18.04	
Washburn, Purizone Co., disinfectants . . . . .	6.25	
Swift & Co., meat . . . . .	90.48	
D. M. Rowe, provisions . . . . .	116.93	
Knight & Huntress, dry goods . . . . .	13.05	
J. Henry Story, medicine . . . . .	6.28	
J. S. Morrill, grain . . . . .	127.90	
E. J. Dinsmore, repairs . . . . .	4.50	
West Disinfecting Co., disinfectants . . . . .	6.25	
Lougee-Robinson Co., furniture . . . . .	3.50	
A. T. Quimby & Son, hardware . . . . .	4.25	
W. D. Huse & Sons, repairs . . . . .	8.99	
F. S. Roberts, meat . . . . .	26.67	
Emile St. Jacques, footwear . . . . .	8.88	
Kidder Machine Co., repairs . . . . .	70	
C. J. Burke, smith work . . . . .	1.65	
Fred H. Smith, Meredith taxes . . . . .	12.00	
Citizens' Tel. Co., service . . . . .	2.00	
Winnepesaukee Tel. Co., service . . . . .	2.66	
B. & M. R. R., freight . . . . .	16.17	
S. L. Weeks, lamb . . . . .	6.88	
		\$670.99

## OCTOBER

Leon Rand, threshing . . . . .	\$17.59
Laconia Gas & Electric Co., service .	11.28
A. P. Batchelder, Supt., payroll . . .	181.48
"          "          sundries . . .	7.73
"          " $\frac{1}{4}$ salary . . .	200.00
Swift & Co., meat . . . . .	59.58
People's Market, meat . . . . .	13.12
Emile St. Jacques, shoes . . . . .	4.99
W. A. Moore, shoes . . . . .	8.10
Cook's Lumber Co., lumber . . . . .	33.75
O. T. Lougee, clothing . . . . .	8.83
D. M. Rowe, provisions . . . . .	42.93
Lawrence Baldi, tobacco . . . . .	18.00
O. M. Dean & Sons, supplies . . . . .	7.00
Frederick C. Small & Co., coffee . . . .	13.71
R. F. Moore, vet. services . . . . .	3.00
J. Henry Story, medicine . . . . .	7.25
J. H. Johnston & Sons, leg shackle . . .	15.00
Dennis O'Shea, clothing . . . . .	24.07
F. S. Roberts, meat . . . . .	28.47
J. S. Morrill, grain . . . . .	44.05
Wesley D. Sanborn, supplies . . . . .	.35
O. A. Lougee, dry goods . . . . .	39.94
F. W. Friend, filling silo . . . . .	50.25
Fred A. Young, insurance . . . . .	247.50
A. T. Quinby & Son, hardware . . . . .	1.57
Lewis S. Perley, repair windmill . . . .	32.72
Smith's Variety Store, supplies . . . . .	3.00
C. J. Burke, smith work . . . . .	8.05
Winnepesaukee Tel. Co., service . . . .	3.87
Citizens' Tel. Co., service . . . . .	2.00
W. D. Huse & Sons, repairs . . . . .	2.92
L. H. Wilkinson, burial Goodell child .	7.00
"          "          John Tuttle . .	15.00

REPORTS

453

Cash Market, meat . . . . .	9.85
S. D. McGloughlin, coal . . . . .	112.79
	<hr/> \$1,286.74

NOVEMBER

Laconia Gas & Electric Co., service . . . . .	\$16.08
A. P. Batchelder, Supt., payroll . . . . .	168.83
"          "          sundries . . . . .	6.05
Bickford & Moulton, spraying . . . . .	13.88
"          "          apples . . . . .	1.50
"          "          storage . . . . .	10.00
O. T. Lougee, clothing . . . . .	8.65
M. M. Cole, making cider . . . . .	3.00
L. S. Perley, apples . . . . .	12.50
O. A. Lougee, dry goods . . . . .	4.80
C. J. Burke, smith work . . . . .	4.45
J. P. Pitman & Co., hardware . . . . .	15.01
Maher Book Store, tobacco . . . . .	11.35
F. S. Roberts, meat . . . . .	36.51
J. S. Morrill, grain . . . . .	93.53
John S. Wallis, fertilizer . . . . .	22.00
"          plow and points . . . . .	13.00
A. T. Quinby & Son, brush . . . . .	1.00
Knight & Huntress, dry goods . . . . .	5.47
W. E. Foster, medicine . . . . .	1.25
Cook's Lumber Co., lumber and saw- dust . . . . .	15.55
H. C. Sanborn, spading fork . . . . .	.75
J. Henry Story, medicine . . . . .	6.80
Swift & Co., meat . . . . .	59.63
Willis P. Lamprey, lime and cement . . . . .	2.25
W. A. Moore, footwear . . . . .	10.40
W. A. Plummer, pasturing . . . . .	30.75
Winnetoesaukee Tel. Co., service . . . . .	2.92

Citizens' Tel. Co., service . . . . .	2.00	
Cash Market, meat . . . . .	9.87	
City of Laconia, taxes . . . . .	284.21	
		\$873.99

## DECEMBER

S. L. Weeks, freight . . . . .	\$3.43
Laconia Gas & Electric Co., service . . . . .	23.88
A. P. Batchelder, Supt., payroll . . . . .	200.00
"                    "          sundries . . . . .	12.43
H. S. Chase, footwear . . . . .	35.05
A. P. Batchelder, Supt., $\frac{1}{4}$ salary . . . . .	200.00
Citizens' Tel. Co., service . . . . .	2.00
Winnepesaukee Tel. Co., service . . . . .	2.77
D. M. Rowe, provisions . . . . .	21.76
Frederick C. Small & Co., groceries . . . . .	28.64
W. A. Moore, footwear . . . . .	2.25
Swift & Co., meat . . . . .	32.59
F. S. Roberts, meat . . . . .	19.71
Lougee-Robinson Co., furnishings . . . . .	12.62
O. A. Lougee, dry goods . . . . .	18.51
A. T. Quinby & Son, hardware . . . . .	11.04
Emile St. Jacques, footwear . . . . .	6.84
Cook's Lumber Co., lumber . . . . .	3.20
H. C. Sanborn, peas . . . . .	2.50
O. T. Lougee, clothing . . . . .	4.20
J. P. Pitman & Co., hardware . . . . .	1.68
O'Shea Furniture Co., furniture . . . . .	36.00
C. J. Burke, smith work . . . . .	11.35
J. Henry Story, medicine . . . . .	6.65
S. D. McGloughlin & Co., fuel . . . . .	142.15
Fred A. Young, insurance . . . . .	49.50
J. S. Morrill, grain . . . . .	198.96
Heard's Insurance Co., insurance . . . . .	88.00
Cash Market, meat . . . . .	6.62

## REPORTS

455

W. E. Foster, medicine . . . . .	2.00	
Geo. L. Thompson, chaplain . . . . .	50.00	
Wallace Building Co., labor . . . . .	163.31	
Kidder Machine Co., repairs . . . . .	4.52	
	\$1,404.16	
Total for year ending Dec. 31, 1914 .		\$12,572.19

### JAIL ACCOUNT

A. P. Batchelder, services as jailor . .	200.00	
	\$200.00	

### COURT HOUSE ACCOUNT

Laconia Gas & Electric Co., service .	\$69.47	
“ “ “ “ lamps . . . . .	10.87	
Winnepesaukee Tel. Co., service . . . .	125.88	
Citizens' Tel. Co., service . . . . .	48.30	
J. S. Chase, janitor . . . . .	480.00	
J. S. Chase, cash, paid sundries . . .	17.05	
Rumford Printing Co., supplies . . . .	41.75	
Little, Brown & Co., law books . . . .	72.00	
Wallace Building Co., repairs . . . . .	89.25	
Laconia Water Co., service . . . . .	25.78	
J. F. Trask, postage . . . . .	10.00	
N. J. Dyer, postage . . . . .	50.00	
S. L. Weeks, wood . . . . .	70.50	
W. D. Huse & Sons, repairs . . . . .	46.41	
Union Publishing Co., directories . . .	13.00	
Maher Book Store, stationery . . . . .	13.30	
Ruel Hoadley, slabs . . . . .	18.75	
E. G. Baker & Co., stationery . . . . .	7.75	
W. F. Seaverns, repairs . . . . .	2.00	
J. L. Roberts, repairs . . . . .	.40	
W. B. Fellows, insurance . . . . .	12.00	

Lougee-Robinson Co., matting . . . . .	20.61
American Law Book Co., law books . . . . .	6.00
Martin B. Plummer, indexing and supplies . . . . .	54.95
F. H. Moore, fertilizer and grass seed . . . . .	7.30
News and Critic, printing . . . . .	26.75
Cornelius Maguire, repairing chairs . . . . .	9.35
Laconia Car Co., lumber and labor . . . . .	130.85
S. D. McGloughlin, fuel . . . . .	209.25
J. P. Pitman & Co., supplies . . . . .	66.73
Star Stamp Co., stamp . . . . .	.30
Wilcox Bros., ice . . . . .	2.65
Daniel S. Shea, brushes . . . . .	4.00
Wesley D. Sanborn, electric supplies . . . . .	8.53
Clarence Clark Co., supplies . . . . .	7.75
L. E. Dearborn, cleaning carpet . . . . .	12.00
Henry Stone, roofing . . . . .	3.08
John B. Moore, boiler insurance . . . . .	51.00
Lougee-Robinson Co., matting . . . . .	102.24
W. J. Webster, painting . . . . .	222.91
Knight & Huntress, flag . . . . .	7.75
Cook's Lumber Co., lumber and flag pole . . . . .	24.08
	<hr/> \$2,202.54

### COUNTY OFFICERS

[Salaries Paid by Commissioners]

Harris A. Morse, auditor . . . . .	\$25.00
Oscar L. Young, " . . . . .	25.00
Lester Philbrook, sheriff . . . . .	200.00
John M. Meserve, solicitor . . . . .	500.00
Stephen B. Cole, treasurer . . . . .	200.00
	<hr/> \$950.00



MEDICAL REFEREE

E. P. Hodgdon M. D. —	
Moses Ayotte case . . . . .	\$6.60
Malcolm Patch " . . . . .	5.10
Raymond Patch case . . . . .	5.10
Ellen M. Moulton case . . . . .	5.30
John W. Murphy case . . . . .	5.80
Cleophas Morin case . . . . .	5.30
Austin D. Young case . . . . .	5.30
James F. Burns case . . . . .	5.00
Nellie J. Potter case . . . . .	6.10
Howard Maguire case . . . . .	9.60
Joseph Begin case . . . . .	5.90
Leo G. Whittier case . . . . .	6.40
H. G. Blaisdell case . . . . .	5.00
E. J. Benson case . . . . .	5.00
F. T. Fahey case . . . . .	5.18
F. N. Gilman case . . . . .	5.48
A. Paradis case . . . . .	5.00
C. A. Armstrong case . . . . .	5.84
O. G. Smith case . . . . .	5.00
J. H. Downey case . . . . .	5.18
	————— \$113.18

FARM IMPROVEMENT ACCOUNT

Bergen & Lindman, balance Chimney contract . . . . .	\$118.50
Kidder Machine Co., on account heat-tract . . . . .	425.00
Wallace Building Co., part contract . . . . .	1,082.22
Alfred S. Kellogg, engineer . . . . .	100.00
Morristown Magnesia and Asbestos Co., pipe covering . . . . .	319.47

American Laundry Machinery Co., laundry machinery . . . . .	1,260.00
A.P. Batchelder, Supt., paid for remov- ing boiler . . . . .	15.00
F. S. Willey, trucking . . . . .	2.00
F. W. Fowler, services on building com- mittee . . . . .	90.00
Alfred S. Kellogg, engineer . . . . .	100.00
Wallace Building Co., part contract .	500.00
Kidder Machine Co., part contract . .	1,000.00
C. A. French, 2 trips to farm . . . .	2.00
American Laundry Co., balance on clothes trucks . . . . .	7.50
Morristown Magnesia Co., balance in full . . . . .	38.08
Wallace Building Co., payment on con- tract . . . . .	600.00
A. S. Kellogg, engineer, balance . .	54.64
Kidder Machine Co., balance of con- tract . . . . .	1,975.79
The Creamery Package Co., silo . . .	255.52
Boston & Maine R. R., freight . . . .	1.99
David P. Cutting, graves stones . . .	102.00
Wallace Building Co., labor . . . . .	70.64
	<hr/> \$8,120.35

#### MISCELLANEOUS

Weeks Bros., printing 1400 reports .	\$88.80
Laconia Savings Bank, box rent . . .	5.00
John M. Meserve, legal services, Flan- ders case . . . . .	10.00
Lester Philbrook, expenses in Hutch case . . . . .	31.15
Daniel Finn, expenses in Hutch case .	3.10

REPORTS

459

Laconia Tavern Garage, auto to Bos-		
cowan	8.00	
John M. Meserve, car fare for Thomas		
Higgins	3.00	
Willis R. Morrison, painting notices	3.80	
Felix McCarthy, reward in Graney case	10.00	
		<u>\$162.85</u>

LACONIA DISTRICT COURT

W. S. Peaslee, Justice's salary	\$499.96	
George A. Ringer, clerk, salary	50.00	
W. C. Herbert, clerk, salary	37.50	
Earl Flanders, " "	62.50	
F. W. Fowler, special justice	15.00	
Fletcher Hale, " "	26.00	
Fred A. Young, bond for W. C. Her-		
bert	5.00	
Cook's Lumber Co., platform for court		
room	4.00	
P. Hamilton, probation officer	187.50	
Daniel Finn, expenses in Marchant and		
Provencal case	34.41	
Carter's Garage, car to Center Harbor	8.84	
Laconia Tavern Garage, auto hire	4.00	
Laconia National Bank, desk	5.00	
Lester Philbrook, expenses in Seeley		
case	33.85	
Fred A. Young, bond	5.00	
Laconia Tavern Garage, two cars to		
Romeo Cottage	7.00	
A. A. Tyler, special justice	3.00	
		<u>\$988.56</u>

TILTON DISTRICT COURT

Charles E. Smith, justice's salary	\$183.34	
" " " paid officer's fees	19.75	
		<u>\$203.09</u>

## ALTON DISTRICT COURT

Charles H. Downing, justice's salary . . . . .	\$83.34	
"    "    "    court expenses . . . . .	51.00	
Carter's Garage, auto hire . . . . .	6.46	
		<u>\$140.80</u>

## PERMANENT IMPROVEMENT ACCOUNT

Maher's Book Store, 1 filing case . . . . .	\$59.00	
Frank E. Pearson, labor on court room . . . . .	76.05	
W. D. Huse & Sons, radiator and foot rest . . . . .	44.51	
		<u>\$179.56</u>

## SUMMARY

Total Amount of Orders Drawn on the Treasurer by the  
Commissioners for the Year Ending Dec. 31, 1914.

Poor off the Farm . . . . .	\$8,307.98	
Almshouse, house of correction and jail . . . . .	12,572.19	
Jail account (salary of deputy jailor) . . . . .	200.00	
Court house account . . . . .	2,202.54	
County officers paid by commissioners . . . . .	950.00	
Farm Improvement account . . . . .	8,120.35	
Medical referee . . . . .	113.18	
Laconia District Court . . . . .	988.56	
Tilton " " . . . . .	203.09	
Alton " " . . . . .	140.80	
Permanent Improvement account . . . . .	179.56	
Miscellaneous . . . . .	162.85	
		<u>\$34,341.10</u>

INVENTORY OF PERSONAL PROPERTY AT  
COUNTY FARM, DEC. 31, 1914

Live stock . . . . .	\$4,030.00
Farm produce . . . . .	2,571.18
Wood and lumber . . . . .	363.00
Farming tools . . . . .	1,057.50
Provisions . . . . .	1,097.46
Dry goods and clothing . . . . .	350.00
Household furniture . . . . .	4,165.72
Miscellaneous . . . . .	1,534.74
	<hr/>
	\$15,169.60

## Financial Condition

Of Belknap County at Close of Business Dec. 31, 1914

### ASSETS

County farm and buildings . . . .	\$60,000.00	
Wood lot at Meredith . . . . .	1,000.00	
Court house and lot . . . . .	35,000.00	
Personal property at county farm .	15,169.60	
Personal property at court house .	6,000.00	
Due county farm for board, etc. . .	506.00	
Savings Bank deposits . . . . .	3,043.70	
Cash on hand . . . . .	15,650.21	
		\$136,369.51

### LIABILITIES

9 Refunding bonds, due Jan. 1st, 1915 . . . . .	\$9,000.00	\$9,000.00
Net assets Dec. 31, 1914 . . . . .		127,369.51
Net assets Dec. 31, 1913 . . . . .		122,236.98
Gain in net assets since Dec. 31, 1913		\$5,132.63
Savings Bank deposits . . . . .	\$3,043.70	
Cash in hand of Treasurer . . . . .	15,650.21	
Total cash assets . . . . .		\$18,693.91
Outstanding bonds due Jan. 1st, 1915		9,000.00
Excess of cash assets over debt . . .		\$9,693.91

Respectfully submitted,

ARTHUR C. S. RANDLETT,  
STEPHEN L. WEEKS,  
JONATHAN C. SHANNON,  
*Commissioners of Belknap County*

# Superintendent's Report.

*To the Board of Commissioners for Belknap County:*

I herewith submit to you my report of the Belknap County Almshouse, House of Correction and Jail for the year ending December 31, 1914.

## Inmates Supported at the Belknap County Farm for the Year 1914

Name	Age	Where from	Disch'd or died	wk.	d'
Adams, Margaret	60	Alton	At farm	52	1
Avery, Ina	24	Lakeport	Dis. Apr. 10	4	
Avery, Irving	4	"	"	10	4
Avery, Wilfred	2	"	"	10	4
Bunker, Charles	59	New Hampton	At farm	52	1
Black, William	82	Laconia	"	52	1
Brown, Percy	37	Alton	"	52	1
Brown, Mabel B.	27	Laconia	"	52	1
Brown, Wallace	3	"	"	52	1
Brown, Lillian B.	2	"	Dis. Nov. 10	44	5
Blaisdell, John	67	"	At farm	52	1
Briggs, Robert	75	"	"	52	1
Buchane, Melvina	37	"	Dis. May 18	19	4
Buchane, Philip	8	"	Dis. April 16	15	
Buchene, Jerry	5	"	Dis. May 18	19	4
Buchene, Mary I.		Born at farm	"	18	19 4
Burroughs, George	68	Barnstead	At farm	30	4
Burroughs, Cedelia	65	"	"	30	4
Carr, Charles	63	Meredith	"	52	1
Carrignant, Felix	53	Laconia	"	52	1
Cole, Eliza	27	Sanbornton	"	52	1
Crane, Fannie	46	Laconia	"	52	1

Name	Age	Where from	Disch'd or died	wk. d
Cook, John	70	Barnstead	Died May 18	9 4
Clough, Hattie	50	Laconia	Dis. April 1	4 4
Callahan, James	50	Lakeport	Dis. Mar. 28	2 4
Clough, Hattie	50	Laconia	Dis. Sept. 19	1
Crawford, J. H.	40	Meredith	Dis. Dec. 7	15 5
Dwyer, John	54	Transient	Dis. Feb. 3	2
Dolan, James	52	Transient	Dis. June 1	9
Elliott Horace	79	Gilmanton	At farm	52 1
Foster, Louisa	63	Gilford	At farm	52 1
Foss, Mary O.	60	Alton	"	52 1
Flanders, Joe D.	69	"	"	52 1
Flint, Charles	58	Tilton	Dis. May 12	16
Gilman, Belle	45	Gilmanton	At farm	52 1
Guy, Walter	27	"	" "	52 1
Greenleaf, Willie	35	Transient	Dis. Jan. 17	2
Gault, Roland	10	Meredith	At farm	18 1
Gault, Augustus	9	"	" "	18 5
Gault, Edna	6	"	" "	16 5
Gault, Charles	4	"	" "	16 5
Hubbard, Harriet	76	Laconia	At farm	52 1
Hayes, Lillia	47	Alton	" "	52 1
Holland, Joseph	77	New Hampton	" "	52 1
Hussey, Stephen	77	Gilmanton	" "	52 1
Herbert, Leroy	18	Laconia	Dis. Apr. 4	10 5
Hull, Eva	20	East Tilton	At farm	41 2
Hull, Ellen		born at farm		17 4
Hall, Henry	67	Sanbornton	At farm	23
Hall, Louise	60	"	" "	35 1
Hanaford, Frank	45	Sanbornton	Dis. Jan. 6	6
Johnson, Mabel	24	Meredith	At farm	52 1
Jacques, Alphonse	1	born at farm	" "	52 1
Jacques, Anna	25	Laconia	" "	52 1
Jewell, Emma	57	Northfield	Dis. Apr. 10	1 2
Knott, Frank	57	Transient	Dis. Apr. 13	14 4



## REPORTS

465

Name	Age	Where from	Disch'd or died	wk.	d.
Lavin, William	42	Transient	Dis. July 6	4	2
Larvalee, Frank	52	Tilton	died July 30	2	
Mc Manus, Pat	63	Transient	Dis. Mar. 28	7	
Monahan, John	52	Meredith	Dis. Aug. 10	2	
Nutter, Rebecca	79	Barnstead	At farm	52	1
Page, Javadene	64	Meredith	" "	52	1
Perron, Napoleon	57	Belmont	" "	52	1
Prescott, Charles	60	Alton	" "	52	1
Pickering, Fred	53	Laconia	Dis. Aug. 24	1	
Pinkos, Albert	48	Transient	Dis. Aug. 7	5	6
Ramsey, Lydia	60	Meredith	At farm	52	1
Swain, Arthur	54	Sanbornton	" "	52	1
Stent, Henry	76	Belmont	At farm	52	1
Tuttle, John	63	Laconia	Died Sept. 26	38	2
Triogue, Mary	49	Belmont	Dis. May 19	9	5
Varney, Waldo	31	Alton	Dis. May 12	18	5
Varey, Katherine	25	Sanbornton	At farm	23	1
Walker, John	57	Transient	Dis. March 19	6	
Wilkins, Frank	60	Transient	Dis. Apr. 28	2	3

Number weeks of board furnished inmates, 2,263-1

### BOARDERS AT FARM

	Weeks	Days
Burroughs, George F. . . . .	21	4
Burroughs, Cedelia A. . . . .	21	4
Considine, Anthony, died Oct. 17 . . . . .	33	3
Crabtree, William, dis. March 30 . . . . .	3	4
Clay, Mary S. . . . .	4	6
Dow, George, dis. Feb. 24 . . . . .	1	1
Folsom, John . . . . .	40	6
Goodell, Bessie . . . . .	51	5
Goodell, Viola, died Sept. 4 . . . . .	14	4
Giff, Emma, dis. June 5 . . . . .	2	2

	Weeks	Days
Hilliard, Hannah . . . . .	52	1
Hannaford, George . . . . .	15	3
Huntress, Frank, died July 23 . . . . .	9	6
Jefferson, Taylor, died Nov. 5 . . . . .	44	1
Jones, Thomas . . . . .	52	1
Lord, Fannie . . . . .	52	1
Marden, Cora . . . . .	52	1
Ordway, William . . . . .	52	1
Osgood, Eben . . . . .	2	4
Ruddy, Rose . . . . .	25	
Towle, Jonathan S. . . . .	52	1
Number weeks board furnished boarders . . . . .	595	3

[This item 595-3 weeks is not included in computing cost of board of paupers, as the farm is credited with the amount received in cash for care of these parties.]

### SUMMARY

Number of inmates including boarders, Jan. 1, 1914 . . . . .	50
Number admitted during year . . . . .	43
Whole number during year . . . . .	93
Number discharged during year . . . . .	31
Number died . . . . .	7
Number at farm Dec. 31, 1914 . . . . .	55

### HOUSE OF CORRECTION

#### Prisoners Committed to the House of Correction for the Year 1914.

Name	Where from	wks	days
Myra Stevens	Laconia	28	3
William Egan	Tilton	4	
Frank Wallace	Meredith	9	3
William Grogan	Tilton	7	1

REPORTS

467

Name	Where from	wks	days
Harry Perkins	Laconia	4	2
George Aldrich	"	19	3
John Rigley	"	7	5
Charles E. Stover	Belmont	4	2
John Riley	Laconia	8	
Thomas Cassidy	"	8	
Michael Leonard	Tilton	4	2
Phillip Hammond	"	4	3
Charles Rock	"	4	
Thomas Hayes	"	4	5
Jack Johnson	Alton	5	
George McAllear	Laconia	7	5
John Shea	"	2	
Henry Burnham	Tilton	4	1
James Flannigan	Laconia		3
Harry Adams	Mcredith	8	4
Omar Demars	Alton	9	1
Joseph Raffaely	Tilton	8	4
Thomas Graney	Laconia	1	4
Alphonse Jacques	Laconia	4	2
Charles Emerson	Alton	5	
Harry Burns	Laconia	6	1
John Tisbro	Alton	8	1
Joseph Cieslon	"	8	1
Jacob Waszelonke	"	6	2
Dennis Doherty	Tilton	4	2
Henry Seymore	Gilmanton	5	2
Nelson Emerson	"	9	2
Bert Russell	Tilton	5	5
Joseph Raffaely	"	11	
James B. Webster	"	1	
Alice Webster	"	4	2
Patrick McManus	Laconia	4	2
Mike Smith	"	13	3
Thomas Graney	"	4	3

Name	Where from	wks	days
George F. Davis	Alton	8	6
Charles Hawkins	Laconia	2	6
Samuel Drouin	"	2	6
Arthur Langevin	"	13	3
John Leahy	"	2	6
Benton Leavitt	Tilton	3	4
Eunice Ordway	Laconia	8	4
Garrett Pierce	"	4	
John Edwards	Meredith	4	2
Timothy Connolly	Tilton	4	1
William Snow	Laconia	3	

Number of weeks board furnished prisoners	324-6
Number in house of correction, Jan. 1, 1914	4
Number committed during year	50
Number in house of correction, Dec. 31, 1914	4

ALFRED P. BATCHELDER, Supt.

### JAILOR'S REPORT

Number in Jail Jan. 1, 1914 . . . . .	4
Number committed during the year . . . . .	24
Number in jail Dec. 31, 1914 . . . . .	10
Number weeks board furnished prisoners in year	
1914 . . . . .	348

ALFRED P. BATCHELDER, Deputy Jailer.

### STATEMENT OF FARM ACCOUNT

Inventory of personal property at Belknap County Farm Jan. 1, 1914 . . . . .	\$13,529.81
Amount of orders drawn for all ex- penses at the farm for the year ending Dec. 31, 1914 . . . . .	\$12,572.19
	<hr/> \$26,102.00

Amount received and paid Treasurer for merchandise sold and board furnished . . . . .	\$3,900.00	
Amount credited farm for board of prisoners in Jail at statutory price	870.00	
Amount credited farm for clothing furnished prisoners in Jail . . . .	120.00	
Amount due from various sources for board furnished, etc . . . . .	506.00	
Inventory of personal property at Belknap County Farm Dec. 31, 1914 . . . . .	15,169.60	
Total credits . . . . .	—————	\$20,565.60
Net cost at farm for year 1914 . . . .		\$5,536.40
Number of weeks board furnished at farm for inmates and prisoners in House of Correction, help not included . . . . .	2,588	

Dividing the net cost of board, \$5536.40 by 2,588, the total number of weeks board furnished, gives \$2.14 and a fraction as the average cost of board per week.

ALFRED P. BATCHELDER, Supt.

## Physician's Report.

*To the Belknap County Commissioners:*

I submit the following vital statistics of the Belknap County Farm, for the year nineteen hundred fourteen.

### DEATHS.

Name	Age	Died	Disease
John Cook	69	May 18	Tuberculosis
Frank Huntress	66	July 23	Paralysis
Frank Larrabee	52	July 30	Alcoholism
Viola Goodell	4 mo.	Sept. 4	Malnutrition
John Tuttle	62	Sept. 26	Cancer
Anthony Considine	80	Oct. 17	Senility
Taylor Jefferson	81	Nov. 5	"

There were two births during the year.

Yours respectfully,

H. C. WELLS, M. D.

## Chaplain's Report.

---

*To the Commissioners of Belknap County :*

Gentlemen :— The spiritual and moral welfare of the people who are in the County Institutions is a matter of importance. This year, as in years past, I have gone on the assumption that no matter how poor, unfortunate or deficient the inmates may be, they are entitled to our attention and care from the religious standpoint.

There is a misconception on the part of many as to the nature of the work done here for the religious life of the farm people. I have preached regularly once a month, and while avoiding abstract and difficult subjects, I have given these people the same sermons which I have given in my church and have found a real appreciation. In fact, it may be said that a sermon which gains the attention and interest of the inmates of your institution will do the same to any audience.

While many of the people who attend the services from month to month are permanent residents of the farm, there are always some who will leave the institution in time and mingle with other people. This is particularly true of the House of Correction men. It is for this reason that my aim has been to give words, which will encourage, cheer and help my hearers.

While we have had music every Sunday, it would be a fine thing if some of the numerous singers of Laconia, or other towns in the county would volunteer their services and help these people. This would involve a little labor and trouble. It would not bring any pecuniary reward, but it would seem that there ought to be enough vital Christianity in Belknap County to occasionally bring forth an

effort on the part of those who have talent without the incentive of a money reward.

We need a piano. It is not essential that it be an instrument of the latest style and make, but a serviceable, good toned piano.

Our Christmas tree was a pronounced success this year, with a larger number of presents than usual. These presents are the contributions of the general public and there is always an opportunity here for an expression of generosity and good will to the unfortunate.

There have been a number of children who are temporarily inmates of the institution for various reasons. The chaplain has been able to assist in getting some of these into good homes. The fact that a child is an inmate of the county farm for a time does not necessarily mean that it is a pauper, or that its parents are paupers or degenerates. Death, misfortune, in fact, many circumstances, may contribute to place a child here who is deserving of a good home, and who, no doubt, may be a good citizen in years to come.

It may not be out of place in this report to say that there are many people in the county who have suffered from hunger, cold and want of care, because they have dreaded going to the County Farm. Many of these people would be better cared for and better treated in this institution than in their own home.

The monotony and routine of institutional life cannot be wholly avoided in such a place as this, but a wholesome interest on the part of those outside can do much to cheer and help the unfortunate.

I know of nothing to criticize and much to commend in the work of the superintendent and his wife.

Respectfully submitted,

GEORGE L. THOMPSON, Chaplain.



## Solicitor's Report.

*To the Commissioners of Belknap County:*

I herewith submit my report for the year ending Dec. 31st, 1914.

### FROM MARCH TERM, 1914.

State vs. Harry O. Corson, embezzlement. Misentry.

State vs. Fred Goodale, appeal from Police Court, continued.

State vs. Charles W. Keyser, malicious injury to real estate. Continued.

State vs. Pearl R. Nudd, adultery. Nol. Pros.

State vs. Josiah Blaisdell, adultery. Nol. Pros.

State vs. Charles W. Varney, arson. Not to go forward.

State vs. Joseph Lessard and Demarise Roy, adultery. Nol. Pros.

State vs. William Collins, breaking and entering. Continued.

State vs. Herbert L. Turner, breaking and entering. Not to go forward.

State vs. Samuel Caton, appeal from police court. Continued.

### NOVEMBER TERM, 1914.

State vs. George A. Collins, illegal sale of liquor. Appeal from police court. Continued.

State vs. Bert Livingston, illegal fishing. Appeal from police court. Nol. Pros.

State vs. Dennis Belisle, illegal sale of liquor. Appeal from police court. Plea of guilty of procuring liquor. Sentenced to pay fine of \$25 and costs of \$6.16, and serve 60 days in jail. Jail sentence suspended upon payment of fine and costs. Fine and costs paid.

State vs. Frank Dublois, illegal sale of liquor. Appeal

from police court. Plea of guilty of procuring liquor. Sentenced to pay fine of \$25 and costs of \$6.16 and serve 60 days in jail. Jail sentence suspended upon payment of fine and costs. Fine and costs paid.

State vs. Thomas Weeks, illegal fishing. Appeal from police court. Nol. Pros.

State vs. Harry F. Heath, breaking and entering. Plea guilty. Committed to State Prison.

State vs. Jerry Merchant, rape. Trial. Verdict of attempted rape. Committed to State Prison.

State vs. Chester A. Yagel, breaking and entering. Continued for sentence.

State vs. George W. Stevens, forgery. Plea of guilty. Continued for sentence.

State vs. Alfred R. Chapman, rape. Continued. Respondent committed to State Hospital for observation.

State vs. Thomas Higgins, breaking and entering. Plea of guilty. Continued for sentence.

State vs. George Hatch, larceny. Plea of guilty. Committed to State Prison.

State vs. Joseph Provencal, rape. Plea of guilty of aggravated assault. Committed to jail.

State vs. Oscar G. Smith, rape. Trial. Verdict, guilty. Committed suicide.

State vs. John Foley, breaking and entering. Committed to State Hospital, as insane.

State vs. Calvin S. Glidden, larceny of lumber continued.

State vs. John Whitehouse, illegal sale of liquor. Appeal from police court. Nol. Pros.

In addition to the cases which I have listed above, were quite a few appeals from the District Court of Tilton, and I have had them marked not to go forward for the reason that there was little if any merit in them, not sufficient merit to warrant the expense which they would cause the county and further because of the fact that the

same parties have brought civil proceedings in Merrimack County which are pending and which involve the same acts complained of in the appeals.

Our jail at Laconia is in very bad condition and is not adequate or in any way suitable for the prisoners that we are obliged to confine. I understand that appropriations will be asked for, to remedy this. It is my opinion that a cage of steel could be placed about the cells and this, together with modern locks, would suffice for many years and be less expensive than a new jail.

I would like to see the time when the prisoners committed to our jail between terms of court and those sentenced to jail would have an opportunity to work at some gainful occupation. It seems too bad for men who are unfortunate enough to be confined in jail to be obliged to sit there day in and day out without having any chance to improve their time.

I have noticed that one Solicitor has advocated and suggested the plan of issuing subpoenas for any witnesses who will testify before the Grand Jury in behalf of the accused. This idea is novel in our practice and it seems to me will open the doors to fraud and abuse unless guarded closely by the solicitor. The solicitor must of necessity be the judge of the strength of the case. Grand Jury proceedings are secret and it has been decided in several cases that the accused has no right to be heard in person or by witnesses. (*United States v. Palmer*, 2 Cranch. C. C. (U. S.) II.) and other cases.

I am looking forward to the time when we shall have a system of State Police, which in my judgement will better protect property owners and facilitate the capture of criminals.

I am glad to report that no action has been brought against the county since I have been solicitor.

Respectfully submitted,

John M. Meserve,

Solicitor.

## Sheriff's Report.

### MARCH TERM COURT, 1914.

Lester Philbrook, attendance and travel	\$90.12	
W. H. Philbrook, deputy sheriff, attendance and travel . . . . .	24.12	
J. H. Lyford, deputy sheriff, attendance and travel . . . . .	21.72	
D. F. Caverly, deputy sheriff, attendance and travel . . . . .	22.20	
Charles Varney to State Hospital . .	9.62	
Charles Varney from State Hospital .	9.62	
Jack Johnson from State Hospital . .	9.62	
Paid clergyman . . . . .	2.00	
Meals for prisoner and attendant . .	1.00	
Teams conveying prisoners . . . . .	2.00	
Jack Johnson to House of Correction .	1.74	
	\$193.76	

### NOVEMBER TERM COURT, 1914.

Lester Philbrook, attendance and travel	\$126.12
J. H. Lyford, deputy sheriff, attendance and travel . . . . .	53.40
D. F. Caverly, deputy sheriff, attendance and travel . . . . .	44.40
Calvin Jenkins, deputy sheriff, attendance and travel . . . . .	52.80
W. H. Philbrook, deputy sheriff, attendance and travel . . . . .	48.12
John Foley to State Hospital . . . .	9.62
George Hatch to State Prison . . . .	9.62
Alfred Chapman to State Hospital . .	9.62
Jerry Merchant to State Prison . . .	9.62

REPORTS

477

Harry F. Heath to State Prison . . .	9.62	
Joseph Provencal to jail . . . . .	1.90	
F. O. Wallace, meals for jurors and attendants . . . . .	24.50	
Charles A. French, teams conveying prisoners . . . . .	14.00	
J. H. Lyford, teams conveying prisoners . . . . .	5.50	
Paid clergyman . . . . .	2.00	
	<hr/>	\$420.80

Respectfully submitted,  
LESTER PHILBROOK, Sheriff.

## Report of the Clerk of the Court.

*To the Commissioners of the County of Belknap :*

I herewith submit my annual report in compliance with the Statute.

### MARCH TERM, 1914.

#### *Dr.*

To costs State v. Jacques . . . . .	\$20.70
“ “ “ “ Coflan . . . . .	62.44
“ 16 Dockets sold . . . . .	32.00
“ 79 entries at \$.90 . . . . .	71.10
“ costs State v. Turner . . . . .	10.57
“ order on Treasurer . . . . .	605.10
	\$801.91

#### *Cr.*

By paid incidentals . . . . .	\$2.65
“ “ for repairs typewriter . . . . .	2.00
“ “ F. S. Webster Co. . . . .	1.00
“ 12 days' attendance at Adj. Nov. Term . . . . .	36.00
“ paid Hobbs & Warren . . . . .	2.40
“ “ John B. Clarke Co. . . . .	10.22
“ “ Laconia Press Association . . . . .	142.14
“ “ G. G. Neal . . . . .	2.50
“ 1 Capias . . . . .	1.00
“ ½ annual allowance to July 1 . . . . .	500.00
“ paid Laconia Post Office . . . . .	10.00
“ 2 Capias' . . . . .	2.00
“ 30 days' attendance . . . . .	90.00
	\$801.91

REPORTS

479

NOVEMBER TERM, 1914.

*Dr.*

To 17 Dockets sold . . . . .	\$34.00
" 140 entries at \$.90 . . . . .	126.00
" Fine and costs State v. Belisle . .	31.16
" " " " " " " Deblois . . . . .	31.16
" ½ cost printing cases . . . . .	4.50
" " " " " evidence . . . . .	106.50
" Balance due clerk . . . . .	700.32
	<hr/> \$1,033.64

*Cr.*

By 38 returns Divorces Nov. Term, 1913 . . . . .	\$3.80
By paid incidentals . . . . .	5.40
" Recording Jdgs. Mar. Term, 1913	48.17
" paid for pens . . . . .	2.50
" " " typewriter ribbon . . . . .	1.00
" 1 day's attendance at Court, Dover	5.00
" Recording Jdgs. Nov. Term, 1913	40.67
" paid for pencils . . . . .	1.90
" 2 days' attendance . . . . .	6.00
" paid Library Bureau . . . . .	7.14
" 1 day's attendance at Dover . . . .	5.00
" paid Geo. G. Neal . . . . .	1.34
" " F. S. Webster Co. . . . .	1.00
1 Mittimus 1431 . . . . .	1.00
paid Geo. G. Neal . . . . .	2.07
" " Laconia Post Office . . . . .	10.00
" " " Press Association . . . . .	260.65
" ½ annual allowance to Jan. 1, 1915 .	500.00
" 32 days' attendance . . . . .	96.00
" 4 Mittimus' . . . . .	4.00
" 1 Mittimus . . . . .	1.00
" 10 days' attendance . . . . .	30.00
	<hr/> \$1,033.64

E. P. THOMPSON, Clerk.

## Treasurer's Report.

*To the Honorable Board of Commissioners of Belknap County:*

Gentlemen :—The following is a statement of the financial transactions of the County of Belknap as shown by the books of the Treasurer for the year ending Dec. 31. 1914.

### RECEIPTS.

Cash on hand Jan. 1, 1914 . . . . . \$12,471.97

### COUNTY TAXES.

Alton . . . . .	\$2,175.90
Barnstead . . . . .	1,400.65
Belmont . . . . .	1,550.49
Center Harbor . . . . .	1,009.77
Gilford . . . . .	1,309.45
Gilmanton . . . . .	1,048.86
Laconia . . . . .	14,592.84
Meredith . . . . .	2,820.85
New Hampton . . . . .	970.69
Sanbornton . . . . .	1,250.80
Tilton . . . . .	3,869.70
	\$32,000.00

### MISCELLANEOUS RECEIPTS.

A. P. Batchelder, Supt., for fines and costs . . . . .	\$75.93
A. P. Batchelder, Supt., fines and costs in Davis case . . . . .	44.16
A. P. Batchelder, Supt., fines, Lavigne case . . . . .	35.40
Merrimack County, aid to paupers . . . . .	68.58



REPORTS

481

Rockingham County, aid to paupers	23.19	
A. P. Batchelder, fines and cost, A. Jacques case . . . . .	31.86	
A. P. Batchelder, fines and costs in Raffally, Seymour and Emerson cases . . . . .	68.12	
A. P. Batchelder, fines and costs in Davis, Leavitt and Griffin cases .	51.68	
Town of Lisbon, aid to Peter Foster	95.04	
Merrimack County, aid to paupers .	53.00	
E. P. Thompson, Admr., in Jos. D. Flanders Est. for board at County farm . . . . .	390.00	
	\$936.96	

**STATE LICENSE COMMISSION.**

For balance of year ending Apr. 30 .	\$37.00	
For fifty per cent available funds, May 1, 1914 to July 15, 1914 . .	402.70	
	\$439.70	

**RECEIPTS FROM COUNTY FARM.**

A. P. Batchelder, Supt. for board and mdse. sold . . . . .	\$900.00
A. P. Batchelder, Supt., for board and mdse. sold . . . . .	800.00
A. P. Batchelder, Supt., for board and mdse. sold . . . . .	450.00
A. P. Batchelder Supt., for board and mdse. sold . . . . .	800.00
A. P. Batchelder, Supt., for board and mdse. sold . . . . .	600.00

A. P. Batchelder, Supt., for board . . . . .	10.50	
E. P. Thompson, for board of Frank Dow . . . . .	399.50	
		<u>\$3,900.00</u>

---

**DISTRICT COURTS.**

District of Alton, C. H. Downing, Justice . . . . .	\$52.50	
District of Tilton Chas. E. Smith, Justice . . . . .	285.23	
District of Laconia, Geo. A. Ringer, clerk . . . \$252.29 . . .		
W. C. Herbert, clerk . . . 313.08 . . .		
Earl Flanders, clerk . . . 458.77		
	<u>\$1,024.14</u>	
		<u>\$1,361.87</u>

---

**SINKING FUND.**

Rec'd for 3 Laconia City bonds . . . . .	\$3,025.33	
3 Bond coupons . . . . .	60.00	
Rec'd for one 4 per cent Boston bond and interest . . . . .	1,003.44	
Rec'd for one 4 per cent Jersey City bond and interest . . . . .	991.36	
Rec'd for one 4 per cent Passaic bond and interest . . . . .	961.25	
	<u>\$6,041.38</u>	

---

**SUMMARY OF RECEIPTS.**

Cash on hand, Jan. 1, 1914 . . . . .	\$12,471.97
County Taxes . . . . .	32,000.00
Miscellaneous receipts . . . . .	936.96
State License Commission . . . . .	439.70
Receipts from County farm . . . . .	3,900.00

## REPORTS

483

District Courts . . . . .	1,361.87	
From Sinking fund . . . . .	6,041.38	
	\$57,151.88	

## EXPENDITURES.

Amount of orders drawn by Commissioners, Jan. 1, 1914 to Jan. 1, 1915	\$34,141.10
---	-------------

## COURT ORDERS PAID.

Jonathan C. Shannon, services as Commissioner and expenses . . .	\$186.57
Arthur C. S. Randlett, services as Commissioner and expenses . . .	175.96
Stephen L. Weeks, services as Commissioner and expenses . . . . .	158.18
Lester Philbrook, services as sheriff and deputies . . . . .	36.00
Margaret A. Conway, services as stenographer . . . . .	55.45
A. C. S. Randlett, services as Commissioner and expenses . . . . .	168.16
Jonathan C. Shannon, services as Commissioner and expenses . . .	181.64
Stephen L. Weeks, services as Commissioner and expenses . . . . .	128.80
Edwin P. Thompson, balance due clerk . . . . .	605.10
Lizzie H. Sanborn, services as stenographer . . . . .	45.00
Lester Philbrook, services as sheriff and deputies . . . . .	193.76
A. C. S. Randlett, services as Commissioner and expenses . . . . .	182.29
Jonathan C. Shannon, services as Commissioner and expenses . . .	193.34

Stephen L. Weeks, services as Commissioner and expenses . . . . .	162.04	
Jonathan C. Shannan, services as Commissioner and expenses . . . . .	179.27	
Stephen L. Weeks services as Commissioner and expenses . . . . .	130.00	
A. C. S. Randlett, services as Commissioner and expenses . . . . .	171.25	
Bessie A. Marsh, services as stenographer . . . . .	7.50	
Lillian M. Gonya, typewriting finding in case Wallace Building Co. v. Blume . . . . .	1.50	
Mary D. Eldridge, services as stenographer in Piscopo v. Piscopo . . . . .	17.17	
A. C. S. Randlett, services as Commissioner and expenses . . . . .	254.52	
Stephen L. Weeks, services as Commissioner and expenses . . . . .	237.24	
Jonathan C. Shannon, services as Commissioner and expenses . . . . .	265.65	
Oscar L. Young, services as counsel State v. Joseph Provencal . . . . .	40.00	
Edwin H. Shannon, services as counsel State v. Jerry Merchant . . . . .	75.00	
	<hr/>	\$3,851.39

---

**COURT EXPENSES**

Grand jurors pay roll, March term . . . . .	\$72.12
Petit " " " " " . . . . .	601.68
Grand " " " " " . . . . .	89.52
Petit " " " " " . . . . .	1,374.60

REPORTS

485

Pay Roll	State	vs.	Eugene Jacques	9.70
"	"	"	Alfred Lavelley	2.14
"	"	"	" "	1.49
"	"	"	Donald F. Coflan	54.02
"	"	"	Jos. Lessard . .	2.14
"	"	"	Oscar G. Smith .	10.03
"	"	"	Chas. W. Varney	8.23
"	"	"	Miscellaneous .	29.34
"	"	"	William Collins	17.10
"	"	"	H. L. Turner .	8.37
"	"	"	Micellaneous .	109.50
"	"	"	Louis S. Dow .	4.73
"	"	"	Joseph Lessard	12.68
"	"	"	Oscar G. Smith	2.26
"	"	"	Geo. W. Stevens	7.76
"	"	"	Chester Yagel .	8.22
"	"	"	Oscar G. Smith	35.95
"	"	"	Calvin S. Glidden	7.49
"	"	"	Miscellaneous .	153.49
"	"	"	George Hatch .	14.61
"	"	"	Dennis Belisle .	5.39
"	"	"	Frank Deblois .	5.39
"	"	"	Thomas Higgins	18.65
"	"	"	Miscellaneous .	219.62
"	"	"	John Foley . .	17.44
"	"	"	Harry Heath .	25.52
				\$2,929.18

INTEREST ACCOUNT

20 refunding bond coupons . . . . .		\$400.00	
9 " " " " . . . . .		180.00	
			\$580.00

## RECAPITULATION

Total amount of receipts . . . . .	\$57,151.88
------------------------------------	-------------

## EXPENDITURES

Amt. paid orders of commissioners . . . . .	34,141.10
Amt. of court orders paid . . . . .	3,851.39
Paid court expenses . . . . .	2,929.18
Interest account . . . . .	580.00
Cash on hand (including \$6,041.38 belonging to sinking fund) . . . . .	15,650.00
	\$57,151.88

## SINKING FUND

Deposited in Meredith Villiage Sav- ings Bank . . . . .	\$3,043.70
Cash on hand from sale of bonds . . . . .	6,041.38
	\$9,085.08

## OUTSTANDING BONDS

Nine refunding bonds due Jan. 1, 1915 . . . . .	\$9,000.00
---	------------

Respectfully submitted,

STEPHEN B. COLE, Treasurer.

## Auditors' Report.

STATE OF NEW HAMPSHIRE,      BELKNAP, SS.  
TO THE SUPERIOR COURT:

We hereby certify that we have carefully examined the accounts of the several officers of the County of Belknap for the six months ending June 30, 1914; that said accounts are properly kept, correct, and well vouched; that the sums charged therein for articles purchased appear to be according to market value and price; that according to the best of our information, knowledge and belief all of such articles have been used for the benefit of the county; and that the charges for services and expenses of the county commissioners appear reasonable.

Dated at Laconia this seventh day of July, 1914.

OSCAR L. YOUNG,  
HERBERT J. JONES,

Auditors of Belknap County.

STATE OF NEW HAMPSHIRE,      BELKNAP, SS.  
To the Superior Court:

We have carefully examined all of the accounts of the several county officers for the six months ending December 31, 1914, and we find that said accounts are correct, well kept and properly vouched; that the sums charged therein for articles purchased are according to market value; that according to the best of our judgment and belief all of such articles have been used for the benefit

of the county; that the charges for services and expenses of the commissioners appear reasonable; that the treasurer has proper vouchers for all payments made by him, which agree with the orders drawn by the commissioners and the payrolls and orders drawn and approved by the court; that said treasurer had on hand at the end of said six months the sum of \$15,650.20; that the superintendent of the county farm had in his hands a balance of \$102.62, he showing receipts from the treasurer for other money collected by him. The commissioners have filed with us a sworn statement of the indebtedness of the county outstanding at the end of said six months, which is, in substance, that there are no bills outstanding against said county except the accounts due in the several towns for aid rendered to paupers and soldiers and their families and bills contracted at the county farm since the last settlement, the amounts of which are unknown, and the amounts due the commissioners for services and expenses since October 1, 1914.

We have also examined the securities in the sinking fund. Municipal bonds heretofore belonging to the sinking fund, amounting to \$6,000.00, have been turned over to the treasurer since January 1, 1914. There was on deposit on the 31st day of December, 1914, in the Meredith Village Savings Bank the sum of \$3,043.70. There are also Belknap County refunding bonds, the par value of which amount to \$11,000.00, making the total fund, \$14,043.70.

Dated at Laconia this fourteenth day of January, 1915.

OSCAR L. YOUNG,  
HERBERT J. JONES,  
Auditors.



# INDEX.

Auditor's Report . . . . .	487
Belknap County Delegation, 1915—16 . . . . .	438
Clerk of the Court's Report . . . . .	478
Commissioners' Report . . . . .	439
County Officers . . . . .	437
County Farm Account . . . . .	444
Court House Account . . . . .	455
Chaplain's Report . . . . .	471
District Courts . . . . .	459
External Poor Account . . . . .	442
Farm Improvement . . . . .	457
Financial Statement of Belknap County . . . . .	462
House of Correction . . . . .	466
Inmates of County Farm . . . . .	463
Inventory of Personal Property at County Farm . . . . .	461
Jailer's Report . . . . .	466
Jail Account . . . . .	455
Miscellaneous . . . . .	458
Medical Referee . . . . .	457
Physician's Report . . . . .	470
Permanent Improvement . . . . .	460
Recapitulation of Orders drawn on Treasurer . . . . .	460
Salary of County Officers . . . . .	456
Sheriff's Report . . . . .	476
Solicitor's Report . . . . .	473
Statement of Farm Account . . . . .	468
State License Commission Receipts . . . . .	481
Superintendent's Report . . . . .	463
Superior Court Expenses . . . . .	484
Treasurer's Report . . . . .	480













