

# GRAFTON COUNTY


## Annual Report



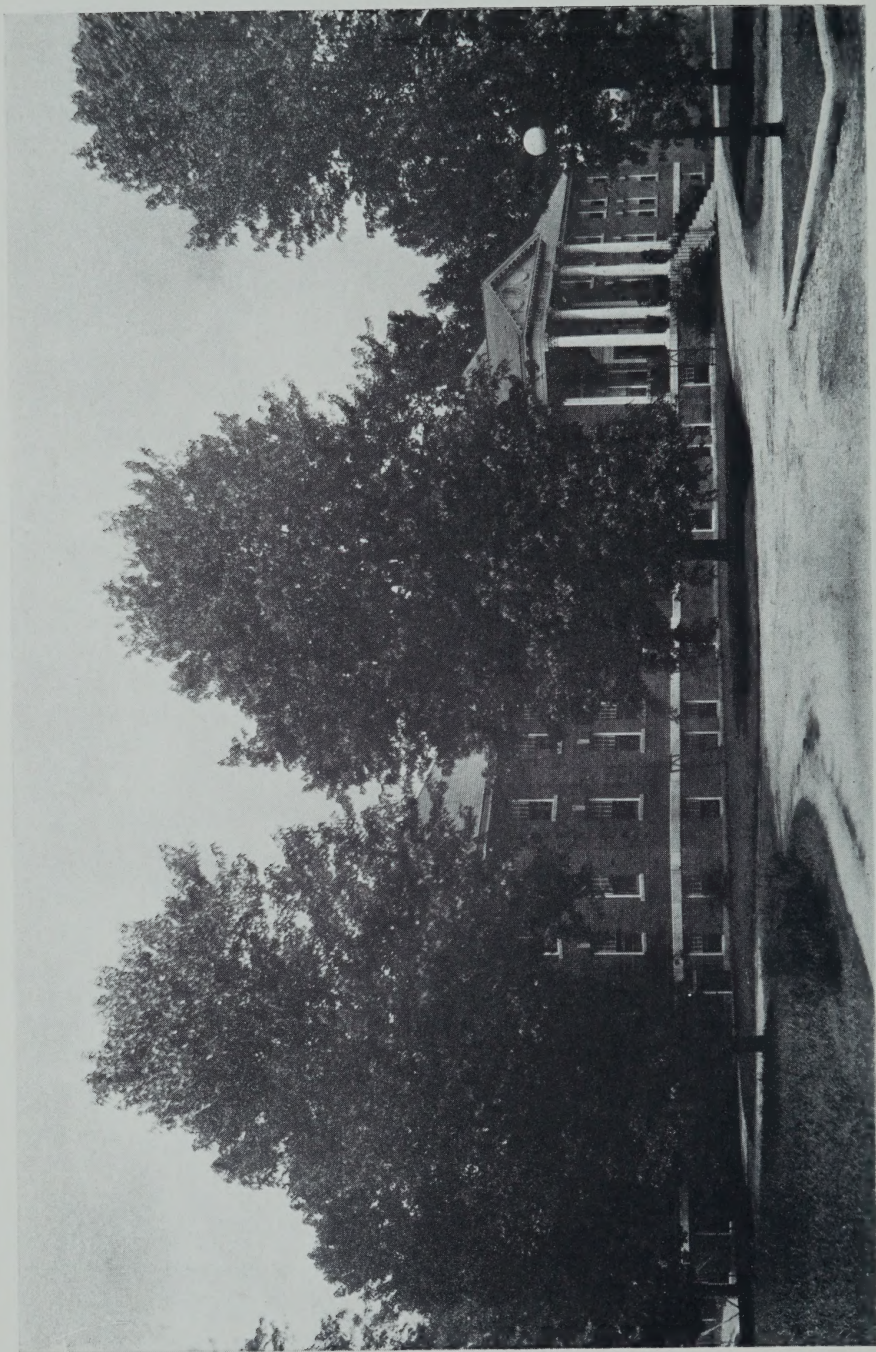
FOR THE YEAR ENDING

**December 31, 1942**





Digitized by the Internet Archive  
in 2022 with funding from  
University of New Hampshire Library



GRAFTON COUNTY FARM HOME

**ANNUAL REPORT**  
**OF THE**  
**COMMISSIONERS**  
**OF THE**  
**County of Grafton**

Together with the Reports of the  
Treasurer, Auditors, Superintendent, Jailer  
Clerk of Court, Solicitor, Sheriff,  
Chaplain, Physician and  
Farm Bureau

---

**FOR THE YEAR ENDING**  
**DECEMBER 31, 1942**

---

THE RECORD PRINT  
Plymouth, New Hampshire



N  
352.0742  
G73  
1942

## INDEX

---

County Officers .....	5
Grafton County Delegation .....	6
Commissioners' Report .....	7
Text of Audit Report of Municipal Accounting	
Division, State Tax Commission .....	9
Selectmen of Town and Overseers of Poor .....	19
Financial Report—	
Balance Sheet .....	21
Receipts and Payments .....	22
Schedule of County Property .....	26
Detail of Bonded Debt .....	27
Detail of Receipts .....	28
Detail of Payments .....	30
Comparative Statement of Appropriations and Expenditures .....	40
Treasurer's Report .....	41
Comparative Debt Statement .....	42
Auditors' Report .....	43
Superintendent's Report .....	44
Clerk of Court's Report .....	58
County Solicitor's Report .....	61
Sheriff's Report .....	67
Chaplain's Report .....	70
Physician's Report .....	72
Summary of Farm Accounts .....	74
Grafton County Farm Bureau .....	76





## GRAFTON COUNTY OFFICERS

---

### COMMISSIONERS

George A. Pushee	Lyme
Fred Parker	Lisbon
John Gadd	Plymouth

### TREASURER

Harry S. Huckins	Plymouth
------------------	----------

### SOLICITOR

Hazen K. Sturtevant	Plymouth
---------------------	----------

### SHERIFF

Robert P. Peckett, Jr.	Franconia
------------------------	-----------

### JAILER

J. Earle Andrews	Woodsville
------------------	------------

### CLERK OF COURT

C. Murray Sawyer	Woodsville
------------------	------------

### JUDGE OF PROBATE

Henry A. Dodge	Littleton
----------------	-----------

### REGISTER OF PROBATE

Charles E. Dixon, Jan. 1 to June 30, 1942,	Woodsville
Luigi J. Castello, July 1 to Dec. 31, 1942, Commissioner	Woodsville

### REGISTER OF DEEDS

Fred J. Shores	Woodsville
----------------	------------

### COUNTY ALMSHOUSE AND HOUSE OF CORRECTION

J. Earle Andrews, Superintendent	Woodsville
----------------------------------	------------

### CHAPLAIN

Rev. R. W. E. MacKenzie	North Haverhill
-------------------------	-----------------

### PHYSICIAN

E. M. Miller, M. D.	Woodsville
---------------------	------------

### AUDITORS

Moses A. Batchelder	Plymouth
Horace B. Knight	Woodsville

## GRAFTON COUNTY DELEGATION

---

Alexandria	Harry D. Rollins
Ashland	William A. Brown
Bath	Amos N. Blandin
Bethlehem	George T. Noyes
Bristol	John W. Coolidge
Campton	Bertram W. Pulsifer
Canaan	Frank B. Clarke
Enfield	Isaac H. Sanborn
Franconia	William P. Hodge
Grafton	Henry M. Valia
Hanover	Archie B. Gile
	Charles A. Holden
	Edgar H. Hunter
Haverhill	Alec J. Cryan
	Lewis E. Davison
	Frank R. Dean
Holderness	Harold E. Haley
Landaff	Roscoe J. Oakes
Lebanon	Earl T. Burby
	Daniel E. Butler
	Matthew S. Gile
	Frank X. Guay
	Napoleon A. Jette
	Frank Kelley
Lincoln	Sherman Adams
Lisbon	James E. Collins
	Arthur L. Hamilton
Littleton	Clare R. Blount
	Lawrence W. Collins
	Mabel M. Downing
	Henry F. Whitcomb
Lyme	Frank H. Bailey
Monroe	Harlan J. Johnson
Orford	Charles L. Cushman
Piermont	Ernest D. Day
Plymouth	Kenneth G. Bell
	Harry A. Merrill
Rumney	Jesse A. Barney
Thornton	Kenneth Robbins
Warren	Ira H. Morse
Wentworth	Charles A. Gilbert
Woodstock	Harry D. Sawyer

## REPORT OF COUNTY COMMISSIONERS

To the Citizens of Grafton County:

In accordance with the Public Laws of the State of New Hampshire the Commissioners of Grafton County herewith present the annual report of the Commissioners, Treasurer, Auditors, Superintendent of County Farm, Jailer, Clerk of Court, Solicitor, Sheriff, Chaplain, Physician and Farm Bureau.

Our Treasurer, Harry S. Huckins, has again succeeded in collecting all taxes for the year 1942. This is the seventh consecutive year that all taxes have been collected.

### Superior Court

There was appropriated for the year 1942 \$25,000, and this less an expense of \$19,394.44 leaves a surplus of \$5,605.56 under the amount appropriated.

### County Farm

The number of inmates cared for at the Farm shows a slight decrease over the year 1941. However, with the increased cost of labor and supplies, the per capita cost was reduced to \$5.97.

The hospital as usual has been well filled and provides good care and comfort for those requiring hospitalization - it is a real financial asset to the County.

The buildings connected with the farm are in first class condition, repairs being made as needed.

For the excellent conditions at the farm we are indebted to Superintendent and Mrs. J. E. Andrews, their assistants together with all others, who have contributed to the success of the farm.

For details covering administration of the institution we would refer you to the Superintendent's report on other pages.

### Welfare and Relief

The cost of taking care of the Poor not on the Farm for the year 1942 was \$18,094.92, a decrease of

\$27,176.11 over the year 1941. The cost of Aid to Soldiers and their families for the year 1942 was \$2,616.82 or a decrease of \$3,528.70 over the year 1941. There was also a slight decrease in the cost of Board and Care of Children with a slight increase in the cost of Old Age Assistance. Welfare Administration expense decreased \$3,086.77 over the year 1941.

From the above you will note that this amounts to a very substantial saving in the cost of Welfare and Relief, particularly due to business conditions, which give employment to all able bodied persons at a good rate of pay. There have also been several cases transferred from Direct Relief to Old Age Assistance and Aid to Dependent Children. However, you should not lose sight of the fact that whatever unit of government, whether Federal, State, County, City or Town, meets these costs in the first instance it is the taxpayer who has to pay in the final analysis.

#### Finances

There was appropriated for 1942, \$200,600.00 for County expenses. This amount was reduced by \$11,432.00, which was surplus cash on hand January 1, 1942, making the county tax \$189,168.00.

We are happy to report that with all bills paid we close the year with a surplus on hand of \$52,922.26, December 31, 1942, which will help materially for a low county tax for the years 1943 and 1944.

The net debt of the County on December 31, 1941 was \$67,250.45 and December 31, 1942 the net debt was \$15,446.85 or a decrease of \$51,803.60, which leaves the finances of the County in the best of condition.

Respectfully submitted,

GEORGE A. PUSHEE,  
FRED PARKER,  
JOHN GADD,

Commissioners.

DIVISION OF MUNICIPAL ACCOUNTING  
STATE TAX COMMISSION  
Concord, New Hampshire

---

May 14, 1942

Board of County Commissioners,  
Grafton County,  
Woodsville New Hampshire

Gentlemen:

In accordance with the provisions of Chapter 209 of the Session Laws of 1941, an audit of the accounts of Grafton County has been made by the Division of Municipal Accounting of the State Tax Commission. The period covered included the fiscal year ending December 31, 1941, and the current year from January 1, 1942 to March 31, 1942. Submitted herewith is the report of this audit, including Schedules as hereafter listed.

**Scope of Audit**

Included in the audit and examination were the accounts and records of the County Commissioners, County Treasurer and Superintendent of the County Farm.

**Finances**

In order to present a comprehensive picture of the financial condition of the County during the last ten years and the changes which have occurred in this period, certain statements have been prepared and will be referred to in the comments which follow.

**Comparative Balance Sheets - 1932 to 1941, inclusive:**  
(Schedule A)

It will be noted that during this period the Net Debt of the County decreased from \$243,287.47 to \$67,250.45. In the same period the Bonded Debt decreased from \$193,000.00 to \$80,000.00.

**County Tax Apportionment - 1933 to 1942, inclusive:**  
(Schedule B)

The apportionment of the County tax by towns during the years from 1933 to 1942 inclusive, is shown in this Schedule. The highest County Tax was \$277,-600.00, in 1939. From this peak it has dropped to \$189,168.00, in 1942.

**Receipts and Expenditures - 1932 to 1941, inclusive:**  
(Schedule C)

Summaries of receipts and expenditures classified in accordance with the uniform classification of accounts, for the years 1932 to 1941, inclusive, are presented in Schedule C.

**Bonded Debt and Annual Maturities**  
(Schedule D)

The outstanding bonded debt of the County, as of December 31, 1941, amounted to \$80,000.00. This represented the balance of the original issue of \$200,-000.00, on account of the construction of the County Farm. These bonds mature at the rate of \$10,000.00 a year until 1949, when the final payment on this issue becomes due.

**Revenues, Appropriations and Expenditures - 1941:**  
(Schedules H and I)

Comparative statements of Appropriations and Expenditures and Estimated and Actual Revenues, for the fiscal year ended December 31, 1941, are included in these Schedules. A net unexpended balance of appropriations of \$13,361.68, and a net revenue deficit of \$1,929.14, resulted in a net budget surplus for the year of \$11,432.54, which was the actual amount of the cash balance on December 31, 1941.

**ACCOUNTS OF COMMISSIONERS  
AND TREASURER**

(Schedules E, F and G)

All orders issued by the Commissioners and Clerk of the Superior Court during the fiscal year ended December 31, 1941, and the period from January 1 to March 31, 1942, were examined and compared with corresponding entries in the Treasurer's records. The classification of expenditures was noted. Payments made by the Commissioners were properly supported

by vendors' invoices or relief orders issued by town overseers acting as agents of the County. County relief orders, issued by local overseers, were not in all cases supported by vendors' bills. This requirement should be insisted upon when settlements are made with towns.

Totals of receipts and expenditures, as indicated by the Treasurer's records, were verified. The Treasurer's balance as of December 31, 1941, and March 31, 1942, was in agreement with the reconciled bank balance on each date.

### WELFARE EXPENDITURES - 1940 and 1941

(Schedule K)

This statement has been prepared showing the amount expended by the County in each town for all classes of relief, viz:—direct relief, old age assistance, board and care of children and soldiers' aid, during the years 1940 and 1941. The number of cases and number of persons served are indicated therein. It will be noted that a substantial decrease in the number of cases and the amount expended took place in 1941.

### ANALYSIS OF "POOR OFF FARM" AND "OLD AGE ASSISTANCE" CASES BY MONTHS DURING

1939, 1940, 1941 and 1942 TO MARCH 31st

(Schedules L and M)

The number of persons receiving aid at the present time who are classified as "Poor Off Farm" (including recipients of direct relief, boarded children and dependent soldiers) is less than one third of the number in March 1939. The total expenditure by the County for this class of relief amounted to \$116,693.77, in 1939; \$97,956.47, in 1940; \$72,362.88, in 1941; and \$12,079.23 for the first three months of 1942.

On the other hand the number of County old age assistance cases has increased from 38 in January 1939, to 121 in March 1942. The cost of old age assistance to the County in these two monthly periods was \$188.50 and \$720.62, respectively. Total cost of old age assistance to the County amounted to \$3,741.95, in 1939;

\$5,667.09, in 1940; \$8,611.73, in 1941; and \$2,246.78, in the first three months of 1942.

The increase in old age assistance cases is due to the lowering of the age limit for those eligible for this type of aid.

### COUNTY FARM ACCOUNTS

At the beginning of the fiscal year the County Commissioners issue an order to the Superintendent of the County Farm for \$1,500.00. Out of this fund the Superintendent makes the monthly payroll disbursements, pays freight and express bills and makes miscellaneous small purchases. All other bills are approved by the Superintendent and sent to the Commissioners for payment.

At the end of each month the Superintendent renders a statement to the Commissioners showing all disbursements made by him during the month and files with this statement signed payrolls and receipted bills. He is subsequently reimbursed by the Commissioners for the total amount of his monthly disbursements, so that his fund is brought up to the original amount of \$1,500.00.

Income received by the Superintendent from all sources is deposited by him directly in the Woodsville National Bank to the credit of the "Superintendent of County Farm" account. At the end of each month he draws a check against this account to the County Treasurer for the total amount of County Farm income during the month.

The Superintendent's accounts were balanced as of December 31, 1941, and April 15, 1942, and his balance reconciled with the bank balance on the latter date. (Schedules N and O.)

The record of fines and costs collected and subsequently paid to the Superior and various Municipal Courts was examined. A summary of this account for the fiscal year ended December 31, 1941, appears in Schedule P and for the period from January 1, 1942 to April 15, 1942, in Schedule Q.



There are certain changes in the County Farm accounting procedure which we believe will improve present practices. We therefore make the following recommendations:

1. Superintendent should use serially numbered, triplicate receipt forms, the original to be issued to the remitter when money is received from any source whatsoever. The duplicate receipt should be sent to the County Commissioners' office and the triplicate retained by the Superintendent.

2. Superintendent should deposit all receipts from County Farm directly to the credit of the County Treasurer's account in the Woodsville National Bank, sending a duplicate deposit ticket each time to the County Treasurer. At the end of each month a detailed statement of receipts should be sent to the County Commissioners, the total amount of which will agree with the bank deposits and the total of the individual duplicate receipts issued during the month by the Superintendent.

3. Payroll payments to County Farm employees should be made directly by the Commissioners. The usual County order-check should be issued to each employee. This will eliminate the necessity of advancing \$1,500.00 to the Superintendent for payroll purposes. All bills, except those for freight, express and miscellaneous small purchases to be paid out of the petty cash fund, should be approved and sent to the Commissioners for payment.

4. Superintendent's account at bank should be limited to a petty cash fund of \$200.00. This fund when established would be reimbursed monthly by the Commissioners on the basis of actual payments made from it. Fines and costs collected at the house of correction may be deposited in this account and checks to Superior and Municipal Courts issued therefrom, as is now the case. Checks on account of personal transactions should not be drawn against this account.

5. Either the Superintendent or the bookkeeper in the Commissioners' office should keep the classification record of County Farm receipts and expenditures. A standard form is published for this purpose. Ex-

penditures will be on the basis of bills approved and sent to the Commissioners for payment. If the record is kept at the Commissioners' office all bills should be classified as to purpose of expenditure when approved by Superintendent. Classification of receipts can be made from the detailed monthly statements of receipts which will be furnished the Commissioners by the Superintendent.

6. Receipts from fines and costs should be recorded in the Superintendent's Petty Cash Book as well as subsequent payments of fines and costs to the Superior and Municipal Courts.

## GENERAL COMMENTS

### Balance Sheet

The fiscal year of all Counties is from January 1st to December 31st, and, inasmuch as the Counties operate on a cash rather than an accrual basis, the annual budget is made to cover expenditures during the fiscal period. The usual procedure is to pay bills in the month following that in which they are incurred. Consequently expenditures during the fiscal year, January 1st to December 31st, are made on account of bills contracted from December 1st to November 30th. It follows therefor that bills contracted in December are paid during the first month of the next fiscal year and are charged against the next year's appropriations. For this reason such accounts should not be included as "Accounts Payable" in the Balance Sheet as of December 31st. However, bills contracted prior to December 1st, payment of which should have been made in December but is actually delayed until the next fiscal year, should be reported as "Accounts Payable".

Unexpended balances of appropriations made for specific purposes, such as new construction or the purchase of equipment, do not lapse at the end of the year provided that the particular project for which the appropriations was made is not completed at that time. It is proper to include such balances in "Accounts Payable" at the close of the fiscal year.

### **Mileage**

At a meeting of the Grafton County Delegation held on May 8th, 1941, the following motion was made and voted upon favorably by the Delegation:

“Mr. Blandin moved that it was the sense of the Delegation, that the Commissioners be asked to charge five cents per mile to conform with the rate paid investigators. Motion carried.”

An opinion was requested from the Attorney-General as to the authority of the County Convention to fix the mileage rate for County Commissioners and he has ruled as follows:

“You have inquired whether the County Convention has authority to fix the mileage rate for County Commissioners at five cents per mile. This office has previously ruled that the County Convention possesses the power to fix mileage rates of County Commissioners and county officers under the authority of P. L. c. 35 s. 5, as amended by Laws 1933, c. 102. This conclusion has been in effect approved and ratified by the legislature. See Laws 1941 c. 187 s. 2. The authority of the County Convention to appropriate money must necessarily include money for mileage as well as other county expenses. Their authority in this respect is not unlike that of the legislature who determines appropriations for state departments.”

The Commissioners should therefor be governed by the vote of the County Convention fixing the mileage rate.

### **Competitive Bidding**

Chapter 108 of the Session Laws of 1941 provides that “Any purchase of equipment or materials made by a county in an amount exceeding fifty dollars shall be by competitive bidding, provided that the county commissioners by unanimous vote may waive the provisions for such bidding.”

In order that the interpretation of this law might be clarified the following question was asked the Attorney-General:

“In your opinion does this act apply in cases where orders are made up of different articles, the total

amount of which exceeds fifty dollars? This might apply to groceries, provisions, clothing or grain for the County Farm, medical supplies for the Hospital or any other merchandise purchased by the County."

The Attorney-General has ruled as follows:

"Your second inquiry is whether or not Laws 1941 c. 108 requiring competitive bidding in purchases made by County Commissioners applies to groceries, provisions, clothing, grain, medical supplies and other merchandise purchased by the County. The law, Public Laws c. 38 s. 7a (Laws 1941 c. 108) requires competitive bidding for "any purchase of equipment or materials." The quoted phrase has no technical meaning and is to be interpreted broadly to effectuate its purpose. A narrow construction of the quoted phrase "equipment or materials" would be contrary to the legislative intention and would emasculate the purpose of the statute. The act is intended to apply to any purchase including these purchases mentioned in your inquiry. Nor can the dictate of the statute be avoided by consciously and deliberately making consecutive purchases of less than fifty dollars in order to avoid competitive bidding. The fifty dollar limitation was intended to take care of purchases which were made occasionally and was not intended to be a device by which the purpose of the act could be frustrated. The statute does not define competitive bidding but it has been interpreted generally to mean a bona fide attempt to obtain offers or bids from several sources in order that the county may benefit by the lowest price. Since the statute does not determine the manner of ascertaining these offers and bids, it rests with the sound discretion of the County Commissioners as to whether the bids will be in writing and the form which they will take. In cases where competitive bidding cannot fulfill its purpose, it may be waived by unanimous vote of the County Commissioners duly recorded in their offices, together with a statement of the reasons therefor, which are open to public inspection at all reasonable hours."

There is no question therefore as to the application of this law to all County purchases of equipment or materials exceeding fifty dollars in amount.

Although not mandatory it would seem as though a more effective system could be set up if all purchasing was done by the County Commissioners and all requests for bids would in that case be sent out from the Commissioners' office. Suggested forms for this purpose will be furnished by this Division. It is also important that a record of all bids received and awards made be kept.

### CLERK OF THE SUPERIOR COURT

In order that the audits of County accounts made by this Division might include the accounts of the Clerks of the Superior Court authorization of such procedure was requested of the Court. Permission was granted, under date of May 15, 1942, in a letter to the Tax Commission from Chief Justice Oscar L. Young, which reads in part as follows:

"In connection with the county audits which by law your commission is required to make, you or your representatives are hereby given permission to examine the financial records of the clerk of court in any of the counties of the state so far as they have to do with county funds."

Accordingly the accounts and records of the Clerk of Court of Grafton County were examined for the period covered by the audit of other County accounts. Court receipts were checked by source, insofar as possible, and found to be properly recorded. Court orders issued by the Clerk were supported by invoices, vouchers and payrolls bearing the approval of a Superior Court Justice.

After the examination of the accounts of the several County Courts has been completed a uniform system of accounting procedure will be developed which will enable each Clerk of Court to keep accounts and make reports on a comparable basis.

### ACCOUNTING PROCEDURE

The accounts and records of all County officials which were examined were found in good condition and the accounting procedure, with certain exceptions pertaining to the County Farm accounts as heretofore noted, conformed to the standard procedure prescribed by

this Division. All records were very complete and accurate, particularly those having to do with relief accounts.

Section 31 of Chapter 211, Laws of 1939, provides that:

“Upon the completion of each audit, as herein provided, a report thereof shall be made to the proper local officials, and a copy of such report or summary of its essential features shall be published in the next annual report of the county, city, town, school district, village district or precinct concerned.”

In accordance with the provisions of this law, therefore, the text of this report and essential Schedules should be printed in the next annual County report.

We wish to express our appreciation and thanks to the County officials and their office staff for the assistance rendered while we were engaged in this audit.

Yours very truly,

HAROLD G. FOWLER, Director,  
Division of Municipal Accounting,  
State Tax Commission.

Lawton B. Chandler,	}	Accountants
Alan R. Matthews,		
Herbert E. Hunt,		

**SELECTMEN OF TOWN AND OVERSEERS  
OF THE POOR**

---

Your attention is called to the following extracts from  
the laws of 1903:

**CHAPTER 42, SECTION 1**

**SECTION 1.** Any town or county furnishing any assistance to any person within six years preceding his death shall be entitled to recover from the estate of such persons the sum or sums paid out for such assistance the said claim to be a preferred claim against his said estate after payment of funeral charges, expense of last sickness and expenses of administration, provided he leaves no widow or minor children at his decease.

**CHAPTER 106, SECTION 1, as amended**

**SECTION 1.** No town shall be liable for the support of any person unless, he or the person under whom he derives his settlement, shall have wholly gained a settlement therein during the ten years preceding the last date of application for support provided that no person having a settlement in any town in this state upon arriving at age of seventy years shall lose that settlement on account of being exempt by law from paying a poll tax, if he resides in said town.

**ASSISTANCE TO PERSONS IN QUARANTINE:**

**PUBLIC STATUTES, CHAPTER 110**

**Following Section 6**

**SECTION 1.** Whenever any person or family is placed in quarantine by a board of health, to protect the public against small pox, scarlet fever, diphtheria or any other dangerous, infectious or contagious disease, it shall be the duty of said board to assist such

person or family while in quarantine in such manner as in the judgment of the board may be deemed wise and necessary.

SECTION 2. All expenses thus incurred, or such part thereof as the board may determine, shall be deemed as legitimate expenditure for the protection of public health and shall be charged to the account of incidental expenses, but not to any indigent pauper account, nor shall such expenditure be construed to mean a public aid to the person or persons so quarantined and assisted unless such person or persons are already paupers as defined by the Public Statutes.

The following towns may send their affidavits and direct their correspondence to:

GEORGE A. PUSHEE, Lyme, N. H.—Canaan, Dorchester, Enfield, Grafton, Hanover, Lebanon, Lyme, Orford, Orange and Piermont.

FRED PARKER, Lisbon, N. H.—Bath, Benton, Bethlehem, Easton, Franconia, Haverhill, Landaff, Lisbon, Littleton, Lyman, and Monroe.

JOHN GADD, Plymouth, N. H.—Alexandria, Ashland, Bridgewater, Bristol, Campton, Ellsworth, Groton, Hebron, Holderness, Lincoln, Plymouth, Rumney, Thornton, Warren, Waterville, Wentworth, and Woodstock.

GEORGE A. PUSHEE,  
 FRED PARKER,  
 JOHN GADD,  
 Commissioners.



**FINANCIAL REPORT  
BALANCE SHEET**

**Fiscal Year Ending December 31, 1942**

**ASSETS**

Cash on Hand	\$52,922.26
<b>Accounts Due County:</b>	
(a) Taxes due from towns	None
(b) For boarders	\$ 1,630.89
	\$ 1,630.89
Total assets	\$54,553.15
*Excess of liabilities over assets (Net debt)	\$15,446.85
	\$70,000.00
Net Debt—December 31, 1941	\$67,250.45
Net Debt—December 31, 1942	\$15,446.85
	\$51,803.60

\*This is offset by Schedule of County Property amounting to \$480,125.30. See Schedule of County Property on Page 26.

Purpose for which debt was created—New Almshouse

**LIABILITIES**

**\*Bonds Outstanding**

Grafton County Farm Bonds (Almshouse)	\$70,000.00
	\$70,000.00
Total liabilities	\$70,000.00
	\$70,000.00
Grand total	\$70,000.00

\* See page 29 Schedule of Bonds outstanding.

## Financial Report

## RECEIPTS AND

---



---

**RECEIPTS**
**Current Revenue:**

Taxes from Towns and Cities	\$189,168.00	\$189,168.00
Fines and Forfeits, Superior Court	705.82	705.82
Income of Institutions		
(a) County Farm	18,690.30	
(b) Court Houses	294.00	
		\$ 18,984.30
Reimbursement of Expenditures for support of Poor etc.		
(a) From State of New Hampshire	45.89	45.89
(b) From other sources	1,548.33	1,548.33
<b>Total Current Revenue Receipts</b>		<b>\$210,452.34</b>

(Receipts Carried Forward to Page 24)

**PAYMENTS****Financial Report****PAYMENTS****Current Maintenance Expenses:****General Government:**

1. Salaries of		
(a) Commissioners	\$ 4,500.00	
(b) Treasurer	300.00	
(c) Auditors	100.00	
(d) Solicitor	1,200.00	
(e) Medical Referees	661.00	
(f) Sheriff	1,000.00	
		\$ 7,761.00
2. Expenses of		
(a) Above Officers	2,569.01	
(b) Register of Deeds	812.75	
(c) Register of Probate	1,181.07	
		\$ 4,562.83
3. Care and Supplies for Court Houses	2,903.68	
		\$ 2,903.68

**Superior Court:**

4. Jury Payrolls	5,082.06	
5. "State vs.—" Payrolls	1,029.57	
6. Counsel Fees	250.00	
7. Stenographer, etc.	4,185.56	
8. Clerk of Superior Court	4,100.53	
9. Sheriff and Deputies	4,746.72	
		\$19,394.44

**Public Welfare:**

10. County Farm Expenditures	51,671.15	
11. Support of Poor not on County Farm	18,094.92	
12. Old Age Assistance	9,242.25	
13. Board and care of Children	20,675.28	
14. Aid to Soldiers	2,616.82	
15. Welfare Administration Expense	8,438.74	
		\$110,739.16

Total Current Maintenance Expenses \$145,361.11

(Payments Carried Forward to Page 25)

**Financial Report****RECEIPTS AND**


---

Total Receipts Brought Forward	\$210,452.34
From Page 22	

**Receipts Other Than Current Revenue:**

Temporary loans during year	\$200,000.00
-----------------------------	--------------

## All Other Receipts:

(a) Returned bond premium	42.99
---------------------------	-------

(b) Returned J. E. Andrews, Farm Supt. advance	1,500.00
---	----------

---

Total receipts other than current revenue	\$201,542.99
---	--------------

Total receipts from all sources	\$411,995.33
---------------------------------	--------------

Cash on hand at beginning of year	\$ 11,432.54
-----------------------------------	--------------

---

Grand total

\$423,427.87

<b>PAYMENTS (Continued)</b>	<b>Financial Report</b>
-----------------------------	-------------------------

Total Payments Brought Forward	\$145,361.11
From Page 23	

**Interest:**

16. Paid on temporary loans	\$866.94
17. Paid on Bonded Debt	4,000.00

Total Interest payments	\$ 4,866.94
-------------------------	-------------

## Total Outlay Payments:

**Indebtedness:**

18. Payments on Temporary Loans	200,000.00
19. Payments on Principal of Bonds	10,000.00

Total Indebtedness Payments	\$210,000.00
-----------------------------	--------------

**All Other Payments:**

20. Farm Bureau	8,300.00	\$ 8,300.00
21. Miscellaneous	477.56	477.56
22. J. E. Andrews, Farm Supt., Advance	1,500.00	1,500.00

Total payments for all purposes	\$370,505.61
Cash on Hand at end of year	52,922.26

Grand Total

\$423,427.87

**Financial Report**

---

---

**SCHEDULE OF COUNTY PROPERTY**

---

## Description

## Land and Buildings:

(a) Court House	\$100,000.00
(b) Jail	55,000.00
(c) County Farm	250,000.00
(d) Water System	20,000.00

## Furniture and Equipment:

(a) Court House	25,700.00
(b) Jail	1,548.10
(c) County Farm	27,877.20

---

**\$480,125.30**

**LIABILITIES**  
**DETAIL OF BONDED DEBT OF**  
**GRAFTON COUNTY**

---

December 31, 1942

Showing Annual Maturities of Outstanding Obligations

County Farm

1929

1943	\$10,000.00
1944	10,000.00
1945	10,000.00
1946	10,000.00
1947	10,000.00
1948	10,000.00
1949	10,000.00
	<hr style="width: 10%; margin: 0 auto;"/>
	\$70,000.00

These Bonds Issued to Build New Almshouse.

## DETAIL OF RECEIPTS

### Taxes from Towns

Alexandria	\$ 1,482.39
Ashland	5,116.07
Bath	2,621.31
Benton	343.48
Bethlehem	8,550.89
Bridgewater	1,825.87
Bristol	8,080.86
Campton	3,863.69
Canaan	3651.75
Dorchester	451.95
Easton	379.63
Ellsworth	90.39
Enfield	4,035.62
Franconia	2,892.48
Grafton	1,355.85
Groton	1,048.52
Hanover	18,764.95
Haverhill	12,238.80
Hebron	1,663.17
Holderness	5,563.02
Landaff	759.27
Lebanon	23,989.48
Lincoln	3,724.06
Lisbon	8,537.05
Littleton	15,095.13
Lyman	777.35
Lyme	2,567.07
Monroe	25,128.40
Orange	361.56
Orford	2,115.12
Piermont	1,843.95
Plymouth	10,087.52
Rumney	2,567.07
Thornton	1,265.46
Warren	1,753.56
Waterville	235.01
Wentworth	1,423.16
Woodstock	2,802.09
	\$189,168.00



**DETAIL OF RECEIPTS (Continued)****Fines and Forfeits, Superior Court**

Robert P. Peckett, Jr., Sheriff  
Slot Machine money \$ 705.82

**Income of Institutions**

Grafton County Farm \$18,690.30  
(See Report of Superintendent of County  
Farm, Page 54.)  
Use of Court Houses  
U. S. Selective Service \$ 264.00  
State Tax Commission 20.00  
Plymouth Pistol Club 10.00  

---

\$18,984.30

**Reimbursements**

State of New Hampshire  
Old Age Assistance 18.89  
Cancer Commission 27.00  
Other Sources:  
Support of Poor not on  
County Farm 692.51  
Boarded Children 821.82  
Strafford County  
Old Age Assistance 34.00  

---

\$ 1,594.22

**Temporary Loans During Year**

Second National Bank, Boston, Mass.  
Notes 98 and 99, January 15,  
'42; due Nov. 27, '42 50,000.00  
Notes 100, 101, 102, 103, Jan.  
15, '42, due Dec. 24, '42 100,000.00  
Notes 104 and 105, Jan. 15, '42  
due Jan. 14, '43 50,000.00  

---

\$200,000.00

Above notes discounted at .379 of 1%

**All Other Receipts**

Gile & Co., Hanover, N. H.  
Return premium Deputy Sheriff  
Henry W. Buskey's bond 42.99  
Andrews, J. E., Farm Supt.  
Return advance 1,500.00  

---

\$ 1,542.99

**DETAIL OF PAYMENTS**  
**CURRENT MAINTENANCE EXPENSES**

**General Government**

**Salaries of County Officers**

**Commissioners:**

Pushee, George A.		
July 1, '41 - Dec. 31, '42	\$ 1,500.00	
Parker, Fred		
July 1, '41 - Dec. 31, '42	\$ 1,500.00	
Gadd, John		
July 1, '41 - Dec. 31, '42	\$ 1,500.00	
	<u>          </u>	\$ 4,500.00

**Treasurer:**

Huckins, Harry S.	300.00	
	<u>          </u>	\$ 300.00

**Auditors:**

Batchelder, M. A.	50.00	
Knight, H. B.	50.00	
	<u>          </u>	\$ 100.00

**Solicitor:**

Sturtevant, Hazen K.	1,200.00	
	<u>          </u>	\$ 1,200.00

**Medical Referees:**

Churchill, Dr. Kenneth	10.50	
DeWitt, Dr. Reginald F.	6.40	
House, Dr. Reginald K.	25.00	
Miller, Dr. Ralph E.	94.00	
Orton, Dr. Leon M.	210.65	
Page, Dr. John M.	15.00	
Pickwick, Dr. H. C.	91.80	
Putnam, Dr. William F.	207.65	
	<u>          </u>	\$ 661.00

**Sheriff:**

Peckett, Robert P., Jr.	1,000.00	
	<u>          </u>	\$1,000.00

            
\$ 7,761.00

**Detail of Payments (Continued)****Expenses of County Officers**

Pushee, George A., Commissioner	690.94	
Parker, Fred, Commissioner	348.56	
Gadd, John, Commissioner	887.80	
Huckins Harry S., Treasurer	96.71	
Kirk, Madeline W., Services as clerk—50%	400.00	
Ayer Insurance Agency, Treasurer's Bond	145.00	
	<hr/>	\$ 2,569.01

**Register of Deeds**

Shores, Fred J., telephone	47.00	
Shores, Fred J., express and cartage	7.53	
Shores, Fred J., work on attach- ment book	91.00	
Larson, Carl, supplies	28.74	
Mann, E. B. & Co., supplies	3.90	
Martell, A. E. & Co., supplies	381.39	
Musgrove Printing House supplies	7.18	
Record Print, The, supplies	29.75	
Remington Rand, Inc., supplies	141.84	
Twin State Pub. Co., supplies	16.15	
Ward's, supplies	3.70	
White River Paper Co., supplies	1.32	
Woodsville Pub. Co., supplies	53.25	
	<hr/>	\$ 812.75

**Register of Probate**

Dixon, Charles E., clerk hire Jan. 1, '42—June 30, '42	150.00
Castello, Luigi J., clerk hire July 1, '42—Dec. 31, '42	150.00
Dixon, Charles E., equipment	75.00
Dixon, Charles E., telephone	53.42
Dixon, Charles E., postage	64.00
Dixon, Charles E., express	2.08
Dixon, Charles E., supplies	8.44
Castello, Luigi J., telephone	34.20
Castello, Luigi J., postage	84.93
Castello, Luigi J., express	3.00

### Detail of Payments (Continued)

Castello, Luigi J., supplies	5.00
Dodge, Henry A., Judge, postage	46.44
Dodge, Henry A., Judge, telephone	11.95
Flax Co., The, supplies	3.00
Hall & McChesney, Inc., supplies	50.37
Remington Rand Inc., supplies	17.04
Shovan, George O., copies of opinions	5.50
Twin State Pub. Co., supplies	123.58
Tuttle Stationery Co., supplies	235.57
Varick, John B. Co.	16.40
White River Paper Co., supplies	12.15
Woodsville Furniture Co., equipment	29.00
	\$ 1,181.07

### Care and Supplies for Court Houses

Boston & Maine Railroad, freight	286.96
Brill, N. H., cartage	2.25
Caldbeck-Cosgrove Corp., supplies	13.14
Grafton County Farm, services	56.98
Insurance	278.22
Johnson, Frank A. services as janitor	793.00
Johnson, Frank A., labor and supplies	11.53
Johnson, Oscar, labor	8.43
Kearney, James, cartage	6.50
Mann, E. B. & Co., supplies	15.17
McAllister, S. F., labor	3.75
Newell, D. H., Inc., fuel	243.04
Northern Coal Co., services	98.70
Noyes, N. H., labor	16.50
Orient Spray Co., supplies	10.00
Railway Express Agency, express	.83
Scruggs Hardware, supplies	8.63
Thayer, C. E., ice	10.00
Thornton, Norman J., labor	9.00
Waterman, Chas. A. & Co., supplies	2.65
White River Paper Co., supplies	19.11
Woodsville Water & Light Dept., water and electric service	276.45
Cass, Ralph W., labor	1.00
Cushing, W. C., labor & supplies	15.50
Ford, Earle R., services as janitor	220.11

### Detail of Payments (Continued)

Ford, Earle R., labor	68.17	
Gadd, John, supplies	.75	
Huckins, Elmer E., labor & material	2.60	
Miles, Ralph A., labor	.60	
Putney, N. F., electrical supplies and labor	29.25	
Rand, A. M. Co., supplies	1.15	
Stevens, C. P. Co., supplies	4.00	
Timson, William, cartage	3.25	
Warren, Beatrice M., supplies	.50	
Water Dept., Plymouth Village water rent	14.00	
White Mountain Power Co., electricity	81.96	
Lebanon, Town of, remodelling	290.00	
		\$ 2,903.68

### Superior Court Counsel Fees

Castello, Luigi J., attorney's fees	35.00	
Clark, Frank B., attorney's fees	35.00	
Davison, Harold K., attorney's fees	30.00	
Jones, Fred A., attorney's fees	75.00	
Zellers, Atlee, attorney's fees	75.00	
		\$ 250.00

### Stenographers, Etc.

Budway, Thelma R., stenographer's fees	750.14	
Conway, Margaret A., stenographer's fees	3.00	
Fay, Thelma E. stenographer's fees	7.50	
Foresburg, Martha, stenographer's fees	1.50	
Hammond, Emma C., stenographer's fees	742.30	
Hoag, Oliver, stenographer's fees	10.00	
Ladd, Ethel, stenographer's fees	158.40	
Minot, Lena M., stenographer's fees	39.45	
Sturtevant, Hazen K. Solicitor Expenses	\$1,972.73	
Supplies	500.54	2,473.27
		\$ 4,185.56

## Detail of Payments (Continued)

## Clerk of Superior Court

American Law Book Co., supplies	12.00
Bartlett, R. T., Insurance Co., bond	25.00
Larson, Carl, supplies	69.46
Lawyer's Co-operative Pub. Co., supplies	127.00
Lewis Motor Co., supplies	1.00
McAllister, S. F., office equipment	14.25
N. E. Tel. & Tel. Co., telephone	343.08
Northern Supply Co., supplies	36.00
Phaneuf Press, printing	12.71
Remington Rand, Inc., supplies	130.36
Sawyer, C. Murray, salary and receipts	2,154.65
Shepard, Frank, Co., supplies	10.00
Shoven, George O., Supreme Court opinions	20.00
Stewart, Warren & Benson Corp., supplies	7.33
Twin State Publishing Co., Docket and printing	1,034.14
Wander In Shop, supplies	4.75
Woodsville Post Office, postage	98.80
	\$ 4,100.53

## Sheriff and Deputies

Peckett, Robert P. Jr., sheriff fees	2,605.39
Andross, Harry Deputy sheriff fees	6.70
Farnham, John L., Deputy sheriff fees	347.72
Gardner, Van H., Deputy sheriff fees	205.50
Hopkins, Ernest C., Deputy sheriff fees	79.03
LaBonte, Edward J., Deputy sheriff fees	38.60
Leavitt, George U. L., Deputy sheriff fees	159.70
Lynch, Thomas F. Deputy sheriff fees	285.69

**Detail of Payments (Continued)**

Kimball, William A., Deputy sheriff fees	664.45	
Pratt, Leon E., Deputy sheriff fees	210.10	
Titus, Seth O., Deputy sheriff fees	71.10	
Bruce, R. J., officer's fees	16.00	
Lorden, Eugene F., officer's fees	9.50	
Roby, Bernard, officer's fees	6.60	
Degnan Insurance Agency, Deputy sheriff bond	27.84	
Hadlock Agency, The, Deputy sheriff bond	12.80	
	<hr/>	4,746.72

**County Farm Expenditures**  
(See Superintendent's Report)  
Page 44

## PUBLIC WELFARE

	Poor not on County Farm	Old Age Assistance	Board & Care of Children	Aid to Soldiers	Total
Alexandria	\$ 198.97	\$ 266.61			\$ 465.58
Ashland	608.30	243.72	129.92		981.94
Bath	174.40	447.77	195.60		817.77
Bethlehem	360.26	20.63	230.00		610.89
Bristol	33.95	410.85		7.00	451.80
Campton	437.95	52.31	835.73		1,325.99
Canaan	696.30	614.10	1,018.02	650.66	2,979.08
Easton	68.40		230.00		298.40
Enfield	162.66	801.71	652.41	234.75	1,851.53
Franconia		60.00	27.20		87.20
Grafton	204.11	91.18	146.50	289.15	730.94
Groton		30.00			30.00
Hanover	1,026.05	217.58	726.68		1,970.31
Haverhill	1,462.02	584.49	1,767.63	614.20	4,428.34
Holderness	439.49	59.75	795.34		1,294.58
Landaff	17.30		230.00		247.30
Lebanon	6,681.51	1,759.86	5,194.88	344.36	13,980.61
Lincoln	10.00	57.50	242.04		309.54
Lisbon	1,150.44	319.82	1,427.50	150.00	3,047.76
Littleton	1,240.39	1,491.19	2,302.98		5,034.56
Lyman	173.11	97.21	45.00		315.32
Lyme	312.69	76.38			389.07
Monroe	331.60	46.57	186.92		565.09
Orange	27.50	98.06			125.56
Orford	422.62	162.00	628.48		1,213.10
Piermont	148.59	10.00	310.70		469.29
Plymouth	496.65	811.06	637.00		1,944.71
Rumney	148.25	128.53	3.00		279.78
Thornton	135.73	196.00	803.15	119.20	1,254.08
Warren	304.34	87.37	1,015.87	207.50	1,615.08
Wentworth	21.00		892.73		913.73
Woodstock	137.47				137.47
Surplus					
Commodities	462.87				462.87
Totals	\$18,094.92	*\$9,242.25	\$20,675.28	\$2,616.82	\$50,629.27

\* This amount represents 25% of grant and amount paid by County.



**Statement of Old Age Assistance and Boarded Children**

1942	Old Age Assistance		Boarded Children	
	Cases	Amount	Cases	Amount
January	115	\$708.58	99	\$1,706.00
February	121	817.58	96	1,680.76
March	121	720.62	97	1,828.13
April	118	750.17	96	1,720.00
May	120	825.54	96	1,720.48
June	119	765.46	96	1,837.95
July	120	760.61	102	1,901.27
August	117	755.85	95	1,843.09
September	117	781.77	88	1,698.29
October	118	784.80	84	1,656.00
November	116	684.92	81	1,645.14
December	110	886.35	73	1,438.17
		<u>\$ 9,242.25</u>		<u>\$20,675.28</u>

### Welfare Administration Expenses

Currier, Albina H., Services as Investigator	\$ 1,260.00
Expenses	707.75
Warren, Beatrice M., Services as Investigator	1,320.00
Expenses	994.00
Smith, Beatrice M., Services as Bookkeeper	1,040.00
Kirk, Madeline W. Services as Clerk, Commissioners' office 50%	400.00
Goudie, Millie, Services as clerk, Lisbon Relief Office	300.00
Astle, William A., Relief Administration, Littleton	720.00
Greenough, Clara B., Services as Bookkeeper, Lebanon Relief Office 50%	170.00
Ramsdell, Louise, Services as Clerk, Lebanon Relief office 50%	504.00
National Bank of Lebanon, rent of Lebanon Relief Office 50%	210.00
Granite State Electric Co., Electricity Lebanon Relief office 50%	6.11

### Detail of Payments (Continued)

New England Tel. & Tel. Co., service	394.17
United States Post Office, postage	222.55
Clark, Dorothy M., Overseer's expense, Warren	2.35
Hamel, L. J., Overseer's expense Lebanon	26.85
Lorden, Eugene F., Overseer's expense, Canaan, 1941	10.50
Steele, R. D., Overseer's expense Thornton	6.00
Abbott Printing Co., supplies	10.75
Bruce, R. J., fees	10.35
Concord Press, The, supplies	20.15
Eagle Supply Corp., supplies	5.07
Foster's Book Store, advertising	4.00
Free Press Company, advertising	1.32

Gadd, John, supplies	.35	
Llewellyn, R. H. Co., supplies	18.86	
Mann, E. B. & Co., supplies	2.60	
Railway Express Company, express	.94	
Record Print, The, supplies	9.00	
Remington Rand Inc., supplies	30.12	
Ward's, supplies	18.81	
White River Paper Co., supplies	12.14	
		\$ 8,438.74

**Interest**

Paid on Temporary Loans		
Second National Bank of Boston		
Interest on notes 98 to 105 inc.	716.94	
National Shawmut Bank of		
Boston - Service charge on		
Notes 98 to 105 inc.	150.00	
Paid on Bonds		
First National Bank,		
Boston, Mass.	4,000.00	
		\$ 4,866.94

**Indebtedness**

Payments on Temporary Loans		
National Shawmut Bank of		
Boston, Notes 98 to 105 inc.	200,000.00	
Detail of Payments (Continued)		

Payments on Principal of		
Bonds		
First National Bank,		
Boston, Mass.	10,000.00	
		\$210,000.00

**All Other Payments**

Farm Bureau	\$ 8,300.00	\$ 8,300.00
<b>Miscellaneous:</b>		
Twin State Publishing Co.		
County Reports 1941	131.20	
State Tax Commission		
Audit	344.86	
Other	1.50	
		\$ 477.56
Andrews, J. E., Farm Supt.,		
advance	1,500.00	\$ 1,500.00

COMPARATIVE STATEMENT OF  
APPROPRIATIONS AND EXPENDITURES  
YEAR 1942

	Appropria- tions	Expendi- tures	Unexpended Balance	Overdraft
County Officers'				
Salaries	\$ 6,600.00	\$ 7,761.00		\$ 1,161.00
County Officers'				
Expenses	4,200.00	4,562.83		362.83
Care and Supplies for				
Court Houses	* 3,700.00	* 2,609.68	1,090.32	
Jury Payrolls	* 6,700.00	* 4,376.24	2,323.76	
State vs. Payrolls	1,750.00	1,029.57	720.43	
Counsel Fees	1,000.00	250.00	750.00	
Stenographer, etc.	3,700.00	4,185.56		485.56
Clerk of Superior				
Court	7,000.00	4,100.53	2,899.47	
Sheriff and Deputies	4,750.00	* 4,703.73	46.27	
County Farm & Jail	*36,000.00	*32,980.85	3,019.15	
Support of Poor not				
on County Farm	*50,500.00	*17,375.41	33,124.59	
Old Age Assistance	9,000.00	* 9,189.36		189.36
Board and Care				
of Children	19,000.00	*19,853.46		853.46
Aid to Soldiers	9,000.00	2,616.82	6,383.18	
Welfare Administration				
Expense	9,000.00	8,438.74	561.26	
Interest	* 4,400.00	4,866.94		466.94
Permanent Improve- ments	1,000.00		1,000.00	
Principal on Bonds	10,000.00	10,000.00		
Farm Bureau	8,300.00	8,300.00		
Miscellaneous	5,000.00	477.56	4,522.44	
	\$200,600.00	\$147,678.28	\$56,440.87	\$ 3,519.15
Less Amount Trans- ferred from 1941	11,432.00			
Amount of County Tax	\$189,168.00		3,519.15	
Net unexpended balance			\$52,921.72	
Net expenditures		\$147,678.28		
Net unexpended balance		52,921.72		
		\$200,600.00		

\* Represents Net Figure—i.e. Total Expenditures less reimbursement.

## TREASURER'S REPORT

---

### Receipts

Cash balance from year 1941	\$ 11,432.54
Taxes collected	189,168.00
Temporary loans	200,000.00
J. E. Andrews, Supt. Grafton County Farm	18,690.30
J. E. Andrews, Supt.	1,500.00
Court Houses	294.00
Reimbursement for Direct Relief	1,514.33
Reimbursement from Strafford County (O.A.A.)	34.00
Reimbursement from N. H. Cancer Commission	27.00
Reimbursement, Old Age Assistance	18.89
Reimbursement, Sheriff's expense	42.99
Slot Machine money	705.82
	\$423,427.87

### Disbursements

Commissioners' Orders	\$136,244.23
Court Orders	19,394.44
Payment on Temporary Loans	200,000.00
Payment on Principal of Bonds	10,000.00
Interest on Bonds	4,000.00
Interest on Temporary Loans	866.94
Cash in Treasurer's hands Dec. 31, 1942	52,922.26
	\$423,427.87

### COMPARATIVE DEBT STATEMENT

	Dec. 31, 1941	Dec. 31, 1942
Bonds outstanding	\$80,000.00	\$70,000.00
<b>Total bonded debt</b>	<b>\$80,000.00</b>	<b>\$70,000.00</b>
Treasurer's balance	\$11,432.54	\$52,922.26
Bills receivable	1,230.50	1,630.89
Miscellaneous	86.51	
	<u>\$12,749.55</u>	<u>\$54,553.15</u>
Bills Payable	None	None
	<u>\$12,749.55</u>	<u>\$54,553.15</u>
	\$12,749.55	\$54,553.15
Surplus	\$12,749.55	Surplus \$54,553.15

Woodsville, N. H.  
January 14, 1943

We hereby certify that there were no outstanding bills against the County December 31, 1942, which were presented for payment and no orders issued by us which have not been paid by the Treasurer.

GEORGE A. PUSHEE,  
FRED PARKER,  
JOHN GADD,  
Grafton County Commissioners.

State of New Hampshire, Grafton, ss.

January 14, 1943

Personally appeared the above named George A. Pushee, Fred Parker, and John Gadd and made oath to the truth of the above statement by them signed.

FRED J. SHORES,  
Justice of the Peace.

---

### AUDITORS' REPORT

---

We, the undersigned, auditors of Grafton County, certify that we have carefully examined the accounts of the County Commissioners, and Treasurer and the Superintendent of the County Farm for the year 1942 and we find them correctly cast and properly vouched, and there is a balance of \$52,922.26 in the hands of the Treasurer.

M. A. BATCHELDER,  
H. B. KNIGHT,

January 14, 1943.

Auditors.

## SUPERINTENDENT'S REPORT

---

P. O., Woodsville, N. H.

Grafton County Home  
Haverhill, N. H.

Gentlemen:

I herewith submit my report of the Grafton County Almshouse, House of Correction and Jail from January 1, 1942 to December 31, 1942:

### Almshouse

Number of Inmates January 1, 1942	86
Number admitted during year	136
Number discharged during year	118
Number deaths during year	28
Number of inmates January 1, 1943	76

### House of Correction

Number of inmates January 1, 1942	16
Number admitted during year	73
Number discharged during year	67
Number inmates January 1, 1943	22

### Jail

Number of inmates January 1, 1942	11
Number admitted during year	28
Number discharged during year	32
Number inmates January 1, 1943	7
Average number in Almshouse, House of Correction and Jail whose board was not paid by towns or individuals	92 plus
Number of weeks' board furnished inmates, House of Correction and Jail not paid by towns or individuals	4823 w. 3 d.



## COUNTY FARM EXPENDITURES

Institution	
Equipment	\$ 73.42
Fuel, including freight	8,110.47
Freight, express and telephone	408.05
Groceries and provisions	5,626.22
Insurance	1,315.78
Labor	5,743.91
Repairs and supplies	3,557.51
Water, light and power	2,544.16
Miscellaneous	642.44
	\$28,021.96
Farm	
Automobile expense	\$ 795.93
Equipment	112.70
Repairs and supplies	5,740.27
Taxes	1,144.44
Miscellaneous	219.75
Labor	3,805.00
	\$11,818.09
Hospital	
Doctors	\$ 2,696.79
Labor	4,852.75
Repairs and supplies	1,828.02
	\$ 9,377.56
Jail	
Labor	\$ 2,200.00
Repairs and supplies	113.89
Miscellaneous	139.65
	\$ 2,453.54
Total	\$51,671.15

## INMATES GRAFTON COUNTY ALMSHOUSE

Name	Where from:	Age	Wks.	Days
John Yeggerman*	Alexandria	72	52	1
Sadie Hart	Alexandria	50	2	1
Lily Watson*	Ashland	61	52	1
Mabel Randall*	Ashland	51	52	1
Omer St. Peter	Ashland	48	37	4
George Hill	Ashland	62	4	6
William Ferrell*	Bath	72	52	1
Roy Stubbs	Bath	11	2	4
James Merrey	Bath	44	1	1
Florence Boutin	Benton	9	18	6
Clara Boutin	Benton	28	4	4
Barbara Boutin	Benton	0	4	0
Kathryn Mills	Benton	24	15	2
Joseph Johnson	Bethlehem	69	2	2
Gustave Anderson*	Bridgewater	68	52	1
Sally Ferrin*	Bristol	32	52	1
Edward Simonds*	Bristol	60	52	1
Fannie Richards*	Canaan	80	52	1
Peter Campbell*	Canaan	81	52	1
Ed. Hutchins	Campton	75	25	3
Joe Boris*	Campton	61	52	1
Emily Savage	Campton	17	3	4
Joseph Courey*	Enfield	70	52	1
Peter Brown*	Enfield	74	52	1
Willard Tobey*	Enfield	89	52	1
Stanley Barnes	Enfield	3	2	6
Marjorie Reyell	Enfield	16	0	2
Jennie Lawrence	Enfield	42	1	2
Paul Lombard	Enfield	7	6	0
Hazel Lombard	Enfield	28	0	1
John Johnson*	Enfield	73	4	1
Lena Byron	Franconia	71	37	6
John Sawler*	Franconia	77	52	1
Michael Long*	Franconia	63	52	1
Frank Locke*	Franconia	51	52	1
Lynn Bowles*	Franconia	57	52	1
James Corliss	Franconia	64	3	5
John Flanders*	Grafton	62	52	1
Herbert Beede	Grafton	77	19	3
Ernest Morse*	Grafton	65	6	3
Alice Jewell*	Groton	62	52	1
George Teeney*	Hanover	87	52	1
Leslie McGaw*	Hanover	39	2	0
Marshall Annis*	Hanover	65	3	1
Edward Hoyt*	Haverhill	36	52	1
Albert Trudeau*	Haverhill	75	52	1
Ned Ware*	Haverhill	63	52	1
Edward Kingsley*	Haverhill	76	52	1
Henry Andrews*	Haverhill	79	52	1
Lemuel Sleep	Haverhill	72	11	4

## INMATES GRAFTON COUNTY ALMSHOUSE

Name	Where from:	Age	Wks.	Days
Ellen Barney*	Haverhill	83	52	1
Bertha Felch	Haverhill	61	18	0
Kenneth Blodgett	Haverhill	11	1	5
Elizabeth Cowan	Haverhill	14	0	4
Frank Provenchia	Haverhill	57	3	2
Maud Day	Haverhill	65	0	2
Norman McDonald	Haverhill	68	0	3
Flora Millette	Haverhill	58	10	2
Robert Stanley*	Haverhill	75	52	1
Virginia Emery*	Holderness	24	52	1
Arlie Shontell	Holderness	37	0	3
Elie Lambert*	Holderness	86	26	6
Leander Fitzgerald*	Landaff	77	43	5
Abbie Smith*	Lebanon	66	52	1
Annie Johnson*	Lebanon	45	52	1
Mildred Johnson*	Lebanon	51	52	1
Lizzie Van Gilder*	Lebanon	83	52	1
Maude Quimby*	Lebanon	46	52	1
Frank LaPorte*	Lebanon	76	52	1
Sophie Verbeck	Lebanon	95	52	1
Blanche Kristl*	Lebanon	70	52	1
William Scott*	Lebanon	62	52	1
Samuel Donaldson*	Lebanon	80	52	1
Theresa Messier	Lebanon	15	1	6
Mae Ashley	Lebanon	19	3	3
Francis Ashley	Lebanon	0	2	0
Thomas Nelligan	Lebanon	83	22	5
William DeVoe	Lebanon	9	2	3
Harriet Franklin	Lebanon	17	2	0
Sadie Caron	Lebanon	41	2	3
Patrick DeVoe	Lebanon	11	4	2
Hazel Stevens	Lebanon	29	11	5
Marilyn Stevens	Lebanon	2 wks	11	5
Alice Drambourg*	Lebanon	80	7	5
Edward Field*	Lebanon	63	3	5
Isaac Laro	Lebanon	12	0	5
Joseph Fenton*	Lincoln	69	52	1
Edward Condon*	Lincoln	64	4	3
Frank Mullen*	Lincoln	67	52	1
James Proctor	Lincoln	63	1	1
Stanley Doran*	Lincoln	60	48	6
Sam Vasalo	Lincoln	63	1	0
Lena Drake	Lisbon	51	1	3
Dorothy Greene	Lisbon	29	2	5
Herbert Dodge	Lisbon	79	0	3
Ina LaFrance	Lisbon	44	0	2
Charles Foran	Lisbon	66	5	2
John McSweeney	Lisbon	64	1	2
Arthur Metcalf	Lisbon	13	0	3
Oscar Hill	Lisbon	36	2	1

## INMATES GRAFTON COUNTY ALMSHOUSE

Name	Where from:	Age	Wks.	Days
Florence Williams	Lisbon	15	0	5
Mary Peacock	Lisbon	20	4	2
Stephen Peacock	Lisbon	0	2	4
Fred Rasciott	Lisbon	10	3	0
Delbert Clark*	Littleton	50	52	1
John Hassey*	Littleton	65	52	1
Joseph Druin*	Littleton	85	52	1
Howard Harris	Littleton	31	24	1
Carl Miner*	Littleton	64	52	1
Kenneth Powers	Littleton	30	1	5
Archie Carpenter	Littleton	66	33	6
Frank Viggue	Littleton	74	0	6
Martin Doherty	Littleton	60	5	1
Harriet Wentworth	Littleton	25	4	0
Etta Cote	Littleton	51	0	4
Valida Viggue	Littleton	11	5	2
Frank Carbonneau*	Littleton	69	7	0
Calvin Taylor*	Lyman	92	52	1
Benjamin Emery*	Lyme	87	52	1
Herbert Bythrow*	Monroe	51	52	1
Emily Dewey*	Monroe	92	40	0
Patience Woods*	Orford	100	52	1
Clinton Marsh	Orford	8	9	0
Gladys Marsh	Orford	28	1	0
Flora Miles*	Piermont	40	52	1
Flora Simpson*	Piermont	70	52	1
James White*	Piermont	76	52	1
Frank Dawson*	Plymouth	65	52	1
Warren Leavitt*	Plymouth	67	52	1
Myrtle Chase	Plymouth	17	4	2
Jeanette Seguin	Plymouth	35	1	0
William Page*	Rumney	80	52	1
Ruth Holt	Rumney	17	0	4
Manley Coffran	Rumney	15	1	6
George Avery*	Thornton	81	52	1
Eugene Wood	Thornton	69	42	1
Lottie Knowles	Thornton	29	4	5
Lucy Knowles	Thornton	11	6	4
Martha Knowles	Thornton	7	27	0
James Knowles	Thornton	4	6	4
Walter Applebee*	Thornton	75	47	0
Israel Starr	Thornton	62	1	2
Charles Bixby	Warren	7	4	0
Frederick Lowden	Warren	27	0	6
Alberta Eastman	Warren	20	2	3
James Howland*	Wentworth	76	52	1
Nellie Howland*	Wentworth	54	52	1
Florence Wiggett	Wentworth	15	0	5

\* Indicates inmates now on Farm

## TOWN BOARDERS AT GRAFTON COUNTY HOME

Name	Where from:	Age	Wks.	Days
Homer Hanscome	Alexandria	48	2	2
Henry Logan	Ashland	65	3	5
Edward Legro	Bath	74	5	3
Mary Hamilton	Bethlehem	23	1	3
James Hamilton	Bethlehem	0	1	3
George Welch	Bethlehem	73	0	2
George Wilder	Canaan	79	25	1
Kate Durgin	Canaan	77	3	5
Lewis Rainey	Canaan	86	5	3
Anna Hobart	Campton	22	6	1
Barbara Hobart	Campton	0	4	5
Fred Moore	Campton	55	1	5
Ruth Collins	Enfield	31	8	6
Roger Collins	Enfield	10	8	6
Almira Collins	Enfield	8	8	6
Caroline Collins	Enfield	7	8	6
Manford Collins	Enfield	4	8	6
Mary Miner	Enfield	90	1	2
Charles Saunders	Enfield	77	1	0
Josephine Sweet	Enfield	81	5	3
Erwin Olyer	Enfield	78	3	5
Andrew Green	Enfield	92	1	2
Ernest Morse*	Grafton	65	45	5
George Snaden	Hanover	70	1	3
George Clark	Hanover	78	6	2
Horace Pettee	Haverhill	84	12	3
Mary Davidson	Haverhill	16	0	2
Abbie Meader	Haverhill	86	3	5
Luella Willis*	Haverhill	85	7	2
Orilla Wade	Haverhill	62	2	1
Herbert Dow*	Hebron	74	52	1
Emma Roberts	Hebron	76	36	3
Philip Shaw	Holderness	6 mos.	2	0
Joseph Rollins	Holderness	60	19	4
Charles Thompson	Holderness	80	3	0
Lewis Beaulieu*	Holderness	78	4	1
Leander Fitzgerald*	Landaff	77	8	3
Nelson Lower*	Lebanon	78	52	1
Cora Spencer	Lebanon	81	8	6
Frank Howard	Lisbon	79	19	1
Grover Hanno	Lisbon	56	1	0
Doris Bennett	Lisbon	36	1	4
Eddie Bennett	Lisbon		1	4
Ida Lemay	Lisbon	68	1	3
Freeman Downs	Monroe	65	18	2
Vera Gould	Monroe	11	1	3
Leah Royce	Monroe	8	2	6
Mary Tattersall	Monroe	91	0	3
Josie Claffin	Orford	64	1	1
Gideon LaMontagne*	Piermont	90	52	1

## TOWN BOARDERS AT GRAFTON COUNTY HOME

Name	Where from:	Age	Wks.	Days
Jay LaMontagne	Piermont	44	17	1
Lucy Morin	Piermont	72	2	4
Nettie Terrill	Plymouth	52	3	2
Eva Clark*	Rumney	55	52	1
Grace Bickford*	Rumney	60	28	5
Frank Hall*	Rumney	59	25	0
Addie Day	Rumney	66	0	2
Gloria McClennan	Rumney	15	2	2
Emery Bacon	Rumney	82	6	4
John Kelley	Warren	77	2	5
Florence Derrick	Wentworth	40	3	4

\* Indicates inmates now on **Farm**

INMATES AT GRAFTON COUNTY HOUSE  
OF CORRECTION

Name	Court	Crime	Age	Wks.	Days
Joseph Adshade, Lebanon,		Drunk	53	11	2
Lester E. Langford, Superior,		Adultery	32	19	
Frank H. Butman, Superior,		Rape	22	19	
Frank Vigue, Littleton,		Drunk	73		2
Ernest W. Pierce, Bethlehem,		Petty Larceny	51	5	2
Raymond A. Clark, Haverhill,		Drunk	31	4	5
Sanford St. Francis, Lebanon,		Hit and Run	36	7	4
Charles E. Hobart, Ashland,		Oper. under infl.	21	8	4
Charles E. Poole, Superior,		Grand Larceny	30	36	3
Wilfred Dufraire, Lebanon,		Drunk	42	12	3
George H. Harrington, Lebanon,		Non-support	47	18	3
Howard F. Parker, Enfield,		Disorderly Person	24	4	
Robert Mullen, Lebanon,		Drunk	59	19	6
David H. Carlisle, Littleton,		Drunk	60	10	
Harry N. Thornton, Hanover,		Dis. conduct	61	11	4
Wesley H. Lewellyn, Hanover,		Non-support	57	3	
Robert E. Wheeler, Lebanon,		Drunk	32	13	1
Leon Shontell, Plymouth,		Non-support	60	2	4
George H. Williams, Haverhill,		Absconding	28	12	4
Patrick L. Killgallon, Ashland,		Drunk	36	5	
John W. Burns, Haverhill,		Drunk	44		3
Donald J. Cote, Littleton,		Drunk	36	2	6
Wendell M. Grubb, Rumney,		Reckless Oper.	29		1
Fred S. Melanson, Lincoln,		Drunk	47	15	1
Fred Harrington, Haverhill,		Drunk	70	3	4
Ernest Perrin, Haverhill,		Op under influence	31		1
Edward Vinton, Haverhill,		Drunk	57	1	5
Frank P. Brooks, Haverhill,		Drunk	62		6
Patrick J. Brennan, Haverhill,		Drunk	45	27	2
Alfred J. Boudreau, Haverhill,		Reckless Op.	23		6
Robert E. Wheeler, Haverhill,		Absconding	32	3	5
Arthur F. Slayton, Hanover,		Drunk	67	2	4
Israel Boyea, Hanover,		Drunk	56	12	6
Walter L. Newcity, Haverhill,		Drunk	37	4	1
William J. Babineau, Superior,		Grand Larceny			
Auto			29	3	1
Maurice J. Perrin, Superior,		Grand Larceny			
Auto			29	33	2
Orrison L. Wade, Superior,		Arson	60	33	2
Wendell F. Smith, Lebanon,		Assault	30	4	2
Herbert Annis, Haverhill,		Drunk	52	9	5
Emery J. Soucy, Haverhill,		Drunk	35	5	6
Henry Tibbetts, Haverhill,		Op under influence	57	4	2
Joseph Adshade, Lebanon,		Drunk	54	29	6
William J. Carr, Campton,		Ill sale of liquor	77	9	1
Russell F. Shepard, Enfield,		non-support	31	28	2
Walter Waite, Lincoln,		Drunk	51	6	1
Edgar Hollins, Haverhill,		Reckless Operating			1

INMATES AT GRAFTON COUNTY HOUSE  
OF CORRECTION

Name	Court	Crime	Age	Wks.	Days
Edward G. Dunkerton,	Ashland,	Drunk	26	4	2
Homer E. St. Sauveur,	Plymouth,	Drunk	55	9	2
William R. Mattson,	Campton,	Indecent expos.	39	9	
Joseph Boudreau,	Haverhill,	Drunk	23	1	2
Wilfred Dufraire,	Lebanon,	Drunk	43	25	2
Robert H. Bryant,	Littleton,	Non-support	21	12	6
Cornelius McCaffrey,	Hanover,	Drunk	66	17	6
Michael Rooney,	Littleton,	Drunk	66	4	2
Walter C. Finnen,	Woodstock,	Disord Person	38	10	1
Dona Arvisais,	Hanover,	Petty Larceny	41	16	2
Merton H. Plume,	Enfield,	Non-support	28	4	
Arthur L. C. Lambert,	Littleton,	Petty Lar .	30	17	5
Aurelian J. Grenier,	Lebanon,	Malicious Act	36	22	1
Edward Potvin,	Lebanon,	Drunk	37	6	4
Vance V. Hurd,	Hanover,	Take Auto			
	w/o consent		31	2	1
Ernest A. Gravel,	Ashland,	Drunk	59	4	2
James M. Carter,	Lebanon,	Drunk	33	14	3
Fred Harrington,	Littleton,	Drunk	72	12	6
Lindel W. Coolbeth,	Haverhill,	Op under infl.	50		2
Raymond W. Wills,	Lebanon,	Drunk	35	12	
Harvey R. Leamond,	Lebanon,	Petty Larceny	19	17	
William J. Ainsworth,	Lebanon,	Petty Lar.	21	17	
Richard R. Ainsworth,	Lebanon,	Petty Lar.	19	17	
Roger M. Mason,	Lebanon,	Oper under infl.	24	13	
Irene Santy,	Lisbon,	Unlicensed Dogs			4
Arthur F. Slayton,	Hanover,	Drunk	67	14	6
Walter W. Harding,	Plymouth,	Drunk	50	1	3
Clifton R. Smith,	Canaan,	Lewd Conduct	44	12	2
Royal Corey,	Haverhill,	Drunk	60	13	
Warren W. Tenney,	Haverhill,	Drunk	50	7	1
Earl D. Jacobs,	Lebanon,	Drunk	39	5	3
Leon A. Barney,	Ashland,	Assault	37	9	1
Israel Boyea,	Hanover,	Drunk	56	9	
Gerald O'Neil,	Lebanon,	Drunk	42	8	4
Clifford Cutter,	Haverhill,	Oper under infl	34		2
Merton E. Lovely,	Enfield,	Assault	54	5	6
Armand Leclerc,	Canaan,	Oper. under infl.	53	4	6
William Q. Rouff,	Haverhill,	Drunk	49	3	
Joseph R. E. Bonnier,	Lebanon,	Petty Larceny	32	3	
Paul W. Henry,	Hanover,	Drunk	29	2	2
Benjamin Teed,	Littleton,	Vagrant	74	2	2
Ernest A. Fitchett,	Littleton,	Vagrant	68	2	1
Leo Labarre,	Lebanon,	Drunk	40	1	2



## INMATES AT GRAFTON COUNTY JAIL

Name	Court	Crime	Age	Wks.	Days
Charles H. Roux,	Haverhill,	Adultery	25	2	2
Russell C. Mitton,	Enfield,	Desertion, children	30	2	2
Louis J. Lizzotte,	Littleton,	Break & Enter	59	2	2
Ernest Perrin,	Haverhill,	take auto w/o con	30	2	2
Robert J. Winkley,	Lincoln,	Arson	19	2	2
Ray P. Victory,	Lebanon,	Break & Enter	37	2	2
Howard F. Parker,	Enfield,	Lar from person	24	2	2
Frederick M. Dunlap,	Plymouth,	Break & enter	21	2	2
Ralph R. Martin,	Plymouth,	Break & enter	21	2	2
William L. Martin,	Plymouth,	Break & enter	18	2	2
Jerry Blair,	Lisbon,	Crime against nature	48	19	3
Lawrence Rancourt,	Lincoln,	Arson	30		4
Maurice J. Perrin,	Haverhill,	Larceny, auto	29	16	2
William J. Babineau,	Plymouth,	Larceny, auto	29	16	1
Charles E. Webster,	Haverhill,	Break & enter	31		3
Herman A. Wright,	Superior,	Contempt	26		3
Leon J. Dustin,	Superior,	Centempt	46	11	5
Delbert J. Cole,	Lebanon,	Carry Concealed Weapons	27		5
Lincoln A. Hill,	Haverhill,	Unlaw sell liquor	21		3
Alfred J. Boudreau,	Haverhill,	Reckless oper	23	2	2
George H. King,	Superior,	Bigamy	39	6	
Charles E. Webster,	Surrender by	Bondsman	31	3	3
Orrison L. Wade,	Haverhill,	Arson	59	3	
Earl N. Goss,	Superior,	Break & Enter	23	2	3
Leon A. Howe,	Superior,	Break & Enter	53	2	3
George S. Bishop,	Woodstock,	Break & Enter	21	1	3
Clifton R. Smith,	Canaan,	Lewd Conduct	44	14	2
Henry J. Bourbeau,	Lebanon,	Carnal Assault	52	13	2
Kathleen E. Shepard,	Enfield,	Desert children	26	11	5
Harry W. Roads,	Enfield,	Aid in desertion	48	11	5
Lionel J. Goodin,	Superior,	Contempt	25	3	4
Marguerite A. Grondier,	Lisbon,	Prostitution	22	12	
Joseph Johnson,	Superior,	Aggravated Assault	11		2
Byron Howe,	Littleton,	False Pretenses	54	10	4
Purgis C. Tyrrell,	Plymouth,	Break & Enter	22	8	6
Lucien H. Ouellette,	Rumney,	Break & Enter	18		5
Angeline B. Hickey,	Lisbon,	Larceny, Money	37	3	4
Harold B. Charboneau,	Lebanon,	Larceny, Auto	24		6
Harry J. Woods,	Lisbon,	Forgery, check	28		2

## RECEIPTS

Town Boarders	\$ 6,665.68
Private Boarders	2,550.62
State Boarders	546.31
Merchandise	382.43
Sale of Produce from Farm	418.53
Sale of Milk and Cream	5,771.70
Sale of Cattle and Swine	2,168.00
Miscellaneous	187.03
	<hr/>
	\$18,690.30
Cash advanced by Commissioners	1,500.00
	<hr/>
	\$20,190.30

## EXPENDITURES

Paid County Treasurer	\$18,690.30
Paid County Treasurer (money advanced by Commissioners)	1,500.00
	<hr/>
	\$20,190.30

## INVENTORY

Personal Property at Grafton County  
Farm: December 31, 1941

Live Stock	\$13,170.00
Produce and Supplies	18,333.48
Farm Implements	8,700.50
Household Furniture	6,816.79
Almshouse Furniture	12,020.55
Jail and House of Correction	1,478.93
Chapel	417.00
Hospital	8,724.77
	<hr/>
	\$69,662.02

Personal Property at Grafton County  
Farm: December 31, 1942

Live Stock	\$14,035.00
Produce and Supplies	22,148.24
Farm Implements	7,817.65
Household Furniture	7,057.71
Almshouse Furniture	11,823.25
Jail and House of Correction	1,548.10

Chapel	432.00
Hospital	8,564.24

Total	<u>\$73,426.19</u>
-------	--------------------

Per capita cost of inmates at County Farm,  
Including Almshouse, Soldiers' Dependents,  
House of Correction and Jail:

	Weeks	Days
Almshouse	3739	1
Soldiers' Dependents	20	1
House of Correction	850	6
Jail	213	2
County Charges at Farm	4823	3
Town Boarders	629	5
Private Boarders	149	1
Total weeks	5602	2
County Farm expenditures	\$51,671.15	
Inventory of personal property at beginning of year	69,662.02	
Accounts due farm at beginning of year	1,230.50	
	<u>\$122,563.67</u>	
Cash receipts from farm	\$ 8,927.69	
From all other sources	9,762.61	
Inventory at end of year	73,426.19	
Account due from boarders	1,630.89	
	<u>\$93,747.38</u>	
Balance against farm	\$28,816.29	

Number of weeks served	Weeks	Days
County Cases	4823	3
Per capita cost per week of all inmates, but excluding boarders, employees and guests	\$ 5.97 plus	

The hay and corn crops of 1942 were average crops as were potatoes and squashes. We had an unusual amount of asparagus, strawberries and raspberries. However, the drought later in the season damaged the late garden vegetables, thus curtailing our usual supply of canned goods and pickles.

Only minor repairs were made about the premises in the way of paint and varnish necessary to the upkeep of the buildings. All three of the tenant houses received an outside application of paint. This work was done by House of Correction men under the supervision of employees. The cement floors in the Alms-house also received a coat of cement paint.

Several changes have taken place in the working staff, as Mrs. Sayers and Mrs. Land accepted positions elsewhere. Their places here have been filled by Mrs. Little and Mrs. Lang with Mrs. Young assisting with the general work. Mrs. McDonald of the hospital staff is also succeeded by Miss Spooner.

Annie Johnson, R. N., is still in charge of the hospital and with her able assistants, the work in all departments is very satisfactory.

The number at the Farm has been smaller than for several years.

Due to the gas rationing, we have been obliged to omit some of our pleasure trips, such as the annual picnic to Lake Morey and trips to the movies. We have enjoyed the special music at our services provided by the Rev. R. W. E. MacKenzie and moving pictures brought to us by Dr. Miller.

We have not been forgotten by our outside friends, as we have received even more books, magazines, candies, flowers and cards than usual, especially during the Christmas season, making this season a happy one.

In concluding we wish to thank the County Commissioners, County Physician, Chaplain and Employees for their kind co-operation during the past year.

Respectfully submitted,

J. EARLE ANDREWS, Supt.

ANNE M. ANDREWS, Matron.

We hereby certify that we have examined the foregoing accounts of the Superintendent of the County Farm for the year ending December 31, 1942, and find them correctly cast and properly vouched.

GEORGE A. PUSHEE,  
FRED PARKER,  
JOHN GADD,  
Commissioners of Grafton County.

## CLERK OF COURT'S REPORT

---

To the Commissioners of Grafton County:

I submit herewith report of the receipts and disbursements of this office for the year ending December 31, 1942, as examined and allowed by the Court.

JANUARY TERM, 1942

### Disbursements

To office supplies	\$ 13.55
Judgment records	101.60
558 certifications	83.70
5 petitions for discharge	5.00
46 divorce certificates	4.60
9 mittimus and capias	9.00
6 probation certificates	6.00
14 State entries	4.20
17 days attendance	170.00
Allowance	1,100.00
Fine State v Chalker	150.00
	\$ 1,647.65

### Receipts

By 23 Dockets Sold	\$ 34.50
111 civil entries 7153-7263	99.90
57 equity entries No. 3347-3403	60.30
1 Municipal Court appeal	.90
Telephone calls	2.22
Costs—State v Dow	20.00
Costs—State v Richardson	40.00
Costs—State v Hastings, Jr.	50.00
Costs—State v Cole	3.00
Costs—State v Horne	15.00
Costs—State v Bolduc	120.00
Costs—State v Carter	75.00
Fine and costs—State v Chalker	200.00
Fine and costs—State v Thorne	350.00
Fine and costs—State v Goddard	250.00
Order on County Treasurer	326.83
	\$ 1,647.65

## MAY TERM, 1942

## Disbursements

To Office Supplies	\$	26.07
2 petitions for discharge		2.00
46 divorce certificates		4.60
28 mittimus and capias		28.00
7 probation certificates		7.00
13 State entries		3.90
Fine—State v Marro		50.00
Fine—State v Cryans		100.00
Fine—State v Montembeault		25.00
65 days attendance		650.00
Allowance		1,100.00
		<hr/>
	\$	1,996.57

## Receipts

By 23 Dockets Sold	\$	34.50
105 civil entries No. 7264-7368		94.50
75 equity entries No. 3404-3478		67.50
1 Municipal Court appeal		1.20
Telephone calls		1.77
Costs—State v Geary		50.00
Costs—State v Butman		2.40
Costs—State v Elliott		15.40
Costs—State v Hazelton		15.47
Costs—State v Richards		300.00
Fine and costs—State v Marro		62.82
Fine and costs—State v Noyes		120.00
Fine and costs—State v Cryans		125.00
Fine and costs—State v Hill		194.22
Fine and costs—State v Montembeault		72.00
Order on County Treasurer		839.79
		<hr/>
	\$	1,996.57

## SEPTEMBER TERM, 1942

## Disbursements

To Office Supplies	\$	17.78
3 petitions for discharge		3.00
25 divorce cards		2.50
Mittimus, capias, etc.		24.00

7 probation certificates	7.00
13 State entries	3.90
Fine—State v Reynolds	100.00
58 days attendance	290.00
Allowance	1,100.00
	<hr/>
	\$ 1,548.18

#### Receipts

By 23 Dockets Sold	\$ 34.50
65 civil entries 7368-7434	58.50
74 equity entries 3478-3550	66.60
4 Municipal Court appeals	4.80
Telephone calls	2.10
Costs—State v Poole	2.10
Costs—State v Goodin	75.00
Costs—State v Perrin	25.00
Fine and costs—State v Reynolds	200.00
Fine and costs—State v Decato	200.00
Order on County Treasurer	879.58
	<hr/>
	\$ 1,548.18

C. MURRAY SAWYER,  
Clerk of Superior Court.



## REPORT OF COUNTY SOLICITOR

---

To the Commissioners for the County of Grafton:

I respectfully present the following report of cases presented before the Superior Court for the January, May and September Terms for the year 1942.

### JANUARY TERM

#### Indictments

State vs. Orrison Lyonel Wade—Arrested May 13, 1942—Arson, plea guilty. Sentence to one year in House of Correction. Committed.

State vs. Robert James Winkley—Arson. Plea guilty. Sentenced to State Prison for a term of not more than eight years nor less than four years. Committed.

State vs. Lawrence Rancourt—Attempted arson. Plea guilty. Sentenced to State Prison for a term of not more than three years nor less than two years; sentence suspended. Placed on Probation for a term of three years. Mittimus not to issue until called for by the Solicitor.

State vs. John W. Carter—Operating motor vehicle recklessly, death resulting. Plea guilty. Sentenced to one year in the House of Correction and to pay costs taxed at seventy-five dollars. One year House of Correction sentence suspended on payment of costs in the amount of seventy-five dollars; costs paid; mittimus not to issue until called for by Solicitor. Placed on Probation for a term of three years in order to pay funeral expenses of the deceased.

State vs. Philip Claude Goddard—Shooting human being mistaking for game. Plea guilty, and ordered to pay fine of two hundred dollars and costs taxed at fifty dollars; fine and costs paid.

State vs. Ralph R. Martin—Breaking and entering in the night time and larceny. Plea guilty. Sentenced to State Prison for a term of not more than three years nor less than one year and one day. Committed.

State vs. Fred M. Dunlap—Breaking and entering in the night time and larceny. Plea guilty. Sentenced to State Prison for a term of not more than three years nor less than one year and one day. Committed.

State vs. William L. Martin—Breaking and entering in the night time and larceny. Plea guilty. Sentenced to State Prison for a term of not more than three years nor less than one year and one day. Committed.

State vs. Louis Joseph Lizotte - alias George Dunn. Breaking and entering in the night time and larceny. Plea guilty. Sentenced to State Prison for a term of not more than five years nor less than three years. Committed.

State vs. Charles H. Roux—Adultery. Plea guilty. Sentenced to House of Correction for a term of one year; sentence suspended; mittimus not to issue until called for by Solicitor. Placed on Probation for a term of two years.

State vs. Ray P. Victory—Breaking and entering in the night time and larceny. Plea guilty. Sentenced to State Prison for not more than three years nor less than one year and one day. Sentence suspended. Mittimus not to issue until called for by Solicitor. Placed on Probation for a term of three years.

State vs. John Harry Thorne—Unnatural act. Plea guilty. Case continued for sentence on payment of fine of three hundred dollars and costs taxed at fifty dollars. Fine and costs paid.

State vs. John Albert Chalker—Hit and run. Plea guilty. Ordered to pay fine in the amount of one hundred fifty dollars and costs taxed at fifty dollars and sentenced to serve one year in the House of Correction. Sentence suspended. Mittimus not to issue until called for by the Solicitor; placed on Probation until fine and costs were paid. Fine and costs paid.

State vs. Russell Chester Mitton—Desertion of minor child. Plea guilty. Sentenced to State Prison

for a term of not more than fifteen months nor less than one year and a day. Sentence suspended. Placed on Probation for a term of three years.

### Appealed Cases—January Term

State vs. Maurice Bickford—Malicious destruction of property. Plea guilty. Sentenced to serve twelve months in the House of Correction; and to pay costs taxed at twenty dollars and eighty-six cents. Sentence suspended. Mittimus to issue at the call of the Solicitor.

State vs. Frederick Elliott—Driving motor vehicle left of the center of the road. Plea nolo. Fined ten dollars and costs assessed at fifteen dollars and forty cents. On payment of costs fine suspended. Costs paid.

## MAY TERM

### Indictments

State vs. William Joseph Babineau—Larceny. Plea guilty. Sentenced to four months in the House of Correction. Committed.

State vs. Ida Richards—Larceny. Plea guilty. Sentenced to State Prison for not more than three years nor less than two years. Ordered to pay costs in the amount of three hundred dollars. On payment of costs in the amount of three hundred dollars sentence to be suspended. Costs paid. Placed on Probation for a term of three years. Mittimus not to issue until called for by Solicitor.

State vs. Mose Richards—Larceny. Plea guilty. Sentenced to State Prison for not more than three years nor less than two years. Committed.

State vs. Andrew W. Cryans—Operating motor vehicle recklessly, death resulting. Plea nolo, changed to guilty. Sentenced to State Prison for not more than three years nor less than two years. Ordered to pay fine in the amount of two hundred dollars. On payment of fine sentence to be suspended. Fine paid. Placed on Probation for a term of three years. Mittimus not to issue until called for by Solicitor.

State vs. Leon A. Howe—Breaking and entering in the night time and larceny. Plea guilty. Sentenced to State Prison for not more than three years nor less than two years. Committed.

State vs. Earl N. Goss—Breaking and entering in the night time and larceny. Plea guilty. Sentenced to State Prison for not more than three years nor less than two years. Committed.

State vs. Charles Edward Webster—Breaking and entering in the night time and larceny. Plea guilty. Sentenced to State Prison for not more than three years nor less than two years. Sentence suspended. Mitimus to issue at the call of the Solicitor.

State vs. George Henry King—Adultery. Plea guilty. Sentenced to State Prison for not more than three years nor less than one year and one day. Committed.

State vs. George S. Bishop—Breaking and entering in the night time and larceny. Plea not guilty changed to guilty. Sentenced to State Prison for not more than three years nor less than two years. Committed.

State vs. Maurice J. Perrin—Larceny. Plea guilty. Sentenced to the House of Correction for a term of one year. Committed.

### Appeals

State vs. Romeo Montenbault—Operating motor vehicle after right to operate had been suspended. Tried by Jury. Found guilty as charged. Fined twenty-five dollars and costs of forty-seven dollars.

State vs. Lincoln Hill—Haverhill Municipal Court. Illegal sale of liquor. Fined seventy-five dollars and costs of twenty-six dollars ninety-six cents.

State vs. Lincoln Hill—Haverhill Municipal Court. Illegal sale of liquor. Fined seventy-five dollars and costs of seventeen dollars and twenty-six cents.

## SEPTEMBER TERM

## Indictments

State vs. Lauris Reynolds—Hit and run. Plea guilty. Sentenced to State Prison for not more than three years nor less than two years. Ordered to pay costs of one hundred dollars and fine in the amount of one hundred dollars. On payment of fine and costs sentence suspended. Fine and costs paid. Placed on Probation for a term of three years.

State vs. Kathleen George Shepard—Abandonment of infants. Plea guilty. Sentenced to State Prison for not more than three years nor less than one year and one day. Sentence suspended. Placed on Probation for a term of three years.

State vs. Harry Roads alias Harry Rhodes—Accessory to abandonment of infants. Plea not guilty changed to guilty. Sentenced to State Prison for not more than two years nor less than eighteen months. Sentence to be suspended on payment of costs in the amount of one hundred dollars. Costs paid. Placed on Probation for a term of three years. Mittimus to issue on call of the Solicitor.

State vs. George Henry Houghton—Breaking and entering in the night time and larceny. Plea guilty. Sentenced to State Prison for a term of not more than three years nor less than two years. Sentence suspended on payment of costs in the amount of one hundred dollars. Costs paid. Placed on Probation for a term of three years.

State vs. Alton Merton Harriman—Breaking and entering in the night time and larceny. Plea guilty. Sentenced to State Prison for a term of not more than three years nor less than two years. Sentence suspended on payment of costs in the amount of one hundred dollars. Costs paid. Placed on Probation for a term of three years.

State vs. Henry Joseph Bourbeau—Assault with intent to rape. Plea not guilty changed to guilty. Sentenced to State Prison for a term of not more than seven years nor less than five years. Committed.

State vs. Romeo Decato—Assault with intent to rape. Plea guilty. Sentenced to State Prison for a term of not more than eight years nor less than six years. Sentence suspended on payment of costs in the amount of two hundred dollars. Costs paid. Placed on Probation for a term of three years.

State vs. Robert Henry Munkittrick—Larceny. Plea guilty. Sentenced to State Prison for not more than three years nor less than one year and one day. Committed.

State vs. Cleveland Armstrong Engberg, alias Lucky O'Connor—Breaking and entering in the day time and larceny. Plea guilty. Sentenced to State Prison for not more than three years nor less than one year and one day. Committed.

State vs. Edward Danforth Blake—Breaking and entering in the day time and larceny. Plea not guilty changed to guilty. Sentenced to not more than three years nor less than one year and one day. Sentence suspended on payment of costs in the amount of fifty dollars. Costs paid. Placed on Probation for a term of three years. Mittimus to be issued at the call of the Solicitor.

### Appeals

State vs. Hugh Moore—Operating after right to operate had been suspended. Plea not guilty. Found guilty. Sentence arrested pending appeal to Supreme Court. Death of defendant now suggested.

State vs. William Moore—Going by stop sign. Plea not guilty. Found guilty. Sentence arrested pending exceptions to Supreme Court.

I wish to take this opportunity to express my appreciation for the cooperation given the Solicitor's office by the New Hampshire State Police, the Sheriff's Department, and the Police Departments in Grafton County.

Continued effort to lower the cost of criminal investigation and prosecution is being carried on.

Respectfully submitted,

HAZEN K. STURTEVANT,  
County Solicitor.

## SHERIFF'S REPORT

---

To the Commissioners of Grafton County:

I respectfully submit the following report as Sheriff of the County from January 1, 1942 to December 31, 1942:

### JANUARY TERM AT LEBANON

To Attendance

Robert P. Peckett, Jr., Sheriff	
6 days	\$ 30.00
Travel, 1753 miles	175.30
Expenses	22.40
Harry Andross, Deputy Sheriff	
1 day	5.00
Expenses	.85
Thomas Lynch	
1 day	5.00
Travel, 56 miles	5.60
Expenses	1.00
George U. L. Leavitt, Deputy Sheriff	
12 days	60.00
Travel, 6 miles	.60
Seth Titus, Deputy Sheriff	
1 day	5.00
Expenses	.85
Edward J. LaBonte, Deputy Sheriff	
1 day	5.00
Travel, 326 miles	32.60
Expenses	1.00
John L. Farnham, Deputy Sheriff	
4 days	20.00
Expenses	2.75
Travel, 35 miles	3.55
\$	376.50

Respectfully submitted,

ROBERT P. PECKETT, Jr.,  
Sheriff.

## MAY TERM AT PLYMOUTH

## To Attendance

Robert P. Peckett, Jr., Sheriff	
35 days	\$ 175.00
Travel, 3810 miles	381.00
Expense	169.70
Clergyman	5.00
Paid meals for jury	114.12
Paid for supplies	3.56
William Kimball, Deputy Sheriff	
32 days	160.00
Travel, 211 miles	21.10
Expense	9.50
L. E. Pratt, Deputy Sheriff	
19 days	95.00
Travel, 738 miles	73.80
Expense	11.60
George U. L. Leavitt, Deputy Sheriff	
8 days	40.00
Travel, 4 miles	4.00
Expense	5.00
S. O. Titus, Deputy Sheriff	
3 days	15.00
Expense	8.25
John L. Farnham, Deputy Sheriff	
3 days	15.00
Travel, 30 miles	3.00
Expense	2.70
	<hr/>
	\$ 1,308.73

## SEPTEMBER TERM AT WOODSVILLE

## To Attendance

Robert P. Peckett, Jr., Sheriff	
13 days	\$ 65.00
Travel, 983 miles	98.30
Expenses	14.90



John Farnham, Deputy Sheriff	
10 days	50.00
Travel, 194 miles	19.40
Expense	4.85
George U. L. Leavitt, Deputy Sheriff	
2 days	10.00
William Kimball, Deputy Sheriff	
1 day	5.00
Travel, 2 miles	.20
S. O. Titus, Deputy Sheriff	
4 days	20.00
Expense	11.00
	<hr/>
	\$ 298.65

Respectfully submitted,

ROBERT P. PECKETT, Jr.,

Sheriff.

## CHAPLAIN'S REPORT

---

To the Honorable Commissioners of Grafton County:

I herewith submit my report for the year ending December 31, 1942.

During the year I have conducted twenty-six preaching services in the Chapel, one every other Sunday.

There have been five musical programs presented which were most inspiring. Assisting in these programs were the young people from Lisbon Methodist Church with their pastor, Rev. Sven Laurin, the young people of Monroe with their pastor, Rev. G. B. Van Buskirk, Rev. R. B. Nichols and family from Woodsville and a splendid group of musicians from Rumney Camp Ground. The Chaplain's family has also assisted at various times. All these services have been greatly enjoyed.

The annual Christmas tree was held in the Chapel, Wednesday evening of Christmas week and was a huge success. The inmates, staff and Commissioners gathered in the Chapel, where two large and beautifully decorated trees were laden with gifts. The Chaplain led in the singing of Christmas Carols assisted by Mrs. MacKenzie and Malcolm.

One of the outstanding features of the Sunday services is the piano, played so well, with all variations by Miss Dewey, who is ninety-three years of age.

The Chaplain had the great pleasure of baptizing at a Chapel Service, one of the inmates, who was ninety-two years old.

I officiated at three funerals in the Chapel during the year and visited the sick in the Hospital; also the other inmates in their rooms.

In closing this report, I would like to say that I have enjoyed working with all those who are entrusted

with the physical and spiritual welfare of people less fortunate than themselves. I can truly say that my ministry has been greatly enriched through this fellowship. I cannot speak too highly of the service that is being rendered in this great Institution by the Commissioners, the Superintendent, the Matron, the Doctor and Nurses.

The County may well be proud of this missionary project which it sponsors, where the sick, the maimed, the halt, the blind are all given a home and all necessary comforts.

Only in a Christian land can this be possible.

Very respectfully submitted,

R. W. E. MacKENZIE,  
Chaplain.

## REPORT OF THE COUNTY PHYSICIAN

---

To the Commissioners of Grafton County:

I herewith submit my report for the year ending December 31, 1942.

With its modern equipment the hospital is now prepared to render splendid service to medical, surgical and obstetrical cases. It is under the management of Superintendent and Mrs. J. E. Andrews, who have interested themselves in each individual patient.

Emergency cases are admitted at any time, but before they are sent in, one of the Commissioners should be consulted whenever possible.

During the past year there has been an unusual number of patients with far advanced chronic ailments to be cared for. Most of these have been elderly people without homes or near relatives and it has been the settled purpose of the management to make their stay with us as comfortable as possible.

Our nursing staff continues on as last year - three graduate nurses and two orderlies. It is a pleasure to commend the fine spirit of cooperation which has prevailed among them.

I gratefully acknowledge the valuable counsel of the Commissioners, the cooperation of the Management and the assistance of all connected with the work of the institution.

Respectfully submitted,

E. M. MILLER, M. D.

County Physician.

### Statistics For 1942

Patients in hospital January 1, 1942	26	
Patients admitted during year 1942	162	
	188	
Patients in hospital January 1, 1943	23	
Patients discharged, cured or improved	160	
Daily average	27	
Total nursing days in the year	9905	
Number of births during the year	7	
Number of operations during the year	29	
Total number of deaths during year	28	

## DEATHS 1942

Date	Name	Yrs.	Mos.	Dys.	Cause of Death
Jan. 14	Frank Vigue	75		27	Carcinoma of Prostate
	Kate E. Durgin	78		19	Organic Heart Disease
Feb. 9	George Snaden	70	8	4	Lobar Pneumonia Fractured Ribs
	Harvey A. Young	66	2	7	Chronic Myocarditis
	Mary Miner	90			Carcinoma of Liver
	Homer Hanscome	48	7	17	Coronary Thrombosis
Mar. 14	Charles Sanders	77	1	12	Cerebral Hemorrhage
May 8	Herbert Dodge	79	4	2	Chronic Myocarditis
	Joseph Rollins	60	9	17	Carcinoma of Stomach
June 26	Israel Starr	62	6	16	Organic Heart Disease
	Edson Hutchins	74			Senility Arterio- Sclerosis
July 5	Isaac M. Burnham	82	4		Senility Arterio- Sclerosis
	Thomas Nelligan	82	9		Carcinoma of Liver
Sept. 10	George Clark	78	4	8	Cardiac Decompensation
	Lena Byron	73	21	8	Suicide from over dose of Strychnine and Strophanthus Des- pondency
	Addie Day	66	4	7	Carcinoma of Uterus
Oct. 2	Maude L. Day	65	7	14	Intestinal Obstruction
	Josie Clafin	64	5	27	Cholecystitis Hypostat- ic Pneumonia
	Bertha Felch	61	11	2	Organic Heart Disease
	Emma Roberts	76	8	15	Carcinoma of Liver
	Abbie S. Meader	86	3	6	Shock from Fractured Hip Senility
	Cora H. Spencer	81	3	19	Senility
	Eugene Wood	69		24	Acute Hemorrhagic Pancreatitis
	Mary H. Tattersall	91	2	7	Hypostatic Pneumonia
	Lewis Rainey	86	2	4	Hypostatic Pneumonia
Dec. 14	Erwin Olyer	78	9	28	Cerebral Hemorrhage
	Andrew Green	92	10	17	General Arterio- Sclerosis
	Emery Bacon	82	11	25	Coronary Occlusion Senile Gangrene of Foot

**SUMMARY OF FARM ACCOUNTS OF  
GRAFTON COUNTY FARM FOR 1942**

**CAPITAL INVESTMENT**

	1942	1943
Value of land and buildings	\$42,715.00	\$42,715.00
Inventory of livestock	13,170.00	14,135.00
Inventory of machinery	9,451.75	8,506.51
Inventory of feed and supplies	6,867.33	7,419.78
<b>Totals</b>	<b>\$72,204.08</b>	<b>\$72,776.29</b>
Increase for year		\$ 572.21

**SUMMARY OF RECEIPTS**

	Institution	Cash	Total
Milk and milk products	\$2,696.85	\$6,093.95	\$8,790.80
Potatoes and other vegetables	2,599.73	120.60	2,720.33
Poultry and eggs	338.03		338.03
Dressed beef and pork	2,329.74		2,329.74
Sale of livestock		2,130.75	2,130.75
Miscellaneous		376.54	376.54
	<b>\$7,964.35</b>	<b>\$8,721.84</b>	<b>\$16,686.19</b>
Increase in value of livestock		\$ 965.00	
Increase in value of feed and supplies		\$ 552.45	
<b>Total receipts plus increases in inventory</b>		<b>\$18,203.64</b>	

## SUMMARY OF EXPENSES

Supervision	\$ 250.00
Labor—Regular	3,000.00
Labor—House of Correction	838.50
Purchased feed	4,882.23
Livestock and veterinarian	302.03
Seed, fertilizer, and spray material	565.50
Machinery and repairs	84.23
Miscellaneous	59.94
Taxes	1,144.44
Insurance	767.52
Light and power	327.33
Gas and oil	514.32
	<hr/>
	\$12,736.04
Decrease in value of machinery	\$ 945.18
	<hr/>
Total expenses plus decreases in inventory	\$13,681.22
Total receipts plus inventory increases	\$18,203.64
Total expenses, plus inventory decreases	\$13,681.22
	<hr/>
Operating profit	\$ 4,522.42

J. EARLE ANDREWS

Superintendent.

W. ROSS WILSON,

County Agricultural Agent.

**FINANCIAL REPORT OF GRAFTON COUNTY**  
**FARM BUREAU FOR THE YEAR ENDING**  
**DECEMBER 31, 1942**

---

County Extension Work in Agriculture, Home Economics, and Boys' and Girls' Club Work.

Herewith is submitted a statement of expenditures of the Legislative appropriation of \$8,300.00 for Grafton County Extension Work in cooperation with the University of New Hampshire and the U. S. Department of Agriculture.

Balance on hand January 1, 1942	\$ 747.52
Legislative appropriation for 1942	8,300.00
	\$ 9,047.52
Toward salary and expenses of Agricultural Agent	\$ 2,463.98
Toward salary and expenses of Home Demonstration Agent	524.95
Toward salary and expenses of Club Agent	749.95
Expenses of Assistant Club Agent	445.77
Expenses of District Agri- cultural Agent	331.56
Stenographic services (2 clerks)	1,599.80
Office supplies	264.85
Other supplies	45.14
Printing	28.62
Telephone	322.14
Express and freight	13.52
Rent	446.50
Postage	70.61
Furniture	8.67
Library	3.08
Labor	60.28



Equipment	297.85	
Club Awards	23.10	
Miscellaneous	49.65	
	<hr/>	\$ 7,750.02
Balance on hand December 31, 1942		<hr/> \$ 1,297.50

Respectfully submitted,

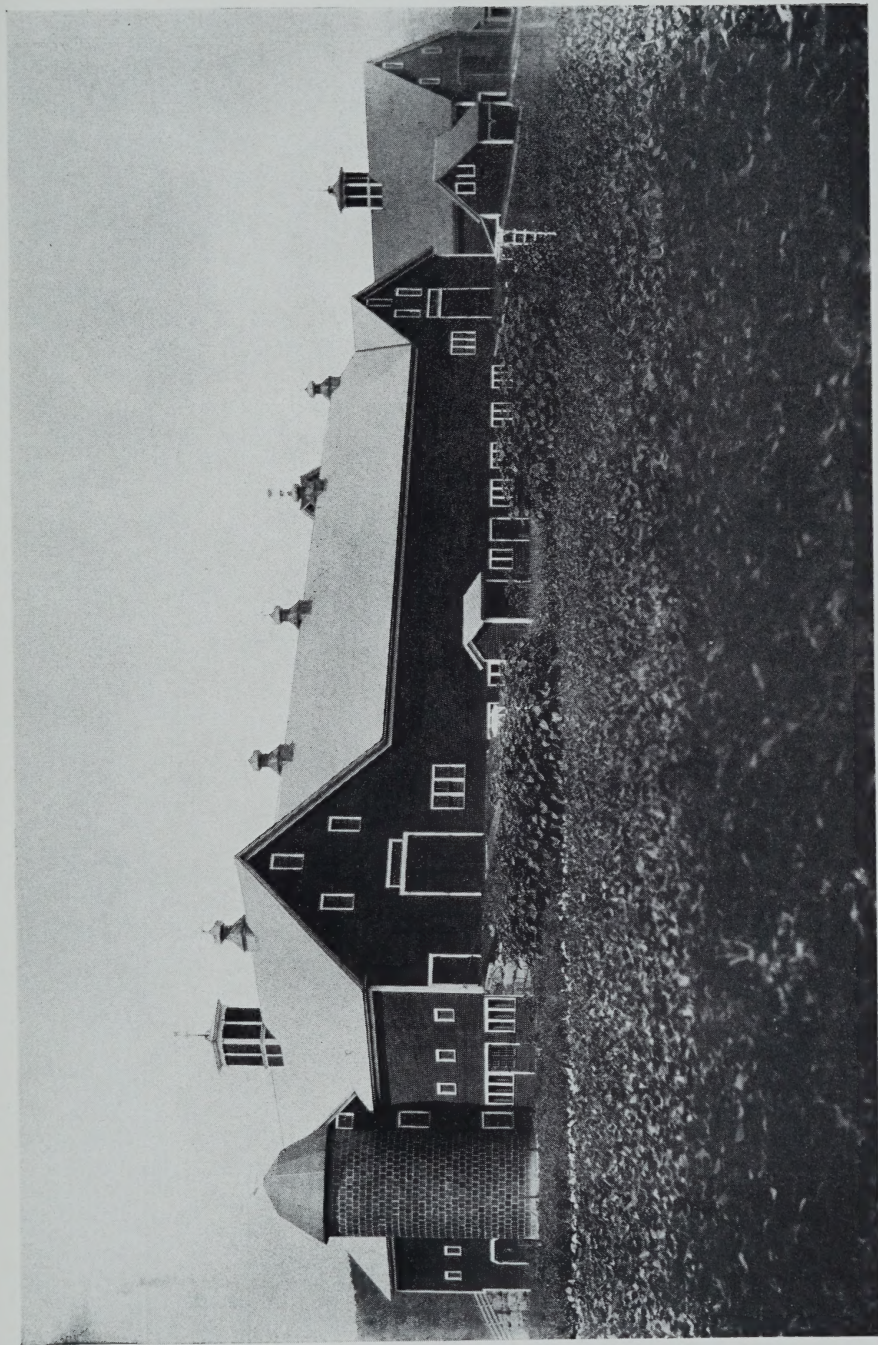
MILDRED HIGGINS,  
Treasurer Grafton County Farm Bureau  
and Extension Service.

W. ROSS WILSON,  
County Agricultural Agent.









GRAFTON COUNTY FARM BARNS





