

Harvard
Library
University of
New Hampshire

ANNUAL REPORTS of
Commissioners, Treasurer,
and ----- Other Officers of
SULLIVAN COUNTY

FOR THE YEAR ENDING
DECEMBER 31 ----- 1931

ANNUAL REPORTS of
Commissioners, Treasurer,
and ----- Other Officers of
SULLIVAN COUNTY, N. H.

EAGLE PRESS. CLAREMONT, N. H.

FOR THE YEAR ENDING
DECEMBER 31 ----- 1931

N
352.0742
895
1931

508

COUNTY OFFICERS

COMMISSIONERS

FREDERICK W. AIKEN	Newport
FRED A. BARTON	Lempster
OLIVER A. PUTNAM	Claremont

TREASURER

CLINTON K. BARTON	North Charlestown
-------------------	-------------------

SOLICITOR

HOWARD H. HAMLIN, (resigned)	Claremont
FRANCIS W. JOHNSTON (Commissioner to perform duties of Solicitor from July 1 to October 2, 1931)	Claremont
JOHN H. LEAHY (Commissioner to perform duties as Solicitor)	Claremont

SHERIFF

EMERY B. MONTA	Claremont
----------------	-----------

CLERK OF SUPERIOR COURT

JOHN McCRILLIS	Newport
JOHN. W. McCRILLIS, Deputy Clerk	Newport

JUDGE OF PROBATE

HENRY S. RICHARDSON	Claremont
---------------------	-----------

REGISTER OF PROBATE

HARRY E. JAMESON Newport

REGISTER OF DEEDS

CHARLES W. ROUNSEVEL Newport

AUDITORS

IRA G. COLBY Claremont
JOHN J. CONDON Newport

MEDICAL REFEREE

FRED P. CLAGGETT, M. D. Newport

SUPERINTENDENT OF COUNTY FARM

L. M. GROUT Unity

CHAPLAIN

AGNES C. ELLINGWOOD North Charlestown

PHYSICIAN

HENRY C. SANDERS, JR. Claremont

DEPUTY SHERIFFS

WILLIAM M. LIVINGSTON (deceased) Acworth
JAMES W. DAVIDSON Charlestown
JOHN E. BAYLISS Cornish
SIDNEY G. WHITMORE Newport
HENRY G. HASTINGS (deceased) Newport

JANITOR OF COURT HOUSE

W. E. HUNTING Newport

COMMISSIONERS' REPORT

In accordance with the Public Statutes of the State of New Hampshire, the Commissioners of Sullivan County submit their Annual Report for the year ending December 31, 1931, together with the reports of the Superintendent of the County Home and House of Correction, Treasurer, Clerk of the Superior Court, Sheriff, Solicitor, Chaplain, Physician, and Auditors, for the fiscal year ending December 31, 1931.

By vote of the Convention on December 12, 1931, the name of Sullivan County Farm was changed to Sullivan County Home.

The Sullivan County Home still remains under the very efficient supervision of Mr. and Mrs. L. M. Grout as Superintendent and Matron. Their duties have been more numerous and varied than formerly owing to the moving and arrangement of affairs in their new home which they have performed to perfection.

May 6, 1931 the new Building was dedicated with appropriate ceremonies. It was a beautiful day and the attendance was large. We extend an invitation to the taxpayers of the County and all people interested in the welfare of the County to visit this new Home so that they may become better acquainted with what has been done. The new hospital is well equipped with modern equipment and is in charge of a registered nurse. The County should feel proud of this addition to the new Home because it will not only add to the kind treatment and care of all patients concerned but it will mean a financial saving to the County in years to come. The new Jail with its equipment can now adequately take care of all prisoners and thus eliminate the enormous expense of conveying them to and from other Counties as well as their board while confined outside of the County.

The new road now being constructed from the Claremont town line to the Sullivan County Home was nearly completed last fall and will be a great accommodation and improvement for the benefit of the public as well as the lessening of expense to the Sullivan County Home.

The Farm is in a high state of cultivation and the crops as a

whole have been very good. The stock of some ninety head of pure bred Holsteins are constantly improving year by year and in the near future it seems as though by introducing high bred sires continually the County will soon be getting the highest prices possible for all products.

The Old Alms House building has been removed. A corner of the old building on the side of the Superintendent's House was reserved and on the lower floor there is a sewing room and a store room for supplies kept in stock and a private office. On the second floor there is a sun porch, making one of the most attractive rooms in the whole building and the whole affair adding to the outside and general appearance of the premises.

The former House of Correction which was moved to a new place has been thoroughly remodeled so as to take care of any emergency cases which may occur.

The general health of the inmates has been very good. There have been several hospital cases and most of them have made a remarkable recovery which goes to show that we are getting good results from our latest arrangements for the care of the sick.

The Commissioners have had a busy year and have tried hard to do their various duties to the best of their ability. The adding of the Old Age Assistance necessitates a great amount of extra work. We have tried to use our best judgment in these cases. A new system of handling the pauper accounts in the County has been installed by the Commissioners following the recommendations of the Investigating Committee appointed to investigate County affairs in general. While this entails more work, we have faith to believe that as time goes on it will bring good results as each case is thoroughly investigated and an allotment made for the needs of the pauper a month in advance. This necessitates a settlement each month with the towns of Claremont and Newport. Accordingly this report shows payments for Poor for fifteen months instead of twelve months as heretofore in the Towns of Claremont and Newport. Everyone knows that the unemployment situation at present is the worst it has ever been but people have to live like human beings. The cost of necessities is somewhat lower but the number to be cared for is much greater than ever before. Everyone in all the towns is trying to lessen these expenses but it is a hard problem. The report of the Investigating Committee which appears in another part of this book will explain many things they have accomplished. Their labors we are sure will bring good results. They have surely worked hard. We wish to

thank all of the various relief organizations in the County for their assistance in connection with the difficulties of the present time.

To Mr. and Mrs. Grout, we express our sincere appreciation of their efficient management of the Sullivan County Home and their kindness to all those connected therewith. We also wish to express our appreciation to all those who are in any way connected with the several departments of the Sullivan County Home for the faithful performance of their duties.

Respectfully submitted,

FREDERICK W. AIKEN,
FRED A. BARTON,
OLIVER A. PUTNAM,

Commissioners of Sullivan County.

SULLIVAN COUNTY DELEGATION

1931

Sullivan County Delegation met in Section 5, House of Representatives, Wednesday, January 14th, for the purpose of organization.

The following members were present:

Kemp of Acworth
 Hamlin of Charlestown
 Colby of Claremont
 Dow of Claremont
 Fitch of Claremont
 Leahy of Claremont
 Putnam of Claremont
 Turner of Claremont
 Warner of Claremont
 Whitcomb of Claremont
 Dandrow of Goshen
 Hudson of Grantham
 Barry of Newport
 Reed of Newport
 Rowell of Newport
 Ward of Plainfield
 Osborne of Sunapee
 Reed of Unity
 Fowler of Washington

Meeting called to order by Mr. Warner of Claremont.

Mr. Whitcomb of Claremont was nominated and elected Chairman, and Mr. Osborne of Sunapee was nominated and elected Clerk of the Delegation.

Mr. Warner moved and Mr. Dow seconded, that an Executive Committee of five members be appointed by the Chair to serve for the ensuing two years. Chairman appointed Osborne of Sunapee,

Barry of Newport, Ward of Plainfield, Fitch of Claremont, and Whitcomb of Claremont.

Meeting adjourned to call of the Chairman.

A true record:

LEO L. OSBORNE, Clerk.

A true copy of record. ATTEST.

LEO L. OSBORNE, Clerk.

January 21, 1931.

Meeting of Sullivan County Delegation held in Room No. 156 at 11:20 a. m.

Present: All members except Quimby of Cornish and Rowell of Newport.

Meeting called to consider House Bill No. 11.

AN ACT to provide for an increase of Salary for the Solicitor of Sullivan County.

Howard Hamlin appeared in favor of the bill. Questions were asked by Dow, Ward, Fitch, Turner, Whitcomb, Warner and Osborne.

EXECUTIVE SESSION

Letter read from Mr. Hurd in favor of the bill. Motion made by Leahy, seconded by Dow, to report bill ought to pass. 3 in favor, 10 opposed.

Motion made by Reed of Newport, seconded by Ward, to report bill inexpedient to legislate. 9 in favor, 3 opposed.

On motion made by Osborne it was voted to adjourn to the call of the Chairman.

A true record, ATTEST:

LEO L. OSBORNE, Clerk.

A true copy of record. ATTEST:

LEO L. OSBORNE, Clerk.

January 28, 1931.

Sullivan County Delegation met in Balcony of House of Representatives on Wednesday, January 28th, at 3:15 p. m. at the call of the Chairman.

All present except Rowell of Newport, Leahy of Claremont,

and Quimby of Cornish.

Subject matter was the Daylight Saving Bill. General discussion ensued by everyone present.

Meeting adjourned to call of Chairman.

A true record, ATTEST:

LEO L. OSBORNE, Clerk.

A true copy of record. ATTEST:

LEO L. OSBORNE, Clerk.

February 17th, 1931.

Sullivan County Delegation met in Balcony at the close of the afternoon session.

Meeting called to order by Chairman Whitcomb.

The Clerk called the roll and the following members were present:

Kemp of Acworth
 Hamlin of Charlestown
 Colby of Claremont
 Fitch of Claremont
 Putnam of Claremont
 Whitcomb of Claremont
 Dandrow of Goshen
 Barry of Newport
 Reed of Newport
 Rowell of Newport
 Ward of Plainfield
 Osborne of Sunapee
 Reed of Unity
 Fowler of Washington

Mr. Osborne reported for the Executive Committee that the Committee had met with the Commissioners to go over the budget, and that after careful checking, unanimously voted to report in favor of the Budget as submitted by the Commissioners as follows:

	1931	1932
For the support of		
Poor not at County Farm	\$ 45,000	\$ 42,000
For the support of		
Dependent Soldiers	1,000	1,000
Expenses at County Farm	25,000	25,000

	1931	1932
County Officers	\$ 2,500	\$ 2,500
Debt and Interest	14,000	22,000
Jail Expenses	600	600
Court House Expenses	2,500	2,500
Superior Court Expenses	10,000	10,000
Miscellaneous Expenses	10,000	8,000
Blind	1,000	1,000
Farm Bureau	5,400	5,400
New Road	3,000	
	\$120,000	\$120,000

On motion of Mr. Fitch of Claremont, seconded by Mr. Colby of Claremont, it was voted that we raise by taxation the sum of \$120,000.00 for 1931, and a like sum in 1932; this being the sum submitted by the Commissioners and recommended by the Executive Committee.

Meeting adjourned to call of the Chairman.

A true record, ATTEST:

LEO L. OSBORNE, Clerk.

A true copy of record. ATTEST:

LEO L. OSBORNE, Clerk.

February 18th, 1931.

Sullivan County Delegation met in Balcony at call of the Chairman.

All members present except Quimby of Cornish.

Subject matter, to consider House Joint Resolution No. 61. An Act relating to the outlet of Crescent Lake in the Towns of Acworth and Unity. General discussion. Mr. Woodworth of Concord, Counsel for Public Service Company of New Hampshire was present and spoke on the bill. Mr. Rowell of Newport moved and seconded by Mr. Dow of Claremont and it was voted that a committee of three be appointed by Chairman to go over the proposition more thoroughly and report at a future meeting.

Chairman appointed as Committee: Leahy and Colby of Claremont and Osborne of Sunapee.

Meeting adjourned to call of the Chairman.

A true record, ATTEST:

LEO L. OSBORNE, Clerk.

A true copy of record. ATTEST:

LEO L. OSBORNE, Clerk.

March 11, 1931.

The Sullivan County Delegation held a meeting in the Balcony on March 11th to consider House Joint Resolution No. 61.

Members present as follows: Hamlin of Charlestown; Colby, Dow, Fitch, Leahy, Putnam, Turner, and Whitcomb all of Claremont; Barry and Reed of Newport; Ward of Plainfield; and Osborne of Sunapee.

Leahy reported for Special Committee on House Joint Resolution No. 61. Joint Resolution relating to the Outlet of Crescent Lake in the towns of Acworth and Unity. (Bill in new draft.) General discussion ensued.

On motion of Mr. Dow it was voted that House Joint Resolution No. 61 in new draft be reported Ought to Pass.

Meeting adjourned, subject to the call of the Chairman.

A true record, ATTEST:

LEO L. OSBORNE, Clerk.

A true copy of record. ATTEST:

LEO L. OSBORNE, Clerk.

March 17, 1931

The Sullivan County Delegation met in the Balcony March 17, to consider House Bill No. 238. An Act relating to the Sheriff of Sullivan County.

Members present: Kemp of Acworth; Hamlin of Charlestown; Colby, Dow, Leahy, Putnam, Whitcomb, and Turner of Claremont; Hudson of Grantham; Barry of Newport; Osborne of Sunapee; Reed of Unity; Fowler of Washington.

On motion made by Leahy, it was voted to report House Bill No. 238 inexpedient to legislate.

It was voted to adjourn, to meet at County Farm on Monday, March 23rd at 10 a. m.

A true record, ATTEST:

LEO L. OSBORNE, Clerk.

A true copy of record. ATTEST:

LEO L. OSBORNE, Clerk.

Monday, March 23, 1931.

Sullivan County Delegation met at 10 a. m. at the County Farm.

Inspection of Buildings. Dinner at 12:30 p. m.

All members present, except Dow of Claremont.

Short business meeting at 1:45 p. m. Chairman Whitcomb presiding.

Ward of Plainfield announced a dinner given by Kimball Union Academy at White Memorial Church, Concord, Wednesday evening, March 25th, all invited.

Remarks by Mr. Aiken, Chairman of County Commissioners. Also Barton and Putnam of the Commissioners.

Report to date on financial condition of Building Committee on new Alms House given by Mr. Warner, Clerk for the Committee. He reported they are able to keep under the appropriation of \$150,000.

Remarks by Mr. Wells of Farm Bureau on Farm Bureau Work in Sullivan County.

Remarks by Senator Robinson, and by ex-Senator Etsler.

Mr. Quimby thanked delegation for letter received from delegation while sick at home.

On motion of Mr. Osborne it was voted that a vote of thanks be given Mr. and Mrs. Grout for the excellent dinner served today.

Remarks by Colby, Leahy, Barry, and Mrs. Hamlin.

Mr. Osborne called attention to gift of \$600 piano from Major Francis P. Murphy of Nashua, for the new Alms House.

Meeting adjourned to call of the Chair.

A true record, ATTEST:

LEO L. OSBORNE, Clerk.

A true copy of record. ATTEST:

LEO L. OSBORNE, Clerk.

Tuesday, April 28, 1931.

Meeting of Sullivan County Delegation held in room 100 State House, Tuesday morning at 9 a. m. Meeting called to order by Chairman Whitcomb.

Roll call showed 16 members present as follows: Hamlin; Colby; Putnam; Turner; Whitcomb; Quimby; Kemp; Dandrow; Hudson; Barry; Reed of Newport; Ward; Osborne; Reed of Unity; Fowler; and Warner.

Question of the new road from Claremont town line to County Farm discussed.

Albert Reed, a member of the Board of Selectmen of Unity places the position of the Town before the convention.

On motion of Warner it was voted that the clerk draw up resolution in favor of the town of Unity building the new road.

The Clerk presented the following resolution:

“WHEREAS: the State of New Hampshire, County of Sullivan and town of Unity are to construct a state aid road from the Claremont town line to the County Farm, and

WHEREAS: The town of Unity is to contribute \$3,000 and \$1,200 as their part of the money,

BE IT RESOLVED that the Sullivan County delegation favor the construction of the said road by the town of Unity and not by contract provided it meets with the approval of the Highway Commissioner.”

On motion of Dandrow, seconded by Turner, it was voted that the Resolution be adopted and a copy be sent to Commissioner Everett. Vote was unanimous.

Moved to adjourn to call of Chairman.

A true record, ATTEST:

LEO L. OSBORNE, Clerk.

A true copy of record. ATTEST:

LEO L. OSBORNE, Clerk.

Concord, N. H., May 5th, 1931.

Sullivan County Delegation met in room 100 on May 5th, 1931, at 1 p. m.

The following members were present: Kemp, Acworth; Hamlin, Charlestown; Colby, Dow, Putnam, Turner, Warner and Whitcomb of Claremont; Quimby, Cornish; Dandrow, Gosken; Barry, Newport; Reed, Newport; Rowell, Newport; Ward, Plainfield; and Osborne, Sunapee.

Meeting called to order by Chairman Whitcomb.

Question of the study of County Affairs in general. Dis-

cussion ensued.

Motion made by Warner and seconded by Dandrow that a committee of five be appointed by Chairman (to include chairman) to study county affairs in general, and chairman petition court for a sum not to exceed \$200 for this purpose, and committee to report at some future time. Unanimous vote in the affirmative.

Chairman to have 48 hours to appoint committee.

Adjourned to call of Chairman.

A true record, ATTEST:

LEO L. OSBORNE, Clerk.

A true copy of record. ATTEST:

LEO L. OSBORNE, Clerk.

May 7, 1931.

The Chairman appointed the following Committee to study County Affairs in general: Whitcomb, Warner, and Colby of Claremont; Rowell of Newport; and Osborne of Sunapee.

A true record, ATTEST:

LEO L. OSBORNE, Clerk.

A true copy of record. ATTEST:

LEO L. OSBORNE, Clerk.

SPECIAL MEETING OF SULLIVAN COUNTY DELEGATION.

Unity, N. H., October 27, 1931.

Meeting called to order by W. F. Whitcomb, Chairman. Call of meeting read by chairman.

Newport, N. H., October 7, 1931.

To the Members of the County Delegation of the County of Sullivan:

Please take notice that there will be a Special Meeting of the County Delegation of said County holden at the County Farm in Unity, in said county, on the twenty-second day of October, 1931, at ten o'clock in the forenoon, to hear the report of the committee appointed to make a survey of County affairs, and pass any vote relating thereto.

To transact any other business that may legally come before said meeting.

FREDERICK W. AIKEN
 FRED A. BARTON
 OLIVER A. PUTNAM

County Commissioners.

Roll call showing the following members present: Kemp of Acworth; Hamlin of Charlestown; Colby of Claremont; Leahy of Claremont; Putnam of Claremont; Turner of Claremont; Warner of Claremont; Whitcomb of Claremont; Quimby of Cornish; Dandrow of Goshen; Barry of Newport; Reed of Newport; Rowell of Newport; Ward of Plainfield; Osborne of Sunapee; Reed of Unity; Fowler of Washington.

Motion by Rowell of Newport, seconded by Warner of Claremont, that Convention go into executive session to consider preliminary report of the Committee to study Sullivan County affairs. Motion carried unanimously.

Report of committee read by the clerk, George C. Warner; remarks by Osborne, Rowell, and John H. Leahy, County Solicitor, upon the preliminary report of the committee.

PRELIMINARY REPORT OF SPECIAL COMMITTEE TO MAKE GENERAL SURVEY

On May 5, 1931, we held a meeting of the Sullivan County delegates in Room 100 at the State House in Concord. We had a discussion of County affairs in general. The outcome of this meeting was that we thought a general study and survey of County affairs might result in instituting certain economies.

You authorized the chairman to appoint a committee of five and to include the Chairman as a member of the committee. Mr. Whitcomb appointed Leo L. Osborne of Sunapee; Jesse R. Rowell of Newport; M. F. Colby, W. F. Whitcomb, and George C. Warner of Claremont to make up this committee.

On May 20, 1931, the Committee held its first meeting in Claremont. Mr. Osborne was elected chairman, and Mr. Warner, clerk. The clerk was instructed to confer with a certified public accountant to audit the accounts of the County in general.

We have held about fifteen committee meetings and quite a good many sub-committee meetings.

On July 13, 1931, the clerk went to Manchester to interview

Mr. Clarence I. Drayton, a certified public accountant. On his return, we had a meeting of the committee, and the clerk was instructed to engage the services of Mr. Drayton to audit the accounts of the County. He commenced work at once.

We wish to say right here, the Committee desire to thank Mr. Drayton for his cooperation and excellent work in making this very complete report.

We received on August 22, 1931, Mr. Drayton's report recommending various changes in the operation of the Commissioners' office, which we will explain in detail. There are also suggestions in the report recommending further investigation by your committee. Due to the changes that have taken place in the office of the County Solicitor, we have been unable to carry out these investigations properly. The report, and final report of your committee will be made at a later date.

We at once went over Mr. Drayton's report with the County Commissioners and suggested they adopt the recommendations made in this report.

On Sept. 3, 1931 we had Mr. Drayton come to Newport and see about installing the necessary system to keep closer supervision of County expenditures.

The system was put in operation Oct. 5, 1931.

The Commissioners had all the Overseers of the Poor of the various towns and Mr. Drayton at their office in Newport on Oct. 5, 1931. Mr. Drayton explained to them the new system, and each Overseer was supplied with blanks and orders to enable the system to be put in effect in each Town.

We will not go into the details of the new system, but we think it is very simple and effective. We will explain the system later.

We suggested to the Commissioners they engage a Clerk to look after the clerical work in the office. This has been done.

We suggested to the Commissioners that each Commissioner have a certain Town, or Towns, to look after. This has been done.

We are very glad to advise you that most all of the recommendations to Commissioners in the report have been adopted, and we wish to thank them most highly for their splendid assistance.

We wish to advise you that the only expense connected with the survey was the expense of the Auditors. The expense of installing the new system and forms was met by the Commissioners.

We would recommend that the Sullivan County Delegates at

the next session of the General Court see that a bill is introduced to have the Overseers of the Poor who are handling large sums of money be bonded.

We would recommend that the Overseers of the Poor be appointed by the Selectmen of the Town, and necessary laws be made so they will be governed by the Selectmen.

We would recommend that the next session of the General Court consider a bill to put the Commissioners on a salary and to give them an allowance for expenses.

All the Counties in the State have the Commissioners on a salary except Carroll, Coos and Sullivan.

We wish every member of the County delegation, and as many of the tax payers as possible, would see that the recommendations made in the Auditor's report are carried out. If we do not take an interest in these improvements, they will in time cease to operate.

COMMITTEE:

LEO L. OSBORNE, Chairman,
 JESSE R. ROWELL,
 MELVIN F. COLBY,
 WILLIAM F. WHITCOMB,
 GEORGE C. WARNER.

Motion by Leahy of Claremont, seconded by Barry of Newport.

Motion No. I

Moved,—

That the Convention approves the new system of bookkeeping installed by the County Commissioners relative to caring for the County dependents and wished strict adherence to the system. Also, that the Convention approves of the action of the Commissioners in employing a part-time Office Clerk.

Motion carried unanimously.

Motion by Ward of Plainfield, seconded by Reed of Newport.

Motion No. II

Moved,—

That the preliminary report of the Special Committee to make a survey of County affairs be accepted and placed on file.

Motion carried unanimously.

Motion made and seconded and carried unanimously that delegates serve without pay for this meeting.

Motion made, seconded and carried unanimously to pay the clerk of the Committee postage and telephone bills.

Recess for dinner at 12:30 p. m.

Meeting called to order at 1:30 p. m., by Chairman.

Motion made by Warner of Claremont, seconded by Osborne of Sunapee, and carried unanimously, that a vote of thanks be extended to Mrs. Grout and helpers for the excellent dinner.

Motion made by Warner of Claremont, seconded by Ward of Plainfield, that Convention express appreciation of the very efficient services of Supt. Grout and Mrs. Grout, and recommends to the Commissioners that an annual vacation be granted them without loss of salary.

Motion made by Mrs. Hamlin of Charlestown, and seconded by Ward of Plainfield, that a Committee be appointed by the Chairman to act with the Commissioners in the selection of a name for the Sullivan County Farm.

The Chairman appointed as Committee, Mrs. Hamlin of Charlestown, Ward of Plainfield, and Leahy of Claremont.

Remarks by F. W. Aiken, Chairman of County Commissioners, about the general conditions of the County business.

Remarks of appreciation by Mr. Grout, Superintendent of the Farm.

Moved by Osborne to adjourn.

LEON L. OSBORNE, Clerk.

Claremont, N. H., December 12, 1931.

Special meeting of Sullivan County Delegation.

Meeting called to order by W. F. Whitcomb, Chairman. Call of meeting read by the Chairman.

To the Members of the Convention of the County of Sullivan and State of New Hampshire:

Please take notice that there will be a Special Meeting of the County Convention of said County held at the Court House in Claremont, N. H., in said County on the twelfth day of December, 1931 at ten o'clock in the forenoon to act upon the following subjects:

- 1st To see if the County Convention will vote to authorize the County Commissioners to transfer all funds of the Sullivan County Building Account to the General Account.

- 2nd To hear the Final Report of the Investigating Committee authorized by the Sullivan County Convention and pass any vote relating thereto.
- 3rd To transact any other business that may legally come before said meeting.

FREDERICK W. AIKEN
 FRED A. BARTON

County Commissioners.

Dated at Newport, N. H., December 2, 1931.

Hamlin of Charlestown; Colby of Claremont; Leahy of Claremont; Putnam of Claremont; Turner of Claremont; Warner of Claremont; Whitcomb of Claremont; Quimby of Cornish; Dandrow of Goshen; Barry of Newport; Reed of Newport; Rowell of Newport; Ward of Plainfield; Osborne of Sunapee; Reed of Unity.

Article I. Final report on new building read by F. W. Aiken, Chairman of the Commissioners, showing \$2,368.52, unexpended balance.

General remarks by Whitcomb, Rowell, and Warner about the disposition of balance.

Motion by Leahy of Claremont, seconded by Ward of Plainfield, to transfer from the Building Account to the General County Fund, the unexpended balance of \$2,368.52. Motion carried 8 to 1.

Article 2. Final report of Investigating Committee.

Chairman Osborne reports that the Committee has not and will not receive any pay or expenses for this investigation.

George C. Warner, clerk, read the written report of the Investigating Committee, which will be filed with this record. Mr. Warner also read the report of Clarence I. Drayton, C. P. A., which will be filed with this record.

Moved by Leahy of Claremont, seconded by Ward of Plainfield, that the report of the investigating Committee be accepted and placed on file. Motion unanimously carried.

Claremont, N. H., Dec. 12, 1931.

FINAL REPORT OF SPECIAL COMMITTEE TO MAKE
 GENERAL SURVEY

It was the committee's understanding when appointed that they were authorized to study Sullivan County administration

and expenditures and make a report to the delegation.

On October 22nd, 1931 we made our preliminary report. At that time we advised you of the new up-to-date book-keeping system that had been installed by the commissioners. This new system will enable closer supervision of county expenditures. We had no authority or money to make any further investigations.

The delay in the complete operation of the new system before Dec. 1st, 1931 was due to the lack of cooperation by the former overseer of the poor of Claremont, but it is now in full operation. The public can examine these records at any time and the committee hope that this will be done.

The following extract recently taken from the records in the commissioners' office may be interesting:—

SEVEN MONTHS' SETTLEMENT

Sept. 1, 1931

Claremont	\$31,413.00	Newport	\$ 7,152.52
Ave. per mo.	4,487.57	Ave. per mo.	1,021.79
Other towns			\$ 6,100.19

SEPTEMBER SETTLEMENTS

Claremont	\$ 3,339.37	Newport	\$ 384.40
-----------	-------------	---------	-----------

OCTOBER SETTLEMENTS

Claremont	(No settlement)	Newport	\$ 510.06
-----------	-----------------	---------	-----------

ALLOWANCES AS PER NEW SYSTEM—PER MONTH

Claremont	\$ 3,391.50
Newport	1,757.00
All other towns	1,259.00

We have a very favorable report from the overseer of the poor of Newport. He had his doubts, at first, about the new system. We understand, now that he has had an opportunity to see how it works, he is very enthusiastic about it. He now has a record in his possession of all the applications. This record gives him a complete history of all the cases.

The commissioners report that they have now on file about 117 cases in Claremont. You will see by Mr. Drayton's report there were 220 cases reported for the period investigated. We have

very good reason to think that the new system will cut down the number of cases materially.

We herewith submit the auditor's report. We think after you have heard this report it will not be necessary for us to make any further remarks about it, as it is very complete. We think the money expended in having this survey made was money well spent.

Mr. Drayton's report has been carefully studied by the county solicitor and he has taken it up with the attorney general of the state. The attorney general has already sent auditors to make further investigation of the former overseer of the poor of Claremont's records.

We wish to thank the commissioners and county solicitor for their suggestions and splendid assistance. Also wish to thank Mr. Drayton for his cooperation and excellent work and very complete report.

The investigation made by your committee has brought to light some conditions which needed correction as shown in Mr. Drayton's report. The installation of more business-like methods in caring for the county dependents is one of the results. Other matters are being looked after by the proper authorities. As cited in our previous report, the commissioners have put in operation the recommendations made to them.

COMMITTEE:—

LEO L. OSBORNE, Chairman
 WILLIAM F. WHITCOMB
 M. F. COLBY
 J. R. ROWELL
 GEORGE C. WARNER

Mr. Warner, Clerk of the Committee, informed the Delegation that Paul A. Mineau, overseer of the poor of Claremont, had resigned, and that the Selectmen of Claremont had appointed Mr. Melvin F. Colby to fill out the unexpired term of Mr. Mineau.

Mr. Osborne, of Sunapee, informed the Delegation that all reports of the Committee have been placed in the hands of John H. Leahy, County Solicitor, for any action that he may deem expedient.

Motion by Colby of Claremont, seconded by Barry of Newport, as follows:

Resolved that the Committee appointed to study ways and means for bettering the affairs of Sullivan County be continued during the term of this Delegation. Motion carried unanimously.

Motion by Leahy of Claremont, seconded by Ward of Plainfield; That this Delegation recommends to the 1933 Sullivan County Delegation to be enacted into law the following:

That overseers of the poor handling \$1,000.00, per month or more be bonded. That the salaries of Commissioners be put on a salary basis, and that all overseers of the poor be appointed by the Selectmen of each town.

Article III. Report of Committees to suggest a new name for the Sullivan County Farm made at this time.

Mrs. Hamlin of Charlestown, suggested the following new names:

(1) Hillcrest; (2) Mountain View; (3) Mountain View Home; (4) Sullivan County Home.

General discussion by the Delegation.

Moved by Barry of Newport, seconded by Quimby of Cornish, that the new name for our County Farm should be "Sullivan County Home," on and after this date.

Moved by Rowell of Newport to adjourn. Carried.

I, Leo L. Osborne of Sunapee, N. H., certify that I am Clerk of the Sullivan County Delegation and that the foregoing copy of records are true copies of the records of all the meetings of the Sullivan County Delegation.

LEO L. OSBORNE, Clerk.

State of New Hampshire, Sullivan S.S. Dec. 15th, 1931.

Personally appeared the above named Leo L. Osborne and took oath that the above certificate by him signed is true to the best of his knowledge and belief.

Before me,

H. C. YOUNG, Justice of Peace.

REPORT OF BUILDING COMMITTEE

The new Sullivan County Home at Unity was opened to the public for inspection and dedicated, May 6, 1931.

The authorized appropriation for the erection and equipment of the new building was \$150,000.00

The general expense covering the contracts for the erection of the building, heating, plumbing, electric installation,

linoleum, screens, architects fees and expenses, amounted to	\$121,193.68	
Equipment expense covering kitchen furnishings, refrigerator, installation of refrigerating equipment, laundry machinery, shafting, hangers and erecting laundry machinery, hospital equipment, shades, furniture, bedding, etc.	19,293.50	
Miscellaneous expense covering bronze tablet, painting porches, insurance, grills for Jail, radios, pictures and legal advice	1,125.85	
Incidental expense covering the moving of the old House of Correction building and repairs on same, increasing the capacity of the reservoir, removal of old almshouse, repairs on Superintendent's building, grading, etc.	7,813.25	
Total cost	\$149,426.28	
Balance	573.72	
	<hr/>	<hr/>
	\$150,000.00	\$150,000.00

A fine piano for the Assembly room was donated by Francis P. Murphy of Nashua, formerly of Newport.

At a special meeting, the Sullivan County Delegation voted to turn the balance of the building fund into the general funds of the County.

Also, by vote of the Delegation, the new building was named "The Sullivan County Home."

Respectfully submitted,

WILLIAM F. WHITCOMB

GEORGE C. WARNER

LEO L. OSBORNE

JAMES W. DAVIDSON

and

COUNTY COMMISSIONERS

Committee

POOR NOT AT COUNTY FARM

Paid Towns for Support of Poor, 1931

	Feb. Term	Sept. Term
Acworth	\$	\$ 397.96
Charlestown	571.92	514.44
Claremont	12,431.08	27,862.50
Cornish	585.80	1,066.01
Croydon	155.34	128.22
Goshen	99.97	132.16
Grantham	695.27	1,002.72
Langdon	162.36	
Lempster	144.50	715.25
Newport	5,503.80	6,743.00
Plainfield	831.94	1,612.21
Springfield	30.00	274.34
Sunapee	53.83	2.00
Unity	146.83	16.00
Washington		29.25

\$ 21,412.64 \$ 40,496.06

	Sept.	Oct.	Nov.
Claremont	\$ 3,260.38	\$ 3,187.24	\$ 3,877.91
Newport	384.40	506.10	708.67

DEPENDENT SOLDIERS

Paid Towns for Aid to Dependent Soldiers, 1931

	Feb. Term	Sept. Term
Charlestown	\$ 72.92	\$ 39.47
Claremont	2,050.65	3,550.50
Newport		409.52
Sunapee	14.39	117.53
Unity	75.99	450.59

\$ 2,213.95 \$ 4,567.61

	Sept.	Oct.	Nov.
Claremont	\$ 234.11	\$ 484.21	\$ 542.51
Newport			72.38

Total paid for year 1931 for Poor not at County Farm,
\$73,833.40.

Total paid for Year 1931 for Dependent Soldiers, \$8,114.77.

SUPPORT OF CHILDREN

Paid for Support of Children in Families

Frank Zugale	\$	22.85
June Therrien		34.24
Irene Therrien		49.78
June LaValley		22.25
LaValley children		88.25
Ralph LaValley		11.00
DeMars Children		47.00
Hastings Children		110.00
Laura McNeil		130.00
Lombard Children		101.00
LaPorte Children		314.40
Virginia McNeil		112.01
Henry McNeil		216.65
Robert Wolfgrain		164.00
Donovan Children		214.43
Mrs. M. G. Dole for James Marden, Roland Keniston, Angelle Rondeau, Conrade Rondeau, Walter Leavitt		744.00

Paid for Aid of Children in Families

Arthur L. Patch, M. D., medical aid for James Marden	\$	6.25
Nashua Hospital Ass'n., care of Eleanor Royce		18.00
Arthur L. Wallace, M. D., medical aid for Eleanor Royce		32.00
Noyes Shoe Co., Inc., shoes for LaValley child		2.45
Wm. P. Nolin, supplies for June LaValley		3.24
A. L. Patch, M. D., medical aid for James Marden		24.00
M. H. Fishman Co., clothing for LaValley children		2.94
Surprise Store, supplies for Roland LaPorte		2.88
M. J. Hourihan, supplies for Rene LaPorte		4.50
Winter Bros., supplies for Rene LaPorte		3.94
Child Welfare Club, expenses in connection with Baxter children		50.00

M. H. Fishman Co., Inc., supplies for Lombard children	\$ 6.92
O. A. Putnam, supplies for Robert Wolfgrain	2.27
M. J. Hourihan, supplies for LaPorte child	5.50
J. W. Doyle Shoe Store, shoes for LaPorte children	6.70
Montgomery Ward & Co., supplies for LaPorte children	4.06
	<hr/>
	\$ 2,557.51

New Hampshire Children's Aid and Protective Society

Care of Children	\$ 1,677.03
------------------	-------------

New Hampshire Orphans' Home

Care of Children	1,030.90
------------------	----------

Nashua Orphans' Home

(Nashua Protestant Orphanage Association)

Care of Children	745.78
------------------	--------

Coit House

Care of Children	130.00
------------------	--------

OLD AGE ASSISTANCE

Care of Aged Persons	582.00
----------------------	--------

PAID FOR RELIEF OF NEEDY BLIND

Fisher, Herbert S.	\$ 87.50
Fontaine, Ludger	150.00
Gobin, Michael	150.00
Gilman, William	37.50
Hurd, Horace D.	87.50
Pitkin, Nathan E.	150.00
Reed, James R.	150.00
York, Eugene	150.00
	<hr/>
	\$ 962.50

MISCELLANEOUS ORDERS FOR SUPPORT OF POOR AND
DEPENDENT SOLDIERS

Frank C. Archibald, Attorney in Fannie Nash Case	\$	164.14
Oscar F. Adams, expense in Fannie Nash case		14.25
Claremont General Hospital, John Ellis case		20.74
Elmer E. Dodge, expense in pauper cases		44.00
James W. Davidson, expense in pauper cases		60.00
Massachusetts General Hospital, Kosanen case		100.00
Mason S. Colby, expense in pauper cases		3.31
Mason S. Colby, milk for Emma R. Reed		6.75
Hillsborough County General Hospital, L. J. Peach case		44.00
Mary Hitchcock Hospital, Claude Graves case		42.50
Philip Parizo, Josephine Donovan case		3.00
F. W. Aiken, groceries for Winnell		5.00
Eagle Press, citation Guardianship Grandberg children		4.00
Henry May, seeds for Poor of Claremont		72.74
Henry May, seed potatoes for Poor of Claremont		5.00
F. W. Aiken, expense in pauper cases		8.71
Charles F. Keeley, M. D., expense in pauper cases		115.00
Claremont General Hospital, Quimby and Dahill cases		46.55
F. A. Barton, expense in pauper cases		3.00
Claremont General Hospital, Mark King case		72.70
Elmer E. Dodge, Hastings case		178.80
Elmer E. Dodge, supplies for paupers		32.12
T. I. Farmer, moving Duncan goods		5.00
T. I. Farmer, moving Gobin to North Newport		4.00
Carrie F. Wright Hospital, Joseph Connolly case		7.15
Dixi C. Newton, Joseph Connolly case		5.00
Charles F. Keeley, M. D., Mark King case		75.00
Budd D. Hawkins, seeds for Poor		5.70
H. P. George, M. D., Herbert Thornton case		25.00
H. P. George, M. D., Grace Wilder case		20.00
Dr. A. S. Marden, Emma Reed case		21.00
Carrie F. Wright Hospital, Emma Reed case		10.75
Mansfield & Hilliard, Alfred Ouilette prescription		12.50
George E. Lewis, rent for Bert C. Fowler		52.00
F. W. Aiken, Aid for Poor		20.30
Kimballs, Inc., supplies for Overseer of Poor at Claremont		34.20
J. C. Ketchen, supplies for Harry Farwell		38.53
Dr. R. H. Brooks, M. D., medical aid for Poor at		

Claremont	\$ 625.00
O. A. Putnam, expense in LaValley case	70.00
Claremont General Hospital, Ethel Lord case	48.00
E. M. Fitch, M. D., medical aid for Ethel Lord	33.00
E. M. Fitch, M. D., medical aid for Doris Amell	33.00
Claremont General Hospital, Doris Amell case	47.00
George H. Stoughton, burial of infant	20.00
	<hr/>
	\$ 2,264.94

FINANCIAL STATEMENT

Assets

Cash on hand, January 1, 1932	\$ 16,994.63
Cash in hands of Superintendent of County Farm, January 1, 1932	2.90
Amount due Sullivan County from towns for Old Age Assistance	220.00
	<hr/>
Total Assets	\$ 17,217.53

Liabilities

Bills owed by County, Order No. 1073	\$ 28.00
Notes Outstanding:	
Merchants National Bank, Boston	25,000.00
Estate of Mrs. Ella Sargent Albin	35,000.00
New Hampshire Savings Bank	15,000.00
Sugar River Savings Bank	15,000.00
J. F. McElwain Company	15,000.00
	<hr/>
	\$105,028.00
Bonds Outstanding:	
Sullivan County Building Bonds 4¼ % (exempt from debt limitation)	\$150,000.00
Sullivan County Funding Bond, 4%	4,000.00
Sullivan County Funding Bond, 1928 issue, 4%	24,000.00
John McCrillis, serial note, 4¼ %	1,000.00
	<hr/>
	\$179,000.00
Total Liabilities	\$284,028.00
Total Assets	17,217.53
	<hr/>
Net Debt, December 31, 1931	\$266,810.47

INVENTORY OF PROPERTY OF SULLIVAN COUNTY
DECEMBER 31, 1931

County Home

Real Estate	\$126,000.00
Personal Property	56,983.08
Electric Line	1,600.00
	\$184,583.08

Court House

Real Estate	\$ 50,000.00
Office Furnishings	2,000.00
Law Library	700.00
	\$ 52,700.00

Jail

Real Estate	\$ 15,000.00
Personal Property	100.00
	\$ 15,100.00

Grand Total	\$252,383.08
-------------	--------------

INVENTORY FOR SULLIVAN COUNTY HOME

December 31, 1931

Real Estate	\$126,000.00
Personal Property	56,983.08
Electric Line	1,600.00
	\$184,583.08

Personal Property

Live Stock	\$ 13,810.50
Produce and Provisions	2,965.07

Grain, Feed, Ensilage and Hay		\$	2,407.39
Farm Supplies			2,953.72
Farming Tools			7,244.00
Work Shop			584.00
Dairy Room			480.00
Household Goods, Superintendent			4,544.26
Household Goods, Inmates			1,039.36
Old Hospital			1,180.80
Old Jail			205.50
New Building:			
Reception Room		\$	123.00
Office			33.00
Chapel			817.30
Sun Porch			42.00
Guest Suite	\$172.40		
	124.00		
	2.00		
	<hr/>		298.40
Female Ward			572.30
Male Ward No. 1			1,929.78
Male Ward No. 2			2,213.01
Male Dining Room			398.15
Female Dining Room			219.23
Kitchen			1,852.25
Bake Shop			847.71
Canning Room			175.00
Basement			95.80
Laundry			5,349.00
Stock Room			109.25
Jail			847.21
Hospital			3,646.09
			<hr/>
		\$	19,568.48
Total Personal Property		\$	56,983.08

INVENTORY OF PERSONAL PROPERTY

December 31, 1931

Inventory of Personal Property, Dec. 31, 1930	\$	45,880.21
Paid for insurance on County Home buildings and fixtures		1,537.90

Paid for interest on Sullivan County Building Bonds	6,375.00
Amount of orders drawn for current expenses at Home	27,600.00
Balance in hands of Superintendent, Dec. 31, 1930	225.92

\$ 81,619.03

Inventory of Personal Property, including furnishings of New Building, Dec. 31, 1931	\$ 56,983.08
Balance in hands of Superintendent, Dec. 31, 1931	2.90
	<hr/> \$ 56,985.98
Balance against the Home	\$ 24,633.05

The total number of weeks' board furnished for inmates and prisoners was 5,620. If the balance against the Home, \$24,633.05 be divided by 5,620, it gives \$4.38 per week as the cost for board, including clothing and medical attendance for the year ending December 31, 1931.

TOTAL PAYMENTS FOR EXPENSE OF POOR

Amount paid for support of poor in towns	\$ 73,833.40
Amount paid for support of dependent soldiers in towns	8,114.77
Amount paid for poor not at Home	2,264.94
Paid for children at New Hampshire Orphan's Home	1,030.90
Paid for children in families	2,557.51
Paid New Hampshire Children's Aid and Protective Society	1,677.03
Paid Nashua Orphan's Home	745.78
Paid Coit House	130.00
Paid for Support of Needy Blind	962.50
Paid for Old Age Assistance	582.00
Balance against the Home	24,633.05
	<hr/>
Total	\$116,531.88

We hereby certify that there were no outstanding bills against the County of Sullivan on December 31, 1931, which had been presented for payment, and that all orders issued by the Commissioners have been paid by the Treasurer, except No. 1073 for \$28.00 issued for Old Age Assistance.

Respectfully submitted,

FREDERICK W. AIKEN,
FRED A. BARTON,
OLIVER A. PUTNAM,

Commissioners of Sullivan County.

DETAILED STATEMENT OF BUILDING ACCOUNT

December 31, 1931

1931—Received on Building Account:

Aug. 4	First National Bank, note	\$ 15,000.00
Sept. 10	Newport Savings Bank, note	10,000.00
Oct. 3	Harris, Forbes & Co., bonds	151,500.00
		<hr/>
		\$176,500.00
Received from First National Bank, Newport, interest on deposit (after balancing account)		
		\$ 200.00
Total Receipts	\$176,500.00	
Total Expenditures	174,131.48	<hr/>
Balance		\$ 2,368.52
Balance transferred to General Account		\$ 2,568.52
Allowed General Account for grading and miscellaneous		1,794.80
		<hr/>
		\$ 773.72
Less amount received after closing account as above stated		200.00
		<hr/>
Balance as shown in Building Committee's Account		\$ 573.72

EXPENDITURES

Davison & Swanburg, general contractors		\$ 7,628.96
Davison & Swanburg, general contractors		11,050.00
Davison & Swanburg, general contractors		21,186.25
Davison & Swanburg, general contractors		11,475.00
Davison & Swanburg, general contractors		6,970.00
Davison & Swanburg, general contractors		4,441.25
Davison & Swanburg, general contractors		4,505.00
Davison & Swanburg, general contractors		971.55
Davison & Swanburg, general contractors		12,444.74
Total		<u>\$ 80,672.75</u>
Surgeon's & Physician's Supply Company		\$ 1,800.00
Albert Peck Bath Co., kitchen equipment	\$ 817.27	
Albert Peck Bath Co., kitchen equipment	144.23	
	<u> </u>	\$ 961.50
Gaudreau Furniture Co., supplies	\$ 402.50	
Gaudreau Furniture Co., linoleum and waxing floors	4,012.50	
Gaudreau Furniture Co., washing machine	197.50	
Gaudreau Furniture Co., supplies	40.50	
	<u> </u>	\$ 4,653.00
Newport Furniture Co., chairs for chapel	\$ 325.00	
Newport Furniture Co., supplies	136.00	
	<u> </u>	\$ 461.00
Chamberlain Metal Weather Strip Co., part payment on screens	\$ 608.15	
Chamberlain Metal Weather Strip Co., balance on screening	570.15	
	<u> </u>	\$ 1,178.30
Wells & Hudson, services		\$ 2,000.00
Wells & Hudson, expenses		50.15
Wells & Hudson, mileage and services		3,100.45
Wells & Hudson, balance services		2,388.92
		<u>\$ 7,539.52</u>
L. M. Grout, Supt., expense account		\$ 300.00
L. M. Grout, Supt., money voted on supplies		50.00

L. M. Grout, Supt., money voted on supplies	\$ 1,800.00
L. M. Grout, Supt., voted by Committee	2,500.00
	<hr/>
	\$ 4,650.00
Troy Laundry Machine Co., Inc., laundry supplies	\$ 3,900.65
Bellamy, Robie & Sargent, Inc., labor and material for laundry	1,268.20
Troy Laundry Machine Co.	688.35
Bellamy, Robie & Sargent	223.80
	<hr/>
	\$ 6,081.00
Colonial Furniture Co., furniture	\$ 4,064.64
Colonial Furniture Co., furniture	263.75
Colonial Furniture Co., window shades	270.96
	<hr/>
	\$ 4,599.35
L. Mundet & Sons, Inc., refrigerating	\$ 879.75
York Machinery Corp., materials and services	516.80
York Machinery Corp., materials and services	299.20
York Machinery Corp., materials and services	144.00
L. Mundet & Sons, Inc., balance	155.25
	<hr/>
	\$ 1,995.00
First National Bank, postage and services	\$ 9.73
First National Bank, interest on \$15,000 note	88.97
First National Bank, payment of note	15,000.00
	<hr/>
	\$ 15,098.70
Newport Savings Bank, interest on note	\$ 35.11
Newport Savings Bank, payment of note	10,000.00
	<hr/>
	\$ 10,035.11
Thomas Ward, plumbing	\$ 935.00
Thomas Ward, plumbing	2,182.77
Thomas Ward, plumbing	1,492.09
Thomas Ward, plumbing	2,491.35
Thomas Ward, plumbing	1,483.79
Thomas Ward, plumbing	431.13

Thomas Ward, extra work	\$ 73.95
Thomas Ward, balance	1,791.08
	<hr/>
	\$ 10,881.16
A. L. Franks & Co., electrical contract	\$ 1,487.50
A. L. Franks & Co., electrical contract	913.75
A. L. Franks & Co., electrical contract	2,791.59
A. L. Franks & Co., electrical contract	1,565.11
A. L. Franks & Co., extra at County Farm	141.87
	<hr/>
	\$ 6,899.82
F. W. Newcomb, heating contract	\$ 5,877.00
F. E. Newcomb, heating contract	2,919.65
F. E. Newcomb, heating contract	1,644.05
F. E. Newcomb coils for dryer and grills for jail windows	148.75
	<hr/>
	\$ 10,589.45

MISCELLANEOUS

Rush Chellis, surveyor	\$ 9.00
Harris, Forbes, legal services on bonds	347.35
Public Service, advice on dam	16.55
W. P. Sweeney, supplies for old jail	93.89
Austin LeClair, labor with truck	210.00
John Blake, labor with truck	188.35
A. V. Wright, labor with steam shovel and truck	604.87
Rhoades & Company	236.93
A. J. Hilliard, labor and supplies on tables	88.67
Bartlett Insurance Agency	26.05
Bartlett Insurance Agency	56.03
F. W. Woolworth Co., silver	49.20
Albert Russell & Son, bronze tablet	130.00
Sullivan County, premium on bonds	1,500.00
Gilchrist's, blankets for County Farm	50.00
Houghton & Simonds, supplies	227.45
Kimballs, Inc.	51.50
A. J. Hilliard, labor and materials for tables	48.45
Claremont Water Works, labor and supplies	9.51
Hadley & Flowers, labor and materials for tables	41.00

Boardway & Cowles, labor and materials for tables	\$	97.37
W. F. Whitcomb, services and expenses		190.20
J. W. Davidson, services and expenses		180.60
L. L. Osborne, services and expenses		202.40
George C. Warner, services and expenses		125.05
Russell & Whitcomb, supplies		205.00
A. J. Hilliard, labor and supplies on tables		59.55
Dodge's Pharmacy, supplies		56.25
Eagle Press, printing invitations		14.75
Frank Bush, music		9.00
D. M. Banister, picture		30.00
Currier & Matthews, Frigidaire		600.00
Jâmes W. Hill Co., supplies		104.75
Russell & Whitcomb, supplies		1.75
Currier & Matthews, supplies		25.50
Rhoades & Co.		56.75
Hadley & Flowers, labor and materials for tables		92.10
Total	\$	6,035.82

SPECIAL BUILDING ACCOUNT OF L. M. GROUT, SUPT.

Expenditures

1931		
Sept. 19	R. Pollard, labor	\$ 18.00
	P. R. Strout, labor	18.00
	P. R. Strout, labor	18.00
26	P. R. Strout, labor	18.00
	R. Pollard, labor	18.00
Oct. 3	P. R. Strout, labor	18.00
	R. Pollard, labor	18.00
10	R. Pollard, labor	18.00
	P. R. Strout, labor	18.00
	J. H. Kiniry, supplies	49.22
	Rand, Ball & King Co., supplies	202.17
	R. Pollard, labor	18.00
	C. S. Lombard, labor	10.00
20	George Califf, labor and supplies	86.78
24	J. C. Brown, labor	15.00
	P. R. Strout, labor	18.00

1920	24	R. Pollard, labor	\$	18.00
	31	Charles Charest, labor		15.00
		R. Pollard, labor		12.00
		P. R. Strout, labor		18.00
		C. S. Lombard, labor		15.00
		W. P. Sweeney, labor and supplies		70.59
		Boardway & Cowles, supplies		207.16
Nov.	14	P. R. Strout, labor		36.00
		R. Pollard, labor		36.00
	15	Claremont Lumber Co., supplies		161.74
	16	C. S. Lombard, labor		20.00
	21	R. Pollard, labor		18.00
	28	R. Pollard, labor		18.00
		P. R. Strout, labor		36.00
	30	C. S. Lombard, labor		20.00
Dec.	4	Claremont Water Works, repairs, water main		63.68
		Claremont Lumber Co., supplies		49.95
		Boardway & Cowles, supplies		11.60
		Charles Charest, labor		20.00
		P. R. Strout, labor		18.00
		Boynton & Ellis, supplies		64.91
	12	C. S. Lombard, labor		20.00
	14	R. Pollard, labor		36.00
		P. R. Strout, labor		18.00
	15	George Calif, electrical work		72.53
	19	R. Pollard, labor		18.00
		P. R. Strout, labor		18.00
	24	C. S. Lombard, labor		20.00
		R. Pollard, labor		12.00
	26	P. R. Strout, labor		18.00
	28	Granite State Electric Co., supplies		49.20
	29	John B. Varick Co., supplies		90.00
	31	Wm. P. Sweeney, labor		115.97
		Claremont Lumber Co., supplies		39.63
		John Jollinder, labor		5.00
		P. R. Strout, labor		36.00
		R. Pollard, labor		24.00
		W. P. Sweeney, supplies		11.28
		J. H. Kiniry, supplies		110.81
		Rand, Ball & King Co.,		99.90
		R. Pollard, labor		12.00

Dec. 31 John Jollinder, labor	\$ 5.00
	<hr/>
	\$ 2,322.12
Less outstanding check	15.00
	<hr/>
	\$ 2,307.12

Cash Received

1931	
July 1 Cash on hand	\$ 3.19
Sept. 19 County Order	2,500.00
	<hr/>
	\$ 2,503.19
1931	
Dec. 31 Total cash received	\$ 2,503.19
Cash paid out	2,307.12
	<hr/>
Balance on hand Dec. 31, 1931	\$ 196.07

SUPERINTENDENT'S REPORT

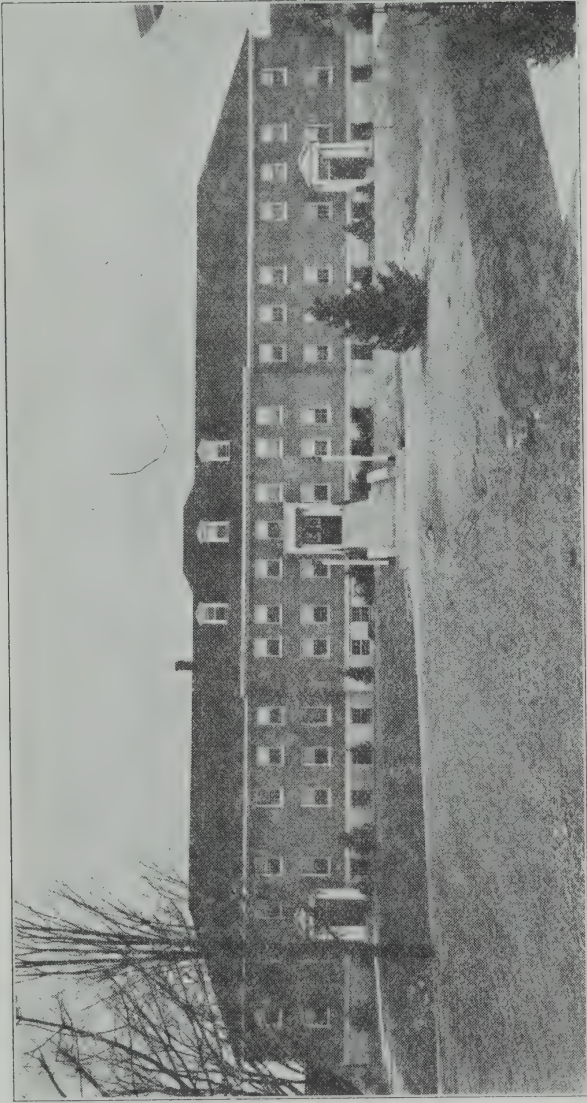
LIVE STOCK AT FARM DEC. 31, 1931

5	Horses
35	Registered Holstein cows
1	Registered Holstein three-year-old heifer
2	Registered Holstein two-year-old heifers
12	Registered Holstein one-year-old heifers
11	Registered Holstein heifer calves
17	Registered Holstein bull calves
1	Registered Holstein bull, seven years old, Mt. Hermon Sir Aggie Walker
1	Registered Holstein bull three years old, General Burke Washington
2	two-year-old steers
5	Steers under one year
15	Brood sows
13	Fat hogs
71	Shoats
1	Boar
3	Small pigs
325	Hens
165	Roosters
17	Ducks

PRODUCE RAISED

Cream	35,783 lbs.
Butter fat	10,735 lbs.
Milk	314,300 lbs.
Pork, dressed	11,759 lbs.
Beef, dressed	586 lbs.
Poultry, dressed	2,895 lbs.
Eggs, hens	3,004 doz.
Eggs, ducks	40 doz.

Asparagus	95 lbs.
Apples	40 bbls.
Cider apples	25 bu.
Crab apples	6 bu.
Syrup	65 gal.
Potatoes	363 bu.
Beets, table	47 bu.
Green peas	31 bu.
Beans, dry	800 lbs.
String beans	47 bu.
Tomatoes, green	12 bu.
Tomatoes, ripe	22 bu.
Sweet corn	164 bu.
Cucumbers	34 bu.
Cucumbers, ripe	22 bu.
Turnips	72 bu.
Squash	500 lbs.
Lettuce	200 heads
Cabbage	465 heads
Carrots	26 bu.
Radishes	230 bunches
Rhubarb	640 lbs.
Parsnips	26 bu.
Celery	350 bunches
Swiss chard	15 bu.
Spinach	38 bu.
Shell beans	62 bu.
Onions, green	164 bunches
Beet greens	22 bu.
Hay, mixed	182 tons
Rowen	45 tons
Ensilage	100 tons
Cherries	50 qts.
Plums	3 bu.
Pears	6 bu.
Strawberries	432 qts.
Squash, Summer	320 lbs.
Cauliflower	80 lbs.
Corn on cob	359 bu.



NEW BUILDING—SULLIVAN COUNTY HOME

RECEIPTS AND EXPENDITURES FOR 1931

RECEIPTS

January

Jan.- 1	Cash on hand	\$	225.94
30	Brown, pigs		12.00
	Mrs. Bailey, eggs		2.00
	Miss Briggs, cream		.70
	Mrs. E. Tenney, chicken and eggs		2.60
	H. G. Knight, supplies		2.80
	A. R. Palmer, supplies		1.18
	M. W. Merrill, supplies		3.94
	Bellows Falls Creamery		158.95
	E. H. Hunter, board		20.00
	Harriett Marsh, board in part, Otis Reynolds		26.00
	Perley Breed, payment on bull		10.00
	County Order		2,000.00
		\$	2,471.11

February

Feb. 28	Geo. Worster, supplies	\$	6.00
	O. A. Putnam, pigs		10.00
	A. H. Ainsworth, board, W. Ainsworth		13.38
	Reed, for gas		1.50
	K. Dewey, board		30.00
	Edward Tenney, chicken and eggs		3.10
	Mrs. Geo. P. Tenney, chicken		1.50
	C. W. Brown, pig		4.00
	Mrs. Boutey, eggs		.90
	F. E. Coy, cream and eggs		17.40
	C. W. Ainsworth, board, W. Ainsworth		15.50
	Geo. P. Tenney, chicken and eggs		5.00
	Ruth Batchelder, eggs		4.55
	Bellows Falls Creamery, cream		153.12
	E. S. Farmer's, extra dividend		76.52
	County Order		2,400.00
		\$	2,742.47

March

Mar. 25	Mrs. E. Tenney, eggs	\$.60
	H. C. Sanders, M. D., eggs	.60
	K. Dewey, board	18.00
	Laura G. Briggs, cream	1.40
	Austin LeClair, gas and oil	14.55
	M. W. Merrill, supplies	15.86
	Evelyn Fifield, board, F. Fifield	24.00
	Miriam Dodge, cream	37.44
	F. E. Coy, cream and eggs	7.20
	C. W. Ainsworth, board, W. Ainsworth	12.00
	Perley Breed, balance for bull	50.00
	Lane Bros., lumber	40.00
	Bellows Falls Creamery, cream	117.76
	Farm Bureau Insurance Co., refund	15.60
	W. H. Skinner, board, George Sweet	50.58
30	C. A. Rice, syrup	20.00
	G. Blake, work snow plow	115.50
	Laura G. Briggs, cream and eggs	.95
	K. Dewey, board	12.00
	F. W. Whitcomb, pigs	8.00
	M. W. Merrill, supplies	7.18
	C. H. McDuffee, syrup	4.00
	County Order	2,300.00
		<hr/>
		\$ 2,873.22

April

Apr. 24	Mr. Page, pigs	\$ 10.00
	Mrs. Geo. Tenney, chicken	2.00
	Miss Thomas, chicken	2.00
	Received for pigs	39.50
	K. Dewey, board	12.00
	Laura G. Briggs, cream	1.20
	P. B. Strout, pig and supplies	9.85
	B. A. Howard, pig	5.00
	Bert Christinson, pig	10.00
	T. Harrington, pig	5.00
	Herbert Cole, pig	3.50
	Mrs. Batchelder, eggs	.60

Apr. 24	H. C. Sanders, eggs	\$	1.00
	Ray Hodgkins, chickens		4.20
	Mrs. Geo. B. Tenney, eggs and chicken		6.35
	W. Stack, pigs		7.50
	Sarah D. Chandler, pigs		30.00
	W. H. Walker, gas		17.36
	B. E. Livingston, pigs		10.00
	York Ice Machine Co., cartage		13.00
	F. W. Boardway, lumber		27.00
	P. A. Nolin, eggs		12.45
	M. M. Dodge, cream		34.40
	H. E. Emery, bull		150.00
	Elsie M. Thomas, eggs		4.50
	F. E. Coy, cream and eggs		8.60
	Bellows Falls Creamery, dividend		5.00
	Bellows Falls Creamery, cream		195.52
	Miriam Dodge, cream		31.60
30	Received for gas		.75
	H. H. Hurd, chicken		2.00
	Sunapee Inn, pigs		15.00
	Catherine Bunn, pigs		10.00
	Earl White, pigs		10.00
	Earl White, cream		2.00
	Geo. LeClair, pigs		7.00
	Evelyn A. Fifield, board, F. Fifield		44.58
	Myrle E. Reid, balance for stock		100.00
	Alice Hall Etsler, syrup		5.25
	W. H. Cotta, hide		1.80
	County Order		2,800.00
		\$	3,657.51

May

May	1	P. A. Nolin, eggs	\$	3.30
		Juliette P. Tenney, chicken and eggs		7.40
	3	F. E. Coy, cream and eggs		8.10
		M. Merrill, supplies		9.55
		William Dodge, cream		34.80
		Myra D. Sanders, eggs		5.00
		W. H. Cotta, hide		1.59
	20	Bellows Falls Creamery, cream		274.16

May 20	K. Dewey, board	\$	24.00
29	M. Colby, pigs		10.00
	F. H. Britton, pigs		10.00
	H. E. Brown, supplies		4.00
	H. C. Sanders, M. D., eggs		.50
	E. B. Osgood, eggs		2.50
	J. Mead, supplies		4.72
	Austin LeClair, gravel		32.00
	Received for gas		1.60
	Harry LeClair, gas		.80
	Albert Reed, gas		2.88
	Charles Newton, eggs		.50
	Mrs. Bailey, eggs		1.25
	O. S. Stearns, pigs		20.00
	M. Merrill, supplies		10.00
	O. S. Stearns, pigs		10.00
	C. Alney, pigs		4.00
	Mr. Hood, pigs		4.00
	Sarah B. Tenney, eggs		5.00
	Miriam Dodge, cream		21.60
	Bellamy, Robey & Sargent, cartage		22.00
	P. R. Strout, feed		1.52
	G. Blake, gas		1.28
	H. B. Shute, gas		1.50
	G. Blake, gas		1.12
	Received for gas		2.52
	K. Dewey, board		6.00
	H. E. Brown, supplies		4.72
	County Order		2,800.00
	A. O. Spear, eggs		3.75
		\$	3,357.66

June

June 10	Geo. Worster, supplies	\$	10.45
	G. F. Roberts, bull		150.00
	W. H. Walker, grain		19.20
	Geo. W. Paul, account Carl McKeever		25.00
	W. H. Skinner, board, Geo. Sweet		78.88
	H. B. Shute, gas		.60
	Mrs. Batchelder, eggs		1.90

June 20	K. Dewey, board	\$	24.00
	Mr. Quimby, pig		5.00
	H. E. Brown, supplies		3.36
	Ralph Parker, milk		2.79
	H. C. Sanders, M. D., eggs		2.50
	G. White, cream		6.00
	Received for gas		.83
	C. W. Bumpus, eggs		2.00
30	Dartmouth College, supplies		40.00
	F. E. Coy, cream and eggs		16.15
	C. E. Putney, lumber		7.00
	William H. Skinner, board, Geo. Sweet		25.72
	Town of Newport, board, Chas. Hutchinson		156.00
	Ralph Parker, milk		2.80
	Bellows Falls Creamery, cream		339.27
	Perley Breed, pigs		10.00
	F. L. Adams, pigs		10.00
	Town of Goshen, board, Henry Lear		120.00
	George Worster, supplies		2.24
	M. M. Dodge, cream and eggs		69.50
	Miss E. M. Hubbard, board		60.00
	Charles A. Hatch Co., over payment		2.34
	Ora E. Dyke, water boiler		20.00
	Town of Springfield, board, Emma and Jennie Heath		312.00
	Dartmouth College, supplies		80.00
	Town of Sunapee, board, E. Colby		156.00
	County Order		2,000.00
	M. M. Merrill, supplies		17.16
		\$	3,778.69

July

July 3	P. A. Mineau, board, Mrs. Blaisdell	\$	156.00
	P. A. Mineau, board, Frank LaRush		156.00
	P. A. Mineau, board, David LaRoch		156.00
	P. A. Mineau, board, William Nichols		156.00
	P. A. Mineau, board, Napoleon Chabot		156.00
	P. A. Mineau, board, J. Sanders		156.00
10	P. Nolin & Sons, eggs		3.30
15	Town of Lebanon, board Mr. Noyes		176.00

July 15	Albert Reed, gas	\$.75
	Edw. Tenney, chicken		3.00
	Mrs. Geo. Tenney, cream and eggs		1.00
	Mrs. Bailey, eggs		1.40
	Received for gas		1.20
	Received for supplies		3.70
20	Bellows Falls Creamery, cream		302.08
21	Town of Langdon, board, John O'Brien		14.00
	Holstein-Fresian Asso., return of reg.		6.00
	Received for pigs		23.00
	H. C. Sanders, M. D., eggs		1.00
	M. Shute, gas		1.60
31	County Order		1,800.00
			<hr/>
		\$	3,274.03

August

Aug. 5	P. Nolin & Sons, eggs	\$	4.95
	Josephine Snow, board, Mrs. Randell		37.72
	F. E. Coy, cream and eggs		8.55
	Miss Emma Hubbard, board		24.00
6	Juliette P. Tenney, chicken		5.00
10	A. W. Sanborn, payment, stock		80.00
11	Robert H. Bruce, pig		5.00
13	Holstein-Fresian Asso., over payment		8.00
20	Bellows Falls Creamery, cream		259.07
	M. M. Merrill, supplies		16.03
22	H. E. Brown, supplies		14.04
	Mrs. Bishop, chicken		1.00
	Received for pigs		25.00
	O. A. Putnam, gas		1.35
	G. White, cream		2.00
	Laura G. Briggs, cream		1.75
	G. Blake, gas		5.47
24	M. Shute, gas		2.00
	P. R. Strout, supplies		10.52
	A. W. Sanborn, payment on stock		20.00
	Received for gas		5.12
	Mrs. Stoodley, cream and eggs		1.50
	Mrs. Geo. Tenney, chicken		1.60
	Geo. Worster, supplies		5.04

Aug. 24	C. W. Bumpus, eggs	\$	3.50
	K. Dewey, board		48.00
25	F. A. Barton, pigs		24.00
27	Miriam Dodge, cream		43.20
31	County Order		2,500.00
	J. G. Christopher, broilers		3.15
	H. B. Shute, gas		1.00
	H. C. Sanders, eggs		.50
	Mrs. H. E. Marsh, board in part, Mrs. Reynolds		25.00
	Mrs. Batchelder, eggs		.80
	Charles J. Eberlin, cow		200.00
	G. White, cream		2.00
	William Carron, hay		8.00
	Received for gas		1.12
	H. E. Brown, supplies		1.25
	P. R. Strout, supplies		1.70
	Charles Bumpus, eggs		3.50
	Received for pig		6.00
		\$	3,417.43

September

Sept. 3	Eugene L. Moore, cows	\$	250.00
4	F. W. Aiken, chickens		2.50
5	P. A. Nolin, eggs		20.40
	Holstein-Fresian Association, rebate		2.00
10	F. E. Coy, cream and eggs		9.00
12	M. W. Merrill, pigs		24.00
	M. W. Merrill, supplies		7.14
	Walter E. Davis, board, Mrs. French		48.00
	Ralph Parker, milk		1.40
15	Eugene W. Libby, bull		100.00
18	G. Blake, lumber and gravel		20.75
	George Worster, supplies		8.61
21	Bellows Falls Creamery, cream		249.62
	Louis Dion, eggs		12.00
	Received for gas		.80
	Eugene L. Moore, pig		5.00
	Mrs. E. Tenney, chicken and eggs		3.80
	J. G. Christopher, chicken and eggs		8.20

Sept. 22	G. White, cream	\$	4.00
	Mrs. Batchelder, eggs		2.40
	John Colby, pigs		8.00
	Mrs. Bishop, chicken		1.75
	Received for pigs		27.00
	Mrs. Stoodley, cream and eggs		1.50
			<hr/>
		\$	817.87

October

Oct. 7	E. E. Gay, pigs	\$	12.00
	K. Dewey, board		12.00
	E. Diekamper, supplies		1.26
	Mrs. Bailey, eggs		1.60
	P. R. Strout, supplies		1.75
10	Mrs. E. Tenney, chicken and eggs		2.15
	Charles Bumpus, eggs		15.15
	C. S. Lombard, supplies		1.00
	Albert Reid, gas		1.00
	George G. Grout, board		21.00
	Mrs. Batchelder, eggs		.80
12	R. White, cream		2.00
	Chas. Bumpus, eggs		4.97
	Gertrude Johnson, eggs		2.00
	Miriam Dodge, cream		51.00
14	Gertrude Johnson, eggs		2.00
	H. N. Wells, bull		70.00
30	F. E. Coy, cream and eggs		8.00
31	Town of Cornish, board, J. Smith		24.8¢
	S. E. Green, pigs		20.00
	Bert Warner, cows		950.00
	County Order		1,800.00
	Bellows Falls Creamery, cream		172.11
	P. A. Mineau, town borders		550.16
	Town of Lebanon, board, F. Mayotte		185.12
	F. T. Pollard, board, Gene Pollard		173.25
	County Order		2,300.00
			<hr/>
		\$	6,385.18

November

Nov. 10	G. Blake, gas	\$	1.50
	K. Dewey, board		18.00
	Mrs. E. Tenney, chicken and eggs		3.00
14	O. S. Lombard, supplies		1.50
	Mrs. Batchelder, eggs		.90
15	Received for pig		4.00
16	Received for gas		1.44
	C. E. Densmore, chickens		6.40
	E. Diekamper, supplies		1.26
	H. C. Sanders, eggs		1.00
	George G. Grout, board		21.00
	W. H. Skinner, board, George Sweet		78.87
	P. Nolin & Sons, cow hide		1.47
	Charles Bumpus, eggs		6.00
	F. E. Clark, eggs		8.75
	John Carroll, pullets		18.00
	W. H. Cotta, cow hide		1.47
	W. E. Davis, board, Mrs. French		48.00
	Bellows Falls Creamery, dividend		5.00
	M. W. Merrill, supplies		40.77
	Claremont Lumber Co., lumber		32.62
20	W. E. Davis, board, Mrs. French		48.00
	F. F. Sherbut, eggs		10.50
	F. E. Coy, cream and eggs		9.45
	M. M. Dodge, cream		70.00
30	P. A. Nolin Sons, eggs and vegetables		30.79
	Ralph Parker, cream		7.50
	C. W. Bumpus, eggs		9.46
	C. B. Etsler, vegetables		2.00
	George G. Grout, board		22.00
	H. C. Sanders, eggs		.80
	E. Diekamper, supplies		1.26
	H. C. Sanders, eggs		.50
	Mrs. Towles, eggs		.90
	Mrs. Batchelder, eggs		.90
	C. W. Ainsworth, pigs		10.00
	E. Diekamper, supplies		5.04
	H. N. Hurd, chicken		2.00
	H. C. Sanders, eggs		1.60
	George G. Grout, board		14.00

Nov. 30	Received for gas	\$	2.31
	C. S. Lombard, supplies		1.00
	P. R. Strout, supplies		1.00
	T. A. Harty, pig		5.00
	R. Parker, cream		2.00
	W. H. Cotta, beef hide		1.44
	R. Parker, cream		5.50
	James Redden, balance on stock		35.00
	Condon's Market, fowl		24.66
	E. H. Hunter, board		9.00
	Bellows Falls Creamery, cream		255.25
	County Order		3,200.00
			<hr/>
		\$	4,090.31

December

Dec. 10	Dr. Sanders, eggs	\$	2.90
	I. J. Elliott, gas		.16
	A. Lozowski, pork		17.20
	T. Trn, pork		25.00
12	Willard Walker, grease		.90
15	Diekamper, supplies		8.16
16	Mrs. Batchelder, eggs		2.70
	G. White, cream		11.00
	Mrs. Towle, eggs		1.80
	R. Pollard, supplies		1.80
	George G. Grout, board		22.00
19	Robert J. Dunn & Son, bull		70.00
21	Received for gas		2.87
	C. Bumpus, eggs		6.00
	George Powlasky, pig		8.00
	G. Blake, gas		2.00
	C. B. Etsler, apples		2.50
30	P. Savoie, chickens		5.25
31	A. J. Hilliard, chickens		3.25
	A. J. Paradis, chicken		1.50
	W. E. Davis, board, Mrs. French		48.00
	P. A. Nolin & Son, poultry		78.58
	Rachel B. Tenney, eggs		4.15
	M. M. Merrill, supplies		7.00
	F. B. Coy, cream and eggs		9.45

Dec. 31	George Worster, supplies	\$	5.27
	Lewis & Angier, barrels		12.00
	E. H. Hunter, board		3.36
	W. H. Walker, gravel		49.50
	W. H. Cotta, beef hide		1.32
	W. H. Walker, gravel		46.65
	W. H. Walker, gravel		18.45
	Ralph Parker, cream		1.60
	Town of Newport, board, Chas. Hutchinson		157.72
	Town of Unity, board, Mrs. Delaurier		352.00
	W. H. Skinner, board, George Sweet		78.86
	Bellows Falls Creamery, cream		168.43
	Gene L. Moore, cows		250.00
	Ralph Parker, cream		3.00
	W. H. Cotta, cow hide		1.45
	Alfred Carr, pork		23.20
	Mrs. Paradis, fowl		3.50
	P. Savoie, fowl		1.80
	Mrs. E. Tenney, chicken and eggs		4.80
	Ralph Parker, gas		.52
	George G. Grout, board		14.00
	E. Diekamper, supplies		1.68
	P. R. Strout, gas		2.00
	Mrs. Doris Johnson, board		20.00
	Mrs. George P. Tenney, chicken and eggs		7.20
	Town of Sunapee, board, E. Colby		145.72
	Condon's Market, fowl		31.68
	Town of Goshen, board, H. Lear		157.72
	State of N. H., board, L. Gouin		77.74
	E. G. Gartin, chicken		1.80
	F. A. Barton, labor and supplies		47.50
	Town of Acworth, care of Evelyn Lufkin		62.00
	Town of Newport, care of Evelyn Lowyer		49.00
	B. Christenson, pigs		10.00
	Condon's Market, fowl		28.98
	Town of Springfield, board, Emma and Jenny Heath		315.44
	F. E. Coy, cream and eggs		9.00
	W. E. Davis, board, Mrs. French		48.00
	Mrs. Geo. P. Tenney, chicken and eggs		2.20
	H. C. Sanders, M. D., eggs		.30
	Charles Bumpus, eggs		6.00

Dec. 31	E. Diekamper, supplies	\$	2.52
	Mrs. E. Tenney, chicken		2.00
	Mrs. F. F. Sherbut, board		7.00
	Mr. Hill, pigs		10.00
	Mrs. H. P. Stryker, board, Mr. Stryker		8.00
	M. M. Merrill, supplies		7.56
	E. G. Gartin, fowl		1.65
	P. A. Nolin & Son, chickens and eggs		81.40
	M. M. Dodge, cream		34.20
	Town of Claremont, board, Selma Cheever		60.00
	Town of Claremont, Town boarders		1,084.53
	County Order		1,700.00
	Mrs. E. Tenney, eggs		.70
	Town of Langdon, board, John O'Brien		184.00
	Bellows Falls Creamery, cream		107.03
	Willis Brown, wood		8.00
	Dr. Sanders, eggs		.63
	George G. Grout, board		7.00
	F. M. Lovejoy, rooster		1.50
	Mrs. Stoodley, eggs		.70
	Mrs. Towle, eggs		1.60
	Cash unaccounted for		2.90
		\$	5,877.18

EXPENDITURES

January

Jan. 29	A. & P. Tea Co., sugar	\$	100.00
31	F. G. Storm, honey		4.20
	L. W. Grout, miscellaneous account		44.40
	Swift & Co., supplies		113.01
	Smith & Son, supplies		14.46
	Central Vermont Public Service Corp., elec.		50.18
	M. H. Fishman, supplies		85.60
	Claremont Garage Co., gas		74.00
	V. J. Haines, fish		20.96
	Sullivan County Farmers' Exchange, feed		332.16
	C. E. Densmore, supplies		184.27
	United Shoe Stores Co., supplies		5.95

Jan. 31	Sugar River Grist Mill, feed	\$	103.20
	Boston & Maine Ry., freight		9.35
	New England Tel. & Tel. Co., telephone		35.15
	P. J. Noyes Co., supplies		12.08
	Foster Beef Co., supplies		29.13
	Noyes Shoe Co., supplies		16.25
	Claremont Auto Wrecking Co., parts		6.00
	George S. Sparks, cow testing		3.75
	Holstein-Fresian Association, registration		10.00
	Pay Roll		703.90
			<hr/>
		\$	1,958.00

February

Feb. 9	Houghton's, cabinet	\$	9.00
	Louis Blacker, shoe repair		12.00
11	Checkerboard Grain Warehouse, feed		43.00
	S. E. Sinclair, supplies		23.00
13	Richford Garment Co., supplies		11.72
	John B. Varick Co., supplies		21.79
	Ried, Murdock Co., supplies		19.07
	Blue Mountain Cheese Co., cheese		2.60
14	Harry P. Kibby, labor on mill		18.40
20	James W. Hill Co., supplies		46.98
26	Boston & Maine Ry., freight		8.70
	Francis P. Thayer, funeral services		6.00
27	Dodge's Pharmacy, supplies		22.70
28	P. B. Strout, carpenter work		18.00
	L. M. Grout, miscellaneous account		34.27
	J. R. Williams, supplies		59.80
	Dodge's Pharmacy		28.85
	George S. Sparks, cow testing		3.75
	Gartley Cailiff, work, boiler house		10.00
	P. R. Strout, carpenter work		18.00
	Hamilton Products Co., supplies		4.00
	Sullivan County Farmers' Exchange, feed		351.80
	Smith & Son, supplies		15.57
	Leonard Jarvis, Md., medical services		12.50
	Osgood's Pharmacy, supplies		3.50
	United Shoe Stores, supplies		3.29
	Rand, Ball & King Co., supplies		101.97

Sullivan County Farm Bureau, membership	5.00
Jones' Express, express	2.44
D. S. Ramsay, supplies	48.00
C. W. Hatch, clock repair	3.50
Claremont Garage Co., gas	76.50
V. J. Haines, fish	46.94
J. H. Kiniry, supplies	42.37
Evelyn Fisk, book work	4.00
White River Transfer Co., supplies	8.24
Federal Mill Inc., flour	112.50
M. H. Fishman Co., supplies	65.71
New England Tel. & Tel. Co., telephone	34.84
Central Vermont Public Service Corp., elec.	46.31
Wm. P. Sweeney, repairs and supplies	5.45
Noyes Shoe Store, shoes	32.99
Twin State Fruit Corp., fruit	5.10
P. J. Noyes Co., supplies	16.38
Ray K. Hodgkins, dental work	16.00
Boynton & Ellis, supplies	39.79
J. Fine, supplies	17.99
P. Nolin & Sons, supplies	51.72
P. I. Ledoux, repairs	16.95
Economy Food Product Co., supplies	61.28
Swift & Co., supplies	80.00
Ried, Murdock Co., supplies	25.34
L. R. Haubrich, veterinary services	35.00
Pay Roll	769.00
	<hr/>
	\$ 2,578.70

March

Mar. 10 Foster Beef Co., supplies	\$ 151.81
12 Holstein-Fresian Association, registration	10.00
Literary Digest, subscription	3.35
13 Houghton & Simonds, supplies	28.31
Howe's Garage, repairs and supplies	168.63
George Cram, butter	17.79
14 H. C. Nelson, carpenter	10.00
16 Holstein-Fresian Association, registration	4.00
Holstein-Fresian Association, registration	1.50
20 P. R. Strout, carpenter	36.00

Mar. 24	George B. Bowen, wagons	\$	15.50
	Boston & Maine Ry., freight		6.71
30	L. R. Haubrich, cow testing		81.00
	P. R. Strout, carpenter		18.00
31	Central Vermont Public Service Corp., elec.		45.09
	A. & P. Tea Co., supplies		120.70
	L. M. Grout, miscellaneous account		54.89
	John F. Williams, supplies		42.90
	George S. Sparks, cow testing		3.75
	C. E. Densmore, supplies		240.93
	J. H. Kiniry, supplies		98.74
	Foster Beef Co., supplies		67.15
	P. I. Perkins Co., repairs and supplies		122.91
	P. L. Hutchins, trucking		5.00
	Boardway & Cowles, supplies		45.31
	Stevens' Pharmacy, supplies		2.50
	W. P. Sweeney, supplies		47.61
	Boynton & Ellis, supplies		4.28
	George Gardner, welding		6.50
	Swift & Co., supplies		54.85
	Rand, Ball & King Co., supplies		47.13
	Lewis & Angier, gas		74.00
	Sullivan County Farmers' Exchange, feed and fertilizer		477.60
	Phelps Publishing Co., advertising		19.50
	Sullivan County Farm Bureau, supplies		1.50
	P. J. Noyes Co., supplies		12.25
	Blain Motor Co., repairs and supplies		45.40
	L. W. Gile, feed		106.50
	Eagle Press, subscription		5.00
	Ried, Murdock & Co., supplies		42.23
	Pay Roll		763.85
		\$	3,110.97

April

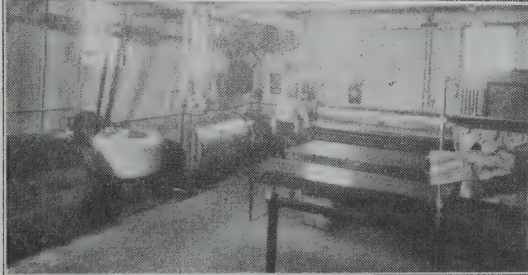
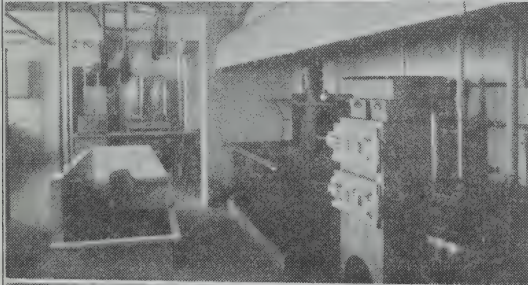
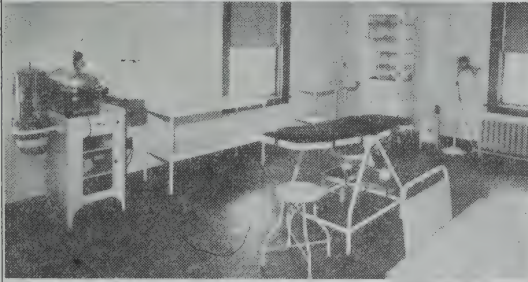
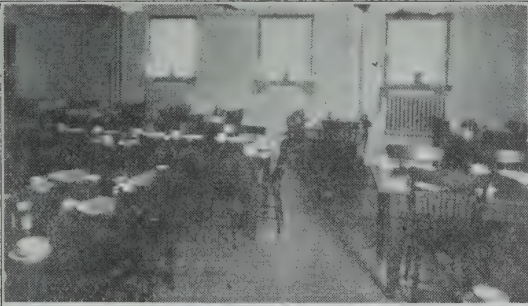
Apr. 10	Willard Walker, butter	\$	7.50
	George Worster, expense to Nashua		3.00
	Agnes C. Ellingwood, Chaplain		25.00
11	C. F. Aiken, feed		12.00
13	L. M. Grout, expenses		5.29

Apr. 13	Dodge's Pharmacy, supplies	\$	34.44
	Ralph Gould, expenses		50.00
	P. Nolin & Sons, supplies		60.53
15	Holstein-Fresian Association, registration		12.00
17	P. B. Strout, carpenter		51.00
20	George Cram, butter		17.50
24	R. H. Holmes, transfer car insurance		4.00
25	E. A. Emerson, butter		33.00
	J. S. Tanzy, supplies		19.10
	Agnes C. Ellingwood, Chaplain		25.00
27	Charles W. Vadney, cement work		25.60
	P. R. Strout, carpenter		18.00
28	Joseph Tuat, carpenter		10.00
29	Napoleon Brodeur, horse shoeing		12.00
30	Winfield Farr, organ tuning		3.00
	L. M. Grout, miscellaneous account		48.45
	P. R. Strout, carpenter		18.00
	S. E. Sinclair, supplies		48.00
	W. T. Grant Co., supplies		56.37
	P. Nolin & Sons, supplies		21.93
	Boynton & Ellis, supplies		35.21
	The Eagle Press, supplies		2.50
	Phelps Publishing Co., advertising		19.80
	Federick C. Small Co., supplies		119.50
	Sullivan County Farmers' Exchange, feed and fertilizer		492.25
	C. E. Densmore, supplies		126.11
	C. B. Dolge Co., supplies		11.52
	Claremont General Hospital, X-ray		5.00
	Town of Claremont, cold patch		21.30
	J. A. Pelletier & Co., supplies		72.29
	Howe's Garage, repairs and supplies		100.70
	F. E. Newcomb, roofing		110.50
	A. J. Lockard, optical work		12.00
	Trent Fruit Co., supplies		6.46
	Smith & Son, supplies		6.78
	New England Tel. & Tel. Co., telephone		36.98
	W. H. Fishman Co., supplies		35.99
	Central Vermont Public Service Corp., elec.		73.62
	V. J. Haines, fish		6.71
	Sig. Heller, supplies		15.64
	Richford Garment Co., supplies		138.83

Apr. 30	Russell & Whitcomb, supplies	\$	1.75
	James E. Dubois, repairs and supplies		4.50
	Louis & Angier, gas		74.00
	Osgood's Pharmacy, supplies		3.00
	Stevens' Pharmacy, supplies		3.90
	Alvin W. Fisk, funeral expenses		151.00
	Noyes Shoe Co., supplies		7.37
	Francis E. Chase, supplies		2.00
	Dodge's Pharmacy, supplies		22.53
	Rand, Ball & King Co., supplies		166.18
	D. W. Banister, pictures		1.30
	J. H. Kiniry, supplies		14.57
	Boardway & Cowles, supplies		52.05
	Ray K. Hodgkins, dental work		16.00
	Houghton & Simonds, supplies		6.22
	Pay Roll		745.70
			<hr/>
		\$	3,342.47

May

May 9	L. M. Grout, for cash paid for butter	\$	12.80
12	Louis Blacker, shoe repair		14.00
13	Boston & Maine Ry., freight		4.54
	P. R. Strout, carpenter		18.00
14	Henry Foss, watchman		15.00
15	F. W. Woolworth, supplies		13.00
16	Cycil Nolette, work with team		10.00
18	Martin Cahill, work in laundry		25.00
21	George Cram, butter		11.20
23	E. A. Emerson, butter		12.00
25	L. W. Gile, feed		120.40
29	P. R. Strout, carpenter		15.00
	P. R. Strout, carpenter		18.00
	F. W. Woolworth, supplies		5.00
	Cycil Nolette, chain		6.00
	E. G. Moore Co., supplies		294.65
	Bartley Conliff, work, boiler house		15.00
	L. M. Grout, miscellaneous account		44.91
	P. R. Strout, carpenter		18.00
	James W. Hill Co., supplies		32.70
	Raymond F. Adams, supplies		2.45



NEW COUNTY HOME INTERIORS

Dining Room

Kitchen

Hospital

Laundry

May	29	Boston & Maine Ry., freight	\$	3.82
		Railway Express Co., express		5.60
		Central Vermont Public Service Corp., elec.		79.57
		Sullivan County Farmers' Exchange, feed		325.85
		Foster Beef Co., supplies		127.52
		C. E. Densmore, supplies		115.86
		Herman H. Rice, optical work		16.00
		Lewis & Angier, gas		74.00
		A. Szyman, feed		168.95
		John B. Varick Co., chickens		128.00
		W. T. Grant Co., supplies		35.90
		Aiken Nurseries, vines		4.65
		Amsden Lime Co., lime		7.00
		P. I. Ledoux & Son, repairs and supplies		12.32
		V. J. Haines, fish		22.49
		Reid, Murdock Co., supplies		55.11
		New England Tel. & Tel. Co., telephone		21.90
		F. E. Newcomb, roofing		114.90
		P. Nolin & Sons, supplies		57.60
		Claremont Waste Manufacturing Co., supplies		2.34
		Dodge's Pharmacy, supplies		46.21
		Ray K. Hodgkins, dental work		9.50
		Noyes Shoe Co., supplies		9.77
		C. S. Lear, digging grave		8.00
		P. J. Noyes Co., supplies		26.38
		Houghton & Simonds, supplies		18.97
		United Shoe Stores, shoes		4.95
		J. H. Kiniry, supplies		24.24
		D. S. Ramsay, supplies		6.37
		M. H. Fishman, supplies		48.29
		Trent Fruit Co., supplies		15.35
		Wm. P. Sweeney, repairs and supplies		3.30
		Amsden Lime Co., lime		14.00
		George S. Sparks, cow testing		8.50
		Pay Roll		826.50
			\$	3,157.36

June

June	6	E. A. Emerson, butter	\$	9.00
	8	Farm Bureau Insurance Co., car insurance		29.75

June	8	N. E. Tel. & Tel. Co., telephone	\$	34.97
	9	P. H. Lynch, painting		50.00
		W. A. Walker, hay and sawdust		72.50
	13	Dan Paul, sawdust		5.00
		Sanford Densmore, hay		65.50
		Perley Breed, beef		50.00
		P. R. Strout, carpenter		31.50
	15	Frank Reed, dog license		4.00
		Peter Mreck, mill work		56.00
	17	W. E. Noyes Co., supplies		12.97
	20	P. R. Strout, carpenter		10.75
	22	Perley Breed, beef		18.70
		P. G. Clogsden, teaming		10.00
	25	F. W. Aiken, beef		51.60
		Blue Mountain Cheese Co., cheese		2.16
	27	E. A. Emerson, butter		7.50
		W. E. Noyes Co., supplies		12.54
		George Calif, electrical work		19.34
	29	James Watson, supplies		12.00
		A. & P. Tea Co., supplies		101.06
		E. E. Lewis, hay		127.90
	30	Central Vermont Public Service Corp., elec.		82.16
		Dodge's Pharmacy, supplies		31.90
		P. R. Strout, carpenter		33.00
		A. & P. Tea Co., supplies		5.00
		P. I. Perkins, tractor repair		36.00
		E. L. Elliott, printing		24.00
		Stevens' Pharmacy, supplies		23.90
		W. S. Emerson Co., supplies		11.28
		Swift & Co., supplies		19.80
		E. & F. King Co., supplies		30.20
		P. Nolin & Sons, supplies		19.74
		The White-Warner Co., stove repair		11.00
		Smith & Son, supplies		13.02
		Sullivan County Farmers' Exchange, feed		337.99
		Central Vermont Public Service Corp., supplies		2.44
		Federal Mill Inc., feed		212.95
		Lewis & Angier, gas		74.00
		W. E. Truesdell, supplies		106.20
		Jones' Express, express		3.60
		Peerless Handcuff Co., supplies		20.00
		R. A. Quimby, supplies		52.88

June 30	M. H. Fishman, supplies	\$ 28.16
	Frederick C. Small Co., supplies	96.17
	John B. Varick Co., supplies	86.00
	R. J. Adsit & Co., supplies	130.40
	Rand, Ball & King Co., supplies	343.02
	C. E. Densmore, supplies	124.38
	Reid, Murdock & Co., supplies	35.01
	Boardway & Cowles, mill work and supplies	38.46
	Foster Beef Co., supplies	150.94
	J. H. Kiniry, supplies	3.61
	Howe's Garage, repairs and supplies	66.79
	P. J. Noyes Co., supplies	5.21
	C. E. Stevens, plants	5.35
	W. T. Grant Co., supplies	27.07
	Boston & Maine Ry., freight	1.94
	J. Johnson, labor on lawn	30.00
	Perley Clogsden, team work	30.00
	L. M. Grout, miscellaneous account	45.64
	Twin State Fruit Corp., fruit	9.70
	New England Tel. & Tel. Co., telephone	31.80
	Boynton & Ellis, supplies	162.45
	L. W. Gile, feed	66.95
	P. R. Strout, carpenter	18.00
	Pay Roll	850.81
	Louis Blacker, shoe repair	17.00
		<hr/>
		\$ 4,350.66

July

July 22	George S. Sparks, cow testing	\$ 3.75
30	P. G. Clogston, haying	7.00
	P. G. Clogston, haying	40.00
31	M. H. Fishman, supplies	71.66
	L. M. Grout, miscellaneous account	58.72
	J. H. Willis, supplies	67.45
	Holstein-Fresian Association, registration	24.00
	Central Vermont Public Service Corp., elec	104.14
	Trent Fruit Co., supplies	11.36
	Sullivan County Farmers' Exchange, feed	500.15
	Empire Milking Machine Co., supplies	25.32
	W. T. Grant Co., supplies	85.72

July 31	Smith & Son, supplies	\$	13.86
	P. I. Ledoux & Son, supplies and repairs		10.39
	Central Vermont Public Service Corp., elec.		12.90
	Monadnock Mills, supplies		8.00
	Lewis & Angier, gas		74.00
	P. J. Noyes & Co., supplies		9.97
	Charles A. Hoitt & Co., supplies		34.05
	C. E. Densmore, supplies		109.17
	P. Nolin & Sons, supplies		20.26
	Quimby & Quimby, repairs		1.75
	Reid, Murdock & Co., supplies		15.97
	White River Transfer Co., supplies and repairs		113.46
	George S. Sparks, cow testing		3.75
	Pay Roll		883.00
			<hr/>
		\$	2,309.80

August

Aug. 17	Nap. Brodeur, horse shoeing	\$	18.50
22	The Worrell Manufacturing Co., supplies		20.00
	M. M. Dodge, supplies		26.38
24	Foster Beef Co., supplies		150.25
	Sugar River Grist Mill, feed		515.80
25	Lewis Blacker, shoe repair		30.10
	F. A. Barton, beef		119.80
28	V. J. Haines, fish		36.71
31	Central Vermont Public Service Corp., elec.		68.32
	E. A. Emerson, butter		6.00
	P. Clogston, teaming		40.00
	L. M. Grout, miscellaneous account		54.90
	F. G. Stone, supplies		67.40
	M. H. Fishman, supplies		61.92
	Phelps Publishing Co., advertisement		19.80
	Sullivan County Farmers' Exchange, feed		448.82
	J. B. O'Neil, repairs		7.25
	Hy-Gien Laboratory, supplies		10.00
	Argus-Champion, subscription		2.00
	Lewis & Angier, gas		74.00
	F. E. Newcomb, supplies		53.44
	Rand, Ball & King, Co., supplies		113.16

Aug. 31	Welch & Riley, tip cart	\$	50.00
	L. R. Haubrich, veterinary services		94.50
	H. A. Metz Laboratory, drugs		3.20
	New England Tel. & Tel. Co., telephone		29.45
	Larus & Bros., tobacco		43.20
	Hathorne's Garage, repairs		1.75
	United Shoe Stores, supplies		20.25
	Stevens' Pharmacy, supplies		2.90
	R. J. Adsit & Co., supplies		102.38
	Dodge's Pharmacy, supplies		71.60
	P. Nolin & Son, supplies		17.04
	Reid, Murdock & Co., supplies		99.15
	Noyes Shoe Co., shoes		27.21
	George Gardner, repairs		7.50
	A. & P. Tea Co., supplies		230.77
	George S. Sparks, cow testing		3.75
	Pay Roll		930.00
			<hr/>
		\$	3,679.20

September

Sept. 14	Storm King Roofing Co., roofing	\$	20.00
21	J. H. Williams, supplies		48.20
28	E. & T. King Co., supplies		24.28
	L. M. Grout, miscellaneous account		57.35
28	Central Vermont Public Service Corp., elec.		134.11
	A. J. Lockard, optical work		24.25
	Blue Mountain Cheese Co., cheese		4.13
	Foster Beef Co., supplies		171.06
	N. E. T. & T. Co., telephone		29.26
	Checkerboard Grain Warehouse, feed		71.45
	C. W. Easter, plants		5.95
28	Ray K. Hodgkins, dental work		21.00
	J. Gardner, repairs		7.50
	Harmon Newell, dental work		3.00
	Fred K. Phillips, dental work		4.50
	C. E. Densmore, supplies		184.45
	James M. Boyle, supplies		64.60
	S. E. Sinclair, supplies		95.00

Sept. 30	C. A. Moulthrop, supplies	\$	27.00
	M. H. Fishman, supplies		19.99
	Chas. A. Hoitt, supplies		15.93
	Surgeons & Physicians Supply Co., supplies		14.63
	Hanover St. Garage, repairs		6.20
	P. Nolin & Sons, supplies		47.86
	Smith & Sons, supplies		20.07
	Fairbanks Morse Co., repairs		4.06
	S. Gumpert Co., supplies		23.25
	The Advocate Press, printing		13.21
	Currier & Mathews, supplies		6.75
	Standard Brands Inc., supplies		35.90
	T. E. Ward,		7.15
	P. I. Ledoux, supplies and repairs		105.45
	D. S. Ramsay, supplies		30.22
	P. J. Noyes Co., drugs		15.75
	Frederick C. Small Co., supplies		46.44
	Lewis & Angier, gas and oil		148.00
	The Eagle Press, supplies		6.48
	Dunham Bros., shoes		120.19
	R. J. Adsit & Co., supplies		148.30
	W. E. Truesdale, supplies		238.51
	Foster Beef Co., supplies		125.57
	Goudreau Furniture Co., supplies		12.50
	John B. Varick Co., supplies		13.05
	Noyes Shoe Co., shoes		3.92
	J. W. Hill Co., supplies		35.10
	J. E. Suker, supplies		.88
	Int. Oil Co., oil		80.15
	C. E. Densmore, supplies		202.86
	Armour & Co., supplies		69.48
	Richford Garment Co., supplies		8.28
	W. S. Emerson Co., supplies		23.04
	Sullivan County Farmers' Exchange, feed		340.75
	Yates Drug & Chemical Co., drugs		5.10
	B. Heller & Co., supplies		10.10
	Reid, Murdock & Co., supplies		33.71
	Economy Lub. Co., supplies		26.22
	Pay roll,		949.84
		\$	4,011.98

October

Oct.	3	Holstein-Fresian Asso., registration	\$	31.50
	5	C. P. Cobb, machine repairs		1.75
	7	D. M. Vadney, supplies		1.50
	8	Howe's Garage, repair and supplies		152.32
	12	W. J. Eaton, repairs		5.00
	17	J. H. Kiniry, supplies		32.00
		Rand, Ball & King Co., supplies		57.05
	19	P. R. Strout, carpenter		15.00
	20	Frank Bane, supplies		1.00
	26	M. Prouty, supplies		1.00
	31	Agnes C. Ellingwood, chaplain		30.00
		Central Vermont Public Service Corp., elec.		96.26
		R. F. Adams, supplies		9.50
		Agnes C. Ellingwood, services		6.00
		General Electric Co., supplies		6.54
		Howe's Garage, repairs and supplies		27.55
		D. S. Ramsay, supplies		9.20
		Noyes Shoe Store, supplies		14.99
		P. Nolin & Sons., supplies		61.47
		Nault's Pharmacy, supplies		1.80
		Lewis & Angier, gas and oil		105.35
		A. & P. Tea Co., supplies		63.90
		M. H. Fishman, supplies		38.44
		United Shoe Stores, supplies		15.50
		Gage's Doughnut Shop, supplies		5.60
		Sullivan County Farmers' Exchange, feed		355.16
		The Kent Co., supplies		26.21
		Geo. Gardner, repairs		3.50
		Farm Bureau Ins. Co., insurance		30.63
		Reid, Murdock & Co., supplies		66.95
		Hy-Gien Laboratory, supplies		22.50
		New England Tel. & Tel. Co., telephone		36.68
		Wm. P. Sweeney, repairs and supplies		19.90
		White River Transfer Co., supplies		88.00
		R. J. Adsit & Co., supplies		106.77
		Smith & Son, supplies		26.40
		Twin State Fruit Corp., supplies		22.85
		Boardway & Cowles, supplies		1.00
		Houghton & Simonds, supplies		53.82

Oct.	31	W. E. Truesdell, supplies	\$	21.32
		Dodge's Pharmacy, supplies		80.71
		L. M. Grout, miscellaneous account		49.35
		F. K. Brown, supplies		72.80
		Foster Beef Co., supplies		124.79
		Claremont Lumber Co., supplies		48.87
		V. J. Haines, fish		73.48
		Pay Roll		904.00
				<hr/>
				\$ 3,025.94

November

Nov.	9	Boston Globe, subscription	\$	5.00
		George S. Sparks, cow testing		7.50
	13	Boston & Maine Ry., freight		11.59
		Holstein-Fresian Association, registration		21.00
	16	W. H. Spaulding, supplies		49.35
	23	V. S. Daily, subscription		7.50
		Catherine A. Putnam, hospital work		40.00
	27	L. W. Gile, feed		334.65
	28	New England Tel. & Tel. Co., telephone		30.45
		Central Vermont Public Service Corp., elec.		114.41
		C. E. Densmore, supplies		530.43
	30	L. M. Grout, miscellaneous account		62.92
		Joseph E. LaClair, taxes		1,402.92
		A. S. Marden, medical services		3.00
		P. Nolin & Sons, supplies		23.29
		Dr. Holt, dental work		1.00
		C. A. Gardner, veterinary work		5.00
		Stevens' Pharmacy, supplies		24.31
		Ray K. Hodgkins, dental work		15.00
		Dodge's Pharmacy, supplies		45.90
		Sullivan Machinery Co., repairs		1.00
		Alden Spears Sons Co., supplies		15.60
		Sugar River Manufacturing Co., supplies		12.73

Nov. 30	Reid, Murdock & Co., supplies	\$	13.49
	Lewis & Angier, gas		78.25
	Sullivan County Farmers' Exchange, feed		396.09
	P. J. Noyes Co., supplies		24.75
	P. I. Ledoux, supplies and repairs		139.70
	Colonial Furniture Co., supplies		101.47
	Boynton & Ellis, supplies		366.80
	W. H. Walker, sawdust		4.45
	A. & P. Tea Co., supplies		196.00
	Pay Roll		994.00
			<hr/>
		\$	5,079.55

December

Dec. 10	George S. Sparks, cow testing	\$	3.75
11	Quimby & Rossiter, desk		17.50
	L. R. Haubrich, veterinary work		45.65
	S. E. Sinclair, supplies		53.00
15	Louis Blacker, shoe repair		22.55
21	Agnes C. Ellingwood, chaplain		35.00
23	Nap. Brodeur, horse shoeing		6.00
26	Horace Mitchell, sawdust		25.00
	Agnes C. Ellingwood, funeral services		5.00
28	Central Vermont Public Service Corp., elec.		132.22
	New England Tel. & Tel. Col., telephone		47.43
29	John B. Varick Co., supplies		197.03
	Boston Fruit Store, supplies		6.25
	Twin State Fruit Corp., supplies		17.90
30	Union Leader, subscription		7.00
	M. H. Fishman, supplies		113.00
31	K. H. Dewey, cash for supplies		8.45
	Smith & Son, supplies		49.16
	Sullivan County Farmers' Exchange, feed		363.29
	Checkerboard Grain Warehouse, feed		153.46

Dec. 31	C. E. Densmore, supplies	\$	324.59
	D. S. Ramsay, supplies		4.90
	Charles A. Hoitt Co., supplies		42.09
	L. M. Grout, miscellaneous account		41.91
	Boston & Maine Ry., freight		5.02
	Frederick C. Small Co., supplies		38.25
	Backus Pedigree Co.,		8.75
	Jones' Express, express		1.76
	V. J. Haines, fish		61.01
	P. J. Noyes Co., drugs		9.43
	Sugar River Grist Mill, feed		303.35
	F. E. Newcomb, roofing		22.25
	Richford Garment Co., supplies		45.90
	J. I. Holcomb Manufacturing Co., supplies		4.28
	A. W. Fisk, funeral services		45.00
	Armour & Co., supplies		18.00
	Claremont General Hospital, operations		59.58
	Frank E. Pierce Co., supplies		7.20
	Ray K. Hodgkins, dental work		6.00
	United Shoe Stores, shoes		14.16
	P. Nolin & Son, supplies		26.24
	R. J. Adsit Co., supplies		43.11
	Frank Reid, vital statistics		12.00
	Hoard's Dairyman, subscription		1.75
	Howe's Garage, supplies and repairs		111.80
	Whiting's Mill, feed		25.70
	F. E. Newcomb, supplies		38.82
	Lewis & Angier, gas		74.00
	Sullivan County Farm Bureau, adv.		5.95
	Noyes Shoe Store, shoes		30.99
	P. J. Perkins, tractor repair		73.02
	Stevens' Pharmacy, supplies		7.50
	New England Tel. & Tel. Co., telephone		32.70
	Colonial Furniture Co., supplies		11.32
	Houghton & Simonds, supplies		55.85
	Hadley & Flower, supplies		3.00
	John B. Varick Co., supplies		26.82
	W. T. Grant Co., supplies		11.49
	A. J. Lockard, optical work		10.00
	Claremont Furniture Co., supplies		17.25
	The Argus Press, subscription		2.00
	Claremont Eagle, adv.,		1.74

Dec. 31	James W. Hill Co., supplies	\$ 22.77
	A. W. Fisk, supplies	5.00
	Reid, Murdock Co., supplies	47.39
	Dodge's Pharmacy, supplies	61.90
	Boynton & Ellis, supplies	115.75
	James W. Hill Co., supplies	4.55
	James H. Kiniry, supplies	51.62
	Nap. Brodeur, horse shoeing	4.50
	E. A. Emerson, butter	5.27
	Rand, Ball & King Co., supplies	550.00
	H. C. Sanders, M. D., services	1,043.50
	Foster Beef Co., supplies	235.01
	Francis Mayhew, trucking	20.00
	George S. Sparks, cow testing	3.75
	Pay Roll	969.00
		<hr/>
		\$ 6,135.13

RECAPITULATION

Receipts

January	\$ 2,471.11
February	2,742.47
March	2,873.22
April	3,657.51
May	3,357.66
June	3,778.69
July	3,274.03
August	3,417.43
September	817.87
October	6,385.18
November	4,090.31
December	5,877.18
	<hr/>
	\$ 42,742.66

Expenditures

January	\$ 1,958.00
February	2,578.70

March	3,110.97
April	3,342.47
May	3,157.36
June	4,350.66
July	2,309.80
August	3,679.20
September	4,011.98
October	3,025.94
November	5,079.55
December	6,135.13
	<hr/>
	\$ 42,739.76
Cash on hand	2.90
	<hr/>
	\$ 42,742.66

INMATES AT THE SULLIVAN COUNTY HOME, JAN. 1, 1931, TO JAN. 1, 1932

Name	Age	Birthplace	Date of Admission	Where from	Date of Discharge or Death	Time Supplied
Ayers, Louis	74	Goffstown	Sept. 3, 1929	Sunapee		w 1
Aalto, Mattie	57	Finland	Aug. 25, 1931	Newport	Sept. 25, 1931	44
Amsden, Elbridge	85	Fall River, Mass.	Dec. 5, 1921	Claremont		52 1
Anderson, Elmer	29	Chicago, Ill.	Dec. 3, 1930	Claremont	May 30, 1931	18 4
Aubey, Sadie	59	Hanover	Oct. 15, 1922	Claremont		52 1
Bacon, Ida	69	Laconia	May 15, 1921	Newport	April 9, 1931	14 1
Bagley, Minnie	60	Hartford, Vt.	Feb. 11, 1930	Newport	June 3, 1931	21
Ballantyne, William	62	Tilton	Dec. 15, 1930	Claremont		52 1
Bashaw, Fred	50	Charlestown	Jan. 17, 1895	Charlestown		52 1
Belrose, Edward G.	76	Swanton, Vt.	Aug. 9, 1931	Newport		20 5
Blodgett, Sumner	75	Newport	April 1, 1931	Newport		37 6
Bourk, Arthur	48	Canada	Aug. 26, 1931	Goshen	Oct. 1, 1931	5 2
Bowker, Thomas	39	Claremont	Nov. 19, 1930	Claremont	Sept. 1, 1931	34 6
Britton, Hazel	39	Burlington, Vt.	Oct. 10, 1927	Cornish		52 1
Budzik, Adam	30	Poland	April 10, 1930	Newport	Oct. 1, 1931	25
Bullock, Raymond	6	Bellows Falls, Vt.	June 7, 1931	Cornish	Aug. 27, 1931	11 5
Bullock, Phylis	5	Keene	June 7, 1931	Cornish	Aug. 9, 1931	9 1
Bullock, Richard	4	Keene	June 7, 1931	Cornish	Aug. 27, 1931	11 5
Bullock, Forest, Jr.	3	Alstead	June 7, 1931	Cornish	Aug. 27, 1931	11 5
Bullock, Margaret	1	Claremont	June 7, 1931	Cornish	July 12, 1931	5 1
Bradbury, Leon	45		Nov. 25, 1931	Newport	Nov. 10, 1931	2
Cahill, Martin	56	Ireland	Oct. 12, 1931	Newport		11 4
Carroll, Scot	79	Croydon	Dec. 7, 1880	Croydon		52 1

INMATES AT THE SULLIVAN COUNTY HOME, JAN. 1, 1931, TO JAN. 1, 1932

Name	Age	Birthplace	Date of Admission	Where from	Date of Discharge or Death	Time Served
Carlson, Nester	41	Finland	Nov. 18, 1931	Sunapee	Nov. 25, 1931	1 w 1 d
Carron, Mary	65	Canada	Aug. 21, 1930	Cornish		52 1
Caswell, William	73	Claremont	Feb. 20, 1924	Newport		52 1
Cazealio, Vincent	47	Italy	Sept. 10, 1931	Charlestown		16 1
Chamberlain, Alice	68	Charlestown	Feb. 5, 1925	Acworth		52 1
Chamberlain, Charles	13	Charlestown	May 9, 1931	Charlestown	May 14, 1931	6
Cheever, Donald	3	Claremont	Mar. 26, 1931	Claremont	May 25, 1931	8 5
Charest, Charles	50	Canada	Oct. 30, 1930	Claremont	May 10, 1931	18 4
Charest, Charles	51	Canada	Oct. 1, 1931	Claremont		13 1
Christian, Peter	47	Claremont	Dec. 30, 1930	Claremont	April 30, 1931	17 1
Clark, Mary (Mrs.)	30	Irisburg, Vt.	Aug. 29, 1931	Newport	Nov. 27, 1931	12 6
Clark, Audrey	6	Newport	Aug. 29, 1931	Newport	Nov. 27, 1931	12 6
Clark, Donald D.	1	Newport	Aug. 29, 1931	Newport	Nov. 27, 1931	12 6
Clark, Iris	3	Newport	Aug. 29, 1931	Newport	Nov. 27, 1931	12 6
Clark, William	69	Tacoma, Wash.	Jan. 24, 1931	Claremont	May 1, 1931	14
Clough, Marie	21	Unity	Nov. 28, 1931	Unity	Dec. 12, 1931	2 1
Clough, Ethel Verna			Nov. 28, 1931		Dec. 12, 1931	2 1
Colburn, Everett	66	Tyson Furnace, Vt.	Jan. 6, 1931	Newport		51 1
Collins, William	42	Calais, Me.	Aug. 1, 1931	Claremont		21 6
Conliff, Bartley	62	Ireland	Nov. 1, 1930	Claremont	May 1, 1931	17 2
Conliff, Bartley	63	Ireland	Sept. 1, 1931	Claremont		17 3
Companion, Theodore	22	Winooski, Vt.	Jan. 9, 1931	Claremont	Jan. 30, 1931	3 1
Connolly, John	62	Roxbury, Mass.	Sept. 19, 1931	Newport		15

INMATES AT THE SULLIVAN COUNTY HOME, JAN. 1, 1931, TO JAN. 1, 1932

Name	Age	Birthplace	Date of Admission	Where from	Date of Discharge or Death	Time Supplied
Cota, Joe	45	St. Johnsbury, Vt.	Oct. 18, 1931	Claremont		w 10 5
Couture, Ovila	66	Randolph, Vt.	Jan. 8, 1931	Claremont	Apr. 10, 1931	13 2
Crabtree, William	79	England	Aug. 10, 1925	Hanover Hosp.	*June 23, 1931	24 6
Currier, Phoebe	76	Lowell, Mass.	Nov. 23, 1930	Claremont		52 1
Colson, Lillian	70	Orient, Me.	Dec. 17, 1931	Newport		2 1
Dalmage, Edward	71	Claremont	Jan. 4, 1928	Claremont		52 1
Daignault, John	42	St. Albans, Vt.	Jan. 20, 1931	Claremont	May 20, 1931	17 2
Daignault, William	45	St. Albans, Vt.	Jan. 20, 1931	Claremont	May 20, 1931	17 2
DeMayo, Dorothy	37	Charlestown	May 9, 1931	Charlestown	June 5, 1931	4 4
DeMayo, Donald R.	2	Northfield, Vt.	May 9, 1931	Charlestown	June 5, 1931	4 4
DeMayo, Francis W.	3	Charlestown	May 9, 1931	Charlestown	May 15, 1931	1 1
DeMayo, John J.	5	Charlestown	May 9, 1931	Charlestown	May 15, 1931	1 1
Derkach, Karpo	42	Russia	Nov. 10, 1930	Claremont	June 26, 1931	25 2
Donovan, Josephine F.	35	Boston	June 10, 1931	Springfield	June 29, 1931	2 6
Donovan, Josephine F.	35	Boston	Oct. 3, 1931	Springfield	June 29, 1931	12 6
Dowling, Albert	30	Nashua	May 1, 1931	Claremont		35 3
Dresner, Vincent	68	Czechoslovakia	Aug. 5, 1931	Newport	May 30, 1931	21 3
Duval, Fred	53	Plattsburgh, N. Y.	Aug. 5, 1931	Claremont	Sept. 10, 1931	5 2
Dwinell, Benj.	46		June 15, 1931	Claremont	June 26, 1931	1 3
Dahill, Earl	16	Hadley, Mass.	Dec. 17, 1931	Newport		2 1
Dufield, Bessie M.	27	Weston, Vt.	Dec. 17, 1931	Claremont	Dec. 29, 1931	1 6
Edwards, Helen	33	Haverhill, Mass.	June 13, 1931	Newport		28 6
Edwards, Frank W.	41	Boston, Mass.	June 13, 1931	Newport	Sept. 30, 1931	15 5

*Died

INMATES AT THE SULLIVAN COUNTY HOME, JAN. 1, 1931, TO JAN. 1, 1932

Name	Age	Birthplace	Date of Admission	Where from	Date of Discharge or Death	Time Supted
Easton, Andrew	67	Scotland	Sept. 3, 1930	Newport	April 2, 1931	13 1
Easton, Andrew	68	Scotland	Nov. 27, 1931	Newport		7
Enese, Romeo	67	Suncook	Jan. 12, 1931	Claremont	April 15, 1931	13 3
Facto, Peter	62	Ellensburg, N. Y.	June 28, 1930	Newport	*May 26, 1931	20 6
Fairbanks, Helen (Mrs.)	3	Northampton, Mass.	Sept. 19, 1931	Claremont	Oct. 17, 1931	4 2
Fairbanks, Helen T.	3	Bristol, Conn.	Sept. 19, 1931	Claremont	Oct. 17, 1931	4 2
Fairbanks, Catherine	2	Claremont	Sept. 19, 1931	Claremont	Oct. 17, 1931	4 2
Fairbanks, Violet G.	4m	Claremont	Sept. 19, 1931	Claremont	Oct. 14, 1931	4 2
Falkowski, Joseph		Russia	Aug. 8, 1928	Claremont		52 1
Filiault, June Ruth		Unity	Born Sept. 16, 1931	Claremont	Sept. 30, 1931	2 1
Foss, Henry	75	Cherryfield, Me.	April 3, 1930	Claremont		52 1
Fournier, Alfred	51	Wanegan, Conn.	Sept. 1, 1930	Claremont	May 1, 1931	17 2
Fowler, Horace	78	Colchester, Vt.	Aug. 7, 1929	Newport		52 1
Frazier, Walter	62	Washington, N. H.	May 3, 1930	Newport		52 1
Gould, Ralph	20	Charlestown	Oct. 3, 1930	Charlestown	April 30, 1931	13 2
Godfrey, Forest	37	Lyme	Dec. 1, 1930	Claremont	March 23, 1931	11 5
Gardner, Albert	57	Sunapee	Sept. 28, 1912	Springfield		52 1
Garten, David	56		Nov. 28, 1931	Claremont		4 6
Geehan, Charles	54	Ludlow, Vt.	Sept. 14, 1929	Claremont	March 10, 1931	7 6
Geehan, Charles	55	Ludlow, Vt.	July 18, 1931	Claremont		23 6
Genenig, John	24	Brockton, Mass.	Jan. 12, 1931	Claremont	April 15, 1931	13 3
Gilcrease, Angelina	32	Woodstock, Conn.	July 15, 1931	Charlestown	August 31, 1931	6 6
Gilcrease, Evelyn	11	St. Johnsbury, Vt.	July 15, 1931	Claremont	August 31, 1931	6 6

*Died

INMATES AT THE SULLIVAN COUNTY HOME, JAN. 1, 1931, TO JAN. 1, 1932

Name	Age	Birthplace	Date of Admission	Where from	Date of Discharge or Death	Time Supplied
Gilcrease, Everett	9	St. Johnsbury, Vt.	July 15, 1931	Claremont	August 31, 1931	w 6
Gilcrease, Ivan	14	Pasumpsic, Vt.	July 15, 1931	Claremont	August 31, 1931	6 6
Gilcrease, Precilla	7	St. Johnsbury, Vt.	July 15, 1931	Claremont	August 31, 1931	6 6
Gilpatrick, Alonzo	79	Kennebunk, Me.	Jan. 27, 1926	Unity		52 1
Gordon, Samuel	58	England	Feb. 8, 1928	Claremont		52 1
Gould, Ralph	20	Charlestown	Oct. 3, 1931	Charlestown		12 6
Gilson, John	73	Abbingtion, Mass.	Feb. 10, 1930	Claremont	May 1, 1931	17 2
Gilson, John	73	Abbingtion, Mass.	Dec. 6, 1931	Claremont		3 5
Grim, James	30	Georgia	July 20, 1931	Claremont	Nov. 4, 1931	15 3
Howe, Merle (Mrs.)	25	Northfield, Vt.	Dec. 29, 1931	Claremont		3 3
Howe, Kenneth	4	Claremont	Dec. 29, 1931	Claremont		3 3
Hastings, Herman	28	Grantham	Nov. 8, 1931	Newport		6 2
Hastings, Estella	29	Cornish	Nov. 8, 1931	Newport		6 2
Hazen, James	38	Newport	Nov. 30, 1931	Newport		4 4
Hoitt, Mattie	78	Goshen	May 14, 1926	Goshen		52 1
Hoitt, Louis	54		May 15, 1930	Newport		52 1
Hosmer, Martin	66	Louisville, N. Y.	Aug. 10, 1930	Newport		52 1
Hunt, Leslie	47	Cornish	April 19, 1931	Cornish	May 1, 1931	52 1
Howe, Alice Jessie		Unity	Born Dec. 29, 1931			2
Howe, Albert	1	Claremont	Dec. 29, 1931	Claremont		3 3
Howe, Robert	3	Claremont	Dec. 29, 1931	Claremont		3 3
Jarvis, William	46	Canada	Nov. 1, 1930	Claremont	May 10, 1931	18 4

INMATES AT THE SULLIVAN COUNTY HOME, JAN. 1, 1931, TO JAN. 1, 1932

Name	Age	Birthplace	Date of Admission	Where from	Date of Dis-charge or Death	Time Supted
Jerard, Essie	14	Claremont	Nov. 25, 1931	Claremont		w
Jerard, Ethel	14		Nov. 25, 1931	Claremont		5
Jerard, Carl	9		Nov. 25, 1931	Claremont	Dec. 10, 1931	5
Johnson, Andrew	61	Finland	July 18, 1930	Newport	Oct. 3, 1931	2
Johnson, John	47	Newfoundland	May 2, 1931	Claremont	July 18, 1931	39
Jordan, Darwin	78	Plainfield	July 4, 1931	Plainfield	*Dec. 24, 1931	11
Kelley, John	28	Jamestown	Sept. 1, 1931	Newport		24
Kimball, Amasa	63	Plainfield	Jan. 13, 1926	Cornish		6
Kimball, Florence	64	Plainfield	Sept. 3, 1922	Plainfield	March 18, 1931	52
Lamphere, Leonard	23	Lowell, Vt.	Dec. 30, 1930	Plainfield	April 20, 1931	1
LaPorte, Arthur	42	Canada	April 28, 1930	Cornish		11
LaPorte, Rene	11	Claremont	June 15, 1930	Claremont	May 2, 1931	15
LaPorte, Lillian	5	Claremont	Jan. 4, 1931	Claremont	May 2, 1931	5
LaPorte, Blanche	9	Claremont	June 2, 1930	Claremont	May 2, 1931	17
LaPorte, Rollin	7	Claremont	April 28, 1930	Claremont	May 2, 1931	17
LaRush, Joe	43	Canada	Aug. 14, 1931	Claremont	Oct. 18, 1931	3
LaValley, Helen	3	Claremont	March 23, 1931	Claremont	May 3, 1931	9
LaValley, Grace	27	Brattleboro, Vt.	March 23, 1931	Claremont	May 3, 1931	6
LaValley, Ralph	1m	Claremont	March 23, 1931	Claremont	Nov. 17, 1931	6
Levasseur, Pierre	47	Lawrence, Mass.	Nov. 15, 1927	Claremont		34
Libby, Josephine	44	Claremont	Oct. 12, 1931	Claremont	Nov. 3, 1931	52
Libby, Forest	40	Lempster	Oct. 12, 1931	Claremont	Nov. 3, 1931	3

*Died

INMATES AT THE SULLIVAN COUNTY HOME, JAN. 1, 1931, TO JAN. 1, 1932

Name	Age	Birthplace	Date of Admission	Where from	Date of Discharge or Death	Time Served
Lombard, Delia	25	Lowell, Mass.	May 22, 1931	Claremont		W 1
Lombard, Margaret	5	Dover	May 22, 1931	Claremont	Sept. 19, 1931	17 2
Lombard, Catherine	4	Dover	May 22, 1931	Claremont	Sept. 19, 1931	17 2
Londres, Girard	19	Canada	Nov. 20, 1930	Claremont	Sept. 10, 1931	17 2
Long, John	70	Ireland	June 25, 1931	Claremont	May 2, 1931	17 3
Lord, Robert	3	Claremont	April 1, 1931	Claremont		28 4
Lord, Walter	2	Claremont	Aug. 28, 1931	Claremont	Nov. 17, 1931	33
Masterson, James	75	Ireland	April 4, 1927	Claremont	Nov. 17, 1931	11 5
Mayette, Addie	74	Monroe	Sept. 11, 1929	Claremont		52 1
Mayette, Alvin	70	Canada	Sept. 1, 1929	Claremont		52 1
McDonald, John	58	Ireland	May 10, 1931	Claremont		52 1
McInnis, Douglas	65	Nova Scotia	April 21, 1929	Sunapee	Sept. 1, 1931	16 3
McIntyre, Archie	35	Pittsburgh, Pa.	Aug. 25, 1930	Charlestown		52 1
McNeil, Francis	50	Keene	March 15, 1931	Newport	May 1, 1931	17 2
Merriss, Peter	36	Germany	May 18, 1931	Claremont	April 30, 1931	6 5
Moran, Frank	47	Island Pond, Vt.	Dec. 1, 1930	Claremont	June 30, 1931	6 2
Murray, Hazel	12	Weathersfield, Vt.	Nov. 13, 1931	Unity	April 1, 1931	27 4
Nadeau, Joseph	45	Canada	June 10, 1931	Newport		7
Nelson, Doris	29	Cornish	July 31, 1925	Cornish	June 28, 1931	2 5
Nolette, Cyril	57	Canada	July 6, 1930	Claremont		52 1
Noll, Frank	52	France	Nov. 20, 1930	Claremont	Feb. 20, 1931	7 2

INMATES AT THE SULLIVAN COUNTY HOME, JAN. 1, 1931, TO JAN. 1, 1932

Name	Age	Birthplace	Date of Admission	Where from	Date of Discharge or Death	Time Served
Osgood, Helen	22	Claremont	Sept. 12, 1931	Unity	Sept. 19, 1931	1 w 1 d
Osgood, Helen	22	Claremont	Sept. 27, 1931	Unity	Oct. 9, 1931	1 6
Osgood, Betty		Unity	Born Sept. 28, 1931	Unity	Oct. 9, 1931	1 5
Paakki, Henry	62	Finland	Dec. 4, 1929	Newport		52 1
Paro, Louise	15	Troy, N. H.	June 26, 1931	Lempster	Dec. 6, 1931	23 3
Paquette, Paul	2	Claremont	Sept. 9, 1931	Claremont	Oct. 9, 1931	4 3
Poole, Verna	35	Henniker	Nov. 12, 1931	Claremont	Dec. 20, 1931	5 4
Pregent, Frank	48	Canada	Jan. 9, 1931	Claremont	May 10, 1931	17 3
Poole, Barbara	12	Goffstown	Dec. 6, 1931	Claremont	Dec. 20, 1931	2 1
Polard, Edna	54	Lempster	Dec. 22, 1931	Newport		1 3
Quimby, Freda	25	Haverhill, Mass.	May 23, 1931	Newport	June 6, 1931	2 1
Quimby, Loraine		Unity	Born May 25, 1931	Unity	June 6, 1931	1 6
Rand, William	39		Dec. 14, 1930	Claremont	April 4, 1931	13 3
Raney, Wilfred		Cornish	June 7, 1931	Newport	June 22, 1931	2 2
Richardson, Bruce	75	Pittsford, Vt.	Nov. 8, 1926	Claremont	*June 30, 1931	25 6
Robinson, George	60	North Adams, Mass.	Oct. 15, 1931	Claremont	Nov. 15, 1931	4 4
Root, Bernard	26	Claremont	Aug. 23, 1931	Claremont		18 6
Sanders, Arba	69	Montpelier, Vt.	Oct. 20, 1929	Claremont		52 1
Sanderson, Benj.	29	Woodstock, Vt.	Sept. 14, 1931	Newport	Sept. 24, 1931	1 4
Sanderson, George	52	Woodstock, Vt.	Dec. 9, 1931	Newport	Dec. 17, 1931	1 2
Scofield, Emma	29	Shrewsbury, Mass.	Oct. 4, 1930	Washington	Jan. 24, 1931	3 3
Scofield, Emma	30	Shrewsbury, Mass.	Aug. 8, 1931	Washington		19 3

*Died

INMATES AT THE SULLIVAN COUNTY HOME, JAN. 1, 1931, TO JAN. 1, 1932

Name	Age	Birthplace	Date of Admission	Where from	Date of Discharge or Death	Time Supplied
Small, Frank	19	Hinsdale	Oct. 2, 1930	Claremont	Feb. 3, 1931	w d
Small, Frank	20	Hinsdale	Aug. 20, 1931	Claremont	Oct. 1, 1931	4 5
Smith, Clifton	33	Newport	May 27, 1931	Newport	Aug. 1, 1931	6 1
Smith, Clifton	33	Newport	Oct. 1, 1931	Newport		13 1
Smith, Emma E.	24	Greenfield, Mass.	Aug. 22, 1931	Lempster	Nov. 11, 1931	13 1
Smith, Mary Ann	2	Franklin	Aug. 22, 1931	Lempster	Nov. 11, 1931	11 5
Smith, Helen	8m	Lempster	Aug. 22, 1931	Lempster	Nov. 11, 1931	11 5
Smith, Earl	43	Center Harbor	July 20, 1931	Newport	Oct. 1, 1931	10 4
Smith, Ted	26		Oct. 29, 1931	Lempster		9 1
Sherman, Arthur	70	Stoughton, Mass.	Dec. 5, 1931	Lempster		52 1
St. Peter, Joseph	65	Bangor, Me.	Aug. 10, 1931	Claremont	Dec. 14, 1931	18 1
Stevens, Charles	57	Lewiston, Me.	Aug. 1, 1931	Claremont		21 6
Taruen, Evon M.	6m	Boston, Mass.	July 24, 1931	Newport	Aug. 8, 1931	2 1
Thornton, Mary	34	Plymouth	May 14, 1931	Grantham	July 12, 1931	8 3
Thornton, Norton E.		Unity	Born June 30, 1931	Unity	July 12, 1931	1 6
Titus, Harriet	77	Hartford, Vt.	Dec. 11, 1926	Cornish	*Feb. 24, 1931	7 6
Trombley, Alphense	46	Canada	July 11, 1931	Claremont		24 6
Trombley, Myrtle	33	South Royalton, Vt.	July 11, 1931	Claremont		24 6
Trombley, Arthur	11	Newport	July 11, 1931	Claremont		24 6
Trombley, Ethel	8	East Hardwick, Vt.	July 11, 1931	Claremont		24 6
Trombley, Ella	7	East Hardwick, Vt.	July 11, 1931	Claremont		24 6
Trombley, Lillian	3	Littleton	July 11, 1931	Claremont		24 6

*Died

INMATES AT THE SULLIVAN COUNTY HOME, JAN. 1, 1931, TO JAN. 1, 1932

Name	Age	Birthplace	Date of Admission	Where from	Date of Discharge or Death	Time Supplied
Trombley, Margaret	10	Claremont	July 11, 1931	Claremont		24 6
Trombley, Donald	1	Wheelock, Vt.	July 11, 1931	Claremont		24 6
Twombly, Alfred	50	Lancaster	Oct. 22, 1931	Claremont		10 1
Trinder, John	67	Boston, Mass.	Dec. 11, 1931	Claremont	Dec. 25, 1931	2 1
Vines, Archie	34	Winooski, Vt.	Jan. 20, 1931	Claremont	May 20, 1931	17 2
Walker, Evelyn	75	Claremont	Sept. 4, 1930	Newport	*Mar. 15, 1931	10 4
Walker, Sarah	72	Claremont	Jan. 17, 1927	Claremont		52 1
Webster, Edward	59	Grafton	Sept. 10, 1931	Newport	*Nov. 30, 1931	7 6
Wells, Arthur	49	Contoocook	Aug. 22, 1892	Claremont		52 1
Wells, Jennie	54	Contoocook	Jan. 18, 1915	Charlestown		52 1
Whipple, Edgar	5	Claremont	Nov. 28, 1931	Charlestown	Dec. 21, 1931	3 3
Whipple, Ralph	7	Newport	Nov. 28, 1931	Charlestown	Dec. 21, 1931	3 3
Whipple, Mildred	37	Bristol	Nov. 28, 1931	Charlestown	Dec. 21, 1931	3 3
Whitney, Henry	21		June 13, 1931	Claremont	Nov. 6, 1931	21
Wilder, Sam	60	Canada	Nov. 6, 1931	Springfield		8
Wilson, Edward	54	Norfolk, Va.	May 9, 1931	Claremont		33 6
Wilson, Josephine	29	Northampton, Mass.	Feb. 28, 1931	Claremont	June 9, 1931	14 4
Woolley, Marvin	51	Newfane, Vt.	July 10, 1927	Charlestown		52 1
Worthen, Herbert	72	Lynden, Vt.	Oct. 23, 1931	Claremont		10
York, Charles	45		Nov. 30, 1931	Newport		4 4
Young, James	54	Laconia	Oct. 24, 1930	Claremont	May 3, 1931	17 4
Young, James	54	Laconia	Sept. 23, 1931	Claremont		14 2

*Died

BOARDERS AT SULLIVAN COUNTY HOME

Name	Age	Birthplace	Date of Entry	Where from	Date of Dis-charge or Death	Time Suppl'd
Ainsworth, Walter	82	Claremont	May 18, 1929	Claremont	*Feb. 24, 1931	7 6
Blaisdell, Cynthia	79	Plainfield	Sept. 20, 1926	Claremont		52 1
Boucher, Paul N.	61	Canada	Aug. 10, 1931	Claremont		20 4
Browne, Samuel J.	54	Springfield, Vt.	Dec. 19, 1931	Claremont		1 6
Browne, William H.	49	Springfield, Vt.	July 7, 1931	Claremont		25 3
Chabot, Napoleon	66	Canada	Nov. 26, 1930	Claremont		52 1
Cheever, Celina	23	St. Johnsbury, Vt.	March 26, 1931	Claremont	May 25, 1931	8 5
Colby, Eugene	72	Sunapee	May 9, 1927	Sunapee	Oct. 27, 1931	50 6
Colby, Eugene	72	Sunapee	Nov. 5, 1931	Sunapee		8 1
Cowles, Eugene	60	Claremont	July 16, 1931	Claremont	Oct. 27, 1931	14 6
Deloriar, Marion	77	Canada	July 9, 1931	Unity	*Dec. 23, 1931	24
Fifield, Fred L.	70	Meriden	May 19, 1930	Cornish	*Mar. 21, 1931	11 3
French, Mariah	82	Norwich, Vt.	Aug. 16, 1931	Newport		19 5
Gouin, Ludger	25	Claremont	Nov. 28, 1931	Claremont		4 6
Heath, Emma	80	Enfield	May 7, 1931	Springfield		52 1
Heath, Jennie	54	Springfield	May 7, 1931	Springfield		52 1
How, Rose	70	Claremont	May 23, 1931	Claremont		31 6
Hubbard, Emma	85	Parisville, N. Y.	May 26, 1931	Claremont	July 14, 1931	7 1
Hunter, Eugene	66	South Royalton, Vt.	Oct. 28, 1930	Claremont	Jan. 19, 1931	2 5
Hunter, Eugene	67	South Royalton, Vt.	Nov. 6, 1931	Claremont	Nov. 12, 1931	1

*Died

BOARDERS AT SULLIVAN COUNTY HOME

Name	Age	Birthplace	Date of Entry	Where from	Date of Dis-charge or Death	Time Sup'ed
Hutchinson, Charles	82	Windsor, Vt.	Aug. 22, 1928	Newport		w 1
Johnson, Doris	56	Contoocook	Sept. 19, 1931	Claremont	Oct. 12, 1931	3 3
LaRock, David	75	Canada	June 6, 1928	Claremont		52 1
LaRush, Frank	71	Quebec	Aug. 12, 1927	Claremont		52 1
Lear, Henry	63	Goshen	Oct. 14, 1930	Claremont		52 1
Lear, Frank	33	Goshen	Jan. 6, 1931	Newport	May 1, 1931	16 4
Lower, Evelyn	16	Newport	Nov. 1, 1931	Newport	Dec. 19, 1931	7
Lufkin, Evelyn	27	Essex, N. Y.	May 25, 1931	South Acworth	July 25, 1931	8 6
Mayotte, Fred	87	Canada	Feb. 15, 1930	Claremont	*Jan. 26, 1931	3 5
Nichols, William	86	Bradford	Feb. 12, 1929	Claremont		52 1
Noyes, Fred L.	81	Concord	April 15, 1931	Lebanon	*Sept. 19, 1931	22 4
O'Brien, John	73	Ireland	June 16, 1931	Langdon		28 3
Pollard, Eugene	86	Lempster	May 22, 1931	Newport		32
Randall, Christine	84	Springfield, Vt.	June 20, 1931	Claremont	Aug. 4, 1931	6 4
Reynolds, Lydia	95	Canada	July 1, 1922	Claremont		52 1
Sanders, James	67	Ticonderoga, N. Y.	Sept. 24, 1929	Claremont		52 1
Smith, Joseph	62	Windsor, Vt.	March 2, 1931	Cornish	May 30, 1931	12 6
Stryker, M. Campbell	62	Baltimore, Md.	Dec. 29, 1931	Georges Mills		3
Sweet, George H.	80	Plainfield	Nov. 25, 1930	Plainfield		52 1
Wetmore, Wilson	69	Bellows Falls, Vt.	Dec. 23, 1922	Claremont		52 1

*Died

PRISONERS AT SULLIVAN COUNTY HOUSE OF CORRECTION, JAN. 1, 1931, TO JAN. 1, 1932

Name	Age	Date of Entry	Date of charge or Death	Where from	Crime	Time Sup'd
Amaza, Peter	48	Dec. 3, 1930	Jan. 6, 1931	Claremont	Drunk	6
Amell, Seymour	31	Aug. 21, 1931	Aug. 29, 1931	Claremont	Drunk	1
Anderson, Chris	29	Sept. 9, 1931		Claremont	Larceny	2
Anderson, Walter	26	Oct. 20, 1931		Newport	Non-support	3
Anderson, Julius	60	Mar. 30, 1931	March 30, 1931	Newport	Drunk	3
Bissell, William	19	Sept. 9, 1931		Newport	Reckless driving	2
Brock, Stuart H.	36	Aug. 12, 1931	Sept. 10, 1931	Claremont	Theft	4
Barrows, Raymond	26	Feb. 24, 1931	May 6, 1931	Charlestown	Breaking, entering	2
Bedell, William	20	Sept. 14, 1931	Dec. 21, 1931	Claremont	Concealed weapons	1
Begin, John	35	Oct. 30, 1930	Jan. 4, 1931	Claremont	Drunk	4
Begin, John	36	Oct. 10, 1931	Nov. 14, 1931	Claremont	Drunk	1
Blake, Lei	25	Oct. 26, 1931	Dec. 30, 1931	Claremont		22
Bouchard, Gilbert	39	Nov. 7, 1931	Dec. 22, 1931	Newport	Possession	3
Bourke, William	48	July 4, 1931	Aug. 8, 1931	Claremont	Possession	5
Brady, Thomas	37	Nov. 14, 1931	Dec. 24, 1931	Claremont	Drunk	5
Brown, Frank	55	Sept. 4, 1931	Nov. 22, 1931	Claremont	Possession	7
Brown, George	18	May 9, 1931	Nov. 4, 1931	Newport	Larceny	21
Brown, James	47	July 2, 1931	Aug. 6, 1931	Newport	Drunk	5
Brown, James	63	Sept. 4, 1931	Oct. 20, 1931	Newport	Drunk	2
Buskey, Roy	42	July 20, 1931		Newport	Possession	23

PRISONERS AT SULLIVAN COUNTY HOUSE OF CORRECTION, JAN. 1, 1931, TO JAN. 1, 1932

Name	Age	Birthplace	Date of Dis-charge or Death	Where from	Crime	Time Suppld
Bresnan, Mike	61	April 7, 1931	May 12, 1931	Claremont	Drunk	w 5 1
Ballantyne, Wm.	62	April 7, 1931	May 12, 1931	Claremont	Drunk	5 1
Brown, Thomas	64	June 6, 1931	July 11, 1931	Claremont	Vagrancy	5 1
Ballantyne, Wm.	62	May 14, 1931	July 17, 1931	Claremont	Drunk	5 1
Bowker, Wm.	48	July 14, 1931	Aug. 8, 1931	Claremont	Possession	5 1
Bowker, Tom	39	July 22, 1931	Aug. 26, 1931	Claremont	Drunk	5 1
Brown, Thomas	64	June 6, 1931	July 11, 1931	Claremont	Vagrancy	5 1
Brooks, George	56	June 6, 1931	July 11, 1931	Claremont	Vagrancy	5 1
Carr, Austin	45	Nov. 2, 1931	Dec. 2, 1931	Claremont	Driving inf'nce liquor	4 3
Casey, Joe	27	June 8, 1931	July 13, 1931	Claremont	Vagrancy	6
Cazzalio, Vincent	47	Feb. 16, 1931	March 18, 1931	Charlestown	Drunk	4 3
Clark, Ernest	47	Aug. 17, 1931		Newport	Possession	19 4
Clementoriz, C.	41	Aug. 15, 1931	Aug. 26, 1931	Claremont	Drunk	1 5
Cobb, Clifford	30	March 19, 1931	Sept. 19, 1931	Claremont	Theft	26 3
Coda, Joseph	63	Feb. 2, 1931	March 9, 1931	Claremont	Drunk	5 1
Coda, Joseph	64	Nov. 20, 1931	Dec. 31, 1931	Claremont	Drunk	6
Collins, George	50	Aug. 21, 1931	Oct. 26, 1931	Claremont	Keeping for sale	9 4
Conway, John	30	Aug. 31, 1931	Sept. 12, 1931	Charlestown	*	1 6
Corcoran, George	56	Feb. 11, 1931	May 18, 1931	Claremont	Drunk	13 6
Clogston, Perley	37	May 5, 1931	June 21, 1931	Claremont	Driving inf'nce liquor	6 6

*Operating car without license and driving under influence liquor.

PRISONERS AT SULLIVAN COUNTY HOUSE OF CORRECTION, JAN. 1, 1931, TO JAN. 1, 1932

Name	Avg	Date of Entry	Date of Dis-charge or Death	Where from	Crime	Time Sup'd
Donahue, Larry	54	March 31, 1931	May 6, 1931	Claremont	Drunk	w 2
Davis, Harold	19	Nov. 25, 1931		Claremont	Driving infl'nce liquor	5 2
Day, James	52	July 13, 1931	Sept. 16, 1931	Claremont	Drunk	9 3
Decoteau, Walter	26	Nov. 15, 1931	Jan. 1, 1931	Claremont	Drunk	6 5
Desmarais, Osia	33	Dec. 29, 1930	Feb. 2, 1931	Claremont	Drunk	5 1
Doherty, Martin	49	Oct. 12, 1931	Dec. 20, 1931	Claremont	Vagrancy	11 5
Dillon, John	52	May 20, 1931	June 24, 1931	Claremont	Drunk	5 1
Donahue, Dan	54	April 22, 1931	May 7, 1931	Claremont	Drunk	2 2
Donahue, Dan	54	June 2, 1931	July 2, 1931	Claremont	Drunk	4 3
Donahue, Dan	54	Sept. 14, 1931	Dec. 13, 1931	Claremont	Drunk	4 2
Donahue, Frank	43	April 7, 1931	May 12, 1931	Claremont	Drunk	5 1
Donovan, John	66	June 6, 1931	July 11, 1931	Claremont	Vagrancy	5 1
Donahue, Frank	43	June 6, 1931	July 11, 1931	Claremont	Drunk	5 1
Duncan, James	25	Sept. 17, 1931	Dec. 17, 1931	Newport	Selling	13 1
Day, James	52	March 30, 1931	May 4, 1931	Claremont	Drunk	5 1
Day, James	52	Dec. 26, 1931		Claremont	Drunk	6
Eastman, Albert	32	July 23, 1931	Nov. 23, 1931	Claremont	Possession	11 2
Easton, Andrew	68	Oct. 19, 1931	Nov. 27, 1931	Newport	Drunk	5 5
Edison, Wilbur	42	Nov. 13, 1931		Newport	Possession	7
Fairbanks, Harold	19	Set. 9, 1931		Claremont	Theft	16 2

PRISONERS AT SULLIVAN COUNTY HOUSE OF CORRECTION, JAN. 1, 1931, TO JAN. 1, 1932

Name	Age	Birthplace	Date of Dis-charge or Death	Where from	Crime	Time Sup'd
Fairbanks, Ernest	27	Sept. 18, 1931	Oct. 17, 1931	Claremont	Driv. unlicensed car	4 2
Filiault, Nellie	22	Jan. 22, 1931	Sept. 30, 1931	Claremont	Ret. to serve sentence	36
Fortin, Napoleon	20	July 18, 1931	Aug. 22, 1931	Claremont	Default	5 1
Flanagin, Edward	52	March 20, 1931	May 4, 1931	Claremont	Drunk	5 2
Fournier, Chas.	21	April 22, 1931	May 31, 1931	Charlestown	Concealed weapon	5 5
Gartin, David	56	Sept. 15, 1931	Nov. 25, 1931	Claremont	Drunk	10 2
Gartland, John	33	June 5, 1931	Aug. 4, 1931	Claremont	Larceny	8 5
Gilcrease, Harry	42	Feb. 11, 1931	May 11, 1931	Claremont	Non-support	12 6
Ginty, Mathew	53	June 8, 1931	July 13, 1931	Claremont	Drunk	5 1
Giroux, Jack	21	April 22, 1931	May 1, 1931	Charlestown	Concealed weapon	1 3
Goldberg, Louis	61	Dec. 23, 1930	Feb. 24, 1931	Claremont	Drunk	7 6
Gray, Lyman	34	Sept. 11, 1930	Sept. 11, 1931	Claremont	Abduction im. purp.	36 2
Green, Samuel	59	Aug. 22, 1931	Sept. 21, 1931	Claremont	Drunk	4 2
Greenwood, John	46	Aug. 5, 1931	Sept. 9, 1931	Claremont	Drunk	5 3
Hart, Charles	24	Dec. 3, 1930	Jan. 22, 1931	Claremont	Theft	3 1
Hart, Charles	25	Oct. 4, 1931	Jan. 22, 1931	Claremont	Theft	12 5
Harrison, Evelyn	27	Nov. 10, 1930	Feb. 17, 1931	Newport	Desertion	6 6
Hastings, Herman	27	Sept. 5, 1931	Nov. 4, 1931	Newport	Op. car without lic.	8 5
Hazen, Chauncy	50	Nov. 25, 1931	Dec. 30, 1931	Newport	Selling liquor	5 1
Hazen, James	37	Nov. 3, 1930	Jan. 16, 1931	Newport	Drunk	2 2

PRISONERS AT SULLIVAN COUNTY HOUSE OF CORRECTION, JAN. 1, 1931, TO JAN. 1, 1932

Name	Age	Date of Entry	Date of Dis-charge or Death	Where from	Crime	Time Supt'd
Hazen, James	38	Sept. 19, 1931	Nov. 28, 1931	Claremont	Non-support	10
Hopps, Wm.	63	Aug. 29, 1931	Oct. 2, 1931	Claremont	Drunk	7
Horton, Wm.	73	Sept. 17, 1931	Oct. 26, 1931	Newport	Vagrancy	5
Hunt, Clarence	46	July 17, 1931	Aug. 10, 1931	Claremont	Non-support	3
Harris, Julius	54	Dec. 26, 1931		Newport	Drunk	4
Harbour, Noel	49	Dec. 29, 1931		Acworth	Drunk	6
Jangel, Mary	33	June 1, 1931	July 1, 1931	Claremont	Possession	3
Johnson, Harold	21	Sept. 9, 1931		Claremont	Theft	4
Johnson, Louis	27	Oct. 28, 1931		Claremont	Trans. auto plates	16
Jolinder, John	46	Nov. 30, 1931	Nov. 13, 1931	Newport	Drunk	5
Jerard, Otis	52	April 25, 1931	May 25, 1931	Claremont	Possession	4
Kelley, Daniel	48	April 8, 1931	May 13, 1931	Claremont	Drunk	3
Kelley, Daniel	48	June 15, 1931	July 18, 1931	Claremont	Drunk	5
Kennedy, George	52	March 25, 1931	April 29, 1931	Claremont	Drunk	4
Kenyon, Roy	34	Jan. 30, 1931	Feb. 28, 1931	Newport	Shooting deer illegally	5
Keough, Robert	49	June 8, 1931	July 13, 1931	Claremont	Vagrancy	4
Knight, Patrick	64	Feb. 28, 1931	April 1, 1931	Claremont	Drunk	5
LeClair, Guy	34	March 14, 1931	May 13, 1931	Unity	Drunk	5
Landry, Ameda	48	Sept. 14, 1931	Nov. 9, 1931	Claremont	Driving infl'nce liquor	7
						6
						1

PRISONERS AT SULLIVAN COUNTY HOUSE OF CORRECTION, JAN. 1, 1931, TO JAN. 1, 1932

Name	Age	Date of Entry	Date of Dis-charge or Death	Where from	Crime	Time Sup'd
Larkin, George	37	Aug. 5, 1931	Sept. 9, 1931	Claremont	Drunk	w 5 1
LeClair, Guy	34	Aug. 25, 1931	Sept. 23, 1931	Unity	Drunk	4 2
Lynch, Patrick	64	Nov. 30, 1931		Claremont	Drunk	4 4
Lawrence, Edward	48	April 28, 1931	June 2, 1931	Claremont	Drunk	5 1
Lynch, Patrick	64	April 3, 1931	May 8, 1931	Claremont	Drunk	5 1
Lamont, George	57	March 31, 1931	May 6, 1931	Claremont	Drunk	5 2
Malone, Mike	46	Nov. 14, 1931	Dec. 24, 1931	Claremont	Drunk	5 6
Marble, Daniel	20	Sept. 19, 1931		Newport	Concealed weapons	14 6
Marshall, Fred	61	March 25, 1931	April 29, 1931	Claremont	Drunk	5 1
Martin, Peter	74	Dec. 29, 1930	Feb. 4, 1931	Claremont	Drunk	5
Martin, Peter	74	Feb. 3, 1931	Feb. 6, 1931	Claremont	Drunk	4
Mayhew, Francis	27	Sept. 11, 1930	Sept. 20, 1931	Claremont	Non-support	37 4
Mayotte, Armand	26	Oct. 27, 1931	Dec. 19, 1931	Claremont	Keeping for sale	7 5
McGuire, George	57	Sept. 17, 1931	Oct. 26, 1931	Newport	Vagrancy	5 5
Murphy, George	34	Nov. 3, 1930	Feb. 17, 1931	Claremont	Drunk	6 6
McClintock, John	39	May 4, 1931		Claremont	Driving infl'nce liquor	
Murray, Edward	40	April 7, 1931	May 12, 1931	Claremont	Drunk	5 1
Marshall, Fred	61	April 30, 1931	June 13, 1931	Claremont	Drunk	6 3
Nelson, Henry	25	Oct. 10, 1931	Nov. 13, 1931	Claremont	Possession	5
Nelson, Robert	21	Dec. 30, 1931		Claremont	Non-support	2

PRISONERS AT SULLIVAN COUNTY HOUSE OF CORRECTION, JAN. 1, 1931, TO JAN. 1, 1932

Name	Age	Date of Entry	Date of Dis-charge or Death	Where from	Crime	Time Suppl'd
Niemela, Heikki	31	Aug. 31, 1931	Oct. 15, 1931	Newport	Drunk	w 6
Novak, Adam	42	Aug. 15, 1931	Aug. 26, 1931	Claremont	Drunk	1 5
McCallister, Torrence	30	May 27, 1931	June 27, 1931	Claremont	Driving inf'nce liquor	4 4
Nadolski, Adolph	34	June 5, 1931	Jan. 11, 1931	Claremont	Drunk	1 4
McPolin, Joseph	37	Nov. 3, 1930	July 10, 1931	Claremont	Drunk	5 1
Matson, Uno	22	Dec. 30, 1931		Claremont	Drunk	2 2
O'Brien, Thomas	64	Aug. 19, 1931	Sept. 19, 1931	Claremont	Drunk	4 4
Ormsby, Erma	34	June 8, 1931	June 8, 1931	Claremont	Driving inf'nce liquor	4 4
O'Donnell, Frank	31	March 30, 1931	May 4, 1931	Claremont	Drunk	5 1
Paquette, Estelle	23	Sept. 9, 1931	Oct. 9, 1931	Claremont	Possession	4 3
Pitts, George	49	Nov. 3, 1931	Dec. 13, 1931	Claremont	Drunk	5 6
Porter, Ernest	20	March 16, 1931	Sept. 21, 1931	Claremont	Theft	27 1
Putnam, Ray	30	Sept. 9, 1931		Claremont	Larceny	16 2
Powers, Robert	35	March 30, 1931	May 4, 1931	Claremont	Drunk	5 1
Patte, Perley	47	April 8, 1931	May 9, 1931	Newport	Driving inf'nce liquor	4 4
Perras, William	23	April 20, 1931	May 20, 1931	Claremont	Possession	4 3
Quinn, Frank	70	June 3, 1931	July 8, 1931	Claremont	Drunk	5 1
Rayburn, John	28	Nov. 13, 1931		Newport	Possession	7 7
Rich, Clyde	31	Nov. 19, 1931		Charlestown	Non-support	6 2
Russell, Burt	54	June 21, 1931	July 7, 1931	Claremont	Drunk	5 1

PRISONERS AT SULLIVAN COUNTY HOUSE OF CORRECTION, JAN. 1, 1931, TO JAN. 1, 1932

Name	Age	Date of Entry	Date of Dis-charge or Death	Where from	Crime	Time Served
Russell, Burt	54	Oct. 19, 1931		Newport	Drunk	10 4
Russell, Charles	49	Oct. 5, 1931	Oct. 1, 1931	Charlestown	Drunk	3 6
Russell, Horace	44	Oct. 5, 1931	Oct. 1, 1931	Charlestown	Drunk	3 6
Russell, Walter	48	Oct. 5, 1931	Oct. 1, 1931	Charlestown	Drunk	3 6
Ryan, Henry	53	July 2, 1931	Aug. 6, 1931	Claremont	Drunk	5 1
Ryan, Henry	53	Aug. 13, 1931	Nov. 13, 1931	Claremont	Drunk	9
Ryan, Henry	54	Nov. 14, 1931		Claremont	Drunk	6
Ryan, John	49	Aug. 4, 1931	Sept. 9, 1931	Claremont	Drunk	5 2
Smith, James	58	April 8, 1931	May 13, 1931	Claremont	Drunk	5 1
Sanderson, C.	24	Nov. 23, 1931		Newport	Reckless driving	5 4
Schettino, John	22	Oct. 1, 1931		Newport	Larceny	13 1
Smith, Frank	46	May 31, 1931	July 5, 1931	Claremont	Drunk	5 1
Smith, Harry	30	Aug. 31, 1931	Oct. 7, 1931	Claremont	Driving inf'nce liquor	5 3
Smith, Ted	26	June 17, 1931	Oct. 9, 1931	Newport	Possession	19 2
St. Armand, Arthur	52	June 15, 1931	July 18, 1931	Claremont	Drunk	4 6
Steiner, Frank	63	July 2, 1931	Aug. 6, 1931	Claremont	Drunk	5 1
Stuart, John	67	Sept. 17, 1931	Oct. 26, 1931	Newport	Vagrancy	5 5
Sturgeon, Theo.	54	Sept. 21, 1931	Oct. 26, 1931	Claremont	Drunk	5 1
Sullivan, John	18	Dec. 8, 1931		Claremont	Larceny	3 3
Therberge, Wm.	46	July 2, 1931	Aug. 6, 1931	Claremont	Drunk	5 1

PRISONERS AT SULLIVAN COUNTY HOUSE OF CORRECTION, JAN. 1, 1931, TO JAN. 1, 1932

Name	%	Date of Entry	Date of Dis-charge or Death	Where from	Crime	Time Suppl'd
Thibodeau, Francis	17	Sept. 14, 1931	Dec. 21, 1931	Claremont	Larceny	w
Thibodeau, Henry	20	Sept. 9, 1931	Nov. 8, 1931	Claremont	Theft	14
Thornton, Francis	17	June 18, 1931	July 25, 1931	Claremont	Theft	2
Toole, Pat	45	Aug. 31, 1931	Sept. 29, 1931	Charlestown	Drunk	5
Traver, Fred	31	Aug. 9, 1931	Nov. 9, 1931	Newport	Driving inf'nce liquor	4
Vashon, Arthur	41	Aug. 20, 1931	Aug. 29, 1931	Claremont	Possession	13
Watson, James	45	April 7, 1931	May 12, 1931	Claremont	Drunk	1
Watson, James	45	Aug. 5, 1931	Sept. 9, 1931	Claremont	Drunk	5
Wesolaski, Alex.	19	Nov. 16, 1931	Nov. 19, 1931	Charlestown	Trapping unlawfully	1
Wesolaski, Joseph	20	Nov. 17, 1931	Nov. 19, 1931	Charlestown	Hunting without lic.	4
Willette, Everett	29	Dec. 2, 1931	Sept. 14, 1931	Claremont	Transporting liquor	4
Willis, Wilbert	23	Aug. 6, 1931	Dec. 13, 1931	Claremont	Driving inf'nce liquor	4
Wilson, James	54	Nov. 2, 1931	Nov. 21, 1931	Claremont	Drunk	6
Wisinski, Antoni	41	Nov. 20, 1931	Sept. 17, 1931	Claremont	Fishing without lic.	2
Witowski, Stanley	35	Aug. 19, 1931	Oct. 27, 1931	Claremont	Drunk	4
Woods, Frank	50	Sept. 21, 1931	Dec. 7, 1931	Claremont	Drunk	5
Woods, Frank	50	Oct. 29, 1931	June 5, 1931	Claremont	Drunk	5
Woods, Frank	50	Dec. 13, 1931	May 6, 1931	Claremont	Drunk	2
Williams, Jos. (Carey)	56	May 1, 1931	May 8, 1931	Claremont	Drunk	5
Worster, John	50	March 31, 1931	Nov. 27, 1931	Claremont	Drunk	5
Wall, John	46	April 3, 1931	Aug. 17, 1931	Claremont	Drunk	1
York, Charles	45	Sept. 8, 1931		Newport	Driving inf'nce liquor	11
Zulukey, Peter	34	July 13, 1931		Claremont	Drunk	4
						5

PRISONERS AT SULLIVAN COUNTY JAIL, JAN. 1, 1931, TO JAN. 1, 1932

Name	Age	Date of Entry	Date of Dis-charge or Death	Where from	Crime	Time Sup'd
Bates, Elmer	27	May 11, 1931	Sept. 2, 1931	Newport	Held for trial	16 3
Bissell, Wm.	19	July 31, 1931	Sept. 9, 1931	Newport	Held for trial	5 6
Brock, Henry S.	36	Aug. 12, 1931	Sept. 10, 1931	Claremont	Held for trial	4 2
Colby, John	24	Nov. 5, 1931		Claremont	Held for trial	8 1
Collins, Homer	29	Dec. 30, 1931		Newport	Held for trial	8 3
Gouin, Louis	28	Nov. 5, 1931		Claremont	Held for trial	8 1
Hodge, Warren	18	Oct. 30, 1931		Claremont	Held as witness	8 6
Nash, Ellsworth	17	Oct. 30, 1931		Claremont	Held as witness	9
Paquette, Albert	29	Aug. 27, 1931	Sept. 10, 1931	Charlestown	Held for trial	2 1
Paquette, Albert	29	Sept. 10, 1931		Claremont	Possession	8 4
Paquette, Albert	29	Nov. 9, 1931		Claremont	Held for deportation	7 5
Schettino, John	22	Aug. 13, 1931		Claremont	Held for trial	7 1
Smith, Daniel	34	Sept. 19, 1931	Oct. 1, 1931	Claremont	Held for trial	14 6
Sylvester, Herbert	21	Oct. 30, 1931	Nov. 4, 1931	Charlestown	Held for trial	5
Stocks, Kenneth	25	July 25, 1931	Oct. 1, 1931	Cornish	Held for trial	9 6
Thibault, Durile	52	July 8, 1931	July 12, 1931	Claremont	Held for trial	5
Thibault, Yvonne	30	July 8, 1931	July 12, 1931	Claremont	Held for trial	5
Thibodeau, Henry	20	July 30, 1931	Sept. 9, 1931	Claremont	Held for trial	6 1
Williams, Leo	18	Nov. 5, 1931		Charlestown	Held for trial	8 1

Number of Inmates admitted during the year	149
Number of Inmates at Home Jan. 1, 1931	76
	<hr/>
	225
Number of Inmates discharged during the year	127
Number of deaths	10
Number of Inmates at the Home Dec. 31, 1931	88
	<hr/>
	225
Number of Boarders	39
Number of deaths	4
Number of Boarders gone away	12
Number of Boarders remaining Dec. 31, 1931	23
Number of Prisoners at House of Correction Jan. 1, 1931	12
Number of Prisoners admitted during the year	169
	<hr/>
	181
Number of Prisoners discharged during the year	153
Number of Prisoners remaining	28
	<hr/>
	181
Number of Prisoners admitted to County Jail during 1931	19
Number of Prisoners discharged during the year	11
Number of Prisoners remaining	7

REPORT OF SUPERINTENDENT AND MATRON

As we enter on the new year with our new building, new equipment and an up to date hospital, and look back just one short year, it seems a miracle, the changes that have taken place in so short a time.

The past year has been a busy one for all of us, but we are well satisfied that something has been accomplished.

With the increased numbers, both inmates and prisoners, it would have been next to impossible to have cared for them under the old conditions.

We have many thanks for all who have worked with us the past year, everything has moved along very harmoniously and we realize we are not the only ones that have put in a hard year, for we know our County Commissioners have had fully as much to bear as we, and we fully appreciate their cooperation with us, considering the burdens they have had to bear outside the Home.

We appreciate the courtesy and kindness of the building committee toward us, they seemed to have realized all our problems and certainly did their utmost to help us work them out for the good of the Home.

Our new hospital is a wonderful help in caring for the sick, and as we have had from twenty to thirty patients nearly all the time, we feel that it must mean somewhat of a saving to the County rather than have them cared for elsewhere.

We wish to thank all our employes who have worked with us the past year. It has been an unusually hard one for them as well as ourselves. Dr. Sanders who took great interest in equipping the hospital and operating room, and seems to take pride in having and keeping the same up to standard. Also Miss Agnes Ellingwood who takes a very great interest in the welfare of the inmates, giving them a social call as well as a very interesting service on Sunday.

We wish to extend a hearty invitation to all the people of the County who have not as yet visited the new County Home. We would be pleased to have them call and we will be glad to go through the Home with them.

Very respectfully,

LUMAN M. GROUT, Superintendent.

FLORENCE D. GROUT, Matron.

REPORT OF CLERK OF SUPERIOR COURT

To the Commissioners of Sullivan County:

Gentlemen—The following is a correct statement of my accounts with said County, ending October 19, 1931, as examined and approved by the Court:

FEBRUARY TERM, 1931

County		Dr.
To one-half allowance made by Court	\$	1,500.00
To return of 23 divorces		2.30
To 52 days attendance at \$5.00		260.00
To recording		56.20
To cash paid Argus Press, dockets	\$ 103.25	
To cash paid postage \$11.49, stationery and other incidentals	21.52	124.77
County	Cr.	
By 16 dockets sold at \$1.50	\$ 24.00	
By 159 entries at 90c (102 Civil including No. 1788) (39 Equity including No. 888) (18 State including No. 244)	143.10	
By County order	1,776.17	
	\$ 1,943.27	\$ 1,943.27

SEPTEMBER TERM, 1931

County		Dr.
To one-half allowance made by Court	\$	1,500.00
To return of 18 divorces		1.80
To 25 days attendance at \$5.00		125.00
To recording		263.55

To cash paid Argus Press, dockets	\$	103.00	
To cash paid postage \$11.24, stationery and other incidentals		14.24	
		<hr/>	\$ 117.24
To certificate in State v. Donovan			.50
County		Cr.	
By 16 dockets sold	\$	24.00	
By 196 entries at 90c		176.40	
(134 Civil including No. 1923)			
(15 State including No. 263)			
(47 Equity including No. 933A)			
By costs—State v. Leon C. Rollins		50.00	
By County Order		1,757.69	
		<hr/>	<hr/>
	\$	2,008.09	\$ 2,008.09

NOTE—Since above account was made and approved by the Court there has been received

State v. Sunn fine and costs	\$ 50.00
State v. Duncan fine	100.00

which two sums were paid County Treasurer December 29, 1931.
December 31, 1931.

Respectfully submitted,

JOHN MCCRILLIS, Clerk.

SHERIFF'S REPORT

To the Commissioners of Sullivan County:

Gentlemen:

I herewith submit my annual report for expenses and services for the year ending December 31st, 1931.

FEBRUARY TERM

Rev. H. D. Harver, Chaplain	\$ 5.00
Emery B. Monta, sheriff, 52 days attendance	260.00
Emery B. Monta, sheriff, 700 miles travel and expenses	92.50
James W. Davidson, deputy sheriff, 16 days attendance	80.00
James W. Davidson, deputy sheriff, 704 miles travel and expenses	82.40
Henry G. Hastings, deputy sheriff, 19 days attendance	95.00
Henry G. Hastings, deputy sheriff, 38 miles travel	3.80
Winston Hotel, meals for jurors	63.00
Winston Hotel, meals for prisoners	9.00
Winston Hotel, room for State witness	2.00
Newport Hotel, meals for jurors	45.00
Jameson's Restaurant, meals for jurors	16.30
Tremont Restaurant, meals for prisoners	91.90
	\$ 845.90

Special Session May 13, 14 and 15

Emery B. Monta, sheriff, 3 days attendance	\$ 15.00
Emery B. Monta, sheriff, 60 miles travel	6.00
Emery B. Monta, sheriff, conveying jurors	6.00
Wm. M. Livingston, deputy sheriff, 3 days attendance	15.00
Wm. M. Livingston, deputy sheriff, 132 miles travel	13.20
Wm. M. Livingston, deputy sheriff, conveying jurors	6.00
George W. Coles, conveying jurors	6.00
Wm. L. Gaffney, conveying jurors	6.00
Newport Hotel, meals for jurors	31.00

Winston Hotel, meals for jurors	\$	21.00
Winston hotel, prisoners and witness, meals		7.90
	\$	133.10

SEPTEMBER TERM

Rev. Charles W. Turner, chaplain	\$	5.00
Emery B. Monta, sheriff, 25 days attendance		125.00
Emery B. Monta, sheriff, 500 miles travel		50.00
Emery B. Monta, expenses		11.25
James W. Davidson, sheriff, 6 days attendance		30.00
James W. Davidson, deputy sheriff, 264 miles travel		26.40
James W. Davidson, deputy sheriff, expenses		4.50
James W. Davidson, conveying prisoners		18.60
Sidney G. Whitmore, deputy sheriff, 13 days attendance		65.00
Sidney G. Whitmore, deputy sheriff, 52 miles travel		5.20
Sidney G. Whitmore, deputy sheriff, expenses		6.50
Sidney G. Whitmore, conveying prisoners		14.00
John Baylis, deputy sheriff, 8 days attendance		40.00
John Baylis, deputy sheriff, 336 miles travel		33.60
John Baylis, conveying prisoners		13.50
John Baylis, expenses		6.00
Newport House, meals for jurors		22.50
Winston Hotel, meals for jurors		43.50
Winston Hotel, meals for prisoners		12.85
Shehan's Restaurant, meals for prisoners		23.80
Jameson's Restaurant, meals for prisoners		10.50
	\$	567.70
To Emery B. Monta, 12 months salary, from Jan. 1st, 1931 to Jan. 1st, 1932	\$	800.00
By County orders received	\$	800.00

Respectfully submitted,

E. B. MONTA.

CHAPLAIN'S REPORT

To the Commissioners of Sullivan County:

Dear Sirs:

The past year's work has been one of enjoyment and I believe of profit. The new chapel has greatly added to the atmosphere of the services. The piano, the gift of Major Murphy of Nashua, has been much enjoyed and the music furnished each Sunday on the violin and banjo by Mr. Sanders and Mr. Wilson has been a welcome addition.

The attendance each Sunday has numbered from seventy-five to one hundred and all have evidenced a spirit of interest and cooperation.

During the year about two hundred calls have been made on those in the hospital department.

It has indeed been a pleasure to work where so much of kindly cooperation has been manifest.

Respectfully submitted,

AGNES C. ELLINGWOOD.

SOLICITOR'S REPORT

June 30, 1931.

To the County Commissioners for the County of Sullivan:

I beg herewith to submit my report as County Solicitor.

From the first of the year to date I have been engaged quite continuously in the prosecuting of liquor cases and minor offenses, within their jurisdiction, in the Municipal Courts throughout the County.

At the February term 1931, of the Superior Court there were about the usual number of indictments, and the respondents in nearly all the cases plead guilty and were sentenced.

The case of the most importance, for which an indictment was returned at the February term 1931, and which was subsequently tried in May, 1931, was the case of State vs. Elmer Bates. Bates was charged with robbery and upon trial was convicted and sentenced to not less than 15 nor more than 18 years at hard labor, at the State Prison, Concord, N. H.

I wish to take this opportunity of thanking you gentlemen, as well as all others with whom I had to work while holding the office of Solicitor, for your cooperation.

Respectfully submitted,

HOWARD H. HAMLIN.

REPORT OF COMMISSIONER TO PERFORM THE DUTIES OF THE COUNTY SOLICITOR FROM JULY 1 TO OCTOBER 2, 1931

To the Commissioners of Sullivan County:

My term of office lasted as above indicated and included acting as solicitor for the criminal cases at the September, 1931 term of the Superior Court. At that term the grand jury returned indictments against fourteen respondents.

One of these indictments charging reckless driving of an automobile resulting in the death of a small child was tried by

jury and the respondent was acquitted. Another defendant pleaded guilty to the same charge and was given a house of correction sentence.

Three respondents received sentences at the house of correction for breaking and entering; two others were sent to the same institution for larceny of hens; and another went there for the larceny of an automobile. The two accomplices of the last mentioned party were prosecuted in the State of Maine for another offence.

On a charge of robbery one party was sent to State's prison for a term of five to six years. A larceny case was nol prossed on restitution being made; and a perjury case was disposed of with a fine.

Another larceny case I was obliged to continue because of the fact that the term came to an end without opportunity for all cases to be heard.

Respectfully submitted,

F. W. JOHNSTON,

Commissioner to perform the duties
of the County Solicitor.

REPORT OF COMMISSIONER TO PERFORM THE DUTIES
OF THE SOLICITOR FROM
OCTOBER 2 TO DECEMBER 31, 1931

Claremont, N. H., Feb. 5, 1932.

To the Commissioners of Sullivan County:

Gentlemen:

My report to you at this time must necessarily be brief in view of the fact that I only assumed my duties on October 1, 1931.

I have, as yet, had no cases in the Superior Court.

In the Municipal Courts of the county, I have had twenty cases involving violation of the liquor law.

Sixteen of these cases were disposed of by pleas of guilty.

There were four respondents who were tried and convicted.

There were no acquittals.

There are two appealed liquor cases to be disposed of.

There has been prosecution of two respondents on the charge of lascivious conduct. They were found guilty and paid fines.

Respondents bound over for appearance at the February Term of the Superior Court include two charged with assault and robbery; four charged with breaking and entering; one charged with forgery; and another respondent charged with numerous offences, including embezzlement, forgery, obtaining money under false pretenses.

Just how many respondents will be tried cannot be determined until they have been arraigned.

Your solicitor has entered a case for the county against the Town of Lempster, over a matter involving the Old Age Pension Law recently passed. This should be very interesting from a legal and practical standpoint.

It has been very gratifying to find the cooperation that exists among the various county officials.

Respectfully submitted,

JOHN H. LEAHY,

Commissioner to perform the duties
of the County Solicitor.

PHYSICIAN'S REPORT

To the Commissioners of Sullivan County:

Gentlemen:

The work of the attending physician to the Sullivan County Home was greatly increased during the past year. More persons acutely sick were admitted to the Home. There were more children at the Home requiring vaccination, diphtheria immunization and minor surgical operations. More prisoners in the jail and workhouse required medical treatment. Three persons have been under quarantine and treatment for syphilis. Nine women have been attended in childbirth. Six of these women were County charges, and three were women who availed themselves of the facilities of the Home in preference to being cared for in their own homes.

There were seventeen deaths and with the exception of two stillborn children were of people over fifty years of age and were due to chronic diseases.

Name	Date	Age	Cause of Death
Ainsworth, Walter H.	Feb. 24	81	Cerebral hemorrhage
Bacon, Ida	Apr. 9	69	Arteriosclerosis
Crabtree, William	May 23	80	Arteriosclerosis
Delaurier, Marion	Dec. 23	77	Arteriosclerosis
Falkowski, Joseph	Dec. 25	60	Arteriosclerosis
Fecteau, Peter	May 26	72	Diabetes mellitus
Fifield, Fred L.	Mar. 26	70	Chronic myocarditis
Jordan, Darwin	Dec. 24	77	Chronic nephritis
Kimball, Florence	Mar. 18	63	Pneumonia
Mayotte, Fred	Jan. 26	87	Cancer of lip
Noyes, Fred L.	Sept. 19	81	Cancer of lip
Richardson, Bruce	Jun. 30	76	Arteriosclerosis
Titus, Harriet	Feb. 24	77	Cerebral hemorrhage
Walker, Melissa	Mar. 15	75	Chronic myocarditis
Webster, Edward G.	Nov. 3	59	Chronic myocarditis

Yours respectfully,

HENRY C. SANDERS, JR., M. D.

COUNTY TREASURER'S REPORT

To the Honorable Board of Commissioners of Sullivan County:

Gentlemen:—The following is a statement of the financial transactions of the County of Sullivan as shown by the books of the Treasurer for the year ending December 31, 1931:

Receipts

Cash on hand January 1, 1931	\$ 5,546.82
------------------------------	-------------

COUNTY TAXES

Acworth	\$ 1,458.65
Charlestown	7,110.92
Claremont	64,441.07
Cornish	3,828.96
Croydon	1,823.31
Goshen	781.42
Grantham	1,067.94
Langdon	859.56
Lempster	1,067.94
Newport	20,004.34
Plainfield	3,620.58
Springfield	1,745.17
Sunapee	8,751.90
Unity	1,432.60
Washington	2,005.64
	\$120,000.00

FINES AND FORFEITS

Municipal Court of Claremont, State vs. Kessap	\$ 100.00
Municipal Court of Claremont, State vs. Paradise	100.00
Municipal Court of Claremont, State vs. Hugues	100.00
Municipal Court of Claremont, State vs. Gallaro	100.00

Municipal Court of Claremont, State vs. Reed	\$	100.00
Municipal Court of Claremont, State vs. Bacher		100.00
Municipal Court of Claremont, State vs. Smith		100.00
Municipal Court of Claremont, State vs. Rinsky		25.00
Municipal Court of Newport, State vs. Chambers		25.00
Municipal Court of Newport, State vs. Stone		123.50
Municipal Court of Newport, State vs. LaCrox		200.00
Municipal Court of Newport, State vs. Shultz		100.00
Municipal Court of Newport, State vs. Trow		75.00
Municipal Court of Newport, State vs. Putney		75.00
Municipal Court of Newport, State vs. Norris		100.00
Municipal Court of Newport, State vs. Howard		100.00
Municipal Court of Newport, State vs. Clark		100.00
Municipal Court of Newport, State vs. Sprague		50.00
Municipal Court of Newport, State vs. Hoy		100.00
Municipal Court of Newport, State vs. Rosenthal		100.00
Municipal Court of Sunapee, State vs. Click		100.00
Municipal Court of Sunapee, State vs. Fortune		50.00
John McCrillis, Clerk of Superior Court, State vs. Duncan		100.00
John McCrillis, Clerk of Superior Court, State vs. Sun		50.00
	\$	<u>2,173.50</u>

INCOME FROM INSTITUTIONS

Lawrence Brown, rent of Jail House	\$	128.75
Vernon C. Delaney, rent of Jail House		235.00
	\$	<u>363.75</u>

REIMBURSEMENTS FOR SUPPORT OF POOR

Grafton County, aid to Maynard Clark	\$	323.52
Josephine Donovan, for care of children		80.00
W. F. Gonyea, board for Harold Gonyea		36.00
Town of Claremont, rebate of Amos Davidson		53.58
Town of Newport, rebate of Harvey Wright		144.69
Town of Newport, rebate of Jay Hager		3.05
Town of Newport, rebate of Everett Emery		247.00

Town of Newport, rebate of Nellie Clement	\$	4.00
Town of Newport, rebate of Charles H. Partlow		15.03
	\$	<u>906.87</u>

LOANS

The National Shawmut Bank of Boston, proceeds of note	\$	10,000.00
The National Shawmut Bank of Boston, proceeds of note		65,000.00
Merchants National Bank of Boston, proceeds of note		35,000.00
First National Bank of Newport, proceeds of note		10,000.00
Sugar River Savings Bank of Newport, proceeds of note		15,000.00
New Hampshire Savings Bank, proceeds of note		15,000.00
J. F. McElwain Co., proceeds of note		15,000.00
Estate of Mrs. Ella Sargent Albin		35,000.00
	\$	<u>200,000.00</u>

ALL OTHER RECEIPTS

Sullivan County Building Account	\$	2,568.52
Premium on Sullivan County Building Bonds		1,500.00
Barnes & Rouillard, rebate on insurance		58.13
P. A. Mineau Agency, rebate on insurance		64.14
Bartlett Insurance Agency, rebate on insurance		27.74
Henry C. Hawkins, rebate on insurance		20.66
Quimby & Rossiter, rebate on insurance		23.70
Merton J. Sargent, rebate on insurance		11.85
Fred T. Pollard, rebate on insurance		5.60
Town of Newport, repairs on Town Hall		79.52
Town of Newport, rebate on Soldiers' claims		72.38
Town of Claremont, old age assistance		206.00
Burroughs Adding Machine Co., rebate		1.29
E. B. Monta, rebate on telephone bill		12.45
Citizens National Bank, credit for returned checks		44.40
New England Telephone and Telegraph Co., rebate		.60
	\$	<u>4,696.98</u>

Disbursements

SALARIES OF COUNTY OFFICERS

Ira G. Colby, Auditor	\$	25.00
John J. Condon, Auditor		25.00
Wesley A. Hunt, Treasurer, salary		100.00
Emery B. Monta, salary		800.00
Howard H. Hamlin, salary		400.00
F. W. Johnston, salary		200.00
John H. Leahy, salary		200.00
Clinton K. Barton, salary		100.00
		<hr/>
	\$	1,850.00

REGISTER OF PROBATE

John R. Kelly, supplies	\$	1.30
Harry E. Jameson, cleaning		5.50
J. H. Faught & Son, supplies		2.66
Harry E. Jameson, envelopes		12.12
Marion W. Call, supplies		30.78
Carl Larson, supplies		5.46
The Argus Press, supplies		33.00
Harry E. Jameson, clerk hire		300.00
Harry E. Jameson, supplies		58.18
		<hr/>
	\$	449.00

REGISTER OF DEEDS

Paul Ersenhardt, supplies	\$	2.08
American Ribbon & Carbon Co., supplies		10.00
Allyn W. Kellogg, supplies		3.00
Silsby & Johnson, labor		.90
Charles W. Rounsevel, supplies		2.25
Charles W. Rounsevel, indexing for 1931		84.24
John R. Kelly, supplies		4.73
The Argus Press, supplies		46.25
William Mann Company, supplies		130.66
		<hr/>
	\$	284.11

CLERK OF COURT

Argus Press, supplies	\$	80.25
Carl Larson, supplies		4.22
The Therrault Press, supplies		4.51
Kimballs, Inc., supplies		1.82
William Mann & Co., supplies		37.75
Keystone Envelope Co., envelopes		7.65
Frank Shepard Co., supplies		8.00
Star Products Co., supplies		7.00
John R. Kelley, supplies		4.35
	\$	155.55

COUNTY COMMISSIONERS

George A. Wilson, labor and material, electric light	\$	7.55
Easthampton Rubber Thread Co., rubber bands		2.22
William Mann Co., supplies		51.56
Eagle Press, envelopes		1.50
Charles J. Felps, Justice and Sheriff		6.00
Argus Press, supplies		2.40
Fred A. Barton, envelopes		23.84
Harry E. Jameson, directory		8.00
Joseph Block, renewal of check machine insurance		40.00
Eagle Press, affidavits		14.65
A. E. Martell & Co., supplies		175.61
Burroughs Adding Machine Co., supplies		1.29
Kimballs, Inc., supplies		12.40
Burroughs Adding Machine Co., supplies		1.29
Keystone Envelope Co., envelopes		7.18
F. W. Aiken, miscellaneous account		13.75
Kimballs, Inc., supplies		15.71
Clinton K. Barton, labor and expenses		24.01
John R. Kelly, supplies		12.15
F. A. Barton, telephones, stamps, etc.		67.10
Marion W. Call, supplies		2.00
Eagle Press, supplies		17.75
Bernice M. Sawyer, labor and expenses		225.00
State Board of Public Welfare, old age blanks		4.20
Secretary of State, copy of 1929 Delegation		1.00
John McCrillis, labor on 1930 reports		9.50
	\$	747.66

MISCELLANEOUS EXPENSES COUNTY OFFICERS

R. A. Quimby, rent of Sheriff's office	\$	135.00
John McCrillis, bonds for County Treasurer and Register of Deeds		112.50
John McCrillis, bond for Deputy Sheriff		20.00
John McCrillis, bond for County Solicitor		12.50
E. B. Monta, Sheriff's telephone		171.34
W. A. Hunt, County Treasurer's expenses		4.87
Evans Printing Co., supplies for County Treasurer		8.50
Howard H. Hamlin, County Solicitor's telephone		182.30
The Advocate Press, supplies for County Solicitor		7.50
The Argus Press, supplies for County Treasurer		1.75
The Eagle Press, supplies for County Solicitor		43.50
F. W. Johnston, Solicitor's telephone		25.05
H. S. Richardson, rent of office for Judge of Probate		60.00
H. S. Richardson, supplies for Judge of Probate		21.96
Total	\$	806.77

COURT HOUSE

Newport Water Works, water rent	\$	30.00
John L. Dame, coal		136.22
The Argus Press, supplies		5.00
Walter E. Hunting, janitor's salary		500.00
Walter E. Hunting, expenses		31.46
Stone & Forsyth Co., supplies		10.80
H. H. Chatfield, labor		9.75
Guy A. Dodge, labor and materials		131.51
B. L. Horn, labor and materials		10.95
F. E. Newcomb, labor and supplies		36.03
K. E. Peterson, repairing court room clock		1.50
John McCrillis, insurance		175.50
Fred T. Pollard, insurance		162.00
Arthur S. Nelson, insurance		162.00
Frank H. Jordan, labor and materials		9.95
Fred W. Aiken, labor and wood for Court House		51.50
Town of Newport, labor, etc., for Court House		92.30
New Hampshire Power Company, lights		247.40
New Eng. Tel & Tel. Co., telephone		529.75
	\$	2,333.62

JURY PAYROLLS

Grand Jurors' Payroll, February term 1931	\$	167.96
Grand Jurors' Payroll, September term 1931		146.88
Petit Jurors' Payroll, February term 1931		3,194.68
Petit Jurors' Payroll, Special Session		349.64
Petit Jurors' Payroll, September term 1931		1,740.48
	\$	5,599.64

STATE VS. PAYROLLS

Assistance to Solicitor	\$	1,396.30
State vs. Elmer Bates		814.06
State vs. Ivan Bell and Wesley Orcutt		311.74
State vs. George Brown and Stewart Stone		46.88
State vs. Walter G. Chapman		7.32
State vs. Clifford Cobb		169.64
State vs. Martin Harron		232.80
State vs. Lester Rollins		3.00
State vs. Robert Wells		3.00
State vs. Ethel Gray, Beatrice Atkins and Dorothy Atkins		105.06
State vs. George Merton and Juvenile		217.34
State vs. Sidney Withington		106.02
State vs. Frank Filiault		1.00
State vs. Edwin Dupruis		22.00
State vs. Two Juveniles		66.40
State vs. Anthony Marro		90.34
State vs. Vincent Cazzalio		16.00
State vs. Nellie Filault		3.00
State vs. Lyman H. Gray		3.00
State vs. Ernest Porter and Joseph Alger		25.80
State vs. Archie Paquette		9.40
State vs. Harry Smith		7.20
State vs. Ted Smith and Sumner Quimby		79.14
State vs. John Schettino		6.40
State vs. Howard D. Bailey		51.40
State vs. Jack Brady		33.38
State vs. Edward J. Valley		79.26
State vs. James Duncan		27.24
State vs. Brock, Putnam and Anderson		9.60
State vs. William Bissell		7.70
State vs. Albert N. Jewett		8.48

State vs. Leon C. Rollins	\$ 1.00
State vs. Fairbanks and Johnson	2.20
State vs. H. Stuart Osgood	1.20
State vs. Kenneth Stocks	34.64
State vs. Effie Gonyea	16.50
	<hr/>
	\$ 4,015.44

COUNSEL FEES

Charles D. Barnard, services State vs. Bowen	\$ 1,123.37
J. H. Leahy, defense of Wesley Orcutt	50.00
Charles D. Barnard, witness, State vs. Bowen	96.00
Howard H. Hamlin, defense of Kenneth H. Stocks	75.00
Hamlin and Spooner, State vs. Jack Brady	25.00
Leahy and Leahy, defense of John Schettino	50.00
Leahy and Leahy, services et al to Eugene Jondro	100.00
Barton and Shulins, srvcies in Bissell case	25.00
Henry N. Hurd, services in State vs. Johnson	25.00
Henry N. Hurd, services in State vs. Fairbanks	25.00
Henry N. Hurd, services in State vs. Ray Putnam	50.00
Kenneth E. Shaw, services in State vs. Bates	150.00
	<hr/>
	\$ 1,794.37

MASTER FEES

David F. Dudley, services as master, Lawrence vs. Brown	\$ 35.00
John W. McCrillis, services as master in Equity No. 886	5.00
John W. McCrillis, services as master in Equity No. 889	5.00
John W. McCrillis, services as master in Equity No. 933	7.50
	<hr/>
	\$ 52.50

REFEREE'S SERVICES

H. S. Richardson, services as referee	\$ 112.50
Chester B. Jordan, services in Gullette Rubber Co. vs. Richards	114.85
H. S. Richardson, services in Hanlon vs. Nadolski	5.00
Roy M. Picard, services as referee in civil cases	70.70
F. W. Johnston, services as referee in civil No. 1655	5.00

David F. Dudley, services as referee in Brody vs. Gellis	\$ 5.00
John W. McCrillis, services as referee in No. 1472	5.00
David F. Dudley, services as referee in Hamlin vs. Bushman	55.20
David F. Dudley, services as referee in No. 1548-1549	87.70
F. W. Johnston, services as referee in No. 1710	7.50
Fred C. Cleaveland, services as referee in Lear vs. Brodeur	114.00
David F. Dudley, services as referee in Jordan vs. Carter	34.48
	<hr/>
	\$ 616.93

STENOGRAPHER

Margaret A. Conway, services as stenographer February Term, 1931	\$ 507.20
Margaret A. Conway, services as stenographer, September Term, 1931	227.00
Margaret A. Conway, copies of Supreme Court opinions	57.00
Margaret A. Conway, transcript, Raymond vs. Indemity Company	37.60
Robert M. McCurdy, Clerk, typed copies, Lear vs. Brodeur	1.40
H. L. Trask, services as stenographer in Horawitz vs. Nassau	20.25
H. L. Trask, services as stenographer in Lear vs. Brodeur	128.35
Ida M. Lawrence, taking testimony	12.75
Clerk of the Supreme Court, typed opinions	18.55
H. L. Trask, transcript of evidence, State vs. Bates	117.25
H. L. Trask, services as stenographer in Patterson vs. Patterson	70.00
Lena M. Minot, services as stenographer	6.74
H. L. Trask, services as stenographer in No. 799 Equity	125.75
Ida M. Lawrence, stenographer in Jordan vs. Carter	8.50
	<hr/>
	\$ 1,400.99

COMMISSIONERS' ACCOUNT

Frederick W. Aiken, services and expenses as County Commissioner	\$ 1,283.10
Fred A. Barton, services and expenses as County Commissioner	2,051.35

Oliver A. Putnam, services and expenses as County Commissioner	\$ 1,959.60
	<hr/> 5,294.05

CLERK OF SUPERIOR COURT

John W. McCrillis, services and expenses as Clerk of Court	\$ 3,533.86
Edson C. Eastman, Co. Inc., copy of "Justice and Sheriff"	6.20
	<hr/> \$ 3,540.06

SHERIFF AND DEPUTIES

E. B. Monta, Sheriff, services and expenses February Term, 1931	\$ 845.90
E. B. Monta, Sheriff, special session	133.10
E. B. Monta, Sheriff, services and expenses September Term, 1931	567.70
	<hr/> \$ 1,546.70

SOLICITOR'S EXPENSE ACCOUNT

Howard H. Hamlin, six months expense	\$ 269.40
Howard H. Hamlin, services in liquor cases	350.30
Howard H. Hamlin, three months expenses	41.00
F. W. Johnston, services in liquor cases	102.00
F. W. Johnston, incidental expenses	68.10
John H. Leahy, expenses for October	63.40
John H. Leahy, services in liquor cases	80.70
Howard H. Hamlin, services in presenting case to Grand Jury	25.00
	<hr/> \$ 999.90

MAINTENANCE OF COUNTY FARM

L. M. Grout, Supt., orders drawn by Commissioners	\$ 27,600.00
Insurance at County Farm:	
Barnes and Rouillard	507.50

Quimby & Rossiter	\$ 292.50
Henry C. Hawkins	87.50
Fred T. Pollard	43.00
P. A. Mineau Agency	332.40
Bartlett Insurance Agency	212.50
Merton J. Sargent	62.50
Claremont Paper Company, supplies	57.96
Outlet Supply Company, mattress	10.70
	<hr/>
	\$ 29,206.56

SUPPORT OF POOR NOT AT FARM

Acworth	\$ 397.96
Charlestown	1,086.36
Claremont	50,619.11
Cornish	1,651.81
Croydon	283.56
Goshen	232.13
Grantham	1,697.99
Langdon	162.36
Lempster	859.75
Newport	13,845.97
Plainfield	2,444.15
Springfield	304.34
Sunapee	55.83
Unity	162.83
Washington	29.25
	<hr/>
	\$ 73,833.40

SUPPORT OF CHILDREN

Paid for Support of Children in Families

Mrs. M. G. Dole	\$ 744.00
Mrs. C. R. Pattee	53.20
George J. Smith	214.43
Agnes C. Ellingwood	130.00
Harry Ryan	88.25
Cora MacWilliams	47.00
Louie T. Lufkin	112.01
Mrs. Pearl Clark	84.02

Mrs. Perley Cole	\$	174.45
Mrs. B. F. Hawkins		326.85
Mrs. Ruth Brooks		296.85
Alexis J. LaPorte		110.80
		<hr/>
	\$	2,381.86

Paid for Aid of Children in Families

Arthur L. Patch, M.D., medical aid for James Marden	\$	6.25
Nashua Hospital Ass'n, care of Eleanor Royce		18.00
Arthur L. Wallace, M.D., medical aid for Eleanor Royce		32.00
Noyes Shoe Co. Inc., shoes for LaValley child		2.45
William P. Nolin, supplies for June LaValley		3.24
A. L. Patch, M.D., medical aid for James Marden		24.00
M. H. Fishman Co., clothing for LaValley children		2.94
Surprise Store, supplies for Roland LaPorte		2.88
M. J. Hourihan, supplies for Rene LaPorte		4.50
Winter Bros., supplies for Rene LaPorte		3.94
Child Welfare Club, expenses in connection with Baxter children		50.00
M. H. Fishman Co., Inc., supplies for Lombard children		6.92
O. A. Putnam, supplies for Robert Wolfgrain		2.27
M. J. Hourihan, supplies for LaPorte child		5.50
J. W. Doyle Shoe Store, shoes for LaPorte children		6.70
Montgomery Ward and Co., supplies for LaPorte children		4.06
		<hr/>
	\$	175.65
New Hampshire Children's Aid and Protective Society		
Care of children	\$	1,677.03
New Hampshire Orphan's Home		
Care of children		1,030.90
Nashua Orphan's Home (Nashua Protestant Orphanage Association)		
Care of children		745.78
Coit House, Care of children		130.00
Old Age Assistance, Care of Aged Persons		554.00

MISCELLANEOUS ORDERS FOR SUPPORT OF POOR
AND DEPENDENT SOLDIERS

March Clark, wood and supplies for Arthur Sherman (Outstanding in 1931)	\$ 37.45
Frank C. Archibald, attorney in Fannie Nash case	164.14
Oscar F. Adams, expense in Fannie Nash case	14.25
Claremont General Hospital, John Ellis case	20.74
Elmer E. Dodge, expense in pauper cases	44.00
James W. Davidson, expense in pauper cases	60.00
Massachusetts General Hospital, Kosanen case	100.00
Mason S. Colby, expense in pauper cases	9.81
Mason S. Colby, milk for Emma R. Reed	6.75
Hillsborough County General Hospital, L. J. Peach case	44.00
Mary Hitchcock Hospital, Claude Graves case	42.50
Philip Parizo, Josephine Donovan case	3.00
F. W. Aiken, groceries for Winnell	5.00
The Eagle Press, citation guardianship Grandberg children	4.00
W. Henry May, seeds for Poor of Claremont	72.74
W. Henry May, seed potatoes for Poor of Claremont	5.00
F. W. Aiken, expense in pauper cases	8.71
Charles F. Keeley, M.D., expense in pauper cases	115.00
Claremont General Hospital, Quimby and Dahill cases	46.55
F. A. Barton, expense in pauper cases	3.00
Claremont General Hospital, Mark King case	72.70
Elmer E. Dodge, Hastings case	178.80
Elmer E. Dodge, supplies for paupers	32.12
T. I. Farmer, moving Duncan goods	5.00
T. I. Farmer, moving Gobin to North Newport	4.90
Carrie F. Wright Hospital, Joseph Connolly case	7.15
Dixi C. Newton, Joseph Conolly case	5.00
Charles F. Keeley, M.D., Mark King case	75.00
Budd D. Hawkins, seeds for poor	5.70
H. P. George, M.D., Herbert Thornton case	25.00
H. P. George, M.D., Grace Wilder case	20.00
Dr. A. S. Marden, Emma Reed case	21.00
Carrie F. Wright Hospital, Emma Reed case	10.75
Mansfield and Hilliard, Alfred Ouillette prescription	12.50
George E. Lewis, rent for Bert C. Fowler	52.00
F. W. Aiken, Aid for Poor	20.30
Kimballs, Inc., supplies for Overseer of Poor, Claremont	34.20

J. C. Ketchen, supplies for Harry Farwell	\$ 38.53
Dr. R. H. Brooks, M.D., medical aid for Poor at Claremont	625.00
O. A. Putnam, expense in LaValley case	70.00
Claremont General Hospital, Ethel Lord case	48.00
E. M. Fitch, M.D., medical aid for Ethel Lord	33.00
E. M. Fitch, M.D., medical aid for Doris Amell	33.00
Claremont General Hospital, Doris Amell case	47.00
George H. Stoughton, burial of infant	20.00

\$ 2,302.39

JAIL EXPENDITURES

Newport Water Works, water rent	\$ 30.00
County of Hillsborough, N. H., board of prisoners	238.56
County of Hillsborough, N. H., board of prisoners	395.00
County of Hillsborough, N. H., board of prisoners	130.72
County of Hillsborough, N. H., board of Prisoners	27.14
John McCrillis, insurance	17.50
V. C. Delaney, labor and supplies	23.40

\$ 862.32

PAID FOR RELIEF OF NEEDY BLIND

Fisher, Herbert S.	\$ 87.50
Fontaine, Ludger	150.00
Gobin, Michael	150.00
Gilman, William	37.50
Hurd, Horace D.	87.50
Pitken, Nathan E.	150.00
Reed, James R.	150.00
York, Eugene	150.00

\$ 962.50

SOLDIERS' BENEFITS

Charlestown	\$ 112.39
Claremont	6,861.98
Newport	481.90
Sunapee	131.92
Unity	526.58

\$ 8,114.77

MEDICAL REFEREE

H. N. Kingsford, M. D., Mary Burke, post mortem	\$	12.00
H. N. Kingsford, M. D., post mortem, case John Cutts		12.00
H. N. Kingsford, M. D., post mortem, case Bertha E. McGinley		13.65
H. N. Kingsford, M. D., post mortem, Lionel Clark		12.00
Charles F. Keeley, M. D., autopsy, Lionel Clark		10.00
H. C. Sanders, M. D., case Raymond Landry		35.00
H. C. Sanders, M. D., case John Cutts		35.00
H. C. Sanders, M. D. case of Hyacinth Rumrill		5.10
H. C. Sanders, M. D., case Stachy Birker		5.10
H. C. Sanders, M. D., case John Cutts		5.10
H. C. Sanders, M. D., case Beulah Larach		5.10
H. C. Sanders, M. D., case Raymond Landry		5.10
H. C. Sanders, M. D., case Eleanor Larach		5.10
H. C. Sanders, M. D., case May Larach		5.10
H. C. Sanders, M. D., case Eva Nelson		6.60
H. C. Sanders, M. D., case Stephen Zuhas		10.00
H. C. Sanders, M. D., case Rufus Densmore		5.10
H. C. Sanders, M. D., case autopsy, Lionel Clark		35.00
F. P. Claggett, M. D., Medical Referee, case Bertha McGinley		25.00
F. P. Claggett, M. D., Medical Referee, case unknown baby		25.00
F. P. Claggett, M. D., Medical Referee, case Joseph I. Clark		5.00
F. P. Claggett, M. D., Medical Referee, case Justine Laliberte		7.30
F. P. Claggett, M. D., Medical Referee, case Rhicken Morgan		6.00
F. P. Claggett, M. D., Medical Referee, case Ernest Foley		9.20
F. P. Claggett, M. D., Medical Referee, case Bertha McGinley		7.30
F. P. Claggett, M. D., Medical Referee, case Tom Davehue		7.20
F. P. Claggett, M. D., Medical Referee, case John Barton		5.80
F. P. Claggett, M. D., Medical Referee, case Harold E. Daigno		7.30

F. P. Claggett, M. D., Medical Referee, case Dorothy McClintock	\$ 7.00
F. P. Claggett, M. D., Medical Referee, case unknown baby	9.20
	<hr/>
	\$ 343.35

OUTLAY FOR CONSTRUCTION AND EQUIPMENT

County Farm

Howe's Garage, boot between trucks	\$ 566.00
Howe's Garage, boot between cars	250.00
Kimballs, Inc., office table at County Farm	60.50
F. E. Newcomb, labor and materials (heating)	295.98
H. H. LeClair, separator	335.00
	<hr/>
	\$ 1,507.48

INDEBTEDNESS AND INTEREST

Payments on Principal

Harris, Forbes & Co., two bonds	\$ 1,000.00
First National Bank of Newport, three bonds	3,000.00
John McCrillis, serial note	1,000.00
First National Bank of Newport, payment of note	40,000.00
First National Bank of Newport, payment of note	10,000.00
Citizens National Bank, payment of note	65,000.00
Citizens National Bank, payment of note	10,000.00
First National Bank of Newport, note	10,000.00
	<hr/>
	\$140,000.00

Payments of Interest

Harris Forbes Trust Co., int. on Building Bonds	\$ 6,375.00
First National Bank of Newport, int. on Funding Bonds	1,080.00
Harris, Forbes & Co., int. on Funding Bonds	200.00
John McCrillis, int. on serial note	85.00
First National Bank of Newport, payment of int. on note	267.35

First National Bank of Newport, payment of int. on note	\$ 1,495.00
Citizens National Bank, payment of int. on note	620.28
First National Bank of Newport, int. on note	56.95
Sugar River Savings Bank, int. on note	560.42
Merchants National Bank of Boston, int. on note	778.65
New Hampshire Savings Bank, int. on note	564.58
J. F. McElwain Company, int. on note	412.50
National Shawmut Bank of Boston, int.	83.06
	<hr/>
	\$ 12,578.79

FARM BUREAU

Carl B. Chellis, Treasurer	\$ 5,400.00
----------------------------	-------------

INVESTIGATING COMMITTEE

C. I. Drayton, Public Accountant, services	\$ 905.15
George C. Warner, supplies	15.00
	<hr/>
	\$ 920.15

NEW ROAD TO COUNTY HOME

T. E. Malloy, part payment	\$ 2,000.00
----------------------------	-------------

MISCELLANEOUS DISBURSEMENTS

The Eagle Press, county reports	\$ 391.00
The Eagle Press, labor and postage on reports	22.42
Citizens National Bank, expense in note issue	3.65
Herbert Rainie, attorney, services	25.00
The Argus Press, printing notices	2.00
Merchants National Bank of Boston, expense in note issue	35.00
	<hr/>
Total	\$ 479.07

SUMMARY

Receipts

Cash on hand January 1, 1931	\$ 5,546.82
County Taxes	120,000.00
Fines and forfeits	2,173.50
Income from Institutions	363.75
Reimbursement for Support of Poor	906.87
Loans	200,000.00
All other receipts	4,696.98
	<hr/>
	\$333,687.92

Disbursements

Salaries of County Officers	\$ 1,850.00
Register of Probate	449.00
Register of Deeds	284.11
Clerk of Court	155.55
County Commissioners	747.66
Miscellaneous expenses of County Officers	806.77
Court House	2,333.62
Jury payrolls	5,599.64
State vs. Payrolls	4,015.44
Counsel Fees	1,794.37
Master Fees	52.50
Referee's Fees	616.93
Stenographer	1,400.99
Commissioners Account	5,294.05
Clerk of Superior Court	3,540.06
Sheriff and Deputies	1,546.70
Solicitor's expense account	999.90
Maintenance of County Farm	29,206.56
Support of poor not at farm	73,833.40
Paid for support of children in families	2,381.86
Paid for Aid of children in families	175.65
New Hampshire Children's Aid Protective Society	1,677.03
New Hampshire Orphans' Home	1,030.90
Nashua Orphans' Home	745.78
Coit House	130.00
Old Age assistance	554.00
Miscellaneous orders for support of poor not at farm	2,302.39

Jail expenses	\$ 862.32
Aid to blind	962.50
Soldiers' benefits	8,114.77
Medical referee	343.35
Outlay for construction and equipment	1,507.48
Payments on principal indebtedness	140,000.00
Payments of interest	12,578.79
Farm Bureau	5,400.00
Investigating committee	920.15
New road to County Home	2,000.00
Miscellaneous disbursements	479.07
Cash on hand, January 1, 1932	16,994.63
	<hr/>
	\$333,687.92

FINANCIAL STATEMENT

Assets

Cash on hand, January 1, 1932	\$ 16,994.63
Cash in hands of Superintendent of County Farm, January 1, 1932	2.90
Amount due Sullivan County from towns for Old Age Assistance	220.00
	<hr/>
Total Assets	\$ 17,217.53

Liabilities

Bills owed by County, order No. 1073	\$ 28.00
Notes Outstanding:	
Merchants National Bank, Boston	25,000.00
Estate of Mrs. Ella Sargent Albin	35,000.00
New Hampshire Savings Bank	15,000.00
Sugar River Savings Bank	15,000.00
J. F. McElwain Company	15,000.00
	<hr/>
	\$105,028.00
Bonds Outstanding:	
Sullivan County Building Bonds 4¼%	
(exempt from debt limitation)	\$150,000.00
Sullivan County Funding Bond, 4%	4,000.00

Sullivan County Funding Bond, 1928 issue, 4%	\$ 24,000.00
John McCrillis, serial note, 4¼ %	1,000.00
	<hr/>
	\$179,000.00
Total Liabilities	\$284,028.00
Total Liabilities	\$284,028.00
Total Assets	17,217.53
	<hr/>
Net Debt, December 31, 1931	\$266,810.47

Respectfully submitted,

CLINTON K. BARTON, Treasurer.

AUDITORS' REPORT

We hereby certify that we have examined the accounts of the County Treasurer, Superintendent of the County Farm and County Commissioners for the year ending December 31st, 1931; also the bills, vouchers and payments named therein, and find them correctly cast and supported by vouchers. The vouchers however in several cases were found to be for checks for aid, etc. without further information.

IRA G. COLBY,
JOHN J. CONDON,

County Auditors.

January 19th, 1932.

