

Hamilton Smith  
Library,  
University of  
New Hampshire

**ANNUAL REPORT**  
OF THE  
**COMMISSIONERS**  
OF THE  
**COUNTY OF GRAFTON**

TOGETHER WITH THE REPORTS OF THE

Superintendent, Physician, Chaplain, Clerk  
of the Court, Treasurer, Sheriff,  
Jailer, Solicitor and Auditors

FOR THE

**Year Ending December 31, 1925**

---

**VOL. V, PART 6**





# ANNUAL REPORT

OF THE

## COMMISSIONERS

OF THE

# COUNTY OF GRAFTON

TOGETHER WITH THE REPORTS OF THE

Superintendent, Physician, Chaplain, Clerk  
of the Court, Treasurer, Sheriff,  
Jailer, Solicitor and Auditors

FOR THE

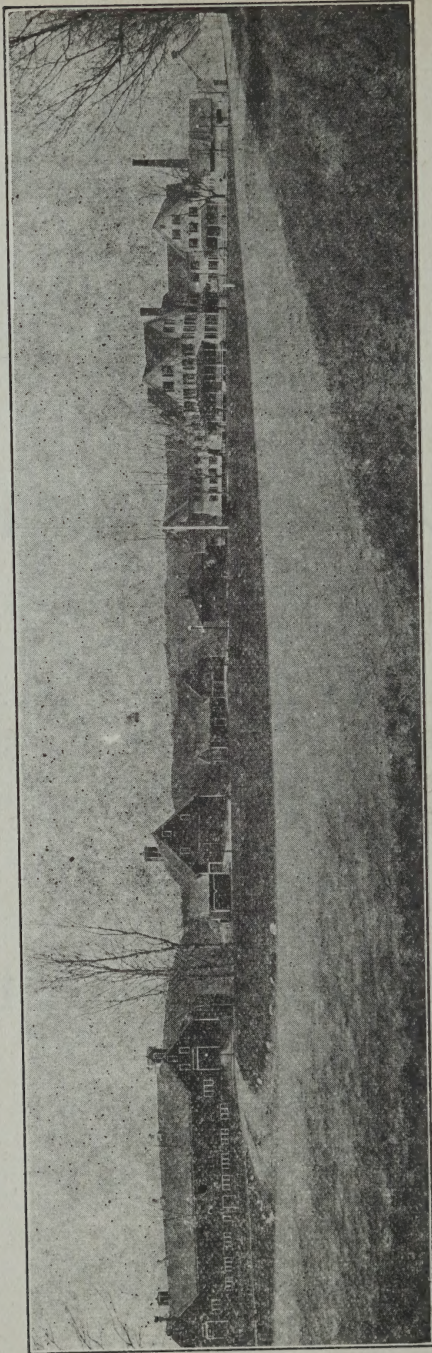
**Year Ending December 31, 1925**

VOL. V, PART 6

---

Woodsville, N. H.  
WOODSVILLE PUBLISHING CO.  
1926

N  
352.0742  
G73  
1925



Grafton County Farm Buildings, Horse Meadow Station, N. H.



## COUNTY OFFICERS

### COMMISSIONERS

Ora A. Brown		Ashland
William H. Noyes	To April 1	Woodsville
George A. Pushee		Lyme
Fred Parker	From April 1	Lisbon

### TREASURER

Frank H. Foster	Plymouth
-----------------	----------

### SOLICITOR

Clark B. Frost	Lisbon
----------------	--------

### SHERIFF

Claude Murray	Canaan
---------------	--------

### DEPUTY JAILER

Alvah H. Parker	Woodsville
-----------------	------------

### CLERK OF COURT

Dexter D. Dow	Woodsville
---------------	------------

### JUDGE OF PROBATE

Harry Bingham	Littleton
---------------	-----------

### REGISTER OF PROBATE

Russell T. Bartlett	Woodsville
---------------------	------------

### REGISTER OF DEEDS

William J. Randolph	Woodsville
---------------------	------------

### COUNTY ALMSHOUSE AND HOUSE OF

### CORRECTION

Alvah H. Parker, Superintendent	Woodsville
---------------------------------	------------

### CHAPLAIN

Rev. D. E. Burns	North Haverhill
------------------	-----------------

### PHYSICIAN

E. M. Miller, M. D.	Woodsville
---------------------	------------

### AUDITORS

Moses A. Batcheldor	Plymouth
Harry M. Eaton	Littleton

## COMMISSIONER'S REPORT

---

To the Citizens of Grafton County:

Your Commissioners herewith present their report, together with the reports of the Sheriff, Solicitor, Clerk of the Court, Jailer and Auditors, and the Superintendent, Physician and Chaplain of the County Farm, for the year ending December 31, 1925, and a statement of the financial standing of the County at the close of the year.

Expenses have been closed to the estimates and appropriations, as may be seen by comparing the appropriations, as printed in the records of the County Convention with payments as shown by the reports of the Commissioners and Treasurer.

Repairs to the Jail and Steam Plant at the County Farm, have been made in accordance with recommendation of the Commissioners and authorization by the County Convention, and in neither case did the expenditures exceed the estimates.

The Jail is now safe, conveniently operated and we believe it to be altogether satisfactory. The changes in the Steam Plant have made this part of our Institution most efficient and this is resulting in a large saving in fuel.

The cost of these alterations was \$24,412.01. The rebinding and covering of Records in the Registry of Deeds, has been completed and paid for, and the indexing is progressing satisfactorily and will be completed this year. The expenditures for this work, up to January 1st., has been \$4,818.27, making total expenditures on these three accounts of \$29,230.28,

which the Commissioners were authorized to borrow. Serial notes were issued for \$27,000, the balance of \$2,230.28 was paid from current revenue.

The property of the County is in good condition and you are cordially invited to visit Grafton County Farm.

ORA A. BROWN,  
GEORGE A. PUSHEE,  
FRED PARKER,  
Commissioners.



## PAID FOR SUPPORT OF PAUPERS

From January 1, 1925 to January 1, 1926

Bethlehem	\$178.42
Bristol	45.31
Campton	78.23
Enfield	480.77
Franconia	192.00
Haverhill	587.32
Landaff	425.31
Lebanon	4744.36
Lincoln	228.52
Lisbon	1096.30
Lyman	21.00
Littleton	1639.86
Piermont	76.00
Plymouth	22.74
Rumney	473.50
Town of Danbury	251.00
Littleton Hospital Association	625.20
Memorial Hospital	180.78
Cottage Hospital	61.45
Laconia Hospital Association	124.57
New Hampshire State Hospital	2.64
J. M. Gibson, M. D.	9.00
John Wheeler, M. D.	165.50
A. T. Downing, M. D.	35.00
S. K. Dearborn, M. D.	15.00
H. H. Boynton, M. D.	54.20
H. C. Pickwick, M. D.	11.50
E. M. Miller, M. D.	55.00
A. S. Dolloff	6.50
L. Ernest L. Bell, M. D.	50.00
L. M. Orton, M. D.	31.25
H. A. Cheney, M. D.	15.00



A. S. Russell, M. D.	21.25
H. H. Palmer, M. D.	5.00
Etta G. Wilder, transportation of pauper	12.99
George A Pushee, transportation and exp. of pauper	39.34
C. V. Knowlton, transportation of pauper	6.00
John Manchester, transportation of pauper	11.70
Varney G. Durgin, transportation of pauper	3.00
W. O. Kimball, transportation of pauper	12.00
Town of Plymouth, transportation of pauper,	1.90
Davis & Rinehart	6.00
Mrs. H. C. Phillips, board of child	180.00
State Board of Charities and Corrections, board of children	1054.91
County of Belknap, board of children	67.12
Harvey G. Kinney, burial expense, paupers	150.00
Cota & Day, support of paupers	37.63
Mabel H. Rugg, support of paupers	30.00
P. R. Lewis, support of paupers	367.73
Walter Butson, support of paupers	34.20
Flora E. Hamilton, support of pauper	72.00
E. M. Roby, support of pauper	90.00
Mrs. Howland, support of pauper	50.00
Benjamin Deane, support of pauper	10.00
W. B. Avery, support of pauper	260.61
E. G. Gammons, burial expense, paupers	61.36
Curt E. Eastman, support of pauper	11.00
E. W. Sanborn, support of pauper	3.00
The Y. D. Pharmacy, support of pauper	4.10
Scott Sloane, legal services, county pauper	5.00
W. H. French, service, county pauper	4.50
E. M. Nichols, burial expenses, county paupers	124.68
	<hr/>
	\$14,630.25

### Aid Furnished to Soldiers and Their Families

From January 1, 1925 to January 1, 1926

Enfield	\$ 32.00
Lisbon	277.20
Haverhill	329.00
Smith Piper & Sons, aid	4.55
C. S. Bowen, board of soldier's widow	237.14
Littleton Hospital Association, care	162.50
H. L. Johnson, M. D. professional services	234.17
H. C. Pickwick, M. D. professional services	82.00
F. E. Speare, M. D. professional services	25.00
A. B. Woodman, M. D. professional services	10.00
Mrs. Eugene Guyotte, board	50.00
W. F. Parker & Son, supplies	8.00
Cottage Hospital, care	29.00

---

\$1,480.56

### Paid For Support of Grafton County Children in Homes

From January 1, 1925 to January 1, 1926

New Hampshire Orphan's Home	\$5,048.00
Bethseda Children's Home	1,136.43
St. Peter's Orphanage	564.50
St. Patrick's Orphanage	420.00
Infant Asylum	142.50
Notre Dame Hospital	165.00
L. Hospital Notre Dame de Lourdes	532.50
Dover Children's Home	716.00
King's Daughters' Benevolent Association	360.00
Coit House	200.00
New Hampshire Children's Aid and Protective Society	156.00
Nashua Protestant Orphanage Association	201.63
St. Joseph's Boys' Home	221.00
State Board of Charities and Corrections	249.34

---

\$10,112.90



**Paid for Support of Paupers on Farm**

From January 1, 1925 to January 1, 1926

F. P. Dearth, insurance	\$ 135.00
Hunkins & Eaton, insurance	168.75
Woolson & Clough, insurance	101.25
R. T. Bartlett, insurance	135.00
Merrill Insurance Agency, insurance	67.50
Dewey, Peck & Co., insurance	168.75
Joseph C. Smith, insurance	236.25
Fred A. Jones, insurance	101.25
W. R. Conant Ins., Agency, insurance	101.25
Ayer Insurance Agency, insurance	168.75
J. P. Huckins, insurance	168.76
Alvin Burleigh, insurance	158.64
Dearborn & Chase, insurance	101.25
Boston & Maine Railroad, water pipe privilege,	5.00
White Mountain Telephone & Telegraph Co.,	173.06
Water & Light Dept., Woodsville Fire District, electric current,	780.70
Woodsville Furniture Co., caskets, robes and supplies,	870.77
A. F. Kimball, recording death,	5.75
E. F. Mulliken, supplies	13.03
Armour & Co., supplies	573.27
E. H. Lewis, supplies	49.92
Dickerman & Co., supplies	2,423.71
John B. Varick Co., material and supplies	510.49
Buffalo Fertilizer Works,	2.50
Arthur W. Young, cutting ice,	211.05
E. B. Mann & Co., supplies	430.51
Liggett & Meyers Co., supplies	92.42
Batchelder & Snyder Co., supplies	346.99
C. L. Bailey, automobile truck, repairs and supplies	2733.25
E. A. Sargent, supplies	200.53
L. M. McKinley, M. D., professional services,	75.00

C. J. O'Neil, feed	4,249.12
L. E. Mason, blacksmithing	103.95
Eugene Pomphed, labor	5.00
W. V. Cummings, nurse	19.70
Boston & Maine Railroad, freight	1,526.39
Boston & Maine Railroad, coal	377.30
Rhett R. Scruggs, labor material and supplies	867.77
The Alden Speares Sons Co., supplies	112.67
The Peck Co., equipment	18.52
The Holbrook Grocery Co., supplies	19.00
National Dairy Co., supplies	314.40
M. W. Field, supplies	233.19
The Willard-Daggett Co., supplies	13.60
J. R. W. Beattie, 2 cars	3.00
F. S. Sleeper Co., supplies	215.47
National Biscuit Co., supplies	9.72
New England Coal & Coke Co., coal	2,509.31
American Express Co.,	137.82
F. P. Dearth, liability insurance	28.00
Fred A Jones, insurance	21.09
A. H. Bailey, equipment, labor and supplies	157.59
Mitchell, Woodbury Co., equipment	60.04
R. J. Strasburg Co., supplies	5.97
International Agricultural Corp. fertilizer	78.46
H. G. Smith, harness repairs	18.80
Hunt, Helms, Ferris Corp. stable equipment	63.00
Eagle Oil & Supply Co.	121.76
E. H. Lothar, supplies	35.00
The Geo. H. Cross Co., supplies	78.16
Central Garage, supplies	4.67
Sawyer-Barker Co., supplies	516.74
A. F. Cox & Son, footwear	348.85
Arthur W. Coates, work on ice	42.25
S. F. McAllister, supplies	8.95
White's Garage, supplies	24.48



Delia Thayer, labor	4.00
Post Office Box Rent 12 months	6.00
Existe Albert Trudeau, live stock and tools	546.32
H. H. Stewart, blacksmithing	14.00
Taylor & Mann, material and supplies	186.94
Woodsville Variety Store, supplies	56.95
C. H. Dana Co., ear tags	4.31
W. B. Thomas, supplies	60.95
Chemo Co., supplies	112.85
The Miller Automobile Co., repairs	25.25
H. C. Kent, repairs	1.00
F. V. Land, sawdust	48.75
W. S. Clough, labor	306.50
C. & O. Oil Co., supplies	437.30
H. I. Dallman Co., supplies	210.21
White River Transfer & Storage Co., repairs	130.50
Joseph Brack & Sons, supplies	49.00
Carter & Churchill Co., clothing	102.90
Daisy Coneau, labor	10.00
M. S. Coffrin, labor	6.00
P. E. Traganza, cement work	122.50
J. J. Stanley, supplies	91.01
John Thomas, veterinary	22.50
Page Belting Co., equipment	21.35
Walter Burbeck, material	27.66
Acer Lumber Co., lumber and supplies	63.90
H. M. Totman Co., plants	73.20
Mrs. L. J. Southard, supplies	6.00
D. S. Stone Lumber Co., material and supplies	58.37
L. C. Butler, repairs and equipment	20.90
Swift & Co., supplies	161.45
Valley Iron Works, repairs and equipment	236.21
Fred P. Wells, supplies	7.00
The Hospital Supply Co., supplies	6.81
A. E. Thompson, hospital supplies	71.54

Underhay Oil Co., supplies	102.77
The American Laundry Machine Co., repairs and equipment	200.90
McLeod Henry Co., supplies	53.00
L. H. Parker, supplies	13.00
H. J. Clark, supplies	5.40
John H. Keith, supplies	5.65
John A. Thornton, labor	78.75
H. D. Stevens, head stones	328.00
E. C. Capron, supplies	6.60
Washburn, Crosby Co., flour and feed	1,870.00
Town of Haverhill, tax	1,468.84
Arthur E. Dorr & Co., supplies	18.81
W. F. Pike, labor and equipment	71.90
Hy-Gein Laboratories, supplies	23.52
Raymond J. Cnossen, painting	421.05
Jamaica Glove Co., gloves and mittens	26.30
E. F. Mahady, supplies	1.61
Mrs. S. F. Hobart, photography	4.00
The Cota-Hanley Co., clothing	376.14
Asher Manufacturing Co., repairs	7.19
S. Shallow, labor	9.50
Wm. Ross, labor	21.25
Boston & Maine Railroad, supplies	5.00
F. J. Norris Co., supplies	15.00
F. G. Weeks, D. D. S.,	2.00
The E. Howard Clock Co., supplies	20.20
The Proctor & Gamble Distributing Co., supplies	171.61
W. L. Hartwell, supplies	28.32
E. W. French, supplies	25.00
Fred Henry, supplies	2.45
M. S. Coffrin, chairs	11.00
Phil Doherty,	2.00
Pearl Keenan, nurse	196.70
The Worrell Manufacturing Co., supplies	126.13



Frank B. Graves, hospital supplies	32.34
C. A. Butson, supplies	78.41
The F. H. Mann Co., supplies	93.25
Rev. D. E. Burns, chaplain 12 months	84.00
E. M. Miller, M. D., physician 12 months	400.15
Sundry Bills, 12 months	323.58
Help's Pay-Roll, 12 months	7,521.61
Mr. & Mrs. A. H. Parker, Supt. and Matron 12 months	1,600.00
	<hr/>
	\$42,823.13

**PAID FOR STEAM HEATING ALTERATIONS  
AT COUNTY FARM**

Hollis French and Allen Hubbard, engineering services	\$ 1,240.66
Rhett R. Scruggs, contract	15,612.02
Rhett R. Scruggs, extra labor and material	398.90
A. H. Bailey, electrical equipment and labor	237.41
W. F. Pike, stable equipment	327.02
	<hr/>
	\$17,816.01

**REPAIRS TO JAIL**

Paid The Van Dorn Ironworks Co., contract	\$ 6,596.00
Paid for Indexing, Rebinding and Equipment, Registry of Deeds E. F. Killion, Rebinding and covering Records	2,402.00
W. J. Randolph, Indexing	1,726.87
Remington Typewriter Co., equipment	209.75
The Record Print, supplies	56.25
B. D. Benson & Sons, supplies	95.00
Art Metal Construction Co. Equipment	328.40
	<hr/>
	\$4,818.27

## STATEMENT

---

Of the Expenses of the County for the Year Ending  
December 31, 1925

Bills paid by Commissioners:	
For support of paupers and prisoners at Farm	\$42,823.13
For support of paupers off Farm	14,630.25
For support of Grafton County Children in Homes	10,112.90
Supplies, material and expense, Register of Deeds	460.29
Supplies, material and expense, Register of Probate equipment, material, (including indexing)	798.53
Supplies and care of Woodsville Court House	3,109.94
Material, supplies and care of Plymouth Court House	141.50
Grafton County Farm Bureau	6,200.00
Aid to Needy Blind	1,637.50
Sheriffs, Deputies and Messengers	1,130.08
County Officers Salaries	2,316.67
Supplies for Commissioners	61.85
Supplies for Judge of Probate	4.50
Supplies for Treasurer	46.23
Supplies and expense for Solicitor	219.96
Medical Referees	138.95
Aid to Soldiers and their Families	1,480.56
Jail expenses, aside from board and clothing, which is credited to the Farm	438.00
Town of Lebanon, Legislative appropriation for Court Room	4,000.00
Dexter D. Dow, returning divorce record	10.40
Musgrove Printing House, printing 1924 Re- port and exp.	161.58

Wm. A. Kimball, Treasurer's bond	85.00
Clark B. Frost, expense prosecuting violations of liquor laws	98.52
S. L. Blake, expense, violations of liquor laws	86.01
Steam Heating Alterations at County Farm	17,816.01
Repairs to Jail	6,596.00
Indexing, Rebinding and Equipment, Registry of Deeds	4,818.27
	<hr/>
	\$119,422.63



**County of Grafton****BALANCE**


---

<b>Assets</b>	
Cash on hand	\$5,236.90
<b>Amount due County:</b>	
(a) Taxes due from Towns	
(b) For Board of persons	533.40
(c) Due from individuals	812.28
(d) Personal property at County Farm	63,787.34
	<hr/>
Total Assets	\$70,369.92
	<hr/>
<b>Grand Total</b>	<b>\$70,396.92</b>

SHEET

December 31, 1925

---

<b>Liabilities</b>	
Notes outstanding:	\$55,000.00
Bonds outstanding:	12,000.00
Interest due	379.36
Commissioners' Orders outstanding	509.70
	<hr/>
Total Liabilities	\$67,889.06
Excess of assets over liabilities (surplus)	2,480.86
	<hr/>
<b>Grand Total</b>	<b>\$70,369 92</b>

**RECEIPTS AND**

---

**Receipts****CURRENT REVENUE:**

Taxes from Towns and Cities	\$116,200.00
Fines and forfeits, Superior Court	2,923.25
Income of Institutions:	
(a) County farm	9,544.23
Reinbursement of expenditures for support of poor, etc.	33.00

(Continued on Page 346)



## PAYMENTS

---

### Payments

#### CURRENT MAINTENANCE EXPENSES:

##### General Government:

1. Salaries of	
(a) Commissioners	\$1,500.00
(b) Treasurer	300.00
(c) Auditors	50.00
(d) Solicitor	1,100.00
(e) Medical Referee (exp.)	138.95
2. Expenses of	
(a) Above officers	1,181.11
(b) Register of Deeds	460.29
(c) Register of Probate	798.53
3. Care and supplies for Court Houses	3,251.44
(a) Indexing and rebinding ,Registry Deeds	4,489.87

##### Superior Court:

4. Jury payrolls	5,705.34
5. "State vs.——" payrolls	7,993.34
6. Counsel fees	668.56
7. Stenographer, etc.	1,217.33
8. Clerk of Superior Court	1,827.10
9. Sheriff and deputies	1,996.75

##### Charities and Corrections:

10. County farm expenditures	42,823.13
(a)reprs. to steam Plant at County Farm	17,816.01
11. Support of poor not on County Farm	24,743.15
12. Jail expenditures	438.00
(a) Repairs to Jail	6,596.00

##### Patriotic Purposes

13. Soldiers' benefits	1,480.56
------------------------	----------

(Continued on page 347)

## RECEIPTS AND

---

(Continued from page 344)

### Receipts

RECEIPTS OTHER THAN CURRENT REVENUE:	
Temporary loans during year	\$110,000.00
Long term Notes issued	27,000.00
All Other Receipts	
(a) Balance Clerk's account Sept. Term	399.15
	_____
Total Receipts from All Sources	\$266,099.63

Cash on hand at beginning of year	814.91
	_____
<b>Grand Total</b>	<b>\$266,914 54</b>

## PAYMENTS

---

(Continued from page 345)

### Payments

#### Health and Sanitation:

15. Aid to blind \$1,637.50

Total Current Maintenance                     

Expenses \$128,212.96

#### Interest:

16. Paid on indebtedness 4,347.63

#### Outlay for New Construction and Equipment:

17. Court house Steel counter  
Registry of Deeds \$328.40

Total outlay new construction 328.40

#### Indebtedness:

20. Payments on principal of  
debt \$8,000.00

21. Payment of Temporary  
Loans 110,000.00

Total Indebtedness Payments 118,000.00

#### All Other Payments:

(a) Miscellaneous \$441.51

(b) Lebanon Court Room 4,000.00

22. Farm Bureau 6,200.00

23. Commissioners orders 1924, 656.84

                      
11,289.35

Total Payments for All Purposes \$262,187.34

Cash on hand at end of year

Less commissioners orders out \$4,727.20

**Grand Total**                      \$266,914.54



### Schedule of County Property

Description	Value
Land and Buildings:	
(a) Court Houses	\$100,000.00
(b) Jail	25,000.00
(c) County Farm	125,000.00
Furniture and Equipment	25,000.00
(a) Court Houses	25,000.00
(b) Jail	766.75
(c) County Farm	26,918.99
Total Valuation	\$302,685.74

## SELECTMEN OF TOWN AND OVERSEERS OF THE POOR

---

Your attention is called to the following extracts from the laws of 1903:

### CHAPTER 42, SECTION 1

SECTION 1. Any town or county furnishing any assistance to any person within six years preceding his death shall be entitled to recover from the estate of such persons the sum or sums paid out for such assistance the said claim to be a preferred claim against his said estate after payment of funeral charges, expense of last sickness and expenses of administration, provided he leaves no widow or minor children living at his decease.

### CHAPTER 106, SECTION 1, as amended

“SECTION 1. No town shall be liable for the support of any person unless he, or the person under whom he derives his settlement therein during the ten years preceding the last date of application for support provided that no person having a settlement in any town in this state upon arriving at the age of seventy years shall lose that settlement on account of being exempt by law from paying a poll tax, if he still resides in said town.”

---

### ASSISTANCE TO PERSONS IN QUARANTINE: PUBLIC STATUTES, CHAPTER 110, Following

#### SECTION 6

SECTION 1. Whenever any person or family is placed in quarantine by a board of health, to protect

the public against small pox, scarlet fever, diphtheria or any other dangerous, infectious or contagious disease, it shall be the duty of said board to assist such person or family while in quarantine in such manner as in the judgement of the board may be deemed wise and necessary.

SECTION 2. All expenses thus incurred, or such part thereof as the board may determine, shall be deemed a legitimate expenditure for the protection of the public health and shall be charged to the account of incidental expenses, but not to any indigent pauper account, nor shall such expenditure be construed to mean a public aid to the person or persons so quarantined and assisted unless such person or persons are already paupers as defined by the Public Statutes.

The following towns may send their affidavits and direct their correspondence to:

ORA A. BROWN, Ashland, N. H.—Ashland, Alexandria, Bristol, Bridgewater, Campton, Ellsworth, Hebron, Holderness, Lincoln, Groton, Plymouth, Rumney, Thornton, Wentworth, Waterville, Woodstock, and present their bills to the commissioners at Plymouth in May and November.

GEORGE A. PUSHEE, Lyme, N. H.—Dorchester, Enfield, Canaan, Grafton, Hanover, Lebanon, Lyme, Orford, Orange, Piermont, and present their bills to the commissioners at Lebanon in April and October.

FRED PARKER, Lisbon, N. H.—Bethlehem, Bath, Easton, Franconia, Haverhill, Landaff, Littleton, Lisbon, Lyman, Livermore, Monroe, Warren, and present their bills to the commissioners at Woodsville in March



and September. If considered advisable, different dates for settlement with towns may be arranged.

All applications for aid should be immediately reported to the commissioners, as under the laws of 1903 no bill will be paid more than 10 days' support previous to the proper affidavit being received. Affidavit blanks will be supplied by the commissioners upon request.

ORA A. BROWN,  
GEORGE A. PUSHEE,  
FRED A. PARKER,

Commissioners.

## SUPERINTENDENT'S REPORT

---

Post Office,  
Woodsville, N. H.

Grafton County Almshouse,  
Haverhill, Dec., 31, 1925.

Gentlemen:-

In compliance with the Public Statutes of the State of New Hampshire, I hereby submit my report of the Grafton County Almshouse and House of Correction from January 1, 1925 to January 1, 1926:

Number of inmates January 1, 1925	80	
Number admitted during the year	55	
Total		135
Number discharged during the year	43	
Numbers of deaths	11	
Total		54
Number of inmates January 1, 1926	81	
Number in House of Correction	8	
Number admitted during the year	74	
Number discharged during the year	83	
Number in House of Correction January 1, 1925	17	
Average number during the year in Alms- house and House of Correction whose board was not paid by towns or individuals		83
Number of weeks board furnished inmates and House of Correction not paid by towns or individuals	4 326 wks. 6 ds.	
<b>List of Inmates January 1, 1926</b>		
Number of Inmates in Almshouse	81	
Number in House of Correction	8	

## ALMSHOUSE

Name	Where from	Age	Weeks	Days
Simeon Rogers	Alexander	84	52	1
Lillian Watson	Ashland	43	52	1
Charles Whitney	Bath	66	27	3
Harry Jobin	Bethlehem	30	1	3
Sarah Taylor	Bristol	67	52	1
Eben Phullips	Bristol	75	52	1
William Tyler Page	Bristol	56	8	4
John K. Dow	Bristol	82	12	4
Catherine Colby	Canaan	86	52	1
Felix Martin	Canaan	91	52	1
Ella Austin	Canaan	35	42	
Arthur Austin	Canaan	11	19	
Dorothy Austin	Canaan	10	19	
Mary Austin	Canaan	8	19	
Charles Austin	Canaan	6	19	
Edson Hutchins	Campton	59	52	1
Adaline Lowe	Campton	79	52	1
Elizabeth Morrill	Campton	77	52	1
Harry Morrill	Campton	56	52	1
Celia Armstrong	Campton	42	52	1
Eugene McAvoy	Campton	57	20	
Franklin Reed	Dorchester	74	35	1
Arthur Harrison	Dorchester	44	52	1
Ruth Bowles	Easton	58	52	1
Addie Hoyt	Easton	53	52	1
Ester Gilligan	Enfield	84	52	1
Madrin May	Enfield	82	52	1
Joseph Courcy	Enfield	54	52	1
Eldon Crane	Franconia	50	52	1
Lena Byron	Franconia	56	52	1
Alice Jewell	Groton	45	52	1
Frank Hutchins	Hanover	48	52	1
Emma Laber	Hanover	23	52	1
Geraldine Prouty	Hanover	7 mo.	21	2
Henry Welch	Hanover	68	4	

Name	Where from	Age	Weeks	Days
Ellen Carr	Holderness	76	52	1
Thomas Russell	Holderness	42	25	
Perley Annis	Holderness	81	33	1
Lucy Wheeler	Haverhill	70	52	1
Louis George	Haverhill	65	52	1
Larry Griffin	Haverhill	68	52	1
Caroline Pratt	Haverhill	78	52	1
Edward Hoit	Haverhill	19	52	1
John Grant	Haverhill	8	2	5
Hazel Grant	Haverhill	7	2	5
Alice Narcross	Haverhill	45	2	1
Henry Page	Haverhill	31	4	2
Fisk Austin	Haverhill	7 mo.	30	
Jerry Higgins	Haverhill	64	1	2
Frank Dickerson	Haverhill	38	3	3
Eugene LaFrance	Haverhill	41		1
Arthur Tucker	Haverhill	57	1	4
George Fritz	Hebron	84	52	1
Clifford Leleme	Landaff	10	2	5
Myra Leleme	Landaff	8	2	5
Ida Hood	Landaff	35	5	3
Eva Hood	Landaff		2 wk.	2
Sarah Clement	Lyme	54	52	1
Carrie Smith	Lebanon	51	52	1
Abbie Smith	Lebanon	49	52	1
James McCoy	Lebanon	82	52	1
Eli Purrese	Lebanon	93	52	1
Gertrude Sanborn	Lebanon	54	52	1
Elizabeth Clark	Lebanon	62	52	1
Amelia Thompson	Lebanon	82	4	1
John Murphy	Lebanon	69	52	1
Annie Johnson	Lebanon	29	52	1
Mildred Johnson	Lebanon	34	52	1
George Foster	Lebanon	81	52	1
Eva Johnson	Lebanon	63	52	1
Thomas Como	Lebanon	19	1	3
James Denning	Lebanon	54	20	4



Name	Where from	Age	Weeks	Days
Henry Garon	Lebanon	75	16	3
Maude Quimby	Lebanon	30	29	3
Herbert Howland	Littleton	82	52	1
John Clune	Littleton	73	52	1
Lita Sanford	Littleton	57	52	1
Joel Bushie	Littleton	82	47	1
Eliza McMillen	Littleton	68	52	1
Charles Nye	Littleton	33		6
Maria Corey	Littleton	74	40	2
George King	Littleton	70	6	1
Fred Emery	Littleton	59	1	
Annie Brooks	Lisbon	22	52	1
Alexander Adams	Lisbon	79	20	5
Mary Felch	Lisbon	70	52	1
Henry Hughes	Lisbon	61	52	1
Henry Hodge	Lisbon	63	5	4
William Felch	Lisbon	61	52	1
Peter Carroll	Lisbon	63	5	4
Hial Braley	Orange	58	52	1
Frank Rogers	Plymouth	50	52	1
John Wilbur	Plymouth	84	29	
Livingston Smith	Plymouth	57	21	4
Lafayette Wheat	Plymouth	90	52	1
Roy Harris	Plymouth	63	11	5
Edith Dennis	Piermont	16	33	6
Herman Simpson	Piermont	66	30	2
Benjamin Aldrich	Rumney	90	24	6
Charlotte Brockway	Rumney	91	9	5
Jennie Preston	Rumney	78	52	1
Gertrude Bowen	Rumney	15	8	1
Horace Willoughby	Rumney	66	12	4
Mary Willoughby	Rumney	61	12	4
William Manion	Rumney	69	2	4
Harrison Jesserman	Warren	80	13	6
Ernest Bassie	Warren	45	2	2
Almeda Copp	Warren	70	3	2
Dana Drake	Waterville	48	52	1

### Town Boarders

Name	Where from	Age	Week	Days
Peter Peters	Bristol	79	38	4
Allen Seavey	Bristol	67	8	4
Vanda Tenny	Bristol	65	3	
Charles Farr	Franconia	75	4	3
Lena Soelongley	Holderness	58	52	1
Charles Goodall	Landaff	67	1	4
Winnifred Parker	Lyman	48	31	3
Lovell Reynolds	Lebanon	56	11	1
James Fagan	Lebanon	75	8	4
Frank Chamberlin	Littleton	67	2	3
Janette Bass	Littleton	84	19	1
Deborah Bass	Littleton	44	19	1
Joseph Durant	Lisbon	63	31	
Caleb Waldron	Orange	86	22	6
Luvabell Davis	Plymouth	1	4	2
Diana Lougee	Rumney	59	33	
Frank Jewell	Warren	67	1	1
Frank Gove	Wentworth	70	52	1

---

### Private Boarders

Name	Where from	Age	Weeks	Days
Albert Trudeau	Haverhill	58	52	1
Jennie Dick	Haverhill	76	8	2
Gardner Kennerson	Lisbon	75	30	2
Elizabeth Burrows	Plymouth	48	52	1
Cortez Hawkins	Plymouth	81	13	6
William Bartlett	Plymouth	78	3	4

## HOUSE OF CORRECTION

Name, Sent from, Offence	Time Served	
	Weeks	Days
Winthrop Langill, Plymouth, stealing auto	4	3
Chas. Weston, Lisbon, stealing	7	5
Con McCafferty, Enfield, drunk	15	
Joseph Roulx, Franconia, stealing	23	5
Geo. Stinson, Plymouth, keeping for sale	10	1
Grace Randall, Plymouth, selling liquor	5	5
James McGoff, Plymouth, selling liquor	5	5
Wm. Corr, Campton, making liquor	1	5
Oliver Como, Campton, drunk		2
Daisy Como, Campton, selling liquor	21	1
Chas. Theriault, Campton, selling liquor	3	1
Claude Bristol, Littleton, perjury	3	3
Arthur Gerade, Littleton, operating auto under influence of liquor		6
John Smith, Haverhill, drunk		6
Bert Southworth, Hanover, vagrancy	12	1
Eugene Pomphret, Haverhill, Drunk	1	5
Oliver Como, Campton, assault	8	4
Wolf Wanna, Enfield, illegal possession	8	5
Lottie Davis, Plymouth, illegal possession	4	2
Leslie Bean, Littleton, drunk	9	3
Gustav Shusks, Hanover, larceny	25	5
Fred Day, Lebanon, drunk		10
Gus Leware, Lebanon, illegal possession	8	
Ambrose Miollett, Haverhill, drunk	4	2
Joseph Martin, Littleton, illegal possession	10	
Paul Sousa, Lincoln, illegal possession	11	2
Joe Ustick, Lisbon, illegal possession	4	2
John Donalli, Lebanon, drunk	6	5
Geo McLean, Lebanon, drunk	6	5
Lenwood Hawse, Lisbon, illegal possession	4	2
Geo. Corey, Haverhill, drunk		5
Joe LeBell, Littleton, illegal possession	2	5
Fred Emery, Haverhill, drunk	3	6
Louise Laundry, Lebanon, drunk	5	6
Ambrose Miollett, Haverhill, drunk,	25	5
John Dennis, Haverhill, drunk	3	4
Moses Paige, Haverhill, violation Volstead Act	28	4
Joe Devens, Haverhill, drunk	3	4

Name,	Sent from,	Offence	Time Served	
			Weeks	Days
Thomas Noonan,	Haverhill,	drunk,	3	4
Con McCafferty,	Enfield,	drunk	1	3
Chas. Gaffney,	Haverhill,	drunk	3	4
Tom Graney,	Haverhill,	drunk	1	3
Jacob Cantin,	Haverhill,	drunk	3	4
Joe Devens,	Haverhill,	drunk	6	4
Samuel Morin,	Campton,	drunk	4	2
Pat Golden,	Haverhill,	drunk	3	4
Thomas Williams,	Haverhill,	drunk	3	4
John Peters,	Franconia,	drunk	6	4
Walter Peters,	Franconia,	assault	25	5
James Riley,	Haverhill,	drunk	3	4
Robert Cleary,	Haverhill,	drunk	3	4
Ted Murray,	Haverhill,	drunk	3	4
Frank Fellows,	Lebanon,	operating auto under influence liquor	4	2
Wilbur Flanders,	Lebanon,	violation Volstead Act	8	4
Harry Lee,	Plymouth,	drunk	8	2
David Wagner,	Littleton,	stealing	4	2
John Gillis,	Haverhill,	drunk	3	4
Neal Hunt,	Haverhill,	drunk		5
Dan Burton,	Canaan,	drunk	3	
Angus Beaton,	Canaan,	drunk	1	1
Fred Emery,	Haverhill,	drunk	3	4
Milton Montrell,	Plymouth,	prostitution	24	5
Carroll Brooks,	Lebanon,	violation Volstead Act	4	2
Angus Beaton,	Canaan,	assault		1
Sim Lemay,	Lisbon,	drunk	4	2
Lovell Williams,	Lisbon,	drunk	8	4
Bertha Talbot,	Lebanon,	illegal possession		1
Loren Derusha,	Lebanon,	adultery	12	6
Dan Nadeau,	Haverhill,	drunk	3	4
Mae Mason,	Lebanon,	illegal possession	12	6
Edna Brown,	Lebanon,	illegal possession	4	2
Alex Moore,	Lebanon,	assault on child	7	
Leo Violet,	Littleton,	neglect of child	12	6
Malcom Wadleigh,	Lisbon,	assault	8	4
Peter Doherty,	Lincoln,	drunk	12	2
Evelyn Fahey,	Woodstock,	stealing	19	5
Frank Colt,	Hanover,	stealing	12	6



Name, Sent from, Offence	Time Served	
	Weeks	Days
Everett Delarge, Bristol, assault	16	6
Arthur Hutchins, Haverhill, drunk	8	4
Alfred Durant, Lebanon, non-support	16	
Roxy DeGeorge, Bethlehem, larceny of auto	16	2
Richard Bryan, Hanover, drunk	4	2
Thomas Murdock, Haverhill, drunk	3	4
Warren Fish, Bristol, operating auto under influence of liquor	4	2
Joseph Donovan, Haverhill, drunk	5	6
Eugene Pomphret, Haverhill, drunk		4
Clarence Dearborn, Lincoln, larceny	12	2
Zepherin Desilets, Lebanon, violation auto laws	8	6
Joseph LeFountain, Plymouth, violation auto laws	1	3
Fred Emery, Littleton, drunk	7	
Chas. Donovan, Lisbon, stealing		1

### Receipts

Cream and milk sold from the Farm	\$3670.25
For board of individuals	4102.96
For board of U. S. Prisoners	335.19
For fines and costs	333.29
For stock, hogs etc., sold	507.79
For hay sold	130.65
For miscellaneous articles sold	464.61
	<hr/>
	\$9544.23

### Expenditures

Paid County Treasurer	\$9544.23
-----------------------	-----------

### Inventory

Personal property at County Farm January 1, 1925:	
Live Stock	\$ 8930.00
Produce and supplies	23730.89
Farming implements	11835.95

Household furniture	3205.16
Almshouse furniture	6687.54
Jail and House of Correction furniture	568.99
Hospital furniture and supplies	1647.61
Chapel furniture	197.00

---

\$56803.14

Personal property at County Farm January 1, 1926:

Live stock	\$ 9520.00
Produce and supplies	26581.60
Farming implements	12605.83
Household furniture	3495.91
Almshouse furniture	8326.13
Jail and House of Correction furniture	766.75
Hospital furniture and supplies	2294.12
Chapel furniture	197.00

---

\$63787.34

### Cost of Supporting Paupers

At County Farm from January 1, 1925, to January 1, 1926:

Inventory of personal property at County Farm

January 1, 1925	\$56803.14
Due for board of persons	904.81
Bills paid by Commissioners	42821.23

---

\$100,529.18

Inventory of Personal property at County

Farm January 1, 1926:	\$63787.34
Due from board of persons	533.40
Amount credited for board of prisoners	2769.68
Clothing for individuals	2075.00
Due from individuals	812.28
Cash paid to Treasurer	9544.23

---

\$79521.93

Total cost of supporting paupers at County Farm  
for year ending December 31, 1925      \$21,007.25

In accordance with Chapter 30, Section 1, Public Statutes, the Superintendent of the County Farm shall make up his report to January 1, annually, and also Section 2, of said Chapter requires that the Superintendent's report shall contain, in addition, a list of paupers actually supported at the Farm and the number of weeks each was supported, also a statement of the average cost per week for each pauper with an explanation of the basis upon which said calculations were made.

The whole number of persons supported and partially supported for the year ending December 31, 1925 was 135. The number of weeks board is ascertained by taking the number of days between the day of admittance and the day of departure of each individual and dividing that number by seven which gives the total number of weeks each was supported.

The whole cost of supporting paupers at the Farm for the year ending December 31, 1925, was \$21007.25. This sum divided by the whole number of weeks furnished, viz. 4,326 weeks, 6 days, gives \$4.85 as the price per week.

Respectfully submitted,  
ALVAH H. PARKER,  
Superintendent.

We, the undersigned, hereby certify that we have examined the foregoing accounts of the Superintendent of the County Farm for the County of Grafton for the year ending December 31, 1925, and find the same correctly cast and properly vouched.

ORA A. BROWN,  
GEORGE A. PUSHEE,  
FRED PARKER,  
Commissioners of Grafton County.

## JAILER'S REPORT

---

From January 1, 1925, to January 1, 1926

Whole number in Jail January 1, 1925	13
Whole number in Jail January 1, 1926	14
Number admitted during year	44
Number discharged during year	43

Name, Sent from, Offence	Time Served	
	Weeks	Days
John Anderson, Lebanon, assault	3	1
Dan Ferrare, Campton, breaking and entering	3	
Chas. Buker, Littleton, stealing		3
Clarence Cookman, Lisbon, forgery	52	1
Howard Ingalls, Littleton, stealing	38	3
Harold Tibbets, Ashland, breaking and entering	3	3
Raymond Wheelock, Orford, breaking and entering	3	3
Frank Brown, Orford, breaking and entering	2	6
Roger Longevin, Littleton, larceny of auto	3	
Wesley Sanborn, Bristol, breaking and entering	2	5
Fred White, Plymouth, assault	49	5
Arthur Hough, Lebanon, larceny	1	
Oscar Enderson, Littleton, forgery	17	3
Joseph Brooks,		
alias LeRock, Littleton, adultery	25	1
John Paul, Holderness, assault to kill	16	
Mike Smithwitch, Holderness, assault intent to kill	15	6
Milton Montrell, Lincoln, breaking and entering	11	6
M. V. Bancroft, Littleton, fraud	6	2
John Jenkins, Littleton, arson	6	1
John Morgan, Lincoln, breaking and entering	1	4
Iving Paylor, Littleton, stealing auto		1
Lawrence Weldon, Littleton, stealing auto		1
Delbert Jenks, Haverhill, rape	14	
Valmor Gallipo, Ashland, stealing	1	
Lester Stone, Bethlehem, violation of Volstead Act	12	6
John, Bennett, Hanover, assault	3	6
Peter Lafarrie, Bethlehem, violation of Volstead Act	12	6
Robert Connors, Bethlehem, violation of Volstead Act		4
Nathan Benjamine, Bethlehem, violation Volstead Act		4



John Mohoney, Bethlehem, stealing auto	2	2
Roxie DeGeorge, Bethlehem, stealing auto	2	2
Napoleon Tebreaulte, Lincoln, stealing	22	5
Wesley Buck, Landaff, assault	17	5
Ray Enderson, Littleton, breaking and entering	16	
Gerald Marsh, Littleton, breaking and entering	1	3
Donald Cleveland, Littleton, forgery	3	6
Arthur Longlois, Littleton, carrying concealed weapon	10	4
Alfred Valliere, Franconia, forgery	13	2
Wm. Sullivan, Plymouth, violation motor laws	8	3
Russell Eastman, Enfield, violation of Volstead Act	7	6
Peter Hammell, Franconia, breaking and entering	7	2
Joseph Morin, Haverhill, transportation and illegal possession	1	3
Lester Adams, Haverhill, transporting and illegal possession	1	3
Minnie Courser, Littleton, fraud	6	1
Clarence Cookman, Haverhill, forgery	5	3
Bertie Howland, Littleton, statutory offence	5	3
Henry Day, Lebanon, larceny	1	6

#### UNITED STATES PRISONERS

Wm. Soucey, Concord, violation of Volstead Act	10	
Archie Turgeon, Concord, violation of Volstead Act	10	
Othens Adams, Concord, violation of Volstead Act	10	
Walter Dextras, Concord, violation of Volstead Act	25	6
Othens Adams, Concord, violation of Volstead Act	14	4
Joseph Fountain, Berlin, violation of Volstead Act	1	4
Alfred Duchame, Concord, violation of Volstead Act	12	6
Daniel Giles, Concord, contempt of Court	29	1
Antonia Gomez, Newport, Vt., violation of Immigration Act	2	
Lafayette Archabold, Bartlett, violation of Volstead Act	4	

Respectfully submitted

ALVAH H. PARKER,

Deputy Jailer.

## CHAPLAIN'S REPORT

---

For the year ending December 31, 1925

To the Honorable Board of Grafton County Commissioners:

It is with much pleasure that I present my ninth annual report to your Board.

Superintendent and Matron, Mr. and Mrs. Alvah H. Parker, still maintain their excellent ability to care for all departments of the institution.

People in the County who have never made a visit to the home cannot realize the responsibility in caring for such a large family.

A good supply of religious literature, magazines, and books has been furnished by many friends and the North Haverhill Sunday School.

Sunday services are held once in two weeks. Mrs. Charles Little has served as organist with singing by the congregation. The excellent attendance during the year is due largely to the interest manifested by the Superintendent and Matron.

The annual Flower Day in June, held by the W. C. T. U., brought cheer and happiness to the inmates. Ice cream, cake, cookies, oranges and candy were served to all. A program followed in the afternoon.

The patients in the hospital have been kindly cared for by Elmer M. Miller, M. D. and Mrs. Winnifred Day, also supply nurses during her absence. We are sorry to report that Mrs. Day has been ill for a few weeks as this report goes to press.

Christmas was observed with a roast pork dinner and "all the fixings." In the evening a musical and literary program was rendered by the North Haverhill

Sunday School with Mrs. Daniel Carr, reader, and Miss Geraldine Wallace, violinist. The Superintendent, with his assistants distributed presents from two well laden trees, to all the inmates and others. All were sorry that Mrs. Parker was absent owing to the illness of her mother in Brookfield, Vt. Compliments of the season with boxes of candy presented by Commissioner Ora A. Brown and cornballs served by Mr. Parker were much enjoyed. It was a Merry Christmas for all present.

I wish to express my thanks to the Board of Commissioners, Superintendent, Matron, Physician, Nurses, Jailer, and others for courtesies shown me during the year.

Number of Sunday services held	24
Number of funerals attended	4

Respectfully submitted,

DICK E. BURNS,

Chaplain.

## REPORT OF THE COUNTY PHYSICIAN

---

To the Commissioners of Grafton County:

Gentlemen:—

There has been very little sickness at the County Farm during the past year. We have escaped epidemics and there have been no cases of contagious disease.

The artesian well which was put in last year by the Commissioners now supplies the institution with pure water and is doubtless a large factor for healthfulness. With so many individuals living in one building, sanitation is always a problem. That it has been solved successfully is shown by the vital statistics. It has required constant supervision by the management and those working under them to provide nourishing food, sufficient heat and ventilation for so many patients and inmates, many of whom, because of physical or mental incapacity have required a great deal of individual attention.

The Hospital, with Mrs. Day as nurse, has continued to give excellent service to all inmates who have been sick in bed. Most of the patients have been well advanced in years and the kind attention which they have received is worthy of commendation.

I would gratefully acknowledge the assistance of the Management and all those connected with the institution.

Respectfully submitted,  
ELMER M. MILLER,  
County Physician.



LIST OF DEATHS DURING YEAR 1925

---

Jan. 29, Amelia Thompson, 82 yrs. Cerebral Hemorrhage  
 March 9, Charlotte Brockway, 91 yrs. Senility  
 April 7, Cortez Hawkins, 81 Cancer of Throat  
 April 7, Harrison Jesseman 80 yrs. Cerebral Hemorrhage  
 April 14, Frank Reed, 74 yrs. Influenza  
 April 17, Allen Seavey, 67 yrs. Aortic Regurgitation  
 May 25, Alexander Adams, 80 yrs. Cancer  
 June 23, Benjamin Aldrich, 90 yrs. Senility  
 July 11, Charles Whitney, 68 yrs. Senility  
 July 27, Bertha Talbot, 60 yrs. Organic heart disease  
 Nov. 29, Joel Bushie, 80 yrs. Arterio Sclerosis

**Statistics**

Patients in Hospital Jan. 1, 1925	4	
Patients admitted during year	49	
	<hr style="width: 10%; margin-left: auto; margin-right: 0;"/>	53
Patients discharged, cured or improved		31
Patients in Hospital, Jan. 1, 1926		11
Greatest number in Hospital at any time		14
Least number in Hospital at any time		4
Daily average		8.3
Total nursing days during year		3096
Number of deaths during year		11
Number of births during year		2
Average age of deaths		77

## SHERIFF'S REPORT

---

To the Commissioners of Grafton County:

I submit herewith my report as Sheriff of the County, from January 1st, 1925 to April 1st, 1925, at which date my term of office expired.

### January Term, Superior Court at Lebanon

To attendance

Claude M. Murray, Sheriff	
45 days	\$ 225.00
168 miles travel	33.60
Geo. U. L. Leavitt, Deputy Sherriff	
9 days	45.00
3 miles travel	.60
H. B. Rood, Deputy Sheriff	
4 days	20.00
10 miles travel	2.00
W. H. French, Deputy Sheriff	
2 days	10.00
15 miles travel	3.00
S. O. Titus, Deputy Sheriff	
2 days	10.00
50 miles travel	10.00
R. S. Rinehart, Deputy Sheriff	
6 days	30.00
2 miles travel	.40
A. E. Strain, Deputy Sheriff	
3 days	15.00
40 miles travel	8.00
A. E. Davis, Deputy Sheriff	
1 day	5.00
1 mile travel	.20
J. P. Huckins, Deputy Sheriff	
1 day	5.00
1 mile travel	.20

Paid Hotel Rogers, meals for jury	13.00
C. W. Foster, Court Supplies	6.24
Clergyman	2.00

---

\$444.24

Respectfully submitted,  
 CLAUDE M. MURRAY,  
 Sheriff.

---

To the Commissioners of Grafton County:

I submit herewith my report as Sheriff of the County from April 1st, to Dec. 31st, 1925.

**May Term, Superior Court at Plymouth**

To attendance

A. E. Strain, Sheriff	
23 days	\$ 115.00
126 miles travel	25.20
J. P. Huckins, Deputy Sheriff	
6 days	30.00
2 miles travel	.40
Geo. U. Leavitt, Deputy Sheriff	
6 days	30.00
Supplies, etc., furnished	1.15
Roscoe Rinehart, Deputy Sheriff	
10 days	50.00
H. L. Cotton, Deputy Sheriff	
2 days	10.00
20 miles travel	4.00
S. O. Titus, Deputy Sheriff	
7 days	35.00
20 miles travel	4.00
W. H. French, Deputy Sheriff	
1 day	5.00
27 miles travel	5.40
	<hr/>
	\$ 315.15

September Term, Superior Court at Woodsville	
To attendance	
A. E. Strain, Sheriff	
23 days	\$ 115.00
218 miles travel	43.60
George U. Leavitt, Deputy Sheriff	
5 days	25.00
Expense	4.90
Seth O. Titus, Deputy Sheriff	
7 days	35.00
20 miles travel	4.00
Roscoe Rinehart, Deputy Sheriff	
16 days	80.00
Meals for Jury	22.05
Fees on Capias "Mahoney"	2.10
Fees on Capias "DeGeorge"	2.10
Fees on Mittimus "DeGeorge"	2.10
Fees on Mittimus "Mahoney"	20.62
Fees on Capias "Cleveland"	24.22
	<hr/>
	\$ 340.69

Respectfully submitted,

ALBERT E. STRAIN,

Sheriff.

## COUNTY SOLICITOR'S REPORT

---

To the Commissioners of Grafton County:

May I submit the annual report of the County Solicitor for the year ending December 31st, 1925?

There were two what might be called history making cases in Grafton County during the year. The failure of the Lebanon Trust Company and the attendant prosecution of Arthur Hough, and the shooting of Police Officer Dow at Plymouth, accompanied by the search for his assailant, George Dell Fellowes. That the Hough case was properly disposed of is evidenced by the fact that the respondent is serving the equivalent of ten years in States Prison.

The Fellowes case presented quite a problem and argues definitely for a State constabulary. A rural community like Grafton County, cannot consider itself immune from the workings of the larger and more important criminals, though Grafton County has been fortunate in not having more experience with them. The Fellowes case is another instance where a young, intelligent and clever criminal was able to evade the search of the best officers in the State. I feel that the officers did all that possibly could be done, after they were called into the case, and that the individuals nearest at hand cannot be blamed that there was no efficient and mobile police power to take care of the matter at an instant's notice.

Another line of criminal work which prompts me to recommend action at the next Legislature, arises from the use of firearms by boys under the age of sixteen years. Three times during my term of office I have been called to investigate shooting accidents where the victims have been under thirteen years of



age, and in two of the cases the boys who fired the rifles were that age . Under our present law the boys can be prosecuted for hunting without being accompanied by their parent or guardian. I believe that the parent should be held liable criminally for allowing a child under sixteen to have a rifle to use on his own responsibility.

It is my belief that with the utmost co-operation between the Federal and State departments, County officials have been very successful during the past year in the enforcement of the prohibition law, and I believe that Grafton County is bothered less by bootlegging and rum-running than any other County in the State.

A list of cases handled in the Superior Court is attached to and made a part of this report.

Respectfully submitted,

CLARK B. FROST,

County Solicitor.

---

### List of Cases Disposed of in the Superior Court.

#### JANUARY TERM, 1925

- State vs. Wesley Sanborn. Breaking and entering and larceny, two counts, not less than four nor more than five years in State Prison.
- State vs Roger Longevin Larceny. Not less than three years and six months, nor more than five years.
- State vs. Dan Ferrare. Breaking and entering and Larceny, two counts. Not less than two years and six months, nor more than four in State Prison on each count. Sentence on second indictment suspended.

- State vs. Harold Tibbetts. Breaking and entering and larceny. Not less than two, nor more than three years in State Prison.
- State vs. Raymond Wheelock. Breaking and entering and larceny. Not less than one year and one day, nor more than two years in State Prison.
- State vs. Frank Brown. Breaking and entering and larceny. One year in the House of Correction, suspended on payment of costs.
- State vs. Stanley Gray. Reckless driving. Fine \$100, and costs taxed at \$454.20.

MAY TERM, 1925.

- State vs. Harold J. Burt. Forgery. One year in the House of Correction, mittimus to issue at the call of the solicitor.
- State vs. Oscar Enderson. Forgery. One year in the House of Correction, mittimus to issue at the call of the Solicitor.
- State vs. Louis Bonardi. Adultery. nol prossed on payment of costs and plea of guilty to aggravated assault. Fined \$50.00.
- State vs. Arthur Hough. Embezzlement. Guilty on two counts. Two sentences of not less than five, nor more than eight years.
- State vs. Richard L. Young. Returned to State Prison for violation of parole.
- State vs. Paul John. Manslaughter. Not less than eight, nor more than twelve years in State Prison.
- State vs. Mike Smithwitch. Accessory. One year in the House of Correction, mittimus to issue at call of the Solicitor.

- State vs. Milton Montreuill. Breaking and entering and larceny. Nine months in the House of Correction, mittimus to issue at the call of the Solicitor.
- State vs. John Morgan. Breaking and entering and larceny, three counts. Not less than one year and one day, nor more than two years in States Prison on each count. Sentence suspended on two counts.
- State vs. Philip W. Chellis. Aggravated assault. Fine of \$100 and costs.
- State vs. Nicholas Georgalas. Keeping for sale. \$500 bail forfeited.

---

SEPTEMBER TERM, 1925.

- State vs W. M. Persons. Perjury. Sentence of three months in the House of Correction. Suspended on payment of costs.
- State vs. Haslit D. Fullington. Speeding. Fine \$25.00 and costs.
- State vs. Napoleon Tetreault. Larceny. One year in the House of Correction.
- State vs. Donald Cleaveland. Forgery. Industrial School during minority.
- State vs. John W. Mahoney. Larceny. Not less than one year and one day, nor more than one year and six months in State Prison.
- State vs. Roxie DeGeorge. Larceny. Six months in the House of Correction.
- State vs. Davis Bell. Keeping for sale. \$500 bail forfeited.
- State vs. John Jenkins. Aggravated assault. Six months in the House of Correction, mittimus to issue at the call of the Solicitor.

- State vs. Walter R. Brooks. Second degree manslaughter. Fine of \$500 and costs.
- State vs. Russell Eastman. Illegal manufacture of intoxicating liquor. Fine of \$200 and costs.
- State vs. Lyman W. Chamberlin. Driving under the influence of liquor. Fine of \$25.00 and costs.
- State vs. Arthur Spofford. Common seller of intoxicating liquor. Fine of \$500 and costs.
- State vs. George W. Plummer. Embezzlement. Indictment filed.
- State vs. Irving Burroughs. Assault. Dismissed on payment of costs.
- State vs. Judson Burroughs. Assault. Dismissed on payment of costs.
- State vs. Leon Hamel. Keeping for sale. Transferred to Supreme Court.
- State vs. Valmon Gallipo. Nol prossed for lack of evidence.
- State vs. George Martel. Dismissed by order of the Court for lack of evidence.

## CLERK'S REPORT

---

To the Commissioners for the County of Grafton:

I submit herewith report of the receipts and disbursements of this office for the year ending December 31, 1925.

### January Term

#### Disbursements

To cash paid for printing docket	\$164.98
To cash paid printing blanks	75.10
To cash paid binding dockets	36.97
To cash paid printing lists	6.08
To cash paid Shepard's citations	21.00
To cash paid stamped envelopes and stamps	97.55
To cash paid Supreme Court opinions	.60
To Equity records, Sept. T. 1920 and Jan. T.'21	97.44
To Capias Tibbetts, Longevin, Sanborn, Brown Wheelock, Ferrare	6.00
To orders —————, same	6.00
To 15 State entries	4.50
To cash paid Tel. and incidentals	29.24
To 14 days attendance at \$10	140.00
To 32 days attendance at \$5	160.00
To Allowance	766.66
	\$1606.12

#### Receipts

By 24 dockets sold	\$36.00
By 198 entries	178.20
By 2 State entries	2.40
By Costs State vs. Brown	33.66
By Fine and costs State vs. Sherman	56.90
By Order on County Treasurer	1,298.96
	\$1606.12



**May Term**  
**Disbursements**

To cash paid printing docket	158.00
To cash paid binding docket	36.97
To cash paid printing blanks	58.85
To cash paid office supplies	49.79
To cash paid stamped envelopes and stamps	30.01
To cash paid Supreme Court opinions	11.70
To 7 Capias	7.00
To 4 Mittimus	4.00
To 5 petitions discharge	5.00
To 41 State entries	12.30
To cash paid Tel. and incidentals	30.46
To 21 days attendance at \$10.00	210.00
To 22 days attendance at \$5.00	110.00
To Allowance	766.66
	\$1,490.74

**Receipts**

By 24 dockets sold	\$36.00
By 238 entries	214.20
By 2 State appeals	2.40
By part fine and costs State vs. Gray	454.20
By costs State vs. Burt	50.00
By costs State vs. Andrews	10.10
By fine and costs State vs. Bean	55.70
By fine and costs State vs. Chellis	140.00
By order on County Treasurer	528.14
	\$1,490.74

**September Term**  
**Disbursements**

To cash paid printing docket	\$143.00
To cash paid printing blanks	94.25
To cash paid binding docket	37.04
To cash paid binding record books	182.54
To cash paid attorneys lists and roster	5.00
To Equity records, May and September 1921	104.08
To 5 Capias	5.00
To 3 Mittimus	3.00
To 13 State entries	3.90
To 12 days attendance at 10.00	120.00
To 27 days attendance at \$5.00	135.00
To cash, Tel. stamps etc.	49.86
To allowance	766.68
To cash paid Treasurer	399.15
	\$2,048.50

**Receipts**

By 24 docket sold	\$36.00
By 20 entries	188.10
By 5 State entries	6.00
By balance fine State vs. Gray	100.00
By bal forfeiture State vs. Georgalas	500.00
By costs State vs Persons	35.00
By fine and costs State vs. Brooks	600.00
By costs State vs. I Burroughs	18.80
By Costs State vs. J. Burroughs	9.20
By fine and costs State vs. Spofford	502.20
By costs State vs. Fullington (fine paid state)	53.20
	\$2,048.50

DEXTER D. DOW,  
Clerk.

## TREASURER'S REPORT

---

Report of the Treasurer of Grafton County for the  
Year Ending December 31, 1925

### Receipts

Cash on hand, balance from year 1924	\$ 814.91
Plymouth Guaranty Savings Bank, note	5,000.00
Plymouth Guaranty Savings Bank, note	5,000.00
Plymouth Guaranty Savings Bank, note	5,000.00
Plymouth Guaranty Savings Bank, note	5,000.00
Plymouth Guaranty Savings Bank, note	5,000.00
Hanover Municipal Court, fine Robert Eastman	30.00
Clark B. Frost, fine State vs. Olive Knighton	50.00
Plymouth Guaranty Savings Bank, note	5,000.00
Lisbon Court, fine State vs George Demase	47.48
Lisbon Court, fine State vs Carl Corum	50.00
Lisbon Court, fine State vs Joe Deneau	25.00
Lisbon Court, fine State vs Sheldon Mac Fawwyner	25.00
Enfield Municipal Court, fine Mattie Hendrickson	100.00
A. H. Parker, Supt.	9,544.23
Plymouth Guaranty Savings Bank, note	5,000.00
Plymouth Guaranty Savings Bank, note	5,000.00
Plymouth Guaranty Savings Bank, note	5,000.00
Plymouth Guaranty Savings Bank, note	5,000.00
Clark B. Frost, fine State vs John Boutin	100.00
Pemigewasset National Bank, note	5,000.00
Pemigewasset National Bank, note	5,000.00
Lisbon Municipal Court, State vs Ralph Bedell	100.00
Pemigewasset National Bank, note	5,000.00
Bethlehem Municipal Court, fine Nicola Vitacco	200.00

Clark B. Frost, fine State vs Robert Connors	100.00
Clark B. Frost, fine State vs Nath Benjamin	200.00
Clark B. Frost, release libel liquor car	250.00
Plymouth Guaranty Savings Bank, note	5,000.00
Plymouth Guaranty Savings Bank, note	5,000.00
Clark B. Frost, slot machine at Bethlehem	7.25
Pemigewasset National Bank, note	5,000.00
Pemigewasset National Bank, note	5,000.00
Town of Lyman, Tax 1925	977.35
Plymouth Guaranty Savings Bank, note	5,000.00
Plymouth Guaranty Savings Bank, note	5,000.00
Plymouth Guaranty Savings Bank, note	5,000.00
Hanover Municipal Court, fine John Bresette	100.00
Haverhill Municipal Court, State vs R E Henderson	500.00
Town of Thornton, Tax 1925	1,094.63
Plymouth Guaranty Savings Bank, note	5,000.00
Plymouth Guaranty Savings Bank, note	5,000.00
Haverhill Municipal Court, State vs Chas. W Johnson	100.00
Lisbon Municipal Court, State vs Perley Jenkins	100.00
Lisbon Municipal Court, forfeiture car, liquor libel Geo. Jenkins	100.00
Lisbon Municipal Court, fine State vs Geo. W. Jenkins	200.00
Town of Hanover, Tax 1925	8,783.08
Town of Lyme, Tax 1925	2,202.29
Town of Haverhill, Tax 1925	8,639.75
Town of Ashland, Tax 1925	3,700.88
Town of Canaan, Tax 1925	2,997.19
Town of Wentworth, Tax 1925	1,185.85
Town of Campton, Tax 1925	2,593.22
Hanover Municipal Court, fine State vs James Harvey	25.00

Haverhill Municipal Court, fine State vs Milo Woods	100.00
Town of Alexandria, Tax 1925	912.19
Town of Piermont, Tax 1925	1,511.63
Town of Grafton, Tax 1925	1,511.63
Susie J Cranshaw, support Howard Chase children	21.00
Eva A. Reed, account support Howard Chase children	2.00
Town of Woodstock, Tax 1925	1,342.22
Town of Bristol, Tax 1925	4,183.04
Town of Lincoln, Tax 1925	4,534.89
Littleton Municipal Court, State vs Powers	94.26
Littleton Municipal Court, State vs Isabelle	94.26
Town of Lebanon, Tax 1925	15,546.31
Dexter D. Dow, Balance Clerk's Account September 1925	399.15
Town of Littleton, Tax 1925	10,268.66
Town of Rumney, Tax 1925	1,602.85
Town of Holderness, Tax 1925	2,827.79
Town of Plymouth, Tax 1925	6,658.98
Town of Orange, Tax 1925	390.94
Town of Bath, Tax 1925	1,785.29
Town of Benton, Tax 1925	417.00
Town of Enfield, Tax 1925	4,808.54
Town of Hebron, Tax 1925	1,133.72
Bristol Municipal Court, liquor fine	25.00
Town of Bethlehem, Tax 1925	4,665.24
Town of Lisbon, Tax 1925	7,115.09
Canaan Municipal Court, State vs Robert A. Porter	25.00
Plymouth Municipal Court, State vs Geo. Spaulding	50.00
Town of Ellsworth, Tax 1925	195.47
Town of Waterville (Check received and returned)	1,407.38



Town of Livermore, Tax 1925	1,420.41
Town of Franconia, Tax 1925	1,746.19
Town of Landaff, Tax 1925	1,211.91
Town of Bridgewater, Tax 1925	794.91
Town of Easton, Tax 1925	430.03
Town of Orford, Tax 1925	1,811.35
Hanover Municipal Court, fine A. Des Rosiers	100.00
Town of Warren, Tax 1925	1,446.47
Town of Warren, overpaid Tax 1925	22.41
Town of Waterville, Tax 1925	1,407.38
Town of Monroe, Tax 1925	925.22
Plymouth Guaranty Savings Bank, 6 Serial Notes of \$4,500.00 each, payable Nov. 1, 1927 to Nov. 1, 1932	27,000.00
Claude M. Murray, fine State vs Armstrong	25.00
Town of Groton, Tax 1925	847.03
Town of Dorchester, Tax 1925	573.38
Geo. A. Pushee, Receipts support Lamont children	10.00
	\$268,344.33

#### Disbursements

Commissioners' Orders outstanding Jan. 1	\$ 656.84
Commissioners' Orders, issued 1925, paid	118,921.93

#### COURT ORDERS

Geo. A. Brown, Commissioner, to Dec. 31, 1924	447.87
Mary D. Eldridge, stenographer	7.02
Geo. H. Pushee, Commissioner, to Dec. 31, 1924	418.30
W. H. Noyes, Commissioner, to Dec. 31, 1924	285.15
Dexter D. Dow, Master's fees, Houlehan vs Houlehan	19.16
Dexter D. Dow, referee fees, Allen vs Johnson	51.21
Mabel E. Dooley, stenographer	9.70

Geo. M. Fletcher, referee fees, Hardy Sargent vs United Mica Co.	15.00
Emma C. Hammond, stenographer	326.16
Geo. M. Fletcher, referee fees, Sargent vs United Mica Corp Mica Products Co., vs Heath et als	60.00
Dexter D. Dow, referee fees, Bishop & Co., Cavis Bros. Co.	46.00
Dexter D. Dow, balance clerk's account	1,298.96
Dexter D. Dow, referee fee, Morrison vs Chapman	24.18
Dexter D. Dow, referee fees, Greenleaf vs Greenleaf	15.00
W. H. Noyes, Commissioner, to March 1, 1925	129.88
Emma C. Hammond, stenographer	402.54
Dexter D. Dow, balance Clerk's account, May term 1925	528.14
Geo. W. Pike, counsel fees, State vs John Paul	150.00
Geo. W. Pike, counsel fees, State vs John Jenkins	50.00
Dexter D. Dow, Master's fees, McLean vs McLean	15.00
Dexter D. Dow, referee fees, Johnson vs Johnson	19.36
Ora A. Brown, Commissioner, to July 1, 1925	484.21
Fred A. Parker, Commissioner, to July 1, 1925	178.12
Geo. A. Pushee, Commissioner, to July 1, 1925	405.04
John M. Stark, counsel fees, State vs Donald Cleveland	100.00
Lena T. Marsh, stenographer	162.95
Lena T. Marsh, stenographer	251.21
Harry L. Heald, Referee fees, Webster vs Amie	23.65
Lena T. Marsh, stenographer	57.75
D. F. Dudley, referee fees, Labie vs Labie	80.00

Refund, Town of Warren	22.41
Town of Waterville, check returned	1,407.38

## NOTES AND BONDS

Littleton Savings Bank interest on \$32,000, notes to May 1, 1925	760.00
Interest on \$16,000 funding bonds to May 1, 1925	360.00
Plymouth Guaranty Savings Bank, note dated Jan. 15, 1925	5,000.00
Interest on same	125.00
Plymouth Guaranty Savings Bank, note dated Feb. 2, 1925	5,000.00
Interest on same	125.00
Plymouth Guaranty Savings Bank, note dated Feb. 16, 1925	5,000.00
Interest on same	125.00
Plymouth Guaranty Savings Bank, note dated March 2, 1925	5,000.00
Interest on same	125.00
Plymouth Guaranty Savings Bank, note dated March 16, 1925	5,000.00
Interest on same	125.00
Plymouth Guaranty Savings Bank, note dated March 30, 1925	5,000.00
Interest on same	125.00
Plymouth Guaranty Savings Bank, note dated May 11, 1925	5,000.00
Interest on same	115.97
Plymouth Guaranty Savings Bank, note dated May 21, 1925	5,000.00
Interest on same	109.03
Littleton Savings Bank, interest on \$32,000 notes to Nov. 1, 1925	760.00
Littleton Savings Bank, note dated March 26, 1923	4,000.00

Interest on \$16,000 funding bonds to Nov. 1, 1925	360.00
Atlantic National Bank, funding bonds	4,000.00
Plymouth Guaranty Savings Bank, note dated June 1, 1925	5,000.00
Interest on same	111.81
Plymouth Guaranty Savings Bank, note dated June 15, 1925	5,000.00
Interest on same	103.47
Pemigewasset National Bank, note dated July 1, 1925	5,000.00
Interest on same	93.75
Pemigewasset National Bank, note dated July 14, 1925	5,000.00
Interest on same	86.11
Pemigewasset National Bank, note dated July 15, 1925	5,000.00
Interest on same	88.89
Pemigewasset National Bank, note dated Aug. 1, 1925	5,000.00
Interest on same	79.17
Pemigewasset National Bank, note dated Aug. 1, 1925	5,000.00
Interest on same	83.33
Pemigewasset National Bank, note dated Aug. 15, 1925	5,000.00
Interest on same	75.00
Pemigewasset National Bank, note dated Aug. 15, 1925	5,000.00
Interest on same	79.86
Plymouth Guaranty Savings Bank, note dated Aug. 21, 1925	5,000.00
Interest on same	76.39

Plymouth Guaranty Savings Bank, note dated Sept. 2, 1925	5,000.00
Interest on same	68.75
Plymouth Guaranty Savings Bank, note dated Sept. 2, 1925	5,000.00
Interest on same	69.44
Plymouth Guaranty Savings Bank, note dated Sept. 16, 1925	5,000.00
Interest on same	58.33
Plymouth Guaranty Savings Bank, note dated Sept. 16, 1925	5,000.00
Interest on same	58.33

---

#### PAY ROLLS

Petit Jury, January term, 1925	1,237.30
State vs. Roger Longevin	68.33
Dan Ferarre	75.50
Frank Brown	33.36
Raymond Wheelock	54.98
Wesley Sanborn	76.49
Harold Tibbetts	44.88
Betty Lutz	17.04
Frank Robinson	43.76
Stanley Gray	43.46
Alvin Wentworth	24.96
Geo. Johnson, Charlotte Mathus	253.51
Herbert B. Rood	10.00
Frank E. Merrill	15.20
J. P. Huckins	15.00
James R. Wood	57.41
A. E. Strain	157.11



Lisbon Auto Garage Co.	35.00
S. O. Titus	100.10
H. D. Corey	5.00
R. S. Rinehart	28.12
C. M. Murray	120.45
Clark B. Frost, January term	163.93
Clark B. Frost, January term	192.30
C. M. Murray, January term	28.72
Clark B. Frost, January term	205.41
Petit Jury, May term	1,520.49
Clark B. Frost, May term	298.30
Grand Jury, May term	174.31
State vs. Geo. W. Plummer	3.60
Harold J. Burt	20.64
Morton V. Bancroft	10.44
John Martin	21.60
Ira Conkey	17.00
Louis Bonardi	70.68
Phillip Chellis	36.42
John Jenkins	101.42
Oscar Enderson	20.20
R. L. Brooks	12.70
Lisbon Auto Garage Co.	2.75
Edward A. Barney	4.00
Leon F. Copp	15.00
Parker Young Co.	30.00
Carl E. Crowley	24.00
Frank E. Merrill	28.57
A. E. Strain	158.32
Claude M. Murray	140.40
S. O. Titus	76.00
Felix McCarthy	7.00
H. B. Rood	5.00
J. P. Huckins	10.10
S. Blake	152.28

Mrs. H. B. Stevens	10.00
Clark B. Frost	169.91
State vs. Arthur Hough	445.68
John Morgan	27.54
Milton Montreuil	51.68
Mike Smithwitch	21.76
John Paul	64.78
Phillip Chellis	10.20
Frank Chase	12.40
Richard Young	78.00
Clarence Cookman or Walter Brown	30.60
Joseph Roulx	26.00
Charlie Weston	24.40
George Martel	3.00
A. E. Strain	118.40
Clark B. Frost, May term	658.25
Clark B. Frost, May term	413.45
L. F. McGovern	37.55
State vs. Ellsworth Tupper et als	7.80
Henry Day	68.04
Hazlet D. Fullington	25.20
State vs. Donald Cleveland	108.04
Napoleon Tetreault	58.25
Valmon Gallipo	12.48
John W. Mahoney	55.27
W. M. Person	6.00
Roxie De George	17.25
Walter R. Brooks	75.65
Clark B. Frost, Sept. term	581.25
Clark B. Frost, Sept. term	76.43
State vs. Russell Eastman	41.00
John Gardner	17.04
Frank Masaitis	17.40
Lebanon Art Studio	20.00
W. H. French	56.40

J. P. Huckins	58.25
Seth O. Titus	238.25
Agnes T. Collins	5.00
H. D. Corey	40.00
H. T. Anderson	40.00
W. O. Kimball	4.00
Claude M. Murray	104.30
William Birch Jr.	5.00
Clark B. Frost	77.55
Davis & Rinehart	33.90
A. E. Strain	121.85
State vs. Nathan Benjamin	36.58
Jenks Wilkie	44.26
Robert Connors	36.58
Peter Lafarrie	13.54
Clark B. Frost, Sept. term	383.50
State vs. David Bell	5.50
Richard Foley	7.80
Blanche M. Blodgett	10.44
Steve Grokoest	10.80
Geo. U. L. Leavitt	10.40
A. E. Strain	74.40
J. P. Huckins	9.00
State vs. Martin V. Bancroft	14.70
John Bennett	19.50
William Thornton	4.70
Grand Jury, Sept. term	137.27
Petit Jury, Sept. term	2,635.97
Cash on hand	5,236.90
	<hr/>
	\$268,344.33

### Liabilities

Refunding bonds outstanding	\$12,000.00	
Serial notes outstanding	28,000.00	
Serial notes outstanding	27,000.00	
Accrued interest to Jan. 1, 1926	379.36	
Commissioners' outstanding orders		
No. 604	\$ 1.25	
No. 210	156.00	
No. 169	2.45	
No. 798	12.50	
No. 811	21.00	
No. 859	192.00	
No. 873	19.50	
No. 875	15.00	
No. 877	90.00	
		509.70
		\$67,889.06

## SUMMARY

---

### Financial standing of the County of Grafton January 1, 1926

Commissioners' Inventory of property on the County Farm January 1 1926	\$63,787.34
Due for board of persons	533.40
Due from individuals	812.28
Cash in treasury	5,236.90
	\$70,369.92

#### Liabilities

Refunding bonds outstanding	\$12,000.00	
Serial notes outstanding (Littleton)	28,000.00	
Serial notes outstanding (Plymouth), (issued 1925)	27,000.00	
Accrued interest to Jan 1, 1926	379.36	
Commissioners' outstanding orders		
No. 604	\$ 1.25	
210	156.00	
169	2.45	
798	12.50	
811	21.00	
859	192.00	
873	19.50	
875	15.00	
877	90.00	
	\$ 509.70	
		\$67,889.06
Surplus January 1, 1926		\$2,480.86
		\$70,369.92



Surplus January 1 1925	\$12,125.67
Surplus January 1, 1926	2,484.86

---

Decrease of surplus for 1925	\$9,644.81
------------------------------	------------

Respectfully submitted,

FRANK H. FOSTER, Treasurer.

---

### Commissioners' Outstanding Orders

Woodsville, N. H. January, 15, 1926.

We hereby certify that there were no outstanding bill against the County January 1, 1926, which were presented for payment, and no orders issued by us which have not been paid by the Treasurer, except:

No. 604	\$ 1.25
210	156.00
169	2.45
798	12.50
811	21.00
859	192.00
873	19.50
875	15.00
877	90.00

All amounting to

\$509.70

ORA A. BROWN,  
GEO. A. PUSHEE,  
FRED PARKER,

Commissioners.

State of New Hampshire, Grafton, ss.,  
January 15, 1926.

Personally appeared the above named Ora A. Brown, George A. Pushee and Fred Parker, and made oath to the truth of the above statement by them signed.

HARRY M. EATON,

Justice of the Peace.

## AUDITORS' REPORT

---

We, the undersigned, auditors of Grafton County, certify that we have carefully examined the accounts of the County Commissioners and Treasurer and the Superintendent of the County Farm for the year 1925, and we find them correctly cast and properly vouched, and there is a balance in the hands of the Treasurer of \$5,236.90.

Respectfully submitted,

H. M. EATON,

M. A. BATCHELDER,

Auditors.

January 15, 1926.

## COUNTY CONVENTION

---

Concord, N. H., January 15, 1925.

The Grafton County Representatives met in Convention in Division 4 directly after the morning session of the House on Tuesday, January 13, 1925, and elected the following officers:-

Chairman, George W Barnes of Lyme.

Clerk, Orrin W. Hunkins of Littleton.

The Grafton County Convention met in Divison 4 after the morning session of the House on Wednesday, January 14.

Mr. Orrin W. Hunkins of Littleton resigned as Clerk and Charles A. Holden of Hanover was elected clerk.

(Signed) CHARLES A HOLDEN,  
Clerk.

A true record, Attest:

CHARLES A. HOLDEN,  
Clerk of Convention.

A true copy of Record:

Attest:  
CHARLES A. HOLDEN,  
Clerk.

Wednesday, February 4, 1925.

Pursuant to the call of the Chairman, the Grafton County Convention met in Division 5 directly after the morning session.

The convention was called to order by Chairman George W. Barnes.

Upon motion of Mr. D. E. Burns, of Haverhill, it was voted to invite the Senators residing in Grafton

County to join with the Convention and visit for inspecting Grafton County Farm on Friday, February 13.

At 12:10 p. m. it was voted to adjourn, subject to the call of the Chairman.

A true record

Attest:

CHARLES A. HOLDEN,  
Clerk.

A true copy of record

Attest:

CHARLES A. HOLDEN,  
Clerk.

---

**GRAFTON COUNTY CONVENTION MEETING  
GRAFTON COUNTY FARM, WOODSVILLE,  
N. H., FRIDAY, FEBRUARY 13, 1925**

The members of the Grafton County Convention met at the Grafton County Farm upon the arrival of trains from their respective homes at intervals from 9:30 a. m.

Superintendent Alvah H. Parker conducted tours of inspection through the County Buildings, including the dormitories, hospital, dining room, jail and barns. The members were impressed with the neat and orderly appearance of all the buildings and they were, after dinner, told by Representative Burns, Chaplain at the County Farm, that the institution was found in a normal condition, and that no special cleaning up had been done.

Superintendent Parker called the particular attention of the Representatives to the needs at the jail and of the heating system.

At noon, Mrs. Parker provided a bountiful dinner of deliciously prepared food for which the members of the convention and guests showed in a very visible way their appreciation.

There were about forty-two in attendance.

Following the dinner the Convention was called to the Chapel at 1:05 p. m. by Chairman George W. Barnes. The roll call showed the following 34 members present: Bailey, Barnes, Bell, Bourlet, Burns, Burt, Carpenter, Colby, Cook, Currier, Eaton, Ford, Foster, Gale, Goudie, Gove, Hardy, Holden, Howard, Hunkins, Hyde, Lytle, Morgan, Phillips, Renfrew, Richards, Ross, Sawyer, Smith, Webster, Weeks, Wentworth, Woolson, Young.

Representative Allen had been present but was called away by urgent business.

Mr. Ora A Brown, County Commissioner, was called upon and gave the Commissioners' Report and a proposed appropriation for 1925 and 1926. For many years the salary of Mr. and Mrs. A H Parker, Superintendent and Matron, respectively, had been \$1600 per year. In addition, Mr. Parker, as Deputy Jailer, received \$200 making their combined total salary \$1800. The Commissioners recommend an increase of \$200 in the Deputy Jailer's salary, making the total yearly salary \$2000.

One of the important improvements which has been made during the past two years is the drilling of a deep well, from which water of fine quality is pumped a reservoir, giving 65 pounds pressure at the farm buildings.

There was no appropriation for this work. The cost amounted to about \$3000. The amount by which the expenses at the County Farm exceeded the appropriations.



**The Financial Statement of the  
Commissioners showed:-**

Total appropriation for 1923 and 1924 (Including a \$10,000 emergency item)	\$165,000.00
Total Payments	175,209.43
Regular appropriations exceeded	22,670.46
Regular appropriations unexpended	2,461.03
Regular appropriation net amount exceeded	20,209.43
Emergency Fund	10 000.00
Net excess payments over total appropriations	10,209.43

Attention was called to the fact that on the first floor of the jail the concrete floor needs extensive repairs and that new fronts and doors are needed to the cells. At present the cell doors cannot be locked so that the prisoners at all times have free access to the inner corridor.

At the entrance to each of the floors of the jail the doors were placed in wrong relative positions. These should be changed so that when the solid door is opened the grating door will still be locked allowing the jailer to have a view into the jail while still protected from the prisoners.

On the first floor a cage is needed in which the prisoner can be confined while receiving visitors in the room adjoining on the east and a grating door on west would allow the jailer an opportunity to observe the prisoner without himself becoming exposed to possible harm.

The Van Dorn Iron Works Company of Cleveland, Ohio, gave an estimate of the steel work repairs needed, of \$7,150. The repairs to the concrete floor would be made by the farm forces.

A report from Hollis French and Allen Hubbard, 210 South Street, Boston, Mass., on the Heating System was read by Commissioner Brown. The report gave the following conclusions:- The boilers have sufficient capacity and are in good condition. The piping is in poor condition from deterioration. Gradual growth has resulted in a poor layout and due to inadequate pipe covering there is much loss of heat. Most of it would have to be replaced in the near future. (The Superintendent stated that the plumbing bills were \$2300 during the year. To this must be added the cost of materials.)

Because of the steam pressure required to start the pump, it does not operate at night and the pit fills and much of the condensation water has to be wasted into the river before the pump can be started. This results in much loss.

During the heating season about 700 tons of coal are used. This costs about \$8.00 per ton at the farm siding. It is expected that the changes suggested below will save about 50% of the fuel consumption.

The suggested changes are:-

1. Remove all present basement piping and run new supply and return piping to the foot of all risers.

2. Eliminate present low pressure steam line and run high pressure line from boiler house to farthest building, taking off branches with separate reducing valve at each building so that each building can be heated independently.

3. Replace the present valves on the return ends of radiators by new valves of the thermostatic type.

4. Remove present return pump and install two electrically driven combination vacuum and boiler feed pumps.

The cost is estimated at between \$15,000 and \$18,000.

The Commissioners estimated that the replacements and repairs to the jail and the heating system can be made for \$25,000..

It was voted that when the Convention adjourns at the Farm, it adjourn to the County Court House at Woodsville, and that when it adjourns at the Court House, it adjourn to meet at the House Gallery in the State House in Concord at 10:00 a. m. on Wednesday, February 28.

Following the report of the Commissioners, addresses were made by the following gentlemen:-

Representatives Burns, the Chaplain, who referred to the efficient work of Superintendent and Mrs. Parker.

Dr. Miller, Farm Physician, spoke of the inadequate salary of the Jailer and also in regard to the hospital. The acute cases are decreasing and the chronic cases are increasing. Due to the lack of facilities many of the cases have to be sent away to other hospitals for operations. He called attention to the need of an operating room and adequate equipment.

Appreciative remarks were made of former Commissioners Turner and Morrison.

Senator Rudd remarked that he had made three visits to the Farm, and that he had always found it in good condition with the inmates happy and contented.

Mr. William J. Randolph, Register of Deeds, explained the needs in the Register's office. There are in the office about 600 volumes of records of which about 50% are over 100 years old. At least 100 volumes must be repaired.

It has been the custom once in ten years to put indexes into book form. It is proposed to do this for the five year period ending in 1924. It is desired also to provide canvas covers for each of the 600 volumes.

New counters would make it not necessary to pile books on top of each other with the resulting breaking of bindings.

Mr. Bartlett, Register of Probate, stated that his office contained about 150 volumes from 1773. The office is in excellent condition and not in need of any extensive improvements.

By rising vote it was voted to extend to Mr. and Mrs. Parker the thanks of the Convention for the courteous manner in which it has been received and the excellent dinner which has been furnished.

At 2:10 the Convention adjourned to the office of the Register of Deeds where, at 2:30 the Register explained the office records and restated the needs of his office. The estimated cost was for:-

100 books rebound, 600 canvas covers	\$2300.00
Counter (Art. Metal Construction Co.)	338.00
Index (Clerk, paper, binding 2 years to date)	4000.00
	<hr/>
	\$6638.00

Adjourned at 3.00 p. m.

A true record

Attest:

CHARLES A. HOLDEN,  
Clerk.

A true copy of record

Attest:

CHARLES A. HOLDEN,  
Clerk.

The adjourned meeting of the Grafton County Convention met in the House Gallery at 10:00 a. m. on Wednesday February 18, 1925, and was called to order by Chairman George W Barnes. Those present were Messrs. Bailey, Barnes, Bourlet, Burns, Colby, Cook, Currier, Drury, Eaton, Ford, Foster, Gale, Goudie, Gove, Holden, Howard, Hunkins, Hyde, Lynch, Lytle, Martin, F E Richardson, Ross, Sawyer, Smith, Woolson.

Mr. N F Stearns, President of the Grafton County Farm Bureau, presented the Budget for the Farm Bureau for the years 1925 and 1926. The total Budget called for a yearly appropriation of nine thousand one hundred and fifty (\$9,150) dollars of which the Farm Bureau will contribute one thousand one hundred and fifty (\$1,150) dollars, and Grafton County is asked to contribute eight thousand (\$8,000) dollars.

After the above presentation. Mr. Wilson described the work of the County Agent, Miss Eggleston of the Home Demonstration work, and Miss. Sargent, of the Boys and Girls Clubs. Two Club members spoke of the work accomplished by the clubs.

Voted: To adjourn to meet in Room 145 at the State House on Wednesday, February 25, 1925, at 10 a. m.

Adjourned.

A true record

Attest:

CHARLES A. HOLDEN,

Clerk.

A true copy of record

Attest:

CHARLES A. HOLDEN,

Clerk.



The adjourned meeting of the Grafton County Convention was called to order by Chairman George W. Barnes at 10:00 a. m., on Wednesday February 25, 1925, in Room 145 at the State House, Concord, N. H.

Chairman Barnes explained the budget presented by Grafton County Commissioners, the other <sup>or</sup> expenses and the repairs and improvements contemplated. After a discussion the following unanimous votes were passed:

Voted:

That two hundred and twenty thousand (\$220,000) dollars be voted and appropriated for the two year period 1925 and 1926, to be divided as follows:-

Regular Maintainance	\$188,000
Payment on account of Lebanon	
Court Room	8,000
Payment on Bonds	8,000
Payment on Notes	8,000
Interest on Bonds and Notes	8,000

Voted:-

That the repairs and improvements to the jail and steam plant at the County Farm and in the Register of Deeds Office, as proposed by the Commissioners and the Register of Deeds, be voted and the payment for the same be distributed over six (6) years so that one third (1-3) of the cost shall be paid during each two-year period commencing in 1927.

Voted:

That the Commissioners of Grafton County are hereby authorized to give notes of Grafton County to meet the costs of Repairs and Improvements to the jail, Steam Plant and the Register of Deeds Office, as voted in the previous vote. The following thirty (30) members of the Convention were present: Bai'ey, Barnes, Bell, Bourlet, Burns, Colby, Carpenter, Collins, Cook, Currier, Drake, Drury, Lynch, Lytle, Martin, Morgan,

Renfrew, Ross, Sawyer, Smith, Weeks, Wentworth, Woolson, Eaton, Gale, Foster, Hardy, Holden, Howard, and Hunkins.

Voted:

To adjourn to meet in Room 145 at the State House at 10:00 a. m., on Wednesday March 4, 1925.

Adjourned 10:50 a. m.

A true record

Attest:

CHARLES A. HOLDEN,  
Clerk.

A true copy of record

Attest:

CHARLES A. HOLDEN,  
Clerk.

The adjourned meeting of the Grafton County Convention was called to order by the Chairman George W. Barnes, at 10 a. m. on Wednesday March 4, 1925, in Room 145 at the State House.

A hearing was given on House Bill No. 304. An act to provide for an increase of salary for Sheriff of Grafton County. The bill was read, and provides a salary of eight hundred dollars (\$800) for said salary. After discussion, twenty-five (25) voted for the bill and none against. It was voted to refer the bill to the Special Committee to consider county affairs.

Members voting were Bailey, Barnes, Bell, Bourlet, Burns, Burt, Carpenter, Colby, Collins, Cook, Currier, Drake, Eaton, Foster, Hardy, Holden, Howard, Hunkins, Lynch, Renfrew, Ross, Sawyer, Smith, Webster, Wentworth.

The Grafton County Farm Bureau budget for each of the years 1925 and 1926 was read in detail as follows

	Expenses 1924	Estimates 1925 & 1926
Toward salary of County Agent	\$1800.00	\$1800.00
Expense of County Agent	1088.00	1200.00
Toward salary of Home Dem. Agt. (6 months)	325.00	500.00
Expense of Home Dem. Agt. (6 months)	807.00	1000.00
Toward salary of Club Agent	307.00	500.00
Expense of Club Agent	968.00	1100.00
Stenographic Services	1090.00	1100.00
Travel of Executive Committee	118.00	200.00
Rent and Lights	252.00	250.00
Printing	876.00	500.00
Postage	170.00	150.00
Supplies and Equipment	160.00	250.00
Telephone	130.00	150.00
Demonstration and Meetings	127.00	150.00
Miscellaneous	228.00	200.00
	\$8444.00	\$9150.00

The difference between the expenses for 1924 and the estimated budget for 1925 and 1926, which amounts to \$706 is largely due to the fact that Home Demonstration Agent has been employed for only 6 months out of the past year.

Estimated budget for each of the years 1925 and 1926	\$9150.00
Contribution by Farm Bureau for Cooperative Extension work	1150.00
Appropriation asked for each of the years 1925 and 1926	\$8000.00

This appropriation is based on expenditures for the past two years, and has been approved by the Executive Committee of the Grafton County Farm Bureau.

The Executive Committee considers it a conservative amount for the purpose of carrying on Cooperative Extension Work in Grafton County including County Agent Work with farmers: Home Demonstration work with women, and Club Work with the boys and girls of Grafton County.

After a thorough discussion, it was moved by Mr. Smith and Voted: That Grafton County raise and appropriate sixteen thousand dollars (\$16,000) for the work of the Grafton County Farm Bureau according to the budget presented for the two year period 1925-1926, eight thousand dollars (\$8000) for each of the years 1925 and 1926.

The vote was 19 for, 1 against the appropriation. For—Bailey, Bourlet, Carpenter, Colby, Collins, Cook, Currier, Eaton Foster, Hardy, Holden, Howard, Hunkins, Lynch, Renfrew, Ross, Sawyer, Smith Webster.

Against—Drake. During the discussion it was stated that in Grafton County, calling those who have a home garden, farmers, there are about 2800 farmers. 800 belong to the Farm Bureau.

Upon motion by Mr. Holden it was unanimously voted: That after the book index to deeds in Register of Deeds Office is brought up to date, the index shall be continuously made so that it will be always practically up to date.

Upon motion, voted to adjourn, subject to call of the Chairman.

10:55 a. m.

A true record . . . . . CHARLES A. HOLDEN, Clerk.  
Attest:

A true copy of record . . . . . CHARLES A. HOLDEN, Clerk.  
Attest: . . . . . CHARLES A. HOLDEN, Clerk.

At a meeting of the Grafton County Convention called by Chairman George W. Barnes to meet in the House Gallery directly after the morning session on Tuesday, April 21, 1925 it was voted, that the Grafton County Commissioners be given power to do as they see fit in regard to allowing the Town of Plymouth to erect a soldiers' and sailors' Memorial on the plot of land in front of the Plymouth Court House, and in regard to allowing the American Legion of Woodsville to place a captured German gun on the land in front of the Woodsville Court House. Present twenty-five members.

Adjourned. Charles A. Holden, Secretary of Grafton County Convention.

At a meeting of the Grafton County Convention, called by Chairman George W. Barnes, in Room 156, at 10:30 a. m., Thursday April 30, 1925, there were present: Drury, Colby, Woolson, Collins, Martin, Young Hardy, Holden, J. P. Richardson, Bailey, Burns, Wentworth, Gale, Bourlet, Drake, Eaton, Hyde, Ross, Barnes, Smith, Renfrew, Howard, Bell, Burt and Sawyer.

At the request of Chairman Barnes, Representative, H. S. Smith explained that due to the passage of House Joint Resolution No. 60, there was available from the State One Thousand Eight Hundred Dollars (\$1800) for expenditures already appropriated for the use of Grafton County Farm Bureau for each of the years 1925 and 1926, he therefore moved and it was unanimously voted to amend the vote passed March 4, 1925 by substituting twelve thousand four hundred dollars (\$12,400) for sixteen thousand dollars (\$16,000) and six thousand two hundred dollars (\$6,200) for eight thousand dollars (\$8,000) so that the amended section will be:



Voted: That Grafton County raise and appropriate twelve thousand four hundred dollars (\$12,400) for the work of Grafton County Farm Bureau according to the budget presented for the two year period 1925-1926, six thousand two hundred (\$6,200) dollars for each of the years 1925 and 1926.

Adjourned at 10:50 a. m., subject to the call of the Chairman.

CHARLES A. HOLDEN,  
Secretary.

## COUNTY AGRICULTURAL EXTENSION WORK

---

To the Commissioners of Grafton County:-

Herewith is submitted a statement of expenditure of legislative appropriation of \$6200 for 1925 for agricultural extension work in Grafton County in cooperation with the University of New Hampshire and the U. S. Department of Agricultural.

Toward Salary of County Agricultural Agent	\$1500.00
Expenses of County Agricultural Agent	1075.87
Toward Salary of Home Demonstration Agent	100.00
Expenses of Home Demonstration Agent	535.03
Toward Salary of Club Agent	169.99
Expenses of Club Agent	922.30
Postage	63.60
Supplies & Equipment	239.95
Telephone	154.27
Rent and Light	183.65
Stenographic Service	879.75
Travel of Executive Committee	80.68
Printing	124.65
Demonstration & Meetings	20.12
Miscellaneous	169.06
Scientific Supplies	64.77
Total	\$6283.69
Legislative Appropriation	6200.00
Difference paid by G. C. F. B.	83.69

**Note:—**The difference \$83.69 is the amount paid by the Grafton County Farm Bureau to supplement the County Appropriation in carrying on cooperative extension work in Agriculture, Home Economics, and Boys and Girls Club Work in Grafton County.

Respectfully submitted,

F. V. TUXBURY,  
Treas. Co. Farm Bureau.  
W. ROSS WILSON,  
County Agr. Agent









