

Library
University of
New Hampshire

ANNUAL REPORT

OF THE

COMMISSIONERS

OF THE

County of Grafton

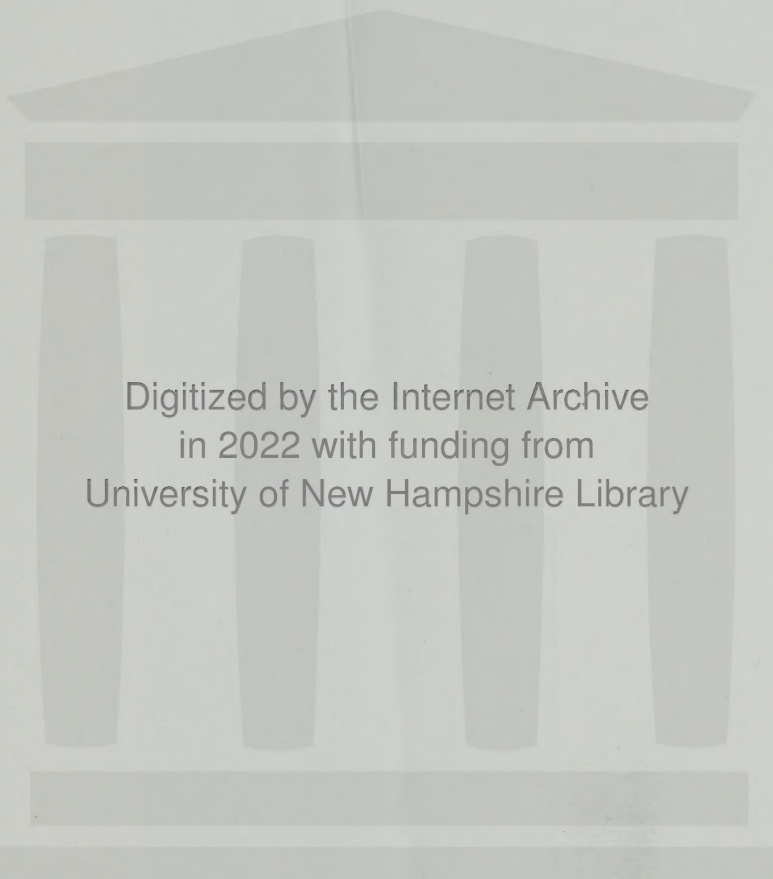
TOGETHER WITH THE REPORTS OF THE

Superintendent, Physician, Chaplain, Clerk of the
Court, Treasurer, Sheriff, Jailer,
Solicitor and Auditors

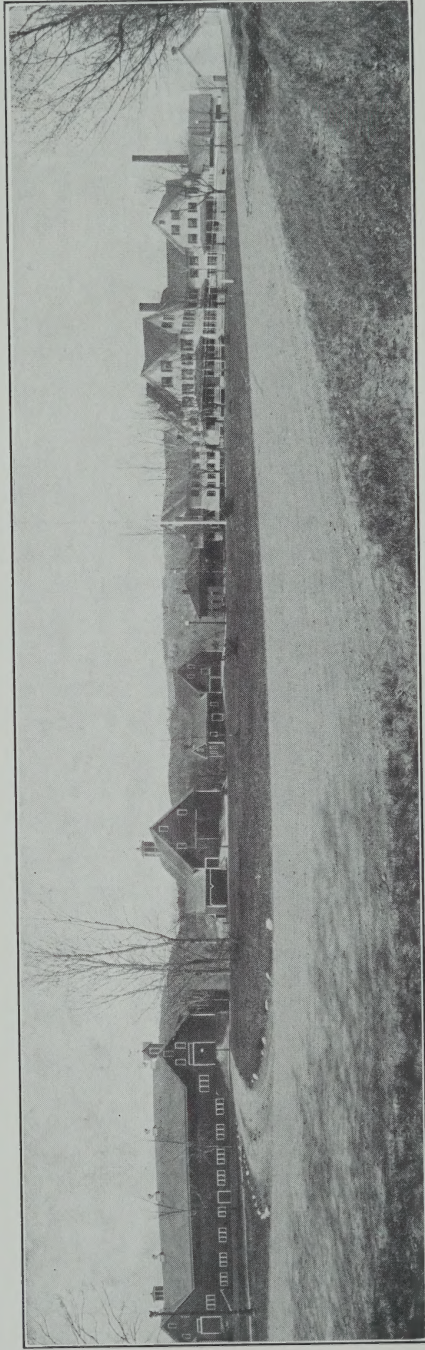
FOR THE

Year Ending December 31, 1922

VOL. V, PART 3



Digitized by the Internet Archive
in 2022 with funding from
University of New Hampshire Library



Grafton County Farm Buildings, Horse Meadow Station, N. H.

ANNUAL REPORT

OF THE

COMMISSIONERS

OF THE

County of Grafton

TOGETHER WITH THE REPORTS OF THE

Superintendent, Physician, Chaplain, Clerk of the
Court, Treasurer, Sheriff, Jailer,
Solicitor and Auditors

FOR THE

Year Ending December 31, 1922

VOL. V, PART 3

THE RECORD PRINT
PLYMOUTH, N. H.
1923

N
352.0742
G73
1922

County Officers

COMMISSIONERS

Ora A. Brown	Ashland
Harry E. Morrison	Orford
George H. Turner	Bethlehem

TREASURER

Earnest H. Hallett	Lisbon
--------------------	--------

SOLICITOR

John H. Noonan	Enfield
----------------	---------

SHERIFF

Claude Murray	Canaan
---------------	--------

DEPUTY JAILER

Alvah H. Parker	Woodsville
-----------------	------------

CLERK OF COURT

Dexter D. Dow	Woodsville
---------------	------------

JUDGE OF PROBATE

Harry Bingham	Littleton
---------------	-----------

REGISTER OF PROBATE

Russell T Bartlett	Woodsville
--------------------	------------

REGISTER OF DEEDS

William J. Randolph	Woodsville
---------------------	------------

COUNTY ALMSHOUSE AND HOUSE OF CORRECTION

Alvah H. Parker, Superintendent	Woodsville
---------------------------------	------------

CHAPLAIN

Rev. D. E. Burns	North Haverhill
------------------	-----------------

PHYSICIAN

E. M. Miller, M. D.	Woodsville
---------------------	------------

AUDITORS

Moses A Batchelder	Plymouth
Harry M. Eaton	Littleton

Commissioners' Report

To the Citizens of Grafton County:

Your Commissioners herewith present their report together with reports of the Sheriff, Solicitor, Clerk of the Court, Jailer and Treasurer and the Auditors and Superintendent, Physician and Chaplain of the County Farm for the year ending December 31st, 1922, and a statement of the financial standing of the County at the close of the year.

As may be seen by comparing this year's balance sheet with that of last, the indebtedness has been decreased some \$6,000, although the expenses have overrun the appropriations in some departments. It has cost over \$2,500 per year more than the appropriation for the support of paupers off the Farm. These are hospital cases and doctors' bills and for families who can partly support themselves and would cost the County a good deal more if they were broken up and the children placed in homes at \$13 per month as we have to do now.

The Court expense has been more for the past two years, by some \$4,000 than the appropriation and the cost of keeping prisoners in the Jail and House of Correction has been \$12,510 for the two years for which there was no appropriation.

\$4,000 was appropriated to complete the indexing in the Registry of Deeds and this work has been completed. \$1,000 was appropriated for indexing the Probate Records and that work is well under way. The County may as well take pride in both these offices as the systems and maintenance are second to none in the state.

Last year a new steam-heating plant was installed in the Woodsville Court House, the old one being insufficient to heat the Court Room now that it is used in the middle of the winter.

The County Farm, still under the direction of Mr. and Mrs. Parker, has had a good year and the per capita cost of keeping the inmates has been reduced from \$6.69 per week in 1921 to \$5.01 this year.

In 1921 the stock was tested for tuberculosis and forty-eight condemned and disposed of, it being understood that the state would pay one-half the value of the animals which was figured by the Commissioner of Agriculture at \$3,250. This has not yet been paid but we hope it will be soon.

We now have a clean herd of over 100 head of cows and Hereford beef stock. The Farm has received for milk and cream besides what was used there, \$2,256.45; for hay, \$1,240; and for stock sold, \$825; 15 hogs, 13 beef and 9 veal have been killed and used on the Farm.

Citizens and taxpayers are invited to visit the institution at any time.

Respectfully submitted,

ORA A. BROWN,
HARRY E. MORRISON,
GEORGE H. TURNER,
Commissioners.

Paid for Support of Paupers

From January 1, 1922 to January 1, 1923

Alexandria	\$ 567.39
Bath	117.22
Bristol	246.10
Canaan	455.22
Dorchester	46.40
Ellsworth	260.71
Enfield	754.92
Franconia	155.58
Grafton	185.18
Landaff	212.17
Lebanon	3,271.95
Lisbon	659.69
Littleton	1,765.98
Lyme	96.84
Plymouth	112.36
Piermont	51.15
Rumney	144.15
Warren	205.52
Littleton Hospital Association	521.50
Cottage Hospital	200.42
Margaret Pillsbury Hospital	28.00
Memorial Hospital	155.00
L'Hospital Notre-Dame-de Lourdes	134.30
St. Joseph's Hospital	24.45
The Mary Hitchcock Memorial Hospital	108.71
Mrs. H. C. Phillipps, support of pauper child	156.00
County of Belknap, support of Grafton County children	68.00
Mrs. John Carr, support of pauper child	222.73
J. W. Beede & Co., support of paupers	9.10

E. G. Gammons, Burial expense County paupers	85.00
New Hampshire Childrens' Aid & Protective Society, Support of pauper children	156.00
Mabel D. Rogers, support of pauper child	144.00
Agnes Ingersoll, support of pauper child	52.62
E. D. Burt, M. D., professional services County paupers	36.00
G. W. McGregor, M. D., professional services County paupers	25.00
J. Eddy Blake, M. D., professional services County paupers	89.00
E. L. Bell, M. D., professional services County paupers	105.00
T. S. Huckins, M. D., professional services County paupers	6.00
H. H. Boynton, M. D., professional services County paupers	14.00
A. T. Downing, M. D., professional services County paupers	130.00
W. R. Garland, M. D., professional services County paupers	10.00
W. A. Parker, M. D., professional services County paupers	28.00
H. A. Cheney, M. D., professional services County paupers	8.50
G. D. Tibbetts, M. D., professional services County paupers	25.00
John Wheeler, M. D., professional services County paupers	134.00
P. A. Pion, M. D., professional services County paupers	18.00
L. M. Orton, M. D., professional services County paupers	10.00

H. H. Palmer, M. D., professional services County paupers	33.85
Woodsville Furniture Co., burial expense County paupers	25.50
S. Grad, support of paupers	23.56
Zelda F. Felch, support of pauper	58.00
W. C. Kenyon, support of pauper	2.03
Town of Danbury, support of Grafton County paupers	295.00
Harry Bingham, expense, County pauper	15.60
Womans' Hospital Aid Association	20.90
Lucas Carleton Co., burial expense, County paupers	52.20
P. B. Farrington, support of paupers	19.71
W. F. Parker & Son, support of paupers	3.33
G. W. Stimson, support of paupers	9.70
H. E. Morrison, expense County paupers	48.60
Geo. H. Turner, expense County paupers	10.00
O. A. Brown	18.00
State Board of Charities and Corrections, support of Grafton County children	414.71
P. R. Lewis, support of paupers	41.45
E. A. Barney, expense in non support case	16.98
Aleta E. Smith, care of pauper	83.50
Charles F. Bingham, burial expense of paupers	57.50
	<hr/>
	\$13,276.08

Aid Furnished Soldiers and their Families

From January 1, 1922 to January 1, 1923

Lisbon \$ 282.25

Paid for Support of Grafton County Children in Homes

From January 1, 1922 to January 1, 1923

New Hampshire Orphans' Home	\$ 5,150.40
Nashua Protestant Orphanage Association	178.61
St. Peter's Orphanage	756.00
St. Joseph's Boys' Home	91.00
Bethesda Home	448.23
St. Patrick's Orphanage	419.00
Infant Asylum	197.28
Orphans' Home	504.33

\$ 7,744.85

Paid for Support of Paupers on Farm

From January 1, 1922 to January 1, 1923

Hunkins & Eaton, insurance	\$	120.00
Woolson & Clough, insurance		72.00
R. T. Bartlett, insurance		96.00
F. P. Dearth, insurance		129.00
W. H. Merrill, insurance		48.00
Dewey, Peck & Co., insurance		120.00
J. C. Smith, insurance		168.00
Fred A. Jones, insurance		72.00
W. R. Conant, insurance		72.00
Ayer Insurance Agency, insurance		120.00
J. P. Huckins, insurance		120.00
Alvin Burleigh, insurance		109.20
Dearborn & Chase, insurance		72.00
White Mountain Telephone & Telegraph Co.		176.57
Village of Wells River, electric current		415.19
Boston & Maine Railroad, freight		3,377.15
Chemo Company, disinfectant		165.00
Boston & Maine Railroad, water pipe privilege		6.25
W. B. Brown, supplies		11.75
B. F. St. Clair, coal		1,617.22
Woodsville Furniture Co., caskets, robes and supplies		360.73
Mrs. M. N. Hoyt, supplies		135.78
Armour & Co., supplies		718.28
Rhett R. Scruggs, labor and supplies		531.46
Dickerman & Co., supplies		3,034.85
John B. Varick Co., tools and supplies		907.69

M. W. Field, supplies	91.04
F. E. Blodgett, sawdust	45.00
National Biscuit Co., supplies	120.42
Burlington Drug Co., supplies	165.65
Sawyer-Barker Co., supplies	393.11
C. J. O'Neil, feed	2,968.44
The Holbrook Grocery Co., supplies	157.07
C. L. Bailey, labor and supplies	394.32
E. B. Mann & Co., supplies	192.67
Boston & Maine Railroad, repairs to side-track	234.42
American Express Co.	38.94
Grace C. Shaw, nurse	4.78
Standard Oil Co., supplies	540.30
A. C. Sherman, blacksmithing	205.50
Edson C. Eastman Co., supplies	3.31
A. H. Bailey, equipment, labor and supplies	641.14
A. F. Cox & Son, footwear	198.51
Dr. H. R. Clark, Veterinary	88.00
E. A. Sargent, supplies	46.86
Hunt, Helms, Ferris Co., supplies	2.37
F. S. Sleeper & Co., feed	276.45
Empire Laundry Machinery Co., repairs	7.54
Bowker Fertilizer Co.,	156.14
Burlington Rendering Co.,	59.23
Woodsville Publishing Co., supplies	13.25
Clarence H. Bickford, labor and supplies	51.65
W. D. Stinson & Son, supplies	71.34
Dr. John Thomas, Veterinary	28.00
Eagle Oil & Supply Co.,	152.03
Allen, Sterling & Lathrop, seed	214.55
Jerome B. Rice Seed Co.,	29.15
Colgate & Co., supplies	21.00
Post Office, box rent	6.00
Rev. D. E. Burns, Chaplain	73.00

L. Kelly Davis, nurse	22.37
D. S. Stone Lumber Co.,	72.32
Charles McIntire, harness repairs	68.50
White River Transfer & Storage Co., repairs	9.96
R. E. Henderson, livery	1.25
G. D. McKean, supplies	4.00
B. F. Barker, labor	50.00
L. P. Gunnison & Co., seed corn	23.20
Central Garage, labor and supplies	13.52
L. C. Butler, repairs and supplies	83.30
L. M. McKinley, M. D., professional services	37.50
C. C. Lawless, labor and supplies	28.23
The H. M. Tatman Co., plants	46.60
Acer Lumber Co.,	271.81
The Miller Automobile Co., tractor repairs	303.00
Pierce, Austin, Caswell, Livermore Co., supplies	15.84
Woodworth & Co., supplies	38.81
Ross Bros. Co., supplies	52.50
The Cedar Hill Formulae Co., supplies	6.00
The F. H. Mann Co., supplies	22.17
The Pike Manufacturing Co., supplies	3.80
S. K. Dearborn, M. D., professional services	10.00
The Holland System, supplies	14.70
Wm. C. Batchelder, repairs	35.94
The Cudahy Packing Co., supplies	77.49
The H. I. Dallman Co., supplies	217.07
Haverhill Garage, supplies	4.45
Cyrus Batchelder, cemetery work	3.50
Echo Farm, supplies	14.00
G. H. Nutter, nurse	141.00
Boston & Maine Railroad, land rent	5.00
New England Coal & Coke Co., coal	924.89
Edward S. Miller, D. D. S., professional services	100.50
W. F. Pike, farm machinery and repairs	159.55

Edgar A. Murray Co., supplies	5.50
F. B. Graves Co., supplies	24.96
Dr. A. C. Daniels, supplies	7.45
Nut-Z-All Sales Co., supplies	92.24
Batchelder & Snyder Co., supplies	119.00
Batchelder, Libbey Co., supplies	21.32
Rev. J. G. Buckley, services	2.00
Grace W Arnold, nurse	50.00
Amos J. Eaton, supplies	12.50
W. L. McIntire, supplies	9.10
Town of Haverhill, 1922 tax	1,199.13
Irving Tharey, labor	78.00
C. T. Gates, clock	2.00
C. C. Tyler, supplies	17.00
E. H. Lother, supplies	13.07
A. E. Thompson, supplies	3.06
Bethlehem Electric Co., supplies	138.60
E. W. French, supplies	150.00
A. E. Tyler, supplies	10.00
Levi Kugleman, supplies	26.65
Hygien Laboratories, supplies	18.00
Edward M. Alden, coal	288.75
The Holyoke Valve and Hydrant Co.,	1.68
The Cota-Hanley Co., supplies	63.14
P. R. Lewis, supplies	47.25
W. D. Stimson & Son, supplies	42.01
Morris Hospital Supply Co., supplies	28.51
Daniel Carr, 4 heifers	150.00
Moulton & Clark, cement	109.00
W. L. Hartwell, supplies	48.90
National Dairy Co., supplies	55.80

E. D. Day, pressing hay	388.35
Frank Mossey, labor	42.40
E. M. Miller, M. D., Physician, 12 months	384.65
Sundry Bills, 12 months.	282.97
Helps' Pay Roll, 12 months	6,616.96
Mr. and Mrs. A. H. Parker, Superintendent and Matron, 12 months	1,600.00
	<hr/>
	\$35,827.08

Statement

Of the Expenses of the County for the year ending
December 31, 1922.

Bills paid by Commissioners:

For support of paupers and prisoners at Farm	\$35,827.34
For support of paupers off Farm	13,276.08
Aid furnished to Soldiers and their Families	282.25
Equipment, supplies and care of Woodsville Court House	1,776.88
Repairs, supplies and care of Ply- mouth Court House	486.80
Indexing Records and supplies for Register of Deeds	1,430.37
Indexing Records and supplies for Register of Probate	1,592.88
Supplies for Commissioners	6.98
Supplies for Judge of Probate	1.88
Supplies for Treasurer	11.33
Supplies and expense for Solicitor	88.25
County Officers salaries	1,750.00
Support of Grafton County children in Homes	7,744.85
Sheriffs, Deputies and Messengers	1,428.36
Medical Referees	36.60
Jail expenses, aside from board and clothing, which is credited to the Farm	220.00
Aid to Needy Blind	1,200.00

Grafton County Farm Bureau, Legislative appropriation	5,150.00
The Courier Printing Co., printing 1921 Report and expense	196.76
Town of Bridgewater, one-fifth of total expense of repairs to Union Bridge, as per order of the Court	82.48
The Rumford Press, binding County Reports	2.00
	<hr/>
	\$72,592.09

County of Grafton	BALANCE
	<hr/>
Assets	
Cash on hand	\$4,432.68
Amount due County:	
(a) Taxes due from Towns	3,082.31
(b) Due from individuals	1,557.22
(c) Due for board of persons	424.29
(d) Due from State of New Hampshire	3,250.00
(e) Personal property at Farm	60,919.61
	<hr/>
Total assets	\$73,666.11
	<hr/>
Grand total	\$73,666.11

SHEET**December, 31, 1922**

Liabilities	
Notes outstanding	\$40,000.00
Bonds outstanding	24,000.00
Interest due	180.00
Outstanding orders	350.25
	<hr/>
Total liabilities	\$64,530.25
Excess of assets over liabilities (surplus)	9,135.86
	<hr/>
Grand total	\$73,666.11

RECEIPTS AND

Current Revenue:	
Taxes from Towns and Cities	\$93,605.41
Fines and forfeits, Superior Court	729.50
Income of Institutions:	
(c) County Hospital	7,581.98
Receipts Other than Current Revenue:	
Temporary loans during year	40,000

Continued on page 150

Schedule of County Property

Lands and Buildings:	
(a) Court House	\$54,000.00
(b) Jail	17,000.00
(c) County Farm	125,000.00
Furniture and Equipment:	
(a) Court House	12,000.00
(b) Jail	272.65
(c) County Farm	21,666.48
	<hr/>
Total Valuation	\$229,939.13

Certificate

This is to certify that the information contained in this report was taken from official records and is complete and correct to the best of my knowledge and belief.

ORA A. BROWN

January 23, 1923.

PAYMENTS

Current Maintenance Expenses:

General Government:

1. Salaries of	
(a) Commissioners	\$1,500.00
(b) Treasurer	300.00
(c) Auditors	50.00
(d) Solicitor	800.00
(e) Medical Referee	36.60
2. Expenses of	
(a) Above Officers	1,200.83
(b) Register of Deeds	1,430.37
(c) Register of Probate	1,592.88
3. Care and supplies for Court	
House	2,263.68
Miscellaneous expenses	281.24

Superior Court:

4. Jury payrolls	7,239.32
5. "State vs.—" payrolls	1,804.10
6. Counsel fees	254.63
7. Stenographer, etc.	1,684.60
8. Clerk of Superior Court	2,525.70
9. Sheriff and deputies	3,646.33

Charities and Corrections:

10. County farm expenditures	35,827.34
11. Support of poor not on county farm	13,276.08
12. Jail expenditures	220.00

Patriotic Purposes:

13. Soldiers benefits	282.25
-----------------------	--------

Health and Sanitation:

14. County hospital (Inc. in Farm)	
------------------------------------	--

Total Current Maintenance expenses	\$76,215.95
------------------------------------	-------------

Continued on page 151

PAYMENTS

Brought forward from page 149	
Interest:	
15. Paid on indebtedness	4,546.14
Indebtedness:	
19. Payments on principal of debt	44,000.00
	<hr/>
Total indebtedness payments	\$44,000.00
All other payments:	
21. Aid to needy blind	1,200.00
22. Grafton Co. Farm Bureau	5,150.00
23. Support of children in homes	7,744.85
	14,094.85
	<hr/>
Total payments for all purposes	\$138,856.94
Cash on hand at end of year, less outstanding Commissioners' orders	4,082.43
	<hr/>
Grand total	\$142,939.37

Selectmen of Town and Overseers of the Poor

Your attention is called to the following extracts from
the laws of 1903

CHAPTER 42, SECTION 1

SECTION 1. Any town or county furnishing any assistance to any person within six years preceding his death shall be entitled to recover from the estate of such persons the sum or sums paid out for such assistance, the said claim to be a preferred claim against his said estate after payment of funeral charges, expense of last sickness and expenses of administration, provided he leaves no widow or minor children living at his decease.

CHAPTER 106, SECTION 1, as amended

“SECTION 1. No town shall be liable for the support of any person unless he, or the person under whom he derives his settlement, shall have wholly gained a settlement therein during the ten years preceding the last date of application for support provided that no person having a settlement in any town in this state upon arriving at the age of seventy years shall lose that settlement on account of being exempt by law from paying a poll tax, if he still resides in said town.”

CHAPTER 110, SECTION 1, last clause as amended

“Also to Chapter 67 of the laws of 1903, Chapter

84 of the Public Statutes, Chapters 1 and 71 of the laws of 1907, relating to paupers, and the following from Chapter 110, Public Statutes, relating to 'assistance to persons in quarantine.' ”

SECTION 1. Whenever any person or family is placed in quarantine by a board of health, to protect the public against small pox, scarlet fever, diphtheria or any other dangerous, infectious or contagious diseases, it shall be the duty of said board to assist such person or family while in quarantine in such manner as in the judgment of the board may be deemed wise and necessary.

SECTION 2. All expenses thus incurred, or such part thereof as the board may determine, shall be deemed a legitimate expenditure for the protection of the public health and shall be charged to the account of incidental expenses, but not to any indigent pauper account, nor shall such expenditure be construed to mean a public aid to the person or persons so quarantined and assisted unless such person or persons are already paupers as defined by the Public Statutes.

The following towns may send their affidavits and direct their correspondence to:

ORA A. BROWN, Ashland, N. H.—Ashland, Alexandria, Bristol, Bridgewater, Campton, Ellsworth, Hebron, Holderness, Lincoln, Groton, Plymouth, Rumney, Thornton, Wentworth, Waterville, Woodstock, and present their bills to the commissioners at Plymouth the second Tuesday in May.

HARRY E. MORRISON, Orford, N. H.—Dorchester, Enfield, Canaan, Grafton, Hanover, Lebanon, Lyme, Orford, Orange, Piermont, and present their bills to the commissioners at Lebanon on the first Tuesday of January.

GEORGE H. TURNER, Bethlehem, N. H.—Bethlehem, Bath, Easton, Franconia, Haverhill, Landaff, Littleton, Lisbon, Lyman, Livermore, Monroe, Warren, and present their bills to the commissioners at Woodsville the second Tuesday in September. If considered advisable, additional dates for settlement with towns may be arranged.

All applications for aid should be immediately reported to the commissioners, as under the laws of 1903 no bill will be paid for more than 10 days' support previous to the proper affidavit being received. Affidavit blanks will be supplied by the commissioners upon request.

ORA A. BROWN,
HARRY E. MORRISON,
GEORGE H. TURNER,
Commissioners.

Superintendent's Report

Post Office, Grafton County Almshouse,
Woodsville, N. H. Haverhill, Dec. 31, 1922

Gentlemen:

In compliance with the Public Statutes of the State of New Hampshire, I hereby submit my report of the Grafton County Almshouse and House of Correction from January 1, 1922 to January 1, 1923:

Number of inmates January 1, 1922	77	
Number admitted during the year	54	
Total	—	131
Number discharged during the year	36	
Number of deaths	11	
Total	—	47
Number of inmates January 1, 1923	84	
Number in House of Correction	10	
Number admitted during the year	49	
Number discharged during the year	47	
Number in House of Correction Jan. 1, 1922	8	
Average number during year in Almshouse and House of Correction whose board was not paid by towns or individuals	79	plus
Number of weeks board furnished inmates and House of Correction not paid by towns or individuals	4067	

List of Inmates January 1, 1923

Number of Inmates in Almshouse 84

ALMSHOUSE

Name	Where from	Age	Weeks	Days
Simeon Rogers	Alexandria	81	52	1
Martha Kenny	Alexandria	52	3	
Lillian Watson	Ashland	40	52	1
Fannie Waters	Bath	65	52	1
Richard Daws	Bath	65	42	2
Sarah Taylor	Bristol	64	52	1
Edson Hutchins	Campton	56	52	1
Alhaneau Hutchins	Campton	50	52	1
Adaline Lowe	Campton	76	52	1
Joseph Moulton	Campton	68	32	
Catherine Colby	Canaan	83	52	1
Luella Keezer	Canaan	67	29	
Franklin Reed	Dorchester	72	52	1
Arthur Harrison	Dorchester	41	52	1
Ruth Bowles	Easton	55	52	1
Addie Hoyt	Easton	50	52	1
Esther Gilligan	Enfield	81	52	1
Madrin May	Enfield	79	52	1
Eldon Crane	Franconia	47	52	1
George Oakes	Franconia	86	22	
Belle Pierce	Grafton	41	52	1
Alice Jewell	Groton	42	52	1
Edna Kennison	Hanover	64	52	1
Frank Hutchins	Hanover	45	52	1
Martin Frein	Hanover	55	12	2
Frank Page	Hanover	40	1	3
George Fritz	Hebron	81	52	1
Perley Annis	Holderness	77	13	4
Aruna Hall	Haverhill	76	52	1
Naomi Dow	Haverhill	86	52	1
Lary Griffin	Haverhill	65	52	1
Edmond Johnson	Haverhill	1	19	3
Alice Ingram	Haverhill	17	37	5
Susan Emery	Haverhill	18	3	6
William Emery	Haverhill	9 mo.	3	6
Fred Barker	Haverhill	42	10	4
Silas Eaton	Haverhill	29		3
Irvin Brown	Haverhill	2	18	2
Charles Nurse	Haverhill	3 wks	11	5

Name	Where from	Age	Weeks	Days
Newell Randall	Haverhill	70	35	3
Caroline Pratt	Haverhill	75	26	6
George Currier	Haverhill	43	9	3
Frank Brown	Haverhill	18	7	5
Daisy Brown	Haverhill	38	2	5
William Brown	Haverhill	6	14	3
Irvin Brown	Haverhill	3	11	2
Nellie Jalvenpaar	Haverhill	26		6
Charles Brown	Haverhill	9	9	6
Mildred Brown	Haverhill	11	9	6
Eva Brown	Haverhill	7	9	6
Georgia B. Conners	Landaff	60	52	1
Alice Wheeler	Landaff	65	41	2
Carrie Smith	Lebanon	48	52	1
Abbie Smith	Lebanon	46	52	1
James McCoy	Lebanon	79	52	1
Eli Purrese	Lebanon	90	52	1
Gertrude Sanborn	Lebanon	51	52	1
Elizabeth Clark	Lebanon	59		
Mary Adams	Lebanon	65	52	1
Amelia Thompson	Lebanon	80	52	1
John Murphy	Lebanon	66	52	1
Annie Johnson	Lebanon	26	52	1
Sarah Baker	Lebanon	94	52	1
Alexander Ward	Lebanon	87	52	1
Mrs. John St. Clair	Lebanon	83	51	2
Fred Bean	Lebanon	54		6
Mildred Johnson	Lebanon	31	9	3
Sarah Clement	Lebanon	51	52	1
Stillman Waid	Lebanon	66	8	4
Herman Simpson	Lebanon	63	21	6
Nepoleon Joslin	Littleton	60	3	
Herbert Howland	Littleton	79	52	1
John Clune	Littleton	70	52	1
Juliana Archer	Littleton	84	40	4
Florence Burt	Littleton	3	19	3
Charles Goodrich	Littleton	68	21	3
Hiram Gray	Littleton	68	11	3
Ruth Hilton	Littleton	13	17	6
Gertrude Berry	Littleton	27	19	
Earl Berry	Littleton	9	3	6

Name	Where from	Age	Weeks	Days
Alda Viscuse	Littleton	21	28	4
Dorothy Viscuse	Littleton	8 mo.	28	4
Hiram Gray	Littleton	68		4
Sarah Mountain	Lincoln	39	20	5
Daniel O'Brien	Lincoln	40	4	6
Annie Brooks	Lisbon	19	52	1
Walter Barrett	Lisbon	79	52	1
Leon Foran	Lisbon	36	15	2
Henry Hughs	Lisbon	57	27	3
Alexander Adams	Lisbon	77	52	1
Mary Felch	Lisbon	67	52	1
Henry Hodge	Lisbon	68	52	1
Thomas Graney	Lisbon	39	4	
Leon Foran	Lisbon	36	2	2
Fred Blackburn	Lyman	3	17	3
Hial Braley	Orange	55	52	1
Frank Rogers	Plymouth	47	52	1
Ann Merrill	Plymouth	84	52	1
John Wilbur	Plymouth	81	52	1
Elbridge Homans	Plymouth	70	18	5
Earl S. Fox	Piermont	64	52	1
Evelyn Robinson	Rumney	74	52	1
Benjamin Aldrich	Rumney	88	5	3
Ina Avery	Thornton	32	52	1
Robert Goudie	Warren	72	32	
Robert Powers	Warren	27	1	5
Dana Drake	Waterville	46	52	1
Robert H. Sheean	Woodstock	48		4

TOWN BOARDERS

Joseph Lucissna	Bethlehem	24	2	2
Betty Dodd	Bethlehem	80		5
Samuel Graham	Groton	66	10	2
Harriet Stone	Hanover	82	28	3
Henri Whitney	Hanover	66	8	6
Charles Jackson	Hanover	77	6	
Lena Selongly	Holderness	55	4	5
John Chellis	Haverhill	62	52	1
Louis George	Haverhill	62	52	1
Phillip Doreity	Haverhill	63		5

Name	Where from	Age	Weeks	Days
John Dixon	Lyman	80	10	3
John Brown	Wentworth	82	4	1
Frank R. Gove	Wentworth	67	16	6

PRIVATE BOARDERS

Thomas Husband	Canaan	70	52	1
Bartlett J. Hall	Enfield	75	52	1
Lillian Littlefield	Enfield	16	2	3
Joseph Courcy	Enfield	76	1	1
Joseph Courcy, Jr.	Enfield	51	8	1
Lucy M. Wheeler	Haverhill	67	52	1
Winifred Littlefield	Haverhill	2wks.	2	2
Lita Sanford	Littleton	54	52	1
Elizabeth Burrows	Plymouth	45	52	1
Harrison Jesseman	Warren	78	7	

Receipts

Cream and milk sold from Farm	\$2,256.45
For board of individuals	2,828.58
For stock, hogs etc. sold	815.00
For hay sold	1,239.64
For miscellaneous articles sold	444.11
	<hr/>
	\$7,583.78

Expenditures

Paid County Treasurer	\$7,581.98
-----------------------	------------

Inventory

Personal property at County Farm, January 1, 1922:

Live stock	\$12,578.00
Farming implements	13,675.67
Produce and supplies	26,264.23
Household furniture	2,825.36
Almshouse furniture	2,828.03
Jail and House of Correction furniture	568.75
Hospital furniture and supplies	1,434.60
Chapel furniture	186.00
	<hr/>
	\$60,360.64

Personal property at County Farm, January 1, 1923:

Live stock	\$12,491.00
Farming implements	13,116.49
Produce and supplies	26,489.48
Household furniture	2,747.44
Almshouse furniture	4,015.00
Jail and House of Correction furniture	272.65
Hospital furniture and supplies	1,601.55
Chapel furniture	186.00
	<hr/>
	\$60,919.61

Cost of Supporting Paupers

At County Farm from January 1, 1922 to January 1, 1923:

Inventory of personal property at County	
Farm January 1, 1922	\$60,360.64
Due for board of persons	708.00
Bills paid by Commissioners	35,827.08
	<hr/>
	\$96,895.72

Inventory of personal property at County	
Farm January 1, 1923	\$60,919.61
Due for board of persons	424.29
Amount credited for board of prisoners	4,047.41
Clothing for individuals	1,975.00
Due from individuals	1,557.22
Cash paid Treasurer	7,581.98
	<hr/>
	\$76,505.51

Total cost of supporting paupers at County	
Farm for the year ending December	
31, 1922	\$20,390.21

In accordance with Chapter 30, Section 1, Public Statutes, the Superintendent of the County Farm shall make up his report to January 1, annually and also Section 2 of said Chapter requires that the Superintendent's report shall contain, in addition, a list of paupers actually supported at the Farm and the number of weeks each was supported, also a statement of the average cost per week for each pauper, with an explanation of the basis upon which said calculations were made.

The whole number of persons supported and partially supported for the year ending December 31, 1922

was 131. The number of weeks' board is ascertained by taking the number of days between the day of admittance and the day of departure of each individual and dividing that number by seven, which gives the total number of weeks each was supported.

For whole cost of supporting paupers at the Farm for the year ending December 31, 1922 was \$20,390 21. This sum divided by the whole number of weeks furnished, viz: 4067 gives \$5.01plus, as the price per week.

In concluding my annual report I wish to thank the Commissioners, Chaplain, and Physician for their help and courteous treatment at all times; also the W. C. T. U. and all other kind friends who have remembered the inmates during the year.

Respectfully submitted,

ALVAH H. PARKER,

Superintendent.

We, the undersigned, hereby certify that we have examined the foregoing accounts of the Superintendent of the County Farm for the County of Grafton for the year ending December 31, 1922 and find the same correctly cast and properly vouched.

ORA A. BROWN,

HARRY E. MORRISON,

GEORGE H. TURNER,

Commissioners of Grafton County.

Jailer's Report

From January 1, 1922 to January 1, 1923

Whole number in jail January 1, 1922	7
Whole number in jail January 1, 1923	5
Number admitted during year	27
Number discharged during year	29

Name, where from, and crime	Weeks	Days
Henry Ellis, Rumney, breaking and entering	8	4
William Nuttall, Rumney, breaking and entering	8	4
Ray Stanley, Plymouth, shooting cattle	2	2
George Rolf, Littleton, selling liquor	3	2
Harry Fogg, Enfield, passing forged checks		5
William Martin, Jr., Grafton, breaking and entering	3	3
Perry Fox, Plymouth, breaking and entering	3	5
Fred Russell, Plymouth, forgery	16	2
Robert Clark, Littleton, assault on female child	} 14	
Robert Clark, Littleton, bastardy		
John Hunkins, Haverhill, larceny	11	6
Eugene Marcotte, Lebanon, bastardy	4	3
Oliver Knighton, Haverhill breaking and entering	} 2	
Oliver Knighton, Bath, breaking and entering		
P. T. Hawkins, Haverhill, selling mortgaged property		2
Frank Mossey, Littleton, larceny	6	2
Fred Merrill, Warren, assault with pistol	4	2
Walter Watson, Canaan, breaking and entering	10	6
Oliver Knighton, Haverhill, breaking and entering		2
John Bennett, Bristol, selling liquor	11	
Walter Fletcher, Bristol, assault with intent to kill	3	6
Frank Martini, Haverhill, stealing		4
Leonard Parker, Littleton, horse stealing	8	6
Solomon Haweeli, Littleton, selling liquor	8	4
Irving Tucker, Bristol, arson	7	5
Felix Levine, Lincoln, assault on female child	8	3
F. J. McCarty, Warren, breaking contract	3	
Antony Novik, Warren, breaking contract	3	
Joseph St. Francis, Lebanon, breaking and entering		6

UNITED STATES PRISONERS

Name, where from, and crime	Weeks	Days
Edward Couture, Berlin, N. H. violation of the Volstead Act	8	4
Onesime Gordin, Jr., Berlin, N. H. Violation of Volstead Act	4	3
George Fevreau, Berlin, N. H., Violation of the Volstead Act	4	3
Theopolis Pilotte, Berlin, N. H., Violation of the Volstead Act		1
Adelard Gagne, Berlin, N. H., Violation of the Volstead Act		1

HOUSE OF CORRECTION

Name, where from, and crime	Weeks	Days
Homer McFarland, Lisbon, larceny	25	4
John Cross, Easton, breaking and entering	25	4
Frank Anderson, Lincoln, selling without license	3	4
Will Elliott, Littleton, stealing	7	6
Samuel Dorr, Littleton, taking auto	6	5
Benj. Caswell, Lebanon, drunk	1	3
Wm. McKane, Lebanon, drunk	1	
Joseph Brown, Plymouth, selling without license	2	
Everett Delarge, Franconia, breaking and entering	8	5
Tom Rooney, Warren, breaking contract	5	5
Perry Fox, Plymouth, breaking and entering	16	1
Wm. Martin, Jr., Enfield, breaking and entering	21	5
George Mason, Lebanon, assault	11	3
Joseph Donovan, Haverhill, drunk	11	3
Jack Anderson, Haverhill, drunk	4	2
John Riley, Haverhill, drunk	3	5
William Kelley, Haverhill, drunk	3	5
John Lynch, Haverhill, drunk	3	5
Peter Hill alias Hughes, Haverhill, drunk	3	5
Fred Emery, Littleton, drunk	26	1
Fred Sabine, Littleton, drunk	4	2
Peter Hughes alias Hill, Plymouth, assault	21	5
Fred Lovell, Lebanon, breaking and entering	35	2
Aimien Abdelnour, Plymouth, selling liquor	6	2
Ralph Lovett, Plymouth, driving auto intoxicated	4	2

Name, where from, and crime	Weeks	Days
Thomas Thornton, Enfield, drunk	7	5
William McCarty, Enfield, drunk	8	4
John Blanch, Enfield, drunk		3
Frank Mossey, Littleton, larceny	26	3
George Bellville, Lebanon, selling liquor	12	2
Mabel Everett, Littleton, larceny	2	4
Patrick Owens, Lebanon, drunk	4	1
Joseph Smith, Lebanon, drunk	4	1
John Brown, Lebanon, drunk	4	1
Walter Fletcher, Bristol, assault		1
Jack Anderson, Lisbon, changing number plates	13	
Kenneth Badger, Lebanon, stealing	18	3
John Riley, Lebanon, drunk	7	1
John Kelley, Lebanon, drunk	5	6
Joseph Smith, Lebanon, absconded	4	2
John O'Brien, Lebanon, drunk	3	2
Bert Waid, Enfield, furnishing liquor	4	2
Fred Merrill, Warren, assault with intent to kill	13	6
Fred Canfield, Lebanon, driving auto intoxicated	4	2
James Robinson, Lincoln, drunk	10	3
Felix Levine, Lincoln, assault	4	2
Joseph Zullo, Lincoln, assault	9	3
Fred Day, Lebanon, assault	8	4
Fred Sabine, Littleton, drunk	6	4
Robert Grant, Littleton, breaking contract	5	4
Pat Murphy, Littleton, breaking contract	5	4
Fred Emery, Littleton, drunk	6	3
Charles Sargent, Ellsworth, selling liquor	6	2
Thomas Erwin, Haverhill, drunk	4	2
Ambrose Millette, Haverhill, drunk	3	3
Wallace Knapp, Littleton, selling liquor	1	6
Harry Winters, Campton, breaking contract	1	6

Respectfully submitted,

ALVAH H. PARKER,

Deputy Jailer.

Chaplain's Report

For the year ending December 31, 1922

To the Honorable Board of Commissioners of Grafton County:

I herewith present to your Honorable Board my sixth annual report.

Superintendent and Matron, Mr. and Mrs. Alvah Parker, have in a very large degree maintained their reputation for caring for the institution, both indoors and out.

The North Haverhill Sunday School and many friends from far and near have provided religious literature, books, magazines, etc., to all who wished for them.

With the excellent and watchful care given to the patients in the hospital, by County Physician, Mr. Elmer M. Miller and Mrs. Winifred Day the nurse, assisted by others, have made the patients very comfortable.

Once in two weeks religious services have been held on Sunday afternoon. Mrs. Charles Little, organist and the choir have added much to the services.

The W. C. T. U. with a large number present for the annual flower mission day, June 9th, brought much cheer and comfort to all the inmates. Ice cream, cake fruit, candies, assorted cookies etc., were served to inmates including those in the jail.

Christmas night the Chapel was filled to the door with inmates and friends to listen to a musical and literary program rendered by inmates, assisted by Mr.

Forest Land, soloist; Mrs. Daniel Carr, reader; Miss Mildred Higgins with pantomime. At the close of the program three well laden trees were relieved of presents and given to all.

Mr. and Mrs. Alvah Parker and friends gave a fine treat of cornballs and candy to all present.

For interest manifested in the Sunday services and the success of the special occasions, the neat and tidy appearance in the institution at all times great credit is due the Superintendent and Matron and their corps of assistants.

I wish to express many thanks to the Board of Commissioners, Superintendent, Matron, Physician, Nurse, Jailer and others for courtesies shown me during the year.

Number of Sunday services held	25
Number of funerals attended	2

Respectfully submitted,

DICK E. BURNS,

December 31, 1922.

Chaplain.

Report of County Physician

To the Commissioners of Grafton County:

Gentlemen:

The work in the Hospital has been unusual this year in that we have had more sick children, and more special cases requiring particular care. However, the work has been done by the regular nurse and without any extra expense.

Mrs. Day, the head nurse at the Hospital, is particularly adapted to the place which she has so acceptably filled.

The honest interest which Superintendent and Mrs. Alvah Parker has had in each individual patient has assured for them whatever special care was necessary.

The patients have uniformly been hopeful and contented which has greatly aided their convalescence.

I desire to express my appreciation of your continual approbation and also of the cooperation of all connected with the Institution.

Respectfully submitted,

ELMER M. MILLER,

County Physician.

Statistics

Patients in hospital January 1, 1922	8	
Patients admitted during the year	48	56
Patients discharged, cured or improved		17
Patients in hospital January 1, 1923		12
Greatest number in hospital at any time		16

Least number in hospital at any time	6
Daily average	10.6
Total nursing days for the year	3,894
Number of deaths during the year	11
Number of births during the year	1
Average age of deaths	69

Deaths for the year 1922

Jan. 21.	Napoleon Joslin	65	Heart Disease
Jan. 30.	John Brown	82	General Debility
Feb. 14.	Daniel O'Brien	40	Tuberculosis
Feb. 19.	Fred Bean	54	Heart Disease
May 11.	Elbridge Homans	72	Cancer—Bladder
June 3.	George Oakes	87	Senility—broken leg
July 22.	Luella Keezer	67	Cerebral Hemorrhage
Aug. 15.	Betty Dodd	65	Senility
Oct. 11.	Juliana Archer	82	Senility
Oct. 18.	John Dixon	80	Pneumonia
Oct. 23.	Richard Daws	66	Cerebral Hemorrhage

Sheriff's Report

To the Commissioners of Grafton County:

I submit herewith my report as Sheriff of the County, from January 1, 1922, to December 31, 1922.

January Term of Superior Court at Lebanon

To attendance Claude M. Murray, Sheriff

38 days	\$114.00
298 miles travel	59.60
Geo. U. L. Leavitt, deputy sheriff	
12 days	48.00
3 miles travel	.60
Walter H. French, deputy sheriff	
6 days	24.00
45 miles travel	9.00
Alfred J. Densmore, deputy sheriff	
4 days	16.00
1 mile travel	.20
Roscoe H. Rinehart, deputy sheriff	
13 days	52.00
3 miles travel	.60
Albert E. Strain, deputy sheriff	
2 days	8.00
42 miles travel	8.40
Arthur E. Davis, deputy sheriff	
3 days	12.00
1 mile travel	.20
Seth O. Titus, deputy sheriff	
3 days	12.00
10 miles travel	2.00

Joseph P. Huckins, deputy sheriff	
1 day	4.00
1 mile travel	.20
To paid Clergyman	2.00
Court supplies	4.60
Hotel Rogers meals for jury	18.00
Hotel Wentworth, meals for jury	13.00
	<hr/>
	\$ 408.40

May Term Superior Court at Plymouth

To attendance Claude M. Murray, Sheriff	
46 days	\$ 138.00
476 miles travel	95.20
J. P. Huckins, deputy sheriff	
19 days	76.00
3 miles travel	.60
Bernard B. Chase, deputy sheriff	
18 days	72.00
3 miles travel	.60
Henry L. Cotton, deputy sheriff	
4 days	16.00
20 miles travel	4.00
Geo. U. L. Leavitt, deputy sheriff	
1 mile travel	.20
2 days	8.00
R. S. Rinehart, deputy sheriff	
11 days	44.00
3 miles travel	.60
Seth O. Titus, deputy sheriff	
7 days	28.00
20 miles travel	4.00
A. E. Strain, deputy sheriff	
5 days	20.00
40 miles travel	8.00

Walter H. French, deputy sheriff	
1 day	4.00
30 miles travel	6.00
A. E. Davis, deputy sheriff	
2 days	8.00
1 mile travel	.20
To Paid Clergyman	2.00
Felix McCarthy, court supplies	3.51
J. P. Huckins, telephone account	1.55
J. E. Kebrich, meals for jury	34.75
W. F. Wormwood, meals for jury	13.00
	<hr/>
	\$ 581.21

September Term Superior Court Woodsville

To attendance Claude M. Murray, Sheriff	
39 days	\$ 117.00
380 miles travel	76.00
A. E. Strain, deputy sheriff	
2 days	8.00
20 miles travel	4.00
Seth O. Titus, deputy sheriff	
2 days	8.00
10 miles travel	2.00
R. S. Rinehart, deputy sheriff	
10 days	40.00
3 miles travel	.60
J. P. Huckins, deputy sheriff	
8 days	32.00
2 miles travel	.40
Bernard B. Chase, deputy sheriff	
7 days	28.00
2 miles travel	.40

173

Henry L. Cotton, deputy sheriff	
1 day	4.00
20 miles travel	4.00
To Paid Clergyman	2.00
Felix McCarthy	2.85
Telephone "stopping jury"	6.45
	<hr/>
	\$ 335.70

Respectfully submitted,
CLAUDE M. MURRAY,
Sheriff.

Report of County Solicitor

To the Honorable Board of Commissioners for the
County of Grafton:

I herewith submit my final annual report as Solicitor for Grafton County. A report covering the period from January 1st., next to April 1st., following will later be made, at which time, my successor, Brother Clark B. Frost of Lisbon will take up the work of this office.

As a public prosecutor, I have always tried to keep in mind, that fidelity to duty did not require the "persecution" but merely the "prosecution" of offenders with whom I had to deal. With me, it has never followed that because a person is under arrest charged with the violation of a criminal statute; nor even when that person has pleaded, or been convicted after a full, fair and impartial trial, that he, or she, is inherently bad, a public nuisance or a confirmed criminal whose wayward tendencies and criminal instincts require his, or her, immediate and permanent removal from the helpful influences of wholesome society. Especially is this true in the case of young offenders, and, it would seem, that the courts are inclining more and more to the view that a prison sentence for a juvenile offender means that he will be a criminal when he gets out of prison if he was not one when he went in. That this is the correct view is borne out by the many instances of crimes committed by young men so soon after leaving prison. The atmosphere of confinement, and influences of prison life and that

daily contact with hardened criminals, has every effect but that of making for wholesome and decent living afterwards.

I believe the prosecutor should at all times keep before him that hoary presumption of the innocence of every man until he has been proven guilty by a jury of his peers and under the laws of the land. It is easy to deteriorate into the foolish notions, and confirmed ideas, that everybody is guilty as charged and that an acquittal at the hands of an intelligent jury is a gross mis-carriage of justice.

It would not be strange if the work of this office had not been done to the entire satisfaction of everybody who had a complaint to make. I don't expect it has. I am glad of it and have no apologies to make. Some complaints have been consigned to the wastebasket, and invariably, those where the complainant failed in his signature and where the complaint ended with "don't bring my name into it".

Probably, no more serious offence has ever been committed in Grafton County than that of the murder of the Davis Brothers in Orford. The investigation following; the suicides and the history of the double murder are already known to the public. Since the crimes are still unsolved, it would seem best at this time to withhold further comment.

The Solicitor wishes to extend his gratitude and thanks to the Commissioners, Judges, Clerk, Sheriff and his Deputies and his Brother Attorneys for their helpful suggestions, rare patience, kind indulgences

and hearty co-operation during his term of office. To his successor, he wishes that measure of success limited only by "Webster's top-story."

A list of cases is hereto appended, but not including those disposed of in Municipal Courts.

Respectfully submitted,

JOHN H. NOONAN,
County Solicitor.

Enfield, N. H. December 31, 1922.

January Term 1922

William Martin, Jr., breaking and entering, 1 year House of Correction and costs.

Perry Fox, breaking with intent to commit larceny, 8 years, House of Correction and costs.

Marcus Breton, forgery, 1 to 3 years, State Prison, suspended on payment, \$50, mitimus on call Solicitor.

May Term 1922

Fred Russell, forgery, nolo, continued for sentence.

John Hunkins, grand larceny, nolo, simple larceny accepted, continued for sentence.

Waldo C Nelson, statutory rape, nolo, continued for sentence.

Jean Labell, assault, intent to rape, jury trial, not guilty.

Frank Mossey, grand larceny, simple larceny accepted, 6 months House of Correction and costs.

Robert Clark, statutory rape, parties married.

Oliver Knighton, breaking and entering, guilty, State Prison, 1 to 2 years.

Oliver Knighton, breaking and entering, guilty, continued for sentence.

A. N. Abdelnour, illegal sale, Jury trial, guilty, \$100, 2 months House of Correction.

September Term 1922

Walter Watson, breaking and entering, guilty, 6 months jail, suspended, mittimus on call of Solicitor.

Leonard Parker, grand larceny, guilty, 18 to 24 months State Prison.

Fred Merrill, assault, deadly weapon, 8 months House of Correction.

Walter Fletcher, aggravated assault, \$100 costs, 6 months suspended.

Clerk's Report

To the Commissioners for the County of Grafton:

I submit herewith report of the receipts and disbursements of this office for the year 1922.

January Term

To cash paid:

Printing docket	\$ 125.00
Printing blanks	56.00
Binding docket	26.65
Opinions Supreme Court	7.48
Office supplies	48.00
Fine State v. Black Auto Co.	25.00
Fine State v. Ibey Auto Co.	50.00
Fine State v. Ibey Auto Co.	10.00
3 capias, 2 mittimus	5.00
3 State entries	.90
2 days attendance Sept. adj. term	12.00
26 days attendance Lebanon and Plymouth	156.00
12 days attendance Woodsville	36.00
Cash paid telephone and incidentals	30.98
Allowance	600.00
Cash paid stamped envelopes and stamps	36.11
	<hr/>
	\$ 1,225.12

Credit

By 21 dockets sold	\$ 31.50
187 entries	168.30
Costs State v. Buton	25.00

Auto forfeiture, State v. Putnam Motors Corp.	250.00
Order on County Treasurer	750.32
	<hr/>
	\$ 1,225.12

May Term

To cash paid:

Printing docket	\$ 135.00
Printing blanks	87.50
Binding docket	26.65
Office supplies	60.00
7 capias, 3 mittimus	10.00
Equity records, Sept. 5, 1919	73.02
11 State entries	3.30
Cash paid telephone and incidentals	29.90
5 days attendance, Jan. adj. term	30.00
29 days attendance Plymouth and Lebanon	174.00
17 days attendance Woodsville	51.00
Allowance	600.00
	<hr/>
	\$ 1,280.37

Credit

By 22 dockets sold	\$ 33.50
Costs State v. Vincent Atkins	18.26
164 entries	147.60
2 Municipal Court appeals	2.40
Order on County Treasurer	1,078.61
	<hr/>
	\$ 1,280.37

September Term

To cash paid:

Printing docket	\$ 130.00
Binding docket	33.00

Printing blanks	62.50
Office supplies	63.50
4 capiases, 2 mittimus	6.00
Equity records, Jan. term 1920	42.04
Stamped envelopes and stamps	8.92
7 State entries	2.10
4 days attendance May adj. term	24.00
30 days attendance Woodsville	90.00
13 days attendance Plymouth	98.00
Cash paid telephone and incidentals	25.26
Allowance	600.00
	<hr/>
	\$ 1,185.32

Credit

By 22 docketts sold	\$ 33.00
Balance received on sale State v. Peerless Auto	36.70
Balance received on sale State v. Cadillac Auto	248.15
187 entries	168.30
2 Municipal Court appeals	2.40
Order on County Treasurer	696.77
	<hr/>
	\$ 1,185.32

DEXTER D. DOW,
Clerk.

Treasurer's Report

Report of Treasurer of Grafton County for the year
ending December 30, 1922

Receipts

Cash on hand, balance from year 1921	\$1,476.92
E. R. Cummings, fine-Ryan	50.00
Town of Thornton, balance tax of 1921	419.36
Town of Warren, balance tax of 1921	656.34
Town of Waterville, balance tax of 1921	1,585.53
Town of Lincoln, balance tax of 1921	2,616.49
Lebanon Court, fine Daniel J. Weeks	200.00
Lisbon Sav. Bank & Trust Co. note	5,000.00
Lisbon Sav. Bank & Trust Co. note	5,000.00
Lisbon Sav. Bank & Trust Co. note	5,000.00
Lisbon Sav. Bank & Trust Co. note	5,000.00
Leo Fox, fine	100.00
A. H. Parker, Supt. County Farm	7,581.98
Lisbon Sav. Bank & Trust Co. note	5,000.00
Enfield Court, fine Peter Laramie	50.00
Lisbon Sav. Bank & Trust Co. note	5,000.00
Lisbon Sav. Bank & Trust Co. note	5,000.00
Lebanon Court, fine Eddie Tomaskey	50.00
Lebanon Court, fine J. Marchewski	25.00
Town of Plymouth taxes of 1922	4,689.56
W. A. Kimball fine 'Bundy' Abdelnour	112.50
Town of Ashland, taxes 1922	3,037.41
Lisbon Sav. Bank & Trust Co. note	5,000.00
Enfield Court, fine Mossure	50.00
Town of Franconia taxes 1922	1,662.37

Town of Lyme, taxes 1922	1,898.38
Town of Lyman, taxes 1922	687.53
C. W. Fling, fine J. C. Bennett	42.00
Town of Piermont, taxes 1922	1,426.35
Town of Grafton, taxes 1922	1,323.74
Town of Lisbon, taxes 1922	4,699.82
Town of Landaff, taxes 1922	892.75
J. C. Smith, rebate on insurance	9.12
Woolson & Clough, rebate on insurance	3.94
Merrill Insurance Agency, rebate on insurance	2.63
Hunkins & Eaton, rebate on insurance	6.57
Ayer Insurance Agency, rebate on insurance	6.55
Town of Lebanon, taxes 1922	11,328.80
Town of Bristol, taxes 1922	2,975.84
Town of Hanover, taxes 1922	6,290.35
Town of Haverhill, taxes 1922	6,382.70
Town of Ellsworth, taxes 1922	236.02
Town of Canaan, taxes 1922	2,873.22
Town of Woodstock, taxes 1922	923.54
Town of Wentworth, taxes 1922	861.97
Town of Bridgewater, taxes 1922	708.05
Town of Rumney, taxes 1922	1,487.92
Town of Holderness, taxes 1922	2,329.36
Town of Alexandria, taxes 1922	718.31
Town of Campton, taxes 1922	2,534.59
Town of Benton, taxes 1922	389.94
Town of Thornton, taxes 1922	738.83
Town of Bethlehem, taxes 1922	3,591.54
Town of Littleton, taxes 1922	6,782.91
Enfield Court, fine No. 85	50.00
Town of Warren, taxes 1922	1,149.29
Town of Orange, taxes 1922	420.00
Town of Groton, taxes 1922	564.39
Town Waterville, taxes 1922	2,072.83
Town of Orford, taxes 1922	1,816.29
Town of Enfield, taxes 1922	3,109.24

Town of Hebron, taxes 1922	502.82
Town of Easton, taxes 1922	441.25
Town of Bath, taxes 1922	1,631.58
Town of Lincoln, part payment taxes 1922	2,500.00
Town of Livermore, taxes 1922	1,292.95
Town of Dorchester, taxes 1922	574.65
Francis Mahoney estate, taxes 1922	18.85
Town of Monroe, taxes 1922	800.40
	<hr/>
	\$143,441.47

Disbursements

Commissioners' orders outstanding Jan 1,	\$ 502.10
Comissioners' orders issued 1922 paid	72,241.84

COURT ORDERS

O. A. Brown, commissioner to Dec. 31 1922	414.37
H. E. Morrison, commissioner to Dec. 31 1922	546.95
G. H. Turner, commissioner to Dec. 31, 1922	355.73
Dexter D. Dow, cerk	750.32
Lizzie Sanborn, stenographer	436.80
Lizzie Sanborn, stenographer	40.00
H. L. Heald referee fees, Drouse vs Elliott	25.00
Lizzie Sanborn, stenographer	40.00
Lizzie Sanborn, stenographer	10.50
Dexter D. Dow, clerk	1,078.61
Lizzie Sanborn, stenographer	549.25
Geo. W. Pike, counsel fees State vs R. G. Clark	25.00
Geo. W. Pike, referee fees Frost vs Shattuck	15.00
Geo. W. Pike, counsel fees State vs Frank Mossey	10.00
Geo. W. Pike, counsel fees State vs Fred Russell	10.00
Dexter D. Dow, referee fees Sawyer vs John- son, adm.	72.31

Dexter D. Dow, referee fees, Jackson Durgin Co., vs Pearson	17.87
C. D. Hibbard, referee fees, Spicer & Hayes	30.00
Lizzie H. Sanborn, stenographer	15.00
O. A. Brown, commissioner to June 30 1922	418.39
H. E. Morrison, commissioner to June 30 1922	506.34
G. H. Turner, commissioner to June 30, 1922	350.61
D. H. Foster, masters fees Goodell vs Goodell	5.00
Emma C. Clapp, stenographer	23.98
Bessie A. Marsh, stenographer	34.42
Margaret A. Conway, stenographer	16.50
Dexter D. Dow, Clerk	696.77
Margaret A. Conway, stenographer	30.76
Fred S. Wright, referee fees Wilson vs Atwood	21.25
H. S. Richardson, referee fees Inn Stable vs Graham	23.20
Lizzie H. Sanborn, stenographer	450.35
Mary D. Eldridge, stenographer	37.04

NOTES AND BONDS

Interest of refunding bonds to May 1 1922	630.00
Lisbon Savings Bank & Trust Co., note dated June 6, 1922	5,000.00
Interest on same	92.36
Note dated April 12, 1922	5,000.00
Interest on same	150.00
Note dated April 10, 1922	5,000.00
Interest on same	150.00
Note dated June 22, 1922	5,000.00
Interest on same	83.34
Interest on refunding bonds to Nov. 1, 1922	630.00
Refunding Bonds, 4 at \$1,000.00	4,000.00
Lisbon Savings Bank & Trust Co., note dated May 10, 1920	5,000.00

Note dated Jan. 27, 1920	5,000.00
Interest on same	232.65
Interest on note dated June 15, 1920 to Jan. 1, 1923	262.50
Interest on note dated June 18, 1920 to Jan. 1, 1923	262.50
Interest on note dated July 15, 1920 to Jan. 1, 1923	262.50
Interest on note dated June 15, 1921 to Jan. 1, 1923	262.50
Interest on note dated July 11, 1921 to Jan. 1, 1923	262.50
Interest on note dated July 26, 1921 to Jan. 1, 1923	262.50
Interest on note dated February, 23, 1922, to Jan. 1, 1923	216.67
Interest on note dated February 11, 1922, to Jan. 1, 1923	222.23
Interest on note dated May 5, 1922 to Jan. 1, 1923	196.67
Interest on note dated July 22, 1922 to Jan. 1, 1923	109.72
Note dated June 15, 1920	5,000.00
Interest on same	245.00
Interest on same	6.25
Note dated July 15, 1920	5,000.00
Interest on same	6.25

PAY ROLLS

Petit jury, Sept. Term 1921	7.24
Grand Jury, Jan. Term 1922	157.36
Petit Jury, Jan. Term 1922	2,150.08
State vs Elmer Mess	42.64
Milo Woods	77.79
Ernest Mason	51.22

Ray Stanley	70.18
Antonio Auberton	79.44
D. J. Weeks, intoxicating liquor	43.50
Hobbs alias Welch	18.66
Perry Fox	42.88
Robert Meads	9.06
Ray Maples	50.19
Harry G. Fogg	52.12
Marcus Breton	35.12
William Martin, Jr.	43.02
John H. Noonan	89.91
J. P. Huckins	36.80
A. E. Strain	67.05
Arthur E. Davis	103.60
C. M. Murray	115.59
Grand Jury, May Term	109.12
Petit Jury, May Term	3,381.68
State vs Oliver Knighton	67.38
Robert Clark	45.28
Frank Mossey	18.60
John H. Weston	18.32
Waldo C. Nelson	57.60
Jean Bell	18.50
Smith & Dalton	14.10
Jack Buyzezette	62.90
Amos Moses	34.62
Sidney Hillard	34.62
Carroll Gray	57.40
Fred Merrow	64.72
A. N. Abdelnour	64.78
Oliver Knighton	16.60
John Hunkins	51.18
Fred Russell	28.70
John H. Noonan	265.60
J. P. Huckins	150.65

	187
A. E. Davis	78.37
A. F. Wentworth	15.00
Walter M. French	19.85
A. E. Strain	80.00
Seth O. Titus	45.23
W. H. French	37.10
Chas. D. Howard	3.00
C. M. Murray	142.17
Guy F. Spaulding	37.50
Geo. U. L. Leavitt	8.00
Grand Jury, Sept. Term	107.32
Petit Jury, Sept. Term	1,326.52
State vs Geo. Drouse	38.96
Harry Morrill	49.00
Fred Merrill	38.40
Walter Watson	26.70
Leonard Parker	74.92
Walter Fletcher	68.45
A. J. Marcotte	21.70
Mrs. Geo. Belville	19.50
Wallace Maynard	62.08
Victor Sherman	16.50
Geo. Belville et al.	116.77
C. M. Murray	128.20
Seth O. Titus	20.00
A. E. Strain	53.70
A. E. Davis	18.00
J. P. Huckins	53.60
H. L. Cotton	18.45
John H. Noonan	30.60
Balance, cash on hand	4,432.68
	<hr/>
	\$143,441.47

Summary

Financial standing of the County of Grafton

January 1, 1923

Commissioners' inventory of property on

County Farm Jan. 1, 1923	\$60,919.61
Due for board of persons	424.29
Due from individuals	1,557.22
Due from State of New Hampshire	3,250.00
Due from town of Lincoln	3,082.31
Cash in treasury	4,432.68
	<hr/>
	\$73,666.11

Liabilities

Refunding Bonds, outstanding	\$24,000.00
Accrued interest to Jan. 1, 1923	180.00
Note dated June 18, 1920	5,000.00
Note dated July 11, 1921	5,000.00
Note dated June 15, 1921	5,000.00
Note dated July 26, 1921	5,000.00
Note dated May 5, 1922	5,000.00
Note dated Feb. 11, 1922	5,000.00
Note dated July 22, 1922	5,000.00
Note dated Feb. 23, 1922	5,000.00

Commissioners' Outstanding Orders

No. 330	—	\$ 16.00
No. 421	—	100.50
No. 505	—	26.00
No. 604	—	1.25
No. 648	—	12.50
No. 703	—	12.50
No. 707	—	12.50
No. 725	—	156.00
No. 756	—	13.00
Total		64,530.25

Surplus Jan. 1, 1923	\$9,135.86
Surplus Jan. 1, 1922	3,174.98
Increase for year 1922	5,960.88

Respectfully submitted,
EARNEST H. HALLETT,
 Treasurer.

Commissioners' Outstanding Bills

Woodsville, N. H., Jan. 12, 1923.

We hereby certify that there were no outstanding bills against the County, January 1, 1923, which were presented for payment, and no orders issued by us which have not been paid by the Treasurer, except:

No. 330	—	\$ 16.00
No. 421	—	100.50
No. 505	—	26.00
No. 604	—	1.25
No. 648	—	12.50
No. 703	—	12.50
No. 707	—	12.50
No. 725	—	156.00

No. 756	_____	13.00
All amounting to		<u>\$ 350.25</u>

State of New Hampshire, Grafton ss.

January 12, 1923.

Personally appeared the above named Ora A. Brown and George H. Turner, and made oath that the above statement by them signed is true.

HARRY M. EATON,
Justice of the Peace.

Auditors' Report

We, the undersigned, auditors of Grafton County, hereby certify that we have carefully examined the accounts of the County Commissioners and Treasurer and of the Superintendent of the County Farm for the year 1922, and we find them correctly cast and properly vouched, and there is a balance in the hands of the Treasurer of \$4,432.68.

Respectfully submitted,

HARRY M. EATON,
MOSES A. BATCHELDER,
Auditors

January 12, 1923.

Grafton County Farm Bureau

To the Commissioners of Grafton County:

Herewith is submitted a statement of expenditures of legislative appropriation of \$5,150 for 1922 for agricultural extension work in Grafton County in cooperation with the New Hampshire State College and the U. S. Department of Agriculture.

Toward salary of County Agricultural Agt.	\$1,800.00
Toward salary of County Home Demonstration Agent (6½ months)	375.00
Travel of County Agricultural Agent	1,096.08
Travel of Home Demonstration Agent (includes purchase of car)	1,120.80
Stenographic Services	902.88
Travel of Executive Committee	279.99
Rent of office	168.00
Lights for office	18.00
Telephone	157.09
Postage	144.83
Supplies and equipment	201.41
Printing	1,379.57
Demonstrations	92.57
Miscellaneous	207.71
Total	<hr/> \$ 7,943.93

Legislative Appropriation	\$ 5,150.00
---------------------------	-------------

Difference Paid by G. C. F. B.	\$ 2,793.93
--------------------------------	-------------

Note:—The difference of \$2,793.93 is the amount paid by the Grafton County Farm Bureau to supplement the county appropriation in carrying on cooperative extension work in agriculture and home economics in the County.

Respectfully submitted,

W. ROSS WILSON,

County Agricultural Agent.

WINTHROP B. FIELD,

Treasurer Grafton Co. Farm Bureau.

