

Hamilton Smith
Library,
University of
New Hampshire

ANNUAL REPORT
OF THE
COMMISSIONERS
OF THE
County of Grafton

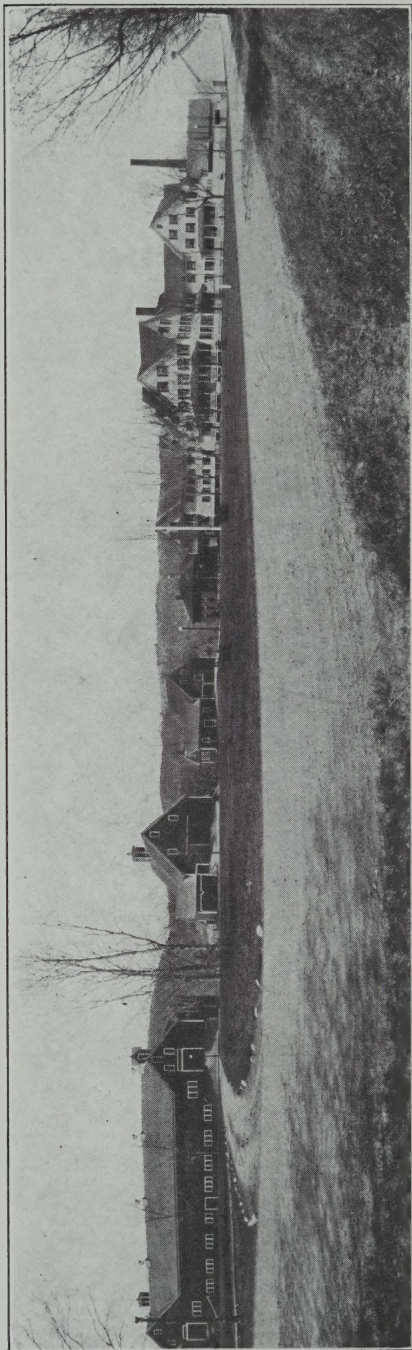
TOGETHER WITH THE REPORTS OF THE

Superintendent, Physician, Chaplain, Clerk of the
Court, Treasurer, Sheriff, Jailer,
Solicitor and Auditors

FOR THE

Year Ending December 31, 1921

VOL. V, PART 2



Grafton County Farm Buildings, Horse Meadow Station, N. H.

ANNUAL REPORT

OF THE

COMMISSIONERS

OF THE

County of Grafton

TOGETHER WITH THE REPORTS OF THE

Superintendent, Physician, Chaplain, Clerk of the
Court, Treasurer, Sheriff, Jailer,
Solicitor and Auditors

FOR THE

Year Ending December 31, 1921

VOL. V, PART 2

COURIER PRINTING COMPANY
LITTLETON, N. H.
1922

N
352.0742
G73
1921

County Officers

COMMISSIONERS

Ora A. Brown	Ashland
Harry E. Morrison	Orford
George H. Turner	Bethlehem

TREASURER

Earnest H. Hallett	Lisbon
--------------------	--------

SOLICITOR

John H. Noonan	Enfield
----------------	---------

SHERIFF

Claude Murray	Canaan
---------------	--------

DEPUTY JAILERS

Henry D. Harriman, to April 1, 1921	Woodsville
Alvah H. Parker, from April 1, 1921	Woodsville

CLERK OF COURT

Dexter D. Dow	Woodsville
---------------	------------

JUDGE OF PROBATE

Harry Bingham	Littleton
---------------	-----------

REGISTER OF PROBATE

Russell T. Bartlett	Woodsville
---------------------	------------

REGISTER OF DEEDS

William J. Randolph	Woodsville
---------------------	------------

COUNTY ALMSHOUSE AND HOUSE OF CORRECTION

Alvah H. Parker, Superintendent	Woodsville
Henry D. Harriman, Ass't Supt. to April 1,	Woodsville

CHAPLAIN

Rev. D. E. Burns	North Haverhill
------------------	-----------------

PHYSICIAN

E. M. Miller, M. D.	Woodsville
---------------------	------------

AUDITORS

Harry D. Green, to December, 1921	Littleton
Moses A. Batchelder	Plymouth
Harry M. Eaton, from December, 1921	Littleton

Commissioners' Report

To the Citizens of Grafton County:

Your Commissioners herewith present their report together with reports of the Sheriff, Solicitor, Clerk of the Court, Jailer and Treasurer and the Auditors and Superintendent, Physician and Chaplain of the County Farm for the year ending December 31st, 1921, and a statement of the financial standing of the County at the close of the year.

The County is feeling the after effects of the war in the increase of paupers, especially families of children, who in many instances have been abandoned by the father leaving the mother and children to be supported by the County. In many cases the children are placed in orphanages where the expense is \$12 per month for each child besides clothing and special doctor's bills; but where, with temporary relief, the family can be kept together it is done. There has also been an increase in the number of criminals making the court expense larger by \$3,000, and a greater number in the jail and House of Correction. There actually has been four times the number in the House of Correction in 1921 that there was in 1920, costing the County for board and clothing, \$6,487.84 for which there was no appropriation.

The County Farm buildings have been equipped with lightning rods, and fire escapes have been provided by connecting the buildings with new passageways. By using the old House of Correction for in-

mates of the Almshouse there are now no inmates above the second floor in any department.

These matters were discussed by the delegation who appropriated \$3,000 for lightning rods and fire escapes and we feel that what we have done will meet with their approval although it cost more than the appropriation.

Nearly a car load of shingles has been used on the buildings the past year.

Feeling that the County should keep a clean herd of cows we had them tested for tuberculosis last spring finding a good many affected. These were disposed of and now we have a herd of fifty clean cows and sixty head of young stock.

Mr. and Mrs. Parker are always glad to show any attention to citizens who may be interested to visit the institution.

Respectfully submitted,

ORA A. BROWN,
HARRY E. MORRISON,
GEORGE H. TURNER,
Commissioners.

Paid for Support of Paupers

From January 1, 1921 to January 1, 1922

Alexandria	\$ 168 00
Bath	119 25
Bethlehem	74 64
Bristol	333 53
Campton	36 50
Canaan	217 89
Dorchester	190 91
Ellsworth	260 70
Enfield	915 18
Franconia	1,514 21
Hanover	74 79
Haverhill	446 55
Landaff	61 16
Lebanon	2,543 36
Lisbon	129 97
Littleton	940 44
Orford	464 75
Plymouth	100 83
Piermont	105 64
Warren	351 50
The Littleton Hospital Association, care of Grafton County paupers	174 11
Laconia Hospital Association, care of Graf- ton County paupers	19 77
Cottage Hospital, care of Grafton County paupers	217 92
Mary Hitchcock Memorial Hospital, care of Grafton County paupers	264 00

Emily Balch Hospital, care of Grafton County paupers	110 30
Memorial Hospital, care of Grafton County paupers	180 00
Bristol Public Health Association, care of Grafton County pauper	3 50
New Hampshire Children's Aid and Protective Society, care of Grafton County paupers	21 23
Mrs. H. C. Phillips, board of County pauper	161 17
Mabel D. Rogers, board of County pauper	156 00
Agnes Ingersoll, board of County pauper	67 00
Mrs. John Carr, board of County pauper	213 35
J. E. Munn, expense County pauper	15 00
Fred P. Wells, support of County pauper	11 45
C. M. Murray, expense County pauper	18 05
Sullivan Brothers, support of County paupers	26 71
G. M. Smith, support of County paupers	21 56
Town of Danbury, support of Grafton County paupers	197 45
Geo. H. Turner, transportation and expense County pauper	12 66
H. E. Morrison, transportation and expense County Pauper	20 60
H. N. Merrill Est., burial expense County pauper	40 00
Aletea E. Smith, care of County pauper	166 00
County of Belnap, board of Grafton County paupers	212 00
Oscar A. Lougee, supplies for County pauper	76
R. M. Whitcomb, supplies for County pauper	10 50
C. W. Valley, burial expense County pauper	66 50
American Express Co., supplies for County pauper	16 67
Woodsville Furniture Co., burial expense County paupers	50 00

T. H. Huckins, M. D., medical attendance County paupers	6 00
E. L. Bell, M. D., professional services County paupers	169 00
Willard A. Bates, M. D., professional services County paupers	57 00
A. T. Downing, M. D., professional services County paupers	3 75
F. E. Speare, M. D., professional services County paupers	71 00
John Wheeler, M. D. professional services County paupers	125 00
H. H. Palmer, M. D., professional services County paupers	5 00
L. M. Orton, M. D. professional services County paupers	74 50
H. A. Cheney, M. D., professional services County paupers	37 50
E. A. Chase, M. D., professional services Coun- ty paupers	10 00
Andrew L. McMillan, M. D., professional ser- vices County paupers	50 00
Richard E. Wilder, M. D., professional ser- vices County paupers	33 00
G. H. Morrison, M. D., professional services County paupers	51 00
John M. Page, M. D., professional services County paupers	4 00
H. H. Boynton, M. D., professional services County paupers	35 00
A. S. Russell, M. D., professional services County paupers	31 00
J. Eddy Blake, M. D., professional services County paupers	40 00
W. R. Garland, M. D., professional services County paupers	25 00

A. E. Burt, supplies for County paupers	50 88
B. D. Thorpe, M. D., professional services	
County paupers	25 00
	<hr/>
	\$12,427 69

Aid Furnished Soldiers and Their Families

From January 1, 1921 to January 1, 1922

Haverhill	\$324 41
Lisbon	218 08
Littleton	40 11
Direct aid	74 02
	<hr/>
	\$656 62

Paid for Support of Grafton County Children in Homes

From January 1, 1921 to January 1, 1922

New Hampshire Orphans' Home	\$5,537 30
Nashua Protestant Orphanage Association	190 01
St. Peter's Orphanage	592 00
St. Joseph's Boys' Home	138 24
St. Patrick's Orphanage	327 00
Infant Asylum	91 00
Bethesda Home	60 43
	<hr/>
	\$6,935 98

Paid for Support of Paupers on Farm

From January 1, 1921 to January 1, 1922

	1921	1922	
Hunkins & Eaton, insurance	120 00	120 00	
Woolson & Clough, insurance	72 14	100 00	
R. T. Bartlett, insurance	116 00	96 00	
F. P. Dearth, insurance	129 00	123 75	
W. H. Merrill, insurance	48 00	48 00	
Dewey, Peck & Co., insurance	120 00	121 00	
J. C. Smith, insurance	168 00	168 00	
F. A. Jones, insurance	72 00	72 00	
W. R. Conant, insurance	72 00	72 00	
Ayer Insurance Agency, insurance	120 00	241 90	
J. P. Huckins, insurance	120 00	120 00	
Alvin Burleigh, insurance	109 20	109 20	
Dearborn & Chase, insurance	72 00	72 00	
New England Coal & Coke Co., coal	440 04		
B. F. St. Clair, coal	1,172 25		
Freight	3,971 50	1,937 23	
Boston & Maine Railroad, water pipe privilege	5 00		
National Biscuit Co., supplies	153 23	734 40	
John B. Varick Co., equipment and supplies	1,076 87		
White Mountain Telephone & Telegraph Co.	144 08	136 14	
The Holbrook Grocery Co., supplies	1,369 87	1,015 72	
Dickerman & Co., supplies	1,576 60	1,515 06	
Armour & Co., supplies	1,009 91	1,018 41	
Mrs. M. N. Hoyt, poultry and eggs	221 84	160 59	
J. M. Howe, supplies	18 65	129 22	
E. B. Mann & Co.	200 80	203 46	

		1921	1920
F. B. Sawyer, cutting wood	8	00	
E. A. Sargent, supplies	154	50	234.17
Davis & Rinehart, livery and supplies	20	50	
A. U. Sherman, blacksmithing	97	50	
Woodsville Furniture Co., caskets, robes and supplies	142	45	
L. C. Butler, farm machinery, repairs and feed	2,787	46	3664.18
Joshua Nutter, sawdust	50	00	
A. F. Kimball, recording deaths and tax on truck	15	47	
W. G. Wetherbee, labor and supplies	1,741	93	471.00
E. W. French, feed	250	00	
D. S. Stone Lumber Co., lumber	241	48	
The Parker-Young Co., lumber	14	70	
Rhett R. Scruggs, labor and material	753	14	938.08
Central Garage, labor and supplies	21	02	
The E. Howard Clock Co., clock repairs and supplies	14	94	17.50
Parker Brothers Co., gloves and mittens	25	50	
Sawyer-Barker Co., supplies	258	25	343.67
Burlington Drug Co., supplies	129	51	181.36
Marston Stock Farm, farm machinery and pasturing cattle	637	00	394.95
Irving Tharer, labor	72	00	
Eagle Oil and Supply Co., supplies	332	46	289.74
M. W. Field, supplies	103	77	122.32
F. E. Blodgett, sawdust	280	00	
Empire Laundry Machinery Co., repairs	19	61	
Wright, Zeigler Co., supplies	6	86	
Oscar S. Olson, labor and supplies	928	00	
D. S. Merrill, labor	36	00	
F. V. Land, labor	40	00	
E. F. Mulliken, labor and supplies	208	58	
C. L. Bailey, labor and supplies	364	87	
P. O. Box rent and key	6	20	

	71	
	1927	1928
S. S. Dunn, labor	138	79
Stetson, Cutler & Co., shingles	1,057	53
A. H. Bailey, machinery, labor and supplies	324	99
Burlington Rendering Co., supplies	126	18
H. G. Smith, harness repairs	29	80
Ross Bros. Co., seed	48	33
Essex Fertilizer Co., fertilizer	115	88
American Agricultural Chemical Co., fertilizer	20	53
The F. H. Mann Co., supplies	37	29
Gowing & Chamberlin, supplies	60	
Greens Nursery Co., plants	16	00
The Union-Leader Publishing Co., newspaper	6	00
The Standard Oil Company, supplies	824	40
A. F. Cox & Son, shoes and rubbers	423	07
Woodworth & Co., supplies	21	34
The Caldbeck-Cosgrove Corp., lumber and building material	1,051	67
The Cota-Hanley Co., supplies	167	24
Mary D. Randall, coal	41	90
L. H. Hall, maple sugar and syrup	17	50
George H. Hegbie & Co., seed	7	80
John Thomas, D. V. S., veterinary	25	75
H. R. Clark, D. V. S., veterinary	85	00
Clarence H. Bickford, labor and supplies	225	89
W. D. Stinson & Son., supplies	213	40
Catherine Morse, labor	13	00
H. I. Dallman Co., supplies	103	88
Lisbon Auto. Garage, livery	5	00
Ideal Manufacturing Co., supplies	115	27
Colgate & Co., supplies	8	82
The Miller Automobile Co., repairs and supplies	91	76
L. P. Gunnison & Co., seed	35	00
American Express Co., transportation	22	67
A. E. Morse, sawdust	3	00

W. L. Hartwell, supplies	123	41	
E. Davis, lumber	63	06	
Walter Burbeck, laths	11	50	
E. H. Lother, supplies	21	55	
Haskell Floral Co., plants	25	75	
Farm machinery, labor and supplies	370	46	
P. Lorillard & Co., supplies	44	80	
C. C. Lawless, supplies	13	20	
W. C. Batchelder, repairs	61	85	
Boston & Maine Railroad, land rent	5	00	
International Sugar Feed Co., supplies	376	76	
Joseph Willis, labor	3	00	
Mirandi-Proctor Co., kitchen utensils	24	10	
The Hospital Specialty Co., supplies	34	30	
C. J. O'Neil, feed	1,637	85	
P. E. Tragansa, labor	19	00	42.70
White River Transfer & Storage Co., repairs	110	52	
Haverhill Garage, repairs and supplies	22	90	
The Cudahy Packing Co., supplies	115	54	
W. F. Reney, blacksmithing	5	25	
Pastura Manufacturing Co., feed	108	75	
S. F. Hobart, photographic work	13	60	
Richardson & Cameron Co., lightning rod equipment	1,847	00	✓
Town of Haverhill, 1921 tax	1,368	15	1199.70
Lang & Chamberlin, supplies	9	60	
F. S. Sleeper & Co., feed	1,074	28	1560.00
B. M. Tyler, labor	14	00	
Cross, Abbott Co., supplies	22	94	
H. W. Carter & Sons, supplies	58	22	
Clough & Chamberlin, potatoes	37	35	
Turner & Powers, sawdust	9	25	
Jesse Sheldon, supplies	4	00	
J. P. White, potatoes	41	04	
Hunt, Helms, Ferris Co.,	14	70	
The Russeloid Co., material	12	00	

S. L. Clifford, fertilizer	58 50	
Lewis Moran, labor	20 95	
D. W. Field, supplies	15 25	
The Furniture Shop, supplies	16 00	
Saranac Glove Co., gloves and mittens	40 55	
Woodsville Publishing Co., supplies	19 50	47.90
Batchelder, Libby Co., supplies	3 50	
E. D. Day, pressing hay	290 00	
M. L. McKinley, M. D., professional services	17 50	
Village of Wells River, electric current	281 96	455.74
Sundry bills paid by Superintendent	222 65	
Helps' pay roll, 12 months	7,567 62	7,100.72
Rev. D. E. Burns, chaplain, 12 months	75 00	74.00
E. M. Miller, M. D. physician, 12 months	400 14	341.40
Henry D. Harriman, balance assistant superintendent, 3 months	50 00	
Mr. and Mrs. A. H. Parker, superintendent and matron, 12 months	1,600 00	
	<hr/>	
	\$46,289 76	

Statement

Of the Expenses of the County for the year ending
December 31, 1921.

Bills paid by Commissioners:

For support of paupers and prisoners at farm	\$46,289 76
For support of paupers off farm	12,427 69
Aid furnished to soldiers and their families	656 62
Equipment, supplies and care of Woodsville Court House	3,039 83
Repairs, supplies and care of Plymouth Court House	313 08
Indexing records and supplies for Register of Deeds	3,641 72
Indexing Records, supplies and expense, Register of Probate	905 65
Supplies for Commissioners	35 02
Equipment and supplies for Judge of Probate	118 12
Supplies and expense for Solicitor	56 87
Supplies for Treasurer	14 72
County officers' salaries	1,750 00
Support of Grafton County Children in Homes	6,935 98
Sheriffs, deputies and messengers	1,484 51
Medical referees	64 80
Jail expenses, aside from board and clothing, which is credited to the farm	220 00

	75
Aid to needy blind	1,050 00
Grafton County Farm Bureau, legislative appropriation	5,150 00
The Courier Printing Co., printing 1920 report	188 04
Dexter D. Dow, returning divorce records	10 30
	<hr/>
	\$84,352 71

County of Grafton	BALANCE
<u>Assets</u>	
Cash on hand	\$ 1,476 92
Amount due County:	
(a) Taxes due from towns	5,277 80
(b) Due from individuals	814 00
(c) Due for board of persons	708 00
(d) Due from State of New Hampshire	3,250 00
(e) Personal property at farm	60,360 64
	<hr/>
Total assets	\$71,887 36
	<hr/>
Grand total	\$71,887 36

SHEET

December 31, 1921

Liabilities	
Notes outstanding	\$40,000 00
Bonds outstanding:	
Refunding bonds	28,000 00
Interest due	210 00
Outstanding orders	502 38
	<hr/>
Total liabilities	\$68,712 38
Excess of assets over liabilities (surplus)	3,174 98
	<hr/>
Grand total	\$71,887 36

RECEIPTS AND

Current Revenue:	
Taxes from towns and cities	\$86,692 20
Income of institutions:	
(a) County farm	7,170 18
Reimbursement of expenditures for support of poor, etc.	
	189 03
Receipts other than current revenue:	
Temporary loans during year	55,000 00

Continued on page 80

Schedule of County Property

Lands and Buildings:	
(a) Court Houses	\$ 54,000 00
(b) Jail	17,000 00
(c) County Farm	125,000 00
Furniture and equipment:	
(a) Court House	12,000 00
(b) Jail	568 75
(c) County Farm	20,949 66
	<hr/>
Total valuation	\$229,518 41

Certificate

This is to certify that the information contained in this report was taken from official records and is complete and correct to the best of my knowledge and belief.

ORA A. BROWN

February 1, 1922.

PAYMENTS

General government:

1. Salaries of	
(a) Commissioners	\$1,500 00
(b) Treasurer	300 00
(c) Auditors	50 00
(d) Solicitor	800 00
(e) Medical referee	64 80
2. Expenses of	
(a) Above officers	1,256 61
(b) Register of Deeds	3,641 72
(c) Register of Probate	905 65
3. Care and supplies for Court	
House	3,352 91
Miscellaneous expense	306 16

Superior Court:

4. Jury payrolls	5,608 10
5. "State Vs.—" payrolls	1,900 11
6. Counsel fees and referees'	
fees	496 95
7. Stenographer, etc.	1,227 10
8. Clerk of superior court	2,154 59
9. Sheriff and deputies, etc.	3,730 22

Charities and Corrections:

10. County farm expenditures	45,787 66
11. Support of poor not on	
County farm	12,427 69
12. Jail expenditures	220 00

Patriotic purposes:

13. Soldiers' benefits	656 62
------------------------	--------

Total current maintenance ex- penses	\$86,386 89
---	-------------

Continued on page 81

RECEIPTS AND

Brought forward from page 78

All other Receipts:

(a) Taxes due 1920	1,424 33	
(b) Dexter D. Dow, clerk	361 75	
(c) Acct. overpayment and refund	51 26	
(d) Insurance	25 00	
(e) Supplies sold	30 00	
(f) Municipal court fines	177 95	<u> </u>
Total receipts from all sources		\$151,121 70
Cash on hand at beginning of year		908 93
		<u> </u>

Grand total \$152,030 63

PAYMENTS (continued)

Brought forward from page 79

Interest:		
15. Paid on indebtedness		5,030 84
Indebtedness:		
19. Payments on principal of debt	46,000 00	
		<hr/>
Total indebtedness payments		46,000 00
All other payments:		
21. Aid to needy blind	1,050 00	
22. Grafton Co. Farm Bureau	5,150 00	
23. Support of children in Homes	6,935 98	13,135 98
		<hr/>
Total payments for all pur- poses		\$150,553 71
Cash on hand at end of year		1,476 92
		<hr/>
Grand total		\$152,030 63

Selectmen of Town and Overseers of the Poor

Your attention is called to the following extracts from
the laws of 1903

CHAPTER 42, SECTION 1

SECTION 1. Any town or county furnishing any assistance to any person within six years preceding his death shall be entitled to recover from the estate of such persons the sum or sums paid out for such assistance, the said claim to be a preferred claim against his said estate after payment of funeral charges, expense of last sickness and expenses of administration, provided he leaves no widow or minor children living at his decease.

CHAPTER 106, SECTION 1, as amended

“SECTION 1. No town shall be liable for the support of any person unless he, or the person under whom he derives his settlement, shall have wholly gained a settlement therein during the ten years preceding the last date of application for support provided that no person having a settlement in any town in this state upon arriving at the age of seventy years shall lose that settlement on account of being exempt by law from paying a poll tax, if he still resides in said town.”

CHAPTER 110, SECTION 1, last clause as amended

“Also to Chapter 67 of the laws of 1903, Chapter

84 of the Public Statutes, Chapters 1 and 71 of the laws of 1907, relating to paupers, and the following from Chapter 110, Public Statutes, relating to 'assistance to persons in quarantine.' ”

SECTION 1. Whenever any person or family is placed in quarantine by a board of health, to protect the public against small pox, scarlet fever, diphtheria or any other dangerous, infectious or contagious diseases, it shall be the duty of said board to assist such person or family while in quarantine in such manner as in the judgment of the board may be deemed wise and necessary.

SECTION 2. All expenses thus incurred, or such part thereof as the board may determine, shall be deemed a legitimate expenditure for the protection of the public health and shall be charged to the account of incidental expenses, but not to any indigent pauper account, nor shall such expenditure be construed to mean a public aid to the person or persons so quarantined and assisted unless such person or persons are already paupers as defined by the Public Statutes.

The following towns may send their affidavits and direct their correspondence to:

ORA A. BROWN, Ashland, N. H.—Ashland, Alexandria, Bristol, Bridgewater, Campton, Ellsworth, Hebron, Holderness, Lincoln, Groton, Plymouth, Rumney, Thornton, Wentworth, Waterville, Woodstock, and present their bills to the commissioners at Plymouth the second Tuesday in May.

HARRY E. MORRISON, Orford, N. H.—Dorchester, Enfield, Canaan, Grafton, Hanover, Lebanon, Lyme, Orford, Orange, Piermont, and present their bills to the commissioners at Lebanon on the first Tuesday of January.

GEORGE H. TURNER, Bethlehem, N. H.—Bethlehem, Bath, Easton, Franconia, Haverhill, Landaff, Littleton, Lisbon, Lyman, Livermore, Monroe, Warren, and present their bills to the commissioners at Woodsville the second Tuesday in September. If considered advisable, additional dates for settlement with towns may be arranged.

All applications for aid should be immediately reported to the commissioners, as under the laws of 1903 no bill will be paid for more than 10 days' support previous to the proper affidavit being received. Affidavit blanks will be supplied by the commissioners upon request.

ORA A. BROWN,
HARRY E. MORRISON,
GEORGE H. TURNER,
Commissioners.

Superintendent's Report

Post Office,
Woodsville, N. H.

Grafton County Almshouse,
Haverhill, Dec. 31, 1921

Gentlemen:

In compliance with the Public Statutes of the State of New Hampshire, I hereby submit my report of the Grafton County Almshouse and House of Correction from January 1, 1921 to January 1, 1922:

Number of inmates January 1, 1921	72	
Number admitted during the year	43	
Total	—	115
Number discharged during the year	28	
Number of deaths	10	
Total	—	38
Number of inmates January 1, 1922	77	
Number in House of Correction	8	
Number admitted during the year	46	
Number discharged during the year	40	
Number in House of Correction Jan. 1, 1921	2	
Average number during year in Almshouse and House of Correction whose board was not paid by towns or individuals		81
Number of weeks board furnished inmates and House of Correction, not paid by towns or individuals		4308.6

List of Inmates January 1, 1922

Number of Inmates in Almshouse	77
Number in House of Correction	8

ALMSHOUSE

Name	Where from	Age	Weeks	Days
Simeon Rogers	Alexandria	80	52	1
Lillian Watson	Ashland	39	52	1
Frank Garland	Ashland	77	9	6
Fannie Waters	Bath	64	52	1
Richard Daws	Bath	65	6	2
Charles Royce	Bethlehem	37	12	1
Sarah Taylor	Bristol	53	52	1
Edson Hutchins	Campton	55	52	1
Al. Hutchins	Campton	49	52	1
Andrew Lovett	Campton	77	42	2
Adaline Lowe	Campton	75	52	1
Catherine Colby	Canaan	82	52	1
Thomas Husband	Canaan	69	52	1
Luella Keezer	Canaan	67	52	1
Franklin Reed	Dorchester	71	52	1
Annie R. Motts	Dorchester	70	3	4
Arthur Harrison	Dorchester	40	9	6
Ruth Bowles	Easton	54	52	1
Addie Hoyt	Easton	49	52	1
Abigail Jenny	Enfield	69	51	4
Esther Gilligan	Enfield	80	52	1
Madrin May	Enfield	78	52	1
Eldon Crane	Franconia	46	52	1
George Oakes	Franconia	86	52	1
Belle Pierce	Grafton	40	52	1
Alice Jewell	Groton	41	52	1
Edna Kenison	Hanover	63	52	1
Frank Hutchins	Hanover	44	52	1
Martin Frein	Hanover	55	7	2
George Fritz	Hebron	80	52	1
Aruna C. Hall	Haverhill	75	52	1
Fannie Holt	Haverhill	88	44	4
Naomi Dow	Haverhill	85	52	1
Larry Griffin	Haverhill	64	52	1
William Greenleaf	Haverhill	54		5
John M. Higgins	Haverhill	65	10	4
Edmond Roy Gignac	Haverhill	8 mo.	34	6
Alice Ingram	Haverhill	16	31	6
DeWitt C Padderford	Haverhill	64	4	1
Milo S. Bean	Haverhill	61	1	1
Susan Emery	Haverhill	18	1	6

Name	Where from	Age	Weeks	Days
William Emery	Haverhill	9 mo.	1	6
Georgia B. Connors	Landaff	59	52	1
Alice Wheeler	Landaff	62	26	2
Annie Brooks	Lisbon	18	52	1
Walter Barrett	Lisbon	78	52	1
Leon Foran	Lisbon	36	52	1
Henry Hughs	Lisbon	57	52	1
Florence Humphrey	Lisbon	10	39	6
Elijah P. Stickney	Lisbon	85	23	3
Alexander Adams	Lisbon	76	52	1
Mary Felch	Lisbon	66	44	4
Henry Hodge	Lisbon	67	7	4
Carrie Smith	Lebanon	47	52	1
Abbie Smith	Lebanon	45	52	1
James McCoy	Lebanon	78	52	1
Martha Dunham	Lebanon	74	51	
Eli Purrese	Lebanon	89	52	1
Gertrude Sanborn	Lebanon	50	52	1
Elizabeth Clark	Lebanon	58	52	1
Mary Adams	Lebanon	64	52	1
Amelia Thompson	Lebanon	79	52	1
Agnes Castonguay	Lebanon	17	21	
John Murphy	Lebanon	65	46	6
Annie Johnson	Lebanon	25	42	6
Sarah Baker	Lebanon	81	36	3
Christian P. King	Lebanon	82	12	3
Alexander L. Ward	Lebanon	86	9	5
Sarah J. Clement	Lyme	50	52	1
Stillman Waid	Lyme	65	8	5
Napoleon Joslin	Littleton		52	1
Herbert Howland	Littleton	78	52	1
John Clune	Littleton	69	52	1
George King	Littleton	67	26	1
Juliana Archer	Littleton	84	52	1
Florence Burt	Littleton	3	52	1
Lita Sanford	Littleton	53	49	6
Mary Dion	Littleton	19	22	1
Clara Pierce	Littleton	9	39	4
William Richardson	Littleton	7	39	4
Mildred Bowen	Littleton	16	17	5
William Newton	Littleton	47		6
Charles Goodrich	Littleton	68	22	1

Name	Where from	Age	Weeks	Days
Josephine Elliot	Littleton	20	9	1
Richard Burke	Littleton	46	1	3
Sarah Mountain	Lincoln	39	30	2
Flora Mountain	Lincoln	9 mo.	23	4
Raymond Perreault	Monroe	3	9	6
Hial Braley	Orange	54	52	1
Frank Rogers	Plymouth	46	52	1
Ann Merrill	Plymouth	83	52	1
John Wilbur	Plymouth	80	52	1
Elbridge Homans	Plymouth	70	30	1
Earl S. Fox	Piermont	63	52	1
Evelyn Robinson	Rumney	73	52	1
Horace Willoughby	Rumney	62	16	
Mary Willoughby	Rumney	57	16	
Ina Avery	Thornton	31	52	1
Della Heath	Warren	29	30	
Robert Goudie	Warren	72	52	1
Dana Drake	Waterville	45	52	1
Maria Derby	Woodstock	78	9	6

TOWN BOARDERS

John W. Gilman	Bristol	77	4	5
Will E. Marston	Haverhill	65	15	1
John Chellis	Haverhill	61	52	1
Louis George	Haverhill	61	52	1
Joseph Raymond	Monroe	73	1	1
Anse F. Collins	Orford	75		6
John Brown	Wentworth	82	52	1

PRIVATE BOARDERS

Bartlett J. Hall	Enfield	73	10	1
Lucy M. Wheeler	Haverhill	66	52	1
Jennie M. Smith	Lisbon	68	49	1
Theodora M. Goodell	Lyme	77	4	1
Hattie M. Baker	Littleton	83	42	1
Elizabeth Burrows	Plymouth	44	52	1

Receipts

Cream and milk sold from farm	\$2,838 48
For board of individuals	2,432 18
For stock, hogs, etc., sold	1,604 65
For miscellaneous articles sold	294 87
	<hr/>
	\$7,170 18

Expenditures

Paid County Treasurer	\$7,170 18
-----------------------	------------

Inventory

Personal property at County Farm January 1, 1921:

Live stock	\$17,281 00
Farming implements	12,763 05
Produce and supplies	23,489 98
Household furniture	2,730 20
Almshouse furniture	2,350 15
Jail and House of Correction furniture	492 00
Hospital furniture	1,246 70
Chapel furniture	186 00
	<hr/>
	\$60,539 08

Personal property at County Farm January 1, 1922:

Live stock	\$12,578 00
Farming implements	13,675 67
Produce and supplies	26,264 23
Household furniture	2,825 36
Almshouse furniture	2,828 03
Jail and House of Correction furniture	568 75
Hospital furniture and supplies	1,434 60
Chapel furniture	186 00
	<hr/>
	\$60,360 64

Cost of Supporting Paupers

At County Farm from January 1, 1921 to January 1, 1922:

Inventory of personal property at County	
Farm January 1, 1921	\$60,539 08
Due for board of persons	1,042 77
Bills paid by Commissioners	46,289 76
	\$107,871 61
Inventory of personal property at County	
Farm January 1, 1922	\$60,360 64
Due for board of persons	708 00
Amount credited for board of prisoners	4,936 00
Clothing for individuals <i>Prisoners</i>	1,551 84
Due from individuals	814 00
Permanent improvements	3,500 00
Cash paid Treasurer	7,170 18
	\$79,040 66
Total cost of supporting paupers at County	
Farm for the year ending December	
31, 1921	\$28,830 95

In accordance with Chapter 30, Section 1, Public Statutes, the Superintendent of the County Farm, shall make up his report to January 1, annually and also Section 2 of said Chapter requires that the Superintendent's report shall contain, in addition, a list of paupers actually supported at the Farm, and the number of weeks each was supported, also a statement of the average cost per week for each pauper, with an explanation of the basis upon which said calculations were made.

The whole number of persons supported and partially supported for the year ending December 31,

1921 was 115. The number of weeks' board is ascertained by taking the number of days between the day of admittance and the day of departure of each individual and dividing that number by seven, which gives the total number of weeks each was supported.

The whole cost of supporting paupers at the Farm for the year ending December 31, 1921 was \$28,830.95. This sum divided by the whole number of weeks furnished, viz: 4308.6 gives \$6.69 plus, as the price per week.

In concluding my annual report I wish to express my thanks to the Commissioners, Chaplain and Physician for their help and courteous treatment at all times; also the W. C. T. U., Tracy Ross post, of the American Legion and kind friends who so generously remembered the inmates at Christmas and at various times during the year. Special mention should be made of the children of Lebanon Grammar School for the splendid boxes they sent to the Lebanon inmates at Christmas time.

Respectfully submitted,

ALVAH H. PARKER,
Superintendent.

We, the undersigned, hereby certify that we have examined the foregoing accounts of the Superintendent of the County Farm for the County of Grafton for the year ending December 31, 1921, and find the same to be properly vouched and correctly cast.

ORA A. BROWN,
HARRY E. MORRISON,
GEORGE H. TURNER,

Commissioners of Grafton County.

Jailer's Report

From January 1, 1921 to January 1, 1922

Whole number in jail January 1, 1921	12
Whole number in jail January 1, 1922	7
Number admitted during year	30
Number discharged during year	34

Name, where from, and crime	Weeks	Days
Lee O. Hatch, Canaan, breaking and entering	10	4
Joe Beauchine, Canaan, passing forged check	10	4
Peter Lezott, Campton, breaking and entering	12	1
Leo Houle, Lebanon, passing forged check	2	4
Joseph Sheehan, Thornton, grand larceny	2	5
Roy Maples, Lebanon, accessory to burglary	2	5
Alfred Johnson, Warren, grand larceny	2	4
Antonio Auberton, Lebanon, burglarly	2	4
Milo Wood, Lebanon, burglarly	2	4
Ernest Mason, Lebanon, burglarly	2	4
Everett Quick, Plymouth, grand larceny	2	5
Perry Fox, Plymouth, grand larceny	2	4
Joe Kubennis, Lincoln, civil writ		6
Charles Kenney, Haverhill, burglarly	4	1
Earl E. Dube, Haverhill, drunk		4
Joseph Hale, Woodstock, burglary	6	4
Rollin Goodell, Lebanon, assault on female child	4	
John Cross, Easton, breaking and entering	7	1
Wm. F. Deutcher, Easton, breaking and entering	5	4
Simon Des Jardins, Haverhill, desertion		3
Guy J. Foster, Bristol, breaking and entering	2	6
Mike Black, Lisbon, manslaughter	13	6
John Gillis, Canaan, breaking and entering	12	6
Ernest Dodge, Lisbon, breaking and entering	25	
Charles Dodge, Lisbon, breaking and entering	25	

Name, where from, and crime	Weeks	Days
Wm. Thompson, Littleton, burglary	9	1
Thos. Carroll, Plymouth, breaking and entering	8	4
Fred Welch, Plymouth, breaking and entering	8	4
Henry Ellis, Rumney, breaking and entering	23	1
Wm. Nuttall, Rumney, breaking and entering	23	1
Fred Levins, Haverhill, grand larceny	7	5
Frank McKenzie, Bristol, assault on female child	3	1
Charles E. McDonald, Haverhill, false pretenses		6
Harold Keough, Lisbon, contempt of court	3	3
Fred Rogers, Haverhill, civil writ	3	1
Earl Welch, Lisbon larceny		4
Ray Stanley, Plymouth, shooting cattle	6	3
Geo. Rolfe, Littleton, illegal possession of liquor	5	4
Harry Fogg, Enfield, passing forged check	2	2
Wm. Martin Jr., Canaan, breaking and entering	2	1
Perry Fox, Plymouth, breaking and entering	1	5
Total, 275 weeks, and 1 day.		

HOUSE OF CORRECTION

Melburn Arnold, Haverhill, assault	37	4
Ambrose Milette, Haverhill, drunk	1	
Henry Norlett, Lincoln, liquor for sale	31	
Charles Hanson, Lincoln, liquor for sale	8	4
James Sloan, Plymouth, assault	3	4
Peter Hughes, Plymouth, drunk	3	4
Chester Pervear, Littleton, deserting family	12	6
Rosanna Enderson, Littleton, deserting family	12	6
Murray Plant, Lisbon, driving auto, intoxicated	8	4
Homer McFarland, Lisbon, larceny	33	1
Hugh McCaffrey, Lebanon, drunk	6	
Henry Tobin, Lebanon, drunk	10	
Joseph Hale, Lincoln, breaking and entering	15	2
Frank Green, Wentworth, abusing horse	22	
Edward Boyle, Lebanon, begging	8	4
Roland Parks, Haverhill, lascivious behavior		2
John Cross, Easton, breaking and entering	29	5
Howard Corum, Littleton, burglary	8	4
Frank Anderson, Lincoln, liquor for sale	27	6
Will Elliott, Littleton, larceny	6	2
Ollie Klingen, Enfield, lascivious behavior	22	
John Cullan, Haverhill, drunk		3
Samuel Dorr, Littleton, taking automobile	6	3
Richard Harvey, Lebanon, drunk	12	6

Name, where from, and crime	Weeks	Days
John Riley, Lebanon, drunk	12	6
Richard Murdock, Lebanon, drunk	4	2
Donald Sarra, Plymouth, damaging property	10	1
William Shall, Plymouth, damaging property	10	1
Louise Laundry, Haverhill, drunk	6	4
Harold Keough, Lisbon, non-support	4	2
Benj. Caswell, Lebanon, drunk	20	4
Will Elliott, Littleton, larceny	6	2
Edward Surrect, Lebanon, larceny	8	4
George Ibey, Enfield, assault	4	2
Wm. Greenleaf, Haverhill, drunk	3	5
Will Elliott, Littleton, larceny	9	4
Theodore Boisvert, Warren, breaking contract	7	6
Owen LeBranch, Warren, breaking contract	7	6
Frank Graham, Haverhill, drunk	1	3
Thomas Sweeney, Haverhill, drunk	1	3
Owen Gallagher, Haverhill, drunk	3	5
Mike Dunn, Haverhill, drunk	1	1
Frank Graham, Haverhill, drunk	3	5
Fred Devereaux, Haverhill, drunk	3	5
Charles Curley, Haverhill, drunk	2	3
William McKane, Lebanon, drunk	8	1
Jos. Brown, Plymouth, illegal possession liquor	6	4
William Kelly, Haverhill, drunk	3	5

Respectfully submitted,

ALVAH H. PARKER,
Deputy Jailer.

Chaplain's Report

For the year ending December 31, 1921

To the Honorable Board of Commissioners of Grafton County:

It gives me pleasure to present to your Honorable Body my fifth annual report.

Superintendent and Matron Mr. and Mrs. Alvah H. Parker still maintain their highest degree of efficiency in caring for the home and farm.

Through the kindness of many friends and the North Haverhill Sunday school, religious literature, magazines, books, etc., have been distributed to the inmates.

The sick and afflicted in the hospital have had excellent care by the faithful county physician, Elmer M. Miller, and the competent nurses.

As has been the custom for years, services have been held Sunday afternoon once in two weeks. Mr. and Mrs. Parker take a special interest in requesting all inmates to be present which is very much appreciated by the Chaplain. The musical part in the services by several have been helpful.

The W. C. T. U., held their annual flower day the 9th of June, which is one of the special features of the year. Ice cream, cake, candy, fruit and assorted cookies were served to all inmates which was followed with a literary and musical program.

Christmas this year was especially good with an interesting program furnished by the inmates assisted

by Mrs. Charles Little at the organ and Carl Geichel, violinist. At the close of the program two well laden trees were relieved of presents and distributed to all.

Mr. and Mrs. Parker and friends gave a fine treat of cornballs and candy for all present, thus closing a very enjoyable occasion. From my observations in making my visits, congratulations are in order for Mr. and Mrs. Alvah H. Parker, for the neat and tidy appearance throughout the institution.

I wish to thank the Board of Commissioners, Superintendent, Matron, Physician, Nurses and others for courtesies shown me during the year.

Number of Sunday services held	26
Number of funerals attended	7

Respectfully submitted,

DICK E. BURNS,
Chaplain.

Report of County Physician

To the Commissioners of Grafton County:

It has been my privilege, during the past year, to have under my care at the County Hospital a wide variety of patients. Some of them came directly from their homes, while others have been sent in from other hospitals. It has always been the policy of the institution to receive and care for any sort of patient, except those with contagious diseases, and in every instance it has been our aim to give to each one the careful individual attention that is required.

In the statistics I would call your attention to the fact that you have furnished over four thousand days of hospital care, giving to each better, and more, than they could possibly have received in their homes, and at a minimum of expenditure. It would be hard to find any private institution that has been able to do this with so little outlay of money. Most hospitals that average eleven patients daily require a force of five or more nurses, together with other hospital attendants.

The hospital has fifteen private rooms and a ward containing four beds. Beside these there are bath rooms, a serving room, and a large, well-furnished sun parlor. Some of the rooms have a picturesque view of the Connecticut River valley. Also there is a spacious veranda with southern exposure, where patients who are able to sit in a chair, enjoy the fresh air and sunlight.

The statistics show only the work performed in the hospital. Besides this there have been many out patients in the Alms house, Jail and House of Correction.

Several major and many minor surgical operations have been successfully performed.

I have noticed that there is a certain feeling of good fellowship among the patients at the hospital and also in the Almshouse, that has greatly increased in the last few years, and which is a condition highly to be desired. I attribute this to the kindness of the management and especially to the personality of our Chaplain, Rev. Dick Burns.

I particularly wish to commend the cleanliness which at all times prevails in all parts of the institution.

Both Miss Dolan, who worked with us until she was obliged to leave on account of her health, and Mrs. Day, who is now with us, have shown the greatest sympathy and interest in the welfare of the patients, and their work has been of a very high order.

I desire to express my appreciation of your continued approbation, that has enabled us to carry on the good work, and also of the cooperation of Superintendent and Mrs. A. H. Parker.

Respectfully submitted,

ELMER M. MILLER,
County Physician.

Statistics

Patients in hospital January 1, 1921	7	
Patients admitted during the year	43	50
Patients discharged, cured or improved		26
Patients in hospital January 1, 1922		13
Greatest number in hospital at any time		16
Least number in hospital at any time		7

Daily average	11.3
Total days' nursing for the year	4316
Number of deaths during the year	9
Number of births during the year	2
Average age of deaths	77

Deaths for the Year 1921

Jan. 28	Anse F. Collins	75	Cerebral Hemorrhage
Feb. 3	John W. Gilman	77	Senility
June 21	DeWitt C. Padder-		
	ford	64	Brights Disease
Oct. 17	Christian C. King	82	Gastroenteritis
Oct. 22	Harriet M. Baker	83	Senility
Oct. 23	Andrew Lovett	76	Gastroenteritis
Nov. 9	Fannie Holt	88	Cerebral Hemorrhage
Dec. 24	Martha Dunham	74	Cerebral Hemorrhage
Dec. 28	Francelia Jennings	75	Nephritis

Sheriff's Report

To the Commissioners of Grafton County:

I submit herewith my report as Sheriff of the County, from January 1, 1921, to December 31, 1921.

January Term of Superior Court at Lebanon

To attendance Claude M. Murray, sheriff

39 days	..	\$117 00
238 miles' travel		47 60
A. J. Densmore, deputy sheriff		
9 days		36 00
2 miles' travel		40
George U. L. Leavitt, deputy sheriff		
13 days		52 00
3 miles' travel		60
W. H. French, deputy sheriff		
12 days		48 00
60 miles' travel		12 00
R. S. Rinehart, deputy sheriff		
10 days		40 00
2 miles' travel		40
A. E. Strain, deputy sheriff		
5 days		20 00
21 miles' travel		4 20
J. P. Huckins, deputy sheriff		
7 days		28 00
2 miles' travel		40
Henry L. Cotton, deputy sheriff		
4 days		16 00
20 miles' travel		4 00

101

Paid Hotel Rogers meals for Jury	54 00
C. W. Armstrong meals for Jury	13 00
Clergyman	2 00
Court supplies	6 88
Telephone	50
	<hr/>
	\$502 98

May Term Superior Court at Plymouth

To attendance Claude M. Murray, sheriff	
46 days	\$138 00
492 miles' travel	98 40
J. P. Huckins, deputy sheriff	
9 days	36 00
3 miles' travel	60
L. W. Heath, deputy sheriff	
1 day	4 00
18 miles' travel	3 60
H. L. Cotton, deputy sheriff	
4 days	16 00
20 miles' travel	4 00
A. E. Davis, deputy sheriff	
2 days	8 00
1 mile travel	20
R. S. Rinehart, deputy sheriff	
9 days	36 00
3 miles' travel	60
A. E. Strain, deputy sheriff	
5 days	20 00
40 miles' travel	8 00
George U. L. Leavitt, deputy sheriff	
3 days	12 00
2 miles' travel	40
Paid Clergyman	2 00
Court supplies	1 70
J. P. Huckins, expense stopping Jury	22 80
	<hr/>
	\$412 30

September Term Superior Court Woodsville 1921

To attendance Claude M. Murray, sheriff	
32 days	\$96 00
320 miles' travel	64 00
R. S. Rinehart, deputy sheriff	
11 days	44 00
3 miles' travel	60
Seth O. Titus, deputy sheriff	
6 days	24 00
20 miles' travel	4 00
A. E. Davis, deputy sheriff	
2 days	8 00
1 mile travel	20
A. E. Strain, deputy sheriff	
5 days	20 00
42 miles' travel	8 40
J. P. Huckins, deputy sheriff	
9 days	36 00
2 miles' travel	40
Lawrence W. Heath, deputy sheriff	
3 days	12 00
18 miles' travel	3 60
H. L. Cotton, deputy sheriff	
4 days	16 00
20 miles' travel	4 00
George U. L. Leavitt, deputy sheriff	
2 days	8 00
1 mile travel	20
Paid Court Supplies	1 75
J. P. Huckins, expense stopping Jury Clergyman	10 64
W. F. Wormwood, meals for Jury	2 00
	39 00
	<u>\$402 79</u>

Respectfully submitted,

CLAUDE M. MURRAY,
Sheriff.

Report of County Solicitor

Enfield, N. H., December 31, 1921.

To the Honorable Board of Commissioners for the County of Grofton:

In compliance with statute so providing, I herewith submit my third annual report of the work of this office for the year now closed.

Having held the office for nearly three years, it is not strange that some changes in the laws in their application to the office have, from time to time, arisen as happy suggestions making for more orderly and efficient administration of those duties imposed by law upon the Solicitor.

The first of these suggestions has to do with the law in its application to appealed cases from the Municipal Courts. The present law provides, in substance, that copies of appealed cases shall be filed with the Clerk, etc. This is very well so far as it goes, but it does not go far enough. It should also provide that like copies shall be filed with the Solicitor. Under the present law the Solicitor has no knowledge of the number of appeals facing him for trial, or other disposition, at a given term until that term opens. He is further embarrassed in that he has no knowledge of the facts and circumstances surrounding the several cases; whether they are of merit or demerit; the whereabouts and dependability of the State's witnesses; and finally, whether they should be further prosecuted at the expense of the county, nolle prossed.

From the beginning he goes to trial with advantages decidedly with the other fellow.

Another change has to do with those cases where the lower court has jurisdiction only to bind over. While the present law provides that copies shall be filed with the Solicitor, it should further provide, that all copies thus filed shall contain the names and addresses of all those witnesses appearing for the State in the lower court and adding a penalty for a non-compliance. In many of the copies filed under the present law, not a name of a single witness appears on the record although witness fees are taxed on the complaint. This, of course, means that the only way the Solicitor can gather in his witnesses is either to write, or telephone, the justice who heard the case and who, as a rule, has forgotten all about it. Counties could save to themselves a great and unnecessary expense as well as relieve the office of much troublesome and annoying work by seeing to it that these deficiencies in the present laws are corrected.

A list of cases is herewith appended.

Respectfully submitted,

JOHN H. NOONAN,
County Solicitor.

January Term 1921

Leo Houle, false pretenses, plea guilty, state prison 2 to 3 years, suspended, call of Solicitor.

Everett Quick, alias Braddock, larceny, plea guilty, state prison 2 to 3 years.

Everett Quick, alias Braddock, larceny, plea guilty, not to be brought forward, nisi.

Alfred Johnson, larceny, plea guilty, continued for sentence.

Antonio Auberton, breaking and entering, plea guilty, 2 to 4 years state prison.

Ernest Mason, breaking and entering, plea guilty, 2 to 3 years state prison.

Milo Wood, breaking and entering, plea guilty, 1 year and 1 day, state prison.

Roy Maples, accessory before the fact breaking and entering, plea nolo, 1 year to 18 months state prison, mittimus on call of Solicitor.

Joseph Sheehan, grand larceny, plea guilty, 1 to 2 years state prison.

Perry Fox, larceny, plea guilty, continued for sentence.

May Term 1921

John Cross and William Deucher, breaking and entering, plea guilty each; Deucher 3 to 5 years state prison, Cross 1 year House of Correction and costs.

Guy J. H. Foster, breaking and entering, plea guilty, House of Correction 1 year, suspended on payment of costs.

Joseph Hale, breaking and entering, plea guilty House of Correction 1 year and costs.

W. S. Schultz, information, plea guilty, fine \$25 and costs.

William A. Waterman, breaking and entering, discharged September term on payment of costs.

Charles V. Wallace, breaking and entering, jail 6 months, suspended on payment of costs of \$50.

September Term 1921

Thomas Carroll and Fred Welch, breaking and entering, plea guilty, 1 to 2 years state prison.

C. E. McDonald, false pretenses, plea guilty, 1 year in jail, suspended on payment of costs of \$100. Mittimus on call of Solicitor.

William Thompson, breaking and entering, plea guilty, 2 to 3 years state prison suspended on payment of costs of \$40. Mittimus on call of Solicitor.

Henry Ellis, and William Nuttel, breaking and entering, each 6 months in jail.

John Gillis, breaking and entering, 6 months jail; suspended, mittimus on call of Solicitor.

Fred Levins, larceny, 6 months jail; mittimus on call of Solicitor.

Liquor, appealed cases, and cases disposed of in Municipal Courts do not appear in the foregoing lists.

Clerk's Report

To the Commissioner for the County of Grafton:

I submit herewith reports of the receipts and disbursements of this office for the year 1921 as examined and allowed by the Court.

January Term

To cash paid:

Printing docket	\$ 190 80
Printing trial lists	18 00
Binding docket	24 00
Stamped envelopes and stamps	37 32
Office supplies	48 19
Sessions records March 1894 to May 1920	96 50
11 capiases and mittimus	11 00
11 state entries	3 30
Cash paid telephones and incidentals	26 39
2 days' attendance Sept. adj. term	12 00
28 days' attendance at \$6.00 per day	168 00
11 days' attendance at \$3.00 per day	33 00
Allowance	600 00
	<hr/>
	\$1,268 50

Credit

By 21 dockets sold	\$ 32 50
122 entries	109 80
Fine and costs State v Gilman	15 90
Order on County Treasurer	1,110 30
	<hr/>
	\$1,268 50

May Term

To cash paid:

Printing docket	\$ 222 90
Binding docket	24 00
Printing blanks	54 30
Office supplies	33 74
Stamped envelopes	44 92
Copies of opinions	8 38
6 mittimus and capiases	6 00
4 state entries	1 20
Cash paid stamps	5 70
2 days' attendance January adj. term	12 00
Cash paid telephones and incidentals	23 25
12 days' attendance at \$3.00	36 00
34 days' attendance at \$6.00	204 00
Allowance	600 00

 \$1,276 39

Credit

By 22 docketts sold	\$ 33 00
Costs State v Foster	30 00
198 entries	178 20
Costs State v Schultz	1 20
Order on County Treasurer	1,033 99

 \$1,276 39

September Term

To cash paid:

Printing docket	179 25
Binding docket	26 88
Printing blanks	52 00
Office supplies	202 20
Equity records May term 1919	53 52
9 capiases and mittimus	9 00
19 state entries	10 80
Cash paid telephones and incidentals	35 85

109

3 days' attendance adj. term	18 00
16 days' attendance at \$3.00	48 00
16 days' attendance at \$6.00	96 00
Allowance	600 00

\$1,331 50

Balance paid to County Treasurer	361 75
----------------------------------	--------

\$1,693 25

Credit

By 21 dockets sold	31 50
164 entries	147 60
Auto forfeiture, Squalicoti	250 00
Auto forfeiture, Regan and Harnish	250 00
Auto forfeiture, Galvin	250 00
Costs State v McDonald	100 00
Fine State v Black	25 00
Costs State v Thompson	40 00
Fine and costs State v Mrs. Chas. Toney	59 06
Fine and costs State v Mrs. Jos. Toney	60 76
Costs State v Kebling	8 90
Fine and costs State v J. C. Atkins	18 55
Fine and costs State v V. L. Atkins	128 00
Fine and costs State v Ibey	64 70
Fine and costs State v Ibey	29 18
Costs State v Wallace	50 00
Auto forfeiture Daniels and Carr	180 00

\$1,693 25

DEXTER D. DOW,
Clerk.

Treasurer's Report

Report of Treasurer of Grafton County for the year
ending December 31, 1921.

Receipts

Cash on hand, balance from year 1920	\$3,230 37
Town of Ellsworth, taxes for year 1920	168 86
Town of Warren, taxes for year 1920	866 35
S. O. Titus, keeper John Garbarino, acct. Ernest Kendall expenses at hospital	3 75
Franklin hospital, refund acct. Shirley Knapp	8 25
Lisbon Sav. Bank & Trust Co., note	5,000 00
Town of Groton, taxes for year 1920	389 12
R. T. Bartlett, agent, insurance	25 00
Lisbon Sav. Bank & Trust Co., note	5,000 00
Lisbon Sav. Bank & Trust Co., note	5,000 00
Rec'd for typewriter by Register of Deeds	15 00
Rec'd for typewriter by Register of Deeds	15 00
Lisbon Sav. Bank & Trust Co., note	5,000 00
Lisbon Sav. Bank & Trust Co., note	5,000 00
Lisbon Sav. Bank & Trust Co., note	5,000 00
Overseer, Lebanon, acct. children in homes	92 00
Lisbon Sav. Bank & Trust Co., note	5,000 00
Stetson, Cutler & Co., freight, car shingles	40 61
Lisbon Sav. Bank & Trust Co., note	5,000 00
A. H. Parker, Supt. County Farm	7,170 18
Carl Jameson, liquor fine	50 00
Lisbon Sav. Bank & Trust Co., note	5,000 00
Lisbon Sav. Bank & Trust Co., note	5,000 00

Eva Monroe, burial expense, Stephen Ford	54 15
Lisbon Sav. Bank & Trust Co., note	5,000 00
Town of Lyme, taxes for year 1921	1,910 02
Plymouth, taxes for year 1921	4,718 26
Franconia, taxes for year 1921	1,672 56
Bethlehem, taxes for year 1921	3,613 55
Orford, taxes for year 1921	1,827 42
Dexter D. Dow, balance clerk acct. Sept. term	361 75
Town of Holderness, taxes for year 1921	2,343 65
Piermont, taxes for year 1921	1,435 10
Grafton, taxes for year 1921	1,331 85
Littleton, taxes for year 1921	6,824 44
Hebron, taxes for year 1921	505 90
Ellsworth, taxes for year 1921	237 46
Lincoln, part payment of taxes for year 1921	3,000 00
Haverhill, taxes for year 1921	6,421 80
Littleton Municipal Court, refund costs State vs. Rosanna Enderson	52 95
Town of Wentworth, taxes for year 1921	867 25
Thornton, part payment of taxes for year 1921	324 00
Woodstock, taxes for year 1921	929 20
Rumney, taxes for year 1921	1,497 04
Waterville, part payment of taxes for year 1921	500 00
Bristol, part payment of taxes for year 1921	2,994 00
Bath, taxes for year 1921	1,641 58
Alexandria, taxes for year 1921	722 71
Canaan, taxes for year 1921	2,890 84
E. B. Mann & Co., account overpaid	10 65
John Daniels, account aid	30 88
Town of Enfield, taxes for year 1921	3,128 30
Groton, taxes for year 1921	567 84

Town of Hanover, taxes for year 1921	6,328 87
Livermore, taxes for year 1921	1,300 88
Enfield Municipal Court, fine Sam'l Jones illegal transportation alcohol	25 00
Town of Warren, part payment of taxes for year 1921	500 00
Ashland, taxes for year 1921	3,056 03
Lyman, taxes for year 1921	691 74
Easton, taxes for year 1921	443 95
Dorchester, taxes for year 1921	578 17
Bridgewater, taxes for year 1921	712 39
Lisbon, taxes for year 1921	4,728 59
Monroe, taxes for year 1921	805 31
Orange, taxes for year 1921	402 65
Benton, taxes for year 1921	392 33
Campton, taxes for year 1921	2,550 13
Enfield Municipal Court, fine David Moran	50 00
Town of Landaff, taxes for year 1921	898 23
Lebanon, taxes for year 1921	11,398 16
	<hr/>
	\$154,352 07

Disbursements

Commissioners' orders outstanding Jan. 1, 1921	\$ 2,321 44
Commissioners' orders issued 1921, paid	83,850 61

COURT ORDERS

Geo. H. Turner, commissioner to Dec. 31, 1920	346 32
Ora A. Brown, commissioner to Jan 1, 1921	394 14
Harry E. Morrison, commissioner to Dec. 31, 1920	516 36
Robert C. Murchie, special solicitor	25 00
Bessie A. Marsh, stenographer	2 50
Lizzie H. Sanborn, stenographer	5 00
F. S. Wright, counsel fees, State vs. Maple	10 00

Dexter D. Dow, bal. clerk acct. Jan. term 1921	1,110 30
Lizzie H. Sanborn, stenographer	416 93
George F. Rich, referee fees, Littleton vs. Blandin et al	88 90
Lorin D. Goulding, referee fees, Littleton vs. Blandin et al	112 02
Lizzie H. Sanborn, stenographer	78 62
C. A. Young, referee fees, Littleton vs. Blandin et al	93 07
Dexter D. Dow, master's fees, Craig vs. Craig	22 31
Lizzie H. Sanborn, stenographer	30 40
Lizzie H. Sanborn, stenographer	2 50
Margaret A. Conway, stenographer	6 00
Dexter D. Dow, bal. clerk account	1,033 99
Dexter D. Dow, referee fees, Crosby vs. Weaver	15 00
Lizzie H. Sanborn, stenographer	270 24
Geo. H. Turner, commissioner to June 30, 1921	381 21
Ora A. Brown, commissioner to June 30, 1921	448 20
Harry E. Morrison, commissioner to June 30, 1921	563 77
Lizzie H. Sanborn, stenographer	6 50
Bessie A. Marsh, stenographer	68 74
Lizzie H. Sanborn, stenographer	49 37
Lizzie H. Sanborn, stenographer	14 00
Mabel W. Doyle, stenographer	60 80
Lizzie H. Sanborn, stenographer	169 00
Beryle M. Aldrich, stenographer	46 50
Dexter D. Dow, referee fees, Callender Erx. vs. Maplewood Hotel Co.	71 83
David F. Dudley, referee fees, Batchelder vs. Park	31 20

Fred S. Wright, referee fees, English Tr. vs. Richardson	27 62
---	-------

NOTES AND BONDS

Interest on bonds to May 1, 1921	720 00
Littleton Sav. bank, interest on \$2,000.00 note to May 1, 1921	40 00
Lisbon Sav. Bank & Trust Co., note dated Apr. 25, 1921	5,000 00
Interest on same	150 00
Refunding Bonds, 4 @ \$1,000 each	4,000 00
Interest on bonds to Nov. 1, 1921	720 00
Lisbon Sav. Bank & Trust Co., note dated May 11, 1921	5,000 00
Interest on same	150 00
Note dated Apr. 11, 1921	5,000 00
Interest on same	175 00
Littleton Savings bank, note	2,000 00
Interest on same	40 00
Lisbon Savings Bank & Trust Co., note dated Apr. 15, 1921	5,000 00
Interest on same	175 00
Note dated March 18, 1921	5,000 00
Interest on same	200 00
Note dated Jan. 24, 1921	5,000 00
Interest on same	265 00
Note dated Feb. 24, 1921	5,000 00
Interest on same	240 00
Note dated Feb. 14, 1921	5,000 00
Interest on same	271 67
Interest on \$5,000 note dated Jan. 15, 1920 to Jan. 1, 1922	250 00
Interest on \$5,000 note dated May 10, 1920 to Jan. 1, 1922	300 00
Interest on \$5,000 note dated June 15, 1920 to Jan. 1, 1922	300 00

Interest on \$5,000 note dated June 18, 1920 to Jan. 1, 1922	300 00
Interest on \$5,000 note dated July 15, 1920 to Jan. 1, 1922	300 00
Interest on \$5,000 note dated June 15, 1921 to Jan. 1, 1922	163 33
Interest on \$5,000 note dated July 11, 1921 to Jan. 1, 1922	141 67
Interest on \$5,000 note dated July 26, 1921 to Jan. 1, 1922	129 17

PAY ROLLS

Grand Jury, January term	183 80
Petit jury, January term	2,098 92
State vs. Everett Quick, alias Braddock	61 57
Chas. A. Kibling	14 99
John Garbarino	47 80
Alfred Johnson	18 46
Perry Fox	33 15
Leo Houle	31 68
Joseph Shuhan	57 52
Harry Goodell	216 90

OMITTED FROM PRIOR PAY ROLLS

Mrs. Lewis C. Kinne	12 20
Dr. John M. Page	10 00
White Studio	10 00
James Merrill	7 28
Walter French	31 50
Geo. U. L. Leavitt	8 90
Leslie Hughes	3 50
A. J. Densmore	4 00
Chas. D. Howard	10 00
Walter M. Flint	15 18
W. I. Richardson	15 00
James R. Wood Detective Agency	254 97

A. E. Strain	79 66
A. E. Davis	55 27
J. P. Huckins	11 60
C. M. Murray	30 00
John H. Noonan	49 35
Grand Jury, May term	127 04
Petit Jury, May term	1,376 96
State vs. John Cross	44 30
Joseph Hale	31 12
Anthony Squillaceote	16 00
William F. Deutcher	49 70
Mule Chaffee	48 48
Rosanna Enderson	55 95
Rollin H. Goodall	28 34
John F. Meldon et al	132 50
Moses Saleba	18 18
C. C. Dustin et al	19 01
Fred C. Ballon	17 65
Chas. H. Kenney	44 00
Chas. Wallace	11 67
Guy J. R. Foster	19 50
Francis Maroney	54 54
John H. Noonan	128 12
J. P. Huckins	75 80
A. E. Strain	28 95
Geo. W. Pike	19 00
A. E. Davis	81 77
A. J. Densmore	10 90
Felix McCarthy	7 00
Geo. U. L. Leavitt	10 00
C. M. Murray	57 50
State vs. George Ibey	23 40
Grand Jury, September term	115 40
Petit Jury, September term	1,705 98
State vs. Fred Levins	15 22
Arnold & Monfette	48 84

State vs. Clarence E. McDonald	65 48
J. C. Atkins	9 06
Thos. Carroll and Fred Welch	49 92
John H. Noonan	146 37
State vs Anna Bublais	15 43
Thos. Carroll and Fred Welch	41 87
William Thompson	20 30
John Gillis	34 24
F. R. McKenzie	21 52
F. R. McKenzie	65 24
William Gafney	44 90
Almeda McKeage	33 00
John H. Lovely	21 60
Chas. Wallace	13 36
Henry Ellis and William Mitchell	32 10
Walter Quimby	12 20
Ernest Dodge	32 70
Mike Black	19 50
Vincent Atkins	28 00
Jesse Bennett	11 44
Mrs. Chas. Treney	9 06
Chas. Dodge	30 70
Mrs. Joseph Town	10 76
George Ibey	33 88
Sarah T. Knox	10 28
Belmont C. Clark	10 40
A. E. Strain	136 21
C. M. Murray	159 85
Felix McCarthy	12 20
S. O. Titus	87 50
Clark B. Frost	35 00
J. Eddy Blake	10 00
J. P. Huckins	93 83
Balance, cash on hand	1,476 92
	<hr/>
	\$154,352 07

Summary

Financial standing of the County of Grafton on
January 1, 1922.

Commissioners' inventory of property on	
County Farm Jan. 1, 1922	\$60,360 64
Due for board of persons	708 00
Due from individuals	814 00
Due from State of New Hampshire	3,250 00
Due from Town of Bristol	08
Due from town of Lincoln	2,616 49
Due from Town of Thornton	419 36
Due from Town of Warren	656 34
Due from Town of Waterville	1,585 53
Cash in treasury	1,476 92
	<hr/>
	\$71,887 36

Liabilities

Refunding bonds issued Apr. 1, 1919	\$28,000 00
Accrued interest to Jan. 1, 1922	210 00
Note dated January 15, 1920	5,000 00
Note dated May 10, 1920	5,000 00
Note dated June 15, 1920	5,000 00
Note dated June 18, 1920	5,000 00
Note dated July 15, 1920	5,000 00
Note dated June 15, 1921	5,000 00
Note dated July 11, 1921	5,000 00
Note dated July 26, 1921	5,000 00

Commissioners' orders outstanding:

No. 275 issued 1917	28	
No. 614 issued 1921	26 00	
No. 670 issued 1921	12 50	
No. 681 issued 1921	19 50	
No. 703 issued 1921	10 30	
No. 705 issued 1921	67 00	
No. 723 issued 1921	118 40	
No. 729 issued 1921	10 08	
No. 740 issued 1921	195 00	
No. 741 issued 1921	43 32	\$68,712 38
<hr/>		
Surplus January 1, 1922		3,174 98
Surplus January 1, 1921		5,534 08
Decrease for year 1921		2,359 10

Respectfully submitted,

EARNEST H. HALLETT,
Treasurer.

Commissioners' Outstanding Bills

Woodsville, N. H., Jan. 12, 1922.

We hereby certify that there were no outstanding bills against the County January 1, 1922, which were presented for payment, and no orders issued by us which have not been paid by the Treasurer, except:

No. 614	—	\$ 26 00
No. 670	—	12 50
No. 681	—	19 50
No. 703	—	10 30
No. 705	—	67 00
No. 723	—	118 40
No. 729	—	10 08
No. 740	—	195 00

No. 741	—	43 32
All amounting to		<u>\$502 10</u>

ORA A. BROWN,
 HARRY E. MORRISON,
 GEORGE H. TURNER,
 Commissioners.

State of New Hampshire, Grafton, ss.

January 12, 1922.

Personally appeared the above named Ora A. Brown, Harry E. Morrison and George H. Turner, and made oath that the above statement by them signed is true.

HARRY M. EATON
 Justice of the Peace.

Auditors' Report

We, the undersigned, auditors of Grafton County, hereby certify that we have carefully examined the accounts of the County Commissioners and Treasurer and of the Superintendent of the County Farm for the year 1921, and we find them correctly cast and properly vouched, and there is a balance in the hands of the Treasurer of \$1,476.92.

Respectfully submitted,

HARRY M. EATON,
 MOSES A. BATCHELDER,
 Auditors.

January 12, 1922.

Grafton County Farm Bureau

To the Commissioners of Grafton County:

Herewith is submitted a statement of expenditures of legislative appropriation of \$5,150 for 1921 for agricultural extension work in Grafton County in cooperation with the New Hampshire State College and the U. S. Department of Agriculture.

Toward salary of County Agricultural Agt.	\$1,549 98
Travel of County Agricultural Agent	1,346 53
Stenographic service	713 52
Travel of Executive Committee	362 14
Rent of office	150 00
Lights for office	18 00
Telephone	161 01
Postage	250 51
Supplies and equipment	164 47
Printing	1,211 97
Demonstrations	20 00
Miscellaneous	514 50
Total	<u>\$6,463 63</u>
Legislative appropriation	5,150 00
Difference paid by G. C. F. B.	\$1,313 63

Note:—The difference of \$1,313.63 is the amount paid by the Grafton County Farm Bureau to supplement the county appropriation in carrying on co-operative extension work in agriculture and home economics in the county.

Respectfully submitted,

W. ROSS WILSON,

County Agricultural Agt.

WINTHROP B. FIELD,

Treasurer Grafton Co. Farm Bureau.

County Convention

Concord, N. H., Jan. 12, 1921.

The Grafton County delegation met in Division 5, at 11.45 a. m., and perfected the following organization: For chairman, Pardon W. Allen of Haverhill; for clerk, George A. Pushee of Lyme. The meeting then adjourned.

GEORGE A. PUSHEE,
Clerk.

February 2, 1921.

The County delegation met in Division 5 at the close of the afternoon session. The meeting was called to order by the chairman, Mr. Allen. The clerk called the roll and twenty-five members were present: Abbe, of Bethlehem; Heath, of Bristol; Kelly, of Canaan; Jackman, of Enfield; Rudd, of Franconia; Allen, Cass and Davidson, of Haverhill; Haskell, of Holderness; Poor, of Landaff; Jones, Liscomb, Messenger, and Ross, of Lebanon; Fogg, of Lincoln; Batchelder, of Lisbon; Morse and Hunkins, of Littleton; Pushee, of Lyme; Frazer, of Monroe; Harris, of Orford; Deal, of Piermont; Flint, of Plymouth; Steele, of Thornton; McLinn, of Warren; Libbey, of Wentworth; Woodbury, of Woodstock.

Upon a motion made by Davidson of Haverhill, it was voted to have the chairman arrange a joint meeting of the Grafton and Coos County delegation for the purpose of discussing a uniform deer law. Several matters were discussed informally and upon a

motion by Davidson, of Haverhill, the meeting adjourned.

GEORGE A. PUSHEE,
Clerk.

Grafton, ss., February 2, 1921.

Then personally appeared George A. Pushee and made oath that he would faithfully and impartially discharge and perform the duties incumbent upon him as Clerk of the Grafton County Convention, according to the best of his ability, agreeable to the rules and regulations of the constitution and the laws of the State of New Hampshire.

Before me,

WALTER W. FLINT.

Woodsville, N. H., February 18, 1921.

A meeting of the Grafton County delegation was held at the farm here today.

A thorough inspection of the institution was made by the members, after which they were served with a fine dinner.

After dinner the members adjourned to the chapel. Meeting called to order by the chairman; the roll was called and thirty one members were present, consisting of the following: Watson, of Alexandria; Blandin, of Bath; Abbe, of Bethlehem; Heath, of Bristol; Kelly, of Canaan; Jackman, of Enfield; Rudd, of Franconia; Allen, Cass and Davidson, of Haverhill; Haskell, of Holderness; Messenger, Ross, and Sara, of Lebanon; Fogg, of Lincoln; Batchelder and Price, of Lisbon; Hunkins, of Littleton; Pushee, of Lyme; Frazer, of Monroe; Harris, of Orford; Flint and Pppard, of Plymouth; McLinn, of Warren; Libbey, of Wentworth; Woodbury, of Woodstock.

Commissioner Ora A. Brown then read an itemized account of the expenses for the years 1919 and

1920 and an estimate for the years 1921 and 1922. Mr. Brown explained each item.

Remarks were made by Mr. Kelley of Canaan, also Mr. Woodbury, of Woodstock; Haskell, of Holderness; Ross, of Lebanon; Bridgman, of Hanover; Abbe, of Bethlehem. All spoke very highly of the institution.

The Rev. Mr. Burns made brief remarks also Dr. Miller and William J. Randolph. Mr. Turner then spoke of the farm and what it produced.

The delegation then visited the Court House and looked over the Register of Deeds office, after which they listened to a few remarks by Mr. Ross Wilson, County Agent.

It was voted to meet the County Commissioners at Concord, Thursday, February 24th, at one o'clock.

A vote of thanks was given to Mr. and Mrs. Parker and all who helped, for the fine dinner that they served. The meeting then adjourned.

GEORGE A. PUSHEE,
Clerk.

Concord, N. H., February 24, 1921.

A meeting of the Grafton County delegation was held in Room 156 at one o'clock today.

The meeting was called to order by the chairman, Mr. Allen. Remarks were made in regard to the six inch trout law and it was unanimously voted that it was the sense of the delegation to let the law remain as it now is.

The County Commissioners were all present and Mr. Brown spoke about the advisability of reindexing the records in the office of the Register of Probate.

Mr. Bartlett, Register of Probate, was present and made remarks in regard to it and estimated that it would cost \$1,000.00.

Upon a motion made by Mr. Bridgman it was voted to raise \$1,000.00 for that purpose.

The officers of the Farm Bureau were present and the President, Mr. Smith, told of the work they were doing and said they should ask for an appropriation of \$5,150.00 for the Bureau and \$2,000.00 for Home Demonstration work for the coming year and a like amount for next year.

Upon a motion made by Mr. Kelly it was voted to hear what the officers of the Bureau had to say in regard to the work and that the delegation would hold an executive session at some later date.

Remarks were then made by Commissioner Mr. Brown in regard to county expenses. He explained each item and recommended that the county appropriate \$78,000.00 for the coming year and \$75,000.00 for the year after.

Questions were asked by members of the delegation and answered by the Commissioners.

Mr. Turner spoke in regard to the support of children in the different homes and said it cost about \$12.00 per month.

County Agent Mr. Wilson then spoke in regard to the work of the Farm Bureau, after which he called upon Mr. Townsend of Lebanon, who gave a report of conditions in the different counties of the state as well as Grafton County. He answered several questions asked by members of the delegation and said that the Bureau received a total of \$1,200.00 from the government.

Remarks were made by Mr. Putnam, president of the Farm Bureau of the state, also by H. J. Matenea, Horace Benson and Harvey Camp, directors of the Grafton County Farm Bureau.

Mr. Wilson then gave a talk on potato spraying. He thought five times was sufficient. Remarks by Mr. Haskell, recommended spraying ten times.

Evidence was given that there is certified seed potatoes that can be bought in this state.

The delegation then voted to adjourn until Wednesday next, March 2, at the close of the afternoon session.

GEORGE A. PUSHEE,
Clerk.

March 2, 1921.

The County delegation held a meeting in Room 156, after the afternoon session today. County Commissioner Mr. Brown was present. Chairman Mr. Allen was in the chair.

Mr. Bridgman, of Hanover, suggested that a farm account book be kept by the Superintendent of the County Farm. Mr. Brown said that a system had been adopted and that the Superintendent would be glad to do this.

A general discussion then followed in which several members of the delegation took part.

The delegation finally voted to raise the whole amount asked for by the Commissioners. Also \$3,000.00 additional for lightning rods and fire escapes to be put on under the direction of the Commissioners.

On the following page will be found a list of the amounts raised for the coming two years, and it was voted to raise \$78,000.00 each year.

GEORGE A. PUSHEE,
Clerk.

Support of paupers on farm	\$45,000 00
Support of paupers off farm	20,000 00
Aid to soldiers and their families	1,200 00
Jail expenses	400 00
Supplies for Register of Deeds, including indexing	4,000 00

Supplies for Register of Probate	1,000 00
Supplies for other county officers	200 00
County officers' salaries	6,500 00
Sheriffs, deputies and messengers	2,400 00
Woodsville court house	3,000 00
Plymouth court house	800 00
Support of children in homes	16,000 00
Commissioners' bills	2,000 00
Court expenses	25,000 00
Aid to needy blind	2,000 00
Repairs at county farm	3,500 00
To apply on outstanding notes	20,000 00
For fire escapes and lightning rods	3,000 00
	<hr/>
Total	\$156,000 00

We also listened to several members of the Farm Bureau. After which, there was a general discussion of the work they are doing.

Upon a motion made by Mr. Carr of Haverhill, it was voted to give them the amount asked for, (\$5,150.00) for each year, a list of which is on the following page.

Estimated Expenditures for each of the Years 1921-22

Toward salary of Agent	\$1,550 00
Stenographer's services	900 00
Travel of Agent	1,500 00
Rent and lights	200 00
Travel of Executive Committee	200 00
Telephones	200 00
Supplies	150 00
Postage	150 00
Equipment	100 00
Printing	1,000 00
Demonstrations	100 00

Miscellaneous		150 00
		<hr/>
Total		\$6,200 00
Estimated receipts		
Membership	\$ 700 00	
Advertising in reports	350 00	
	<hr/>	\$1,050 00
		<hr/>
Amount granted for each year		\$5,150 00

The delegation voted not to raise the amount asked for home demonstrations, which was \$2,000.00.

Upon motion made by Mr. Cross the meeting adjourned.

GEORGE A. PUSHEE,
Clerk.

Concord, N. H., March 16, 1921.

A meeting of the Grafton County delegation was held in Room 156 at 3.30 p. m. The meeting was called to order by Chairman Mr. Allen. Thirty-one members were present.

Mr. Ross made remarks in regard to re-considering the vote taken at the last meeting. A general discussion followed. The following members took part: Mr. Kelley, Mr. Jones, Mr. Liscomb, Mr. Allen and Mr. Cross.

Mr. Davidson then made a motion to ratify and confirm the vote taken at the last meeting in regard to the appropriation for the County Farm and the motion was carried by a vote of 28 to 1.

Mr. Cross then made some remarks in regard to the Farm Bureau. Mr. Davidson made a motion to ratify and confirm the vote taken at the last meeting in regard to the appropriation for the Farm Bureau.

A general discussion followed in which several members took part. Mr. Allen asked Mr. Bridgman to take the chair and he did so. The motion was finally carried by a vote of 21 to 6.

Mr. Harris then made a motion to request the Farm Bureau to make a report each year and have it printed in the County report. The motion was carried.

Upon motion of Mr. Cross the meeting adjourned.

GEORGE A. PUSHEE,
Clerk.

Concord, N. H., April 5, 1921.

A meeting of the Grafton County delegation was held in Room 156 at 4 p. m.

The purpose of the meeting was to discuss whether or not the county shall pay Register of Probate, R. T. Bartlett, an increase of salary, which the legislature of 1921 refused to grant.

A general discussion followed in which the following gentlemen took part: Abbe, of Bethlehem; Rudd, of Franconia; and Flint, of Plymouth.

A motion was finally made by Mr. Flint that the Commissioners be instructed to pay the traveling expenses of Mr. Bartlett, not to exceed three hundred dollars (\$300.00) annually. The motion was unanimously carried. There were twenty-four members present. Adjourned at 4.15 p. m.

H. K. DAVIDSON,
Clerk Pro Tem.

48
5352
2676
32112

