

352.0742  
C31  
1916

# Annual Report

## Carroll County

...1916...

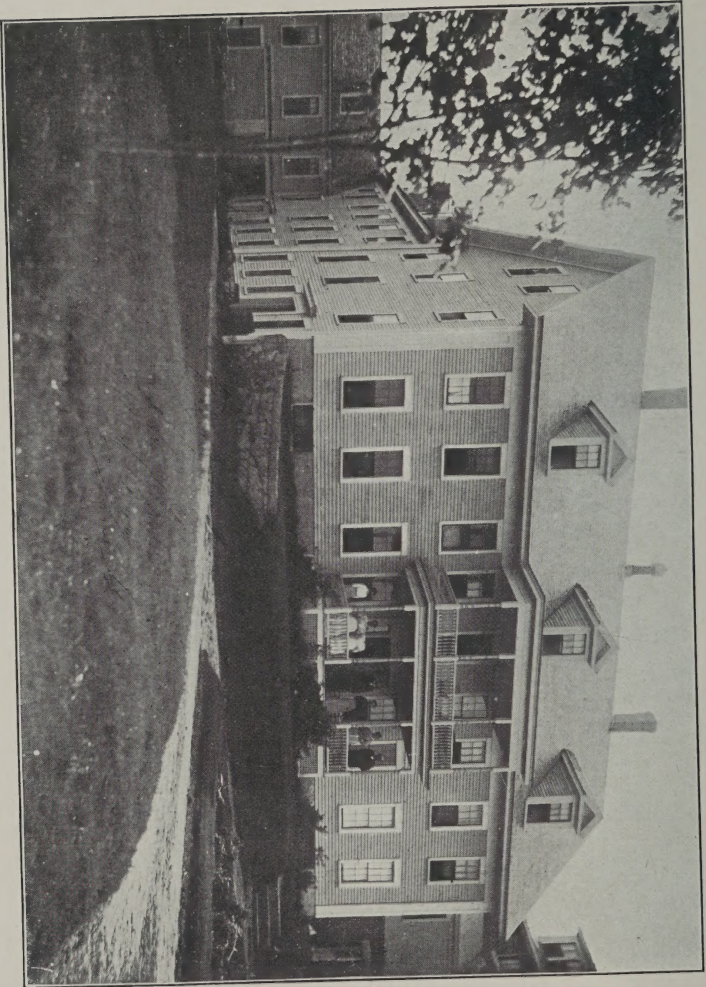


Hamilton Smith  
Library,  
University of  
New Hampshire









Carroll County Farm House at Ossipee

# ANNUAL REPORT

OF

County Commissioners, Treasurer, Superintendent  
of the County Farm, Solicitor, Auditors,  
Clerk of Court, Sheriff and Jailor

OF

# CARROLL COUNTY

For the Year Ending December 31,

....1916....

---

NORTH CONWAY, N. H.  
REPORTER BOOK AND JOB PRESS

1917



## County Officers

---

### Commissioners,

WILBUR H. GILMAN, to April 1, 1917, East Wolfeboro

GEORGE A. BLANCHARD, Moultonboro

JOHN E. PERKINS, Freedom

ARTHUR R. SHIRLEY, after April 1, 1917,  
East Conway, N. H.

### Treasurer,

SAMUEL A. HIDDEN, Tamworth

### Solicitor,

WALTER D. H. HILL, North Conway

### Sheriff,

ARTHUR W. CHANDLER, North Conway

### Register of Deeds,

FRED R. EASTMAN, Ossipee

### Register of Probate,

CHARLES S. MILES, Ossipee

### Clerk of the Superior Court,

ARTHUR E. KENISON, Ossipee

### Physician,

IRVING W. HODSDON, Mountainview

### Superintendent of the County Farm,

GEORGE B. REED, Ossipee

### Medical Referee,

B. FRANK HORNE, Conway

### Auditors,

HENRY B. COTTON, Conway Center

FRANK WEEKS, Mountainview

### Deputy Sheriffs,

JOHN S. QUIMBY, Center Sandwich

GEORGE I. PHILBROOK, Freedom

HORACE B. TUTTLE, Sanbornville, R. F. D.

## Carroll County Delegation

---

Bartlett,	AUSTIN L. STILLINGS
Conway,	ALBERT S. POLLARD
	CHARLES E. POOLE
	WILLIAM R. CARTER
Eaton,	FRED E. WHITE
Effingham,	E. FOREST LEAVITT
Freedom,	ARTHUR A. MERROW
Jackson,	HARRY A. THOMPSON
Madison,	SAMUEL J. GILMAN
Moultonboro,	JAMES E. FRENCH
Ossipee,	ERWIN W. HODSDON
Sandwich,	HARRY BLANCHARD
Tamworth,	CHARLES C. SMITH
Tuftonboro,	WILLIAM THOMAS
Wakefield,	WILLIAM N. ROGERS
Wolfeboro,	JOHN FRANK GOODWIN
	HENRY F. LIBBY



## COMMISSIONERS' REPORT

---

TO THE CITIZENS OF CARROLL COUNTY:

In accordance with the requirements of the Public Statutes of the State of New Hampshire, the Commissioners of Carroll County herewith submit the following report of their business transactions for the year ending December 31, 1916, together with the report of several of the other County Officers.

The County Farm is under the same management as last year, Mr. Geo. B. Reed, Superintendent and Mrs. Geo. B. Reed, as Matron, and the results have been very satisfactory.

Owing to the cold and wet seasons for the past two years the products of the Farm have been far less than was anticipated as there was an extra effort to make them far in excess of the previous year.

The expenses of the County in the nature of things must increase as the expenses are increasing on all commodities. The Commissioners would invite the tax-payers and all others interested in the affairs of the County to visit its institutions and see for themselves how they are managed.

We wish to thank the Selectmen and Overseers of the Poor in the several towns for their assistance in looking after the needy and unfortunate; and to all others who have rendered us their assistance we extend our hearty thanks.



COUNTY OF CARROLL

309

INVENTORY

County farm and buildings,	\$30,000 00
Jail building and equipment,	14,000 00
Court house and furniture,	40,000 00
	<hr/>
	\$84,000 00

PERSONAL PROPERTY AT COUNTY FARM

Live stock,	\$2,451 00
Farming tools,	1,153 50
Wood, coal and farm products,	1,963 40
Produce and provisions,	828 24
Clothing,	134 48
Silverware,	42 95
Miscellaneous,	1,605 80
Household goods,	1,569 03
	<hr/>
	\$ 9,748 40

CLAIMS ALLOWED BY THE COMMISSIONERS FOR THE  
YEAR FOR THE SUPPORT OF PAUPERS AWAY FROM  
THE FARM

Albany,	\$ 158 70
Bartlett,	52 00
Conway,	1,931 27
Eaton,	19 00
Freedom,	3 00
Madison,	332 20
Moultonboro,	176 00
Ossipee,	38 87
Tamworth,	25 00
Tuftonboro,	321 00
Wakefield,	397 56
Wolfeboro,	2,267 35

## DEPENDENT SOLDIERS

Conway,	\$ 300 00
Effingham,	111 16
Eaton,	86 20

## PAUPERS ASSISTED AWAY FROM THE FARM

Albany—Henry Smith family.

Conway—Frank Graves family, Nelson Colbroth family, Mrs. William Perrin.

Madison—Mrs. Lowell M. Holt, Harry Jones family, Foster children.

Moultonboro—Fred Penniman, Josiah Fogg.

Ossipee—Mary McKennon.

Tuftonboro—George Mack.

Wakefield—Douglass children, Lloyd Chester Kimball, Walter Bishop.

Wolfeboro—Daniel Moody, Minnie Brown family, Ghedone Boy, Charles Heath, Colboth children, Melvin Tibbetts, Ludger Roy, Ephraim Keniston, Ed. Burke family, Frank Pauquette, Helen Conner, Mary Griffin, Charles L. Adjatant, Frank Locke, Charles E. Morgan.

## DEPENDENT SOLDIERS AND FAMILIES

Conway—Mrs. A. H. Eastman.

Eaton—Mrs. Martha Sanborn.

## FINANCIAL STATEMENT, DEC. 31, 1916

Outstanding notes,	\$41,100 00
Court House construction bonds,	35,000 00

## ACCOUNTS PAYABLE

Walter D. H. Hill, Solicitor, 9 months' salary,	\$ 450 00
Samuel A. Hidden, Treasurer, one year's salary,	300 00
Wilbur H. Gilman, services and expenses, 6 months,	171 08



COUNTY OF CARROLL

311

George A. Blanchard, services and expenses, 6 months,	154 91
John E. Perkins, services and expenses, 6 months,	153 54
	<hr/>
	\$77,329 53

ASSETS

Cash on hand,	\$6,753 63
Due from the town of Jackson, 1916 tax,	\$ 743 75
Due from the town of Tuftonboro, 1916 tax,	925 00
Due from Hale's Location, 1916 tax, 12 50	
	<hr/>
	\$8,434 88
Net debt, December 31, 1916,	\$58,894 65
Net debt, December 31, 1915,	14,272 80
Increase in debt,	\$44,621 85

WILBUR H. GILMAN,  
 GEORGE A. BLANCHARD,  
 JOHN E. PERKINS,  
 Commissioners of Carroll County.

## COST OF NEW COURT HOUSE

---

Paid Wallace Building Co., as per contract,	\$31,950 00
Wallace Building Co., for extras more than deductions,	116 80
Wallace Building Co., cementing basement not in contract,	465 00
Albert H. Dow, architect, 6 per cent. on Wallace contract,	1,917 00
Albert H. Dow, architect, 10 per cent. on Doten's contract,	109 80
Herbert W. Doten, as per contract on desks, rails, etc. for court room,	1,098 00
Art Metal Construction Co., as per contract, for steel furnishings,	3,000 00
Hodge's House Furnishing Co., as per contract, for wood furniture,	1,430 38
For grading,	1,284 14
Brackett, Shaw & Lunt Co., for electric lighting plant,	964 07
W. D. Sanborn, for wiring court house and fixtures,	181 60
Smart Bros., for window screens,	49 50
C. O. Doe, for window shades,	122 93
Sumner & Gerald, for flush tanks and piping,	140 09
Delegation and special committee,	455 16
John A. Lovell, printing bonds,	65 00
Sundry items of furnishings,	77 83
E. Howard Clock Co., for one clock,	30 00
	\$43,457 30



## TREASURER'S REPORT

---

TO WILBUR H. GILMAN, GEORGE A. BLANCHARD AND  
JOHN E. PERKINS, COMMISSIONERS OF CARROLL  
COUNTY:

Gentlemen:--I respectfully submit the following statement of the receipts and disbursements of the Treasurer for the year ending December 31, 1916.

### APPORTIONMENT OF COUNTY TAX FOR 1916

Albany,	\$ 500 00
Bartlett,	1,093 75
Brookfield,	350 00
Chatham,	275 00
Conway,	3,968 75
Eaton,	293 75
Effingham,	587 50
Freedom,	512 50
Hart's Location,	156 25
Jackson,	743 75
Madison,	606 25
Moultonboro,	2,137 50
Ossipee,	1,687 50
Sandwich,	1,706 25
Tamworth,	1,587 50
Tuftonboro,	925 00
Wakefield,	2,006 25
Wolfeboro,	3,350 00
Hale's Location,	

Publishers' Paper Co.,	1 25
Conway Co.,	15
Frank P. Allard,	31
John H. Smith,	92
C. W. and D. Stilphen,	31
J. L. Gibson,	64
G. H. and J. Z. Shedd,	2 56
A. C. Kennett,	3 16
F. E. Faxon,	2 56
C. W. Thompson,	64

---

\$22,500 00

### RECEIPTS

1916		
	Cash on hand, Jan. 1, 1915,	\$10,273 91
Jan. 1	Town of Jackson, tax in full for 1915,	790 85
Jan. 5	C. W. Thompson, tax in Hale's Location,	67
"	A. H. Eastman, part support of wife,	36 00
Jan. 18	Town of Conway, part tax for 1915,	2,000 00
"	Dr. Shedd, tax in Hale's Location,	2 55
Jan. 25	Town of Tuftonboro, tax in full for 1915,	983 58
Jan. 28	Town of Conway, part tax for 1915,	2,200 20
Feb. 1	Town of Sandwich, tax in full for 1915,	1,814 31
Feb. 9	George B. Reed, fines and costs in case of Annie Burgess,	64 54
Feb. 11	Town of Conway, balance tax in 1915,	19 90



COUNTY OF CARROLL

315

Feb. 12	Town of Effingham, tax in full for 1915,	624 71
Feb. 16	Town of Brookfield, tax in full for 1915,	372 17
Feb. 16	Town of Chatham, tax in full for 1915,	292 42
Mar. 29	North Conway Loan & Banking Co., interest on deposits,	19 38
Apr. 25	A. H. Eastman, part support of wife,	36 00
Apr. 29	North Conway Loan & Banking Co., interest on deposits,	8 65
May 5	Frank S. Lord, on note,	6,000 00
"	North Conway Loan & Banking Co., on note,	2,000 00
June 1	North Conway Loan & Banking Co., interest on deposits,	7 03
June 29	North Conway Loan & Banking Co., interest on deposits,	4 36
"	Wolfeboro National Bank, interest on deposits,	18 24
July 31	Conway National Bank, interest on deposits,	10 50
"	North Conway Loan & Banking Co., interest on deposits,	3 88
"	A. H. Eastman, part support of wife,	36 00
"	State Board of Excise Commission,	433 24
"	State Board of Excise Commission,	124 95
Aug. 3	North Conway Loan & Banking Co., on note,	6,000 00

Aug. 30	Conway National Bank, interest on deposits,	10 00
"	North Conway Loan & Banking Co., interest on deposits,	1 63
Sept. 14	North Conway Loan & Banking Co., on note,	4,000 00
Sept. 30	Conway National Bank, interest on deposits,	10 00
Oct. 5	Isadore Kenison, on note,	1,000 00
"	Arthur E. Kenison, on note,	500 00
Oct. 31	A. H. Eastman, part support of wife,	36 00
"	Conway National Bank, interest on deposits,	10 00
"	North Conway Loan & Banking Co., interest on deposits,	3 95
Dec. 6	George B. Reed, fines and fees,	149 98
"	Wolfeboro, County tax in full for 1916,	3,350 00
Dec. 9	Town of Wakefield, tax in full for 1916,	2,006 25
"	Town of Freedom, tax in full for 1916,	512 50
Dec. 11	Town of Madison, tax in full for 1916,	606 25
"	Town of Chatham, tax in full for 1916,	275 00
Dec. 14	Town of Conway, tax in full for 1916,	3,968 75
"	Hart's Location, tax in full for 1916,	156 25
"	Town of Eaton, tax in full for 1916,	293 75

COUNTY OF CARROLL

317

Dec. 18	Town of Moultonboro, tax in full for 1916,	2,127 50
"	Town of Albany, tax in full for 1916,	500 00
Dec. 26	Town of Brookfield, tax in full for 1916,	350 00
"	Town of Bartlett, tax in full for 1916,	1,000 00
"	Town of Sandwich, tax in full for 1916,	1,706 25
Dec. 27	Town of Effingham, tax in full for 1916,	587 50
Dec. 30	Town of Tamworth, tax in full for 1916,	1,587 50
"	Town of Ossipee, tax in full for 1916,	1,687 50
"	Herbert W. Doten, overpay on contract,	1 00
"	Walter N. Morrison,	25 00
"	Conway National Bank, interest on deposits,	4 25
"	North Conway Loan & Banking Co., interest on deposits,	7 54
		<hr/>
		\$60,652 39

**Paid Commissioners' Orders:**

1916

Jan. 1	L. O. Moulton, insurance on Court House,	\$ 75 00
--------	--	----------



Jan.	1.	The Huggins Hospital, board and nursing of Frank Pauquette, from Sept. 13 to Nov. 6, 1915,	86 00
"		L. O. Moulton, insurance,	10 00
"		Wolfeboro National Bank, note and interest,	2,012 00
Jan.	5	Fred E. Clow, M. D., services and operation in case of Helen Connors,	60 00
"		Alfred J. Nute, labor on vault stairs,	11 69
"		Harry D. Piper, supplies for Ed. Burke family,	1 25
"		George W. Waters, burial expenses of Joseph Foster,	32 86
"		Fred Garney, board and care of Frank Pauquette family,	10 00
Jan.	7	Mrs. George Willand, board and care of Daniel Moody to Jan. 3, 1916,	8 00
"		S. J. Thompson & Son, supplies for Court House,	20 43
"		H. L. Craft, M. D., services in case of Helen Connors,	30 00
"		Carroll Inn, use of room for jurors two weeks,	20 00
"		Underwood Typewriter Co., exchange in typewriters for Clerk of Court,	56 75
"		Loring, Short & Harmon, supplies for Register of Deeds' office,	2 20

COUNTY OF CARROLL

319

Jan. 7.			
"	Loring, Short & Harmon, supplies for Clerk of Court's office,	3	00
"	Loring, Short & Harmon, supplies for Clerk of Court's office,	5	97
Jan. 8	L. O. Moulton, supplies for Court House,	18	19
"	George B. Reed, advance on Jan. account,	400	00
"	Philip S. Davis, auto hire,	1	00
"	A. W. Chandler, salary from Oct. 1 to Dec. 31,	50	00
Jan. 10	L. O. Moulton, supplies furnished Minnie Brown,	7	37
"	L. O. Moulton, supplies for vaults,	2	96
"	H. B. Moody, fixtures for vaults,	50	
"	S. A. Edgerly, supplies furnished Ed. Burke family,	7	15
"	Charles P. Cleaves, services as Chaplain to Jan. 1, 1916,	4	16
"	A. W. Leighton Co., insurance on contents stable and piggery,	74	82
"	A. W. Chandler, court expenses,	184	76
Jan. 11	Mrs. Angie Thebodoleau, board of Burgess children,	26	15
"	George B. Reed, advance on Jan. account,	100	00
"	E. W. Beacham, court expenses,	1	10
Jan. 12	Hodges House Furnishings, table and chairs,	34	65
"	Redstone General Store, supplies furnished Frank Graves family,	59	50

Jan.	12.	Redstone General Store, supplies furnished William Perrin family, from June 1 to Nov. 1,	78 00
Jan.	13	Alice R. McMaster, transportation for Little Wanderers,	9 68
"		Forsyth Dental Infirmary, ward accommodations for Charles Heath,	15 00
"		Margaret Pillsbury General Hospital, board and nursing three days for Joseph Foster,	3 84
"		Tom H. Brown, auto hire,	2 00
"		Drs. G. H. and J. Z. Shedd, services in case of Nelson Coolbroth,	12 00
"		Drs. G. H. and J. Z. Shedd, services in case of Elmer Henderson,	3 50
Jan.	14	A. A. Phelps, supplies furnished Burgess family,	2 55
Jan.	18	Town of Tuftonboro, general pauper bill,	19 00
Jan.	19	John M. Harmon, board and care of Douglass children from Dec. 6 to Jan. 3,	20 00
Jan.	24	J. A. Edgerly, transportation of two persons to Ashland,	9 00
Feb.	1	Martin W. Adjutant, hauling wood for E. Burke family,	1 50
Feb.	8	Horace Rust, supplies furnished Frank Pauquette,	67 91
"		Town of Wolfeboro, general pauper bill,	558 01



COUNTY OF CARROLL

321

Feb. 9	Town of Raymond, cash paid George H. Guptill, M. D., for medical services in case of Mary Griffin,	34 00
"	C. B. Cotton, M. D., operation on Mr. Wyatt Cheeney,	70 00
Feb. 12	Charles S. Miles, bolts for foun- dation for dynamo,	3 20
"	J. M. Harmon, board and care of Douglass children, Jan. 3 to Feb. 7, 1916,	25 00
"	Charles P. Cleaves, services for month of January,	4 17
"	George B. Reed, advance on Feb- ruary account,	1,025 00
"	Loring, Short & Harmon, sup- plies for Register of Deeds' office,	4 00
"	George B. Reed, balance on Jan- uary account,	322 60
"	J. H. Burke, supplies furnished Harry Jones family,	30 00
"	J. H. Burke, supplies furnished Mrs. Holt,	15 00
"	Carroll Inn, use of room for Clerk of Court,	40 00
"	S. A. Edgerly, supplies furnish- ed Minnie E. Brown,	4 65
Feb. 14	Drs. G. H. and J. Z. Shedd, autopsy in case of Mr. Hale,	25 00
"	George C. Stone, medicines fur- nished Harry Jones,	3 50

Feb. 14.	Alfred Gagnie, board and care of Mr. and Mrs. Frank Pauquette, 5 weeks,	12 00
"	Mrs. George Willand, board and care of Daniel Moody, Jan. 3 to Feb. 7, 1916,	10 00
"	E. K. Freeman, supplies furnished C. C. Varney,	3 01
Feb. 16	Ira C. Evans Co., supplies for Clerk of Court,	2 08
"	A. E. Kenison, expense of removing Colburn Norton from N. H. State Hospital to Massachusetts,	2 00
Feb. 17	B. C. Snyder, supplies for Register of Deeds' office,	9 00
"	B. C. Snyder, supplies for Register of Probate's office,	5 00
"	B. C. Snyder, supplies for Clerk of Court's office,	27 46
"	B. & M. R. R. Co., mileage,	11 25
"	Town of Effingham, board of Martha Sanborn, May 8 to Oct. 31, 1915,	50 00
Feb. 18	C. M. Wiggin, M. D., medical services in case of Harry Jones,	36 25
Feb. 19	Carroll Inn, use of room for Auditors,	2 00
Feb. 21	William G. Abbott, board and care of Carrie F. Peavey from Nov. 1 to Dec. 6, 1915,	10 00

COUNTY OF CARROLL

323

Mar. 2	New Hampshire Orphans' Home, board and care of Melvin Tib- betts,	18 00
"	New Hampshire Orphans' Home, board and care of Foster chil- dren,	12 00
"	New Hampshire Orphans' Home, board and care of Albert Ghedone,	19 50
"	New Hampshire Orphans' Home, board of Charles Heath,	9 00
"	O. V. Tel. & Tel. Co., telephone service,	34 73
Mar. 9	J. M. Harmon, board and care of Douglass children, Feb. 7 to March 6, 1916,	20 00
"	Mrs. George Willand, board and care of Daniel Moody, Feb. 7 to March 6, 1916,	8 00
Mar. 10	G. E. Thompson, supplies fur- nished Daniel Moody,	6 60
"	F. E. Clow, M. D., services in case of W. F. Whittier,	5 20
Mar. 11	B. Frank Horne, M. D., services in case of Jonathan F. Tyler,	25 80
"	C. P. Cleaves, services as Chap- lain for Feb., 1916,	4 16
"	Carroll Inn, dinners,	3 75
Mar. 13	S. D. Snow, M. D., services in case of Peter McQuade,	10 00
"	Loring, Short & Harmon, sup- plies for Clerk of Court's office,	2 25
"	S. D. Snow, M. D., medical ser- vices in case of Elide Ledoux,	5 00



March 13.		
“	George B. Reed, advance on March account,	450 00
“	George B. Reed, balance due on February account,	305 19
Mar. 14	Ossipee Valley Tel. & Tel. Co., telephone service,	8 78
Mar. 15	F. S. Lovering, M. D., examina- tion in case of Fred Brown,	6 00
“	Lyman Cook, board and care of A. H. Eastman, Oct. 17 to Feb. 28, 1916,	114 00
“	W. D. H. Hill, services as Solici- tor from April 1, 1915 to March 31, 1916,	600 00
“	Smith H. Paine, supplies fur- nished Frank Pauquette,	10 00
Mar. 16	B. C. Snyder, supplies for Reg- ister of Deeds' office,	4 70
“	B. C. Snyder, supplies for Clerk of Court's office,	2 50
“	Drs. G. H. and J. Z Shedd, med- ical services in case Adelaide	1 00
“	B. C. Snyder, printing reports,	132 00
“	C. M. Wiggin, M. D., medical ser- vices in case of Nelson Cool- broth,	9 50
Mar. 17	C. Danforth Ross, M. D., medical services in case of Walter Bishop,	19 50
Mar. 22	Town of Conway, general pauper bill,	756 03

COUNTY OF CARROLL

325

Apr. 4	C. D. Evans, supplies furnished Minnie Brown,	19 99
"	Drs. G. H. and J. Z. Shedd, autopsy in case of Peter Mc- Quade,	25 00
Apr. 7	A. C. Moulton, gravel for Court House lot,	3 60
"	J. H. Burke, supplies furnished Mrs. Holt,	8 00
"	J. H. Burke, supplies furnished Harry Jones family,	16 00
"	George B. Reed, services as jailer to Apr. 1, 1916,	75 00
"	B. Frank Horne, M. D., post mor- tem in case of Peter McQuade,	29 00
"	Carroll Inn, office rent for Clerk of Court,	31 50
Apr. 10	B. & M. R. R. Co., mileage,	11 25
"	Loring, Short & Harmon, sup- plies for Register of Probate's office,	5 00
"	Loring, Short & Harmon, sup- plies for Register of Deeds' office,	5 75
"	N. H. Scott, M. D., professional services as per contract,	75 00
"	C. D. Evans, supplies furnished Ed. Burke,	4 30
"	C. B. Cotton, M. D., services in case of Thomas Heath,	15 00
"	George B. Reed, balance due on March account,	183 40
"	George B. Reed, advance on April account,	500 00

Apr. 11	Ossipee Valley Tel. & Tel. Co., telephone service,	7 59
"	F. E. Clow, M. D., medical referee in case of Charles E. Chandler,	5 20
"	Alfred Gagne, board and care of Frank Pauquette and wife, 4½ weeks,	10 00
"	Earl Adjutant, supplies furnished. Ed. Burke family,	8 80
"	George Willand, cord of wood delivered to Daniel Moody,	4 00
"	Mrs. George Willand, board of Daniel Moody, March 6 to April 3, 1916,	8 00
Apr. 13	The Huggins Hospital, nursing and care of Mrs. Thomas Heath,	28 60
"	The Huggins Hospital, nursing and care and use of operating room for Mrs. Leroy Griffin,	15 50
Apr. 15	J. M. Harmon, board and care of Douglass children, March 6 to April 3, 1916,	20 00
May 1	Town of Raymond, paid N. A. Folsom, for board and care of Mary Griffin,	100 00
May 2	A. W. Chandler, services as Sheriff from Jan. 1 to April 1, 1916,	50 00
May 4	H. H. Randall, board and supplies for Commissioners,	10 00

COUNTY OF CARROLL

327

May 5	County of Strafford, attendance of jurors in Belware case,	266 00
"	C. H. Carter, recording deaths at Farm,	75
"	George H. Guptill, M. D., services in case of Mary Griffin,	4 00
"	B. & M. R. R. Co., mileage,	11 25
May 8	A. J. Farnum, steel roofing for piggery,	95 93
"	George B. Reed, advance on May account,	800 00
"	George B. Reed, balance due on April account,	29 10
"	P. E. Young, supplies furnished Charles D. Morgan,	116 93
"	P. E. Young, supplies furnished Frank Locke,	35 88
"	P. E. Young, supplies furnished Charles L. Adjutant,	59 92
"	North Conway Loan & Banking Co., revenue on loan,	40
May 11	C. D. Evans, supplies furnished Minnie Brown,	16 56
"	B. Frank Horne, M. D., services in case of Mae Louise Foster,	9 00
May 15	Mrs. George Willand, board and care of Daniel Moody, April 3 to May 1, 1916,	8 00
"	Charles P. Cleaves, services as Chaplain, March and April,	8 33
"	J. M. Harmon, board and care of Douglass children, April 3 to May 1,	20 00



May 15.		
“	Ossipee Valley Tel. & Tel. Co., telephone service,	9 38
May 17	Nellie A. Folsom, board and care of Mary Griffin to March 11, 1916,	42 00
May 24	N. H. Orphans' Home, board and care of Melvin Colbert to May 1, 1916,	18 35
“	N. H. Orphan's Home, board and and care of Charles Heath to May 1, 1916,	8 85
“	N. H. Orphan's Home, board and care of Albert Ghedone, to May 1, 1916,	18 00
“	Adalia E. Hanley, board and care of Walter Bishop,	27 00
May 25	Wolfeboro National Bank, in- terest on loan,	50 00
May 29	H. H. Kinsford, M. D., services in case of Peter McQuade,	25 00
“	J. L. Hammett Co., blackboard for Court House,	12 60
“	Jordan Marsh Co., cuspidors,	15 10
May 30	Hodges House Furnishings, part payment for furnishings,	850 00
“	W. H. Gilman, cash paid for coat racks for Court House,	6 00
“	C. B. Cotton, M. D., operation on Leroy Griffin and treatment,	40 00
“	C. B. Cotton, M. D., operation on Mrs. Sprague,	25 00

COUNTY OF CARROLL

329

May 30.			
"		Charles S. Miles, postage and express for Probate office Dec. 21, 1915 to May 24, 1916,	27 85
June 2		John F. Chick & Son, lumber for lighting system,	25 71
June 5		A. W. Chandler, services in case Mabel Nute vs. L. Eastman,	12 18
"		S. A. Edgerly & Co., supplies furnished Minnie Brown,	8 20
"		Mrs. Evelyn L. Wilkins, cleaning windows at Court House,	4 00
June 6		N. H. Scott, M. D., services as per contract,	75 00
June 7		C. D. Evans, supplies furnished Minnie Brown,	21 21
"		Toby's Pharmacy, medicines furnished County poor,	4 15
"		Burdett, Williams Co., locks for Court House,	19 30
June 8		B. & M. R. R. Co., freight bills,	8 20
"		Loring, Short & Harmon, supplies for Clerk of Court's office,	84 81
June 9		J. H. Burke, supplies furnished Harry Jones family,	16 00
"		J. H. Burke, supplies furnished Mr. Holt,	8 00
"		George B. Reed, balance due on May account,	64 14
"		George B. Reed, advance on June account,	850 00
June 10		P. B. Dale, auto hire,	6 00

June 10.			
“	Brackett, Shaw & Lunt, extra horse power engine in place of 3 H. P. engine for Court House,		155 00
“	Brackett, Shaw & Lunt, fixtures for electric light plant,		78 75
June 12	Mrs. George Willand, board of Daniel Moody, May 1 to June 5,		10 00
“	H. H. Clay, burial outfit for Fred Pennyman,		34 00
June 14	Town of Wakefield, food and transportation of transients to Berlin, N. H.,		5 25
“	B. C. Snyder, supplies for Court,		6 00
“	B. C. Snyder, advertising for bids for County money,		1 00
“	B. C. Snyder, supplies for Register of Probate's office,		12 00
“	B. C. Snyder, supplies for Clerk of Court's office,		9 00
June 22	A. C. Moulton, gravel for Court House,		5 15
“	C. B. Sceggel, lettering doors for Court House,		1 25
“	L. O. Moulton, supplies for Court House,		27 82
“	C. P. Cleaves, services as Chaplain,		4 16
“	John M. Harmon, board and care of Douglass children,		25 00
June 26	E. W. Beacham, auto hire,		3 50
“	E. W. Beacham, auto hire,		18 00

COUNTY OF CARROLL

331

June 26.			
"	E. W. Beacham, auto hire,		1 50
July 1	Wolfeboro National Bank, note and interest,	2,568	61
July 3	Hinds & Coon, cuspidors for Court House,		4 50
"	Town of Eaton, supplies for Frank Bodwell,		19 00
July 5	S. A. Edgerly & Co., goods delivered to Lizzie Cropley, for Keniston boy,		2 50
"	Mrs. George Willand, board and care of Daniel Moody, June 5 to July 3,		8 00
July 6	Horace Rust, supplies furnished Frank Pauquette,		19 60
"	The E. Howard Clock Co., clock for Court room,		30 00
July 7	Loring, Short & Harmon, supplies for Clerk of Court's office,		134 13
"	William Heard, supplies furnished Joseph P. Clark to January 1, 1916, .		52 00
"	E. W. Hodsdon, M. D., services at County Farm,		37 50
"	B. A. Carlton, witness fee in re State vs. John Dore,		1 25
"	E. W. Hodsdon, fees in re State vs. John Dore, chargeable to Police Court,		1 50
"	F. W. Bickford, glass jars for Court House,		90



July 7.			
"		Fred W. Bickford, two days' attendance at Court, June 15 and 16	5 00
"		Burdett & Williams Co., key for Court House,	1 00
"		John B. Varick Co., sash pull for Court House,	86
"		Vermont Marble Co., marble directory board,	4 50
July 8		Loring, Short & Harmon, supplies for Register of Probate's office,	1 60
"		Loring, Short & Harmon, supplies for Register of Deeds' office,	6 30
"		Loring, Short & Harmon, supplies for Court House,	4 80
"		Loring, Short & Harmon, supplies for Commissioners' office,	11 00
"		F. S. Lovering, M. D., medical attendance in case of Fred Pen-nyman,	20 00
"		F. S. Lovering, M. D., medical attendance in case of Cyrus Fogg,	20 00
"		E. W. Beacham, auto hire,	22 50
"		De Silva Sign Co., Inc., lettering marble tablets for Court House,	4 08
"		T. F. McGann & Son Co., bolts for Court House,	2 00

COUNTY OF CARROLL

333

July 8.	B. Frank Horne, M. D., services as medical referee in case of Eugene W. Alley,	8 00
July 9	Hobson & Eaton, supplies furnish Nelson Coolbroth family,	28 56
"	B. Frank Horne, M. D., referee in case of Merle Edgar Coswell,	6 20
"	A. W. Chandler, services as Sheriff from April 1 to June 30, 1916,	50 00
"	B. Frank Horne, M. D., services in case of Thomas Kovonchock,	5 40
"	Fred Eaton, burial services in case of Charles Mahan,	35 50
"	E. W. Hodsdon, M. D., medical referee at Alms House, as per contract,	37 50
"	O. B. Merrill, rent for Mrs. C. W. Colbroth,	12 00
"	B. Frank Horne, M. D., referee in case of Charles Mahan,	8 20
"	B. Frank Horne, M. D., referee in case of Mark E. Nickerson,	6 40
"	O. B. Merrill, house rent for Mrs. Coolbroth and family,	24 00
"	E. W. Hodsdon, M. D., medical services,	43 00
July 14	C. M. Wiggin, M. D., medical services in case of Harry Jones family,	44 75
July 17	American Express Co., express,	11 36

July 19	Carroll Inn, 1 $\frac{3}{4}$ months' office rent for Clerk of Court,	17 50
"	Carroll Inn, gasoline for Court House,	18 30
"	Arthur W. Chandler, court expenses,	202 68
July 20	George B. Reed, balance due on June account,	160 06
"	George B. Reed, advance on July account,	500 00
July 24	C. M. Wiggin, M. D., medical aid furnished Mrs. Nelson Coolbroth,	11 25
"	The Memorial Hospital, board and nursing of Henry Smith, 62 days, 1913,	95 50
"	John M. Harmon, board and care of Douglass children from June 5 to July 3,	20 00
"	Lyman Cook, board and care of Mrs. A. H. Eastman, Feb. 27 to June 26,	102 00
"	Mrs. George B. Straw, support of George Mack and family, June 1 to June 29,	16 00
"	Mrs. John Fogg, board and care of Josiah Fogg, March 2 to June 8,	42 00
"	H. L. Clow, M. D., medical services in case of Charles Bunce child,	10 00
"	Bank and Office Equipment Co., steel cases for Clerk of Court's office,	24 00

COUNTY OF CARROLL

335

July 24.		
"	Ossipee Valley Tel. & Tel. Co., telephone service,	10 92
July 29	W. C. Connor, rent of room for Probate Court, June 1, 1914 to June 1, 1916,	12 00
July 24	H. B. Cotton, salary as Auditor for 1915,	25 00
"	Frank Weeks, salary as Auditor for 1915,	25 00
"	Samuel A. Hidden, services as Treasurer for six months end- ing Dec. 31, 1915,	150 00
Aug. 1	Strafford County Treasurer, ser- vices of stenographer in State vs. Belware,	33 75
"	Strafford County Treasurer, transportation and board of jurors and others in case State vs. Belware,	105 41
Aug. 7	Fred E. Clow, M. D., medical referee in case of Marion Horne,	15 00
Aug. 8	H. H. Randall, ambulance for Emile La Duke,	2 00
Aug. 9	Brackett, Shaw & Lunt Co., supplies for electric plant,	58 27
"	A. E. Kenison, cash paid for crating door,	50
"	The Memorial Hospital, bill for Emile La Duke,	255 75
"	E. J. Tibbetts, house rent for Minnie Brown, Feb. 3 to Aug. 3,	24 00



Aug. 10	Loring, Short & Harmon, supplies for Clerk of Court,	69 75
"	Loring, Short & Harmon, supplies for Court House,	1 60
"	Loring, Short & Harmon, supplies for Register of Deeds' office,	9 00
"	Underwood Typewriter Co., supplies for Clerk of Court,	20
"	George B. Reed, advance on August account,	900 00
"	George B. Reed, balance due on July account,	204 32
"	J. W. Garvin & Co., supplies furnished Lloyd Chester Kimball,	14 80
Aug. 11	Hobson & Eaton, supplies furnished Nelson Colbroth family,	27 97
"	Library Bureau, manila folders,	2 24
"	J. M. Harmon, board and care of Douglass children, July 3 to Aug. 7,	25 00
"	Drs. G. H. and J. Z. Shedd, medical aid for Mr. Ledoux,	87 50
"	Hodges House Furnishings, balance due on furniture,	545 73
Aug. 12	C. E. and H. P. Smart, screens for new Court House,	49 50
Aug. 14	Charles P. Cleaves, services as Chaplain to July 1,	4 16
"	Art Metal Construction Co., Inc., resetting old work,	3 60
"	Alice C. Milliken, insurance on Court House,	85 00

COUNTY OF CARROLL

337

Aug. 14.		
"	Mrs. George D. Straw, support of George Mack and family,	20 00
"	J. H. Burke, supplies furnished Harry Jones family,	18 00
"	J. H. Burke, supplies furnished Mrs. L. M. Holt,	9 00
"	A. A. Phelps, supplies furnished Colbroth family,	25 00
"	A. E. Kenison, insurance on Court House,	85 00
Aug. 15	Drs. G. H. and J. Z. Shedd, medi- cal services in case of Henry Smith,	34 50
"	W. J. Britton, insurance on Court House,	85 00
"	J. L. Young, burial of Ludger Roy,	20 00
Aug. 16	Wesley B. Sanborn, part pay- ment on electrical supplies and labor,	150 00
"	Wallace Building Co., extra labor at Court House	106 28
"	George A. Thurston,	24 00
"	Mrs. George Willand, board of Daniel Moody family, July 3 to Aug. 7,	10 00
Aug. 18	C. O. Doe, shades for Court House,	122 93
"	Art Metal Construction Co., Inc., steel filing cases for Court House,	3,000 00

Aug. 21	C. M. Wiggin, M. D., medical services in case of Frank Graves,	10 00
Aug. 26	Herbert W. Doten, final payment on Court House furniture,	292 72
Aug. 29	P. B. Dale, auto hire,	3 30
"	I. S. Gilman, auto hire,	2 25
Sept. 5	N. H. Orphan's Home, board of Albert Ghedone for the quarter,	18 00
"	N. H. Orphan's Home, board of Charles Heath for quarter,	18 00
"	N. H. Orphan's Home, board of two Colbroth children for July and $\frac{1}{2}$ of June,	18 00
"	N. H. Orphan's Home, board of Melvin Tibbetts for quarter,	18 00
"	N. H. Orphan's Home, board of Lloyd Kimball for July and $\frac{1}{2}$ of June,	9 00
"	Mrs. L. H. Cropley, care of Ephraim Keniston, 8 weeks,	24 00
Sept. 7	Fred W. Morse, burial expenses of Mrs. Mary McKennon,	27 50
Sept. 8	Beedè Philbrick, auto hire for Commissioners,	7 20
"	C. D. Evans, supplies for Mrs. Minnie Bown,	13 64
"	George B. Reed, advance on September account,	500 00
"	George B. Reed, balance due on August account,	197 74

COUNTY OF CARROLL

339

Sept. 11	H. L. Clow, M. D., medical attendance in case of Mary McKennon,	4 00
Oct. 4	B. C. Snyder, supplies for Register of Probate's office,	15 67
"	B. C. Snyder, supplies for Register of Deeds' office,	6 00
"	B. C. Snyder, supplies for Clerk of Court's office,	3 00
"	Drs. G. H. and J. Z. Shedd, medical services in case of Mrs. Hill,	2 00
"	Drs. G. H. and J. Z. Shedd, autopsy of Mrs. Hill,	35 00
Oct. 5	George B. Reed, balance due on September account,	228 23
"	George B. Reed, advance on Oct. account,	1,050 00
"	A. E. Kenison, note,	1,500 00
"	B. & M. R. R. Co., freight on coal for Court House,	189 20
"	Loring, Short & Harmon, supplies for Register of Deeds' office,	1 15
"	Lyman Cook, board and care of Mrs. A. H. Eastman, 14 weeks,	84 00
Oct. 6	C. Shackford & Son, supplies furnished Nelson Coolbroth family,	39 08
"	B. Frank Horne, M. D., referee in case of Frank B. Ashnault,	6 20
"	B. Frank Horne, M. D., referee in case of Alonzo H. Smith,	6 20



Oct. 6,			
“	B. Frank Horne, M. D., referee in case on unknown man,		10 00
Oct. 9	Ford J. Smith, auto hire for Commissioners,		4 00
“	J. H. Burke, supplies furnished Mrs. Holt to Sept. 30, 1916,		9 00
“	E. W. Beacham, auto hire,		31 50
Oct. 10	Mrs. George Willand, board and care of Daniel Moody, Aug. 1 to Sept. 8,		11 00
Oct. 11	Ossipee Valley Tel. & Tel. Co., telephone service,		15 35
Oct. 16	Town of Effingham, board and care of Martha Sanborn, Oct. 31, 1915 to June 19, 1916,		61 16
Oct. 17	J. H. Burke, supplies furnished Harry Jones family,		18 00
Oct. 18	Staples & Bell, Inc., coal for Court House,		180 60
“	Mrs. L. H. Cropley, care of Ephraim Keniston, 5 weeks,		10 50
“	Town of Eaton, support of Mrs. Martha Sanborn, Aug. 2 to Sept. 27,		25 20
Oct. 23	O. B. Merrill, house rent for Col- broth family, Aug. 24 to Sept. 24,		12 00
Oct. 25	Charles A. Wiggin, grading at Court House,		278 03
“	John M. Harmon, board and care of Douglass children, Aug. 7 to Sept. 4,		20 00

COUNTY OF CARROLL

341

Oct. 25.		
"	Daniel McIntyre, services as Chaplain for July, Aug. and Sept.,	12 50
Oct. 28	Q. A. Thurston, board and care Mrs. Martha Sanborn,	24 00
Nov. 1	E. M. Thomas & Son, cash paid Frank Locke for labor on Court House,	2 00
Nov. 2	A. E. Kenison, interest on note of Luther Neal, Jan. 1 to Oct. 5, 1916,	40 25
"	C. A. Wiggin, grading at Court House,	236 10
Nov. 3	Loring, Short & Harmon, sup- plies for Clerk of Court's office,	33 47
Nov. 7	C. A. Wiggin, grading at Court House,	413 13
Nov. 9	H. E. Bickford, labor putting up bulletin board at Court House,	1 50
Nov. 10	Shirl Buswell, labor on vaults,	2 00
"	Charles E. Eastman, services as Janitor to Nov. 1, 1916,	47 62
"	E. L. Mills, balance due on insur- ance policy No. 40066,	60 00
"	George B. Reed, balance due on October account,	153 62
"	George B. Reed, advance on No- vember account,	400 00
Nov. 14	F. E. Clow, M. D., services as per contract,	5 65
"	F. E. Clow, M. D., medical aid in case of George Mack,	108 00

Nov. 14.	Irving S. Gilman, auto hire for Commissioners,	5 00
Nov. 16	The Boulton Gorrell Lumber Co., bulletin board,	4 50
"	B. Frank Horne, M. D., services in case of Austin E. Sanphy,	7 00
"	B. Frank Horne, M. D., medical services in case of Annie J. O. Neil,	7 00
"	Wesley D. Sanborn, balance due on electrical supplies,	31 60
Nov. 17	A. T. Quimby & Son, hinges and hook for Court House,	10 00
"	C. A. Wiggin, grading at Court House,	348 13
"	Carroll D. Piper, insurance on Court House,	85 00
"	Carroll D. Piper, insurance on boilers,	77 88
"	J. L. Young, burial of George F. Mack,	30 00
"	George E. Thompson, supplies furnished Ephraim Keniston,	6 49
"	F. W. Prindall, for John K. Chase, benefit for Sept. and Oct., 1916,	25 00
Nov. 18	Foster G. Warren, telephone pole and labor,	9 70
"	F. G. Warren, wood for Court House,	10 00
Nov. 20	Mrs. George D. Straw, support of George Mack and family, Aug. 30 to Oct. 25,	32 00

## COUNTY OF CARROLL

343

Nov. 20.		
"	Mrs. L. H. Croyley, board of Ephraim Keniston, Sept. 28 to Oct. 26,	6 00
"	John M. Harmon, board and care of Douglass children, Sept. 4 to Nov. 6,	45 00
"	Florence Abbott, cleaning Court House,	28 35
Nov. 21	John M. Guay, finishing bulletin board,	5 05
"	Arthur Leach, digging grave for Fred Pennyman,	3 00
Nov. 24	Mrs. John Fogg, care of Josiah Fogg from July 1 to Nov. 11,	57 00
Dec. 5	E. W. Beacham, auto hire for Commissioners,	12 00
Dec. 6	John K. Chase, aid for month of Nov., 1916, State aid for Blind,	12 50
"	Charles S. Miles, postage and express, June 2 to Dec. 5,	16 75
"	Ford J. Smith, auto hire for Commissioners,	2 00
"	F. W. Prindall, advertising bids for County deposits,	1 00
Dec. 8	George B. Reed, balance due on November account,	69 28
"	George B. Reed, advance on De- cember account,	500 00
Dec. 11	N. H. Orphan's Home, board for children from Wolfeboro,	166 00
"	N. H. Orphan's Home, board of Foster children for 3 months,	52 00

Dec. 11.			
"	N. H. Orphan's Home, board of Lloyd Kimball,		26 00
"	Sumner & Gerald, plumbing goods for Court House,		65 84
"	N. H. Scott, M. D., medical ser- vices as per contract,		75 00
"	Wallace Building Co., supplies for Court House,	132	46
"	Eugene C. Foss Co., supplies for Court House,		8 58
"	Eugene M. Drake, carying pau- per, George H. Lovering, to Alms House,		3 00
Dec. 12	C. Shackford & Son, supplies furnished Nelson Colbroth family,		46 42
Dec. 13	C. D. Evans, 3 cords wood de- livered to Ed. Burke family,		18 00
"	George E. Thompson, supplies furnished Daniel Moody,		5 46
"	B. C. Snyder, supplies for Treas- urer's office,		4 75
"	B. C. Snyder, supplies for Com- missioners' office,		6 25
"	B. C. Snyder, supplies for Regis- ter-of Deeds' office,		4 25
"	George E. Thompson, supplies for Ephraim Keniston,		7 20
Dec. 14	Sumner & Gerald, plumbing sup- plies for Court House,	74	25
"	Loring, Short & Harmon, sup- plies for Register of Deeds' office,		4 80



- COUNTY OF CARROLL

345

Dec. 14.		
"	Loring, Short & Harmon, supplies for Clerk of Court's office,	6 00
"	George B. Reed, insurance,	207 00
"	C. M. Wiggin, M. D., service in case of James Drew,	80 55
Dec. 15	John M. Harmon, board and care of Douglass children, Nov. 6 to Dec. 5,	20 00
"	Redstone General Store, supplies furnished Frank Graves,	28 00
"	Redstone General Store, supplies furnished Mrs. William Perin,	24 00
Dec. 18	B. Frank Horne, M. D., medical referee in case of Sarah Parain,	6 00
"	B. Frank Horne, M. D., medical referee in case of James F. Sanborn,	10 00
"	Arthur W. Chandler, services as Sheriff, July 1 to Dec. 31,	100 00
"	Ossipee Valley Tel. & Tel. Co., telephone service,	26 01
"	Mrs. L. H. Cropley, care of Ephraim Keniston, Oct. 26 to Nov. 30,	7 50
Dec. 21	A. A. Phelps, supplies furnished Colbroth family,	45 60
Dec. 22	S. A. Edgerly & Co., goods furnished Ephraim Keniston,	3 55
"	H. L. Clow, M. D., vaccinating 3 Douglass children,	3 00

Dec. 22.	“	Charles E. Eastman, services as Janitor of Court House to date,	21 00
Dec. 30		Samuel A. Hidden, interest on outstanding notes,	1,175 46
			<hr/>
			\$35,494 14

## PAID CARROLL COUNTY COUPONS TO NOV. 1, 1916:

Nov. 4	Nos. 2, 3, 4, 5, 6, 7, 8, 9, 10, 11,	\$ 200 00
Nov. 9	Nos. 12, 13, 15, 16, 17, 18, 19, 20, 21, 22,	200 00
Nov. 13	No. 33,	20 00
Nov. 15	Nos. 14, 34, 35,	60 00
Nov. 17	No. 1,	20 00
Dec. 12	Nos. 23, 24, 25, 26, 27, 28, 29, 30, 31, 32,	200 00
		<hr/>
		\$ 700 00

## PAID COURT ORDERS AND STATE PAY ROLLS:

Jan. 4	Marion W. Cottle, professional services in re State vs. Arthur Paradis,	\$ 15 00
“	Marion W. Cottle, professional services in re. State vs Tony Collins,	10 00
“	A. E. Kenison, allowance and ex- penses incurred as Clerk of the Superior Court,	875 16

COUNTY OF CARROLL

347

Jan. 4.			
"	Arthur E. Kenison, services as Master in re Thurston vs. Thurston,		12 50
Jan. 5	Bessie A. Marsh, services as stenographer, State vs. Bel- ware,		42 30
Jan. 8	State Pay Roll, No. 1, State vs. Fred Belware,	418	02
"	State Pay Roll, No. 2, State vs. Reed Lang,	75	68
"	State Pay Roll, No. 3, State vs. Gertrude Watson,	91	05
"	State Pay Roll, No. 4, State vs. James A. Drew,	78	34
"	State Pay Roll, No. 5, State vs. Leavitt,	12	00
"	State Pay Roll, No. 6, State vs. Colburn Norton,	33	75
"	State Pay Roll, No. 7, State vs. U. L. Auster,	4	50
"	State Pay Roll, No. 8, State vs. Charles Drew,	72	37
"	State Pay Roll, No. 9, State vs. Tony Collins,	26	21
"	State Pay Roll, No. 10, State vs. E. Nickerson,	8	50
"	State Pay Roll, No. 11, State vs. Mary Johnson,	1	50
"	State Pay Roll, No. 12, State vs. Philip G. Smearer,	17	50
"	State Pay Roll, No. 13, State vs. Mr. and Mrs. George H. Wat- son,	1	61

Jan. 8.		
"	State Pay Roll, No. 14, State vs. Hiram Mason,	13 70
"	State Pay Roll, No. 15, State vs. James H. Drew,	10 00
"	State Pay Roll, No. 16, State vs. Charles Woodman,	10 00
"	State Pay Roll, No. 17, State vs. Criminal Investigation,	6 60
"	State Pay Roll, No. 18, State vs. F. J. Wiseman, Jr.,	12 50
"	State Pay Roll, No. 19, State vs. Housebreakers at North Con- way,	22 90
"	State Pay Roll, No. 20, State vs. Jackson Assault,	8 00
"	State Pay Roll, No. 21, State vs. Swanson Auto Accident,	23 33
"	State Pay Roll, No. 22, State vs. Fred Nichols,	7 50
"	State Pay Roll, No. 23, State vs. Leland E. Wade,	5 50
"	State Pay Roll, No. 24, State vs. Lewis Rice,	7 22
"	State Pay Roll, No. 25, State vs. A. St. Cye,	29 60
"	State Pay Roll, No. 26, State vs. Larcenies, Effingham,	9 50
"	State Pay Roll, No. 27, State vs. J. Gomes et als.,	16 04
"	State Pay Roll, No. 28, State vs. Arthur Paradis,	146 59
"	State Pay Roll, No. 29, State vs. Auto Accident,	82 83

COUNTY OF CARROLL

349

Jan. 8.		
"	State Pay Roll, No. 30, State vs. Jesse Mason,	2 50
"	State Pay Roll, No. 31, State vs. Harry Morse, et al,	14 02
"	State Pay Roll, No. 32, State vs. Lester W. Lord,	10 00
"	State Pay Roll, No. 33, State vs. James Libby,	33 40
"	State Pay Roll, No. 34, State vs. James Libby,	20 06
"	State Pay Roll, No. 35, State vs. Ernest Haley,	19 09
"	State Pay Roll, No. 36, State vs. E. Piper,	33 62
"	State Pay Roll, No. 37, State vs. L. M. Garney,	11 02
"	State Pay Roll, No. 38, State vs. J. Ganns,	3 00
"	State Pay Roll, No. 39, State vs. John Kolnick,	4 00
"	State Pay Roll, No. 40, State vs. James Casey,	4 90
"	State Pay Roll, No. 41, State vs. Robert Johnson,	11 50
"	State Pay Roll, No. 42, State vs. Annie Burgess,	51 54
"	State Pay Roll, No. 43, State vs. George E. Dalton,	22 00
"	State Pay Roll, No. 44, State vs. Edward Berry,	25 21
"	State Pay Roll, No. 45, State vs. Charles H. Drew,	66 94



Jan. 8.			
“	State Pay Roll, No. 46, State vs. Jack Weymouth,		30 55
“	State Pay Roll, No. 47, State vs. Nathan Rand,		376 92
“	State Pay Roll, No. 48, State vs. Edward Piper,		14 21
Jan. 11	W. D. H. Hill, expenses incur- red away from office as Solic- itor,		79 08
Jan. 12	Bessie A. Marsh, services as stenographer, and for copies at December term, 1915,		202 46
Jan. 20	George A. Blanchard, services and expenses as Commissioner, July 31 to Dec. 31, 1915,		195 43
Jan. 21	Wilbur H. Gilman, services and expenses as Commissioner, July 31 to Dec. 31, 1915,		205 13
Jan. 31	John E. Perkins, services and ex- penses as Commissioner, July 31 to Dec. 31, 1915,		164 88
Feb. 17	Margaret A. Conway, services as stenographer in Master's hearing in re — vs. Berry,		35 86
Mar. 9	Mabel E. Dooley, typewriting re- port in re Brown vs. Berry,		1 70
“	William J. Britton, prosecution of liquor cases, by order of At- torney General,		60 00
Apr. 15	Bessie A. Marsh, services as stenographer in re Willand vs. Huckins and others,		27 42
May 24	Grand Jury Pay Roll,		124 68

COUNTY OF CARROLL

351

May 31	Pay Roll, No. 1A, State vs. Belware,	119 88
June 1	Petit Jury Pay Roll, May term, 1916,	572 06
June 9	State Pay Roll, No. 1, State vs. Harry Heath,	2 74
"	State Pay Roll, No. 2, State vs. Gertrude Watson,	5 00
"	State Pay Roll, No. 3, State vs. Fred Eldridge,	10 00
"	State Pay Roll, No. 4, State vs. Arthur Paradis,	9 34
"	State Pay Roll, No. 5, State vs. Lizzie Grant, in part,	30 20
"	State Pay Roll, No. 6, State vs. Gilbert Clements, in part,	13 36
"	State Pay Roll, No. 7, State vs. Crosby B. Remick,	27 58
"	State Pay Roll, No. 8, State vs. Ed. Burgess,	5 00
"	State Pay Roll, No. 9, State vs. Stolen Property,	3 83
"	State Pay Roll, No. 10, State vs. Tony Collins,	25 10
"	State Pay Roll, No. 11, State vs. Colburn Norton,	25 10
"	State Pay Roll, No. 12, State vs. Arthur Leavitt, in part,	79 37
"	State Pay Roll, No. 13, State vs. <b>Clyde Cook, in part,</b>	61 73
"	State Pay Roll, No. 14, State vs. Fred Belware,	72 94
"	State Pay Roll, No. 15, State vs. Bertha E. Lane, in part,	17 86

June 9.		
“	State Pay Roll, No. 16, State vs. Benjamin Sanphy,	49 42
“	State Pay Roll, No. 17, State vs. Caroline Corline,	5 00
“	State Pay Roll, No. 18, State vs. Fred Pennyman,	5 00
“	State Pay Roll, No. 19, State vs. Mrs. Noah Bickford,	10 00
“	State Pay Roll, No. 20, State vs. Grattan Larceny Case,	5 00
“	State Pay Roll, No. 21, State vs. Joseph Perry,	6 50
“	State Pay Roll, No. 22, State vs. Jack McKinnon,	10 83
“	State Pay Roll, No. 23, State vs. C. E. Ham,	4 30
“	State Pay Roll, No. 24, State vs. Henry A. Pike,	5 94
“	State Pay Roll, No. 25, State vs. Breaking and Entering,	13 27
June 10	Mabel E. Dooley, services as stenographer at May term, 1916,	94 70
June 14	Arthur E. Kenison, allowance and expenses incurred as Clerk of the Superior Court,	526 56
June 18	Della B. Yeaton, 1½ days as stenographer,	16 58
June 22	Arthur E. Kenison, services and expenses as Clerk of the Superior Court,	8 00

COUNTY OF CARROLL

353

July 7	Mabel E. Dooley, services transcript and expenses in re Brown vs. Fisher,	11 09
July 21	Lena T. Marsh, services as Court stenographer at hearing in Crawford Notch cases,	29 80
July 24	Jackson & Hurlburt, services of Paul Hurlburt assigned as counsel for Gertrude Watson in State vs. Watson,	30 00
"	Charles P. Smith, Sheriff, services and services of George A. Wooster as Deputy Sheriff attending Carpenter trial,	105 00
"	Bessie A. Marsh, services as stenographer in Carpenter vs. Carpenter,	356 05
Aug. 8	Wilbur H. Gilman, services and expenses as County Commissioner for 6 months ending June 30,	249 80
Aug. 9	Arthur E. Kenison, fees as Master in No. 744 Equity, Brown vs. Goodwin,	30 00
Aug. 10	Bessie A. Marsh, services and expenses in Rollins vs. Brock,	57 10
"	John E. Perkins, services and expenses as County Commissioner, 6 months ending June 30,	235 19
Aug. 11	Thomas L. Marble, services and expenses as Master in Rollins vs. Brock,	58 94

Aug. 14	George A. Blanchard, services and expenses as County Commissioner for 6 months, ending June 30, 1916,	190 60
"	State Pay Roll, No. 10A, State vs. William J. Henderson,	10 72
Nov. 7	Bessie A. Marsh, services as stenographer in Carpenter vs. Carpenter,	171 88
Dec. 20	State Pay Roll, No. 1, State vs. Small,	265 73
"	Grand Jury Pay Roll, December term, 1916,	243 24
"	Petit Jury Pay Roll,	328 20
		<hr/>
		\$ 8,274 45
		<hr/>
		\$44,468 59

## NEW COURT HOUSE ACCOUNT

## RECEIPTS

1916

Jan. 1	Cash in hands of Treasurer,	\$26,381 61
Jan. 29	Conway National Bank, interest on deposit,	53 25
Feb. 28	Conway National Bank, interest on deposit,	41 50
Mar. 30	Conway National Bank, interest on deposit,	29 71
Apr. 29	Conway National Bank, interest on deposit,	20 83
May 20	Conway National Bank, interest on deposit,	13 54



COUNTY OF CARROLL

355

June 29	Conway National Bank, interest on deposit,	11 00
"	Loring, Short & Harmon, rebate on error,	4 50
"	C. D. Piper, agent, return premium insurance,	4 79
Nov. 24	Conway National Bank, on note,	2,000 00
		<hr/>
		\$28,560 73

PAID COMMISSIONERS' ORDERS

1916

Jan. 6	Wallace Building Co., third payment on contract,	\$ 6,150 00
Feb. 7	Albert H. Dow, services as architect,	250 00
"	James E. French, insurance on Court House,	75 00
"	Wallace Building Co., fourth payment on contract,	3,970 00
Mar. 1	Edgar L. Mills, insurance on Court House,	75 00
Mar. 10	Wallace Building Co., fifth payment on contract,	3,050 00
Apr. 8	Albert H. Dow, part payment as architect,	300 00
Apr. 10	Wallace Building Co., sixth payment on contract,	3,550 00
May 9	Wallace Building Co., cementing basement of Court House,	465 00
"	Wallace Building Co., seventh payment on contract,	3,098 00

June 9	Albert H. Dow, balance due for services as architect,	326 80
June 10	Herbert Doten, first payment as per contract for Court Room furniture,	700 00
"	Carroll County Coupons, due May 1, Nos. 1, 2, 3, 4, 5, 6, 7, 8, 9, 10, 11, 12, 13, 15, 16, 17, 18, 19, 20, 21, 22, 23, 24, 25, 26, 27, 28, 29, 30, 31, 32, 33,	640 00
Nov. 17	Wallace Building Co., eighth payment on contract,	3,600 00
Dec. 11	Wallace Building Co., ninth payment on contract,	1,059 05
Dec. 12	Brackett, Shaw & Lunt Co., lighting system for Court House,	682 05
		<hr/>
		\$27,990 90
Dec. 31	Balance,	569 83
		<hr/>
		\$28,560 73

## RECAPITULATION

## RECEIPTS

Cash in hands of Treasurer, Jan. 1, 1916,	\$10,273 91
County tax,	\$22,500 00
Less due from Jackson,	\$ 743 75
" Tuftonboro,	925 00
" Bartlett,	93 75
" Hale's Location,	12 19
	<hr/>
	1,774 69
	<hr/>
	20,725 31

COUNTY OF CARROLL

357

Jackson, tax in full (1915),	790 85
Conway, tax in full (1915),	4,220 10
Tuftonboro, tax in full (1915),	983 58
Sandwich, tax in full (1915),	1,814 31
Effingham, tax in full (1915),	624 71
Brookfield, tax in full (1915),	372 17
Chatham, tax in full (1915),	292 42
C. W. Thompson, (Hale's Location), tax in full (1915),	67
G. H. and J. Z. Shedd, (Hale's Location,) tax in full, (1915),	2 55
George B. Reed, fines and fees,	214 52
Excise Commission,	558 19
W. N. Morrison, on account of sale,	25 00
Interest on average daily deposits,	110 10
On County notes,	19,500 00
Bills receivable,	144 00
	<hr/>
	\$60,652 39

DISBURSEMENTS

Maintenance at County Farm,	\$10,192 44
Maintenance outside of County Farm,	6,135 44
Grand and Petit Jury, pay rolls,	1,534 18
State pay rolls,	2,908 08
Court House expenses,	7,266 38
Court expense,	3,420 71
Office expense,	807 96
Salaries, (including Commissioners' ser- vices and expenses),	2,291 03
Insurance	844 62
Notes and interest,	6,160 86
Interest on outstanding notes,	1,175 46

Dependent soldiers,	435 16
Medical referee,	141 40
County Coupons,	700 00
Miscellaneous,	454 87
	<hr/>
	\$44,468 59
Cash, balance December 31, 1916,	16,183 80
	<hr/>
	\$60,652 39

SAMUEL A. HIDDEN, County Treasurer.

# REPORT OF SUPERINTENDENT OF COUNTY FARM

---

*To the Honorable Board of County Commissioners,  
Carroll County:*

I herewith submit to you my report of the County Farm for the year ending December 31, 1916.

---

## CASH RECEIVED.

Cash received for board, stock and articles sold from the farm, also orders on the County Treasurer:

### JANUARY

Balance last year,	\$ 36 13
Orders from the County Commissioners,	822 60
Wallace Building Co., for board,	56 87
Labor,	9 15
One case sardines,	2 75
Board of prisoner,	1 50
J. W. Brooks, board of G. Brooks,	43 00
C. S. Page, for hides,	26 27
Labor,	4 55
Cream,	27 31
	<hr/>
	\$1,030 13

### FEBRUARY

Dates,	\$ 1 43
C. S. Page, balance due on hides,	1 40
Labor and team hire,	2 15
Bull service,	2 00



Wallace Building Co., for board,	58 45
Fred Belware, for team hire,	4 73
Lodgings and meals,	1 50
Town of Wolfeboro, board,	15 86
Cheese,	1 85
Board,	6 00
W. A. Marshall Lbr. Co., beef,	56 52
Orders, County Commissioners,	1,330 19
	<hr/>
	\$1,482 08

## MARCH

Board,	\$ 17 04
Walter Goodrich, on account for board,	3 00
Wallace Building Co., board,	8 81
Team labor,	34 36
Cream,	29 24
Three filing cases,	75
Telephone,	36
Butter,	70
County Commissioners, orders,	633 40
	<hr/>
	\$ 727 66

## APRIL

Team hire and labor,	\$ 22 83
George B. Reed, balance due for board,	97 00
Cream and butter,	12 22
Round hogs and hams,	58 63
Coffee,	30
Shoats,	63 37
Pigs,	10 00
Salt fish, taps, sirup, tobacco,	2 50

COUNTY OF CARROLL

361

J. W. Brooks, board G. Brooks,	39 00
County Commissioners, orders,	529 10

---

\$834 95

MAY

Pigs,	\$ 44 00
Boar service,	3 00
Cream and butter,	18 50
Board,	15 59
Keeping hog,	50
Team labor,	22 00
Grafton county, for board,	5 77
Telephone,	10
Round hog,	26 18
W. L. Bodge, balance account,	1 35
One bushel potatoes,	1 50
One pair oxen,	275 00
Bull service,	1 00
County Commissioners, orders,	864 14

---

\$1,278 63

JUNE

Pig,	\$ 4 00
Chester boar,	18 00
Cream and butter,	20 61
Calf skin,	2 15
Registered bull calf,	40 00
Round hog,	31 57
Shoe taps,	25
Team hire,	1 50
County Commissioners, orders,	1,010 06
Board,	5 00

---

\$1,133 14

## JULY

Cream and butter,	\$ 34 88
D. J. Brown, board Mary Abbott,	26 29
Team hire,	7 50
Town of Wolfeboro, board F. Kimball,	12 00
J. W. Brooks, board G. Brooks,	40 00
E. Beacham, hay,	6 00
Board,	1 50
Bull service,	1 00
County Commissioners, orders,	704 32
	<hr/>
	\$ 833 49

## AUGUST

L. A. Townsend, board H. Huckins,	\$ 37 58
John Pelren, clothing,	4 25
Cream,	30 11
Keeping prisoner,	1 50
Bull service,	2 00
Gas and telephone,	1 25
County Commissioners, orders,	1,097 74
	<hr/>
	\$1,174 43

## SEPTEMBER

Cream,	\$ 35 93
Pig,	5 00
Town Ossipee, for team labor,	80 12
Gas,	1 15
Calves,	15 00
Bull service,	1 00
Labor,	2 15
County Commissioners, orders,	728 23
	<hr/>
	\$ 868 58

COUNTY OF CARROLL

363

OCTOBER

Cream and milk,	\$ 38 64
Pigs,	32 50
Old stove,	5 00
D. J. Brown, board Mary Abbott,	52 00
Team labor on Court house,	33 50
One dinner and telephone,	95
Bull service,	1 00
Pasturing calf,	2 00
County Commissioners, orders,	1,203 62
J. W. Brooks, board G. Brooks,	52 00
	<hr/>
	\$1,421 21

NOVEMBER

Bull service,	\$ 1 00
Cream,	9 30
Team labor on Court House,	74 25
Board,	12 15
Cash left by inmate,	4 00
Fresh pork,	12 32
Telephone,	10
One cow,	45 00
L. T. Townsend, board H. Huckins,	44 76
County Commissioners, orders,	469 28
	<hr/>
	\$ 672 16

DECEMBER

Cream,	\$ 76 13
J. W. Brooks, on account board G. Brooks,	25 00
Cow, (old),	20 00
Board,	12 75
Frank Moulton, board,	12 00

Walter Bodge, balance account,	10 24
Thanksgiving fund, (to reimburse),	15 00
Team hire,	11 25
J. W. Brooks, balance account G. Brooks,	44 57
C. A. Wiggins, labor on Court House,	2 50
Telephone,	20
Veal calf,	8 20
Pig,	4 50
D. J. Brown, board Mary Abbott,	52 00
Boar service,	1 00
C. A. Wiggins, balance account,	5 00
Town Sandwich, board A. Carter,	156 00
County Commissioners, orders,	707 00
	<hr/>
	\$1,163 34

## EXPENDITURES

## JANUARY

Consolidation Coal Co., coal,	\$ 151 47
Armour & Co., provisions,	42 86
H. W. Allen, grain,	82 70
Boston & Maine R. R., freight,	35 21
Standard Oil Co., gas,	30 75
Parker & Thoms Co., clothing,	28 95
H. L. Clow, M. D., for G. Brooks,	3 00
Conway Lumber Co., chains,	13 18
Brackett, Shaw & Lunt Co., light supplies,	25 31
Boston Hose & Rubber Co., hose,	18 90
W. L. Blake Co., oil,	14 75
A. F. Cox & Son, shoes,	1 09
F. W. Davis, dining table,	5 40
Hobson & Eaton, sundries,	6 37
Kendall & Whitney, seed and cooker,	34 69



COUNTY OF CARROLL

365

E. I. Towle, pasturing,	19 00
W. P. Dore, lumber,	79 10
Brackett, Shaw & Lunt Co., lamps,	3 24
Maine Pickling Co.,	10 60
Ossipee Valley Tel. Co., telephone,	6 21
D. E. Parmenter, drugs,	5 50
Salinger Brothers, clothing,	1 40
Fairmount Tel. Co., telephone, two months,	2 50
Fred Belware, pung,	28 00
Celia Meloon, balance account,	3 00
Twitchell, Champlin Co., groceries,	50 01
Frederick L. Small, coffee,	16 20
A. A. Phelps, sundries,	1 05
Fred L. Bickford,	2 02
H. B. Moody, blacksmithing,	33 67
George B. Reed, pay roll,	274 00

---

\$1,030 13

FEBRUARY

Geo. B. Reed, sundries,	\$ 6 03
J. E. Beacham, meat,	13 31
Boston & Maine R. R., freight,	64 73
H. K. Webster Co., tobacco,	7 30
Hussey Mfg. Co., fire escapes,	462 83
Geo. A. Orcutt, piping and plumbing,	151 21
Con. Coal Co., coal,	122 83
Armour & Co., provisions,	16 65
G. W. Bent, lumber,	2 00
F. O. Bailey Carriage Co., surcingles,	1 07
A. W. Chandler, lumber,	4 37
A. F. Cox & Son, shoes,	1 44
Globe Stamp Works, branding irons,	3 83
Loring, Short & Harmon, stationery,	1 25

Milliken, Tomlinson Co., groceries,	11 17
The Reporter, stationery,	6 00
Standard Oil Co., gas,	30 55
Swift & Co., provisions,	12 91
S. J. Thompson, lumber,	1 86
H. W. Allen, grain,	72 75
Ossipee Valley Tel. Co.,	6 40
Fairmount Tel. Co.,	1 25
L. O. Moulton, sundries,	16 99
Chas. Edwards, fish,	2 72
Hoards Dairyman, sub. paper,	1 00
Laura Merrow, labor,	9 83
C. P. Cleaves, glasses for inmate,	3 50
Staples & Bell, coal,	181 44
Tom Brown, dressing,	13 25
Mrs. F. Hanson, gas,	2 40
Geo. B. Reed, pay roll,	249 21

---

\$1,482 08

## MARCH

Fairmount Tel. Co.,	\$ 1 25
Isaac Buzzell, ice,	16 78
J. E. Beacham, seed potatoes,	8 00
Geo. B. Reed, sundries,	2 52
Boston & Maine R. R., freight,	2 53
L. O. Moulton, sugar,	80 64
H. W. Allen, grain,	131 22
Thomas Roberts, labor,	8 01
Vermont F. Machinery Co., repairs separator,	2 81
Twitchell, Champlin Co., groceries,	82 08
Salinger Bros., clothing,	3 41
Swift & Co., provisions,	11 00
Standard Oil Co., gas,	24 50
Rochester Foundry Co., grates,	26 24

COUNTY OF CARROLL

367

John W. Perkins, Co., drugs,	9 07
Walter N. Morrison, pipe,	2 25
H. B. Fifield, screen,	1 20
Armour & Co., provisions,	10 75
Twitchell Champlin Co., groceries,	34 86
Emery, Waterhouse Co., hardware,	7 60
Ossipee Valley Tel. Co.,	6 80
Ayers & Jenkins, bull ring,	30
Alonzo Bickford, stove G. pattern,	2 00
Fred L. Bickford, sundries,	1 30
Armour & Co., butterine,	14 12
Imperial Machine Co., potato parer,	12 50
J. Churchill, fixing horse's teeth,	75
Boston & Maine R. R., mileage,	11 25
Geo. B. Reed, pay roll,	211 92

---

\$ 727 66

APRIL

Staples & Bell, coal,	\$ 152 47
Con. Coal Co., coal,	121 97
Boston & Maine R. R., freight,	56 23
Mrs. F. Hanson, spittoons,	2 00
H. W. Allen, grain,	121 75
Twitchell, Champlin Co., groceries,	13 25
D. W. True Co., groceries,	6 25
Swift & Co., meat,	6 44
Swift & Co., butterine,	15 30
Parker & Thoms Co., clothing,	3 24
Loring, Short & Harmon, sundries,	4 25
Kendall & Whitney, seed,	5 89
W. L. Blake Co., gas pump,	4 50
L. O. Moulton, sundries,	47 96
Chas. Edwards, fish,	2 72
Boston & Maine R. R., ticket to inmate,	2 77

Tennis White, pig,	10 00
Geo. B. Reed, sundries,	6 08
Ossipee Valley Tel. Co.,	8 31
Fairmount Tel. Co.,	1 25
J. E. Beacham, maple syrup,	3 00
Alfred Nute, carpenter work,	16 20
Chas. Edwards, fish,	3 12
Geo. B. Reed, pay roll,	220 00

---

\$ 834 95

## MAY

Wood Pollard, alcohol,	\$ 4 00
H. B. Moody, blacksmithing,	18 05
Standard Oil Co., gas,	27 95
Jos. P. Manning, tobacco,	26 11
H. W. Allen, grain,	105 35
L. O. Moulton, sundries,	18 86
American Express Co.,	8 26
Armour & Co., meat,	11 25
Edwards & Walker Co., hardware,	3 01
L. C. Carran Co., gas oil,	10 48
Goodhue & Harkins, labor,	15 66
Loring, Short & Harmon, stationery,	1 20
Mascoma Mfg. Co., clothing,	26 00
National Biscuit Co., crackers,	6 30
John W. Perkins Co., naphthol,	4 50
Frederick C. Small, coffee,	11 00
Twitchell, Champlin Co., groceries,	45 76
Boston & Maine R. R., freight,	20 31
James Canney, one horse cart,	77 00
Alonzo Bickford, labor,	2 50
Brackett, Shaw & Lunt Co., gas engine,	297 64
A. C. Moulton, casket,	14 00
V. W. Hodge, mattress,	38 26



General View Carroll County Buildings at Ossipee





COUNTY OF CARROLL

369

Ossipee Valley Tel. Co.,	5 77
Abner L. Whiting, bug death,	2 50
Ayrshire Breeders' Association, registra- tion fee,	4 00
Standard Oil Co., gas,	22 95
Grover Rines, labor,	14 00
Ayrshire B. Association, membership fee,	25 00
Ayrshire B. Association, reg. fee,	4 00
A. W. French, labor,	22 64
F. C. Palmer, labor on refrigerator,	78 96
S. J. Thompson & Son, lumber,	26 24
Smith & Rummery Co., lumber for refrig- erator,	57 40
Swift & Co., lard,	12 50
Geo. B. Reed, sundries,	14 22
Geo. B. Reed, pay roll,	195 00

---

\$1,278 63

JUNE

Chas. Edwards, fish,	\$ 5 68
Lester Buzzell, labor,	20 00
Boston & Maine R. R., freight,	53 24
H. W. Allen, grain,	125 26
H. B. Moody, blacksmithing,	12 15
Geo. H. Yeaton, registered stock,	300 00
Miss J. T. Donovan, nurse,	54 88
Boston & Maine R. R., mileage,	11 25
Ayers & Jenkins, hardware,	5 45
The Globe, tinware,	5 30
Armour & Co., provisions,	24 92
A. F. Cox & Son, shoes,	18 90
F. W. Davis, beds and stove grate,	19 14
Kendall & Whitney, sundries,	15 39
Standard Oil Co., gas,	31 20

Swift & Co., provisions,	14 40
Salinger Brothers, cloth,	9 45
Twitchell, Champlin Co., groceries,	54 80
Ossipee Valley Tel. Co.,	6 86
L. O. Moulton, sundries,	49 23
Chas. Edwards, fish,	2 40
Fairmount Tel. Co.,	2 50
Harris Strashum, clothing,	10 50
American Express Co.,	1 77
Thomas Bolduc, repair harness,	2 00
Chas. Edwards, fish,	2 72
W. L. Bodge, horse labor,	20 00
Chas. Dore, cutting wood,	32 75
H. L. Clow, M. D., for G. Brooks,	1 00
Geo. B. Reed, pay roll,	220 00

---

\$1,133 14

## JULY

G. C. Wiggins, postmaster, stamped envelopes, \$	10 62
Geo. B. Reed, sundries,	16 09
Armour & Co., provisions,	40 53
A. F. Cox & Co., shoes,	29 69
Consolidation Coal Co., coal,	130 59
Emery, Waterhouse Co., hardware,	27 07
S. O. Huckins, tile,	24 20
Mascoma Mfg. Co., clothing,	1 08
Standard Oil Co., gas,	30 00
Swift & Co., lard,	12 50
Swift & Co., butterine,	14 40
Abner L. Whiting, disinfectant,	22 50
Selden Kimball, labor,	2 50
National Biscuit Co., crackers,	6 40
H. W. Allen, grain,	98 13
Boston & Maine R. R., freight,	21 64

COUNTY OF CARROLL

371

Ossipee Valley Tel. Co.,	5 74
H. B. Moody, blacksmithing,	6 00
F. O. Bailey Carriage Co., collars,	9 20
G. W. Copp, veterinary,	4 00
Chas. Carter, grass,	15 00
L. O. Moulton, sundries,	52 61
Geo. B. Reed, pay roll,	253 00

---

\$ 833 49

AUGUST

Salinger Brothers, underwear and cloth,	\$ 20 64
Boston & Maine R. R., freight,	1 90
Albert W. Leighton Co., insurance,	250 50
Abbott & Avery, insurance,	46 84
H. W. Allen, grain,	94 65
A. F. Cox & Son, tennis shoes,	3 37
Hobson & Eaton, sundries,	8 61
Kendall & Whitney, planter, etc.,	25 97
Milliken, Tomlinson Co., groceries,	32 50
D. E. Parmenter, flavoring and drugs,	9 60
Swift & Co., provisions,	45 75
Standard Oil Co., gas,	23 75
Frederick C. Small,, coffee,	15 96
Geo. A. Orcutt, piping and plumbing,	115 36
Twitchell, Champlin Co., groceries,	98 49
Thompson & Hoague Co., plow points,	4 80
A. L. Torry, cotton gloves,	6 00
Vermont Hosiery Co., women's socks,	2 41
Ayers & Jenkins, hose,	8 00
Fairmount Co., telephone,	2 65
L. O. Moulton, sundries,	78 10
Ossipee Valley Co.,	6 48
H. Strasham, suit of clothes,	9 00
A. S. B. Lothrop,	4 00

Walter Bodge, medicine,	1 10
Austin B. Welch, wheel chair,	5 00
Geo. B. Reed, pay roll,	253 00

---

\$1,174 43

SEPTEMBER

Geo. B. Reed, sundries,	\$ 14 51
Clifford Stockbridge, labor,	3 33
Buffalo Scale Co., wagon scales,	137 00
Armour & Co., provisions,	21 00
Brackett, Shaw & Lunt Co., repairs,	5 07
John W. Perkins Co., crutches,	1 25
Standard Oil Co., gas,	28 75
Swift & Co., provisions,	43 86
Twitchell, Champlin Co., groceries,	50 28
Mark H. Winkley, Ossipee taxes,	136 06
H. W. Allen, grain,	98 10
Alfred Nute, carpenter,	3 00
Boston & Maine R. R., freight,	2 41
John Pelren, labor,	3 33
Bertha Dore, labor,	4 50
Milliken, Tomlinson Co., groceries,	15 75
Walter N. Morrison, pipe,	1 43
E. W. Beacham, mowing machine,	40 75
A. C. Moulton, casket,	14 00
Ossipee Valley Tel. Co.,	4 88
Irving Abbott, labor,	1 04
Chas. Edwards, fish,	3 17
H. B. Moody, blacksmithing,	18 95
Geo. Roswell, labor on engine,	13 00
Chas. Edwards, fish,	2 32
Geo. B. Reed, pay roll,	200 84

---

\$ 868 58



## COUNTY OF CARROLL

373

## OCTOBER

Richmond Radiator Co., grates,	\$ 40 65
Boston & Maine R. R., freight,	320 39
H. W. Allen, grain,	112 20
W. N. Morrison, packing,	68
National Biscuit Co., crackers,	7 53
John W. Perkins Co., drugs,	10 50
Standard Oil Co., gas,	30 25
Swift & Co., provisions,	36 20
Swift & Co., butterine,	16 20
Salinger Brothers, clothing,	7 51
Thompson & Hoague Co., plow points,	1 80
Vermont Farm Machinery Co., separator oil,	2 35
Chas. Edwards, fish,	2 96
Alonzo Bickford, nurse, G. Brooks,	8 00
Fred L. Bickford, sundries,	2 50
E. L. Wilkins, labor,	8 75
Chas. Edwards, fish,	2 80
James Canney, repairs on rack,	6 50
Staples & Bell Co., coal,	288 31
Voyt Milling Co., flour,	191 25
Ossipee Valley Co.,	7 42
Chas. Edwards, fish,	2 40
J. E. Burek, watchman clock dials,	3 60
H. L. Clow, M. D., for G. Brooks,	5 00
Chas. Edwards, fish,	4 04
Alonzo Bickford, nurse, G. Brooks,	48 00
Irving Abbott, labor on coal,	7 67
Geo. B. Reed, pay roll,	243 50
P. S. Davis, team hire,	2 25
	<hr/>
	\$1,421 21

## NOVEMBER

H. L. Clow, M. D., for G. Brooks,	\$ 10 00
S. O. Huckins, pasturing,	15 00
Racine F. Knitting Co., sock feet,	1 64
Chas. Edwards, fish,	2 00
Boston & Maine R. R., freight,	1 70
Rogers & Hubbard Co., fertilizer,	93 60
H. W. Allen, grain,	86 40
A. F. Cox & Son, shoes,	2 57
Twitchell, Champlin Co., groceries,	82 30
Standard Oil Co., gas,	26 45
Brackett, Shaw & Lunt Co., lamps,	13 72
Armour & Co., provisions,	23 05
Fairmount Tel. Co.,	3 75
G. E. Chesley, veterinary,	10 00
S. F. Clafin, agent, sub. papers,	3 00
Ossipee Valley Tel Co.,	5 56
H. B. Moody, blacksmithing,	15 10
American Express Co., freight,	4 02
Lowell Morgan, mason,	1 00
Albert Hodgdon, apples,	1 75
L. O. Moulton, sundries,	41 55
Geo. B. Reed, pay roll,	228 00
	<hr/>
	\$ 672 16

## DECEMBER

Standard Oil Co., gas,	\$ 26 45
H. W. Allen, grain,	84 60
Boston & Maine R. R., freight,	2 24
Fairmount Tel. Co.,	1 25
Armour & Co., provisions,	40 89
Coe, Mortimer Co., fertilizer,	86 65
Edwards & Walker Co., belt,	10 22
Kendall & Whitney, milk tester,	11 00

COUNTY OF CARROLL

375

Milliken, Tomlinson Co., groceries,	5 50
Mascoma Mfg. Co., clothing,	33 00
B. C. Snyder, printing,	2 25
Twitchell, Champlin Co., groceries,	26 15
West Disinfectant Co., disinfectant,	9 00
Chas. Edwards, fish,	3 -15
Boston & Maine R. R., mileage,	11 25
Albert W. Leighton Co., insurance,	75 00
W. D. H. Hill, insurance,	132 00
S. J. Thompson, lumber,	1 00
Ossipee Valley Telephone Co.,	6 91
S. S. Jacobs, hog,	20 00
Geo. B. Reed, sundry bills,	15 11
E. K. Brown,	11 50
Geo. B. Reed, pay roll,	228 00
	<hr/>
	\$ 896 67

---

**Auditor's Report**

The undersigned, Auditors of the County of Carroll, certify that we have examined the foregoing accounts of the County Commissioners, County Treasurer and Superintendent of the County Farm, from January 1st to December 31, 1916, and find them correct and supported by proper vouchers.

For the receipts and disbursements, we refer to the accounts of the County officers herewith published.

Ossipee, January 31, 1917.

H. B. COTTON,  
FRANK WEEKS,  
County Auditors

## Inmates at the County Farm

Names of persons supported at the County Farm, number of weeks each was supported, age and former residence.

Name	Town	Age	Weeks	Days
Mabel Deland	Wolfeboro	51	52	
Maud Valley	"	53	52	
Arthur Briggs	"	40	52	
Everett Briggs	"	38	52	
Mary Green	"	75	52	
Addie Horn	"	62	52	
Robert Hill	"	84	46	5
Walter E. Ghedone	"	7 mos	26	
Bryon Copp	"	77	16	5
Rufus E. Parker	"	19	18	4
Blanche Colbath	"	9	1	
Marion G. Colbath	"	13	1	
Sarah Kenison	Conway	75	52	
Hattie Kenison	"	38	52	
Hattie Smith	"	40	30	9
Jos. Rivers	"	56	26	
Chas. W. Goodrich	"	53	27	4
J. B. Colbath	"	64	3	6
Bertha Carter	Sandwich	41	25	
Del Nute	Bartlett	30	52	
Ernest Nute	"	35	52	
Bertha Morrison	Chatham	49	52	
Geo. Benson	Moultonboro	45	52	
Sam Whitten	"	57	52	
William Cloutman	Wakefield	51	52	
Mary E. Drake	"	70	52	
Loyd C. Kimball	"	7	3	
Georgia Haddock	Ossipee	24	52	
Ed Plagman	Effingham	55		8
Joseph Godfrey	Freedom	40	6	
Geo. H. Lovering	"	80	5	4
Mike Moran	Bartlett	45		2
Malvena Bickford	Wolfeboro	33	52	
Irving Abbott	Ossipee	42	2	
John Kenney	Conway	58	1	2
Tramps and transients		50		

### BOARDERS

	Weeks		Weeks	Days
Gardiner Brooks	43	Alonzo Carter	52	
Mary Abbott	33	William Judd	1	
Doris A. Wiggins	3 days	Frank Moulton	3	2

### DIED DURING YEAR

	Age		Age
Byron Copp	73	Bertha Carter	41
C. W. Goodrich	54	M. Moran	45
Gardiner Brooks	85		

STATEMENT SHOWING COST OF SUPPORTING INMATES AT  
FARM FROM JAN. 1, 1916, TO JAN. 1, 1917

Inventory Jan. 1, 1916,	\$8,492 06
Total expenditures for year,	12,353 13
	<hr/>
	\$20,845 19

CR.

Less Credit from Farm,	\$2,520 12
Less bills receivable,	284 83
Less board, clothing, tobacco and matresses for prisoners,	1,100 00
Less permanent improvements, (fire escapes, cooler),	650 00
Less cash in hands of Supt.,	266 67
Less inventory, Jan. 1, 1917,	9,748 40
	<hr/>
	\$14,570 02

Net cost,	\$6,275 15
-----------	------------

Number of inmates at Farm, Jan. 1, 1916,	28
Admitted during year,	16
Died during year,	5
Discharged during year,	13
Number at Farm, Jan. 1, 1917,	26
Number weeks support,	1,177
Cost per week per inmate,	\$4 99

(N. B. The above number of week's support does not include the board of any help.)

Gentlemen:—In submitting to you this my second annual report, kindly allow me to express my hearty appreciation for the generous co-operation you have given us, in the care and management of this institution.



While the past year has had perhaps more than the usual exigences, in the way of high prices and unfavorable farming conditions, yet, comparing with last year, we are pleased to report that we have succeeded in materially reducing the net cost of operating this institution.

The health of the inmates have been unusually good, not having a single case of acute or contagious disease during the whole year.

We still maintain the practice of each day being a visiting day, and our records show that 510 people have visited us during the past year.

As mentioned below the inmates were served with a turkey dinner with all the fixings on Thanksgiving Day and at Christmas time each one received a small remembrance.

We wish to thank all who have sent papers and magazines, or did anything to help lighten the burden of the wards under our care; we would especially mention Mrs. Mary Buzzell of Lynn, Mass., (a native of this County), who gave us the generous sum of \$50.00 for a Thanksgiving dinner for the inmates, also Mrs. Velma Wiggins in giving the women inmates an outing in her automobile; these substantial acts of kindness are to be commended, and the simple, but hearty appreciation of each recipient is surely a rich reward for the effort involved.

Respectfully submitted,

GEO. B. REED, Superintendent.

## **Jailor's Report**

---

TO THE SHERIFF AND COMMISSIONERS OF CARROLL  
COUNTY:

Number of prisoners in jail Jan. 1, 1916,	7
Committed during the year,	18
Discharged during the year,	19
In jail Jan. 1, 1917,	6

Respectfully submitted,  
GEO. B. REED, Deputy Jailor.

---

## **Chaplain's Report**

TO THE COMMISSIONERS OF CARROLL COUNTY:

I submit to you the report of my work as chaplain. Since July 1st I have conducted a preaching service on the second Sunday afternoon at 2.30 o'clock of each month, and three praise services in the jail. When I have known of sickness, especially among the aged or unfortunate, I have been in attendance. I have officiated at one funeral. This field of work is capable of great possibilities.

Cordially yours,  
DANIEL McINTYRE,  
Pastor 2nd Congregational Church, Ossipee.

## Report of the Clerk of the Superior Court

---

TO THE COMMISSIONERS FOR THE COUNTY OF CARROLL:

Gentlemen:—The following is a correct report of my receipts and disbursements as Clerk of the Superior Court for the year ending December 31st, 1916.

### MAY TERM, 1916

#### RECEIPTS

Dockets sold,	\$ 33 00
Civil entry fees,	27 90
Equity entry fees,	23 40
Recived from fines and costs, State vs. Lang,	400 82
Received from costs, State vs. Pike,	23 02
Balance due clerk,	526 56
	<hr/>
	\$1,034 70

### ADJOURNED MAY TERM, 1916

Balance due Clerk,	\$ 8 00
--------------------	---------

#### DISBURSEMENTS

Recording judgments, (including cards),	\$ 62 00
Reporting divorces,	1 30
Postage, registering letters, etc.,	34 70
Express, cartage and telegrams,	6 10
Supplies for office,	1 50
Dockets and blanks,	117 00
Clerk's fees in State cases,	21 10
Attending court, seventeen days,	51 00
Attending court, three days, Laconia,	15 00
Attending court, fourteen days, Concord,	70 00
Attending court, one day, Dover,	5 00

COUNTY OF CARROLL

381

Allowance by court, six months,	650 00
	<hr/>
	\$1,034 70

ADJOURNED MAY TERM, 1916

Postage,	\$ 2 00
Attending court, two days,	6 00
	<hr/>
	\$ 8 00

DECEMBER TERM, 1916

RECEIPTS

Dockets sold,	\$ 37 50
Civil entry fees,	57 60
Equity entry fees,	14 40
One typewriter ribbon sold,	1 00
Balance due clerk,	889 94
	<hr/>
	\$1,000 44

DISBURSEMENTS

Recording judgments,	\$ 64 24
Postage, registered letters, etc.,	46 46
Express, cartage and telegrams,	9 38
Clerk's fees in State cases,	19 80
Dockets and blanks,	102 50
Attending court, thirty-six days,	108 00
Allowance by court, six months,	650 00
	<hr/>
	\$1,000 44

A. E. KENISON, Clerk.

## Report of Solicitor

---

TO THE COUNTY COMMISSIONERS:

In compliance with the law, I herewith submit my report as Solicitor from January 1, 1916, to December 31, 1916.

At the May term, four indictments were found by the Grand Jury, two of which were for burglary, one for breaking and entering in the day time, and one for larceny. One against whom there is an indictment for burglary pending, is confined in prison in a neighboring state. The party against whom the remaining indictment for burglary and the one for breaking and entering in the day time is pending, has not been apprehended. On indictment for larceny, the respondent pleaded nolo contendere, and the case was continued for sentence, the respondent giving personal recognizance in the sum of Two Hundred Dollars, to appear when called for, and to be of good behavior in the meantime. There was an appeal from the Municipal Court of Wolfeboro, in which the respondent was charged with illegally keeping spirituous liquor for sale; owing to the peculiar circumstances of the case, upon the respondent's plea of guilty, the Court imposed a sentence of thirty days in jail, and a fine of Twenty-Five Dollars; the fine and jail sentence to be suspended during good behavior; Mittimus to issue upon call of the Solicitor.

At the December term, four indictments were returned, one for murder, two for statutory rape, and one for grand larceny. Upon the one for murder there has been a trial and conviction, the respondent having a limited time in which to transfer the case to the Supreme Court on exceptions taken during the trial. Upon the two indictments for statutory rape, one party has not been brought into Court, and the



other upon a plea of guilty received a sentence of not less than seven nor more than ten years in State Prison, and the respondent charged with grand larceny also plead guilty, and was sentenced to not less than one year and one day, nor more than three years in State Prison, the sentence to be suspended during good behavior, and Mittimus to issue upon call of the Solicitor. One information was filed for illegally keeping for sale spirituous liquor, and the injunction in this case, as in other like cases now pending, was continued.

There is at this time, two civil cases upon the docket in which the State is interested.

The Solicitor has appeared before the different Municipal Courts of the County in several important criminal matters, which have resulted in the respondents having received appropriate sentences before the Municipal Court, or being held for the Superior Court, according to the crime of which the respondent stood charged.

Respectfully submitted,  
WALTER D. H. HILL, Solicitor

### Sheriff's Report

---

TO THE COMMISSIONERS OF CARROLL COUNTY:

Gentlemen:—In accordance with Sec. 1, Chap. 30 of the Public Statutes of New Hampshire, I would respectfully submit the following report as Sheriff of said County, from Jan. 1, 1916 to Dec. 31, 1916.

#### MAY TERM OF COURT, 1916

Arthur W. Chandler, Sheriff, 17 days' attendance,	\$ 51 00
60 miles travel,	3 60
George I. Philbrick, Deputy, 12 days' attendance,	36 00
36 miles travel,	2 16

John S. Quimby, Deputy Sheriff, 6 days' attendance,	18 00
50 miles travel,	3 00
Horace B. Tuttle, Deputy Sheriff, 1 day attendance,	3 00
28 miles travel,	1 68
Fred W. Bickford, Messenger, 17 days' attendance,	42 50
2 miles travel,	12
Rev. Charles P. Cleaves, Chaplain,	3 00
2 miles travel,	12
Mrs. Frank Hanson, meals for jurymen,	38 50
	<hr/>
	\$202 68

## DECEMBER TERM OF COURT, 1916

Arthur W. Chandler, Sheriff, 36 days' attendance,	\$108 00
60 miles travel,	3 60
George I. Philbrick, Deputy Sheriff, 25 days' attendance,	75 00
36 miles travel,	2 16
John S. Quimby, Deputy Sheriff, 36 days' attendance,	108 00
50 miles travel,	3 00
Horace B. Tuttle, Deputy Sheriff, 33 days' attendance,	99 00
28 miles travel,	1 68
Fred W. Bickford, Messenger, 36 days' attendance,	90 00
2 miles travel,	12
Rev. Daniel McIntire, Chaplain,	2 00
Mrs. Frank Hanson, for jurymen and rooms,	679 50
Frank P. Allard, Special Deputy Sheriff, 14 days' attendance,	42 00
60 miles travel,	3 60

COUNTY OF CARROLL

385

W. N. Rogers, Special Deputy Sheriff, 14 days' attendance,	42 00
28 miles travel,	1 68
Rooms and meals for jurors to Deputy taking care,	82 50
	<hr/>
	\$1,343 84
By errors in items 12 and 17 in bills of hotel,	120 40
	<hr/>
	\$1,223 44

Respectfully submitted,  
 ARTHUR W. CHANDLER, Sheriff

# SELECTMEN OF TOWNS

AND

## OVERSEERS OF THE POOR

ARE REQUESTED TO OBSERVE THE FOLLOWING LAWS AND  
AMENDMENTS PASSED JANUARY SESSION, 1903:

---

### AN ACT

TO REIMBURSE THE TOWN OR COUNTY FOR AID FURNISHED  
PAUPERS.

*Be it enacted by the senate and house of representatives in  
general court convened:*

SECTION 1. Any town or county furnishing any assistance to any person within six years preceding his death shall be entitled to recover from the estate of such person the sum or sums paid out for such assistance, the said claim to be a preferred claim against his said estate after the payment of funeral charges, expense of last sickness and expenses of administration, provided he leaves no widow or minor children living at his decease.

SECT. 2. All acts and part of acts inconsistent with this act are hereby repealed and this act shall take effect upon its passage.

Approved March 4, 1903.

### AN ACT

IN AMENDMENT OF SECTION 4, 5 AND 9, OF CHAPTER 85 OF  
THE PUBLIC STATUTES, ENTITLED, SUPPORT OF COUNTY  
PAUPERS.

*Be it enacted by the senate and house of representatives in  
general court convened:*

SECTION 1. Section 4 of chapter 85 of the Public Statutes is hereby amended by striking out all said section

after the word "presented" in the first line and inserting in the place thereof the words "within thirty days after the expenditures were made, if the county commissioners shall require it," so that said section as amended shall read as follows:

"SECT. 4. The account and vouchers shall be thus presented within thirty days after the expenditures were made, if the county commissioners shall require it."

SECT. 2. Section 5 of said chapter is hereby amended by striking out the word "thirty" in the second line of said section and inserting in the place thereof the word "ten," so that said section as amended shall read as follows:

"SECT. 5. The overseers of the poor shall take and transmit to the county commissioners, within ten days after the expenditures were made, the affidavit of every pauper on whose account they were made, if the pauper is capable, otherwise of some well informed person, as to the pauper's age, place of birth, place of residence, time of residence in each place, and the time when and place where he or any of his family have been relieved or supported."

SECT. 3. Section 9 of said chapter is hereby amended by inserting after the words "one year" in the third line the words "within the last five years," and said section is hereby further amended by striking out the words "as soon as practicable" in the seventh and eighth lines of said section and inserting in the place thereof the words "within thirty days," so that said section as amended shall read as follows:

"SECT. 9. The county which shall have relieved any county pauper within one year, or in which he shall have last resided not less than one year within the last five years, shall be liable to the county in which he may afterward be relieved, if he has not resided in the latter county above three months at the time of his first relief, for all sums of money paid for his relief, support of funeral, provided a

copy of the affidavit before mentioned shall be forwarded within thirty days to the county commissioners of the county to be charged."

SECT. 4. All acts and parts of acts inconsistent with this act are hereby repealed and this act shall take effect upon its passage.

Approved March 7, 1903.

#### AN ACT.

IN AMENDMENT OF SECTION 1, CHAPTER 31, OF THE LAWS OF 1897, ENTITLED, AN ACT IN AMENDMENT OF SECTION 6 OF CHAPTER 83 OF THE PUBLIC STATUTES, IN RELATION TO THE SETTLEMENT OF PAUPERS.

*Be it enacted by the senate and house of representatives in general court convened:*

SECTION 1. Section 1 of Chapter 31 of the Laws of 1897 is hereby amended by striking out the words "last preceding the" in the fourth line of said section and inserting in the place thereof the words "preceding the last," and said section is hereby further amended by adding at the end of said section the words "provided that no person having a settlement in any town in this state upon arriving at the age of seventy years shall lose that settlement on account of being exempt by law from paying a poll tax, if he still resides in said town," so that said section as amended shall read as follows:

"SECTION 1. No town shall be liable for the support of any person unless he, or the person under whom he derives his settlement shall have wholly gained a settlement therein during the ten years preceding the last date of application for support; provided that no person having a settlement in any town in this state upon arriving at the age of seventy years shall lose that settlement on account of



being exempt by law from paying a poll tax, if he still resides in said town."

Approved, March 31, 1903.

### AN ACT.

IN AMENDMENT OF SECTION 1 OF CHAPTER 83 OF THE PUBLIC STATUTES, ENTITLED, SETTLEMENT OF PAUPERS.

*Be it enacted by the senate and house of representatives in general court convened:*

SECTION 1. Section 1, Division II. of Chapter 83 of the Public Statutes is hereby amended by striking out all after words "if any she has" in the third line of said division so that said division as amended shall read as follows: "II. Legitimate children shall have the settlement of their father, if any he has within this state; otherwise the settlement of their mother if any she has."

Division IX of said section is hereby amended by inserting after the word "term" in the fourth line of said division the words "and any unmarried woman of the age of twenty-one years who shall have resided in any town in this state seven years in succession, shall have paid all taxes legally assessed on her estate during that term" so that said division as amended shall read as follows:

"IX. Any person of the age of twenty-one years who shall have resided in any town in this state, and, being taxed for his poll for seven years in succession, shall have paid all taxes legally assessed on his poll and estate during that term, and any unmarried woman of the age of twenty-one years who shall have resided in any town in this state seven years in succession, shall have paid all taxes legally assessed on her estate during that term, shall thereby gain a settlement in such town."

SECT. 2. All acts and parts of acts inconsistent with this act are hereby repealed, and this act shall take effect upon its passage.

Approved April 2, 1903.

AID TO PERSONS QUARANTINED.

It sometimes becomes necessary to assist a family when quarantined on account of scarlet fever, diphtheria, etc, by reason of its being deprived of the opportunity to earn wages or from other causes, and to provide for which the following law was enacted by the legislature and approved March 11, 1899.

SECTION 1. Whenever any person or family is placed in quarantine by a board of health, to protect the public against small pox, scarlet fever, diphtheria or any other dangerous, infectious or contagious disease, it shall be the duty of said board to assist such person or family while in quarantine in such a manner as in the judgment of the board may be deemed wise and necessary.

SECT. 2. All expenses thus incurred, or such part thereof as the board may determine, shall be deemed a legitimate expenditure for the protection of the public health and shall be charged to the account of incidental expenses, but not to any indigent pauper account, nor shall such expenditure be construed to mean a public aid to the person or persons quarantined and assisted unless such person or persons are already paupers as defined by the Public Statutes..

The above law would seem to solve, in a thoroughly satisfactory way, a question which heretofore has been considerable of a problem in some localities. The entire matter is left to the judgment of the local board of health, and whatever aid the board may deem to be wise and necessary to extend to the families in question must be paid by the town and charged up as provided for in section 2.

# PUBLIC STATUTES

---

## CHAPTER 84.

### LAWS IN RELATION TO AID FURNISHED TO INDIGENT SOLDIERS, AND PROVIDING FOR ENTRANCE TO THE SOLDIERS' HOME IN CERTAIN CASES.

SECT. 9. Whenever any person resident in this state, who enlisted in the quota of this state, and was reckoned and served as a soldier or sailor from New Hampshire in the army or navy of the United States, in the War of the Rebellion or in the Spanish or Philippine wars, and who received an honorable discharge, not being under guardianship or legal restraint, shall become poor, and unable to provide maintenance for himself and dependent family, such person, his wife widow or minor children, or such of the children as are unable to maintain themselves shall be supported at the public expense in the town or city of their abode, at their own home or any such place, other than a town or county almshouse, as the overseers of the poor or county commissioners shall deem right or proper, but no person shall receive aid under the provisions of this section unless he has resided in this state three years or more before making application for such aid, and no person shall, while receiving aid under the provisions of this section use intoxicating liquor to an extent which shall render him incapable of working at his usual occupation and no person receiving aid under the provisions of this section shall sell any article furnished him, nor exchange them for intoxicating liquors, nor share any such aid with any persons other than those above named as being entitled to the benefit of these provisions. Any person receiving aid under the provisions of this section, who receives a pension from the United States government, shall, while

receiving such aid, apply the pension to the support of himself and dependent family, and shall, when requested, furnish to the overseers of the poor or the county commissioners satisfactory proof that such pension has been so applied. Any person applying for such aid, shall, when requested, furnish to the county commissioners or the overseers of the poor the certificate of a reputable physician, resident in the county in which he lives, as to the incapacity on his part to perform manual labor. Neglect by any person applying for or receiving aid under the provisions of this section to comply with the foregoing provisions and conditions of this section so far as such person is concerned, and such person may be supported at the town or county almshouse.

SECT. 10. The expense of support furnished under the provisions of the preceding section shall be kept and reported in a separate account under the head of "aid furnished to dependent soldiers and their families," and not in the general pauper account, but shall be recoverable of the person, town or county liable therefor as in other cases.\*

SECT. 11. The county commissioners or the overseers of the poor of any town may require any person applying for aid under the provisions of Section 9 of this chapter, who is eligible for admission, to make application for admission to the New Hampshire Soldiers' Home, in case he has no family or settled place of abode, whenever in their discretion they deem it best; and if such person refuses to make such application, or if admitted refuses to go to said Soldiers' Home, the county or town shall be relieved from the provisions of the preceding sections so far as such person is concerned, and he may be supported at the county or town almshouse.

### AN ACT

#### TO PROVIDE FOR THE PUNISHMENT OF PARENTS FOR THE ABANDONMENT OF THEIR FAMILIES IN CERTAIN CASES.

\* This section was passed by the house and senate, but was omitted from the engrossed bill. Such references are made to it in the engrossed bill that it is evident the legislature intended it should be a part of the law.

*Be it enacted by the Senate and House of Representatives in General Court Convened:*

SECTION 1. That as used in this act the word "children" shall be limited to mean children under sixteen years of age and also such children over sixteen years of age and under twenty-one years as by reason of physical or mental infirmity are incapable of supporting themselves; and further that separation within the meaning of this act shall include, in addition to the cases embraced within the usual meaning of the word, every case where a husband has caused his wife to leave him by conduct on his part which would be ground for divorce and also every case where by extreme cruelty or other conduct it becomes improper for children to remain with their father and have for this reason become separated from him.

SECT. 2. If any husband or father being within the limits of this state shall hereafter separate himself from his wife or from his children or from his wife and children without reasonable cause and shall wilfully neglect to maintain his children, and his wife, when such wife is destitute or dependent wholly or in part on her earnings for adequate support he shall be guilty of a misdemeanor, and on conviction thereof be sentenced to jail or the house of correction for a period of not more than six months, and to pay a fine not exceeding twenty dollars or either or both at the discretion of the court; such fine if any to be paid or applied in whole or in part to the deserted wife or children as the court may direct.

Provided no such conviction, payment of fine or undergoing imprisonment shall in any manner effect the obligation of any order for support theretofore made against the defendant.

And provided further that upon conviction the court may suspend sentence upon and during compliance by the



defendant with any order for support theretofore made against him as already made or as may theretofore have been modified in the manner now provided by law; and if no such order shall have been made then the court trying the defendant may make such order for the support by the defendant of his wife and children or either of them which order shall be subject to modification by the court on cause shown and the court may suspend sentence upon and during compliance by the defendant with such order as originally made or as subsequently modified by the court.

SECT. 3. If any woman or mother shall separate herself as the term is defined in section 1 of this act from her husband without cause, or from her children, she shall be guilty of a misdemeanor and upon conviction thereof shall be sentenced to the county jail or the house of correction for a term not exceeding six months and to pay a fine not exceeding twenty dollars or either or both as the court may determine, the fine if any to be applied in the discretion of the court to the benefit of the deserted husband or children or both.

SECT. 4. All acts and parts of acts inconsistent with this act are hereby repealed.

SECT. 5. This act shall take effect upon its passage.

Approved, March 22, 1907.

#### AN ACT

#### FOR THE PROTECTION OF CHILDREN.

*Be it enacted by the Senate and House of Representatives in General Court Convened:*

SECTION 1. If any person shall abandon an infant under four years of age, or being its parent and having made contract for its support, shall abscond or fail to perform said contract if of sufficient ability, shall neither visit nor remove such infant nor notify the proper authority of the town, ward or city in which he resides of his or her inability to support



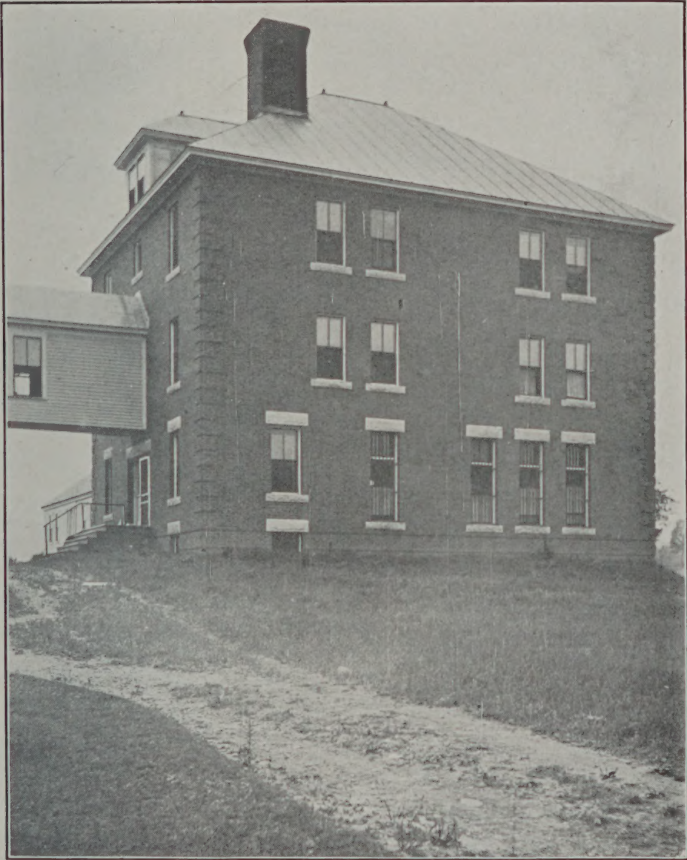
such infant, he shall be punished by imprisonment not exceeding two years; or if the infant dies by reason of such abandonment, by imprisonment not exceeding thirty years.

SECT. 2. If any person, knowingly and with wrongful intent shall aid or abet in the abandonment of such infant he shall be punished by a fine not exceeding one hundred dollars or by imprisonment not exceeding two years, or both.

SECT. 3. This act shall take effect upon its passage.

Approved, January 31, 1907.





Carroll County Jail at Ossipee







