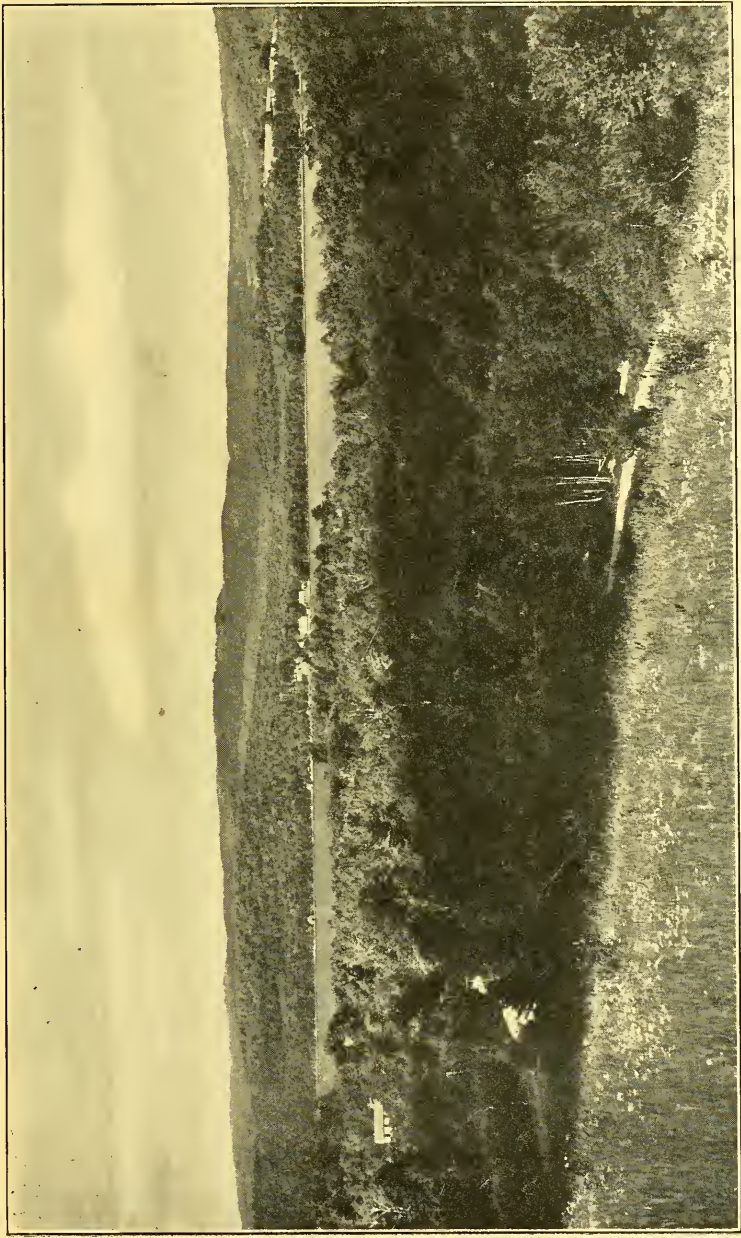



1938

CITIZENS OF CHESTERFIELD



YOUR TOWN FINANCIALLY
FEBRUARY 1, 1937 TO FEBRUARY 1, 1938

Hamilton Smith
Library
University of
New Hampshire



Digitized by the Internet Archive
in 2009 with funding from
Boston Library Consortium Member Libraries

ANNUAL REPORTS
OF THE
TOWN OFFICERS
AND
Inventory of Polls and Ratable Property
OF
CHESTERFIELD, N. H.
FOR THE YEAR ENDING
JANUARY 31, 1938



SENTINEL PRINTING COMPANY
KEENE, N. H.
1938

TOWN OFFICERS

Moderator

E. JAMES WINSLOW

Clerk

IMOGENE L. CHICKERING

Collector of Taxes

HARRY E. WINN

Treasurer

ADA W. ALLEN

Selectmen

JOHN MANSLEY

CHESTER M. BURHAM

ALBERT D. BERRY

Highway Agents

WALTER J. POST

ROGER C. SPAULDING

LYLE B. CHICKERING

Supervisors of Chesk List

MAURICE L. AMIDON

FLOYD M. FULLER

HENRY C. CHICKERING

Auditors

HAROLD E. RANDALL

ELEANOR J. PEARSON

Constables

WILLIAM D. PIERCE

CHARLES H. SPAULDING

HAROLD E. RANDALL

Trustees of Trust Funds

VIOLA V. TUTTLE

WILLIAM E. NURSE

CHESTER M. BURNHAM

Firewards

PAUL M. PENNING

HAROLD W. INGALLS

ARVID W. PEARSON

Sextons

WALTER L. DESELLE PAUL E. WELCOME
 FRED W. HOLMAN FRANK WHORFE

Fence Viewers

RICHARD G. CHICKERING DONALD A. WELLINGTON

Surveyors of Wood and Lumber

GEORGE L. FULLER GEORGE W. GOODRIDGE

Budget Committee

ARTHUR H. POST FRED C. HUMPHREY
 MOSES H. CHICKERING CLIFFORD W. TUTTLE
 CLARENCE K. LEWIS CHESTER M. BURNHAM
 MAURICE L. AMIDON AGNES B. CHICKERING

Trustees of Town Library

HAROLD POST JOHN MANSLEY

GEORGE E. JOSLIN

SCHOOL DISTRICT OFFICERS

Moderator

ARTHUR H. POST

Clerk

NORMAN J. LANGMAID

Auditors

TOWN AUDITORS

Treasurer

EVELYN L. WINN

Members of School Board

ELSIE E. FOSTER, ALICE L. SPAULDING
 AGNES B. CHICKERING

Superintendent of Schools

FREDERICK T. JOHNSON

School Nurse

FRANCES E. EDGETT

THE STATE OF NEW HAMPSHIRE

TOWN WARRANT

To the inhabitants of the Town of Chesterfield in the County of Cheshire in said State, qualified to vote in Town Affairs:

You are hereby notified to meet at the Town Hall in said Chesterfield on Tuesday, the eighth day of March, next, at nine of the clock in the forenoon, to act upon the following subjects:

Article 1. To vote by Australian ballot for all necessary Town officers for the ensuing year.

Article 2. To see what action the Town wishes to take in regards to assessors.

Article 3. To determine the method of collecting taxes for the ensuing year.

Article 4. To see if the Town will vote to authorize the Selectmen to borrow money in anticipation of taxes for the ensuing year.

Article 5. To hear the report of the budget committee and act thereon.

Article 6. To see if the Town will vote to accept the budget committees budget as a whole or vote on each article separately.

Article 7. To see what sum of money the Town will vote to raise to defray Town charges.

Article 8. To see what sum of money the Town will vote to raise for the support of the fire departments.

Article 9. To see what sum of money the Town will vote to raise to fight forest fires.

Article 10. To see what sum of money the Town will vote to raise for snow removal.

Article 11. To see what sum of money the Town will vote to raise for highway maintenance.

Article 12. To see what sum of money the Town will vote to raise for the support of the poor.

Article 13. To see what sum of money the Town will vote to raise for old age assistance.

Article 14. To see what sum of money the Town will vote to raise for the support of the police department.

Article 15. To see what sum of money the Town will vote to raise for street lighting.

Article 16. To see what sum of money the Town will vote to raise for the support of the public libraries.

Article 17. To see if the Town will vote to observe old home day and raise money for the same.

Article 18. To see if the Town will vote to continue State Aid on the Bear Hill road and raise the sum of \$2,000.00 for the same.

Article 19. To see if the Town will vote to raise the sum of \$2,553.48 to cover the deficit of past years.

Article 20. To see if the Town will vote to authorize the Selectmen to insure any or all Town owned buildings against fire losses.

Article 21. To see if the Town will vote to raise and appropriate the sum of \$140.00 to the Monadnock Region Association of scenic N. H. for issuance and distribution of printed

matter, newspaper and magazine advertising calling attention to the resources and natural advantages of the Town, in cooperation with the other 37 Towns in the Monadnock Region.

Article 22. To see if the Town will vote to raise the sum of \$400.00 for pine blister control.

Article 23. To see if the Town will vote to paint the Center part fire house and raise money for the same.

Article 24. To see what sum of money the Town will vote to raise for Town Hall reconditioning, the same to include a Selectmen's room if possible.

Article 25. To see what sum of money the Town will vote to raise for repairs to the New Boston bridge.

Article 26. To see what sum of money the Town will vote to raise for Town Beach maintenance.

Article 27. To see if the Town will vote to straighten and grade the lower end of the Welcome road and to raise a sum sufficient for this purpose not to exceed \$600.00.

Article 28. To see if the Town will vote to authorize the Selectmen to install street lamps along the State road between the Lake Spofford Hotel and Stone House four corners, location as chosen by the Selectmen as best suited to protect winter residents and guide summer pedestrian traffic.

Article 29. To see if the Town will vote to install a street light on Main street between the house of Antonio Campanella and Henry Chickering.

Article 30. To see if the Town will vote to raise a sum of money sufficient to dig a water hole in Chesterfield near the Town hall pump provided that money for labor on the project will be furnished by W. P. A. the Town to pay for materials and foreman only.

Article 31. To see if the Town will vote to relocate and build approximately 300 feet of road starting at John Bellevue house going past the two bridges hereby eliminating the two bridges and two bad curves and raise \$600.00 for the same.

Article 32. To see if the Town will vote to accept the sum of \$200.00 to be known as the Fred E. and William Ather-ton Trust Fund. The income to be used for the perpetual care and improvement of their lot in Spofford Cemetery.

Article 33. To see if the Town will vote to accept the sum of \$100.00 from Mrs. Laura A. Cheever, the income to be paid to Chesterfield Center Cemetery for perpetual care and improvement of the Stephen Rice burial lot in that cemetery. Fund to be known as the Laura A. Cheever Trust Fund.

Article 34. To see if the Town will vote to accept the sum of \$100.00 given by Mrs. Alice E. Hurford. The fund to be known as the Walter C. Hurford Trust Fund and the income to be used for the perpetual care and improvement of the Walter C. Hurford burial lot in Spofford Cemetery.

Article 35. To transact any other business that may legally come before said meeting.

Given under our hands and seal, this 19th day of February, in the year of our Lord nineteen hundred and thirty-eight.

JOHN MANSLEY,
CHESTER M. BURNHAM,
ALBERT D. BERRY,
Selectmen of Chesterfield.

A true copy of Warrant—Attest:

JOHN MANSLEY,
CHESTER M. BURNHAM,
ALBERT D. BERRY,
Selectmen of Chesterfield.

TOWN MEETING, MARCH, 1937

Proceedings of the annual meeting of the voters of the town of Chesterfield called at the Town Hall in said town on Tuesday, March 9, 1937.

The meeting was called to order at 9 o'clock by the Moderator E. James Winslow, who declared the polls open for voting by Australian Ballot for all necessary town officers for the ensuing year under Article 1 and on the resolution adopted by the General Court, "Is it expedient to revise the Constitution of the State of New Hampshire?"

At ten o'clock Richard G. Chickering as assistant Town Clerk and Alice L. Spaulding as assistant Moderator took the oaths of office before the Moderator and took over their duties of the Australian Ballot voting.

The Warrant was read by the Clerk and the articles disposed of as follows:

Article 2. Voted that we follow the same method in regard to Assessors as in previous years. (That the Selectmen act as Assessors).

Article 3. Voted that the same method of collecting taxes be used for the ensuing year as in the past year.

Article 4. Arthur H. Post, Chairman of the Budget Committee was called upon to give the report and he referred them to pages 44 to 49 inc., of the Annual Town Report where the Budget as made up and approved by the Committee is given.

Voted to accept the report of the Budget Committee as offered.

Article 5. Under the Budget Act the unexpended balances of appropriations for 1936 go back into the Treasury as General Fund.

Article 6. In accepting the Budget Committee's Report with their budget the amounts to be raised under Articles 6 to 14 inc., were declared taken care of. These amounts follow :

Article 6. Town Charges,	\$4,685.00
Article 7. Highway maintenance,	6,000.00
Article 8. Snow Removal,	2,000.00
Article 9. Support of Poor,	1,200.00
Article 10. Old Age Assistance,	500.00
Article 11. Public Libraries,	135.00
Article 12. Fire Department,	500.00
Article 13. Street lighting,	1,740.00
Article 14. Old Home Day,	130.00

Article 14. Voted to observe Old Home Day as usual and the selection of a Committee for same was left to the Selectmen.

Article 15. Voted that the Town raise the sum of \$50.00 to enlarge the door of the fire house in the center village to house the Town tractor.

Article 16. Voted that \$200.00 be taken out of the \$500.00 appropriated by the Budget Committee for the Fire Department to purchase a new booster tank for the middle town fire truck and a hose drying rack for the West Part Fire House.

Article 17. Voted that the salaries of Town Executives of 1932 be restored.

Article 18. Voted to raise the rate of Town labor to forty cents an hour, to conform with the rate paid by the State for labor.

Article 19. Voted to adopt the following by-laws:

Section 1. The Selectmen are authorized and empowered to set aside in the compact parts of the village of Spofford,

Chesterfield and West Chesterfield, and the compact parts of the area beside Spofford Lake and on the State highway, areas where parking shall be limited and restricted. Such areas when so determined shall be defined and limited and the hours and method of parking shall be set forth and defined by vote of the Selectmen duly recorded in the office of the Town Clerk. Said areas shall be properly marked by the Selectmn.

Section 2. The board of Selectmen are also authorized and empowered to locate traffic lights, stop signs, and other markings on the highways in the Town of Chesterfield for the purpose of safeguarding the lives and property of those resorting to the highways for travel. The location of such lights, signs and other markers shall be recorded by the Selectmen over their signatures in the office of the Town Clerk.

Section 3. No public dance, skating rink, show or other exhibition as defined in Chapters 145 and 363 of the public laws shall be held within the Town without a written license shall have been granted by the Selectmen for which license the fee shall be one dollar.

Section 4. The Selectmen may make and prescribe rules and regulations for such public dances, roller skating and other exhibitions, which rules and regulations shall be duly recorded over the signatures of the Selectmen in the records of the Town Clerk.

Section 5. All rules and regulations made by the Selectmen under the authority of the foregoing sections shall have the full effect of by-laws of the Town when duly recorded in the Town Clerk's office as above set forth.

Section 6. Any person who shall violate any of the provisions of the foregoing by-laws shall be fined not exceeding ten dollars for each offence for the use of the Town.

Article 20. Voted to raise and appropriate a sum not to exceed \$500.00 to be used to install a fire alarm system in West Chesterfield.

Article 21. Voted to raise the sum of \$800.00 to erect a building with dressing rooms and toilets on the Town property on the north side of Lake Spofford and the sum of \$200.00 for its maintenance, all to be under the supervision of the Selectmen.

Article 22. Voted to authorize the Selectmen to install a blinker light in front of the store of Clifford W. Tuttle in Spofford Village and to raise the sum of \$200.00 for the same.

Article 23. Voted to raise and appropriate the sum of \$1,000.00 to drill a well and install a deep well pump near the Town Hall leaving the selection of spot to the three Selectmen.

Article 24. A paper ballot to see if the Town will vote to authorize the Selectmen to install eight street lamps along the State road between the Lake Spofford Hotel and Stone House four corners, location as chosen by the Selectmen as best suited to protect winter residents and guide summer pedestrian traffic, resulted as follows:

Whole number of votes cast	107
Necessary for choice	54
Yes had 53 votes. No had	54.

Article 25. A motion made and supported to place a street light at the foot of Mill hill, so-called, near, or at the new bridge, in the village of Spofford, did not pass.

Article 26. Voted to pass over the article.

Article 27. Moderator declared the Article out of order.

Article 28. A motion made and supported to install two lights on the Keene road, one at intersection of upper road from the Kellogg place, so-called, and one at, or near residence of George Goodridge did not pass.

Article 29. Voted to accept the sum of \$100.00 to be known as the Emoretta T. Robertson trust fund. The income

to be used for the perpetual care and upkeep of the Noyes Robertson lot in Coolidge cemetery.

Article 30. Voted to accept the sum of \$100.00 in trust to be known as the Jennie Hubbard Burroughs Trust Fund, the income to be paid to the Chesterfield West Cemetery Association for the perpetual care and improvement of the Jennie Hubbard Burroughs burial lot. Lot numbers 235 and 236.

Article 31. Voted to accept the sum of \$100.00 to be known as the Squire Amidon trust fund, the income to be paid to the Chesterfield West Cemetery Association for the perpetual care and improvement of the Squire Amidon burial lot in Chesterfield West Cemetery.

Article 32. Voted to accept the sum of \$100.00 to be known as the George F. Amidon trust fund, the income to be paid to the Chesterfield West Cemetery Association for the perpetual care and improvement of the George F. Amidon lot in Chesterfield West Cemetery.

Voted to take up Article 34. This article to raise the sum of \$760.39 for Town Road Aid was declared already provided for in the budget acceptance.

Article 33. Voted that the Selectmen be given authority to borrow money in anticipation of taxes.

Voted to accept the adjustment of Trust Funds as given in the Town Report.

Voted to adjourn at 2 o'clock for the School Meeting.

At three o'clock the polls were closed and a count of the ballots resulted as follows:

Number of names on check list, 478.

Number of ballots cast, 269.

For Town Clerk. Imogene L. Chickering had 221 votes.

For Selectman for three years, John Mansley had 172 votes; John P. Redding had 81 votes.

For Selectman for one year, Albert D. Berry had 130 votes; Henry C. Chickering had 117 votes; George J. Sanderpree had 11 votes.

For Town Treasurer, Ada W. Allen had 222 votes; John Mansley had 1 vote; Shirley G. Bevis had 1 vote.

For Tax Collector, Harry E. Winn had 243 votes.

For Spofford Road Agent, Everett J. Pearson had 28 votes; Lyle W. Pierce had 70 votes; Walter J. Post had 160 votes.

For Center Road Agent, William E. Nurse had 116 votes; Roger C. Spaulding had 144 votes.

For West Chesterfield Road Agent, Lyle B. Chickering had 232 votes; Clarence Springer had 1 vote.

For Fireward for Three Years, Arvid W. Pearson had 171 votes; Raymond Slack had 51 votes.

For Trustee of Town Library, George E. Joslin had 217 votes.

For Auditors, Eleanor J. Pearson had 157 votes; Harold E. Randall had 189 votes; Clifford E. Chickering had 2 votes; Paul Penning had 2 votes; John P. Redding had 1 vote; Clifford W. Tuttle had 1 vote.

For Budget Committee for Three Years, Arthur H. Post had 195 votes; Clifford W. Tuttle had 21 votes; Paul Penning had 6; Ada W. Allen had 2 votes; John Redding had 2 votes; John Mansley had 2 votes; George E. Joslin had 2 votes; Fred Humphrey had 2 votes; John Nurse had 1 vote; John C. Schlichting had 1 vote; Harold E. Randall had 1 vote; Arvid W. Pearson had 1 vote; Fred Houghton had 1 vote; Harry E. Winn had 1 vote.

For Trustee of Trust Funds. Chester M. Burnham had 167 votes; Edward L. Welcome had 52 votes; Frederick V. Houghton had 1 vote.

For Sexton Spofford Village Cemetery. Walter L. Deselle had 80 votes; George W. Goodridge had 52 votes; John C. Schlichting had 43 votes; Donald A. Wellington had 63 votes.

For Sexton Center Cemeteries. Fred W. Holman had 212 votes; William E. Nurse had 1 vote.

For Sexton New Boston Cemetery. Paul E. Welcome had 206 votes.

For Sexton Pattridge and Atherton Hill Cemeteries. Frank Whorfe had 197 votes.

For Spofford Constable. William D. Pierce had 232 votes; Lyle P. Blake had 1 vote.

For Center Constable. Bernest E. Aldrich had 25 votes; John A. Furlone had 47 votes; Charles H. Spaulding had 168 votes; Kenneth Fales had 1 vote.

For West Chesterfield Constable. Harold E. Randall had 175 votes; Ora J. Underwood had 51 votes.

For Surveyors of Wood and Lumber. George L. Fuller had 159 votes; George W. Goodridge had 156 votes; Arthur H. Post had 3 votes; Donald A. Wellington had 3 votes; John Castle had 2 votes; Walter J. Post had 2 votes; Raymond Slack; Henry Plante, Paul M. Penning, Chester M. Burnham, Henry C. Chickering, Floyd Fuller, Roger C. Spaulding, John Redding, Walter Dunbar, Lyle Pierce, George Joslin, and Frederick V. Houghton each had 1 vote.

For fence viewers. Richard G. Chickering had 173 votes; Donald A. Wellington had 161 votes; John Castle had 5 votes; William E. Nurse had 2 votes; George L. Fuller had 2 votes;

Roger C. Spaulding had 2 votes; Henry C. Chickering had 2 votes; Harold E. Randall had 2 votes; Raymond Slack, Lionel Cashmore, Chester Burnham, Morris Friedsam, Paul E. Welcome, Floyd Fuller, Everett Pearson, Maurice Amidon, and Herbert L. Jordan each had 1 vote.

Question: Is it expedient that a convention be called to revise the constitution of the State of New Hampshire? Yes 33; No 54.

Respectfully submitted,
IMOGENE L. CHICKERING,
Town Clerk.

WARRANT FOR SPECIAL MEETING

STATE OF NEW HAMPSHIRE

To the inhabitants of the Town of Chesterfield, in the County of Cheshire, in said State, qualified to vote in town affairs;

You are hereby notified to meet at the Town Hall in said Chesterfield on Thursday, the Twenty-Fourth Day of June, Nineteen Hundred and Thirty-Seven, at Eight o'clock in the evening, to vote upon the following articles:

Article 1. To see if the Town will vote to rescind it's vote to accept Town Road Aid, as voted March 9, 1937 and transfer the sum of Seven Hundred and Sixty Dollars and thirty-nine cents from Town Road Aid to State Aid, and in addition appropriate the sum of Twelve Hundred and Five Dollars and sixty-one cents to take advantage of State Aid, and complete the Bear Hill road.

Article 2. To transact any other business that may legally come before this meeting.

Given under our hands and seal this ninth day of June, Nineteen Hundred and Thirty-Seven, in the year of our Lord.

CHESTER M. BURNHAM,
JOHN MANSLEY,
ALBERT D. BERRY,

Selectmen of Chesterfield.

A true copy of Warrant attest:

CHESTER M. BURNHAM,
JOHN MANSLEY,
ALBERT D. BERRY,

Selectmen of Chesterfield.

Chesterfield, New Hampshire, June 24, 1937.

We hereby certify that we gave notice to the inhabitants within named, to meet at the time and place and for the purpose within mentioned, by posting an attested copy of the within warrant at the place of meeting within mentioned and a like attested copy at the store of Paul M. Penning, being a public place of the said Town, on the ninth day of June nineteen hundred and thirty-six.

JOHN MANSLEY,
ALBERT D. BERRY,
Selectmen of Chesterfield.

SPECIAL MEETING, JUNE 24, 1937

Proceedings of the Special Meeting of the voters of the Town of Chesterfield called at the Town Hall in said Town on Thursday, June 24, 1937.

The meeting was called to order by the Moderator E. James Winslow, at 8:04 p. m., and the warrant read by the Clerk.

The articles of the warrant were then disposed of as follows:

Article 1. After a short discussion during which a letter from State Highway Commissioner Everett was read by Selectman John Mansley and explanations given concerning the Bear Hill Road Project, it was voted on motion made by Frank H. Watts and supported by Paul M. Penning to rescind the vote to accept Town Road Aid, as voted March 9, 1937 and transfer the sum of Seven Hundred and Sixty Dollars and thirty-nine cents from Town Road Aid to State Aid, and in addition appropriate the sum of Twelve Hundred and Five Dollars and sixty-one cents to take advantage of State Aid, and complete the Bear Hill Road.

Article 2. No further business appearing it was voted to adjourn at 8.20 p. m.

Respectfully submitted,

IMOGENE L. CHICKERING,

Town Clerk.

RESIDENT INVOICE AND TAXES FOR THE YEAR 1937.

Name and Description	Valu- ation	Total Tax	Name and Description	Valu- ation	Total Tax
Alden, Charles			Amidon, George Est.		
Poll		\$2.00	Homestead 1800	1800	45.90
Alden, Mrs. Charles			Armstrong, Willis		
Poll		2.00	Colburn farm 500	500	
Aldrich, Bernest			(Exempt)		
Poll		2.00	Armstrong, Alice		
Aldrich, Emma M.			Poll		2.00
Poll		2.00	Anderson, Charles		
Aldrich, Gladys			Poll		2.00
Poll		2.00	Anderson, Edith		
Allen, Warren B.			Poll		2.00
Poll			Atema, Doeke		
Homestead \$100			Poll		
Ware Place 600			Cottage and land		
Streeter woodlot 100				700	
Davis woodlot 200	\$1000	27.50	87 fowl	87	22.06
Allen, Ada W.			Atema, Martha		
Poll			Poll		2.00
Homestead 2250	2250	61.85	Atema, James		
Allen, Chester E.			Poll		2.00
Poll		2.00	Atherton, Fred E. Est.		
Amidon, Richard			Homestead 2500	2500	66.50
Poll			Atherton, Laura S.		
Cottage at lake 150	150	5.99	Poll		
Amidon, C. B.			Chamberlin Place		
Poll				1550	
85 fowl 85	85	4.17	1/3 interest Cham-		
Amidon, Lina			berlin land 200		
Poll		2.00	1/3 interest		
Amidon, Mrs. C. B.			Thompson land 8	1758	48.54
and C. D. Ashe			Avery, William		
Poll			Poll		2.00
Homestead 2000	2000	53.00	Avery, Eliza		
Amidon, Maurice L.			Poll		2.00
Poll			Ball, Fred		
Davis farm 1200			Poll		
Kelly land 40			Homestead 800	800	23.28
Presho land 400			Ball, John		
Richardson pasture			Poll		
	600		Cottage 700		
2 oxen 125			Garage, storehouse		
3 cows 125	2490	65.49	and land 750		
Amidon, Elvira			Stock in trade 600	2050	56.53
Poll		2.00	Ball, Barbara		
Amidon, Lorenzo Est.			Poll		
Home place 700	700	17.85	Homestead 1250		
Amidon, Vivian K.			Campbell land 150	1400	39.24
Poll		2.00	Ball, Nelson		

Name and Description	Valuation	Total Tax	Name and Description	Valuation	Total Tax
Poll			Boocock, Lilla		
Wellington pasture			Poll		2.00
land 200			Boomhower, Leonard		
3 horses 100	300	9.98	Poll		2.00
Ball, John & Nelson			Boomhower, Delbert		
Part of Dinnigan			Poll		2.00
land and barn 425	425	11.31	Bothwell, James G.		
Berry, Albert D.			Poll		2.00
Poll			Bothwell, Alice		
Platts Place 700	700	19.85	Poll		2.00
Berry, Ruth L.			Brown, Frank		
Poll		2.00	Poll		
Beals, Curtis			Home place 600	600	17.30
Homestead and			Brown, Ethel		
mill yard 1150			Poll		2.00
Whittaker Sprout			Brown, Mabel Est.		
land 75			Homestead 350	350	8.92
Stearns-Fletcher			Brown, Emma		
land 200	1425	37.91	Poll		
Bellasai, Joseph			Homestead 700		
Poll		2.00	Butterfield land 50	750	21.95
Bellevue, John			Burnham, Chester M.		
Poll		2.00	Poll		
Bennett, Donald			Homestead 1800		
Poll		2.00	Ice house and		
Bevis, Shirley			cottage 1000		
Poll		2.00	Stock in trade 500	3300	87.80
Bevis, Esther			Burnham, Myrtie		
Poll		2.00	Poll		2.00
Bills, Inez			Butler, Olin		
Poll		2.00	Poll		
Black, William			Homestead 2250		
Poll		2.00	Harvey woodlot 150		
Black, Mrs. William			3 cows 75	2475	65.11
Poll		2.00	Butler, Alice		
Blake, James			Kelly land 100		
Poll		2.00	Butler pasture 1000		
Blake, Lyle			Merritt land 150	1250	31.88
Poll		2.00	Callahan, Mr. and		
Blodgett, Hyland			Mrs. C. J.		
Poll			Home place 1400		
Homestead 2000			Dudley & Phillips		
J. Scott land 225			land 200		
C. Scott land 100			1 horse 25		
Butterfield land 180			4 cows 140	1765	45.01
1 mule 25			Campanella, Antonio		
8 cows 300			Poll		
1 neat stock 25	2855	74.80	Shepardson place		
Boocock, Lawrence			1000		
Poll			Hildreth land 100		
Cottage on lake 7500	7500	201.50	2 cows 75	1175	31.96

Name and Description	Valuation	Total Tax	Name and Description	Valuation	Total Tax
Campanella, Mrs. A. Poll		2.00	Chickering, Donald Poll		2.00
Capin, Henry C. Poll		2.00	Chickering, Bernard 1/3 interest in Streeter land	35	
Carey, Emroy G. Poll			2 oxen	125	
Webb land	25		1 cow	40	200 5.10
Bowker land	500		Chickering, Lewis Poll		2.00
Home place	500	1025 28.14	Chickering, Ann L. Poll		2.00
Carey, Esther Poll		2.00	Chickering, Beatrice Poll		2.00
Carlson, Carl Poll			Chickering, Lyle B. Poll		
Homestead	950		Homestead	1900	
Machinery	700	1650 44.08	O. R. Farr land	100	
Carlson, Jennie Poll		2.00	2/3 interest in Streeter land	70	
Castle, John & Carl Home place	1000		7 cows	210	
2/3 Amidon land	667		2 neat stock	40	2320 61.16
1 horse	75		Chickering, Curtis Wheeler pasture	200	
1 cow	40		Clark land	400	600 15.30
Wood & lumber	240	2022 .56	Chickering, Clifford E. Poll		
(Exemption)			Smith farm	2000	
Cashmore, Lionel Camps & land	600		Snow land	500	
1 cow	40	640 .70	H. Chickering farm	400	
(Exempt)			7 cows	225	
Cashmore, Genevieve Poll			2 neat stock	40	3165 82.71
Homestead	1500	1500 41.90	Chickering, Agnes Poll		
Chase, Carroll Poll			Lots 20 & 26		
Davenport place	1000		Shadowland	50	50 3.33
Meadow	300	1300 35.15	Chickering, Moses Homestead	5750	
Chase, Madeline Poll		2.00	Sargent land	600	
Chickering, Henry Poll			Hubbard land	250	
Home place	2000		1 horse	25	
Barrett pasture	500		14 cows	450	
Thatcher land	200		2 neat stock	50	7125 181.69
10 cows	380		Chickering, R. C. Poll		2.00
4 neat stock	100	3180 83.09	Chickering, R. B. Poll		2.00
Chickering, Imogene Poll		2.00	Chickering, Mary V. Poll		2.00
Chatfield, Thomas Home place	2000	2000 51.00	Chickering, R. G. Poll		
Cherry, Mrs. Stella M. Poll		2.00			

Name and Description	Valuation	Total Tax	Name and Description	Valuation	Total Tax
1/3 interest in Amidon land	333		Poll		2.00
Wood & lumber	120	453	Cray, Winston		2.00
Cobleigh, Ned			Poll		2.00
Poll		2.00	Crowell, Lawrence		2.00
Clancy, Edna			Poll		2.00
Poll		2.00	Crowell, Mildred		2.00
Clawson, Vanetta			Poll		2.00
Poll		2.00	Darling, Newton H.		2.00
Cobleigh, Merle			Poll		2.00
Ford place	1200	1200	Darling, Newton E.		2.00
Poll		32.60	Poll		2.00
Cobleigh, Miriam			Davenport, Fred R.		2.00
Poll		2.00	Poll		2.00
Cobleigh, George O.			Davis, Alice M.		2.00
Poll			Poll		2.00
Homestead	5750		Davis, Dora		
Warner land	100		Poll		
Davis & Spaulding land	500		Wheeler place	800	800
2 horses	75		Poll		22.40
8 cows	320		Davis, Katherine		
3 neat stock	75	6820	Poll		2.00
Poll		175.91	Davis, Clinton		
Cobleigh, Minnie			Poll		
Poll		2.00	William Davis		
Colburn, Norman			Homestead	1100	
Homestead	750		Lilly Pond lot	100	
Davis land	500	1250	Starkey woodlot	25	
Colburn, Alice M.			Chickering woodlot	100	
Homestead	900	900	Poll		
Conant, Bertha			Springer dish		
Poll		2.00	land	25	
Cook, Elmer			Clegg land & Smith	100	
Poll		2.00	Burnham lot	100	
Cook, Gertrude			4 sheep	20	1570
Homestead	1500	1500	Poll		42.03
Poll		40.25	Davis, Byron		
Cousins, Charles			Poll		
Poll		2.00	5 cows	225	
Cox, Vinna			1 neat stock	25	
Poll			100 fowl	100	350
Ford place	1800	1800	Davis, Benjamin L.		
Poll		47.90	Poll		
Cox, Zerah			Pearson Farm and land opposite with meadow and Fletcher land	2000	2000
Poll		2.00	Poll		55.20
Cray, Homer D.			Davis, Adeline		
Homestead	1600		Poll		
2 horses	85		Homestead	800	
4 cows	160		Fisher land	400	
1 neat stock	35	1880	Thompson land	300	1500
Poll		49.94	Poll		41.90
Cray, Martha			Delill, Mrs. Earl		

Name and Description	Valuation	Total Tax	Name and Description	Valuation	Total Tax
Poll		2.00	Eddy, Blanche		
Delill, Earl J.			Poll		
George Plant place	1250	1250	Land and buildings	200	200
(Exemption)					7.10
Deselle, Minnie			Eddy, Kenneth		
Poll			Poll		2.00
Lincoln Place	225		Eddy, Mrs. K.		
Hamilton land	75	300	Poll		2.00
Deselle, Walter			Estler, Dr. L. E. Est.		
Poll		2.00	Home place	3250	
Delamater, Ethel			1 cow	35	3285
Poll			Estler, Minnie		
Birthmere cottage	9000	9000	Poll		2.00
Delamater, Charles H.			Estler, Everett		
Poll		2.00	Poll		2.00
Delamater, Rea			Fales, Kenneth		
Poll		2.00	Poll		
Dodge, Merrill			Stock in trade	300	300
Poll			Farr, Marshall		
Home place	500		Poll		
Spaulding land	375		Home place	700	
Yeager pasture	25	900	Beers land	300	
Dodge, Mildred			2 horses	100	
Poll		2.00	2 cows	80	
Drew, Austin			5 neat stock	100	
Poll		2.00	70 fowl	70	1350
Drew, Arline			Farr, Alba		
Poll		2.00	Horse	25	25
Dunbar, Walter			Farr, Elva		
Poll		2.00	Poll		2.00
Homestead	2800		Faunce, Minnie		
1 horse	25		Poll		
2 cows	75	2900	Safford place	1000	1000
Dunbar, Sarah			Faunce, Olin J.		
Poll		2.00	Poll		2.00
Duberlaw, John			Feather, Arthur		
Poll		2.00	Poll		
Dunham, Bertha			Cottage & land	900	900
Poll		2.00	Feather, Addie		
Eager, George			Poll		2.00
Poll			Feather, Lester		
George Butler place	500	500	Poll		2.00
Eager, Mary			Feather, Harry		
Poll		2.00	Poll		2.00
Eager, Forest			Feather, Edith		
Poll		2.00	Poll		2.00
Eager, Cora			Ferm, Emil		
Poll		2.00	Poll		
			Otis Wilson		
			place	800	
			2 horses	150	

Name and Description	Valuation	Total Tax	Name and Description	Valuation	Total Tax	
2 cows	70	1020	28.01	Allard Place	1000	
Fern, Mrs. E.				Pine hill place	200	
Poll			2.00	1 cow	35	
Fisher, J. T. B.				20 fowl	20	1255 32.01
Poll				French, Wilfred		
Whittemore place	2000	2000	53.00	Poll		2.00
Fisher, Marion				Friedsam, Sally		
Poll			2.00	Poll		
Flavin, Lilly				Woodside cottage	3000	
Poll			2.00	Edgewater cottage	12500	
Fossey, C. J.				2 Wells Lake		
Poll				lots	3000	18500 494.10
Pinnacle Springs	4000			Friedsam, Morris		
farm	90			Poll		
2 horses	750	4840	125.42	Ghee cottage	800	
17 cows				Bliss lots	3000	
Fossey, Jeanie				Darling place	1100	
Poll			2.00	Franklin mill site	25	
Foster, Elsie				Woodlot south		
Poll				woods	25	
Hotel pasture	800			Stone House and		
Worthington land	100			land west of		
Wyman land	100			road	8000	
Fullam land	150			Ben. Pierce place	3500	
White Place lake				Camp Chesterfield	1500	
property	10800			Cressy place and		
Henry Place	800	12750	339.88	Harvey land	4500	
Foster, Maude				Hampshire House		
Poll				and land	3800	
Homestead	2400	2400	65.84	Prospect hill land	3000	
Foster, Julia, Est.				Wetherby hill		
Cottage at lake	2000	2000	53.20	land	1500	
Foster, Reuben, Est.				Lake Shore lots		
Homestead	1300			west	1000	
Howe land	300			Land south of		
Cook land	300	1900	50.94	Stone House	400	
Fowke, Frank B.				Porter pasture	300	
Riverside Cabins	1000			Wheeler pasture	400	
	600			Thatcher land	400	
Kent land	40			Faulkner land	300	
1 cow				O. R. Farr land	200	
(Exemption)		1640	16.32	Lydia Joslin		
Fowke, Ada				land	250	
Poll			2.00	Slade land	275	
Frazer, Oscar				Brown land	250	
Poll			2.00	Whitney land	200	
Frazer, Ethel						
Poll			2.00			
French, Watson						

Name and Description	Valuation	Total Tax	Name and Description	Valuation	Total Tax
Boats	500	35225	929.12	Gallagher, Rose E.	
Fuller, Haskell			2.00	Poll	2.00
Poll			2.00	Gauthier, Louis	
Fuller, Mildred				Poll	
Poll				Carey Place	1000
Fuller, Elisha				1 cow	35
Poll				1035	28.39
Homestead and				Gauthier, Mildred	
Slade land	550			Poll	2.00
Cottage	100	650	19.29	Gibson, Edith	
Fuller, Gertrude				Poll	
Poll				Gibson Farm	2000
Fuller, William H.				2000	55.20
Poll				Goodrich, Robert C.	
Cottage & Puffer				Poll	
land	200	200	7.32	Woodlot Winches-	
Fuller, William E.				ter road	150
Poll				150	5.82
Fuller, Floyd M.				Goodrich, Florence S.	
Poll				Poll	2.00
Fuller, Dorothy				Goodridge, George	
Poll				Poll	
Fuller, George				Home place	700
Poll				Taylor land	25
Fuller, Eleanor				McClennin land	25
Poll				750	21.89
Fuller, George H.				Goodridge, Annie B.	
Poll				Poll	2.00
Furlone, Alphonse				Grimes, Earl	
Poll				Poll	
Barrett land	25			2 cows	50
1 horse	25			50	3.27
1 cow	35	85	4.17	Grimes, Rose	
Furlone, Vida				Poll	2.00
Poll				Guyette, Frank	
Goodwin place	1000			Thompson place	800
1 gas pump	75	1075	29.42	Land south of	
Furlone, John				Beals	100
Poll				(Exempt)	
Furlone, Charles				Guyette, Hazel	
Poll				Poll	2.00
Goodridge Place				Hall, Joseph	
1200	1200	33.92		Poll	2.00
Furlone, Elizabeth				Harbridge, A. J.	
Poll				Cottage at lake	1700
Gallagher, William E.				(Exemption)	1700
Poll				Harbridge, Germaine	
Homestead	1200			Poll	2.00
1 cow	35	1235	34.85	Hamilton, Frank	
Gallagher, Blanche				Homestead	1650
Poll				J. Chamberlin	
				farm	2000
				Goodrich land	125
				Flora Hamilton	
				place	1200
				4975	130.14
				Haskell, Wilder A.	

Name and Description	Valuation	Total Tax	Name and Description	Valuation	Total Tax
Poll			Holman, Nellie, Est.		
2 cows	65	3.66	Homestead	1500	
Haskell, Ardelle			2 cows	75	1575
Poll		2.00	Holman, Alice		
Hebert, Walter			Poll		2.00
Poll		2.00	Houghton, Frederick		
Hebert, Laura			V.		
Poll		2.00	Poll		2.00
Haynie, L. A.			Howell, Myrtle		
Poll		2.00	Poll		
Heath, Lester, Sr.			Chamberlin place	800	800
Poll					22.40
Frank Burnham			Howell, Richard		
place	800	22.40	Poll		2.00
Heath, Louise			Hoyt, E. E.		
Poll		2.00	Poll		
Henkel, Carl			Spaulding Farm	4000	
Cottage at lake	1000	1.10	2 horses	100	
(Exemption)			12 cows	450	4550
Henkel, Grace					118.20
Poll		2.00	Hoyt, E. L.		
Herrick, Avis			Poll		2.00
Poll		2.00	Hoyt, Bertha		
Herrick, Mavarette			Poll		2.00
Poll		2.00	Hubbard, Leland		
Herrick, Louis			Poll		
Poll			Homestead	2000	
6 cows	210	7.35	Richardson wood-		
Hewitt, Arthur			lot	25	
Poll		2.00	3 horses	75	
Hills, Clifford			2 cows	60	2160
Poll			Hubner, Frank A.		57.08
Chickering land			Poll		
& buildings	650		Butler place	2250	
1 cow	35	685	2 cows	80	2330
Hills, Mary		19.46	Hubner, Anna C.		
Poll		2.00	Poll		2.00
Hidden, Elizabeth			Humphrey, Fred C.		
Poll		2.00	Poll		
Hildreth, Oscar			Home place	4000	
Poll		2.00	Harvey land	200	
Hildreth, Mabel			Hill pasture	100	
Poll		2.00	2 horses	100	
Hilliard, Marion			13 cows	650	5050
Poll		2.00	Humphrey, Agnes		
Hitchcock, R. A.			Poll		2.00
Poll		2.00	Hunt, Fred C.		
Hoffecker, Bessie			Poll		2.00
Poll		2.00	Hunt, Olive		
Holman, Fred M.			Poll		2.00
1 cow	35	.89	Huntley, Westley		

Name and Description	Valuation	Total Tax	Name and Description	Valuation	Total Tax
Poll		2.00	Johnson, Burton		
Huntley, Edith			Davenport farm	1350	
Poll		2.00	Cottage & lots 14		
Hutchins, John			and 15 Shad-		
Poll			owland	800	2150
Homestead	2250		Johnson, Lillian		
Pierce land	700		Poll		2.00
2 horses	50		Jordan, Herbert		
6 cows	155		Poll		2.00
1 neat stock	20	3175	82.96	Jordan, Elizabeth	
Hutchins, Emma			Poll		
Poll		2.00	Homestead	2200	2200
Ingalls, Lula			Joslin, Charles		60.52
Poll		2.00	Homestead	2000	2000
Ingalls, Harold			Joslin, Lydia		
Poll		2.00	Poll		
Ingalls, Charlotte			Beals land and		
Poll		2.00	barn	1000	
Ingalls, Charles F.			Tuttle land	300	
Poll		2.00	Hildreth land	100	1400
Ingalls, Gilbert E.			Joslin, Jessie M. B.		37.70
Poll		2.00	Poll		
Isherwood, Ruth			Homestead	1600	
Poll		2.00	Butler Sprout		
Jackson, Jonathan			land	300	
Poll		2.00	Carpenter House	1500	3400
Jacobson, Abe H.			Joslin, George E.		92.44
Poll			Poll		
Pine Grove Springs			Part of Dinnigan		
Hotel	60000		land	175	
Shop & water			Shed and land	25	
rights	500		Blacksmith shop		
Ware land	600		site	25	
Pearson land	500		5 cows	200	425
Boats	200	61800	Joslin, Marie E.		13.31
Jacobson, Tillie			Poll		2.00
Poll		2.00	Joslyn, Clinton E.		
Jacobson, Walter			Poll		
Poll		2.00	Homestead and		
Jacobson, Mildred E.			buildings	1600	
Poll		2.00	Pest land and		
Jefts, Lorenzo			camp	50	1650
Poll			Joslyn, Olive		45.84
Homestead	350		Poll		
Franklin land	200		Joslyn, Herbert		2.00
Hackett land	100		Poll		2.00
2 horses	125	775	Joslyn, Everett		
Jefts, Rose			Poll		2.00
Poll		2.00	Joslyn, Mrs. Everett		2.00
Johnson, Leonard					
Poll		2.00			

Name and Description	Valuation	Total Tax	Name and Description	Valuation	Total Tax
Poll		2.00	Poll		2.00
Kent, Clara			Lynch, C. J.		
Poll			Poll		
Bellevue place 800			Upper Wager place 400	400	12.20
Whittaker place 150			Lynch, Buella		
Corbett land and barn 250			Poll		2.00
7 cows 275	1475	41.25	Mansley, John		
Kent, James			Poll		
Poll		2.00	Spofford House 4500	4500	121.70
Kilburn, Amy			Mansley, Irene M.		
Poll		2.00	Poll		2.00
King, Viola			Marchant, Freeman		
Poll		2.00	Poll		
Knight, Henry			Royce place 650	650	19.29
Robbins place 1000			Marchant, Ella R.		
Robbins land 25			Poll		2.00
Holman woodlot 650			Martin, Barney		
2 cows 75	1750	19.12	Poll		2.00
(Exemption)			Martin, Victoria		
Koskella, Esther			Poll		2.00
Poll		2.00	Maynard, Charles		
Lacomb, George			Poll		
Poll		2.00	Charles Davis farm 1500		
LaPlante, Melvina			Stoddard farm 1500		
Poll			1 horse 25		
Ryan place 900			11 cows 400	3425	89.34
1 horse 40			Maynard, Emma		
5 cows 175	1115	30.43	Poll		2.00
LaPlante, George			McGowan, James		
Poll		2.00	Land and buildings 450		
Langmaid, Norman			20 fowl 20	470	
Poll		2.00	(Exempt)		
Langmaid, Mrs. N.			Merrifield, C. J.		
Poll		2.00	Poll		
Lawton, Paul			Harris farm 2800		
Poll		2.00	1 horse 100		
Lawton, Esther			2 oxen 100		
Poll		2.00	6 cows 250	3250	84.87
Larkin, William			Merrifield, Eva C.		
Poll		2.00	Poll		2.00
LeBlanc, Oliver			Merrifield, Francis		
Poll		2.00	Poll		2.00
Lilly, Nellie M.			Mitchell, Robert E.		
Home place 1400	1400	39.24	Poll		
Lewis, C. K.			Randall farm 4000		
Store buildings 2250			3 horses 140		
Stock in trade 1500	3750	70.12	10 cows 500	4640	120.32
(Exemption)			Mitchell, Ann E.		
Lewis, Ella					

Name and Description	Valuation	Total Tax	Name and Description	Valuation	Total Tax
Poll		2.00	Nurse, Elizabeth		
Mills, Lucius			Poll		2.00
Poll		2.00	Nurse, Philip		
Morris, Ruth			Poll		2.00
Poll			Nurse, Lucy		
Barrett place	900		Poll		2.00
Part Webb land	100		Nurse, John		
Hudson lot at lake	500	1500	Poll		
		40.80	Unfinished cottage		
Morris, Susie				600	600
Poll		2.00	Nurse, Marion		
Mulligan, Rolph			Poll		2.00
Poll			O'Donnell, Mrs.		
Cottage and land	5700		Poll		2.00
Mead land and cottage	750	6450	Ogilvie, Edward		
		173.57	Poll		
Murphy, Thomas			1 cow	35	35
Poll		2.00	Ogilvie, Jessie Mrs.		
Miller, Viola			Poll		2.00
Poll			Ogilvie, Jessie		
Rhinesmith place	300	300	Poll		2.00
		9.65	Orr, James, Est.		
Morrison, Frank J.			The Farmhouse and land	4250	4250
Poll					113.05
Brown Homestead	2450		Orr, Florence		
			Poll		2.00
Farr land	50		Paine, Amy L.		
2 horses	50		Poll		2.00
2 cows	60	2610	Patnode, Frank		
		68.58	Poll		2.00
Murell, Edith			Patnode, Mrs. F.		
Poll		2.00	Poll		2.00
Mutter, Mabelle			Paine, Hazel		
Poll		2.00	Poll		2.00
Nelson, Henry			Pattridge, Georgiana, Est.		
Poll		2.00	Pattridge Home-		
Neilson, Clarence			stead	1500	1500
Poll		2.00			39.90
Neilson, Mildred			Parker, Walter		
Poll		2.00	Poll		2.00
Neilson, Harold			Pattridge, Fred		
Poll		2.00	Poll		2.00
Newstead, George			Pattridge, Lyra		
Poll		2.00	Poll		2.00
Nurse, William			Pattridge, Grace		
Poll			Poll		
Home place	950		Davis & Harvey		
Mead woodlot	350		land & blds.	25	25
Fletcher woodlot	100				2.64
			Pearson, Arvid W.		
1 cow	45	1445	Poll		
		38.85	Old engine house		

Name and Description	Valuation	Total Tax	Name and Description	Valuation	Total Tax
	400	400	Poll		12.64
Pearson, Eleanor			Homestead	1000	
Poll		2.00	Atherton Hill		
Pearson, May L.			farm	1400	
Poll			Corbett land	225	
Bonney home-			Garage	300	2925
stead	2000		Pierce, Rose H.		78.27
Starkey place	700		Poll		2.00
Store house	100	2800	Pierce, Lyle W.		
Pearson, Axel			Poll		2.00
Poll		2.00	Pierce, Rea		
Pearson, Everett			Poll		
Poll		2.00	1 horse	25	25
Penning, Paul M.			Phetteplace, George		
Poll			Homestead	900	900
Stone store	2000		Plante, Bessie		
Stock in trade	1000	3000	Poll		
Pegule, Michal			Bertha Brown		
Poll			place	750	750
Cottage on Gulf			Plante, Perley		
Road	100		Poll		
Winslow building			1 cow	35	35
lot	200	300	Plante, Cometh		
Perry, William I.			Poll		2.00
Poll		2.00	Plante, Henry		
Perry, Ruth E.			Poll		
Poll		2.00	Saw mill and		
Perkins, Cyrus			land	1000	
Poll		2.00	Store building	1000	
Pickering, Mr.			Blacksmith shop	100	
Poll		2.00	Farr Mill site	150	
Pickering, Marion			2 Stearns wood-		
Poll		2.00	lots	300	
Pierce, Guy			Davis woodlot	350	
Poll			Wood and lumber	450	3350
204 pullets	90		Porter, Rose		
300 fowl	250	340	Homestead	800	
Pierce, Frank, Est.			Amidon land and		
Homestead	600		barn	400	
Stowell land	175		Clark land	100	1300
Wheeler land	25		Post, Wilhelmina		
Bennett land	100		Poll		
Pond land	50		Garage	1000	
Thompson land	25	975	Randall place	1250	
Pierce, Nahum			Hammond lot	50	2300
Poll			Post, Ella		
2 horses	100		Poll		
5 cows	185	285	Slade place	4000	
Pierce, Alberta			Butler land	200	4200
Poll		2.00	Post, Walter J.		113.72
Pierce, William					

Name and Description	Valuation	Total Tax	Name and Description	Valuation	Total Tax
Poll			Randall, Harold E.		
Building lot at lake	500	500	Poll		
Post, Katherine			Smith land (timber exempt)	125	125
Poll		2.00	Randall, Rose E.		
Post, Arthur H.			Poll		
Poll			Homestead	1350	
Spofford garage	6000		Woodward woodlot	60	
J. F. Butler place	2500		2 cows	70	1480
Stowell land	100		Rawson, Rena		
Field pasture	100		Poll		
Saw mill and water rights	100		Part Darling land	150	
Fowler land and water rights	50		Darling land and buildings	250	
Foster shop	800		Fletcher land	25	425
Schiewe cottage	50		Rawson, Pearl		
Stock in trade	200	9900	Poll		2.00
Post, Lucy			Record, Wallace		
Poll		2.00	Poll		2.00
Post, Harold			Record, Pauline		
Poll			Poll		2.00
Unfinished cottage	350	350	Redding John		
Prouty, Harry			Poll		
Poll			Homestead	1300	
2 horses	150	150	Lincoln place	400	
Prouty, Mrs. H.			Parks place	500	
Poll		2.00	Leach lot	200	
Prouty, G. N.			Lincoln lot	100	
Poll		2.00	Forbes lot	40	
Prouty, Iva			2 horses	75	
Poll			13 cows	550	3165
Carey cottage	250	250	Redding, Edna		
Puffer, Nathan, Est.			Poll		2.00
Homestead	1000	1000	Reed, Edward		
Putnam, Henry			Poll		
Poll			Fred Farr		
C. Chickering farm	2000		Homestead	500	
Chamberlin pasture	1000		Holman sprout land	100	
Ford mill site	50		Part Beals land	150	
Waldo pasture	50		1 horse	75	825
2 horses	100		Rice, Margaret		
21 cows	800		Poll		
1 neat stock	25	4025	Homestead	1400	1400
Putnam, Olive		104.64	Rice, Sherman		
Poll		2.00	Homestead	2800	2800
			Richardson, Wilfred		
			Poll		

Name and Description	Valuation	Total Tax	Name and Description	Valuation	Total Tax
Poultry houses	300		Sanderspree, George		
1 cow	40		Poll		2.00
Fowl	1000	1340	Sanderspree, Jeanette		
Richardson, Beatrice			Poll		2.00
Poll		2.00	Sanderspree, Eva		
Richter, Fritz			Poll		
Poll			Cless Davis		
Snowling land	1000		farm	3500	
Hewitt land	150		Hubbard farm	100	
4 cows	140	1290	2 horses	75	
Richter, Martha			14 cows	500	4175
Poll		2.00	Schairi, Julian		
Robbins, George			Poll		2.00
Homestead	150	150	Schiewe, August		
Robbins, Nellie			Poll		
Poll			Kellogg place	700	700
1 horse	25	25	Schlichting, Jessie		20.62
Robbins, Jack			Poll		
Poll		2.00	Homestead	500	500
Robbins, Arthur			Schlichting, Paul		15.30
Poll		2.00	Wilson place	700	
Riley, Robert			Gift shop	450	1150
Poll		2.00	(Exemption)		5.09
Riley, Agnes			Schlichting, Katherine		
Poll		2.00	Poll		2.00
Robinson, Frederick C.			Schlichting, John		
Poll		2.00	Poll		2.00
Rogers, Lenora G.			Schlichting, Muriel		
Poll		2.00	Poll		2.00
Rogers, Byron L.			Schlichting, Otto		
Poll			Poll		
Campanella land			Homestead	1400	1400
and buildings	400	400	Schlichting, Margaret		
Rolfe, Bertha			Poll		2.00
Poll		2.00	Shippee, Clarence		
Rowe, Alice			Poll		
Poll			Harris farm	1250	
Crowningshield			2 cows	80	1330
farm	750		Shippee, Dorothy		
Royce land	125		Poll		2.00
1 horse	25		Slack, Raymond		
2 cows	70	970	Poll		2.00
Rowe, Raymond			Smith, Annie		
Poll		2.00	Poll		2.00
Royce, Dennis			Smith, Robert		
Home place	700		Poll		2.00
1 cow	30	730	Smith, David J.		
Ryder, Thomas			Spring land and		
Poll		2.00	buildings	1000	1000
Ryder, Helen			(Exemption)		
Poll		2.00	Smith, Leon		

Name and Description	Valuation	Total Tax	Name and Description	Valuation	Total Tax
Poll			Stoddard, Leon		
2 horses	75		Poll		2.00
10 cows	300	375	11.56	Stoddard, Erwin	
Smith, Theodore			Poll		2.00
Poll		2.00	Winn place	800	
Snow, Harry C.			2 horses	100	
Poll			8 cows	250	1150
Hill Sugar			Stoddard, Marion		
Orchard	100	100	Poll		2.00
4.55			Stoddard, Fred J.		
Snow, Clarence, Est.			Poll		
Gilson land	50	50	1.27	Garage	400
Spaulding, Roger C.			Grange House and		
Poll			lot	100	500
Home place	2000		14.75	Stoddard, Margaret	
Newman land	25		Poll		2.00
Building lot south			Stoddard, Emma		
woods	10		Homestead	700	700
Cornell pasture	600		17.85	St. Lawrence, Edith	
Part Cressy farm			Poll		2.00
75			Stratton, George W.		
Fiske Homestead			Poll		2.00
pasture	300		Streeter, Beatrice		
1 horse	150		Poll		2.00
4 oxen	275		Streeter, Louis		
5 cows	190	3625	Poll		
94.44			Hildreth place	1200	
Spaulding, Alice L.			Goodrich land	300	1500
Poll		2.00	41.90	Streeter, Harold	
Spofford Garage			Poll		2.00
Stock in trade	500	500	Streeter Doris		
13.30			Poll		2.00
Spring, A. M. Est.			Streeter, Harlan		
Homestead	900		Poll		
Amidon land	50	950	Homestead	1600	1600
24.22			42.80	Streeter, Kenneth	
Springer, Edna			Poll		2.00
Poll		2.00	Streeter, Gertrude		
Springer, Clarence			Poll		2.00
Poll			Streeter, Mrs K.		
Homestead	1500		Poll		2.00
Presho land	200		Tarbox, A. P.		
Presho lily pond			Poll		
lot	250		6 horses	750	
2 horses	125		Portable mill	500	1250
3 cows	120		33.88	Tarbox, Ethel	
Portable mill	100	2295	Poll		2.00
60.52			Thomas, Albert		
Stevens, Edythe			Poll		
Poll			Homestead	1200	
Sally Lunn Tea			1 horse	50	
House	3500	3500	2.00		
95.10					
Stinson, Steve					
Poll		2.00			
Stoddard, Carrie					
Poll		2.00			

Name and Description	Valuation	Total Tax	Name and Description	Valuation	Total Tax
5 cows	180		3 cows	75	
100 fowl	100	1530	50 fowl	50	205
Thomas, Bertha			Underwood, Corinne		
Poll		2.00	Poll		2.00
Thomas, George			Underwood, Ora		
Poll			Poll		2.00
Nearlake Inn	5000		Ware, Sidney		
Boyce land	400	5400	Poll		2.00
Thomas, Mrs. G.			Ware, Mary		
Poll		2.00	Poll		2.00
Thompson, Alzada			Washburn, Lester		
Poll			Poll		2.00
Davis land and			Washburn, Viola		
buildings	500	500	Poll		2.00
Thompson, Roland			Watts, Frank		
Poll		2.00	Poll		
Thompson, Mary, Est.			Wheeler farm	2000	
Land	5	5	1 horse	25	
Turner, Gerald			6 cows	175	2200
Poll			Watts, Margaret		
2 cows	80	80	Poll		2.00
Turner, Ada			Watts, John		
Poll		2.00	Poll		2.00
Turner, Minerva			Webb, Mary		
Poll		2.00	Poll		
Tuttle, Clifford			Puffer place	700	700
Poll			Webb, Elizabeth, Est.		
Store building	2500		Homestead	3800	
Beckley House	1250		Royce pasture	400	4200
Warren land	100		Welcome, Roger		
Stock in trade	2500	6350	Poll		2.00
Tuttle, Viola V.			Welcome, Edward L.		
Poll		2.00	Poll		
Tuttle, Charles			Homestead	3000	
Poll			Colburn farm	100	
Homestead	1500		2 horses	80	
J. Beals land	500		Fowl	600	3780
1 horse	35		Welcome, Grace		
2 cows	75	2110	Poll		
Tuttle, George, Est.			4 oxen	250	
Hopkins place	1500		16 cows	600	
Pierce pasture	350	1850	5 neat stock	125	975
Underwood, Bertha			Welcome, Clara		
Poll			Poll		2.00
Homestead	1200		Welcome, Paul		
1 horse	25		Poll		2.00
2 cows	60		Wellington, Donald A.		
1 neat stock	25	1310	Poll		
Underwood, Raymond			1 cow	40	40
Poll			Wellington, Clara		
2 horses	80		Poll		3.06

Name and Description	Valuation	Total Tax	Name and Description	Valuation	Total Tax
Cottage	500	500	15.30	Poll	2.00
White, George S.				Winn, Harry E.	
Poll			2.00	Poll	
White, Marjorie				Smith farm	2500
Poll			2.00	1 horse	50
White, George F.				7 cows	300
Poll				3 neat stock	75
Scott farm	2300			2925	76.59
1 horse	25			Winn, Evelyn L.	
500 fowl	500	2825	77.15	Poll	2.00
Wheeler, Clinton				Winn, Lucy	
Poll			2.00	Poll	
Wheeler, Ethel				Rugg place	900
Poll			2.00	1 horse	25
Whorfe, Frank				925	25.59
Poll			2.00	Winn, Celia	
Whorfe, Mary				Poll	
Poll			2.00	Homestead	900
Williams, Etta				900	24.95
Poll				Winchester, Cherry	
William Smith				Poll	2.00
place	1800	1800	49.88	Winslow, E. James	
Williams, Miller				Poll	
Land and cabin	200			Skyline farm	2300
(Exempt)				1 cow	45
Williams, Flossie				2345	61.80
Poll			2.00	Winslow, Emma	
Williams, Dan				Poll	2.00
Poll				Whitney, Adelle	
Pattridge place	2000			Poll	2.00
1 horse	40			Whitney, William	
8 cows	350			Poll	2.00
1 neat stock	25	2415	66.24	Wood, Flora M.	
Wilde, Lila R.				Tenney place	900
Poll				900	23.94
Edgar Homestead	1800	1800	49.88	York, C. D.	
Wilson, Arthur, Jr.				Poll	
Poll			2.00	Warren land and	
Wilson, James A.				water right	200
Poll			2.00	Grist mill land and	
Wilson, Jessie				water right	50
Poll			2.00	250	8.65
Wilson, Edwin				York, Nora A., Est.	
				C. D. York Admin.	
				Store building	2000
				2000	53.20
				York, C. D. &	
				Daisy Allen	
				Homestead	2250
				2350	62.51
				Eddy land	100

NON-RESIDENT INVOICE AND TAXES FOR 1937.

Name and Description	Valuation	Total Tax	Name and Description	Valuation	Total Tax
Adams, Ernest W.			Cottage and land on river	300	300 7.65
Lot No. 21 Shadowland	100	100	2.66		
Albee, Emily M.			Barker, E. C., C. F. & C. L.		
Albee cottage	5000	5000	133.00	Lot No. 1 Shadowland	350
Aldrich, Mrs. R. W.				Lot No. 10 Shadowland	200
Pearson cottage	5000	5000	133.00	Albee & French land	500
Allen, Raymond				1050	27.94
Amidon land	25			Barrett, Clifton H. Snow Homestead	1800
Stone land	400				
Stone farm	1650	2075	52.91	Streeter Hill sproutland	500
Allen, Mary				2300	58.65
Field place	1400	1400	37.24	Barrows, E. B. Wood and lumber	4000
Allen, Louis I.				4000	102.00
Four pumps	340	340	9.04	Barrows, F. K. Land and cottage at lake	8000
American Steel & Wire Co.				Land and cottage at river	350
Leonard, Clark & Hersh lands	200	200	5.10	8350	221.72
Amsden, Madeline				Beacon Oil Co. Two pumps	170
Cook farm	3000			170	4.33
Turner Falls lot	500	3500	89.25	Becker, Eva Cottage and garage	1200
Arms, Jane B.				1200	31.92
Cottage and Webb land	75	75	1.91	Beers, Charles Part Bunnel farm	1000
Austin, Mary R.				1000	25.50
Staten cottage	1750	1750	46.56	Beers, Ida Land and roadside stand	350
Averill, Richard				350	8.92
Amidon farm	1700			Bell, John Lot No. 34 Shadowland	25
Wheeler farm	300			25	.67
Home cottage	5000			Bennett, Frank Cottage at lake	2000
2 Silverdale cottages	6000			2000	53.20
Land back of Silverdale	250			Bennett, Florence R. ½ int. Robertson Homestead	1200
Ice house and land	500			1200	
Island	4000	17750	469.95	½ int. Streeter lot	800
Barber, Frank P.				800	
Telfer camp	350	350	8.92	½ int. Muckle Hill	750
Barber, George E.				2750	70.12
Pasture	1500			Bernier, Nelson Presho land and	
Goodrich land	300	1800	45.90		
Barden, James					
Lot No. 23 Shadowland	75	75	2.00		
Barden, John					

Name and Description	Valu- ation	Total Tax	Name and Description	Valu- ation	Total Tax		
buildings	250	250	6.37	place (Exempt)	400	400	
Berry, George W. Westview House	2500	2500	63.75	Buffum, Eroine ½ int. C. Buffum place	400	400	10.20
Bert, John, Est. Buffum land	150	150	3.82	Burbank, Mary Farr land	200	200	5.10
Bethlehem Steel Co. 1 hoisting engine 1 derrick		5000	127.50	Butler, Bessie Wheeler pasture	400	400	10.20
Beverstock, Blanche Cottage at lake	2500	2500	66.50	Butler, Thomas Withington lot	200		
Black, Adelle M., Est. Bungalow and Garage	1500	1500	38.25	Davis land	100	300	7.65
Blake, H. M. Cottage at lake	1400	1400	37.24	Butler, Richard Lyman Royce land	125	125	3.19
Bliss, Laura E. Lot No. 25 Shad- owland	75	75	2.00	Butler, Sidney Cottage at lake	2500	2500	66.50
Boisvert, E. Madden woodlot	60	60	1.53	Burnett, Virginia Fieldstone Lodge	10000	10000	266.00
Bothwell, Ada Homestead	1000			Callahan, Richard Lot No. 7 Shad- owland	500	500	13.13
Land opposite	100	1100	28.05	Calef, Robert Naylor place	2000		
Eowker, Arthur Pattridge land	1200	1200	30.60	Truell land and timber	2000	4000	102.00
Boyden, Charles Cottage at lake	4500	4500	119.70	Campanella, Joseph E. Carey place	700	700	17.85
Brattleboro Retreat Mountain land	3500			Camp Marquette Lakeside property	12000		
Spaulding land	600			Eoats	200	12200	324.52
Safford land	600	5000	127.50	Camp Namaschaug Land and build- ings	25000		
Mountain land	300			Boats	200	25200	670.32
Brattleboro Trust Co. H. Stearns place	600			Capron, Ida Worcester Hill lot	50	50	1.27
Davidson cot- tage	1750	2350	61.85	Carey, Forest Cole lot	200		
Brown, Lenna, Est. Randall land	125			Timber on Pierce lot	350	550	14.02
Chamberlin land	50	675	17.21	Carmick, Prudence Smith farm	1500		
Woodlot	500			Randall cottage	700	2200	56.10
Brown, Zilla M. Cottage at lake	2250	2250	59.85	Carlton, Eva & Paul Blodgett land	25	25	.64
Brown, Dr. H. L. Cottage and Sprout land	1750			Carlton, Frank P. Sprout land	100	100	2.55
Day pasture	400	2150	54.82				
Bourne, Lloyd Gage land	200	200	5.10				
Buffum, E. C. ½ int. C. Buffum							

Name and Description	Valuation	Total Tax	Name and Description	Valuation	Total Tax
Chambers, John			Clark, Dr. W. K.		
Lot No. 2 and			Cottage at lake	5000	133.00
Cottage			Clark, Walter I. &		
Shadowland	900	900	Annie B.		
Chamberlain, Elmer			Adams cottage on		
B.			river	600	15.30
Chas. Chamberlain			Clawson, Neil D.,		
place	1500		Guardian		
Wm. Chamberlain			George Hamilton		
land	300	1800	place	2500	2500
(Exemption)		20.40	Cobb, Bernice		
Chandler & Kingsley			Bodner camp	100	2.55
Lot No. 11 Shad-			Cobb, Paul D.		
owland	200	200	Cottage at lake	1500	39.90
Chapman, Laurence			Cole, Fred		
Fullam Mill site	150	150	Land near C.		
Cherrie, George K.			Scott farm	100	2.55
T. Humphrey			Coffin, Eston L.		
place	1000	1000	Part Crowningshield		
Campanella, John			farm	750	750
Baraby land	25		Colony, John &		
Thatcher land	300	325	Charles		
Cheshire Oil Co.			Bennett lot	150	
4 pumps	320	320	Joslin lot	450	600
Cheshire County			Colony, Lawrence D.		
Barker woodlot	350	350	Ben Wheeler lot	60	60
Chandler, Eleanor S.			Colony, Horatio, Est.		
Cottage at lake	1500	1500	Stowell place	58000	
Chesterfield Lumber			Derr cottage	2500	
Co.			Woodbury lot	2800	
% Mrs. J. McCor-			Woodward south		
mick			pasture	500	
Hubbard farm	1000	1000	Sherman lot	800	
Chickering, Fannie			Scripture lot	5000	
Amidon cottage	1750	1750	Joslin lot	5500	
Christman, Henry			Hill & Russell		
Cottage at lake	3300		lots	1200	
½ int. in Merchant			Fairbanks &		
place	50	3350	Chamberlain lots		
Chickering, H. E., Est.				300	76600
Chamberlain pas-			Colton, Ruth		
ture	200		Lot No. 31 Shad-		
Stone land	150		owland	25	25
Chickering Home-			Conn. River Power		
stead	1200	1550	Co.		
Clapp, Emily R.			Transmission lines		
Clapp cottage	3100			4500	
Lindstrom cottage			Vernon flowage		
	2750	5850	rights	4500	9000
Clapp, George W.		155.61	Cook, Mrs. Herman		229.50
Land at lake	20	20	Woodlot	200	200
		.53			5.10

Name and Description	Valuation	Total Tax	Name and Description	Valuation	Total Tax
Coughlin, Jennie G.			7000		
Fiske cottage and land	3500	3500	Schlichting lot	800	
Crandall, Mrs. I. H.		93.10	Wilbur lot	1000	
Joslin land and cottage	5000		Barker pasture	1100	
Joslin lot at lake	500	5500	Bear Hill lot	800	
Cushman, Charles		146.30	Field pasture	100	
McGowan farm	1100	1100	Carter lot	250	11050
Curtis, Roland S.		28.05	Dodds, Mary R.		281.77
Carroll cottage	1250	1250	½ int. in Presho lot	800	800
Damon, Belle, Agt.		33.26	Dort, Kate C.		20.40
C. Bliss Pierce homestead	2750		Cottage at lake	3000	3000
Burnham land	300	3050	Douglass, Dr. Charles		79.80
Davis, Cadman		81.13	Case cottage	5500	
Amidon woodlot	75	75	Land and boat house	1000	6500
Davis, Bertha		1.91	Duane, Mrs. John		172.90
Butler land	100	100	Howe land	150	150
Davidson, Dr. R. W.		2.55	Dunbar, Charles & Wallace Robbins		3.82
Stearns cottage	9000		Frank Holman farm	1000	
Stearns land	1000		3 cows	115	1115
1 pump	85		Dunham, John L.		28.43
Boats	600	10685	Norwood cottage	3000	3000
Dearborn, Jessie		284.23	Dunham, Mary		79.80
Cottages and land at lake	1500	1500	Homestead	400	
Deering, Ernest		39.90	Paro land	25	425
Frank Robbins place (Exempt)	250	250	Dutcher, Alphaena		10.84
Denault, Laurence		.28	Sunnyhill farm	1900	1900
Lot 22 Shadowland	75	75	Eames, Robert		48.45
DesJordins, Rene		2.00	Lot 29 Shadowland	25	25
Lot 30 Shadowland	25	25	Estey, Thomas		.67
DeWitt, Armon L.		.66	Cottage and land at lake	5000	5000
Lot 48 Shadowland	25	25	Estey, Allethaire		133.00
DeWitt, George A.		.66	Cottage at lake	4000	4000
Jennings lot	100	100	Ebbighausen, Chas.		106.40
Dial, Alice S.		2.55	Indian Pond land	10	10
Garage at lake	300	300	Emerson, Harry		.25
Dickinson Estate		7.98	Cottage and land at lake	6000	6000
Land and timber south woods	7000	7000	Emery, Bert, Est.		159.60
Dickinson, Josie		178.50	George Robbins place	75	75
Lot 7 range 2	500	500	Edgar, Ida		1.91
Dickinson, Milan		12.75	Woodlot	200	200
Isaac Stratton lot			Fairfield, Ethel R.		5.32
			Cottage at lake	5000	5000

Name and Description	Valu- ation	Total Tax	Name and Description	Valu- ation	Total Tax
Fairbanks, O. K.			at river	950	950 24.22
Truell place	2000	2000	Hall, Blanche C.		
Farr, Winfield			Idlewild cottage	4000	4000 106.40
Part of Ford			Hamilton, Fred M.		
farm	25	25 .64	Cottage and		
Farr, F. O. C. Est.			land	600	600 15.96
Harvey land	500		Hannum, William		
Fletcher land	225	725 18.49	Jeffrey Sprout		
Fisher, Mabel			land	50	50 1.27
Hunt place	150	150 3.82	Hardy, George M.		
Ferguson, Clarence			Cottage and land		
Cobb cottage	3000	3000 79.80	at lake	1000	1000 26.60
Fisher, Samuel			Hart, Mrs. E. E.		
W. J. Post cottage			% C. Ferguson		
at lake	1750	1750 46.56	Ferguson cottage		
Fisher, Fred L.				7000	7000 186.20
Erown cottage	1600	1600 42.56	Hartt, Leroy F.		
Fisher, Arthur			Burbank farm	8000	
Norcross pasture	500		1 horse	75	
Beals land	100	600 15.30	1 cow	40	
Fineberg, Hilda C.			35 fowl	35	8150 207.82
Cottage at river	1500	1500 38.25	Harris, Charles A.		
Foley, Clarence G.			2 cottages and		
Lewis lot	300	300 7.65	land	9500	
Forbes, Mrs. R. A.			Barker land	500	10000 266.00
Bowker land	90	90 2.29	Hatch, Walter		
Ford, George R.			Cottage at lake	2500	2500 66.50
Clark cottage	8000	8000 212.80	Harvey, Elsie		
Fordrung, Dr. W. J.			Part of Marsh		
Cottage and land			farm	750	750 19.12
	3500	3500 93.10	Harvey, Melvin G.		
Freeman, Ralph, Est.			Woodlot south		
Pasture land	100	100 2.55	woods	250	250 6.37
Fredette, Fred			Haus, E. J. & B. H.		
Wallace pasture	400	400 10.20	No. 4 Silverdale	4000	4000 106.40
Gabree, Amy W.			Hawkins, Dean		
Cottage and land			Old Hotel prop-		
at lake	1600	1600 42.56	erty	1200	1200 30.60
Gaston, William G.			Heighton, Henry F.		
E. Ball place	2250	2250 59.85	Home place	850	850 22.61
Geham, Winfield			Hildreth, Lena		
Dunham farm	1000	1000 25.50	Pierce land	100	
Goodell, Clifford			Stockwell land	100	
Newman lot	500		Hill pasture	500	700 17.85
Butler pasture	250	750 19.12	Hill, Lyle W.		
Greenwold, Philip			Woodlot	50	50 1.27
Torrey place	1500	1500 38.25	Hinds, Winfield		
Gulf Oil Corp.			Hinds homestead		
5 pumps	400	400 10.20		2500	
Hadlock, Lesley			Hopkins & Butler		
Houghton cottage			land	150	

Name and Description	Valuation	Total Tax	Name and Description	Valuation	Total Tax
Eben Brown place	300		place	1400	1400 37.24
Sarah Draper land	200		Horton, E. A. C. Lot at lake	400	400 10.64
Taylor land	350		Hosley, Ralph Lot No. 3 Shad- owland	500	500 13.30
Carter land	125		Hulme, George Dutcher land and cottage	900	900 23.94
Hinds lot	45		Huntley, Carl Lot No. 28 Shad- owland	25	25 .67
Wilcox land	30		IoFolla, John C. Caterpillar tractor R. D. 8 with Bull dozer & Carry- all	10000	10000 255.00
Lumber	500	4200 107.10	Jacobs, Arthur & Minnie Lot No. 26a Shad- owland	50	50 1.33
Hinds, Calvin, Est. Mill site	50	50 1.27	Jacobs, Cecil Lot No. 27 Shad- owland	25	25 .67
Hoagland, Ogden M. Jackson Hill farm	10000		Johnson, Charles & Mabel Cottage at lake	2250	2250 59.85
Sanderson pasture	800		Johnson, John P. Lot No. 43 Shad- owland	25	25 .67
Hawes lot	250	11050 281.77	Johnson, F. P. Fiske homestead	1500	1500 38.25
Holbrook, Clara A. Harris farm	2000	2000 51.00	Joslin, Mrs. C. Cottage at lake	4500	4500 119.70
Holden & Martin Liscom lot	200	200 5.10	Kaiser, Joseph, Jr. Cottages and land	5000	5000 133.00
Holland, Mrs. Henry Cottage at lake	1500	1500 39.90	Keene Chair Co. Davis lot	700	
Holmes, Dr. R. W. Cottage at lake	5500	5500 146.30	Snow lot	100	800 20.40
Holroyd, Jack Building lot	300	300 7.65	Keene Savings Bank LaFountain land	100	100 2.55
Holton, R. L. & C. R. Kelly woodlot	800	800 20.40	Keene National Bank Ossego cottage	3500	3500 93.10
Hopkins, Harry D. Land and timber south woods	5000		Goldstein, Nathan Wyantha lodge	6000	
Buffum Sprout land	450		Part of Wells lot	1000	7000 186.20
Franklin lot	100		Kellum & Handy Chamberlin lot	100	
Fletcher pasture	300				
Burton lot	200				
Albee lot	25	6075 155.16			
Hopkins, Maude Harris cottage	3500				
Lumber yard Spofford	200				
Wetherby Hill pasture	1000				
Ben. Pierce pasture	200	4900 129.02			
Hopkins, Benjamin Slade slash land	600	600 15.30			
Horton, Sarah Fred Holman					

Name and Description	Valu- ation	Total Tax	Name and Description	Valu- ation	Total Tax
Lewis & Taylor lot 450			Licari, Marie Part of Marsh farm 500	500	12.75
Carter lot 100			Little, Emma K. No. 6 Silverdale cottage 4000	4000	106.40
No. 2 Carter lot 375	1025	26.14	Lloyd, Fred H. Camp and lot 200	200	5.10
Kingsbury, Margaret Cottage and land at lake 600	600	15.96	Longfelder, Jane B. Jeffery Hill land 500	500	12.75
Kingsbury, Lillian Huntress cot- tage 6000	6000	159.60	Lyle, Mrs. C. R. McDonald cot- tage 8000	8000	212.80
Kingsbury, Lottie Wilcox cottage 4500	4500	119.70	Maloney, James George Tuttle place 2 tracts 800	800	20.40
Kingsbury, Charles Carpenter lot 1500	1500	38.25	Manch, William R. Wares Grove 15000 Boats 100	15400	409.64
Kingsbury, Harry J. 2 cottages at lake 6600	6600	175.56	Stock in trade 300		
Kingsbury, Thayer Porter boat house and land and buildings 1700	1700	45.22	Manley, John French lot 300	300	7.65
Kingsbury, Frederick M. Porter cottage 6600	6600	175.56	Manley, Warren F. Pierce cottage 10000	10000	266.00
Kuhlke, Florence, Eleanor and George Cottage and land 16000			Mansley, Herbert Truell land and buildings 900	900	22.95
LaPoint farm 4000	20000	532.00	Marshall, Mrs. Florence Charles Chamber- lain place 1500	1500	38.25
Kirkwood, Samuel Hastings lot 50	50	1.27	Marshall, Carl R. Cut over land 75	75	1.91
Lackey, Eunice Lot No. 32 Shad- owland 25	25	.67	Marsente, Theadore Herrick farm 1800	1800	45.90
LaPoint, Frank Cottage at lake 1250	1250	33.26	Martell, G. C. & B. J. Lot. No. 33 Shad- owland 25	25	.67
Lambert, Mrs. C. P. Cottage on river 3000	3000	76.50	Martin, Frank H. Land and buildings at river 250	250	6.37
Lathrop, Royden H. C. Stoddard place 2300			May, Ethel R. Cottage at lake 2250	2250	59.85
1 cow 35	2335	59.54	McCoy, Alice Madden place 2000		
Langley, Margaret R. ½ int. in Muckle Hill 750	750	19.12	Hubbard land 200	2200	56.10
Leach, Dr. C. S. Est. Cottage at lake 2000	2000	53.20	McDonald, E. J. Puffer place 1200	1200	31.92
Levine, L. D. Pierce cottage 2000	2000	53.20	McGillicuddy, Lucre-		

Name and Description	Valuation	Total Tax	Name and Description	Valuation	Total Tax
tia E.			Oakman, Frank B.		
Cottage at lake	2000	53.20	Crouch Spring land	800	20.40
McLean, George			O'Connor, P. L.		
Lot No. 19 Shadowland plus unfinished cottage	300	7.98	Fales pasture	200	5.10
Mead, Mrs. E. D.			O'Neil, Lena		
Mead woodlot	1000	26.60	Green cottage	2200	58.52
Mehren, Grace			Patnode, Norbert		
Faulkner land	3500		Cottage at Fullam Pond	75	1.91
Puffer place	2500	156.85	Osborn, H. B.		
Merwin, Stuart			Nurse place	450	11.47
No. 7 Silverdale cottage	3500	93.10	Parker, C. A.		
Minor, Charles W.			Eddy cottage	350	8.92
Gruber cottage	1500	39.90	Pearson, William		
Mitchel, Miss Jessie			Parker cottage	8500	
Kaiser garage and lot	1300	34.58	White pasture	600	
Morse, Sewall			Slade lot	50	
Cottage on river	200	5.10	Fay lot	150	247.38
Mosher, D. A.			Pierce, Cora		
Camp on river	200	5.10	Marsh land	200	5.10
Murray, Miss Ethel M.			Penn, DeWitt		
Smith cottage	1500	39.90	Sanford land	50	1.27
Murray, Pauline & Henrietta			Pierce, Harry A.		
Part Smith land	100	2.66	Joe and George		
Miller, O. W.			Pierce farm	800	
Caterpillar crane	5750		Babbitt land	200	
Cement mixer	50	147.90	Stone land	100	
N. E. Box Co.			Buffum land	50	
Capron lot	100		Land near Roundy cottage	100	
Buffum lot	25	3.19	Cottage on north shore	1250	
N. E. Woodenware Co.			Slade land	100	
Tenney lot	150		Bump land	200	
Hewett lot	1000	29.32	Blodgett land	600	
Nichols, Hazel S.			Upper part of		
Sheldon Ramble cottage	10000	266.00	Scott farm	45	
Nims, Arthur			Stowell place	500	
Cottage and land at lake	3000	79.80	Amidon cottage and boat house	1750	
Norwood, Leon C.			Barn and land both sides of road	400	
Land and shack	150	3.99	Fintell lot	25	
Nosek, Harry			Jessie Hinds place	2000	
Tea room and 17 camps	7500		Amidon land in south woods	1500	
Boats	500		Amidon big cottage		
Stock in trade	100	215.46			

Name and Description	Valuation	Total Tax	Name and Description	Valuation	Total Tax
and land	3500		Rawson, Minor		
Atherton land	800		Upper part Fletcher		
2 horses	300		pasture	100	2.55
14 hogs	300		Reynolds, John		
1 portable mill	300		Lot No. 35 Shad-		
Wood and			owland	25	.67
lumber	10000	24820	Rice, Herman C.		
Fishon, Melvin I.			Land and cottage		
Bagshaw property			at lake	5000	5000
	8000	8000			133.00
Place, Lenora			Rice, Wayne H.		
Pierce cottage	2500	2500	Cray land	100	100
Porter, Walter R.					2.55
Land opposite			Riley, Daniel F.		
cottage	750	750	Cottage at lake	2250	2250
Porter, Eva					59.85
Darling land	600	600	Robertson, Byron, Est.		
Prague, Edward L.			Presho farm	500	500
Cottage at lake	1000	1000			12.75
Prentiss, John			Robertson, Ellis		
Cottage at lake	3500	3500	$\frac{1}{2}$ int. in Robertson		
Proctor, Ralph			homestead	1200	1200
Colburn lot	700				30.60
Currier lot	500	1200	Robertson, Myrtle E.		
Proctor, Annie and			Cottage at lake	2500	2500
Mildred					66.50
Rockwell cottage	2250	2250	Robertson Co.		
Protestant Episcopal			Fullam water right		
Church				200	200
Old School House					5.10
lot	200	200	Robertson, Edwina W.		
Public Service Co.			2 cottages North		
of N. H.			Shore	5000	5000
Trans. and distrib.					133.00
lines	29450		Robinson, Helen		
Meters and trans-			Keyes		
formers	7805	37255	Camp Nitawa	5000	
Puffer, Clara			Indian Acres	800	5800
Puffer pasture	3600				153.40
Andrews and			Rothe, Emil & Clara		
Gibson land			Rawson place	500	500
Timber exempt	500	4100			12.75
Putney, Maude R.			Russell, George T.		
Cottage at lake	2000	2000	Prouty Hill lot	1300	
Quigley, Mary C.			Fox Hill lot	925	
Sargent cottage	2200	2200	Windham lot	750	
Randall, Harry			2 Whitcomb lots	500	
Lot No. 6 Shadow-			Oakham lot	125	3600
land and cot-					91.80
tage	1250	1250	Russell, Whitman		
			Cottage at lake	1500	1500
					39.90
			Ryan, Mary		
			Lower Meadow		
			Ryan place	100	100
					2.55
			Ryan, Henry		
			Beers cottage		
			and land	400	400
					10.20
			Ryder, Nellie		
			Brookside	800	
			Convalescent home		
				3000	
			Stock in trade	50	3850
					102.41

Name and Description	Valuation	Total Tax	Name and Description	Valuation	Total Tax
Sanderson, Mrs. E. B.			tage	700	700
Pasture land	300	300	7.65	Smith, Dwight	
Schmidt, John			Joe Hubbard farm		
W. Thomas place			1300		
3000			Part of Webb		
Uncompleted cot-			land	200	
tage	300	3300	84.15	Clough place	125
Scott, Lucy			Standing timber on		
O. Scott House			Kirk Chickering		
lot	50	50	place	100	1725
Seaver, Lloyd S.			43.99	Smith, Carl	
Cottage at lake	1250	1250	Cottage at lake	700	700
(Exemption)			7.75	Snowling, Sadie	
Seaverns, Houghton			Bingham land	100	100
& Florence W.			Socony Vacuum Oil		
Cottage at lake	4000	4000	Co., Boston		
26.60		106.40	8 pumps	600	600
Senning, Helen B.			Socony Vacuum Oil		
Brainard farm	1000	1000	Co., Albany		
26.60		26.60	2 pumps	150	150
Shaw, Ira, Est.			3.82	Spaulding, Florence	
Shaw homestead	500	500	and Henry		
12.75		12.75	No. 1 Silverdale		
Shippee, Wallace			cottage	4000	
Winslow building			Mead farm	5000	9000
lot	200	200	239.40	Spaulding, Fuma C.	
5.10		5.10	and Almon W.		
Sheldon, Agnes P.			Part of Day farm		
Oakmere cottage			and buildings		
9500			2000	2000	51.00
Boats	100	9600	255.36	Starkey, James	
9600		255.36	William Holman		
Sherri, Antoinette			pasture	500	500
Cottage and farm			12.75	Stearns, Louis	
7000			Stearns orchard		
Stoddard pas-			2500	2500	63.75
ture	1000		Stegman, Walter A.		
Webb land	300		Butler farm	3500	
Pond land	300		Royce farm	450	
Dunham land	300		Mill lot	50	4000
Thomas lot	300		102.00	Stiff, Louis	
Barber land	75	9275	Lower Wagner		
236.51		236.51	place	500	500
Simpson, William E.			12.75	Stoddard, Etta M.	
Lots 5-8-9-13-24			Lot at lake	500	500
and backland	2150	2150	13.30	Stoddard, Maude M.	
57.19		57.19	Cottage at lake	1750	1750
Simonds, Arthur P.			46.56	Stoddard, Dr. M. J.	
and Maude J.			Averill land and		
Cottage at lake	2000	2000	garage	500	500
53.20		53.20	13.30	Stone, Dwight	
Smith, Madeline					
Lantry Tea					
House	900	900			
23.94		23.94			
Smith, Irving					
Frosh lot	400	400			
10.20		10.20			
Smith, Edna G.					
Lot No. 22 Shad-					
owland and cot-					

Name and Description	Valuation	Total Tax	Name and Description	Valuation	Total Tax
Crouch pasture	900		Turato, Josephine		
Forbush pine lot	200	28.05	Yeager farm	600	15.30
Sturtevant, Clifford L.			Turner, Olive, Est.		
Burt lot	150		1/3 int. in Chamberlain place	200	
Dragoon pasture	600		1/3 int. in Thompson land	8	5.30
Hewitt lot	350		Turner, Cecil C.		
Hunt lot	75		Cottage at lake	2250	59.85
Blodgett land	75	32.05	Tuttle, Sidney		
Talbot, Jessie			Pratt woodlot	300	7.65
1/3 int. Chamberlain place	200		Tuttle, Jessie		
1/3 int. Thompson land	8	5.30	Part of Cressy farm	450	11.47
Taft, Violet			Wager, Bidwell		
Cottage near Field place	700	18.62	Mill site Gulf road	25	.64
Taft, Lilla G.			Watson, H. C.		
Glebe lot	150		Day place	2250	
Smith land	50	5.10	New cottage	500	
Taggart, Everett			2 horses	125	
Lot 12 Shadowland	200	5.32	8 cows	290	80.71
Tasker Bros.			Watson, Harry W.		
Cottage on river	600	15.30	Cottage at lake	3000	
Taylor, H. W.			Land across road	100	82.46
Wright pasture	400	10.20	Walston, Earl		
Taylor, Minnie			Saw mill and cottage	500	13.30
Cottage and boat-house	2750	73.15	Wheeler, Warren H.		
Telfer, R. Bligh			Huldyanna cottage	2000	53.20
Land and camp	300	7.65	Wilcox, Allen C.		
Thomas, Walter			Snow farm	1200	30.60
Sargent land	50	1.27	Williams, Don J.		
Thomas, Ethel A.			Leonard land	400	
Hubbard farm	2500	63.75	Robinson land	250	16.57
Thomas, Fred			Whitcomb, F. H. and J. F.		
Cook land	100	2.55	Holbrook lot	100	2.55
Tinkham, Wayne C.			Whitcomb, Fred J.		
Lot No. 4 Shadowland and cottage	700	18.62	H. D. Pierce lot	100	
Todd, Minnie			Trask meadow	100	5.10
Sarah Cobb place	3000	79.80	Whitcomb, J. H. and H. C.		
Toof, J. A., Est.			Stoddard cottage	1750	46.56
Patrick Hare lot	200	5.10	Whitcomb, Cecil J.		
Trafton, Miles S. and Mayme			Jess Brown lot	50	1.27
Stratton homestead	1000	26.60	Wilcox, Perley		
			Camp on River No. 10	200	5.10

Name and Description	Valu- ation	Total Tax	Name and Description	Valu- ation	Total Tax		
Williams, Helen Lovejoy Elmont farm	4000	4000	102.00	Woods, Carol Cottage No. 3 on river	350	350	8.92
White, H. B. Barnes place	1400	1400	35.70	Woodward, Roby Cottage at lake	4000	4000	106.40
Whitney, Esther L. Annie Foster place	1300	1300	34.58	Worth, Erich Butterfield place	300		
Whitney, Roy V. Cottage at lake	3250	3250	86.45	½ int. on Mer- chant place	50	350	9.31
Whittemore, James F. Lots 16-17-18 Shadowland	275	275	7.32	Worcester, Alice L. Rixford pasture	25	25	.64
Woods, Richard D. Holman homestead	2000	2000	53.20	Wright, A. M. Lot at lake	2000	2000	53.20
Woodbury, Flora Sprout land	400	400	10.20	Weissenback, Robert Colliss farm	2000	2000	51.00
Woodell, Mark Naylor place	700	700	18.62	Yeaw, Ralph Cottage and land	600	600	15.30

912,880

UNLISTED TAXES

John Campanello,	\$2.00	Clarence Foley,	2.00
Wallace Shippee,	2.00	Ida Edgar,	2.00
Beulah Shippee,	2.00		

BUDGET OF THE TOWN OF CHESTERFIELD

ESTIMATES OF REVENUE AND EXPENDITURES FOR
THE ENSUING YEAR FEB. 1, 1938 TO JAN. 31, 1939
COMPARED WITH
ACTUAL REVENUE AND EXPENDITURES OF THE PRE-
VIOUS YEAR FEB. 1, 1937 TO JAN. 31, 1938

SOURCES OF REVENUE

	Actual Revenue Previous Year 1937	Estimated Revenue Ensuing Year 1938	Increase	Decrease
From state:				
Interest and dividends tax,	\$1,694 06 ✓	\$1,500 00		\$194 06
Savings bank tax,	119 64 ✓	100 00		19 64
For fighting forest fires,	6 23 ✓	125 00	\$118 77	
Bounties,	19 80			
Abatement of taxes,	2 62 ✓	2 62		
State aid refund,	20 07			
Pauper refund,	247 73 ✓	60 00		187 73
Flood,	37 90 ✓			
From local sources except taxes:				
Business licenses and permits,	62 00 ✓	62 00		
Rent of town hall and other buildings,	92 00 ✓	92 00		
Interest received on taxes and deposits,	63 95	63 95		

	Actual Revenue Previous Year 1937	Estimated Revenue Ensuing Year 1938	Increase	Decrease
Income of depart- ments:				
(a) Highway, including				
rental of equipment,	83 85 ✓			
Use of tractor, state,	62 00 ✓			
Chestnut posts, state,	48 00 ✓			
Income from mu- nicipally owned utilities:				
County poor and				
O. A. A.	468 73 ✓	200 00		268 73
Motor vehicle permit				
fees, 815 ✓	1,011 59 ✓	1,000 00		11 59
Soldiers' aid,	110 00 ✓			
From local taxes other than prop- erty taxes:				
(a) Poll taxes,	592 00	592 00		
(b) National bank stock taxes,	3 00	3 00		
Dog licenses,	319 00 ✓			
Amount raised by issue of bonds or notes:				
Temporary loans,	21,000 00			
Refunds,	43 25 ✓			
Trust funds,	400 00			

13
 12
 11
 10
 9
 8
 7
 6
 5
 4
 3
 2
 1

	Actual Revenue Previous Year 1937	Estimated Revenue Ensuing Year 1938	Increase	Decrease
Bank transfer,	1,081 25			
Bank credit,	10 ✓			
<hr/>				
Total revenues from all sources except property taxes,	\$27,588 67	\$3,800 57	\$118 77	\$681 75
*Amount to be raised by property taxes,		36,156 50		
<hr/>				
Total revenues,		\$39,957 07		

*Total estimated "Revenues from all sources except property taxes" deducted from total estimated "expenditures" should give estimated "amount to be raised by property taxes."

PURPOSES OF EXPENDITURES

	Actual Expenditures Previous Year 1937	Estimated Expenditures Ensuing Year 1938	Increase	Decrease
Current maintenance expenses:				
General government:				
Town officers' salaries,	\$1,605 00 ✓	\$1,605 00		1329.68
Town officers' expenses,	1,191 46 ✓	1,200 00	\$8 54	1133.46
Election and registration expenses,	76 43 ✓	250 00	173 57	76.43
Expenses town hall and other town buildings,	248 58 ✓	150 00		\$98 58
Protection of persons and property:				
Police department,	1,093 92 ✓	600 00	493 92	1061.80
Fire department,	291 38 ✓	500 00	208 62	293.55
Forest fire,	8 40 ✓	250 00	241 60	293.55
Health:				
Health department,	333 14 ✓	250 00		83 14
Highways and bridges:				
Snow removal,	1,687 45 ✓	2,000 00	312 55	
Town maintenance,	6,084 37 ✓	6,000 00		84 37
Street lighting,	1,650 00 ✓	1,700 00	50 00	1650.00
General expenses of highway department,	121 89 ✓	100 00		21 89
	7893.71			
	37.90			
	83.85			
	62			
	48			
	151.04			
	382.79			
	7510.92			7510.92

	Actual Expenditures Previous Year 1937	Estimated Expenditures Ensuing Year 1938	Increase	Decrease
Damage and legal expenses,	30 75 ✓	100 00	69 25	30.75
Libraries:				
Libraries,	135 00 ✓	135 00		134.79
Public welfare:				
Town poor,	1,425 75 ✓	1,500 00	74 25	
Old age assistance,	289 07	500 00	210 93	
Patriotic pur- poses:				
Memorial day and other celebrations,	137 19 ✓	140 00	2 81	137.19
Recreation:				
Parks and playgrounds, including band con- certs,	144 45 ✓	100 00		44 45 144.45
Public service enterprises:				
Cemeteries,	71 80 ✓	100 00	28 20	71.80
Interest:				
On temporary loans,	256 44 ✓	250 00		6 44 256.44
Taxes bought,	1,453 45 ✓			
Dog damage,	25 00 ✓			
Outlay for new construction and permanent improvement:				
Highways and bridges:				
Tree spray,	30 00 ✓			30.00
County poor,	704 44			704.44

	Actual Expenditures Previous Year 1937	Estimated Expenditures Ensuing Year 1938	Increase	Decrease
State aid construction—Town's share,	✓ 1979.93 2,000-00 ✓	2,000 00		1979.93 821.32
Deep well,	✓ 1,100 82 ✓			
Blinker,	✓ 180 02 ✓			
Fire siren,	✓ 391 30 ✓			
Fire house doors,	✓ 45 81 ✓			
New lands and buildings, beach house,	✓ 976 62 ✓			
New equipment, hose tower and tank,	✓ 249 98 ✓			
Auto permits,	✓ 81 25 ✓	80 00		1 25 81.25
Bounty,	11-60			
Indebtedness:				
Payments on principal of debt:				
(a) Temporary loans,	19,000 00 ✓			
(b) Bank transfer,	1,081-25 ✓			
(c) Trust funds,	400-00			
(d) Refunds,	55 97 ✓			
(e) Deficit of previous years,		2,553 48	2,553 48	
Payments to other governmental divisions:				
State taxes,	3,280 00 ✓	2,500 00		780 00
County taxes,	3,598 44 ✓	4,000 00	401 56	

180.02
391.30
249.98
821.32

1979.93
821.32
1100.82
976.62
2077.47

with a copy of
W. H. ...
311 ...

	Actual Expenditures Previous Year 1937	Estimated Expenditures Ensuing Year 1938	Increase	Decrease
Payments to school districts,	11,817 20	11,393 59		10999.01
Total expen- ditures,	\$63,365 62	\$39,957 07	\$4,335 36	\$1,614 04

ARTHUR H. POST,
MAURICE L. AMIDON,
FRED C. HUMPHREY,
MOSES H. CHICKERING,
CLARENCE K. LEWIS,
CHESTER M. BURNHAM,
ELSIE E. FOSTER,
CLIFFORD W. TUTTLE,
Budget Committee.

SUMMARY OF INVENTORY APRIL 1, 1937

	1274189.00		
Land and buildings,	\$1,289,549 00	✓	<i>1274189.00</i>
Electric plants, lands, etc.,	46,255 00	✓	<i>15360.00</i>
Horses 84,	4,390 00	✓	<i>1274549.00</i>
Mules 1, -	25 00	✓	
Oxen 14,	875 00	✓	
Cows 364,	13,695 00	✓	
Other neat stock 33,	785 00	✓	
Sheep 4,	20 00	✓	
Hogs 14,	300 00	✓	
Fowls,	3,007 00	✓	
Portable mills 9,	22,400 00	✓	<i>2411.00</i>
Boats and launches,	2,400 00	✓	
Wood and lumber,	15,660 00	✓	
Gas pumps and tanks 27,	2,140 00	✓	
Stock in trade,	7,550 00	✓	
	1,393,691.00	✓	
Total valuation,	\$1,409,051 00		
Total exclusive of soldiers exemption,	\$1,393,691 00		
475 polls,	\$950 00	✓	
National bank stock tax,	3 00	✓	
Soldiers exemptions,	15,360 00		
Taxes authorized:			
Town officers' salaries,	1,500 00		
Town officers' expenses,	900 00		
Election and registration expenses,	150 00		
Town Hall,	200 00		
Police department,	1,200 00		
Fire department,	300 00		

Health department,	250 00	
State Aid Construction,	1,966 00	
Town maintenance,	6,000 00	
Snow removal,	2,000 00	
Old age assistance,	500 00	
Street lighting,	1,740 00	
General expenses of highway department,	10 00	
Old home day,	130 00	
Deep well,	1,000 00	
Land and buildings,	1,050 00	
New equipment,	700 00	
Libraries,	135 00	
Town poor,	1,200 00	
Parks and playgrounds,	50 00	
Blinker light,	200 00	
Cemeteries,	100 00	
Damage and legal expenses,	75 00	
Interest,	250 00	
State tax,	3,280 00	
County tax,	3,598 44	
School tax,	10,034 00	
Total town and school appropriations,		\$38,518 44
Less estimated revenue and credits:		
Interest and dividend tax,	\$1,573 12	
Forest fires,	100 00	
Relief refunds,	450 00	
Savings bank tax,	120 00	
Motor vehicle permit fees,	900 00	
Hall rent,	60 00	
Interest on taxes,	90 00	
Permits and fees,	39 00	
Use of fire truck,	10 00	
Total,		\$3,342 12

Plus overlay,	\$1,315 80	
	<hr/>	
Net amount to be raised by taxation,		\$36,492 12
Less poll taxes 475,	\$950 00	
Less National bank stock tax,	3 00	
	<hr/>	
Amount to be raised by taxation,		\$35,539 12
Tax rate \$2.55		

Taxes to be committed to the collector:

Property taxes,	\$35,539 12	
Poll taxes,	950 00	
National bank stock tax,	3 00	
Precinct taxes,	986 74	
	<hr/>	
Collector's totals,		\$37,478 86

Comparative Statement of Appropriations and Expenditures
FISCAL YEAR ENDING JANUARY 31, 1938

	Amount Raised	Amount Spent	Unexpended bal. of appro.	Over-run
Town charges,	\$4,685 00	\$5,181 05		\$496 05
Town roads,	6,000 00	6,084 37		84 37
Snow removal,	2,000 00	1,687 45	\$312 55	
Paupers & O. A. A.	1,700 00	1,714 82		14 82
Libraries,	135 00	135 00		
Fire Dep't & Forest fire,	550 00	299 78	250 22	
Street lights,	1,740 00	1,650 00	90 00	
Old Home Day,	130 00	120 55	9 45	
Fire House Doors (Center),	50 00	45 81	4 19	
Hose tower & Booster tank,	200 00	249 98		49 98
Fire Siren (West Part),	500 00	391 30	108 70	
Town Beach House,	1,000 00	1,088 62		88 62
Blinker light (Spofford),	200 00	180 02	19 98	
Deep Well (Center),	1,000 00	1,100 82		100 82
State Aid (Bear Hill),	1,966 00	1,979 93		13 93
	\$21,856 00	\$21,909 50	\$795 09	\$848 59
Net overdraft of appropriations,			53 50	
			\$848 59	\$848 59

FINANCIAL REPORT
OF THE TOWN OF CHESTERFIELD
 IN CHESHIRE COUNTY
 For the Fiscal Year Ended January 31, 1938

Certificate

This is to certify that the information contained in this report was taken from official records and is complete to the best of our knowledge and belief.

February 8, 1938.

JOHN MANSLEY,
 ALBERT D. BERRY,
 CHESTER M. BURNHAM,
 Selectmen.

ADA W. ALLEN,
 Treasurer.

ASSETS

Cash :		
In hands of treasurer (Do no include sinking funds),	\$872 50	
In hands of officials :		
(a) Walter J. Post,	91	
(b) Harry E. Winn,	1 00	
(c) Harry E. Winn,	99	
Accounts due to the town—		
Due from state :		
(a) Pauper refund,	32 12	
(b) Bounties,	11 60	

Due from county:		
(a) Pauper refund,	132 55	
Other bills due town:	321	
(a) Walter Dunbar, rent of plow,	164.67	
Unredeemed taxes (current and previous years' sales)),		
Current	582 68	
Previous,	287 73	
Uncollected taxes:		
(a) Levy of 1937,	4,200 60	
Total assets,		\$6,325 72
Excess of liabilities over assets, (net debt),		2,553 48
Grand total,		\$8,879 20

LIABILITIES

Accounts owed by the town:		
Bills outstanding, Delill,	\$ 20	
Due to county, O. A. A.,	51 00	
Due to school districts:		
(a) Dog licenses,	294 00	
(b) Balance of appropriation,	4,534 00	
Outstanding temporary loans in anti- cipation of taxes:		
Keene National bank,	4,000 00	
Total liabilities,		\$8,879 20
Grand total,		\$8,879 20

RECEIPTS

Current revenue:

From local taxes:

Total taxes committed		
to collector, 1937,	\$36,502	12
Less discounts and		
abatements, 1937,	1,167	21
Less uncollected, 1937,	4,200	60
1. Property taxes, current year,		
actually collected,	\$30,539	31 ✓
2. Poll taxes, current year, ac-		
tually collected,	592	00 ✓
3. National bank stock taxes,	3	00 ✓
	<hr/>	
Total of current year's collections,	\$31,134	31
4. Property and poll taxes, previous		
years, actually collected,	3,737	14 ✓
5. Tax sales redeemed,	1,161	62 ✓

From state:

6. For highways and bridges:		
(a) For flood damage,	\$37	90 ✓ <i>de l. ct</i>
(d) For state aid construction, refund,	20	07
7. Reimbursement for town poor,	247	73 ✓
8. Interest and dividend tax,	1,694	06 ✓
9. Use of tractor,	62	00 ✓
10. Abatement of state tax,	2	62 ✓
11. Savings bank tax,	119	64 ✓
12. Chestnut posts,	48	00 ✓
13. Fighting forest fires,	6	23 ✓
14. Bounties,	19	80 2,258 05 ✓

From county:

15. For support of poor,	468	73 ✓
16. For aid furnished soldiers,	110	00 ✓ 578 73 ✓

From local sources, except taxes:	
17. Dog licenses,	319 00 ✓
18. Business licenses and permits,	62 00 ✓
20. Rent of town property, hall rent,	92 00 ✓
21. Interest received on taxes,	63 95
22. Rent of equipment,	83 85 ✓
27. Registration of motor vehicles, 1937 permits,	948 46 ✓
Registration of motor vehicles, 1938 permits,	63 13 ✓
28. National forest reserve,	<u>1,011.59</u> 1,632 39
Total current revenue receipts,	\$40,502 24
Receipts other than current revenue:	
29. Temporary loans in anticipation of taxes during year,	\$21,000 00
34. Refunds,	41 15 ✓
36. Trust funds,	400 00
Bank transfer,	1,081 25
Bank credit,	10 ✓
Total receipts other than current revenue,	\$22,522 50
Total receipts from all sources,	\$63,024 74
Cash on hand Februray 1, 1937,	1,213 38 ✓
Grand total,	\$64,238 12

PAYMENTS

Current maintenance expenses:	
General government:	
1. Town officers' salaries,	\$1,605 00 ✓
2. Town officers' expenses,	1,191 46 ✓
3. Election and registration expenses,	76 43 ✓

4. Auto permits,	81 25	
5. Expenses town hall and other town buildings,	248 58	\$3,202 72
Protection of persons and property :		
6. Police department, including care of tramps,	1,093 92	
7. Fire department, including forest fires,	299 78	
9. Bounties,	11 60	
10. Damage by dogs,	25 00	1,430 30
Health :		
11. Health department, including hospitals,	333 14	333 14
Highways and bridges :		
14. Snow,	1,687 45	
15. Fire house doors,	45 81	
16. Town maintenance,	6,084 37	
17. Street lighting and sprinkling,	1,650 00	
18. General expenses of highway department,	121 89	9,589 52
Libraries :		
19. Libraries,	135 00	
Charities :		
20. Old age assistance,	253 19	
21. Town poor,	1,482 63	
22. County poor,	683 44	2,419 26
Patriotic purposes :		
23. Aid to G. A. R. Memorial Day exercises,	7 19	
24. Old Home Day,	130 00	137 19

Recreation :		
25. Parks and playgrounds, including band concerts,	144 45	144 45 ✓
Public service enterprises :		
27. Bank transfer,	1,081 25	
28. Cemeteries,	71 80	
Unclassified :		
Tree spray,	30 00	
29. Damages and legal expenses,	30 75	
30. Taxes bought by town,	1,453 45	2,667 25
Total current maintenance expenses,		<u>\$20,058 83</u>
Interest :		
32. Paid on temporary loans in anticipation of taxes,	256 44	
Total interest payments,		<u>\$256 44</u> ✓
Outlay for new construction and permanent improvements :		
36. Highways and bridges—state aid construction,	1979.93 \$2,000 00	
37. Fire siren,	391 30	
39. Blinker light,	180 02	
43. Lands and buildings,	1,086 62	
44. New equipment,	1,240 80	
Total outlay payments :		<u>\$4,898 74</u>
Indebtedness :		
45. Payments on temporary loans in anticipation of taxes,	19,000 00	
48. Refunds,	55 97	
49. Payments to trustees, trust funds,	400 00	
Total indebtedness payments,		<u>\$19,455 97</u>

Payments to other governmental divisions:	
51. Taxes paid to state,	\$3,280 00
52. Taxes paid to county,	3,598 44
54. Payments to school districts,	<u>11,817 20</u>
Total payments to other governmental divisions,	\$18,695 64
Total payments for all purposes,	\$63,365 62
Cash on hand January 31, 1938,	872 50
Grand total,	<u>\$64,238 12</u>

SCHEDULE OF TOWN PROPERTY

DESCRIPTION	VALUE
Town hall, land and buildings,	\$10,000 00
Furniture and equipment,	1,100 00
Libraries, land and buildings,	1,000 00
Fire department, land and buildings,	3,500 00
Equipment,	2,500 00
Highway department equipment,	10,000 00
Schools, lands and buildings,	6,000 00
Equipment,	2,000 00
All land and buildings acquired through tax collectors' deeds:	
Reed and Pressler woodlot,	500 00
Giffin Coal Co. woodlot,	200 00
Alba Farr homestead,	1,000 00
3 Sam Winn lots,	250 00
Town beach and beach house,	2,000 00
Other properties,	3,000 00
All other property and equipment:	
Lot in Spofford cemetery,	<u>25 00</u>
Total,	<u>\$41,975 00</u>

REPORT OF TOWN CLERK

1. Receipts:		
a. Dog licenses:		
108 males @ \$2.00,	\$216 00	
1 male for 6 months,	1 00	
14 females @ \$5.00,	70 00	
Woodside Kennels,	20 00	
Hillside Kennels,	12 00	
		\$319 00
b. Automobile permits:		
Year of 1937, 315 permits,	\$948 46	
Year of 1938, 10 permits,	63 13	
		\$948 46
c. Filing fees:		
For March Town Meeting, 1937,	\$28 00	
		\$28 00
2. Payments to treasurer:		
For dog licenses,	\$319 00	
For automobile permits,	948 46	
For filing fees,	28 00	
		\$1,295 46
3. Vital statistics:		
Number of births registered in 1937,		19
Number of marriages registered in 1937,		9

Number of deaths registered in 1937,	13
Number of deaths registered, brought here for burial, in 1937,	12

Respectfully submitted,
IMOGENE L. CHICKERING,
Town Clerk.

36492.12
 + present 986.74
 37478.86

STATEMENT OF HARRY E. WINN, COLLECTOR

Amount due January 31, 1938, on 1936 book,		\$3,637 64
Interest,		157 09
		\$3,794 73
Amount paid treasurer,	\$3,738 13	
Abatements,	56 60	
		\$3,794 73
Amount committed, 1937,		\$36,492 12
Unlisted taxes and interest,		73 95
		\$36,566 07
Amount paid treasurer,	\$31,198 26	
Abatements,	64 88	
Discounts,	1,102 33	
Balance on book,	4,155 45	
Cash no hand,	45 15	
		\$36,566 07

Respectfully submitted,
 HARRY E. WINN,
 Collector.

UNCOLLECTED TAXES, JANUARY 31, 1938

Blanche Beverstock,		\$63 75
Adella M. Black Est.,		38 25
H. M. Blake,		35 70
Camp Marquette,		311 10

Forrest Carey,	14 02
Lawrence Chapman,	3 82
Chesterfield Lumber Co.,	25 50
H. E. Chickering Est.,	39 53
Paul D. Cobb,	38 25
Rene Disjardis,	64
Dickinson Estate,	178 50
Charles Dunbar and Wallace Robbins,	28 43
Clarence G. Foley,	7 65
Leroy F. Hartt,	207 82
Deane Hawkins,	30 60
Ogden M. Hoagland,	281 77
Samuel Kirkwood,	1 27
Emma K. Little,	102 00
Fred H. Lloyd,	5 10
Warren F. Manley,	255 00
Mrs. Florence Marshall,	38 25
George C. and Blanche J. Martel,	64
Stuart Merwin,	89 25
Miss Jessie Mitchell,	33 15
D. A. Mosher,	5 10
Harry Nosek,	206 55
P. L. O'Connor,	5 10
Norbert Patnode,	1 91
Cless Davis,	15 30
John Reynolds,	64
Byron Robertson Est.,	12 75
Emil and Clara Rothe,	12 75
Nellie Ryder,	98 17
Antonette Sherri,	100 00
Dwight Smith,	43 99
Lilla G. Taft,	5 10
Ethel A. Thomas,	6 75
Fred Thomas,	2 55
Bidwell Wager,	64

Earl Walston,	12 75
H. B. White,	35 70
Mark Woodell,	17 85
Carol Woods,	8 92
Alice L. Worcester,	64
Bernest Aldrich,	2 00
Emma M. Aldrich,	2 00
Richard Amidon,	5 83
Alice Armstrong,	2 00
Fred Ball,	22 41
John Ball,	54 28
Mabel Brown Est.,	8 93
Henry Charles Capin,	2 00
Emroy G. Carey,	28 15
Esther Carey,	2 00
Donald Chickering,	2 00
Ned Clancy,	2 00
Edna Clancy,	2 00
Bertha Conant,	2 00
Elmer Cook,	2 00
Vina Cox,	11 51
Laurence Crowell,	2 00
Mildred Crowell,	2 00
Merrill Dodge,	24 96
Minnie Faunce,	27 50
Olin J. Faunce,	2 00
Lester Feather,	2 00
Emil Ferm,	28 01
Mrs. Emil Ferm,	2 00
James T. B. Fisher,	53 00
Marion Fisher,	2 00
Haskell Fuller,	2 00
Mildred Fuller,	2 00
William E. Fuller,	2 00
Louise Heath,	2 00

Avis Herrick,	2 00
Maverette Herrick,	2 00
Louis Herrick,	7 35
R. A. Hitchcock,	2 00
Alice Holman,	2 00
Myrtle Howell,	22 40
Richard Howell,	2 00
E. E. Hoyt,	118 02
E. L. Hoyt,	2 00
Bertha Hoyt,	2 00
Leland Hubbard,	57 08
Olive Hunt,	2 00
Lula Ingalls,	2 00
Walter Jacobson,	2 00
Mildred E. Jacobson,	2 00
Lorenzo Jefts,	21 76
Rose Jefts,	2 00
Herbert Jordan,	2 00
Elizabeth Jordan,	58 10
Clinton E. Joslyn,	44 08
Olive Joslyn,	2 00
Herbert Joslyn,	2 00
Oliver LeBlanc,	2 00
Beulah Lynch,	2 00
Freeman Marchant,	18 57
Ella R. Marchant,	2 00
C. J. Merrifield,	84 87
Eva C. Merrifield,	2 00
Robert Mitchell,	60 32
Ann E. Mitchell,	2 00
Lucius Mills,	2 00
Henry Nelson,	2 00
George Newstead,	2 00
Phillip Nurse,	2 00
Mrs. O'Donnell,	2 00

Edward Ogilvie,	89
Mrs. Jessie Ogilvie,	2 00
Jessie Ogilvie,	2 00
Amy L. Paine,	2 00
Hazel Paine,	2 00
Lyra Pattridge,	2 00
May L. Pearson,	73 40
Michel Pequla,	9 65
William I. Perry,	2 00
Ruth E. Perry,	2 00
Cyrus Perkins,	2 00
Guy Pierce,	10 67
Frank Pierce Est.,	24 86
Nahum Pierce,	9 26
Alberta Pierce,	2 00
Bessie Plante,	21 12
Perley Plante,	2 89
Harry Prouty,	5 82
Mrs. Harry Prouty,	2 00
Henry Putnam,	102 64
Pearl Rawson,	2 00
Wilford Richardson,	36 17
Beatrice Richardson,	2 00
George Robbins,	3 82
Nellie Robbins,	2 64
Jack Robbins,	2 00
Agnes Riley,	2 00
Thomas Ryder,	2 00
Helen Ryder,	2 00
George Sanderspree,	2 00
Jeanette Sanderspree,	2 00
Eva Sanderspree,	108 46
Julian Scharri,	2 00
Clarence Shippee,	33 91
Raymond Slack,	2 00

Leon Smith,	2 00
Theadore Smith,	2 00
Edna Springer,	2 00
Clarence Springer,	60 52
Edythe Stevens,	91 25
Erwin Stoddard,	31 32
Marion Stoddard,	2 00
George W. Stratton,	2 00
Beatrice Streeter,	2 00
Harold Streeter,	2 00
Kenneth Streeter,	2 00
Mrs. Kenneth Streeter,	2 00
A. P. Tarbox,	33 88
Ethel Tarbox,	2 00
Elzeda Thompson,	14 75
Roland Thompson,	2 00
Raymond Underwood,	7 23
Corinne Underwood,	2 00
Frank Watts,	58 10
Margaret Watts,	2 00
Clinton Wheeler,	2 00
Frank Whorfe,	2 00
Mary Whorfe,	2 00
James A. Wilson,	2 00
Cherry Winchester,	2 00
Adele Whitney,	2 00
William Whitney,	2 00
C. D. York and Daisy Allen,	59 92
Mildred Dodge,	2 00

TOWN TREASURER'S REPORT

Balance in Ashuelot-Citizens National Bank, January 31st, 1937,	\$710 79
Cash in hands of treasurer, January 31st, 1937,	502 59

RECEIPTS

Harry E. Winn, collector:

1936 taxes,	\$3,737 14
1937 taxes,	31,198 26
Redeemed taxes,	1,119 81
Interest on redeemed taxes,	41 81
	11 61.62

State of New Hampshire:

Bounties,	19 80
Forest fires,	6 23
Savings bank tax,	119 64
Distribution of interest and division tax,	1,694 06
Abatement of state tax,	2 62
Refund pauper account,	247 73
Flood relief,	37 90
Use of tractor,	62 00
Fence posts,	48 00
State aid refund,	20 07

Imogene L. Chickering:

Filing fees,	28 00
1937 auto permits,	948 46
1937 dog licenses,	319 00
1938 auto permits,	63 13

County Commissioners:

Pauper account,	468 73
Dependent soldiers,	110 00

Keene National Bank:

Selectmen's notes,	21,000 00
Ashuelot-Citizens National Bank,	1,081 25

Trust Funds:

George Amidon Estate,	200 00
Jennie Bouroughs,	100 00
Alice Hurford,	100 00

John Mansley:

Hall rental,	87 00 ✓
Dance licenses,	14 00 ✓

Albert Berry:

Hall rental,	5 00 -
Milk licenses,	20 00 ✓

Forest Fires:

C. K. Lewis,	2 00 -
--------------	--------

Harold Ingalls:

Use of pump,	2 40 -
--------------	--------

Refunds:

P. L. Rawson, (doctor's account),	25 00
Paul Penning,	4 70
Town of Hinsdale,	19 95
Alice Spaulding, (Old Home Day),	9 45 -
Lyle Chickering,	2 10
Highway department,	42 50 -
Refund on bank statement,	10

103.80

25.00
4.70
2.10
19.95
51.75

31.70
19.95
51.65

Arthur Whitcomb:

Use of tractor,	19 00
-----------------	-------

Total Receipts:

February 1st, 1937 to January 31st, 1938,	\$64,240 22
Selectmen's orders paid,	63,367 72

Balance Keene National Bank January 31st, 1938,	\$872 50
---	----------

Respectfully submitted,

ASA W. ALLEN,

Treasurer.

DETAILED STATEMENT OF EXPENSES

TOWN OFFICERS' SALARIES

John Mansley, assessing and keeping books,	\$150 00
Chester M. Burnham, assessing,	125 00
Albert D. Berry, assessing,	125 00
John Mansley, overseer of poor and keeping books,	50 00
Chester M. Burnham, overseer of poor,	15 00
Albert D. Berry, overseer of poor,	15 00
John Mansley, chairman, board of selectmen and books,	250 00
Chester M. Burnham, selectman,	125 00
Albert D. Berry, selectman,	125 00
Imogene L. Chickering, town clerk,	75 00
Ada W. Allen, treasurer,	250 00
Harry E. Winn, tax collector,	300 00
	\$1,605 00

TOWN OFFICERS' EXPENSES

William E. Nurse, trustee of trust expenses,	\$17 09
Harold E. Randall, auditor 1936,	28 00
John P. Redding, auditor 1936,	30 00

paid in 1927 for...
to...
Treasurer's Office.

*Received seal,
 am. Sal.*

town poor

New Eng. Tel. & Tel., toll calls,	1 00 —
Chase Book Store, town officers' supplies,	59 95 —
New Eng. Tel. & Tel., toll calls,	40 —
Albert D. Berry, officers' bonds,	107 50 —
Maurice L. Amidon, budget committee,	20 00 —
Maurice L. Amidon, appointing auditor,	4 99 —
New Hamp. Assessors Ass'n dues,	2 00 —
Winfield Chaplin, 118 transfers,	23 60 —
Chase Book Store, officers' supplies,	19 53 —
Sentinel Printing Co., town reports,	300 18 —
New Eng. Tel. & Tel., toll calls,	60 —
Ada W. Allen, telephone and postage,	3 39 —
Fred Humphrey, budget committee,	20 00 —
C. K. Lewis, budget committee,	20 00 —
John Mansley, town reports,	50 00 —
John Mansley, trip to Concord and expenses,	11 10 —
C. W. Tuttle, budget committee,	20 00 —
Chase Book Store, town officers' supplies,	9 40 —
Agnes B. Chickering, budget committee,	20 00 —
New Eng. Tel. & Tel., toll call,	60 —
Chase Book Store, town officers' supplies,	4 80 —
John Mansley, tax meeting and dinners,	6 65 —
A. H. Post, budget committee,	20 00 —
New Eng. Tel. & Tel., toll calls,	1 90 —
C. W. Tuttle, registered letters,	2 34 —
Reg. of Deeds, mortgage lists,	17 00 —
New Eng. Tel. & Tel., toll calls,	1 25 —
The Sanderson Press, stationery,	6 75 —
C. K. Lewis, collector's postage,	15 98 —
New Eng. Tel. & Tel., toll calls	30 —
C. K. Lewis, collector's postage,	3 00 —
Chase Book Store, town officers' supplies,	5 60 —
Sentinel Printing Co., letter heads,	4 00 —
Winfield Chaplin, copy hotel deed,	5 00 —
New Eng. Tel. & Tel., toll calls,	80 —

Moses H. Chickering, budget committee,	20 00	✓
New Eng. Tel. & Tel., toll calls,	35	✓
State welfare dept., index cards,	15	✓
John Mansley, use of car assessing, making up prec. book, ex. Manchester Assn's meeting,	67 95	✓
New Eng. Tel. & Tel., toll calls,	75	✓
Ada W. Allen, postage and tel.,	4 00	✓
Ashuelot-Citizens National Bank, safe dep. box,	5 50	✓
Chase Book Store, town officers' supplies,	6 74	✓
John Mansley, paid to planning and dev. commission,	29 50	✓
New Eng. Tel. & Tel., toll calls,	1 30	✓
Chase Book Store, town officers' supplies,	60	✓
New Eng. Tel. & Tel., toll calls,	90	✓
Viola V. Tuttle, trustee of trust expenses,	21 96	✓
Harry E. Winn, Manchester and Keene,	22 81	✓
Henry C. Chickering, trucking,	75	✓
Imogene L. Chickering, postage and supplies,	3 00	✓
Albert D. Berry, use of car and expenses,	35 50	✓
C. M. Burnham, budget committee,	20 00	✓
C. M. Burnham, use of car and expenses,	30 00	✓
John Mansley, use of car and expenses,	55 00	✓
Total,	<u>\$1,191 46</u>	✓

ELECTION AND REGISTRATION

Pauline Record, ballot clerk,	\$4 00	✓
Paul Penning, ballot clerk,	4 00	✓
William R. Gallagher, ballot clerk,	4 00	✓
Shirley Bevis, ballot clerk,	4 00	✓
Richard Chickering, ballot clerk,	4 00	✓
Alice L. Spaulding, ballot clerk,	4 00	✓
E. J. Winslow, moderator,	10 00	✓
Floyd M. Fuller, supervisor,	12 00	✓
Maurice L. Amidon, supervisor,	12 00	✓
Sentinel Printing Co., ballots,	2 63	✓

Henry C. Chickering, supervisor and mileage,	15 80
--	-------

	\$76 43 ✓
--	-----------

TOWN HALL

Public Service Co., lights,	2 56
Pearson Brothers, chemical,	1 50
Public Service Co., lights,	1 00
John L. Castle, cord of wood,	8 00
Public Service Co., lights,	1 76
Paul M. Penning, supplies,	94
Public Service Co., lights,	3 20
Public Service Co., lights,	1 12
Public Service Co., lights,	1 44
A. H. Post, town hall repairs,	173 70
A. H. Post, town hall repairs,	4 05
Eugene S. Smith, tuning piano,	5 00
Public Service Co., lights,	1 00
A. H. Post, plumbing,	80
Public Service Co., lights,	4 24
Public Service Co., lights,	1 00
Public Service Co., lights,	1 00
John Castle, cord of wood,	8 00
Public Service Co., lights,	1 00
School Board, chemical,	6 00
Paul M. Penning, supplies,	1 27
Estate of C. H. Spaulding, janitor of hall,	20 00

	\$248 58 ✓
--	------------

POLICE

Lyle P. Blake, special officer,	\$66 66
Lyle P. Blake, special officer,	66 66
Lyle P. Blake, special officer,	79 00
Lyle P. Blake, special officer,	79 00
Lyle P. Blake, special officer,	79 00
Lyle P. Blake, special officer,	79 00

Lyle P. Blake, special officer,	79 00
Lyle P. Blake, special officer,	79 00
Lyle P. Blake, special officer,	39 50
Lyle P. Blake, special officer,	39 50
Lyle P. Blake, special officer,	39 50
Lyle P. Blake, special officer,	39 50
Lyle P. Blake, special officer,	39 50
C. K. Lewis, food for tramps,	50
C. H. Spaulding, constable,	4 00
Bertha Underwood, 20 tramps,	20 00
Bertha Underwood, 43 tramps,	43 00
Bertha Underwood, 19 tramps,	19 00
C. W. Tuttle, food for tramps,	80
C. W. Tuttle, food for tramps,	20
Bertha Underwood, 4 tramps,	4 00
Bertha Underwood, 15 tramps,	15 00
The Sanderson Press, license blanks,	9 75
Bertha Underwood, 14 tramps,	14 00
C. W. Tuttle, food for tramps,	1 00
Bertha Underwood, 28 tramps,	28 00
Bertha Underwood, 18 tramps,	18 00
Ora Underwood, police duty,	4 00
Henry Bingham, police duty,	4 00
Bertha Underwood, 22 tramps,	22 00
Bertha Underwood, 43 tramps,	43 00
Clifford W. Tuttle, food for tramps,	50
John Dennis, police duty,	3 00
Harold E. Randall, constable,	5 00
Bertha Underwood, 23 tramps,	23 00
Paul M. Penning, food for tramps,	1 00
Harold E. Randall, constable,	6 35
	<hr/>
	\$1,093 92 ✓

FIRE DEPARTMENT

Cheshire Oil Co., oil,	\$15 87
Public Service Co., lights,	2 00

James H. Austin, oil,	7 40
James H. Austin, oil,	6 94
Cheshire Oil Co., oil,	19 67
Public Service Co., lights,	2 00
Cheshire Oil Co., oil,	17 87
C. K. Lewis, gas,	1 62
Public Service Co., lights,	2 00
Paul M. Penning, supplies,	2 30
Cheshire Oil Co., oil,	10 21
Public Service Co., lights,	2 00
Paul M. Penning, supplies,	9 79
C. K. Lewis, supplies,	3 01
Harold Ingalls, work on siren,	1 33
Bernard Chickering, wind fire,	2 80
Walter Parker, wind fire,	2 80
Shirley Bevis, wind fire,	1 60
Town of Brattleboro, wind fire,	47 00
Public Service Co., lights,	2 00
Public Service Co., lights,	1 00
Public Service Co., lights,	3 00
Arthur H. Blanchard, supplies,	1 58
Arthur H. Blanchard, supplies,	4 28
Fred Houghton, labor on pump,	40
Public Service Co., lights,	2 00
Public Service Co., lights,	1 00
C. K. Lewis, supplies,	1 41
C. K. Lewis, supplies,	1 65
Cheshire Oil Co., oil,	6 90
James H. Austin, oil,	9 00
James H. Austin, oil,	10 00
Public Service Co., lights,	2 00
Cheshire Oil Co., oil,	21 85
Public Service Co., lights,	2 00
Harold Ingalls, labor on fire house,	3 40
Harold Ingalls, labor on fire house,	1 72

James H. Austin, oil,	12 00
James H. Austin, oil,	9 00
Betterley & Avery, fire supplies,	1 50
R. H. Brown & Co., fire ropes and pulleys,	18 13
Paul M. Penning, supplies,	4 00
Carl F. Carlson, labor on fire house,	10 00
Henry C. Chickering, trucking,	50
C. K. Lewis, supplies,	85

299.78 ~~\$291 58~~
840

FOREST FIRE

C. K. Lewis, forest fire,	\$4 90
A. H. Post, forest fire,	3 50

\$8 40

BOUNTIES

Albert D. Berry, 9 hedgehog noses,	\$1 80
John Mansley, 38 hedgehog noses,	7 60
Chester M. Burnham, 11 hedgehog noses,	2 20

~~\$11 60~~

DAMAGE BY DOGS

Charles H. Spaulding, dog constable,	\$25 00
--------------------------------------	---------

HEALTH DEPARTMENT

Richard Howell, cleaning dump,	\$8 00
Richard Howell, cleaning dump,	3 60
George Robbins, cleaning dump,	3 20
Ned Clancy, cleaning dump,	3 20
Sentinel Printing Co., health cards,	2 75
Joe Bellassi, cleaning dump,	3 20
Walter Dunbar, cleaning dump,	3 20
Chester M. Burnham, cleaning dump,	2 40
Chester M. Burnham, cleaning dump,	6 40
Floyd Lewis, cleaning dump,	4 00

Walter J. Post, gravelling Marquette entrance to lake,	18 80
Walter J. Post, work on dump,	9 60
Harold E. Randall, health officer's expenses,	75 00
Arthur H. Post, gate house repairs,	76 51
E. J. Stoddard, dump rent and damage,	25 00
Frank Whorfe, cleaning dump, 3 months,	12 00
Harold E. Randall, health officer's expenses,	52 48
Frank Whorfe, cleaning dump, 3 months,	13 00
John Mansley, use of car,	10 00
C. W. Tuttle, supplies,	80

\$333 14 ✓

TREE SPRAYING

Bartlett Tree Co., tree spraying, W. Chesterfield,	\$30 00
--	---------

FIRE SIREN

Paul Penning, freight on siren,	\$4 79
A. H. Post, work on fire siren,	8 74
Sterling Siren Co., fire siren,	320 63
Henry & Johnson, wiring siren,	57 14

\$391 30 ✓

SNOW REMOVAL

A. H. Post, repairs to tractor doors, (house),	\$14 93
Clyde Coombs, ice caulks,	110 00
Clyde Coombs, tractor repairs,	23 90
James H. Austin, oil,	10 00
Walter J. Post, agent,	529 96
Lyle B. Chickering, agent,	770 11
Roger C. Spaulding, agent,	228 55

\$1,687 45 ✓

HIGHWAYS AND BRIDGES

Walter J. Post, Spofford agent,	\$1,999 50
Roger C. Spaulding, Chesterfield agent,	1,967 34

Lyle B. Chickering, West Chesterfield agent,	2,117 53
	<hr/>
	\$6,084 37 ✓

STREET LIGHTING

Henry & Johnson, blinker repairs,	\$3 00
Paul M. Penning, bulbs,	90
Public Service Co., bulbs,	3 60
Henry C. Chickering, services,	3 00
Public Service Co., street lights,	1,639 50
	<hr/>
	\$1,650 00 ✓

GENERAL HIGHWAY EXPENSES

P. L. Rawson, 200 fence posts,	\$50 00
C. M. Burnham, trucking,	6 40
A. H. Post, signs,	13 96
John Mansley, selectmen's expenses, Concord, Keene,	
Brattleboro, (flood),	25 00
E. F. Sutton, painting signs,	17 50
A. H. Post, signs,	7 00
Granite studio, Channel road expenses,	2 03
	<hr/>
	\$121 89 ✓

LIBRARIES

George E. Joslin, library appropriation,	\$135 00
	<hr/>
	\$135 00 ✓

TOWN POOR

Dr. George Prevost, Anderson case,	\$5 10
State Cancer Commission, Newton H. Darling,	53 62
City of Keene, Harland Nurse,	71 05
City of Keene, George Stratton,	14 25
Harry E. Winn, milk for Howells,	4 48
C. K. Lewis, Howell case,	20 00
C. K. Lewis, Farr case,	12 00

C. W. Tuttle, George Robbins,	4 00
Mrs. Clifford Hills, Amidon children,	30 00
County Commissioners, Richard Howell hospital,	32 14
C. W. Tuttle, George Robbins,	8 00
City of Keene, Harlan Nurse,	56 65
City of Keene, George Stratton,	26 50
C. K. Lewis, Richard Howell,	25 00
C. K. Lewis, Alba Farr,	15 00
Mary L. Hills, Amidon children,	30 00
John R. Malloy, Richard Howell case,	5 00
State Cancer Commission, Newton Darling case,	53 75
City of Keene, Harlan Nurse,	50 85
City of Keene, George Stratton,	12 00
John Mansley, Lester Heath case,	5 00
Harry E. Winn, Howell, milk,	4 96
Albert D. Berry, Lester Heath case,	2 00
Harry E. Winn, Howell, milk,	4 80
C. W. Tuttle, Clancey case,	3 00
C. K. Lewis, Howell case,	15 00
C. K. Lewis, Alba Farr,	12 02
Paul Penning, pauper aid,	5 90
Mary L. Hills, Amidon children,	30 00
State of New Hampshire, Newton Darling,	23 32
City of Keene, Harlan Nurse,	43 50
City of Keene, George Stratton,	27 98
Mary L. Hills, Amidon children,	30 00
C. K. Lewis, Alba Farr,	12 00
Harry E. Winn, Howell, milk,	4 96
City of Keene, Harlan Nurse,	43 80
City of Keene, George Stratton,	58 41
C. K. Lewis, Alba Farr case,	12 32
Mary L. Hills, Amidon children,	30 00
Mary L. Hills, Amidon children,	30 00
C. K. Lewis, Alba Farr case,	11 29
State Cancer Commission, Newton Darling,	24 92

City of Keene, Harlan Nurse case,	27 30
Mary L. Hills, Amidon children,	30 00
Harry E. Winn, Howell, milk,	9 92
C. K. Lewis, Alba Farr case,	12 00
C. K. Lewis, Alba Farr case,	12 00
Mary L. Hills, Amidon children,	30 00
Harry E. Winn, Howell, milk,	4 80
Mary L. Hills, Amidon children,	30 00
C. K. Lewis, Farr case,	12 00
City of Keene, Harlan Nurse case,	4 50
Harry E. Winn, Howell, milk,	4 96
Harry E. Winn, Howell, milk,	4 80
C. K. Lewis, Alba Farr case,	12 00
Mary L. Hills, Amidon children,	30 00
Harry E. Winn, Howell, milk,	4 96
C. W. Tuttle, Clancey case,	3 64
C. W. Tuttle, Robbins case,	8 61
Paul M. Penning, Grace Pattridge case,	1 07
Mary L. Hills, Amidon children,	30 00
C. K. Lewis, Howell case,	10 10
C. K. Lewis, Alba Farr case,	12 00
City of Keene, Harlan Nurse case,	63 99
James Robertson, Anderson case,	12 92
C. W. Tuttle, Clancey case,	4 00
C. W. Tuttle, Freeman Marchant case,	8 00
Mary L. Hills, Amidon children,	30 00
Harry E. Winn, Howell, milk,	4 96
Henry C. Chickering, Grace Pattridge case,	3 50
C. K. Lewis, Howell case,	25 00
C. K. Lewis, Alba Farr case,	11 75
C. M. Burnham, Farr case,	2 40
City of Keene, Nourse case,	52 00
H. E. Winn, Howell, milk,	4 88

\$1,482 63

~~1,482.63~~

4562.63

COUNTY POOR

C. K. Lewis, Frank Patinode case,	\$10 00
C. W. Tuttle, soldier's aid,	20 00
C. W. Tuttle, soldier's aid,	20 00
C. W. Tuttle, soldier's aid,	5 00
C. K. Lewis, Patinode and Joslyn case,	17 50
John H. Ball, Wheeler case,	24 96
C. K. Lewis, Patinode and Joslyn case,	14 99
Paul M. Penning, county aid,	13 98
John N. Ball, Wheeler case,	32 02
C. K. Lewis, Patinode case,	10 00
C. W. Tuttle, soldier's aid,	25 00
John N. Ball, Wheeler case,	32 39
C. K. Lewis, Patinode case,	12 50
C. W. Tuttle, soldier's aid,	10 00
John N. Ball, Wheeler case,	40 30
C. K. Lewis, Patinode case,	10 04
Henry C. Chickering, Lilly Flavin case,	6 00
Henry C. Chickering, Wheeler, milk,	4 80
C. K. Lewis, Aldrich and Patinode case,	21 48
John N. Ball, Wheeler case,	31 76
Agnes Chickering, Gaylor Aldrich case,	35 00
C. K. Lewis, Patinode case,	9 99
John N. Ball, Wheeler case,	24 34
Henry C. Chickering, Wheeler, milk,	6 00
Henry C. Chickering, Wheeler, milk,	6 20
C. K. Lawis, Patinode case,	10 04
John N. Ball, Wheeler case,	24 30
John N. Ball, Wheeler case,	24 85
Henry C. Chickering, Wheeler, milk,	6 00
C. K. Lewis, Patinode case,	15 50
Emroy Carey, Crowell case,	1 50
Henry Plante, Crowell case,	1 50
John N. Ball, Wheeler case,	30 79
Paul M. Penning, Crowell case,	8 02

C. K. Lewis, Joslyn and Patinode case,	22 99
H. C. Chickering, Wheeler milk,	6 20
Paul M. Penning, Crowell case,	8 00
Henry Plante, Crowell case,	1 50
Emroy Carey, Crowell case,	1 50
John N. Ball, Wheeler case,	24 13
Paul M. Penning, Crowell case,	7 98
C. K. Lewis, Patinode case,	17 56

\$683 44 ✓

MEMORIAL AND OTHER CELEBRATIONS

G. H. Tilden Co., flags,	\$3 49
G. H. Tilden Co., flags,	3 70

\$7 19

Alice L. Spaulding, Old Home Day,	\$130 00
-----------------------------------	----------

\$137 19 ✓

PARKS AND PLAYGROUNDS

A. H. Post, plumber,	\$ 80
Fred C. Humphrey, mowing common,	7 00
Donald Bennett, mowing common,	11 00
Walter Dunbar, Town Beach, caretaker,	112 00
A. H. Post, plumbing,	2 15
Public Service Co., lights,	2 88
Public Service Co., lights,	4 62
Chester M. Burnham, cleaning beach,	4 00

\$144 45 ✓ *124.45*

CEMETERIES

Ned Clancy, cemetery labor,	\$11 20
George Robbins, cemetery labor,	11 20
Frank Whorfe, cemetery labor,	5 00
H. L. Streeter, cemetery labor,	4 00

Walter De Selle, cemetery labor,	22 80
Fred W. Holman, cemetery labor,	17 60

\$71 80 ✓

OLD AGE ASSISTANCE

Cheshire County, O. A. cases,	21 00
Cheshire County, O. A. cases,	21 00
Cheshire County, O. A. cases,	21 52
Cheshire County, O. A. cases,	22 05
Cheshire County, O. A. cases,	42 00
Cheshire County, O. A. cases,	21 52
Cheshire County, O. A. cases,	42 00
Cheshire County, O. A. cases,	19 50
Cheshire County, O. A. cases,	21 60
Cheshire County, O. A. cases,	21 00

\$253 19 ✓

DAMAGE AND LEGAL EXPENSES

Roy M. Pickard, tax conference,	\$3 00
Orville E. Cain, services and expenses,	27 75

\$30 75 ✓

TAXES BOUGHT BY TOWN

Harry E. Winn, collector, sale of 1936 taxes,	\$177 28
Harry E. Winn, collector, sale fo 1936 taxes,	1,276 17

\$1,453 45

INTEREST

Ashuelot-Citizens National Bank,	\$15 56
Keene National Bank,	30 00
Keene National Bank,	30 00
Keene National Bank,	20 00
Keene National Bank,	40 00
Keene National Bank,	20 00

Ada W. Allen, bank note interest,	30 23
Ada W. Allen, bank note interest,	23 77
Ada W. Allen, bank note interest,	26 88
Keene National Bank,	20 00

\$256 44 ✓

BEACH HOUSE

A. H. Post, building, on account,	\$400 00
A. H. Post, building, on account,	490 00
Harland Amidon, wiring beach house,	35 11
A. H. Post, beach house extras,	51 51

\$976 62 ✓

DEEP WELL

A. H. Post, starting well,	\$13 00
A. W. Lapage, drilling, on account,	500 00
A. W. Lapage, drilling, on account,	432 00
A. H. Post, concrete pit and pumping outfit,	155 82

\$1,100 82 ✓

BOOSTER TANK (CENTER BANK)

Arthur H. Blanchard, booster tank,	\$104 18
Paul M. Penning, installing booster,	35 80

\$139 98 ✓

AUTO PERMITS

Imogene L. Chickering,	\$81 25 ✓
------------------------	-----------

FIRE HOUSE DOORS (Center Part)

A. H. Post, widening doors,	\$45 81 ✓
-----------------------------	-----------

HOSE TOWER (West Part)

A. H. Post, hose tower,	\$110 00 ✓
-------------------------	------------

TEMPORARY LOANS

Ashuelot-Citizens National Bank,	\$2,000 00
Keene National Bank,	17,000 00
	<hr/>
	\$19,000 00

BANK TRANSFER

Keene National Bank,	\$1,081 25
----------------------	------------

STATE TAX

State of New Hampshire, state tax 1937,	\$3,280 00
---	------------

COUNTY TAX

Cheshire County, county tax 1937,	\$3,598 44
-----------------------------------	------------

SCHOOL DISTRICT

Evelyn L. Winn, school treasurer,	\$11,817 20
-----------------------------------	-------------

TRUST FUNDS

Trustees of Trust Funds,	\$400 00
--------------------------	----------

BLINKER LIGHT (Spofford)

Henry & Johnson, wiring light,	\$39 62
A. H. Post, cutting trees,	5 40
General Electric Co., blinker light,	135 00
	<hr/>
	\$180 02

STATE AID ACCOUNT

State of New Hampshire,	\$2,000 00
-------------------------	------------

REFUNDS

Ethel Delemater, auto permit refund,	\$8 05
John IoFolla, tax refund,	23 04
O. W. Miller Co., tax refund,	13 36
Bethlehem Steel Co., tax refund,	11 52
	<hr/>
	\$55 97

1979.93 \$2,000 00
- 20.07 rec.

8.00
47.97

ROAD AGENT'S REPORT

Schedule of Prices Paid on Maintenance

Trucks with driver, 2 yds. per hour,	\$1 20
Foreman, per hour,	45
Labor, per hour,	40
Gravel, per yard,	10
Tractor storage, per month,	5 00
Driving tractor, per hour,	50
Mechanic, per hour,	50
Teams, per hour,	80

Walter J. Post, Agent

Walter J. Post, foreman,	\$91 57
Walter J. Post, truck,	471 20
Walter J. Post, tractor,	70 50
Walter J. Post, chloride,	96 00
Nils Hansson, repairs,	2 80
Arthur H. Post, gravel,	58 70
Arthur H. Post, repairs,	10 23
H. C. Chickering, truck,	12 78
L. B. Chickering, truck,	8 40
Nahum Pierce, team,	6 40
Nahum Pierce, labor,	3 20
Spofford Garage, Inc., repairs and supplies,	154 60
Paul Schlichting, brick,	1 00
Hedge & Hattheis, parts,	7 92
Frank Whorfe, labor,	103 60
George Fuller, labor,	3 00
George Fuller, tractor,	32 50
William E. Fuller, labor,	266 60
Alisha Fuller, labor,	2 40

Earl Long, labor,	70 80
Haskell Fuller, labor,	2 40
John Campanello, labor,	4 80
Arthur Hewett, labor,	227 60
James Blake, labor,	6 40
Raymond Rowe, labor,	1 60
L. N. Mills, labor,	5 60
John Mansley, tractor,	6 50
L. A. Cashmore, labor,	80
John Nurse, labor,	77 60
James A. Wilson, labor,	52 20
Clinton Wheeler, labor,	4 80
Otto Schlichting, labor,	5 60
C. W. Tuttle, supplies,	26 40
R. J. Putnam, labor,	6 40
R. S. Amidon, labor,	34 40
Edwin Wilson, labor,	20 60
George Robbins, labor,	18 40
Freeman Marchant, labor,	25 60
Everett Pearson, labor,	4 00
A. L. Wilson, Jr., labor,	3 20
	<hr/>
Total	\$2,009 10
Charged to Health Dep't.,	9 60
	<hr/>
Total maintenance,	\$1,999 50

Walter J. Post, Agent
Distributon of Money by Roads

Fern road,	\$40 05
Woods road,	6 70
Namaschaug road,	460 83
Nearlake Loop,	28 60
High street,	46 00
School street,	14 70
West Swanzey road,	165 10

Channel road,	161 15
Atherton hill,	239 85
Village,	117 30
West Spofford,	90 68
Mead road,	46 00
Prospect hill,	5 25
Stratton road,	60 67
Buffum road,	9 65
Scott road,	6 70
Charles Tuttle,	70 70
Calef road,	30 70
Glebe road,	17 85
W. D. Peirce,	5 45
Dan Williams,	4 10
Cross roads,	5 80
	<hr/>
	\$1,999 50

Roger C. Spaulding, Agent, Center

R. C. Spaulding, foreman,	\$3 60
R. C. Spaulding, truck,	652 00
R. C. Spaulding, gravel,	93 30
R. C. Spaulding, tractor,	134 00
Spofford Garage, supplies,	5 65
R. H. Brown Co., supplies,	7 63
Solvay Sales Co., chloride,	48 00
C. E. Flanders, culvert,	18 32
John Castle, supplies,	55 90
Rose Porter, storage,	5 00
Fred Huntley, 1-2 of rake,	37 50
P. M. Penning, supplies,	110 04
Kenneth Fales, supplies,	1 60
Louis Allen, oil,	5 60
Shirley Bevis, mechanic,	4 00
Erwin Stoddard, team,	54 40

Pat Rawson, posts,	12 50
George White, tractor,	6 50
Olin Butler, truck,	46 20
Pat Rawson, labor,	29 80
George White, labor,	384 40
Raymond Rowe, labor,	18 20
Laurence Crowell, labor,	20 00
Duke Atema, labor,	61 20
Gaylord Aldrich, labor,	3 20
William Larkin, labor,	52 40
Walter Riggleman, labor,	12 80
John Campanella, labor,	12 80
Joe Bellassie, labor,	50 00
Byron Rogers, labor,	18 80
Miller Williams, labor,	1 60
Forrest Eager, labor,	40
	<hr/>
	\$1,967 34

Roger C. Spaulding, Agent
Distribution of Money by Roads

Brattleboro road,	\$312 35
Haskell road,	74 10
All roads,	239 77
Dump road,	128 50
Back Spofford,	60 50
Armstrong road,	69 70
Hinsdale road,	86 15
Common,	83 60
Jones road,	96 50
Horseshoe road,	349 62
Winchester road,	41 80
Gulf road,	64 35
Day road,	59 50
North Hinsdale road,	109 70

LeFoy road,	16 00
Fossey road,	109 55
Jackson Hill road,	27 00
Eager road,	17 80
Lovers lane,	10 40
Crowningshield road,	10 45
	<hr/>
	\$1.967 34

Lyle B. Chickering, Agent, West Part

Lyle B. Chickering, foreman,	\$108 23
Lyle B. Chickering, truck,	670 20
Lyle B. Chickering, gravel,	27 60
Lyle B. Chickering, supplies,	4 19
Moses H. Chickering, supplies,	141 34
Moses H. Chickering, gravel,	9 80
C. E. Chickering, tractor,	202 15
C. E. Chickering, truck,	32 40
C. E. Chickering, labor,	84 40
C. E. Chickering, gravel,	40
R. B. Chickering, labor,	134 20
R. B. Chickering, mechanic,	12 00
R. B. Chickering, supplies,	1 50
B. A. Chickering, labor,	18 80
C. K. Lewis, supplies,	15 76
Shirley Bevis, mechanic,	4 40
C. M. Burnham, gravel,	1 00
Roger Welcome, team,	3 20
Solvay Sales Co., chloride,	72 00
G. E. Hawkins, supplies,	31 88
Henry Plant, lumber,	26 05
George S. Gage, supplies,	8 45
Bertha Underwood, gravel,	3 00
Roger C. Spaulding, truck,	4 80
George White, tractor,	6 00

Spofford Garage, supplies,	26 63
Fred Huntley, 1-2 on rake,	37 50
George Cobleigh, gravel,	3 00
Carl Carlson, repairs,	1 50
Leland Hubbard, gravel,	60
Bemis Motors, Inc., repairs,	5 30
Alphonse Furlone, labor,	6 80
Burton Johnson, labor,	1 60
Winston Cray, labor,	24 80
Frank Morrison, labor,	154 60
Ed. Ogilvie, labor,	9 60
Richard Howell, labor,	23 80
Leon Smith, labor,	3 20
R. H. Brown Co., supplies,	12 65
Newton Darling, labor,	14 40
K. Merrifield, labor,	1 60
Clinton Davis, labor,	2 40
Roger Welcome, labor,	23 20
M. Merrifield, labor,	20 80
Richard Amidon, labor,	21 60
Fred Davenport, labor,	30 00
T. L. Chatfield, labor,	17 60
Dexter Thomas, labor,	3 20
Frank Brown, labor,	43 80
Maurice Amidon, labor,	3 20
K. Streeter, labor,	40
	<hr/>
	\$2,117 53

Lyle B. Chickering, Agent

Distribution of Money by Roads

All roads,	\$360 91
Streeter hill,	159 92
Curt Chickering road,	255 30
Laskey road,	10 40

Dr. Bowen road,	22 20
Gulf road,	123 05
Herrick road,	55 30
Woodbury road,	22 30
Welcome road,	224 40
Poocham road,	94 30
River road,	95 55
Cross road,	37 65
Mountain road,	368 36
Carmick road,	2 50
Marshall Farr	25 60
Harris road,	29 73
Poor street,	56 10
Hutchins road,	23 95
Houghton road,	31 10
Staples road,	4 20

\$2,002 82

Difference between above figure and total of maintenance expenditure chargeable to other departments.

Snow Removal

Wage Scale Same as Maintenance

Expended Under Walter J. Post, Foreman

Walter J. Post, truck,	\$72 00
Walter J. Post, foreman,	22 05
Walter J. Post, tractor,	44 00
Arthur H. Post, truck,	25 20
Arthur H. Post, sand,	12 50
Spofford Garage, storage and supplies,	135 14
William Fuller, tractor,	4 00
John Schlichting, mechanic,	2 50
Farm Service Co., salt,	14 00
George Fuller, tractor,	25 00

Paul M. Penning, supplies,	9 20
Lyle Pierce, labor,	4 55
Donald Wellington, labor,	5 30
Haskell Fuller, labor,	1 30
L. C. Mills, labor,	2 80
Frank Whorfe, labor,	6 47
Elisha Fuller, labor,	6 30
Otto Schlichting, labor,	2 25
Wallace Record, labor,	1 20
George Fuller, labor,	16 20
Daniel Schlichting, labor,	1 20
Emil Fern, labor,	17 20
Arthur Hewitt, labor,	6 80
William Fuller, labor,	32 00
Everett Pearson, labor,	5 60
Richard Putnam, labor,	34 00
William Gallagher, labor,	8 00
Walter Deselle, labor,	6 40
Edwin Wilson, labor,	3 66
A. L. Wilson, Jr., labor,	3 20

\$529 96

Snow Removal

Expended Under Lyle B. Chickering, Foreman

Lyle B. Chickering, foreman,	\$67 76
Lyle B. Chickering, tractor,	28 25
Lyle B. Chickering, truck,	109 80
Lyle B. Chickering, storing snow fence,	5 00
Lyle B. Chickering, supplies,	1 00
B. A. Chickering, labor,	37 05
B. A. Chickering, tractor,	41 25
C. E. Chickering, labor,	30 24
C. E. Chickering, truck,	20 40
C. E. Chickering, tractor,	1 75

Louis Chickering, labor,	3 20
R. B. Chickering, labor,	11 05
M. H. Chickering, sand,	10 90
C. K. Lewis, supplies,	102 43
Watson French, supplies,	1 95
Henry Plante, lumber,	3 45
Alphonse Furlone, gas,	1 91
C. W. Brown, labor,	1 18
Clyde Combs, tractor supplies,	24 44
Henry Chickering, gas,	21 73
James Austin, oil,	7 40
Watson Garage, gas,	3 40
Carl Carlson, supplies,	10 25
Frank Whitcomb, compressor,	27 00
R. H. Brown Co., supplies,	24 75
Spofford Garage, supplies,	13 85
Elm Grain Co., salt,	9 50
Shirley Bevis, tractor,	58 85
Shirley Bevis, mechanic,	15 25
Shirley Bevis, labor,	3 20
Laurence Crowell, labor,	88
E. J. Stoddard, labor,	2 80
Perley Plante, labor,	70
Chester M. Burnham, sand,	2 70
Floyd Lewis, labor,	1 40
Newton Darling, labor,	6 60
Winston Cray, labor,	10 60
Frank Morrison, labor,	30 20
Roger Welcome, labor,	3 20
Richard Howell, labor,	3 20
Fred Davenport, labor,	3 60

\$770 11

Expended Under Roger C. Spaulding, Foreman

Roger C. Spaulding, tractor,	\$1 90
Roger C. Spaulding, truck,	96 60
Roger C. Spaulding, sand,	1 60
Roger C. Spaulding, housing tractor Feb. and March '37,	10 00
George White, tractor,	8 10
George White, labor,	31 95
Shirley Bevis, mechanic,	2 50
Olin Butler, truck,	15 00
Arthur H. Post, sand,	5 60
Elm City Grain Co., salt,	9 50
Rose Porter, storing snow fence,	5 00
Raymond Rowe, labor,	8 50
Joe LeBlanc, labor,	7 75
Walter Riggleman, labor,	1 05
Paul M. Penning, supplies,	7 50
Myron Ingalls, labor,	1 40
Joe Bellassie, labor,	1 60
Gaylord Aldrich, labor,	3 20
Laurence Crowell, labor,	5 00
Bernice Aldrich, labor,	4 40
Donald Bennett, labor,	40

 \$228 55
Bear Hill Road (State Aid)

State of New Hampshire,	\$20,000 00
Town of Chesterfield,	2,000 00
Refund to Town of Chesterfield,	20 07

REPORT OF THE TRUST FUNDS OF THE TOWN OF CHESTERFIELD, N. H., ON JANUARY 31, 1938

Trust Funds	Purpose of Creation	How Invested	Amount of Principal	Rate of Per Cent of Interest	Balance of Income on Hand at Beginning of Year	Income During Year	Expended During Year	Balance of Income on Hand at End of Year
Amidon-Stanley—Income paid to C. W. C. A.		Walpole Savings Bank—Book 7543	\$100.00	3%		\$3.02	\$3.02	\$3.58
Barratt-Jackson—Care of lot		Walpole Savings Bank—Book 7117	100.00	3%	\$3.56	3.02	3.02	3.00
Bevis-Richardson—Income paid to C. W. C. A.		Cheshire County Savings Bank—Book 17762	100.00	3%		3.00	3.00	3.00
Bollock-Clark—Care of lot		Cheshire County Savings Bank—Book 19049	100.00	3%	.43	3.00	3.00	.43
Helen Farr Burnham—Income paid to C. W. C. A.		Cheshire County Savings Bank—Book 22150	95.00	3%		2.86	2.86	
Butler-Marsh—Care of lot		Cheshire County Savings Bank—Book 22201	200.00	3%	23.11	6.00	3.00	26.11
Anna Chamberlain—Care of lot		Cheshire County Savings Bank—Book 23633	100.00	3%	4.85	3.00	3.00	4.85
George Chamberlain—Income paid to C. W. C. A.		Cheshire County Savings Bank—Book 25992	100.00	3%		3.00	3.00	
Albert S. Chickering—Income paid to C. W. C. A.		Keene Savings Bank—Book 2095	2,141.94	3%		64.24	64.24	
Solon Chickering—Care of lot		Keene Savings Bank—Book 18323	100.00	3%		3.00	3.00	4.64
Henry Chickering—Income paid to C. W. C. A.		Keene Savings Bank—Book 9868	100.00	3%	4.64	3.00	3.00	2.89
Byard-Chickering—Care of lot		Keene Savings Bank—Book 9869	100.00	3%	2.89	3.00	3.00	
Johnathan Cobleigh—Income paid to C. W. C. A.		Keene Savings Bank—Book 12763	100.00	3%		3.00	3.00	
Leroy N. Colburn—Care of lot		Walpole Savings Bank—Book 7462	100.00	3%		3.02	3.00	.02
Gertrude B. Cook—Care of lot		Keene Savings Bank—Book 11557	200.00	3%		6.00	6.00	
Arthur M. Davis—Care of lot		Walpole Savings Bank—Book 11557	50.00	3%	1.11	1.50	1.50	1.11
John W. Davis—Income paid to C. W. C. A.		Walpole Savings Bank—Book 6798	100.00	3%	*.22	3.02	3.00	1.02
Louise E. Davis—Income paid to C. W. C. A.		Walpole Savings Bank—Book 6469	100.00	3%	2.31	3.00	3.00	2.31
Martha L. & Bertha L. Davis—Care of lot		Cheshire County Savings Bank—Book 21134	100.00	3%		3.02	3.02	
Davis-Wells—Income paid to C. W. C. A.		Walpole Savings Bank—Book 6627	100.00	3%		3.00	3.00	
Farr-Caswell—Income paid to C. W. C. A.		Cheshire County Savings Bank—Book 21155	100.00	3%	3.11	3.00	3.02	3.11
Dennie W. Farr—Income paid to C. W. C. A.		New Hampshire Savings Bank—Book 91436	100.00	3%		3.00	3.00	
Olin R. Farr—Income paid to C. W. C. A.		Walpole Savings Bank—Book 7539	100.00	3%		3.02	3.00	
Farr-Kingsley—Income paid to C. W. C. A.		Walpole Savings Bank—Book 7555	100.00	3%		3.02	3.02	
Ransom C. Farr—Income paid to C. W. C. A.		Cheshire County Savings Bank—Book 15165	100.00	3%		3.00	3.00	
Hannum-Amidon—Income paid to C. W. C. A.		Cheshire County Savings Bank—Book 18019	200.00	3%		6.00	6.00	
Fred J. Harris—Care of lot		Walpole Savings Bank—Book 7582	100.00	3%		3.02	3.02	
Etta Hubbard-Hildreth—Care of lot		Keene Savings Bank—Book 18178	100.00	3%		3.00	3.00	
		Walpole Savings Bank—Book 7528	100.00	3%	1.12	3.02	3.02	1.12
		Cheshire County Savings Bank—Book 21516	100.00	3%	.54	3.00	3.00	.54
		Cheshire County Savings Bank—Book 21519	100.00	3%		3.00	3.00	

*Overdrawn.

Laura Smith Houghton—Income paid to C. W. C. A.	Keene Savings Bank—Book 10983	100.00	3%	3.00	3.00
George A. Hubbard—Income paid to C. W. C. A.	New Hampshire Savings Bank—Book 91434	100.00	3%	3.00	3.00
Walden L. Laskey—Income paid to C. W. C. A.	Keene Savings Bank—Book 18250	100.00	3%	3.00	3.00
Henry C. Marsh—Income paid to C. W. C. A.	Manchester Savings Bank—Book 150876	500.00	3%	15.00	15.00
Clara J. Puffer—Care of lot	Walpole Savings Bank—Book 6866	100.00	3%	3.02	2.12
Eleanor Randall—Care of lot	Cheshire County Savings Bank—Book 13961	100.00	3%	3.00	1.89
George W. Sargent—Care of lot	Walpole Savings Bank—Book 7464	150.00	3%	4.50	1.50
	Keene Savings Bank—Book 18176	150.00	3%	4.50	20.43
Elizabeth D. Smith—Income paid to C. W. C. A.	Cheshire County Savings Bank—Book 21762	100.00	3%	3.00	3.00
Elielen A. Smith—Income paid to C. W. C. A.	Cheshire County Savings Bank—Book 19050	100.00	3%	3.00	3.00
Gordis R. Stearns—Income paid to C. W. C. A.	Walpole Savings Bank—Book 7540	200.00	3%	6.05	6.05
Sem L. Stowell—Care of lot	Cheshire County Savings Bank—Book 18020	100.00	3%	3.00	3.00
Harriet Dailley Streeter—Income paid to C. W. C. A.	New Hampshire Savings Bank—Book 91433	100.00	3%	3.00	3.00
George Ware—Care of lot	Walpole Savings Bank—Book 7309	50.00	3%	1.50	1.38
George W. Webb—Care of lot	Walpole Savings Bank—Book 7463	100.00	3%	3.02	2.84
Melvin M. Smith—Income paid to C. W. C. A.	Walpole Savings Bank—Book 6143	500.00	3%	15.11	15.11
	Cheshire County Savings Bank—Book 21037	500.00	3%	15.00	15.00
	Manchester Savings Bank—Book 149443	500.00	3%	15.00	15.00
	Keene Savings Bank—Book 14336	500.00	3%	15.00	15.00
	New Hampshire Savings Bank—Book 90419	2,000.00	3%	60.00	60.00
	Amoskeag Savings Bank—Book 170928	1,119.02	3%	33.58	33.58
Emma V. Winn—Care of lot	Keene Savings Bank—Book 18177	100.00	3%	3.00	3.00
George F. Amidon—Income paid to C. W. C. A.	Keene Savings Bank—Book 19161	100.00	3%	1.50	1.50
Squire Amidon—Income paid to C. W. C. A.	Keene Savings Bank—Book 19160	100.00	3%	1.50	1.50
Jennie Hubbard Burroughs—Income paid to C. W. C. A.	Keene Savings Bank—Book 19159	100.00	3%	1.50	1.50
Onesime Peltier—To accumulate at interest as long as Mrs. Peltier lives	Cheshire County Savings Bank Book 18536	100.00	3%	7.04	161.69
Annie A. Amidon—Care of 3 burial lots	Cheshire County Savings Bank—Book 15733	500.00	3%	15.00	34.56
Warren H. Butler—Care of burial lot	Keene Savings Bank—Book 14960	100.00	3%	3.00	84
Louise E. Davis—Care of burial lot	Walpole Savings Bank—Book 6471	100.00	3%	3.02	2.60
John W. Africa—Hidreth—Care of burial lot	Manchester Savings Bank—Book 150876	100.00	3%	3.00	1.05
Ida A. Hosford—Care of burial lot	Walpole Savings Bank—Book 6800	150.00	3%	4.53	1.35
Emily Merriam—Care of burial lot	Keene Savings Bank—Book 2100	65.36	3%	1.96	4.00
Mary C. Smith—Care of burial lot	Cheshire County Savings Bank—Book 20226	100.00	3%	3.00	1.44
John Stanford—Care of burial lot	Walpole Savings Bank—Book 6561	100.00	3%	3.02	1.94
Wallace K. Ware—Care of burial lot	Cheshire County Savings Bank—Book 17148	200.00	3%	6.04	2.60
Emoretta T. Robertson—Care of burial lot	Keene Savings Bank—Book 18844	100.00	3%	3.00	8.24
Henry O. Coolidge—Care of Coolidge Cemetery	Manchester Savings Bank—Book 150745	1,000.00	3%	30.00	8.85
Nellie Cressey Ware—Care of burial lot	New Hampshire Savings Bank—Book 91430	100.00	3%	3.00	10.03
Mead—Care Converse—Mead cemetery	Cheshire County Savings Bank—Book 18741	150.00	3%	4.50	3.34
New Boston Cemetery—Care of cemetery	Walpole County Sav. Bank—Book 8795	50.00	3%	1.57	2.27
	Walpole Savings Bank—Book 6091	50.00	3%	1.50	3.80
	Walpole Savings Bank—Book 7542	50.00	3%	4.82	2.27

*Overdrawn. †Accumulated.

REPORT OF THE TRUST FUNDS OF THE TOWN OF CHESTERFIELD, N. H., ON JANUARY 31, 1938

Trust Funds	Purpose of Creation	How Invested	Amount of Principal	Rate of Per Cent Interest	Balance of Income on Hand at Beginning of Year	Income During Year	Expended During Year	Balance of Income on Hand at End of Year
Kate Cresscy—Care lot in New Boston cemetery		Cheshire County Savings Bank—Book 14848	25.00	3%	3.20	.76		3.96
Robertson—Care Robertson cemetery		Keene Savings Bank—Book 9661	150.00	3%	*.38	4.50	3.80	1.08
Lucinda Hunt—Care Wheeler cemetery		New Hampshire Savings Bank—Book 91431	200.00	3%	*.16	6.00	4.00	1.84
Ellen M. Ball—Care burial lot		Cheshire County Savings Bank—Book 15743	100.00	3%	*.06	3.00	4.30	2.76
Nelson H. Ball—Care burial lot		Cheshire County Savings Bank—Book 25926	100.00	3%	*1.75	3.00	3.00	
Beckley Library Fund—Purchase books Town Library		Keene Savings Bank—Book 18430	500.00	3%		15.00	15.00	
Elizabeth E. Bonney—Evangelical preaching in Spofford Church		Walpole Savings Bank—Book 6865	200.00	3%		6.05	6.05	
Elizabeth E. Bonney—Abel & Joseph Holt burial lots		Walpole Savings Bank—Book 6864	200.00	3%	.89	6.05	6.00	.94
John F. Butler—Care of burial lot		Cheshire County Savings Bank—Book 14847	200.00	3%	17.74	6.00	3.70	20.04
Ira P. Buxton—Care of burial lot		New Hampshire Savings Bank—Book 91435	100.00	3%	*.38	3.00	2.12	.50
Merrick E. Chandler—Care of burial lot		Cheshire County Savings Bank—Book 11405	100.00	3%	1.24	3.00	3.00	1.24
Richard T. Cobb—Care of burial lot		Keene Savings Bank—Book 11639	100.00	3%				
Anna Campbell Clark—Care of burial lot		Walpole Savings Bank—Book 7307	100.00	3%	7.81	6.02	3.00	10.83
George E. Corbett—Care Samuel Burt & George Corbett lots		Walpole County Savings Bank—Book 15734	100.00	3%	.48	6.00	3.00	.48
George E. Corbett—Care burial lot		Keene Savings Bank—Book 14958	200.00	3%	.67	6.00	5.80	.87
Estabrook-Hopkins—Care burial lots		Cheshire County Savings Bank—Book 15744	100.00	3%	2.43	3.00	3.00	2.43
Elsie M. Albee Fasset—Care burial lot		Cheshire County Savings Bank—Book 15496	100.00	3%				
Henry O. Field—Care burial lot		Keene Savings Bank—Book 18322	50.00	3%	1.98	4.50	3.10	3.38
George S. Fletcher—Care of burial lot		New Hampshire Savings Bank—Book 91438	500.00	3%	15.19	15.00	3.80	26.39
Reuben B. Foster—Care of burial lot		Walpole Savings Bank—Book 7151	100.00	3%	*.62	3.00	2.28	10.00
Herschel J. Fowler—Carpenter-Fowler lots		Cheshire County Savings Bank—Book 22144	100.00	3%	.48	3.02	3.00	.50
Frank & Henry Lyman Gilson—Care of burial lots		Cheshire County Savings Bank—Book 11248	100.00	3%	.88	3.00	3.00	.88
Pineas Gline—Care of burial lots		Cheshire County Savings Bank—Book 6856	100.00	3%	2.64	3.00	3.00	2.64
Brown-Willard Gline—Care of burial lot		Walpole Savings Bank—Book 10922	100.00	3%	.35	3.02	3.00	.37
George L. Hamilton—Care of burial lot		Keene Savings Bank—Book 11247	100.00	3%	.25	3.00	3.00	.25
Goodrich-Hill—Care of burial lot		Cheshire County Savings Bank—Book 14266	100.00	3%	.49	3.00	3.40	.09
John H. Henry—Care of burial lot		Cheshire County Savings Bank—Book 16079	100.00	3%	1.40	3.00	3.00	1.40
Erving A. Hildreth—Care of burial lot		Cheshire County Savings Bank—Book 15786	100.00	3%	1.09	3.00	3.00	1.09
		Cheshire County Savings Bank—Book 15786	100.00	3%	1.09	3.00	3.50	.50

*Overdrawn.

Fred W. Hopkins—Care of burial lot	Cheshire County Savings Bank—Book	16730	100.00	3%	.87	3.00	3.00	.87
Henry H. Howe—Care of burial lot	Keene Savings Bank—Book 18251	150.00	3%	1.97	4.50	4.00	2.47
George H. Joslin—Care of burial lot	Cheshire County Savings Bank—Book 25927	100.00	3%	*.85	6.00	2.15	
John A. Joslin—Care of 2 burial lots	Cheshire County Savings Bank—Book 17733	200.00	3%	.20	6.00	5.90	.30
Horace S. Lincoln—Care of burial lot	Cheshire County Savings Bank—Book 16496	100.00	3%	2.92	6.00	3.60	5.32
Jam S. Naylor—Care of burial lot	Cheshire County Savings Bank—Book 19051	100.00	3%	.78	3.00	3.00	.78
H. D. Pletcher—Care of burial lot	Cheshire County Savings Bank—Book 20435	100.00	3%	.04	3.00	3.00	.04
Jennie M. Phillips—Care of burial lots	Walpole Savings Bank—Book 6468	100.00	3%	1.88	3.02	3.20	1.70
Abrial Miles Post—Care of burial lot	Cheshire County Savings Bank—Book 16740	100.00	3%	2.12	3.00	3.00	2.12
Arthur H. Post—Care of burial lot	Walpole Savings Bank—Book 7234	100.00	3%	*.69	3.02	2.31	.69
Charles L. Puffer—Care of burial lot	Keene Savings Bank—Book 9285	100.00	3%	.52	3.00	3.00	.52
Henry Puffer—Care of burial lot	Cheshire County Savings Bank—Book 17780	100.00	3%	.83	3.00	3.00	.83
Jabez Puffer—Care of burial lot	Keene Savings Bank—Book 9286	100.00	3%	1.62	3.00	3.00	1.62
Moses Puffer—Care of burial lot	Cheshire County Savings Bank—Book 22911	100.00	3%	4.36	3.00	2.40	4.99
Nathan Puffer—Care of burial lot	Walpole Savings Bank—Book 7532	100.00	3%	*.35	3.02	2.65	.02
James W. Scott—Care of burial lot	Keene Savings Bank—Book 18252	100.00	3%	2.97	3.00	3.10	2.87
Slade-Arnold—Care of 2 burial lots	Keene Savings Bank—Book 7297	100.00	3%	*3.68	6.02	2.32	.02
M. H. Spaulding—Care of burial lot	Walpole Savings Bank—Book 7308	100.00	3%	4.79	6.02	3.00	7.81
Spaulding-Higgins—Care of burial lot	Keene Savings Bank—Book 14961	100.00	3%	1.81	3.00	3.00	1.81
Thaddeus Streeter—Care of burial lot	Cheshire County Savings Bank—Book 14021	100.00	3%	2.62	3.00	2.40	3.22
Maryann Thompson—Care of burial lot	New Hampshire Savings Bank—Book 91432	100.00	3%	1.51	3.02	3.00	1.53
David S. Walton—Care of burial lot	Walpole Savings Bank—Book 7282	100.00	3%	1.51	3.02	3.00	1.53
J. Foster Wheeler—Care of burial lot	New Hampshire Savings Bank—Book 91437	100.00	3%	.12	3.00	2.60	.52
Walter P. Hurford—Care of burial lot	Walpole Savings Bank—Book 6514	100.00	3%	.68	3.02	3.00	.70
Walter P. Hurford—Care of burial lot	Walpole Savings Bank—Book 19414	100.00	3%				

*Overdrawn.

CERTIFICATE

This is to certify that the information contained in this report is complete and correct, to the best of our knowledge and belief.

January 31, 1938.

VIOLA V. TUTTLE,
WILLIAM E. NURSE,
CHESTER M. BURNHAM,
Trustees.

This is to certify that we have this day examined all securities named in this report and find them correct and in a safe deposit box in the Ashelot-Citizens National Bank in Keene, N. H.

JOHN P. REDDING,
HAROLD E. RANDALL,
Auditors.

REPORT OF TRUSTEES OF TRUST FUNDS

RECEIPTS

Cash on hand Feb. 1, 1937,	\$183 71
Interest on 2 shares stock,	1 80
Check from Town of Chesterfield,	300 00
Check from Town of Chesterfield, Oct.,	100 00
Dividends received, Jan., April, July,	675 67

\$1,261 18

EXPENDITURES

C. W. C. A. income from funds,	\$318 48
C. W. C. A. care of lots,	57 00
Trustees of library, Beckley fund,	15 00
Treasurer Spofford church, Bonney fund,	6 05
New Trust Funds created,	400 00
Walter Deselle, town sexton,	141 88
William Nurse, town sexton,	70 04

\$1,008 45

Bal. on hand Feb. 1, 1938, includes \$8.92 due
C. W. C. A. by adjustment,

193 45

\$1,201 90

Cash paid, invoice of last year's report,

59 28

\$1,261 18

Respectfully submitted,
 VIOLA V. TUTTLE,
 WILLIAM E. NURSE,
 CHESTER M. BURNHAM,
 Trustees.

OLD HOME DAY ACCOUNT

Committee: Alice L. Spaulding, Agnes B. Chickering, Walter Dunbar, Norman Langmaid.

Received from town appropriation,	\$130 00
Proceeds from dance,	72 55

Total receipts,		\$202 55
-----------------	--	----------

Expenditures:

Musical Bargerons Orchestra, afternoon and evening,	\$85 00
Rev. Arthur Blair, speaker,	10 00
Sentinel Printing Co.,	9 25
Mr. Langmaid, baseball supplies and expenses,	3 00
Alice L. Spaulding, sport prizes, dance prizes, decorations and expenses,	37 40
Walter Dunbar, constable,	2 00
Wilder Haskell, pig and expenses,	6 00
Agnes B. Chickering, expenses,	6 00
Roger Spaulding, work on common and building stand,	5 00
George White, work on common and building stand,	3 00
Ladies' Aid Society, supplies and refreshments,	4 90
N. G. Gurnsey Co., Crackerjacks,	7 20
Charles Ingalls, selling tickets,	1 00
Hathaway bakers, blueberry pies,	7 68
Paul M. Penning, groceries,	2 22
Stanley Spaulding, cleaning common,	50

William Conway, cleaning common,	50	
Henry Chickering, Jr., cleaning common,	50	
Moses Chickering, milk,	1 00	
Henry Chickering, cream,	1 20	
		<hr/>
Total expenditures,		\$193 10
		<hr/>
Balance refunded to town,		\$9 45

ALICE L. SPAULDING,
Acting Chairman of Committee.

893.10
72.55
120.55

REPORT OF THE FIREWARDS

We have had a very good year with only one fire loss at Harry E. Winn's in the West part of Town.

Calls in the center part of Town:

Chimney fires,	9
House fires,	2
Forest fires,	0
Truck fires,	1
	12
Total,	12

Calls in the west part of Town:

Chimney fires,	4
House fires,	3
Grass fires,	2
Truck fires,	2
	11
Total,	11

We have installed a new booster tank on the Center truck and remodeled the body of the truck.

We have had a tower for drying hose put on the west part fire station and have installed ropes and pulleys in the same.

We recommend that the fire department appropriation be raised so that we can pay the firemen this year.

Respectfully submitted,
 HAROLD INGALLS,
 ARVID PEARSON,
 Firewards.

REPORT OF THE BOARD OF HEALTH

The past year has been an active one and cannot be gone into in detail in this report for lack of space. We have cleaned up Lake Spofford's outlet and rebuilt the gate house and are keeping a close watch on the lake level at all times. Sections of the Town have been posted against the dumping of rubbish and we urge our residents and non-residents alike to use the town dump which has been provided for that purpose. Dead animals have been properly buried and we ask that the town dump be not used for this purpose. Improvements have been made in disposing of sewage from Lake Spofford Hotel by excess chlorination. There still exists an odor around the canal which can be cleared up by a little cooperation. The sewage system of one of our boys' camps has been ordered changed. Water samples of places used by the public have been tested and are being watched at all times. Three camps in town have been condemned as being unfit to live in and posted as such by the board.

Twenty-five milk licenses were issued, ten of which were issued to buy and sell milk and cream, these being: Harry Nosek, William Manch, John Belliveau, George Joslyn, George LaPlante, John Redding, C. J. Fossey, Byron Davis, Henry Chickering and Samuel Winn. A beach house with flush toilets was built on the town beach during the past year and a caretaker placed in charge, in the interest of the public. Contaminating conditions close to water supplies have been cleared up to a great extent.

Venereal diseases are quite prevalent in all parts of the country and we are no exception. We are doing our best with the aid of the State board to safe-guard our people and we

strongly urge anyone with any doubts concerning themselves to get in touch with either your health officer or one of your selectmen who comprise the board.

We are determined to rid the town of unsightly shacks and health menaces. This can be done, and, with cooperation from mill owners, in a very short time.

Water samples have been taken from all parts of the lake at all hours and the results of these tests are a part of the town records for those who care to see them. From a health standpoint we consider the lake to be excellent for bathing and we urge those using it to help keep it that way.

A clean town means a clean bill of health for you and your children.

Respectfully submitted,
HAROLD E. RANDALL,
JOHN MANSLEY,
CHESTER M. BURNHAM,
ALBERT D. BERRY,
The Board of Health.

PATROL OFFICER'S REPORT

The third year of police protection for the lake properties has been very gratifying to your officer, the value of a night patrol and the daily check-up on the cottages has resulted in keeping the breaks down to a minimum with no breaks reported or discovered around the lake during the past year, and only one theft reported, that of a row boat.

In addition to the lake patrol, other duties have included, on order of the selectmen, police duty at dances in the town hall; summer traffic duty; and the investigation of a break in a summer property in another part of the town, which resulted in the arrest of the party responsible and the recovery of the goods stolen; also your officer has handled a great many other calls throughout the year for a variety of other matters.

It is felt that the police protection should include the summer properties in the other parts of the town, as our summer colony is growing and your officer believes these properties should be afforded the same protection as the lake properties, a careful study of your town report shows that our summer people should be afforded every protection.

LYLE P. BLAKE,
Patrol Officer.

January 31, 1938.

REPORT OF LIBRARIAN AND TRUSTEES OF LIBRARY

RECEIPTS

Cash on hand February 1, 1937,	\$18 41
Received from town treasurer,	135 00
Received from David Beckley trust fund, 1937,	6 90
Received from David Beckley trust fund, 1938,	15 00

\$175 31

EXPENDITURES

G. H. Tilden Co., (pending complete arrival of books),	\$65 00
John N. Ball, librarian,	28 00
Lena Amidon, assistant librarian,	22 00
Paul Penning, assistant librarian,	22 00
John N. Ball, cataloguing 143 gift books by Fred Hamilton to town,	4 77
Sentinel Printing Co., printing 1,000 labels for books,	4 90
Expenditures for librarian's material and trustees expenses,	3 12

\$149 79

Balance on hand February 1, 1938, (cash),	\$25 52
Check to be paid G. H. Tilden Co., on full arrival of books,	65 00

\$90 52

149.79
 21.90
 127.89

New books added,	146
Gift books, added, (November, 1937),	143
Books in library,	6,171
Books loaned, Spofford,	1,965
Books loaned, Chesterfield,	1,776
Books loaned, West Chesterfield,	1,906

Respectfully submitted,
GEORGE E. JOSLIN,

Trustee.

REPORT OF AUDITORS

February, 1938.

Board of Selectmen,
Chesterfield, N. H.

Gentlemen :

We, the undersigned, hereby certify that the accounts of the Selectmen, Town Clerk, Town Treasurer, Tax Collector, Road Agents, Library Trustees, Trustees of Trust Funds, and Fire Precinct have been carefully examined.

We believe them well kept, properly vouched and correct to the best of our knowledge and belief with the exceptions of the following items :

Owed to the town by Harry E. Winn \$1.00 for error on abatement on 1935 book.

Owed to the town by Harry E. Winn, 99c for error on 1937 taxes.

Owed to the town by Walter J. Post 91c.

Owed to Earl Delill by the town 20c for overcharge on redeemed taxes.

The total payments of the Town Treasurer exceed the total of orders of Selectmen by \$2.10, by error of Treasurer. This amount was refunded to the town by L. B. Chickering.

We find that the balance on hand of the Trustee of Town Library Feb. 1, 1937, should have been \$13.97 instead of \$18.41 as reported. Feb. 2, 1937 omitted credit from G. H. Tilden Co. for \$4.44. Total receipts (correct), \$175.31. Under expenditures the item for G. H. Tilden Co., for \$65.00 was unpaid Jan. 31, 1938. Balance on hand Jan. 31, 1938 should be \$90.52.

Signed,

HAROLD E. RANDALL,
ELEANOR J. PEARSON,

Town Auditors.

FINANCIAL REPORT

OF THE SPOFFORD FIRE PRECINCT IN THE TOWN OF
CHESTERFIELD IN THE COUNTY OF CHESHIRE
For the Fiscal Year Ending January 31, 1938

CERTIFICATE

This is to certify that the information contained in this report was taken from official records and is complete and correct to the best of my knowledge and belief.

JOHN MANSLEY,
Treasurer and Clerk.

Feb. 3, 1938.

BALANCE SHEET

ASSETS

Cash on hand,		\$861 94
Amounts due to precinct:		
From town or city,		75 02
Total assets,		\$936 96
Grand total,		\$936 96

LIABILITIES

Excess of assets over liabilities, (surplus),		\$936 96
Grand total,		\$936 96

SCHEDULE OF PRECINCT PROPERTY

Description	Value
Lands and buildings:	
Including plumbing and heating plants,	\$9,000 00
Furniture and apparatus:	
Triple combination pump,	\$1,200 00
Fire hose,	1,000 00
Fire alarm system,	500 00
Waterous pump,	350 00
Hose reel,	25 00
Hats, coats, etc.,	25 00
Furniture,	300 00
	<hr/>
Total valuation,	\$12,400 00

RECEIPTS

Current revenue:	
From taxes,	\$1,050 71
From other sources:	
Hall rent,	7 00
Return check,	2 13
	<hr/>
Total receipts from all sources,	\$1,059 84
Cash on hand at beginning of year,	499 66
	<hr/>
Grand total,	\$1,559 50

PAYMENTS

Current maintenance expenses:	
Firemen's pay,	\$84 28
Heat,	125 39
Insurance,	231 40
Janitor,	120 00

Lights,	15 84
Alarm repairs,	8 63
Clerical expenses,	25 00
Building repairs and chemical supplies,	66 46
Wiring,	14 28
Transfer to S. B. B. Co.,	2 13
Allen brush fire,	2 40
Record book,	1 75
	<hr/>
Total current maintenance expenses,	\$697 56
	<hr/>
Total payments for all purposes,	\$697 56
Cash on hand at end of year,	861 94
	<hr/>
Grand total,	\$1,559 50

697.56
 9.17
 688.43

 1050.71
 639.21
 262.282

861.94
 499.00
 262.282

1050.71
 362.28
 688.43

697.56
 9.17
 688.43

REPORT OF THE
**TREASURER OF SPOFFORD FIRE
 DISTRICT**

DETAILED RECEIPTS AND EXPENDITURES

RECEIPTS

1937		
April	12	A. L. Wilson, hall rent, \$4 00
April	19	A. L. Wilson, hall rent, 2 00
May	10	A. L. Wilson, hall rent, 1 00
June	2	Harry E. Winn, taxes, 81 58
June	18	Harry E. Winn, taxes, 57 43
Sept.	22	Harry E. Winn, taxes, 279 91
Sept.	29	Harry E. Winn, taxes, 218 75
Oct.	1	Harry E. Winn, taxes, 176 51
Nov.	2	Harry E. Winn, taxes, 97 53
Nov.	29	Harry E. Winn, taxes, 69 51
Dec.	6	Hary E. Winn, taxes, 52 61
		<hr/>
		\$1,040 83
Feb.	9	Returned check, Merton Davis, 2 13
		<hr/>
		\$1,042 96
Balance in Keene National Bank, Feb. 1, 1937,		499 66
		<hr/>
Total receipts,		\$1,542 62
Plus added receipt Jan. 31, H. E. Winn,		16 88
		<hr/>
		\$1,559 50

EXPENDITURES

1937

Feb.	9	S. B. E. & H. Co., M. Davis check,	\$2 13
Feb.	9	P. S. Co. of N. H., lights,	1 28
Mar.	10	P. S. Co. of N. H., lights,	3 36
Mar.	10	C. W. Tuttle, hall supplies,	2 22
Mar.	10	A. L. Wilson, janitor,	10 00
Mar.	31	Davis Coal & Oil Co., coal,	47 39
Apr.	12	A. L. Wilson, janitor,	10 00
Apr.	12	Mason Insurance Agency, policies,	89 00
Apr.	12	Albert D. Berry Agency, policies,	142 40
Apr.	15	P. S. Co. of N. H., lights,	3 20
May	8	P. S. Co. of N. H., lighst,	1 00
May	10	A. L. Wilson, janitor,	10 00
May	10	A. H. Post, labor and material,	20 20
May	10	C. W. Tuttle, supplies,	2 24
May	10	Henry & Johnson, wiring lights,	14 28
June	5	A. L. Wilson, janitor,	10 00
June	11	P. S. Co of N. H., lights,	1 00
June	17	Elisha Fuller, Allen brush fire,	60
June	17	Clarence Neilson, Allen brush fire,	60
June	17	Byron Davis, Allen brush fire,	60
June	17	Thomas Murphy, Allen brush fire,	60
July	2	A. L. Wilson, janitor,	10 00
July	13	Chase Book Store, record book,	1 75
Aug.	1	A. L. Wilson, janitor,	10 00
Aug.	9	P. S. Co. of N. H., lights,	2 00
Sept.	1	A. L. Wilson, janitor,	10 00
Sept.	13	C. W. Tuttle, supplies,	4 19
Sept.	13	A. H. Post, alarm repairs, etc.,	12 61
Nov.	5	P. S. Co. of N. H., lights,	1 00
Nov.	5	P. S. Co. of N. H., lights,	1 00
Dec.	6	P. S. Co. of N. H., lights,	1 00
Dec.	14	Spencer Hardware Co., coal,	39 00
Dec.	14	P. S. Co. of N. H., lights,	1 00

1938

Jan. 17	P. S. Co. of N. H., alarm repairs,	8 63
Jan. 17	Spencer Hardware Co., coal,	39 00
Jan. 26	Otto Schlichting, janitor, 5 mos.,	50 00
Jan. 26	S. F. Stuart, caulking building,	25 00
Jan. 29	John Mansley, clerk and treasurer's salary,	25 00
Jan. 29	Firemen's pay for 1937,	84 28

 \$697 56 ✓

 Balance in Keene National Bank, Feb. 1, 1938, 845 06

\$1,542 62

 Plus added receipt, Jan. 31, H. E. Winn, 16 88

\$1,559 50

Respectfully submitted,

JOHN MANSLEY,

Precinct Treasurer.

SPOFFORD FIRE PRECINCT
STATEMENT OF HARRY E. WINN, COLLECTOR

Amount committed, 1937,		\$986 74
Amount paid precinct treasurer,	\$911 70	
Abatements,	02	
Balance on book,	73 59	
Cash on hand,	1 43	

 \$986 74

 Amount due January 31, 1937, on 1936 book, \$139 01

Paid precinct treasurer, 139 01

Respectfully submitted,

HARRY E. WINN,

Collector.

PRECINCT BOOK
UNCOLLECTED TAXES JANUARY 31, 1938

Blanche Beverstock,	\$2 75
H. M. Blake,	1 54
Camp Marquette,	13 42
Paul D. Cobb,	1 65
Rene Disjardis,	02
Emma K. Little,	4 40
Warren F. Manley,	11 00
George C. and Blanche J. Martel,	03
Stuart Merwin,	3 85
Miss Jessie Mitchell,	1 43
Harry Nosek,	8 91
John Reynolds,	03
Nellie Ryder,	4 24
Earl Walston,	55
Mark Woodell,	77
Richard Amidon,	46
Fred Ball,	86
John Ball,	2 24
Minnie Faunce,	1 08
Elizabeth Jordon,	2 41
Clinton E. Joslyn,	1 75
Freeman Marchant,	71
May L. Pearson,	3 07
Edythe Stevens,	3 84
C. D. York and Daisy Allen,	2 58

REPORT OF SUPERINTENDENT OF SCHOOLS

To the School Board and Citizens of Chesterfield:

I herein submit my fifth annual report as superintendent of schools.

ORGANIZATION FOR YEAR 1937-1938

School	Teacher	Enrollment Jan. 15
Spofford Grammar,	Oscar Frazer,	23
Spofford Primary,	Vanetta Clawson,	27
Chesterfield Grammar,	Esther Koskela,	21
Chesterfield Primary,	Marion E. Hilliard,	25
West Chesterfield Grammar,	Elizabeth M. Hidden,	23
West Chesterfield Primary,	Ruth A. Isherwood,	24
Total,		143

During the present year no changes were made in our teaching staff. This fact speaks well for the success of our teachers, the satisfaction of the parents with the schools and gives evidence of their cooperation.

PROMOTIONS

The following numbers of promotions in respective grades were made in June:

Grades	I	II	III	IV	V	VI	VII	VIII	
Spofford Primary,	7	2	3	4					
Spofford Grammar,					3	4	11	3	
Chesterfield Primary,	5	9	5	6					
Chesterfield Grammar,					2	9	2	6	
West Primary,	7	8	4	10					
West Grammar,					5	9	5	3	
Totals,									
	19	19	12	20	10	22	18	12	

These promotions were made on the following points: regularity of attendance, term rank, standard tests, examinations given by teachers.

Metropolitan Achievement tests were given; one at mid-year and one in June.

The Otis Standard Graduation examination for elementary schools were given to the eighth grade.

The results obtained in respective grades justified the above mentioned promotions.

GRADUATION

Three grammar schools of the town united in a union graduation at the Town Hall, Chesterfield Village, on the evening of June 17.

The exercises were interesting, instructive, well rendered and gave evidence of good work on the part of teachers and pupils.

The following is the program:

PROGRAM

Invocation,	Rev. N. J. Langmaid
Song, "We'll Remember You,"	Graduates
Welcome,	Jane Post
Constellation drill,	W. Chesterfield Primary
Class poem,	Joyce Watts
Song, "Next September,"	Seventh Grade and Graduates
Rose drill,	Spofford Primary
Play, "The Class Banquet,"	Graduates
Class gifts,	Patricia Ingalls
Maypole dance,	Chesterfield Primary
Song, "The Good Ship Alma Mater,"	Graduates
Farewell,	Virginia Spaulding
Presentation of books from Chesterfield Community Club,	Mrs. Allan, Pres.
Presentation of Diplomas,	Supt. Johnson

Class Colors
Crimson and White

Class Flower
Red Carnation

Class Motto
Not Learned but Learning

Class Marshall
Priscilla Post

Graduating Class of 1937

Chesterfield—Paul Anderson, Elsie Heath, Ethel Rowe,
Virginia Spaulding, Joyce Watts, Winifred Watts.

West Chesterfield—Patricia Ingalls, Emily Lewis, Raymond Underwood.

Spofford—Rita Pearson, Harry Pierce, Jane Post.

HEALTH ACTIVITIES

The program of hot lunches, milk, cod liver oil, etc., have been carried on by use of funds raised under special activities.

For further details of health activities, consult Miss Edgett's report.

MINOR REPAIRS

In addition to the usual minor repairs on the three school houses, new ceilings in the two rooms at the West school house were installed. These ceilings were much needed and give additional beauty to the rooms and a satisfying comfort to the pupils and teachers. Also screens for windows and doors have been provided.

NEW EQUIPMENT

Due to the increase in number of pupils, three new desks were installed at the Spofford Grammar and five new desks at the West Grammar. Also bought new visitors' chairs for three buildings. Electric clocks have been installed in each school building.

In conclusion, I wish to thank the school board, teachers and parents for their cooperation and support.

Respectfully submitted,

FREDERICK T. JOHNSON,

Superintendent of Schools.

Marlborough, N. H., Jan. 31, 1938.

STATISTICS FOR SCHOOL YEAR 1936-1937

Total length of school year in weeks,	37
Number of pupils registered,	173
Number of half days schools were in session,	355
Number of half days schools were closed,	15
Average membership in the schools,	135.88
Average attendance,	125.99
Percent of attendance for Chesterfield,	92.71
Percent of attendance for district,	93.99
Number of tardinesses,	430
Number of pupils not absent nor tardy,	12
Number of visits made by school board members,	15
Number of visits made by superintendent,	110
Number of visits made by citizens,	141
Number of visits made by district nurse,	79
Number of pupils transported by district,	48

HONOR ROLL

Pupils neither absent nor tardy for entire year:

Catherine Amidon	Ethel Rowe
Thelma Amidon	Virginia Spaulding
Dorothea Bevis	Jane Shippee
Dorothy Chickering	Betty Streeter

REPORT OF SCHOOL NURSE

Mr. F. T. Johnson,
Supt. of Schools.
Dear Sir:

I hereby submit my annual report as School Nurse:

- 140 pupils were inspected.
- 4 pupils showed defective vision.
- 1 pupil showed defective hearing.
- 6 pupils showed poor posture.
- 15 pupils were underweight.
- 73 pupils were in need of dental care.
- 8 pupils were recommended to have a throat and nose examination by a physician.
- 12 pupils had enlarged neck glands.

Dental clinics were held October 14th, 15th, 25th, 27th, 1937, with work done as follows:

Number of pupils treated,	47
Total number of cleanings,	36
Total number of extractions,	22
Total number of silver fillings,	25
Total number of porcelain fillings,	9

The above work was paid for by the parents of the pupils having the work done.

A tonsil clinic was held at the Elliot Community Hospital, Keene, N. H., three children were treated.

One tonsil case was treated privately.

Six pupils had their teeth cared for by their own dentist.

Three pupils had special eye examination and defect corrected.

Much time is spent each year in home visits, business calls and providing clothing.

I wish to express the appreciation of the district to the local Red Cross chapters and Miss Alice Bennett for assistance given in carrying on the work.

I also wish to express my appreciation to the Supt. of Schools, Members of the School Board, Teachers, Parents and pupils for their help and cooperation.

Respectfully submitted,
FRANCES F. EDGETT, R. N.,
School Nurse.

SCHOOL BOARD'S FINANCIAL REPORT

From July 1, 1936 to June 30, 1937

EXPENDITURES

Salaries of school board:

Agnes B. Chickering,	\$100 00	
Elsie Foster,	50 00	
Alice L. Spaulding,	50 00	
		\$200 00

Salaries of district officers:

Evelyn L. Winn, treasurer,	\$50 00	
		\$50 00

Superintendent's excess salary:

State treasurer,	\$204 88	
		\$204 88

School census:

Agnes B. Chickering,	\$3 50	
Elsie Foster,	3 50	
Alice L. Spaulding,	3 50	
		\$10 50

Expenses of administration:

Wallace Record, auditor 1936,	\$5 00	
Ralph C. Chickering, auditor 1936,	5 00	
Agnes B. Chickering,	4 40	
R. E. Lane,	1 60	
Clifford Chickering,	75	

Norman J. Langmaid,	5 00
H. E. Taylor & Son,	5 00
Howard & Brown,	4 50
Alice L. Spaulding,	30
F. T. Johnson,	4 46

\$36 01

Teachers' salaries:

Oscar Frazer,	\$1,000 00
Vanetta Clwason,	850 00
Esther Koskela,	1,000 00
Marion Hilliard,	1,000 00
Elizabeth Hidden,	1,000 00
Ruth Isherwood,	1,000 00

\$5,850 00

Textbooks:

American Book Co.,	\$17 06
Allyn & Bacon Co.,	13 34
Ginn & Co.,	40 96
Gledhill Bros. Inc.,	30 24
D. C. Heath & Co.,	11 47
Hall & McCreary,	1 80
Macmillan Co.,	20 15
McCormick, Mathers Co.,	2 73
Newson & Co.,	4 16
F. A. Owen Pub. Co.,	1 55
Row, Peterson Co.,	78
Scott, Foresman Co.,	3 44
L. W. Singer Co.,	17 78
John C. Winston Co.,	14 60
World Book Co.,	15 99

\$196 05

240.21
436.26

Scholars' supplies :

American Education Press,	\$8 06
American Book Co.,	3 74
Allyn and Bacon Co.,	2 54
Beckley-Cardy Co.,	24 46
Edward E. Babb Co.,	63 38
Ginn Co.,	3 30
The Heyer Corporation,	1 92
J. L. Hammett Co.,	26 70
Iroquois Pub. Co.,	5 71
Philip H. James,	37 76
F. T. Johnson,	8 45
Milton Bradley Co.,	12 60
Macmillan Co.,	5 29
Papercrafters,	4 65
Benjamin H. Sanborn Co.,	9 26
Webster Pub. Co.,	22 39

 \$240 21

Flags and appurtenances :

Beckley-Cardy Co.,	\$4 70
Milton Bradley Co.,	4 11

 \$8 81

Other expenses of instruction :

Edward E. Babb Co.,	\$ 35
The Harter Pub. Co.,	1 90
Esther Koskela,	60
E. J. Plantier,	3 60
Alice L. Spaulding,	1 95
Roger Spaulding,	90
Universiyt Pub. Co.,	2 79
Webster Pub. Co.,	1 59
World Book Co.,	13 48

 \$27 16

Janitor service:	
Fred Stoddard,	\$113 50
Raymond Rowe,	114 00
Fred Partridge,	113 50
Elsie Foster,	75
	<hr/>
	\$341 75
Light and janitors' supplies:	
Edward E. Babb Co.,	\$36 80
Cheshire Chemical Co.,	7 70
Public Service Co. of N. H.,	63 04
Paul M. Penning,	1 35
Raymond Rowe,	1 00
Marguerite Stoddard,	2 00
Spencer Hardware,	2 00
C. W. Tuttle,	26
	<hr/>
	\$114 15
Fuel:	
Emroy Carey,	\$3 00
John Castle,	8 50
Clifford Chickering,	8 00
Clinton Davis,	192 50
	<hr/>
	\$212 00
Minor repairs:	
Harlon P. Amidon,	\$6 60
Agnes B. Chickering,	5 00
Clifford Chickering,	4 00
R. G. Chickering,	110 00
Carl F. Carlson,	6 50
Clinton Davis,	3 00
Elsie Foster,	3 50
Wallace Foster,	1 25

R. C. Goodrich,	2 25
Lewis Humphrey,	50
Elizabeth Hidden,	1 00
C. K. Lewis,	40
Esther Koskela,	2 00
Lyon Hardware Co.,	4 63
Pearson Bros.,	2 75
A. H. Post,	37 55
Marguerite Stoddard,	4 50
George Sanderspree,	31 10
Alice L. Spaulding,	10 43
Stanley Spaulding,	6 50
Fred J. Stoddard,	3 25
Eugene Smith,	10 00
Roger C. Spaulding,	1 00
Robbins and Cowles,	80
Spencer Hardware Co.,	6 39
Lucy Winn,	5 00
C. O. York,	149 18

\$419 08

Medical inspection:

Frances Edgett,	\$340 00
C. C. Davis Drug Co.,	21

\$340 21

Transportation of pupils:

Clifford Chickering,	\$280 00
Henry C. Chickering,	109 69
Clinton Davis,	360 75
Nahum Pierce,	352 00
Harold Pierce,	15 00
Robert Riley,	179 70
John Redding,	30 00
Earl Grimes,	276 00

Alice Rowe,	185 00	
Pearl Rawson,	30 96	
	<hr/>	\$1,819 10
Other special activities:		
John Belleview,	\$1 70	
Clifford E. Chickering,	10 01	
Agnes Chickering,	85	
Elsie Foster,	1 28	
George E. Joslyn,	3 50	
Esther Koskela,	1 01	
C. K. Lewis,	15 98	
Paul M. Penning,	24 32	
Remington, The Florist,	7 29	
Alice L. Spaulding,	2 85	
Roger C. Spaulding,	10 32	
C. W. Tuttle,	8 65	
	<hr/>	\$87 76
High school tuitions:		
Union School District, Keene,	\$559 97	
Battleboro School District,	1,306 00	
	<hr/>	\$1,865 97
New equipment:		
G. H. Tilden Co.,	\$25 00	
	<hr/>	\$25 00
Per capita tax:		
State treasurer,	\$318 00	
	<hr/>	\$318 00
Total expenditure,		<hr/> \$12,366 64

RECEIPTS

Cash on hand July 1, 1936,	\$647 52
Sept. 9, received from town treasurer balance of 1935-1936 appropriation,	1,000 00
Oct. 10, received from town treasure,	1,000 00
Nov. 5, received from town treasurer,	500 00
Dec. 7, received from town treasurer,	2,000 00
Dec. 23, received from state treasurer,	1,387 62
Jan. 23, received from town treasurer,	500 00
Mar. 2, received from town treasurer,	1,000 00
Apr. 7, received from town treasurer,	1,000 00
May 7, received from town treasurer,	1,000 00
June 2, received from town treasurer,	2,500 00
June 24, received from town treasurer,	500 00
June 24, received from town treasurer, dog tax,	317 20
	<hr/>
Total receipts,	\$13,352 34
Total expenditure,	12,366 64
	<hr/>
Balance on hand, June 30, 1937,	\$985 70

Audited and found correctly cast and properly vouched,
July 17, 1937.

HAROLD E. RANDALL,
Auditor.

BALANCE SHEET

ASSETS JUNE 30, 1937

Cash on hand:	
Balance, June 30, 1937,	\$985 70
	<hr/>
Total assets,	\$985 70

LIABILITIES, JUNE 30, 1937

Accounts owed by district:	
Unpaid bills,	\$0 00
	<hr/>
Total liabilities,	\$0 00

ELSIE E. FOSTER,
ALICE L. SPAULDING,
AGNES B. CHICKERING,
School Board.

SCHOOL BOARD'S ESTIMATE FOR 1938-1939

School Board's statement of amounts required to support public schools and meet other statutory obligations of the district for the fiscal year beginning July 1, 1938.

DETAILED STATEMENT OF EXPENDITURES

Support of schools:

Teachers' salaries,	\$5,950 00
Text books,	175 00
Scholars' supplies,	225 00
Flags and appurtenances,	5 00
Other expenses of instruction,	30 00
Janitor service,	333 00
Fuel,	225 00
Water, light, janitors' supplies,	125 00
Minor repairs and expenses,	300 00
Health supervision, (medical inspection),	340 00
Transportation of pupils,	2,327 75
Other special activities,	75 00
	<hr/>
	\$10,110 75

Other statutory requirements:

Salaries of district officers,	\$275 00
Truant officer and school census, (fixed by district),	20 00
Expenses of administration,	35 00
Payments of tuitions in high schools, (estimated),	2,500 00
Superintendent's excess salary, (fixed by supervisory union),	205 00
Per capita tax, (reported by state treasurer),	364 00

New equipment,	60 00	
	<hr/>	
		3,459 00
		<hr/>
Total amount required to meet school board's budget,		\$13,569 75
Estimated income of district:		
Balance, June 30, 1938, (estimated),	\$100 00	
State aid,	1,876 16	
Dog tax, (estimated),	200 00	
	<hr/>	
Deduct total estimated income, (not raised by taxation),		2,176 16
		<hr/>
Assessment required to balance school board's budget,		\$11,393 59

ELSIE E. FOSTER,
ALICE L. SPAULDING,
AGNES B. CHICKERING,
School Board.

REPORT OF SCHOOL TREASURER

July 1, 1936 to June 30, 1937

SUMMARY OF THE ACCOUNT

Receipts:

Cash on hand June 30, 1936,	\$647 52
Received from selectmen, balance of previous appropriation,	1,000 00
Received from selectmen, appropriations for current year,	10,000 00
Received from selectmen, dog tax, (1936),	317 20
Received from state treasurer, (state aid),	1,387 62

Total amount available for fiscal year,	\$13,352 34
Less school board orders paid,	12,366 64

Balance on hand as of June 30, 1937, (treasurer's bank balance),	\$985 70
--	----------

Respectfully submitted,
 EVELYN L. WINN,
 Treasurer.

June 30, 1937.

AUDITOR'S CERTIFICATE

This is to certify that I have examined the books, vouchers, bank statements and other financial records of the treasurer of the school district of Chesterfield, of which the above is a true summary for the fiscal year ending June 30, 1937 and find them correct in all respects.

(Signed),

HAROLD E. RANDALL,

Auditor.

July 17, 1937.

THE STATE OF NEW HAMPSHIRE
SCHOOL WARRANT

To the inhabitants of the School district in the town of Chesterfield, qualified to vote in district affairs:

You are hereby notified to meet at the Town Hall in said district on the 8th day of March, 1938, at 2 o'clock in the afternoon, to act upon the following subjects:

1. To choose a Moderator for the coming year.
2. To choose a Clerk for the ensuing year.
3. To choose a Member of the School Board for the ensuing three years.
4. To choose a Treasurer for the ensuing year.
5. To determine and appoint the salaries of the School Board and Truant Officer, and fix the compensation of any other officers or agent of the district.
6. To hear the reports of Agents, Auditors, Committees, or Officers chosen, and pass any vote relating thereto.
7. To choose Agents, Auditors and Committees in relation to any subject embraced in this warrant.
8. To see if the district will vote to make any alteration in the amount of money required to be assessed for the ensuing year for the support of public schools and the payment of the statutory obligations of the district, as determined by the school board in its annual report.

9. To see if the Town will raise the sum of \$600.00 for the purchase of heating equipment for the Schools at Spofford, Chesterfield and West Chesterfield.

Given under our hands at said Town this fifteenth day of February, 1938.

ELSIE E. FOSTER,
ALICE L. SPAULDING,
AGNES B. CHICKERING,
School Board.

A true copy of Warrant—Attest:

ELSIE E. FOSTER,
ALICE L. SPAULDING,
AGNES B. CHICKERING,
School Board.

VITAL STATISTICS

To the Selectmen:

In compliance with an act of the legislature, passed June session, 1887, amended by the legislature of 1889, requiring "clerks of towns and cities to furnish a transcript of the record of births, marriages and deaths to the municipal officers for publication in the Annual Report," I hereby submit the following:

BIRTHS REGISTERED IN THE TOWN OF CHESTERFIELD, N. H., FOR THE YEAR ENDING DECEMBER 31, 1937

Date of Birth	Name of Child (if any.)	Sex and Condition.		Name of Father.	Maiden Name of Mother.	Occupation of Father.	Birthplace of Father.	Birthplace of Mother.	Age of Father.	Age of Mother.
		Male or Female.	Living or Stillborn.							
Jan. 22	Charles Edward	M	L	George E. Joslin	Marie E. Elder	Contractor	Brattleboro, Vt.	Brimfield, Ms.	29	26
" 31	Myron Roberts, Jr.	M	L	Myron R. Ingalls	Hazel E. Aldrich	Laborer	Springfield, Ms.	Bernardston, Ms.	19	17
Feb. 10	Jack Elmer, Jr.	M	L	Jack E. Robbins	Nellie F. Davis	Laborer	Spooford	Alstead	33	35
Mar. 27	Allen Edward	M	L	Earl F. Grimes	Rose Collis	Laborer	Westmoreland	Colrain, Ms.	37	25
May 5	Nancy Elizabeth	F	L	Rich'd G. Chickering	Mary V. Flather	Carpenter	Chesterfield	Nashua	30	33
" 24	Clarence Bernard	M	L	Charles H. Anderson	Edith P. Grover	Sawyer	Weston, Vt.	Brattleboro, Vt.	45	30
June 13	Martha Jane	F	S	Louis W. Chickering	Anna Manning	Laborer	Chesterfield	Brattleboro, Vt.	46	38
" 30	Arthur Joseph	M	L	Robert E. Mitchell	Anne E. Leary	Farmer	Northboro, Mass.	Westboro, Ms.	35	36
July 5	David Lawrence	M	L	H. Kenneth Streeter	Francis T. Parker	Laborer	Halifax, Vt.	Clinton, Ms.	26	21
" 10	Barbara Katherine	F	L	Clinton A. Davis	Katherine G. Gage	Farming	W. Chesterfield	West Swazey	29	27
" 11	John Russell	M	L	William R. Wheeler	Ethel E. Joslyn	Laborer	Northfield	Chesterfield	32	25
" 13	Billy Theodor	M	L	Willi Stukenborg	Elizabeth Wild	Carpenter	Germany	Portstown, Pa.	33	28
" 13	Barbara Alice	F	L	John H. Nurse	Marion I. Metcalf	Laborer	New York City	Medford, Mass.	24	27
" 28	Miriam Ann	F	L	Merle W. Cobleigh	Miriam I. Spaulding	Manager	Auto Co.	St. Albans, Vt.	35	35
Aug. 5	Paul Martin	M	L	Frank A. Hubner	Anna C. Delohery	Farmer	Torzan, Bohemia	Danbury, Conn.	34	32
" 14	Esther Arnes	F	L	Gaylord F. Aldrich	Adelaide E. Simonds	Laborer	Shelburne Fs., Ms	Springfield, Vt.	24	16
Sept. 22	Dorothy Ann	F	L	Paul E. Welcome	Grace More	Cattle dealer	W. Chesterfield	Closter, N. J.	27	25
Dec. 2	Baby Smith	M	S	Robert D. Smith	Beatrice E. Hager	Auto mechanic	Quincy, Mass.	Woodford, Vt.	28	19
" 13	Isabelle Jessie	F	L	Arvid W. Pearson	Eleanor Schlichtung	Truck driver	New Britain, Ct.	Chesterfield	30	24

MARRIAGES REGISTERED IN THE TOWN OF CHESTERFIELD, N. H., FOR THE YEAR ENDING DECEMBER 31, 1937

Date of Marriage.	Place of Marriage.	Name and Surname of Groom and Bride.	Residence of each at time of Marriage	Age in years.	Occupation of Groom and Bride.	Place of Birth of each.	Names of Parents.	Birthplace of Parents.	* Condition.	Name, Residence and Official Station of person by whom married.
Feb. 14	Chesterfield	Louis W. Chickering	Chesterfield	35	Laborer	Chesterfield	Curtis H. Chick'g Caroline Winn	Westmoreland Pever Dam, Wis	2d	Rv N J Lang'id
		Ann L. M. Whitney	Brattleb'o, Vt.	37	Sewing	Brattleboro, Vt.	Marie Manning Jane Colbrook	Brattleboro, Vt. Putney, Vt.	2d	Chesterfield
Feb. 27	West Rindge	Forrest J. Eager	Chesterfield	23	Carpenter	Jamaica, Vt.	George N. Eager Mary E. Jones	Essex, N. Y. Stratton, Vt.	1st	Rv S R Roland
July 5	W. Chesterfield	Cora A. Fowle	Chesterfield	24	Housework	Newburyprt, Ms	Ray E. Fowle Alice E. Mansur	Newburyprt, Ms Newburyprt, Ms	1st	West Rindge
		Edw. J. Partridge, Jr.	Bainb'ge, N Y	31	Shipping clerk	Whitehall, N Y	Ed'd J. Partridge Minnie Lindgren	Aifton, N. Y. Bainbridge, N Y	st	Rv W Estabr'k
Aug. 28	Brattleb'o, Vt	Marion E. Welcome	E Orange, N J	33	Teacher	Chesterfield	Ed'd L. Welcome Clara M. Stodd'd	W. Chesterfield Jamaica, Vt.	1st	Thetford, Vt.
		Shirley L. Rawson	Chesterfield	19	Mill wright	Chesterfield	Pearl Rawson Rena P. Jones	Jamaica, Vt. Jamaica, Vt.	1st	CS Hopk's, J P
		Marion F. Dyer	Troy	19	At home	Otter Riv, Ms.	Lawrence T. Dyer Florence M. Elmore	Keene Warwick, Ms.	1st	Brattleboro, Vt.
Sept. 30	Winchester	James E. Buzby	Brattleb'o, Vt.	22	Painter	Brattleboro, Vt.	Wm. H. Buzby Bridget F. Cline	Quakertown, Pa. Brattleboro, Vt.	1st	R P Kel'm, J P
		Myrtle R. Hunt	Spofford	19	At home	Winchester	Fred M. Hunt Olive A. Joslyn	So Deerfield, Ms Lyman, Ms.	1st	Winchester
Oct. 2	Spofford	Winfield O. Tripp	Provid'ce, R I	32	Sales mgr.	Boston, Ms.	Wayland F. Tripp Harriett J. Nutter	Lyman, Ms. Alfred, Me.	2d	Rv N J Lang'id
		Catherine D. Brown	Jamaica P, Ms	27	Bookkeeper	Scotland	John Brown Helen I. Peacock	Scotland Scotland	1st	Chesterfield
Oct. 17	Westmoreland	George L. Newstead	Chesterfield	27	Farm hand	Conway, Ms.	Geo. F. Newstead Sadie Hammond	Shelb'ne, Fs., Ms Winchester	1st	Rv H M Frye
		Charlotte R. Rawson	Chesterfield	17	At home	Brattleboro, Vt.	Pearl L. Rawson Rena P. Jones	Jamaica, Vt. Jamaica, Vt.	1st	Westmoreland
		George F. White	Chesterfield	60	Farming	Hudson	Charles White Marcia Grant	Haverhill Pownal, Me.	3d	Rv W E Smith
Nov. 6	Keene	Minnie E. MacKay	Revere, Ms.	54	Housewife	Pr. Edward Is.	James Williams Jane Whitehead	Pr. Edward Is. Pr. Edward Is.	2d	Keene

*What marriage, whether 1st, 2nd, etc.

MARRIAGES REGISTERED IN THE TOWN OF CHESTERFIELD, N. H., FOR THE YEAR ENDING DECEMBER 31, 1937

Date of Mar- riage.	Place of Marriage.	Name and Surname of Groom and Bride.	Residence of each at time of Marriage	Age in years.	Occupation of Groom and Bride.	Place of Birth of each.	Names of Parents.	Birthplace of Parents.	* Condition	Name, Residence and Official Sta- tion of person by whom mar- ried.
Nov. 18	Chesterfield	Raymond S. Shippee Dorothy V. Curtis	Wilmington, Vt Wilmington, Vt	38 28	MILL wkr. MILL wkr.	Warwick, Ms. Bellows Fs., Vt.	William Shippee Ella Johnson Orrin Stockford Lena Weber	Newport, Vt. Blackstone, R. I. Nova Scotia Nova Scotia	1st 2d	Rv N J Lang'rd Chesterfield

*What marriage, whether 1st, 2nd, etc.

DEATHS REGISTERED IN THE TOWN OF CHESTERFIELD, N. H., FOR THE YEAR ENDING DECEMBER 31, 1937

Date of Death.	Name and Surname of the Deceased.	Age		Place of Birth.	Sex and Condition*	Place of Birth.		Name of Father.	Maiden Name of Mother.
		Years.	Months.			Father.	Mother.		
		Days.							
Jan. 29	Emma Jeffs	68	11	23	W	Winchester	Winchester	David Whittemore	Delores Davis
" 30	Clifton I. Stoddard	58	2	9	M	Chesterfield	Winchester	Frederick O. Stoddard	Anna E. Herrick
Feb. 2	Elmira E. Tuttle	73	11	26	F	Braundon, Vt.	Winchester	David Whittemore	Elizabeth Phelps
Apr. 4	Perley Holden	64	0	0	M	W. Chesterfield	Brattleboro, Vt.	Louis W. Chickering	Anna Manning
June 13	Martha J. Chickering	70	8	27	F	Dover, Vt.	Somerset, Vt.	Henry Rice	Melvina Cobb
" 30	Sherman L. Rice	79	0	0	M	Chesterfield	Chesterfield	Clinton R. Wheeler	Ethel E. Joslyn
July 11	John R. Wheeler	0	0	0	M	Chesterfield	Northfield	Frank Britton	Francis Leger
" 30	Vivian K. Amidon	37	0	0	F	Gouverneur, N. Y.	Vermont	Edgar Spaulding	Elizabeth Howard
Aug. 18	Miriam I. Cobleigh	35	11	30	F	St. Albans, Vt.	Vermont	Erving Van Houten, Sr.	Mary M. Alison
Sept. 5	Erving V. Houten, Jr	31	6	2	M	Pratt Bridge, N. J.	Ireland	Frank Phelps	Catherine Kavanaugh
" 5	George A. Phelps	30	6	28	M	Chester, Vt.	Chesterfield	George Spaulding	Emily Cressey
Nov. 8	Chas. H. Spaulding	80	8	28	M	Chesterfield	Chesterfield	George Spaulding	Emily Cressey
" 16	Viola E. Miller	66	0	4	F	Bondville, Vt.	Vermont	Lynnan Stone	Eldora Lackey

*Single, married or widowed.

BROUGHT TO CHESTERFIELD FOR BURIAL FOR THE YEAR
ENDING DECEMBER 31, 1937

Date of Death	Name and Surname of the Deceased	Age			Sex and Cond'n		Place of Death	Name of Father	Maiden Name of Mother
		Years	Months	Days	Male or Female	S., M., W.*			
1936									
Dec. 22 1937	Ellen M. Shumway	95	0	29	F		Portland, Me		
Jan. 5	Angelo M. Spring	81	7	17	M	W	Keene		
Feb. 1	Fay Stickney	54	7	9	M		Westmorel'd	Edson M. Stickney	Anna Gage
" 6	Stella E. Whit'm'e	56	11	25	F	S	Westmorel'd	Jas. Whittemore	Louise E. Phelps
" 6	Hub't W. Watkins	21	8	17	M		Spr'g'd, Vt.	Cecil Watkins	Ruth Brown
Mar. 3	Lewis E. Estler	68	4	23	M	M	Arl'g'n, N J	Ezra Estler	— Smith
" 23	Ellen M. C. H'ton	57	6	5	F		Guilford, Vt		
Apr. 24	Cecil H. Watkins	48	5	4	M	M	Burl'gton, Vt		
June 7	Kate L. Burt	59	6	18	F	M	Keene	Edward Wells	Elizabeth — —
" 7	Alice H. Farr	59	3	1	F	W	Swanzy	Preston Hewitt	Mary Lincoln
Nov. 17	Frances Goodrich	89	0	8	F	W	Westmorel'd	Alonzo Taylor	Elizabeth Preston
Dec. 2	Baby Smith	0	0	0	M	S	Brat'boro, Vt	Robert D. Smith	Beatrice E. Hager

*Single, married or widowed.

BROUGHT TO CHESTERFIELD FOR BURIAL FOR THE YEAR
ENDING DECEMBER 31, 1936

Date of Death	Name and Surname of the Deceased	Age			Sex and Cond'n		Place of Death	Name of Father	Maiden Name of Mother
		Years	Month	Days	Male or Female	S., M., W.*			
Jan. 25	Henry B. Beeching	63	11	15	M	M	Gardner, Ms	Samuel Beeching	Francis Woollett
June 2	Walter C. Hurford	65	8	6	M	M	Thomas'n, Ct		
" 12	Della Torrey	74	3	5	F	W	Keene	Josiah Leach	Lizzie Wheelock
Aug. 14	Edgar J. Scott	67	10		M	M	Pembroke	James Scott	Lydia Perry
" 22	Edna O. Place	52	8	24	F	W	Wor'ster, Ms		
" 26	Laura Jackson	89	11	24	F	S	Ber'ley, Cal.	Jay Jackson	Betsey E. Henry
" 28	Edward F. Jackson	12			M	S	Was'g'n, D C	Edward Jackson	Adice Barrett

*Single, married or widowed.

I hereby certify that the foregoing transcript of births, marriages and deaths is correct, according to the best of my knowledge and belief.

IMOGENE L. CHICKERING,
Town Clerk.

