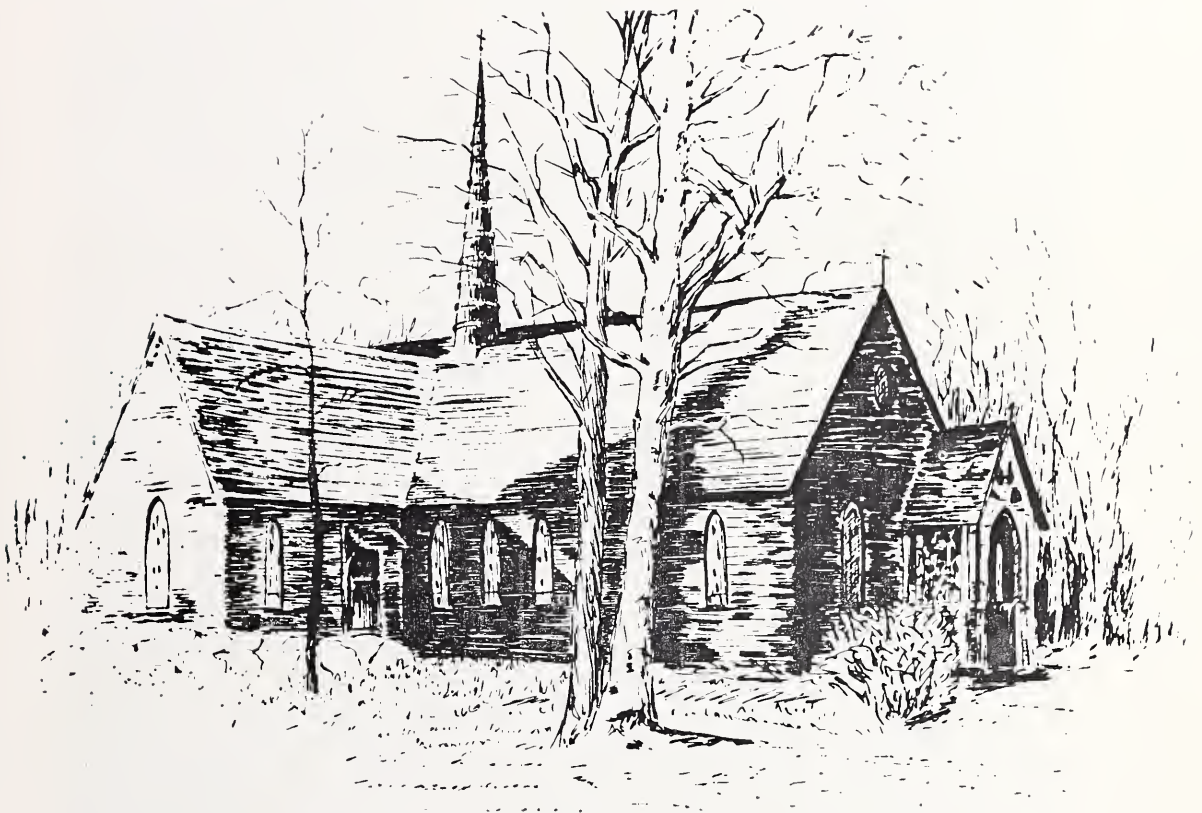


NH
352.07
T15
1969

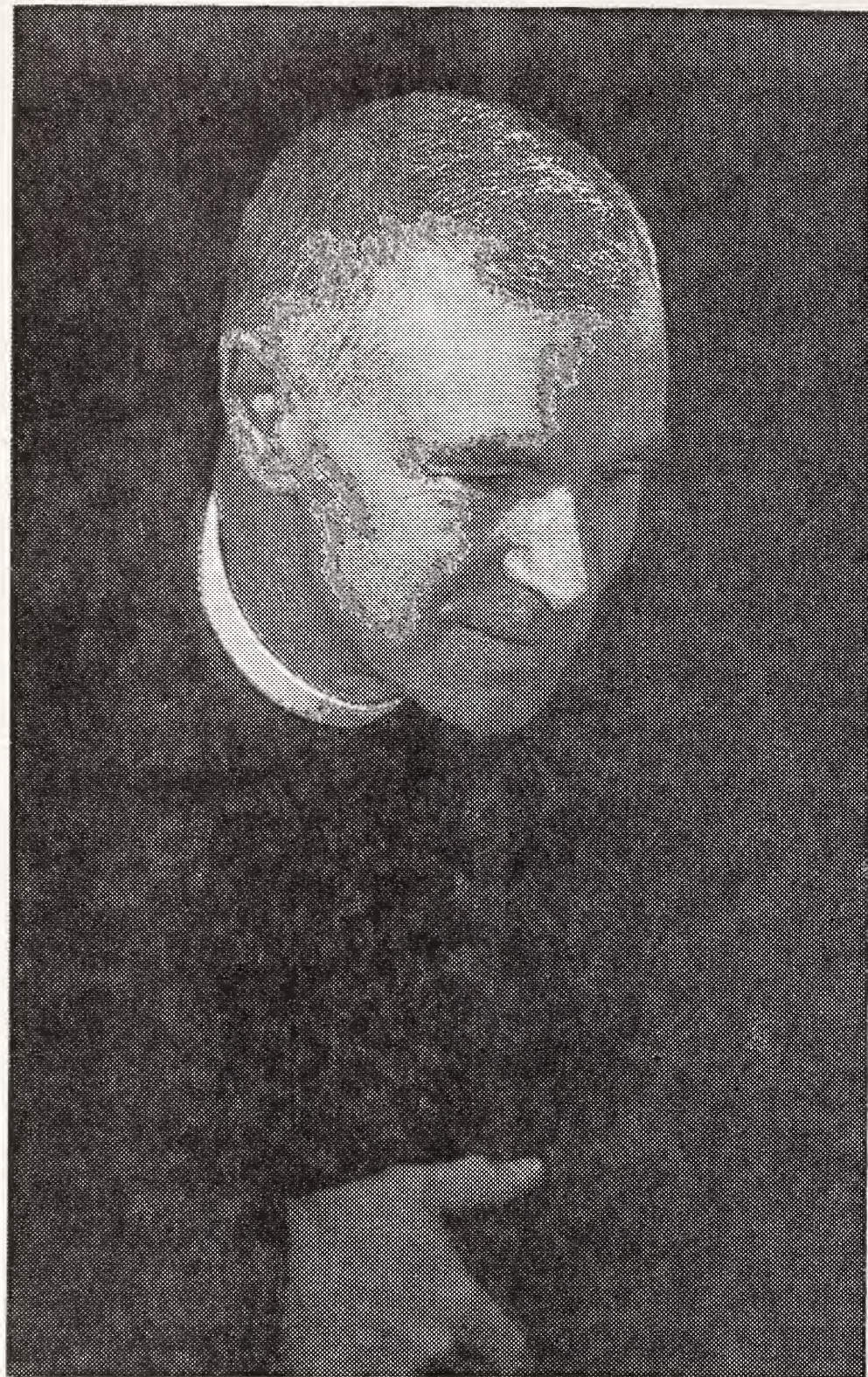
ANNUAL REPORT

1969



TOWN OF TAMWORTH

New Hampshire



THE REV. GEORGE W. WICKERSHAM II, D. D.
First Minister of the Tamworth Associated Churches
1957 — 1969

“Wick” set in motion the unique association of churches in Tamworth brought harmony amongst our children and a new unity to the Town.

ANNUAL REPORTS

Town Officers

TAMWORTH

New Hampshire

For the fiscal year ending
December 31, 1969

Tax Rate	\$3.70 per \$100
School	\$2.59
Town	.90
County	.21

Cover picture: Our Lady of Perpetual Help, Chocorua, N. H.

Vital Statistics For 1969

113
1969

INDEX

Town Officers	5-6
Tentative Warrant	7-12
Budget	13-15
Inventory	16-17
Statement of Appropriations	18-21
Statement of Bonded Debt	22
Comparative Statement	24-25
Financial Report	26-32
Town Clerk's Report	33
Tax Collector's Report	34-40
Detailed Statement of Payments	41-55
Fire Department	56-57
Forest Fire Warden's Report	58-59
Report of Planning Board	60-61
Conservation Commission	62-65
Tamworth Community Nurse Assoc.	
(e) Treasurer's Report	66
(b) Nurses's Report	67
Red Cross Annual Report	68
Tamworth Outing Club Activities Report	69-70
(a) Treasurer's Report	71
Cook Memorial Library	72-74
Tamworth Foundation	75-76
Special Health Officer	77
Dump Committee	78
Committe on Plowing	79
Trust Funds	80-84
Summer Enrichment Program	85-86
Vital Statistics	87-89
School Report	91
School Warrant	92-93
Comparative Statement of Appropriations	94-95
Comparative Budgets	96-99
School District Treasurer	100
School Financial Report	101
Financial Summary	101
Balance Sheet	102
School Lunch Program	103-104
School District Budget	105-106
Principal's Report	107-108
Enrollment Statistics	109
School Nurse Report	110-111
Salary Schedule	112
School Calendar	113

TOWN OFFICERS 1969

Moderator

WILBUR SMITH

Representative

EARL REMICK

Town Clerk

ALLAN KENNESON

Selectmen

FRANCIS J. WELCH

STEPHEN F. DAMON

DONALD P. HUTCHINS

Supervisors of Check List

JOSEPH MAHONEY

WILLARD JONAH

DORIS AYER

Tax Collector

ALLEN KENNESON

Road Agent

EVERETT DAVIS

Treasurer

WILLIAM B. HIDDEN

Dog Constable

EMERY ROBERTS

Present Holder of Post Cane

ADDIE SAULINER

Cemetery Trustees

RAYMOND GARDNER

ALBERT ELLIOTT

ROGER ELLIOTT

Library Trustees

PERCY OLTON
ELVA BICKFORD
ROBERT FINLEY, Ch.

IRENE IRWIN
PAULINE CRANE
MERLE DUNN

Chief of Police
EMERY ROBERTS

Special Police
DONALD P. HUTCHINS

Ballot Inspectors
FORREST WOODWARD
PAUL WILLIAMS
CHARLES REMICK
HAZEL WHITING

Health Officers
EDWIN REMICK, M. D.
ALEXANDER CHAPMAN, Asst.

Auditors
CHARLES REMICK
WILBUR SMITH

Finance Committee
ROBERT FLOYD
HOWARD WHITING
OLGA M. FARO
CARL HANSON
WILLIAM B. ABBOTT
MARION FROST

ROY HAMMOND
GLADYS EVANS
JOSEPH MAHONEY

Fire Wards
JAMES ELLIOTT
RONALD BERRY
DONALD P. HUTCHINS
DAVID BOWLES
ROGER ELLIOTT

Clerical
LINDA HANSEN

THE STATE OF NEW HAMPSHIRE
TENTATIVE TOWN WARRANT

To the inhabitants of the Town of Tamworth in the County of Carroll in said State qualified to vote in Town Affairs:

You are hereby notified to meet in the Kenneth A. Brett School in Tamworth on Tuesday, March tenth next. The meeting will be in two parts:

I. In order that the following article may be legally voted on by Australian ballot, you are hereby notified that the polls will be open for this purpose at ten of the clock on said Tuesday, March 10.

ARTICLE 1. To elect all necessary Town Officers for the ensuing year.

II. The meeting will reconvene at 7 P. M. in said school house to see what sums of money the Town will vote to raise and appropriate for the following purposes and to transact any other business which may legally come before this meeting.

ARTICLE 2. To see what time the polls shall be closed.

ARTICLE 3. Maintenance of General Government
Town Officers' Salaries

Selectmen	\$3000 00
Treasurer	350 00
Trustees	100 00
Auditors	150 00
Tax Collector	750 00
Town Clerk	350 00

Total	\$4,675 00
Approved by Finance Committee	

ARTICLE 4.

Town Officers Expenses	\$1000 00	
Election & Registration	1050 00	
Clerical	1000 00	
Town Hall & Other Bldgs.	1800 00	
Police Department	2000 00	
Printing	1800 00	
Insurance & Bonding	3500 00	
Cemeteries	1000 00	
		<hr/>
Total		\$13,150 00
Approved by Finance Committee		

ARTICLE 5. Health Department

Nursing Association	\$1000 00	
Hospitals	450 00	
Vitals	10 00	
Medical Services	150 00	
Town Share in Mental Health Program	450 00	
Special Health Officer	500 00	
Ambulance Service	1000 00	
		<hr/>
Total		\$3560 00
Approved by Finance Committee		

ARTICLE 6. Town Dump

Town Dump		\$2500 00
Approved by Finance Committee		

ARTICLE 7. Highways

Summer Maintenance	\$20,000 00	
Winter Maintenance	25,000 00	
Street Lights	2,300 00	
Town Road Aid	1,447 66	
General Expenses-Highways	2,000 00	
		<hr/>
Total		\$50,747 66
Approved by Finance Committee		

ARTICLE 8. Public Welfare

Town Needy	\$3,000 00	
Old Age Assistance	4,000 00	
Aid to Permanently and Totally Disabled	1,500 00	
	<hr/>	
Total		\$8,500 00
Approved by Finance Committee		

ARTICLE 9. Libraries

Cook Memorial Library	\$1,500 00	
	<hr/>	
Total		\$1,500 00
Approved by Finance Committee		

ARTICLE 10. Patriotic Purposes

Memorial Day	\$ 30 00	
Aid to Soldiers	600 00	
	<hr/>	
Total		\$630 00
Approved by Finance Committee		

ARTICLE 11. Recreation

Red Cross Swimming	\$1,100 00	
Tamworth Outing Club	400 00	
	<hr/>	
Total		\$1,500 00
Approved by Finance Committee		

ARTICLE 12. Damages & Legal Expenses \$200 00
Approved by Finance Committee

ARTICLE 13. Fire Dept. & Red Network, Forest Fires

Fire Dept. & Red Network	\$3,000 00	
Forest Fires	2,000 00	
	<hr/>	
Total		\$5,000 00
Approved by Finance Committee		

ARTICLE 14. To see if the Town will vote to raise and appropriate \$2000.00 to start a capital reserve fund to purchase a new fire truck in future years. Approved by Finance Committee.

ARTICLE 15. Fire Holes and Dry Hydrants

To see if the Town will vote to raise and appropriate the sum of \$300.00 for a fire hole or dry hydrant to go with matching funds of the Tamworth Fireman's Club.

Approved by Finance Committee

ARTICLE 16. County Tax \$15,000.00

Approved by Finance Committee

ARTICLE 17. To see if the Town will vote to raise and appropriate \$25.00 to be expended in cooperation with the New Hampshire Forestry and Recreation Commission for the opening and maintaining of trails and old roads for forest fire protection. The New Hampshire Forestry and Recreation Commission to provide a matching sum not in excess of \$25.00 for this purpose.

Approved by Finance Committee.

ARTICLE 18. To see if the Town will vote to raise and appropriate the sum of \$345.00 for a new electric typewriter (Hermes Ambassador) which we have had to hire.

ARTICLE 19. Interest on Temporary Loans and Long Term Notes.

Approved by Finance Committee 2000.00

ARTICLE 20. To see if the Town will vote to raise and appropriate the sum of \$744.19 which is 1/100th of 1% of the assessed valuation of the Town, to the Lakes Region Association for the purpose of promoting the natural advantages and resources of the Town in cooperation with other towns in the Lakes Region. NOT APPROVED BY FINANCE COMMITTEE.

ARTICLE 21. To see if the Town will vote to continue the name Fowlers Mills Road from its intersection with Philbrook Neighborhood Road to Route 16, a request of neighborhood residents in that part of the town. Not acted on by Finance Committee.

ARTICLE 22. To see if the Town will vote to raise and appropriate the sum of \$4000.00 to participate further in the urban planning assistance program as the town's share of the total cost.

Not approved by Finance Committee

ARTICLE 23. To see if the Town will vote to declare the Tax Collector's office a three year term instead of a one year.

ARTICLE 24. To see if the Town will vote to raise \$100 for the Tamworth Conservation Commission for the purpose of planting trees. Approved.

ARTICLE 25. To see if the Town will vote to raise \$800 for the care of trees and tree removal. Approved by Finance Committee.

ARTICLE 26. To see if the Town will vote to raise and appropriate the sum of \$100.00 for Blister Rust Control Program in accordance with RSA 223. Also state and federal funds are with this. Approved - Finance Comm.

ARTICLE 27. To see if the Town will vote to raise and appropriate the sum of \$1000.00 to continue perambulation of town lines.

Approved by Finance Committee

ARTICLE 28. To see if the Town will vote to raise and appropriate the sum of \$32,485.50 for new Austin Weston Grader Super 100. This figure includes a snow

wing complete and mounted. Also a V snow plow at the cost of \$2000.00. This is to be paid as follows \$10,000 in 1970. The balance to be paid off as such:

1971 - \$7,496.50	—	Interest @ 6%	- \$1349.10
1972 - 7,495.00	—	Interest @ 6%	- 899.40
1973 - 7,495.00	—	Interest @ 6%	- 449.70

ARTICLE 29. To see if the Town will vote to authorize the Selectmen or a committee to have what necessary changes and proposals they want done with the building given to the Town by Mrs. Harry Damon and raise such sums of money as necessary.

ARTICLE 30. To see if the Town will vote to raise and appropriate the sum of \$1000 for a new dump disposal. This sum will be set us as a capital reserve fund along with the \$1000 raised at last year's meeting for same purpose. Approved by Finance Committee.

ARTICLE 31. To see if the Town will vote to raise and appropriate the sum of \$1000 to continue the widening of the Gilman Valley Road so it can be plowed and summer maintenance be done.

ARTICLE 32. To see if the Town will vote to raise and appropriate for the Tamworth Summer Enrichment Program, Inc. the sum of \$1500 for continuation of a similar program for another summer.

Not approved by Finance Committee

ARTICLE 33. To see if the Town will vote to authorize the Selectmen to borrow money in anticipation of taxes.

ARTICLE 34. To see if the Town will vote to authorize the Selectmen to dispose of any property acquired through tax collector's deeds.

ARTICLE 35. To transact any other business that may legally come before the meeting.

BUDGET OF THE TOWN OF TAMWORTH

Estimates of Revenue and Expenditures for the Ensuing Year January 1, 1970 to December 31, 1970. Compared with Estimated and Actual Revenue, Appropriations and Expenditures of the Previous Year January 1, 1969 to December 31, 1969.

SOURCES OF REVENUE

	Estimated Revenue Previous Year 1969	Actual Revenue Previous Year 1969	Estimated Revenue Ensuing Year 1970
From State:			
Interest and Dividends Tax	\$25,000 00	\$25,203 06	\$25,000 00
Reimbursement a/c State and Federal forest lands	800 00	26 16	25 00
From Local Sources Except Taxes:			
Dog Licenses	200 00	447 50	400 00
Business Licenses, Permits and Filing Fees	25 00	52 00	50 00
Mapping	25 00	82 00	25 00
Highway, including rental of equipment		475 37	
Tamworth Foundation	5000 00	9165 78	
Motor Vehicle Permit Fees	13,000 00	13,356 10	13,000 00
Dump Rental	450 00	290 00	500 00
Fire Engine			7471 02
Amount Raised by Issue of			
Bonds or Notes:			
Fire Engine			2000 00
From Local Taxes Other Than			
Property Taxes:			
Poll Taxes—Regular @ \$2	800 00		
Yield Taxes	1500 00		
<hr/>			
Total Revenues From All Sources			
Except Property Taxes	\$46,800 00	\$49,097 97	\$47,971 02

PURPOSES OF EXPENDITURES

	Actual Expenditures Previous Year 1969	Estimated Expenditures Ensnring Year 1970	Finance Committee Action
General Government:			
Town Officer's Salaries	\$4515 00	\$4318 47	approved
Town Officer's Expenses	1000 00	906 98	approved
Election and Registration Expenses	525 00	730 08	approved
Clerical	600 00	600 00	approved
Expenses Town Hall and Other Town Bldgs.	800 00	959 70	approved
Printing	1500 00	2083 07	approved
State's Fee-Timber Tax		272 69	275 00
Protection of Persons and Property:			
Police Department	1000 00	1103 65	approved
Fire Department	6000 00	4168 09	approved
Moth Extermin.--Blister Rust & Care of Trees	300 00	535 05	approved
Insurance	3000 00	3549 00	approved
Planning Board		28 00	approved
Perambulation	300 00	226 00	approved
Damages and Legal Expenses	200 00	2485 29	approved
Auto Permits		765 53	
Health:			
Health Department, Inc. Hospitals & Ambulance	2050 00	3536 00	approved
Vital Statistics	50 00	75	approved
Duncan Fund		1020 92	
Town Dump and Garbage Removal	2500 00	2969 40	approved
Highways and Bridges			
Town Maintenance -- Summer	18,500 00	18,973 22	approved
Town Maintenance -- Winter	25,000 00	27,998 96	approved
Street Lighting	2100 00	2225 69	approved
General Expenses of Highway Department	1500 00	1377 91	approved
Town Road Aid	1272 43	2709 78	approved
Libraries:			
New Electric Typewriter	1500 00	1500 00	approved
		345 00	

Town Poor	3000 00	581 21	3000 00	approved
Old Age Assistance	4000 00	1230 88	3000 00	approved
Aid to Permanently and Totally Disabled	1500 00	735 33	1500 00	approved
Patriotic Purposes:				
Memorial Day and Veterans' Associations	25 00	25 31	30 00	approved
Aid to Soldiers and Their Families	600 00		600 00	approved
Recreation:				
Parks and Playground, Incl. Band Concerts	1500 00	1500 00	1500 00	approved
Summer Enrichment Program	1500 00	1500 00	1500 00	not approved
Fire Trails			25 00	approved
Cemeteries	1800 00	1800 00	1000 00	approved
OASI Fund		2 98	5 00	approved
Advertising and Regional Associations	660 85	675 25	744 19	not approved
Interest:	1257 84	1938 81	2000 00	approved
Temporary Loans		75,000 00		
On Long Term Notes and Bonds			320 00	approved
Special Health Officer			500 00	approved
Town Construction, Fowler's Mills Special		44 80	2000 00	approved
Refunds		446 94		approved
Gilman Rd. Special	1000 00	1001 40	1000 00	approved
Tanworth Foundation		5519 85		
Head Tax		2560 00		
Payments on Principal of Debt:				
Long Term Notes	5261 56	7263 52	2000 00	approved
County Taxes	14,000	15,362 54	15,000 00	approved
School Taxes	194,444 00	125,000 00	176,649 22	approved
TOTAL EXPENDITURES	\$304,761 68	\$327,233 05	\$295,312 07	

SUMMARY INVENTORY OF VALUATION

Land	\$1,159,740 00
Buildings	4,610,536 00
Factory Buildings	1,600 00
Factory Machinery	36,225 00
Public Utilities — Electric	1,435,190 00
House Trailers, Mobile Homes & Travel	
Trailers Assessed as Personal Property	79,262 00
Stock in Trade of Merchants	71,362 00
Stock in Trade of Manufacturers	12,000 00
Neat Stock & Poultry	
Cattle	13 2,600 00
Poultry	14,200 7,100 00
Gasoline Pumps & Tanks	6,150 00
Road Building & Construction Machinery	20,911 00
	<hr/>
Total Valuation Before Exemptions	
Allowed	\$7,442,676 00
G. I. Exemptions	\$5,236 64
Neatstock Exemptions	350 00
Poultry Exemptions	350 00
	<hr/>
Total Exemptions Allowed	\$5,936 64
	<hr/>
Net Valuation on which Tax Rate is Computed	\$7,436,739 36

ELECTRIC, GAS & PIPELINE COMPANIES

N. H. Electric	\$1,790 00
Public Service	14,334 00
Number of Inventories Distributed in 1969	1100
Date 1969 Inventories Were Mailed	March 4
Number of Inventories Returned in 1969	869

CERTIFICATE

This is to certify that the information contained in this report was taken from official records and is correct to the best of our knowledge and belief.

October 7, 1969

FRANCIS J. WELCH
STEPHEN F. DAMON
DONALD P. HUTCHINS
Selectmen of Tamworth

**STATEMENT OF APPROPRIATIONS
AND TAXES ASSESSED**

For the Tax Year 1969

APPROPRIATIONS

Town Officers Salaries	\$4,465 00
Town Office Administrative Expenses	1,000 00
Election and Registration Expenses	525 00
Clerical	600 00
Town Hall and Buildings Maintenance	800 00
Social Security and Retirement Contributions	1,300 00
Police Department	1,000 00
Printing	1,500 00
Fire Dept.	\$4,000 00
Forest Fires	2,000 00
	\$6,000 00
Blister Rust—Moth Extermination and Care of Trees	\$ 300 00
Insurance	3,000 00
Mapping	400 00
Damages and Legal Expenses	600 00
Health Dept.	\$1,150 00
Hospitals	450 00
Ambulance	1,000 00
Mental	450 00
	\$3,050 00
Vital Statistics	50 00
Dump & Garbage Collection \$2500 - \$1000 land	3,500 00
Town Maintenance	
Summer	\$18,500 00
Winter	25,000 00
	\$43,500 00

Street Lighting		2,100 00
General Expenses of Highway Dept.		1,500 00
Town Road Aid		1,272 43
Libraries		1,500 00
Old Age Assistance	A P 7D \$1500	5,500 00
Public Relief		
Town Poor	\$3,000 00	
Veterans' Aid	600 00	
		<hr/>
		\$3,600 00
Memorial Day, Vet. Assoc., Old Home Day		25 00
Recreation		1,500 00
Perambulation		300 00
Cemeteries		1,000 00
Fire Trails		25 00
Advertising and Regional Associations		660 85
Water Holes		300 00
Riverside Cemetery		800 00
Payment on Debt		
Principal	\$5,621 56	
Interest	1,257 84	
		<hr/>
		\$6,879 40
Summer Enrichment		1,500 00
Town Hall Painting		600 00
Gilman Road		1,000 00
Fire Engine		2,000 00
		<hr/>
Total Town Appropriations		\$103,652 68
Less: Estimated Revenues and Credits		
Interest and Dividends Tax	\$24,499 00	
Railroad Tax	4 00	
Savings Bank Tax	700 00	
Meals and Rooms Tax	2,771 00	
Reimbursement a/c State and Federal Lands	800 00	

Revenue from Yield Tax Sources	1,363 00
Interest Received on Taxes and Deposits	300 00
Business Licenses, Permits and Filing Fees	25 00
Dog Licenses	300 00
Motor Vehicle Permit Fees	13,000 00
Rent of Town Property and equipment	700 00
Poll Taxes at \$2.00 (1969 Warrant) No. 472	944 00
Mapping	25 00
Gift — Tamworth Foundation	3,354 00
	<hr/>
Total Revenues and Credits	\$48,785 00
Net Town Appropriations	\$54,867 68
Net School Appropriations	192,308 73
County Tax Assessment	15,362 54
	<hr/>
Total of Town, School and County	\$262,538 95
Add: War Service Tax Credits	5,300 00
Add: Overlay	7,514 16
	<hr/>
Property Taxes To Be Raised	\$275,353 11

TAXES TO BE COMMITTED TO COLLECTOR

Gross Property Taxes	\$275,353 11
Less: w/Serv. Tax Cr.	5,300 00
	<hr/>
Net Property Taxes	\$270,053 11
Add: 1969 Poll Taxes at \$2.00	944 00
	<hr/>
Total Tax Commitment	\$270,997 11
Tax Rate:	
Town	\$3 70
\$74,419 76 x \$3.70 equals	\$275,353 11

WAR SERVICE TAX CREDITS

	Number	Estimated Tax Credits
Totally and permanently disabled veterans, their spouses or widows, and the widows of veterans who died or were killed on active duty.	3	\$1,800 00
All other qualified persons	70	3,500 00
	<hr/>	<hr/>
Total Number and Amount July 24, 1969	73	\$5,300 00

CERTIFICATE

This is to certify that the information contained in this report was taken from official records and is correct to the best of our knowledge and belief.

July 24, 1969

FRANCIS J. WELCH
STEPHEN F. DAMON
DONALD P. HUTCHINS
Selectmen of Tamworth

**STATEMENT OF BONDED DEBT
AND LONG TERM NOTES**

New Fire Engine Note

Year	Principal	Interest
1970	\$2000 00	\$480 00
1971	2000 00	360 00
1972	2000 00	240 00
1973	2000 00	120 00

Kenneth A. Brett School

1970	7000 00	831 00
------	---------	--------

Last Payment on school will be in 1975

COMPARATIVE STATEMENT OF APPROPRIATIONS AND EXPENDITURES

Fiscal Year Ending December 31, 1969

Title	Appropriation	Receipts	Total Available	Expended	Surplus	Overdraft
Town Officers' Salaries	\$4465 00		\$4465 00	\$4313 47	\$ 146 53	
Town Officers Expenses	1000 00		1000 00	906 98	93 02	
Election & Registration	525 00		525 00	730 08		205 08
Clerical	600 00		600 00	600 00		
Town Hall & Other Bldgs.	1400 00		1400 00	959 70	440 30	
Police Department	1000 00		1000 00	1103 65		103 65
Printing	1500 00		1500 00	2083 07		583 07
Fire Department	6000 00	\$300 00	6300 00	4168 09	2131 91	
Care of Trees	300 00		300 00	807 74		507 74
Perambulation	300 00		300 00	226 00	74 00	
Insurance	3000 00	96 00	3096 00	3549 00		453 00
Health Department	3100 00		3100 00	3536 00		436 00
Dump	2500 00	290 00	2790 00	2969 00		179 40
Summer Highway	18,500 00	475 37	18,975 37	18,973 22	2 15	
Winter Highway	25,000 00		25,000 00	27,998 96		2998 96
Street Lights	2100 00		2100 00	2225 69		125 69
General Highway	1500 00		1500 00	1377 91	122 09	
Library	1500 00		1500 00	1500 00		
Old Age Assistance	4000 00	40 43	4040 43	1230 88	2809 55	
Town Poor	3000 00		3000 00	581 21	2418 79	
Aid to Disabled	1500 00		1500 00	735 33	764 67	
Memorial Day	25 00		25 00	25 31		31
Soldiers Aid	600 00		600 00		600 00	
Recreation	1500 00		1500 00	1500 00		
Enrichment Program	1500 00		1500 00	1500 00		
County Tax	14,000 00		14,000 00	15,362 54		1362 54
Cemeteries	1800 00		1800 00	1800 00		
Legals	600 00		600 00	2485 29		1885 29
Regional Association	660 85		660 85	660 85		

Gilman Valley Road
 Dump Special
 Mapping

1000 00	1000 00	1001 40	1000 00	1 40
1000 00	1000 00		1000 00	
400 00	480 00	150 00	330 00	
<u>\$105,875 85</u>	<u>\$107,157 65</u>	<u>\$105,066 77</u>	<u>\$10,983 01</u>	<u>\$3,842 13</u>
			8842 13	
			<u>\$2,090 88</u>	

TOTALS

Net Surplus

FINANCIAL REPORT

For the Fiscal Year Ended December 31, 1969

ASSETS

Cash in hands of treasurer	\$128,0001	22
Capital Reserve Funds:		
Fire Engine	7,471	02
Accounts Due to the Town:		
State of New Hampshire		
Dump Rental	350	00
Unredeemed taxes:		
Levy of 1968	1,529	77
Levy of 1967	1,899	33
Previous Years	1,128	03
Uncollected Taxes:		
Levy of 1969	38,453	23
Levy of 1968	24	00
State Head Taxes —Levy of 1969	490	00
State Head Taxes, previous years	55	00
Total Asset	\$179,401	60
Grand Total	\$179,401	60
Net Surplus, December 31, 1968	\$ 14,336	47
Net Surplus, December 31, 1969	\$26,770	14
Increase of Surplus	\$12,433	67

LIABILITIES

Accounts Owed by the Town:		
Dump Special	\$1000	00
Planning Board	3972	00
Due to State:		
State Head Taxes—1969		
Uncollected	490	00

Due to School Districts:		
Balance of School Tax	139,698	44
Capital Reserve Funds:	7471	02
		<hr/>
Total Liabilities		\$152,631 46
Excess of assets over liabilities (Surplus)		26,770 00
		<hr/>
Grand Total		\$179,401 60

RECEIPTS

Current Revenue:

From Local Taxes:

Property Taxes, Current		
Year—1969	\$231,701	95
Poll Taxes, Current Year—1969	822	00
National Bank Stock Taxes, 1969	12	50
Yield Taxes, 1969	1640	99
State Head Taxes @ \$5, 1969	1930	00
		<hr/>
Total Current Year's Taxes		
collected and remitted		\$236,107 44
Property Taxes and Yield Taxes		
Previous Years	19,842	69
Poll Taxes, Previous Years	98	00
State Head Taxes @ \$5		
Previous Years	285	00
Interest received on Taxes	1444	97
Penalties on State Head Taxes	43	00
Tax sales redeemed	26,248	20

From State:

For Highways and Bridges:		
For Town Road Aid	2407	20
Interest and dividends tax	25,203	06
Savings Bank Tax and Building and		
Loan Association Tax	26	16

Refund		38 70
Reimbursement a/c Old Age Assistance		40 43
Bounties		5 00
Meals and Rooms Tax		2770 73
From Local Sources, Except Taxes:		
Dog Licenses		447 50
Business licenses, permits and filing fees		52 00
Rent of town property		290 00
Map Sales		82 00
Income from departments		475 37
Motor vehicle permits		
1968—	\$317 07	
1969—	\$12,836 44	
1970—	\$202 59	\$13,356 10
Receipts Other than Current Revenue:		
Temporary loans in anticipation		
of taxes during year	\$75,000 00	
Insurance adjustments	96 00	
Gifts	9,165 78	
Total Receipts Other than Current Revenue		\$84,261 78
Total Receipts from All Sources		\$413,525 33
Cash on hand January 1, 1969		59,994 46
Grand Total		\$473,519 79

PAYMENTS

Current Maintenance Expenses:		
General Government:		
Town officer's salaries	\$4318 47	
Town officer's expenses	906 98	
Election and registration expenses	730 08	
Clerical	600 00	
Expenses town hall and other		
town buildings	959 70	

Protection of Persons and Property:

Police department	1103 65
Printing	2083 07
Fire department, including forest fires	4168 09
Moth extermination—Blister Rust and Care of Trees	535 05
Planning and Zoning	28 00
Insurance	3549 00
Auto Permit Fees	765 53

Health:

Health department, including hospitals & ambulance	3536 00
Vital statistics	75
Duncan Fund	1020 92
Town dumps and garbage removal	2969 40

Highways and Bridges:

Town Road Aid	2709 78
Town Maintenance	
Summer	\$18,973 22
Winter	27,998 96

\$46,972 18

Street lighting	2225 69
General Expenses of Highway Department	1377 91

Libraries: 1500 00

Public Welfare:

Old age assistance	1230 88
Town poor	581 21
Aid to Permanently and Totally Disabled	735 33

Patriotic Purposes:

Memorial Day, Veteran's Associations and Old Home Day	25 31
---	-------

Recreation:

Parks and playgrounds, including band concerts	3000 00
--	---------

Public Service Enterprises:

Cemeteries, including hearse hire	1800 00
Perambulation	226 00

Unclassified:

Damages and legal expenses	2485 29
Advertising and Regional Associations	675 25
Taxes bought by town	18,331 09
Discounts, Abatements and Refunds	446 94
OASI Fund	2 98

Interest:	1938 81
-----------	---------

Outlay for New Construction, Equipment and Permanent Improvements:

Highways and Bridges	
Town construction	44 80
Gilman Valley Road Special	1001 40
Tamworth Foundation	5519 85

Indebtedness:

Payments on temporary loans in anticipation of taxes	75,000 00
Payments on long term notes	7263 52

Payments to Other Governmental Divisions:

State Head Taxes paid State Treas.	2560 00
Payments to State a/c Yield	
Tax Debt Retirement	272 69
Taxes paid to County	15,362 54

Payments to School Districts

1968 Tax	\$88,049 22
1969 Tax	36,950 78

\$125,000 00

Total Payments for all Purposes	\$345,564 14
Cash on hand December 31, 1969	128,001 22
 Grand Total	 \$473,537 36

SCHEDULE OF TOWN PROPERTY

Town Hall, Lands and Buildings	\$50,000 00
Furniture and Equipment	3,000 00
Libraries, Lands and Buildings	9,000 00
Furniture and Equipment	1,000 00
Police Department, Lands and Buildings	500 00
Fire Department, Lands and Buildings	49,000 00
Equipment	27,600 00
Highway Department, Lands and Buildings	9,000 00
Equipment	11,000 00
Schools, Lands and Buildings	165,000 00
Equipment	7,000 00
All Lands and Buildings acquired through Tax Collector's deeds	
Fred Whiting lot	100 00
Melanson lot	250 00
 Total	 \$332,450 00

CERTIFICATE

This is to certify that the information contained in this report was taken from official records and is complete to the best of our knowledge and belief.

February 24, 1970

FRANCIS J. WELCH
STEPHEN F. DAMON
DONALD P. HUTCHINS
Selectmen
WILLIAM B. HIDDEN
Treasurer

TOWN CLERK'S REPORT

January 1, 1969 thru December 31, 1969

AUTO PERMITS

1968	125 Permits issued	\$ 317 07
1969	1286 Permits issued	12,836 44
1970	15 Permits issued	202 59
		<hr/>
		\$13,356 10

DOG LICENSES

1969 Licenses issued	\$447 50
----------------------	----------

FILING FEES

For Town Office	10 00
	<hr/>
Total Debits	\$13,813 60

TREASURER'S RECEIPTS

Auto Permits	\$13,356 10
Filing Fees	10 00
Dog Licenses	447 50
	<hr/>
Total Credits	\$13,813 60

ALLAN S. KENNESON
Town Clerk

**SUMMARY OF WARRANT
PROPERTY, POLL AND YIELD TAXES
LEVY OF 1969**

- DR. -

Taxes Committed to Collector:

Property Taxes	\$270,268 33
Poll Taxes	1002 00

	\$271,270 33
--	--------------

Yield Taxes	1640 99
-------------	---------

Added Taxes:

Property Taxes	\$397 01
Poll Taxes	32 00

	\$429 01
--	----------

Interest Collected	1 53
--------------------	------

TOTAL DEBITS	\$273,341 86
---------------------	---------------------

- CR. -

Remittances to Treasurer:

Property Taxes	\$231,191 95
Poll Taxes	822 00
Yield Taxes	1640 99
Interest Collected	1 53

	\$233,653 17
--	--------------

Abatements:

Property Taxes	\$1023 46
Poll Taxes	48 00

	\$1071 46
--	-----------

Uncollected Taxes - As Per Collector's List:

Property Taxes	\$38,453 23
Poll Taxes	164 00

	\$38,617 23
--	-------------

TOTAL CREDITS	\$273,341 86
----------------------	---------------------

**SUMMARY OF WARRANT
PROPERTY AND POLL TAXES**

LEVY OF 1968

- DR. -

Uncollected Taxes - As of

January 1, 1969:

Property Taxes	\$37,250 62
Added Property Taxes	565 82
Poll Taxes	128 00
Added Poll Taxes	16 00

\$37,960 44

Interest Collected During Fiscal

Year Ended December 31, 1969 \$943 68

TOTAL DEBITS \$38,904 12

- CR. -

Remittances to Treasurer

During Fiscal Year

Ended December 31, 1969:

Property Taxes	\$37,648 29
Poll Taxes	98 00
Interest Collected	
During Year	943 68

\$38,689 97

Abatements Made During Year:

Property Taxes	\$168 15
Poll Taxes	22 00

\$190 15

Uncollected Taxes - As Per

Collector's List:

Poll Taxes \$ 24 00

TOTAL CREDITS

\$38,904 12

SUMMARY OF WARRANT

STATE HEAD TAXES

LEVY OF 1969

- DR. -

State Head Taxes Com-
mitted to Collector:

Original Warrant	\$2955 00
Added Taxes	105 00

Total Commitment	\$3060 00
Penalties Collected	19 00

TOTAL DEBITS

\$3079 00

- CR. -

Remittances to Treasurer:

Head Taxes	\$2440 00
Penalties	19 00

\$2459 00

Abatements 130 00

Uncollected Head Taxes -
As Per Collector's List

490 00

TOTAL CREDITS

\$3079 00

SUMMARY OF WARRANT

STATE HEAD TAX

LEVY OF 1968

- DR. -

Uncollected Taxes - As of

January 1, 1969 \$340 00

Penalties Collected

During 1969 24 00

TOTAL DEBITS

\$364 00

- CR. -

Remittances to Treasurer

During 1969:

Head Taxes \$285 00

Penalties 24 00

\$309 00

Uncollected Head Taxes - As Per

Collector's List: \$55 00

TOTAL CREDITS

\$364 00

SUMMARY OF TAX SALES ACCOUNTS

As of December 31, 1969

-- DR. --

	Tax Sale on Account of Levies of:—		Previous
	1967	1966	Years
(a) Taxes Sold to Town During Current Fiscal Year	1963 \$18,448 59		
(b) Balance of Unredeemed Taxes January 1, 1969	\$2,656 50	\$1,233 99	\$100 44
Interest Collected After Sale	109 29	35 02	
Redemption Costs	14 90	6 57	
TOTAL DEBITS	\$18,969 95	\$1,273 58	\$100 44

--CR.--

Remittances to Treasurer During Year	\$7,974 44	\$ 881 36	
Abatements During Year	9,465 74		
Unredeemed Taxes - At Close of Year	1,529 77	1,899 33	100 44
TOTAL CREDITS	\$18,969 95	\$1,273 58	\$100 44

UNREDEEMED TAXES FROM TAX SALES On Account of Levies of

American Central	1968	1967	1966	Previous
John G. Avollo	\$ 60 00	\$213 44	\$ 245 99	Years

Lawrence Berry		20 00	
Walter Berry	44 30		
Adolph Blumit		3 08	
Bob & Mal Bowles	36 47		
Joy Brothers	22 77		
Ellsworth Brown		34 89	
Chase Poultry	819 53	565 04	
Edward Consalvi		98 18	96 89
Francis A. Corbett	16 90		
David Dunham			15 19
Charles H. Fletcher	67 79		
John Gammon		110 40	
Norman J. Glover	16 90		
Robert J. Harvey	28 64		
Mrs. Dennis Johnson	2 67		
Earl Jones	57 08		
Thomas Larson	52 13	49 79	
Fay Marshall		49 79	
Lillian Martin	24 73		
Henry Mathews			115 47
Kenneth Mayette			124 75
Theodore & Ruth Metz			27 27
George Moody	9 07	8 83	22 21
N. H. Forest Development Assoc.	94 81		
Carlton Page		5 97	
Dixie Page	91 29		
Oliver Page		12 14	
Paul Pray		10 69	
Kenneth D. Roberts		49 79	
Wilmer Semans			
Jay Sheldon	63 88		
Edwin C. Simpson		183 81	
Arthur Solomon		180 65	
			36 96

Ronald & Edna Ulm
Ronaldo Villeneuve
George A. Wendell
Freeman Woodward

20 81	16 28	17 05
	34 89	15 19
		11 42
<hr/>	<hr/>	<hr/>
\$1,529 77	\$1,899 33	\$1,027 59
		<hr/>
		\$100 44

I hereby certify that the enclosed report is correct to the best of my knowledge and belief.

ALLAN S. KENNESON
Collector

... AUDITOR'S CERTIFICATE

This is to certify that we have examined the accounts and records of the Tax Collector of the Town of Tamworth and find them correct.
Feb. 19, 1970

CHARLES W. REMICK
W. L. SMITH
Auditors

DETAILED STATEMENT OF PAYMENTS

TOWN OFFICERS SALARIES

Wilbur Smith	\$ 25 00	
Francis Welch	879 52	
Stephen Damon	879 52	
Donald Hutchins	879 52	
Alan Kenneson	1,100 27	
William Hidden	333 20	
Raymond Gardner	100 00	
State Treasurer - FICA Taxes	272 48	
		<hr/>
Total		\$4,469 51
Approp.		4,465 00
		<hr/>
Overdraft		\$ 4 51

TOWN OFFICERS EXPENSES

Dorothy Dowle, Treas.	\$ 6 00	
Assoc. of N. H. Assessors	5 00	
N. H. Tax Collectors Assoc.	5 00	
N. H. Municipal Assoc.	60 36	
Carroll County Trust Co.	36 55	
Edson Eastman Co.	129 04	
Carroll County Independent	26 00	
Farnum Company	107 00	
Registry of Deeds	89 04	
State Treasurer	3 18	
William Hidden	55 80	
Alan Kenneson	324 53	
Francis Welch	75 32	
Stephen F. Damon	20 00	
Donald Hutchins	76 20	
		<hr/>
Total		\$1,019 02
Approp.		1,000 00
		<hr/>
Overdraft		\$ 19 02

ELECTION AND REGISTRATION

Carroll County Independent	\$ 42 10	
Joseph Mahoney	180 00	
Doris Ayer	180 00	
Willard Jonah	180 00	
Francis Cleveland	12 00	
Forrest Woodward	12 00	
Charles Remick	12 00	
Hazel Whiting	24 00	
Tamworth Inn	57 98	
Chester Davis	30 00	
		<hr/>
Total		\$730 08
Approp.		525 00
		<hr/>
Overdraft		\$175 08

CLERICAL

Linda W. Hansen	\$571 20	
State Treasurer - FICA taxes	28 80	
		<hr/>
Total		\$600 00
Approp.		600 00
		<hr/>
		— 0 —

TOWN HALL AND OTHER BUILDINGS

New England Telephone Co.	\$162 79	
Dube & Murphy, Inc.	27 90	
Public Service Co. of N. H.	71 30	
Carroll County Independent	19 20	
Willard Stockbridge	500 00	
Edson Eastman Co.	26 45	
Kennett Oil Company	128 12	
Tamworth Oil Company	23 94	
		<hr/>
Total		\$959 70

Reg. Approp.	800 00
Paint Approp.	600 00
	<hr/>
Surplus	\$440 30

POLICE

Emery Roberts	\$507 75
Everett Chase	208 00
2-Way Communications Service	16 90
Chocorua Patrol	44 00
Joseph Costello	224 00
Richard Jones	22 00
Donald Hutchins	75 00
Edward Lyman	6 00
	<hr/>
Total	\$1,103 65
Approp.	1,000 00
	<hr/>
Overdraft	\$ 103 65

PRINTING

Donald Hutchins (postage)	\$ 169 56
Carroll County Independent	1,651 47
	<hr/>
Total	\$1,821 03
Approp.	1,500 00
	<hr/>
Overdraft	\$ 321 03

FIRE DEPARTMENT

James Elliott, Treasurer	\$4,000 00
James Elliott	11 55
Charles Remick	11 10
Kennett Oil Company	36 19
	<hr/>
Total	\$4,058 84
Approp.	6,000 00
	<hr/>
Surplus	\$1,941 16

CARE OF TREES

Charles Behr	\$ 53 05	
Everett Davis	382 00	
Treasurer State of N. H.	100 00	
		<hr/>
Total		\$535 05
Approp.		300 00
		<hr/>
Overdraft		\$235 05

PERAMBULATION

Roger Buswell	\$130 00	
Francis Welch	96 00	
		<hr/>
Total		\$226 00
Approp.		300 00
		<hr/>
Surplus		\$ 74 00

INSURANCE & BONDING

Raymond Flanagan		\$3,549 00
		<hr/>
Total		\$3,549 00
Approp.		3,000 00
		<hr/>
Overdraft		\$ 549 00

HEALTH DEPARTMENT

Carroll County Community		
Mental Health Service	\$ 450 00	
Alexander Chapman	500 00	
Merle Dunn, Treas. Nurses		
Assoc.	1,000 00	
Huggins Hospital	150 00	

Memorial Hospital	150 00	
Lakes Region General Hospital	150 00	
Edwin Remick, M. D.	8 00	
	<hr/>	
Total		\$2,408 00
Approp.		2,100 00
		<hr/>
Overdraft		\$ 308 00

VITALS

Edwin Remick, M. D.	75	
	<hr/>	
Total		\$ 75
Approp.		50 00
		<hr/>
Surplus		\$49 25

DUMP

Arnold Anthony	\$1,984 56
Clifford Streeter	71 40
Everett Davis	282 60

DUMP FIRE

Sandwich Fire Department	70 70
Fred Welch	6 00
Arthur Pomeroy	6 00
Hazen Eldridge, Sr.	6 00
Richard Grant	6 00
Edwin Welch	6 00
Paul Williams	7 50
Gordon Evans	6 00
Garfield Dicey	6 00
Arthur Mason, Jr.	6 00
Robert Streeter	6 00
Daniel Jennings	6 00

David Anthony	6 00
Glen Evans	6 00
Ray Sanborn	6 00
Robert Elliott	6 00
Freeman Woodward	6 00
Robert Woodward	6 00
Calvin Marsh	6 00
Forrest Woodward	12 50
Melvin Woodward	6 00
Roger Elliott	7 50
James Elliott	12 50
Allan Jennings	6 00
Paul Jennings	6 00
Richard Streeter	6 00
Alan Ames	6 00
David Goodson	6 00
Harold Smith	6 00
Alan Larrabee	6 00
Arnold Larrabee	7 50
Richard Chase	6 00
Norman Wilkinson	8 00
Raymond Gardner	6 00
Carl Smith	6 00
James O'Shaughnessy	6 00
Merton Moody	8 00
Harry Remick	6 00
Charles Remick	12 50
David Thomas	6 00
Clifford Streeter	6 00
Ronald Remick	6 00
Wilbur Seamans	6 00
Chester Anthony	6 00
Arnold Anthony	6 00
William Farnum	6 00
Walter Farnum	6 00
Francis Welch	6 00
Roy Hammond	6 00

Bernard Jennings	6 00	
Emery Roberts	6 00	
Kevin Brothers	6 00	
Ronald Streeter	6 00	
Boyd Speckman	6 00	
Don Eldridge	6 00	
Philip Haines	6 00	
David Clancy	6 00	
David Currier	6 00	
Donald Hutchins	10 00	
Neal Hansen	2 00	
William Anthony	4 00	
West Ossipee Fire Department	126 00	
Charles Remick	21 50	
		<hr/>
Sub. Total		\$2,942 76
Treasurer, State of N. H. (FICA Taxes)		219 88
		<hr/>
Total		\$3,162 64
Approp.		2,500 00
		<hr/>
Overdraft		\$662 64

SUMMER

Campton Sand & Gravel	\$ 38 68
Everett Davis	14,349 44
Tilton Sand & Gravel	359 94
Merrimack Farmers Exchange	487 90
Penn Culvert	420 42
Eastman Culvert	111 40
Carroll County Trust Co.	700 40
Ashland Hot Mix	50 05
Treasurer, State of N. H. (FICA taxes)	1,260 71

Internal Revenue Service	463 30	
N. H. Bituminous	397 54	
		<hr/>
Total		\$18,639 78
Approp.	18,500 00	
		<hr/>
Overdraft		\$ 139 78

WINTER

Clifford Streeter	\$19,276 50	
Everett Davis	7,919 69	
Wiggins Esso Station	181 50	
Alphonse Brown	58 50	
Austin Welch	324 00	
John B. Hidden, Sr.	195 19	
International Salt Co.	1,205 00	
Internal Revenue Service	790 90	
State Treasurer - FICA	1,222 68	
		<hr/>
Total		\$31,173 96
Approp.		25,000 00
		<hr/>
Overdraft		\$6,173 96

LABOR

Anthony, David	\$ 277 00
Austin, Charles R.	121 00
Carr, Charles M.	198 00
Cook, Allan	16 00
Cook, John, Jr.	16 00
Cook, John, Sr.	10 00
Davis, Everett	4,955 00
Day, Alfred	66 00
Dacey, Dennis	8 00
Drew, Frank	22 55
Eldridge, Ritchie	106 00
Eldridge, Scotty	32 80

Frost, Bernard	74 00
Hobbs, Philip	10 25
Hutchins, Donald	437 00
Hutchins, Paul	1,873 00
Larrabee, Arnold	2,053 00
Moody, Merton	4,359 00
Thomas, David	941 00
Streeter, Clifford	1,730 80
Streeter, Richard	604 90
Streeter, Robert	14 40
	<hr/>
Total	\$17,925 70

EQUIPMENT

Streeter, Clifford	\$1,761 05
Evans Construction	4,756 82
Cummings, Elmer	239 40
Hutchins, Donald	662 75
Roberts, Emery	3,313 12
Wasson, Dannie	549 00
Elliott, Albert	262 30
Davis, Raymond	335 50
Elliott, James	2,505 60
Hidden, John	2,786 79
Hammond, Roy	2,256 25
Drew, Arthur	51 00
Cook, John Sr.	1,036 50
Davis, Everett	7,998 45
Avery, L. E.	48 00
Ambrose, Bros., Inc.	1,515 50
Larrabee, Arnold	217 50
	<hr/>
Total	\$30,295 53

GRAVEL

Roberts, Emery	\$41 00
Smith, Harry	34 50

Anthony, Chester	24 00
Aspinall, Charles	49 80
Perkins, Pike	7 60
	<hr/>
Total	\$156 90

STREET LIGHTING

Public Service Co. of N. H.	\$2,225 69
	<hr/>
Total	\$2,225 69
Approp.	2,100 00
	<hr/>
Overdraft	\$ 125 69

GENERAL EXPENSE OF HIGHWAY DEPARTMENT

Tamworth Oil Co.	\$ 65 40
N. H. Explosives Mch. Corp.	546 58
Ray Road Equipment	97 80
R. C. Hazelton Comany	29 68
Elliott Bros. Garage	98 90
Conway Supply Company	6 40
Sanel Auto Parts	149 79
Raymond Davis	138 20
Remick Bros.	55 00
N. E. Pole & Wood Treating	65 00
Jordan Milton Machinery	100 75
R. H. Smith Company	20 31
Harold Mosley	4 10
	<hr/>
Total	\$1,377 91
Approp.	1,500 00
	<hr/>
Surplus	\$ 122 09

LIBRARIES

Cook Memorial Library	\$750 00
Percy Olton, Treasurer, Cook Mem. Library	750 00
	<hr/>
Total	\$1,500 00
Approp.	1,500 00
	<hr/>
	— 0 —

OLD AGE ASSISTANCE

Treasurer, State of N. H.	\$1,230 88
	<hr/>
Total	\$1,230 88
Approp.	4,000 00
	<hr/>
Surplus	\$2,769 12

TOWN POOR

Clifford Streeter	\$ 58 51
Everett Davis	322 70
Rolland Lord	200 00
	<hr/>
Total	\$ 581 21
Approp.	3,000 00
	<hr/>
Surplus	\$2,418 79

AID TO PERMANENTLY & TOTALLY DISABLED

State Treasurer of N. H.	\$ 735 33
	<hr/>
Total	\$ 735 33
Approp.	1,500 00
	<hr/>
Surplus	\$ 764 67

AUTO PERMITS

Alan Kenneson	\$765 53	
	<hr/>	
Total		\$765 53

DUNCAN FUND

Everett Davis	\$1,020 92	
	<hr/>	
Total		\$1,020 92
Federal Money - No Town Approp.		

MEMORIAL DAY AND OTHER CELEBRATIONS

Eagle Flag Company	\$25 31	
	<hr/>	
Total		\$25 31
Approp.		25 00
		<hr/>
Overdraft		31

RECREATION — PARKS AND PLAYGROUNDS

Tamworth Summer Enrichment	\$1,500 00	
Mona Hanson, Red Cross		
Swimming	1,100 00	
Mildred Streeter, Treas. Town		
Outing Club	400 00	
	<hr/>	
Total		\$3,000 00
Approp.		\$3,000 00
		<hr/>
		— 0 —

CEMETERIES

Garfield Dicey	\$800 00	
Raymond Gardner	500 00	
Raymond Gardner	500 00	
	<hr/>	
Total		\$1,800 00
Approp.		1,800 00
		<hr/>
		— 0 —

DAMAGES AND LEGAL EXPENSES

Charles E. Davidson	\$ 50 00	
Hall, Zellers, Morse and Gallagher	1,649 59	
Estella White, Registry of Probate	50	
Joseph Luke	782 70	
Registry of Deeds	2 50	
	<hr/>	
Total		\$2,485 29
Approp.		200 00
		<hr/>
Overdraft		\$2,285 29

ADVERTISING AND REGIONAL ASSOCIATIONS

Lakes Region Association	\$660 85	
Carroll County Independent (advert.)	14 40	
	<hr/>	
Total		\$675 25
Approp.		660 85
		<hr/>
Overdraft		\$ 14 40

TAMWORTH FOUNDATION

Warren's Express	\$ 9 15
Charles Behr	81 50
E. Olton, Treas. Tamworth's Arts Council	150 00
Charles Campbell (Baseball Team)	100 00
Robert Eastwick	329 20
Treasurer, Conservation Dept.	1,000 00
Percy Olton, Treas. Cook Library	200 00
Mona Hanson, Treas. Red Cross Swimming	100 00
Nancy Coville, Pre-School Program	2,000 00
Tamworth School District	700 00

Mildred Streeter, Tamworth Outing Club	450 00
Tamworth Outing Club	400 00
	<hr/>
Total	\$5,519 85

TEMPORARY LOANS

Carroll County Trust Company	\$75,000 00
------------------------------	-------------

LONG TERM NOTES

Carroll County Trust Company	\$7,263 52
------------------------------	------------

COUNTY TAXES

County of Carroll	\$15,362 54
	<hr/>
Total	\$15,362 54

TAXES BOUGHT BY TOWN

Allen Kenneson, Tax Collector	\$18,331 09
	<hr/>
Total	\$18,331 09
Discounts, Abatements & Refunds on Taxes	\$446 94
OASI Fund	\$2 98

STATE HEAD TAX

Treasurer, State of N. H.	\$2,560 00
Interest on Long Term & Short Term Notes	\$1,938 81

TOWN CONTRUCTION

Bruce Thomas (bridge plank)	\$44 80
-----------------------------	---------

GILMAN VALLEY ROAD SPECIAL

Everett Davis	\$1,001 40
	<hr/>
Total	\$1,001 40
Approp.	1,000 00
	<hr/>
Overdraft	\$1 40

SCHOOL DISTRICT

W. C. Goodson, Treasurer	\$125,000 00	
Balance due - 1968	88,049 22	
	<hr/>	\$36,950 78
Approp.		176,649 22
Balance due - 1969		<hr/> \$139,698 44

PLANNING BOARD

Elizabeth Bowles	\$28 00	
	<hr/>	
Total		\$28 00
Approp.		3,963 40
		<hr/> \$3,935 40
Note: Surplus held for ensuing year		

TOWN OF TAMWORTH FIRE DEPT.

Expenditures:

Telephone & Red Network	\$	329 76
Heat		794 69
Gas, Oil, Repairs		285 50
Hose & Equipment		1450 46
Water		18 00
Building Repairs		55 82
Dry Hydrant Parts		
(South Tamworth)		168 00
Insurance		52 00
Insulate (Tamworth Station)		722 50

Total		\$3876 73
-------	--	-----------

Receipts:

Town Appropriation		\$4000 00
Balance From 1968		576 74

		\$4576 74
--	--	-----------

Expended 1969

		3876 73
--	--	---------

Balance on Hand Jan. 1, 1970

		\$700 01
--	--	----------

TOWN FIRE DEPARTMENT

For a second year, I wish to report the number of fires as being very low, with 5 in houses. One of these fires was beyond hope before any call was put in, while 3 others were successful stops and one was out on arrival.

The lack of a long dry season prevented dangerous fires caused by outside burning and forest fires which are always a serious hazard. The department has been greatly improved by the addition of a new combination pump and tank at Tamworth and the relocating of a larger pump and tank in Chocorua and a larger truck in South Tamworth. To help keep a clean record we ask that every person check around his or her home to see that all storage areas are clean and free from unneeded combustible material and that all brush and grass are cleaned away from all buildings.

Your continued contributions of saleable materials for the annual auctions makes possible the purchase of needed equipment for the department.

CHARLES W. REMICK
Chief

REPORT OF THE FOREST FIRE WARDEN AND DISTRICT CHIEF

The 1969 fire season was a quiet one in this area. Frequent rains kept the danger to a minimum and there were few violations. Your Forest Fire Warden's job would be easier if everyone understood the State laws that govern the kindling of outdoor fires. A synopsis of these laws follow:

Fire Permit

A fire permit is needed for all outdoor fires in or near woodland anytime the ground is not covered with snow. This includes household waste burning, even if in an incinerator, grass burning, garden trash as well as brush burning. Such burning is restricted by regulation to be prior to 9:00 a. m. and after 5:00 p. m.

Exceptions

Commercial or industrial burning is allowed anytime under normal conditions with permission of the District Chief and a permit from the Fire Warden.

Camp or cooking fires are allowed on your own property with permission of the Fire Warden. On another's property with written permission of the landowner and permission of the Fire Warden. The Warden can forbid such fires if in a hazardous area. Permits for cooking fires in the White Mountain National Forest can be obtained from the Laconia Office or at the Ranger Stations. Permits are not required in public camp or picnic grounds where fireplaces have been built for this purpose.

Penalties

1. For kindling a fire without a permit. Maximum of \$200.00 fine; or imprisonment for not more than 60 days.

2. For kindling a fire by any means willfully or recklessly that shall endanger woodlands the maximum fine is \$500.00 or one year's imprisonment.
3. For failure to totally extinguish a camp or cooking fire before leaving it the same penalties as in (1) above.
4. For dropping inflammable material in or near woodland maximum fine of \$25.00.

Fire prevention is a personal matter and a good habit.
Keep our town free from smokes in 1970.

Fires reported — State	453
Fires reported — District	29

Forest Fire Warden
EARLE H. REMICK
District Chief
HUBERT C. HARTWELL, JR.

REPORT OF THE PLANNING BOARD

The Tamworth Planning Board met, as usual, on the last Wednesday of every month at 7:30 P.M. in the Town House. These meetings are open to the public, and it was with considerable disappointment that we noted its absence. Although it is obviously impossible to discuss what everybody might want, it is still possible to discuss what a lot of people might want. Basically that is what the Planning Board is for. Unfortunately, this aspect of the Board, as a tool, so to speak, of the Town, is not generally considered.

Pursuant to the authority vested in the Planning Board at last year's Town Meeting to set up subdivision regulations, much of the time at meetings was given over to discussion on that subject. One very interesting meeting was held at which Mr. Theodore Browne showed slides of a new type of incinerator which he had seen in operation in Canada. Though very expensive it looked like a very practical solution to a problem which we shall have to face in a few years. The so-called "Dump Committee" composed of some members of the Planning Board, as well as Mr. Browne, will probably have more to say on this subject at Town Meeting.

On December 24, 1969, notices were posted in the four post-offices and the Town House, announcing that a hearing would be held on the matter of the sub-division regulations. This notice was also printed in the Carroll County Independent for two succeeding weeks.* About 35 people showed up. The chairman, Norris Frost, read through the list of definitions and regulations, the most important one of which was that no lot could be sold in the Town of Tamworth less than an acre in size. After some discussion it was unanimously voted by those present to adopt the regulations, which was accordingly done by the Planning Board.

Because it is now felt that money for the overall plan may be forthcoming before too long, there is an article in the Warrant calling for an additional \$4000.00 for this purpose. This article had to be inserted because the State planning people want to know how much money each town, which has applied under the provisions of 701, is willing to put up. As will be seen from the accompanying financial statement, there is still a lot of money left over from the last appropriation. However, at the moment, we can't seem to find out how much money we will need.

* The meeting was held on January 20th, 1970.

NORRIS FROST, CHAIRMAN
 RAYMOND FLANAGAN
 FRANCIS CLEVELAND
 DONALD HUTCHINS
 MARION SPAULDING
 ELVA BICKFORD
 CHARLES ASPINALL

FINANCIAL REPORT OF PLANNING BOARD

Bal. of Town Approp.	\$3963 40	
Elizabeth Bowles	28 00	
	<hr/>	
Net Bal.		\$3935 40

Note: Net Balance to be carried over to 1970.

CONSERVATION COMMISSION REPORT

On Saturday night, March 1st, 1969, at the Kenneth Brett School approximately sixty people attended the Tamworth Conservation Commission's open meeting on starting a conservation plan for the Town. John Damon, a member of the Conservation Commission at that time, conducted the planning part of this gathering and asked the seventeen organizations from the Town that were in any way concerned with natural resources--all of whom had representatives present--for their assistance in forming the plan. He pointed out that an organization's (as well as an individual's) concept of conservation relates to its *particular* interest--to the protection of those resources that have to do with this interest--preserving wild habitats for a local bird and wildflower society, maintaining trails for a cross-country ski club, assuring unpolluted waters in streams and rivers for a fish and game club, for example. Since then each of these organizations has had an opportunity to express its thoughts to Commission members in a series of individual meetings held last spring and summer. The ideas they have expressed have become the base for Commission members as they consider what is needed in terms of conservation practices. As this is being written, those of us on the Commission will shortly be holding workshop sessions to begin to correlate these suggestions into a workable plan. The framework of our conservation plan is based on:

- a. The protection of water and air.
- b. The preservation of wildlife and forests for business and recreation use.
- c. The planning for a wise balance of lands to be developed and those to be left as open spaces.
- d. The designation of certain tracts of land and bodies of water as wild or natural areas.

In June 1969 our Hemenway Natural Area, in which we are planning to lay out a nature trail after constructing a footbridge across the Swift River, became officially legal when the lease from the State permitting us to manage this tract was signed by Betty Steele, chairman of the Conservation Commission. It will be known as "The Big Pines Natural Area" and consists of approximately 105 acres. Construction on the footbridge will begin in the spring of 1970.

The Natural Preserves Forum, an advisory group of largely professional people in natural resources at the State level, had a field trip through "The Big Pines Natural Area" on May 24th. This was held at their request. They suggested that we have a geologist go over our proposed nature trail as they felt there were unusual geological features present.

On July 31st a warranty deed was signed and a tract of ten acres, including land along the shore of Jackman Pond, owned by Pike Perkins became the property of the Tamworth Conservation Commission. We had raised \$6000 from residents living in the vicinity of the Pond who wished to see this small body of water left unspoiled as a wild place. Subsequently we raised over \$1000 more and bought on December 31st twelve acres owned by the Taylors which further protects the Pond from developers. We have recorded in the Carroll County Court House these two deeds and also a "first refusal option" from Ted Graham on his property on Jackman Pond. Thus we have tried to preserve, to the best of our ability, one of the last remaining unspoiled ponds in the Township.

The seven Commission members are truly beholden to the thirty-one families and the Tamworth Foundation, and to those who made a joint memorial gift honoring Joseph Dawson, one of our original members, for together they made possible the purchase of land around Jackman Pond. Without their overwhelming financial support during the two Pond fund-raising drives we would not have succeeded

in our first land acquisition project. We can only thank one and all again for their immediate and heartwarming response.

The Commission has its first “green-strip” easement along a waterway given us by Irene Irwin on her property along Sanborn Brook. We thank Miss Irwin for leading the way and are hopeful that many more residents will care to preserve the beauty of our streams and rivers by utilizing easements to protect them.

The Harry Damon family is going to give to the Commission a triangular piece of land of about thirty-five acres including one and one half tiny, bog type ponds that are near White Lake. This vicinity is a haven for song birds and wildflowers. We are more than grateful for their generosity.

Because of increasing job pressures John Damon has resigned from our Commission but we are fortunate indeed that he will be in a position to help us with our conservation plan which he has masterminded.

John Hidden joined us on the Commission in January of 1970. We have welcomed him for he brings to us a wealth of knowledge about the Town of Tamworth and its fields, forests and streams plus a great depth of interest in conservation.

Tamworth is well represented on “New Hampshire Tomorrow” with our chairman serving on the land acquisition committee, Peg King a member of the environmental education committee and Percy Olton on the scenic preservation committee.

The secretary of the Commission represented Tamworth at The Annual New Hampshire Town Conservation Commissions Meeting in Henniker in October.

Commission members especially appreciate the willing

aid and assistance given us during the past year by non-members Dave Bowles, Ted Gallagher and Stan Coville.

It has been said that 1969 will be looked back on as the year conservationists across the country came to the forefront. Perhaps it is fitting that we close with a few words spoken by John Damon at the open meeting last March. "Tamworth's natural resources are the Town's only economic base. *Tamworth* needs conservation because it represents dollars to our Town. A *resident* of Tamworth needs conservation because it effects his property and property evaluations, and often his job and income. When our natural resources are gone they will have vanished forever and there will be no more. For these reasons the Conservation Commission is against the destruction of them."

Respectfully submitted,

SALLY GALLAGHER

Secretary for the Tamworth
Conservation Commission

ELIZABETH STEELE

MRS. MYRICK CRANE

MISS MARGARET KING

MR. PERCY OLTON

MR. ELTON PERKINS

MR. JOHN HIDDEN

TAMWORTH COMMUNITY NURSE ASSOCIATION

Annual Report 1969

RECEIPTS

Balance on hand January 1, 1969		\$4723 29
Town Appropriation	\$1000 00	
Income, Whittemore Estate	8860 17	
Fund Drive	1913 00	
Sale of Tamworth Maps	49 50	
Unsolicited Contributions	50 20	
Return, Pre-School Dental Program	47 00	
Bill correction	09	
	<hr/>	
Total Receipts		\$11,919 96
		<hr/>
		\$16,643 25

DISBURSEMENTS

Salaries	\$5174 45	
Internal Revenue Service	1913 34	
Dental Health Fund	240 00	
School Psychologist	172 40	
Insurance	269 00	
Saab	1200 00	
Car Maintenance	393 48	
Phone	198 43	
Nursing Equipment	192 51	
Supplies & Misc.	133 33	
	<hr/>	
		\$9886 94
Transferred to Savings Account		4000 00
		<hr/>
Total Disbursements		\$13,886 94
		<hr/>
Balance on hand January 1, 1970		\$ 2756 31

MERLE T. DUNN, Treas.

TAMWORTH COMMUNITY NURSE, 1969

Total Nursing Visits	2194
Total patients using nursing service	95
Patients discharged	59

Children's Services:

Babies under 28 days	18
Babies 1 month to 1 year	24
Children 1-5 years	19
Children 5-19 years	128
Hearing Tests - pre-school	17
Visual Acuity - pre-school	17
Lazy Eye Clinic at Conway, N. H. May 1969	

Immunization Clinic - Jan., Feb. 1969 - Oct., Nov., Dec. 1969

Children attending	134
Pre-school	60
School	74

Adult Services:

Ante partum & post partum visits	16
Health promotion	481
Disease Control	1697
Emergency transportation to a doctor	2
Emergency transportation to a hospital	6
Conferences	33

Assisted at:

 Pediatric clinics at Center Ossipee
 School physicals at Memorial Hospital, North Conway

Educational Conferences:

 Post partum conference
 Arthritis Clinic at Mary Hitchcock Hospital

Meetings attended as part of duty:

 Carroll County Mental Health Agency
 New Hampshire Department of Welfare in Conway,
 New Hampshire
 Comprehensive Youth Project Meeting in Conway, New
 Hampshire

**FINANCIAL REPORT OF
TAMWORTH BRANCH AMERICAN RED CROSS**

1969

White Lake Water Safety Program

DR.

Town Appropriation	\$1100 00	
Tamworth Foundation	100 00	
		\$1200 00

CR.

Transportation	\$754 90	
Instruction (in part)	445 10	
		\$1200 00

Actual Cost of Program:

Transportation	\$754 90	
2 drivers gave services		
Instruction paid	550 40	
		\$1305 30

The difference of \$105.30 was furnished by Tamworth Branch and Conway Chapter American Red Cross.

MONA L. HANSON
Treasurer

TAMWORTH OUTING CLUB

ACTIVITIES REPORT

The Tamworth Outing Club conducted many varied events throughout the year in the attempt to provide recreational interest for everyone.

The annual fishing derby for children 16 years and under is always held from May 1 - 31st. Prizes were awarded to the winning anglers at a school assembly.

This past spring was the third season for the Tamworth Little League Team. Under the able coaching and managing hand of Whip Farnum who generously gives his time and talent, the boys had their best season. A wish for a very successful upcoming season is extended.

Square dances are sponsored weekly throughout the summer at Stafford's-in-the-Field.

Mt. Chocorua in the foreground became the scene of the trap shoot in September. The shoot and view was enjoyed by the largest participant turnout ever.

In October, Roberts Sand Pit was the site of the annual Rifle Shoot. The 22 class has become a permanent event drawing ever increasing numbers of youngsters each year.

The Christmas tree lights were again hung on the Kenneth A. Brett Memorial tree in the Village and made an attractive holiday display.

The New England Sled Dog Club's opening race was sponsored by the Outing Club as an annual event. This time-consuming event is only possible with the much appreciated voluntary assistance of members and non-members alike.

The ski season has been underway for some months, but there seems to be a lack of one of the necessary ele-

ments this year -- SNOW. A ski repair night was held and thereafter approximately 45 pairs of skis and poles were issued to the school children for the rental fee of 50c per season.

Each winter TOC arranges transportation and ski lessons at Mt. Whittier Ski Area for the elementary school children. This year 91 children signed up, but with the lack of snow, only three lessons were offered.

Reduced season ski tickets at Mt. Whittier were again made available to Junior TOC members who are year-around residents of Tamworth.

The Tamworth Outing Club thanks its loyal supporters who give generously of their time, talent, and finances, and especially the Tamworth Foundation without whose help our recreational program and activities would not have been possible.

H. ALTON HUGHES
President
1969-70

TAMWORTH OUTING CLUB, INC.

TREASURER'S REPORT

September 1, 1968 to August 31, 1969

	Income	Expense	Balance
Cash Balance Sept. 1, 1968			\$ 649 64
Tamworth Foundation	\$450 00		1099 64
Town Appropriation	400 00		1499 64
Dues	369 00		1868 64
Little League Supper	209 75	\$ 72 65	2005 74
Square Dance	202 70	362 50	1845 94
Shoots	221 16	176 06	1891 04
Little League Baseball		242 45	1648 59
Dog Race	1095 98	1173 41	1571 16
Ski Program		1048 25	522 91
Ladies & Jr. Tennis	33 50		556 41
Administration		41 08	515 33
			<hr/>
Cash Balance August 31, 1969			\$515 33

Respectfully Submitted,
MILDRED M. STREETER
Treasurer

COOK MEMORIAL LIBRARY

In 1969 there were 2456 visitors in your library who checked out books or used reference materials in the library itself. When there are requests for books which we do not own we borrow from the State Library. There has been a great increase for this type of service in recent years, particularly for elementary and high school students.

Interested citizens have continued to donate new books and magazines and the bookmobile in its quarterly visits provides us with many more which keeps us fairly well up to date in spite of a small book budget. Numerous gifts have also been made in memory of Harry Damon.

The Friends of the Library erected a lighted outdoor Christmas tree and have made a substantial donation to the building fund. During the summer they prepared interesting exhibits on a variety of subjects.

The Garden Club donated a handsome wreath for the library window and arranged window box decorations throughout the year.

To these and all others who have helped to improve our library we are grateful.

ELIZABETH SPICER, Librarian
MARGARET A. KING, Asst. Librarian

**COOK MEMORIAL LIBRARY
TREASURER'S REPORT**

Year Ending December 31, 1969

Balance on hand Jan. 1, 1969 \$ 469 76

Receipts

Town appropriation	\$1500 00
Tamworth Foundation	200 00
Mason Trust Fund	28 75
Memorial gifts	327 00
Sale of books and replacement charges	21 12
State grant for "reference" functions	100 00
Refund of balance in Cooperative Book Buying Service	71 13
Drawn from Building Fund	2398 92

Total receipts \$4646 92

\$5116 68

Expenditures

Book purchases	\$542 79
Librarians' salaries	749 00
Social Security	70 41
Light, heat and power	114 42
Library supplies	28 15
Justodial services	150 00
Compensation insurance	39 00
Library Assn. dues and other services	6 30
Transfer of memorial to Building Fund	200 00
Construction work - sewage disposal system and building alteration	2398 92

Total expenditures \$4298 99

Balance on hand December 31, 1969 \$ 817 69

COOK MEMORIAL LIBRARY BUILDING FUND

Balance on hand Jan. 1, 1969		\$2539 52
Donations received	\$1160 00	
Memorial transferred	200 00	
Interest credited	149 90	
	<hr/>	
Total received		\$1509 90
		<hr/>
		\$4049 42
Transferred to Cook Memorial Library for construction expenses		2398 92
		<hr/>
Balance December 31, 1969		\$1650 50

PERCY T. OLTON, Jr.
Treasurer

TAMWORTH FOUNDATION

Treasurer's Report

For Year Ending December 31, 1969

RECEIPTS

Contributions		\$1511 00
Income:		
Wilson Fund	\$12,686 42	
Foundation Investments	2117 40	
Runnells Fund	378 14	
Whittemore Bequests	16,292 48	
Income balance Common Trust Fund	204 70	
		<hr/>
		\$31,679 14
Roy Sturtevant bequest		1000 00
		<hr/>
Total		\$34,190 14

EXPENDITURES

Administrative expense		\$ 116 90
Wilson legatees		2871 23
Town of Tamworth for:		
Fire notes	\$3555 08	
School tennis courts	7147 95	
Police radio	400 00	
School play at Hanover	150 00	
Jackman Pond Conservation	1000 00	
Tamworth Library	200 00	
American Red Cross	100 00	
School ski instruction	450 00	
Pre-school program	500 00	
School library	100 00	
School sports equipment	100 00	
School art program	300 00	
		<hr/>
		\$14,003 03

Whittemore Fund:

Chocorua Public Library — income	7601 13
—building	65,301 57
Community Nurse Association	9545 65

 \$32,448 35

Runnells Memorial Hall

378 14

Net loss on security transactions

1639 41

 Total

\$101,457 06

Balance on Hand July 31, 1969:

Cash:

Foundation Account	\$5523 46
Common Trust Fund	204 70
Cash Reserve	484 38

 \$6212 54

Book Values of Principal*

Cash Reserve	\$ 19,468 73
Common Trust Fund	579,145 59

 \$598,614 32

 Total

\$604,826 86

Reconciliation:

Balance on hand August 1, 1968	\$672,093 78
Receipts	\$ 34,190 14
Expenditures	101,457 06

 (\$67,266 92)

 \$604,826 86

* Market value may be higher or lower

Respectfully submitted,
 CHARLES T. GALLAGHER
 Treasurer

REPORT OF SPECIAL HEALTH OFFICER**Year 1969**

During the year 1969, 34 Tamworth property owners were assisted with the design and construction of septic sewage disposal systems. Of these, 16 designs required the approval of the N. H. Water Supply and Pollution Control Commission. These applications were prepared by the Special Health Officer, and State permits were obtained. In the case of the remaining 18 systems, designs conforming to State Regulations were drawn up, and valid permits were issued directly on behalf of the Selectmen.

These activities were carried out during the period May 1 to November 15. Travel amounted to 2,000 miles, and work time consumed about 300 hours.

Respectfully submitted,
A. H. CHAPMAN
Special Health Officer

REPORT OF THE DUMP COMMITTEE

The New Hampshire Air Pollution Control Agency extended the time before its order prohibiting burning on open dumps takes effect. Instead of 1971, the order now permits open burning in towns the size of Tamworth until 1975. Unless the Federal Government supervenes and forces earlier compliance, New Hampshire's order stands. Federal law is already on the books.

Because the time was extended, your Committee believed that the Town should take full advantage of it and await the results of engineering and cost studies, reports, and experience with pilot operations which are now being undertaken in this State. These reports will become available during 1970. Consequently, the money appropriated for "Solid Waste" disposal facilities was not spent.

It is most probable that under legislation now pending before Congress cost-sharing for the installation of approved facilities for Solid Waste disposal will be available.

Therefore, your Committee recommends that the \$1000 he held in special reserve and that an equal sum be appropriated and added to the reserve this current year so that the Town will be able to act promptly in the acquisition of approved facilities or land, or have some money in hand to take advantage of whatever cost-sharing arrangements become available.

TAMWORTH DUMP COMMITTEE

Donald Hutchins

Charles Aspinall

Theodore C. Browne, Secretary

REPORT BY COMMITTEE ON PLOWING DRIVEWAYS

A request was made at last year's Town Meeting for the Selectmen to appoint a Committee to investigate the cost of plowing driveways.

The following are based on figures received from Selectmen and Road Agent.

1964

Approx. 300 driveways — 15 storms \$4,649.75 per storm \$310.00 — each driveway \$1.05.

1969

Approx. 598 driveways — 18 storms \$16,112.29 per storm \$895.00 — each driveway \$1.50.

This Committee unanimously agreed that the Town continue to plow the driveways.

The Committee was asked by Selectmen for their opinion about individuals being paid for plowing their own driveways.

This Committee recommends that no individual be paid for plowing his own driveway.

Respectfully submitted,
COMMITTEE ON
PLOWING DRIVEWAYS

HOW INVESTED

NAME OF TRUST FUND
PURPOSE OF TRUST FUND

Date of
Creation

New Funds Created

Balance Principal
Beginning Year

Balance Principal
End Year

Balance Income
Beginning Year

Balance Income
End Year

Income Expended
During Year

Balance Income
During Year

Balance Income
End Year

Date of Creation	Name of Trust Fund Purpose of Trust Fund	How Invested	Balance Principal Beginning Year	New Funds Created	Balance Principal End Year	Balance Income Beginning Year	Balance Income End Year	Income Expended During Year	Balance Income During Year	Balance Income End Year
Oct. 1918	C & T Mason	Cook Library	\$750 00		\$750 00			\$18 75	\$18 75	
Oct. 1918	C & T Mason	Cook Library	200 00		200 00			10 00	10 00	
Apr. 1927	Tilton Heirs etc.	Pease Cemetery	377 94		377 94	56 91		20 00	22 16	\$39 07
Apr. 1927	Tilton Heirs etc.	Pease Cemetery	30 00		30 00	30 56			2 42	32 98
May 1927	C. P. Atkinson	Chocorua Cemetery	200 00		200 00	47 84		10 00	10 00	47 90
May 1894	Susan Clark	Chocorua Cemetery	100 00		100 00	26 48		5 00	5 00	26 48
May 1894	Azubah Dorman	Chocorua Cemetery	100 00		100 00	24 44		5 00	5 00	24 44
May 1896	Flaxon Garnett	Chocorua Cemetery	100 00		100 00	38 72		5 00	5 00	38 72
May 1894	Nancy Clark	Chocorua Cemetery	50 00		50 00	14 28		2 50	2 50	14 28
Oct. 1899	John Nickerson	Chocorua Cemetery	100 00		100 00	34 64		5 00	5 00	34 64
Oct. 1899	Edwin R. Perkins	Chocorua Cemetery	350 00		350 00	23 24		17 50	17 50	23 24
Feb. 1895	Elizabeth Harmon	Chocorua Cemetery	100 00		100 00	35 66		5 00	5 00	35 66
Feb. 1899	Maria Hane	Chocorua Cemetery	15 00		15 00	14 79		75	75	15 54
Feb. 1899	Hannah S. Marsden	Chocorua Cemetery	15 00		15 00	14 79		75	75	15 54
Feb. 1906	C. W. & C. Salvage	Chocorua Cemetery	100 00		100 00	21 38		5 00	5 00	21 38
July 1908	C. B. & M. Hatch	Chocorua Cemetery	75 00		75 00	18 34		3 75	3 75	18 34
Mar. 1908	Otis A. Hatch	Chocorua Cemetery	50 00		50 00	14 28		2 50	2 50	14 28
July 1908	James Perkins	Chocorua Cemetery	500 00		500 00	71 95		25 00	25 00	71 95
July 1909	John S. Runnels	Chocorua Cemetery	100 00		100 00	14 24		5 00	5 00	14 24
June 1927	Susie S. Furness	Chocorua Cemetery	100 00		100 00	15 84		5 00	5 00	16 74
July 1927	J. Neally	Neally Cemetery	101 88		101 88	6 40		4 40	4 40	6 80
July 1927	John Ranger	Chocorua Cemetery	100 00		100 00	26 75		4 00	4 00	29 96
Apr. 1927	Albion Blasdel	Chocorua Cemetery	100 00		100 00	11 54		5 00	4 52	11 06
Oct. 1928	Robert Nickerson	Chocorua Cemetery	100 00		100 00	10 73		4 48	4 48	11 21
May 1896	E. P. Atkinson	Drew School Fund	7809 08		7809 08			399 81	399 81	

May 1911	Colburn Lot	Bowles Mill Cemetery	C. C. Trust Th 160	75 00	7 72	3 75	3 75	7 72
May 1908	Azubah Dorman	Gilman Cemetery	C. C. Trust Th 160	50 00	5 12	2 50	2 50	5 12
May 1908	Cordellia Gilman	Gilman Cemetery	C. C. Trust Th 160	100 00	14 24	5 00	5 00	14 24
May 1906	Azubah Dorman	Riverside Cemetery	C. C. Trust Th 160	50 00	4 08	2 50	2 50	4 08
Sept. 1927	Pike G. Perkins	Riverside Cemetery	C. C. Trust Th 160	100 00	6 08	5 00	5 00	6 08
Sept. 1918	Pike G. Perkins, etal	Riverside Cemetery	C. C. Trust Th 160	150 00	6 00	7 50	7 50	6 00
Sept. 1918	Pike G. Perkins, etal	Riverside Cemetery	C. C. Trust Th 160	1000 00	46 10	50 00	50 00	46 10
Sept. 1918	Susan B. Cook	Riverside Cemetery	C. C. Trust Th 160	100 00	6 08	5 00	5 00	6 08
Sept. 1914	Martha Sanborn	Riverside Cemetery	C. C. Trust Th 160	20 00	10 93	1 00		11 93
Sept. 1914	John Grant	Riverside Cemetery	C. C. Trust Th 160	5 00	3 30	25		3 55
Sept. 1918	Sarah O. Mason	Riverside Cemetery	C. C. Trust Th 160	100 00	6 08	5 00	5 00	6 08
Sept. 1918	Hubbard Lot J. H. L.	Riverside Cemetery	C. C. Trust Th 160	100 00	10 16	5 00	5 00	10 16
Sept. 1918	C. & T. Mason	Riverside Cemetery	U. S. Treasury Bond	750 00		18 75	18 75	
Sept. 1918	C. & T. Mason	Riverside Cemetery	C. C. Trust 13523	200 00	21 59	9 01	9 01	21 60
Jan. 1937	Bachelor Lot	Riverside Cemetery	C. C. Trust 8121	100 00	7 90	4 40	4 40	7 90
Sept. 1923	Mary E. Felch	Riverside Cemetery	Rochester Savings 31930	100 00	10 32	6 27	6 00	10 59
Sept. 1918	Mary K. Remick	Riverside Cemetery	C. C. Trust 9104	100 00	9 28	4 44	4 44	9 28
Sept. 1921	J. D. Royden	Stephenson Hill	N. H. Savings 88374	200 00	24 37	11 43	11 43	24 37
Sept. 1923	W. M. Cushing	Town Cemetery	C. C. Trust 160	100 00	4 62	5 00	5 00	4 62
Sept. 1923	J. Chick Lot	Town Cemetery	C. C. Trust 160	100 00	5 96	5 00	5 00	5 96
Sept. 1923	F. P. Remick	Town Cemetery	C. C. Trust 160	100 00	14 70	5 00	5 00	14 70
July 1923	Jewett Lowe	Town Cemetery	Amos. Bk. 197310	500 00	131 97	32 20	32 20	131 97
Oct. 1923	Obed Hall F. W. L.	Town Cemetery	Stratford Bk. 46898	250 00	49 95	14 84	14 86	49 95
Oct. 1930	Albert Eastman	Town Cemetery	C. C. Trust 8848	100 00	19 15	4 84	4 84	19 15
May 1931	Chas. S. Clark	Riverside Cemetery	C. C. Trust 160	100 00	18 18	5 00	5 00	18 18
May 1930	Chas. Stephenson	Riverside Cemetery	C. C. Trust 160	100 00	13 04	5 00	5 00	13 04
Nov. 1936	Mary A. Gilman	Town Cemetery	Rochester Bk. 6406	100 00	22 80	6 98	6 98	22 80
Nov. 1937	Edgar Roberts	Chocorua Cemetery	C. C. Trust 160	100 00	25 03	5 00	5 00	25 03
June 1938	F. S. & H. B. Lord	Chocorua Cemetery	Meredith Bk. NA 1935	200 00	46 01	12 53	12 53	46 01
June 1938	Isreal Mayo	Chocorua Cemetery	Meredith Bk. NA 1936	100 00	25 31	6 37	6 37	25 31
June 1938	Rand Smith	Chocorua Cemetery	Meredith Bk. NA 1937	100 00	25 31	6 37	6 37	25 31
June 1938	Stetson Blaisdell	Chocorua Cemetery	Meredith Bk. NA 1938	100 00	25 31	6 37	6 37	25 31
June 1938	J. Everts Merrill	Town Cemetery	Meredith Bk. NA 1923	800 00	143 11	48 03	20 00	171 14
Nov. 1939	Joel S. Sanborn	Town Cemetery	Meredith Bk. NA 1939	515 44	335 26	43 32	20 00	358 58
Dec. 1939	James Scott	Chocorua Cemetery	Meredith Bk. NA 3111	25 00	20 94	2 75		23 69
June 1940	Frank S. Carle	Riverside Cemetery	Meredith Bk. NA 1940	100 00	9 65	5 56	5 56	9 65

June 1942	Florstina Carle	Riverside Cemetery	Meredith Bk. NA 1943	100 00	12 28	5 70	5 70	12 28
Apr. 1942	George Tewksbury	Chocorua Cemetery	Meredith Bk. NA 1942	300 00	91 38	19 93	19 93	91 38
Apr. 1942	George Tewksbury	Chocorua Cemetery	Meredith Bk. NA 1944	600 00	602 44	61 24		603 68
Apr. 1942	John W. King	Chocorua Cemetery	Meredith Bk. NA 1944	100 00	21 64	6 18	6 18	21 64
Dec. 1944	S. O. Gillman	Chocorua Cemetery	C. C. Trust 161	1000 00	208 76	61 88	61 88	208 76
Apr. 1899	Frauk B. Stanley	Riverside Cemetery	Meredith Bk. N A 1945	300 00	67 73	18 70	18 70	67 73
Jan. 1946	Archie Nickerson	Chocorua Cemetery	Meredith Bk. 3111	50 00	45 89	5 08		48 97
Aug. 1946	George Evans	Riverside Cemetery	Meredith Bk. N A 1946	370 00	81 00	21 94	21 94	81 00
Jan. 1948	Ida I. Parker	Chocorua Cemetery	Meredith Bk. N A 1947	100 00	9 82	5 56	5 56	9 82
Nov. 1948	Eva W. Roberts Fund	Chocorua Cemetery	Meredith Bk. N A 1948	200 00	19 27	11 16	11 16	19 27
Nov. 1948	Eva W. Roberts Fund	Town Cemetery	Meredith Bk. N A 1950	100 00	16 81	5 93	5 93	16 81
Dec. 1948	Winifred Alexander	Chocorua Cemetery	Meredith Bk. N A 1951	400 00	53 50	23 08	23 08	53 50
Dec. 1956	Herbert & Emma Knox	Chocorua Cemetery	Meredith Bk. N A 1952	200 00	13 90	10 88	10 88	13 90
Aug. 1957	Harry W. Hammond	Chocorua Cemetery	C. C. Trust 17505	500 00	97 53	24 30	20 00	101 83
May 1959	Annie W. Hammond	Chocorua Cemetery	C. C. Trust 18086	300 00	42 50	13 96	13 96	42 50
Sept. 1859	George W. Downs	Riverside Cemetery	Meredith Bk. N A 1953	1000 00	223 46	62 31	50 00	235 77
Dec. 1956	Taylor B. Grant	Chocorua Cemetery	Meredith Bk. N A 1954	200 00	25 56	11 48	11 48	25 56
Oct. 1960	Joseph H. Towle	Chocorua Cemetery	C. C. Trust 18023	100 00	4 93	4 28	4 28	4 93
Aug. 1961	J. & F. Kingsbury	Chocorua Cemetery	C. C. Trust 18887	50 00	15 38	2 64		18 52
Feb. 1961	Florence Hammond	Chocorua Cemetery	C. C. Trust 18709	200 00	11 65	8 59	8 00	12 24
Mar. 1961	Trustee of Trust Funds	E. D. Funds	C. C. Trust 18407	955 84	307 92	51 02		358 94
Dec. 1962	Clarence Gill	Chocorua Cemetery	C. C. Trust 19660	25 00	5 05	1 29		6 25
May 1962	Roy Arling a/c	Special	C. C. Trust 19089	25 00	23 34		8 00	15 34
May 1898	Irene Bickford	Chocorua Needy	Meredith Bk. 32165	3500 00	983 20	135 62		1118 82
Aug. 1964	Chas. F. Bodge	Riverside Cemetery	U. S. Bonds					
Jan. 1965	Harry C. Taylor	Chocorua Cemetery	Meredith Bk. N A 2075	200 00	8 95	10 62	10 00	9 58
Aug. 1965	G. C. Weeks	Chocorua Cemetery	Meredith Bk. N A 2217	100 00	5 08	5 08	5 08	
Sept. 1965	Phillip H. Smith	Chocorua Cemetery	C. C. Trust 20329	300 00	6 65	12 45	10 00	9 10
Sept. 1965	Virgil D. White	Riverside Cemetery	C. C. Trust 20346	25 00	3 20	1 12		4 32
Dec. 1965	Eddith Provost & Marion Smith	Riverside Cemetery	C. C. Trust 20358	300 00	9 93	12 59	10 00	12 52
Dec. 1967	Capital Reserve Fund	Fire Engine	C. C. Trust 20423	100 00	1 65	4 13	5 00	78
May 1966	M. Antonette Johnson	Chocorua Cemetery	C. C. Trust 0276	600 00	211 77	259 25		471 02
May 1966	Smith & Mason Lots	Riverside Cemetery	C. C. Trust 20543	510 59	19 02	21 47	10 00	30 40
May 1967	Wilbur Hobbs	Chocorua Cemetery	C. C. Trust 20453	200 00	19	8 15	8 00	34
July 1967	Margaret R. Chase	Chocorua Cemetery	Meredith Bk. N A 2757	100 00	2 72	5 22	5 00	2 94
		Chocorua Cemetery	Meredith Bk. N A 2905	100 00	1 82	5 16	5 00	1 98

Apr. 1968	Harry E. & Maud Cummings	Chocorua Cemetery	Meredith Bk. N. A. 2968	100 00	2 93	5 22	5 00	3 15
Apr. 1968	Elinor B. McCabe	Chocorua Cemetery	Meredith Bk. N. A. 2967	300 00	82	15 30	15 00	1 12
May 1968	Paul Scott Mowrer	Chocorua Cemetery	Meredith Bk. N. A. 2992	200 00	03	10 18	10 00	21
July 1968	Ralph R. & Marton R. Acker	Chocorua Cemetery	Meredith Bk. N. A. 3073	200 00	33	10 18	10 00	51
July 1968	Geo. W. Wickersham, Jr.	Chocorua Cemetery	Meredith Bk. N. A. 3072	100 00	1 67	5 15	5 00	1 82
Mar. 1969	Minnie A. Moore	Riverside Cemetery	Meredith Bk. N. A. 36195	50 00		1 69	1 69	
May 1969	Richard G. Bleakney	Chocorua Cemetery	Meredith Bk. N. A. 36312	600 00		17 66	10 00	7 66
May 1969	Frank E. Garland	Chocorua Cemetery	Meredith Bk. N. A. 36311	200 00		5 45	5 45	
Dec. 1969	Ruth S. Robertson	Chocorua Cemetery	Meredith Bk. N. A. 37282	25 00				
Oct. 1969	Perkins	Chocorua Cemetery	C. C. Trust 043	500 00				
Oct. 1968	T. B. & M. B. Robertson	Chocorua Cemetery	Meredith A3111	50 00		3 55		3 55
Dec. 1969	Chas. Chase	Chocorua Cemetery	Meredith A3111					

This is to certify that we have examined the accounts of the Trustees of Trust Funds and find them correct and properly vouched.

Charles W. Remick
W. L. Smith
Auditors

2-5-1970

This is to certify that the information contained in this report is complete and correct, to the best of our knowledge and belief.

ALBERT S. ELLIOTT
RAYMOND B. GARDNER
ROGER S. ELLIOTT
Trustees

TAMWORTH TRUST FUNDS CASH ACCOUNT 1969

Voucher	Check No.	Date	To	For	Amount	Deposited
1	108	Jan. 1969	Balance		\$ 5 00	\$2209 18
2	109	May 7	Carroll County Trust	Safe Deposit Box	656 00	
3	110	May 8	Elliott Bros.	Tractor Mower \$696. -40.00	28 92	
4	111	June 3	Elliott Bros.	Gas, Oil & Supplies	3 00	
		June 14	Walter Staples	Memor. Flowers		18 75
		June 24	Checking a/c	U. S. Bond int.		
5	112	July 11	Elliott Bros.	Gas & Oil	11 75	
6	113	Aug. 2	Elliott Bros.	Gas & Oil	6 12	
7	114	Sept. 3	Elliott Bros.	Gas, Oil & Labor	9 44	
		Dec. 9	Checking a/c	U. S. Bond int.		18 75
8	115	Dec. 31	Albert G. Elliott etc.	Cemetery Work	748 75	
	116	Dec. 31	Cook Library	Int. C. & T. Mason a/c	28 75	
	117	Dec. 31	Tamworth School Dept.	Town Cemetery Work	399 81	
		Dec. 31	Trustees of Trust Funds	C. C. Trust		500 00
		Dec. 31	Checking a/c	Meredith Savings int.		812 11
		Dec. 31	Checking a/c	New Hampshire Savings, int.		354 96
		Dec. 31	Checking a/c	Amoskeag Savings, int.	32 20	36 43
		Dec. 31	Checking a/c	Strafford Savings, int.		14 86
		Dec. 31	Checking a/c	Rochester Savings, int.		16 98
					\$1897 54	\$4014 22
						1897 54
						\$2116 68

This is to certify that we have examined the amounts of the Trustees of Trust Funds and find them correct and properly vouched.

CHARLES W. REMICK
W. L. SMITH
Auditors Town of Tamworth

Feb. 5, 1970

TAMWORTH SUMMER ENRICHMENT PROGRAM

The Tamworth Summer Enrichment Program, a program of sports, arts and crafts, and other activities for boys and girls aged 6-14 concluded its second season last summer at the Tamworth School. The program ran 3 days a week for seven weeks, starting July 8th and ending August 22nd.

Some pertinent facts:

Registration	118
Average daily attendance	60-70
Year around residents	75%
Summer residents	25%

This year the program was extremely fortunate in obtaining the full-time services of Bob Magruder, Noelle Prince and Lisa Thomson. Bob, a teacher at Mercersburg Academy in Pennsylvania, assisted with sports and outside activities, such as bike hikes and mountain climbing trips. Noelle and Lisa displayed boundless energy in setting up a modern dance program and a full-scale drama program. These two programs were capped by a highly successful performance of "King Arthur."

Mrs. Belle Swenson returned as assistant director, sharing the arts and crafts instruction with Mrs. Connie Hughes. Edouard Sandoz again offered formal drawing lessons and Dana Steele returned as director.

Space does not permit the mentioning of the many parents and friends who gave unselfishly of their time and effort and so to them we offer a grateful "Thank You."

A Rundown of Activities:

Sports: tennis, baseball, soccer, track, tetherball, touch football.

Arts and Crafts: Papier mache, string drawing, clay modeling, formal art lessons, free form expression.

Special Activities: Modern Dance, Drama, Bike Trips,

Mountain Climbing, (Chocorua, Whiteface, Washington)
 Executive Committee: Art Pomeroy, Chairman; Nancy
 Coville, Secretary; Belle Swenson, Treasurer; Connie
 Hughes, Corresponding Secretary.

Directors: Walt Swenson, Betty Wickersham, Betty Was-
 son, Ned Behr, Eleanor Ripley, Virginia Staples, Sally
 Gallagher, Eleanor Taylor, Percy Olton.

Respectfully submitted,
 DANA STEELE, director

Tamworth Summer Enrichment Program, Inc.
Treasurer's Report

Cash on hand (\$510.03 in savings)	\$550 17
------------------------------------	----------

RECEIPTS

Art Council of Tamworth	\$187 55	
Town of Tamworth	1500 00	
Private Contributions	430 00	
TOTAL RECEIPTS		\$2117 55
TOTAL CASH ON HAND		\$2667 72

PAYMENTS

Salaries	\$1575 00	
Postage	21 52	
Stationery	3 25	
Supplies	266 98	
Edouard Sandoz	100 00	
Lisa Thompson (gift)	15 00	
TOTAL PAYMENTS		\$1981 75
Balance on Hand:		
Savings	\$510 03	
Check Book	175 94	
TOTAL CASH ON HAND		\$685 97

Respectfully submitted,
 ISABELLE R. SWENSON
 Treasurer

BIRTHS RECORDED IN THE TOWN OF TAMWORTH, N. H. FOR THE YEAR ENDING DECEMBER 31, 1939

Name of Child	Sex	Date	Born at	Name of Father	Maiden Name of Mother
Jennifer Jeanne Anthony	F	June 16	North Conway	Harry Edward Anthony	Joyce Carolyn Bradley
Daniel Charles Banfill	M	Jan. 14	Laconia	Carroll Benjamin Banfill	Lois Carol Roberts
Joanna Karen Bickford	F	June 20	Laconia	Fred Marsena Bickford	Ingrid Emma Ingles
Virginia Jean Dickinson	F	May 6	North Conway	Forrest Edward Dickinson	Leona Pearl Avery
Michelle Lynn Eldridge	F	July 29	Wolfeboro	James Franklin Eldridge	Kathleen Marie Hawes
Dale Wayne Johnson	M	Apr. 29	Laconia	Dennis Wayne Johnson	Rose Marie Hobbs
Dana Wayne Johnson	M	Apr. 29	Laconia	Dennis Wayne Johnson	Rose Marie Hobbs
Paula Lee Phillips	F	July 26	North Conway	Thomas William Phillips	Ann Marie Moore
Katherine Denise Sandoz	F	Apr. 5	Wolfeboro	Charles Edouard Sandoz	Margaret Ann Johnson
Kelly Marie Welch	F	July 6	North Conway	Frederick Russell Welch	Martha Lucille Alward
Marcella Ruth Webster	F	Dec. 24	Laconia	Wayne Chester Webster	Janet Louise Bickford

MARRIAGES RECORDED IN THE TOWN OF TAMWORTH, N. H. FOR THE YEAR ENDING DECEMBER 31, 1969

Parties	Age	Residence	Date	Married By
Alan A. Ames	19	Tamworth	Aug. 8	Linwood C. Potter
Jo-Ann Thompson	13	Effingham, N. H.		
David M. Anthony	21	Tamworth	June 8	George W. Wickersham II
Donna L. Stewart	20	Tamworth		
Donald K. Bennett	42	Rochester, N. H.	Dec. 6	James Fitzsimmons
Elaine E. Knox	42	Tamworth		
Frederick J. Corcoran	25	Wellesley Hills, Mass.	May 3	Thomas Cleveland
Frances Black Cleveland	23	Baltimore, Md.		
George Ray Gurick Jr.	21	Boston, Mass.	June 21	Alfred A. Daniszewski
Sandra Kathryn Flanagan	21	Tamworth		
Stanley Frank Hammond	30	Tamworth	July 12	Wallace W. Anderson
Beverly Mae Black	25	Tamworth		
Randall Everett Hayford	18	Center Ossipee, N. H.	Aug. 23	Wallace W. Anderson
Susan May Wearre	18	Tamworth		
Conrad Mayberry	55	Maynard, Mass.	Aug. 10	Louis C. Dufour
Irene F. Malcolm	51	Maynard, Mass.		
John E. Nichols	39	West Ossipee, N. H.	Aug. 2	Wallace W. Anderson
Beverly L. Olson	33	West Ossipee, N. H.		
James J. O'Shaughnessy	35	Tamworth	Feb. 15	Francis G. Cleveland
Marjorie M. Richardson	25	Center Harbor, N. H.		
George Adam Simpson Jr.	48	East Orange, N. J.	Dec. 27	Leroy S. Rouner
Kit Nordbo Therkildsen	24	New York, N. Y.		
Dana Allen Steele, Jr.	26	Tamworth	June 21	Francis G. Cleveland
Helen Read	24	Tamworth		
Parker C. Whipple	45	Tamworth	Aug. 23	Robert E. Allten
Donna L. Ford	27	Franconia, N. H.		
George M. Whitesides	30	Cambridge, Mass.	June 28	Francis G. Cleveland
Barbara Breasted	28	Cambridge, Mass.		

DEATHS RECORDED IN THE TOWN OF TAMWORTH, N. H. FOR THE YEAR ENDING DECEMBER 31, 1969

Name	Age	Residence	Date of Death	Place of Death	Place of Birth
Otis Bean	79	Tamworth	June 29	Wolfeboro	
Charles Bennett	97	Tamworth	Feb. 24	Ossipee	N. H.
Alice Bickford	71	Tamworth	Mar. 27	Tamworth	Newark, N. J.
Ruth Abigail Chase	79	Tamworth	July 29	Laconia	N. H.
Kenneth Cote	18	Meredith	Oct. 4	Tamworth	N. H.
Harry F. Damon	82	Tamworth	Jan. 11	Tamworth	Mass.
Elva M. Eggleston	62	Poland, Me.	July 13	Tamworth	Maine
Lucie Elwell	93	Tamworth	Jan. 11	Laconia	N. H.
Robert W. Gibson	52	Tamworth	Oct. 22	Laconia	Mass.
Samuel H. Hadden	78	Tamworth	Dec. 27	Ossipee	Tamworth
Harry Dearborn Hobbs	64	Tamworth	Dec. 20	Manchester	N. H.
Mary Stuart Johnson	17	Tamworth	May 30	Tamworth	Va.
Lawrence J. Merrill	63	Tamworth	Aug. 11	Laconia	Vt.
Herbert Charles Moore	76	Tamworth	Feb. 7	No. Conway	N. H.
Winona H. Page	61	Tamworth	July 21	No. Conway	N. H.
Harry C. Roberts	91	Tamworth	Jan. 8	Ctr. Harbor	N. H.
George Edmund Shaw	70	Tamworth	Dec. 5	Laconia	Peabody, Mass.
George H. Webster	89	Tamworth	Nov. 20	Tamworth	Picto, NS
Dorothy N. Weed	68	Tamworth	May 4	Laconia	Mass.

BURIED IN TAMWORTH — NOT RESIDENTS OF TAMWORTH, N. H.

Name	Age	Residence	Date of Death	Place of Death
Abigail Elliott Chase	64	Rochester	Nov. 30	Ossipee
Muriel M. C. Garland	62	Dover	Mar. 19	Madbury
Clifton Niblock	70	Rochester	Mar. 27	Wolfeboro
Peter Gerrit Schmidt	4	Rhode Island	Mar. 31	Westerly, R. I.
Sarah Christine Smith	77	Portsmouth	Dec. 28	Dover
Kenneth F. Vittum	56		Nov. 24	Moultonboro

TAMWORTH SCHOOL DISTRICT

School Board

LOIS AMES	Term expires 1970
PAUL I. TAYLOR	Term expires 1971
STEPHEN DAMON	Term expires 1972

Moderator

WILBUR L. SMITH

Clerk

OLIVE L. FOLKINS

Treasurer

WILBUR C. GOODSON

Truant Officer

EMERY ROBERTS

Auditors

CHARLES W. REMICK

WILBUR L. SMITH

Superintendent of Schools

DAVID APPLETON

Assistant Superintendent of Schools

MARGARET G. STRACK

Supervisory Union Staff

School Nurses

REBECCA P. SANBORN

VIRGINIA DAMON

Office Staff

OLIVE L. FOLKINS

GLADYS E. SAWYER

KAY BATES

**WARRANT
FOR ANNUAL MEETING
OF TAMWORTH SCHOOL DISTRICT**

To the inhabitants of the School District in the Town of Tamworth qualified to vote in district affairs:

You are hereby notified to meet at the Kenneth A. Brett School in said district on the 14th day of March, 1970. The meeting will be in two parts:

PART I

In order that the following five articles may be legally voted upon, you are hereby notified that the polls will be open from 2 o'clock in the afternoon on said day.

ARTICLE 1. To choose a Moderator for the ensuing year.

ARTICLE 2. To choose a Clerk for the ensuing year.

ARTICLE 3. To choose a member of the School Board for the ensuing three years.

ARTICLE 4. To choose a Treasurer for the ensuing year.

ARTICLE 5. To choose Auditors for the coming year; and to choose five members of the Advisory Committee for the ensuing two years.

PART II

The meeting will reconvene at 7:00 p. m. in said school to act upon the following articles, and any other business which may legally come before the meeting.

ARTICLE 6. To see what time the polls shall be closed.

ARTICLE 7. To hear the reports of Agents, Auditors, Committees, or officers chosen, and pass any vote relating thereto.

ARTICLE 8. To see if the district will vote to raise and appropriate a sum not to exceed \$800.00 for tarring the school driveway.

ARTICLE 9. To see if the district will vote to raise and appropriate a sum not to exceed \$2000.00 for the salary of a Teacher Aide.

ARTICLE 10. To see if the district will vote to accept the provisions of RSA 197:1, a through g inclusive, that is, to elect district officers at the Annual Town Meeting.

ARTICLE 11. To see what sum of money the district will vote to raise and appropriate for the support of schools, for the payment of salaries for school district officials and agents, and for the payment of statutory obligations of the district.

ARTICLE 12. To transact any other business that may legally come before said meeting.

Given under our hands this 26th day of February, 1970.

LOIS AMES

PAUL I. TAYLOR

STEPHEN DAMON

School Board of Tamworth,
New Hampshire

COMPARATIVE STATEMENT OF APPROPRIATIONS AND EXPENDITURES

	Adopted Budget 1968-1969	Actual Expend. 1968-1969	Balance 1968-1969	Overdraft 1968-1969	Budget 1969-1970	School Board's Budget 1970-1971
ADMINISTRATION						
Salaries, District Officers	\$1015 00	\$1195 00		\$180 00	\$1030 00	\$1130 00
Contracted Services	67 00	51 00	\$ 16 00		278 00	84 00
Other Expenses	350 00	225 92	124 08		225 00	240 00
INSTRUCTION						
Teachers' Salaries	54,925 00	54,782 29	142 71		60,655 00	70,370 00
Textbooks	800 00	784 56	15 44		800 00	950 00
Libr. & Audio-Visual	250 00	305 67		55 67	350 00	425 00
Teaching Supplies	1600 00	1682 00		82 00	2000 00	2000 00
Contracted Services	200 00	300 00		100 00	425 00	447 00
Other Expenses	175 00	239 41		64 41	255 00	230 00
ATTENDANCE SERVICES						
	25 00	50 00		25 00	25 00	25 00
HEALTH SERVICES						
	275 00	278 58		3 58	353 00	334 00
PUPIL TRANSPORTATION						
	21,398 20	20,351 56	1046 64		22,500 00	24,220 00
OPERATION OF PLANT						
Salaries	4400 00	4502 85		102 85	5400 00	5800 00
Supplies	1000 00	1066 78		66 78	1000 00	1100 00
Contracted Services						
Heat	1800 00	1480 91	319 09		1900 00	2000 00
Utilities	1900 00	1783 73	116 27		1900 00	1900 00
MAINTENANCE OF PLANT						
	700 00	1319 38		619 38	1000 00	1200 00
RETIREMENT	3596 00	2962 47			5556 88	5575 00
INSURANCE	1132 00	1305 25	633 53		2043 25	2648 00
SCHOOL LUNCH	5350 00	5354 46		4 46	6197 00	6380 00
STUDENT ACTIVITIES						
	1300 00	1995 34		695 36	1600 00	2000 00
CAPITAL OUTLAY						
Equipment	900 00	1953 53		1053 53	400 00	500 00
DEBT SERVICE						

Principal of Debt	6000 00	6000 00			7000 00	7000 00
Interest on Debt	1070 00	1068 80		1 20	997 10	831 00
OUTGOING TRANSFER FUNDS						
Tuition	66,650 00	63,927 58		2722 58	70,450 00	69,460 00
Supervisory Union	5171 02	5171 02			5296 10	6284 00
OTHER EXPENSES						
Capital Reserve Funds						
TOTAL	\$182,049 22	\$180,137 95	3226 27	\$5137 54	\$199,636 33	\$213,683 00
REVENUE ITEMS						
Unencumbered Balance		1083 48		1083 48	1491 33	-0-
Sweepstakes	1200 00	1525 03		325 03	1536 27	1500 00
State Sources	1800 00	1800 00			2100 00	2100 00
Other Revenue		589 55		589 55		
School Lunch	2200 00	1558 40			2200 02	2200 00
Other Revenue (Fed.)	200 00			641 60		
				200 00		
TOTAL RECEIPTS	\$5400 00	\$6556 46	\$841 60	\$1998 06	\$7327 60	\$5800 00
LOCAL TAXATION	\$176,649 22	\$175,000 00			\$192,308 73	\$207,883 00
TOTAL APPROPRIATION	\$182,049 22	\$181,556 46			\$199,636 33	\$213,683 00

SUPERVISORY SCHOOL UNION NO. 9

COMPARATIVE BUDGETS

	Actual Expenditures 1968-1969	Adopted Budget 1969-1970	Adopted Budget 1970-1971	Tamworth's Share Based On 9.12% 1970-1971
SALARIES				
Superintendent	\$16,000 00	\$17,400 00	\$19,300 00	\$1,532 16
Ass't Superintendent	10,700 00	11,800 00	14,000 00	1,030 56
Nurse-Teacher	6,154 34	6,600 00	7,400 00	674 88
Nurse-Teacher	4,880 40	5,680 00	6,300 00	574 56
Secretary	4,482 62	4,700 00	5,200 00	474 24
Bookkeeper	4,852 82	5,200 00	5,800 00	528 96
Clerical Service			800 00	72 96
	<hr/>	<hr/>	<hr/>	<hr/>
	\$47,070 18	\$51,380 00	\$58,800 00	\$4,888 32
TRAVEL				
Superintendent	\$1,150 00	1,150 00	1,500 00	136 80
Ass't Superintendent	1,000 00	1,000 00	1,200 00	109 44
Nurse-Teacher	600 00	600 00	700 00	63 84
	<hr/>	<hr/>	<hr/>	<hr/>
	\$2,750 00	\$2,750 00	\$3,400 00	\$310 08
RETIREMENT				
Superintendent	\$2,208 54	655 00	771 00	70 32

Ass't Superintendent	488 50	643 00	58 65
Nurse-Teacher	396 00	444 00	40 50
Nurse-Teacher	312 00	378 00	34 47
Secretary	374 40	416 00	37 94
Bookkeeper	416 00	464 00	42 32
Clerical Service		64 00	5 84

\$3,930 32

\$3,180 00

\$290 04

OFFICE SUPPLIES
EQUIPMENT REPAIRS
CONFERENCES, MEETINGS
CENTRAL OFFICE

Rent	1,200 00	1,600 00	145 92
Heat	600 00	900 00	82 08
Lights	600 00	900 00	82 08
Telephone	1,500 00	1,500 00	136 80
Custodian	400 00	400 00	36 48
Insurance	250 00	250 00	22 80
	975 00	1,000 00	91 20
	150 00	250 00	22 80
	1,021 00	1,120 00	102 12

\$3 726 93

\$4,295 00

\$412 20

SCHOOL BOARD
TEACHERS' MEETINGS
NURSE-TEACHER TRAVEL

\$361 57

450 00

41 04

District shares for Ass't Superintendent: Albany, \$125.54; Bartlett, \$998.92; Chatham, \$53.11; Conway, \$6,795.82; Eaton, \$159.33; Freedom, \$614.72; Jackson, \$685.74; Madison, \$846.37; Tamworth, \$1,030.56.

* State Share: Superintendent — \$2500. Assistant Superintendent - \$2700.

* Included in the salary figures, but not in percentage amounts.

REPORT OF SCHOOL DISTRICT TREASURER

For the Fiscal Year July 1, 1968 to June 30, 1969

SUMMARY

Cash on Hand July 1, 1968		\$562 16
Received from Selectmen	\$175,000 00	
Revenue from State Sources	2,079 72	
Received from Trust Fund	389 55	
Received from all other Sources	9,881 15	
	<hr/>	
Total Receipts		\$187,350 42
		<hr/>
Total amount available for Fiscal Year		187,912 58
Less School Board orders Paid		\$186,494 51
		<hr/>
Balance on Hand June 30, 1969		\$1,418 51

July 6, 1969

W. C. GOODSON

District Treasurer

AUDITOR'S CERTIFICATE

This is to certify that I have examined the books, vouchers, bank statements and other financial records of the treasurer of the school district of Tamworth of which the above is a true summary for the fiscal year ending June 30, 1969 and find them correct in all respects.

August 1, 1969

W. L. SMITH

Auditor

FINANCIAL REPORT

1968-1969

RECEIPTS

Revenue from Local Sources		
Current Appropriation	\$175,000	00
Other revenue from Local Sources		
Earnings from Permanent		
Funds and Endowments	589	55
Revenue from State Sources		
School Building Aid	1,800	00
Sweepstakes	1,525	03
Revenue from Federal Sources		
School Lunch & Special Milk		
Program	1,558	40
		<hr/>
Total Net Receipts from all Sources	\$180,472	98
Cash on Hand, July 1, 1968		
(Drew Fund)		1,083 48
		<hr/>
Grand total Net Receipts	\$181,556.46	

SCHOOL YEAR FINANCIAL SUMMARY

GENERAL FUND

Cash on Hand July 1, 1968	\$	1,083 48
Total Receipts Fiscal Year 1968-1969		180,472 98
		<hr/>
Total Receipts School Year 1968-1969	\$181,556	46
Total Expenditures Fiscal Year 1968-1969	\$181,556	46

DREW FUND

Cash on Hand July 1, 1968	\$1,083	48
Total Receipts	589	55
		<hr/>
Grand total Receipts	\$1,673	03
Total Expenditures		487 13
		<hr/>
Balance on Hand June 30, 1969	\$1,185	90
Reserved in Drew Fund	\$1,185	90

BALANCE SHEET

June 30, 1969

ASSETS

Cash on Hand	
General Fund	\$ 232 61
Drew Fund	1,185 90
Accounts Due to District	
From Town	1,649 22
	<hr/>
Total Assets	\$3,067 73
Net Debt	\$40,508 67
	<hr/>
GRAND TOTAL	\$43,576 40

LIABILITIES

Amounts reserved for Special Purposes	
Drew Fund	\$ 1,185 90
Amounts Owed by District	
Tamworth Lunch Program	100 00
Eleanor Taylor	40 00
Supervisory Union Lunches	50 00
Wiggin's Esso Station	200 50
Notes and Bonds Outstanding	42,000 00
	<hr/>
GRAND TOTAL LIABILITIES	\$43,576 40

TAMWORTH SCHOOL LUNCH PROGRAM

Financial Statement

July 1, 1968 to June 30, 1969

Beginning Balance - July 1, 1968	\$86 57
----------------------------------	---------

RECEIPTS:

Lunch Sales - Children	\$4425 83
Lunch Sales - Adults	427 00
Reimbursement	1381 64
District Appropriation	3050 00
Misc. Cash	540 21
	<hr/>
TOTAL RECEIPTS	\$9,824 68

TOTAL AVAILABLE	<hr/> \$9,911 25
-----------------	------------------

EXPENDITURES

Food	\$6059 24
Labor	3645 57
All Other Expenditures	201 05
	<hr/>
TOTAL EXPENDITURES	\$9,905 86

BALANCE - June 30, 1969	<hr/> \$5 39
-------------------------	--------------

BALANCE SHEET

Fiscal Year Ended June 30, 1969

ASSETS

Cash in Bank	\$ 5 39
Income due Program	1035 34
	<hr/>
TOTAL ASSETS	\$1,040 73

LIABILITIES

Loans Payable	
Other Accounts Payable	\$930 84
	<hr/>
TOTAL LIABILITIES	\$930 84

Working Capital	109 89
	<hr/>
TOTAL LIABILITIES AND WORKING CAPITAL	\$1,040 73

LOIS AMES

This is to certify that we have examined the records of the School Lunch Program and find them correct and properly vouched.

7/19/69

CHARLES W. REMICK
W. L. SMITH
AUDITORS

TAMWORTH SCHOOL DISTRICT BUDGET

SECTION 1
ADMINISTRATION

APPROPRIATIONS

	Approved Budget 1969-70	School Board's Budget 1970-71
Salaries	\$1,030 00	\$1,130 00
Contracted Services	278 00	84 00
Other Expenses	225 00	240 00
INSTRUCTION		
Salaries	60,655 00	70,870 00
Testbooks	800 00	950 00
Library & Audiovisual Materials	350 00	425 00
Teaching Supplies	2,000 00	2,000 00
Contracted Services	425 00	447 00
Other Expenses	255 00	280 00
ATTENDANCE SERVICES	25 00	25 00
HEALTH SERVICES	353 00	334 00
PUPIL TRANSPORTATION	22,500 00	24,220 00
OPERATION OF PLANT		
Salaries	5,400 00	5,800 00
Supplies	1,000 00	1,100 00
Heat	1,900 00	2,000 00
Utilities	1,900 00	1,900 00
MAINTENANCE OF PLANT	1,000 00	1,700 00
FIXED CHARGES		
Employee Retirement & F. I. C. A.	5,556 88	5,575 00
Insurance	2,043 25	2,648 00
SCHOOL LUNCH & SPEC. MILK PROGRAM	6,197 00	6,380 00
STUDENT-BODY ACTIVITIES	1,600 00	2,000 00

CAPITAL OUTLAY

Equipment	400 00	500 00
-----------	--------	--------

DEBT SERVICE

Principal of Debt	7,000 00	7,000 00
Interest on Debt	997 10	831 00

OUTGOING TRANSFER ACCOUNTS

IN STATE

Tuition	70,450 00	69,460 00
Supervisory Union Expenses	5,296 10	6,284 00

TOTAL APPROPRIATIONS	\$199,636 33	\$214,183 00
----------------------	--------------	--------------

SECTION 3

Unencumbered Balance	\$1,491 33	
----------------------	------------	--

REVENUE FROM STATE SOURCES:

Sweepstakes	\$1,536 27	\$1,500 00
Other Revenue from State Sources	2,100 00	2,100 00

REVENUE FROM FEDERAL SOURCES:

Sch. Lunch & Special Milk Program	2,200 00	2,200 00
--------------------------------------	----------	----------

TOTAL REVENUES and
CREDITS

\$7,327 60	\$5,800 00
------------	------------

DISTRICT ASSESSMENT TO BE
RAISED BY PROPERTY
TAXES

192,308 73	208,383 00
------------	------------

TOTAL APPROPRIATIONS	\$199,636 33	\$214,183 00
----------------------	--------------	--------------

PRINCIPAL'S REPORT

The school year of 1969-1970 opened with an enrollment of 151 in the Kenneth A. Brett School; with a breakdown by class as follows: Grade 1 - 16, Grade 2 - 16, Grade 3 - 18, Grade 4 - 23, Grade 5 - 15, Grade 6 - 19, Grade 7 - 25, and Grade 8 -19.

Six former teachers returned this year to carry on their instructional duties, Pauline Merrill in the first grade, Dorothy Remick in the second grade, Judith Goss in the fourth grade, Helen Davison in the fifth grade, Alice White in the seventh and eighth grades, and Roger Person, instructor in seventh and eighth grades, and Principal. We welcomed as newcomers to the staff, Sandra Switzer in the third grade, and Robert Hurd in the sixth grade.

Eleanor Taylor continues to give the students of grades 4, 5, 6, 7, and 8, lessons in French; and Jean Fickett is teaching music to all of the children each week for one day. We are fortunate in having Donna Whipple come in three afternoons a week to give special help in Reading to selected children in grades 3, 4, and 6. The need to update the Reading Program in the school is a hope for next year, and the consideration of the Tamworth citizens, for extra help in this area is important to the high standard of education which is always uppermost in the plans of your Principal.

Alice White and Virginia White Damon have been holding health classes for the girls in grades 6, 7, and 8, covering nutrition, grooming, and other subjects of importance. Special speakers have also been secured for their program.

Members of the non-professional staff have been doing a fine job. Custodian, Chester Davis is keeping the

school clean, and working hard on the grounds and playing field. Martha Williams, head cook, and her helper, Mildred Streeter, are serving very good meals, and providing healthful hot lunches to the children and staff.

Respectfully submitted,
ROGER PERSON, Principal

**SCHOOL DISTRICT OF TAMWORTH
ENROLLMENT STATISTICS**

SEPTEMBER 15
1969

GRADES	ESTIMATED ENROLLMENT												
	1962	1963	1964	1965	1966	1967	1968	1969	1970	1971	1972	1973	1974
1	19	27	20	15	21	18	18	16	18	15	20	16	16
2	19	18	25	21	14	22	20	17	16	18	15	20	20
3	24	16	16	25	20	15	20	17	17	16	18	15	15
4	16	24	13	18	23	21	14	24	17	17	16	18	18
5	26	16	26	15	15	25	19	16	24	17	17	16	16
6	25	24	18	23	15	18	24	19	15	24	17	17	17
7	25	29	26	18	21	14	18	25	19	15	24	17	17
8	21	19	26	21	17	21	15	20	25	19	15	24	24
Total 1-8	175	173	170	156	146	154	148	154	151	140	142	143	143
9	18	17	22	27	23	19	24	16	20	24	19	16	16
10	20	19	16	19	24	20	17	21	16	19	23	19	19
11	10	17	18	15	17	23	21	17	20	16	18	22	22
12	14	8	16	19	13	17	23	18	16	19	16	18	18
Total 9-12	62	61	72	80	77	79	85	72	72	78	76	75	75
Total 1-12	237	234	242	236	223	233	233	226	223	219	218	218	218

REPORT OF THE SCHOOL NURSE

School Health Service

Medical Examinations	- 150	Heights	- 154
Hemoglobins	- 63	Weights	- 154
Urinalysis	- 63	Vision Tests	- 154
Tine Test for Tuberculosis	- 15	Seen for reason of illness or injury	- 316

Number of defects found

Ear Wax	- 1	Poor Posture	- 11
Enlarged Turbinates	- 1	Pronated Feet	- 13
Tonsils	- 5	Obesity	- 1
Congenital Deformities	- 1	Scoliosis	- 1
Functional Heart Murmur	- 2	Cervical Glands	- 2
Albumin in Urine		- 2	

Seventy-four pupils attended the Immunization Clinics held in October, November and December 1969 sponsored by the Tamworth Community Nurse Association and the New Hampshire State Department of Health, the local health officer and the Tamworth School Board.

One student attended the Orthopedic Clinic sponsored by the New Hampshire Department of Health, Crippled Childrens Service.

In March 1969, Tine Test for tuberculosis was done on the first grade children with negative results.

Sixty-eight pupils took advantage of oral hygiene and topical flouride program held during the month of May 1969.

Thirteen children attended the dental clinics.

In June, eight kindergarten pupils participated in a dental screening program at Wolfeboro.

Orientation Day for incoming first graders was held at the Kenneth A. Brett School on June 2, 1969. Care of teeth and proper foods were discussed with the children at this time.

Meetings attended as part of duty:

Carroll County Mental Health Agency

Tamworth School Board Meeting

Local school nurses meeting in North Conway in reference to the proposed Portsmouth Rehabilitation Center Mobile Bus

Headstart meeting at the Conway Elementary School

Mid-Winter meeting of the New Hampshire School Nurses Association in Concord

Meeting of educators, school nurses and Lions Club in regards to Lazy Eye and Audio Testing Clinic. Annual meeting of the T. B. and Allied Disease Association at Concord in April.

Conference on Perceptual Learning Disorders in Children

Training session for Visual and Audio Clinic

Visual and Audio Clinic held at Conway Elementary School on May 17, 1969.

Annual State Meeting of the Future Nurses Club at Portsmouth, New Hampshire

Spring meeting of the New Hampshire School Nurses Association at Woodstock, New Hampshire

Fall meeting of the New Hampshire School Nurses Association at Concord, New Hampshire

Educational Courses:

Audiological Testing and Educational Management of the Hearing Impaired Child, Crotched Mountain

Handling Children Under Stress Within the School System, Laconia

Respectfully submitted,
VIRGINIA W. WHITE, R. N.

SCHOOL DISTRICT OF TAMWORTH, N. H.

SALARY SCHEDULE 1970-1971

YEARS	NON-DEGREE		BACHELOR'S	
1.	.90	5850	1.00	6500
2.	.95	6175	1.05	6825
3.	1.00	6500	1.10	7150
4.	1.05	6825	1.15	7475
5.	1.10	7150	1.20	7800
6.	1.15	7475	1.25	8125
7.	1.20	7800	1.30	8450
8.	1.25	8125	1.35	8775
9.	1.30	8450	1.40	9100
10.	1.35	8775	1.45	9425

Adopted by Tamworth School Board, December 15, 1969

TEACHERS' SALARIES 1970-1971

Roger Person, Teaching Principal	\$10,700
Alice White	7,150
Robert Hurd	6,825
Helen Davidson	8,450*
Judith Goss	7,475
Sandra Switzer	6,825
Dorothy Remick	7,800*
Pauline Merrill	7,800*
Jean Fickett	2,145
Eleanor Taylor	1,800
Reading Teacher (1/2 day)	3,300
Substitutes	600
	\$70,870

* Below salary step on schedule.

Note: Principals are not on Teachers' Salary Schedule.

SEPTEMBER (16)

M	T	W	T	F
	8	9	10	11
14	15	16	17	18
21	22	23	24	25
28	29	30		

OCTOBER (20)

M	T	W	T	F
			1	2
5	6	7	8	9
12	13	14	15	16
19	20	21	22	23
26	27	28	29	30

NOVEMBER (18)

M	T	W	T	F
2	3	4	5	6
9	10	11	12	13
16	17	18	19	20
23	24	25	26	27
30				

DECEMBER (16)

M	T	W	T	F
	1	2	3	4
7	8	9	10	11
14	15	16	17	18
21	22	23	24	25
28	29	30	31	

JANUARY (20)

M	T	W	T	F
4	5	6	7	8
11	12	13	14	15
18	19	20	21	22
25	26	27	28	29

FEBRUARY (14)

M	T	W	T	F
1	2	3	4	5
8	9	10	11	12
15	16	17	18	19
22	23	24	25	26

MARCH (23)

M	T	W	T	F
1	2	3	4	5
8	9	10	11	12
15	16	17	18	19
22	23	24	25	26
29	30	31		

APRIL (17)

M	T	W	T	F
			1	2
5	6	7	8	9
12	13	14	15	16
19	20	21	22	23
26	27	28	29	30

MAY (20)

M	T	W	T	F
3	4	5	6	7
10	11	12	13	14
17	18	19	20	21
24	25	26	27	28
31				

JUNE (17)

M	T	W	T	F
	1	2	3	4
7	8	9	10	11
14	15	16	17	18
21	22	23		

180 Days
 360 Sessions
 () Total Sessions Monthly

- September 8
- September 9
- October 12
- October 16
- November 11
- November 26-27
- December 23-Jan. 1
- February 15
- February 22-26
- April 9
- April 26-30
- May 31
- June 22
- June 23

- Meeting With All Teachers
- Schools Open
- Columbus Day
- Teachers' Convention
- Veterans' Day
- Thanksgiving
- Christmas Vacation
- Washington's Birthday
- Winter Vacation
- Good Friday
- Spring Vacation
- Memorial Day
- Schools Close
- Graduation (Kennett)

