


*Lebanon  
New Hampshire  
1943*







Digitized by the Internet Archive  
in 2022 with funding from  
University of New Hampshire Library

### WALLACE RICHARD HEATH

Wallace Richard Heath, son of Mr. and Mrs. J. A. Heath, 49 Mascoma St., was born in Hanover, N. H., July 1, 1919, and was officially reported November 16, 1941 as "Killed on Active Service" in Canada. He entered the R. C. A. F. at Montreal on May 5, 1941. He was educated at Lebanon Grammar and High Schools and was an under-graduate at the University of Michigan at Ann Arbor, Michigan. Wallace was a member of the Baptist Church, also a member of the DeMolay.

### CLAYTON NORMAN BELIVEAU

Clayton N. Beliveau, the son of Mr. and Mrs. Resene J. Beliveau, was born in Lebanon, N. H., Oct. 22, 1915.

He was graduated from the Sacred Heart School, and also attended Lebanon High School.

On Oct. 16th, 1933, just before his 18th birthday he entered the United States Navy, and was promoted to Quartermaster 2nd cl.

In May 1942 his parents were notified by the War Department, that he was missing in action during the capitulation of the Manila Bay Area. At that time he was serving as a member of the famous Motor Torpedo Boat Squadron 3 whose deeds are immortalized by W. L. White, in his latest book, "They Were Expendable."

The name, Clayton N. Beliveau of Lebanon, N. H., appears among the officers and enlisted personnel attached to that squadron.

## HONOR ROLL

Pvt. Benjamin Franklin Adams  
Pvt. John Quincy Adams  
John W. Adams, USN  
Joseph William Adams  
Pvt. George Alafat  
Pvt. Arthur J. Albu  
Pvt. Frederick C. Aldrich  
1st C Pvt. John C. Aldrich  
Pvt. Robert Aldrich  
PFC Frederick W. Alexander  
2nd. Lt. Stanley B. Alexander  
Corp. David Allan  
Pvt. J. B. Allard  
Sgt. Roland W. Allen  
Pvt. Leon E. Armstrong  
PFC Howard J. Ashley  
Placide A. Ashley, A. S.  
Lt. S. E. Atherton, Jr.  
Pvt. Gerald F. Avery  
Lt. Everett H. Bacon  
Pvt. Malcolm C. Bagley  
Sgt. Richard Bagley  
Tech. Sgt. V. F. Bagley  
Pvt. Harold F. Baldwin  
Pvt. William Ballard  
Pvt. Joseph Barden  
S. Sgt. Nelson C. Barron  
Sgt. Leonard M. Bashaw  
Pvt. Clifford Bean  
PFC Ernest P. Beaupre  
Pvt. John H. Bedell  
Edmond A. Belisle, S 2/c  
Clayton N. Beliveau, QM 2c  
Louis A. Beliveau, Jr., A.S.  
Pvt. L. E. Benjamin  
2nd Lt. Robert L. Benjamin  
Lieut. A. C. Benjes, Jr.  
Pvt. Leland R. Bennett  
Sgt. Paul L. Bennett  
Willis A. Bennett, A. S. (CG)  
Alden L. Berry, Fireman 1/c  
Staff Sgt. Howard Berry  
Corp. Ralph J. Bircher  
Pvt. Richard J. Bircher  
PFC Alfred R. Blanchard  
Major Barclay Bloomgarden  
Pvt. Clement R. Boisvert  
PFC Leonard G. Boisvert  
Sgt. Leonard G. Boisvert  
Corp. Maurice P. Boivin  
PFC Philip Boivin  
Pvt. Sylvio R. Boivin  
Charles T. Booth, S 1/c  
Pvt. Harold P. Bonardi  
Corp. Clarence L. Bortree  
Pvt. Paul Raoul Boucher  
Pvt. Robert E. Boucher  
Pvt. William P. Boucher  
Corp. Arthur L. Boutin  
Ensign Francis Boutin  
Pvt. S. C. Bresee  
1st Lt. Nathan F. Bridgman  
PFC Clarence Brissette  
Pvt. Frank J. Brodzensky  
Pvt. Karl J. Bromley  
Staff Sgt. Noel D. Bromley  
2nd Lt. Clifton Brock  
Capt. Richard E. Brown  
Pvt. Robert J. Brown  
John V. Bryar S 2c  
Staff Sgt. Donald Bryar  
PFC Edward P. Brzezinski  
Pvt. Mitchell J. Brzezinski  
Peter S. Buccellato, USN  
Sgt. Earle A. Burke  
Marion L. Burke, ASUSNR  
Nina R. Burke, ASUSNR  
Roland F. Burke, S 1c  
Corp. Francis J. Bushee  
Tech. Corp. Joseph C. Bushee  
Pvt. William Bushee  
Pvt. Gavin Campbell  
Corp. Clark A. Cantlin  
Donald E. Cantlin, Jr., A. S.  
Sgt. Richard J. Carignan  
Corp. Wm. E. Carr  
Pvt. Charles S. Carter  
Pvt. Walter E. Carter



Russell V. Carver, USN  
 James Arthur Caswell, USN  
 Pvt. Henry L. Caswell  
 James A. Caswell, S 2/c  
 T. 4th Gr. Evo Cattabriga, Jr.  
 Pvt. Paul Cattabriga  
 Earl H. Chamberlain, S 2/c  
 Pvt. Cleon H. Chapman  
 PFC R. D. Chipman, Jr.  
 PFC Hollis L. Church  
 Pvt. Walter Churchhill  
 Pvt. George W. Cilbrith  
 Pvt. Thomas Clapper  
 Corp. Carl P. Clark  
 Fletcher B. Clark, S 1/c  
 Vernon N. Clark, S 2/c  
 PFC Gordon Cleveland  
 Corp. Pearl G. Clogston  
 Pvt. Howard F. Colburn  
 Pvt. Roy Colby  
 Pvt. Frederick G. Connor, Jr.  
 Corp. T. Richard Cookman  
 Staff Sgt. Denny J. Cooney  
 PFC Wilbert H. Corrette  
 Pvt. Herman Coutermarsh  
 2nd Lt. Evelyn Couture  
 1st Lt. Chap. Ray H. Cowen  
 Lt. Stanley G. Costine  
 PFC Arthur W. Cowles  
 Sgt. Hart E. Crandall  
 Corp. Crandell S. Creighton  
 Donald N. Creighton, S 1/c  
 Pvt. John F. Cronin  
 Eustace W. Cummings, A.A.C.  
 Pvt. Cecil Cunningham  
 Pvt. Bernard C. Currier  
 Harry F. Currier MM 2c M-2  
 Ensign Frederick G. Cushing  
 Pvt. Clement J. Curtis  
 Corp. Leo R. Dahill  
 Pvt. Charles H. Dalton  
 Sargent H. Daniels Y 2c  
 Corp. Earl Richard Day  
 Pvt. Richard W. Day, USMC  
 Robert J. Davison, C. Ph. M.  
 Pvt. Ira H. Day  
 Pvt. Loren C. Dean  
 PFC Edmund J. Decato  
 PFC Forrest M. Decato  
 Norman Decato, RM 3/c  
 Corp. William E. Decato  
 Pvt. Benjamin DeLauri  
 Pvt. Reuben A. DeLauri  
 Tech. Sgt. Rodney E. Demars  
 A/C Alfred J. Densmore, Jr.  
 Tech. Sgt. George A. Dessert  
 PFC Maurice A. Dessert  
 Corp. Bernard Devens  
 Pvt. Leon A. Dion  
 PFC Robert M. Dion  
 Ensign Herman Donegan  
 Pvt. Raymond A. Doucette  
 Pvt. Bernard F. Doucette  
 Pvt. Harold Dow  
 Pvt. Robert G. Dow  
 Lt. Edward Drake  
 Corp. John Drake  
 Arthur Dube, S 2/c  
 Pvt. David J. Dupuis  
 Pvt. F. W. Dubuque, USMC  
 Gordon F. Ducharme, SM 3K  
 PFC Stanley H. Ducharme  
 Staff Sgt. Wilfred A. Dulac  
 Pvt. Earl H. Dumas  
 Pvt. John Duncklee  
 Corp. Leo E. Duplessis  
 Pvt. Theodore J. Duplessis  
 Pvt. Arthur Durocher  
 P.H.M. 3rd C., L. P. Durocher  
 2nd Lt. Burt D. Dutcher  
 Col. Harold W. Dutcher  
 Capt. George I. Dyer  
 PFC Myrl R. Eaton  
 Pvt. Philip H. Edson  
 Air Cadet Donald J. Ellis  
 Corp. Tech. Bernard C. Emery  
 Pvt. Stanley F. Emery  
 Pvt. Guilbert P. Fafard  
 Leo E. Fafard, S 2/c  
 Robert S. Fairbanks, USN

Pvt. Robert H. Farnham  
Capt. George Farnsworth, Jr.  
Pvt. Norman F. Farnsworth  
Capt. Richard Farr  
Pvt. Hubert O. Farnum  
Pvt. Richard L. Faufaw  
Pvt. Clarence B. Fellows  
Pvt. John T. Fitzgerald  
Corp. James J. Fizette  
PFC Warren Flanders  
Corp. George E. Flynn  
Air Cadet Albert H. Follensbee  
Pvt. William C. Follansbee  
James A. Forman, Ph. M. 3/c  
Pvt. Joseph St. Francis, Jr.  
PFC Richard T. Franklin  
Pvt. John Gallagher  
Roger Gaillard, A. S.  
Aaron E. Garey, F 2/c  
Pvt. Ralph F. Garey  
Corp. Edwin L. Gaudette  
Tech. Corp. Wm. Gaudette  
Pvt. Raymond Gaudreau  
Pvt. Ernest Gault, Jr.  
Pvt. Henry G. Gauthier  
PFC Raymond P. Gauthier  
Pvt. George Gerlach  
Pvt. Bernard P. Gibson  
Pvt. Harold K. Gibson  
Lieut. Edward Gignac  
Pvt. Omer F. Gignac  
Pvt. Ernest E. Gilman  
Howard E. Gilson, Jr., S 2c  
Corp. William R. Godfrey  
Sgt. Tech. Paul F. Goodhue  
Pvt. Raleigh E. Goodhue  
Ensign Harry E. Goodman  
2nd Lt. Harvey Goodman  
2nd Lt. Robert A. Goodman  
Pvt. Edson Goodrich  
Pvt. Floyd J. Goodwin  
PFC Raymond G. Goodwin  
2nd Lt. L. Munro Grandy  
Donald F. Gray, E. M. 1st C  
Pvt. Frederick W. Gray  
Staff Sgt. Robert F. Gray

Pvt. George E. Greenough  
Pvt. Lawrence Greenough  
Pvt. Howard C. Griswold  
Pvt. Roger J. Guay  
Pvt. Theophile Guay  
Pvt. R. L. Guertin, Jr., USMC  
Pvt. George Guy  
Staff Sgt. Herbert W. Guyer  
PFC James Haggerty  
Pvt. Matthew Haggerty, Jr.  
Corp. A. E. Hall  
Pvt. Richard L. Hall  
Pvt. Merle Hamilton  
Pvt. William Harper  
Pvt. Douglas C. Harlow  
Pvt. Elwin Harlow, Jr.  
Sgt. Earl E. Hatch  
PFC Robert D. Hatch  
Corp. Ernest Hathaway  
Bruce Hazeltine A.M.M.3  
Sgt. Donald R. Hazelton  
Jackson Hazen, S 2/c  
2nd Lt. Roger C. Hazen  
Wallace Heath, RCAF  
S. C. 1st C. Kenneth C. Henry  
PFC Emile J. St. Hilaire  
Corp. Raymond Hill  
Maurice E. Holbrook, S 2c  
Bruce Howard, S 1c  
Pvt. Clifton R. Holt  
Staff Sgt. Douglas F. Hough  
Pvt. Bertie Howland  
Sgt. Harold E. Hubbard  
Sgt. Ronald A. Huckins  
2nd Lt. Edgar F. Hunt  
Corp. James R. Hurd  
Francis Hurlburt, A. S.  
Pvt. Irving D. Hurlburt  
Pvt. James A. Ingalls  
Lt. Arvo J. Jamback  
Edwin A. Jamback, S 2/c  
Pvt. Harry E. Johnson, Jr.  
Corp. Robert C. Johnston  
Pvt. Leonard D. Johnston  
Ensign Donald Jones  
Ensign Robert A. Jones

PFC Mitchell Jordan  
Pvt. John R. Keating  
Pvt. Allen R. Kidder  
Pvt. Lawrence R. Kidder  
Corp. Douglas M. Kierstead  
Pvt. James C. Kierstead  
Pvt. Reginald G. Kierstead  
Arthur W. Kilgore, SC 2c  
William Kilgore, OCS  
Pvt. Emery L. Kimball  
Pvt. Brewster G. Kimball  
Franklin T. King, Mdsm.  
Lieut. (j.g.) Ross A. Knight  
A/C Wayne H. Knight  
Pvt. Allen E. Korpela  
Tech. Sgt. Earl A. LaBarre  
Pvt. Royal L. LaBarre  
Pvt. Kermit J. LaBombard  
Corp. Tech. Robert LaBombard  
Pvt. Romeo LaBombard  
Staff Sgt. Wendell L. LaBombard  
Pvt. Donald A. LaBounty  
PFC Francis Lacasse  
Sgt. Omer W. LaCasse  
Stephen C. LaChance, CB, USN  
Pvt. Dedace Lacroix  
Pvt. Paul C. Lacroix  
Pvt. Kenneth F. LaDue, USMC  
Pvt. Norman P. LaDue, USMC  
Pvt. Millard F. LaJoie  
PFC Albert D. Lambert, Jr.  
Pvt. Andrew L. Lambert  
Sgt. Arthur W. Lambert  
PFC H. Edward Lambert  
PFC Raymond P. Lambert  
Tech. Sgt. R. J. Lambert  
Pvt. Arthur H. Landry  
Joseph A. Landry, Jr., S 1c  
Pvt. Maurice Landry  
Pvt. William J. Landry  
Earle M. Lane, Gnr.  
Pvt. Raymond W. Langley  
Lt. Fred C. Langlois  
Leroy K. Langlois, S 2/c  
Edward A. Lapan, S 1/c  
Pvt. Nelson A. Lapan

Pvt. Wm. F. Lapan  
Pvt. Kenneth Lanpher  
Pvt. Roy Lanpher  
Major George O. LaPlante  
Pvt. Joseph E. LaPlante, Jr.  
Pvt. Marvin Laraway  
Pvt. Wilfred M. Laraway  
Capt. F. H. Lansing, USMC  
Floyd Laurent  
John LaValley, Seaman 2 C.  
Rolland Lariviere Mo MM 2c  
Pvt. Donald D. Laro  
F. James Lauren, QM 2c  
Pvt. Charles Laware  
Pvt. Harvey Leamond  
Pvt. Maurice J. LeBlanc  
Roger L. LeBlanc, USN  
Sgt. William R. LeBrun  
Staff Sgt. Roland W. Lacours  
T-3 Armand H. LeDuc  
S.-Sgt. Damon C. Lee  
Sgt. Raymond Lee  
Francis Lemay, USN  
Corp. John Lessonde  
Pvt. Richard E. Lindsay  
Pvt. Raymond A. Louzeau  
Sgt. Maynard R. Lovely  
Sgt. Harold K. Lovejoy  
Donald Lower, 3/c Petty Officer  
PFC Roy E. Lucas  
Henry G. Macie, A. S.  
Pvt. Clarence C. Magoon  
Pvt. Armand A. Marchand  
Pvt. Stephen Marchewka  
PFC Stanley J. Marchewka  
Pvt. Henry Marcotte  
PFC Norman O. Marcotte  
Pvt. Robert Marcotte  
Aux. Eloise L. Marcus  
Pvt. Forrest C. Marsh  
Corp. Charles S. Mason  
Sgt. Richard J. Mason  
Maynard J. Maville, S 2/c  
Pvt. Jack R. Mayberry  
Pvt. Gordon W. Maynard  
Sgt. George C. McBain



Thomas E. McCarthy, S 2/c  
 Corp. Clifford McCondach  
 Corp. Donald H. McCue  
 James McDermott, S 3/c  
 Pvt. Clayton McEwen  
 Pvt. Albert J. McGonis  
 Pvt. Francis J. McGonis  
 Pvt. Richard McGonis  
 PFC Joseph E. McGonis  
 Pvt. John McMillan  
 Edward J. McNamara, CPO  
 William T. McNamara, S 1/c  
 Wright McNeill, Sea. 2nd C.  
 Pvt. John H. McShea  
 Pvt. Leo E. Melancon  
 Pvt. Albert E. Merrihew  
 Pvt. Theodore R. Messier  
 Corp. Leopold J. Minor  
 Pvt. Leonard W. Moffatt  
 Pvt. Richard Moffatt  
 S. Sgt. Frank Duffy Monroe  
 Capt. Edwin F. Moody  
 PFC Forest E. Moody  
 Pvt. Harold Moody  
 Lt. George E. Moore, 2nd  
 Pvt. Raymond C. Morin  
 Sgt. Robert B. Morin  
 Pvt. L. H. Morrill, USMC  
 Lieut. Carl S. Morrison  
 Pvt. Chester A. Morrow  
 Pvt. Clyde H. Morse  
 Harold M. Morse, C SK  
 S.-Sgt. Donald G. Mossey  
 Pvt. Harold P. Mossey  
 Pvt. Raymond J. Mossey, Jr.  
 Pvt. Carlos F. Mowers  
 Pvt. Thomas P. Mulherrin  
 Pvt. Robert H. Napsey  
 Pvt. Clark A. Niles  
 Wm. F. Neilson, C 1/c  
 Howard E. Nelson, CM 3/c  
 Corp. Tech. Leon S. Nichols  
 Corp. T. P. O'Brien  
 Aviation Cadet John O'Grady  
 PFC Alfred G. Olivier  
 Albert L. Ouellette, G M 2/c  
 Donald R. Ouellette, F 2/c  
 Ensign Jos. C. Palamountain, Jr.  
 PFC Charles A. Paradis  
 PFC Royce W. Parker  
 Sgt. Paul Paro  
 Pvt. Leonard W. Parra  
 Corp. Stanley L. Patnode  
 Pvt. Wm. Patterson  
 Corp. Daniel E. Pauze  
 Pvt. Eugene F. Pauze  
 Pvt. Robert L. Pelton, USMC  
 Pvt. Fred C. Penn  
 Lt. Kenneth F. Perkins  
 Pvt. Merle Perkins  
 Corp. Carl E. Perrault  
 Pvt. Roger H. Perrault  
 Homer O. Perron, Ph. M 2c  
 2nd Lt. Emil F. Perry  
 Pvt. Robert B. Perry  
 Pvt. Alfred Philleson  
 PFC Raymond Philleson  
 Pvt. Richard D. Picard  
 1st Sgt. Lee F. Pillsbury  
 Arnold L. Place, MM 2/c  
 Sgt. Eugene E. Plamondon  
 Lt. Gordon Plummer  
 Pvt. Fred R. Pope  
 Corp. E. J. Pratte  
 Tech. Sgt. Paul V. Pratte  
 Pvt. Ernest L. Provost  
 J. Clayton Ramsdell, AS  
 Sgt. Alfred L. Raymond  
 Pvt. George Rennel  
 Pvt. Wendell K. Rice  
 Pvt. Paul N. Rich  
 Pvt. Fred Richardson  
 Edward C. Rickert, A. S.  
 Capt. Walter A. Rihl  
 Pvt. H. A. Rock  
 Lt. Raymond S. Rogers  
 Pvt. Patsy A. Romano  
 Joseph Rondeau, Jr., A. S.  
 Corp. Glenn J. Ross  
 Pvt. Robert Rousseau  
 Pvt. Clayton Roy  
 Pvt. Philip E. Ruel



Pvt. Roland E. Ruel  
 Pvt. Charles Russell  
 Pvt. Wildred Russell  
 PFC Emile J. St. Hilaire  
 Robert H. Sanborn, Sr., USMC  
 Pvt. Ronald H. Sanborn  
 Major Francis A. Sargent  
 Pvt. Gerald H. Sargent  
 Pvt. Philip E. Sargent  
 PFC Paul J. Sausville  
 Lieut. Harry W. Savage  
 Pvt. Howard A. Seace  
 Pvt. Lawrence W. Shepard  
 Leon Shepard, CPO  
 1st Lt. Paul Shores  
 Tech. Corp. Gerald S. Sleeper  
 Pvt. Stanley Sleeper  
 Lieut. (j.g.) Kenneth G. Smith  
 Clayton E. Spaulding, S 3/c  
 Ivan C. Spaulding, S 2/c  
 Pvt. George D. Stacy  
 Pvt. Robert C. Stacy  
 Pvt. Omer St. Cyr  
 Pvt. Charles S. Stevens  
 Pvt. Kenneth W. Stevens  
 Sgt. Ernest E. Stearns  
 Staff Sgt. Andrew J. Stewart  
 Pvt. Richard P. Still  
 1st Lt. Bartlett H. Stone  
 Pvt. Charles E. Stone, Jr.  
 Lt. Gordon M. Stone  
 Pvt. Carroll R. Story  
 Richard H. Strong, RM 3/c  
 Raymond Swain, Ph. M. 3/c  
 2nd Lt. Francis V. Talbert  
 Jean P. Tanguay, RM 3/c  
 Pvt. Sidney C. Temple  
 Henry Thibault, A. M. 3/c  
 Pvt. Floribere Therrien  
 Pvt. Floriand Therrien  
 Pvt. Joseph A. Therrien  
 Pvt. Alphonse A. Thibodeau  
 2nd Lt. Robert W. Thibodeau  
 PFC Edward T. Tomaski, Jr.  
 Capt. Stanley E. Tomkinson  
 Corp. Harold J. Townsend  
 Ira P. Townsend, A. C.  
 1st Lieut. Paul A. Townsend  
 Pvt. Ralph E. Townsend  
 Pvt. Ralph J. Townsend  
 Corp. Arthur J. Tremblay  
 Pvt. Paul Tremblay  
 Corp. Roland L. Tremblay  
 Ervin Tucker, A. S.  
 Pvt. Henry Tucker  
 Pvt. Wallace C. Tucker  
 Pvt. R. O. Vaillancourt  
 Paul Valia, USN  
 Pvt. Ralph E. Vallee  
 Archie Vanese, USN  
 Corp. Donald C. Waite  
 Clyde G. Wallace, USN  
 Staff Sgt. Richard Wallace  
 Pvt. Robert H. Wallace  
 Pvt. Afton Walling  
 Sgt. Gordon L. Walsh  
 Pvt. Patrick H. Walsh  
 Tech. Sgt. George E. Walton  
 Pvt. Jenness S. Ware  
 Pvt. Leet Ware  
 Pvt. Leonard A. Waterman  
 Corp. Erwin Frederick Watrous  
 PFC Ralph Watrous  
 Staff Sgt. Lawrence A. West  
 Ensign Thomas E. West  
 Pvt. William B. Weston  
 Pvt. Wesley E. Wetmore  
 Pvt. William Wetmore  
 Aux. Leona White  
 Lucien G. White, USN  
 Pvt. Roger J. White  
 Rodney P. White, S 2/c  
 Rudolph J. White, Jr., S 1/c  
 Pvt. Roland S. White  
 Clyde J. Whipple, S. C. 2/c  
 S. Q. M. 2/c E. Stanley White  
 Capt. Royal A. Whitney  
 Lieut. (j.g.) H. A. Wickstrom  
 Gerald S. Wilcox, CPO  
 Pvt. Paul F. Wilcox  
 Pvt. A. L. Wood  
 Pvt. Harold I. Wood

Pvt. Richard H. Wood  
PFC John S. Woodbury  
Corp. Emery C. Woodward  
Lieut. Esther M. Woodward  
Pvt. F. E. Woodward, USMC  
Pvt. Harold I. Woodward

Sgt. Paul H. Woodward  
PFC Robert O. Woodward  
Lt. Timothy F. Woodward  
Pvt. Robert M. Worcester  
Sgt. Andrew Young



ANNUAL REPORTS  
OF THE  
SELECTMEN  
AND OTHER  
Town Officers



For the Year Ending January 31

1943

---

*Printed by*  
CORY-HEWITT PRESS, INC.  
Lebanon, New Hampshire

N  
352.07  
L44  
1943

# New Hampshire Annual Report Contest

This certifies that

THE TOWN OF LEBANON

has been awarded FIRST PLACE

in

CLASS FOUR

for the year 1941

Judges

*Dwight T. Clark*  
*Andrew C. August*  
*Raymond L. Clark*

Bureau of Government Research  
University of New Hampshire

*Thorton V. Kalyan*  
President of Executive Council

*Lashley S. Hawley*  
Executive Secretary



## TOWN OFFICERS

---

- Moderator**—John F. Cronin  
**Town Clerk**—Joseph C. Smith  
**Selectmen**—Joseph B. Perley, Chairman; Henry H. Rogers, George C. Loomis  
**Highway Agent**—Wallace E. Stockwell  
**Tax Collector**—Milo L. Knight  
**Town Treasurer**—Herbert V. Palumbo  
**Health Officer**—George U. L. Leavitt  
**Milk Inspector**—W. E. Mowers  
**Town Agent**—Leo J. Hamel  
**Chief of Police**—Clarence W. Wright  
**Police Officers**—Bertrand E. Hubbard, Clyde L. Greenwood, Nelson Stacy, Harold Morse, Jr., Clarence L. Hastings  
**Special Officers**—William Harriman, George U. L. Leavitt, Louis Pregent, J. Albert Heath, George H. Gibson  
**Judge of Municipal Court**—Norris Cotton  
**Special Justice**—Mark E. Powers  
**Probation Officer**—Ernest P. Conlon  
**Dog Constable**—Lucien White  
**Supervisors of Check List**—Bert P. Shores, J. Daniel Porter, William N. Allan  
**Trustees of Trust Funds**—Milo L. Knight, Bert P. Shores, Maude B. Marston  
**Trustees of the Public Library**—Clifton Waldo, Fannie Bean, Arthur W. Burnham, Mary E. Hough, Henry Ford, C. Elbert Dole  
**Cemetery Committee**—Joseph B. Perley, Henry H. Rogers, George C. Loomis, S. E. Lamotte, Maude B. Marston  
**Treasurer of the Cemetery Committee**—Maude B. Marston  
**Surveyors of Wood and Lumber**—H. A. Follensbee, W. B. True  
**Fence Viewers**—H. A. Follensbee, W. B. True  
**Budget Committee**—Charles Foster, Charles W. Goss, J. A. H. Levesque, Roy Hathorn, Charles C. Smith, Stuart B. Emerson, Lane Dwinell, Frank S. Field, Eric H. Garrett, Daniel H. Brown, Stanley S. Jackson, Robert D. Patch

## WARRANT FOR THE ANNUAL MEETING

March 9, 1943

---

### State of New Hampshire

To the inhabitants of the Town of Lebanon qualified to vote in town affairs:

You are hereby notified to meet at the Town Hall in said Town on the second Tuesday of March next at 9:30 o'clock in the forenoon to act upon the following subjects; said meeting to be held open until six o'clock in the afternoon:

**First**—To see if the Town will vote to accept the report of the Budget Committee and vote to adopt their recommendations as printed.

**Second**—To see if the Town will vote to authorize the Selectmen to hire money in anticipation of taxes.

**Third**—To see if the Town will vote to petition the State Tax Commission to have an audit made by the Municipal Accounting Division.

**Fourth**—On a petition of ten or more legal voters, to see if the Town will vote to repair the river road, so called, leading from the State Highway near the bridge over Stony Brook, easterly to the State Highway near the viaduct over the railroad and river in Mascoma.

**Fifth**—To choose a Selectman for the ensuing three years.

**Sixth**—To choose a Town Clerk, a Tax Collector, Overseer of the Poor, Treasurer, a Highway Agent, and a Chief of Police for the ensuing year.

**Seventh**—To choose two Library Trustees for the ensuing three years.



**Eighth**—To choose a Trustee to administer the Trust Funds for the ensuing three years.

**Ninth**—To choose four members to act on the Budget Committee for the ensuing three years.

**Tenth**—To transact any other business that may properly come before the meeting.

Given under our hands and seal this 20th day of February, 1943.

Joseph B. Perley,  
Geo. C. Loomis,  
H. H. Rogers,  
Selectmen of Lebanon, N. H.

A true copy of Warrant—Attest:

Joseph B. Perley,  
Geo. C. Loomis,  
H. H. Rogers,  
Selectmen of Lebanon, N. H.

February 20, 1943.

## BUDGET OF THE TOWN OF LEBANON

**Estimates of Revenue and Expenditures for the Ensuing  
 Year February 1, 1943 to January 31, 1944  
 Compared with  
 Actual Revenue and Expenditures of the Previous Year  
 February 1, 1942 to January 31, 1943**

### SOURCES OF REVENUE

	Actual Revenue Previous Year 1942	Estimated Revenue Ensuing Year 1943
<b>From State:</b>		
Interest and Dividends Tax	\$ 4,425.68	\$ 4,000.00
Railroad Tax	12,641.19	12,000.00
Savings Bank Tax	2,849.44	2,500.00
<b>From Local Sources Except Taxes:</b>		
Business Licenses and Permits	488.50	500.00
Fines and Forfeits, Municipal Court	800.00	950.00
Rent of Town Hall and Other Buildings	7,030.00	7,000.00
Lebanon Improvement Society	10,000.00	10,000.00
Rent of Other Town Property	766.00	200.00
Motor Vehicle Permit Fees	8,713.84	3,000.00
<b>From Local Taxes Other Than Property Taxes:</b>		
(a) Poll Taxes	7,590.00	5,600.00
(b) National Bank Stock Taxes	982.00	950.00
<hr/>		
Total Revenues from All Sources	\$56,286.65	46,700.00
Except Property Taxes		75,263.00
<hr/>		
Amount to be Raised by Property Taxes		75,263.00
<hr/>		
TOTAL REVENUES		\$121,963.00

**PURPOSES OF EXPENDITURES**

	Actual Exp. Previous Year 1942	Estimated Exp. Ensuing Year 1943
<b>General Government:</b>		
Town Officers' Salaries	\$ 5,200.00	\$ 5,200.00
Town Officers' Expenses	2,445.34	3,000.00
Election and Registration Expenses	909.86	300.00
Municipal Court Expenses	1,611.83	1,800.00
Expenses Town Hall and Other Town Bldgs.	12,687.70	12,000.00
<b>Protection of Persons and Property:</b>		
Police Department	11,174.54	12,800.00
Fire Department	966.24	500.00
Moth Extermination—Blister Rust	300.00	300.00
<b>Health:</b>		
Milk Inspection	300.00	300.00
Health Department, including hospitals	4,163.09	3,500.00
Vital Statistics	111.62	125.00
Sewer Maintenance	2,818.25	3,500.00
Visiting Nurse	1,000.00	1,000.00
<b>Highways and Bridges:</b>		
Town Maintenance	20,619.35	22,500.00
Street Lighting	10,309.29	10,500.00
Town Road Aid	963.00	963.00
Sidewalk Maintenance	2,236.84	3,000.00
<b>Libraries:</b>		
Lebanon	1,736.52	1,600.00
West Lebanon	450.00	450.00
<b>Public Welfare:</b>		
Town Poor	6,743.19	6,000.00
Old Age Assistance	4,662.36	5,000.00
<b>Patriotic Purposes:</b>		
Memorial Day and Other Celebration	100.65	150.00
<b>Recreation:</b>		
Parks and Playgrounds, incl. band concerts	1,354.42	1,100.00
<b>Public Service Enterprises:</b>		
Cemeteries Leb. 2000—W. L. 650	3,065.16	2,650.00
<b>Interest:</b>		
On Temporary Loans	375.79	400.00
On Bonded Debt	1,125.00	225.00
Emergency Defense	5,023.17	3,100.00
General Expenses	2,076.21	5,000.00
<b>Payment on Principal of Debt:</b>		
(a) Town Hall Bonds	15,000.00	15,000.00
<b>TOTAL EXPENDITURES</b>	<b>\$119,529.42</b>	<b>\$121,963.00</b>



## ANALYSIS ASSESSMENT VALUATION

For the Year 1942

Classification	Assessed Value
Lands and Buildings	\$5,844,970.00
Electric Plants	531,000.00
Horses (150)	15,650.00
Oxen (11)	750.00
Cows (1006)	55,790.00
Other Neat Stock (185)	7,440.00
Sheep (151)	971.00
Fowls (5335)	5,335.00
Wood, Lumber, etc. (Pub. Laws, Ch. 61, s. 11)	10,000.00
Gasoline Pumps and Tanks	14,660.00
Stock in Trade	726,735.00
Aqueducts	250,000.00
Mills and Machinery	281,800.00
Polls Number 2800 at \$2	\$5,600.00
National Bank Stock taxes	950.00
	\$7,745,101.00

Amount of taxes to be committed  
to collector, including poll  
taxes and national bank stock  
taxes \$245,622.43

Average rate per cent of tax-  
ation for all purposes 3.09

Amount exempted to soldiers \$94,500.00

Amount exempted to blind \$2,000.00

Joseph B. Perley, Lebanon.  
H. H. Rogers, West Lebanon, N. H.  
Geo. C. Loomis, R. F. D., W. Leb.  
Selectmen of Lebanon, N. H.

**STATEMENT OF APPROPRIATIONS AND  
TAXES ASSESSED**

Year 1942

Town officers' salaries	\$ 5,200.00
Town officers' expenses	3,000.00
Election and registration expenses	1,000.00
Municipal court expenses	1,650.00
Town hall	12,000.00
Police department	11,000.00
Fire department	500.00
Blister rust—Moth extermination	300.00
Health department, including hospitals	4,500.00
Vital statistics	100.00
Town Road Aid—Class 5	963.00
Town maintenance	18,000.00
Visiting Nurse	1,000.00
Milk Inspection	300.00
Street lighting	10,500.00
Sidewalk construction—Maintenance	3,000.00
Sewer maintenance	3,000.00
Libraries	2,050.00
Old age assistance	4,800.00
Town poor	10,000.00
Memorial Day	150.00
Parks and playgrounds, incl. band concerts	1,400.00
Cemeteries	2,900.00
Interest	1,525.00
Payments on Principal of Debt	15,000.00
County Tax	23,989.48
School Tax	125,595.30
Emergency Defense	4,300.00
General Expenses	5,000.00
	<hr/>
Total Town and School Appropriations	\$272,722.78

Less Estimated Revenue and Credits:

Interest and Dividend Tax	\$ 4,500.00	
Railroad Tax	12,000.00	
Savings Bank Tax	2,500.00	
Business Licenses and Permits	500.00	
Fines and Forfeits, Mun. Court	800.00	
Rent of Town Hall	7,000.00	
Lebanon Improvement Society	10,000.00	
Rent of Other Town Property	600.00	
Motor Vehicles Permits	6,000.00	
		43,900.00
		\$228,822.78
Plus overlay		2,335.15
Net amount to be raised by taxation		\$231,157.93
Less Poll Taxes	\$ 5,600.00	
National Bank Stock Taxes	950.00	
		6,550.00

Town Rate—\$2.90

Lebanon Center Precinct — \$.19

West Lebanon Precinct—\$ .35

Average Rate—\$3.09

Amount to be raised by property taxes on which town tax rate is figured \$224,607.93

Taxes to be Committed to

Collector:

Property Taxes	\$224,607.93
Poll Taxes	5,600.00
National Bank Stock Taxes	950.00
Precinct Taxes	14,464.50
	\$245,622.43

Total Taxes to be Committed to

Collector \$245,622.43

Joseph B. Perley,

H. H. Rogers,

Geo. C. Loomis,

Selectmen of Lebanon, N. H.

Precincts:	Valuation	Taxes	Rate
Lebanon Center Village	\$4,975,000.00	\$9,452.50	.19
West Lebanon Precinct	\$1,432,005.00	\$5,012.00	.35



**REPORT**  
**OF AN AUDIT AND EXAMINATION**  
**OF THE ACCOUNTS**  
**OF THE**  
**TOWN OF LEBANON**

**MADE BY**  
**THE DIVISION OF MUNICIPAL ACCOUNTING**  
**STATE TAX COMMISSION**

**JANUARY 31, 1943**

**DIVISION OF MUNICIPAL ACCOUNTING  
STATE TAX COMMISSION  
CONCORD, NEW HAMPSHIRE**

---

February 23, 1943

The Board of Selectmen,  
Lebanon, New Hampshre

Gentlemen:

Submitted herewith is the report of an audit and examination of the accounts of the Town of Lebanon for the fiscal year ended January 31, 1943, which has been made by the Division of Municipal Accounting of the State Tax Commission in accordance with your request. Exhibits as hereafter listed are included as part of this report.

**Scope of Audit**

Included in the examination and audit were the accounts of the Selectmen, Treasurer, Tax Collector, Town Clerk, Trustees of Trust Funds, Library Trustees and Library Treasurer, Lebanon and West Lebanon Cemetery Committees and the Municipal Court.

**Balance Sheet**

Comparative Balance Sheets in detailed form for the years ended January 31, 1942 and January 31, 1943, are presented in Exhibit A. Comparative Balance Sheets in condensed form are included in Exhibit B.

As indicated by Exhibit A, the Net Debt which amounted to \$26,058.98, on January 31, 1942, had been converted to a Surplus of \$782.76, as of January 31, 1943, indicating a decrease in Net Debt of \$26,841.74. The principal factors which contributed to this improvement in the financial condition of the Town were:

(1) Reduction of bonded indebtedness by \$15,000.00, provided for by appropriation.

(2) Net excess of actual over estimated revenues of \$6,742.03 and a net unexpended balance of appropriations of \$1,949.46.

(3) Taxes added to the 1942 Levy, totalling \$4,568.65 in excess of the amount established to meet budgetary requirements when the tax rate was approved.

A summary indicating items affecting Net Debt is included in Exhibit A-1, entitled Reconciliation of

Change in Net Debt. It should be noted that the reduction would have been greater had not the Tax Deed account, which was carried at \$1,204.47 in the January 31, 1942, balance sheet, been eliminated from the assets in accordance with the recommendation made in our last audit report.

Exhibit B, which includes comparative balance sheets in condensed form for a ten year period, indicates a Net Debt of \$139,372.11 as of January 31, 1934, and a Surplus of \$782.76 as of January 31, 1943, or a total reduction in Net Debt of \$140,154.87 for this period. Outstanding long term indebtedness at the beginning of the period was \$141,000.00, and at the close \$15,000.00. This latter amount is represented by three bonds of \$5,000.00 each, which will be retired during the current year. The town officials responsible should be commended for the marked improvement shown in the financial condition of the Town during a period the greater part of which was marked by large expenditures for relief.

#### **Selectmen and Treasurer's Accounts**

The accounts of the Selectmen and Treasurer, for the period under review, were audited by examination of the Selectmen's vouchers and supporting invoices and payrolls and comparison thereof with the Treasurer's cancelled checks and entries in the cash book. These were found to be in agreement. Classification of expenditures conformed to the uniform system of accounts as prescribed by this division. The Treasurer's receipts were checked by source insofar as it was possible to do so and totals of receipts and expenditures were verified. The cash book balance as of January 31, 1943, was reconciled with the bank balance of like date.

Bonds, bond coupons and temporary loan notes paid during the fiscal year were examined and destroyed. An excess deposit of \$112.50 was made to the Bond and Coupon account in the National Shawmut Bank during the year and will be available to partially meet maturing coupons during the current year.

#### **Tax Collector**

The accounts of the Tax Collector for the 1942 levy, as well as tax warrant and tax sale accounts which were outstanding as of January 31, 1942, were audited and



balanced. All poll and property taxes, which appeared as delinquent on the Collector's records on January 31, 1943, were verified as outstanding by notices sent to the taxpayers.

#### **Town Clerk**

Motor vehicle permits and dog licenses issued by the Town Clerk during the period of audit were examined and funds received therefor, less fees for the issuance of dog licenses, were properly accounted for.

#### **Trust Funds**

The records of the Trustees of Trust Funds were examined. Principal and income, as indicated therein, was found to be on deposit in various savings banks as shown by pass books. Securities representing the balance of principal were also examined. Disbursements of income were found to have been made to the proper recipients.

#### **Financial Reports**

The accounts of the Lebanon Cemetery Committee, the West Lebanon Cemetery Committee from August 12, 1942 to January 31, 1943, the Library Treasurer, the Library Trustees, and the Clerk of the Municipal Court were audited and the reports as submitted by them were correct. Cash balances as of January 31, 1943, were reconciled with bank statements of like date. The library trust funds in custody of the Library Trustees were verified as on deposit in savings banks.

#### **General Comments**

The accounts and records of all town officials were in good order. This facilitated the work of the auditors materially. We extend our thanks to the officials of the town for assistance rendered and information furnished while we were engaged in making this audit.

Very truly yours,  
Harold G. Fowler, Director  
Division of Municipal Accounting  
State Tax Commission.

Lawton B. Chandler  
Herbert E. Hunt

Accountants

## CERTIFICATE OF AUDIT

This is to certify that we have audited the accounts and records of the Town of Lebanon for the fiscal year ended January 31, 1943. In our opinion the exhibits included in our report present a correct statement of the assets and liabilities and financial transactions of the Town for the period, subject to comments as included in the letter of transmittal.

Respectfully submitted,  
Harold G. Fowler, Director,  
Division of Municipal Accounting  
State Tax Commission

Lawton B. Chandler  
Herbert E. Hunt  
Accountants

**TOWN OF LEBANON**  
**INDEX OF REPORT OF AUDIT**

---

<b>TITLE OF EXHIBIT:</b>	<b>EXHIBIT</b>
<b>Balance Sheets</b>	
Comparative Balance Sheets—1941 and 1942	A
Reconciliation of Change in Net Debt	A—1
Comparative Balance Sheets—10 Year Period	B
Statement of Bonded Debt and Coupon Account	C
<b>Selectmen and Treasurer</b>	
Classified Summary of Receipts and Expenditures	D
Comparative Statement of Appropriations and Expenditures	E
Comparative Statement of Estimated and Actual Revenues	F
Proof of Treasurer's Cash Balance	G
<b>Tax Collector</b>	
Levy of 1942—Summary of Warrants	H
Previous Years' Tax Warrant Accounts	I
Summary of Tax Title Account	J
<b>Town Clerk</b>	
Summary of Motor Vehicle Permit and Dog License Accounts	K
<b>Trust Funds</b>	
Trust Fund Principal, Income and Investments	L
New Trust Funds Created—1942	L—1
Summary of Income Checking Account	M
Summary of Eldridge Land Account	N
<b>Financial Reports</b>	
Report of Lebanon Cemetery Committee	O
Report of West Lebanon Cemetery Committee	P
Report of Public Library	Q
Report of Public Library Trustees	Q—1
Report of Municipal Court	R
<b>Bonds</b>	
Town Officers' Bonds—1942	S



**EXHIBIT A**  
**TOWN OF LEBANON**  
**COMPARATIVE BALANCE SHEETS**

**Fiscal Year Ended**  
**January 31, 1942**

**Fiscal Year Ended**  
**January 31, 1943**

**Assets:**

Cash in Bank:		
National Bank, Lebanon	\$ 7,546.49	\$14,791.15
National Shawmut Bank	112.50	112.50
		<b>\$14,903.65</b>

**Uncollected Taxes:**

Levy of 1942		
Levy of 1941	\$1,290.90	964.50
Levy of 1940	467.12	462.19
Prior Years	554.09	135.00
		—0—

**Tax Titles**

**Property Bought by Town**

**Tax Deeds**

Tax Titles		
Property Bought by Town	\$ 2,312.11	1,561.69
Tax Deeds	9,455.14	7,894.61
	1,422.81	1,422.81
	1,204.47	—0—
		1,561.69

**Total Assets**

**Net Debt**

Total Assets		
Net Debt	\$21,941.02	\$25,782.76
	26,058.98	—0—
		\$25,782.76

**Total Assets and Net Debt**

**Liabilities:**

**Balance School Appropriation**

**Town Hall Bonds**

Total Assets and Net Debt		
Balance School Appropriation	\$48,000.00	\$25,782.76
Town Hall Bonds	\$18,000.00	\$10,000.00
	30,000.00	15,000.00
		\$25,000.00

**Total Liabilities**

**Surplus**

Total Liabilities		
Surplus	\$48,000.00	\$25,000.00
	—0—	782.76
		\$25,000.00

**Total Liabilities and Surplus**

Total Liabilities and Surplus		
	\$48,000.00	\$25,782.76
		<b>\$25,782.76</b>

**EXHIBIT A-1  
TOWN OF LEBANON**

**Reconciliation of Change in Net Debt  
January 31, 1942 and January 31, 1943**

**Summary of Change in Debt**

Net Debt—January 31, 1942	\$26,058.98	
Surplus—January 31, 1943	782.76	
Total Decrease in Debt and Increase in Surplus	<u>26,841.74</u>	\$26,841.74
<b>Reconciliation</b>		
<b>Decreases in Debt:</b>		
Excess of Actual Over Estimated Revenues (Sched. F)	\$ 6,816.35	
Unexpended Balances of Appropriations (Sched. E)	9,828.61	
<b>Added Taxes:</b>		
Current Year	\$ 4,568.65	
Prior Years	<u>569.84</u>	
Reduction of Bonded Debt	\$ 5,138.49	
	<u>15,000.00</u>	
Total Decreases in Debt		\$36,783.45

**Increase in Debt:**

Overdrafts of Appropriations (Schedule E)  
Revenue Deficit (Schedule F)

\$ 7,879.15  
74.32

**Abatements:**

Tax Warrant Accounts  
Tax Title Accounts

\$ 781.14  
2.63

Tax Deed Account Charged Off

783.77  
1,204.47

Total Increases in Debt

9,941.71

Total Decrease in Debt and Increase in Surplus

\$26,841.74

**EXHIBIT B**  
**TOWN OF LEBANON**  
**Comparative Balance Sheets**  
**Period of Ten Years Ended January 31, 1943**

	1934	1935	1936	1937	1938	1939	1940	1941	1942	1943
<b>ASSETS</b>										
Cash	\$ 1,107.08	\$ 10,471.87	\$ 9,282.31	\$ 6,242.63	\$ 2,403.53	\$ 3,602.82	\$ 6,244.99	\$ 7,327.69	\$ 7,546.49	\$14,903.65
Accounts Receivable	29,098.77	26,330.55	30,647.19	26,281.60	27,744.19	25,353.21	26,557.19	19,986.96	11,767.25	9,456.30
Other Assets		712.00	712.00	712.00		1,166.42	200.80	6,746.74	2,627.28	1,422.81
Total Assets	\$ 30,205.85	\$ 37,514.42	\$ 40,641.50	\$33,236.23	\$30,147.72	\$30,122.45	\$33,002.98	\$34,061.39	\$21,941.02	\$25,782.76
Net Debt to Balance	\$139,372.11	97,027.00	78,378.50	63,982.93	56,263.92	60,886.13	28,997.02	34,612.61	26,058.98	—
Total Assets and Net Debt	\$169,577.96	\$134,541.42	\$119,020.00	\$97,219.16	\$86,411.64	\$91,008.58	\$62,000.00	\$68,674.00	\$48,000.00	\$25,782.76
<b>LIABILITIES</b>										
Accounts Payable	\$ 3.46	\$ 50.00	\$ 241.16	\$ 8.58	\$ 28,000.00	\$ 28,000.00	\$ 22,000.00	\$ 28,674.00	\$ 18,000.00	\$ 10,000.00
Unexpended Approp.	28,574.50	12,491.42	20,020.00	19,978.00	32,411.64	20,000.00	22,000.00	28,674.00	18,000.00	10,000.00
Temporary Loans						20,000.00				
Bonds Outstanding	141,000.00	122,000.00	99,000.00	77,000.00	54,000.00	43,000.00	40,000.00	40,000.00	30,000.00	15,000.00
Total Liabilities	\$169,577.96	\$134,541.42	\$119,020.00	\$97,219.16	\$86,411.64	\$91,008.58	\$62,000.00	\$68,674.00	\$48,000.00	\$25,000.00
Surplus	—	—	—	—	—	—	—	—	—	782.76
Total Liabilities and Surplus	\$169,577.96	\$134,541.42	\$119,020.00	\$97,219.16	\$86,411.64	\$91,008.58	\$62,000.00	\$68,674.00	\$48,000.00	\$25,782.76



# TOWN OF LEBANON

## EXHIBIT C

### Statement of Bonded Indebtedness Showing Annual Maturities of Principal and Interest

As of January 31, 1943

Town Hall Bonds 4½%

Original Amount of Issue	\$250,000.00
Date of Issue	May 1, 1923
Annual Maturity Date	May 1
Interest Payable Dates	Nov. 1 and May 1
Payable at	Nat'l. Shawmut Bank of Boston

Maturities Fiscal			Annual
Year Ending	Serial No.	Amount	Interest
January 31, 1944	48—49 & 50	\$15,000.00	\$337.50

### SUMMARY OF BOND COUPON ACCOUNT

#### Fiscal Year Ended January 31, 1943

Deposited in Coupon Account, National Shawmut Bank, Fiscal Year 1942	\$1,125.00
Coupons Matured and Paid During Year	1,012.50
	<hr/>
(a) Balance in National Shawmut Bank January 31, 1943	\$ 112.50
(a) To be applied toward 1943 coupon maturities.	

# TOWN OF LEBANON

## EXHIBIT D

### Summary of Cash Receipts and Expenditures

Fiscal Year Ended January 31, 1943

#### Cash Receipts

##### From Local Taxes:

###### Polls and Property

Levy of 1932	\$	4.00	
1933		4.00	
1934		6.00	
1935		10.00	
1936		15.00	
1937		37.20	
1938		58.50	
1939		77.00	
1940		160.12	
1941		1,131.80	
1942		248,687.21	
			<hr/>
			\$250,190.83

Tax Sales Redeemed 6,966.70

Interest on Redemptions 892.59

Sales of Tax Deeded Property 1,580.00

Interest on Current Taxes 142.05

Delinquent Poll Tax Fees 77.80

---

\$259,849.97

##### From State of New Hampshire:

Interest and Dividend Tax \$ 4,425.68

Railroad Tax 12,641.19

Savings Bank Tax 2,849.44

Fighting Forest Fires 11.88

---

19,928.19

##### From the Town Clerk:

Registration of Motor Vehicles

1941—1942 \$ 20.73

1942—1943 8,713.84

1943—1944 —0—

---

\$ 8,734.57

Dog Licenses 948.48

---

9,683.05

**From Local Sources:**

Business Licenses and Permits	\$ 638.50	
Municipal Court:		
Fines and Forfeits	800.00	
Rent of Town Hall	7,030.00	
Rent of Other Buildings	776.00	
	<hr/>	9,244.50

**Income From Departments:**

Town Maintenance	\$ 1,970.99	
Sewer Maintenance	193.61	
Parks and Playgrounds	155.00	
Police Department	8.00	
Transient Camp	189.50	
	<hr/>	2,517.10

**Refunds:**

Town Poor	\$ 1,377.68	
Special Poor	246.00	
Emergency Defense	53.03	
Old Age Assistance	50.00	
	<hr/>	1,726.71

**Other Revenues:**

Lebanon Improvement Society	\$ 10,000.00	
Miscellaneous	54.21	
	<hr/>	10,054.21

Temporary Loans Issued: 75,000.00

Total Receipts From All Sources	<hr/>	\$388,003.73
Cash On Hand February 1, 1942		7,546.49

Grand Total 

---

---

\$395,550.22

**EXHIBIT D (Continued)**  
**TOWN OF LEBANON**  
**Summary of Cash Receipts and Expenditures**  
**Fiscal Year Ended January 31, 1943**

<b>Expenditures</b>		
<b>General Government:</b>		
Town Officers' Salaries	\$ 6,141.99	
Town Officers' Expenses	2,445.34	
Election and Registration Expense	909.86	
Municipal Court Expense	1,611.83	
Town Hall Expense	12,687.70	
Expense Other Buildings	861.12	
		\$24,657.84
<b>Protection of Persons and Property:</b>		
Police Department	\$11,182.54	
Fire Department	978.12	
Moth Extermination	300.00	
Damage by Dogs	111.85	
Emergency Defense	5,076.20	
		17,648.71
<b>Health:</b>		
Health Department	\$ 663.09	
Hospitalization	3,500.00	
Visiting Nurses	1,000.00	
Milk Inspection	300.00	
Vital Statistics	111.62	
Sewer Maintenance	3,011.86	
Town Dump	225.00	
		8,811.57
<b>Highways and Bridges:</b>		
Town Maintenance	\$22,590.34	
Street Lighting	10,309.29	
Town Road Aid	963.00	
		33,862.63
<b>Public Welfare:</b>		
Old Age Assistance	\$ 4,712.36	
Town Poor	8,120.87	
Special Poor	591.50	
Transient Camp	202.31	
		13,627.04
<b>Libraries:</b>		
Lebanon Library	\$ 1,736.52	
West Lebanon Library	450.00	
		2,186.52



## Expenditures (Continued)

### Patriotic Purposes:

Memorial Day Exercises	\$	100.65
------------------------	----	--------

### Recreation:

Parks and Playgrounds	\$ 1,209.42	
Band Concerts	300.00	
	<hr/>	1,509.42

### Public Service Enterprises:

Lebanon Cemetery	\$ 2,565.16	
West Lebanon Cemetery	500.00	
Airport Maintenance	236.82	
	<hr/>	3,301.98

### Interest On Indebtedness:

On Temporary Loans	\$ 375.79	
On Bonded Indebtedness	1,125.00	
	<hr/>	1,500.79

### Indebtedness:

Payment On Bonded Debt	\$15,000.00	
Payment On Temporary Loan	75,000.00	
	<hr/>	90,000.00

### New Construction & Permanent

#### Improvements:

Sidewalk Construction	2,236.84
-----------------------	----------

### Unclassified:

Expenses On Town Owned		
Property	\$ 245.13	
Taxes Bought by Town	5,408.80	
Expense Tax Deeded Property	26.48	
General Expense	1,369.26	
	<hr/>	7,049.67

### Other Governmental Units:

County Tax	23,989.48
------------	-----------

#### Precinct Taxes:

Lebanon	\$11,000.00	
West Lebanon	4,844.00	
	<hr/>	15,844.00

**EXHIBIT D (Continued)**  
**TOWN OF LEBANON**  
**Summary of Cash Receipts and Expenditures**  
**Fiscal Year Ended January 31, 1943**

**Expenditures (Continued)**

**School District:**

Appropriation		
1941-1942	\$18,000.00	
Appropriation		
1942-1943	115,595.30	
Dog Licenses	836.63	
	\$134,431.93	
Total Expenditures for		
All Purposes	\$380,759.07	
Cash on Hand		
January 31, 1943		14,791.15
Grand Total		\$395,550.22

**EXHIBIT E**  
**TOWN OF LEBANON**  
**Comparative Statement of Appropriations and Expenditures**  
**Fiscal Year Ended January 31, 1943**

	Carried From		Cash		Total		BALANCES	
	1941	1942	Appropriation	and Other	Amount	Expenditures	Unexpended	Overdrawn
	\$	\$	\$	Credits	Available	1942	\$	to 1943
<b>General Government:</b>								
Town Officers' Salaries		5,200.00	\$		5,200.00	\$ 6,141.99	\$ 941.99	\$
Town Officers' Expenses		3,000.00			3,000.00	2,445.34	554.66	
Election and Registration Exp.		1,000.00			1,000.00	909.86	90.14	
Municipal Court Expense		1,650.00			1,650.00	1,611.83	38.17	
Town Hall Expense		12,000.00			12,000.00	12,687.70	687.70	
Expense Other Town Buildings						887.60	887.60	
Exp. Property Owned by Town						245.13	245.13	
<b>Protection of Persons and Property:</b>								
Police Department		11,000.00		8.00	11,008.00	11,182.54	174.54	
Fire Department		500.00		11.88	511.88	978.12	466.24	
Moth Extermination, B'ster Rust		300.00			300.00	300.00		
Emergency Defense		4,300.00		53.03	4,353.03	5,076.20	723.17	
<b>Health:</b>								
Health Department, Includes								
Hospitalization		4,500.00			4,500.00	4,163.09	336.91	
Visiting Nurse		1,000.00			1,000.00	1,000.00		
Milk Inspection		300.00			300.00	300.00		
Vital Statistics		100.00			100.00	111.62	11.62	
Sewer Maintenance		3,000.00		193.61	3,193.61	3,011.86	181.75	
Town Dump						225.00	225.00	
<b>Highways and Bridges:</b>								
Town Maintenance		18,000.00		1,970.99	19,970.99	22,590.34	2,619.35	
Street Lighting		10,500.00			10,500.00	10,309.29	190.71	
<b>Libraries:</b>								
Lebanon Library		1,600.00			1,600.00	1,736.52	136.52	
West Lebanon Library		450.00			450.00	450.00		
<b>Public Welfare:</b>								
Old Age Assistance		4,800.00		50.00	4,850.00	4,712.36	137.64	
Town Poor		10,000.00		1,377.68	11,377.68	8,120.87	3,256.81	
Special Poor				246.00	246.00	591.50	345.50	
Transient Camp				189.50	189.50	202.31	12.81	
<b>Patriotic Purpose:</b>								
Memorial Day Exercises		150.00			150.00	100.65	49.35	

**EXHIBIT E (Continued)**  
**TOWN OF LEBANON**  
**Comparative Statement of Appropriations and Expenditures**  
**Fiscal Year Ended January 31, 1943**

	Carried From 1941	Cash and Other Credits	Total Amount Available	Expenditures 1942	BALANCES		Carried to 1943
					Unexpended	Overdrawn	
<b>Recreation:</b>							
Parks and Playgrounds	1,100.00	155.00	1,255.00	1,209.42	45.58		
Band Concerts	300.00		300.00	300.00			
<b>Public Service Enterprises:</b>							
Lebanon Cemetery	2,500.00		2,500.00	2,565.16	65.16		
West Lebanon Cemetery	400.00		400.00	500.00	100.00		
<b>Interest on Indebtedness:</b>							
On Temporary Loans	400.00		400.00	375.79	24.21		
On Bonded Indebtedness	1,125.00	112.50	1,237.50	1,125.00	112.50		
<b>Indebtedness:</b>							
Payment on Bonded Debt	15,000.00		15,000.00	15,000.00			
<b>New Construction and Permanent Improvements:</b>							
State Aid Construction	963.00		963.00	963.00			
Sidewalk Construction	3,000.00		3,000.00	2,236.84	763.16		
Airport				236.82		236.82	
<b>Unclassified:</b>							
General Expense	5,000.00		5,000.00	1,369.26	3,630.74		
<b>Other Governmental Units:</b>							
County Tax	23,989.48		23,989.48	23,989.48			
Precinct Taxes—Lebanon	9,452.50	1,547.50	11,000.00	11,000.00			
Precinct Taxes—West Lebanon	5,012.00		5,012.00	5,012.00			
School District—1941-42			18,000.00	18,000.00			
School District—1942-43	125,595.30		125,595.30	115,595.30			10,000.00
School District—Dog Taxes		948.48	948.48	836.63		111.85	
Dog Damage				111.85			
Overlay, Abatements, 1942 Levy	2,335.15		2,335.15	1,918.87	416.28		
	\$18,000.00	\$289,522.43	\$314,386.60	\$302,437.14	\$9,828.61	\$7,879.15	\$10,000.00



The data and biographical sketches of men in the service from Lebanon, were compiled by The American Legion and Veterans of Foreign Wars.

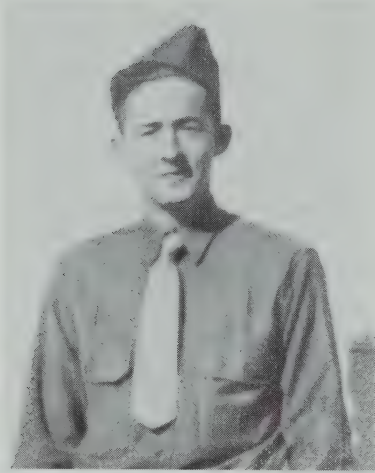
Commander H. Ross Knight, of the Legion and Commander Edward W. Strong, of the Veterans of Foreign Wars deeply appreciate the services of the following persons who have spent so much of their time and effort, in the project:

Leo J. Hamel, Overseer of the Poor, and his secretary, Mrs. J. Clayton Ramsdell, who have acted as a clearing house for the information received from various sources, and compiled it in a neat permanent record.

The management and staff of the *Granite State Free Press*, who have so kindly given space in their paper.

Mrs. Dorothea Downing, of The American Legion Auxiliary from West Lebanon, who compiled the list of over 100 men from that end of the town.

And last, to Sen. J. B. Perley, and the Board of Selectmen, whose enthusiastic cooperation for the project has made the publication of this roster in our Town Report, possible.



PVT. JOHN QUINCY ADAMS



PVT. 1/C BENJAMIN  
FRANKLIN ADAMS



JOSEPH WILLIAM ADAMS  
U. S. Navy

## FOUR SONS OF MRS. FLORENCE ADAMS WHIPPLE

### PVT. JOHN QUINCY ADAMS

Born in Hanover, September 28, 1908. He is attending the 1st. Tech. School Squadron at Chanute Field, Rantoul, Ill. Enlisted August 27, 1942. He attended school at Hanover, N. H. He is a member of the Baptist Church. Formerly worked for George Richardson, Jr. on Forestry Work. He also had been employed at the E. Cummings Bros. Tannery.

### JOSEPH WILLIAM ADAMS—U. S. Navy

Born July 5, 1920, Hanover, N. H. Enlisted in the U. S. Navy on December 28, 1941. He is with the Air Detail Station—Gould Island, Newport, R. I. He attended the Hanover Grammar School. He was formerly employed at the Split Ballbearing Corp. Is a member of the Baptist Church.

### PVT. 1/C BENJAMIN FRANKLIN ADAMS

Born in Hanover, N. H., September 26, 1913. He is with Co. G—B. 305 D, Post Hd.—Q. Bn. H.R.P.E.—Newport News, Virginia. He attended the Hanover School and also High School in Enfield. He was employed in the Enfield Mill. Is also a member of the Baptist Church.

### DANIEL WEBSTER ADAMS—U. S. Navy

Born in Canaan, N. H., August 22, 1907. Attended school in Hanover and also Enfield High. Enlisted in Navy at outbreak of war. He is a Chief Boastwain Mate. He is somewhere on the Pacific. Daniel is a member of the Baptist Church.



S 1/c ROLAND F. BURKE



SERGEANT EARL A. BURKE



MARION LOIS BURKE  
A.S.—U.S.N.R., WAVES



NINA R. BURKE—A.S.  
U.S.N.R., WAVES



## SONS AND DAUGHTERS OF MR. AND MRS. FRANK BURKE

### S 1/c ROLAND F. BURKE, U.S.N.R.

Born in Lebanon, April 8, 1910. Entered the Navy August 21, 1942. Graduated from Lebanon High School in 1929. He was employed at State Highway Dept. He is married and has no children. Roland is a member of the Congregational Church and Franklin Lodge No. 6, A.F.A.M. Roland also is a member of the Lebanon Fire Department.

### SERGEANT EARL A. BURKE

Born in Lebanon, June 15, 1911. Entered the Army February 25, 1942. He is with Battery C. 308th. CAAB Bn. Earl attended the Lebanon Schools. Was employed at the American Woolen Company. Is a member of the Lebanon Fire Department, also member of the Congregational Church.

### MARION LOIS BURKE—A.S.—U.S.N.R. WAVES

Born in Lebanon, September 26, 1919. Graduated from Lebanon High School in the Class of 1937. She also attended Plymouth Teachers' College. She was sworn into the Women's Reserve of the U. S. Naval Reserve, (WAVES), February 1, 1943. Marion belongs to the Eastern Star and is a member of the Congregational Church.

### NINA R. BURKE—A.S.—U.S.N.R. WAVES

Was born in Lebanon, January 2, 1923. Graduated from Lebanon High School in 1941. She was sworn into the Women's Reserve of the U. S. Naval Reserves on February 1, 1943 with her sister, Marion. She has two brothers in the Service, Roland F. and Earl A. She also is a member of the Congregational Church.



S 1/c JOSEPH A. LANDRY



P.F.C. ARTHUR H. LANDRY



PVT. WILLIAM J. LANDRY



PVT. MAURICE J. LANDRY

## SONS OF MR. AND MRS. JOSEPH LANDRY

### S 1/c JOSEPH A. LANDRY

Of West Lebanon. Born in Dracut, Mass., October 4, 1918. Attended Sacred Heart School and graduated from Lebanon High School. Is a member of the Sacred Heart Church. Joseph worked for the Boston & Main Railroad in West Lebanon. He is married and has one child.

### P.F.C. ARTHUR H. LANDRY

Born February 7, 1919 in Dracut, Mass. Attended Sacred Heart School, also graduated from Lebanon High School, and is a member of the Sacred Heart Church. He was employed by the Cummings Bros. Tannery. He is now serving with the 118th. Obsn. Sqdn., T.B. 229, U. S. Army Air Base, Morris Field, Communication Message Center, Charlotte, N. C.

### PVT. WILLIAM J. LANDRY

Born February 15, 1920, Dracut, Mass. Attended Sacred Heart School. Graduated from Lebanon High School. Member of the Sacred Heart Church. He was employed at the Split Ball Bearing Corp. William is married and the father of two children. Now, he is an instructor in the Signal Corp., 18th. Company, Campwood, Monmouth, N. J.

### PVT. MAURICE J. LANDRY

Born in Lebanon, N. H., March 28, 1922. He also attended Sacred Heart School and graduated from Lebanon High School. Is a member of the Sacred Heart Church. He was employed by the Cummings Bros. Tannery. Now, he is serving with the 800th. Tech. School Squadron, Seymour-Johnson Field, Goldsboro, N. C.



PVT. ALBERT J. McGONIS



RICHARD J. McGONIS



JOSEPH E. McGONIS



FRANCIS J. McGONIS

These four brothers are the sons of Mr. Felix McGonis, of Hanover St. It is to be noted that all four boys were born in Lebanon, and lived here until entering the service.

PVT. ALBERT J. McGONIS

Was born in Lebanon, N. H., July 16th, 1922. He attended Sacred Heart School and was graduated from Lebanon High School in June 1940. He entered the United States Army, Dec. 3rd, 1942.

RICHARD J. McGONIS

Was born in Lebanon, N. H., Nov. 17th, 1915. He was graduated from Sacred Heart School and attended Lebanon High School three years. He entered the United States Army Jan. 8th, 1940.

JOSEPH E. McGONIS

Was born in Lebanon, N. H., Dec. 25th, 1918. He attended Sacred Heart School and entered the service of the United States Army Feb. 18th, 1941.

FRANCIS J. McGONIS

Was born in Lebanon, N. H., Nov. 22nd, 1914. He attended Sacred Heart School and entered the U. S. Army July 16th, 1942.





LT. SUMNER E. ATHERTON JR

## LT. SUMNER EDWARD ATHERTON, JR.

Naval Reserve Officer, member of Coast Patrol. Born May 23, 1916 at Boston, Mass. Attended the graded school of West Lebanon and graduated from West Lebanon High School in 1934, and the University of N. H. in 1938. Graduated from Naval School of Aeronautics, Pensacola, Fla., in 1939. Member of the West Lebanon Congregational Church. He married Martha B. Kennard of Pensacola, Fla., September 30, 1939, and has a boy, John Sumner, 2 years, and a daughter, Martha Jean, born Jan. 29, 1943.

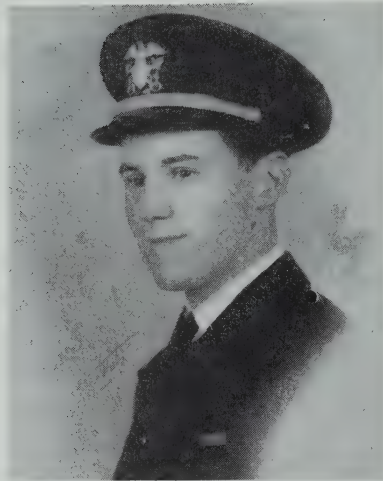
Awarded Distinguished Flying Cross. Representing President Roosevelt was Vice Admiral John W. Greenslade who pinned the coveted award on Lt. Atherton (j.g.), and Frank Knox, Secretary of the Navy, cited him saying "For volunteering to fly from the Naval Air Station Palmyra on a rescue flight of 180 miles in spite of low visibility, Lt. Atherton (j.g.) succeeded in locating a raft with a lone survivor (Lt. John Crawford of Baltimore, Md.) from the U. S. Army plane wrecked at sea, landing was made in a hazardous condition of wind and sea. The survivor was picked up, take off safely accomplished, he then returned to his base, in so doing he displayed excellent judgement, skill and courage to a high order, and thereby saved the life of an officer in the Army Air Corps." This was the first citation made in the twelfth naval district.

Air Medal. Citation made by R. A. Thierbold, Rear Admiral who said, "Second citation Naval Air Medal awarded to Lt. Sumner E. Atherton A-B-(N,U.S.N.R.) for service on duty in his profession during a mission which required the scouting of bays and islands. To accomplish this hazardous mission necessarily, took his plane close in under shore batteries and was attacked by three enemy seaplane fighters, of which one was probably shot down and another seriously damaged. The matter in which damage was inflicted upon this superior force and the courage and determined manner in which he carried out his mission, is in keeping with the best traditions of the Naval Service."

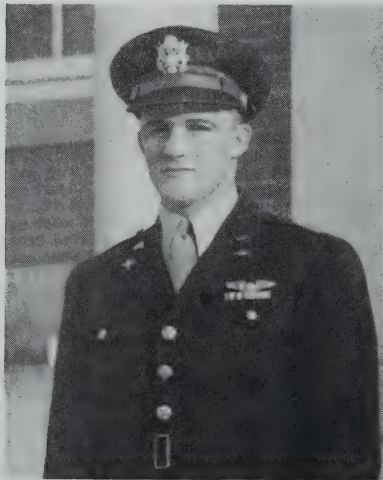
Citation. After having served for three months in Bermuda in line of duty, he returned home, and forty-eight hours later made a voluntary mercy mission back to Bermuda to carry Infantile Serum to Bermuda's first victim, under hazardous weather conditions.

Countries Lt. Atherton has served in during this war. Newfoundland, one of the first 4 officers at the time of the exchange of ships from this country for the air base. Hawaii, left with his squadron three days after the bombing of Pearl Harbor. Bermuda. Porto Rico. Alaska. West and East coasts.

Lt. Atherton is now serving in the Pacific Area.



LT. (j.g.) ROSS ADAMS KNIGHT



LT. EDWARD J. GIGNAC

## LIEUT. (j.g.) ROSS ADAMS KNIGHT

Ross A. Knight, son of Mr. and Mrs. H. R. Knight of 23 Pine St., was born in Burlington, Vt., Oct. 19th, 1920. The family moved to Lebanon in 1929, where Ross attended the public schools, graduating from Lebanon High in 1938.

He received his appointment to the Naval Academy at Annapolis, from Senator H. Styles Bridges, and became a Midshipman two weeks after his graduation from high school.

Officially a member of the class of '42, his class was graduated Dec. 19th, 1941 as Ensigns.

He was immediately assigned to the U.S.S. Cruiser, Vincinnes, which soon left for the South Pacific Battle Area.

The Vincinnes took part in the battles of Coral Seas, Midway and others and was finally sunk during the occupation of the Solomons on Aug. 7th, 1942.

Surviving this loss he was granted a month's leave and was then reassigned to the U.S.S. Cruiser San Francisco, and promoted to the rank of Lieut. (j.g.).

## LT. EDWARD J. GIGNAC

Son of Clovis Gignac. Was born in Lebanon, September 7, 1918.

Enlisted in the Army Air Force April 1941. Edward is a graduate of Lebanon High School in the Class of 1940, and also attended Middlebury College before enlisting, also Kimball Union Academy.

"Eddie" as he was known, was a very good baseball and football player and was nationally known as a great boy on skis. He won the Eastern Class "A" Ski Jumping Championship at Berlin, N. H., while at K.U.A. While attending Middlebury College, he won the Inter-Collegiate Ski Jumping Championship. When he was only a young boy, he went over the Dartmouth jump and made a perfect landing. Lebanon High has been very proud of "Eddie" for he has won many prizes for their school while a pupil there. He was awarded the Silver Star for gallantry in action at General MacArthur's headquarters in Australia. He was one of the three pilots who attacked nine Jap bombers and eight fighters over New Guinea on June 18th. "Eddie" attacked a bomber and then, although wounded very badly, he damaged another before landing his plane. He is a member of the Sacred Heart Church.



S 2/c LEO E. FAFARD



S 1/c FLETCHER B. CLARK



S 2/c LEO E. FAFARD

Son of Mr. and Mrs. Isaac Fafard, Lebanon. Born in Lebanon, N. H., July 26, 1920. Enlisted July 6, 1942. Graduated from Lebanon High School. Before enlistment, worked for Pratte & Whitney, East Hartford, Conn. Leo was wounded while in the invasion of Africa, port of Fedala. He was on the Troop Transport, Hugh L. Scott. His ship was hit by a torpedo after the troops all landed and it was sunk. Leo is a member of the Sacred Heart Church. and was a star on the Track team. He broke the inter-scholastic mile record when he covered that distance in four minutes, 32-2 seconds in 1940.

S 1/c FLETCHER B. CLARK

Son of Mr. and Mrs. George Clark. Born in Enfield, N. H., January 13, 1924. Enlisted in the U. S. Navy November 17, 1941 and went to sea on active duty December 7, 1941. He attended Lebanon High School and is a member of the Sacred Heart Church. His father is a World War Veteran, served with the 26th. Div. in France. He has a brother, Vernon Clark, who is in the Navy on the U.S.S. Merak. Fletcher is on the U.S.S. Philadelphia and was in action for three days in Africa.



SGT. RICHARD J. (Pat)  
CARIGNAN

SGT. RICHARD J. (Pat) CARIGNAN

Son of Leon Carignan. Born in Lebanon, N. H., January 12, 1917. Enlisted in the U. S. Army November 21, 1941. He attended the Sacred Heart School, also Lebanon High School. Is a member of the Sacred Heart Church. Before entering the service, he was employed by the E. Cummings Bros., Inc. Tannery. Richard (Pat) was well known in Baseball and Bowling. He has taken part in the greatest daylight aerial bombing over Lille, France, and Germany. Sgt. Carignan is attached to the Bomber Command in England.

**EXHIBIT F**

**TOWN OF LEBANON**

**Comparative Statement of Actual and Estimated Revenue  
Fiscal Year Ended January 31, 1943**

	Revenue				
	Estimated	Actual	Excess	Deficit	
Interest and Divi- dend Tax \$	4,500.00	\$ 4,425.68	\$		\$ 74.32
Railroad Tax	12,000.00	12,641.19		641.19	
Savings Bank Tax	2,500.00	2,849.44		349.44	
Business Li- censes and Permits	500.00	638.50		138.50	
Municipal Court	800.00	800.00			
Town Hall Rent	7,000.00	7,030.00		30.00	
Lebanon Im- provement Society	10,000.00	10,000.00			
Rent of Other Town Property	600.00	776.00		176.00	
Motor Vehicle Permits	6,000.00	8,734.57		2,734.57	
Interest on Taxes		142.05		142.05	
Interest on Redemptions		892.59		892.59	
Poll Tax Fees		77.80		77.80	
Sale of Tax Deed- ed Property		1,580.00		1,580.00	
Miscellaneous		54.21		54.21	
	\$43,900.00	\$50,642.03		\$6,816.35	\$74.32

**EXHIBIT G**  
**TOWN OF LEBANON**  
**Herbert Palumbo - Treasurer**

---

**Summary of Cash Book**

Balance on Hand, January 31, 1942	\$7,546.49	
Receipts, Fiscal Year 1942	388,003.73	
		\$395,550.22
Expenditures, Fiscal Year 1942	380,759.07	
Cash Book Balance, January 31, 1943		\$14,791.15

**Summary of Bank Activity and Proof of  
Treasurer's Balance**

Balance in National Bank of Lebanon as per State- ment, January 31, 1942		\$10,905.69
Deposits as per Bank Statements	\$388,445.44	
Less: Duplicate Deposits	441.71	
Net Deposits	388,003.73	
		\$398,909.42

**Checks Paid During Year:**

Previous Years' Checks	\$ 3,277.42	
Current Year's Checks	375,254.32	
	378,531.74	
Balance in National Bank of Lebanon as per Statement January 31, 1943		\$ 20,377.68
Less: Outstanding Checks:		
Previous Years'	\$ 81.78	
Current Year's	5,504.75	
	5,586.53	

Reconciled Bank Balance January 31, 1943		\$14,791.15
---	--	-------------

## EXHIBIT H

### TOWN OF LEBANON

#### Tax Levy of 1942

#### Summary of Warrant As of January 31, 1943

#### Taxes Committed to Collector

#### Tax Levy as Approved by Tax Commission:

Property Taxes	\$224,607.93	
Poll Taxes	5,600.00	
Precinct Taxes	14,464.50	
Bank Stock Taxes	950.00	
		—————\$245,622.43

#### Additional Taxes in Commitment:

Property Taxes	\$ 681.13	
Poll Taxes	2,544.00	
Precinct Taxes	130.60	
Bank Stock Taxes	32.00	
		————— 3,387.73

#### Added Taxes—After Commitment:

Property	\$ 728.63	
Polls	384.00	
Precinct	68.29	
		————— 1,180.92

Total Commitment to Collector		—————\$250,191.08
----------------------------------	--	-------------------

#### Credits to Commitment

Remittances to Treasurer	\$248,687.21	
--------------------------	--------------	--

#### Abatements:

Property	\$ 519.37	
Polls	20.00	
		————— 539.37

#### Uncollected Taxes:

Property	\$ 26.50	
Polls	938.00	
		————— 964.50

Total Credits		—————\$250,191.08
---------------	--	-------------------



**EXHIBIT I**

**TOWN OF LEBANON**

**Summary of Previous Years' Tax Accounts**

**As of January 31, 1943**

	YEAR OF LEVY						
	1941	1940	1939	1938	1937	1936	1935
Uncollected Taxes—January 31, 1942	\$1,290.90	\$467.12	\$253.00	\$106.23	\$140.86	\$40.00	\$14.00
Added Taxes—During Year	473.84	30.00	12.00	30.00	8.00		2.00
Total Debits	<u>\$1,764.74</u>	<u>\$497.12</u>	<u>\$265.00</u>	<u>\$136.23</u>	<u>\$148.86</u>	<u>\$40.00</u>	<u>\$16.00</u>
Remittances to Treasurer	\$1,131.80	\$160.12	\$ 77.00	\$ 58.50	\$ 37.20	\$15.00	\$10.00
Taxes Abated During Year	170.75	202.00	188.00	77.73	111.66	25.00	6.00
Uncollected Taxes—January 31, 1943	462.19	135.00					
Total Credits	<u>\$1,764.74</u>	<u>\$497.12</u>	<u>\$265.00</u>	<u>\$136.23</u>	<u>\$148.86</u>	<u>\$40.00</u>	<u>\$16.00</u>

**EXHIBIT J**

**TOWN OF LEBANON**

**Summary of Tax Title Account**

**As of January 31, 1943**

---

Unredeemed Taxes, January 31, 1942		\$9,455.14	
1942 Taxes Paid by Town	\$ 154.81		
1942 Tax Sale	5,253.99		
	<hr/>	5,408.80	
Total Debits		<hr/>	\$14,863.94

**Credits to Tax Title Account:**

Remittances to Treasurer:	\$ 6,966.70
Abatement	2.63

**Unredeemed Taxes, January 31, 1943**

Levy of 1942	\$5,408.80		
Levy of 1941	2,047.06		
Levy of 1940	246.87		
Levy of 1939	117.10		
Levy of 1938	74.78		
	<hr/>	7,894.61	
Total Credits		<hr/>	\$14,863.94

EXHIBIT K

TOWN OF LEBANON

Summary of Town Clerk's Motor Vehicle Permit and  
Dog License Accounts  
Fiscal Year Ended January 31, 1943

DR.

Motor Vehicle Permits Issued:

1941-42	\$ 22.99	
1942-43	8,713.06	
	<hr/>	\$8,736.05
Dog Licenses Issued	\$ 1,036.08	
Less: Fees Retained	87.60	
	<hr/>	948.48
Total Debits		<hr/> \$9,684.53

CR.

Remittances to Treasurer:

a/c 1941-42 Motor Vehicle Permits	\$ 20.73	
a/c 1942-43 Motor Vehicle Permits	8,713.84	
a/c Dog Licenses	948.48	
	<hr/>	\$9,683.05
Unremitted Cash		1.48
Total Credits		<hr/> \$9,684.53

## EXHIBIT L

### TOWN OF LEBANON

#### Summary of Trust Fund Principal, Income and Investments Fiscal Year Ended January 31, 1943

	Library Funds		Old Ladies Fund		Flag Funds		Cemetery Funds		Totals	
	Principal	Income	Principal	Income	Principal	Income	Principal	Income	Principal	Income
Balance—January 31, 1942	\$22,649.10	\$	\$1,587.32	\$	\$300.00	\$	\$41,610.53	\$4,912.44	\$66,146.95	\$4,912.44
Added During Year		485.84		31.82		12.61	1,550.00	995.86	1,550.00	1,526.13
Withdrawn During Year	\$22,649.10	\$485.84	\$1,587.32	\$31.82	\$300.00	\$12.61	\$43,160.53	\$5,908.30	\$67,696.95	\$6,433.57
		485.84		16.24				817.39		1,319.47
Balance—January 31, 1943	\$22,649.10	\$	\$1,587.32	\$15.58	\$300.00	\$12.61	\$43,160.53	\$5,090.91	\$67,696.95	\$5,119.10
<b>INVESTMENTS</b>										
Savings Banks:										
New Hampshire Savings	\$ 6,117.70	\$	\$ 812.00	\$	\$300.00	\$12.61	\$ 6,077.03	\$1,285.03	\$13,306.73	\$1,297.64
Mascoma	10,347.65		775.32	15.58			25,037.37	1,382.88	36,160.34	1,398.46
Merrimack County							2,300.00	1,045.19	2,300.00	1,045.19
Amoskeag	2,000.00						1,700.00	379.78	3,700.00	379.78
Dartmouth	4,183.75						7,046.13	998.03	11,229.88	998.03
U. S. Defense Bonds:							1,000.00		1,000.00	
Total Investments	\$22,649.10	\$	\$1,587.32	\$15.58	\$300.00	\$12.61	\$43,160.53	\$5,090.91	\$67,696.95	\$5,119.10

EXHIBIT L-1

TOWN OF LEBANON

New Trust Funds Created

Fiscal Year Ended January 31, 1943

Cemetery Funds	How Invested	Account or Security No.	Amount
Donor Unknown	U. S. Defense Bond	C553564G	\$ 100.00
Cora Stewart Wilson	U. S. Defense Bond	C553565G	100.00
Charles H. Simmons	U. S. Defense Bond	C553566G	100.00
Martha Woodward	U. S. Defense Bond	C572109G	100.00
John B. Raynes	U. S. Defense Bond	C619258G	100.00
James A. Davis	U. S. Defense Bond	C619259G	100.00
Charles A. Weston	U. S. Defense Bond	C700515G	100.00
Leon S. Nichols	U. S. Defense Bond	C829690G	100.00
Ellen Stewart	U. S. Defense Bond	C941988G	100.00
Mary L. Campbell	U. S. Defense Bond	C892288G	100.00
Nellie Hickey Barry	Mascoma Savings Bank	21312	50.00
Katherine McCabe	N. H. Savings Bank	115300	100.00
Kate Knights	N. H. Savings Bank	115301	100.00
Hannah Coughlan	N. H. Savings Bank	115302	175.00
Blanche Miller Grimes	N. H. Savings Bank	115605	50.00
Medos Fountain	Mascoma Savings Bank	21275	50.00
Emma LaRock	N. H. Savings Bank	113307	25.00
			<hr/> \$1,550.00



## EXHIBIT M

### TOWN OF LEBANON

#### Trust Fund Income Checking Account Year Ended January 31, 1943

---

#### Unexpended Income, January 31, 1942:

Old Ladies' Fund	\$ 170.52	
Trust Funds	162.93	
	<hr/>	\$ 333.45

#### Income Received During Year:

Int. on Trust Funds	\$1,319.47	
Rent of Eldridge Land	498.75	
	<hr/>	1,818.22
		<hr/>
		\$ 2,151.67

#### Disbursements During Year:

Public Library	\$ 678.86	
Care Cemetery Lots Lebanon	694.46	
Care Cemetery Lots West Lebanon	122.93	
Care Eldridge Lot	20.00	
Taxes on Eldridge Property	92.70	
Paid Old Ladies	70.00	
Unitarian Society	193.03	
	<hr/>	1,871.98

Income in Checking Account, January 31, 1943	<hr/>	\$ 279.69
---	-------	-----------

#### Proof of Balance

Balance in Nat'l. Bank of Lebanon as of February 10, 1943	\$ 372.72	
Less: Outstanding Check	193.03	
	<hr/>	
Reconciled Bank Balance	\$ 179.69	
Defense Bond, Series C940331G	100.00	
	<hr/>	\$ 279.69

**EXHIBIT N**  
**TOWN OF LEBANON**  
**Summary of Receipts and Expenditures**  
**Eldridge Land Account**  
**Fiscal Year Ended January 31, 1943**

**Receipts:**

Feb. 6, 1942—Oliver Marcotte	\$	12.00
Feb. 7, 1942—Albina Jarvis		6.25
Feb. 9, 1942—Annie Whipple		14.00
Feb. 10, 1942—Mildred Weeden		10.00
Mar. 12, 1942—E. Coutermanche		14.00
Mar. 25, 1942—A. Ollivier		21.00
Mar. 31, 1942—Dona Provencher		60.00
Apr. 14, 1942—Nellie Pringle		6.25
May 16, 1942—Wm. Corrette		90.00
June 23, 1942—D. Provencher		48.00
Sept. 14, 1942—A. Mayette		12.00
Nov. 14, 1942—A. Mayette		12.00
Dec. 1, 1942—Town of Lebanon		100.00
Jan. 12, 1943—A. Jarvis		6.25
Jan. 12, 1943—A. Ollivier		21.00
Jan. 15, 1943—G. Deurell		30.00
Jan. 19, 1943—A. Whipple		14.00
Jan. 21, 1943—M. Weeden		10.00
Jan. 22, 1943—O. Marcotte		12.00
Total Receipts	\$	498.75
Deposited to Trust Fund Income		
Checking Account	\$	498.75

## EXHIBIT O

### TOWN OF LEBANON

#### Financial Report of Lebanon Cemetery Committee

Fiscal Year Ended January 31, 1943

---

Balance on Hand, Feb. 1, 1942      \$1,324.39

**Receipts During Year:**

Town Appropriation	\$2,500.00	
Trust Fund Income	714.46	
Care of Lots	1,600.70	
Sale of Lots	484.49	
Foundations	254.10	
	<hr/>	5,553.75
		<hr/>
		\$6,878.14

**Expenditures During Year:**

Payrolls	\$3,649.75	
Truck Expense	101.19	
Tools and Supplies	367.87	
Insurance	59.11	
Lumber, Cement, etc.	49.26	
Office Supplies	16.10	
Fertilizer, Plants, etc.	84.75	
Water Rent	39.15	
	<hr/>	4,367.18

Balance on Hand

January 31, 1943	<hr/>	\$2,510.96
------------------	-------	------------

**Proof of Balance**

Balance in Nat'l. Bank of Lebanon	
as per Statement January 26, 1943	\$1,795.09
Less: Outstanding Checks	24.35

Reconciled Bank Balance	\$1,770.74
Undeposited Funds	740.22

---

Total Cash on Hand and in Bank      \$2,510.96

**EXHIBIT P**

**TOWN OF LEBANON**

**Financial Report of West Lebanon Cemetery Committee  
Period August 24, 1942 to January 31, 1943**

---

**Cash Received from Former Treasurer:**

On Deposit in Nat'l. Bank of Lebanon	\$255.38	
Cash on Hand	39.70	
	<hr/>	\$ 295.08
Receipts, August 24, 1942 to January 31, 1943		1,032.90
		<hr/>
		\$1,327.98
Disbursements, August 24, 1942 to Jan. 31, 1943		320.01
Cash Book Balance January 31, 1943		<hr/>
		\$1,007.97

**Proof of Balance**

Balance in Nat'l. Bank of Lebanon as per Statement, January 25, 1943		\$1,007.97
---	--	------------

EXHIBIT Q

TOWN OF LEBANON

Financial Report of Public Library  
Fiscal Year Ended January 31, 1943

Balance on Hand, January 31, 1942 \$1,217.84

**Receipts During Year:**

Appropriation	\$1,600.00	
Trust Fund Income:		
Town Trustees	485.84	
Library Trustees	200.78	
Wm. S. Carter Estate	310.00	
Eldridge Land Account	193.02	
Sale of Scrap	7.70	
	<hr/>	2,797.34
		<hr/>
		\$4,015.18

**Disbursements During Year:**

Librarian	\$ 801.19	
Assistant to Librarian	428.21	
Janitor	468.50	
Fuel, Lights and Water	335.50	
Books and Magazines	321.89	
Book Repairs	64.49	
Miscellaneous	126.36	
	<hr/>	2,546.14
		<hr/>

Cash Book Balance, January 31, 1943 \$1,469.04

**Proof of Balance**

Balance in Nat'l. Bank of Lebanon		
as per Statement, Jan. 30, 1943	\$1,670.12	
Less: Outstanding Checks	201.08	
Reconciled Bank Balance		
January 31, 1943	<hr/>	\$1,469.04



**EXHIBIT Q-1**

**TOWN OF LEBANON**

**Summary of Library Trust Funds Held by Library Trustees  
Fiscal Year Ended January 31, 1943**

---

Principal of Trust Funds—January 31, 1942      \$8,552.56

**Income During Year:**

David Ross Fund	\$ 2.01	
C. M. Hildreth Fund	113.13	
H. M. Wood Fund	1.00	
M. S. Lathrop Fund	6.07	
E. A. Tenney Fund	6.00	
Universalist Society Fund	6.00	
B. Eastman Fund	4.00	
M. H. White Fund	50.00	
E. Perren Fund	2.51	
W. S. Ela Fund	10.06	
	<hr/>	200.78
		<hr/>
		\$8,753.34

**Disbursements During Year:**

Paid to Lebanon Library	200.78
	<hr/>
Principal of Trust Funds—January 31, 1943	\$8,552.56

## EXHIBIT R

### TOWN OF LEBANON

#### Summary of Receipts and Expenditures—Municipal Court—Fiscal Year Ended January 31, 1943

---

Cash on Hand—January 31, 1942		\$ 852.89
<b>Received During the Year:</b>		
Fines	\$1,972.80	
Costs	1,288.48	
Bail, etc.	1,686.71	
	<hr/>	4,947.99
		<hr/>
		\$5,800.88
<b>Payments During Year:</b>		
Officers' Fees	\$ 174.05	
Special Justice	94.00	
Motor Vehicle Department	1,668.50	
Expense	50.01	
Commitments	230.11	
Fish and Game	14.50	
Bureau of Labor	170.70	
Restitution	255.48	
Special Poor—Town	216.00	
Town	800.00	
Witness Fees	92.32	
Support & Sundry	1,124.57	
		4,890.24
		<hr/>
Balance on Hand—January 31, 1943		\$ 910.64

#### Proof of Balance

Balance in Nat'l Bank of Lebanon		
as per Statement—Jan. 30, 1943	\$ 840.78	
Add Deposit Not Credited	37.57	
	<hr/>	
	\$ 878.35	

**Less: Outstanding Checks:**

6283—\$ 2.12  
6309— 1.50  
6316— 1.00  
6318— 3.50  
6319— 1.00  
6320— 1.92  
6321— 7.50

18.54

Reconciled Bank Balance—  
January 31, 1943  
Undeposited Funds

\$ 859.81  
50.83

\$ 910.64

**EXHIBIT S**

**TOWN OF LEBANON**

**Town Officers' Bonds**

---

	<b>Serial Number</b>	<b>Principal Amount</b>	<b>Term</b>
<b>Surety</b>			
<b>Town Clerk</b>			
Century Indemnity Co. Joseph C. Smith	S-118032	\$ 5,000.00	Beginning Mar. 10, 1942
<b>Treasurer</b>			
Century Indemnity Co. Herbert V. Palumbo	S-118082	\$15,000.00	Beginning Mar. 10, 1942
<b>Water Commissioner</b>			
Century Indemnity Co. Harry Manson	S-118433	\$ 2,000.00	Beginning April 1, 1942
<b>Clerk of Municipal Court</b>			
Century Indemnity Co. Ernest P. Conlon	S-116930 S-116930	\$ 500.00 \$ 500.00	Beginning Dec. 1, 1941 Continuation Certificate— Beginning Dec. 1, 1942
<b>Tax Collector</b>			
The Employers' Liability Assurance Corp. Milo L. Knight	E-4701-1	\$10,000.00	Beginning Mar. 10, 1942
<b>Trustees of Trust Funds</b>		No Bonds	

## SCHEDULE 1.

### Town Officers' Salaries

Joseph B. Perley		\$2,100.00
George C. Loomis		500.00
Henry H. Rogers		500.00
Milo L. Knight		1,800.00
Herbert V. Palumbo		300.00
		<hr/>
		\$5,200.00
Joseph C. Smith	\$839.84	
C. L. Brewster	102.15	
	<hr/>	
(Above paid by fees)		941.99
		<hr/>
		\$6,141.99

## SCHEDULE 2.

### Town Officers' Expenses

Joseph B. Perley	\$ 300.00
George C. Loomis	100.00
Henry H. Rogers	100.00
Payroll	1,038.40
Supplies	593.59
Miscellaneous	313.35
	<hr/>
	\$2,445.34

## SCHEDULE 3.

### Election and Registration

Supervisors, two years	\$450.00
Ballot clerks	205.00
John F. Cronin, Moderator	50.00
Printing and supplies	204.86
	<hr/>
	\$909.86

## SCHEDULE 4.

### Municipal Court Expenses

Norris Cotton, Judge	\$ 733.34
Mark E. Powers, Special Justice	65.73
Ernest P. Conlon, Clerk	150.00
Ernest P. Conlon, Probation Officer	600.00
Miscellaneous	62.76
	<hr/>
	\$1,611.83



**SCHEDULE 5.**  
**Town Hall Expenses**

Payroll	\$ 3,414.00
Lights	2,275.62
Coal	2,487.02
Insurance	1,782.52
Supplies	1,442.00
Repairs and Maintenance	1,286.54
	\$12,687.70

**SCHEDULE 6.**  
**Expense of Other Town Buildings**

Coal and wood, G.A.R. Hall	\$258.30
Supplies and repairs	80.06
Repairs, K. of C. building	221.71
Insurance	266.83
Miscellaneous	60.70
	\$887.60

**SCHEDULE 7.**  
**Expense of Property owned by Town**

Repairs, Insurance and Supplies	\$245.13
---------------------------------	----------

**SCHEDULE 8.**  
**Police Department**

Payroll	\$ 9,847.42
Insurance	197.24
Telephone and Lights	373.00
Supplies and Equipment	764.88
	\$11,182.54
Reimbursed by B. & M. R. R. for special officer's services	8.00
Net expenditures	\$11,174.54

**SCHEDULE 9.**  
**Fire Department**

Payroll	\$ 37.13
Fires out of precinct, 1941 and 1942	656.17
Repairs and Supplies	241.05
Insurance	43.77
	\$978.12
Reimbursed for Fighting Forest Fires	11.88
Net expenditures	\$966.24

**SCHEDULE 10.**

**Blister Rust**

John H. Foster, State Forester \$300.00

**SCHEDULE 11.**

**Emergency Defense**

Payroll, clerical	\$1,284.40
Payroll, police	1,771.45
Labor, Salvage Collection and Sand Distribution	402.10
Telephones	525.74
Supplies and miscellaneous expenses	1,092.51
	<hr/>
	\$5,076.20
Refunds and telephone charges remitted by Hanover, Enfield, Canaan and Meriden	53.03
	<hr/>
Net expenditures	\$5,023.17

**SCHEDULE 12.**

**Health Dept.—Including Hospitalization**

Hospitalization	\$3,500.00
Health Officer	227.95
State Cancer Commission	295.49
Supplies	139.65
	<hr/>
	\$4,163.09

**SCHEDULE 13.**

**Visiting Nurse**

Lebanon Visiting Nurse Association \$1,000.00

**SCHEDULE 14.**

**Milk Inspection**

W. B. Mowers \$300.00

**SCHEDULE 15.**

**Vital Statistics**

Fees	\$ 92.25
Supplies	19.37
	<hr/>
	\$111.62

**SCHEDULE 16.**

**Sewer Maintenance**

Payroll	\$2,476.50
Insurance	113.89
Supplies, gas and repairs	421.47
	<hr/>
	\$3,011.86
Received for labor and use of equipment	193.61
	<hr/>
Net expenditures	\$2,818.25

**SCHEDULE 17.**

**Town Dump**

A. R. Blake, rent	\$225.00
-------------------	----------

**SCHEDULE 18.**

**Town Maintenance**

Payroll	\$11,397.21
Insurance	1,225.30
Telephone and lights	90.70
Repairs and supplies	9,877.13
	<hr/>
	\$22,590.34
Received for labor and use of machines	1,970.99
	<hr/>
Net expenditures	\$20,619.35

**SCHEDULE 19.**

**Street Lighting**

Granite State Electric Company	\$10,309.29
--------------------------------	-------------

**SCHEDULE 20.**

**Libraries**

Lebanon Library	1,600.00
Insurance	136.52
West Lebanon Library	450.00
	<hr/>
	\$2,186.52

**SCHEDULE 21.**

**Old Age Assistance**

State of New Hampshire	\$4,712.36
Received from State of New Hampshire	50.00
	<hr/>
Net expenditures	\$4,662.36

**SCHEDULE 22.**

**Town Poor**

Direct Relief	\$4,954.24
Administration	2,778.30
Wood, supplies and miscellaneous	388.33
	<hr/>
Received from Grafton County	\$8,120.87
	1,377.68
	<hr/>
Net expenditures	\$6,743.19

**SCHEDULE 23.**

**Special Poor**

Payroll and supplies	\$591.50
Credits to account	246.00
	<hr/>
Net expenditures	\$345.50

**SCHEDULE 24**

**Transient Camp**

Insurance	\$ 99.72
Repairs and supplies	102.59
	<hr/>
	\$202.31
Rent received	189.50
	<hr/>
Net expenditures	\$ 12.81

**SCHEDULE 25.**

**Memorial Day Exercises**

Leon M. Howard	\$100.65
----------------	----------

**SCHEDULE 26.**

**Parks and Playgrounds**

Payroll	\$ 207.50
Repairs to grandstand	359.25
Insurance	16.46
Supplies and miscellaneous expenses	626.21
	<hr/>
	\$1,209.42
Credits to account	155.00
	<hr/>
Net expenditures	\$1,054.42

**SCHEDULE 27.**

**Band Concerts**

Henry Cushman, Treasurer, Lebanon Band \$300.00

**SCHEDULE 28.**

**Cemeteries**

Lebanon Cemetery \$2,500.00  
West Lebanon Cemetery 400.00  
New tool house, West Lebanon Cemetery 100.00  
Insurance 65.16

---

\$3,065.16

**SCHEDULE 29.**

**Interest**

Lincoln R. Young Co., Temporary Loans \$ 375.79  
National Bank of Lebanon, Interest on Bonded Debt 1,012.50

---

\$1,388.29

**SCHEDULE 30.**

**Town Hall Bonds**

National Bank of Lebanon \$15,000.00

**SCHEDULE 31.**

**State Aid Construction—Class 5**

State of New Hampshire \$963.00

**SCHEDULE 32.**

**Sidewalk Maintenance**

Payroll \$1,722.35  
Insurance 79.13  
Supplies, gas, sand and gravel 435.36

---

\$2,236.84

**SCHEDULE 33.**

**Airport**

General expenses \$236.82

**SCHEDULE 34.**

**General Expenses**

State Tax Commission, Audit \$ 142.08  
Cory-Hewitt Press, Town Reports 504.83  
Miscellaneous 722.35

---

\$1,369.26



**SCHEDULE 35.**

**County Tax**

Harry S. Huckins, County Treasurer \$23,989.48

**SCHEDULE 36.**

**Precincts**

Lebanon \$11,000.00  
West Lebanon 4,844.00  

---

\$15,844.00

**SCHEDULE 37.**

**School District**

Balance on 1941-1942 appropriation \$ 18,000.00  
On appropriation 1942-1943 115,595.30  

---

\$133,595.30  
Dog Tax, 1942-1943 836.63  

---

\$134,431.93

**SCHEDULE 38.**

**Dog Damage**

Dog Tags \$ 20.50  
Printing 19.35  
Damage by Dogs 72.00  

---

\$111.85

**SCHEDULE 39.**

**Temporary Loans**

Lincoln R. Young Company \$75,000.00

**SCHEDULE 40.**

**Taxes Bought by Town**

Collector of Taxes \$5,408.80

**SCHEDULE 41.**

**Overlay**

Abatements—1942 Levy \$1,918.87

## HEALTH OFFICER'S REPORT

---

Lebanon is still among the healthy Towns in New Hampshire, for during the year we have had no cases of Typhoid Fever, Diphtheria or any other serious diseases, but of course we have had the usual Childrens Diseases reported.

The Doctors and Nurses have reported 185 cases of Measles, 27 cases of Mumps, 26 of Whooping Cough, 12 of Scarlet Fever, 9 of Chicken Pox, 3 German Measles, 3 of Pneumonia, 8 Occupational Diseases, 10 of Venereal Diseases, 2 of Undulent Fever, 1 of Meningitis, 1 of Infantile Paralysis, 1 of Influenza, and 1 of Pulmonary Tuberculosis. Quarantine has been established in all cases required by law to be Quarantined, and Cards posted.

During the year 1942 the State Board of Health in cooperation with the local Public Health Nurse and the Local Child Health Committee have held 12 Well Child Health Clinics at the Community Building. A total of 99 Infants and 63 children of pre-school age were examined. In conjunction with clinics 9 Diphtheritic Immunisation Clinics were held. A total of 23 Infants under one year and 51 children of pre-school and school age received the immunisation treatment for the prevention of Diphtheria, all under the supervision of Elizabeth H. Carriel, Health Nurse.

This has been a year of complaints, mostly of "dumps" of all kinds and sizes, along the banks of the River, beside the High Ways, in vacant lots and even on Private Grounds in the Village. All complaints have been investigated and notices have been posted, and in some places, several times. We have been called to Fumigate several places, and have had numerous office calls, in relation to sanitary conditions in various places. We hope that at no far distant time, Lebanon will have an Incinerator, or some other nearby place of disposal of waste matter and garbage.

Again I wish to thank the School Nurse, the Superintendent of the Lebanon Water Works, the Doctors and all who have in any way assisted me in my efforts to do my duty as your Health Officer.

Respectfully submitted,

Geo. U. L. Leavitt,  
Health Officer.

## REPORT OF MILK INSPECTION

The following is a report of my activities as your milk inspector for the past year.

The stables and milk rooms of the different milk producers have been inspected for sanitation and the proper care of the milk utensils. The samples taken from the delivery trucks have been sent to the state laboratory of hygiene for analysis and upon return a report has been mailed to the producer. Any trouble in his technique is noted and later gone over to remedy the trouble. The state law of 1931 requiring metal cappers by dairymen producing over forty quarts of milk has been violated in a few cases and some cases of improper pasteurization have been remedied. We have had a few cases of undulant fever in town but they have not been traced for a certainty to our milk supply. We are getting considerable milk from out of the state due to the inability of our producers to supply the required amount, this milk has been used in some of the bakeries and restaurants for cooking only. Most of the milk used in Lebanon at this date is pasteurized which makes a safer food. The raw milk used is in all cases from herds that are tuberculosis and Bang's tested.

Dr. W. B. Mowers,

Milk Inspector.

## LIBRARIAN'S REPORT

For Year Ending January 31, 1943

### Accession of Books:

By purchase	186	
By gift	25	
	<hr/>	
Total		211
Books discarded or lost		220
Present number of books		9,560
Number of books in circulation Jan. 31		687

### Circulation for the year:

Fiction	11,957	
Juvenile	5,159	
Non-Fiction	3,478	
	<hr/>	
Total		20,594

### Money Received and Expended:

Received:		
Cash on hand Feb. 1, 1942	\$36.97	
Received from sale of books and paper	4.35	
Received from fines	72.16	
	<hr/>	
		\$113.48
Expended:		
Supplies and books	\$73.71	
Cash on hand	39.77	
	<hr/>	
		\$113.48

S. Blanche Young,  
Librarian.

**REPORT OF THE TRUSTEES OF THE  
LEBANON PUBLIC LIBRARY**

---

**Receipts**

Cash on hand from last year	\$1,217.84
William S. Carter Estate	310.00
Town of Lebanon, Eldridge Estate, land account	193.02
Town of Lebanon, Eldridge Fund	355.22
Town of Lebanon, Whipple Fund	118.04
Town of Lebanon, Purmort Fund	12.58
Town of Lebanon	1,600.00
Sale of old iron	7.70
Maria H. White Fund, National Bank of Lebanon dividend	30.00
Interest, Wm. S. Ela Fund	10.06
Interest, Emily Perrin Fund	2.51
Interest, Maria H. White Fund	20.00
Interest, Bela Eastman Fund	4.00
Interest, E. A. Tenney Fund	6.00
Interest, Universalist Fund	6.00
Interest, Charles M. Hildreth Fund	113.13
Interest, David T. Ross Fund	2.01
Interest, Margaret S. Lathrop Fund	6.07
Interest, Hannah M. Wood Fund	1.00
Total	\$4,015.18

**Payments**

Books	\$ 273.64
Magazines	48.25
Rebinding	64.49
Librarian	801.19
Assistants to Librarian	428.21
Janitor	468.50
Fuel	235.63
Lights	90.62
Water	9.25
Miscellaneous	126.36
Cash on hand	1,469.04
Total	\$4,015.18



## TRUST FUNDS

### Town of Lebanon, Trustee

Watson K. Eldridge Fund	\$
Gilman C. Whipple Fund	5,000.00
Martin V. Purmort Fund	500.00
	\$

### Funds in Hands of Library Trustees

Universalist Society Fund, deposited in New Hampshire Savings Bank	\$ 300.00
Maria H. White Fund, deposited in New Hampshire Savings Bank	1,000.00
Five shares Nat'l. Bank of Lebanon stock	500.00
	\$1,500.00
Bela Eastman Fund, deposited in New Hampshire Savings Bank	200.00
Wm. S. Ela Fund, deposited in Amoskeag Savings Bank	\$ 400.00
Paid for land in rear of library	300.00
	700.00
E. A. Tenney Fund, deposited in New Hampshire Savings Bank	300.00
David T. Ross Fund, deposited in Mascoma Savings Bank	100.00
Emily Perrin Fund, deposited in Amoskeag Savings Bank	100.00
Charles M. Hildreth Fund, deposited in Dartmouth Savings Bank	2,500.00
Charles M. Hildreth Fund, deposited in Mascoma Savings Bank	2,500.00
Margaret S. Lathrop Fund, deposited in Mascoma Savings Bank	302.56
Hannah M. Wood Fund, deposited in Mascoma Savings Bank	50.00
	\$8,552.56

C. Elbert Dole, Treasurer  
for the Trustees.

## TOWN OF LEBANON MUNICIPAL COURT

### Summary of Receipts and Expenditures for the Fiscal Year January 31, 1943

Cash on hand January 31, 1942	\$ 852.89
-------------------------------	-----------

**Received during the year:**

Fines	\$1,972.80	
Costs	1,288.48	
Bail, etc.	1,686.71	
		4,947.99
		\$5,800.88

**Payments during the year:**

Officers fees	\$ 174.05	
Special Justice	94.00	
Motor Vehicle Dept.	1,668.50	
Expense	50.01	
Commitments	230.11	
Fish & Game	14.50	
Bureau of Labor	170.70	
Restitution	255.48	
Support—Town	216.00	
Town	800.00	
Witness Fees	92.32	
Support & Sundry	1,124.57	
		4,890.24

Balance on Hand January 31, 1943	\$ 910.64
----------------------------------	-----------

**Proof of Balance**

Balance in Nat. Bank of Lebanon as per Statement January 30, 1943	\$ 840.78	
Add Deposit not credited	37.57	

---

878.35

**Less: Outstanding Checks (below)**

Reconciled Bank Balance Jan. 31, 1943	18.54	
---------------------------------------	-------	--

---

859.81

**Undeposited Funds on hand (deposit  
February 12, 1943)**

50.83

---

\$ 910.64

6283	\$ 2.12
6309	1.50
6316	1.00
6318	3.50
6319	1.00
6320	1.92
6321	7.50

---

\$18.54

Due others from Court funds

M. H. Horton Case	\$119.00
N. H. Motor Vehicle Dept.	
Raymond Peters	13.50
R. N. LaBombard	11.80

---

\$144.30

Ernest P. Conlon,

Clerk.

February 12, 1943

### LEBANON MUNICIPAL COURT

#### Summary for Fiscal Year Ending January 31, 1943

Month	Fines	Costs	Collections	Receipts
February	\$ 41.00	\$ 104.00	\$ 97.70	\$ 242.70
March	245.00	142.00	196.50	583.50
April	266.00	132.62	86.50	485.12
May	310.00	141.89	67.00	518.89
June	194.00	113.70	208.73	516.43
July	130.00	124.20	248.70	502.90
August	130.00	75.50	33.00	238.50
September	105.00	77.16	18.50	200.66
October	235.00	100.59	233.18	568.77
November	160.00	103.41	262.50	525.91
December	75.00	107.77	45.40	228.17
January	81.80	65.64	189.00	336.44
Total	\$1,972.80	\$1,288.48	\$1,686.71	\$4,947.99

Due others from Court funds:

M. H. Horton Case	\$119.00
N. H. Motor Vehicle Dept.	
Raymond Peters	13.50
R. N. LaBombard	11.80

---

\$144.30

# LEBANON MUNICIPAL COURT

## 1942 - 1943

Month	Travel	Officers	Fees	Special Justice	Motor Vehicle	Expense	Comments	Fish & Game	Restitution	Town	Witness	Support	Total
1942 February	\$ 4.40	\$10.00	\$ 24.20	\$ 26.80				\$	\$218.00	\$10.00	\$ 115.50	\$ 408.90	
1943 March	16.75	9.00	256.20	13.95					18.00	6.36	88.00	408.26	
April	7.35	6.00	212.80						218.00	6.36	92.55	543.06	
May	31.00	9.00	327.70	21.44					18.00	4.72	49.00	460.86	
June	16.60	12.00	116.20	13.90	F.G	14.50	17.92	155.78	535.60				
July	18.05	6.00	186.40	41.70		1.50		L. 170.70		218.00	16.32	238.09	726.06
August	11.85	6.00	80.00	46.70					18.00	4.24	12.60	179.39	
September	23.75	9.00	80.00	45.41					18.00	4.24	15.14	195.54	
October	10.50	12.00	185.00	13.90	R.	215.18			218.00		13.14	667.72	
November	16.60	12.00	125.00	13.90	R.	25.00			18.00	17.92	235.56	465.98	
December	12.70	3.00	25.00	27.80	R.	15.30			18.00	4.24	16.71	122.75	
January	4.50		50.00	11.12					18.00		92.50	176.12	
Total	\$174.05	\$94.00	\$1,668.50	\$50.01	\$230.11	\$440.68	\$92.32	\$1,124.57	\$4,890.24	\$216.00			

**MUNICIPAL COURT OF LEBANON**  
**Probation Department**

**Report for 1942 - 1943**

Month	Probationers			New Adult	New Juvenile	Fines	Collections	
	Adult	Juvenile	Total				costs	Support
February	38	9	50	9	2	\$ 6.00	\$	98.00
March	38	10	48	6	2	87.70		98.00
April	38	9	47	7	3	105.16		96.00
May	41	12	53	7		108.20		90.50
June	43	9	52	6	1	98.70		91.70
July	44	8	52	2	3	48.50		183.51
August	40	10	50	6		118.30		61.00
September	44	9	53	2		125.74		38.00
October	42	6	48	4	1	62.50		218.50
November	43	6	49	2	2	51.50		50.50
December	39	8	47	4	2	69.12		18.50
January	40	10	50	3		39.70		104.50

\$921.12      \$1,148.71

**Probationers:**

1942-1943  
(1941-1942)

**Discharged:**

Adults            53  
Juvenile         14

**Transferred:**

Adults            3  
Juvenile         2

**Returned:**

Adults            4  
Juvenile

**New Probationers:**

Adults            58  
Juvenile         16

**Violations:**

Adults            4

Ernest P. Conlon,  
Probation Officer.

## POLICE DEPARTMENT

---

### Arrests for Year Ending January 31, 1943

Drunkenness	93
Resisting arrest	1
Carrying dangerous weapon	1
Attempted rape	1
Petty Larceny	5
Panhandling	2
Failure to have child in school	9
Assault	4
Ringing false fire alarm	1
Breaking glass in highway	1
Malicious injury to property	2
Disturbing the peace	10
Grand Larceny	1
Furnishing liquor to minors	1
Non-support	3
Disorderly conduct	6
<b>Total</b>	<b>141</b>

### Motor Vehicle Violations

Operating under the influence of liquor	30
Leaving the scene of an accident	1
Violating town ordinance	1
Stop sign violations	3
Operating unregistered vehicle	2
Operating without license	7
Reckless driving	6
Joy ride act	1
Operating truck without permit	2
Permitting unlicensed person to operate motor vehicle	2
Failure to keep to right of road	1
Operating after right denied	2
Misuse of plates	6
Uninspected cars	5
Speeding	12
Inadequate brakes	4
<b>Total</b>	<b>85</b>
<b>Grand total of arrests</b>	<b>226</b>



Commitments to jail 19  
 Property stolen and recovered by police and returned to  
 owner amounting to \$4,500.  
 Bicycles registered by Police Department 632  
 Officers now working with Police Department are:  
 Chief Clarence W. Wright  
 Patrolmen at Lebanon—Clyde L. Greenwood and Nel-  
 son Stacy  
 Patrolmen at West Lebanon—Bertrand E. Hubbard  
 and Harold F. Morse, Jr.  
 Spare Officer—Clarence L. Hastings  
 Special Officers—William Harriman, George U. L.  
 Leavitt, Louis Pregent, J. Albert Heath, and George  
 H. Gibson.

We have had to make some changes as two of our officers are now in the Armed Forces.

Respectfully submitted,  
 C. W. Wright,  
 Chief of Police.

---

## WHITE PINE BLISTER RUST CONTROL

### Financial Statement

1942

### TOWN OF LEBANON

#### Town Work:

Crew wages	\$299.90	
Foreman wages	75.00	
Total expended		\$374.90
Received from town	\$300.00	
Expended from town funds	299.90	
Balance due town		.10
Area covered		684 acres
Currant & gooseberry bushes destroyed		867

## REPORT OF THE RELIEF DEPARTMENT

---

The total of 359 Town persons were given relief for the year 1942, making a Town average of 29 persons per month. The monthly average cost was \$14.50 per person.

The sub-total of Administration, excluding the Overseer's salary, of the Relief Department was \$1950.02 in Town Orders. Of this amount, a rebate of \$933.43 was paid by the County, which was their part of this expense. The Overseer's salary is paid directly through the Selectmen's Office, with the other Town Officers, and not through Town Orders by the Relief Department.

For the year 1942, orders in the amount of \$4754.35 were made for Town Boarding Adults and Children, and Town Direct Relief.

County Direct Relief and extras on County Boarding Adults amount to \$5591.15 in County Orders made.

One Town Direct Relief case was granted Old Age Assistance during 1942. Aid To Dependent Children was granted one County case with four children.

During the year, two Town cases, including 5 persons, were transferred to County, having relief over a 5 year period.

A monthly average of 59 County persons were on Relief for 1942.

The wood on hand January 1, 1943, according to our records, was 26 cords of cut wood and 179 cords of four ft. wood.

During 1942, 24 cds. of four ft. wood and 87½ cds. of cut wood were delivered from the yard. Of this total, 16½ cds. of four ft. wood and 31 cds. of cut wood were delivered to County Direct Relief cases, for which the Town of Lebanon was reimbursed through the County office.

Respectfully submitted,

L. J. Hamel,

Overseer of Poor.





