

2-20-2013

## 101420 - G - Attachment F - Panel Signage Post

Sandra Hickey  
sandra.hickey@unh.edu

Follow this and additional works at: [https://scholars.unh.edu/pdch\\_5\\_10](https://scholars.unh.edu/pdch_5_10)

---

### Recommended Citation

Hickey, Sandra, "101420 - G - Attachment F - Panel Signage Post" (2013). *Division 10 – Specialties*. 8.  
[https://scholars.unh.edu/pdch\\_5\\_10/8](https://scholars.unh.edu/pdch_5_10/8)

This Article is brought to you for free and open access by the Chapter 5 – Technical Construction and Renovation Standards at University of New Hampshire Scholars' Repository. It has been accepted for inclusion in Division 10 – Specialties by an authorized administrator of University of New Hampshire Scholars' Repository. For more information, please contact [nicole.hentz@unh.edu](mailto:nicole.hentz@unh.edu).



UNIVERSITY of  
 NEW HAMPSHIRE  
 DURHAM, NEW HAMPSHIRE

ISSUED FOR:  
**CONSTRUCTION**  
 BY  
 FACILITIES DESIGN & CONSTRUCTION

APPROVED BY: \_\_\_\_\_ DATE: \_\_\_\_\_  
 Project Mgr.  
 Architect  
 Client  
 Fire Dept.  
 Safety

PROJECT NUMBER:  
 PROJECT NAME:  
**UNH STANDARDS  
 PANEL SIGNAGE**

DRAWING TITLE:  
**ALTERNATE WITH  
 WOOD POSTS**

SCALE: 1" = 1'-0"

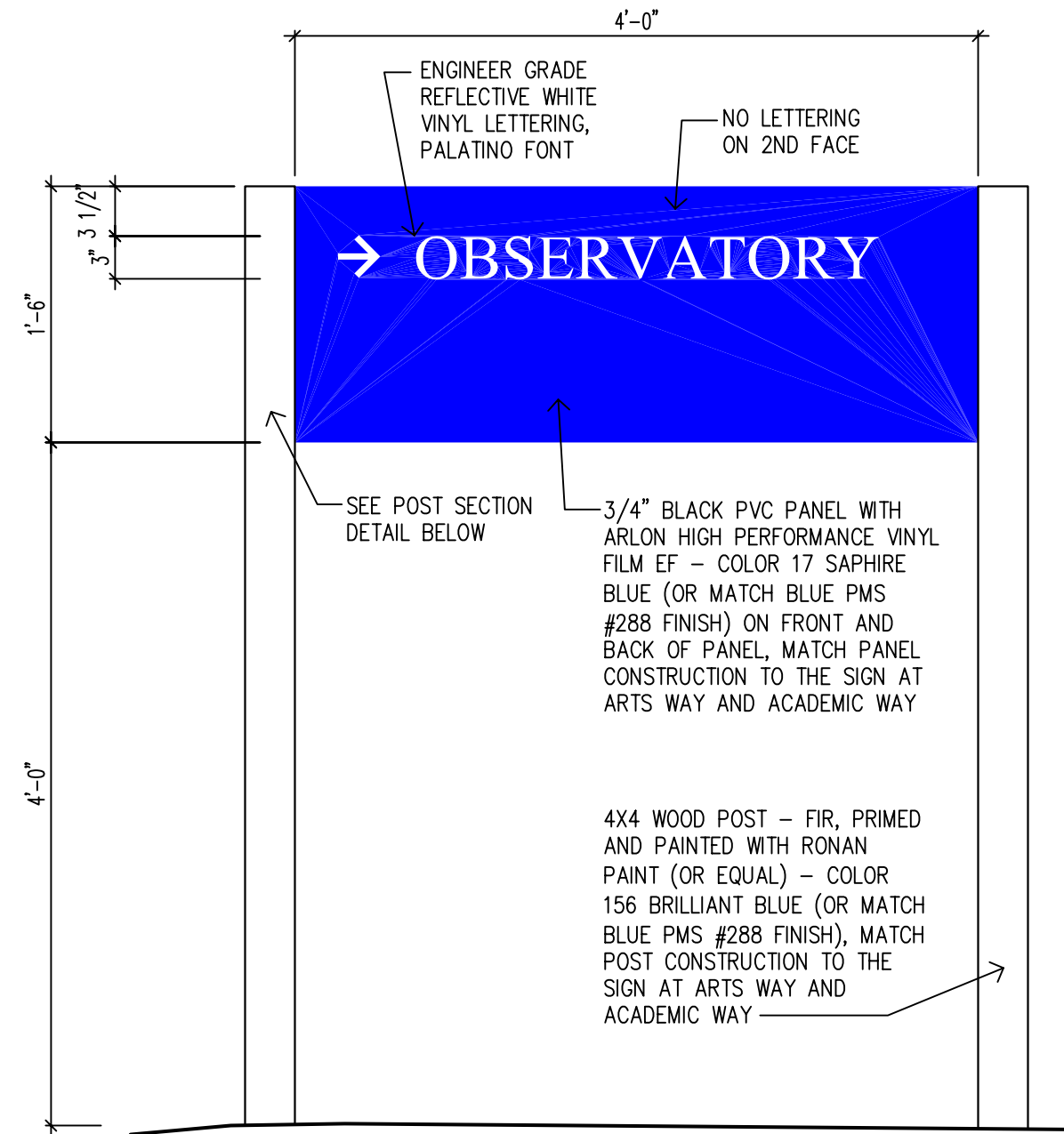
DRAWN BY: STH

CHECKED BY: DB

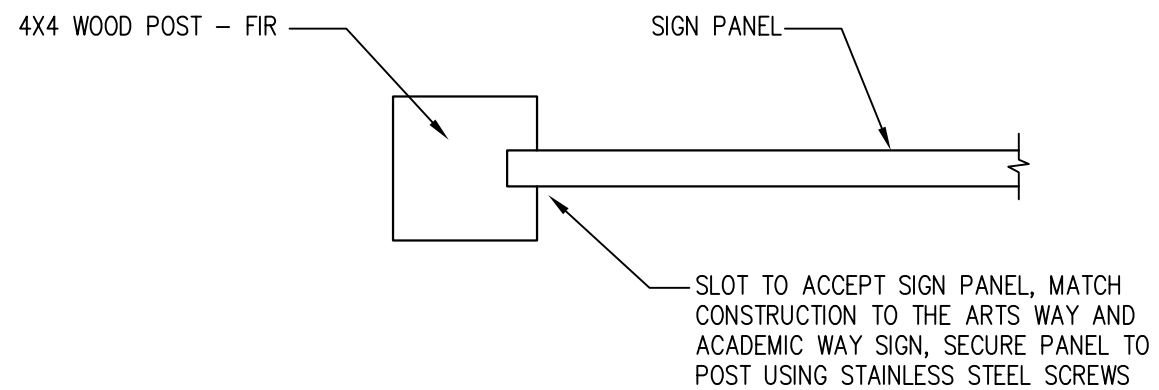
DATE:  
 APR. 27, 2010

DRAWING NO.

**A-1**



**PANEL SIGN**



**POST SECTION DETAIL**

101420 - Attachment F