

ANNUAL REPORT
— OF THE —
TOWN OFFICERS
— OF —
MILFORD, N. H.



FOR THE YEAR ENDING

JANUARY 31, 1918

ANNUAL REPORTS

—OF THE—

Selectmen, Treasurer, Other Town
Officers and School Board

—OF—

MILFORD, N. H.

FOR THE YEAR ENDING

JANUARY 31, 1918

Also Vital Statistics for the Year Ending
December 31, 1917

MILFORD, N. H.
CABINET PRINT
1918

NH
352.07
M64
1918

b

CONTENTS

Town Officers	C
Warrant of Annual Meeting	E
Warrant of School Meeting	G
Inventory	I
Appropriations	2
Report of Finance Committee	4
Report of Selectmen	6
Balance Sheet	9
Summary of Receipts and Payments	10
Schedule of Property	14
Report of Trust Funds	19
Report of Debts	20
Budget of 1917	22
Detailed Expenditures	25
Report of Town Treasurer	34
Report of Fire Engineers	40
Report of Overseer of the Poor	44
Report of Municipal Court	45
Report of Chief of Police	46
Report of Tax Collector	48
Report of Lull Memorial Fund	49
Report of Shepard Park	51
Report of Highway Agent	52
Report of Auditors	62
Report of Water Commissioners	57
Report of School Board	63
Report of School District Treasurer	85
Report of Truant Officer	86
Report of Superintendent of Schools	87
Report of Principal of High School	102
Report of Music Supervisor	110
Report of Library Trustees	113
Report of Town Clerk	139

TOWN OFFICERS FOR 1917-1918.

Selectmen

HARRY WILKINS GEORGE A. WORCESTER
FRED. J. KENDALL

Town Clerk

JAMES M. LAWS

Town Treasurer

FREDERICK W. SAWYER

Highway Agent

CHESTER V. CARLTON

Auditors

J. A. MALLALIEU F. W. BARNES

Moderator

CHARLES S. EMERSON

Supervisors of Checklist

J. A. MALLALIEU JOHN PIROVANO
J. H. FAY

Firewards

LEON C. HALL ERNEST C. BROOKS
J. J. CASEY

Water Commissioners

H. A. WILKINS GEO. A. WORCESTER
F. J. KENDALL

Superintendent

F. B. WILKINS

Register and Treasurer

GEORGE A. WORCESTER

Cemetery Trustees

J. T. YOUNG	Term expires	1918
H. H. BARBER	" "	1919
B. F. FOSTER	" "	1920

Health Officer

B. F. FOSTER

Trustees of Free Library

GEORGE A. WORCESTER	Term expires	1918
HARRIET A. HUTCHINSON	" "	1918
CHARLES A. LANGDELL	" "	1918
WILLIAM B. ROTCH	" "	1918
BENJAMIN F. PRESCOTT	" "	1919
ELLA M. POWERS	" "	1919
ELLEN GUNNISON	" "	1919
WILLIAM F. FRENCH	" "	1919
EMORY D. HEALD	" "	1919
BERTHA M. SAWYER	" "	1920
HELEN M. WEBSTER	" "	1920
FRED W. BARNES	" "	1920

Trustees of Mary A. Lull Property

SAMUEL A. LOVEJOY	Term expires	1918
FRED N. HUTCHINSON	" "	1919
FRANK P. FISK	" "	1920

Shepard Park Commissioners

JOHN F. PIROVANO	Term expires	1918
CHARLES B. CAME	" "	1919
PULASKI R. WOODMAN	" "	1920

Warrant for Town Meeting.

THE STATE OF NEW HAMPSHIRE

To the Inhabitants of the Town of Milford in the County of Hillsborough, in said State, qualified to vote in Town Affairs.

You are hereby notified to meet at the town house in said Milford, on Tuesday, the twelfth day of March next, at nine o'clock in the forenoon, to act upon the following subjects:

1. To choose all necessary town officers for the ensuing year.
2. To choose three delegates to the Constitutional Convention.
3. To hear the reports of all town officers, agents and committees and pass any vote relating thereto:
4. To see if the town will vote to raise and appropriate the amount of money necessary to secure state aid for the permanent improvement of highways under the law passed at the January session 1905.
5. To see what sum of money the town will vote to raise and appropriate for town officers' salaries, town officers' expenses, election and registration expenses, municipal court expenses, care and supplies for town house, Police protection, Fire protection, moth extermination, White Pine Blister extermination, Health department, vital statistics, state aid maintenance of highways, trunk line maintenance of highways, town maintenance of highways, street lighting, Milford Free Library, town poor, Memorial day, Roll of Honor, parks and play grounds (including band concerts), cemeteries, interest on temporary loans, interest on bonded debt, interest on

serial notes, interest on trust funds, town construction of highways, state aid construction of highways, sidewalk construction, sewer construction, payments on principal of debt, payments to sinking funds, State taxes, County taxes.

6. To see what action the town will take to furnish more room for the Milford Free Library and pass any vote relating thereto.

7. To see if the town will vote to authorize the selectmen to borrow money in anticipation of taxes, if necessary, as provided by law of 1907.

8. To see if the town will vote to establish a town liquor agency or vote to license a druggist to sell liquor under the provisions of the law in effect May 1, 1918, or take any action relating thereto.

9. To transact any other business that may legally come before said meeting.

Given under our hands and seals this twenty-second day of February, in the year of our Lord nineteen hundred and eighteen.

HARRY A. WILKINS,
GEORGE A. WORCESTER,
FRED J. KENDALL,
Selectmen of Milford, N. H.

School District Warrant

STATE OF NEW HAMPSHIRE

To the Inhabitants of the School District of the Town of Milford, qualified to vote in District Affairs:

You are hereby notified to meet at the town house, in said district, on the twelfth day of March next, at three o'clock in the afternoon, to act on the following subjects:

1. To choose a moderator for the ensuing year.
2. To choose a clerk for the ensuing year.
3. To choose a treasurer for the ensuing year.
4. To choose a member of the school board for the ensuing three years.
5. To see what sum of money the district will vote to raise and appropriate for the support of schools for the fiscal year beginning September 1, 1918 and ending August 31, 1919, and for the remainder of the present fiscal year, ending August 31, 1918.
6. To see if the district will vote to continue the practical arts courses in the high school for the third year, raise and appropriate money therefor, or take any action in relation thereto.
7. To see if the district will vote to make improvements to the Osgood or other schoolhouse and raise and appropriate money for the same.
8. To see if the district will vote to have medical inspection in its schools and raise and appropriate money for the same, or take any action in relation thereto.

9. To see if the district will vote to make changes in the heating system at the high school building and raise and appropriate money therefor.

10. To see if the district will vote to raise and appropriate money to meet its note, due January 1, 1919, and money for interest on its notes authorized at its meeting of March 13, 1917.

11. To hear reports of agents, auditors and committees in relation to any subject embraced in this warrant.

12. To see if the district will vote to authorize its officers to hire money by means of notes, as provided by laws of 1913, to meet any of the expense of matters considered in Articles 5, 6, 7, 8 and 9 of this warrant.

Given under our hands and seal this twenty-second day of February, A. D. 1918.

J. THORNE YOUNG,
ARTHUR B. ROTCH,
ELLEN GUNNISON,
School Board.

Inventory of Town for 1917

Real estate	\$2,389,316 00
Horses 411	47,810 00
Asses and mules 2	300 00
Oxen 2	150 00
Cows 525	32,725 00
Other neat stock 60	2,330 00
Sheep 7	42 00
Hogs 36	1,085 00
Fowls 11,655	11,655 00
Vehicles	59,350 00
Wood and lumber	38,075 00
Stock in banks	44,570 00
Money on hand, at interest or on deposit	51,675 00
Stock in trade	217,575 00
Mills and machinery	270,850 00
	<hr/>
Total assessed valuation 1917	\$3,319,508 00
Total assessed valuation 1916	3,285,894 00
	<hr/>
Increase	\$33,614 00
Exemption of Soldiers	\$14,885 00
Exemption by vote of town	\$152,000 00

SELECTMEN'S ESTIMATES OF INCOME

Savings Bank Tax	\$4,000 00
Railroad Tax	3,000 00
Insurance Tax	350 00
Water Works Surplus	2,500 00
Licenses	200 00
Rents	2,500 00
	<hr/>
	\$12,550 00

Appropriations for 1917-18

Town Officers, salaries and expenses	\$2,300 00
Election and Registration	50 00
Municipal Court	350 00
Town House repairs and expenses	2,800 00
Police Protection	1,550 00
Fire Protection	7,165 00
Moth Extermination	500 00
Health Department	275 00
Vital Statistics	150 00
State Aid Maintenance	750 00
Trunk Line Maintenance	1,500 00
Town Maintenance	5,800 00
Street Lighting	3,600 00
General	500 00
Library	1,600 00
Town Poor	100 00
Memorial Day	100 00
Parks and Playgrounds	900 00
Cemeteries	400 00
Interest	2,720 00
State Aid Construction	2,463 75
Town Construction	1,000 00
Sidewalk Construction	1,000 00
Sewer Construction	1,000 00
Bridge	200 00
Bonds and Notes, Sinking Fund	4,500 00
State and County Precincts	11,244 40
School District	21,125 00
Advertising	200 00
	<hr/>
	\$75,843 15

TOTAL TAXES COMMITTED TO COLLECTOR

Property Tax	\$63,474 69
Poll Tax	2,054 00
Sewer Tax	76 50
	<hr/>
	\$65,605 19

Report of Finance Committee

The Finance Committee respectfully recommends the following estimated expenditures for the ensuing year.

CURRENT MAINTENANCE EXPENSES:

General Government

Town Officers' Salaries	\$1,700 00
Town Officers' Expenses	700 00
Election and Registration Expenses	150 00
Municipal Court Expenses	325 00
Care and Supplies for Town Hall	2,700 00

Protection of Persons and Property

Police Department	1,550 00
Fire Department	6,360 00
Moth Extermination	750 00
White Pine Blister	250 00

Health

Health Department	300 00
Vital Statistics	125 00

Highways and Bridges

State aid maintenance, town's contribution	175 00
Trunk line maintenance, town's contribution	784 74
Town maintenance	7,000 00
General expenses	500 00

Street Lighting

Street lighting	3,600 00
-----------------	----------

Education

Libraries	1,700 00
-----------	----------

Charities

Town poor	200 00
-----------	--------

Patriotic Purposes

Memorial day and other celebrations	100 00
Roll of Honor	25 00

Recreation

Parks and playgrounds	650 00
-----------------------	--------

Public Service Enterprises

Cemeteries	350 00
------------	--------

Interest

On temporary loans	275 00
On bonded debt	1,770 00
On long-term notes	1,025 00
On principal of trust funds used by town	456 65

Outlay, New Construction and Permanent Improvements

State aid construction, town's contribution	2,392 50
Sidewalk construction	1,000 00

Indebtedness

Payments on principal of debt, long-term notes	3,500 00
Payments to sinking funds	2,000 00
Payments to restore Trust Funds	1,172 68
State taxes	6,416 00
County taxes	6,454 87

\$56,457 44

Respectfully submitted,

B. F. PRESCOTT,

C. E. KENDALL,

EDW. B. HALL,

D. D. TUTTLE,

SAMUEL A. LOVEJOY,

THOMAS H. CASSIDY,

FRANK W. ORDWAY,

JAMES A. BRAHANEY,

A. B. ROTCH,

ERNEST M. STICKNEY,

Finance Committee.

Report of Selectmen

In presenting the reports of the various departments of our municipal organization we would call attention to several matters of importance.

For several years we have heard through the press or otherwise that the road to Mont Vernon was not what it should be, and now that the more important trunk lines are completed we early in the season gave our attention to this road and have practically reconstructed it from the Hartshorn Corner to the Mont Vernon town line with the exception of the portion which is in Amherst. We have widened and straightened it in several places and given it an even grade and erected new guard rails. The wooden bridge at Hartshorn's mill has been replaced with a stone one and is now a permanent structure that will sustain any load that is likely to be placed upon it. The ledge that projected into the road near the mill has been removed thus making the road safer. Crushed stone being hard to get and of a high price, we used a large quantity of screened gravel for the surfacing and believe it to be a suitable road for the character of the traffic over it.

For several years we have felt that the old wooden County bridge at Pine Valley, built in 1835, was not suitable for modern conditions with its heavy loads on auto trucks and largely increased travel by other automobiles.

This matter was considered by the last annual town meeting with the result that at an adjourned meeting held May 1, 1917, the Selectmen were instructed to erect a granite bridge. We feel that we were fortunate in being able to contract with a local company, who had the equipment for such work together with an ample supply of first class granite.

We of course realized that the traffic would be inconvenienced by being diverted to the old road over the hill, but we resurfaced it in many places, blasted out large stones and practically reconstructed and increased

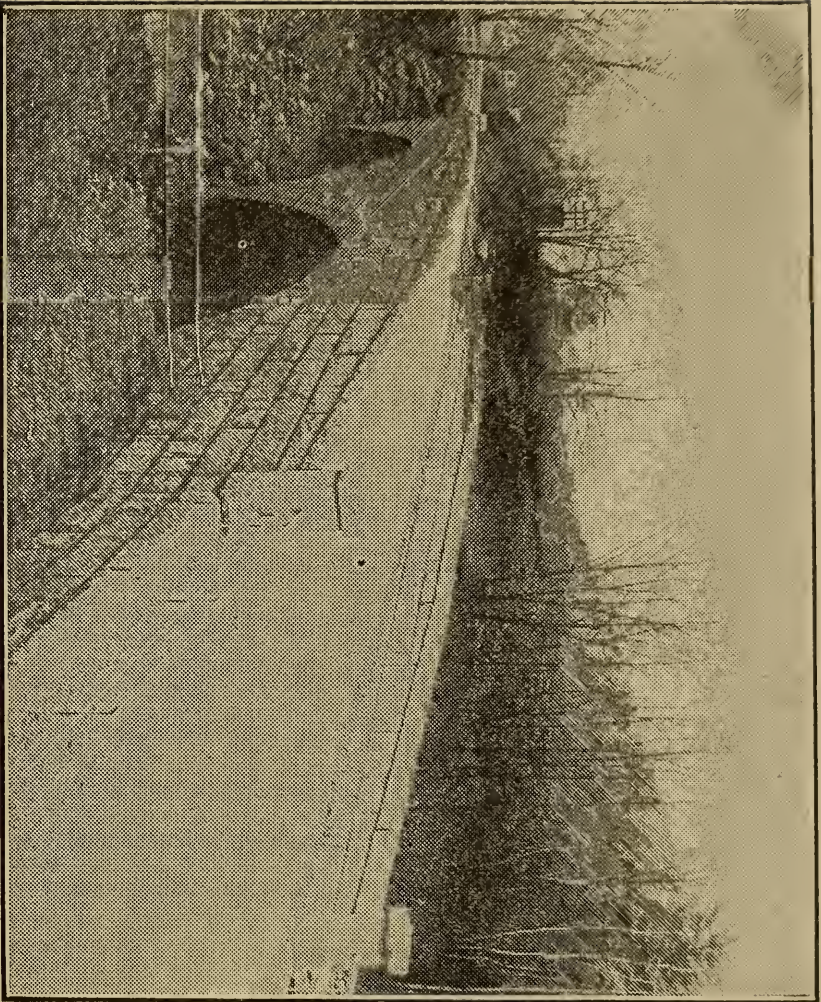
the guard rails and each week the selectmen or some of them inspected it, and considering the amount of traffic over it (80 autos passed over it in one hour by actual count one Sunday) and the speed with which some of them went, it is a wonder there were not more accidents.

Work was started June 5, 1917, and the bridge was opened to the public Nov. 1, nearly five months afterward, and it may be of interest to note a few facts in relation thereto: Length of bridge 152 ft. 6 inches; span of each arch 60 feet; width of bridge over all 28 feet; width of roadway 20 feet; width of sidewalk 5 feet; 1770 tons cut granite all delivered by auto trucks; 108½ tons cement used; height of each arch over river bed 23 feet; cost of bridge \$26,226.53; cost of relaying retaining walls \$832.16.

The Selectmen having full responsibility for the construction of the bridge and having the largest confidence in the contractor felt, however, that in a work of this size they should give it their full attention, situated as it is four miles from the town house the question arose how could we get up there as occasion might require. We first tried hiring autos, the price for the trip being \$1 and no stop over. This method we found unsatisfactory and so we bought an auto with a delivery body and very few were the days that the Selectmen or some of them were not on the job. The machine was also used a large part of the time to carry the men out and back for the road work and also to carry tools and material for this and other jobs. We also used it for inspection of the highways when complaints were made. It has been used several times for police work and twice went to Mont Vernon on July 4 to fires and has been at the service of the Fire department when asked for, and we believe in the line of efficiency we must use modern methods. The horse is a noble animal and in his place is invaluable but he is too slow for these times.

Your attention is especially called to the Treasurer's report, from which you will see that although a \$27,000 bridge has been built the net indebtedness of the town has been increased only \$5,124.82.

For the coming year we advise that unusual care



NEW GRANITE BRIDGE AT PINE VALLEY

be exercised in making the annual appropriations. With the war conditions that prevail and the increased cost of material together with the necessity of making appropriation of money for the schools for a year and a half to conform to the new law making the fiscal year of school districts end Aug. 31 instead of Feb. 15 there is bound to be an increase in our tax rate.

BALANCE SHEET

ASSETS

Cash:

In hands of treasurer (Do not include sinking funds \$ 2,492 14

Sinking Funds:

(a) List and par value of securities 78,603 35
(b) Cash belonging to sinking funds 6,191 06

Accounts Due to the Town:

Due from State:

(a) Joint Highway Accounts, Unexpended Balances in State Treas. 868 00
Other bills due Town: Rents 275 00
Taxes not collected: (a) Levy of 1916 305 12
(b) Levy of 1917 9,207 30

Total Assets \$97,941 97

Excess of liabilities over assets (Net Debt) 54,216 59

Grand Total \$152,158 56

Net Debt—Surplus, Feb. 15, 1917 \$49,091 77

Net Debt—Surplus, Jan. 31, 1918 54,216 59

Increase—Decrease of debt, of surplus increase \$5,124 82

LIABILITIES

Accounts Owed by the Town:

Orders outstanding \$ 11 00

Due to School District: Dog licenses 458 40

State and Town Joint Highways Accts:

Unexpended Bal in State Treasury 868 00

Unexpended Bal. in Town Treasury 1,774 05

Long Term Notes Outstanding:..... 29,047 11

Bridge \$23,000, Sewer \$3000, given for trust funds \$3,047.11

Bonds Outstanding 120,000 00

Water Works, School House, Funding

Grand Total \$152,158 56

Town of Milford, N. H.

RECEIPTS

RECEIPTS

Current Revenue from Local Taxes:

Amount committed to collector.....	\$65,799	19	
Less uncollected	9,207	30	
1. Property and poll taxes, current year, actually collected			\$56,591 89
2. Uncollected taxes of previous year	7,634	84	
Uncollected	305	12	7,329 72

From State:

3. For highways			
(a) For State Aid maintenance....	1,111	04	
4. Insurance tax	364	50	
5. Railroad tax	3,069	73	
6. Savings bank tax	4,488	24	
8. Literary fund	550	80	
9. State aid for education, School Supt.	518	00	
10. Liquor licenses	21	24	

From Local Sources Except Taxes:

15. Dog licenses	458	40	
16. Business licenses and permits	324	50	
17. Fines and forfeits, municipal court	480	23	
18. Rent of town hall	2,622	25	
19. Interest received on taxes.....	272	31	
23. Income from departments	7,782	00	
25. Miscellaneous	672	53	
			—————\$22,735 77

Total Current Revenue Receipts\$86,657 38

Receipts Other than Current Revenue:

27. Temporary loans in anticipation of taxes during year	\$15,000	00	
28. Serial notes during year for pay- ment of new bridge	25,000	00	
Total Receipts Other than Cur- rent Revenue			—————\$40,000 00

AND PAYMENTS

For year ending Jan. 31, 1918.

PAYMENTS

Current Maintenance Expenses:

General Government:

1. Town officers salaries	\$1,690 00
2. Town officers expenses.....	725 94
3. Election and registration expenses	29 00
4. Municipal court expenses	309 00
5. Expenses town hall and buildings	2,730 41

Protection of Persons and Property:

6. Police department, including care of tramps	1,525 81
7. Fire dept., including forest fires	7,231 00
8. Moth extermination	468 36
10. Damage by dogs	33 10

Health:

11. Health depart. including hospitals	336 00
12. Vital statistics	125 33

Highways and Bridges:

14. State Aid maintenance, Town's contribution	1,481 17
15. Trunk Line maintenance, Town's contribution	978 84
16. Town maintenance	6,694 25
17. Street lighting and sprinkling ...	3,511 44
18. General expenses of highway dept. including watering troughs	711 29

Education:

19. Libraries	1,600 00
---------------------	----------

Charities:

20. Town poor	215 01
---------------------	--------

Patriotic Purposes:

22. Aid to G. A. R. and Memorial Day exercises	100 00
23. Flag and flag staff	122 43

Recreation:

24. Parks and playgrounds, including band concerts	766 60
-------------------------------------------------------------	--------

Public Service Enterprises:

27. Cemeteries, including hearse hire	452 04
---------------------------------------	--------

Unclassified:

Town of Milford, N. H.

RECEIPTS

 RECEIPTS

Cash on hand at beginning of year	\$3,826 47	
Less orders of previous year paid this		
year	18 01	
	<hr/>	3,808 46
Grand Total		<hr/>
		\$130,465 84

PAYMENTS

For year ending Jan. 31, 1918.

PAYMENTS		
28. Damages and legal expenses	325 00	
30. Advertising	123 11	
Total Current Maintenance Exp. —————		\$32,285 13
Interest:		
32. Paid on temporary loans in anticipation of taxes and building new bridge	\$ 607 36	
33. Paid on long term notes	157 50	
34. Paid on bonded debt	4,690 00	
35. Paid on principal of trust funds used by town	495 15	
Total Interest Payments		\$5,950 01
Outlay for New Construction and Permanent Improvements:		
36. Highways and bridges—State Aid construct'n, Town's contribution	\$2,978 69	
38. Highways and bridges—Town construction	28,254 65	
39. Sidewalk construction	459 75	
40. Sewer construction	971 69	
Total Outlay Payments		\$32,664 78
Indebtedness:		
43. Payments on temporary loans in anticipation of taxes	\$15,000 00	
44. Payments on long term notes	4,600 00	
46. Payments to sinking funds	2,000 00	
Total Indebtedness Payment.. —————		\$21,600 00
Payments to Other Governmental Divisions:		
47. Taxes paid to State	\$6,817 00	
48. Taxes paid to County	4,427 46	
50. Payments to School Districts	23,622 80	
Total Payments to Other Governmental Divisions		\$34,867 26
Tax abatements	\$617 52	617 52
Cash on hand at end of year	\$2,492 14	
Less orders issuing and outstanding.	11 00	2,481 14
Grand Total		\$130,465 84

SCHEDULE OF TOWN PROPERTY

	Description	Value
1	Town Hall, Lands and Buildings	\$40,000 00
	Furniture and Equipment	1,000 00
2.	Libraries, Lands and Buildings	12,000 00
	Furniture and Equipment	2,000 00
4	Fire Department, Lands and Buildings	
	Equipment	4,500 00
5	Highway Department, Lands and Buildings..	3,000 00
	Equipment	5,500 00
6.	Parks, Commons, and Playgrounds	2,000 00
7.	Water Supply	75,000 00
8	All other Property and Equipment:	
	Lull Property, real estate	6,300 00
	Lull Property, cash and securities	5,701 46
		<hr/>
	Total	\$157,001 46

BALANCE SHEET FOR PRECINCT OF MILFORD

ASSETS

Cash on hand	\$	2,481 14
Sinking Funds:		
(a) Par value of securities.....		78,603 35
(b) Cash		6,191 06
Other Assets:		
(a) Rents		275 00
(b) Uncollected taxes		9,512 42
Total Assets		\$97,062 97
Excess of Liabilities over Assets (Net Debt)		54,216 59
Grand Total		\$151,279 56

LIABILITIES

Bills owed by Precinct:		
Dog licenses, 1917	\$	458 40
Joint highway account, unexpended balance in town treasury		1,774 05
Notes Outstanding		29,047 11
Bonds Outstanding		120,000 00
Total Liabilities		\$151,279 56
Grand Total		\$151,279 56

Precinct of Milford, N. H.

RECEIPTS

RECEIPTS

Current Revenue:

From Taxes\$ 64,193 92

From Other Sources:

From State 10,123 55

Municipal Court 480 23

Licenses 782 90

Rents 2,622 25

Income from Departments 7,782 00

Miscellaneous 672 53

Receipts Other than Current Revenue:

Temporary loans during year 15,000 00

Serial Notes issued during year 25,000 00

Cash on hand at beginning of year \$3,826 47

Less orders of previous year paid this

year 18 01

-----3,808 46

Grand Total\$130,465 84

AND PAYMENTS

For year ending January 31, 1918.

 PAYMENTS
Current Maintenance Expenses:

General Government	\$ 5,484 35	
Protection of Persons and Property.....	9,258 27	
Health	461 33	
Highways and Bridges	13,376 99	
Education	1,600 00	
Charities	215 01	
Patriotic Purposes	222 43	
Recreation	766 60	
Public Service Enterprises	452 04	
Damages	325 00	
Advertising	123 11	
Tax Abatements	617 52	
Payments to Other Governmental Di- visions	34,867 26	
Total Current Maintenance Expenses	—————	\$67,769 91

Interest paid		\$5,950 01
----------------------------	--	------------

Outlay for New Construction and Equipment:

Highways and bridges:

State Aid Construction	\$ 2,978 69
Town Construction	28,254 65
Sidewalks	459 75
Sewer	971 69

Total Outlay Payments	—————	\$32,664 78
-----------------------	-------	-------------

Indebtedness:

Payments on principal of debt	\$19,600 00	
Payments to sinking funds	2,000 00	
Total Indebtedness Payments	—————	\$21,600 00

Total Payments for All Purposes		\$127,984 70
---------------------------------	--	--------------

Cash on hand at end of year	\$2,492 14	
-----------------------------	------------	--

Less orders issued and outstanding	11 00	
------------------------------------	-------	--

	—————	\$2,481 14	\$2,481 14
--	-------	------------	------------

Grand Total		\$130 465 84
-------------------	--	--------------

SCHEDULE OF PRECINCT PROPERTY

Description		
Lands and Buildings	\$	55,000 00
Furniture and Apparatus		13,000 00
Parks and Playgrounds		2,000 00
Water Supply		75,000 00
Lull Property, real estate	\$6,300 00	
Lull Property, cash and securities	\$5,701 46	12,001 46
		<hr/>
Total Valuation	\$	157,001 46

Report of the Trust Funds of the Town of Milford for the Year Ending January 31, 1918

Date of Creation	Trust Funds—Purpose of Creation	How Invested	Amount of Principal	Rate of interest	Balance of Income on hand at Beginning of Year	Income During Year	Expended During Year	Balance of Income on Hand at End of Year
	Ezra M. Gay Fund for Library	Town of Milford notes 3½% under Chap. 162, Laws 1915	\$5,000 00	3½	0	\$175 00	\$175 00	0
	Nancy Averill fund for Library	Town of Milford notes 3½% under Chap. 162, Laws 1915(pd)	100 00	3½	0	3 50	3 50	0
Feb. 14, 1907	Dorcas Peabody fund for Library	Granite Savings Bank, Milford	638 24	3½	22 33	23 10	0	\$45 43
Feb. 14, 1907	Mary Ann Peabody fund for Library	Granite Savings Bank, Milford	638 24	3½	22 33	23 10	0	45 43
	Alice C. Gray fund for Library	Granite Savings Bank, Milford	228 13	3½	7 98	8 26	0	16 24
Jan. 13, 1915	Marinda A. Smith fund for library	Town of Milford notes 3½% under Chap. 162, Laws 1915(pd)	1000 00	3½	0	35 00	35 00	0
Jan. 13, 1915	Marinda A. Smith fund for Old Ladies' Home	Granite Savings Bank, Milford	1000 00	3½	68 20	37 38	0	105 58
Feb. 15, 1913	Esther M. Thompson fund for Library	Town of Milford School Bond, No. 133	500 00	4	0	20 00	20 00	0
	Cemetery Trust Funds	Town of Milford note 3½% under Chap. 162, Laws 1915	6,874 43	3½	77 61	240 61	311 26	6 96
	Unexpended income accumulated previous to Feb. 15, 1916	Town of Milford note 3½% under Chap. 162, Laws 1915	1,172 68	3½	41 04	41 04	0	82 08
	Cemetery Trust Funds	Granite Savings Bank, Milford	2,450 00	3½	12 42	61 73	25 25	2,408 90

The Town of Milford notes of \$100 issued for the Nancy Averill Fund and \$1000 issued for the Marinda A. Smith Fund were paid by the Selectmen January 31st, 1918 and the money is in the hands of the Trustees of Trust Funds awaiting reinvestment.

Report of Outstanding Debt and Sinking Funds

For Fiscal Year ending Jan. 31, 1918.

Total Water Debt	\$75,000 00	
Sinking Funds	54,659 49	
Net Water Debt	\$20,340 51	
Total General Debt	\$84,047 11	
Sinking Funds	30,134 92	
Net General Debt	\$53,912 19	
Total Net Debt	\$74,252 70	

(See opposite page.)

Report of the Outstanding Debt and Sinking Funds of the Town of Milford on January 31, 1918.

Date of issue	INDEBTEDNESS—PURPOSE OF CREATION ALL DEBTS OUTSTANDING; both bonded and floating should be reported, including: loans in anticipation of taxes, trust funds appropriated to city or town uses, and all other indebtedness	Rate of interest	Date of Maturity	Amount outstanding	Sinking Funds	Net Debt	SINKING FUNDS—HOW INVESTED State character and amount of investment, and rate of return.
1891	Water Loan Coupon Bonds	4	1911-21	\$65000 00	\$54659 49	\$10340 51	Municipal Bonds.
1894	Water Loan Registered Bonds	4	1924	10000 00	10000 00	10000 00	Municipal Bonds
1894	School Funding Bonds	4	1925	45000 00	30134 92	14865 08	Municipal Bonds
1910	Serial Sewer Notes	3½	Serially \$1500 each year	3000 00	3000 00	3000 00	Municipal Notes
1917	Serial Bridge Notes	4	Serially \$2000 each year	23000 00	23000 00	23000 00	Municipal Notes
Feb. 15, 1916	Ezra M. Gay Fund for Library Note	3½	Demand	5000 00	5000 00	5000 00	Town of Milford note under Chap. 162 Laws 1915, held by trustees of Trust Funds
	Cemetery Trust Funds Note	3½	Demand	6874 43	6874 43	6874 43	Town of Milford note under Chap. 162 Laws 1915, held by trustees of Trust Funds
	Cemetery Trust Funds unexpended income note.	3½	Demand	1172 68	1172 68	1172 68	Town of Milford note under Chap. 162 Laws 1915, held by trustees of Trust Funds

FREDERICK W. SAWYER, ARTHUR L KEYES, Trustees.

BUDGET [OF THE TOWN OF MILFORD

REVENUE AND EXPENDITURES OF YEAR FEB. 16, 1917 TO JAN. 31, 1918.

SOURCES OF REVENUE

From State :

Insurance Tax	\$ 364 50
Railroad Tax	3,069 73
Savings Bank Tax	4,488 24
Liquor Licenses	21 24
For Highways	
(a) For State Aid Maintenance	1,111 04
Literary Fund	550 80
District School Supt.	518 00

From Local Sources Except Taxes :

All Licenses & Permits except Dog Licenses	324 50
Fines and Forfeits	480 23
Rent of Town Hall and Other Buildings	2,622 25
Interest Received on Taxes and Deposits	272 31
Income of Depts. : Highways, Sewers, etc.	82 00
Water Works	7,700 00
Cemetery lots sold	160 00
Junk sold	3 72
Horses sold	225 00
Land sold	25 00
Miscellaneous	258 81

Revenue Applicable Only to New Construction and Improvements

Amount Raised by Issue of Bonds or Notes :

Notes issued in anticipation of taxes	\$15,000 00
Serial notes issued for paym't of new bridge	25,000 00

Revenue Which Must Be Paid to Other Governmental Divisions

Dog Licenses	\$ 458 40
Cash on hand at beginning of year	\$3,826 47
Less orders of previous year paid	
this year	18 01
	3,808 46

	Amount Raised by Property Taxes	\$63,921 61
TOTAL REVENUES		<u>\$130,465 84</u>

PURPOSE OF EXPENDITURES

Current Maintenance Expenses:

General Government:		
Town Officers' Salaries		\$1,690 00
Town Officers' Expenses		725 94
Election and Registration Expenses		29 00
Municipal Court Expenses		309 00
Care and Supplies for Town Hall		2,730 41
Protection of Persons and Property:		
Police Department		1,525 81
Fire Department		7,231 00
Moth Extermination		468 36
Damage by dogs		33 10
Health:		
Health Department		336 00
Vital Statistics		125 33
Highways and Bridges:		
State Aid Maintenance:		
State's Contribution	\$145 69	
Town's Contribution		1,481 17
Trunk Line Maintenance		
State's Contribution	\$1,178 27	
Town's Contribution		978 84
Town Maintenance		6,694 25
Damage case		325 00
Street Lighting		3,511 44
General Expenses of Highway Dept.		711 29
Education:		
Libraries		1,600 00
Charities:		
Town Poor		215 01
Patriotic Purposes:		
Memorial Day and Other Celebrations		100 00
Flag and flag staff		122 43

Recreation:		
Parks and Playgrounds		766 60
Public Service Enterprises:		
Cemeteries		452 04
Advertising		123 11
Interest:		
On Temporary Loans		607 36
On Bonded Debt		4,690 00
On Long-term Notes		157 50
On Prin. of Trust Funds Used by Town		495 15

Outlay for New Construction and Permanent Improvements

Highways and Bridges:		
Town Construction		1,195 96
Pine Valley Bridge		26,226 53
Retaining Wall		832 16
State Aid Const'n, Town's Contribution		2,978 69
Sidewalk Construction		459 75
Sewer Construction		971 69

Indebtedness

Payment on Principal of Debt:		
Long Term Notes		3,500 00
To Restore Trust Funds		1,100 00
Payments to Sinking Funds		2,000 00
Temporary Notes, anticipation of taxes		15,000 00

Payments to Other Governmental Divisions

State Taxes		6,817 00
County Taxes		4,427 46
Payments to School Districts		23,622 80
Tax abatements		617 52
Cash on hand at end of year	\$2,492 14	
Less orders issued after close of year	11 00	2,481 14
TOTAL EXPENDITURES		\$130,465 84

DETAILED STATEMENT OF PAYMENTS

GENERAL GOVERNMENT

Detail 1, Salaries and Expenses of Town Officers:

Salaries:

Selectmen, H. A. Wilkins	\$400 00
G. A. Worcester	300 00
F. J. Kendall	275 00
Overseer of Poor, G. A. Worcester	50 00
Town Treasurer, F. W. Sawyer	125 00
Co.-Treasurer, A. L. Keyes	25 00
Town Clerk, J. M. Laws	100 00
Tax Collector, C. L. Luce	375 00
Auditors, J. A. Mallalieu	20 00
F. W. Barnes	20 00

\$1,690 00

Expenses:

Edson C. Eastman, Session Laws	\$ 6 00
Annie E. White, Abstract of Titles	8 08
A. L. Keyes, Treasurer's Bond	60 00
A. L. Keyes, Trustee's Bond	60 00
C. L. Luce, Tax Collector's Bond	15 00
The Wilkins Press, binder	4 61
Helen A. Foster, clerical work	44 00
F. W. Sawyer, floating bridge note	50 00
Kittredge & Prescott, legal expense	30 00
Kittredge & Prescott, retainers	25 00
Milford Cabinet, print. Town Reports	291 65
Milford Cabinet, printing	15 65
J. P. Melzer, printing	18 30
F. C. Boutelle, teams	21 00
A. R. Burnham, auto	6 00
F. E. Cooley, auto	3 00
L. S. Hartshorn, auto	1 75
J. A. Brahaney, stamps	17 00
N. E. Tel. & Tel. Co., telephones	5 77
H. A. Wilkins:	
Expense of Selectmen to Concord	11 40
Expense of Selectmen to Court	14 27
Exp. of Selectmen, Tax Meetings	17 46

\$725 94

Detail 2, Election and Registration Expenses:

Moderator, C. S. Emerson	\$5 00	
Supervisors, J. A. Mallalieu	8 00	
John Pirovano	8 00	
J. H. Fay	8 00	
	<hr/>	29 00

Detail 3, Municipal Court Expenses:

Benjamin F. Prescott	\$300 00	
George A. Worcester	9 00	
	<hr/>	\$309 00

Detail 4, Care, Repairs and Supplies for Town House:

Janitor, John Riedle	\$690 00	
Janitor, W. J. Prince	4 00	
Janitor, C. H. Gault	2 50	
Fuel, C. B. Came	899 47	
Fuel, Milford Water Works	71 91	
Fuel, Haseltine & Caldwell	33 50	
Repairs and Supplies:		
Cassidy Brothers	136 32	
H. H. Barber Heating & Plumb'g. Co.	147 49	
G. W. Moore	6 50	
Emerson & Son	19 80	
F. P. Fiske	5 00	
A. Storrs & Bement Co.	7 25	
Bergami Hardware & Electric Co.	68 32	
A. M. Whittier	7 50	
C. H. Colby	1 40	
J. J. Casey	4 50	
McLane Mfg. Co.	6 34	
Fuller Brush Co.	2 40	
G. F. Jewett Co.	10 30	
J. A. Bruce	7 00	
J. E. Webster	8 00	
W. F. French	50 61	
W. L. Nutting	3 00	
A. E. Brown	2 80	
Milford Water Works	122 79	
Milford Light & Power Co.	411 71	
	<hr/>	\$2,730 41

PROTECTION OF PERSONS AND PROPERTY

Detail 5, Police Protection:

J. J. Monteith, Chief	\$1,171 84	
J. E. Hodlin, special	140 00	
A. A. Simonds, special	45 00	
Wm. R. Wilson, special	20 00	
Specials for July 4th	16 00	
Milford Cabinet, printing	8 75	
G. F. Jewett Co., food for tramps	23 38	
W. F. French, supplies	6 98	
Bergami Hardware & Electric Co., supplies	1 60	
F. C. Boutelle, teams	18 50	
F. E. Cooley, auto	7 50	
C. E. Foster, auto	2 00	
M. H. Harriman, auto	2 00	
F. H. Hopkins, auto	1 00	
Traffic Sign Co.	1 02	
C. Edward Powers	4 00	
New Eng. Tel. & Tel. Co.	56 22	
	<hr/>	\$1,525 79

Detail 6, Fire Protection:

Hydrants, Milford Water Works	\$3,610 00	
Hydrants, Wilton Water Works	150 00	
Appropriation, L. C. Hall, Treas.	3,390 00	
Appropriation, W. L. Winslow, for- est warden	75 00	
Souhegan Auto & Electric Co., auto	6 00	
	<hr/>	\$7,231 00

Detail 7, Moth Extermination:

Spraying, C. A. Adams	\$468 00	
Supplies, W. F. French	36	
	<hr/>	\$468 36

Detail 9, Damage by Dogs:

Killing dogs, J. E. Hodlin	\$ 6 00	
Expense getting licenses, J. J. Mon- teith	3 10	

G. L. Hilton, M. D., care of child bitten by dog	24 00	
	<hr/>	\$33 10

HEALTH AND SANITATION

Detail 10, Health Department:

B. F. Foster, health officer	\$ 82 50	
Sarah L. Abbott, services	126 00	
G. L. Hilton, M. D., services	20 00	
F. H. Lovejoy, M. D., services	25 50	
H. S. Hutchinson, M. D., services	7 00	
Life Saving Device Co., lungmotor	75 00	
	<hr/>	\$336 00

Detail 11, Vital Statistics:

J. M. Laws	\$92 58	
H. S. Hutchinson, M. D.	8 75	
W. H. W. Hinds, M. D.	3 25	
Oscar Burns, M. D.	2 00	
B. L. Talbott, M. D.	3 75	
J. H. Proctor, M. D.	2 25	
Eugene Wason, M. D.	1 50	
F. H. Lovejoy, M. D.	2 00	
G. L. Hilton, M. D.	4 00	
J. W. Finerty, M. D.	75	
Rev. G. Edgar Wolfe	75	
Rev. G. A. Hickson	75	
Rev. C. A. Reese	1 00	
Rev. H. E. Lennon	75	
B. F. Prescott, Esq.	75	
C. L. Luce, Esq.	50	
	<hr/>	\$125 33

HIGHWAYS AND BRIDGES

Detail 12, State Aid Maintenance

J. A. Casey	\$ 213 83	
C. V. Carlton	1,267 34	
	<hr/>	\$1,481 17

Paid by State	\$145 69
Paid by State to Town	664 91
Bal. in Town Treasury	\$273 88
Bal. in State Treasury	152 80
	<hr/>
	\$426 68

Detail 13, Trunk Line Maintenance:

C. V. Carlton	\$11 00	
J. A. Casey	967 84	
	<hr/>	\$978 84
Paid by State	\$1,178 27	
Bal. in Town Treasury	\$804 20	
Bal. in State Treasury	626 33	
	<hr/>	
	\$1,430 53	

Detail 14, Town Maintenance:

C. V. Carlton	\$6,447 01	
Standard Oil Co.	247 24	
	<hr/>	\$6,694 25

Detail 15, Street Lighting:

Milford Light & Power Co.	\$3,511 44
---------------------------	------------

Detail 16, General:

Souhegan Auto & Electric Co., Auto	\$350 00
Souhegan Auto & Electric Co., s'plies	72 46
Milford Machine Works	107 03
Nashua St. Garage	13 41
Kittredge & Prescott, Ins.	35 83
George A. Sears	2 00
Milford Water Works	95 00
Cassidy Bros.	14 56
H. H. Thorp, water tub	3 00
R. B. Cotton, water tub	3 00
P. C. Colby, water tub	3 00
C. A. Webster, water tub	3 00
August Kohorner, water tub	3 00

F. D. Holland, water tub	3 00	
F. & P. Noon, water tub	3 00	
	<hr/>	\$711 29

Detail 17, Damage Case:

Mrs. Annie P. Denny	\$300 00	
E. J. Hopkins	25 00	
	<hr/>	\$325 00

Detail 18, Education:

Milford Free Library		\$1,600 00
----------------------	--	------------

CHARITIES

Detail 19, Town Poor:

A. P. Brigham	\$141 20	
George Hatch	73 81	
	<hr/>	\$215 01

PATRIOTIC PURPOSES

Detail 20, Memorial Day:

J. C. Lewis		\$100 00
-------------	--	----------

Detail 21:

American Banner Co.	\$35 00	
Rev. W. H. Morrison, address	10 00	
Geo. R. Sears, irons for flag staff	2 20	
P. O. B. Dillon, mending flag	75	
Laurel Band	21 50	
F. P. Fisk, Roll of Honor board	9 30	
W. H. Prichard, painting Roll of Honor board	35 00	
W. F. French, supplies	8 68	
	<hr/>	122 43

RECREATION

Detail 22, Band Concerts

A. P. Conti		\$500 00
-------------	--	----------

Detail 23, Parks and Playgrounds:

John Pirovano, Shepard Park	\$50 00	
Cassidy Bros, moving flag staff	77 31	
P. H. Osgood, painting flag staff	9 38	
W. H. Pritchard, gilding ball for flag staff	3 50	
G. W. Moore, oakum for flag staff	90	
Joe. Silver, work on Oval	33 13	
McLane Mfg. Co., repairs for seats	25	
Kendall & Wilkins, grass seed and fertilizer	26 80	
Milford School District, work on Endicott Park	65 33	
	<hr/>	\$266 60

PUBLIC SERVICE ENTERPRISES**Detail 23, Cemeteries:**

B. F. Foster, sexton	\$161 50	
B. F. Foster, cleaning yards	188 00	
C. V. Carlton, removing trees	17 23	
F. J. Reiley, building wall, Union St.	82 31	
Milford Water Works	3 00	
	<hr/>	\$452 04

Detail 24, Advertising:

Milford Cabinet	\$123 11
-----------------	----------

Detail 27, Interest:

Souhegan Bank on		
Temporary loan	\$ 173 49	
Registered bonds	400 00	
Serial notes	157 50	
Water bonds	2,620 00	
School bonds	1,670 00	
Bridge notes	433 87	
Trustees of Trust Funds	495 15	
	<hr/>	\$5,950 01

NEW CONSTRUCTION

Detail 28, State Aid Construction:

C. V. Carlton		\$2,978 69
Paid by the State	\$110 55	
Paid by State to Town	\$446 13	
Bal. in Town Treasury	\$695 97	
Bal. in State Treasury	88.87	
	<hr/>	
	\$784 84	

Detail 30, Town Construction:

C. V. Carlton	\$767 35	
Standard Oil Co.	428 61	
	<hr/>	\$1,195 96

Detail 31, Sidewalk Construction:

C. V. Carlton	\$459 75
---------------	----------

Detail 32, Sewer Construction:

Concord Foundry & Machine Co.	\$ 55 80	
A. W. Howison	349 74	
Joseph Silver	130 00	
C. V. Carlton	284 63	
W. L. Winslow	89 75	
John Romani	15 00	
A. E. Gay Co.	22 50	
Kendall & Wilkins	1 40	
W. F. French	11 85	
G. R. Sears	2 50	
Boston Store	1 35	
E. M. Parker	3 17	
H. H. Barber	4 00	
	<hr/>	\$971 69

Detail 33, Bridge Construction:

Lovejoy Granite Co., contractors	\$23,480 00
Storrs & Storrs, engineers	2,538 00
F. W. Ordway, expenses of Com.	5 95
Cassidy Bros., foot bridge	147 23

Frank Hartshorn Co., lumber	26 40	
C. E. Foster, trucking	2 00	
J. L. Thomas, trucking	8 00	
George R. Sears, irons	11 95	
Perley Jones	7 00	
	<hr/>	\$26,226 53

Detail 34, Retaining Wall at Pine Valley:

Loveoyj Granite Co.	\$832 16
---------------------	----------

PAYMENTS ON INDEBTEDNESS

Detail 35:

Souhegan Nat'l Bank temp notes	\$15,000 00
--------------------------------	-------------

Detail 36:

Serial Notes	\$3,500 00	
Water Loan Sinking Fund	1,200 00	
School Loan Sinking Fund	800 00	
Trustees Trust Funds Notes	1,100 00	
	<hr/>	\$6,600 00

PAYMENTS TO OTHER GOVERNMENTAL DIVISIONS

Detail 37, Taxes:

Taxes paid to State	\$6,817 00	
Taxes paid to County	4,427 46	
	<hr/>	\$11,244 46

Detail 38, Paid to School District:

Appropriation	\$21,125 00	
Appropriation for school building	1,000 00	
Dog Tax	429 00	
Literary Fund	550 80	
District Superintendent	518 00	
	<hr/>	\$23,622 80

Detail 39, Abatement of Taxes:

C. L. Luce for 1915	\$ 5 40	
C. L. Luce for 1916	612 12	
	<hr/>	\$617 52

Report of Town Treasurer

FOR FISCAL YEAR ENDING JAN. 31, 1918.

F. W. Sawyer, Treasurer,

In account with Town of Milford

Dr.

Balance in treasury Feb. 15, 1917 \$ 3,826 47

Amounts received as follows:

From C. L. Luce, Tax Collector	64,193 92	
From loans in anticipation of taxes	15,000 00	
From serial notes issued for new bridge	25,000 00	
From State of N. H.	10,102 31	
From Milford Water Works	7,700 00	
From rents	2,622 25	
From Municipal Court	480 23	
Income from Highway Dept	82 00	
Articles sold	253 72	
Licenses	804 14	
From other local sources	418 91	
		—————\$130,483 95

Cr.

Payments made on orders of Board of Selectmen	\$127,991 81	
Balance of cash on hand	2,492 14	
		—————\$130,483 95

Respectfully submitted,

FREDERICK W. SAWYER,

Town Treasurer,

SINKING FUNDS ACCOUNT

F. W. Sawyer and A. L. Keyes, Trustees,
In account with Water Loan Sinking Fund.

Dr.

Cash uninvested, as per last report	\$ 164 29	
Annual appropriation	1200 00	
		\$1,364 29

INCOME FROM INVESTMENTS

BONDS

2000 Danbury, Conn. 3½'s	\$ 70 00	
1000 Winooski, Vt. 4's	40 00	
500 Milford, Conn. 4's	20 00	
2000 City of New York 4¼'s	85 00	
1000 Concord & Montreal R. R. 4's	40 00	
2000 Boston & Lowell R. R. 3½'s	70 00	
1000 Kennebec Co., Me. 4's	40 00	
500 North Providence, R. I. 4's	20 00	
32000 Milford Coupon Water Loan Bonds	1,280 00	
2000 Milford Coupon School Loan	80 00	
5000 Milford Registered Water Loan (6 mos. on 1000)	180 00	
		\$1,925 00

STOCK

7 shares Concord & Montreal R. R.	\$49 00	
		\$49 00

MISCELLANEOUS

Interest from Granite Savings Bank	\$24 85	
		\$24 85
		\$3,363 14

Cr.

AMOUNTS INVESTED

Milford Registered Water Loan bond bought of A. R. Worcester	\$1,000 00	
Cash on hand uninvested	2,363 14	
	<u> </u>	\$3,363 14

DEDUCTIONS

Cash balance from last year	\$164 29	
	<u> </u>	\$164 29
Net increase of fund for fiscal year		<u> </u> \$3,198 85

IN ACCOUNT WITH SCHOOL LOAN SINKING
FUND

Dr.

Cash uninvested as per last report	\$713 11	
Annual appropriation	800 00	
	<u> </u>	\$1,513 11

INCOME FROM INVESTMENTS

BONDS

1500 Milford, Conn. 4's	\$ 60 00	
1000 Canton, O. 5's	50 00	
2000 Chelsea, Mass. 4's	80 00	
1000 Newton, Mass. 3½'s	35 00	
3000 Hartford, Conn. 4½'s	135 00	
1000 Concord & Montreal R. R. 4's	40 00	
2000 Pawtucket, R. I. 4's	80 00	
1000 Montpelier, Vt. 4's	40 00	
10000 Milford Water Loan	400 00	
4000 Milford School Loan	160 00	
	<u> </u>	\$1,080 00

MISCELLANEOUS

Interest from Granite Savings Bank	\$17 75	
	<u> </u>	\$17 75
		<u> </u>
		\$2,610 86

Cr.

Cash on hand uninvested	\$2,610 86	
	<u> </u>	\$2,610 86

DEDUCTIONS

Cash balance from last year	\$713 11	
	<u> </u>	\$713 11
Net increase of fund for fiscal year		<u> </u>
		\$1,897 75

SCHEDULE OF INVESTMENTS BELONGING TO
SINKING FUNDS

WATER LOAN FUND

Bonds

1000 Boston & Maine R. R. 4½'s	\$1,000 00	
2000 Boston & Lowell R. R. 3½'s	2,000 00	
1000 Concord & Montreal R. R. 4's	1,000 00	
2000 Danbury, Conn. 3½'s	1,980 31	
1000 Kennebec Co., Me. 4's	1,000 00	
5000 Milford Reg. Water Bonds		
4's		5,000 00
32000 Milford Water Loan Bonds		
4's		32,201 72
2000 Milford School Loan		
Bonds 4's'		2,000 00
500 Milford, Conn. 4's		500 00
2000 City of New York 4¼'s	2,030 51	
500 North Providence, R. I. 4's	500 00	
1000 Winooski, Vt. 4's	1,000 00	
	<u> </u>	\$50,212 54

Stock

7 shares Concord & Montreal R. R. Class 4	\$1,373 75	
	<u> </u>	\$1,373 75

Miscellaneous

Deposited in Granite Savings Bank	\$ 710 06	
Deposited in Souhegan Nat'l. Bank	2,363 14	
	<u> </u>	\$3,073 20
 Total		<u> </u> \$54,659 49

SCHOOL LOAN FUND**Bonds**

1000 Canton, O. 4's	\$1,054 14	
2000 Chelsea, Mass. 4's	2,186 28	
1000 Concord & Montreal R. R. 4's	1,000 00	
3000 Hartford, Conn. 4½'s	3,167 25	
4000 Milford School Loan 4's	4,000 00	
10000 Milford Water Loan 4's	10,090 00	
1500 Milford, Conn. 4's	1,500 00	
1000 Montpelier, Vt. 4's	1,034 56	
1000 Newton, Mass. 3½'s	984 83	
2000 Pawtucket, R. I. 4's	2,000 00	
	<u> </u>	\$27,017 06

Miscellaneous

Deposited in Granite Savings Bank	\$ 507 00	
Deposited in Souhegan Nat'l. Bank	2,610 86	
	<u> </u>	\$3,117 86
 Total		<u> </u> \$30,134 92

SUMMARY OF SINKING FUNDS ACCOUNT

WATER LOAN FUND

Amount of fund Feb. 15, 1917	\$51,460 64	
Increase for fiscal year	3,198 85	
Total amount of fund Jan. 31, 1918	<u> </u>	\$54,659 49

SCHOOL LOAN FUND

Amount of fund Feb. 15, 1917	\$28,237 17	
Increase for fiscal year	1,897 75	
Total amount of fund Jan. 31, 1918	<u> </u>	\$30,134 92

Grand total of all sinking funds		\$84,794 41
Increase for the year		\$5,096 60

Respectfully submitted,

FREDERICK W. SAWYER,
ARTHUR L. KEYES,

Trustees.

Milford, N. H., Jan. 31, 1918.

Report of Fire Engineers.

The Board of Fire Engineers submit the following report for year ending Jan. 31st, 1918:

APPARATUS

Eagle Hose wagon, Souhegan Hose wagon, Alert Hook and Ladder truck, Neptune Fire Engine and Hose reel, all equipped and in good condition.

Hose on hand, 3900 ft. 2½ inch, 150 ft. 1 inch hose in good condition.

The hose house at Pine Valley was built and equipped with hose wagon and hose.

For usual running expenses of Department we recommend an appropriation of \$2600.

FINANCIAL STATEMENT

Cr.

Electrician

A. Sawyer	\$114 65	
C. W. Talbott	21 30	
	<hr/>	\$135 95

Steward

J. Riedle	\$21 20	
J. A. Grant	18 25	
G. L. Grant	27 95	
C. H. Hall	2 76	
	<hr/>	\$70 16

Light and Power

Milford Light & Power Co.	\$129 41
---------------------------	----------

Supplies

Boston Woven Hose Co.	\$462 00	
Fiske and Harris	52 00	
American La France Engine Co.	16 00	
R. W. LeBaron	3 50	
Pettingill, Andrews Co.	1 20	
Frank Hughes	8 15	
J. A. Bruce	3 00	
Kendall & Wilkins	2 53	
Fred Bergami	16 49	
A. M. Whittier	2 75	
W. F. French	30 12	
	<hr/>	\$597 74

Repairs

George R. Sears	\$112 60	
E. C. Brooks	33 92	
	<hr/>	\$146 52

Labor

W. W. Hutchinson	\$ 2 50	
W. Conley	5 00	
P. F. Sullivan	16 00	
Earl Carlton	1 00	
George Byard	2 00	
Gamewell Fire Alarm Co.	13 97	
	<hr/>	\$40 47

Autos and Teams

Nashua St. Garage	\$25 40
Souhegan Auto Co.	2 50
Milford Machine Works & Garage	12 50
Elm St. Garage	9 00
Emerson & Son	2 00
F. W. Barnes	3 00
C. E. Foster	5 00
J. L. Gilson	6 00
F. C. Boutelle	7 00
James Casey	7 50
Jerry J. Casey	20 00

S. F. Trafton	34 00	
John McGuire	2 00	
	<hr/>	\$135 90

Pine Valley Hose House

Cassidy Bros.	\$140 00	
J. A. Mixer	15 00	
W. H. Pritchard	25 00	
	<hr/>	\$180 00

Watching Fires

E. A. Dutton	\$2 50	
W. J. Gangloff	1 00	
Ed. Tarbell	1 00	
H. D. Sanderson	1 00	
John McGuire	75	
M. L. Warren	75	
	<hr/>	\$7 00

Telephone

L. C. Hall	\$12 00	
E. C. Brooks	9 00	
J. J. Casey	9 00	
	<hr/>	\$30 00

Miscellaneous

Town of Milford, water rate	\$11 00	
J. F. Trafton, use of sled	2 00	
L. C. Hall, time, express, etc	36 97	
	<hr/>	\$49 97

Pay Roll

Fire Engineers	\$240 00	
Alert Hook & Ladder Co.	644 95	
Eagle Hose Co.	489 93	
Souhegan Hose Co.	506 65	
	<hr/>	\$1,881 53
Cash on hand		46 94
		<hr/>
		\$3,451 59

Dr.

Cash on hand Feb. 15, 1917	\$ 14 61	
Cash rec'd. from Town Treasurer	3,390 00	
Cash rec'd. from town Mont Vernon	46 98	
	<hr/>	\$3,451 59

Respectfully submitted,

LEON C. HALL,
 ERNEST C. BROOKS,
 JERRY J. CASEY,
 Board of Fire Engineers.

Report of Overseer of the Poor

TOWN POOR

George Hatch	\$73 81	
Azel Brigham	141 20	
	<hr/>	\$215 01

COUNTY POOR

Maria Brown	\$ 84 47	
Julia Calvetti	257 80	
George Flanders	96 89	
Mary E. Hutchinson	76 75	
Mrs. E. E. Johnson	78 00	
James E. Crowell	17 50	
Raphael Calvetti	158 71	
John W. Tarbell	20 00	
Mrs. Anna Matson	55 01	
Mrs. Charles Calvetti	24 60	
Mrs. Alec. Neimi	94 11	
Thomas Cummings	68	
Charles Elliott	34 45	
Vicengo D'Andrea	251 64	
Dick Dandrea	5 00	
M. E. Towne	6 87	
Mrs. Umberto Oslandini	15 00	
Irving Johnson	31 00	
H. Brown	14 80	
Mrs. Eliza Bishop	17 29	
F. Perkins (Tramp)	5 00	
A. Korhorner	20 00	
John Brandt	42 00	
Frank Elliott	20 00	
Harry Crowell	1 00	
	<hr/>	\$1,428 57
Aid for Civil War Soldiers' Families		\$173 50

Respectfully submitted,
 GEO. A. WORCESTER,
 Overseer.

Report of Municipal Court

Report of the Municipal Court of Milford, N. H.,
from February 1st, 1917 to February 1st, 1918.

RECEIPTS

Fines and costs (Criminal)	\$755 64	
Writs and Entry fees (Civil)	17 05	
	<hr/>	\$772 69

DISBURSEMENTS

State of New Hampshire, State Treasurer, auto fines	\$ 20 00	
Officer's fees in Fish & Game cases, paid John Wentworth	13 84	
Milford Cabinet, printing	9 90	
Costs paid out in criminal cases to various parties as per vouchers on file:		
Complaint and Warrant	3 00	
Officers' fees	8 50	
Witness fees	31 22	
Bail commissioners	6 00	
Telephone charges	3 00	
Commitment fees	40 00	
Conveyance, keeping & assistance	157 00	
F. W. Sawyer, Town Treasurer	480 23	
	<hr/>	\$772 69

Respectfully submitted,

BENJ. F. PRESCOTT, Justice.

G. A. WORCESTER,

Associate Justice.

Report of Chief of Police

January 31st, 1918.

To the Honorable Board of Selectmen:

Gentlemen:—In discharging the duties of my official position as Chief of this department, I herewith submit for your consideration my annual report of the police department for the year ending Jan. 31st, 1918:

Whole number of arrests	86
Drunkenness	38
Assault and battery	5
Larceny	4
Breaking, entering and larceny	2
Nonsupport	2
Violating auto laws	7
Violating labor laws	1
Violating liquor laws	6
Gambling	8
Peddling without license	3
Carrying concealed weapon	1
Obtaining money falsely	1
Fugitive from justice	1
Vagabond	1
Disturbing peace	1
Arrests for outside police	5
Males	82
Females	4
Residents	44
Non-residents	42
Minors	7

DISPOSITION OF CASES

58 were fined
 8 were committed to Grasemere
 5 went to the Grand Jury

- 3 were found not guilty
- 3 were released without arraignment
- 1 was filed
- 3 were dismissed
- 5 were turned over to outside police

MISCELLANEOUS REPORT

Buildings found open	47
Defective sidewalks reported to Agent	3
Fire alarms given	2
Lost children cared for	2
Lanterns hung in dangerous places	4
Stray teams cared for	5
Tramps lodged at the station	449

All lights found out by the police were reported.

In cases of larceny the sum of \$78.50 was restituted to the losers.

I will add that in the past year this department has been called on to take part in the investigation of a great many cases pertaining to the war, and has enjoyed the privilege of aiding materially the Local Exemption Board, and the Government in their effort.

In concluding my report I desire to thank the Honorable Board of Selectmen for their co-operation, to the Judge of the Municipal Court for his advice, and the officers of the department for their help to further the efforts of this department, and to the citizens in general, I wish to extend my appreciation.

Respectfully submitted,

JOHN J. MONTEITH,
Chief of Police.

Milford, January 31st, 1918.

Report of Tax Collector

1915:

	Dr.	
Taxes uncollected, Feb. 15, 1917	\$33 06	
Interest	4 12	
	\$37 18	\$37 18
	Cr.	
Paid Town Treasurer	\$31 78	
Abatement	5 40	
	\$37 18	\$37 18

1916:

	Dr.	
Taxes uncollected, Feb. 15, 1917	\$7,601 78	
Interest	218 92	
	\$7,820 70	\$7,820 70
	Cr.	
Paid Town Treasurer	\$6,903 46	
Abatements	612 12	
Taxes not collected	305 12	
	\$7,820 70	\$7,820 70

1917:

	Dr.	
1917 Taxes	\$65,528 69	
Interest	49 27	
Sewer Tax	76 50	
Added Taxes	194 00	
	\$65,848 46	\$65,848 46
	Cr.	
Paid Town Treasurer	\$56,641 16	
Uncollected Taxes	9,207 30	
	\$65,848 46	\$65,848 46

Respectfully submitted,

CHARLES L. LUCE,
Tax Collector.

February 5, 1918.

Report of Trustees of the Lull Memorial Fund

Financial Statement, February 1, 1918

Cash, Souhegan National Bank	\$ 10 53	
Cash, Granite Savings Bank, book No. 3033	870 95	
Cash, Amoskeag Savings Bank, book No. 110,604	2,278 98	
Town of Milford Water Bond	1,000 00	
New Hampshire 3½ per cent bond	1,000 00	
2 shares Old Colony R. R.	185 00	
2 shares N. Y., N. H. & H. R. R.	56 00	
U. S. Liberty Bonds	300 00	
	\$5,701 46	
Real Estate as per Assessors' valuation:		
Lull Est. homestead	\$3,300 00	
Bruce house	1,400 00	
Armstrong house	1,600 00	
	\$6,300 00	

Receipts

Balance Souhegan National Bank	\$ 2 18	
Rent for Homestead	252 00	
Rent for Bruce house	176 00	
Rent for Armstrong house	137 75	
Miscellaneous	7 00	
Securities	89 00	
Withdrawn Granite Savings bank	325 00	
	\$988 93	

Disbursements

Milford Light & Power Co.	\$ 13 75
Milford Water Works	34 71
Taxes	126 00

Souhegan National Bank, safety deposit box	5 00	
D. Whiting & Son	12 00	
Fred M. Reilly, labor	36 98	
Fred Bergami, supplies	4 45	
Cassidy Bros.	6 64	
Frank P. Fisk, labor and supplies	23 94	
H. H. Barber Plumbing & Heating Co., contract and repairs	133 39	
Walter B. Merrill, labor	4 00	
Souhegan National Bank, U. S. Liberty Bond	300 00	
A. L. Keyes,, insurance	18 00	
F. N. Hutchinson, labor & supplies	5 49	
G. C. Blood, labor and supplies	125 86	
A. M. Whittier, labor and supplies	68 19	
Frank P. Fisk, services	20 00	
F. N. Hutchinson, services	20 00	
S. A. Lovejoy, services	20 00	
Cash Souhegan National Bank	10 53	
	<hr/>	\$988 93

S. A. LOVEJOY,
 F. N. HUTCHINSON,
 FRANK P. FISK,
 Trustees.

Shepard Park Commission

Milford, N. H., Feb. 9, 1918.

To the Selectmen of Milford:—

During the last year it has not been necessary to expend any considerable amount of money, but rather attention to the protections of the trees already planted in the park, the repair and maintenance of apparatus on playground. We think some few trees should be added during the coming season and together with destruction of insect pest and trimming some trees, also further grading of playground will constitute all necessary work to maintain property for coming season.

Mr. Charles B. Came, for the last two years one of our members, has been called from his work here. We as associate members with him desire to testify to his public spirited service and interest in the care of the park and to our very pleasant association with him. While the town as a whole has lost an excellent citizen, we as associates in this work more deeply appreciate his work and our loss.

We recommend an appropriation of \$25 in addition to unexpended balance for the coming season.

FINANCIAL STATEMENT

		Dr.	
Balance 1916		\$12 18	
Appropriation		50 00	
		_____	\$62 18
		Cr.	
E. Mahoney, labor		\$ 2 20	
George R. Sears, labor		26 25	
Charles H. Colby		1 25	
1917 Balance		32 48	
		_____	\$62 18

P. R. WOODMAN, Chairman,
JOHN F. PIROVANO, Clerk.

Report of Highway Agent

The Governor and Council having designated the highway leading to Mont Vernon as the road to be improved with state aid, work was begun May 14.

The Selectmen decided to complete the work in one year. We finished in September. Commencing at Sloan's Corner where the Lyndeborough road leaves the Mont Vernon road, a section of 1700 ft. was entirely rebuilt, with screened gravel spread in courses and rolled wet.

The next section repaired was the part built as state aid road in 1911. The next section of 1200 ft. to the Amherst line was regraded and built with screened gravel.

Beginning again above Wheeler's corner at the Amherst line we built 2250 ft. with loose gravel and hard pan to a point just above the ice house and connecting with the section built in 1910 from the Mont Vernon line toward Milford.

One valuable improvement is the stone bridge built to replace the plank bridge between the two mill ponds. The town paid for this work, state aid not applying to bridges.

The retaining wall at the mill pond was relayed and the road somewhat straightened. The old wall rebuilt in 1875 was in bad condition.

Straightening the road below the mill cost \$400 in solid rock excavation.

The permanent road building was allotted to South St. by the Selectmen. A section of 1300 ft. in length south of the railroad crossing was built in October with screened gravel and one coating of binder B road oil. The total cost was \$1,195.96. There remains but a short section to build to connect with the continuous granite macadam to the Brookline corner near Tonella's siding.

The town has extended its oiled roads by oiling Union St. from the railroad crossing to George St. and Cottage

St., from Elm St. to Garden St. using 60 per cent oil with gravel.

Elm St. was reoiled over the macadam section built in 1913, also South St. from the Square to the railroad.

The plank bridge near the quarry sidings on the Brookline road has been entirely rebuilt.

One pair of horses was sold in January. We have the pair purchased in 1912.

SUMMARY OF HIGHWAY EXPENDITURES.

Pine Valley sidewalk	\$ 459 75
Town maintenance	6,694 25
State Aid Construction Mont Vernon road	2,978 69
State Aid maintenance Mont Vernon road	1,481 17
Permanent road, South St.	1,195 96
	<hr/>
	\$12,809 82

C. V. CARLTON.

FINANCIAL REPORT

C. V. CARLTON, Highway Agent,

In account with the TOWN OF MILFORD.

Dr.

Selectmen's orders:

Cemeteries	\$ 17 23
Sewer construction	284 63
Sidewalks	459 75
Trunk line maintenance (Wilton road)	11 00
State Aid construction (Mont Vernon road)	2,978 69
State Aid maintenance (Mont Vernon road)	1,267 34
Permanent road const'n. (South street)	767 35
Town maintenance	6,447 01
Milford Water Works	127 66

Other sources :

Walter Billing, pump	1 00
V. C. Smith, pump	..2 00
Homer Chase, pump	5 00
J. Stein, pump	1 00
George Boutelle, stone lifter	1 00
S. F. Trafton, pump	2 00
Holt farm, pump	1 00
Mrs. Buckley, pump	1 00
Fred Clarke, pump	1 00
J. A. Casey, teaming	17 00
Dr. Finerty, teaming	30 00
C. V. Carlton, stable manure	20 00

 \$12,442 66

Cr.

PAY ROLL

C. V. Carlton	\$1,000 00
Brooks Pierson, teamster	774 45
Herman H. Parker, teamster	688 05
C. O'Leary, laborer	715 15
A. O'Brien, laborer	685 30
C. H. Gault, engineer	535 20
James O'Neil, laborer	403 62
H. A. Wilkins, foreman	369 00
Laborers :	
Joe Burgeson	353 90
J. C. Colburn	346 27
Joe Dube	262 70
E. Mahoney	285 92
John O'Brien	215 87
Thomas McLeod	151 04
William McLeod	132 07
Charles Elliott	86 25
Mike Burke	78 87
John Rossiter	70 20
James Kelleher	61 45
George Reynolds	59 00
Lewis Adams	40 70
John Hennesey	32 50
William Hanrahan	32 25
M. E. O'Neil	22 05
John Burns	15 00

A. A. Simonds	13 30
H. R. Lewis	11 00
Patrick Doyle	5 00
Sam. Frasier	4 50
J. G. Sann	4 50
Earl G. Boutelle	2 50
Watson Byrd	2 50
Harvey Messer	2 25
James Fitzgerald	2 25
Tim. Burns	2 25
J. W. Dodge	2 25
Charles Mills	2 25
M. Hennessey	2 00
William Cullinan	2 00
Haseltine & Caldwell, team	575 45
J. A. Casey, team	469 98
Frank Gervais, team	138 20
Oliver Paradis, team	135 00
James Thomas	75 50

\$8,869 49

SNOW BILLS

F. B. French, snow path	\$167 60
C. S. Bills	113 00
Josiah Howe	99 75
Irving Lackey	73 13
W. J. Bills	61 75
C. H. Beals, railings and snow bill	59 65
C. L. Kendall	52 65
J. F. Savage	51 75
C. F. Manning	31 85
Hillsboro Mills	28 80
H. W. Crosby	26 00
F. D. Holland	21 53
S. A. Lovejoy	15 00
Ernest H. Adams	3 00
Harry Melendy	1 25
Henry Wendelin	1 00

SUPPLIES

F. W. Sawyer, Town Treas.	\$ 93 00
Kendall & Wilkins, grain	751 48

Haseltine & Caldwell, coal	198 95
Lovejoy Granite Co., bridge	319 45
Geo. R. Sears, blacksmith	174 33
Milford Machine Works, roller rep.	123 39
Frank Hartshorn Co., railings	109 64
New England Road Machine Co.	100 67
Melvin Hutchinson, gravel	97 30
C. P. Wheeler, gravel	96 50
John B. Varick, pump	96 00
W. F. French, hardware	75 30
Harold L. Bond Co., screen	74 44
Milford Water Works, coal & water	69 96
D. O. Handley, hay	65 52
C. B. Came, coal and wood	60 55
Geo. N. Woodward, hay	59 62
Tonella & Sons, crushed stone	58 36
Frank Hughes, harness repairs	22 15
C. V. Carlton, use of engine, derrick	15 00
Cleaning after concerts	12 00
Milford L. & P. Co., barn light	12 20
Freight on Tarvia	10 30
Good Roads Machinery Co.	9 50
A. W. Howison, Akron pipe	9 00
Bergami Hardwarde Co.	8 60
William Jacques, harness repairs	8 60
George W. Moore, railings	7 27
W. B. Loring, M. D. V.	6 00
B. F. Jerome, gravel	5 00
Fred Jones, gravel	3 30
Roberts Bros., culvert stone	3 00
Paige & Cote, drag plank	2 48
A. L. Keyes, bond premium	2 50
C. C. Fitch, gravel	1 60
H. H. Barber, plumber	1 25
Wilkins Paper Box Co., twine	75
P. O'B. Dillon, blanket repairs	50

 \$3,573 17

 \$12,442 66

MILFORD WATER WORKS

REPORT OF THE BOARD OF WATER COMMISSIONERS

To the Citizens of Milford:—

The Board of Water Commissioners herewith submit its report for the year ending Jan. 31, 1918, together with the report of the Registrar and Treasurer.

There has been no extension of the service the past year on account of the high price of material and scarcity of labor. The supply of water has been ample to meet the requirement, but during the intense cold period there was a severe test of the supply as many users left their faucets open to prevent freezing. There is great need of better coal accommodations at the pumping station and we hope a new coal shed will be constructed the present year.

From the income of the department we have paid the interest on the bonds, the \$1200 to the sinking fund, and \$3500 to the Town Treasurer.

Respectfully submitted,

H. A. WILKINS,

GEO. A. WORCESTER,

F. J. KENDALL,

Water Commissioners.

REPORT OF REGISTRAR AND TREASURER OF
MILFORD WATER WORKS

Jan. 31, 1918

Dr.

Cash on hand Feb. 16, 1917	\$ 315 95
Rec'd. from faucet rate April & Oct	2,804 93
Rec'd. from meter rate	6,509 87
Rec'd. from new services	79 19
Rec'd. from installing and repairing meters	106 27
Miscellaneous	217 78
Hydrant service	3,610 00
Drinking founth's & Riverside Cem.	98 00
Stable, sewers	20 00
	<hr/> \$13,761 99

Cr.

Service	\$ 15 79
General repairs	621 06
Fuel and supplies	2,652 00
Salaries	1,995 00
Miscellaneous	212 43
Sinking fund	1200 00
Interest on Water Bonds	3,000 00
F. W. Sawyer, surplus	3,500 00
	<hr/> \$13,196 28
Cash on hand Jan. 31, 1918	565 71
	<hr/> \$13,761 99

GEO. A. WORCESTER,
Registrar.

FUEL AND SUPPLIES

C. B. Came, coal	\$1,645 58	
Union Water Meter Co.	116 00	
H. W. Johns Manville Co.	58 03	
Braman Dow & Co.	1 70	
Pratt & Cady	6 55	
Milford Mfg. Co., coal and freight	378 07	
Vacuum Oil Co.	40 52	
C. V. Carlton	32 00	
Rensselaer Valve Co.	196 69	
Davis & Farnum Co.	17 88	
M. F. Davidson	4 76	
F. A. Houdlette & Son	9 72	
Edson Mfg. Co.	45	
Sumner & Gerald	45 60	
National Meter Co.	19 05	
Neptune Meter Co.	23 62	
Crown Die & Tool Co.	7 68	
Hersey Mfg. Co.	48 10	
	<hr/>	\$2,652 00

GENERAL REPAIRS

Wm. McLeod	\$321 50	
Joseph Dube	191 75	
H. A. Wilkins	2 00	
G. W. Moore	10 15	
C. V. Carlton	95 66	
	<hr/>	\$621 06

SALARIES

F. B. Wilkins, Superintendent	\$1,000 00	
E. P. Barrett, Engineer	670 00	
H. A. Wilkins, Commissioner	100 00	
F. J. Kendall, Commissioner	25 00	
G. A. Worcester, Regis. & Treas.	200 00	
	<hr/>	\$1,995 00

MISCELLANEOUS

W. L. Winslow	\$ 2 40
A. L. Keyes, renewal of bond	9 00

J. A. Bruce	8 25
Fidelia Fields, rebate	2 75
Multipost Co.	15 00
J. P. Melzer, envelopes & printing	15 90
Transo Env. Co.	10 71
Express	83
C. G. Blood	2 00
E. M. Parker	3 12
J. H. Broughton, rebate	5 00
F. W. Sawyer, Treas. School Dist.	30 54
Milford Machine Works	1 75
G. R. Sears	7 67
Postage stamps	1 00
F. H. Clarke	14 15
G. W. Moore	25
E. M. Parker	3 58
F. B. Wilkins	36 80
W. F. French	5 48
New England Tel. & Tel. Co.	36 25
	<hr/>
	\$212 43

SERVICES

Thomas McLeod	\$ 3 04
Joseph Dube	12 75
	<hr/>
	\$15 79

PUMPING RECORD

	Pumping time		Coal	Banking	Ashes	Gallons
	Hours	mins.	lbs.	lbs.	lbs.	pumped
January	165	0	30777	4650	2800	3829815
February	175	0	32727	4200	5082	4073810
March	196	10	31427	4650	3158	4560920
April	182	35	30275	4500	3841	4238650
May	178	0	32418	4650	4848	4134780
June	169	55	29849	4500	4825	3944105
July	199	5	35364	4650	5503	4674635
August	190	0	32654	4650	5090	4424160
September	145	35	25785	4500	4174	3307780
October	151	10	27098	4650	5012	3521430
November	139	20	25951	4500	4435	3232007
December	169	50	29576	4650	3647	3947425
	<hr/>	<hr/>	<hr/>	<hr/>	<hr/>	<hr/>
	2061	40	363901	54750	52415	47889517

STATISTICS

Number services Feb. 1916	637
Number services added during the year	2
Total number services	639
Number services metered	334
Number services not in use	23
Number of hydrants	86
Average gallons water pumped per day 1916	143337
Average gallons water pumped per day 1917	131204
Largest No. gallons pumped in one day, Aug. 2	238850
Least No. gallons pumped in one day, Sept. 9	88920
Largest. No. lbs. coal used in one day, Feb. 13	1711
Least No. lbs. coal used in one day, Dec. 2	628
No. tons coal used for pumping only, 1916	199½
No. tons coal used for pumping only, 1917	132
No. tons coal including banking, 1916	227
No. tons coal used including banking, 1917	290
No. tons ash 1916	27¾
No. tons ash 1917	26 1-5
No. gallons pumped per lb. of coal 1916	131
No. gallons pumped per lb. of coal 1917	131½
Average lbs. coal used per day for pumping only 1916	1090
Average lbs. coal used per day for pumping only 1917	997

Report of Auditors

This certifies that we have examined the items of the following accounts and find them correctly cast and properly vouched, and the securities of the sinking fund we find as reported: H. A. Wilkins, George A. Worcester and Fred J. Kendall, Selectmen; Chester V. Carlton, Highway Agent; S. A. Lovejoy, Treasurer of Lull Memorial Fund; Geo. A. Worcester, Treasurer of Water Board; John F. Pirovano, Clerk of Shepard Park Trustees; C. L. Luce, Tax Collector; Frederick W. Sawyer, Town Treasurer; Frederick W. Sawyer and A. L. Keyes, Trustees of Sinking Fund; Frederick W. Sawyer, Treasurer of School District; Helen M. Webster, Treasurer of Milford Free Library; L. C. Hall, Treasurer of Board of Fire Engineers; A. B. Rotch, Clerk of School Board; Benjamin F. Prescott, Treasurer of Municipal Court.

F. W. BARNES,

J. A. MALLALIEU,

Auditors.

February 15, 1918.

ANNUAL REPORTS

— OF THE —

SCHOOL BOARD

SUPERINTENDENT OF SCHOOLS

— AND —

HIGH SCHOOL PRINCIPAL

REPORT OF MILFORD SCHOOL BOARD

In most ways the school year just closed has been very satisfactory. Superintendent A. W. Smith and Principal R. P. Currier continued their work with the benefit of familiarity with the Milford schools and aided by an unusually large number of experienced teachers. The standard of scholarship, according to testimony of the state department of public instruction and our own observation, is higher than it has been for several years. In this there is always room for improvement. But on the whole the Milford schools have maintained a good grade of instruction throughout the year, and this is the final test of the schools, whatever flaws or special merit may be found in certain spots.

Two Buildings Closed by Fuel Shortage

On February 7 the Fuel Commissioners notified the school board that no more coal could be burned in the schoolhouses until more came into town. They took the small stock of hard coal from the Brick school for use in homes where the need was urgent.

Both the Brick and White schoolhouses were closed and as this report is written all the village pupils are being accommodated in the high school building.

This building is being heated by wood, which is costly both in fuel and labor, but all pupils are having classes. All the grades are on a one-session plan and every room in the building is in use from 8.15 to 5 o'clock. For the small children benches have been built and the Congregational and Methodist Sunday schools have loaned their small chairs.

More Supervision

At the annual meeting of the supervisory district last June Mont Vernon was admitted to the district with Milford, Amherst and Hollis. The district fixed the superintendent's salary with the understanding that he employ an office assistant. Mrs. Gunnison is at the sup-

erintendent's office daily and attends to the clerical work and countless time-consuming details. This enables the superintendent to devote nearly all of his time to actual supervision of schools in his district. This desirable arrangement was accomplished at very slight expense to the district over the old arrangement by which fully half the superintendent's time was taken up by clerical, routine work.

Hours of Sessions

After 16 years of one-session days the high school was changed back last fall to the two-session plan. The change was made in order to carry the schedule of studies, and to eliminate much of the 'home study' by allowing more time for study at school. Supervised study, with a teacher present to answer questions, is much more effective than the same time spent in study at home. Too often home study has been left until late at night or slighted entirely. Results have proved the wisdom of the change. It was to be expected that many of the pupils would not take kindly to it, but most parents approve; if for no other reason than because it does not upset the meal schedule of the average family. Special arrangements have been made for pupils who can show that they actually need longer afternoon hours for gainful work.

In the grade and lower schools the hours were slightly modified, and are now changed to meet the unusual conditions forced on us by the fuel situation. During the noon hour Miss Bertha Wasto is employed to take charge of a room in the high school building where all the younger pupils go who bring their lunches or cannot go home at noon.

Special Improvements

At the meeting a year ago \$450 was appropriated for improvements at the Brick school. With this money seven new windows were cut in the four dark rooms. Seats were rearranged and a great improvement made in the light. This building isn't, and never can be, an ideal schoolhouse, but the changes made have put it in condition which is as satisfactory as can be expected. Several trees cut off light and should be removed, and slate

blackboards should replace the old composition boards in several rooms. The latter have a glaze very trying to the eyes.

In addition to the windows a bulkhead door was cut in the basement. This is primarily for convenience in removing ashes, but it also provides another exit in case of fire which, with the fire escapes built last year, make the building reasonably safe, which couldn't be said of it before.

Osgood School Next in Line

In pursuance of the state department's recommendations, outlined a year ago, the district should each year put one of its old-fashioned buildings in good repair. Two years ago the Laurel school was so treated, and last year the Old Brick. Next year another should be renovated. The Osgood schoolhouse has the best claim, both in respect to its condition now and the number of pupils accommodated there. It will cost \$400 to remodel the Osgood school. This contemplates closing the windows on one side and filling the other with mullion windows; new blackboards, fitting up a small class room, and installing suitable toilets.

Last year the district appropriated \$25 for a well at the Osgood school. Charles Colby undertook to put in the well last summer. The schoolboard has reserved \$30 (see financial account) to pay for the well when it is finished.

The Fuel Question

A year ago the estimates for the year's fuel supply were made with full realization that they were nothing but "guesstimates."

Heretofore it has been customary for the town and school fuel contracts to be let together and soft coal has been bought at about five dollars a ton. This year no dealer could promise either price or delivery. The board ordered coal last summer but, like most buyers, in New England, it has not gotten full delivery.

Manufacturing plants have loaned us coal, and wood is being burned in the boilers. Fuel paid for has exceeded the estimate of 1917, and the district has a considerable liability in the form of coal borrowed which must

be returned (see financial report). It did not seem wise, however, to yield to the temptation to close schools, as many cities did, and continue the term through the summer, when there is no doubt the pupils will do valuable work in producing food. The excellent accomplishment of boys last summer, both high school boys and younger pupils, is a guarantee that real production is accomplished.

The New Mechanic Arts Building

The mechanic arts addition, 80 x 42 feet, was built last summer on plans submitted to the meeting last year. Few indeed are the schools with so good a place for developing the mechanic arts courses. From the opening day of school the boys had practical work to do, for they built and fitted all the interior finish in the new building, which is now divided into forge and machine room, carpenter shop, stock room, drafting room and office. There are two forges with anvils, two lathes, power drill, grinder and ample tools for iron and wood working. More equipment will be needed for next year, as the course grows and develops. The machinery is driven by a new 3 h. p. motor which was presented to the school district by Maurice A. Goldman, who has showed much interest in the schools and especially the practical arts work.

A year ago the architect had just finished his plans for the building. His estimate of cost was used in asking for the appropriation. Five building concerns figured on the specifications and the lowest bid was about \$1000 higher than the architect's estimate. Many extras in the way of wiring, interior finish, shafting, belts, etc., could not be estimated a year ago, and the financial report shows the cost of the plant in excess of the \$8000 appropriation. But the schoolboard can assure the district that it has a mechanics arts building to be proud of and that it was erected and equipped at the lowest cost possible under present conditions.

Teachers' Salaries

For several years the school board has resisted claims for higher salaries for the teachers. This was not from undervaluation of the services nor unwilling-

ness to have the teachers receive more money; but because it seemed that Milford was offering about the same pay as other New Hampshire towns of similar size and means, and could not hope to compete with the wealthier and larger places.

Soon after schools opened last fall the teachers asked a ten percent increase to take effect January 1. This had to be refused, as no funds were at the school board's disposal to pay the advance.

Now the board, in its estimates for next year, has figured on a new salary schedule which will give all the teachers a small increase and has promised the teachers that if the district makes the appropriation the new salaries will take effect next month. The new wage scale is shown in the superintendent's report.

The board recommends this not so much because of the individual teachers' needs as because it seems wise for the district to invest more in the teachers. For some positions higher pay is offered in smaller towns. Amherst pays new teachers more than Milford. There is going to be a serious scarcity of teachers next fall, and unless Milford does its best to retain those we now have, and offers as much as similar or smaller towns for new teachers, we can hardly hope for an efficient corps next year.

Practical Arts Courses

This year the high school courses in mechanic and domestic arts were given for the first two years.

If the district wishes to continue the program through the third year it will need to expend \$2450 for instructors' salary, machines, tools and supplies needed for the third year.

Medical Inspection

The estimated cost of medical inspection in the Milford schools for a year, based on costs in other towns, is \$300.

Heating and Boiler

The heating problems at the high school building have been given most careful attention. In considering this subject it must be remembered that we have had a

winter of unparalleled severity, coupled with a fuel situation never before experienced. Extreme cold, lack of coal, and coal of poor quality have been the rule.

A year ago it was claimed that the high school boiler would never carry the extra load of the new addition, and that it had outlived its usefulness anyway, after 23 years of service.

During the year the school board has had the advice of an architect of public buildings, a heating engineer from Boston, a boiler expert from the boiler-insurance company and several local men with practical knowledge of such matters. No two have agreed on all points and our conclusions are drawn from all the opinions and evidences.

There is no doubt (on this all agree) that the old boiler is not large enough for the work now demanded of it. It was barely big enough for the original building, before the third story and new addition were completed. It is too short for its diameter and would be more effective and economical if it were 16 feet long instead of 12.

If times were different the proper thing to do would be to remove this boiler entirely from the building and, perhaps, install two new boilers in a new powerhouse located under the bank to the east of the building, where gravity returns could replace the dumping trap now in use. This plan we expect to see carried out sometime.

This winter there have been several days when some of the rooms could not be heated and schools were dismissed. The same thing has occurred every winter for years. During the coldest weather two janitors have been employed; one to constantly stoke the boiler. This is obviously not economical either of fuel or labor.

But the real trouble, we thoroughly believe, is not with the boiler but with the system by which some of the rooms are supposed to be heated.

There are no radiators in any of the old rooms. In the basement there is a coil of pipe through which steam passes. Air from outdoors is drawn into the building by a revolving fan, passed through and around this coil, and thence makes its way to the rooms through square galvanized iron conduits. This system was in vogue for a few years about 1894, but so far as we can learn it

never gave satisfaction and in most buildings has been replaced by direct heat. From the standpoint of ventilation it has merit, but as a heating system it is a failure.

This is the system which has consistently failed to heat the building for 20 years and wasted countless tons of coal.

Coupled with this system there is direct heat, through radiators, in those rooms added since the theory of indirect warm air was exploded. These rooms are heated with less trouble, and in December the schoolboard had radiators put in two of the old rooms where the indirect heat had long proved most ineffective. The contrast was remarkable.

The additions and changes and alterations have resulted in a tangle of pipes throughout the building. New lines have been added; mains and returns are too small and overloaded.

In the interests of economy and warmth the whole system should be gone over, necessary changes made, and radiators put in every room. The old system can remain and will help ventilate some rooms, after they are comfortably warm.

We are told that if this work is done we can expect a saving in fuel as high as 25 per cent in severe weather. If it is not done now we shall face another winter of doubled janitor service, fuel waste and poor heat.

F. E. Cooley has estimated the cost of the changes at \$1500.

This is not the year to buy new boilers or put up new buildings. As soon as the weather permits we shall have another thorough inspection of the interior of the boiler. If, as we hope, it shows prospects of continued service under the reduced load demanded by the heating system proposed, we believe it will be wise for the district to make the necessary changes now, and especially in view of the fact that whatever is done now will lessen by so much the changes which will be necessary when, ultimately, a new boiler equipment becomes imperative.

ESTIMATES FOR 1918-1919.

By act of the legislature of 1917 the fiscal year of all school districts, which began Feb. 15, 1917, does not end until August 31, 1918. After that August 31 of each

year shall be the end of the fiscal year. This amendment to the state laws was passed, and signed by Governor Keyes on April 4, 1917, after the Milford meeting had been held and appropriations made with February 15 in mind as the end of the fiscal year.

Appropriations must be made in March, 1918, to carry the schools from February 15, 1918 to August 31, 1919.

For this long period the schoolboard has made estimates with full realization that in 18 months conditions may be very much changed. A fuel estimate, for example, can be little more than a guess, and some other items are almost as uncertain. Conservative figuring indicates that the next 18 months will require for :

Deficit of 1917	\$ 771 28
Books	800
Teachers' salaries	24,750
Superintendent	1554
District officers	375
Truant officer and census	120
Tuitions	400
Transportation	275
Repairs	1300
Janitors	2500
Building supplies	225
Fuel	3000
Light and power	250
Water	250
Supplies	1200
Miscellaneous	400
	<hr/>
	\$38,170 28
Income, estimated	4000
	<hr/>
Needed for running expenses	\$34,170 28

These estimates are for running expenses only. They do not include changes to the heating plant, extension of practical courses, note and interest, medical inspection or special improvements to any schoolhouse.

Respectfully submitted,

J. THORNE YOUNG,
ARTHUR B. ROTCH,
ELLEN GUNNISON,
School Board.

STATISTICS FOR THE SCHOOL YEAR 1917

Whole number of pupils registered during the year	800
Boys	414
Girls	386
Whole number of different pupils who have attended at least two weeks during year	793
Number registered who have previously attended in some other town in the state during the current year	14
Number under five years of age	2
Number between five and eight	159
Number between eight and fourteen	429
Number between fourteen and sixteen	142
Number over sixteen	61
Number of non-resident pupils attending the high school, whose tuition is paid by their respective towns	29
Number of pupils registered in high school	166
Boys	72
Girls	94
Average attendance	147
Average absence	2.86
Average attendance of all schools together	714.2
Average absence of all schools together	30.86
Average membership in all schools together	745.06
Percent of attendance	95.8
Number of pupils not absent or tardy during the year	79
Number of cases of tardiness	1287
Greatest number of pupils in any school below high school	46
Least number	18
Length of schools below the high school	36 weeks
High School	38 weeks

HIGH SCHOOL GRADUATES, CLASS OF 1917

Carl Emerson Batchelder
Leon Kenneth Boutelle

Helen Marie Lorden
Mary Rosina Plante

Olive R. Boutelle	Laura K. Shea
Roger Conant Carlton	Howard Prentiss Stoddard
Eileen B. Cassidy	William Laurence Sullivan
Mabel M. Curtis	Maude Beatrice Terrien
Walter D. Cleary	Lila Whiting Trow
James Tobias Comi	Beatrice Anna Turner
Walter Mark Duval	Ralph Hodgman Upham
Gladys Eliza Emery	Arthur Thomas Ward
Elizabeth Theresa Flanagan	Isabelle Adella Ward
James Francis Gogan	Marion Emery Wheeler
Ruth Mildred Hall	Maud Boyce Wheeler
Maurice Wentworth Hammond	Perry E. Joslin
Marion Farnsworth Wright	

GRAMMAR SCHOOL GRADUATES CLASS OF 1917

Howard Herbert Adams	Paul Ignatus Hutchinson
Pierre John Bernasconi	Hattie Matilda Hodge
Rouel Bourke	Willard Arthur Jennison
Robert Joseph Brahaney	Daniel James Mahoney
William Kenneth Cassidy	Alma Rider Matson
Patricia Vivian Cassidy	Robert Leonard O'Leary
Gladys Prescott Cole	Kathleen Patricia Phippard
Jennie Ambrosina Cassivio	Frances Elizabeth Pirovano
Gerald Arthur Colburn	Esther Marion Ricciardi
Marion Catherine Caron	Carl Keith Stimson
John Jeremiah Casey	Earl Keith Stimson
Dorris Clarissa Clarke	Kenneth Parker Stoddard
Clift Roger Colby	Anna Margaret Sullivan
Eva Mary Dube	Margaret Viola Sunerson
Charles Abel Damon	Guy Franklin Tuck
Mark Farley Emerson	Frances Maude Thomas
Carrol Linwood French	Clifford Tostevin
Leo Dennis Flanagan	Ugo Ettore Trentini
Joseph Ingalls Grady	Joseph Trentini
Elizabeth Hemenway	John Villane
Maurice Erastus Hokinson	George Henry Wendelin
Paul Nathaniel Hutchinson	Louis Victor Viola
Amelia Hyslop	

ROLL OF PERFECT ATTENDANCE, 1916-17

High School

Charles Ansaldo	Ida Romani
Leo Brahaney	Edward Ryan
Dalton Brown	Louis Smith
Martin Calderara	Maude Terrien
Leon Comolli	Mario Trentini
Charles Hopkins	Ruth Wadleigh
Cedric Langdell	Theodore Wadleigh
Eva Mason	Winthrop Wadleigh
Mildred Merrill	Arthur Ward
Mabel Morrow	Isabelle Ward
Mary Murphy	Gloria Whitehead
Laura Richardson	Marion Wright

Grades in High School Building

Robert Brahaney	John Casey
Eva Dube	Alma Matson
Robert Anderson	Kent Greeley
John O'Neil	Pearl Hartshorn

White School

Pauline Peabody	Donald Bruce
Arthur Dutton	Louise Farwell
Mary Infante	Mary Iancelli
Fannie Falcone	John Hyslop
Walter Philbrick	Theodore Pierce
Cora Fraser	James Whitehead
Richard Twombly	Annie Infante
Joseph Iancelli	Italo Macchi
Olympia Romani	Mary Richardson
Theodore Morrow	David Deans
Gabrielle Lanouette	John Hinds

Basil Martin

Old Brick School

Russell Hokinson	Grace Calvitti
Nunziatina Romeo	Owen Fisk
William Hutchinson	Joan Lanouette
Werner Oikari	Victorine Jaques
James Pratt	Scott Richardson
Catherine Sullivan	Theodore Wilkins

North School

Evelyn Drew
Myrtle Webster

Morton Webster
Nellie Webster

Federal Hill School

Earle Nichols

Eva Jean Smith

Thriza Northrop

FINANCIAL REPORT OF SCHOOL BOARD

ORDERS ON DISTRICT TREASURER

Books

Ginn & Co.	\$254 51	
Oliver Ditson Co.	13 34	
Little Brown Co.	8 02	
E. E. Babb & Co.	81 98	
D. C. Heath Co.	45 04	
Silver Burdett Co.	3 54	
American Book Co.	75 89	
Boston Music Co.	7 01	
J. Fischer & Bro.	10 47	
Macmillan Co.	14 61	
Chas. E. Merrill Co.	21 87	
Allyn & Bacon Co.	5 08	
B. H. Sanborn Co.	19 10	
Rand, McNally	4 19	
J. L. Hammett Co.	44 65	
Gregg & Co.	2 74	
C. & G. Meriram	11 13	
A. S. Barnes Co.	1 72	
		\$624 89

Supplies

Kendall & Wilkins	\$ 11 20
N. E. Walter	1 39
G. A. Jennison	4 27
E. M. Stickney	7 11
E. E. Babb & Co.	184 32
F. D. Cook Co.	33 78
Kenney Bros. & Wolkins	26 66
Milton Bradley Co.	28 76
Amherst School Board	50
J. L. Hammett & Co.	119 56
Milford Cabinet	67 53
Cambridge Botanical Sup. Co.	46 96
White Sons Co.	15 59

E. H. Proctor	5 64	
Office Appliance Co.	6 98	
Library Bureau	1 57	
Frank Hartshorn Co.	26 80	
Wadsworth Howland	43 96	
Standard Oil Co.	9 00	
E. E. Coon & Co.	3 18	
Margaret Howison	6 60	
Gainey & Cassidy	35	
J. A. Bruce	2 43	
Milton Bradley Co.	16 33	
Manchester Hardward Co.	8 88	
Remington Typewriter Co.	8 00	
J. P. Melzer	7 50	
	<hr/>	\$694 85

Teachers' Salaries

Bertha G. Wasto	\$100 00	
Ellen Herlihy	30 00	
F. W. Sawyer, Treas.	14,947 74	
	<hr/>	\$15,077 74

Superintendent's Salary

A. B. Rotch, Dist. Treasurer	\$989 60
------------------------------	----------

Clerical Expenses

Belle Twombly	\$33 33
---------------	---------

School Board Salary

J. T. Young	\$ 50 00	
Ellen Gunnison	50 00	
A. B. Rotch, clerk	100 00	
	<hr/>	\$200 00

Truant Officer and Enumerator

J. J. Monteith	\$60 00
----------------	---------

Treasurer School District

F. W. Sawyer	\$50 00
--------------	---------

Elementary Tuition

Wilton School District	\$105 00
------------------------	----------

Maps

Macmillan Co.	\$18 85
---------------	---------

Telephone

N. E. Tel. & Tel. Co.	\$32 86
-----------------------	---------

Flags

Mrs. A. L. Farwell	\$2 45	
Joseph Comi	2 00	
Charles Colby	5 00	
	<hr/>	\$9 45

Transportation

H. W. Crosby	\$ 1 00	
Mrs. Ernest Adams	87 00	
B. & M. Railroad	80 00	
	<hr/>	168 00

Repairs

E. C. Brooks	\$108 87
F. E. Cooley	2 00
H. H. Barber P. & H. Co.	228 39
W. L. Winslow	70 35
G. R. Sears	7 40
Wm. Cullinan	3 00
J. A. Twiss	2 25
J. E. Webster	12 50
Nashua Typewriter Co.	2 50
Milford Water Works	7 50
J. A. Mixer	23 90
C. L. Luce, trustee	1 70
E. E. Colburn	43 20
Emerson & Son	11 46
W. H. McKenzie	9 20
F. P. Fisk	1 40
Cassidy Bros.	9 49
G. W. Moore	10 05

C. A. Baker	3 70	
C. M. Wheaton	78 76	
H. A. Shepard	3 12	
A. M. Whittier	6 60	
P. H. Osgood	1 31	
	<hr/>	\$648 65

Insurance

A. L. Keyes	\$119 10	
W. B. Rotch	44 00	
	<hr/>	\$163 10

Janitors

John Reidle	\$250 00	
P. B. Kedall	166 66	
Mrs. Wm. Cullinan	16 50	
W. H. McKenzie	23 13	
E. Dunbar	3 31	
Frank Holland	10 60	
B. I. Smith	5 00	
G. H. Eaton	750 00	
M. A. Foley	40 00	
James Brahaney	1 00	
C. C. Carlton	4 00	
Mrs. M. H. Shannon	5 39	
Mrs. O'Neil	2 97	
Miss O'Neil	4 73	
Mrs. Hatfield	1 64	
M. F. Dickerson	9 00	
H. F. Melendy	4 50	
Charles Gault	72 00	
	<hr/>	\$1,370 43

Building Supplies

H. C. Doughty	\$75 00	
Emerson & Son	42 82	
Kendall & Wilkins	2 42	
Milton Bradley Co.	6 75	
A. P. W. Paper Co.	13 20	
E. E. Babb & Co.	10 00	
	<hr/>	\$150 19

Fuel

C. B. Came	\$914 99	
H. L. Webster	42 75	
E. W. Kakas	14 25	
J. Faustine	19 65	
J. W. Easton	4 50	
F. B. French	37 00	
Haseltine & Caldwell	82 90	
L. M. Adams	11 00	
W. J. McKenzie	39 00	
B. & M. R. R.	43 05	
J. J. Casey	10 03	
D. Whiting & Son	199 74	
A. Caridelli	1 50	
White Mt. Freezer Co.	4 00	
J. T. Young (freight, teaming & tax)	39 20	
	<hr/>	\$1,463 56

Light and Power

Milford Light & Power Co.	\$160 20
---------------------------	----------

Water

Milford Water Works	\$269 18
---------------------	----------

New Buildings

Nashua Building Co., contract	\$6,650 00	
Nashua Building Co., material	476 95	
C. H. Austin, extra wiring	20 00	
Fred Bergami, extra wiring, etc.	66 39	
Milford Cabinets (notes)	3 00	
C. R. Whitcher, plans	166 25	
C. H. Jackman	634 70	
Milford Machine Works	99 14	
	<hr/>	\$8,116 43

New Equipment

McLane Mfg. Co., desk	\$ 15 50
Jas. Beal Co.	58 00
Lynd & Farquah	23 50

J. B. Varick Co.	4 50	
Chandler & Farquah	4 00	
Manchester Hardware Co.	184 95	
F. E. Wells & Sons	142 12	
W. H. Wilkins, desk	12 00	
	<hr/>	\$444 57

Unclassified

F. C. Boutelle, teams	\$37 50	
G. C. Langdell, diplomas	3 00	
M. G. Sanborn, diplomas	7 25	
A. W. Smith, expenses	32 79	
E. M. Parker, Ft. & teaming	12 88	
A. B. Rotch, postage & 'phone	8 05	
C. H. Colby, removing ashes	14 70	
R. P. Currier, expenses	2 05	
McLane Mfg. Co., teaming	25	
Jos. Silver, cutting trees	67 50	
G. H. Eaton, express paid	5 00	
F. H. Clark, Ft. and teaming	9 81	
	<hr/>	\$200 78

Brick School Repairs

Henry deMontigny	\$346 52	
F. M. Reilly	29 12	
J. J. Casey	4 50	
W. H. McKenzie	6 60	
Fred Bergami	22 93	
	<hr/>	\$409 67

Endicott Park

F. M. Reilly, teaming	\$41 33	
R. C. Akerman, teaming	24 00	
	<hr/>	\$65 33

SUMMARY

Income

Appropriation	\$21,125 00
Literary Fund	550 80

Dog Tax	429 00	
State's rebate, Supt's. salary	518 00	
Tuitions	1,603 00	
Miscellaneous	54 82	
Endicott Park balance	364 54	
Endicott Park, from town	65 33	
Appropriation for addition	1,000 00	
Notes issued for addition	7,000 00	
	<hr/>	\$32,710 49
Deduct :		
Endicott Park balance	\$364 54	
Overdraft of 1917	20 00	
Reserved for Osgood well	30 00	
	<hr/>	414 54
Net income for current expenses		<hr/> \$32,295 95

Expenditures

Books	\$ 624 89	
Maps	18 85	
Teachers' salaries	15,077 74	
Superintendent's salary	989 60	
Clerical expense	33 33	
District Officers	310 00	
Telephone	32 86	
Tuition paid	105 00	
Flags	9 45	
Transportation	168 00	
Repairs	648 65	
Insurance	163 10	
Janitors	1,370 43	
Building supplies	150 19	
Fuel	1,463 56	
Light	160 20	
Water	269 18	
New Building & equipment	8,561 00	
Unclassified	200 78	
Scholars' supplies	694 85	
Brick school alterations	409 67	
Endicott Park	65 33	
	<hr/>	\$31,526 66
Balance on hand		\$769 26

FINANCIAL STANDING, Feb. 15, 1918

Liabilities

Unpaid bills	\$1,243 03	
Owed for coal (about)	339 51	
	<hr/>	\$1,582 54

Assets

Tuitions due	\$ 42 00	
Balance cash, Feb. 15	769 26	
	<hr/>	\$811 26
Net deficit of year		<hr/> \$771 28

In addition there are charges for freight on coal which have not yet been presented. The district borrowed 125,090 pounds of soft coal.

Bills Owed Feb. 15, 1918

Milford Light & Power Co., light	\$18 88
Carl Fisher Co., books	4 74
E. M. Stickney, supplies	1 13
Ginn & Co., books	7 20
Wilton School Dist., tuition	105 00
E. E. Babb & Co., supplies	10 24
C. B. Came, fuel	115 33
H. H. Barber, repairs	17 60
J. J. Casey, carting coal	20 00
Trus-Con Laboratories	16 00
D. Whiting & Son, fuel	26 25
G. W. Moore, repairs	3 25
W. L. Winslow, repairs	7 15
A. B. Rotch, postage	5 19
Emerson & Son, supplies	13 63
George Huey, prof. services	28 07
Mrs. E. Adams, transportation	24 00
W. F. Mayne, janitor	12 00
F. E. Cooley, steam fittings	281 81

F. E. Cooley, repairs	137 66	
J. A .Bruce, supplies	3 21	
Haseltine & Caldwell, fuel	36 05	
Henry Ruonalla, transportation	43 00	
G. F. Jewett & Co., supplies	55 40	
Bergami Hardware Co.	60 68	
W. F. French, supplies	189 56	
	<hr/>	\$1,243 03

REPORT OF TREASURER OF SCHOOL DISTRICT

FREDERICK W. SAWYER, Treasurer,
In account with School District of Milford.

Dr.

Balance as per last report	\$ 496 95
Unexpended balance on park acct.	364 54
Amounts received as follows:	
Board of Selectmen, appropriat'ns	22,125 00
Tuitions received	1,569 25
Tuitions received, Summer school	33 75
Serial notes issued for High School extension	7,000 00
Sale of junk	3 50
Sale of lumber and material	2 80
Sale of supplies	1 05
Telephone tolls	3 36
Mechanics Arts	5 57
Rebate water bill	30 54
States of New Hampshire:	
Literary fund	550 80
On account Supt. salary	518 00
Dog licenses	429 00
Work on Endicott Park	65 33
Refund over payment on pay roll	8 00
	\$33,207 44

Cr.

Payments on orders of School Board	\$31,909 42
Balance of cash on hand	933 48
Bal. of Park account unexpended	364 54
	\$33,207 44

Respectfully submitted,

FREDERICK W. SAWYER,
Treasurer.

REPORT OF TRUANT OFFICER

January 31st, 1918.

To the Milford School Board:

I submit the following report of my services as Truant Officer for the year ending January 31st, 1918, and also for the enumeration of the children in the town between the ages of 5 and 16 years.

I find a total of 704, of these 349 are females, and 355 are males. Four children of school age were not attending school.

During the year 44 absentees were reported and their cases investigated, 19 were home sick, 14 were working, 5 had left town, 5 were taken to school from the street, and 1 had wearing apparel unfit for attendance.

I acknowledge the ever ready assistance of the School Committee, Superintendent, and teachers in the performance of my duties during the year.

Respectfully submitted,

JOHN J. MONTEITH,
Truant Officer.

REPORT OF SUPERINTENDENT OF SCHOOLS

To the School Board of Milford:—

I herewith submit my annual report which is the thirteenth since supervision was established. The enrollment one month after school opened this year was 28 less than at the same time last year, owing chiefly to a smaller entering class in grade one. The percent of attendance was better than the year before but the number of tardinesses is larger. Six rooms had an average of more than two tardinesses per pupil. That this is excessive is shown by the fact that most schools have a better record. This is a matter for parents to attend to as well as teachers not only for the reputation of the school but for the much more important purpose of training children in habits of punctuality.

The morning session of the grades was changed to 8.45-11.45 instead of 8.30-11.30 because the noon hour was found to be longer than necessary and 8.30 seemed a little early. The scarcity of fuel compelled us early in February to close the White and Old Brick schools and hold all classes in the High School building on a part time basis. The White School pupils occupy afternoons the same rooms which the upper grades occupy mornings. The two first grade rooms meet in the Assembly Hall mornings and Miss Kieley's and Miss Holmes' rooms meet in the same place afternoons. Mrs. Gault has the old domestic arts room in the basement afternoons. This plan is, of course, not ideal but it is better than closing schools altogether. Both teachers and pupils are cheerfully making the best of an unfortunate situation.

The seats in Miss Tobie's room have been turned to face the west so that the light comes in from the left of the pupils.

This improves the lighting so much that it is now seldom found necessary to use the electric lights.

Summer School

Among the pupils whose work was unsatisfactory last year there were 31 who had failed in only one or

two subjects, chiefly arithmetic. If these should make up their deficiencies by successful summer study, they could attain promotion to the next grade. This would save such pupils a year of school life, prevent overcrowding in some grades, and save the teacher's time and effort. Realizing that some pupils could not employ a tutor and would thus be at a disadvantage as compared with more fortunate pupils, the School Board adopted my suggestion of opening a summer school presenting equal opportunities to all. The school was ably conducted by Miss Ellen Herlihy from July 5 to August 16. A nominal charge of twenty-five cents a week was made for each pupil. Pupils' tuitions amounted to \$35.50. The instructor's salary was \$45 for the six weeks. The balance was paid out of the school funds.

Twenty-four pupils attended. All but two did the required work and were passed to the next grade. Of these, eight were given grammar school diplomas and entered the high school.

The results of the school were not as good, on the whole, as expected. This year's records show that 63 per cent of those pupils who were advanced on account of their summer work are now passing in their studies. About half a dozen are doing distinctly good work. In other words the decisions of the teachers in June about the non-promotion of most of these pupils are shown to have been correct. There was more to be made up than could be accomplished in six weeks. Nevertheless the pupils worked faithfully and the summer session can not be regarded as wasted effort.

High School

The program of studies printed in last year's report has been followed without change. The second year's work in mechanic arts is now being given. The new addition for this department was nearly completed when school opened and the boys put up the inside partitions and arranged benches and machinery. The equipment installed includes two speed lathes, post drills, grinder, two forges and anvils, with the necessary tools, a motor (3 H. P.), which Mr. Goldman very generously presented to the school, and a vise donated by Mr. A. B. Rotch.

For the third year's work there will be needed an engine lathe, planer or shaper, and the tools to accompany these machines. It is a poor time to purchase machinery, but to go on with the work we should have it. By taking advantage of special opportunities we may be able to secure this equipment for \$1000-\$1200.

The cost of all material purchased for the mechanic arts department during the school year 1916-17 was \$138.76. Last June the stock on hand was worth \$24; pupils paid for materials amounting to \$6.46. Therefore the net cost was \$108.30. It is estimated that a sum of \$390. will be required for running expenses for the next school year with three years of high school and two of grade work.

The domestic arts department has been moved into the former manual training room where it has larger, brighter and cleaner quarters. The Women's Club of Milford has presented this department with a curtain to partition off one corner of the room for use as a dining room, where meals are served to guests. The club also gave curtains for the windows and some dishes. This year the High School teacher, Miss White, has taught cooking and sewing to the grades in addition to the work of the High School. The grades (7th and 8th) have had two periods a week instead of one as last year.

The instructors in these two departments have taught other subjects in the High School during the past two years but with the addition of the third and fourth years' work in mechanic and domestic arts they will not be able to do this. Unless we curtail the courses already offered we shall need another teacher in the High School very soon, possibly next year.

The Deputy State Superintendent after his annual inspection last November reported the condition of buildings, grounds, equipment, and records as very satisfactory. He further stated, "The change to a long school day, with two sessions, is a step in the right direction. I found an unusually capable corps of teachers but most of them are decidedly underpaid."

Work of the Schools

We have now practically completed the readjustment

necessary to conform to the new State Program of Studies issued in 1916. This program follows the ever increasing practice in school systems by introducing a Junior High School at the end of the sixth grade. This Junior High School embraces the seventh and eighth grades. Thus the elementary subjects are finished in six years and then a course of studies is provided more adapted to the interests and needs of boys and girls who are entering upon the period of adolescence. Geography, and the fundamentals of Arithmetic are completed at the close of the sixth grade but, of course, the knowledge acquired in these subjects is by no means dropped but is constantly reviewed in the regular work. A foreign language may be begun in grade seven; practical arts subjects are also given.

Another advantage of the reorganization of our school system into a period of six years for elementary instruction and six for high school is that it abolishes the previous break between the grammar school graduation and freshman year in high school. Many pupils were lost in this chasm. Few pupils are old enough to leave school at the end of grade six; therefore they will have a chance to start a type of work more intimately connected with the future work of life which is offered in a modern high school. Once a pupil is in the high school and becomes acquainted with its purposes and methods the more likely he is to remain. There will be no break anywhere between grades one and twelve.

Conditions are very favorable for starting this reorganization in Milford. The seventh and eighth grades are in the same building with the High School; we already have manual training and domestic arts in grades seven and eight; we have just introduced the study of general science (a study assigned to the Junior High School) which acquaints the pupils with the elementary facts of physics, chemistry, astronomy, and meteorology; and the necessary readjustments in our school work have, as I have said, been made.

Provision for Retarded Pupils

There are in all school systems many pupils who are misfits in the grades where they find themselves. They

are more or less of a hindrance to the instruction of normally developed children and they profit very little themselves from the regular school work presented to them. They are usually distinguished by a listless attitude, hopeless expression, oversize, and often a rebellious spirit. These pupils are, of course, over age, or retarded. The standard commonly agreed upon is that which rates as "above normal age" all children in the first grade who are eight years or older, those in the second who are nine or older, and so on for the following grades. Children are in this class because of late entrance, slow progress, or both. If a child is over age because of late entrance society is responsible probably, because of regulations postponing his entrance to the first grade until he reached a certain age. (New Hampshire law does not require a child to attend school until he is eight.). If he is over age because of slow progress, the school must account for it, although no blame necessarily is attached. The following table shows the number and percent of over age pupils in the grades in January, 1918, and distributes them in three groups according to the reason.

Grade	Number of pupils in grade	Above normal age	Late entrance	Slow progress	Late entrance and slow progress	No records available
1	75	5	4	1		
2	83	4	2	1		1
3	64	8	3	3	2	
4	83	14	6	7	1	
5	82	16	6	8	1	1
6	64	10	1	8	1	
7	69	15	2	11	1	1
8	49	11	3	4		4
	—	—	—	—	—	—
	569	83	27	43	6	7

In the average city where such a study has been made it is found that one-third of the entire school membership is above normal age. The Milford percent ($14\frac{1}{2}$) is therefore below the average.

The number of overage pupils who have difficulty with their work increases through the grades up to the eighth. This is due to the increasing difficulty of the subjects of instruction, causing more pupils to repeat a year's work, and to the fact that pupils who have laid incomplete foundations in the lower grades find it impossible to erect the superstructure in the upper grades. The abrupt falling off of over age pupils in the eighth grade is due to the fact that these pupils reach the age of 16, at which time they can legally leave school.

Of the 43 pupils over age because of slow progress 17 are now doing passable work in their present grades. Therefore the teachers have brought these up to standard. The remaining 26 are not able for one reason or another to derive much benefit from the time they are compelled by law to attend school. They may be mentally deficient or in poor health or otherwise misfits. Evidently we are not doing our duty by them because we require them to come to school and then feed them things for which they have no taste and thus produce mental indigestion, whereas, a special diet is necessary. In other words not only justice but decided benefit would result from putting these pupils in a room where they can have appropriate instruction by a special teacher. Often these pupils can with special attention make up deficiencies and be returned to their regular grades.

A room can be provided by putting a partition through the middle of Mrs. Gault's room at the Old Brick School. The present room is too large as it is difficult to see blackboard across the room. I recommend that this alteration be made and a special teacher engaged as soon as it is financially possible.

Change in Supervisory District

Last July this supervisory district was enlarged by the addition of Mont Vernon, so that it now comprises four towns, Milford, Amherst, Hollis and Mont Vernon. This is, according to the last report of the State Superintendent, the largest union district (outside of cities) in the state. It has become necessary to have assistance in transacting the clerical and administrative work of the office and I was fortunately able to secure the services

of Mrs. Ellen Gunnison. She has had charge of correspondence, records, state and government reports, preparation and distribution of notices and supplies, the ordering of books and supplies and keeping accounts thereof, and substitute teachers. It is a further advantage to have a competent person in the office at all times to attend to the business of those who call. All this work has been so efficiently done that it has been possible to attend to more business and accomplish better results than would have been possible for one person acting alone.

With the completion of the drawing-room in the addition and the removal thither of drawing classes a room was made available for use as an office for the Superintendent. The commercial department was moved upstairs to the former drawing-room and the typewriter room converted into an office. There is now a real superintendent's office, large enough, well equipped, with a complete set of records, and someone on duty all the time school is in session. An extension telephone has recently been installed, saving the time and effort wasted in frequent trips to the headmaster's office.

Medical Inspection

Laws of 1917, chapter 14, section 1: "The school board of every city, union, special or town school district, shall hereafter cause to be inserted in the warrant for the annual meeting of said district an article relating to the adoption of the provisions of chapter 83 of the Laws of 1913, providing for the medical inspection of schools, unless said district has already adopted the provisions of said chapter."

In any town which adopts medical inspection the School Board appoints one or more physicians of not less than five years' experience who shall at least once a year examine every pupil and teacher and inspect the grounds and buildings. If any defects are found in a pupil, notice is sent to the parent or guardian, who is supposed to have the child treated by his regular physician. The school physician does not supplant the regular family doctor. He merely notifies parents of defects which he observes: further action then rests with the

parent. If a parent or guardian protests in writing against the examination of his or her child, such child will not be examined by the school physician unless afflicted with a contagious disease.

The physical condition of each child is recorded, after the annual examination, on blank forms prepared by the State. Therefore at each examination it can readily be seen whether defects indicated by the previous examination have been remedied or allowed to grow worse. These records are accessible to proper persons at any time so that parents can have accurate information about the physical development of their children precisely as they receive information on report cards about the mental development. The examination by the school physician often reveals troubles which are either unknown or mildly suspected and accordingly neglected. It is far better to attend to defects in their incipient stages when a cure is surer, easier, and quicker. Very often a child's slow progress in his lessons is due to some physical ailment. The regular medical inspection discovers these cases and points out the remedy. The annual examination includes tests of sight and hearing.

Everyone interested in the welfare of children will readily appreciate the value of a system of thorough medical inspection. The expense is not large and is not to be considered in comparison to the benefits to the pupils. Until an agreement is actually made with some physicians it is difficult to state the expense definitely but I recommend that a sum of three hundred dollars be appropriated to carry out the provisions of the medical inspection act if the voters accept it.

School Bank

There are 320 depositors in the School Bank. We have \$378.99 (Feb. 1, 1918) on deposit in the Granite Savings Bank and have \$100 invested in a Liberty Bond. The bank pays $3\frac{1}{2}$ per cent and the bond 4 per cent. The interest from the bank is paid annually in January and amounts this year to \$14.60. The interest on the bond is, of course, paid semi-annually. All interest which we receive is divided among the depositors according to the amount of their deposits and the time these amounts have been on deposit in the School Bank.

Employment Certificates

Since my last report I have issued 38 employment certificates making a total of 190 issued since the system started. The State Inspector on both his trips last year not only approved the records but reported that he found only one case of a child illegally employed without a certificate. All trouble could be avoided if all pupils between the ages of 14 and 16 who intend to work would consult the superintendent. Any attempt to evade the school attendance law has been vigorously prosecuted with the effective assistance of the truant officer, J. J. Monteith.

New Salary Schedule for Teachers

In my last report I urged an increase in the teachers' salaries on account of the greatly increased cost of living. I recently submitted to the School Board a new salary schedule which, with some alterations, was adopted at the last meeting of the Board, to go into effect April 1, providing the voters of the district are willing to appropriate enough money to put it in operation. I would call attention to the following points about this schedule:

1. All teachers start at a salary which gives us a reasonable chance of securing good teachers with training or experience.

2. Increases are granted grade teachers for the second, third, and fifth years, offering an inducement for teachers to remain. The present schedule offers no increases to grade teachers until the sixth year. The maximum salary of the High School Headmaster is raised to \$1600; assistants have a \$50 increase yearly up to and including the fifth year.

3. Grade teachers' salaries are rated on a weekly basis making the accounting simpler and facilitating adjustments in salaries of teachers who serve only part of a year. This makes the unit for annual increase \$36.

4. Teachers below the High School are divided into four groups as regards salary.

5. The value of experienced teachers is recognized by starting such teachers on the second year's salary for 1-5 years experience and on the third year's salary for more than five years' of experience.

6. Teachers must be trained or experienced. High School teachers must be college graduates or otherwise specially prepared for their work.

This schedule, with the present corps of teachers, will require about \$2500 more a year than the present one. The town is fortunate in having an unusually capable corps of teachers and they should surely receive compensation worthy of their faithful and efficient service.

PROPOSED SALARY SCHEDULE FOR TEACHERS

HIGH SCHOOL

	1st yr	2nd yr	3rd yr	4th yr	5th yr
Headmaster	\$1400	\$1500	\$1600		
Assistants	\$600	\$650	\$700	\$750	\$800

This schedule does not apply to special teachers.

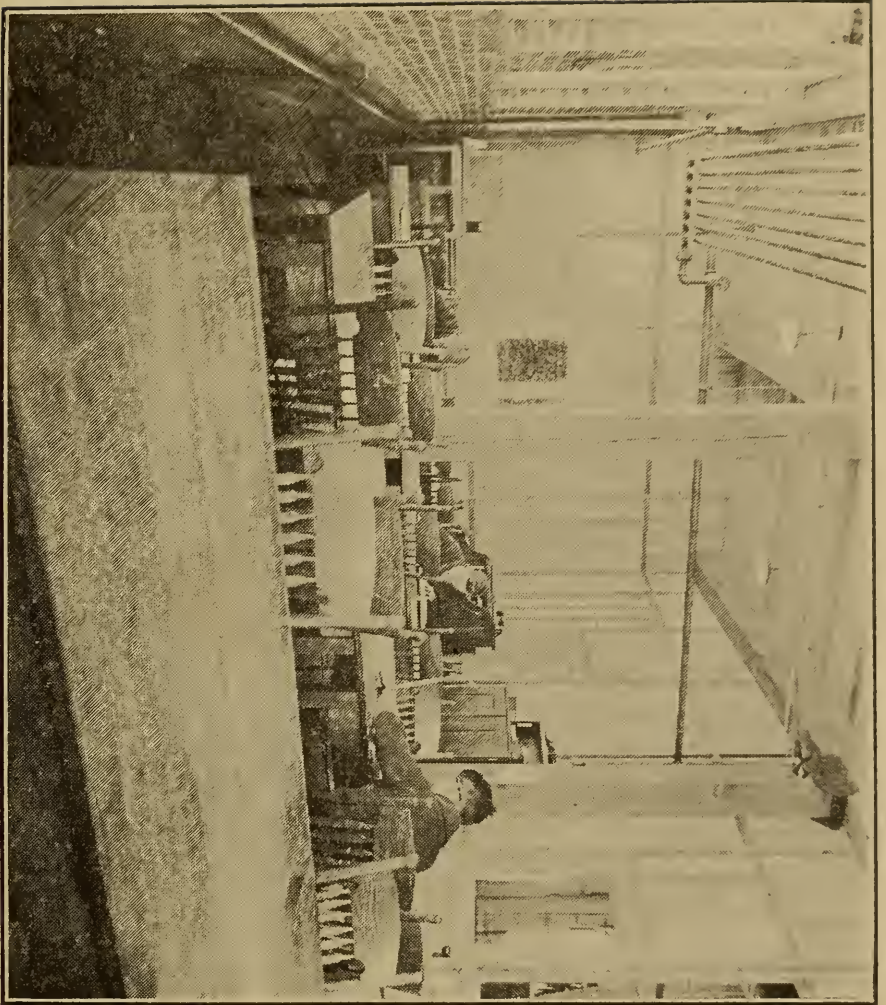
GRADE TEACHERS

	1st yr	2nd yr	3rd yr	5th yr	10th yr
Grades 1, 2, 3	\$432	\$468	\$504	\$540	\$576
Grades 4, 5, 6	\$468	\$504	\$540	\$576	\$612
Grades 7 & 8	\$504	\$540	\$576	\$612	\$648
Rural Schools	\$432	\$450	\$468		

Teachers with 1 to 5 years' experience will start on the 2nd year's salary. Those with more than five years' experience will start on the 3rd year's salary.

War Work of Pupils

The pupils in all grades have been serving their country by doing Red Cross work. Their patriotism is not expressed wholly in flag salutes, songs, and recitations (although we have those) but finds a practical expression in the production of articles needed by the soldiers and sailors. The last part of the session on Friday afternoons is devoted to this work. Pupils also work before school and at recess. The primary grades do snipping and knitting, the fourth grade is making picture puzzles and dominoes and the fifth and sixth make a specialty of checkerboards. The other articles are made by pupils in different grades: 82 comfort pillows, 12 handkerchiefs, 2 linen squares (bundles of 40), 5



DRAFTING ROOM IN NEW ADDITION

knitted wash cloths, 2 pairs wristers 3 tray cloths, 12 napkins, 29 strings of gunwipes (25 in a string), 10 crutch pads, 74 domino sets, 117 checker boards and checkers, 3 afghans, 74 picture puzzles.

The Red Cross work in the schools is carried on under the direction of a committee appointed by the Executive Committee of the local chapter of the Red Cross. It consists of Mrs. Gunnison, chairman, Miss White, Mrs. Trumbull, and Mrs. Gault.

I am glad to have this opportunity of expressing the pleasure and satisfaction which my work in Milford gives me and my appreciation of the unfailing support of the School Board and of all who are interested in our schools. I wish especially to thank the Parent-Teachers Association for its interest and cooperation in promoting the welfare of the schools.

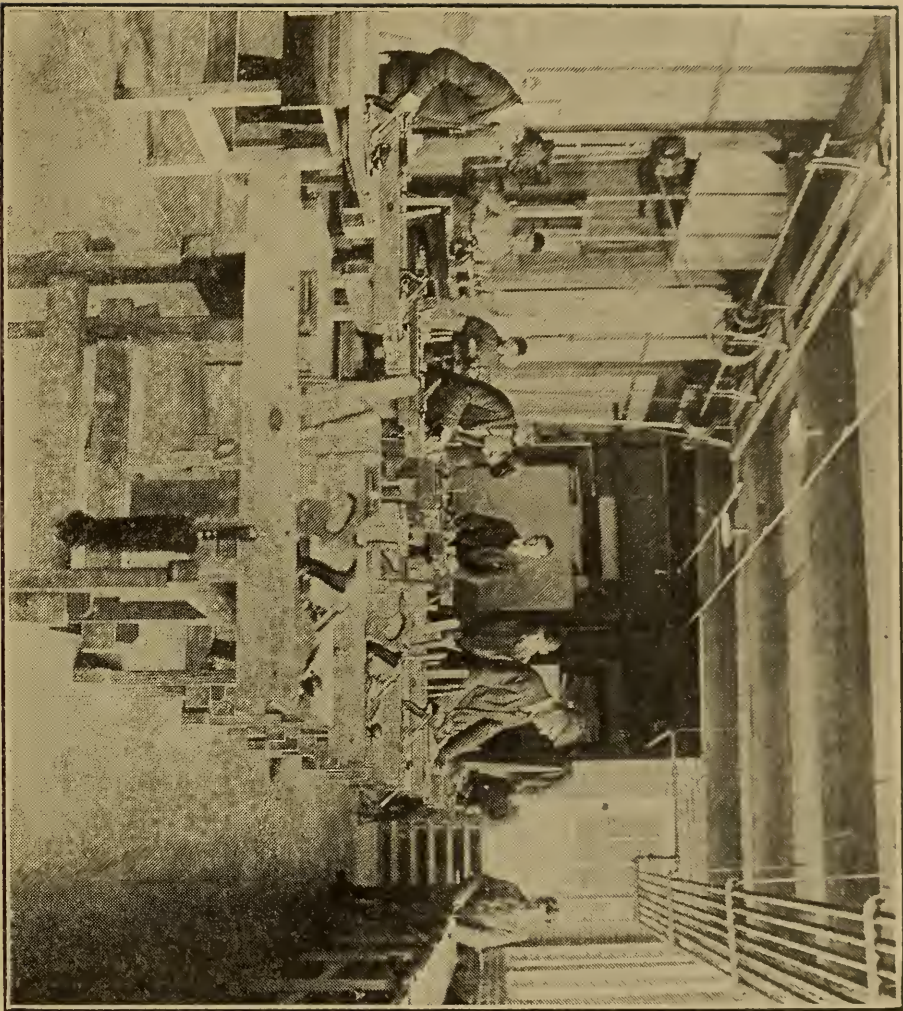
Respectfully submitted,
ALFRED W. SMITH.

Table of Attendance for School Year 1917-18

School	Whole No. of pupils registered			Av. Attendance	Av. Absence	Av. Membership	P. C. Attendance	No. Tardinesses
		Boys	Girls					
High School	166	72	94	147.00	2.86	149.86	98.00	172
Miss Knight	41	27	14	35.78	.71	36.49	98.00	52
Mrs. Lilly	36	20	16	32.90	1.10	34.00	96.76	44
Miss Tobie	46	29	17	37.69	1.32	39.01	96.62	88
Miss Ricker	40	24	16	33.90	1.10	35.00	96.80	93
Mrs. Trumbull	40	15	25	38.80	1.02	39.82	97.40	13
Miss Calnan	35	17	18	30.84	1.59	32.40	95.00	28
Miss Sandlun	41	17	24	36.97	1.69	38.66	95.60	40
Miss McHugh	44	25	19	38.84	1.06	39.90	97.32	36
Mrs. Gault	45	16	29	40.20	1.73	41.93	95.87	54
Mrs. Wiley	41	26	15	36.18	1.80	37.98	95.10	185
Miss Keiley	44	23	21	38.10	2.00	40.10	95.01	34
Miss Pettee	34	19	15	31.03	1.40	32.43	95.65	14
Mrs. Manning	30	17	13	28.22	1.24	29.40	95.62	27
Osgood	30	22	8	32.50	5.50	38.01	85.00	62
Laurel	24	14	10	23.50	.40	23.90	98.00	144
North	20	10	10	16.30	1.70	18.00	90.00	123
Pine Valley	25	11	14	19.36	1.42	20.78	93.16	50
Federal Hill	18	10	8	16.09	.83	16.92	95.06	28
	800	414	386	714.20	30.86	745.00	95.8	1287

Enrollment by Schools and Grades, February 1, 1918

Grade	1	2	3	4	5	6	7	8	9	10	11	12	T'l
High School									47	44	30	28	149
Ralph P. Currier													
Sara A. White													
Grace Darling													
Amelia Bilotti													
Belle Twombly													
Katherine A. Blanchard													
Anna M. Rouke													
Roy Kimball													
Francis H. Webster								32					32
Clementine E. Lilly							19	14					33
Minnie M. Tobie							44						44
Hariette Ricker					36								36
Ina M. Needham					22	17							39
Clara M., Trumbull					40								40
Ruth N. Sandlun				37									37
Helen F. French				37									37
Elizabeth B. Gault			33										33
Blanche Holmes		27	11										38
Eleanor M. Kieley		38											38
Mary A. Pettee	28												28
Effie P. Manning	25												25
Osgood	1	4	4	4	5	6	5	3					32
Anna Kittredge													
Caroline Felli													
North	5	2	2		4	2	2						17
Edna Vernon													
Laurel	12	5	8										25
Edith Hutchinson													
Pine Valley	4	4	4	3	5								20
May F. Dickerson													
Federal Hill	1	6	6	2	4		1						20
Eveline S. Marsh													
	76	86	68	83	80	61	71	49	47	44	30	28	723



WOODWORKING ROOM AT HIGH SCHOOL

REPORT OF THE HEAD MASTER OF THE HIGH SCHOOL

Mr. A. W. Smith, Supt. of Schools:—

Herewith, I submit my second annual report as head-master of the Milford High School.

The total number of pupils this year, 155, consisting of 74 boys and 81 girls, is enrolled by classes as follows: seniors 30, juniors 28, sophomores 47, and freshmen 49. The enrollment for last year was 166. This loss of 11 represents the excess of last year's entering class over this year's. The cause for this falling off in numbers is due largely to the fact that several families have moved from town, the percentage of those leaving school to go to work remaining about the same as in previous years. Still it is to be regretted that there are any pupils in these days of higher education who are deprived of the opportunity of receiving at least a high school education.

The number of tuition pupils, likewise, shows a slight diminution over that of last year. Greenfield still maintains the lead with 7, while the number of pupils enrolled from the other towns is as follows: Lyndeboro 6, Mont Vernon 5, Bennington 3, Hancock 1, Amherst 1, and Bedford 1. Following is a tabular statement showing the enrollment by classes in the different curricular offered by the school. It should be noted that the general course is no longer given.

	Seniors	Juniors	Soph.	Fresh.	Total
Academic	18	15	13	8	54
Commercial	9	10	13	9	41
Mechanic Arts	0	0	10	21	31
Domestic Arts	0	0	11	11	22
General	3	0	0	0	3
Special	0	4	0	0	4

A careful analysis of the above tabulation yields important facts. Perhaps the most striking of these is the constantly increasing importance of the practical arts courses in our school. While the academic depart-

ment still heads the list in total enrollment for the four years, yet this leadership is more apparent than real, for a true comparison can be obtained only by taking the figures for the first two years in which all courses are offered. With this as a basis the percentages are as follows: Mechanic Arts 32.3 per cent, Domestic Arts 22.9 per cent, Commercial 22.9 per cent, and Academic 21.9 per cent. This makes a combined total for the Practical Arts Courses of 78.1 per cent as opposed to 21.9 per cent for the Academic Course. These percentages are indicative of the probable number that will be enrolled in the different curricula during the next few years and the proportionate expenditure which should be made for each. However, the fact that this year's entering class has enrolled in it twice as many boys as girls, a most unusual circumstance, makes these percentages not quite normal. I should expect a reduction in the figures for the Mechanical Arts department with a corresponding increase in those for the Academic department. Of course the number electing Latin will vary from year to year in proportion to the college element represented, although the fact should not be lost sight of that there is an increasing disposition on the part of colleges to accept the credentials of pupils who have pursued curricula other than the strictly college preparatory. This is a healthy sign and will do more than anything else to insure the proper selection of curricula by pupils on entering high school. The fact that the majority of failures and consequent dropping out of school are furnished by students of Latin is sufficient proof that pupils often elect the Latin when another curricula would have better suited their needs. No longer can it be considered that the grammar school is primarily a preparation for high school and high school a preparation for college. It is now generally conceded that the goal of each is efficiency and service and that the work of each should be so interwoven with the work of the other that there is no break in promotion and that no matter where a pupil drops out of the educational system he will receive the most benefit possible from the time and effort he has devoted to the acquisition of knowledge. It is in furtherance of such a plan as this that the extension of the Junior High

School principle is proposed for our schools in Milford.

The new departure this year of adopting the longer school day with the consequent lengthening of each period, the time of which is evenly divided between recitation and supervised study seems to be achieving the results hoped for it. Under the old system of short recitation period and unsupervised study in the assembly hall neither time nor opportunity was afforded the teacher to "direct the study" of the pupil. He was simply told to study or prepare the assigned lessons, little or no conscious effort being made to direct such study. Now the teacher is actively engaged in teaching the pupil "how to study." She can see that the steps in the students' thinking are logical, criticize errors, and arouse enthusiasm, while the student on his part can ask for assistance at the point where he finds himself floundering. The pupils are generally agreed that they learn more during the supervised study period than during the recitation period. While it is still early to pass final judgment on the new system, its operation, where it has had the best try out, appears to have achieved the following tangible results: it has lessened materially the time spent on home study; it has decreased the number of failures and has raised the general scholarship average of the whole school. It should be said in passing that the lengthened school day and supervised study are not dependent on the two session arrangement, the advantages of which should be decided on its own merits. Thus far the two session plan has not inconvenienced very many in as much as a special dismissal is granted those who work afternoons. However, to insure a economical expenditure of time, especially during the war, I should suggest a session from 8.15 to 2.30 with 25 minutes for luncheon to be prepared and served by the domestic science class. I believe this would be of distinct educational value to them, the greatest good usually resulting from having a purposeful motive for work or study.

Perhaps the thing which overshadows all else at the present time is the necessity for increased food production during the coming summer among the boys and girls of the high school as well as those of the grades. Every boy this year and I do not know but every girl,

should plan to have not only a summer garden, but also to raise enough winter vegetables at least for use in his own family and as much more as he has time for. Girls too should be especially active in canning this year. Parents can assist greatly by encouraging this movement in every way possible, for without their cooperation the efforts of the school authorities would be of little avail. Last summer the organized projects of the boys of the high school in the potato and bean clubs were very successful, but nothing could have been accomplished had not the Board of Trade very generously come forward with the money to finance the undertaking. In the same way it will be the duty of parents during the coming summer to finance if necessary the agricultural projects of the boys and girls. The return in money may not be very great, but it is a patriotic duty we owe our country in this, which will probably be the most critical year of the war, to produce all we can. However, the money return should not be entirely lost sight of as one of the boys in the potato club last summer made as high as \$70 and the work was a side-line and not his regular job. Others, with but one-fourth acre planted realized nearly \$50 from their summer's work.

The work of the Commercial department under the capable direction of Miss Bilotti, I feel is more effective and thorough than last year. What was formerly the drawing room on the third floor is now occupied by this department. The room is ideally arranged for the book-keeping desks and the typewriters and the compactness and isolation thus secured assists materially in the work. It is the aim of the department to turn out stenographers who are actually proficient and capable of starting work immediately after their graduation, unless they prefer to attend a business college. This year it has been our policy to have the girls get as much practical experience as possible by letting them go out to work for various business concerns in the town. This plan has worked well thus far and I trust to the mutual advantage of both parties concerned. I appreciate this cooperation on the part of the business men to help train our girls and I solicit the aid of any others who may need part time services of girls, either in stenogra-

phy or bookkeeping. They can thus assist us materially in turning out trained workers.

The work in the practical arts courses has been greatly extended this year. The new building erected during the past summer to accommodate the work in the mechanic arts classes furnishes the department with one of the best equipped buildings of its kind in the state. No little credit is due Mr. Kimball for the careful planning of the interior of the building and the supervision of its construction by the boys of the freshman class. Much of the work of this class thus far has consisted in putting up the partitions between the rooms, hanging doors, making window casings, constructing shelves, cupboards, a tool room, etc. The drafting room is very well located at the end of the building having much window exposure, thus affording plenty of light. The second year class has been occupied largely with work at the forges and lathes and assisting in getting the machinery in operation. It should be noted that the work in this department might have been seriously handicapped had not Mr. M. A. Goldman come forward with the gift of a three horse power motor to run the machinery. Next year the building will be further equipped by purchasing an engine lathe and a planer or shaper and the accompanying tools for the work in the machine shop.

The quarters of the domestic arts classes have likewise been made more commodious. What was originally the manual training room has been turned over to the girls for a kitchen and the increased floor space thus afforded is greatly facilitating the work in this department. Recently the Milford Woman's Club voted to present not only curtains to partition off a dining room, but also curtains for the windows and a further supply of dishes. This generous gift affords the girls a complete suite of rooms in which to pursue their studies in household arts. The town has been very fortunate in having as capable a woman as Miss White for the department. She has built a foundation which should insure its success in the future.

The work in French is being very ably conducted this year by Miss Anna Rouke, a greater interest being

shown in the courses this year than for some time past. Miss Belle Twombly, who has taken Miss Fessenden's place as Principal's assistant and head of the English Department, is a teacher of experience and a strong asset to the teaching corps. While deprecating the unfortunate absence for the major part of the year of Miss Howison, whose history classes were very successful, we are fortunate in securing as a substitute, a woman of such broad training and sterling worth as Miss Grace Darling. There is also a change this year in the department of Latin, Miss Catherine Blanchard succeeding Miss Jones. Miss Blanchard also teaches Chemistry. She is exceedingly well trained in both subjects.

I cannot let the opportunity pass to appeal to the parents of children now in high school and of those who are to enter next fall, to make every needed sacrifice to keep their children in school as long as possible. Never in the history of the world has there been such a drain on the skilled and trained manhood not only of Europe but of our own country, although the sacrifices it is to make are just beginning. It is the boys and girls in our schools today who must make good this loss. They will be the men and women of tomorrow upon whose shoulders must rest the responsibility of rearing upon the ruins of a depleted and chaotic world a structure industrially, politically, and morally sound. We cannot supply these trained young men and women unless they remain in high school and in so far as possible continue their education to schools of higher learning. Accordingly every encouragement should be given and sacrifice made to have them continue in school.

Perhaps it would be of interest to record some of the organized patriotic activities of the school during the year. Besides the splendid work done last summer by the boys in increasing food production and by the girls in canning, a club of high school girls, known as the "Liberty Girls" has been formed for the purpose of assisting in the war work. Last fall the Athletic Association with the gratuitous assistance of Rev. H. E. Lennon as lecturer gave an entertainment, the proceeds of which went toward the payment of a Liberty bond. The annual high school concert likewise was given as a Red

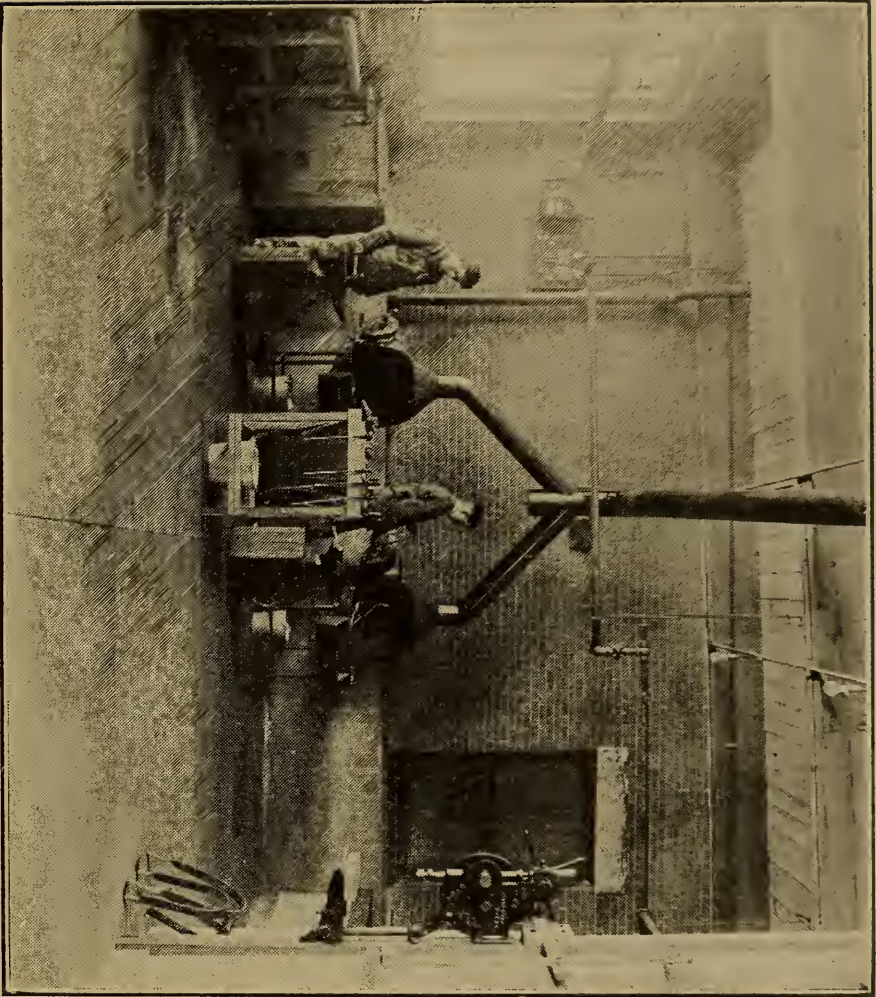
Cross benefit. The Senior class also is reflecting the spirit of the times by doing its share to help win the war. In the fall a Liberty Bond was purchased and the money realized from the annual senior play, to be given early in April, will be devoted to Red Cross work. Mention should also be made of the fact that 18 boys have pledged themselves to earn and give \$10 apiece to the "Red Triangle" work; over \$50 of this amount has already been subscribed.

Again General F. E. Kaley has come forward with his generous gift to defray the expenses of the Kaley Speaking Contest.

With the expression of appreciation for the hearty support accorded me by teachers, superintendent and school committee to the administration of the high school, I close my report.

Respectfully submitted,

R. P. CURRIER.



A CORNER OF THE NEW FORGE ROOM

REPORT OF SUPERVISOR OF MUSIC

Mr. A. W. Smith, Supt. of School:—

In accordance with your request, the Department of Music submits the following report for the fiscal year just closing:

With our nation at war, it is interesting to note what an important part music plays in the lives of our men at the front, in cantonments and other training camps. We are informed that singing and instrumental music constitute one of the main features of their lives when off duty—also on the marches and hikes.

That being the case, we recognize once more, how important is our work, as we endeavor, year by year, to foster the children's natural love of song, and to develop a greater appreciation of the best in music.

Music is a subject that grips the hearts and minds of us all, and occupies a larger place in our lives than is often realized. A few minutes of singing in any grade, under a competent leader, stimulates the children and helps wonderfully in brightening up a session.

From the first grade up, intelligent singing is our first consideration. Careful attention is given to the technical side of the subject, so that the pupils early comprehend the construction of the songs they use.

While there are undoubtedly many men in the service today, with very little knowledge of music, yet there are thousands who can now put to excellent use, the ability gained through just such instruction as we are giving our children in school.

That this steady, consistent work is producing good results was demonstrated once more by the Eighth grade and High School at their graduation last June, and by the High School in their May concert. On the latter occasion, a fine program of miscellaneous numbers was sung by the school, aided by two excellent soloists, Mrs. Florette Tessier Desparios, Soprano, and Mrs. Johan Smith Colburn, Contralto—a concert worthy of the High School and a credit to the town. If conditions permit, we shall have a similar concert early this Spring, as

such affairs are a stimulus and incentive to work, as well as being interesting and enjoyable to our citizens, who take just pride in the achievements of our school.

The High School pupils were tested and classified as in previous years—those unable to sing for one cause or another being excused either permanently or temporarily as the case demanded.

No note-worthy changes in the course of study have been made. We are somewhat handicapped, as you know, in some grades, by lack of time, etc., but we are progressing nevertheless.

I want to express my appreciation of your help and the cooperation of the school board and teachers.

Respectfully submitted,

CLARENCE A. WOODBURY.

Supervisor.

Milford, N. H., Feb. 19, 1918.

MILFORD FREE LIBRARY

ANNUAL REPORT OF THE TRUSTEES FOR THE YEAR ENDING 1918

On the evening of March 27 the Trustees met and organized as follows:

W. F. French,	President
George A. Worcester,	Secretary
Helen M. Webster,	Treasurer
Annabell Secombe,	Librarian

Charles A. Langdell,
Ella M. Powers,
Bertha Sawyer,
Library Committee

Harriet A. Hutchinson,
F. W. Barnes
Finance Committee

The year has not been an eventful one so far as the circulation of books is concerned but eventful as to our part, in a small way, in the world's great war. Following the custom adopted by libraries throughout the country, we solicited from the public books and magazines and delivered them to the proper authorities to be placed among our soldier boys in the great cantonments. But this plan was not found to be wholly satisfactory because of the disposition of many people, with good intentions, to thrust upon our boys old and worthless books of little interest to the youth of today. The government, seeing the result, developed a better plan by inviting all library committees to cooperate in soliciting funds to build libraries and equip them suitably in all the great cantonments of the nation and in our military organization abroad. This plan met with

hearty approval throughout the Union. We assumed our part in this great undertaking to raise one million dollars. The trustees, assisted by several of our patriotic citizens consisting of a committee of twenty, canvassed the town and secured two hundred dollars which was our part allotted by the officers of the national organization. The ready response met by the people of this town was deeply appreciated.

The continued growth of our library and the diminishing capacity of our stack room still affords a great problem for the trustees. Frequent attempts have been made by our librarian to improve the conditions in this respect by rearranging the books and the furniture, but thus far no satisfactory results have been obtained. Not until more room is secured will it be possible to grant to the children and adults the much better service given by thousands of libraries of less patronage in our country today.

At our last annual town meeting, a resolution was adopted whereby the moderator was authorized to appoint a committee of five to investigate the conditions of the library relating to more room. This committee has conferred with the trustees and we hope they have formulated a plan which will meet with the approval of our citizens.

To maintain our present efficiency for the year the sum of \$1700 should be appropriated.

WILLIAM F. FRENCH,
 WILLIAM B. ROTCH
 G. A. WORCESTER,
 CHARLES A. LANGDELL,
 ELLA M. POWERS,
 BERTHA M. SAWYER,
 FRED W. BARNES,
 HARRIET A. HUTCHINSON,
 HELEN M. WEBSTER,
 EMORY D. HEALD,
 BENJ. F. PRESCOTT,

Trustees,

REPORT OF LIBRARIAN

To the Trustees of the Milford Free Library:

The report showing the work of the library for the year ending January 31, 1918, is herewith presented.

The library has been open 291 days; the circulation has been 35,867, and an average circulation of 123.

The decrease in our circulation from the banner circulation of last year is due partly to the fact that this year's work closes January 31, thereby losing a circulation of from 1,500 to 2,000. Then the conditions arising from the war have affected the library. There has been a notable decrease in fiction reading, over four thousand books of fiction less than last year, and an increase in reading of history, principally books of the war.

We have felt our cramped conditions most acutely in the children's department this year. We have a good collection of juvenile books for a small place. There are 1,455 books in that department, nearly all live books, and it is very unfortunate that there is not a suitable room, where these books could be used to better advantage than is possible at present. Milford strives to be very progressive; but she falls behind in the accommodations she furnishes her library. We have outgrown those provided twenty-six years ago, and our constant hope is that the people of Milford will soon awake to this fact, and do something. I have laid special stress on the conditions in the children's department, but that does not mean it is any easier to find room for our increasing stock of books, or to endure the other inconveniences.

Through the efforts of a committee of your board and a few others the library was able to raise and send in its proportion, \$200, of the fund for camp libraries. Also there has been sent, through the library for the camp libraries, three boxes containing about a hundred bound volumes, besides a number of the current magazines. There will soon be another request for books, up-to-date, not old, worthless books. We hope we shall be able to do our part by sending a generous contribution.

Respectfully submitted,
ANNABELL C. SECOMBE.

ANNUAL REPORT OF MILFORD FREE LIBRARY
For Year Ending January 31, 1918

Milford population 1910 census	3,939
Number of days open during year	291
Hours open each week for lending	54
Hours open each week for reading	54
Number of volumes at beginning of year: Adult 11,545, Juvenile 1,373, Total	12,918
Number of volumes added during the year by purchase: Adult 218, Juvenile 180, Total	398
Number of volumes added during the year by gift: Adult 24, Juvenile 2, Total	26
Number of volumes added during the year by binding: Adult 36, Juvenile 4, Total	40
Number of books lost or withdrawn during the year: Adult 74, Juvenile 104, Total	178
Number of volumes at end of the year: Adult 11,749, Juvenile 1,455, Total	13,204
Number of pamphlets at beginning of the year	2,865
Number of pamphlets added during year	66
Number of pamphlets withdrawn during year	0
Number of pamphlets at end of the year	2,931
Number of volumes of fiction lent for home use	24,177
Total number of volumes lent for home use	35,867
Number of borrowers registered during the year	163
Total number of registered borrowers	2,666
Number of newspapers and periodicals current- ly received	67
Number of persons using library for reading and study	9,096

NUMBER AND CLASS OF BOOKS USED

Class	Number	Per Cent
General works, including magazines	3,251	9.10
Philosophy	36	.10
Religion	311	.87
Sociology	1,235	3.44
Philosophy	21	.06
Natural Science	422	1.20
Useful Arts	466	1.30
Fine Arts	245	.68
Fiction	24,177	67.30
Literature	2,275	6.34
Geography and Travels	1,436	4.00
Biography	756	2.11
History	1,236	3.50
	<hr/>	<hr/>
	35,867	100.00

CONTRIBUTORS TO READING ROOM

Barber H. H.	1	periodical
Christian Science Church	1	"
Foster, M. F.	5	"
French, W. F.	1	"
International Correspondence School	1	"
Luce, C. L.	1	"
McCrillis, Mrs. Sarah	1	"
Milford Chapter D. A. R.	1	"
Nashua Telegraph Company	1	"
New Hampshire Anti-Saloon League	1	"
Rotch, W. B.	1	"
Seaverns, George B.	1	"
Stickney, Ernest	1	"
Whitehead, W. E.	1	"
Winslow, Miss C.	1	"

GIFTS TO THE LIBRARY

Adams, Chauncey	2	bound	volumes
Carnegie Endowment of International Peace	1	"	"
Fisher, Mrs. Jennie	2	"	"
Fletcher, Miss Lucy	2	"	"
Foster, Mrs. Hannah E.	1	"	"
Lilly, Mrs. C. E.	1	"	"
Locke, Mrs. Emma	1	"	"
Paine, Eugenie	1	"	"
Pettee, C. H.	1	"	"
State of New Hampshire	10	"	"
United States	3	"	"
Brown University		1	pamphlet
Dartmouth College		1	"
New Hampshire College		1	"
Wentworth Institute		1	"
Concord Library		1	"
Derry Library		1	"
Nashua Library		1	"
Peterborough Library		1	"
Providence Library		1	"
Rochester Library		1	"
Weymouth (Mass.) Library		1	"
Wilton Library		J	"

LIST OF PERIODICALS IN READING ROOM AND
IN CIRCULATION

- | | |
|----------------------------------|-------------------------------------|
| Ambition | Life |
| American Boy | Literary Digest |
| American City | Little Folks |
| American Forestry | McCall's Magazine |
| American Magazine | Manchester Union |
| Atlantic Monthly | Milford Cabinet |
| Bird Lore | Missionary Review |
| Boston Herald | Motor |
| Boy Life | Munsey |
| Building Age | Nashua Telegraph |
| Century | National Geographic Mag-
azine |
| Christian Register | New Hampshire Issue |
| Christian Science Journal | North American Review |
| Christian Science Monitor | Official Bulletin |
| Christian Science Herald | Outlook |
| Cotton | Outing |
| Country Gentleman | Pictorial Review |
| Craftsman | Popular Mechanics |
| Current History | Photo Era |
| D. A. R. Magazine | Railroad Trainman |
| Delineator | Red Cross Magazine |
| Educational Review | Review of Reviews |
| Everybody's Magazine | Sacred Heart Review |
| Forum | St. Nicholas |
| General Federation Maga-
zine | Scientific American Sup-
plement |
| Good Housekeeping | Scientific Monthly |
| Granite Monthly | School |
| Harper's Magazine | Scribner's Magazine |
| House and Garden | Survey |
| Independent | Watchman |
| Illustrated World | World's Work |
| La Ficallo | Youth's Companion |
| Leslie's Weekly | |

REPORT OF TREASURER OF MILFORD FREE
LIBRARY

Debit

Rec'd. of Town of Milford, appro- priation	\$1,600 00	
Int. on Gay, Averill, Smith funds	233 50	
Fines, sale of books, magazines, etc.	124 64	
		\$1,958 14

Credit

Deficit of last year	\$ 5 27	
Light	83 72	
Miss Secombe	582 75	
Miss Parker	349 97	
Books and magazines	509 59	
Rebinding and printing	122 82	
Town water	11 00	
Supplies, express, P. O. box, clean- ing, etc	124 64	
		\$1,789 76
Balance		168 38
		\$1,958 14

Of this balace \$141.22 has already been paid on bills for the coming year, leaving a true balance of \$27.16

MILFORD FREE LIBRARY

Books Added Since February, 1917

*Books Presented.

RELIGION

- Jowett, John Henry. The whole armour of God 252 J83
Mathews, Basil. Paul the dauntless 225 M42
Wells, H. G. God, the invisible king 210 W46

SOCIOLOGY

- Abbott, Grace. The immigrant and the community 325 Ab2
Bagley, William Chandler. Classroom management 371 B14
The educative process 371 B14.1
Dexter, Edwin G. History of education in the United States 370 D521
Doty, Madeleine. Society's misfits 364 D74
Ellis, Capt. O. O. and Garey, Capt. E. B. The Plattsburg manual 355 E16
Huey, Edmund B. The psychology and pedagogy of reading 371 H87
Johnson, George E. Education by plays and games 371 J62
Johnston, Charles H. The modern high school 397 J64
Kern, O. J. Among country schools 372 K45
McMurray, Charles A. Special method in arithmetic 371 M22.3
Special method in geography 371 M22.2
Special method in history 371 M22.1
Special method in the reading of complete English classics 371 M22
Moss, Capt. James A. Private's manual 355 M85
Sargent, Walter. Fine and industrial arts in elementary schools 371 Sa7

NATURAL SCIENCE

- Croft, Terrell. Practical electricity 537 C87
Hough, Walter. Culture of the ancient Pueblos 506 Sm5
Martin, Martha Evans. The friendly stars 520 M36

USEFUL ARTS

Cabot, Richard C. A layman's handbook of medicine	616 C11
Collins, Francis. The airman	629 C69
Gilbert, Arthur W. The potato	633 G37
Hay, Marley F. Secrets of the submarine	623 H33
Glover, Ellye H. Dame Curtsey's book of hints to housewives	640 G51
Rose, Mary Swartz. Feeding the family	613 R72
Turner, Charles C. Aircraft of today	629 T85

FINE ARTS

Barstow, Charles L. Famous sculpture	730 B28
Bryant, Lorinda. American pictures and their painters	759 B84
Clutton-Brock, A. Studies in gardening	710 C62
Thurston, Carl H. P. The art of looking at pictures	750 T42
Wallick, Ekin. The small house for a mod- erate income	720 W16
National parks portfolio	711 P24

POETRY

Braithwaite, William S. Anthology of mag- azine verse for 1916 and year book of American poetry	811 B73.1
*Gould, Alta I. The veteran's bride	811 G72
Holman, Carrie. In the day of battle	811 H731
Replier, Agnes. A book of famous verse	811 R31
A book of American humorous verse	811 An1

FICTION

Bacheller, Irving. The light in the clearing	B12.6
Bailey, Temple. Mistress Anne	B151.2
Barburse, Henri. Under fire	B233
Barr, Amelia E. Joan	B27.22
Bartlett, Frederick O. The triflers	B281.1
Bennett, John. Barnaby Lee	B43.1
Bindloss, Harold. Carmen's messenger	B51.9
Winston of the prairie	B51.8
Bottome, Phyllis. The second fiddle	B651
Brown, Alice. Bromley neighborhood	B812.12
Buchan, John. Greenmantle	B852
Buckrose, Mrs. J. E. The matchmakers	B851.2

Cholmondeley, Alice. Christine	C451
Davis, Richard Harding. The deserter	D29.13
Day, Holman. Where your treasure is	D331.6
Doyle, Conan. His last bow	D77.17
Ferber, Edna. Fanny herself	F37.2
Fox, John Jr. In happy valley	F83.7
Freeman, Mary E. W. and Kingsley, Florence. The alabaster box	W65:14
French, Allen. The hiding places	F88.2
Gerould, Gordon Hall. Peter Sanders, retired	G31
Gilson, Roy Rolfe. In the morning glow	G423.4
Gordon, C. W. The major	G65.9
Grayson, David. Great possessions	G791.3
Grey, Zane. Betty Zane	G86.5
Harker, Mrs. L. Allen. Jan and her job	H223.6
Hopkins, William J. The clammer and the submarine	H771.7
Hueston, Ethel. Sunny slopes	H872
Jacobs, W. W. The castaways	J15.7
Kelland, Clarence B. Sudden Jim	K282.1
Kerr, Sophie. The blue envelope	K461
King, Basil. The high heart	K584.4
The lifted veil	K584.3
Kingsley, Florence. Neighbors	K61.12
Lee, Jennette. The green jacket	L551.7
Lincoln, Joseph C. Extricating Obadiah	L631.17
Lippman, Julie M. The mannequin	L66.4
Locke, William I. The red planet	L79.10
The wonderful year	L79.9
Luehrmann, Adele. The other Brown	L961
Lutz, Grace L. H. Marcia Schuyler	L971.7
Lynde, Francis. Stranded in Arcady	L99.1
MacGrath, Harold. The luck of the Irish	M171.5
Maher, Richard A. Gold must be tried by fire	M271.1
Manders, J. Hartley. Peg o' my heart	M321
Mikels, Rosa M. Short stories for high schools	M582
Montgomery, Lucy M. Anne's house of dreams	M76.7
Oppenheim, E. Phillips. The kingdom of the blind	Op5.16
Pier, Arthur S. Jerry	P61.7
Poole, Ernest. His family	P781.1
Porter, Eleanor H. The road to understand- ing	P833.8
Rice, Alice Hegan. Calvary alley	H36.5
Richards, Laura E. Pippin	R39.25

Richmond, Grace S. The brown study	R4I.6
Red Pepper's patients	R4I.8
Strawberry acres	R4I.7
Seton, Ernest Thompson. The preacher of Cedar Mountain	Se7.1
Sidwick, Mrs. Alfred. Salt of the earth	SiI.1
Singmaster, Elsie. The long journey	SI6I.2
When Sarah saved the day	Si6I.3
Stanley, Caroline Abbott. Dr. Llewellyn and his friends	StII.4
Van Schaick, George. A top floor idyl	V28I.2
Ward, Mrs. Humphrey. Missing	W2I.I5
Webster, Henry K. The thoroughbred	W39.4
Webster, Jean. Just Patty	W39I.4
Wells, H. G. The soul of a bishop	W463.I
Wescott, F. N. Hepsy Burke	W522
Weston, George. Oh Mary be careful	W52I
Willsie, Mrs. Honore. The heart of the desert	W68.2
Lydia of the pines	W68.I

MISCELLANEOUS

Snow, W. L. The high school prize speaker	808 Sn5
Out of their own mouths, utterances of German rulers, statesmen and others	838 AI

GEOGRAPHY AND TRAVELS

Franck, Harry A. Vegabonding down the Andes	918 M68F
Graham, Sephen. Russia in 1916	914 R9IG
Hammond, John M. Winter journeys in the South	917 M68Ham
Mathews, Gertrude S. Treasure	918 M68Ma
Quaife, Milo M. editor. The journals of Cap- tain Meriwether Lewis and Sergeant John Ordway kept on the expedition of western exploration 1803-1806	917 Q682
Rihbany, Abraham M. The Syrian Christ	915 P17R
Stuck, Hudson. Ten thousand miles with a dog sled	917 AlISt

BIOGRAPHY

*Barnum, P. T. Struggles and triumphs or forty years' recollections of P. T. Barnum	B B262
-------------------------------------------------------------------------------------------	--------

- *Billings, Elizabeth F. and others. Memories of a New England homestead 929 W69
- Eastman, Charles A. From the deep woods to civilization. Chapters in the autobiography of an Indian B Ea8
- Garland, Hamlin. A son of the middle border B G181
- *Hammond, Otis G. History of the seal and flag of the state of New Hampshire 929 H17
- Howells, W. D. Years of my youth B H832
- Innes Jr., George. Life, art and letters of George Innes B In6I
- Livingstone, W. P. Mary Slessor of Calabar B Sl2L
- *Paine, Albert W. Paine genealogy 929 P16
- Ravage, M. E. An American in the making B R21
- Scott, Emmett J. and Stowe, Lyman B. Booker T. Washington, builder of a civilization B W272S
- Stern, E. G. My mother and I B St42
- *Stewart, Charles W. The stars and stripes 929 St4

HISTORY

- Aldrich, Mildred. On the edge of the war zone 940 Al2.1
- Ashew, Alice and Claude. The stricken land, Serbia as we saw it 940 As6
- Beith, Ian Hay. All in it 940 B39.1
- Breasted, James H. Ancient times, a history of the early world 930 B74
- Bullitt, Ernesta Drinker. An uncensored diary 940 B87
- Cable, Boyd. Action front 940 C11
- Cheradame, Andre. The Pangerman plot unmasked 940 C42
- Curtin, D. Thomas. The land of deepening shadow 943 C94
- Desson, Georges. A hostage in Germany 940 D47
- Empey, Arthur Guy. Over the top 940 Em7
- Genevoix, Maurice. Neath Verdun 940 G29
- Gerard, James W. My four years in Germany 940 G31
- Gibbs, Philip. The battle of the Somme 940 G35I
- Gibson, Hugh. A journal from our legation in Belgium 949 G35
- Gleason, Arthur. Our part in the great war 940 G47
- Hankey, Donald. A student in arms 940 H19

- Huard, Frances W. My home in the field of
mercy 940 H86.1
- Levine, Isaac Don. The Russian revolution 947 L59
- Lintier, Paul. My '75 reminiscences of a
gunner of a '75 m-battery in 1914 940 L65
- *Locke, Emme B. Colonial Amherst 974 Am5L
- Nobbs, Captain Gilbert. On the right of the
British line 940 N66
- Palmer, Frederick. My second year of the
war 940 P18.1
- Peat, Harold. Private Peat 940 P31
- Powell, E. Alexander. Italy at war 940 P87.1
- Robinson, James H. Medieval and modern
times 940 R56.2
- Ruhl, Arthur. White nights and other Rus-
sian impressions 947 R85
- Swope, Herbert B. Inside the German em-
pire 1916 943 Sw7
- Turozynowioz, Laura de. When the Prus-
sians came to Poland 940 T84
- Van Dyke, Henry. Fighting for peace 940 V28
- *Wallace, William A. History of Canaan,
New Hampshire 974 C161W
- Wilson, Woodrow. Why we are at war 940 W69
- Winslow, Carrol D. With the French flying
corps 940 W73

JUVENILE BOOKS

LEGENDS AND FAIRY STORIES

- Baldwin, James. The sampo j398 B19.5
- Brooke, L. Leslie. The tailor and the crow j398 B791
- Bryce, Catherine T. Fables from afar j398 B84
- Clay, Beatrice. Stories from Mort D'Arthur
and the Mabinogion j398 C57
- Howard, Frank W. Banbury cross stories j398 H83
- Lang, Andrew. The nursery rhyme book j398 L25.18
- Nankivell, Frank A. A book of fairy tales
bears j398 N16
- Partridge, Emelyn. Joyful star j398 P251
- Stevens, Lillian and Allen, Edward F. King
Arthur stories from Malory j398 St3
- Wiggin, Kate D. and Smith, Nora A. The
fairy ring j398 W64.2
- Wiley, Belle. Mother Goose primer j398 W65
- Wilson, Gilbert L. Myths of the red children j398 W69

Goosey, goosey gander series. Little Jack	
Horner	j398 R15.1
Tommy Tittlemouse	j398 R15

NATURAL SCIENCE

Bostock, Frank C. The training of wild animals	j591 B65
Collins, Francis A. The wireless man	j537 C69I
Fultz, Francis. The fly-aways and other seed travelers	j580 F95
*Goodrich, S. G. The animal kingdom, 2 vols	j591 G62
Monteith, John and Caroline. Some useful animals and what they do for us	j591 M76

USEFUL ARTS

Beard, Dan. Handicraft for outdoor boys	j621 B38
Crump, Irving. The boys' book of firemen	j614 C89
Hall, A. Neely. Handicraft for handy girls	j680 H14
Maule, Harry E. The boys' book of new inventions	j608 M44
Mowry, William A. and Arthur M. American inventions and inventors	j609 M87
Rocheleau, W. F. and others. Great American industries, 3 vols	j670 R58
Tappan, Eva March. Diggers in the earth	j609 T16
The farmer and his friends	j630 T16
Markers of many things	j670 T16
Travelers and traveling	j656 T16

FICTION

Altsheller, Joseph. The eyes of the woods	j Al7.18
The keepers of the trail	j Al7.20
The riflemen of the Ohio	j Al7.17
The rock of Chickamauga	j Al7.21
Scouts of Stonewall	j Al7.16
The scouts of the valley	j Al7.22
The sword of Antietam	j Al7.19
Ashmun, Margaret. Isabel Carleton's year	j As3
Barbour, Ralph H. Winning his game	j B231.22
Bartlett, Frederick. The forest castaways	j B28I
Blaisdell, Mary F. Bunny Rabbitt's diary	j B571.4
Cherry tree children	j B571.3
Pretty Polly Flinders	j B571.2
Brown, Abbie F. The lonesomest doll	j B815.1

- Brown, Alice. The secret of the clan j B812.13
 Burnett, Frances H. Editha's burglar j B93.22
 Camp, Walter. Danny Fists j C15.1
 Canfield, Dorothy. Understood Betsy j C16.3
 Deland, Ellen D. Cyntra j D371.9
 The friendship of Anne j D371.8
 Dragoumis, Julia D. Under Greek skies j D781
 French, Harry W. The lance of the Kanana j F881
 Gerson, Virginia. The happy heart family j G311
 Grey, Zane. The last of the plainsmen j G86.5
 The young forester j G86.6
 Haines, Alice C. The luck of the Dudley
 Grahams j H121
 Holland, Rupert S. The boy scouts of
 Birch-Bark island j H722.2
 The boy scouts of Snow-Shoe lodge j H722.1
 Hornebrook, Isabel. A scout of today j H871
 Hunt, Clara W. About Harriet j H91
 Jacobs, Caroline. A Texas blue bonnet j J151.1
 Kirkland, Winifred. The home-comers j K63.1
 Knipe, Emile B. and Alden A. Peg o' the
 ring j K742.2
 Lucia, Rose. Peter and Polly in summer j L96
 Mathewson, Christy. Pitcher Polluck j M421.1
 Morley, Margaret W. Donkey John of the
 Toy valley j M821
 Paine, Ralph D. Campus days j P161.7
 Sons of Eli j P161.8
 Parry, Edward A., translator. Don Quixote
 of the Mancha j C32P
 Perkins, Lucy F. The cave twins j P41.5
 Potter, Beatrix. The tale of Pigling Bland j P85.14
 Pyle, Howard. Jack Ballister's fortunes j P99.6
 The wonder clock j P99.5
 Rankin, Carroll W. Dandelion cottage j R16
 The adopting of Rosa Marie j R16.1
 Schultz, James W. Apauk, caller of buffalo j Sch8.2
 The quest of the fish dog skin j Sch8
 Sinopah, the Indian boy j Sch8.3
 With the Indians in the Rockies j Sch8.4
 On the war path j Sch8.1

MISCELLANEOUS

- Bryce, Catherine. The child lore dramatic
 reader j820 B84

- Dye, Charity, editor. James Whitcomb Riley
reader j811 R45.4
- Francis, J. G. A book of cheerful cats and
other animated animals j741 F85
- Garnett, Louise. The muffin shop j811 G18
- Guerber, H. A. The story of the chosen people j221 G93
- Grahame, Kenneth. The Cambridge book of
poetry for children j821 G76
- Greenaway, Kate. Under the window j821 G82.1
- Sherman, Frank D. Little-folk lyrics j811 Sh5
- Tappan, Eva March. The Christ story j232 T16
- Old world hero stories j900 T16
- Thacher, Lucy W. The listening child j821 T32
- Carroll and Brooks readers
- First reader !820 C23
- Second reader j820 C23.1
- Third reader j820 C23.2

HISTORY

- Hill, Frederick. On the trail of Grant and
Lee j920 H551
- Lang, Mrs. Leonora B. The red book of
heroes j920 L25
- Wade, Mary H. Pilgrims of today j920 W11.2
- Wilmot-Buxton, E. M. Jeanne D'Arc j BD24W
- Channing, Edward. First lessons in United
States history j973 C362
- Higginson, Thomas W. Young folks' book
of American explorers j973 H53.2
- Hodgdon, Jeannette R. A first course in
American history, Bks. 1-2 j973 H66
- Humphrey, Frances. How New England was
made j974 H88
- Jenks, Tudor. When America became a na-
tion j973 J42
- Johnston, Alexander. History of the United
States for schools j973 J64
- Kieffer, Harry M. The recollections of a
drummer boy j973 K55
- Scudder, Horace E. Short history stories of
the United States of America j973 Scu4.1
- Shaw, Edward R. Discoverers and explorers j920 Sh2
- Tappan, Eva M. Letters from colonial chil-
dren j973 T16
- Famous adventures and prison escapes
of the Civil War j973 A7

REFERENCE

- Bacon, Corinne. Children's catalog
Colby, F. M. and others. New international year book
1916
Kroeger, Alice B. Guide to the study and use of reference books
Potter, Marian. Cumulative book index 1916
Business digest, 2 vols., Jan.-June 1917
Carnegie endowment for international peace
Readers' guide to periodical literature 1916
Reports of Milford Free Library 1892-1917

REPORTS AND PUBLIC DOCUMENTS

- | | |
|------------------------|------------|
| State of New Hampshire | 10 volumes |
| United States | 1 volume |

BOUND MAGAZINES

- | | |
|-----------------------------------|--------------------------|
| American Forestry | Vol. 22 |
| Atlantic Monthly | Vols. 118, 119 |
| Century Magazine | Vols. 92, 93 |
| Educational Review | Vols. 51, 53 |
| Everybody's Magazine | Vol. 35 |
| Forum | Vol. 56 |
| Granite Monthly | Vol. 48 |
| Harper's Magazine | Vols. 133, 134 |
| Independent | Vols. 86, 87, 88, 89, 90 |
| Milford Cabinet July—June 1916-17 | Vol. 29 |
| National Geographic Magazine | Vols. 29, 30 |
| North American Review | Vols. 204, 205 |
| Outing | Vol. 69 |
| Outlook | Vols. 113, 114, 115 |
| Popular Mechanics | Vol. 26 |
| Review of Reviews | Vols. 54, 55 |
| St. Nicholas | Vols. 27, 43, 44 |
| Scientific Monthly | Vol. 3 |
| Scribner's Monthly | Vols. 60, 61 |
| Technical World | Vols. 24, 25 |
| World's Work | Vols. 32, 33 |

VITAL STATISTICS.

To the Selectmen of Milford, N. H.

In compliance with an act of the Legislature enacted June session, 1887, requiring "clerks of towns and cities to furnish a transcript of the record of births, marriages and deaths to the municipal officers for publication in the annual reports," I submit the following.

JAMES M. LAWS,
Town Clerk.

Marriages Registered in the Town of Milford, N. H. for the Year Ending December 31, 1917

Date of marriage.	Place of marriage.	Name and surname of groom and bride.	Residence of each at time of marriage.	Age.	Color.	Occupation of groom and bride.	Place of birth of each.	Names of parents.	Birthplace of parents.	Occupation.	Marriage.	Name, residence, and official station of person by whom married.
Jan. 7	Boston, Ms	Guisepe Gatto	Milford	25	All white	Stonecutter	Tripri, Italy	Antonio Gatto Francesca Farstori	Tripri, Italy Tripri, Italy	Stone cutter Housewife	1	Pasquale DiMilla, Clergyman, Boston, Mass.
		Guiseppina Roselli	Roxbury Mass	22		At home	Mazzaria, Italy	Salvatore Roselli Anna Leubo	Mazzaria, Italy Mazzaria, Italy	Barber Housewife	1	
Jan. 17	Hatifax, Ms	Charles Anthony Calderara	Milford	26		Sanitary engineer	Quincy, Mass	Louis Calderara Theresa Rossi	Bisuschio, Italy Bisuschio, Italy	Stone cutter. Housewife	1	Thomas Bickford Cong'l Clergyman.
		Alice Dodge Bourne	Hatifax Mass	22		Music teacher.	Bridgewater	Abram Bourne Minnie M. Dysert	Hatifax, Mass. Boston, Mass.	Farmer Housewife	1	Brewster, Mass.
Feb. 23	Wilton	James J. Mansfield	Milford	30		Coachman	Ireland	Thomas J. Mansfield Apne Sullivan	Waterford, Ireland Mallow, Ireland	Housewife Cook	1	Thomas Redden, Clergyman, Wilton, N. H.
		Cecil Kilcup	Lawrence Mass	18		Mill operative.	Waterloo, Me	Percy Kilcup Helen Burgess	Lawrence, Mass. Methuen, Mass.	Teamster Mill operative	1	
Feb. 24	Milford	Ernest Edward Smith	Amherst	23		Wood worker	Sherbrook, Can	Augustus Smith Ellen Brown	Slapton, Bucks Eng Wolverton, Eng.	Farmer Housewife	1	G. Edgar Wolfe, Clergyman, Milford
		Anna Viola Bursley	Milford	22		School teacher	Andover, Mass	George Bursley Anelia A. Woodbridge	Barnstable, Mass Andover, Mass.	Gardener Sch'l teacher	1	
Feb. 25	Milford	Albert Wood	E. Hartford Conn	22		Machinist	Stoneham Mass	Ralph L. Akannan Louise F. Meredith	Boston, Mass. Buckingham, Eng	Farmer Housewife	1	Dudley Tyng, Episcopal Clergyman Milford.
		Esther Marion	Milford	22		Inspector in Novelty works	Concord	Gustave A. Wasto Augusta Anderson	Wisoy, Gortland Jonkopinj, Sweden	Foreman Housewife	1	
Mar. 3	Milford	John Pulkkinen	Milford	25		Quarryman	Pielavesi, Fin'd	Mikko Pulkkinen Henry Berg	Pielavesi, Finland Pielavesi, Finland	Farmer Housewife	1	Benj. F. Prescott, Justice of the Peace
		Ejina Pekkanen	Milford	17		Housework	Karstula, Fin	Stina Pekkanen Hanna Pitkanen	Karstula, " Glasgow, Scotland	Laborer Housewife	1	Wm. Porter Niles, Clergyman, Nashua
Mar. 3	Nashua	Alexander Smith	Milford	31		Mill operative	Glasgow, Scot.	William Thompson Margaret Smith	Glasgow, Scotland "	Sail maker Housewife	1	
		Catherine Thompson	Wilton	26		Mill operative.	Kirkentloek	Archibald Thompson Catherine Currie	Purton, " Kirkentloek, Scot	Carpenter Housewife	2	
Apr. 9	Milford	Amanda Bruno	Milford	28		Stone cutter	Fanano, Italy	Antonio Turchi Beatrice Magnani	Fanano, Italy Sestola, Italy	Stone cutter. Housewife	1	Dudley Tyng, Clergyman, Milford
		Teresa Raymonde	Milford	20		At home	Concord, N. H.	Giulio M. Tonella Leontine H. Delabare	Angera, " Paris, France	Granite d'her Housewife	1	

Apr. 10	Milford	Harold Linton	Milford	21	Plumber	Milford	Albro M. Wilson	Nelson	Butcher	1	Chas. A. Reese, Clergyman, Milford
	Milford	Freida Asenath Burt Brigham	Milford	20	Housekeeper	Milford	Rosa M. Sulham	Cabot, Vt.	Housewife	1	
Apr. 25	Milford	Gardner Raymond	Milford	21	Clerk	Lyndeboro	Ida A. Savage	Wellesley, Mass.	Photopher	1	G. Edgar Wolfe, Clergyman, Milford
	Milford	Edna Jane Armstrong	Milford	19	Stenographer	Milford	Norris E. Wright	Annapolis, N. S.	Clerk	1	
May 26	Hillsboro	Edwin Thomas Carr	Milford	23	Engineer	Milford	Lourena White	Lowell, Mass.	Housewife	1	
	Springvale	Esther Gladys Richards	Springvale	19	Laundress	Milford	George D. Armstrong	Bedford	Farmer	1	C. L. Buchler, Clergyman Hillsboro
June 6	Milford	John Davidson	Worcester Mass	23	Machinist	Milford	William L. Garr	Hillsboro	Express Agt	1	
	Milford	Evelyn Gertrude Holohan	Milford	25	Pharmacist	Milford	Laura F. Howard	Lyndeboro	Housewife	1	
June 9	Milford	Harlan Edgar Burns	Milford	22	Farmer	Milford	Marshall B. Richards	Claremont	Physician	1	H. E. Lemmon, Clergyman, Milford
	Amherst	Blanch Marguerita Broome	Amherst	25	At home	New Ross, N.S.	Addie C. Burton	So. Lyndeboro	Housewife	1	
June 16	Nashua	Carl George Prescott	Milford	23	Wood worker	Laconia	George D. Armstrong	Bedford	Farmer	1	Daniel I. Gross, Clergyman, Nashua
	Wilton	Jennie May Nickerson	Wilton	20	Mill operative	Milford	Mary F. Haseltine	Amherst	Housewife	1	
June 19	Milford	David Julius Kalehmainen	Milford	28	Quarryman	Kivijarvi, Fin.	Daniel F. Holohan	W Summers, N. Y.	Machanic	1	
	Milford	Tilda Sofia Neimi	Milford	28	Domestic	Jurva, W.L. Fin	Ann M. Garrily	Milford	Housewife	1	J. E. Luarnala, Clergyman, Milford
June 21	Mashua	Joseph Alex Sonn	Milford	38	Stone cutter	West Quincy Mass	Herbert G. Burus	Bennington	Housewife	1	Edward A. Durham Clergyman, Nashua
	Milford	Rachel Greenwood Sangster	Milford	39	Boarding house	Cazadale Ohio	Angelia E. Burt	New Ross, N. S.	Housewife	1	
June 25	Milford	Alexander Gow Macdonald	Cleveland Ohio	28	Lithographer	Perth, Scot	William F. Prescott	Center Harbor	Woodworker	1	
	Milford	Hazel Ruth Taundy	Milford	26	At home	Milford	Jennie O. Bennett	Moultonboro	Housewife	1	
July 14	Milford	Thomas Frank Timony	Milford	22	Mill operative	Lawrence Mass	Frank O. Nickerson	Bangor, Maine	Teamster	1	
	Wilton	Lucy Martin	Wilton	20	Mill operative	Milford	Jennie M. May	Greenfield	Housewife	1	
July 14	Milford	Heikki Leppanen	Milford	29	Quarryman	Kivijarvi Fin.	David Katehmainen	Kivijarvi, Finland	Farmer	1	
	Milford	Ailina Weid	Milford	20	Mill operative	Wiita Saari	Mika Neimi	Jurva	Housewife	1	
							Sofi Neimi	Jurva	Housewife	1	
							Oliver L. Sonn	Worcester, Mass	Farmer	1	
							Mary Jane Delony	Trocadie, N. S.	Housekeeper	1	
							Abner Greenwood	Westboro, Mass	Merchant	2	
							Elizabeth Johnson	Truro, N. S.	Housewife	1	
							Alex Macdonald	Inverness, Scot	R. R. Signal	1	Charles A. Reese, Clergyman, Milford
							Elizabeth Gow	Scone,	Housewife	1	
							Ehner O. Tandy	Goshen	Mechanic	1	
							Carrie C. Morgan	Ashby, Mass	Housewife	1	
							John Timony	Manchester, Eng	Machinist	1	Charles L. Luce, Justice of the Peace, Milford
							Ellen J. Colgan	N. S	Splice driver	1	
							James Martin	Lonsdale, R. I	Housewife	1	
							Mary Ann Mercer	Kivijarvi Fin.	Farmer	1	
							Heikki Leppanen	Wiita Saari	Housewife	1	Chas. L. Luce, Justice of the Peace, Milford
							Saara Bolkki	Wiita Saari	Farmer	1	
							Kousta Weid	Wiita Saari	Housewife	1	
							Wilhelmina	Wiita Saari	Housewife	1	

All White

MARRIAGES.—Continued.

Date of marriage.	Place of marriage.	Name and surname of groom and bride.	Residence of each at time of marriage.	Age	Color	Occupation of groom and bride.	Place of birth of each.	Names of parents.	Birthplace of parents.	Occupation.	Marriage.	Name, residence, and official station of person by whom married.
July 3	Milford	John Arthur Tostevin	Milford	31	All White	Paving cutter	Guernsey, C. I.	Peter Tostevin Eliza Radford	Guernsey, C. I.	Paving cutter Housewife	1	Geo. A. Hickson, Clergyman, Milford
		Alice M. Bradley	Milford	19		Piano player	Milford	James S. Bradley Clara M. Longa	Stranraer, Scot. So. Merrimack	Mill hand Housewife	1	
July 7	Milford	Julius Runonwirta	Milford	29		Quarryman	Kivijarvi, Fin.	Henry Runonwirta Mari Oinonen	Kivijarvi, Finland " "	Farmer Housewife	1	Benj. F. Prescott, Justice of the Peace Milford
		Manta Franfila	Milford	23		Mill operative	Alahanna, Fin.	Matti Franfila Tiina Tallanen	Harna, " "	Farmer Housewife	1	
July 21	Nashua	Egidio J. Bianchi	Milford	23		Blacksmith	Quincy, Mass.	John Bianchi	Milan, Italy	Granite d'ler Housewife	1	W. H. Morrison, D. D., Clergyman, Nashua
		Irene M. Bennett	Milford	17		Housework	Laconia, N. H.	Charles W. Bennett Lucy M. Cass	Monktonboro Chelsea, Mass.	Painter Housewife	1	
July 21	Milford	Carl James Webster	Milford	33		Clerk	Milford	James E. Webster Mary A. Robinson	Nashua	Jeweler Housewife	1	H. E. Lennou, Clergyman, Milford
		Frances Veronica Herlihy	Milford	29		School teacher	Milford	John W. Herlihy Margaret Halloran	Castle Island, Ire. Milltown,	Retired Housewife	1	
Aug. 29	Milford	John Louis Bishop	Milford	20		Machinist	Island Pond, Vt.	Octave Bishop	Canada	Quarryman	1	Geo. A. Hickson, Clergyman, Milford
		Mary Rillia Thompson	Wilton	23		Twister in mill	Milford	Zuby Paradise Archibald Thompson	Compton, Quebec Alexander, Scot.	Housewife Laborer	1	
Sept. 1	Milford	Edward Bernard Whitney	Meriden Conn	42		Newspaper man	Providence, R. I.	Catherine Currier William H. Whitney	Mullinburn, Watertown, Mass.	Housewife Manufact'rer	1	Edward P. Daniels, Clergyman, Wilton
		Ivah Louise Kenney	Milford	39		Teacher	Greenville	Mary A. Giddings John Kenney	Boston Mass. Salem, Mass.	Housewife Real estate	1	
Sept. 1	Nashua	Anthony James Rossi	Milford	35		Granite m'fg.	Bisuschio, Italy	Mary C. Bullard John Rossi	Greenville, N. H. Bisuschio, Italy	Housewife Stone cutter	2	W. H. Morrison, D. D., Clergyman, Nashua
		Carolina Petazzi	Nashua	33		Housekeeper	Saliceto, Italy	Jeannie Fossi Cesare Pugliasco	" "	Housekeeper Inn keeper	2	
Oct. 2	Marlboro	Maurice Harry Muzzey	Milford	27		Basket maker	Bennington	Luigia Bandino Henry S. Muzzey	Dedham, Mass. Hancock	Clerk Housewife	1	William Weston, Clergyman, Marlboro, N. H.
		Laura Agnes Wheeler	Marlboro	27		Domestic	Greenfield	Alice Munhall Frank H. Wheeler	New Boston Cavendish, Vt.	Toy shop Housewife	1	
Oct. 5	Amherst	Alpheus Warren Hutchinson	Milford	23		Wood worker	Amherst	Effie H. White Ludlow M. Hutchinson	Milford Amherst	Housewife Ice man	1	Jonathan S. Lewis, Clergyman, Amherst
		Alice Marion Barringer	Milford	18		At home	Washington	Clara E. Stearns James M. Barringer	Milford Graufield, Kansas	Housewife Lumberman	1	
								Carrie M. Johnson	Boston, Mass.	Housewife		

Oct. 8	Milford ..	William Blais	Gardner Mass	37	Wood worker ..	St. Anastasia, Canada	Edward Blais	Athabaska B. A. ...	Laborer	1	H. E. Lennon, Catholic Priest, Milford.
		Mary Alice Dube ...	Milford....	25	Mill operative.	Milford	Odella LaCasse.....	St. Anastasia, Can.	Housewife ...	1	
							Joseph Dube	St. Anne, P., Q. ...	Laborer ...	1	
Oct. 10	Milford ...	Samuel Braybrook ..	Lynn, Mass	38	Bar tender	Mount Sorrel Eng	Eugene Guy	Stratham, Eng.....	Quarryman ..	1	Geo. A. Hickson Clergyman, Milford
		Irene Lanyon	Lynn, Mass	29	Shoe operative	Strafford, Eng	Samuel Braybrook...	Barrow on Saar.....	Housewife ...	2	
							James Padderson ...	Stafford, Eng. ...	Shoe worker ..	2	
							Sarah Eccleston	Stafford, Eng. ...	Housewife ..	2	
Oct. 10	Milford ...	Austin Wilson Merrill	Milford....	40	Harness maker	Amherst	Charles Merrill	Amherst	Farmer.....	1	Benj. F. Prescott, Justice of the Peace Milford
		Celia Frances Conners	Lowell, Mass	42	Mill operative.	Newburyport Mass	Mary Butterfield.....	Merrimack	Housewife ...	1	
		John Leon Hall	Lisbon	30	Photographer	Lisbon	Patrick Conner.....	Galway, Ireland ..	Shoe maker ..	1	
Nov. 4	Milford ...	Beatrice Carlotta Dodge	Milford	35	At home	Milford	John W. Hall.....	Lyman	Housewife ..	1	H. P. Peck, Cong. Clergyman, Mont Vernon
		Carlton Eugene Ingerson	Milford....	23	Farmer.....	Manchester ..	Charles B. Clough...	Nashua.....	Dressmaker ..	1	
Nov. 15	Manchester	Ada Etta Butterfield	Manchester..	43	Shoe shop	Upton	Nellie S. Fitch	Concord	Housewife ...	1	Arthur W. Phinney, Justice of the Peace Manchester
		Rodney Canfield Woodman	Milford....	23	Floaist	Medford, Mass.	Herman E. Ingerson ..	Lyndeboro	Farmer	2	
Nov. 29	Milford ...	Mildred Dodge Kimball	Milford....	25	Music teacher.	Milford	Jessie Idella Pond....	Bennington	Housewife ...	1	Charles A. Reese, Clergyman Milford
							Andrew Butterfield ...	Merrimack.....	Farmer.....	2	
							Sarah Seavey	Hampstead	Housewife ...	1	
							Pulaski R. Woodman.	New Hampton	Salesman ...	1	
							Jessie E. Smith	Kirkwood, Mo	Housewife ..	1	
							Willis H. Kimball	Milford	Housewife ..	1	
							Addie Dodge.....	Charlestown, N. H.	Mechanic	1	

All White

Deaths Registered in the Town of Milford, N. H. for the Year Ending December 31, 1917

Date of death.	Name and surname of deceased.	Age.		Place of birth.	Sex and condition.		Occupation.	Place of birth.		Name of father.	Maiden name of mother.
		Years.	Months.		Days.	Sex.		Color.	Father.		
January	1 Emma Florence Twiss..	61	1	5	F	M	Housewife	Brookfield, Vt.	William Allen	Emily Herrick	
"	2 Odile LeBlanc	64	14	14	F	M	Housewife	Isleboro, Me	James McCormack	Bessie Dolan	
"	4 Margarette Curlie	69	8	9	F	W	At home	Italy	Simone Pendleton	Lavinia Bates	
"	7 Lavinia B. Chandler	73	5	12	F	M	Stone cutter.	Italy	Joseph Calderara	Catherine Calderara	
"	13 Carlo Calderara	57	12	23	M	W	Housewife	Arlington, Mass	James Whittemore	Hannah Stevens	
"	18 Sarah J. Bruce	89	7	23	F	W	Housewife	Ireland	Philip McHugh	Kosa O'Brien	
"	19 Mary P. Sloan	71	3	22	F	M	Blacksmith	Townsend, Mass	David J. Stickney	Lydia Amnden	
"	19 James Myron Stickney	76	4	9	M	M	Merchant	Peterboro	Charles Dodge	Elizabeth Saunders	
"	20 Charles B. Dodge	69	4	5	M	M	Merchant	Italy	Tobias Comi	Clotilda Callaneo	
"	23 Charles J. Comi	57	3	28	M	M	Housewife	N. B.	Courtney Sears	Sarah Ward	
"	31 Nancy G. Wilkins	86	5	24	F	W	Housewife	Can	Pierre Gamache	Mary	
February	2 Agnes Aubertine	83	9	9	F	W	Housewife	Can	Joseph Colburn	Hannah Spaulding	
"	5 William P. Colburn	89	2	17	M	W	Farmer	Tewksbury, Mass	Joseph Colburn	Sarah Stoddard	
"	10 Henry W. Hayden	62	6	22	M	M	Farmer	Quincy	Joseph Hayden	Margaret B. acons	
"	10 Alexander W. Cheyne	71	7	7	M	M	Merchant	Scotland	James Cheyne	Judith Davis	
"	11 Fauny H. Kimball	96	7	15	F	W	Housewife	Scotland	Joseph Hoyt	Elizabeth Rotch	
March	1 David H. Rhoades	73	2	15	M	W	Farmer	Warren	Warren Rhoades	Annie Moore	
"	9 Harriet Ridcut	79	3	19	F	W	Nurse	Dracut, Mass	Hiram Wood	Carrie Danielson	
"	21 Smith Berry	55	5	19	M	M	Lumberman	Pittsfield	Isaac S. Berry	Julia	
"	27 Christic A. Durrun	75	3	27	F	W	Housewife	Peterboro	Joseph Martin	Ann Percival	
April	1 Mabel L. McNulty	23	2	20	F	M	Housewife	Milton, Mass	Charles A. Fields	Annie Percival	
"	8 Lycean Chaddock	58	11	2	F	M	Housewife	Portsmouth	Clark Hunt	Lydia Cathoral	
"	8 Mikko Harmaala	39	5	21	M	M	Paving cutter	Finland	Daniel Harmaala	Kustanva Heikkila	
"	11 Annie Mabel Baum	24	6	11	F	M	Housewife	Conwall, Eng	Benjamin Keast	Elizabeth Brooking	
"	17 James Robert Conley	2	18	1	M	M	Housewife	Burke, N. Y.	Roy W. Conley	Margaret White	
"	21 Jennie T. K. Consigli	77	1	2	F	S	Housewife	Venice, Italy	Louis Consigli	Mary Rossi	
"	27 Mary O Connor	75	3	13	F	M	Housewife	Milford, Mass	M ullarkey	Mary Head	
"	29 Oliver H. Foster	74	3	19	M	M	Marketman	Temple	Joshua Foster	Mary Head	
May	6 David C. Drew	74	3	19	M	M	Farmer	Bangor, Me	William A. Sibley	Alice Carrie Kent	
"	12 William Albert Sibley				M	M		Milford	William A. Sibley	Alice Carrie Kent	

All White

DEATHS—Continued

Date of death.	Name and surname of deceased.			Age.		Place of birth.	Sex and condition.		Occupation.	Place of birth.		Name of father.	Maiden name of mother.
	Years.	Months.	Days.	Color.	Sex.		Father.	Mother.					
"	19	66	11	F	M	Milford	F	M	Housewife	Grafton, Vt	Milford	Xenophon E. Mills	Harriet R. Melzer
"	25	68	20	F	M	"	F	M	Housewife	Milford	Nelson	Abial A. Lovejoy	Mary Jane Osgood
June	11	72	28	F	W	"	F	W	Housewife	Milford	Milford	Judson J. Hutchinson	Ierusha P. Hutchinson
"	15	50	6	M	M	"	M	M	Farmer	Harvard, Mass	Litchfield	James Sanderson	Betsy McQueston
"	18	32	6	M	S	"	M	S	Housewife	Milford	S. Lyndebo	Chas W. Shaughnessey	Sarah A. Ross
"	19	32	11	F	M	S. Lyndebo	F	M	Housewife	Stoddard	Milford	Richard Ross	Augusta Sheild
"	20	73	8	M	M	Aberdeen, Scot	M	M	Paving cutter	Scotland	Scotland	Vincenzo D'Andria	Pasqualina DeLorenzo
"	22	73	7	M	M	Milford	M	M	"	St. Benadetta, It	Havelock, N. B.	Arthur F. Dutton	Fthel Sears
"	26	64	7	M	S	"	M	S	"	Milford	Weston, Mass	Geo. Smith	Mary Ann Dickinson
July	21	64	2	M	W	"	M	W	Quarryman	Finland	Finland	Konsta Weid	"
"	21	31	2	M	W	Finland	M	W	Laborer	Wilton	Milford	Robert C. Davis	Betsy Blanchard
"	6	78	11	M	M	Wilton, N. H.	M	M	Housewife	Brookline, Mass.	Dover	Winthrop Bennett	Mary Shannon
Aug.	12	74	4	F	F	Brookline, Mas	F	F	Housewife	Canada	Dover	Walter Buckley	Dufoc
"	17	54	8	F	M	Moultonboro'	F	M	Paving cutter	Canada	Can	Emilio Jeannotte	"
"	9	39	6	M	S	Nashua	M	S	"	Amherst	Milford	Walter Buckley	"
Sept.	13	5	10	F	M	Rochester	F	M	Farmer	Ticonderoga, N. Y	Ticonderoga, N. Y	Michael Michols	Mary Gertrude Smith
"	18	72	5	M	M	Moore's Forks	M	M	Farmer	Ireland	Ireland	Michael Leavitt	Mary Jane Benson
"	22	57	5	M	S	Amherst [N. Y	M	S	Teamster	Ireland	Ireland	Antonio Mazukelli	"
"	26	57	5	M	S	Amherst [N. Y	M	S	Teamster	Italy	Ireland	Antonio Mazukelli	"
Oct.	9	62	5	F	F	Milford	F	F	Housewife	Fryeburg, Me.	Meredith	Royal Mausfield	Cognitti Govanna
"	13	45	6	F	M	Bradford	F	M	Housewife	Kildare Ire	Kildare, ire	John Cam	Ruth E. Smith
"	20	33	8	M	M	Greenfield	M	M	Housewife	Kildare Ire	Prince Edward I	John McDonald	Ann Cassidy
Nov.	30	58	1	M	W	Quincy, Mass	M	W	Stone polisher	Prince Edward I	Prince Edward I	John McDonald	Zilpha Sherman
"	1	60	1	M	W	Croydon	M	W	Carpenter	Croydon	Croydon	Albert Barton	Martha J. Gilmore
Dec.	1	60	3	F	W	Bedford	F	W	Housewife	Croydon	Croydon	John H. Lindsey	Elizabeth Blanchard
"	2	71	10	F	F	Amherst	F	F	Housewife	Acworth	Milford	David H. McKean	Mary Pearson
"	28	78	10	M	M	Amherst	M	M	Farmer	Lyndebo	Lyndebo	William Richardson Jr	Elizabeth G. Newbold
"	31	78	10	F	S	Lyndebo	F	S	Farmer	Wilton	Clayton, N. Y	Alphonse Jarest	"

All White

Brought from Away for Burial in Milford.

Date of Death	Place of Death	Name and Surname of the Deceased	Age			Cemetery
			Years	Months	Days	
Jan. 18	Amherst	Chastina B. Boutelle	74	1	7	West
Feb. 3	Amherst	Herbert L. Proctor.....	54	West
" 20	Nashua	Hannah Johnson	25	West
Mar. 11	Mont Vernon.....	Benj. F. Roberts	57	8	6	Riverside
" 21	Lowell, Mass.	Julia A. Keith	84	West
" 21	Concord.....	Chas. V. Pillsbury	83	7	15	West
Apr. 4	Lillian Gil	36	1	...	West
" 23	Mont Vernon.....	Lizzie A. Hadley	62	10	16	North
" 28	Lynn, Mass	Marietta P. Cheever.....	62	2	11	Elm.
" 30	Amherst	Maria D. Elliott	49	5	...	Riverside.....
May 2	Goffstown	Martha Potter	76	West ..
" 16	Francestown.....	Henry W. Spalding	83	8	13	Union
" 21	Lowell, Mass.....	Charles G. Avery	43	8	20	Riverside.....
" 25	Pembroke.....	Peter Calderara	40	Riverside.....
June 7	Amherst	Dodge G. Hartshorn....	76	3	19	Riverside.....
Aug. 5	Mont Vernon.....	H. Appleton Hutchinson	66	11	12	North
Sept. 14	Goffstown	Charles Colby	Union
" 18	Boston, Mass.....	Frank G. Dickey	65	2	25	Riverside.....
" 20	Nashua	Eta M. Wilson	49	1	14	Union
Nov. 8	Southfield, Mich..	Frederick Watkins	River-ide.....
" 13	Brockton, Mass...	Josephine E. Bruce	69	1	18	Riverside.....
" 25	Concord ..	Wallace D. Stone	52	West
Dec. 2	Lyndedoro	Mary E. Gutterson.....	71	1	22	North
" 29	Goffstown	Harry Crowell	37	2	15	Tomb

Of the deaths in town in 1917, 18 were buried elsewhere, 6 in Massachusetts, 1 in Vermont, and the other 11 in other towns in our own State.

There were 25 brought from out of town for burial. Some were only away for a short time but most of them brought home after many years to rest with old friends. Almost all past middle life and four had numbered more than four score years.

There were seven whose united ages was not 3 months—aside from them the average age passed the three score mark—Mrs. Fanny H. Kimball was the oldest, 96 years and 7 months. There were 3 between 80 and 90; 18 between 70 and 80; 10 between 60 and 70; 8 between 50 and 60; 1 between 40 and 50; 5 between 30 and 40; 3 between 20 and 30; one child between 1 and 10; but not one of school age.

The sex was: Males 28, Females 29. Of 22 one or both parents were born in other countries, 12 themselves came from afar.

Of the 70 births, 36 were males, 34 females. 37 of the number one or both parents were born in other lands.

The Vital Statistics of a town are one of its most important records, not merely for today but for generations to come. If everyone would see to it that the records of their own families were correctly and fully filled out on Marriage, Birth and Death Certificates when handed in, it might be of great use to them and their descendants at some future day, and a great help to us in making out the records of today.

Births Registered in the Town of Milford, N. H. for the Year Ending December 31, 1917

Date of Birth.	Place of Birth.	Name of the Child (if any.)	Sex and Condition.		Name of father.	Maiden name of mother.	Color of parents	Residence of parents.	Occupation of father.	Birthplace of father.	Birthplace of mother.
			Male.	Female.							
Jan. 3	Milford	Delorenzo	"	"	Edward Delorenzo	Grace Ledwith	Milford	Milford	Sta. engineer	Raritan, N. J.	Saranac, N. Y.
6	"	Salvatore Saraceno	"	"	Charles Saraceno	Rosa Sulano	"	"	Woodworker	Angu-ta, Italy	Angu-ta, Italy
13	"	Paul Vincent	"	"	Eugene A. Dutton	Margaret J. Caulfield	"	"	Painter	Milford	Boston, Mass.
20	Nashua	Gregory Grannels	"	"	Darius A. Robinson	Agnes Grannels	"	"	R F D Carrier	Boston, Mass.	Vergennes, Vt.
25	Milford	Marie Marguerite	"	"	Louis N. Sylvester	Caroline Gagnon	"	"	Mill operative	Francestown	Canada
27	"	Patrick Miles	"	"	Thomas Fitzpatrick	Catherine McFadden	"	"	Station hand	Co. Clare, Ire.	Co. Lethin, Ire.
29	"	Barbara	"	"	George F. Peavey	Frieda M. Jewett	"	"	Auto dealer	Greenfield	Milford
Feb'y 3	"	Laford	"	"	Emile Laford	Hazel Provost	"	"	Mechanic	Lewiston, Me.	Morrisville, Vt.
6	"	Caroline Margery	"	"	Melvin A. Small	Alice M. Powers	"	"	Engineer	Unity	Lancaster
10	"	Eugene Edward	"	"	Chas. E. Elliott	Filla Wilson	"	"	Teamster	Nashua	Greenfield
19	"	Salvatore Saraceno	"	"	Carnello Saraceno	Maria Passanisi	"	"	Engineer	Angu-ta, Sicily	Angu-ta, Sicily
2	"	Mildred Ellen	"	"	Lewis H. Wilkins	Helen M. Sanderson	"	"	Furniture fin	Milford	Milford
23	"	Edna Muriel	"	"	John Mitchell	Pilja Metelan	"	"	Faving cutter	Kivijarvi, Fin.	Halsaja, Finland
23	"	Elli Dellerva	"	"	Andrew Johnson	Mary Sankala	"	"	Quarryman	Finland	Finland
Mar 2	"	Enid Margery	"	"	Anthony Carpenter	Zelia Martel	"	"	Blacksmith	New Haven, Ct.	Gaernsey, C. I.
4	"	Roy Albert	"	"	Albert W. Peacock	Lava A. Williamus	"	"	Wood work'r	Amherst	Wilton
4	"	Catherine Theresa	"	"	Thomas E. Hurley	Annie Cooley	"	"	Mill hand	Milford	Wilton
5	"	Barbara Louise	"	"	Charles A. Cutts	Roma B. Hutchinson	"	"	Clerk	Newport	Lyndeboro
5	"	Clark	"	"	George Clark	Helen F. McCoombes	"	"	Laborer	Lambertville, N. J.	Pantucket R. I.
6	"	Teresa Ricitelli	"	"	Rocco Ricitelli	Cogetta Gurguale	"	"	Quarryman	Viola, Italy	Cilieve, Italy
14	"	Amadeo	"	"	Antonio Amadeo	Annie Dondsjia	"	"	Wood work'r	Maori, Italy	St. Benidito, It'y
23	"	Edward Lawrence	"	"	Edward L. Searles	Mary A. Sargent	"	"	Salesman	Cambridge, Mass	Milford
31	"	Ruth Joan	"	"	Herbert E. Sears	Mary A. Tonella	"	"	Teamster	Havelock, N. B.	Angera, Italy
April 4	"	Herbert	"	"	John W. Baum	Mabel Keast	"	"	Paving cutter	Mt. Sorrel, Eng.	Sheffield, Eng.
6	"	George Frederick	"	"	Harry G. Turner	Lucie E. Brown	"	"	Painter	Milford	Boothbay, Me.
12	"	Jennie Theresa	"	"	Louis Costigli	Mary T. Rossi	"	"	Stone cutter	Venice, Italy	Mil rd, Mass.
22	"	Wayne	"	"	Harry Ashford	Lila G. Nelson	"	"	Mill operative	St. John, N. B.	Hillsboro
24	"	Dana Wheeler	"	"	William J. Gangloff	Hazel E. Wheeler	"	"	Clerk	Woodbury, N. J.	Milford
May 4	"	Rufus John	"	"	John E. Luomaala	Ahna Konni	"	"	Engineer	Mala, Finland	Keuru, Finland
17	"	William Albert	"	"	Clarence W. Sibley	Carrie Alice Kent	"	"	Quarryman	Bangor, Me.	Milford
19	"	Helen Dagmar	"	"	Matti Koski	Lena Copala	"	"	Quarryman	Vasau, Fin.	Tenava, Finland
25	"	Leah Anna	"	"	A delard Pecard	Mary L. Martin	"	"	Mill hand	Chanda	Greenfield

BIRTHS—Continued

Date of Birth.	Place of Birth.	Name of the Child (if any.)	Sex and Condition.		Name of father.	Maiden name of mother.	Color of parents	Residence of parents.	Occupation of father.	Birthplace of father.	Birthplace of mother.
			Male.	Female.							
May 29	Milford.....	Casey	S	3	James A. Casey	Jennie E. Doucett.....	Milford.....	Road Patrol	Milford.....	Nashua.....	
June 9	"	Harry Elmer.....	L	3	Frank G. LaBelle	Amelia Levine.....	"	Furniture	Embroke.....	Göthenberg, Swe	
" 12	"	Marguerite Alice.....	L	1	Raymond C. Wright	Winifred A. Bowler	"	Furniture	Milford.....	Milford.....	
" 18	"	Shaughnessy	S	1	Chas. W. Shaughnessy	Sarah A. Koss.....	"	Wood work	"	Lyndeboro.....	
" 18	"	Warren Warren.....	L	4	Arthur F. Dutton	Ethel Sears.....	"	Wood work	"	Havelock, N. B.	
" 18	"	Walter Walker.....	L	5	Arthur F. Dutton	Ethel Sears.....	"	Wood work	"	Havelock, N. B.	
" 22	"	Vincenza Sundried	L	4	Vincenzo D'Andrea	Pasqualina D'Lenzo	"	Quarryman	St. Bernadetto It	St. Bernadetto, It	
" 23	"	Florence Eileen.....	L	2	Henry Baum	Mary A. Clark.....	"	Paving cut'r	Mt. Sorrel Eng.	Middletown, Eng	
July 6	Manchester	Martha Albright.....	L	2	Walter E. Billings	Emilie B. Farnsworth	"	Auto dealer	Milford.....	Red Wing, Minn	
" 14	Milford.....	Hasu Daniels	L	12	Otto Hasu.....	Lydia Daniels.....	"	Quarryman	Sippola, Finland	Fitchburg, Mass	
" 19	"	Daniels	L	1	Andrew Daniels	Amelia Kangas.....	"	Quarryman	Haapajavi	Viivreska, Fin'd	
" 20	"	Paul Olavi.....	L	1	August Tuominen	Ida Hainalainen.....	"	Quarryman	"	Wirtsaari, Fin'd	
" 20	"	Norman Ellsworth	L	6	Phraim A. Wheeler	Bessie E. Smith.....	"	Teamster	Moors Forks, NY	Goffstown, N. H	
Aug. 3	"	Stacy Elbridge.....	L	1	Willis E. Jewett	Eva M. Stacy.....	"	Farmer	Milford.....	W. Newton, Mass	
" 12	"	Frederick Leroy.....	L	2	Carl W. Talbot	Hazel F. Perkins.....	"	Wood work	"	Milford.....	
Sept. 11	York, Me.....	Ellingwood	L	4	Clinton A. McLane	Dorothy Ellingwood	"	Army	"	Lowell, Mass.....	
" 26	Milford.....	Mazrukelli	S	1	Antonio Mazrukelli	Cognitti Giovanna	"	Graanite Pol.	Italy	Italy	
" 27	"	Herbert Hugo.....	L	3	Oskar Duerschmidt	Flora A. Granze.....	"	Baker	Thurni, Saxony.	Plaisa, Saxony..	
" 29	"	Rudolph Edward	L	7	Archie Carpentieri	Marie Doucett.....	"	Blacksmith	Naples, Italy....	Newmarket.....	
" 29	"	Veronica.....	L	3	Wm. P. Buckley	Ellen M. Bizel.....	"	Clerk	Amherst.....	Malone, N. Y....	
" 30	"	Vincenzo Frederik	L	1	Cesare Falcini	Aida Rocca.....	"	Shoemaker	Vicoli, Italy.....	Vicoli, Italy.....	
" 20	"	Marion Krharine	L	1&6	Joseph A. Souin	Rachel Greenwood	"	Granite cut'r	Quincy, Mass....	Cazadale, Ohio..	
" 20	"	Leonora Adelina	L	2&3	Batista G. Lotti	Leontine De la Barre	"	Merchant	Brenno, Italy....	Paris, France....	
" 23	"	John Robert.....	L	1	George Hagar	Alberta Taylor.....	"	Machinist	Cambridge Mass	Milford.....	
" 23	"	John Robert.....	L	1	Frederick Noon	Mary H. Hodgson	"	Paving cut'r	Middletown, Eng	Keswick, Eng....	
Nov. 5	"	Marion.....	L	5	Maurice G. Jewett	Alfa S. Hayden.....	"	Asst. Cashier	Milford.....	Concord.....	
" 9	"	John Henrich.....	L	2	Henrich Ylfito	Saima Koskinen.....	"	Quarryman	Finland	Finland	
" 16	"	Elinor.....	L	3	Chas. W. Robinson	Jessie Duncan.....	"	Salesman	Milford.....	Oak Bay, N. B....	
" 17	"	Evelyn Margaret	L	4	Joseph Laponsie	Cora Jalburt.....	"	Painter	"	Canada	
" 23	"	Dante.....	L	3	Joseph Silva	Laura Diaferice.....	"	Blacksmith	Orsogna, Italy....	Ruvodipualia, Ly	
" 25	"	Frank Levi.....	L	2	Levi J. Hartshorn	Emma Ingerston.....	"	Farmer	Amherst	West Upton, Mas	
" 28	"	Deane M.....	L	1	Andrew J. Young	Jessie Duncan.....	"	Paving cut'er	Aberdeen, Scot..	Aberdeen, Scot..	
" 8	"	Amelia Josephine	L	8	Joseph Silva	Maria A. Gonzales	"	Stone mason	Madeira Islands	Madeira Islands	
" 18	Nashua.....	Ruth.....	L	9	Nicola Calvitti	Mary Amato.....	"	Stone cutter	Pascopentarioti	Santa Catarina I	
" 28	Milford.....	Arelene May.....	L	1	Alexander W Falconer	Grace Wilson.....	"	Clerk	Ayer, Mass.....	Philadelphia, Pa	
" 28	"	Elizabeth Grace.....	L	7	Charles E. Little	Evangeline Tyler.....	"	Farmer	Lenoxville, Can.	Whitefield.....	
" 31	"	Lillian.....	L	2	Alphonse Jarest	Elizabeth G. Newbold	"	Teamster	Wilton.....	Clayton, N. V....	
" 31	"	Lillian.....	L	3	Alphonse Jarest	Elizabeth G. Newbold	"	Teamster	Wilton.....	Clayton, N. V....	

All living

All White

I hereby certify that the foregoing returns are correct according to the best of my knowledge and belief. JAMES M. LAWS, Town Clerk.