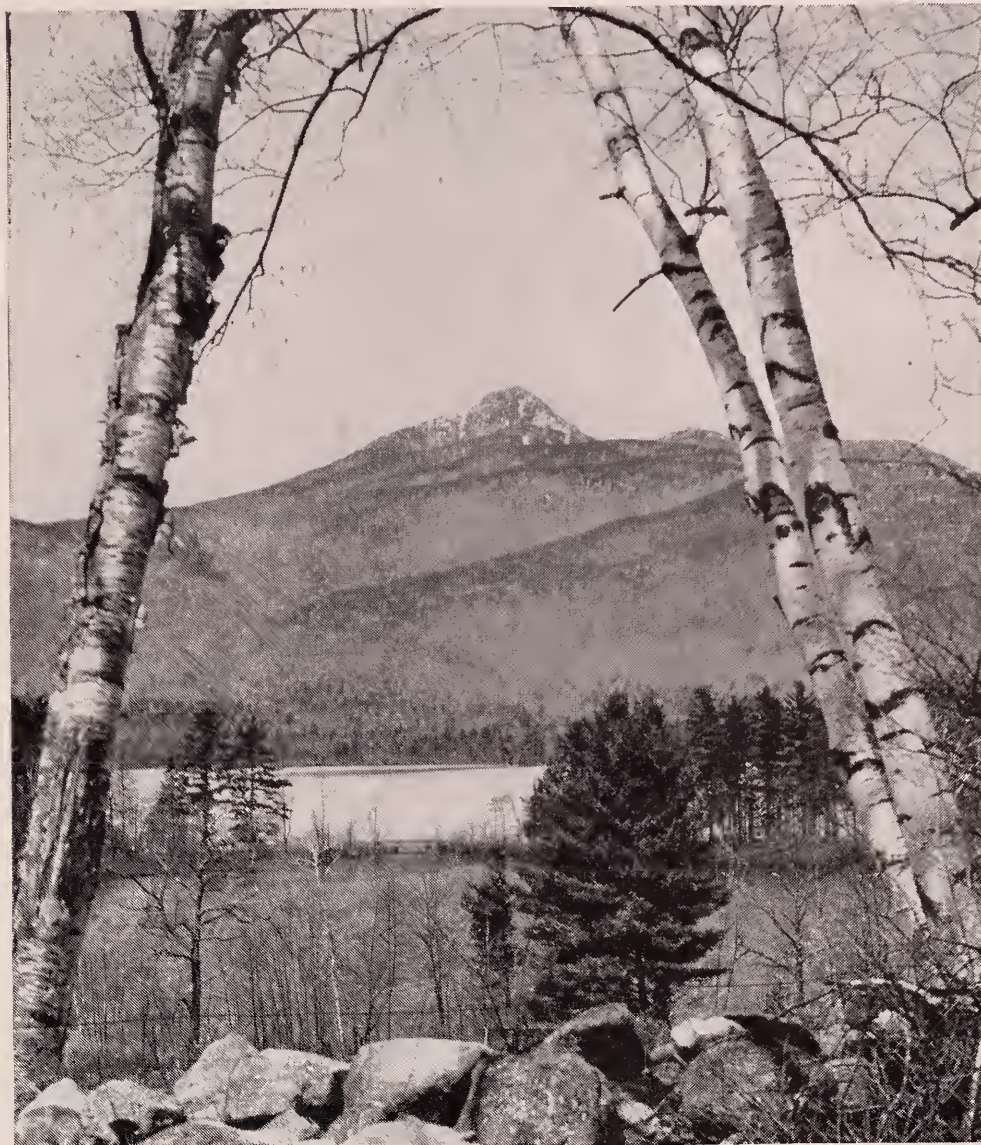


ANNUAL REPORTS



CHOCORUA MOUNTAIN AND LAKE

Town of Tamworth

NEW HAMPSHIRE

1950

University of New Hampshire
Library

352
T 13
195

INDEX

Town Officers	2 - 3
Warrant	4 - 8
Budget	9 - 11
Inventory	12
Statment of Appropriations	13
Financial Rport	14 - 19
Schedul of Town Property	20
Town Clerk's Report	21
Tax Collector's Report	21 - 29
Detailed Statement of Payments	30 - 54
Auditors' Certificate	55
Trust Funds	56 - 57
Tamworth Fire Dept.	58 - 59
Cmmunity Nurse Treasurer's Report	60
Tamworth Community Nurse Association	61 - 63
Memorial Day	64
American Red Cross	65
Cook Memorial Library	66
Librarian's Report	67
Forst Fire Warden	68 - 69
Tamworth Outing Club	70 - 72
Old Home Week Observance	73 - 74
School Board	75
School Warrant	76 - 77
Superintenen't's Report	78 - 81
School Lunch Program	82 - 84
School Nurse	84 - 85
School Board's Estimate	86 - 88
School Board's Statement	89 - 90
School District Treasurer's Report	91 - 92
Detailed Statement of Expenditures	93 - 98
School Board Report	99 - 100
Vital Statistics	101 - 102

TOWN OFFICERS FOR 1950

Moderator

EMMONS HEALD

Representative

EARL REMICK

Town Clerk

FORREST D. AYER

Selectmen

FRANCIS J. WELCH GEORGE R. NICKERSON
FRANCIS G. CLEVELAND

Supervisors of Check List

HARRY HENDERSON MANLEY E. BRETT
EDWIN E. CLOUGH

Tax Collector

THOMAS M. LEARY

Road Agents

HAROLD ROSS ALMON G. EVANS
PIKE G. PERKINS EDWARD DWYER

Treasurer

WILLIAM B. HIDDEN

Dog Constable

HENRY HOBBS

Present Holder of Post Cane

EMILY BELLE WHITTREDGE

Cemetery Trustees

LEONARD H. VITTUM THEODORE JOHNSON

Trustees of Trust Funds

LEONARD H. VITTUM THEODORE JOHNSON
FRANCIS G. CLEVELAND

Library Trustees

ROBERT SPAULDING MARION REMICK
ETHEL BERRY

Chief of Police

HIRAM MASON

Special Police

EMERY ROBERTS

Constable

JAMES WELCH

Ballot Inspectors

FRANK BLACKKEY CHARLES REMICK
LAWRENCE D. HAYFORD ANDREW ELDRIDGE

Health Officer

EDWIN C. REMICK, M. D.

TENTATIVE TOWN WARRANT

To the inhabitants of the Town of Tamworth, in the County of Carroll, qualified to vote in Town Affairs:

You are hereby notified to meet at the Town House in said Tamworth on Tuesday the 13th day of March at Ten of the clock in the forenoon to act upon the following subjects:

1. To raise such sums of money as may be necessary to defray town charges for the ensuing year and make appropriations for the same. \$9700 is approved by the finance committee.

2. To see if the town will vote to raise and appropriate the sum of \$600 to be let out at contract for cutting bushes on town roads. Approved by finance committee.

3. To see what sum of money the town will vote to raise and appropriate for repairing summer highways for the ensuing year. \$3600 is approved by the finance committee.

4. To see what sum of money the town will vote to raise and appropriate for plowing snow for the ensuing year. \$6000 has been approved.

5. To see if the town will vote to raise and appropriate the sum of \$1200 for repair of road equipment, road maintenance and general highway. Approved.

6. To see if the town will vote to raise and appropriate the sum of \$844.28 for Town Road Aid and the State will contribute the sum of \$5631.84. Approved.

7. To see if the town will vote to raise and appropriate the sum of \$1200 for repairing and building bridges. Approved.

8. To see what sum of money the town will vote to raise and appropriate in addition to the amount required by law for the support of the Town Library. The sum recommended and approved to be raised as a whole is \$400.

9. To see if the town will vote to raise and appropriate the sum of \$25 for the upkeep and care of shrubs and plants around the Town Buildings. Approved.

10. To see what sum of money the town will vote to raise and appropriate for Memorial Day observance. \$150 is approved.

11. To see what sum of money the town will vote to raise and appropriate for the observance of Old Home Day. \$175 approved.

12. To see if the town will vote to raise and appropriate the sum of \$167 which is 1/100 of 1% of the assessed valuation of the Town for the Lakes Region Association for the purpose of publicizing and promoting the natural advantages and resources of the Town, in cooperation with other towns in the Lakes Region. Approved.

13. To see if the town will vote to raise and appropriate the sum of \$300 for the Tamworth Outing Club for promoting and advertising winter business. Approved by finance committee.

14. To see if the town will vote to raise and

appropriate the sum of \$1500 for support of the Tamworth Community Nurse. Approved.

15. To see if the town will vote to raise and appropriate the sum of \$350 to aid the Red Cross Water Safety Program in transporting children to White Lake State Park for swimming instruction. Approved.

16. To see if the town will vote to raise and appropriate the sum of \$300 to be divided equally between the Laconia Hospital, North Conway Hospital and Huggins Hospital. Approved.

17. To see if the town will vote to raise and appropriate the sum of \$500 to be used by the Civilian Defense Committee for the purchase of food, supplies and other needs in case of an emergency. Approved.

18. To see if the town will vote to authorize the Selectmen to borrow money in anticipation of taxes.

19. To see if the town will vote to raise and appropriate the sum of \$150 for gilding the town clock. Approved.

20. To see if the town will vote to raise and appropriate the sum of \$300 for the repair of the Gilman Road to make it possible to plow it in winter. Approved.

21. To see if the town will vote to raise the salaries of the Town Clerk and Town Treasurer, each from \$100 to \$150. Approved.

22. To see if the town will vote to raise and appropriate the sum of \$4000 for Tarvia. Approved.

23. To see if the town will vote to raise and appropriate the sum of \$1500 to continue the White Lake Road from the LeFebvre place toward the Willie Eldridge place. Approved.

24. To see if the town will vote to raise and appropriate the sum of \$250 for Firemen's Insurance in compliance with the Public Laws of New Hampshire, section 4, Chapter 146, Paragraph 16. Approved.

25. To see if the town will vote to authorize the Selectmen to administer or dispose of any real estate acquired by the town through Tax Collector's Deeds.

26. To see if the town will vote to authorize the Selectmen to distribute the inventory blanks at the time they examine and appraise taxable property.

27. To see if the town will vote to raise and appropriate the sum of \$1500 for the Tamworth Fire Department. Approved.

28. To see if the town will vote to raise and appropriate the sum of \$200 for White Pine Blister Rust Control, to be spent in cooperation with the State Forestry and Recreation Department. Approved.

29. To see if the town will vote to appoint or elect a Supervisor or Commissioner of Highways of the Town of Tamworth, and raise such sums of money as will be necessary to defray his salary and expense. By vote of the finance committee and approved.

30. To choose a Selectman for three years, to choose a Town Clerk, Tax Collector, Highway Agents, Auditors, and all other officers and agents for the ensuing year.

31. To see if the town will vote to keep the polls open until six of the clock in the afternoon.

32. To transact any other business that may come legally before said meeting.

Given under our hand and seal this 23rd day of February in the year of our Lord nineteen hundred and fifty-one.

FRANCIS J. WELCH
GEORGE R. NICKERSON
FRANCIS G. CLEVELAND
Selectmen of Tamworth

A true copy of Warrant — Attest:

FRANCIS J. WELCH
GEORGE R. NICKERSON
FRANCIS G. CLEVELAND
Selectmen of Tamworth

BUDGET OF THE TOWN OF TAMWORTH

Estimates of Revenue and Expenditures for the Ensuing Year January 1, 1951 to December 31, 1951 Compared with Estimated and Actual Revenue, Appropriations and Expenditures of the Previous Year January 1, 1950 to December 31, 1950.

SOURCES OF REVENUE	Estimated Revenue Previous Year 1950	Actual Revenue Previous Year 1950	Estimated Revenue Ensuing Year 1951
From State:			
Interest and Dividends Tax	\$6854.31	\$7683.75	\$7000.00
Railroad Tax	12.59	12.61	12.50
Savings Bank Tax	153.36	112.98	100.00
Reimbursement a/c State and Federal forest lands	464.77	549.20	500.00
Blister Rust	.32	1.40	1.00
Reimbursement a/c Exemption of Growing Wood and Timber Yield Tax	4000.00	3950.54	
For Fighting Forest Fires	71.48	22.12	50.00
National Forest Reserve	8.36	7.85	8.00
Bounties	136.00	136.00	66.25
From Local Sources Except Taxes:			
Dog Licenses	372.80	402.20	400.00
Business Licenses, Permits and Filing Fees	12.00	15.00	10.00
Interest Received on Taxes and Deposits	32.36	43.21	40.00
Tax Sales Redeemed	87.08	1456.31	25.00
Memorial Day Refund	65.73		
Town of Albany	7.50	7.50	
Motor Vehicle Permit Fees	3712.70	4466.42	4000.00
School District Reports	120.00	120.00	80.00
Use of Fire Equipment	82.41	32.80	
Lord Est. for Cemetery		200.00	
N. Henry Black for Culvert		29.52	
Albert Elliott for Tarvia		14.20	
Amount Raised by Issue of Bonds or Notes:			
Town of Sandwich on Fires		17.36	
Temporary Loans	20000.00	20000.00	20000.00
Previous Year's Poll Taxes	14.00	36.00	
†Cash Surplus	13439.57	11425.54	10000.00
From Local Taxes Other Than Property Taxes:			
Poll Taxes—Regular @ \$2	1120.00	1086.00	1100.00
National Bank Stock Taxes	2.25	2.25	2.25
Total Revenues from All Sources			
Except Property Taxes	\$50769.59	\$55781.30	\$53390.00
*Amount to Be Raised by Prop. Taxes		\$64168.63	
TOTAL REVENUES			\$119949.93

*Total estimated "Revenues from All Sources except Property Taxes" deducted from Total estimated "Expenditures" should give estimated "Amount to be raised by Property Taxes."

†Cash Surplus equals Excess of actual Cash on Hand at close of fiscal year over Current Liabilities, i.e., Balance of Appropriations due School District, Unexpended Balances of Special Appropriations, Outstanding Temporary Loans in Anticipation of Taxes and Accounts Payable.

PURPOSES OF EXPENDITURES	Appropriations	Actual	Estimated
	Previous Year 1950	Expenditures Previous Year 1950	Expenditures Ensuing Year 1951
Current Maintenance Expenses:			
General Government	\$9000.00		\$9700.00
Town Officers' Salaries		1720.50	
Town Officers' Expenses		803.95	
Election and Registration Expenses		387.74	
Municipal Court Expenses		87.05	
Expenses Town Hall and Other			
Town Bldgs.		33.00	
Bushes	600.00	429.20	600.00
Police Department		172.60	
Fire Department	1500.00	1586.90	1500.00
Moth Extermination—			
Blister Rust	200.00	200.00	200.00
Insurance, Firemen		250.00	250.00
Health:			
Health Department, Including			
Hospitals	1800.00	1819.00	1800.00
Vital Statistics		31.00	
Printing		261.16	
Town Dump and Garbage Removal		299.49	
Highways and Bridges:			
Tarvia	4000.00	3453.81	4000.00
Town Maintenance—Summer	3600.00	4015.50	3600.00
Town Maintenance—Winter	4500.00	5789.66	6000.00
Street Lighting		1051.15	
General Expenses of			
Highway Department	1200.00	1015.60	1200.00
Town Road Aid	823.61	823.61	844.28
Libraries	600.00	600.00	400.00
Public Welfare			
Town Poor		2191.49	
Old Age Assistance		2104.97	
Patriotic Purposes:			
Memorial Day & Old Home Day	325.00	325.00	325.00
Aid to Soldiers and Their Families		10.00	
Recreation:			
Advertising — Outing Club	650.00		
Parks and Playgrounds, Incl.			
Band Concerts, Red Cross	175.00	878.14	817.00
Garden Club	25.00	25.00	25.00

Cemeteries		109.00	
Bounties		15.00	
Tubs		10.00	10.00
Damages and Legal Expenses, Incl. Dog Damage		54.40	
Town Clock Repairs			150.00
Interest:	233.34	394.54	
Temporary Loans	20000.00	20000.00	20000.00
Civilian Defense			500.00
On Long Term Notes, interest		161.75	
On Principal of Trust Funds Used By Town	176.20		
Bridges:	1200.00	1084.05	1200.00
Washouts		781.30	
W. Moore, Special	500.00	527.25	
White Lake, Special	1500.00	1174.55	1500.00
Great Hill, Special	1500.00	1434.25	
Gilman Road			300.00
Taxes Bought by Town		550.89	
Precinct Taxes		200.00	200.00
Auto Permits		366.00	
Payments to Other Govern- mental Divisions:			
County Taxes	9000.00	7943.16	9000.00
School Taxes	41471.70	30807.97	40000.00
TOTAL EXPENDITURES	\$104580.85	\$95724.63	\$104121.28

SUMMARY INVENTORY OF VALUATION

Lands and buildings, exclusive of growing wood and timber		\$1,525,530 00
Horses	79	7,550 00
Oxen	6	700 00
Cows	169	19,465 00
Other neat stock	13	1,040 00
Sheep and goats	22	174 00
Fowl	2906	3,235 00
Vehicles	2	2,000 00
Portable Mills	7	10,400 00
Wood and lumber		109,750 50
Gasoline pumps and tanks		6,165 00
Stock in trade		19,803 00
Milk and machinery		2,250 00
Total Inventory of valuation		_____
exclusive blind exemptions, and soldiers' exemptions		\$1,708,062 50
Soldiers' and blind exemptions		37,725 00

Total valuation		\$1,670,337 50
Tax rate		\$3 70

STATEMENT OF APPROPRIATIONS, 1950

Town Charges	\$ 9000 00
Sanding Roads	800 00
Repairing Highways	7300 00
Repairing and building bridges	1200 00
Memorial Day	200 00
Town Library	400 00
Painting Town Library	200 00
Repair Road Equipment, Road Maintenance and General Highway	1200 00
Tamworth Community Nurse	1500 00
Tarvia	4000 00
Tamworth Fire Department	1500 00
Firemen's Insurance	250 00
Washington Hill Special	500 00
White Lake Special	1500 00
Laconia, North Conway and Huggins Hospitals	300 00
T. R. A.	823 61
White Pine Blister Rust Control	200 00
Old Home Week	175 00
Red Cross Water Safety Program transportation	350 00
Great Hill Special	1500 00
Tamworth Outing Club	300 00
Bush Cutting	600 00
Upkeep and Care of Plants around Town Buildings	25 00
Lakes Region Association	175 00
County Tax	7943 16
Total School District Appropriation	41471 70
 Total Appropriations	 \$83413 47

FINANCIAL REPORT

For the Fiscal Year Ended December 31, 1950

CERTIFICATE

This is to certify that the information contained in this report was taken from official records and is complete to the best of our knowledge and belief.

Dec. 31, 1950

FRANCIS J. WELCH
 GEORGE R. NICKERSON —
 FRANCIS G. CLEVELAND —
 Selectmen
 WILLIAM B. HIDDEN
 Treasurer

ASSETS

Cash

In hands of treasurer		\$31266 64
Capital Reserve Funds:		
Government Bonds	10000 00	
Interest on Bonds	1000 00	
State purpose of Fund: Post war work by vote of Town		
Compound interest on Govern- ment Bonds	25 93	
		11025 93
Due from School District, Print- ing Reports 1948 & 1949	80 00	
Accounts Due to the Town —		
Due from State:		
Balance Timber Tax Reim- bursement 1950	725 22	

1949 Bounties	51 25	
1950 Bounties	15 00	
Due from City of Oriskey, N. Y., for Fred Tewksbury	167 42	
Due from Ben Page	125 00	
Due from Raymond Berry	51 00	
Due from Ernest Roebarge	48 00	
Due from George Moody	80 00	
Due from Carroll County Coop	48 00	
Due from Leon Hobbs	7 50	
Unredeemed Taxes: (from tax sale on account of) Levy of 1950	550 89	
Uncollected Taxes: Levy of 1949	188 12	
		<hr/>
Total Assets		\$44429 97
		<hr/>
Grand Total		\$44429 97
Net Surplus, December 31, 1949		13439 57
Net Surplus, December 31, 1950		11425 54
Decrease of Surplus		2014 03
		<hr/>
LIABILITIES		
Accounts Owed by the Town:		
Due to School Districts:		
(b) Balance of Approp- riation	\$28527 19	
(c)	72 00	\$28599 19
Trust Funds, Amount of Principal Used by Town:	4405 24	4405 24
		<hr/>
Total Liabilities		\$33004 43
Excess of assets over liabilities (Surplus)		11425 54
		<hr/>
Grand Total		\$44429 97

RECEIPTS

Current Revenue:

From Local Taxes: (Collected and
remitted to Treasurer)

Property Taxes, Current year	\$63122	49	
Poll Taxes, Current Year,			
Regular @ \$2	1086	00	
National Bank Stock Taxes	2	25	
Yield Taxes	1046	14	
Total Current Year's Taxes	<hr/>		
collected and remitted			\$65256 88
Property Taxes, Previous Years, 1946 & 1949			1456 31
Poll Taxes, Previous Years, Regular @ \$2, 1949			36 00
Interest received on Taxes			43 21
Notice to Mortgagee			70

From State:

Timber tax	3950	54	
Interest and dividend tax	7683	75	
Railroad tax	12	61	
Savings bank tax	112	98	
Reimbursement a/c State and Federal forest lands	549	20	
National forest reserve	7	85	
Fighting forest fires	22	12	
Bounties	136	00	
	<hr/>		12475 05

From Town of Sandwich on town
lines

17 36 17 36

From Local Sources, Except Taxes:

N. Henry Black for culvert	29	52	
Dog licenses	402	20	
Filing fees	15	00	
Use of Fire Equipment	32	80	
Use of Tractor, Town of Albany	7	50	
Albert Elliott for Tarvia	14	20	

Lord Cemetery lot, Effie Lord Est.	200 00	
E. A. Dwyer, overpayment	2 20	
Registration of motor vehicles,		
1949 Permits	37 19	
1950 Permits	4466 42	5207 03
		<hr/>
Total Current Revenue Receipts		\$84492 54
Receipts Other than Current Revenue:		
Temporary loans in anticipation		
of taxes during year	20000 00	
Refunds, Blister Rust	1 40	
Total Receipts Other than Current Revenue		<hr/> 20001 40
		<hr/>
Total Receipts from All Sources		\$104493 94
Cash on hand January 1, 1950		22497 33
		<hr/>
Grand Total		\$126991 27

PAYMENTS

Current Maintenance Expenses:		
General Government:		
Town officers' salaries	\$1720 50	
Town officers' expenses	803 95	
Election and registration expenses	387 74	
Collector's costs	87 05	
Expenses town hall and other		
town buildings	33 00	
		<hr/> \$3032 24
Protection of Persons and Property:		
Police department	172 60	
Fire department, including		
forest fires	1586 90	
Moth extermination — Blister		
Rust	200 00	

Bounties	15 00	
Tarvia	3453 81	
	<hr/>	5438 31
Health:		
Health department, including		
hospitals	1819 00	
Vital statistics	31 00	
Printing	261 16	
	<hr/>	2111 16
Bridges:	1084 05	
Town Road Aid	823 61	
Town Maintenance (Summer —		
\$4015.50) (Winter — \$5784.66)	9800 16	
Street lighting	1051 15	
General Expenses of Highway		
Department	1015 60	
Bushes	429 20	
Libraries	600 00	
	<hr/>	14803 77
Public Welfare:		
Old age assistance	2104 97	
Town poor	2191 49	
Watering tubs	10 00	
Garden Club	25 00	
Old Home Day	325 00	4666 46
Patriotic Purposes:		
Aid to soldiers and their families	10 00	
Recreation:		
Parks and playgrounds, includ-		
ing band concerts	878 14	878 14
Public Service Enterprises:		
Cemeteries, including hearse hire	109 00	
Auto Permits	366 00	475 00
Unclassified:		
Damages and legal expenses	54 40	54 40
William Moore Road Special	527 25	
White Lake Special	1174 55	

Taxes bought by town	550 89	
Great Hill Special	1434 25	
	<hr/>	3686 94
Interest:	394 54	
Paid on temporary loans in anticipation of taxes	20000 00	
Paid on long term notes	161 75	
	<hr/>	20556 29
Washouts on Town Roads	781 30	
Lands and buildings	299 49	
	<hr/>	1080 79
Payments to Other Governmental Divisions:		
Taxes paid to County	7943 16	
Payments to Precincts	200 00	
Payments to School Districts	30807 97	
Total Payments to Other Gov- ernmental Divisions	<hr/>	38951 13
Total Payments for all Purposes		<hr/> \$95724 63
Cash on hand December 31, 1950		31266 64
		<hr/>
Grand Total		\$126991 27

SCHEDULE OF TOWN PROPERTY

Town Hall, Lands and Buildings	\$ 4,000 00
Furniture and Equipment	1,000 00
Libraries, Lands and Buildings	2,500 00
Furniture and Equipment	500 00
Fire Department, Lands and Buildings, Owned	
by Tamworth Precinct	6,150 00
Equipment, Town fire equipment	3,000 00
Highway Department, Lands and Buildings	2,500 00
Equipment	7,435 00
Schools, Lands and Buildings	20,000 00
Dump	1,000 00
All Lands and Buildings acquired through	
Tax Collector's deeds, 2 lots No. 146	
& No. 147	1,200 00
	<hr/>
Total	\$49,285 00

TOWN CLERK'S REPORT

Dec. 31, 1950

1949 Auto Permits	\$ 37 19
1950 Auto Permits	4466 42
1950 Dog Tax	402 20
Filing Fees	15 00

 \$4920 81

I hereby certify that the above is correct to the best of my knowledge and belief.

FORREST D. AYER
Town Clerk

TAX COLLECTOR'S REPORT**SUMMARY OF WARRANT**

LEVY — 1950

DR

Taxes Committed to Collector

Property Taxes	\$62,846 66
Poll Taxes	1,154 00

 Total Warrants \$64,000 66

Yield Taxes 1,235 90

Added Taxes:

Property Taxes on Warrant	68 48
Property Taxes, Unlisted	305 40
Poll Taxes, Unlisted	42 00

 415 88

Interest Collected 8 76

National Bank Stock Tax 2 25

 Total Debits \$65,663 45

CR

Remittance to Treasurer:

Property Taxes	\$62,122 49	
Poll Taxes	1,086 00	
National Bank Stock Tax	2 25	
Yield Taxes	1,046 14	
Interest Collected	8 76	
	<hr/>	
Total Remittance		\$65,265 64
Abatements:		
Property Taxes:	98 05	
Poll Taxes	90 00	
Yield Taxes	189 76	
	<hr/>	377 81
Uncollected Taxes as per Collector's List:		
Poll Taxes		20 00
		<hr/>
Total Credits		\$65,663 45

THOMAS M. LEARY
Collector of Taxes

UNLISTED PROPERTY TAXES, 1950

Aspinall, Charles, Precinct Tax	\$ 2 52
Bickford, Charles R., Lot 58, Brown Heirs	5 55
Bickford, Nellie, Homestead	25 90
Higgins Lot	3 70
Collier, Wilfred, Precinct Tax	2 10
Currier, Flora, Precinct Tax	1 85
Damon, Harry F., Precinct Tax, (Inn)	14 00
(L. Robinson)	3 50
Elliott, Cora, Precinct Tax	1 12
Fairclough, Herbert, Precinct Tax	2 38
Folkins, Mary, Precinct Tax	1 96

Finley, Robert, Chestley Land	3 70
Flaccus Land	37 00
Goss, Gordon, Precinct Tax	1 40
Kelley, Reginald, Part, J. Smith Pl.	3 70
Tayler Place	33 30
Leach, William, Homestead	18 30
Pelletier, Albert, G. Brown Camp	3 70
Poor, Harry, Precinct Tax	1 40
Quirion, Philias, 2 Horses	6 48
Robinson, Harold, Camp	14 80
Rowe, Ernest, Harl Place	49 92
Win Kimball Plot	1 92
Smith, Albert, Precinct	1 68
Smith, Gilman, Moody Lot	3 70
Stocker, Arthur, Summer Residence	22 20
The Parsonage	37 14
Underhill, George, Precinct Tax	28

\$305 40

UNLISTED POLL TAXES, 1950

Autio, Ahti E.	\$2 00
Bernier, Cyrelle	2 00
Bogart, Margaret	2 00
Cummings, Gladys	2 00
Clough, Ida L.	2 00
Farnum, J. Arlene	2 00
Fox, Earle	2 00
Fox, Mrs. Earle	2 00
Harmon, Chester	2 00
Harmon, Mrs. Chester	2 00
Kane, Sadie	2 00
Landry, Marquis	2 00
Landry, Eileen	2 00
Lapointe, Joseph	2 00
Merrell, Lawrence J.	2 00
Moulton, Maxine	2 00
Moulton, Muriel	2 00

Quirion, Phileas	2 00	
Quirion, Paul	2 00	
Sutherland, Donald	2 00	
Sutherland, Elizabeth	2 00	
	<hr/>	42 00
Total Unlisted Taxes		<hr/> \$347 40

ABATEMENTS, LEVY OF 1950

Property Taxes

Robinson, Chester	\$ 3 70	
Anthony, William, Camp	1 85	
Austin, Howard, Camp	7 40	
Rowe, Ernest, Hidden Lot	1 85	
Ossipee Oil Company, Tanks	27 75	
Taylor, Harry, Ski Slope	18 50	
Vial, Norman, Chocorua Inn	37 00	
	<hr/>	\$98 05

Poll Taxes

World War II

Anthony, William	2 00	2 00
In Armed Service		
Pratt, Lucinda	2 00	
Pratt, Margaret	2 00	
Pratt, William B.	2 00	
Wiggin, Harold	2 00	
	<hr/>	8 00

Under 21 Years

Anthony, Ethel	2 00	
Rowe, Mrs. Ivan	2 00	
	<hr/>	4 00

Over 70 Years

Berry, Harry	2 00	
Bickford, Lenora	2 00	
Clark, Mrs. Johnson	2 00	
Fortier, Charles	2 00	
Page, Mrs. Arthur	2 00	
Smith, Lamont	2 00	
Tideman, Maude	2 00	
Underwood, Elizabeth	2 00	
Webster, George	2 00	
	<hr/>	18 00

Non-Residents

Bickford, Paul	2 00	
Loring, Katherine	2 00	
Page, Alice	2 00	
Rich, William	2 00	
Rich, Mrs. William	2 00	
	<hr/>	10 00

Duplicates

Anthony, Jack (William)	2 00	
Carr, Morrell (Charles)	2 00	
Carr, Mrs. Morrell (Sylvia)	2 00	
	<hr/>	6 00

Left Town

Berry, Chester	2 00
Brown, Earle	2 00
Brown, Mrs. Earle	2 00
Corson, Edna	2 00
Crowell, Harold	2 00
Crowell, Mrs. Harold	2 00
Gilman, Edwin	2 00
Halpin, James	2 00
Halpin, Mrs. James	2 00
Hutchins, Mrs. Walter	2 00

Johnson, Marshall	2 00	
Johnson, Mrs. Marshall	2 00	
Johnson, Mrs. Harry	2 00	
Lane, Mrs. Henry	2 00	
Smoot, Estella	2 00	
Lord, Donald	2 00	
Lord, Mrs. Donald	2 00	
Trask, Stanley	2 00	
Trask, Mrs. Stanley	2 00	
Trott, Frank	2 00	
Trott, Mrs. Frank	2 00	
		42 00

Yield Taxes

Bickford, Charles R.		
Bowers Lot	\$24 30	
Clark Lot	4 55	
Gardner Lot	6 39	
Nutter Lot	4 08	
		\$ 39 32
Diamond Match Company	128 67	
Walker, Edward	21 77	
		189 76
Total Abatements		\$377 81

UNCOLLECTED TAXES, POLLS

Aldridge, Lendell	\$2 00
Aldridge, Mrs. Lendell	2 00
Anthony, Mrs. Minard	2 00
Ames, Carl	2 00
Bean, Mrs. Otis	2 00
Brothers, Mrs. Wayne	2 00
Hurd, Albert	2 00
Hurd, Mrs. Albert	2 00

Whiting, James	2 00
Whiting, Mrs. James	2 00

Total Uncollected Poll Taxes \$20 00

RECORD OF SALE, LEVY — 1949

	Tax	Interest		Costs		Total
		Before	After	Before	After	
Anthony, Arnold	\$ 7 50	\$ 03		\$2 18	\$1 55	\$11 26
Brown, Elmer	37 80	18		2 18	1 55	41 71
King, James	75 60	38		2 18	1 55	79 71
Wakefield, Wilfred	51 45	26		2 18	1 55	55 44
Unredeemed as of December 31, 1950						\$188 12
City Lumber Co.	\$636 93	\$3 18		\$2 18		\$642 29
Davis, Rodney	21 35	10	\$ 18	2 18	\$1 55	25 36
Eldridge, Lester	29 40	13	35	2 18	1 55	33 61
Eldridge, Roland	6 30	03	10	2 18	1 55	10 16
Lamprey, Robert, Jr.	415 80	1 89	14 33	7 28	4 85	444 15
Morton Edwin	126 00	60	44	3 03	2 10	132 17
Nickerson, Mark	6 30	03	44	2 18	1 55	10 50
Tucci, Marion	8 40	04	24	2 18	1 55	12 41
Welch, Harry	105 00	52	2 78	2 18	1 55	112 03
<hr/>						
\$1540 30 \$7 43 \$18 95 \$36 47 \$24 00						\$1627 28
Redeemed 1949 taxes during 1950						\$1,420 21
Interest received during 1950						18 95
Unredeemed (see above)						188 12
<hr/>						
\$1,627 28						

SUMMARY OF WARRANT

LEVY — 1949

DR

Uncollected Taxes As of January 1, 1950:

Property Taxes	\$1608 33
Poll Taxes	38 00

\$1646 33

Interest Collected During Fiscal		
Year Ended December 31, 1950		18 95
Notice to Mortgagee Fee		70
	<hr/>	\$1665 98

CR

Remittance to Treasurer During Fiscal		
Year Ended December 31, 1950:		
Property Taxes	\$1420 21	
Poll Taxes	36 00	
Mortgagee Notice Fee	70	
Interest Collected During Year	18 95	
	<hr/>	\$1475 86

Uncollected Taxes as per Collector's		
List:		
Property Taxes		188 12
Poll Taxes		2 00
		<hr/>
		\$1665 98

SUMMARY OF WARRANT
LEVY OF 1946

DR

Uncollected Taxes As of January 1, 1950:		
Property Taxes	\$36 10	
Interest Collected During Fiscal Year		
Ended December 31, 1950	15 50	
	<hr/>	
Total Debits		\$51 60

CR

Remittance to Treasurer During Fiscal		
Year ended December 31, 1950:		
Property Taxes	\$36 10	
Interest Collected During Year	15 50	
	<hr/>	
Total Credits		\$51 60

UNCOLLECTED TAXES

LEVY OF 1949

Property Taxes

	Tax	Interest	Costs	Total
Anthony, Arnold	\$ 7 50	\$ 03	\$3 73	\$11 26
Brown, Elmer	37 80	18	3 73	41 71
King, James	75 60	38	3 73	79 71
Wakefield, Wilfred (Estate — Clarence Wakefield)	51 45	26	3 73	55 44
Total Property Taxes				<u>\$188 12</u>
Poll Taxes				
Anthony, Mrs. Minard				2 00
Total Uncollected Taxes				<u>\$190 12</u>

I hereby certify that the above list showing the name and amount due from each delinquent taxpayer, as of December 31, 1950, on account of the tax levy of 1949, is correct to the best of my knowledge and belief.

THOMAS M. LEARY
Collector of Taxes

DETAILED STATEMENT OF PAYMENTS

TOWN OFFICERS' SALARIES

Roy E. Arling, Selectman	\$ 95 00	
Francis J. Welch, Selectman	389 50	
George R. Nickerson, Selectman	376 00	
Francis G. Cleveland, Selectman	260 00	
Thomas M. Leary, Tax Collector	350 00	
Forrest D. Ayer, Town Clerk	100 00	
William B. Hidden, Treasurer	100 00	
Emmons Heald, Moderator	10 00	
Lawrence D. Hayford, Auditor	20 00	
Harry F. Damon, Auditor	20 00	
	<hr/>	
Total Town Officers' Salaries		\$1720 50

TOWN OFFICERS' EXPENSES

William B. Hidden, Treasurer	\$28 61	
Forrest D. Ayer, Town Clerk	53 35	
Roy E. Arling, Selectman	17 30	
Francis J. Welch, Selectman	87 90	
Gorge R. Nickerson, Selectman	73 00	
Francis G. Cleveland, Selectman	40 80	
Thomas Leary, Tax Collector	44 45	
Edson C. Eastman Co., Supplies	57 88	
Carroll County Independent, Supplies	23 12	
Brown & Saltmarsh Inc., Office Supplies	46 93	
Wheeler & Clark, Supplies	16 88	
New England Tel. and Tel. Co.	93 95	
New Hampshire Tax Collectors' Ass'n, Dues	2 00	
New Hampshire City and Town Clerks' Ass'n, Dues	2 00	

New Hampshire Assessors' Ass'n,		
Dues	2	00
L. H. Vittum, Trustee of Trust Funds	15	00
Francis J. Welch Trip to Assessors'		
Meeting	39	55
George R. Nickerson Trip to Assess-		
ors' Meeting	26	00
Francis G. Cleveland Trip to Assess-		
ors' Meeting	35	00
Thomas M. Leary Tax Collectors'		
Convention	15	87
Thomas M. Leary Tax Commission-		
ers' Meeting	9	20
Francis J. Welch Tax Commission-		
ers' Meeting	6	00
George R. Nickerson Tax Commis-		
sioners' Meeting	6	00
Francis Welch, Highway Meeting	8	00
Francis Welch, Timber Tax Meeting	5	00
George R. Nickerson, Highway		
Meeting	8	00
George R. Nickerson, Timber Tax		
Meeting	4	00
Francis G. Cleveland, Highway		
Meeting	12	16
Francis G. Cleveland, Timber Tax		
Meeting	4	00
E. A. Dwyer, Highway Meeting	8	00
H. Ross, Highway Meeting	12	00
Total Town Officers' Expenses 1950		\$803 95

ELECTION AND REGISTRATION

Emmons Heald, Moderator	\$20	00
Edwin E. Clough, Supervisor	76	00

Harry Hendreson, Supervisor	72 00	
Manley E. Brett, Supervisor	68 00	
Frank Blackey, Ballot Clerk	12 00	
Andrew Eldridge, Ballot Clerk	12 00	
Hi Mason, Ballot Clerk	8 00	
Harold Trask, Ballot Clerk	4 00	
Addie Smith, Officers' Meals	41 00	
Carroll County Independent, Notices and Check Lists	74 74	
		<hr/>
Total Election and Registration 1950		\$387 74

POLICE

Hi Mason, Police Duty	\$80 00	
Emery Roberts, Police Duty	10 00	
Leon Hobbs, Police Duty	7 00	
James Welch, Constable Duty	25 10	
Henry Hobbs, Dog Constable	40 00	
George Nickerson, Tramps	10 50	
		<hr/>
Total Police		\$172 60

WHITE PINE BLISTER RUST CONTROL

Financial Statement, 1950, Town of Tamworth		
Expenditures:		
Town Funds		\$198 60
State and Federal Funds		
Eradication	\$99 71	
Mapping*	80 31	
		<hr/>
Total		180 02
Total Expenditures		<hr/> \$378 62

Received from Town	\$200 00	
Expended from Town Funds	198 60	
	<hr/>	
Balance Due Town		\$1 40
Area covered		1.259 acres
Currant & gooseberry bushes destroyed		531

*Cooperative expenditure in making detailed maps of the control area.

TOWN FIRE DEPARTMENT

Tamworth Fire Precinct, for fires outside Precinct	\$334 00	
Continental Casualty Company, Firemen's Insurance	275 00	
Earl Remick, Salary	5 80	
Earl Remick, Express	3 51	
Earl Remick, Forest Fires	30 23	
	<hr/>	\$648 54
Ernest Rowe, Lumber for Chocorua Department	\$ 4 10	
Roy E. Arling, Wonalancet Fire Station and Truck Insurance	12 00	
Harry F. Damon, Interest and Principal on Note	226 00	
Chocorua Fire Patrol	25 00	
Fire Protection Co., South Tamworth Fire Department	8 00	
Emmons Heald, Insurance	108 70	
Sudbury Laboratory, South Tam- worth Department	12 50	
Alvin Helme, Chocorua Department	5 25	
Justin A. McCarthy Co., Fire Equipment	356 89	
Carroll County Independent	10 14	

Dube and Murphy Inc., Fuel	120 56	
Charles Remick, Equipment	30 55	
Public Service Co. of N. H., Lights	9 00	
Eastman Paint and Body Shop, Fuel	1 82	
Knights' General Store	3 05	
Aldo M. Stearns, Fuel	4 80	
		<u>\$938 36</u>
Total Fire Department		<u>\$1586 90</u>

LAND AND BUILDINGS AND TOWN DUMP

Frank Locke for Town Dump	\$193 00	
Roy E. Arling, Insurance	40 59	
Frank Whipple, Town Dump	25 00	
Emmons Heald, Insurance	30 00	
Albert Boothby, Fire at Dump	6 40	
Merton Moody, Fire at Dump	4 50	
		<u>\$299 49</u>

TOWN POOR

Grace Abbott for Board and Care of Ben French	\$936 00
C. F. Bamford & Son for Medical Supplies for Ben French	93 82
Dr. Ewin C. Remick for care, Ben French	123 45
Dr. Edwin C. Remick for Cora Eldridge	34 35
Whittier Cash Market for Charles Jeffers	9 67

Laconia Hospital for Lora Baker	81 70	
Carroll County Home for George Brown	912 50	
	<hr/>	
Total Town Poor		\$2191 49

HEALTH DEPARTMENT

Tamworth Community Nurse Ass'n		
Town Appropriation	\$1500 00	
Memorial Hospital, Town Appro.	100 00	
Laconia Hospital, Town Appro.	100 00	
Huggins Hospital, Town Appro.	100 00	
Edwin C. Remick, M. D., Board of Health	19 00	
	<hr/>	
Total Health Department		\$1819 00

TOWN LIBRARIES

Marion Remick, Town Appro.	\$400 00	
Marion Remick, Town Appro., painting Town Library	200 00	
	<hr/>	
Total Libraries		\$600 00

PRINTING

Carroll County Independent, Town Reports	\$226 16	
Warrants	3 00	

Notice	2 40	
Sargent Brothers Printing Tax Bill		
Forms	29 60	
	<hr/>	
Total Printing		\$261 16

VITALS

Town of Conway Reporting Births	\$ 2 50	
Forrest D. Ayer, Copies	26 50	
Edwin C. Remick, M. D., Death		
Certificates	2 00	
	<hr/>	
Total Vitals		\$31 00

OLD AGE ASSISTANCE

December, 1949	\$138 55	
January, 1950	163 68	
February, 1950	143 38	
March, 1950	196 41	
April, 1950	148 81	
May, 1950	154 88	
June, 1950	182 20	
July, 1950	229 23	
August, 1950	162 81	
September, 1950	164 69	
October, 1950	221 58	
November, 1950	198 75	
	<hr/>	
		\$2104 97

SOLDIERS' AID

Total		\$10 00
-------	--	---------

CEMETERIES

Archie McCoughlin, Moulton Cemetery	\$12 00	
George Lawrence, Weeks Cemetery	12 00	
Emery Roberts, Weeks Cemetery	11 00	
Fred Bunker, Town Cemetery	32 00	
Harold Hidden, Town Cemetery	32 00	
Harold Hidden, Fowlers Mills Cemetery	10 00	
	<hr/>	
Total Cemeteries		\$109 00

STREET LIGHTS

Conway Branch	\$335 63	
Ossipee Branch	642 96	
Town Buildings and Blinker Light	82 56	
	<hr/>	
Total Lights		\$1051 15

TAX COLLECTOR'S COSTS FOR TAXES BOUGHT
BY TOWN

1949 Costs	\$60 47	
1950 Costs	26 58	
	<hr/>	
Total Costs		\$87 05

TOWN HALL EXPENSES

Wadsworth Remick, Winding Clock	\$20 00	
Edwin E. Clough, Labor Town Hall	13 00	
	<hr/>	
Total Town Hall		\$33 00

TOWN ROAD AID

Town Appropriation	\$823 61
--------------------	----------

TEMPORARY LOANS

Carroll County Trust Co.	\$20,000 00
--------------------------	-------------

TAXES BOUGHT BY TOWN

Thomas M. Leary, Collector	\$550 89
----------------------------	----------

INTEREST

Harry F. Damon, Interest on note, South Tamworth F. D.	\$ 10 00
Leonard H. Vittum, Int. on Trust Funds	176 20
Carroll County Trust Co., Interest on Temporary Loan	85 00
Carroll County Trust Co., Interest on Temporary Loan	123 34

Total	\$394 54
-------	----------

GENERAL HIGHWAY

Ross Garage	\$ 22 97
Nutter's Garage	136 47
Casellini Venable Corp.	414 11
Alvin Helme	133 00
Elmer Downs	4 00
Harold Ross	15 00
W. D. Huse and Son	8 70

N. H. Explosive and Machinery Corp.	26 17	
Remick Gas and Electric Co.	22 17	
Brett's Garage	62 23	
Conway Supply Co.	10 00	
Municipal Steel Corp.	93 40	
Brocky's Inc.	2 16	
W. Edward Walker	8 00	
Bancroft and Martin Rolling Mills Co.	42 61	
E. A. Dwyer	5 30	
Edward C. Knox	1 00	
Whittier Cash Market	4 18	
Aldo Stearns	3 19	
White's Garage	94	
<hr/>		
Total General Highway		\$1015 60

PIKE PERKINS (Winter Plowing)

Pike Perkins	\$797 90	
Almon Evans	10 00	
Alton Evans	2 40	
Merton Moody	3 20	
Ronald Ames	3 20	
H. Ross	36 00	
<hr/>		
Pike Perkins, Total Winter Plowing		\$852 70

PIKE PERKINS (Winter Sand)

Pike Perkins	\$152 20	
Almon Evans	4 00	
Alton Evans	1 60	
Carroll Whiting	4 00	
Merton Moody	24 40	

Daniel Hayford	15 20	
Joseph Baker	4 80	
Paul Hayford	8 40	
Wesley Ames	4 00	
Standley Young	15 20	
Ronald Ames	11 20	
Elias Downs	21 00	
		<hr/>
Pike Perkins, Total Winter Sand		\$266 00
		<hr/>
Pike Perkins, Total Winter		\$1118 70

ALMON G. EVANS (Winter Plowing)

A. G. Evans	\$1112 50	
Alton Evans	223 90	
Lester Berry	58 00	
Roland Bowles	49 50	
W. D. Huse and Son	6 76	
Justin Brande	66 00	
		<hr/>
Total Plowing, A. G. Evans		\$1516 66

ALMON G. EVANS (Winter Sand)

Almon G. Evans	\$232 80	
Alton Evans	91 70	
Florence Smith, sand	14 00	
Glenn Evans	5 30	
Joseph Helpin	27 20	
Harold Wiggin	12 80	
		<hr/>
Total winter sand, A. G. Evans		\$383 80
		<hr/>
Almon G. Evans, Total Winter		\$1900 46

E. A. DWYER (Winter Plowing)

E. A. Dwyer	\$155 55	
H. Ross	12 00	
Guy Grace	22 40	
A. G. Evans	38 50	
Francis J. Welch	8 00	
Page's Filling Station	3 00	
Lawrence Boothby	7 20	
Albert Boothby	19 20	
	<hr/>	
E. A. Dwyer, Total Plowing		\$265 85

E. A. DWYER (Winter Sand)

E. A. Dwyer	\$24 00	
Dixie Page	2 40	
James Ames	2 40	
	<hr/>	
E. A. Dwyer, Total sand		\$28 80
		<hr/>
E. A. Dwyer, Total winter		\$294 65

HAROLD ROSS (Winter Plowing)

Harold Ross	\$1069 30	
Dixie Page	16 80	
	<hr/>	
H. Ross, Total Winter Plowing		\$1086 10

HAROLD ROSS (Winter Sand)

Harold Ross	\$231 70	
Dixie Page	41 60	

Harland Ross	16 00	
Willard Stevens	11 20	
Harland Hurd	2 40	
Alton Evans, Tractor	15 00	
Carlton Page	6 40	
Mrs. Harry Smith, sand	9 80	
Albert Elliott	14 40	
Samuel Gilman	12 80	
		<hr/>
H. Ross, Total Winter Sand		\$361 30
		<hr/>
H. Ross, Total Winter		\$1447 40

WINTER

Municipal Steel Corp.	\$513 65	
State Highway Garage	9 35	
State of N. H. Highway Dept.	108 27	
State of N. H. Highway Dept. for		
Evans division	44 00	
Ross division	11 50	
Perkins division	21 00	
Frank Whipple	16 00	
Socony Vacuum Oil Co.	34 18	
Roland Bowles	105 00	
Meredith Grain Store, salt	71 55	
W. Edward Walker	46 50	
Nutter's Garage	42 45	
		<hr/>
Total		\$1023 45
A. G. Evans, total winter		1900 46
H. Ross, total winter		1447 40
P. G. Perkins, total winter		1118 70
E. A. Dwyer, total winter		294 65
		<hr/>
Town's Total Winter Expense		\$5784 66

TARVIA

H. Ross, Tarvia	
Harold Ross	\$ 208 75
A. G. Evans	195 66
E. A. Dwyer	145 00
Alton Evans	259 25
Dixie Page	67 00
Jack McCoughin	17 30
Harland Ross	20 30
C. Streeter	39 20
Harland Hurd	3 20
James Ames	6 40
Guy Grace	20 00
Francis Welch	13 80
Pike Perkins	4 40
Mrs. H. Smith	28 70
	<hr/>
H. Ross, total tarvia	\$1,028 96
A. G. Evans, Tarvia	
A. G. Evans	\$ 50 50
Glenn Evans	14 40
Alton Evans	15 00
Francis Welch	8 00
	<hr/>
A. G. Evans, total tarvia	\$87 90
E. A. Dwyer, Tarvia	
E. A. Dwyer	\$ 26 00
Guy Grace	6 40
Albert Boothby	4 00
Alton Evans	18 00
	<hr/>
E. A. Dwyer, total tarvia	\$ 55 44
State of New Hampshire	213 81
H. H. McGuire Co., 14277 gal. tarvia	2068 74
	<hr/>
Total Tarvia	\$3453 81

BOUNTIES

Francis J. Welch — Hedgehogs

Andrew Eldridge, Apr. 2	1—	25	
Edwin Hidden, Apr. 20	1—	25	
Lawrence Boothby, Apr. 11	2—	50	
Everett Davis, May 6	1—	25	
Everett Davis, May 13	1—	25	
Stanley Hobbs, May 28	1—	25	
Herbert Clark, May 28	1—	25	
Everett Davis, May 29	1—	25	
Freddie Welch, May 31	1—	25	
Harry Anthony, June 24	1—	25	
Huntington Thompson, Jly 1	1—	25	
Charles Jeffers, July 24	4—	1 00	
N. Henry Black, Aug. 28	1—	25	
Emily Welch, Sept. 25	1—	25	
Walter Hand, Nov. 12	2—	50	
Emily Welch, Nov. 12	1—	25	
Francis Welch, Nov. 18	1—	25	
Francis Welch, Nov. 26	1—	25	
	<hr/>		
	23—		\$5 75

George Nickerson — Hedgehogs

Bruce & David Bowles, Apr. 10	1—	25	
Andrew Eldridge, July 7	1—	25	
Harland Hurd, July 24	1—	25	
Ernest Stevens, Oct. 20	1—	25	
	<hr/>		
	4—		\$1 00

Francis Cleveland — Hedgehogs

Donald Hutchins, July 15	10—	2 50	
--------------------------	-----	------	--

Kilham Boys, July 2	2—	50	
David Laughren, July 20	8—	2 00	
Charles Brown, Oct. 10	2—	50	
Clarence Palmer, Dec. 30	2—	50	
	<hr/>		
	24—		\$6 00

Roy E. Arling — Hedgehogs

Charles Jeffers, Jan. 1	1—	25	
Donald Hutchins, Jan. 30	1—	25	
Andrew Eldridge, Feb. 24	2—	50	
Edward Walker, Mar. 4	5—	1 25	
	<hr/>		
	9—		\$2 25
			<hr/>
Total Bounties			\$15 00

BUSHES

E. A. Dwyer, (Bushes)			
E. A. Dwyer		\$ 122 00	
Francis Welch		14 40	
Lawrence Boothby		26 40	
Guy Grace		9 60	
John Boothby		20 00	
Albert Boothby		22 40	
	<hr/>		
E. A. Dwyer, total bushes			\$214 80

Harold Ross, (Bushes)			
H. Ross		\$ 33 90	
Arthur Frost		15 00	

Dixie Page	35 00	
Elmer Brown	6 40	
Austin Savary	3 20	
Walter Berry	12 80	
Earl Vinton	25 60	
Lyman Martin	10 00	
Wm. E. Moore	3 20	
Albert Elliott	12 00	
Archie McCoughin	29 60	
Harland Hurd	4 00	
	<hr/>	
Harold Ross, total bushes		\$193 90
	<hr/>	
Almon Evans, (Bushes)		
Alton Evans		\$ 20 50
		<hr/>
Total Bushes		\$429 20

A. G. EVANS (Summer)

A. G. Evans	\$ 307 10	
Alton Evans	215 40	
Mrs. Harry Smith	6 10	
Preston Chase	39 20	
Francis Cleveland	25 50	
John L. Goodwin	156 00	
Glenn Evans	24 00	
Rolf Spicer	14 40	
Carroll Grace	20 00	
Ralph Smith	35 00	
State Highway Garage	133 57	
State Highway Dept.	266 75	
	<hr/>	
A. G. Evans, total summer		\$1243 02

E. A. DWYER (Summer)

E. A. Dwyer	\$ 681 50	
Alton Evans	15 00	
Ronald Ames	16 00	
Lawrence Boothby	48 20	
Albert Boothby	55 20	
Elmer Downs	1 00	
John Boothby	21 60	
Edward LeFebvre	1 20	
Roland Berry	1 60	
Willie Eldridge	1 50	
Guy Grace	158 10	
Raymond Boothby	4 80	
Pike Perkins	1 20	
Clarence Palmer	3 20	
Philip Murdock	9 75	
Joseph Baker	4 00	
State of N. H. Highway	111 25	
State Highway Garage	222 20	
	<hr/>	
E. A. Dwyer, total summer		\$1357 30

HAROLD ROSS (Summer)

Harold Ross	\$ 759 90
Dixie Page	237 30
Elmer Brown	24 80
Howard Berry	9 60
Walter Berry	9 60
Harland Ross	63 60
E. J. Ross	23 60
Carlton Page	12 80
Jack McCoughin	9 60
Albert Elliott	42 90
Willard Stevens	25 60

John F. Goodwin	5 00	
Reginald Lyman	3 00	
Emery Roberts	8 20	
George Moore	12 80	
Samuel Gilman	4 00	
Harland Hurd	16 80	
Archie McCoughin	6 40	
A. D. Brown	7 00	
Howard Gilman	5 00	
State Highway Garage	41 28	
	<hr/>	
Harold Ross, total summer		\$1328 78

SUMMER, 1950

Withholding Tax, Collector of Internal Revenue	\$ 38 40	
Town of Sandwich, part of culvert	48 00	
E. A. Dwyer, total summer	1357 30	
A. G. Evans, total summer	1243 02	
H. Ross, total summer	1328 78	
	<hr/>	
Total Summer Expense		\$4015 50

BRIDGES

E. A. Dwyer, (Bridges)		
E. Dwyer	\$ 312 00	
Guy Grace	96 00	
Joseph Baker	3 20	
Stanley Young	3 20	
Lawrence Boothby	20 80	
John Boothby	26 60	

Ronald Ames	6 40	
Ed Welch	5 00	
Conway Supply Co.	51 00	
	<hr/>	
Dwyer, total bridges		\$524 20

A. G. Evans, (Bridges)

A. G. Evans	\$ 59 30	
Alton Evans	53 40	
E. Lefebvre	6 00	
Morris Nelson	52 50	
Clifford Streeter	4 80	
Glenn Evans	11 20	
John F. Goodwin	84 00	
Francis Welch	29 00	
State Highway Dept.	33 60	
John Boothby	24 00	
Brocky's Inc.	12 00	
	<hr/>	
A. G. Evans, total bridges		\$369 80

H. Ross, (Bridges)

Harold Ross, total bridges		18 00
Ernest Rowe, bridge plank		172 05
		<hr/>
Total Bridges Expense		\$1084 05

GREAT HILL SPECIAL

Almon Evans	\$ 208 10
Alton Evans	31 90
H. Ross	132 40
Frank Whipple	80 00

Emery Roberts	83 70
Pike Perkins	83 70
Edward Dwyer	97 30
Guy Grace	17 60
Dixie Page	24 00
Glenn Evans	23 30
John Goodwin	186 00
D. J. Ambrose	28 15
Ed LeFebvre	135 60
Mrs. Harry Smith	2 00
State of N. H. Highway Dept.	300 50

Total Great Hill Special

\$1434 25

WHITE LAKE SPECIAL

John F. Goodwin	\$ 213 00
E. A. Dwyer	109 90
Almon Evans	165 50
State of N. H. Highway Dept.	203 50
Alton Evans	49 80
Ralph Smith	36 25
Harold Ross	44 80
Preston Chase	21 60
Harry Roberts	33 40
Francis Welch	98 40
Guy Grace	15 20
Lawrence Boothby	3 20
Frank Whipple	180 00

Total White Lake Special

\$1174 55

WILL MOORE SPECIAL

Harold Ross	\$ 110 50
Dixie Page	39 20

Harland Ross	8 00	
State of N. H. Highway Dept.	82 75	
Almon Evans	50 00	
E. A. Dwyer	22 50	
Alton Evans	75 50	
Isaiah Forrest	17 20	
Frank Whipple	112 00	
George Nickerson	9 60	
		<hr/>
Total Will Moore Special		\$527 25

WASHOUTS ON TOWN ROADS

A. G. Evans and E. A. Dwyer Divisions

John Boothby	\$ 17 60	
E. A. Dwyer	256 00	
Lawrence Boothby	6 40	
Guy Grace	56 80	
Francis Welch	36 60	
A. G. Evans	74 50	
Alton Evans	15 60	
Ed Lefebvre	3 20	
Albert Boothby	20 00	
Clarence Palmer	6 40	
Frank Whipple	220 00	
Glenn Evans	6 40	
P. G. Perkins	2 00	
Joseph Baker	7 20	
Stanley Young	16 00	
State Highway Dept.	26 50	
Clifford Street	9 60	
		<hr/>
Total Washouts		\$781 30

GARDEN CLUB

Tamworth Garden Club, Town Appropriation \$ 25 00

WATERING TUBS

Harry Henderson	\$ 5 00	
Charles Drew	5 00	
	<hr/>	
Total		\$10 00

DAMAGE AND LEGAL

Preston Smart, Deeds	\$ 9 00	
Preston Smart, Retaining Fee	25 00	
Registry Deeds Transfers	20 40	
	<hr/>	
Total		\$54 40

BONDS AND LONG TERM NOTES

Roy E. Arling	\$ 58 00	
Emmons Heald	103 75	
	<hr/>	
		\$161 75

AUTO PERMITS

Auto Permits, 1949	\$ 12 50	
Forrest D. Ayer, 1950	353 50	
	<hr/>	
		\$366 00

COUNTY TAX

Kenneth Berry, County Treasurer	\$7943 16
---------------------------------	-----------

TAMWORTH PRECINCT TAX

Precinct Tax	\$200 00
--------------	----------

SCHOOLS

Manley E. Brett, School Treas.	\$30,363 17
Dog Tax, M. E. Brett, Schol Treas.	372 80
Int. on School Note, Manley E. Brett, School Treasurer	72 00

Total Schools	\$30,807 97
---------------	-------------

MEMORIAL DAY AND OTHER CELEBRATIONS,
RECREATION AND PARKS AND PLAYGROUNDS

Thomas M. Leary, part Town appro- priation for Memorial Day	\$ 75 00
Thomas M. Leary, for Conway Band	125 00

\$200 00

Tamworth Outing Club	\$ 300 00
Thomas Leary, Treasurer Tamworth Branch Red Cross	350 00
Lakes Region Association, Town appropriation, advertising	175 00

\$825 00

OLD HOME DAY

Dr.

Carried over from 1949	\$ 31 95
Town appropriation	175 00

\$ 206 95

Cr.

Dana Farrington, Con- way Band	\$125 00	
Carroll County Ind. for printing	19 10	
Reporter Press, for printing	5 04	
Flowerland Florists, flowers	6 00	
Nellie W. Fortier, expenses	3 00	
Barnstormers Inc., adver- tising	20 00	
		<hr/>
		178 14
		<hr/>
Balance unexpended	\$28 81	
Total Old Home Day 1950		\$ 178 14
		<hr/>
Total Memorial Day and other celebra- tions and Parks and Playgrounds		\$1203 14

AUDITORS' CERTIFICATE

We hereby certify that we have examined the books and accounts of the Selectmen, Town Treasurer, Tax Collector, Trustees of Trust Funds, Town Clerk and Library Trustees, and find them correct and properly vouched, and the several cash balances to be in accordance with those set forth in this report.

HARRY F. DAMON
LAWRENCE D. HAYFORD
Auditors

REPORT OF THE TRUST FUNDS OF THE TOWN OF TAMWORTH, N. H., ON DECEMBER 31, 1950

Date of Creation	TRUST FUNDS PURPOSE OF CREATION	HOW INVESTED				
		Amount of Principal	Balance of Income on Hand at Beginning of Year	Income During Year	Expended During Year	Balance of Income on Hand at End of Year
Oct. 1918	Cook Library Fund, C. T. T. Mason	Treasury Bonds	\$750.00	\$18.75	\$18.75	
Oct. 1918	Cook Library Fund, C. T. T. Mason	Town Note	200.00	8.00	8.00	
April 1927	Pease Cemetery Fund, Tilton Heirs, et al	N. H. Bank	377.94	9.70	15.00	21.19
April 1927	Pease Cemetery Fund, Tilton Heirs, et al	C. C. Trust Co.	30.00	9.72		10.26
May 1927	E. P. Atkinson Fund, E. P. Atkinson	C. C. Trust Co.	200.00	16.26	3.33	19.59
May 1894	Chocorua Cem., Susan B. Clark	Town Note	100.00	26.00	4.00	26.00
May 1896	Chocorua Cem., Azubah Dorman	Town Note	100.00	24.00	4.00	24.00
May 1894	Chocorua Cem., Faxon Gannett	Town Note	100.00	24.00	4.00	28.00
May 1894	Chocorua Cem., Nancy Clark	Town Note	50.00	10.00	2.00	10.00
May 1899	Chocorua Cem., John Nickerson	Town Note	100.00	24.00	4.00	24.00
May 1899	Chocorua Cem., Edwin E. Perkins	Town Note	350.00	96.00	14.00	96.00
May 1898	Chocorua Cem., Elizabeth Harmon	Town Note	100.00	25.00	4.00	25.00
Feb. 1899	Chocorua Cem., Maria Hanu	Town Note	15.00	4.80	.60	5.40
Feb. 1899	Chocorua Cem., Hannah S. Marston	Town Note	15.00	4.80	.60	5.40
Jan. 1906	Chocorua Cem., G. W. & C. Salvage	Town Note	100.00	26.00	4.00	26.00
Jan. 1908	Chocorua Cem., D. B. & M. Hatch	Town Note	75.00	18.00	3.00	18.00
Nov. 1908	Chocorua Cem., Otis G. Hatch	Town Note	50.00	10.00	2.00	10.00
July 1909	Chocorua Cem., James Perkins	Town Note	500.00	124.75	20.00	124.75
July 1909	Chocorua Cem., John S. Rimmels	Town Note	100.00	26.00	4.00	26.00
Oct. 1899	Chocorua Cem., Susie L. Furness	N. H. Bank	100.00	13.29	2.55	15.84
July 1927	Chocorua Cem., Nealey Lot, J. Nealey	C. C. Trust Co.	101.88	13.04	1.70	14.74
July 1927	Chocorua Cem., John Ranger	Rochester Trust Co.	100.00	14.83	2.17	17.00
April 1927	Chocorua Cem., Albion Blaisdell Lot	C. C. Trust Co.	100.00	6.72	1.65	8.37
Oct. 1928	Chocorua Cem., Robert Nickerson Lot	C. C. Trust Co.	100.00	12.72	1.65	14.37
May 1896	A. Drew School Fund, E. P. Atkinson	C. C. Trust Co.	7,809.08	58.59	117.57	58.57
May 1911	Fowler's Mills Cem., Colburn Lot	Town Note	75.00	24.00	3.00	27.00
May 1908	Gilman Cem., Azubah Dorman	Town Note	50.00	2.00	2.00	2.00
May 1908	Gilman Cem., Cordelia Gilman	Town Note	100.00	4.00	4.00	4.00
May 1906	Riverside Cem., Azubah Dorman	Town Note	50.00	2.00	2.00	4.00
Sept. 1927	Riverside Cem., Pike G. Perkins	Town Note	100.00	4.00	4.00	3.20
Sept. 1918	Riverside Cem., Pike G. Perkins, et al	Town Note	1,750.00	20.00	46.00	12.00
Sept. 1918	Riverside Cem., Susan B. Cook	Town Note	100.00	4.00	4.00	8.00
Sept. 1914	Riverside Cem., Martha J. Sanborn	Town Note	20.00	2.00	.80	2.80
Sept. 1914	Riverside Cem., John Grant	Town Note	5.00	1.00	.20	1.20
Sept. 1918	Riverside Cem., Sarah O. Mason	Town Note	100.00	4.00	4.00	8.00
Sept. 1918	Riverside Cem., Hubbard Lot, J. H. L.	Town Note	100.00	4.00	4.00	8.00
Sept. 1918	Riverside Cem., C. T. T. Mason	Treasury Bonds	750.00	3.43	18.75	21.00
Sept. 1918	Riverside Cem., C. T. T. Mason	C. C. Trust Co.	200.00	14.32	3.19	10.51
Jan. 1932	Riverside Cem., Batchelder Lot	C. C. Trust Co.	100.00	1.72	1.65	3.37
Sept. 1927	Riverside Cem., Mary E. Felch	Rochester Trust Co.	100.00	2.74	2.17	4.91
Sept. 1918	Riverside Cem., Mary K. Remick	C. C. Trust Co.	100.00	6.72	1.65	8.37
Sept. 1921	Stevenson Hill Cem., J. D. Boyden	N. H. Bank	200.00	5.44	5.13	5.13
Sept. 1923	Town Cem., W. M. Cnshin Lot	Town Note	100.00	38.53	4.00	42.53
Sept. 1923	Town Cem., J. Chick Lot, J. B. H.	Town Note	100.00	32.00	4.00	36.00
Sept. 1923	Town Cem., F. P. Remick Lot, F. P. R.	Town Note	100.00	32.00	4.00	36.00

July 1933	Town Cem., Jewett Low Fund	Amoskeag Bank	110.28	14.70	124.98
Oct. 1933	Town Cem., Obed Hall Lot, F. W. L.	Stratford Bank	38.22	5.63	43.85
Oct. 1930	Town Cem., Albert Eastman Lot	C. C. Trust Co.	14.74	1.65	16.39
May 1931	Riverside Cem., Charles S. Clark	Town Note	5.63	4.00	4.83
May 1930	Riverside Cem., Charles Stevenson	Town Note	100.00	4.00	12.00
Nov. 1936	Town Cem., Mary J. Gilman	Rochester Trust Co.	100.00	2.17	15.07
Nov. 1937	Chocorua Cem., Edgar J. Roberts	Town Note	100.00	4.00	26.00
June 1938	Chocorua Cem., F. S. Lord, Hannah Blaisdell Lord Lot	Meredith Bank	200.00	27.81	17.95
June 1938	Chocorua Cem., Israel Mayors Lot	Meredith Bank	100.00	2.92	13.78
June 1938	Chocorua Cem., Rand Smith Lot	Meredith Bank	100.00	2.92	13.78
June 1938	Chocorua Cem., Stetson Blaisdell Lot	Meredith Bank	100.00	2.92	13.78
June 1938	Town Cem., J. Everts Merrill Fund	Meredith Bank	800.00	155.77	179.30
Nov. 1939	Town Cem., Joel Sauborn Lot	Meredith Bank	515.44	15.14	115.43
Dec. 1939	Chocorua Cem., James Scott Lot	Meredith Bank	25.00	5.79	5.93
June 1941	Riverside Cem., Frank S. Carl Lot	Meredith Bank	100.00	6.86	2.92
June 1942	Riverside Cem., Florentine Carl Lot	Meredith Bank	100.00	9.79	2.97
April 1942	Chocorua Cem., Geo. Tuksbury Fund	Meredith Bank	300.00	32.77	8.81
April 1942	Chocorua Cem., Geo. Tuksbury Fund	Meredith Bank	600.00	113.35	17.93
April 1942	Chocorua Cem., Jolin W. King	Meredith Bank	100.00	14.94	2.87
Dec. 1941	Chocorua Cem., S. O. Gilman & Harriman	C. C. Trust Co.	1,000.00	128.12	17.00
April 1949	Riverside Cem., Frank B. Stonley	Meredith Trust Co.	300.00	30.38	8.53
Jan. 1946	Chocorua Cem., Archie Nickerson	Meredith Trust Co.	50.00	4.26	1.34
Aug. 1946	Riverside Cem., George Evans Lot	Meredith Trust Co.	350.00	25.79	9.44
April 1945	Town of Tamworth, N. H.	U. S. Bonds	10,000.00	763.38	262.55
Jan. 1948	Chocorua Cem., Ida J. Parker	Meredith Trust Co.	100.00	4.38	2.61
Nov. 1948	Chocorua Cem., Eva M. Roberts Fund	Meredith Trust Co.	200.00	5.35	5.15
Nov. 1948	Old Town Cem., Eva M. Roberts Fund	Meredith Trust Co.	100.00	2.67	2.56
Dec. 1948	Chocorua Cem., Winfred Alexander Lot	Meredith Trust Co.	400.00	10.05	10.31
Feb. 1948	Chocorua Poor, Irene H. Bickford	Meredith Trust Co.	*	255.95	106.43
May 1950	Wonalancet Fire Precinct Fund	Meredith Trust Co.	*	500.21	7.37
			\$32014.34	\$3358.53	\$915.37
				\$416.68	\$3857.22

This is to certify the information in this report is complete and correct to the best of our knowledge and belief.

LEONARD H. VITUM
FRANCIS G. CLEVELAND
Trustees

January 24, 1951

This is to certify that we have this day examined the records of the Trustees of Trust Funds and find all records to be in order and properly vouched.

HARRY F. DAMON
LAWRENCE D. HAYFORD
Auditors

REPORT OF THE TOWN OF TAMWORTH FIRE DEPARTMENT

We are very fortunate that damage by fire this year was almost negligible.

John Fortier, the Fire Ward elected for Chocorua and who did a very good job was obliged to resign in the early Fall in order to attend New England College at Henniker. Consequently Howard Gilman was recommended and in due time was appointed by the Selectmen to fill out the term.

The Chocorua Unit was called out for 3 chimney fires, 3 Brush fires and 1 Gas Pump fire.

The South Tamworth Unit was called to the Town Dump 10 times, 2 Chimney fires and 2 Brush Fires.

The Wonalancet Unit made 2 Trips to Grants Peak Forest Fire.

Following are the expenditures contracted for and approved by the Fire Wards for Equipment and maintenance of the 3 Units belonging to the Town Department.

The amount raised and appropriated under Article 13 of last year's Town Warrant for the Town Fire Department was \$1500.00.

Chas. Remick, recharging extinguishers	\$ 8 50
Carroll Co. Ind., printing (old account)	10 14
Sudbury Lab., rust preventative	12 50
Alvin Helme, welding	5 25
Justin A. McCarthy Chimpex, washers etc.	23 95
Emmons E. Heald, ins. on So. Tamworth truck	54 35
Justin A. McCarthy Co., equipment	4 52
Justin A. McCarthy Co., 300 ft. hose for So. Tamworth	200 00
Justin A. McCarthy Co., Chimpex	8 00

Chas. Remick, supplies		16 91
Roy Arling, ins. on Wonalancet Truck		12 00
Justin A. McCarthy, equipment		7 16
Justin A. McCarthy, supplies		3 85
Dube & Murphy, fuel oil So. Tamworth		49 44
Emmons E. Heald, ins. on Chocorua Truck		54 35
Public Service Co., light bill for Wonalancet		11 00
Harry Damon, installment on note		200 00
Aldo Stearns, alky for Wonalancet truck		4 80
Knights General Store, gas		3 05
Eastman's Paint & Body Shop, gas		1 82
Harry Damon, Interest on note		26 00
Justin A. McCarthy Co., 2 instant extinguishers		91 00
Justin A. McCarthy Co., liquid & cartridge		22 25
Justin A. McCarthy Co., express		4 16
Chas. Remick, express on ladder		2 74
		<hr/>
		\$837 74
2 Fuel oil bills that showed up as	\$27 12	
unpaid from last year	39 56	
		66 68
		<hr/>
Balance	\$595 58	\$904 42

The amount raised for Firemen's Insurance under Article No. 14 was \$250.00.

**TAMWORTH COMMUNITY NURSE ASSOCIATION
ANNUAL TREASURER'S REPORT 1950**

Jan. 1st Balance	\$2293 47	
Town Appropriation	1500 00	
School District	71 00	
Contributions	1865 98	
	\$5730 45	

1950 EXPENDITURES

Nurse's Salary	\$2059 92	
Collector of Internal Revenue	252 60	
Maintenance of Car	544 50	
Laconia Clinic	95 00	
P T A	10 00	
Supplies	3 50	
Miscellaneous	17 94	
Transferred to Savings Account	300 00	
	\$3283 46	
Dec. 31, 1950 Balance on Hand		\$2446 99

This is to certify that we have examined the accounts of the Treasurer, and find them correct and properly vouched with cash on hand of \$2446.99 as of Dec. 31, 1950.

FRANCIS J. WELCH
FRANCIS G. CLEVELAND

TAMWORTH COMMUNITY NURSE ASS'N. INC.
Secretary's Report

The year 1950 has been an active one in the field of public health with increasing cooperation on the part of the board and the nurse with other agencies related to this field. The community can be proud of the fact that there have been no epidemics of any kind during the year so that much of the emphasis of the work of the nurse has been on the preventive level.

The Association has been fortunate in again having the professional services of Margaret Philbrick, R. N. Loyal members of the summer community have given of their time and money to make this program possible.

Since the committee is aware that basic changes are taking place in public health, Miss Florence Clarke, head of the program in New Hampshire, was invited to meet and discuss new developments with the members of the board.

The following summary is not an adequate picture but it may give some idea of the scope of work being carried on.

Calls:

Medical	665
Prenatal	58
Postnatal	1
Infant Supervision	78
Social Service	98
School	220
Contagious Diseases	6
	1126

Clinics and Tests:

Orthopedic	9
Immunization	15

Speech	8
Tuberculosis	2
X-Rays	3
Hearing Tests	74
Eye Tests	300
	<hr/>
	411

Transportation (The Association car has traveled over 11,500 miles this year). It is used only in emergencies or when no other transportation is available.

To regular clinics	46
To hospitals	9
To doctors	10
To dentists	15
To nursing homes	5
	<hr/>
	85

Respectfully submitted,

Ethel Prince, Chairman
 Marjory Mather, Vice Chairman
 Lilian McGrew, Secretary
 Ellen Bookholz, Treasurer
 Elizabeth Spicer
 Gertrude Behr
 Blanche Smith
 Lucy Hodgkins
 Mildred Rowland
 Miss Grace Pennock

The following comprise the summer committee:

Mrs. A. Farwell Bemis
 Mrs. N. Henry Black
 Mrs. Ingersol Bowditch
 Miss Laura Dwight
 Mrs. John Finley, Sr.

Mrs. Fred Hammond
Mrs. Charles Peabody
Mrs. Lawrence Scudder
Miss Grace Weymouth
Mrs. James K. Whittemore

MEMORIAL DAY

January 8, 1951

To the Selectmen
Town of Tamworth, N. H.

Report of expenditures from 1950 appropriation of \$200.00 voted for Memorial Day services under the auspices of Moore Brothers Post, 9441, Veterans of Foreign Wars, Chocorua, N. H.

American flags	\$ 20 25	
Band	125 00	
Grave markers	30 00	
Flowers	3 00	
Ice cream for children	12 50	
Telephone calls	2 35	
Postage	60	
		\$193 70
Balance on hand		6 30
		\$200 00

THOMAS M. LEARY
Chairman, V.F.W. Com.

AMERICAN RED CROSS

January 8, 1951

To the Selectmen
Town of Tamworth, N. H.

Report of expenditure of \$350.00 voted in 1950 for use of Tamworth Branch, American Red Cross, in defraying expenses of transportation of children to the White Lake Water Safety activities during the summer of 1950.

Amount appropriated by the Town	\$350 00
Amount expended by Tamworth Red Cross	48 98
	\$398 98
Total amount expended	\$398 98

THOMAS M. LEARY
Treasurer, Tamworth
Branch American Red Cross

COOK MEMORIAL LIBRARY REPORT

Year Ending January 1, 1951

RECEIPTS

Balance on hand Jan. 1, 1950	\$174 62
Town Appropriation	400 00
Town Appropriation for painting exterior	200 00
Mason Trust Fund	26 75
Book Sale	10 00

\$811 37

DISBURSEMENTS

Personal Book Shop	\$ 57 04
Adventure Book Club	10 00
Detective Book Club	20 60
The Atlantic Monthly	5 50
Yankee (magazine)	2 00
Highlights for Children (magazine)	5 00
Current History (magazine)	4 00
Insurance	75 00
Helen Hidden, Librarian's salary	150 00
Harold Hidden, Janitor service	40 00
Public Service Company	12 01
Bank Service Charges	1 56
Fuel	90 00
Painting, labor and materials (exterior)	198 02
Painting, labor and materials (interior)	61 13

\$731 86

79 51

Respectfully submitted

MARIAN E. REMICK

ETHEL BERRY

ROBERT C. SPAULDING

Library Trustees

LIBRARIAN'S REPORT

There have been several improvements made on the library building this year. The outside of the building was painted white, while on the inside the floor of the reading room was sanded and refinished making the room much lighter and more attractive. The Garden Club contributed much to the appearance of the library, placing petunias and periwinkles in the window boxes in the early summer and evergreens and red berries for the winter months. Also by keeping a variety of arrangements in the reading room. At Christmas they placed a lighted tree on the lawn.

During the summer the library is well patronized by summer residents from all parts of the town. During the school year children from the local school visit the library each Wednesday on school time. This is to accommodate the children who go by bus.

We are most grateful to the Tamworth Foundation for the subscription to the "Book-of-the-Month" club books; to Mrs. Francis Cleveland for the gift of the "Literary Guild" Club books and for magazines; to Mrs. Clarence Hoagg for the gift subscription to the Geographic magazine; to Mr. and Mrs. Huntington Thompson and Mrs. Charles Rheault for gifts of books; and Mrs. Serena Bentley for her gift of books and subscription to the Omni book magazine.

The library subscribes to the Detective Book Club, the Adventure Book Club, The Atlantic Monthly Magazine, Current History and Good Housekeeping Magazine.

Beginning this last summer we are building up a magazine exchange of current numbers, inviting everyone to donate their magazines after reading them.

Respectfully submitted,
HELEN B. HIDDEN
Librarian

REPORT OF FOREST FIRE WARDENS

Each year two hundred thousand forest fires annually burn over 36 million acres of the forest land of this great nation. This area is roughly the size of our New England states. Tens of thousands of man-hours costing over 40 millions of dollars are used in combating these fires. They destroy valuable mature timber and new growth, and leave desolation and often death in their wake. With the large deficit in rainfall the past four to five years the need for extreme caution is great.

Every brush, grass or forest fire that you have in your town has its effect on you in several ways; such as increased taxes, loss of mature timber, marring of the landscape and spoiling the recreation value of our country side. It is safe to say that approximately 97% of the fires occurring in this state are man-caused and because all man-caused fires are preventable, remember — only YOU can prevent forest fire.

Our forest fire organization is doing a grand job in keeping our fires small, but the public in general is becoming careless in discarding matches and cigarettes. Another form of carelessness is the neglect to secure the required permit from the town fire warden to burn brush or use an incinerator in or near woodlands. It is YOU and YOU alone who can help correct this shameful waste of our natural resource by:

1. Seeing that your incinerator is tight and is sitting on clean ground.
2. Always clean a space about any open fire to prevent its spreading.
3. Never burn in dry windy weather.

4. In all cases a written permit is required from your town Fire Warden.

It is with your cooperation that this shameful waste of timber and money can be stopped.

1950 FIRE RECORD

Number of Fires	1
Acreage Burned	2.0
Number of Fire Permits Issued	44

Forest Fire Warden
EARL REMICK

District Chief
ROBERT B. SMITH

REPORT OF THE TAMWORTH OUTING CLUB

USE MADE OF THE \$300 TOWN APPROPRIATION

- \$ 85.00 Purchase and repair of skis and poles for the Tamworth School Children.
- \$150.80 Paid to the New England Sled Dog Club to cover their expenses and the purchase of prizes for the First Race of the Season held annually in Tamworth on New Year's Weekend.
- \$ 37.80 Advertising and promoting Tamworth Region winter sports in the New York Herald Tribune's annual Winter Sports Magazine.
- \$ 50.00 Mowing brush from Page Hill to put our facilities in good condition for whatever the weather may bring. Although much work was volunteer, considerably more money was spent by the Outing Club to put the two ski tows in shape and to mow other slopes.
- \$ 5.40 Purchase of bulbs for the Christmas tree in the School yard. The tree is set up each year by the T. O. C. to help decorate the Town and add to the Christmas spirit.

The above items were chosen by the Outing Club as good advertising because that is what the appropriation is for according to the Town Warrant. We hope they really are. That will bring business to our Town. In addition the Outing Club carries on the following activities for recreation and publicity.

As for several years past, there were tournaments with appropriate prizes in Ping Pong, Badminton and Bridge open to anyone with 25c to spend on recreation.

They were lots of fun but not very well attended. Next year let's make that Barn look too small.

The Huckins Barn is State property, maintained by them and leased to the Tamworth Outing Club at \$50. a year for Community Recreation. YOU are part of this community. Our equipment has been increased by the very generous donation from Mrs. Lawrence Scudder of a new Ping Pong table in memory of her son, Jack, who was a fine sportsman.

The Square Dances held every Wednesday night at the Barn for eleven weeks in the Summer were a tremendous success both financially and as promotion for Tamworth.

In August the annual Tennis Tournament for Juniors and the Senior Singles were held with a long list of enthusiastic competitors. Much sport and a good show.

For years many people have scoffed at our steep ski trail on Mt. Whittier as a fool's stunt. But good skiers have called it excellent. Last winter the New England Intercollegiate Ski Conference held a race on it and the racers thought it the best find they'd made in years. At least one of those colleges and perhaps others would like to buy land here on which to build a ski lodge. This is the work of your Outing Club. But the bigger the snowball gets, the more of us it will take to keep it rolling.

In addition to the publicity items listed at the beginning of this Report we have won a fight to get Tamworth and several other small ski areas back into the newspapers beside the big developments in the syndicated Ski and Snow Condition Reports throughout New England. We maintain several eye-catching road side signs in the Township and are

considering letting people hear our name over the Radio.

However, you are reminded that this is your Club and if you would like to see different activities or expenditures then — —

SUPPORT IT * * JOIN IT * * HELP RUN IT

CHARLES E. BEHR
Pres., T. O. C.

TAMWORTH OLD HOME WEEKEND

Tamworth observed Saturday, August 26th and Sunday, August 27th as Old Home Weekend.

On Saturday, four of the Town's women's organizations held a food, fancy work and apron sale at the Cook Memorial Library. By late afternoon, nearly everything had been sold. This was the first time these groups had held a combined sale.

Saturday evening, beginning at 7:45, the Tamworth Outing Club presented a demonstration of Quadrilles in front of the Barnstormers Theatre. Here in the street, under the lights, gay young blades swung their fair ladies to tunes played by Charles Aspinall on his accordian, while Ned Behr and Fred Pulsifer called the numbers. Over a hundred people were on hand to witness the event, and many expressed the wish that it would be repeated another year. Beginning at 8:30, the Barnstormers presented "Born Yesterday" to a full house.

Sunday, the 27th, was observed as "Old Home Day." It proved to be a memorable one. Governor Sherman Adams was the speaker, there was a good parade and everything went off according to schedule. The parade began up on the Chinook trail, went down around the theatre and returned to starting place. Miss Joan Goodson, on horseback, led the parade as Marshal, followed by the Conway band. Other entries were the Moore Bros. Post VFW, with a squad on foot and a float; the Tamworth Branch of the ARC; and the Tamworth, South Tamworth and Chocorua Fire Departments. Kenneth Vittum drove one of the new Ford Prefect cars, sold by Pynn's Garage in Meredith — the LeGrand Cannon family had an entry as did the Aliston Grants of Sandwich. The three Town Fathers, Francis Welch, George Nickerson and Francis Cleve-

land in handle bar mustaches and derby hats, riding in Frank Whipple's 1919 model T Ford were applauded all along the way. Mr. and Mrs. Maurice Nelson as Uncle Sam and Miss America, and Mrs. Charles Remick, Mrs. Gabelle, Mrs. Charles Aspinall, and Mrs. Klein dressed in gowns of the gay nineties period, received many favorable comments as they marched over the route.

And then came the town children, and many who were here for the summer months, led by Beverly Black wearing the green and gold colors of the Woman's Club which sponsored the group. Picture if you will over 150 children, nearly all in costume and carrying balloons, some on bicycles, some on tricycles or pushing decorated doll carriages or wheel barrows, leading dogs, or drawing smaller children in carts, all hustling over the road and past the Barnstormers Theatre, where Gov. and Mrs. Sherman Adams, Mr. and Mrs. Harry Smart, Mr. and Mrs. Forrest Ayer, and Rep. Earl Remick were on the reviewing stand. It is estimated that about 500 people were present to hear the Governor speak, and must have been proud of the many nice things he said about Tamworth.

In the evening at 7 P. M., impressive services were held at Ordination Rock. The Rev. Herbert W. Prince gave a fine address, and Mr. Magnussen played beautifully on his violin, accompanied by Mrs. Helen Hidden. Rev. Alvin Rowland gave the benediction. Mr. Samuel Hidden, whose paternal ancestor was ordained here in September, 1792, was in attendance.

Everyone had a good time, and we hope the townspeople will vote to observe another Old Home Weekend in 1951 if world conditions permit.

ANNUAL REPORT OF THE SCHOOL BOARD

School Board

RICHARD W. READ, Chairman
 RAYMOND LARRABEE, Secretary
 ALTA N. ABBOTT, Clerk

District Clerk

FORREST D. AYER

Treasurer

MANLEY E. BRETT

Truant Officer

FRANK A. BLACKKEY

School Nurse

MARGARET E. PHILBRICK

Auditors

ROBERT T. CARR
 WILBUR C. GOODSON

Superintendent

EVERETT H. BRASIER

Headmaster

EDWIN A. BLACKKEY

School Board Members' Terms Expire	
RICHARD W. READ	1951
RAYMOND LARRABEE	1952
ALTA N. ABBOTT	1953

SCHOOL WARRANT

To the Inhabitants of the School District in the town of Tamworth qualified to vote in district affairs:

You are hereby notified to meet at the Town Hall in said District on the 14th day of April 1951 at two o'clock in the afternoon to act upon the following subjects:

1. To choose a Moderator for the coming year.
2. To choose a Clerk for the ensuing year.
3. To choose a Member of the School Board for the ensuing three years.
4. To choose a Treasurer for the ensuing year.
5. To determine and appoint the salaries of the School Board and Truant Officer, and fix the compensation of any other officers or agents of the District.
6. To hear the reports of Agents, Auditors, Committees, or Officers chosen, and pass any vote relating thereto.
7. To choose Agents, Auditors and Committees in relation to any subject embraced in this warrant.
8. To see what sum of money the District will vote to raise and appropriate for the support of schools, for salaries of school district officials and agents, and for payment of statutory obligations of the District, and to authorize the application against said appro-

priation of such sums as are estimated to be received from the state equalization fund together with other income; the School Board to certify to the Selectmen the balance between the estimated revenue and the appropriation, which balance is to be raised by taxes by the Town.

9. To see if the District will vote to authorize the School Board to make application for and accept for school purposes such funds or grants-in-aid as may be obtainable from state, federal, or other sources; and to authorize the School Board to pay any part or all of such sums to any organization, which manages projects for the benefit of the schools.

10. To see if the District will raise the sum of \$675.20 to hire, in cooperation with the other towns of our Union, a music supervisor to teach and supervise a general course in music in the schools; and to pay our share of expense incident to this program. (Not approved by the Finance Committee).

11. To transact any other business that may legally come before said meeting.

Given under our hands at said Tamworth this 20th day of March, 1951.

RICHARD W. READ
RAYMOND LARRABEE
ALTA N. ABBOTT

School Board of Tamworth

A True Copy of Warrant — Attest:

RICHARD W. READ
RAYMOND LARRABEE
ALTA N. ABBOTT

School Board of Tamworth

REPORT OF THE SUPERINTENDENT OF SCHOOLS

To the School Board and Citizens of Tamworth:

Teachers in the Tamworth School for the year 1949-1950 were: — Principal Edwin A. Blackey, grades 7 and 8; Mrs. Elizabeth Sutherland, grades 5 and 6; Miss Margaret King, grades 3 and 4; Mrs. Dorothy Remick, grade 2; Mrs. Lois Boothby, grade 1. The same staff is serving for the current year. No profession bears a heavier burden of responsibility than the teaching profession. Small children come into our schools to develop the knowledges, skills and attitudes that are to be theirs for a lifetime. It is the purpose of your teachers to guide and help their pupils to acquire these desirable attributes to the maximum degree. To the degree that the teacher is successful the future of the child, as an adult, is assured, assuming other influences are favorable. Your teachers are well aware of their responsibility. This is evidenced by the high quality of their work and their devotion to the welfare of their pupils.

Total enrollment in the Tamworth School was 156 pupils with an average membership of 146. Two elementary tuition pupils attended the Madison School. At Kennett High School there were 43 enrolled, including 10 seniors who were graduated in June. At the beginning of the current year the enrollment at the Tamworth School was 164, and at Kennett High School 44 distributed as follows: — Freshmen 14, Sophomores 8, Juniors 10, Seniors 12. One pupil is enrolled at Fryeburg Academy, and three elementary pupils at Madison. Current totals are: — Elementary 167, High School 45.

Mrs. Margaret Philbrick continues her efficient and valuable service as school nurse. Purchase by

the supervisory union of modern devices for testing sight and hearing has made an important contribution to the school health service.

The continuation of the noon lunch program under the sponsorship of the Parent-Teachers Association is an excellent contribution to the health and welfare of the pupils. Mrs. Blackey is to be commended for her exceptionally economical production of balanced, nourishing meals.

All the Tamworth teachers attended a 15-week extension course in the teaching of elementary science held at Center Ossipee during the fall term of 1950. Your teachers are taking advantage of every opportunity to make professional improvement.

Costs of education in Tamworth for 1949-50 are shown by the figures below:

	Tamworth	State Average
Total cost per elementary pupil	\$173.23	\$208.57
Total cost per high school pupil	261.18	326.34
Tax rate for school purposes per \$1000 equalized valuation	15.54	17.98

Costs may be expected to increase next year due to general inflation and an increase in high school tuition from \$160.00 to \$200.00 per pupil.

For some years school board members of Supervisory Union No. 36 have discussed the matter of hiring a music supervisor for the union. Such a supervisor would provide instruction in both vocal and instrument work in the schools of the union. The supervisor's time would be allocated, principally, on the basis of the number of pupils in the district. In

some instances two rooms could be combined for instruction. In general the supervisor could spend about one hour each week in each classroom. In addition to actual instruction the supervisor would organize the work in music for the teachers to carry on during the rest of the week. It is usual for such supervisors to present one or more concerts at some central place with pupils from all districts participating. At the Supervisory Union Budget meeting held December 20, 1950 it was voted to recommend that a special article be inserted in each warrant to see if the district will vote to appropriate its share of the cost of a music supervisor. The total cost of hiring a supervisor, including salary and travel expense is estimated at \$3200.00. Tamworth's share for next year would be \$675.20.

The active cooperation of the School Board, teachers, pupils, and citizens is gratefully acknowledged.

Respectfully submitted,

EVERETT H. BRASIER

January 31, 1951.

Superintendent of Schools.

STATISTICS

Number of weeks of school year	38
Average number of half-days in session	360
Total number of different pupils registered	156
Boys 86 Girls 70	
Average membership in elementary schools	145.84
*Number of pupils in high school	43
Per cent of attendance in all schools for year	93.82
Average number of tardiness, Elementary	.29
Number of pupils transported at district expense	155
Number of visits to school by	
School Board members	4
Citizens	153
Superintendent	118
Number of school board meetings held	15

Perfect attendance for the school year 1949-50:
Elementary school

Ralph Ames	Edwin Hidden
Coleen Banfill	Marie Hobbs
Wilbur Blackey	Mary Rogers
Lynwood Ryder	Nancy Tupper
Louise Underhill	Irene Ames
Linda Jennings	Carmen Deatte
Theodore Emerson	Alan Larrabee
Sandra Hutchins	Betty Remick
Stuart Remick	David Remick
Dorothy Hammond	Alton Ryder
Margaret Johnson	

*43 pupils at Kennett High School.

TAMWORTH SCHOOL LUNCH PROGRAM

The Tamworth Parent-Teachers Association continues to sponsor the hot lunch program. From the first of November, 1949 to the close of school in June 1950, 17,418 type B hot lunches were served at a cost of 5 cents per child and federal reimbursement of 4 cents per lunch per child as well as the receipt of a variety of surplus foods.

Beginning with September 1950 it was voted by the association to sponsor the type A lunch with the same cost of 5 cents per child and receive federal reimbursement of 7 cents per lunch per day for each child. Beginning with Jan. 1, 1951 the federal reimbursement was reduced to 5 cents with less surplus commodities being received this school year.

The public still continues to support the Fund Raising Campaigns under the sponsorship of the P.T.A. group. Due to the support of the public additional equipment has been added to the kitchen. It is hoped that it will soon be possible to purchase more dishes to serve food in.

Volunteer labor continues to be depended upon to assist in the washing of the dishes. Mrs. Charles Remick is the present chairman of the dish washing committee and has submitted the names of the following people who have assisted in the performance of this task since the beginning of this school year.

Mrs. Harold Trask, Mrs. Edward Hammond, Mrs. Russell Welch, Mrs. Evelyn Gobelle, Mrs. Teresa Severy, Mrs. Edward Bookholz, Mrs. Clifford Downs, Mrs. Robert Eastwick, Mrs. Philip Stone, Mrs. Harold Hidden, Mrs. Marquis Landry, Mrs. Richard Read, Mrs. Sidney Mather, Mrs. Maurice Nelson, Mrs. Edith

King, Mrs. Raymond Larrabee, Mrs. Henry Tappan, Mrs. Rolfe Spicer, Mrs. Elmer Cummings, Mrs. Francis Cleveland, Mrs. Robert Carr, Mrs. Edwin Clough, Miss Ida Clough, Mrs. Wesley Taggett, Mrs. Charles Remick. Other volunteers will be appreciated by Mrs. Remick.

During the current year the number of meals served to date average 135 per day. Practically every child who remains at school during the noon hour partakes of the lunch.

The continued cooperation of the members of the P.T.A., parents and citizens, organizations, girls and boys is sincerely appreciated in the continuance of this excellent program.

Respectfully submitted,

EDWIN A. BLACKKEY, SR.

Principal

TAMWORTH SCHOOL LUNCH

Financial Statement 1949-1950

Cash on hand July 1, 1949		None
Receipts:		
Lunch sales, children	\$821 50	
Lunch sales, adults	33 15	
	<hr/>	\$854 65
Misc. cash contributions		26 58
District appropriations claims for reimbursement		657 46
		<hr/>
Total Receipts		\$1,538 69

Expenditures:

Food	\$748 38	
Labor	408 00	
All other	179 56	
		<hr/>
Total Expenditures		\$1,335 94
Cash on hand June 30, 1950		202 75
		<hr/>
		\$1,538 69

REPORT OF SCHOOL NURSE

The yearly examination of the children in the Tamworth School was done by Dr. Remick and your Nurse with the following defects found.

Malnutrition (Which means under weight for their age and height)	12
Vision	6
Anaemia	1
Heart	1
Skin	1
Orthopedic:	
Flat Feet	1
Pronated Feet	1
Posture (Incorrect)	42
Teeth	21
Tonsils:	
Diseased	6
Enlarged	2
Breathing Defects:	
Asthma	1
Adenoids	1
Hypertrophied Turbinates	3
Glands:	

Enlarged	5
Ductless	1
Speech	2
Hernia	1

Due to the Polio scare and the lateness of school closing there wasn't a tonsil clinic as usual. We hope to have one this year and hope all parents that are interested will contact the School Nurse. We have had an Orthopedic and T. B. clinic and there have been many corrections made since the fall examination, several have glasses and teeth are being taken care of. The entire school has been tested with the Massachusetts Vision tester, and the Maico Audiometer examination will soon be completed.

Dr. Remick finds our children improving in health each year and we feel this is partly due to the splendid hot lunch program sponsored by the P.T.A.

Respectfully submitted,

MARGARET E. PHILBRICK, R. N.

SCHOOL BOARD'S ESTIMATE FOR 1951-1952

School Board's statement of amounts required to support public schools and meet other statutory obligation of the District for the fiscal year beginning July 1, 1951.

Administration:

Salaries of District Officers	\$ 238 00	
Administration expense	138 74	
Salaries of other administrative personnel	75 00	
Superintendent's salary	696 30	
Superintendent's expense	137 15	
District's share of Union expense	424 11	
Tax for statewide supervision	402 00	
		\$2111 30

Instruction:

Teachers' salaries	\$12200 00	
Books and instructional material	550 00	
Scholars' supplies	650 00	
Other instructional expense	75 00	
		\$13475 00

Operation of School Plant:

Janitor's salary	\$ 550 00	
Janitor supplies	270 00	
Fuel	650 00	
Water and light	130 00	
		\$1600 00

Maintenance of School Plant:

Repairs and replacements	\$500 00	\$500 00
Auxiliary Activities:		

Health supervision	\$ 250 00	
Transportation, Elementary	8925 00	
Tuition, Elementary	300 00	
Special activities	300 00	
	<hr/>	\$9775 00

High School Activities:

Transportation	\$4500 00	
Tuition	8800 00	
Special activities	1500 00	
	<hr/>	\$14800 00

Fixed Charges:

Teachers' retirement	\$800 00	
Insurance, Treas. Bond	500 00	
	<hr/>	\$1300 00

Capital Outlay:

Additions and improvements to buildings	\$300 00	
New equipment	100 00	
	<hr/>	\$400 00

Total to meet School Board's Budget	\$43961 30
-------------------------------------	------------

Estimated Income of District:

Balance June 30, 1950	\$3955 22	
School Note	72 00	
	<hr/>	\$4027 22

Assessment required to balance budget	\$39934 08
---------------------------------------	------------

These figures approved by the

Finance Committee

Special Appropriation (Article in Warrant)

Union music supervisor	\$675 20
Assessment required to cover	<hr/>
Budget and Appropriation	\$40609 28

SCHOOL BOARD'S STATEMENT FOR YEAR 1950-51

School Board's statement of amounts paid through January 31, 1951; amount estimated to be paid through June 30, 1951; amounts raised at School District meeting of April 15, 1950 to support public schools.

Administration:

	1/31/51	6/30/51	Budget -
Salaries of District Officers	\$ 216.00	\$238.00	\$238.00
Superintendent's salary	680.66	680.66	680.48
Superintendent's expense	138.23	138.23	138.22
Salaries of other adm. personnel	55.00	75.00	75.00
Administration expense	92.96	147.96	125.00
District's share of Union exp.	273.30	273.30	275.00
Tax for statewide supervision	392.00	392.00	392.00
	<hr/>	<hr/>	<hr/>
	\$1848.15	\$1945.15	\$1923.70

Instruction:

Teachers' salaries	\$5537.01	\$11763.50	\$11750.00
Text books & instruction material	464.73	500.00	500.00
Scholars' supplies	555.67	600.00	600.00
Other instructional expense	44.40	75.00	75.00
	<hr/>	<hr/>	<hr/>
	\$6601.81	\$12938.50	\$12925.00

Operation of School Plant:

Janitor's salary	\$275.00	\$550.00	\$500.00
Janitor supplies & expense	196.87	270.00	170.00
Fuel	200.16	600.00	650.00
Water and light	60.07	130.00	130.00
	<hr/>	<hr/>	<hr/>
	\$732.10	\$1550.00	\$1450.00

Maintenance of School Plant:

Repairs and replacements	\$345.51	\$650.00	\$500.00
Auxiliary Activities:			
Health supervision	\$.45	\$250.00	\$250.00
Transportation, elementary	4258.40	8550.00	8625.00
Tuition, elementary		300.00	400.00
Special activities	9.00	150.00	150.00
	<hr/>	<hr/>	<hr/>
	\$4267.85	\$9250.00	\$9425.00

High School Activities:

Transportation	\$2090.00	\$4180.00	\$4500.00
Tuition	3462.25	6924.50	7750.00
Special activities	610.01	1500.00	1500.00
	<hr/>	<hr/>	<hr/>
	\$6162.26	\$12604.50	\$13750.00

Fixed Charges:

Teachers' retirement		\$682.80	\$500.00
Insurance, Treasurer's Bond	95.21	522.71	500.00
		<hr/>	
	\$95.21	\$1205.51	\$1000.00

Capital Outlay:

Additions and improvements	\$283.69	\$283.69	
New equipment	119.00	119.00	100.00
		<hr/>	
	\$402.69	\$402.69	\$100.00

Special Appropriation:

Painting school, outside	\$398.00	\$398.00	\$398.00
		<hr/>	
Total Expenditures	\$20853.58	\$40944.35	\$41471.70

ANNUAL REPORT OF DISTRICT TREASURER

Fiscal year ending June 30, 1950

Cash on hand June 30, 1949	\$1,070 10
Received from selectmen:	
Appropriation for current year	35,000 00
Received from State Aid	984 24
Received State Treas., for noon lunch	562 62
Received from all other sources	327 85
	<hr/>
TOTAL RECEIPTS	\$37,944 81
LESS: Orders paid	36,870 30
	<hr/>
Balance on hand June 30, 1950	\$1,074 51

Attention is called to the difference of \$19.00 between the balance on hand June 30, 1949 of \$1,089.10 and the balance shown above as of June 30, 1949 of \$1,070.10. Examination of the figures for the year 1948-49 disclosed that two deposits, one in the amount of one dollar, and one in the amount of eighteen dollars, were entered twice. When this error is corrected, the proper opening balance is \$1,070.10.

SUMMARY OF DREW FUND

Cash on hand June 30, 1949	\$ 80 80
Income	117 57
	<hr/>
	\$198 37
Less orders paid	97 76
	<hr/>
Balance June 30, 1950	\$100 61

M. E. BRETT

District Treasurer

Treasurer's bank balance as of		
June 30, 1950		\$1074 51
Accounts Receivable:		
State: Noon lunch program	\$ 87 44	
Town: Dog tax	372 80	
School note	72 00	
Balance of appropriation	2418 60	
Conway: Tuition refund	144 00	
	<hr/>	
Total accounts receivable		\$3094 84
		<hr/>
Total Assets		\$4169 35
Accounts Payable:		
P.T.A. Noon lunch	\$87 44	
Town: Printing school report	80 00	
Robert Carr: auditing	8 00	
Heald's Cabinet Shop: repairs	28 69	
Manley Brett: transportation	10 00	
	<hr/>	
Total Liabilities		\$214 13
		<hr/>
Surplus for year ending June 30, 1950		\$3955 22

DETAILED STATEMENT OF EXPENDITURES

Fiscal Year Ending June 30, 1950

SALARIES OF DISTRICT OFFICERS

Howard R. Gilman	\$50 00	
Richard W. Read	50 00	
Raymond Larrabee	50 00	
Manley E. Brett	50 00	
Forrest D. Ayer	5 00	
Emmons Heald ('49-'50)	10 00	
William Fortier	4 00	
Charles Remick	4 00	
		<hr/>
		\$223 00

SUPERINTENDENT'S SALARY AND EXPENSES

Rebecca Sanborn, Treas.		
Union No. 36 expense	\$247 42	
Superintendent's salary and expense	712 50	
District Share of Supt's. Retirement	43 40	
		<hr/>
		\$1003 32

TRUANT OFFICER AND CENSUS

Frank A. Blackey	\$35 00	
		<hr/>
		\$35 00

EXPENSES OF ADMINISTRATION

Printing	\$34 08	
----------	---------	--

Howard Gilman, clerk hire	40 00
Howard Gilman, clerk expense	50
Edna Mason, box rent	3 20
Everett Brasier, minor supplies	3 84
Bank charge for check book	3 89
Telephone	82 80

\$168 31

TEACHERS' SALARIES

Edwin A. Blackey	\$2550 00
Elizabeth H. Sutherland	1961 00
Lois A. Boothby	1993 00
Margaret A. King	1910 00
Dorothy G. Remick	1528 00
Helen Hidden	192 00
Collector of Internal Revenue	568 00
Teachers' Retirement Board	358 00
Ruth Chick, sub. teacher	8 00
Lillian McGrew, sub. teacher	144 00

\$11,212 00

TEXT BOOKS AND SCHOOL SUPPLIES

Text books	\$440 92
School supplies	609 42

\$1050 34

SUPPLIES AND OTHER EXPENSES

Educator's Progress Serv.	\$10 78
---------------------------	---------

American Educator Press	15 25	
World Book Co.	5 81	
Allyn Bacon	3 60	
		\$35 44

JANITOR'S SALARY AND EXPENSES

William B. Hidden	\$501 50	
Donald Sutherland	1 50	
Janitor's supplies	95 11	
Frank R. Howe	20 00	
Thos. B. Tupper	20 00	
Knowltons Store	5 01	
Carroll County Hardware Co.	5 18	
Remick Bros.	58	
		\$648 88

FUEL

Charles Remick	\$89 79	
Ossipee Oil Co.	503 21	
		\$593 00

WATER AND LIGHTS

Walter H. White	\$30 00	
Public Service Co., lights	141 48	
		\$171 48

MINOR REPAIRS AND EXPENSES

Geo. R. Nickerson	\$169 53	
-------------------	----------	--

Charles W. Remick	5 20	
Remick Bros.	18 07	
Knowltons Store	39	
Albert S. Elliott	8 00	
E. R. Johnson	80 00	
Dexter Remick	25 85	
Alvin Helme	4 00	
Alzer Sherman	8 50	
William Hidden	14 25	
John F. Chick & Son, Inc.	49 68	
		\$383 47

HEALTH SUPERVISION

Edwin C. Remick, M.D.	\$142 00	
Remick Bros.	49	
Tamworth Comm. Nurse Assoc., Inc.	71 00	
		\$213 49

TRANSPORTATION OF PUPILS TO HIGH SCHOOL

M. E. & S. L. Brett, all town	\$3500 00	
		\$3500 00

TRANSPORTATION OF PUPILS TO GRAMMAR SCHOOL

Edna Banfill	\$1000 00	
Waino Autio	360 00	
M. E. & S. L. Brett	7092 00	
		\$8452 00

PAYMENT OF TUITION

High School

Conway School District	\$6012 00	
Mrs. Lillian Bowles, reimbursement	144 00	
	<hr/>	\$6156 00

Elementary School

Madison School District	\$220 00	
	<hr/>	\$220 00

OTHER SPECIAL ACTIVITIES

M. E. & S. L. Brett, extra trips for High School recreation	\$1192 45	
Reimbursement to school lunch pro- gram of State Aid received for school lunch program	562 62	
	<hr/>	\$1755 07

TAX FOR STATE WIDE SUPERVISION

N. H. State Treasurer, per capita tax	\$384 00	
	<hr/>	\$384 00

INSURANCE AND OTHER FIXED CHARGES

Emmons Heald (Treasurer Bond)	\$15 00	
District share of Teachers' retirement	445 00	
	<hr/>	\$460 00

NEW EQUIPMENT

Charles Remick	\$155 00
Remick Bros.	27 00
J. L. Hammett Co.	2 27
District share for Audiometer	21 23

\$205 50

REPORT OF SCHOOL BOARD

Your School Board wishes to make the following comments in regard to the financial reports on the preceding pages:

The surplus, reported on the page of the District Treasurer's report in the sum of \$3955.22, includes the estimated surplus reported to you in last year's report, in the amount of \$1463.95; which sum, together with \$737.55, (the other items of expected income declared) the Selectmen failed to take advantage of in figuring the town's assessment. Therefore, this same amount of \$3955.22 will be part of any surplus declared for the year ending June 30, 1951.

You will note on the page, School Board's Statement for year 1950-1951 (the current year), that although we have run over the budgeted amounts in some classifications, we are happy to report an expected surplus for this year of \$527.35. Repairs and replacements ran over mainly on account of the large water tank in the basement breaking, due to age, and needing immediate replacement—at a cost of over \$300.00. Teachers' retirement was increased by state law after the District meeting had been held. The painting of one of the school rooms, the upper and lower halls; and the cement skirt at the rear of the building; to try and keep out the rats, and to reduce the amount of water that was coming into the cellar; all seemed like advisable additions and improvements, although no money was budgeted for these purposes.

In our opinion, the school building and equipment are in better condition than for a number of years, so, we have provided in this year's budget an

item of \$300.00 to keep on with an orderly program of painting and improvements.

We wish that more parents would visit school and attend the monthly P.T.A. meetings, so that we might have the benefit of your ideas and suggestions—the men are parents also.

RICHARD W. READ, Chairman

BIRTHS FOR YEAR ENDING DECEMBER 31, 1950

DATE	NAME	NO.	FATHER	MOTHER
Jan. 7	Barbara A. Evans	2	Leon A. Evans	Frances L. Panno
Jan. 9	Linda M. Stevens	2	Willard E. Stevens	Adelaide M. Fischer
Feb. 1	Richard L. Streeter	1	Clifford L. Streeter	Lorraine E. Evans
Mar. 8	Charles M. Jeffers, Jr.	4	Charles M. Jeffers	Madaline F. Jewett
May 2	Mary E. Nason	2	Walter A. Nason	Yvonne T. Petitpas
May 3	Rose M. Webster	3	William F. Webster	Nola H. Frie
May 4	Charles W. Brown, Jr.	7	Charles W. Brown	Doris L. Whiting
June 4	Phyllis C. Frost	1	Lawrence E. Frost	Rita M. Lawson
June 12	Bruce E. Robinson	2	Henry E. A. Robinson	Ann J. Webster
July 12	Wand L. Abbott	1	Harry A. Abbott	Louise L. Hall
July 13	Cynthia L. Brothers	2	Elmer W. Brothers	Esther G. Ames
July 20	Mary E. Page	1	Oliver E. Page	Winona H. Clemous
Aug. 13	Beth E. Hazeltine	2	Malcolm F. Hazeltine	Myrtle E. Stacy
Aug. 18	Joel F. Streeter	1	Joseph A. Streeter	Mildred D. Marshall
Sept. 30	Bruce E. Hutchins	4	Paul W. Hutchins	Leah C. Wentworth
Nov. 3	Joan D. Roberts	4	Emery R. Roberts	Fayralyn O. Leso

DEATHS FOR YEAR ENDING DECEMBER 31, 1950

DATE	NAME	AGE			PLACE OF DEATH
		Y	M	D	
Mar. 7	Winifred O. Remick	72			Concord, N. H.
Mar. 27	Sarah A. Clough	75			Moultonboro, N. H.
Mar. 28	Maude Gordon	46			Laconia, N. H.
April 3	Harold M. Gray	52	2	1	West Ossipee, N. H.
April 4	Eunice E. Cartland	49	4	20	Tamworth, N. H.
May 30	Arthur R. C. Drake	82	6	27	Moultonboro, N. H.
July 14	Mary E. Roberts	82			Laconia, N. H.
Aug. 2	Arthur E. Jones	62	11	18	Tamworth, N. H.
Nov. 10	John N. Ames	71	2	16	So. Tamworth, N. H.
Nov. 28	Quincy G. Perkins	76	6	25	Moultonboro, N. H.
Dec. 19	Jay C. Knight	58	3	11	Tamworth, N. H.
Dec. 22	Walter H. Berry	76			Moultonboro, N. H.

Marriages Registered in the Town of Tamworth, N. H., for the Year Ending December 31, 1950

DATE	PLACE	PARTIES	AGE & OCCUPATION	MARRIED BY WHOM
Jan. 24	Meredith, N. H.	Harry A. Abbott, Jr. Madison, N. H.	20 Truck Driver	Rev. Francis L. Cooper
Feb. 3	Bartlett, N. H.	Lillian L. Hall Tamworth, N. H. Joseph A. Streeter Tamworth, N. H.	19 At Home 29 Truck Driver	Rev. Harold R. Coleman
Mar. 4	Tamworth, N. H.	Mildred D. Marshall Tamworth, N. H. Wallace H. Baker Tamworth, N. H.	17 At Home 28 Lumberjack 16 Housework	Forrest D. Ayer, J.P.
May 28	Moultonville, N. H.	Lorraine Bean Ctr. Ossipee, N. H. Paul L. Hayford Tamworth, N. H.	22 Laborer	Rev. D. Windemiller
June 3	Monltonville, N. H.	Caroline F. Demerit Ctr. Ossipee, N. H. Raymond A. Berry West Ossipee, N. H.	19 Waitress 20 Painter	Rev. D. Windemiller
June 7	Tamworth, N. H.	Charlotte E. Eldridge Tamworth, N. H. Albert Drake Milbury, Mass.	19 At Home 24 Salvage Dealer	Forrest D. Ayer, J.P.
June 24	Tamworth, N. H.	Pauline M. Stinchfield Worcester, Mass. Charles F. Plummer Tamworth, N. H.	18 At Home 26 Lumbering	Rev. Herbert W. Prince
July 1	Tamworth, N. H.	Doris M. Palmer Tamworth, N. H. James W. Ames Tamworth, N. H.	18 Student 18 Lumbering	Rev. A. H. Rowland
July 2	Tamworth, N. H.	Joanne Stoddard Ossipee, N. H. Everett E. Grace Tamworth, N. H.	17 At Home 22 Furniture Factory	Rev. Herbert W. Prince
July 17	Tamworth, N. H.	Shirley A. Brown Tamworth, N. H. William S. Mayer New York	21 Clerk 25 U. S. Navy	William J. Collins, Priest
July 23	Tamworth, N. H.	Elizabeth G. Pratt Tamworth, N. H. Pike G. Perkins, Jr. Tamworth, N. H.	25 At Home 20 Marine	Forrest D. Ayer, J.P.
July 23	Tamworth, N. H.	Emily E. Knox Tamworth, N. H. Donald T. Stoddard Ossipee, N. H.	21 At Home 16 At Home	Rev. A. H. Rowland
Oct. 7	Tamworth, N. H.	Maudie A. Gordon Tamworth, N. H. Arthur Paula Worcester, Mass.	16 At Home 23 Foundry	Forrest D. Ayer, J.P.
Nov. 23	Tamworth, N. H.	Marion Stinchfield Worcester, Mass. Raymond R. Guay Laconia, N. H. Mary T. Hayford Tamworth, N. H.	24 At Home 25 Accountant 23 At Home	William J. Collins, Priest

