



3-31-2004

GRANIT Conservation Lands Data Layer Update

Fay A. Rubin

University of New Hampshire - Main Campus, Fay.Rubin@unh.edu

Christopher M. Phaneuf

University of New Hampshire - Main Campus, Chris.Phaneuf@unh.edu

Follow this and additional works at: <https://scholars.unh.edu/prep>



Part of the [Marine Biology Commons](#)

Recommended Citation

Rubin, Fay A. and Phaneuf, Christopher M., "GRANIT Conservation Lands Data Layer Update" (2004). *PREP Reports & Publications*. 220.

<https://scholars.unh.edu/prep/220>

This Report is brought to you for free and open access by the Institute for the Study of Earth, Oceans, and Space (EOS) at University of New Hampshire Scholars' Repository. It has been accepted for inclusion in PREP Reports & Publications by an authorized administrator of University of New Hampshire Scholars' Repository. For more information, please contact Scholarly.Communication@unh.edu.

GRANIT CONSERVATION LANDS DATA LAYER UPDATE

A Final Report to
The New Hampshire Estuaries Project

Submitted by

Fay Rubin and Chris Phaneuf
Complex Systems Research Center
University of New Hampshire
Durham, NH 03824

March 31, 2004

This report was funded by a grant from the New Hampshire Estuaries Project, as authorized by the U.S. Environmental Protection Agency pursuant to Section 320 of the Clean Water Act.



Table of Contents

Executive Summary	i
List of Tables	ii
List of Figures	ii
1. Introduction	1
2. Project Goals and Objectives	1
3. Methods	2
4. Results and Discussion	4
5. Conclusions	4
6. Recommendations	5

Executive Summary

The Complex Systems Research Center (CSRC) at the University of New Hampshire has developed, implemented, and coordinated the GRANIT GIS clearinghouse since its inception in the mid 1980's. One of the primary data sets maintained by CSRC and served through the clearinghouse is the GRANIT Conservation and Protected Lands Data Layer. This data set contains a digital record of parcels of land of two or more acres that are mostly undeveloped and are protected from future development. Smaller parcels that adjoin previously mapped parcels or represent unique features, such as a bog or state-owned boat ramp, may also be included in the data layer.

Through the GRANIT Conservation Lands Data Layer Update project, current protected lands data were collected, reviewed, and processed for the 47-community area within the NH Estuaries Project study area. GRANIT staff contacted each community's conservation commission to solicit updates. Concurrently, staff from the Society for the Protection of NH Forests contacted the active land trusts in the region. Through this collaborative process, 235 tracts covering 6,997 acres were added to the database. In addition to new tracts, information for existing tracts was modified to incorporate any reported corrections. The resulting, updated data set is available to municipal decision-makers, the land trust community, and the general public through the GRANIT web site (www.granit.sr.unh.edu) and the GRANIT Conservation Lands Viewer (www.granitmap.sr.unh.edu).

List of Tables

Table 1. Project contact list

Table 2. List of parcels mapped during the project

List of Figures

Figure 1. Map of parcels added to the data layer (in back pocket)

1. Introduction

The Complex Systems Research Center (CSRC) at the University of New Hampshire has developed, implemented, and coordinated the GRANIT GIS clearinghouse since its inception in the mid 1980's. One of the primary data sets maintained by CSRC and served through the clearinghouse is the GRANIT Conservation and Protected Lands Data Layer. The data layer contains a digital record of parcels of land of two or more acres that are mostly undeveloped and are protected from future development. Smaller parcels that adjoin previously mapped parcels or represent unique features, such as a bog or state-owned boat ramp, may also be included in the data layer.

The Conservation and Protected Lands data set is among the most frequently requested layers in the GRANIT archive, and is accessed by a broad range of users throughout the state, including local/regional land trusts, statewide conservation organizations, state/federal agencies, regional planning commissions, municipalities, and the general public. It is used to support mapping of current protected lands, buildout analyses, natural resources inventories, strategic plans for land acquisition, and general planning activities. Further, it is often accessed by users in the larger northeast region to support multi-state land conservation activities.

2. Project Goals and Objectives

The primary objective of the GRANIT Conservation Lands Data Layer Update project was to collect and map current, accurate and comprehensive information describing protected lands in the 47 NH Estuaries Project communities of coastal New Hampshire, and to integrate this updated information into the publicly available data layer. A secondary project objective was to review, verify, and update information within the existing data set. GRANIT also sought to develop and maintain a list of contacts representing organizations actively involved in land conservation in the state, in order to facilitate ongoing maintenance of the data layer.

Specifically, the update project comprised a sequence of the three tasks, as follows:

- Identify the coastal watershed land protection community
- Promote the GRANIT Conservation Lands dataset
- Conduct GRANIT Conservation Lands dataset updates

3. Methods

Task 1. Identify the coastal watershed land protection community

The goal of the first task was to assemble a list of seacoast region land trusts, municipalities, regional conservation groups, and statewide conservation groups. This list would be used to establish the contacts for the subsequent parcel updating task. For convenience, we began by developing two separate lists – one for municipal contacts and one for other groups active in land conservation. The following mechanisms were used to generate the two products:

- **Municipal Contacts:** We began with a list generated from prior GRANIT contacts and data from the Rockingham and Strafford Regional Planning Commissions. This information was revised based on a listing of conservation commission members, received from Marjory Swope, Executive Director, NH Association of Conservation Commissions (NHACC), which was updated at the NHACC annual meeting in November, 2003.
- **Land Trusts/Regional Conservation Groups:** An initial list of groups and organizations active in land protection was developed based on records in the existing GRANIT Conservation Lands data set. The preliminary list was reviewed with the Society for the Protection of New Hampshire Forests, and organizations were added/modified as necessary.

Ultimately, the two lists were merged into a single contact inventory for the project.

Task 2. Promote the GRANIT Conservation Lands dataset

The second task comprised corresponding with each organization identified in Task 1 in order to verify contact information and prepare for updating the conservation lands data set. During this process, we planned to promote the value of the data layer as a means of raising awareness of the project and encouraging participation.

As a result of discussions with staff from the Society for the Protection of NH Forests (SPNHF), we opted to focus our efforts on the municipal component of the update process. SPNHF staff agreed to approach the land trust community and other non-municipal entities on the list. The strategy was for each of us to comprehensively cover our respective organizations to collect the required source data. Once collected, GRANIT staff would perform all GIS-related work to process the data (see Task 3 below).

Verification of the municipal contact list was accomplished by sending an initial letter to each municipal conservation commission in the summer of 2003. The letter introduced the project, outlined the goals of the update activity, and asked for confirmation of name and address. It also invited people to visit the GRANIT web site, and interact with the existing data layer to better familiarize themselves with its contents.

Several other promotional activities were undertaken in addition to the directed letters. GRANIT staff coordinated a display describing the project at the aforementioned NHACC November meeting. We also printed bookmarks to publicize the GRANIT Conservation Lands Viewer for distribution at various meetings/events, including the November, 2003 GIS Day at UNH. Future outreach plans include a scheduled presentation at the Rockingham County Conservation Commission Roundtable in late March.

Task 3. Conduct GRANIT Conservation Lands dataset updates

The third and most substantive task in the update project was the actual collection of updated parcel information, and the incorporation of the data into the GRANIT Conservation Lands Data Layer. This was accomplished by the following sequence of activities:

- A second letter was sent to each confirmed municipal contact established during task 1. The mailing included:
 - (1) a listing of parcels in the existing data set, with a request for recipients to review and confirm all existing map and attribute data;
 - (2) a townwide map of parcels in the existing data set to assist in reviewing the current data and identifying gaps;
 - (3) instructions for submitting maps for new tracts and/or revising information for existing tracts; and
 - (4) data collection sheets/templates for collecting the associated attribute/tract characteristics
- Concurrently, SPNHF staff contacted via letter the organizations on their list, and requested updated information
- All information collected by GRANIT and/or SPNHF was assembled at CSRC
- The source tract maps were recompiled onto standard, 1:24,000-scale base maps
- Attribute sheets were reviewed for completeness and logical consistency, and additional information was requested as necessary
- Tract boundaries were digitized and added to the GRANIT Conservation Lands data layer, and tract characteristics were recorded in the associated attribute tables

- Reported corrections to pre-existing tract information were incorporated into the spatial and/or attribute data
- Metadata, or data documentation, was updated to reflect the updates

As expected, there were a number of communities who did not respond to our multiple attempts to contact them. In these cases, follow-up phone calls were made to encourage participation in the project. In addition, we sought assistance from the GIS staff at the regional planning commissions.

4. Results and Discussion

The list of contacts established during the project is presented in Table 1. This represents the collaborative efforts of GRANIT staff, the Rockingham Planning Commission, the Strafford Regional Planning Commission, and the Society for the Protection of NH Forests.

A total of 235 tracts covering 6,997 acres were mapped during this project. In addition, information was updated for 26 tracts. Table 2 presents a summary of newly mapped tracts. (Calculated tract size is the size of the parcel based on the actual mapping. This figure may differ from the reported tract size.) A map of the updates is provided in Figure 1 (oversized map, see back pocket).

Throughout the project, repeated attempts were made to contact several of the towns in the project area. In a number of cases, we are confident that these attempts will yield responses in the form of data submissions after the conclusion of the formal project period. In these instances, GRANIT will continue to incorporate data received as a result of the project contacts. Nevertheless, despite our best efforts, there will remain some towns who declined to participate in the update project.

All data developed during this project, as well as the updated metadata (or data documentation) are available to the public via download from the GRANIT web site (www.granit.sr.unh.edu).

5. Conclusions

The update of the GRANIT Conservation Lands Data Layer has successfully concluded, progressing through a sequence of steps from source data collection through spatial data layer update. The contact lists we generated were critical to the project, and will be valuable as we undertake subsequent data layer maintenance activities. The maps that were distributed as part of the data request package were well-received. Feedback indicated they were particularly valuable as towns reviewed the existing tracts and identified gaps in the data set. The final data layer, incorporating the updates and the newly mapped tracts, will

support a number of mapping and analytical applications by users in the region and the state.

6. Recommendations

Land protection activity is underway by many organizations in seacoast New Hampshire. In particular, support for local land conservation activities has been increasing over the past several years as documented by the expanding number of communities issuing bonds for land protection. Maintaining a record of these transactions, and ensuring that the spatial data are reported to GRANIT and made available in a digital, mapped format to the statewide GIS community, is vital. Accordingly, a number of basic recommendations are offered as a result of this project:

- The GRANIT Conservation Lands Data Layer should be maintained on a regular basis, and a reliable funding mechanism must be identified to support this activity.
- Ongoing dialog with community conservation commission members, as well as other organizations active in land conservation, is important to increase awareness of the data and ensure that people understand the utility of the data set.
- A mechanism for encouraging participation by towns who are reluctant to do so should be identified.
- Additional tools should be developed to facilitate the data submission and maintenance tasks. Web-based resources would be valuable for many constituents, although reliance solely on this approach is not recommended as some of the smaller towns in the region do not have high-speed access to the web.

Table 1. Project contact list

Agency Name	Contact Person	Title	Address 1	Address 2
Federal				
US Dept. of Interior, Fish & Wildlife Service	Regional Office		300 Westgate Center Dr	Hadley, MA 01035-9589
State				
Dept. of Resources & Econ. Dev.	Philip Bryce	Director, Forests & Lands	172 Pembroke Rd PO Box 1856	Concord, NH 03302
Fish & Game	Katie Callahan, Beth McGuinn	GIS Manager	11 Hazen Dr	Concord, NH 03301
Dept. of Agriculture	Stephen Taylor	Commissioner	PO Box 2042	Concord, NH 03302
University of New Hampshire	Douglas Bencks	Campus Planner (Acting)	Figment Hall	Durham, NH 03824
DES, Water Resources Division	Harry T. Stewart, P.E.	Water Division Director	6 Hazen Dr PO Box 95	Concord, NH 03302
Dept. of Transportation	William Hauser	Administrator	7 Hazen Dr	Concord, NH 03302
Public/Quasi-Public				
Coe-Brown Northwood Acad.	David S. Smith	Headmaster	907 First NH Turnpike	Northwood, NH 03261
Northwood Ridge Vill. Water Dist.			PO Box 325	Northwood, NH 03261
Pinkerton Academy	Mary A. Anderson	Headmaster	5 Pinkerton St	Derry, NH 03038
Rockingham Cty. Cons. District	Mary A. Currier	District Manager	110 North Rd	Brentwood, NH 03833-6614
Rollinsford Water / Sewer Dist.	Jack Hladick	Chief Operator	5 Lower Mill Road PO Box 174	Rollinsford, NH 03869
Rye Water District	Joe Kenney	Chairman	60 Sagamore Ave PO Box 156	Rye, NH 03870
Strafford Cty. Conservation Dist.	Bambi Miller	District Manager	259 County Farm Rd, Unit #3	Dover, NH 03820-6015
Private				
Audubon Society of NH	Joanna Magoon	Land Protection Specialist	3 Silk Farm Road	Concord, NH 03301-8200
Aquarion Water Company of NH	Ryan Lynch	Water Quality Specialist	1 Merill Industrial Dr (Suite A)	Hampton, NH 03842
Bear Paw Regional Greenways	Susan Zankel	Executive Director	PO Box 19	Deerfield, NH 03037
Blue Hills Foundation	C.R. Shillaber, Esq		PO Box 1500	Rochester, NH 03866-1500
Five Rivers Conservation Trust	Paul McDonald	Chairman	54 Portsmouth St	Concord, NH 03301
Howfirma Trust	James VanBokkelen		45 Hilldale Ave	South Hampton, NH 03827
Lakes Region Cons. Trust	Tom Curren	Executive Director	PO Box 1097	Meredith, NH 03253
Moose Mtns. Reg. Greenways	Cynthia Wyatt	President	PO Box 191	Union, NH 03887
New England Forestry Found.	Keith Ross	Director of Land Protection	PO Box 27	Orange, MA 01364
Philips Exeter Academy	Don Briselden	Director, Facilities Management	20 Main St	Exeter, NH 03833-2460
Rockingham Land Trust	Brian Hart	Executive Director	14 Center St, Fl.2	Exeter, NH 03833
Seacoast Land Trust	Danna Truslow	Executive Director	PO Box 4183	Portsmouth, NH 03802-4183
Society for the Prot. of NH Forests	Dan Sundquist	Director, Research	54 Portsmouth St	Concord, NH 03301
Strafford Rivers Conservancy	Kevin McEneaney	Owner, McEneaney Survey	17 Portland Ave	Dover, NH 03820
The Nature Conservancy	Mark Zankel	Director, Conservation Programs	22 Bridge St, 4th Floor	Concord, NH 03301
Municipal				
Alton	Justine Gengras	Conservation Commission	RR 1 Box 193-G	Alton, NH 03809
Brookfield	Richard Peckham	Conservation Commission Chair	16 Palmer Rd	Brookfield, NH 03872
Wakefield	Marsha Lavallee		212 Arbutus Ave	Wakefield, NH 03872
Wolfeboro	William A. Rae	Conservation Commission	PO Box 1435	Wolfeboro, NH 03894-1435
Brentwood	Lisa McNaughton	Conservation Commission Chair	1 Dalton Rd	Brentwood, NH 03833
Candia	Edward Fowler		302 Chester Rd	Candia, NH 03034
Chester	Chuck Myette	Conservation Commission	159 Fremont Rd	Chester, NH 03036
Danville	Laura Games	Conservation Commission Chair	50 Hillside Terrace	Danville, NH 03819
Deerfield	Joe Sears	Conservation Commission Chair	PO Box 230	Deerfield, NH 03037-0230
Derry	Paul Dionne	Conservation Commission	PO Box 557	Derry, NH 03038

East Kingston	Larry Smith	RPC Commissioner	91 Powwow River Rd	East Kingston, NH 03827
Epping	Scott Pim	Conservation Commission	201 Main St	Epping, NH 03042
Exeter	Donald Clement	Conservation Commission Chair	10 Front St	Exeter, NH 03833
Fremont	John Whitside	Conservation Commission Chair	234 North Rd	Fremont, NH 03044
Greenland	David McNeil	Conservation Commission Chair	PO Box 100	Greenland, NH 03840
Hampstead	Karen Hannades	Conservation Commission Chair	11 Main St	Hampstead, NH 03841
Hampton Falls	Tracy Healey -Beattie	Conservation Commission Chair	149 Drinkwater Rd	Hampton Falls, NH 03844
Hampton	Gregory Smart	Conservation Commission Chair	43 Mill Rd	Hampton, NH 03842
Kensington	Robert Garneau	Conservation Commission Chair	18 Osgood Rd	Kensington, NH 03833
Kingston	Brian Quinlan	Conservation Commission Chair	29 Colby Rd	Kingston, NH 03848
New Castle	Beth Hume	Conservation Commission Chair	49 Main St	New Castle, NH 03854-0367
Newfields	David Mason	Conservation Commission	53 Sanborn Dr	Newfields, NH 03856
Newington	Margaret Lamson	Conservation Commission Chair	40 Little Bay Rd	Newington, NH 03801
Newmarket	Clay Mitchell	Conservation Commission Chair	186 Main St	Newmarket, NH 03857
North Hampton	Henry Mixter	Conservation Commission Chair	PO Box 710, 233 Atlantic Ave	North Hampton, NH 03862
Northwood	Wini Young	Conservation Commission Chair	PO Box 494	Northwood, NH 03261
Nottingham	Samuel Demeritt		213 Old Turnpike Rd	Nottingham, NH 03290
Portsmouth	Alanson H. Sturgis Jr.	Conservation Commission Chair	1 Junkins Ave	Portsmouth, NH 03801
Raymond	Janis Kent	Conservation Commission Chair	4 Epping St	Raymond, NH 03077
Rye	Jim Raynes	Conservation Commission Chair	10 Central Rd	Rye, NH 03870
Sandown	Cheryl Cronin	Conservation Commission Chair	PO Box 1756	Sandown, NH 03873
Seabrook	Susan Foote	Conservation Commission Chair	226 South Main St	Seabrook, NH 03874
South Hampton	Adele Fiorillo	Conservation Commission Chair	3 Hilldale Ave	South Hampton, NH 03827
Stratham	Gordon Barker	Conservation Commission Chair	10 Bunker Hill Ave	Stratham, NH 03885
Barrington	John Wallace	Conservation Commission Chair	218 France Rd	Barrington, NH 03825
Dover	Tom Fargo	Conservation Commission Chair	14 Cobble Hill Dr	Dover, NH 03820
Durham	Lee Alexander	Conservation Commission Chair	32 Dover Rd	Durham, NH 03824
Farmington	Bradley Anderson	Conservation Commission Chair	262 Meaderboro Rd	Farmington, NH 03867
Lee	Dick Weyrick	Conservation Commission Chair	25 Old Concord Tpke	Lee, NH 03824
Madbury	John Nachilly		83 Hayes Rd	Madbury, NH 03820
Middleton	Kathryn Buzard	Conservation Commission Chair	62 Gary Rd RR1 Box 3096	Middleton, NH 03887
Milton	Betsey Baker	Conservation Commission Chair	PO Box 310, Town Office	Milton, NH 03851
New Durham	Paul Zuzgo		425 Ridge Rd	New Durham, NH 03855
Rochester	George Bailey	Conservation Commission Chair	9 Riverlawn Ave	Rochester, NH 03868
Rollinsford	Ralph Phipps		589 Silver St PO Box 427	Rollinsford, NH 03869
Somersworth	Frank Richardson	Conservation Commission	11 Mount Vernon St	Somersworth, NH 03878
Strafford	Liz Evans		PO Box 13	Strafford, NH 03884

Table 2. List of parcels mapped during the project

Tract ID	Tract Name	Primary Protection Type	Primary Protecting Agency	Tract Size (Acres)
114-006-004	Middleton Town Forest	FO	Town of Middleton	9.2
114-006-005	Middleton Town Forest	FO	Town of Middleton	13.0
114-006-006	Middleton Town Forest	FO	Town of Middleton	9.2
114-006-007	Middleton Town Forest	FO	Town of Middleton	14.5
114-006-008	Middleton Town Forest	FO	Town of Middleton	13.0
114-006-009	Middleton Town Forest	FO	Town of Middleton	8.1
114-006-010	Middleton Town Forest	FO	Town of Middleton	8.6
114-006-011	Middleton Town Forest	FO	Town of Middleton	5.1
114-013-001	Nature Conservancy	CE	The Nature Conservancy	17.7
114-014-001	White	FO	The Nature Conservancy	14.5
127-016-001	Town Forest	FO	Town of Middleton	15.4
139-014-009	Blue Hills Foundation Lands	FO	Blue Hills Foundation	101.7
139-014-010	Blue Hills Foundation Lands	FO	Blue Hills Foundation	121.5
139-014-011	Blue Hills Foundation Lands	FO	Blue Hills Foundation	64.3
139-014-012	Blue Hills Foundation Lands	FO	Blue Hills Foundation	23.0
139-014-013	Blue Hills Foundation Lands	FO	Blue Hills Foundation	248.4
139-014-014	Blue Hills Foundation Lands	FO	Blue Hills Foundation	5.8
139-014-015	Blue Hills Foundation Lands	FO	Blue Hills Foundation	15.4
139-014-016	Blue Hills Foundation Lands	FO	Blue Hills Foundation	22.0
139-014-017	Blue Hills Foundation Lands	FO	Blue Hills Foundation	8.6
139-014-018	Blue Hills Foundation Lands	FO	Blue Hills Foundation	4.8
139-014-019	Blue Hills Foundation Lands	FO	Blue Hills Foundation	84.9
139-014-020	Blue Hills Foundation Lands	FO	Blue Hills Foundation	227.4
139-014-021	Blue Hills Foundation Lands	FO	Blue Hills Foundation	836.0
139-014-022	Blue Hills Foundation Lands	FO	Blue Hills Foundation	60.7
139-014-023	Blue Hills Foundation Lands	FO	Blue Hills Foundation	46.5
139-014-024	Blue Hills Foundation Lands	FO	Blue Hills Foundation	27.9
139-014-025	Blue Hills Foundation Lands	FO	Blue Hills Foundation	18.7
139-014-026	Blue Hills Foundation Lands	FO	Blue Hills Foundation	30.1
139-014-027	Blue Hills Foundation Lands	FO	Blue Hills Foundation	14.0
154-027-001	Newhall Easement	CE	Town of Barrington	99.4
154-028-001	Kids of the River	FO	Town of Barrington	17.4
154-029-001	Whitney / Juniper Hill	CE	Town of Barrington	12.0
154-030-001	Swains Lake Village Water District	DR	Town of Barrington	67.8
155-058-001	Falls on the Isinglass	CE	Town of Barrington	1.6
155-059-001	Locke Falls	DR	Town of Barrington	0.4
155-060-001	Palmer	FO	The Nature Conservancy	23.2
156-021-001	Business Partners	FO	The Nature Conservancy	19.1
156-021-002	Hoitt	FO	The Nature Conservancy	7.4
166-005-001	Abe Emerson Marsh	FO	Audubon Society of NH	105.2
167-022-001	Fulcrum Conservation Area	FO	Town of Epping	28.0
167-023-001	Mary Blain Park	FO	Town of Epping	8.2
168-032-001	Fox Run Conservation Area	CE	Rockingham Land Trust	26.5
168-033-001	Piscassic River Conservation Area	CE	Rockingham Land Trust	16.3
168-034-001	Windy Brook	CE	Town of Brentwood	63.4
168-035-001	Condo Association	CE	Town of Brentwood	48.0

168-036-001	Stratham Tire - Labonte	SA	Town of Brentwood	5.3
168-036-002	Stratham Tire - Labonte	SA	Town of Brentwood	2.4
168-037-001	Epping Crossing Mitigation Area	CE	Town of Brentwood	73.0
168-037-002	Epping Crossing Mitigation Area	CE	Town of Brentwood	22.2
168-037-003	Epping Crossing Mitigation Area	CE	Town of Brentwood	5.5
168-037-004	Epping Crossing Mitigation Area	CE	Town of Brentwood	6.0
168-037-005	Epping Crossing Mitigation Area	CE	Town of Brentwood	11.2
168-038-001	NHDOT - Piscassic River	FO	NH Dept. of Transportation	13.0
168-039-001	NLI - East Coast Land	DR	Town of Epping	6.0
168-040-001	Barnes / Tilton Bridge	CE	Town of Epping	12.1
168-041-001	Rosemary Dumas Preserve	DR	Town of Epping	7.2
168-042-001	Tuck Easement	CE	Town of Fremont	7.6
168-042-002	Tuck Easement	CE	Town of Fremont	7.9
168-042-003	Tuck Easement	CE	Town of Fremont	2.7
168-043-001	Lamprey River Wildlife Preserve	FO	Rockingham Land Trust	28.0
169-098-007	Billeter	FO	The Nature Conservancy	14.4
169-098-008	Gonet	FO	The Nature Conservancy	27.4
169-098-009	Borner Easement	CE	The Nature Conservancy	24.0
169-098-010	Piecuch	FO	The Nature Conservancy	30.7
169-098-011	Newsy	FO	The Nature Conservancy	5.3
169-098-012	Newsy	FO	The Nature Conservancy	19.1
169-098-013	Rollins Easement	CE	The Nature Conservancy	82.8
169-098-014	Keefe	FO	The Nature Conservancy	14.4
169-098-015	Solomon	FO	The Nature Conservancy	106.5
169-098-016	Powers	FO	The Nature Conservancy	95.7
169-098-017	Sawtell	FO	The Nature Conservancy	25.2
169-105-001	Oliver Easement	CE	Rockingham Land Trust	20.8
169-106-001	Deertrees - 1	DR	Town of Newfields	5.6
169-107-001	Deertrees - 2	DR	Town of Newfields	8.0
169-108-001	Rivers Reach Open Space	FO	Town of Newfields	34.5
169-109-001	Moore Easement	CE	Town of Brentwood	14.5
169-109-002	Moore Easement	CE	Town of Brentwood	23.7
169-110-001	Harrington Conservation Easement	CE	Rockingham Land Trust	35.7
169-111-001	Hill Conservation Easement	CE	Rockingham Land Trust	16.9
169-112-001	Raynes Farm	FO	Town of Exeter	36.3
169-112-002	Raynes Fam	FO	Town of Exeter	11.7
169-112-003	Raynes Farm	FO	Town of Exeter	1.3
169-112-004	Raynes Farm	FO	Town of Exeter	9.6
169-113-001	Sewall #1	CE	The Nature Conservancy	21.9
169-113-002	Sewall #2	FO	The Nature Conservancy	44.3
169-113-003	Squillace Tract	FO	The Nature Conservancy	42.7
169-113-004	Benoit Tract	FO	The Nature Conservancy	62.2
169-114-001	Sprucewood Subdivision	CE	Town of Stratham	14.5
169-114-002	Sprucewood Subdivision	CE	Town of Stratham	2.5
169-114-003	Sprucewood Subdivision	CE	Town of Stratham	4.2
169-114-004	Sprucewood Subdivision	CE	Town of Stratham	7.7
169-114-005	Sprucewood Subdivision	CE	Town of Stratham	5.4
169-114-006	Sprucewood Subdivision	CE	Town of Stratham	8.8
169-114-007	Sprucewood Subdivision	CE	Town of Stratham	0.9
170-068-001	White Easement	CE	Rockingham Land Trust	19.8

170-069-001	Morgan Ryan	FO	Town of Greenland	49.8
170-070-001	Beahe Farm	CE	Town of Newington	4.2
170-071-001	Murray Easement	CE	Town of Newington	0.6
170-072-001	White House Farm Subdivision	FO	Town of Rye	89.9
170-073-001	Trefethorn	FO	Town of Rye	17.2
170-074-001	Varrel Woods	FO	Town of Rye	25.0
170-075-001	Goodwin	FO	Town of Rye	4.0
170-076-001	Beane	FO	The Nature Conservancy	15.9
170-076-002	Mazeau	FO	The Nature Conservancy	33.3
171-029-001	Wallis Salt Marsh	FO	Town of Rye	13.2
171-032-001	Wallis Marsh	FO	Town of Rye	5.5
183-067-001	Cornerstone Estates of Sandown	CE	Town of Sandown	17.7
183-068-001	Mugar-Eveillard Conservation Easement	CE	Rockingham Land Trust	1.7
183-068-002	Mugar-Eveillard Conservation Easement	CE	Rockingham Land Trust	4.4
183-068-003	Mugar-Eveillard Conservation Easement	CE	Rockingham Land Trust	0.5
183-068-004	Mugar-Eveillard Conservation Easement	CE	Rockingham Land Trust	0.0
183-069-001	Preston Drive Common Land	SA	Town of Sandown	2.3
183-070-001	Miller Recreation Field	FO	Town of Sandown	13.5
183-071-001	Off Beechwood Road	FO	Town of Sandown	3.5
183-072-001	Seeley Park	FO	Town of Sandown	2.3
183-073-001	Hawkewood Road	FO	Town of Sandown	6.9
183-074-001	608 Main Street	FO	Town of Sandown	7.7
183-075-001	Behind Morrison Lane	FO	Town of Sandown	7.8
183-076-001	359 Main Street	FO	Town of Sandown	2.1
183-077-001	367 Main Street	FO	Town of Sandown	3.6
183-078-001	551 Main Street	FO	Town of Sandown	8.6
183-079-001	13 William Street	FO	Town of Sandown	4.5
183-080-001	Behind 49 Hampstead Road	FO	Town of Sandown	4.4
183-081-001	Behind 74 Hampstead Road	FO	Town of Sandown	4.2
183-082-001	Sawyer Access Lot	FO	Town of Sandown	0.9
183-083-001	Stoneford Parcel	SA	Town of Sandown	120.1
184-078-001	Greer Easement	CE	Rockingham Land Trust	49.7
184-087-001	Vadas Easement	CE	Rockingham Land Trust	17.5
184-088-001	Brown Easement	CE	Rockingham Land Trust	43.7
184-089-001	Deerhill Farm Mitigation Area	CE	Town of Brentwood	4.6
184-090-001	Swasey 2	CE	Rockingham Land Trust	27.0
184-091-001	Stevens - Old Haigh Road	CE	Rockingham County Conservation District	36.7
184-091-002	Stevens - South Road	CE	Rockingham County Conservation District	34.6
184-092-001	Robinson / Gove	CE	Rockingham Land Trust	3.6
184-093-001	Robinson Easement	CE	Rockingham Land Trust	72.9
184-094-001	Dudley Brook Open Space	SA	Town of Brentwood	11.7
184-095-001	Mink Run	SA	Town of Brentwood	58.5
184-096-001	Mills Falls Open Space	SA	Town of Brentwood	41.7
184-097-001	Demeritt	FO	Town of Brentwood	48.3
184-098-001	Peabody Drive River Access	FO	Town of Brentwood	5.8
184-099-001	Dow Easement	CE	Town of Brentwood	63.4
184-100-001	Martin	FO	Town of Brentwood	39.8
184-101-001	Brook Crossing Open Space	SA	Town of Brentwood	7.2
184-101-002	Brook Crossing Open Space	SA	Town of Brentwood	3.9
184-102-001	Nekton Easement	CE	Town of Brentwood	37.1

184-103-001	Hull Easement	CE	Town of Brentwood	7.2
184-104-001	Crestwood Estates	FO	Town of Danville	7.8
184-105-001	Rockrimmon Estates	FO	Town of Danville	13.3
184-106-001	Parsonage Land	FO	Town of Danville	3.4
184-107-001	Ed Smith	FO	Town of East Kingston	43.6
184-108-001	Bolduc Easement	CE	Town of Fremont	2.6
184-109-001	Noyes Easement	CE	Town of Kingston	36.7
184-110-001	Sargent Estate	CE	The Nature Conservancy	118.5
184-111-001	Russman	FO	The Nature Conservancy	1.8
185-065-001	Asset Title	CE	Rockingham Land Trust	67.4
185-066-001	Prescott / Kaczmarek / Heinlein	CE	Rockingham Land Trust	39.6
185-066-002	Poisson / Crowell	CE	Rockingham Land Trust	3.4
185-067-001	Saltonstall Easement	CE	Rockingham Land Trust	90.6
185-068-001	Tuthill Easement	CE	Rockingham Land Trust	46.9
185-069-001	Beatrice Rollins Trust	FO	Town of Stratham	7.2
185-070-001	Langden Place	SA	Town of Exeter	15.3
185-071-001	Pine Meadow	SA	Town of Exeter	17.0
185-072-001	PEA Land	FO	Philips Exeter Academy	135.7
185-073-001	Folsom Area Open Space	SA	Town of Exeter	2.7
185-073-002	Folsom Area Open Space	SA	Town of Exeter	3.2
185-074-001	Waleryszak Easement	CE	Town of Exeter	5.3
185-075-001	Starry Brook	FO	Town of Exeter	3.1
185-076-001	Exeter Hospital Land	CE	Town of Exeter	1.5
185-076-002	Exeter Hospital Land	CE	Town of Exeter	2.0
185-077-001	Windemere Land	FO	Town of Exeter	8.4
185-078-001	Vaughn-Cusick	CE	Town of Exeter	1.9
185-079-001	Swasey Parkway	FO	Town of Exeter	11.6
185-080-001	Parker Lot	FO	Town of Hampton Falls	18.4
185-081-001	Hamel Lot	DR	Town of Hampton Falls	2.3
185-082-001	Jamcor Lot	FO	Town of Hampton Falls	3.3
185-083-001	Set Aside Land	SA	Town of Hampton Falls	8.0
185-084-001	Merchant Parcel	FO	Town of Hampton Falls	7.8
185-085-001	John Foss's Field	DR	Town of Hampton Falls	6.2
185-086-001	Stonemark / Gove Hill	CE	Town of Kensington	64.0
185-087-001	Seabrook Town Forest	FO	Town of Seabrook	12.4
185-088-001	PEA Kensington	FO	Philips Exeter Academy	257.2
185-089-001	KLC	FO	Kensington Learning Center Trust	177.7
185-090-001	Town Forest	FO	Town of Seabrook	10.0
185-091-001	House Realty Trust	CE	Town of Seabrook	4.3
185-092-001	Sam's Conservation Easement	CE	Town of Seabrook	6.4
185-092-002	Sam's Conservation Easement	CE	Town of Seabrook	10.0
185-093-001	Town Forest	FO	Town of Seabrook	8.4
185-094-001	Town Forest	FO	Town of Seabrook	4.4
185-095-001	Leighton Land	FO	Town of Exeter	17.8
185-096-001	FGS Land	FO	Town of Exeter	11.4
185-097-001	Little River Conservation Area	FO	Town of Exeter	203.4
185-098-001	Hauser	FO	Town of Exeter	23.4
185-098-002	Hauser	FO	Town of Exeter	9.0
185-099-001	Goodrich Easement	CE	Town of Stratham	40.5
185-099-002	Goodrich Easement	CE	Town of Stratham	8.2

185-100-001	Coop. Middle School Conservation Easement	CE	Town of Stratham	12.9
185-101-001	The Vineyards	CE	Town of Stratham	20.2
185-102-001	Rollins	FO	Town of Stratham	37.1
186-067-001	Wollmar Easement	CE	Rockingham Land Trust	28.6
186-068-001	Governor Weare Park	FO	Town of Hampton Falls	17.0
186-069-001	Chase Lot	CE	Town of Hampton Falls	14.8
186-069-002	Chase Lot	CE	Town of Hampton Falls	15.2
186-069-003	Chase Lot	CE	Town of Hampton Falls	3.3
186-070-001	Knowles Field	FO	Town of North Hampton	5.0
186-071-001	Eaton Parcel	FO	Town of North Hampton	67.0
186-072-001	Fitzgerald Parcel	FO	Town of North Hampton	9.2
186-073-001	Luck Parcel	FO	Town of North Hampton	11.0
186-074-001	Fuller Easement	CE	Town of North Hampton	3.7
186-075-001	Drop Anchor - Wollmar	FO	Town of North Hampton	1.7
186-075-002	Drop Anchor - Wollmar	FO	Town of North Hampton	0.9
186-076-001	Lamprey Easement	CE	Town of North Hampton	22.2
186-077-001	Lamprey Woods Road	CE	Town of North Hampton	0.5
186-078-001	Chase Farm	CE	Town of North Hampton	22.0
186-079-001	Wolfson Easement	CE	Town of North Hampton	3.9
186-080-001	Fogg Easement	CE	Town of North Hampton	14.2
186-081-001	Runnymede Easement	CE	Town of North Hampton	3.0
186-082-001	Sawyers Beach	FO	Town of Rye	4.6
186-083-001	Backland Central Road	FO	Town of Rye	7.8
186-084-001	Conservation for Water Department	FO	Town of Rye	33.1
186-085-001	Backland West & South Road	FO	Town of Rye	8.5
186-086-001	Eldridge	FO	Town of Rye	4.9
186-087-001	Independence Farm	CE	Town of Rye	59.6
186-088-001	Noel	CE	Town of Seabrook	2.5
186-089-001	Seabrook Community Center	FO	Town of Seabrook	11.9
186-090-001	Cain's Mill Pond Park	FO	Town of Seabrook	2.5
186-091-001	Dove Marsh	FO	Town of Seabrook	0.7
186-092-001	Cross Beach Marsh Land	FO	Town of Seabrook	9.2
186-093-001	Wright Salt Marsh	FO	Town of Seabrook	2.8
186-094-001	Seabrook Dunes and Beach	FO	Town of Seabrook	49.3
202-002-001	OI Adam's Camp Land and Forest	FO	Town of Seabrook	22.0
202-002-002	OI Adam's Camp Land and Forest	FO	Town of Seabrook	8.6
202-003-001	Salt Marsh	FO	Town of Seabrook	8.3
202-004-001	Salt Marsh	FO	Town of Seabrook	5.2
202-005-001	Salt Marsh	FO	Town of Seabrook	3.5

TOTAL ACRES	6996.6
--------------------	---------------

Key to Primary Protection Types:

- CE Conservation Easement
- DR Deed Restriction
- FO Fee Ownership
- SA "Set Aside" Open Space Areas of Development





(Note: This table reports final figures for tracts added to the database. An interim status report inadvertently included some tracts in the coastal basin that are in close proximity to the project area but not within the targeted communities.)

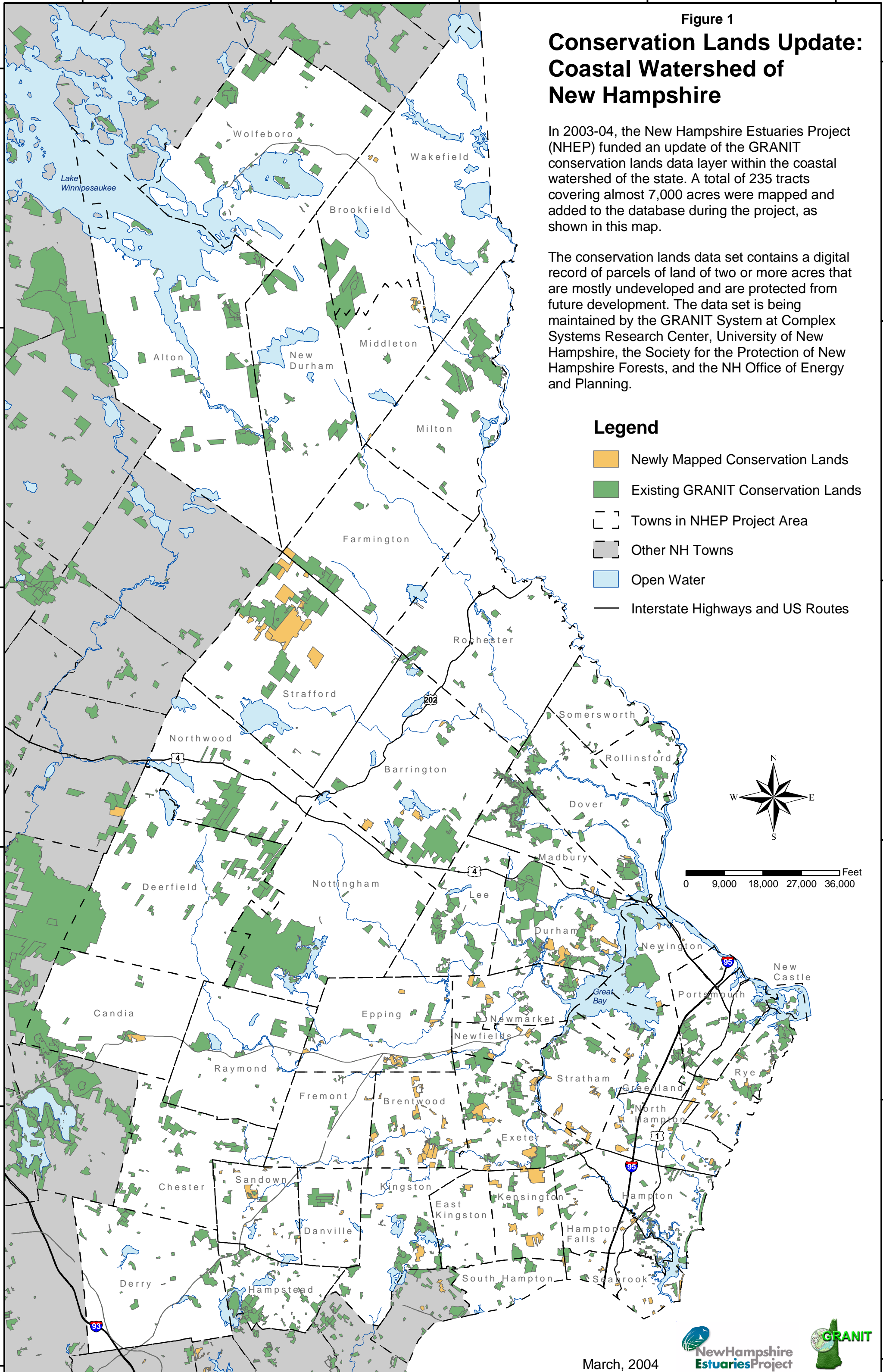
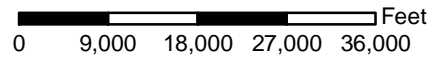
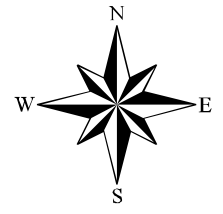
Figure 1 Conservation Lands Update: Coastal Watershed of New Hampshire

In 2003-04, the New Hampshire Estuaries Project (NHEP) funded an update of the GRANIT conservation lands data layer within the coastal watershed of the state. A total of 235 tracts covering almost 7,000 acres were mapped and added to the database during the project, as shown in this map.

The conservation lands data set contains a digital record of parcels of land of two or more acres that are mostly undeveloped and are protected from future development. The data set is being maintained by the GRANIT System at Complex Systems Research Center, University of New Hampshire, the Society for the Protection of New Hampshire Forests, and the NH Office of Energy and Planning.

Legend

-  Newly Mapped Conservation Lands
-  Existing GRANIT Conservation Lands
-  Towns in NHEP Project Area
-  Other NH Towns
-  Open Water
-  Interstate Highways and US Routes



March, 2004

